

## Guest Slot

'MELLOW MOOD' time' perhaps, as you read this; turkey already into left-overs; desserts piling; wrappings and trash all BFI'd; sizings and returns sorted and figured out; noisy-toy batteries dead or dying; and now maybe time to bask a bit in the glow of a mid-week holiday. And thinking maybe that even with all its commercialism, Christmas is still very special. A time of sharing: the drum stick, the pecan pie, the new neck tie, the little bottle of perfume, the toys (stuffed, mechanized, anatomized, educational, destructive, boring and exciting) and the 1,001 little keep-sake treasures, any one of which we felt Aunt Martha couldn't live without.

A time of sharing: the time when those without are remembered by those with; a time of thankfulness that we have, a job, a warm, non-flooded home, loved ones, friends.

But sharing, for sure. Because Christmas commemorates God's sharing of Himself, and as long as we keep that in mind, we're not all bad.

\*\*\*

AS GOOD a time as any for our regular apology for our, alas, also equally-regular goofs: mis-spelled names, words, unintelligible English, slips, mis-cues and just plain dumbness. We have perfect proof reading ability "once it's in print." The unintentional lapses of logic are embarrassing to all, and you hesitate to single any one, but for example everybody knows that Lisa Germany's last name doesn't have a "d" in it. We apologize.

\*\*\*

SIMPLY BECAUSE we've been asked: drag is not the past tense of drag. Say dragged; so says the Word Watcher's Handbook.

\*\*\*

AMONG THE many "offerings" that cross our desk daily, along with the hot news releases that just happen to plug some product in the bottom paragraph, and pep pills available to renew one's youth, is a new one offering a free subscription to Print and Voice, a new publication that will detail the marriage between newspapers and the telephone. In other words, it's promoting the sponsorship by newspapers of 900 (for fee) telephone services -- and as you know, there are hundreds of these services available: weather, sports, stock market, etc., and apparently most prevalent of all, the listing of personal notices, through which folks apparently get acquainted with each other. Don't think we want to get involved.

\*\*\*

LIGHTS BY night, and by day, the beautiful green, green grass of the Courthouse Square. Don't miss either at this holiday time.

\*\*\*

SPECIAL TIPS of the hats, thanks and appreciation to those who go above and beyond the call of duty in serving others; including Volunteer and Paid Firemen, Police, Sheriff's Dept., D.P.S., Dispatch, Hospital Staff and all others who stand ready when need arises. Thank you!

\*\*\*

NOW, HERE'S a super holiday bonus to YOU from your LOCAL hometown newspaper:

1-800-829-1040.

THAT'S THE toll-free number to call to see if the IRS has a check waiting for you. "Almost three-quarters of a million dollars in undeliverable refunds is waiting for 1,728 North Texas taxpayers. Undeliverable: illegible handwriting, incorrect address, whatever. Largest check: \$45,768. Smallest, \$1.00. Average: \$431.75. If you believe that you were due a refund and still haven't received it, better call.

HAPPY HOLIDAYS for EVER MORE!

\*\*\*

## Ranger 4-H Report

By: Libby Koenig, Reporter

The Ranger 4-H club met Thursday, December 19th at the fire station. We had our regular club meeting and also our Christmas party. Some 4-

Hers went to the nursing home and sang carols. Our next meeting will be the fourth Thursday in January.



# Ranger Times

© 1991 Eastland County Newspapers Inc.

McCleskey No. 1 - October 1917

Ora. B. Jones No. 3 - November 1985

50¢

Volume 87 Number 103

"City Of Flowing Gold" Thursday, December 26, 1991

## 'WORST-EVER' LEON FLOOD RAVAGES PROPERTY, HOLIDAY



Above-average — but non-record — continuous rains flooded field and stream, sent the Leon River and Lake Leon on a rampage, doing extensive pre holiday damage in the process.

Many homes as many as 100, some estimate in the Lake Leon area were flooded and Volunteer Firemen brought residents out in boats in many locations.

The Staff Road area on the South Side of the lake was hardest hit, and that FM 2214 was temporarily closed, routing traffic around the east side of the lake, over the dam.

The over-filled lake challenged the morning glory capacity to remove excess to the downside of the dam, and that area was a swirling mass of water, hurling South in the Leon.

A great deal of retaining wall damage was evident below the dam where the torrents of water washed away soil, rock and barriers.

Total rain in the five-day pour was only 5.39 inches, Official Weather Observer Ron Bailey reports, but it was general, all over the area, he added.

The Lake Leon watershed is roughly 200,000 acres which is about a

third of the total county acreage of some 600,000 and the rains apparently soaked every inch, and there wasn't anywhere for it to go but south on the Leon.

It came like this: .03 of an inch Wednesday; 1.19 Thursday; 2.63 Friday; .92 Saturday; and .62 Sunday; for the 5.39 inch total, which compared to the total June rainfall of 8.72 this year. Bailey's measurements are made at 7 a.m. daily.

Chief Phillip Arther said Eastland Volunteer Firemen began watching the situation Friday afternoon. Both forks of the Leon River running high.

By daylight Saturday a number of people — mostly in the Staff area — couldn't get in or out.

The Volunteer Firemen's Command Post was set up at La Mancha. It was cold, misty, foggy, rainy all day — Firemen and other personnel worked until 8 p.m. Saturday. Around 20 people were evacuated, with an estimated 50-75 homes in or near high water. Some people decided to stay in homes and sandbag or bail out water.

Working: State Game Warden Kenneth Payne, Eastland Volunteer Fire Dept., Sheriff's Dept.,

Texas D.P.S., and Gary Crew, Lake Warden. About 10-12 Volunteer Firemen helped. On Sunday Volunteer Firemen went back to pick up debris, ferry sinking boats, etc.

The people brought from their homes either stayed with friends or went to local Motels. Arrangements had been made to house people at the Camp Inspiration Church of God, but this did not have to be used.

Saturday the Lake was gauged at 13.819 ft. "I've never seen it higher," Phillip Arther says. "I consider this flooding a major disaster."

Phillip Arther is Head of the Eastland Volunteer Fire Department. His Department, State Game Warden Kenneth Payne and other Law Enforcement officers coordinated efforts. They undoubtedly saved some lives out there.

Arther does not know the names of all the people brought out. He says they "scattered so fast" in the cold that names were not always given.

### A REPORTER'S NOTES

Working in the Rescue Operation: Game Warden Kenneth Payne, County Commissioner Calvin

Ainsworth, Eastland Volunteer Firemen, Eastland County Sheriff's Dept., Texas Dept. of Public Safety.

Both recreational and permanent homes affected.

The Leon River Forks, Colony Creek brought in plenty of high water. In places the total was up to 6-7 inches.

Some 10 or 12 boats operated out of the La Mancha area on the north to pick up people.

Eastland Ambulance stood by much of the time. Sometimes people were carried on the backs of volunteers.

The rescue operation went on all day Saturday, Dec. 21.

The only main places still flooded Monday are Pollywag Slough and two Islands in the Lake.

Two homes are still flooded (Monday) but the road is passable and people are back in the Staff community.

In speaking of the flood: "The morning glory" was not big enough to carry the excess water away," said County Commissioner Calvin Ainsworth. "This is a real disaster for the people at the Lake."

Ainsworth seems to have been out at the Lake all Saturday.

## READ THE CLASSIFIEDS

### RANGER TIMES

RANGER TIMES and Weekly Chronicle  
Publication No. (USPS 455-400)  
647-1101 P.O. Box Ranger, Texas 76470  
©1991 Eastland County Newspaper Co.

POSTMASTER: Send address changes to Ranger Times P. O. Box 118, Ranger, Texas 76470.

Second Class Postage paid at Ranger, Texas, under Act of Congress in March, 1870. Published every Thursday and Sunday.

### SUBSCRIPTION RATES:

In Eastland County \$18.00; Adjoining Counties \$23.00; In Texas \$25.00; Out of Texas \$35.00. No Out of U.S. Without APO.

Publishers Mr. and Mrs. H. V. O'Brien  
Editor - Cisco Joan Elliott  
Editor - Eastland H. V. O'Brien  
Editor - Ranger Carlotta Wilson  
Editor - Rising Star Carolyn Ratliff  
Editor - Baird Debbie Smedley  
Office Staff Margaret Hallmark  
Office Staff Sheila McCoy  
Computer Operator Ladonna Clement  
Advertising Representative Tim Hull  
Production Supervisor Ted Rogers  
Production Raymond McCoy  
Production John McCoy  
Feature Writer Viola Payne  
Commercial Printing Hale Dunson

## Busy Monday At Commissioners Court

Eastland County Commissioners had a busy session Monday. A number of items were discussed, with some approved.

County Judge Scott Bailey displayed three Certificates of Appreciation given to area people who had contributed much to the community.

Arlin Bint of Cisco was recognized for ten years of service to the Eastland County Appraisal Board. Mr. Bint, educator and rancher, became a Charter member of the Board when it was set up in 1981. Mr. Bint resigned his post this year.

L. E. ("Compound") Clark of Desdemona was recognized for 50 years as Election Judge and Precinct Chairman of the Democratic Party in Eastland County. L. E. Clark, rancher, is resigning from this office.

Another Certificate of Appreciation was signed for Rose Webb, artist, homemaker and musician of Strawn. She was especially for her winning quilt block placed in the Wal Mart "America the Beautiful" National Quilt.

Before they began on the agenda the Commissioners had comments on the recent rains and flooding, each one saying that roads in his Precinct were washed and muddy. Some remained closed.

Pct. 1 Commissioner Richard Robinson said he felt that the Emergency Management people should be contacted about this disaster. He said that more than 30 homes were flooded around Lake Leon, with water nine feet deep in some houses.

Pct. 2 Commissioner Calvin Ainsworth gave a report on the situation at Lake Leon. He said the water was receding, with FMM 2214 now possible. He knew of two homes that were still under water. A number of people were rescued from the Staff area on Saturday.

On another matter, Texas Extension Service District Supervisor Ron Wooley introduced Michael David (Davy) Vestal, County Extension Agent of Baylor County.

He recommended Vestal be hired to fill the position of County Agent (Agriculture) left vacant by the resignation of David Tunmire November 25. Vestal brought his res-

ume, and appeared to be very qualified for the job. He grew up in Baird and attended schools there. (His father is a retired Vocational Agricultural teacher, well-known for his work in the Baird School.)

David Vestal's College work includes Cisco Junior College, Tarleton State University and a Master's Degree from Texas Tech University.

The Commissioners appeared to favor the hiring of Vestal. This item will go on the agenda of a special meeting to be held Monday, Dec. 30, 10 a.m. A decision will be made at that time.

During Monday's meeting the Commissioners approved a payment of \$4,189 to the Ranger Fire Department on the 1990 Contract, to operate Emergency Services. Shawn Wells brought the request, saying that a mistake had been made in not claiming the money earlier.

Wells told the Commissioners that in neither the old or new Emergency Services Contracts does the County require the Emergency Services unit to submit bills - he said this was a courtesy and a sound business practice - not a requirement in the contract.

The vote was 3 for, 1 against a motion to amend the budget, declare an Emergency Expenditure, and take the \$4,189 from the General Fund for the Ranger Ambulance Services, stationed at the Fire Department.

Also approved was a Resolution concerning the Texas Department of Criminal Justice Community Corrections. This is apparently a state project to encourage counties to adopt ways of keeping more prisoners in their own localities.

Richard Robinson said he had some reservations about the new plan - before taking Grant Money he would like to know more about what was required of the County.

On local jail matters, Pct. 4 Commissioner Reggie Pittman reported that 21 prisoners were in the county jail. Three were for TDC, 11 waiting trial, 2 doing County Jail time, 1 in on a Bench Warrant, and 4 on "Blue" or state warrants.

## Mrs. Joe Scott Gives Program

New Era Club met Thursday, December 19th at 3 p.m. in the home of Mrs. Rankin Britt. Her home was beautifully decorated throughout with the Christmas Theme.

After a short time of visitation, Mrs. Black called the meeting to order. She asked for reading of the minutes of previous meeting - Mrs. Hunt read minutes and they were approved as read.

Treasurer Reporter was given by Mrs. Oliver. Mrs. Townsend read several Thank you notes.

The Club collect was read by everyone. Mrs. Black introduced Mrs. Joe Scott who have

an interesting program by showing slides and telling about her daughter, Caprice's "Wedding in Romania." It was a very festive occasion. The slides showed how they prepared food for the wedding, Caprice and her husband were married twice that day - a State and Christian.

Delicious refreshments were served from a table cloth and seasons decorations.

Those present were: Mmes H.C. Lange, J.R. Hunt, Cecil Townsend, George Falls, James Upshaw, Edgar Black, H.H. Oliver, Joe Scott and Rankin Britt.

The regular monthly Board of Directors Meeting of the Ranger Chamber of Commerce will be held Monday, December 30th at 12:00 at Lillies Coffee Pot.

**RANGER GARDEN CLUB**  
In spite of all the rain, which did lessen the Ranger Garden Club did get to go, look, see, decide, who got what in the decorating of homes. Some how we all thought that the city limits be extended at least a few miles farther out. So many of our business people do have homes beyond the city limits that are as much Ranger as Main Street. Mother Nature was kind to us and held back some of her rain and permitted to do the judging. Ranger should be proud of itself, when so many turned Santa on the house top, and the manger scenes proclaimed the Christmas Season.

**FIRST THREE PLACES:**  
• **First Place:** Sarah Neal, Blundel  
• **Second Place:** Barbara Wheat, 203 Summit  
• **Third Place:** Kenneth Colgrove, Eastland Hwy

**HONORABLE MENTION:**  
• D.B. Allsup - W. Main  
• John Wilson - 711 Paige  
• David Pickrell - 915 Cypress  
• Stephen Lang - 700 Walnut  
• Goswick - T.P. Camp Rd.  
• Ward - T.P. Camp Rd.  
• Jerry Greer - Winset Spring Rd.  
• Dirk Zollinger - Oakcrest Drive  
• Gary Harton - Breckenridge Hwy.  
• Jack Williams - Young St.  
• Arthur Comancho - 715 S. Rusk

To each and all of you, Many Thanks and Best Wishes for a Merry Christmas and a Prosperous New Year.  
R.G.C.

### Special Legislative Session To Consider Redistricting

The holidays have brought on a lull in the confusion surrounding the redistricting of the State.

On the contrary, this week the supreme Court threw out a settlement advocated by Dan Morales, saying that he overstepped his authority.

The matter must go back to Legislators, and Governor Ann Richards Thursday called for a Special Session of the State Legislatures to convene Jan. 22.

If State lawmakers approve the plan, the redrawing of lines will be set in motion.

Affected are State House Districts, U.S. Congressional Districts, State Senate District 22, and State Board of Education Districts.

Most noticeable for Eastland County will be the 65th State Rep. District, Bob Turner representing, and the 17th U.S. Congressional District, Charles Stenholm representing.

Legislators have suggested that the filing date for offices may have to be moved up from Jan. 2 to Jan. 10. It is not specified whether this would apply only to state and national offices involved in the redistricting, or would also include county offices not affected by the changes.

The latest court battles over redrawing districts was brought about when certain minority groups, and in some cases Republicans, objected to lines drawn by the predominantly Democratic State Legislature.

## OpEd By: Congressman Charles Stenholm FACING THE FEDERAL DEFICIT

One of the most frustrating realities for both the citizens of this great Country and their representatives in Congress is dealing with the size of our federal government. Without trying to determine which way to point the blaming finger — towards the citizens who demand more services and support, the legislators who make unrealistic promises, or the bureaucrats who enlarge their territory and lose touch with the imposition government makes on private citizens — the fact is that our government has reached proportions which few find manageable or even understandable.

Nowhere is that reality more true than in the area of the federal budget, debt and deficit.

Which one of us can really grasp the enormity of a \$1 trillion budget? How important is a \$350 billion annual deficit? How do we comprehend an accumulated debt which will pass the \$4 trillion mark by September 1992?

It's hard to imagine what 4 trillion of anything is. Did you know that with \$4 trillion, we could paper all of Abilene corner-to-corner with \$100 bills and still have \$1 trillion to hand out to every man, woman and child in the city — \$10.8 million per person!

It would take the U.S. Bureau of Printing and Engraving and the U.S. Mint, working together at their present pace, more than 1200 years to print and coin \$4 trillion.

If four million workers each worked at the average industrial wage from age 18 to nearly 80, they would have to pool their total life savings to come up with \$4 trillion.

The enormity of the numbers is mind-boggling and yet we must find a way to deal with those numbers. Why? Because the numbers do not represent money the govern-

ment has collected and then spent. That \$4 trillion is the build-up of spending beyond our national means.

Our federal spending habits are analogous to what happens in a household where credit card use and loan accumulation outpace income. The family which repeatedly decides to "Buy Now, Pay Later" soon finds itself on a treadmill which leads nowhere. Rapidly their interest payments reach a proportion where all the family can do is pay for the interest, never actually reducing the principle. It goes without saying that at this point in the family's economic life, the prospect of buying a new car or another TV or taking a vacation is seen as simply preposterous. Heaven help them if some emergency — long term illness, destruction of their home, or other major crisis — strikes at that point. There is no where to turn.

Unfortunately, this is exactly the place we find ourselves today as a national family. For the first time this year, the gross interest payments on the public debt of the United States will become the costliest single item in the federal budget. This means that as a Nation we are spending more on interest payments than we are on education or farm programs of senior citizens centers or any other single federal program. Predictions are that by next October the expenses for servicing the National debt will account for 21 percent of the entire fiscal year 1992 budget, or 57 cents out of every personal income tax dollar.

Making the problem even worse is the fact that America did not invest enough of the debt-increasing funds that we borrowed in the 1980's. Far more of the spending went for immediate gratification of wants than for solid investments in the future. Spending which has a return for the dollar — such as investment tax credits, infrastructure

### Stenholm Encourages Use of Congressional Budget Tracking System

In an effort to encourage fiscal responsibility, Congressman Charles Stenholm has endorsed a Congressional Budget Tracking System that will enable Members of the House of Representatives to determine the net impact of their cosponsored bills on the federal deficit.

With number one indicating the highest spending Member, Stenholm ranked 422 out of 435 Members in cosponsored spending. The net spending effect of legislation cosponsored by Stenholm would be \$2.65 billion.

"The Congressional budget tracking system brings accountability to the system," said Stenholm. "Hopefully, it will encourage Members to weigh the benefits of a bill against its cost before signing on as cosponsor, instead of cosponsoring every good idea they hear about without considering the overall budget picture."

Stenholm was second only to Representative Mel Hancock (R-MO) in cosponsoring spending cuts. Stenholm's cosponsored legislation would cut \$4.67 billion in spending. The legislation includes: H.R. 1755, repeal of the Davis-Bacon Act, an antiquated labor law which inflates federal construction costs; H.R. 2643, Spending Priority Reform Act of 1991 which would eliminate several wasteful spending projects; and H.R. 2336, In-

**CHILD ABUSE**  
**24 HOUR HOTLINE**  
**1-800-252-5400**

**READ THE COUNTY CLASSIFIEDS**

State Farm Insurance

**State Farm Sells Life Insurance.**

Jim Wortman  
214 S. Seaman  
Eastland  
629-1096

STATE FARM INSURANCE COMPANIES  
Home Office: Bloomington, Illinois

**READ THE COUNTY CLASSIFIEDS**

**CLASSIFIED**

IT'S A SURE SHOT!

### THOUSANDS READ THE RANGER TIMES ALL WEEK LONG!

**Seasons Greetings!**

IN HOW MANY LANGUAGES CAN YOU SAY "MERRY CHRISTMAS"?

A. Danish	Sabatari vesicle
B. Finnish	Boas Festas
C. French	Feliz Navidad
D. German	Guð Jul
E. Hawaiian	Buone Feste Natalizie
F. Dutch	Houska Joulua
G. Hungarian	Nadolig Llawen
H. Irish	Boce Narodzenie
I. Italian	Nodlaig mhaith chugnat
J. Swedish	Mele Kalikimaha
K. Polish	Fröhliche Weihnachten
L. Portuguese	Gledelig Jul
M. Romanian	Joyeux Noël
N. Spanish	Vrolyk Kerstfest
O. Welsh	Kellemes Karacsonyi unnepeket

**A LITTLE EARLY?**

Maybe... But now is a good time to think of a gift subscription of The Times to a friend or loved one away.

It will say "Merry Christmas" From you 104 times a year.

And here's a gift for your thoughtfulness: \$2 Off with each local new subscription and \$1.00 Off for each in state subscription you order from now until Christmas.

**MAKE IT A YEARLONG GREETING WITH WELCOME NEWS FROM HOME**

*We'll Announce Your Gift With A Card*

**CALL TODAY!**

Callahan Star 854-1008	Cisco Press 442-2244
------------------------	----------------------

Answers to the "Merry Christmas" quiz:

Eastland Telegram 629-1707

Ranger Times 647-1101	Rising Star 643-4141
-----------------------	----------------------

### READ THE CLASSIFIEDS

**To Help You Make The Ranger Times Classifieds Ads Work Harder For You:**

**AD WRITING TIPS**  
"The More You Tell - The More You Sell"

Include answers to as many of the points noted in each type of ad shown below for maximum response to your reader ad. A national survey by the CLASSIFIED ADVERTISING MANAGERS' ASSOCIATION has shown these are the features that people want to know when answering an ad. They are listed in order of importance.

<b>AUTOS FOR SALE</b> Make Year Model Body Style Motor (V-8? Horsepower?) Transmission Power Equipment Finish Mileage Previous Use (One Owner?) Mechanical Condition Accessories Tires, Battery Interior Price, Terms, Down Payment	<b>RENTALS</b> Location Number Of Rooms Closets Bath, Shower Garage Heating Air Conditioning Furnishings Utilities Furnished Elevator Neighborhood Convenience To Schools, Stores And Transportation Children Accepted Pets Allowed Privileges - Phone, Kitchen Laundry, Television, Etc. When Available Price	<b>MERCHANDISE AND MISCELLANEOUS FOR SALE</b> Item Brand Name Size Age Color Condition Specifications Previous Usage Upholstery Finish Accessories & Attachments Hours To See Offering Price
<b>HELP WANTED</b> Kind Of Job Hours Security Benefits Facilities Vacation Privileges Advancement Opportunity Wages Experience Necessary Qualifications Location How To Apply	<b>REAL ESTATE</b> Location Construction (Frame? Brick?) Architecture, Landscaping Number Of Rooms, Description Number Of Bedrooms Condition, Age Possession Date Convenience To Stores, Schools and Transportation Lot Size, Zoning Garage Bathrooms Kitchen (Disposal?) Basement, Recreation Room City, Sewer, Utilities Heating Fireplace Plumbing Built Ins, Closets Features For Children Price, Terms, How Much Down?	<b>LIVESTOCK AND PETS</b> Kind Of Animal Breed Age Size Or Weight Color, Markings Registered Price
<b>FARM ITEMS</b> Item Make (Brand Name) Model Year Condition Overhauled Attachments Hours Of Previous Use Paint Price	<b>BUSINESS SERVICES</b> Kind Of Service Experience Special Equipment Trained Personnel Guarantee Follow-Up Service Hour Insured? Bonded? Price	

# Obituaries

## Rebecca Perkins

EASTLAND - Rebecca Smoot Perkins, 71, died Saturday, December 21, 1991 in a local hospital.

Services were held at 11 a.m. Monday, December 23, 1991 at First Baptist Church with Dr. Robert Jeffress officiating and Dr. Vaughn Baker assisting. Burial was in Eastland Cemetery, directed by Edwards Funeral Home.

Mrs. Perkins was born in Colorado City. She was a graduate of Baylor Uni-

versity and taught school in Midland. She was a member of Civic League and First Baptist Church, where she taught Sunday school for many years.

Survivors include her husband, Bob Perkins of Eastland; three daughters, Sally Arnold of Conroe, Mary Spradling of Waco and Emily Karlack of Plano; a sister, Margaret Pope of Houston; a brother, Joe Smoot of Big Spring; and eight grandchildren.

## James Harris Jr.

EASTLAND - James Harris Jr., 67, of Eastland died Sunday, December 22, 1991 at his residence of a sudden illness.

Funeral services were held at 3:30 p.m. Monday, December 23, 1991 in the Edwards Funeral Home Chapel in Eastland with Rev. Weems Dykes officiating assisted by Dr. Vaughn Baker. Burial was in the Eastland City Cemetery.

Mr. Harris was born July 8, 1924 in Gorman. He attended schools in Eastland and worked for the Kincaid Turkey Farm and later Bellhurst

Chicken Farm. He was employed by Sneed Construction Company in Eastland for over 30 years. He was the widower of Musette Greenwood whom he married in 1945, she preceded him in death in 1975.

He enjoyed music, dancing and pets.

He is survived by one son, Harvey Harris of Eastland; one daughter, Mrs. Keith (Jammie) Wolf of Dallas; one brother, W. T. "Bill" Harris of Eastland and one granddaughter, Ashley Wolf of Dallas.

## Christopher Cogburn

RISEING STAR - Christopher Dain Cogburn, 16, died Saturday, December 21, 1991 at an Abilene hospital.

Services were held at 2 p.m. Sunday, December 22, 1991 at Higginbotham Funeral Home Chapel with the Rev. Dick Williams officiating. Burial was in Stag Creek Cemetery in Comanche County. Mr. Cogburn was born

in De Leon and was a Methodist.

Survivors include his father, Bickey Cogborn of Childress; his mother, Judy Cogburn of Clyde; maternal grandparents, Billy Paul and Mary Ann Underwood of Rising Star; a paternal grandmother, Madeline Cogburn of Clyde; and a sister, Brandi Dawn Cogburn of Clyde.

## Martin Luker

Martin Luker, 91, of Houston, died Tuesday, December 17, 1991, in Houston.

Services were Friday, December 20, 1991, at 11 a.m. at the Pilgrim Lutheran Church in Houston with Harold Hickman officiating, assisted by Rev. Pineman. Burial was in the church's cemetery in Houston.

He was born in 1900 in Romney. He married Lena Stroebel on March 14, 1920, in Romney.

Survivors include his wife, Lena of Houston; three children and in-laws, Dorothy Proctor of Houston, Martin and Helen Luker of Houston, Norman and Shirley Luker of Baton Rouge, Louisiana; eight grandchildren and 12 great-grandchildren.

Also surviving are Cisco relatives including brothers-in-law and sisters-in-law, Clarence Stroebel, Adolph Stroebel, Alma Dunning, Freida Stroebel and Murl Stroebel.

Eastland Telegram, Cisco Press, Ranger Times, Thursday, December 26, 1991

## Harris Home Health Erath County

Cares for their patients from hospital to home.

Our special services include:

- Skilled Nursing
- Physical Therapy
- Speech Pathology
- Occupational Therapy
- Medical Social Services
- Home Health Aide Services

"We care...and caring makes a difference."

Call Lynn Vaughn - Director 817-965-2588 or 1-800-869-3812

## Earl Finley

SWEETWATER - Earl Arthur Finley, 64, died Saturday, December 21, 1991 at an Abilene hospital of a sudden illness.

A memorial service was held at 10 a.m. Monday, December 23, 1991 at McCoy Funeral Home Chapel of Memories in Sweetwater with the Rev. Orvel Brantley officiating. Graveside services were held at 2:30 p.m. on Monday, December 23, 1991 at Eastland Cemetery, directed by Bakker Funeral Home of Eastland.

Mr. Finley was born in Eastland County and lived in Sweetwater since 1947. He was a veteran of World War II and a member of the American Legion. He belonged to Elks Lodge and was a Baptist.

Survivors include his wife, Dorothy A. Finley of Sweetwater; a daughter, Earline Nietzler of Abilene; two sisters-in-law, Catherine Finley and Leina Finley, both of Eastland; and several nieces and nephews.

## Edward G. Browder

GORDON - Edward G. Browder, 92, died Thursday, December 19, 1991 at a Stephenville hospital.

Services were held at 2 p.m. Sunday, December 22, 1991 at First United Methodist Church with the Revs. Henry Kile-Smith and Eugene Browder officiating. Burial was held in New Gordon Cemetery, directed by Edwards Funeral Home in Strawn.

Mr. Browder was born in Gordon, graduated

from Gordon High School in 1916, and was a life-long resident there. He was a self-employed carpenter and a rancher. He was a member of Gordon Masonic Lodge No. 634, Stephenville Lodge No. 140 and Council No. 85 for more than 50 years. He was a member of First United Methodist Church.

Survivors include his wife, Ann Browder of Gordon; and several nieces and nephews.

## Marvin Malaer

Marvin Glyn Malaer, 78, died December 13, 1991 in Abilene.

Services were held Monday, December 16, 1991, directed by O'Bannon Funeral Home. Mr. Malaer was a pumper.

Survivors include his wife, Mrs. Ollie Mae Ma-

laer of Abilene; four sons, Wayne Malaer of Schertz, Bob Malaer of Gorman, Marvin Malaer of Abilene, and Jimmy Malaer of Stephenville; a brother, Clifton Malaer of Tuleta; a stepson, Johnny Casey of Coleman; 25 grandchildren; and 36 great-grandchildren.

## Oh, I'll Never Complain

That I've had too much rain!  
As a farmer I've made that firm vow  
But if you haven't

enough  
Of this falling wet stuff  
You're not in Eastland County right now.  
Gordon S. Clark

## Popular Store

**Annual Closeout Sale Everything Must Go At All 3 Locations Wall to Wall Beginning Inventory over \$600,000.00 at reg. retail at each location 25% OFF Entire Stock**

Wide selections of Junior and Missy Sportswear, Dresses, Skirts, Blouses, Pants, Swimsuits, Sweaters and Lots More!!!

Just Restocked with lots of new merchandise best selections ever to choose from at all 3 locations

Sample \$50.00 Reg. \$30.00 Our \$22.50 Sale Price

Popular Store 535 Lingleville Rd. Stephenville, TX

Popular Store 103 W. Walker Breckenridge, TX

Popular Store N. Main Cleburne, TX

Sale Starts December 26

## Raymond Newcomb

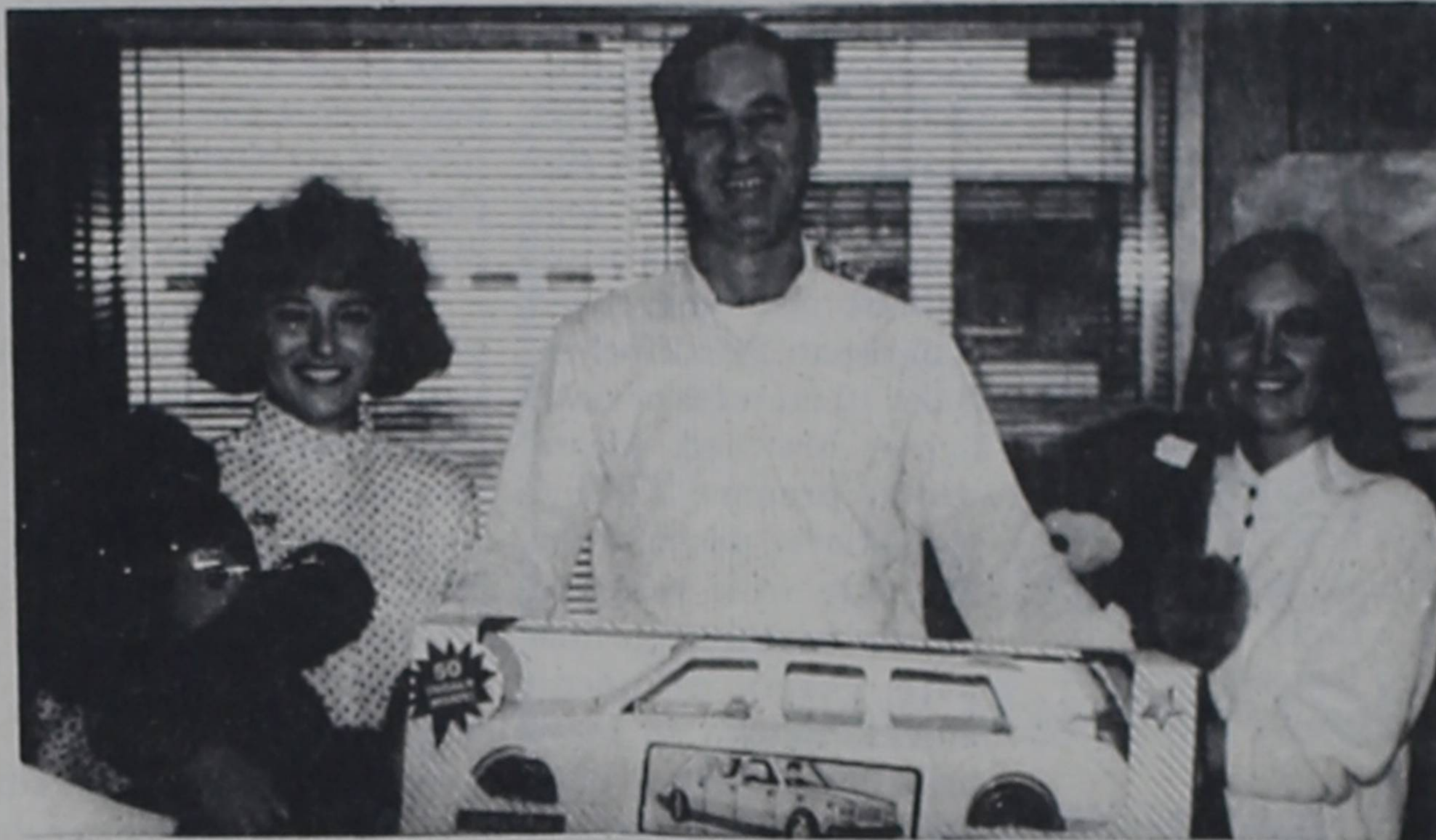
DE LEON - Raymond Leon Newcomb, 80, died Wednesday, December 18, 1991 at his home.

Graveside services were held at 11 a.m. Saturday, December 21, 1991 at Bluebonnet Hill in Colleyville, directed by Nowlin Funeral Home.

Mr. Newcomb was born in Brown County. He was a maintenance man for Justin Boot Company in Fort Worth. He had lived in De Leon for five years, coming from Fort Worth. He was a Jehovah's Witness.

Survivors include a son, Edward Roger Newcomb of Clute; two daughters, Reba Ray Green of Colleyville and Tina Nadene Scheu of Richland Hills; three brothers, Orville Newcomb of Gorman, Ellis Newcomb of Athens, and Lafayette Newcomb of Memphis, Tenn.; three sisters, Vitrice Armichaw of San Pedro, Calif., Marie Harris of Brownwood, and Lucille Bickler of Clarksville; five grandchildren; and a great-grandchild.

## Read The Classifieds



Pictured are Stefani Ball, (L) System Manager Robert Moore and Diane Harton of the TCI Cablevision office in Eastland with toys donated to The Goodfellows through their office. The people at TCI Cablevision would like to thank all the people who contributed toys or food items.

On Nov. 1 the Company began a collection drive, offering a special Cable connection rate to anyone who contributed toys or food. The people of Eastland, Cisco, Ranger and Olden all gave generously. Over 100 toys and \$1700 worth of non-perishable food was collected by this project.

The toys will be distributed by the Eastland Goodfellows, Cisco Goodfellows, and Ranger Fire Department. The food will be distributed by The Eastland County Food Pantry.

A Happy Holiday Season from all employees at TCI Cablevision!

## Classifieds Get Results!!

**DID YOU KNOW?**  
by AL 446

ALTHOUGH THE ROADRUNNER CAN FLY, IT SEEMS TO PREFER RUNNING — AND HAS BEEN TIMED AT TWENTY-THREE MILES AN HOUR! IT LIVES OFF SNAKES AND LIZARDS.

HITTING A SNAKE WITH ITS BEAK AND SWALLOWING IT HEAD FIRST.

IN IRELAND THE NATIONAL SPORT IS "HURLING." IT IS PLAYED WITH A STICK, LIKE HOCKEY, AND THE GOALPOSTS LOOK LIKE FOOTBALL AND RUGBY POSTS COMBINED. THREE POINTS ARE SCORED BY HITTING THE BALL INTO THE NET AND ONE POINT FOR HITTING IT OVER THE BAR.

IN THE YEAR 1666, THE GREAT-GREAT GRANDSON OF THE KING OF SPAIN WAS BORN AND WAS GIVEN EIGHTY-NINE CHRISTIAN NAMES!

## PUBLIC SALE NOTICE

Friday ONE DAY ONLY Dec. 27th

NEW UNSOLD SCHOOL SEWING MACHINES WITH THE PROFESSIONAL SERGING STITCH

NECCHI EDUCATION DEPARTMENT placed orders in anticipation of large school sales. Due to budget cuts these sales were unsold. These machines must be sold! All machines offered are the most modern machines in Necchi line. These heavy duty machines are MADE OF METAL and sew on all fabrics. LEVIS, CANVAS, UPHOLSTERY, NYLON, STRETCH, VINYL, SILK, EVEN SEWS ON LEATHER! THESE MACHINES ARE NEW WITH A 25-YEAR WARRANTY. With the new 1992 Necchi Machine, you just set the color code and see magic happen: Straight sewing, zigzag, buttonholes, (any size), invisible blind hem, monogram satin stitch embroider, applique, sews on buttons and snaps, top stitch, elastic stitch, PROFESSIONAL SERGING STITCH, SPECIAL SWEATSHIRT APPLIQUE, all of this and more without the need of old-fashioned cams or programmers. Your checks are welcome and lay-aways available. All models come cabinet ready.

Your Price With This Ad **\$197** Without this ad \$529

**Bill's Dollar Store**  
308 W. Main, Ranger  
Demonstrations 8:30 to 5:00

**Factory Demonstrators Will Be On Hand.**

## Hospital Report

**EASTLAND MEMORIAL HOSPITAL Admissions**  
December 20, 1991  
Meredith L. Edwards  
Baby Boy Edwards  
Ira E. Maupin  
Rolando H. Veloz

**Dismissals**  
Kimberly B. Seaton  
Baby Girl Willis  
Maggie M. Wilson  
Baby Girl Wilson  
Felicia A. Willis

**Admissions**  
December 21, 1991  
Joseph H. Barton  
Duane E. Walking

stick  
**Dismissals**  
Leola G. Barris  
Joseph H. Barton  
Alex D. Haney  
Willard T. Liles.

**Admissions**  
December 22, 1991  
Steven G. Clary  
Luther B. Culpepper  
Alma L. Green  
Ramona Hernandez

**Admissions**  
December 23, 1991  
Harold J. Bulgerin  
Clyde F. Kerr  
Johnny H. McCoy  
John L. Petree

**Dismissals**  
Meredith L. Edwards  
Baby Boy Edwards  
Alma L. Green  
Dorothy Hartman  
Ramona Hernandez  
Edra Amelia Hilliard  
Frances M. Robinson

## Calendar of Events

A Public Service from Eastland/Callahan County Newspapers and The Majestic Theatre.

- WED., DEC 25**  
Christmas Day
- THURS., DEC. 26**  
12:00 Lions, Ranger.  
7:00-10:30 Forty Plus Dance, Cisco.  
7:00 Eastland County Disabled Veterans, Olden.  
7:00 American Legion, Rising Star.  
7:30 The Shadow Majestic Theater of the Air, KEAS 97.7.  
8:00 Narcotics Anonymous, Eastland.
- FRI., DEC. 27**  
6:30 Country Western Musical, Rising Star.  
7:30 The Addams Family, Rated PG 13, Majestic Theatre.
- SAT., DEC. 28**  
6:00 Bingo, Rising Star.  
6:00 Country Western Musical, Desdemona.  
7:30 Majestic Theatre, The Addams Family, Rated PG 13.  
8:00 Alcoholics Anonymous, Eastland.  
8:00 Al Anon, Eastland.
- For Deletions or Additions Call Faye Spurlen at Majestic Theatre, 629-2102

**Extension Home Economics**  
Mrs. Janet Thomas  
County Extension Agent, Home Economics  
Texas Agricultural Extension Service

**TEXAS FAMILY FORUM - JANUARY 14TH**

The Texas Family Forum will be held on Tuesday, January 14th in conjunction with the Blackland Income Growth Conference and Mid-Texas Farm & Ranch Show at the Waco Convention Center.

The day's agenda is... **TEXAS FAMILY FORUM - LIFE IS FULL OF CHOICES**

Margaret Hale, Chairman

**TUESDAY, JANUARY 14, 1992**

Texas Room 3  
9:00 a.m.-Registration.  
10:00 a.m.-Political Issues Affecting Families-Betty Denton, State Representative.

10:45 a.m.-Concurrent Sessions-Spice Up Your Life, Charlotte Raines, President, Waco Herb Society.

The Sandwich Generation-Coping skills-Judith Warren, TAEX Gerontology Specialist.

Financial Planning For Families-Nancy Granovsky, TAEX Family Economics Specialist.

12:15 p.m.-Luncheon. Families on the Move-

Toody Byrd, National Motivational Speaker.

1:30 p.m.-Adjourn.  
Pre-registration deadline is January 10. The cost which includes the luncheon is \$10.00. The program will begin at 10:00 a.m. and adjourns at 1:30 p.m. Pre-registration forms are available at the Eastland County Extension Office or by calling Mrs. Janet Thomas, County Extension Agent at 629-2222.

**E. H. COUNCIL - JANUARY 2nd**

The Extension Homemakers Council will meet on Thursday, January 2nd at the Eastland National Bank Community Room. (Council members should note that date has been changed due to New Year's Day.)

New Officers for 1992:  
Chairman-Mrs. Dois Hodges.

Vice Chairman-Mrs. Norma Webb.

Secretary-Mrs. Twila Lee.

Treasurer-Mrs. Jane Stark.  
Co. TEHA Chairman-Mrs. Gerry Zummer.  
Co. TEHA Vice-Chairman-Mrs. Wynelle Brown.

**RECIPE FOR THE WEEK**

The winning cookie recipe at the Pecan Bake Show was entered by Mrs. Elizabeth Sikes, of Lake Leon. This is a delicious cookie for the holidays.

**Chocolate-Cherry Squares**

1 cup all purpose flour  
1/3 cup butter or margarine

1/2 cup packed light brown sugar

1/2 cup chopped nuts

Filling (recipe follows)

Red candied cherries, halved or pecan halves

Heat oven to 350 degree.

In large mixer bowl combine flour, butter and brown sugar. Blend on low speed to form fine crumbs, about 2 or 3 minutes. Stir in nuts. Reserve 3/4 cup crumb mixture for topping; pat remaining crumbs into ungreased square pan, 9x9x2 inches. Bake 10 minutes or until lightly browned. Meanwhile, prepare filling; spread over warm crust. Sprinkle with reserved crumb mixture; garnish with cherry or pecan halves. Return to oven; bake 25 minutes or until lightly browned. Cool; cut into squares. Store, covered, in refrigerator. About 3 doz. squares.

**Filling**

1 pkg. (8 oz.) cream cheese, softened

1/2 cup sugar

1/3 cup Hershey's Cocoa

**Free Eye Care Program Starts In January**

Austin, TX, December, 1991 - A program to provide free eye examinations to low-income working people and their families gets underway in Texas in January.

The program, called VISION USA, is being sponsored by the Texas Optometric Association and is part of a nationwide effort initiated by the American Optometric Association.

Low-income workers can sign up for the free eye care by calling 1-800-766-4466 in January, according to Carolyn Carman-Merrifield, O.D., chair of the VISION USA program in Texas.

The eye exams will be given in optometrists' private offices in March, coinciding with the 65th anniversary celebration of Save Your Vision Week, March 1-7. The optometrists are volunteering their time and services as

"a way of giving something back to the people of our community," Dr. Carman-Merrifield said.

To qualify for the free eye care, persons must: have a job or live in a household where there is one working member; have no health insurance; have income below an established level based on family size; and have had no eye examination within 12 months.

This is the second year the VISION USA program has been offered nationally. Last year, more than 8,000 AOA-member optometrists across the country donated their services and nearly 40,000 people received the free eye care.

In Texas, almost 300 optometrists donated free eye care to low-income workers and their families.

"Almost 90 percent of the people we examined throughout the country in last year's VISION USA program had eye health or vision problems," Dr. Carman-Merrifield said.

For over 15 percent, this was their first eye exam ever. And that group included middle-aged adults. It shows what a great need there is for a program like VISION USA.

Based on that experience, Dr. Carman-Merrifield said "it's evident that many people in low-income families are not doing as well as they could at work or in school because of uncorrected vision problems. We want to help eliminate this situation by giving these people access to regular eye care."



Morticia (Angelica Huston) entertains her children Wednesday (Christina Ricci) and Pugsley (Jimmy Workman) with a frightening bedtime story in Paramount Pictures' "The Addams Family." This picture will open at the Majestic Friday, Dec. 27, and show nightly at 7:30 through Monday, Dec. 30. Tickets will be \$3 at the box office, with the picture rated PG-13.

"The Addams Family" is based on cartoon characters created by Charles Addams - lovable, eccentric beings who manage to be a tightly knit family. This new movie is rated in the No. 2 slot in box-office appeal nationwide. Holiday fun with a different twist.

**SOLUTIONS**

**ACROSS**

- Float
- Sepia
- Apert
- Swirl
- Upend
- Logic
- Rank
- Turret
- Group
- Shriek
- Spew
- Usual
- Rabbi
- Impel
- Nylon
- Horse
- Kitty

**DOWN**

- Fester
- Origin
- Tally
- Gauge
- Stuck up
- Prefer
- Ardent
- Ash
- Irk
- Tug
- Ewe
- Genuine
- Scorch
- Rubber
- Puppet
- Wholly
- Bully
- Blink

**Rescue Line**

Battered, abused, alcoholism, suicidal, divorced, troubled marriage, etc.

*There is free help for Eastland County Women*

Listen to KVMX 97 F.M. 442-4479  
6:00-7:00 Monday night

**Paul Williams Roofing Co.**

- FREE Estimates •
- All Work Guaranteed •
- Hot Tar & Gravel Composition •
- Shingles • T-Locks • Wood Shingles •

25 Years Experience In Eastland Area  
Paul Williams Carbon, Texas  
817-639-2330  
If No Answer Call 817-629-1020

**NEW LOCATION**

**Pat Albus Bookkeeping Service**

1331 Hwy 80 East  
Maynard Bldg. Suite 6 & 7  
Phone 629-3327

**TRADERS CORNER**

We Buy & Sell Used Furniture • Tools • Appliances • Heaters & A.C.s • Much! Much! More!

Come by  
219 W. Main  
Ranger Tx  
or Call 647-3072

**Vic's Welding**

323 N. Commerce Ranger, TX 76470

- Heliarc & Wire Feed Aluminum Welding - Heavy or Light
- Portable & Shop Arc Welding
- Custom Fabrication

Call 817-647-5120  
Phone answered 24 hours, 7 days  
Owner: Vic Huerta

**ELROD'S MOBILE LOCK SHOP**

423 W. Main Ranger, Texas 76470  
Phone 647-3444

*Bonded Locksmith*  
Auto - Residential - Commercial

Eastland Telegram, Cisco Press, Ranger Times,  
Thursday, December 26, 1991

**Christmas Special**

8 x 7 Beginning at \$227.00  
16 x 7 Beginning at \$403.00  
Genie is from \$228.00

**VERMAR GARAGE DOORS**  
TOLL FREE 1-214-230-0559  
Owner-Vernon Smith

**Squires Roofing Contractors**

45 Years In Service  
Carbon - Eastland

653-2397      653-2354

1500 PRIMROSE - 3 BR, 2 Bath, Study, LR/DR, Fireplace all for only \$81,000.  
700 W 7TH - 3 BR home reduced to \$25,000.  
908 AVE F Reduced to \$7,500.  
502 W. 18TH - 2 or 3 Bedroom on lots with workshop, \$10,000.  
809 W. 6TH - 3 BR, 1 3/4 Bath, living room, den/kitchen, util., with 2 car garage on pretty corner lot. \$65,000.  
1308 Primrose - 3 BR, 2 1/2 Bath, living rm, den/kitchen, 2 car garage. \$70,000.  
1601 Railroad Ave. - 3 bdrm, w/fireplace, shop and small house. Needs a handy man. \$11,500.  
50 acres off the Nimrod hwy-good hunting and fishing. \$18,000.  
1503 Liggett-home or office on triangle of land. \$54,000.  
County Rd #126-8 miles W of Cisco, 3 bdrm, 1 1/2 bath, 3 carport and storage on 5 1/2 acres with stock tank: \$26,000.

**McMillan Real Estate**  
Yvonne McMillan-Broker  
8th & C. Hilton Ave. - Cisco, Texas 442-3846  
Nancy Bacon, Associate 442-2679

**Cozart Repair Service**

- Washers • Dryers
- Refrigerators
- A/C • Lawn Mowers

*22 Years Experience*

**Carbon 639-2424**

**Certified AUTO GLASS**

\* Commercial Glass \* Auto Glass  
\* Residential Glass \* Tinting  
\* Mirrors

**FREE MOBILE SERVICE**  
1-800-262-7369

Read The Classifieds

**D.L. Kinnaird General Insurance Since 1919**

Contact us if you want to save money on all your insurance needs  
Call 629-2544

**M.H. Perry Insurance**

104 N. Lamar Eastland, TX

Phone 629-1566

- Life Insurance
- Hospitalization
- Group
- Cancer
- Supplement
- Medicare

started in 1985 with a pilot program in Kentucky. It quickly spread to many other states and, in 1991, became a nationwide program. The 1992 nationwide project is being supported, for the second time, by a grant from Vistakon, a Johnson & Johnson Company.

**READ THE CLASSIFIEDS**

**Rescue Line For Women**

Ruth Stewart, M.Ed.

Q. What are some other ways to motivate my child?

A. 1. Be enthusiastic. It can make all the difference.  
2. Develop strong inner convictions. (What do we believe is right for our family? What is wrong?)  
3. Use contracts. Enlist the child's help in drawing up the contract.  
Source: *The Key To Your Child's Heart* by Gary Smalley

Questions should be addressed to:  
Rescue Line  
P.O. Box 269  
Cisco, Texas 76437

**DriveRite Defensive Driving**  
1-800-460-3508

**Budget Host Inn I-20 Eastland**

**\$19**

Saturday, Jan. 18  
Saturday, Feb. 22  
Saturday, March 14  
Saturday, April 11

8:30 a.m. - 5:00 p.m.  
Walkins Welcome  
State Approved Driving Safety Course

**Remodeling - Siding**

Windows and Doors  
Jobbers For All Sides  
Reynolds, Mastic and B.M.D.  
Siding, Windows, and Doors  
Also Remodeling & Add-Ons.  
Cover Facers and Overhang on Brick Homes.  
All Work Guaranteed.

**Butler & Fox**  
Phone 629-2149 or 629-2814

**Citi Har**  
ED. NO  
ing is an e  
ters from  
Truett Be  
Washingt  
back to J  
President  
Phil Gran  
Bentley  
les Sten  
19th, he h  
Sen. Bent  
Stenholm  
shares.)  
I want t  
nation of  
creases th  
income of  
judges, an  
ment emp  
the same t  
CDs and  
ments are  
It is sair  
the ric  
the poor. I  
because  
people are  
cial Secur  
amount of  
of these p  
company  
are havin  
making er  
Many of  
a compar  
and the m  
ement in  
savings. I  
welfare pe  
better tha  
There i  
disgust at  
the job the  
by our el  
The gener  
ing that  
against  
elected of  
now in offi  
to the na  
ment.  
General  
1. A re  
size of the  
2. Limit  
elected off  
pointment  
life.  
3. No fi  
salaries f  
cials.  
4. Great  
aid.  
5. A wo  
unemploy  
people.  
It is t  
Cisco Pr  
Telegrar  
Times - I  
Callabar  
Thu  
Deceml  
MC  
H  
TRANS  
Comp  
M  
Throug  
• Tie  
• Bl  
&  
• I  
• B  
• I  
18 Year  
817-8  
CC  
ANN  
Sar

## Citizen Asks Officials Hard Questions

(ED. NOTE: The following is an exchange of letters from Eastlander Truett Bean to officials in Washington. He wrote back to November, to President Bush, Sens. Phil Gramm and Lloyd Bentsen and Cong. Charles Stenholm. As of Dec. 19th, he had replies from Sen. Bentsen and Cong. Stenholm which he shares.)

I want to get an explanation of the idea that increases the salaries and income of congressmen, judges, and other government employees, and at the same time interest on CDs and other investments are pushed down.

It is said that this taxing the rich and helping the poor. That is an error because many retired people are living on Social Security and a small amount of savings. Many of these people are on no company retirement and are having a hard time making ends meet.

Many of us do not have a company retirement and the moves of the government is eating up our savings. It seems that the welfare people are living better than we are.

There is a feeling of disgust at the antics and the job that is being done by our elected officials. The general public is saying that they will vote against any and all elected officials who are now in office from the city to the national government.

General opinion is:  
1. A reduction in the size of the government.  
2. Limiting terms of all elected officials, and no appointment of judges for life.  
3. No full payment of salaries for retired officials.  
4. Great cuts in foreign aid.  
5. A work program for unemployed and welfare people.

It is time that the Cisco Press - Eastland Telegram - Ranger Times - Rising Star - Callahan County Star Thursday, December 26, 1991

**MOBILE HOME PORTING**  
Complete Moves & Setups  
Moving Throughout Texas  
• Tie Downs  
• Blocking & Leveling  
\* Licensed  
\* Bonded  
\* Insured  
18 Years Experience  
817-893-6753

elected people quit playing politics and starting doing the job they were elected to do.

Yours Truly,  
Truett Bean  
Box 225  
Eastland, Texas  
76448

United States Senate  
Dear Mr. Bean:  
Thank you for your recent correspondence.

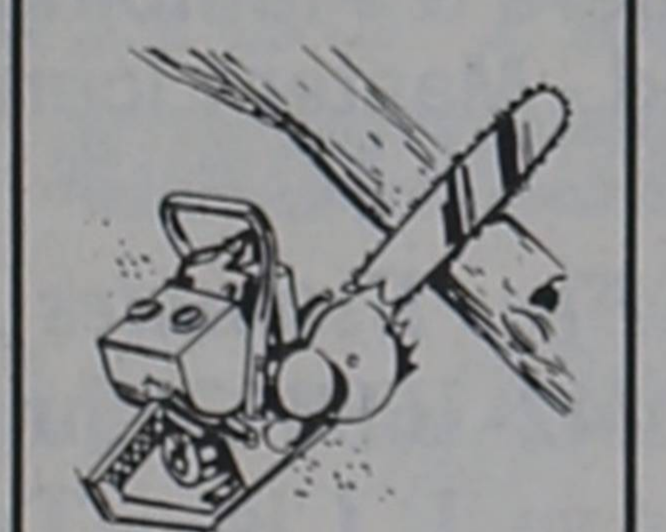
I appreciate knowing of your support for legislation which would limit the number of terms U.S. Representatives and Senators may serve. There has been a great deal of discussion recently about proposals like yours. However, any such proposal would require amending our Constitution. As you can imagine, most Americans are reluctant to alter our Constitution except under compelling circumstances. As you may know, a two-thirds majority of Congress and a three-fourths majority of the states must approve a constitutional amendment. I am glad to have your views on this matter, and please know that I will keep your comments and suggestions in mind should the full Senate have the opportunity to debate the subject.

Justices serving on the United States Supreme Court need to be fair and unbiased judges. As you know, the process for nominating and confirming Supreme Court justices is set forth by the Constitution. The President nominates a candidate to serve a life term, who must then be approved by the full Senate. As part of the nominating process, the Senate Committee on the Judiciary conducts an extensive

**Grandpaw's Tool Shed Rental**

**WINTER SPECIAL**

**CHAIN SAWS \$12.00 day**



1304 E. Main Eastland  
Travis Chapman  
629-3363

investigation into the background and qualifications of the nominee. Any changes in this process, including a mandatory retirement age, would require a constitutional amendment.

The judicial branch functions as a check on the decisions made by the legislative and executive branches of our government. However, Congress can impeach any judge on the federal bench, which acts as a check against unsound judicial decisions and behavior. Additionally, Congress does have the power to propose an amendment to the Constitution to validate a measure that the Court has declared unconstitutional. At this point, no legislation is pending that would make substantial changes to this process. Should a limited term or a mandatory retirement age be debated by the full Senate, your comments will be helpful to me.

I appreciate knowing of your opposition to providing all civil and military retirees with a full cost of living allowance for fiscal year 1991. I understand your concerns regarding the COLA, especially in times of tight budgetary constraints. However, I feel providing retirees who have served their nation for so long with this small, additional financial cushion is important for them and their families.

I appreciate knowing of your concern about the amount of money the United States spends on foreign assistance. Like you, I oppose the idea of throwing our taxpayers' money into overseas projects that do not benefit our own country in significant ways. Accordingly, I consistently vote against foreign aid proposals that I deem to be unnecessary or inappropriate. There are simply too many issues that must be addressed at home to be spending tax dollars wastefully abroad.

Under the Reagan and

Bush Administrations, Congress has repeatedly cut the President's budget requests for foreign assistance. While the foreign aid appropriations bill for fiscal year 1992 has not yet been passed, both the House and Senate Appropriations Committees have recommended less funding than the Administration had requested.

As you know, the United States spends billions of dollars in foreign assistance every year in helping other countries develop their economies or their national defense. We should do so only if it is in our mutual self-interest. Unfortunately, too much of our foreign assistance is in the form of cash and too little of it is linked to increased U.S. jobs and exports. For that reason, I have joined Senators Boren and Byrd in proposing major legislation mandating that more of our foreign aid be used by the recipient country for the procurement of U.S. goods and services. This bill increases to 40 percent in 1992 and 50 percent in 1993 the amount of U.S. economic aid that must be spent on projects using U.S. services and goods, and would decrease the portion of aid given in cash without any strings attached. Our bill would also increase the amount of foreign aid we provide for capital projects to develop the telecommunications, energy and transportation sectors and for protecting the environment. Those projects would provide significant economic returns to the U.S. through the purchase of U.S. goods and services.

Imposing the above guidelines enables the United States to use our foreign economic assistance to help our industries and workers even as we help the aid recipients. Although this bill is still pending before the Senate Committee on Foreign Relations, the entire Senate has voiced its support

for this tied aid proposal. I believe it is clearly to our advantage to adopt a foreign aid policy that helps the United States. Please be assured that I will not support any foreign aid measure unless I am convinced it meets these requirements as well as reflects sound fiscal policy.

I agree that the present welfare system is burdened by waste and abuse. We've poured billions of dollars into programs that haven't created the incentive to work, and consequently, we have second and third generations of welfare recipients. I will not support any program that fails to allocate money to those most in need and which fails to include strong work incentives.

Again, I appreciate your taking the time to contact me.

Sincerely,  
Lloyd Bentsen  
Congress of the United States  
House of Representatives

Thank you for taking the time to inform me about your feelings of frustration concerning the way things are operating these days. I do appreciate your concern.

You mentioned a number of issues in your letter that I would like to address. The term limit proposal advocates a limit on Congressional terms to bring more new faces into Congress and theoretically make Congress more responsive to popular wishes.

It is my belief that these are worthy goals. There is not enough competition in House elections and Congress would be benefited by the input of more new faces. However, these term limit proposals miss the mark by addressing the results rather than the causes. The problems are uncompetitive races, public indifference and cynicism and high campaign costs. The results

are high reelection rates and low turnover.

Addressing results does not reverse or eliminate the symptoms which brought them. In fact it creates new problems. Term limits are in effect limits on the choices available to voters. They would rob the Congress of the experience which is every bit as essential to its smooth functioning as a newcomer's enthusiasm.

As for foreign aid, I strongly feel that it is inappropriate for programs benefiting Americans to be cut while we continue to support wasteful foreign aid expenditures. All too often money we have sent abroad with

the best of intentions has been misused by corrupt local elites.

It is my belief that foreign aid must be subjected to rigorous scrutiny to prevent waste, fraud and abuse. In addition, it should not even be considered unless it meets the following two criteria. One, aid must clearly promote or protect our national security. Two, aid must meet an overwhelming or exceptional human need. I believe that current standards for distribution of aid are far too broad and result in

CHILD ABUSE  
24 HOUR HOTLINE  
1-800-252-5400

high costs for the taxpayer. I trust that I have addressed your concerns. I remain, as always,

Sincerely yours,  
Charles W. Stenholm  
Member of Congress

(ED. NOTE: No. Two: Do you have a message for public officials?)



**Classic Creations Jewelry**  
After Christmas Sale  
New Merchandise In Stock  
**25-50% Off All Items In Stock**  
104 S. Seaman Eastland  
629-3484

**I-20 MOTORS**  
19th & I-20  
Cisco, Texas  
(817) 442-4262 or 442-2161

87 Mercury Topaz, 4 door, all wheel drive, auto, air, cruise.....\$3350	89 Escort, 4 spd, w/air, nice car.....\$3495
87 Ford Ranger Pickup, 5 sp., air, nice pickup.\$3350	85 GMC Cargo Van w/tilt, cruise, auto, air.....\$2995
89 Tempo 4 dr, auto, air, cruise, tilt, AM/FM Cassette, 1 owner.....\$3995	83 Oldsmobile, Delta 88 Royale Brougham, 4 dr., auto, air, extra clean car.....\$2250
81 Chevy Luv Pickup, 5 sp., deisel.....\$2550	87 Plymouth Horizon, auto, air, clean car.....\$1995
88 Chevy Celebrity Wagon, extra clean, fully loaded, auto, air.....\$4550	77 Chevy Blazer, auto, air, 4 WD, excellent condition.....\$2250
84 Dodge Good Times Van, Fully loaded.....\$5495	89 Tempo, 3500 miles, red, 2 dr.....\$4995
89 Ford Festiva L 5 sp., air, extra nice.....\$2995	89 Tempo blue, low miles, 2 dr, 5 sp., 3500 miles....\$4795
89 Ford Tempo Auto, air, cruise, tilt, wheel, AM/FM, tape.....\$4250	89 Escort Wagon, low mileage.....\$4950
90 Escort Wagon LX Auto, air cruise, tilt, extra nice.....\$4250	89 Ford Tempo, red, auto, air, low mileage.....\$4450

Also For Sale: Lake Cabin South of Lake Cisco.  
Other Cars To Choose From

**Buddy Aaron**  
Managing General Agent  
Grand Council  
108 S. Seaman  
P. O. Box 392  
Eastland, Texas 76448  
Business (817) 629-8533  
Home (817) 629-1086

**CONTACT BUDDY AARON ABOUT GUARANTEED ANNUITIES - SAME PRINCIPLE AS C.D. OR SAVINGS**  
Minimum \$5,000 to Maximum \$500,000.  
Same Rate of 8.05% Annual and 7.77% Monthly on \$5,000 to \$500,000.

**A-1 BUILDERS**  
Building & Remodeling  
- ROOFING  
- SIDING  
- METAL BUILDINGS  
- PLUMBING  
- ELECTRICAL  
- CONCRETE  
Commercial \* Residential  
**Jerry Maston • Owner 629-8148**

## Guest Slot

By H.V.O.

OVER THE Tevere, by the Castel S. Angelo and on to Citta Del Vaticano (Vatican City), central for the world's Catholics, home of St. Peter's, the world's largest church, and its Sistine Chapel, a part of the Vatican Museums. This was our second Roman day, and it could be done on your own, but the tour buses, though numerous, are the most efficient, and with a group, you probably cover more territory than one would otherwise.

Certainly Michelangelo's ceiling in the Chapel was the highlight for us, but there's so much more, even for non-Catholics. And his Pieta (now protected by shatter-proof glass) in the Basilica is a thing of beauty, but virtually impossible to photograph. We stayed with the tour in the morning, and came back on our own in the afternoon to be able to spend more time at the things we wanted to inspect closer.

An independent state, with its own money, postage and self-government since 1929, the Vatican has been the home for 265 Popes. Originally the site of Circus Neronianus where legend has it that Nero had St. Peter the Apostle crucified and his body was buried nearby. Constantine built a basilica

## Rome II

on the spot; it fell into disrepair; and in the 1500s Julius II began the construction of the new basilica which took 176 years to complete. At age 70 Michelangelo designed the dome, which was completed after his death. The square, known to most by New Year's Eve televised masses, is a virtual museum of colonnades, obelisk, fountains, statues, outside and into the church. This Pieta, one of four done by Michelangelo (this one at age 25), is possibly his most famous piece; on the knees of the immortally young Virgin lies the body of Christ who seems asleep. The center aisle of the church is marked with the sizes of other large

churches of the world, proving that St. Peter's is the largest. Our picture of Amy standing by the giant holy water fountain by Bernini, with its two cherubs, shows the massive proportions of this beautiful piece.

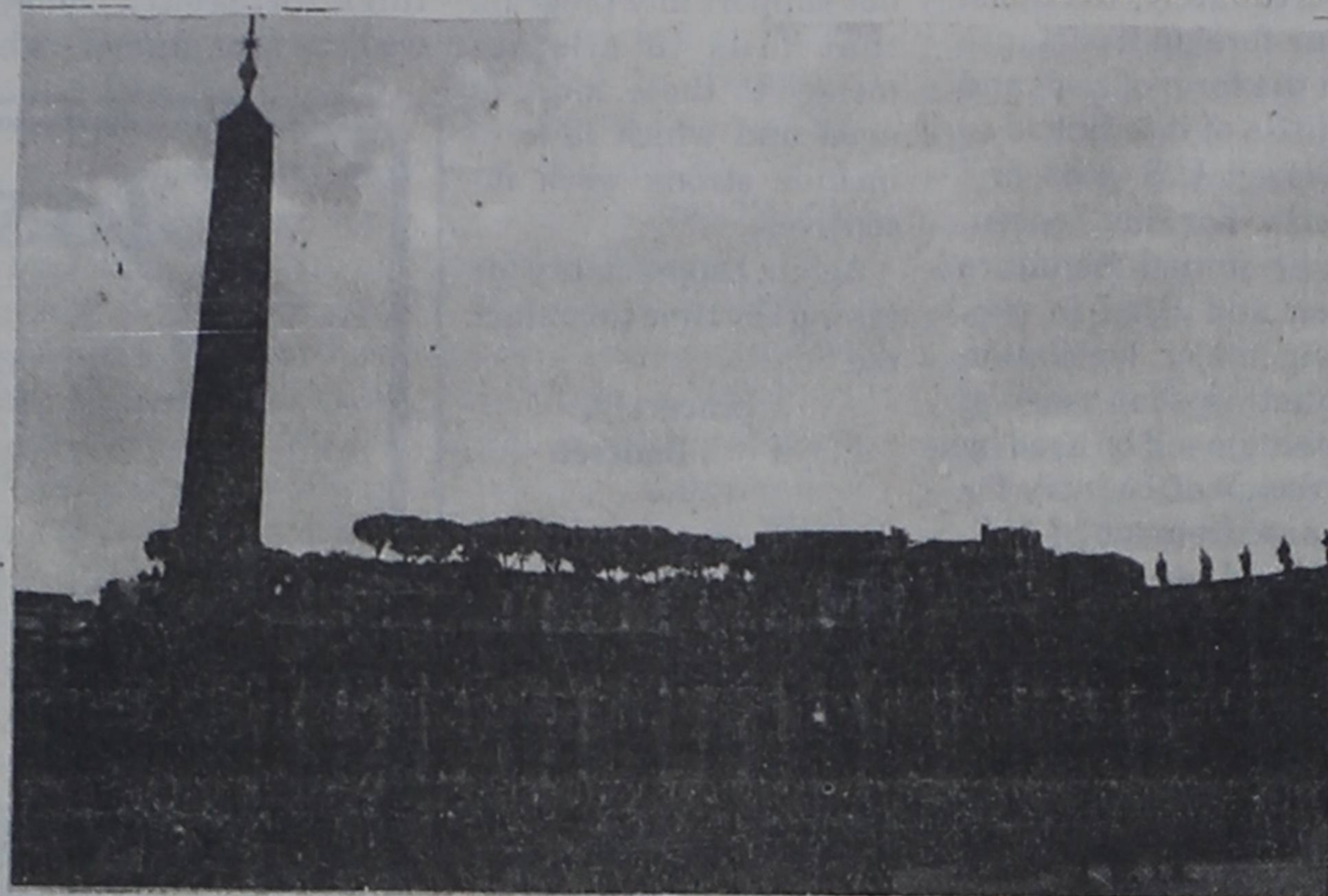
The Sistine is an in-use chapel of worship although on weekday mornings it is packed with tourists, who have bought tickets to visit. It is the site of Papal election by the College of Cardinals following the death of a Pope. From one of its windows is affixed a chimney to signal progress, through smoke, on the selection of the next Pope.

It is of course an unbelievable thing of beauty; with frescoes on the walls, tapestries, all done by leading artists of the day, and then there's the ceiling, now being restored to its original brilliance.

The young Michelangelo started the project in May, 1508 and finished it on Nov. 2, 1512, following the Old Testament, particularly Genesis. Shown are God dividing light from dark, creation of the sun and moon, dividing the earth from the waters, creation of man, of Eve, the fall of man, the sacrifice of Jonah, the deluge and the drunkenness of Noah. The portraits of 12 prophets and the Sibyls are in the triangular spaces between the curved main paintings. In all, truly a thing of beauty, but a question by another tourist helped put it into perspective: "Why all the nakedness?"

Some 23 years later Michelangelo spent six more years doing the magnificent Last Judgement on the wall above the main altar.

The Vatican also offers probably one of the world's foremost picture galleries, libraries, and its museums display the wealth of the Catholic church. The 4 1/2 miles of corridors actually take you through five major museums: the Raphael Rooms, ancient and modern sculpture, tapestries, and displays of high-dollar gifts to the Popes from world notables and countries, with lots of gold and precious jewels in crowns, thrones and every imaginable form of decorative art. Do mortals not find it hard to keep the mind and focus on worship in such a place?



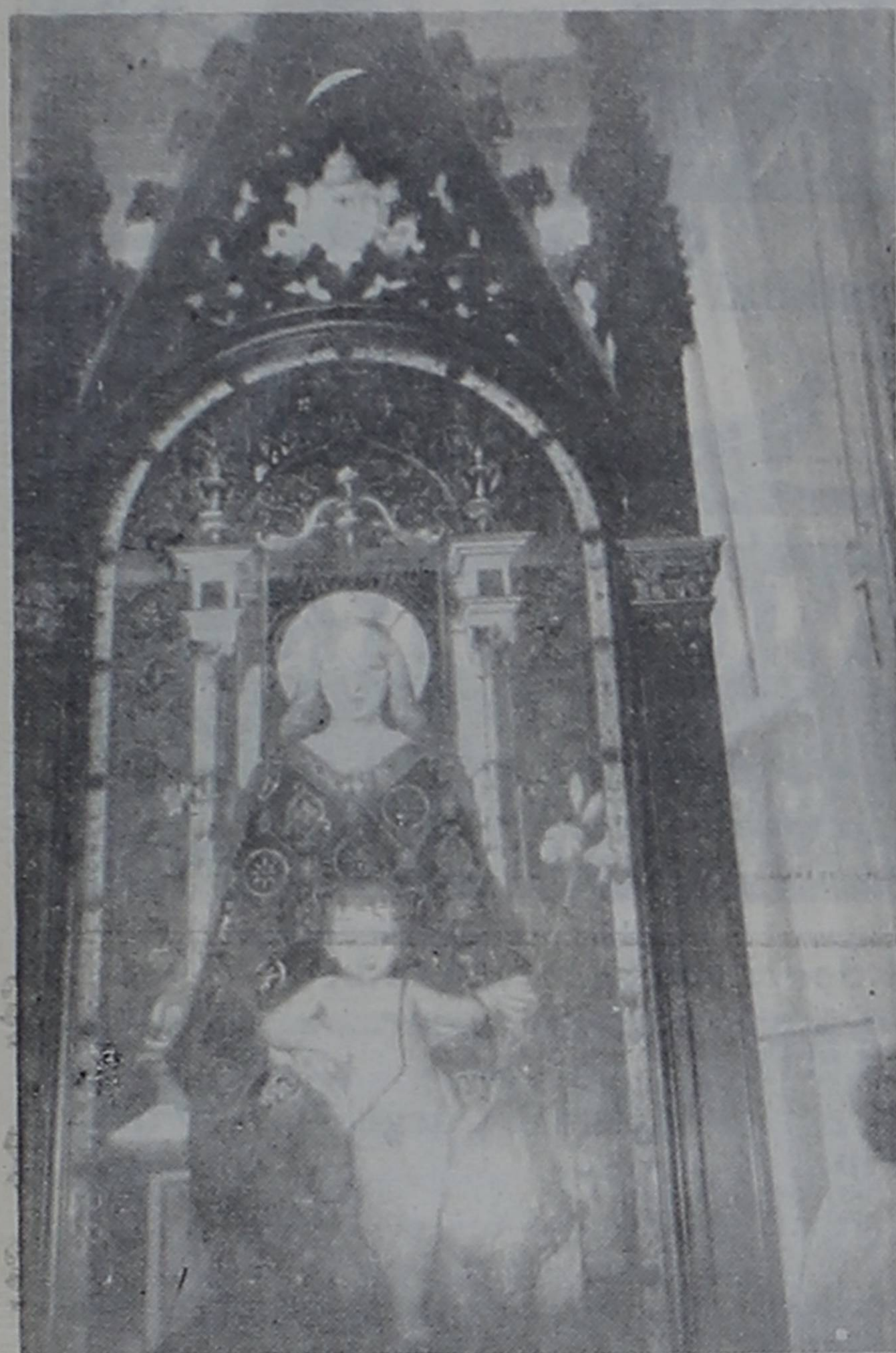
THE SQUARE



ST. PETER'S



AMY AT THE FOUNT



ART



ART

## Use The Classifieds

CHILD ABUSE  
24 HOUR HOTLINE  
1-800-252-5400

## EASTLAND GREAT TIMES

I-20 Access, Eastland  
629-3921

### Special Holiday Hours

Matinees December 26th, 27th, 29th, & 30th  
12-5 p.m. \$3

**NEW YEARS EVE LOCK-IN**

7 p.m.-7 a.m. \$10

Closed Dec. 23rd, 24th, 25th

Fun & Games • Skating • Raquetball

Cisco Press - Eastland Telegram - Ranger Times - Rising Star - Callahan County Star  
Thursday, December 26, 1991

817/629-3631 OPEN 8:00 - 5:30 SAT. 8:00 - 12:30

**EXPRESS PHOTO**  
SAME DAY PHOTO PROCESSING  
COLOR, BLACK & WHITE, PHOTO REPRODUCTION

601 W. Main  
BILL CULVERHOUSE, OWNER

Wedding  
Sports  
Studio Pictures  
Passports  
ID Cards  
Immigration pictures

Serving all your photographic needs

## MAJESTIC THEATRE

629-1322

WEIRD IS RELATIVE

**The Addams Family**

DECEMBER 27 thru 30

Fri. • Sat. • Sun. • Mon.  
All Shows: 7:30 p.m. - \$3.00

I have a new selection of fish & pet supplies.



Tanks of all sizes and supplies for fresh & salt water fish



**Special**  
10 gal. Tank set  
\$39<sup>95</sup>

**IAMS** PET FOODS

Fish, Birds and small animals

We carry name brands



**Pat's Pot Luck**  
200 E. Plummer, Eastland  
629-1984

## RANDY GATTIS PLUMBING

Residential & Commercial Repairs  
Remodeling & New Construction  
Electric Sewer & Sink Cleaning Machines  
Water Heaters & Plumbing Fixtures  
State Licensed - Master License - M-18038

Free Estimates  
Call: 442-1688 24 hrs/day  
106 Ave. I Cisco, Texas

## Budget Host

629-2655 I-20 Eastland

**BREAKFAST \$1.99**  
Eggs, Bacon, Hashbrowns & Toast

**DAILY LUNCH SPECIALS \$3.50**  
Senior Citizens Save 10% On Mondays

**SUNDAY SPECIALS \$5.50**  
Served From 11:00 AM - 3:00 PM

Banquet Room Available For Holiday Parties

## Grandma's Kitchen

I-20 Exit 343

**OPEN**  
M-S 6:00 a.m.-2:00 p.m.  
5:00 p.m.-10:00 p.m.  
Sun. 6:00 a.m.-3:00 p.m.

## ELEVENTH COURT OF APPEALS

The following proceedings were had in the Court of Appeals, Eleventh District of Texas:

### AFFIRMED

11-89-075-CR Michael Wayne Ross v. State of Texas-Dallas. (Per Curiam Opinion).  
11-90-071-CR Nasir Hussain v. State of Texas-Harris. (Opinion by Judge Dickenson).  
11-90-084-CR Ronald Bruce Lippe v. State of Texas-Harris. (Per Curiam Opinion).

11-90-096-CR Gary Barron v. State of Texas-Harris. (Per Curiam Opinion).  
11-90-113-CR Jesse Bernard Jackson v. State of Texas-Harris. State's motion for extension of time to file motion for rehearing.

11-90-107-CR Melton Paris v. State of Texas-Anderson. State's second motion for extension of time to file brief.

11-90-166-CV American Commercial Colleges, Inc. v. Dianna Davis-Taylor. (Opinion by Judge Arnot).

### MOTIONS SUBMITTED & GRANTED

11-90-088-CR Dale Gordon Everett v. State of Texas-Harris. State's motion for extension of time to file motion for rehearing.  
11-91-201-CV The State of Texas v. F/R Cattle Company, Inc.-Erath Appellant's motion for leave to file second supplemental transcript.  
11-91-214-CV Magda Luker v. Terri Luker-Shelby. Appellant's motion for permission to file late transcript.

11-91-225-CV Alta J. Kilpatrick and George D. Kilpatrick v. Brookshire Brothers, Inc.-Cherokee. Appellants' motion for extension of time to file record.

11-91-226-CR Leonard Reese v. State of Texas-Smith. Appellant's motion for extension of time to file statement of facts.

11-91-268-CR Bobby Vela, Jr. v. State of Texas-Dawson. Appellant's motion for permission to file justice court certificate.

11-90-033-CR Homer Cornish, Jr. v. State of Texas-Harris. Appellant's motion for rehearing.

11-91-178-CR Michael Alex Fields v. State of Texas-Taylor. Appellant's pro se motion for rehearing.

11-91-179-CR Michael Alex Fields v. State of Texas-Taylor. Appellant's pro se motion for rehearing.

11-91-180-CR Michael Alex Fields v. State of Texas-Taylor. Appellant's pro se motion for rehearing.

11-91-181-CR Michael Alex Fields v. State of Texas-Taylor. Appellant's pro se motion for rehearing.

11-91-182-CR Michael Alex Fields v. State of Texas-Taylor. Appellant's pro se motion for rehearing.

11-91-183-CR Michael Alex Fields v. State of Texas-Taylor. Appellant's pro se motion for rehearing.

11-91-184-CR Michael Alex Fields v. State of Texas-Taylor. Appellant's pro se motion for rehearing.

11-91-185-CR Michael Alex Fields v. State of Texas-Taylor. Appellant's pro se motion for rehearing.

11-91-186-CR Michael Alex Fields v. State of Texas-Taylor. Appellant's pro se motion for rehearing.

11-91-187-CR Michael Alex Fields v. State of Texas-Taylor. Appellant's pro se motion for rehearing.

11-91-188-CR Michael Alex Fields v. State of Texas-Taylor. Appellant's pro se motion for rehearing.

11-91-189-CR Michael Alex Fields v. State of Texas-Taylor. Appellant's pro se motion for rehearing.

11-91-190-CR Michael Alex Fields v. State of Texas-Taylor. Appellant's pro se motion for rehearing.

11-91-191-CR Michael Alex Fields v. State of Texas-Taylor. Appellant's pro se motion for rehearing.

11-91-192-CR Michael Alex Fields v. State of Texas-Taylor. Appellant's pro se motion for rehearing.

11-91-193-CR Michael Alex Fields v. State of Texas-Taylor. Appellant's pro se motion for rehearing.

11-91-194-CR Michael Alex Fields v. State of Texas-Taylor. Appellant's pro se motion for rehearing.

11-91-195-CR Michael Alex Fields v. State of Texas-Taylor. Appellant's pro se motion for rehearing.

## Railroad Commission Gives Penalties

The Railroad Commission assessed a total of \$25,500 in administrative penalties this week to seven oil and gas operators for violations under Commission well plugging and pollution rules, according to RRC Chairman Lena Guerrero.

Associated Minerals Interest of Conroe was ordered to pay \$3,000 for one inactive and unplugged well on the H. R. Stockton lease in Wharton County; Kodiak Oilfield Equipment, Inc. of Rush Springs, Okla. was assessed \$4,000 for two wells on the McFall Estate lease in Yoakum County; and, Lance Oil, Inc., of Abilene was penalized to total of \$10,000 for improperly plugging a well, failing to backfill a pit, and for failing to repair a leaking saltwater tank on the Perry lease in Taylor County.

In addition, four operators agreed to pay penalties without admitting any violation of Commission rules. C & T Production, Inc. of Kirbyville was ordered to pay \$1,000 for one inactive and unplugged well on the William Crockett lease in Jasper County; Cone & Petree Oil and Gas Exploration, Inc. of Lubbock was assessed \$500 for one

Appellant's pro se motion for rehearing.

11-91-179-CR Michael Alex Fields v. State of Texas-Taylor. Appellant's pro se motion for rehearing.

11-91-180-CR Michael Alex Fields v. State of Texas-Taylor. Appellant's pro se motion for rehearing.

11-91-181-CR Michael Alex Fields v. State of Texas-Taylor. Appellant's pro se motion for rehearing.

11-91-182-CR Michael Alex Fields v. State of Texas-Taylor. Appellant's pro se motion for rehearing.

11-91-183-CR Michael Alex Fields v. State of Texas-Taylor. Appellant's pro se motion for rehearing.

11-91-184-CR Michael Alex Fields v. State of Texas-Taylor. Appellant's pro se motion for rehearing.

11-91-185-CR Michael Alex Fields v. State of Texas-Taylor. Appellant's pro se motion for rehearing.

11-91-186-CR Michael Alex Fields v. State of Texas-Taylor. Appellant's pro se motion for rehearing.

11-91-187-CR Michael Alex Fields v. State of Texas-Taylor. Appellant's pro se motion for rehearing.

11-91-188-CR Michael Alex Fields v. State of Texas-Taylor. Appellant's pro se motion for rehearing.

11-91-189-CR Michael Alex Fields v. State of Texas-Taylor. Appellant's pro se motion for rehearing.

11-91-190-CR Michael Alex Fields v. State of Texas-Taylor. Appellant's pro se motion for rehearing.

11-91-191-CR Michael Alex Fields v. State of Texas-Taylor. Appellant's pro se motion for rehearing.

11-91-192-CR Michael Alex Fields v. State of Texas-Taylor. Appellant's pro se motion for rehearing.

11-91-193-CR Michael Alex Fields v. State of Texas-Taylor. Appellant's pro se motion for rehearing.

well on the Sibley Taff lease in Runnels County; Robert C. Wash of Big Spring was penalized \$5,000 for discharging saltwater from a storage tank on the Nobles lease in Mitchell County; and, Tech Resources, Inc. of Dallas was ordered to pay a total of \$2,000 for failure to timely file a plugging report and for failure to backfill drilling pits on the F.A. Kumpel lease in Tom Green County.

To date in 1991, the Commission has levied more than \$733,000 in well plugging and pollution penalties. Last year, the Commission assessed more than \$836,000 in such penalties.

Cisco Press - Eastland  
Telegram - Ranger  
Times - Rising Star - Callahan County Star  
Thursday,  
December 26, 1991

## Social Security Payment Increases For 1992

A 3.7 percent cost-of-living adjustment will affect the amount of Social Security and Supplemental Security Income (SSI) payment received in January.

This change raises the maximum Social Security retirement benefits to \$1,088 a month and the Federal SSI payment to \$422 a month for an individual and \$633 a month for a couple.

The tax rate for Social Security remains unchanged at 7.65 percent each for employees and employer. However, the wage base, the amount of earnings subject to the Social Security tax, increases from \$53,400 to \$55,500. The wage base for the Medicare portion of the Social Security tax increase from \$125,000 to \$130,200.

Benefits increase are made annually based on the change in the consumer price index as measured from the third quarter of one year to the third quarter of the following year.

Other changes announced by the Social Security Administration include new limits on the amount of money a beneficiary can earn and still receive full Social Security benefits. The limits for 1992 increase from \$7,080 to \$7,440 for beneficiaries under 65; from \$9,720 to \$10,200 for people 65 to 69. The earning limits do not apply to people 70 and older.

CHILD ABUSE  
24 HOUR HOTLINE  
1-800-252-5400

5-10 MOTT'S 5-10 Cisco

50 Lite Midget Light Set Clear and Asst. \$3.99 Value <b>\$2.99</b>	Queen Anne Chocolate Covered Cherries \$1.99 Value <b>\$1.44</b>	25 Count Christmas Star Bows Our Price <b>67¢</b>
Candy Canes Peppermint or Cherry 12 ct. \$1.29 Value <b>99¢</b>	100 Lite Midget Light Set All Colors & Clear \$5.00 Value <b>\$4.99</b>	25 Lite Outdoor Light Set Asst. Colors & Clear \$8.99 Value Our Price <b>\$6.99</b>
4 1/2 foot Norway Pine Tree \$19.99 Value Our Price <b>\$16.99</b>	Liquid Potpourri Asst. Frag. 16 oz. \$2.99 Value <b>\$1.99</b>	Boxed Christmas Cards <b>50% OFF</b> Manufacturers Suggested Selling Price

From all of us at Ranch House Restaurant, thank you for the continued support you've shown us and we hope you have a Very Merry Christmas and a Happy New Year.

If we can help with your holiday parties give us a call.

**Ranch House Restaurant**  
607 E. I-20 Cisco 442-2855

**Gaines Automotive**  
Hi Tech Care For Hi Tech Cars

Merry Christmas & Happy New Year

Hours: Mon.-Fri. 8:00 till 5:30  
Sat. 8:00 till Noon

314 W. Main Eastland 629-1008

Owner Blake Gaines

**NOTICE**

DON'T OVERLOOK YOUR INSURANCE NEEDS

Serving Eastland County Since 1919

**CONTACT**  
**D.L. KINNAIRD**  
**GENERAL INSURANCE**

629-2544 104 N. Lamar 629-8606  
Sallie Kinnaird Mike Perry

**HAPPY HOLIDAYS**  
from all of us at  
**EASTLAND FARM & RANCH INC.**

Offering you only the best in service & products.  
We sure do appreciate you. Thanks for a very successful year.

629-2173 629-8035

LIQUID & DRY FEEDS • VETERINARY SUPPLIES • HERBICIDES • MORTON SALT • SWEETLIX • GARDEN-LAWN SUPPLIES • INSECTICIDES • ACCO

Give A Gift that will be enjoyed all year...

**\$8900\***

**NowTel 3100 Series TRANSPORTABLE**

\*Requires NEW Southwestern Bell Mobile Systems phone activation. Basic, Corporate or Association rate plans. Some restrictions may apply. Local Eastland No. Available (629-2995)

- 911 Emergency Dialing
- Automatic Call Re-dial
- Triple Electronic Lock
- Missed Call Counter
- Call Timer
- 3 year Warranty

**CSSI**  
1-800-588-2774

An Authorized Agent Of  
Southwestern Bell Mobile Systems

**WIDE AREA PAGING**

## Houston CNRC Researcher Suspects Osteoporosis May Begin In Childhood

A researcher at the Children's Nutrition Research Center (CNRC) in Houston suspects osteoporosis, a crippling bone disease, may begin in childhood.

"Most of an adult's skeleton is built and enlarged during adolescence. Being short-changed on calcium at this stage of life could be especially damaging," said Dr. Steve Abrams, assistant professor of pediatrics at Baylor College of Medicine.

Little is known about how growing children absorb calcium from foods and deposit it into healthy bones. Previous studies were performed more than 40 years ago and do not represent growth or dietary patterns of American children today.

Abrams is working on a study that will help fill this "calcium gap" by measuring calcium absorption and skeletal formation of young girls. Girls were chosen for the study because women are more susceptible to bone loss in later years.

The study will follow 50 white and 50 black volunteers between the ages of 5 and 15. Abrams will look at the amount of calcium

Cisco Press - Eastland Telegram - Ranger Times - Rising Star - Callahan County Star Thursday, December 26, 1991

absorbed from the diet, how it is distributed and how rapidly that calcium forms bones in relationship to age, the onset of puberty, diet and race.

Current Recommended Daily Allowances (RDAs) of calcium range from 800 milligrams for children ages 1-10 and 1,200 milligrams for children 11 and older. Abrams suspects the RDA may not be adequate for the skeletal needs of all children.

Abrams believes that many children do not receive enough calcium. He also expects to find a significant difference in calcium distribution and bone density among ethnic groups. Caucasians appear to be at higher risk for developing osteoporosis than blacks.

Osteoporosis, a disease that causes bones to break easily, leads to hip fractures and crushed vertebrae as well as "dowager's hump," a telltale sign of a collapsing spine. Osteoporosis affects an estimated 20 million American — most of them elderly women.

There is no cure, but Abrams believes that understanding calcium needs and bone growth during childhood can lead to its prevention.

Use The Classifieds

## Blackland Income Growth Conference Scheduled For Jan. 13-15

"Winning in Agriculture" will be the theme of the Blackland Income Growth Conference and Mid-Tex Farm and Ranch Show on January 13-15. The Blackland Income Growth Confer-

ence marks 30 years of winning leadership to agriculture in North and Central Texas. Farmers and ranchers gather at the Waco Convention Center every January to get the latest information on the

complete range of agriculture issues affecting North-Central Texas.

Sessions on commodities, livestock, economics and management form the core of the conference. And, special seminars

have been added to highlight the prospects of US-Mexico free trade, farm financial standards, and Ag leadership issues.

Herbert Richardson, Texas A&M's newly-named Chancellor, will be

the Wednesday morning keynote speaker. Featured luncheon speakers include: Layton Black, State Representative (Tuesday exhibitors Luncheon) and Stanley White, nationally-known motivational humorist (Wednesday B.I.G. Luncheon and annual meeting). On Tuesday, the Texas Family Forum focuses on the life choices

confronting families. Toody Byrd, well known motivational speaker and guidance counseling expert, will address the Family Forum Seminar.

The two-day conference sponsored by the Texas Agricultural Extension Service features speakers from private industry, major agriculture producers and experts from Texas A & M University.

## Railroad Commission Says Projected Purchases Of Texas Oil And Gas Up For January 1992

Chairman Lena Guerrero and Commissioners James E. (Jim) Nugent and Robert Krueger reviewed oil companies' January 1992 nominations to buy a total of 1,774,301 barrels of Texas oil per day. The nomination total, an increase of 7,715 barrels daily when compared to December 1991 purchaser nominations, estimates Texas oil purchases in the coming month. January 1991 nominations totaled 1,881,833 barrels daily.

Chairman Guerrero also reported that January 1992 nominations for the purchase of Texas gas totaled 20,150,276 Mcf/d (thousand cubic feet per day). December 1991 nominations totaled 20,151,177 Mcf/d. January 1991 nominations amounted to 21,345,273 Mcf/d.

Major purchasers filed these January 1992 nominations from the floor at the hearing: Amoco Production Company, 143,000 barrels, down

500; Exxon Company, U.S.A., 120,700 barrels, down 1,000; Mobil Oil Corp., 104,000 barrels, down 4,000; Phillips 66 Company, 81,200 barrels, unchanged; and Texaco Trading and Transp. Inc. 116,450 barrels, unchanged.

Chairman Guerrero reported that crude oil and petroleum products imported into the U.S. averaged 7,349,000 barrels per day for the month of October 1991. This was an increase of 632,000 barrels per day from the same period a year ago.

The next statewide oil and gas production allowable hearing will begin at 1:30 p.m., on Monday, January 13, 1992, at the Railroad Commission in the William B. Travis Bldg., 1701 N. Congress Avenue, in Austin.

**CHILD ABUSE  
24 HOUR HOTLINE  
1-800-252-5400**

**they won't**



your marketplace the  
**WANT ADS**

## Home of the Lobo Burger!

The Best Groceries Since You Left Home!

Call In Orders Welcomed

## R.D.'s Restaurant

901 Conrad Hilton  
Cisco, TX  
442-4425

Open Mon.-Fri. 9 a.m. - 8 p.m.

Sat. 9 a.m. - 5 p.m.

Daily Plate Lunch Specials

Evening Supper Specials

**The Kat's**  
**MEOW**

629-3433 Open Mon.-Fr. 9:00 - 6:00  
Sat. 1:00-4:00  
Closed Wednesdays

Haircuts • Permanents • Solor •  
Manicures Nail Art • Shampoo-Sets  
Sculptured Nails

Kara Ford Owner/Operator  
Walk-Ins Welcome

## WAIT!!

Check With Us Before You Buy.  
Local Owned Business For 35 Years  
Siding: Vinyl - Steel - Aluminum  
Windows: Storm - Replacements - Thermal Break  
Sun Rooms - Solariums

100% FINANCING AVAILABLE  
NO DOWN PAYMENT TO QUALIFIED BUYERS  
ON INSTALLED (labor and material) JOBS

For Free Estimates Call 442-2077, or  
If Out of Town Call 1-800-772-8532

CERTIFIED TEXAS VETERANS LAND BOARD CONTRACTOR

S & M Supply - Reynolds Manufacturing  
105 East Eighth  
Cisco, Texas 76437

## BIBLES

All Leather Bound  
**20% OFF**

Hardbacks  
**10% OFF**

Songs And Psalms  
Bible-Book & Gift Store  
721 Conrad Hilton  
Cisco  
817/442-2168

## THERE IS STILL A DIFFERENCE AT FOOD PLAZA

INSURANCE AVAILABLE

(Management Position Available By Appointment)  
We are interested in hiring persons who possess the following qualities:

- Personal Integrity & Dependability.
- Willingness To Work & Contribute To A Progressive Organization.
- An Ability To Work In A Fast Paced Work Environment.
- An Outgoing Personality With An Eagerness To Serve The Public.
- Personal Schedule Flexibility.
- Personal Phone Number.
- High School Diploma or Equivalent.

If You Feel You Meet All Of These Criteria, Please Apply At:

The Former J & W Kwik Stop

I-20, Hwy 6 629-2918

The New Food Plaza

(Drug Screening Required)

*Happy  
Holiday  
Season*

From Dr. Clute  
and Staff

## F. Brian Clute, D.D.S.

General and Cosmetic Dentistry  
1004 W. Main in Eastland 629-8581

Office Hours by Appointment

## Pharmacy Topics

By Bob Mueller

Are old ladies sharper than old men? Researchers at the University of Pennsylvania say yes, because women's brains are more resistant to the shrinking that comes with age.

Radioactive marker, injected before surgery, latches onto any cancer cells that surgery missed and signals loudly as a monitoring device is passed over the body.

Drinking low-fat milk instead of whole milk seems to lower the risk of ovarian cancer, an American Cancer Society study found.

A little sugar water may ease infants' discomfort with blood collection and even circumcision, according to doctors at Johns Hopkins Hospital in Baltimore. The taste of sugar seems to release brain chemicals that ease pain.

Dentist in Columbia, MO, has created a handy wristband with a pouch to hold a teenager's orthodontic appliance during school lunch hour and protect against loss on a cafeteria tray.

Here's wishing you a happy and healthy New Year. Three cheers for 1992 from the folks at Wal-Mart Pharmacy, Hwy. 80 East, Eastland, 629-3347. Make us your health and beauty headquarters.



# J and J Air Conditioning & Appliances

Maytag Appliances, and Frigidaire Appliances

License # TA CLB002300C

201 So. Lamar 629-2251

CEX14-7

## Keeping Up With Our Folks

By Weems Dykes

### CISCO

Tim Hull of Cisco was born in October of 1968 in Eastland, the son of Harvey and Dixie Hull. Tim has one brother Corey who is 16 years of age and attends school at Cisco High School.

Tim graduated from Cisco High School in 1987. He then worked for his dad applying siding, installing windows and gutter and other home exterior improvements.

He is presently employed by The Eastland Telegram as advertising representative, reporter, and writer and press room worker.

Tim is an active young man who loves gospel music and has sung solos in several churches in this area. He is a member of Calvary Baptist Church in Cisco, and also helps lead the music at Riddle Street Mission in Ranger.

He likes to hunt, fish and camp as well as other outdoor activities.

Tim we're glad to have you as a part of the Eastland Telegram.

Thanksgiving and Christmas are wonderful times for families to get together and enjoy the closeness of a common family bond of love and fellowship together as parents, children and grandchildren and grandparents, such is found in the home of Al and La Nelle Anderson of Cisco.

At Thanksgiving time their son Kendall and wife Leanne and daughter, Kelsay of Arlington, son Kyle, who serves on the Cisco Police force, came together as a family to enjoy the season of Thanksgiving and some family members will be together for Christmas.

Their son, Kendall serves as a pharmacist for

Tom Thumb Page in Arlington and while in the area at Thanksgiving he and his family also visited Vergie Hale of Cisco, the mother of La Nelle Anderson, Donald and Maria Hale and Brandon of Carbon and Ronald and Connie Hale of Eastland.

So may the light of this season guide your footsteps, the music fill your hearts with joy, and the story of the Christ child grant you peace now and always at Christmastime.

Mrs. Nora Stevens of Cisco will visit her son Bill and wife in Jackson, Mississippi during the Christmas season, Nora is the sister of Olga Faye Parker of Cisco.

Aza Lee Henderson, sister of Nora and Olga Faye will visit her daughter Mary Ann Gallagher and family in Fort Worth for Christmas.

These sisters are very close and where you see one you generally see all three together.

Olga Faye taught English for Cisco Junior College for many years until her retirement.

Cisco has been blessed by the influence of these three sister's lives.

### EASTLAND

Mrs. La Rue Broussard of Eastland will have her son Edward Broussard and wife, Wanda, and their children Trudy, Eric and April of Fort Worth visiting her for Christmas Day.

Edward has a tire service in Ft. Worth, daughter Trudy attends Mc Lean Middle School, son Eric and daughter April are in South Hills Elementary School.

Mrs. Broussard retired from the Westbrook Independent School District of Mitchell County before moving to Eastland to

make her home. She is the pianist for the Friendship Class of First United Methodist Church in Eastland and for the evening worship service. She also provides special music at the Eastland Senior Center.

Mrs. Billie Fox and "Shorty" Fox will have Christmas dinner at her home on Christmas Day.

Her mother Elsie Clemmer will have Christmas Dinner with her daughter, Brenda Snow, on Saturday, they will exchange gifts and on Sunday they will have their pre-Christmas Dinner.

Mr. and Mrs. Jimmy Jordan and boys, Jason and Jeffery of Winters, will have Christmas Dinner with Jimmy's mother, Mrs. Ora Mae Jordan of Eastland.

Also her daughter Nora Black and husband Jerry of Clyde, Melva and Otis and all grandchildren and two great-grandchildren will be present for the Christmas festivities.

Ora Mae's son, Jimmy is President of the First State Bank in Winters. Her daughter Nora Black is a first grade teacher in Clyde Elementary School. Her son, Otis Ray lives in Eastland and is employed by Lone Star Gas Company as a welder specialist and is over 17 counties in this area with headquarters in Abilene.

Her children are Mavericks having graduated from Eastland High School. Mrs. Jordan is a member of the Eastland Senior Center and the Eastland Chapter 2428 of the AARP. She also has a green thumb and grows lovely flowers in her yard in Eastland to make our city a more attractive place to live.

Mrs. Lee, Simpson of Eastland will attend the

graduation exercises at Tarleton University in Stephenville on December 21, as her grandson David May of Stephenville will be receiving his Bachelor of Science Degree in Education and Physical Science as a teacher. David is the son of Jerry and Kay May of Stephenville and the grandson of Cody and Lillian McDaniel of Kokomo.

Lee is very active as a volunteer member of the Eastland Senior Center and will serve on the Eastland Board of the AARP for 1992 as one of its members.

Ashley and Bradley Harrison, children of Mrs. Jane Harrison of Mineral Wells, Texas spent the Christmas holidays with their grandparents, Rev. and Mrs. Weems Dykes of Eastland.

They attended the Christmas Dinner on Lake Leon with their Uncle Elmer and Aunt Edith Foster and cousins Carolyn and John Foster and their grandparents, Weems and Verne Dykes. Verne and Edith are daughters of the late J. C. and Lillie May Allison.

Remove the commercialism from Christmas and the business world would collapse, remove Santa Claus from Christmas and the little children would be deprived of a long awaited friend, remove the bright and colored lights from the homes and churches and businesses and from the Eastland Court House and the travelers and citizens would feel a sense of drab darkness, remove the music and hymns and songs of Christmas and the heart and spirit would suffer a great loss, remove the N.T. Christmas Story from Christmas and humanity would suffer its greatest loss, for without the story of the birth of the Christ child, his teach-

ings as the Son of God, His death on Calvary's cross for the sins of mankind and Jesus' resurrection from the grave giving man hope of eternal life beyond the grave, man would never know that Jesus was the Son of God, the Wonderful Counselor, the Might God, The Everlasting Father, the Prince of Peace and the divider of history into B.C., before Christ and A.D. - the year of our Lord.

Go tell the Christmas story, but better still, live it!

### RANGER

Some of the greatest people you see eating at Ken's, Ramonas, K-Bobs Steak House and other places that serve food are citizens of Ranger who eat in Eastland, not because Ranger doesn't have good food places to eat at, but because there is more of a sense of romanticism in just getting out of town where you live, husband taking the wife out for a good meal which she didn't have to fix nor wash the dishes, friends joining other friends just to break bread together in fellowship and being able to eat a meal out of town without having to travel too far.

Two of my goods from Ranger that I see eating good food here on the weekend are Mr. and Mrs. King of King Insurance Agency and other Ranger citizens that I know.

Just remember you'll see Eastland folks eating in Ranger and Cisco and vice versa for it seems people just like to eat no matter where it is.

IT'S THE LAW!

SEATBELTS  
Buckle Up  
for Safety!

## Men In Service

Navy Petty Officer 2nd Class Edward D. Eller, son of Billie M. Hohenstein of 708 Schultz, Albany, recently returned from a six-month deployment to the Western Pacific, Indian Ocean and Arabian Gulf.

Eller serves aboard the guided missile cruiser USS Long Beach, homported in San Diego. Eller's ship was part of Battle Group Foxtrot, an eight ship task group centered around the Navy's newest nuclear powered aircraft carrier, USS Abraham Lincoln.

Eller participated in Operation Fiery Vigil which evacuated more than 17,000 Americans from the Philippines after the eruption of Mount Pinatubo. The battle group also spent more than three months on station in the Arabian Gulf joining the multinational peace keeping force of Operation Desert Storm.

Battle Group Foxtrot operated with forces from France, Great Britain, Japan, Kuwait, Saudi Arabia and several other Gulf states to support United Nations resolutions in the region. The group also worked with the navies of Thailand, Malaysia and Singapore. Additionally, while off the coast of Japan, the battle

## Anniversary



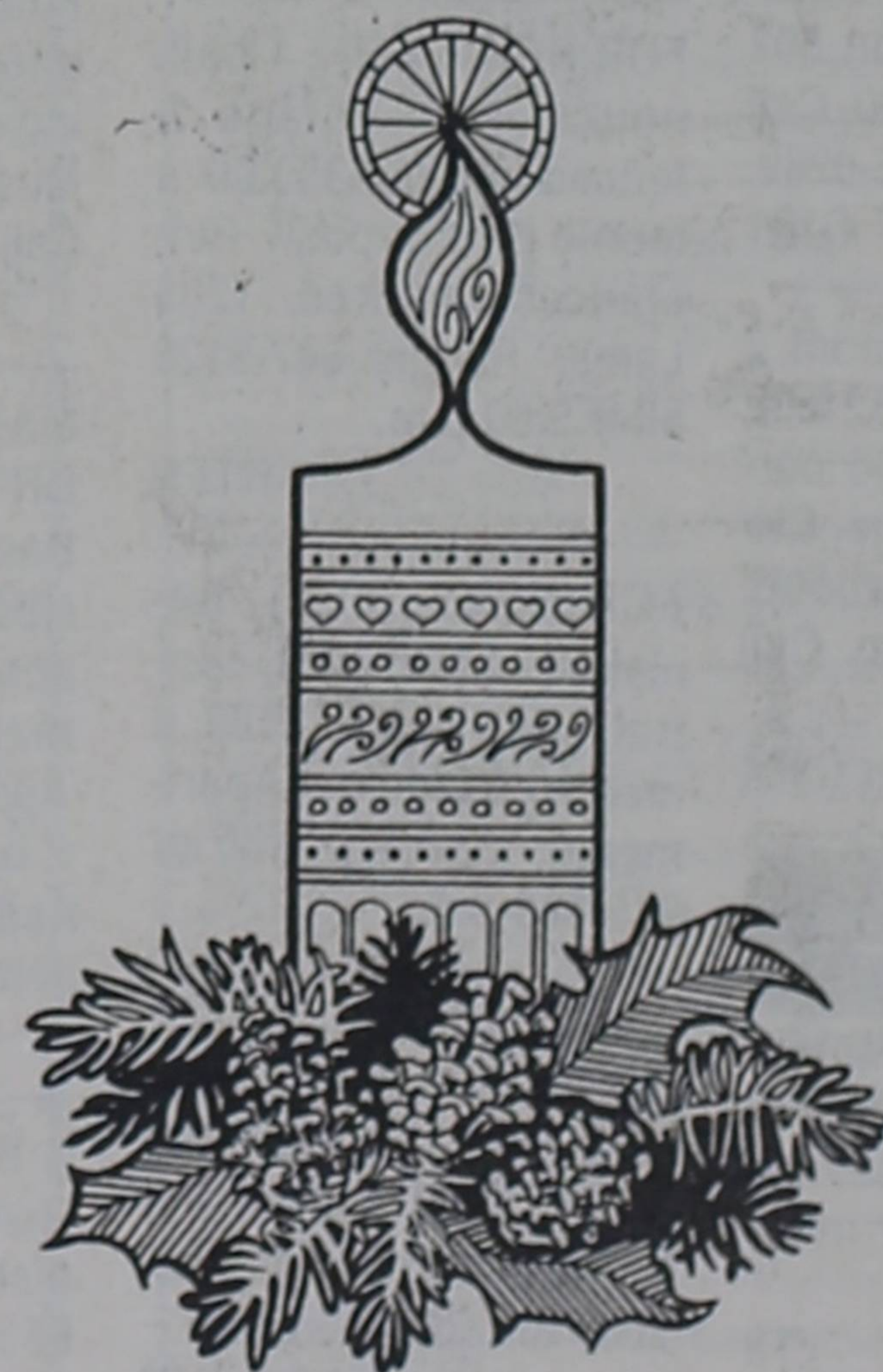
### Mr. and Mrs. Bernard Milmo To Celebrate 50th Anniversary

The children of Bernard & Adona Milmo are proud to announce their parents 50th Anniversary. The reception will be in La Marque, Texas at the Highlands Baptist Church from 2:00 - 5:00 p.m. on Saturday, December 28th, 1991. Bernie & Adona have 7 children, 19 grandchildren, and 3 great-grandchildren. Adona has a sister, Rosie White, residing in Ranger and Bernie, has a step-sister, Lucille Burch, that also resides in Ranger. Bernie was raised in

Ranger and lived there until 1957 when he left and moved to the coast with his family and to work for Union Carbide as a welder until retiring in 1982. Adona was from the Highlands Baptist Church from 2:00 - 5:00 p.m. on Saturday, December 28th, 1991. Bernie & Adona still reside in their home in La Marque, but spend their summer months in his mother's (Bertha Blakney) homestead in Ranger.

The 1979 graduate of Moran High School, Moran, joined the Navy in June 1988.

During the Holiday Season more than ever, our thoughts turn gratefully to those who have made our progress possible. And in this spirit we say, simply but sincerely



Thank You and Best Wishes for a Merry Christmas and Happy New Year

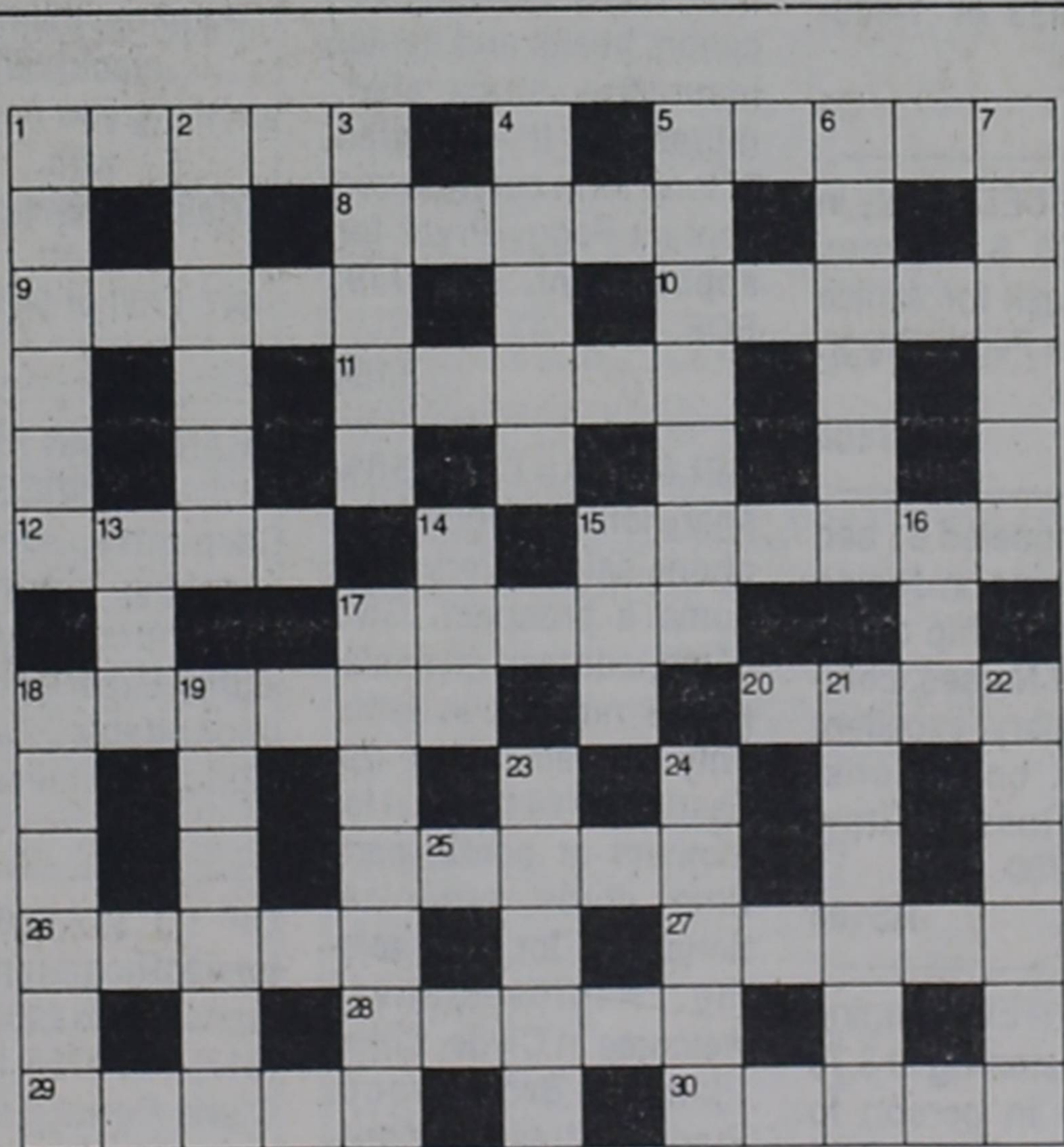
ACE Hardware and Garden Center  
504 EAST MAIN • EASTLAND, TEXAS 76448  
817-629-3373

OPEN 7 DAYS A WEEK

OPEN 7 DAYS A WEEK

HOURS: 8:00 A.M. to 6:00 P.M. Monday-Saturday  
1:00 P.M. to 5:00 P.M. Sunday

WE BELIEVE IN AMERICA



### CLUES ACROSS

1. Drift (5)
5. Brown pigment (5)
8. Separated (5)
9. Eddy (5)
10. Tilt (5)
11. Reasoning (5)
12. Grade (4)
15. Tower (6)
17. Cluster (5)
18. Scream (6)
20. Ooze forth (4)
25. Normal (5)
26. Jewish teacher (5)
27. Force (5)
28. Synthetic fiber (5)
29. Steed (5)
30. Cat (5)

### CLUES DOWN

1. Rankle (6)
2. Source (6)
3. Tabulate (5)
4. Measure (5)
5. Pompous (7)
6. Favor (6)
7. Passionate (6)
13. Cinder (3)
14. Annoy (3)
15. Pull (3)
16. Female sheep (3)
17. Authentic (7)
18. Char (6)
19. Eraser (6)
21. Marionette (6)
22. Entirely (6)
23. Intimidate (5)
24. Wink (5)

Sponsored by Eastland Drug

## Your Special Invitation...



If you like to hear about...

# Jesus

The pastor, and international speaker, John C. Jones presents the "living Christ" through the message of "faith" weekly. The congregation is a inter-denomination worship center where people from all walks of life and religious experience come to study God's Word.

A Church of "Signs & Miracles"

### Service Times

Sunday 10:30 a.m. 6:00 p.m.  
Wednesday 7:30 p.m.

"Where going to church is fun"

This week, join those who drive from a 100 mile radius each week to attend a church that is "Delightfully Charismatic."

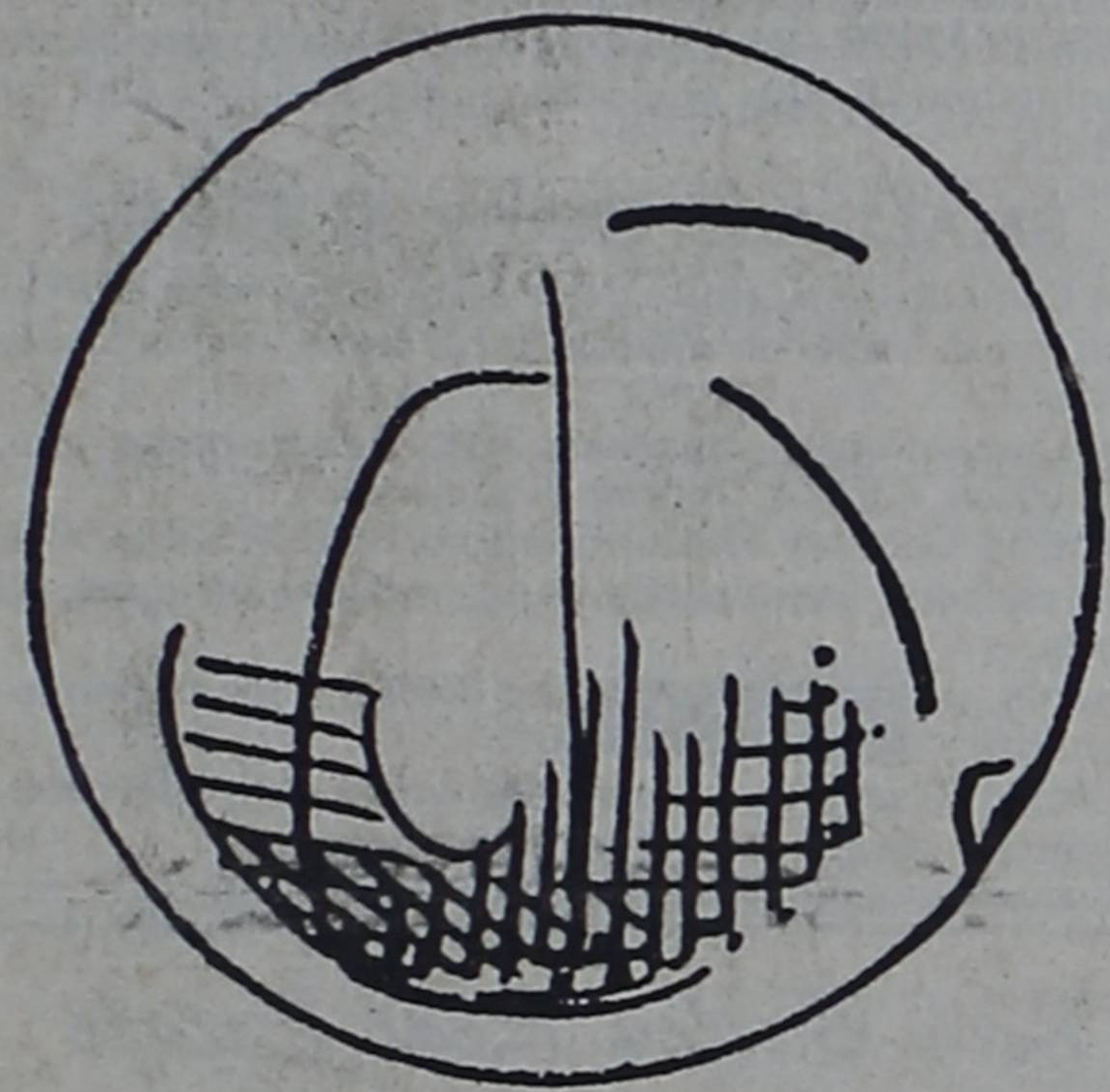
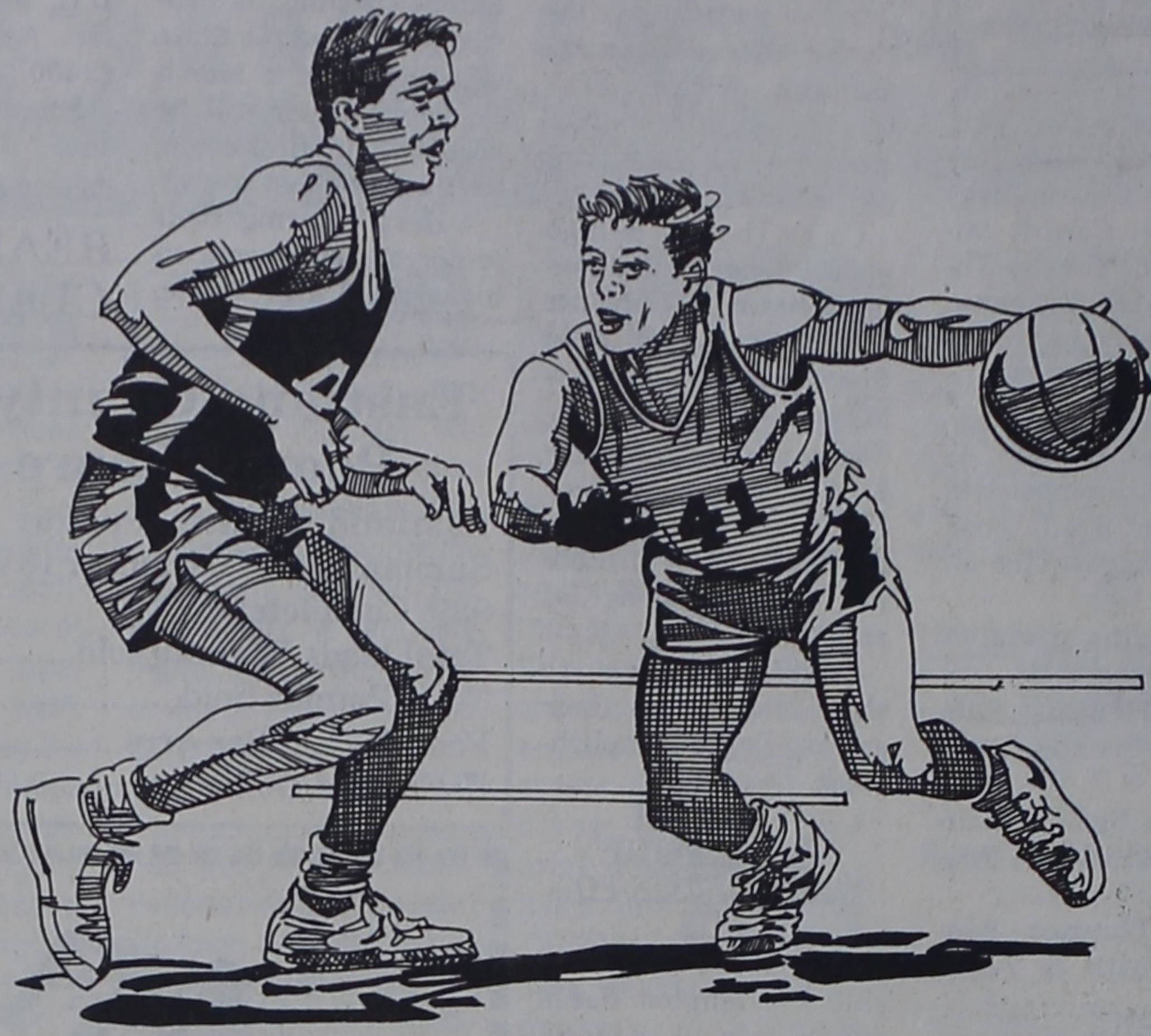
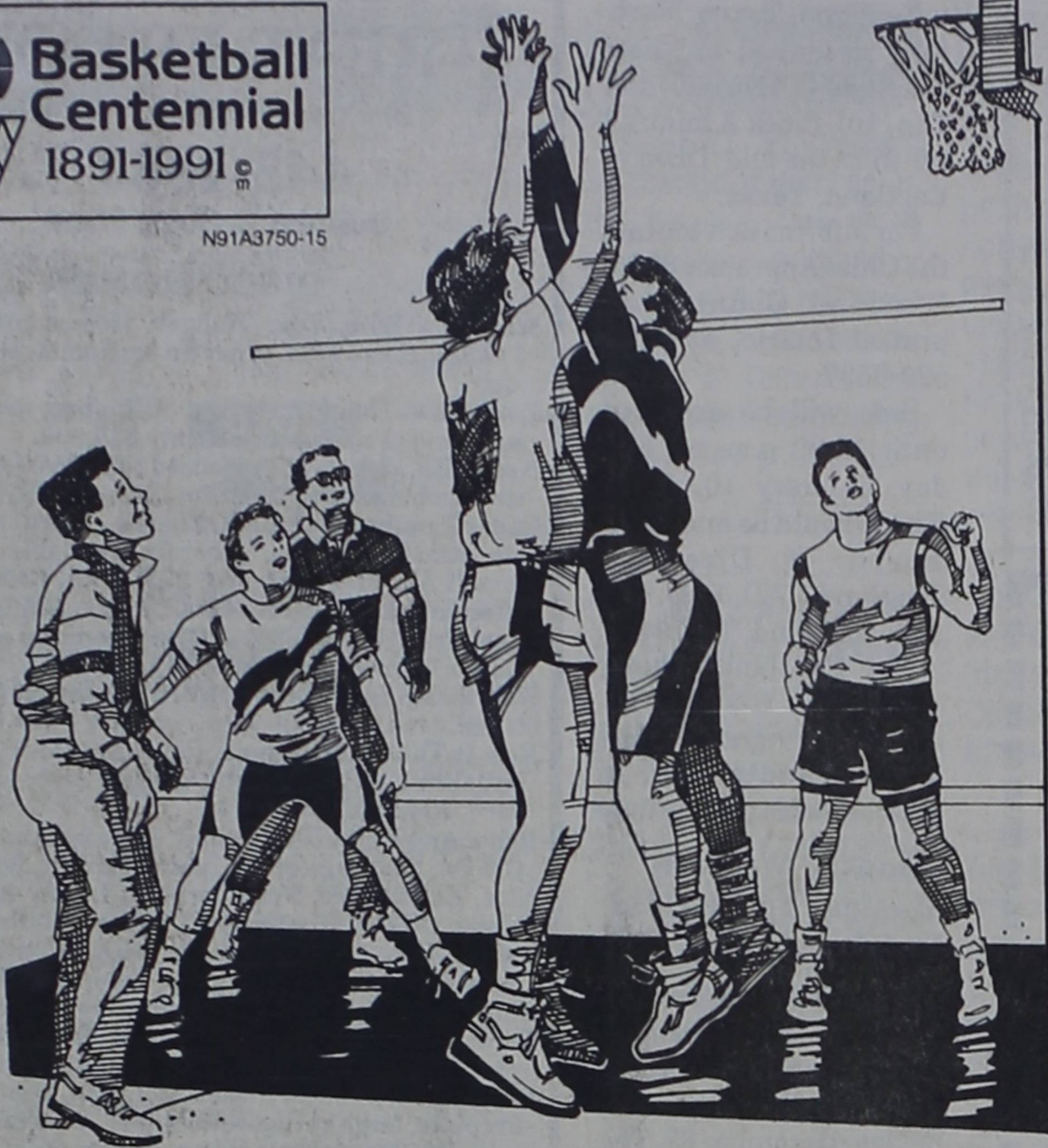
608 E. 8th  
Ph. 442-2673 Cisco, Texas Ph. 442-4479





# BASKETBALL '91

**Basketball Centennial**  
1891-1991



**1991-92 RJHS BASKETBALL SCHEDULE**

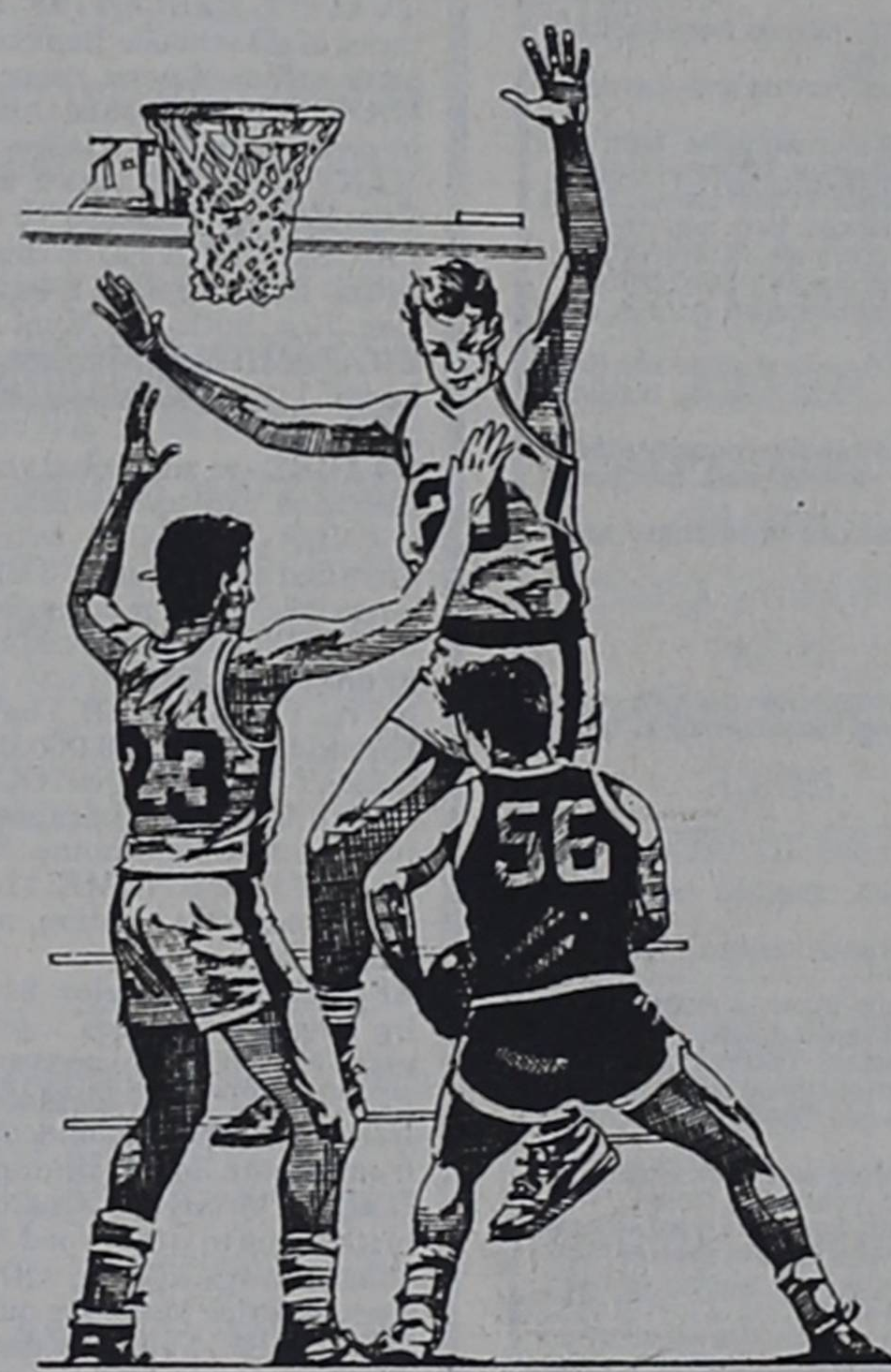
DATE	OPP	SITE	TIME
Nov. 18	Graford	T	4:00
25	Graford	H	4:00
Dec. 2	Eula	T	4:00
9	Breckenridge	H	5:00 Girls
9	Breckenridge	T	5:00 Boys
16	Breckenridge	H	5:00 Boys
Jan. 6	Eastland	H	4:00
11	Eastland	7th	Tournament
13	DeLeon	H	5:00 Girls
13	DeLeon	T	5:00 Boys
20	Cisco	H	5:00 Girls
20	Cisco	T	5:00 Boys
25	Eastland	8th	Tournament
27	Eastland	T	4:00
Feb. 3	DeLeon	T	5:00 Girls
3	DeLeon	H	5:00 Boys
10	Cisco	T	5:00 Girls
10	Cisco	H	5:00 Boys

**RANGER HIGH SCHOOL BASKETBALL 1991-1992**

DATE	OPP	SITE	TIME
Nov. 19	Hico	T	5:00
22	Baird	T	4:00
23	Albany	T	10:00
25	Coleman	T	6:00
26	Tolar	H	5:30
Dec. 2	Coleman	H	6:00
3	Albany	T	4:00
5-7	CJC Tournament		
9	Eastland	T	6:30
10	Albany	H	4:00
12-14	Glen Rose Tournament		
12-14	Huckaby Tournament		
12 & 14	Gorman Tournament		
17	Eastland	T	6:00
19-21	Eastland Tournament		
30	Merkel	T	5:00
Jan. 3	Coleman	H	4:00
4	Albany	H	10:00
7	Bangs	T	5:00
10	Cisco	H	4:00
13	DeLeon	H after Jr. High	9th boys
14	DeLeon	H after Jr. High	9th girls
17	Goldwithe	T	5:00
21	San Saba	H	5:00
24	Eastland	H	4:00
25	Albany	9th	Tournament
27	Eastland	H	6:30
28	Coleman	T	5:00
31	Bangs	H	5:00
Feb. 3	DeLeon	H after Jr. High	9th boys
3	DeLeon	T after Jr. High	9th girls
4	Cisco	T	4:00
7	DeLeon	T	4:00
11	Goldwithe	H	5:00
14	San Saba	T	5:00
18	Eastland	T	6:00

**1991-92 RANGER JUNIOR COLLEGE MEN'S BASKETBALL SCHEDULE**

DATE	DAY	OPPONENT	SITE	TIME
Th-F-S Nov 28-29-30		Odessa Tour	Odessa	
Sat Dec 7		SWCC Ranger		8:00
Sat Jan 11		Collin Plano		8:00
Wed Jan 15		Temple Ranger		8:00
Sat Jan 18		Weatherford Weatherford		8:00
Wed Jan 22		Cisco Cisco		8:00
Sat Jan 25		Hill Ranger		8:00
Wed Jan 29		MCC Waco		8:00
Sat Feb 1		Grayson Ranger		8:00
Wed Feb 5		SWCC Terrell		8:00
Sat Feb 8		Collin Ranger		8:00
Wed Feb 12		Temple Temple		8:00
Sat Feb 15		Weatherford Ranger		8:00
Wed Feb 19		Cisco Ranger		8:00
Sat Feb 22		Hill Hillsboro		8:00
Wed Feb 26		MCC Ranger		8:00
Sat Feb 29		Grayson Sherman		8:00



**1991-92 RANGER JUNIOR COLLEGE WOMEN'S BASKETBALL SCHEDULE**

DATE	DAY	OPPONENT	SITE	TIME
Th-F-S Nov 28-29-30		Odessa Odessa	TBA	
Sat Dec 7		SWCC Ranger		6:00
Wed Jan 15		Temple Ranger		6:00
Sat Jan 18		Weatherford Weatherford		6:00
Wed Jan 22		Cisco Cisco		6:00
Sat Jan 25		Hill Ranger		6:00
Wed Jan 29		MCC Waco		6:00
Sat Feb 1		Grayson Ranger		6:00
Wed Feb 5		SWCC Terrell		6:00
Wed Feb 12		Temple Temple		6:00
Sat Feb 15		Weatherford Ranger		6:00
Wed Feb 19		Cisco Ranger		6:00
Sat Feb 22		Hill Hillsboro		6:00
Wed Feb 26		MCC Ranger		6:00
Sat Feb 29		Grayson Sherman		6:00



# BASKETBALL '91



**Ranger Auction Company**  
Thomas Seay 434-2978  
Jackie Gentry 647-3247

---

**Mathews Pharmacy**  
300 Hwy 80 W.  
647-1115

**Adams Grocery & Market**  
114 N. Austin  
647-1144

---

**Gary's Automotive**  
Hwy 80 W. 647-3003

**BOND TOWN**  
FM Rd. 2461  
647-5200

---

**Ranger Times**  
211 Elm  
647-1101

**G. E. Railcar Repair Service**  
NE of City  
647-3223

---

**Edwards Funeral Home**  
211 Pine Street  
647-1133