

## Football Season Opens Tonight With Mason Cowpuncher Tilt

**FIRST OF SIX HOME GAMES START AT 8:15**

The Sonora Bronco 1946 football season will open here tonight at the high school stadium at 8:15 o'clock when the rampaging Broncos, who have most of last year's lettermen back, take the field against the highly touted Mason Cowpunchers.

According to Coach Mack Alexander, the Broncos are really "ready" for this first tilt and plan to play top-flight football for four quarters against the invading waddies.

The Broncos hold a slight weight advantage over the Masonites, but aren't counting on this alone to turn the trick, because the cowmen have the reputation of always producing in the pinches.

Officials for the game will be Charles E. (Bubba) Brown, Tom Ratliff and J. T. Bailey of Ozona. Mason will wear white jerseys and Sonora red.

MASON		
Name	WL	Pos.
Schnessler	140	LE
Schmidt	155	LT
Cransford	150	LG
Branderburger	165	C
Loeffler	150	RG
Loeffler	165	RT
Harden	145	RE
Preymake	145	Q
Holloway	145	LH
Loeffler	140	RH
Fuller	165	FB

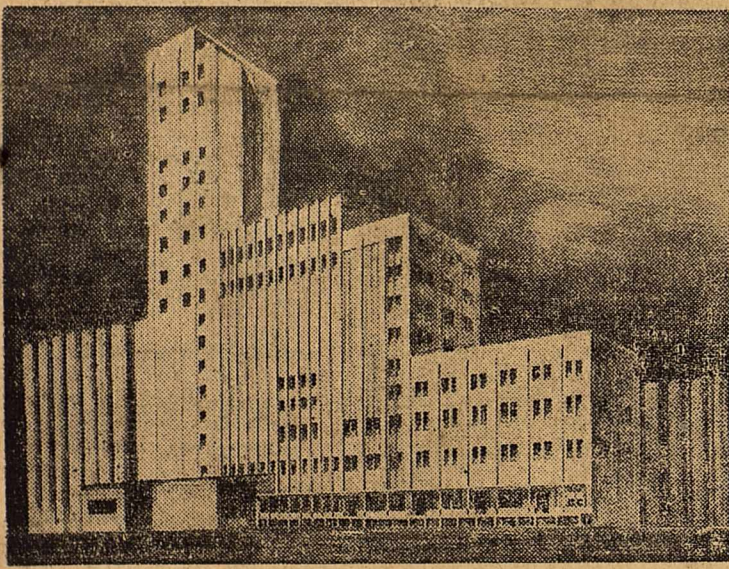
  

SONORA		
Name	Wt.	Pos.
Ward	160	LE

or		
Name	Wt.	Pos.
Sharp	150	LE
West	158	LT
Walters	134	LG
Cusenbary	160	C
Taylor	140	RG
Jackson	164	RT
McIntire	165	RE
Street	126	Q

## Million Dollar Feed Mill



This architect's sketch shows the new \$1,000,000 ten-story, fireproof Burrus Feed Mill now being erected at Fort Worth for the manufacture of Texo feeds. Upon completion of construction about January 1, general offices of the Burrus

Feed Mills will be moved from Dallas to Fort Worth. Other Burrus Feed Mills are operated at McKinney and San Benito, and a plant and a sales office will be maintained at Dallas.

## Sonora Trims Goodfellow Field Team 5-1 Sunday

**FANS SEE LEFTY STEWART PITCH ONE-HIT GAME**

The Sonora Independent Baseball team added another victory to its growing list Sunday when it defeated the Goodfellow Student Officers 5-1 behind the steady pitching of Lefty Stewart, who let the fliers down with a single hit in the seventh inning.

Sonora got to Hennessy in the fifth for five hits and two runs and scored runs in the first, second and fifth to total five runs and five hits.

The win, along with the tie game last week with Miles, gives Sonora a firm grip on third place in the Concho Basin League. Sonora's heavy hitting has been responsible for the fast climb up the ladder with "Snuffy" Hendricks leading the batters with 474. Number 2 hitter is Bob Medford with 422 and third is Tallman Millican with 400.

Sunday the Eola team, victors over Sonora a few weeks ago, comes here for a game at 3 o'clock. Sonora has dedicated this game to George E. (Bud) Smith, who Sunday will complete 27 years in baseball. Ceremonies will be held at the end of the seventh inning and A. E. Wells will act as master of ceremonies and will present a gift to Smith.

Subscribe to the NEWS

## Former Sonorans Will Reside In Balboa, Panama

After shipping a piano, sewing machine, three trunks and various boxes and suitcases, Mrs. Fred A. DeLashaw put her two daughters, Sandra and Linda, in the family automobile Saturday and left Fort Worth for New Orleans. There they will board a steamer—with the car—for the Canal Zone to join Chaplain Fred DeLashaw.

In Panama they have a furnished apartment awaiting for them at Albright Field, Balboa. The children will attend school on the post.

DeLashaw, a captain in the Airways Communications Service, 153rd Squadron, is chaplain for a circuit of airbases in Peru, Guatemala and Galapagos Island. He is a veteran of 28 months Pacific duty and was stationed at Hensley Field before going to Panama four months ago.

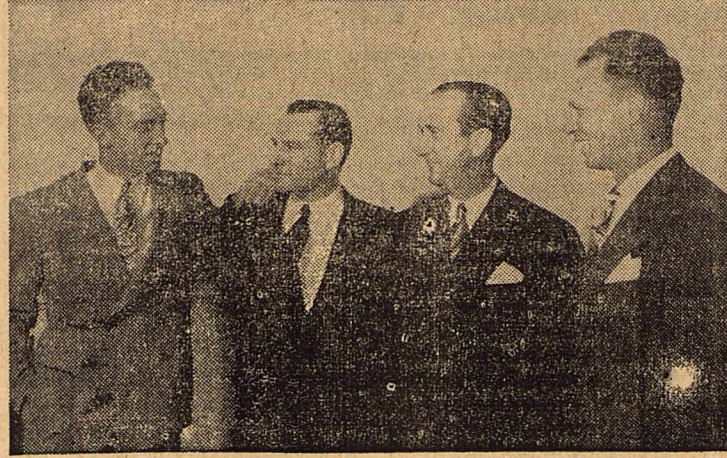
He has written his daughters that, to compensate for leaving their dog here, he has a pet monkey waiting for them.

The chaplain and his wife were the first couple to be married in the Botanical Gardens. At the time he was a student at Southwestern Baptist Theological Seminary. He was pastor of the First Baptist at Sonora when he enlisted four years ago.

During his absence, Mrs. DeLashaw and the children have been living in Fort Worth.

Subscribe to the NEWS

## SOUTHWEST CONFERENCE FOOTBALL ANNOUNCERS



Humble radio announcers, reading left to right: Bill Michaels, Kern Tips, Charlie Jordan, Ves Box.

## Nearly 95 Per Cent Of Texas Wool Clip Falls Into Fine Wool Class

The Devil's River News this week introduces the first of a series of articles by well known authorities on the wool and mohair industry. Although some of the articles have been published before, it is felt that they may have been overlooked by some of our readers. -Ed.

by S. P. DAVIS, Wool Specialist, Texas Agricultural Experiment Station

Practically 95 per cent of the wool clip in Texas falls into a class known by the wool trade as "Fine Wool", and is produced by the Rambouillet and Merino breeds of sheep. The term "Fine" denotes a wool that is capable of being spun into yarn classing as 64's and up. This means that 64 worsted hanks of 560 yards each will weigh one pound. There is so much uniformity in the clip that Texas is known as a fine wool state and holds a commanding place in the market. There is a small amount of Texas wool that will produce as fine as 70's while there are a few mutton breeds of sheep in the state such as Shropshire and Hampshire which produce coarser grades of wool that fall into what is known in the trade as medium wools and spin into 50's and 56's. The annual clip of more than 60 million pounds of this one fine class of wool which may be likened to "Middling" as used in rating cotton class, greatly simplifies the problem of arriving at the proper market value of the crop.

Texas has a very successful system of marketing that is unlike that of any other wool producing state. Warehouses are located throughout the wool growing areas of the state. San Angelo, known in the wool trade as the largest inland wool market in the world has nine of these warehouses which handled 22 million pounds of wool for growers during the past year. This amount was 1/3 of the total Texas production for that year. Other large warehouses are located in Del Rio, Sonora, Kerrville, Uvalde, Junction and other points.

Producers are usually able to secure advances from the warehouse concerns to enable them to finance their operations through the year. These advances are made under favorable conditions and have the effect of inducing the producer to store his wool with the warehouse, and the commission, usually one cent per pound when sale is made, has proved to be satisfactory to both the warehouse and the wool grower. The system results in the accumulation of large stores of wool for inspection by eastern buyers and their representatives, and results in keen competition among the purchasers of Texas wools. One of these warehouses, the Sonora Wool and Mohair Company, has for several years been grading its wool at the shearing pens and while it has been impracticable to obtain experienced graders from the mills, the quality of the work done by local men has been such that this company has been receiving a premium for these graded wools offered for sale. Due to the uniformity of the Texas wools, it is a comparatively simple matter to train young men to judge rather accurately the correct grades according to the important factors governing wool prices which are in the order named: shrinkage, which is loss in scouring, length of staple, strength, uniformity and fineness, color, and elasticity. Generally speaking, light shrinking, longer stapled wools command the highest prices both in the 12 months and in the spring and fall shearing. In fact, as we stated recently, the price paid for the wool is made on the gross weight, but depends entirely upon the estimated clean weight of the wool which means that having ascertained the shrinkage, the clean weight of the clip

that will remain after scouring is the commodity which commands the price. It is true, however, that the price is influenced by the length of the staple inasmuch as more of the uses for wool require good length. The strength, uniformity, and fineness figure in the value as well as color and elasticity.

The warehouses having found a market for the seasons clip ship their accumulated stores to the buyers usually through Houston and Galveston by boat to the eastern mills. Near the mills scouring facilities are found and the clean wool passes from scouring into the process of manufacture. The manufacturer having found that the wool is satisfactory is in position to offer for the next season's clip a price sufficient to insure that he will get enough of this fine Texas wool for his purposes. If the wool is of poorer quality than expected, the mills will be disappointed and their subsequent offers will be reduced accordingly; but considering the popularity of Texas wools the producers have obviously been able to supply a quality that brings repeat orders. There has been a notable improvement in many of the flocks in recent years and the percentage of choice wool is known to be increasing. The Experiment Station has found definitely that certain animals even within the same breed produce better fleeces than certain other animals and gradually these better animals are being used to build up the flocks to a high type of production.

There are other methods of marketing Texas wools and under certain conditions involve a considerable percentage of the clip. In years when wool supplies are unusually low and there is an active demand on the part of mills and foreign wool markets are reflecting a strengthening tendency in prices, there will be considerable contracting of wool prior to shearing as has been the case for the past two years in Texas. The general procedure in such contracting is for the buyer to advance cash to the grower at the time of making the contract and to guarantee the remainder of the money at the time of delivery of the wool after shearing. It is estimated that over 30 million pounds of wool of the 1937 clip have been bought by this method. In some cases the merchant inspects the wool at the ranch and pays for the clip when it is put on the rails.

In the years when wool prices are low and there is no active demand by manufacturers, it is sometimes the practice for the wool

## Alvis Johnson Resigns Judgeship; George Wynn Takes Over Office

### Dr. C. F. Browne To Open General Practice In Sonora

**WILL REMODEL HALLUM BUILDING FOR OFFICES**

Announcement was made this week that Dr. Charles F. Browne of Lubbock, recently discharged from service with the U. S. Army Medical Corps, will open offices in the Hallum Building adjoining the E. F. Vander Stucken Co. and conduct a general practice in Sonora and Sutton County. Dr. Browne stated that the building would be remodeled and that complete x-ray and laboratory equipment would be installed. The offices are expected to be ready for use in two or three weeks.

A native of Missouri, Dr. Browne moved to Clayton, New Mexico at an early age and received his primary education there. After graduation from high school at Clayton, he attended Texas Tech at Lubbock and received his Bachelor of Arts degree there in 1938. In the same year he enrolled in the University of Texas Medical School at Galveston and received his M. D. in 1942. This was followed by his internship at King's Daughters Hospital in Temple, where he specialized in eye, ear, nose and throat work.

In 1943, he was called to active duty with the army and served overseas with the 96th Field Hospital in Burma, Assam, India and China. He landed in Formosa with the first occupation troops and was made commanding officer of one of the hospitals there. Upon completion of his duty in Formosa, he returned to Shanghai for six months duty with the 172 General Hospital. He received his honorable discharge from the army in June, 1946, with the rank of major.

In 1942, Dr. Browne was married to the former Miss Maxine Reeder of Pasadena, California. During Dr. Browne's overseas duty, Mrs. Browne was a volunteer worker with the Pasadena Woman's Clinic and was a member of the Huntington Memorial Clinic Auxiliary, an organization which has done outstanding work in cancer treatment. Mrs. Browne was also associated during the war with the Parker-Lane X-Ray Laboratory in Pasadena.

Miss Jamie Trainer and Miss Marjorie Dameron have returned to Lubbock to attend Texas Tech.

Mrs. Lee Hart and Miss Pauline Allen of San Angelo were here Sunday visiting friends. Mrs. Hart is to join her husband in Alaska.

Mrs. J. W. Duckett and her sister, Mrs. Julia Meadow of Junction, are in Bowie, Arizona, visiting another sister, Mrs. Eula Stanley.

Subscribe to the NEWS

growers to consign wools to eastern merchants and brokers to be sold to the manufacturers upon the approval of the grower. This method of marketing is usually unsatisfactory to the grower.

The cooperative marketing of Texas wools is conducted on a very small scale at this time and is not of great importance as a marketing factor.

George A. Wynn, county judge-elect, was installed as county judge Monday morning after the Commissioners Court had accepted the resignation of Judge Alvis Johnson. Judge Johnson stated in his letter to the court:

"I hereby tender my resignation as County Judge of Sutton County, to take effect as of this date. "I am taking this action because my services are badly needed in my own private business and in order that I can devote my full time to my own private affairs. I feel that I have neglected my ranching interests much too long already.

"In this connection I call to your attention the fact that everything of a current nature connected with the duties of the County Judge has been brought to completion. There are no projects that are in an unfinished condition. The budget for next year has been prepared and approved, the tax rate has been set, and the tax rolls for next year approved. The road bonds voted sometime back have been issued and sold and the proceeds are in the hands of the Treasurer, and the time has now come to begin the acquisition of the right of way and the changing of fences on the Junction and Del Rio Highways. This project will necessarily drag along over many months and take considerable of the time of the County Judge. I do not feel that I should now begin it, when it is certain to be in an unfinished condition at the expiration of my term of office, especially when it will mean considerable financial sacrifice on my part.

"I have enjoyed working with all of you and with all the preceding members of the Commissioners Court. The cooperation you have given me and have given each other has in my opinion enabled the County to make much progress in supplying the ranch people of this county with good roads over which to travel to town and over which they can move their livestock.

With good wishes for each of you, I am

Alvis Johnson."

In accepting the resignation, the Commissioners Court passed the following resolution:

"WHEREAS, this Commissioners' Court is not unmindful of the more than twenty-three years of continuous and faithful service rendered the people of Sutton County by Judge Johnson, and

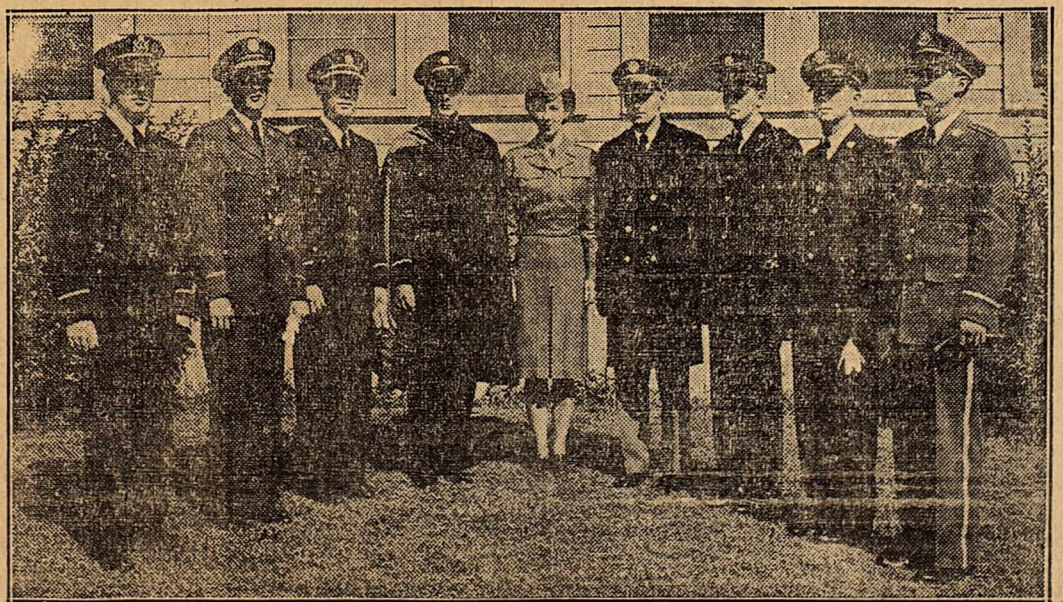
"WHEREAS, this Commissioners' Court is desirous of expressing to Judge Johnson its appreciation for the quality and loyalty of his service;

NOW THEREFORE BE IT RESOLVED, that the resignation of Judge Johnson be accepted as County Judge, effective as of this date, and that he carry with him in his new endeavors our heartfelt good wishes for his future success and our appreciation for his honorable service. And,

FURTHER BE IT RESOLVED, that this resolution be spread upon the official minutes of this Court and that a copy of same be furnished Judge Johnson.

"GIVEN UNDER THE OFFICIAL SEAL OF THIS BODY, on this the 9th day of September, A. D., 1946.

Subscribe to the NEWS



**BOYS (AND GIRLS) IN BLUE ONCE AGAIN**—American soldiers will appear in dress uniforms of traditional blue which distinguished them from the days of the American Revolution until the Spanish-American war. From the designs modeled as shown above will be selected the official suit for the dressed up GI of the future. There are various shades of blue to select from, white, blue or ecru, neckties of blue or black, gloves of white, tan, brown or black and caps matching coats. Overcoats of dark blue and a cape of dark blue with velvet collar, trimmed with embroidered insignia and lined with red nylon are offered for cool weather. The WAC model wears a battle jacket of moss green, light green shirt, medium green tie, nylon stockings, brown oxfords and brown utility bag and brown gloves. The cap is moss green with braid (yellow with green for enlisted women, and gold with black for officers.)

Office Supplies at NEWS Office

Ligustrums

In containers ready for planting in your yard

NOW IS A GOOD TIME TO PLANT

Priced From \$1.00

Gardenias-- In Bloom  
Large — \$1.98

DUCKETT NURSERY  
PHONE 237

News Classified Ads Bring Results

SONOTONE HEARING CENTER  
WILL BE IN SONORA THURSDAY, SEPT 19  
ALWAYS ON THE THIRD THURSDAY  
Hear With SONOTONE  
NOT JUST A HEARING AID

but a personal service that seeks to give you BETTER HEARING for the rest of your life.  
The new war improved instrument, the SONOTONE 600, provides clearer, easier hearing at farther distances and comfortable hearing in noisy places.  
The SONOTONE 600 makes possible the use of the light-weight midget batteries, so tiny and easy to wear.  
Come in for free test or write for the free booklet "Hearing Through the Years."

SONOTONE of San Angelo  
C. V. HARWOOD Manager  
2 OAKS BLDG., 204 S. OAK ST. SAN ANGELO, TEXAS

UNDER NEW OWNERSHIP



I have recently leased the Lightfoot Service Station and cordially invite your patronage.

By The Bridge On The Ozona Highway

Brooks Powell Service Station  
TIRES — TUBES — GULF PRODUCTS

Mrs. R. A. King, Pioneer Ranch And Club Woman, Announces Retirement

Mrs. R. A. King, ranch woman for 30 years, club and church worker in the 50 years she has spent in or near Brady, Eldorado and San Angelo, has retired, after leasing and selling her stock to her son, John I. King.

From early girlhood, she has always lived an active and interesting life. She was reared on ranches of the Southwest, mainly in McCulloch County, near Brady. Her schooling was thorough for the times, but obtained the hard way, the home ranch being so isolated that she could never attend school from home, but always boarded in town. She finished high school in Burnet and attended the old Centenary College at Lampasas. In McCulloch County in 1898, her marriage to R. A. King took place, the couple continuing to live in that locality for a number of years. They moved to Sutton County in the fall of 1915 after purchasing 7,680 acres of land from Judge Taylor of San Antonio.

The first thing they did was to go to San Angelo and buy three saddles from Bob Andrews, one

each for Mr. and Mrs. King and their young son. They bought cows from S. E. McKing and then stocked the place with lambs and goats.

After a year the Kings sold their ranch to Lowrey and Bryson of Sonora, and moved back to Brady, a few months later in 1916, purchasing the Schleicher County ranch which the family now owns. Widowed 10 years, Mrs. King has continued to operate the ranch, assisted by her son, John Irwin, who now makes his home there.

Mrs. King has four children, two sons and two daughters: Robert King of San Angelo, John I. King of Schleicher and Sutton Counties, Mrs. J. B. Granville of Brady, and Mrs. Georgia Brittain of Eldorado; seven grandsons, the youngest, Bunch King Brittain, being in boot camp at San Diego; and three great-grandchildren.

She has always been interested in church and civic work. Every year she attends sessions of the Daughters of Trail Drivers at San Antonio, her membership being based on her record as the daughter of John I. Jones, early trail driver whose cattle were branded with the Flying Y.

Wherever she lived she belonged to the Federated Women's Clubs, and was a charter member of the club at Brady. She and her husband were both members of the West Texas Sheep and Goat Raisers' Association and she was a charter member of the organization's auxiliary.

A Presbyterian, she was a charter member of Presbyterian churches at Brady, San Angelo and Eldorado, and was Auxiliary president 15 years in Brady, and three years in San Angelo and was the first Auxiliary president in Eldorado.

FOR SALE—Wood heater and kerosene circulating heater. Call 309, Sonora Gas Co. 2tc-47



217 S. Chadbourne  
SAN ANGELO  
Phone 5384

POSTED!

No Hunting

Violators Prosecuted

Aldwell Brothers

For 24 Hour Cab Service  
CALL 363

Sonora Cab Co.

Melvin A. (Buster) Shroyer

THE

Pan American

Liquor Store

BONDED WHISKEY  
Quarts & Pints  
Nationally Advertised  
BLENDED WHISKEYS  
GORDON'S GIN

Imported & Domestic  
WHISKEY WINE  
LIQUEURS GIN

Across Bridge on Ozona Highway

C. M. Weatherly

FRYERS

Baby Chicks - - -  
Started Chicks

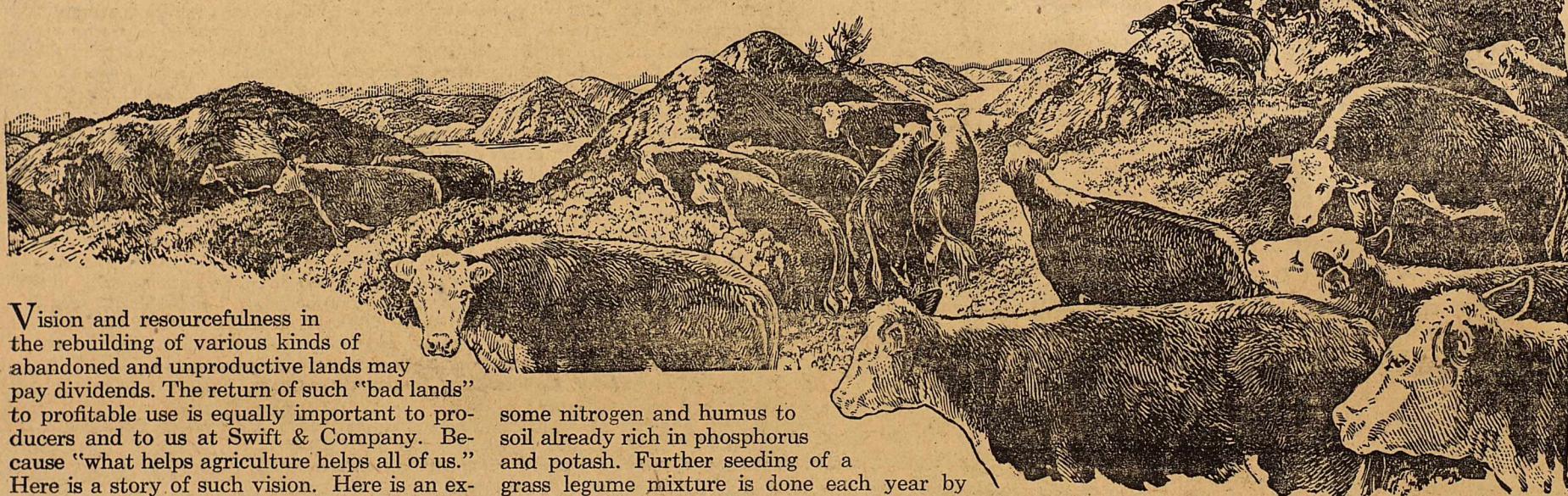
TOP QUALITY

Hillman Brown  
Jimmy Taylor

Phone 345

Phone 380

"Bad Lands" Into Good Meat



Vision and resourcefulness in the rebuilding of various kinds of abandoned and unproductive lands may pay dividends. The return of such "bad lands" to profitable use is equally important to producers and to us at Swift & Company. Because "what helps agriculture helps all of us." Here is a story of such vision. Here is an example of one man's initiative.

Like a farm torn up by a giant's plow, 600 acres of Illinois strip mine land stood bare. It was apparently worthless. That was in 1938. Today those once-bare ridges are knee-deep in grass and clover. Each rugged acre makes more than enough grass for one steer. And it's getting better each year.

The year after the land was mined for coal, a few volunteer sweet clover plants took root. They flourished in the lime-rich soil. Byron Somers of Canton, Illinois, who farmed adjacent land, noticed them. He bought the "bad land" for \$5 an acre. With a hand seeder, he walked the ridges and sowed sweet clover. The next year he had a good stand. This added

some nitrogen and humus to soil already rich in phosphorus and potash. Further seeding of a grass legume mixture is done each year by airplane. Brome grass has got a start, and now his pastures will be even more productive. In addition to grass, plenty of drinking water for the cattle is held in the little valleys.

Since being returned to usefulness, this land has averaged a net profit of \$7 an acre each year. Similar Illinois land has recently sold for \$25 an acre.

This is only one example. Every state has unproductive lands. Many other men have returned them to use—and profited. Huge areas still offer a challenge and an opportunity to American producers everywhere. Your opportunity, too, may be indicated by such a little thing as sweet clover growing on abandoned land.

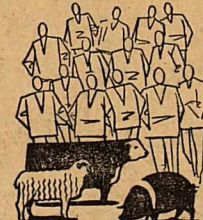
It's extra care that cuts shipping fever losses among feeder cattle. Vaccination also will produce a measure of immunity. After cattle reach the feed lots, provide them with shelter from cold winds and rain. Give them light, bulky feeds such as whole oats and roughage. Cattle fall easy prey to shipping fever when they are run down, due to fatigue, exposure, or irregular feeding. If animals do fall sick, isolate them promptly and call a veterinarian.



You BET There's Competition!

Recently I spoke to a meeting of livestock producers. When I had finished talking, the chairman asked if any persons in the audience wanted to ask questions. Immediately one livestock man stood up. "Is there any competition in the buying of our livestock?" he asked. Naturally, my answer was, "Yes." I went on from there to an explanation...

One of the best evidences of competition is found in United States Government figures. They show that there are more than 3,500 meat packers in the United States. Also there are 22,500 other commercial slaughterers of livestock. Surely this means much competition. Of course, Swift & Company does not come in competition with every one of these 26,000 slaughterers at every point at which it buys livestock. However, there is no place in the United States but what Swift & Company does come in competition in the buying of livestock with one or more of the 26,000 slaughterers.



26,000 slaughterers compete for livestock

Here's another fact about competition. At practically all markets in the country there are order buyers. During a year they buy for up to hundreds of meat packers. No individual buys for several hundred on any one day. But when the meat packers whom they represent need livestock, these order buyers are out competing with Swift & Company and every other buyer in the market.



He buys for plants in many parts of the country

The foregoing are just two examples of the many to be found indicating the ever present competition in our business.

F.M. Simpson.

Agricultural Research Department

More Beef from Less Feed

Nevada Bulletin No. 162

Nevada experiments indicate it is particularly advantageous to ranch owners if calves are born at such a time and grazed in such a way that they develop into feeders of satisfactory selling weights at the youngest possible age. The bulletin advocates ranchers planning their breeding season so that calves are born during the months of March, April, and May. Calves born during these months usually are of sufficient age and maturity to wean before winter sets in. During the winter months it is suggested they be fed all of the good "tame" grass and clover hay they will clean up without waste. They should be placed on good range in the summer and on irrigated pasture during the fall. Then they will be ready to market as feeders at 17 months of age. Under these conditions, they are held on the ranch only one winter and may be expected to weigh from 700 to 750 pounds.

When calves are born in other than the spring months, a large percentage of them must be fed on the ranch throughout two winters before they make satisfactory selling weights. Records show that cattle carried on the ranch for two winters have reached an average of 27 months of age at selling time and weigh approximately 875 pounds. Even though these cattle are practically a year older than seasonally bred cattle, they average only 150 pounds heavier than the younger animals. This is because calves born late in the year make only a poor start when winter sets in.

The most rapid as well as the most economical gains are made by younger animals. Gains gradually decline as cattle approach mature ages unless they are placed on extensive feeding rations.

Martha Logan Recipe for INDIVIDUAL SWISS STEAKS

3 to 4 pounds round steak (cut 2 inches thick)  
Salt, Pepper  
1/2 cup lard  
2 onions  
2 cups cooked tomatoes  
1 cup flour

Cut steak in serving size portions. Season meat and place on well floured cutting board. Cover with flour and pound with meat hammer or edge of heavy sealer. Continue to turn, flour and pound meat until all flour is taken up. Brown sliced onions in lard in heavy skillet. Remove onion and brown steaks on both sides. Place onions on top of meat. Add tomatoes. Cover and bake slowly in a moderate oven (350° F.) 2 1/2 to 3 hours. Diced vegetables may be cooked in with the meat during the last half hour. Serves 6 to 8.



Soda Bill Sez:

... He who aims high, shoots ahead.

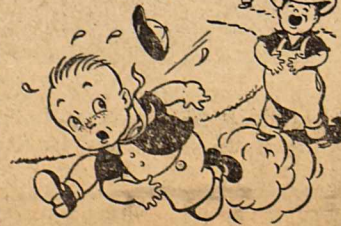
Geography of Meat Production and Consumption

The United States by rail is approximately 3,000 miles from East to West. It is about 2,000 miles from North to South. Not all of its 1,934,326,280 acres produce agricultural products. Neither do all of its square miles have the same number of people. The western part, including the Corn Belt, is the great food producing area. The East is the section in which most of the people live.

Approximately two-thirds of the livestock is produced west of the Mississippi River. Approximately two-thirds of the people live east of it. More specifically, about one-third of the people live in the area from Pennsylvania northeast into New England. Thus there is a great distance between the producers of livestock and the consumers of meats. This makes it necessary to have national concerns like Swift & Company in the slaughtering of livestock, processing, handling and selling of meats. The products handled by meat packers average to move more than one thousand miles from producer to consumer.

OUR CITY COUSIN

City Cousin ran away  
When he heard  
the farmer say,  
"Tomorrow will be  
thrashing day."



SWIFT & COMPANY  
UNION STOCK YARDS  
CHICAGO 9, ILLINOIS

NUTRITION IS OUR BUSINESS—AND YOURS  
Right Eating Adds Life to Your Years—and Years to Your Life

# OPENING SATURDAY

(SEPTEMBER 14)

## BLAKE'S ELECTRIC SHOP

Exclusive Dealer  
IN SUTTON COUNTY

For

### Frigidaire Appliances

(REA and Municipal Light Plant Customers  
Only)

Frigidaire — Ranges — Hot Water Heaters  
Kitchen Cabinets & Other Electric Appliances

Some Major Appliances Will Be Shown

AT

### Blake's Electric Shop

ACROSS FROM FROZEN FOOD LOCKER

B. L. Blakeway, owner and operator

ELDORADO, TEXAS

SALES AND SERVICE

# cash is IMPORTANT to her



Cash is important to her today,  
and it will be more important to  
her in the distant tomorrow  
when she wants to go to college



OR to buy herself a trousseau



OR to start a home of her own.



And it's so easy to assure her of all the cash she'll need, through Southwestern Life Insurance. Ask for a Southwestern Life plan for your daughter today. It's the sound, economical way to *guarantee* her happiness.

Sonora Representatives

L. W. Elliott

A. C. Elliott

## Southwestern Life

*Insurance Company*

C. F. O'DONNELL, PRESIDENT

HOME OFFICE • DALLAS

#### MRS. PATRICK HOSTESS TO BRIDGE CLUB

The Firemen's Wives Bridge Club met last Wednesday night in the home of Mrs. Lee Patrick. The rooms were decorated with roses.

Mrs. Kate Brasher won high club prize, Mrs. Sibe McKee won high guest prize, and Mrs. T. K.

Neville won low guest prize. Sandwiches, cake and cokes were served to Mesdames Ford Allen, A. H. Adkins, George Barrow, L. E. Holland, Brasher, Lenoy Lyles, E. T. Smith, Bill McGilvary, O. C. Ogden, McKee, Neville and Scott Roberts.

SUBSCRIBE TO THE NEWS

Cut those high weeds  
Clean up this week

# WEEK END SPECIALS

Friday, September 13, 1946

Saturday, September 14, 1946

### CANNED GOODS

MISSION PEAS, 2 No. 2 Cans	34c
CRYSTAL PACK SPINACH, 2 No. 2 Cans	31c
SKARLET KING - - WHITE OR YELLOW CORN, 2 No. 2 Cans	36c
VAL VITA PEACHES, No. 2 1/2 Can	30c
BLACKBERRIES, No. 2 Can	39c
GERBERS BABY FOOD, Doz. Cans	95c
VAN CAMP'S - - IN TOMATO SAUCE BEANS, 20 Oz. Can	17c
VAN CAMP'S CHILI CON CARNE, Can	29c
DELGALDOS TAMALES, Tall Can	19c

### FRUITS & VEGETABLES

FANCY CALIFORNIA LETTUCE, Head	10c
SQUASH, Fancy Yellow, 1 lb	10c
FANCY LONG GREEN CUCUMBERS, 1 lb	10c
CARROTS, 2 Large Bunches	13c
WHITE SEEDLESS GRAPES, 1 lb	20c
NO 1 WHITES SPUDS, 10 lb	43c
432 SIZE LEMONS, Doz.	22c
CALIFORNIA ORANGES, 1 lb	11c
YELLOW SWEETS ONIONS, 1 lb	7c
Okra, Yellow Squash, Fresh Corn, Celery, Bell Pepper, Tomatoes, Green Beans	

WHITE FLOUR BACK IN STOCK  
JOHNSON'S ELECTRIC WAXER FOR RENT  
SCHOOL SUPPLIES

VEAL CHUCK STEAK, 1 lb	30c
GROUND BEEF, 1 lb	27c
SHORT RIBS, 1 lb	21c

### MEATS

CHUCK ROAST, 1 lb	30c
CLOVERBLOOM PIMENTO CHEESE, 2 lb Box	99c
PHILADELPHIA Cream Cheese 2 Pkg.	25c

En frente del Garage Ford a sus ordenes

Phone 339

Phone 158

# Sonora Grocery

Delivery Service

Geo. E. (Bud) Smith

R. D. (Ralph) Trainer

Sanding Finishing

### R. J. (DICK) ADAMS

Floor Contractor  
Ozona and Sonora

Ozona, Phone 33 Sonora Phone 148

### BILL'S RADIO SHOP

BIGGEST STOCK OF PARTS IN TOWN  
At rear of Home Hardware & Furniture Co.

Complete Repair Service

Phone 140 Sonora, Texas



### COSDEN PRODUCTS

Wholesale & Retail  
Oil Gasoline  
Grease

ALSO  
GROCERIES &  
COLD DRINKS

ROUCHE BROS.  
Phone 56

Exclusive Distributors for Cosden Products in  
Sutton, Schleicher & Edwards Counties

Music . . . Art  
Women's Interests



# SOCIETY NOTES



Parties...Clubs  
Future Events

## Art Guild Head Touring West Texas Cities

Miss Jessica Davon, president of The Arts and Fashion Guild of the Americas, is making a personal tour of West Texas, Western Oklahoma and Eastern New Mexico, seeking individual manufacturers, artists and designers. It is her aim to publicize individual workmanship through the Guild and thus offer new outlets for items created by the individual and small business.

The Guild, a non-profit organization sponsored by leading citizens of America and Mexico, is dedicated to furthering all works of arts, crafts and business. Realizing there are many men, women and children, who are adept at making things, either by hand or small machine, the Guild proposes to seek out these items, display them for brokers and agents, help improve such creations, and exchange ideas between the nations both through cultural and industrial mediums.

Miss Davon has worked closely with officials of both nations in organizing the Guild. She pointed out the arts and crafts of disabled veterans, manufacturing on small scale of many commodities, and creations offered by the individual,

### L. W. ELLIOTT

ATTORNEY-AT-LAW

SONORA, TEXAS

Will practice in all state and

federal courts

### MRS. MILTON BLANTON HONORED WITH PARTY FRI.

Mrs. J. E. Eldridge was hostess Friday to a game party in honor of Mrs. Milton Blanton of San Angelo.

The group played games and punch and cookies were served to Mesdames Lawrence Nichols, C. D. Crumley, Grady White, Bob Odom, Walter Anthony, W. O. Crites, Jack Drennan, W. K. Regeon and J. K. Lancaster.

### MRS. BABCOCK HOSTESS TO THURSDAY BRIDGE CLUB

Mrs. O. G. Babcock was hostess to the Thursday Bridge Club last week. Mrs. Robert Rees won high score prize.

The rooms were decorated with cut flowers and potted plants. A salad and sandwich plate, cookies and punch were served to Mesdames John Bunnell, Lee Labenske, B. C. McGilvary, R. G. Nance, O. L. Carpenter, Rees, Joe Berger and George Barrow.

as being the basis of the Guild's foundation. She proposes to work in close harmony with industrial chairmen of chambers of commerce or through city officials of each town in the region. "I believe this is a quick way to expedite small business," she said. "The Guild can at least search out such items and bring them to the attention of distributors, manufacturers, artists and brokers." She is asking all persons who make or create to register with such industrial chairmen or the local mayor in order that she may make an appointment when she visits here within the next few days. An appointment does not obligate anyone, Miss Davon said.

Guild officials are hopeful this research will not only be a new outlet for the small operator but will uncover new talent throughout the southwest. Exhibits of such items will be made in the principal cities of both nations, Miss Davon assured.

### MRS. WALLACE ENTERTAINS THE IDLE HOUR CLUB

Mrs. Ella Wallace was hostess to the Idle Hour Club when it met at her home Tuesday afternoon. The rooms were decorated with Queen's wreath and rosebuds.

Mrs. Sterling Baker won high club prize, Mrs. E. B. Keng second high, Mrs. R. A. Halbert high guest and Mrs. Earl Lomax won the bingo prize.

A salad plate was served to the following members and guests: Mesdames Josie McDonald, Joe B. Ross, Baker, George Wynn, A. E. Wells, Halbert, C. A. Tyler, R. D. Trainer, Lomax, Susie Blanton and E. F. Vander Stucken.

### LLOYD BROWN, JR. GIVEN PARTY ON BIRTHDAY

Mrs. Jack Rape honored her son, Lloyd Brown, Jr., with a party on his fifth birthday Friday at her home, assisted by Miss Doris Warren.

The children played games. Birthday cake and ice cream were served to Joe and Jinnie Gatlin, Lou Ann Adkins, Kenny and Patsy Perkins, Joy Lee Lewis, Jerry Baldwin, Ann, Polly, and Bonnie Templeton, Bennie Bond McPherson, June Rose Lyles, Ronald Drennan, Jimmy Ward and Buddy Joe Brown.

Mr. and Mrs. Arthur Stetson of Grass Valley, California, visited in the Boyd Lovelace home last week. Mrs. Stetson was the former Miss Edna Stutzman of San Angelo.

Flies carry disease

**SCALP TROUBLE!**  
You must find **DURHAM'S RESORCIN** the best preparation ever used for itching scalp, loose dandruff or falling hair or purchase price promptly refunded. Large bottle only 75c at

CORNER DRUG STORE

### WMU MEETS WITH MRS. ODOM WEDNESDAY

The Women's Missionary Union met for Royal service at the home of Mrs. Bob Odom Wednesday.

The program opened with a prayer by Mrs. Fern McGhee. Mrs. McGhee, president, installed the new officers for the coming year. Mrs. Lawrence Nichols is the new president, Mrs. W. O. Crites, second vice-president, Mrs. J. E. Eldridge, third vice-president and Mrs. Bob Odom recording secretary.

The topic for the month is "The Christian Foundation to Build." "Neighbor Nations" was discussed by Mrs. Grady White, "Needy Nations" by Mrs. Odom, "Religious Liberty for All" by Mrs. Walter Anthony, "Christ for the Land of Tomorrow" by Mrs. W. K. Regeon. Mrs. Crites led the program, and the prayer was given by Mrs. Eldridge and the meeting was dismissed by Mrs. Grady White.

Punch and cake were served to Mesdames McGhee, Crites, Nichols, Jack Drennan, Anthony, White, Regeon, Eldridge and Odom.

### CARD OF THANKS

We wish to take this opportunity to thank our many friends for their expressions of kindness during our recent bereavement.

The McKee children.

SUBSCRIBE TO THE NEWS

### Robert Massie Co.

Funeral Directors, Embalmers

Superior Ambulance

Service

Phone 4444

Day or Night

SAN ANGELO, TEXAS

### P. J. TAYLORS HOSTS TO FRIDAY NIGHT CLUB

Mr. and Mrs. P. J. Taylor were hosts to the Friday Night Bridge Club when it met at their home for a lawn supper.

Mrs. J. T. Ratliff won high for the ladies, Ben Cusenbary high for the men, and Mrs. Collier Shurley won the bingo prize.

The following members and guests were present: Messrs. and Mesdames R. C. Vicars, George Wynn, Ratliff, L. E. Johnson, Sr., I. B. Boughton, W. H. Dameron, E. B. Keng, A. E. Wells, W. R. Cusenbary, Leo Merrill, Ben Cusenbary and Collier Shurley.

SUBSCRIBE TO THE NEWS

### For Sale

Fine Haired

GOATS

JOE B. ROSS

Sonora

Texas

### E. B. TIPTONS ENTERTAIN WITH SUPPER WEDNESDAY

Mr. and Mrs. Charles Warren of Toronto, Ontario, were honored Wednesday night by Mr. and Mrs. E. B. Tipton at the ranch home of Mr. and Mrs. E. D. Shurley.

A barbecue supper was served to Messrs. and Mesdames Russell Davis, Hillman Brown, DeWitt Lancaster, Floyd McKinney, Jack Shurley, L. E. Johnson, Jr., H. C. Kirby, Mrs. Dorothy Norris, Miss Phoebe Ann Pearson, Dr. Joseph Logan, Robert Kelley and Mrs. O. G. Babcock.

\$500

### Reward

I will pay \$500 to any person furnishing information leading to the arrest and conviction of anyone stealing any kind of livestock from any ranch in which I am interested.

SOL MAYER

### Cox - Vautrain Funeral Home

500 W. Beauregard

San Angelo

Air Conditioned Ambulance Service

DIAL 3113

When not convenient to shop in person, use our mail service. Mail orders given personal, prompt attention.

### Personal Shopping Service

*Cox-Rushing-Greer Co*

"Serving West Texas Since 1913"  
SAN ANGELO, TEXAS

### BILL SMITH'S

Service Station

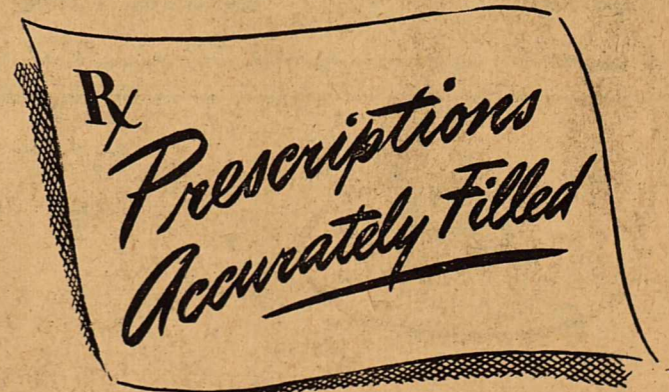
MAGNOLIA PRODUCTS

WASHING and

GREASING

NEW TIRES AND TUBES

"If we please you, tell others.  
If we don't, tell us."



When you bring a prescription to the Sonora Drug you know that it will be filled quickly and accurately by registered pharmacists.

We are prepared to serve you 24 hours a day.

*Sonora Drug Co*  
SONORA, TEXAS

# E. F. Vander Stucken Co. Inc.

## STORE WIDE SPECIALS

Friday, September 13, 1946

Saturday, September 14, 1946

### Frozen Foods - Ice Cream

PECAN VALLEY - - MEXICAN STYLE		SILVER DALE - SLICED	
BEANS, 3 No. 1 Cans	35c	PEACHES, No. 2 1/2 Can	28c
CRYSTAL CITY - GREEN, SHELLED		CHB MIXED SOUR	
BLACK EYED PEAS, 2 Cans	36c	PICKLES, Pint Jar	33c
VAL-TEX		KERN'S	
TOMATO PUREE, 2 No. 1 Cans	19c	CHILI SAUCE, 12 Oz. Bottle	23c
DEL MONTE -- REGULAR OR DRIP		DEL HAVEN	
COFFEE, 1lb Jar	40c	PRUNE JUICE, 14 Oz. Bottle	33c
RO MAY		MRS. RAGSDALE'S, LOW CALORIE	
TOMATOES, No. 2 Can	14c	SALAD DRESSING, Pint Jar	37c
MA BROWN		CUFF, GRANULATED, VEGETABLE OIL	
RHUBARB PRESERVES, 1lb Jar	29c	SOAP, 24 Oz. Box	28c
HEART'S DELIGHT		FREDERICK'S, ALL PURPOSE	
APRICOT NECTAR, No. 2 Can	19c	SOAP, 24 Oz. Box	28c
SQUASH, 1lb	9c	CABBAGE, Firm & Green, 1lb	5c
CUCUMBERS, 1lb	9c	LETTUCE, Head	10c
GRAPES, 1lb	16c	ONIONS, Yellow, 1lb	6c

### HARDWARE

ALUMINUM	
KITCHEN STOOLS, Each	\$3.85
O'CEDAR	
PASTE WAX, 1lb	55c
BEE BRAND	
INSECT SPRAY, 1% DDT, Quart	39c
FLASHLIGHT BATTERIES, 2 For	15c
FIRE KING	
PIE PLATES, Each	19c

### MEATS

SHORT RIBS, 1lb	21c
ASSORTED	
LUNCH MEATS, 1lb	35c
KRAFT'S	
VELVETA CHEESE, 2 lb Box	\$1.15
CHUCH STEAK, 1lb	32c
CALF LIVER, 1lb	35c

FRYERS - BARBECUE

SINCE 1890

SINCE 1890

EYES EXAMINED  
GLASSES FITTED

**Dr. C. L. Baskett**

Optometrist

DEL RIO, TEXAS


**TUESDAY CLUB MEETS**

Mrs. C. E. Brown, Jr. was hostess to the Tuesday Afternoon Club when it met at her home.

A sandwich plate was served to Mesdames Hillman Brown, DeWitt Lancaster, Dorothy Norris, H. C. Kirby, Russell Davis, Edwin Sawyer, L. P. Bloodworth and Bob Byrd.

**BOYCE HOUSE**

*"Gives You Texas"*



**HUMBLE TO BROADCAST SW CONFERENCE GAMES**

Broadcasts of Southwest Conference football games this fall will be brought to radio-listeners once again by Humble Oil and Refining Company. This will be the twelfth consecutive year that Humble has sponsored these broadcasts.

Humble will bring football fans all the Conference games and the important intercollegiate and inter-sectional games in which conference teams play. With scores of scrapping GI stars back in college uniforms, the 1946 season promises fans the most exciting football they've had on opportunity to enjoy in years.

Kern Tips, Ves Box, Charlie Jordan and Bill Michaels, all veterans of many broadcasts, will be back at the mikes again this fall. These top Texas sports announcers will give accurate and colorful play-by-play descriptions, as well as the interesting highlights that add so much to the enjoyment of every game.

**The Devil's River News**

ESTABLISHED 1890  
PUBLISHED EVERY FRIDAY MORNING

ENTERED AT THE Postoffice at Sonora, Sutton County, Texas, as second-class matter under the Act of Congress of 1879.

CLAY PUCKETT Editor and Publisher

ANY ERRONEOUS REFLECTION upon the character, standing, or reputation of any person, firm or corporation will be gladly corrected if the matter is brought to the attention of the publisher.

SUBSCRIPTION RATES — PAYABLE IN ADVANCE

One Year in Sutton and Adjoining Counties . . . \$2.00  
One Year Elsewhere . . . . . \$2.50

**Walter Winchell SPECIAL**

A Gift of New 25c Jergens

**DRYAD DEODORANT**

With Your Purchase of 50c Jergens Lotion

**BOTH FOR ONLY 39¢ PLUS TAX**



CITY VARIETY STORE

One of the most eloquent speeches in the history of American politics was the speech of James A. Garfield nominating John Sherman for President. An excerpt follows:

I have witnessed the extraordinary scenes of this convention with deep solicitude. Nothing touches my heart more quickly than a tribute of honor to a great and noble character; but as I sat in my seat and witnessed this demonstration, this assemblage seemed to me a human ocean in tempest.

I have seen the sea lashed into fury and tossed into spray, and its grandeur moves the soul of the dullest man; but I remember that it is not the billows, but the calm level of the sea, from which all heights and depths are measured. When the storm has passed and the hour of calm settles on the ocean, when the sunlight bathes its peaceful surface, then the astronomer and surveyor take the level from which they measure all terrestrial heights and depths.

Gentlemen of the convention, your present temper may not mark the healthful pulse of our people. When your enthusiasm has passed, when the emotions of this hour have subsided, we shall find below the storm and passion, that calm level of public opinion from which the thoughts of a mighty people are to be measured and by which final action will be determined.

Not here in this brilliant circle where fifteen thousand men and women are gathered is the destiny of the Republic to be decreed for the next four years. Not here, where I see the enthusiastic faces of seven hundred and fifty-six

**ENLISTS IN ARMY**

Gustavo M. Flores of Sonora has enlisted for four years in the Regular Army according to Captain E. L. Edwards of the San Antonio Recruiting Office. Flores has not yet been assigned to duty.

**FOR SALE:** Practically new coolerator and table model Baltic cream separator. Phone 335W 1tp 1fn47

Miss Charlene Hull and Miss Edith Eldridge left Thursday for Belton where they will attend Mary-Hardin Baylor College.

Richard Boughton, O. L. and Glen Richardson have gone to Texas A. & M. College where they will enroll for the fall semester.

delegates waiting to cast their lots into the urn and determine the choice of the Republic, but by four millions of Republican firesides, where the thoughtful voters are seated, with the calm thoughts inspired by love of home and country, with the history of the past, the hopes of the future, and reverence for the great men who have adorned and blessed our nation in days gone by, burning in their hearts,—there God prepares the verdict which will determine the wisdom of our tonight. Not in Chicago, in the heat of June, but at the ballot-boxes of the Republic, in the quiet of November, after the silence of deliberate judgment, will this question be settled.

**From The Churches**

**FIRST BAPTIST CHURCH**

Sunday School 10:00  
Morning Service 11:00  
Evening Service 7:45  
Mid-week Service and Choir Rehearsal, Wednesday 7:45  
W. M. U., each Wednesday 8:00

**ST. JOHN'S CHURCH**

Morning Prayer 11:00

**ST. ANN'S CHURCH**

Sunday Masses 8:00 10:00  
Weekday Mass 7:30

**FIRST METHODIST CHURCH**

"The Power of the Gospel" will be the sermon subject for 10:50 o'clock Sunday. Our choir under direction of Mr. Savell Lea Sharp, with Mrs. G. H. Hall at the piano, will lead our song service.

Do you go to Sunday School? Why not? We have a class that will prove beneficial to you

Mrs. Dock Rape has been visiting her daughter, Mrs. Carl Cahill in Brownwood.

**FOR SALE:** New Perfection oil range. Has been little used. Call 10 or 2504. Mrs. Hi Eastland. 1tc46

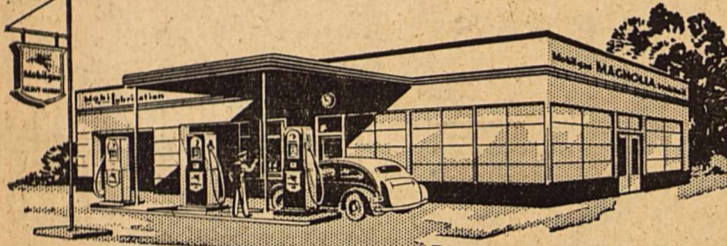
**HELP WANTED**

MALE & FEMALE

**WHY NOT BE THE WATKINS DEALER** in the city Sonora? Permanent, pleasant and highly profitable. Established dealers earning over \$1.50 an hour. Requirements: good reputation and a desire to make good. For particulars, write the J. R. Watkins Co., 72-80 W. Iowa, Memphis, Tennessee.

throughout the whole week; so bring your children and stay for Sunday School at 9:45 o'clock. Sub-district Youth Rally at Ozona Sunday 3 to 8:30 o'clock. Have you found a church home in Sonora? If not we invite you to worship with us—"The Friendly Church for Friendly Folk."

**Clean, Courteous Service**



at Merriman's Service Station

In Traffic—on the Hills, you need the Gasoline that says

**LET'S GO!**




With **ESSO EXTRA** you've got power aplenty — and to spare — for quick starts and easy pulls. Extra power is built into every gallon of **ESSO EXTRA**, at one of the world's great refineries at Baytown, Texas.

What's more, you also get highest octane rating for knockfree performance and a patented solvent oil to keep your motor clean

Make it fun to drive your car. Fill up with **ESSO EXTRA** at every stop—let's go!

CLEAN REST ROOMS AND FRIENDLY SERVICE AT EVERY HUMBLE SIGN



**HUMBLE**

Motorists throughout Texas say that you'll notice the improved performance of your car when you use Esso Extra. Fill up with Esso Extra at any Humble sign.

**HUMBLE OIL & REFINING COMPANY**

**RIDE PAINTER BUS LINES, INC.**

**Schedule**

SONORA 11 A. M.	Uvalde 2:40 P. M.	SAN ANTONIO 5:35 P. M.
-----------------	-------------------	------------------------

**Return Trip**

SAN ANTONIO 2:30 P. M.	Uvalde 5:30 P. M.	SONORA 9:30 P. M.
------------------------	-------------------	-------------------

Connections At Uvalde For Eagle Pass — Crystal City — Del Rio Laredo — Carrizo Springs

it's "CUP-TESTED"

"Cup-Tested"? Yes, that's exactly what I mean. The same experts who have been guarding the goodness of ADMIRATION for nearly thirty years personally "Cup-Test" all ADMIRATION coffee to see that the same fine blend of rich, fragrant coffee goes into every package. Cup after cup, day after day, year after year, ADMIRATION is tested BY TASTE to make it the distinctive coffee that never varies. The personally "Cup-Tested" ADMIRATION way is the ONLY way to assure the same perfect blend—package after package.



**Admiration Coffee**

Copyright 1946, Duncan Coffee Company

DUNCAN COFFEE CO. . . ROASTERS ALSO OF MARYLAND CLUB AND BRIGHT AND EARLY COFFEES

for FLAVOR

for AROMA

for RICHNESS

**CITATION BY PUBLICATION**  
**THE STATE OF TEXAS**  
**TO: H. West Evans, Jr.**  
**GREETING:**  
 You are commanded to appear and answer the plaintiff's petition at or before 10 o'clock A. M. of the first Monday after the expiration of 42 days from the date of issuance of this Citation, the same being Monday the 14th day of October, A. D., 1946, at or before

10 o'clock A. M., before the Honorable District Court of Sutton County, at the Court House in Sonora, Texas.  
 Said plaintiff's petition was filed on the 12th day of June, 1945. The file number of said suit being No. 972.  
 The names of the parties in said suit are: Mrs. Margie Evans, as Plaintiff, and H. West, Jr., as Defendant.

The nature of said suit being substantially as follows, to wit: Suit for divorce and for custody of minor child, Michael Andrew Evans.  
 Issued this the 27th day of August, 1946.  
 Given under my hand and seal of said Court, at office in Sonora, Texas, this the 27th day of August, A. D., 1946  
 (SEAL) H. C. Kirby, Clerk,

**Happy Birthday**

Saturday, September 14—  
 Eugene Neuberger  
 Sunday, September 15—  
 Mrs. O. C. Ogden  
 Mrs. Harry Kiser  
 Monday, September 16—  
 Joe B. Renfro  
 Johnnie Lois Johnson  
 Francis Archer  
 F. T. Jones  
 Tuesday, September 17—  
 Mrs. H. J. Greenhill  
 Robby Morris  
 Wednesday, September 18—  
 Margaret Reese  
 Thursday, September 19—  
 Mrs. Lea Allison  
 Friday, September 20—  
 Joe D. Cook  
 C. T. Jones  
 Clyde Henderson

Mrs. Bailey Pruitt of Veribest was visiting her parents, Rev. and Mrs. J. E. Eldridge last week.  
 Mr. and Mrs. Jimmy Morris were in Sonora last week. They left for

Denton Friday.  
 Mr. and Mrs. E. B. Tipton have as their guests this week Mr. and Mrs. Charles Warren of Toronto, Ontario, Canada.

**"The Home of Good Food"**

FEATURING  
**STEAK and CHICKEN**  
**DINNERS**

**Gulley's Tavern**

OPEN 5 A.M. — 11:30 P.M.

MRS. NORA GULLEY

LOY GULLEY, JR.

District Court,  
 Sutton County, Texas.  
 4tc-45

FOR  
**FINE LIQUORS**

**J & J**

**LIQUOR STORE**

OPEN 10 - 10

ON S TURN DEL RIO ROAD

**Sonora Abstract Co.**

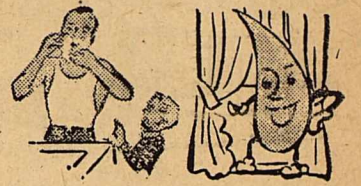
J. D. LOWREY, Mgr.

**EFFICIENT LAND TITLE SERVICE**  
**ON SUTTON COUNTY LAND**  
 We represent several of the old line fire insurance companies.



... means glorious suds ... and  
 a soft, silky shampoo ...

A soft water shampoo ... in water softer than rain ... will bring you a thrilling revelation of the true beauty of your hair. Soap rinses out completely ... no dull film is left. Hair washed with softened water feels soft, silky ... has a natural gleam that delights you, and is the envy of your hard water friends.

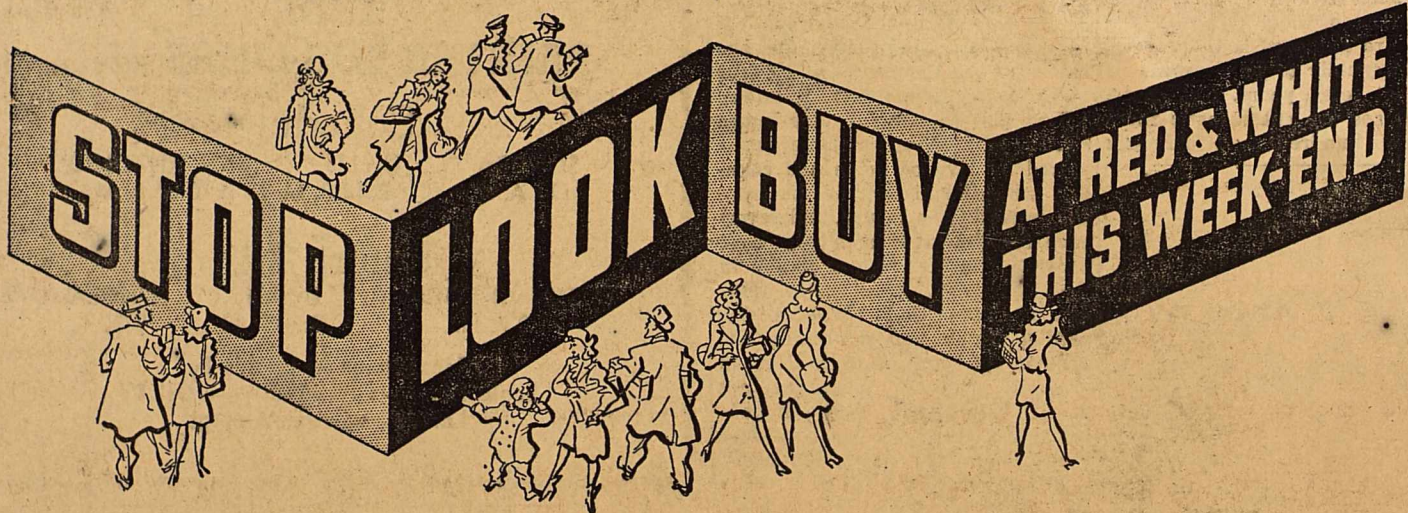


**NO FUSS, NO MUSS, NO WORK, and NO EQUIPMENT TO BUY WITH CULLIGAN SOFT WATER SERVICE.** We install a softener in your basement or utility room. We own this equipment and we take entire care of it. You have sparkling soft water at the turn of the faucet—it is that simple. Don't put up with hard water troubles and wastes any longer. Phone for CULLIGAN Soft Water Service now—we're as near to you as your phone.

**DAD, HAVE YOU EVER TRIED A SOFT WATER SHAVE?** You'll be amazed at the rich, creamy lather that soft water produces. The whiskers come off like magic and leave your face like a baby's ... and razor blades last twice as long. Imagine this ... if yours is an average family, the cost for softened water throughout the house is only \$3.00 per month.



**SONORA GAS COMPANY**



Friday, September 13, 1946

Saturday, September 14, 1946

<b>APRICOT NECTAR</b> No. 2 Can <b>18¢</b>	 YELLOW SQUASH, 2 lb ..... 19c BELL PEPPER, 2 lb ..... 25c OKRA, 1 lb ..... 17c CARROTS, 2 Bunches ..... 15c WHITE GRAPES, 1 lb ..... 15c	<b>JACK SPRATT CORN</b> No. 2 Can <b>17¢</b>
<b>PRUNE JUICE</b> Pint Bottle <b>18¢</b>	<b>MARKET BASKET SPECIALS</b>	<b>SCHOOL DAY PEAS</b> No. 2 Can <b>16¢</b>
<b>PRUNE JUICE</b> Quart Bottle <b>34¢</b>	CHUCK ROAST, 1 lb ..... 31c CHUCK STEAK, 1 lb ..... 33c	<b>SAUER KRAUT</b> Quart Jar <b>25¢</b>
<b>RED &amp; WHITE APRICOTS</b> No. 2 1/2 Can <b>33¢</b>	RED & WHITE POTTED MEAT, Can ..... 5c LIBBEYS DEVILED HAM, Can ..... 15c	<b>BROWN BEAUTY BEANS</b> 1 1/2 Oz. Can <b>10¢</b>
<b>PEACHES</b> No. 2 1/2 Can <b>29¢</b>	MUFFETS, 8 Oz. Pkg. .... 11c INSTANT PURITY OATS, 20 Oz. Pkg. .... 13c MRS. JOHNSON'S CORNBREAD MIX, 16 Oz. Pkg. .... 22c FREE RUNNING SALT, 2 1 1/2 lb Pkg. .... 9c	<b>PENNICK'S Golden SYRUP</b> No. 5 Jar <b>43¢</b>

PHONE **HAMILTON GROCERY** PHONE  
 2 Delivery Service 57  
 SONORA TEXAS

Rip Van Winkle wakes up to a bargain!



What day is it? I mean, what year is it? My word, I've been asleep 15 years!

Yessir, I see lots of changes since 1931, but women's hats are as silly as ever! and the high cost of living is enough to send me back to sleep for another 15 years!

Gosh, look at all the new electric gadgets! When I dozed off back in the Thirties, we had electric lights and an iron and a vacuum cleaner at our house! Now we've got a refrigerator, a couple of radios (my last one was a crystal set), clocks, toaster, washer—why, everything you touch has a switch on it!

It's funny, too, with all those gadgets perking away, my electric bill isn't much more than it was 15 years ago, while everything else has gone up a lot!

(Yes, Rip Van Winkle, you're getting twice as much electricity for your money today as you did 15 years ago. It took increased usage plus plenty of skill and planning—under sound business management—to make electricity the bargain it is right now!)

**West Texas Utilities Company**

from the ranch country

# Son of a gun



Ed Tipton was in for a surprise last Sunday when extolling the beauties and enchantment of a day in old Mexico to his and Mrs. Tipton's guests, Mr. and Mrs. Charles Warren of Toronto, Canada, it was discovered that the Warrens could not cross the border without a visa since they were citizens of Canada. Tipton says he took care of everything, however, by promising to mail his guests a picture postcard of some familiar scene in Villa Acuna each week.

—(½\*!?\$\*@)—

Occasionally when someone has a particularly hard run of luck you will hear him say, "Well, grandma said there would be days like this." Hardly a better example of one of "grandma's days" could be found than a week ago Sunday when Gomer Minnick attended a family picnic on the Llano.

Everything was going along fine late in the afternoon when a cry for help was heard from one of the children who was swimming. When Gomer arrived at the scene he found that the child had only been playing. All the children were ordered out of the water and told to dress behind a large tree nearby. The excitement and mad dash to the swimming hole had left the grownups well nigh out of breath, so Gomer, who seems predestined to be the fall guy in this act, stretched out on the grass for a rest. No sooner had he gotten comfortable than a second cry of alarm was heard, "Hey, there's a big rattler over here!" Gomer jumped up and ran to the tree, thinking this time he really had the kids redhanded. To his surprise however, he was confronted by a pair of beady eyes followed by about four feet of West Texas rattlesnake, several rattlers and a buton. After killing the snake, Gomer rounded the kids up and returned home, vowing not to leave town again until something lucky happens. Don't look now, Gomer, but the date line at the top of this page says Friday the 13th.

—(½\*!?\$\*@)—

With the resignation of County Judge Alvis Johnson this week, comes the end of one of the most outstanding careers of public service in West Texas. Judge Johnson first took office more than 23 years ago and has held office continuously since then. Under his administration have come most of the modern improvements the county has known.

In tendering his resignation to the Commissioners Court, Judge Johnson stated that everything of a current nature connected with the office had been completed, including the setting of the tax rate, completion of the tax rolls, completion of the budget, issuing the road bonds and selling them. The time has now come, Judge Johnson said, to begin acquiring right-of-way and changing fences on the Junction and Del Rio roads. He said that he felt that it would be better if one person saw the whole project through.

The Commissioners Court, in accepting Judge Johnson's resignation, voted a resolution of appreciation for the outstanding quality and loyalty of Judge Johnson's service to the county.

## No Increase In The Price Of Inlaid Silverplate

GREAT NEWS for so many women who are determined to wait for the famous silverplate that's Sterling Inlaid — Holmes & Edwards! The manufactureres have announced that they plan no price increases during 1946, despite mounting costs in every phase of

silverware production. This means we can continue to make regular deliveries of this fine silverplate at no change in price.

We'll be happy to advise you in the selection of your Holmes & Edwards pattern.

See the

BARROW JEWELRY STORE Adv.

Mrs. John Kring has returned from Corpus Christi.

### CARD OF THANKS

We wish to express our thanks and gratitude to our friends who were so kind and thoughtful at the death of our loved one. Your

words of comfort and kindness will always be remembered. Mrs. Lewis Spraggins and the Turman family.

SUBSCRIBE TO THE NEWS

## SMITTY'S WELDING SHOP

(Portable Welder Ready to Go At All Times)

Tires Playground Equipment  
Morris Bldg. next to Sonora Gas Co.  
Sonora, Texas

## PAINTING PAPER HANGING

### WATERPROOFING — GLAZING

"Get A Quality Job"

A. C. (Spike) REDMAN

CALL 120W

FREE ESTIMATES ON JOBS

Within 75 Mile Radius of Sonora

BOX 5244

SONORA, TEXAS

## EXPERT Stock Drenching

Prompt, Dependable Service

We drench your stock and get it back on the range in the shortest time possible.

ALSO, WE CARRY A FULL LINE OF STOCK MEDICINES AND VACCINES

PHONE 102 or 58

SONORA, TEXAS

TAYLOR & MOORE STOCK MEDICINE CO.

## See "The Devil" for Business Printing

SEE JOHNNY FOR—

PLUMBING AND SUPPLIES

JOHN A. MARTIN, JR.

Sonora, Texas

Phone 228

## REAL ESTATE

SEE US FOR CITY PROPERTY

## INSURANCE

Every kind of protection known to Standard Insurance Companies.

## RANCH LOANS

THE BIGGER THE BETTER

Auditing—Tax Consultants

Elliott Brothers Co.

## ATTENTION

All West Texas Sheepmen!

What is your Answer to these Questions:

1. Do you want to cut down your (a) Death losses caused by worm troubles?....., (b) Expense and extra work of drenching?.....
2. Do you want, (a) Longer lasting ewes?....., (b) Heavier mutttons?....., (c) Heavier, higher quality wool clip?.....

## Economy Special Sheep Minerals

have been answering these questions on the Glasscock ranch for the past eight years to our entire satisfaction. You can get the same results! Let's get together.

H. E. GLASSCOCK, Sonora, Texas

## BOBBY

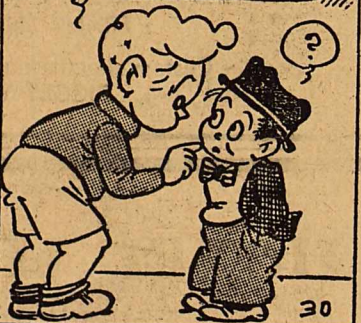
By

## BILL NELSON

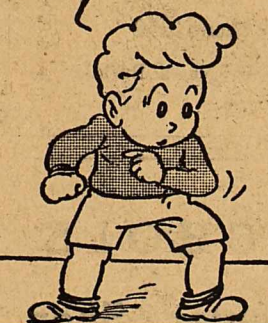
HEY, JONES, WAIT I'VE GOT SOMETHIN' VERY IMPORTANT TO TELL YA



NOW THIS IS AN ABSOLUTELY DEADLY SECRET - I GOT IT FROM SPUD WILLIAMS -



STOP ME IF YOU'VE HEARD IT



72 PAIRS MEN'S KHAKI PANTS \$2.98

# CITY VARIETY STORE

SONORA — TEXAS

SHOE CLEARANCE OVER 100 PAIR

## Let Us Drill Your WATER WELLS

We are permanently located in Sonora and earnestly solicit your drilling needs

PHONE OR SEE

C. E. BROWN — CHARLES E. (BUBBA) BROWN

Box 5107 Phone 398J

SONORA, TEXAS

## A NEW WHITE 62

DR. RODGER'S 215 — Containing everything in the regular 62 except lampblack

## D-D-T

POWDER — 50% 25% 10%  
WATER EMULSION — 25% OIL BASE 5% for inside use only

2-4-D WEED KILLER

SONORA Wool & Mohair Co.

Phone 8 or LD 220

Sonora, Texas

## WE HAVE IN STOCK . . .

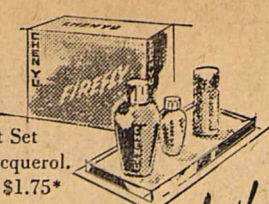
Milo, Yellow Corn And Many Of The Scarce Feed Items

DUE TO CIRCUMSTANCES BEYOND OUR CONTROL IT HAS BEEN NECESSARY FOR US TO ABANDON OUR DELIVERY SERVICE AND TO SELL FOR CASH. THIS MAKES IT POSSIBLE FOR US TO GIVE YOU BETTER PRICES AND BETTER SERVICE.

H. V. STOKES FEED COMPANY

Phone 89

Firefly Smart Set (Lacquer, Lacquerol, Lipstick) ... \$1.75\*



*with all of fashions' glitter!*

**CHEN YU**  
**FIREFLY**

The new singing, lilting Spring scarlet for your nails and lips

Firefly Lipstick ... \$1.00\* Firefly Lacquer (with Lacquerol) ... 75c\*  
\*tax extra

---

**CORNER DRUG STORE**  
AIR CONDITIONED  
ELLINGSON & LOCKLIN

### 43 Years Ago

Mrs. J. W. Potter and children who have been visiting friends and relatives in Bell County, arrived home Tuesday and John is happy once more.

Rev. Caleb Smith and sons, W. B. and L. B. Smith, of Tyler were in Sonora several days last week visiting their son and brother, Dr. C. D. Smith.

Hop Wood was in from the ranch Tuesday trading.

Mr. and Mrs. A. P. Belcher were in from the ranch Saturday.

Bob Peacock and Will Ledbetter were in from the Peacock ranch Tuesday.

Jim Buchanan left for Austin Tuesday to attend the St. Edwards College.

Murdock McDonald left for Pecos City Tuesday to attend school.

Mr. and Mrs. A. F. Clarkson and son were in from their Lost Lake ranch Wednesday.

Sam Palmer, the well-known stockman of Edwards County, moved his family to town this week.

B. E. Adams left for Alice, Texas, Tuesday to receive the sheep he recently bought down there.

R. C. Carmen, deputy collector of the U. S. Internal Revenue Service, was in Sonora Thursday. Mr. Carmen is a very agreeable gentleman and found everything in good shape here.

Ed Parker finished the well for Dr. Lark Taylor Monday, and got lots of water at 153 feet.

Mr. and Mrs. Henry Lang and children are visiting friends and relatives in Mason this week.

Chris Wyatt and Berry Baker were in from their ranch Monday trading.

J. D. Lowrey was in from the Sol Mayer & Bro. ranch Tuesday for supplies.

Mr. and Mrs. John W. Reiley were in Sonora, Tuesday trading. Mr. Reiley has some fine French Merino rams for sale.

Will Adams, who recently moved his family to Sherwood, was in Sonora several days this week looking after his sheep.

Arthur Martin, the wind mill man, will make Sonora his headquarters. Anyone wanting wind mills put up or repaired would do well to see Arthur.

G. P. Hill, Jr. was up from the Stokes ranch, where he has his cattle, Monday trading. His sister-in-law, Miss Madlin McKinney of Leakey, accompanied him.

H. Sharp was up from his ranch Tuesday trading.

Glass Sharp was up from his ranch on Devil's River Monday for supplies.

A. W. Mills and family left for San Angelo Monday where they will reside for some time.

B. F. Bellows was in from the Tom Gillespie ranch Saturday where he is building a fine house and barn.

Ira Wheat, Jr. was in from his ranch Saturday trading. Ira looks well; ranch life seems to agree with him.

W. B. Silliman, the well-known lawyer and land agent of Eldorado, was in Sonora Thursday on professional business.

Mr. and Mrs. Homer Wood and son, Herbert, of Mertzon are visiting Mrs. Wood's sister, Mrs. Clyde Hill, and her mother, Mrs. W. L. Teague. Herbert has just been discharged from the Navy.

Mrs. Tommy Thorp of Little Rock Arkansas, is here visiting friends and relatives this week.

FOR SALE: Girl's bicycle. Phone 330. 1tp47

## School Days



... Boys' and Girls' school clothes

## THE RATLIFF STORE

SONORA, TEXAS

**G. A. WYNN**  
ATTORNEY-AT-LAW  
Fire, Windstorm, Auto  
—and—  
Other Types Of  
**Insurance**  
Phone 350  
OFFICE: News Building

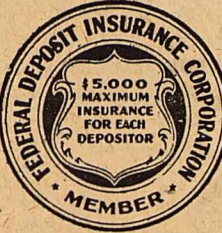
**NICHOLS**  
Carpenter Shop  
PHONE 132J  
**?**

## "Lazy Money" HELPS NOBODY

In order to justify its existence, money should be working for somebody.

We have ample resources -- money that is ready to go to work for you. Perhaps, by arranging a sound loan, you can put that money to work for you.

Converting a house into apartments,  
Painting or insulating your house,  
Financing other business and home improvements or a score of other tasks. The thing is, put lazy money to work through a loan at the **FIRST NATIONAL BANK**.



**SAVING BONDS**  
Always a good investment

## First National Bank

46 Years  
Serving Sutton County

## LUMBER RIPPED

ANY SIZE  
**M-O-U-L-D-I-N-G**  
(Manufactured in Sonora by F. A. Farias)  
QUARTER ROUND DOOR STOP  
COVE MOULD CROWN MOULD  
**SCREEN WINDOW FRAMES**  
**FARIAS CABINET SHOP**  
(ACROSS FROM AZTEC THEATRE)

—NOTICE—  
**FRANK SMITH PENS**  
Custom slaughtering done. Inquire at  
**PIGGLY WIGGLY**

## HOTEL McDONALD

"The Home Away From Home"  
Sonora, Texas



## The World's Voice for 70 Years

Through war and peace for 70 years, the telephone has been the sure, swift speaking voice of the world. These have been 70 years of immense progress... and the Independent industry, of which this company is a part, has created much to this advancement. This is only the beginning of the years of even greater progress in telephone service that lie ahead. We are proud to serve you as part of the world's voice.

THE SAN ANGELO TELEPHONE CO.

## A NEW LAUNDRY SERVICE FOR SONORA

Bring your laundry before 12 o'clock Monday -  
Pick it up at 12 o'clock Friday

NOT RESPONSIBLE for loss of buttons or other damages to laundry

PRICES  
REASONABLE

## H & P CLOTHIERS

A. B. Hightower Sonora, Texas Preston Prater