

Political Announcements

District	\$15.00
Congressional	\$20.00
Sheriff, Assessor and Collector	\$10.00
County Precinct	\$10.00
Commissioner	\$7.50
Justice of the Peace	\$7.50
Constable	\$7.50
City	\$7.50

(One insertion per week)
 Terms: Strictly cash in advance.
 No announcements unless cash accompanies same. Announcements inserted in order in which fees are paid at this office. No refund of fees, or any part thereof, will be made after announcement is published, even though candidate should withdraw from his race. Withdrawal notices published at the rate of ten cents per line. Announcement fee does not include subscription to The Devil's River News.

The Devil's River News is authorized to make the following announcements, subject to the action of the Democratic primary: DISTRICT:

For State Senator, 29th Senatorial District—
CHARLES B. MOORE
HENRY A. COFFIELD
 State Representative of the 86th District—
CALLAN GRAHAM

CONGRESSIONAL:
 Representative of the 21st District—
O. C. FISHER (Reelection)
HOWELL E. COBB
CHARLES L. SOUTH

COUNTY:
 For County and District Clerk—
H. C. (Doc) KIRBY (Reelection)
 County Treasurer —
MRS. THELMA BRISCOE (Reelection)
 For Sheriff, Tax Assessor-Collector—
B. W. HUTCHERSON (Reelection)
 County Judge —
G. A. WYNN (Reelection)
 County Constable, Precinct No. 1 —
N. W. POTEET (Reelection)
 County Commissioner, Precinct No. 1 —
DAVE LOCKLIN (Reelection)
 County Commissioner, Precinct No. 4 —
DANTES REILEY (Reelection)
 Justice of the Peace, Precinct No. 1 —
GEORGE BARROW (Reelection)
 County Commissioner, Precinct No. 3 —
C. W. ADAMS (Reelection)

Adding machine, cash register and typewriter cleaning and repair -- Guaranteed work. Leave your machine at the News Office. adv.

GEORGE WYNN
 Insurance Agency

Fire Windstorm & Automobile Insurance.
 Bonds and Casualty Coverage.
 Protection against loss from suits arising out of automobile accidents.

Office at
 Devil's River News Bldg.
 TEL. 350

THE BEST IN
 Products
 and
 Service
 at
JOY'S GULF STATION

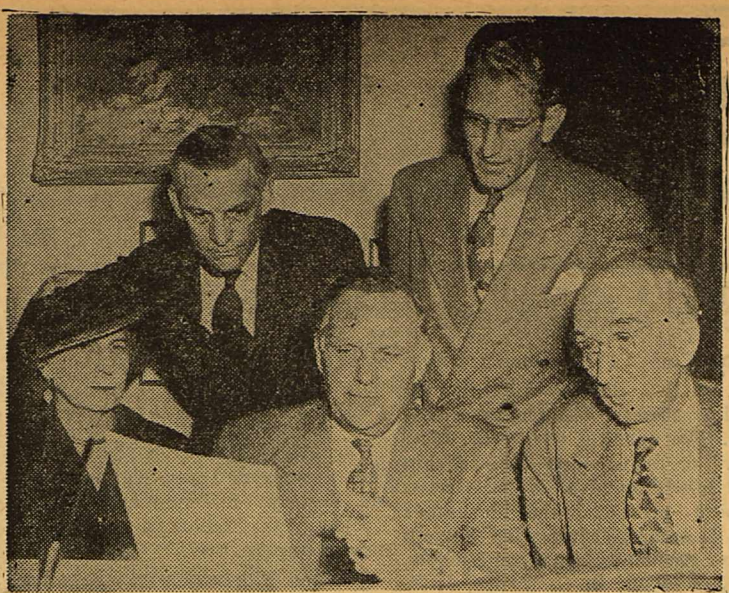
Tires - Tubes
 Waxing, Polishing and
 Vacuum Cleaner Service.

BIL-DER-BACK
 can
BUILD-ER-BACK
 MATTRESS renovating
 FURNITURE re-upholstering
 Call The Devil's River News
 or mail us a card.
BILDERBACK BROS.
 MATTRESS & UPHOLSTERY
 1717 S. OAKS
 San Angelo Dial 7834

Memorial for Alamo's Heroes



San Antonio's annual Pilgrimage to the Alamo, which opens the city's Fiesta San Jacinto, will be held Monday, April 19, when a scene similar to this will be enacted at the "Shrine of Texas Liberty". Cities, organizations and individuals are invited to send flowers which are carried to the Alamo as a memorial to the men who died in its defense.



PARTY HARMONY — Texas Democratic leaders are shown with Gov. Beauford Jester as they made plans for party unity at a conference in Austin. Front row, left to right: Mrs. R. A. Thompson of Goliad, vice president of the Texas Association of County Chairmen; Jester, and Arthur Stevenson of Dallas, president of the county chairmen. Back row, left to right: Robert W. Calvert of Hillsboro, chairman of the Texas Democratic Executive Committee, and Jimmy Brinkley of Houston, state president of the Young Democrats.

CLEAN, COURTEOUS
 SERVICE

MAGNOLIA

TIRES, TUBES & BATTERIES
Merriman's Station

Mobilgas
 Mobiloil

Mrs. Monte Elliott of San Angelo visited relatives and friends here this week. A heliograph is a signaling apparatus which reflects the sun's rays.

HOTEL McDONALD
 "The Home Away From Home"
 Sonora, Texas

Washing - Greasing
 Tires - Tubes - Batteries

"If we please you, tell others.
 If we don't, tell us."

Bill Smith
 YOUR FRIENDLY

MAGNOLIA DEALER

**SATURDAY NIGHT
 AT THE**

CLUB
K-BAR

DAVE HUGHES
 AND HIS ORCHESTRA

Music 9 Until 1 O'clock

\$1.50 Per Person (tax included)
 RESERVATION PLEASE

APRIL 16. - DUB ADAMS
 And His K - Bar Ranch Hands

**Homemaking Club
To Buy Silver**

The Future Homemakers is conducting a coupon campaign to buy a set of silver for the Homemaking Cottage. Persons interested in helping out in the campaign are asked to take coupons out of breakfast food, flour and cereal cartons and turn them in at the local drug stores. Receptacles have been provided at both stores.

According to Nancy Neill, president, the campaign will last about two months.

**FIREMEN'S AUXILIARY
MEETS WITH MRS. BARROW**

Mrs. George Barrow entertained the Firemen's Auxiliary Wednesday night at her home.

A dessert course was served to Mesdames J. H. Brasher, E. T. Smith, Earl Duncan, Ford Allen, Scott Roberts, Arthur Carroll, Lee Patrick, Jack Hite, Wes Granger, Tommy Smith, Hilton Turney, J. A. Martin, Jr., Artie Joy, M. C. Scott and Jack Rape.

Prizes were won by Mesdames Duncan, Patrick, Turney and Hite.

SUBSCRIBE TO THE NEWS

**BAPTIST LADIES STUDY
MISSION WORK WEDNESDAY**

The Women's Missionary Union met at the Baptist Church for mission study Wednesday afternoon. The opening song was "Our Best." A prayer and stewardship were given by Mrs. W. O. Crites.

Those present were Mesdames Jack Drennan, Crites, Roy Sewell, Walter Anthony, Lawrence Nichols, W. K. Regeon, R. G. Nance, J. E. Eldridge and Bob Odom.

Mrs. Sam Karnes and sons, Bill and Dick, visited relatives in San Angelo for a few days this week.

**Gamma Phi Holds
Initiation Meet
At Rocksprings**

On Saturday, March 13, Gamma Phi Chapter of Delta Kappa Gamma Society of Texas met at the Rocksprings Clubhouse to initiate new members.

Gamma Phi, which was organized at Uvalde December 6, 1941, was reorganized at Junction November 8, 1947. After the registration of guests, a luncheon was held under the supervision of the WSCS of the Methodist Church. Red roses and sprays of green leaves were used to carry out the official colors of the organization.

Mrs. James Whittenburg, president of Gamma Phi, presided over the luncheon. Mrs. Doreen Shanklin had charge of the program. The invocation was given by Mrs. J. W. McCann. Entertainment during the luncheon hour was music by Josephine Davis, Cippi Brown and Mary Beth Fleischer.

After the luncheon Mrs. Gus Fleischer played a piano solo, "Second Hungarian Rhapsody" by Liszt. Mrs. W. G. Brown reviewed the book, "Lest We Lose Our Eden," by Loula Grace Erdman. The audience sang the Delta Kappa Gamma song.

An initiation service was held and the following women came into the chapter of Gamma Phi: Mrs. Leona G. Daniels, Mrs. Sam McMath, Mrs. Hugh Brown, Mrs. Freeman Knight and Mrs. Fusie Galloway of Del Rio; Mrs. C. I. Skinner of Comstock; Mrs. A. P. Shanklin and Mrs. Delia Glasscock of Rocksprings.

Miss Ruth Horner and Mrs. Roswell Wardlaw were luncheon guests of the chapter.

Gamma Phi chapter consists of women from Sutton, Val Verde and Edwards Counties, who are members of the National Honor Society for Women Educators.

**WSCS DELEGATES TO
OZONA DISTRICT MEET**

A district meeting of the Women's Society of Christian Service was held in Ozona Tuesday and Wednesday. Several from Sonora attended each day. Sonora's part on the program was under the direction of Mrs. C. W. Blalock which was a memorial service for deceased members of the WSCS during the past year. Mrs. Blalock was assisted by Mrs. G. H. Hall and Mrs. Bob Baker.

**ROBERTS - HOLLAND RITES
READ IN JUNCTION**

The wedding of Mrs. Edith Holland and Cloma Roberts was solemnized Monday afternoon in the Methodist Church parsonage of Junction with the Rev. J. B. Jordan officiating at the single ring ceremony.

Mrs. Roberts is a daughter of Mr. and Mrs. J. L. Bruce. For her wedding she wore a black gabardine suit and a corsage of white carnations.

Roberts is a son of Volney Roberts and the late Mrs. Roberts of Sonora.

The couple is at home in Alpine.

**MRS. HARRAL SPEAKS TO
EPISCOPAL GUILD WEDNESDAY**

Mrs. P. W. Harral of San Antonio was the guest speaker at the Young Women's Guild which met Wednesday afternoon with Mrs. George H. Neill.

Mrs. Harral spoke on the five fields of Women's Auxiliary Work: worship, study, gifts, service and fellowship. She showed how the local auxiliary can improve its service and participation in the five fields and recommended books and studies that will help in planning the program.

The group voted to buy a cowboy outfit for an eight year old English boy who had asked for one in a letter addressed to "A Cowboy Anywhere in Texas, USA." The letter was received by an Episcopal Guild member in Junction who gave it the Rev. S. F. Hauser.

Those present voted to have clean up day at the church for the next Guild meeting on Wednesday, April 21 at the church.

Refreshments of cake and coffee were served.

Here From Mason

Mr. and Mrs. Ervin Willman and son, Joe, spent the weekend in Mason. Mrs. Willman's parents, Mr. and Mrs. Will Behrens, returned home with the Willmans to spend a week.

Mrs. P. A. Reary and daughter, Donna, of San Angelo are visiting Mr. and Mrs. Lewis Roueche this week.

Bill Whittemore of Newton, Kansas is visiting his sisters, Mrs. Jack Ellingson and Mrs. Roy Cooper.

**MRS. ASKINS HONORED
AT SHOWER THURSDAY**

Mrs. Emmitt Askins was honored with a layette shower Thursday afternoon when Mrs. Frank Potmesil, Mrs. Roy Sewell and Mrs. Bob Baker entertained at the Baker home.

Arrangements were of ivy and blue daisies. Guests were registered in a hand made register of pink taffeta, lined with blue tulle and tied with white satin.

Refreshment plates of sandwiches and spiced tea and mints were served and plate favors of pink and blue scrolls, tied with white satin, bore a personal message in poetry to the guests.

Guests were Mesdames E. L. Brown, Dick Morrison, Ted Lettinger, Aubrey Ward, Charles F. Browne, Tom Ratliff, Lawrence Nichols, W. O. Crites, A. E. Prugel, Gordon Smith, Sam Crites, Joe B. Logan, Cashes Taylor, W. K. Regeon, Jack Hite and Harold Saunders.

**MRS. BLALOCK CONDUCTS
LESSONS IN SCOUT WORK**

Mrs. C. W. Blalock served as training chairman at an all day meeting at the Girl Scout Hall which was for the purpose of training Girl Scout leaders, assistant leaders and council members.

Each person attending brought a nose-bag lunch and spent the entire day at the Scout Hall.

Some of the class studied first aid while others made a poster showing Girl Scout work from Brownies through senior Scouting.

SUBSCRIBE TO THE NEWS

World's Finest Watches

HAMILTON LONGINES
BULOVA
ELGIN
GRUEN BENRUS \$24^{75 up}

Names of Quality, Beauty and Accuracy . . . renowned among the watches of the world for unsurpassed performance and outstanding values.

Dignified Budget Terms

George Barrow
Your Jeweler

THE RATLIFF STORE

Gift — Party Items — Men's, Ladies' Children's Wear
Household Furnishings — Complete Shoe Department

THE RATLIFF FUNERAL HOME

"Understanding Service In Time Of Need"

24 HOUR AMBULANCE SERVICE PHONES 250 — 87 — 80

1998
50
GOODYEAR
ANNIVERSARY
1948

**The Most Unusual Offer
Ever Made In The
Tire Business!!**

**YOUR MONEY BACK IF *Super-Cushion* TIRES
DON'T GIVE YOU THE SOFTEST RIDE YOU'VE EVER HAD!
YOU RIDE... THEN YOU DECIDE!**

Due to the demand for Super-Cushion tires we are able to make this unusual offer for only these few more days. Come in — we'll put a set of Super-Cushion tires and tubes on your car. Drive it for one week. Then, if you don't agree they give you a softer ride than any tire you've ever owned, we'll replace your old tires and tubes and give your money back. Super-Cushion is a remarkable new kind of tire. Bigger, softer than conventional tires and runs on only 24 pounds of air pressure. It is so superior that we can afford to make this amazing offer.

Super-Cushion
TIRES BY
GOODYEAR

Super-Cushions give you a remarkable new ease in car handling. Your car hugs the road, seems to float through traffic, to flow around curves.

Super-Cushions soak up crosswise jolts, soak up vibration. Results: less driving fatigue, less wear and tear on your car, fewer rattles, fewer repair bills.

Super-Cushions consistently average more mileage than the best standard tires. More — they make small cars ride like big ones . . . big cars ride better.

Super-Cushions run cooler; and because they're softer they "roll with the punch", are harder to cut, bruise or blow out.

Arrange for a Super-Cushion trial on your car today.

MILLIONS OF SUPER-CUSHIONS ARE NOW IN USE ON NEW AND OLDER CARS

Sonora Motor Company
SONORA, TEXAS

**EASY FIGURING
LOW PRICES EVERYDAY
SAVE YOU MORE**

WEEKEND SPECIALS

Friday, April 9, 1948 Saturday, April 10, 1948

CIGARETTES, Carton \$1.65

RED & WHITE FLOUR, 25 lb \$1.89	RED & WHITE CORN, No. 2 Can 21c
FLOUR, 10 lb 89c	HEART'S DELIGHT SPINACH, 2 - No. 2 Cans 31c
SUGAR, 5 lb 49c	HEART'S DELIGHT PEACHES, No. 2 1/2 Can 29c
ADMIRATION OR DEL MONTE COFFEE, 1 Lb. Can 52c	MILE HIGH -- CUT Green Beans, 2 - No. 2 Cans 25c

fresh Fruits and Vegetables

Apples, 150 Size, Doz. 39c	Lettuce, 5 Doz. Size, Head 9c
GRAPEFRUIT, Doz. 39c	Oranges, 176 Size, Doz. 33c
Green Beans, Fresh, lb 24c	

GARDEN FRESH FROZEN FOODS

GRAPEFRUIT, Pkg. 15c	APRICOTS, Pkg. 14c
CAULIFLOWER, Pkg. 29c	CHERRIES, Pkg. 37c
APPLESAUCE, Pkg. 9c	

Lifebuoy, 3 Bars 25c Washo, Large Pkg. 32c

CHOICE MEATS

T-BONE STEAK, lb 55c	CLUB STEAK, lb 55c
	Seven or Shoulder Roast, lb 53c
	PACE SLICED BACON, lb 59c
	SWIFT'S PURE PORK Brookfield Sausage, lb 49c
	SALT PORK, lb 39c

McAllister FOODS **Free DELIVERY**

Red & White Store
PHONE 4

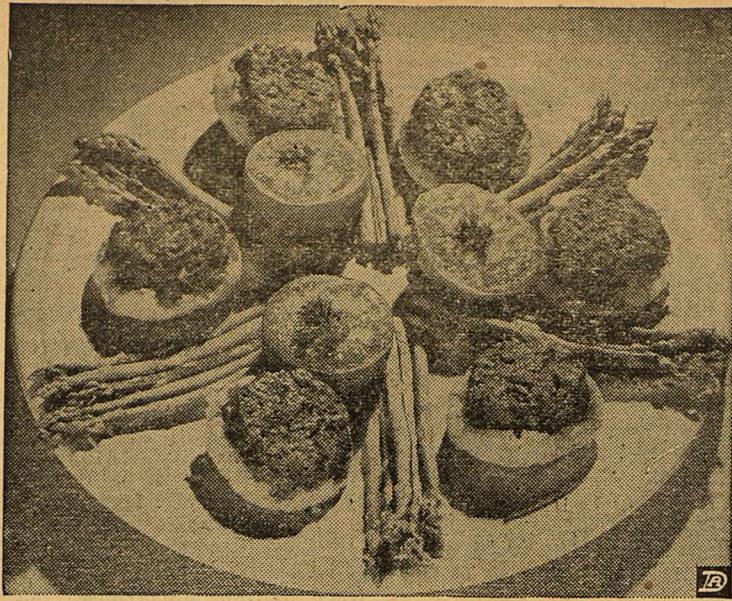


This prize-winning wool topper, made by Nardis of Dallas, was recently selected by an all-male jury at a television fashion show in New York as being best of its type.

Mrs. Don Sprinkle has returned to her home in Gainesville after a ten day visit here with her parents, Mr. and Mrs. C. A. Tyler. Mrs. Sprinkle's son, Michael Evans, remained to visit with his grandparents.

Attend SOME Church Sunday

Economy Oven Menu



Just one and one-half cups of ground meat serves six in two-in-one biscuits. The entire menu can be baked in the oven.

Economy in meal planning means attention to small details—like using leftovers, purchasing of seasonal foods, getting the most for your money whenever a food item is added to the market basket. This menu has been planned to help you make a good start on the spring budget—and still please the family with food that looks and tastes good.

Two-In-One biscuits make excellent use of a cup or so of left-over meat or of fresh ground meat, always less expensive because it does not need to be tender. Enriched flour in the biscuits gives more for your money because it contains added B-vitamins and iron at no additional cost.

Tomatoes and asparagus are foods that spring makes inexpensive, yet they provide just the right color touch.

A saving in time is accomplished by using the oven for the entire menu. Yes, asparagus and tomatoes can be baked, and you'll find that color is retained when a moderately hot oven is used. Place the asparagus in a flat, shallow pan with just enough water to cover the bottom of the pan. Season to taste and bake uncovered until tender, turning the spears just once. The tomatoes are cut in half, brushed with melted butter or margarine and heated until they bubble.

Two-In-One Biscuits

- 1 cup sifted enriched flour
- 1/2 teaspoon salt
- 1/2 teaspoon baking powder
- 1/2 cup milk
- 1 1/2 cups ground meat (may be either cooked or uncooked)
- 1/2 cup shortening
- Salt and pepper to taste.

Sift together flour, salt and baking powder. Cut or rub in shortening. Add milk to make a very soft batter. Fill greased muffin pans one-third full with seasoned meat. Pour batter on top of meat, filling pan two-thirds full. Bake in a moderately hot oven (400 degrees F.) 30 to 40 minutes. Remove from pans. Turn upside down and serve with grilled tomatoes.

Yield: Six three-inch biscuits.

EARLY FLOWERING SHRUBS NEED INSPECTION AFTER LATE FROST DAMAGE

Early flowering shrubs which were injured recently by the late freeze should get their annual pruning at this time, says Miss Sadie Hatfield, extension landscape gardening specialist of Texas A&M College.

If the roses, jasmine and other shrubs injured by the frost March 10 and 11 have not been pruned back yet, take comfort in knowing that the injury has not been increased through neglect. Most injury in Texas takes two forms: killing of the outer twigs and frost cracks along the larger limbs and sprouts.

Twig injury is easily removed on roses, other shrubs and trees.

By this time it is easy to decide how far back the twig needs to be cut in order to remove the dead part. Choose a healthy bud and make a slanting cut about one-half inch above the bud. It is important that the cut be made in the right place. If the cut is made too far above the bud, a dead stub will be left. This may cause a dead streak or "black heart." On the other hand, if the cut is made too close to the bud, it will die.

Most of the time it is hard to see frost cracks, especially when they are on the lower branches of a shrub. These cracks or ruptures, which may be one inch to one foot in length, run in the same general direction as the limbs. Usually it is best to cut off the entire limb if the frost cracks are especially large. However, if the cracks are small and few, the limb may wall-over this injury and remain healthy looking. Some plants with frost injury on the limbs and sprouts remain unthrifty and unattractive for years.

Sometimes the frost cracks are not discovered until summer-time, when the plant is examined to find out why it has an unhealthy appearance. It is pretty late to do much about it then, so remove the damaged parts now for a vigorous looking tree or shrub this summer. Here is a point to remember: it is better to remove a great deal than too little on such shrubs as spirea, jasmine, vitex, oleander, primrose, poinsettia and crapple myrtle, says Miss Hatfield.

Miss Palmer reviews "IDES OF MARCH" AT WOMAN'S CLUB MEET

Miss Anne Palmer reviewed "The Ides of March" at a meeting of the Sonora Woman's Club Thursday afternoon. Delegates were also elected to the state convention and to the district meeting; Mrs. E. B. Keng and Mrs. A. E. Wells are attending the meeting San Angelo and Mrs. Keng and Mrs. Clay Puckett were elected to attend the one in Austin.

Hostesses were Mesdames L. E. Johnson, Jr., W. B. McMillan and Edwin Sawyer. Fourteen were present.

PASCAL ALLISON GIVEN PARTY ON BIRTHDAY

Pascal Allison was feted on his seventh birthday Saturday afternoon in the basement of the Methodist Church by his mother, Mrs. Lea Allison.

The color scheme was carried out in blue and gold and little cars were given as favors.

Cake and ice cream were served to twenty six children and Mrs. Dan Cauthorn, Mrs. Herbert Fields and Mrs. Howard Espy.

The first telephone service between New York and London cost \$25 per minute with a 3 minute minimum charge.

MRS. LABENSKE HOSTESS TO THURSDAY CLUB

Mrs. Lee Labenske entertained the Thursday Bridge Club last week at her home.

A salad plate and punch were served to Mesdames O. G. Babcock, Joe Berger, John Bunnell, B. C. McGilvary, George Barrow, H. V. Morris, A. H. Adkins, Robert Rees, R. G. Nance, O. L. Carpenter, Gene Henderson, Ralph Trainer, Arthur Carroll, Louie Trainer and Nellie Allen.

Mrs. Louie Trainer won high guest, Mrs. Ralph Trainer won low for guests, Mrs. Carpenter won high club and Mrs. Babcock won low for members.

Mrs. Bill McGilvary and Mrs. Lloyd McMullen were hostesses when the Sonora Art Club met at the home of Mrs. McGilvary Thursday night. Mrs. F. L. McKinney, president presided. Textile painting, done by the members during the year was exhibited, and plans were discussed for the annual picnic to be held in May.

Mesdames Maysie Brown, A. E. Prugel and Dorothy Norris were appointed as a nominating committee.

Those present were Mesdames

Congratulations To These New Parents

Mr. and Mrs. R. G. Pipkin of San Angelo became the parents of a daughter Friday in a San Angelo hospital. The baby's weight at birth was 7 pounds, 7 ounces and she has been named Velma Lacey.

Mrs. Pipkin is the former Miss Lillie Marie Smith, daughter of Mrs. Velma Shurley of San Angelo and Sonora.

A whiffletree is the movable, horizontal crossbar to which the traces are hitched on a horsedrawn vehicle.

Jumping beans come from Mexico.

ART CLUB HOLDS TEXTILE PAINTING SHOW THURSDAY NIGHT

Mrs. Lee Labenske entertained the Thursday Bridge Club last week at her home.

A salad plate and punch were served to Mesdames O. G. Babcock, Joe Berger, John Bunnell, B. C. McGilvary, George Barrow, H. V. Morris, A. H. Adkins, Robert Rees, R. G. Nance, O. L. Carpenter, Gene Henderson, Ralph Trainer, Arthur Carroll, Louie Trainer and Nellie Allen.

Mrs. Louie Trainer won high guest, Mrs. Ralph Trainer won low for guests, Mrs. Carpenter won high club and Mrs. Babcock won low for members.

Mrs. Stanley in Hospital

Mrs. Stella Stanley, Mrs. Violet Morrow, Mrs. J. F. Hamby and Mrs. R. S. Williams of Mertzton went to San Antonio the first part of the week and Mrs. Stanley underwent an operation on Tuesday. Mrs. Morrow and Mrs. Williams returned home Wednesday and report that Mrs. Stanley is doing well.

New York City is composed of five boroughs, the Bronx, Richmond, Queens, Manhattan, and Brooklyn.

L. P. Bloodworth, H. C. Kirby, McKinney, Prugel, Reggie Trainer, Elmer Wilson and James Wilson.

AT THE Texaco Station, Del Rio Highway

- * GAS, OIL, BATTERIES
- * COMPLETE RADIATOR SERVICE
- * WRECKING YARD
- * USED TIRES
- * USED AUTO PARTS

Sonora Radiator Service
Sonora, Texas Phone 88-J

Back In Stock!

- * Haviland Bavaria and Thomason Ivory Bavaria in two patterns.
- * Noritake China Tea Sets, for service of six.
- * Indiana Cut Glass Punch Sets, 15 pieces - \$11.50
- * Just received a large shipment of Fostoria Glass and Stemware.
- * We are especially proud to announce that once more we have in stock TIFFIN, the finest in cut and polished stemware. Available in several patterns.

George Barrow
Your Jeweler

For The Rest Of Your Life Sleep On A Keel Mattress

MODERN RENOVATING — INTERSPRING REWORK

KEEL UPHOLSTERING SHOP AND MATTRESS FACTORY

8 W. 5th St. San Angelo, Texas

All Types Of Upholstering
Custom Built Furniture

LEAVE CALLS AT 24 — THE NEWS OFFICE

MILLIONS* OF *Maytag* OWNERS AGREE:

"For outstanding value choose *Maytag*"

THE FAMOUS MAYTAG CHIEFTAIN

\$124.95

*Over 5 million Maytags sold—far more than any other washer.

The average price increase of all washers since 1941 has been more than twice that of Maytag. When you can get a genuine Maytag—with its well-known reputation—and so reasonably priced, there's no need to delay the decision. For quickest possible delivery, come in and choose the model you want, right away. Low monthly payments.

HOME GAS COMPANY

PHONE HAMILTON GROCERY PHONE

A Red & White Store

2 Friday, April 9, 1948 57 Saturday, April 10, 1948

Q & Q Spaghetti
4 - 6 Oz. Boxes
25¢

QUICK Quaker Oats
3 Lb. Pkg.
39¢

JACK SPRATT CATSUP
14 Oz. Bottle
19¢

KUNER'S Sweet Chip PICKLES
8 Oz. Jar
20¢

BAMA Blackberry Jam
Pint Jar
31¢

FRUITS and VEGETABLES

RADISHES, Bunch 5c

CARROTS, 2 Bunches 15c

POTATOES, No. 1 White, 10 lb 49c

TEXAS ORANGES, Doz. 25c

GRAPE FRUIT, White, 6 For 17c

MEATS

SALT PORK BACON, No. 1, lb 45c

SLAB BACON, Swift's, lb 65c

ARMOUR'S FRANKS, lb 45c

OLEOMARGARINE, Uncolored, lb 45c

DRESSED HENS

FIRST REALLY NEW CAKE IN 100 YEARS!

Betty Crocker CHIFFON CAKE
made with **SOFTASILK 44c**
RECIPE AT OUR DISPLAY

FRANCO-AMERICAN Spaghetti
15 1/2 Oz. Can
16¢

ROSE-DALE Dark Sweet Cherries
No. 2 Can
43¢

RED & WHITE FLOUR
10 Lb. Sack
92¢

CALUMET Baking Powder
1 Lb. Can
22¢

Wesson Oil
USE IN CHIFFON CAKE
Pint
45¢

Firing upon Ft. Sumter in April, 1861, was the first military act for the payment of a fixed sum until death is an annuity.

From Vulcan, God of fire and metal work, comes the word vulcanize.

LIVESTOCK SHIPMENTS SHOW 42% SLUMP IN FEBRUARY

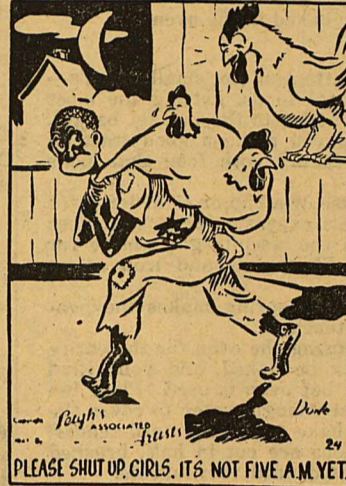
Livestock shipments from Texas stations dropped 42 per cent from January to February, the Texas Bureau of Business Research reported.

Shipments of livestock totaled 5,086 carloads in February, or 58 per cent below a year earlier.

All livestock shipments were substantially lower in February from the previous month. Shipments of calves fell 53 per cent from January; sheep, 46 per cent; cattle, 41 per cent; and hogs, 20 per cent.

Compared with February 1947, all livestock shipments were down. Greatest decrease occurred in sheep shipments—72 per cent. Shipments of cattle were 63 per cent under a year earlier.

According to Greek mythology, the 100 eyes of Argus were, after her death, put into the tail of the peacock.



PARK INN CAFE
Mexican Food
Steaks - Chicken - Seafood
COURTEOUS SERVICE
PHONE 32 SONORA, TEXAS

WASHINGTON NEWS LETTER

By O. C. FISHER, M. C.

Since our last report the House has adopted the compromise tax reduction bill and also the European Assistance measure.

The tax measure would cut about four and one-half billion dollars per year off of the nation's tax bill and repeals the double-tax now levied on estates of decedents in community property States like Texas. This is a real triumph for Texas and the dozen other States that have been the object of this discriminatory tax since it was imposed in 1942. This unjust penalty is now removed.

This European Assistance measure will soon go to the White House after passing the House the other day by a vote of 329 to 74. I voted for this bill because even though it involves a gamble and possible waste, it does offer some real hope for furthering the chances of peace and the prevention of another world war. It is now generally admitted that except for the aid this country gave Greece and Turkey, those two countries would today be behind the iron curtain and the Mediterranean would be a Soviet lake. They may fall under the terrific Communist pressure yet, but their resistance has certainly been stiffened and the gamble taken thus far proven to have been a wise one from our standpoint.

The aid bill involves a cost in money, credits and goods that will total around \$6 billion during the next year. It is only 1 1/2 percent of the cost of the recent war to us. If it will help to prevent a recurrence of war, or if it even has a possible chance of doing so, then it is money well spent and a gamble well worth taking.

The fact is that the program will involve a considerable amount of money following back into this country in the form of trade and purchases. So while the cost will be terrific, some of it will be retrieved for our own economy through expenditures in this country.

The assistance program provides for relief, rehabilitation and the third and very important objective of containment of Russia within her present bounds. If we succeed in stiffening the resistance of the people of Italy and of Western Europe, and thereby keeping the Russian flag off the Atlantic shores, we will thereby save our own taxpayers many billions of dollars in increased costs for national security in the future. The program will, according to plans, be accompanied by a stepped-up increase in our own military strength as well as that of our allied countries to benefit from the assistance. It is admittedly a gamble we can hardly afford not to take.

Gilmer For Agriculture Secretary
Texas-born Jesse Gilmer, now chief of the Production and Marketing Administration, has high-level support to succeed Clinton P. Anderson as Agriculture Secretary. If it were put on the basis of merit, Gilmer would undoubtedly get the nod. But he is obviously handicapped by the fact that already one cabinet member - Tom Clark - is from Texas, and the further fact that Democratic politicians may want the job for the resident of a "doubtful" State.

I hope Gilmer gets the appointment. He is a very capable man and is endowed with unusual administrative ability. Above all, he understands the problems of the farmer and livestock producer. A native of Edwards County, Jesse said to me the other day: "You know, I'd like to be out there in Edwards County helping kid out a bunch of goats."

Some Recent Visitors
Among friends from our section who have recently called on us have been: Gerald C. Allen of Robert Lee; H. G. Wendland, Grady Hill, Mr. and Mrs. M. A. Avinger, Owen Gray, Capt. Gerald Fairbanks, Mr. and Mrs. Wm. L. Bales, Mrs. Ray Willoughby, all of San Angelo; Mrs. Lea Aldwell of Sonora; L. T. Youngblood of Bronte; Mr. and Mrs. Granville Kerley and two children, Jimmy and Deanna, of San Angelo; H. L. Lee of Mercury; Wilbur M. Brown of Richland Springs; and Allen J. McDaniel, Jr. of Ballinger.

SUBSCRIBE TO THE NEWS

Sonora Abstract Co.

J. D. LOWREY, Mgr.

EFFICIENT LAND TITLE SERVICE
ON SUTTON COUNTY LAND
We represent several of the old line fire insurance companies.

Robert Massie Co.

Funeral Directors, Embalmers

Superior Ambulance
Service

Phone 4444

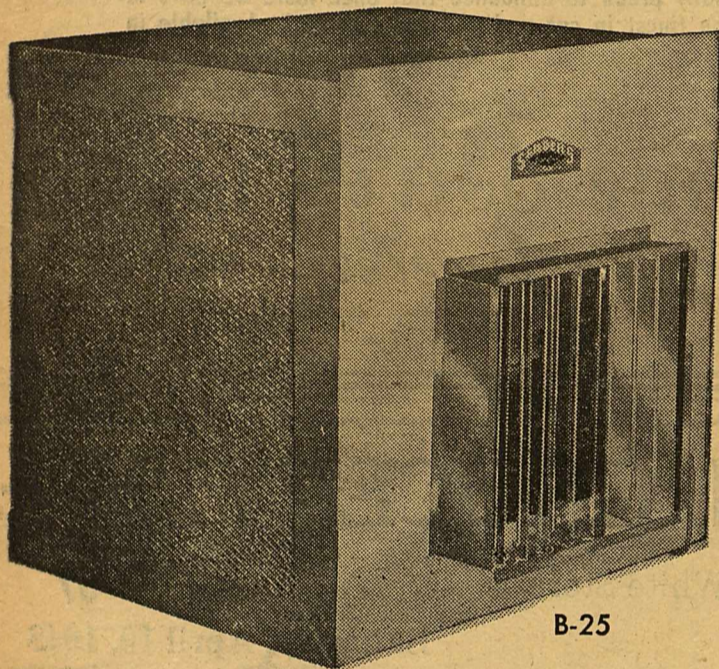
Day or Night
SAN ANGELO, TEXAS

We Can Satisfy Your FEED WANTS

- **FIELD SEED**
Stocked on orders only
- **MINERAL SALT**
Straight or mixed to your order
- **PHENOTHIAZENE SALT**
We stock San-Tex, Red and Green Tag, 10% Pheno Salt.

H. V. STOKES FEED CO.

Phone 89

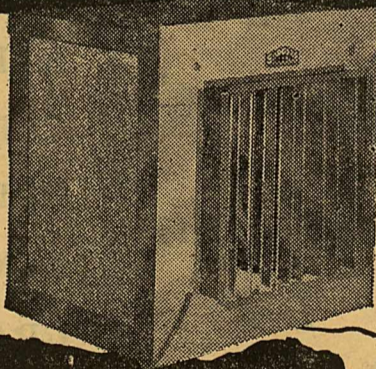


FOR A KOZY KOOL SUMMER

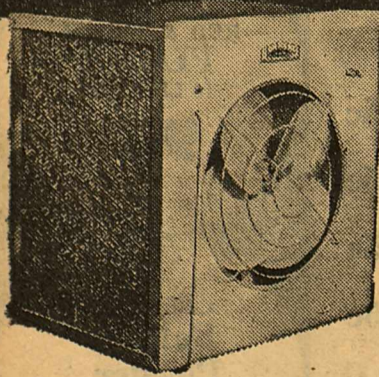
- **FORCED AIR**—Famous USAIRCO cage type blower.
- **ATTRACTIVE**—Rust proof, heavy gauge bright aluminum cabinet.
- **NO CLOG**—Special trough water system prevents stopping-up.
- **QUIET OPERATION**—G-E 1/2 H.P. motor is rubber mounted for shock-proof smooth running performance.
- **KOZY KOOL OUTPUT**—2500 cubic feet of cool washed air per minute.
- **FULLY GUARANTEED**—12 months written guarantee.

SURE TEMPERATURE CONTROL

- **SHOT-BALANCED** Torrington fan, non-vibrating.
- **ATTRACTIVE**—Rust proof, heavy gauge bright aluminum cabinet.
- **NO CLOG**—Special trough water system prevents stopping-up.
- **SILENT OPERATION**—Special patented Emerson motor gives greater output at a slower speed.
- **ADJUSTABLE TO WINDOW**—Fits any size window with adjustable side plates.
- **KOZY KOOL OUTPUT**—2000 cubic feet of cool washed air per minute.
- **FULLY GUARANTEED**—12 months written guarantee.



12 MONTHS WRITTEN GUARANTEE ON ALL MODELS



- **SHOT-BALANCED** non-vibrating Torrington fan.
- **ATTRACTIVE**—Rust proof, heavy gauge bright aluminum cabinet.
- **NO CLOG**—Special trough water system prevents stopping-up.
- **SELF-OILED**—G-E sealed-in-oil motor never requires oil or attention.
- **ADJUSTABLE TO WINDOW**—Fits any size window with adjustable side plates.
- **KOZY KOOL OUTPUT**—1500 cubic feet of cool washed air per minute.
- **FULLY GUARANTEED**—12 months written guarantee.

Limited Quantity
SPECIAL FACTORY PRICES

- B - 25 - \$ 99.50
- F - 20 - \$ 59.50
- F - 15 - \$ 34.50

SONORA APPLIANCE STORE

Phone 14 J

Sonora, Texas

W. R. LEIGH MAKES AMERICA'S FABULOUS WEST LIVE AGAIN IN EXCITING ART SHOW!



"The Killer." Mr. Leigh's factual interpretation of how the cougar of our Western plains kills horses that roam the plain. It is a legend among cattlemen that no human has ever seen the cougar kill his prey, the horse, and the artist's conception, based on extensive research, coincides with that of Will James, that other lover and recorder of our fast disappearing wild and woolly West.

William R. Leigh, whose Indian and western paintings record an integral part of American history as nostalgic as a Will James "Western," opens another of his stimulating exhibitions at the Grand Central Art Galleries, Grand Central Terminal, 15 Vanderbilt Avenue, New York City, April 13 through 24, to which the public is invited.

Today when Americanism in the best sense is held out as a beacon to other less fortunate nations, Mr. Leigh's exhibition is like turning back through enchanting pages of American history and having them come to life vitally and accurately.

The exhibition is a large and comprehensive panorama of Mr. Leigh's work. In addition to characteristic cowboy and Indian paintings, there will be seventy oils done in Africa by Mr. Leigh when he accompanied Carl Akeley to paint studies for the habitat groups of the Akeley African Hall at the Museum of Natural History and on the Carlisle-Clark Expedition. Also fifty-two black and white drawings, never before exhibited in New York, of African animals and landscapes used in Mr. Leigh's book, "Frontiers of Enchantment," published by Simon & Schuster in 1940.

News Classified Ads Bring Results

COSDEN PRODUCTS

Wholesale & Retail
Oil Gasoline
Grease

ALSO

GROCERIES &
COLD DRINKS

ROUECHE BROS.
Phone 56

Exclusive Distributors for Cosden Products in
Sutton, Schleicher & Edwards Counties

We Stock A Complete Line Of Comodes, Lavatories, Chrome Fittings

JOHN A. MARTIN, JR.

See Johnny For Plumbing Supplies
And Accessories

SMITTY'S WELDING SHOP
(Portable Welder Ready to Go At All Times)

Wool Racks and Rings

Sonora, Texas

Sanding • Finishing

Let Me Make Your Old Floors
Look Like NEW

JIM MARTIN

ASPHALT and RUBBER TILE
We Also Lay Linoleum

\$500

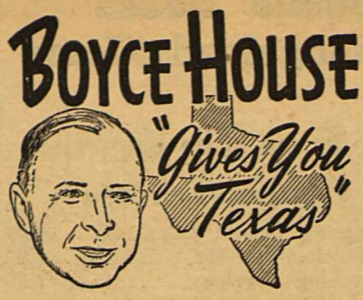
Reward

I will pay \$500 to any person furnishing information leading to the arrest and conviction of anyone stealing any kind of livestock from any ranch in which I am interested.

SOL MAYER

from the ranch country

Son of a gun



A representative group of Sonorans was appointed this week to the Gilmer-Aiken Committee of Sutton County, organized to study the educational needs of the local area from five points of view and report back to the state committee before the legislature meets. Points especially to be considered are organization of the educational system on a state level, organization of administrative units on a local level, financing the school program, the question of textbooks, curriculum, certification and training of teachers, school census, attendance of school laws, buildings and building codes.

Serving on the committee are Mrs. Rip Ward, Mrs. C. W. Blacklock, George H. Neill, Mrs. Tom Ratliff, Mrs. Howard Espy, H. M. Smith, S. M. Kerbow, Bryan Hunt, Mrs. W. R. Cusenbary, George Wynn, John McFadyen, Rex Lowe, Miss Emma Hamilton, W. W. Wendt, E. B. Keng, Henry Burkett, Joseph Vander Stucken and Joe B. Ross.

Quite a bit of talk is going around about the Patch Test, a test which determines the presence of the tubercle bacillus simply by sticking a piece of specially treated tape on a person's arm and leaving it for

three days. No needles, knives or boogers. Put the tape on Monday, take it off Wednesday, see if there are two red spots on your arm Friday. If there are, don't go into a convulsion, just see your doctor and have an x-ray made of your chest. The two red spots mean that there are tuberculosis germs in your body and that you may or may not have active tuberculosis.

Anyhow, some time next week all our school students will be asked to get their parents' permission to have this test made. Please give them that permission because by doing so you will help the Parent-Teacher Association and the local Tuberculosis Association complete a vast project designed to safeguard the health and well-being of YOUR child.

The tuberculin patch test, as it is known now, is an outgrowth of the work of two men in particular, aided by many others. The first is Dr. Robert Koch, a Prussian bacteriologist who, in 1882, discovered the tubercle bacillus. The second is Dr. Leonard Pearson, dean of the Veterinary School at the University of Pennsylvania, who developed the tuberculin test on cattle. In 1918, veterinarians injected cattle with tuberculin on

Spoke in Mineral Wells recently at the annual dinner of the Chamber of Commerce. The occasion was really a home-coming for Col. Ray Leeman, of San Antonio, executive vice president of the South Texas Chamber of Commerce, who began his career nearly 30 years ago as manager of the Mineral Wells Chamber of Commerce.

While there, I picked up this story from Col. Bill Cameron of the Index:

During the war, Texans at Camp Wolters used the expression, "damyankee" pretty freely, so a colonel who was a native Texan called the Lone Star lads together and said, "Men, we must quit calling these fellows from Massachusetts and Illinois damyankees; we should remember that they are our allies now!"

This will come as a surprise to those who know me personally but, at heart, I'm really modest.

It is embarrassing to me to have a fuss made over me in public and for people to come up and tell me how much they have enjoyed my books and ask for my autograph. All this is very distressing—in fact, there is only one thing that is more distressing—and that is for them not to do this.

But most of the time, they don't.

Like the young lady during the war. She was riding on a city bus and she complained to a policeman who was on the bus, "That Marine over there is annoying me." The policeman replied, "Why, he hasn't said a word to you." She said, "I know; that's what's annoying me."

The point in relating all this seemingly extraneous background material is to emphasize that here in Sonora we and our children are able to benefit in just three short days from the result of over 70 years' experimentation by science.

44 Years Ago

Miss Ethel Schwalbe is the guest of Mrs. Lark Taylor this week.

John Smith was in from the R. F. Halbert ranch Monday trading.

Mrs. Ira Glasscock was in from the ranch this week visiting her brother, Mike Sharp.

J. W. Putman is in Brady this week having a good time with his old friends.

Mr. and Mrs. Louis Lane left for Brady Monday to take in the reunion.

J. H. Lohman of Eldorado is drilling a well for Sam Taylor down on his ranch.

Mr. and Mrs. Hiram Sharp and Miss Mary were up from the ranch this week visiting their son and brother, Mike.

Mr. and Mrs. Max Vander Stucken arrived home last week from a very pleasant visit to friends and relatives in Menardville and Fredericksburg.

Lum Hudson of San Angelo was in Sonora several days this week with a cream separator and churn.

Mr. and Mrs. D. H. Wood of Dallas are visiting Mrs. Wood's parents, Mr. and Mrs. W. A. Holland, on the ranch this week.

Pat Lee was in from the Mayer ranch Wednesday for supplies.

Mrs. Ben Benyon and children were in from the Whitehead ranch Wednesday shopping and visiting.

Twenty-four former Japanese warships, stripped of armament, have been turned over to the U. S. Navy for use as target vessels or for scrapping.

Assigned to the Atlantic and one to the Pacific Fleet, but there are seven large carriers in the Atlantic and five in the Pacific Fleets.

J. A. Allison and Tom Wood were in from the ranch Monday trading.

Mr. and Mrs. Harry Sharp arrived home from a visit to Del Rio Monday.

John Robbins was in from the ranch Wednesday on business.

A. F. Clarkson and son were in from their Lost Lake ranch Wednesday.

Geo. Richardson of San Angelo sold Cal Word's clip of wool for 14 3/4 cents per pound.

Tom Adams arrived home from Brady Thursday and reports having a bought 1,470 head of sheep from Messrs. Davis and Black well at p. t.

Walter Whitehead was up from the ranch Thursday on business.

Happy Birthday

Friday, April 9—

Flora Dell Davis

Saturday, April 10—

Mrs. Wilfred Berger

Mrs. W. B. McMillan

Sunday, April 11—

Mrs. Frank Bond

Mrs. H. L. Taylor

Mrs. G. G. Bennett

Monday, April 12—

Mrs. E. T. Smith

Artie Zina Joy

Tuesday, April 13—

Bob Teaff

Wednesday, April 14—

Thursday, April 15—

assigned to the Atlantic and one to the Pacific Fleet, but there are seven large carriers in the Atlantic and five in the Pacific Fleets.

Twenty-four former Japanese warships, stripped of armament, have been turned over to the U. S. Navy for use as target vessels or for scrapping.

Jolly Jester says: Gossip is the kind of news that goes in one ear and over the phone.

GULLEY'S CAFE

The Devil's River News
ESTABLISHED 1890
PUBLISHED EVERY FRIDAY MORNING
ENTERED AT THE Postoffice at Sonora, Sutton County, Texas, as second-class matter under the Act of Congress of 1879.
CLAY PUCKETT Editor and Publisher
ANY ERRONEOUS REFLECTION upon the character, standing, or reputation of any person, firm or corporation will be gladly corrected if the matter is brought to the attention of the publisher.
SUBSCRIPTION RATES — PAYABLE IN ADVANCE
One Year in Sutton and Adjoining Counties . . . \$2.00
One Year Elsewhere \$2.50

Office Supplies at NEWS Office

DRINK MORE
Dairyland
PASTEURIZED MILK
"Babies Love It—You'll Like It!"

SOS
SAN ANGELO OLONA SONORA
MOTOR LINES
SONORA AGENT — Smith Motor Co., Phone 167
We are glad to serve you. Truck leaves San Angelo at 12 noon each day.
Request Your Freight Be Shipped -- FOR PROMPT SERVICE -- BY --
SOS
MOTOR LINES

Our Name Is New To You
BUT
Our Work Is Not
Give Us A Try We Rent Floor Polishers
Call or Write For Free Estimate
Sonora Floor Covering Company
Phone 40-J Sonora, Texas

PRESCRIPTIONS

We carry a complete line of drugs and are at all times ready to give you the best in accurate, carefully compounded prescriptions.

Sonora Drug Co.
SONORA, TEXAS
FOR 24-HOUR SERVICE
CALL 38 OR 45

Notice To Shearers

We now handling a complete line of shearing equipment, including heads and parts for both E. B. and J. B. types.

ALL TYPES OF COMBS AND CUTTERS

We have bought out the E. F. Vander Stucken Co. stock of shearing supplies.

SONORA
Wool & Mohair Co.
Phone 8 or LD 220 Sonora, Texas

EDW. A. CAROE
217 S. Chadbourne
SAN ANGELO
Phone 5384

For Sale
Fine Haired
GOATS
JOE B. ROSS
Sonora Texas

EYES EXAMINED
GLASSES FITTED
Dr. C. L. Baskett
Optometrist
DEL RIO, TEXAS

POSTED!
No Hunting
Violators Prosecuted
Aldwell Brothers

L. W. ELLIOTT
ATTORNEY-AT-LAW
SONORA, TEXAS
Will practice in all state and federal courts

Sonora Grocery

Geo. E. (Bud) Smith R. D. (Ralph) Trainer
FRIDAY APRIL 9 SPECIALS SATURDAY APRIL 10
Phone 339 Delivery Service Phone 158

TEA, Schilling's Black 1/4 lb Pkg. 25c 3 - 10c Pkg 25c	SUNKIST -- 432 SIZE LEMONS, Doz. 25c
HYPRO, Bleach & Cleanser Qt. 14c 1/2 Gal. 27c Gal. 49c	TEXAS SEEDLESS--216 SIZE ORANGES, Doz. 33c
AMERICAN SARDINES, 2 Cans 25c	TEXAS MARSH SEEDLESS -- 96 SIZE GRAPE FRUIT, Doz. 37c
PURE LARD, 4 lb Carton \$1.18	EXTRA FANCY RED DELICIOUS -- 100 SIZE APPLES, Doz. 64c
Pineapple Juice, Del Monte 46 Oz. Can 49c No. 2 Can 19c	EXTRA FANCY WINESAPS -- 100 SIZE APPLES, Doz. 54c
Makes 6 Pints Drink -- No Sugar Needed Tropical Punch, Pt. Bottle 55c	CALIFORNIA ICEBERG LETTUCE, 2 Nice Heads 19c
ALL BRANDS CIGARETTES, Carton \$1.67	GOLDEN HEART -- FIRM & CRISP CELERY, Stalk 19c
HULLED BERMUDA GRASS SEED GARDEN AND FLOWER SEEDS	TEXAS -- FANCY -- NEW CROP RED SPUDS, 3 lb 35c
MEATS	EXTRA NICE Green Onions, 2 Bunches 15c
SWIFT'S ORIOLE SLAB BACON, lb 63c	RADISHES, Bunch 5c
ASSORTED LUNCHEON MEATS, lb 47c	SMOKED COUNTRY STYLE SAUSAGE, lb 39c
FULL CREAM LONGHORN CHEESE, lb 54c	NO. 1 SALT PORK, lb 35c
	HORMEL BREAKFAST SAUSAGE, 8 Oz. Can 39c

Something wonderful bound to happen

CHEN YU LUCKY DEVIL

puts luck in your life

That mischievous new red for nails and lips

LUCKY DEVIL SINGLETON — Nail lacquer, packaged separately for the first time! 60c*

LUCKY DEVIL LIP AND FINGERTIP SET — Lacquer and matching lipstick, \$1.60*

LUCKY DEVIL DUAL — Lacquer with Twincote, 75c*

LUCKY DEVIL LIPSTICK, \$1.00*

GOOD LUCK SET — Lucky Devil lacquer, lipstick and Flurescent (iridescent) lacquer, \$1.95*

CORNER DRUG STORE

GIFTS COSMETICS

PHONE 41

The Friendly Store of Reasonable Prices

Plant Research Institute Seeks Improvement Of Rangeland Grass

If a start is not made in the near future toward obtaining biological data on grasses, within two decades Texans will be faced with the most serious kind of problem in attempting to produce sufficient food from grasslands, Dr. W. G. Whaley, University of Texas botanist, says.

University scientists are now preparing an attack on some of the basic problems which stand in the way of improvement of grasses and management of rangelands.

The grass research program is conducted by the Plant Research Institute, which has been endorsed by the Texas and Southwest Cattle Raisers' Association.

"We are fully aware that what we are undertaking is designed to pay off only some years hence, but we are quite aware that if someone does not tackle these fundamental problems now, that payoff date years hence will never arrive," Dr. Whaley said.

"Further improvement of grasses depends directly upon our gaining a much more thorough understanding of the biology of plants, particularly with reference to their nutrition, reproduction, and interaction of heredity and environmental factors in controlling their development."

Three inter-related groups of problems are slated for study in laboratories now being set up. The first concerns mineral nutrition of grasses; the second has to do with plant reproduction, and the third is that of mapping the background of facts essential to a planned program of hybridization and selection by which it should be possible to synthesize new types of grasses.

PUBLIC STENOGRAPHER — Can do legal and business typing. Phone 102. Notary Public. 4tp23

FOR SALE: Bedroom suite and dinette suite with six chairs. See Jack Biggs. 1tp

*Attend SOME Church Sunday

From The Churches

BAPTIST CHURCH
 Sunday School 10:00
 Morning Service 11:00
 Evening Service 7:30
 W. M. U., each Wednesday 3:00

FIRST METHODIST CHURCH
 Church School 9:30 o'clock
 Morning worship 10:50 o'clock
 Choir 7:30 o'clock

ST. ANN'S CHURCH
 Sunday Masses 8 o'clock
 10 o'clock
 Weekday Masses 7:30 o'clock

CHURCH OF CHRIST
 Bible classes for all ages 10:00 o'clock
 Preaching 11:00 o'clock
 Lord's Supper 11:45 o'clock
 Young People's Class 7:15 o'clock
 Mid-week Bible Study, Wednesday 8:00 o'clock

ST. JOHN'S CHURCH
 Sunday, April 18
 The Rev. Frederic Brasher will preach.

War Assets Adm. Surplus Sales News

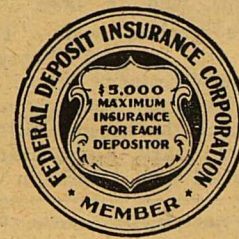
Two public sale of war housing in Texas will be held in the near future. At Laughlin Air Field, 310 buildings previously claimed by priority holders, have been released for sale to the general public on a high bid basis. The inspection period for this sale near Del Rio will continue through April 13, with bidding and awarding to be conducted April 14 and 15. At Childress Army Air Field, War Assets will dispose of 75 surplus structures by means of a similar location sale. The Childress inspection will be from April 8 through April 20, excepting Saturdays and Sundays. The sale will be held on April 21 and 22.

In The Spring A Young Man's Fancy . . .

if he has a home, turns to thoughts of how to make it more comfortable, how to prolong its life, how to make it more attractive.

Painting, papering, adding a room or landscaping may be just what your home needs.

We are prepared to help you with your Spring building program. Ask us for full details.



First National Bank

47 Years
 Serving Sutton County

FRIDAY APRIL 9 PIGGLY WIGGLY SATURDAY APRIL 10

Where the Cost of Living Is Down

PURE LARD - Armour's 3 lb. Carton 89c

TOMATOES, No. 2 Can	13c	ALL GREEN CUT ASPARAGUS, No. 300 Can	27c
TOMATOES, No. 1 Can	9c	KIMBELL'S Mexican Style Beans, No. 300 Can	12c
PEAS, Good Quality, No. 2 Can	13c	CHILI SAUCE, CHB, 12 Oz. Bottle	24c
HEART'S DELIGHT SPINACH, No. 2 Can	13c	CATSUP, Jack Sprat, 12 Oz. Bottle	15c
FINE GROVE SWEET POTATOES, No. 2 1/2 Can	15c	OLIVES, Ripe, Large, 300 Can	21c
CORN, Cream Style, No. 2 Can	17c	Grapefruit Juice, Texsun, No. 2 Can	9c

SPUDS, Whites, No. 1, 10 Lbs. 39c

TREND, 2 Large Boxes	39c	THE MAGIC SUDS SWERL, Giant Box	35c
"IT" DEODORANT, 79c Size	39c	CRISCO, 3 lb Can	\$1.25
DUSTS & POLISHES DUSTING PAPER, Large Box	15c	PICKLES, Whole Sour, Quart	29c

Fruits & Vegetables	Meats
CLEREY, Bleached, Large Stalk	PORK ROAST, Lean, lb
SQUASH, Small Yellow, lb	CHEESE, Longhorn, Full Cream, lb
BELL PEPPER, Fancy, lb	BACON, Smoked, Slab, lb
STRAWBERRIES, Good, Box	Cheese Spread, Kraff's Asst., Glass
LEMONS, Sunkist, Doz.	SALT PORK, No. 1, lb
Full Line of Fruits & Vegetables	FRYERS — HENS — BARBECUE

44 Years Ago

Bert Turney of Rockwood, Coleman County, is in Sonora on a visit to his brother, Frank.

J. Q. Sharp has moved to the Sam Stokes residence in East Sonora this week.

Mr. and Mrs. B. M. Halbert and children were in Sonora Tuesday the guests of Mr. and Mrs. D. F. Patterson at the Decker Hotel.

John McKee and John Woolford were in from the ranch Tuesday trading. John says everything is doing well down his way.

W. T. O. Holman and daughter, Miss Ruby, were in from the ranch a couple of days this week shopping and visiting.

J. B. Reiley, a well known stockman of Crockett and a candidate for county judge, was in Sonora Monday on his way down to the Wheat ranch to look after some sheep he has down there.

Mr. and Mrs. W. J. Fields and children were in from the ranch Thursday visiting and shopping.

Eli Kuykendall, the tank builder, was up from the Whitehead ranch Wednesday for supplies.

Mrs. D. F. Patterson arrived home Monday from a week's visit to Mr. and Mrs. B. M. Halbert at the ranch.

Wm. Beavans and Perry McConnell, prominent stockmen from Menardville, were in Sonora Friday wanting to buy bulls.

Mrs. Lena D. Sampson and babe of Houston and sister, Miss Blanche Stephenson, arrived home Monday on a visit to their parents, Mr. and Mrs. S. W. Stephenson.

Carl Gunzer, the sheep and goat man, was in from his ranch Thursday and says his brother, Tony, is having a good time in St. Louis.

Livestock, Wool and Mutton sales of the Sonora country for the year 1903 was as follows: Shipped to the Territory 15,000 cattle; sold 1-and-2-year-old steers 12,000; mutton sheep shipped to market 75,000; wool shipped and sold at Kerrville and San Angelo from the Sonora country 500,000 pounds at an average price of 13 cents per pound, and the year 1904 will lead 1903 in both cattle, mutton and wool.

J. C. Hargie, who has sheep down on Dry Devil's River, was in Sonora Saturday on his way home to Paint Rock on a visit to his family. Mr. Hargie says if he can get a house he will move to Sonora.

Attend SOME Church Sunday

It's Straw Hat Time!

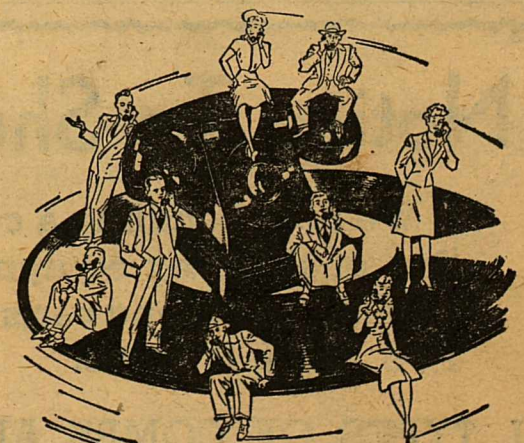
Snap Brims and Westerns

STYLED RIGHT, PRICED RIGHT, FIT RIGHT

\$2.95 & \$6.95

H & P CLOTHIERS

A. P. Prater -- A. B. Hightower



"JAM SESSION" . . . TELEPHONE STYLE

Telephone "jam sessions" occur when too many people try to make calls at the same time. With the telephone industry handling a record number of telephone calls daily, these "jams" are sometimes unavoidable. But you can help us reduce their frequency. Whenever possible, make local calls during less busy hours. Make long distance calls after 6 PM or on Sunday, when you'll benefit by lower rates. And if you should have a few seconds' wait when telephoning—please be patient. You will be served as soon as a line is open.

THE SAN ANGELO TELEPHONE CO.