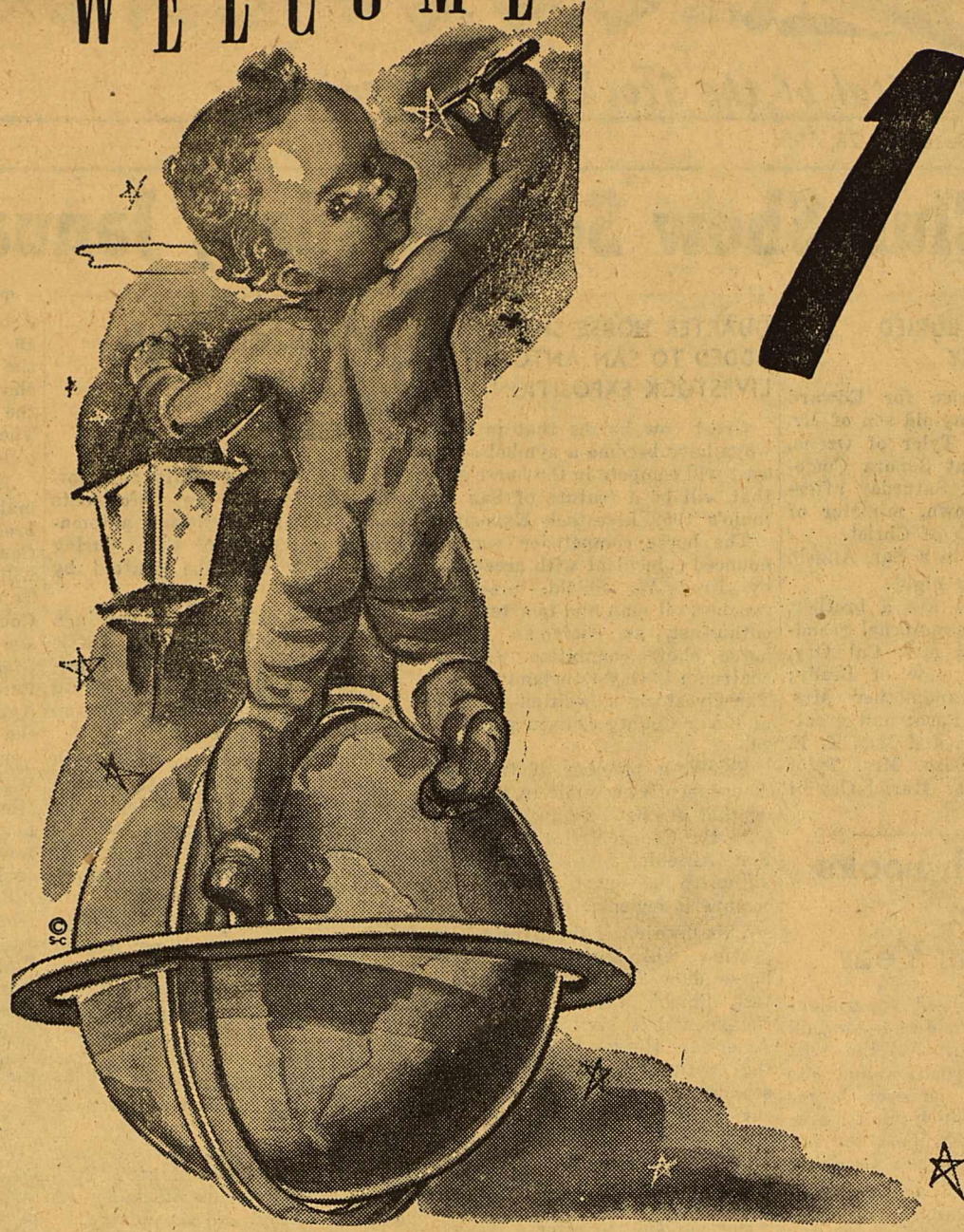


WELCOME



1

9

5

2

FROM YOUR SONO



Your Best Year

May you find all the ingredients
for health and happiness
in the New Year ahead!

Arthur Carroll
Texaco Consignee

La Vista-Bronco Drive Inn
Your Local Theatres

Taylor & Moore Stock Medicine Co.
C. W. Taylor, Owner

Piggly Wiggly Grocery

Hamilton Grocery

Chappel's Red & White

Sonora Superette

Sonora Grocery
Geo. E. (Bud) Smith

Sonora Motor Company
Home of Finer Fords

Robert Massie Company

Elliott Brothers Co.

Neil Roueche

Hotel McDonald
The Home Away From Home

Bill Smith Station
Magnolia Products

Greenhill's Texaco Station

Sonora Drug

First National Bank

San Angelo Telephone Co.

West Texas Utilities Co.

Wesley Sawyer Jeweler

Sonora Wool & Mercery

The City Of Sonora

Granger & Johnson

George Barrow
Your Jeweler

Sonora Men's Store
John A. McClelland

Sonora Abstract Co.

Davis Insurance Co.
Insurance For Every Need

Willman's Service

Gulf Service Station
Corner U. S. 290 & U. S. 277

Smitty's Welding Shop

Wesley C. Young

Sonora Appliance

The Ratliff Store

Joseph's Department Store

Dick's Welding Shop

Club Cafe
A Good Place To Eat



RA BUSINESSMEN

- Foxworth Galbraith Lumber Co.
- Wm. Cameron Co.
- Corner Drug Store
- Sonora Feed & Supply
- C. G. Morrison Co.
- Brooks Powell
International Harvester
- Crosley Electric
Brooks Powell, Owner
- Sonora Electric Co.
Your Philco Dealer
- Sonora Courts - Humble Station
- Western Motel
Granville Barker
- Home Hardare & Furniture Co.
Firestone Dealers
- Drive-Inn Package Store
- Sonora Gas Company
- Home Gas Company
- Labenske Style Shop
- Sonora Recreation Club
Earl Duncan
- Sonora Food Locker
- John A Martin, Jr.



Time to remember friendships true,
and wish the best of luck to you!

velry
air Co.

Station

Shop

Store

nt Store

op

ELLIOTT MOTOR COMPANY

THE NEW YEAR
By W. H. Marshall

Don't let the New Year catch you off guard. If you enter the New Year with a grudge against someone you are a readbeat. It is foolish to beat yourself out of being that gracious person you were meant to be. So, be on guard. No one can hurt you as much as you can hurt yourself.

Every New Year ought to be begun with a season of forgetting during which old grudges are conspicuously dismissed. It takes a big person to dismiss a grudge but a lot of folks do it. They do it for self-protection, if for nothing else, because they have learned how to live.

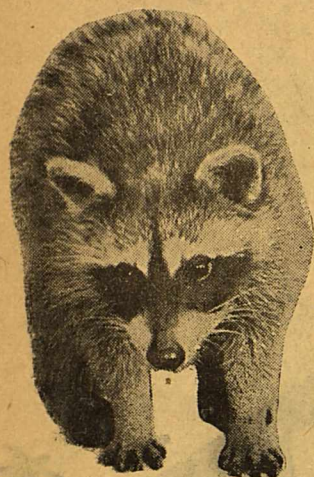
What is your New Year wish? Let us wish the New Year will bring us a few friends who understand us, and yet remain our friends.

A work to do which has real value without which the world would feel the poorer.

A mind unafraid to travel, even though the trail be not blazed. An understanding heart. A sight of the eternal hills and unsetting sea, and of something beautiful the

NOW OPEN
LEONARD SUTTON
NEXT DOOR

VIC CASTILLO LIQUOR STORE



We Buy Furs, Deer Hids
BEST Fur PRICES
We Also Buy Feed Sacks

Drouth - Proof Shrubs Suggested For West Texas Home Owners

Although most of Texas has remained dry for the past two years, some shrubs including evergreens continue to be grown in all areas. Sadie Hatfield, homestead improvement specialist with the Texas Agricultural Extension Service, explains that some native shrubs like chamiza and creosote bush can be expected to live with as little as ten to 12 inches of rainfall during the year. Many more can be grown in areas of 15 to 18 inches rainfall.

For Southwest Texas, the agave, sometimes called algerita, is suitable. It is a hardy evergreen barberry. Bird-of-paradise, known by its yellow and red flowers with long stamens, thrives in this area, also. Purple dalea, Apache plume, Texas persimmon or black persimmon, rock bush or thornless cat-claw, Chinese and Burford varieties of holly, and many kinds of privets grow successfully in the southwest. Wild lippia, nandina, evergreen sumac, desert yaupon and many kinds of yuccas are others requiring little water.

Adapted to the Lower Rio Grande Valley are the wild olive or cordia, poinsettia, lantana, ceniza, dwarf and large pomgranate, native tocoma or golden shower, bush morning glory and vitex, sometimes called pepper tree or lavender tree. Guayacan or soap bush is a variable native evergreen.

For the Panhandle and Plains area, Miss Hatfield lists amorpha or dwarf indigo, anisacanth or cigarette bush, bridal wreath or spirea, Vanhoutti, Scotch and Spanish broom, feather dalea, desert willow or flowering willow. In this area the crape myrtle is used as a perennial flower - that is, it is killed to the ground during severe cold but comes back and blooms the next summer.

Other shrubs listed by the specialist for Northwest Texas are the common lilac and Chinese lilac, fontanesia or fortune's fontanesia, New Mexican forestiera or elbow bush, Maacki honeysuckle, vitex, althea, lemonade sumac or three-leaf sumac, kashgar salt cedar,

profiter juniper and nandina. Miss Hatfield explains that all of these shrubs will grow better and be healthier plants if they have plenty of water. Clean cultivation allows them to thrive on 15 to 18 inches of rain per year. Most of them, however will live in dry areas or on well-drained hills of West and Southwest Texas. When given good drainage they will grow in Central Texas and even beyond, too, she adds.

TOMMY LYNN SMITH GIVEN BIRTHDAY PARTY

Mrs. Tommy Smith honored her daughter, Tommy Lynn, with a party on her third birthday December 13. Various games were played after which Jimmy Trainer presented the honoree with a pink carnation corsage.

Favors of hats and whistles were given. Cake and ice cream was served.

The Christmas notice was carried out in vantage points.

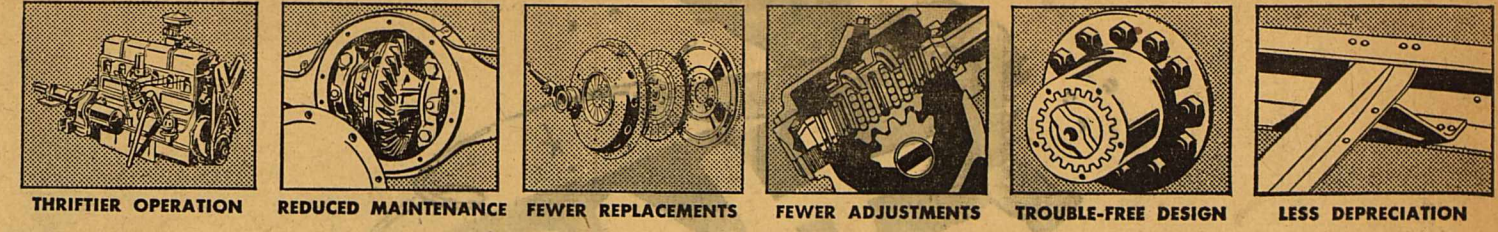
Gifts were received from Cindy Lambert, Judy Smith, Janice Mae Hardesty, Debbie Hines, Joan Berry, Ed. Lee Renfro, Bill Glasscock, Ray Glasscock, Dar Scherz, Jimmy Trainer, Gary McGilvray, Joe Moore, Marshal Kring, Sammy Odom, Randy and Cheryl Awalt.

THIS TASTES GOOD IN TEXAS

Cranberry Crunch
1 cup uncooked rolled oats
1/2 cup flour
1 cup brown sugar
1/2 cup butter
1 1/2 cups cranberry sauce (whole or jelly)
Mix oats, flour and brown sugar. Cut in butter until crumbly. Place half of this mixture in an 8 x 8 inch greased baking dish or shallow pan. Cover with cranberry sauce. Top with balance of mixture. Bake 45 minutes at 350 degrees F. Serve hot in squares topped with scoops of vanilla ice cream. Serves 6 to 8.

FOR RENT:- Bungalow near school. Call J. V. Alley. 2 to 11.

FOR SALE OR TRADE: for livestock:- One \$40 Letz Feed Mill mounted on 4 wheel trailer power with Buick 8 motor. 4 V belt Drive used one season A-1 condition. Phone 2202 Eldorado. 1 to 10.

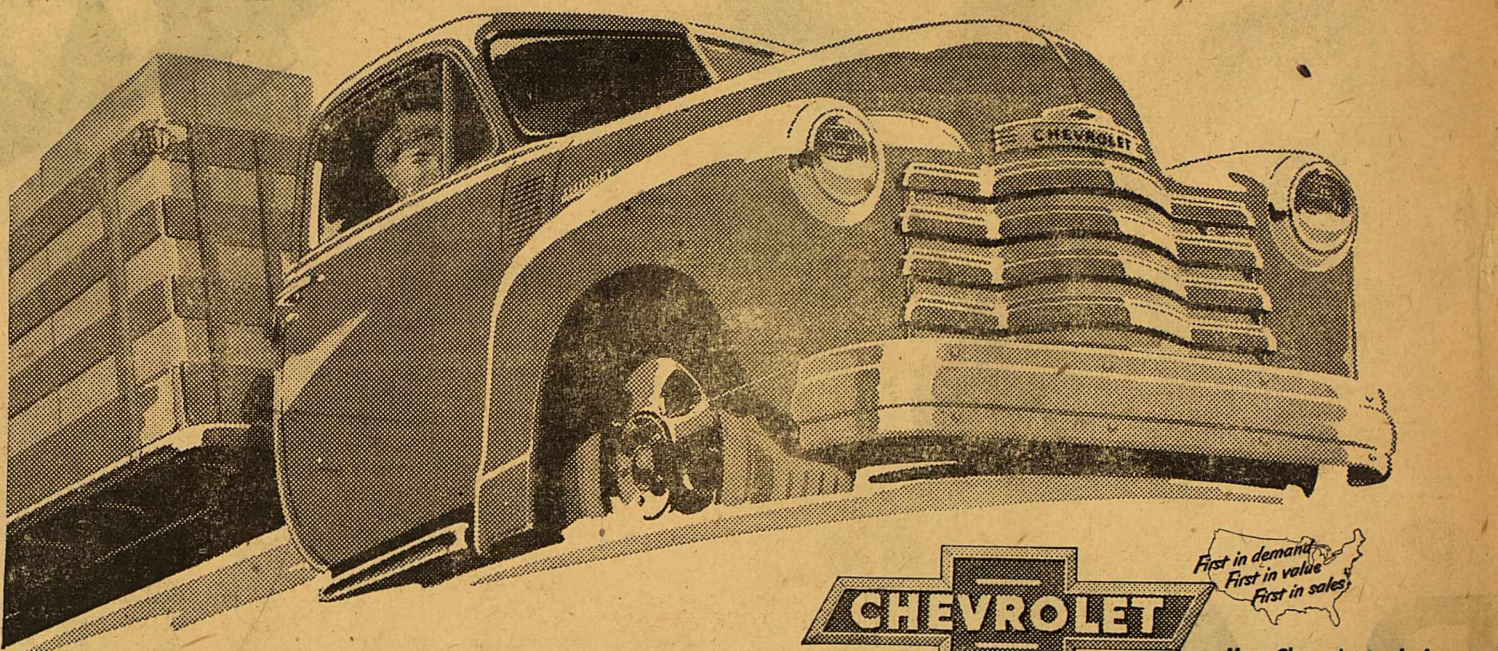


THRIFTIER OPERATION REDUCED MAINTENANCE FEWER REPLACEMENTS FEWER ADJUSTMENTS TROUBLE-FREE DESIGN LESS DEPRECIATION

lower hauling costs

engineered in!
... to do more work for your money

America has made Chevrolet Advance-Design trucks its No. 1 choice, because Chevrolet trucks consistently do more work for the money... cut hauling costs. This outstanding economy stems from Chevrolet's great engineered-in features—powerful valve-in-head engine, durable channel-type frame, rugged rear axle and dozens of other money-saving advantages. Follow the lead of America's largest group of truck owners. Choose a Chevrolet Advance-Design Truck and save! Come in and see us—and get the right truck for your job.



CHEVROLET
ADVANCE-DESIGN TRUCKS

First in demand
First in value
First in sales
More Chevrolet trucks in use than any other make!

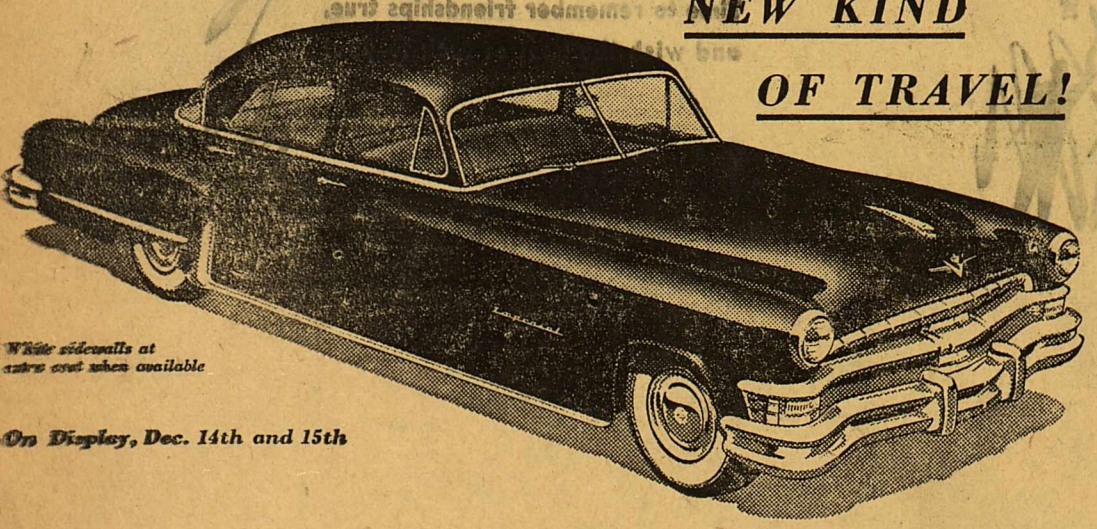
(Continuation of standard equipment and trim illustrated is dependent on availability of material.)

Lamar Fuqua Chevrolet Co.
SONORA, TEXAS PHONE 27921

ANNOUNCING CHRYSLER for '52

CARS SO WONDERFULLY DIFFERENT TO DRIVE
THEY BRING YOU A

NEW KIND OF TRAVEL!

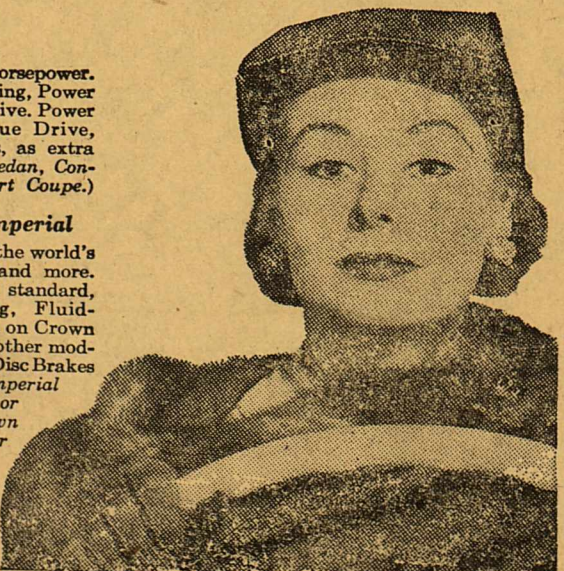


A More Powerful Windsor "6"
The famous Spitfire engine is increased in size and power. Hydrazoid Power Steering, Electric Window Lifts, available at extra cost. (Windsor Body Styles: 6 and 8-Passenger Sedans, Club Coupe, Town & Country Wagon, Windsor DeLuxe: 6-Pass. Sedan, Convertible Coupe, Newport Coupe.)

The Distinguished New Yorker
131 1/2" wheelbase, 180 horsepower. All-new Interior Tailoring, Power brakes, Fluid-Matic Drive, Power Steering, Fluid-Torque Drive, Electric Window Lifts, as extra equipment. (6-Pass. Sedan, Convertible Coupe, Newport Coupe.)

The Magnificent Imperial
Peerless new leader of the world's fine cars. 180 H.P.—and more. Electric Window Lifts standard, Hydrazoid Steering, Fluid-Torque Drive standard on Crown Imperial, available on other models. New airplane-type Disc Brakes on Crown Imperial. (Imperial in 6-Passenger Sedan or Newport Coupe, Crown Imperial in 8-Passenger Sedan and Limousine.)

The Brilliant 180 H.P. Saratoga V-8
The spectacular Chrysler Fire-Power engine on 125 1/2" wheelbase. Power brakes, Fluid-Matic Drive, Hydrazoid Steering, Electric Window Lifts, Fluid-Torque Drive, as extra equipment. (6 and 8-Pass. Sedans, Club Coupe, Town & Country Wagon.)



AMERICA'S FIRST POWER STEERING
New in safety, ease, control... hydraulic power automatically does 4/5 of the work!

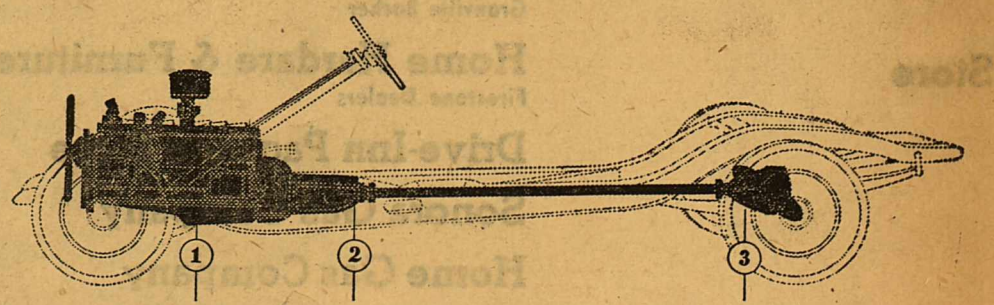
ELLIOTT MOTOR COMPANY



What a Wonderful Thrill To Drive!

The Great New 1952 Pontiac with Spectacular Dual-Range Performance!

The only way to fully appreciate Pontiac's wonderful new Dual-Range performance is to try it for yourself. There has never before been anything quite like this combination of Pontiac's high-compression engine, the new GM Dual-Range Hydra-Matic* and Pontiac's high-performance, economy axle. You can select, with a flick of your finger, exactly the power you want—when you want it, where you want it—instantly, automatically! When you combine this basic engineering advance with Pontiac's beauty, economy and durability you can see why dollar for dollar you can't beat a Pontiac. Come on in and drive it!



THE POWER YOU WANT • WHEN YOU WANT IT • WHERE YOU WANT IT
① High-Compression Engine ② New Dual-Range Hydra-Matic ③ New Economy Axle
*Optional at Extra Cost

DOLLAR FOR DOLLAR YOU CAN'T BEAT A PONTIAC

Johnson & Granger Pontiac & Cadillac Co.,
Concho And Plumb, Sonora, Texas