

DEVIL'S RIVER NEWS



Published in Sonora, Texas, Capital of Stockmen's Paradise

SIXTY-NINTH YEAR

Devil's River News-Sonora, Texas, Thursday, November 20, 1958

SEVENTH WEEK

Broncos Defeat Big Lake 62-8 In Final Grid Game Friday

The Sonora Broncos romped over the Big Lake Owls 62-8 here Friday night in the final game of the 1958 football season. The Broncos scored in each quarter with the Owls tallying their only touchdown in the fourth period.

The first score came as Eddie Sosa ran off tackle for 33 yards. Sosa's scamper resulted from a pass interception by Ben Cas-

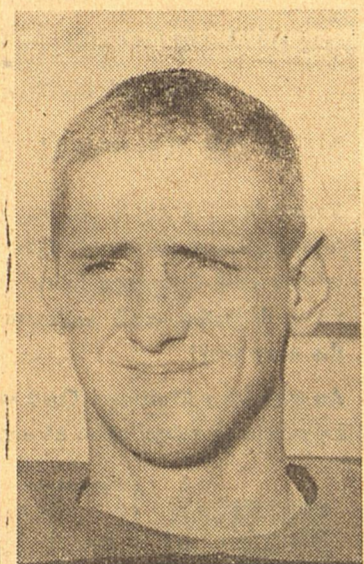
ing the opening kickoff and going up the middle for 84 yards and the third touchdown. Sykes carried for the two bonus points. In one of the outstanding plays of the game, Sosa followed up a 16-yard end run by Sykes to scamper 36 yards for a touchdown with none of the opposition knowing he had the ball. The conversion try failed.



George Caldwell, 150 pound senior guard.

tillo on the Bronco 20. The conversion try was no good. In the second quarter Sonora took over on the 43 yardline with Sykes making a brilliant 27 yard run. Sosa and Galindo each carried off tackle and Sosa went over standing up from the seven-

The second string Broncos went in at this point, starting a drive on the 40 yardline. From the 20, Bobby Sosa ran off right tackle for the score. A Big Lake fumble on the 12 yardline resulted in another TD by B. Sosa with Jerry Baldwin carrying for the conversion.



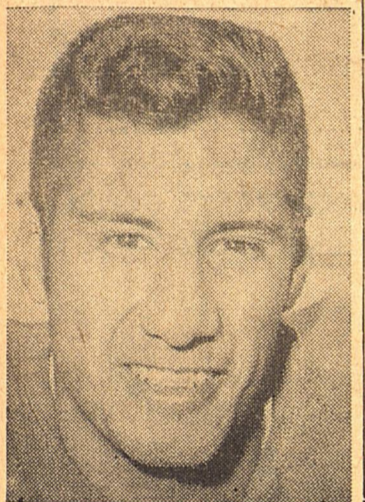
Luther Chalk, 170 pound junior guard.

In the fourth period, Castillo took the ball on a 65-yard run, fell back to pick up blocking for another TD. Galindo carried for the conversion. E. Sosa followed with a run off tackle for 62 yards and another six point. The try for extra point was no good.

Late in the final period, Big Lake's Bobby Hubbard caught a pass off Harold Gardner and ran 56 yards to score the Owl's only touchdown. Hubbard ran the conversion for another two points.

The final drive for the Broncos started on the 56 with Johnny Fields scoring from the six yardline. Baldwin ran for the two extra points.

Statistics: First Downs: Sonora 29, Big Lake 6; Yards Rushing: Sonora 518, Big Lake 42;



Sam Galindo, 150 pound senior back.

Again the conversion try failed.

In the third quarter the Broncos ran wild with Galindo receiv-

Hale-Aikin Groups To Meet At School Thursday Night

The local committees of the Hale-Aikin Grassroots Survey group will meet at the school cafeteria at seven o'clock Thursday night, November 20. At this time findings of the state survey will be heard and the committees will again have the opportunity to submit a report to the state group asking for additions to or eliminations from the recommendations to be made by the state committee.

Chairman of the subcommittees are Clayton Hamilton, school program; Mrs. Duke Wilson, teacher supply; Mrs. E. D. Shurley, school construction; Arner Earwood, finance.

Everyone is invited to attend this meeting and enter into discussions.

Janet Morrison Crowned Sweetheart Of Junior High School Football Team

Janet Morrison, daughter of Mr. and Mrs. Dick Morrison, was crowned sweetheart of the Junior High School football team in special half time ceremonies Thursday night, November 6. Janet was chosen by vote of members of the team.

Aubrey Morris, principal of the school, crowned Janet who was escorted by Jimmy Frank Richardson. Attendants were Lue Smith and Tom Glascock and Francine Fields and Buck Bloodworth. She was presented a bouquet of yellow chrysanthemums.

CONSTRUCTION AGREEMENT SIGNED AT FLOOD MEETING TUESDAY

Jack Baker, Jo Addah Johnson Receive 4-H Gold Star Award Certificates

A. H. HOOSER SPEAKS AT STATE TEACHERS MEETING

Sonora's unit of the Texas State Teachers Association met for an early morning breakfast meeting on Wednesday, November 19. Table decorations followed a fall motif. Mrs. Muriel Hamilton, director of cafeteria service, and her staff prepared a delicious breakfast which started at 7:00 a. m. and ended at 8:00.

A. H. Hooser from TSTA head quarters in Austin spoke to the group. His subject was "Teachers Retirement in Texas Today."

LOCAL NEWS BRIEFS

Mrs. Jimmy Sloan of Hobbs, New Mexico, was in Sonora during last weekend the guest of her father, G. H. Hall.

Mr. and Mrs. George Edward Allison of San Angelo and Jack Grimland of San Antonio were here to attend the funeral services for Mrs. J. E. Grimland.

Jack Baker and Jo Addah Johnson were among the 4-H Club Gold Star Award winners honored at the District 6 banquet held at Fort Clark Ranch, Brackettville, last weekend. The banquet, sponsored by the Rio Grande Electric Coop, Inc., is the first to honor these winners.

The Gold Star Award is given annually to the outstanding boy and girl in each county 4-H Club. They must have completed three years of active club work, must be active at the time of their nomination, must be at least 13 years of age. The award may be received only once by a 4-H member.

Certificates were presented to Jack and Jo Addah who will receive the Award pins at the local achievement banquet.

Accompanying the pair were their parents, Mrs. Dorothy Baker and Mr. and Mrs. L. E. Johnson, Jr., and County Agent D. C. Langford.

Representatives of the Soil Conservation Service met Tuesday with the Sutton County Commissioner's Court, Edwards Plateau Soil Conservation District Supervisors, and representatives of the Eldorado Divide SCD, and completed two forward steps in starting construction of 13 flood prevention dams on Dry Devil's River and Lowrey Draw.

Faculty, Varsity Set Cage Game

The High School varsity basketball team will meet a faculty cage team in a benefit game at the high school gym Tuesday night, November 25, at eight o'clock.

The Faculty All-Stars will be composed of A. T. Barrett, W. L. Sewell, Jesse Jabour, Milby Sexton, Ralph Finklea, Carl Jones, Oliver Wuest, Kenneth Cleveland, and Joe Turner.

Admission will be fifty cents for adults and 25 cents for students.

At 6:30 the same evening the Junior High team will play the varsity "B" squad.

Proceeds from the game will go to help meet expenses of the basketball teams.

the responsibilities of Sutton County in operating and maintaining the 13 structures to be built above Sonora. The federal government, through the Soil Conservation Service, will construct the dams, but operation and maintenance will be performed by Sutton County. Since nearly all of the spillways will be cut in solid rock, maintenance is expected to be a minor item.

A Project Agreement for Construction of Works of Improvement (dams) was also discussed and signed. This document obligates the use of \$144,877 for the construction of dams at Sites 9 and 10 on Lowrey Draw. Site 9 is on the Thomson ranch and Site 10 is on land owned by Mrs. Ada Wynn.

The invitation to bid on construction at Sites 9 and 10 is expected to be advertised in December of this year, with construction to start early in 1959. Contracts for the remaining three structures on Lowrey Draw are expected to be let before June, 1959.

H. R. Baker, State Administrative Officer of the Temple SCS office, and J. L. Richmond, SCS, San Angelo, explained the documents to local sponsors.

A Soil Conservation Service core drill party arrived in Sonora Tuesday to make foundation investigations on Sites 11, 12, and 13. This work is expected to be completed within the next two weeks.

Funeral Services Held Here Monday For Mrs. Lucy W. Grimland, 85

Funeral services for Mrs. J. E. Grimland, 85, who died about 5 a.m. Sunday in Hudspeth Memorial Hospital, were held Monday afternoon in the First Methodist Church with the Rev. Doyle Morton officiating. Burial was in Sonora Cemetery under direction of Rliff-Kerbow Funeral Home.

NOTICE

A community Thanksgiving service will be held in the First Baptist Church at 7:30 p.m. Wednesday, November 26. The Rev. Alanson Brown will bring the message. Everyone is cordially invited to attend this service.

Last Week's Scores

Scores in the football games featured in last week's contest are as follows: Sonora 62 over Big Lake 8; Ozona 58 over Menard 6; Eden 7 over Richland Springs 6; Crystal City 42 over Carrizo Springs 28; Crane 50 over McCamey 12. Bronte 31 over Robert Lee 8; Mertzon 30 over Sterling City 0; Tivy of Kerrville 38 over Seguin 0; Sanderson 44 over Marfa 20; Arkansas 13 over SMU 6. Hardin-Simmons 26 over West Texas State 6; North Texas State over University of Houston 6; Texas A. & M. 28 over Rice 21; Tulsa 9 over Texas Tech; TCU 22 over Texas 8. Tennessee 18 over Mississippi 16; Arizona 14 over Texas Western 12; Army 26 over Villanova 0; Princeton 50 over Yale 14; West Virginia 56 over William and Mary 0.

Born in Norse, Lucy Wallace, had been a member of the Methodist Church since she was a very young girl. She married the late J. E. Grimland December 30, 1890 and they moved to Sonora here most of the time since then. Survivors include two daughters, Mrs. B. W. Hutcherson of Sonora and Mrs. H. M. Sneed of Seattle, Wash.; two sons, Fred Grimland of Alambra, California, and Jack Grimland of San Antonio; one sister, Mrs. Minnie Dahl of Houston; seven grandchildren and eleven great-grandchildren. Pallbearers were Joseph Vander Stucken, John Fields, L. E. Johnson, Sr. Marion Elliott, James D. Trainer and Collier Shurley.

NOTICE

The Wesleyan Service Guild of the Methodist Church will sponsor a bake sale in the Bank Building, November 26, beginning at 1:00 p. m.

120 Deer, 20 Turkeys Bagged So Far; Game Fat, Plentiful Hunters Report

Sutton County hunters had 120 deer on storage at the Sonora Food Locker by Tuesday of this week, only two days after the opening of the season. This figure is much higher than last year when 114 deer were reported four days after the season opened. M. C. Scott, locker plant owner, described the deer as being much larger and fatter than last year.

First deer of the season was brought in by Johnny Merck, 13 year old son of Mr. and Mrs.

Jake Merck. The largest so far is a 132-pound (dressed) buck bagged by Earl Scott of Odessa. Largest head is a 14-pointer brought in by John A. Ward III of Dallas.

Claire Jones, daughter of Mrs. Cleve Jones, Jr., brought in the first turkey of the season. About 20 turkeys were in the locker Tuesday compared to nine at the reporting time in 1957. Scott says the turkeys are much larger than last year's, most being young and fat.

Sonoran's Brother Buried Saturday

Sam Awalt, 83, died Thursday, November 13, in San Antonio where he made his home. Funeral services were held in Bethel, Mason County and burial was in Bethel Cemetery Saturday. His nephews served as pallbearers.

He is survived by his wife; six sisters, including Mrs. J. D. Lowrey of Sonora; six children; four grandchildren and 4 great-grandchildren.

Attending the services from Sonora were Mr. and Mrs. A. W. Awalt, Mr. and Mrs. R. C. Vicars, Mrs. Seth Prater, Mrs. Annie Sharp and Mrs. J. W. Trainer. Also attending were Grady Lowrey of Del Rio and Mrs. Mans Hoggett of Mertzon.

This Week's Winners

First Prize \$25.00
Juan N. Reyna.
Second Prize \$15.00
K. R. Brunson.
Third Prize \$10.00
To be divided between Bill McGilvray, Mike Duran, Jr., and Hut Moore.

An Editorial A Retirement Home For Sonora?

In considering the possibility of obtaining a home for retired persons here, let's stop to evaluate the worth of such a home.

It is estimated that there are approximately 17 million retired persons in the United States at the present time. By 1970 the number is expected to rise to between 20 and 21 million, therefore there is a great need now and it is growing more acute. Only 84 such homes are in operation at the present.

Besides the exangelical service to be rendered by having such a home located here, there is also the commercial side of the picture. What do we stand to gain by locating a home here? To begin with, the proposed cost would be in the neighborhood of \$300,000 which would, in part or in whole, be spent in our community in merely getting the building and facilities constructed. Next, according to Dr. Brabham, the cost of operation of a home would be about \$100,000 to \$125,000 per year, most of which would be spent in Sonora. Then, there are the weekend guests who would be spending money here on gasoline, food, motel and hotel accommodations. Dr. Brabham, who has made a study of

this, states that these homes are, commercially speaking, more beneficial to a community than a manufacturing concern of like size.

It costs about \$110 to \$125 per month per individual to operate a home—in most cases this is cheaper than the maintenance of our own homes when we consider food, utilities, taxes, insurance, etc. These homes are self-sustaining once they are built and in operation and the Church assumes full responsibility for their operation so that they will never be a burden on the community.

On the other hand, let's see what Sonora has to offer. We have two major highways intersecting here, transcontinental bus service, rail facilities and our airport which would enable visitors to arrive by plane. Then, too, we have Hudspeth Memorial Hospital, which is also a necessity even though the homes have a medical wing for infirmity care.

Finally, and possibly most important, we must have the WILL to want a home located here and we must get out and WORK to obtain its location IN AND FOR SONORA.

Dr. Brabham Explains Requirements For Retirement Home Construction

Dr. Tom W. Brabham, executive secretary of the Board of Pensions and the Board of Hospitals and Homes of the Methodist Church of the Southwest Texas Conference, spoke Tuesday night, November 18, at a public meeting jointly sponsored by the Sonora Lions Club and the Chamber of Commerce.

Dr. Brabham explained the program under which the Church is at present constructing and maintaining homes for retired persons. All such homes are interdenominational are designed to provide accommodations for a portion of the retired persons in all areas of the state. Homes are now completed and in operation in Kerrville, Cuero, Lockhart, Weslaco and San Antonio. All are filled to capacity.

Each Home accommodates a minimum of 60 persons. Single and double rooms are available as well as units which include living room and bedrooms. Food, linens, maid service and a limited amount of medical care is provided by the Home.

In considering a location, the Board requires at least 20 acres of land, preferably within the city limits, and 25 percent of total construction costs. These must be provided by the city seeking the Home.

Several communities are interested in securing a Home to serve this district. Menard first sought its location but was rejected by the Board. Eden has a proposal which is to be considered at the December 4 meeting of the Board. Bronte is also seeking to have the Home constructed there. All applications must be in the hands of the Board before its meeting in December.

and THE WEST TEXAS PRESS ASSOCIATION
PUBLISHED EVERY THURSDAY

Entered as second-class mail matter on October 18, 1890
at the post office at Sonora, Texas under the Act of Congress
of March 3, 1879.

Sutton County \$8.00
Elsewhere \$8.50

Mr. and Mrs. Stanton Bundy, owners
Stanton Bundy, Editor and Publisher
Roy Cooper, Associate Editor
Mrs. H. V. Morris, Woman's Editor

Any erroneous reflection upon the character or standing of
any person or firm appearing in these columns will be gladly
and promptly corrected upon calling the attention of the
management to the article in question.

CLASSIFIED ADVERTISING RATES

4 cents per word per insertion - 60 cent minimum charge.
If a classified ad or legal notice is more than 100 words, the
rate will be 4 cents per word first insertion and 3 cents per
word each time thereafter.



YOUR MINISTER SAYS

By Rev. W. L. Brown

"For as the rain cometh down from Heaven . . . that it may give seed to the sower and bread to the eater, so shall My Word be that goeth forth out of My mouth" (Isa. 55:10, 11).

The seed is the word, and the Word of God is the incorruptible seed. As the rain comes down from Heaven to water the earth, so this Word comes forth from the mouth of God to revive the hearts of men.

The pilgrim witnesses, that go over the broad field of this world as sowers for the Son of God, should see to it that the baskets of their hearts are filled with the good seed of the Kingdom. The Word of God is God's own seed for the sower.

This seed is also to be the "bread of the eater". The Word of God then is food and strength for the Christian's own soul. All who live must eat. If we live by faith in the Son of God, His Word will be sweet unto our taste. May we demonstrate this Christian Spirit as we enter the Thanksgiving season.

People get weak eyes from looking at the bright side of life.

Man who is willing to make the best of it, seldom gets the worst of it.

Children are a great deal more apt to follow your lead than the way you point.

The modern theory seems to be that a dollar saved is just a good time lost.

It's possible that college education doesn't always pay, but that doesn't release Pop from his financial obligation.

A man never gets so rich that he can afford to lose a friend.

Men who make big money are careful with their small change.

Self-made men should be more careful in selecting the materials they use.

Devil's River Philosopher Takes A Look At The Election Returns, Comes To Only Vague Conclusions

Editor's Note: The Devil's River Philosopher on his bitter-weed ranch on Devil's River has found out about the election a week ago, which is pretty fast work for him.

Dear editor:
Outside of reading what the political experts and analysts have to say before an election, I guess the next best reading comes from what they have to say after the election.

For example, last week as soon as the returns from the elections around the country came in the experts rolled up their sleeves and started explaining what had happened and why, and I'll admit they've left me puzzled, although you understand I'm not crediting them with getting me puzzled. I've been that way for years on my own.

One expert said this isn't true, that he knows of candidates who got elected on the most conservative platform he'd ever heard of. The main trouble with this is that the pure strains in both parties have about disappeared, mostly cross-breeds left.

And you take all these crosses, like liberal Republicans and conservatives Democrats, conserva-

tive Republicans and liberal Democrats, liberal conservatives liberals, conservative conservatives and liberal liberals, and several who don't know how they got elected, and put them all in the same feed lot in Washington and it's no wonder the Presidency of the United States is considered the most back-breaking job on earth.

If the cattlemen or the horse breeders or sheep producers or dog lovers of this country registered their stock like political parties do, you couldn't tell any more about what the offspring would be like than you can about what the next Congress will do.

You take two members from the same party, one with a mandate from the people in his pockets to vote conservative, and the other with a mandate to vote liberal, and turn them loose in Washington, and it's about like a football team with two coaches, one sending in word to pass, the other to punt.

Personally, I prefer to run this ranch out here on Devil's River. Nobody issue me any mandates.

Yours faithfully,
J. A.

Devil's River Philosopher Up In Arms Over Congressmen Who Want To Plug Up Some Tax Loopholes

Editor's Note: The Devil's River Philosopher on his bitter-weed ranch on Devil's River has taxes on his mind, his letter this week indicates.

Dear editor:

Yesterday afternoon I was out here on my ranch wandering around hunting for something to read—some people think when I'm wandering around I'm just loafing but if you're going to let what people think influence what you do, you'll wind up tired and the other people no better off than they were to start with, in fact I see so many ways I could improve myself I have very little time left for improving somebody else, although on the whole I'm like most people, I'm fairly well satisfied with my own conduct and if there's any changing to be done it's up to the other people to do it—at any rate, I finally found a newspaper lodged in a fence corner under a pile of leaves and drifted back home and sat down and read it.

One article in it burned me up. According to it, a group of Congressmen, looking around for something to do in the next session in January, have decided they're going to launch a drive to close what they called some major tax loopholes.

This is what burned me up. Close some tax loopholes? Thunder, I don't want em closed, I want em POINTED OUT.

If there are any major tax loopholes, and these Congressmen know about them, and they want to be popular with me, just let them send me a list right away.

What this country needs is not

Reports Show 93% Hunters

Despite cold rainy weather the Trans-Pecos prong-horned antelope hunt was considered a success with a total kill of 803 reported, according to the Director of Wildlife Restoration of the Game and Fish Commission.

Three hunts of three days each were held October 1-10 with 860 hunters participating. Hunter success this year was more than 93 percent, the Director said.

During the first hunt 374 hunters bagged 358 pronghorns for a 95.7 percent success. The second hunt had 359 hunters netting 93 percent success with 334 pronghorns killed. Only 111 pronghorns were taken on the third hunt with 87.4 percent success by 127 hunters.

Heavy rains in the region aroused speculation that the hunts would be seriously hampered. Only one ranch, however, had to call off its hunt, the Director said.

Range Management Society To Have Convention

The top range management specialists of Texas will gather in San Antonio at the Hilton Hotel, December 5 and 6 for the annual convention of the American Society of Range Management. Program chairman for the meet, Dr. Gerald W. Thomas, Dean of Agriculture, Texas Technological College, Lubbock, has predicted a record turnout of the membership as well as interested area cattlemen and representatives of professional agriculture.

Speakers for the two day session include Jim Humphreys of the widely known panhandle Pitchfork Ranch. He will talk on "Ranching in the Rolling Plains." King Ranch biologist Val W. Lehmann will present a paper on "Brush Control and Wildlife." Judd Morrow, Range Specialist with the Texas Agriculture Research Stations, Big Spring, and widely known for his work with grass nursery projects throughout Texas, will speak on "Grass Evaluation and Reseeding."

The group's annual banquet will be held Friday night, December 5, at the Hilton Hotel. Speaker for the occasion will be Dolph Briscoe, Jr., 1st Vice-President of the Southwestern Cattle Raisers' Association and former State Representative from Uvalde. Briscoe has applied a phenomenal range program on his 100,000-acre Catarina Ranch, including 70,000-acres of root-planting and range reseeding.

Jack M. Fletcher, San Antonio, Chairman of the state-wide

Devil's River News-Sonora, Texas, Thursday, November 20, 1958

organization will present his annual report and introduce officers for 1959.

Members of the Farm and Ranch Committee, San Antonio Chamber of Commerce, will join with the group for their banquet. Fletcher said: "Our program and banquet is open to anyone interested in range and wildlife management. Tickets for

and can be obtained by writing the banquet are \$4 per person to me at 367 Sea Brook, San Antonio, or phoning CAPitol 6-3079."

The American Society of Range Management has 3,420 members nation-wide with Texas having the largest section. This position was taken over from Arizona in 1958.

ANNUAL Bargain Rates

DAILY WITH SUNDAY
Regular Price \$20.00
15⁷⁵
BARGAIN PRICE
(7 DAYS A WEEK)

YOU SAVE \$4²⁵

DAILY EXCEPT SUNDAY
Regular Price \$15.00
12⁹⁵
BARGAIN PRICE
6 DAYS A WEEK

YOU SAVE \$2⁰⁵

NOW IN EFFECT ON THE FORT WORTH STAR-TELEGRAM
LARGEST CIRCULATION IN TEXAS

NEW OR RENEWAL SUBSCRIPTIONS

Remember the old folks this Christmas with a year's Gift Subscription to THE STAR-TELEGRAM—one that will bear good wishes and Christmas Spirit throughout the year. An economical—lasting—and welcome gift. Say Merry Christmas the easy way!

An attractive Christmas Card with your name as donor will be sent with subscription at any time designated.

Fill Out & Mail Today or See Your Hometown Agent

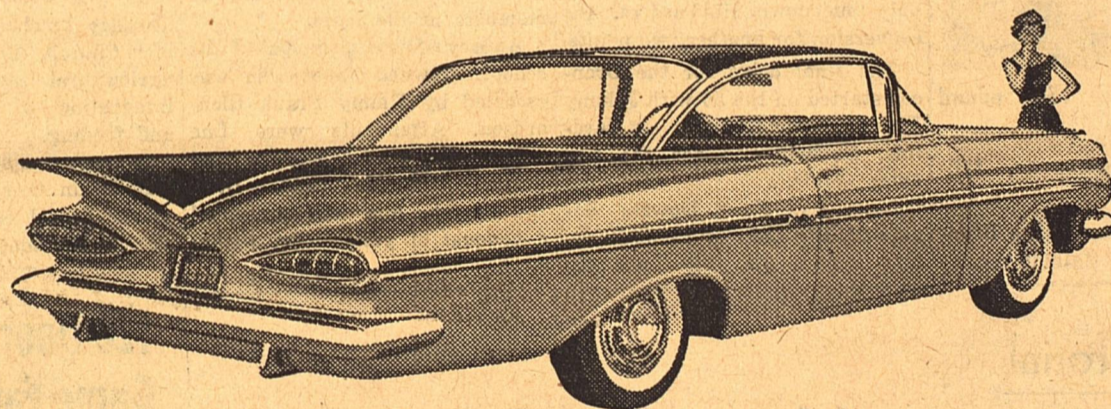
NAME

ADDRESS

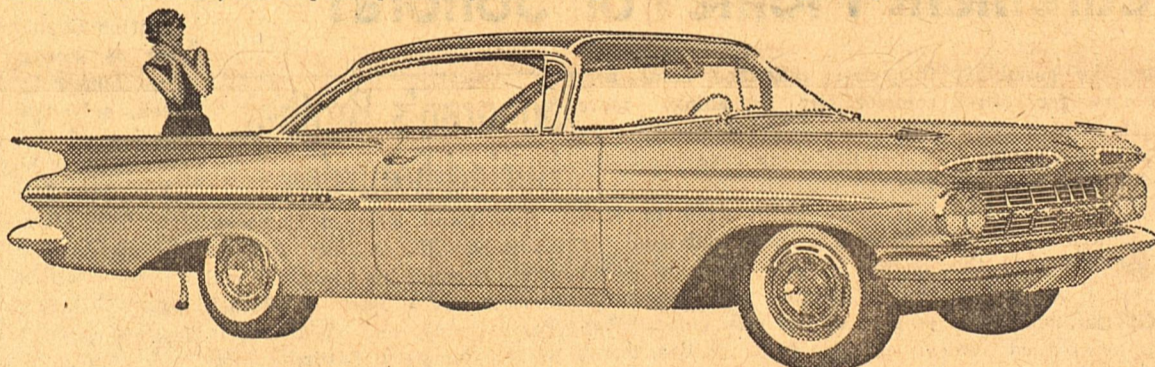
CITY STATE

BARGAIN DAYS REDUCED RATES GOOD ONLY ON FULL YEAR MAIL SUBSCRIPTIONS

TOP TV—The Dinah Shore Chevy Show—Sunday—NBC-TV and the Pat Boone Chevy Showroom—weekly on ABC-TV.



Like all '59 Chevis, this Impala Sport Coupe is new right down to the tougher Tyrex cord tires it rolls on.



Walk around the car that's all-round new . . . then be our guest for a pleasure test—

DRIVE A '59 CHEVY TODAY!

One look at this '59 Chevy tells you here's a car with a whole new slant on driving. You see the transformation in its low-set headlights, the overhead curve of its windshield, the sheen of its Magic-Mirror finish—a new acrylic lacquer that does away with waxing and polishing for up to three years.

But to discover all that's fresh and fine you must relax in Chevrolet's roomier Body by Fisher (up

to 4.2 inches more room in front, 3.3 inches in back), feel the lounge-like comfort of Chevy's new interior, experience the hushed tranquility of its ride (choice of improved Full Coil or gentler-than-ever Level Air suspension*). Once you're on the road you'll discover such basic benefits as bigger, better cooled brakes that give over 50% longer life, new easy-ratio steering and a Hi-Thrift 6 that gets up to

10 per cent more miles per gallon. And, of course, you find Safety Plate Glass all around in every Chevrolet. Stop by your dealer's and pleasure test the car that's shaped to the new American taste!

*Optional at extra cost.



ELLIOTT CHEVROLET CO.
Sonora, Texas

see your local authorized Chevrolet dealer

JAY'S BARGAINS

Power Take Off For Chev. or GMC . . . \$35.00

11' x 16' - 16 Oz Tarp . . . \$18.50

10' x 10' - 16 Oz. Tarp . . . \$10.00

9' x 11' - 16 Oz. Tarp . . . \$10.35

Used Army Blankets . . . \$ 4.65

Army Field Jackets . . . \$2.50 - \$3.75

Army Work Shoes . . . \$5.25

Blue Airforce Shirts . . . \$1.00

Leather Work Gloves, good quality - \$1.95

2 Wood Burning Cook Stoves

Put A New Guitar On Lay-A-Way

For Christmas At

JAY'S LOAN SERVICE - PHONE 26611

Weekly Football Contest

SONORA'S ANNUAL FOOTBALL CONTEST

1st Prize **\$25** 2nd Prize **\$15** 3rd Prize **\$10**

\$50.00 In Prizes Every Week!



Nothing To Buy
•
Anyone Can Win
•
Enter Today

THIS WEEK'S
CONTEST CLOSSES
FRIDAY, 4 P.M.

HERE'S YOUR CHANCE TO HAVE FUN, OUTGUESS THE EXPERTS, AND WIN BIG WEEKLY PRIZES! JUST CLIP THE ENTRY BLANK FROM THE DEVIL'S RIVER NEWS, MARK THE WINNERS, AND DEPOSIT IN ANY CONTEST BOX! REMEMBER, JUST MARK THE WINNERS, NOT THE SCORES! A DIFFERENT CONTEST EVERY WEEK!

DEPOSIT ENTRY BLANK WITH ANY OF THE FIRMS LISTED BELOW!

Contest Rules

- * Weekly contests open to everyone except employees and families of this newspaper.
- * Entries to be judged by the staff of this newspaper. All decisions of the judges are final. In case of tie, prizes will be divided.
- * Entries must be submitted on official form, as printed in this paper. Entries must be deposited in official contest boxes.
- * The deadline for weekly submission is 4 P. M. Friday. Only one entry blank per person.
- * Winners will be announced Thursday of the week following.
- * All tie games will be counted as a loss unless so marked.



First National Bank

MEMBER F.D.I.C.

Serving Sutton County Since 1900

Modern-Way Grocery
CALL 27301 FOR FREE DELIVERY

The Devil's River News

YOUR HOME-TOWN NEWSPAPER FOR 65 YEARS

Elliott Chevrolet Company

YOUR AUTHORIZED CHEVROLET DEALER

Bell's Cash-Way

WE GIVE S. & H. GREEN STAMPS

Evans Foodway Stores

THE FRIENDLIEST STORE IN TOWN



Piggly Wiggly

YOUR HOME OWNED GROCERY STORE

Sonora Food Locker

WHOLESALE MEATS- BARBECUE -SMOKED TURKEY

Jay's Loan Service

BUY, SELL, TRADE OR PAWN — PHONE 26611

La Vista & Bronco Theaters

PLEASURE FOR THE WHOLE FAMILY

Granger & Johnson Motor Co.

BUICK - PONTIAC - CADILLAC

Commercial Cafe

SPECIALIZING IN STEAKS AND MEXICAN DISHES

Stockmen's Feed Company

YOUR PAYMASTER DEALER

Sonora Drug Company

WHERE SONORANS MEET



OFFICIAL CONTEST ENTRY BLANK

WEEK ENDING November 21, 1958

- | | | | | | | | |
|-------------------|--------------------------|------------|--------------------------|--------------------|--------------------------|---------------|--------------------------|
| 1. Ozona | <input type="checkbox"/> | Fabens | <input type="checkbox"/> | 11. Kentucky | <input type="checkbox"/> | Tennessee | <input type="checkbox"/> |
| 2. Mason | <input type="checkbox"/> | Merkel | <input type="checkbox"/> | 12. Abilene | <input type="checkbox"/> | San Angelo | <input type="checkbox"/> |
| 3. White Oak | <input type="checkbox"/> | Edgewood | <input type="checkbox"/> | 13. Notre Dame | <input type="checkbox"/> | Iowa | <input type="checkbox"/> |
| 4. Spur | <input type="checkbox"/> | Crane | <input type="checkbox"/> | 14. Air Force | <input type="checkbox"/> | New Mexico | <input type="checkbox"/> |
| 5. Brady | <input type="checkbox"/> | Belton | <input type="checkbox"/> | 15. Michigan | <input type="checkbox"/> | Ohio State | <input type="checkbox"/> |
| 6. Perryton | <input type="checkbox"/> | Stamford | <input type="checkbox"/> | 16. Michigan State | <input type="checkbox"/> | Kansas State | <input type="checkbox"/> |
| 7. Tivy Kerrville | <input type="checkbox"/> | San Marcos | <input type="checkbox"/> | 17. LSU | <input type="checkbox"/> | Tulane | <input type="checkbox"/> |
| 8. Rice | <input type="checkbox"/> | TCU | <input type="checkbox"/> | 18. Missouri | <input type="checkbox"/> | Kansas | <input type="checkbox"/> |
| 9. SMU | <input type="checkbox"/> | Baylor | <input type="checkbox"/> | 19. Wake Forest | <input type="checkbox"/> | Auburn | <input type="checkbox"/> |
| 10. Texas Tech | <input type="checkbox"/> | Arkansas | <input type="checkbox"/> | 20. Syracuse | <input type="checkbox"/> | West Virginia | <input type="checkbox"/> |

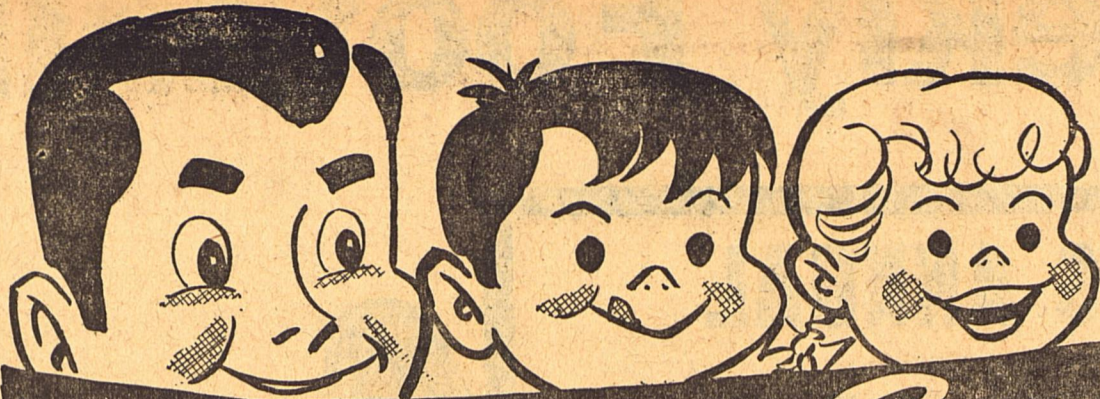
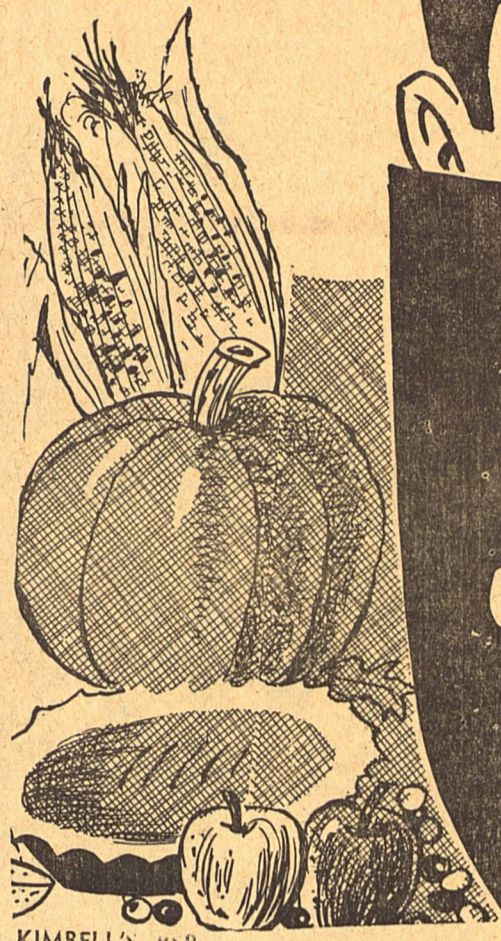
NAME _____ ADDRESS _____

CITY _____ TEL NO. _____

We Will Be Cl

Cranberry Sauce
 KIMBELL'S 300 can **19c**

Pumpkin
 DEL MONTE 303 can
2 for 25c



Feast Your Eyes on these
THANKSGIVING BUYS

Preserves
 KRAFT'S STRAWBERRY 12 OZ. JAR
3 for 69c

PRICES EFFECTIVE:
 Thurs., Fri., Sat., Mon.
 Tues., Wed.
 NOVEMBER 20 THRU 26
 WE RESERVE THE RIGHT
 TO LIMIT QUANTITIES
 AND REFUSE SALES TO
 DEALERS.

DOUBLE STAMPS
 EVERY WEDNESDAY
 WITH PURCHASE OF
 \$2.50 OR MORE

CHERRIES 2 for 49c
APPLES KIMBELL'S PIE NO. 2 CAN 2 for 43c
MILK EAGLE BRAND 15 OZ. CAN 31c
PUMPKIN DEL MONTE NO. 2 1/2 CAN 25c
PINEAPPLE DIAMOND CRUSHED 303 CAN 23c
FRUIT COCKTAIL DEL MONTE 303 CAN 25c

FREE  **\$299.95 G.E. Refrigerator**
 TO BE GIVEN AWAY SOON
 NOTHING TO BUY
 JUST COME IN AND REGISTER

Pineapple Juice DEL MONTE 46 OZ. CAN 33c
Orange Juice ADAMS NO. 2 CAN 2 for 29c
Tomato Juice DEL MONTE 46 OZ. CAN 33c

Corn Meal
 KIMBELL'S 5 LB. BAG
39c

Cake Mix
 PILLSBURY ANGEL FOOD 14 OZ. PKG.
49c

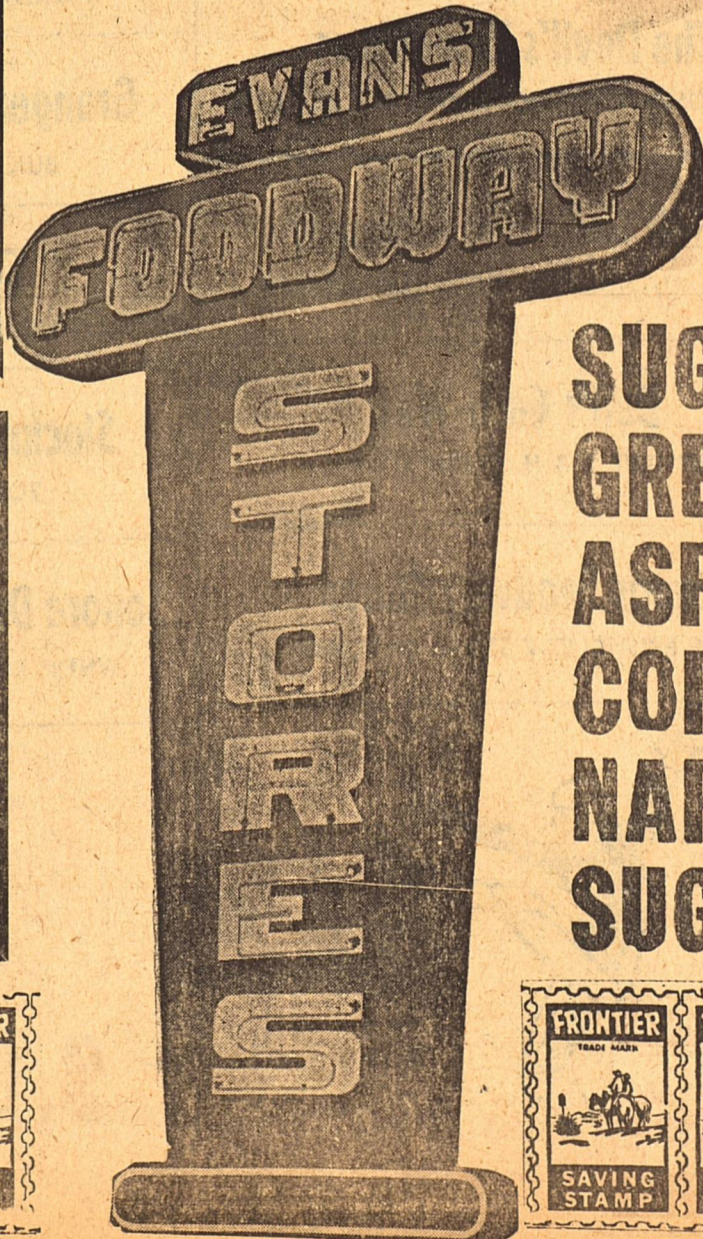
Frozen Foods

Rolls FROZEN RITE PKG. OF 24 29c	Green Peas SNOW CROP PKG. 19c
Pot Pies SWANSON Chicken, Beef, Turkey EACH 25c	Broccoli SNOW CROP SPEARS PKG. 25c
Strawberries WESTERN WONDER 10 OZ. PKG. 19c	Juice ORANGE SEALED SWEET 6 OZ. CAN 25c

Swiftning
 SHORTENING 3 lb. can **69c**

OLEO
 BANNER 1 lb. pkg.
2 for 35c

Celery LARGE PASCAL STALK **12 1/2c**
Apples DELICIOUS LB. **10c**
Cranberries FRESH 1 LB. BOX **19c**
Onions CRISP GREEN 2 BUNCHES **19c**
Bananas C. A. LB. **12 1/2c**
Yams FRESH DUG LB. **7 1/2c**



SUGAR P
GREEN B
ASPARAG
CORN
NAPKINS
SUGAR



osed Thanksgiving



Cheese

SWIFT'S Brookfield 2 lb. box

69¢

Flour

GOLD MEDAL 10 lb. bag

89¢

THE WOMEN'S PAGE

Devil's River News-Sonora, Texas, Thursday, November 20, 1958

Lee Labenskies Observe 60th Anniversary With Open House Sunday Afternoon

Mr. and Mrs. John Cauthorn were hosts for a tea honoring Mrs. Cauthorn's parents, Mr. and Mrs. Lee Labenske, on their 60th wedding anniversary Sunday afternoon November 16, in the Labenske home.

The table was covered with a white linen cut work cloth and centered with an arrangement of chateaufe spider mums in a silver bowl flanked by white tapers in silver holders. Arrange-

ments of fall flowers were featured throughout the party rooms.

Alternating at the register and the service table were Mrs. Harold Scherz, Mrs. John J. Swatchesue and Mrs. W. O. Crites.

Out-of-town guests included Mrs. Swatchesue of Winters, Mrs. Ernest Woodward of San Angelo and Mr. and Mrs. W. E. Wallace of Blanco. Approximately 75 guests attended.

THEATER PARTY HONORS

KAY ELLIS SATURDAY

Mrs. Marie Ellis complimented her daughter, Kay on her 10th birthday with a theater party, Saturday, November 15.

Following the matinee guests were served cake and ice cream at the Ellis home.

Attending were Angie Neill Moore, Susan Prugel, Linda McBride, Brenda Browne, Yvonne Young, Janet Johnson, Jaine and Al Letsinger, Donna Lee, Martha Love, Susan Allison and Eddie Sawyer.

MRS. CHENOWETH REVIEWS BOOK AT SILVER COFFEE

The A. & M. Mothers Club sponsored a silver coffee at the Sonora Woman's Club last Thursday with Mrs. Edwin Mayer, Mrs. G. H. Davis and Mrs. Thomas Morriss as hostesses.

The traditional A. & M. colors, maroon and white, were featured in room decorations and flower arrangements. The table was centered with a large arrangement of maroon and white mums. Mrs. Jack Grafa served the guests.

Mrs. Dean Chenoweth of San Angelo reviewed the book "Dear Dorothy Dix." She was presented a gift of silver and a corsage.

Guests were present from San Angelo, Rocksprings and Sonora.

MRS. MAYER ENTERTAINS IDLE HOUR CLUB FRIDAY

Mrs. Edwin Mayer entertained the Idle Hour Bridge Club with a luncheon and six tables of bridge at her ranch home Friday. Arrangements of fall flowers decorated the party rooms.

High score prizes went to Mrs. Tom Rathiff and Mrs. Lee Fawcett. Mrs. Sterling Baker won second high score prize and bingo prizes were won by Mrs. Ben Cusenbary and Mrs. George Barrow.

BIRTHDAY PARTY SUNDAY HONORS RONNIE BALTAZAR

Sallie Baltabar, assisted by her mother and sister, honored her son, Ronnie, on his 5th birthday with a cowboy party at the Parish House Sunday afternoon.

The wall decorations were cowboy pictures and the pinata was horse shaped. The birthday cake was decorated with a ranch scene and inscribed "El R. B. Rancho." Mrs. Ernest Perez played piano selections.

Prizes were won by Sylvia Sanchez, Pete Martinez and Robert Ramos. 59 guests attended.

MRS. HEANER LEADS STUDY AT WSCS MEETING MONDAY

The Woman's Society of Christian Service met in the Methodist Church Monday for a special program.

Mrs. Alvis Johnson gave the welcome and Mrs. J. C. Stephen gave the call to worship. Mrs. S. M. Loeffler was organist and the group sang a hymn. Mrs. C. W. Taylor read the scripture, Mrs. W. L. Davis led in prayer and Mrs. Doyle Morton, secretary of missionary education, gave the introduction.

Mrs. Russell Heaner of Eldorado conducted the study "Understanding Other Cultures." A solo was sung by Mrs. Jack Thomas accompanied by Mrs. Louie Trainer.

Following the program Mrs. Morton was hostess during a social hour at the Methodist parsonage.

ART CLUB HAS PROGRAM ON CHRISTMAS PROJECTS

The Sonora Art Club met in the Art Room Monday night in regular session, with Mrs. R. M. McCarver presiding during the business session.

Mrs. John A. Martin, Jr. conducted a program with illustrations on various Christmas projects.

Mrs. Louin Martin, hostess served refreshments to Mmes. McCarvey, Martin, R. B. Kelley, G. M. Owens, A. W. Awalt, Robert Hardgrave, Maysie Brown, J. T. Sellman and H. V. Morris.

CARD OF THANKS

We extend sincere appreciation for all who expressed their love and sympathy in so many comforting ways during our recent sorrow. We are deeply grateful to all of you.

The family of Dee Word.

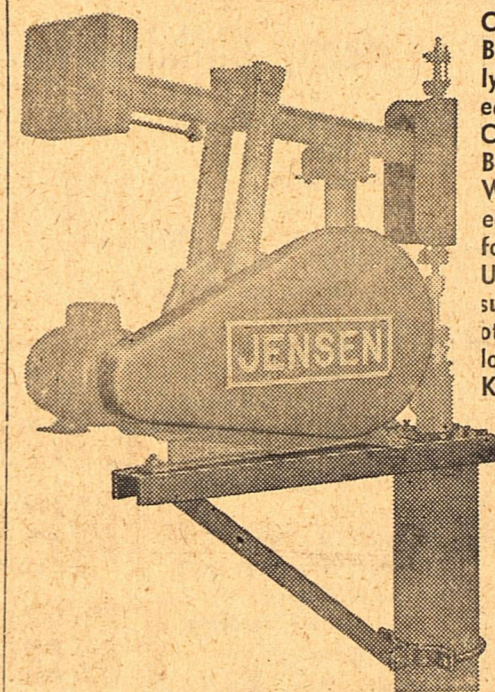
Mr. and Mrs. James Hutcherson and family of Fort Worth, Mr. and Mrs. Rex Hutcherson and family of Houston and Mr. and Mrs. Batts Friend and family of Ozona were here to attend funeral services for their grandmother, Mrs. J. E. Grimland.

Mrs. Merton Shurley and Mrs. Troy White of Chritoval were in Sonora this week attending the funeral services for Mrs. J. E. Grimland.

G. A. Browne of Fayetteville, Arkansas, arrived for a visit with his son and family, Dr. and Mrs. Charles F. Browne, Brenda, Chuck and Paul.

Mr. and Mrs. Roy Neill of Lubbock are the guests of Mr. and Mrs. Gay Copeland this week.

3 New Accessories For Junior-Sized JENSEN 13-W



CABLE GUARD and BELT GUARD, quickly attached for added safety. COMBINATION Jack Base and SANITARY WELL CAP, for fast, easy installation—no foundation is needed. Unit is off of ground; surface water, dirt and other impurities are locked out of the well. Keeps water clean and pure.

If you now own a JENSEN 13-W... smallest of 14 JENSEN JACKS... or plan to install one—don't forget to ask about these new accessories. Will be glad to help you solve your water problems... with a JENSEN.

Made by Jensen Bros. Mfg. Co. Coffeyville, Kansas

SONORA WOOL AND MOHAIR COMPANY SERVING THE CAPITAL OF THE STOCKMEN'S PARADISE

TURKEYS

Toms LB. 45c | Hens LB. 49c

ROAST STEAK ROUND LB. 89c

ROAST STEAK LOIN LB. 79c

ROAST STEAK CHUCK LB. 59c

FRANKS CIRCLE "C" 1 LB. PKG. 45c

BACON SWEET RASHER 1 LB. PKG. 55c

ROAST ARM - CHUCK - RUMP LB. 55c

JEWELS CHARMIN REG ROLL 19c

BEANS DEL MONTE 303 CAN 19c

BEANS DEL MONTE 303 CAN 19c

BEANS DEL MONTE SPEARS NO. 1 CAN 33c

DEL MONTE WHOLE YELLOW 12 OZ. CAN 2 for 33c

CHARMIN 80 COUNT 2 for 25c

ORDERED OR BROWN 1 LB. BOX 2 for 25c

Biscuits

KIMBELL'S CAN

9c

Coffee

FOLGER'S 2 LB. CAN

\$1.29

LAYAWAY NOW!

This Year We Offer A Wide Variety Of Imported Gifts. Shipments Arriving Daily.

Carving & Steak Sets In Stainless And In Bone-By Sheffield And Others From Britain & Japan

A Wide & Complete Line Of Brasses From India

It's New

"DISCOWARE" Ovenware This Is Porcelainized Cast-Iron For The Wife Who Has Everything.

A Variety

Of TV Tables And Stands To Select From



Shop Now From Complete Stocks And Lay-Away.

Corral Trading Post



CAUSE AND EFFECT



Three SWC Games To Be Broadcast This Saturday

Three Southwest Conference football games will be broadcast Saturday by the Humble Co. All broadcasts will start at 1:45 p.m. The Rice-TCU game will be broadcast from Houston by Kern Tips and Alec Chesser over WOAI, San Antonio.

The SMU-Baylor game will be broadcast from Dallas by Ves Box and Eddie Hill over KENS, San Antonio.

The Texas Tech-Arkansas game will be broadcast from Lubbock by Eddie Barker and Jack Dale over KONO, San Antonio.

All men are created equal—and endowed by their creator with an insatiable urge to become otherwise.

Dreaming is all right as long as you keep wide awake doing it.

Happy Birthday

- Friday, November 21,
 Bill Elliott
 Lois Jackson
 Stephen Leo Bolt
 Saturday, November 22,
 O. L. Richardson, Jr.
 Mrs. Alfred Schwiening, Jr.
 Bennie Babb
 Annette Shroyer
 Betty Sue Jones
 Mrs. Melvin Glasscock
 William Lawrence Finklea
 Sunday, November 23,
 Mrs. L. H. McGhee
 Lee Hart
 Jennie Murray
 Monday, November 24,
 Alfred Sesson
 Mrs. Jerrel Hardesty
 Rip Ward
 Tuesday, November 25,
 Mrs. Earl Duncan
 Mrs. Lee Lewis
 Vera Beth Wade
 Wednesday, November 26,
 Frank P. Bond
 Mattie Mae McKee
 Matilda Hearn
 W. A. Miers
 John William Hull

Jim Hugh Lewis
 Tim Thorp
 Thursday, November 27,
 Mrs. J. P. Morgan, Sr.
 Mrs. O. L. Richardson

KCTV

- Friday, November 21, 1958
 7:45 Test Pattern
 7:55 Sign On and Previews
 8:00 Captain Kangaroo
 8:45 CBS News
 8:55 Texas News
 9:00 For Love Or Money
 9:30 Play Your Hunch
 10:00 Romper Room
 11:00 Love of Life
 11:30 Short Story
 11:56 Liberace
 12:15 Noon News
 12:30 As The World Turns
 1:00 Jimmy Dean Show
 1:30 Houseparty
 2:00 The Big Payoff
 2:30 The Verdict Is Yours
 3:00 Star Time
 3:15 The Secret Storm
 3:30 Movie Matinee
 5:00 Short Story
 5:30 Doug Fairbanks
 6:00 The World At Large
 6:10 Weathercast
 6:15 Doug Edwards
 6:30 Your Hit Parade
 7:00 Trackdown
 7:30 Rin Tin Tin
 8:00 O'Henry Playhouse
 8:30 Schlitz Playhouse
 9:00 Red Skelton
 9:30 Person to Person
 10:00 Tomorrow's Headlines
 10:10 Weathercast
 10:15 The Emperor's Candlestick
 Saturday, November 22, 1958
 7:30 Test Pattern
 7:55 Sign On and Previews
 8:00 Texas Education
 8:30 Captain Kangaroo
 9:30 Highy Mouse Playhouse
 10:00 Heckle and Jeckle
 10:30 Robin Hood
 11:00 Fury
 11:30 Cartoon Theater
 12:00 Adventure Theater
 12:40 Little Rascals
 1:00 Lee Hockey
 3:30 TBA
 4:30 Movie Matinee
 6:30 Perry Mason
 7:30 Wanted Dead or Alive
 8:00 Chevy Show
 9:00 Gunsmoke
 9:30 People Are Funny
 10:00 Whistling In The Dark

You don't hear so much about the man in the street since automobiles have become so numerous.

Too many people who save for a rainy day work on the assumption that it will be a light shower.

Make it a habit to keep your feet on the ground and you'll never have far to fall.

Most of us are beginning to learn that the cost of experience has gone up like everything else.

Living today is a game of robbing Peter to pay Paul in order to make it possible to stand pat.



Ship and Travel Santa Fe

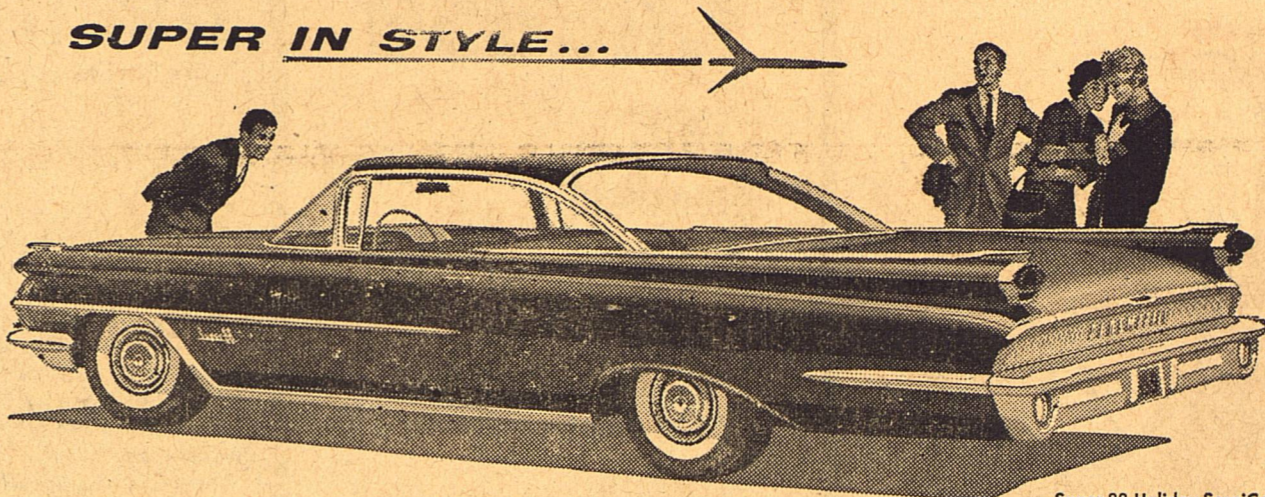
It's the only railroad under one management linking Chicago, California, Colorado, Texas and points in the busy southwest.



See your nearest Santa Fe agent

OLDSmobility for '59 introduces the "Linear Look"...

SUPER IN STYLE...

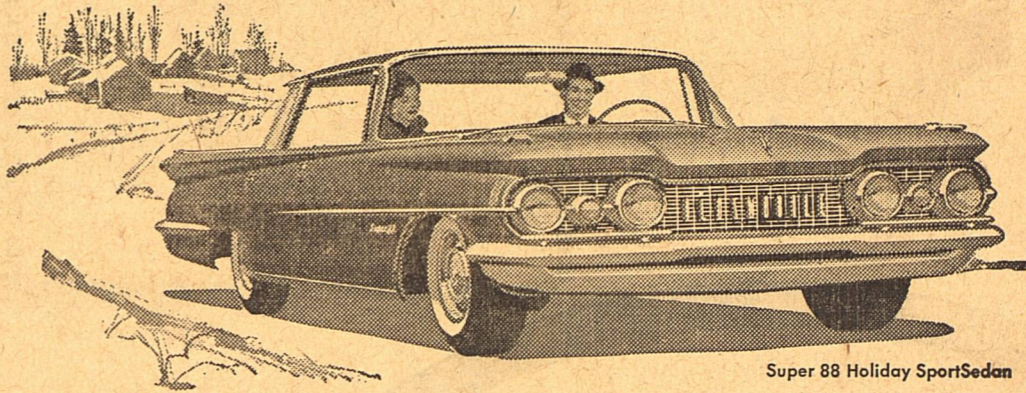


Super 88 Holiday Scenic Coupe

SUPER IN ACTION!

See for yourself... Take the wheel of a Super 88!

One look at those sleek lines and you know there's a great new ride in Oldsmobile for '59! Smooth... quiet... and with the wonderful response of a great new Rocket Engine. There's a new look everywhere, highlighted by wide expanses of glass and the new Vista-Panoramic Windshield. Come in for a test-ride now!



Super 88 Holiday Sport Sedan

DISCOVER THE ADDED VALUES IN

OLDSMOBILE FOR '59

SEE YOUR LOCAL AUTHORIZED QUALITY DEALER NOW!

WAGLEY MOTORS

Eldorado Main Street Eldorado, Texas

TUNE IN THE "NEW OLDS SHOW," STARRING PATTI PAGE • EVERY WEEK ON ABC-TV



"IT TAKES
 40 FINGERS
 TO COUNT
 THE WAYS
 WE PUT
 ELECTRICITY
 TO WORK"

What about your family

Take a look around the room right now. How many different places is electricity at your command?

And think of the other rooms in your home... You put electricity to work in dozens of ways every day — cooking, cleaning, lighting, even entertaining.

Can you think of anything else that gives so much value for so little cost?



"My, My, I'm busy and just think, I will cook a meal for the average WTU family the modern electric way for less than 3¢—about \$2.34 a month."

Electricity costs so little — you can use lots of it!

West Texas Utilities Company

Be happy! Live Better — Electrically



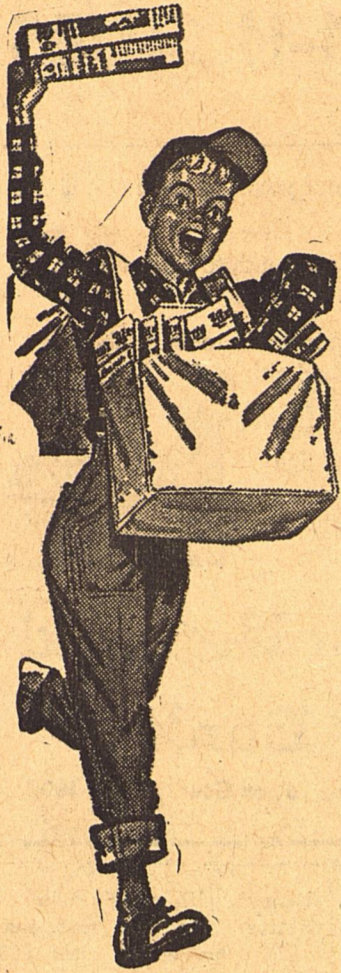
EVERY DAY IS BARGAIN DAY

SHOP YOUR

CLASSIFIED ADS

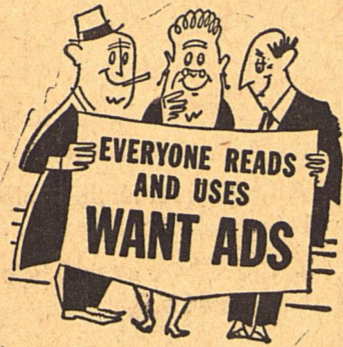
JOB · RADIO · CLOTHES
MONEY · HOME · CAR
FURNITURE · JEWELRY

Devil's River News-Sonora, Texas, Thursday, November 20, 1958



PERSONALS

Mattresses made to order or re-conditioned. Leave order at News Office. Western Mattress Co. tfn 3.



Miscellaneous For Sale

FOR SALE- Modern two-bedroom home, and 2 1/2 lots, on Bond Road. Price \$3,500. Contact Mrs. L. W. McDonald, 930 Garden, Kerrville, Texas. tfn 49.

FOR SALE- If you want to steal a good house in Sonora here is your opportunity. The former home of Tom Ratliff, now occupied by Web Elliott, is a 4 bedroom, 2 bath, central heat, 2 car garage, 1 acre of land in the newest addition, free from city taxes, and was recently appraised by a San Angelo lending firm at \$29,000. This property must be sold. Immediate possession. Make offer. Jack Ratliff Cloudercroft, New Mexico. tfn 6.

ANNOUNCEMENTS

NOTICE- Call 24321 or see Buddy Middleton for repairing any make of sewing machine. Has 11 years of experience. 4 tp 5.

**Floor Bracing
And Leveling**
FREE ESTIMATES
WORK GUARANTEED
**Sonora
Exterminators**
BOND ROAD PHONE 21941

SPECIAL NOTICES

SPECIAL NOTICE- The Service Master Carpet Cleaning Service will be in Sonora 2 days each month. For appointment call Western Motel. tfn 6.

NOTICE

The Airport zoning Committee will meet at seven o'clock Wednesday night, November 19, at the Sutton County Courthouse.

Purpose of the committee is to set up zoning regulations which will maintain a safety area within bounds of the municipal airport.

Members of the committee are F. L. McKinney, G. M. Owens and W. M. Elliott.

All persons having business with the committee are invited to be present. 2 tp 6.

SPECIAL NOTICES

KEEP THIS AD!
Over 25,000 Arthritic and Rheumatic Sufferers have taken this Medicine since it has been on the market. It is inexpensive, can be taken in the home. For Free information give name and address to P. O. Box 826, Hot Springs, Arkansas. 6 tp 6.

THE DANCE ACADEMY, instructed by Sarah Elizabeth Mad-dux, offering tap, toe, ballet, acrobatics, modeling, ballroom, modern jazz, and ladies exercises. For registration and further information call Mrs. Jack Rape 27193. 3 tp 6.

Singer Sales And Service

Singer Representative In SONORA
Tuesday Of Each Week
FOR CONTACT SEE OR CALL
Jay's Loan Service
PHONE 26611
OR R. N. McDONALD
22931 — ELDORADO, TEXAS
4 tp 5.

PERSONALS

Concrete Work—Brick, tile, plastering, all types of concrete work. Free estimates. See Leandro Badillo, Jr. tfn 50.

Positions Wanted

HELP WANTED- MAN OR WOMAN-to take over route of established customers in Sonora. Weekly profits of \$50.00 or more at start possible. No car or other investment necessary. Will help you get started. Write C. R. Ruble, Dept. N-4, The J. R. Watkins Company, Memphis 2, Tenn. 1 tp 7.

BUSINESS OPPORTUNITY- MAN OR WOMAN-Responsible person from this area, to service and collect from cigarette dispensers. No selling. Car, references, and \$592.00 to \$1,975.00 investment necessary. 7 to 12 hours weekly nets up to \$327.00 monthly income. Possible full-time work For local interview give phone and particulars. Write International Distributing Co., P. O. Box 865, Okla. City, Okla. 1 tp 7.

RELIABLE PARTY- MALE OR FEMALE wanted to service and collect from CIGARETTE VENDING machines. No selling. Locations are fully established for operator. Full or part time. Up to \$300 per month to start. \$1,000 to \$2,000 cash required. Write, giving full particulars and phone number to Personnel Dept., P. O. Box 9552, Dallas 6, Texas. 1 tp 7.

NOTICE

A game warden is on full-time duty on the E. S. Mayer and Son Ranch and all trespassers and violators will be prosecuted. 6 tp 7.

The good judgment of some people will never wear out. They don't use it often enough.

What a man gets out of the world today depends largely on what he puts into it.

Men who are industrious, sincere, and honest will have easy sledding on their way to success.

**Remodeling
LOANS**
NOTHING DOWN
TERMS TO SUIT
3 Years To Pay
**Foxworth
Galbraith
Lumber Co.**

GOT BUGS!

CALL
"SMITTY" SMITHSON
AT
21941

SONORA EXTERMINATORS
BOND RD. — SONORA, TEXAS

THE SERVICE MASTER
CARPET CLEANING SERVICE
OF SAN ANGELO
WIII BE IN SONORA
2 DAYS EACH MONTH

Service Master is recommended by Robert Massie's, Shepper-son's and Jeffers Interiors. For Information Call Western Motel. Service Master, Box 3003, San Angelo, Texas. tfn 38.

Hospital Notes

ADMISSIONS
Rosetta Lozano, Menard
Manuela San Miguel
Amparo Cantu, San Angelo
A. T. Barrett
Gloria Bolt
Bobbye Thompson
Manuela Aguilar, Christoval
Odella Martinez
Pablo Arenivas, Sweetwater
Nicholas Carrillo, Ft. McKavett
Yvonne Davis
W. R. Barnes
Mary Delrie
Debra Cooper
Marilyn Adkins
Nancy Davis, Eldorado
Syble Mackey, Eldorado
Helen Dietz
Robert Williams
Jan Williams
Jewel Sykes

DISMISSALS
George Sofge
Yvonne Davis
Nichola Carrillo
Marilyn Adkins
W. R. Barnes
Debra Cooper
Nancy Davis
Bobbye Thompson
Manuela San Miguel
Prula Caldwell
Odella Martinez
Manuela Aguilar
A. T. Barrett
Amparo Cantu
Gloria Bolt
Mrs. Rosetta Lozano
Duard Archer
Maria Leija
Eddie Lee Alexander
Henry Wyatt
Rosetta Lozano
Gail Odum
Dolores Salinas
Norma Pfister
Larry Kiser
Elida Chavez
Zadie Reeder

SONORA ABSTRACT CO.

J. D. LOWREY, Mgr.

Efficient Land Title Service

On Sutton County Land

WE REPRESENT SEVERAL OF THE OLD LINE FIRE INSURANCE COMPANIES.

STOCKMEN'S FEED CO.

PROTEINS

CUSTOM MIXING

We'll Mix Your Formula.

MAKE STOCKMEN'S FEED COMPANY YOUR HEADQUARTERS IN SONORA

Bryan Hunt

Jack Neill

Andy Moore, Mgr.



Martin Plumbing
Plumbing-Heating
Fixtures
Appliances
Phone 2-5281
SONORA, TEX.

Understanding Service
RATLIFF - KERBOW
FUNERAL HOME
Ambulance Service
Dial
23501 — 21871

L. W. Elliott
ATTORNEY-AT-LAW
SONORA, TEXAS

Will practice in all state and federal courts

**EXPERT
Mattress Repair**

RENOVATING
Western Mattress

Leave Call At News Office



217 S. Chadborne
Phone 5384
SAN ANGELO TEXAS

REAL ESTATE SEE US FOR CITY PROPERTY INSURANCE

Every kind of protection known to Standard insurance Companies

RANCH LOANS
THE BIGGER THE BETTER
TAX CONSULTANTS
ELLIOTT BROTHERS CO

"The Texas Sheep and Goat Raisers Association will pay a reward of \$500.00 for information leading to the arrest and final conviction of anyone for stealing sheep or goats from a member or members of the Association. Law enforcement officers are excluded from this offer. The information must be furnished to any law enforcement officer or to the Secretary of the Texas Sheep and Goat Raisers Association at its office, Cactus Hotel Annex, San Angelo, Texas. Telephone 6242 or 25612, San Angelo. tfn 25. TEXAS SHEEP & GOAT RAISERS ASSOCIATION

**EXPERT Stock Drenching
Prompt, Dependable Service**

We drench your stock and get it back on the range in the shortest time possible.

ALSO WE CARRY A FULL LINE OF STOCK MEDICINES AND VACCINES

Dial 23431 or 21581 — Sonora, Texas

**TAYLOR & MOORE
STOCK MEDICINE CO.**

BEST BUYS at **Modern-Way**
Grocery
WHERE DOLLARS MAKE CENTS
COUPON BOOKS FOR GREATER SAVINGS
PRICES EFFECTIVE: NOV. 20, 21, AND 22

EGGS RED BOX DOZ. **49c**

MARYLAND CLUB
Coffee
2 LBS.
\$1.69



6 Pak 89c

NBC
Crackers
1 LB. BOX
27c

Bacon ARMOUR'S SLICED LB. **49c**
Oranges LB. **10c**
Spuds 10 LBS. **45c**

Spinach DEL MONTE 303 CAN **15c**
Corn DEL MONTE 303 CAN **19c**

DEL MONTE
Tomato Sauce 8 OZ. CAN **10c**

400 SIZE BOX
Kleenex **29c**



**SERVING YOUR
Prescription
NEEDS**

Confidence in the training, ethics and know-how of your pharmacist, and the prescriptions he prepares, is vitally important. We feel we can merit yours.

**24 Hours
Service**

PHARMACY

Sonora Drug Co.

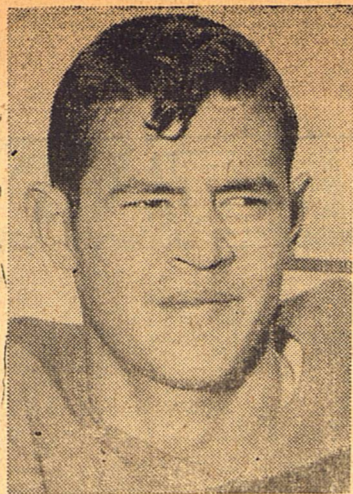
IN THE YEAR OF

Friday, November 14, 1930
Mr. and Mrs. Gene Lightfoot were here from the ranch Wednesday afternoon and upon the fender of their car hung a large Mexican Eagle killed by Mr. Lightfoot west of town. The bird measured over seven feet from

tip to tip. He was shot with a rifle, the ball piercing vital organs.

It is said that a grown Mexican eagle can carry, after piercing it's prey with it's talons, a lamb several months old, rabbits and chickens.

W. L. Aldwell, president of the First National Bank and a



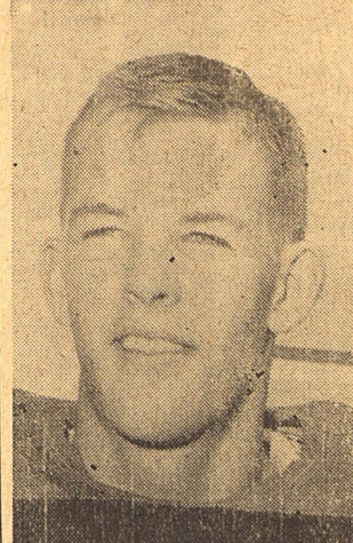
Bobby Sosa, 130 pound freshman back.



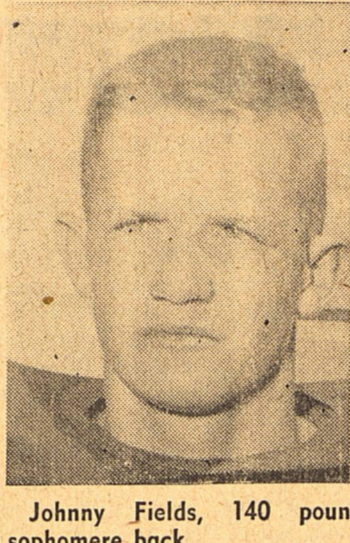
Armando Reyna, 145 pound junior center.



Jerry Baldwin, 150 pound junior back.



Albert Sykes, 145 pound junior center.



Johnny Fields, 140 pound sophomore back.

director of the Orient Ry. Co., is resting well after an operation in a Fort Worth hospital Tuesday. Relatives present when the operation was performed were Mrs. Aldwell, Roy Aldwell, Mr. and Mrs. T. A. Williams and Mrs. Nesbit.

Mrs. Charles F. Browne attended the Woman's Medical Auxiliary of Tom Green County at the Country Club in San Angelo Tuesday.

Mrs. Browne, who was previously elected president of District 4, Woman's Medical Auxiliary, will begin her service in May.

Guy Askew of Uvalde spent last weekend in Sonora visiting his father, Vestel Askew.

Continued From Front Page

Gary Thomas Smith paid a fine of \$10.50 plus costs, total \$26.00, on a charge of having defective headlights. Highway Patrol.

Olen Jessie Johnson was charged with speeding and fine set at \$15.50 plus costs, total \$31.00. Highway Patrol.

Clay N. Wakeland was charged with being drunk in a motor vehicle and fine set at \$50.50 plus costs, total \$70.00. Sheriff's Dept.

William Chaillette paid a fine

3 CHEERS

for the

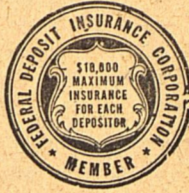
4-H CLUBS

A CHEER for all they help our youth to learn about being capable farmers...

A CHEER for all they help our youth to learn about being self-reliant people...

A CHEER for all they help our youth to learn about being good neighbors and good citizens!

We salute the 4-H Clubs — and their members, especially the fine boys and girls of our own community. We are always ready to cooperate with them.



**First National
Bank**

Serving Sutton County Since 1900

of \$5.50 plus costs, total \$25.00, on a charge of drunkenness. Sheriff's Dept.

Louis Chaillette paid a fine of \$5.50 plus costs, total \$25.00, on a charge of drunkenness. Sheriff's Dept.

Patricia Louise Speck was charged with speeding and fine set at \$20.50 plus costs, total \$36.00. Highway Patrol.

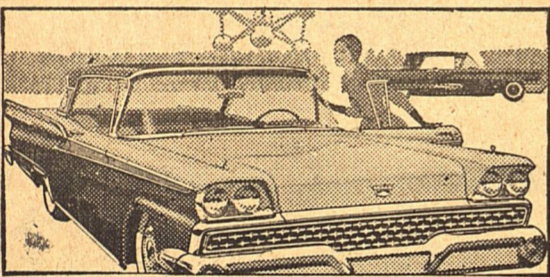
Thomas Edward Harman was

charged with passing in a no passing zone and fine set at \$10.50 plus costs, total \$26.00. Highway Patrol.

Fritz Stanke paid a fine of \$10.50 plus costs, total \$38.00, on a charge of drunkenness. Sheriff's Dept.

E. T. Johnson paid a fine of \$50.50 plus costs, total \$70.00, on a charge of being drunk in a motor vehicle. Sheriff's Dept.

**Four big reasons why
FORD
IS OUTSELLING
ALL OTHER '59 CARS**



AT THE BRUSSELS WORLD'S FAIR, the '59 Fords were awarded the Gold Medal for handsome new styling elegance by the Comité Français de l'Élégance.

The world's best-selling car is the car with Thunderbird elegance

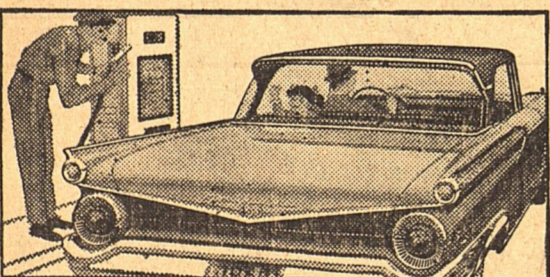
In the greatest styling decision of the year, the American public has already shown a clear preference for the new Fords. Ford sales are way ahead of all competition. Why? One reason is the classic simplicity of their Thunderbird-inspired design—clean, crisp lines that are pure automobile! And Fords are built for people—to sit in, to drive, to ride in—with comfort.



ANYONE CAN FIT IN A FORD: Our cars are built for people—full-size people who want space to stretch out. And all passengers ride in deep-cushion comfort.

The car in hottest demand across the land has greater roominess and comfort

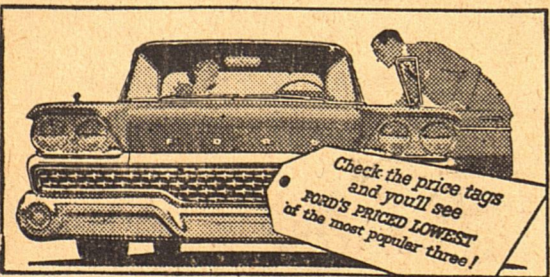
Thousands of customers have bought the new Ford over all competition for another compelling reason—it's a true six-passenger car. (The only four-passenger car we recommend is the Thunderbird.) All six Ford passengers get plenty of every kind of room—from leg and head to elbow and hip. Rear seat passengers don't feel like they're riding with their feet in a bucket!



YOU'LL BE THANKFUL EVERY TANKFUL if you buy the new Ford, for you'll save up to a dollar a tankful with new engines that run superbly on regular gas.

The No. 1 car in sales saves money on gas, on oil, on maintenance bills

A new Ford will save you up to 5¢ a gallon on gas. That's because both standard engines—Six or Thunderbird V-8—thrive on regular gas. And Ford saves on oil, too, with a Full-Flow Oil Filter as standard equipment. Drive 4000 miles between oil changes! And you can forget about waxing your car. Ford's Diamond Lustre Finish stays gleaming bright without waxing—ever!



THE FAMOUS FORD LOW PRICES have already made a hit, because only in Fords will you find value and beauty coming together at down-to-earth prices!

The most popular American car is priced as much as \$102.75 lower

Ford costs you less right down the line than the competition. Compare price tags and you'll see that the manufacturer's suggested retail price of a Ford, equipped with radio, heater and automatic transmission, is as much as \$102.75 less than the major competition! And on an air-conditioned car, you can save up to \$219.85. So compare and save on a 1959 Ford!

**SONORA MOTOR COMPANY
Sonora, Texas**

FOOD SPECIALS

FOR HEARTY APPETITES

PIGGLY WIGGLY

PLEASE PLACE ORDER FOR THANKSGIVING TURKEY

Friday, November 21,

Saturday, November 22,

Margarine

KIMBELL'S
lb.

19¢

- CAPE COD CRANBERRY SAUCE 300 can 20c
- "BUD" WAFFLE SYRUP - 24 oz. jar . 39c
- MISSION PEAS - 303 can 15c

- HUNT'S PEACHES - no. 2 1/2 can 29c
- VAN CAMPS TUNA - flat can 23c
- DEL MONTE FRUIT COCKTAIL - 303 can . 25c

Milk

GANDY'S
1/2 GAL.

45¢

- TIDE or CHEER, giant box 69c
- CHARMIN TISSUE - 4 rolls 39c

- FLEECY WHITE BLEACH - quart 15c
- KIM DOG FOOD - 3 cans 25c

Sausage

PURE PORK
HOME MADE
lb.

45¢

Garden Fresh VEGETABLES

- CARROTS - cello Bag 10c
- CUCUMBERS - fresh - lb. 10c
- YELLOW ONIONS - lb. 7c
- NEW POTATOES - fresh - lb. 9c
- LETTUCE - large head 15c

Top Quality Fruits & Vegetables

Finest Quality MEATS

- PORK BACK BONES - lb. 25c
- BEEF ROAST Choice Chuck lb. 49c
- RIBS - b.b. - lb. 35c
- STEAK - Choice Seven - lb. 59c
- SALT PORK - no. 1 - lb. 39c

Top Quality Meats