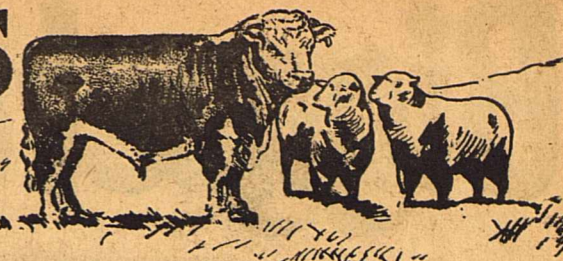


DEVIL'S RIVER NEWS

Published in Sonora, Texas, Capital of Stockmen's Paradise



SEVENTIETH YEAR

The Devil's River News-Sonora, Texas, Thursday, January 14, 1960

FIFTEENTH WEEK

Odds And Ends

Things are really humming around Sonora these days. V-Day against rabies Saturday morning, 4-H Livestock show coming up the next Saturday. 4-H kids on their way to the Hill Country show in Kerrville the 18 and 19th. Jetty Young to be one of the state finalists in Make-It-Yourself With Wool in San Antonio Saturday. San Antonio booster group due Wednesday. Junior High Basketball Tournament later this month. Bank has annual stockholders' meeting. Horse Show Assn. elects officers. Dam Bids let. Texas Warehouse Association to meet here Saturday. Candidates filing for office.

Everybody is busy BUT-TAKE TIME OUT TO PAY YOUR POLL TAX. Come May 7 and the Democratic Primary you'll be glad you did.

WEATHER

	Pr.	H	L
Wednesday, Jan. 6	0	51	46
Thursday, Jan. 7	0	64	24
Friday, Jan. 8	0	67	25
Saturday, Jan. 9	0	71	44
Sunday, Jan. 10	0	67	57
Monday, Jan. 11	T	68	59
Tuesday, Jan. 12	.41	76	60

47 Youngsters To Show 224 Animals At Annual 4-H Livestock Show, Sale

Forty-seven Sutton County 4-H Club members will exhibit 224 animals at the annual Livestock Show and Sale to be held here Saturday, January 23, according to County Agent D. C. Langford.

Seven classes will be shown and will include Fat Lambs, Commercial Ewe Lambs, Commercial Rams, Registered Rambouillet Sheep, Registered Delaine Sheep, Angora Goats and Steers.

The Fat Lamb class will have 108 entries shown by Johnny Fields, Herbert Fields, Jr., John Friess, Dick Swails, Mike Ellis, Kay Ellis, Alvin Beyer, Sue Nix, Mickey Harris, Walter Harris, Scotty Harris, Stanley Harris, Bobby Harris, Buster Harris, Linda Harris, Steve Fish, Jim Fish, Mack Mayhew, Louis Wardlaw III, George Roberson, Douglas Guest, Libb Mills Wallace, Bob Tolliver, Jimmy Richardson, Mark Jacoby, Cindy Galbreath, Debbie Galbreath, Dick Hearn, Ed Lee Renfro, Royce Mears, Martha Love, Robert Brown, Tom Glasscock, Ray Glasscock, Jo Addah Johnson, Janet Johnson.

Debbie Galbreath, Cindy Galbreath, Robert Brown, Shelly Morris, Chris Berger, Libb Mills Wallace, Mark Jacoby, Steve Fish, Jim Fish, Cleve T. Jones, Claire Jones, Janet Johnson, Jo Addah Johnson, Bib Tolliver, Dick Karnes, Brenda Browne, and John Friess.

Chris Berger and Tim Thorp will show four commercial rams. Showing 29 Registered Rambouillets will be Tom Glasscock, Steve Fish and Mark Jacoby.

Fourteen registered Delaines will be exhibited by Brenda Browne, Jimmy Richardson and Ray Glasscock.

Jessie Lem Johnson, Janet Johnson and Jo Addah Johnson will show six Angora goats.

Eleven steers will be shown by Cleve T. Jones III, Claire Jones, Jessie Lem Johnson, Don Cooper and Betty Jack Cooper.

Trophies to be awarded are: Grand Champion Fat Steer by First National Bank of Sonora; Champion Crossbred Lamb by Pioneer Gathering System of Sonora; Champion Finewool Lamb by Sonora Feed and Supply; Grand Champion Fat Lamb by

General Elections Coming; Only 517 Poll Taxes Paid

Boys Ranch Banquet NAMED Recipient Of DAR Award

Boys' Ranch of West Texas will hold its first annual banquet at the Town and Country Club in San Angelo Saturday night, January 23, according to J. M. VanderStucken, member of the ranch's executive board.

All friends of Boys' Ranch are invited to attend. Tickets may be obtained from VanderStucken.

Nathan's Jewelers of San Angelo; Grand Champion Registered Breeding Sheep by Stockmen's Feed Company of Sonora.

Grand Champion Angora Goat by Humble Oil and Refining Co., Marion Elliott, Agent; Grand Champion Pen of Three Commercial Ewe Lambs by Sonora Wool and Mohair Company; Showmanship by Sonora National Farm Loan Association.

Named Recipient Of DAR Award

Alice Claire Jones has been chosen Sonora High School's DAR Good Citizen for 1959.

The contest is open only to Senior Girls. Members of each Senior Class elect three girls who are outstanding in the required qualities of dependability, service, leadership and patriotism. From the three girls thus elected the high school faculty selects



Claire Jones

one who becomes the school's Good Citizen. The winner then answers a questionnaire covering American and Texas history subjects. Twenty-two questionnaires judged best on basis of accuracy and originality receive awards and the most outstanding of the 22 is chosen as state winner.

Claire, daughter of Mrs. Cleve Jones, Jr., and the late Mr. Jones, is a member of the National Honor Society, Future Home-

Only 517 Sutton County citizens have paid their poll taxes for this year, according to Mrs. Zilpha Wheelis, chief office deputy in the office of the Sheriff and Tax-Assessor-Collector Wess Hill.

Voters this year will choose a new president and vice-president on the national level. Other national offices to be filled include

Bank Officers, Directors Renamed

All officers and directors of the First National Bank were re-elected at the annual stockholders' meeting held here Tuesday, January 12.

George H. (Jack) Neill told stockholders that the past year was one of the best in the bank's history and that another good year is anticipated.

Renamed to the board of directors were L. W. Elliott, chairman; J. M. VanderStucken, Lea Roy Aldwell, George L. Aldwell of San Angelo, S. H. Allison, Edwin E. Sawyer and Neill.

Neill will continue to head the bank as president. J. M. VanderStucken and Lea Roy Aldwell are inactive vice-presidents, Clayton Hamilton is cashier and Harold Scherz assistant cashier.

makers of America and is Class Secretary and 4-H Club President. She has been a cheer leader for the past two years and has given generously of her time and talents to her school.

The Good Citizen contest has been placed on the approved list of national contests and activities for 1959-60 by the National Association of Secondary School Principals.

that of Representative to Congress from this district.

On the state level, voters will choose a Governor, Lieutenant-Governor, and certain judicial seats are to be filled.

A District Judge and District Attorney are to be selected as well as a representative to the Legislature.

In the county, offices to be filled include those of Sheriff, Tax Assessor-Collector; County Treasurer, County Attorney, Commissioner Precinct 1 and Commissioner Precinct 3.

Deadline for filing of names of candidates for office is February 1 and the Democratic Primary is called for Saturday, May 7.

The right to vote is yours if you pay your poll tax. The deadline is January 31.

Mrs. Hutcherson Seeks Re-election As County Treasurer

Mrs. Lucille Hutcherson announced this week that she will be a candidate for re-election to the office of Treasurer of Sutton County. Mrs. Hutcherson was appointed by the Sutton County Commissioners Court to fill the unexpired term of Mrs. Thelma Phillips who resigned last May.

Mrs. Hutcherson came to Sutton County as a small child with her parents, Mr. and Mrs. Grimland, pioneer Sutton County people. Her husband, the late B. W. Hutcherson, was Sutton County sheriff for many years.

In announcing her candidacy, Mrs. Hutcherson said she would continue to apply herself wholeheartedly to the duties of the office, fulfilling them to the best of her ability and in the interest of the people. "I will appreciate the vote of everyone and will do my best to warrant it."

Immunize Sonora Against Rabies Bring Pets To City Hall Saturday

Sonora's second "V-Day" is scheduled for Saturday morning, January 16, at the City Hall when Dr. Joe David Ross will vaccinate Sonora pets against rabies. 4-H Club members and Boy Scouts have been canvassing the town, advising pet owners of the scheduled Vaccination Day.

Pet owners will be charged \$2.00 for each cat inoculated and \$2.50 for each dog. The fee for dogs includes the city dog tax.

Vaccinations will be given between 9:30 Saturday morning and one o'clock Saturday afternoon. Dr. Ross will examine each pet before giving the injections in order to determine that the animal is in good health and thus more likely to receive maximum benefit from the serum.

Each pet owner will be given a rabies immune certificate and the pet will be immune from the danger of rabies for one year.

4-H members and Boy Scouts are to receive the veterinarian fees.

12 Sutton County 4-H Club Members To Exhibit At District Stock Show

By D. C. Langford

Twelve Sutton County 4-H Club members will exhibit livestock at the Hill Country District Livestock Show in Kerrville January 18 and 19.

Exhibitors will include Tom Glasscock with four registered Rambouillet sheep, Ray Glasscock with eight registered Delaine sheep, Robert Brown with seven commercial ewes, Jo Addah Johnson with three commercial ewes and one Angora goat, Jessie Lem Johnson with one Angora goat, Janet Johnson with one Angora goat, Chris Berger with five

commercial sheep, Mark Jacoby with three commercial ewe lambs and two registered Rambouillet ewe lambs, Steve Fish with three commercial ewe lambs and two registered Rambouillet ram lambs, Bob Tolliver with three commercial ewe lambs, and Claire Jones with three commercial ewe lambs.

Registered breeding sheep will be judged at nine o'clock Monday morning, January 18 by Billy Kidd, San Saba County agent. Fred T. Earwood of Sonora will judge the commercial sheep classes at eight o'clock Tuesday morning, January 19.

Mrs. M. R. Thomason of Montgomery, Alabama, is a guest of her son-in-law and daughter and children, Mr. and Mrs. Gene Shurley, Scott and Suzanne.

Fling Ding Club To Meet Tues. Night

The Fling Ding Club will hold its annual membership meeting at 7:30 Tuesday night, January 19 at the auditorium of Central Elementary School, according to G. C. (Son) Allison, president.

At this time officers and directors for the coming year will be elected.

Wet Weather Continues With Additional Rainfall Of Up To .75

A wet January became even wetter when .50-.75 inch of rain fell Monday night over the So-

nora area. More rain was in prospect at midweek.

Cloudy weather and mild temperatures were favorable to rapid growth of winter growing weeds and grasses on rangeland. Abundant stands of tallow weed, filaree, bladderpod, rescuegrass and Texas winter grass promise early feed for livestock and light supplemental feed bills for ranchmen. Poisonous bitterweed, though limited largely to small spots, is growing rapidly, and a few cases of poisoning have been reported. Conditions are also right for a bumper crop of annual broomweed, E. B. Keng, SCS technician, pointed out. Ranchmen can do much to control broomweed by concentrating sheep in February and March on pastures having deep valley or divide soils.

Wet weather during the past three weeks has kept construction of flood prevention structures at a standstill. Contractors can look forward, however, to moving material that will require little additional moisture for compaction in the earth fill.

A few representative rainfall reports gathered by SCS technicians include the following amounts for Monday night's rain: Herbert Fields 39; Sonora Woolhouse 41; W. L. Davis .58; Ed Shurley (Byrd) .75, and Holman Estate .50.

Albuquerque Constuction Firm Low Bidder On Dry Devil's Sites

Political Announcements

County Offices \$20.00. Commissioners \$15.00. Federal Offices \$25.00.

State and Congressional \$25.00. Note: The above price includes one writup not to exceed 250 words. No refund to candidates withdrawing. All candidates must file not later than February 1, 1960.

The Devil's River News is authorized to announce the following names of candidates for office, subject to the action of the Democratic Primary on May 7, 1960.

For Judge 112th Judicial District HART JOHNSON
For District Attorney
For County Attorney

Bids for the construction of flood prevention structures on Sites 2 and 4, Dry Devil's River, were opened at 10:00 A. M. Monday. Boswell Construction Company of Albuquerque, New Mexico, was the apparent low bidder, with a bid of \$217,155.10.

Six bids were submitted on the two sites, ranging from the low bid to \$259,775.60. The Soil Conservation Service estimate was \$233,246.45.

Site 2 is a large structure lo-

For Sheriff, Tax Assessor-Collector HERMAN MOORE
WESS HILL, Re-election
For County Treasurer MRS. LUCILLE HUTCHERSON
For Commissioner Precinct 1 T. E. GLASSCOCK, Re-election
For Commissioner Precinct 3
For Constable Precinct 1

cated on the Homer Byrd ranch. It will control floods on the 25.77 square mile west prong of Dry Devil's River, which heads northwest of Eldorado. The dam will be approximately 49 feet high and the embankment will contain 201,000 cubic yards of earth and rock fill.

Site 4 is located on the Ben Mittel ranch on a prong which drains 6.27 square miles of rangeland. The dam will be 43 feet high and contain 107,487 cubic yards of fill. The two structures will temporarily impound 6,774 acre feet of floodwater at emergency spillway level.

With the awarding of a construction contract covering Sites 2 and 4, eleven of the 13 structures planned to protect Sonora will be under construction. The remaining two structures are expected to be contracted between May and July of this year.

Band Calendars Arrive This Week

Activity calendars sold annually by the Band Parents Club have arrived, according to Mrs. Gay Copeland, and are being distributed to purchasers. Anyone who bought a calendar and has not received it is requested to contact Mrs. Copeland. She also said that a very few extras are on hand for sale to those who would like to buy.

LIONS ROAR

Members of the Sonora Lions Club saw a film on the March of Dimes at their regular Tuesday meeting this week at the Methodist Church. Joe Nance, county chairman for the March of Dimes, showed the film which told of the National Foundation for Infantile Paralysis's work in three fields: birth defects, arthritis and polio.

President Harold Scherz announced the Mid-Winter conference of area Lions Clubs to be held in San Angelo Saturday, January 16.



Elodia Flores and Diamantina Gomez, both of Sonora, are currently affiliating at San Antonio State Hospital. Although both are from Sonora they are Seniors at different nursing schools. Miss Flores is training at Shannon Hospital at San Angelo and Miss Gomez is training at Baptist Memorial Hospital in San Antonio.

PAY YOUR POLL TAX

Biggest ever! **CLEARANCE!**

JANUARY

3 Big Days Thursday, Friday, Saturday Jan. 14, 15, 16

BARGAIN COUNTER

98c

Dig Deep You Might Find What You Want

SALE	SALE
GIRLS SWEATERS	BED SPREADS
1/3 OFF	1/4 OFF

PIECE GOODS
Every Yard On Sale

Reg	Sale	Reg	Sale
39c	33c	79c	59c
49c	39c	89c	69c
59c	45c	\$1.00	79c

GROUP GOWNS - SLIPS 1/2 PRICE

SAVE ON TOWELS

One Group Values
\$1.95 \$1.49
Group \$1.00 Towels
Now 79c
Group Reg. 69c
2 for 98c

WASH CLOTHS

Reg.	Sale
29c	2 for 35c
29c	19c

SALE	SALE		
LADIES SLIPS	LADIES PANTIES		
Luxite - Shirey			
Reg	Sale	Reg	Sale
\$2.95	\$2.49	49c	39c
\$3.95	\$3.29	79c	59c
\$4.95	\$3.98	\$1.00	79c
\$5.95	\$4.79	\$1.35	98c
		\$1.95	\$1.59

All Ladies Gowns And Pajamas On Sale

Semi - Annual Store Wide Sale

PRICE REDUCED ON EVERY ITEM
(Except Stetson Hats And McCall Patterns)

Save With Confidence

All Regular First Quality Merchandise
Save Now On Your Dry Goods Needs

CLOSED ALL DAY WED. TO MARK DOWN PRICES

Ready-To-Wear Sale

DRESSES SUITS SKIRTS BLOUSES SWEATERS
Drastic Reductions In This Department

ONE GROUP DRESSES

Reg	Sale
\$8.95	\$5.98
\$9.95	\$5.98
\$10.95	\$6.98
\$12.95	\$7.98
\$14.95	\$8.98

Bobbie Brooks SWEATERS ONE-THIRD OFF

ONE GROUP DRESSES 1/2 PRICE

GROUP DRESSES Values To \$12.95 \$4.95

All Children's And Girls' Dresses On Sale

All Shoes On Sale

DRESS	WORK	TENNIS	BOOTS
Broken Lots Ladies Shoes	Group Men's Shoes		
Two Groups	Values To \$9.95 \$4.98		
\$1.98 - \$2.98			

20% OFF

All Children's Shoes

WORK SHOES SALE

Reg	Sale
\$5.95	\$4.98
\$6.95	\$5.79
\$7.95	\$6.49

Only A Few Of The Money Saving Values Listed
SHOP EVERY COUNTER

BARGAIN COUNTER

\$1.98

Save Over 50% On This Merchandise

JACKET SALE

All Men's And Boy's Jackets Reduced

Reg	Sale	Reg	Sale
\$5.95	\$3.98	\$9.95	\$6.98
\$6.95	\$4.69	\$12.95	\$8.98
\$8.95	\$5.98	\$14.95	\$9.98
LEE JACKETS		Lee Riders	\$3.59
Unlined	\$4.29	Levis	\$3.49
Lined	\$6.49		

MEN'S SPORT SHIRT SALE

Reg	Sale	Reg	Sale
\$2.95	\$2.49	\$4.95	\$3.98
\$3.95	\$2.98	\$5.95	\$4.69

SHORTS & T-SHIRTS

Reg.	Sale
69c	49c
\$1.00	79c

KHAKI PANTS

Reg.	Sale
\$2.98	\$2.49
\$3.95	\$3.29
\$5.95	\$4.98

BOYS SHIRTS

Reg.	Sale
\$1.98	\$1.59
\$2.98	\$2.49
\$3.95	\$2.98
\$4.95	\$3.79

WORK SHIRTS

Reg.	Sale
\$1.49	\$1.19
\$2.98	\$2.59
\$3.98	\$3.29

All Boy's

Blue Jeans And Dress Pants On Sale

SWEAT SHIRTS

Heavy Weight \$1.19

Men's Dress Shirts Reduced
Every Thing On Sale

THE RATLIFF STORE

OFFICIAL RECORDS

Justice Court
Alfred Cooper presiding
January 4, 1960

Jake Merck paid a fine of \$100.00 plus costs, total \$115.50, on a charge of violation of Railroad Commission Tariff 88. Charge by Walton.

Jack Hearn paid a fine of \$50.00 plus costs, total \$65.50, on a charge of violation of Tariff 8D, Railroad Commission. Charge by Walton.

Melvin Hearn paid a fine of \$50.00 plus costs, total \$65.50 on a charge of violation of 8A Railroad Commission. Charge by Walton.

January 5, 1960

Thurman Gene Fowler paid a fine of \$50.50 plus costs, total \$70.00, on a charge of being drunk on a public highway. Charge by Clark.

Vernon Ray Hopkins was returned to jail on a charge of vagrancy and fine set at \$100.50 plus costs, total \$120.00. Charge by Clark.

William Griggs Chambers was returned to jail on a charge of vagrancy and fine set at \$100.50 plus costs, total \$120.00. Charge by Clark.

Royce L. Shelton was charged with failure to appear and fine set at \$10.50 plus costs, total \$26.00. Charge by Holmes.

Martias Galindo Gandar paid a fine of \$5.50 plus costs, total \$21.00, on a charge of having no operator's license.

Fred James Durban paid a fine of \$5.50 plus costs, total \$21.00, on a charge of turning without safety. Charge by Holmes.

January 8, 1960

Robert J. Williams III was charged with being drunk on a public highway and fine set at \$100.50 plus costs, total \$120.00. Charge by Clark.

January 10, 1960

Doyle R. Locklin paid a fine of \$5.50 plus costs, total \$21.00, on a charge of driving on the left not in passing. Charge by Price.

James Forrest Runge, Jr., was charged with driving on the left not in passing and fine set at \$25.50 plus costs, total \$41.00. Charge by Price.

James Forrest Runge, Jr., was charged with speeding and fine set at \$30.50 plus costs, total \$46.00. Charge by Price.

Elliott Edwin Brunson was charged with speeding and fine set at \$13.50 plus costs, total \$29.00. Charge by Price.

January 10, 1960

Robert Harold Kirk was charged with speeding and fine set at \$14.50 plus costs, total \$30.00. Charge by Price.

Bill Smith was charged with speeding and fine set at \$10.50 plus costs, total \$26.00. Charge by Price.

Annie Lee Westbrook was charged with speeding and fine set at \$30.50 plus costs, total \$46.00. Charge by Price.

Robert J. Boyde was charged with speeding and fine set at \$9.50 plus costs, total \$25.00. Charge by Price.

Alberto C. Rodriguez was charged with speeding and fine set at \$13.50 plus costs, total \$29.00. Charge by Price.

Theo White Hollis paid a fine of \$15.50 plus costs, total \$31.00, on a charge of speeding. Charge by Price.

Jesus Rodriguez paid a fine of \$12.50 plus costs, total \$28.00, on a charge of speeding. Charge by Price.

Elisardo A. Salazar was charged with having no mud flaps on a public highway truck and fine set at \$5.50 plus costs, total \$21.00. Charge by Price.

County Court
Judge J. W. Elliott presiding
State of Texas vs Edgar A. Hagan charged with worthless checking. Filed.

State of Texas vs Richard K. Kellogg charged with worthless checking. Filed.

LOCAL NEWS BRIEFS

Mrs. Alvis Johnson is visiting in Colorado Springs, Colorado, where she was called on account of the sudden illness of her granddaughter, Cynthia Johnson. Mrs. Johnson reports Cynthia to be improving.

Harold C. Saunders, Sr. has returned from Houston where he

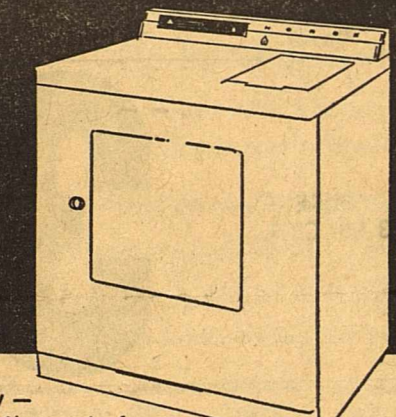
State of Texas vs. Elton E. Donaldson charged with worthless checking. Filed

received medical treatment. Mrs. Fred Ross of San Antonio spent several days last week with her mother, Mrs. Neil Roueche and her daughter and family, Mr. and Mrs. R. S. Teaff, Carl and Trouba.

Mr. and Mrs. Clarence Self attended funeral services in Menard Friday for Mrs. Self's brother-in-law, A. F. Rogers.

Mrs. J. A. Letsinger left Tuesday for a visit of several days with her son and family, Mr. and Mrs. Bill Baldwin and Brenda Marie in Austin.

FLAME-FAST GAS DRIES BEST FOR LESS AND FASTER TOO



Only gas heats instantly - dries for a fraction of the cost of non-flame drying. Safe, dependable gas gives gentle heat for fluffier, fresher, laundry. Costs less to maintain: no element to burn out, no expensive wiring needed.

SEE NORGE GAS DRYERS with exclusive 4-way drying, guaranteed rust-proof and full 5-year warranty on all working parts (one-year on motor).

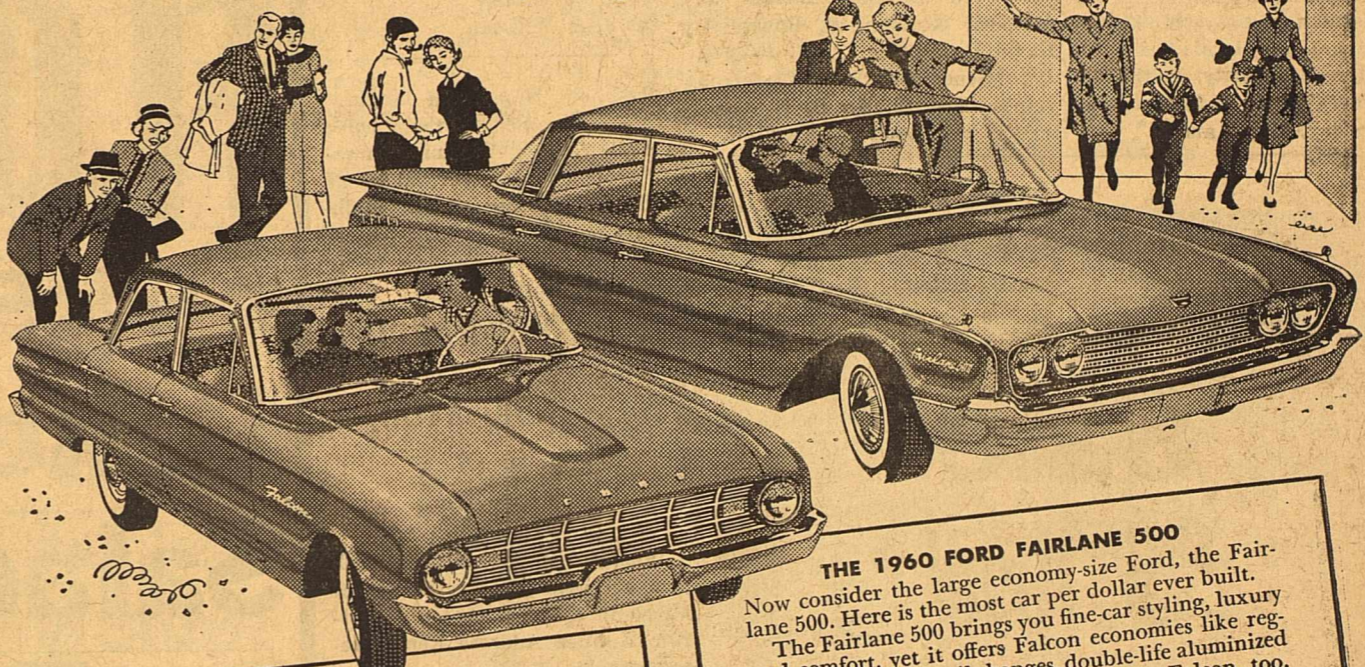
\$179.95 cash price; or, \$1.00 down, 36 months to pay
LONE STAR GAS COMPANY

Blessed event for budgets

FORD'S ECONOMY TWINS FOR 1960

The Economy Choice of a lifetime - Two new Fords... Two new low-price fields...

Two wonderful new ways to go 'The Finest'



THE 1960 FORD FALCON
Now there's both a new economy-size Ford and a large economy-size Ford.
The new economy size is the Ford Falcon—America's lowest-priced 6-passenger car. It's up to \$124 less than other 6-passenger cars in the compact field.* It goes up to 30 miles on a gallon of regular gas. Servicing is easy and repair costs are low. You can even save up to 15% on your insurance.
And the Falcon is the one American compact car that is thoroughly proved for American driving. There's room for 6 people—luggage and all.
*Based upon a comparison of manufacturers' suggested retail delivered prices

THE 1960 FORD FAIRLANE 500
Now consider the large economy-size Ford, the Fairlane 500. Here is the most car per dollar ever built. The Fairlane 500 brings you fine-car styling, luxury and comfort, yet it offers Falcon economies like regular gas, 4,000-mile oil changes, double-life aluminum mufflers, and no more waxing. Like the Falcon, too, it brings you big price news: \$142 less than last year's popular Fairlane 500!
Come see, come save, come pick the Ford economy twin that saves and serves you best. Visiting hours as usual at your Ford Dealer's.
FORD DIVISION, Ford Motor Company.

Economy choice of a lifetime in the wonderful New World of '60



A WONDERFUL NEW WORLD OF FORDS FOR '60 FORD—The Finest Fords of a Lifetime FALCON—The New-size Ford THUNDERBIRD—The World's Most Wanted Car

Sonora Motor Company
Sonora, Texas

ANNUAL REPORT BY SUPERINTENDENT OF UTILITIES FISCAL YEAR SEPTEMBER 30, 1958 TO SEPTEMBER 30, 1959

TO THE MAYOR OF THE CITY OF SONORA, TEXAS

As Superintendent of the General Department, and the Light, Water and Sewer System of the City of Sonora, Texas, I hereby file with you a condensed balance sheet, and a combined report of the operations of departments, plants and systems, for the fiscal year ending September 30, 1959 as follows:

CONDENSED BALANCE SHEET

ASSETS	TOTAL	FUND			
		GENERAL AND SOCIAL SECURITY	ELECTRIC	WATER	SEWER
Current Assets	\$ 142,064.83	\$ 8,730.28	\$ 51,951.25	\$ 76,460.54	\$ 4,922.76
Investments (Sinking fund)	21,967.50	—	4,987.50	—	16,980.00
Property and Equipment, net	1,165,262.24	196,876.25	603,981.82	259,595.65	104,808.52
Other Assets	804.93	—	500.00	294.93	10.00
TOTALS	\$1,330,099.50	\$205,606.53	\$661,420.57	\$336,351.12	\$126,721.28
LIABILITIES		FUND			
Current Liabilities	\$ 76,767.91	\$ 11,163.90	\$ 42,119.67	\$ 17,751.22	\$ 5,733.12
Long-term Indebtedness	454,481.74	25,802.33	271,601.60	141,077.81	16,000.00
Surplus	798,849.85	168,640.30	347,699.30	177,522.09	104,988.16
TOTALS	\$1,330,099.50	\$205,606.53	\$661,420.57	\$336,351.12	\$126,721.28
OPERATIONS		FUND			
Operating Revenue	\$ 226,583.40	\$ 49,256.24	\$125,557.64	\$ 41,767.87	\$ 10,001.65
Operating Expenses excl. depreciation	133,850.34	42,573.42	60,870.01	21,761.42	8,645.49
Operating Income before depreciation	\$ 92,733.06	\$ 6,682.82	\$ 64,687.63	\$ 20,006.45	\$ 1,356.16
Other Income	7,773.40	—	264.01	2,233.07	5,276.32
Net Income before Depreciation, Debt Service and Contributions to other City Funds	\$ 100,506.46	\$ 6,682.82	\$ 64,951.64	\$ 22,239.52	\$ 6,632.48
Depreciation	31,877.76	—	22,075.57	7,301.07	2,501.12
Debt Service	9,921.22	990.14	2,621.49	5,147.11	1,162.48
Contribution to other City Funds	4,000.00	—	2,000.00	2,000.00	—
NET INCOME	\$ 45,798.98	\$ 990.14	\$26,697.06	\$ 14,448.18	\$ 3,663.60
	\$ 54,707.48	\$ 5,692.68	\$ 38,254.58	\$ 7,791.34	\$ 2,968.88

The foregoing is taken from the Audit Report of the City, copies of which are on file with the City Secretary, and reference is made thereto for a complete itemization of revenues and expenses.

RESPECTFULLY SUBMITTED,
R. M. McCARVER
SUPERINTENDENT OF UTILITIES

San Antonio Livestock Exposition Boosters Due Here Wednesday Morning

Sonora will be one of the cities visited on a 1,500 mile tour to be made this month by a goodwill group from the San Antonio Stock Show and Rodeo.

The boosters for San Antonio's February 12 to 21 exposition are scheduled to arrive here at 9:25 Wednesday morning, January 20.

Travelling by bus on the tour the group will include San Antonio businessmen and their wives, stock show representatives, U. S. Air Force recruiting personnel and a western band.

While here they will make a "Community Service" award for the area's active participation in the annual San Antonio Livestock Exposition.

Local civic and community leaders are scheduled to meet and welcome the booster group upon their arrival.

A discussion was held on how to prepare the local track for an enlarged futurity at the spring meet to be held Saturday and Sunday, May 7 and 8.

MRS. SMITH ENTERTAINS TWICE TUESDAY CLUB

Mrs. Tommy Smith was hostess to the Twice Tuesday Club with a bridge luncheon at her home Tuesday. A fall arrangement centered the luncheon table which was laid with a brown cloth and pink carnations were used to decorate the livingroom.

Mrs. M. R. Thomason of Montgomery, Alabama won high guest prize and Mrs. George D. Wallace won high club. The slam prize went to Mrs. W. A. McCoy and Mrs. Clayton Hamilton won at Bingo.

Others attending included Mmes. Bill Tittle, D. C. Langford, Jerry N. Shurley, Nolan W. Johnson, Norman W. Rousselot, David D. Shurley, J. W. Pepper, Jr., Gene Shurley, Cleveland Nance, Dick Black, B. E. Cartwright and Louis J. Wardlaw.

Happy Birthday

Friday, January 15,
Bill Savell
Joe B. Ross
Jack Henderson
Mrs. J. R. Traylor
Mrs. T. R. Chenault
Mrs. Henry Greenhill

Saturday, January 16
Jim Perry
Sara Stewart
Mason Shurley

Sunday, January 17,
Raymond Morgan
Mrs. Francis Jones

Monday, January 18,
J. R. Caldwell
Philip Cooper

Tuesday, January 19,
Vincent Roueche
Robert Clark
Robert Douglas Drennan

Wednesday, January 20,
Mrs. L. P. Bloodworth
Carl Teaff

Thursday, January 21,
Mrs. Joe B. Ross
Cecil Westerman
Joe Gail Willman

Mrs. John Hagan and daughter Candace returned to their home in Falls Church, Virginia, Thursday after a visit of several weeks with her mother, Mrs. Stella Keene.

Alien Registration Progressing Well, Says Official

Immigration officials are well pleased with the response of aliens in the San Antonio District to Alien Address Report requirements.

E. DeWitt Marshall, District Director of the San Antonio District of the Immigration and Naturalization Service, stated that although the program has been under way only 12 days the number of aliens reporting thus far is well ahead of the number reporting during the same period last year.

Aliens have until the end of January within which to submit their report of address to the Government. Forms for the purpose may be obtained at any Post Office or any office of the Immigration and Naturalization Service.

All aliens, with few exceptions, are required to report. Those excused from this requirement include diplomats, persons accredited to certain international organizations, and persons who were admitted temporarily as agricultural workers.

Aliens who are minors must also report, but the parent or legal guardian should submit the report for an alien child under fourteen years of age.



News For Ranchers About SS Law

Farm and ranch-employers with one or more employees are being asked two questions by S. Mallett, administrative officer, of Internal Revenue Service, San Angelo.

"Have you paid an employee \$150 or more in cash wages during 1959, or has the employee per-

formed agricultural labor for you on 20 or more days during 1959 for cash wages figured on a time basis?"

If your employees meet either of these two tests you must withhold social security tax from the cash wages paid to these employees at the rate of 2½ per cent of such cash wages, his 2½ per cent, together with another 2½ per cent representing your share as the employer, must be sent to the IRS district director in Dallas.

Mallett says that farmers and ranchers subject to this tax are required to file a return, Form 943, with their district director of Internal Revenue before January 31 of the year following the year covered by the return.

IRS recommends Circular A for non-technical explanation of Uncle Sam's tax rules for withholding of social security tax from farm employees' wages. It's available free at Internal Revenue's office U. S. Post Office, San Angelo.

Highland Hereford Sale

226 Head

106 Registered Hereford Bulls
120 Top Commercial Heifers

Marfa, Texas

January 26, 1960

Barbecue Dinner On Grounds

The Concho Valley Council Boy Scouts Of America

Needs Funds

Sonora and Sutton County people, through the Lions Club and individual donations, have always done their part.

Due to the increased activity and membership in Scouting, the Council is short of funds at the year's end.

Please give! Give so that existing programs may be carried out.

The Concho Valley Council
B.S.A.

Leave your donation at First National Bank, Chamber of Commerce Office or with Joe B. Ross.

for
I
N
S
U
R
A
N
C
E
call

Do us Insurance Agency
22951

Prices Effective: January 14, 15, 16

We Reserve The Right To Limit Quantities

FLOUR	GLADIOLA 25 LB. BAG	\$1.79
Eggs	LUCKY DOLLAR GRADE A MED DOZ.	39c
Cokes	12 BTL. CTN. PLUS DEPOSIT	49c
Salad Dressing	MORTON 3 QTS.	\$1
LARD	PURE 3 LB. CTN.	39c
Pinto Beans	4 LB. BAG	39c
Baby Food	HEINZ	10 for \$1
Milk	PET OR CARNATION	7 for \$1
COFFEE	FOLGERS 2 LBS.	\$1.39
Tomatoes	OUR VALUE CAN	10c
Tissue	VANITY TOILET 4 ROLL PKG.	19c
Drinks	ROYAL CROWN ASSORTED FLAVORS CAN	3 for 29c
Steak	ARMOUR'S CHUCK LB.	55c
Hamburger	FRESH 3 LBS.	\$1
Avocados	EACH	5c
Oranges or Grapefruit	5 LB. BAG	35c

THE WOMEN'S PAGE

Jetty Young To San Antonio Saturday For "Make-It Yourself With Wool" Finals

Jetty Young of Sonora will be one of 39 finalists in the Junior Division of the Texas "Make-It Yourself With Wool" contest to be held in San Antonio Saturday, January 16. Jetty won the right to compete in state finals by placing fourth in district competition held in Junction last Saturday. She modeled a white wool coat which she made under the supervision of Mrs. A. E. Prugel, home economics instructor at Sonora High School.

The junior division is for girls aged 14 to 17. Other area girls guests at a luncheon at noon to compete in this division are Sally Baggett of Ozona, Edna Marlene Faught of Eldorado, Nancy Friend of Ozona, Peggy Harvick of Ozona, Lucy Hunt of Rocksprings, Linda Millsbaugh of Ozona, Ann Virdell of Rochelle, Paula Woodard of Junction. In the senior division will be Ann Baggett of Ozona and Mrs. Pierce A. Hoggett, Jr., of Junction.

Judging of garments is scheduled for Friday and a dress rehearsal is called for Saturday morning. Contestants will be

Saturday and the showing is scheduled for 2:30 Saturday afternoon at the auditorium of Joske's of Texas. Following the style show at which Day Padgett of San Antonio, Miss Wool of Texas, is to model, Mrs. Willie B. Whitehead, president of the sponsoring TSKGRA Auxiliary, will be hostess to a tea in the Renaissance Room of Joske's.

According to Mrs. S. M. Harvick of Ozona, director of the state contest, some 676 entries were received in district contests. Of these, 52 are eligible to enter the state finals. Winners of the state contest may compete in the national event to be held in San Antonio later this month.

A popular place at the dance was the punch table. This picture shows the table and several onlookers. An estimated 600 young people attended the dance.

MRS. HAMBY HOSTESS TO IDLE HOUR CLUB TUESDAY

Mrs. Johnny Hamby was hostess to members and guests of the Idle Hour Club at the Woman's Club Tuesday afternoon. A color scheme of red and white was carried out and an arrangement of red gladioli centered the serving table which was laid with a white cloth. Pecan pie and coffee were served.

Prizes went to Mrs. G. H. Davis for high score, Mrs. B. H. Cusenbary for second high, Mrs. R. A. Halbert for high guest, Mrs. Charles F. Browne for slam and Mrs. Joe B. Ross and Mrs. Ed Grobe for Bingo.

Attending were the following club members: Mmes. Edwin S. Mayer, W. T. Hardy, L. E. Johnson, Sr., J. F. Howell, G. H. Davis, B. H. Cusenbary and Joe B. Ross. Guests were Mmes. R. A. Halbert, Charles F. Browne, Ed Grobe, Belle Steen, Cecil Westerman, W. J. Fields, Jr., Vestel Askew, Lee Fawcett, R. G. Nance, Lea Allison, W. B. McMillan, John Tedford and Herbert Fields.

Tom Wallace, executive secretary of the Texas Sheep and Goat Raisers Association, was a Sonora visitor last week.



Miss Sue Ann Stokes of Sonora is scheduled to complete requirements for a bachelor of science in education degree at Texas Christian University, Fort Worth, at the close of the fall semester on January 28. Degrees will be conferred officially at spring commencement exercises June 1.

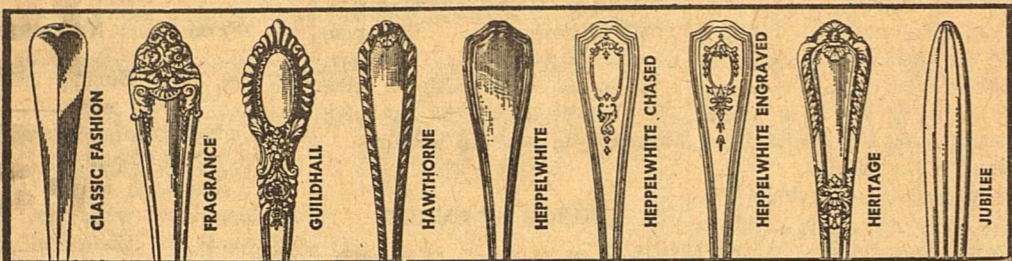
A total of 149 students are on the January candidate list. There are 134 candidates for bachelor's degrees, eight for master's degrees and seven for bachelor of divinity degrees.

Miss Stokes, the daughter of Mr. and Mrs. H. V. (Buzzie) Stokes, is an elementary education major at TCU.



H. V. (Buzzie) Stokes was a Uvalde visitor Saturday afternoon.

Members of the younger set in West Texas were entertained December 28 with a formal dance at the Sonora Wool and Mohair Company. Guests are shown here as they dance to the music of The Esquires.

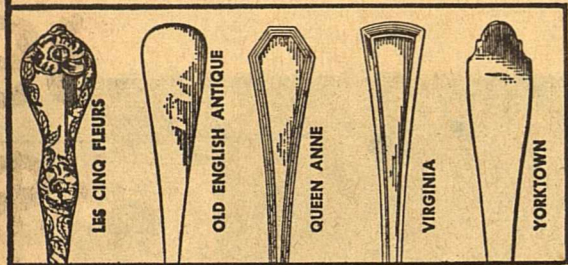


NOW AVAILABLE!

THESE OLDER REED & BARTON STERLING DESIGNS

Is your sterling pattern one of the fourteen older designs by Reed & Barton shown here?

If it is, you won't want to miss this opportunity to add to your service — or perhaps complete it! From now until March 1, 1960, we can accept orders for serving and place pieces in these patterns on a made-to-order basis. Visit, phone or write us for an illustrated price folder. Get your order in before the deadline!



THE RUTH SHURLEY JEWELRY

Woman's Club Hears Program On Literature

Mrs. Harold Scherz and Miss Ann Palmer were speakers at the January 7, meeting of the Sonora Woman's Club. Mrs. Scherz spoke on children's literature. She stressed the value of reading necessity of guidance in selection of books. She passed out pamphlets entitled, "A Guide to Children's Literature".

Miss Palmer talked on literature and libraries in general, commenting on the worth of good books and recommending especially literary classics. She said, "To be well educated a person has to be well read. Good books are not expensive since they are the cheapest form of good entertainment money can buy." She stated

that neither television, comic books nor movies can ever replace good books.

Mrs. J. F. Howell, president, presided over the business session. The club voted to accept Foxworth-Galbraith's bid for painting the exterior of the club building and Mrs. B. H. Cusenbary, house chairman, was instructed to see that the project get underway as soon as weather permits.

A club invitation was extended to the Hospital Auxiliary to attend and assist with the February meeting on "The Need for Nurses" and the March program which will be a benefit book review with proceeds to go to the Professional Nursing Scholarship Fund sponsored by the TFWC.

Other contributions were voted for the Latin-American Scholarship Fund, the Musical Penny Scholarship Fund and the Penny Art Fund.

Mrs. Louis J. Wardlaw was welcomed as a new club member. Mrs. M. R. Thomason of Montgomery, Alabama was a guest.

Hostesses for the social hour were Mmes. Clayton Hamilton, Tommy Smith and R. G. Robertson as hostesses.

CRISTELA FLORES MEMBER OF HPC SOCIAL CLUB

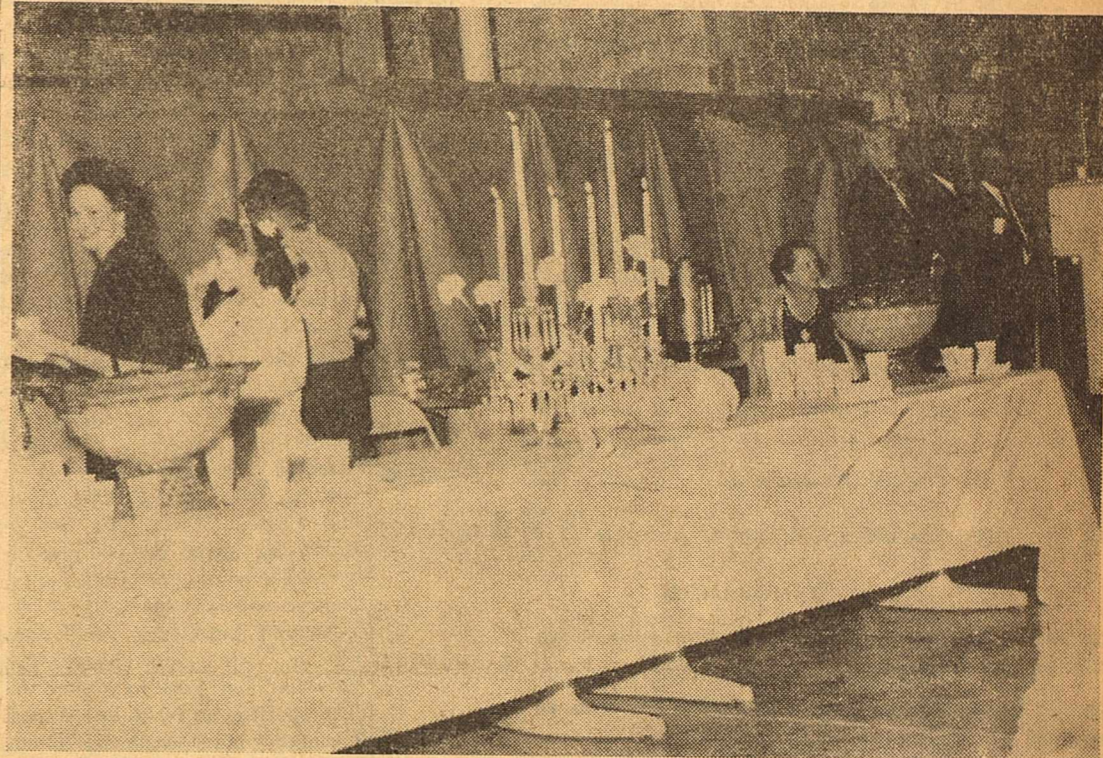
Cristela Flores of Sonora is an organizing member of Athena, one of three women's social clubs being on the Howard Payne College campus under the direction of the Dean of Women.

A junior student, Miss Flores is the daughter of the Rev. and Mrs. E. L. Flores of Houston, formerly of Sonora, and is a graduate of Sonora High School.

MRS. LOUIE STUART WINS \$4,300 IN WORK CONTEST

Mrs. Louie Stuart of College Station, Texas was the winner of the Houston Post's \$4,300 Cash Words Contest recently. Mrs. Stuart is the wife of Louie Stuart, former Sonoran.

Mr. and Mrs. Arthur Stuart of Sonora were visitors with their son and daughter-in-law in College Station when the cash award was made.



NEEDED ON EVERY RANCH



We are dealers for W.W. & Turner Cattle Chutes.

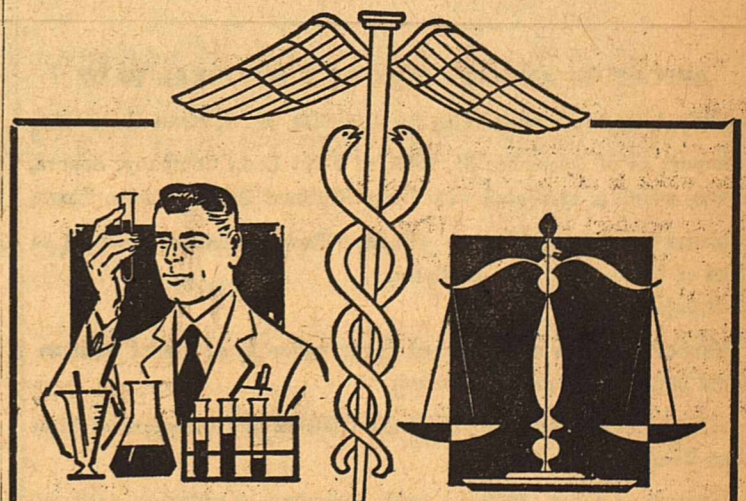
These chutes are built in two models stationary or wheel mounted.

Come by and see them.

Fells trees up to 3 feet in diameter. Cuts 18" trees in 18 seconds. Only 185 pounds. Famous Homelite quality.

Have a FREE DEMONSTRATION

SONORA WOOL AND MOHAIR COMPANY
SERVING THE CAPITAL OF THE STOCKMEN'S PARADISE



A MESSAGE TO MOTHERS-TO-BE!

Your doctor will probably suggest that you take vitamins and minerals to build strong bones and teeth for baby, and to also protect your own general health. Come in and let us help you with your vitamin list, prescriptions and baby needs. We're always here to serve you.

IN AN EMERGENCY . . . PHONE!

WESTERMAN DRUG

Cecil Westerman Would Like To Be Your Pharmacist.

ANNUAL Rabies Vaccination Dog & Cat

Sat. January 16, 1960

9:30 A.M. TO 1:00 P.M.

DOG \$2.50 CAT \$2.00

ALSO CITY REGISTRATION

CITY HALL

CITY OF SONORA

CHARTER NO 5466 RESERVE DISTRICT 11
REPORT OF CONDITION OF THE

FIRST NATIONAL BANK

In the State of Texas, at the Close of Business on December 31, 1959
Published in response to call made by comptroller of the currency
under section 5211, U. S. REVISED STATUTES

ASSETS

1. Cash, balances with other banks, including reserve balance, and cash items in process of collection	\$ 825,337.96
2. United States Government obligations, direct and guaranteed	982,213.38
3. Obligations of States and political subdivisions	1,648,556.31
5. Corporate stocks (including \$9,750.00 stock of Federal Reserve Bank)	9,750.00
6. Loans and discounts (including \$29,834.88 overdrafts)	2,419,061.11
7. Bank premises owned, None, Leasehold Improvements \$51,000.00, furniture and fixtures \$11,000.00	62,000.00
12. Total Assets	\$5,896,918.76

LIABILITIES

13. Demand deposits of individuals, partnerships, and corporations	\$4,591,749.39
14. Time deposits of individuals, partnerships, and corporations	139,765.86
15. Deposits of United States Government (including postal savings)	48,314.16
16. Deposits of States and political subdivisions	409,891.68
17. Deposits of banks	8,149.95
18. Other deposits (certified and cashier's checks, etc.)	79,975.37
19. Total Deposits	\$5,277,846.41
24. Total Liabilities	\$5,277,846.41

CAPITAL ACCOUNTS

25. Capital Stock:	
(a) Common stock, total par \$150,000.00	\$ 150,000.00
26. Surplus	175,000.00
27. Undivided profits	155,072.35
28. Reserves (and retirement account for preferred stock)	139,000.00
29. Total Capital Accounts	619,072.35
30. Total Liabilities and Capital Accounts	\$5,896,918.76

MEMORANDA

- 31. Assets pledged or assigned to secure liabilities and for other purposes \$ 674,055.91
- 32. (a) Loans as shown above are after deduction of reserves of None
- 33. (a) (1) Loans to farmers directly guaranteed and redeemable on demand by the Commodity Credit Corporation, and certificates of interest representing ownership thereof None
- (2) Real estate loans insured under Titles II, VI, and VIII of the National Housing Act 20,673.00
- (3) Loans insured or guaranteed by Veterans' Administration—insured or guaranteed portions only 24,446.86
- (8) Total Amount of Loans, Certificates of Interest and Obligations, or portions thereof (listed above), which are fully backed or insured by agencies of the United States Government (other than "United States Government obligations, direct and guaranteed") 45,119.86

I, Clayton Hamilton, Cashier of the above-named bank, do solemnly swear that the above statement is true to the best of my knowledge and belief.

Clayton Hamilton, Cashier.

Correct—Attest: Geo. H. Neill, Joe M. VanderStucken, Lea Roy Aldwell, Directors.

STATE OF TEXAS
COUNTY OF SUTTON, ss

Sworn to and subscribed before me this 8 day of January, 1960 and I hereby certify that I am not an officer or director of this bank.

(SEAL) Sue Linthicum, Notary Public
My commission expires June 1, 1961

REPORT OF AN AFFILIATE OF A NATIONAL BANK

Published In Accordance With Section 5211, U. S. Revised Statutes
Report as of December 31, 1959, of First Loan Company, Sonora, Texas, which is affiliated with First National Bank, Sonora, Texas, (Charter number) 5466 (Federal Reserve district number) 11
Kind of business of this affiliate:
Mortgage Company

Manner in which above-named organization is affiliated with national bank, and degree of control:

Officers and Directors of Bank are Officers and Directors of First Loan Company.

Borrowings from affiliated bank, including acceptances executed by affiliated bank for account of affiliate and securities sold to affiliated bank under repurchase agreement \$8,000.00

I, Harold Scherz, Assistant Secretary-Treasurer of First Loan Company, Sonora, Texas, do solemnly swear that the above statement is true, to the best of my knowledge and belief.

Harold Scherz

Sworn to and subscribed before me this 8 day of January, 1960 (SEAL) Sue Linthicum, Notary Public
My commission expires June 1, 1961

Devil's River Philosopher Advises Rest Of World Not To Hold Back On Account Of Him And Mongolia

Editor's Note: The Devil's River Philosopher on his bitter-weed ranch on Devil's River has found out a new year is at hand, his letter indicates.

Dear editar:
This is the time of year when all the experts bring out their predictions for the next twelve months, and while I'm no expert-oh, I'll admit I've been wrong about as many times as they have, still I don't qualify as one-I thought I'd fall in line and bring out a few of my own.

The trouble with most predictions is they aren't strong enough. They hedge. They say times are going to be good in 1960, unless this or that occurs. There's going to be an upturn, unless there's a downturn.

Mine are more positive. For example, I predict the world's coming to an end in 1960. Naturally, I don't really think so, I'm going ahead and making a crop, but you've got to admit, if I'm right, I'll go down in history.

As for the economic situation in the next twelve months, I predict most people will make it, but at the end of the year when they look back, they won't see how they did.

Internationally, the scene looks clouded. This is the same prediction I've made every year since I found out there were other countries besides the United States, and it's always been right. I've never been caught napping on that one. If I want to pick out the easiest job on earth, I'd pick the job of predicting every January 1 that the international scene is fraught with danger and uncertainty.

On the national scene, I predict the United States, despite the feeling some people have it won't hold together, will hold together for another twelve months. It's a funny thing about the United States. It's not as smart as some people give it credit for being, nor half as dumb as some people suspect.

Around here, my predictions are a little more hazy. The closer a man gets to home, the less specific he is, if he's smart. I wouldn't mind predicting what's going to happen around here in the next twelve months, and may

do it some day, just as soon as I find out what happened in the last twelve.

Happy new year. That's the kind I intend to have.
Yours faithfully,
J.A.

Visitors in the home of Mrs. Beulah Pfister during the holidays were: Mr. and Mrs. George Phillips of Berryville, Arkansas; Mr. and Mrs. Ed Pfister of Fort Stockett; Mr. and Mrs. J. L. Guthals and daughter Janelle and children of San Angelo; Mr. and Mrs. Fletcher Holt of Big Lake; Mr. and Mrs. Jack Pfister, Mr. and Mrs. Jimmy R. Harris, Mrs. Bud Glasscock and children, Rostein Pfister, Jr., Mr. and Mrs. Aubrey Chadwick and children and Mr. and Mrs. Bill Barnes, all of Sonora.



YOUR MINISTER SAYS

By Rev. William Mitschke
WHY DON'T PEOPLE PRAY MORE? Many reasons are given. Some of the reasons are not spoken audibly, but they bring themselves out in practice. One excuse that comes up often, and we tell ourselves this, is that **WE DON'T HAVE TIME TO PRAY MORE.**

In the morning it's a rush to get going. At night we are too tired. Somehow prayers are simply forgotten.

How can I pray more? One important thing to do is to "Practice the Presence of God." Cultivate a sense of God's presence. Wherever you go tell yourself

"God is here!" Whatever you do tell yourself "God is here!" When you feel God's presence you will talk to Him more.

As an outgrowth of this you should set aside special times for concentrated prayer periods—every morning, every night, a special time each week. But don't forget, God is with you always.

If you want to pray more ask God to help you. Ask God to help you recognize His continual presence. When you are aware of this you will see your prayerlife increase.

Prayer builds! The more you pray the more you will want to pray and know you need to pray.

Edwards Plateau Soil Conservation District News

By E. B. Keng
Soil Conservation Service

Control of cedar is being undertaken very efficiently on the Jo

Hardgrave ranch east of Sonora. With the use of axe and chain saw Jo is clearing several hundred acres of medium to heavy stands of cedar, which will be of good benefit to the grass.

Cedar is a serious invading plant in the Edwards Plateau Soil Conservation District as well as in surrounding areas. It is an evergreen, requiring soil moisture continuously, and competing strongly with more desirable range plants for moisture and growth area. Control of cedar is definitely a good range management practice and an economical factor on a ranch.

Jo Hardgrave is using an axe to cut small cedar, and to clear an access for the chain saw on large branching cedar. The operation seems to be very efficient and fast. About 165 man hours were needed for 200 acres, or approximately one acre cut per hour. Jo said that oil was the big expense with him, because he might tend to over lubricate the chain. He has used about 10 gallons of gasoline and six gallons of oil. He feels that the cost of time, gas and oil is less when the saw is used on big cedar than the labor cost of clearing small cedar with an axe, when density of the two is about equal. The time to completely cut big cedar which has 6 to 10 branches at the base is about two minutes. An axe would probably take five or six times as long, with a lot more danger of risk to the operator.

Ash (blueberry) juniper will die when all branches are cut off. most of this type cedar is found east of Highway 277, while to the west most of the cedar is redberry juniper which must be killed by uprooting. Much of the old cedar was killed by drought, but large areas are still infested. Good rainfall during recent years has also brought on a crop of seedling cedars. These will continue to grow, others will germinate, and before long they will create a problem. It is not impossible to completely free a pasture or a ranch of cedar, or at least control it to the point that cedar is of little or no significance.



DR. ERNEST SMITH
CHIROPRACTOR
ANNOUNCES OPENING
OF OFFICES
Corner Crockett & Main
(Next door to Piggly Wiggly)
Phone 21111
4 tp 14.

Church Notices

ST. ANN'S CATHOLIC CHURCH
Rev. Godfrey Blank, O.F.M.
S. Plum St. Phone 21861
Weekday Mass 6:30 a.m.
Sunday Masses 8:00 a.m. 10:00 a.m.
Holy Days Masses 6:30 a.m.

ST. JOHN'S EPISCOPAL CHURCH
Rev. Alanson Brown, Rector
Each Sunday
Holy Communion 8:00 a.m.
Church School 10:00 a.m.
Family Worship 11:00 a.m.
Thursday Holy Communion 7:30 p.m.

HOPE LUTHERAN CHURCH
Rev. William Mitschke, Pastor
Meeting At
Sonora Woman's Club
Sunday School and Bible Classes 9:30 a.m.
Worship Service 10:30 a.m.

FIRST METHODIST CHURCH
Rev. Doyle W. Morton, Pastor
Church School 9:45 a.m.
Morning Worship 10:50 a.m.
Youth Fellowship 6:00 p.m.
Evening Service 7:30 p.m.

CHURCH OF CHRIST
Robert W. Marshall, Evangelist
Sunday
Bible Classes 9:30 a.m.
Morning Worship 10:30 a.m.
Christian Youth Hour 6:00 p.m.
Evening Worship 7:00 p.m.
Wednesday
Bible Classes 7:00 p.m.
Teacher Training Class 8:00 p.m.
Thursday
Ladies Bible Class 7:30 p.m.

FIRST BAPTIST CHURCH
Rev. Alvin Loiry, Pastor
Sunday School 10:00 a.m.
Morning Worship 10:55 a.m.
Evening Worship 7:30 p.m.
W.M.U. Each Wednesday
Deacon's meeting first Monday each month.

FIRST MEXICAN BAPTIST CHURCH
Rev. Julio Anguiano, Pastor
Sunday School 9:30 a.m.
Worship Service 10:45 a.m.
Training Union 6:45 p.m.
Worship Service 8:00 p.m.
Tuesday:
Brotherhood Meeting 7:30 p.m.
W.M.U. 7:30 p.m.
Wednesday:
Prayer Meeting 7:00 p.m.

CALVARY BAPTIST CHURCH
Rev. Lonnie Baker, Pastor
Sunday Services
Sunday School 9:45 a.m.
Morning Worship 11:00 a.m.
Training Union 6:15 p.m.
Evening Worship 7:30 p.m.
Prayer Service 7:30 p.m.

CHURCH OF CHRIST (South Side)
Farm Road No. 1691
Services Each Sunday Morning 10:30 a.m.
Sunday Evening Services 7:30 p.m.
"He that hath an ear to hear let him hear what the Spirit saith unto the Churches." (Rev. 2:17).

THE CHURCH OF THE GOOD SHEPHERD PRESBYTERIAN
Rev. Allan Guthrie, Pastor
Fellowship 9:30 a.m.
Sunday School 9:45 a.m.
Morning Worship 11:00 a.m.



Always a phone at hand ... in a home that's telephone-planned!

The height of convenience... that's what you and your family will enjoy when there are telephone extensions strategically spotted throughout the house.

No more running, no more missed calls—not when there are extensions in the kitchen, the bedroom, the den, the workshop, the laundry, even out on the patio. All you have to do is reach... and there! your call is on the line.

For help in making your home telephone-planned, simply call our Business Office. Start enjoying the height of convenience soon by calling us today.

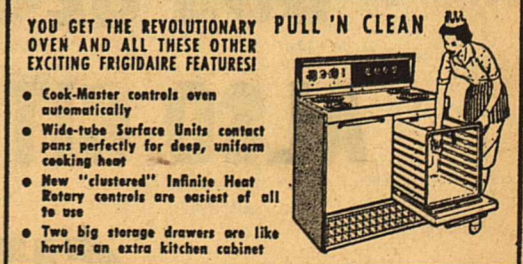
GENERAL TELEPHONE
America's Largest Independent Telephone System



you put your best food forward with a new Electric range

Electric cooking is precisely automatic. There's no fiddling... all you do is select the heat that's exactly right. The 1960 electric ranges come equipped with top unit heat control, balanced-heat ovens, motor driven rotisseries and thermostatically-controlled griddles that bring foods to the peak of perfection... automatically.

see your Electric appliance dealer



FREE WIRING (220 Volts)
INSTALLATION FOR RANGES, WATER HEATERS AND CLOTHES DRYERS
ASK YOUR ELECTRIC APPLIANCE DEALER OR WTU

West Texas Utilities Company

Classified Section

LAND LIVESTOCK INSURANCE

O.L. Richardson

INSURANCE

FIRE AUTO THEFT

LIFE INSURANCE

(Agent For Bankers Life)
LIFE — HEALTH — ACCIDENT

LAND LOANS

ANY SIZE FROM BANKERS LIFE CO.

"The Texas Sheep and Goat Raisers Association will pay a reward of \$500.00 for information leading to the arrest and final conviction of anyone for stealing sheep or goats from a member or members of the Association. Law enforcement officers are excluded from this offer. The information must be furnished to any law enforcement officer or to the Secretary of the Texas Sheep and Goat Raisers Association at its office, Cactus Hotel Annex, San Angelo, Texas. Telephone 6242 or 25612, San Angelo. tfn 25. TEXAS SHEEP & GOAT RAISERS ASSOCIATION

STOCKMEN'S FEED CO.

PROTEINS
CUSTOM MIXING

We'll Mix Your Formula.

MAKE STOCKMEN'S FEED COMPANY YOUR HEADQUARTERS IN SONORA

Bryan Hunt Jack Neill
Andy Moore, Mgr.

SONORA ABSTRACT CO.

J. D. LOWREY, Mgr.

Efficient Land Title Service

On Sutton County Land

WE REPRESENT SEVERAL OF THE OLD LINE FIRE INSURANCE COMPANIES.

REAL ESTATE

SEE US FOR CITY PROPERTY

INSURANCE

Every kind of protection known to Standard insurance Companies

RANCH LOANS

THE BIGGER THE BETTER

TAX CONSULTANTS

ELLIOTT BROTHERS CO

EXPERT Stock Drenching

Prompt, Dependable Service

We drench your stock and get it back on the range in the shortest time possible.

ALSO WE CARRY A FULL LINE OF STOCK MEDICINES AND VACCINES

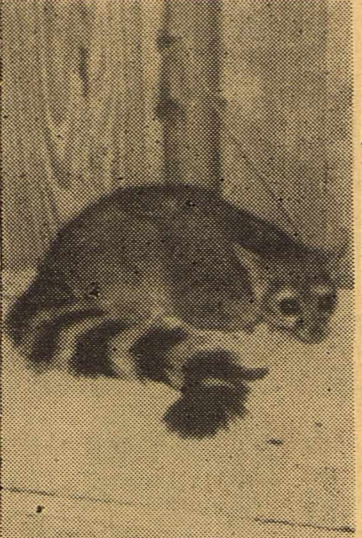
Dial 23431 or 21581 — Sonora, Texas

TAYLOR & MOORE

STOCK MEDICINE CO.


NOTICE

BEGINNING DECEMBER 1



I Will Be Buying Furs In Sonora Again This Year., Offering Top Prices As Always, At The Vick Castillo Building.

Leonard Sutton



217 S. Chadborne
Phone 5384
SAN ANGELO, TEXAS

EXPERT

Mattress Repair

RENOVATING

Western Mattress

Leave Call At News Office

Remodeling

LOANS

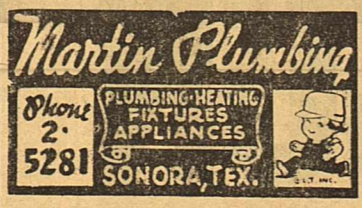
NOTHING DOWN
TERMS TO SUIT
3 Years To Pay

Foxworth Galbraith Lumber Co.



MARTIN'S PLUMBER

REGARDLESS OF THE FUEL YOU USE, OUR HEATING JOBS MAKE FOLKS ENTHUSE



Martin Plumbing

PLUMBING-HEATING FIXTURES APPLIANCES

Phone 2-5281 SONORA, TEX.

Understanding Service

RATLIFF - KERBOW FUNERAL HOME

Ambulance Service

Dial 23501 — 21871

L. W. Elliott

ATTORNEY-AT-LAW

SONORA, TEXAS

Will practice in all state and federal courts

SPECIAL NOTICES

SPECIAL NOTICE- The Service Master Carpet Cleaning Service will be in Sonora 2 days each month. For appointment call Western Motel. tfn 6.

ANNOUNCING- Dr. L. C. Harrell, Chiropractor, McDonald Hotel, 9:00 to 5:00 Wednesdays. tfn 23.

FOR SALE

FOR SALE- 1120 acres- Dee Word Estate Ranch, minerals in tact (reserve 1/4). Mrs. Scott Roberts, 620 W. New York, Gunnison, Colorado. 4 tp 14.

DRESSED HOGS for sale, 25 cents a pound. Lester Shroyer. Call 37K21. 4 tp 11.

HELP WANTED

\$400 MONTHLY SPARE TIME Refilling and collecting money from NEW TYPE high quality coin operated dispensers in this area. No selling. To qualify you must have car, references, \$600 to \$1,900 cash. Seven to twelve hours weekly can net up to \$400 monthly. More full time. For personal interview write P. O. Box 1055, Boise, Idaho. Include phone number. 1 tp 14.

ANNOUNCEMENTS

CARD OF THANKS

In time of bereavement we realize how much our friends really mean to us. Your expressions of sympathy will always be remembered. May God bless and keep each one of you.

R. C. Callan, Mr. and Mrs. Vann Callan, Mr. and Mrs. Cecil Craven, Mr. and Mrs. A. C. Hudson.

ANNOUNCEMENTS

CARD OF THANKS

Friday, January 15,
Bill Savell
Joe B. Ross
Jack Henderson
Mrs. J. R. Traylor
Mrs. T. R. Chenault
Mrs. Henry Greenhill

Saturday, January 16
Jim Perry
Sara Stewart
Mason Shurley

Sunday, January 17,
Raymond Morgan
Mrs. Francis Jones

Monday, January 18,
J. R. Caldwell
Philip Cooper

Tuesday, January 19,
Vincent Roueche
Robert Clark
Robert Douglas Drennan

Wednesday, January 20,
Mrs. L. P. Bloodworth
Carl Teaff

Thursday, January 21,
Mrs. Joe B. Ross
Cecil Westerman
Joe Gail Willman

WANTED

TYPING WANTED- Sara Stewart at 448 Poplar after four p.m. 1 tp 14.

MISC. FOR SALE

20% PROTEIN RANGE CUBES at \$41.00 in truckload purchases for Comanche. WHY PAY MORE? Try a load and you will be pleased. Also, we have Sweet feed containing peanut hulls and 25% molasses available in truckloads or more at \$18.00 per ton. Call W. M. Durham, phone 79 collect before coming after feed. DURHAM PEANUT COMPANY, Comanche, Texas 2 to 15.

ANNOUNCEMENTS

CARD OF THANKS

The recent bereavement which visited our home has brought to us a greater appreciation of our friends. Such kindness and neighborly thoughtfulness can never be forgotten. For all the flowers, food, visits, cards and words of sympathy, we give our sincere thanks.

The Burl Fisher Family.

CARD OF THANKS

I would like to thank my many friends for the beautiful flowers, thoughtful gifts and friendly visits during my recent illness. Your kindnesses contributed greatly to my recovery.

Mrs. Lucille Hutcherson.

Happy Birthday

Friday, January 15,
Bill Savell
Joe B. Ross
Jack Henderson
Mrs. J. R. Traylor
Mrs. T. R. Chenault
Mrs. Henry Greenhill

Saturday, January 16
Jim Perry
Sara Stewart
Mason Shurley

Sunday, January 17,
Raymond Morgan
Mrs. Francis Jones

Monday, January 18,
J. R. Caldwell
Philip Cooper

Tuesday, January 19,
Vincent Roueche
Robert Clark
Robert Douglas Drennan

Wednesday, January 20,
Mrs. L. P. Bloodworth
Carl Teaff

Thursday, January 21,
Mrs. Joe B. Ross
Cecil Westerman
Joe Gail Willman

The Devil's River News-Sonora, Texas, Thursday, January 14, 1960

TEXAS PRESS ASSOCIATION

Member 1959

and THE WEST TEXAS PRESS ASSOCIATION

PUBLISHED EVERY THURSDAY

Entered as second-class mail matter on October 18, 1890 at the post office at Sonora, Texas under the Act of Congress of March 3, 1879.

Sutton County \$3.00
Elsewhere \$8.50

Mr. and Mrs. Stanton Bundy, owners
Stanton Bundy, Editor and Publisher
Roy Cooper, Associate Editor

Any erroneous reflection upon the character or standing of any person or firm appearing in these columns will be gladly and promptly corrected upon calling the attention of the management to the article in question.

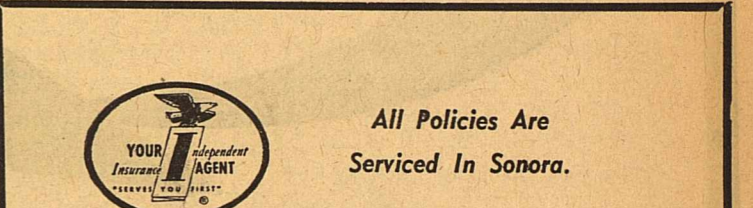
CLASSIFIED ADVERTISING RATES

4 cents per word per insertion - 60 cent minimum charge. If a classified ad or legal notice is more than 100 words, the rate will be 4 cents per word first insertion and 3 cents per word each time thereafter.

Eat The Best

Mims Cafe

Christoval, Texas 4 tp 6



All Policies Are Serviced In Sonora.

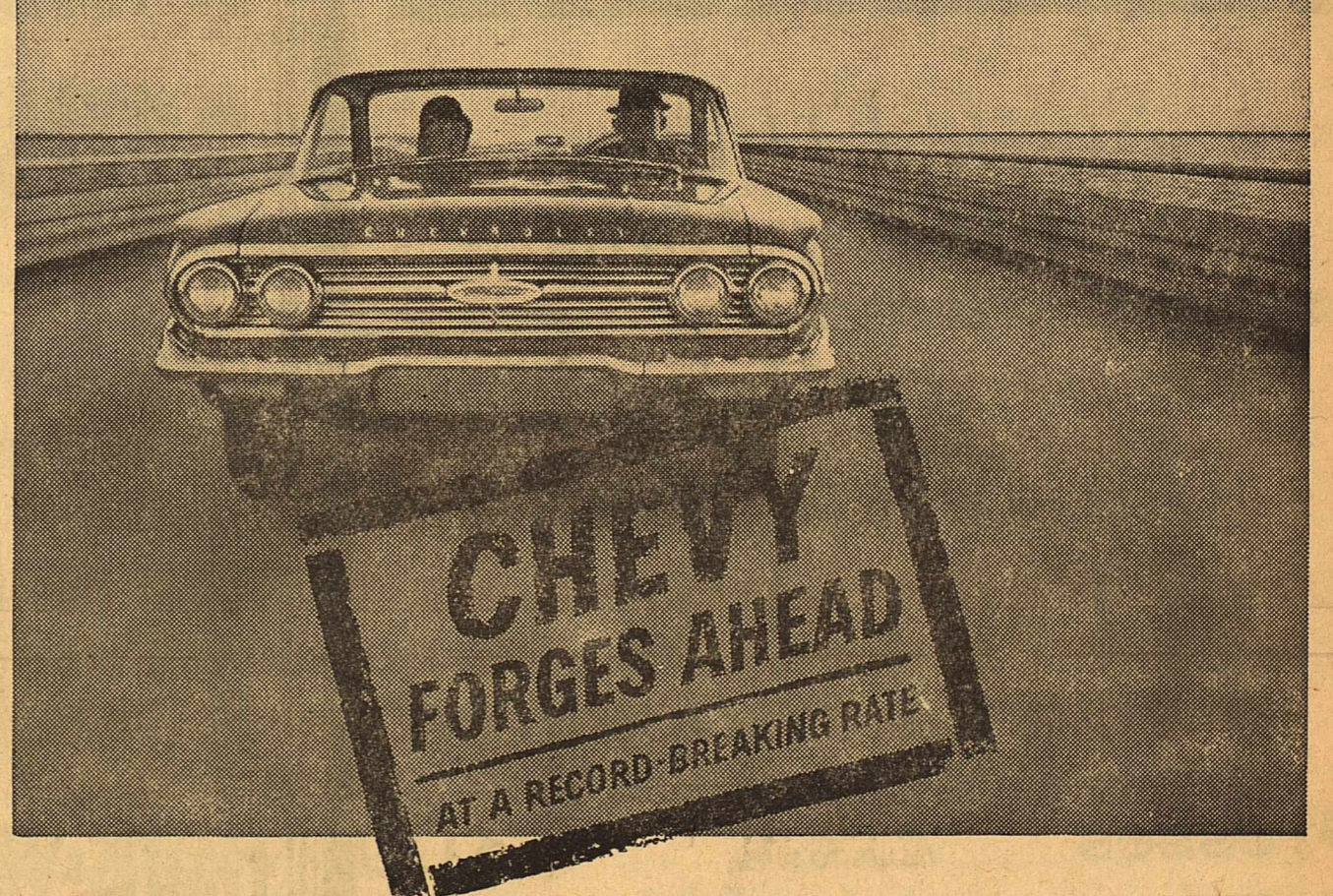
INSURANCE OF ALL KINDS
Fire — Wind & Hail — Automobile
Life Insurance — Casualty Coverage
Hospitalization

GEORGE WYNN

INSURANCE AGENCY

Sonora, Texas Phone 24501

Impala Sport Coupe — one of Chevy's 18 fresh-minted models for '60. See The Dinah Shore Chevy Show in color Sundays, NBC-TV... the Pat Boone Chevy Showroom weekly, ABC-TV.



Factories are turning out more new Chevrolets every day. More proud new Chevy owners taking to the road. Now's the time to see your dealer for fast delivery and a favorable deal!

The pickings couldn't be better. All 18 of Chevrolet's sizzling new models for '60 are now rolling off the assembly lines again—in greater numbers than ever before. Your dealer's waiting with all the details, including a long list of pluses that will prove to you the only way to buy a car for less than this low-priced Chevy is to buy a lot less car:

Roomier Body by Fisher—with a 25% smaller transmission tunnel for more foot room.

Pride-pleasing style—combines good looks with good sense.

New Economy Turbo-Fire V8—gets up to 10% more miles on a gallon.

Widest choice of engines and transmissions—no other car gives you a choice of 24 power teams to satisfy the most finicky driving foot.

Hi-Thrift 6—the '60 version of the engine that won its class in the latest Mobilgas Economy Run.

Coil springs at all 4 wheels—for the kind of silent, satiny ride you'd expect only in the most expensive makes.

Quicker stopping Safety-Master brakes—built with Chevy's ever-faithful dependability, they deliver surer stops with less pedal pressure.

Now—fast delivery, favorable deals! See your local authorized Chevrolet dealer.

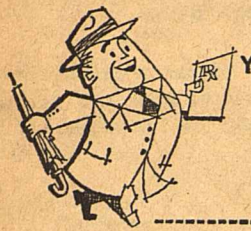
ELLIOTT CHEVROLET COMPANY

Concho & Poplar Sonora, Texas Phone 22281

Under
the
Weather?



● If you aren't feeling your best, right now's the time to call on your doctor. Remember, there's no such thing as an "unimportant" illness. Let your physician help you back on the Highway to Health—with an assist, of course, from our *Reliable Prescriptions* service where you are assured prompt, precise compounding of every prescription.



Sonora Drug Co.



McCarver Re-elected President Of Park And Horse Show Assn.

R. M. McCarver has been re-elected to head the Sonora Park and Horse Show Association for the coming year. Other officers named at the association's annual stockholders meeting Saturday afternoon, January 9, were Duke Wilson, first vice-president; Jerry N. Shurley, second vice-president; Gene Shurley, secretary, and Joe B. Ross, treasurer. Committees appointed were as follows:

Racing Committee: Wesley C. Young, Andrew F. Moore and Duke Wilson.

Judges: Duke Wilson, presiding judge; Gay Copeland, George H. (Jack) Neill and W. B. McMillan.

Foul judges: S. M. Loeffler, Stanley Mayfield, John Fields and Gene Shurley.

Stewards: Wesley C. Young, head steward; Alton Hightower, and Ralph Dye of Odessa, assistant stewards.

Finance: J. M. VanderStucken, Mears Savell and Granville Barker.

A committee from the 4-H Parents Club composed of Hillman D. Brown, Gene Wallace, W. B. McMillan and D. C. Langford met with the association to discuss

permanent improvements to the race track and grounds. Joe B. Ross, Andrew F. Moore and W. B. McMillan were named to work with the 4-H Club in planning such improvements.

The Association voted to extend a formal invitation to the West Texas Quarter Horse Association to hold its halter futurity in Sonora again this year. The WTQHA has been invited by the Sonora Chamber of Commerce to hold its annual meeting of members and directors here.



Martha Love, ten-year-old daughter of Mr. and Mrs. Preston Love, is shown here with her first deer, a six-point buck which she killed December 20. Hunting with her parents on the E.S. Mayer Ranch, Martha killed her deer with a .44 calibre rifle.

STATEMENT OF CONDITION *First National Bank*

SONORA, TEXAS

Close of Business December 31, 1959

ASSETS

Loans & Discounts	\$2,419,061.11
Stock in Federal Reserve Bank ..	9,750.00
U. S. Government Bonds	932,213.38
Other Stocks & Bonds	1,648,556.31
Furniture & Fixtures	11,000.00
Leasehold Improvements	51,000.00
Cash on Hand & in Banks	825,337.96
Total	\$5,896,918.76

LIABILITIES

Capital Stock	\$ 150,000.00
Surplus	175,000.00
Undivided Profits	155,072.85
Reserve for Contingencies	139,000.00
Deposits	5,277,846.41
Total	\$5,896,918.76



Serving Sutton County Since 1900



JOSEPH'S

January CLEARANCE

*Starts Friday
January 15th*

*Seeing Is Believing
Our Entire Stocks
Of Fall & Winter
Merchandise Reduced*

Dresses	AS CHEAP AS VALUES TO \$9.95	\$3.00
Sport Shirts	MEN'S VALUES TO \$4.95	\$2.00
Sweaters	LADIES BANLON VALUES TO \$8.95	\$3.99

**Time - Space and Money Prevent
Listing Hundreds Of Sale Items
Just Come On Down And See**

PIGGLY WIGGLY

January 15,

January 14

Crisco 3 lb. can **69c**

DEL MONTE PEAS - 303 can	19c	DEL MONTE PEARS - 303 can	29c
FRANCO-AMERICAN SPAGHETTI - 300 can	15c	VAN CAMP'S TUNA - flat can	23c
DEL MONTE CUT GREEN BEANS - 303 can	23c	VEG - ALL - 303 can	19c

Milk GANDY'S 1/2 GAL. **45c**

TIDE or CHEER - giant box ...	69c	KOUNTY KIST CORN - 12 oz. can	15c
CHARMIN TISSUE - 4 rolls	39c	REYNOLDS WRAP FOIL - roll	33c

BACON ARMOUR'S STAR Slab lb. **39c**

FRUITS & VEGETABLES

COST LESS NOW!

CARROTS - cello bag	10c
CABBAGE - fresh - lb.	5c
YELLOW ONIONS - lb.	7c
TEXAS ORANGES - lb.	10c
RUTABAGA TURNIPS - lb. ..	10c

Top Quality Fruits & Vegetables

Meats

PORK RIBS - fresh - lb.	33c
BEEF ROAST - good - lb.	49c
BEEF RIBS - good - lb.	33c
PRESSED HAM - lb.	39c
SALT JOWLS - no. - lb.	15c

Top Quality Meats