

WINNER
of the Distinguished
Service Award of the
Vocational Agriculture Teachers
Association of Texas

The Bovina Blade

"In The Agricultural Center Of Parmer County"

10¢
Per
Single
Copy

THE NEWSPAPER
THAT WORKS FOR
A BIGGER, BETTER
BOVINA

WEDNESDAY, MARCH 10, 1965

Bovina, Texas

VOL. IX NO. 36

WHITTLIN'

BY DOLPH MOTEN

We just thought Texas Tech basketball fans weren't nice. You can pick on them just a little bit in this space -- as we did last week -- and they'll really get ugly acting. Probably it's better for us to ignore them, but that's almost impossible to do when they're winning the Conference and having so much fun therefrom!

If this were a men's fashion column, which it isn't, we'd be forced to comment on the sharp appearance of Earl Richards, at the girls regional basketball tournament at Canyon last weekend.

He was wearing a dark suit, a black tie, a freshly-shined pair of black boots and a new hat.

We noticed in the tournament program that his daughter Janice, who played in regional in '58 and '59 still holds several regional tournament records.

We don't blame him for looking extra sharp when he returns to the tournament.

F. M. Crook, the Southside Service Station and Grocery man, had an unusual experience recently.

He sold a lady a box of crackers. She returned to his store soon and reported that the cracker box, which had been properly sealed, contained a package of candy.

The candy was worth more than the crackers, but a new box of crackers were presented to the customer nonetheless. Crook says the same company which makes the crackers also makes and packages candy so the mistake was probably an honest one.

He points out, too, that in canned goods an empty, sealed can is occasionally found in a case. This is easily detected, though, when the empty can is picked up. The candy and the crackers both had, and were supposed to have, the same weight. Thus there was no way to discover the mistake until the box was open.

Don Stone, who is in charge of The Blade's church page, says response to the Bible Quiz which is a regular feature of the page, has been especially good.

Entries have, he says, come from all over the area. And one regular contestant enters from as far away as Doraville, Georgia.

Winners for February, which was the first month of the Bible Quiz, appear on the church page this week.

Evidently the number of entries exceeded Don's expectations. At the end of last month, he confided to us that he had more than he could grade by the scheduled deadline of the first week in March.

In our opinion, the church page which Stone had designed is the best we've ever seen in any paper. And we're not bragging on ourselves, because it's all his doing.

But the feature, as we see it, offers everything that other church pages do plus some additional things which add, without a doubt, to its readership. Certainly we're glad to have it as a part of our newspaper.

Many people in this area are prejudiced against eating mutton. They don't know why they are, but they are.

Once at a school assembly here, the guest speaker was pointing out what prejudice meant. He had a show of hands in regard to how many people in the audience believed they weren't prejudiced about anything. A majority of the hands shot up.

Then after a proper lapse of time and possible a change of the subject, he asked how many did not like mutton. Again a majority of the hands went up. Then he asked how many had ever eaten mutton.

You guessed it. Still another time a majority of those in the audience put up a hand.

And then they understood about prejudice.

With the success Bovina FFA

(Continued on page 6)

7 New Directors On Chamber Board

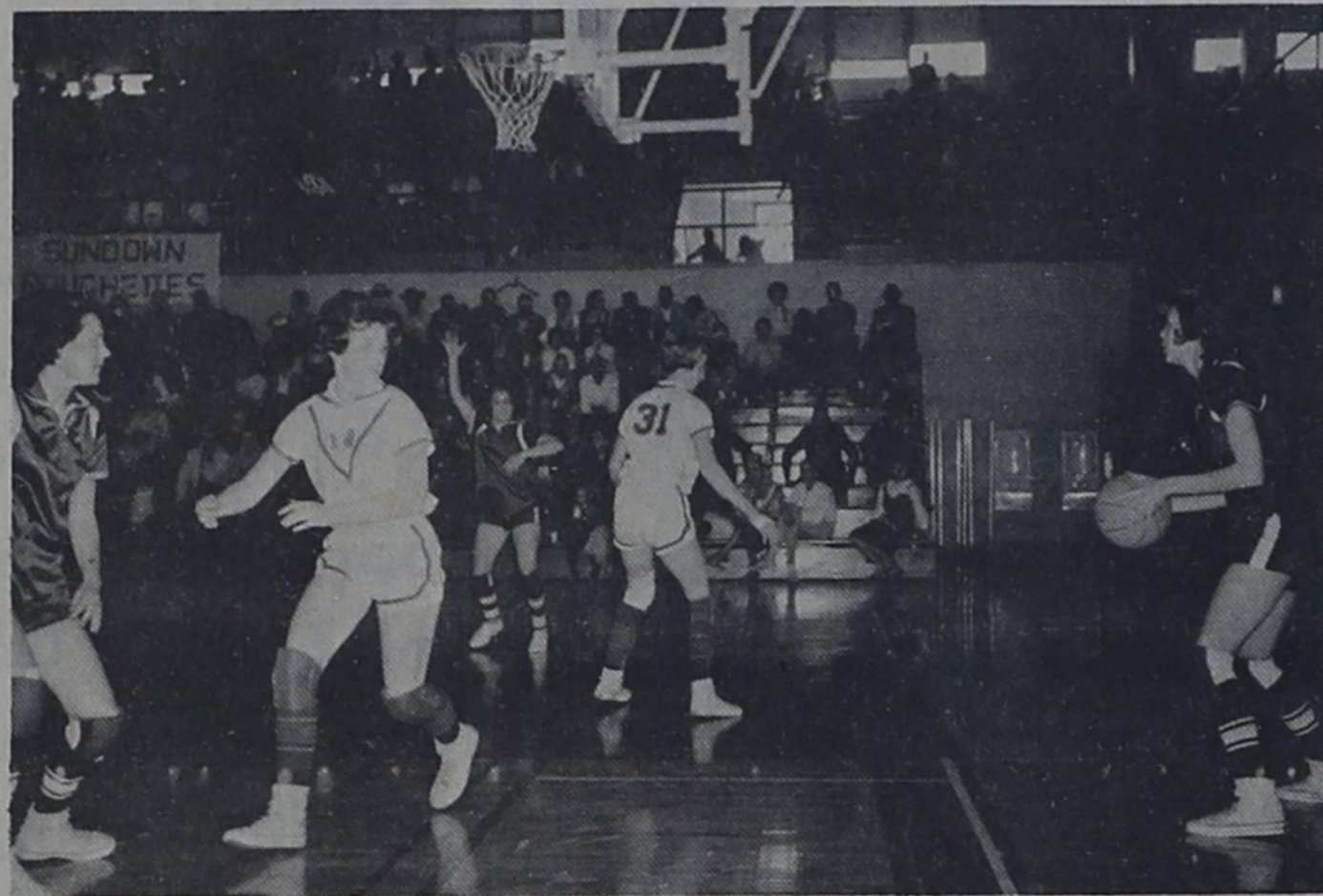
Schools Dismiss Friday

Bovina Public Schools will have a holiday this Friday, according to Alan Staley, high school principal.

Schools will be dismissed Thursday afternoon and will resume again on regular schedule Monday.

The holiday is observed each year in order that local teachers may attend the district meeting of the Texas State Teachers Association in Amarillo.

Mr. and Mrs. Robert Harris were in Caddo, Okla. last weekend to attend a family reunion of the Harris family. It was held at the home of his mother, Mrs. L. A. Harris.



BALL IN! -- Preparing to throw the ball in for Bovina from out of bounds is Kathy Minyen, at right. At left is Tonya Ivy. Linda Estes is signaling for the ball in center. This action was in regional game Friday at Canyon.

TO SAMNORWOOD, 50-31 --

Fillies Lose Opener In Region Tourney

Shooting colder than a Panhandle norther, Bovina's Fillies dropped their opening game in the Region I girls basketball

tournament Friday afternoon at Canyon. Samnorwood was the opponent and the winner in the 50-31

decision. The Fillies stayed in the game during the opening minutes and had the score tied 6-6 midway through the initial period, but from there on it was all Samnorwood.

Score at end of the first quarter was 14-6. At the half, the eventual winners had increased their lead to 15 points, 26-11.

Percentage of shots hit told the story in the first two frames. Both ballclubs attempted 18 field goals. The winners connected on half of theirs while the Fillies made only three of their 18 for a percentage of .167.

In the third quarter, the Fillies held their own and even managed to pick up a point in the scoring margin, but the damage had already been done in the first half. Score at the three-quarters mark was 36-22.

Sandra Patterson was high point for Bovina with 12, Judy Strawn and Lynn Looney each had nine as Gwen Christian, playing briefly, made one.

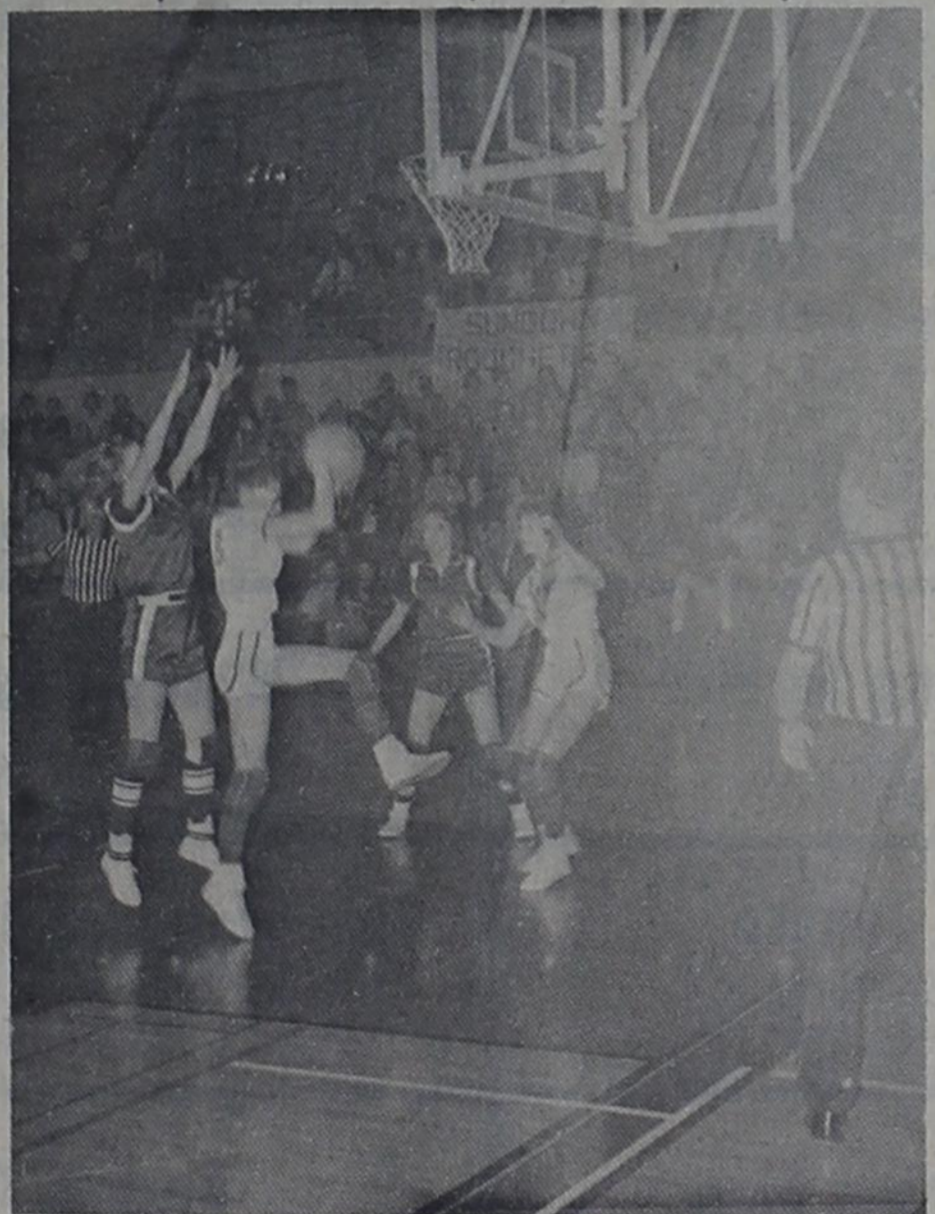
For Samnorwood, JoNell Breeding, No. 15, and Kay Purkey, No. 11, were high with 21 and 19 points respectively.

A large gathering of Bovina fans was on hand for the game which was played in West Texas State College fieldhouse, where almost all good Bovina basketball teams eventually get to play.

Samnorwood was eliminated from the tournament in its semi-final game Saturday morning falling to Sundown, Brisco then defeated Sundown in the tourney finals Saturday night.

The regional tournament finished the season for Coach Milt Fitts' bi-district championship crew.

Five of the six starters are seniors and were playing their (Continued on page 6)



REBOUND -- A Samnorwood guard has just grabbed a rebound during the regional game. Bovina Forwards shown are Judy Strawn, left with arms outstretched, and Sandra Patterson.

5 Fillies On Dream Team

Two of Bovina's Fillies have been named to the all district team. Forward Lynn Looney and Guard Linda Estes were named to the first team.

Heller of Hart. Jerry Roach of Bovina was named to the second team.

Others named to the first team were Carol Schulte, forward, and Delorles Birkenfeld, guard, both of Nazareth, and Connie Bailey, forward, and Sharon Johnson, guard both of Happy.

Named to the second team from the Fillies were Forwards Judy Strawn and Sandra Patterson and Guard Kathy Minyen. Nazareth also placed three on the second team as well as Happy.

First team selections for boys were Jimmy and Marvin Hoelting of Nazareth, Hoppy Jennings of Lazbuddie, Hobie McManigal of Happy and Gary

FFA Team Competing In Contests

Bovina FFA livestock judging team competed in a contest Tuesday at Pampa. The contest was held in connection with Top O' Texas Livestock Show.

Team members included Mike Grissom, Daryl Kirkpatrick, Galen Hromas and Bill Caldwell. They were accompanied to Pampa by John Paul Jones, chapter advisor.

Saturday, the team will compete in a judging contest at Olton.

BVFD Makes 3 Runs To Feed Fire

Bovina Volunteer Fire Department made three trips over the weekend to a stubborn fire at the Jesse Walling farm south of town.

The first call came at 4:30 Friday afternoon when feed caught fire in a cattle feeder. Firemen thought the blaze had been extinguished but it broke out again about 10 Friday night and the fire truck was called out again.

It broke out for the third time about 4 a. m., Sunday and the fire department made the third trip to the Walling farm.

All the feed in the feeder was lost and there was some damage to the feeder itself, according to reports.

AT COUNTY SHOW --

Bowman Steer Reserve Champ

Bovina FFA members were highly successful at the Parmer County Junior Livestock Show at Friona last weekend.

Eugene Bowman exhibited the reserve grand champion steer, a Hereford which was champion of the Bovina show which was held two weeks earlier.

Jerry Roach had the champion Southdown lamb and Kregg Wilson showed the reserve champion medium wool lamb.

Galen Hromas showed his Hampshire barrow to the reserve championship in his breed class.

Bovina FFA members had 10 of 18 barrows entered in the show to place high enough to get in the sale. A total of 13 lambs entered were sold in the sale and three out of four steers made the show and sale, according to John Paul Jones, chapter advisor here.

Bovina boys' placings, purchasers of their animals, and the prices per pound paid were: STEERS

Eugene Bowman, reserve champion, Sherley Grain, 50 cents;

Jerry Cooper, third place lightweight, Oklahoma Lane Farm Supply, 30 cents;

Jerry Cooper, fourth place lightweight, Security State Bank, 35 cents;

BARROWS

Galen Hromas, reserve champion Hampshire, Bovina Blade, 40 cents;

Mike Grissom, second place Chesterwhite, First National

Auto License Available Here

Motor vehicle license plates will be available in Bovina tomorrow (Thursday) from 9 a. m. until 5 p. m.

The staff of Hugh Moseley, county tax assessor-collector, will be at the city hall for the convenience of Bovina area automobile owners.

Moseley requests that people coming to buy license tags bring their vehicle title and their last year's license receipt.

Banquet Ticket Sales Campaign Underway

Seven new directors have been elected to the board of Bovina Chamber of Commerce and Agriculture.

They include Mrs. Bob Estes, Leon Grissom, Mutt Graham, Jim Ware, Wayne Spears, Otis Spears and C. E. Trimble.

The new directors were elected from a slate of 14 in mail balloting by chamber members. Deadline for voting was Wednesday of last week.

Names of those elected were announced at a directors' meeting Thursday noon at Bovina Restaurant.

At the Thursday meeting, ticket sales campaign for the chamber's fifth annual banquet was launched.

Tickets, at \$2.50 each, are available from directors, at First National Bank of Bovina and several other business

places. The banquet is scheduled for Thursday, March 18. It will be in school cafeteria and will begin at 7:30 p.m.

Deadline for ticket sales is Tuesday, March 16, according to Jack McCracken, chamber manager-secretary.

A highlight of the banquet will be the naming of the outstanding man and woman of the year.

Guest speaker will be Tom Lavin of Atlanta.

Lavin is widely known as a humorist, philosopher, musician and toastmaster. He presents a show titled "Laughing All The Way." He calls it the "Fastest 45 Minutes in The West." The show includes 20 minutes of new jokes and stories and 25 minutes of the latest music and fun.

Lavin, whose work carries him to 30 states and over more than 100,000 miles each year, is executive secretary of Natural Food Associates, Inc., a national non-profit educational organization with headquarters in Atlanta.

He is a trained musician with bachelor of music and master of music degrees. He is author of the book, "A Concept of Laughter," which is a collection of jokes and stories published in 1961.

A crowd of approximately 300 is expected to attend the banquet.

McCracken urges people planning to attend to purchase their tickets early so that more accurate planning for the banquet may be done.

"We are especially proud of our banquet speaker this year," says McCracken, "and I'm sure the people of our community will enjoy hearing him."

CHARLES, RUSSELL --

Incumbents In City Campaign

Four candidates are now seeking the two vacancies on Bovina's city council.

The incumbents, Harry J. Charles and Jim Russell, were petitioned last week as candidates. They joined Edward Isaac and C. E. Trimble, who were petitioned a week earlier in the race.

Deadline for filing as a candidate or for petitioning a candidate was Saturday.

Signers of the petition for Charles and Russell were

Zemry Boozer, A. E. Crump, John Wilson, Mrs. S. A. Barbee Jr., Jessie Williams and Pat Kunselman.

Charles and Russell are completing their first two-year terms.

The election is scheduled for Tuesday, April 6.

Other members of the council who have a year to serve on their present terms, are Mayor Boyd Gilreath, Lloyd Gober, Mario Trevino and Tom Bonds.

4-H Horse Program Planned

A 4-H horse program is scheduled to be organized here.

Organizational meeting has been set for tomorrow (Thursday) night in vo-ag department at school, according to an announcement by Joe VanZandt, county agent.

Invited and urged to attend are all 4-H members and their parents who are interested in the horse program.

Leaders for the program in this area are E. E. Trimble, Wendol Christian, Robert Read and Jesse Walling.

Details of the program will be explained at the meeting, VanZandt says.

School Board Meet Routine

Official action was routine at a regular meeting of Bovina Schools board of trustees Monday night.

Teachers' contracts renewals, normally taken care of during March each year, will be considered at a called meeting this month, according to a spokesman for the board.

Paying of the bills for the past month was the only official action taken at the Monday night meeting.

23 Boys Preparing For Track Season

Practice sessions are underway for some 23 high school boys are preparing for the track and field season just ahead.

The first meet the local track clubs will take part in will be March 20 at Levelland. They may have a short practice meet with either Farwell or Friona prior to that date but no day has been set, says Coach Roy Stone.

Following the opening meet they will take part in relays at Springlake on March 27 and at Kress on April 3. The district meet is set for April 10 and will be at Hart.

Boys participating in track are Richard Carson, high jump

and mile run; Eddi Corn, shot and discus; Lane Gober, 440-yard dash, 440 relay and mile relay; Carl Harris, 440-yard dash, 44 relay and mile relay; Billy Marshall, broad jump,

pole vault, 440 relay, mile relay; Don McKinney, shot and discus; Roman Ramirez, shot and discus; Jerry Roach, high and low hurdles, broad jump, high jump; Scotty Rundell, 880-yard dash, broad jump, 440-relay, mile relay; Alfred Stanberry, 880-yard dash, high jump, Dean Stanberry, pole vault; Radford Venable; Kregg Wilson, 880-yard dash; Alan Carson, mile; Bill Caldwell, mile; Rex Cumpston; Larry Denny; Galen Hromas; Randy Jones, pole vault; Darrell Kirkpatrick; Lynn Murphy; Tommy Sisco; Al Shamblin, shot and discus, high and low hurdles.

Weather by Willie
We'll get a little moisture this week, but it may not amount to much. Expect a front in from the west or northwest bringing colder temperatures later this week.



TOM LAVIN
...banquet speaker

Three Issued Traffic Tickets

There were three tickets issued in Bovina last week for traffic violations, according to Bill Denney, city marshal.

Two tickets were issued for failure to stop at stop signs and one was issued for speeding. There was no other police activity, Denney stated.

Congratulations, Fillies

On Your District And Bi-District CHAMPIONSHIPS And Your Fine Play Throughout The Season.



Gwen Christian



Connie Vaughn



Dorothy Bowman



Patsy Cumpton



Brenda Pruitt



Elaine Minyen



Judy Strawn



Lynn Looney



Kathy Minyen



Linda Estes



Tonya Ivy

The Businesses Listed On This Page Greatly Appreciate The Effort And Success Of The Team And Coach Milt Fitts During The '64-65 Season. It Has Been Our Pleasure To Support You!

A Picture Of Sandra Patterson, Starting Senior Forward, Was Unavailable

Bovina Dry Goods -- The Edward Isaacs--
Bonds Oil Co. Gulf Distributor Hwy. 60
Gaines Hardware Co. "Nothing Knocks On Bovina But Opportunity"
Bovina Wheat Growers Inc. "We Serve To Serve Again"
Dairy Freeze The Boyd Gilreaths
C And S Chemical Fertilizers-Insecticides
Bovina Hobby Shop Jack Kesler - James Roach
Bovina Welding Works Hwy. 60
Bovina Insurance Bank Bldg. -- Jim Ware

Bovina Implement Co. Your Massey Ferguson Dealer Hwy. 60 238-2541
Jerry Rogers Barber Shop -Third Street-
Oklahoma Lane Farm Supply Case Farm Machinery
Wilson-Brock Agency All Kinds Insurance
Lawlis Gin Co. Good Sample Good Turnout
Charles Oil Co. Phillips 66 Tires-Batteries-Accessories
Spears Family Fashions Third Street - Bovina
Bovina Gin Co. Don Sides, Mgr.

Kerby Welding Service A <input type="checkbox"/> Deal
Paul Jones Texaco Service Station Hwy. 60
Trimble Barber Shop Emmett Tabor C.E. Trimble
Cicero Smith LUMBER COMPANY 8-2671 Bovina
Dilger's Cleaners "Parmer County's Finest Cleaning" Gunn Bros. Stamps
Super Saveway S & H Green Stamps
Sherley Grain Co. "Serving Parmer County Farmers The Year Round"
BOVINA GLASS AND PAINT CO. Hwy. 60

Bovina Chamber Of Commerce And Agriculture
Wilson's Super Market "Parmer County's Finest"
First National Bank Of Bovina "Helping Bovina Make A Good Community Better"
Barbee Cleaners The Most In Dry Cleaning
Bovina Restaurant Hwy. 60
Southside Service Station And Grocery F.M. Crook
Corn's Farm Store Hwy. 86 - Bovina
The Bovina Blade "Works For Bovina"
S and S Dry Goods --Downtown Bovina--

WEDNESDAY
Draft
Will
For
Herefor
No. 18, w
County, w
Induction
and 15 fo
according
from the s
headquar
The sta
calls for 5
315 for M
The sta
the Texas
call for
the Army.

C
ch
Is
Plac

Fe

Ins

Thu

Phone

Jim

Draft Board Will Call 5 For Induction

Hereford Draft Board, Local No. 18, which includes Parmer County, will send five men for induction in the armed services and 15 for physicals April 5, according to an announcement from the state selective service headquarters.

The state draft quota for April calls for 518 men, compared to 315 for March.

The state quota for April is the Texas share of a national call for 13,700 men, all for the Army.

Reserve Champ--

(Continued from page 1)

Shop, 45 cents;
 Scotty Rundell, eighth place Duroc, Grissom Feed Yards, 45 cents;
 LAMBS
 Jerry Roach, champion Southdown, Oklahoma Lane Gin, 95 cents;
 Kregg Wilson, reserve champion med. wool, Grissom Feed Yards, 65 cents;
 Alan Carson, fourth place med. wool, First National Bank 60 cents;
 Jerry Roach, sixth place med. wool, Parmer Co. Pump, 65 cents;
 Lane Gober, seventh place med. wool, Trimble Barber Shop, 60 cents;
 Billy Marshall, reserve champ Southdown, Bovina Implement, 65 cents;
 Richard Carson, third place Southdown, Friona State Bank, 55 cents;
 Daryl Kirkpatrick, fourth place Southdown, Herring Implement, 75 cents;
 Jerry Roach, fifth place Southdown, Bovina Dry Goods, 60 cents;
 Billy Marshall, seventh place Southdown, Bovina Gin, 55 cents;
 Garry Beauchamp, eighth place Southdown, Friona State Bank, 50 cents;
 Lynn Murphy, ninth place Southdown, Bovina Wheat Growers, 80 cents;
 Kregg Wilson, 10th place Southdown, First National Bank, 70 cents;

Purchasers of the animals pay the difference between the "floor" price and the selling price unless they chose to take the animal. Floor prices were 21.5 cents on lambs, 22 cents on steers and 17.5 cents on barrows.

Approximately 100 parents and friends of students visiting Bovina Schools last week during Public School Week. During their visit they visited in the classrooms and were shown through the new addition to the school building.

C and S Chemical
 Is The Best Place When You Want

Fertilizers

Insecticides

238-4311

FOOD BARGAINS GALORE

Shop These FOOD BARGAINS At WILSON'S Thur.-Fri.-Sat. Many Continue Through Wednesday, Mar. 17

SPRING VEGETABLES AND FRUITS

Fancy Texas

CARROTS

Lb. **8¢**
 Pkg.

Colorado Yellow

ONIONS

Lb. **5¢**

Colorado Red Ripe

TOMATOES

Cello Pkg. **29¢**

Juicy BELL

PEPPERS

Lb. **25¢**

Regular Size or King Size

Coca-Cola

6-BOTTLE CARTON PLUS DEPOSIT

39¢



PUREX BLEACH
 Plastic Bottle

35¢
 1/2 Gal.

Shurfine

Elberta PEACHES
 Slices Or Halves

2 No. 2 1/2 Cans **69¢**



3 Lb. Can **69¢**

Bama Red Plum

JAM 18 Oz. Tumbler

29¢

Trend Detergent

Liquid 32 Oz. Plastic **59¢**
 Powdered 2 Reg. Boxes **35¢**



Shurfine COFFEE

1 Lb. Can **79¢**

Tender Crust Brown 'n Serve

ROLLS

2 Pkgs. **49¢**

Tendercrust

Vanilla Wafers 1 Lb. Cello Bag **29¢**

Shurfine STUFFED OLIVES 7 1/2 oz. Bottle **49¢**

Soflin

NAPKINS

200 Ct. Cello Pkg. **25¢**

Sioux Bee Strained HONEY 20 oz. Bottle **49¢**

Nabisco Premium CRACKERS 2 Lb. Box **55¢**

Arrow Large Lima BEANS 2 Lb. Cello Bag **45¢**

Skinner's Cut SPAGHETTI or MACARONI 2 7 oz. Boxes **27¢**

Shurfine STEWED TOMATOES No. 303 Can **19¢**

Sunshine HI HO CRACKERS 1 Lb. Box **39¢**

Gerber's-Strained Fruits & Vegetables BABY FOOD 7 1/2 oz. Jars **69¢**

DELICIOUS THIRTY MAIN DISH... MEATS

USDA Graded ROAST

CHUCK Lb. **39¢** | ARM Lb. **49¢**

Top Hand Pure Pork SAUSAGE 2 Lb. Pkg. **45¢**

Fresh PORK LIVER Lb. **17¢** | BEEF RIBS Lb. **17¢**

Wolf Brand CHILI No. 2 Can **59¢**

Star Kist Chunk Style TUNA 3 No. 1/2 Cans **\$1**

ROARING VALUES IN FROZEN FOODS!

Shurfine ORANGE JUICE 12 Oz. Can **39¢**

Morton's POT PIES 8 Oz. Size Beef-Turkey-Chicken **19¢**

Shurfine CUT CORN 10 Oz. Pkg. **15¢**

BOVINA WHEAT GROWERS, INC.
 Jim Russell, Mgr.-Pho.238-2691

Not Everyone Belongs To A Co-op, BUT EVERYBODY BENEFITS

See Us Now For Your 1965 Fertilizer Needs

Bovina And Rhea!

Double Gunn Bros. Stamps Each Wednesday With Purchase Of \$2.50 Or More



WILSON'S

Phone 238-4781

PARMER COUNTY'S FINEST



SUPER MARKET BOVINA

ON 88TH BIRTHDAY --

Party Honors Granny Gaines

Friends and neighbors from far and near gathered in Bovina Sunday for the birthday party of Mrs. J. Sam (Granny) Gaines.

The celebration was in honor of her eighty-eighth birthday and it was the 38th year for it to be held.

Also being honored was Granny's granddaughter - in-law, Mrs. S. A. Barbee, Jr., who shares her birthday.

She received three telephone calls Sunday morning to wish her happy returns. They were from Rev. and Mrs. John Ferguson of Denver City, Rev. and Mrs. E. J. Speegle of Casper, Wyoming and her daughter and husband, Rev. and Mrs. W. C. Bryant of Garden Grove, Calif.

Rev. Ferguson also celebrates his birthday on March 7 and had shared in the party for the past five years. He is a former pastor of First Baptist

Church of Bovina, as is Rev. Speegle.

Present for the occasion was Mr. and Mrs. Joe Willie Smith of Paris. They are long-time friends of Granny and Smith was employed by Mr. Gaines 60 years ago when he and Granny had first married. It was the first time the couple had been able to be present for the party.

Traveling farthest for the celebration were two of her friends, Mrs. Elva Diehl, who came from Mark Center, Ohio, and Clifford Belles, from Malcom, Iowa.

The table was covered with an ecru lace cloth and centered with an arrangement of pink and aqua carnations in a purple stemmed bowl. The three tiered birthday cake was decorated in pink and orchid with "Happy Birthday Doris and Granny."

The lace cloth used on the table was a gift to Granny from her daughter and husband, Mr. and Mrs. W. C. Bryant. It was given to her for this special occasion.

The birthday dinner menu consisted of turkey and dressing, ham, fried chicken, vegetable, salads, relishes, hotrolls, cakes, pie and homemade ice cream. Several of the guests brought covered dishes for the meal.

A special treat, and one that has become tradition, was small new potatoes that had been prepared and canned by Granny's daughter-in-law, Mrs. R. M. Gaines of Paris. Although Mrs. Gaines was unable to attend this year, she sent the delicacy for the meal.

Hosting the affair each year is Granny's daughter, Mrs. Lady Armstrong. Also helping her with the hosting duties were Mrs. Bettie Adams, Mrs. Pat Kunselman and Mrs. Joe Wilson.

Present Sunday were Granny's two sons, R. M. Gaines of Paris, and Herbert L. Gaines of New Kirk, New Mexico.

Attending the party Sunday were Mrs. Acha Armstrong, Mr. and Mrs. Bill Rice, Marty and Scott, Jerry Ratcliff, Mr. and Mrs. Garland Potts and two daughters, Mr. and Mrs. W. C. Crowell, Homer Martin and Miss Ethelwyn Platter, all of Amarillo; Mr. and Mrs. Herbert Potts, Mrs. Wanda Walker and Mrs. Mabel Reynolds of Farwell; Mrs. Dollie Williams, Mrs. Doug Nix and Tana of Hereford; Mrs. A. W. Woods and Mrs. Gladys Bryon of Friona; Mr. and Mrs. Jess Curb of Canyon; Mr. and Mrs. Jack Stagner of Ruidoso, Mr. and Mrs. J. L. Stagner and Mr. and Mrs. H. L. Tidenberg of Clovis; Mr. and Mrs. Vincent Cunningham of Abernathy; Mr. and Mrs. Gene Adams and Becky, Mrs. Mary Bennie Waddie, Larry and Dee Dee of Lubbock;

Teenage Party Set Saturday

A party has been planned for high school students Saturday night at the Legion Hall. Activities will get underway about 8 p. m. and will last until 11:30.

The party is being sponsored by several of the parents of students. There will be various games and activities with something to entertain each young person, according to Mrs. R. E. Wilson, one of the parents sponsoring the social. There will be a record player for music and students are invited to bring their favorite records to share with the group.

All students of Bovina high school are invited to attend and any parents who would care to, are invited to come by.

Mr. and Mrs. John Thorp, Jan Johnnie and Jim of Littlefield, Mr. and Mrs. Guy Sanders and Mrs. J. W. Buckner of Arch, New Mexico, and Mrs. Viola Loftin of Tulsa.

Attending from Bovina were Mrs. Jesse Walling, Mrs. Lula White, Mrs. L. C. Moore, Mrs. Tom Hastings, Mr. and Mrs. Dean Hastings, Rev. and Mrs. Ralph Aday, Phillip, Paul and Susan; Rev. and Mrs. Harold Morris, Mrs. C. O. Edens, Mrs. Suzey Smith, Mr. and Mrs. Wilbur Charles and Rene, Mr. and Mrs. Bill Venable, Mr. and Mrs. Frank Hastings, Mr. and Mrs. Pat Kunselman and Ricky, Mrs. Doris Wilson, Mrs. Ruby Wilson, A. G. White, Mrs. Jess Stowers, Mrs. J. R. Glover, Mrs. Amos Steelman, Mrs. U. B. Wheeler, Mrs. G. E. Free, Mrs. Oma Gunn, Mrs. Bess Caldwell, Mr. and Mrs. Fred Paine, Mrs. O. W. Rhinehart, Mrs. Margaret Caldwell, Miss Rita Caldwell, Mr. and Mrs. Charlie Jefferson, Mrs. Vernon Ward, Sharon Spurlin, Mrs. Mary Ruth Martin, Mrs. Arnold Hromas, Mr. and Mrs. Paul Jones, Aunt Ellen Remensnyder, Mr. and Mrs. S. A. Barbee, Jr., Rhonda and Sheila.

Boy Born To Gilbreaths

Mr. and Mrs. Charles Gilbreath became the parents of a son born March 5 at Clovis

Memorial Hospital. The little boy weighed 7 pounds and 6 ounces and has been named Robert Dale.

The Gilbreaths also have two girls and another boy.

Exchange Students On Program

Exchange students from Germany and Australia will be guest speakers for the meeting Thursday of Bovina Woman's Study Club.

The club meets at 3 p. m. at the clubhouse.

Mrs. A. E. Crump will be program chairman with the topic being "Decisions Through Handicaps". Guest speakers will be Alexander Orlovsky, exchange student of Bovina, and Miss Brenda Hawkers, exchange student from Friona.

Hostesses for the meet will be Mrs. Buck Ellison and Mrs. John Dixon.

Society Meets Here Sunday

Guadalupe Society of St. Ann's Church met Sunday at the parish hall with 20 members and two guests present.

Mrs. George Cervantez and Mrs. Conrado Perez volunteered to visit the hospital during March. Mrs. Manuel Hernandez and Janie Hernandez will clean the rectory.

Mrs. Ben Rejino gave a report on the First Communion gowns being made by the group. First Holy Communion day will be May 30.

The group discussed the affiliation with the Diocesan Council of Catholic Women. A decision was made to join the group and four delegates will be sent to the Annual Deaneary meet March 31 at the Student Union Building at WTSU at Canyon.

Mrs. S. A. Brito, hostess, served refreshments.

Cereal grains such as corn, wheat and oats may someday be used to make better paper. U. S. Department of Agriculture chemists have found that use of a cereal derivative in paper manufacture increases the paper's resistance to water.



Granny Gaines on her eighty-eighth birthday.

REPAIR! REMODEL!
Nothing Down - 60 Months To Pay
Complete Line Building Supplies
Cicero Smith
Lumber Co
238-2671 Bovina

First National Bank Presents—**COW POKES** By Ace Reid

Protect Valuables. Rent a SAFETY DEPOSIT BOX

First National Bank
of Bovina
--Member FDIC--
"Helping Make A Good Community Better"

GO SEE-UM
BIG WHITE SALE
AT-UM FORD DEALERS
FAST

F.D.A.A.

SPECIAL PRICES ON-UM WHITE MUSTANGS TOO!

FRIONA MOTORS
Grand & Highway 60 Friona, Texas

NOTICE
Schedule Of Dates And Places We Will Be To Register Motor Vehicles :

DATE	DAY	TIME	PLACE
3-10-65	Wed.	2-5 p.m.	RHEA Sherley-Anderson Elevator
3-11-65	Thur.	9-5	BOVINA Bovina City Hall
3-12-65	Friday	9-5	FRIONA Friona City Hall
3-19-65	Friday	9-5	FRIONA Friona City Hall
3-25-65	Thur.	2-5 p.m.	LAZBUDDIE Sherley-Anderson Elevator

★ ★ ★
NOTE: Please Bring Your Vehicle Titles And Last Year's License Receipt.
★ ★ ★
No Title Work, Please.

HUGH MOSELEY
Parmer County Tax Assessor-Collector

Bovina Hobby Shop
Jack Kesler - Sonny Roach

Attend Church This Sunday!

Bovina Wheat Growers
"We Serve To Serve Again"

BOVINA METHODIST CHURCH



Bovina Methodist Church

Sunday School - 9:45 a.m.
Morning Worship - 11:00 a.m.
M. Y. F. - 6:00 p.m.



Rev. Harold L. Morris

Evening Worship - 7:00 p.m.
Choir Practice -
Wednesday - 8 p.m.

Church Chuckles by CARTWRIGHT



"For just an hour or two a week couldn't I get a little more cooperation?"

This Week's DEVOTIONAL

A HEAVY STONE
Mark 15:43-46

The last act of the play was over. The sands in the hour glass had run out. Jesus was dead. It had been a wonderful dream while it lasted, but that was all over now. Everything He had talked about had sounded good, but obviously it was not realistic. His whole life had been vetoed. His body was in the tomb; a heavy stone had been rolled over the door; and that was that. Perhaps another leader would come along some other day and prove to be more powerful-- or at least more successful.

The disciples had fled for their lives and found hiding places. Would it be impossible to take up fishing again? Probably tax collecting was out. If only they could escape the un-Jewish Activities Committee which no doubt was even then looking for them. Jesus had let them down. No, they had let Him down. No, they did not know what to think. Have you ever been in a situation like that where the whole bottom of the world dropped out? Bitter disappointment... everything mixed up... no present... no future... a heavy stone?

Well, that's the way the cookie crumbles in this old world of ours. That's the way life is. And yet... that was the day before Easter!

Harold L. Morris
Pastor, Bovina
Methodist Church.

BIBLE QUIZ

...by Don Stone

The high scorer in March will win: MORE THAN CONQUERORS, by William Hendriksen (value \$3.50)

Mail your quiz to: Box 422, Bovina

1. The garden where Jesus prayed was called _____ meaning _____.
2. The idolatrous queen who tried to kill the prophet Elijah was _____, a native of _____.
3. The son of David who became the legitimate heir to the throne was _____, but two usurpers were _____ and _____.
4. The "beloved physician" was _____ who is so called in _____ chapter _____, verse _____.
5. The disciple who betrayed his Lord with a kiss was _____ who is distinguished as _____ meaning _____.

Only complete answers will be counted. In case of a tie, the winner will be determined by a drawing.

February winner: Harold Carpenter
Four tied with perfect scores: Sandie Johnson, Arlene McCallum, Jesse Walling.
One wrong: Sam Bradley, Muleshoe; Mrs. W. H. McKinney, Ft. Worth; Mrs. A. L. Nuttall, Bovina. Many other fine entries were received!

ST. ANN'S CATHOLIC CHURCH



St. Ann's Catholic Church - Bovina

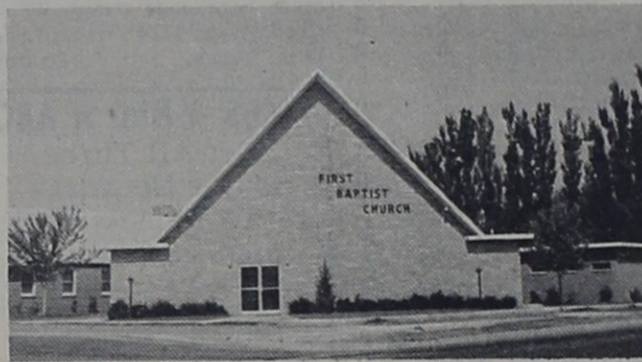
Masses: Sunday 8:30 & 10:30 a.m.
Weekdays 8:30 a.m. Daily Except
Tuesday 8 p.m.
First Friday 8 p.m.
Holy Days 10 a.m. & 6:30 p.m.



Fr. Claver Giblin S.A.

Confessions: Saturday 4-5 p.m.
7-8 p.m.
Before Masses
Baptisms: 3p.m. Sunday

FIRST BAPTIST CHURCH of BOVINA



First Baptist Church of Bovina

SUNDAY Sunday School - 9:45 a.m.
Morning Worship - 10:55 a.m.
Training Worship - 6:30 p.m.
Evening Worship - 7:30 p.m.



Rev. Ralph Aday

--WEDNESDAY--
Y. W. A. - 5 p.m.
Youth Choir - 7 p.m.
Mid-Week Prayer Meeting - 7:30 p.m.
Adult Choir - 8:30 p.m.

BOVINA PENTECOSTAL HOLINESS CHURCH



Bovina Pentecostal Holiness Church

Sunday School-- 10:00 a.m.
Morning Worship-- 11:00 a.m.
Lifetime Service -- 6:30 p.m.



Rev. Archie Cooper

Evening Worship -- 7:00 p.m.
Wednesday
Prayer Meeting -- 8:00 p.m.

OKLAHOMA LANE METHODIST CHURCH



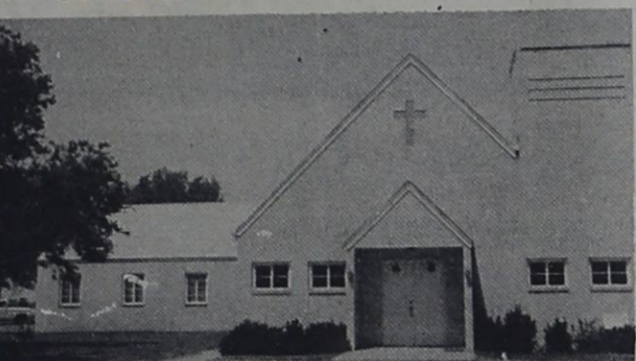
Oklahoma Lane Methodist Church

Sunday School - 10 a.m.
Morning Worship - 11 a.m.
Evening Worship - 7 p.m.



Rev. Douglas W. Gossett

ST. JOHN LUTHERAN CHURCH



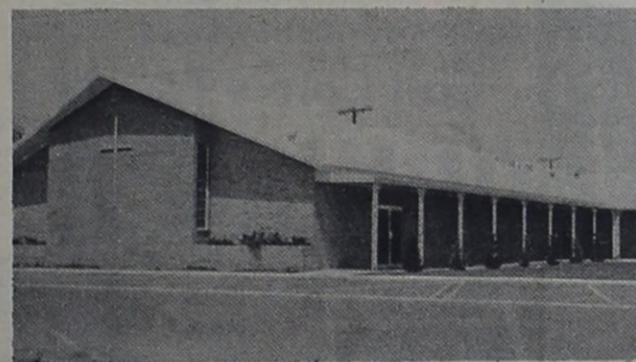
St. John Lutheran Church LARIAT, TEXAS

--LARIAT--
Sunday School - 9:30 a.m.
Morning Worship - 10:30 a.m.



H.F. Peiman, Pastor

BOVINA CHURCH of CHRIST



Bovina Church of Christ

SUNDAY BIBLE SCHOOL:
Morning Classes - 9:45
Evening Classes - 5:30



Don Stone

SUNDAY WORSHIP:
Morning - 10:45
Evening - 6:30
WEDNESDAY
Devotional and Classes - 8p.m.

OKLAHOMA LANE BAPTIST CHURCH



Oklahoma Lane Baptist Church

Sunday School - 10 a.m.
Morning Worship - 11 a.m.
Evening Worship - 7:30 p.m.



Ray Wood

CHURCH PAGE SPONSORS:

Bovina Gin Co. Don Sides, Mgr.	Kerby Welding Service A Deal The Year O	S and S Dry Goods - Downtown Bovina -	Mr. & Mrs. C. R. Elliott	Bovina Welding Shop & Blacksmithing - Hwy. 60 -
Mr. & Mrs. J.P. Macon	Bovina Implement Co. Your Massey-Ferguson Dealer	Wilson's Super Market - Gunn Bros. Stamps -	Barbee Cleaners The Most In Dry Cleaning	Mr. & Mrs. Ralph Aday
Mr. & Mrs. Tom Caldwell	Cicero Smith Lumber Co. In Bovina Since 1904	Sherley Grain Co. "Serving Farmer Co. Farmers The Year 'Round"	Oklahoma Lane Farm Supply & Gin	Mr. & Mrs. Buck Ellison
Gateway Produce Co. - Bovina -	Mr. & Mrs. Wilbur Charles	Dairy Freeze Mr & Mrs. Boyd Gilreath	Union Compress And Warehouse Co. -Bovina-	Mr. & Mrs. Harold Morris
Mr. & Mrs. Troy Fuller	Mr. & Mrs. Gene Ezell	Paul Jones Texaco Firestone Tires	Corn's Farm Store - Charles Corn -	Mr. & Mrs. Don Stone
C And S Chemical Third St. Bovina	Mr. & Mrs. O. H. Jones	Bonds Oil Co. Gulf Distributor	Gaines Hardware Co. "Nothing Knocks On Bovina But Opportunity"	A. L. Glasscock Real Estate
Warren Auto Supply Hwy. 60 - Bovina	Bovina Ser. Sta. & Gro. Clifford Leake	Bovina Glass & Paint Co. Hwy. 60 - Ed Dendy, Mgr.	Spudnut Shop The Odis Whites	First National Bank of Bovina Member FDIC -
Mr. & Mrs. J.D. Kirkpatrick	McCallum Real Estate Dean McCallum-Bank Bldg.	Charles Oil Co. Phillips 66 Tires, Batteries	Bovina Dry Goods Mr And Mrs. Edward Isaac	Hartzog Seed Farms Now Booking Texas 660

Courtesy For Mrs. Brumit Thursday.

Mrs. Jim Brumit was honored Thursday afternoon at Fellowship Hall of First Baptist Church with a lullaby shower. Hosting the courtesy were members of the Mary Martha Sunday School class.

white finger cakes were served by Mrs. James Clayton and Mrs. Dickie Steelman. The group played several games and a reading about a boy and one about a girl were given by Mrs. Ralph Aday and Mrs. Don Murphy.

Filles Lose--

(Continued from page 1) final game for the maroon and white.

Senior starters include the three forwards and guards Linda Estes and Tonya Ivy. Guard Kathy Minyen, a junior, will return to next season's team.

The Filles earned their way to the regional tournament by winning their district with a 7-1 record and edging Cotton Center, which was considered one of the strongest teams in the area, 51-48, in the bi-district game.

Table with columns: Name, fg, ft, tp. Rows include Samnorwood (50), Bentley, Breeding, K. Purkey, Stice, Martind, Colson, B. Purkey, Coleman, Tate, Kindrick, TOTALS, Bovina (31), Patterson, Strawn, Looney, Ivy, Estes, K. Minyen, Cumpton, Pruitt, Christian, Bowman, Vaughn, TOTALS, Samnorwood, Bovina.

WANT ADS

FOR SALE OR WILL TRADE equity for farm machinery -- Three bedroom home in Bovina. Less than two years old. See Big Nick Trienen at Machinery Supply, Bovina, phone 238-4861. 11-tfnc

FOR SALE -- '64 Ford Galaxie 500 2-dr., three-speed transmission, 390 engine, overdrive, Mac Glasscock, phone 238-3551. 32-tfnc

FOR ALL KINDS OF insurance and farm loans, see Jim Ware at Bovina Insurance in First National Bank Building or phone 238-4382. 33-tfnc

FOR SALE BY OWNER -- 160 A, irrigated farm, Cotton, maize and wheat allotments. Strong 8" well, underground tile, natural gas. Located between Hub and Bovina, half mile from pavement. Call or see D. H. Nelson, Box 604, Friona, Phone 247-3108. 27-tfnc

CARD OF THANKS We would like to express our thanks and appreciation to our many friends and neighbors for their many acts of kindness and sympathy shown to us during our bereavement over the passing of our father and grandfather, J. T. Rhodes of Duncan, Oklahoma. Mr. and Mrs. Burl Sims and family of Happy Mr. and Mrs. Thomas Rhodes and family Mr. and Mrs. Tom Rhodes Mr. and Mrs. Aubrey Rhodes and Tim of Friona

GERT'S a gay girl -- ready for a whirl after cleaning carpets with Blue Lustre. Rent electric shampooer \$1 Super Sawevay. 34-tfnc

"You Can Learn to Sing" -- Take lessons from a qualified college graduate with a Major in Voice! Contact 238-4891-1 if no answer call 238-6581 and ask for Jack Boggs... 34-tfnc

FOR Sale -- 1958 Simca 4-dr. Motor's in top condition. \$150. See Terry Barker at Wilson's Super Market. 34-tfnc

Repossessed 1964 model Singer made sewing machine, equipped to zig-zags, fancy stitches, etc. 5 payments at \$6.81 or \$30.00 cash. Write Credit Manager, 1114 19th Street, Lubbock, Texas. 24-tfnc

A-1 Plumbing All Kinds Of Plumbing - New Installations and Repairs JERRY AND OWEN BURNETT 404 Ave. C Ph. 238-6501

Late Model Repossessed Singer Sewing Machine in walnut console. Will zig-zag, blind hem, fancy stitches, Etc. 5 payments at \$6.72. Will discount for cash. Must have good credit. Write Credit Mgr. 1114 19th St. Lubbock, Texas. 36-tfnc

CBS * NBC * ABC Get All Three Major Networks To Perfection: Get On Cable TV Now! *Low Tie -- On Fee As Low As \$12. Down *Low Monthly Rates Clearview Company Of Bovina Phone Bovina 238-3592 Or Friona 247-3271

Machinery For Sale New 66-Inch Shredders each \$275 9 Ft. Industrial Blade With 3-Point Hook-Up \$175 Thomas C. Hartwell Machinery Supply Hwy. 60 -- Bovina See Tom For Your Best Deals

QUIETLY AND EFFICIENTLY BUILDING THE BEST UNDERGROUND IRRIGATION SYSTEMS Over The Years Under The Same Ownership and Management STANDARD CONCRETE PIPE COMPANY CHECK carefully the quality of the product you contract to purchase There Is A MATERIAL DIFFERENCE In Product And Installations! Bovina Ph. 238-6911 Friona Ph. 247-28888

Whittlin'--

(Continued from page 1) members are having with showing lambs, it's high time prejudice against eating lamb was wiped out here.

It's a shame to produce some of the best meat in the world right here and then have to ship it to some place where people appreciate it and will eat it. To encourage more local eating of lamb, we'll be happy to furnish the publicity for a good mutton recipe if some kind, lamb-loving reader will provide the recipe.

We honestly hope that this offer won't get the beef cattle people unhappy with us. We're not, Cowboys, with our limited circulation paper, going to influence enough people, if any, to eat lamb to cause a decline in the price of beef. Please be assured of that.

Mrs. Robert Thane and her daughter, Mrs. Willie Lee Medford and son all of Stamford, spent several days last week visiting in the Clifford Leake home. Mrs. Thane is the twin sister of Mrs. Leake. While here they all attend the regional tournament in Canyon. Mrs. Thane teaches school at Paint Creek, whose girls team was also playing in the tourney.

CARD OF THANKS We take this means of publicly expressing our deep gratitude to the many dear friends who came with acts of kindness and beautiful floral offerings, to express their sympathy for us in our sorrow and bereavement in the death of our beloved mother, Orpha Jane Parker. The Parker Family

PIONEER Sorghum High yields--Top standability and uniformity for easy harvesting JIM HEMKE Phone 389-2336 Pleasant Hill

REAL ESTATE LOANS... with old line reliable companies. Free appraisal. Best terms. Absolutely no service charge to the borrower. McCallum Real Estate, Bank Building, Phone 238-2081. 13-tfnc

Farwell Lodge No. 977 --BOVINA-- Slated Meetings Second Tuesday Of Each Month 7:30 p. m. PRACTIC SESSIONS Each Tuesday At 7:30 p. m. Art Mast, W. M. J.E. Sherrill, Jr., Secy.

FOR SALE -- 3500 acres in North Central Reagan County, level, all tillable, irrigation adjoining on two sides, adjoins pavement, \$45 per acre. Terms or trade. C. R. Elliott, Bovina. 34-tfnc

WILSON DRILLING --Muleshoe-- Cess Pools, Pier Holes, Construction Man Holes, Boat Pits, Test Holes, Sizes from 36" to 9' in width and up to 50' deep. Phone Muleshoe Day - 3-0962 Night - 3-1480 or 3-5910

CARD OF THANKS To all who were so kind and thoughtful during my stay in the hospital and my convalescing at home I wish to say "Thank You". I am deeply grateful to all who sent cards, flowers and food and for every expression of concern. May God bless each and every one of you. Mrs. P. O. Dixon

Electrical Installation And Repair Hot Water Heater Sales & Service BOVINA ELECTRIC Odis White - Ph. 238-3871

FOR SALE -- Young Duroc boar. Weighs about 250 pounds. Jim Hemke, phone Pleasant Hill 389-2336. 36-2tc

ANNOUNCEMENT - W. M. Dean, M.D., And B. E. Sanderlin, M. D., Wish To Announce The Association Of HERBERT M. HINCKLEY, M.D., Formerly Of Littlefield, In The Practice Of Medicine And Surgery At The Green Memorial Hospital - Muleshoe -



Stop Weeds And Grass In Cotton All Summer Long With Treflan Treflan-The Weather Proof Weed Control For Application Of Treflan On Your Cotton Land. Call Corn's Today! CORN'S Farm Store Highway 86 And Third Street Bovina Phone 238-3181

SAVE 10% with GULF WARRENGAS



Save up to 10% OR MORE... on tractor fuel and upkeep costs REDUCE TOTAL TRACTOR COSTS. Save money with Gulf-Warregas fuel over diesel, the so-called economy fuel--and over gasoline, too. Consider all costs. SLASH REPAIR AND UPKEEP COSTS. Cut these costs about one-third with Gulf-Warregas, compared with gasoline engines. Save more than \$100 a year for 1000 hours of use with a 4-plow tractor. FEWER OIL AND FILTER CHANGES. You go three times as long as diesels and one and one half times as long as gasoline engines between changes. Spark plugs last longer--no foul-up due to fuel residues. Gulf-Warregas is the LP-Gas member of the Gulf family of quality petroleum products. OUR PROMISE! You'll have better living and better farming with Gulf-Warregas. BONDS OIL CO. Hwy. 60 - Ph. 238-2271

BEE GEE IT'S ECONOMICAL BESIDES ITS USEFULNESS CAN'T BE DENIED

PHILGAS

CHARLES Oil Co. 238-4321

WINTER'S HERE! Get Your New National Battery Today! HYDRALIC HOSE REPAIR SERVICE No. 41 IRRIGATION DRIVESHAFTS \$37.50 BOVINA AUTO PARTS, INC. Sonny Spurllin, Owner - Manager Highway 60 Ph. 238-3701

GUARANTEED TO GO thru ice, mud, or snow or WE pay the tow PLUS Guaranteed Against Road Hazards in all 50 States and Canada Firestone Town & Country TIRES Now Only 15.95 PAUL JONES TEXACO SERVICE STATION Highway 60 -BOVINA- Ph. 238-4331

On sale now through April 30th! Big travel bargain for cities along Santa Fe It's Chico Bargain Fare time again on the Santa Fe--through April 30, 1965. For example, a regular round-trip ticket costing \$100 will be sold at the off-season bargain fare of \$80. Round trips costing \$75 now will be only \$60, and similar reductions will apply for round-trip tickets from all stations except for local trips within the State of California. No matter where you travel on Santa Fe trains, round-trip bargain fares will save you approximately 20%. Tickets on sale every day with a return limit of 30 days. Yes, bargain fares apply for both round-trip coach and first-class tickets. Now you can leave the car at home and save money traveling by Santa Fe. See the Santa Fe Agent in your home town for complete information

PER POUND

Grand Champion Steer In Friona Livestock Show Brings 75 Cents



GRAND CHAMPION BARROW - Bobby Gleason of the Lazbuddie FFA presented this grand champion which brought 70 cents a pound. It weighed 199 pounds and was purchased by Foster Fertilizer.



CHAMPION SOUTHDOWN - Jerry Roach of the Bovina FFA showed this sheep for a trophy. The animal weighed 92 pounds and brought 95 cents a pound. It was bought by the Oklahoma Lane Gin.

A 951-pound steer shown by Mike Riehmayer of the Friona FFA was chosen grand champion at the Parmer County Junior Livestock Show Saturday. It sold for 75 cents per pound to the Friona Wheat Growers Association.

Eugene Bowman of the Bovina FFA showed a Hereford steer to take reserve champion honors. His steer, weighing 1,066 pounds, sold for 50 cents per pound to the Sherley Grain Co. of Bovina.

The grand champion pig, a Poland China shown by Bobby Gleason of the Lazbuddie FFA, weighed 199 pounds and sold

for 70 cents per pound to Foster Fertilizer of Lazbuddie. The reserve champion swine, a Hampshire shown by Theresa Seaton of the Lazbuddie 4-H Club, weighed 209 pounds and sold for 75 cents per pound to Cummings Farm Store of Friona.

In the lamb division, the grand champion of the fine wool class weighed 110 pounds and brought 75 cents per pound. It was exhibited by Terry Parham of the Lazbuddie FFA and bought by Foster Fertilizer of Lazbuddie.

Royce Barnes of the Lazbuddie FFA, showed the grand champion medium wool lamb weighing 112 pounds which sold

for 80 cents per pound to the SIB Gin of Lazbuddie.

Jerry Roach of the Bovina FFA received 95 cents per pound for his 92-pound grand champion Southdown lamb. Oklahoma Lanes community was the purchaser.

The floor on the hogs was bought at \$17.50 per hundred-weight by the Clovis N.M. Hog Co. The sheep floor was bought at \$21.50 per hundred-weight by Edwin Cain of Clovis, and the calf floor was purchased at \$22.00 per hundred-weight by Piggly Wiggly at Lubbock.

The show was held Friday and Saturday with steer judging and the stock sale taking place Saturday.

THE HIGH PLAINS FARM AND HOME

On The Farm In Parmer County

By JOE VAN ZANDT
County Agent

The Irrigation and Water Conservation Workshop held a couple of weeks ago at Hub was very interesting and informative. There were 50 farmers in attendance but there should have been 500.

The reason I say 500 is that this meeting was planned to bring everyone up-to-date on the latest in irrigation and water conservation, which I believe it did.

Tom McFarland, manager of the High Plains Water Conservation District, told us that the results of the recent survey on water table decline in Parmer County showed we had an average decline of 4 feet this past year. This compares to the past average decline of 3.13 feet per year.

Tom also said that the average total decline over the county from 1960 to 1965 was about 17.16 feet.

I mention the above statistics just to emphasize the fact that our water table is getting lower and that we, I mean here everyone, must do our best to use all of our available water wisely.

Most of Parmer County has plenty of water and we had rather not think about this abundant water supply being depleted but it is! This water is our lifeblood here.

I challenge every farm operator and land owner to see that you get a maximum net return from the water available to your farm. This available water would include rainfall, irrigation well water, lake water and tail water.

This maximum net return may very well not come from maximum production per acre. We have all got to work together to get this maximum net return on our crops.

FARM SAFETY
Each farmer is responsible for his own safety and that of his family. There are no safety consultants on farms as in industry and business. Therefore, it's up to each farmer to see that the basic rules of safety are observed on the farm he oversees.

The American Medical Association reports that the human factor is largely responsible in 9 out of 10 accidents. These human factors include mental attitude or mood, fatigue, working while sleepy or taking medicine, or a failure to pay strict attention to the job being performed.

The taking of brief breaks during the day will help prevent fatigue and help keep alertness high. Anger, emotional upsets, being "down in the dumps," grief, worry, tension and perhaps other disturbances can set the stage for accidents in farming as well as in other professions.

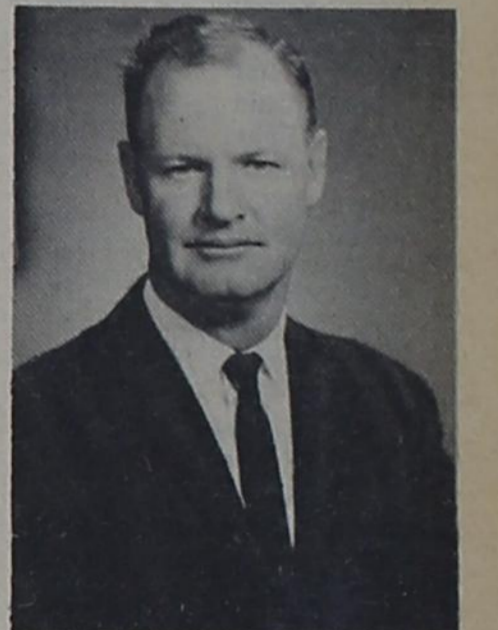
It is the wise farmer who avoids taking unnecessary chances or uses short cuts such as not shutting off power before working on a machine. Also the avoidance of extreme hunger by taking midmorning or midafternoon snacks during busy times to help prevent a let-down, and to keep work at top efficiency.

Be prepared for the un-

New Employee At Halfway

The High Plains Research Foundation at Halfway, has added Dean Howard as assistant agronomist to its staff in the Soils and Water Department. Howard will be an assistant to Jim Valliant, water engineer for the Foundation.

Howard, who is a native of the Plainview and Hale County area, has been farming in the Finney Switch area since 1957. Dean received his B. S. in agriculture from Abilene Christian



DEAN HOWARD

College in 1954, and in December of 1954, Howard entered the U. S. Army, where he spent a two year hitch of active duty.

After discharge from the service, Howard returned to the Plainview area, where he started farming. In 1962, Dean was the runner-up for the Area Young Farmer's Award, sponsored by the Plainview Young Farmers.

In speaking of the new addition to the staff, Dr. Earl H. Collister, Director of the Foundation said "Dean's experience as a local farmer and his college background will make him a very valuable member of our staff. The Department of Water here at the Foundation is the most important single department that we have and we are looking forward to Dean's assistance in finding some better ways to save water."

Dean, his wife Loma Faye, and their three boys live on their farm in the Finney Switch Community.

RITWAY JANITOR SERVICE
Clovis, N. Mex.
Carpet shampooing. Free estimate. Cleaning is our only business - not a sideline. Phone 763-6361.

LIVESTOCK SHOW RESULTS :

STEERS				
NAME	WEIGHT	SCHOOL	PLACING	SALE
Mike Riehmayer	951	Friona	Grand Champ	75¢ Friona Wheat
Eugene Bowman	1066	Bovina	Res. Gd. Champ	50¢ Sherley Grain
Cary Lyles	771	Friona	1 - 4-H	35¢ Porter & Sons Oliver
Ricky Hurst	805	Friona	1 FFA	40¢ T. G. McFarland
Ricky Hurst	695	Friona	2 FFA	35¢ Friona State Bank
Bobby Redwine	949	Lazbuddie	2 FFA	40¢ Sib Gin
Don Hoover	825	Friona	2 - 4-H	35¢ Parmer Co. Pump
Gene Weatherly	994	Friona	2 FFA	30¢ Friona Consumers
Jerry Cooper	686	Bovina	3 FFA	30¢ Okla. Lane Imp.
Dwayne Gable	818	Friona	3 FFA	30¢ Ranchers & Farmers
Jim Bob Jones	931	Friona	3 FFA	45¢ Fleming Gin
David Sides	994	Friona	3 - 4-H	55¢ Parmer Co. Impl.
Jerry Cooper	679	Bovina	4 FFA	35¢ Security State Bank
Mike Smith	860	Friona	4 FFA	30¢ West Hub Gin
Gary Phipps	923	Friona	4 - 4-H	30¢ Herring Impl.
Rex Wells	1082	Friona	4 FFA	34¢ Black Grain Co.
Jay Potts	708	Friona	5 FFA	35¢ Herring Impl.
Mike Fred	845	Lazbuddie	5 - 4-H	40¢ Farmer Union Coop
Bob Carrothers	916	Friona	5 FFA	42¢ Friona Seed yard
Gary Phipps	999	Friona	5 - 4-H	31¢ Friona State Bank
James Gable	761	Friona	6 FFA	Carl McCaslin
James Weatherly	868	Friona	6 - 4-H	30¢ Herring Impl.
Tommy Jarecki	951	Friona	6 FFA	32¢ Parmer Co. Coop
Rex Wells	977	Friona	6 FFA	29¢ W. Friona Grain
James Sides	912	Friona	7 FFA	36¢ Fleming & Son

Commercial Steers
Happy Jennings
Randy Ellis
Dennis Fallwell,

Lazbuddie FFA
Friona FFA
Friona FFA
2 pens & Grand Champ
2 pens
1 pen

SWINE				
NAME	WEIGHT	SCHOOL	PLACING	SALE
Bobby Gleason	199	Lazbuddie FFA	Grand Champ.	70¢ Foster Fertilizer F.
Theresa Seaton	209	Lazbuddie 4-H	Res. Gd. Champ.	75¢ Cummings F.
Mike Riehmayer	175	Friona 4-H	Champion	45¢ Friona State Bank F.
Ronnie Melton	184	Lazbuddie FFA	Champion	40¢ Foster Fert. F.
John Claborn	221	Friona FFA	Champion	41¢ Sib Gin - F.
Jill Riehmayer	184	Friona 4-H	Res. Champ	40¢ Flemings & Son F.
Loy Dale Clark	206	Lazbuddie 4-H	Res. Champ	70¢ Awrey - F.
Bobby Gleason	199	Lazbuddie FFA	Res. Champ	50¢ Sib Gin. F.
Galen Hromas	204	Bovina FFA	Res. Champ	35¢ Sherley Anderson Laz.
Linda Gleason	178	Lazbuddie FFA	Res. Champ	40¢ Bovina Blade
John Claborn	228	Friona FFA	Res. Champ	40¢ Sib. Gin.
Eddie Wood	209	Friona FFA	1st	35¢ Hurst's
Larry Eubanks	179	Friona FFA	1st	50¢ Fleming & Son
Loy Dale Clark	184	Lazbuddie 4-H	2d	35¢ McBride Gin
Kay Riehmayer	179	Friona 4-H	2d	35¢ Lazbuddie Farmers Union
Mike Grissom	194	Bovina FFA	2d	40¢ Parmer Co. Imp.
Ronnie Melton	209	Lazbuddie FFA	2d	55¢ 1st Natl. (Grissom)
Charlotte Seaton	206	Lazbuddie FFA	2d	30¢ Sib Gin
Mike Holt	209	Lazbuddie FFA	2d	60¢ Carl McCaslin
Theresa Seaton	204	Lazbuddie 4-H	2d	35¢ Sib Gin
Ronald Mayfield	223	Lazbuddie 4-H	2d	50¢ Herring Imp.
Linda Gleason	213	Lazbuddie FFA	2d	35¢ Farwell Abstract
Larry Mitchell	201	Lazbuddie 4-H	2d	35¢ Farm Bureau
Jill Riehmayer	175	Friona 4-H	3d	55¢ 1st Nat. Bov.
John Baker	194	Friona FFA	3d	45¢ Reeves
Kenny Ford	175	Friona FFA	3d	60¢ Rockwell Bros.
Alan Dale Carson	209	Bovina FFA	3d	35¢ Black Grain
Kay Riehmayer	184	Friona 4-H	3d	50¢ Cicero Smith Lumber Co.
Larry Cox	223	Lazbuddie 4-H	3d	55¢ Earls Cafe
Pamela Hawkins	194	Friona 4-H	3d	40¢ Sib Gin
Ronald Mayfield	228	Lazbuddie 4-H	3d	35¢ Maurer Mach.
Ronnie Altman	179	Friona 4-H	3d	30¢ Sec. State Farwell
Charles Bishop	204	Friona FFA	3d	40¢ Charlie Short
				45¢ Chester Fleming

(Continued on page 2)

Keynote speakers for a family life education conference at Texas A&M University, March 8-12, will be Dr. John G. Chantny, program leader for the family and society program at the Merrill-Palmer Institute, Detroit, Michigan, and Edward V. Pope, specialist in human development and human relations with the Federal Extension Service, Washington, D.C. Other speakers will include Dr. Fred Crawford, research chief with the Office of Mental Health Planning, Austin; Texas A&M sociologists and counseling and guidance representatives, and A&M Extension staff members. Patsy Reynolds, Extension family life education specialist and program coordinator, has announced that 45 key county home demonstration agents have pre-registered for the workshop.

The latest household cottons with stain and water repellent finishes are mattress pads and pillow covers. Both zippered mattress covers and fitted pads are available with the protective finishes, and the treated pillow covers also come in zippered covers, says Lynn Parks, A&M Extension consumer education specialist.

FOOTSAVING EDUCATION



by James E. Edwards

No Extension On Safety Inspection Deadline

There will be no extension of the Motor Vehicle Safety Inspection deadline of April 15, 1965, announced Captain Alan Johnson of the Motor Vehicle Inspection Service, Texas Department of Public Safety, for this area.

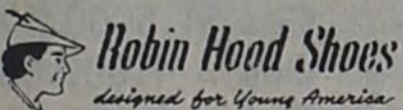
"Only two million of the five and a quarter million registered vehicles in Texas have been inspected. This leaves over three million vehicles to be inspected in about five weeks," said Captain Johnson. Many thousands of vehicle owners can expect to wait in long lines in order to get their vehicles inspected by the April 15 deadline.

It is almost apparent now that many vehicle owners have waited too long for the inspection stations to safety inspect their vehicles by April 15. "Any driver operating a vehicle registered in Texas that is required to be inspected, on public roads after April 15 without a valid 1965 inspection sticker will be operating in violation of the law," stated the Captain.

The DPS supervisor said, "The purpose of the motor vehicle inspection program is to discover any maladjustment which might become a link in a cycle of events leading to an accident, and by removing the link, prevent the accident."

How Dr. Scholl's Arch Supports Work

Help Restore Normal Foot Function. Dr. Scholl's Arch Supports provide strength and springiness for the foot which does not have these characteristics, and help restore its natural functions of weight-bearing, shock absorption and locomotion.



Orthopedic Shoes Fitted To Your Doctor's Prescription

Edwards' SHOE STORE
312 MAIN
CLOVIS, N. MEX.

Dr. William Beene
Optometrist

Phone 247-3061 13th. & Cleveland
Friona, Texas (South Of Hospital)

HARTZOG SEED FARMS

NOW BOOKING

Certified Texas 660 Hybrid Milo Seed

★ Triple-Treated

For ★ Wireworm ★ Smut ★ And Is Pre-Fertilized

★ Test Grown
★ Extremely High Germination

"Texas 660 Does More For More Farmers"

For Farm Delivery, See Paul Craig
Or Your Elevator Or Seed Dealer

--Certified Gregg and Austin Cotton Seed Also Available--

HARTZOG SEED FARMS

Phone Oklahoma Lane Area Code 806 --825-2711

If You Have
FARM MACHINERY
TO SELL
Call Big Nick
Trienen at
Machinery Supply
Highway 60 Bovina
Phone 238-4861

Drum Major

STYLE: 3942
SIZES: 8-18
FABRICS: Imported
Double Knit

THE FASHION SHOP

6th. and Main Clovis

When they build their real homes, we'll be here to help them with home loans. If you need a home loan now, talk it over with us today. We are home loan specialists.

MEMBER OF THE SAVINGS AND LOAN FOUNDATION
SPONSOR OF THIS ADVERTISEMENT IN LOOK MAGAZINE

First Federal Savings & Loan

HOME OFFICE
4th & FILE
CLOVIS, N.M.

BRANCH OFFICE
2nd & ABILENE
PORTALES, N.M.

(Continued from page 1)

Ricky Seaton	233	Lazbuddie 4-H	3d	304 Foster Fert.
Duane Proctor	204	Frlona FFA	4th	604 Frlona Plumbing
Ernestine Templar	197	Lazbuddie 4-H	4th	354 Sec. State Farwell
David Reeve	204	Frlona FFA	4th	504 West Frlona Grain
Mike Grissom	204	Bovina FFA	4th	654 Okla. Lane Gin
Ronnie Altman	211	Frlona FFA	4th	454 Frlona State Bank
Marsella Mayfield	204	Lazbuddie FFA	4th	454 Gifford Hill
Randy Milloy	223	Frlona FFA	4th	354 Cummings
Phillip Johnson	194	Frlona FFA	4th	354 Farm Bureau
Pamela Hawkins	175	Frlona 4-H	4th	404 Parmer Co. Imp.
Eddie Carthel	213	Lazbuddie 4-H	4th	354 Frlona Consumers
Larry Mitchell	184	Bovina 4-H	5th	504 Bovina Gin
Raymond Drager	201	Bovina FFA	5th	354 Farm Bureau
R. B. Riley	204	Bovina FFA	5th	554 Charles Oil Co.
Mike Fallwell	194	Lazbuddie FFA	5th	454 White's Elev.
Charlotte Seaton	208	Frlona FFA	5th	404 White's Elev.
Mike Garth	194	Lazbuddie FFA	5th	304 Sib Gin
Ronnie Altman	194	Frlona FFA	5th	604 Fleming & Son
Walter Carlton	233	Frlona FFA	6th	404 Ben Franklin
Kenneth White	204	Frlona FFA	6th	354 Mauer Mach.
Ronald Mayfield	223	Laz. 4-H	6th	454 White's Elev.
Delbert Lorenz	182	Bovina FFA	7th	304 Sib Gin
Larry Cox	213	Lazbuddie 4-H	7th	454 Trimble Barber Shop
Scotty Rundell	184	Bovina FFA	8th	454 White's Elev.
Nick Collier	233	Frlona 4-H	8th	454 Leon Grissom
				604 C. B. Potts

SHEEP

NAME	WEIGHT	SCHOOL	PLACING	SALE
Terry Parham	110	Lazbuddie FFA	Fine Wool Champ	754 Foster Fertilizer
Royce Barnes	112	Lazbuddie FFA	Med Wool Champ	804 Sib Gin
Jerry Roach	92	Bovina FFA	S'DN Champ	954 Okla Lane Gin
Terry Parham	107	Lazbuddie FFA	2d F. Wool	504 Security State Bank
Sammy Harlan	87	Lazbuddie FFA	3d F. Wool	304 Sib Gin
Terry Parham	116	Lazbuddie FFA	4th F. W.	354 Security State Bank
Billy Jones	90	Lazbuddie FFA	5th F. W.	354 Farwell Abstract
Albert Fuller	110	Lazbuddie FFA	6th F. W.	354 Foster Fertilizer
David Nelson	91	Lazbuddie FFA	7th F. W.	404 Sib Gin
John Mitchell	109	Lazbuddie FFA	8th M. W.	654 Leon Grissom
Alan Dale Carson	97	Bovina FFA	4th M. W.	404 Sib Gin
Royce Barnes	118	Lazbuddie FFA	5th M. W.	604 First Natnl Bank
Jerry Roach	91	Bovina FFA	6th M. W.	504 Frlona Bank
Lane Guber	113	Bovina FFA	7th M. W.	654 Parmer Co. Pump
John Mitchell	107	Lazbuddie FFA	8th M. W.	604 Trimble Barber
Troy Steinback	104	Lazbuddie 4-H	9th M. W.	404 Gifford Hill Western
Timmy Foster	81	Lazbuddie FFA	10th M. W.	604 Sib Gin
Howard Rhodes	90	Frlona FFA	11th M. W.	704 Sib Gin
Howard Rhodes	87	Frlona FFA	12th M. W.	654 Charlie Short
Billy Marshall	87	Bovina FFA	2d S'DWN	554 Frlona Consumers
Richard Carson	89	Bovina FFA	3d S'DWN	704 Bovina Impl.
Daryl Kirkpatrick	84	Bovina FFA	4th S'DWN	554 Frlona Bank
Jerry Roach	91	Bovina FFA	5th S'DWN	754 Herring Impl.
Timmy Foster	75	Lazbuddie FFA	6th S'DWN	604 Bovina Dry Goods
Billy Marshall	84	Bovina FFA	7th S'DWN	854 Lazbuddie Domino Club
Garry Beauchamp	85	Bovina FFA	8th S'DWN	554 Bovina Gin
Lynn Murphy	88	Bovina FFA	9th S'DWN	504 Frlona State Bank
Kregg Wilson	117	Bovina FFA	10th S'DWN	804 Bovina Wheat Gr.
Don Ready	83	Frlona FFA	11th S'DWN	704 First Natnl Bank, Bov.
				454 Reeve Chevrolet

On The Farm--

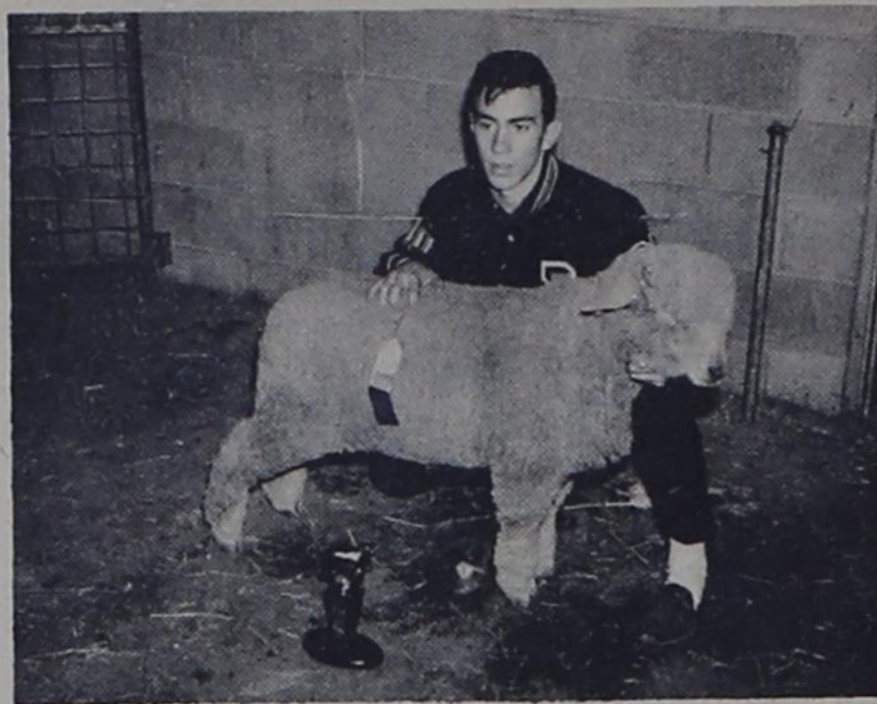
(Continued from page 1)

is good preparedness. Knowledge of first aid is especially important in times of emergency. Disasters often mean injuries and sickness without emergency help being available. An increased knowledge of first aid plans plus a first aid kit could mean the difference in the survival of a family member or friend in a disaster.

Shelter is another item in a disaster program. Living in the nuclear age requires shelter protection from radioactive fallout. And too, shelters for use in case of natural disasters, like tornadoes, could save many lives.

We suggest that these essential facts be considered when plans are being made to protect your family in time of disaster.

shamrocks to keep destructive pests -- such as golden nematodes -- from spreading. If there's the slightest chance of infestation, the shamrocks are fumigated before going to their destination. So, buyers can display or wear their shamrocks with pride as they join in "the wearin' 'o the green" this St. Patrick's Day.



FINE WOOL CHAMP - Terry Parkham of Lazbuddie FFA showed this champion. The sheep weighed 110 pounds and brought 75 cents per pound. It was purchased by Foster Fertilizer.



CHAMPION MEDIUM WOOL - Royce Barnes of the Lazbuddie FFA Club showed this champ. It was purchased by Sib Gin for 80 cents a pound.

COURTHOUSE NEWS

March 1 thru 6, 1965

ML Aff. - M.H. Dye - Horton Homes & H. Hollis Horton - W 400 ft. of 6,96 a in Sect. 31 T1N R4E.

ML - Finis Kimbrough - Brown Supply Co. - W/2 Sect. 23 D8&K.

DT - Lowell I. St. Clair et al - Federal Land Bank S/2 Sect. 23 T4S R4E

DT - Howard L. Ellison - Federal Land Bank - S/2 Sect. 38 Synd "B"

WD - Lowell I. St. Clair - Bill Jim St. Clair Trust - S/2 Sect 23 T5S R4E

DT - Doyle Eubanks - Federal Land Bank - NW/4 Sect 67 Johnson "Y"

WD - J.T. Eubanks - Doyle Eubanks - NW/4 Sect 67 Johnson "Y"

ML Aff. - Dadco Overhead Door, Inc. - Billy G. Hutto - W 50 feet Lot 1 & E 35 ft. Lot 2 Blk 87 O.T. Bovina

WD - Theodoric C. Linthicum - Harry Ray Jesko - W/2 Garden Lot 27 Sect 31 T9S R1E

DT - Ralph O. Wenner - John Hancock Mutual - SE/4 Sect 18 T5S R4E

DT - J.W. Harris et al - Glen Lesly - Lots 1,2,7 & 8 Sect 28 T9S R1E

WD - Glen Lesly - J.W. Harris et al - Lots 1,2,7 & 8 Sect. 28 T9S R1E.

WD - J.W. Harris - W.O. Chadwick, Jr. - Lots 1,2,7 & 8 T9S R1E

DT - W.O. Chadwick, Jr. - Prudential Ins. Co. - Lots 1,2,7 & 8 T9S R1E

WD - I.T. Graves - Joe B. Douglas - 1.43 a of SW corner NW/4 Sect 18 & 65.0 a of S. part of NW/4 Sect 18 T4S R4E

WD - Joe B. Douglas - I.T. Graves - Lot 7 & S/2 Lot 8 Blk 19 O.T. Frlona

WD - W.L. Venable - Robert Estes - Lots 4 & 5 & SE 15 ft. Lot 3 Blk 33 O.T. Bovina

ML Aff. - Gifford-Hill-West-

ern - Travis Dyer - S/2 Sect 24 Synd "A"

DT - W.P. Newman - Travelers Ins. Co. - W/2 Sect 26; NE/4 Sect 27 D8&K

WD - Dean Hinkson - W.P. Newman - E/2 Sect 27 & W/2 Sect 26 D&K

WD - Dean Hinkson - Keith Hinkson - W 178 a of E/2 Sect. 27 D&K.

DT - Dean Hinkson - W.W. Newman - SE/4 Sect 27 D&K

WD - Geo. McKinney - Bovina Independent School District - Blks 50 & 51 Bovina

Abst. Judg. - Underwood Oil Distributors - J.D. Mitchell et al - S.R.

DT - Loucile Foster - Federal Land Bank - E/2 Sect 19 T5S R4E

DT - Thomas Lewellen - Prudential Ins. Co. - 351 a in Sects 24 & 25 Cap Leagues Nos. 464 & 469

DT - Leon Smith, Sr. - Federal Land Bank - W 20 a S/2 Sect 1 T11S R3E

DT - Leon Smith, Sr. - Federal Land Bank - E 200 a of S/2 Sect 1 T11 S R3E

WD - Oral Kunselman, Jr. - Wilbur Charles - NW/2 Lot 1 Blk 47 O.T. Bovina

WD - Wilbur Charles - Oral Kunselman, Jr. - SW 80 ft. Lot 1 Blk 91 O.T. Bovina

DT - Don A. Reeves - First Federal Savings & Loan 16,48 a of NW part of NE/4 Sect 1 T3S R3E

WD - Danny Mac Bainum et ux - Balmun Butane Co. - E 46 ft. Lot 16; W 29 ft. Lot 17 Blk 1 Lakeside Frlona

DT - Bainum Butane Co. - First Federal Savings & Loan - E 46 ft. Lot 16; W 29 ft. Lot 17 Blk 1 Lakeside Frlona

DT - Ross Ayers et ux - Conn. Mutual Life Ins. Co. - Sect 28 T5S R4E

26 Girls Participate In The 4-H County Food Show

Katie Blackstone, Ann Blackstone and Carolyn Herington took top honors in the Parmer County 4-H Food Show Saturday, March 6, at Hub Community Center.

Katie, will compete at Canyon, Ann and Carolyn, juniors, will go to district and show their products and compete for District Honors. Katie and Ann are daughters of Mr. and Mrs. Harvey Blackstone of the Lazbuddie community. Carolyn is the daughter of Mr. and Mrs. L.C. Herington of Farwell.

Marilyn Fred of the Lazbuddie Club will be alternate for Ann Blackstone. Both exhibits were in Fruit and Vegetable group.

Jan Jamison of Frlona will be alternate for Carolyn Herington, both in the Bread and Cereal group exhibits. Exhibits were displayed in four Food groups. The two top winners in each group were: Polly Dollar, Farwell and Joyce White, Farwell-Milk Group.

Beverly Roberts, Farwell, and Charlotte Davis, Lazbuddie-Meat Group. Ann Blackstone, and Marilyn Fred, Lazbuddie-Fruit & Vegetable Group.

Carolyn Herington, Farwell; and Jan Jamison of Frlona-Bread & Cereal Group. Others competing in the Food Show were: In the Bread & Cereal Group-Deborah Harding, Farwell; Kathy Shook, Bovina; Linda Hart, Farwell; Kirtie Warren, Farwell; La Shawn Sheets, Farwell; Delayne Stein-

ington, both in the Bread and Cereal group exhibits.

In the Milk Group were: Lynn White, Farwell, Vickie Gamble, Bovina; Patti Mills, Bovina; Tina McCollough, Farwell; Joyce White, Farwell, and Polly Dollar, Farwell.

In the Fruit & Vegetable Group were: Carol Morgan, Frlona; Carleen Schlenker, Frlona; Gail Dixon, Bovina; and Caroline Anderson, Farwell.

In the Meat Group were: Kathy Coker, Lazbuddie; Charlotte Davis, Lazbuddie; and Beverly Roberts, Farwell.

Leaders of Food Groups assisting with the Food Show were: Mesdames: T.A. Mills, Bovina; Leon Billingsley, Oklahoma Lane; L.C. Herington, Farwell; Hershel Harding, Farwell; Carl Schlenker, Frlona; and Freeman Davis, Lazbuddie.

The Food Show, according to Mrs. Cricket B. Taylor, County Extension Agent, was one of the best to be held in the County, in spite of many activities that conflicted with the showing date. More than 70 girls and boys received training in food projects this year, under the leadership of adult 4-H leaders.



At Home In Parmer County

By CRICKET B. TAYLOR County HD Agent

With spring just around the corner, shopping for spring clothes and fabrics is taking up some time of many homemakers. How good a shopper are you? We might test ourselves with a few shopping guide lines.

LABEL PROVIDES IMPORTANT CARE INFORMATION

A wise shopper will read the label for clues in finding easy-care garments. A good label will give the name of the manufacturer, the fiber content and finish of the fabric, and laundry or cleaning instructions. The label should indicate how much ironing the garment will need, and the colorfastness and shrinkage resistance. If the garment doesn't have such a label, buying it is a gamble.

Lets take shrinkage for instance. The label should give this information and if not, you may be in for trouble. Company's that do not give this information will not stand behind their products, therefore a wise shopper will look for information on care as well as fiber content of products.

If the garment is a synthetic or a blend, more than half the fiber content should be a wash-and-wear type. If the garment is cotton, look for a name brand finish.

Even a lightweight fabric should be sturdy -- a sleazy fabric just won't stay looking nice. Examine seams and construction points before buying. The seams shouldn't pucker -- they should be flat-felled or finished to prevent fraying. Buttonholes should be free of loose threads.

MILK IS IMPORTANT - In everyone's diets. Food costs are high, but it is never economy to cut down or cut out nutrients needed daily. One never outgrows their need for milk. Children need 3 glasses or more of milk daily and adults need at least two glasses to supply their calcium needs.

Often women are heard to say, "I don't drink milk, I get enough calcium in foods I eat."

By the third month, it had dropped another 51 cents. Lower prices for meat and some vegetables were responsible for most of the differences, the survey showed. Meat which accounts for one-third of the family's weekly food bill, was the item most frequently on sale.

Among the meats on sale during the survey, chuck roast was first followed by frying chickens, ground beef and luncheon meats. Also listed were vegetables, dairy products, fats and oils, fruit and vegetable juices, fresh and canned fruits, coffee and soft drinks. These items can add up to a well-balanced diet, the specialist says.

Do they really? Lets take a look. The recommended daily calcium need is 800 mgm. of calcium is needed for:

1. Normal blood clotting
2. Regular heartbeat
3. Building and maintaining the bone & teeth.

DRINK: One glass of milk to supply 298 mgm. of calcium.

EAT all of these to supply 298 mgm. of calcium. 1 cup (canned corn) 1 cup asparagus (green) 1 cup green peas 1 lb. potatoes (3 med. baked) 1 cup (6 1/2 oz.) tuna 1 cup cabbage (raw, shredded) 4 1/2 slices enriched bread

PLAN YOUR SAVINGS WITHOUT REDUCING FOOD VALUE. Foods from the milk group generally are the largest single item in the food budget if sufficient amounts are bought.

Homemakers can realize a saving by using fresh whole milk for drinking and evaporated and dry skimmed milk for cooking. Dry skim milk is convenient to use because it needs no refrigeration. It costs less than one-third as much as whole milk and is, of course, higher in calcium and protein because of the absence of fat.

With the present milk prices, a family of two adults and two children using 22 quarts of milk a week could save approximately \$1.83 a week by this allotment of milk. The reduction could be even greater if the milk drunk is one-half fresh and one-half dry.

Add this savings to the total savings realized by wise shopping -- and watch it grow.

Read Labels To Prolong Fabric Life

Piece-good departments are a maze of colors, designs and textures that tempt the home sewer into starting her spring and summer wardrobe, says Lynn Parks, Texas A&M Extension consumer education specialist.

With the endless array of fabrics on the market today, it is often difficult for the home seamstress to know what she's buying by looking and feeling. Too often, the color, texture and pattern to be used influence and selection of the fabric -- yet the home sewer also should take into consideration how the finished garment is to be cared for, the specialist says.

Information concerning the care of the fabric usually is tucked deep into the bolt of material, where buyers do not always see it. And, of course, this information stays at the store.

A lot of time and work goes into making an outfit. To keep it looking chic, the garment must have proper care. So read the labels to know the characteristics of the fabrics being bought. Label-reading is just as important when selecting fabrics for home sewing as it is when choosing ready-made apparel.

After reading the fabric labels, write down special instructions for future reference, the specialist recommends.

IRRIGATION ENGINE SALE

Rebuilt & Guaranteed

- 1 - 820" Continental Nat. Gas \$1,500.00
- 1 - 602" Continental Nat. Gas 1,000.00
- 1 - 501" Continental Nat. Gas 800.00
- 1 - T427" Continental Nat. Gas 500.00

All New Continental Engines 25% Discount From Factory List Prices

NEW ENGINES IN STOCK

- 425" Oldsmobile Less Carburetor \$650.00
- 413" Chrysler Less Carburetor 679.00
- HT 413-201 H.D. Chrysler Less Carburetor 925.00

- * TURNKEY IRRIGATION PLANTS
- * DRILLING CASING
- * PUMPS
- * UNDERGROUND PIPE
- * SPRINKLER SYSTEMS
- * WAGNER SPRINKLER PIPE MOVERS
- * GATED PIPE
- * FLOW LINES

SNEED SUPPLY

Phone 3-4260 Mulshoe, Texas

Boyd's Radiator Shop

Located Behind BOYD'S BRAKE & ALIGNMENT SHOP

221 West Grand Ave. - Phone 763-4326-Clovis, New Mexico

All Latest and New Equipment

LARGE TANKS-We Can Handle The Largest Radiators.

CAR-TRUCK-TRACTOR-CATS HEAVY EQUIPMENT

All Radiators Are Checked On a Flo-Check Machine When Completed To Double Check For Leaks and Water Flow.

RADIATOR CLEANING AND REPAIRING GUARANTEED

RADIATOR CORES When We Don't Have Them In Stock We Can Get Them In 5 Or 6 Hours.

New & Reconditioned Radiators

G. H. McConnell With 8 yrs. Experience In Light and Heavy Radiator Work Will Be In Charge Of Our Department

Weekend 'Special' Can Cut Food Costs

Use weekend specials as a guide to cutting food costs, says Mrs. Gwen Clyatt, Texas A&M Extension consumer marketing specialist.

Prices do fluctuate, and shoppers who take advantage of these slight changes can come out ahead.

A recent study by the Economic Research Service of the USDA showed that the average weekly food bill for a family of four -- which included two teenagers -- was \$32.11 over a three-month period. During this time, the food bill varied from month to month. For the first month, the market basket averaged \$33.04 a week, and one month later the cost of the identical food was \$1.13 less.

By the third month, it had dropped another 51 cents.

Lower prices for meat and some vegetables were responsible for most of the differences, the survey showed. Meat which accounts for one-third of the family's weekly food bill, was the item most frequently on sale.

Among the meats on sale during the survey, chuck roast was first followed by frying chickens, ground beef and luncheon meats. Also listed were vegetables, dairy products, fats and oils, fruit and vegetable juices, fresh and canned fruits, coffee and soft drinks. These items can add up to a well-balanced diet, the specialist says.

INSURANCE
SAVE MONEY ON ALL OF IT AT **RAYMOND EULER AGENCY**
715 Main, Frlona Ph. 247-2230

Sooner Craft, Glastron, Crestliner, Traveler, New And Used Boats Home Of Evinrude Boats And Motors Sales And Service **CLOVIS BOAT AND MOTOR** 2106 Prince Ph. 762-2641

GUTS!

The big story behind the big new CASE 930 ROW CROP

Head the new Case 930 Row Crop Comfort King down the furrow... sock six big bottoms down deep... pour it on... and man, you know you've got something going for you! Call it power. Call it lugging ability. Call it guts. Whatever the name, it all begins with a massive 6-cylinder tractor engine. Big bore, long stroke, moderate speed, huge 401 cubic inch displacement. Result: exceptionally high torque. Extra muscle to do bigger jobs faster and more profitably. The 930 not only peaks higher than competitive tractors but maintains higher torque over a broader range of rpm's. Out in the field, Case high-torque power means handling bigger implements, bigger hitches. Less time wasted down-shifting. There's a lot more to the 930 story. Such as Dual-Range 8-speed transmission with 6 job-matched speeds in the heavy tillage range. Rear-mounted, 48-gallon fuel tank. Hydraulic steering. Draftomatic implement control and a whole line-up of wonderful comfort features that make you a more productive man. You've read the big story behind the big Case 930 Row Crop. Next step? Stop at your Case dealer. Make him prove it! J. I. Case Co., Racine, Wisconsin.

CASE SEE YOUR CASE DEALER FOR QUALITY GOLD SEAL USED EQUIPMENT **OKLA. LANE FARM SUPPLY** Pho. Tharp 225-4386

Farm Record-Keeping Good Chore For Kids

A farm management specialist with the Texas Agricultural Extension Service here says teenagers often make the best bookkeepers on a farm or ranch.

The specialist, James Murphrey, says many farmers prefer to work on production problems rather than records, so he suggests they get their wives, teenage children or bookkeeping services to keep their farm records.

"Teenage children are often overlooked for this job," Murphrey said, "yet they can do a top job and the experience will be valuable no matter what they do as adults."

Farm and ranch children learn to handle machinery and livestock and take responsibility for important chores, but Murphrey believes few are ever given the job of keeping farm records.

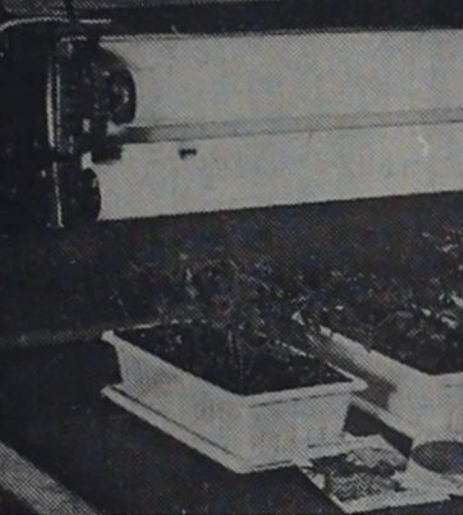
He said the experience would enable teenagers to understand the economics of modern agricultural production, thus helping them decide whether they wanted to be farmers or ranchers when they are adults.

The farm management specialist believes it is almost impossible to have a successful farm or ranch without good records. He said a farmer's wife told him that her time spent on record-keeping was worth \$10 per hour to their farm income. The increased income came from wiser buying and selling, tax savings and better management.

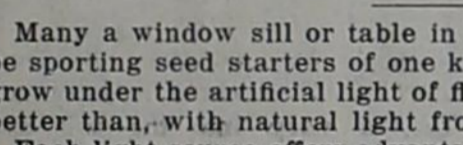
"Teenagers can do just as well," Murphrey said. "They are good at arithmetic and often learn to be better bookkeepers than their parents."

Murphrey learned to have faith in teenagers when he served as a vocational agricultural teacher. He holds a masters degree in agricultural economics and is a widely respected farm management specialist in the Panhandle.

TIPS FOR STARTING SEEDS INDOORS



Zinnia, marigold and tomato seeds sprout readily when starters are set on a sunny window sill. Day temperature should be 65 degrees; night temperature 55 to 60 degrees.



Seeds of the same plants also may be started under artificial light from one or more fluorescent tubes. This allows use of basement or otherwise unlighted areas in the home.

Many a window sill or table in home, school and office soon will be sporting seed starters of one kind or another. For seedlings will grow under the artificial light of fluorescent lamps as well as, if not better than, with natural light from the sun.

Each light source offers advantages but each also requires special knowledge. Thus, if you are starting seeds on a window sill, be sure it is one that receives maximum sun.

Set the seed starters as close to the glass as possible but, if a cold night threatens, slip a piece of cardboard between planter and window to keep the cold radiated by the glass from freezing the seedlings.

Under conditions of natural light, the seedlings will sprout and grow best if the day temperature is 65 degrees, dropping to 55 to 60 degrees at night.

When starting seeds under artificial light the lights may be placed within a few inches of the planters at first, but must be moved further away as seedlings grow. Remember that seedlings need more light than the mature house plants you may have been growing under fluorescents.

Although plants will tolerate higher temperatures when under fluorescent lights than they will under natural light, the differences are not great. 60 to 65 degrees at night and up to 75 degrees during the daytime are the limits above which plant growth deteriorates.

Whichever method you use to start seeds, there are three factors which remain the same: water plants only when growing medium becomes dry on top, use a nutrient solution to fertilize plants growing in a sterile medium such as vermiculite or milled sphagnum moss, and be certain that you do not start the seeds too early.

If you do not know the proper time for setting young plants in the garden in your area, find out. Then figure backwards from that date 8 to 10 weeks (depending on the rate of growth of the kind of plant involved). Start the seeds at the time indicated so they will be the right size for transplanting when frost-free time arrives.

ABSTRACTS See JOHNSON ABSTRACT COMPANY In Farwell Fast, Accurate Ph. 481-3878 Box 84

As seen in MADEMOISELLE



- A. Weskit 10.00, blouse 9.00, pleated skirt 11.00
 - B. Blazer 11.00, shell 6.00, skirt 8.00
 - C. Blouse 6.00, shorts 6.00
 - D. Chelsea jumper 20.00
 - E. Suit 23.00
- Not shown: Slim pants 9.00
Sizes 6 to 16

Mayfair of Kansas City
"MAVERICK" dacron/cotton "Acceptables" ... yours in beautiful Iced Aqua!
Lucille's
"ACRES OF FREE PARKING"
Hilltop Plaza
Clovis, N. Mex.

COTTON TALKS

FROM PLAINS COTTON GROWERS, INC.

NEW AGRICULTURAL WEATHER SERVICES

New services to help area farmers cut weather-induced losses and conduct more effective operations in general will be featured by the specialized agricultural weather service in 1965 and future years, according to Oliver Newton, Agricultural Advisory Meteorologist at the South Plains Research and Extension Center.

Beginning March 15, daily reports on soil temperatures at both eight inch and four inch depths will be released as an aid to farmers in their choice of a planting date for the various crops. To assure that these soil temperatures are accurate and not affected by varied ground conditions, Newton reports that each thermometer, or soil thermometer, has been placed under bare, cultivated land. And to give a better coverage of the High Plains area, thermographs are located at Seminole, Morton, Hereford, Silverton, Lubbock and at Locketville, near Ropesville.

For future years, Newton plans to collect historical data on soil temperatures, and from this data to extract a formula for predicting soil temperatures. This can be done, he says, by the evaluation of other weather factors and their relationship to soil temperatures, and will enable farmers to plan for planting ahead of time.

IRRIGATION EFFICIENCY FORECASTS PLANNED

Also beginning March 15, the agricultural weather service will put out five-day sprinkler irrigation efficiency forecasts in conjunction with their regular five-day weather predictions which are issued three times a week. These forecasts will evaluate the percentage of water leaving sprinkler nozzles which will actually enter the soil under predicted weather conditions. As an example, Newton pointed out that with 15 per cent relative humidity and 20 to 25 mile per hour wind some 30 to 35 per cent of irrigation water evaporates. "For this reason," he said, "a nine-hour setting during early morning or late evening hours when there is little or no wind may be equal to only a six hour setting at noon or other times when humidity is lower or higher." He pointed out that making use of this kind of information is particularly important to producers of cotton during the early bloom stage when sufficient water for the plant greatly affects staple length, and went on to say that this sort of thing could well account for the wide variations in staples from a single field which are sometimes experienced.

30 DAY WEATHER FORECAST

Newton's weather forecast for the month of March was reminiscent of the words from a song popular not long ago: "He only builds me up to let me down." The forecast begins by saying precipitation for the area would average above normal for the period, but later defines "normal" as less than one inch of rainfall. More specifically, the forecast says: "The prediction of above normal rainfall for this March only indicates that total rainfall for the month may range up to around one inch," -- certainly not enough to do much about the low soil moisture level prevalent over the High Plains.

The special weather service to agricultural was initiated on the High Plains in May of last year after long-time efforts by Plains Cotton Growers and other interested farm organizations to secure it for the area. Since that time interpretive weather information tailored to the needs of agriculture has been transmitted to area newspapers, radio and television stations by means of a teletypewriter circuit. Forty-six receiving sets for the service are now in operation.

COOPERATION WITH RESEARCH EFFORTS NOTED

A bonus value from Newton's work in weather as it relates to agriculture is his close contact and cooperation with agricultural research being done at the South Plains Research and Extension Center. Certainly no production research project can be divorced from the effects of weather, and as more and more historical data is compiled on area weather conditions the value of Newton's work to research will be enhanced. By use of an electronic data logger capable of recording data from as many as 48 sensors, Newton is working now with Dr. J.D. Bilbro, U.S.D.A. Research Agronomist at SPREG, to determine the effects of individual weather factors on such things as plant growth, rate of blooming, boll set and the eventual fiber quality. This data logger, Dr. Bilbro explains, permits precise recording of temperatures, moisture levels etc. right down in the plant. Previously, only what he calls "gross" weather factors at ground level and above the plants were known. One of the purposes of such studies, Bilbro said, "is to demonstrate the variable effects of weather on different varieties and thus give plant breeders information of value to them in breeding up plants more suited to the area's climate."

Color Me Easter



Your thoughtfulness will be especially appreciated when you give a gift of hand-decorated eggs. Start by dyeing the eggs with a convenient egg dyeing kit.

The custom of coloring eggs goes back many years before Christianity. They were colored and exchanged as tokens of good will during the spring festivals.

Today gaily colored eggs are shared with family and friends as part of the Easter tradition. The eggs can be beautiful centerpieces and they make lovely gifts for a shut-in or that special friend.

Start with clean white eggs. Bring to a boil, then simmer gently for twenty minutes in water enough to cover. Immediately plunge into cold water. When cool drain and air dry. Handle eggs as little as possible since the oils in your skin make them more resistant to dyes.

Infinite variety in the trimming is the secret of a successful coloring session. The easiest way to color the eggs is to use an egg dyeing kit. One of the popular ones contains six certified food colors, an egg dipper, a wax pencil, decals, and western cutouts for the children.

The colored eggs can be beautifully decorated with inexpensive materials; glitter, sequins, ribbon, rick rack and imitation flowers are but a few of the things you can use. Best of all, keep a "treasure" box of odd earrings, beads, lace or anything at all that is dainty and pretty.

The makers of Rit Easter Egg Dyes assure us that eggs may be safely kept at room temperature for up to three days before eating. After they've served their decorative purpose, they should be refrigerated and then they may be kept up to ten days.

HIGHEST CASH PRICES PAID FOR Copper - Radiators - Brass - Lead Aluminum - Scrap Iron - Tubes Steel - Cast - Batteries



1010 W. 7th St. CLOVIS, N.M.

A&M To Host Family Life Education Workshop

Principal speakers for a family life education workshop at Texas A&M University, March 8-12, have been announced by Peter Reynolds, Extension family life education specialist and program coordinator.

Keynoters for the conference will be Dr. John C. Chantiny, program leader for the family and society program at the Merrill - Palmer Institute, Detroit, and Edward V. Pope, specialist in human development and human relations with the Federal Extension Service, Washington, D. C.

Texas Extension Director, John E. Hutchison will welcome conference participants on March 8, following registration the previous day. Mrs. Florence W. Low, Extension assistant director for home economics, will address the opening session on "Challenges of Family Life Education."

Speakers also will include

William P. Kuvlesky, A&M University sociologist; Mrs. Eloise T. Johnson, former Extension family life specialist and now a college instructor in that field; Austin Kerley, director of counseling and guidance at A&M; Dr. Dan Russell, long-time A&M sociologist who retired recently; Kennedy Upham, A&M sociologist; Mrs. Gladys Kolander, state Extension home demonstration agent at A&M; Claudia Williams, Extension program specialist; Dr. Fred Crawford, research chief with the Office of Mental Health Planning, Austin; and Miss Reynolds.

Richard E. Burselen, Extension reports and evaluation specialist, will assist participants with techniques for evaluating their county programs in family life education.

Forty-five key county home demonstration agents have pre-registered for the conference.

Cricket B. Taylor, Farmer Co. HD Agent, Mrs. Agnes Smith, Deaf Smith HD Agent,

and Mrs. Geraldine Mays, Hutchison Co. HD Agent will attend the workshop.

For Beautiful Evergreens, Provide Adequate Moisture

Regular watering of evergreen plants should be continued through the winter months if good leaf color and plant health is to be maintained, says Everett Janne, Extension landscape horticulturist at Texas A&M University.

Evergreen plants frequently suffer from lack of moisture during the winter season because of the natural tendency of people to stop watering every winter until the spring growing season begins.

Watering evergreens thoroughly every two or three

weeks is preferable to a light watering more frequently, says Janne.

Water with a soaker hose or sprinkler until the soil is soaked to a depth of 12-18 inches. Doing this manually is impractical because of the time required, says Janne.

After the roots remove the moisture from the soil, it is transported through the stems to the leaves, where it is lost to the atmosphere through transpiration. With their vast amount of leaf surface area, evergreens continue to lose large quantities of water vapor to the air during the winter. Severe leafburn will result if the soil moisture is not replaced by normal rainfall or supplemental irrigation, says Janne.

Light May Influence Marbling In Beef

The amount of light to which beef cattle are exposed prior to slaughter appears to have a significant influence on the degree of marbling in the carcass, says Dr. Jan C. Bonsma, visiting professor at Texas

A&M University. Dr. Bonsma, a famed animal scientist and head of the Department of Animal Science at the University of Pretoria, Republic of South Africa, came to this conclusion as the result

of experiments conducted with two-year old Hereford steers in his native country.

"I kept 14 animals in total darkness for a period of 2 1/2 months before slaughter," says Dr. Bonsma. "Fourteen other steers were kept under normal light conditions and another 14 were subjected to more light than they would normally receive."

The effects of the light were clearly visible when the cuts were graded by a meat specialist after slaughter.

"The meat from those steers kept in total darkness had a higher percentage of marbling than the meat from the others,"

The calves with highly marbled cuts were kept in barns most of the time. They were occasionally put in a small pen outside at night to exercise.

"There was no fly problem. The calves were calmer than under ordinary circumstances," Dr. Bonsma said.

The calves kept in darkness had much longer hair growth and had a lower gonadotropin content in the blood. The feed conversion ratio was about the same, said Dr. Bonsma.

Dr. Bonsma was brought to Texas A&M for one year by a Wortham Foundation grant.

USDA Recommends Plant Fewer Potatoes In '65

The U.S. Department of Agriculture has recommended that Texas growers plant about 3 per cent fewer early-summer potatoes than last year.

At the same time, USDA has suggested a 7 per cent reduction in the nation's acreage planted to late-summer and fall potatoes.

With normal growing conditions, potato acreages that follow these recommendations would provide 6 per cent more production than last year, according to the Consumer and Marketing Service of the USDA that establishes the voluntary acreage-marketing guides.

The reduced planting would mean a national acreage of 79,710 for early-summer potatoes and 904,390 acres for the

fall crop and 136,720 acres for the late-summer plantings.

These acreages would provide an estimated 257 million hundred-weight of potatoes or about 6 per cent more than last year's below average crop. This year's high potato prices points out the C&MS, are due to bad weather which cut yields in 1964 and resulted in smaller market supplies.

Potato guides for 1965, says County Agent Joe VanZandt, are designed to assist growers in crop planning. The 1965 acreage marketing guides recommend that growers plan this year's acreages carefully since, in the past, potato production has exceeded market demands.

MEDICAL CARE OR "MEDICARE" WHICH DO YOU WANT?

TEXAS has one of the nation's finest, most comprehensive programs of medical care for the aged. These programs—the Texas approach, we call it—include medical benefits to Old Age Assistance recipients and extensive health cost protection through the use of special insurance plans for the aged. The Texas legislature is also expected to implement a medical care plan for those who are not on Old Age Assistance but who do need help in meeting medical expenses.

Consider these facts:

- 229,000 needy aged, representing 30 per cent of Texas' entire aged population, now have a Blue Cross-Blue Shield health insurance policy paid for by the State.
- This State program provides hospital, medical, surgical, x-ray, and nursing home benefits.
- 72% of the aged in Texas now have one or more health insurance policies.
- Through the "Texas 65 Health Insurance Plan," Blue Cross' "Senior Texan Service," and other special programs offered to the aged by private companies, health insurance is available to all who want it at a reasonable cost.
- Studies by Belden Associates indicate that only a small percentage of the aged actually still need and want help in paying health costs (these aged would be covered by the program now being considered by the Texas Legislature).

In view of these facts, the national "medicare" tax proposal (the King-Anderson bill,

H.R. 1) is not needed. "Medicare" benefits are very limited, covering about one quarter (25%) of the total yearly health care costs of the average aged person. "Medicare" would not cover physicians' services or surgical charges, nor would it cover the cost of drugs outside of institutional care.

The "medicare" proposal is an extremely expensive one. While we all are starting to enjoy a reduction in federal income taxes as a result of action by Congress last year, the "medicare" program would cost an estimated \$1.7 billion dollars in additional taxes the first year. "Medicare" would increase payroll taxes to cover everyone over 65—even the wealthy. The employee who now pays a maximum tax of \$174 annually would find the amount for Social Security benefits and "medicare" increased to \$291 by 1971. Employers would pay a similar increase for each employee, thus resulting in higher prices for goods and services.

The Texas approach of providing medical, surgical and hospital care to those who need it is a more comprehensive, more economical program than "medicare," and it provides more benefits. If you object to paying higher payroll taxes for an undesirable, unneeded program, write your Congressman today. Ask him to oppose the "medicare" tax proposal, mentioning the programs for the aged now available in Texas. Ask him to support the Herlong-Curtis Elder Care Bill (H.R. 3727), which would make possible the broadening of the existing Texas program to provide medical, hospital and nursing home care for those few remaining aged who are still in need of help.

For further information, see your doctor or any member of the

TIERRA BLANCA MEDICAL SOCIETY

Friena, Texas

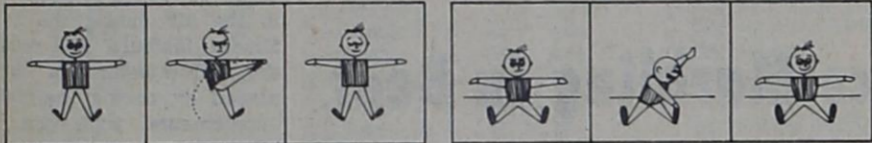
Regular Exercise Can Provide Both Physical and Mental Tonic, says AMA



Stretcher (4 to 10 times). Reach high, rise on toes. High-stepper (10 to 20 steps). Run in place, pump-bent, hands behind head, tuck chin and "curl" as stride forward as possible, aiming elbow to opposite toe in place, left knee off floor. Return and exercise opposite. Side Bender (6 to 15 times). Raise first one arm then the other straight over head.



Push-up (6 to 15 times). Men on hands and toes; women on hands and knees. Starting in raised position, with trunk and neck straight, lower trunk to two inches from floor and return. Curl (6 to 15 times). Starting on back with knees bent, hands behind head, tuck chin and "curl" as stride forward as possible, aiming elbow to opposite toe in place, left knee off floor. Return and exercise opposite. Stride Squat (6 to 15 times). Hands behind head, as stride forward with right leg. Keep left toe in place, left knee off floor. Return and exercise opposite.



Compressor (6 to 15 times). Lie spread-eagled on back. Roll onto hip and with leg and arm straight touch toe to opposite hand. Return and exercise opposite. Twister (6 to 15 times). Sit with legs and arms extended straight. Touch fingers to opposite toe. Return and exercise opposite.

ISOMETRIC EXERCISES —
The following exercises do not involve movement, but rather muscular contractions. One of their advantages is that many can be done at times and places where normal exercise would be impossible, such as in the office. Hold each contraction forcefully for six seconds. Repeating is not necessary.

There's more to physical fitness than mere muscles, but you can't be truly healthy and a bundle of flab at the same time.

To be physically fit you must be both medically fit and dynamically fit. The two don't necessarily go hand in hand, points out

Raymond L. White, M.D., director of Environmental Medicine and Medical Services for the American Medical Association.

"Medical fitness means body soundness. This can be determined only by a medical examination. Dynamic fitness or 'action capacity' is a measurement of strength, agility and endurance," he said.

"A person who shuns activity may get a 'clean bill of health' from his doctor but if he can't endure even slight exertion, he's hardly physically fit. On the other hand, neither is the athlete with a chronic or undetected health problem."

In a sense it seems silly to be

concerned about strength and endurance in a push-button age.

But the fact is, the human body was not designed for push buttons but for work, said Dr. White. "The absence of dynamic fitness through lack of physical exertion is a detriment to health. Furthermore, muscle tone, or lack of it, can be a factor in your whole outlook on life."

Strength and endurance, developed through regular exercise, leads to skill and agility and adds to poise and grace. Not only do daily tasks become easier, you also look better and so feel more at ease in social situations.

Even more evident, however, are the benefits to physical health, Dr. White pointed out.

Since exercise is a factor in weight control, it indirectly aids in preventing degenerative diseases, such as diabetes and arthritis, which are more prevalent in the obese.

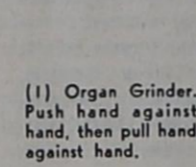
Evidence indicates that exercise also may help prevent heart and blood vessel diseases. Active people have fewer heart attacks and a better recovery rate when such attacks do occur.

The best exercise is enjoyable exercise. Activities such as hiking, swimming, skiing, tennis or gardening along with their physical benefits can provide relief from tension, thus serving as a safe, natural tranquilizer.

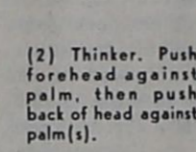
When there is no opportunity for taking exercise in such form, however, a daily walk and series of calisthenics can provide much the same tonic.

Above are a few examples of scientifically sound exercises, taken from the AMA pamphlet, "Physical Fitness." Used daily, they will help to increase muscular strength, body suppleness and motor reaction, and to improve circulation and other body functions.

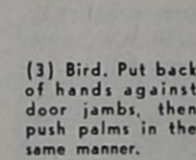
Start out slowly, Dr. White warned, and gradually work up to the point where you can do all of these exercises quickly without stopping.



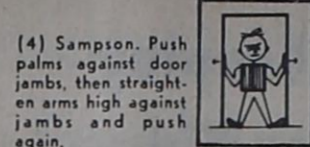
(1) Organ Grinder. Push hand against hand, then pull hand against hand.



(2) Thinker. Push forehead against palm, then push back of head against palm(s).



(3) Bird. Put back of hands against door jams, then push palms in the same manner.



(4) Sampson. Push palms against door jams, then straighten arms high against door jams and push again.



(5) Siesta. Sitting with back against one door jamb, push foot against other side, then push other foot in same manner.

Small boy studying civics: "What does the Chaplain of Congress do, Daddy?" Father: "Oh, he just gets up on a platform, looks at Congress, and prays for the country."

If You're Interested In Buying FARM MACHINERY Call Big Nick Trienen at Machinery Supply
Highway 60, Bovina
Phone 238-4861

The elderly man had been waiting for two hours to see the doctor. After another group of patients walked in and had to stand for lack of chairs, he stood up and said: "Well, I guess I'll go home and die a natural death!"

Complete Automotive Machine Shop SERVICE
Valve Work-A Speciality
Crankshaft Grinding
MOTOR LAB

311 W. 7th. rear Elliot Auto Parts Clovis

LARDY-CAMPBELL Quality Chekd DAIRY PRODUCTS

Farm And Ranch Loans
Long Term
Low Interest
ETHRIDGE-SPRING Agency, Friona
Phone 247-2766

GIBSON'S DISCOUNT CENTER
"WHERE YOU ALWAYS BUY THE BEST FOR LESS"

111 Park HEREFORD Em 4-2630

★ ★ ★ HEALTH AND BEAUTY AIDS ★ ★ ★	
Woodbury - Ret. \$1.00 HAND & BODY LOTION 3 for 97c	Norwich - 250 Ct. ASPIRIN Ret. 89c 27c
Lanolin Plus - Ret. \$4.00 CLEANSING CREAM \$1.17	Economy Size LYSOL SPRAY Ret. \$1.97 97c
20 Oz. LISTERINE Ret. \$1.29 77c	Mennen - Large 7 Oz. SKIN BRACER Ret. \$1.10 67c
13 Oz. - Ret. \$2.00 OJ's BEAUTY LOTION 57c	Get Set - 13 Oz. HAIR SPRAY Ret. \$2.00 67c
Toni Home PERMANENT Ret \$2.00 97c	PEPTO-BISMOL 1 Pint \$1.17
King Size VITALIS Ret. \$1.49 87c	KOTEX 48 Ct. 97c

Reynold's Economy Size Aluminum Foil 75 Feet x 12 Inches 63c	Regent's Foam Back 100% Nylon 9'x12' RUGS Ret. \$24.95 \$18.87	Lomas Heavy Duty Plastic Dish Pan Ret. \$1.98 88c	Lomas Multi-Purpose Utility Tub Ret. \$1.19 44c
---	--	--	--

JUST ARRIVED-REDWOOD FLOWER POTS-WITH BRASS RIMS

REG. RETAIL	GIBSON'S PRICE
\$5.95 - - - - - 15 INCH - - - - -	\$4.77
\$3.49 - - - - - 12 INCH - - - - -	\$2.67
\$2.98 - - - - - 10 INCH - - - - -	\$2.27
\$2.49 - - - - - 8 INCH - - - - -	\$1.83
STANDS WITH CASTERS AND DRAIN DISH	\$2.17

Gibson's 100% Vinyl Ret. \$5.95
GARDEN HOSE 3/4" Brass Coupling's 12 Year Guar **\$3.87**

Ram's - 7' - 1 1/2 H.P. - Fury
ELECTRIC POWER SAW Retail \$21.95 **\$15.88**

Algoma's
HAMMOCK & STAND Retail \$19.95 **\$11.97**

Prestige - Vinyl - Front Only
AUTO RUGS Retail \$6.95 **\$2.97**

Complete Stock - Just Arrived
Willsonite And Vision
SUN GLASSES
At Gibson's Discount Prices
Also Dust Goggles And Dust Respirators
J.F.D. Recommended For This Area

TV ANTENNA Retail \$14.95 **\$10.97**

Body Guard
SAFETY SEAT BELTS Retail \$3.95 **\$1.88**

So I told him, "Tom Edison, get those silly notions about electricity out of your head." Can you imagine that boy saying someday there'd be machines to wash, dry and iron clothes for just two or three pennies an hour?



SEE YOUR REDDY KILOWATT RECOMMENDED ELECTRIC APPLIANCE DEALER

HAVE YOU TRIED---
GIBSON'S DISCOUNT PHARMACY?