

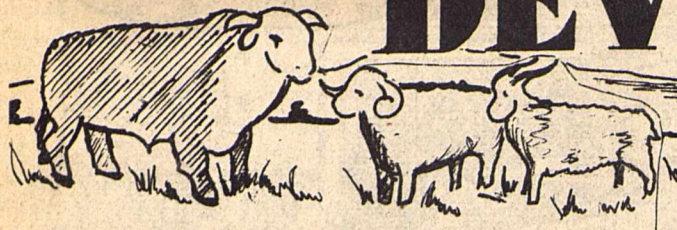
Buge Book Binding

514 W. 7th

Amarillo, TX 79101

DEVIL'S RIVER NEWS

30¢



Published in Sonora, Texas • Capitol of the Stockman's Paradise

(115-920)

January 15, 1987

Sonora, Texas 76950



Waiting, while the judge makes it during last weeks Angora Goat the way down the line, takes judging. The livestock show will many forms. This was the scene conclude this Saturday.

Rendition of opera termed superb

by Charlotte Gilmore

SUPERB! That is the only adjective I know which suitably describes in one word the performance of I PAGLIACCI which we Sonorans were privileged to see and hear Saturday evening.

Sitting in the lovely, intimate, new Sonora High School Auditorium, enjoying some of the best music and drama I have ever been privy to, I had one of my first impressions of Sonora reinforced. After our first visit to the city, before Scott was employed by Lillian M. Hudspeth Memorial Hospital, we were struck with the fact that this small town, out of the way as it may be, old as it may be, has so much creative energy and so much culture. Those of you who have lived here most of your lives may not realize how unique this is. How many towns of comparable size and particularly in the southwestern portion of Texas will host a real live opera this year?

How fortunate we are to have people who not only love great music and drama but who are concerned that our entire community have the opportunity to be exposed to it. This is one of the signs of a great community. I want to express my own appreciation to Sonora Community Arts and

Theater and to others who were responsible for bringing to Sonora the superb performance Saturday evening.

True, there were only 73 of us in attendance, which felt a little small, but this figure represents the small percent of the population as if the performance had been held in San Angelo with 1,500 people in attendance. Our attendance was good. I am only sorry that so many did not have the opportunity to sit there mesmerized like I was. We were entertained, thrilled, shocked by the magnificent voices which came from these rather ordinary looking people.

The setting was very simple and the costumes as well, but the music (both voices and piano accompaniment) and the acting were very out of the ordinary. I'm sure the good acoustics and the intimacy of the auditorium helped us to feel that we were the audience at the fair celebrating the Feast of the Assumption of Calabria, Italy, sometime in the 16th and 17th century as this traveling group of comedy actors performed on the city street. We, just like they, were caught up in the comedy and were, I am quite certain, just as touched and moved and caught off guard when the comedy suddenly turned

to real tragedy. I could hardly get out of my seat when it ended.

If the new auditorium had not previously been properly graced with the BEST of the theater world and with the BEST in music, it most assuredly has been after Saturday evening.

We will all have another opportunity to see I PAGLIACCI as this same cast of actors performs it again in San Angelo in March. I don't have the dates yet, but it is on the San Angelo Symphony Calendar and will be performed in the municipal auditorium. That performance will be exactly the same as the one we saw except that it will be backed by the symphony orchestra and full chorus. You can believe I will be there and encourage you to watch for news of the date.

I want to give Sonora Community Arts and Theater a pat on the back for moving up a rung on the success ladder. I understand that in 1985 they gave an outstanding performance of THE SOUND OF MUSIC. I saw their magnificent performance of THE KING AND I (equally as good as the one I saw in Dallas some years ago with Yul Brenner) in August of 1986 and now this. I salute you SCAT AND SONORA.

4-H Livestock show concludes Saturday

The Sutton County 4-H Livestock Show began last Friday with deadline of arrival and shearing.

Judging for the live lamb carcass began at 10 a.m. Saturday with Jerry Seifert and Fred Igo having the unenviable task of selecting the winners.

More than once throughout the judging of the various classes, the judges pointed out the high quality of stock being shown by our youth. (See results in First National Bank of Sonora's ad on page 3 of this issue.)

First National Bank sponsored the lamb carcass portion of the show, providing all trophies and prize money.

The Angora Goat Show started at 1:30 p.m. Saturday with Edwin Hipher judging the event.

Results of the Goat Show are as follows:

Class 20: Reg. Angora Buck Kids-1. David Ross, Ross; 2. David Ross, Espy; 3. Cody Schenkel, Wilson Ranch; 4. Mary Ross, Ross; 5. Cody Schenkel, Wilson Ranch; 6. Bonner Walsh, B. Walsh; 7. Bonner Walsh, B. Walsh; 8. Russell Chalk, Espy.

Class 21: Commercial Angora Buck Kids-1. Heather Bunkley,

T.A.E.S.; 2. Heather Bunkley, T.A.E.S.; 3. Farah Gee, F. Gee; 4. Russell Chalk, Luther Chalk.

Class 22: Reg. Angora Doe Kids-1. Cody Schenkel, Wilson Ranch; 2. Christopher Crowder, Schwiening; 3. David Ross, Espy; 4. Mary Ross, Ross; 5. Christopher Crowder, Schwiening; 6. David Ross, Ross; 7. Cody Schenkel, Wilson Ranch; 8. Bonner Walsh, B. Walsh; 9. Bonner Walsh, B. Walsh; 10. Richard Martinez, David Walsh; 11. Russell Chalk, Espy; 12. Russell Chalk, Espy.

Class 23: Reg. Angora Yearling Does-1. David Ross, Ross; 2. Cody Schenkel, Wilson Ranch; 3. Bonner Walsh, B. Walsh; 4. Russell Chalk, Preston Joy.

Class 24: Reg. Angora Aged Does-1. Cody Schenkel, Wilson Ranch.

Class 25: Commercial Angora Doe Kids-1. Bonner Walsh, Margaret Galbreath; 2. Lewis Baker, Chadwick; 3. Bonner Walsh, Margaret Galbreath; 4. Russell Chalk, Luther Chalk; 5. Ben Taylor, T.A.E.S.; 6. Wheelless Baker, Chadwick; 7. Lewis Baker, Chadwick; 8. Ben Taylor, T.A.E.S.; 9. T.J. Thorp, Tim Thorp; 10. Farah Gee, F. Gee; 11. Wheelless Baker, Finklea Bros.; 12. Farah Gee, F.

Gee; 13. Elsa Trevino, Reyes Trevino; 14. Casey Thorp, 15. T.J. Thorp, 16. Casey Thorp, 17. Rebecca Chalk, Chadwick; 18. Elsa Trevino, Reyes Trevino.

Class 26: Commercial Angora Yearling Does-1. Bonner Walsh, Margaret Galbreath; 2. Bonner Walsh, Margaret Galbreath; 3. Farah Gee, Field Ranch Co.; 4. Elsa Trevino, Reyes Trevino; 5. Elsa Trevino, Reyes Trevino.

Class 27: Commercial Angora Aged Does-1. Farah Gee, Field Ranch Co.; 2. Farah Gee, Fields Ranch Co.; 3. Farah Gee, Fields Ranch Co.

Champion Angora Doe: Bonner Walsh.

Reserve Champion Angora Doe: Bonner Walsh.

Angora Showmanship: 1. David Ross.

The show will conclude this weekend with the Market Lamb Show beginning at 2:30 p.m. on Friday.

Barbecue will be served beginning at 11:30 a.m. Saturday with the Auction beginning at 12 noon.

Awards presentation will begin at 1:30 p.m. Saturday.

The public is certainly invited to come out and show their support for this fine group of young people.

Sheepdog trials set for January 24

Sheepdog trials are nothing new as the first one was held in Bala, Wales over a hundred year ago. They began, much as any other sport, by the friendly banter which amounted to "my dog can beat your dog."

Sheep dogs are a breed of dogs developed in the border country of

England and Scotland and known as Border Collies. They come in various colors with a vast array of markings and the trainers agree on one point: "We don't care if they're purple as long as they will work."

When asked about the prize money, since people travel from such great distances to participate,

Dr. Patti Strauch, local organizer of the event, replied, "This can only be termed as a 'Poor Man's Sport.' These people compete primarily for the love of what they are doing."

The Third Annual Sheepdog Trials will be held on Saturday, [Con't. on pg. 6.]



This picture of a dog at work was taken during the Second Annual Sheepdog Trails held in Sonora last year.

Briefly

Medical dates in Sonora

Friday, January 16: Paul Breen, Chiropractor
Tuesday Afternoon, January 20: Dr. Jim Lummus, Podiatrist. Call 658-4020 for appointment.
Thursday Afternoon, Jan 22: Sheila Dickey, Optician
Wednesday, January 28, Mammograms done by van from St. John's, by appointment only.

Publicity Workshop

The Devil's River News will be conducting a Publicity Workshop on Monday, January 26 at 7 p.m. in the meeting room at Sutton County National Bank.

The Workshop will be conducted by Turk Teragliafera, publisher of the Del Rio News Herald and will be geared to accommodate the needs of all school, church and civic organizations.

We are conducting this workshop in an effort to help each organization by encouraging a steady flow of information within the community.

We cordially invite a representative of each organization and club to attend the workshop.

SS Representative

Edwin Draughon, representative for the San Angelo Social Security Office, has scheduled his January visit to Sonora. He will be at the County Courthouse on Thursday, January 22nd, between 9:00 a.m. and 10:30 a.m.

Anyone who wants to file a claim for benefits, get information, or transact other business with the Social Security Administration may contact him at this time.

Lodge date announced

The regular stated meeting of Dee Ora Lodge 715 will be held on January 15, 6:30 p.m. at the Lodge. Members will enjoy a meal of steak, beans and cole slaw before the meeting. All area Masons are invited to attend.

Merchants to meet

The Sonora Merchants Association will be meeting on Monday, January 19, 6:30 p.m. in the meeting room of First National Bank Annex.

This is to be a very important meeting and all members of the Association are urged to attend.

If you own or operate a business in Sonora and are not a member, we encourage and invite you to join us.

The Sonora Merchants Association is working toward one goal—a better community for each and every citizen of Sonora and Sutton County.

Smokeout information

Lou Faulks, area chairperson for the American Cancer Association, is interested in gathering some follow-up information regarding the Great American Smokeout held in November.

If you quit smoking for the day or if you quit smoking altogether please give Lou a call at 387-3269.

Story clarification

It has been brought to our attention that we need to make a clarification regarding the winners of the Big Buck Contest.

Terry Powell of Chapman won in the most points category.

The article merely stated that the deer was killed on the Shurley Ranch.

It has since been noted that it was the David D. Shurley Ranch and also that a crew from ESPN was on the ranch filming during hunting season.

Ward named FNB Director

Albert Ward, a local rancher, has been elected to the Board of Directors of Sonora's First National Bank and First Loan Co. In making

the announcement, Don Westlake, the bank's Executive Vice President, said that Ward was elected at the board's monthly meeting December 9, 1986.

"He will," Westlake said, "serve until the annual meeting, February 10, 1987. At that time, the stockholders of the Bank and the Loan Co. will elect directors for the ensuing year." Westlake noted that the other directors are: Joseph VanderStucken, Edwin Sawyer, Winnie L. McPherson, Wesley Sawyer, Armer Earwood, and J.W. Elliott, who serves as President.

Ward commented, "I am honored to be selected to join in the operation of Sonora's First National Bank. It will be, I think, an interesting and challenging experience."

He continued, "The First National Bank is an integral part of this community. It has, you know, served the financial needs of Sonora and Sutton County since the

beginning of this century, 1900. Moreover, the bank has always been an active participant in worthwhile activities, events and causes, locally. This comes from the really fine people that make up the First National Bank. I look forward to being a part of that tradition."

The bank's newest director is a life long resident of Sutton County. Ward graduated from Baylor University. In addition, he has taken Post Graduate studies at Baylor and Graduate work at Texas A&M University. He is married to the former Cynthia Hall. They have three grown children and three grandchildren.

Ward is a member of Sonora's First United Methodist Church, where he currently serves as Lay Leader. He also serves as a director of the Edwards Plateau Soil and Water Conservation District and of the Sutton County Appraisal District.



Notes from the Chamber

by Dede Doran

by Dede Doran

The Board of Directors of the Sonora Chamber of Commerce met Thursday, January 8, 1987 for their regular monthly meeting. The annual Chamber of Commerce Banquet will be held March 31, 1987 at the 4-H Center. Get your Hawaiian clothes together because this year the banquet will be a luau! Won't that be fun! The tickets will be \$10.00 for adults and \$5.00 for children age 12 and under. Now mark your calendar and get ready for a fun evening. George McKinney, noted humorist will be our speaker. If you don't know George, you should!! He is very often the after-dinner speaker at Chamber functions. You know how sleepy you can get after you eat, well, George will always keep you awake and laughing!! I know from experience. It will be well worth your money just to hear George. Be sure and plan to attend.

The Board also decided to make arrangements to have a Sutton County booth at Hunters Extravaganzas in Fort Worth, Houston, and San Antonio in 1987. Where are

those leases I asked for? Only a few have responded. After January 31, I will not have time to get you in for the Dallas Show! I feel sure you will also want your information taken to these other shows also. Let's have an even better and bigger season in 1987 than we had in 1986.

The Chamber is also going to help sponsor the Sheep Dog Trails to be held January 24 at the County Park. Please remember to go watch this event. It will be very interesting to see these dogs work sheep with only a little coaxing from their trainers. They are fine dogs and are amazing. There is no gate fee, so you can be entertained for free!

Patricia's Place Antiques was named January Business of the Month. Congratulations, Patricia!

Anyone want to set up a horseshoeing business, a horse training business, a sheep shearing or goat shearing service, a Blacksmith type operation, etc.? Jimmy Cahill has just the place for you. He also has a good deal to offer. Just give Jimmy a call and discuss this with him. He is always

willing to help Sonora.

There will be an auction on January 31 at 2:00 p.m. at the 4-H Center to benefit Ted Westover. You might remember that Mr. Westover is the San Angelo man who is dire need of a liver transplant. He must raise \$120,000 before they will do the transplant. If you are interested in donating any item to be auctioned off, please call Seldon Cummings at 387-3312 (night) or Jim Fish at 387-2418. Also, please go out to the 4-H Barn on January 31 and help with this benefit. I'm sure that anything they raise will be appreciated.

Remember these five Chamber businesses: Mustang Mobile Home Division, Patricia's Place Antiques, Perry Bros., Pizza Hut, and Rudy's Bakery. We do appreciate your membership in the Sonora Chamber of Commerce.

See you next week!

Letters to the Editor

Dear Editor,

I want the people of Sonora and your readers to know what an honest person named Zeke Duran lives in your area.

Last Tuesday while I was shopping in San Angelo I lost my billfold. I was very worried because my checkbook, drivers license, credit cards, pictures, and addresses were gone.

After I came home I was trying to decide first who all I had to notify when there was a knock on our door. My husband answered and an honest nice looking fellow stood there. He asked if this was the Etheredge residence and when Jack answered "yes" he said "I think I have your wife's billfold that I found in San Angelo."

It was returned with all contents. With the economy like it is I'm sure he could have used the money for something he wanted or needed. I have never lost my trust in people and he certainly proved that there are good honest people in our area.

Jack said when he saw him he knew he was an honest reliable person.

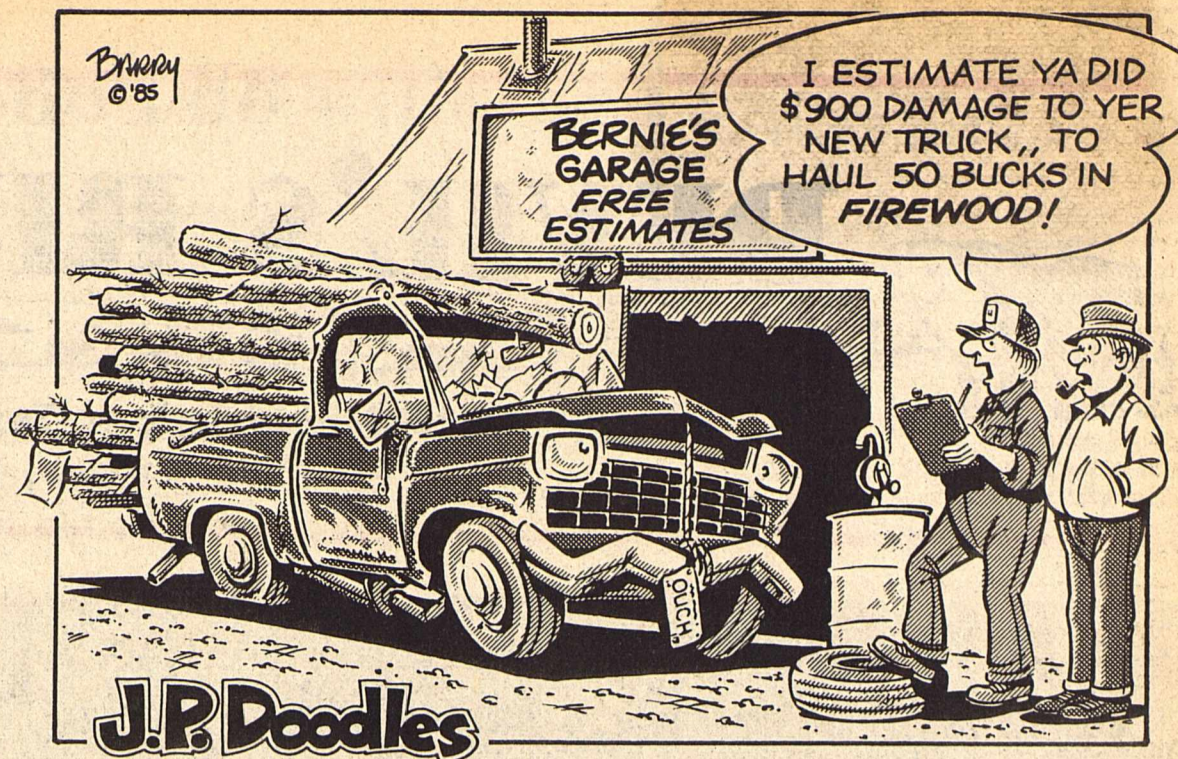
I hope he is doing good in all his endeavors and that the people in Sonora will be kind and good to him and if he ever needs help someone will let us know.

I feel sure God will bless him but I want him to know we appreciate him.

Thank you,
Jack and Lois Etheredge



The annual per capita consumption of soap in the United States is about forty pounds.



Mind searching

by T. Driskell

Licensing my first automobile for the year, I got a chuckle when I read the note about fixing the "chug" holes in Texas' roads, then I turned the license form over, picked my dental plate off the floor, and decided I did not want to fix so many "chug" holes nor did I want to pay for them all at once. An increase from \$13.95 to \$50.80 represents an increase in one year of 264%. The coup de grace was going by the appraisal office to pick up my hospital tax bill which they had been instructed to hold to save the County 22 cents. The bill made it obvious, from what I have been told, that some concepts are not trying to save the County money.

The human mind is a strange computer it tends to discard, in

time, the unpleasant or negative data, and emphasize the pleasant or ego boosting data. It would do well for us to examine our position. How did we get there? What was the basis of our logic? How should we alter our behavior to meet the situation? The answers should be sought, regardless of how unpleasant they might be. Economic survival is the name of the game, and it can be achieved at our present level only through economic diversification.

Historically, Sutton County has been on a cycle between agricultural economy and agricultural economy boosted by fossil fuel exploration. The recently passed "boom" was the largest, peaking in 1980 to 1981 with a steady decline since 1982. We seem to have

latched on to that peak as our level to sustain and have logically taken the appropriate steps-the school, and now hospital thinking is apparently in the same year.

Originally I believed that 1987 would be our worst year taxwise. That is still true, but superimposing the State deficit and National deficit it becomes impressive. Considering that the oil service companies, if their managers are functional, are moving even office chairs with wheels out of the County, can we maintain our level of expenditure?

We must examine our basic tenets; a reduction in our taxes is necessary if we are to have a diversified economy. Failing in that we will revert to an agricultural economy and a population of 2000 to 2500.

On the Lighter Side

by Elwood P. Suggins
from Snake Navel, Idaho

When I was growing up in the region known as West Texas it was hard to ever find a place to go fishing because of the fact that there is no water in this part of Texas. Now, there was an old man by the name of Bunyon who had a big stock tank just oozing with catfish and largemouth bass. We used to make it a nightly ritual to sneak onto old man Bunyon's place and try to rid him of some of these beautys. We nearly always had good luck but there was one time in particular that didn't turn out so well.

There was usually four or five of us who would wait until about 10:30 and grab our poles and a bucket of worms and stealthily sneak through the pasture, over a couple of hills and down to the water's edge. Old

man Bunyon was usually in bed by 9:00 sharp. His house was about thirty yards from the pond and he had an old coon dog that stood watch. Well, we knew that the old coon dog couldn't hold his eyes open past 10:00 so 10:30 was a good time to get started. By the time we arrived it was around 11:00.

Well this particular night we were having unusually good luck, having caught two 6 pounders and a couple of 4 and 5 pounders. The old moon was might near full and it cast some eerie shadows about. I remember that it was the night that Elwood P. Suggins was supposed to be home watching his little sister but when we came by to get him he just couldn't resist coming along so he sent his old dog into the house to watch his little sister. Now, Elwood was some kind of crazy. He had moved to West Texas in the winter because his dad couldn't find work back in Idaho. His dad was a professional potato picker and the potatoes just don't grow well aroun Snake Navel, Idaho in the winter, so he loaded up his family and brought them to West Texas to be professional Bitterweed pickers. I never knew how much money his dad made but he got a check from the government every two weeks so I figured he must be really important and even considered checking into that profession myself.

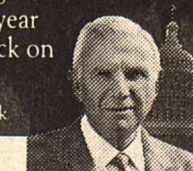
Well, back to the story. Now Elwood was a tall lanky fellow with red hair and freckles all over his face and one of his front teeth was missing but he weren't ugly but he weren't good looking either. Elwood had a way of catching these fish that mystified all of us. He never used no pole or nothin' he just jumped into the water and would struggle about until he would come up with a fish. This night we had caught those fish pretty soon after we had gotten there and Elwood hadn't even gotten out of his clothes. He never went in with clothes on cause his Ma would find out what he had been up to and

whip the tar out of him. Well, old Elwood commenced his chanting, he always chanted before going in 'cause he thought he was some kind of Injun and he danced about and chanted his fish chant. I never knew if this was why he got more fish than the rest of us or not but he really impressed us. He never got to loud but I couldn't figger how he remembered the words. It went something like this; yabba dabba yeeby yeeby yuck I like fishin' so bring me luck' and off he'd go into that cold water. When he hit that water he would let out a groan like a dyin' dog. We had all stopped fishin' and was watchin' ol' Elwood flounce around when all of a sudden he went under and come up real fast. He was a strainin' and cussin' and just raisin' all kinds of havoc out there in the water. "Help" "Help" he was a yellin' like a skalded dog. He was gettin' a mite loud so we decided we better shut him up, Ol' Jake McKinney throwed a rock and hit Ol' Elwood right up side the head and Elwood just kinda rolled over with his tongue hangin' out. I could see ol' Elwood needed some help so I jumped in after him and reached him in just a smidgin of time. Well I tugged and I pulled at him until I finally got him close to bank where the others could help me drag him out. We tugged and strained and when he was finally out of the water there was a catfish as big as old Elwood a hangin' onto his toes. His whole foot was lodged in that catfishes mouth. What with all the ruckus we was raisin' it was no surprise Ol' man Bunyon came a runnin' and we knew we was done for.

All these years we had a been sneekin' out there and ain't neverbeen caught and this here fish was the biggest ever brought out of this pond, and we had to get caught. Boy, I could see it now all five of us sittin' up ther in Sherriff Johnson's jailhouse. I started to run but with Ol' Elwood knocked in the head and tired from bringing him out I just couldn't move. Ol' man Bunyon come a runnin' with his break over "Greener" and I knew we was gonners. He run right up to us in his BVD's with the flap in the rear just a flyin'. "What are you boys doin' on my property?" Well, I knew we was caught and decided that the best thing to do was to confess. "We was fishin'," I told him, "Ain't no fish in that pond," was his reply. I told him all about the times we had snuck into his pasture and come fishin' and that we was sorry about it and wouldn't do it no more. Well, Ol' man Bunyon just said that all we had to do was ask him and we could go when ever we wanted. Well, I tell ya we hadn't been back since, just don't seem right for him to just let us go. He took all the fun out of it.

"The recent tax changes are the most sweeping in history. This year put H&R Block on your side."

— Henry Block



H&R Block's trained tax preparers understand the new tax laws. We'll answer your questions and find you the biggest refund you're entitled to. This year get back everything you've got coming.

H&R BLOCK
THE INCOME TAX PEOPLE
Shell Station

704 West Crockett
Open 9 A.M. - 4 P.M. Weekdays, 1 - 5 P.M. Phone 387-4092
MasterCard, Visa, and Discover accepted at most area locations.

THE PIZZERIA
- The Pizzeria is featuring Clam Chowder this Friday night, January 16 from 6 till 10pm.
Both New England (Boston) and Manhattan Style Chowders will be served.
Bring the children in for Pizza and Mom and Dad for Clam Chowder
For orders to go **387-5483** Call ahead for lunch or food to go
THE PIZZERIA
303 Crockett
Open 7 Days a Week

Devil's River News
USPS (155-920)
Published every Thursday at 220 N.E. Main Sonora, Texas 76950. Phone (915) 387-2507. Second class postage is paid at Sonora, Texas.
Any erroneous reflection upon the character of standing of any person or firm appearing in these columns will be gladly and promptly corrected upon calling the attention of the management to the article in question.
Ann Cates, Publisher/Editor
Carla Yager, Advertising Director
Noema Sanchez, Typesetter
Marl Sanchez, Bookkeeper
Attn. Postmaster: Send address changes to Devil's River News, 220 N.E. Main, Sonora, Texas 76950.

TA MEMBER 1986
TEXAS PRESS ASSOCIATION

Everyone is invited
SUTTON COUNTY LIVESTOCK SHOW
January 16 and 17
SCHEDULE OF ACTIVITIES
Thursday, January 15 7:00 PM Arrival Deadline for Lambs
Friday, January 16 2:00 PM Market Lamb Show
Saturday, January 17 11:30 AM Barbecue Lunch
12:00 PM Auction
1:30 PM Awards Presentation
Ad sponsored by
Sonora Wool & Mohair
210 SW College
387-2543
Food Center
600 Crockett
387-3438

Mohair Council to meet in San Angelo

Joe David Ross, President of the Mohair Council of America, announced that the Annual Membership Meeting of the Mohair Council will be held on January 29th. The meeting will be at the River Club, 800 West Avenue D, San Angelo, Texas. Registration will begin at 9:00 a.m. and the meeting will commence at 10:00 a.m. Lunch will be at noon and the afternoon session is scheduled to conclude about 3:00 p.m.

producers and persons with an interest in the U.S. Mohair Industry to attend. In addition to the regular business of the Council, reports on domestic and foreign market surveys and past and future Council activity reports, growers will have the opportunity to elect Directors for 1987.

For further information concerning the Council's meeting, interested persons should contact the Council office at 915/655-3161.

Angora Goat test to be conducted at TAES in Sonora

An Angora Goat Performance Test will be conducted at the Texas Agricultural Experiment Station at Sonora in the spring and summer of 1987.

The purpose of this communication is to provide details for those who may have an interest in participating.

Important Dates

Deliver to Station-February 16 & 17; Shear-February 23 & 24; Weight on test-February 25; Final weigh day-June 17; Shear-June 18 & 19; Field day and potential sale-July 16.

This will provide a 112 day test period for gains and a 114 to 116 day growth period for mohair.

Animals may be delivered as individuals or in sire groups. It is not required that the animals be registered, but sale or use prospects may be improved with registered animals.

Producers are advised to inspect their animals and to insure that they are healthy and sound. The animals will be inspected at time of delivery and again after shearing. Animals showing evidence of infections or communicable disease or parasites (lice and internal parasites excepted) will be rejected. Animals should be inspected before delivery for soundness including mouth, testicles and scrotum, feed and legs and defective types of fleece such as "sheepy" fleeces.

The animals will initially be fed in a large group with access to a trap for exercise. Later, after the ram test pens have been cleared and cleaned, the animals will be placed in pens sorted by size. After final shearing, the animals will be placed in sire and/or ownership groups in smaller pens for display at field day.

Ideally, the goats (male kids born in spring of 1986) which are submitted for testing should be in fleece when they arrive at the station. These fleeces will be returned to the owner. Shorn animals will be accepted, but it will be necessary to reshear them. Please make sure the animals' feet are trimmed when they arrive. The goats' feet will be trimmed two times during the test, near the middle and between the final weigh day and field day. The costs for doing this will be charged to the

cooperators. Producers are welcome to trim their own goats' feet as they wish. The animals will be drenched, vaccinated for enterotoxemia and sprayed or dipped at the start of the test. Even so, producers are advised to deliver their animals as free and clean of parasites as possible.

The proposed ration will be approximately as outlined below, but may require minor changes as dictated by available ingredients and prices.

Ingredient & Percent

Ground alfalfa hay-30.00; Peanut hulls or cottonseed hulls-20.00; Cottonseed meal-17.00; Corn or sorghum grain-26.00; Molasses-5.00; TM salt-0.50; Urea-0.20; Ammonium chloride or Ammonium sulfate-0.50; Calcium carbonate-0.80; Vitamin A and Coccidiostat.

The animals will be sampled for fineness in advance of final shearing. Yield values will be based on scoured core samples taken from the shorn fleeces. The cored mohair fleece will be packaged in plastic bags and will be on display at the end of the test. These fleeces will be provided to buyers of sale bucks or will be returned to breeders.

Attempt will be made to provide good care for the animals, but the Experiment Station or Station personnel will not be responsible for death losses or veterinary costs.

The index to be used for ranking the animals at the end of the test will be similar to that used in previous years. Fleece weights will be adjusted for initial body size, but the coefficient used will be a pooled regression value for the period of years instead of being based on single year's calculation. Actual values will be reported, but the adjusted values will be used in the index calculations.

Participants are asked to deposit \$100.00 to cover the cost to feed and shearing. Any unused funds will be returned at the end of the test. An account known as the "Goat Test Account" will be established in the First National Bank of Sonora. Trevlin Luttrell of the Sonora Station will do the necessary accounting, and the expenditure of these funds will be the responsibility of she and Dr. C.A. Taylor of these funds will be the responsi-

What do I do with the postcard?

"Sutton County landowners and ranch foremen have the opportunity to provide valuable deer and other game harvest data for our Department", says Mary Haecker, Wildlife Technician with the Texas Parks and Wildlife Department in Sonora.

"Every person who was issued antlerless deer tags this year should have a landowner receipt card with the tags. At the bottom of the receipt card are 4 questions asking how many animals or birds of several species were harvested on the specific tract during the past hunting season. If the person in charge of the tags will see to it that the requested information is put on the card and that the card is stamped and mailed to the address on the back of the card, our department will get a valuable insight into the overall harvest that took place in Sutton County during the 1986 hunting season." Haecker stressed that, "We need the cards back as soon as possible after the season ends on Sunday, January 4. If the cards are too late, we can't use them in developing our harvest estimates. Also, even if nothing was harvested on the specific tract of land, the returned card, with all zeroes, still gives us important data on the harvest rate."

"The data allow us to monitor the

game populations occurring in Sutton County, and to determine the impact that annual harvest, changes in habitat, and other important factors have on the local animal populations," Haecker said. "We utilize these annual county harvest figures, along with other important game population data, to justify maintaining current harvest regulations or when proposing new regulations for the county."

Haecker, commenting on the situation here in Sutton County, said, "Last year, we received only 56 returned cards from the 197 tracts of land that we issued to in Sutton County during the 1985 season. The returned cards resulted in an estimated harvest of 3,094 bucks, 3,073 does, and 382 turkeys. This year, we've issued to about 191 tracts comprising approximately 872,632 acres. Hopefully, more

landowners will submit the requested harvest information this year, and we'll end up with a reliable estimate of the 1986 harvest in Sutton County. I sure appreciate the landowners cooperation when they provide our department with any requested data, since without their assistance, it would be very difficult to obtain important information about our valuable game populations."

Kerbow's "All New"

Little Outdoors



214 NE Main

387-5500

FISHING REEL REPAIR

by Cullen Luttrell

Reels cleaned, oiled, adjusted and new line installed

24 HOUR SERVICE

Leave reels at Kerbow's Little Outdoors

Downtown Sonora

- Shimano Reels
- Garcia Reels
- Zebco Reels

- Tackle Boxes
- Graphite Rods
- Gun-Guard Gun Cases

- Coleman Stoves
- Tents
- Buck Knives

—Varmint Special—

Burnham Bros. Calling Tapes &

Varmint Caller

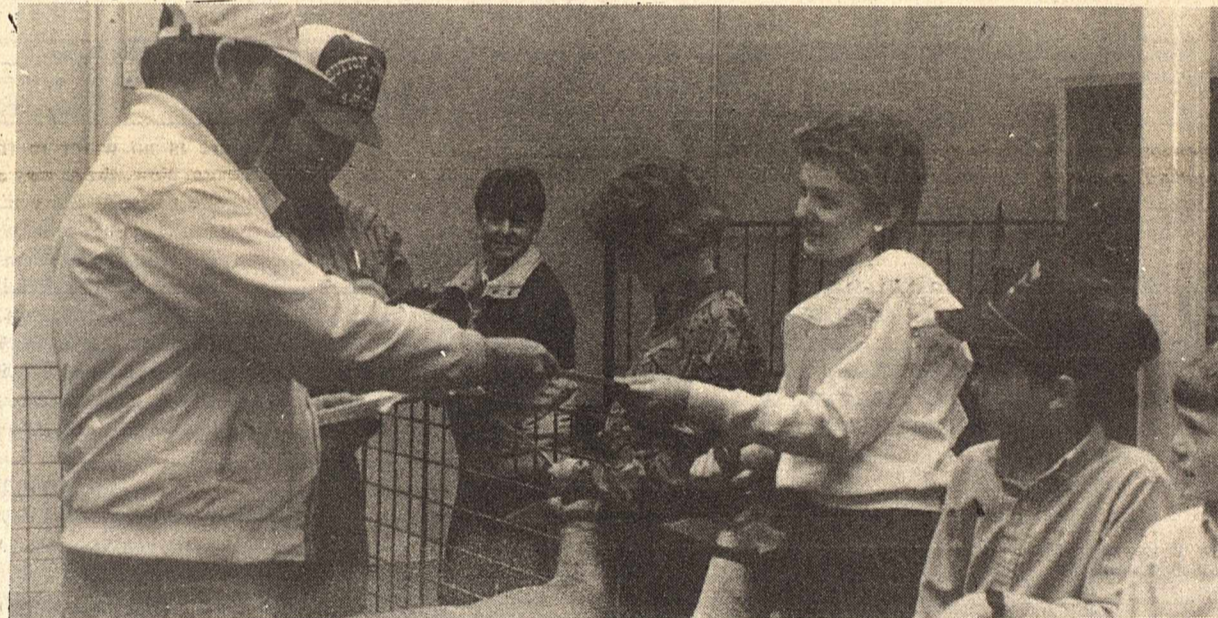
- Q-Beam Spotlight



bility of she and Dr. C.A. Taylor. Please mail or deliver deposits to the Experiment Station at Sonora. Make checks payable to the "Goat Test Account".

For additional information, inquiries may be addressed to: Don Spiller, Texas Agricultural Experiment Station, P.O. Box 918, Sonora, Tx. 76950 or 915-387-3168.

First National Bank of Sonora is proud to sponsor the Lamb Carcass division of the Sutton County 4-H Livestock Show.



Class 14: Live Finewool Carcass Lamb

- | | |
|-------------------------------------|-----------------------------------|
| 1. Keith Wallace
Friend Ranch | 6. Sara Patton
Rousselot Ranch |
| 2. Anna Balch
Jerry Balch | 7. Decky Spiller
T.A.E.S. |
| 3. April Spiller
T.A.E.S. | 8. Amy Patton
Rousselot Ranch |
| 4. Shanna Patton
Rousselot Ranch | 9. Elsa Trevino
Reyes Trevino |
| 5. Cleve Jones, IV
Alice Jones | 10. Sam Taylor
T.A.E.S. |

Class 16: Live Crossbred Carcass Lamb

- | | |
|-------------------------------------|--|
| 1. Sara Patton
Rousselot Ranch | 6. Cindy Doran
Hill Country Rambouillet |
| 2. Shanna Patton
Rousselot Ranch | 7. Cole Crenwelge
Rousselot Ranch |
| 3. Hadley Smith
Rousselot Ranch | 8. Tammy Fisher
Glen Fisher |
| 4. Bobby Mogford
Rousselot Ranch | 9. Tracy Crites
Rousselot Ranch |
| 5. Jason Morley
Rousselot Ranch | 10. Russell Crenwelge
Encino Ranch |



We believe in the 4-H Motto "To make the best better" and there are none better than our youth.

102 N Main

387-3861

Country Basket

SALE \$1.89

Crisp, tender, chicken-fried fingers of 100% beef, golden fries, Texas toast and creamy country gravy. That's the one and only Dairy Queen Country Basket. So come on by for the Texas taste that's just this side of heaven — now at a heavenly sale price!

Monday, Jan. 5 thru Sunday, Jan. 18

at participating stores.

Dairy Queen

"better than ever."

NOW WITH FOUR NEW SAUCES



© 1987 U.S. Pat. & TM. Off. © 1987 T.A.E.S. Co. Coated. Registered Trademark Am. D.O. Corp.

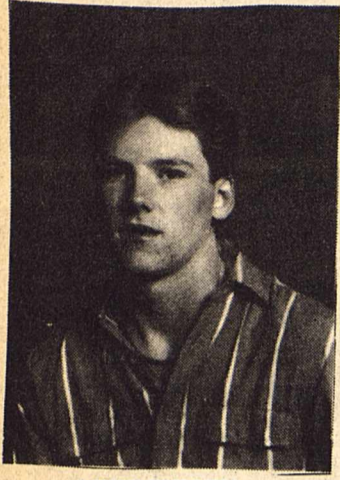
Two Broncos named to All West Texas Football Team

Two young men from the Sonora High School 1986 Bronco Football Team were recently recognized for their outstanding efforts by being named to the All West Texas Football Team.

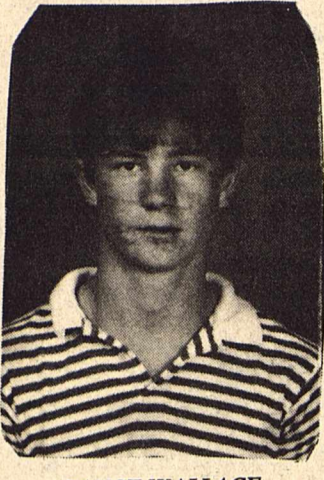
Mike Fullen, son of Nancy Fullen and a Junior, was named All West Texas Defensive Linebacker. Earlier this season, Mike was

named to the All District Team both as Defensive Linebacker and Offensive Team Tight End.

Lance Wallace, son of Mr. and Mrs. Tony Wallace and a Senior, was named All West Texas Defensive Lineman. Lance was also All District Defensive Lineman and was recently elected by his teammates as team captain.



MIKE FULLEN



LANCE WALLACE

WTU's Oklaunion Power Station in operation

With its new Oklaunion Power Station in commercial operation, West Texas Utilities Co. is again capable of generating all the power its customers will need during the peak usage period of hot summer-time.

The peak demand for electricity exceeded the capacity of WTU's installed general stations several summers ago and additional power had to be purchased from neighboring utility companies.

"This means that we literally have grown into this new power plant," explained Walter Meller, WTU's manager of system production.

"Often, when a new plant is brought on line it creates an immediate huge surplus of general

capacity. In our case, completion of Oklaunion was timed to coincide with our needs."

The coal-burning Oklaunion unit eight miles southeast of Vernon has a net rated capacity of 665 megawatts, which is more than half the 1,070 megawatt capacity of all of WTU's gas-fired plants. WTU owns 54.69 percent, or 379 megawatts, of the new plant, which is the first jointly-owned unit in the Central and South West System. Other owners are Public Service Co. of Oklahoma and Central Power and Light Co., both members of CSW; the Oklahoma Municipal Power Authority and the City of Brownsville.

The new plant was officially declared commercial December 24.

The power is under control of a central dispatcher in Abilene, who economically loads the various generating units in the WTU system.

As Plant Manager Chuck Adami of Vernon explains it, "When the load increases, the unit that can make the next kilowatt the cheapest is the one that is brought on line."

Adami's staff includes 126 employees, who work in shifts to keep the plant running 24 hours a day. Most of the staff has been on the site for several involved in training and start-up operations.

Construction at Oklaunion was begun in May 1982, and almost all the news regarding the plant since then has been good. The best news

is that it was completed on time and under original cost estimates.

The plant will provide over 25 percent of WTU's generating capacity and will end the Company's almost total reliance on natural gas as boiler fuel. The low-sulphur coal comes by rail from Wyoming. Each delivery averages from 100-115 cars, with each car holding 100 tons of coal. About 300 tons will be burned an hour when the plant is in full operation.

The plant is one of the most modern in existence. Equipment includes the most up-to-date pollution control facilities and complies with all air quality control requirements.

Men turning 26 in 1987 reach important milestone

The Selective Service System has announced that men who will reach their 26th Birthday in 1987 are reaching an important milestone.

Beginning January 1, 1987, men who were required to register with Selective Service in 1981 will be turning 26. Selective Service does not have the authority to accept registrations after age 26. By failing to register before turning 26, a young man will have permanently forfeited his right to certain benefits including Federal Student Aid, Job Training and Federal Employment. In addition to these federal benefits, some states require registration for State Student Aid, entrance to a state supportive college or university, state employment and permission to practice law.

Many of the 25 year olds who have still not registered may be unaware of the requirement or do not understand the importance of the obligation to register. Some

may even have served in the military but failed to register either before entering the Armed Forces or after leaving active duty. Others may have been Institutionalized or Incarcerated at the time of their 18th Birthday and not realized that they were required to register if released prior to age 26.

For those men born in 1961 who have registered, 1987 also marks the year that ends their eligibility for selection for induction under present law should there be a return to the draft. Over 17 million men, age 18 through 25 have registered with selective service since registration was reinstated in 1980. These men comprise over 97 percent of those required to register.

Men age 18 to 25 who have not yet registered still have a chance to avoid risk of prosecution and loss of benefits by registering promptly at any local post office. Failure to register is a felony punishable by a fine of up to \$250,000, up to 5 years in jail, or both.

ASU spring registration

Registration for the 1987 Spring Semester at Angelo State University begins Thursday, January 15, and runs through Friday, January 16, at the Robert and Nona Carr Education-Fine Arts Building.

Upperclassmen, Goodfellow Air Force Base active duty personnel, graduate students, and evening school students will register on Thursday, January 15, from 10 a.m. to 7:30 p.m. based on their classification and the last two digits of their Social Security number. The order, for students who have preregistered, is as follows for upperclassmen:

Registration employees, 10 a.m.; GAFB active duty personnel, 10:30. Seniors (90 or more hours) 00-24, at 11 a.m.; 25-49, 11:30 a.m.; 50-74, 12 noon; 75-99, 12:30 p.m. Juniors (60-89 hours) 00-24 at 1 p.m.; 25-49, 1:30 p.m.; 50-74, 2 p.m.; 75-99, 2:30 p.m. Sophomores (30-59 hours) 00-24 at 3 p.m.; 25-49, 3:30 p.m.; 50-74, 4 p.m.; 75-99, 4:30 p.m. Graduate and evening school students, 00-32 at 6 p.m.; 33-66, 6:30 p.m.; 67-99, 7 p.m. Friday's order, for freshmen

students who have preregistered, is as follows:

Freshmen (less than 30 hours), 00-16 at 10 a.m.; 17-32, 10:30 a.m.; 33-49, 11 a.m.; 50-66, 11:30 a.m.; 67-82, 12 noon; and 83-99, 12:30 p.m.

Students who have not preregistered will register Friday in the order that follows:

Seniors at 2 p.m.; juniors at 2:30 p.m.; sophomores, 00-49, 3 p.m.; sophomores, 50-99, 3:30 p.m.; freshmen, 00-49, 4 p.m.; freshmen, 50-99, 4:30 p.m.

Classes for the 1987 Spring Semester begins Monday, January 19.

Late registration begins Monday, January 19, and runs through Friday, January 23.

Senior students expecting to complete their degree requirements by June should apply for graduation during registration. Final date to apply for graduate is Friday 6, in the office of the appropriate academic dean.

Final exams for the 1987 Spring Semester are May 11-15, and graduation is scheduled for Friday, May 15.

18th Annual Gem and Mineral Show

The 18th Annual Gem and Mineral Show of the Fredericksburg Rockhounds will be held in the Pioneer Pavilion at Lady Bird Johnson Municipal Park in Fredericksburg, Texas on Saturday, January 17, from 10 a.m. to 8 p.m. and on Sunday, January 18, from 10 a.m. to 5 p.m. More than 40 exhibits will show the handcrafts of lapidarists from throughout Texas and nine craftsmen will be on hand to continuously demonstrate their skills and to answer questions. Four dealers will have booths, providing an ample supply of tools, books, materials, and finished jewelry.

The admission is FREE and everyone is eligible for the hourly drawing of valuable door prizes.

There is ample FREE parking, and RV hook-ups are available in the park.

The ladies of the Fredericksburg American Legion Auxiliary will serve their famous home-cooked meals and snacks.

This show is one of the outstanding Gem & Mineral Shows in the United States and was attended last year by more than 3000 visitors from 33 states and several foreign countries.

An entertaining and educational time is assured for all ages.

FUND	BEGINNING BALANCE	RECEIPTS	TRANSFER IN	DISBURSEMENTS	TRANSFERRED OUT	BALANCE
Road & Bridge	449,806.07	53,487.63		108,706.77		394,586.93
County	200,250.28	236,926.60		358,322.41		78,854.47
Payroll Fund-General	3,822.51		201,518.11		192,818.53	12,522.09
Payroll Fund-FMFC	2,510.24		51,916.68		48,957.61	5,469.31
Flood Control	13,785.38	-0-		252.20		13,533.18
Law Library	389.17	591.00		175.75		804.42
Interest & Sinking, 19	79,431.30	7,060.77		59,707.50		26,784.57
Revenue Sharing	182,181.66	2,408.18		31,638.94		152,950.90
Lateral Road	30.67	17,362.21		-0-		17,392.88
State Trust Funds	5,573.20	7,242.30		7,922.70		4,892.80
State Arrest Fees	1,656.00	3,245.00		3,483.00		1,418.00
County Attorney Fund	23.26	-0-		-0-		23.26
Juvenile Probation	8,977.37	7,092.62		9,105.61		6,964.38
					Total	716,197.19
Checking-State Arrest Fees						1,418.00
Checking-FMFC						7,678.89
Checking-Juvenile Probation						6,964.38
Checking-Operating						12,672.56
Checking-Revenue Sharing						2,526.99
Checking-Interest & Sinking						2,534.76
Money Market Accounts						682,401.61
TOTAL					Total	716,197.19

(County of Sutton 115,350.54) (FMFC 392,377.35) (Interest & Sinking 24,249.81) (Revenue Sharing 150,423.91)

Cade completes training

Pvt. 1st Class Larry D. Cade, son of Clay and Gaile Cade of 108 Keeselburg, Sonora, Texas, has completed basic training at Fort Leonard Wood, Mo. During the training, students

received instruction in drill and ceremonies, weapons, map reading, tactics, military courtesy, military justice, first aid, and Army history and traditions.

He is a 1979 graduate of Texas Tech University, Lubbock.

Death Notices

George Christian Ory

George Christian Ory passed away January 6, 1987. He was born December 24, 1913 in Sonora, to Cal and Viola Ory. Mr. Ory lived all his life in Sonora doing ranch work around Sonora. He moved his family in 1961 to Hobbs, New Mexico where he worked for INCE Oil Co. as a service station attendant. He moved to Edmond, Oklahoma in 1966 where he worked for Kerr-McGee as a service station attendant for 13 years, retiring in 1976 and had been in ill health ever since. He was a World War II veteran. He is preceded in death by his parents, two brothers, one sister and two grandsons. He is survived by his wife, Ethel of the home, two sons, James Ory of Edmond, Okla.,

and Carl Ory of Roanoke, Texas; three daughters, Sharon Jones of Edmond, Okla., Ann Applegate of Inola, Okla., and Karen Bailey of Denton, Texas; five sisters, Alma Taylor of Del Rio, Tx., Pearl Lee Barker of Lampassas, Tx., Merle Tyler of San Angelo, Viola Jones of Brownwood and Sharon Welchert of Spokane, Washington. He has five granddaughters and eight grandsons.

Mr. and Mrs. Ory had been married for 50 years in 1987.

Funeral was held January 8, at 2 p.m. with burial in Pleasant Hill Cemetery in Edmond, Oklahoma.

The family request donations be made to the American Heart Association.

Church Directory

Church of Christ Minister-Don Jones Bible School-10 a.m. Worship-11 a.m. Sunday night-6:30 p.m. Wednesday night-7 p.m.	The Church of the Good Shepherd Presbyterian USA Rev. William R. Jones Worship Service-10 a.m. Communion first Sunday of each month	First Assembly of God Rev. Louis Halford Sunday Adult Bible Hour 9:30 a.m. Super Son Bible Hour-9:30 a.m. Morning Services-11:00 a.m. L.I.F.E. (youth) 3 p.m. Evening Service 6 p.m. Wednesday Bible Study 7 p.m.	First Baptist Church Rev. Jim Stephen Sunday School-9:45 a.m. Morning Worship-11 a.m. Church Training-6 p.m. Evening Worship-7 p.m. Wednesday Service-7 p.m.
Primera Iglesia Bautista Pastor-Rev. Jorge Herrera Sunday School-9:45 a.m. Worship Service-11 a.m. Training Union-5 p.m. Evening Service-6 p.m. Wednesday Service-7 p.m. W.M.U.-Sunday-2 p.m. Between Santa Clara & Chestnut	First United Methodist Church Kent L. Kepler-Pastor Sunday School-9:45 a.m. Worship-10:55 a.m. KVRN 98 AM-11 a.m. Wednesday UMYF-6 p.m. Chancel Choir-7 p.m.	Hope Lutheran Church Sunday: Sunday School-10 a.m. Worship Service-11 a.m. Wednesday: Adult Bible Class-7:30 p.m. Charles Huffman, Pastor	St. Ann's Catholic Church Rev. Bernard L. Gully Saturday Night Mass- 7 p.m. English Sunday Mass- 8 a.m. Spanish; 11 a.m. English Holy Day Mass-7 p.m.
Sonora Tabernacle United Pentecostal Rev. Kenneth Doyle, Pastor Sunday School-10 a.m. Worship-11 a.m. Evening Worship-7:30 p.m. Wednesday Services-7:30 p.m.	Live Oak Baptist Church Sunday Morning Worship-10:30 a.m. Evening Worship-7 p.m. Wednesday Evening Services	Jehovah's Witnesses 310 St. Ann's 387-2679 or 387-3947 Spanish Language Meeting Public Talk 10:00 Sunday Watchtower Study 11:00 Sunday Theocratic Ministry 7:30 Tuesday Service Meeting 8:15 Tuesday Bible Study 7:30 Thursday	St. John's Episcopal Church 404 NE Poplar Holy Eucharist-Sunday 8 & 11 a.m. Sunday Schools-9:45 a.m. Holy Eucharist w/Prayers for Healing, 1st, 3rd, & 5th Wed., 7:00 p.m. Daily Morning Prayer-8:45 a.m., Monday-Friday The Rev. J. Monte Jones, Rector

The following businesses urge you to attend the church of your choice

Westerman Drug
387-2541

Southwest Texas Electric Co-op
853-2544

Food Center
387-3438

INTRODUCING
THE 1987 QUICK START
PLUS PROGRAM®

Weight Watchers®

JOIN NOW!
HALF PRICE OFFER!
SAVE \$10!

Quick! Check it out at the following convenient locations by January 31, 1987, and join for only \$10!

San Angelo Savings and Loan
115 N.E. Main
Wednesdays 5:30 p.m.
1-800-862-2345 ext. 991

*Fee for subsequent weeks, \$6.00, visa and MasterCard accepted at selected locations for prepayment. Offer valid at participating locations only. Cannot be combined with other discounts or special rates. Weight Watchers and Quick Start are registered trademarks of WEIGHT WATCHERS INTERNATIONAL, INC. ©1987 WEIGHT WATCHERS INTERNATIONAL, INC.



Lenora Pool, Treva McReynolds and Leslie Thorp present Outstanding Member Award to George Keese.

George Keese receives award

This year the EMS organization elected to give the Gene West Memorial Award for Outstanding EMS Person of the Year 1986 to George Keese.

Each person on the crew is very conscious about the time they give, and the patients they treat. When your peers elect you for this award it is indeed a great honor. George has shown dedication to the service in his own special way-a way other

members respect and admire. George is married to Donna Keese also a member of the EMS they have two children Jimmy and Dawn. George is the Customer Equipment Technician for General Telephone, and a member of the Sonora Volunteer Fire Dept.

This award was presented to George at the Christmas party December 20th.

Congratulations George for being

the "Outstanding EMS Member of 1986."

Sutton Co. EMS would like to extend a special thank you to Chief of Police Brent Gesch for being the guest speaker at our December 15th training meeting. We all learned something new and it was enjoyed by all!

Thanks again Brent.

Sutton Co. EMS



Around Town

by Hazel McClelland

Our sympathy to Mr. and Mrs. Ed Harrell on the death of her mother, on Christmas.

Mr. and Mrs. Ted Miller and Mrs. Louise Glasscock of Austin were here visiting their mother, Mrs. Thelma Phillips.

Mr. and Mrs. Dick Hamilton of San Angelo were here visiting his grandmother, Mrs. Muriel Hamilton, over the weekend.

Visiting Mr. and Mrs. Scott Gilmore were their grandsons, Michael and Patric Rieley of Montgomery, Alabama.

The Sonora-Ozona Sewing Club met January 6th with Mrs. Bernice Savell hostess, at the home of Mrs. Charles Shannon.

Coffee, spice tea, orange juice and cakes were served when members arrived.

Those present were: Mrs. Lucille Coleman, Mrs. Charlotte Wilson, Mrs. Virginia Kepler, Mrs. Elizabeth Hemphill, Mrs. Joan Cusenbary, Mrs. Marcia Rioux, Mrs. Sadie Archer, Mrs. Colleen Miller, Mrs. Leona Bishop, Mrs. Hazel McClelland, Mrs. Marty McLain, Mrs. Vicki Shannon and

Mrs. Barbara Savell from Sonora. From Ozona: Mrs. Mary Friend, Mrs. Gail Hunnicutt, Mrs. Benny Gail Hunnicutt, and Mrs. Luetta Kost.

Lunch was served at the Fiddler Restaurant.

Mrs. Lena Belle Ross entertained the Tuesday night Bridge Club January 6 at her home. A salad and chicken plate was served.

Members present were: Mrs. Ruth Shurley, Mrs. Guila Vicars, Mrs. Mary Barrow, Mrs. Norman Rousselot, Mrs. Vivian Crites, Mrs. Vestal Askew, Mrs. Leo Merrill, Mrs. Fred Adkins, Mrs. A.W. Bishop and Mrs. Edwin Sawyer. Guests were: Mrs. Ada Wynn and Mrs. Pauline Thompson.

Mrs. Crites won the high score prize; Mrs. Rousselot won the traveling prize; and Mrs. Merrill won the Bingo prize.

Mr. and Mrs. Johnny Morris and Zackery of Georgetown were here over the weekend visiting his parents, Mr. and Mrs. James Morris.

Visiting Mr. and Mrs. Clyde Hill last week was their niece and her son, Mrs. Mary Jo Tangemor and David, from Iowa.

Hospital District meets with board members

The Hospital District met Monday night along with members of the Hudspeth Hospital Board and several interested citizens. Rexann Friess presented the 1986 Tax Levy and the 1987 Budget Allocation of all taxes raised from 1986. \$595,395.00 are to go toward the Hospital District. The quarterly payments to pay the Appraisal District will be \$3448.52 each.

The Board then considered competitive bids from each of the two

banks to be a depository for the Hospital District. The vote was two for First National Bank, one for Sutton County National Bank, with four members abstaining.

Al Elliott then introduced Mr. Charles Bailey, Legal Counsel for the Texas Hospital Association, who spoke to the group about upcoming legislation regarding Hospital Districts and Indigent Care.

Hill & Dunn to unite

Miss Hill graduated from Sonora High School and Angelo State University. She is currently teaching in the Reagan County I.S.D. and plans to continue after the wedding.

The bridegroom is a graduate of Coahoma High School and the University of Texas at Arlington. He is a partner in J-Tex Meter Service of Coahoma.

Mr. and Mrs. J.T. Hill are proud to announce the engagement of their daughter Kari Kay to James Rodney Dunn of Big Spring. Parents of the bridegroom are Mr. and Mrs. Sam Posey also of Big Spring.

The couple will be exchanging vows on March 14 in the First United Methodist Church in Sonora.

Creative Art's Department invite participants to this year's show

The Creative Arts Department (formerly The Women's Department) of the San Angelo Stock Show & Rodeo would like to extend an invitation to all men, women, and children of this area to participate in this year's show to be held March 11-15, 1987.

There are nine divisions: 1. Clothing 2. Foods 3. Hobbies & Crafts 4. Needlework 5. Flower Arranging 6. Art 7. Handpainted China 8. Ceramics and Plaster Art 9. Photography

As an added feature our special contest this year will be Party Foods, Mexican Fiesta, and Ice Cream Contest which will be held Wednesday through Friday, March 11-13 at 1:30 each day.

To all you talented folks-get that entry form in by February 7th.

Catalogs and entry blanks available at the Stock Show office at 2017 West Beauregard. Remember-February 7th is the deadline.

Hospital

Notes

In the Lillian M. Hudspeth Memorial Hospital December 27, 1986-January 9, 1987.
Cindy Covington, Sonora
Baby girl Covington
Mary Prentice, Junction
Gilbert Martinez, Sonora
Aneida Castillo, Sonora
Jessica Luttrell, Bastrop, Tx.
Betty Ruth Luckett, Sonora
Granville Barker, Sonora
Rosa Perez, Bellgarden, Calif.
Gil Favila, Sonora
Rip Ward, Sonora



MRS. BRYCE JOHNSON

Tedford's Bridal Registry
Mrs. Richard MyCue, nee Kari Eustace
Downtown Sonora 387-3839

CLIP & SAVE

School Menu

Monday, Jan. 19-Pizza, Buttered Cinnamon Roll, & Milk.
Tuesday, Jan. 20-Chicken Fillet, Macaroni & Cheese, Green Beans, Hot Rolls, Jello, & Milk.
Wednesday, Jan. 21-Enchiladas, Pinto Beans, Tossed Salad, Milk.
Thursday, Jan. 22-Barbequed Chicken, Ranch Beans, Potato Salad, Hot Rolls, Lime Fluff, & Milk.
Friday, Jan. 23-Fish Burger, Potato Chips, Cole Slaw, Ice Cream, & Milk.

Pick up your Free refrigerator magnet at:

State Farm
MIKE KROPP Agent
114 NW Concho
387-3893

Like a good neighbor, State Farm is there.

CLIP & SAVE

MYOFLEX Analgesic Cream Pump 3 oz 2.99	Rx VALUE DRUGS	THERAGRAN-M Vitamins 130's 7.99
BAUSCH & LOMB Saline Solution 12 oz 3.29		TYLENOL Extra-Strength Tablets 100's 5.39
ROBITUSSIN DM Expectorant Cough Suppressant 4 oz 2.19	GAVISCON Antacid 12 oz 4.59	SUDAFED Decongestant 30mg Tablets 24's 2.13
WESTERMAN DRUG COX DRUG, INC Downtown Sonora 387-2541		OS-CAL 500 Tablets 120's 8.99

Our beauty resolution offer: We resolve to make you more beautiful.



With a beauty package you won't want to do without. And for only \$1.50, with any \$12 minimum purchase of Merle Norman products, you won't have to. It's a bonus containing a sample packet of The Difference™ Total Health and Beauty Supplements, plus samples of our exclusive anti-aging skin care line: Luxiva® Including Luxiva Energizing Concentrate, Luxiva Moisture Masque and Luxiva Protein Creme. Get to know Luxiva Skin Care and The Difference. Offer good from January 5 through February 15. Bring this ad into the following Merle Norman Studios. Limit one per customer, while supplies last.

Woman to Woman MERLE NORMAN

Carol's Merle Norman is located at 205 Hwy. 277 N. in the Park Place Shopping Plaza 387-2036

FUR WANTED

Fur buyer, Steve Tyler, of TEXAS FUR CO. will be in Juno at Mayfield Grocery every Monday starting January 12 at 4pm. Also in Sonora behind Gulf Station next to Fiddler's Restaurant & Lounge on Mondays at 5:30 pm. **BEST PRICES BY FAR**

STOP WORRYING ABOUT DWI

When you come to San Angelo stay and party with us at Santa Fe Junction Motor Inn & Club. South Bryant Blvd. at Ave L in San Angelo

25.00 a couple any time

Includes a room at Santa Fe Junction Motor Inn and no cover charge with your key at Santa Fe Junction Club next door.

San Angelo's country home, Santa Fe Junction features a large dance floor and the best country and western dance bands anywhere

SANTA FE JUNCTION
San Angelo's Country Home

658-5068
1524 S. Bryant Blvd.
San Angelo, TX.

Social Security News

Excess Social Security Withholding

A person who works for more than one employer during the course of a year may have more Social Security taxes withheld than are required by law, Franklin H. Upp, Social Security manager in San Angelo, said recently.

"If this occurs," Upp said, "the person may claim a refund for the excess amount when he or she files an income tax return for that year; however, if the excess withholding occurs because an employer deducts too much in taxes, the

person should ask the employer for a refund.

"Earnings in excess of the maximum amount that counts for Social Security cannot be used in figuring the benefit rate."

Additional information about taxes and refunds may be obtained from the Internal Revenue Service. Information about Social Security benefits can be obtained from the San Angelo Social Security Office located at 2214 Sherwood Way. The telephone number is 949-4608.

Vocational Rehabilitation Services

Anyone who applies for Social Security or supplemental security income disability payments may be considered for vocational rehabilitation services by the State Agency responsible for these services, Franklin H. Upp, Social Security manager in San Angelo, said recently.

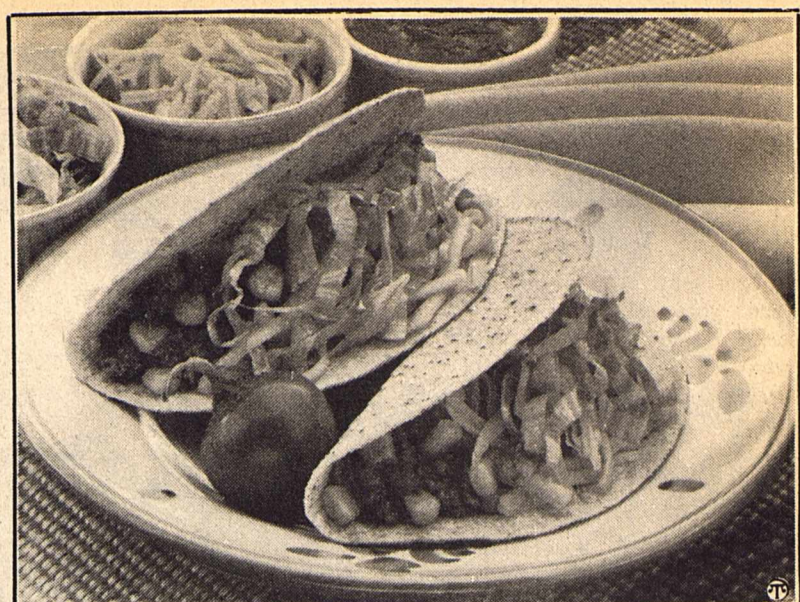
If it is determined that vocational rehabilitation services might enable you to return to work, you will be interviewed by a counselor, Upp said. The services offered may range from counseling and guidance to job training and

placement.

Accepting these services does not prevent the person from getting disability benefits; however, a refusal to accept the services without a good reason may cause payments to be suspended.

Additional information about vocational rehabilitation services can be obtained from the appropriate State agency. The address and phone number can be obtained at the San Angelo Social Security Office located at 2214 Sherwood Way. The telephone number is 949-4608.

LICENSED BONDED	COMMERCIAL RESIDENTIAL
*NEW CONSTRUCTION	*REPAIRS *REMODELING
WAYNE PURCELLA (915) 387-5411	ROSS LATTA (915) 387-2635



TEX'S TACOS

- 1 lb. ground beef
- 1/2 cup chopped onion
- 2 garlic cloves, minced
- 1/3 cup catsup
- 2 tablespoons chili powder
- 1/2 teaspoon cumin
- 12-oz. can Green Giant Niblets golden whole kernel corn
- 1 medium tomato, chopped
- 4 1/2-oz. pkg. (12) taco shells
- 4 oz. (1 cup) shredded Cheddar cheese
- 2 cups shredded lettuce
- Taco sauce, if desired

Heat oven to 250°F. In large skillet, brown ground beef with onion and garlic; drain. Add catsup, chili powder, cumin, corn and tomato. Simmer uncovered for 10 minutes, stirring occasionally.

Heat taco shells in oven at 250°F. for 3 to 5 minutes. Spoon about 1/3 cup meat mixture into each shell. Top each with cheese and lettuce. Serve with taco sauce. 12 tacos.

Sheepdogs

[Con't from pg. 1.]

January 24 starting at 8 a.m. at the County Park Baseball Field.

The event is sponsored by local businesses, ranchers and the Chamber of Commerce.

Contestants and their dogs will be coming in from all parts of Texas as well as Arizona, Iowa, Tennessee and other states.

Judging the trails this year will be Willie McMillan from Scotland who is not only an international judge but a distinguished dog handler as well.

This years trails will sport a new class which is limited to Sutton County residents. Anyone interested in competing in this class should contact Patti Strauch at 387-3784.

The trail course is laid out to simulate actual working conditions as closely as possible. The handler stays within a circle at the end of the course and directs his dog through the obstacles within a time limit. The dogs are directed by voice commands and whistles.

The first part of the course is called the "outrun." In this, the dog travels in a large half circle or pear shape to get behind the sheep. Naturally, the dog must stay well back on his way around the sheep or they are likely to scatter.

The next task is to "lift" or come up behind the sheep and start driving them toward the handler. Each situation is different. On cold, windy days with skittish sheep the challenge to the dog is considerably increased. Sometimes the sheep are uncooperative to the point of refusing to move, snorting, and charging at the dog. The group of sheep is brought straight toward the handler, passing between two gate panels set in the center.

When the sheep reach the

handler, they are brought into a circle and then turned and driven away from the handler in the direction of "3rd Base." They are maneuvered between two panels and turned to the right, toward "1st Base". Here they pass between two panels and are turned back toward the handler. Points are awarded for each sheep that goes through the panels in the correct manner.

The next phase is called "shedding" and the dog is directed to come in and split off one of two animals and "wear" them (in other words, keep them apart from the rest of the group) until the judge is satisfied.

The last part of the contest includes penning the five sheep into a six foot square pen, which is located away from any fences that would aid the dog. The handler is not allowed to assist the dog in driving the sheep to the pen. He must hold onto a short rope attached to the gate until penning is completed.

It can be very difficult to force five suspicious sheep into a tiny, unfamiliar pen with a person at the gate. The dog must be totally attentive and ready to head the sheep should they try to break and run. After the sheep enter the pen, the gate is closed and the course is set up for the next contestant.

The Grand Prize this year will be a most unusual trophy. A small border collie head sculpted by Patti Strauch and cast in bronze. The model for this sculpture was "Flash", a working Border Collie owned by Patti.

The public is invited out to enjoy the fun. There is no admission charge. St. Ann's Youth Group will have a concession stand with lots of good eats. See you there!

Western Auto

Your Discount Auto Parts Supermarket

Shop Now for Home and Auto Values During DOLLAR DAYS

<p>W.A. Air Filter 2/4 U.S. vehicles. 74-5951 ser.</p>	<p>Champion Spark Plugs 4/3 Standard. Lmt. 16. 64-1313 ser.</p>	<p>Wiper Blade or Pr. Refills 2/3 Most vehicles. 76-9970,80 ser.</p>	<p>ATF—Stock Up! 4/3 Quart. 37-3094,95</p>
<p>Furnace Filters 2/1 47-2200,01,02, 03,04,05,14,15</p>	<p>Frosted 3-Way Bulbs \$1 60, 75 or 100W. 4-pk. 53-9000-02</p>	<p>Bic Razors 2/1 5 per pack. 66-3710,11</p>	<p>Electrical PVC Tape 5/1 3/4 in. x 30 ft. 53-3802-5</p>
<p>Your Choice—Wynn's \$1 P.S. Fluid or Valve Guard. 78-3087,1245</p>	<p>Gumout Carb Cleaner \$1 8 oz. Limit 2. 78-6938-1</p>	<p>Fix-A-Flat 2/1 12 oz. Limit 2. 78-4537-3</p>	<p>Heet® Anti-Freeze 3/1 12 oz. Limit 3. 78-8090-9</p>
<p>Blank Cassette Tapes \$1 60 min. Pack of 3 tapes. 26-1404-8</p>	<p>Suede Work Gloves \$2 Thermo-lined. 92-5029-1</p>	<p>W.A. Spray Paint \$1 11 oz. Limit 6. 73-1795-1833</p>	<p>Hi/Low 4 Lamp 2/3 Round. 64-6120,23</p>

Fun wheels!

Yamaha A.T.V. 60cc to 350cc, plus a 4-wheel drive model. These are four wheelers. Displayed, demonstrated, distributed, sold and serviced at the new Uvalde Yamaha dealer.

UVALDE YAMAHA SALES
Contact Steve Morris in Sonora
387-2988 after 5 p.m.

UVALDE EQUIPMENT CO. (512)
Hwy 90 E. (across from Walmart) 278-5628

YAMAHA
We make the difference™

"Over the Hill Gang" News from the Nursing Home

by Doris Cahill

Bringing you up to date on our news and letting you know it is heartening to know that you care. Your support enables us to better reject stagnation.

Registered guests were: Courtney and Whitney Hearnese-New Braunfels, Vivian Miers-Irving, Rodney Davis-Stephenville, Louise Glasscock-Austin, Bill Ray-Eldorado, Jodi, Christi and Cal Wallace-Hereford, Harold and Jo Ella Briscoe-Midland, Bill and Sara Lou Burrows-Houston, Hazel McClelland, Ruth Lee Eaton, Frances Reyna, Yolanda Avila, Ashley Northcott, Jeannie Lozano, Petra Gonzales, Martha Wallace, Delma Northcott, Pete Gomez, Tony Guerra, Mandy Turk, Guila Vicars, Maria Aldwell, Hot Shot, Elizabeth Cusenbary, Greta Smith, Cecilia Espinosa, Susie Torres, Maria Espinosa, Kent Kepler, Lois McCalmount, Ben and Virginia Epps, Pat Allen and Nadine Porter.

Marilee Saegert visited her mother in San Antonio twice during the holidays.

Scott and Charlotte Gilmore brought their grandsons: Patrick and Michael Reiley of Montgomery to the Nursing Home one evening while they were here visiting.

Armando Martinez of maintenance and Stacy Brown, Nursing assistance are recent employees.

Elijio Gonzales celebrated his 93rd Birthday December 29th. Daughters: Gracia Hernandez and Petra Gonzales served hot chocolate, cake and cookies to about 30 guests. Alice Hardy played the piano and everyone sang Happy Birthday. Bingo was lively December 30th. Lilia called and Lori Ann Galindo assisted. Doris Cox, Dorothy Cusenbary and Doris Cahill each made two Bingos. Eugenia Mata, Muriel Hamilton, Cordie Drennan and Ruby Brotherton made one.

A pet visit is scheduled every Friday by Patti Strauch DVM, so far 89 yr. old Judy, a border collie dog and 49 yr. old Milkop, a white short hair domestic cat have visited us.

On Saturday the 4th services from the First United Methodist were heard over the radio. That afternoon Chapo Samaniego read passages from the Catholic Prayer Book. Alice Hardy played the piano and Mary Lou Gilly led the singing.

A large number of Poinsettias were brought to the Nursing Home from the Presbyterian Church. Grouped together they make an impressive display.

Poinsettias were also brought from the Episcopal after their Epiphany.

After exercises Tuesday we watched Dolly Parton and Sylvester Stallone on "Rhinestone Cowboy". Chuckles and the aroma of popcorn filled the air.

Lilia announced Bingo Bucks Wednesday 7th. Each Bingo made is worth one dollar. That day Cordie Drennan and Elijio Gonzales each made two Bingos. Muriel Hamilton, Dorothy Cusenbary, Doris Cox, Doris Cahill, Ruby Brotherton, Florence Knight and Maxie Reiley made one each.

A fifty cent certificate will also be given for any other activity in which we take part. Accumulated bucks can be spent for our needs at the Country Store at the end of every

Affairs of Life

Who are
God's
Chosen
People?

All baptized into CHRIST have put on CHRIST. There is neither Jew nor Greek, bond nor free, male nor female; for ye are all one in CHRIST JESUS. If ye be CHRIST'S then are ye Abraham's seed and heirs according to the promise.
Gal. 3:26-29 and 11 Corin. 5:17

KERBOW FUNERAL HOME

Sonora 387-2266
Eldorado 853-2636

month.

The Monthly Hospital Auxiliary Birthday party hosted by Martha Wallace and Greta Smith in conjunction with our weekly sing-along with pianist Leona Bishop and led by Charlotte and Scott Gilmore was held Wednesday afternoon. Cake by Rudy's Bakery and orange juice were served.

Birthday people were: Jack and Cordie Drennan, Ada Mae Neal, Dixie Jacobson and Ruby Brotherton who were presented corsages by Petal's. The party concluded with everyone singing Happy Birthday. Only nine residents out of 35 were unable to attend which is a very good record.

Helping in the Beauty Shop, Friday were Mary Hoffman, Gertrude Webb, and Phyllis Jones.

Talented resident 95 yr. old Etta Turner tells us she has been poetic inclined many years. One day in school she composed a poem, not complimentary about her teacher and was caught! The teacher was not inclined to laugh it off, so Etta was in bad trouble. The poem she shares with us is very different: "The Whipor Will."

Dreaming, I lay on the grass by the Lily pool

Where the willows bend and sigh and the south wind blows cool, From over across the field near the gate

I hear the Whipor Will calling his mate

He begins in the early evening and stops at rising sun

So I hear him when my work is done

He is there still, Calling Whipor Will, Whipor Will

Sunday morning we were listening to Rev. Kepler over the radio when suddenly he started sounding like Elvis humming, strumming and warbling, mourning then technical difficulties were announced.

Sunday morning Pat Allen from St. Ann's brought Holy Communion to residents.

Sunday afternoon, Robert Hocutt, brought a message from The Assembly of God Church entitled devotional life.

His daughters Sherry sang two solos Falling in Love with Jesus and Holy Spirit Thou Art Welcome In This Place.

Doris Cahill and Dorothy Cusenbary went out to Church Sunday morning.

Louisa Lozano went out to visit her family.

Bertha Guthlas and daughter Janelle of San Angelo visited her sister Thelma Phillips, Sunday.

Helpful hint-Brush your tongue when you brush your teeth to help prevent bacteria causing bad breath.

Bueno Bye-Until next week.

Mobile breast cancer screening unit to be at Hudspeth Hospital

According to the American Cancer Society, one in every 11 women in the United States will develop breast cancer sometime during her lifetime. Every year, over 37,000 women die as a result of breast cancer which is the number one cancer killer of women.

In an effort to find cancers at the earliest possible stage and to prevent unnecessary deaths, Hudspeth Memorial Hospital, Sonora, will sponsor a mobile breast cancer detection unit at the hospital on Wednesday, January 28, 1987.

Hospital Administrator Scott Gilmore said the unit is an extension of the Breast Imaging Center at St. John's Hospital & Health Center in San Angelo, Texas.

The unit will be parked near the hospital that day, and women who wish to have a screening mammogram should call Hudspeth Memorial Hospital at 387-2521, before that day if possible to schedule an appointment.

Mr. Gilmore said the test will cost \$55 cash and the results will be sent to the patient's physician who will go over the results with the patient.

According to a spokesman from the Breast Imaging Center at St. John's Hospital in San Angelo, "the death rate from breast cancer could be drastically reduced if women would have mammograms done before a problem exists."

By using modern state of the art X-ray equipment, breast cancers can be found when they are about the size of a grain of rice and well before the cancer can be felt. A woman who is diagnosed with breast cancer at this early stage has a 90-97 percent survival rate.

However, a woman who is not diagnosed until a lump can be felt has approximately a 50 percent survival rate in five years.

Women should report approximately 15 minutes prior to the appointment time for registration. Typically, the exam takes less than 30 minutes. A female technologist will perform the examination.

The films will be returned to the Breast Imaging Center at St. John's Hospital & Health Center where they will be interpreted by a radiologist and a report sent to your physician.

HEALTH CARE

by M. Scott Gilmore
Hospital Administrator

BAD INFLUENCE

Pneumonia, an infection of the lungs, is the chief complication of influenza and the major cause of death associated with the flu. Approximately 80 to 90 percent of flu-related pneumonia is caused by bacteria that invade virus-weakened lungs. The remainder is caused by the flu virus itself. Pneumonia should be suspected when the flu

provides a full range of health services, including pediatric and geriatric care, x-ray and lab facilities, and emergency treatment. Open around the clock. Tel. 387-2521.

The combination of flu and pneumonia is the leading cause of death from an infectious disease in the U.S.

sufferer has some or all of the following symptoms: continued high fever (over 101 degrees F.) accompanied by rapid pulse of more than 100 beats per minute, difficult or rapid breathing (30 to 60 breaths per minute), severe cough, brown or bloody sputum, chest pains, and shaking chills. Severe pneumonia will require hospitalization. With appropriate treatment, pneumonia

usually clears up in from one to three weeks.

The symptoms, treatment, and prognosis of pneumonia depend not only on its type, but also on the general health of the patient. With the advent of antibiotics, complete recovery is expected in the vast majority of cases. For your continued well-being, see a doctor if cold or flu symptoms persist. The Lillian M. Hudspeth Memorial Hospital, located at 308 Hudspeth,



Sylvan Bartlett, M.D.

HOW TO CHOOSE A PLASTIC SURGEON.

Today, you no longer have to live with a nose you hate. Or wrinkles that make you look older than you feel. Or an unflattering figure. Modern plastic surgery can improve these and many other conditions. If you're considering plastic surgery, you should make sure you select a doctor who is qualified as a specialist in plastic surgery. Because of the level of expertise needed, a specialist in plastic surgery has completed five to seven years of supervised training. To be a board-certified plastic surgeon, the physician then is required to pass a series of stringent examinations. However, the average consumer may not know that a doctor can legally claim to be a cosmetic surgeon without specialized training or board certification.

How can you tell? Check his credentials thoroughly. Is he certified by the American Board of Plastic Surgery? Is he a member of the American Society of Plastic and Reconstructive Surgeons? Does he get good references from his patients? Is he listed in the Directory of Medical Specialists? Is he affiliated with an accredited hospital? Make sure you check before you choose.



Sylvan Bartlett, M.D. is a board-certified plastic and reconstructive surgeon and otolaryngologist. He is a member of the American Society of Plastic and Reconstructive Surgeons and the American Academy of Otolaryngology. Dr. Bartlett is a specialist in plastic and reconstructive surgery including hand and microvascular surgery and otolaryngology as it applies directly to problems in plastic surgery.



Sylvan Bartlett, M.D.
848 Central
Odessa, TX 79761

Call 563-3110 today for free information or make an appointment for consultation. Or call the American Society of Plastic and Reconstructive Surgeons at 1-800-635-0635.

Send me free information on plastic surgery.

Name _____
Address _____
City _____ State _____ Zip _____
Phone _____

RETURN COUPON TO
Sylvan Bartlett, M.D.
848 Central, Odessa, Texas 79761 • (915) 563-3110

J. D. Bishop
House Moving & Leveling
Experienced & Reliable
Bonded
(915) 446-3678
Junction Tx.

PERRYS

HOME VIDEO CENTER

FOR SALE

Used Movies \$9.95

Limited Quantities!
Hyw. 277 N. Sonora 387-3692

Complete Physical Exams • Screening for Cervical Cancer • High Blood Pressure

- Anemia • Sexually Transmitted Diseases
- Family Planning Services • Reproductive Health Care Information & Supplies
- Information on Pregnancy Alternatives
- Provide Referrals to Other Service Agencies
- Supplies of Current Birth Control Methods
- Confidential Services for Everyone
- Transportation Services • Toll Free Calling Outside San Angelo • Sliding Fee Scale & Payment Plans

Planned Parenthood®
of the Concho Valley
2619 Sherwood Way 915-944-1909
San Angelo, Texas 76901

Transportation Services from:
Sterling, Sutton, Coke, Concho, Crockett, Irion, Kimble, Mason, Menard, Reagan, Schliecher, Tom Green

Hours: Tues. Wed. Thurs. 8am-7pm
Fri. Sat. 9am-5:30pm

1-800-237-2162

Call for Appointments or Information

For your Convenience

A Saturday Clinic

at Lillian M. Hudspeth Memorial Hospital
with a doctor on duty
will be in operation every Saturday
9am to 12 noon

This clinic is for routine illnesses or for routine office visits which can not be taken care of during the week

Se abra una clinica para su conveniencia cada Sabado de 9am al doce de medio dia

Esta clinica es para enfermedades oh vusitas rutinas que no se pudieron hacer durante la semana

Lillian M. Hudspeth Memorial Hospital

Hudspeth Drive

387-2521

Buy, Sell or Trade
CALL 387-2507
TO PLACE YOUR AD

Classified Ads

FOR RENT/LEASE

Sonora Sage
 Now has 1 and 2 bdrm. Apts for Rent. Call or come by at 387-5910 or 101 Deerwood. 16-4tc

Shurley Enterprises Mini-Storage, 8x12-\$25 monthly and 12x24-\$50 monthly. Please call 387-3619, 8 a.m. until 12 noon Monday through Friday. 21-tfc

For Rent-Furnished one & two bedroom apartments-\$5 a day & up, some bills paid. Call 387-2294 for more information. 21-4tc

For Rent: Large house, 2 Mi. out of town, unfurnished, call 387-3377. 15-4tc

For Rent-2 bedroom house. Call 387-2294 for more information. 15-4tc

HOUSE FOR SALE

House for Sale: 3 bdrm., 2 bath, central h/a, fireplace. Located at 121 Deerwood Dr. Call 387-5317 after 4 p.m. 4tp

For Sale by owner: 3bdr., 1 1/2 bath home. Carpeted, ceiling fans throughout. Wooden siding, carport, store room. Close to all schools. Call 387-5166 after 5 p.m. Equity and take up low payments. 32-tfc

House for Sale-2 bedroom, 2 bath, carpeted-asking \$22,000. Call 387-3461. 15-tfc

For Sale or Lease: 2 bedroom home, all new ceiling fans and mini blinds, hardwood floors, excellent location near school; will consider owner financing-price reduced! 416 College St. For more information call 387-5786 or 387-6091. 41-tfc

For Sale: An exclusive home custom built on about 10 acres in the DeBerry addition. For more information call 387-5642 or 387-5903. 22-tfc

House for Sale: 3 bdrm, 1 1/2 baths, paneled central heat and air conditioning, drapes, new carpet, utility room, ceiling fan, 3 carports, 1 1/2 lots, stove, refrigerator, fire place, dishwasher, garbage disposal, covered patio. Cheap \$38,000. Call 387-3658. tfnc

LOT FOR SALE

1/2 acre lot for sale, 807 E. 2nd. Call 387-2444. 10-tfc

MOBILE HOMES

For Sale-3 bdrm., 2 bath, new carpet, central h/a, fenced backyard, double carport, workshops. Call 387-2883 after 5 p.m. 19-tfc

For Rent or Sale: 14x74 Mobile Home with appliances. 2 bdrm., 2 bath, \$300 mc .hly. Call 387-2883 after 5 p.m. 19-tfc

14x80 3 bdrm., 2 bath, 1977 Deerfield Mobile Home. \$15,000 & take up payments. Call after 12 noon 387-6120. 19-4tc

1980, 14X70 Festival, central a/h, 2 bdrm., 2 bath with kitchen appliances. Call 336-3477. 15-tfc

Clearance Sale

On all 1986 double-wides. Hurry they are going fast. Financing available. Call Karla collect at (915) 695-3270. 22-3tc

Doublewide Liquidation Sale

Redman, Oak Creek, Cameo, Columbia. All priced below factory invoice. Entire inventory of area's largest doublewide dealer. From \$10,000. Saturday January 17, 10 a.m. to 6 p.m. Discount Homes of San Angelo, 2502 N. Bryant Blvd. (Hwy. 87), San Angelo. (915) 658-3344. 48-1tc

FOR SALE

1977 Oldsmobile. Clean. Contact Ray Smith or A.W. Bishop at Sutton County National Bank. 387-2593. 15-2tc

Half Price! Flashing arrow signs \$299! Lighted, non-arrow \$279! Unlighted \$249! Free Letters! See locally. Call today! Factory: 1(800) 423-0163, anytime. 1tp

1985 Chevrolet 1/2 ton pickup, V8, automatic, Scottsdale, fully loaded, one owner 19,000 miles. Chaparral Mtrs. 387-2529. 17-tfc

Sutton Specialty Electric, Inc.

Quality electrical contracting & wiring
Ranch-Residential Commercial
 Weekdays 8-5 512 Crockett
 Ph. 387-6516 Sonora

LIVESTOCK
 For sale fresh raw honey-387-3086. Mrs. C.W. West. 15-4tc

Metal shipping containers. 40'x8'x8'-\$2,990.00 each, 20'x8'x8'-\$1,990.00 each. Make great storage buildings or hunting cabins. Call 387-2524. 18-tfc

1984 Pontiac Gran Prix. Low mileage, terms available. Contact Ray Smith or A.W. Bishop at Sutton County National Bank. 387-2593. 20-2tc

One drop electric shearing rig. Call 387-2454. 2tp

12 cu. ft. frostless refrigerator, \$75.00. Call after 12 noon, 387-6120. 15-2tc

1 traditional sofa by Hicory Co. 91" long, 3 cushions, flowered print, apricot beige & brown. Can be seen at the Hunt Apt. #8. Lois Morriss 387-2860. 27-1tc

For Sale: 8 x 24 self-contained Sprouter camping trailer. New tires and electrical wiring hook-up. \$3700 negotiable. Call 387-5166 after 5 p.m. 21-tfc

For Sale
 19" Zenith Color TV. Call 387-2736, anytime. 1tp

1984 Ford Escort Wagon-good condition. Contact Ray Smith or A.W. Bishop at Sutton County National Bank. 387-2593. 18-2tc

FIREWOOD

Quality firewood for sale-Mesquite and Oak. Pickup or deliver, call 915/446-3145. 8tp

Firewood for Sale-Oak and mesquite. Pick up or delivered 387-3347. 25tp

SERVICES

Monuments and Memorials
 For monuments or markers and other cemetery needs call 915/387-2398.

Mirike Memorials
 Sonora, Texas 4tp

Desa Comprar
 Casa-Trella-Poquito O No
 Create-Able
 Con-Rosa Mendez
 (915) 695-3270

FIREPLACE OWNERS

A dirty chimney is a potential hazard. No Rain Cap means damage to metal firebox & damper, deterioration to mortar joints & cracked firebrick. We'll be in Sonora on January 29 And we guarantee NO MESS

For appointment call

337-1726

Residential
 Apartments
 Rain Caps
 Repair

Find us fast in the yellow pages (Odessa)



GARAGE SALE

Garage Sale, Saturday January 17. 903 Prospect. Lots of bargains. 15-1tc

Classifieds get results call 387-2507



BOBBIE A. SMITH REAL ESTATE

New Listings Daily

- 3 bdrm., 2 bath, brick home with fireplace, AC/CH, privately Fenced. Price reasonable.
- Beautiful 3 bdrm., 2 bath on 10 acres, all kitchen appl., satellite dish.
- 3 br., 1 3/4 bath on corner lot, fenced, price reasonable.
- 3 br., 2 bath family room, on corner lot. Nice!
- 3 restricted lots-Meadow Creek Addition.

The First National Bank of Sonora is accepting sealed bids on the following automobiles and mobile homes until January 20, 1987

- 1985 Olds 98 Regency 4 door, blue
- 1982 Chevrolet Pickup 1/2 ton, tan
- 1982 Ford Pickup 1/2 ton, blue and gray
- 1979 Ford LTD 2 door, silver and blue
- 1981 Ford Crown Victoria LTD 4 door, green
- 10 X 50 1963 Van Dyke House Trailer
- 14 X 80 1973 Oakmont Mobile Home

To see these vehicles contact one of the following officers at First National Bank:
Don Westlake, Michael Hale, JoAnn Jones or Harold McEwen

Your locally owned independent bank serving the Stockman's Paradise since 1900

387-3861



Oilfield Directory

The following companies support and appreciate your patronage in helping Sonora grow.

LIGHT ELECTRONICS TWO WAY RADIO SERVICE JOHN HENRY STRAUCH Telephone No 608 S.E. Concho (915) 387-2273 Sonora, Tx 76950	Dresser Atlas 387-3531 302 East 5th St.	CARL J. CAHILL, INC. OILFIELD CONTRACTOR (915) 387-2524 , INC. Sonora, Tx. 76950
Your ad could be here Call 387-2507	ASAY Company, Inc. Oilfield Roustabouts Box 945 Office-387-6085 Duane Davis Jerry Parker Res. 387-2055	Sonora-Ozona Oil Company Exxon Products (915) 387-2400
Jimmy Condra Jimmy Trainer Oilfield Enterprises, Inc. SONORA, TEXAS Water Hauling 387-3843 RRC Pipehauling	Sonora Wool & Mohair 210 S.W. College Tools, steel, pipe, fencing, welding supplies 387-2543	TREY TRUCKS INC. 24 Hour Service 853-2186
WESTEX COMMUNICATIONS DIRECT DIAL MOBILE PHONE LAND MOBILE RADIO SYSTEM 387-3831	JIMCO Complete Oilfield Services Jimmy Condra 387-3843 Jimmy Trainer 387-3179	CHARLES HOWARD GENERAL OILFIELD CONTRACTOR 387-3093 387-2270 387-2551 216 Hudspeth Sonora, Tx

FREE ONE MONTHS RENT with ONE YEAR LEASE

KASEY'S "Luxury at it's Best"
 CORNER
 Total Electric They have it all!
 Microwave, ice maker, disposal, self-cleaning oven, dishwasher, central heat & air

REDUCED RATES

- 1 Bdrm. Eff. \$200
- 1 Bdrm. w/dining \$250
- 2 Bdrm/2 bath \$300
- 3 Bdrm/2 bath \$350

NEW MANAGEMENT
 Cheryl Skains, Phyllis Blocker,
 Manager Assistant
 103 Dollie
 Adjacent to new High School
 387-2104

Service Directory

- Apartments
 Kasey's Korner 387-2104
- Bridal Registries
 Hill's Jewelry 387-2755
 Tedford Jewelry 387-3839
- Electrician
 Sutton Specialty Electric, Inc.
 512 Crockett
 387-6516
- Insulation
 Tex-Sun Insulation 853-2996,
 Free estimates commercial and residential. Farris Nixon, Eldorado, Tx.

- Moving
 Big State Movers
 (915) 446-3678
- Pharmacy
 Western Drug 387-2541
- Physicians
 Gregory C. Lind, M.D.
 387-6565
- Real Estate
 Bobbie Smith
 Real Estate 387-2728
- Restaurants
 Sutton County Steakhouse
 387-3833
- Video
 Perry's Video Center
 387-3692
- Welding
 Gonzales Welding 387-3008.
 Good used furniture, appliances, antiques, new linoleum. Hwy 277 S. Sonora, Tx.