

THE Devil's River NEWS

SINCE 1890

Volume 104 • Issue 50

SONORA, TEXAS

Thursday, December 15, 1994

THE SOUNDS OF SONORA

by Melett Rowland

The Sonora Merchants Association proudly presents the third night of their Christmas promotion for the holiday season on December 15, 1994. The sounds of Sonora is a night devoted to spreading Christmas cheer.

The merchants will be open until 8:00 p.m. this evening for holiday shoppers. Carolers will be all around town singing the songs of the season to brighten everyone's night. They will be in the business districts, at community parks, and in neighborhoods.

The First United Methodist Church is having a live nativity scene this evening as well. The church is located on the corners of Oak Street and Water Street in the downtown area.

The Saturday ticket drawing will be downtown on Main Street at 2:00 p.m. You must be present to win all those fabulous prizes, so come join in the fun.

Questions? Call the Chamber of Commerce at (915) 387-2880.

BANDS TO PERFORM

submitted

The Band Department of the Sonora I.S.D. will present its annual Christmas Concert on Thursday, December 15, at 7:30 p.m. in the Sonora High School gymnasium. Featured on the program will be the Sixth Grade Beginner Band, the Seventh Grade Band, the Eighth Grade Band, and the Sonora High School Concert Band.

Each band will be performing various medleys of Christmas music. Admission is free, and the public is cordially invited to attend.



Richard Key, is pictured above with Jamie Rainey, Suzette McIntyre and Lynn Barber during the West Texas Utilities customer appreciation day on Wednesday, December 7, 1994.

USDA REORGANIZATION AFFECTS SUTTON COUNTY

submitted

Harold Bob Bennett, State Executive Director FSA released a list of county offices that are affected by the USDA reorganization taking place in the state of Texas. There are two lists, one indicating the county offices that will be closed and the other indicating the county offices that will be collocated. Collecting means that where USDA agencies occupy different facilities in the same counties, they will now occupy joint facilities.

The following counties will be closed as soon as feasibly possible: Bandera, Borden, Camp, Dallas, Franklin, Glasscock, Gregg, Grimes, Irion, King, Marion, Montgomery, Morris, Rains, Real, Rockwall, Sabine, San Jacinto, Ward, and Zavala.

These counties will be collocated: Atascosa, Bell, Blanco, Brewster, Burleson, Burnet, Chambers, Cherokee, Clay, Cochran, Collin, Colorado, Concho, Cooke, Coryell, Crockett, Crosby, Delta, Denton, Dickens, Dimmitt, Duval, Eastland, Ector, Edwards, Fisher, Fort Bend, Gaines, Hansford, Harris, Haskell, Hudspeth, Hunt, Jackson, Jasper, Jefferson, Karnes, Kent, Kimble, LaSalle, Leon, Liberty, Live Oak, Llano, Lubbock, Lynn, McCulloch, Maverick, Menard, Montague, Moore, Navarro, Nueces, Oldham, Parmer, Presidio, Reagan, Red River, Reeves, Roberts, Schleicher, Shackelford, Sutton, Tarrant, Uvalde, Val Verde, Webb, Williamson, and Wood.

The combinations of staffs and functions at the county FSA office (formerly ASCS) and NRCS office (formerly SCS) will come in time. In the meantime, farmers and ranchers can receive service as usual at their county offices.

COMMUNITY CHOIR TO PRESENT MUSICAL

The Community Choir of Sonora will present "Rose of Bethlehem" Sunday, December 18, 1994. The performance will begin at 7:00 p.m. at the First Baptist Church.

This is a musical that sends an ageless message, "He is born". It will be directed by Dennis Pharriss of First Baptist, Sonora. Soloists include Bessie Roach, Joy Galbreath, Sam Odom Jr., Frank Conlen, Jan Folds, and Karen Fincher.

The musical is written by Lowell Alexander and arranged by Phil Perkins. It is a new musical that portrays the miracle of Christ's birth 2000 years ago.

The Community Choir invites everyone to join them in this special season of celebration.

ST. JOHN'S TO CELEBRATE NATIVITY

submitted

St. John's Episcopal Church will celebrate the Nativity of our Lord Jesus Christ on Christmas Eve with a service of Holy Eucharist at 9:00 p.m. The Christmas Day Eucharist will be celebrated at 10:00 a.m. There will also be a Christmas Eve service at 5:00 p.m. at St. James' Episcopal Church in Fort McKavett. Visitors are welcome at all Episcopal services, and Holy Communion is offered to all baptized Christians.

Angel Tree Project

The Sutton County Child Protective Board is sponsoring the Angel Tree project for local children in need of clothing. Donations can be made at Sutton County National Bank or First National Bank.

KIDS, INC To Host Talent Show

KIDS, INC. will be sponsoring a Talent Show December 19th. The talent show will be at the Sonora High School Auditorium at 7:00 p.m. All talent is welcomed. There is no age limit. Three cash prizes will be awarded to winners. Door prizes will also be given. The entry fee is \$10 per person. Tickets are available in advance or at the door. Call 387-5566 or 387-2474 for more information.

Social Security Representative

Garland Gregg, representative for the San Angelo Social Security Office, has scheduled his December visit to Sonora. He will be at the County Courthouse on Tuesday, December 27th, between 9:30 a.m. and 10:30 a.m.

Anyone who wants to file a claim for benefits, get information, or transact other business with the Social Security Administration may contact him at this time.

THREE INJURED IN EXPLOSION

An explosion occurred at a hunter's cabin on the Claire Powers Ranch early Monday morning. Joseph Giller of Lewisville, Texas, Don Roy Giller of Irving, Texas, and Chris Cooper of Plano, Texas are hunters at the Powers' ranch.

Carl Teaff, Sonora Fire Chief, stated that the hunters awaked at approximately 5:30 a.m. According to one of the hunters, a cigar was lit and the house exploded. Bob Blackburn, another hunter from the Dallas area, was sleeping in a camper trailer near the house. He phoned local officials. Officer's responded at 5:42 a.m.

Two suffered burns covering 30% of their bodies and the third suffered 60% bodily burns. Two of the men were flown to a Lubbock facility and the third is now at Parkland Hospital in Dallas. According to Sheriff Bill Webster, the other two may be at Parkland Hospital at this time.

Webster suspects a gas leak caused the explosion.

CITY RECEIVES GRANT

submitted

It's a simple step that everyone can take to alleviate solid waste and conserve energy and resources. The City of Sonora, the Alice Beautification Commission (Alice, Texas) and Brazos Beautiful, Inc. (Brazos, Texas) have each received a \$500 grant from the Steel Recycling Institute in recognition of efforts to educate consumers about steel can recycling. The award program is part of the Steel Invests in Texas Initiative, sponsored by SRI, Keep Texas Beautiful (KTB) and the Texas Natural Resource Conservation Commission (TNRCC).

"Through this program, we offered members of KTB the opportunity to use SRI's public awareness program, the Steel Recycling CANpaign, to educate residents and increase steel can recycling throughout the state," said Ben Walker, southwestern regional recycling manager for SRI. The grants were awarded to programs which creatively used the elements of the CANpaign to supplement existing education efforts. The CANpaign kit includes outdoor advertising, broadcast public service announcements, posters, print ads, and other promotional materials, all of which incorporate the simple message RECYCLE STEEL CANS.

SRI developed the CANpaign to educate consumers where it counts, at the local level. TNRCC, KTB, and SRI are working together to provide Texas recycling coordinators with the tools to implement the public awareness campaign in their local programs. "These partnerships are working to maintain the momentum to meet our Clean Texas 2000 goal of 50 percent reductions in solid waste disposal by the year 2000," said TNRCC Commissioner Peggy Garner.

Steel cans, also known as tin cans, are easily recycled because the steel making process requires the use of scrap steel in making new steel. Recycling steel cans not only diverts solid waste from landfills, but also conserves energy and natural resources. The steel industry's annual recycling conserves the equivalent energy to electrically power about 18 million homes for one year. And since all new steel products contain at least 25 percent recycled steel, buying steel products ensures a continuing market for recycling.

"Texans have long been committed to conservation and recycling," said Bill Heenan, president of SRI. "We are pleased to be working with KTB and TNRCC to continue the education process, thereby increasing recycling rates and diverting more materials from the landfill." SRI is working with recycling coordinators, intermediate processors and end market buyers across the country to reach a national steel can recycling rate of 66 percent by year-end 1995.

For more information on local education efforts, please contact Becky Covington, City of Sonora 915/387-2558.

CHANCEL CHOIR TO PRESENT CANTATA

submitted

The Chancel Choir of the First United Methodist Church will present Gilbert Martin and Terry Kirkland's Cantata, "Nowell, Nowell, Emmanuel", during the 11:00 a.m. worship service on Sunday, December 18, 1994.

The Chancel Choir is under the direction of Wayne Warren and will feature soloists Joy Galbreath, Amy Massey, Jesse Kerbow, Matthew Hunt, Karole Hunt, and Ron Myers. The Chancel Choir is accompanied by Charlotte Wilson. This musical is set in the context of worship and narrators will be Albert and Cynthia Ward.

The public is invited to join us in praising God in this Season of Advent. The service will be broadcast on KHOS 92.1 FM at 11:00 a.m. on Sunday morning.



Edward Earwood, Carolyn Earwood, Bruce Kerbow and Monte Jones are pictured as they served chili and beans during the "Hospitality of Sonora" celebration on Thursday, December 8, 1994.

PAVERS FOR CHRISTMAS

by Sharon Holman

Solve your Christmas gift dilemma -- give that hard to buy for someone a paver engraved with their name for the sidewalk at the new library. Don't forget your child's teacher or care giver, your boss, employees, mailman, and hairdresser.

Your gift will not only be on permanent display at the Sutton County Public Library, it will also help fund the landscaping around the building. Pavers are \$25 and can be purchased at the library. A certificate will be given for all pavers purchased during the holiday season.

SAINT ANN'S HOLIDAY MASS SCHEDULE

Christmas Eve Dec. 24
5:00 - 6:00 p.m. confessions
7:00 p.m. Mass
especially for children
and senior citizens

Midnight Mass
Christmas Day Dec. 25
10:00 a.m. Mass
New Year's Eve Dec. 31
7:00 p.m. Mass
New Year's Day Jan. 1
11:00 a.m. Mass

BRIEFLY

Keeping Christ In Christmas

Isn't it sad we sing the beautiful traditional Christmas songs so little and the Christmas season is gone? Hope Lutheran Church is scheduling special services to sing these songs and meditate on the real reason for Christmas. Besides regular Sunday services, the last Advent service "Gift Exchange" will be held on December 21st, with meditations and lots of Christmas Carol singing. The Children's Program will be on December 18th at 6:00 p.m. and a special Christmas Eve Program will be on December 24th, also at 6:00 p.m. There will be NO Christmas Day Service but families are urged to stay home with their families. The Sonora community is invited to attend these services to help keep our minds on Christ our Savior.



WHERE'S SANTA?

Find the picture of Santa Claus in the Devil's River News, circle it, and bring it into the newspaper office to receive a free personal pan pizza from Pizza Hut. Contest open to children age 12 and under.

COUNTRY CHRISTMAS HELD AT CAVERNS OF SONORA

The Caverns of Sonora's 1st Annual Country Christmas, held on Saturday, December 10, 1994, was deemed a success. Elf-guided tours were held from 9:00 a.m. to 5:00 p.m., and thirty-five craft booths were open from 9:30 a.m. to 6:00 p.m. Western Santa was on the grounds during the morning and Traditional Santa was there part of the day for pictures. L.P. Bloodworth gave 58 wagon rides during the afternoon. 4 pots of stew and cornbread were served throughout the day. A living, singing Christmas Tree entertained from 5:00 to 7:00 p.m. It featured the community choir, directed by Dennis Pharris, which presented excerpts from the Contata, "Rose of Bethlehem." The Christmas Tree also feature the Sonora High School Choir singing traditional Christmas Carols, and humorous Christmas stories by cowboy poet, Biscuits O'Bryan. Thirty-thousand Christmas lights lit up the sky, while area youths participated in a living nativity scene. Plans are already underway for the 2nd Annual Country Christmas for the Caverns of Sonora.

Our Sympathy

Dixie Faught Belk

Dixie Faught Belk, 80, went to her heavenly home on Monday, December 12, 1994.

Funeral services will be held Thursday, December 15, 1994, at 3 p.m. at the First Baptist Church of Eldorado. Burial will follow in Eldorado Cemetery under the direction of Kerbow Funeral Home.

She was born January 29, 1914, in Nix, Texas. She married H.A. Belk July 27, 1933. H.A. preceded her in death in 1981. She has a homemaker and a member of the Eldorado Primitive Baptist Church.

Survivors include her children, Jane and James Alexander of Sonora, Gainell Minnick of Dimmitt, H. Allen and Elsie Belk of Winters, and Jimmy and Sherry Belk of Eldorado; her grandchildren, June and Eddie Sutton, Eddie and Elizabeth Alexander, Shelia and Charlie Halfmann, R.B. and Brenda Alexander, Shellie and Kyle Collins, Heath and Stacie Belk, H.A. Belk Jr., Jamey Belk, Barbara Belk, Mandy Belk, and Susan and Bryan Schwiening.

One grandson, Robert Jodie Minnick II, preceded her in death.

Also surviving are her great-grandchildren, Stuart, Justin and Houston Sutton; April, Autumn and Cory Alexander; Kayla and Jake Halfmann; Kristen Alexander; Cody and Carolyn Collins; Robert Jordan Minnick; Mayce and Lindsay Schwiening; and Eryn Belk.

She will be dearly missed by all who knew and loved her.



Juanita Mesa is pictured above as she congratulates Maria Dominguez on her 85th birthday.

Card of Thanks

Maria Dominguez wants to thank the scouts and everyone else who came to her house for caroling Sunday afternoon. "I will always remember this". Thanks again and God bless each and everyone of you.

Card of Thanks

We would like to extend our most sincere thanks to our friends who helped us through our time of sorrow. The food, flowers, cards, calls, and loving kindness were all appreciated very much. The family of William Schwiening



Robert Mayer and Bill Cascadden sit down for a chat during Thursday nights "Hospitality of Sonora."



Sue Moore won the barbecue grill during the West Texas Utilities customer appreciation day annual give-away.

SENIOR CENTER MENU

- Thursday, December 15**
Fried Catfish, Corn O'Brien, Okra Gumbo, Cornbread, Cherry Cobbler
- Friday, December 16**
Chicken Nuggets w/Gravy, Lima Beans, Carrot-Raisin Salad, Cauliflower, Hot Rolls, Jell-O w/Fruit
- Monday, December 19**
Beef Burrito & Cheese Sauce, Spanish Rice, Garden Rice, Saltine Crackers, Pineapple & Strawberries
- Tuesday, December 20**
Creole Chicken, Corn, Broccoli, Hot Rolls, Pears & Cheese, Peanutty Granola Bars
- Wednesday, December 21**
Country Fried Steak, Mashed Potatoes, Carrots, Hot Rolls, Bananas
- Thursday, December 22**
Turkey & Dressing w/Giblet Gravy & Cream Sauce, Green Beans, Sweet Potatoes, Hot Rolls, Pumpkin Pie
- Friday, December 23**
Senior Center Closed

Community Calendar



- Thursday, December 15th**
5:00-8:00 p.m. - Participating Merchants Remain Open; Sounds of Sonora - Caroling Around Town, Living Nativity 7:30 p.m. - SISD Band Concert - High School Aud.
- Friday, December 16th**
5:00 p.m. - J.V. Boys & Girls vs. Water Valley - H
6:30 p.m. - Varsity Girls vs. Water Valley - H
8:00 p.m. - Varsity Boys vs. Water Valley - H
- Saturday, December 17th**
2:00 p.m. - Christmas Drawing - Downtown Sonora
- Sunday, December 18th**
10:00 a.m. - Church of the Good Shepherd Youth present "Never Too Old For Christmas" - Presbyterian Church
11:00 a.m. - FUMC Cantata "Nowell, Nowell Emmanuel"
7:00 p.m. - Community Choir presents "Rose of Bethlehem" - First Baptist Church
- Tuesday, December 20th**
School Dismissed for Christmas Holidays
5:00 p.m. - J.V. Boys & Girls vs. Ozona - T
6:30 p.m. - Varsity Girls vs. Ozona - T
8:00 p.m. - Varsity Boys vs. Ozona - T
- Thursday, December 22nd**
5:00-8:00 p.m. - Participating Merchants Remain Open; Gifts of Sonora - Ministerial Alliance Delivers Gifts
- Saturday, December 24th**
2:00 p.m. - Final Christmas Drawing - Perry's Parking Lot

The Community Calendar is made possible by:
First National Bank | **Devil's River News**
 Member FDIC | 220 N. Main
 102 N. Main 387-3861 | 387-2507

Sonora Church Directory

- NEW LIFE ASSEMBLY OF GOD**
C.G. Fuston, Pastor
306 N. 4th Street
387-2898
- PRIMERA IGLESIA BAUTISTA**
504 Santa Clara
387-2035
- CHURCH OF CHRIST**
Randy Dunn, Minister
304 W. Water
387-3190
- FIRST BAPTIST CHURCH**
Rev. Jim Stephen, Pastor
404 NE Oak
387-2951
- ST. JOHN'S EPISCOPAL CHURCH**
Rev. J. Monte Jones, Rector
404 NE Poplar
387-2955
- FIRST UNITED METHODIST CHURCH**
Rev. Ron Myers, Pastor
201 NW Water
387-2466
- JERUSALEM ASAMBLEA DE DIOS**
Daniel Diaz de Leon, Pastor
St. Ann's Street
387-3600
- THE CHURCH OF THE GOOD SHEPHERD PRESBYTERIAN**
Lewis Allen, Pastor
319 NE Mulberry
387-2616
- HOPE LUTHERAN CHURCH**
Fred Darkow, Pastor
417 E 2nd St.
387-5366
- SONORA TABERNACLE UNITED PENTECOSTAL**
Brett Prince, Pastor
501 Fay
387-5627
- ST. ANN'S CATHOLIC CHURCH**
Father William DuBuisson, O.M.I.
229 SW Plum
387-2278
- JEHOVA'S WITNESS**
310 St. Ann's Street
387-5658 or 387-5518
- NEW HOPE BAPTIST CHURCH**
Dana Floyd, Pastor
511 Cornell
387-5215

Attend the church of your choice this Sunday.

Southwest Texas Electric Co-op
387-2544

Kerbow Funeral Home
387-2266

GIVE A GIFT THAT KEEPS ON GIVING!

THE Devil's River NEWS

Holiday Special ALL SUBSCRIPTIONS \$15.00

School Breakfast & Lunch Menu

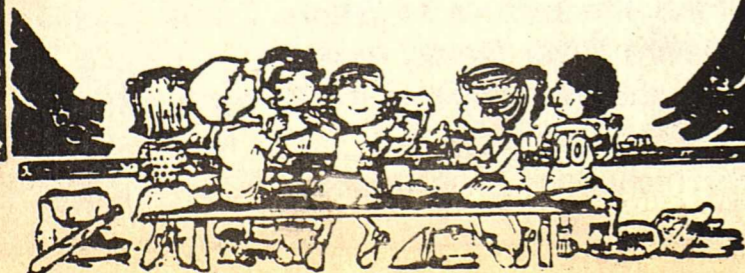
All meals are served with milk.

BREAKFAST

- Mon., Dec. 19
Malt-O-Meal, Toast w/Jelly, Fruit
- Tues., Dec. 20
Egg, Pop Tart, Juice
- Wednesday, December 21 through Tuesday, January 2
NO SCHOOL
Christmas Holidays

LUNCH

- Mon., Dec. 19
Pizza Pockets, Vegetable Sticks, Corn, Pears
- Tues., Dec. 20
Grilled Cheese Sandwich, Vegetable Soup, Potato Chips, Fruit Roll-Up
- Wednesday, December 21 through Tuesday, January 2
NO SCHOOL
Christmas Holidays



THE DEVIL'S RIVER NEWS

USPS (155-920)
 Published by the Gary Smith Publishing Company
 every Thursday at 220 East Main Street Sonora, Texas 76950
 Phone: (915) 387-2507 FAX (915) 387-5691
 Second class postage paid at Sonora, Texas

Catherine Smith, Managing Editor
Stephanie Campbell, Associate Editor
Corie Avila, Associate Editor/Sales Rep.

\$18 per year (\$15 for senior citizens) in county
 \$22 per year (\$18 for senior citizens) out of county
 Attn. POSTMASTER: Send address changes to Devil's River News, 220 East Main St., Sonora, TX 76950

Copy and Ads deadline - Monday, 5:00 p.m.
 Any erroneous reflection upon the character, standing or reputation of any person, firm, or corporation which appears in the columns of this paper will be corrected upon due notice given to the Editor of this publication.

TA TEXAS PRESS ASSOCIATION

MEMBER 1994

THANK YOU

Thank you to the following donors for your generous contributions toward the construction, furnishings, and equipment of the new Sutton County Public Library.

BUSINESSES

Carl J. Cahill, Inc.
Casparis Swabbing
Ft. Terrett Ranch
GTE
Jimco
Louis Dreyfus Inc.
N&R Construction
Red Hoss Feeds
J.Cleo Thompson
Tucker Drilling Inc.
Valero
WesTex Bancorp
West Texas Utilities

ORGANIZATIONS

Knights of Columbus
Sonora Woman's Club Library Association
Sutton County 4-H
West Side Lions Club

TRUSTS AND GRANTS

John and Mildred Cauthorn Charitable Trust
The Meadows Foundation
Sutton County Community Trust
Texas State Library Construction Grant

INDIVIDUALS

Mr. and Mrs. John Ainsworth
Anonymous Memorial for de Berry
Mr. and Mrs. Vestel Askew
Mr. and Mrs. Jack Baker
Mr. and Mrs. L.P. Bloodworth
Susan Bloodworth
George Brockman
Jereta Buschman
Mr. and Mrs. Robert Buschman
Hazel Caldwell
Mr. and Mrs. Curry Campbell
Molly Sawyer Campbell
Maria Carlomagno
Mr. and Mrs. Ed Carrasco
Maria Carrasco
Jaime Chavez
Mr. and Mrs. Paul Chevalier

Mr. and Mrs. James Condra
B. Cooper
Mr. and Mrs. Richard Cooper
Mr. and Mrs. Carlos Davis
W.L. Doran
Mr. and Mrs. John Downing
Mrs. Monica Du Russell
Mr. and Mrs. J.T. Dugger
Mr. and Mrs. Armer Earwood
Mr. and Mrs. Edward Earwood
Mr. and Mrs. Ben Epps
Sammie Espy
Mr. and Mrs. D.H. Faulks
Ranee Rawcett
Dr. and Mrs. Johnny Fields
Loise L. Fields
Larry Finklea
Mr. and Mrs. Lawrence Finklea
Firefighters
Margaret Galbreath
Lydia Galindo
Elida Guerra
Ann Guin
Maria Gutierrez
Francine Hardeman
Dorothy Harrell
Mr. and Mrs. Clay Hicks
Mr. and Mrs. Warren Hemphill
Doris Howell
Mr. and Mrs. Reed Jennings
Dr. and Mrs. Alvis Johnson
Mr. and Mrs. Earl Johnson
Mr. and Mrs. Donald Jones
Mr. and Mrs. Cleve T. Jones III
Mr. and Mrs. George Joseph
Rev. and Mrs. Kent Kepler
Mr. and Mrs. Jack Kerbow
Nina M. Langford
Nancy Neill Law
Alma Love
Mr. and Mrs. Tommy Love
Kathryn Lovejoy
Mr. and Mrs. Billy Martin
Mr. and Mrs. Gary Maupin
Mr. and Mrs. Ralph Mayer
Mr. and Mrs. Stanley Mayfield

Mr. and Mrs. W.B. McMillan
Mrs. Dorothy Baker Millsbaugh
Robert Moen
Mrs. Maydelle Moore
Mr. and Mrs. Doyle Morgan
Mr. and Mrs. Bill Morriss
Mr. and Mrs. Preston Neely
Mrs. Elizabeth Neill
Mr. and Mrs. Durwood Neville
Candelaria Noriega
Mr. and Mrs. Richard Olson
Dr. Prudie L. Orr
Mr. and Mrs. Richard Palmer
Mr. and Mrs. Jamie Parker
Mr. and Mrs. Robert Pfluger
Dr. and Mrs. Lonnie Pollard
Mr. and Mrs. Walter Pope
Claire Jones Powers
Mrs. Celeste Prugel
Bruce A. Redwine
Mrs. J.P. Rieck
Mr. and Mrs. Norm Rousselot
Mrs. Lura Sawyer
Wilna Schwiening
Ralph Shiyama
Mr. and Mrs. Gene Shurley
Mr. and Mrs. Marvin Shurley
Mr. and Mrs. Jack Smith
Dr. and Mrs. Mike Sudderth
Mr. and Mrs. John Tedford
Debbie Thompson
Wayford Tyler
Mrs. Esther Valliant
Mr. and Mrs. Fred Van Shoubrouek
Mrs. Fannie Wade
Mr. and Mrs. John Wade
Mr. and Mrs. George Wallace
Mrs. R.W. Wallace
Mr. and Mrs. F.C. Wamble
Mr. and Mrs. John Ward
Mrs. Mae C. Ward
Mr. and Mrs. Jack Wardlaw
Troy D. Williams
Mrs. Adele Wilson
Vernon Wolf
Francis J. Zucco

If you were planning to contribute, there is still time to take advantage of a 1994 tax deduction. Make your check payable to the Sonora Woman's Club Library Association and mail it to: P.O. Box 895, Sonora, TX 76950. You may also take your contribution to the library or to the Sutton County National Bank.

Thanks also to the following purchasers of the 180 engraved pavers for sidewalks and landscaping around the library. There are still 820 pavers waiting at the library to be bought and given a name.

Rev. and Mrs. Lewis Allen
Elias Avila
Mrs. Dorothy Baker
Linda Burge
Mr. and Mrs. Ray Burrows
Gail Cade
Calvin Cole
Bob & Patty Cramer
Mr. and Mrs. Mike Efeney
Anna Mary Eustace
Mr. and Mrs. D.H. Faulks
Fiestas Patrias
Mr. and Mrs. Lawrence Finklea
Sonora Volunteer Fire Department
Melvin Glasscock
Dorothy Graham
Robert Graham
Francine Hardeman
Mr. and Mrs. Gary Hardgrave
Honey Hicks
Lindsey Hicks

Beverly Howard
Brent Humphrey
Kate Jennings
Rev. and Mrs. Monte Jones
Rev. and Mrs. Kent Kepler
Anita Lane
Si Loeffler
Los Amigos Club
Mr. and Mrs. Tommy Love
Luna Construction
Robert Luna
Rosemary Mathew
Mr and Mrs. Frank Maxwell
Mrs. Fae McClelland
Mr. and Mrs. W.B. McMillan
James Morris

Mr. and Mrs. Preston Neeley
Mrs. Elizabeth Neill
N&R Construction
Mrs. Eva Perez
Mr. and Mrs. Walter Pope
Gus Redman
Pamela Reese
Mr. and Mrs. Glen Richardson
Mrs. Brigitte Rogers
Mrs. Lena Belle Ross
Dr. and Mrs. Bernard Rust
Enrique Sanchez
Luciano Sanchez
Maria Sanchez
Midge Shurley
Suzanne Shurley
Mrs. Gretta Smith
Sally Thompson
Mr. and Mrs. Jack Trainer
Wayford Tyler
Mr. and Mrs. George Wallace
Linda Wallace



Ask The Historical Society



Remember when you could pull up in front of the Sonora Motor Company, fill your gas tank and get the oil and water checked?!

by the Sutton County Historical Society, contributed by Bill Stewart

Continued from last week's issue of The Devil's River News

There were almost no buffalo closer than the Concho Watershed. The turkey were the native blue head and were extremely hardy, could live anywhere and were sold for 50 cents each.

The quail were mostly bob white on the Llano watershed and scaled or blue quail were mostly on the draws of the Devil's River. W.A. Miers recalls prairie chickens were plentiful at times in the Devil's River country. Javilinas like the wolves were found everywhere.

There were thousands of antelope on all the open country. Lee Merck tells us that the last Lobo was killed in 1902 in the Whiteheads by Lewis Martin and that the largest panther he saw was killed on the Fort Terret ranch and measured 11 feet. The last timber wolves were killed in about 1922 and a small number of bobcats survive. The deer began to get scarce in about 1905 and prairie chickens drifted in and out according to range conditions and stopped coming when sheep and goats took over.

Deer Hams sold for \$1.50 to \$2.00. W.A. Miers says that game began to dwindle about 1897. The prairie chicken

Ronnie Cox would like to be your pharmacist

stopped coming about then and in place of seeing 15 or 20 deer in a bunch he only saw 2 or 3 at a time. Mr. Miers says the Market Hunters did a big business at first, taking 40 to 50 deer hams in a 2 or 3 day period and selling them in the settlements for as little as 50 cents each. The hunters would also cut a wagon load of wood while out and haul it back to sell in the settlements. Quail held out the longest and Mr. Miers says that a good wing shot like Judge Burrows would often kill 40 in an afternoon.

Prairie dogs were once abundant in the district and prized as food by some of the Indian tribes. They are now reduced to almost none. And since the white man doesn't eat them he doesn't miss them.

The game supply was the lowest from about 1910 to 1920 when people began to practice conservation. Deer and turkey started to increase and continue until present times. We have plenty of deer and turkey in some areas, the quail are very limited, not all the area carries game. The closer grazed pastures have much less game than the

pastures on which light grazing has been practiced, and this is especially true of the pastures grazed by sheep and goats.

The game has been restored under the present laws, and they have been sufficient protection where they have been applied. A small part of the section has enough game to take pay hunters and in this area the laws have been vigorously enforced. Some of the money derived from the sale of hunting has been used for police purposes. The parts of the district that have fewer roads and less travel has shown to be the best adapted to the production. Wildlife and commercial hunting is getting a good start in the district and at present about 100 deer and 50 turkey are taken per year by

pay hunters. These bring growers about \$5000 per year. The fishing and camping yield somewhere around \$1000 additional.

We now graze every part of our ranges, if we would lease some parts and never graze them with domestic stock it would be a great boon to all wild life and especially turkey and quail. We have too few quail and this would be one of the best ways to replenish them.

We all know that our wild life can be increased or decreased by the amount of food and protection supplied them and that this depends almost entirely on the grower. We have made a comeback on deer and turkey and we can come back on quail but we may not be able to rope bear as Joe and Bob Wyatt did on Lost Lake and see moccasin tracks in Ten Mile Water Hole as Bill Kingston did in the summer of 1879 when he and Joe Callan were horse hunting.

The Sutton County Historical Society is looking for a copy of "The Devil's River News" dated June 17, 1927 or copies of the articles that were in it regarding the marriage of Jim Caldwell to Ella Cecile Farris. If you have this paper or a copy of the article, please call Jo-Ann Palmer at 387-5144 or 387-2855 after noon.

If you have any questions regarding Sutton County history, send them to "Ask the Historical Society", P.O. Box 885, Sonora TX 76950-0885. or give the Historical Society a call at (915) 387-5144.



submitted

Dorothy Barbee (right), manager of the I-10 Exxon, presents another check to Lewis Allen, representing the Sonora Ministerial Alliance. Dorothy would like to thank Jean and Claude Humpries, Cliff and Kevin Hudson, and Nacho Ramero for their extra help in the collecting of these cans - and anyone else who has helped.

UP TO 40% OFF CASH PRICE 25% OFF RENT-TO-OWN



Electronics
Recliners
Sofa Sleepers
Dinettes

Start Christmas Shopping NOW!



FREE DELIVERY

Les's Television Service
902 Ave. E Ozona, TX
392-3256

Financing Available With Approved Credit

If your loved one is in need of more care than you can give, but you resist a nursing home,
Lillian M. Hudspeth Memorial Hospital
has a "long term" program that might be just the right thing for you! For more information about taking advantage of 24-hour nursing care in the hospital call **387-2521**

BI-DISTRICT CHAMPS!!!
Shirts for Sale \$10.00

front

back

Call Team Graphics 387-5017

CAN'T FIND THE RIGHT PRESENT?

WHY NOT GIVE THE PLATEAU CELLULAR NETWORK ADVANTAGE.

First United Methodist Church
Sonora, Texas
Come and Celebrate the Christ Child's birth!

1st UMC Cantata. "Nowell, Nowell Emmanuel" December 18, 1994
Chancel Choir 11:00 a.m.

Christmas Services:
December 24, 6:00 p.m. Candlelight Services
December 25, 10:00 a.m. Morning Worship

The Advantage of convenient, reliable cellular phone service from Plateau Cellular is the perfect gift for that person that's always on the go.

For Complete Sales and Service see one of these Authorized Plateau Cellular Network Agents.

Cellular Resources
114 N.E. Concho
Sonora Texas
915-387-3592

L.A.C. Cellular of Sonora
(Tommy Wooten)
1006 Glasscock
Sonora, Texas
915-387-3239

Quad H Cellular
Sonora, Texas
915-226-2366

or Plateau Cellular Network
101 S. Betty
Monahans, Texas
1-800-658-9577

"REACHING A NEW LEVEL IN COMMUNICATION"

PLATEAU CELLULAR NETWORK

Valiant Effort

by Martha Valliant McLain

Did you catch the circus on the front steps of my office Wednesday? David and Dedra Jennings were the animal trainers, and I think the animals won. Christmas pictures were being taken of my nephew's (Tom E. Valliant) family. We had 1 cat, 2 dogs (one large and one small), 4 children, and Brenda and Tommy. A neighbor brought an extra cat; some of the animals and children, unaccustomed to being in town, made a break for freedom and had to be chased for a block or two. The barbecue aroma from next door tempted the animals and the hungry kids. The big blue dog with the brown spots is Tom's dog and minds only Tom. We tried to get pictures of her before Tom arrived, but she did her own thing. Surprisingly, the pictures were excellent. I feel sure that the Jennings can hardly wait to get back to easy pictures, like bucking horses and angry bulls. Do you think that I should get Tom E. a book on dog training for Christmas? If you haven't had your family pictures taken, David will be in Sonora for one month before hitting the rodeo circuit.

The Tarantella Dance Club had the big Christmas Dance Saturday night at the Langford Building. The theme was Feliz Navidad featuring La Posada. Decorations followed the theme with the Holy Family, a starry night, and luminarias made from cans. The band was good, but the food was wonderful. This is one club that always has a feast at Christmas. The centerpiece of the table was a large baked suckling pig, complete with the traditional apple in its mouth. Other traditional foods included fresh oysters and shrimp. There were fruit plates, veggies, fajitas, dips and chips, sandwiches, and of course the beverage of your choice. Let's hope that everyone danced a lot with such a feast. Linda Johnson won a beautiful white angel candle from The Registry.

Three hunters at Claire Power's ranch were burned in an explosion early Monday morning. They were seriously burned and are in a Lubbock hospital for treatment. It is alleged, one man woke early and thought that he smelled gas. It is suspected he lit a cigar and the gas ignited. Another hunter had decided to sleep in the camper next to the hunting cabin. He called for help on his car phone, and medical aid was there within ten minutes. We hope that all fully recover.

J.W. Neville is still in intensive care in San Angelo. He has never fully awakened since his heart surgery. He is probably facing a long, long illness.

Oscar Lee Carpenter is in San Angelo and is in ICU. He has been in a coma for several days.

Sarah Schwiening has been back in ICU with serious respiratory problems.

Jane and James Alexander have been back and forth since daughter Sheila had a heart attack. Reports indicate that she is fine and getting stronger daily. The doctors think that they can treat her with medication. It is such a shock because she is only 30 something. Much too young for a heart attack.

1995 MAILING ADDRESS BOOK

submitted

Sonora Woman's Club compiles and publishes the *Sonora and Sutton County Mailing Address Book*, every five years as a community service. All proceeds go to the Sutton County Public Library.

For the first time, business mailing addresses will be printed for those businesses wishing to participate. A one time \$10 donation will make your mailing address instantly available for the next five years. Although the book does not include telephone numbers, a space will be provided at the end of your address where your phone number may be written in.

If you wish your business mailing address to be in the 1995 book and you have not been contacted, please make your check payable to Sonora Woman's Club Library Association and return it with the form below by December 31, 1994. Send to Mailing Address Book, P.O. Box 452, Sonora, Texas 76950 or drop it off at the library or the Devil's River News. If you have any questions, call the Sutton County Public Library at 387-2111.

Business Name _____

Mailing Address _____

Physical Address _____

Telephone _____

If you have more than one business, additional businesses will be listed for \$2 each.

Westerman Drug Bridal Registry

Kristen Keel and Joel Nixon
Trey and Jane Rushing

101 NW Concho
387-2541

CHOI'S TAE KWON DO

Days - Monday & Wednesday
Hours - 4:00 p.m. thru 5:30 p.m.

Summer Classes:

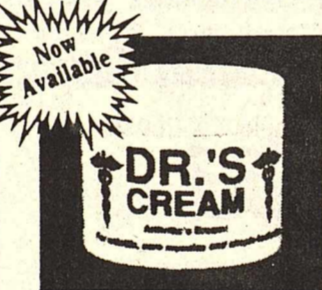
11:00-12:30 & 5:00-6:15

Instructor - Randy Corbin

Call for more information - 949-5667 or 473-2641.



Great News for ARTHRITIS SUFFERERS



Amazing DR.'S CREAM

DR.'S CREAM - a new dual-action formula developed by a group of Doctors now available to relieve the suffering and nagging pain from Arthritis, Rheumatism, Bursitis and Muscular Aches.

Westerman Drug

101 NW Concho 387-2541

The Sonora Merchants Association would like to invite you to experience

A Sonora Christmas Thursday, December 15th

Sounds of Sonora

Caroling Around Town

Living Nativity - Methodist Church

Merchants open until 8:00 P.M.

Saturday, December 17th

Christmas Ticket Drawing held Downtown at 2:00 p.m.*

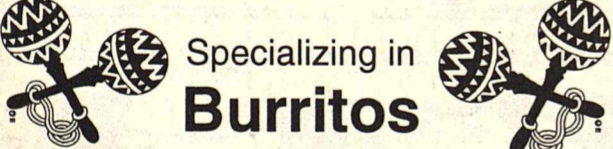
Sunday, December 18th

Community Christmas Cantata - 7:00 p.m.

*Tickets are given for each dollar spent at participating merchants. The stubs are placed into a hopper and drawn for gift certificates each Saturday.

NOW OPEN LA CASITA CAFE

(formerly Cynthia's Party Villa)



Specializing in
Burritos

Tamales • Chalupas

Dine In or Take Out

Balloon Bouquets • Mylar Balloons
Novelty Gifts

Hours: 8:00 a.m. to 3:00 p.m.

218 Main Street 387-5472

CHRISTMAS SHARES

of Sonora Mohair & Company, Inc.
available for you and/or your loved ones.

\$6.00/share, 100 share min. Texas residents only.

Your opportunity to participate in a vertically integrated company selling
TEXAS MOHAIR

Blended with TEXAS FINE WOOL in fabrics, throws, socks, sweaters, etc.
Sold in major U.S. markets -- New York, Chicago, Los Angeles, Dallas

SHARE AVAILABLE ANNOUNCEMENT - NOT AN OFFER TO SELL
Risks involved, as with all investments.

Prospectus must be obtained prior to sale of shares. Read carefully before you invest.

SONORA MOHAIR & COMPANY, INC.
END OF EAST SECOND STREET • P.O. BOX 1154
SONORA, TEXAS 76950

Non-commissioned company sales agents:
JIMMY CAHILL • KELLY CAHILL • JAMES SWEETEN
(915) 387-2524 FAX (915) 387-2271

TEXAS MOHAIR is a renewable resource. (minerals are not - remember 1985)
TEXAS MOHAIR represents 92% of U.S. production and 40% of the total commodity
IF YOU MUST IMPORT, IMPORT FROM TEXAS!



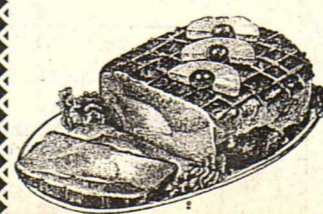
La Mexicana Restaurant



has something new!

We are now offering Delicious
Party Trays for all occasions.

Great for the Christmas Holidays!



CALL 387-3401
and place your order!





Stacy Becknell, Jan Folds and Gayla Frederickson accompanied the choir during their Christmas Concert on Thursday, December 7, 1994.

HOLIDAY CHOIR CONCERT HELD

The Sonora Independent School District choirs held their Holiday Christmas Concert on December 8, 1994 at 7:30 p.m. at the High School Auditorium. The choirs were under the direction of Frank W. Conlon. Accompanists were Stacey Becknell, Gayla Frederickson and Jan Folds.

The Sixth Grade Choir was the first to perform. They sang "Has Anybody Seen Christmas", "Carol For the Baby", and "Chocolate in My Stocking". Members of the Sixth Grade Choir are: Hilario Aguero, Serena Duran, Jessica Esquivell, Joe kFlores, Jonathan Folds, Mary Jo Galvan, Stephanie Hard, Shalayne Hobbs, Stacey Keeton, Lorena Lopez, Jeremiahh McLaughlin, Dora Mendez, Audra Nichols, Elizabeth Ramirez, Jennifer Rivas, Jake Trainer, Sandra Cardona, and Mary Trosper.

The Junior High Mixed Choir performed "Christmas Alleluia", "Silent Night", "Christmas Noel", and "Hap, Hap, Happy Snowman". Members of this choir are: Cathy Aguero, Jessie Aguilar, Stacey Becknell, Andy Castilleja, Laura Castilleja, Ruben Castilleja, Patty Cerna, Mark Cooper, Imelda Delgado, Ester Diaz De Leon, Noemi Diaz De Leon, Graciela Esquivel, Rosa Esquivel, Stacy Fox, Prissy Galindo, Michael Galindo, Maria Garcia, Gabby Gutierrez, Sara Lomas, Homer Lozano, Teresa Lozaon, Anthony Luna, Roy Luna, Erin Marrs, Edward Maskill, Evelyn Mungia, Roberto Murillo, Crystal Ponsett, Liza Ramirez, Felicia Rivera, Janet Salazar, Augustina Solis, Jamie Teasley, Kristen Whitehead, Lindsey Whitworth, and Monica Valdez.

After a brief intermission, the High School Choir began with a candle lit procession to "O Come, O Come Emmanuel". They followed by "Noel", "The Most Wonderful Time of The Year", "The Joy of Mary", and "Candles Long Ago". The members of the High School Choir are: Soprano - Becky Banda, Teresa Brown, Debbie Buitron, Jill Hazelton, Kathleen McManus, Jennifer Stroud and Cindy Villanueva; Alto - Romy Castaneda, Irma Gandar, Sarah Marrs, Amy Massey and Amy Robertson; Tenor - Matthew Hunt, Sam Odom and Eric Talamentes; Bass - Josh Akins and Tom Ramon.



Gwen Frederickson, Delma Martinez and Christina Flores served refreshments after the Christmas choir concert on Thursday night.

Irene would like to wish everyone a happy holiday!
Come in and see what she has to offer.
Beautiful arrangements & much more!

Carolina Country Cones • Aglow Candles
Fresh Scent Potpourri • Fireside Cone Baskets
Fine Home Fragrances

FLOWERS BY IRENE
308 RAILROAD 387-3914

HOURS
Mon-Fri: 9:00 a.m.-5:00 p.m. Sat: 9:00 a.m.-12:00 Noon

DOYLE MORGAN INSURANCE
"Your Independent Agent for 25 years."

Auto, Home, Commercial, Oil field, Ranch, Mobile, Homes, Life & Health



213 E. Main
387-3912 or 387-2296



Yvette Samaniego

AGRICULTURE ANGLE

WINTER PASTURE MANAGEMENT

submitted by Virgel Pelock

Now that we have our winter pastures established, the time to make decisions concerning their use is here. Management is the key part in making our winter pastures pay for themselves. Management practices in winter pastures include such things as when to start grazing, stocking rates, expected yields of forage, grazing time, rotational grazing and alternative grazing areas for wet weather and non-growth periods.

Grazing should begin when winter pasture growth reaches the height of five to seven inches. It is extremely important to allow wheat pasture to reach the proper height before initiating grazing. Grazing prior to this time drastically reduces root development and total production. Once grazing begins, wheat should have a stubble height of at least three inches left following each grazing cycle. We should also remember that wheat has two major growing periods, one in the fall and early winter and one in the early spring. Normally wheat will not grow much during colder periods in January and February.

When winter pastures are first stocked, there will appear to be a surplus of forage. Some of this surplus must be held in reserve for grazing during non-growth periods in January and February. These considerations will help to determine proper stocking rates for your winter forage.

Care should be taken, especially this year with good growth conditions, to prevent the pasture from getting too tall before grazing. If the forage is allowed to grow too tall before grazing,

much of the forage will be wasted and the wheat could be damaged by hard cold weather. Excessively tall wheat pasture is more sensitive to cold weather than shorter plants.

The most efficient way to graze pasture, is by concentrating a large number of animals on a small area. This area can then be grazed to the proper height in a short period of time and animals moved to the next area at the proper time. Obviously, to do this, pastures will have to be fenced into smaller areas. The least expensive way to do this is with electric fencing. Good quality electric fencing material can be purchased very reasonably. With proper care it will give excellent service for many years. The current cost of electric fence runs about thirty cents a foot which would include the cost of the energizer or charger.

By limiting the amount of time that animals are on winter pasture each day, the forage can be stretched to increase the available grazing and reduce the cost per animal. It has been shown repeatedly with mature animals, that short grazing periods of about three hours per day will give the same animal response as full time grazing. This way much less forage is required per animal and much less is wasted due to trampling or soiling from mud, manure or urine. Research has shown, for example, that a cow and calf pair grazing full time will get almost twice the protein and 60 percent more energy than is required. A lactating cow can be satisfactorily supplemented by grazing winter pasture only three hours per day. After grazing the pasture for the necessary time, livestock can then be moved to winter dormant rangeland or tame pasture.

If schedules prohibit moving livestock this frequently, one day on and one day off grazing would be a second alternative. If dry, breeding animals are being grazed, three or four hours every second or third day might also be a very desirable choice. Normally animals can be trained to move very quickly in about a 7-10 day period.

By observing a few simple rules and by supplying a little management time, winter pastures supply an economic alternative to other winter supplement programs. For assistance on pasture management, contact your local Natural Resources Conservation Service office (formerly Soil Conservation Service).

JUNCTION STOCKYARDS HELD CATTLE SALE

The Junction Stockyards held their monthly cattle sale December 2, 1994. Three hundred and seventy three head of cattle sold. Heavy calves sold steady. Light calves sold mostly \$1-2 lower. Packer cows and bulls were steady. Stocker cows are in good demand.

The monthly sheep and goat sale was Monday, December 5. Lambs sold \$2-3 lower. Slaughter ewes and bucks were also \$2-3 lower. Stocker Angora sold steady. Slaughter Angora nannies and mutton sold \$2-3 lower. Fat Angora kids and yearlings sold \$2-3 lower also. Spanish kids sold \$2-3 higher. Spanish mutton and billies were \$2-5 higher.

Why Not The Best?

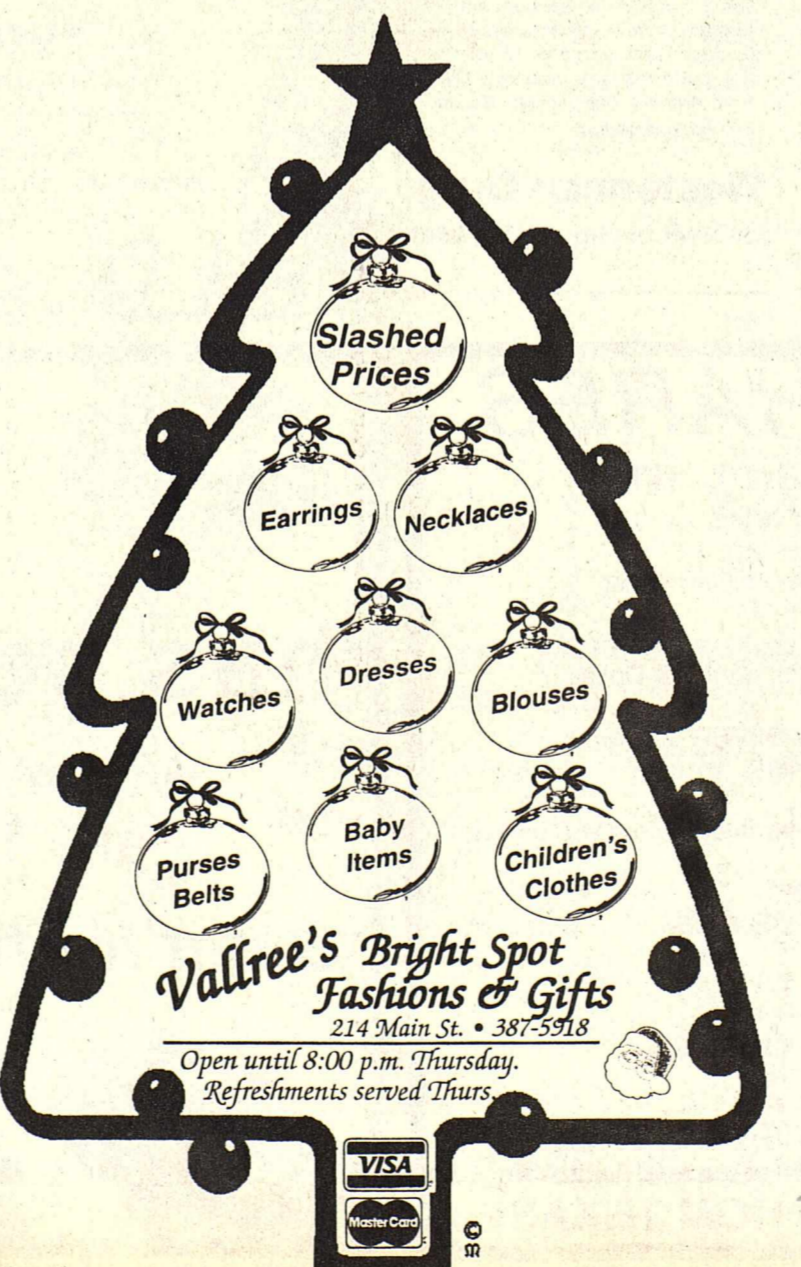
The Classifieds
A CLASS ACT

FAMILY PRACTICE
S.A. Sobredo, Jr., M.D., F.A.A.F.P.
• Board Certified •
American Board of Family Practice
Traditional and Comprehensive Health Care
and Preventive Medicine for the Entire Family
Schleicher County Medical Center
404 W. Murchison Ave. • Eldorado, TX 76936
853-2533
• Office and Full Hospital Services •
• Appointments and Walk-In Service •
• Medicare Participant • Member of Lions Club •


If you're looking for the latest movie releases, look no further than the VIDEO STORE!!

NEW RELEASES FOR THIS WEEK ARE:
Blown Away • Baby's Day Out Ernest Goes To School I Love Trouble

GREAT GIFT ITEMS!
CASSETTE TAPES & C.D.'S FOR SALE
Country, Spanish, Rock, Rap, Top Ten & Special Orders!
Telephones • TV/VCR Cables

Vallree's Bright Spot Fashions & Gifts
214 Main St. • 387-5918
Open until 8:00 p.m. Thursday.
Refreshments served Thurs.



For you last minute Christmas decorators...
Sonora Wool & Mohair has decorations still in stock.
Come by and take a look!

We also offer gifts for the whole family!

SHOP SONORA FIRST!

SONORA WOOL & MOHAIR
Your Local True Value Store
210 S. W. College
Sonora, TX 76950
387-2543

YORBA TO RECEIVE DIPLOMA

submitted

Mrs. Nelda L. Yorba, mother of ten children, will receive her diploma in Religious Education from the Hispanic Baptist Theological Seminary. The ceremony will take place at Lackland Baptist Church December 16, 1994.

After three and a half years of struggle and hard work, raising her children; at the end it was worth every minute. God was always there to help, protect and guide.

Her son, Rick Sanchez, a May graduate from the same seminary, is serving as the Minister of Education and Youth Minister at Segunda Iglesia Bautista in Corpus Christi, Texas. Joe Sanchez, U.S. Army, resides in Auorra, Colorado. In his free time, he is team captain for a group that helps troubled and abused teens. Patty Yorba, a new freshman in Sonora High School, will sing before 14,000 youth in the Hispanic Baptist Youth Congress April of 1995 in Austin, Texas. Mrs. Yorba's husband, Ruben, also attends the seminary where he is preparing for the ministry.

The Yorbas have worked in the Apartment Ministries, where they ministered to troubled children, worked with gang members, and helped the people who needed someone just to talk to.

"Sonora is a safe town and has never really seen people, most of all children, suffer in the streets. We want to help serve in Sonora in any way we can." The Yorbas will go to Idaho this summer as missionaries.

Mrs. Yorba is the daughter of Maria Leija from Sonora.



submitted by Flori Mesa

New books at the Sutton County Public Library are the following:

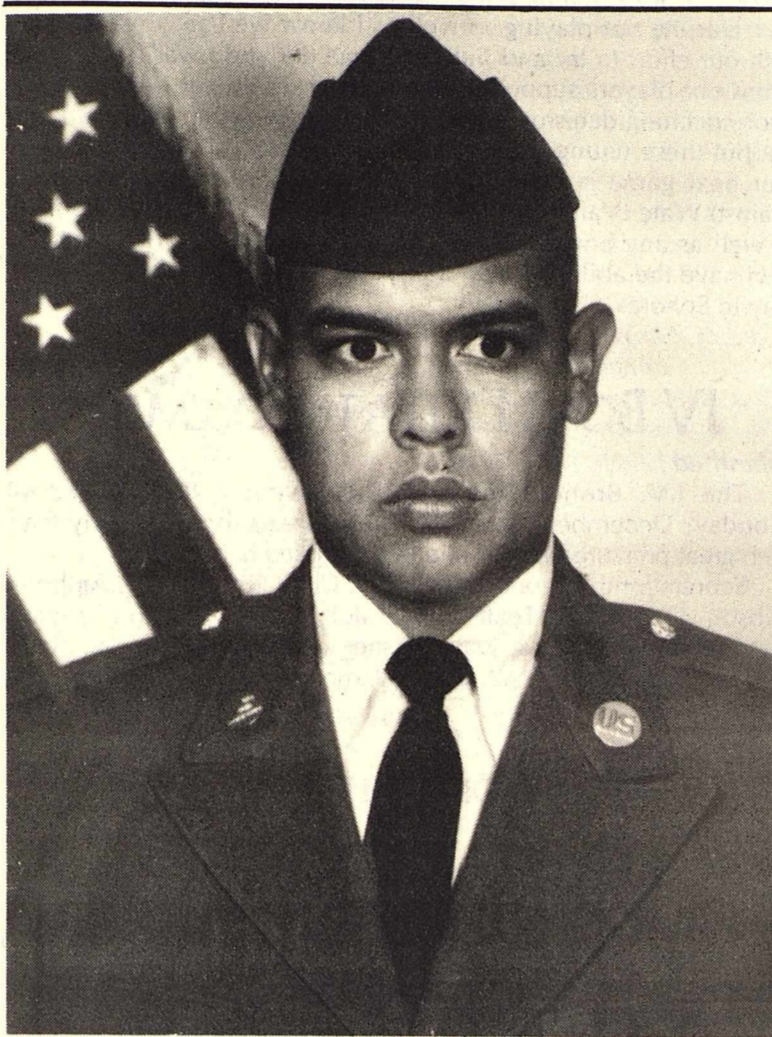
Adult Fiction: *Remembrance* by Jude Deveraux; *Shortgrass Song*, Mike Blakely; *Kirk Rivers of the Heart*, Dean Koontz; *It Wasn't Always Easy, But I Sure Had Fun*, Lewis Grizzard; *Trek Power*, William Shatner; *The Delany Sisters' Book of Everyday Wisdom*, Amy Hill Hearth; *Great Health Hints and Handy Tips*, Reader's Digest; *Angels in the Kitchen*, Patricia Corrigan; *Only You*, Cynthia Victor.

Children and Youth: *The Pagemaster*, *The Christmas House*,

Santa Cow, *Clifford Takes A Trip*, *Berenstein Bears Go Out For the Team*, *Just Me In the Tub*, *Berenstein Bears and the Bully*, *Berenstein Bears and the Trouble with Grownups*, *Happy Christmas to All*, *Absolute Rulers*, *Thinkers*, *People Who Care*, *Firefighters*, *Customs and Traditions*, *The Christmas Tree Ride*, and *Grandfather's Journey*.

Adult Audios: *Expedition*, Dana Fuller Ross; *El Lazo*, Larry Martini, *The Fate*, Richard Wheeler; *The Titan*, *The Warriors*, *The Furies*, *The Rebels*, and *The Seekers*, all by John Jakes.

Reference: 1994-95 *The Scholarship Guide For Hispanics* and 1993-94 *Who's Who Among American High School Students*.



John Lopez

LOPEZ ASSIGNED TO FT. BLISS

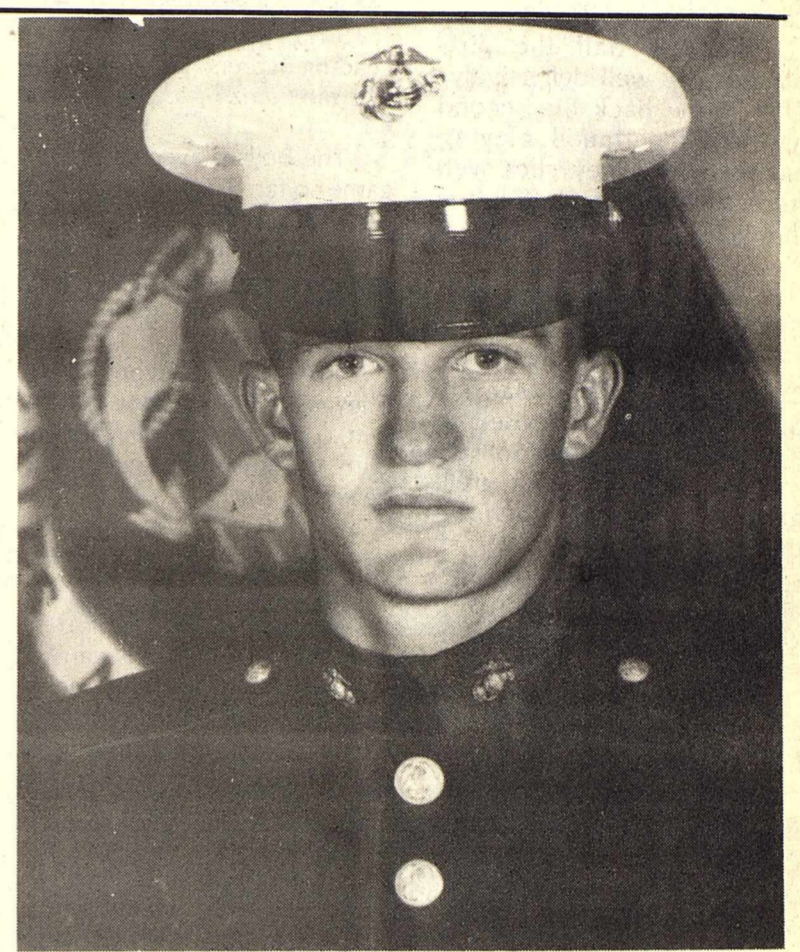
submitted

John E. Lopez, III graduated from basic training on December 5, 1994 at Fort Sill's Army Field Artillery Training Center in Lawton, Oklahoma. He was a member of Bravo Battery 133 FA, 4th PLT.

Lopez completed eight weeks of basic training followed by eight weeks of advanced infantry training in which he received special recognition as a qualified sharp shooter in rifle and also as an expert in grenade.

Lopez's first assignment is at Ft. Bliss in El Paso, Texas where he will be joined by his wife Yvonne and his son John Lopez IV.

John is a 1994 graduate of Sonora High School. He is the son of John and Betty Lopez of Sonora.



Corp. J. Savage Glasscock

GLASCOCK GRADUATES FROM BASIC

submitted

J. Savage Glasscock, a graduate of Marathon High School officially earned the title, "United State Marine", after 12 weeks of recruit training at Marine Corps Recruit Depot, San Diego. Corporal Glasscock will serve four years in the Marine Corps.

Corp. Glasscock completed Basic Training at Camp Pendleton, Infantry School, Marine Corp Combat Training, Reconnaissance/Special Forces, Scuba School, Jump School, Survival Evasion Resistance and Escape School, Emergency Medical Technician School, and was awarded Marine of the Quarter for the 2nd Recon Division. He is stationed at Camp Lejune, North Carolina.

Parents are Dr. and Mrs. Joe Kind of El Paso, Texas and Mr. and Mrs. Tom Glasscock of Marathon, Texas.

Grandparents are Mrs. Faye McClelland and Mr. and Mrs. V.J. Glasscock all of Sonora.

CHRISTMAS PIANO RECITAL HELD

submitted

Family and friends gathered at St. John's Episcopal Parish Hall on Sunday afternoon, December 11, to hear Christmas music performed by the piano students of Virginia Jones. A variety of carols and songs were played by pupils ranging from beginners who started taking lessons this fall to advanced-level students. Students who participated were: Clayton Hicks, Wilson Wallace, Payton Holekamp, Andi Allen, Will Ferguson, Thia McKissack, Ashley Brockman, Shane Benson, Allison Benson, Dacey Fawcett, Krista Simpler, Elizabeth Elliott, James Elliott, Nathanael Prather, Lee Voight, Susanna Street, Brian Payton, Desiree Gonzales, Heather Lawson, Kara Hard, Stephanie Hard, Whitney Martin, Jordan Anderson, Mayer Anderson, Ashley Parker, Marjorie Becknell, Stacey Becknell, Gayla Frederickson, Lacy Ragsdale, Leslie Gamez, Allison Higdon, Kate Higdon, Adrian Mendez, Cady Taylor, Kimberly Bustamante, and Kristen Hardgrave.

TIGER CUBS TOUR POST OFFICE

submitted

Tiger Cub Group 1 met Monday, December 12, 1994 at the Sonora Post Office. Postmaster Norm Eisenhut guided the scouts on a tour. The boys learned how the mail travels from the post office in Sonora to other post offices in the U.S. Each scout brought a letter to mail and Mr. Eisenhut showed the boys how to cancel the stamp. The scouts learned to recognize the mail carriers' uniform and vehicles so that if they are ever lost or in need of help, they can go to a mail carrier for help.

The next Tiger Cub 1 meeting will be Monday, January 9, 1995 at 4:00 p.m. The topic is "Prepare for Emergencies". The Pinewood Derby is scheduled for Saturday, January 21, 1995. This will be a pack meeting. For more information on the next meeting and upcoming activity, contact Todd Munn at 387-3731.

SONORA INDEPENDENT SCHOOL DISTRICT Combined Statement of Revenues, Expenditures, and Changes in Fund Balance - All Governmental Fund Types and Similar Trust Funds Year Ended August 31, 1994

Data Control Codes	Governmental Fund Types	Similar Trust Funds	Totals (Memorandum Only)			
			August 31, 1994	August 31, 1993		
	100-199	200-499	810-879	98	97	
	General	Special Revenue	Cooperative Expendable	August 31, 1994	August 31, 1993	
5700	Local, Intermediate, and Out-of-State	\$ 4,889,307	\$ 139,556	\$ 0	\$ 5,028,863	\$ 4,792,783
5800	State Program Revenues	371,945	54,420	0	426,365	284,534
5900	Federal Program Revenues	0	304,492	0	304,492	274,980
	Total Revenues Excluding Function 14	\$ 5,261,252	\$ 498,468	\$ 0	\$ 5,759,720	\$ 5,352,297
0014	Revenues Collected for Function 14	267,037	0	0	267,037	0
5030	Total Revenues	\$ 5,528,289	\$ 498,468	\$ 0	\$ 6,026,757	\$ 5,352,297
	Expenditures					
0011	Instruction	\$ 3,320,845	\$ 200,878	\$ 0	\$ 3,521,723	\$ 3,246,735
0021	Instructional Administration	33,348	0	0	33,348	81,453
0022	Instructional Resources and Media Services	78,940	12,483	0	91,423	83,033
0023	School Administration	278,313	3,853	0	282,166	285,798
0025	Curriculum and Instructional Staff Development	26,178	22,168	0	48,346	29,645
0031	Guidance and Counseling Services	82,610	1,623	0	84,233	42,050
0033	Health Services	29,129	0	0	29,129	24,606
0034	Student (Pupil) Transportation	193,200	0	0	193,200	203,567
0036	Cocurricular/Extracurricular Activities	241,346	0	0	241,346	253,551
0037	Food Services	0	308,933	0	308,933	298,201
0041	General Administration	291,488	0	0	291,488	298,752
0051	Plant Maintenance and Operations	619,185	0	0	619,185	609,842
0052	Facilities Acquisition and Construction	116,012	0	0	116,012	772
0075	Data Processing Services	7,603	0	0	7,603	7,709
	Total Expenditures Excluding Function 14	\$ 5,318,197	\$ 549,938	\$ 0	\$ 5,868,135	\$ 5,465,714
0014	Instructional Services Between Public Schools	267,037	0	0	267,037	0
6050	Total Expenditures	\$ 5,585,234	\$ 549,938	\$ 0	\$ 6,135,172	\$ 5,465,714
1100	Excess (Deficiency) of Revenues Over Expenditures	\$ (56,945)	\$ (51,470)	\$ 0	\$ (108,415)	\$ (113,417)
7990	Other Resources	1,000	70,000	35,422	106,422	112,652
8990	Other Uses	(115,876)	0	(35,422)	(151,298)	(138,972)
1200	Excess (Deficiency) of Revenues and Other Resources Over Expenditures and Other Uses	\$ (171,821)	\$ 18,530	\$ 0	\$ (153,291)	\$ (139,737)
0100	Fund Balance - Beginning	2,319,164	25,329	946	2,345,439	2,485,176
1300	Increase (Decrease) in Fund Balance	(300,084)	(24,384)	(946)	(325,414)	0
3000	Fund Balance - Ending	\$ 1,847,259	\$ 19,475	\$ 0	\$ 1,866,734	\$ 2,345,439



Mary Ross Buchholz is pictured above as she tries on jewelry made by Susan Schwetner during the open house at the image on Thursday, December 7, 1994.

The Classics



A SURE BET

GOOD LUCK BRONCOS!

NOTICE OF APPLICATION

NOTICE IS HEREBY GIVEN that the Applicant, Louis Dreyfus Natural Gas Corporation, 14000 Quail Springs Pkwy, Ste 600, Oklahoma City, OK 73134, has made application for a spacing exception permit under the provisions of Railroad Commission Statewide Rule 37 (16 Tex. Admin. Code Section 3.37). Applicant seeks exception to the distance to nearest well requirement to drill Well No. 102, Rip Ward "F", 82.49 Acres, Section 93, Block B, HE&WT RR Co. Survey, A-319, Sawyer (Canyon) and Sawyer (Strawn N.) Field(s), Sutton County, being .5 miles southwest from Sonora, Texas. The location of this well is as follows:

SHL: 672' from the west line and 1280' from the south line of lease. 1363' from the north line and 1015' from the east line of survey.

BHL: 467' from the east line and 467' from the south line of lease. 467' from the east line and 2176' from the north line of survey.

Field rules for the Sawyer (Canyon) field are 500/1000, 320/80/40 acres. Field rules for the Sawyer (Strawn N.) field are 467/1200, 40 acres. This well is to be drilled to an approximate depth of 7000 feet.

PURSUANT TO THE TERMS of Rule 37(h) (2) (A), this application may be granted administratively if no protest to the application is received. An affected person is entitled to protest to the application.

Affected persons include owners of record and the operator or lessees of record of adjacent tracts and tracts nearer to the proposed well than the minimum lease line spacing distance. If a hearing is called, the applicant has the burden to prove the need for an exception. A protestant should be prepared to establish standing as an affected person, and to appear at the hearing either in person or by qualified representative and protest the application with cross-examination or presentation of a direct case. The rules of evidence are applicable in the hearing. If you have questions regarding this application, please contact the Applicant's representative, Pat Day, at (915) 387-3588. If you have any questions regarding the hearing procedure, please contact the Commission at (512) 463-6718.

IF YOU WISH TO REQUEST A HEARING ON THIS APPLICATION, YOU MUST FILL OUT, SIGN AND MAIL OR DELIVER TO THE AUSTIN OFFICE OF THE RAILROAD COMMISSION OF TEXAS THE ENCLOSED NOTICE OF INTENT TO APPEAR IN PROTEST. A COPY OF THE INTENT TO APPEAR IN PROTEST MUST ALSO BE MAILED OR DELIVERED ON THE SAME DATE TO APPLICANT AT THE ADDRESS SHOWN ABOVE. THIS INTENT TO APPEAR IN PROTEST MUST BE RECEIVED IN THE RAILROAD COMMISSION'S AUSTIN OFFICE BY **DECEMBER 30, 1994**. IF NO PROTEST IS RECEIVED WITHIN SUCH TIME, THE REQUESTED PERMIT WILL BE GRANTED ADMINISTRATIVELY, TO BE

Public Notice

EFFECTIVE THE DAY FOLLOWING TERMINATION OF SUCH THREE-WEEK PERIOD.

4-(12-1-94)-b

JOB VACANCIES

The Texas Department of Transportation is accepting applications for the following two (2) positions located in Sonora, Texas.

Job Title: Roadway Maintenance Technician II (Maintenance Technician II) Job Vacancy Number: 407K510067 Salary: \$7.27 hourly minimum

Job Description: Under supervision of a crew chief, performs maintenance work on a specialized or routine maintenance crew. May perform some duties independently. Work requires contact with the public. Will be required to have a Class A CDL, with endorsements, within 60 days of employment.

Address: U.S. 277 North, Sonora, Texas 76950

Telephone Number: For additional information on the job vacancy notice or applications call 915-387-2848 or 387-3750 or contact any TxDOT office in the state of Texas.

A completed application is required and will be accepted until December 16, 1994 at 5:00 p.m.

Applications mailed must be postmarked no later than December 15, 1994.

The Texas Department of Transportation is an EQUAL OPPORTUNITY/AFFIRMATIVE ACTION EMPLOYER.

2-(12-8-94)-b

NOTICE OF APPLICATION FOR OIL AND GAS WASTE DISPOSAL WELL PERMIT

MERIDIAN OIL INC., P.O. BOX 51810, MIDLAND, TEXAS 79710-1810 is applying to the Railroad Commission for a permit to dispose of produced salt water or other oil and gas waste by well injection into porous formation not productive of oil or gas.

The applicant proposes to dispose of oil and gas waste into the ELLENBURGER, CANYON RANCH Well Number 0828SD. The proposed disposal well is located 23 MILES SOUTH FROM SONORA in the SAWYER (CANYON) in SUTTON County.

The waste water will be injected into strata in the subsurface depth interval from 7000 to 8675 feet.

LEGAL AUTHORITY: Chapter 27 of the Texas Water Code, as amended, Title 3 of the Texas Natural Resources Code, as amended, and the Statewide Rules of the Oil and Gas Division of the Railroad Commission of Texas.

Requests for a public hearing from persons who can show they are adversely affected, or requests for further information concerning any aspect of the application should be submitted in writing, within fifteen days of publication, to the Environmental Services Department, Oil and Gas Division, Railroad Commission of Texas, P.O. Box 12967, Capitol Station, Austin, Texas 78711 (Telephone 512-463-6792).

PUBLIC NOTICE

Notice is hereby given that the San Angelo State School/Del Rio Outreach is seeking financial assistance from the U.S. Department of Transportation under the Section 16 grant program. Grant funds will be used to purchase 1-2 vehicles to provide transportation primarily for persons with disabilities participating in outreach programs to work, appointments, therapy, ect. Copies of the grant proposal are available for inspection by the public at 906 East 11th Street, Del Rio, Texas.

If requested in writing by 5:00 p.m., January 5, 1995, a public hearing will be held by the San Angelo State School/Del Rio Outreach at 906 East 11th Street, Del Rio, Texas on January 13th at 11:00 a.m. to accept comments on the proposed initiation of transportation services for the disabled within Sutton, Terrell, and Val Verde counties. Written comments on the proposed project may be submitted to Velma Valdez at 906 East 11th Street, Del Rio, Texas 78840.

Velma Valdez, Director San Angelo State School/Del Rio Outreach

Give the Gift of COMMUNICATION

Cellular Phones & Accessories ON SALE NOW Motorola Pagers

TALK IS CHEAP

at Cellular Resources 114 N. Concho 387-3592

THE TOWN & COUNTRY DIFFERENCE

Town & Country Food Stores An Employee Owned Company COME EXPERIENCE THE TOWN & COUNTRY DIFFERENCE AND HELP US WELCOME OUR NEW ADDITION "SUBWAY SANDWICHES"

Tedford Jewelry Bridal Gift Registry Kristen Keel, bride-elect of Joel Nixon 15th Celebration Gabby Gutierrez

Pam's Purrfect Petals Flowers & Gifts wishes everyone a very Meowy Christmas! Stop by and look, we're open Monday-Friday from 10:00 a.m. to 7:00 p.m. and Saturdays from 9:00 a.m. to 12:00 p.m. Christmas Wreaths - 25% OFF

Talent Show Monday, November 19th 7:00 p.m. SHS Auditorium sponsored by KIDS, INC. 3 Age Categories CASH PRIZES \$10 entry fee Door prizes Call 387-5566 or 387-2474 for more information

Christmas Shopping Countdown 12 MORE DAYS! Have you finished your Christmas shopping? Well, come by Ol' Sonora where you'll be sure to find that perfect gift for that special someone! Open until 8:00 p.m. every Thursday until Christmas. Ol' Sonora Trading Company 204 Hwy. 277 N. Sonora, Texas 387-5507

MEADOR PECAN ORCHARD Come Visit Us At Our Orchard Excellent Quality Pecans Shelled Pecans Available Great Christmas Gifts No Order Too Large Or Small Will Do Custom Cracking Shipping Available Call For More Information See You Soon! John Edward and Rita Meador Hwy 190 East Eldorado, TX (915) 853-3135

Christmas Sale 16 Ft. Pipe Trailer reg. \$1399.00, SALE \$1189.00 16 ft. Angle Trailer reg. \$920.00, SALE \$785.00 14 Ft. Angle Trailer reg. \$820.00, SALE \$695.00 11 1/2 Ft. Golf Cart Trailer reg. \$475, SALE \$399.00 Live Stock Sprayer 18 horse power, Kohlar engine, 10 gallons per minute, triple tandem axle trailer 50 ft. hose & 2 guns, tool box on trailer reg. \$4995.00, SALE \$4195.00 AMERICAN SALES & SERVICE 105 S. Main Sonora, TX (915) 387-3641

Sonora Real Estate

Home Mortgage Loans

Fixed Rates 10/30 Years
Sierra Mortgage Corp.

Refinance
Purchase

Bob Lauffer San Angelo, TX
1-800-942-9346
Residence 915-659-3196

1990 16x80 MOBILE HOME on 100x140 fenced lot. Under penning and storage. 3 BR/2B. \$27,000. 915-853-2820 after 5:00 915-853-3705.
tfn-(10-13-94)-nc

HOUSE FOR SALE: 3 Bedroom, 2 Bath, 1 car garage, fenced in patio and back yard. 704 Lee Street in Eldorado - \$29,000. Call 853-3039 after 5:00 p.m.

RESIDENTIAL MORTGAGE LOANS

Fixed Rates--Adjustable Rates
15, 20, 30 years
FNMA Underwriting Standards

SUTTON COUNTY NATIONAL BANK

207 Highway 277 N., Sonora, TX 76950

915-387-2593

Member
FDIC



McLain Real Estate

Martha Valliant McLain
Broker - 387-5060

LARGE PRICE REDUCTION - GREAT LOCATION
121 Edgemont - Beautiful custom designed 3 BR, 3 B home with a large 2 car garage. This split level home also offers an office, 2 fireplaces and abundant storage. It is priced to sell!

LARGE PRICE REDUCTION - LOTS OF POTENTIAL
East 2nd Street lot - 100'x100' corner lot - cleaned and ready for a home. Excellent location near schools.

Call us - we can find what you need!

Anita Hudson 387-2994 Suzanne Powers 387-3347 Mike Smith 387-5771

387-5060

BOBBIE SMITH REAL ESTATE

387-2728

PRICE REDUCED

118 Deerwood
Beautifully landscaped, three spacious bedrooms, three living areas. Fireplace.

912 Crockett Ave
4 Bedroom, 3 Bath, formal dining, living room, AC/CH, carpet, tile.

Call For Appointment.

Don Sessom - Salesman
387-5797

Bob Caruthers Real Estate

16 Tracts FOR SALE

STRIEGLER ADDITION
Act Soon for Choice!

3 BR, 1 B

Bargain - 4th & Menard St.



(915) 387-LAND

(915) 387-2260

WANT ADS

387-2507

MANUFACTURED HOMES SHIPPED DIRECT: High quality singlewides and doublewides. Save Big \$\$\$. For free color literature, call 1-800-950-8161.
tfn-(5-19-94)-b

HELP WANTED: Experienced dozer and maintainer operators. Drug testing required. Call Howard Construction at 387-3093.
tfn-(5-19-94)-b

1990 16x80 MOBILE HOME on 100x140 fenced lot. Under penning and storage. 3 BR/2B. \$27,000. 915-853-2820 after 5:00 915-853-3705.
tfn-(10-13-94)-nc

FOR SALE: Two registered black Angus bulls - out of the Frank Fish herd. Call Bill Fish at 387-2418.
tfn-(10-20-94)-b

FOR SALE: Structural Pipe - 2 3/8" & 2 7/8". Delivery Available. 387-5387, 387-2303 or 1-226-2330.
10-(11-10-94)-p

HOUSE FOR SALE: 3 Bedroom, 2 Bath, 1 car garage, fenced in patio and back yard. 704 Lee Street in Eldorado - \$29,000. Call 853-3039 after 5:00 p.m.
tfn-(11-17-94)-b

Gipson Construction
Roads, Brush Work, Tads & Subdivision. Dale & Chad Gipson - Junction, TX (915) 446-2730 or (915) 446-3375.
24-(11-17-94)-b

Banquet Room
for any occasion
\$75 per day
387-3680

2nd Hand Rose
• Good Selection •
Ladies Plus Sizes & Men's Levis & Wranglers
Hwy. 277 S. Eldorado, TX
853-3736

ROUTE SALES SCHWAN'S HOME FOOD SERVICE
Paid Vacations/Excellent Benefits. No prior experience necessary. Must be at least 21 years of age. Good driving record and work history. For interview appointment: call: 1-800-437-2068
An Equal Opportunity Employer

HELP WANTED: Part-time housekeeper. Call Becky at 387-6009.

1-(12-15-94)-p
FOR SALE: '86 Ford 3/4 Ton Pickup - 85,000 miles - auto transmission - long wheel base. \$3500. 387-6066 or Gene at 387-2536.

2-(12-15-94)-b
SUNNY ROOFING & CONSTRUCTION: Shingles, metal, torch down single ply roof systems, and built up roofs. Owner: Sunny Palermo 210-234-3612.

2-(12-1-94)-p
EZ FINANCE: Free Delivery and set. 4 BR 2 bath d/w, appliances, carpet, \$37,900. Circle B Homes in Odessa, 333-3212.

5-(12-1-94)-p
IMMEDIATE OPENING roustabout, cement workers, operators, laborers. Pick up applications at William Tiffie Construction. 387-3846.

2-(12-8-94)-B
WILL DO LAWN CARE & yard clean-up. Complete lawn services, hauling, free estimates. Call 387-2857.
4-(12-8-94)-b

HELP WANTED: OTR Driver wanted for team operation. Driving 1994 Kenworth T-600 Flat top. Above average pay, home every 10-14 day, mostly drop & hook, coast to coast routes. Must have class "A" CDL, Doubles and Hazmat endorsements. Must pass drug screen. Will consider limited driving experience. Eldorado call 853-3237 or 1-800-756-3352. or you may call collect. If no one answers, please leave name and number.
2-(12-8-94)-b

CHICKENS FOR SALE: Big, brown, egg layers. Ready to start laying in spring. Call 387-2357 after 5:30 p.m.
1-(12-8-94)-p

FOR SALE: Boer bred nannies - \$175.00. Boer goat semen - \$25.00 per straw. Call 713-332-5588.

4CFR-(12-8-94)-b
SPARS HOMES OF KERRVILLE 18TH ANNIVERSARY SALE: Come see our new expanded location with more than 25 homes to view. All Palm Harbor, Schult, Fleetwood, Oak Creek, and Patriot Homes on sale now at our guaranteed lowest price. 1-800-475-3004.
4-(12-1-94)-p

BUILDING SITES FOR SALE: 2 to 8 acres. Adjoins city limit. Call 387-3242.
4-(12-1-94)-p

NEW DOUBLEWIDE: 3/2 unbelievable living space, many extras, \$34,900-up. Circle B Homes 700 N. Grandview, Odessa, 333-3212.
5-(12-1-94)-p

RANCHES WANTED

Have clients for good ranches in this area. Need listings. One to twenty sections. Minerals important. Contact:

KUYKENDALL LAND CO.
P.O. BOX 3543
AUSTIN, TEXAS 78764
(512) 892-0366

All You Can Eat Mexican Food Every Friday - \$5.95.

Commercial Restaurant

154 SW Plum
387-9928

Now open till 9:30 on Friday & Saturday nights!

Laid Off?

(915) 944-9666
Texas Needs You Back On The Job

Works PLUS
Dislocated Workers Program
5002 Knickerbocker Rd.
San Angelo, TX 76904

SERVICE DIRECTORY

<p>Kasey's Luxury at its best! Call for more information 387-2104 103 Dollie St Sonora, TX</p>	<p>Windmills Pumps Service George Thorp Waterwell Service GEO. "JENKY" THORP 915-387-5104 MOBILE: 915-387-3700-210 414 Mulberry • Sonora, TX</p>	<p>Beauticontrol & Formula One Call Shelly Briscoe at 387 - 3433</p>	<p>Knox Floor Covering Carpet-Vinyl-Tile 392-2180 201 Ave I Ozona, Tx</p>
<p>Senior Citizen Discount 1,2 & 3 BR Units All Electric Carpet T.V. Outlet Laundry Room Reas. Rates</p>	<p>Marian Bland Overstreet Attorney-At-Law General Practice of Law Criminal Defense • Bankruptcy 103 S.W. Main Eldorado 853-3309</p>	<p>General Oilfield Construction <i>Location Builders</i> Roustabout Gangs</p>	<p>TEAM GRAPHICS CUSTOM SCREEN PRINTING T-Shirts • Caps Marla Percifull (915) 387-5017 Sonora, Tx</p>
<p>JIMCO Complete Oilfield Service Jimmy Condra (915)387-3843</p>	<p>M.D. Shurley Box 1198 Sonora, TX 76950 387-6585</p>	<p>The Bright Spot Beauty Shop Total Hair Care for the whole family Mon-Fri 8-5 387-2460 214 1/2 Main Sonora, Tx</p>	<p>Sugar & Spice Baby Wear 226 S. Chadbourne 655-4021 Sizes Premies to 6X BABY SALE 30% OFF Select your holiday gift now!</p>
<p>CHARLES HOWARD General Oilfield Contractor 387-3093 387-5608 387-5302 216 Hudspeth Sonora, Tx</p>	<p>Developmental Toys, Books and Games For All Ages • Catalog & Phone Orders • Home Demonstrations • Part-Time & Full-Time Opportunities • THE NEW BOOK OF KNOWLEDGE Encyclopedia Set</p>	<p>Red Hoss Feeds Your Local Purina Dealer 387-3621 801 Glasscock</p>	<p>Carl J. Cahill, Inc. OILFIELD CONTRACTOR (915)387-2524 Sonora, TX</p>
<p>Listen To KHOS 92.1 FM The I-10 Connection</p>	<p>Bonnie Lou Campbell Educational Consultant HC 65, Box 243 • Sonora, TX 76950 (915) 387-3174 1-800-658-8359 Pager (915) 444-0315 West Texas Toxicology Substance Abuse Screening P.O. Box 3680 San Angelo, TX 76902-3680</p>	<p>THE Devil's River NEWS "Serving Sutton County Since 1890" Call us for all your printing needs!! Typesetting For Printing At No Charge!! 387-2507 220 NE Main • Sonora, TX 76950</p>	<p>CREEK STORAGE RENTALS HWY 277 S. SONORA, TX 387-3295 387-5938</p>