

Pageant Features Annual Birthday Observance of Presbyterian Auxiliary

The Presbyterian auxiliary met at the church Monday afternoon at 3:30 o'clock for the annual birthday party. Mrs. C. K. LaGue was in charge of the worship service, giving the devotional on "I Am the Light" and also offering the opening prayer.

Methodist Circles Close for Summer; One to Continue

Three circles of the Methodist missionary society held their final study sessions for the season Monday afternoon. They were the Mary Scharbauer, the Laura Haygood, and the Young Women's circles.

Baptist Women Have Informal Luncheon At Church Monday

Twenty-two members of the Baptist women's missionary union met at the church for a covered-dish luncheon at one o'clock Monday.

To Check Constipation Get at Its Cause!

If constipation has you down so you feel heavy, tired and dopey, it's time you did something about it. And something more than just taking a physic!

The United States Treasury has more than \$5,000,000,000 (billion) worth of gold in an underground vault at Fort Knox, Ky.

The Tenth Annual Scoring Contest will be held at Elmira, N. Y., from June 24 to July 9, inclusive.

FOUR QUEENS FROM FROGLAND



MARtha CEIL GRAVES, EMAJEAN HAGGARD, HELEN CONNOR, FRANCES BUSTER. Proud of its beautiful coeds as well as of its No. 1 football team is Texas Christian University.

Christian Women Hold Study Sessions In Circle Meetings

Mrs. Glenn Brunson conducted the lesson at the meeting of Circle No. 2 of the Christian women's council with Mrs. B. W. Stevens, 1109 West Indiana, Monday afternoon.

Donna Gale McClain Is Honored With Party on Birthday

Honoring her small niece, Donna Gale McClain who, with her mother, is her houseguest, Mrs. A. W. Wyatt entertained with a lawn party at her home, 515 W. Holmesley, Monday afternoon from 5 o'clock until 6:30.

Hope and Ross Teamed Again in Swingy Film

Bob Hope and Shirley Ross are re-united for the third time in Paramount's rip-roaring swing comedy, "Some Like It Hot," co-starring Gene Krupa and his orchestra.

Announcements

- WEDNESDAY. Fine Arts club will meet with Mrs. Roy Parks at her ranch home Wednesday afternoon at 3 o'clock. THURSDAY. The 1928 club will meet with Mrs. Tom Sloan, 706 N. Pecos, Thursday.

Learn Beauty Culture SPECIAL RATES. Enroll now for our special summer course. Position Assured. 90% of the operators in San Angelo are Jolley Beauty College graduates.

SWEDISH MASSAGE BATHS—RADIO RAY TREATMENTS FOR RHEUMATISM AND ARTHRITIS. COLONIC TREATMENTS FOR CONSTIPATION AND OTHER COLON TROUBLES.

TAXI 15c MOTORCYCLE DELIVERY 10c CITY CABS Inc. PHONE 80 OR 500

BONDED STORAGE Is the Safest Place for Your WINTER CLOTHES. If you are going to keep them in your home, let us give them a thorough cleaning to protect them against moths.

ENROLL NOW ROSS SECRETARIAL SCHOOL Offers Complete courses in both Byrnes and Gregg Shorthand and Typewriting.

New Episcopal Rector to Arrive Here Next Month

Announcement that the new rector of Trinity Chapel, Rev. Oliver C. Cox of Decatur, Alabama, is due here in June, was made at the meeting of the Episcopal auxiliary with Mrs. John E. Adams, at her home on College avenue, Monday afternoon.

FEMININE FANCIES

By Kathleen Eiland. Sulfa-pyridine, the astounding new cure for pneumonia, has been used in one case we've been told of in Midland.

Rural Schools

Prairie Lee. Prairie Lee school will close the year on Thursday of this week. A two-night closing program will be presented on Wednesday and Friday nights.



Electricity IS SERVICE

...not Just "Juice"

It's very simple. With the flick of a switch comes the electric "juice" that brings comfort and health for you and your family . . . and precious sight-protection, too.

Good Electric Service Doesn't Just Happen TEXAS ELECTRIC SERVICE COMPANY R. L. MILLER, Manager

PERSONALS

Mr. and Mrs. Geo. Kidd Jr. have returned from Brownwood where he visited his mother, Mrs. Geo. Kidd Sr. and his sister, Miss Mildred Kidd. The latter has returned from London, England, where she received a degree from the Royal Academy.

READ THE CLASSIFIEDS.

SPECIALS

Tuesday Only New Raye \$7.50 Permanent Wave—Special \$4.00. Wednesday Only Shampoo and Wave Set, Eyebrow Dye and Manicure—Special All for \$1.50.

History Points To Sian, China

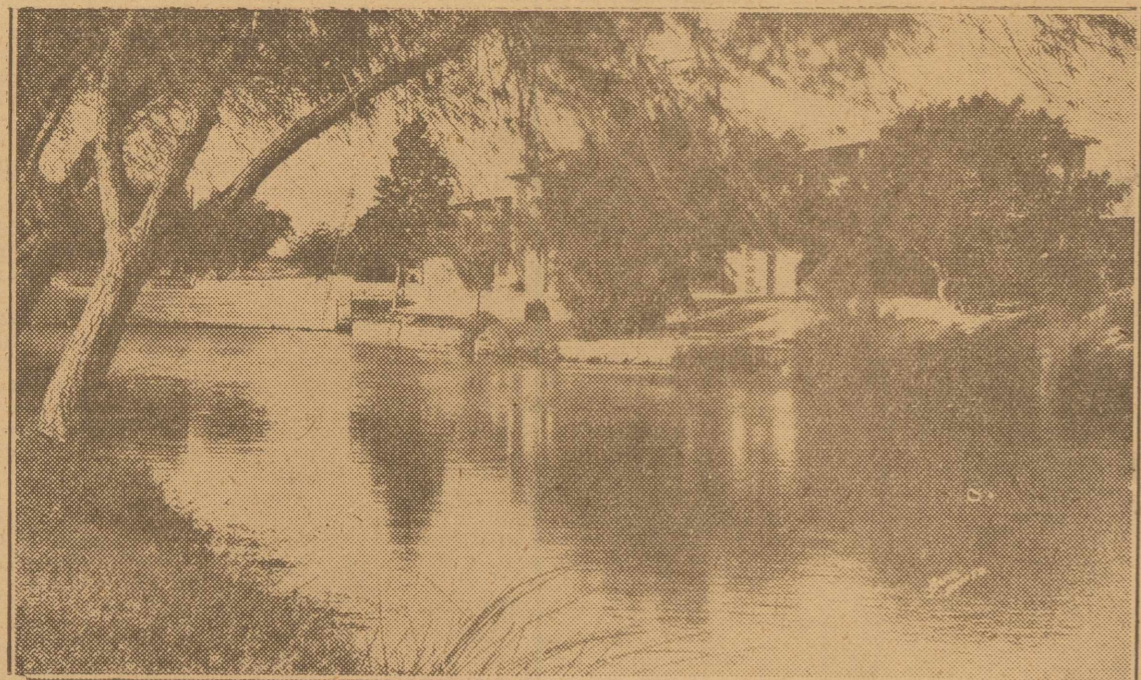
SIAN, Shensi (UP)—For the third time since the turn of the century this thriving little city, sheltered on two sides by mountain ranges and protected on the east by the Yellow river seems destined to play a prominent role in Chinese history. Founded in the 11th century B. C. as Chang An, the capital of the Chou dynasty, Sian first broke into the headlines in 1900 when the Empress Dowager fled here from Peking after the collapse of the Boxer Rebellion. In December, 1936, newspapers of the world flashed the news that Generalissimo Chiang Kai-shek had been imprisoned here by the two rebels, Kang Hui-cheng and Chang Hsueh-liang. Out of that imprisonment and subsequent release grew the United Front, welding the Kuomintang and Communist parties in a single plan of resistance against Japan. Now for the third time, military observers believe, the city will become the focal point of the Far East as the Japanese war machine bears down in an evident attempt to capture Sian.

Economically speaking, the city and the territory it commands has little to entice the Japanese. From a military viewpoint, however, it has assumed great significance. Just six hours distant by railroad is Paochi, railroad of the all-important Lunhua railway and a jumping-off point of the highway which forms the western end of the "Red Route" to Russia, through Lanchow.

Vital Route for Supplies

To cut this supply route, which has enabled China to bring in a thin but steady stream of war supplies since hostilities first began, is the motivating force of the proposed Japanese drive, Chinese believe. And to cut this route, it is necessary to capture Sian, where a base could be established for a push on Paochi or Lanchow. Chinese militarists assert that even the loss of Paochi would not prove disastrous, for supplies from Lanchow could be routed south from Tsinchow, near the border of Kansu and Shensi provinces, to Taanyi, just west of Hanchung, where the highway between Sian and Chungking curves to the south toward Chengtu, in western Szechwan province. There is no road as

West Texas' Proudest Beauties to Parade Here in June



Above is shown a recent photograph of tree-framed and shaded Comanche Spring swimming pool, and the beautiful native stone Pecos county bathhouse which occupies its northwest bank. Here on June 9 and 10, West Texas' fairest beauties will compete for the title for the Queen of the Water Carnival, which carries with it this year as prize an all expense trip to Treasure Island, San Francisco. In this crystal-clear, pure water, fed from the 35-million gallon a day Comanche Spring, free swimming is enjoyed the year round. Waters from the pool irrigate the 6,000 acre project of Pecos County Improvement District No. 1, and it is through generosity of farm owners, who own the water rights, that the free swimming is made available. In addition to the bathing revue, the spring will be the scene of varied amateur water contests and of an aquatic show to be staged by the widely known Ambassador swimming team of Los Angeles.

yet, but militarists believe one would be easily constructed through the rugged Tsinling mountain range.

In addition, they point out, Chinese troops forced to the west by the Japanese capture of Sian would have abundant supplies pouring in from Lanchow at their rear, which would make the task of the Japanese double difficult.

For the first time since the Japanese entered Shansi province, across the Yellow river from Shensi, they are in a position to strike toward Sian. Chinese forces have already begun preparing for a Japanese advance along the Lung-hai by tearing up the tracks from Chungmou, halfway between Kailong and Chengchow, to Chengchow where the Lung-hai and the Pinghan intersect.

Attack May Be Near

If the anti-guerrilla campaign in Shansi proves even partly successful, foreign military observers believe the Japanese will mass men along the Tungpu railroad for an attempt to cross the Yellow river near Hotsin or Yumen and strike south and west of Sian. Japanese strategy is based on searching the Chinese lines for the points of weakest resistance and then attempting to advance there. A Japanese drive up the Han and Tan rivers would leave some of Generalissimo Chiang Kai-shek's crack divisions isolated at Nanyang, in the triangle formed by the Pinghan railway between Honkow and Chengchow, the Lung-hai between Chengchow, and Sian, and the Han and Tan rivers. Unless these troops were withdrawn to the northwest in time, their lines of supply would be cut off and their activities reduced to guerrilla fighting.

A Japanese sweep to Sian would be severely felt by the 8th Route army. Despite their boast that most of their supplies are taken from the Japanese, they still depend to a great extent on supplies from Russian, which are routed through Sian.

U. S. Reassures Housewives On Surprise Dinner Guests

By FRED BAILEY United Press Staff Correspondent

WASHINGTON (UP)—The Agriculture Department bureau of home economics advises housewives to prepare an "emergency shelf" for mealtime security against husbands who have a habit of bringing home unexpected guests for dinner. "Famous last words of many a funny" paper husband have been "Dearie, I've brought a couple of fellows home with me for dinner" isn't at all funny in real life," the bureau said. Husbands have been shot for less.

But, said the bureau, if the woman is foresighted it does not call either for panic or kitchen heroics. "Rather it is an intriguing challenge—a trial by fire of her cooking imagination and skill," it said. "At such times a homemaker can come off with flying colors if she has a well-stocked emergency food shelf on which to draw. This investment in mealtime security should be planned with an eye to the preparation of attractive meals on short notice."

Charter members of any collection of emergency foods, the bureau said, are cereals like macaroni, spaghetti, cornmeal and rice that form the basis of many cheese and meat dishes. The shelf also should contain dried or evaporated milk, salad dressing, canned soup, canned fish, vegetables and fruits.

"In addition to these staples there may be some of the prepared quick-bread mixtures that have only to be mixed with liquid, then baked. Olives and pickles, jars of jelly or jam, a can of mushrooms, tins of crackers and cookies, some cheese in the ice box or other foods that will add zest and variety.

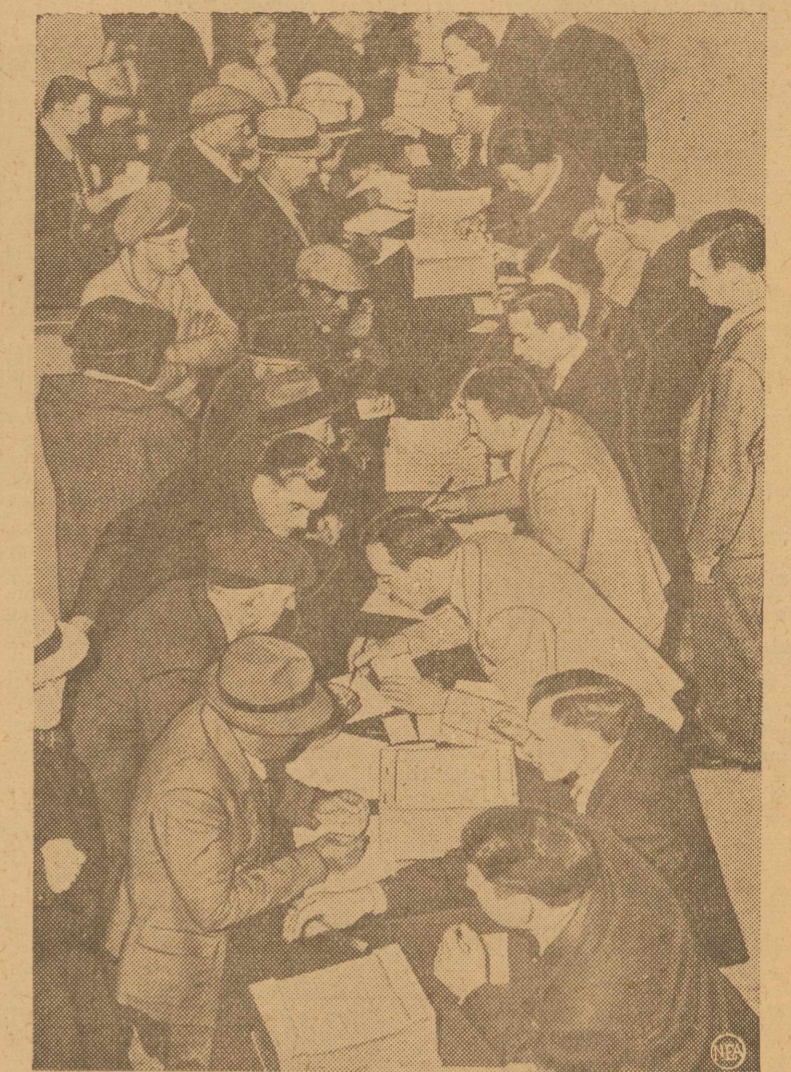
"A hostess might do well to imagine herself in a position where she is called upon to get a company meal in an hour or less—think what she'd have to eat—then stock the shelf with other supplies she'd need.

The bureau offered as a sample quick-dinner dish: "One substantial main dish made of home-canned meat is a meat and onion sandwich. First cook sliced onions tender in water, broth or gravy. Thicken slightly with flour. Cook for a few minutes, then stir cup of meat into it. Heat thoroughly.

"Season with salt and pepper, celery seed—maybe some parsley and catsup. Use this as a filling for sandwiches of bread or with hot biscuits as shortcake. Pour gravy over the top."

Another emergency-meal suggestion was: "A well-seasoned mixture of chopped canned meat and mashed potatoes or boiled rice, moistened with gravy, milk or tomatoes, may be used to stuff peppers or to roll up in green leaves of cabbage. Bake either of these for half an hour in a moderate oven."

Eating Up Food Surplus



As the whole country turned its attention on the scene above, an important government-sponsored experiment which may affect the future of relief and the problem of surplus food production was launched in Rochester, N. Y. Under the plan, relief recipients are encouraged to exchange part of their relief money for "food stamps" which enable them to buy foods listed as "surplus". Photo shows government checkers handling a throng of stamp-seekers.

a net profit of \$10.49 an acre.

Seed beds were prepared in April and sugar beets planted in rows May 30, about 20 inches apart. Thinning took place July 8 and during April and August two applications of fertilizer were plowed in. The plot was irrigated eight times—approximately 3 acre inches at each application.

Beets were sent off for analysis of sugar content after harvest Nov. 18. Returns showed a sugar content of 16.25 per cent, a value of \$4 per ton if delivered to a sugar company, and an average weight of 2.34 pounds each. In general the plants were free from disease and insect trouble, although a number

of the beets had developed a crown gall of varying intensity. Previous crops grown on the site of the experiment were cotton in 1935; grain scrumblers in 1936; cotton in 1937.

By means of an upside-down "periscope" thrust through the floor of a plane, a photographer is reported to be able to direct the pilot in obtaining the best air-views.

By the use of color films in aerial cameras, the art of camouflage is expected to be drastically revised. The use of the film will immediately detect the placement of cut branches of trees because of the discolored foliage.

There's Gold in Mud of Ohio Creek; Biggest Nugget Like Grain of Corn

OWENSVILLE, O. (UP)—There's gold along the rock-stream bed of Brushy Fork Creek on the farm of Edward Titus in this rugged hill country 30 miles northeast of Cincinnati and Titus hopes to find enough of it to make himself a small fortune.

Prospectors have been finding the yellow metal in small quantities ever since the memorable morning six years ago that Titus noticed a glint of a bright particle near the water's edge while strolling with his wife. "Quick, bring me a pan!" he called. Titus scooped up a handful of mud and placed it in the pan. A few minutes of shaking and there lay a hundred tiny specks of gold.

The discovery attracted wide attention and many visited OwenSVille to seek the gold. Among the first was Kyle Meyer of Batavia, O., a friend of Titus and a machinery expert. Meyer rigged up a home-made contraption to separate the gold particles from the mud. Later, business men from all over the country brought the newest ideas in machinery for placer mining near Titus' farm land—sluice boxes, rockets and stationary riffles. None worked to complete satisfaction.

Several men from Cleveland are bringing machinery which is supposed to be an improvement on the equipment used last year. But Titus is doubtful about its effectiveness. Only a machine which can handle large quantities of gravel in a day's time can put the prospecting on a profitable basis, he believes.

According to previous tests, the gravel assays 10 cents to \$3 a cubic yard, but Titus says its value soars as high as \$5 a yard in good spots. The richest pan Titus ever has taken out of the creek contained 35 good-sized flecks worth a dollar or two. The largest nugget was the

size of a grain of corn. Neither Titus nor his friend, Meyer, has made any appreciable amount of money since they began working the discovery. They have sold most of it as souvenirs and samples to business interests. But both of them are optimistic about this year's prospects.

"This may be the year," they say. "The gold is here. All we've got to do is find it."

Cotton Road Will Be Built Near Dallas

DALLAS (AP)—A process similar to carpet-laying will be used in building a two-mile stretch of experimental cotton road in the northern part of Dallas county soon. Thick rolls of cotton fabric resembling the material used for sacking will be unfurled longitudinally in overlapping strips on the road base previously treated with a priming coat of asphalt. The strips will be tacked down at the overlap.

A coat of hot asphalt then will be spread over the fabric and pea gravel scattered while the asphalt is warm. R. H. Clinger, county engineer, has been informed the cotton fabric will cost \$700 a mile. The additional labor and asphalt will cost another \$300. Single asphalt surfacing costs from \$1,200 to \$1,500 a mile, including material and labor. Advocates of cotton roads claim the fabric prevents cracking, raveling of the edges of the asphalt surfaces and the nature of the asphalt to stick to the base in spots, which causes holes.

H. V. Patton, county engineer of Shelby county, Tenn., wrote Clinger that one-half miles of cotton fabric road built there in 1937 has given excellent service. "The addition of the cotton fabric properly laid will prolong the life of the surface from three to five years and prevent the formation of pot holes which develop in

INVEST IN FRESH LOWERS FROM ROM ROMHOLD
MEMBER FLORIST TELEGRAPH DELIVERY
MIDLAND FLORAL CO.
PHONE 1288
1705 West Wall

Playtime
Wives very often lose out in the affection of their families and friends, by letting themselves become washray drudges. Get in the fun—let us do your laundry while you have more time for outdoor sports. Our prices are so economical, our work so expert, it doesn't pay to slave over a steaming tub and washboard.
Just Phone **90**
Midland Steam Laundry

FOREIGN STATESMAN

HORIZONTAL
1 Edouard European statesman.
8 He is an official of
13 Maritime.
14 One who delivers goods in trust.
15 To disencumber.
16 Outer garment of an Eskimo.
18 To rebound.
20 Paradise.
22 Breakwater.
23 Ending for nouns.
24 Jaundice remedy.
27 Sea tale.
30 Useful.
33 Gaseous element.
35 Paro paste.
36 A little.
37 Pound.
39 Quadruped.
40 Ship term.
41 Behold.
42 Heron.
44 Distinctive.

Answer to Previous Puzzle
MACKENZIE KING
TABOO
USED
ROT
ENIGMA
NEGOTIATOR
ROMA
STIMB
ONSLIP
PRIME
ACER

VERTICAL
2 Amidst.
3 To bail.
4 Measure of area.
5 To immerse.
6 Not suitable.
7 Frightened.
8 Musical note.
9 Cereal grass.
10 Wing-shaped.
11 Neither.
12 Blood money.
14 Pressure.
15 His land is a (pl.).
17 Part of type.
19 He is also of war (pl.).
21 Nothing.
25 Monastery room.
26 Company (abbr.).
28 Armadillo.
29 Red flower.
31 Cravals.
32 Paragraph.
34 To require.
38 Ribbon ornament.
43 Gazelle.
45 Courtesy title.
48 Half.
50 Lawyers' charges.
51 Person opposed.
53 Auto.
54 Single thing.
55 Over.
59 Whirlwind.
60 Railroad.
61 While.
62 North Carolina.

12 13 14 15 16 17 18 19 20 21 22 23 24 25 26 27 28 29 30 31 32 33 34 35 36 37 38 39 40 41 42 43 44 45 46 47 48 49 50 51 52 53 54 55 56 57 58 59 60 61 62 63 64 65

STANDARD OIL COMPANY OF TEXAS PRESENTS
Walt Disney's TRAVEL TYKES
LITTLE PEOPLE

GET READY—GET SET WEEK!

It's Merry May! Vacation's near— It's time to get your car in gear! A Standard check-up—just the thing To give your car vacation zing! Then have your fun—without a care For you'll find Standard everywhere!

ROAD MAP
HERE'S HOW AND WHERE!
Unless you're guided by a star You need a road map for your car! From Standard men, all maps are free— So's travel dope—for any spree!

BATTERY ON THE BLINK?
The batt'ry in the family bus— Say—here's a job to leave to us! We check 'em, charge 'em—give 'em pep! For this we've got a famous "rep"!

IS YOUR OIL UNHAPPY?
Say! Leave your work and care today! You need a trip—for rest and play! Before you start—here's a tip for you— If you need a change, your oil may, too!

TIRES NEED AN AIRING?
Treat your tires to Standard care! Let us check 'em—tread and air. They'll last you longer—save you dough! Service free, where'er you go!

WE SQUELCH SQUEAKS!
Before you go, give us a peck! We know a way to squelch that squeak! And when we treat your car to grease You'll roll along in quiet peace!

More value per gallon with
STANDARD
Unsurpassed
USE OUR NATIONAL CREDIT CARD—GOOD IN YOUR NEIGHBORHOOD AND FROM COAST TO COAST
STANDARD OIL COMPANY OF TEXAS

Classified Advertising

RATES AND INFORMATION

RATES:
 2c a word a day.
 4c a word two days.
 6c a word three days.
MINIMUM CHARGES:
 1 day 50c.
 2 days 60c.
 3 days 60c.
CASH must accompany all orders for classified ads, with a specified number of days for each to be inserted.
CLASSIFIEDS will be accepted until 12 noon on week days and 6 p. m., Saturday for Sunday issues.
PROPER classification of advertisements will be done in the office of The Reporter-Telegram.
ERRORS appearing in classified ads will be corrected without charge by notice given immediately after the first insertion.
FURTHER information will be given gladly by calling 7 or 8.

NOTICE

Classified advertising is CASH WITH ORDER except to business establishments with an accredited rating. Please do not ask us to deviate from this regulation.

2—For Sale

"WE have stored in Midland one baby grand piano, also one Spinnet Console, would like to sell for the balance against them rather than ship." Write Jackson Finance Co., 1101 Elm, Dallas, Texas. (60-6).

5-ROOM frame cottage in good condition; will sell my equity. Phone 378. (64-3)

3—Furnished Apts.

THREE room furnished apartment; utilities paid; adults only; private bath. 609 North Big Spring. (61-6)

TWO-ROOM furnished apartments; downstairs; utilities paid. 209 East Texas. (62-3)

THREE-ROOM furnished apartment; close in; private bath; Frigidaire. 421 West Missouri. (62-3)

THREE-ROOM apartment in duplex; couple only; also 3-room unfurnished apartment. 705 North D Street, phone 138. (62-3)

TWO- and one-room cool clean furnished apartments, 1201 N. Main, phone 1386-R. (62-3)

4—Unfurnished Apts.

NEW duplex; 3 large rooms, each side; 2 baths; one block east Maiden Lane. 1104 North Main, phone 891. (62-3)

5—Furnished Houses

FOR summer: 5-room furnished house. Call 143-J. (62-3)

NEW modern 4-room house; furnished; \$30.00 per month. 1106 North Main Street. (64-5)

6—Unfurnished Houses

THREE-ROOM unfurnished house; close in; reasonable. Apply 392 South Weatherford, phone 631-J. (63-3)

FOUR-ROOM unfurnished house; 2-room unfurnished garage apartment. 903 South Marienfeld, Geo. Friday Boot Shop. (64-1)

FOR RENT: 7-room unfurnished house; 2 baths; double garage; \$50.00 per month. 1803 West Wall, phone 24. (64-3)

7—Houses for Sale

FOR SALE or trade: 5-room stucco in Monahans. See Buddy Williams, Post Office Barber Shop, Monahans. (60-6)

THREE rooms, bath; oak floors; Venetian blinds; weather-stripped; garage attached. See owner, R. H. Biggs, 1200 W. College. (64-3)

Give us the privilege of helping you secure that home you have wanted so long.

MIMS & CRANE

205 W. Wall Street
 Phones 24—366—172

FOR SALE

Six-room frame house, garage and two servants quarters. Newly painted and only three blocks from the business district. Only \$3800.00; terms can be arranged. 109 N. Marienfeld St.

Five-room Brick Veneer, double garage, large lot and near all the schools. \$5250.00. Terms can be arranged. 1002 West Tennessee St.

Seven-room frame house, new, two baths, double garage, servants quarters with bath, Tennis court, play ground lighted for night use. Outdoor living room with fireplace. 1604 College St.

We can make FHA or straight life insurance loans on new homes or existing dwellings. (62-3)

Railway Mediator Switched to NLRB



Dr. William Leiserson, head of the railway mediation board, has been appointed to the National Labor Relations Board by President Roosevelt.

Bun Coiffure for Dietrich



Her taffy-tinted tresses tapering in a new "bun" coiffure, Marlene Dietrich enjoys the charity party at Basil Rathbone's Bel Air estate in Hollywood.

Killed in Ohio Strike Battle



Shot and killed in Ohio coal field battle was 25-year-old John Abbram, above, of New Philadelphia, O., one of 200 strikers who besieged a mine near Otsego.

frilly gowns, lacy petticoats, flower festooned hats and poke bonnets in the stock of a pioneer clothing firm here. The store owner said the goods were bought more than 65 years ago by the founders of the firm. The buyers assert the women's hats were close kin to today's odd-shaped headwear.

10—Bedrooms

SOUTHEAST bedroom; close in; men preferred. Phone 1056-J. (62-3)

NICE, clean, cool bedroom; suitable for two persons; \$20.00 per month; garage if wanted. 910 W. Missouri. (62-3)

10-a—Room & Board

BOARD and room at Rountree's; excellent meals; inquire for meal tickets or monthly rates; rooms nicely arranged for girls and boys; lavatories in all rooms. 107 South Pecos, phone 278. (6-6-39)

14—Personal

READINGS by Naomi from 9 a. m. to 8 p. m. except Sunday. No. 3 McKee apartments across street from Drane Tank Co., on new Midland highway, Odessa, Texas. (60-6)

15—Miscellaneous

PAINTING and paperhanging, Charles Styron, phone 43, 402 East Pennsylvania. (61-6)

BE ready for opportunity! For information concerning accounting, stenography, complete business training, day or evening classes, write Midland School of Business, Box 710, Midland. (63-3)

SPECIAL MAGIC AIRE \$54.50—Complete For a Limited Time Only



All makes used cleaners including Eureka, Hoover and Electrolux. Many like new at BARGAINS on time.

G. BLAIN LUSE
 Services the cleaners for Texas Electric Service Company in 10 towns.
WHY NOT YOURS?
 PHONE 74

MOVE SAFELY BONDED—INSURED ROCKY FORD MOVING VANS

Operating in Texas, California, Arizona, New Mexico, Colorado, Oklahoma, Kansas and Louisiana.

Storage—Phone 400—Midland

WELL ROTTED BARNYARD FERTILIZER FOR SALE Scruggs Dairy PHONE 9000

Market Found for "Gay 90s" Clothes

FREDERICKSBURG, Tex. (AP).—There is a market for everything if the seller can hold out.

In search of "gay ninety" garments for a pioneer jubilee, four citizens of Sonora found a suitable selection for cutaway coats, tight pants, fancy vests, derby hats and box-toed, button shoes, and bustles.

Hold Everything!



"If my husband finds with you just ignore him—he used to try that with me!"

READ THE CLASSIFIED ADS DAILY

NOTICE TO SUBSCRIBERS

If you have not received your Reporter-Telegram by 6:15 on week day or 8:00 on Sunday morning, please call 80 or 500 and your paper will be brought to you immediately. Please call by 8:00 P. M. through the week and by 10:30 on Sunday morning.

Any misconduct on the part of any carrier should be reported to this office at once.

CIRCULATION DEPARTMENT
 THE REPORTER-TELEGRAM

BOOTS AND HER BUDDIES



Hail Damage Heavy In State This Spring

COLLEGE STATION. — Severe hail on a wide-flung sector of the state has filled the mail basket of J. F. Rosborough, horticulturist of the Texas A&M College Extension Service, with letters asking for information regarding treatment of damaged shade trees, shrubs, and orchards.

Rosborough says prompt and careful action can cut down the damage to a large extent. Where the foliage, twigs, and top part of the branches have been injured, orange shellac applied to peeled branches with an ordinary paint brush, will seal the damaged area, prevent loss of sap, and allow quick healing to take place.

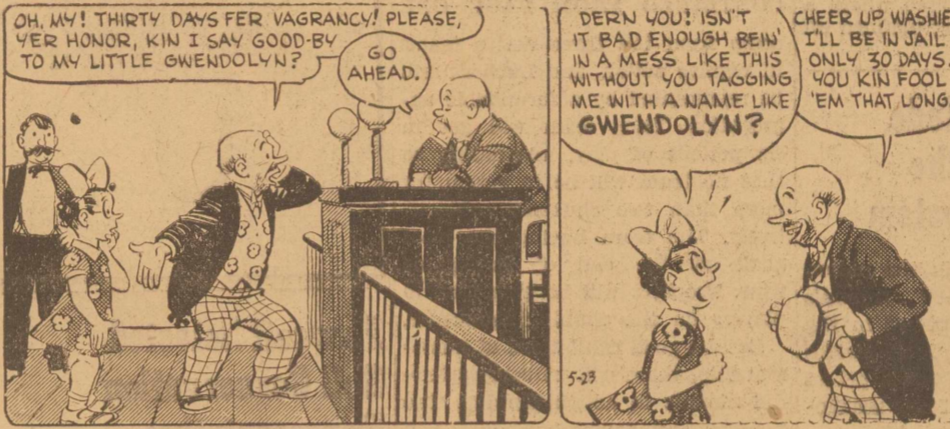
In cases where large portions of the wood is exposed, the surface should be covered with asphaltum paint after the bark has begun to heal—usually within three or four weeks.

The pruning off of damaged growth should be delayed until new sprouts have begun to come out on the branches, when the proper place to make the cuts can be easily determined.

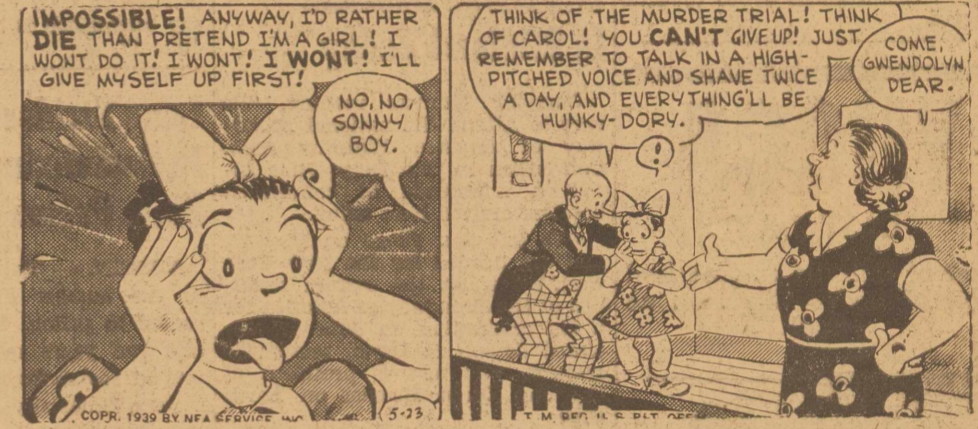
Trees that have suffered from hail damage should be watered throughout the summer wherever possible to encourage the development of foliage, the horticulturist indicated.

The roman empress, Poppaea, once bathed in the milk of 500 white asses.

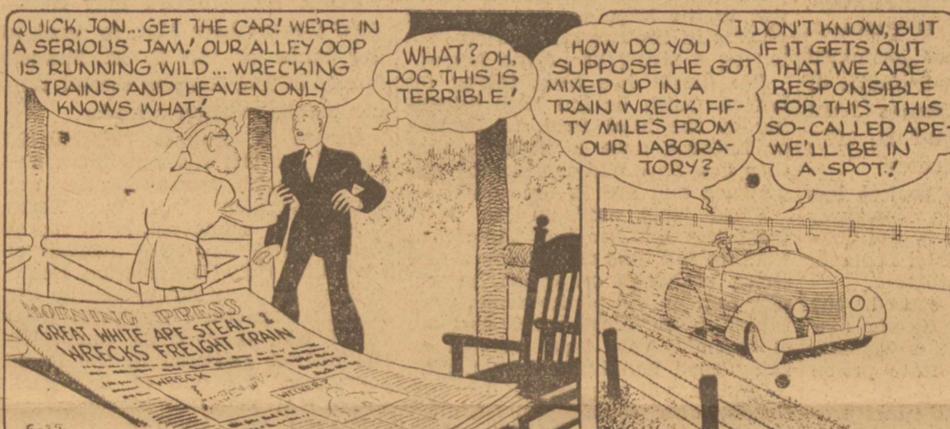
WASH TUBBS



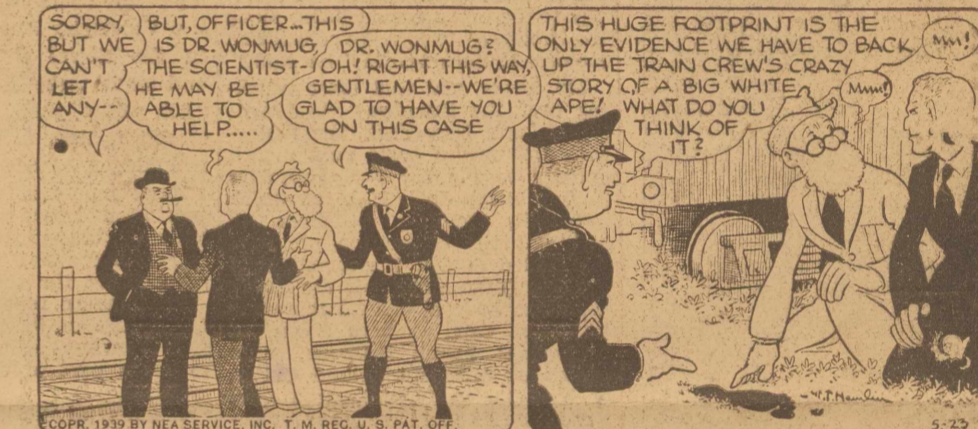
ALLEY OOP



RED RYDER



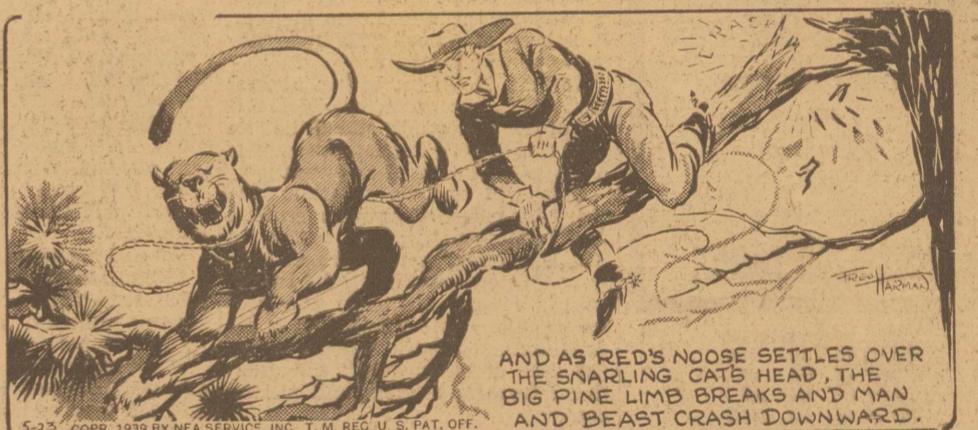
FRECKLES AND HIS FRIENDS



OUR BOARDING HOUSE



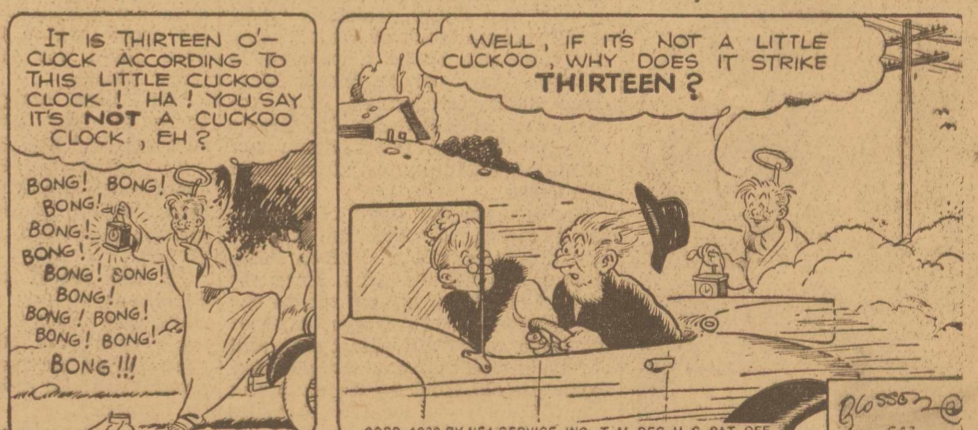
RED RYDER



FRECKLES AND HIS FRIENDS



OUR BOARDING HOUSE



OUR BOARDING HOUSE



OUR BOARDING HOUSE



