



The Midland Reporter-Telegram

WEST TEXAS: Fair tonight, Thursday; warmer in Panhandle.

VOLUME XI

(AP) MEANS ASSOCIATED PRESS

MIDLAND, TEXAS, WEDNESDAY, NOVEMBER 22, 1939

NUMBER 221

Should



Triplets



Be Separated?



Threat that a St. Louis Board of Guardians may separate these triplets by placing them in different homes has drawn protest from all over the country. They are daughters of James and Mary Stillman, who are unable to care for the triplets along with eight other children.

Club Objectives Are Discussed by Lions at Luncheon

Members of the Midland Lions club devoted the program at their regular weekly luncheon today noon to "The Object of Lions Clubs," members of the club discussing each of the six objectives of the international organization. Club members appearing on the interesting and informative program were Joseph H. Mims, T. Duke Kimbrough, Bill Collins, Rev. W. C. Hinds, Merritt F. Hines and Frank Stubbsman. Lian Berte E. Haigh was in charge of the program.

The six Lions Clubs objectives are: "To create and foster a spirit of generous consideration among the peoples of the world through a study of the problems of international relationships from the standpoint of business and professional ethics.

"To promote the theory and practice of the principles of good government and good citizenship.

"To take an active interest in the civic, commercial, social and moral welfare of the community.

"To unite the members in the bonds of friendship and fellowship and mutual understanding.

"To provide a forum for the full and free discussion of all matters of public interest, partisan politics and sectarian religion alone excepted.

"To encourage efficiency and promote high ethical standards in business and professions; provided that no club shall hold out as one of its objects financial benefits to its members."

Announcement was made relative to the joint meeting of the Rotary and Lions clubs next Wednesday. It was also agreed to invite members of the El Paso good-will delegation who will be in Midland the following Wednesday noon to lunch with the Lions club.

A report on the recent zone meeting held in Colorado City was made by H. B. Spence.

Guests present at today's luncheon included Rev. and Mrs. T. D. Murphy, Odessa; Rev. and Mrs. Leland Murphy, Houston; W. H. Ragan, Fort Worth; and George Burton, Walter Abell and Ed Hitchcock of Midland.

The luncheon was served by the women of the First Methodist church.

ODESSANS VISIT HERE.
Mr. and Mrs. Haycen Barrow of Odessa visited Midland yesterday afternoon, remaining for the revival services at the Baptist church last night.

CHICKEN DINNER TONIGHT.
A sock sale and chicken dinner will be held in the I.O.O.F. hall tonight at 8:30 o'clock under auspices of the Miriam club.
The public is invited to attend.

All Sailings Cancelled by Dutch Ships

Seizure by British Feared in Transport Of German Exports

AMSTERDAM, Nov. 22 (AP). — Netherlands ship owners, on advice of their government, today cancelled all sailings from Dutch ports.

No explanation was given but the step followed an announcement by the British that German export cargoes on neutral vessels were subject to seizure on the high seas.

Ten million tons of German exports were trans-shipped from Rotterdam and Amsterdam in the first nine months of 1939.

NAZIS CLAIM GAINS IN SUB WARFARE

BERLIN, Nov. 22 (AP). — DNE, official German news agency, asserted today 11 commercial ships, eight of them British, had failed to reach British ports since Winston Churchill declared two weeks ago that the submarine menace had been defeated.

The agency said three English fish cutters and the freighter Arlington Court had been torpedoed, two English freighters attacked in the Atlantic and one English freighter off the coast of Iceland.

The agency did not name the eighth British ship or the non-British ships involved.

Large Attendance At Baptist Revival As Students Visit

Last night the faculty and the student body of the public schools attended in numbers as special guests of the revival meeting at the First Baptist church. At the conclusion of the sermon three responded to gospel invitation, making 28 additions in all to the church membership. The Evangelist's subject for this evening will be "Life's Greatest Story Every Told."

He showed how the children of Israel were welcomed into Egypt and then given the very best of everything, even the land of Goshen, the richest part of that great empire. After that had been there for some time there arose a king who knew not Joseph, and the children of Israel became virtual slaves in the hands of their Egyptian Master. This slavery was a galling bondage to a liberty loving, mountain people. Dr. Bailes pointed out the comparison of the condition of the children of Israel to that of men today in sin. Sin attracts its devotees with open arms offering them the very best. Sin gives its best at first and when sin enslaves one, then the slavery begins a galling bondage to the sensitive, liberty loving soul. Sin has every man bound hand and foot and that same sin becomes a galling bondage from which no man, of himself, can escape. The Evangelist then pointed out how that Jesus is the only one who can break the bonds of sin and life the shackles of iniquity and set the prisoner free. Freedom from sin and the slavery of sin comes only through the blood of Christ. And that blood must be applied before the fourteenth day. When the death Angel comes through the land he looks for the blood and failing to find it he leaves death and destruction in his wake. A number of illustrations setting forth these urgent truths were used.

Prayer services were announced as follows:
1. Adult Prayer meeting in Alathcan room, 7 p. m. S. T. Cole and Mrs. Thurman Pylant, leader.
2. Young people, pastor's study, Jimmie Van Arsdale and Jerry Prestridge, leading.
3. Intermediates, primary room, Mrs. J. B. East and Mr. Joe Talley, leading.
4. Juniors, auditorium, Mrs. H. D. Bruce and Mr. J. B. East, leaders.
5. Nursery for children open each evening during the entire service.

Kuhn Depicted as A "Shipboard Romeo" In His Trial Today

NEW YORK, Nov. 22 (AP). — Fritz Kuhn, leader of the German-American bond, blushed scarlet today when the prosecution depicted him as a shipboard Romeo and read a billet doux he wrote his "heaven sent" woman friend, Mrs. Florence Camp.

Kuhn, who already has a wife, denied a few seconds earlier in his lacy trial he proposed marriage to Mrs. Camp during an ocean cruise. He said the note was written "all in fun."

ARE DISMISSED.

Mrs. J. L. Barber Jr. and baby returned to their home Tuesday from a Midland hospital.

Appears Before Grand Jury



Alluring Corinne Maddox, 26, who held the two guns that sent 10 bullets into Brooks Coffman's body, appeared before the grand jury in Dallas and related her story of the shooting. She is pictured as she breakfasted in a cafe (out on \$7,500 bond) before going to the court room.

BULLETIN

AUSTIN, Nov. 22 (AP). — The supreme court today gave judgment for the state in the case concerning highly-indebted claims to a strip of valuable oil land in the Yates field of Pecos county.

The suit was brought by the state against the Standard Oil and Gas Co., Cardinal Oil Co., Dogie Oil Co., George D. Morgan, J. H. Arthur, Bob Reid, H. W. Compton, M. D. Bryant, J. H. Tyler, Eula B. Tyler and V. C. Hogan. Contending the land was vacant but subject to the rights of certain persons to purchase for oil or gas development, the state sought to recover a tract 122.5 acres wide by 1,208.9 acres long, between the west line of Tyler survey No. 1 and the east line of T. C. Railway Co. survey No. 104.

The supreme court reversed judgment of the court of civil appeals and affirmed a reformed judgment of the trial court. The effect of the decision, according to Grady Chandler, former assistant attorney general who represented the state in the litigation, was to decide this:

The land was vacant, public land. Awards made by the land commissioner were proper. This opinion related only to persons who were parties to the suit. Except for reference to other parties, the trial court judgment was correct.

Whiteside Announces Rank Wildcat Test In Northeast Lovng

BY FRANK GARDNER.
Rank wildcat location for northeastern Lovng county was announced today by J. E. Whiteside of Brownwood as his No. 1. It is 660 feet from the south and west lines of section 24, block 76, public school land. The well is scheduled to start drilling immediately to 5,500-foot contract, and it will seek Delaware production.

Kenneth Slack No. 1 Bird S. Hayes, western Ward county Delaware test, is drilling below 420 feet in red beds and shale.

Continental Oil Company No. 1 7000 unit block, 15 miles northwest of Ozona in Crockett county, is swabbing off bottom through 2-inch tubing, recovering drilling fluid with very slight show of oil and gas. Total depth is 6,316 feet in Ellenberger, lower Ordovician, dolomite, which was topped high structurally at 6,256 feet, according to operator.

Advanced drilling depths were reported today from two Ordovician wildcats in northern Pecos county. Humble Oil & Refining Company No. 1 Mrs. Bertha D. Young is drilling at 1,927 feet in lime and anhydrite, while Olson Drilling Company and Bryce McCandless No. 1 Mrs. V. W. Crockett had reached 1,650 feet in lime.

Sandhills Producer Gauged.
Humble No. 32 J. B. Tubb, in the Sandhills deep Permian pool of western Crane county, has been completed for daily potential of 3,276.24 barrels, based upon flow through open 2-inch tubing the last four hours of six-hour test. Oil is 25.4-gravity and gas-oil ratio 924-1. Bottomed at 4,420 feet in lime, the well was treated with 1,000, then with 3,000 gallons of acid.

Humble No. 33 Tubb, extension test a mile east of the pool, had drilled to 2,099 feet in anhydrite.

Gulf No. 12 Waddell, northeast outpost to Sandhills production, is (See OIL NEWS, page 6)

Neutrality Act Is Scored by Senator Glass

Says Measure Should Be Repealed at the Next Congress Meet

WASHINGTON, Nov. 22 (AP). — Senator Carter Glass said Tuesday that the new neutrality law "is not graceful" and should be repealed when Congress convenes in January.

The Virginia Democrat, granting an interview at his Washington apartment, declared that no neutrality legislation was necessary because, in the absence of a statute, the executive branch would direct foreign policy within the framework of international law.

"I wouldn't be a bit surprised if Congress repeals the act," Glass declared. "It certainly ought to. The United States is saying, 'Please Mr. Hitler, where do you want our ships to go and where shouldn't they go?'"

The 81-year-old senator said he believed the people and the Congress would be convinced of the impracticability of the act after they had observed its operation fully.

Glass declared he saw no chance of American participation in the European war "unless Germany sinks our ships in contravention of international law."

The recently-proposed transfer of American ships to Panamanian registry "would have been a disgraceful evasion of the neutrality act," Glass asserted.

Discussing other issues, he said that expenses of the army "are high enough now" but that "we ought to have a navy that can't be licked."

The Virginian said that the mounting public debt is bringing on a day "when we must repudiate our indebtedness, inflate—which would be a form of repudiation and would be worse — or have unendurable taxes."

If the Democratic party is to win in 1940, Glass said, the administration should stop the present deficit spending. He added that he might make a fight for curtailed expenditures at the next session if it appeared possible he could succeed.

Questioned about the presidential election, Glass declared there was no one better qualified for the Democratic nomination "than John Garner or Harry Byrd."

Friends said Glass would seek to have the Virginia delegation to the next party convention instructed to elect Byrd, but added that he would give wholehearted support to Garner if it developed that Byrd could not be nominated.

Wichita Falls Man Is Slain in Wreck

WICHITA FALLS, Texas, Nov. 22 (AP). — The career of J. A. Kell, 44 Wichita Falls capitalist, sportsman, ex-Army officer and son of the millionaire Northwest Texas pioneer Ernie Kell, ended in an automobile crash five miles south of here Tuesday.

Kell was driving toward Wichita Falls when his automobile failed to take a curve, flipped over five times and finally crashed into a car coming from the opposite direction. Kell was killed almost instantly, physicians said, but the occupant of the other car, C. H. Mothes, Seymour, was uninjured.

Kell was born in Bosque county in 1895. He attended Kemper Military Academy in Booneville, Mo., and the University of Texas. He served with the Thirty-Sixth Division of the American Expeditionary Forces in France in the World War as a first lieutenant.

As a financier and capitalist, he was known throughout Texas, Missouri and Kansas. His principal activities were in railroading, milling and oil production.

He was president of the Missouri & Arkansas Railway Company, Wichita Lakeside Park and the Wichita Falls Medical Arts Building Company, vice president of the Arkansas City Flour Mills Company at Arkansas City, Kan.; the Plant Flour Mills Company at St. Louis, Wichita Falls Cotton Oil Company, Wichita Falls Ice Company, Texas Cattle Company and the Deep Oil Development Company. He was formerly vice-president and general manager of the Wichita Mill & Elevator Company.

He also was active in banking and chamber of commerce work here.

Mrs. Kell was visiting her mother in Waxahachie at the time of the accident.

Besides his wife, his parents and six sisters survive.

LOOKS OVER CITY

Mr. and Mrs. Norman P. Valkenburg of Los Angeles stopped here this morning, looking over the city and inquiring about status of oil operations. He is a member of the firm of Williams and Van Valkenburg, pipe line construction contractors.

IN SAN ANGELO HOSPITAL

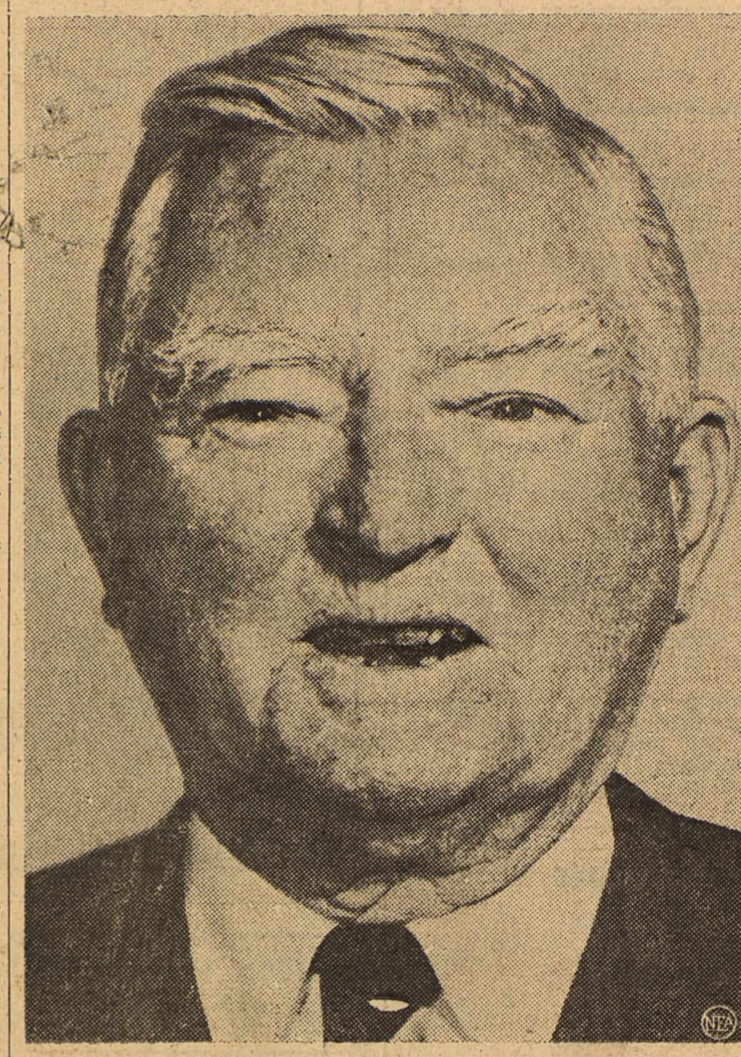
S. M. Francis, taken Monday to a hospital at San Angelo, was reported today to have shown no appreciable change in condition. He has been ill at his home here for several weeks.

RECEIVES PROMOTION

Sgt. Tony Bauer of the airport staff has been promoted to the rank of Technical Sergeant, he has been informed. He has been heretofore ranked as a Staff Sergeant.

BOMB SHETLAND ISLANDS

"Happy Jack" Garner at 70



John Nance Garner gets set for his 70th birthday and poses for this exclusive portrait. Hale and hearty, the smiling vice president is still sharp of eye and glib of tongue despite his three-score years.

Suspect in Munich Bombing Plot Arrested by German Policemen

BERLIN, Nov. 22 (AP). — German secret police last night announced the arrest of a man charged with the Nov. 8 beer cellar bombing attempt of Adolf Hitler's life and the capture of two British intelligence agents accused of plotting German revolution from Netherlands soil.

The Nazi communique charged that the man charged with the bombing was named as George Elser, 36, of Munich, who was said by the Gestapo to have confessed.

He was said to have been arrested Nov. 11—three days after the Munich explosion which took eight lives and injured 62 others—while attempting to escape into Switzerland, and to have confessed on Nov. 14. Several of his accomplices also were declared to have been arrested.

The two British agents were named as "Best" and "Captain Stevens," and were declared to have been captured on Nov. 9 while attempting to escape across the border into the Netherlands at Venloo.

The Nazi report said that "contradictory claims whether they were captured while still in Holland or when in Germany are at present being examined."

(Netherlands reports of Nov. 5 said that occupants of a German automobile alighted, crossed the frontier on foot and engaged in gunplay with occupants of a Netherlands automobile near the Venloo border customs station. One report said two persons were killed, another that only one was injured, but all accounts agreed that several occupants of the Netherlands car were carried into Germany.)

The Nazi communique charged that the Hague, Netherlands capital, was headquarters of the British intelligence service for Western Europe.

It charged further that those headquarters attempted to "organize plots" in Germany, and sought to "establish contact with what were surmised to be revolutionary organizations."

On the basis of German emigre stories, it went on to say, the British believed that "opposition existed in the (German) state party and army with the aim of causing revolution in the Reich."

President to Spend Holiday in Georgia

WARM SPRINGS, Ga. Nov. 22 (AP). — President Roosevelt arrived here by special train from Washington today to spend Thanksgiving and a few extra days at the famed infantile paralysis foundation.

Corn Growers to Get Loans on Year's Crop

WASHINGTON, Nov. 22 (AP). — Secretary Wallace announced today the government would make loans to farmers on surplus 1939-grown corn at the base rate of 57 cents a bushel.

Those eligible at this rate would be farmers of the midwestern commercial corn belt who did not plant in excess of this year's acreage allotments.

Bob Throckmorton Jr. Named Cadet Colonel

Robert (Bob) Throckmorton, second year man at John Tarleton College, Stephenville, has been promoted to R. O. T. C. corps to cadet colonel. It was announced in the last issue of J-Tac, school publication. He is the son of Mr. and Mrs. Robert E. Throckmorton who live at 1911 West College street here. The colonelship is a signal honor and the promotion was made by Maj. James D. Bender.

Four Landings At Airport Today

Four landings at the Midland Municipal Airport were reported in a checkup early this afternoon. A Stinson of the Civil Aeronautics Authority arrived from Fort Worth and went to El Paso. Pilot was Major E. M. Haight. A Douglas, C-39, flown by Sgt. Guile, came from San Antonio and went to Tucson.

A Beechcraft of the Noble Drilling company made a landing on a round-trip flight from Ozona. Thomas Wadlow was pilot. An O-47-A came from San Antonio and went to El Paso, flown by Capt. W. C. Sams.

HERE FROM LOVINGTON.

Millard Eldson, Lovington ranchman, was a business visitor here today.

Direct Hits Not Made by Nazi Fliers

Six Planes Take a Part in Raid Along East British Coast

LONDON, Nov. 22 (AP). — German planes today dropped bombs in a raid over the Shetland Islands. Six planes took part but failed to score hits, British sources announced.

The admiralty announced a British warship had intercepted the 4-110-ton German freighter Bertha Fisser off Iceland's coast, stating the crew started to sink the ship, took to lifeboats and were picked up by the warship.

(A dispatch from Reykjavik, Iceland, indicated the German ship may have been shelled.)

The Italian freighter, Flanona, 6,660 tons, was added to the list of mine victims off England's south-east coast. Although badly damaged last night, it was still afloat today. It was the sixteenth victim of warfare off the British Isles in the last five days.

A later communique said the German aircraft made a second raid on the islands, setting fire to a royal airforce seaplane.

Russell Is Given Death Sentence in Salesman's Slaying

CHICAGO, Nov. 22 (AP). — A federal court jury today convicted Jack Russell, 39, Oklahoma desperado, of kidnaping and killing William Hamilton, 23, Arkansas City, Kansas, salesman, and recommended the death penalty.

The slaying occurred after Russell escaped the Oklahoma state prison where he was serving ten years for robbery.

Pendergast Is Denied Parole From Prison

WASHINGTON, Nov. 22 (AP). — The Federal Parole Board refused Tuesday to grant a parole to Tom Pendergast, erstwhile Democratic boss of Kansas City, who is serving a 15-month term in Leavenworth prison for evading the income tax law.

The decision meant that Pendergast probably will stay in the penitentiary until May 30, 1940, which would be a year and a day from his entry. Good behavior would cut his sentence to that length despite the board's decision today.

"The board," a statement said, "is constrained by the conviction that parole issuance in the case of Thomas J. Pendergast would be unjustifiable and incompatible with the public interest."

It reached this decision, the board said, "after a most thorough investigation" in which it took into consideration Pendergast's age, health, previous clear record and his plea of guilty.

Christmas Carols Through the Ages

Illustration of people singing carols

O COME ALL YE FAITHFUL
"O come all ye faithful, joyful and triumphant,
O come ye, O come ye to Bethlehem . . ."

Originally sung with the Latin words, Adeste Fideles, this hymn antedates 1751, but its origin is unknown. In France it was used as a processional hymn by the monks on their way to sanctuaries for the Christmas Midnight Mass.

26 Shopping Days Till Christmas

THE REPORTER-TELEGRAM

Evenings (except Saturday) and Sunday Morning
MIDLAND PUBLISHING COMPANY, PUBLISHERS
112 West Missouri, Midland, Texas

T. PAUL BARRON, Publisher
Entered as second class matter at the postoffice at Midland, Texas, under the Act of March 30, 1879

Subscription Price
Daily, by Carrier or Mail \$5.00
Per Year, by Carrier or Mail \$50.00
Per Month \$5.00
Advertising Rates
Display advertising rates on application. Classified rate, 2¢ per word; minimum charge 5¢. Local readers, 10¢ per line.

Any erroneous reflection upon the character, standing or reputation of any persons, firm or corporation which may occur in the columns of The Reporter-Telegram will be gladly corrected upon being brought to the attention of the firm.

News from warring countries is subject to censorship. It may sometimes be misleading. It is the right and duty of every American citizen to do his own thinking, hold to his own beliefs, and not permit himself or his country to become a victim of emotionalism or propaganda.

SO THEY SAY

Offers Encouragement

Report of Dr. F. A. Buechel, a business research expert of the University of Texas, that the industrial development of Texas is continuing steadily on what appears to be a permanent basis offers encouragement that an important part of the foundation necessary to an enduring prosperity is being laid.
This statement was made in connection with the monthly report from the Bureau of Business Research of the university that Texas' industrialization reached the highest point in history during October with 133,764 employees on weekly payrolls drawing \$2,645,000 in wages. He added as his opinion that the record is not of the "flash in the pan" variety, but represents "a steady surge toward industrialization."
While it probably is true that most of the residents of Texas would object to this ever becoming a highly industrialized state, every economic factor supports the statement that many, many more industries than now exist are needed. Particularly do we need the kind of industries which will process more of our enormous production of raw materials. We need the payrolls and we need the money now expended in transporting raw materials to distant factories and then in bringing the finished product back to this state.
This matter of needed industries is a problem which has been receiving increasingly close study in recent years. Progress has been slow, as would be expected in such things. But progress, as indicated by Dr. Buechel's report, is being made and there is reason to hope that, with proper encouragement, it will gain momentum with passage of time.

Brazil to Get Four Powerful Locomotives

ERIE, Pa. (U.P.)—The four most powerful direct-current electric locomotives in the world, consigned to a Brazil railroad, are nearing completion in the General Electric plant here.
The locomotives, being built for the Paulista Railroad of Brazil, weigh 185 tons each and will have a maximum speed of 93 miles an hour. They will be delivered to South America soon after Jan. 1.
Having a continuous rating of approximately 4,200 horsepower, and a one-hour rating of 4,560 horsepower, the engines will have a higher rating than any other locomotive now in use either in this country or abroad. They are powered by 3,000-volt direct-current motors.
The locomotives represent the first Paulista orders filled by General Electric since 1926, when the Brazilian company purchased six. The Erie concern is also completing an order of five Diesel-electric locomotives for the Panama Railroad, Canal Zone.
There were 177,790 saloons, 7090 breweries, and 236 distilleries in the United States before the prohibition era, according to estimates.

War Cautions Are Ordered At Gulf Port

NEW ORLEANS (U.P.)—Officials of the Port of New Orleans have taken precautions to guard this nation's neutrality and prevent any ships clearing for a port in a warring foreign nation with war materials.
A. Miles Pratt, collector of customs, in a statement issued to steamship owners, agents and operators, ordered that no vessel may clear at New Orleans for a foreign port until all shippers' export declarations covering the cargo laden on the ship has been filed with customs authorities.
This order, Pratt said, is effective until the end of the European war.
In the past, government regulations have permitted ships to clear for foreign ports without completing export declarations upon permission granted by the collector. These regulations, however, have been amended for the war period.

Fluffy Mashed Potatoes
A little baking powder added to mashed white potatoes is sure to make them fluffy.
READ THE CLASSIFIEDS.

Follow-Up on the Thanksgiving Proclamation



BRUCE CATTON IN WASHINGTON

BY BRUCE CATTON
Reporter-Telegram
Washington Correspondent

WASHINGTON.—The latest effort to solve the farm problem finds the administration circling back to the famous processing tax idea, which was embodied in the original Agricultural Adjustment Act, and which went out the window when the Supreme Court killed that act in 1936.

The court killed the first AAA, not because it objected to the processing tax, but because it felt that the tax was being used for the unlawful end—viz., the regulation of crop production.

The plan which Secretary Henry Wallace is now formulating would not restrict production; it would, however, get the government out from under an annual expense of around a quarter of a billion dollars, and would provide a method of financing parity payments to growers of wheat, rice and cotton.

CONGRESS HOLDS PURSE STRINGS

PARITY payments now come directly out of the federal treasury. The Agriculture Department, for instance, may decide that the cotton grower needs a payment of two cents a pound on his production in order to bring the net price he gets up to "parity."

Texas Today

By Associated Press.
Sulphur Springs is a North Texas city that profits by the depression—and Bossy paid the freight.

TWO METHODS OF FIXING PAYMENT

THIS, in turn, could be figured in one or two ways; it could be a straight payment on his entire production, up to a maximum set by his farm's average yield over a period of years, or it could be an equivalent payment at a higher rate per pound based on that percentage of his production which the Agriculture Department deemed needed for the domestic market.

In either case, it would figure out to a total sufficient to boost his receipts for his crop to parity. And the money with which he could turn his certificate into cash would come from the processor who bought the cotton.

In substance, the processor would pay a tax of so much per pound on cotton bought for his mill; he would not pay his tax into the treasury, but would handle it either through a pool or through the banks.

WOULD LEAVE U. S. IN CLEAR
THE result would be that the transaction would not show up on the treasury books at all. The Department of Agriculture would

scope to look over its claim for attention. One concern selected Sulphur Springs as headquarters for the largest milk condensory plant south of the Mason-Dixon line, and a cheese corporation built a good-sized plant here.

Hopkins county farmers estimated these two plants alone mean their revenue has been increased \$750,000 annually.

The beef cattle industry is growing in importance as a factor in the section's development, and improvement of cotton staple also is sought.

The success with the dairy effort is the spur.
Results already have been shown in the cotton work. The staple since the outbreak of the European war in early September, a substantial advance in domestic prices has occurred. Domestic demand for wool has been increased by prospects of improvement in business activity and consumer incomes and may be increased because of reduced imports and larger purchases of wool goods for military purposes by foreign countries.

These facts are reflected in a review prepared by the Bureau of Agricultural Economics, Department of Agriculture.
Wool producers will recall that prices were fairly low at the beginning of the World War in 1914, but after 1915 prices went up in both domestic and foreign markets. In the United States, wool prices in 1918 were about three times as high as in 1914, but by 1921 they were about half the 1918 level.

United States production of wool is now about 50 percent greater than in 1914, while population is only about 30 per cent larger. That means imports of foreign wool have been largely replaced by domestic production.

Production of staple rayon fiber in lengths similar to wool and suitable for mixture with wool and for spinning on woolen machinery has increased greatly in the United States in the past decade. In 1930, U. S. production of this rayon was less than a million pounds; in 1938, 30 million pounds were produced here and an additional 23 million pounds imported. World production of staple rayon fiber was estimated at 932 million pounds in 1938, with 90 percent of this amount produced by Germany, Italy and Japan. An advance in wool prices will further stimulate the production of substitutes.

In November 1914 the British government regulated exports of wool from her dominions, and in 1917 look over the Australian and New Zealand wool clips. This time—in October, 1939—Britain has already taken over the wool clips from these countries and has a close working agreement with South Africa.

These clips total about one and a half billion pounds, and Great Britain and France normally use about a billion pounds of wool a year. Even with war needs, this means that the British Government will have to sell some wool to neutral countries.

Since medium wools are best for war purposes, and since the Australian sheep ranching, page 4

feed and take care of them until they send for them.

Aunt Priscilla was born on an adjoining farm, a slave of the Jarmon family. Her husband, also a slave, was born in the Marsh family. They grew up with some of the men who today are bankers, merchants and leading citizens of Tyler, including Gus F. Taylor, Tyler banker, who was born on a nearby farm.

She and her husband were unable to buy their farm because her husband's childhood playmate, Ed Shamburger, the owner, did not want any one else to be in possession of the property which held fond associations with him.

She says she has raised 27 children, including her own, her grandchildren and great grandchildren, and the children of her whitefolks for whom she has worked. These include many of the Shamburger children, sons and daughters of M. Shamburger who settled in this vicinity and started Smith county's rose industry in 1874.

To Reheat Cereal

To reheat leftover cooked cereal, add a little warm water, warm over a low flame and beat until smooth with a rotary egg beater to remove lumps.



about the sun.
It is believed that the English colonists first brought sheep to Virginia in 1609.
The Ivy is the ancient badge of the Gordon clan.
The Bank of Pennsylvania, the first bank in the United States, was chartered on March 1, 1780.

A lot of people have the clipping habit, among them being W. M. Schrock and Fred Wemple. When they see an interesting item in the paper, they simply clip it out and put it in their wallets. Sooner or later, they will find occasion to use most of it in connection with conversation on some subject.

Tony Slaughter, in the Odessa Bulletin, always ready to help the opposing team to the Odessa Bronchos feel like the greater power, admits freely that our Jay Francis is the cat's whiskers. Referring probably to Hank Hart's most recent explosion, Tony said: "We can't see why anyone would want to argue about who is the best back in District 3-AA. Jay Francis has it all to himself and he comes to Odessa Thanksgiving afternoon and we hope it rains." But I doubt if the rain would check the Francis-True-love-Harris-White-Williams and Bratton power as much as it would that of the lighter boys. What I want to see is a dry-land battle, with the entire squad of each team ready for battle. If the Bulldogs get beat, we won't have any alibis, and vice versa.

Period of Good Times Seen for Sheep Ranchers During the War

COLLEGE STATION.—It looks like a period of relatively good times ahead of the sheep rancher. Since the outbreak of the European war in early September, a substantial advance in domestic prices has occurred. Domestic demand for wool has been increased by prospects of improvement in business activity and consumer incomes and may be increased because of reduced imports and larger purchases of wool goods for military purposes by foreign countries.

These facts are reflected in a review prepared by the Bureau of Agricultural Economics, Department of Agriculture.
Wool producers will recall that prices were fairly low at the beginning of the World War in 1914, but after 1915 prices went up in both domestic and foreign markets. In the United States, wool prices in 1918 were about three times as high as in 1914, but by 1921 they were about half the 1918 level.

United States production of wool is now about 50 percent greater than in 1914, while population is only about 30 per cent larger. That means imports of foreign wool have been largely replaced by domestic production.

Production of staple rayon fiber in lengths similar to wool and suitable for mixture with wool and for spinning on woolen machinery has increased greatly in the United States in the past decade. In 1930, U. S. production of this rayon was less than a million pounds; in 1938, 30 million pounds were produced here and an additional 23 million pounds imported. World production of staple rayon fiber was estimated at 932 million pounds in 1938, with 90 percent of this amount produced by Germany, Italy and Japan. An advance in wool prices will further stimulate the production of substitutes.

In November 1914 the British government regulated exports of wool from her dominions, and in 1917 look over the Australian and New Zealand wool clips. This time—in October, 1939—Britain has already taken over the wool clips from these countries and has a close working agreement with South Africa.

These clips total about one and a half billion pounds, and Great Britain and France normally use about a billion pounds of wool a year. Even with war needs, this means that the British Government will have to sell some wool to neutral countries.

Since medium wools are best for war purposes, and since the Australian sheep ranching, page 4

Advertisement for Grand Prize Beer featuring a turkey and a bottle of beer. Text includes: 'There may be some QUESTION over DATES', 'NOV. 23', 'NOV. 30', 'But there is no question about the folks of Texas and this country having plenty to be thankful for. Nor is there any question about the supreme quality, flavor and leadership of GRAND PRIZE BEER. We are thankful to be in Texas and grateful for your preference having made Grand Prize Texas' Largest Seller. Grand Prize is good any day—There is no finer beer at any price.'

IMPORTANT PLANT

Crossword puzzle grid with clues for horizontal and vertical words. Clues include: '1 Shrub which yields the beverage', '7 Its fruit or beans', '12 Garden vegetables', '13 Frostier', '14 Furtive person', '15 Russian council', '16 Huey gatherer', '17 Pronoun', '18 Tree', '20 Right', '21 By', '22 Half an em.', '24 Musical note', '25 Mountain pass', '26 Lard', '29 Wood demon', '31 Olympian god', '32 Pits, included', '34 To be undecided', '35 Reform', '36 Pound', '40 Chest bone', '41 Stir', '42 Per.', '43 Printer's measure', '44 Venomous snake', '47 Thrice', '48 Mama', '49 Sketched', '51 Lion', '53 Is not included', '56 Garret', '57 Weapon', '58 A fine grade of this shrub', '59 It has a fragrant', '11 Year.', '16 This shrub is extensively grown in', '19 Its beverage is stimulating', '21 Buzz', '23 All gone', '25 Mongrel', '26 Because', '27 Charity', '28 Afternoon meal', '30 X', '32 Heavily body', '36 Betrothed person', '37 Dialect expressions', '39 Med on a boat', '42 To have', '44 Chinese sedge', '46 Scheme', '47 Grave vault', '48 Rodents', '49 Jackdaw', '50 Humor', '52 Silkworm sac', '54 Witty remark', '55 Sombre', 'Answer to Previous Puzzle', 'ACROSS: 1. SHRUB, 2. BEVERAGE, 3. FRUIT, 4. BEANS, 5. GARDEN, 6. FROSTIER, 7. FURTIVE, 8. PERSON, 9. RUSSIAN, 10. COUNCIL, 11. YEAR, 12. GARDEN, 13. VEGETABLES, 14. FURTIVE, 15. RUSSIAN, 16. HUEY, 17. PRONOUN, 18. TREE, 19. BEVERAGE, 20. RIGHT, 21. BY, 22. HALF AN EM., 23. ALL GONE, 24. MUSICAL NOTE, 25. MOUNTAIN PASS, 26. LARD, 27. CHARITY, 28. AFTERNOON MEAL, 29. WOOD DEMON, 30. X, 31. OLYMPIAN GOD, 32. PITS, 33. INCLUDED, 34. TO BE UNDECIDED, 35. REFORM, 36. POUND, 37. DIALECT, 38. MOUNTAIN PASS, 39. MED ON A BOAT, 40. CHEST BONE, 41. STIR, 42. PER., 43. PRINTER'S MEASURE, 44. VENOMOUS SNAKE, 45. THICE, 46. SCHEME, 47. THRICE, 48. MAMA, 49. SKETCHED, 50. HUMOR, 51. LION, 52. SILKWORM SAC, 53. IS NOT INCLUDED, 54. WITTY REMARK, 55. SOMBRE, 56. GARRET, 57. WEAPON, 58. A FINE GRADE OF THIS SHRUB, 59. IT HAS A FRAGRANT', 'VERTICAL: 1. SHRUB, 2. BEVERAGE, 3. FRUIT, 4. BEANS, 5. GARDEN, 6. FROSTIER, 7. FURTIVE, 8. PERSON, 9. RUSSIAN, 10. COUNCIL, 11. YEAR, 12. GARDEN, 13. VEGETABLES, 14. FURTIVE, 15. RUSSIAN, 16. HUEY, 17. PRONOUN, 18. TREE, 19. BEVERAGE, 20. RIGHT, 21. BY, 22. HALF AN EM., 23. ALL GONE, 24. MUSICAL NOTE, 25. MOUNTAIN PASS, 26. LARD, 27. CHARITY, 28. AFTERNOON MEAL, 29. WOOD DEMON, 30. X, 31. OLYMPIAN GOD, 32. PITS, 33. INCLUDED, 34. TO BE UNDECIDED, 35. REFORM, 36. POUND, 37. DIALECT, 38. MOUNTAIN PASS, 39. MED ON A BOAT, 40. CHEST BONE, 41. STIR, 42. PER., 43. PRINTER'S MEASURE, 44. VENOMOUS SNAKE, 45. THICE, 46. SCHEME, 47. THRICE, 48. MAMA, 49. SKETCHED, 50. HUMOR, 51. LION, 52. SILKWORM SAC, 53. IS NOT INCLUDED, 54. WITTY REMARK, 55. SOMBRE, 56. GARRET, 57. WEAPON, 58. A FINE GRADE OF THIS SHRUB, 59. IT HAS A FRAGRANT'

Advertisement for Midland Federal Savings and Loan Association. Text includes: 'Build a Real American Family IN A HOME OF YOUR OWN FINANCED THROUGH YOUR SAVINGS & LOAN MIDDLE FEDERAL SAVINGS AND LOAN ASSOCIATION PHONE 79'.

Three Delphian Chapters Meet Here Tuesday

Members From Big Spring, Odessa and Midland Attend Luncheon and Program

Forty-four women representing three chapters of Delphian, those at Big Spring, Odessa, and Midland, gathered in the Crystal ballroom of Hotel Scharbauer at noon Tuesday for luncheon and presentation of the quarterly program on the Delphian magazine.

Tables were arranged in the shape of a triangle, the Delphian emblem, and Delphian colors of black and gold were evident in table appointments. Delta-shaped handpainted place cards were in the favored colors and also served as programs and menus in pamphlet form. The tables were lighted by yellow candles and centered with bowls of white chrysanthemums.

Mrs. A. J. Cooper presided at the black and gold register which was handpainted by a member of the Midland chapter.

Invocation before the luncheon was given by Mrs. Earl Chapman of the Midland chapter.

A novel feature of the exchange of greetings and welcome was the delivery of telegrams to Mrs. A. Swartz of the Big Spring chapter and to Mrs. P. W. Appleby of Odessa.

When Mrs. Chas. L. Klapproth, president of the Midland chapter, had welcomed the visitors and made the introductions, Mrs. Swartz and Mrs. Appleby made responses.

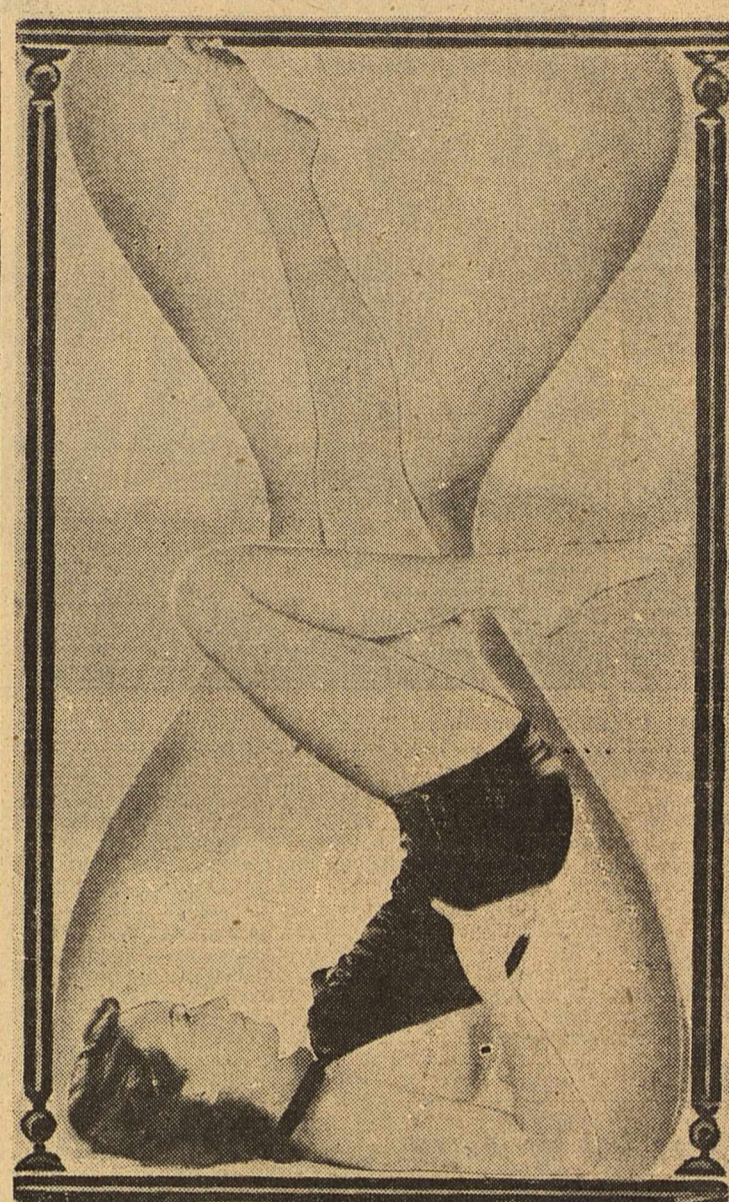
Marjorie Barron, small daughter of Mr. and Mrs. Ralph Barron, presented a dance number.

Following the luncheon, the group adjourned to the private dining room where Delphian songs were sung, led by Mrs. Hayden Barrow of Odessa and accompanied by Mrs. Bates Hoffer.

Mrs. Hal Peck was leader for the program consisting of discussions on articles in the quarterly magazine. She was assisted in conducting by Mrs. Robert Turpin.

Mrs. Dorothy Perkins opened the program with a discussion of the

Hourglass Tells Your Style Time To Be Up to Minute--Exercise Now



BY ALICIA HART, NEA Service Staff Writer.

The hourglass figure becomes more important by the minute. Unlike many a new fashion which is shouted about for a few months, then dropped completely, the slim-waisted silhouette with full bosom and rounded hips is likely to be with you for months and months, if not years.

Unless your waistline is slender and your stomach and diaphragm quite flat, you simply cannot expect to be flattered by clothes that are cut to emphasize every line in the middle of the body.

"HOURLASSES" EXERCISES. The smart thing to do, therefore, is to go in for special exercise routines to decrease dimensions through the midriff.

The stretcher: Stand on bare toes, lift arms toward the ceiling and walk around the room. Pull your upper body up and away from hips. Hold stomach in, chest high and backbone as straight as possible.

The bicycle: Lie flat on the floor with arms at sides. Now lift legs until they are perpendicular to your body, supporting hips with hands. Keeping head flat and hips well off the floor, make believe that you are riding a bicycle up a steep hill, then down the hill.

The bender: Sit on the floor with legs far apart and arms outstretched in front of you at shoulder level. Swing body forward, touching right foot with left hand. Reverse, touching left foot with right hand.

Pick of the lot: Lie flat on the floor with arms folded on chest and ankles together. Without moving arms, sit up, then return to prone position. Now lift legs until they are perpendicular to your body, then lower them slowly.

Christmas Fruit Cake: Like a Good Friend, Will Improve With Age. Christmas may seem a long way off, but to the experienced maker of fruit cakes, the longer a fruit cake mellow the better it will be at Christmas.

Mrs. Gaynor Maddox, NEA Service Staff Writer, provides a recipe for Christmas fruit cake that improves with time.

Gift Fruit Cake en Casserole. (Baked weight, about 5 1/2 lbs.) One cup seedless raisins, 1 cup uncooked prunes, 1 cup uncooked dried figs, 3/4 cup cut citron, 1/2 cup cut preserved orange peel, 1/2 cup halved candied cherries, 1 cup thick jelly, 1/4 cup orange juice, 1 teaspoon allspice, 2 teaspoons cinnamon, 1 teaspoon mace, 1 1/4 cups butter, 3/4 cup brown sugar, 3/4 cup white sugar, 4 eggs, 2 teaspoons vanilla extract, 3 1/2 cups sifted all-purpose flour, 1/2 teaspoon soda, 3/4 teaspoon salt.

Topping: One cup seedless raisins, 3/4 cup broken walnut meats, 3/4 cup

Midland Women Golfers Will Go To Odessa Friday

Eighteen or more women golfers from Midland are expected to go to Odessa Friday for the one-day tournament which is being sponsored there by the Odessa Women's Golf Association.

Guests are to be at the Country Club at 9 o'clock Friday morning. After the morning's games, luncheon will be served at one o'clock. Following the afternoon's play, a social hour will be held.

All Midland golfers are urged to attend. Those planning to go are asked to communicate with Mrs. W. B. Harkrider, president of the Midland Women's Golf Association, and send in a qualifying score.

Those planning to go from here include: Mmes. L. A. Absher, C. A. Mix, R. H. Henderson, H. J. Kemler, P. H. Liberty, R. P. Coats, Ralph Harp, F. A. Stacy, E. B. Dozier, H. W. Hamilton, Curtis Inman, A. H. Riley, W. P. Thurmond, A. E. Horst, R. T. Mobley, Gayther Nowell, W. B. Harkrider, and possibly Mrs. J. L. Rush.

Mrs. Phil Yeckel Is Hostess to Adelante Club

Mrs. Phil Yeckel was hostess to the Adelante club and two guests with a two-table bridge luncheon at her home, 612 W. Storey, Tuesday at one o'clock.

The luncheon, featuring barbecued chicken, was served in buffet style. Chrysanthemums in burgundy and other tones were used for party decor.

Guests were Mrs. V. P. Neiss and Mrs. Harry Prickett.

Two tables of bridge were played during the afternoon.

Adelante members present were: Mmes. Joe D. Chambers, R. P. Coats, W. B. Harkrider, Ralph Harp, Curtis Inman, M. P. Turner, and the hostesses.

For Wedding Without Worry, Call on the Bridal Consultant

Particularly feminine among the new avenues of professional work for women is that of bridal consultant. Bridal consultant—the very name connotes the glamorous, the choice among a dozen gleaming materials for the one that is just right for the important gown, the selection of the most exquisite colors for the attendants, of the right flowers for the church, and the best decorations for the cake.

Because even such delightful tasks sometimes multiply to the point of overwhelming the bride-to-be and her harassed mother, the bridal consultant came on the scene and in the belief of Thelma Barse Hendricks of Fort Worth saved the "big" wedding for the envy of on-lookers and the delight of society editors.

Mrs. B. K. Buffington presided at the meeting for which attendance of more than 100 was reported.

Two-Part Discussion Presented at North Ward PTA Meeting

Mrs. Jack Hawkins sang "Out of My Soul's Great Sadness," first in English and then in German, as a special number at the meeting of the North Ward PTA Tuesday afternoon. She was accompanied by Mrs. A. M. McClure.

An interesting and pertinent two-part discussion was presented by Mrs. R. W. Hamilton and Mrs. Don Sivalls.

Mrs. Hamilton told "What We Expect of Our Teachers" and Mrs. Sivalls described "What Teachers Expect of Parents."

Plans were made for more puppet shows to be presented under auspices of the PTA.

Supt. W. W. Lackey introduced Mrs. S. P. Hazlip who spoke in behalf of the Clare Tree Major Children's Theatre plays which will be brought here this winter.

Mrs. B. K. Buffington presided at the meeting for which attendance of more than 100 was reported.

Blind Judge Weds 4068 ARKANSAS CITY, Kan. (U.P.)—Judge Willis White of the city court has performed 4068 wedding ceremonies, yet he never saw a single couple that he has married. The judge is blind.

BEFORE A COLD GETS A REAL START

Use a few drops of Va-tro-nol. It's a wonderful help in preventing colds from developing.

VICKS VVA-TRO-NOL

J. D. MCKENZIE

CHIROPRACTOR

MASSAGE—DIET
210 THOMAS BLDG.

SPECIAL ON PERMANENTS

Two \$3.50 Permanents.....\$5.50
Two Eugene Permanents \$8.50 or One for \$5.00
Two Duart Permanents \$8.50 or One for \$5.00
Machineless Waves
Two New Ray Permanents \$8.50 or One for \$5.00
Two Coffet Permanents \$7.00 or One for \$4.00
Also on Mon., Tues., Wed. of each week we give Shampoo & Set, Facial, Manicure, Lash & Brow Dye—all for \$2.00

IDEAL BEAUTY SHOP

Phone 85—Ritz Theatre Bldg.
Earlene Cox, Mozelle Hill, Francis Jones, Nedra Gee

NO TEARS LADY!
We can do Hubby's shirts so beautifully that even his own mother will compliment them.

It's a Fact!

Midland Steam Laundry

Phone 90

FOR GLASSES THAT FIT

Longer hours for reading, study and sewing cause eyestrain and discomfort. Be sure your eyes are right. Have an examination regularly.

"Our Prices Are Lower"

T. J. INMAN

Optometrist

Your Christmas Fruit Cake, Like a Good Friend, Will Improve With Age

Christmas may seem a long way off, but to the experienced maker of fruit cakes, the longer a fruit cake mellow the better it will be at Christmas. Special recipe for this cake calls for a topping of seedless raisins, broken walnut meats, candied cherries, butter and light corn syrup.

BY MRS. GAYNOR MADDIX, NEA Service Staff Writer.

CHRISTMAS Fruit cake improves with time. Cooks in the know always do their fruit cake baking as far ahead of the 25th of December as possible. For those advanced cooks, this exclusive recipe is printed now. For those who will bake later, it can be clipped and saved for the Christmas baking day.

To make a two-in-one gift, bake your fruit cake in one of the heat-resistant glass casseroles. Long after the cake has been eaten, the casserole will serve to remind your friends of your practical and generous Christmas thought.

This recipe is the creation of Lucy Malby, outstanding in the field of up-state New York traditional cookery. Follow her directions step by step and yours will be a truly Merry Christmas cake.

Gift Fruit Cake en Casserole. (Baked weight, about 5 1/2 lbs.) One cup seedless raisins, 1 cup uncooked prunes, 1 cup uncooked dried figs, 3/4 cup cut citron, 1/2 cup cut preserved orange peel, 1/2 cup halved candied cherries, 1 cup thick jelly, 1/4 cup orange juice, 1 teaspoon allspice, 2 teaspoons cinnamon, 1 teaspoon mace, 1 1/4 cups butter, 3/4 cup brown sugar, 3/4 cup white sugar, 4 eggs, 2 teaspoons vanilla extract, 3 1/2 cups sifted all-purpose flour, 1/2 teaspoon soda, 3/4 teaspoon salt.

Topping: One cup seedless raisins, 3/4 cup broken walnut meats, 3/4 cup

All-Musical Program To Be Presented at B&PW Silver Tea

The musical program to be presented at the annual silver tea which will be sponsored by the Business and Professional Women's club in the assembly room at the courthouse Saturday afternoon has been announced by Mrs. Frances Stalworth, chairman of the program.

During the tea hours from 3:00 o'clock until 5:30 o'clock the following musicians will be at the piano: Mrs. J. B. Leonard from 3:15 until 3:30 o'clock; Wallace Wimberly from 3:30 to 4:15 o'clock; Mrs. Lee Cornelius from 4:15 until 4:45 o'clock; Miss Jesse Scott Price from 4:45 until 5:15 o'clock.

Proceeds of the silver tea will go to the fund which the club maintains for medical loans to the needy. Miss Elma Graves is chairman in general charge of tea arrangements.

Coming Events

THURSDAY

Leslie Flyaron will meet with Miss Eddie Moore, 811 S. Colorado, Thursday evening at 7:30 o'clock.

Neighbors' club will meet with Mrs. Fred Klatt, 910 W. Florida, Thursday afternoon at the usual hour.

Needcraft club will meet with Mrs. O. R. Jeffers, 1901 W. Wall, Thursday afternoon at 2:30 o'clock.

FRIDAY

Belmont Bible class will meet with Mrs. W. L. Sutton, 511 N. Pecos, Friday afternoon at 3:30 o'clock.

Home Arts club will hold its regular Thanksgiving dinner at the home of Mrs. Ernest Neill, 411 North A street, Friday.

SATURDAY

Story Hour will be held in the children's library at the courthouse Saturday morning at 10 o'clock.

Treble Clef Juvenile Music club will meet at the Mason studio, 210 W. Ohio, Saturday morning at 9:30 o'clock.

Business and Profession Women's club will sponsor its annual silver tea in the assembly room of the courthouse Saturday afternoon from 3 o'clock until 5:30.

Bridgette Club Meets at Home Of Mrs. Cooper

Mrs. L. A. Absher, held high score and Mrs. A. E. Horst second high when Mrs. S. O. Cooper, 808 W. Louisiana, was hostess to the Bridgette club Tuesday afternoon at 2:30 o'clock.

Chrysanthemums were used in the party rooms where tables were laid for bridge as the afternoon's diversion.

A dessert course was served after the games to: Mmes. Absher, K. S. Blackford, Glenn Black, Horst, Lamar Lunt, E. D. Richardson, A. H. Riley, W. B. Stowe, Bill Van Huss, and the hostess.

Beta Sigma Phi Members Try Hand At Ballad Making

Composition of a ballad by each member's making up a line brought a cheerful note into the program of the Beta Sigma Phi meeting Tuesday evening in the private dining room of Hotel Scharbauer. Also adding to the merriment of the occasion was the reading of the members' own compositions of a limerick, a lyric, and of jumbled nursery rhymes.

Roll call was answered with nursery rhymes.

Plans were discussed for attending the area council at Odessa, December 3.

Mrs. Riley Parr was in charge of last night's program.

Present were: Miss Marguerite Elyens, Mrs. L. C. Link, Miss Norone Kirby, Mrs. M. D. Johnson Jr., Mrs. Tom Potter, Miss Ruth Pratt, Miss Maedelee Roberts, Mrs. Johnny Sherrod, Mrs. S. R. McKinney, Jr., Mrs. Emil Stutter, Miss Buryne McCollum, Miss Freda Tarrborough, and Miss Alma Heard.

READ THE CLASSIFIEDS

HAVE YOU BEEN LOOKING FOR A BLOUSE?

Edelweiss Club Complimented by Mrs. J. R. Martin

Talies in a design of bright-colored fruits and vegetables lent an autumn motif to appointments for the afternoon party with which Mrs. J. R. Martin complimented the Edelweiss club at her home, 2001 West Indiana, Tuesday at 2:30 o'clock.

Fall flowers were used in the house.

Two tables were laid for bridge games in the sun porch. Awards went to Mrs. Hal C. Peck, for high score and to Mrs. Hayden Miles for second high.

A salad-and-dessert course was served at the close of play.

Present were the following, all club members: Mmes. Ellis Cowden, John Dublin, Miles, Peck, A. P. Shirey, J. M. Speed Sr., Maymie Stokes, and the hostess.

Rice is grown more widely and used more extensively than any other foodstuff.

MANY NEVER SUSPECT CAUSE OF BACKACHES

This Old Treatment Often Brings Happy Relief

Many sufferers relieve nagging backache quickly once they discover that the real cause of their trouble may be tired kidneys. The kidneys are Nature's chief way of taking the excess acids and waste out of the blood. They help most people pass about 3 pints a day. When a disorder of kidney function permits poisonous matter to remain in your blood, it may cause nagging backache, rheumatic pains, leg pains, loss of pep and energy, getting up nights, swelling, puffiness under the eyes, headaches and dizziness. Frequent or heavy passages with smarting and burning sometimes show there is something wrong with your kidneys or bladder.

Don't wait! Ask your druggist for Doan's Pills, used successfully by over 40 million years. They give happy relief and will help the 15 million kidney tubes flush out poisonous waste from your blood. Get Doan's Pills.

Excel-Sure Cleaners

We Appreciate Your Patronage

We give you Quality Plus Personal Service

Phone 23
Hotel Scharbauer

On Monday, Tuesday & Wednesday

Oil shampoo, manicure, brow & lash dye.....\$1.00
With a facial every 30 days for 25c extra

Plain shampoo & set 35c — Dandruff Remover S & S 60c
Plain manicure 35c — Brow and lash dye 50c
Clean up facial 75c — Facial with pack \$1.25

SPECIALS THURSDAY & FRIDAY ON HAIR TINTS, MACHINE AND MACHINLESS PERMANENTS, LIONEL GORDON Prescription line of COSMETICS

The Best Money Can Buy

SOUTHSIDE BEAUTY SHOP

310 South Dallas—Phone 269

SPECIAL

First Four Days of Each Week
Mon.-Tues.-Wed.-Thurs.

Shampoo and Set, Manicure, Lash and Brow Dye, all for... \$1

Operators: Virgie Davis, Vada Mae Roberts, Bert Heard

BOBBY'S BEAUTY SHOP

Phone 232—117 S. Main

NO TEARS LADY!

We can do Hubby's shirts so beautifully that even his own mother will compliment them.

It's a Fact!

Midland Steam Laundry

Phone 90

For Glasses That Fit

Longer hours for reading, study and sewing cause eyestrain and discomfort. Be sure your eyes are right. Have an examination regularly.

"Our Prices Are Lower"

T. J. INMAN

Optometrist

Canada Off Weather Map

JACKSONVILLE, Fla. (U.P.)—The local weather bureau has received instructions from Washington to delete all Canadian points from the daily weather map. It is believed that the ban is connected with the European war.

The PAYOFF

BY JESS RODGERS.

Probably one of the most important decisions made by WTNM directors at the meeting in Amarillo last Sunday was that of deciding the pennant winner by the same system that was used last season.

There will be both a split season and a Shaughnessy playoff. The team that is in first place at mid-season will be given a spot in the playoffs; the other three teams that finish at the top in the second half will also gain the final round.

Lamesa and Amarillo opposed the idea while six clubs voted for it. It can well be understood why Lamesa opposed the plan. Had it not been in effect last season, the Lobos would have finished in fourth place ahead of a Midland team that managed to reach the playoffs after the season was split. The Cowboys would have wound up sixth over the full season.

Jada Davis, Odessa News-Times sports editor, has started a lot of argument in Odessa by declaring the most effective method of stopping Jay Francis is to tackle him around the ankles. Most of the Odessa fans say "The Little Man Who Wasn't There" sure enough wouldn't be there if the Broncs started diving for his ankles. Davis finally admitted that any way the Broncs could stop Jay would be the best way as far as he was concerned. Incidentally, Davis is the scribe who wrote the story about Jay being so

swell-headed that he only reported for practice one time a week and was not in condition.

He may get around to being sorry for saying that after the game.

Reports from Odessa now indicate that all of the 6,000 seats at Fly field are going to be sold out several days ahead of the Midland-Odessa game Thanksgiving Day. Nine hundred more were sent here this morning after more than 1,000 had been sold in two days.

This'n that—Early in the season, Bud Taylor and Joe Coleman agreed on officials for the Thanksgiving Day game. Now Coleman wants to get a different quartet. Claude Duffey says Neal Rabe reported Venezuelan hitters batted Tex Nugent all over South America in the recent barnstorming trip Neal sponsored. His team won three of the seven games played. Fan who squawk about paying 40 cents to see games here should pat themselves on the back when they think about what the Venezuelans had to pay—\$5.50 for each game. The Bulldogs are getting a lot of rest this week and a chance to recover from injuries before meeting Odessa Saturday.

The boy Johnson that paced Amarillo to its easy win over Borger Saturday is a cousin of Mrs. Bill Holmes of Midland. The Johnson boy returned two punts 93 and 90 yards for touchdowns and scored another on a 21-yard sprint. Another Southwest Conference school is now putting out "feelies" on Jay Francis. Try to show us another coach in this area who has a better record than Bud Taylor in the last two and a half years. Losing four games early but since that time the Bulldogs have dropped only two. Looks like Dutch Baumgarten has him a district championship team down at Nacogdoches this year.

Dilemma Bises Over Tobacco At Poor Farm

TULSA, Okla. (UP)—The Tulsa county farm apparently is heading for a "more whisky and less tobacco situation," according to Supt. W. E. Lantz.

That will result, he told county commissioners, from reduction in the institution's budget.

"If you cut down my funds, I'll have to fire the night watchman," Lantz said. "And if I fire the night watchman, those old men will manage to lose more whisky bootleggers."

Lantz said the night watchman had "done much to keep bootleggers from the premises."

The tentative reduction in the farm tobacco budget from \$1,600 to \$1,200 was protested by Lantz.

"Our aged inmates are used to so many plugs of chewing tobacco and so many sicks of tobacco. To cut the amount is like taking food from them," Lantz asserted.

Winter Drivers Offered 9 Tips

TRENTON, N. J. (UP)—Arthur W. Magee, state motor vehicle commissioner, offers the following safe winter driving tips:

1. Check electrical and exhaust systems, windshield wipers and keep brakes equalized. Keep tire chains, defrosters and other vital equipment in good condition for use when needed. Distribute the car's load evenly.
2. Speeds on ice should not be excessive even with abrasives on the ice or with tire chains.
3. The common practices of lowering tire pressure or of increasing the load give only slightly more traction and not nearly sufficient for all-around safety.
4. Maintain adequate vision through windshields and windows. Circulate fresh air by opening the cowl ventilator, rather than side windows which tends to suck exhaust gasses through the floor boards.
5. On wet and even dry pavement always anticipate ice on bridges in shaded spots, around curves and over hills and when thawing temperatures are dropping.
6. Start by releasing the clutch slowly, with engine idling and the car in low gear and accelerate slowly to avoid spinning the rear wheels.
7. Pump the brakes in stopping, even when using chains, to keep the wheels rolling. Slow down in gear to about 10 miles an hour, then release the clutch for the final stop.
8. Keep a steady foot on the accelerator to avoid spinning the rear wheels. If a skid starts, turn the front wheels in the direction the rear is skidding.
9. When it is slippery try out the brakes occasionally to get the feel of the road. Keep speed down and car in gear. Avoid situations requiring sudden stops and sudden changes in direction.

Players	1st.	2nd.	3rd.	Tot.
Owens	173	108	102	383
Kimrey	136	155	180	471
Brewer	133	224	161	518
Baker	209	156	192	557
Shores	154	208	180	542
Team average	805	851	815	2471

Players	1st.	2nd.	3rd.	Tot.
Roripugh	147	122	125	394
Shaw	185	133	131	449
Blind	147	147	147	441
Allen	120	144	139	393
Boring	113	111	114	335
Handicap				151
Team average	712	657	646	2156

Players	1st.	2nd.	3rd.	Tot.
McHargue	134	151	136	421
Weaver	179	182	144	505
Hockendorf	148	132	123	403
Crooks	142	116	140	398
Langford	162	158	181	501
Team average	735	739	724	2198

Players	1st.	2nd.	3rd.	Tot.
Jones	153	159	152	462
Clement	168	167	140	475
Bizzell	135	193	177	505
Nalley	118	139	131	428
Hall	132	124	102	358
Team average	711	822	702	2235

Players	1st.	2nd.	3rd.	Tot.
McKay	148	177	117	442
Powledge	139	144	136	419
West	178	125	178	481
Jones	133	112	137	382
Hallman	168	153	145	466
Team average	766	711	713	2190

Players	1st.	2nd.	3rd.	Tot.
Kiser	138	179	167	484
Nance	141	147	143	431
Gibbs	145	88	145	378
Smith	156	146	167	469
Adams	126	158	116	400
Handicap	28	28	28	84
Team average	744	746	766	2256

Players	1st.	2nd.	3rd.	Tot.
Coley	148	167	142	457
Cole	145	162	200	507
Swift	142	170	191	503
Burton	103	163	165	431
Hugh	148	204	180	532
Team average	686	866	878	2430

Players	1st.	2nd.	3rd.	Tot.
Clement	138	147	143	428
Kennedy	125	159	145	429
Bizzell	120	124	177	421
Hill	120	183	155	458
Hall	215	153	153	521
Handicap	44	44	44	132
Team average	760	810	817	2387

Players	1st.	2nd.	3rd.	Tot.
Kiser	138	179	167	484
Nance	141	147	143	431
Gibbs	145	88	145	378
Smith	156	146	167	469
Adams	126	158	116	400
Handicap	28	28	28	84
Team average	744	746	766	2256

Players	1st.	2nd.	3rd.	Tot.
Coley	148	167	142	457
Cole	145	162	200	507
Swift	142	170	191	503
Burton	103	163	165	431
Hugh	148	204	180	532
Team average	686	866	878	2430

Players	1st.	2nd.	3rd.	Tot.
Clement	138	147	143	428
Kennedy	125	159	145	429
Bizzell	120	124	177	421
Hill	120	183	155	458
Hall	215	153	153	521
Handicap	44	44	44	132
Team average	760	810	817	2387

Players	1st.	2nd.	3rd.	Tot.
Kiser	138	179	167	484
Nance	141	147	143	431
Gibbs	145	88	145	378
Smith	156	146	167	469
Adams	126	158	116	400
Handicap	28	28	28	84
Team average	744	746	766	2256

Players	1st.	2nd.	3rd.	Tot.
Coley	148	167	142	457
Cole	145	162	200	507
Swift	142	170	191	503
Burton	103	163	165	431
Hugh	148	204	180	532
Team average	686	866	878	2430

Players	1st.	2nd.	3rd.	Tot.
Clement	138	147	143	428
Kennedy	125	159	145	429
Bizzell	120	124	177	421
Hill	120	183	155	458
Hall	215	153	153	521
Handicap	44	44	44	132
Team average	760	810	817	2387

Players	1st.	2nd.	3rd.	Tot.
Kiser	138	179	167	484
Nance	141	147	143	431
Gibbs	145	88	145	378
Smith	156	146	167	469
Adams	126	158	116	400
Handicap	28	28	28	84
Team average	744	746	766	2256

Players	1st.	2nd.	3rd.	Tot.
Coley	148	167	142	457
Cole	145	162	200	507
Swift	142	170	191	503
Burton	103	163	165	431
Hugh	148	204	180	532
Team average	686	866	878	2430

Players	1st.	2nd.	3rd.	Tot.
Clement	138	147	143	428
Kennedy	125	159	145	429
Bizzell	120	124	177	421
Hill	120	183	155	458
Hall	215	153	153	521
Handicap	44	44	44	132
Team average	760	810	817	2387

Players	1st.	2nd.	3rd.	Tot.
Kiser	138	179	167	484
Nance	141	147	143	431
Gibbs	145	88	145	378
Smith	156	146	167	469
Adams	126	158	116	400
Handicap	28	28	28	84
Team average	744	746	766	2256

Players	1st.	2nd.	3rd.	Tot.
Coley	148	167	142	457
Cole	145	162	200	507
Swift	142	170	191	503
Burton	103	163	165	431
Hugh	148	204	180	532
Team average	686	866	878	2430

Players	1st.	2nd.	3rd.	Tot.
Clement	138	147	143	428
Kennedy	125	159	145	429
Bizzell	120	124	177	421
Hill	120	183	155	458
Hall	215	153	153	521
Handicap	44	44	44	132
Team average	760	810	817	2387

Players	1st.	2nd.	3rd.	Tot.
Kiser	138	179	167	484
Nance	141	147	143	431
Gibbs	145	88	145	378
Smith	156	146	167	469
Adams	126	158	116	400
Handicap	28	28	28	84
Team average	744	746	766	2256

Players	1st.	2nd.	3rd.	Tot.
Coley	148	167	142	457
Cole	145	162	200	507
Swift	142	170	191	503
Burton	103	163	165	431
Hugh	148	204	180	532
Team average	686	866	878	2430

Players	1st.	2nd.	3rd.	Tot.
Clement	138	147	143	428
Kennedy	125	159	145	429
Bizzell	120	124	177	421
Hill	120	183	155	458
Hall	215	153	153	521
Handicap	44	44	44	132
Team average	760	810	817	2387

Players	1st.	2nd.	3rd.	Tot.
Kiser	138	179	167	484
Nance	141	147	143	431
Gibbs	145	88	145	378
Smith	156</			

Classified Advertising

RATES AND INFORMATION

2c a word a day.
4c a word two days.
6c a word three days.

MINIMUM CHARGES:
1 day 25c
2 days 50c
3 days 75c

CASH must accompany all orders for classified ads, with a specified number of days for each to be inserted. CLASSIFIEDS will be accepted until 12 noon on week days and 6 p. m., Saturday for Sunday issues.

PROPER classification of advertisements will be done in the office of The Reporter-Telegram. ERRORS appearing in classified ads will be corrected without charge by notice given immediately after the first insertion.

FURTHER information will be given gladly by calling 7 or 8.

10-a—Room and Board

ROOM AND BOARD
Weekly or Monthly Rates
Extra Meals
2 Blocks North Petroleum Bldg.
Mrs. Ed Dozier—Phone 985-M
411 N. Colorado
(11-19-39)

12—Situations Wanted

YOUNG man wants farm or dairy work. J. L. Simmons, 910 East Wall.
(221-1)

15—Loans

LOANS \$100 to \$2500
For Any Purpose
Secured by Automobile Furniture—Personal Endorsements.
Low Rates—Up to 18 Months to Pay.
Commercial Loan Co.
109 South Loraine—Phone 503
(Hotel Scharbauer Bldg.)
(12-11-39)

NOTICE

Classified advertising is CASH WITH ORDER except to business establishments with an accredited rating. Please do not ask us to deviate from this regulation.

1—Lost & Found

LOST: White gold bracelet with 3 diamonds, two emeralds; reward. Phone 623.
(220-3)

2—For Sale

FOR FLOWERS see your local dealer. Vestal Flower Shop, Phone 408, 104 South H Street.
(12-1-39)

PRACTICALLY new flat-top desk; one office chair with arms. 602 North Pecos, phone 1150-W.
(220-3)

TRUCK load of paper shell pecans; block west court house on the highway; 15¢ a pound and up.
(220-3)

3—Furnished Apts.

FURNISHED apartment; new Electrolux; \$24.00 to \$30.00; bills paid. See Mrs. J. L. Sneed, 617 West Indiana.
(212-15)

JUST finished papering and painting; nice, clean; one or two rooms. 209 East Texas.
(218-6)

THREE-ROOM furnished apartment; private bath. 802 South Pecos.
(219-3)

FOR RENT: New modern apartment. 602 North Pecos, phone 1159-W.
(220-3)

THREE rooms; private bath; inner-spring mattress; Frigidaire; near schools. 409 West Texas.
(220-3)

THREE-ROOM southeast apartment; nicely furnished. Three 2-room apartments; close in. 323 South Baird.
(221-1)

FURNISHED 4-room apartment; 4 blocks from town. Phone 291, 521 West Wall.
(221-3)

5—Furnished Houses

TWO-ROOM furnished house; utilities paid; bath; Frigidaire. 410 North Main, phone 551-W.
(220-3)

7—Houses for Sale

FOR SALE

New 5-room frame home being completed Dec. 1st. Small down payment, balance less than rent.

5-room brick, corner lot, will consider well-located lot or small home part cash payment.

Dandy 5-room brick; corner lot; paved street; a real bargain this week. Better see me at once.

Will furnish lot and build your home, 10% down, balance less than rent.

BARNEY GRAFA
303 Thomas Bldg.
Phone 106
(221-1)

ONE 3-room frame modern house, \$1,400, part trade; one 4-room box house, \$700, \$250 down; terms. Phone 503 or 1090.
(221-3)

10—Bedrooms

NICELY furnished; new mattresses; with or without board; \$4.00 per week. 121 North Big Spring.
(218-6)

BEDROOM; newly furnished bedroom; private entrance; adjoining bath; garage; close in. 704 West Illinois.
(218-6)

LARGE room suitable for employed couple; private entrance and bath; twin beds; gentlemen preferred. 1901 West Wall.
(221-3)

10-a—Room & Board

BOARD and room at Rountree's; excellent meals; rooms nicely arranged for girls and boys. 107 South Pecos, phone 278.
(12-4-39)

16—Miscellaneous



Get Our Prices Before You Buy Heaters

A Heater for All Fuels
Natural Gas—
Butane—
Wood and Coal—
Coal Oil—
Distillate—
Electric

UPHAM FURNITURE COMPANY
201 S. Main — Phone 451

MOVE SAFELY
BONDED—INSURED
ROCKY FORD
MOVING VANS

Operating in Texas, California, Arizona, New Mexico, Colorado, Oklahoma, Kansas and Louisiana.
Storage—Phone 400—Midland

—Call—
G. BLAIN LUSE

For New **EUREKA, HOOVER, MAGIC-AIRE** and **PREMIER DUPLEX VACUUM CLEANERS**

Bigger trade-ins with payments to suit you.
G. BLAIN LUSE
Services the cleaners for Texas Electric Service Co. in 10 towns. Why not yours?
—Phone 74—

16—Miscellaneous

BEAUTY parlor location in Odessa for rent cheap. Inquire B. & B. Food Store, Odessa.
(216-6)

BUS SCHEDULES
FREE meals, pillows; lowest fares through service. All-American Bus Line, Yellow Cab Co., phone 555.
(219-6)

SUGGESTED for Milady: Personal corsage service. Phone 1044.
(221-1)

Good Grade "A" Raw Milk
Scruggs Dairy
PHONE 9000

SIDE GLANCES



by Galbraith

Rural Doctor Now Is Serving 3rd Generation

OAKMAN, Ala. (UP)—Dr. Hugh Watson Stephenson, now in his 60th year of practice, is Alabama's outstanding example of the vanishing country doctor.

Dr. Stephenson, in his late 30s, still is active, practicing in three counties around Oakman, but has "just about given up night practice."

He has brought into the world three generations in many of the families around this tiny Alabama town.

When the citizens of Oakman recently resented Dr. Stephenson with a loving cup in appreciation of his "long service," the aged doctor exclaimed modestly: "I don't deserve that. People are too good to me."

Dr. Stephenson was born in Arkansas. His father, also a doctor, died when he was a child, so he moved to Lawrence county, Ala., where he was reared by his grandfather.

The doctor finished his medical studies at the Medical College of Alabama at Mobile in 1899.

The country doctor, who still is active in the Knights of Pythias, the Methodist church and the Walker County Medical society, gets his relaxation by going to the movies.

He agrees with Elbert Hubbard

Over-Size Bathroom Cabinet

Bathroom cabinets, as a rule, run to small—medicine bottle size. If you'd like to know what to do with over-size bottles and jars you sometimes think it economical to buy, consider a new inexpensive steel cabinet 30 inches high, 14 inches wide, divided into three roomy compartments. A removable container for cleansing tissue is fitted on the inside of the door. Buy it in white, light shades of peach, green, blue, or ivory.

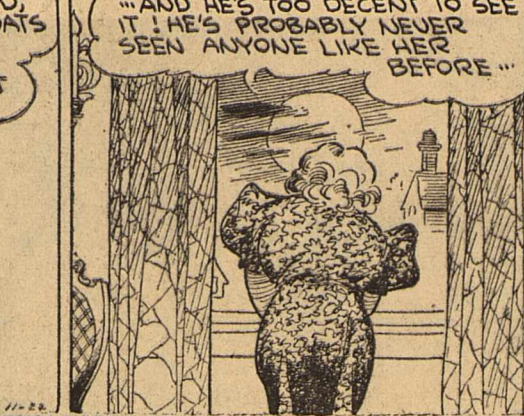
that "with the doctor's management, it is soon going to be a discredit to die of anything but old age."

BOOTS AND HER BUDDIES



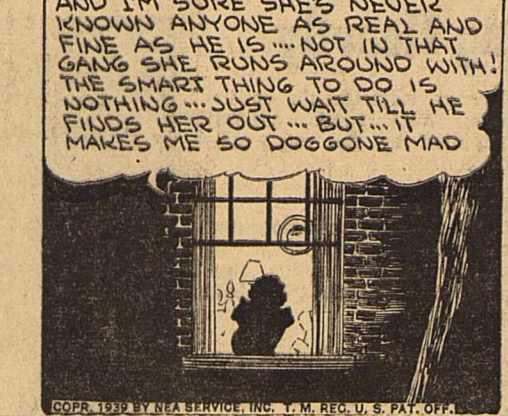
By EDGAR MARTIN

WASH TUBS?



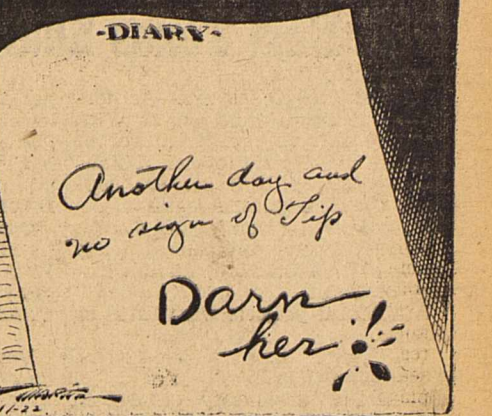
By ROY CRANE

ALLEY OOP



By V. T. HAMLIN

RED RYDER



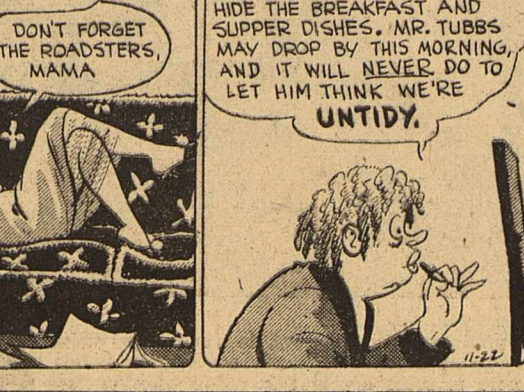
By FRED HARMAN

FRECKLES AND HIS FRIENDS



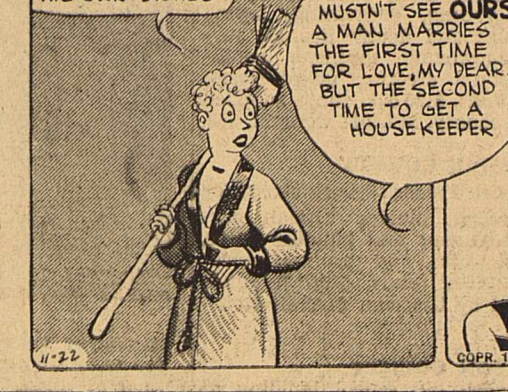
By MERRILL RUSSELL

OUR BOARDING HOUSE



with MAJOR HOOPLE

OUT OUR WAY



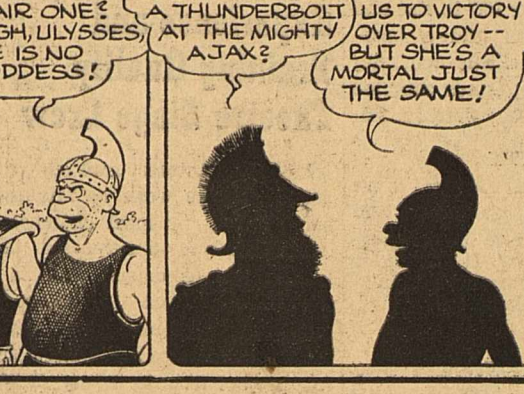
By J. R. WILLIAMS

HOW ONE NIGHT IN THE AIR Brought Polly A Thousand Good Mornings!



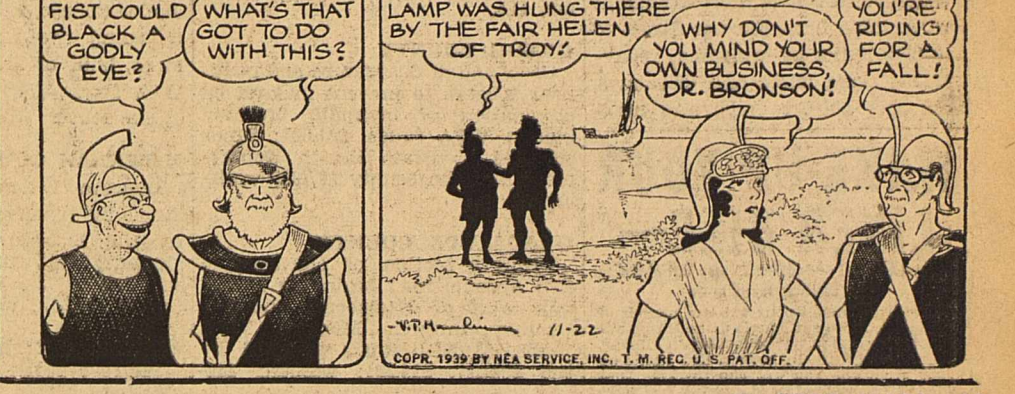
Back Home

FOLGER'S COFFEE



Good Morning, Honey

It's the "Magic Mountains" that give Folger's such VIGOROUS FLAVOR!



A Mountain of Flavor in Every Spoonful!

Work Authorized on 21 WPA Jobs With East Texas Sharing Heavily

SAN ANTONIO, Nov. 22.—Authorization to begin work on 21 WPA projects, involving expenditures of \$317,831, in Work Projects Administration funds, and \$575,999 supplied by local governmental agencies, has been given Texas district directors, it was announced today by Harold J. Stafford, administrative assistant.

Authorized projects were listed as follows:

ARCHER COUNTY
Eliminate unsanitary devices in rural and suburban areas throughout the county where sewer systems are impractical; WPA funds, \$3,847; funds supplied by State Health Department and county, \$6,736; workers, 23.

Reconstruct the Megargel school building, which is unsafe and inadequate in present condition, by removing second story and adding a wing to first story; WPA funds \$5,877; funds supplied by the school district, \$11,254; workers, 15.

BEE COUNTY
Improve 2 1/2 miles of road, beginning at State Highway 12 and extending to the Candlish School, by grading, surfacing with caliche, and constructing small drainage structures; WPA funds, \$6,970; funds supplied by the county, \$5,131; workers, 43.

BEXAR COUNTY
Improve New Braunfels Avenue in San Antonio from Eleanor Street to the city limits by widening, repaving, replacing curbs and driveways, extending culvert ends, and mak-

WAKE UP YOUR LIVER BILE!
Without Calomel—And You'll Jump Out of Bed in the Morning Ready to Go
The liver should pour out two pounds of liquid bile into your bowels daily. If this bile is not flowing freely, your food doesn't digest. It just decays in the bowels. Gas bloats up your stomach. You get constipated. Your whole system is poisoned and you feel sour, sunk and the world looks punk.
A more bowel movement doesn't get at the cause. It takes those good, old Carter's Little Liver Pills to get these two pounds of bile flowing freely and make you feel "top and up." Harmless, gentle, yet amazing in making bile flow freely. Ask for Carter's Little Liver Pills by name. Refuse anything else. At all drug stores. 10¢ and 25¢.

YUCCA
TODAY & THURSDAY
Every dollar is phoney . . . every thrill is real . . . as the T-Men carry out their toughest job!

UNCLE SAM'S SECRET SERVICE IS READY FOR ACTION AGAIN!

SMASHING THE MONEY RING!

RONALD REAGAN
MARGOT STEVENSON
EDDIE BOY, JR.
A WATSON

PLUS!
Charley Chase
Comedy

RITZ
TODAY & THURSDAY
A spook hasn't a ghost of a chance . . . when Nancy starts to haunt him!

WHAT A DETECTIVE... She's "out" Chas's "Chas" Chas!

Nancy Drew and the Hidden Staircase

Bonita Franklin John
GRANVILLE THOMAS LITEL

ADDED!
News
Floyd Gibbons

THREE BIG NIGHTS DANCING

Byrd Mancha and His Orchestra

Thursday Night, Nov. 23

HARRISON'S TEXANS

Featuring PAT OGLE, Vocalist

Fri. & Sat. Nights, Nov. 24-25

Open from 9 A. M. till ?
Best Dance Floor in West Texas
We Feature Steaks and Spanish Dishes

TRAIL'S END
700 EAST HIGHWAY
Midland

White Coats for Prague Police for Blackops



A trio of Prague policemen turning out in their new white coats for wear at night during blackouts. These coats make police easily seen at night. There is some speculation as to whether this is to make the men easy targets or to distinguish from the black uniformed elite guards of Herr Himmler, head of the Nazi Gestapo, active in the round-up of demonstrating Czechs.

Junior College, 262 x 168' in size and including two floors and a basement, built of monolithic concrete; WPA funds, \$74,949; funds supplied by the school, \$165,516; workers, 141.

MELLENNAN COUNTY
Improve Veterans Hospital near Waco by painting, plastering, and repairing buildings and landscaping grounds; WPA funds, \$11,182; funds supplied by the Veterans Administration, \$4,602; workers, 29.

MILAM COUNTY
Improve roads in Precinct 4 by clearing, grubbing, grading, and building drainage structures; WPA funds, \$33,834; funds supplied by the county, \$16,328; workers, 96.

MITCHELL COUNTY
Improve streets in Colorado City by constructing pavement, sidewalks, and drives; WPA funds, \$28,849; funds supplied by the city, \$40,907; workers, 54.

RUNNELS COUNTY
Improve U. S. Highway 83 by widening existing culverts and culvert approaches from 18 foot width to 36 foot width; WPA funds, \$3,430; funds supplied by the State Highway Department, \$2,432; workers, 24.

WALLER COUNTY
Construct a rock building at Hempstead to house offices of county agent, AAA, relief agencies, and other government organizations; WPA funds, \$7,863; funds supplied by the county, \$4,607; workers, 33.

WICHITA COUNTY
Improve sanitary sewer system in Wichita Falls by constructing sewer line extensions and manholes; WPA funds, \$3,175; funds supplied by the city, \$1,414; workers, 30.

Story Hour to Feature Film

"All Baba and the Forty Thieves" is the title of the moving picture to be shown at the Story Hour at the courthouse Saturday morning, Miss Marguerite Hester, county librarian, has announced. The three-reel film tells the story of the outwitting of the 40 thieves by the clever Arabian and of his discovery of their enormous store of wealth in a secret cave.

All children are invited to see the show which will be presented at 10 o'clock, the regular time for the Story Hour.

LAFFIT-OFF!

The hungry flames do leap and roar— They're gutting Laffit Off's own store! But you don't see him weep and cuss— For Laffit Off's insured by US!

MIMS & CRANE
COMPLETE INSURANCE SERVICE
205 W. WALL ST., PHONE 166, MIDLAND, TEX.

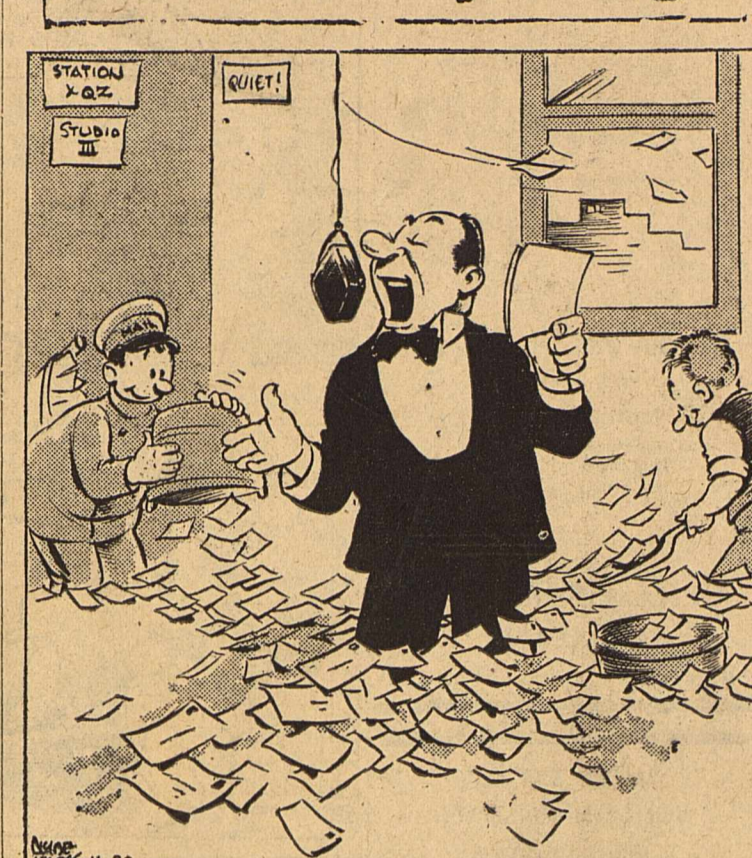
ACCEPTS POSITION.
Miss Delphine Frayson has accepted a position on the staff of the Ryan Hospital here. She is a registered anesthetist and registered nurse and is from the Baylor Hospital at Dallas.

TO RETURN HOME.
Mrs. H. A. Roberts will return to her home this afternoon from a Midland hospital where she underwent major surgery recently.

IS IMPROVED.
Mrs. S. P. Myrick, patient in a Midland hospital is reported improved today.

L. H. TIFFIN
FOR
Commercial Photographs
PHONE 166
Studio at 513 West Wall

Hold Everything!



"Remember, friends . . . everyone has an equal opportunity to win this great contest!"

Oil News—

(Continued from page 1)

Ector Deep Well.
With a natural production estimated at 75 barrels per day, bailed and swabbed, Sinclair-Prairie Oil Company No. 3 Fay Holt, third deep Permian well in northern Ector county, today was running tubing preparatory to acidizing. Yesterday, it filled 2,000 feet with oil in drilling to total depth of 5,160 feet in lime. Show of oil was logged from 5,140-45, and main pay was encountered in dark brown lime from 5,145-58 feet. The well is a direct east offset to Gulf Oil Corporation No. 1 O. B. Holt, 217-barrel discovery of the deep pay northwest of shallower Permian producers in the North Cowden pool.

Kewanee Oil Company No. 2-B University, on the Ector side of the Jordan pool of Crane-Ector, rated potential of 2,099.84 barrels of 36.5-gravity oil daily, based upon six-1/2-inch, 29-gravity oil 600 quarts in pay horizon from 3,468 to 3,633 feet, total depth. Gas-oil ratio was 600-1.

Humble No. 70 J. S. Means, in the pool of that name in northern Andrews county, set potential of 1,424.40 barrels of 29-gravity oil per day and gas-oil ratio of 1,941-1, after 10,000 gallons of acid injected in lime pay from 4,480 to 4,510 feet, the total depth.

Sinclair-Prairie No. 1-69 University, short northeast outpost to the Emma pool, southern Andrews, had drilled to 3,720 feet in anhydrite. In the Cedar Lake pool of northeastern Gains county, Stanolind Oil & Gas Company No. 1 American Warehouse Company, west offset to

FEMININE FANCIES
By Kathleen Eiland

The vogue for coming-out parties is reaching new heights. A famous woman cosmetic manufacturer gave a coming-out party in a smart night club in New York to celebrate the introduction of a new evening make-up. Which seems to us rather straining the uses of coming-out festivities.

The new make-up referred to, by the way, aims for a delicate, warm, soft, transparent-glowing tone to the complexion.

A new trend in cleansing cosmetics is noted in recent months. For years we have been exhorted on the virtues of pore cleansers in the form of soaps, liquids, or creams. Now at least two different houses are advertising skin cleansers which come in grain form. We're all for them if they can do any better than the liquids and the creams, not to mention plain old soap, have done for our imperfect skin.

At the risk of sounding over-enthusiastic and bore some we can't resist expressing again our liking for the new close-fitting turbans—the kinds that are trimmed with an up-standing bow or loop of self-material. One such in gold velvet, another in black velvet, still others in gold or green crepe, win our complete allegiance. If wardrobes depended solely on wishes, we'd have about three such forthwith and immediately.

An interminable list of variations is being played this year on the theme of costume jewelry—and about nine-tenths of the variations are strung upon a gold chain. Two of the latest we've noticed are cylindrical circles of clear crystal, or colored, strung upon the aforementioned chain. By cylindrical circles we mean that the glass has the shape one would achieve by slicing down irregularly through a stick of candy, so that, although circular, the piece would be much thicker at one side of the circle than on the other.

Also there is a cluster of gray bubbles or balls, some of them as large as grapes, to form the proper bib-like effect for a chain. The gray shade is unusual.

SWEATERS in the Gift-Class

\$1.00 TO \$3.95

Beige
Blue
Red
Coral
Green
Gold

FOR Christmas—give her the finest sweater she ever owned! Pull-over, cardigan and blouse types unusual at this price.

Wadley's

Old Harvard Building, Landmark, Modernized

CAMBRIDGE, Mass. (U.P.)—Massachusetts Hall, the oldest college building in the United States, is being modernized for use of Harvard officials.

Radio Fire Patrols Busy in Pennsylvania Forests

HARRISBURG, Pa. (U.P.)—Pennsylvania has enlisted the short-wave radio and the airplane to fight a constant and one of its most destructive enemies—the forest fire.

CRITICALLY ILL.

Y. J. Scruggs is critically ill in a Midland hospital where he has been a patient since being injured in a car wreck several days ago.

HAS MAJOR SURGERY.

Mrs. Chas. V. Romer underwent a major operation in a Midland hospital this morning.

Japanese to Seal Foreign Ship Radios

TOKYO. (U.P.)—All foreign ships entering Japanese ports will have their wireless apparatus sealed hereafter until the conclusion of the European war, the Communications Ministry has decreed. The rule resulted from the transmission of code messages from foreign ships to their home countries which are held liable to impair Japan's neutrality.

He's Building Something... Are You?

Remember the wagons and shanties you made as a kid . . . and the caves you dug? You played—but you worked at it. Seems unimportant now, but you built things—and in the building you enlarged your stature, your point of view. You grew into manhood with the spirit of youth.

If life still invites you to enjoy a wholesome balance of work and play, you've kept that spirit of youth. You greet each dawn as another privilege to build—not castles or caves—but business and friendships and reputation. When day's work is done, the companionship of family and friends brings you ample rewards.

Of course, Budweiser is only an incident in your daily life . . . but what is good living but a series of pleasant incidents? You who know the good things of life—know Budweiser.

ANHEUSER-BUSCH
Makers of the World-Famous Beer... **Budweiser**

LISTEN IN!
Station **KBST 1 P. M.**
"The Perfect Host Entertains"
Every Monday—Wednesday—Friday
Texas State Network

8-57

COPY, 1939, ANHEUSER-BUSCH, INC., ST. LOUIS, MO.