

15c
Per Copy

THE HASKELL



FREE PRESS

"HASKELL—A GOOD PLACE TO VISIT; A BETTER PLACE TO LIVE"

VOLUME NINETY

20 PAGES

HASKELL, TEXAS, 79521, THURSDAY, OCTOBER 28, 1976

NUMBER FORTY-FOUR



Next Tuesday, November 2, is election day in Haskell and we all need to make a few decisions between now and then.

The easiest of the decisions will probably be the one that most people get wrong. Whether or not to go vote at all.

Everyone from the presidential candidates to the bottom name on the ballot are expressing more and more concern that a large percentage of the registered voters will not mark their ballots.

Rural people should be more concerned with voting than urban residents for one simple reason. Our total economy has as its foundation agribusiness. If farmers and ranchers in Haskell county don't make money no other business will prosper. True some might be able to stay in business but it would not be anything like our economy today.

Our concern should come from the fact that one decision made by our President or his cabinet could create a severe hardship on our total economy. More than likely that decision will not be made to that degree, but our failure to vote makes us defenseless to the possibility.

Every elected official will from time to time make decisions which individuals will not agree with, but which hopefully are in the best interest of all people which the official serves.

When a majority of the voters do not even mark a ballot then elected officials are placed in office by minorities. The officials naturally listen more to the people who put them into office and are therefore controlled by a minority of the people.

You may be of the opinion that the best box to mark on the ballot is the box that is not

there, the one which says, "None of the above." If you do not agree with everything a candidate says but believe he is better than another give him your vote in hopes that yours added with enough others will give him the confidence to do a good job and at the same time convince him that he must answer to a majority of the people.

ps

Listed in other parts of the Free Press this week is a sample ballot. Hopefully the ballot can be studied at your leisure and will make the task of marking a ballot on November 2, an easier one.

Also published is an analysis of the two proposed constitutional amendments which include comments both for and against the amendments and an explanation of each. This information was prepared by the Texas Legislative Council.

Cyclethon Set For Saturday Morning

Plans continue to grow on the Haskell Cyclethon set for this Saturday.

Riders may still pick up applications at all county schools and Busters Drive Inn Grocery.

Cyclethon officials announced that prizes are still being donated by local merchants. They announced first prizes in the two age groups as a CB radio donated by Owens Radio and Electric and a 10 speed bicycle donated by Hale Farm Supply. Since several more prizes are expected to be received during the next few weeks a complete list of all prizes and the donors will be published in the Free Press when the winners are announced.

All participants should meet

at 9 a.m. Saturday at the parking lot of the Haskell National Bank to register. Actual riding will begin at about 9:30 a.m. All participants will follow the same route from the bank to Rule and back. Check points will be placed along the route.

4-H Awards Program Set November 1

The Haskell County 4-H Awards Program has been scheduled for Monday, November 1st, 7:00 p.m. in the Community Building of the Haskell National Bank. The annual event is held to honor 4-H members, that have excelled in 4-H club work during the past year. Awards in the different projects that have been carried will be awarded to members that have completed 4-H records on the projects.

The highlight of the program is the presentation of the Gold Star Boy and Girl. This Award is the highest award a member can receive. Parents and friends of 4-H are cordially invited to the program.

weather

WEATHER SUMMARY

October 19-26
TEMPERATURE
Hi 75° 23rd
Lo 32° 20th
RAINFALL
Total 0.09
Normal to Date 21.39
Total to Date 20.18

Rule Homecoming Saturday

Rule High School Homecoming will be held October 30 with registration beginning at 9 a.m. in the foyer of the high school building.

Speaker for Homecoming will be Dr. Elbert B. (Sonny) Whorton, Jr. son of Mr. and Mrs. E. B. Whorton of Rule, and a former graduate, class of 1957.

Dr. Horton holds a Ph.D of Statistics-Biostatistics, Oklahoma University; M.S. Statistics-Biostatistics, Tulane University; B.S. Mathematics-Physics, Baylor University and Graduate Work Statistics, Stanford University. He is at present Associate Professor and Director of Division of Biometry, Department of Preventive Medicine and Community Health, School of Medicine and Associate Dean for Curriculum, Graduate School of Biomedical Sciences, University of Texas Medical Branch, Galveston.

He has also held assistant professorships with University of Medicine, Burlington, Vermont; statistician at National Communicable Disease Center, USPHA, Atlanta, Georgia; Senior Statistician Louisiana State Department of Health, New Orleans, Louisiana.

He has been associated with University of Vermont College of Medicine, Burlington, Vermont; University of Oklahoma Medical Research Center, School of Health, Oklahoma City, Oklahoma; Louisiana State Department of Health, New Orleans, Louisiana; National Communicable Disease Center, USPHS, Atlanta, Georgia; has participated in research activities at the University of Vermont; worked for the state of Vermont; U.S. Government, State of Texas; been a consultant for a number of state government offices; and had a number of articles published in journals and industrial publications; has served on a number of boards including board of directors, United Way of Galveston, president of Galveston Historical Foundation and president of Galveston County Baylor Association.

He holds memberships in American Public Health Association, American Statistical Association, The Biometric



DR. SONNY WHORTON

Society and Sigma Xi. Honors he has received include NIH Fellowship to complete his M.S. Degree received from Tulane University, his Ph.D Degree received from the University of Oklahoma and to attend Special Institute in Statistics at Stamford University, and Academic Athletic Scholarship to complete B.S. Degree in Mathematics and Physics at Baylor University; membership to Faculty of Graduate School of Biomedical Sciences, University of Texas Medical Branch 1972, awarded tenure on Faculty of University of Vermont 1972, promoted to Associate professorship University of Vermont 1972, Citizen of the Year in Rule 1957, Honorary Life Membership Oklahoma Museum of Art 1968, Diaconate Board First Baptist Church of Burlington, Vermont, awarded tenure on Faculty of School of Medicine, University of Texas Medical Branch 1973.

He is married to the former Evangeline Loessin of Eagle Lake and they have two daughters, Lalise and Anna.

The Rule Drill team will start the Homecoming activities Friday night at 7 p.m. with a pep rally downtown under the red light. From there the crowd will snake dance to the track field where a bon fire and pep rally will be held.

Registration will begin at 9 a.m. and general assembly will be held at 10:30 a.m. in the auditorium of the high school building. At this time Mr. Whorton will speak. Announcements will be made of class reunions, classes will be recognized and officers for the

next Homecoming 1978, will be elected.

Following the assembly the Rule Junior Class will serve a catered meal in the lunchroom. The menu will include roast with brown gravy, green beans, scalloped potatoes, congealed salad, sheet cake, bread, tea, and coffee. Adults plates will be \$3 and children under ten will be \$2.

A number of class reunions have been scheduled for the afternoon. The Senior Class will serve chili (with or without beans) with crackers and drink for \$1 and barbecue buns with chips and drink for \$1. They will also be selling homemade pies. Serving will begin at 4:30 until 5:30 p.m. and then after the game.

The Rule Bobcats will host the Goree Wildcats in Bobcat Stadium at 6 p.m. Half time activities with special routines are being planned by the Drill Team. Crowning of the 1976 Homecoming Queen will also be held at halftime. Candidates for this honor are: Senior Class-Cynthia Sorrells, Junior Class-Linda Rhoads, Sophomore Class-Mary Macias and Freshmen Class-Tammy Anderson.

At 9 p.m. a Homecoming Dance will be held in the old gym with music being furnished by the Moon Lighters of Old Glory.



INDIAN VONNIE HISE earns hard yardage against Munday last Friday. All Indian runners were met by quick, strong Munday players during the game. The Indians fell to Munday 21-6. The tribe will meet Hamlin here this Friday night at 7:30 p.m. (Staff Photo)

Indians Lose First District Game

By James Lanier

The Haskell Indians lost their first district game and second game of the season last Friday night to the fired up Munday Moguls 21-6.

Munday has been a sleeping giant all season and put it all together against the Indians. The two teams played a confusing game with first one team then the other making a mistake and changing the tempo of the game. The Moguls who have allowed only 32 points on defense all season were able to capitalize on Indian mistakes; hence the victory.

In reality, the victory means little in the conference race. Barring a major upset by one of the weaker teams in the conference only three teams are still in contention, the Indians can still sew up a district championship by winning their next three games. Last Friday night, the Indians will host the Hamlin Pied Pipers at 7:30 at Indian Stadium. The Pied Pipers came in with a district record of 4 and 0 and a season record of 6 wins and 1 loss. Hamlin will probably be favored; however, with the home field advantage, this writer sees the game as a toss up. Both teams have big, tough backs and strong, quick linemen. Hamlin probably has the edge in speed with the Indians having a big edge in passing. Probably the key to the ballgame is how well the sometimes inconsistent Haskell defense can play. Crowell, last year's champion, is the other team with a possibility of winning district. All three contenders play each other in

the next three weeks.

Last Friday night, Haskell started out in good control of the game allowing only two 1st downs the first quarter and recovering two fumbles. Late in the quarter after recovering the second fumble Gary McAdams ran a keeper to the left, cut inside and blasted 21 yards to a touchdown. The snap on the PAT went away so the score was 6-0, temporarily Haskell. However, on the ensuing kickoff, Robbie Thomasson from Munday took the ball on the 5 darter up the middle and sprinted to the Haskell 18 yard line. From there, the Moguls marched for a touchdown. Twice, the Moguls were thrown for big losses; however, the plays were nullified because the Indians were lined up offside. Finally Robert Spells bulled in from the one yard line. The PAT was good and Munday led 7 to 6. On their next possession, the Indians fumbled inside their twenty. On 4th and ten; Munday threw to Urbanczyk for the touchdown. For the rest of the half, Haskell could not move on, their own end of the field on offense. The Indian defense was forced to stiffen and hold again after a blocked punt, the teams went into the half with the score Munday 14, Haskell 6.

The third quarter was a Chinese standoff with both teams hammering and battering and no appreciable edge to each team. Early in the 4th quarter, Haskell cranked up a short drive which moved into Mogul territory but a fumble stopped the drive. But as apathy set in the Haskell stands, Munday returned the

compliment and fumbled back to Haskell on 4th and 7, the Indians ran a fake punt and Kelvin Marshall dashed to the Munday 8 yard line. The Indians took two shots at the Munday goal line and advanced to the 4. Then McAdams ran the keeper but fumbled after a hard rap at the goal line. Munday recovered. Then on the first play, Robert Spells dived the right side of the Indians massed defense, veered outside and raced 96 yards for the last touchdown. The Pat was good. The Indians made a last gasp drive with McAdams completing several passes; however, it came to nothing with two straight dropped passes. This characterized the entire frustrating evening for the Indians. The Indians had 7 turnovers during the game; however, the hard hitting Mogul defense probably caused much of this as they gained a measure of revenge for the sound trouncing at the hands of the Indians last season.

Kelvin Marshall was probably the outstanding Indian Friday night as he consistently moved the ball. Vonnie Hise and Jimmy Browning contributed some nifty runs especially in the second half.

The Indians are working hard this week to pull their game together for their clash with Hamlin. If they could emerge victorious, the Indians would make a giant step to the state school boy playoffs. If they lose, they will be eliminated from contention.

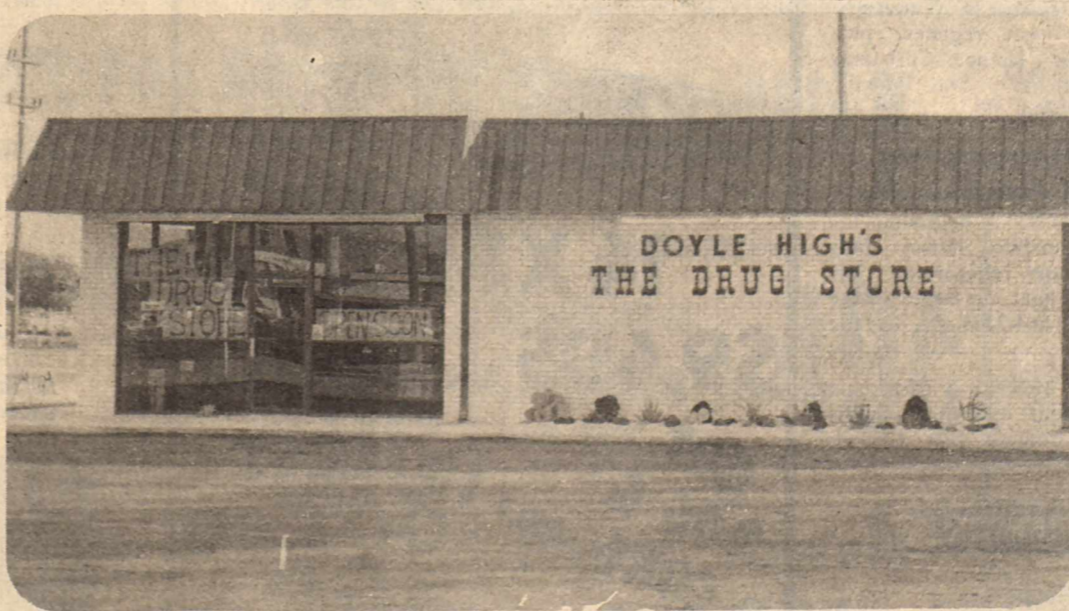
STATISTICS

Haskell	Munday
13	1st Downs 12
217	Rushing Yardage 230
67	Passing Yardage 34
5/21	Passes Completed 4/11
0	Passes Intercepted By 3
6/30	Punts, Avg. 5/46
5/29	Penalties Yds. 5/50
2	Fumbles Lost 4

CONFERENCE STANDING

	W	L	T	Pt	Opp
Hamlin	4	0	0	202	42
Crowell	3	0	1	123	40
Haskell	3	1	0	226	91
Munday	2	1	1	115	43
Knox City	2	2	0	58	119
Paducah	1	3	0	96	166
A-mont	0	4	0	60	209
Rotan	0	4	0	28	228

Back The
Indians
To District



THE DRUG STORE is now open on the south west corner of the square in Haskell. Store hours will be 7:30 a.m. to 6 p.m. Monday through Saturday and 8:30 to 10 a.m. Sunday. The store has ten part time and full time employees. Grand Opening for the new store has been tentatively set for November 10, 11, 12. Full details will be announced at a later date.

Turkey Shoot Set Saturday

There will be a turkey shoot at the Haskell Trap Club October 31.

Shooters may shoot for turkeys or for other prizes which will be named at the shoot. Every shooter has a chance to win. Beginners and ladies will shoot against shooters of comparable ability.

There will also be a drawing for a free turkey. Anyone attending the shoot may register and you need not shoot to be eligible.

At 4 p.m. a special event, "Clumbo Handicap" will be held. The event will place all shooters at the 16 yard line to shoot 25 targets. Each shooter will then move to the yard marker corresponding with the total number of targets which he broke, with no shooter being closer than the 16, and shoot 25 more targets. Highest combined total will win one case of shotgun shells and second place will win one-half case.

PANCAKE SUPPER

The Haskell Lions Club will sponsor a pancake supper this Friday before the Indian-Hamlin football game. The Lions will serve pancakes from 5:30 to 7:15 p.m. in the High School Lunchroom. All proceeds will go to the Good-fellow Fund. Tickets are \$1.50 and are available from any Lion or at the door.

SELL IT FAST! BUY IT RIGHT! USE WANT ADS!

NOTICE

Due to the bookkeeping involved and the high postal rates, we ask that you please remember that classified ads are cash in advance unless you are a business firm or have an established credit with the Haskell Free Press. Either mail your ad with check or if you need assistance in writing it we will be happy to help you. Rates are 5c per word first insertion, 4c thereafter or minimum of \$1.50

NOTICE

The Haskell Free Press reserves the right to edit and/or delete all news stories and locals for length and liability and to refuse to print anything deemed not newsworthy.

NOTICE

Please notify us of your change of address. If you do not, the Post Office charges us 25c for each time the Haskell Free Press is returned to us, this plus the cost of stencils, time and labor can make your move costly to us. In the future, failure to notify us will result in one month being deducted from your subscription.

FOR SALE \$55

McCULLOCH CHAIN SAW HEADQUARTERS. A saw for every job. See new. Woodard Farm Sale. 7fc

WOODARD FARM SALES—Ford tractors, equipment, long harrows, Lilliston-Heston-Oliver plow parts. 4fc

FOR SALE: Iron at wholesale prices. Rounds, flats, sheets, square tubing, channel etc. Haskell Trailer Builders. 20fc

WHEAT SEED FOR SALE: Call Ken Lane, 864-2597 or Cabbage Picker, Channel 23. 38fc

RAG DOLLS for sale: Place your orders now for Christmas. Dolls can be seen at S. 2nd & K. Beth Edwards, 864-3028. 41-44c

FOR SALE: 16' stock trailer with open top. Call Sammy Larned, 864-2454 or 864-2611. 43c

FOR SALE: Linings, Sheers, Crash, 3 yards \$1.00. 1000 zippers 10c each; double knit mill ends, 2c per inch, new patterns 10c ea. The North East Door, 208 N. Av E behind Christene's Beauty Shop. 44c

FOR SALE: 101 Tam, New Con. Agent, seed wheat. Also oat seed. Call 864-3054 or 864-2744. M. C. Josselet. 44-45p

PECAN THRASHERS: Have long, Calcutta fishing poles \$2.95 each. Trade Center, Throckmorton highway. Ph. 864-3278. 44p

HASKELL FFA Citrus Fruit sale. Contact any member or call 864-3310. 44-45p

FOR SALE: good, clean used children's clothing; new ladies clothes at discount prices, new washed denim jackets and pants, good size range, large selection of used clothing in excellent condition. The North East Door, 208 N. Av E behind Christene's Beauty Salon. 44c

MISCELLANEOUS

WANTED: Good used furniture and appliances. We buy and sell. Lee Used Furniture 120 N. Swenson St. (one block north of red light on hwy 277) Stamford, Texas. Phone 773-5608. 42fc

KNOW YOUR blood pressure Day or Night Anywhere! Accu-Rx checks "warning sign" instantly right on the spot \$29.95 Johnson Pharmacy 42-47c

GARDENS plowed and tilled. Call 997-2169. 31fc

MISCELLANEOUS

DON'T wet that carpet. See HOST Dry Cleaner. Sherman's Carpets & Interiors. 33fc

LET US SHOW you State Farm's Hospitalization and Disability Policies. 6% New Car Financing. 15% deviation on auto. 20% on Home Owner's and Fire. 75% Dividend on Life Insurance the 23 year. Leo Fetsch Insurance, 422-4259. 38fc

IT'S LATER than you think! Start shopping for Christmas now. We have 3 sizes Rolodex alphabetical files, pen and pencil sets, desk lamps, scrapbooks, dictionaries, large assortment of address books, calendars and much, much more. Haskell Free Press.

FAMILY REUNIONS, anniversaries, as well as weddings and general photography are our specialty. For fine quality work, contact Blackstock Studio. 44c

ONE OF THE finer things of life—Blue Lustre carpet cleaner. Rent electric shampooer \$1. Perry Brother's. 44c

DIET PROPERLY with Midland Pharamal Grapefruit Diet Plan and Aquavap "water pills." Woods Pharmacy. 44-46p

HAVE YOUR CHRISTMAS portrait made now at Byrd's Studio; custom frames or select from frames in stock. Call for appointment, 864-2204, 104 N. Av D, Haskell. We have a complete line of Carlson Craft wedding & social stationery; Christmas supplies; business cards & stationery. 44-46c

NEEDED: Four deer hunters to finish group lease. Will accept only responsible people. No drinking. Contact E. A. Williams, 864-2419. 44-45p

GARAGE SALES

CARPOR SALE: Oct. 27-29-30, 9 a.m. till 6 p.m. Bedstead & springs, stoves, tables, chairs, lots of dresses, large sizes, jewelry, lots of misc. items. 907 N. 5th St. Haskell, Tx. 44p

SUPER GIANT FLEAMARKET: Oct. 30-31. Antiques, glassware, tables, beds, clothes, rock equipment, jewelry, silver turquoise, saddle, bridles, hackamores, lead ropes. If we don't have it, we'll talk about it. Sign up for free prize. On highway at Rochester. Sluefoot. 44c

GARAGE SALE: Fri. & Sat. Oct. 29 & 30. Paint Creek Road, 3rd house on left. First time for Glenda Gayle & Joy Chapman. 44c

GIANT GARAGE SALE: at Oates Drug Store, 400 N. 1st. Thurs., Fri., Oct. 28 & 29 from 8:30 a.m.-5 p.m. Everything we did not move to the new drug store is on sale, new merchandise, cosmetics, perfumes, gifts, shelving, coffee tables, several 4' fluorescent lights, cash register, plus children's clothes, Christmas decorations. Two family garage sale. 44c

APARTMENTS

FOR RENT: 3 bedroom, 1 1/2 bath mobile home, fully carpeted, refrigerated air-conditioned, on large private lot. Call 864-2204. 44fc

FOR RENT: 2 bedroom furnished apartment. Bills paid. Contact Dee Larned, 864-2409 or 864-2611. 44-45c

HELP WANTED

WANTED: Ford tractor mechanic, must have experience on tractors. Apply 1107 N. First St. Haskell. Woodard Farm Sales. 35fc

JOBS WANTED

BABY SITTING in my home. 206 S. Av G. Maxie Livingston. 44p

PAINTING: Inside & outside. I can save you money on paint & labor. Call 864-3362 at noon or night. 44-45p

LOST & FOUND

LOST: Mixed breed steer. Branded U or U—laying down on left hip. Call Joe Davis 864-3566. 44p

REAL ESTATE

FOR SALE BY OWNER 3 bedroom brick with GE builtins, new carpet, large lots, fenced yard, plumbed for house trailer, water well with new 1/2 HP submersible pump. 505 S. 6th st. 864-3385. 33fc

FOR SALE: Coffee Shop, east side of square, Haskell. Ideal location. \$1000.00 moves you in. Maydell Featherston 817-864-2116 or Don Barnett, 817-532-5118. 44c

FOR SALE: Duplex apartments in Haskell. Good location. Call Rule, 997-2452. 44-45p

Public Notices

CARD OF THANKS
We would like to express our sincere thanks to all who helped in any way in the loss of our brother, for all the prayers, food, cards and flowers. We would like to say thanks to Bro. Jimmy Griffith for coming to our home, reading scriptures of God's word and having prayer with us before we left, to Chester and Lillian Hodgkin for helping us get ready and to Wallace Bird and Bud Pogue for helping us get off. We hope if any of you ever need help, you will have people like these to help. May we just say thanks to everybody and God bless all of you in a special way. Chunky and Viola Tidwell. 44p

FOR ALL YOUR GENERAL PLUMBING NEEDS. Call Philpot's Supply & Service Center. 864-3010 41fc

INSTANT CASH for any good merchandise, modern or old. Phone 864-3197 anytime. LACKEY'S Throckmorton Highway Haskell, Texas 21fc

FOR ALL YOUR GENERAL PLUMBING NEEDS. Call Philpot's Supply & Service Center. 864-3010 41fc

H. F. LANGFORD
Sand and Gravel Caliche and Fill RULE HWY. WEST HASKELL

Happy Birthday To Me Sunday, October 31
And regardless of rumors, I am not a warlock. I wouldn't put a spell on anyone.

REAL ESTATE FOR SALE
Large modern 3 bedroom Redwood with Austin stone front. \$17,500.00.
Nice large 2 bedroom on corner lot. Central heat & air. Good terms available.
The Hartsfield Agency 864-2665 44-47c

GIANT GARAGE SALE: at Oates Drug Store, 400 N. 1st. Thurs., Fri., Oct. 28 & 29 from 8:30 a.m.-5 p.m. Everything we did not move to the new drug store is on sale, new merchandise, cosmetics, perfumes, gifts, shelving, coffee tables, several 4' fluorescent lights, cash register, plus children's clothes, Christmas decorations. Two family garage sale. 44c

NEEDED: Four deer hunters to finish group lease. Will accept only responsible people. No drinking. Contact E. A. Williams, 864-2419. 44-45p

FOR SALE: 16' stock trailer with open top. Call Sammy Larned, 864-2454 or 864-2611. 43c

FOR SALE: Linings, Sheers, Crash, 3 yards \$1.00. 1000 zippers 10c each; double knit mill ends, 2c per inch, new patterns 10c ea. The North East Door, 208 N. Av E behind Christene's Beauty Shop. 44c

FOR SALE: 101 Tam, New Con. Agent, seed wheat. Also oat seed. Call 864-3054 or 864-2744. M. C. Josselet. 44-45p

PECAN THRASHERS: Have long, Calcutta fishing poles \$2.95 each. Trade Center, Throckmorton highway. Ph. 864-3278. 44p

HASKELL FFA Citrus Fruit sale. Contact any member or call 864-3310. 44-45p

FOR SALE: good, clean used children's clothing; new ladies clothes at discount prices, new washed denim jackets and pants, good size range, large selection of used clothing in excellent condition. The North East Door, 208 N. Av E behind Christene's Beauty Salon. 44c

OBITUARIES

Ernest Tidwell
Ernest W. Tidwell, 81, passed away October 16, 1976 at 9:30 p.m. in the V. A. Hospital in Reno, Nevada. Burial was in Mountain View Cemetery, Reno, Nevada with Alexander Pyramid Funeral Home in charge. John D. Ward, Baptist minister officiated.

Born in Witumta, Alabama February 4, 1895, he came to Texas in 1906. He married Jessie Douglas in 1920. She preceded him in death. He had lived in Nevada 36 years. He was a veteran of World War I.

Survivors include one brother C. E. Tidwell of Haskell, one sister Mrs. J. W. Romine, Aubrey; and a host of nieces and nephews.

Preceding him in death were his parents, 8 brothers and 3 sisters.

Funeral services for Otto Peiser, 82, of Haskell were held October 23, at Trinity Lutheran Church with the Rev. Don Marquart, pastor, officiating. Burial was in Willow Cemetery directed by Holden-McCauley Funeral Home.

Mr. Peiser died October 21

CANDIES for those with more good taste than money. Sherman's Interiors & Antiques 44fc

CLEANS clogged pipes, drains, sewers. NO digging. NO damage. Philpot's Supply & Service 864-3010 41fc

ELECTRIC MOTOR repair & service. New & used motors in stock. Philpot's Supply & Service 864-3010 21fc

JUNK-A-TIQUES, glassware, furniture, baby bed, books, dishes, bottles, doll Kleenex box, dolls, misc. We buy, sell or trade. We trade books. 1704 N. First St. Mrs. Harley Langford.

State-Rheem-Phillips A. O. Smith (Gascote) Gas or Electric 864-3010 Philpot's Supply & Service 15fc

State-Rheem-Phillips A. O. Smith (Gascote) Gas or Electric 864-3010 Philpot's Supply & Service 15fc

State-Rheem-Phillips A. O. Smith (Gascote) Gas or Electric 864-3010 Philpot's Supply & Service 15fc

State-Rheem-Phillips A. O. Smith (Gascote) Gas or Electric 864-3010 Philpot's Supply & Service 15fc

State-Rheem-Phillips A. O. Smith (Gascote) Gas or Electric 864-3010 Philpot's Supply & Service 15fc

State-Rheem-Phillips A. O. Smith (Gascote) Gas or Electric 864-3010 Philpot's Supply & Service 15fc

State-Rheem-Phillips A. O. Smith (Gascote) Gas or Electric 864-3010 Philpot's Supply & Service 15fc

State-Rheem-Phillips A. O. Smith (Gascote) Gas or Electric 864-3010 Philpot's Supply & Service 15fc

State-Rheem-Phillips A. O. Smith (Gascote) Gas or Electric 864-3010 Philpot's Supply & Service 15fc

State-Rheem-Phillips A. O. Smith (Gascote) Gas or Electric 864-3010 Philpot's Supply & Service 15fc

State-Rheem-Phillips A. O. Smith (Gascote) Gas or Electric 864-3010 Philpot's Supply & Service 15fc

State-Rheem-Phillips A. O. Smith (Gascote) Gas or Electric 864-3010 Philpot's Supply & Service 15fc

State-Rheem-Phillips A. O. Smith (Gascote) Gas or Electric 864-3010 Philpot's Supply & Service 15fc

State-Rheem-Phillips A. O. Smith (Gascote) Gas or Electric 864-3010 Philpot's Supply & Service 15fc

Haskell; five brothers, Sellie Whitaker of Fort Worth. Born October 11, 1894 in Rockdale, he served with the U. S. Army during WWI. He was a retired farmer, a member of the Lutheran Church and Sons of Hermann Lodge #241.

He married Martha J. Zelisko on July 18, 1923 in Haskell.

Survivors include his wife; one son, Otto Frank of Lubbock; 2 grandchildren; one brother, Oscar of Littlefield; two sisters, Mrs. Henry Arend of Littlefield, and Bertrice Peiser of Taylor.

Nephews served as pallbearers.

Funeral services for Leroy W. Scott, 65, were held October 26, in Hopewell Baptist Church with the Rev. Monroe Ashford, pastor officiating. Burial was in Willow Cemetery directed by Holden-McCauley Funeral Home.

Mr. Scott died October 24, in the VA Hospital in Big Spring. Born August 26, 1911, in Waco, he was a member of the Baptist Church. He served in the U. S. Navy and was a body shop employee.

Survivors include: his mother, Mrs. Lovie Whitaker of Haskell; two sisters, Mrs. Thelma Mullins of Monday, and Mrs. Louvenia Collins of

State-Rheem-Phillips A. O. Smith (Gascote) Gas or Electric 864-3010 Philpot's Supply & Service 15fc

State-Rheem-Phillips A. O. Smith (Gascote) Gas or Electric 864-3010 Philpot's Supply & Service 15fc

State-Rheem-Phillips A. O. Smith (Gascote) Gas or Electric 864-3010 Philpot's Supply & Service 15fc

State-Rheem-Phillips A. O. Smith (Gascote) Gas or Electric 864-3010 Philpot's Supply & Service 15fc

State-Rheem-Phillips A. O. Smith (Gascote) Gas or Electric 864-3010 Philpot's Supply & Service 15fc

State-Rheem-Phillips A. O. Smith (Gascote) Gas or Electric 864-3010 Philpot's Supply & Service 15fc

State-Rheem-Phillips A. O. Smith (Gascote) Gas or Electric 864-3010 Philpot's Supply & Service 15fc

State-Rheem-Phillips A. O. Smith (Gascote) Gas or Electric 864-3010 Philpot's Supply & Service 15fc

State-Rheem-Phillips A. O. Smith (Gascote) Gas or Electric 864-3010 Philpot's Supply & Service 15fc

State-Rheem-Phillips A. O. Smith (Gascote) Gas or Electric 864-3010 Philpot's Supply & Service 15fc

State-Rheem-Phillips A. O. Smith (Gascote) Gas or Electric 864-3010 Philpot's Supply & Service 15fc

State-Rheem-Phillips A. O. Smith (Gascote) Gas or Electric 864-3010 Philpot's Supply & Service 15fc

State-Rheem-Phillips A. O. Smith (Gascote) Gas or Electric 864-3010 Philpot's Supply & Service 15fc

State-Rheem-Phillips A. O. Smith (Gascote) Gas or Electric 864-3010 Philpot's Supply & Service 15fc

State-Rheem-Phillips A. O. Smith (Gascote) Gas or Electric 864-3010 Philpot's Supply & Service 15fc

State-Rheem-Phillips A. O. Smith (Gascote) Gas or Electric 864-3010 Philpot's Supply & Service 15fc

State-Rheem-Phillips A. O. Smith (Gascote) Gas or Electric 864-3010 Philpot's Supply & Service 15fc

Haskell; five brothers, Sellie Whitaker of Fort Worth. Born October 11, 1894 in Rockdale, he served with the U. S. Army during WWI. He was a retired farmer, a member of the Lutheran Church and Sons of Hermann Lodge #241.

He married Martha J. Zelisko on July 18, 1923 in Haskell.

Survivors include his wife; one son, Otto Frank of Lubbock; 2 grandchildren; one brother, Oscar of Littlefield; two sisters, Mrs. Henry Arend of Littlefield, and Bertrice Peiser of Taylor.

Nephews served as pallbearers.

Funeral services for Leroy W. Scott, 65, were held October 26, in Hopewell Baptist Church with the Rev. Monroe Ashford, pastor officiating. Burial was in Willow Cemetery directed by Holden-McCauley Funeral Home.

Mr. Scott died October 24, in the VA Hospital in Big Spring. Born August 26, 1911, in Waco, he was a member of the Baptist Church. He served in the U. S. Navy and was a body shop employee.

Survivors include: his mother, Mrs. Lovie Whitaker of Haskell; two sisters, Mrs. Thelma Mullins of Monday, and Mrs. Louvenia Collins of

State-Rheem-Phillips A. O. Smith (Gascote) Gas or Electric 864-3010 Philpot's Supply & Service 15fc

State-Rheem-Phillips A. O. Smith (Gascote) Gas or Electric 864-3010 Philpot's Supply & Service 15fc

State-Rheem-Phillips A. O. Smith (Gascote) Gas or Electric 864-3010 Philpot's Supply & Service 15fc

State-Rheem-Phillips A. O. Smith (Gascote) Gas or Electric 864-3010 Philpot's Supply & Service 15fc

State-Rheem-Phillips A. O. Smith (Gascote) Gas or Electric 864-3010 Philpot's Supply & Service 15fc

State-Rheem-Phillips A. O. Smith (Gascote) Gas or Electric 864-3010 Philpot's Supply & Service 15fc

State-Rheem-Phillips A. O. Smith (Gascote) Gas or Electric 864-3010 Philpot's Supply & Service 15fc

State-Rheem-Phillips A. O. Smith (Gascote) Gas or Electric 864-3010 Philpot's Supply & Service 15fc

State-Rheem-Phillips A. O. Smith (Gascote) Gas or Electric 864-3010 Philpot's Supply & Service 15fc

State-Rheem-Phillips A. O. Smith (Gascote) Gas or Electric 864-3010 Philpot's Supply & Service 15fc

State-Rheem-Phillips A. O. Smith (Gascote) Gas or Electric 864-3010 Philpot's Supply & Service 15fc

State-Rheem-Phillips A. O. Smith (Gascote) Gas or Electric 864-3010 Philpot's Supply & Service 15fc

State-Rheem-Phillips A. O. Smith (Gascote) Gas or Electric 864-3010 Philpot's Supply & Service 15fc

State-Rheem-Phillips A. O. Smith (Gascote) Gas or Electric 864-3010 Philpot's Supply & Service 15fc

State-Rheem-Phillips A. O. Smith (Gascote) Gas or Electric 864-3010 Philpot's Supply & Service 15fc

State-Rheem-Phillips A. O. Smith (Gascote) Gas or Electric 864-3010 Philpot's Supply & Service 15fc

State-Rheem-Phillips A. O. Smith (Gascote) Gas or Electric 864-3010 Philpot's Supply & Service 15fc

The Haskell Free Press
Established January 1, 1886
PUBLISHED EVERY THURSDAY

MEMBER
TEXAS PRESS ASSOCIATION

BILL COMEDY—Publisher
Entered as second-class matter at the postoffice at Box 577, Haskell, Texas 79521, under the Act of March 3, 1879.

SUBSCRIPTION RATES
In Haskell and Adjoining Counties

	Sub	Tax	Total
One Year	\$ 5.00	.25	\$ 5.25
Six Months	\$ 3.00	.15	\$ 3.15
Two Years	\$ 9.50	.48	\$ 9.98

Elsewhere in Texas			
One Year	\$ 6.00	.30	\$ 6.30
Six Months	\$ 4.00	.20	\$ 4.20
Two Years	\$11.50	.58	\$12.08

Outside of Texas			
One Year	\$ 8.00		
Six Months	\$ 5.00		
Two Years	\$15.50		

NOTICE TO PUBLIC—Any erroneous reflection upon the character, reputation or standing of any firm, individual or corporation will be gladly corrected upon being called to the attention of the publishers.

PUMPS
Irrigation-Domestic Formation Testing Well Drilling We pull & repair all makes. REA PUMP CO. Throckmorton Highway Haskell, Texas Call 24 hrs.—864-3372 41fc

FOR SALE GOING BUSINESS CAR WASH
Lot 100x288 NE 1st St. Haskell, Texas HERREN INSURANCE PHONE 864-3322 27fc

PHILPOT'S DITCHING SERVICE
Plastic pipe & fittings, sewer pipe. Water & gas lines run. Call Philpot's Supply & Service. 864-3010 15fc

ADDRESS ROOFING
Winfred Andress Residential and Commercial 713 S. 10th St. P. O. Box 463 Ph. 864-3078 Haskell, Texas 31fc



The next time you visit your doctor, or a public health clinic, to get a vaccination for yourself or your child, you may be asked to sign an "Informed Consent Card."

This procedure is designed to protect you by making sure that you understand what is involved in a vaccination, according to Hal Nelson, legal consultant for the Texas Department of Health Resources.

The procedure itself is not entirely new, but it has been greatly expanded. Nelson explains, "It has always been necessary for some sort of consent to be given for any type of medical treatment or immunization. The consent quite often has been implied, however."

For example, when a person goes to a physician and seeks treatment, the person's consent is implied by the fact that he sought the treatment. However, Nelson says that this line of legal reasoning doesn't necessarily apply in the case of a mass immuniza-

tion program or a public health clinic, where a physician is not making an independent medical judgment on each individual recipient of the vaccine.

Furthermore, Nelson says, a recent federal court case has spurred renewed concern over the matter of informed consent. The case, "Reyes versus Wyeth Laboratories," developed in Texas and involved vaccination against polio. When a child who had been vaccinated later came down with polio, the parents sued the manufacturer of the vaccine. Although the court agreed that the manufacturer had not been negligent in the sense of producing a harmful vaccine (the child evidently contracted the polio from some other source), nevertheless, the court felt that the parents had not fully understood the inherent risks and limitations of vaccination.

"The key word is 'informed,'" says Nelson. "The Court in the Wyeth case said that not only does a recipient,

or his or her parent or guardian, have to consent to receiving the immunization, but they have to know what they're consenting to. They have to be informed as to various aspects of the vaccine itself, the possible side effects, something about the disease, special precautions, and special allergies, if any."

Nelson emphasizes that informed consent is not an entirely new concept. He points out, "Your physician, your surgeon will not operate unless you give him consent to do so. It's a protection for both parties, actually. It's so that the patient knows fully, and appreciates fully, the treatment he is about to receive, and it's also for the protection of the physician or those persons working in the clinic."

The informed consent concept, although it is not entirely new, became a major problem for both private physicians and public health authorities when the Supreme Court's decision was made in the Reyes case. Part of the problem was that, for the first time, the manufacturer of the vaccine was held responsible for seeing that the recipient had been properly informed; in the past, this was always considered the sole responsibility of the person or agency administering the vaccine.

The vaccine manufacturers, understandably, have now taken the position that they will not release any vaccine until they have been assured that "informed consent" will be achieved. This stance on the part of the manufacturers has resulted in delays in the production and distribution of the new influenza vaccine, for the so-called "swine flu" campaign, and has caused shortages or delays in the delivery of polio vaccines in some parts of the country.

Signing an "Informed Consent Card" does not mean that the person releases the physician or clinic from all liability, Nelson says. He explains, "This does not allow a treating person—a physician or a nurse, for example—to be negligent. A person always is, always has been, and always will be responsible for his or her own acts of negligence." Rather, "informed consent" merely means that a person understands that there is always some degree of risk in any medical treatment or vaccination, even if it is properly given, and that the persons accepts that risk in order to obtain the benefits of treatment.

As a sign of the times, over 30 cities and communities throughout the United States have established ordinances to combat hazardous environmental noise, officials of the Beltone Crusade for Hearing Conservation observe. Other communities wishing to control the deluge of environmental noise are urged to contact the Environmental Protection Agency for recommended regulatory guidelines they add.

Foursquare Church News

son, retired missionaries to the Panama Canal Zone will be the featured speakers during the annual Missionary Conference held at the Haskell Foursquare Church beginning Friday, Nov. 5 at 7:30 p.m. continuing through Sunday Nov. 7. The church is located at 200 S. Avenue F.

Sunday services will be at 11 a.m. and 6 p.m. Rev. and Mrs. Carl Thompson served faithfully several years in the Canal Zone where the Foursquare Church has one of their largest works including the largest protestant church in the country. You won't want to miss these inspiring speakers. Slides will be shown as well as inspiring messages concerning missions.

The Haskell Foursquare Church would like to extend a warm invitation to everyone to attend their fifth Sunday Sing

beginning at 2:00 p.m. Sunday afternoon Oct. 31. There will be special music as well as a time for audience participation. The Sing is a time for fellowship and relaxation.

P.T.L. will not be held this month only because of conflict with the Methodist Holy Spirit Conference. P.T.L. is a time where members of all denominations meet to share what God had marvelously done for them. We hope that you attend the Methodist Conference on the Holy Spirit and then come and join us next month for a time of Praising the Lord.

STOCK MARKET

The market at Haskell Livestock Auction was steady to lower on a run of 1348 head of cattle, 175 hogs, at its sale Sat. October 23, 1976 according to James Powell reporter. Packer cows and packer bulls \$2 lower; pairs steady; plain stocker calves \$3 lower;

feeder steers and heifers steady.

Butcher calves: choice, 29-31; good, 28-30; standard, 26-28; rannies, 20-26.

Cows: fat, 20-22; cutters, 18-20; canners, 16-18; stockers, 20-22 1/2.

Bulls: bologna, 28-31; stockers, 28-31; utility 24-28.

Stocker Steer Calves: choice 38-40; good, 36-38; medium, 35-37; common, 30-33.

Stocker Heifer Calves: choice, 30-32; good, 28-30; medium, 26-28; common, 23-25.

Feeder Steer Yearlings: choice, 33-36; good, 33-35; medium, 32-33.

Feeder Heifer Yearlings: choice, 28-30; good, 26-28; medium, 25-27; common, 23-25.

Cows & Calves: good, 335-380; plain, 250-300.

Top on hogs, 31.50; bulk of butcher hogs, 30-31; sows 25-27; boars 17-20; shoats 30-35; pigs 10-20 by head.

Want ads—Your Best Market Place. Haskell Free Press

Report your comings & goings by calling 864-2686.

LET US HELP YOU with all your office supply needs. Haskell Free Press.

RUSS AGRICULTURE FLYING AERIAL SPRAYING

Cotton Defoliation

Russ Matthews, Owner

Call 864-2035

Haskell, Texas

Haskell, Texas

-We Reserve the Right to Limit-

Home Owned

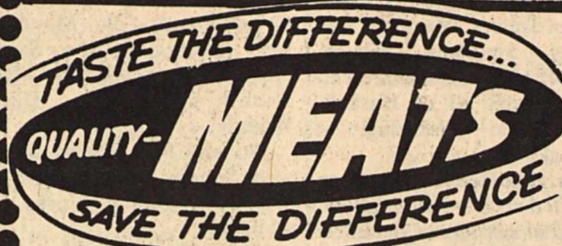
Parker's Super Market

506 North Second

USDA Food Stamps Coupons Gladly Accepted

Phone 864-3454

MORE PROOF YOUR FOOD DOLLAR ALWAYS BUYS MORE!



Fryers

USDA GRADE "A" WHOLE LB **39¢**

FRESH GROUND BEEF LB **69¢**

SLICED SLAB BACON LB **89¢**



BANQUET 16 OZ SIZE

MEXICAN DINNERS **49¢**



RUSSET 10 LB BAG Potatoes **69¢**

VINE RIPE Tomatoes **39¢**

SWEET Corn EAR **10¢**

RED DELICIOUS APPLES LB **29¢**

ALL GRINDS! Maryland Club Coffee **\$1.89** 1 LB CAN

JEWEL PRE-CREAMED SHORTENING **89¢** 42 OZ CAN

WHITE SWAN BLUE LAKE CUT GREEN BEANS 16 OZ **4 FOR \$1.**

WHITE SWAN CREAM STYLE GOLDEN CORN 17 OZ **4 FOR \$1.**

DEL MONTE EARLY GARDEN SPINACH 15 OZ **4 FOR \$1.**

CHEFS' PRIDE MARGARINE 1 LB QUARTER **3 FOR \$1.**

WHITE SWAN 10 COUNT CAN BISCUITS SWEETMILK OR BUTTERMILK **10 FOR \$1.**

2-32 OUNCE COKES FREE WITH 4-32 OUNCE PLUS DEP MR. PIBB **6 FOR \$1.**

WHITE SWAN 100% PURE INSTANT TEA 3 OZ SIZE **\$1.09**

BORDEN HOMO MILK GAL PLASTIC JUG **\$1.69**

SUNSHINE Saltine Crackers **49¢** 1 LB BOX

CAMPBELL'S Tomato Soup 10 3/4 OZ CAN **2 FOR 39¢**

HI-DRI Paper Towels **2 FOR 89¢**

12" x 25 FT ROLL Reynolds Wrap **31¢**

Allow union organizers on our farms and ranches without permission?

Carter says yes.

Ford says no.

What do you say?

Say it on Nov. 2nd.

Vote for President Ford.

SPECIAL GROUP MEN'S LONG SLEEVE REG. \$6.99 SHIRTS **\$4.99**

MEN'S SUITS VESTED SUITS **10% OFF** 3 Days Only Thurs.-Fri.-Sat.

BOY'S ACME COWBOY BOOTS Sizes 8 1/2 to 3 Values \$22.99 **NOW \$14.99**

INTERWOVEN SOX Orlon Acrylic & Nylon All Colors Sizes 10-13 **\$1.00 TO \$1.75**

MEN'S INSULATED Reg ONE PIECE SUIT Tall SIZES SMALL-MEDIUM-LARGE-X LARGE-XX LARGE **\$24.99 AND \$34.99**

MEN'S HOODED SWEAT SHIRTS Small-Medium-Large-X Large **\$5.99 AND \$8.99**



HEIDENHEIMER'S

"Men's and Boy's Wear"

Caddell, Slaton Vows Read

Kathy Caddell of Paint Creek, and Robert Lynn Slaton of Rule were united in holy matrimony October 23, at East Side Baptist Church in Haskell with the Rev. Jimmy Griffith, pastor officiating.

The bride is the daughter of Mr. and Mrs. Linton Caddell of Paint Creek. Parents of the groom are Mr. and Mrs. Frank Slaton of Rule.

Pianist was Teresa Jenkins and soloist was Kenneth Jarred. Maid of honor was Tammy Peiser, best man was Randy Darden and ushers were Mike and Jimmy Slaton, brothers of the groom.

The bride was given in marriage by her father. For her bridal gown, she chose white satin with lace overlay. It was styled with a V neckline, empire waist and leg o mutton sleeves. Her elbow length veil was held with a wide bandeau and edged in lace. Her bouquet was white carnations and daisies intermingled with blue satin roses.

The maid of honor wore a floor length dress of royal blue and carried a bouquet of white daisies.

The parents of the bride hosted a reception in the Fellowship Hall of the church immediately following the wedding.

The bride is a Senior at Paint Creek and the groom is a Senior at Rule High. They will reside in Rule where he is employed by the Rule School system.

The groom's parents hosted a rehearsal dinner in the Fellowship Hall of the East Side Baptist Church Thursday night.

"Mixing" Is New Trend For Table Settings

"Mixing" is the latest trend for attractive informal table settings, Mrs. Barbara Elliott, County Extension Agent, says.

Patterns mixed with solids or other patterns allow unique expressions of personality and denote seasonal changes, she added.

But be careful to give tables and buffets an "altogether" appearance. The personalized, or electric, look should control the mix and match



MRS. ROBERT LYNN SLATON
...formerly Kathy Caddell

look—not create clutter, she reminded.

Before beginning combinations, ask yourself these questions: Do dinnerware, glassware and linens complement each other? Do select mixables fit into the overall decorating color scheme and desire mood? Is there a good balance between selected table patterns and patterns of the floors, walls or windows?

Mixing coordinated patterns of dinnerware or a pattern with a solid will increase numbers—and show the hostess' innovative spirit. If unsure about mixing patterns, alternate favorite patterned plates with solid white ones, Mrs. Elliott said.

A striped yellow placemat put next to or overlapping with a white and brown polka-dotted one can add special interest.

Playing deep colors against beige or white can be a subtle way of introducing fall to the family and guests. Use mirror placemats for an extra treat.

For a different look, cover a table with cloths that reach to the floor, or make table runners that match a hostess dress, she suggested.

Be creative, resourceful and

sensible when creating a personalized table. But do not use all possible "mixables" at one meal. An attractive table set in good taste will enhance the food's good taste, she said.

B&PW Club Holds Dinner

For their final observance of National Business Women's Week, the Haskell Business & Professional Women's Club met Thursday night, Oct. 21 for a dinner meeting at The Haskell Steak House with the Finance and Benevolence Committee as hostess. The tables were centered with Horns of Plenty containing a variety of fruit with fall leaves marking the center of the tables.

Guest speaker was Bonnie Summers of Abilene, district director of District Seven. She spoke on "200 Years of Woman." Ms. Summers was introduced by Artie May Burkett. Other guests were eleven members of the Monday B&PW Club and one guest from Haskell.

The next meeting will be Tuesday, Nov. 2 at 7:30 in the City Cafe. Speaker will be Judy Ender, WTU Economist.

Hospital Notes

ADMISSIONS
MEDICAL: Zina Bills, Rule; Willie Williams, Rule; Marcus Santos, Rule; Fidel Lopez, Jr., Seminole; LaRue Teague, Haskell; Lucia Swenson, Throckmorton.
SURGICAL: Melba Kretschmer, Haskell; Linda Valerio, Rule; Michael Mayfield, Haskell.

DISMISSED
W. E. Sorrells, Gregg Norman Mable Hill, Billy Bennett, Lillie Spitzer, Alma Glass.

agri-facts

Pat Hale

... Ever grow a gallon of gasoline? Lots of folks are taking a hard look at that very thing. Well... not gasoline... but fuels distilled from grain. Not unlike the legendary white lightning... a 200 proof product that will give nearly anything a start. There's no secret about the ability of alcohol to power combustion engines (the four cycle engine was invented for it) but the cost spread between alcohol and gasoline has made such uses obsolete for several years. Lately that spread has been noticeably thinner. Thin enough for a serious experiment with a product called gasohol carried out around Holdrege, Nebraska to get national attention. Use of gasohol (90% gasoline - 10% alcohol) in the Holdrege tests resulted in reports of 7% better mileage, better starts in cold weather, and exhaust emissions no worse than regular gasoline. Looks like the choice could come down to taking a drink or a drive.

HALE FARM SUPPLY
Phone 864-2692

Around Town

by Lois and Lisa

In commemoration of Mrs. Sarah Hise's 79th birthday her daughters Thelma, Faye and Vera and Mrs. Hise's granddaughter Velva Jo Moore were hostesses to relatives and friends Saturday, October 16.

Those enjoying the occasion were Ouida and Billy Hise, Lonnie and Geraldine Hise and sons, Lonnie Alan and Jonnie Todd, Vergil Smith, Glenn Walton, Karen Hise and son, Allan Dale all of Haskell. Lesa Johnson, Weinert and Janna and Dickie Brindle of Lubbock. Many friends and relatives phoned and sent cards to convey Happy Birthday wishes to Sarah.

Mr. J. L. Toliver, Sr. 1005 North Ave. 1 celebrated his 88th birthday October 22. To start the day of celebrating three of his children and families surprised him at 6 a.m. to have breakfast. Mr. Toliver's three daughters had lunch with him and then J. L. and Martha Toliver took him out for dinner.

Mr. Toliver received telephone calls from grandchildren in various points of Texas and many cards were received. All of his children were present sometime during the day. Those attending were Bailey, Nancy, Joseph and Samuel Toliver, J. L. and Martha Toliver, Margaret and Harvey Simmons, Eloise, Johnny and Dudley Perrin, Kathy Futch all of Haskell, and Lucille Pickering of Lubbock.

Mrs. Iola Henshaw is on an extended visit to Birmingham, Michigan to visit her daughter and family Mr. and Mrs. R. W. Taylor. She will stay in Birmingham with grandson Mark while the Taylors

vacation in Hawaii.

Miss Maye Bell Taylor has received a certificate that she will appear in the 1976-1977 Bicentennial edition of the book "Personalities of the South". She was nominated by Hardin Simmons University for outstanding service to community, state and country.

Willard Warren, Austin, Mrs. Louise Turner, Childress and her daughter, Mrs. Billy Perkins of Paducah have been visiting their mother and grandmother. Mrs. Pearl Warren Ivy.

Mrs. J. M. Comedy of Coleman has been visiting Mr. and Mrs. Bill Comedy and Mr. and Mrs. Don Comedy.

Visiting with Mr. and Mrs. James Sloan last weekend were two granddaughters, Patsy, husband Doug and their children, Dee and Jason. They were greeted on their flight from Colorado by their aunt, Sylvia Jo Hill. Kathy and her fiancé Gustave Distler Jr. were met at the Lubbock Airport by the entire group.

Kathy is a co-ordinator of nurses and Gus is a Chevrolet mechanic. They plan to enjoy Texas hospitality in Haskell for ten days. Doug, a former New York City Patrolman is now head custodian of the Boulder School District. He and his family returned home to Nederland, Colo. Monday.

Also visiting in the Sloan home this week is Mrs. Sloan's sister, Mrs. Olive Wadely.

Mr. and Mrs. Randy Shaw were Sunday visitors with Mr. and Mrs. Danny Stocks in Abilene.

Miss Druann Shaw is spending this week with grandparents Mr. and Mrs. Bill Shaw. Druann is the

daughter of Mr. and Mrs. Billy Bob Shaw of Abilene.

Mr. and Mrs. Don Hatfield, Jeff, Terry and Ronnie and Mark Bailey spent last Saturday at the State Fair of Texas.

Mrs. Richard L. Riley, Pat and Kim from Jal, New Mexico are visiting Mr. and Mrs. W. B. Hill and Mr. and Mrs. R. P. Riley. Richard Riley is deer hunting in Ruidoso, N.M.

The Tom Pritchard family, the Max Calk family and the Billy Middlebrook family were in Arlington Sunday to see the Cowboys play the Chicago Bears.

Attending the funeral services for Ernest Tidwell in Reno, Nevada were Dan Burson, Arlington, Mrs. J. W. Romine, Aubrey and Mr. and Mrs. C. E. Tidwell, Haskell.

Recent visitors in the Emmett Russel home were Mr. and Mrs. Larry Lindeman, Mr. and Mrs. Bobby Flick of Kress and James and Maxine Russell of Alvin.

Engagement Announced

Mr. and Mrs. Alton R. Griffin announce the engagement of her daughter Carol Ann Weed, to David Ray Pickering son of Mr. and Mrs. Raymond H. Pickering.

The bride-elect is a graduate of Monterey High School, Lubbock and a fashion college in Arlington.

The future bridegroom was graduated from Monterey High School and is attending Texas Tech and is employed by Simmons Machine and Tool Corp.

Mr. Pickering is a grandson of Mr. J. L. Toliver, Sr. and Mr. and Mrs. J. M. Pickering of Haskell.

The couple plan to marry December 4, 1976 in Trinity Baptist Church with the Rev. Bob Utley officiating.

Matrons Club Holds Meeting

The Weinert Matrons Club met October 21 at Weinert Community Center. Mrs. V. C. Derr, President, called the meeting to order and Mrs. Floyd McGuire read the minutes. Mrs. M. W. Phemister gave the treasurer's report.

The Weinert Matrons Club voted to be co-sponsors with the Weinert Home Demonstration Club in showing of a film on Swine Flu inoculation. The president appointed Mrs. Hazel Smith, chairman.

Mrs. Alice McGuire, and Mrs. Hazel Rainey on the Love Feast Menu.

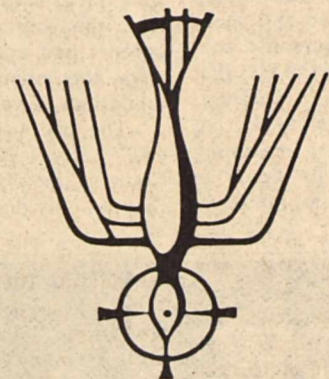
The Federation Program was directed by Mrs. W. C.

Winchester. A panel consisting of Mrs. R. W. Raynes, Accomplishments of Texas Federation of Women's Clubs; Mrs. Henry Smith, Mesquite District Accomplishments; and Mrs. M. W. Phemister, Weinert Matrons Club Achievements. The Directors summarized the panels findings.

Mrs. Mrs. Ramon Liles, gave the collect "Litany for Clubwoman." The hostess, Mrs. Russell Rainey served refreshments to 10 members.

WHITE BIBLES, imitation leather, red letter, with dictionary, concordance, colored pictures, time chart of Bible history. Excellent for gifts. Haskell Free Press.

CONFERENCE ON THE HOLY SPIRIT



FIRST UNITED METHODIST CHURCH
HASKELL, TEXAS
NOVEMBER 12, 13, & 14, 1976

D-DAY FOR DEMOCRATS

Nov. 2

Voters of the 101st Legislative District:

You have seen many times the following test sentence for beginning typists: "Now is the time for all good men to come to the aid of their party."

Tuesday, November 2 is it for this year, though it should be amended by substituting "Democrats" for "men," because everybody 18 years of age and older, regardless of sex, is eligible to vote.

W. S. (Bill) HEATLY

Political advertisement paid for by R. H. Nichols, Box 1979, Vernon, Texas 76384



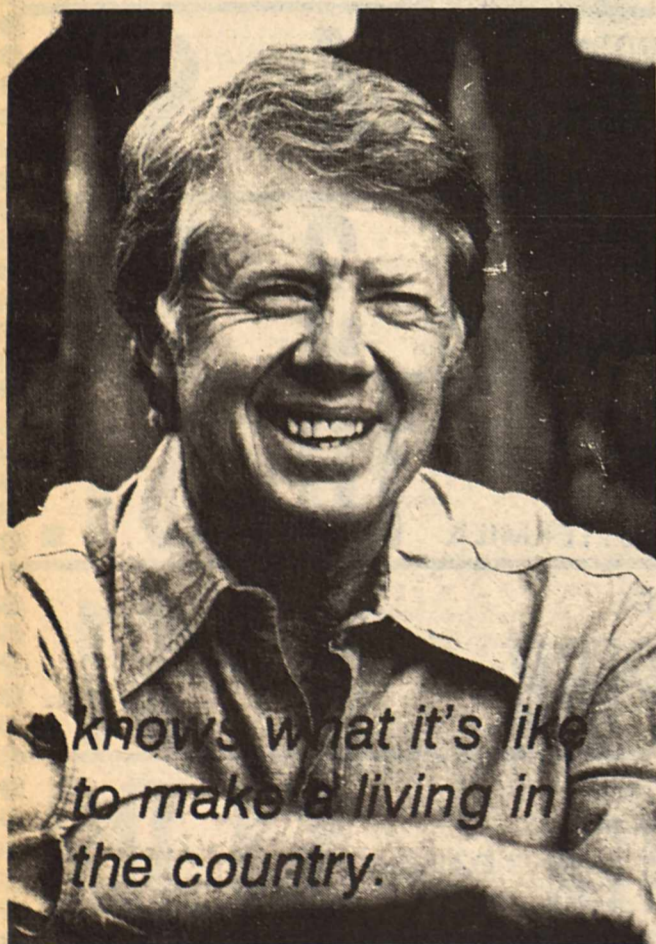
I have two suggestions:

1. Be sure to vote. In case you plan to be away from home on election day, go to your County Clerk's office and cast an absentee ballot in the period prior to election day prescribed by law.

2. Vote a straight Democratic ticket!

I appreciate your support in the past and solicit your vote in the General Election. Call on me when I can be of service. I can be reached at my office in Paducah, except during sessions of the Legislature when I can be reached at my Austin office.

Jimmy Carter



Vote Right
Vote Democratic

Jimmy Carter for President

Political adv. paid for by Haskell County Texans in Agriculture for Carter Committee, Bud Lane Chairman. Texans in Agriculture for Carter, P. O. Box 204, Austin, Texas 78767, unauthorized by the 1976 Democratic Presidential Campaign Committee, Inc.

agri-facts

... Ever grow a gallon of gasoline? Lots of folks are taking a hard look at that very thing. Well... not gasoline... but fuels distilled from grain. Not unlike the legendary white lightning... a 200 proof product that will give nearly anything a start. There's no secret about the ability of alcohol to power combustion engines (the four cycle engine was invented for it) but the cost spread between alcohol and gasoline has made such uses obsolete for several years. Lately that spread has been noticeably thinner. Thin enough for a serious experiment with a product called gasohol carried out around Holdrege, Nebraska to get national attention. Use of gasohol (90% gasoline - 10% alcohol) in the Holdrege tests resulted in reports of 7% better mileage, better starts in cold weather, and exhaust emissions no worse than regular gasoline. Looks like the choice could come down to taking a drink or a drive.

HALE FARM SUPPLY
Phone 864-2692

Bynum's To Celebrate 35 Anniversary

The weekend of November 4th, 5th, and 6th, will mark the 35th year of continued business for BYNUM'S of Haskell, serving this trade area with Home Furnishings, Gifts, Hardware and Office supplies and Equipment.

Mr. and Mrs. J. A. Bynum, owners and proprietors of the modern business opened for business on the north side of the square in the fall of 1941 with lines of office supplies and advertising specialties, as The Southwestern Specialty Co., and as the business expanded and new lines were added, including office machines and furnishings, larger quarters became necessary and the business moved to the south side of the square.

With removal to the larger building, more new lines of merchandise were added, including furniture and home appliances. With the continued expansion of business and steadily increasing patronage, still larger quarters were needed resulting in the move to their present location in November of 1956.

Mrs. Bynum says they still need more space but she is not ready for another move at this time, however from the looks of the moving and re-arranging taking place at this time, she believes they might find proper displays for all the new merchandise arriving for the special Anniversary Sale.

Mr. and Mrs. Bynum are longtime residents of Haskell and have been most active in Civic and community affairs for all these many years. Mr.

Bynum has served on the City Council at two different times and served a term of eleven years on the Haskell Independent School District. Mrs. Bynum is serving as a director of the Haskell Chamber of Commerce and on the Haskell City-County Bicentennial Committee.

Mr. and Mrs. Bynum have two children, a daughter Jane who is married to Bobby Gibson and they have two daughters, Laura and Sharyn and make their home in Portland where Bobby is Field Manager for Schlumberger Well Service. And a son Jimmy who has returned to Haskell and is associated in the business of store operations along with his parents. Jimmy is married to the former Brenda Jameson of Colorado City and they have a daughter, Michelle who is in Kindergarten. Brenda is employed by the Haskell National Bank.

Mr. and Mrs. Bynum, Jimmy and Brenda want to invite all area friends and customers to come see them next week and help celebrate their 35th Anniversary of serving the people of this area with the newest styles in home furnishings, gifts, housewares, office supplies, office equipment, printing and advertising specialties.

Valuable prizes will be given away each day of the celebration and refreshments will be served.

ELECTRIC DIGITAL CLOCK
"Not a second away from the exact time." Precision made, will give many years of trouble free operation. Haskell Free Press

LETTERS TO THE EDITOR

Dear Editor,
It is without malice nor hostile feelings that we write this letter to The Haskell Free Press, but a hope that whatever differences that have arisen between the Comm. Court and the newspaper be resolved so that our county can be run effectively and operated efficiently.

This letter is to show our appreciation and re-establish a vote of confidence for our Commissioner R. L. "Jiggs" Edwards, Prec. 2.

Signed,
Mr. and Mrs. Tiffen Mayfield
Mr. and Mrs. Don Griffith
Mr. and Mrs. Billy J. Robertson

R. A. Mathison
J. E. Reeves
R. W. Herricks
Mr. and Mrs. Kenneth Sanders

Mr. and Mrs. Toby Yates
J. B. Dunnam
Jack P. Dunnam
M. C. Cunningham

Hugh Miller
Mrs. Vern Derr
J. E. Jetton
Mr. and Mrs. E. L. Adams

R. M. Walker
Robert F. Horan, Jr.
Helen Boykin
Mr. and Mrs. Henry Vojkufka

H. W. Liles
Mr. and Mrs. Cecil Jones
M. H. Vojkufka
Rex Herricks

Garden Club Holds Meeting

Members of the Haskell Garden Club met October 14, for their regular meeting.

Mrs. Leon Pearsey, president, presided over the business meeting and welcomed one new member, Mrs. Jean Carroll. Discussion was held concerning planting of trees on the Courthouse lawn, and District 8, meeting to be held in Ozona November 4.

Mrs. R. C. Couch was director of the program, Looking Toward Our Future, Growing Plants.

Mrs. J. C. Dunnam discussed peonies, Mrs. W. P. Trice, ground covers, and Mrs. Maurice Gannaway, vines.

Hostesses were Mrs. Garvin Foote, Mrs. Cecil Bowers, and Mrs. Ira Davis.

Council Looking For Animal Control Officer

City Police Chief Jim Toland reported to the members of the City Council during their regular meeting Tuesday night.

Chief Toland told those present of training schools attended by City Police Officers and brought the Council up to date and told of upcoming schools in the area. Members of the Council agreed to send a City Officer to two different schools scheduled for the near future.

Chief Toland also reported that he had received many complaints from local residents concerning stray dogs. During the discussion, members of the Council agreed that it was not the responsibility of the City Police Dept. to catch stray animals. They agreed to hire a full time animal control officer and applicants may apply at the City Hall.

In other action, the Council appointed Darold Roberson, Stanley Furrh, and George Fouts to two year terms on the Haskell Housing Authority. R. C. Couch and Don Comedy gave a report on the new housing project committee which was appointed at the last City Council meeting. They told the Council of housing plans and asked that the Council make the South Ward School property available. Members of the Council agreed.

Mayor Duncan stated that a check for City's portion of Sales Tax had been received in the amount of \$16,017.29.

Those attending the Council meeting were: Mayor Belton Duncan, Councilmen Loraine Johnson, Guy Kennedy, Earl Proctor, Bob Philpot, and E. J. Stewart, City Secretary Desmond Dulaney, Water Supt. Marvin Collins, Chief Toland, Couch, Comedy, and B. W. Carr.

Next meeting of the Council will be held November 8.

November 1-5
MONDAY

Hot Dogs Mustard
Tater Tots Catsup
Pork and Beans
Chilled Applesauce
Milk

TUESDAY

Tamales
Red Beans

Oven Browned Potatoes
Buttered Spinach
Cornbread Butter
Peach Halves
Milk

WEDNESDAY

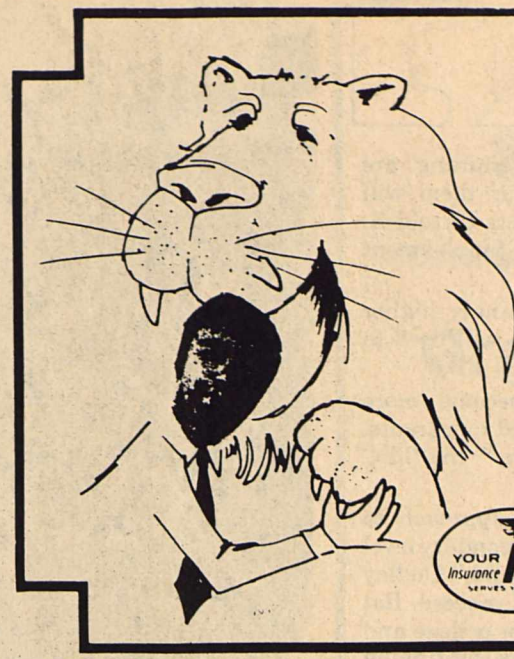
Pizza
Buttered Corn
Cabbage Slaw
Fruit Jello
Milk

THURSDAY

Chicken Croquettes
Potatoes in Cheese Sauce
Blackeyed Peas
Hot Rolls Butter
Orange Juice
Roasted Peanuts
Milk

FRIDAY

Chicken and Rice
Seasoned Green Beans
Carrot Sticks
Hot Rolls Butter
Peach Cobbler
Milk



DON'T BE EAT.N UP BY HIGH RATES

If you think your insurance rates are too high, we'd like to talk to you. Many of our customers are saving money on their insurance policies. We study the best several companies have to offer and select the policy that best fits your needs at the least expense. If you think your insurance costs are "eating you up", it's time to come in and talk it over!

LANE DURHAM AGENCY
510 N. 1st St.
Phone 864-3216
Haskell, Texas



PICK UP— LIGHT TRUCK CAMPER SPECIAL

UNIROYAL LAND-TRAC

\$59⁶⁸ Price Each

- 9.0" Tread Width
- Computer Designed
- Nylon or Polyester Construction

Plus \$4.19 Federal Excise Tax and recappable tire.

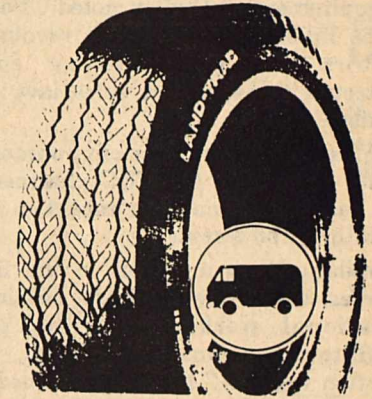


UNIROYAL LAND-TRAC

\$45⁴² Price Each

- .85" Whitewall
- 78 Series Aspect Ratio
- Heavy Duty Nylon Carcass
- 5 Row Tread Design
- Inserts for Skid and Traction

Plus \$3.34 Federal Excise Tax and recappable tire.



WOOTEN OIL CO.

307 So. Ave E
Haskell

Phone 864-2614

NOW HIRING

Immediate Openings

for permanent full time

Sewing Machine Operators

No Experience Necessary

RUSSELL NEWMAN MFG. CO.

ANSON HIGHWAY
NEXT TO RODEO GROUNDS
STAMFORD, TEXAS

HALLOW WHO!!!



Don't let insurance spook you. Granddad will count it a treat to talk over any insurance matter you might have. See him, Kyle.

The HARTSFIELD AGENCY

EVERYTHING IN INSURANCE

HASKELL

PH. 864-2665



Please Write In My Name

Candidates for: (Candidatos para):	Democratic Party (Partido Democratico)	Republican Party (Partido Republicano)	Raza Unida Party (Partido Raza Unida)	American Party (Partido Americano)	Socialist Workers Party (Partido de Trabajadores Socialistas)	Independent (Independiente)	Write-In (Voto Escrito)
President and Vice President (Presidente y Vice Presidente)	<input type="checkbox"/> JIMMY CARTER WALTER MONDALE	<input type="checkbox"/> GERALD R. FORD ROBERT DOLE		<input type="checkbox"/> THOMAS J. ANDERSON RUFUS SHACKELFORD	<input type="checkbox"/> PETER CAMEJO WILLIE MAE REID	<input type="checkbox"/> EUGENE J. MCCARTHY	
United States Senator (Senador de los Estados Unidos)	<input type="checkbox"/> LLOYD BENTSEN	<input type="checkbox"/> ALAN STEELMAN		<input type="checkbox"/> MAJURIE P. GALLION	<input type="checkbox"/> PEDRO VASQUEZ		
United States Representative, (Representante de los Estados Unidos), District No. 17th District	<input type="checkbox"/> OMAR BURLESON						
Railroad Commissioner (Comisionado de Ferrocarriles)	<input type="checkbox"/> JON NEWTON	<input type="checkbox"/> WALTER WENDLANDT	<input type="checkbox"/> FRED RODRIGUEZ GARZA		<input type="checkbox"/> PAT O'REILLY		
Associate Justice, Supreme Court, Place 1 (Juez Asociado, Corte Suprema, Lugar 1)	<input type="checkbox"/> JACK POPE						
Associate Justice, Supreme Court, Place 2 (Juez Asociado, Corte Suprema, Lugar 2)	<input type="checkbox"/> DON YARBROUGH						
Associate Justice, Supreme Court, Place 3 (Juez Asociado, Corte Suprema, Lugar 3)	<input type="checkbox"/> JAMES G. DENTON						
Presiding Judge, Court of Criminal Appeals (Jefe Presidente, Corte de Apelacion Criminal)	<input type="checkbox"/> JOHN F. ONION, JR.						
Judge, Court of Criminal Appeals, (Juez, Corte de Apelacion Criminal)	<input type="checkbox"/> TRUMAN ROBERTS						
Judge, Court of Criminal Appeals— Unexpired Term (Juez, Corte de Apelacion Criminal— Termino no Completado)	<input type="checkbox"/> W. T. PHILLIPS						
State Representative, (Representante Estatal), District No. 10th District	<input type="checkbox"/> W. S. "BILL" HEATLY						
Chief Justice, Court of Civil Appeals, (Jefe Presidente de la Corte de Apelacion Civil), District No. 11th District	<input type="checkbox"/> AUSTIN MCLOUD						
District Attorney, (Fiscal), District Judicial 39th Judicial District	<input type="checkbox"/> JOSEPH THIRGLEN						
County Attorney (Fiscal del Condado)	<input type="checkbox"/> CHARLES CHAPMAN						
Sheriff (Sherif)	<input type="checkbox"/> G. T. GARTH GABBETT						
County Tax Assessor-Collector (Asesor y Colector de Impuestos del Condado)	<input type="checkbox"/> JIMMY OWENS						
County Commissioner, Precinct No. 3 (Comisionado de l Condado, Precinct No. 3)	<input type="checkbox"/> J. R. PERRY						
Constable, Precinct No. 1 (Condestable, Precinct No. 1)	<input type="checkbox"/> D. L. SPEER						

Sample

Gene Wells

PROPOSED CONSTITUTIONAL AMENDMENTS (ENMIENDAS PROPUESTAS A LA CONSTITUCION)

INSTRUCTION NOTE: (NOTA DE INSTRUCCION)
Place an "X" in the square beside the statement indicating the way you wish to vote. (Marque con una "X" el cuadro al lado de la frase que indica la manera en que quiere votar.)

No. 1
 FOR (A FAVOR DE)
 AGAINST (EN CONTRA DE)

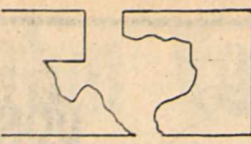
The constitutional amendment authorizing an increase of \$100 million in the amount of Texas Water Development Bond that may be issued on approval of two-thirds of the legislature, amending and consolidating provisions of Sections 49c, 49d, and 49d-1 of Article III of the Texas Constitution, and repealing sections 49d and 49d-1 of Article III of the Texas Constitution. (La enmienda autoriza un aumento de \$100 millones de la cantidad de Bonos de Desarrollo de Agua en Texas que pueden emitirse al ser aprobada por dos tercios, las partes de la legislatura, amending y consolidando disposiciones de Secciones 49c, 49d, y 49d-1 del Artículo III de la Constitución de Texas, y reocando Secciones 49d y 49d-1 del Artículo III de la Constitución de Texas.)

No. 2
 FOR (A FAVOR DE)
 AGAINST (EN CONTRA DE)

A constitutional amendment to increase from \$100 million to \$200 million the amount of Texas Water Development Bonds that may be issued for water quality control purposes. (La enmienda autoriza un aumento de \$100 millones hasta \$200 millones de la cantidad de Bonos de Desarrollo de Agua en Texas que pueden ser emitidos con el proposito de mejorar la calidad del agua.)

Pd. Pol. Adv. Paid for by Wayne Wells Campaign Treasurer.

TEXAS JOB TALK



If you think that education and training are important now, just wait. Demand for them will escalate during the next decade, predicts Harold K. Dudley, chairman of the Texas Employment Commission, headquartered in Austin.

"The better jobs will require increasingly higher skill levels," Dudley said, "and people will need to invest more time and effort in training."

"Thus, career preparations will become more important in the future, a fact to be noted by parents, educators, planners, and many others," the TEC chairman observed.

"We are pleased to see a realistic approach to career—or vocational—training at the secondary level for those people who are not college-bound," Dudley said, "and we hope that this trend will proceed. But we should not de-emphasize the need for college and other higher level training as well as continuing education, for these will be prize commodities in the future job market."

"Employment growth," Dudley continued, "will be fastest in the vocations which require the most education and training, namely the clerical, professional, and technical occupations."

The increasing demand for education and training largely results from two factors—advanced technology and a complex society, the TEC chairman believes.

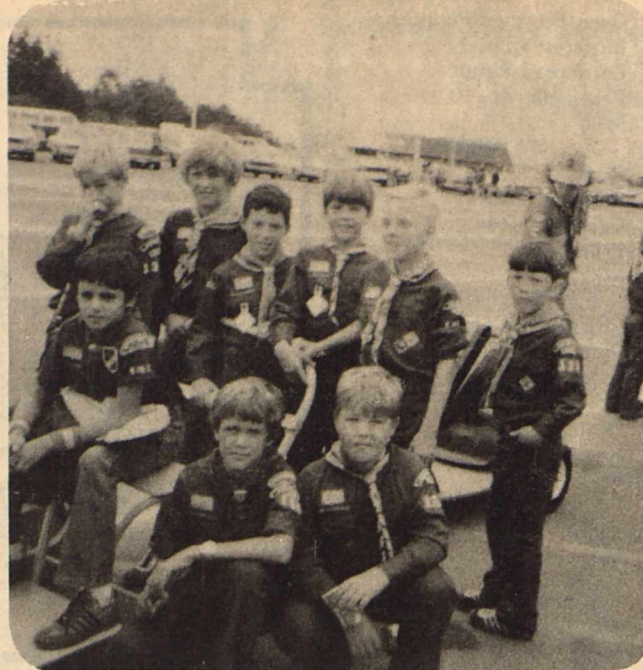
"Organizations tend to become more complex while at the same time, the job requirements within these organizations increase—jobs become more specialized," Dudley explained. "One example is the increasing use of automated equipment which, in turn, is generating a need for many skilled workers. Plumbers, electricians, farmers, and many other workers are also finding increasing complexity in their work."

"Also producing the demand for high-level skills are such factors as new trends, changing priorities in people's lives, and even new laws and government regulations," Dudley said.

"Trends and personal priorities play a major role in job requirements," Dudley noted. "For example, the current interest in energy is revolutionizing both industries and jobs, affecting such fields as architecture, construction, sales, law, real estate, and appraisal."

"Widespread interest in environmental control is another example," the TEC chairman said. "This trend has already made an impact on jobs in mining, agriculture, and forestry."

"Similar effects are seen in the field of human resources, where needs will be developing for more professional workers such as psychologists, rehabilitation counselors, social workers, and recreation workers," Dudley continued.



AMONG HASKELL CUB SCOUTS attending the Pushmobile in Abilene last Sunday afternoon were: (Back row left to right) Shane Gilliam, Steven Boyd, Randy Roewe, Shawn Lane, Harry Henry, and David Adams, (Front row) Fred Rike, Paul Cox, and Joey Kimbrough.

Cub Scouts Attend Derby

Haskell Cub Scouts attended the 18th Annual Pushmobile Derby in Abilene last Sunday afternoon.

A pushmobile can be anything from a modified lawnmower or tricycle, to a streamlined cart. Over 800 Cub Scouts were on hand and 102 pushmobiles were entered. Each pushmobile is manned by a team of eight scouts in relay fashion with each of the eight boys of the team having a chance to drive and push his team's pushmobile down the course.

Den #4 finished third in their heat and Den #2 finished 4th in their heat.

Participating in the derby were: Den #2, Tim Johnson, Michael Sonnemaker, Felipe Arrendondo, Bobby Short, Paul Ramirez, Sammy Baker, Emery Baker, and Ronnie McNeil; Den #4: Shane Gilliam, Steven Boyd, Randy Roewe, Shawn Lane, Harry Henry, David Adams, Joey Kimbrough; Weeblos: Paul Cox and Fred Rike. Adults sponsoring the boys were: Mr. and Mrs. Larry Gilliam, Mr. and Mrs. Ken Lane, Mr. and Mrs. Conrad Roewe, Jo Carol Sonnemaker, Donna Howeth, and Mrs. Joe Mathis.

Cadettes Plan Spook House

Girl Scout Cadette troop #462 is planning a spook house for October 31. The spook house will be at 1102 North Avenue G from 7:00 until 9:30. Tickets will be on sale for 25c. They may be purchased from any Cadette or at the door. All ages are invited to attend and bring a friend. You will be tricked and treated.

The money made will be used for troop activities. The troop has about twenty-three girls from 6th, 7th, and 8th grades. Their leader is Mrs. J. W. Wallace.

Alton Sanders Named To DeKalb Club

Alton Sanders of Weintert was recently named a member of the DeKalb Yieldmasters Club for producing 4703.32 lbs. of sorghum per acre in 1976.

His yield, based on 14% moisture, was mechanically harvested from a solid block measuring 8.733 acres. An impartial third party verified the high yield which was recorded from a field of DeKalb C-43y+.

Sanders planted the field on April 20 at 6.5 lbs. per acre.

His fertilizer program included 49.2 lbs. of nitrogen. Sanders controlled weeds with Ingran at ¼ lbs. per acre. An estimated 6 inches of rain fell on the crop from planting to harvest. Another 2 inches of water was applied through irrigation.

Concerning the hybrid's performance, Sanders says, "I like the shortness of the C-43y+. I can go in with a rolling cultivator when it's in the boot and come back and water it again. I plan on planting C-43y+ again."

The purpose of the DeKalb Yieldmasters Club is to promote an exchange of ideas and information among the nation's leading grain producers and to recognize them for their outstanding accomplishments as well as their important role in helping feed the world. Through the sharing of such information, the program also encourages farmers to adopt management and cultural practices that will aid them in obtaining maximum profit from each acre.

MASTER ART REFERENCE Bible King James Version, red letter edition, genuine black leather. 60,000 Center Column Cross references, 410 page Encyclopedia Concordance. Ideal for Sunday School teachers or any student of the Bible. Haskell Free Press

Sen. Farabee Hints For Endorses Both Water Proposals A Happy Halloween

State Senator Ray Farabee, speaking at a public forum in Wichita Falls sponsored by the Texas Water Development Board, endorsed a proposal to allow an increase in funds available for water development and water quality improvement.

This proposal will be presented to Texas voters on the November 2 ballot in the form of Constitutional Amendments No. 1 and No. 2.

Senator Farabee stated, "The additional funding permitted under these amendments is needed by our smaller cities and communities to build and improve sewage treatment plants, collection lines and other facilities. Sewage treatment plants even for a small town can cost as much as \$2 million, and these communities simply can not raise that kind of money on their own."

Since 1957, when the Water Development Fund was created, over one-third of Texas' population has been helped by such loans. Between 1970 and 1974 \$3,665,000 in bond proceeds, together with a \$1,500,000 HUD grant and \$1,100,000 in Storage Acquisition payments by the State, were used to construct a dam and reservoir on Millers Creek in Baylor County and a treatment plant and pipeline to provide the contracting cities of Haskell, Knox City, Goree and Munday with treated water.

Senator Farabee concluded, "Texas is a growing state with growing needs for water. Also, inadequate and outdated sewage treatment facilities are the major cause of damage to our rivers and streams. We must plan for our future water needs now, and not wait until we have a crisis situation."

Although there seems to be little, if any, opposition to amendment number two, Senator Farabee expressed concern that both amendments might fail because of some confusion about the effects of amendment number one or voter apathy.

and fruit. Avoid costume masks that could slip and block a child's vision or breathing. Painting a child's face with cosmetics, grease paint or burned cork can be a good substitute.

The costume itself should be light colored to help motorists spot children, flame resistant and not so loose or long it could trip a child or catch on obstacles. Costumes should not include sharp objects, torches or candles. Adults can improve safety by putting reflective tape or luminous paint on costumes and objects children carry.

People can make their property safer and cut down on vandalism several ways. Keep the property well lighted. Put away hoses, lawn furniture and garbage cans. If possible, put cars in the garage and lock them. Bring pets inside to protect them and children from each other.

Simple preparations like this can make the holiday safer for children and help adults survive and season.

There's only one thing worse than finding out you have cancer.

Not finding out.

Many cancers can be cured if discovered early enough. Get a regular health check-up. Start now.

We want to wipe out cancer in your lifetime. Give to the American Cancer Society.

American Cancer Society

BUCK'S SPRAYING SERVICE

BOX 113
ROCHESTER, TEXAS 79544

AERIAL APPLICATION

J. C. WHITE, MANAGER
817-743-3317
DON SMITH, FIELD MAN
Residence, Nights 817-743-3492

COMING NOV. 4-5-6

BYNUM'S 35TH ANNIVERSARY SELL-A-BRATION

WATCH FOR MORE DETAILS NEXT WEEK.

DANCE

At Rhineland

SAT. OCTOBER 30

Ronnie Underwood & the Banditos
Lovers, Explorers & A Dance Band
Have recorded in Nashville

9-1

Admission \$3.00

1977 CARDUI CALENDARS HAVE ARRIVED

COME IN AND GET YOURS TODAY

NO PURCHASE NECESSARY

JOHNSON PHARMACY

YOUR PRESCRIPTION CENTER
418 North First—Haskell, Texas
Open 7:30 to 6 P.M.—Closed Sunday
Nights and Sundays call 864-3439

Seminole Spraying Service

ELMER ROBERTS
JOE FOSHEE
DAN GATEWOOD

Guaranteed Service

OVERSTOCKED ON ACID

Office: 105 McHarg
Stamford, Texas

Temporary Haskell Number: 864-2656
Nights Call: Frontier Lodge Room 34 or 20
Stamford 773-2751

GOOD YEAR

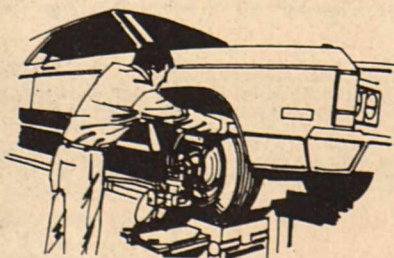
Front-End Alignment

\$12⁹⁵

Most U.S., some Import cars — parts extra only if needed

includes DATSUN, TOYOTA, VW's!

- Complete analysis and alignment correction to increase tire mileage and improve steering safety.
- Precision equipment assurance.



3 Great Ways To Go!

Three Fast Starters For Today's Fine Cars!



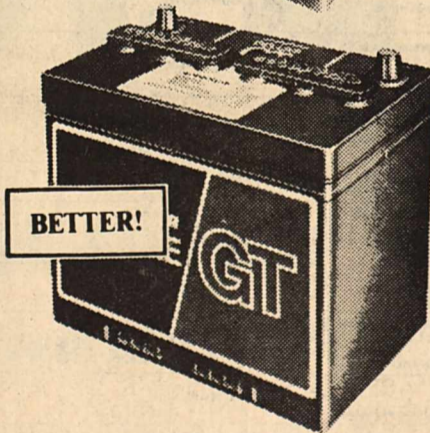
Instant-On Performance...Popular Low Price!

\$29⁶⁰

Groups 22F...24F...24 — Cold Crank — 210 Amps...255 — 25 Amp Reserve — 40 Minutes...60 Proper battery selection = 1 Cold Crank Amp to 1 Cu. In. Engine Displacement

"All-Weather" Battery

- Dry-charged for dependable, long-lasting power • Polypropylene case and cover for high power-to-weight ratio...heat, shock resistance • Non-splash gang vent caps...large plates, plastic rib separators



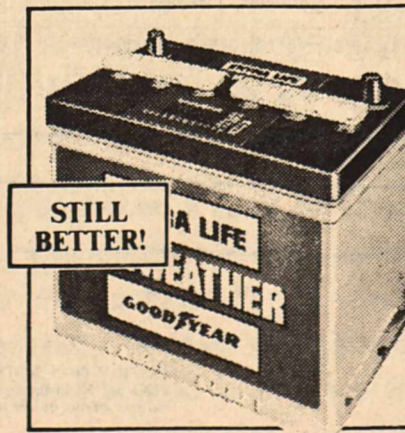
Popular Priced Go-Power Performer!

\$34⁹⁵

Groups 22F...24F...24 — Cold Crank — 260 Amps...290 — 25 Amp Reserve — 50 Minutes...60 — Use with 260-290 Cu. In. Displacement Engine

"Deluxe GT" Battery

- Meets or exceeds standard battery specifications for new cars
- Epoxy seals protect from premature power-loss • Polypropylene case and cover for high power-to-weight ratio • Resists shock and heat for long-life



Fast Starts... "Go-Power" Performance!

\$44⁹⁵

Groups 22F...24F...24 — Cold Crank — 290 Amps...370 — 25 Amp Reserve — 73 Minutes...108 — Use with 290-370 Cu. In. Engines and Maximum Electrical Demand

"Extra-Life All-Weather" Battery

- Meets or exceeds standard battery specifications for new cars
- Polypropylene case and cover for high power-to-weight ratio.
- Advanced design gang-type vent caps • Permanently sealed cover helps protect against power-loss

"Home of the Power House"

GOOD YEAR

Liberal Budget Terms... Low Monthly Payments

206 S. AVENUE E

ANDERSON TIRE CO.

PHONE 864-2900

Mental Retardation

Editor—This is one of a series of articles about Mental Retardation prepared by Mrs. Eugene Cochran and the Public Education Committee of the Texas Association for Retarded Citizens.

WHY A WILL?
A will is a legal document in which a person specifies the disposition of his estate after death. Provision can be made in one's will for specific bequests to individuals or organizations. You can, by your will, determine how your estate is to be distributed to your surviving spouse, to your children or to other relatives or friends in appropriate amounts. A carefully planned will provides for financial housekeeping for every parent.

stand that the laws of intestacy never take into account the fact of mental retardation. Since this is the case, you can make proper provisions for your retarded child, as well as your other heirs, only by making a last will and testament. The laws of most states require that a will be drawn in a precise and technical manner in order to be valid. Therefore, be sure to consult an attorney before writing or revising your will. Review your will periodically. It is a basic principle of law that a will speaks as of the time of death of its maker. That is to say, a will has no legal force or validity until the time that you die. It can be modified, amended, changed, or even revoked, at any time before death. This enables the maker to modify his will periodically to reflect changed family conditions or economic circumstances. It is of great importance that the parent of a retarded child periodically have his will reviewed to determine whether it continues to reflect his wishes. Changes in your will may be required by changing life circumstances, by the progress of the retarded child's brothers and sisters, and most importantly perhaps, by innovative developments affecting the kind of future life a retarded child can anticipate.

For example, under the intestacy laws of some states, when a person dies leaving a husband or wife and children, one-third of the deceased's estate becomes the property of the children and the remaining two-thirds of the surviving spouse. If there is only a retarded child, he would take two-thirds of the deceased parent's estate. One-third would go to the surviving parent-an obviously desirable arrangement.

Under the typical intestacy laws, when the second parent dies, all surviving children will share family assets equally. This might be undesirable for a retarded child with neither need for the funds nor the ability to handle them properly. It may be unfortunate for normal children who may be denied necessary funds for educational or other needs, while those same funds may go to pay institutional charges. Professional Counsel needs to be important to under-

College Night Set Oct. 28 In Abilene

A special invitation has been extended to all Haskell High School juniors, seniors and their parents to attend College Night at Cooper High School in Abilene on Thursday night, October 28th, at 7:30 p.m. College Night is sponsored jointly by Abilene and Cooper High Schools. It is a cooper-

ative service to help students and parents in our area become better informed about opportunities in Texas colleges and universities.

Representatives from thirty colleges, as well as representatives from the Air Force, Army, and Navy R.O.T.C., will be present. Students and parents will have an opportunity to meet with discussion groups of their choice.

All persons interested are urged to arrive early enough to attend the informal reception in the Cooper High School library from 7:00 to 7:30 p.m. Those attending will have some time to visit with the college representatives prior to the opening session. For further information, please call Mrs. Betty Davis, Counselor, at 864-2848.

Randy Darden Named To Who's Who

Randy Darden, son of Mr. and Mrs. Glen Darden of Haskell, has received confirmation of his acceptance in Who's Who Among American High School Students. The letter informing Darden of his acceptance stated in part: "Since fewer than 4% of all upperclassmen from our nation's 24,000 public, private and parochial high schools are featured in Who's Who each year, you are to be heartily commended." Darden is a member of the National Honor Society, football team, and East Side Baptist Church.

SQUARE DANCE
The Knox Prairie Promenaders of Munday, will host a special square dance October 28, at 8 p.m. at the Rhineland Gym. Special caller for the dance will be Chris Vear of Germany.

COMBINE a Bates Director List Finder and a Phone Pen for a thoughtful gift. Pen holder adheres to any surface and holds refillable ball point pen. Haskell Free Press.



BILL GLADSON, Rotan left and Larry Rush, Guthrie. Rush won the championship Gold and Silver belt buckle, but was willing to trade it for the nickel silverware that Thornhill won.

Bad Weather Handicaps Trap Shoot

The seventh annual Richard Adams Memorial Handicap was held here Oct. 23-24.

Larry Rush of Guthrie held the "hot" Handicap gun--adding his name to the other six names already engraved on the coveted trophy. Larry smashed 94x100 from the 27 yard line in bad weather at the Haskell Trap Club, Charles Thornhill of Haskell took the runner-up spot of the second year in a row all by himself with a 91x100 from 25½ yards out. The third place was tied by Billy Gladson of Rotan and Tommy Templeton of Lubbock and Rodger Blackard of Snyder all having a 90x100. After a 25 round Handicap shoot off, Gladson edged the other 2 trap shooters out with 23x25.

RICHARD ADAMS SINGLES
Oct. 23: Class AA-Larry Rush-Guthrie-198x200. Class A-Jack Smallwood-Rotan-193x200. Class B-Rit Milliman Haskell-183x200. Class C-James Owen-Strawn-184x200.
Oct. 24: Richard Adams Doubles: Class A-W. E. Wooten-Haskell-89x100. Class B-Jim Henderson-Wichita

Falls-92x100. Class C-Randy trap shoot and 500 combined Hay-Gainesville-76x100. targets was Larry Rush High Over All for the 2 day 477x500.

AERIAL SPRAYING

Defoliation and all types of Spraying

Grand Junction Spraying

Don [Bluefoot] Smith
Jim Bridwell

NIGHTS 743-3492
DAYS 997-2391

Shop Haskell First

REPORT OF CONDITION

Consolidating domestic subsidiaries of the

Haskell National Bank of Haskell City
In the state of Texas at the close of business on September 30, 1976
published in response to call made by Comptroller of the Currency, under title 12, United States Code, Section 161
Charter number 14149 National Bank Region Number 11

NAME OF BANK: Haskell National Bank		CHARTER NUMBER: 14149
BALANCE SHEET at the close of business on September 30, 1976		Thousands of dollars
INFORMATION ABOVE LINE NOT TO BE PUBLISHED		
Statement of Resources and Liabilities		
ASSETS		
Cash and due from banks		2,134
U.S. Treasury securities		898
Obligations of other U.S. Gov't. agencies and corps		4,993
Obligations of States and political subdivisions		4,700
Other bonds, notes, and debentures		NONE
Federal Reserve stock and corporate stock		9
Trading account securities		NONE
Federal funds sold and securities purchased under agreements to resell		NONE
Loans, Total (excluding unearned income)	7,180	
Less: Reserve for possible loan losses	112	
Loans, Net		7,067
Direct lease financing		NONE
Bank premises, furniture and fixtures, and other assets representing bank premises		178
Real estate owned other than bank premises		NONE
Investments in unconsolidated subsidiaries and associated companies		NONE
Customers' liability to this bank on acceptances outstanding		NONE
Other assets		20
TOTAL ASSETS		19,999
LIABILITIES		
Demand deposits of individuals, prtshps., and corps.		6,877
Time and savings deposits of individuals, prtshps., and corps.		9,953
Deposits of United States Government		50
Deposits of States and political subdivisions		1,412
Deposits of foreign govts. and official institutions		NONE
Deposits of commercial banks		NONE
Certified and officers' checks		131
TOTAL DOMESTIC DEPOSITS		18,423
Total demand deposits	7,649	
Total time and savings deposits	10,774	
Total deposits in foreign offices		NONE
TOTAL DEPOSITS IN DOMESTIC AND FOREIGN OFFICES		18,423
Federal funds purchased and securities sold under agreements to repurchase		250
Liabilities for borrowed money		NONE
Mortgage indebtedness		NONE
Acceptances executed by or for account of this bank and outstanding		NONE
Other liabilities		NONE
TOTAL LIABILITIES (excluding subordinated notes and debentures)		18,673
Subordinated notes and debentures		NONE
Preferred stock a. No. shares outstanding NONE (par value)		NONE
Common stock a. No. shares authorized 20,000		
b. No. shares outstanding 20,000 (par value) 5.00		100
Surplus		200
Undivided profits		1,026
Reserve for contingencies and other capital reserves		NONE
TOTAL EQUITY CAPITAL		1,326
TOTAL LIABILITIES AND EQUITY CAPITAL		19,999
MEMORANDA		
Average for 15 or 30 calendar days ending with call date:		
Cash and due from banks		2,074
Fed. funds sold and securities purchased under agreements to resell		NONE
Total loans		7,157
Time deposits of \$100,000 or more in domestic offices		255
Total deposits		18,313
Fed. funds purchased and securities sold under agreements to repurchase		250
Liabilities for borrowed money		NONE
Standby letters of credit (outstanding as of report date)		NONE
Time deposits of \$100,000 or more (outstanding as of report date)		NONE
Time certificates of deposit in denominations of \$100,000 or more		NONE
Other time deposits in amounts of \$100,000 or more		255

We, the undersigned directors attest the correctness of this statement of resources and liabilities. We declare that it has been examined by us, and to the best of our knowledge and belief is true and correct.

I, Pauline Couch
Name
Asst. Vice President & Cashier
Title

of the above-named bank do hereby declare that this Report of Condition is true and correct to the best of my knowledge and belief.

Directors
John S. Liker, III

Pauline Couch
Signature
October 20, 1976
Date

If you smell natural gas, follow these 3 steps to safety.

The natural gas industry has one of the best safety records of any energy source in the United States.

The fact that you can smell natural gas is because we add a harmless chemical to it as an extra safety feature. Otherwise, it would be completely odorless. If you detect faint whiffs of what you think may be gas, investigate. It may be something that is as easily and safely corrected as a pilot light that has gone out, or a burner valve that's partially open.

If your equipment seems to be working properly and the odor intensifies and seems to be everywhere, please follow these precautions:

- Do not switch anything electrical on or off. Don't use the telephone in your own home. Do not strike a match. Do not do anything that might cause a spark.
- Have everyone leave the house immediately, leaving doors open to help ventilate.
- Go to a nearby telephone and call Lone Star Gas Company. Wait until we have found the source of the odor to determine whether it's safe for you to return to the house.

You may never have a natural gas leak, but we want you to be informed in case one does occur. Please make sure your family is aware of these precautionary steps. And we suggest that you keep this message for future reference.

Lone Star Gas Company

Farm-facts

A Weekly Report Of Agri-Business News
Compiled From Sources Of The
TEXAS DEPARTMENT OF AGRICULTURE
John C. White, Commissioner

Good News For Citrus Lovers... Crop Production Forecasts... Wheat Pasture Outlook.

If you like citrus, a report from the Texas Crop and Livestock Reporting Service should make you happy.

Texas' 1976-77 citrus crop based on Oct. 1 conditions is forecast at 17,700,000 boxes. This year's production is expected to be five per cent more than a year ago and 49 per cent above the small crop of 1974-75.

Grapefruit production is set at 11,500,000 boxes, seven per cent above last season's crop. Production of all oranges is expected to total 6,200,000 boxes, the same as a year ago. Early and mid-season oranges are forecast at 3,800,000 boxes and Valencia oranges are forecast at 2,400,000 boxes.

Citrus trees are currently in good condition. Nationwide, grapefruit production is forecast at a record crop of 75,700,000 boxes; this is a 13 per cent increase over a year ago. Orange production is estimated to be 12 per cent above last year.

COTTON PRODUCTION FOR TEXAS is now forecast lower than a month ago due to weather conditions. Sorghum and corn estimates are unchanged from a month ago.

Upland cotton production is now estimated at 3,000,000 bales, down four per cent from a month ago but still above the 1975 production.

Sorghum production is unchanged at 318,000,000 bushels. This is 15 per cent below last year, however. Harvest of the crop is now about 75 per cent complete.

Corn production is still set at 161,000,000 bushels, with record yields reported.

Peanut production is set at 27,000,000 pounds, which is 70 per cent under a year ago.

Rice production is now forecast at 475,850,000 pounds, which is three per cent more than last year.

Rice production is now expected to be four per cent more than a year ago.

PROSPECTS FOR WHEAT PASTURE in Texas are good in most areas due to recent rains. Very little grazing has been available until recently.

Range and pasture conditions have improved in most areas due to rains. Winter grazing on the High Plains is expected to be limited because the rains came too late to allow ranges to fully recover from the drought.

Sagerton News

The Lutherans in our area are all looking forward to the Third Lutheran Reformation Day Rally in the Abilene Civic Center on Sunday, October 31, at 4:00 p.m.

The theme of the Rally is "Here We Stand." The Rev. Fred A. Naumann, Professor of Concordia Teachers College Seward, Nebraska, will be the guest speaker. Lutherans from all over the Big Country area are expected to attend. Faith Lutheran Church of Sagerton is one of the sponsors. J. B. Toney of the Faith Lutheran congregation will be one of the lay-leaders on the program. Banners will be displayed from all the churches on the stage.

Leon Stegemoller, who is a member of the Lutheran Church in Abilene, is Chairman of the Worship and Lay-Leaders from Sagerton who served on the committee were: Mr. and Mrs. Marvin Stegemoller, Mr. and Mrs. Herbert Vahlenkamp, Rev. and Mrs. Gary Kleypas and Mr. and Mrs. Alvin Bredthauer.

The Annual Queen Coronation will be held at Rule High School Thursday evening October 28, at 7:30 p.m. At this time several of the youth

from Sagerton will participate.

Mrs. M. Y. Benton is visiting in Big Spring with Mrs. Eldon Cook and Lisa and Mr. and Mrs. Steve Clark.

Mr. and Mrs. Buford Letz of Fort Worth, formerly of Sagerton, and Mr. and Mrs. Ray Ulmer and Sharon of Hamlin visited with Mr. and Mrs. Alvin Ulmer Sunday.

The outside of Faith Lutheran Church has been cleaned with water under pressure, and looks very nice and clean. They expect to do some more repair work soon.

Mr. R. W. Callan, science teacher at Rule High School, will be the lay speaker at the United Methodist Church of Sagerton Sunday morning, at 9:30 a.m. in the absence of Bro. Forbis who is out of town this week.

PETITE ROLEDEX: the perfect file for telephone numbers and addresses. Typewriter spaced lines. Replacement refills. Decorator colors and styling for home and office. Haskell Free Press

VA News

A large number of veterans may be eligible to have their GI home loan eligibility reinstated. According to C. H. Herren, Veterans Service Officer for Haskell County, the Veterans Housing Act of 1974 relaxed restrictions on reinstating GI home loan eligibility. Prior to the enactment of this legislation, loan benefits could be restored only in cases demonstrating a "compelling reason." Since January 1, 1975, the VA has been permitted to restore loan benefits whenever the property has been disposed of and the home loan paid in full. More than nine million veterans have used their home loan privileges since the original GI Bill went into effect in June 1944. Of these, 4.6 million veterans have repaid their loans in full, and thus could qualify for full restoration of their GI home loan eligibility.

Through the GI Home Loan Program a veteran can obtain a loan from a private lender for the purchase, construction, repair or improvement of a home which is to be occupied by the veteran. The VA guarantees 60% of the loan amount up to a maximum of \$17,500. There is no limit on the loan amount except that the loan may not exceed the reasonable value of the property as appraised by the VA.

Veterans who used their benefit before December 31,

1974, may have additional loan entitlement while still obligated for an earlier loan. Maximum home loan benefits were raised from \$4,000, to \$7,500 in 1950, to \$12,500 in 1968, and to \$17,500 in 1974. The amount of additional eligibility is the difference between the present maximum of \$17,500 and the amount of entitlement used on a prior loan.

Further information on the GI loan program can be obtained from your local Veterans Service Officer.

PETITE ROLEDEX: the perfect file for telephone numbers and addresses. Typewriter spaced lines. Replacement refills. Decorator colors and styling for home and office. Haskell Free Press.

Increasing numbers of automobiles, trucks and motorcycles in conjunction with more and more noisy labor saving power tools and appliances have combined to make noise pollution one of the most significant health hazards in the second half of the 20th Century, officials of the Beltone Crusade for Hearing Conservation observe.

STARTS THURSDAY

***10% cash discount on all regular price merchandise. Cash Only**

***20% off on some fall mix and match coordinates.**

***30% on all long dresses.**

***All sale items strictly cash only.**

***Holiday Merchandise arriving daily. Brands such as**

LADY WRANGLER LEVIS HOWARD WOLF NORDIS CENTER STAGE COUNTRY SET

WINONA'S

Haskell, Texas

GENERAL ELECTION (ELECCION GENERAL)

(Condado de) Haskell County, Texas

November 2, 1976 (2 de noviembre de 1976)

SAMPLE BALLOT (BOLETA)

INSTRUCTION NOTE: (NOTA DE INSTRUCCION)

Vote for the candidate of your choice in each race by placing an "X" in the square beside the candidate's name. You may vote a straight ticket by placing an "X" in the square beside the name of the party of your choice at the head of the party column. (Vote por el candidato de su preferencia para cada candidatura marcado con una "X" el cuadro al lado del nombre del candidato. Usted puede votar por todos los candidatos de un solo partido marcado con una "X" el cuadro al lado del partido de su preferencia a la cabeza de la columna para partidos.)

Candidates for: (Candidatos para:)	Democratic Party (Partido Democratico)	Republican Party (Partido Republicano)	Raza Unida Party (Partido Raza Unida)	American Party (Partido Americano)	Socialist Workers Party (Partido de Trabajadores Socialistas)	Independent (Independiente)	Write-In (Voto Escrito)
President and Vice President (Presidente y Vice Presidente)	<input type="checkbox"/> JIMMY CARTER WALTER MONDALE	<input type="checkbox"/> GERALD R. FORD ROBERT DOLE		<input type="checkbox"/> THOMAS J. ANDERSON RUFUS SHACKELFORD	<input type="checkbox"/> PETER GOMEZ WILLIE MAE REID	<input type="checkbox"/> EUGENE J. MCCARTHY	
United States Senator (Senador de los Estados Unidos)	<input type="checkbox"/> LLOYD BENTSEN	<input type="checkbox"/> ALAN STEELMAN		<input type="checkbox"/> MARJORIE P. GALLION	<input type="checkbox"/> PEDRO VASQUEZ		
United States Representative, (Representante de los Estados Unidos), Distrito No. 11th District	<input type="checkbox"/> OMAN BURLISON						
Railroad Commissioner (Comisionado de Ferrocarriles)	<input type="checkbox"/> JON NEWTON	<input type="checkbox"/> WALTER WENDLANDT	<input type="checkbox"/> FRED RODRIGUEZ GARZA		<input type="checkbox"/> PAT O'REILLY		
Asociado Justice, Supreme Court, Place 1 (Juez Asociado, Corte Suprema, Lugar 1)	<input type="checkbox"/> JACK POPE						
Asociado Justice, Supreme Court, Place 2 (Juez Asociado, Corte Suprema, Lugar 2)	<input type="checkbox"/> DON YARBROUGH						
Asociado Justice, Supreme Court, Place 3 (Juez Asociado, Corte Suprema, Lugar 3)	<input type="checkbox"/> JAMES G. DENTON						
Presiding Judge, Court of Criminal Appeals (Juez Presidente, Corte de Apelacion Criminal)	<input type="checkbox"/> JOHN F. ONION, JR.						
Judge, Court of Criminal Appeals, (Juez, Corte de Apelacion Criminal)	<input type="checkbox"/> TRUMAN ROBERTS						
Judge, Court of Criminal Appeals, Unexpired Term (Juez, Corte de Apelacion Criminal, Termino no Completado)	<input type="checkbox"/> W. T. PHILLIPS						
State Representative, (Representante Estatal), Distrito No. 10th District	<input type="checkbox"/> W. S. "BILL" HEATLY						
Chief Justice, Court of Civil Appeals, (Juez Presidente de la Corte de Apelacion Civil), Distrito No. 11th District	<input type="checkbox"/> AUSTIN McCLOUD						
District Attorney, (Fiscal), Distrito Judicial 39th Judicial District	<input type="checkbox"/> JOSEPH THIGPEN						
County Attorney (Procurador del Condado)	<input type="checkbox"/> CHARLES CHAPMAN						
Sheriff (Sherife)	<input type="checkbox"/> C. T. (CARTH) GARRETT						
County Tax Assessor-Collector (Asesor-Collecter de Impuestos del Condado)	<input type="checkbox"/> JIMMY OWENS						
County Commissioner, Precinct No. 3 (Comisionado del Condado, Precincto No. 3)	<input type="checkbox"/> J. R. PERRY						
Constable, Precinct No. 1 (Condestable, Precincto No. 1)	<input type="checkbox"/> D. L. SPEER						
Constable, Precinct No. 6 (Condestable, Precincto No. 6)	<input type="checkbox"/> L. V. PITCOCK						
Justice of Peace, Precinct No. 6 Unexpired Term (Jueza de Paz, Precincto No. 6, Termino no Completado)	<input type="checkbox"/> JOHN ESTES						
County Commissioner, Precinct No. 1 (Comisionado del Condado, Precincto No. 1)	<input type="checkbox"/> C. E. TIDWELL						
Justice of Peace, Precinct No. 5, Unexpired Term (Juez de Paz, Precincto No. 5, Termino no Completado)	<input type="checkbox"/> EMETTE CROSS						
Constable, Precinct No. 5 (Condestable, Precincto No. 5)	<input type="checkbox"/> JIM WILKINSON						

PROPOSED CONSTITUTIONAL AMENDMENTS (ENMIENDAS PROPUESTAS A LA CONSTITUCION)

INSTRUCTION NOTE: (NOTA DE INSTRUCCION) Place an "X" in the square beside the statement indicating the way you wish to vote. (Marque con una "X" el cuadro al lado de la frase que indica la manera en que quiere usted votar.)

No. 1 FOR (A FAVOR DE) AGAINST (EN CONTRA DE)

The constitutional amendment authorizing an increase of \$400 million in the amount of Texas Water Development Bonds that may be issued on approval of two-thirds of the legislature; amending and consolidating provisions of Sections 49-c, 49-d, and 49-d-1 of Article III of the Texas Constitution; and repealing Sections 49-d and 49-d-1 of Article III of the Texas Constitution. (La enmienda constitucional autorizando un incremento de \$400 millones de la cantidad de Bonos de Desarrollo de Agua en Texas que podran emitirse al ser aprobada por dos terceras partes de la legislatura; emendando y consolidando disposiciones de Secciones 49-c, 49-d, y 49-d-1 del Artículo III de la Constitución de Texas; y revocando Secciones 49-d y 49-d-1 del Artículo III de la Constitución de Texas.)

No. 2 FOR (A FAVOR DE) AGAINST (EN CONTRA DE)

A constitutional amendment to increase from \$100 million to \$200 million the amount of Texas Water Development Bonds that may be issued for water quality enhancement purposes. (La enmienda constitucional para incrementar desde \$100 millones hasta \$200 millones la cantidad de Bonos de Desarrollo de Agua en Texas que podran ser emitidos con el propósito de mejorar la calidad del agua.)

THE RCA ColorTrak CHALLENGE
RCA ColorTrak for 1977 is here. Come in and see why it's the finest color TV RCA has ever made. Once you see ColorTrak in action, we're sure you'll want to own it—so sure, in fact, we invite you to accept our unique challenge.

Find a TV that beats ColorTrak and we'll get it for you.
Buy any ColorTrak TV during the period from September 23 to October 30, 1976. Watch it in your home for ten days. Then, if you're not convinced that RCA ColorTrak is everything we say it is, just let us know. We'll replace the set with any comparably priced model of any make you choose.
LIMITED TIME OFFER!



New ColorTrak Console Special

Introduced especially for this event: Big-screen ColorTrak console with swivel base! Getting the color right is what RCA ColorTrak is all about. It's a remarkable development that actually adjusts color and keeps it on track. Before you see the picture, the ColorTrak System grabs it, aligns it, defines it, sharpens it, tones it and locks the color on track.

\$669.95

AMONETT & AMONETT TV

414 N. 1st Haskell, Texas

HASKELL high school Football

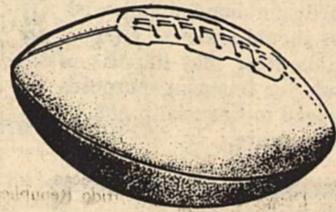
HAMLIN - HERE

7:30 P. M.

THIS PAGE SPONSORED BY THE FOLLOWING
FIRMS AND INDIVIDUALS

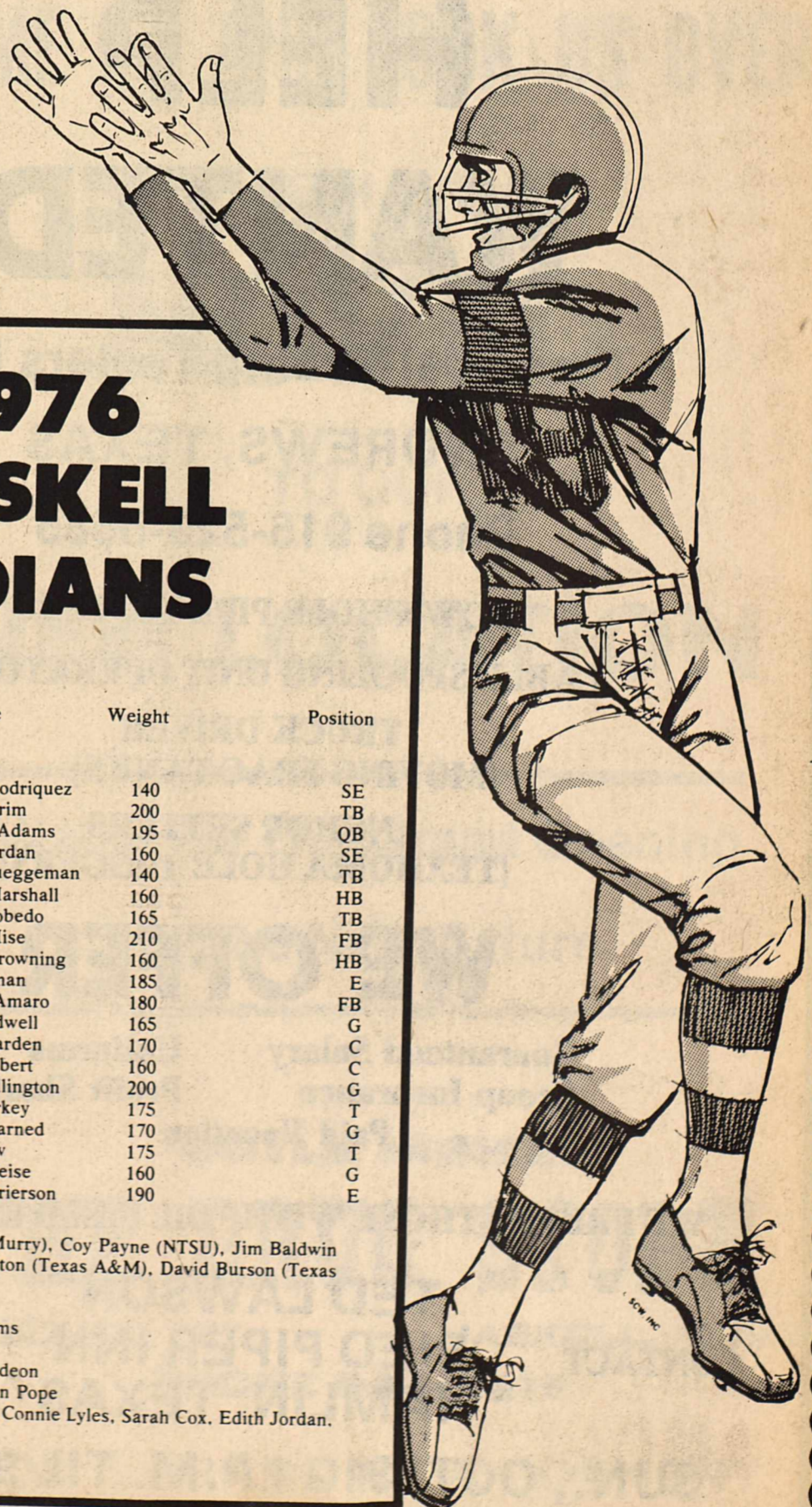
B & B Automotive
Markey Spraying
Hanson Paint & Body
John Wayne McDermott
County Treasurer
Western Auto
Wallace's Exxon
M-System
Boggs & Johnson
Hale Farm Supply
Lane-Felker
Kennedy Lumber Co.
Jeter's Westside Texaco
Dean Butane Co.
Hammer Laundry
Buster's Drive-In Grocery
Martha's Beauty Center
Sue's Beauty Shop
Biard Cleaners
Perry's Gulf
Bill Wilson Motor Co.
Gulf Oil Co.
Brooks Middleton, Agent
Nine Point Grain
Heidenheimer's
Hassen's
Perry Brothers, Inc.
Pitstop Grocery
Owens Radio & Electric
Cliff's Garage
Nanny Plumbing
Lane Apparel
Parker's Super Market
Texaco, Inc.
Larry Gilliam
Fabric Boutique
Trussell Mobil
McGee & Tidrow
Builders Supply
Richardson Truck & Tractor
Elsie's Hi-Lander
The Personality Shoppe
Smart Wear for Women 864-2501

Colonial Food Store
Bynum's
The Sweet Shop
Haskell County
Farm Bureau
City Cafe
Federal Land Bank Assn.
Medford Buick-Pontiac
Haskell Co. Warehouse
& Compress
Merchant Plumbing
& Heating
Smitty's Auto
Anderson Construction Co.
JRB Supermarket
Woodard Farm Sales
Conner Nursery & Floral
Letz Builders Supply
Bailey Toliver Chevrolet
& Olds
Amonett & Amonett TV
Jones Cox & Co.
Sherman's Carpet
& Interiors
Dairy Queen
Haskell Steak House
Haskell Livestock Auction
Haskell National Bank
Gill's Grill
First Federal Savings
& Loan
Haskell Branch — 2 N. Av D
Haskell Coop Gin
Doris G. Reeves
Tax Consultant & Cotton Buyer
John Leek Electric
Cen Tex Cablevision Corp.
Dad 'N Lad
Queen Roofing



**Haskell Indians
1976 Schedule**

Sept. 3	Friday	Haskell 20 — Anson 13
Sept. 10	Friday	Open
Sept. 17	Friday	Haskell 42—Seymour 0
Sept. 24	Friday	Haskell 20—Stamford 28
*Oct. 1	Friday	Haskell 35—Paducah 21
*Oct. 8	Friday	Haskell 47—Rotan 8
*Oct. 15	Friday	Haskell 56-Aspermont 0
*Oct. 22	Friday	Haskell 6-Munday 21
*Oct. 29	Friday	Hamlin Here
*Nov. 5	Friday	Knox City There
Nov. 12	Friday	Crowell There



**1976
HASKELL
INDIANS**

No.	Name	Weight	Position
10	Robert Rodriguez	140	SE
11	Archie Crim	200	TB
12	Gary McAdams	195	QB
20	Frank Jordan	160	SE
25	Lynn Brueggeman	140	TB
28	Kelvin Marshall	160	HB
32	Nati Escobedo	165	TB
33	Vonnie Hise	210	FB
35	Jimmy Browning	160	HB
40	Rex Pittman	185	E
44	Richard Amaro	180	FB
50	David Tidwell	165	G
54	Randy Darden	170	C
55	Chris Colbert	160	C
66	Jessie Billington	200	G
67	Kyle Markey	175	T
68	Johney Larned	170	G
74	Mike New	175	T
79	Dwain Weise	160	G
80	Nathan Frierson	190	E

Coaches:
Tommy McAdams (McMurry), Coy Payne (NTSU), Jim Baldwin (McMurry), Stick Raughton (Texas A&M), David Burson (Texas Tech).

Superintendent: R. K. Sams
Principal: Bill Blakley
Band Director: Wendell Gideon
Cheerleader Sponsor: Susan Pope
Cheerleaders: Kem Kemp, Connie Lyles, Sarah Cox, Edith Jordan, Renae McBroom.

Voters To Decide Two Amendments

(Editors Note: Following is an article which should answer questions voters may have about the proposed Constitutional Amendments which will be voted on next Tuesday in the General Election.)

AMENDMENT NO. 1
[Authorizing the issuance of an additional \$400 million in Texas Water Development Bonds by the Texas Water Development Board; requiring legislative approval of certain projects; prohibiting the use of certain state funds for development of water resources from the Mississippi River;

and amending and consolidating the provision of Sections 49-c, 49-d, 49-d-1, of the Texas Constitution]

This amendment would do four things:

1. The Texas Water Development Board, with the approval of two-thirds of the membership of each house of the legislature, would be authorized to issue an additional \$400 million in Texas Water Development Bonds for use in continued financing of water development projects as provided by law.
2. No proceeds from the sale

of Texas Water Development Bonds would be available for use in developing water resources from the Mississippi River.

3. Before more than \$35 million in proceeds from the sale of Texas Water Development Bonds could be spent on a single water development project, the expenditure would have to be approved through a concurrent resolution by majority vote of both houses of the legislature or the project would have to be a part of a statewide water development plan approved through a concurrent resolution by majority vote of both houses of the legislature.

4. Constitutional provisions relating to the operation of the Texas Water Development Board and the issuance of Texas Water Development Bonds would be consolidated and more detailed statutory

type language would be deleted.

ARGUMENTS FOR

1. Funds available in the Texas Water Development Fund for use in developing water projects have been almost depleted. Failure to provide additional funding authorizations to the Texas Water Development Board in the very near future would probably result in the inability of the state to provide adequate water supplies for its citizens in the future.

2. The escalating costs of construction for new water projects require that the state assure that the limited funds available for water development be used as effectively as possible. Requiring legislative approval of large single project expenditures that are not a part of a plan approved by the legislature would aid in providing some assurance that water development money would be most efficiently spent.

3. The present confusion created by the piecemeal adoption of constitutional provisions relating to state water development should be resolved so that the legislature and state agencies may more effectively handle the state's water resources. Adoption of this amendment would clarify the constitutional requirements and, at the same time, place more detailed legislative-type policy decisions in the hands of the legislature.

ARGUMENTS AGAINST

1. The authorization provided for the Texas Water Development Board to issue an additional \$400 million in Texas Water Development Bonds would double the board's existing bond authorization and would further encourage the reliance of the state on bonded indebtedness to meet its future needs. The problems experienced by other governmental entities in this country relying too heavily on bonded indebtedness should serve as a lesson to this state that the use of bonds for financing purposes can lead to financial problems in the future.

2. Placing further restrictions on approval of the construction of single large water development projects could result in increased costs and delays in providing adequate water supplies for the citizens of the state.

3. Consolidating the water development provisions of the constitution would result in deleting certain detailed constitutional restrictions that should remain in the constitution for the protection of the public.

AMENDMENT NO. 2

[Authorizing the issuance of an additional \$100 million in Texas Water Development Bonds for water quality enhancement purposes]

The proposed amendment to Article III, Section 49-d-1, of the Texas Constitution, authorizes an increase of \$100 million in the amount of Texas Water Development Bonds that may be issued to make funds available for grants and loans to local governments for

use in providing treatment facilities.

ARGUMENTS FOR

1. The future of Texas depends on the quality and supply of its water. Passage of the proposed amendment would make more funds available to assist local governments in providing necessary facilities, thereby enhancing both the quality and quantity of the state's water.

2. Greater federal control and increasing costs have placed an even heavier burden on local governments in attempting to provide high quality water supplies. To assure that these local governments will be able to meet these burdens in the future, the state must take an active part by providing funds where needed.

ARGUMENTS AGAINST

1. The experience of other governmental entities in the United States in relying on bonded indebtedness as a source for financing has not been good. Texas should

cease reliance on long-term bonded debt and seek other avenues for financing needed projects.

2. Adoption of this amendment would permit passing on to the state level another financial burden that is rightfully the responsibility of local governments.

Warriors Win Two

The Haskell Warriors returned to the victory column last Thursday night against the Aspermont Stingers. The 7th graders, in the best offensive effort of the season, blew the Stingers off the field to the tune of 36 to 20. The Warriors returned the opening kickoff for a touchdown and built up their margin of victory from there. The Stingers scored 2 of their 3 touchdowns late in the 4th quarter. This victory brings the 7th grade record to 3 wins and 1 loss. The 8th grade returned to

form defeating Aspermont 6 to 0. Aspermont had two big backs; however, the Warriors consistently stopped for short gains. The Warriors again played tough aggressive defense. The offense sputtered to an extent but were able to control the ball and garner one touchdown which was all that was needed. The 8th grade now has a record of 4 wins and 2 losses.

The 7th grade will be idle this week. However, the 8th grade will play Hamlin at 5 o'clock. The freshmen team will play Wylie at 6:15, followed by a junior varsity game with Hamlin. All these games will be at Indian Stadium in Haskell. This will be the last opportunity to observe the younger Haskell teams at home this season. Hopefully, all Haskell fans will turn out to encourage and observe the Indian teams of the future.

Classified
Small ads...BIG RESULTS

THE RICHTERHALL RECIPE

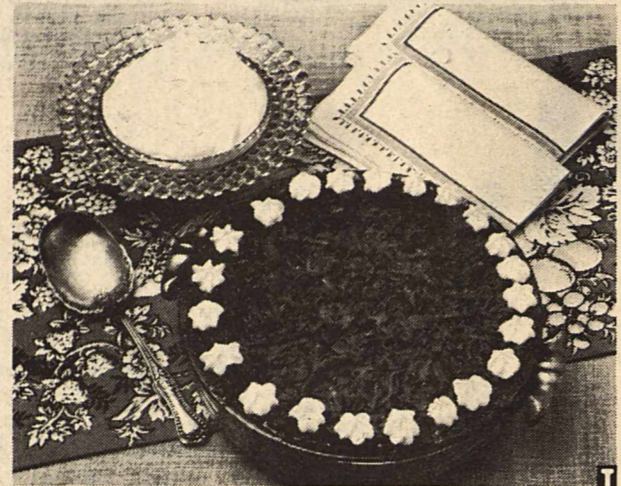
Sweet Potato Pone Is Colonial Charleston Recipe

If you ask for potatoes in the South, you will get sweet potatoes. And if you want the white potatoes of the North, you must ask for Irish potatoes. However, after tasting some of Charleston's long-cherished sweet potato specialties, you may never again ask for white potatoes.

Southerners also make a distinction between yams and sweet potatoes, yams being preferred when it is possible to get them. However, either may be used with equal success.

Charleston's sweet potato dishes are simple yet distinctive, subtly seasoned and a delightful change of pace for family meals. Sweet potatoes can be made into croquettes or puddings, served as pies or combined with apples in a casserole. Or in true Southern style, as Sweet Potato Pone. According to how it's made, this colonial favorite can be a main dish or a dessert.

This is a dessert version. Grated raw sweet potatoes are blended with buttery-flavored Blue Bonnet Margarine, milk, molasses and lemon juice. Then a spicy mixture of brown sugar, lemon peel, ginger, cinnamon and nutmeg is added. After baking, this delicately



spiced dessert is served warm, with whipped cream or ice cream.

SWEET POTATO PONE

6 cups grated raw sweet potatoes
1/2 cup (1 stick) Blue Bonnet Margarine, cut into small pieces
1 cup milk
1/4 cup molasses
2 tablespoons lemon juice
1 cup firmly packed brown sugar
1 tablespoon grated lemon peel
1 teaspoon ground ginger
1/2 teaspoon ground cinnamon

In a large bowl, blend potatoes, margarine, milk, molasses and lemon juice.

In a small bowl, toss together brown sugar, lemon peel, ginger, cinnamon and nutmeg. Add to potato mixture and blend well. Turn into greased 1-1/2 quart shallow baking dish.

Bake at 350°F. for 1 hour. Serve warm. Garnish with whipped cream or ice cream. Makes 6 to 8 servings.

1/8 teaspoon ground nutmeg
Sweetened whipped cream or vanilla ice cream

REPORT OF CONDITION

Consolidating domestic subsidiaries of the

THE FARMERS NATIONAL BANK of _____ RULE _____
Name of Bank City
In the state of TEXAS at the close of business on SEP. 30, 1976
published in response to call made by Comptroller of the Currency, under title 12, United States Code, Section 161.
Charter number 14539 National Bank Region Number 11

NAME OF BANK: FARMERS NATIONAL BANK RULE, TEXAS CHARTER NUMBER: 14539
BALANCE SHEET at the close of business on SEP. 30 1976
month day year

INFORMATION ABOVE LINE NOT TO BE PUBLISHED
Statement of Resources and Liabilities

		Thousands of dollars
		THOUSANDS
ASSETS		
Cash and due from banks		860
U.S. Treasury securities		998
Obligations of other U.S. Gov't. agencies and corps		239
Obligations of States and political subdivisions		831
Other bonds, notes, and debentures		300
Federal Reserve stock and corporate stock		5
Trading account securities		
Federal funds sold and securities purchased under agreements to resell		
Loans, Total (excluding unearned income)	1,129	
Less: Reserve for possible loan losses	3	
Loans, Net		1,126
Direct lease financing		
Bank premises, furniture and fixtures, and other assets representing bank premises		128
Real estate owned other than bank premises		
Investments in unconsolidated subsidiaries and associated companies		
Customers' liability to this bank on acceptances outstanding		
Other assets		
TOTAL ASSETS		4,487
Demand deposits of individuals, prtshps., and corps		2,286
Time and savings deposits of individuals, prtshps., and corps		1,689
Deposits of United States Government		13
Deposits of States and political subdivisions		207
Deposits of foreign govts. and official institutions		
Deposits of commercial banks		
Certified and officers' checks		18
TOTAL DOMESTIC DEPOSITS		4,213
Total demand deposits	2,392	
Total time and savings deposits	1,821	
Total deposits in foreign offices		
TOTAL DEPOSITS IN DOMESTIC AND FOREIGN OFFICES		
Federal funds purchased and securities sold under agreements to repurchase		
Liabilities for borrowed money		
Mortgage indebtedness		
Acceptances executed by or for account of this bank and outstanding		
Other liabilities		4
TOTAL LIABILITIES (excluding subordinated notes and debentures)		4,217
Subordinated notes and debentures		
Preferred stock a. No. shares outstanding _____ (par value)		
Common stock a. No. shares authorized 5000		
b. No. shares outstanding 5000 (par value)		50
Surplus		111
Undivided profits		106
Reserve for contingencies and other capital reserves		3
TOTAL EQUITY CAPITAL		270
TOTAL LIABILITIES AND EQUITY CAPITAL		4,487
Average for 15 or 30 calendar days ending with call date:		
Cash and due from banks		900
Fed. funds sold and securities purchased under agreements to resell		
Total loans		1,158
Time deposits of \$100,000 or more in domestic offices		
Total deposits		4,188
Fed. funds purchased and securities sold under agreements to repurchase		
Liabilities for borrowed money		
Standby letters of credit (outstanding as of report date)		
Time deposits of \$100,000 or more (outstanding as of report date)		
Time certificates of deposit in denominations of \$100,000 or more		
Other time deposits in amounts of \$100,000 or more		

We, the undersigned directors attest the correctness of this statement of resources and liabilities. We declare that it has been examined by us, and to the best of our knowledge and belief is true and correct.

HENRY TOWNSEND

Name

CASHIER

Title

of the above-named bank do hereby declare that this Report of Condition is true and correct to the best of my knowledge and belief.

Mrs. W.D. Payne
B.D. Carothers
Mrs. W.D. Payne

Directors

Henry Townsend
Signature
OCT 21, 1976
Date

HELP WANTED

Technical Tubing Testers Inc.

ANDREWS, TEXAS

Phone 915-523-5585

DOWN HOLE PIPE TESTERS

CABLE SPOOLING UNIT OPERATORS

TRUCK DRIVER

[MOVING FRAC TANKS]

ANCHOR SETTERS

[TEXHOMA HOLE DIGGERS]

WE OFFER

Guaranteed Salary
Group Insurance

Uniforms
Profit Sharing

Paid Vacation

WE PREFER THOSE WITH OIL FIELD EXPERIENCE

TED LAWSON
PIED PIPER INN
HAMLIN, TEXAS

CONTACT

SUN., OCT. 31 - 1 P.M. TIL 9 P.M.

Rice Springs News

The W.M.U. of Haskell First Baptist Church presented the program to the residents Tuesday morning. Bro. Segó brought an inspiring devotional and the pianist, Nellie Ash along with Arvella Holland lead the residents and the ladies in several songs.

The Truett Rose family visited Ethel Rose.

Wanda Lewis from Rule visited James Lewis.

Lee Roy Vanderworth of Rule visited with Oscar Vanderworth.

Peggy Byrd of Stanton and Helen Turnbow of Weinert visited Mary Chandler.

Goodson Sellers and Evelyn Sellers from Munday, Mr. and Mrs. Jack Wood of Galveston, Larry and Brenda Yarbrough from California, Maye Belle Yarbrough of Coalingo, California; Mr. and Mrs. Gene Wood from Munday and Hazel Almond of Rule all visited with Bertha Yarbrough.

We would like to welcome another new resident to our family this week, Mrs. Martha Kretschmer.

A very inspirational devotional was presented by Jo Simpson, Wednesday morning, Wednesday night, Bro. Friedel taught the Bible Class.

Jewel Havran from Munday and Mildred Sanders of Weinert visited Annie Vojkufka.

Mr. and Mrs. John Atterbury, Jr., from Corpus Christi visited with Annice Parrish.

Terry Sellers from Wichita Falls, and Billy Sellers of Abilene visited Pat Sellers.

John McQuinn of Rule visited with Fanny McQuinn. Young and Clara Cawthon from Oklahoma City visited with Daisy West.

Earlene Smith from Rule, Billy Sellers and family of Abilene, Terry Sellers of Wichita Falls, Lillie and Oscar Corzine of Rule, and Mr. and Mrs. Herman Dugan of Old Glory all visited Trudie Bush this past week.

Bingo was enjoyed by 15 residents Thursday afternoon.

Stella Josselet, Cleo Monday, Annie Reynolds, Edith Jousan, Claude Sanders, and Ethel Bradford all played. Mary Chandler bingoed once and also tied with Gene Sanders to be the first player, to call Black-out.

The C. B. Rhea Musical was enjoyed by several of the residents this past Thursday night.

Evelyn Green from Fort Worth, Mr. and Mrs. E. O. Morgan of Rule, and Lee Roy Denton of Rule visited Ora McCollough.

Angie Mullino, and Marion Josselet from Brownsville visited Stella Josselet and Flossie Rogers.

Rev. and Mrs. Alan Forbis of Rule and Mr. and Mrs. E. G. Post of Abilene visited Mrs. Alma Cole.

Mrs. Ralph Weaver, Mrs. Marie Kohout and Debbie Taylor all of Stamford visited Mrs. Lola Medford.

Jean Bell of Rule and Caruthe Corzine visited W. F. Goad.

Vanah Little of Rule and Margaret Lewis also of Rule visited Eunice Thornhill.

Also visiting residents in the home this week were Mr. and Mrs. Glenn Caddell, and Mr. and Mrs. Carl Bangh.

We would like to thank all the churches and groups for all the programs they have presented for the enjoyment of the residents.

Anyone who has any material scraps, yarn scraps, and glue they would like to donate to the Christmas Craft box, please bring them by this week. Craft box is in the office or see the Activity Director. Old Readers Digest magazines would also be appreciated.

AT LAST—a pen you can't lose! The original pocket coil pen. Clips on dress, blouse, shirt or pocket. Contoured for easy writing. Uses standard refill. If dissatisfied with pen, maker will repair or replace. Only \$3.95 at the Haskell Free Press.



AUTHORS AND ILLUSTRATOR of a new book about the history of Rochester are: (left to right) Modelle Ballard, author, Jane Short, illustrator, and Marguarite Gauntt, author. The book, "When the Rails Were Laid" is now on sale in Rochester.

Rochester History Book Now Ready

In May of 1975 two Rochester women, Marguerite Gauntt and Modelle Ballard, decided to put down on paper part of the Rochester Heritage. Their desire was to preserve this heritage before it was too late because they knew that unless history was recorded time would pass and all would fade away as the pioneers died.

Rochester is a small community with rich sandy farming soil with approximately 550 people and is located in the northwest part of Haskell County. When the country was first settled in the late 1800's it was open range, choice land for the picking to courageous men and women who wanted a new frontier country where they could once again feel the thrill of pioneering and developing new land.

When the "rails were laid" in 1906 they by-passed, by about three miles, the small settlement of Marcy. The settlers realizing the importance of the railroad to their lives, picked up and moved their businesses, families and churches when A. B. Caroth-

ers, who gave the right-of-way for the Kansas City, Mexico and Orient Railway, also gave land for the town site of Rochester.

The "Rochester Story" is a book of approximately 350 pages on the history of this community in Haskell County. This book is the pilgrimage of the men and women who came to this area, drove down stakes, and developed a determination to build a fit place to raise their families. They portrayed much courage, physical strength, and a never dying faith to come, stay and develop this land.

Individual histories of about 200 families tells of the hardships endured, economic conditions, tragedies, and happy and humorous happenings.

The book included scores of photographs, maps and early day papers. Also included are histories of schools, including the many small country schools that were around Rochester, churches, civic and social organizations. The book is beautifully illustrated by Jane Short.

"When The Rails Were Laid" can be purchased by sending \$15.75 to Home State Bank, Box 217, Rochester. 75c will be needed for each book to be mailed.

Leisure Lodge News

Mr. and Mrs. R. E. Trussell, Mrs. Mamie Bullard from Cleburne surprised their mother, Mrs. Myrtle Trussell and sister Emmie with a visit. Mrs. Trussell also had old friends from Ballinger in to visit her.

Mrs. Clara Hendrix spent the day on Sunday with her sons, Happy and Bill.

Lawrence Fuller from Hurst and Mr. and Mrs. Howell Cobb from the Cobb Community visited with Norma Baker this week.

Mrs. Nolan Lees from Rule visited her friend, Minnie Brady.

Rev. Jack and Jewel Keys visited Mrs. Olga Tribbey. They were from Abilene. Other visitors were Helen Pierce from Rule and Mrs. Bryant also from Rule.

Mary Bowman had a nice visit from relatives and friends Mr. and Mrs. Tony Eastmond, Mike and Steven from Okla. City, Okla., Mr. and Mrs. Bobby Easley and Bryan from San Angelo, Mr. and Mrs. Edd Stagg from Ft. Worth, Glenda Van Horn from Weir, Mrs. Leanis Tibbets and Olga Alvis from Rochester.

Dutch Wheeler went out to have dinner with his sister, Wilma / Brown on Sunday night.

The Tom Watson gospel singers came on Tuesday night and was enjoyed as always. Rev. Shipman from the Assembly of God Church came out on Thursday night and brought a very interesting message. Princella Ford and Kathryn Mitchell sang a duet, "How Great Thou Art."

Mrs. Bessie Hutchens and Mrs. Maude Jones had a nice visit from their children this week from Houston, Mr. and Mrs. Archie Jones.

The Foursquare brought the Tuesday devotion. Mr. Phillip Martin played the piano and his wife led the singing and brought the devotion. We

invite them back again.

Visiting Mr. Marcus Thomas this week were his wife, Mrs. Roy Day Sr., Mrs. Edna Dennington, Grace Sears all of Knox City and Earl Stamps from Dickens. Mr. Stamps also visited with Mr. Tom Rogers.

Mr. John Long spent the day Sunday with the Van Houtens west of Rule.

Mr. Burt Butler had his daughter, Mr. and Mrs. Gene Woodridge from Riverside, Calif. visit him this past week. Other visitors were Mr. and Mrs. Bill Butler from Gainesville, Mr. and Mrs. Luther Butler, Mr. and Mrs. Albert Butler, Mrs. Stell Bartley from Haskell. Mr. Butler spent Sunday with all of his children present. Other visitors were Mr. and Mrs. Clyde Bartley and children, Mr. and Mrs. Robert McLennan from Stamford and other friends.

We thank the family of Azlee Taylor for sharing the beautiful flowers with us.

Recent visitors of W. O. Lewis were Mr. and Mrs. Roy Moore of Goree, Mrs. Florene Sorrells, Miss Alpha Dyches of Rule and G. C. Brockett of Weinert.

With the return of the school year parents of school-aged children should see to it that their youngsters have their hearing ability tested, officials of the Beltone Crusade for Hearing Conservation advise. All too often a child who appears inattentive, preoccupied, disobedient, withdrawn and even stupid is suffering from an undetected hearing loss, they add.




German silver is made from copper, zinc, and nickel.

SHERMAN'S

1/2 PRICE SALE

[NEW MERCHANDISE]


Sleeper-Couches
Love Seats
Brass Bathroom Fixtures
Planters
Light Fixtures
Cabinet Hardware
Table Lamps
Swag Lamps
Mirrors




DOYLE HIGH

HEALTH TIP

AFTER YOU SEE YOUR DOCTOR, BRING YOUR PRESCRIPTIONS TO:





KENNETH JONES

OATES DRUG

PH. 864-2515

F

Do You Require Security and Reliability in Your Savings Plan? Why Settle for Less than the Best?

Where Your Savings Interest Is Compounded Daily-Paid Quarterly

	Annual Rate	Annual Yield
PASSBOOK	5.25%	5.39%
90-DAY NOTICE \$500.00	5.75%	5.92%
CERTIFICATE MINIMUM \$1,000.00	6.50%	6.72%
12-Mo. CERTIFICATE \$1,000.00 MINIMUM	6.75%	6.98%
30-Mo. CERTIFICATE \$1,000.00 MINIMUM	7.50%	7.79%
48-Mo. CERTIFICATE \$1,000.00 MINIMUM	7.75%	8.06%
72-Mo. INVESTMENT CERTIFICATE	7.75%	8.06%

\$1,000.00 MINIMUM DEPOSIT: Automatically Renewable; Compounded Daily and Paid Quarterly.

A substantial interest penalty is required for early withdrawal.

RETIRED CUSTOMERS

RETIRED CUSTOMERS CAN HAVE SOCIAL SECURITY CHECKS SENT DIRECT FOR DEPOSIT IN A SAVINGS ACCOUNT WHERE IT CAN EARN INTEREST UNTIL NEEDED. CONTACT ONE OF OUR OFFICES TO LEARN MORE ABOUT THIS NEW WAY TO SAVE MONEY.

INDIVIDUAL RETIREMENT ACCOUNTS



INDIVIDUAL RETIREMENT ACCOUNTS ARE NOW AVAILABLE FOR YOU TO SET ASIDE UP TO \$1,500.00 INCOME PER YEAR TAX DEFERRED IN YOUR SAVINGS ACCOUNT WHERE IT WILL EARN INTEREST UNTIL WITHDRAWN FOR RETIREMENT. DO IT NOW AND MAKE YOUR RETIREMENT EASIER TO LIVE WITH.

FIRST FEDERAL SAVINGS AND LOAN ASSOCIATION

Home Office:
122 W. McHarg
P. O. Box 511
Stamford, Texas 79553

Branch Office:
#3 Avenue D
P. O. Box 444
Haskell, Texas 79521
Phone 864-3179

Division Office:
Quanah Federal Savings and Loan
313 South Main St.
Quanah, Texas 79252

COME BY AND LOOK US OVER

WE HAVE

MOVED

TO OUR

NEW LOCATION

Watch For Our Grand Opening

In The Near Future

DOYLE HIGH'S

THE DRUG STORE

100 SOUTH "E" HASKELL, TEXAS

PHONE 864-2515

"ON A BRAND NEW CORNER"

Recommended Mailing Dates For Christmas Mail Announced

The following Postal Service announced recommended mailing dates for Christmas mail to assure delivery before Christmas are:

- Oct 15 International surface parcels to the Far East
- Oct 25 International surface greeting cards to the Far East
- Oct 28 Surface mail to Armed Forces in Antarctica, Australia, Burma, Indonesia, Japan, Korea, New Zealand, Okinawa, Philippines, Taiwan and Thailand
- Nov 1 Surface and Space Available Mail (SAM) to Armed Forces in Ethiopia, Iran, Israel, Saudi Arabia and Turkey
- Nov 4 International surface parcels to Africa and the Near East
- Nov 4 International surface greeting cards to Africa and the Near East
- Nov 8 Parcel Airlift (PAL) mail to Armed Forces in Ethiopia, Iran, Israel, Saudi Arabia and Turkey
- Nov 11 Surface and Space Available (SAM) to Armed Forces in South and Central America, Liberia and Republic of Zaire
- Nov 11 Surface mail to Armed Forces in Belgium, Denmark, England, Finland, France, Germany, Greece, Italy, Norway, Netherlands, Portugal and Spain
- Nov 11 International surface parcels to South and Central America and Europe
- Nov 18 Parcel Airlift (PAL) mail to Armed Forces in South and Central America, Liberia and Republic of Zaire
- Nov 18 International surface greeting cards to South and Central America and Europe
- Nov 20 Space Available Mail (SAM) to Armed Forces in Antarctica, Australia, Burma, Indonesia, Japan, Korea, New Zealand, Okinawa, Philippines, Taiwan, Thailand, Belgium, Denmark, England, Finland, France, Germany, Greece, Italy, Norway, Netherlands, Portugal and Spain
- Nov 25 Surface Mail and Space Available Mail (SAM) to Armed Forces in Canada, Greenland, Labrador, Newfoundland and the Azores
- Nov 27 Parcel Airlift (PAL) to Armed Forces in Antarctica, Australia, Burma, Indonesia, Japan, Korea, New Zealand, Okinawa, Philippines, Taiwan, Thailand, Belgium, Denmark, England, Finland, France, Germany, Greece, Italy, Netherlands, Norway, Portugal and Spain
- Nov 30 Letters to Armed Forces in South and Central America, Ethiopia, Iran, Israel, Saudi Arabia, Turkey, Antarctica, Australia, Burma, Indonesia, Japan, Korea, New Zealand, Okinawa, Philippines, Taiwan and Thailand
- Dec 1 All surface parcels to Alaska and Hawaii
- Dec 1 Parcel Airlift (PAL) mail to Armed Forces in Canada, Greenland, Labrador, Newfoundland and the Azores
- Dec 2 Priority mail to Armed Forces in South and Central America, Ethiopia, Iran, Israel, Saudi Arabia, Turkey, Antarctica, Australia, Burma, Indonesia, Japan, Korea, New Zealand, Okinawa, Philippines, Taiwan and Thailand
- Dec 2 International surface parcels to Canada and Mexico
- Dec 7 Letters to Armed Forces in Canada, Greenland, Labrador, Newfoundland, the Azores, Liberia and Republic of Zaire
- Dec 8 International surface greeting cards to Canada and Mexico
- Dec 9 Letters to Armed Forces in Belgium, Denmark, England, Finland, France, Germany, Greece, Italy, Netherlands, Norway, Portugal and Spain
- Dec 9 Priority mail to Armed Forces in Canada, Greenland, Labrador, Newfoundland, the Azores, the Congo and Liberia
- Dec 9 International air parcels to Africa, the Near East and the Far East
- Dec 10 Surface parcels within the United States (except Alaska and Hawaii)
- Dec 11 Priority mail to Armed Forces in Belgium, Denmark, England, Finland, France, Germany, Greece, Italy, Netherlands, Norway, Portugal and Spain
- Dec 11 International air parcels to South and Central America and Europe
- Dec 14 International air greeting cards to Africa, the Near East and the Far East
- Dec 15 International air parcels to Canada and Mexico
- Dec 16 Letters to Alaska and Hawaii
- Dec 16 International air greeting cards to South and Central America and Europe
- Dec 17 Letters within the United States (except Alaska and Hawaii)
- Dec 20 Priority mail to Alaska and Hawaii
- Dec 20 International air greeting cards to Canada and Mexico
- Dec 21 Priority mail within the United States (except Alaska and Hawaii)



The Battle of Bunker Hill was actually fought on nearby Breed's Hill, and lost by the Revolutionaries.

CONSERVATION VIEWPOINTS USDA Soil Conservation Service

Assisting
California Creek and Wichita-Brazos
Soil and Water Conservation Districts

The 1976 WIND EROSION Program, previously announced by this column and in the September ASCS Newsletter, is now underway. Glenn Brzozowski, County Executive Director, ASCS, released the sign-up dates this past week. Applications will be taken at the Haskell County ASCS Office through November 30, 1976 for the following practices:

- WE-1: Establishing Field Windbreaks.
 - WE-2: Establishing Permanent Vegetative Cover.
 - WE-3: Establishing Strip-cropping Systems.
 - WE-5: Livestock Watering Facilities (Wells and Pipelines.)
- WE-1, 2, and 3 will be cost-shared at 90% of the cost of seedbed preparation, seeding operation, seed or sprigs and fertilizer, if required, and litter crop.
- WE-5 will be at 50% cost-share rate for drilling, casing, pipe and installation of the pipeline.

WE-1 is applicable to farm and ranch land needing protection against serious wind erosion. WE-2 is applicable to farm and ranch land subject to wind erosion. WE-3 is applicable only to cropland subject to wind erosion.

Technical responsibility for the Wind Erosion Program has been given to the Soil Conservation Service, to determine needs, site selection, and determining measures needed and required for layout. This responsibility will require that an SCS planning technician visit the farm or

ranch, meet with the applicant, and plan and record decisions to fulfill the practice requirements. He will also need to measure or determine extent of planned practices actually carried out.

Remember, the sign-up period started October 21 and will last through November 30. Do not put off applying for this assistance if you believe you would like to participate. Do it now.

J. C. Yeary, Jr.
District Conservationist

We pack **SELLING POWER** in our **CLASSIFIED ADS.**

Cotton Classing

MUNDAY
Cotton harvesting activities have been heavy between rains, especially in the Munday area, according to B. B. Manly, Jr. of the USDA Cotton Classing Office in Abilene. On Tuesday, October 26, Mr. Sidney Ferrell will open the sub-office at Munday, Texas. Last season the office opened October 28. Prices being offered for cotton are very good this year, and range from around 60 cents up to 68 cents per pound. Some acreages are being contracted at 33 to 35 cents per pound above the Government loan rate, which would mean from 64 to 67 cents per pound for the most predominant qualities processed this week.

Around 2,000 samples were processed from the Munday area this week, bringing the season total to 2,400. Predominant grades were: 41 with 40 percent; grade 51 with 16 percent; and grade 42 with 24 percent. Nine percent was reduced in grade because of bark. The predominant staple was 30 with 49 percent. Other staples were 31 with 34 percent and 32 with 13 percent.

Mike readings were 89 percent in the premium 3.5-4.9 category with 4 percent falling below 3.5 and 7 percent above 4.9.

Mr. Ferrell will be in his sixth season as Officer-in-Charge of the Munday Office.

ABILENE
Cotton harvesting is getting underway in the area we serve, reports B. B. Manly Jr. of the USDA Cotton Classing Office in Abilene. The harvest was heavy in Runnels, Jones and Haskell Counties and gaining rapidly in many other counties. Mr. Sidney Ferrell will open our sub-office at Munday next week. Haskell County cotton will be classified by the Munday Office.

Around 3,700 samples were processed during the week ending October 22, and around 2,000 of those were

from gins served by the Munday office. A total of 4,300 samples have been processed this season.

Prices being offered for cotton are very good this season, and range from 60 to 68 cents per pound. Prices being paid range from 33 to 35 cents above the Government loan rate, and some acres are being contracted.

Cotton qualities cover a wide range with the predominant grades being 41 with 36 percent and 42 with 23 percent. Grades 51 and 32 had about 14 percent each. Twenty-nine percent was reduced in grade because of bark. Staple 31 was predominant with 52 percent staple 30 was next with 31 percent. Seventeen percent was called longer than 31.

Micronaire readings were 85 percent in the premium category. Eleven percent was 2.7 to 3.4 and 4 percent was 5.0 to 5.2.

BIRTHS

Mr. and Mrs. Juan Garcia of O'Brien announce the birth of a daughter, Yvonne Garcia, born October 23, 1976 at Haskell Memorial Hospital weighing 8 lbs. 1 1/2 oz.

Mr. and Mrs. Sidney Doyle Smart of Rochester announce the birth of a son, Jason Scott Smart born October 20, 1976 at Haskell Memorial Hospital weighing 8 lbs. 7 1/2 oz.

Mr. and Mrs. Timothy Alan Huggins of Haskell announce the birth of a son, Timothy Alan Huggins, Jr., born October 19, 1976 at Haskell Memorial Hospital weighing 7 lbs. 6 oz.

Want to buy? Sell? Results? Want ads will work for you. Haskell Free Press.



WHIP INFLATION!

CENTER CUT PORK CHOPS LB	\$1.29	COLORADO RUSSET POTATOES 10 LB BAG	69¢
PORK STEAK LB	98¢	COLORADO YELLOW ONIONS LB	10¢
PORK ROAST LB	98¢	MEADS FROZEN ROLLS 1 LB 9 OZ PKG	49¢
FRESH PORK BACKBONE LB	\$1.19	WINTER GARDEN FROZEN CORN-ON-COBB	49¢
FRESH PORK SMALL AND LEAN SPARERIBS LB	98¢	MRS. TUCKERS 3 LB CAN Shortening	1.29
FRESH STORE MADE SAUSAGE LB	69¢	GLADIOLA CORNBREAD MIX 3 PKGS	49¢
MRS. BAIRDS BREAD LARGE LOAF	39¢	FIRESIDE CREME COOKIES 3 PKGS	\$1.
BLUE RIBBON BEEF HALF, CUT & WRAPPED APX. 200 LBS	79¢	HEINZ Keg o'Ketchup	89¢
FIRESIDE CRACKERS 1 LB BOX	39¢	KLEENEX TOWELS 2 ROLL PKG	69¢
ARMOURS Potted Meat CAN	19¢	REYNOLDS WRAP 3 REG. SIZE BOXES	\$1
4-32 OUNCE MR. PIBB 2-32 OUNCE COKES ALL FOR PLUS DEPOSIT	\$1.	VEL Beauty Bar 3 BATH SIZE	\$1

POGUE GROCERY

—Extra Parking Behind The Store. Home Owned And Operated—

113 NORTH AVENUE E.

PHONE 864-2015

HASKELL, TEXAS

VOTE Nov. 2

I sincerely appreciated the many votes and splendid support that I received in the primary election and as your Democratic nominee for the office of District Attorney of the 39th Judicial District, I solicit the vote and support of all voters in Haskell, Kent, Stonewall and Throckmorton Counties in the General Election to be held on November 2nd.

Respectfully yours,
Joseph Thigpen

[Pd. Pol. Adv. pd for by Pam Thigpen, Campaign Treasurer]