

"HASKELL—A GOOD PLACE TO VISIT: A BETTER PLACE TO LIVE"

VOLUME NINETY-ONE

16 PAGES

HASKELL, TEXAS, 79521, THURSDAY, APRIL 28, 1977

NUMBER SEVENTEEN



HASKELL HIGH SCHOOL Girls Mile Relay Team completed in Regional last Friday in Odessa. They ran 4:08 in the preliminaries and 4:12 in the finals to finish fifth. Pictured are: (l to r) Coach David Burson, Sherrie Everett, Rachel Gonzales, Kem Kemp, Renae McBroom, and Kim Campbell, alternate. (Staff Photo)

Dates Set For Beef Referendum

Tentative dates for the national Beef Referendum, in which all cattlemen will have an opportunity to vote on a self-help program, have just been announced by the USDA. The dates are June 6-17 for registration and July 5-15 for voting.

All area cattle producers are invited to attend a special meeting on the proposed Beef Market Development Program at 8:30 p.m. Thursday, May 19, at the Community Building of the Haskell National Bank.

Beef Development Taskforce chairman Rob Brown of Throckmorton will speak at this meeting.

"This is a program by cattle producers and for cattle producers," Bobby Howard, County Chairman said. "It's important that it be understood and supported."

The Beef Market Development Program hopes to raise \$30 to \$40 million through voluntary contribution each year to invest in consumer education, research, and foreign market development.

Cattle producers will vote on the proposed program this spring in a national referendum.

"There are four major aspects of the Beef Market Development Program," Howard said. "These are consumer education, research, marketing and distribution, and foreign markets. They'll each be covered in the meeting."

"Cattle industry leaders have been waiting three years for these dates," says J. D. Sartwelle of Houston, who is chairman of the Texas Beef Development Taskforce. "That's how long we have been working to get a self-help program aimed at stabilizing and improving the beef market."

The program, known as the Beef Research and Information Act, was put together by cattle industry leaders and approved by Congress last year. If approved by two-thirds of the cattlemen voting, it will authorize a uniform collection of 3/10 of 1% of the value on each animal sold.

This rate will raise \$30 million to \$40 million a year for beef research, promotion, consumer education and foreign market development, according to Sartwelle. The funds will be administered by a 68-member Beef Board, comprised of cattlemen nominated by existing cattlemen's organizations.

"We have just begun an extensive educational program, aimed at reaching every cattleman in Texas," says Sartwelle. "In addition to the 60-member Texas Beef Development Taskforce, representing beef and dairy organizations throughout the state, we have a county Taskforce in each of Texas' 254 counties. We're all working to explain the merits of the program to cattlemen and encourage them to register and vote. Helping to spearhead the educational effort is the Texas Agricultural Extension Service, plus other cattlemen's organizations and general farm organizations."

A similar effort is underway throughout the United States. "Never has there been such a concerted effort among cattlemen to help themselves," continues Sartwelle. "Over 80 state and national beef and dairy organizations have endorsed the plan, plus a number of general farm organizations."

To vote in the Beef Referendum, producers must first register at the local ASCS office and certify that they have owned cattle at some time during the past 12 months. Then they may return, after a two-week waiting period, to vote at the ASCS office. Absentee forms will be available, upon request, for producers who prefer to register and vote by mail.

WTC To Offer Classes

Western Texas College will offer summer classes at the Haskell extension center beginning May 26.

Haskell students will register on May 24 in the Haskell High School library between the hours of 6:30-8:30 p.m. Classes will meet during evening hours for a period of nine weeks.

Courses to be offered are Business Law 232, English 231, Government 231, State/Local Government, 232, and Philosophy 132.

Persons wishing further information about extension center courses may contact Bill Blakley, center coordinator, or the office of Dr. Duane Hood at WTC.

Summer classes on the WTC campus in Snyder will also begin on May 26. Day classes will meet for six weeks, with evening classes meeting for nine weeks. A second summer session offering day classes only will begin July 7.

Evening classes are to be offered at the WTC extension center in Sweetwater during the first nine-week session.

Golf Team Is Dist. Winner

The Haskell High School golf team, coached by James Raughton, placed first in district 6-A competition last week. The team will enter regional competition the weekend of April 30 at Odessa. Haskell scored 1347 strokes; Knox City placed second with 1388 strokes. Hamlin's team placed third. Haskell's 2nd team placed 6th in district play, with a score of 1555. Kyle Markey is the only senior player on the Haskell team, so the future for Haskell High School golf looks promising.

Joseph McCoy earned the medal for best individual play in the district. He passed the leader from Paducah during the last meet on the Paducah course. Joseph is a sophomore student; he had a four-round score of 321. Nathan Frierson placed 5th and Chris Colbert 6th in medalist honors.

Flea Market Set

The retail trade committee of the Haskell Chamber of Commerce met Monday at the City Cafe to discuss the upcoming flea market and sidewalk sale scheduled May 7.

Project chairman Gene Long announced that the Haskell High School Stage Band would play at 10 a.m. and a special puppet show would be given at 2 p.m. Other special activities, all on the court house lawn, will include an art show all day, and a special demonstration by the Haskell County Emergency Ambulance Service.

Persons who would like to have a garage sale on this day are asked to contact Chamber Manager, Rex Felker at 864-2477, for information about locating the sale around the square.

Local merchants will present special sidewalk sale merchandise and many are also making plans to offer special Mother's Day selections.

Disaster Survival Test Scheduled

What would you do if you were caught in a flash flood? If lightning struck the person at your side? If you were trapped in a beach house during a hurricane? If you were on a highway when a tornado struck?

Would you know how to survive-and how to prevent accidents that can occur during such disasters?

If not, you can learn by watching "The National Disaster Survival Test" on NBC-TV, Sunday, May 1, at 7:00 p.m. CST. Produced by Warren V. Bush in cooperation with the National Safety Council, the 90-minute "Big Event" will incorporate films of actual disasters, dramatic re-enactments and interviews with survivors and survival experts.

Using a test format, viewers at home can compete with each other to see who knows

how best to cope with emergencies. You, in turn, will be competing with a cross-section of Americans in studio audiences in five major test cities. Electronic boards will break down the answers into city-by-city categories, as well as age, sex and even professional categories.

Charles F. Richter, formulator for the Richter Scale for measuring earthquakes, stated that "Over 90% of the loss of life, and more than half the property loss in national disasters is unnecessary and preventable." National Safety Council will provide authoritative information for the show on the prevention of accidents related to disasters, designed to help viewers and test participants increase their "survival quotient."

After reviewing the script for "The National Disaster Survival Test," NSC President Vincent Tofany said that, "By making people aware of how to deal with disasters, this one program could very well save many lives, prevent thousands of injuries and protect millions of dollars in property."

Follow-up information about disasters and disaster-related accidents and prevention techniques will be

available from Texas' NSC affiliate, the Texas Safety Association, P. O. Box 9345, Austin, Texas 78766, (512) 451-7421. A test form is published on page 11.

Little League To Begin Play

The Haskell Little League will open the 1977 season on Monday, May 2, with team introductions and a game between the Rams and the Cubs. All the teams have been working hard and it is shaping up as a fine, competitive season.

The executive committee has scheduled another work day on Saturday, April 30. The Ladies' Auxiliary will also work that day, starting at 1 p.m.

- 6 Bears vs Crows
- 9 Red Horses vs Bears
- 10 Crows vs Cats
- 12 Bears vs Red Horses 13
- 13 Cats vs Crows
- 16 Bears vs Cats
- 17 Red Horses vs Crows
- 19 Cats vs Crows
- 20 Crows vs Red Horses
- 23 Crows vs Bears
- 24 Cats vs Red Horses
- 26 Cats vs Crows
- 27 Red Horses vs Bears
- 30 Bears vs Cats
- 31 Crows vs Red Horses

MINOR LEAGUE

- May
- 3 Crows vs Bears
- 5 Cats vs Red Horses

Hudson Named To Outstanding Young Men



JIM HUDSON

The Board of Advisors for the Outstanding Young Men of America Awards Program announced today that James Derald Hudson of Haskell has been selected for inclusion in the 1977 edition of OUTSTANDING YOUNG MEN OF AMERICA.

The Outstanding Young Men of America Program is co-sponsored by the United States Jaycees and numerous other leading men's civic and service organizations throughout the nation. Serving as chairman of its 12-man Advisory Board is Doug Blankenship, U. S. Jaycee past president.

In every community there are young men working diligently to make their cities, as well as their country, better places in which to live. These men, having distinguished themselves in one or more fields of endeavor, are outstanding and deserve to be recognized for their achievements. The criteria for selection include a man's voluntary service to community, professional leadership, academic

MAJOR LEAGUE

- May
 - 2 Cubs vs Rams
 - 3 Eagles vs Lions
 - 5 Tigers vs Hawks
 - 6 Lions vs Rams
 - 7 Hawks vs Eagles
 - Cubs vs Tigers
 - 9 Rams vs Tigers
 - 10 Lions vs Hawks
 - 12 Eagles vs Cubs
 - 13 Rams vs Hawks
 - 14 Cubs vs Lions
 - Tigers vs Eagles
 - 16 Lions vs Tigers
 - 17 Rams vs Eagles
 - 19 Hawks vs Cubs
 - 20 Lions vs Eagles
 - 21 Rams vs Cubs
 - Hawks vs Tigers
 - 23 Rams vs Lions
 - 24 Tigers vs Cubs
 - 26 Eagles vs Hawks
 - 27 Tigers vs Rams
 - 28 Hawks vs Lions
 - Cubs vs Eagles
 - 30 Hawks vs Rams
 - 31 Lions vs Cubs
- June
- 2 Eagles vs Tigers
 - 3 Cubs vs Hawks
 - 4 Eagles vs Rams
 - Tigers vs Lions
 - 6 Tigers vs Hawks
 - 7 Eagles vs Lions
 - 9 Cubs vs Rams
 - 10 Hawks vs Eagles
 - 11 Lions vs Rams
 - Cubs vs Tigers
 - 13 Rams vs Tigers
 - 14 Lions vs Hawks
 - 16 Eagles vs Cubs
 - 17 Rams vs Hawks
 - 18 Lions vs Cubs
 - Tigers vs Eagles
 - 20 Hawks vs Cubs
 - 21 Rams vs Eagles
 - 23 Lions vs Tigers

Tour Of Homes Set This Sunday, 2-5:30 p.m.

The Tour of Homes sponsored by the Haskell H. D. Council will be Sunday, May 1st, 1977 from 2:00 p.m. to 5:30 p.m.

The tour will include the homes of Mr. and Mrs. Jim Rea, Mr. and Mrs. Eddie Chambers, Mr. and Mrs. Roy Pittman, Mr. and Mrs. Fred Boon and Mr. and Mrs. Donald Griffis, Weinert.

The tour is open to the public and tickets may be purchased from club members

Council Faces Routine Matters

Members of the Haskell City Council met Tuesday night in regular session and discussed routine business matters.

Mayor Belton Duncan called the meeting to order and Councilman Guy Kennedy gave the invocation. Following the approval of the minutes of the last meeting, Frank Jirick requested the assistance of the council with this year's Teenage Baseball field lighting. It was pointed out that the Council had assisted in the past several years and members agreed to continue their support.

Doyle High met with the Council to request funds for building a park and tennis courts in Haskell. Members of the council agreed to pay one-third of the cost up to \$7,000.00 if the County and School would pay one-third each.

Mayor Duncan made department assignments as follows: Loraine Johnson, Police and Parks; Guy Kennedy, Streets; Bob Philpot, Water and Sewer; E. J. Stewart, Fire and Garbage; and Earl Proctor, Ambulance and Airport.

Mayor Duncan reported on the receipt of \$1,931.44 for the City's portion of Sales Tax collected by Comptroller Bob Bullock.

Billy Jacobs reported to the Council that the work on the new sewer plant was approximately 50% complete on April 1, including materials on hand.

Members of the council were presented a copy of last year's budget and requested to have their department budgets complete for consideration at the next regular meeting of the Council which is scheduled for May 10.

Attending the meeting were Mayor and all councilmen, City Secretary Desmond Dulaney, Water Supt., Marvin Collins, Jacobs, Jirick, High, Jack Dunlap, and Mrs. John Sam Rike III.

DOG CARE PROJECT

Max Stapleton, County Extension Agent would like to remind all youth between 9 and 19 that the 4-H Dog Care Project will begin Monday, May 2nd, 4:00 p.m. The first meeting will be at the County Extension Office and do not bring your dog to the first meeting. The project is designed to teach dog obedience. Mr. Tommy Matthews, Adult Leader will be conducting the meetings.

Industrial Arts Students Qualify For State Meet

Thirteen Industrial Arts Students from Haskell High School qualified for state competition during the West-Central Texas Regional Industrial Arts competition last Saturday at Moody Coliseum in Abilene, according to Bill Cullins, industrial arts instructor at HHS.

To qualify for the State competition, which will be held May 7 and 8 in Waco, students had to place in the top three places in their division. Haskell received 6, first place ribbons, 3 second place ribbons and 3 third place ribbons.

Sherri Doty, local Industrial Arts Sweetheart, was also chosen to represent the region at the state meet.

Complete placings of the Haskell students were as follows:

- Rocky Young, 3rd, woods division;
- David Huss, 1st, 2nd, and 3rd, in woods division;
- Bryant Tidrow, 1st, woods division;
- Jeff Hatfield, 1st, woods division;
- Cynthia Jones, 3rd, woods division;
- Gary Thomas, 2nd, woods division;
- Rodger Byran, 1st, woods division;
- Nathan Blair, 3rd, woods division;
- Mike Lusk, 1st, woods division;
- Terry Bartley, 1st, recreational project division;
- Dewight Langlitz, 3rd, technical speaking division;
- J. T. Tidrow, 2nd, woods division;
- Kyle Markey, honorable mention in mechanical drawing.

weather
By Sam Herren
April 19-26
TEMPERATURE
Hi 81° 19th
Lo 45° 22nd
RAINFALL
Total 1.78
Total to Date 7.26
Normal to Date 5.20

Industrial Foundation Stockholders Meet

The annual stockholders meeting of the Haskell Industrial Foundation was held Tuesday night in the Community Building of the Haskell National Bank.

President Royce Adkins presided at the meeting. Darold Roberson gave the treasurers report and Royce Williams, gave the nominating committee report. Directors elected to a two year term include: Pat Hale, Don Comedy, Doyle High, and Royce Adkins. Elected to a three year term were: R. C. Couch Jr., R. W. Herren, Wilda Medford and Darold Roberson.

Chamber of Commerce manager, Rex Felker, reported to the Stockholders that Trammell Bit & Spur Company was in the process of locating in Haskell.

Following the stockholders meeting a directors meeting was held and the following officers were elected: R. W. Herren, president; R. C. Couch, Jr., 1st VP; Pat Hale, 2nd VP; Doyle High, 3rd VP;

Don Comedy, Sec.; and Darold Roberson, Treas.

Herren appointed a committee of Pat Hale, Doyle High, Wilda Medford, and R. C. Couch to contact all new businesses in town and give them an opportunity to join the Industrial Foundation.

Rev. Rinehart Assumes Duties

The Rev. Mike Rinehart assumed duties as pastor of Central Baptist Church in Haskell last Sunday.

Rev. Rinehart moved here from Clovis N.M. He attended college at Frank Phillips Jr. College and West Texas State University. Originally from Borger, this is his first church.

He and his wife, Lynn, have two children, Nick 7 and Monica 5.

Sunday Services at the Church will be: 9:45 a.m. Sunday School; 10:45 a.m. Church Service; 5:30 p.m. Training Union; and 6:30 p.m. Evening worship. Wednesday services will be held at 8 p.m.

SELL IT FAST! BUY IT RIGHT!

USE WANT ADS!

NOTICE
Due to the bookkeeping involved and the high postal rates, we ask that you please remember that classified ads are Cash In Advance unless you are a business firm or have an established credit with the Haskell Free Press. Either mail your ad with check or if you need assistance in writing it we will be happy to help you. Rates are 5c per word or a minimum of \$1.50.

NOTICE
The Haskell Free Press reserves the right to edit and/or delete all news stories and locals for length and liability and to refuse to print anything deemed not newsworthy.

NOTICE
Please notify us of your change of address. If you do not, the Post Office charges us 25c for each time the Haskell Free Press is returned to us, this plus the cost of stencils, time and labor can make your move costly to us. In the future, failure to notify us will result in one month being deducted from your subscription.

FOR SALE \$\$\$
McCULLOCH CHAIN SAW HEADQUARTERS. A saw for every job. See new Woodard Farm Sale. 7tc

WOODARD FARM SALES—Ford tractors, equipment, long harrows, Lilliston-Heston-Oliver plow parts. 4tc

FOR SALE: Iron at wholesale prices. Rounds, flats, sheets, square tubing, channel etc. Haskell Trailer Builders. 20tc

FOR SALE: Gates belts and hose; Delco batteries and service; Texaco gas and oils M. C. Wilfong, ph. 864-2766. 7tc

FOR SALE: Good buys! 1974 International 3/4 ton pickup. 1974 Ford Galaxie 500. 1965 Chevrolet Impala. Call 864-2631. 12tc

FOR SALE: 1976 Mini-motor Home, Ford 460 motor, 22 ft. fully self-contained. Still under warranty. 22 ft. Holiday travel trailer, fully self-contained, tandem axle, Extra nice. 8' Cab-over camper, stove, sink, ice box, water tank, 12 V. 110V, butane lights, nice. Jesse Jones, 864-3107, 1106 S. Av. G. Haskell, Tx. 16tc

FOR SALE: 1973 Shasta travel trailer, self contained, air conditioned. 1957 2-door HT Belair Chevrolet. 1967 2-door HT Mustang. 817-997-2105, Travis Townsend, Rule, Tx. 15tc

FOR SALE: Peanut, Candy & Gum vending business in Haskell requires \$1,238.00 cash & few hours weekly. TEXAS KANDY COMPANY, 1327 Basse Rd. San Antonio, Tx. 78212 include phone No. 16-19p

FOR SALE: '75 Trans AM, red, AM/FM radio, stereo, air conditioner, good condition. 37,000 miles. '57 Chevy, 396 high performance, 425 HP. Call Rule, 997-2440, Charles Threest. 16-17p

FOR SALE: '73 Chevrolet Pickup, C-20, power, air, low miles. 17tc

FOR SALE \$\$\$
FOR SALE: 15' Larson Boat with 90 hp Evinrude Motor, tilt trailer, with extras. See at 1001 N. Av F. 17c

FOR SALE: 82 Massey Harris Combine in good condition. Call after 5 p.m. 864-2467. 17-19p

MISCELLANEOUS

CHANNEL CATFISH Fingerlings. Now booking orders. Fish Farm open daily. Douglass Catfish Farm, Sylvestor, 915-993-4644. 11-17p

BULK SEED, bedding plants 15c, hanging baskets, \$5.95; Geraniums 79c, flowering shrubs \$1.49, balled and burlaped Arborvitae \$6.95. 1 1/2 blk. N. of Depot in Rule at Gann's Greenhouse, 997-2169. 11tc

WANTED: Good used furniture and appliances. We buy and sell. Lee Used Furniture 120 N. Swenson St. (one block north of red light on hwy 277) Stamford, Texas. Phone 773-5608. 42tc

HAY BAILING & HAULING. Call Jerry Threest 997-2597 or Charles Threest 997-2440 in Rule. 16-19p

ATTENTION ARTISTS: We now have frames for you. Why drive out of town to get your paintings framed? Let Byrd's Studio help you with your framing. 104 N. Av D, Haskell, 864-2204. 16tc

SPECIAL FOR BRIDES AND SENIORS Portraits, one at regular price, the second at half price. See our new selection of Wedding Invitations also our custom and ready made frames. Byrd's Studio, 104 N. Av D, Haskell, 864-2204. 17c

NO REGRET, the best yet; Blue Lustre cleans carpets beautifully. Rent electric shampooer \$1. Perry Bros. 17c

YOU'LL SAVE AT CITY FLORAL. Try us for your every floral and photographic need. Haskell 864-3391. 17c

GARAGE SALES
GIANT FLEA MARKET on Hwy 6 at Rochester, Tx. Saturday and Sunday. Truckload Sale: couches, chairs, bedroom suites, washers & dryers, ceramics & rock equipment, metal detectors, silver & turquoise, rings and jewelry. Prices for everyone. Proceeds from the Concession Stand goes to benefit the handicapped. Sluefoot. 17c

YARD SALE, at 1300 SE 5th St. and Av DE on Friday, Saturday and Sunday. Wayne Walters house. 17p

CARPORT SALE: Saturday, April 30 from 9 a.m. to 5 p.m. 700 N. Av L. 17p

GARAGE SALE: Moving to a smaller place. Sale in progress now. Clothing, tools, spreads, curtains, dishes, lamps, pictures, records, clocks, some furniture, lots more. Hwy 380 about 1 mile east of Haskell. 17c

LOST & FOUND
STRAYED from Bill Holcomb place on river at Rochester 575 lbs. steer, ear marked right

HELP WANTED
LVN NEEDED 3 to 11 shift at Leisure Lodge. Apply in person 864-3556. 17tc

HELP WANTED: Wanted distributor for Dallas Morning News and Wichita Falls Record News. Write or phone Lawrence Tennessee, Communications Center, Dallas Morning News, Dallas, TX 75222, or phone 214-745-8391. 17-20p

HOMES FOR SALE
FOR SALE: 10'x48' Trailer House, completely furnished. Also 1972 1/2 ton Chevrolet pickup, power & air. Call 864-2229. 17-18c

FOR SALE: Large 3 bedroom in Rule. Completely carpeted & paneled, corner lot, big yard, lots of shade trees, one Burkett pecan, big garage, \$7,000.00, 1103 7th St., Phone 997-2691. 17p

FOR SALE: 3 bedroom house in Weinert \$9,000. For information call 864-3775-15-17p

HOUSE FOR SALE
4 bedroom, 3 bath on three lots w/well and cellar, Brick w/wood shingle roof. 997-2123. 16-17c

PUMPS
Irrigation-Domestic Formation Testing Well Drilling We pull & repair all makes. REA PUMP CO. Throckmorton Highway Haskell, Texas Call 24 hrs.—864-3372 41tc

XEROX COPIES
Haskell Abstract & Title Company
10 N Av D Haskell, Texas 864-3610 1tc

ELECTRICAL SERVICES
Irrigation, Industrial, Oilfield and Residential New Installation & Repairs Call Joe Williamson Munday, Texas A/C 817-422-4826 Evenings & Weekends A/C 817-422-4355 Days 14-17p

INSTANT CASH for any good merchandise, modern or old. Phone 864-3197 anytime.

LACKEY'S
Throckmorton Highway Haskell, Texas 21tc

Grandmother owned it. Mother gave it away. Daughter wouldn't have it. Granddaughter is looking for it. "Look at Sherman's Antiques" 864-2491 7tc

PENNSYLVANIA DUTCH
Sweet sour dressing to marinate meats or salads. Try it. You will like it. Sherman's Interiors & Antiques 14tc

LEGAL NOTICES
Haskell County Precinct #2 wishes to advertise for a bid for a truck. Specifications as follows:
84 inches cab to axle; 24000 lb. gross vehicle wt.; 15000 lb. two speed rear axle; 300 cubic inch plus, displacement heavy duty V-8 engine; 4 speed transmission; West Coast mirrors; 10590 lb. rear springs; 2250 lb. aux. springs; 6-900x20 10 ply tires; 6-7 inch disc. wheels; Heavy duty cooling system; Power take off.
Trade-in 1964 Dodge two ton dump truck and 1957 Chevrolet two ton dump truck. These trade-ins may be seen at Precinct #2 lot in Weinert.
For further information contact R. L. Edwards, Commissioner Precinct #2. The Court reserves the right to accept or reject any or all bids.
By Order of Haskell County Commissioners Court. B. O. Roberson County Judge 16-17c

NOTICE TO BIDDERS
City Council of Rule, Texas will accept bids at the regular meeting place in the Rule City Hall until May 31, 1977 for patching, cleaning and seal coating roads in Rule on a per mile basis. The City reserves the right to accept or reject any or all bids.
Standard specifications are as follows:
MATERIAL:
1. Asphalt: Type OA-175 .3 gal. per sq./yard.
2. Rock: Type A-Grade 4-1 cubic yard to 120 sq./yards.
MACHINERY:
1. Hydrostatic asphalt distributor
2. Self-propelled rock spreader, with pneumatic tires.
3. 12-ton Pneumatic roller. Minimum rolling time per mile 12 hours.
Ribbon Paving:
Contractor has the responsibility for motor grader and operator for hilling shoulders. Seal Coating:
Contractor has responsibility, on seal contracts, for all patching and cleaning operations.
L. R. Denton, Mayor of City of Rule, Texas 17-19c

NOTICE OF ELECTION
THE STATE OF TEXAS, *County Water District No. 1 County of Haskell, Texas To All Whom This May Concern:
It is hereby ordered, and notice is hereby given, that there will be an election on Tues. the 3rd day of May, A.D. 1977, in Election Precinct No. 8 of County Water District No. 1, County of Haskell, State of Texas, for the purpose of electing three Directors. Kenneth Sanders, Dale Carrol and Chesley Forehand are up for reelection.
All persons who are legally qualified voters of this State and of this County, who are resident property taxpayers voters of the County and this said Water District shall be entitled to vote at this election.
Kenneth Sanders, President, Board of Directors Haskell County, Texas Attest Dale Carrol Secretary, Board of Directors 16-17c

Public Notices
CARD OF THANKS
We wish to express our heartfelt thanks for all the prayers, cards, food, lovely flowers and other expressions of sympathy shown during the illness and death of Fychele. A special thanks to the First Baptist Church in Rochester where the delicious meal was served and all who brought food or helped in any way. May God bless each of you in a special way is our prayer. The families of Fychele Sloan Norman. 17c

CARD OF THANKS
I want to thank everyone, the Doctors, Hospital Staff, relatives, friends and neighbors for their prayers and many deeds of kindness while I was in the hospital. Thelma and Carl Medford. 17p

Kelly Ditching & Plumbing Supply
Water Lines Gas Lines Install Septic Tanks & Bleedlines. All Work Guaranteed for 1 year. Call 915-773-3939 10tc

LEGAL NOTICES
NOTICE
The Board of Equalization for the Rule Independent School District will meet at the Rule City Hall at 9 a.m. on May 11, 1977. Persons who have business with the board may meet with them at that time. 17c

NOTICE TO BIDDERS
City Council of Rule, Texas will accept bids at the regular meeting place in the Rule City Hall until May 31, 1977 for patching, cleaning and seal coating roads in Rule on a per mile basis. The City reserves the right to accept or reject any or all bids.
Standard specifications are as follows:
MATERIAL:
1. Asphalt: Type OA-175 .3 gal. per sq./yard.
2. Rock: Type A-Grade 4-1 cubic yard to 120 sq./yards.
MACHINERY:
1. Hydrostatic asphalt distributor
2. Self-propelled rock spreader, with pneumatic tires.
3. 12-ton Pneumatic roller. Minimum rolling time per mile 12 hours.
Ribbon Paving:
Contractor has the responsibility for motor grader and operator for hilling shoulders. Seal Coating:
Contractor has responsibility, on seal contracts, for all patching and cleaning operations.
L. R. Denton, Mayor of City of Rule, Texas 17-19c

ELECTRIC SEWERROOTER
Cleans clogged pipes, drains, sewers. No digging. No damage. Philpot's Supply & Service 864-3010 41tc

FOR ALL YOUR GENERAL PLUMBING NEEDS
Call Philpot's Supply & Service Center. 864-3010 41tc

Talleys Painting Service
Commercial-Residential Paneling-Sheet Rock General Repair Haskell 864-2459 15-22p

CARPET CLEANING Von Schrader method includes: cleaning that combines scrubbing with extraction. Dries quickly. Pioneer Maintenance 864-2198 17-20p

H. F. LANGFORD
Sand and Gravel Caliche and Fill RULE HWY. WEST HASKELL

ADDRESS ROOFING
Winfred Address Residential & Commercial 713 S. 10th St. P. O. Box 463 Ph. 864-3078 Haskell, Texas 31tc

JUNK-A-TIQUES, glassware, furniture, baby bed, books, dishes, bottles, doll Kleenex box, dolls, misc. We buy, sell or trade. We trade books. 1704 N. First St. Mrs. Harley Langford.

Used Color TV's For Sale

The Haskell Free Press
Established January 1, 1886
PUBLISHED EVERY THURSDAY
MEMBER
TEXAS PRESS ASSOCIATION
1977

BILL COMEDY—Publisher
DON COMEDY—Editor

Entered as second-class matter at the postoffice at Box 577, Haskell, Texas 79521, under the Act of March 3, 1879.

SUBSCRIPTION RATES
In Haskell and Adjoining Counties

	Sub	Tax	Total
One Year	\$ 5.00	.25	\$ 5.25
Six Months	\$ 3.00	.15	\$ 3.15
Two Years	\$ 9.50	.48	\$ 9.98

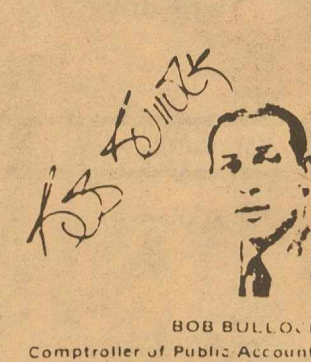
Elsewhere in Texas

	Sub	Tax	Total
One Year	\$ 6.00	.30	\$ 6.30
Six Months	\$ 4.00	.20	\$ 4.20
Two Years	\$11.50	.58	\$12.08

Outside of Texas

	Sub	Tax	Total
One Year	\$ 8.00		\$ 8.00
Six Months	\$ 4.50		\$ 4.50
Two Years	\$15.50		\$15.50

NOTICE TO PUBLIC—Any erroneous reflection upon the character, reputation or standing of any firm, individual or corporation will be gladly corrected upon being called to the attention of the publishers.



BOB BULLOCK, K
Comptroller of Public Accounts
Dear Mr. Bullock,
A store I shop at regularly has been charging me sales tax on packs of cigarettes. I told the clerk that he was wrong in charging the tax, but he insists that he is required by law to do so. Which of us is correct?
You are: Cigarettes are taxed under the Cigarette Tax Act at a rate of 18.5 cents per pack and are not subject to the state and local sales tax. Ask for a refund.
Dear Sir:
What percentage of the state's total tax collections are derived from taxes on the production of oil and gas?
Approximately 20 percent for the 1976 fiscal year.
Mr. Bullock:
I own some tovalty in an oil well in West Texas, but I have yet to receive any money. What should I do?
You should contact the physical operator of the property. There may be a problem causing the money to be placed in suspense. If you know the name of the lease and the field name, the Minerals Tax Division of the Comptroller's Office can supply you the operator's name and address.
You can contact the Minerals Tax Division by calling without charge 1-800-252-5555.
Dear Mr. Bullock:
Recently, my natural gas bill included a state tax of some 2 percent. Is this some kind of a new tax?
No. You probably are referring to the gross receipts tax on utilities which has been in effect for many years. The practice of some companies showing this tax on their monthly bills to customers is relatively new, however.
Sir:
Are computer programs subject to the sales tax?
A computer program which is developed specifically for a customer is not taxable, and changes made to a customer's existing program likewise are not taxable. But prepared computer programs that are copies of existing programs are subject to the tax.
Ask Bob Bullock is produced as a public service to the taxpayers of Texas by the State Comptroller's Office. The answers here do not necessarily apply in every similar situation and should be used only as a general guide.
If you have a question, write Ask Bob Bullock, c/o Tax Information, LBJ Building, Austin, Texas 78774 or call toll-free 1-800-252-5555.

Farm-facts

Texas Department of Agriculture
Reagan V. Brown, Commissioner

All That Glitters... Fewer Potatoes ... More Milk.
With the sharp increase in cotton acres expected in Texas this year, it appears that the state's cotton industry will be the major share of crop income.
But there are problems ahead for cotton, too, not necessarily in price but in ginning.
A series of hearings is now being held throughout the nation relating to a proposed cotton dust standard from the Occupational Safety and Health Administration (OSHA).
The National Cotton Council estimates the industry-wide installation cost of dust control equipment alone at \$3.2 billion. The study also shows an estimated \$2.5 billion cost for textile mills alone.
Opponents of the measure say the adoption of the standard would cause cotton usage to drop drastically, that the cost of producing cotton would increase, and that many gins would be forced out of business because they could not afford to install the equipment. Thus, cotton production itself would decrease, they conclude.
A hearing on the proposal will be held in Lubbock May 10.
Meanwhile, cotton farmers in the state are apparently optimistic about the future of that crop for this year. They indicate they plan to plant 6,300,000 acres this year. This is a 31 per cent increase over a year ago and is the highest acreage to be planted to cotton in Texas since 1962.
Nationwide, cotton producers intend to plant 13,600,000 acres this year, which is an increase of 17 per cent from a year ago.
In Other Cropping Plans, Texas farmers intend to increase corn acres 21 per cent from a year ago, but are going to decrease sorghum acres 25 per cent. This would put sorghum acreage at its lowest level since 1949.
Nationwide, corn acreage will be about the same as last year while sorghum acreage will be down 11 per cent.
The Spring Potato Crop for Texas is now forecast to be 28 per cent below a year ago.
Potato harvest is underway in the Lower Rio Grande Valley. Recent favorable weather in central and south Texas has allowed potatoes to make good progress.
Milk Production in Texas shows a 16 per cent increase during March compared to a year ago. It is up one per cent from a month ago.
Production per cow was up 20 pounds over a year ago.
Wheat Production in Texas is expected to be eight per cent under a year ago. The crop is now forecast at 95,000,000 bushels. This would be 28 per cent under the record crop produced in 1975.

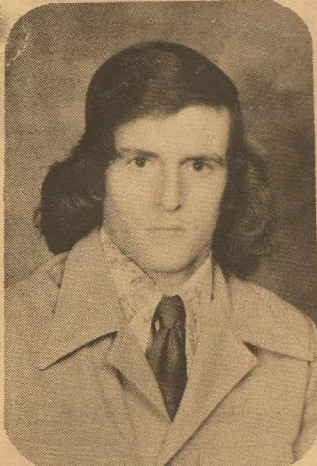
For your metal buildings, Carpets & Grain Storage Bins See Strickland Bridge, Inc. Stamford Hwy. Phone 864-2677. 14tc

FOR SALE
Choice 3 Bedroom B.V. in one of the best locations in Haskell. 14tc

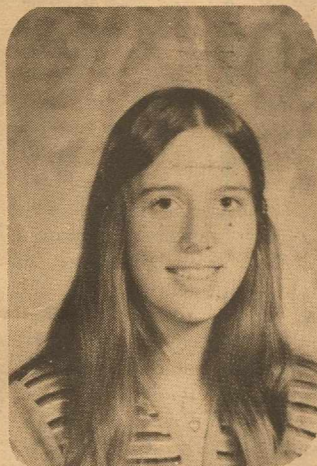
RULE ROUND-UP

BY OLETA CORNELIUS

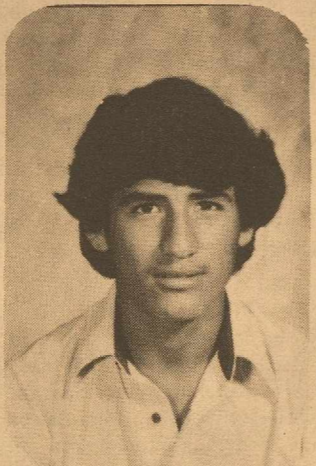
Phone 997-2167 With Your News



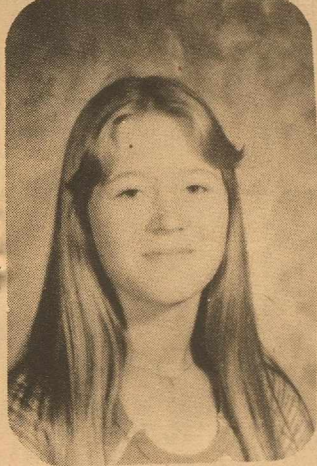
CHARLES THREET



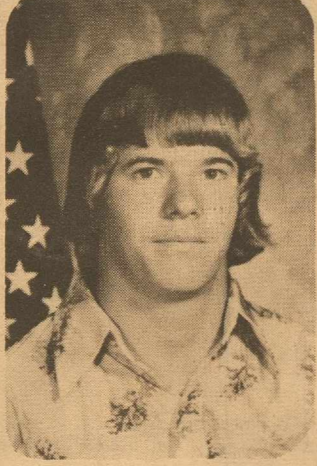
LYNN FOUTS



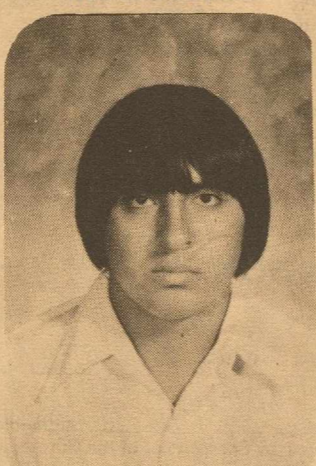
HECTOR PUEBLA



WYNETTE WILLIAMS



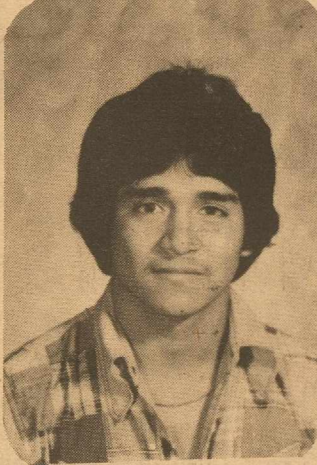
JERRY TUMLINSON



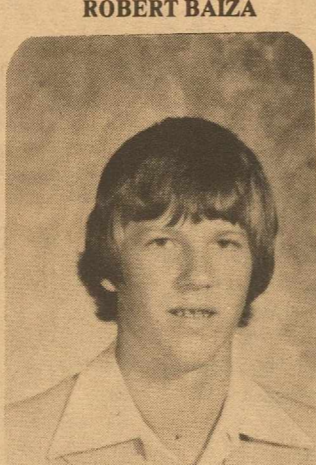
ROBERT BAIZA



MARTHA KITTLEY



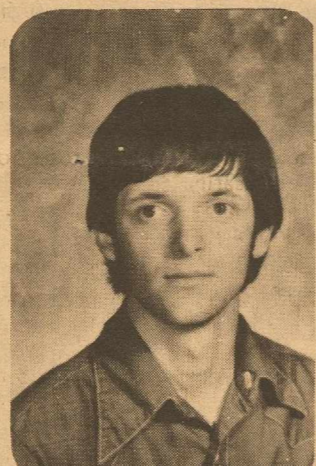
PAUL FLORES



TONY CARTER

JR HI 2ND IN DIST TRACK
The Rule Junior High boys track team won 2nd place in the district meet held at Jayton, April 20th. Winning the meet was Rochester with 170 points, Rule 156, Goree 100, Lueders-Avoca 74 and McCaulley 20.
Boys placing and their events are as follows: Pole vault-1st David Lisle 9'; 3rd

Mike Rhoads 7'. High jump-1st David Lisle 5'2"; 3rd Leon Greeson 4'10". Shot put-1st Santo Baiza 43'10 1/2"; Freddie Benevadies 34'1". Discus-2nd David Lisle 103'7 1/2"; 3rd Terry Threet 103'6 1/2"; 4th Leon Greeson 99'11". Long jump-3rd Cary Hannsz 15'8". Pull ups-1st Terry Threet 31, 5th Mike White 19; 6th Darin Beakley 18.



WES KITTLEY

In running events, 440 relay-4th team of Danny Kittley, Cary Hannsz, Leon Greeson and David Lisle with a time of 51.6. 660 dash-3rd Joe Ortiz 1:43.8, 4th Terry

Threet 1:44.1, 6th Casey Hannsz 1:40.5. 100 yd high hurdles-2nd Mike Rhoads 16.3, 3rd Leon Greeson 16.7, 6th Dennis Cloud 17.6. 100 yd dash-5th Cary Hannsz 12.2, 330 yd dash-4th Danny Kittley 44.4, 220 low hurdles-2nd Freddie Benevadies 30.3, 3rd Mike Rhoads 31.2. 220 yd dash-5th Mark Thane 29, and 6th Wesley Jones 29.9. 1320 run-4th Jay Beakley 4:14.5 and 6th Mike White 4:22.1. 1320 relay-2nd team of David Lisle, Cary Hannsz, Leon Greeson and Danny Kittley with a time of 2:53.2.

DISTRICT TENNIS

Winning the District 20-B boys tennis singles played Monday and Tuesday, April 18th and 19th at Rule was Tony Carter. Tony defeated Bookerman of Weinert 6-0, 6-0, and then Williams of Goree 6-0, 6-0, then Dodge of Paint Creek 6-0, 6-1 and in the finals, Ayles of Goree 6-2, 6-4. 1st and 2nd place winners advance to regional play at Brownwood, April 28th and

STATE QUALIFIERS

Several of Rule students participated in the Region II Conference B meet at Brownwood for UIL last week and qualified for state. The state meet will be held in Austin on Friday, May 6th.
Winning 1st in the slide rule was Wynette Williams, 2nd was Martha Kittley and 3rd was Lynn Fouts.
Winning 2nd in the headline writing was Wes Kittley. Clyde Stegemoeller placed 4th in shorthand. Placing 5th in

number sense was Eddie Brass and Jill LeFevre placed 6th.
Congratulations to these students for placing and winning and good luck to those going to state.

LUNCHROOM MENU

May 2-6
MONDAY
Fish Squares with Catsup Sweet Peas
Tossed Salad
Rolls
Peanut Chocolate Cookies
Milk
TUESDAY
Barbecue on Bun
French Fries with Catsup
Cabbage & Pepper Slaw
Gingerbread with Creme Icing
Milk
WEDNESDAY
Fried Chicken with Gravy
Whipped Potatoes
Lettuce, Cheese,
Tomato Salad
Rolls & Butter
Peach Coliber
Milk
THURSDAY
Pizza with Cheese

Blackeyed Peas
Lettuce & Tomato Salad
Sugar Cookies with Jello
Milk
FRIDAY
Beef Stew
Cheese Toast
Cabbage Slaw
Cornbread
Yellow Cake with
Chocolate Icing
Milk

Primitive and Mahler Supply.
There will be no speaker and entertainment will be furnished by Jeff Thane and his band. Students of Rule High School have represented Rule very well in the Inter-scholastic League Literary meet winning first with 184 1/2 points. Let's show them our support and attend the banquet.

BOBCAT APPRECIATION DINNER

Monday night, May 2, at 7:30 p.m. the Rule Booster Club will host an All-Appreciation Dinner to recognize the honor all students participating in UIL Events and District Athletic Events. The meal will be prepared by the Booster Club members and tickets purchased early will be \$2.50 and at the door they will be \$3.00. Tickets may be purchased from Howard Brass, Delbert LeFevre, Tom Kutch, Sam Turner, Novis Ousley, Malcolm Hertenberger, Derrell Sorrells, Village

PRE-KINDERGARTEN CLINIC

A Pre-Kindergarten Clinic will be held Thursday, May 5, at 1:00 p.m. in the Rule School Cafeteria. Parents should bring all children who are age 5, or will be 5 before September 1st, 1977. They should also bring birth certificates and any immunization records which they have for this child.
Mrs. E. Acree, County School Nurse, will be conducting the Clinic and will be available to give any immunizations that might be needed.

Buy Now AND SAVE!

GOOCH GERMAN SAUSAGE EACH 89c	MRS. BAIRDS BREAD 1 1/2 LB LOAF 39c
WILSONS Bologna LB 79c	CALIFORNIA FRESH CARTON Strawberries 39c
PORK STEAK LB 79c	FLORIDA YELLOW Squash LB 29c
SIRLOIN STEAK LB \$1.19	FLORIDA Fresh Corn 8 EARS \$1.
CHUCK BLADE CUT STEAK LB 88c	RANCH STYLE BEANS NO 300 SIZE 29c
7-BONE ROAST LB 88c	WOLF BEEF STEW 15 OZ CAN 49c
HAMBURGER MEAT LB 59c	KEEBLER ZESTA CRACKERS 1 POUND BOX 49c
WISHBONE ITALIAN DRESSING 8 OZ BOTTLE 49c	JOHNSTONS GRAHAM CRACKER Ready Crust 49c
GRIFFIN Grape Jelly 2 POUND JAR 98c	ARMOURS Potted Meat 3 OZ CAN 19c
MORTONS FROZEN HONEY BUNS PKG 49c	PETTER PAN CRUNCHY 12 OZ JAR Peanut Butter 69c
GLADIOLA FLOUR 5 LB BAG 59c	SCOTT LARGE ROLL TOWELS 59c

Bluebonnet Cafe Rule

Noon Buffet
Open Daily
11:00 A.M. to 2:00 P.M.
Open Wednesday thru Friday nights
CATFISH FRIDAY NIGHT ALL YOU CAN EAT

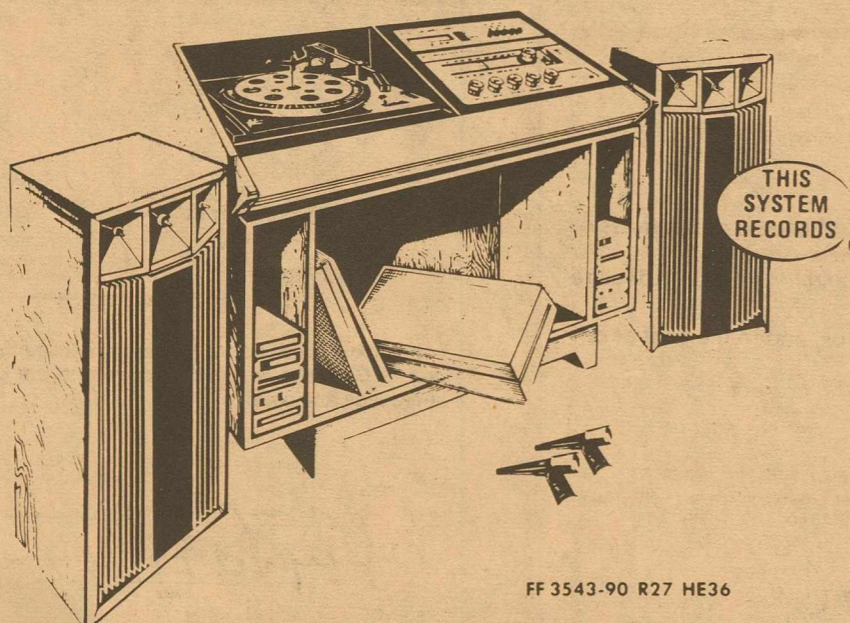
GRADUATE WITH ELECTROPHONIC IN STYLE

The Total Stereo Sound System

- AM FM/FM Stereo
- Deluxe Record Changer
- 8-Track Recorder
- 27" Speakers
- 8" Duocone Woofer
- Two-2" Tweeters
- Tuned Ducted Port
- Stand Included

Only **\$349.95**

Reg. \$409.95



FF 3543-90 R27 HE36

ANDERSON TIRE COMPANY

206 S. AVENUE E

PHONE 864-2900

POGUE GROCERY

—Extra Parking Behind The Store.

Home Owned And Operated—

113 NORTH AVENUE E

PHONE 864-2015

HASKELL, TEXAS

RULE ROUND-UP

BY OLETA CORNELIUS

Phone 997-2167 With Your News

YOUTH SUNDAY

Calvary Baptist Church in Rule will be having a Youth Sunday on May 1. Bobby Isbell will be preaching both morning and night services. Lunch at the church and afterwards games and fun. Our area youth as well as adults are invited to attend.

FHA OFFICERS

Officers were recently elected for the Rule Chapter of Future Homemakers of America (FHA) and those elected for the 1977-78 year are as follows: president—Martha Kittley, 1st vice president—Joanne Cloud, 2nd vice president—Bonnie Woods, 3rd vice president—Jill LeFevre, 4th vice president—Lesla Peel, 5th vice president—Tammy Anderson, secretary—Lynn Fouts, treasurer—Tami Letz, historian—Lisa Sherman, typist—Linda Rhoads. FHA sponsor is Mrs. Becky Baker.

BUSY BEES

Mrs. Bill Gann was hostess to the members of the Rule Busy Bee Club which met in her home on Wednesday, April 13th at 3 p.m. for their bi-monthly meeting.

Club president Mrs. H. H. Hines presided over the meeting. Mrs. W. V. Almond presented the opening exercises entitled, "Down The Road of Time." The minutes which were read by the club secretary, Mrs. Ollis Macon, were approved and she led the roll call. Following the roll call, the members had a round table discussion of the recent visit by staff writer Lynne Messina and staff photographer Billy Adams from the Abilene Reporter News in Abilene. The reporters had visited with the Busy Bee Club on March 31st and interviewed several of the members and viewed various items of hand-craft on display. Their write-up along with a picture was a feature story in the morning edition on April 7th, of the Abilene Reporter Newspaper.

Following the discussion the business meeting was concluded with the report of forty two visits made to the sick and

lonely and ten dishes of food reported being carried to the sick and shut-ins.

Craft work displayed by the members present included an Easter Chicken, crocheted turtle over a butter carton, crocheted rabbit made out of egg carton, an Easter hat, painted china eggs and holders and an embroidered bell pull.

The serving table was laid with a white lace cloth and held an arrangement of various colored irises. Refreshments of Ritz crackers with cheese, pickles, cake, candy and punch were served to the eight members present and one guest, Mrs. Dorothy Stout of Haskell.

Members of the Rule Busy Bee Club will meet next in the home of Mrs. T. D. Hamilton on Wednesday, April 27th, at 3 p.m.

AARP

Members of the American Association of Retired Persons met on Monday night, April 18th, at 6 p.m. in the Rule Recreation Clubhouse for a dinner meeting and fellowship. Twenty six members were present and two guests from Haskell. Mrs. Juanita Rhea and Mrs. Corrie White. The AARP welcomed a new member joining Monday night and that was Mrs. Velma Wilson.

Following the supper, table games of bridge and dominoes were played. Hostesses for the meeting were Mmes. William Camp, Eva White and Alta Carothers. Hostesses for the next meeting to be held on Monday, May 16th, will be Mmes. Ella Franklin, Ruth Eaton and Hazel Lewis.

GARDEN CLUB

Members of the Rule Garden Club will meet on Wednesday, May 4th, at 2 p.m. in the home of Mrs. C. A. Jackson. Other hostesses assisting Mrs. Jackson will be Mrs. O. G. Lewis and Mrs. A. B. Arnett.

Director for the day will be Mrs. Alma Allen. Each member will bring a plant for a Show and Tell Pot Plant and

then Mrs. Allen Forbis will install incoming officers for the 1977-78 year.

U.M.W.

Mrs. A. R. Eaton was hostess to members of the United Methodist Women which met Tuesday, April 19, at 2 p.m. in the Fellowship Hall of the First United Methodist Church.

Mrs. Ollis Macon, president, called the meeting to order and asked Mrs. R. O. Henry to lead in prayer. Following the prayer, Mrs. Macon announced the annual U.M.W. meeting to be held in Midland April 22-23, and then turned the program over to Mrs. Henry. Mrs. Henry spoke on Intercessory Prayer from the book, Prayer Ministry in the Local Church by Steve Harper and also from What Prayer Can Do from Guideposts. The Realistic Test of Prayer was from Guideposts. Following her talks, members discussed the topics and several personal experiences were given by the members.

The meeting was concluded with serving of cake and coffee.

R. Williams, pastor of Rule's First Baptist Church officiated. Burial was in the Rochester Cemetery. Mrs. Norman died at 5:45 p.m. Friday, April 22, in Hendrick Medical Center in Abilene after a brief illness.

Born March 25, 1925 in Haskell County, she married Doyle Norman on August 12, 1976 in Haskell. She was a member of the First United Methodist Church in Rochester.

Survivors include her husband, Doyle of Rule; her mother, Mrs. Edna Adkins of Rochester; her daughter, Sherri Gentry of Rochester, two sons, Dickie Sloan of Rochester and Tommy Don Sloan of Knox City; and seven grandchildren.

SCHOOL EQUALIZATION BOARD

The Equalization Board for the Rule Independent School District will meet at the Rule City Hall on Wednesday, May 11th at 9 a.m. Those wishing to meet with the board may do so at this time to discuss their taxes.

PEE WEE TRACK MEET

Paint Creek will host a Pee Wee Track Meet at their school on Friday, April 13th, beginning at 12:00 noon.

LOOK WHO'S HERE

Mr. and Mrs. Johnny Menchaca announce the arrival of their daughter, Rhonda Sue, born Tuesday, April 19th, at 10:00 a.m. in the Stamford Memorial Hospital in Stamford. Little Miss Rhonda weighed 6 lbs. and ½ oz. and was 19" long.

Maternal grandparents are Mr. and Mrs. J. D. Laughlin of Irving and paternal grandparents are Mr. and Mrs. Leonard Menchaca of Rule. Great-grandparents are Mr. and Mrs. Bruce Miller of Rule and Mr. and Mrs. Clyde Laughlin of Rule.

LOCALS

A group of young people from Hardin Simmons University of Abilene brought the morning message and music last Sunday at the First Baptist Church.

Mr. and Mrs. Joe B. Cloud and Mrs. Henry Cloud, visited in Lubbock over the weekend with Miss Caron Cloud and Mr. and Mrs. Joe Greer and son.

Luncheon guests in the home of Mr. and Mrs. James A. Lisle Jr. and David last Sunday were Mr. and Mrs. Jimmy Lisle of Hamlin, Mrs. Joanne Carroll, Mrs. June White, Mrs. Ronnie Atkins and Brian, Mike Lisle of Abilene and Thelia Grigsby of Abilene Christian University.

Visiting recently with Mrs. Lennie Yarbrough were Mrs. Charles O'Pry and children of Fort Worth.

Attending an Eastern Star School in Abilene last Friday and Saturday were Rev. and

Mrs. Allen Forbis, Lucille Martin, June White and Mrs. J. A. Lisle.

Mrs. Clyde Grice, Mrs. O. G. Lewis, Mrs. J. E. Geer, Mrs. A. R. Eaton, Mrs. J. C. Kyle, Mrs. J. A. Lisle and Mrs. A. T. Verner attended a book review on "Peace Child" last Thursday night at the Haskell Federated Club.

Mmes. Arthur Williams, Ollis Macon and H. H. Hines attended the annual United Methodist Women's meeting held in Midland, last Thursday and Friday.

Mr. and Mrs. Cecil Lewis visited over the weekend at Texas A&M with their daughter, Miss Susan Lewis.

Mmes. James A. Lisle Jr., June White, Ronnie Atkins, W. L. Pinkard, Joanne Carroll, and J. A. Lisle attended a pink and blue shower for Mrs. Jimmy Lisle last Saturday in Hamlin.

Mr. and Mrs. Clarence Ray visited in the home of their granddaughter and Lt. Mike Owens recently and attended Stacy Owens fifth birthday in Fort Polk, La.

Mr. and Mrs. Jimmy Lisle of Hamlin, visited with Mr. and Mrs. Eddie Briles and daughter last Sunday.

DISTRICT GOLF

Winning the District 20-B golf meet held at Munday, April 13th, was Goree High School. Rule's team placed third in the meet. Playing on the golf team for Rule were Larry Denson, Dwayne Landreth, Bobby Slaton and Terry Lee.

Medalist for Rule was Bobby Slaton and golf coach is Mr. Bobby Lusk.

FLEET OF FOOT

The Rule Bobcats won 2nd place in the District 20-B track meet concluded at Jayton, April 20th. The preliminaries had previously been run on Saturday, April 16th, and the meet had to be postponed until Wednesday for the finals because of rain.

Winning 1st place in the meet was Rochester with 188 points. Rule 162, Goree 92, Lueders-Avoca 24, Paint Creek 4, McCaulley 4 and

Weinert 1. Five new records were set in the meet. John Michaels of Rochester set a new record in the 330 intermediate hurdles with a time of 41.3. Goree broke the 440 relay record held by Rule of 44.6, with a 44.5. Robert Baiza's throw of 51'11" in the shot broke the record of 50'11" previously held by Jimmy Lisle of Rule. The mile relay team of Jerry Tumlinson, Paul Flores, Charles Threet and Wes Kittley broke the mile relay record with 3:29.9. It was previously held by Rule with the time of 3:33.1. Wes Kittley broke the 880 run record with a 2:00.0 and it was previously held by his brother Rob Kittley of Rule and was a 2:05.0.

Other events are as follows: pole vault—5th Leonard Menchaca 10'6"; Shot—1st Robert Baiza 51'11"; 2nd Jerry Tumlinson 50'1"; 4th Ramiro Baiza 40'4"; Discus—1st Jerry Tumlinson 131'2"; 3rd Ronnie Oliver 124'1"; 6th Ramiro Baiza 101'5"; Long jump—6th Ronnie Oliver 18'2"; 440 relay—3rd team of

Leonard Menchaca, Jerry Threet, Ruben Gonzales and Ronnie Oliver—time of 47.4. 880-1st West Kittley 2:00.0; 3rd Ricky Kittley 2:12.0; 6th Leonard Menchaca 2:20.0. 120 high hurdles—6th James Cloud 19.6. 100 yd dash—2nd Charles Threet 10.3; 5th Jerry Tumlinson 11.1. 440 yd dash—2nd Mike Hertel 53.0; 3rd Ruben Dominges 54.0; Nicki Hunt 56.0. 220 yd dash—1st Wes Kittley 23.0; 2nd Charles Threet 23.2; 4th Rodney Threet 25.1. Mile run—1st Hector Puebla 5:04.3; 2nd Gavino Ortiz 5:27.3; 3rd James Cloud 5:51.0. Mile relay—1st team of Jerry Tumlinson, Paul Flores, Charles Threet and Wes Kittley 3:29.9.

Boys placing 1st and 2nd now advance to regional competition to be held at Brownwood on Saturday, April 30th. A state qualifiers meet for girls will be held at Jayton on Thursday, April 28th and a boys state qualifiers meet will be held also at Jayton on Thursday, May 5th.

REPORT OF CONDITION

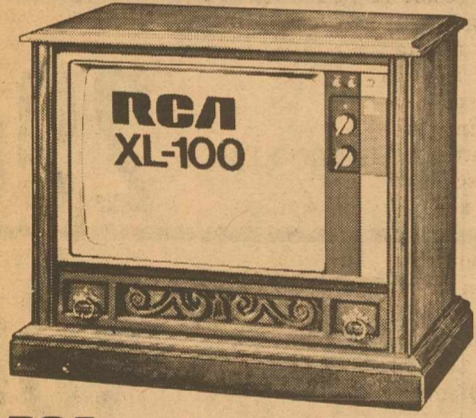
THE FARMERS NATIONAL BANK of RULE
Name of Bank City
In the state of TEXAS, at the close of business on MARCH 31, 1977
published in response to call made by Comptroller of the Currency, under title 12, United States Code, Section 161.
Charter number 14539 National Bank Region Number 11

Statement of Resources and Liabilities		Thousands of dollars
		THOUSANDS
ASSETS		
Cash and due from banks		746
U.S. Treasury securities		1,295
Obligations of other U.S. Gov't. agencies and corps		225
Obligations of States and political subdivisions		849
Other bonds, notes, and debentures		450
Federal Reserve stock and corporate stock		5
Trading account securities		
Federal funds sold and securities purchased		
under agreements to resell		
Loans, Total (excluding unearned income)	1,025	
Less: Reserve for possible loan losses	3	
Loans, Net		1,022
Direct lease financing		
Bank premises, furniture and fixtures, and other assets representing bank premises		126
Real estate owned other than bank premises		
Investments in unconsolidated subsidiaries and associated companies		
Customers' liability to this bank on acceptances outstanding		
Other assets		
TOTAL ASSETS		4,718
LIABILITIES		
Demand deposits of individuals, prtnshps. and corps.		2,476
Time and savings deposits of individuals, prtnshps. and corps.		1,702
Deposits of United States Government		10
Deposits of States and political subdivisions		222
Deposits of foreign govts. and official institutions		
Deposits of commercial banks		
Certified and officers' checks		31
TOTAL DOMESTIC DEPOSITS		4,441
Total demand deposits	2,607	
Total time and savings deposits	1,834	
Total deposits in foreign offices		
TOTAL DEPOSITS IN DOMESTIC AND FOREIGN OFFICES		4,441
Federal funds purchased and securities sold		
under agreements to repurchase		
Liabilities for borrowed money		
Mortgage indebtedness		
Acceptances executed by or for account of this bank and outstanding		
Other liabilities		5
TOTAL LIABILITIES (excluding subordinated notes and debentures)		4,446
Subordinated notes and debentures		
Preferred stock No. shares outstanding (par value)		
Common stock a. No. shares authorized 5000		
b. No. shares outstanding 5000 (par value)		50
Surplus		114
Undivided profits		103
Reserve for contingencies and other capital reserves		5
TOTAL EQUITY CAPITAL		272
TOTAL LIABILITIES AND EQUITY CAPITAL		4,718
MEMORANDA		
Average for 15 or 30 calendar days ending with call date:		
Cash and due from banks		677
Fed. funds sold and securities purchased under agreements to resell		
Total loans		1,037
Time deposits of \$100,000 or more in domestic offices		
Total deposits		4,440
Fed. funds purchased and securities sold under agreements to repurchase		
Liabilities for borrowed money		
Standby letters of credit (outstanding as of report date)		
Time deposits of \$100,000 or more (outstanding as of report date)		
Time certificates of deposit in denominations of \$100,000 or more		
Other time deposits in amounts of \$100,000 or more		

We, the undersigned directors attest the correctness of this statement of resources and liabilities. We declare that it has been examined by us, and to the best of our knowledge and belief is true and correct.

HENRY TOWNSEND
Name
CASHIER
Title
of the above-named bank do hereby declare that this Report of Condition is true and correct to the best of my knowledge and belief.
Henry Townsend
Signature
April 22, 1977
Date

Lerna L Neal
Mrs W D Payne
B O Parrott
Directors



RCA 25" diagonal

Model GA698S

\$639.95

The Carrera XL-100/100% solid state 25" diagonal picture

- Reliable RCA XL-100 chassis has no tubes to burn out—it's 100% solid state! Produces 27,000 volts* for bright, clear color pictures.
- Super AccuColor black matrix picture tube gives you sparkling, dramatically detailed pictures with warm, pleasing flesh tones.
- Perma-Chrome shadow mask maintains color purity during picture tube warm-up.
- Black matrix background separates color phosphors for sharp picture contrast.
- Push-button Automatic Fine Tuning (AFT) pinpoints and holds the correct broadcast signal.
- Automatic Chroma Control electronically stabilizes color intensity on each channel.
- 100% solid state VHF and UHF tuners deliver excellent reception in metropolitan and fringe areas. Individual click stops and number identification for VHF and UHF channels from 2 to 83.
- Twelve plug-in RCA AccuCircuit modules can be easily replaced for simplified servicing.
- Five miniature solid integrated circuits perform key functions in AFT, picture I.F., sound, and color systems.
- Circuit breaker with reset push button eliminates fuse-replacement service calls.

*Design average measured at zero beam current.

RCA Sportable

12" Diagonal Model AX012 Now Only

\$88.88

AMONETT & AMONETT HASKELL

SPRING SALE

FOUR DAYS THURSDAY, APRIL 28-MONDAY, MAY 2

PIECE GOODS

ONE SELECTION VALUES TO \$4.98 PER YD.

Sale \$1.98 per yd.

LONG SLEEVE BLOUSES

SHIP 'N SHORE VALUES TO \$22.00

1/2 PRICE

ACME COWBOY BOOTS

ENTIRE STOCK

30% off

Blacks & Browns Reg. \$44.95-\$31.49 pr., etc. This sale includes one style of Acme Cowboy work boots.

DRESS SHOES

CITY CLUB

SIZES 6 1/2 TO 12. ENTIRE STOCK

30% off

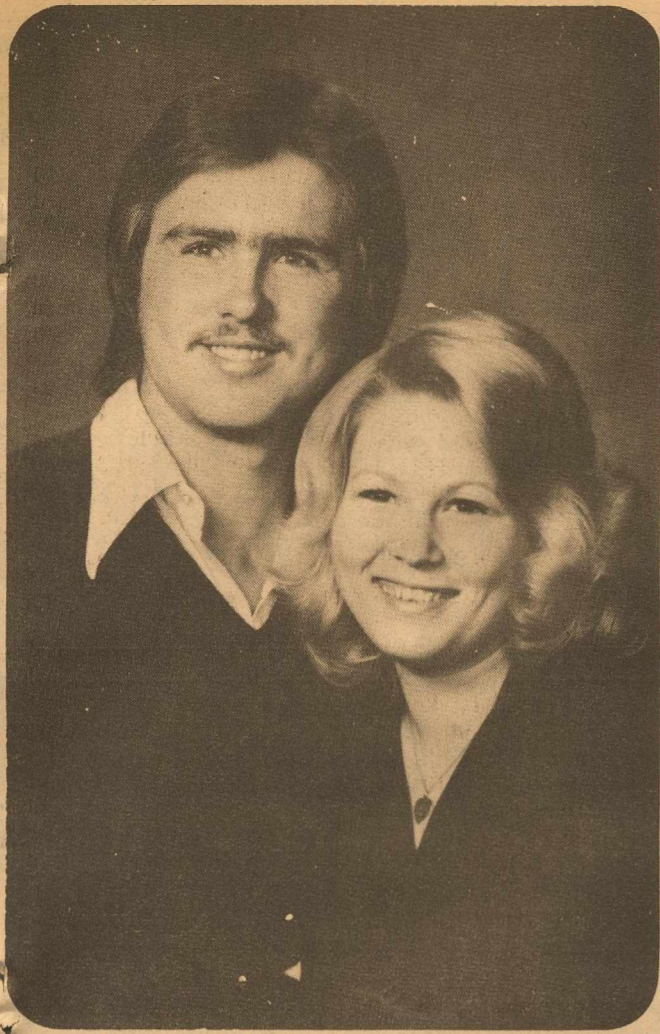
This includes earth shoes, youth heels, laces, slip-ons, ruff-out casuals, solids and two tones in patent. Over 100 pair 30% off. Black, brown, beige, tan and beige, two-tones, etc. Reg. \$29.95 extra value sale \$20.95 etc.

If our Dacron & Cotton Fabrics arrive in time, they will be sold on this sale at 98c per yard.

Ousley's OF RULE

ALL SALES CASH

PHONE 997-2223



Engagement Announced

Mr. and Mrs. C. H. Wall of Arlington, have announced the engagement and approaching marriage of their daughter, Pamela Sue to Mr. Larry Keith Rose of Fort Worth. Larry is the son of Mr. and Mrs. Delbert L. Rose of Fort Worth and the grandson of Mrs. A. B. Arnett of Rule and Mrs. Opal Rose of Haskell. The wedding will be held May 21 in the First Baptist Church of Arlington.

Ruth Class Holds Meeting

The Ruth Sunday School Class of East Side Baptist Church met April 21 for their regular meeting. Neat Bevel brought the devotion on "Living Proof," after which Lena Dendy led a

Bible quiz.

A salad supper was enjoyed and gifts exchanged and secret pals revealed. There were 9 present. Hostesses were Mable Mullings, Ethel Hill and Lena Dendy.

Weinert Matrons Have Meeting

The Weinert Matrons Club met in the home of Mrs. W. C. Winchester April 21. The president called the meeting to order. The secretary read the minutes of the meeting for April 7. The minutes were approved. The secretary also read four letters. One letter was from Mrs. H. T. Wilkinson of Haskell. She was presenting a book through the club to the Weinert High School library. The book was presented in memory of Mrs. Wilkinson's mother, the late Mrs. C. T. Jones. The other letters were letters requesting release from club membership. They were from Mrs. R. J. Rainey, Mrs. R. W. Raynes, and Mrs. Buck Turnbow. Mrs. W. B. Guess moved that the resignations be accepted with regrets. The motion was seconded and carried.

Mrs. V. C. Derr suggested that club members go on to Old Abilene Town in May as had been previously planned. Members are to meet at Mayfield's Grocery at 9:30 May 5 and go together from there.

In the absence of Mrs. Buck Turnbow, Mrs. W. C. Winchester had charge of the program on Americanism. She introduced the program by reading a definition of Americanism. Roll call was answered by each one telling of her most cherished American ideal. Mrs. Henry Smith then gave a talk on "The History of the American Flag." Mrs. V. C. Derr talked on "The Light of Freedom." Mrs. D. L. Moody read a paper on "The Time of Awakening Is Over." Mrs. Winchester gave some points on safety for women.

At the conclusion of the program, Mrs. Winchester served refreshments of sandwiches, angel food cake, punch, and tea. Guest for the day was Mrs. G. C. Marshall.



Engagement Announced

Mr. and Mrs. Willard Grigsby of Nocona, Texas announce the engagement of their daughter, Thelia Ann, to Michael Allen Lisle, son of Mr. and Mrs. James A. Lisle, Jr. of Rule. The couple plan an August 5 wedding in the garden of the bride-elect's grandmother, Mrs. B. R. Grigsby in Nocona.

Around Town

By Lisa and Mary

Mr. and Mrs. Randy Shaw were in Abilene Saturday visiting Mr. and Mrs. Danny Stocks.

Book Review Is Study Club Program



MRS. TOM DANCE

Mrs. Wayne Lehrer was program director for the April 21 meeting of the Progressive Study Club.

She introduced her cousin, Carolyn Dance of Dallas. Mrs. Dance reviewed the book "Peace Child" by Ron Richardson.

A large group of members and guests enjoyed the excellent presentation. Invited guests included members of Rule and Haskell ladies' clubs.

Hostesses for the social hour were Mrs. Bill Holden, Mrs. Mary Martin, Mrs. David Burson, and Mrs. Marvin Letz.

The last meeting of the year an Installation Banquet will be held May 5. Reservations are to be in by May 3.

Facts & Fancies



Because air is a relatively poor conductor of heat, many insulating materials are made quite porous to allow an air layer to aid the insulation.

Hodge, Cliff and Niki of Arlington spent the weekend with Sarah Hodge.

The Martha Sunday School Class of First Baptist Church enjoyed a salad supper in the home of Mrs. David Miller Monday night. Those attending were Sue Yeary, their teacher, Mitzi Lehrer, Earlene Griffith, Roberta High, Laquita Welch and Sandy Horton.

James McClure of Dallas and Duane Josselet of Denton spent the weekend visiting their grandparents Mr. and Mrs. Lee McClure.

Dr. Ben Brock of Snyder and his mother Mrs. Bob Brock of Haskell, visited briefly last Thursday with Mrs. Ruth McKinnon. Dr. Brock is Vice President of Texas Western College in Snyder.

Mr. and Mrs. Vernon Bowen and Janna Kay and Evans Tony Jr., Steve and Tirisa Burrow and baby, Joel Grant all of Lubbock, Mrs. Bob Brock were all guests Sunday of Mrs. Ruth McKinnon of Munday.

Coffee Honors Bride-elect

The approaching marriage of Miss Robin Wheatley, bride-elect of Pat Dulaney, was celebrated with a coffee on Saturday morning April twenty-third in the Frank Cadenhead home. Mrs. Lisa Shaw registered about one hundred guests who were welcomed by Miss Wheatley, her mother, Mrs. Edith Wheatley and Mrs. Betty Dulaney, mother of the prospective bridegroom, and the hostess, Mrs. Billie Cadenhead.

A color scheme of light coral, mist green, and white was blended into the tablecloth, floral arrangements, and gift display tables. From silver and crystal services guests were served spiced tea or coffee and a choice of "goodies" prepared by all the hostesses.

Those who served and hosted the party were Faye Gray, Golda Colbert, Bonnie Jircik, Ruth Langford, Ruby Turner, Claudie Mae Bland, Merle Alexander, Bobby Bragg, Doris Darnell, Linda Kimbrough, and Billie Cadenhead. Two hostesses who helped with all preparations but could not be present were Jane Coston and Sue Guess.

Baptists Honor Pierson's On Anniversary

First Baptist Church honored Mr. and Mrs. Alfred Pierson with a Surprise All Church Fellowship in celebration of their 60th Wedding Anniversary. Following evening worship services April 24th, the members gathered in the Fellowship Hall where the First Baptist Youth "Puppeteers" presented a puppet skit.

The skit featured puppets named "Alfie" and "Corie." Although scenes of the skit were written from the imagination of "what might have been," the Piersons said they were akin to the reality of "how things were."

Following the skits, with the Piersons realizing the Fellowship was in their honor, Brother Bragg congratulated them on their 60 years together and presented them with an orchid corsage and red rose boutonniere sent by their daughter and husband, Louise and Jim Isbell.

The fellowship moved to the refreshment center where a large, all white, four tiered cake, topped with silver bells was revealed. Punch and cake were served to all from toddler to eldest, all joined in celebrating and congratulating the Piersons on their anniversary.

The First Baptist Church of Haskell has been the center of the Piersons' lives these many years. Both Alfred and Cora became Christians, were baptized and entered the church fellowship in 1908. Although that momentous wedding occurred in Dallas on April 22, 1917, the young couple returned to Haskell to live and work, actively, in their church.

In 1920 Alfred was elected to the board of deacons, a membership he continues to fill. During the intervening years, he served as Sunday School Superintendent for a long number of years, was Chairman of the Deacons, and served on many committees and in many places of responsibility. At present, he is teacher of the Ready Men's Bible Class.

Cora was church organist for over thirty five years and served in Sunday School, church Women's Organizations and choir. Both have given faithfully and consistently of their time, effort and substance, through their church, to the Lord's work around the world for well over 60 years.



Mr. and Mrs. Jerry D. Epley of Big Spring announce the birth of a son, Michael Seth Epley, born April 25, 1977 at Haskell Memorial Hospital weighing 8 lbs. 7 1/2 oz.



Engagement Announced

Rev. and Mrs. Kenneth Adress of Snyder announce the engagement of their daughter, Paula Diane, to Terry Len Bowden, son of Mr. and Mrs. Roland Bowden of San Angelo. They will be married May 21 in the First Baptist Church of Snyder. Paula is the granddaughter of Mrs. Vennie Lytle and Mrs. Willie Adress both of Haskell.

Fisher, White Repeat Vows

Jeretta Ellen White and David N. Fischer were united in a double ring ceremony March 19 in the First United Methodist Church in Artesia, N.M. with the Rev. William Hutchinson officiating. The bride is the daughter of Mr. Paul G. White and the late Mrs. Jeannine White of Artesia. Parents of the groom are Mr. and Mrs. Herbert R. Fischer of Haskell.

Mrs. Michael Joyce was Matron of Honor and Mrs. Jeff White and Mrs. Jim Duggan were bridesmaids.

Best Man was Herbert R. Fischer and groomsmen were Alvin Schmidt and Dennis Eckhardt. Ushers were Stephen and Jeff White, candlelighter was Dale Fischer.

Following a wedding trip to San Francisco, Calif., the couple will reside in El Paso where the groom is employed as territory manager for John Deere Co. and the bride is employed as a CPA for Whitfield Enterprises.

Guests attending included: Marilyn Fischer of San Antonio, Mr. and Mrs. Bobby Druessedow and Jay of Abilene, Mr. and Mrs. Kenneth Kline of San Antonio, Mr. and Mrs. Sam Chaffin and Kelly and Becky of Brownfield, Mr. and Mrs. Carl Mauegg and family of Stamford, Mr. and Mrs. Ernest Peiser, Mr. and Mrs. Willie Peiser, Mr. and Mrs. Henry Druessedow, Mr. and Mrs. Gary Druessedow, Mr. and Mrs. Paul Fischer, Mrs. Ann Druessedow, all of Haskell and Mr. and Mrs. Darrell Richards of Avoca.



If you're a new mother, let me tell you an amazing fact: During its first year your baby's weight will nearly triple. It's the fastest growing in the baby's lifetime, and you have to help.

You'll get off to a good start if you remember that the baby needs a balanced diet just as much as you do. An infant's daily feeding program should include all of the essential nutrients: protein, carbohydrates, fats, vitamins, minerals and water.

I've discovered that most doctors and nutritionists agree that a daily caloric balance of 15 percent protein, 35 percent fats and 50 percent carbohydrates is just about right. If you choose foods from the Basic Four Food groups (all available from Gerber)—dairy products, meats, fruit and vegetables, cereals—you'll be providing a good balance.

Sherman Carpets & Interiors
Haskell, Texas
Spring Cleaning Sale
300 South Avenue E Phone 864-3513

Sherman's has done their Spring Cleaning and look at the Treasures they have come up with. Some of these items are brand new and are simply old stock. The sale will begin Thursday at 1:00 p.m. and continue through Saturday at noon. Come by and see us and shop these values.

Discontinued Carpet Samples

Small	25c	Large	50c
Venetian Blinds	Each	\$7.50	
Window Shades	Each	\$4.00	
Antiquing Kits			
Small	\$2.00	Large	\$3.00
Paints			
Pint	75c	Quart	\$1.75
Gallon			\$3.00
Traverse Rods	Each	\$3.00	
All Sizes			
One Group	Each	\$10.00	
Bedspreads			
Vacuum Cleaner Bags	Pkg	50c	
Various Models			
Dust Mops 16"			
Reg. \$14.95 Value		\$6.00	
Dust Mop Handles		\$1.50	
Reg. \$3.19			
One Folding Door		\$5.00	
\$22.50 Value Now			
Wet Mops		\$1.50	
Reg. \$3.79 Now			
One 10' Roll Up Shade		\$7.50	
Reg. Value \$19.95			
Carpet Remnants			
9'6" x 12'	\$36.00	6'9" x 12'	\$27.00
9'8" x 12'	\$39.00	9' x 7'6"	\$30.00
11' x 12'	\$45.00	21' x 7'9"	\$60.00
10' x 12'	\$50.00		
One Area Rug		\$75.00	
9' x 12' Reg. \$225 Value			
One Area Rug 6' x 9'		\$50.00	
Reg. \$145			

Book Review Is B&PW Program

The Business and Professional Women's Club of Haskell met in the Community Room of the Haskell National Bank, April 19.

The World Affairs and Legislation Committees, acted as hostess for the meeting. Mrs. Ozelle Frierson, chairperson for the committee greeted guests.

The room and tables were decorated with arrangements of spring flowers. Each lady was presented a corsage, made by Ozelle Frierson.

Mrs. Callie Robison, club president, greeted guests and presided for a short business meeting. Mrs. Edna Mae Lyles, read an invitation from the Business and Professional Women's Club of Sweetwater, to attend an Appreciation Banquet, at the Holiday Inn, April 28.

Mrs. Frierson introduced the speaker for the evening, Mrs. Alma Jo Simpson. Mrs. Simpson reviewed "The Total Woman", by Marabel Morgan. Every lady present felt a challenge, after hearing this beautiful book.

The committee members, Ozelle Frierson, Fadwa Hasen, Edna Mae Lyles, and Eva Lynn Marr, served a salad plate during the social hour. Program Chairperson, Miss Nettie McCollum, called attention to the May 3rd meeting when Mrs. Betty Davis will be speaker.

Twenty-four members with invited guests enjoyed the review by Mrs. Simpson.

Spring Sportswear Sale

1/3 to 1/2 off and more
Soft blouses, man-tailored shirts, long and short skirts, culottes, pants and trousers, and jackets.

In linens, cotton, polyester knits, gabardines, in solids and prints.
Sizes 4 to 18 in the group. All sales final.

Lane-Felker

REVIVAL

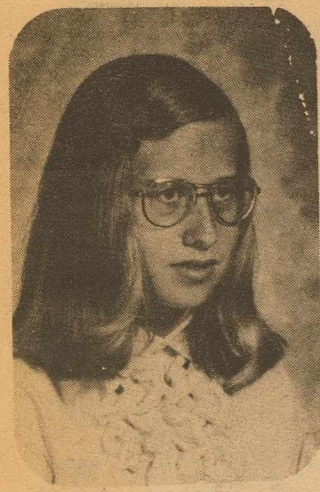
ED ROBB, EVANGELIST

JOHNNY RAY WATSON, MUSIC

MAY 8-11, 1977
SCHEDULE

Sunday	Monday Through Wednesday
11 a.m.-Service 7:30 p.m.-Service	7 a.m. Morning Devotions (Coffee & Donuts Also) 7:30 p.m.-Service

First United Methodist Church
Haskell, Texas



CONNIE SCHEETS

Connie Scheets To Represent This Area

Connie Scheets, daughter of Mr. and Mrs. Howard Scheets of Rochester, will represent this area in the State Semi-final Youth Bible Drill Competition in Lubbock May 7.

She is a member of the First Baptist Church in Rochester and is the only person in this area to qualify in this competition.

The competition is divided into four parts: Books of the Bible, Scripture Searching, Identifying Verses, and Memorizing Selected Passages.

Connie and her pastor, the Rev. Don Jefferys, will be guests at a banquet May 6, in Lubbock with all other contestants and leaders for final instructions before Saturday's drill.

The top three contestants will advance to the State Finals in Fort Worth, May 14 and the first and second place state winners will represent Texas later this summer.

MR. SKETCH-Instant water colors. Each color has a different fragrance, non-toxic, safe for children. For coloring books, murals, maps, hand-crafts, many uses, nothing to mix or spill. No clean up. \$3.90 set of 8 or 49c ea. Haskell Free Press.

Arts awards to be presented at TAA's May 4 Showcase

HOUSTON, Texas -- More than 200 nominations for the coveted Texas Arts Awards to be presented by the Texas Arts Alliance as part of the Texas Arts Showcase in Austin, Wednesday, May 4, have been received.

The awards for distinguished contributions to the arts by individuals and organizations will be presented at 8 p.m. in the Payne Theatre at the University of Texas.

Highlighting the evening's activities will be a presentation of the best of the performing arts from across the state.

Selected by an impartial jury early this spring, performers slated to appear include actor Preston Jones, Dallas; the Ft. Griffin Fandangle, Albany, Texas Opera Theatre, Houston; concert pianist James Dick, Round Top; singer JoAnn Miller, Granbury; Dance Discovery Group, Houston; Houston Jazz Ballet, Houston; country and western singer Dotsy Seguin; the Oscar Ford Singers, San Antonio; and the San Antonio College Mariachies.

Lathan Sanford, a member of the Department of Drama at the University of Texas, is producing and directing Showcase which will be attended by members of the Texas Legislature, as well as statewide social, business, financial, cultural and political leaders.

"The Texas Thirty," an exhibition of paintings and sculpture by outstanding contemporary artists, is included as part of the Showcase. Valued at more than a quarter of a million dollars, "The Texas Thirty" exhibition may be viewed at the Texas Alumni Center immediately following the performance.

Artists represented in the exhibit include John Alexander, Jane Allensworth, Jan

Beauboeuf, Janice Broussard, Jack Boynton, Vernon Fisher, Roy Fridge, Don Foster, Roberta Harris, George Green, James Hill, Dorothy Hood, Luis Jimenez, Norm Looney, Jesse Lott, David McManaway, Vincent Mariani, Richard Stout, James Surls, Robin Utterback, Bob Wade, Mac Whitney, William Wilhelmie, Ben Woitena and Dick Wray. The average age of the artists is 32.

Prior to the Showcase, legislators will attend one of several dinners scheduled at selected restaurants throughout Austin.

Award winners, sponsors and lifetime members of the Texas Arts Alliance will attend a special dinner given by Lt. Gov. and Mrs. Bill Hobby.

Following the actual performance and awards presentation, guests will attend a champagne reception in honor of Alliance members at the University of Texas Alumni Center.

The Texas Arts Awards will be in six basic categories — individual, organizational, school, business, media and community. Only the most outstanding nominees in each category will receive the certificate awards.

The Texas Arts Alliance is a grassroots, non-profit organization of private citizens dedicated to the quality and growth of the arts in the state. The group was formed in 1976 as a means to actively assist the Texas Commission on the Arts and Humanities.

More than 500 persons are expected to attend the Texas Arts Showcase. While no tickets will be available at the door, reservations for TAA members, as well as the general public, may be made by contacting Jim Roll at the Texas Commission on the Arts and Humanities, (512) 475-6593.



The power mower has become a part of the Texas family scene, but it can be as dangerous as a coiled rattlesnake.

There's no refuting the labor-saving qualities of mowers, but they should be handled as carefully as you would a rattler, says Dudley J. Johnson, chief of the Consumer Health Bureau of the Texas Department of Health Resources.

Cuts, bruises and puncture wounds are typical of the injuries which the machines can inflict. The gasoline used to power these mowers causes fires which have killed people and burned down the homes of others, says Johnson.

More than 50,000 adults and children are treated each year in hospital emergency rooms for injuries associated with power lawn mowers, says the US Consumer Product Safety Commission. These are the more serious injuries requiring medical treatment. There is no clear picture on the number of painful minor injuries treated at home.

Accidents can happen in many ways.

*Nancy was mowing long, wet grass when it became clogged in the discharge opening. When she tried to dislodge it, the whirling blades struck her fingers. One finger was amputated.

*Jim's father was mowing grass in a hickory tree grove. A nut struck by the blade ricocheted off the house and hit Jim, blinding the right eye.

*A man using a riding mower on a steep backyard terrace started a sideways turn. The machine rolled over. His left leg was so severely cut it had to be amputated.

*Mr. Smith was mowing a lot with a garden tractor when he backed up, striking his son who had been playing behind the trailer. The boy's left foot was amputated.

Do any of these accidents sound familiar?

They are accident patterns which are repeated time after time. These patterns are:

1. Contact with the rotating blade. This often occurs when the victim is clearing the discharge chute; when the victim adjusts the machine without turning it off and waiting for the blade to stop; or when the machine hits an obstacle such as a rock and the victim's foot slips under the housing.

2. Propelled objects—Wire, rocks and twigs can be shot out either through the discharge chute or from under the housing. Many victims in these cases are bystanders.

3. Overturning—Riding mowers used on steep slopes are involved in this type of accident most often.

4. Mower running over the victim—This often occurs when a riding mower or garden tractor is being driven in reverse. Push type mowers are dangerous when the operator pulls the mower backwards over the foot, or

slips going uphill, allowing the mower to roll backward.

Experts at the Texas Department of Health Resources say that reel lawn mowers are safer than rotary lawn mowers, primarily because their blades move more slowly than those of rotary mowers. A common accident pattern with reel lawn mowers, however, is attempting to release the reel when it is jammed by a twig or other object without first shutting off the engine.

Since reel lawn mowers cannot cut tall grass efficiently, most consumers prefer rotary mowers. Almost 90 percent of all power lawn mowers manufactured each year are rotary mowers. Their blades can reach speeds of 200 miles per hour and can hurl objects 50 feet or more, unless the mowers are equipped with chute deflectors. If your mower has such a deflector, don't take it off and thereby invite an accident to happen.

How about the gasoline used to power your mower? It can be a time bomb just waiting to explode or catch fire.

One of the biggest "don't's" in handling gasoline is: Don't store it in a glass container. And, keep it out of any garage or storage room in which a water heater is located. Gasoline fumes—in case of a spill—can be as explosive as a stick of dynamite.

Gasoline should be kept in a well-ventilated area (away from you living quarters) and in tightly-capped safety cans. Don't refuel a mower while it is running or while the engine is hot. And, never refuel a mower indoors because the unseen vapors may be ignited by a spark. Also, cigarettes and gasoline don't mix.

One other caution—never start your motor or work on it



MEMBERS OF THE HASKELL Jr. High School Student Advisory Council are shown with one of their projects of the year. School buses are delivered with the words "School Bus" painted on the side and the advisory council had Haskell painted on all buses operated by the school district. Another project of the council this year was the proposal to the City Council that speed bumps be located on Avenue D, between 6th and 7th streets to slow traffic. The City Council has agreed and the project should be completed soon. Members of the Advisory Council are: (L to R) Joseph Browning, Kim Lane, Anthony Randle, Carl Mayfield, Steve Livingston, Lisa Jones, Dora Arredondo, Ronnie Rea, Joe Benavides, Sharla Drinnon, Laurie Reynolds, Lorie Johnson, and Julie John Wallace. Advisor is Jr. High Principal, James Lanier. (Staff Photo)

Playnight Results

Results from the Stamford Jr. Sheriff's Posse include the following Haskell winners:

8 and under-Barrels: 2. Sheree Dumas.

9-12 Barrels: 1. Shawn Chambers 2. Tina Morris. 13 and over-Barrels: 1. Gina Brooks 2. Debra Morris 3. James Hopkins.

8 and under-Flags: 2. Sheree Dumas.

9-12 Flags: 2. Tina Morris. 13 and over Flags: 1. Gina Brooks 3. Debra Morris.

9-12 Poles: 1. Tina Morris 3. Shawn Chambers.

13 and over Poles: 1. Gina Brooks 2. Debra Morris 3. Carl Hopkins

Nationally Advertised

Good Housekeeping

Morning Glory

Back Relief Mattresses

famous for Quality since 1903

BYNUM'S

HASKELL, TEXAS

with the motor running in an enclosed area where carbon monoxide can collect.

The Department of Health Resources wants you to have a pretty lawn this summer, but above all safety comes first.

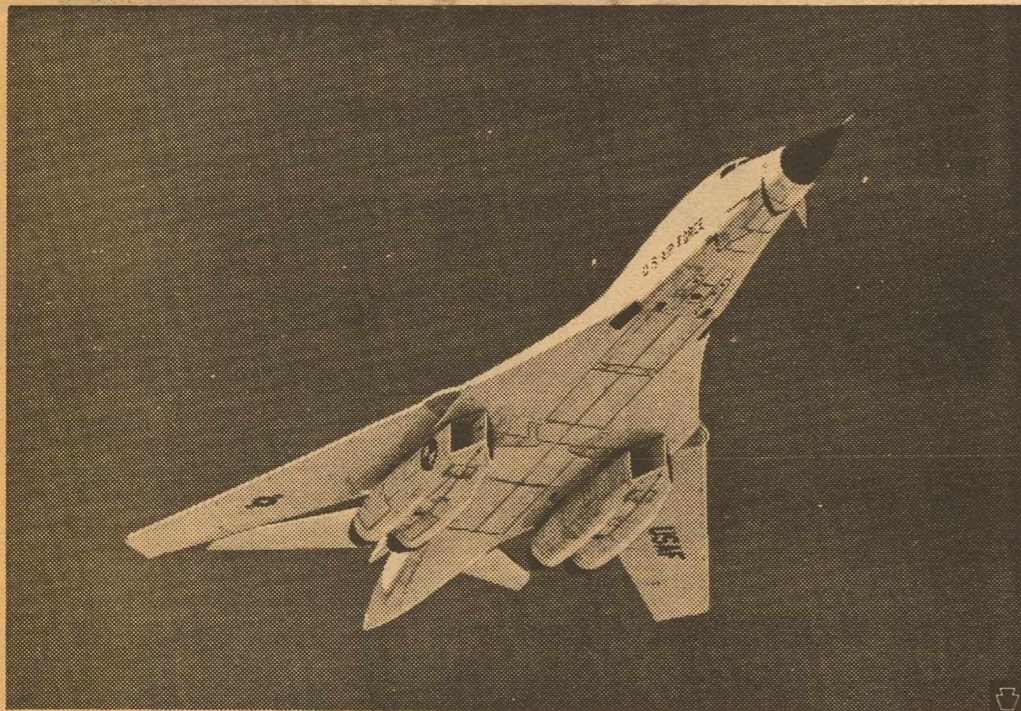
If you have property for sale why not list it with Granddad. He will try to get you out of the picture. Fast. Kyle

The HARTSFIELD AGENCY

EVERYTHING IN INSURANCE

HASKELL PH. 864-2665

B-1 Wins Collier Trophy



The Air Force's new B-1 strategic bomber, shown above, today was named winner of the prestigious Robert J. Collier trophy, which is presented annually by the National Aeronautic Association. The trophy is given "for the greatest achievement in aeronautics or astronautics in America with respect to improving the performance, efficiency, or safety of air or space vehicles, the value of which has been thoroughly demonstrated by actual use during the preceding year."

The citation accompanying the award reads: "The Collier Trophy is being awarded to the United States Air Force/Rockwell International/and the B-1 industrial team for the highly successful design, development, management and flight test of the B-1 strategic aircraft system." Rockwell's Los Angeles-based B-1 Division is system contractor to the Air Force on the program.

Summer Is Coming

Check With Us For The Finest In Air Conditioning.

The Fedders

Also

Evaporative Coolers

Early Bird Special

All Carry in Model **15% off**

Owens Electric

Haskell, Texas

Need an airline? We implore you Let your fingers land it for you.



Name _____

Address _____

Phone Number _____

Please reserve () booths at \$5.00 each for the Haskell Gigantic Sidewalk Sale, Saturday, May 7, 1977. I enclose \$ _____ to reserve this space.

Signed _____

Organization _____

Haskell Chamber of Commerce

P. O. BOX 713, HASKELL, TEXAS



TRAP PUNCHING, left, Bill Womack of Olney looks on as Greg Byars of Vernon gets his card punched for a 97 in the Robert Ward Handicap event by W. E. Wooten. H.O.A. champion at the Haskell Trap Club, Sunday. (Photo W. E. Wooten)

Monthly Trap Shoot Results

The April 24th, monthly shoot Robert Ward; Jimmy Patterson Singles results were:

Class AA-W. E. Wooten, Haskell, 100x100.
Class A-Jimmy Adams, Vernon, 97x100.
Class B-Lloyd Womack, Olney, Bill Womack, Olney, with Bill Womack prevailing 25-24, 97x100.

Class C-Greg Byars, Vernon 96x100.
Class D-R. S. Cox, Graham, 84x100.
Robert Ward Handicap Champion Greg Byars from 19 yd. line 97x100.
Runner-up-Bill Womack from 22 yd. line 95x100.
Foye Gatewood Doubles Class A-W. E. Wooten 95x100.
Class B-Church Hay, Gainsville 92x100.
Class C-Joe Brooks, Paducah 84x100.
High Over All for the total 300 targets program was Wooten 285x300.

Olney-Bill Womack 159; Wendell Patterson 157.
Hamlin-Charles Brumley 156.
Snyder-Ronnie Clawson 152.
Rotan-Dwayne Lee 151.
Newcastle-Richard Forbes 150.
Olney-Lloyd Womack, Jr. 148.
Haskell-Charles Thornhill 145; Larry Gilliam 140; Lee Lane 135; Mike Jordan 132; David Collins 129.

GRAND

Stamford 773-3181
Fri. 29-Sat. 30
Sun. May 1
"Pink Panther Strikes Again"

DRIVE-IN

Stamford 773-3272
5 Days
Fri. 29-Tues. May 3
"Carrie"
Sissy Spacek
Wed. 4-Thurs. 5
2-XX Rated Features
Adults Only
"Blow Dry"
Plus
"Joys of Sex"

Spring League Concludes

Seventeen area trap shooters finish the total 200 target league of the H.T.C. Spring League and will compete in a Handicap event on Thursday night, April 28, for the prizes to the champion and runner-up spot in three yardage groups.

Haskell-W. O. Wooten 195; Rit Milliman 172.
Hamlin-Marshall Bradford 165.
Paint Creek-Larry Walton 163.
Haskell-Dan Hoover 161.

Apply Now For SSI Card For Summer Job

Students, housewives, and other people who plan to get a summer job should apply now for a social security number if they don't have one, according to Glyn Hammons, Social Security District Manager in Abilene.

"You should apply for your number several weeks before you need it for a job covered by social security," Hammons said. "Frequently an employer will require that a new employee has a social security number before beginning work, perhaps to accommodate the company's book-keeping system. Generally it takes several weeks for an application to be processed since it must be screened against central files in Baltimore to make sure that a second number isn't issued to the same person."

More than nine out of ten jobs are covered by social security.

"Your social security number is yours alone and remains the same for life," Hammons said. "People build retirement, disability, survivors and Medicare protection by work and earnings credited to their social security number. So when you get a job covered by social security, be sure your employer copies your name and number correctly from your social security card to his records."

People can get information about applying for a social security number by calling, writing, or visiting any social security office. People applying for a social security number for the first time may be asked to prove their age, identity, and citizenship.

"If you've lost your social security card, you can get a duplicate by contacting any social security office," Hammons said. "You can get a duplicate faster if you've kept the stub that came with your social security card."

The Abilene Social Security Office is at 142 S. Pioneer. The phone number is 698-1360. The Social Security Administration is an agency of the U.S. Department of Health, Education, and Welfare.

STAMP CUBES and other desk accessories in matching vivid colors. Haskell Free Press

Dr. Kemp Elected Vice-Pres.

Dr. William J. Kemp of Haskell was elected Vice-President of the Texas Dental Association Saturday during the annual TDA convention in El Paso. Dr. Kemp served on the Board of Directors of the TDA the past year.

Active in both local and state affairs for many years, Dr. Kemp has served as president of the 17th District Dental Society, president of the West Texas Dental Society, president of the Texas State Board of Dental Examiners and is currently serving as vice-president of the American Association of Dental Examiners. He will be installed as president-elect of that organization in Miami, October 1977. He was elected to that office from the membership of all dental board of examiners in the United States.

Dr. Kemp is a Fellow of the International College of Dentists, the American College of Dentists, the Pierre Fauchard Academy and the Omicron Kappa Upsilon National Honorary Society. He has served as secretary of the Haskell School Board, vice-president of the Haskell Chamber of Commerce and as post commander to the Rogers Cox Post 221.

Dr. Kemp and his wife, Billie Jean, have one daughter, Kem, who is a senior in Haskell High School and one son, Dr. William J. Kemp, Jr., who is serving his resident practice in Pediatric Dentistry at the University of Texas dental school in Houston.

Knox City Jr. Rodeo Set May 6, 7

Knox City will hold its annual junior rodeo May 6 and 7. Performances will get underway at 7:30 p.m. both nights.

Contestants will compete in three age groups, which are 12 and under; 13-15; and 16-19, with contestant's age on January 1, 1977, determining which group he will enter.

Events for girls in all age divisions are barrel and flag racing and pole bending.

Events open to boys 12 and under are barrel and flag racing, pole bending and break away roping. These events are also available to boys 13-15 plus bull and bronc riding and tiedown and ribbon roping. Open to boys 16-19 are bronc and bull riding, and tiedown, break away and ribbon roping.

An all around cowboy and cowgirl buckle will be awarded in each age division. In order to qualify, the contestant must enter three events and place in two.

Trophies will be awarded in the 12 and under groups only, with hackpots being given in the other two age divisions.

Stock producer for the show is Runt Sloan of Newcastle.

For further information, contact Bud Carver of Faye Railsback at Knox City Hall.

Rev. Cox Named To Who's Who

Rev. John B. Cox of Papillion, Nebraska, has been selected to appear in the 1976-77 Bicentennial Edition of Who's Who in Nebraska and also in Who's Who in Religion, a companion volume to Who's Who in America.

Cox is the son of Mr. and Mrs. A. B. Cox of Old Glory and a graduate of Old Glory High School. He received his diploma in Theology from Southwestern Baptist Seminary in 1965, a B.A. Degree from College of Bible, 1969, did post graduate work in Nebraska School of Religion and is a candidate for a Doctor of Theology degree from Immanuel Baptist Seminary. He is a member of the Southern Baptist Convention and on the Board of Directors which will meet in Kansas City, Missouri, this summer and pastor of the First Baptist Church in Papillion.

His wife is the former Mozelle Davis and they have four children. Roy, a Sargent Supervisor of Army Patrol in Leavenworth, Kansas, Robin, a student at Wesleyan College at Liberty, Miss., Tim is attending college in Omaha, Neb., and Machelle, is attending school in Papillion.

The Cox's have one grandchild and he has two brothers, Jimmy of Old Glory and Boyce of Abilene.

pompom routines, skit and pep rally planning, fund raising ideas, tumbling, partner stunts, squad coordination, tryout tips, voice control, uniform design and leadership and responsibility.

Resident campers will be housed in the air-conditioned dormitories on the WTC campus and will eat in the Student Center cafeteria nearby. The fees, determined by the ASCC, will cover all expenses. Commuting students will be responsible for the costs of their own meals.

Applications to attend the clinic may be obtained by writing to Pepster All-Star Cheerleading Conference, 819 Broadway, Kansas City, Mo 64105. Persons wishing additional information may contact Mrs. Mickey Baird, Director of Student Activities at Western Texas College, Snyder, Tx 79549, or phone her at 573-8511, extension 276 or 277.

Robin Wheatley Named G.M. Family Leader

Robin Wheatley has been named Haskell's 1976-77 General Mills Family Leader of Tomorrow. Robin won the honor by competing with other Haskell seniors in a written knowledge and attitude examination. She has been presented a certificate from General Mills, sponsor of the annual educational scholarship program. Robin is now eligible for state and national honors.

The State Family Leader of Tomorrow will receive a \$1,500 college scholarship, with the second-ranking participant in the state receiving a \$500 grant. The state winner will also earn for his or her school a 20-volume reference work, The Annals of America from Encyclopedia Britannica Educational Corporation.

The 50 winners representing every state and the District of Columbia will be the guests of General Mills on an expense-paid educational tour of colonial Williamsburg, Va., and Washington, D.C. During the tour, personal observations and interviews will be conducted to select the All-American Family Leader of Tomorrow, whose scholarship will be increased to \$5,000. Second, third and fourth place winners will receive scholarship increased to \$4,000, \$3,000 and \$2,000 respectively.

Instruction during the clinic emphasizes such areas as cheer techniques, soul chants,

Little Dribblers

The Haskell Girls Little Dribblers are in the last week of regular season play. Following the concluding game Friday night, April 29, the All-Star teams will be announced.

The 9-10 year old league remains very close. The Runt and Tadpoles were tied for first place last week, with only two games to go for each team.

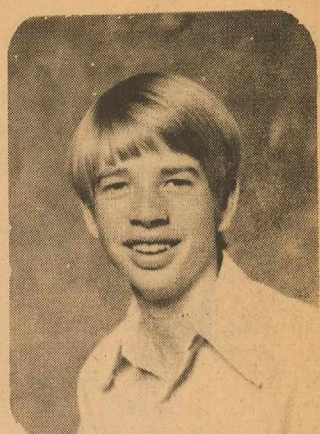
LAST WEEK'S RESULTS
9-10 Year Olds
Runts 16 Yovos 9
Tadpoles 18 Runts 10
Yovos 30 Ghosts 12
Tadpoles 13 Yovos 10
Runts 18 Ghosts 8

LEAGUE STANDINGS
9-10 Year Olds

Runts	5	2
Tadpoles	5	2
YoYos	4	3
Ghosts	0	7

11-12 Year Olds

Jokers	7	0
Maidens	4	3
Roadrunners	2	5
Robins	0	7



Berry Alvis To Compete In UIL Contest

Berry Alvis, grandson of Ethel Alvis and Mr. and Mrs. J. H. Franklin is representing Southland School in UIL Editorial writing contest at the regional level in Lubbock this week.

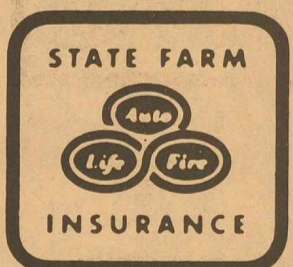
Alvis also won fourth in slide rule and fourth place in singles tennis. He is a sophomore at Southland High School in Southland, Tx.

Try the new "Sharpie" pen. Permanent on most surfaces. Ideal for labeling frozen food packages. In 8 Colors. Only 49c. Haskell Free Press.

Like a good neighbor, State Farm is there.
with help for your car, home, life and health insurance.

See me.

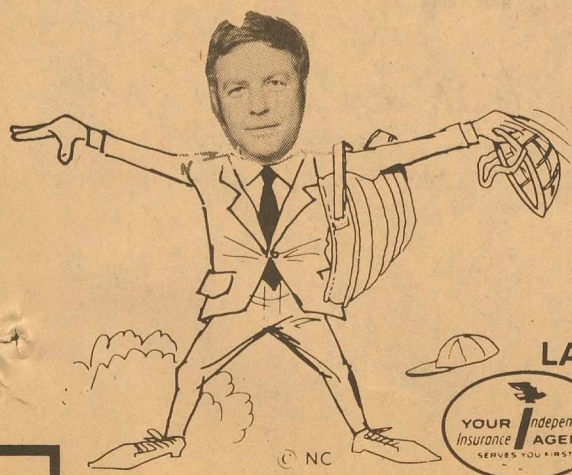
Brian Burgess
111 N. Ave. E
864-3250



STATE FARM
Insurance Companies
Home Offices: Bloomington, Illinois

DON'T "STRIKE-OUT"

By having improper coverage on your home or business. Your insurance should reflect the replacement costs. If it doesn't and disaster strikes, you may find yourself under-insured... and in a real mess. By keeping your insurance up to date you can avoid a heavy loss. Be on the winning team with...



LANE DURHAM AGENCY
510 N. 1st St.
Phone 864-3216
Haskell, Texas

agri-facts



Pat Hale

Significant changes are on the horizon for researchers working on agricultural projects. Underlying factor for these changes is the growing consensus among scientists that current research with its aims at yield increases through better fertilization and cultivation technique may be nearing its peak. In short, there is a growing feeling that we are reaching the stage of making a plant produce all that is possible. That's the reason for the change in direction. Scientists are now beginning to experiment on changes in the biological potential of plants. Basic changes in photosynthesis are being considered. Methods of limiting a plant's respiration are under study and the strange yield increases of some plants when exposed to carbon dioxide are being examined. In short, the new direction for research involves changing the plant itself in ways which could develop new and much greater yield increases.

HALE FARM SUPPLY
Phone 864-2692



LARRY SUTTLE, MINISTER

LET'S VISIT...

"Life", said A. J. Marshall, "is what happens to you while you are making other plans."

The river of life takes some pretty strange twists in its course. About the time everything seems to be going pretty well a problem arises that disappoints and embitters.

Life is so uncertain. We must never take our life for granted. The old saying is true: "No one holds a lease on life." Furthermore, we should never make plans without taking God into consideration. What is His will in the matter?

The Bible Says: "Go to now, ye that say, Today or tomorrow we will go into such a city, and continue there a year, and buy and sell, and get gain: Whereas ye know not what shall be on the morrow. For what is your life? It is even a vapor that appeareth for a little time, and then vanisheth away. For that ye ought to say, If the Lord will, we shall live, and do this, or that." (James 4:13-15)

CHURCH OF CHRIST

510 N. Avenue E

"DEDICATED TO THE RESTORATION OF NEW TESTAMENT CHRISTIANITY"

Schedule of Services:
SUNDAY
9:45 — Bible Study
10:30 — Worship
6:00 — Worship & Classes

WEDNESDAY
9:30 — Ladies Class
7:00 — Bible Study

NAME	_____
ADDRESS	_____
<input type="checkbox"/> Please enroll me in a free Bible Correspondence Course	
<input type="checkbox"/> I would like to study further the Bible	
<input type="checkbox"/> I need transportation to Bible study and worship services	

(Clip & Mail)

Want your children to attend Sunday School? One of our colorful joy buses will gladly pick them up and return them safely to your home. Just call 864-3101 or 864-2772.

Rice Springs News

The Sunday morning services were brought by the Assembly of God Church. Everyone enjoyed the Musical Thursday night. Everyone also enjoyed the devotionals brought by the ladies of the East Side Baptist Church and the Haskell First Baptist Church.

Hallie Morgan of Rule visited with her sister, Ora McCollough.

Mrs. Lois Nunn, Mrs. Frankie Cloud, Mrs. Immalee Smith, and Mrs. Mary Place visited with Charity Bradley.

Carl Moeller of Alma, Okla., visited with his mother, Annie Moeller.

Mr. and Mrs. Roy A. Sanders of Wichita Falls, Mrs. Cliff LeFevre, and Mrs. Etta Leach of Sagerton and Mrs. Immalee Smith of Rule, visited with Mrs. Alma Cole.

Pauline Jenkins of Baytown visited with Ethel Edwards.

Visiting with Mrs. J. A. Rose were Charles and Inez Rose of San Angelo.

Mr. and Mrs. Jim Marion of Walsh, Colo., and Essie Long of Childress visited with Dessie Marion.

Mr. and Mrs. Davis Jones of Stamford visited with Willard Jones.

Mary Chandler went to Weinert this week to visit with her daughter Helen Turnbow. Visiting with Mrs. Chandler was Mrs. G. A. Leach of Rule.

Mr. and Mrs. Otto Peiser and Shane of Lubbock, visited with Martha Peiser.

Mr. and Mrs. Milton Reeves of Knox City, visited with Joe Teague, and Eugene Collier.

Mr. and Mrs. Clancy Lehrmann of Old Glory, Mrs. Otto Lehrmann, Mrs. Etta Leach, and Mrs. Cliff LeFevre all from Sagerton, and Mr. and Mrs. Kenny Wood of Snyder visited with Alvena Holle.

Mrs. Martha West of San Angelo visited with Daisy West.

Karen, Brian, and Larry Strickland, and Mr. and Mrs. Eugene Bitticks all from Rochester visited with Edna Collins, also Ophus, Frankie and Juanita Posey of Knox City.

Mrs. Cliff LeFevre and Mrs. Etta Leach from Sagerton and Mrs. Hollis Rucker from Rule visited with Trudie Bush.

Mrs. James Norman and children from Ft. Worth visited with Stella Josselet.

Mr. and Mrs. Danny Wainwright of Tulsa, Mr. Jerry Herrell of Rule, Mrs. Cliff

LeFevre and Mrs. G. A. Leach of Sagerton visited with Mr. and Mrs. Luther Hines.

Mr. and Mrs. G. A. Bradford of Peacock, and Faye Cox of Clairemont visited with Mr. and Mrs. Sam Bradford.

Hazel Letz, Allen Letz, Betty Letz, Adeline Letz, Margaret Suter, and Willie Suter all from Old Glory, and Mr. and Mrs. Dale Letz and Terry from Stamford visited with Mr. and Mrs. Herbert Klump.

Everyone would like to welcome Jewell Bynum.

STOCK MARKET

The market at Haskell Livestock Auction was \$1.50 to \$3.00 higher on a run of 710 head of cattle, 163 hogs, and 10 head sheep and goats at its sale April 23, 1977 according to Bill Dennis reporter.

Very active market, buyers for all classes of cattle. Butcher calves were steady to \$1.50 higher. Fat cows were \$1.00 to \$2.00 higher. Stocker steers were as much as \$3.00 higher and Stocker Heifers were \$2.00 higher. Feeder cattle were \$1.00 to \$2.00 higher.

Butcher calves: choice, 34-36; good, 32-34; standard, 30-32; rannies, 28-30.

Cows: fat, 28-32; cutters, 25-28; canners, 23-25; stockers, 28-30. \$200-270.00 by the head.

Bulls: bologna, 35-37.50; stockers 37.50-42; utility, 33-37.50.

Stocker Steer Calves: choice, 47-55; good, 44-47; medium, 41-44; common, 37-41.

Stocker Heifer Calves: choice, 38-42; good, 36-38; medium, 34-36; common, 32-34.

Feeder Steer Yearlings: choice, 41-45; good, 38-41; medium, 35-38; common, 32-35.

Feeder Heifer Yearlings: choice, 37-41; good, 34-37; medium, 32-34; common, 30-32.

Cows & Calves: good, 320-410; plain, 265-320.

Tops on Hogs \$36.40. Bulk of Top Hogs 35-36.40. Sows 28-33.50. Boars 20-32.25.

Feeder Shoats 28.25-34.10. Pigs 15-37.00 per head.

WHITE BIBLES, imitation leather, red letter, with dictionary, concordance, colored pictures, time chart of Bible history. Excellent for gifts. Haskell Free Press.

Washington

"As It Looks From Here" **OMAR BURLESON** Congressman—17th District

WASHINGTON, D.C.—HOW CAN THE BAN ON SACCHARIN by the Food and Drug Administration be justified when the Government subsidizes the growing of tobacco? The Surgeon General of the United States has determined that cigarette smoking is dangerous to health. Medical findings relate tobacco use to cancer, heart disease, emphysema and other ills. The proposal to ban saccharin for human consumption was made after laboratory tests on rats in Canada found that saccharin had the potential of causing cancer in people.

THE QUESTION ON THE USE of the Nation's sole artificial sweetener is before FDA officials. From reports there is a difference of opinion in that agency. Although notice has been given that saccharin may be put off the market, the decision will likely be months away. Cyclamate was banned a few years ago, not because it was found to be injurious to health but because it failed to demonstrate its "efficacy". This forced drug manufacturers to reformulate and now, pill coatings, syrups, soft drinks and cosmetics, among other products, use saccharin to replace sugar.

MORE SERIOUS, HOWEVER, IS THE DENIAL of this artificial sweetener to caloriewatchers and the estimated ten million diabetics across the country.

MANY YEARS AGO, MAE WEST was supposed to have said that it seemed that everything she did was either illegal, immoral or fattening. She likely could have more to say about some regulations of these times.

THE TESTS IN CANADA found that at a dietary level of 5% saccharin produced malignant bladder tumors in 17 of 200 test animals. One malignant and one nonmalignant tumor showed up in another 100 under controls. The equivalent human consumption, according to scientific estimates, would be 800 cans of diet soda daily for a lifetime. Under the law, however, known as the Delaney Amendment, a "safe level" of food additives is not recognized if there is demonstrated a cancer-producing potential.

THERE IS A NEED for amending the so-called Delaney clause in the Food, Drug and Cosmetic Act. A number of us in the Congress have proposed modifications to put more reason into it.

HEARINGS ARE SCHEDULED before a Committee in the House of Representatives to review the provisions which now place a narrow and limited interpretation on food additives. Hopefully more clear and practical provisions can be devised and, at the same time, give adequate protection against any product reliably linked with cancer.

HAVING TROUBLE with your office supply needs? Let us help you. Haskell Free Press.

College News

More than 100 Texas Tech University business administration students were inducted into Beta Gamma Sigma honor society this spring.

Membership is the highest scholastic honor a student in business administration can attain. Junior members must rank in the top 5 percent of their class, seniors in the top 10 percent and graduate students in the top 20 percent.

Purposes of the society are to encourage and reward scholarship and accomplishment, to promote business education and to foster integrity in the conduct of business operations.

Among this spring's inductees from Haskell was Robin Colbert, accounting major, son of Mr. and Mrs. R. E. Colbert of 707 N. Ave. L.

Tamara Lee Pearce, daughter of Mr. and Mrs. Curtis Cox and a senior student at Angelo State University has been invited to join three honor societies at the University.

Mrs. Pearce, an English major with a minor in speech, has been invited to become a member of the Texas Alpha Chapter of Alpha Chi, the National Honor Scholarship Society at Angelo State University; Kappa Delta Pi, national honor society for English majors and minors.

The Sigma Tau Delta initiation was held April 19, the Alpha Chi initiation will be held April 26 and the Kappa Delta Pi will be held April 28. She is the granddaughter of Owen W. Cox of Haskell.

Conservation Viewpoints

USDA Soil Conservation Service Assisting California Creek and Wichita-Brazos Soil and Water Conservation Districts

The Boards of Directors of the California Creek and Wichita-Brazos Soil and Water Conservation Districts wish to extend a welcome to the new cooperators who have developed new conservation plans on their lands. The greater number of district cooperators under agreement, the stronger the districts become.

In the California Creek SWCD welcome to Eugene Olson of Stamford, the Cannon Farm of 187 acres; W. F. Hertel of Sagerton on 470 acres; G. W. Roberts of Haskell, 120 acres; G. V. Wofford, Sagerton, 325 acres; Emil Mueller, Sagerton 660 acres; and John and Steve Grand, Haksell 125 acres.

In the Wichita-Brazos SWCD welcome to Anne Underwood, O'Brien, 83 acres; Bobby J. Helton, Knox City, 1614 acres; R. L. Adkins, Sweetwater, 225 acres; W. L. Mullins, Haskell, 100 acres; H. T. 'Cotton' Williams, Rochester, 160 acres; Johnny Wyatt, Jr., Rochester, 320 acres, and Johnny Wheatley, Haskell, 203 acres.

Great Plains Conservation Program contracts have been prepared and certified for funds with Dale Middlebrook, Paint Creek, 923 acres; Mrs. M. E. Overton and Wallar H. Overton, Haskell, 817 acres; Johnny Wheatley, Haskell, 203 acres; M. W. Phemister, Weinert, 231 acres; and Emil Mueller, Sagerton, 310 acres.

If you are interested in participating in the Great Plains Program, please contact your Soil Conservation Service Office. We have about expended our funds for Fiscal Year, 1977, but we can start work on the preparation of a contract covering your farm or ranch, and have it ready to be approved with the beginning of the new fiscal year in October.

The Great Plains Conservation Program is a whole farm program that is designed to completely establish all conservation needs within a given period. When the contract is completed, the unit of land covered by the program should be in top condition. Ask about our program. We will be glad to discuss it fully with you.

J. C. Yeary, Jr. District Conservationist

ALL PURPOSE SHEARS, fine cutting quality, durable. Carries Good Housekeeping and Parents Magazine Seals at the Haskell Free Press.

Letters To The Editor

Dear Mr. Editor:

We surely do want to say a big "thank you" to the people of the Haskell National Bank for letting the Elementary School students visit this past week or so. Frederick Barnett, for one, was totally impressed. He said he had trouble taking his eyes off the \$100 bill he saw. We are so glad for the adventure into the world of money the bank gave the children. A special "thank you" to Carolyn Everett, Betty Wainscott, and Pauline Couch; taking the students through in small groups was such a good way of doing it. From all accounts, it was an unqualified success.

And thank you, Mr. Editor, for letting us share our appreciation with the rest of the community.

Mr. and Mrs. Tom P. Barnett

REPORT OF CONDITION

Consolidating domestic subsidiaries of the

Haskell National Bank of Haskell City
 In the state of Texas at the close of business on March 31, 1977
 published in response to call made by Comptroller of the Currency, under title 12, United States Code, Section 161
 Charter number 14149 National Bank Region Number 11

Statement of Resources and Liabilities		Thousands of dollars
ASSETS		
Cash and due from banks		2,248
U.S. Treasury securities		1,204
Obligations of other U.S. Gov't. agencies and corps		5,390
Obligations of States and political subdivisions		4,824
Other bonds, notes, and debentures		22
Federal Reserve stock and corporate stock		9
Trading account securities		-0-
Federal funds sold and securities purchased under agreements to resell		1,225
Loans, Total (excluding unearned income)	7,718	
Less: Reserve for possible loan losses	107	
Loans, Net		7,611
Direct lease financing		-0-
Bank premises, furniture and fixtures, and other assets representing bank premises		184
Real estate owned other than bank premises		-0-
Investments in unconsolidated subsidiaries and associated companies		-0-
Customers' liability to this bank on acceptances outstanding		-0-
Other assets		386
TOTAL ASSETS		23,103
LIABILITIES		
Demand deposits of individuals, prtshps. and corps		7,719
Time and savings deposits of individuals, prtshps. and corps		11,534
Deposits of United States Government		40
Deposits of States and political subdivisions		1,905
Deposits of foreign govts. and official institutions		-0-
Deposits of commercial banks		-0-
Certified and officers' checks		53
TOTAL DOMESTIC DEPOSITS		21,049
Total demand deposits	8,742	
Total time and savings deposits	12,307	
Total deposits in foreign offices		-0-
TOTAL DEPOSITS IN DOMESTIC AND FOREIGN OFFICES		-0-
Federal funds purchased and securities sold under agreements to repurchase		-0-
Liabilities for borrowed money		-0-
Mortgage indebtedness		-0-
Acceptances executed by or for account of this bank and outstanding		-0-
Other liabilities		228
TOTAL LIABILITIES (excluding subordinated notes and debentures)		21,277
Subordinated notes and debentures		-0-
Preferred stock No. shares outstanding -0- (par value)		-0-
Common stock a. No. shares authorized 20,000		
b. No. shares outstanding 20,000 (par value) 5.00		100
Surplus		200
Undivided profits		1,526
Reserve for contingencies and other capital reserves		-0-
TOTAL EQUITY CAPITAL		1,826
TOTAL LIABILITIES AND EQUITY CAPITAL		23,103
MEMORANDA		
Average for 15 or 30 calendar days ending with call date		
Cash and due from banks		2,376
Fed. funds sold and securities purchased under agreements to resell		1,312
Total loans		7,666
Time deposits of \$100,000 or more in domestic offices		255
Total deposits		21,197
Fed. funds purchased and securities sold under agreements to repurchase		-0-
Liabilities for borrowed money		-0-
Standby letters of credit (outstanding as of report date)		-0-
Time deposits of \$100,000 or more (outstanding as of report date)		-0-
Time certificates of deposit in denominations of \$100,000 or more		-0-
Other time deposits in amounts of \$100,000 or more		255

I, Pauline Couch
 Name
 Asst. Vice President & Cashier
 Title

of the above-named bank do hereby declare that this Report of Condition is true and correct to the best of my knowledge and belief.

Pauline Couch
 Signature

4-22-77
 Date

We, the undersigned directors attest the correctness of this statement of resources and liabilities. We declare that it has been examined by us, and to the best of our knowledge and belief is true and correct.

Edna Collins
John Wainwright
Raymond Adkins
 Directors

Introducing

The Rev. Mike Rinehart
 New Pastor at Central Baptist Church

SERVICES

9:45 a.m. Sunday School
 10:45 a.m. Church
 5:30 p.m. Training Union
 6:30 p.m. Evening Service
 8:00 p.m. Wednesday

Central Baptist Church

The Friendliest Church in Town
 North 3rd at Avenue C

GILL'S GRILL

1308 North Avenue E

Phone 864-2076

[FORMALLY THE WIGWAM]

Luncheon Specials Monday thru Friday

Monday Fried Chicken
 Tuesday Roast Beef
 Thursday Bar-B-Q Beef Tips
 Friday Chicken Fried Steak

\$2.25

Above orders served with desert and tea.

Wed. Spaghetti & Meat Sauce, Garlic Bread & Salad
 All you can eat

\$1.99

Big 12 oz.
 Biggest in Town

COKE 10¢

THIS MONTHS SPECIAL

Bar-B-Q Burger

89¢

Hospital Notes

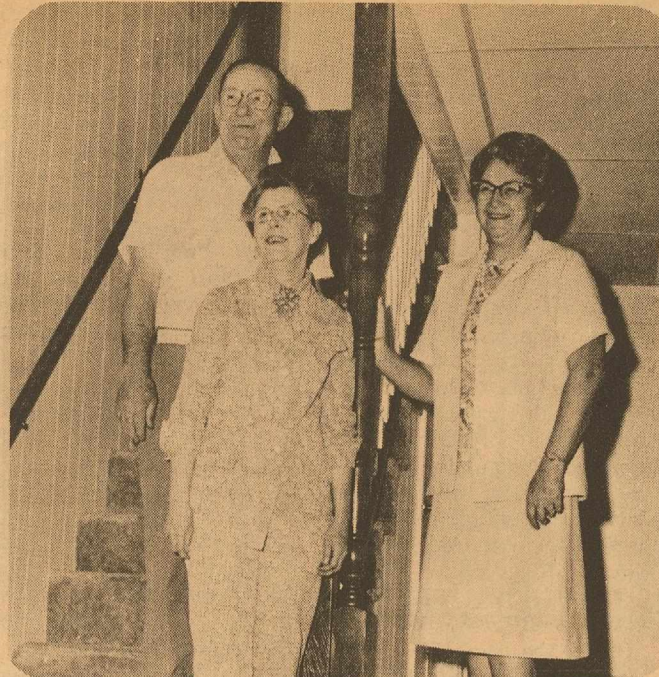
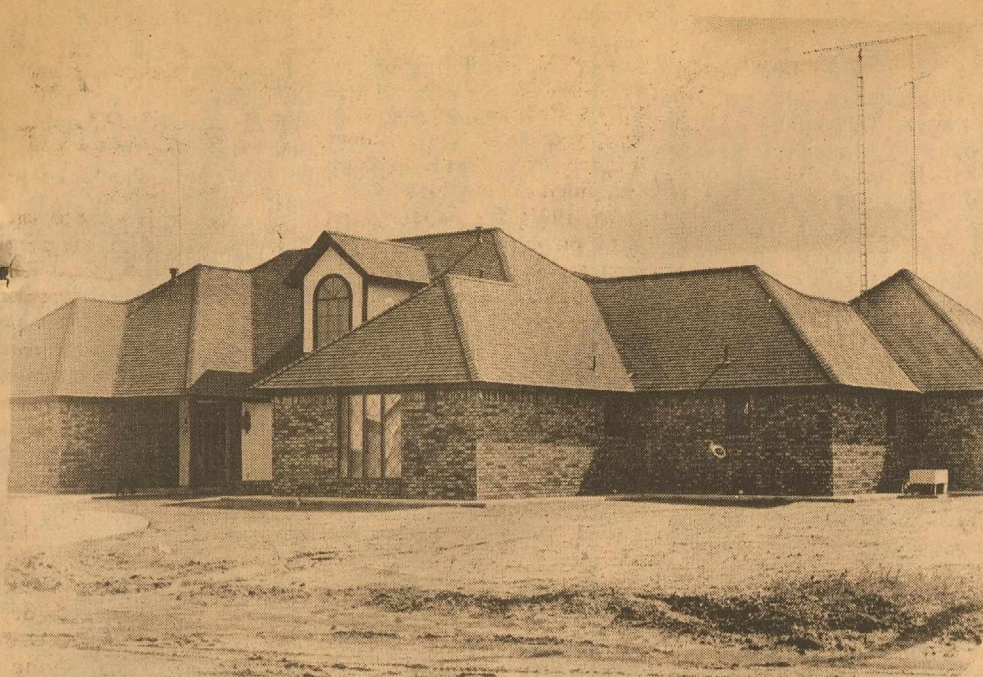
ADMISSIONS
 MEDICAL: W. S. Cole, Rule; Clarence Goebel, Haskell; Edward Bryant, Rule; Princella Ford, Haskell; Nadine Bell, Stamford; Willie Petrich, Haskell; Lonnie Crouch, Munday; Adeline Weaver, Haskell; Thelma Cole, Rule; W. E. Mates, Rule; Tina Palacios, Haskell; Angie Castillo, Weinert; James Sloan, Haskell; Lelia Conner, Haskell; Mary Hunter, Munday; George Free, Haskell.
 SURGICAL: Sharon Kleypas, Sagerton; Jeffrey Hollingsworth, Rochester.
 DISMISSED
 Benito Machado, Verlene Corzine, Peggy Brown, Guida Castillo.

JUNIOR CLASS PLAY

The Haskell High School Speech Classes will present "The Wizard of Oz" May 3, at 7:30 p.m. in the Haskell High School Auditorium. The play will be sponsored by the Junior Class and tickets will be \$1 for adults and 75¢ for students. There will be a special reserve section for elementary students. Elementary students may buy their tickets from 8:15 to 8:30 a.m. from a junior class representative.

COWBELLE LUNCHEON

The Haskell CowBelles Spring Invitational Luncheon will be held April 30, at 11:30 a.m. at the Haskell National Bank Community Building.



Tour Of Homes....

FIVE HASKELL COUNTY HOMES will be toured this Sunday afternoon. The

homes include: Mr. and Mrs. Donald Griffis, (left, Mr. and Mrs. Fred Boon (center), and Mr. and Mrs. Eddie Chambers, (right), Mr. and Mrs. Roy Pittman, and Mr. and Mrs. Jim Rea. The Boon and Pittman homes have both

been recently remodeled and the other three are newly constructed. Shown with Mr. and Mrs. Boon is Mrs. Eldon Anderson, chairman of this year's tour. (Staff Photo)

Haskell Reps. Attend Dist. HDA Meeting

The District III Home Demonstration Association's annual meeting was held at the First Baptist Church in Roby, Tuesday, April 19.

Mrs. Lowell Thornburg, T.H.D.A. Chairman, Mrs. Alice Ballenger, County Extension Agent, and H. D. members from Fisher County

were hostesses for the 9 a.m. to 3 p.m. assembly. Mrs. Clarence Davis, Dist. III Director, Quannah called the meeting to order at 10:00.

Following the opening exercises, Mrs. Harold Preston, T.H.D.A. State President, Llano, brought the message from the Board, on "Home-Our Hope in a Changing World."

The State Recommendations on Family Life-Kent Co., 4-H-Hardeman Co., Citizenship-Young Co., Safety-Jones Co., Health-Childress Co., and Cultural Arts and Recreation-Knox Co. was most enjoyable and very informative.

Miss Telma Wirges, District Extension Agent, Wichita Falls, introduced the Extension Agents who were present from 16 counties. Mrs. W. R. Miller, Llano, editor of the "Messenger" the quarterly T.H.D.A. magazine was, also, introduced.

During the noon hour a delicious luncheon was served by the hostess county and entertainment by a choral group of Fischer Co. 4-H members was presented.

The speaker for the afternoon session was Mr. William D. Benson, Community Resource Development Specialist, College Station, who showed films on "Ranching Heritage in the Rolling Plains." These included the Waggoner, 6666, Pitchfork and S-M-S Ranches.

In the business meeting Mrs. Davis stated that the state meeting would be in Galveston, Sept. 20-22 and the national meeting in Columbia, Missouri, July 17-23. Mrs. Thornburg reported there were 116 visitors, 37 delegates and 17 Extension Personnel present.

Haskell County was represented by Mrs. Hazel Smith and Mrs. Paul Fischer, delegates, Mrs. J. P. Perrin, Co. T.H.D.A. Chairman, Mrs. Carl Bailey, Mrs. Floyd McGuire, Mrs. Tom Yates and Mrs. Barbara Elliott, County Extension Agent.

Hudson...

(Continued From Page 1)

achievement, business advancement, cultural accomplishments and civic and political participation.

Hudson, along with approximately 11,000 fellow Outstanding Young Men from the United States, will be featured in this prestigious annual awards publication.

Hudson is employed as Soil Conservationist at the Haskell Field Office Soil Conservation Service.

TAX RENDITIONS

The final date for rendering your property is April 30th. This is your opportunity to have a voice on the value placed on your property. Remember if you fail to render your property the law states the Tax Assessor shall place an assessment value on the property and you will be taxed on this assessed value. Please come by the Tax Office of the Haskell Independent School District, 705 North Avenue E. and sign your rendition.

LOVE AND INSPIRATION

signature editions. Tiny books on Love, Faith, Friendship. A thoughtful idea to send to someone you care about. Only \$1.35 at the Haskell Free Press.

TDA Officials Keep Watch On Swine Disease Outbreak

AUSTIN--An alarming outbreak of pseudorabies in swine across the country is causing the Texas Department of Agriculture and animal health officials to keep an close eye on Texas swine herds.

Thirteen cases of the disease, which may cause death losses of up to 100 per cent in pigs less than two weeks of age, were reported in the state last year, compared to only seven cases the year before and only one reported case in 1974.

A recent survey by the U.S. Department of Agriculture's Animal and Plant Health Inspection Service shows that during 1976 the disease was laboratory confirmed on 714 swine farms in 22 states. This

is three times the reported 225 cases in 15 states in 1975, and more than five times the 125 cases in 13 states in 1974.

"While increased awareness of the disease may have partially contributed to the rising number of cases, we feel many more herds are affected than the survey indicates because not all

cases are confirmed in the laboratory," commented Pearson V. Brown, Texas Commissioner of Agriculture.

Brown said the incidence in Texas had not reached alarming proportions at this time, "but producers should watch their herds carefully and call their veterinarian if they suspect pseudorabies."

KINDERGARTEN ENROLLMENT

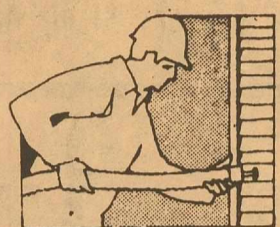
Registration for children entering the Haskell Public School Kindergarten in August will be held Wednesday, May 4 from 9:00 A.M. to 3:00 P.M. Children who are to be enrolled should be accompanied by a parent and bring a birth certificate and immunization record for each child.

PETITE ROLEDEX: the perfect file for telephone numbers and addresses. Typewriter spaced lines. Replacement refills. Decorator colors and styling for home and office. Haskell Free Press

Solar Therm loose-fill insulation is blown into attics with no insulation and as a topping over present insulation.



FREE INSULATION



Side walls of older houses can be effectively insulated without removal of siding material.

INSPECTION of your home to save our nation's energy and to save you hundreds of dollars in heating and cooling cost.

Solar Therm cellulose fibers will give you the maximum insulation with no settling over the years and much less weight in your attic. Thermal resistance value ("R") value of insulation materials, not inches, determines the efficiency of the insulation. Recommended R values for an efficient insulated home is R-30 in attics and R-20 in walls. Use chart below to rate your home. Then call us for a FREE, NO OBLIGATION ESTIMATE.

"R" VALUE	SOLAR THERM INSULATION		ROCKWOOL		FIBERGLASS	
	Inches of Ins.	Wt. per 100 Sq. Ft.	Inches of Ins.	Wt. per 100 Sq. Ft.	Inches of Ins.	Wt. per 100 Sq. Ft.
R-30	6 1/2"	52	10 1/4"	162	13 3/4"	77
R-24	5 1/4"	43	7 1/2"	119	10"	56
R-19	4 1/4"	38	6 1/2"	103	8 3/4"	49
R-11	2 1/4"	31	3 3/4"	59	5"	28

Call us TODAY 864-3010 or mail coupon

Philpot's Service & Supply

402 North 1st
Haskell, Texas 79521
864-3010

MAIL COUPON TODAY!

Please send me more information on Solar Therm.

NAME _____

ADDRESS _____

CITY _____

PHONE _____

THE NATIONAL DISASTER SURVIVAL TEST

A Warren V. Bush Production in cooperation with the National Safety Council
NBC Television 8:00 p.m. Eastern Time, Sunday, May 1, 1977

OFFICIAL TEST FORM			
I. JUDGMENT		II. KNOWLEDGE	
1. a b c d		1. T F	5. T F
2. a b c d		2. T F	6. T F
3. a b c d		3. T F	7. T F
	Score _____	4. T F	8. T F
			9. T F
			10. T F
			Score _____
III. ALERTNESS		V. LEADERSHIP	
1. Yes No		1. a b c d	
2. List the number of potential dangers: _____	Score _____	2. a b c d	
			Score _____
IV. STRESS		VI. SPECIAL SCORING	
1. Yes No	9. Yes No	PRELIMINARY SCORE _____	
2. Yes No	10. Yes No		
3. Yes No	11. Yes No		
4. Yes No	12. Yes No		
5. Yes No	13. Yes No		
6. Yes No	14. Yes No		
7. Yes No	15. Yes No		
8. Yes No			
	Score _____	YOUR FINAL SCORE _____	

Use this test form to indicate your answers, to total your score, and to compare your score with your family, friends, and other groups.

For more information on disaster survival, write to the National Safety Council, P.O. Box 11933, Chicago, Illinois 60611.



National Safety Council

East Side Baptist Schedule Film

Across a barren land, scarred by centuries of war and neglect, the spectres of ancient Israel appear, hover, and fade away. Suddenly there is movement of a different sort, and slowly, steadily, a startling transformation begins to take place.

Thus begins "HIS LAND", the thrilling story of Israel from ancient to modern times. "HIS LAND", a one-hour color feature motion picture, takes you on a journey through space, time and current events. You see graphically, the fact that Israel today is a living testimony to the words of the prophets when they proclaimed that Israel would take her place among the nations of the world.

In the company of Cliff Barrows and Cliff Richard, England's popular star, who sings a number of Ralph Carmichael songs, some of which were actually written on location, you travel the vibrant streets and lonely solitary paths of this nation whose destiny is daily discussed in the counsels of governments all over the world...the same paths taken by Jesus and the prophets: Galilee...the wilderness...Jerusalem...the Mount of Olives...mingle with the people of modern Israel as they work, play and build a nation.

Words of Scripture come to life as the two men reflect upon the events that in recent years have confirmed much of the ancient prophecies. You are witness to the fact that out of death and desolation is emerging a new Land...a "Land of milk and honey," where the future climactic events of history will take place.

"HIS LAND", rich in color and authentic sights and sounds, with a popular musical score composed and arranged by Ralph Carmichael has been called a musical journey into the soul of a nation, and will be shown on May 1 at 7:00 p.m. at East Side Baptist Church.

"HIS LAND" is truly a feast of color, sound and song. An unforgettable experience!

President Urged to Stem Shoe Imports

Washington—(PWS)—Twenty-nine of the nation's fifty governors formally petitioned President Jimmy Carter to provide "effective relief" for the domestic shoe industry from the impact of foreign imports.

At the same time, more than 120 members of the House of Representatives petitioned the president on the same issue urging that he impose tariff quotas to assist the industry.

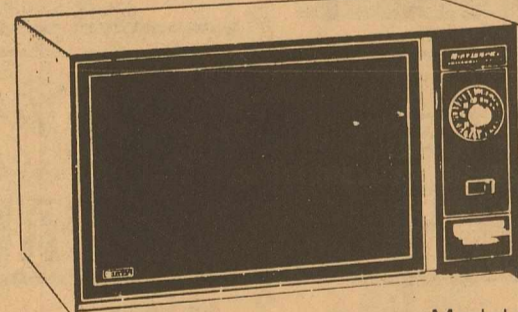
The number of American shoe plants has dropped from over 1,000 to 650, many in one-factory towns and that unemployment among shoe workers is now fifty percent higher than the national average.

The representatives said "At stake is the possible demise of a vital industry in our nation unless strong, affirmative import relief is quickly implemented. We join the American companies and their unions in urging your immediate action to provide relief."

For the second time in one year the U.S. International Trade Commission determined that the domestic shoe industry is being seriously injured by foreign competition, notably from South Korea, Taiwan and Brazil.

Get A Litton Microwave Oven For Mother's Day

the compact microwave oven that thinks big...



Model 102

Litton Mother's Day Microwave Value. \$275.00
Only 275.00

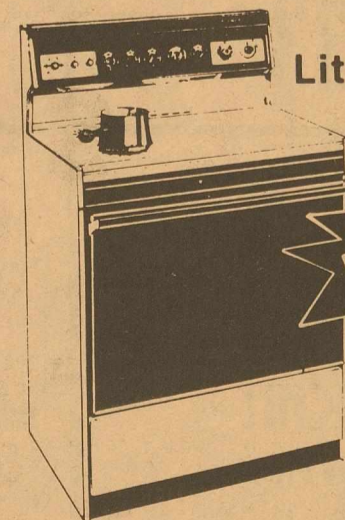
The compact oven that thinks big

The Minutemaster 102 is the microwave oven that is big on features. Yet, with its neat, compact design the 102 will fit perfectly in kitchens with limited counterspace.

Don't let its size fool you. The 102 has an oven interior that's large enough to meet most of your everyday cooking needs. And it contains more features than other microwave ovens in its class. The Automatic Defroster cycles the oven on and off automatically to assure you evenly defrosted food. The 20-minute dial timer is designed for accuracy and ease of operation. Maintenance is quick and easy with a bright acrylic interior and removable glass shelf that can be cleaned by simply wiping with a damp cloth. Everything about the oven is designed for your convenience.

If you have limited counterspace or if you need an oven for your cabin or second home—think Litton 102.

Including Automatic Defrost!



Combination Microwave Range
Lets you choose the one best way to cook your favorite dishes

Why combine microwave and conventional cooking? Because the two in combination work better as one. Microwaves cook quickly and conventional heat browns in crispness. And it takes about half the time of conventional cooking.

Amonett & Amonett TV

414 N. 1ST SALES & SERVICE PHONE 864-2870
CB HEADQUARTERS

Leisure Lodge News

We especially thank Mr. H. C. King for the house shoes he brought out for anyone needing them. We always have some residents who can use them.

Etta Leach and Alva LeFevre of Sagerton visited Mr. L. B. White.

Mrs. Roy Norman and Wanda Lees of Rule visited Mrs. Minnie Brady.

Visiting Mrs. Mary Bowman were Mrs. Calvin Stone and six Boy Scouts from Rochester, Chris Stone, Steve Stone, Paul Ortiz, Brian Johnson, Scott Sloan, and Felix Ortiz, Mrs. Virgie Brown and Lector Thomanson.

Mrs. Minnie Dickey, Mr. and Mrs. Newton Westmoreland, Jerry Westmoreland, Mr. and Mrs. Clyde Franklin, Mike Torrence, Oleta Jackson and Mrs. Aubrey Fouts all of Rule visited Mrs. Lummie Westmoreland.

Mrs. David Gannaway and girls from Roswell, N.M. visited her grandparents, Mr. and Mrs. James M. Shaw.

Mrs. Bruce Cotton and daughter, Sarah Shay of San Angelo and Mrs. J. D. Gillespie from Stamford visited Mrs. Norma Baker.

Vernay Howard of Paint Creek visited his mother, Mrs. Sarah Howard.

Mrs. W. L. Davis from Morton visited her mother, Mrs. Beulah Lackey.

Visitors of W. O. Lewis and Mr. and Mrs. Jeff Smith recently were Dianne Carroll and Lee Gray, Helen Roberts, Lewis Hutchens of Goree, Floyd Hutchens of Seymour, Mr. and Mrs. Vernon Rounton, Lloyd King of Goree, Rev. V. R. Henderson of Childress and Mrs. Grace Montgomery of Munday. Mr. Lewis visited Mr. and Mrs. Walter Coffman in Goree Friday afternoon. Mr. Claire Clemmer from

Abilene, and Mr. Wallace Moorehouse was business visitors of Mr. Lewis.

Charlie Rose, a nephew, visited Mrs. Bessie Piland. Mr. Rose lives near Dallas.

Visiting Mrs. Bertha Fincannon were Mr. and Mrs. Lewis Fincannon, Corsicana, Mr. and Mrs. Alfred Latham, Mr. and Mrs. N. E. Hosea, Mr. and Mrs. J. S. McCrary of Munday and Mr. and Mrs. Jaylon and J'Nae from Abilene.

Visiting Mrs. Lillie Bradley were her granddaughter, Rev. and Mrs. Jay McDonald, Julie and Dianna from Monahans, grandson, Mr. and Mrs. Jerry Bradley from Ft. Worth, her son, George Bradley from Pismo Beach, Calif., and his son, Jamey, and Mrs. Grace Moorman from Munday.

Visiting Mrs. Mary Smith were Mrs. Ruth Langford, Rule, Mrs. Myrie Alexander, Mrs. Georgia Turnbow, Mr. and Mrs. George Gray, Mrs. Susie Brockett, Twyla Turnbow all from Weinert.

Tuesday devotion was by Raymond Crane and music by Rev. Chas. Kardokus from the Foursquare Church. On Thursday, the people from the Assembly of God Church had a singing, and on Sunday the services were by Rev. Coleman and the people from the Church of God. These services were enjoyed, and we thank you for your time and effort.

Mr. and Mrs. Buford Westmoreland from Anson and Mrs. Ray Carter from Rule visited Mrs. Donna Westmoreland.

A SUBSCRIPTION TO The Haskell Free Press is an ideal gift for any occasion. We do all the work. Just come by and give us the name and address and we'll send a gift certificate in your name. Haskell Free Press



That OLE CRANK UP THE STREET Says:

Mr. Jimmy Carter President, U.S.A.

Dear Sir:

I did not know that you or your aides read our local paper and that you took a local columnist seriously!!!

I am referring to a column that I wrote just a few weeks back concerning an increase in our local sales tax and a 5c increase on gasoline taxes, but this was not for the Federal Government but our own State Government to help us meet our money commitments. If you will stop and think for a few minutes about the problems that 90% of the American public face!!! Taxes on the clothes we wear, Taxes on the cars we drive, Taxes on the gasoline we buy to get us to work to pay our INCOME

TAX, Taxes on the tires we buy, Taxes on the Cigs we smoke, taxes on the property we and the financial institutions own jointly, Taxes on our businesses that we own and if you will stop to think not everyone of us is a peanut farmer and has plenty of money to pay these taxes!!!

Mr. President, we, the American people are taxed from head to toe and nearly to death, please take time to think about us, the people who make up this great country!!! Inflation has forced most of us to join our neighbors in facing the front door of the poor house and its time something was done to correct this situation!!!

DO IT NOW, PRESIDENT CARTER BEFORE WE ALL JOIN HANDS IN THE POOR HOUSE BECAUSE OF INEFFICIENCY OF OUR FEDERAL GOVERNMENT!!!

Truly,
The "Ole" Crank

Maybe that will shake up our government, but I doubt

that it will do much good!! This "Ole" Crank is still turning!!

Start Lawn Preparations

Now is the time to prepare your lawn for the summer season. What you do will go a long way to controlling many of the weeds that could invade your grass.

The U. S. Department of Agriculture passes along these tips:

If you haven't put lime on your yard recently, the soil may be too acid for the growth of a really successful lawn. You can put ground limestone on at any convenient time without danger of burning the grass, (dolomitic limestone containing both calcium and magnesium is preferred). An application of 50 to 80 pounds of ground limestone per 1,000 square feet every 5 to 6 years is usually sufficient to keep the soil from getting acid. Be

sure to avoid overliming. Grass needs food too—and the plant food elements it needs in large amounts are nitrogen, phosphorus, and potash. A complete inorganic fertilizer such as 10-6-4, 10-10-10, 20-10-5, 23-7-7, 16-4-8, 20-10-10, or one similar, contains all three nutrients.

And be careful about mowing. Improper mowing can really hurt the grass. Cutting the grass too short weakens it, causes shallow rooting, lowers resistance to drought, and increases susceptibility to disease.

It also leads to thinning of grass and invasion of weeds. Mow your lawn frequently enough so that you don't remove more than half of the total blade at any one mowing. It's less harmful to the grass to mow it frequently, than to shock it by cutting off long growth less frequently.

And after you've mowed, remove the clippings, so you don't smother the grass. Excess clippings can also

encourage the spread of disease organisms.

For more information on lawns, get a copy of "Better Lawns." Just send 50 cents to the Consumer Information Center, Dept. 73E, Pueblo, Colo. 81009.

"Better Lawns" (50 cents) is one of over 200 selected Federal consumer publications listed in the Spring edition of the catalog, Consumer Information. Published quarterly by the Consumer Information Center of the General Services Administration, the catalog is free by sending a postcard to the Consumer Information Center, Pueblo, Colo. 81009.

WTC To Award 3 Scholarships

Three scholarships in English will be awarded at Western Texas College to freshman students for the 1977 school year. The scholarships will be

given by the department of English to students who demonstrate unusual ability in English, although applicants are not necessarily required to major or minor in English.

Applicants should be prepared to submit (1) a completed application form, (2) high school transcripts, (3) an example of their writing (preferably an essay), (4) letters of recommendation, and (5) ACT or SAT scores, if available.

Completed applications must be submitted to the English department no later than May 10, 1977. Scholarships will be awarded by June 1, 1977.

Prospective students interested in applying for the scholarships may secure application forms or further information by contacting Dr. Edward Barkovsky, Chairman, Division of Communications and Letters, Western Texas College, Snyder, Tx. 79549.

Get Your Man With a WANT AD

Haskell, Texas Home Owned

-We Reserve the Right to Limit-

Parker's Super Market

506 North Second USDA Food Stamps Coupons Gladly Accepted Phone 864-3454

<p>GREEN GIANT VERY YOUNG Sweet Peas 17 OZ 3 FOR \$1.</p> <p>WHITE SWAN Leaf Spinach 15 OZ 4 FOR \$1.</p> <p>WHITE SWAN SLICED OR HALVES CLING PEACHES 16 OZ 39¢</p> <p>WHITE SWAN Fruit Cocktail 16 OZ 39¢</p> <p>OCEAN SPRAY WHOLE Cranberry Sauce 16 OZ 39¢</p>	<p>BORDEN'S ICE CREAM</p> <p>\$1.19</p> <p>½ GAL ROUND CARTON ASSORTED FLAVORS</p> <p>OCEAN SPRAY JELLIED Cranberry Sauce 16 OZ 39¢</p>
--	---

Shortening

3 LB CAN **\$1.29**

POT PIES

BANQUET ASST KINDS

4 FOR \$1

2 QUARTS OF COKE FREE...

With purchase of 4 quarts of Mr. PIBB

6 for \$1.19

PLUS DEPOSIT

Shortening 3 LB CAN **\$1.29**

POT PIES BANQUET ASST KINDS **4 FOR \$1**

2 QUARTS OF COKE FREE... With purchase of 4 quarts of Mr. PIBB **6 for \$1.19** PLUS DEPOSIT

BORDEN GAL. PLASTIC JUG HOMO MILK **\$1.69** **ARMOUR'S ALL MEAT HOT DOGS** 12 OZ PKG **59¢**

<p>PRODUCE</p> <p>RUSSET 10 LB BAG POTATOES 79¢</p> <p>FLORIDA Sweet Corn 8 EARS FOR \$1.00</p>	<p>CELLO BAG CRISP Radishes 2 FOR 19¢</p> <p>FRESH Green Onions BUNCHES 2 FOR 19¢</p> <p>SUNKIST NAVEL Oranges LB 19¢</p>	<p>25 SQUARE FT. ROLL Reynolds Wrap 3 FOR \$1.</p>
---	---	--

RUSS AGRICULTURE FLYING AERIAL SPRAYING

WORMS — GREEN BUGS

Russ Matthews, Owner

Call 864-2035

Haskell, Texas

BULLETIN BOARD
 April 28 F.H.A. Salad Supper
 Apr. 28, 29 30 Volleyball Tournament
 Apr. 30 Boys Regional Track Brownwood
 May 2 Appreciation Banquet
 May 3 U.M.W. 2 p.m.
 Book Exg., 1 p.m.
 City Council
 May 4 Garden Club 2 p.m.
 May 5 Pre-Kindergarten Clinic 1 p.m.

Alto Crest Lodge

2 and 3 Bedroom Cabins
 North on N.M. Hwy. 37
 Box No. 494
 Ruidoso, N.M. 88345
 Bob Killen
 Vernay Burson
 Owners
 For Reservations Call 505-336-4400

SAVE on these Mother's Day SPECIALS

<p>Big Fancy Bath Towels</p> <p>\$1.33</p>	<p>26 Piece Crystal Punch Set</p> <p>\$4.44</p>
<p>Hand Towels</p> <p>63¢</p>	<p>Sayelle Yarn</p> <p>88¢</p>
<p>Double Knit</p> <p>Every Day Low Price</p> <p>\$1.99</p>	<p>Lighted Religious Pictures</p> <p>\$12.88</p>
<p>10 Cup Automatic Coffeemaker</p> <p>\$21.88</p>	<p>Super Twin Burger</p> <p>\$19.95</p>

PERRY'S HASKELL