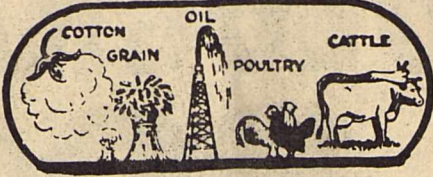


15¢
Per Copy

THE HASKELL FREE PRESS



"HASKELL—A GOOD PLACE TO VISIT; A BETTER PLACE TO LIVE"

WEATHER SUMMARY
By Sam Herren
Month Of July
TEMPERATURE
Hi104°25th
Lo68°22nd
RAINFALL
Total 1.86
Total to Date 11.86
Normal to Date 14.53

VOLUME NINETY-ONE

12 PAGES

HASKELL, TEXAS, 79521, THURSDAY, AUGUST 4, 1977

NUMBER THIRTY-ONE



The Haskell High School Twirlers attended the Texas Tech Band Camp July 10-22. They were picked 2nd over all the other twirling lines there. Odessa Permian was picked 1st. Haskell and Odessa Permian were both asked to twirl for the Municipal Band which played Sunday evening July 17. The Texas Tech Twirlers for the coming year also twirled. It is always considered an honor to be asked to twirl at that special occasion. Jill Adkins and Patricia Arredondo entered their twirling solos in the camp competition held Monday, July 18. They both received a 1st division rating. Left to right: Jill Adkins-Head; Patricia Arredondo, Terri Gideon, Sarah Cortez, Sonja Tidrow, Karon Gray.

Haskell Mojos Win Regional

By James Lanier
The gritty Haskell Mojos won the regional teenage baseball tournament held in Haskell last weekend. The Mojos parlayed speed, hustle and determination into a three game sweep. Two of these victories were last inning comebacks over Stamford, a team that had lost only 2 games previous to the tournament. Haskell was particularly strong in the outfield as Benny Abila, Joseph Browning, and Rocky Young continuously flaged down fly balls with their speed which most 13-15 year old boys could not touch.

In the 1st game Rocky Young delivered a fine performance pitching the entire game as the Mojos defeated Stamford 6-5. Trailing 5-2, the Mojos used a walk, a single by Kerry Therwanger and two long doubles by Joseph Browning and Monnie Hise for 4 runs and the victory. Young gave up only 2 hits and struck out 9 in a very smooth performance.

On the 1st night of the tournament Clyde defeated Eastland 1-0 in a tight pitchers duel. Stamford then defeated

Eastland 6-5 to drop them out of the tournament.

On the second night Haskell with Ricky Gonzales and Albert Enriquez pitching defeated Clyde 4-2 with the outfielders contributing several outstanding catches.

Stamford then defeated Clyde 16-0 to drop them from the tournament. Gomez pitched a brilliant one hitter. Clyde got their only hit with 2 outs in the 7th inning. This set the stage for the final game Saturday night between Stamford and the Mojos.

Haskell jumped into a 3-0 lead in the second inning on singles by Jim Harris, Benny Abila, and Ricky Gonzales plus 2 Stamford errors. However, Stamford came back to take a 4-3 lead in the 3rd inning without the aid of a hit as the Mojos suffered their only defensive cold spell of the tournament. Stamford added another run in the 6th inning making the score 5-3. In the 7th inning, Rocky Young reached base on an error, Kerry Therwanger walked, Joseph Browning moved the runners up with a bunt, Monnie Hise singled to load the bases. Young, then, scored on a passed ball as did Therwanger to tie the score.

Albert Enriquez and Thomas McAdams then followed with singles. After another passed ball and one move out, Benny Abila drilled a line single to drive in 2 more runs. The Mojos held Stamford scoreless in the last inning and cinched their victory. The tough, hustling Mojos will represent their region in the state tournament at Snyder.

Line Score	
Haskell	0 0 1 1 0 4 x
Stamford	1 3 0 0 1 0
	R H E
Haskell	6 4 0
Stamford	5 2 1
Winning Pitcher:	Rocky Young, Losing Pitcher: Gomez.
Clyde	0 0 0 0 0 1 0
Eastland	0 0 0 0 0 0 0
Clyde	1 1 2
Eastland	0 3 2
Winning Pitcher:	Young, Losing Pitcher: Daniels.
Stamford	1 1 0 0 1 2 1
Eastland	0 0 1 2 1 1 0
Stamford	6 4 3
Eastland	5 2 0
Winning Pitcher:	Ty Gross, Losing Pitcher: Swift.
Haskell	0 0 0 3 0 1 x
Clyde	0 0 0 0 0 0 2
Haskell	4 3 6
Clyde	2 2 3
Winning Pitcher:	Ricky Gonzales, Losing Pitcher: Hall

ales, Losing Pitcher: Hall
Stamford 0 0 5 3 3 5 0
Clyde 0 0 0 0 0 0 0
Stamford 16 5 0
Clyde 0 1 9
Winning Pitcher: Gomez
Losing Pitcher: Young
Haskell 0 3 0 0 0 0 5
Stamford 0 0 4 0 0 1 0
Haskell 8 7 6
Stamford 5 4 4
Winning Pitcher: Albert Enriquez, Losing Pitcher: Not available

Tournament Winners

Winners in the golf tournament held here over the weekend are listed below:

David Strickland of Haskell fired a two-under par 69 to win the pro-am Friday at the Haskell Country Club, which preceded Saturday's opening round of the Bob Mobley Invitational golf tournament. Lewis Conn and J.B. Tabor, both of Knox City, and Allen Strickland of Haskell had one over par 72's to tie for second place in individual honors.

The winning four-man team in the pro-am was Strickland-Bill Alsobrook of Breckenridge Jim Bynum of Haskell-Ott Johnson of Haskell. Finishing second was the team of Conn-Ray Herron of Garland-Terry Love of Breckenridge-E.L. Stewart of Haskell.

There was a tie for third place between the teams of Jody Kennedy of Haskell-Tim Everett of Haskell-Bill Matthews-Bill Lane of Haskell and J.B. Tabor of Knox City-Bill Blakeley of Haskell-J.G. Vaughter of Haskell-Alton Fields of Friona.

Championship Flight	
Lewis Conn	70-71-141,
Dave Turner	69-74-143, Jim Nebhut 73-72-145.
Second Flight	
Randy Rhoades	76-71-147,
Ernie Mayer	77-75-152, David Burson 76-77-153.
Third Flight	
Richie Smith	80-75-155,
Max Johnson	80-75-155, Joel Bevel 80-77-157.
Fourth Flight	
Gary Andrews	84-81-165,
Terry Love	84-81-165, Bob Watson 84-82-166, Dudley White 84-82-166.
Fifth Flight	
Allen Rhoades	89-81-170,
Randy Ivy	91-79-170, Bill Allsbrook 87-83-170.
Sixth Flight	
Charles Vickers	94-88-182,
Von Marr	96-87-183, Bill Lane Jr. 98-88-186.

ISD Benefits From Finance Bill

On July 15, 1977 the Texas Legislature passed the House Substitute for Senate Bill number one. This bill, HSSB#1, will virtually replace HB1126, which has been the school finance bill for the past two years. The new finance bill reverses the trend of several years and actually lowers the Local Fund Assignment (that part of the school program that local taxes support) for most schools in the state. Representative W.S. (Bill) Healy and Senator Ray Farabee were very instrumental in gaining passage of the new School Finance Bill.

Since the school year 1974-75, which was prior to the passage of HB1126, the Haskell I.S.D. local fund assignment was \$58,973. After passage of H.B. 1126 our local fund assignment

climbed to \$138,227 in 1976-77. Next year it will be \$118,770. In addition to the reduction in local fund assignment, Haskell I.S.D. will receive an additional \$7,000 in state equalization aid, approximately \$12,000 in additional maintenance and operation money for the net gain of state money of approximately \$38,500. This additional state money is very much needed by the Haskell I.S.D. as we have been operating at about a \$20,000 deficit for the past two years.

Beginning this school year, for the first time in ten years,

REVISED SCHOOL CALENDAR

- Aug. 22-26 Inservice & Workdays
- Aug. 29 Classes Begin
- Sept. 5 Labor Day Holiday
- Oct. 7 End of 1st 6-Wks. (29 Days)
- Oct. 24 TSTA Meeting
- Nov. 18 End of 1st Quar. & 2nd 6-Wks. (29 Days)
- Nov. 24-25 Thanksgiving Holi.
- Dec. 22 Workday
- Dec. 23-Jan. 2 Christmas Holi.
- Jan. 13 End of 3rd 6-Wks. (30 Days)
- Feb. 24 End 2nd Quar. & 4th 6-Wks. (30 Days)
- Feb. 27 Workday
- Feb. 28 In-service
- Mar. 20-24 Spring Break (Easter)
- April 14 End of 5th 6-Wks. (28 Days)
- May 25 End 3rd Quar. & 6th 6-Wks. (29 Days)
- May 26 Workday
- Holidays 15 days
- In-Service & Work Days 10 Days
- School Days 175 Days

Perrin Attends PCA Conference

John Paul Perrin, Rolling Plains PCA board vice chairman from Haskell, joins PCA officials throughout Texas in Arlington August 5 for the annual Production Credit Association Directors Conference.

Other Rolling Plains PCA directors attending include Mack T. Claburn, board chairman, Anson; W.J. Boykin, Northfield; Winfred C. Mann, Clarendon; and W.H. Williams, Spur.

R.C. Cobb, Rolling Plains PCA president who will accompany the group, said conference participants will bring directors up-to-date on farm financing at the state and national level and on activities and philosophies of the Federal Intermediate Credit Bank of Houston, source of most PCA loan funds.

Rolling Plains PCA has loans outstanding of approximately \$33 million to area farmers and ranchers in Briscoe, Childress, Collingsworth, Cottle, Dickens, Donley, Foard, Hall, Hardeman, Haskell, Jones, Kent, King, Knox, Motley, Shackelford and Stonewall counties.

NOTICE

Wendell Gideon, Haskell band director announced today that all High School band students from grade 9 through 12 please meet at the Band Hall Monday, August 8 at 7:15 p.m. It is urgent that all members attend.

STAMFORD PLAYNIGHT

Haskell Winners in the Stamford Junior Sheriffs Posse Play Night July 30 included: Leiza Morales 2nd in barrels and flags in the 8 year and under class; in the 13 and over class Tammy Herricks 1st in barrels and 4th in poles, Carl Hopkins 1st in poles, 1st in flags, and 4th in barrels; James Hopkins 3rd in barrels, 3rd in poles and 6th in flags; Joe Benevides 5th in barrels and 6th in poles; In the all around 8 and under class Leiza Morales 3rd; all around 13 and over, Carl Hopkins, 1st, Tammy Herricks and James Hopkins tied for 3rd.

teachers will begin on August 22 and class will begin on August 29.

Superintendent Kenneth Sams is very optimistic concerning the renewed improvement and quality of the local schools provided by the precedent setting new finance plan and is very appreciative of Representative W.S. (Bill) Healy and Senator Ray Farabee for the part they played in making it come about.

Three Haskell Firemen Attend A&M School

COLLEGE STATION-Roy Thomas Trussell, volunteer fireman on the Haskell Volunteer Fire Department of Haskell, is attending the 48th Annual Texas Firemen's Training School July 25-29. The school, attended by nearly 1,650 students representing about 600 cities from more than 30 states, is being held on the Texas A&M University campus this week.

Firemen can choose their course at the school from a list including Fire Fighting, Fire Prevention, Fire Department Officer Training, Fire Department Pump Maintenance, Specialized Fire Protection, and Disaster Rescue Training.

Fireman Trussell is being sponsored by Haskell County Farm Bureau and Texas Farm Bureau Insurance Companies by contributing toward the cost of the school. Since volunteer firemen are interested in attending this school to help do a better job of fire fighting and fire prevention, 100 County Farm Bureaus and the Texas Farm Bureau Insurance Companies in the statewide program have sponsored 100 firemen at the school.

"The Farm Bureau Insurance Companies believe volunteer fire departments have been very effective in reducing the amount of loss involved by fire in rural areas," said President Carol G. Chaloupka of Dalhart. "It is our hope in sponsoring this program that the fireman will help the Haskell Volunteer Department to better serve the residents of Haskell County."

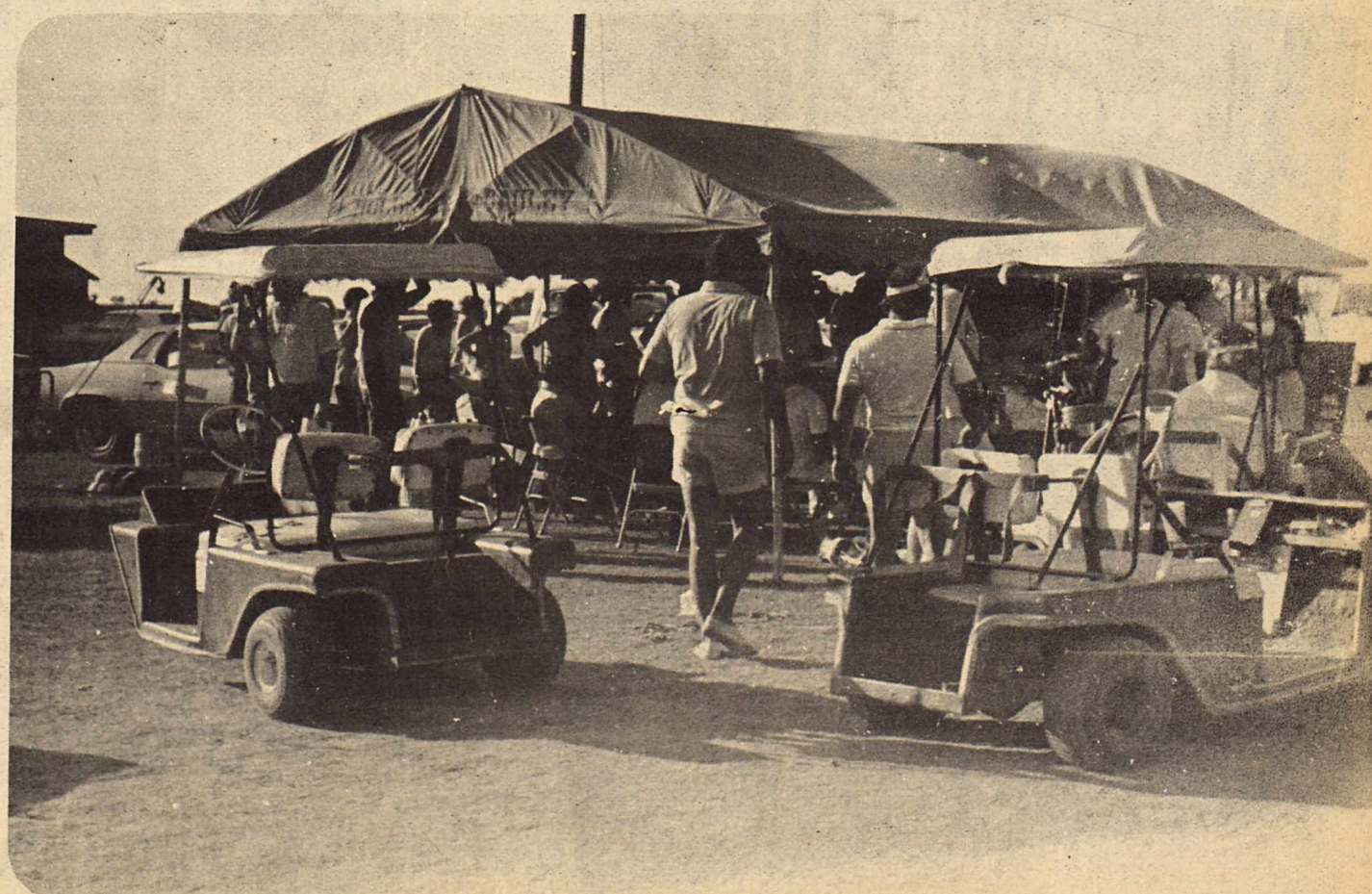
Also attending from Haskell were Don Comedy and Tom Watson. Comedy attended classes on Fire fighting 11, and Watson was an instructor on hose loading.

Prof. Receives Italian Award

Dr. Paul B. Crawford, assistant director of the Texas Petroleum Research Committee and professor of petroleum engineering at Texas A&M, has received Italy's Golden Interpetrol World Award in the field of American science. He is the first American professor ever to receive the Italian government's prize assigned to the most meritorious men of science, oil companies, engineering firms and petroleum equipment companies.

Crawford has authored more than 300 technical publications related to improvement in oil and gas recovery and water conservation. He is a representative to the Interstate Oil Compact Commission.

Dr. Crawford graduated from Haskell High School in 1939. He is one of the sons of the late Mr. and Mrs. John Crawford, longtime civic, religious, and educational leaders of Haskell. The parents and the children of this family have represented Haskell well in outstanding achievements through out the world.



LOOKING FOR A COOL SPOT-Golfers at the Bob Mobley Invitational Tournament held here Saturday and Sunday some of

the 108 players were looking for a cool place to rest when this picture was taken. (Photo by High)

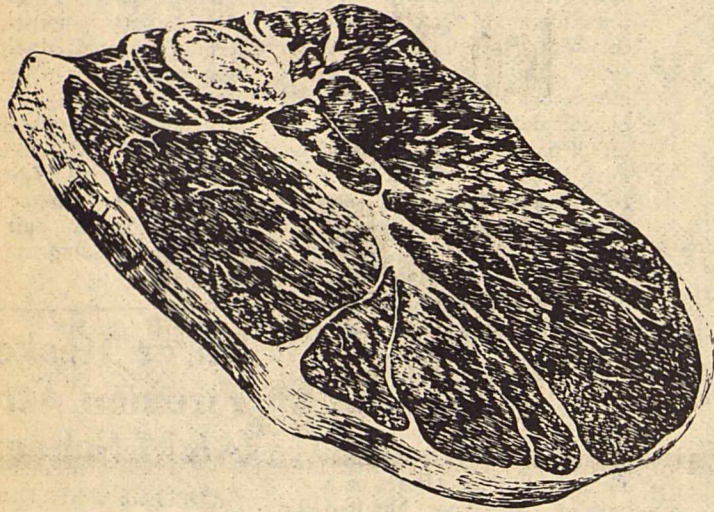
M SYSTEM

Your FRIENDLY
SUPER MARKETS

Haskell, Texas
"Where Your Dollar Buys More"
Now Open Till 8:00 Each Evening

**DOUBLE
S & H GREEN STAMPS
WEDNESDAYS**
With The Purchase
Of \$2.50 Or More

Specials Good
Thurs. Aug. 4 thru
Wed. Aug. 10



Round Steak
lb. \$ **1.29**

**PUREX POWDERED
DETERGENT**
GIANT BOX **89¢**

LILAC TOILET TISSUE
4-ROLL PKG. **69¢**

Morrison's
**CornKits-Bis-Kits-
Pan-Kits**
5 pkg **\$1.00**

**MAZOLA
CORN OIL**
24-OZ. BOTTLE **\$1.19**



BOLOGNA
ALL MEAT
lb. **89¢**

LONGHORN
CHEESE
lb. **\$1.49**

U S Choice
Boneless Beef
Brisket
lb. **89¢**
Great to Barbecue

More for

Wilson's
Certified
Franks
12 oz pkg **79¢**
Diamond Oleo
3 lbs **\$1.00**

Big K
Biscuits
9 10 count cans **\$1**



Del Monte Yellow Whole
Kernel or Cream Style

3 303 CANS

CORN
89¢

ASST. FLAVORS
KOOL-AID
10 PKGS. **\$1.**

THRIFTY MAID
CANNED MILK
3 TALL CANS **\$1.**

- Arrow Paper Towels _____ JUMBO ROLL **49¢**
- Keebler Club Crackers _____ BOX **79¢**
- Easy Serve Plates _____ 100-CT. PKG. **79¢**
- Sweet & Low Sugar Substitute _____ 100-CT. PKG. **89¢**
- Swift's Viennas _____ 3 4 OZ CANS **\$1.00**
- Colgate Tooth Paste _____ 7oz. TUBE **\$1.19**
- New HLH Baby Shampoo _____ \$1.19 VALUE 16oz. **98¢**
- Head & Shoulders Shampoo _____ \$2.09 VALUE 7 oz. LIQUID **\$1.59**



your Food Dollar



SUGAR BARREL SUGAR
5 LB. BAG 79¢

Swifts Jewel
Shortening
 42 oz can **\$1.19**



Deep South Grape or Apple Jelly 2 lb Jar 79¢	Gandy or Oak Farms Ice Cream 1/2 gallon 99¢
--	--

DEL MONTE TOMATO SAUCE
 8 OUNCE CANS
5 FOR \$1.

KOUNTRY FRESH SWEET MILK
 GAL. PLASTIC JUG
\$1.69

ASTOR FRUIT
COCKTAIL
 303 CAN **39¢**



GOLD MEDAL FLOUR
 5 LB. BAG **59¢**
 25 lb Bag \$3.29

RIGHT RESERVED TO LIMIT



DEL MONTE CUT GREEN BEANS
 303 CANS **89¢**

KOUNTRY FRESH COTTAGE CHEESE
 1 LB CTN. **59¢**

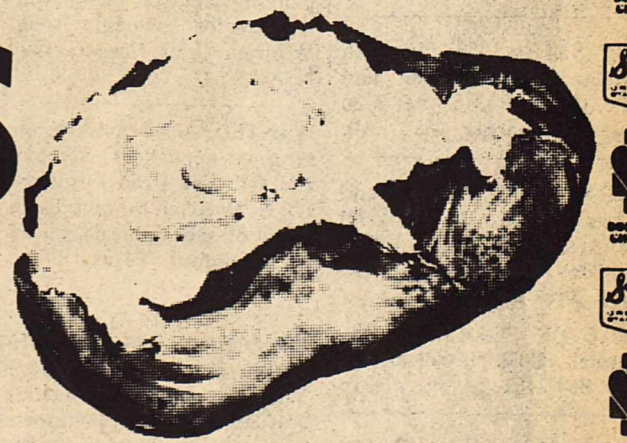
THRIFTY MAID CATSUP
 14-OZ. BOTTLES **\$1.33**

Bestmaid Pickles

Hamburger Sliced Dills Pint **59¢**

All Purpose Russet

POTATOES
 15-LB. BAG **\$1.29**



DEL MONTE PINEAPPLE
 SLICED-CRUSHED-CHUNK
 2 15-OZ. CANS **89¢**

- | | | | |
|--------------------------|----|-------|--------|
| Yellow Corn | 10 | FOR | \$1.00 |
| Calif. Red Plums | 3 | lbs. | \$1.00 |
| Iceberg Lettuce | 3 | HEADS | \$1.00 |
| Sunkist Valencia Oranges | 4 | lbs. | \$1.00 |



BUYING? SELLING? CHECK OUT THE...

CLASSIFIED ADS

NOTICE

The Haskell Free Press reserves the right to edit and/or delete all news stories and locals for length and liability and to refuse to print anything deemed not newsworthy.

NOTICE

Due to the bookkeeping involved and the high postal rates, we ask that you please remember that classified ads are Cash In Advance unless you are a business firm or have an established credit with the Haskell Free Press. Either mail your ad with check or if you need assistance in writing it we will be happy to help you. Rates are 5c per word or a minimum of \$1.50.

NOTICE

Please notify us of your change of address. If you do not, the Post Office charges us 25c for each time the Haskell Free Press is returned to us, this plus the cost of stencils, time and labor can make your move costly to us. In the future, failure to notify us will result in one month being deducted from your subscription.

For Sale

McCULLOCH CHAIN SAW HEADQUARTERS. A saw for every job. See new Woodard Farm Sale. 7fc

WOODARD FARM SALES— Ford tractors, equipment, long hawks, Lilliston-Heston-Oliver plow parts. 4fc

FOR SALE: Iron at wholesale prices. Rounds, flats, sheets, square tubing, channel etc. Haskell Trailer Builders. 20fc

FOR SALE: Good buys! 1975 Chevrolet Malibu, 1974 International 3/4 ton pickup. Call 864-2631. 27fc

FOR SALE: Peaches. A. Havran Farm, phone 422-4405 Knox City. 28-31p

FOR SALE: 1966 Chevrolet 1/2 ton pickup, \$600.00. Call 915-773-3931 or see at Cobbs Camp. 30-31p

FOR SALE: AKC registered Boston Terrier screwtail bulldogs, three males and one female. Call 817-422-4744 in Munday. 30-31c

FOR SALE: 1969 Mercury, four door, pretty clean old car. Can be seen at Richardson Truck and Tractor or at 201 N. Av. D, Wayne Watts. 30fc

FOR SALE: deck boat, in-board/outboard Mercruiser, fish locator, fiberglass Tri-hull canopy, easy on-off trailer. Sacrafice. Bill Wilson Ford Co. 31c

FOR SALE: 1972 Cadillac Calais, 28,000, good condition \$2,500, call 997-2619 after 2 p.m. on weekdays only. 31p

FOR SALE: 1973 Plymouth Satalite, loaded, clean and nice. Call 864-2315 after 5:30 or see Sue Fincher. 31c

FOR SALE: Clarinet, case and music stand, Boosey and Hawkes. Good condition. Call 864-3169. 31p

TRACTOR FOR SALE: M-Farmall, \$800.00, call after 6 p.m. 864-2461. 31p

FOR SALE: 1974 Montego MX Brougham, gold with vinyl top, 351-2 barrel, loaded, good gas mileage. Call 864-3770 after 4:30 p.m. 31-32p

FOR SALE: 1973 Chevrolet 1/2 ton pickup, tan and white, 350 engine, \$1,895.00. Contact Robert Tribbey, 607 Union, Rule, Texas. 31-32p

FOR SALE: extra good telescope TV antenna. John E. Robison, 1001 N. Av. D, 864-3766. 31p

For Sale

FOR SALE: 1975 Pontiac Astre, four speed, new tires, excellent condition, 864-2233. 31p

Miscellaneous

DON'T run all over town planning that special wedding, reunion or anniversary. We can help you with all of it. Flowers and photography are our speciality—and catering is available. We also have complete wedding equipment and will decorate your wedding setting in a special way. City Floral & Photography by Howard-Haskell, on the square, 864-3391. 30-41c

INSTANT CASH for any good merchandise, modern or old. Phone 864-3197 anytime. Lackey's, Throckmorton Highway, Haskell, Texas. 27fc

FREE 11 x 14 bridal portrait is available for you. Ask for details. You'll find our prices are the best. City Floral & Photography by Howard-Haskell, on the square 864-3391. 30-41c

McLEMORE Locker Plant across from Rodeo Grounds, Stamford, Texas, Curing, custom slaughtering beef and hogs. No appointment needed. Monday through Friday from 8:30 to 5:30. Retail and wholesale. Heavy Feeder Lot Beef Bundled-halves and quarters. 915-773-2201. 27-39c

Do you think you have a drinking problem? Can you see what it is doing to you and your family? Contact Alcoholics Anonymous or Al-Anon, 864-2288 or 864-2533. 28-31c

CUSTOM HAY BAILING. Contact Alfred or Dennis Grand. 864-2537. 23-37p

"Grapefruit Pill" with Diadax plan more convenient than grapefruits-Eat satisfying meals and lose weight. Johnson Pharmacy. 28-31p

WEDDINGS \$49.95 and up. Invitations, napkins and accessories. Member of Professional Photographers of America, Texas PP of a Professional Picture Framers, attended Lisle Ramsey Photographic Seminars. Come by Byrd's Studio and let a professional photographer capture your special occasions on film. Photography by Sue, 104 N. Av. D, Haskell, 864-2204. 28-31c

ATTENTION ARTISTS: We now have frames for you. Why drive out of town to get your paintings framed? Let Byrd's Studio help you with your framing. 104 N. Av. D, Haskell, 864-2204. 16fc

WE FRAME needle work, photography, tote painting and miniatures. We make cross frames. We also make frames and have ready-made ones including rustic frames. We have hand made Raggedy Ann dolls. Place your orders now for Christmas. Anita Herrin is going to teach classes on miniatures and tote painting. Register now. Evening classes to begin soon. Wigwam Craft Corner, 1308 N. Av. E. 28-31c

WANTED: Good used furniture and appliances. We buy and sell. Lee Used Furniture 120 N. Swenson St. (one block north of red light on hiway 277) Stamford, Texas. Phone 773-5608. 42fc

POTPOURRI HAIR FASHIONS will now be open each Saturday afternoon starting July 30. Make an appointment early with Paula Mills or Bill Hall, 400 N. 1st, 864-2894. 30-32c

PRIVATE TWIRLING LESSONS: Beginners, Intermediate and Advanced. Starting age six and up. \$5.00 a lesson. Call now for appointment. 864-2265, Connie Turnbow. 30-31p

CARPET LAYER wants work. Seventeen years experience, work guaranteed, no long waiting on one room or a house full. Call Howard at City Floral, 864-3391 31fc

Miscellaneous

FREE PUPPIES: Mother is a registered Beagle; father is a short, dark traveling salesman. Call the little Pace Brothers, 864-2018. 31p

MOM-It's time to get those girls and boys ready for school. I have beautiful cottons for those first Fall days, and will help you get them made and ready to go. Iva Lee's north side of the square. 31-32c

SPOTS before your eyes-on your new carpet-remove them with Blue Lustre. Rent an electric Shampooer. \$1.00 Perry's 31c

Garage Sales

TWO FAMILY GARAGE SALE: at 904 S. Second, Haskell, beginning at 4 p.m. Friday, August 5 and all day Saturday, August 6 beginning at 9 a.m. Children and adult clothing, toys, couch, dining chairs, Wizard clothes dryer and odds and ends. Extremely low prices. 31p

GARAGE SALE: Thursday through Saturday, 905 N. 4th. Tools, baby bed and much misc. 31p

BACK YARD SALE: Thursday, Friday and Saturday, 200 N 6th. Electric cook stove, Hoover washer and much misc. 31p

Lost & Found

LOST from southwest Haskell: one Hereford cow. Yellow tag on left ear. Brand "C" on left shoulder, underbit in both ears. Call 864-3290 or 864-2877. 30fc

Wanted

WANTED: Someone with good credit to take over payments of \$22.00 a month on a console model Touch and Sew, Singer Sewing Machine. Original price \$549.54. Balance \$137.80. Call 864-2350. 29-31p

Help Wanted

WANTED R.N. OR G.N. 11-7 shift. Start immediately. Good pay and benefits. \$900.00 per month, two weeks paid vacation. Small, personal, friendly hospital. Call collect, Tom Boyd, Administrator, hospital 817-989-3551 or home 915-823-2703. 31c

HOMEWORKERS WANTED: in this area: men, women, students. No experience necessary; stuffing and addressing envelopes (Commission Mailers). Earn sparetime money at home. \$100.00 weekly possible! SEND \$1.25 (refundable) and a long, stamped, addressed envelope for details; PPS-748, 323 Franklin #804, Chicago 60606. 31p

Jobs Wanted

WANTED: All kinds of electrical work. Call Eddie McKeever 864-2464. If no answer call 864-3653. 28-31p

WOULD LIKE to do book-keeping for Haskell or surrounding area in my office. Call 997-2333. 30-32p

For Rent

FOR RENT: In Stamford McHarg Manor, two bedroom apartment, kitchen appliances bedroom suit and dinette furnished. No children or pets. Call after 6:00 p.m. 915-692-5797. 28fc

FOR RENT: nice clean house in Weinert for school year or 11 months of the year. Partially furnished, ideal for teachers. Adults only. Call 673-2411. 31-34c

H. F. LANGFORD

Sand and Gravel Caliche and Fill **RULE HWY. WEST HASKELL**

ELECTRIC SEWEROOTER

Cleans clogged pipes, drains, sewers, No digging. No damage. Philpot's Supply & Service 864-3010 41fc

Real Estate

FOR SALE: house with two bedrooms, one bath, near high school. On corner lot 70x140 feet. Has large work shop electrically wired. It has a double carport, wall to wall carpet through out, several fruit trees and one pecan tree. Can be seen after 5:00 by calling 864-2890 or 864-2748, 700 N. Av. C. 30-31p

FOR SALE: By owner, Coin Operated Laundry in Haskell Call for details 864-8997 day 864-2105 after 5 p.m. 30fc

FOR SALE: four bedroom house, large living room, 1 full bath plus two half baths, large den, on two lots with fruit trees. Call 997-2404 in Rule. 31-33p

FOR SALE: large two bedroom and bath home, cellar, shade trees, well located, only \$2,550. Cross Real Estate, Box 235, phone 743-3425, Rochester, Texas. 31-32c

FOR SALE: Hostas Coin Operated Laundry in Seymour, Texas. Building and equipment is four years old. Twenty-six GE washers and twelve Huebch Perma Press dryers. If interested, call 817-888-2527 after 5 in the evenings. 31-33c

Want To Buy Good Two or Three Bedroom House. Call 864-3745 30-31p

Real Estate For Sale

3 bdr., new, B.V., N. Av. L
3 bdr. frame, N. 5th, 22,050 sq. ft. living area, 2 baths, den, living room kitchen, & dining area, carpeted throughout, central cooling & heating, good water well on lot 70 x 145', priced to sell.

3 bdr. frame, real nice, N. Av. A, needs a new owner.

3 bdr. stucco, N. Av. E, need to seal on health reasons.

2 bdr., N. 3rd, cheap, but needs work done on it.

3 bdr. N. Av. D, ready to go.

Large 2 bdr. frame, N. Av. C, central cooling & heating, worth the money.

Furrh's Real Estate

510 North 1st, Haskell
Stanley Furrh 864-2576
Frances Arend 864-3156

ELECTRIC MOTOR repair & service. New & used motors in stock. Philpot's Supply & Service 864-3010 21fc

HOT WATER HEATER HEADQUARTERS State-Rheem-Phillips A.O. Smith (Glascoite) Gas or Electric 864-3010 Philpot's Supply & Service 15fc

JUNK-A-TIQUES, glassware, furniture, baby bed, books, dishes, bottles, doll Kleenex box, dolls, misc. We buy, sell or trade. We trade books. 1704 N. First St. Mrs. Harley Langford.

New & Used Color & BW TV Amonett & Amonett Radio & TV 864-2870 Haskell 13fc

PUMPS Irrigation-Domestic Formation Testing Well Drilling We pull & repair all makes. REA PUMP CO. Throckmorton Highway Haskell, Texas Call 24 hrs.—864-3372 41fc

Legal Notices

CONTRACTOR'S NOTICE OF TEXAS HIGHWAY CONSTRUCTION

Sealed proposals for constructing 5.649 miles of Recondition BS. Cem. Stab. of Bs., Addit. Fnd. Crse., Scraper Work & 2 CST From Knox Co. Line To Rochester on Highway No. SH6, covered by CRP 98-6-9 in Haskell County, will be received at the State Department of Highways and Public Transportation, Austin, until 9:00 A.M., August 18, 1977, and then publicly opened and read. Plans and specifications including minimum wage rates as provided by Law are available at the office of C.W. Wesbrooks, Resident Engineer, Hamlin, Texas, and State Department of Highways and Public Transportation, Austin. Usual rights reserved. 30-31c

SPECIAL STOCKHOLDERS MEETING

Notice is hereby given that a special meeting of the stockholders of THE HASKELL NATIONAL BANK of Haskell, Texas will be held in the Community Room in the City of Haskell, State of Texas on the second Friday in August, A.D. 1977, the same being the 12th day of said month, at 3 o'clock in the afternoon, for the purpose of voting on proposals for raising the Capital and Surplus accounts, involving a stock split, and extensive remodeling of the bank building. Pauline Coach Asst. Vice-Pres. and Cashier 30-32c

NOTICE TO BIDDERS

Haskell County Commissioners Court will accept bids on Patching, Cleaning and sealing coating roads in Haskell County on a per mile basis. The Court reserves the right to accept or reject any and all bids. Bids will be accepted until 10:00 A.M. on Monday August 8, 1977. Completion date must be by Sept. 15, 1977. Standard specifications as follows:

MATERIAL:
(1) Asphalt: Type OA-175-.3 gal. per sq/yd
(2) Rock: Type A-Grade 4-1 cubic yard to 120 sq/yards

MACHINERY:
(1) Hydrostatic Asphalt Distributor
(2) Self-propelled Rock Spreader, with Pneumatic tires
(3) 12-ton Pneumatic Roller—minimum rolling time per mile-12 hours

RIBBON PAVING: Contractor has responsibility for motorgrader and operator for hilling shoulders.

SEAL COATING Contractor has responsibility, on seal coating contracts, for all patching and cleaning operations.

B.O. Roberson, County Judge Haskell County, Texas 30-31c

PUBLIC NOTICE

The Commissioners Court of Haskell County, Texas will hold a public hearing on the proposed budget for the year 1978 on Monday, August 8, 1977 at 10:00 A.M. at their regular meeting place.

Also, a public hearing on the proposed budget for Revenue Sharing funds, Entitlement period #9, will be held immediately following the regular budget.

Any citizen or taxpayer wishing to participate is urged to be present on this date. Haskell County Commissioners Court By B.O. Roberson 30-31c

Kelly Ditching & Plumbing Supply Water Lines Gas Lines Install Septic Tanks & Bleedlines. All Work Guaranteed for 1 year. Call 915-773-3939 10fc

ADDRESS ROOFING Winfred Address Residential & Commercial 713 S. 10th St. P. O. Box 463 Ph. 864-3078 Haskell, Texas 31fc

Legal Notices

NOTICE OF HEARING BEFORE THE TEXAS WATER RIGHTS COMMISSION OF AN APPLICATION TO APPROPRIATE PUBLIC WATERS OF THE STATE OF TEXAS

No. 3795
Haskell County
Notice is given that HASKELL COUNTY COUNTRY CLUB c/o Mr. Royce Adkins, Attorney P.O. Box 68 Haskell, Texas 79521

applicant, seeks a permit to maintain two existing dams and reservoirs on unnamed tributaries of Red Creek, tributary North Paint Creek, tributary Paint Creek, tributary Clear Fork Brazos River, tributary Brazos River, Brazos River Basin, to impound therein not to exceed a combined total of 75 acre-feet of water, to use the impounded water for recreational purposes, and to divert 7 acre-feet of the impounded water per annum to irrigate 1 acre of golf greens on applicant's 145-acre tract in the James Scott Survey, Abstract No. 368, 2-1/2 miles NE of Haskell, Haskell County, Texas, all being more fully set out in the application. Dam and Reservoir No. 1, with a 60 acre-foot capacity, are located in the aforesaid Scott Survey, and the south end of the dam is N 70° E, 8200 feet from the SW corner of said survey. Dam and Reservoir No. 2, with a 15 acre-foot capacity, are located in said survey, and the west end of the dam is N 73° E, 9950 feet from said survey corner.

Diversion facilities include two stationary pumps, each positioned at a point on the perimeter of a reservoir. Application No. 3795 was accepted for filing pursuant to §§5.121, Texas Water Code, and Rules 129.02.95.001 through 129.02.70.008, on July 25, 1977, and a hearing thereon will be held by the Commission in the Stephen F. Austin State Office Building at 1700 N. Congress Avenue in Austin, Texas, on September 27, 1977, at 10 o'clock a.m. Those opposing the granting of said application may appear at the hearing and/or, at least five days before the hearing date, may file written protests with the Commission and serve copies on the applicant by certified mail, return receipt requested, or by attorney's affidavit. Written protests must contain the name and address of the applicant, an allegation of potential injury of the protestant, the basis of protestant's claim of right and the location of protestant's diversion, if applicable, and any possible adjustments to the application which would result in a withdrawal of the protest. However, persons filing such written protests are not entitled to be admitted as parties to the proceeding unless they comply with Rules 129.03.13.001-.003 which require actual presence at the hearing. Persons desiring further information in connection with this application or the administrative procedures to be followed may contact Pam Weddell, P.O. Box 13207, Austin, Texas 78711, Telephone (512) 475-2711. /s/ Joe D. Carter Joe D. Carter, Chairman TEXAS WATER RIGHTS COMMISSION Date: July 26, 1977 31-32c

PHILPOT'S DITCHING SERVICE Plastic pipe & fittings, sewer pipe. Water & gas lines run. Call Philpot's Supply & Service. 864-3010 15fc

FOR ALL YOUR GENERAL PLUMBING NEEDS Call Philpot's Supply & Service Center. 864-3010 41fc

Used Color TV's For Sale Cheap **Anderson Tire Company** 206 S. Av E 864-2900 16fc

The Haskell Free Press

Established January 1, 1886
PUBLISHED EVERY THURSDAY
MEMBER
TEXAS PRESS ASSOCIATION

BILL COMEDY—Publisher
DON COMEDY—Editor
Entered as second-class matter at the postoffice at Box 577, Haskell, Texas 79521, under the Act of March 3, 1879.

SUBSCRIPTION RATES

In Haskell and Adjoining Counties			
	Sub	Tax	Total
One Year	\$ 5.00	.25	\$ 5.25
Six Months	\$ 3.00	.15	\$ 3.15
Two Years	\$ 9.50	.48	\$ 9.98
Elsewhere in Texas			
One Year	\$ 6.00	.30	\$ 6.30
Six Months	\$ 4.00	.20	\$ 4.20
Two Years	\$11.50	.58	\$12.08
Outside of Texas			
One Year	\$ 8.00		\$ 8.00
Six Months	\$ 4.50		\$ 4.50
Two Years	\$15.50		\$15.50

NOTICE TO PUBLIC—Any erroneous reflection upon the character, reputation or standing of any firm, individual or corporation will be gladly corrected upon being called to the attention of the publishers.

Obituaries

Elmer Wheatley

Elmer C. Wheatley, 74, of Haskell County died at 11:15 p.m. Friday of an apparent heart attack at Haskell Memorial Hospital, where he was visiting his wife. Services were held at 3 p.m. Sunday at First Baptist Church.

The Rev. Dudley Bragg, pastor, and the Rev. Walter Copeland, semi-retired Baptist minister, officiated. Burial was in Roberts Cemetery, directed by Holden-McCauley Funeral Home.

Born July 4, 1903, in Glen Rose, he moved to Haskell County in 1917. He was a farmer until his retirement. He married Mamie Bernice Mapes Nov. 17, 1924, in Haskell. He was a member of First Baptist Church, where he was a member of the board of deacons.

Survivors include his wife; a son, Dr. Durwood Wheatley of Wichita Falls; two brothers, Alvin of Earth and Carl of Haskell; three sisters, Laura Mae Whitaker and Ruby Robertson, both of Haskell, and Frieda Littlefield of Abilene; and four grandchildren.

A daughter, Genetha, and a brother, Marvin, preceded him in death.

Pallbearers were Johnny Wheatley, Roddy Sorenson, M.C. Piland, Clyde Bland, Raymond Brewer and Hubert Bledsoe.

B.P. Dake

Funeral services for Bethel P. Dake, 74, of Gladewater were held July 30 at 3 p.m. at the Gladewater Church of Christ, with Hayes Renuau and Truman Smith officiating. He died July 28 in the Gladewater hospital after a lengthy illness. Burial was in Memorial Park at Gladewater under the direction of Malcolm Stone Funeral Home.

He was a native of Oklahoma and moved to Gladewater in 1931. He married the former Pat Shepperd. He served two terms on the City Council and was a director of the Chamber of Commerce. He received the distinguished Bradley Award from the Chamber. He was a longtime member of the Rotary Club and recently they made him a Paul Harris Fellow, one of Rotary's highest honors. He was Vice President of the Gladewater AARP and a director of their American Red Cross. He was a member of the Church of Christ.

Survivors include his wife; one daughter, Mrs. Tom Anderson of Dallas; one son, Frank of Houston; four brothers, Leader of Quanah, Glen of Knox City, Virgil and J.B. of Phoenix, Ariz.; one sister Mrs. Lydia Stocks of Haskell, 5 grandchildren, 2 great grandchildren and also of Haskell two nephews, A.M. Stocks and Jerry Stocks.

Pallbearers were Quentin Abernathy, Kirk Abercrombie, Wallace Bozman, Charles Wilson, Jake Norfleet, E.L. Webb, Jack Phillips, and Johnny Osteen. Honorary pallbearers were members of the Gladewater Rotary Club.

Card of Thanks

CARD OF THANKS

I would like to thank each of you who helped to make my stay in the hospital easier. I especially thank the doctors and nurses who were so kind and attentive while I was there. Also the many friends, neighbors, and loved ones who called, came by, sent cards, flowers or in any way showed concern for me. I appreciate your kindness in my behalf. Ervin Schaahe. 31p

CARD OF THANKS

We would like to say Thanks to each and every person that brought food and sent flowers and money. Also to all that just came by and gave words of comfort. Thanks to Bro. Dudley Bragg and Rev. Wayne Coleman and to all our folks who came from out of town to be with us. God bless each and every one in a very special way. We thank you all. Always, Mr. and Mrs. W.H. Reynolds and Mitchell. 31p

MR. SKETCH-Instant water colors.

Each color has a different fragrance, non-toxic, safe for children. For coloring books, murals maps, handcrafts, many uses, nothing to mix or spill. No clean up. \$3.90 set of 8 or 49c ea. Haskell Free Press

Go Classified for the Action you want.

All Weather Solid Vinyl Siding To insulate and beautify Your Home. Call 997-2

Supplement to Stamford American, Western Observer, Haskell Free Press, Hamilton Herald, Aspermont Star, Knox County News, Rochester Roundup

BACK TO SCHOOL BONANZA OF VALUES

IN STAMFORD THIS WEEKEND

First Anniversary

In Appreciation of your Patronage In our First Year Of Operation Of Thompson Jewelers

All Merchandise Is Discounted

20%

Thursday, Friday and Saturday Register For FREE Prizes Drawings will be held in the store Saturday August 6 Starting at 4:00p.m.

NO NEED TO BE PRESENT TO WIN

Thompson Jewelers 773-2491
124 S. Swenson

PLUMBING AND ELECTRICAL
OUR PLUMBING AND ELECTRICAL DEPARTMENT IS READY TO SERVE YOUR EVERY NEED. . . WHETHER INSTALLING, REMODELING, OR REPAIRING. HOW-TO-DO-IT BOOKS ARE ALSO AVAILABLE TO HELP YOU.

WHITE BATHROOM FIXTURES
REG. 16.49
SAVE 2.00
19" x 17" WALL HUNG LAVATORY AND TRIM EXTRA

ROCKWELL 10" TABLE SAW WITH STAND
COMPLETE WITH BUILT-IN MOTOR, STURDY METAL STAND AND 2 HEAVY DUTY STAMPED STEEL WINGS. CUTS 3 1/2" DEEP AT 90°, 2 1/8" AT 45°. RIPS 2 1/2" RIGHT OR LEFT OF BLADE. MANY SAFETY FEATURES: SEE-THRU BLADE GUARD WITH SPLITTER AND ANTI-KICKBACK ATTACHMENTS.

MODEL 34-600 MOTOR DEVELOPS 2400 RPM

YOU SAVE 55.00
199.99 REG. 254.99

B GRADE COMMODE
36.95 SAVE 3.00
REG. 39.95 LESS SEAT

5' WHITE STEEL TUB
68.95 SAVE 17.05
REG. 86.00 LESS TRIM AND FITTINGS

ROCKWELL MOTORIZED MITRE BOX
FOR FAST, ACCURATE SQUARE CUTS. EXCELLENT FOR TRIM WORK. BUILT-IN MOTOR DEVELOPS 1 1/2 HP. 45° MITER CAPACITY WITH POSITIVE STOPS AT 90° AND 45° RIGHT AND LEFT. LIFETIME LUBRICATED BALL BEARING CONSTRUCTION. "SAFETY-MATIC" PUSH BUTTON BLADE BRAKE. SEE-THRU BLADE GUARD.

MODEL 34-010

YOU SAVE 30.00
189.99 REG. 219.99

SHOWER MASSAGE Water Pik®
SHOWER HEAD, SHOWERER, REGULAR MASSAGE OR COMBINATION

19.99

TOILET SEAT
EASY TO INSTALL

3.99

ROCKWELL 1/2 H.P. ROUTER
28,000 RPM FOR FAST SMOOTH CUTTING. NO VIBRATION. DIAL DEPTH ADJUSTMENT. CONTROL V. SPLIT TYPE WRENCHES. MODEL 4600

29.95 REG. 39.95

19" x 17" BATH VANITY
ASSEMBLED LESS FIXTURES

34.95 SAVE 5.00
REG. 39.95

WATER HEATER
40 GALLON—GLASS LINED
5 YEAR LIMITED WARRANTY
ELECTRIC OR GAS

109.95

WATER HEATER
ELECTRIC OR GAS

109.95

DISSTON HANDSAW
PROFESSIONAL 11 POINT 26" TAPER GROUND

12.99 REG. 16.99

PLUMB HAMMER
"SER-V-ALL" PERMA-BOND HEAD

3.49 REG. 4.90

ALL LIGHT FIXTURES IN STOCK
50% OFF REG. RETAIL

SELECT THE FIXTURE OF YOUR CHOICE FROM OUR LARGE DISPLAY AND SAVE 50% OFF REGULAR RETAIL.

MCCULLOCH MINI-MAC 25 CHAIN SAW
WITH CHAIN-BRAKE SAFETY FEATURE

79.95 Some Models Identified As MAC110

CUTS LOGS UP TO 20" THICK

ROW POWER T-50 MULTI-PURPOSE STAPLE GUN
Drives nails into hardest steel with chromi- finish. Heavy Duty

13.75 SAVE 3.00
REG. 16.75

STEEL SQUARE
No. 500C

3.19

DISSTON 8 PIECE SCREWDRIVER SET
SIZES. PRECISION TIPS.

6.99

ROCKWELL 7/4" BALL BEARING EQUIPPED CIRCULAR SAW
BIG CUTTING CAPACITY.

24.99 SAVE 5.00
REG. 29.99

DRYER VENT KIT
INCLUDES: VERT. 5' HOSE, 2 CLAMPS

3.49

32" x 21" SINK
PORCELAIN ENAMEL DOUBLE COMPARTMENT

19.95 LESS TRIM AND FAUCET

NATIONAL BUILDING CENTERS
A subsidiary of LONE STAR INDUSTRIES
HOME CARE CENTERS NATIONWIDE

125 W. McHarg
773-3691

BACK TO SCHOOL SALE
Group of new Fall Double Knit 100% Polyester. This is co-ordinating material. Special group of Cottons & Blends 1/2 Price to go into fall

1 group of Double Knit \$2 yd. for fall

See the New Fall Fabrics with scraves & Flowers to match

Fabric Shop

BACK TO SCHOOL SALE

Final Clearance on Men's Summer Suits 1/2 & less Values to \$200	Large Group Men's Pants Dark, Lighter Shades, & Patterns	Wrangler Short and Long Sleeved	Sleeveless — Reg. 14.00
One Group SUITS at \$50	Back To School Sport Shoes Smooth and Suede Leather	BLOUSES 1/2 price	SHELLS \$5
Group Florshems Nunn Bush	Group Long Sleeve Borden	SKIRTS 1/2 price	Pants, Tops \$5
Shoes \$19.95	Shirts \$5 Each	No Return or Refund.	SHOES \$3
Group Men's Western Boots, Cowtown Closeout	Group Wrangler Check Sta Press Pants Closeout	BLOUSES \$10	SHOES \$10
Group Short Sleeve Shirts Arrow, Borden	Group Wrangler Check Sta Press Pants Closeout	SKIRTS 1/2 price	DRESSES \$10
Group Short Sleeve Shirts Arrow, Borden	Group Wrangler Check Sta Press Pants Closeout	New School Shoes Good Selection	Summer P. J.'s, Robes \$10
Group Short Sleeve Shirts Arrow, Borden	Group Wrangler Check Sta Press Pants Closeout	New Fall Sweaters Large Variety	New Fall Clothes Arriving Daily

All Kinds of Wrangler Jeans for Back To School or Work

Finde
MEN'S AND WOMEN'S SHOES AND APPAREL
Fall and Winter Coats Hold On Layaway for \$1.

ELECTRONICS DEPARTMENT

We offer a complete selection of all types of electronic items including the famous Radio Shack merchandise. We are always glad to explain the use and function of all the items we sell. If there is a way we can help you, we

welcome the opportunity.

Hand Held Calculators 8.95
 Portable Cassette Recorder 24.95
 8 Track Stereo Tapes 2.99
 Pocket Radios 4.95
 Cobra 23 Channel C.B. 64.95
 All Turner Mics Reduced 20%
 AM FM Table Radio 14.95
 AM FM Clock Radio 29.95
 Large Floor Size Stereo Speakers 29.95
 Mini C.B. Radio, Full Power,
 Full Modulation 24.95
 Midland C.B. Base Station 139.95
 5 Cell Flashlights 1.00
 High Intensity Desk Lamps 9.95
 Portable 8 Track Players 39.95
 AM, FM Stereo, Phonograph, and 8 Track
 Player Complete With Large
 Speakers 189.95

Our large selection of fine furniture comes from some of the most respected names in the industry. Choose from Thomasville, Bassett, Broyhill, Kroehler, Simmons, A. Brandt, Owosso, Tell City, and Douglas. Come in and look over our carefully selected displays with special prices on many items.

FURNITURE:

Large Selection of Reclining Chairs, La-Z-Boy and Lane, Save \$20 to \$60
 One Group of Sofas in Velvets and Prints, Values to \$550.00 Now \$397.00
 Sofa Sleepers, Large Selection in Many Sizes and Colors. Prices Start at \$227.00

ACCESSORIES & GIFTS

We are proud to have one of the largest and most complete selections of gifts and home accessories in West Texas

Sparkling Crystal Glassware 1/2 Price
 Several Sets of Dishes in Stock Reduced 20% to 25%
 All Sterling Flatware Reduced 1/3
 Tote Bag — Reinforced Vinyl, Fully Lined, Regular 19.95 Now 7.77
 Many Bedspreads Reduced 1/4 to 1/2
 Hand Painted Waste Baskets 1/4 Off

Browsers Welcomed,
 Come In and Look Around
 We Won't Pressure You.

LOOK WHAT A DOLLAR WILL BUY!

Dishes, glasses, accessories, odds and ends, etc.
 Values to 10.00
 One large table of items all going for 1 dollar

One Group of Velvet Chairs \$147.00
 Metal Dinettes with Chairs in Heavy Vinyl From \$99.00
 Wood Dinettes, Table and Chairs with Formica Top. Choice of Maple or Pine for the Same Low Price \$219.00

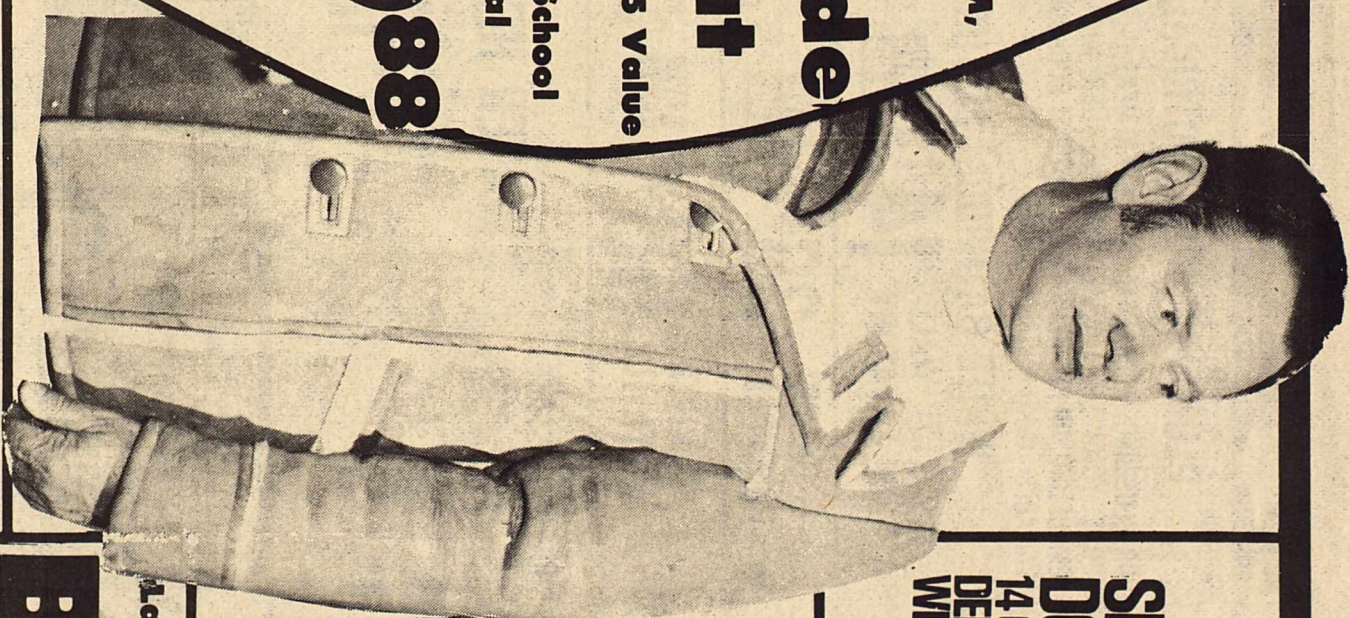
Rimney's

Stamford

Men's
 Fleece
 Lined
 Sizes S, M,
 L & XL

Suede Coat

Reg. 99.95 Value
 Back to School
 Special



5988

Luggage Set

3 Pc. Matched
 Reg. 39.98 Value
 Choice of Colors
 Selected Group Children's

2288

Knit
 Shirts
 299 Each

Discontinued Styles Children's

JEANS 499 Pair

By Levi, Wrangler & Garanimals

One Group Ladies' and Children's

Shoes & Sandals 299 Pair

Closeout

HEADQUARTERS OF

SEDFIELD
 DO-NOTHING
 14 OZ. 100% COTTON
 DENIM JEANS
 WITH SHIRT
 LEVI'S



Children, Students & Men's Sizes

Selected Group Levi & Wrangler

JEANS Close Out

Values to \$17

Asst. Styles, Fabrics & Colors

Men's Asst. Styles & Colors

997 Pair

Broken Sizes
 Values to \$75

Leisure Suits Close Out 2988

Alternations Extra

Ladies' and Children's Fashion

BOOTS

Assortment of Styles For All Ages Priced From

1099 to \$36



COAT Layaway One Group Men's Western SHIRTS Permanent Press sst. Patterns & Styles

Choose From Over 250 Coats in Coats in Reg., Junior & Large Sizes Priced From

\$24 to 35995

599 Values to \$15

Each 3 For \$17

Children's

Dresses for Back to School Wash & Wear Fabrics Priced From

\$9 to \$17

Final Close Out All Spring & Summer Coordinates By Center Stage & Lorch

1/2 Price & Less

Hassen's

54.9 MILLION IN ASSETS

THANK YOU FOR HELPING US REACH THIS GOAL

ON THE GROW TO BETTER SERVE YOU

WHY NOT SAVE WHERE YOUR NEIGHBORS SAVE-AND EARN THE "HIGHEST INTEREST" ON SAVINGS PERMITTED BY FEDERAL REGULATION

DO YOU REQUIRE SECURITY AND RELIABILITY IN YOUR SAVINGS PLAN?

WHERE YOUR SAVINGS INTEREST IS COMPOUNDED DAILY-PAID QUARTERLY

PASSBOOK Annual Rate 5.25% Annual Yield 5.39%	90 DAY NOTICE 500.00 CERTIFICATE MINIMUM Annual Rate 5.75% Annual Yield 5.92%	12 MO CERTIFICATE 1,000.00 MINIMUM Annual Rate 6.50% Annual Yield 6.72%	30-MO CERTIFICATE 1,000.00 MINIMUM Annual Rate 6.75% Annual Yield 6.98%	48 MO. CERTIFICATE 1,000.00 MINIMUM Annual Rate 7.50% Annual Yield 7.79%	72 MO. CERTIFICATE 1,000.00 MINIMUM Annual Rate 7.75% Annual Yield 8.06%
--	--	--	--	---	---

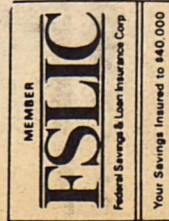
**Interest on Passbook Accounts
Paid From Date of Deposit To
Date of Withdrawal.**

**CERTIFICATE ACCOUNTS
Automatically Renewable; Compounded
Daily and Paid Quarterly.**

**Annual Yield is Based on
Compounding Interest Earn-
ings From Date of Deposit
To The Maturity Date.**

A Substantial Interest Penalty
Is Required For Early Withdrawal.

FIRST FEDERAL SAVINGS AND LOAN ASSOCIATION



Abilene
CUSTOMERS
Toll Free Call
Dial O-Ask For
ENTERPRISE 84015

Home Office:
122 W. McHarg
P.O. Box 511
Stamford, Texas 79553
915-773-2714

Branch Office:
3 Avenue D
P.O. Box 444
Haskell, Texas 79521
817-864-3179

Division Office:
Quanah Federal Savings and Loan
313 South Main St.
Quanah, Texas 79252
817-663-5388

BACK TO SCHOOL!

So Classic...

So Great!

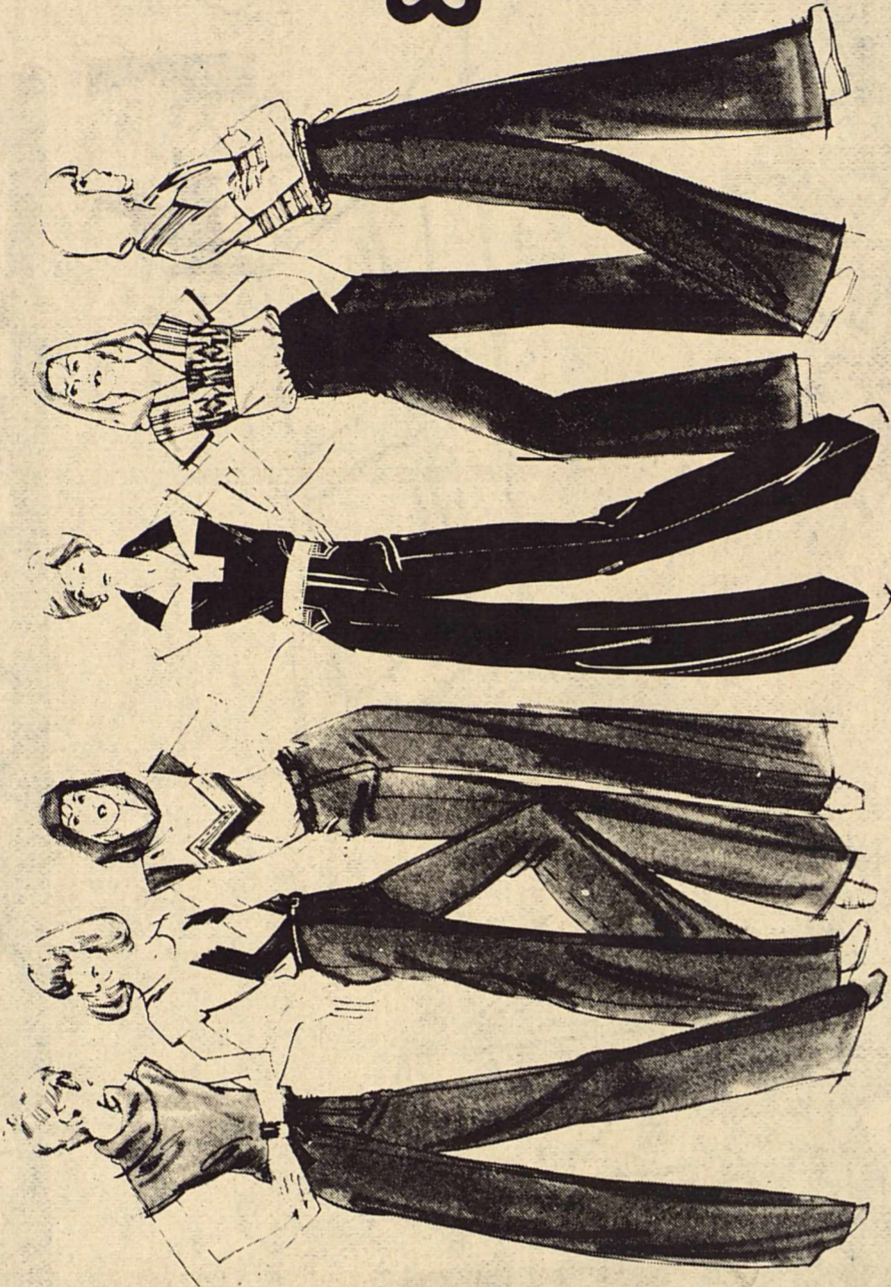
T-SHIRTS and PANTS

FASHION PANTS

8⁹⁷ 3 for \$17.

T-SHIRT TOPS

\$6.-\$7.



100% woven texturized polyester fashion pants. Six styles with elastic back, novelty pockets, and belted and basic. Colors of Hunter, Black, Medium Blue, Navy, and White. Buffalo Tan. Sizes S-13.

Every style imaginable striped, bouffant, cow-necked, bouffant, V-necked tops, hooded, and more. With Geometric prints and Aztec prints. In sizes S-M-L.

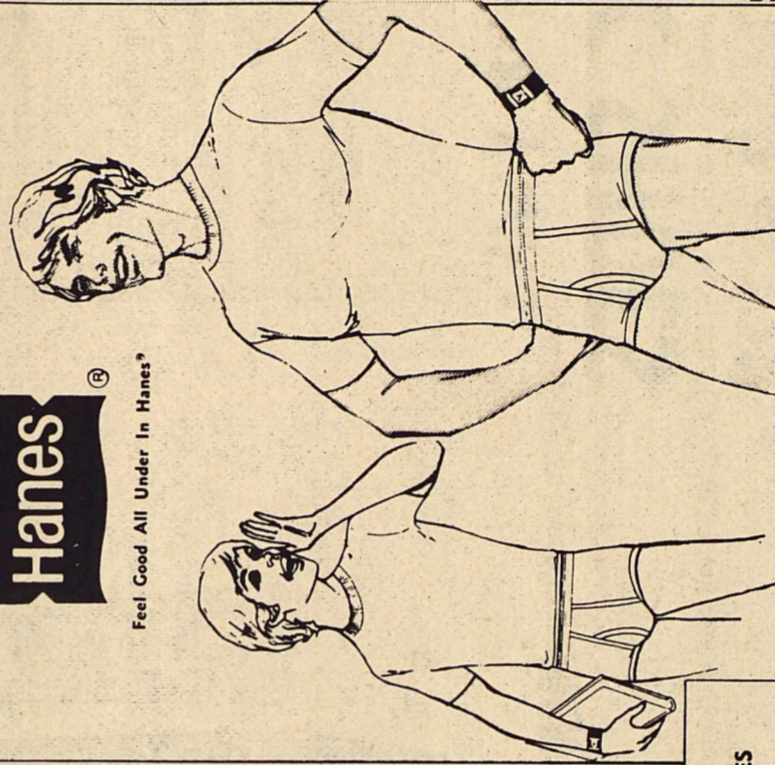
MEN'S AND BOYS

HANES
BRIEFS And
T-SHIRTS

MEN'S BRIEFS 3 FOR 4.69
S-M-L-XL
MEN'S T-SHIRTS 3 FOR 4.99
S-M-L-XL
BOYS BRIEF & T-SHIRT 3 FOR 3.19
Sizes 3-8
BIG BOYS BRIEF & T-SHIRT 3 FOR 3.49
Sizes 10-20

*Comfortable, soft, durable 100% cotton.
Features Haneset controlled shrinkage.
*Reinforced at stress points.

Hanes
Feel Good All Under In Hanes®



FAST-BAK
BASKETBALL SHOES

3⁹⁷



3 FOR \$11.

IF SPORTS IS YOUR THING
MAKE FAST-BAK YOUR SHOE!

Basketball shoe with sturdy canvas upper and rugged skid proof sole and action stripes. Padded collar. Sizes: Men's 6 1/2-12, Boys 2 1/2-6, Youths 11.

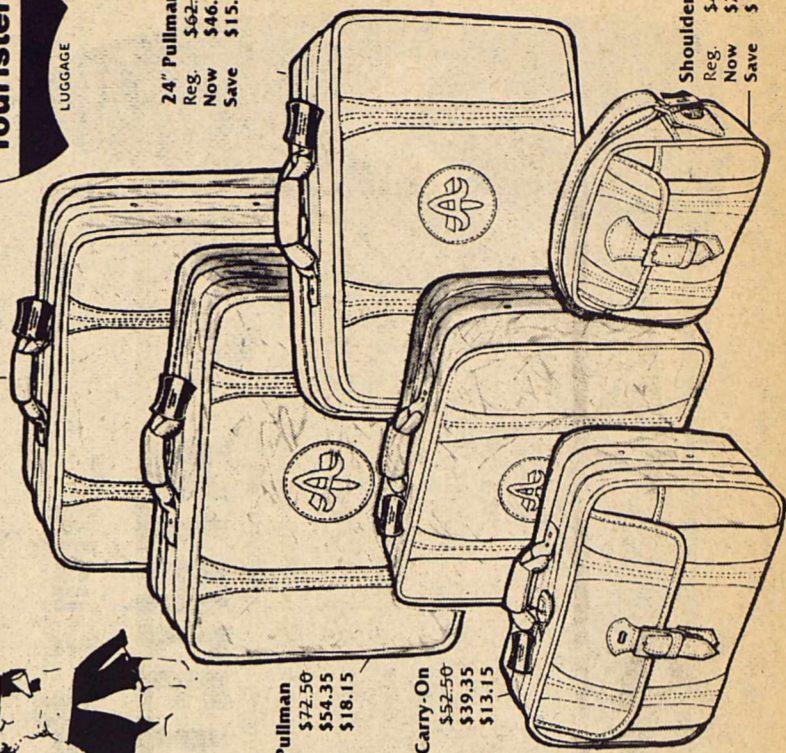
Anthony's
C.R. ANTHONY CO.

Go "Back to School" on us
25% to 30% Off
American Tourister Casual Series 9000

The Veylite luggage that is easy to pack and light to carry. Made of durable, washable vinyl, reinforced with a steel frame and plastic corner and Chinchilla guard supports.

Limited quantities. For a limited time.

29" Overseas
Reg. \$80.00
Now \$60.00
Save \$20.00



26" Pullman
Reg. \$72.50
Now \$58.15
Save \$14.35

22" Carry-On
Reg. \$52.50
Now \$39.35
Save \$13.15

24" Pullman
Reg. \$62.50
Now \$46.85
Save \$15.65

Shoulder Tote
Reg. \$42.50
Now \$29.75
Save \$12.75

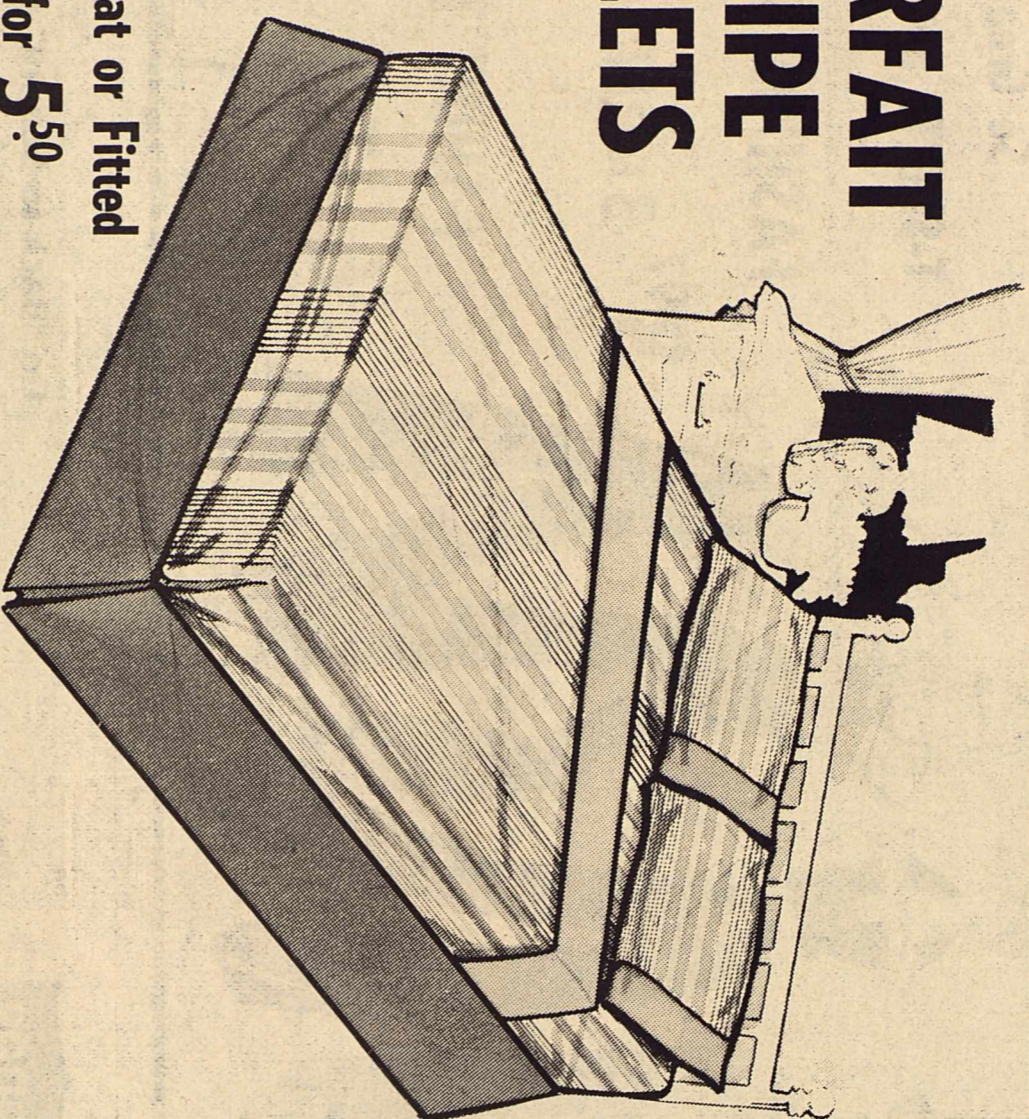
Anthony's
C. R. ANTHONY & CO.

BACK TO SCHOOL!

Anthony's
C. R. ANTHONY & CO.

PARFAIT STRIPE SHEETS

By Dan River®



Twin Flat or Fitted

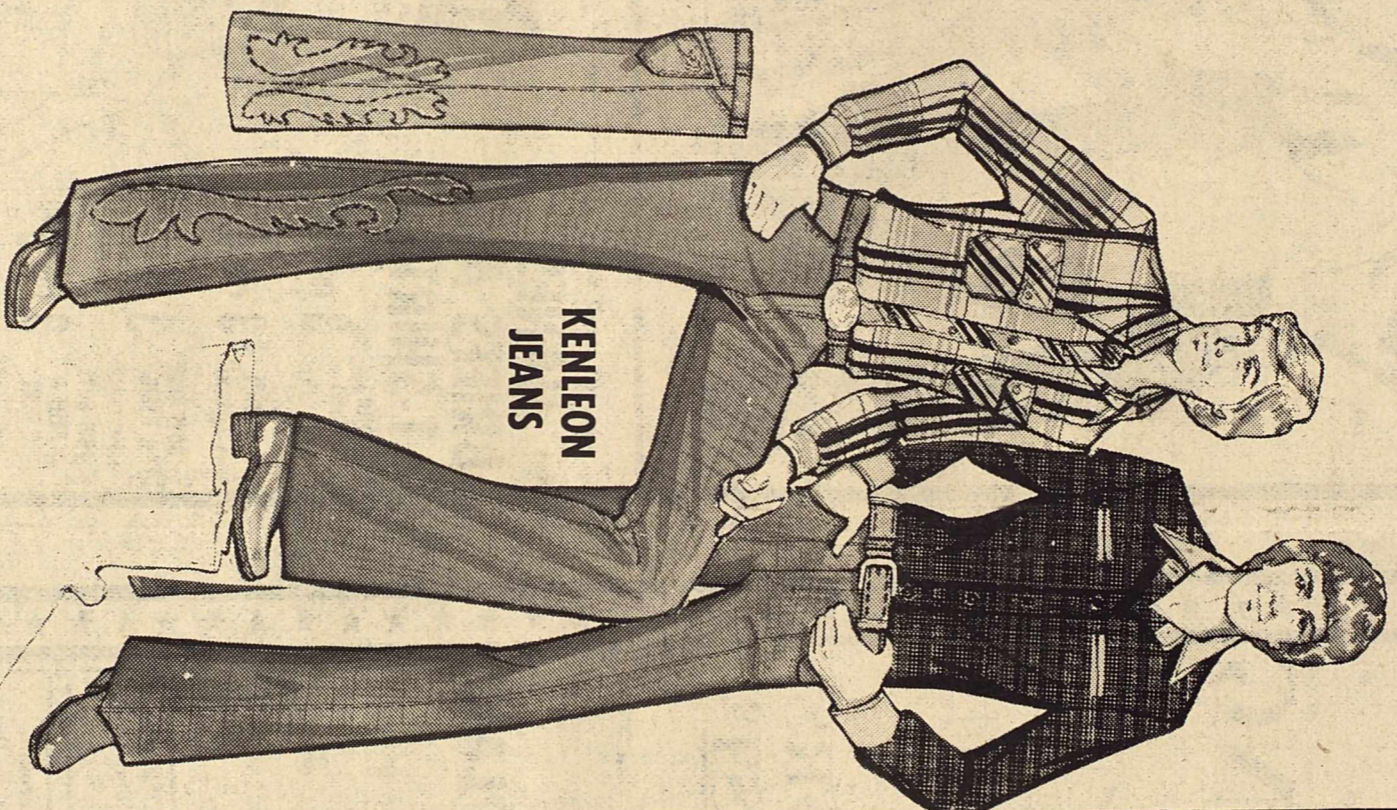
2 for 5.50

Full Flat or Fitted

2 for 7.50

42" x 36" Cases
2.85 pr.

Dan River® brings you beautiful stripes in sheets of Dan Press® Muslin, a no-iron blend of 50% Fortrel® polyester and 50% cotton in color combinations of Mocha, Cream or Yellow. Solid color pastel border with contrasting piping.



MEN'S PATTERNED SHIRTS

Long sleeve 65% polyester, 35% cotton sport shirts. Choose either a satin plaid with 2-button through flap pockets or an all-over dark check with Khaki collar and 2 Khaki trimmed slash pockets. Sizes S-M-L-XL. Reg. \$12.99

10.97

3 FOR \$30.

MEN'S KENLEON® JEANS

100% cotton blue denim fashion jeans. Heavy weights and prewashed. Some with stylish novelty trims that are so popular today. Sizes 28-38, S-XL length. Reg. \$16.

12.97

3 FOR \$35.



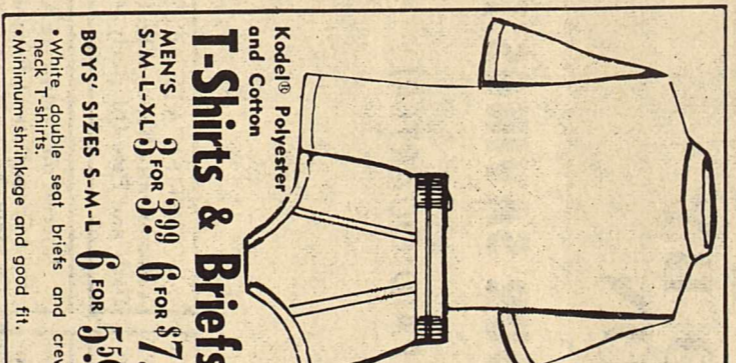
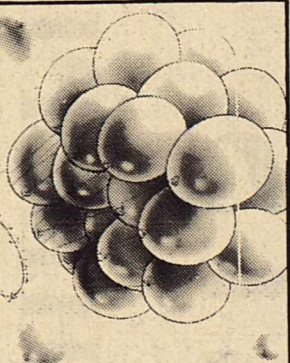
Men's, Boys' & Youth's ATHLETIC SHOES

Reg. 9.97

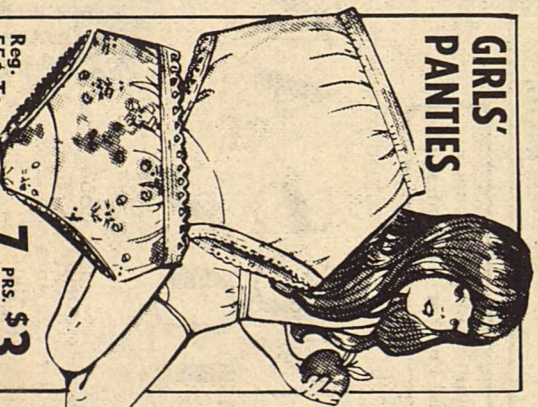
7.97 or 3 for \$21.

Choose either the Fastback all over suede leather shoe or the stylish all over nylon shoe with leather trim. Racy side stripes. Rubber soles. Padded collar. Blue or Red. Men's sizes 6 1/2-12, Boys' sizes 2 1/2-6, and Youth's sizes 11-2.

Up, up & Away...to School!



Kodak® Polyester and Cotton
T-Shirts & Briefs
MEN'S-XL 3 for \$9.99 6 for \$7.50
S-M-L-XL 6 for \$7.50
BOYS' SIZES S-M-L 6 for \$5.00
*White double seat, briefs and crew neck t-shirt
*Minimum shrinkage and good fit.



GIRLS' PANTIES
Reg. 55¢ To 59¢
7 Pcs. \$3.

*Easy care, panties and bikinis with sizes 4-14 in colorful solids and prints.

FAMOUS NATIONAL BRAND Three Piece Polyester Knit Summer PANTSUITS

Save 50%



Six Super Styles

Reg. \$45

Save One Half 22.50

Short Sleeve Jackets with Sleeveless Shell Over Pull-Over Pants.

First Quality, labeled by Famous Maker. Soft Summer Pastels Plus Navy & Red.

Anthony's
C. R. ANTHONY & CO.

Mickler, Miller United

Deborah Kay Mickler and Gary Bruce Miller were united in marriage in a double ring ceremony on Saturday, July 30, in the home of the bride's parents with the Rev. Wayne Struck officiating. The home was decorated with yellow and white killion daisies, yellow pom poms, and white gladiolas.

The bride is the daughter of Mr. and Mrs. Twain Mickler of Haskell.

The bridegroom is the son of Mrs. Raynell Miller of Rule and Mr. and Genelle Miller of Swenson.

Given in marriage by her father, the bride wore an Original gown by Phyllis for Bianchi, in candlelight organza and lace. The fitted bodice with portrait neckline and cap sleeves was an overlay of re-embroidered Alencon lace from France. The skirt with back fullness was enhanced with lace and embellished with tiny seed pearls and plects and fell into a chapel train. She wore a picture hat of matching lace.

She carried a cascade of yellow roses, baby's breath, and English ivy, centered with a white cattleya orchid and mounted on a white Bible borrowed from her grandmother. She wore the traditional blue garter and added a sixpence in her shoe. For something old, she carried a beige handkerchief of her grandmother's. Something new was her wedding dress.

Debbie Young of Haskell was Maid of Honor. The bridesmaid was Sidney Williamson of Lubbock. They wore identical gowns of Jonquil Matte Jersey with empire bodice and draped neckline. They wore candlelight hats with yellow velvet ribbons and streamers. They carried cascades of yellow and white cushion-pom poms and sonja roses.

The bride's mother wore a gown of talisman ponte with a sonja rose corsage. The groom's mother chose a green floor length gown of boucle' knit. Her corsage was of sonja roses.

Music was provided by Amy Medford of Haskell. "Evergreen" and "Could It Be Magic" were sung by Melissa Roberson of Haskell.

Best man was Don Hisey of Rule and Jeff Denson of Rule was groomsmen.



MRS. GARY BRUCE MILLER
...nee Deborah Kay Mickler

Ushers were Jamie Mickler, brother of the bride, and Ricky Miller brother of the bridegroom.

The groom seated his mother and then waited to receive his bride from her father.

Kenya Brashears of Brownfield attended the guests registry.

Melyn Walls of Abilene, cousin of the bride, distributed yellow satin roses filled with rice.

The reception was held in the home of the bride's parents.

The reception table was laid with a yellow bridal satin cloth covered with off-white French illusion which was edged in re-embroidered rosepoint lace. The illusion cover was draped with shirred illusion swags, held in place with nose-gays of sonja rosebuds which were tied with yellow satin ribbon and love-knot streamers. Underlying the center swag on the tablefront was an apron of illusion edged in the rosepoint lace. Both the cloths used at the tea and reception were designed by Mrs. J.R. Perry.

Attending at the reception table were Jenny Kelly of Tulsa, Okla., Debbie Thomas, Kathy Pringle, and Lee Ann Toliver all of Haskell.

The bride is a graduate of Haskell High School. She attended Texas Tech University in Lubbock and was a member of the Epsilon Epsilon Chapter of Alpha Delta Pi. She was chosen as "Most Active Pledge-1974" and "Best Active-1976". She was also elected Chapter Rush Chairman and Song Leader and served on pledge board for two years. She is now a senior at Abilene Christian University majoring in Speech Pathology and Audiology.

The bridegroom is a graduate of Rule High School. He is now employed by Wilcox & Sons of Rule. The bridegroom's mother and sister, Mrs. James Gilliam of Levelland, hosted the rehearsal dinner in the home of Mr. and Mrs. Alton Ross of Rule. After a wedding trip to Ruidoso, New Mexico, the couple will reside at 401 Amity in Rule.

The bride is a graduate of Haskell High School. She attended Texas Tech University in Lubbock and was a member of the Epsilon Epsilon Chapter of Alpha Delta Pi. She was chosen as "Most Active Pledge-1974" and "Best Active-1976". She was also elected Chapter Rush Chairman and Song Leader and served on pledge board for two years. She is now a senior at Abilene Christian University majoring in Speech Pathology and Audiology.

The bridegroom is a graduate of Rule High School. He is now employed by Wilcox & Sons of Rule. The bridegroom's mother and sister, Mrs. James Gilliam of Levelland, hosted the rehearsal dinner in the home of Mr. and Mrs. Alton Ross of Rule. After a wedding trip to Ruidoso, New Mexico, the couple will reside at 401 Amity in Rule.

The bridegroom's mother and sister, Mrs. James Gilliam of Levelland, hosted the rehearsal dinner in the home of Mr. and Mrs. Alton Ross of Rule. After a wedding trip to Ruidoso, New Mexico, the couple will reside at 401 Amity in Rule.

The bridegroom's mother and sister, Mrs. James Gilliam of Levelland, hosted the rehearsal dinner in the home of Mr. and Mrs. Alton Ross of Rule. After a wedding trip to Ruidoso, New Mexico, the couple will reside at 401 Amity in Rule.

Hospital Notes
ADMISSIONS
MEDICAL: Frankie Cloud, Rule; Sharon Gray, Haskell; Edith Jousan, Haskell; John Davis, Haskell; Ima Lee Manning, O'Brien; Ruth Cox, Rule; Joyce Melton, Haskell; Mamie Wheatley, Haskell; Mary Huffstutler, Rule.
SURGICAL: Eunice Hunt, Rule; Jan Newson, Stamford.
DISMISSED
Odell Cox, Lu Nelle Mitchell, Wilma Pruet, Ophelia Qualls, Victor Lowery, Flora Josselet, Josie Andrada, Janie Lopez, Pauline Derr, E.J. Stewart, Arthur Lassetter, Kim Martin.

Want ads--Your Best Market Place. Haskell Free Press

Around Town

By Lisa and Mary

Attending the funeral services of Bethel Dake in Gladewater Saturday were Mrs. Lydia Stocks and A.M. Stocks. They also visited Mr. and Mrs. Hugh Lancaster in Irving.

Melania McClure of Lubbock and Duane Josselet of Denton are visiting their grandparents Mr. and Mrs. Lee McClure.

Mr. and Mrs. E.L. Hilliard went to Brownfield Friday to visit their son and his wife, Mr. and Mrs. Kenneth Hilliard. They all went to Buffalo Springs Lake and spent an enjoyable weekend.

Mr. and Mrs. Richard Riley had guests this weekend—their daughter and her husband, Mr. and Mrs. Dusty Knight of Austin.

Showers Honor Miss Mickler

Miss Debbie Mickler, bride-elect of Gary Miller, was honored recently with a gift shower in the home of Katherine Anne Bradley of Lubbock. Guests included members of the Epsilon Epsilon Chapter of Alpha Delta Pi-Pledge Class of 1974.

Other hostesses were Sidney Williamson, Sara Davis, Kelly Jameson, Ellen Holmes, Beth Sumon, Rhonda Whiteley, Linda Bertram, Missy Park, and Jana Westerman.

A rice-bagging party was given recently in the home of Catherine Ann Kimbrough. The serving table was laid with a white cloth.

A floral arrangement of white and yellow mums, baby's breath, and greenery centered the table. Kathy Pringle also assisted as hostess. Other members of the houseparty were Amy Medford, Lee Ann Toliver, Mrs. Steve Guess, and Dee Ann Ballard.

The J.R. Perry home at Paint Creek was the setting for a bridal tea to honor Miss Mickler. Chosen colors of yellow and off-white were used throughout the rooms where gifts were displayed. Guests were greeted at the door by Miss Mickler, her mother, Mrs. Twain Mickler of Lake Stamford, and presented to the groom's mother, Mrs. Raynell Miller of Rule. Other special guests attending the tea were Debbie's grandmother, Mrs. J. J. Micker and Gary's grandmother, Mrs. Alton Ross.

Guests registered at a table presided over by Miss Debbie Young. The uncovered oak table was accented with yellow roses in a crystal vase tied with yellow ribbon streamers. The pen with which the guests registered in the Bride's book was furnished by Mrs. J. J. Mickler. This pen has been used at all showers and weddings of Mrs. Mickler's grandchildren.

Guests were invited to be served by Misses Melissa Roberson, Kathy Pringle, and Mrs. Jake Walls, cousin of the bride-elect. The serving table was covered with yellow bridal satin draped in lace-edged French illusion. The corners of the illusion was caught by shirring and tiny yellow ribbon streamers. An arrangement of yellow rosebuds, shasta daisies, baby's breath and greenery in a lead crystal bowl was the focal point of the table from which punch and cake squares were served. An accompanying table was spread in yellow knit where guests were asked to serve themselves whole strawberries dipped in confectioners sugar and shrimp dip and crackers. Appointments at both tables were of crystal and silver.

Showing gifts and otherwise assisting in the houseparty were Mmes. Guy Lawson, Max Stapleton, Jackie Young, Lewis Thomas, B.O. Roberson, Buddy Brazell, Wilda Medford, Glen Walton, Bob Guess, Bruce McCain, Carl Bailey, Bobby Howard, Roddy Kuenstler, J.R. Perry and Miss Milla Perry.

A lingerie party was given in the home of Lee Ann Toliver. The serving table was laid with crystal and silver appointments. Debbie Thomas also served as hostess. Brunch was served by Mrs. Nancy Toliver.

The hostess presented her with a gift from Paris, France.

Mr. and Mrs. R.W. Herren visited her relatives Mr. and Mrs. R.L. Mullins and family in Wolf City over the weekend.

Visitors in the home of Mr. and Mrs. Otto Wittenborn were their children, Mr. and Mrs. Leslie Wittenborn, Robert and Christie from San Diego, California, Mr. and Mrs. James Sawey, Janey and Eric from Fort Worth, Texas, Mr. and Mrs. Douglas Clark of San Angelo, Texas. They also visited their grandmother Mrs. Martha Kretschmer at Rice Springs Care Home while here. Mrs. Irene Thompson from Lena, Illinois spend several days visiting her mother Martha Kretschmer and Mr. and Mrs. Otto Wittenborn and family and relatives.

Mr. and Mrs. Jimmy Owens and Mrs. Frankie SoRelle and Emily attended a Bassett family reunion in Henderson, Texas last weekend. Also attending from Houston was their son, Bassett Owens. They also visited in the homes of Mr. Curtis Bassett, Betty Bassett, Mrs. Billie Reeves, and Renee and Mr. and Mrs. Troy Garrison.

Mr. and Mrs. Lee Roy O'Neal, Mr. and Mrs. Ed Fouts visited in Irving last week with Dr. and Mrs. Barry O'Neal, Benjie and Nathan. They also visited Mr. and Mrs. Wilton-Davis and family of Dallas, and with Mrs. Bill Lee who was in Dallas visiting the Davises. Dr. O'Neal is now associated with the Medical and Surgical Clinic of Irving, P.A. 2023 West Park. Dr. O'Neal practices medicine in the field of Internal Medicine.

Visiting Miss Jennifer Comedy in Bryan last weekend were grandparents, Mr. and Mrs. Bill Comedy, Mr. and Mrs. Allen (Jiggs) Isbell, all of Haskell; Clydene Comedy, Abilene, great-grandmother Mrs. J.M. Comedy, Coleman, Mr. and Mrs. Frank Dutton and Kristi, Munday, and Mr. and Mrs. Danny Isbell of Abilene.

Haskell's Market Place The Classified Ad Page

Nelson, Hirsch Wed

On Saturday evening at five o'clock the beautifully decorated home of Mr. and Mrs. Stanley Cooper of Las Vegas, Nevada was the setting for the marriage of Miss Jody E. Nelson to Mr. Roger Haigh Hirsch.

Parents of the couple are Mrs. Billie Jo Hall Nelson of Denver, Colo. and Mr. Eugene E. Nelson of Las Vegas, Nevada. Mrs. Roberta Hirsch and Mr. Hirsch of Las Vegas, Nevada. Maternal grandparents are Mr. Alvin C. Hall of Haskell, Texas and the late Mattie E. Payne Hall. Nialene Hall is the step-Grandmother. Paternal grandparents are Mrs. Pearl Pottoroff of Delano, Calif. The late Frank W. Nelson and Mrs. Minnie L. Nelson of Dallas, Texas is step-Grandmother. The groom's maternal grandmother is of Carmichael, Calif. Paternal grandmother is of La Habre, Calif.

Given in marriage by her mother and father the bride chose a floor length candlelight satin gown under white chiffon with a high neck collar of white lace. White lace around empire waist, wide cuffs with white pearl buttons and white pearls down the back. Her chapel length veil was edged in white lace and held in place with combs. The bride carried a colonial bouquet of stephanotis, yellow roses and baby breath with yellow and candlelight streamers tied with love knots.

Mrs. Kathleen Nelson, sister-in-law of the bride, was matron of honor. Maid of honor was Dalene Dial. Bridesmaids were Paige Hagen all of Las Vegas and Tami DeWolf of Denver, Colo. Their floor length dresses were baby blue and white dotted swiss, puff sleeves with a ruffled hemline. Each carried a bouquet of tinted blue carnations, white daisies and baby breath tied with blue and white streamers. Holly Cabana registered guests.

For something borrowed was her sister-in-laws pearls, something blue was a blue garter and something old was a white gold wedding band and a solid gold wedding band belonging to her grandmother and great-grandmother.

The groom was dressed in a candlelight tuxedo. His boutonniere was a yellow rose. Best man was Mark Stit.



MRS. ROGER HAIGH HIRSCH
...nee Jody Nelson

Ushers were Skip Walker, Greg Stanphil and Steve Rogitch all of Las Vegas, Nevada. They were dressed in baby blue tuxedos and boutonnieres were stephanotis.

Mother of the bride chose a baby blue cocktail length dress accented with white. Mother of the groom chose a floor length baby blue dress under flowered chiffon. Both mothers wore white carnations accented with baby breath and lace.

The bride chose music by Mendelsohn.

A reception followed the ceremony at the Cooper home where a buffet dinner and a beautiful four tiered wedding cake, decorated with pink and yellow forget-me-nots, was served to one hundred guests.

Out of Town guests attending the wedding were: Mrs. Billie Nelson, Mrs. Jean DeWolf, Tami DeWolf and Mrs. Rae Sanders all of Denver, Colo. Colonel Robert McKelvey of Dayton, Ohio.

Jody is a graduate of Western High School in Las Vegas. Roger is a graduate of Vol-Tech in Las Vegas. After a brief honeymoon they will be at home in Las Vegas, Nevada where both are employed by the Review-Journal newspaper.

Washable wall covering in the kitchen can save continual repainting, suggests Mrs. Sue Young, housing and home furnishings specialist with the Texas Agricultural Extension Service, The Texas A&M University System.

Weight Watchers Class Changes Class Location

Beginning Tuesday, August 9th Weight Watchers Class in Haskell will meet in the Haskell County Courthouse on the second floor at 7:00 p.m.

SHUGART COUPON
Monday, August 15
M-SYSTEM 112 N. Ave. D
Haskell, Texas

9 WALLET SIZE COLOR PORTRAITS 99¢

ASK FOR FREE 8 x 10 OFFER

Extra charge for GROUPS

The Wheel of Fashion of Fall

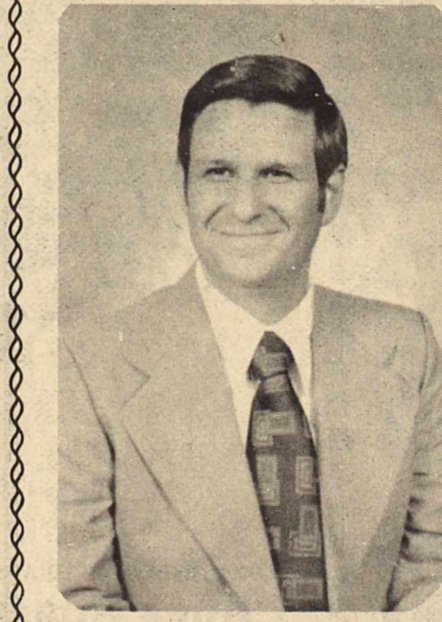
LANE-FELKER WANTS YOU!

We've received all the great looks for fall and they're waiting to become a part of your wardrobe! Come in and register for a gift certificate to be given away each Saturday, beginning July 30th thru August 20th. (need not be present to win!)

GET INVOLVED...try on these fashions for fall any time and as often as you like and try your luck each time at Lane-Felker's Wheel of Fashion for a free sweater, blouse, jewelry, etc.

We're looking forward to seeing you!

The Lane-Felker School Board
Carol Dudensing - Texas Tech
Rosemary Kimbrough - Mc Murray
Janie Stuckert - North Texas State
Betty Brown - Texas Tech



LARRY SUTTLE, MINISTER

LET'S VISIT...

If God was as permissive as some say, he doubtless would have given Israel the tablets of stone bearing the Ten Suggestions.

Some modern religionists have a difficult time saying such words as "commandment" or "obedience" or "work". They shouldn't have difficulty because the Bible uses these words in both the old and new testaments.

God does expect His people to comply with His directives. After all, He is still God. Is your religious and moral life based upon God's will as it is revealed through the Bible?

The Bible Says: "And Nodab and Abihu died before the Lord, when they offered strange fire before the Lord, in the wilderness of Sinai..." (Numbers 3:4)

CHURCH OF CHRIST

510 N. Avenue E

"DEDICATED TO THE RESTORATION OF NEW TESTAMENT CHRISTIANITY"

Schedule of Services:
SUNDAY
9:45 — Bible Study
10:30 — Worship
6:00 — Worship & Classes

WEDNESDAY
9:30 — Ladies Class
7:00 — Bible Study

NAME _____
ADDRESS _____
 Please enroll me in a free Bible Correspondence Course
 I would like to study further the Bible
 I need transportation to Bible study and worship services

(Clip & Mail)

Want your children to attend Sunday School? One of our colorful joy buses will gladly pick them up and return them safely to your home. Just call 864-3101 or 864-2772.

J R B

SUPERMARKET

1200 North Avenue E

Haskell, Texas



CARNATION SLENDER
Diet Drink 10 OZ CAN **47¢**

KRAFT MINIATURE
Marshmallows 10 1/2 OZ BAG **43¢**

DAIRY & FROZEN FOODS

BLUE BONNET
Margarine 1# QUARTERS **59¢**

GANDYS
Half & Half PINT CARTON **49¢**

BLUE BONNET SOFT SPREAD
Margarine 2# BOWL **\$1.09**

PARADE WHIPPED
Topping 10 OZ TUB **49¢**

JRB
Mellorine ALL FLAVORS 1/2 GAL. CTN. **49¢**

MRS. SMITH'S STRAWBERRY
Shortcake **99¢**

CHEF BOY-AR-DEE
Pizzas ALL VARIETIES LARGE SIZE **89¢**

FLAV-R-PAC
Vegetables BROCCOLI SPEARS OR BRUSSEL SPROUTS **39¢**

NICE 'N SOFT
Toilet Tissue



WHITE OR ASST. COLORS
4 ROLL PACK

89¢

Veg All
Mixed Vegetables



3 303 CANS **\$1**

Post Honeycomb
Cereal 12 oz box **93¢**

JIF SMOOTH OR CRUNCHY
12 OZ JAR

Peanut Butter **75¢**

PARADE
BLACK EYE, PURPLE HULL,
CREME OR CROWDER

Peas 303 CANS **4/1**

CHIFFON SPILLMATE

Towels JUMBO ROLL **59¢**

MOP & GLO
Floor Finish 16 OZ BOTTLE **\$1.19**

Hormel
Potted Meat 4 1/2 oz cans **3/\$1**

DOW
Oven Cleaner 8 OZ CAN **98¢**

3 Ring
Pinto Beans 303 cans **4/\$1**

FRISKIES DINNERS
Dog Food 14 1/2 OZ CAN **31¢**

Parade Moist Patties
Dog Food 72 oz pkg **\$1.99**

FRISKIES
Dog Food 25 1/2 OZ CAN **41¢**

GLADIOLA
FLOUR

25# BAG
\$3.29

Contadina
Tomato Sauce

8 oz cans
6/\$1

Palmolive
Dishwashing Liquid

22 oz **89¢**



USDA INSPECTED HEAVY BEEF BLADE CUT

Chuck Roast

69¢ LB

USDA INSPECTED HEAVY BEEF
Chuck Roast 7-BONE CUT LB **79¢**

USDA INSPECTED HEAVY BEEF
Arm Roast LB **89¢**

USDA INSPECTED HEAVY BEEF
Family Steak LB **89¢**

USDA INSPECTED HEAVY BEEF
Swiss Steak ARM ROUND-BONE CUT LB **99¢**

LEAN BONELESS
Stew Meat LB **99¢**

FAMILY PACK

Ground Beef LB **69¢**

FARMLAND
Bacon 1# PKG EACH **\$1.59**

GOOCH 12 OZ PKG
Franks ALL MEAT EACH **79¢**

GOOCH 12 OZ PKG
Bologna THICK SLICED EACH **89¢**

GOOCH (ALL MEAT OR BEEF BOLOGNA, P&P LOAF, SALAMI, LIVER, & SUMMER SAUSAGE)
Luncheon Meat 6 OZ PKG EACH **49¢**

JRB Meats are U.S. Government inspected. If for any reason you are not satisfied we will cheerfully refund your money.

TYSON (6 COUNT PKG)
Chicken Corn Dogs EACH **89¢**

Fryer Breast LB **99¢**

Fryer Thighs & Drumsticks 69¢ LB

Fryer Backs or Necks LB **19¢**

Fryer Wings LB **39¢**

LEAN
Ground Beef LB **99¢**

GOOCH
Hot Links LB **89¢**

ARMOUR STAR
Grill Dogs 1# PKG EACH **\$1.09**

OSCAR MAYER 12 OZ PKG (ROUND OR SQUARE)
Luncheon Variety Pak EACH **\$1.59**



100 Year Old Cotton Gin Given To Museum

A 100-year-old cotton gin, a prize example of the transition from the antebellum plantation gin and the commercial one of the late 19th century, will be dedicated Sept. 16 at

The Museum of Texas Tech University.

The gin was given to The Museum in 1961 and restored by the Texas Cotton Ginners and the Plains Ginners associations as a memorial to the late Ennis Moss Sr., inventor of the Moss Lint Cleaner.

The unusual gin was built about 1875 by Samuel A. Goodman who used oak beams, yellow pine studs and cypress siding for the 64' x 34' building. Equipment consisted of one gin stand with 48 10" diameter saws, a highly unusual two-story screw press and the necessary transmission apparatus, all powered by mules.

A hard day's work could produce six ginned bales. Cotton was delivered from the field to a receiving platform leading into the second floor of the gin.

Four men carried cotton in baskets from receiving stalls to the gin stand, shoveled seed from the floor in front of the gin stand and assisted the ginners.

One man operated the gin stand, powered by two teams of mules. There was a baling crew that carried cotton in their arms from the lint room to the press, packed the cotton in the press box with their feet and operated the wood screw press which was powered by two mules.

The press is unique even among wood screw presses common to the last century. Most screw presses operated by means of two mules attached to levers which turned the wooden screw. However, the Goodman press was operated by two mules turning the entire press box around the wooden screw, forcing it up or down.

Goodman, a South Carolinian, moved to Texas with his family in 1857. He practiced law in Tyler until the Civil War when he volunteered to serve the Confederacy. After the war he went into farming and built the gin. His daughter, Mrs. Sallie Goodman Callaway, maintained the gin as a historical resource for almost half a century before her

death. Her heirs gave it to The Museum.

The South Plains Ginners Association arranged for the dismantling and transportation of the gin to The Museum and provided restoration funds.

Moss, born in St. Augustine, Tex., grew up in the ginning industry. His father was a ginner who brought his family to the Plains when Ennis was about 10 years old. Ennis Moss moved to Lubbock in about 1932, but it wasn't until 1952 that he and James Gordin of Dallas formed a company to manufacture the Moss Lint Cleaner. The company changed hands in the late 1950's, but by that time the Moss Line Cleaner was serving gins throughout the world.

Ginners who helped dismantle the gin and move it to The Museum in 1961 included Rufus Phillips of Sugarland, Orville Bailey, Anton, Bill Thompson, Shallowater, Gene Smith, Ralls, and the late Les Wienke, Lubbock. Others were Alf Pendelton, then a ginning specialist with the U.S. Department of Agriculture, and Beverley Reeves, then ginning specialist with the Texas Department of Agriculture.

Reeves drew the prints which assisted with the restoration.

Instrumental in its restora-

tion has been the Texas Cotton Ginners Association, headed in 1961 by Executive Vice President Ed Bush and now by his successor, Tony Price, who is in charge of dedication arrangements.

Price said that the public is invited to the dedication, scheduled for 2 p.m., Sept. 16. Willard B. Robinson, faculty member and authority on architectural history, has been supervising the restoration.

"From an architectural point of view," Robinson said, "the Goodman Gin is noteworthy for its beauty of

craftsmanship, functional form and innovative mechanical operation.

"The reconstruction has been based on Bush's drawings and old photographs. The building came with the original press, but we have had to replicate the wheels that powered the gin stand and incorporate some steel support which will not be visible to visitors."



SHOWN IS DUANE JOSSELET advancing to third in the Championship game between the E-Z Check and Denton Record Chronicle. Josselet is the grandson of Mr. and Mrs. Lee McClure of Haskell. The McClures were in Denton to see the grandson play ball.

Monday, August 15

9 99¢

KING SIZE WALLET CREATIVE COLOR PORTRAITS FOR ONLY

Kodak paper. For a Good Look at the Times of Your Life.

Extra Charge for GROUPS WE USE KODAK PAPER

NO LIMIT

ASK About Our FREE 8 x 10 OFFER

SHUGART COLOR PHOTOS

M SYSTEM Your FRIENDLY SUPER MARKETS

112 N. Ave. D HASKELL, TEXAS

GET PICTURES MADE OF GRANDPA, GRANDMA, DAD, MOM AND ALL THE LITTLE ONES AT THESE SAME LOW PRICES!

Summer Specials	
Was	Now
F-560 LP WFA, 2 Pt., PTO	\$2500.00 \$2150.00
F-560 D-New WFA 3 Pt. Hitch PTO Nice	\$3250.00 \$2950.00
MM Super 670 LP 1968-New Cyl. Heads A good Local Tractor	\$3250.00 \$2750.00
F-706 LP-WFA 3 PT-TA-PTO Must Go- Wholesale Price	\$3500.00 \$2900.00
F-826 D-1970 Model Ready To Work	\$7500.00 \$7000.00
F-856D-1968 100 LP We Sold New-Bargain	\$8500.00 \$7950.00
F-1066-Cab- Loaded-1972 New Rebuilt Engine-Clutch & Pressure Plate A-1	\$12,500 \$10,500.00
New IH 91 Cotton Harvester With Basket Will mount over IH Cab-Hydo row sensors Mounted & Ready	\$8950.00
1 Only New IH 90 Cotton Harvester with Hyd. Row Sensors & used Basket	Mounted on IH or John Deer 3010-3070 \$6950.00 4010-4020-No Cab
We have an excellent Inventory of Used Cotton Harvester with baskets Not Mounted	From \$800.00 Up
1 Only New IH 1086 Loaded except Cab-130 Lp.	\$19,950.00
1 Only New IH Cadet 76 Riding Lawn Mower	Was \$1225.00 Now \$895.00
1-1974 Suzuki Motorcycle 50 cc-457 miles	\$300.00

See Us For Your

Richardson Truck & Tractor

HASKELL

INTERNATIONAL AGRICULTURAL EQUIPMENT

75th ANNIVERSARY CLEARANCE!

GRANADA

LTD

TWO FOR TEXAS

Now At Old Fashioned Prices. IT'S CLEARANCE TIME, And Your Texas Ford Dealer Is Celebrating With Old Fashioned VALUES... At The Year's LOWEST PRICES. NOW... At Your Texas Ford Dealer.

Bill Wilson Motor Co.

209 S Av E Haskell, Texas 864-2611

Ford 75th ANNIVERSARY

The hours are long, but that's O.K., the pay is lousy.

But as a volunteer you'll get to help America stand a little taller. And you'll stand a little taller yourself. America needs your help or we wouldn't be asking. Your community needs your help. People 18 or 80: we don't care as long as you do. VISTA is coming alive again. Come alive with us. VISTA. Call toll free: 800-424-8580. **VISTA**

Ad Council A Public Service of The Newspaper & The Advertising Council

ROBERT L. STAFFORD, M.D.

PHYSICIAN AND SURGEON

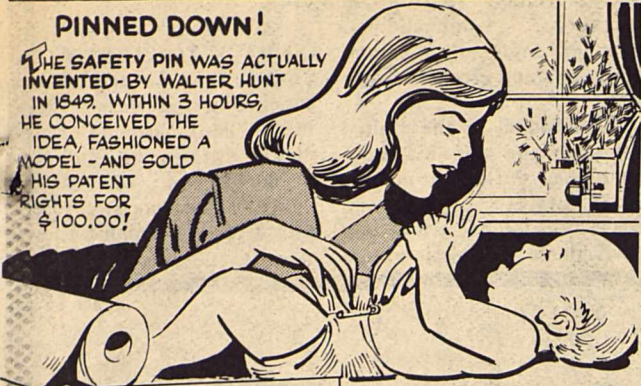
Is now associated with the **HAMLIN CLINIC**

For appointment call 576-3611
632 Northwest Second Hamlin, Texas

THAT'S A FACT

PINNED DOWN!

THE SAFETY PIN WAS ACTUALLY INVENTED BY WALTER HUNT IN 1849. WITHIN 3 HOURS HE CONCEIVED THE IDEA, FASHIONED A MODEL—AND SOLD HIS PATENT RIGHTS FOR \$100,000!



DISAPPEARING ACT!

PAYCHECKS HAVE A WAY OF VANISHING INTO THIN AIR. A GOOD WAY TO SALVAGE SOME OF YOUR SALARY IS TO SIGN UP FOR THE PAYROLL SAVINGS PLAN WHERE YOU WORK. AN AMOUNT SPECIFIED BY YOU WILL BE SET ASIDE AND USED TO BUY U.S. SAVINGS BONDS. AND WHILE YOU'RE SPENDING YOU'LL KNOW YOU'RE SAVING TOO!



BROTHER ACT

DID YOU KNOW THAT TWO OF THE SIGNERS OF THE DECLARATION OF INDEPENDENCE WERE BROTHERS? THEY WERE RICHARD HENRY LEE AND FRANCIS LIGHTFOOT LEE OF VIRGINIA.



Conservation Viewpoints

USDA Soil Conservation Service

Assisting

California Creek and Wichita-Brazos

Soil and Water Conservation Districts

Field bindweed is very difficult to control because it is a perennial with very extensive lateral roots sending up new shoots several feet from the first shoots.

It also has a prolific seed-producing ability. Effective control must consist of a systematic program, not just a single application of a herbicide. Even after the extensive root system is killed on a stand of bindweed, it is still necessary to control the seedlings as they germinate from the seeds in the soil.

A young seedling has the ability to develop a deep taproot in about 11 weeks thus establishing itself as a perennial plant.

Probably no one method of control is best for every farmer. Some producers may be able to use chemical methods best while others may be able to use cultural methods or a combination of the two. Usually a combination of mechanical and chemical practices will provide the best overall control. It is important to cut off the bindweed plant often enough to keep it from storing food in the root system is mechanical control is going to be successful. Skipping one operation could set the program back as much as one whole year of conscientious work has gained.

Floyd McGuire, Jr. of Munday, who farms in and around the Weinert area, has successfully used a new chemical for control. He says that he used 5 quarts of Roundup per acre, and secured a good kill. I am not adding my recommendations for the use of Roundup at this time, as I would like to observe McGuire's treatment for this year, and next year to

determine the degree of total kill achieved by McGuire. However, the treated area does look good, and is worth watching. The area McGuire treated is in the west field of his farm, just north of Weinert on Farm Road 617. If you have a bindweed problem, I'm sure McGuire would be glad to tell you how he applied his chemical treatment, and what he thinks of it's success so far.

Any chemical treatment generally kills most plants that it comes in contact with, including crops. Therefore, it must be used before a crop is planted in the field. The bind weed must also be at the right stage of growth, usually when the plants are in flowering or early fruiting stage.

Bindweed is causing considerable problems in our area. It is often spread throughout the field when conservation work is applied. It is land killing weed that prevents any other crop from growing in the area it occupies.

It is because of this ability to spread and kill the land, that we are interested in helping producers in the California Creek and Wichita-Brazos Soil and Water Conservation Districts arrive at a good control of bindweed.

If you have a bindweed problem, or even think that you have an infestation, bring in a sample of the weed, including leaves, stems and roots for a positive identification. We will be happy to discuss the various methods of control, and known chemicals that do a good job.

Our County Extension Agent is available for help on this problem. J.C. Yeary, Jr. District Conservationist



A measles outbreak this year and the first confirmed case of polio reported since 1975 should prick the conscience of many Texans.

Why? Because these are among the diseases that are preventable through immunization. And, immunizations do work as attested to by the sharp declines in disease since compulsory school immunization laws went into effect in 1971.

August will be observed as Immunization Action Month in Texas as part of a nationwide campaign this year to immunize those needing protection. The Texas Department of Health is spearheading Immunization Action Month, aided by Mrs. Dolph Briscoe's First Lady's Volunteer Program.

During August special efforts will be made statewide to protect all children against such immunizable diseases as polio, measles, rubella (German measles), pertussis (whooping cough), diphtheria, tetanus and mumps.

"This year we had the first confirmed case of polio in the States since 1975," said Dr. Jerome H. Greenberg, Deputy Director of Preventable Disease for the Department. "The case was in Eagle Pass, and the patient had visited relatives in Peidras Negras where polio cases are occurring. So, polio is still with us, and the easy travel between Mexico and Texas can lead to exposure and perhaps the spread of the disease in Texas."

The theme of this year's program will be, "Immunization Isn't Just Kid Stuff." Adults need immunizations just as children do, and special emphasis will be given them this year as well.

One of the three short term goals of IAM is to increase protection against measles by promoting immunizations for the unimmunized and "booster" shots for those who received immunization prior to one year of age.

"Measles has increased this year more than tenfold above last year," said Dr. Greenberg. "This means there is a fairly large number of children who have not been immunized for measles, even though the vaccine has been available for years."

Dr. Greenberg said measles can be an extremely dangerous disease. Serious complications sometimes follow. Pneumonia, hearing disorders and brain damage can all result from measles. Deaths from the complications of measles were common before the vaccine was developed, and they still can occur in the unimmunized. We have already had three know deaths this year as a consequence of measles illness. "Before there were vaccines for measles and polio, for many years measles killed a lot more children than polio did," Dr. Greenberg said.

A second short term goal for IAM is to increase tetanus immunization levels in the state, especially among senior citizens where the most deaths occur. Boosters for tetanus and diphtheria, which are usually combined into one shot, should be received every 10 years.

The third short term goal of IAM is to promote rubella (German measles) blood tests for unimmunized females of child-bearing age so that rubella immunizations can be received through physicians prior to pregnancy. "The disease is of very little consequence to adult men and women, but it can cause severe birth defects if a pregnant woman gets rubella," said Dr. Greenberg. "If a woman isn't sure if she has had German measles or not, then she should have the simple blood test."

Special efforts will be made during IAM, as well as in September and October 1977

to test young females for rubella. Tests can be obtained from private physicians or participating health department clinics.

All children entering school for the first time this year, some 200,000 youngsters, as well as those previously attending (about 2.6 million), must be immunized. Those entering day care centers are also required to have certain immunizations, and new borns should be started as early as age two months.

During August, special efforts will be made in child care facilities and institutions across Texas to bring immunization levels up among children attending these centers. Department of Public Welfare

personnel will be instrumental in getting information to child care centers and in notifying welfare recipients of the need for immunization.

Local health departments and public health regional clinics will be cooperating with IAM activities to give immunizations. Most health departments give all immunizations free, or they can be received from a private physician at the usual fee.

"If you have an immunization record, it should show which shots you and your children have received and the dates," said Dr. Greenberg. "Your local health department may have a record if shots were received there. Check with your own physician also. In areas with no health department, public health regional clinics should be available." Immunization records are required when your child enters Texas child care facilities and institutions.)

Dr. Greenberg said that although most immunizable disease levels are down, measles and rubella are on the increase this year. "Immuniza-

tion is relatively simple, inexpensive, can be free, and prevents tremendous sickness, disability and even death. I think more people should take advantage of the IAM program."

Immunization Action Month had its beginning in Tampa, Florida in 1972 when officials of the American Medical Association and other health groups met to consolidate their efforts in raising the slumping immunization levels. In 1975 the Texas Department of Health joined the campaign with the assistance of Mrs. Dolph Briscoe. A statewide steering committee sponsored by the Texas Department of Health and the First Lady's Volunteer Program is composed of 28 major organizations which work towards increasing immunization levels.

PETITE ROLEDEX: the perfect file for telephone numbers and addresses. Typewriter spaced lines. Replacement refills. Decorator colors and styling for home and office. Haskell Free Press.

Chili-Now State Dish

At last, clandestine chili cooks around Texas can walk proudly into the light of the day.

Chili is no longer a dish cooked by a few firebreathing, fun-loving weirdos. It has been placed in its well-deserved place of honor by the recent State Legislature which proclaimed it the official State dish.

The first "legal" test of chili's new legitimacy will take place at the 8th Annual

Republic of Texas Chilympiad September 15-18. On hand at this year's cook-off will be perennial crowd-pleasers Yellow Dog and John Raven, plus a foreigner from Newport, Kentucky, named Robert J. Bischoff, and many others.

Also providing entertainment at this year's Chilympiad will be the Original Bob Will's Texas Playboys, Mickey Gilley, "Fiddlin'" Frenchie Burke and the Latin Breed.

Perkins Chiropractic Center

Announces The Association Of
Dr. Craig Mills

Diplomate of National Board of Chiropractic Examiners
In Full Time Practice

At
1726 N. 3rd
Abilene, Texas 79603
915-677-9193

WHEN QUALITY COUNTS... COUNT ON US!

Sliced Slab Bacon	\$1 ¹⁹ / _{LB}	VINE RIPE Tomatoes	49 ^c / _{LB}
Chuck Blade Roast	79 ^c / _{LB}	Santa Rosa Plums	29 ^c / _{LB}
Seven Steak	88 ^c / _{LB}	RUSSETT Potatoes	10 LB BAG 89 ^c
Beef Ribs	49 ^c / _{LB}	FIRESIDE OR KRISPY Crackers	1 LB BOX 39 ^c
Hamburger Meat	59 ^c / _{LB}	HONEY BOY Salmon	TALL CAN \$1 ⁴⁹
MRS. BAIRDS Bread	1 1/2 POUND LOAF 39 ^c	MORTON HOUSE Salisbury Steak	CAN 59 ^c
FOLGERS Coffee	1 LB CAN \$3 ²⁹	CRISCO	3 LB CAN \$1 ⁶⁹
NESTEA	3 OZ JAR \$1 ⁵⁹	FOREMOST Big Dip	1/2 GAL. 79 ^c
Milky Way Snickers 3 Musketeers	6 ^{20c} / _{BARS} 89 ^c	Crisco Oil	38 OZ JAR \$1 ⁶⁹
GLADIOLA Flour	5 LB BAG 49 ^c	OUR DARLING Corn	3 ³⁰³ / _{CANS} \$1 ⁰⁰
GLADIOLA OR MORRISON Cornbread Mix	PKG 15 ^c		

POGUE GROCERY

—Extra Parking Behind The Store. Home Owned and Operated—

113 North Avenue E

Phone 864-2015

Haskell, Texas

DANCE IRBY HALL

Friday Night Aug. 5

9-1

Moonlighters

EVERYONE WELCOME

FOR SALE OUR HOME IN RULE

Hiway 380- West of Signal Light

C.O. DAVIS

500 Gladstone Av. Phone 997-2417

The Lot: 3/4 acres well landscaped. 7 large pecan; 5 Fruit; 5 Other large shade and 25 Evergreen Trees. Beautiful lawn-faces east curbs rock fence along Front and 380 Hiway rock fence along back. Good water well with turbin pump for watering yard-Underground spray system.

The House: 2200 sq. ft., 3 bedroom, 2 baths, 7 closets, den, large dining and living area with fireplace. Fully carpeted. except kitchen that is large. Has much storage space. Washer, Dryer, Dishwasher, Disposal, Electric Stove, New Refrigerator. Many Other Goodies.

The Yard: 1800 sq. ft. Concrete terrace, 3 Carport, Double garage 1200 sq. ft. walkway and drive way 8'x16'x7' deep storm cellar with terrace and table above covered. 4 room Guest Cottage completely furnished, partly carpeted.

Priced in the 40's (Beautiful mahogany furniture for 3 front rooms optional). Seller will carry one-half or more at 8% if needed. Open House until SOLD. We love company. "Come See"

Rice Springs News

The First Baptist Church brought the services Sunday morning. Everyone enjoyed the lesson and singing very much.

The ladies from the Church of Christ came out and served cake and punch Tuesday afternoon, honoring those who had birthdays in the month of July. Those having birthdays included: Mollie Abernathy, Sam Bradford, Mattie Harris, and Dessie Marion.

Visiting with Mr. and Mrs. Herbert Klump were: Mr. and Mrs. Cecil Klump, and Mr. and Mrs. Allen Letz of Old Glory, Pete and Lavern Elliot of Arlington, Steve Letz of Abilene, and Mrs. John Windeborn of Sagerton.

G.A. Bradford and Brenda of Peacock visited with Mr. and Mrs. Sam Bradford.

Visitors of Ora McCollough included: Mrs. A.D. May, Lee May, and Mrs. E.O. Morgan of Rule, and Mrs. Claudia Keller of O'Brien.

Jerry Herrell of Rochester visited with Mr. and Mrs. Luther Hines.

The Rule Quartet came over Thursday night and everyone certainly enjoyed the very good singing, and are looking forward to their return.

Mr. and Ms. Milton Reeves of Knox City visited with Joe Teague.

Otto and Lula Peiser of

Lubbock visited with Martha Peiser.

Will Archibald of Marietta, Georgia, visited with his great-grandfather, Andy Cox. Mr. and Mrs. Sam West of Lubbock, visited with Jim and Dutch Cross.

Mr. and Mrs. Rolland Rose of Abilene, visited with Ethel Rose.

Visiting with Annie Vojkufka were: Jerry and Joyce Sanders and Amanda of Noodle, and Mildred Sanders of Weiner.

Mr. and Mrs. Roy Luker of Dublin, and Ricky and Shawn Sims of Texarkana, Arkansas, visited with Mary Chandler.

Davis Jones of Stamford visited with his brother Willard Jones.

Ophus, Frankie, and Neta Posey of Knox City visited with Edna Collins.

Visitors of Charity Bradley included Helen Harding of Okla. City, Okla, Mrs. Weldon Lefler of Munday, and Mr. and Mrs. Rolland Rose of Abilene.

Nelda Sellers of Abilene and Opal Striker of Rule visited with Trudie Bush.

Marion Josselet of Brownfield, visited with his mother Stella Josselet.

Mr. and Mrs. Jerry Morgan of Wichita Falls visited with Ida Phemister.

Everyone would like to welcome Milze Brown into the home.

SENIOR CITIZENS MEET

The Senior Citizens met July 27 in the Community Room. Mr. Davidson, President, presided. The devotion was given by Brian and Jennefer Burgess. Games were played after which a covered dish meal was served. The next meeting will be in the Community Room on August 10 at 2:00 p.m.

THAT'S A FACT



HIGH PRICED!
BECAUSE IT WAS RARE AND A NECESSITY—SALT IN OREGON IN 1852 WAS WORTH ITS WEIGHT IN GOLD!

PICKPOCKET!

PICK YOUR OWN POCKET AND MAKE MONEY FOR YOURSELF. HOW? JOIN THE PAYROLL SAVINGS PLAN WHERE YOU WORK AND THEY'LL SET ASIDE A LITTLE FROM EACH PAYCHECK AND USE IT TO BUY U.S. SAVINGS BONDS. BY "PICKING YOUR OWN POCKET" YOU WIND UP WITH MONEY YOU WON'T MISS—AND WHICH YOU CAN USE IN THE FUTURE!

TRAINED EAR!

COUNT THE RAIL-CLICKS FOR TWENTY SECONDS—AND YOU'LL KNOW HOW MANY MILES PER HOUR YOUR TRAIN IS TRAVELING.



Leisure Lodge News

Mr. and Mrs. Cooter Boles from Rule visited Mrs. Tribbey Sunday.

We would like to thank First Baptist Church for the lovely bouquet of Red gladiolas they sent for our Lobby.

Mr. W.O. Lewis returned home Tuesday after visiting relatives in Stephenville and Grand Prairie.

First Baptist Church held the monthly birthday party for us Monday. Brian Burgess was the speaker, his subject was, my birthday, taken from St. John. Mrs. Sara Hodgkin played the piano. Cake and punch was served and everyone sang the happy birthday song to the guests who had their birthday in the month of July. Mrs. Audie Livingood was chairman and Mrs. Rodie Sorenson dismissed the service.

Vera Ashely from Eddy, Texas visited L.B. White.

Mr. and Mrs. Newton Westmoreland and Jerry, Mrs. Minnie Dickey and Mrs. Oleta Jackson, Ed, Verner, and Elder and Mrs. Hilton Crane from Rule visited Lummie Westmoreland.

Clyde Rogers from Goree visited W.O. Lewis.

Mr. and Mrs. Monroe Murphy from Granbury visited the Jeff Smiths, also Mr. and Mrs. Jerry Collins from New Mexico visited the Jeff Smiths.

Clara Hendrix was in Abilene Tuesday for a check-up.

Mr. and Mrs. Charlie Mapes from Euless, Texas visited Ivy Massey.

Mr. and Mrs. Vernon Bickley from Knox City and Dr. Durwood Wheatley from Wichita Falls and Gilbert Wheeler from Arlington, Texas and her niece from California all visited Ivy Massey.

Mr. and Mrs. Johnny Leo Hill from San Antonio visited Emmy Trussell.

Geraldine Hamie from Munday visited L.B. White over the weekend.

J.L. Reed from Rochester visited Carrie Edwards.

Mrs. Alberta Conway and grandson visited her dad Clarence Butler.

Griffin Reunion

Forty-seven people were present Sunday July 31st as the children, grandchildren of great-grandchildren of the late Mr. and Mrs. Tobe Griffin of Haskell gathered at the Lamb Country Electric building in Littlefield for their annual reunion. The day was spent visiting, eating, game playing, and picture taking.

Present were Mr. and Mrs. Lige Griffin of Amherst, Mrs. J.M. (Christine) Clark of Loop, Mr. and Mrs. J.T. (Nova) Jackson of San Angelo, and Mrs. Robert (Elna) Freeman of Haskell.

Also Mr. and Mrs. Billy Griffin and Reba of Canyon, Mr. and Mrs. Jim Smith and Brian and Terry Martin of Shallowater, Mr. and Mrs. Leroy Leathers, Christina and Katrina of Lelia Lake, Mr. and Mrs. Eugene Griffin, Carol, Fonda, and Allan of Bovina, Mr. and Mrs. Jerry Freeman and Susan of Snyder, Mr. and Mrs. Ronald Hudson of Amarillo, Mr. and Mrs. Thilman Erickson, Tresa, Dena and Ennis of Christoval, Mr. and Mrs. Homer Smith and Deon of Loop, Mr. and Mrs. Raymond Wright, Lance and Christi of Seagraves, Stephen Clark and Mr. and Mrs. Derrel Clark, Kimberly and Craig of Lubbock.

Oldest member of the family attending was Lige Griffin of Amherst and youngest member was Susan Freeman of Snyder.

Visiting with the group were Ella Fenner of Snyder, Craig Hunt of Loop, and Tonya Roberson of Amherst.

Love and Inspiration signature editions. Tiny books on Love, Faith, Friendship. A thoughtful idea to send to someone you care about. Only \$1.35 at the Haskell Free Press.

TOWER DRIVE IN

Rule, Texas 997-2124

Thursday Only August 4 Spanish Picture "Tres Comrades" \$3.00 Carload

Friday 5-Saturday 6 "Crater Lake Monster" Richard Cardella Glenn Roberts

Rated PG-Color Sunday Only August 7 "Hot Box" Rated R

Men In Service

Navy Storekeeper First Class Donald L. Cowart, whose wife Thelma is the daughter of Mr. and Mrs. Charlie Petrich of Route 1, Box 4, Haskell, Tex., has returned from the Silver Jubilee cruise to the United Kingdom.

He is serving as a crew-member aboard the replenish-

ment oiler USS Milwaukee, homeported in Charleston, S.C.

His ship was a member of a seven-ship task group that visited the United Kingdom during June and July in commemoration of the 25th anniversary of Queen Elizabeth's coronation. Additionally, the task group, which had embarked 400 midshipmen from the U.S. Naval Academy and collegiate Naval Reserve

Officer Training Corps units, conducted intensive training during the cruise. The exercises included task group operations, shiphandling, gunnery, engineering, communications and electronic warfare.

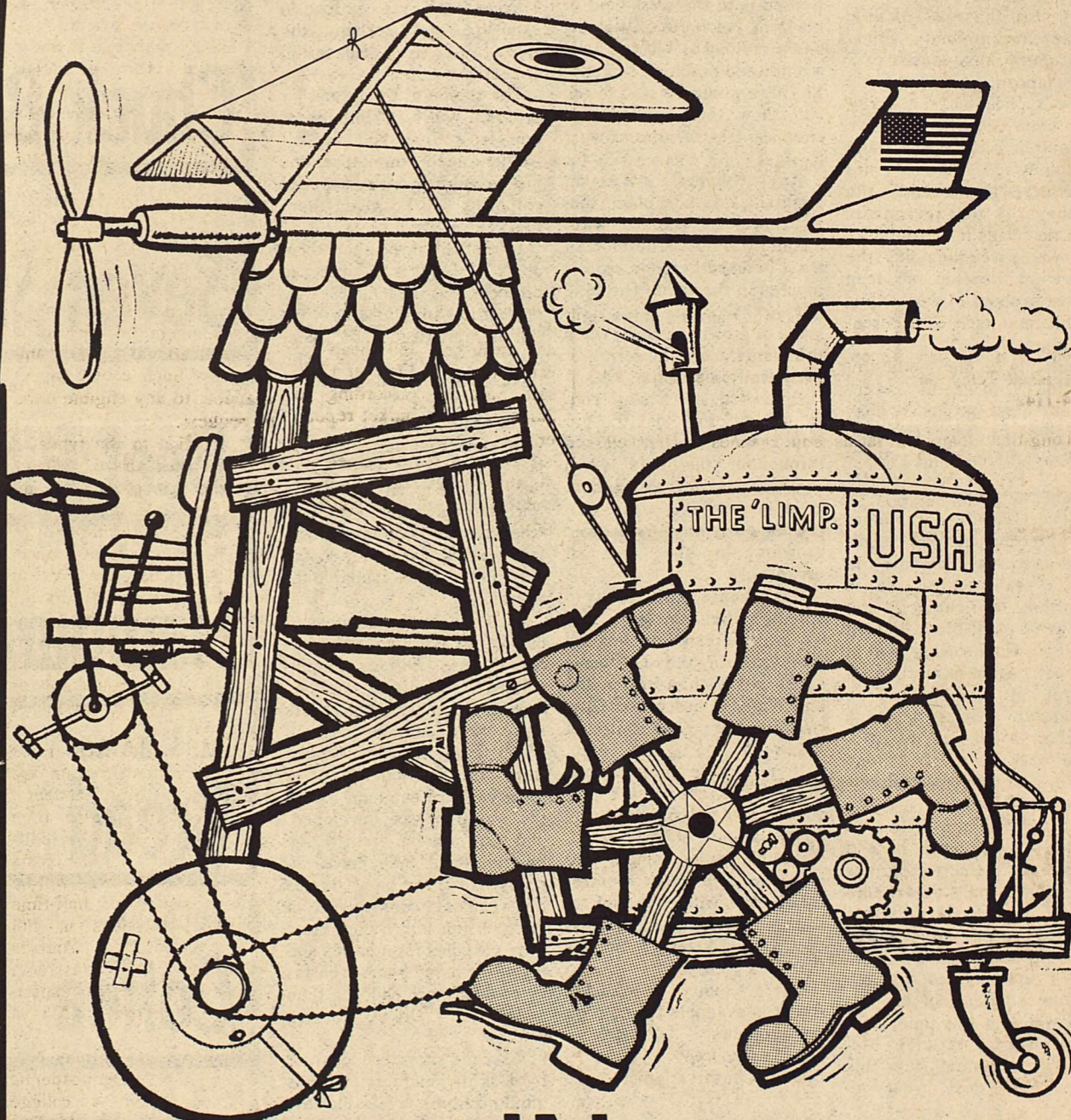
In addition to the United Kingdom, he and his shipmates had the opportunity to visit France, Scotland and Ireland during the cruise and participated in athletic events

and social functions with the host countries.

He joined the Navy in May 1963.

GO BACK TO CLASS WITH CLASS. Shop for your school supplies at the Haskell Free Press. Pens, pencils, notebooks, dictionaries, high intensity lamps, file boxes, pencil sharpeners, rulers, protractors, you name it, we have it.

YOU NAME IT WE'LL SELL IT...



IN The Haskell Free Press Classified Pages!

READ FOR PROFIT • USE FOR RESULTS

CALL 864-2686 TODAY

THE HASKELL FREE PRESS

Gin Labor Needed

Need Ginner & Press Man
George Grammer
Box 258
Bardwell, Texas 75101

Phone 214-646-5346
Gin Phone 646-5329

RUSS AGRICULTURE FLYING

AERIAL SPRAYING

Midge & Cotton Insect Control

Russ Matthews, Owner

Call 864-2035

Haskell, Texas

Back To School Sale

The Prices will hold from Thursday August 4 Through Saturday August 13

Levi Sale Men's Flairs, Giant Bells, Gentlemens Jeans & shrink to fit Levis through August 13 \$12.50 pr.	Men's Short Sleeve Sport Shirts Sizes Small, Medium, Large & Extra Large Cottons & Double Knits Values to \$10.95 \$6.95 each Boxed Shirts not included.
Children's Levis sizes 0 to 12 slims and regulars \$6.95	Turtlebox Blouses Sizes, Small, Medium & Large regularly \$9.95 Sale Price \$6.98 and so forth
Growing Boys Levis sizes 26 waist to 30 waist 30% off	Boys Short Sleeve Shirts 30% off Boys Hanes Briefs 89¢ pr. Girls Rayon Panties sizes 8, 10 & 12 49¢ pr.
Entire Stock of Men's Straw Hats 1/3 off	Cottons reduced as marked from 98¢ yd.
Summer Polyester Fabrics reduced to \$2.98 yd.	

We are sure that we are offering you real values during Our Back to School Sale.

Ousley's OF RULE

997-2223

Volunteers Sought For Jerry Lewis Telethon

Volunteers are needed in Abilene area to help with the Jerry Lewis Labor Day Telethon.

The call was issued today by Albert Watts, President of the Abilene Chapter of the Muscular Dystrophy Association (MDA). "We need men and women of all ages—who can answer phones, add columns of figures, or help in many other ways during this year's marathon show," Albert Watts said. The Telethon will be broadcast in the Abilene area by KTXS TV-Channel 12. Jerry Lewis, MDA National Chairman, will host the star-studded show which originates from Del Webb's Hotel

Sahara, Las Vegas. The spectacular will be seen on a network of nearly 200 stations, including outlets in Hawaii, Alaska, Puerto Rico and Guam.

Last year the Telethon raised over \$21.7 million for the fight against muscular dystrophy and related disorders. Jerry believes that "this year, we can muster up still more love and support for kids and adults disabled by muscular dystrophy and related disorders. That's why I stand up on the stage every year—so they'll be able to stand someday, too."

Mr. Albert Watts said that volunteers are needed to

answer phones, take pledges, type, tabulate, and deliver messages and supplies. Those wishing to volunteer should call 817-923-8819.

MDA supports over 350 neuromuscular research projects in laboratories throughout the U.S. and in 17 foreign countries, and has established a network of ten major university-based research and clinical centers to accelerate its efforts to find cures or effective treatments for the many neuromuscular diseases covered by its programs. In addition, the health agency

maintains a total of 173 free diagnostic and treatment clinics, located throughout the U.S., and in Puerto Rico and Guam.

VA News

Jack Coker, Director of the VA Regional Office in Waco, warned today that a large number of women whose husband died or suffer total, permanent disability resulting from their military service, will lose their eligibility for certain valuable Veterans Administration benefits if they don't act within 18 months.

The VA education benefits provide up to 45 months of schooling to eligible wives and widows and to children between the ages of 18 and 25, Coker said.

But the eligibility of a spouse ends of November 30, 1978, or ten years from the date the veteran was found to have a total and permanent service-connected disability or ten years from date of his or her death, whichever is later.

Dependents of MIA's and service personnel who were captured, interned or forcibly detained in line of duty for more than 90 days may also qualify for these benefits, Coker said.

Spouses of service personnel declared missing in action, captured or detained in line of duty, are eligible for education benefits until December 24, 1980, or for 10 years from the date the listing was made, whichever is later, Coker said.

For a spouse intending to take apprenticeship, on-the-job or correspondence training, eligibility is based on the 10-year period or October 24, 1982, whichever is later.

A child's marriage is not a barrier to the education benefits, Coker said, but the remarriage of a spouse ends his or her eligibility unless that marriage is later terminated by death or divorce.

Unless the child of a veteran has been accepted by an approved institution for courses leading to a standard college degree, he or she is required to have VA counseling to assist in the selection of an educational goal and program. Such counseling is available to any eligible child on request.

In addition to the types of training listed above, spouses may enroll in secondary and correspondence schools, pursued six months or more in schools offering farm cooperative programs. The VA will provide educational-vocational counseling to spouses upon their request. Any program of education outside the United States may be pursued only at an approved institution of higher learning.

Monthly allowance rates paid under this program are \$292 for full-time students, \$219 for three-quarter time students, and \$145 for half-time students. Tuition costs only—limited to \$292—will be paid to less than half-time students. Enrollees in full time cooperative courses which alternate classroom study with on-the-job experience will receive \$235 a month.

Eligible students may borrow up to \$1,500 per academic year to pursue a college degree course or one leading to a professional or vocational objective which requires at least six months to complete.

Loans are available only to students unable to obtain student loans of the amount required under provisions of the Higher Education Act of 1965, as amended.

Full information on the VA dependents' education program can be obtained at the nearest VA office.

Haskell's Market Place
The Classified Ad Page

BIRTHS

Mr. and Mrs. Don Comedy of Haskell, announce the birth of a daughter, Jennifer Donene Comedy, born at 10:55 a.m. July 29, 1977 in the St. Joseph Hospital in Bryan. She weighed 4 lbs. 3 oz. and was 14" long.

Grandparents are Mr. and Mrs. Bill Comedy, Mr. and Mrs. Allen (Jiggs) Isbell, all of Haskell, and Clydene Comedy of Abilene. Great grandparents are Ben Isbell of Haskell, Mrs. Mickler of Stamford, Mrs. J.M. Comedy and Mr. and Mrs. Dewey Cason all of Coleman.

Mr. and Mrs. Frank L. Jimenez, of Haskell, announce the birth of a daughter, Kelly Michelle Jimenez, born July 30, 1977, weighing 7 lb. 3 oz., at the Haskell Memorial Hospital.

Mr. and Mrs. Francisco Garcia, of Haskell announce the birth of a daughter Melissa Michelle Garcia, born July 31, 1977, weighing 7 lb. 3 oz., at the Haskell Memorial Hospital.

Mr. and Mrs. Mike Beeman announce the birth of a daughter, Mindy Shay Beeman, born July 23, 1977, in Hendrick Memorial Hospital in Abilene, weighing in at 7 lbs, 15ozs. Her brother, Jim Tom, was waiting for her at home.

Maternal grandparents are Mr. and Mrs. J.H. Trammell. Maternal great-grandmother is Mrs. Eal Treadwell. Paternal grandmother is Mrs. Fay Beeman.

WINNER NAMED

Sharon Andrews of Rule was the winner of the Back-To-School Gift Certificate given at Lane-Felkers Saturday.

A gift certificate will be given each Saturday through August 20. All area high school and college girls are invited to come in and register. No purchase is necessary.

Marriage Licenses

Ann Strickland, Haskell.
Ronald Richard Johnson, Lamesa, and Riva Maria Hitt, Rochester.

Marriage licenses issued during the month of July, by County Clerk Jenny Brazell included:

Gary William Watts and Christa Janay Pruett, Haskell.
Kendall Ray McFadden and Drida Faye Watts, Haskell.
Jerry William Carter, Big Spring, and Terri Gay Manns, Haskell.

Roger Dale Messenger and Leshia Annette Trussell, Haskell.

Dale Leross Robinson, and Ada Mae Andrews, Synder.
Gary Bruce Miller, Rule and Deborah Kay Mickler, Haskell.
Roy Lee Petrich and Janet

PRESS CONFERENCE

At 10:00 o'clock, Tuesday morning, August 9, Congressman Omar Burleson will hold a press conference at the Windsor Hotel in Abilene, at which time he will announce his future political plans. The public is invited.

GET RESULTS "GO CLASSIFIED"

N. R. KULKARNI, M.D.

GENERAL SURGERY
Board Certified FRCS (England)
FAMILY PRACTICE
Board Certified MRCGP (England)

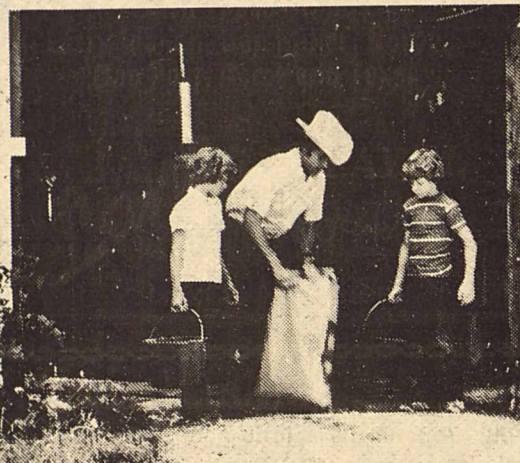
Is now associated with the
HAMLIN CLINIC

For appointment call 576-3611
632 Northwest Second Hamlin, Texas

We're banking on the future of American Agriculture.

The Land Bank

The Bank of Generations



Federal Land Bank Association of Haskell



JOE HARPER—Manager

Offices at Haskell, Anson and Seymour
Haskell Telephone: 864-2062—Anson Telephone: VA 4-1142

Long-time loans on farms and ranches in Haskell, Jones, Baylor and Knox Counties

Hints for HOMEMAKERS

You can save money and energy with your electric dishwasher, as well as time, if you turn the dial to off after the machine finishes washing and then let the dishes dry by themselves.

To save time while vacuuming, get a long extension cord and plug it into a centrally located socket, instead of having to stop, stoop, plug and replug the vacuum cleaner as you go.



Save time and money when it comes to running your portable radio or recorder. Pleasant company when cleaning, it can also be a problem when you're ready to go and your batteries aren't. You can keep rechargeable 9-volt size nickel cadmium battery from General Electric on charge so it's fresh when you need it. And it can be recharged up to 1000 times.

STOCK MARKET

The Market at Haskell Livestock Auction was active with feeder and stocker steers and heifers \$1.00 higher. Top on hogs was \$41.70 on a run of an estimated 780 head of cattle and 333 hogs at their sale Saturday, according to James Powell, market reporter.

New hog time helped to disperse large run of hogs coming from all over state so cattle can be started at 12 noon.

Hog sale will start next Saturday between 9:30 and 10:00 a.m.

Bulls: Bologna, 28-33; light, 32-38.

Butcher Cows: Fat 23-26; canner and cutter, 18 to 23; old shells 4 to 18.

Butcher calves and yearlings: Choice 33 to 35; good 30 to 33; standard 25 to 30.

Feeder steer yearlings: Choice 38 to 42; good 36 to 38; common-medium 30 to 36.

Feeder heifer yearlings: Choice 32 to 35; good 28 to 32; common-medium 23 to 28.

Stocker steer yearlings: Good and choice 36 to 45; common-medium 33 to 36.

Stocker heifer yearlings: Good and choice 34 to 37; common-medium 32 to 34.

Stocker steer calves: Choice 43 to 48; good 38 to 43; common-medium 35 to 38.

Stocker heifer calves: Choice 35 to 40; good 32 to 35; common-medium 28 to 32.

Cows and calves: Choice pairs 300 to 370 per head; good pairs 225 to 300; plain pairs 180 to 225.

Stocker cows: Choice none sold by head; plain 21 to 25 by weight.

Top on Hogs was 41.70, with the bulk of butcher hogs selling from 39 to 41.

Sows from 34 to 37
Feeder Shoats 34 to 37 by Head 10-20.
Boars 25-28.

Largest Stock Best Prices



QUALITY HANDCRAFTED BOOTS

Handcraftsmanship Makes The Difference



Also These Brands
Larry Mahan, Ben Miller, Nocona, Dan Post, Acme and Texas

Lane APPAREL FOR MEN
Next to M-System

1-2 PUNCH

We do know how to MINIMIZE your insurance frustrations on cars, homes and business protection. By lining up with our agency, we explore every avenue with the real KNOW-HOW of an INDEPENDENT INSURANCE AGENCY. If this TWO-FISTED service sounds good to you, stop in or call — we're here to help!

LANE DURHAM AGENCY
510 N. 1st. St.
Phone 864-2629
Haskell, Texas

GRAND

Stamford 773-3181
Fri. 5-Sat. 6-Sun. 7
Don't See It Alone
"It's Alive"

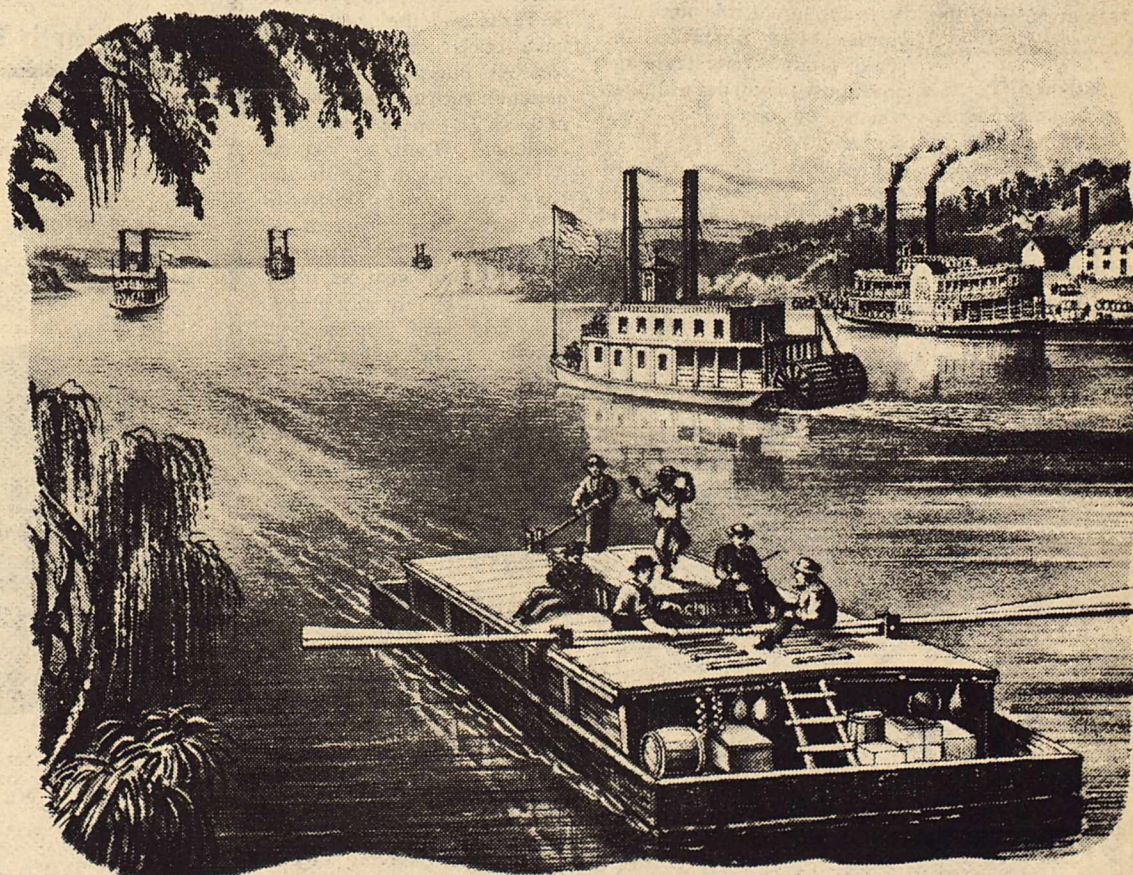
DRIVE-IN

Stamford 773-3272
Fri. 5-Sat. 6
2-Big Hits-2
"Mr. Billion"

"Checkered Flag"
Sun. 7-Mon. 8-Tues. 9
Julie Christi

"Demon Seed"
Wed. 10-Thurs. 11
2-XX Rated Features
Adults Only
"Gemini Affair"
Plus
"Fuego"

Cash Flow.



In 1803, America found herself up the river. The Mississippi, that is. Valuable goods were being produced in the Midwest, and the mighty Mississippi was our only link to the sea. But the outlet in New Orleans belonged to France.

So President Jefferson sent agents to Paris to negotiate for the addition of New Orleans. Surprisingly, Napoleon offered to sell the entire Louisiana Territory for only \$15,000,000.

And that included what is today Arkansas, Missouri, Iowa, North and South Dakota, Nebraska, Louisiana, Oklahoma, most of Minnesota, and parts of Wyoming and Colorado.

Thanks to Americans taking stock in their new country by buying over \$11,000,000 in government securities,

we made the purchase. And doubled our size overnight.

Today, Americans still take stock in their country by buying U.S. Savings Bonds through the Payroll Savings Plan.

They know there's no safer way to save for an education, vacation or retirement. And they know that while they're helping themselves, they're helping America, too.

So buy U.S. Savings Bonds. And help your cash flow into savings.



Take stock in America.

E Bonds pay 6% interest when held to maturity of 5 years (4 1/2% the first year). Interest is not subject to state or local income taxes, and federal tax may be deferred until redemption.

Citizens of Tomorrow



Emily SoRelle, age 3, is the daughter of Mr. and Mrs. Frankie SoRelle, 1400 N. Av. K, Haskell.



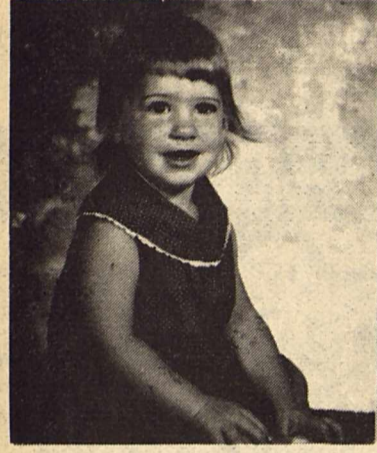
Treel Burson, age 20 months, is the daughter of Mr. and Mrs. C.G. Burson III, 1800 N. Ave. F, Haskell.



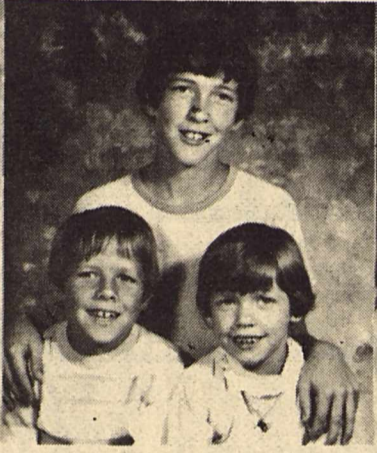
Lynn Newberry, age 2, is the daughter of Mr. and Mrs. Mike Newberry, Box 503, Haskell.



Dusty Burson, age 4, is the son of Mr. and Mrs. David Burson, 1805 N. Av. G, Haskell.



Jennifer Cockerell, age 19 months, is the daughter of Mr. and Mrs. Dudley Cockerell, Rt. 1, Box 28-A, Haskell.



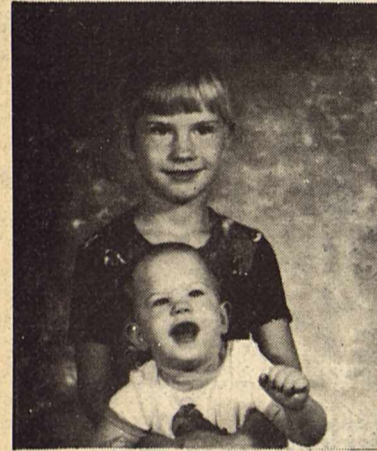
Jamey Davis, age 12, Jerry, age 8, and Missy, age 5, are the children of Mr. and Mrs. James Davis, 1405 N. Av. L, Haskell.



Janya Dunnam, age 2 1/2 years, and Jeffrey, age 5 months, are the children of Mr. and Mrs. Jack Dunnam, Rt. 1, Weinert.



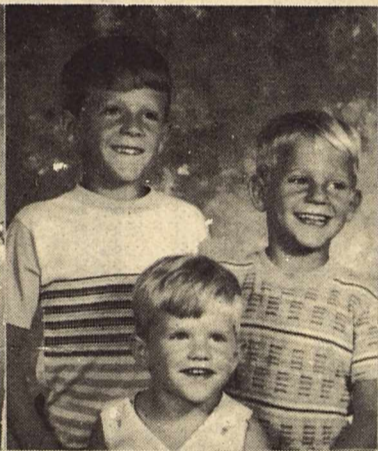
Casey Dale Coleman, age 1 1/2 years, and Adam Brook, age 4 1/2 years, are the children of Mr. and Mrs. Phil Coleman, Route 2, Rule.



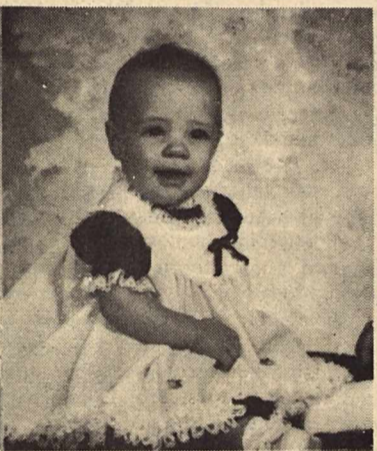
Chris McGhee, age 6, and Chad McGhee, age 1, are the children of Mr. and Mrs. Dean McGhee, 705 S. 10, Haskell.



Ray Burnett, age 11 and Tamra, age 7, are the children of Mr. and Mrs. Charles Burnett, Rt. 1, Box 97 Haskell.



Billy Mitchell, age 8, Kevin, age 6, and Marty, age 3, are the children of Mr. and Mrs. Bill Mitchell, 505 S. 6th, Haskell.



Melissa Jean Chapman, age 7 1/2 mo. is the daughter of Mr. and Mrs. Ronnie Chapman, Rt. 1, Box 60, Haskell.

Knox County To Hold Horse Show Aug. 13

The Knox County Riding Club is sponsoring an Open Youth Horse Show in its arena at Benjamin, Saturday, August 13.

Trophies through fourth place will be given in each class with tack given with the

STORY HOUR SET

There will be a Story Hour program for children at the County Library Saturday August 6th from 10 till 11 a.m. Mrs. Helen Fouts and Shelah Jetton will be in charge. All children are invited.

first place trophy. There will be halter classes for registered and grade mares and geldings.

Performance classes will be divided into two age groups. Youngsters 13 and under will be in the junior division, with youths 14-18 being in the senior group. Contestants age on August 13 will determine in which division they will compete.

A belt buckle will be presented to the all-around winner in both junior and senior divisions.

Performance classes will be

showmanship at halter, western pleasure, western horsemanship, reining, barrels, flags and poles.

BETTER AG WEATHER SERVICE—Farmers and ranchers in Texas and the nation will have access to more and better weather information once a national agricultural weather network is instigated. The National Weather Service (NWS) is working with the Extension Service, USDA, to put into action a system for more effectively gathering and disseminating weather information to benefit producers. The Extension Service will provide a staff member for each state to work closely with NWS personnel in making the best possible use of agricultural weather information.

agri-facts

Pat Hale



Controlled traffic farming is a concept getting a lot of attention lately . . . and probably even more in the future. Idea of the operation is to keep tractors moving only on surfaces not used for crops. Basically that seems quite unreasonable since the crops are in the field and it is usually necessary to get the tractor out there to do any good. None of that has changed. With controlled traffic farming the tractor would be driven on paths between the rows. Paths used only for the machinery. In most concepts of this type operation the paths would be the only points of compaction in the field. Therein lies the reason for concern. If compaction can be reduced, root systems can be more completely developed and higher yields would result. At Auburn University in Alabama a controlled traffic farm experiment resulted in a yield 43 percent higher than crops grown with conventional tillage.



"The Rabbits Got All My Lettuce!"

How damaging if your "Accounts Receivable" and other valuable papers were stolen or destroyed. Protect yourself with Valuable Papers Insurance from The Hartsfield Agency. It Costs Very Little. Kyle.

The HARTSFIELD AGENCY
EVERYTHING IN INSURANCE
HASKELL PH. 864-2665

HALE FARM SUPPLY
Phone 864-2692

Washington "As It Looks"

From Here"
OMAR BURLESON
Congressman—17th District

WASHINGTON, D.C.—**PINBALL MACHINE ADDICTS** are much more interesting to watch than the machine itself. The gyrations some players exhibit show more movement than Elvis Presley or an accomplished ballerina.

SOME PLAYERS OF THE PINBALL MACHINE reach the point of not only shaking it but finally, in anger, kick or turn it over. That feeling must enter the minds of slot machine players who fail to get up three plums or even two cherries.

NOW, HOWEVER, AS REPORTED IN THE AMERICAN BAR JOURNAL, a recent ruling by the National Labor Relations Board has established a new legal test for the abuse of vending machines. The ruling grants union members the same privilege as non-union members to swear at, punch, kick or malfunction a vending machine. The legal case did place some limits. The Board found that, in the particular case, swearing at, banging and kicking have some limits. It seems it grants two kicks resulting in a dent between two and ten inches.

THE PARTICULAR CASE GREW OUT OF THE FACT that a company fired an employee for assaulting a machine. The Board re-instated him with back pay. The Board said that to do violence to a soda machine in the way that his employee did was "commonplace."

NOTING THAT SEVERAL OTHER EMPLOYEES TESTIFIED that they had kicked and jostled the machine or had seen others do so, caused the Board to say that in the particular plant as elsewhere, it is commonplace for human beings to bang or kick a machine which does not deliver promises goods. While finding two kicks and a dent justifiable outrage against the money-eating machine, the Board was silent on whether three kicks, or even going as far as pulling the plug, would be abnormal or excessive. It is assumed that the "reasonable" person will have to

R.R. [Dick] Cole New GTC Foreman

The appointment of R.R. (Dick) Cole as plant foreman of General Telephone Company of the Southwest, with headquarters in Seymour, has been announced by Bill D. Drennan, Brownwood Division Manager.

Cole, who will be responsible for maintenance and service quality at Aspermont, Rule, Haskell, Rochester, Knox City, Munday, Goree, Crowell, and Throckmorton, previously served, since July 1971, as division service and facilities manager for the company in Hobbs, New Mexico. Cole joined General Telephone Company of the Southwest in 1947, as a cable splicer in Seymour. He has held various positions in Memphis, Baytown, Garland, and Littlefield prior to the Hobbs assignment.

A native of Dundee, Archer County, Texas, Cole attended school in Seymour, and has been active in several organizations including the Kiwanis Club.

Cole and his family are members of the Baptist Church.

NOTE # 2— AT 10:00 O'CLOCK, TUESDAY MORNING, AUGUST 9, Congressman Omar Burleson will hold a press conference at the Windsor Hotel in Abilene, at which time he will announce his future plans.

The public is invited.

ble for maintenance and service quality at Aspermont, Rule, Haskell, Rochester, Knox City, Munday, Goree, Crowell, and Throckmorton, previously served, since July 1971, as division service and facilities manager for the company in Hobbs, New Mexico. Cole joined General Telephone Company of the Southwest in 1947, as a cable splicer in Seymour. He has held various positions in Memphis, Baytown, Garland, and Littlefield prior to the Hobbs assignment.

A native of Dundee, Archer County, Texas, Cole attended school in Seymour, and has been active in several organizations including the Kiwanis Club.

Cole and his family are members of the Baptist Church.

ALL PURPOSE SHEARS, fine cutting quality, durable. Carries Good Housekeeping and Parents Magazine Seals at the Haskell Free Press.



STATE FARM'S PERSONALIZED LIFE INSURANCE PLANNING

The State Farm MATCHMAKER can find you a match for life.

State Farm Matchmaker Service is free. And so simple. You tell us a little about yourself, your family, your goals. We feed this information to our computer and in a matter of seconds it prints out a State Farm life insurance program that matches your needs. One you can live with.

See or call:

Brian Burgess
111 N. Ave. E
864-3250



STATE FARM LIFE INSURANCE COMPANY
Home Office: Bloomington, Illinois

Haskell, Texas

—We Reserve the Right to Limit—

Home Owned

Parker's Super Market

506 North Second

USDA Food Stamps

Coupons Gladly Accepted

Phone 864-3454

STORE-WIDE

10% Discount Sale

Not On Just A Few Week-End Specials!

You Save On Every Item You Purchase! (Milk, Cigarettes and Tobacco Excluded)

10% Will Be Deducted From Your Cash Register Tape Total!

SAVE MORE NOW!

10% Discount on Our Already Low Every Day Prices.