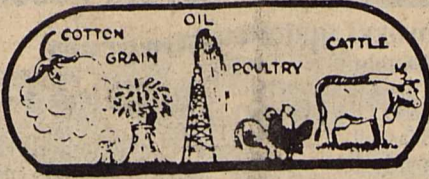


15¢
Per Copy

THE HASKELL



FREE PRESS

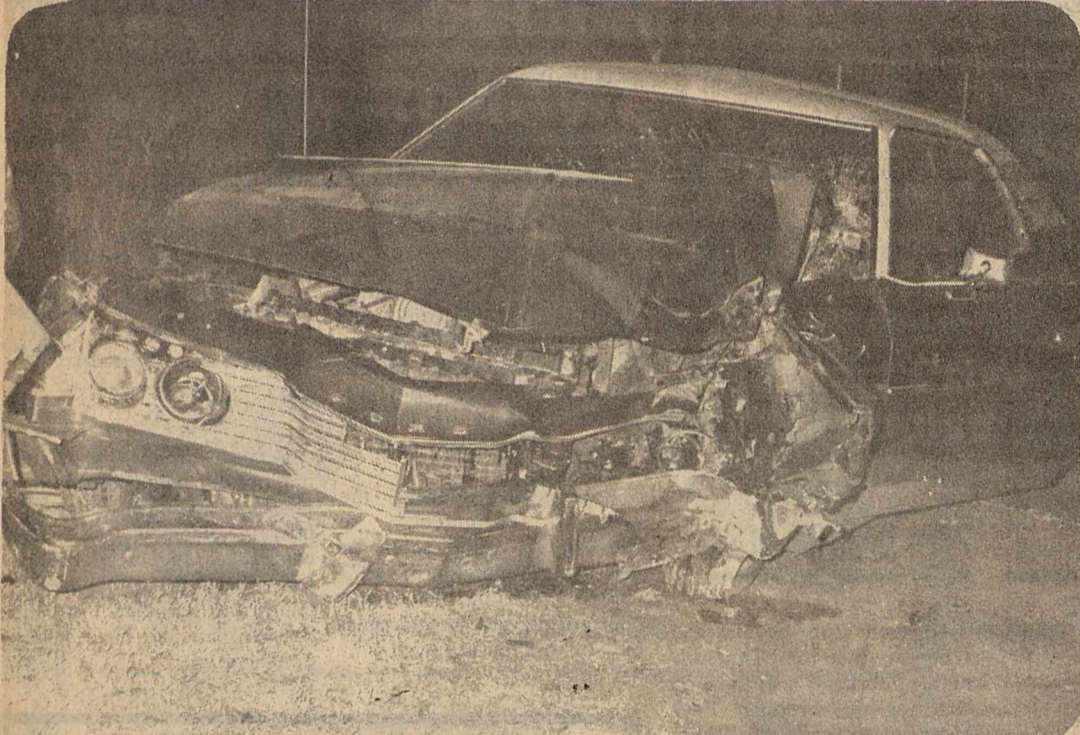
"HASKELL—A GOOD PLACE TO VISIT; A BETTER PLACE TO LIVE"

VOLUME NINETY-TWO

10 PAGES

HASKELL, TEXAS, 79521, THURSDAY, FEBRUARY 9, 1978

NUMBER SIX



EXTENSIVE DAMAGE occurred last Saturday night at 11:55 p.m. when this vehicle driven by Jeff Hatfield left the highway at the south Haskell City limits and struck a large pipe at Haskell Butane. Hatfield was taken to Haskell Memorial Hospital by private vehicle and transferred to Hendrick Medical Center Sunday. The accident was investigated by DPS Trooper James Davis. (Staff Photo)

Little Dribblers To Open 1978 Season February 13

The Haskell Little Dribbler Boys League will swing into action Tuesday, February 13, at 6 o'clock with two games. The players and volunteer coaches have been working very hard the past few weeks. Players are making good progress. Little Dribbler Officials encourage everyone to come out, enjoy youth basketball and help support this program. Everyone who comes to the games is asked for a donation of 25c to defray expenses of uniforms, balls, and all-star play-offs. Players who have shirts or equipment from last year are asked to return it to Loraine Johnson at Boggs & Johnson Furniture.

CHIEFS Robbie Peiser, Coach, Kelly Klose, Billy Shelton, Scott Schaake, Joel Torres, Sammy Hawkins,

Andy Griffith, Jerry Davis, Emery Baker.

SIoux Donnie Carroll, Coach, Bruce Geilhausen, Wayne Geilhausen, Rickey Myers, Paul Rameriz, Patrick Rodriguez, Ramon Bernal, Sammy Baker, Michael Wallace.

BRAVES Jerry Weatherly, Coach, Bryan Baldwin, Joe Martinez, Edward Robertson, Casey Reed, Lex Weatherly, Tim Johnson, Chris Medford, Kendall Larned.

REDMEN Bobby Hanson, Coach, Stephan Brockington, Christopher Lopez, Emeteric Flores, Lonciano Lopez, Santos Bernal, Kelly Strickland, Lance Hanson, Felipe Arrendon.

WAR WHOOPS Billy Mitchell, Coach, Billy Mitchell, Robert McAdams, Bobby Short, David Newman, Scott Burris, George Watson, Steven Rodriguez, Marty Wilson.

WARRIORS Charles Reed, Coach, Steven Boyd, Jimmy Burson, Freddie Villa, Robert Gonzales, Keith Reed, Kendall Medford, Fred Rike, Fred Barnett.

KIOWAS Rickey Martin, Coach, Shawn Lane, Keith Parrott, Joey Kimbrough, Lewis Lacey, Rickey Moeller, Scott Burson, Rickey Dunnam, Paul Cox.

BLACKHAWKS James Davis, Coach, Robert Ivey,

David Adams, Shane Gilliam, Sonny Pena, Trinidad Rodriguez, Patrick McCoy, Val Bragg, Doug Richardson.

MOHAWKS, Wayne Lehner Coach, Randy Roewe, Todd Harris, Robert Robertson, Robert Lehrer, Todd Jennings Andy Hill, Ray Burnett, Scott Langlity.

APACHE, Jerry Hadaway, Coach, Shane Hadaway, Shawn Chambers, Ronald Campbell, Ronnie McNeil, Sam Toliver, Scott Alves, Mark Reynolds.

BOYS SCHEDULE

February 13

Chiefs vs. Redmen

Kiowas vs. Apaches

February 16

Braves vs. Sioux

Blackhawks vs. Mohawks

February 17

War Whoops vs. Chiefs

Warriors vs. Kiowas

February 20

Redmen vs. Sioux

Mohawks vs. Apaches

February 21

Braves vs. Chiefs

Blackhawks vs. Kiowas

February 23

Redmen vs. War Whoops

Apaches vs. Warriors

February 24

Chiefs vs. Sioux

Kiowas vs. Mohawks

February 27

Sioux vs. War Whoops

Mohawks vs. Warriors

February 28

Redmen vs. Braves

Apaches vs. Blackhawks

March 2

Braves vs. War Whoops

Blackhawks vs. Warriors

March 3

Redmen vs. Chiefs

Apaches vs. Kiowas

March 4

Sioux vs. Braves

Mohawks vs. Blackhawks

March 6

Chiefs vs. War Whoops

Kiowas vs. Warriors

March 7

Sioux vs. Redmen

Apaches vs. Mohawks

March 9

Chiefs vs. Braves

Kiowas vs. Blackhawks

March 10

War Whoops vs. Redmen

Warriors vs. Apaches

March 13

Sioux vs. Chiefs

Mohawks vs. Kiowas

March 14

War Whoops vs. Sioux

Warriors vs. Mohawks

March 16

Braves vs. Redmen

Blackhawks vs. Apaches

March 17

War Whoops vs. Braves

Warriors vs. Blackhawks

9-10 league games start 6 p.m., 11-12 league games start 7 p.m.

CowBelles To Sponsor Beef Cook-off

The Texas CowBelles are sponsoring a Beef Cook-Off and all local cooks are urged to enter.

Health Fair Plans Underway

Plans are well underway for a Health Fair to be held in Haskell on Wednesday, April 19, 1978 according to Mrs. Barbara Elliott, County Extension Agent. The Health Fair is being sponsored by the Family Living Subcommittee of the Haskell County Program Building Committee.

Health Service Agencies serving the Haskell County area will be providing health information, educational exhibits and films.

The committee would like for everybody to circle April 19th on their calendar now and plan to attend the Health Fair.

The contest entry blanks and complete rules are available at most Haskell businesses.

The CowBelles are sponsoring the contest for the purpose of featuring beef recipes and promoting the beef cattle industry. Contestants must be at least 18 years old, with a non-professional food status, and a resident of Texas. They do not have to be a member of the CowBelle organization.

Any beef recipe using chuck, round, rump or fresh brisket in any form may be entered. The dish must contain at least two pounds of beef and not more than five pounds. All meat in the recipe must be beef.

From the recipes submitted, a team of judges will select the top ten on the basis of appeal, idea, appearance, flavor and

eating quality and content. The finalist will travel to San Antonio and prepare their dishes for judging at the Texas CowBelle Convention, March 28.

A first place prize of \$300.00, second place of \$200.00, and third place of \$100.00 will be awarded. The first place winner will advance to the National Beef Cook-off in Oklahoma City September 14-15.

Jean Free, local CowBelle, said "We would like to have a winner from Haskell County and all the good cooks in this area we have a good chance. Good luck."

4-H MEETING

There will be a 4-H meeting at 5 o'clock, Monday, February 13, 1978, at the Corral Building. The program will be trap shooting. All interested persons are invited to attend.

GED Tests Scheduled For February 11

The General Educational Development (GED) Tests will be given at the Haskell Junior High School Official Testing Center, Haskell, Texas, on Saturday, February 11, 1978, beginning at 9:00 A.M. The fee for the battery of five tests is \$20.00.

The GED Program provides a means for determining the educational level of adults who have not completed a formal high school education. A certificate of high school equivalency may be issued to adults who successfully complete the GED examination, verifying that the holder has demonstrated a level of competence on the examination which is equivalent to that of a high school senior.

The program is administered nationally by the American Council on Education, Washington, D.C. The Texas Education Agency authorizes accredited high schools and institutions of higher education to serve as testing centers. The centers administer the GED test to adults who are eligible and report the scores of successful examinees to the Texas Education Agency, which issues certificates of high school equivalency free of charge.

The test has five parts: Correctness and Effectiveness of Expression, Interpretation of Reading Materials in the Social Studies, Interpretation of Reading Materials in the

Natural Sciences, Interpretation of Literary Materials, and General Mathematics Ability. The test questions are multiple choice. There is no time limitation but most examinees take approximately eight hours to complete the test battery.

Persons eligible for testing must:

- be a resident of Texas or a member of the Armed Forces stationed in Texas;
- be at least 17 years of age and officially withdrawn from school for one calendar year. (Applicants who have attained their 17th birthday and will enter the Armed Forces may test immediately after withdrawing from school;
- be 18 years of age and officially withdrawn from school.

To receive a certificate of high school equivalency, the examinee must:

- complete the examination with a minimum standard

Principals-Coaches Contracts Renewed

The Board of Trustees of Haskell Independent School District met Tuesday night in regular session.

Members of the board approved the renewal of principals, and coaches contracts. The principals contracts were renewed for two years. The board also agreed to hire one additional coach.

The board had agreed to hire an additional coach last

year but could not locate one before school started. It was also pointed out that with the present number of coaches, at two times during the year there is one more team participating than there are coaches. The additional coach will solve this problem.

Members of the board also approved the use of school vehicles for the upcoming Spanish Club trip.

Supt. Kenneth Sams announced during the meeting the dismissal of grades 3-6 from classes Feb. 8. The dismissal was caused due to damage in the heating system. Sams said he was hopeful that workman could repair the system on Wednesday, but was concerned that major repairs might be required later.

An election to elect three board members was called for April 1. The terms of Becky Richardson, Bob Whisenhunt, and Raymond Andrada expire. Andrada was appointed to the board following the resignation of Abe Turner and his seat will be filled for a two year term. Both other terms are for three years.

The Board renewed the Superintendents contract for three years at the January meeting.

WEATHER SUMMARY

By Sam Herren
Month of January
TEMPERATURE

Hi 76° 5th
Lo 12° 17th
RAINFALL
Total 0.62
Normal to Date 0.93
Trace Of Snow

City-School Elections April 1

City and School elections will be held April 1, and local voters will elect a mayor and two councilman and three members of the board of trustees of Haskell Independent School District.

In the City Election, the terms of Mayor Belton Duncan and Councilmen Earl Proctor, and E.J. Stewart will expire.

Two-three year terms expire and one-two year term expire on the school board. The three year terms of Becky Richardson and Bob Whisenhunt and the two year un-expired term currently being filled by Raymond Andrada will expire.

It was announced at the regular meeting of the school board that the two persons receiving the most votes would fill the three year terms and the person receiving the third highest number of votes would fill the two year term. Deadline to file in either of the elections is March 1.

Heart Drive Scheduled

Mrs. Joe Thigpen has been named 1978 Heart Fund Chairperson for Haskell County. Announcement of her appointment was made by Abe Turner, local Heart Association President.

Mrs. Thigpen will coordinate the efforts of approximately 100 volunteers in distributing heart-saving literature and accepting contributions from each home and business. Funds collected will be used in the research, education, and community service programs of the Heart Association. These include school programs, training in cardiopulmonary resuscitation nurses education, free blood pressure clinics, referral system for heart patients, nutrition information and many others. These programs are available at no cost to any group within the community.

Heart Disease is the nation's Number One Killer, accounting for 52.5% of all deaths, over a million Americans last year and affecting 29 million more in one way or another. There were 86 deaths in Haskell County from cardiovascular disease alone last year.

Burleson Introduces Legislation

Congressman Omar Burleson today announced that he has cosponsored legislation known as "The Agricultural Trade Act of 1978." This legislation is designed to expand foreign markets for U.S. agricultural commodities which he feels is vital to the continued growth of agricultural exports.

In view of the disastrous economic crisis which farmers all over the United States are now facing, Mr. Burleson feels this Nation must reduce agricultural surpluses by establishing an aggressive foreign marketing program such as that contained in his bill.

As introduced, the Agricultural Trade Act of 1978 would provide for the establishment of from 6 to 25 U.S. agricultural trade missions; a new medium term commercial credit program for financing exports; the establishment of an Under Secretary of Agriculture for International Affairs; an upgrading of the role of U.S. Agricultural Attaches; and other provisions.

Deadline To File For Office Passes

The deadline to file for elected office passed Monday afternoon at 6 p.m. and left only two unopposed races in Haskell County.

The two unopposed are District Clerk, Carolyn Reynolds, and Commissioner Prec 4, C.A. (Bud) Turnbow. Both have filed for re-election.

District Judge William P. (Bill) Ratliff has announced for re-election and is opposed by Joe Williams.

County Judge B.O. Roberston has announced for re-election and is opposed by retiring County Treasurer John Wayne McDermett.

The seat vacated by McDermett is being sought by three candidates; Peggy (Blair) Darden, Willie Faye (Petrich) Tidrow, and Laquita (Young) Liles.

County Clerk Jenny Brazell is seeking re-election and is opposed by Sue Fincher.

County Commissioner R.L. (Jiggs) Edwards, is seeking

score of 40 on each of the five tests OR an average standard score of 45 on all five tests:

- have attained at least their 17th birthday prior to date of testing and be out of school for one calendar year;

- have attained their 18th birthday and be officially withdrawn from school.

Applicants must wait six months before retesting. If the applicant is tutored by a certified teacher or participates in an adult education program, retesting may occur when the instructor determines the applicant is prepared.

Applicants are advised to bring their Social Security Number and their driver's license as proper identification.

8 Farmers In Washington

Eight Haskell County farmers left last Sunday for Washington D.C. to continue their efforts to receive a reasonable profit on their investment.

The eight include: Ken Lane, Elmer Adams, Danny Josselet, Rick Perry, Jimmy Browning, Bobby Howard, Jack Dunnam, and Tiffen Mayfield.

Businesses and individuals who donated to the trip were: Osborne's, Abell Ag. Co., Horton Implement, M-System J.C. Elliott, Edwin Johnson, Baker Insurance, Quality Implement, Knox Prairie, V.E. Moore, P.L. Newton, Joe Williams, Lane Durham Ins., David Albus, Birdie Mae Dumas, Jesse R. Miller, J.W. Aycock, Robert Dewayne Aycock, Carl Bailey, Bill Hester, Marvin Wheatley, Mrs. Ira Davis, Anderson Clayton Co., Jerry Dunnam, J.B. Dunnam, Farmers Co-Op Gin, and Haskell Co-Op Gin.

re-election and is opposed by Melba Howard.

E.J. Stewart and Geraldine (Petrich) Hise are seeking the office of Peace Justice Prec. 1. Herbert Bledsoe is not seeking

re-election in that office. State Representative W.S. (Bill) Healty and State Senator Ray Farabee are both unopposed in their bids for re-election.

CB Directories To Be Printed Soon

The Haskell County Jaycees began work this week on a CB Directory.

The directory will include the 'handles' of all area CB's, FCC rules and regulations, and CB slang.

A form is printed on page 6 of this edition of the Free Press and all area CB's are urged to complete the form and return it to Allen Moeller, before Feb. 24.

If more than one member of the family has a handle a sheet should be attached listing the name and handle of each one. The directories should be

available about the first of April and will sell for about \$3.50 each.

The blank on the form for the number of books should be completed to give the Jaycees an idea of how many directories to order. No money should be returned with the form. When the directories are available, it will be announced where they may be purchased.

It is the desire of the Jaycees that the directory be as complete as possible and they urge everyone to complete the form, urge their friends to do so, and return them promptly.

LOOKING FOR A JOB? LOOKING FOR HELP?

SEE THE WANT ADS

NOTICE

The Haskell Free Press reserves the right to edit and/or delete all news stories and locals for length and liability and to refuse to print anything deemed not newsworthy.

NOTICE

Due to the bookkeeping involved and the high postal rates, we ask that you please remember that classified ads are Cash in Advance unless you are a business firm or have an established credit with the Haskell Free Press. Either mail your ad with check or if you need assistance in writing it we will be happy to help you. Rates are 5c per word or a minimum of \$1.50.

NOTICE

Please notify us of your change of address. If you do not, the Post Office charges us 25c for each time the Haskell Free Press is returned to us, this plus the cost of stencils, time and labor can make your move costly to us. In the future, failure to notify us will result in one month being deducted from your subscription.

For Sale

McCOLLOCH CHAIN SAW HEADQUARTERS. A saw for every job. See new. Woodard Farm Sale. 7fc

WOODARD FARM SALES— Ford tractors, equipment, long harrows, Lilliston-Heston-Oliver plow parts. 4fc

FOR SALE: Iron at wholesale prices. Rounds, flats, sheets, square tubing, channel etc. Haskell Trailer Builders. 20fc

PECAN TREES, Fruit Trees, Rosesbushes, Flowering Shrubs, Evergreens, FRUITLESS MULBERRIES now ready at GANSTEAD GARDENS, just West of Rule, 997-2469. 52fc

FOR SALE: Gates fan belts and hoses. Also, heater hose, Delco Batteries and etc. stuff. Texaco gas and other oil and service. M. C. Wilfong, phone 864-2766. 2fc

FOR SALE: Bob Whisenhant personal bass boat. 1976 Tidecraft 15' performance boat, 85 Mercury, power, tilt, and trim. Custom trailer, magnum motor guide. Hummingbird depth finder, 2 gas tanks, 3 batteries, \$4,000. 817-864-3451, after 4 p.m. 4fc

FOR SALE: Sleeper Sofa and a matching lounge chair. See at 304 N. 1st or call 864-2281 between 8 and 5 or 864-2150 after 5 p.m. 6p

FOR SALE: Illustrated Price Guide Books on all antiques. Sherman Interiors and Antiques, northwest corner of square. 6fc

WE HAVE several good used washers and dryers for sale at Frazier's Appliance. 6c

FOR SALE: Large gas range. John E. Robison, 1101 N. Av. D, 864-3766. 6p

FOR SALE: Half bed with almost new box springs and mattress. Call 997-2456 or see at 511 Central Ave. after 5 p.m. in Rule. 6p

Miscellaneous

IF carpets look dull and drear, remove spots as they appear with Blue Lustre Carpet cleaner. Rent electric shampooer \$1. Perry's. 6c

GIVE your sweetie a dazzling smile for Valentines. Crest toothpaste 7 oz. only 95c at Johnson Pharmacy where low overhead means low prices. 6c

ATTENTION ARTISTS: We now have frames for you. Why drive out of town to get your paintings framed? Let Byrd's Studio help you with your framing. 104 N. Av. D, Haskell, 864-2204. 6c

Miscellaneous

FREE Cardui Calendar and Lady's Birthday Almanac while supply lasts at Johnson Pharmacy where low overhead means low prices. 6c

HOW would you like a kiss for Valentines? Get your "Fresh Kiss" (breath freshener) for only 95c at Johnson Pharmacy where low overhead means low prices. 6c

INSTANT CASH for any good merchandise, modern or old. Phone 864-3197 anytime. Lackey's, Throckmorton Highway, Haskell, Texas 27fc

WANTED: Good used furniture and appliances. We buy and sell. Lee Used Furniture 120 N. Swenson St. (one block north of red light on hiway 277) Stamford, Texas. Phone 773-5608. 42fc

BRING ARTS, crafts, antiques, new merchandise, garage sales, pecans, candies, collectors items, furniture, hardware, junk or anything of value to Haskell Trade Mart on the Throckmorton Hwy. for 9 a.m. to dusk each Saturday and noon to dusk each Sunday. 51fc

CUSTOM WELDING, lots, fences, etc. Hauling-flat bed goose-neck. Contact David Davis, 864-3114 after 5 p.m. Reasonable rates. 1-6p

JACK AND JILL Day Center, Open Monday-Friday, 8:00 a.m. to 5:30 p.m., 1002 North 7th St. Noon meal provided, Mid morning and afternoon snack, \$5.00 a day, State approved, Lic. nurse on duty. For more information phone 864-3411 day or 864-2855 nights. 5-6p

BOOKKEEPING in my home. Contact Mrs. J. B. Kirby at 864-3424 or 864-3459. 45-6c

AUTO REPAIRS at Kirby's Garage have first priority. We would appreciate your car, pickup and truck repair business. Kirby's Garage, 203 S. 1st, 864-3424. 5-6c

Lost & Found

LOST: Diamond and sapphire oval shaped pin approximately 1 1/2 inch wide and one inch long. Open work with leaf motif inside. Reward offered. Call 864-3185. 6-7p

Wanted

WANTED: Want to buy used white and gold French Provincial desk. Call 864-2883. 6p

Help Wanted

COLONIAL FOOD STORE now taking applications for full or part-time help. Apply between 7 and 4 daily. 6-7p

Jobs Wanted

WANTED: Repair and remodeling work for any home improvement needs. Call Mike Cook, 864-3481. 6fc

For Rent

FOR RENT: One bedroom furnished, bills paid apartment. Also, two bedroom trailer house, furnished for rent. Contact Dee Larned, 864-2409. 6-7c

FOR RENT: House four miles northwest of Haskell. Phone 864-2590. 6p

Mobile Homes For Sale

FOR SALE: Double-wide mobile home, three bedrooms, two baths, central heat. Includes two refrigerated air conditioners, stove and refrigerator. Located at 404 N. Av B in Haskell. Call 997-2197. 4-7p

HOT WATER HEATER HEADQUARTERS Electric State with Sand Hog Heating Element 5 Year Warranty Gas State with 5 yr. Warranty on Tank 2 Yr. on Controls Philpot's Supply & Service 402 N. 1st 864-3010 37fc

Real Estate

FOR SALE: Two bedroom house to be moved, \$2,000. Pat Henry, 864-3276. 5-7p

FOR SALE: Two bedroom house on corner lot, 1100 N. Av. L. Contact Doyle High, 864-2515 to see. Duncan Realty. 5-6c

FOR SALE: Three bedroom, living room with fireplace, bath, kitchen and dining area with utility room. Call after 5:00 on weekdays, 997-2433, 600 Sunny Av. Rule, Texas. 1fc

HOUSE FOR SALE at 205 N. Av D. Has 2 bedrooms. Call 864-2681 or 864-2420, or see Jesse Dean at Dean Butane Co. 52fc

FOR SALE OR RENT: Three bedroom, 1 1/2 bath Town and Country Mobile home. Central heat and air, carpeted, located on large lot. Call 864-2204. 3fc

FOR SALE: 5 acres of land in new addition on Paint Creek road. For more information call 318-984-3008. 5fc

FOR SALE: 468 acres of rich farm land, 358 cultivation, 110 pasture, some improvements, immediate possession, three miles from Haskell, \$450 acre. Call 915-853-2707. 6-7c

FOR SALE: Small one bedroom-furnished house. Small down payment, finance the rest. Call 864-2491. 6fc

FOR SALE: Two bedroom home, 715 S 11th, 864-3797 after 5. 6-7p

The Haskell Free Press is authorized to make the following announcement for the office in Haskell County, subject to the action of the Democratic Primaries in 1978. Unless otherwise specified the candidates listed paid for the announcement, and have designated themselves as campaign treasurer.

All political advertising, announcements, and printing is cash in advance.

U.S. REPRESENTATIVE 17TH CONG. DIST.
A. L. [Dusty] Rhodes
Pd. for by John Allen Chalk Campaign Treasurer
Charles W. Stenholm
Pd. for Charles E. Brownfield Campaign Treasurer
Fike Godfrey
Pd. for by Dwight L. Kinard Campaign Treasurer
Jim Snowden
Pd. for by Vera Inman, Campaign Treasurer

CREWS McCulloch STATE SENATOR 30TH SENATORIAL DIST.
Ray Farabee
Pd. for by Jerry K. Estes Campaign Treasurer
STATE REP. DISTRICT 101 W. S. [Bill] Healty (Re-election)
Pd. for by R. A. Nichols Campaign Treasurer
DISTRICT JUDGE 39TH JUDICIAL DISTRICT Joe Williams
Pd. for by Grace Williams Campaign Treasurer
William P. Ratliff DISTRICT CLERK Carolyn Reynolds (Re-election)
COUNTY JUDGE John Wayne McDermott
Pd. for by Betty Sue McDermott Campaign Treasurer
B. O. Roberson (Re-election)
COUNTY CLERK Jenny Brazell (Re-election)
Sue Fincher COUNTY TREASURER Peggy [Blair] Darden Willie Faye Tidrow Laquita [Young] Liles
Pd. for by Wayne Liles Campaign Treasurer
COMMISSIONER PREC. 4 C. A. [Bud] Turnbow (Re-election)
COMMISSIONER PREC. 2 R. L. [Jiggs] Edwards (Re-election)
Mrs. Bobby L. [Melba] Howard J P PRECINCT 1 Geraldine (Petrich) Hise E. J. Stewart

Legal Notices

STOCKHOLDERS MEETING
Notice is hereby given that a meeting of the stockholders of THE HASKELL NATIONAL BANK of Haskell, Texas will be held in the Lobby of the bank building in the City of Haskell, State of Texas on the second Friday in February, A.D. 1978, the same being the 10th day of said month, at 3 o'clock in the afternoon, for the purpose of electing a board of directors for said bank and the transaction of such other business that may properly come before said meeting.

Pauline Couch
Asst. Vice-Pres. and Cashier 4-6c

Card of Thanks

CARD OF THANKS
We wish to express our many thanks for all the kindnesses shown us at the loss of our Father and Grandfather, Mr. W.E. Green. A special thanks to Mrs. Hollis Howard and the ladies of the East Side Baptist Church. Mrs. Edith Green, W.E. Green Jr., Mike, Matt, Maureen, Melissa and Mark Green. 6p

Card of Thanks

CARD OF THANKS
We wish to thank everyone for the calls, flowers, food, visits and prayers at the loss of our mother, Della Cox. A special thanks to Rev. Jimmy Griffith and Leisure Lodge. May God Bless each of you in our prayer. Othella Cox and Family, Vaughn Cox and Family, Alice Byrd and Family and Helen Coleman and Family. 6p

Card of Thanks

CARD OF THANKS
We would like to express our sincere thanks to everyone for the visits, food, flowers and prayers at the loss of our loved one. Our special thanks to the Rice Springs Care Home for their loving care and to the doctors and nurses at Haskell Memorial Hospital. May God Bless you. The Family of Mrs. I.L. (Glady) Smith. 6p

The One to See
Brian Burgess
111 N. Ave. E
864-3250
AUTO FINANCING

LEE BAHNEY BOOKKEEPING AND TAX SERVICE
314 N. 1st
Phone 864-2305 4fc

FOR SALE
Our home at 1007 N. Av. G. Approximately 2000 sq. ft., 4 bedroom, 2 bath, Den and fireplace, recent 4 ton heating and cooling unit, water well, fenced, large pecan trees. See to appreciate. The A.C. Richardsons. Call Bus. phone 864-3474, or res. phone 864-3417. 47fc

H.F. LANGFORD
Sand and Gravel
Caliche and Fill
RULE HWY.
WEST HASKELL 15fc

ANDRESS ROOFING
Winfred Andress
Residential & Commercial
713 S. 10th St.
P.O. Box 463
Ph. 864-3078
Haskell, Texas 31fc

Used Color TV's For Sale Cheap
Anderson Tire Company
206 S. Av. E. 864-2900 16fc

Kelly Ditching & Plumbing Supply
Water Lines Gas Lines
Install Septic Tanks & Bleedlines.
All work Guaranteed for 1 year.
Call 915-773-3939 10fc

FOR ALL YOUR GENERAL PLUMBING NEEDS
Call Philpot's Supply & Service Center.
864-3010
402 N. 1st 41fc

Hartsfield Agency
Phone 864-2665 6-7c

Grain Reserve Program Explained

The Grain Reserve Program for Wheat and Feed Grain has the dual purpose of isolating supplies from the marketplace when supplies are excessive and returning these supplies to the market when prices improve.

Under the Reserve Program farmers may sign an agreement for a period of three years and receive annual storage payments in advance. To participate in the program you must file a request for price support no later than:

1. February 28, 1978, in the case of 1976 crop Barley, Oats and Wheat and
2. March 31, 1978, in the case of 1977 crop Barley, Oats, and Wheat.

Starting March 1, all 1976 and 1977 crop Barley, Oats, and Wheat under loan, may be placed immediately into the Reserve Program. Program goals, in the form of quantities have been established for the program. Participation will be on a first come, first served basis until the goals are reached. Be sure to contact your county ASCS official for additional information.

Obituaries

Mrs. Fought

Funeral services for Mrs. Sam Joe Fought, 56, of Haskell were held at 2:30 p.m. February 8, in the East Side Baptist Church with the Rev. Jimmy Griffith and the Rev. Ray Milhoan officiating. Interment was in Willow Cemetery directed by Holden-McCauley Funeral Home.

Born September 4, 1921, in Sanger, she was married to Sam Joe Fought, August 28, 1940 in Weintert. She died February 6, at Haskell Memorial Hospital.

She came to Weintert as a young child with her parents, Mr. and Mrs. Elzie Marion, and has lived in Haskell County since that time. She was a member of East Side Baptist Church.

Survivors include her husband; one daughter, Mrs. Gary (Sandra) Davis of Stamford; father, Elzie Marion of Knox City; one grandson, Jeffrey Davis of Stamford; two brothers, Elzie Loyd (Dick) Marion of Knox City and Joe Marion of Knox City; and three sisters, Mrs. Martha Faye Booe of Munday, Mrs. Mildred Gates of Knox City, and Mrs. Marvin Stiewert of Haskell.

Pallbearers were Howard Reding, Jess Kreger, Allie Karr, Raymond Davis, Jessie Dean, Chester Hodgins, R.L. (Jiggs) Edwards, and Edwin Moeller.

FCIC Is Available

Federal Crop Insurance Corporation (FCIC) will offer insurance on grain sorghum in Haskell County for the 1978 crop year for the first time.

Cotton insurance will continue to be offered as before, according to C.M. Alexander, Sales Specialist for the district. Those who are interested in this insurance should leave their names at the Haskell ASCS Office, or pick up a card at the office and mail it to Federal Crop Insurance Corporation. Normally, Field persons solicit applications, but for 1978, no funds are available for solicitation, according to Mr. Alexander.

Those who leave their names or mail in a card will be contacted by a representative from Federal Crop Insurance. The deadline for making application for grain sorghum and cotton insurance is March 1, 1978.

SCOUTING NEWS

Thirteen Cub Scouts and Webelos met on Thursday night, February 2, at the City Hall for their regular Pack Meeting and annual "Pine-wood Derby."

Each boy constructed his own car from a block of pine wood, and cars of all colors and styles were enthusiastically raced. Stephen Frediel was the first place winner, Lance Hanson placed second and David Newman, third. Judges selected the car built by Lance Hanson as the "best-looking", and all the winners received nice prizes.

The following scouts entered the race: Billy Mitchell, Scott Burris, Stephen Frediel, Ricky Myers, Kendall Larned, George Watson, Jerry Davis, Stephan Brockington, Scott Schaake, Lance Hanson, David Newman, Shane Gilliam Scott Langelitz.

Scout Master Billy Mitchell also presented the following awards: Shane Gilliam—Athletic Award; Scott Langelitz—Athletic Award; Stephen Frediel—1 gold arrow, 2 silver arrows; Jerry Davis—1 gold arrow; Kendall Larned—1 gold arrow, 1 silver arrow.

Refreshments were served to scouts, parents, and leaders immediately following the meeting.

HANDIER THAN a pocket knife, Slip-N-Snip. The Original Folding Scissors. Ideal for gifts, purse, hunters, fisherman and hobbyists. Haskell Free Press.

PHILPOT'S DITCHING SERVICE
Plastic pipe & fittings, sewer pipe. Water & gas lines run. Call Philpot's Supply & Service. 864-3010 402 N. 1st 15fc

ELECTRIC SEWEROOTER
Cleans clogged pipes, drains, sewers. No digging. No damage.
Philpot's Supply & Service 864-3010 402 N. 1st 41fc

PUMPS
Irrigation-Domestic Formation Testing Well Drilling
We pull & repair all makes.
REA PUMP CO.
Throckmorton Highway Haskell, Texas
Call 24 hrs.—864-3372 41fc

New & Used Color & BW TV
Amonett & Amonett Radio & TV 864-2870 Haskell 13fc

JUNK-A-TIQUES, glassware, furniture, baby bed, books, dishes, bottles, doll Kleenex box, dolls, misc. We buy, sell or trade. We trade books. 1704 N. First St. Mrs. Harley Langford.

WTC Tour Information Available

Brochures outlining the Western Texas College Fine Arts Tour of Europe scheduled May 17-June 7 have arrived and are available for those interested in making the tour.

Dr. Robert Clinton, president of WTC, will conduct the tour. Travel arrangements are being made by Linn Travel Agency, Inc., of Lubbock.

Reservations are now being accepted for the tour and may be made by contacting Dr. Clinton's office or the Fine Arts Division office.

Participants in the tour may receive college credit in Music

Savings Bond Report

December sales of Series E and H United States Savings Bonds in Haskell county were reported today by County Bond Chairman R.W. Herren. Sales for the twelve-month period totaled \$80,071 for 49% of the 1977 sales goal of \$165,000.

Texas sales during the month amounted to \$20,953,232, while sales for the twelve months of 1977 totaled \$283,011,461 with 102% of the yearly sales goal of 276.9 million achieved.

131 (Music Appreciation) or Art 131 (Art Appreciation 131). Adults who would like to audit the courses are also welcome to make the tour.

The tour will depart Snyder by chartered bus for the Dallas/Fort Worth Airport on May 17 and fly non-stop to London. From England, the tour will go to Holland, Germany, Austria, Italy and France. Cost of the tour will be \$1,875 per person based on double occupancy or \$2,075 for single occupancy. A deposit of \$200 will be required with each reservation.

The highest noise levels in the typical home are likely to be found in the kitchen, according to the Beltone Crusade for Hearing Conservation.

Because there is no visible impairment connected with a hearing loss, the hard-of-hearing seldom are shown the concern extended to persons with other types of handicaps. point out officials of the Beltone Crusade for Hearing Conservation.

CONTRACTORS NOTICE OF TEXAS HIGHWAY CONSTRUCTION
Sealed proposals for contract mowing on various tracts in Haskell County, covered by Tracts 1-10, will be received at the State Department of Highways and Public Transportation, P. O. Box 150, Abilene, Texas, 79605, until 10:00 a.m., February 16, 1978, and then publicly opened and read.
Plans, specifications, and proposals are available at the office of Mr. James G. Smart, Jr., Haskell County Maintenance Supervisor, Haskell, Texas.
Usual rights reserved. 5-6c

Philpot Supply & Service
402 N. 1st Haskell, Texas
Phone 864-3010 for FREE home insulation estimate. No obligation!
Let Philpot's authorized 4 inches deep per sq. ft. installed insulation to every corner of your attic. It will help cut your utility cost and save energy, too.
Blow-In Solar-Therm Insulation
Help save on fuel bills and energy
The Haskell Free Press
Established January 1, 1886
PUBLISHED EVERY THURSDAY
MEMBER
TEXAS PRESS ASSOCIATION
1978
BILL COMEDY—Publisher
DON COMEDY—Editor
Entered as second-class matter at the postoffice at Box 577, Haskell, Texas 79521, under the Act of March 3, 1879.
SUBSCRIPTION RATES
In Haskell and Adjoining Counties
One Year \$5.25
Six Months \$3.15
Two Years \$9.98
Elsewhere in Texas
One Year \$6.30
Six Months \$4.20
Two Years \$12.08
Outside of Texas
One Year \$8.00
Six Months \$4.50
Two Years \$15.50
NOTICE TO PUBLIC—Any erroneous reflection upon the character, reputation or standing of any firm, individual or corporation will be gladly corrected upon being called to the attention of the publishers.

M SYSTEM

Your FRIENDLY
SUPER MARKETS

112 N. Av. D
Haskell
Where your dollar buys more

DOUBLE S & H GREEN STAMPS WEDNESDAYS
With The Purchase Of \$2.50 Or More

Specials Good
Thurs. Feb. 9
thru Wed. Feb. 15

WELJESKE WYROBY
Dill Pickles
32 oz Polish Dill Jar
24 oz Dill Strip
79¢

MORTON **Pot Pies** 4 FOR **88¢**

DEL MONTE **Peaches** 2 16 OZ CANS **88¢**

DEL MONTE **Tomato Juice** 46 OZ CAN **59¢**

BEEF BRISKET
Cry-O-Vac Bag lb. **\$1.09**

BREASTS
Fryer lb. **89¢**

VALENTINE'S DAY IS FEBRUARY 14th
RIGHT RESERVED TO LIMIT

See Us Now For Valentine Candies!
Large Selections Available

DEL MONTE GOLDEN **CORN** 3 303 CANS **88¢**
*Whole Kernel *Cream Style

Oscar Mayer **BEEF FRANKS**
LB. PKG. **\$1.09**

DEL MONTE **TOMATO SAUCE** 5 8 OZ. CANS **88¢**

DEL MONTE **SWEET PEAS** 3 303 CANS **88¢**

Shurfresh Soft **OLEO** 1 lb tub **49¢**

PATIO FROZEN DINNERS 2 For **99¢**

VAN CAMP'S **PORK & BEANS** 3 16-OZ. CANS **88¢**

Shurfresh **Sweet Milk** GALLON PLASTIC JUG **\$1.79**

HOT LINKS LB **59¢**

SLAB SLICED **BACON** LB **\$1.09**

WOLF CHILI NO.2 CAN **79¢**

DEL MONTE **FRUIT COCKTAIL** 2 303 CANS **88¢**

Shurfresh **BISCUITS** 8 CANS **\$1.00**

Del Monte **Spinach** 3 303 cans **88¢**

FRIED CHICKEN MORTON FROZEN 2-LB. BOX **\$1.99**

TOMATOES FRESH 3 lbs **\$1.00**

TOILET TISSUE NICE 'N SOFT 4 ROLL PKG. **69¢**

QUICK OATS SHURFINE 42 OZ BOX **89¢**

WOLF TAMALES LARGE 15-OZ. CAN **39¢**

Strawberries Pint Box **39¢**

Bold₃ DETERGENT PLUS FABRIC SOFTENER

ZEE NAPKINS COUNTRY GARDEN 140-CT. PKG. **59¢**

HAIR SPRAY AQUA-NET 13-OZ. CAN 1.03 VALUE **89¢**

LEMONS SUNKIST LARGE Ea. **10¢**

Bold₃ 49-OZ. BOX **1.29**

Bold₃ 84-OZ. BOX **2.29**

MAALOX LIQUID 12-OZ. BOTTLE 1.74 VALUE **\$1.49**

CONTACT CAPSULES 10-CT. PKG. 1.44 VALUE **\$1.29**

GRAPEFRUIT RUBY RED 5-LB. BAG **79¢**

POTATOES 10-LB. BAG **89¢**



Around Town

By Lisa and Mary

Brenda, Sandy and Martha attended a Jhirnack Trend Release Sunday in Abilene. Geri Hearn was the artist who had worked in Las Vegas last week learning the new Trend Release.

Visiting the E.L. Hilliards last weekend were Mr. and Mrs. Kenneth Hilliard of Brownfield. Also visiting them on Saturday were Mr. and Mrs. Larry Short of Rochester, Ellen Hilliard and Jan Ballard of Abilene.

Mr. and Mrs. Frankie SoRelle attended the fifty-fifth National Polled Hereford Convention in Ft. Worth last week.

Polled Hereford breeders from all over the United States, Canada, Argentina and Australia attended the convention.

Guest speakers for the four day convention included noted inspirational speaker and author Dr. Norman Vincent Peale; former U.S. Secretary of Agriculture, Dr. Earl L. Butz; and former Texas

Governor and U.S. Secretary of the Treasurer, John Connally.

Mr. and Mrs. Billy Bob Shaw and Druann, of Abilene were weekend visitors with his parents Mr. and Mrs. Bill Shaw.

Richard Walker and friend Ray Aipolani from Aiea Hawaii visited recently in the home of Richards mother, Pearl Walker and his sister Mrs. Buddy Brazell of Paint Creek. Both boys are chefs in the state of Hawaii, and prepared a delicious meal for the families while they were here.

MEXICAN DINNER

The Guadalupanas of St. George's Catholic Church will sponsor a Mexican Dinner Sunday, February 12 at 11:30 till 2:00. The dinner will be at the St. George Parish Hall. Everyone is invited. Plates will sell at \$2.50.

BIRTHS

Mr. and Mrs. Hal Lindo Guess, Jr. of Weinert, announce the birth of a daughter, Heather Camille Guess, born February 1, 1978, weighing 8 lb. 5 1/4 oz., at the Haskell Memorial Hospital.

2nd Lt. and Mrs. Jim Bob Mickler of Koneohe, Hawaii announce the birth of a son, James Henry Mickler, born February 3, 1978 at 6:24 a.m. weighing 7 lbs. 10 1/4 ozs.

Grandparents are Mr. and Mrs. James Ross Mickler of Falfurrias, and Mr. and Mrs. Henry Harris. Paternal great-grandparents are Mr. and Mrs. Joe B. Chaney of Abilene and Mr. and Mrs. Jess Mickler. Maternal great-grandparents are Mrs. O.L. Moore and Mrs. Oscar Helweg.

Mr. and Mrs. Henry Harris are in Hawaii to welcome little James Henry home.

Mr. and Mrs. Micheal Lee Wollard announce the birth of their son, Cody Lewis Wollard born February 4, 1978, at 6:45 a.m. in Baptist Medical Center in Oklahoma City, Oklahoma, weighing 8 lbs. 7 oz and 21" long.

Grandparents are Mr. and Mrs. Lewis Thomas of Haskell and Mrs. Gerri Wollard of Houston.

Great-grandparents are Mrs. J.H. Reding of Haskell and Mrs. Ollie Barnett of Houston.

Communicating with a person suffering from an unrelieved hearing loss can put both parties under a strain. This, say officials of the Beltone Crusade for Hearing Conservation, is why the hard-of-hearing often are considered irritable and difficult to get along with.

The Microwave Cookbook

'SIMMER COOKING' DELICIOUS MEALS

IF YOU ARE A MICROWAVE COOK (OR PLAN SOON TO BECOME ONE), YOU CAN NOW BEGIN A CULINARY ADVENTURE THAT COMBINES THE OLDEST WITH THE VERY NEWEST COOKING TOOLS. RESEARCHERS FOR LITTON MICROWAVE COOKING PRODUCTS HAVE DEVELOPED THE "SIMMER POT" ... A CLAY POT DESIGNED ESPECIALLY FOR USE IN MICROWAVE OVENS. THE POT PROVIDES TENDER AND TASTY MEALS FROM LESS TENDER CUTS OF MEAT WITHOUT MARINATING, TENDERIZING OR ALL-DAY SLOW COOKING. THESE ARE A FEW OF THE DELICIOUS OLD-FASHIONED GOOD RECIPES CREATED BY THE COMPANY'S HOME ECONOMISTS FOR THE SIMMER POT.



COUNTRY POT ROAST



2 1/2 TO 3 LB. BEEF CHUCK ROAST • 1 TBSP DRIED PARSLEY FLAKES • 1 TBSP WORCESTERSHIRE SAUCE • 1/2 TSP GARLIC SALT • 1/4 TSP PEPPER • 2 MEDIUM ONIONS, QUARTERED • 2 STALKS CELERY, CUT INTO CHUNKS • 3 CARROTS, PEEL AND CUT INTO CHUNKS • 6 TOB SMALL RED POTATOES.

1. PLACE ROAST IN WATER-SOAKED CLAY POT. SPRINKLE WITH SEASONINGS. COVER WITH WATER-SOAKED LID.
2. MICROWAVE FOR 15 MINUTES ON HIGH. TURN ROAST OVER; ADD VEGETABLES AND RECOVER.
3. MICROWAVE FOR 50 TO 55 MINUTES ON SIMMER OR UNTIL MEAT AND VEGETABLES ARE TENDER. LET STAND, COVERED, 5 MINUTES BEFORE SERVING. ABOUT 4 SERVINGS.

HAVE QUESTIONS ABOUT MICROWAVE COOKING? CALL THE TOLL-FREE MICROWAVE INFORMATION LINE (800) 328-7777

SCANDINAVIAN FRUIT SOUP

SOUP FOR DESSERT? SURPRISE YOUR FAMILY WITH THIS COLORFUL FRUIT COMPOTE: 1/4 CUP PEARL TAPIOCA • 2 1/2 CUP WATER • 2 PACKAGES (8 OZ EACH) MIXED DRIED FRUIT • 1/2 CUP DARK RAISINS • 1/2 ORANGE, THINLY SLICED • 1 LEMON, HALVED AND THINLY SLICED • 3 CINNAMON STICKS • 1/4 CUP PACKED BROWN SUGAR • 2 CUPS APRICOT NECTAR • 2 CUPS WATER.

1. SOAK PEARL TAPIOCA IN WATER OVERNIGHT. PLACE TAPIOCA IN WATER-SOAKED CLAY POT; STIR IN REMAINING INGREDIENTS. COVER WITH WATER-SOAKED LID.
2. MICROWAVE FOR 10 MINUTES ON HIGH. STIR WELL; RECOVER.
3. MICROWAVE FOR 60 TO 70 MINUTES ON SIMMER OR UNTIL TAPIOCA IS SOFT. REMOVE CINNAMON STICKS. LET STAND, COVERED, 5 MINUTES BEFORE SERVING. 6 SERVINGS.



Theatre Organized In Stamford

An amateur theatre has been formed by a group in Stamford, and named Community Theatre. Anyone in the surrounding area who would like to be a part of this theatre group are invited to come to the business meetings on the first Thursday of each month at 7:30 p.m. in Stamford City Hall.

Community Theatre will present their first two, One-Act Plays Friday, February 10 and Saturday, February 11, Stamford High School Auditorium at 8 p.m.

"Louder, I Can't Hear You" by Bill Gleason is a situation comedy of the present time. Produce by arrangement with the Dramatic Publishing Co., Chicago. Members of the cast include: Pat Grey, Sallie Jolly, Mark Smith, Tracy Daniel, Kate Griffin, Ken Davis. Directed by: Alyce Daniel and Reba Davis.

"Curse You, Jack Dalton!" by Wilbur Braum is an old-fashioned melodrama of the 1890's on Fifth Ave. in upper New York. Produced by special arrangement with Samuel French, New York, N.Y. It is directed by Steven White and Veronica Newell. Members of the cast are: Virginia Lendley, Maggie Parker, Veronica Newell, George Henshaw, John Wendeborn, Pat Connolly, Shelia Tutt.

Intermission Entertainment for Friday night Feb. 10 will be The Tonettes of Stamford, Karen Wedeking, Karen Jones Jennifer Cox, Jo Ann Stockstill, Carol Walker, Martha Rollins, and Jeanne Caston.

Intermission Entertainment for Saturday night Feb. 11 will be the Balfanz Entertainers of Abilene, Gerri Moore and Christina Velasquez.

Tickets are \$1.00 for students; and \$2.00 for adults. Also membership cards will be on sale at the door.

Study Club Holds Meeting

The Haskell Progressive Study Club met Thursday, Jan. 26, in the Bank Community Room. Mrs. Elbert Johnson presided.

Mrs. Bob Herren gave an informative program on "Girlstown," a home for young girls located in Whiteface, Texas. This home is supported by voluntary public contributions, and it is endorsed by Texas Federated Womens clubs. Members or anyone else interested may contribute clothing and other articles by taking them to Mrs. Kenneth Sams, 1104 North Ave. G. Cash contributions or checks made payable to "Girlstown," are tax deductible. They may be mailed directly to Whiteface, or Mrs. Sams will take them. Marshall Cooper is director of "Girlstown."

February 9, members and guests of Progressive Study Club will attend the dinner theater performance of "Harvey" at Sewell Theater, Abilene Christian University.

YOU MAY HAVE A SMALL FORTUNE

Your jewelry, furs, cameras, sports equipment and other portable valuables are often worth much more than you realize. And because you are often on the go with these possessions, they are especially vulnerable to damage or loss. There are several ways to protect all these valuables with insurance. We would be pleased to help you select the one policy that's best for you.

The HARTSFIELD AGENCY

EVERYTHING IN INSURANCE

HASKELL PH. 864-2665

Important Notice

LF

SWEETHEART SALE

A romance with all of you, our Customers, goes on all the time, but especially at this time when we give you such Fantastic Prices!

Group COATS

1/2 price and less
Jr. Dresses—1/2 price
Group
Misses Dresses—1/2 price and less
Group Jewelry—1/2 price and less
Group Lingerie
Robes, short & long
Gowns, short & long
Pajamas
1/4-1/3-1/2 Price
A large group of House Shoes
1/2 price
Group Sportswear—1/2 price
Group Sportswear—1/2 of 1/2 price

Group of
Long Dresses—1/2 and less
Group Formals—1/2 and less
Group Pant Suits—1/2 price & less
1 Group Dresses
values to \$50—\$15.00
1 Group Dresses
values to \$75.00
\$30.00

Lane-Felker

HASKELL Lunch Menu

FEBRUARY 13-17 MONDAY

Beef Stew
Grilled Cheese Sandwiches
Cabbage Slaw
Apricot Cobbler
Milk

TUESDAY

Meat Loaf
Mashed Potatoes
Blackeyed Peas
Garden Salad
Hot Rolls Butter
Valentine Cake
Milk

WEDNESDAY

Spanish Dumplings
Baked Potatoes
Seasoned Greens
Cornbread Butter
Peach Halves
Milk

THURSDAY

Barbecued Weiners
Potato Salad
English Peas
Hot Rolls Butter
Apple Crisp
Milk

FRIDAY

Oven Fried Chicken
Potatoes in Cheese Sauce
Seasoned Green Beans
Hot Rolls Butter
Fruit Jello
Milk

Valentine Dance Set

The entertainment committee of the Sons of Hermann Lodge No 241 of Haskell will host a Valentine Dance February 10 from 8:00 to 12:00 p.m. at Irby Hall.

This dance will be for members and their guests only. A special invitation is issued to the younger members and teenagers of our order to attend, along with an invitation to Old Glory Lodge and their young people. The highlight of the evening will be the crowning of a Prince and Princess.

The dance will be formed and the music will be by the "Moonlighters." This is for the very young and the old alike, so give your valentine a night out, decked out in hers or his best, where the atmosphere is pleasant, and we are all members of a Fraternal Family.

GRAND

Stamford 773-3181

Fri. 10-Sat. 11

"Super Van"

Sun. 12-One Day Only

Matinee & Night

"Late Great Planet Earth"

DRIVE-IN

Stamford 773-3272

Fri. 10-Sat. 11-Sun. 12

"Sorcerer"

Wed. 15-Thurs. 16

2-XX Rated Features

Adults Only

"Vanessa"

Plus

"Vice or Versa"

HYH Hold Meeting

The Haskell Young Homemakers met on Monday, January 23 for their monthly meeting. The program on antiques was presented by Ruby Turner and Gayla Nanny of Barbershop Antiques.

A demonstration of furniture refinishing and a browse through the shop were enjoyed by members and guests.

A business meeting was held and refreshments were served at the homemaking cottage. Ms. Karen Guy-Lerew of the Red Cross presented guidelines and suggestions for the bloodmobile which the Young Homemakers will sponsor in March. Kathleen Tanner won the doorprize.

THE DRUG STORE THE DRUG STORE THE DRUG STORE THE DRUG STORE THE DRUG STORE THE DRUG STORE

DOYLE HIGH'S THE DRUG STORE

100 S. AVE. E

OPEN 8:00-6:00

864-2515

Quality Merchandise

Competitive Prices

Best Service in the World

UNICAP M \$3⁸⁹
10 Vitamins Plus Iron
SPECIAL OFFER 30 FREE

Cepacol Mouthwash \$1⁶⁷
24 oz



CHERACOL D \$1¹⁷
COUGH SYRUP
4 oz reg. \$1⁰⁰

Ascriptin A/D \$1⁸³
Aspirin with Maalox
100 Tab. Reg. \$2⁰⁰

Pangburn's Says It Best

Pangburn's CHOCOLATES

The perfect way to say "I love you" — a beautiful Pangburn's Valentine Heart packed with Milk-and-Honey Chocolates. Your sweetheart will appreciate your good taste in choosing Pangburn's.

DOYLE HIGH'S THE DRUG STORE
100 SOUTH HASKELL, TEXAS
PHONE 864-2515

VALENTINE DAY IS FEBRUARY 14th

McCulloch Announces

Democrat, Crews McCulloch, a 46 year old Weatherford businessman of Parker County, announced that he will seek the post of U.S. Congressman from the 17th Congressional District.

He believes that a Congressman should be qualified for the post and stresses that his varied background has given him the experiences and qualification for the position. His background includes that of combat veteran, foreign area specialist, farmer, rancher, manufacturer, and businessman.

McCulloch views agriculture, energy, and inflation as the most crucial issues facing the district and the nation and sees them as being closely related.

He has first hand knowledge of the problems faced by the farmer and rancher, and says he will work to secure 100 per cent of parity. He grew up on a farm and from 1965 to 1971 owned and operated more than 6,500 acres in cotton, grain and cattle. Other interests included a farm implement dealership, fish farm, cotton gin, and farm supply. He liquidated his farming interests because of decreasing prices and increasing government regulations. He states, "Liquidation can be financially devastating. Tax credits taken for depreciation and investment credit must often be repaid. I'm still paying for my decision."

In the field of energy, McCulloch said that he would fight for total de-regulation of all oil and gas production. "I saw first hand the real impact of no energy policy. During 1971-1973 I owned two manu-

facturing companies producing recreation vehicles. In early 1973 the energy crisis struck without warning. My sales were off more than 90 per cent and by the end of that year I was bankrupt. Other areas of our economy were also thrown into depression. Five years and three congresses later, we are still lacking an energy policy." He continued, "We badly need a national energy policy, but not the untenable, confused maze of proposals before Congress at the present time. Minerals such as gas and oil, are depleted, but agricultural products are replenished on an annual basis and can be exported to offset our foreign trade deficit. Many farm commodities can be converted to alcohol and mixed with gasoline to produce a cleaner more efficient fuel."

McCulloch is a highly decorated veteran, serving during Korea and again in Viet Nam. As a member of the famed Green Berets, he commanded a battalion of 850 men. Among his decorations are the Silver Star for gallantry in action and the Purple Heart for wounds received. He is trained in the use of nuclear weapons and understands their effects. He worked abroad more than five years with U.S. and allied governmental agencies. His work and travels have taken him to nineteen nations.

He holds a Bachelor of Arts degree in history and social science and has done graduate study in those fields. His work has closely involved him in the lives of thousands of people, both in this country and abroad. He states that, "Through direct personal involvement I feel I can justly represent the citizens of this district by understanding their needs. I have stood in the boots of the farmer and rancher. I have experienced the problems of labor and management. My military and foreign service experience would be a great asset in matters of National Defense and Foreign Affairs."

McCulloch sees other important issues being education, tax reform, social security, health care, improved rural housing, care for the elderly and national defense. He expects to take his

campaign to the people and states that he will not be sent to Washington by special interest groups, but as a representative of the people.

McCulloch is the owner of Red Carpet Realtors, Weatherford. He is married to the former Marjorie Henry. They have two daughters, Sharon and Jane, both Weatherford High School sophomores. The family are members of Coats Memorial United Methodist Church in Weatherford. McCulloch is a past lay leader and serves the congregation as trustee, administrative board member and Sunday School teacher.

1040A Is Simplified

Taxpayers who file the Form 1040A tax return will find that the form has been restyled and should be easier to prepare, the Internal Revenue Service said.

Instead of the previous version which was essentially a half-page form printed on both sides, the new 1040A is a full page printed on one side. In addition, the number of lines to be filled out has been cut in half from last year.

The new change in format provides the taxpayer with more space, and it is easier to read. In addition, taxpayers making copies of the form for their files need only reproduce one page. The full-page 1040A will also benefit the Government since it provides for easier IRS processing and storage.

With the new zero bracket amount of \$2,200 for single persons and \$3,200 for married couples filing jointly, fewer persons will have to itemize deductions; and many more taxpayers will be able to use the new Form 1040A instead of the longer Form 1040.

The 1040A form still provides for taxpayers to use the peel-off label containing address and social security information and affords the taxpayer an opportunity to participate in the Presidential Election Campaign Fund.

Go Classified for the Action you want.

Conservation Viewpoints

USDA Soil Conservation Service
 Assisting
 Haskell Soil and Water Conservation District

I read in the February 2 issue of the SOUTHWEST FARM PRESS that U.S. Senator Herman E. Talmadge, chairman of the Senate Committee on Agriculture, Nutrition and Forestry, has called on the Carter Administration to implement immediately a 5-point program to pump up to \$8 billion into the depressed farm economy.

The Talmadge proposals include a \$3.5 billion program of payments to farmers who voluntarily take crop land out of production coupled with sharply higher price supports for wheat, corn and other feed grains, soybeans and peanuts.

Talmadge said that the entire agricultural economy of the nation is caught up in a crisis of major proportions that has frightening implications

far beyond the farm. "Unless bold steps are taken - and taken quickly - this crisis will spill over into the entire economy and will have dire consequences on the lives and security of millions of Americans in the non-farm sector," Talmadge said.

The Talmadge proposals are:

(1) Land diversion payments on a voluntary basis to aid in bringing supply into balance with need.

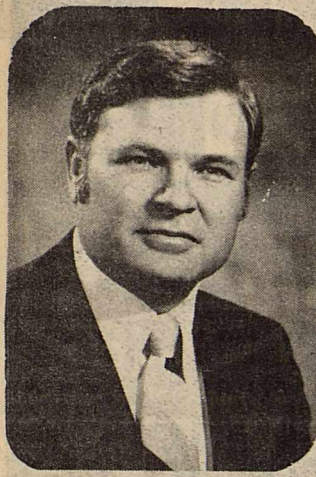
(2) Wheat support increase by 50 cents per bushel by raising the loan level to \$2.75.

(3) Corn support increase by 50 cents per bushel by raising the minimum loan level to \$2.50.

(4) Soybean support increase this year by \$1.50 per bushel by raising the loan



Round Steak	\$1.19 lb	Bordens MILK	1 Gallon Plastic	\$1.79
Rump Roast	\$1.09 lb	Vine Ripe Tomatoes		39¢ lb
Boneless Loin Tip Steak	\$1.39 lb	Arizona Green Onions	Bunch	15¢
Boneless Pikes Peak Roast	\$1.09 lb	Ruby Red Grapefruit	4 For	49¢
Young Turkeys	59¢ lb	Del Monte French Style Green Beans	3 ³⁰³ Can	\$1.00
Dottie Biscuits	Each 10¢	Del Monte Peaches	2½ can	59¢
Fritos	Regular 83¢ Size 69¢	Del Monte Apricots	303 can	59¢
Mrs. Bairds BREAD	1½ Pound Loaf Daily Special 49¢	Del Monte Pineapple	2 ^{1½} cans	89¢
Ranch Style Beans	3 ^{Size 300 Cans} \$1.00	BOLD	Giant Size	\$1.39
Griffin Grape Jelly	2 lb jar 98¢	ZEST Bar Soap	3 ^{Bath Size}	\$1.00
Texsun Grapefruit Juice	46 oz can 59¢	Delsey Tissue	4 Roll Pkg	87¢



CREWS McCULLOCH

FREE vinyl rain jacket

Choose one during NK Seed Days
 February 15

Come on in, celebrate with us and pick up a heavy-duty vinyl rain jacket or other FREE gift with a qualifying order of best-value NK seeds.

While supplies last. We have a lot more in store for you so... come on in!

Farm & Ranch Supply
 Haskell, Texas

FREE toy pickup truck

Choose one during NK Seed Days
 February 15

Come on in, celebrate with us and for that young farmer in the family pick up a toy pickup truck or other FREE gift with a qualifying order of best-value NK seeds.

While supplies last. We have a lot more in store for you so... come on in!

Farm & Ranch Supply
 Haskell, Texas

FREE leather work gloves

Choose one during NK Seed Days
 February 15

Come on in, celebrate with us and pick up a pair of comfortable yet rugged leather work gloves or other FREE gift with a qualifying order of best-value NK seeds.

While supplies last. We have a lot more in store for you so... come on in!

Farm & Ranch Supply
 Haskell, Texas

POGUE GROCERY

—Extra Parking Behind The Store. Home Owned and Operated—

113 North Avenue E

Phone 864-2015

Haskell, Texas



The Consumer Alert

by John L. Hill
Attorney General

AUSTIN—Attorneys in our Consumer Protection Division note that very few consumers approach the purchase of life insurance as seriously as they approach the purchase of a new car or even a new suit of clothes. It has been discovered that consumers give it little thought, little investigation, and do not proceed with the caution that so important a task requires.

There are approximately 1,800 companies nationwide that sell insurance, employing literally hundreds of thousands of agents and offering a wide variety of policies. It is the job of the State Board of Insurance, which our Insurance, Banking, and Securities Division lawyers represented, to regulate the industry in Texas.

Our attorneys and the Board have found that most insurance companies and agents are reputable, honest, and anxious to satisfy the needs of the public. Unfortunately, however, a very few companies and agents are not so concerned.

Therefore, when purchasing life insurance you should analyze your needs and determine which policies are best designed to meet those needs. Basic considerations are age, size of family, income, and the primary purposes for which the insurance is purchased. The most obvious purpose of life insurance, of course, is to provide financial protection for the survivors or beneficiaries of the insured upon the insured's death.

Our Consumer Protection Division lawyers suggest that the first and most important step for the consumer to take in the purchase of life insurance is to give the matter

serious consideration before making a decision. Too often, they say, this is not done. Instead, most life insurance purchases are made only when the consumer is approached by an agent. In such instances, the agent, no matter how professional, may be unable to be of maximum help, simply because the consumer has given little or no thought to actual needs.

Other guidelines the consumer should take under consideration:

-Comparison shop for a good insurance company and policy just as you would for anything else.

-Decide whether you want term or whole life insurance. Term life insurance is cheaper at the time of purchase but the premium increases with age, does not carry a cash value, and will not generally be renewable between the ages of 65 and 75. Whole life insurance is more expensive to purchase, but it carries a cash value and can be used, among other things, for low interest loans.

-Check to see if the insurance company you are considering is licensed by the State Board of Insurance. When you purchase insurance, be sure you receive a conditional receipt verifying that application has been made. If you don't receive the policy within 45 days, you should make immediate inquiry as to the location of the policy.

-Insurance companies in this country have developed a number of policies providing different payout periods, benefits, and other features, such as endowment, return of premium, and accidental death benefits. Each of these should be evaluated within the

context of individual need and ability to pay.

A prudent approach to the consumer purchase of insurance may be summarized in three "knows": know your needs, know your agent, and know your company.

If you have a consumer complaint regarding insurance or any other matter, call our Consumer Protection Division in Austin, Houston, San Antonio, Dallas, El Paso, Lubbock, or McAllen. If you live outside these areas, call toll free: 1-800-252-9236.

Rice Springs News

The Presbyterian Church is having the Sunday morning services for the month of February. Everyone has certainly enjoyed these services so far.

Earlene Smith and Odessa Rucker of Rule visited with their mother Trudie Bush.

Marvin Phemister visited with his mother Ida Phemister.

Visitors of Mr. and Mrs. Sam Bradford included: Mr. and Mrs. G.A. Bradford and Brenda, Rev. and Mrs. J.R. Williams of Rule, Mr. and Mrs. Dutch Horton of Spur, Mrs. Billy Joe Spells of Aspermont, and Mrs. F.A. Robertson of Snyder.

Mrs. Hazel Lewis, Mrs. Faye Simpson, Mrs. Mary Sue Henry, Mrs. Immalee Smith and Mrs. Lou Hisey all of Rule visited with Alma Cole.

The ladies from the Haskell Church of Christ held their monthly birthday party Tuesday afternoon. Many different kinds of delicious homemade cakes were served along with punch.

Ora McCollough's visitors were: Mrs. Evelyn Green of Ft. Worth, Zina Bills, Mrs. Ennon Morgan, and Rev. J.R. Williams of Rule.

Annie Jones welcomed a visit from her son Chester Jones of Walnut Creek, Calif.

Alvin and Ruby Stiewert of Lubbock visited with Lena Stiewert.

Louisa Archibald of Okla. City, Okla., visited with Andy Cox.

Susan Harris and Clotilde Harris of San Antonio, and T.C. and Christine Griffin of Seymour visited with Vera Harris.

Rev. Harvey Friedel held Presbyterian Communion Wednesday night at 6:00. Everyone certainly appreciates Rev. Friedel for this.

Sagerton News

A good representation of the members of the Sagerton Water Supply Corporation met at the Sagerton Community Center January 30, with F.A. Ulmer, chairman of the Board of Directors, presiding.

Mrs. J.B. Toney presented the audit report. Mr. Ulmer brought the members up to date on the construction going on of the some thirty additional miles of water line, which will add approximately 39 new meters. Fred Baitz was introduced as the new meter reader and bookkeeper.

Jerry Threet was elected to the Board of Directors to take the place of Charles Clark, who did not choose to run, and Marvin Baitz was elected to serve another term. Other members of the Board are Jimmy New, C.E. Stegemoeller, Lewis Corzine and Bill Hertel, and the chairman, F.A. Ulmer.

Lorene Huggins and Evelyn Ulmer gave tips of using a slow cooker and Mrs. Hertel served roast and a cake by the slow-cooking process for refreshments at the J.A. Hertel home Thursday of last week.

The ladies drew for this year's secret pals, and discussed plans to make an

educational tour to Abilene to tour facilities at Hendricks Medical Center, a health spa, and the rehab center on February 16 along with other Haskell Co. H.D. members.

Mrs. Leland Thane urged members to bring items of clothing, toilet articles, games etc. to the next meeting in the home of Mrs. Herbert Nierdieck on March 2, and they will be taken to Skyview in Stamford.

Those attending were: Mrs. F.A. Ulmer, Mrs. A.C. Knippling, Mrs. Delbert LeFevre, Mrs. C.P. DeBusk, Mrs. Leland Thane, Mrs. John Teichelmann, Mrs. Herbert Stremmel, Mrs. Herbert Nierdieck, Mrs. Fred Schronerstedt, Mrs. Lorene Huggins and the hostess.

Members of Faith Lutheran Church are reminded that there will be a congregational meeting at 2:30 next Sunday afternoon.

Three of our Sagerton girls are members of the Rule High girls basketball team that came in second in the North Zone of District last week and will play in the District Tournament against Old Glory first place winners of the South Zone, at Haskell Thursday

evening. They are Rene Toney, Jill LeFevre and Kris Kupatt. Mary Macias is the team's score keeper and manager. We wish them good luck in the play-off games! Mike Hertel is a member of the Rule High Boys' team that tied for first place, and they will play Lueders-Avoca the same night at Haskell.

We hope some of our residents will come out and support these young people.

Terry Teichelmann of Irving visited with her parents, Mr. and Mrs. Eugene Teichelmann last weekend.

Mr. and Mrs. George Patzig

and family of Carrollton visited with Mr. and Mrs. Elmer Boedeker last weekend.

Guests at a birthday party in honor of Leon Stegemoeller Sunday at his home were: Mr. and Mrs. Marvin Stegemoeller, Dennis and Brenda of Rochester, Mrs. Emma Rappelt and Erna and Walter Schaake of Stamford, Mrs. Youngquist and son of Abilene and Mr. and Mrs. Joe Clark, C.E. Stegemoeller and Ladain Anderson, Mrs. Stegemoeller and their sons, Carl and Clifford, were hosts.

Congratulations to Kris and Kriag Kupatt on the good showing at the Fort Worth

Stock Show last week with their pigs. They came home with a third place, a fourth place and a fifth. We think that is real good considering the large number of pigs in the show. Their parents, Mr. and Mrs. Fred Kupatt, and Marc Thane all attended the show. Marc showed his pig with the Rule F.F.A. boys.

An ideal gift for kids of all ages, the Froggy by Papermate. It's a fun and bouncy pen holder with a fine quality, Papermate pen, perfect for home, school, or office. The Haskell Free Press.

HEALTH TIP

AFTER YOU SEE YOUR DOCTOR, BRING YOUR PRESCRIPTIONS TO

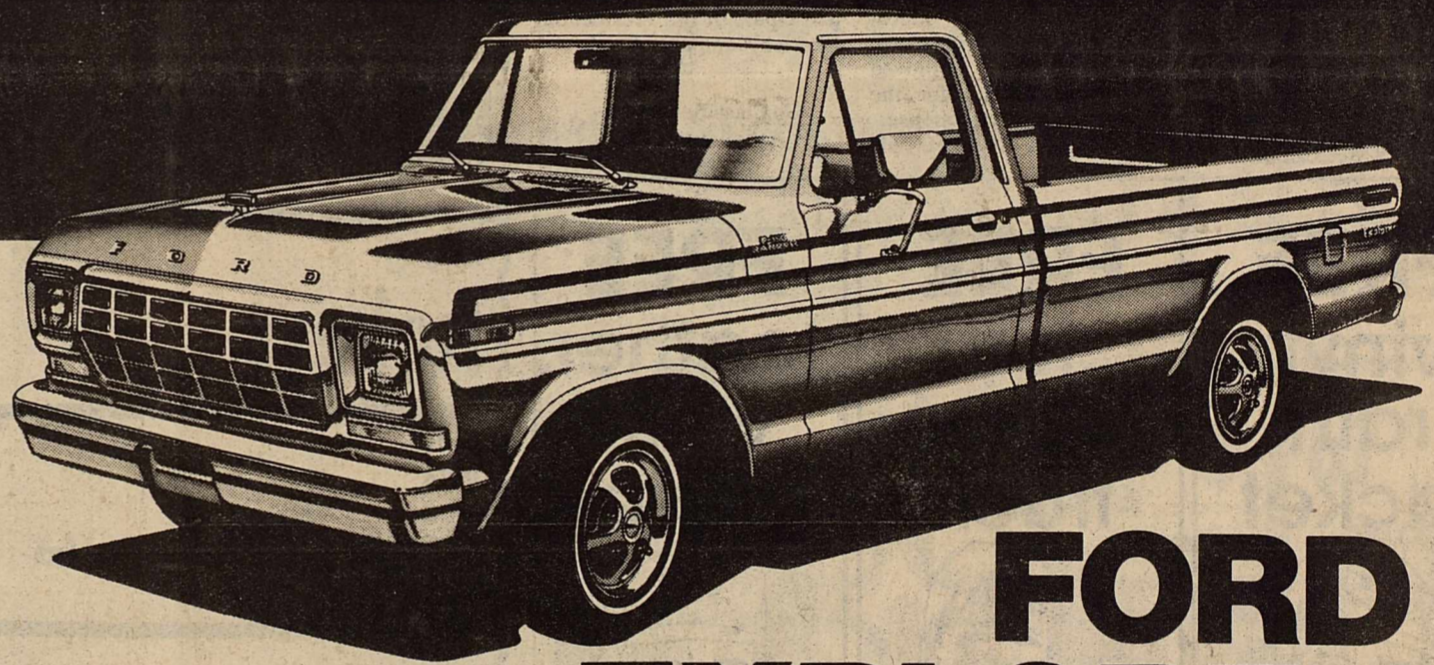
DOYLE HIGH

KENNETH JONES

THE DRUG STORE
100 SOUTH HASKELL, TEXAS
PHONE 864-2515

SAVE up to \$274*

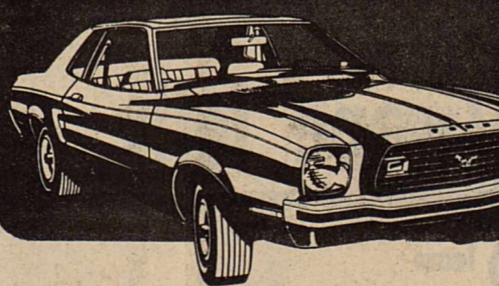
And that's before your Texas Ford Dealer even starts to deal



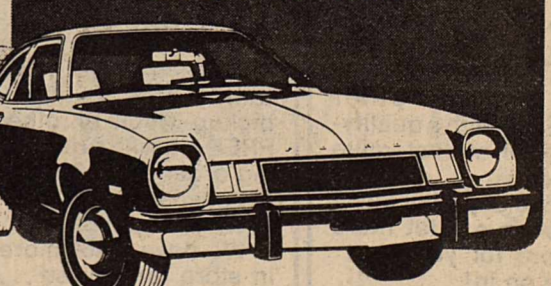
FORD EXPLORER SALE

Texas size savings (up to \$274 off) on Ford Explorer Special pickups when you buy them with special trim, color and convenience packages. Ford pickups are tough all over and even tougher to beat at these prices. Save \$200 on Mustangs specially packaged to look sportier than ever. And save on Pinto, America's best-selling compact, priced less than last year. For the best deals going, visit your Texas Ford Dealer's Ford Explorer Sale.

MUSTANG \$200 OFF



PINTO PRICED LESS THAN LAST YEAR



and Texans go together.

*Based on manufacturer's suggested retail pricing and comparison of prices of options purchased separately and as a package.

Bill Wilson Motor Co.

209 S Av E

Haskell, Texas

864-2611

FOR SALE
Have some new listings. Have some bargains. We are ready to get down and trade with you. Come see us.
LIST YOUR PROPERTY WITH US, WE SELL.
Furrh's Real Estate
510 North 1st, Haskell
Stanley Furrh
864-2576, or call,
Garlene Dunnam 864-2814 Betsy Nanny 864-3626 Frances Arend 864-3156

Haskell's Market Place
The Classified Ad Page

Attention CB'ers

CB Directories will be published soon. Clip and Mail the attached form to be included in the Directory.

Directory will include F.C.C. Rules pertaining to CB Radio; 10 Code; CB Slang; and a list of all area CB'ers.

Complete and return form by Feb. 24, to

Haskell Co. Jaycees
% Allen Moeller
Rt. 1 Box 120B
Haskell, Tx 79521

Name: _____
Address _____
City _____ State _____ Zip Code _____
Handle _____
Channel Monitor _____
F.C.C. License _____
No. of Books _____
(Include Handles of all family members. Attach sheet if necessary)

Obituaries

Jesse Matthews

Funeral services for Jesse Matthews, 80, of Haskell were held Feb. 7 at 2:00 p.m. in East Side Baptist Church with Rev. Jimmy Griffith, pastor, officiating. Interment was in Willow Cemetery under the direction of Holden-McCauley Funeral Home.

Mr. Matthews died Feb. 5 at 4:10 p.m. in the Haskell Memorial Hospital.

Born May 19, 1897 in Hood County, he was a retired grocer. He married Emma Loraine Etheridge June 22, 1925 in Haskell. He came to Haskell County in 1921 and moved to Corpus Christi in 1950 to 1959 when they returned to Haskell. He operated the Turnbow Store until he retired in 1971. He was a member of East Side Baptist Church.

Survivors include his wife, four sisters; Mrs. Ida Patter-

son, and Mrs. Ruby Alvis both of Haskell, Mrs. Ada Gaither, Ft. Worth and Mrs. Zula Newsom, Odessa.

Pallbearers were J.C. Tidrow, Clarence Taylor, Alfred Turnbow, Billy Joe Robertson, Slover Bledsoe, Mansell Robertson.

Kirby White

Kirby White, 45, of Rule died Feb. 1, at his home of natural causes. Services were Friday, February 3, in First Baptist Church.

The Rev. J.R. Williams, pastor, officiated. Burial was in Willow Cemetery in Haskell directed by Pinkard Funeral Home.

Born March 4, 1932, in Big Spring, he had lived in Rule for a year and a half. He attended school and was raised in Haskell. He was a

Baptist. He married Vida Beth Keahy May 22, 1960, in Bellevue. For 20 years he was a coach and teacher at various area schools and for the past six months had owned a service station.

Survivors include his wife; a daughter, Tauniya of the home; three sons, Carl, Mike and Thomas, all of the home; five brothers, Gilbert of Odessa, Bertis of Abilene, Ben of Lefors, Jimmy of Texarkana and "Shorty" of Iowa Park; and three sisters, Lucille Roberts of Gorman, Pauline Thomas of Childress and Dor Duggins of Wichita, Kan.

Lois Berry

Lois Norman Berry, 68, of Rule died at 7:30 p.m. Sunday in Haskell Memorial Hospital after a brief illness. Services were at 2 p.m. Wednesday in First Baptist Church.

The Rev. J.R. Williams, pastor, officiated, assisted by the Rev. James R. Enfield, pastor of Stamford First Baptist Church. Burial was in Rule Cemetery, directed by Pinkard Funeral Home.

Born Sept. 24, 1909, in Rule, she married Carl Berry Jan. 1, 1973, in Dallas. She had been a registered nurse at Baylor Hospital for 35 years, retiring recently. She was a Baptist. She was a member of the Order of Eastern Star.

Survivors include her husband; a brother, Lee Weldon Norman of Rule; a sister, Hazel Eastland of Stamford;

three nephews, Billy Berl Eastland of El Paso, Rae Michael Eastland of Killen and Dr. Jim Norman of Altus, Okla.; a niece, Mrs. Sam (Rebecca) Tankersley of Stamford; a stepson, Carl D. of Los Angeles; and six great-nieces and nephews.

Pallbearers were Allen Davis, Bill Dunnam, Gary Coppage, R.C. Pool, Festus Hunt and Bill Fouts.

Leonard Cerveny

Leonard Rudolph Cerveny, 65, died Friday, 4:20 AM on January 27 in the Weatherford Hospital after a six week illness. Services were held Sunday at 2 p.m. in the Galbreath-Pickard Funeral Chapel by his pastor of the Lion Hill Community Church. Burial was in the Lion Hill Community Cemetery near his home.

Leonard was born December 8, 1912 to Joseph and Minnie Cerveny of the Irby Community. He attended Irby School until his family moved to Munday in 1931. He married Lucy Dow Myrick of Fort Worth. Except for time spent in the United States Army during World War II, he worked in the aircraft industry in Fort Worth until 2 years ago. He retired to work with his cattle until his illness.

Survivors include his wife Lucy; 2 sons: Glenn of Ft. Worth and Jerry of the home; 3 daughters; Theresa Middleton of Weatherford, Faye of the U.S. Army, Ft. Louis, Washington, Kaye of the U.S. Army, Zinzencia, Italy; 4 grandchildren, 2 brothers: William of Lawton, Oklahoma and Bert of Wichita Falls; 2 sisters: Rosie Reidenbach of Munday, and Lillian Hicks of Rochester.

Mrs. Garrett

Funeral services for Mrs. Allene Garrett, 67, of Coleman were held at 2:30 p.m. Feb. 2 in the First Baptist Church in Weinert. Rev. Roy Herricks and Rev. Paris Barton officiated. Interment was in Pleasant Valley Cemetery under the direction of Holden-McCauley Funeral Home.

Mrs. Garrett died Jan. 31 at 5:20 p.m. at Frio County Hospital in Pearsall.

Born Feb. 17, 1910 in Lueders, she married Bryant D. Garrett Nov. 7, 1927 in Anson. He preceded her in death, May 20, 1972. She had lived in Weinert from 1972 until 1976 when she moved to Coleman. She was a Methodist.

Survivors include three daughters: Mrs. Bobby Cammack and Mrs. Jessie Thompson both of Monahans, Mrs. Sandra Gaddy of Ft. Leonard Wood, Mo.; three sons: Bernard Dale Garrett of Snyder, Billy Frank Garrett of Carrizo Springs, Larry Garrett of Devine; one sister, Mrs.

Addie Counts of Abilene; one brother, Ben Vickers of Lueders, 22 grandchildren, and 18 great grandchildren. She was preceded in death by one daughter and one son.

Pallbearers were Donald Griffis, Hershel Alexander, W.P. Curd, Jr., Ben Charlie Curd, James Curd, Robert Moran Jr.

W.E. Green

Graveside services for William E. Green, 87, of Haskell were held in Howard Cemetery Feb. 5 at 2:00 p.m. with Rev. Jimmy Griffith officiating. Service were under the direction of Holden-McCauley Funeral Home.

Mr. Green died Feb. 2 at 4:00 p.m. in Leisure Lodge Care Home.

Born Jan. 25, 1891 in DeLeon, he was a retired farmer. He married Edith Estelle Hunt May 20, 1919 in Haskell. He lived in the Paint Creek community for many years, moving to Haskell in 1947.

Survivors include his wife of Haskell; one son W.E. (Bill) Green Jr., of Midland; two sisters; Mrs. Bertie Lewis of Preist River, Idaho and Mrs. Mogia Howard of Haskell; and five grandchildren.

Mrs. Josselet

Funeral services for Mrs. Stella P. Josselet, 80, of Haskell were held Feb. 4 at 2:00 p.m. in the First Baptist Church in Haskell with Rev. Dudley Bragg, officiating. Interment was in Willow Cemetery under the direction of Holden-McCauley Funeral Home.

Mrs. Josselet died Feb. 3, at 6:00 a.m. in the Rice Springs Care Home. She had been a resident there for about 2 1/2 years.

Born Feb. 1, 1898 in

Eastland County, she was a retired nurse. She married Jesse Victor Josselet Oct. 29, 1916 in Haskell. He preceded her in death June 4, 1957. She came to Haskell as a child and worked at the Haskell Memorial Hospital from 1949-1970 when she retired. She was a member of First Baptist Church, Haskell and a member of Order of Eastern Star.

Survivors include: one son: Marion Jesse Josselet of Brownfield; two sisters, Mrs. Claudia Fouts and Mrs. Flossie Rogers, both of Haskell; two granddaughters; Carolyn Sue Norman of Ft. Worth and Sarah Lou Josselet of Lubbock and 3 great grandchildren.

Pallbearers were Alfred Turnbow, Adell Thomas, Melvin Josselet, Homer Josselet, Olen King, Bailey Toliver.

Social Security Information

An incorrect Social Security number will hinder the processing of a tax return and can delay any refund due, the Internal Revenue Service said.

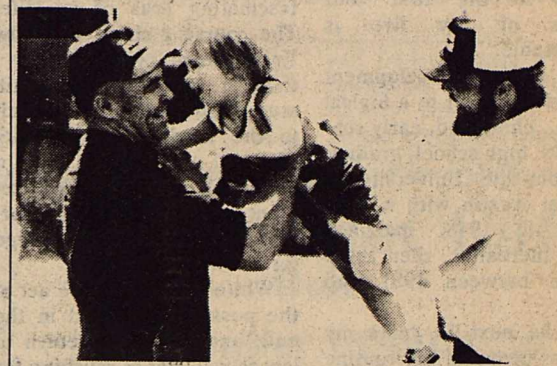
To help avoid this problem, taxpayers should use the peel-off label included in the tax package received in the mail. This label contains the name, address, and social security number of the taxpayer. If the social security number or other information listed is incorrect, the correct information should be written in right on the label.

If a taxpayer has had a change in name since last year, a local office of the Social Security Administration should be contacted so that the taxpayer's new name will correspond to his or her social security number.

"The pleasure of an afternoon nap is double that of sleep at night." Liweng

The Land Bank ...money to keep the farm in the family

One of agriculture's toughest challenges is keeping the farm in the family. It takes long-term planning and, often, long-term credit. For more than three generations, the Land Bank has helped farm families pass along what they have worked so hard to build. We may be able to help you, too.



Federal Land Bank Association of Haskell



JOE HARPER—Manager

Offices at Haskell, Anson and Seymour
Haskell Telephone: 864-2062—Anson Telephone: VA 4-1142

Long-time loans on farms and ranches in Haskell, Jones, Baylor and Knox Counties

FOR THE FINEST

in portraits, wedding photographs, commercial photography, outdoor portraits and weddings also done. We also offer photographs on canvas.

Blackstock Studio

417 South First, Haskell
864-2783

Truck Load Sale

Denim! Denim! Denim!

Hundreds of Pairs Irregulars

Wrangler 14 oz. Denim No-Fault

1. Shrinkage Control for Perfect Fit
2. Out of the dryer - Ready to Wear
3. Wrinkle Free - Pucker Free
4. Fades Great

\$10⁹⁵ ea.-3 pr. \$30⁹⁹-6 pr. \$59⁹⁹

Save 5.00 to 6.00 a pair

Bring A Friend

Lane APPAREL
FOR MEN

Next to M-System

Will you let "Little Red Hen" do it?

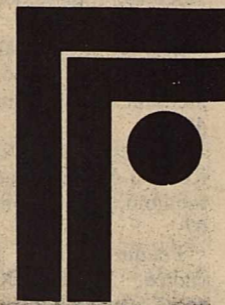
SIR: To all you "stay neutrals" - "lookers on-ers" - and "non-helpers" sitting on the side-lines while "active farmers" are making their one big effort for equality -

What price do you plan to take for your wheat?! Are you going to say "Oh well, \$2.20 a bushel is enough for me, since I didn't help in bringing the price up to the cost-of-production plus?!"

Or will you be like all the animals in the story of "The Little Red Hen" - after she had grown the wheat and baked the bread, they all wanted in on a share of it then?!

American Agriculture Movement

[pd for by Haskell Co. AAM Office]



FIRST FEDERAL SAVINGS AND LOAN ASSOCIATION OF STAMFORD

The Fastest Growing In The Big Country
Where Your Savings Interest is Compounded Daily -- Paid Quarterly

Are You Interested In The Future... DOUBLE YOUR MONEY IN JUST 9 YEARS!

7.75% Interest-Compounded Daily-For 9 Years

TODAY	\$1,000.00	9 Years	\$2,008.57
TODAY	\$5,000.00	9 Years	\$10,042.87
TODAY	\$10,000.00	9 Years	\$20,085.74

HERE'S HOW YOUR MONEY CAN GROW WITH

Term	Beginning Balance	Annual Yield	Balance at Maturity
7.75%, 6-Year Certificate, 1,000.00 Minimum	1,000.00	8.06%	1,591.93
	5,000.00	8.06%	7,959.67
	10,000.00	8.06%	15,919.35
7.50%, 4-Year Certificate, 1,000.00 Minimum	1,000.00	7.79%	1,349.82
	5,000.00	7.79%	6,749.08
	10,000.00	7.79%	13,498.17
6.75%, 2 1/2-Year Certificate, 1,000.00 Minimum	1,000.00	6.98%	1,183.81
	5,000.00	6.98%	5,919.03
	10,000.00	6.98%	11,838.05
6.50%, 1-Year Certificate, 1,000.00 Minimum	1,000.00	6.72%	1,067.15
	5,000.00	6.72%	5,335.76
	10,000.00	6.72%	10,671.53
5.75%, 90 Day Notice Certificate, 500.00 Minimum	1,000.00	5.92%	1,053.90
	5,000.00	5.92%	5,269.49
	10,000.00	5.92%	10,538.99
5.25% Passbook Account,** \$5.00 Minimum	1,000.00	5.39%	1,014.48
	5,000.00	5.39%	5,072.39
	10,000.00	5.39%	10,144.78

**Earnings on Passbook Account are Based on 1-Year Annual Yield is Based on Compounding Interest; Earnings From Date of Deposit to the Maturity Date

Interest on Certificate Accounts Paid From Date of Deposit to Date of Maturity. In By the 10th, Earn from the 1st.

Interest on Passbook Accounts Paid From Date of Deposit to Date of Withdrawal.

A Substantial Interest Penalty is Required for Early Withdrawal, on Certificate Accounts.

Why Not Put Your Money to Work for You With First Federal Savings and Loan Association of Stamford and Watch it Grow!

You Will Receive Security and Reliability in Your Savings Plan. And, All Accounts are Insured up to \$40,000 by the FSLIC.

To Open a Savings Account, Visit Any of Our 3 Conveniently Located Offices or Call Us.

FIRST FEDERAL SAVINGS AND LOAN ASSOCIATION



Division Office:
Quonah Federal Savings and Loan
313 South Main St.
Quonah, Texas 79252
817-663-5388

Branch Office:
#2 Avenue D
P. O. Box 444
Haskell, Texas 79521
817-864-3179

Home Office:
122 W. McHenry
P. O. Box 511
Stamford, Texas 79553
915-773-2714

Abilene
CUSTOMERS
Toll Free Call
Dial -0- Ask For
ENTERPRISE 84015



WTC College Experiences

A community college like Western Texas College is many things to many people. Community colleges are designed to serve students of all ages, providing educational opportunities for a lifetime.

Carolyn Pippen of Haskell is one of the adults who has earned a degree from Western Texas College. She has agreed to share some of her reasons for enrolling for college classes and some of the experiences she gained. We appreciate Mrs. Pippen's interest in the college and in other people, and we think hers is a real human interest story. - Aline Parks, Publicity Director, Western Texas College.

By Carolyn Pippen

Perhaps the term that applies to the first four decades of my life is "predictable."

Each stage of development followed the other in a logical pattern...childhood, early school years, high school, graduation from the University of Texas at Austin with a BBA Degree in 1948, marriage shortly thereafter, then three children between 1951 and 1957.

For the next 16 years my activities included the routine of a housewife and mother interspersed with social and civic activities. Of course, I experienced certain advantages and a few adversities, but as a general observation, my life was that of a typical small-town housewife. Everyday activities were given seasoning with such things as being a Girl Scout leader, a Den mother, a Sunday School teacher and the sponsor of a Youth Fellowship.

When Haskell became interested in developing a Western Texas College extension campus, I was appointed to the development board. In the course of the next few months, I was delighted to see it reach fruition. Later, when it seemed that our local campus was in danger of being closed because too few Haskellites registered, I determined to select some courses and help increase the enrollment. Up until the winter of 1973, however, I had yet to register for a course.

Suddenly the course of my life changed. January 1, 1974, found me a widow with three children almost grown—two in college and another finishing high school. The decisions to make were all mine now, and I

was faced with the question of what I could and should do with the rest of my life. There were no pat answers and no easy solutions.

My first idea was to settle my affairs and move to a place where my UT degree in Air Transportation would be useful and lucrative. I decided to wait until my youngest child finished high school before taking any action about moving. In the meantime there was a lot of time to fill, so when registration for the WTC extension center was announced again I found myself filling out an enrollment form. But what should I take?

Another idea began to form—one that I never did carry out, but one that did lead me into one of the most fascinating eras of my life. The course I chose was Law Enforcement. How better, I thought, to see if I could still study, could still orient myself to the academic community after all those years out of school. If the Law Enforcement study worked out, perhaps I'd go back to college for a law degree.

White's theory of the act of the possible prevailed in the end, and I did not return to law school; but in reaching for the moon I did come away with a piece of it that gave me more than I'd ever have had if I hadn't reached.

In registering for the course in Law Enforcement under Ray Robbins, I came face to face with Law Enforcement's premier salesman. His class was articulate, informative and utterly fascinating to the uninitiated. My family background in law had already given me an inordinate interest in legalistics, and so I embarked on a course of study that culminated in my earning the Associate in Applied Science in Law Enforcement from WTC.

When it came time, ultimately, to commit myself to further action I was employed in a field as far removed from Law Enforcement as kittens are from cows. (Mrs. Pippen is employed by the Agricultural Stabilization and Conservation Service at this time.) But my Law Enforcement studies were not forgotten. Young people came to me for counseling and I realized that if I served no other purpose, I could satisfy some needs. I could be somebody to "just talk about it" with because I was attuned to Law Enforcement.

ment while not officially engaged in it.

I'll not say it was easy (earning the new degree), but I will say that no experience has been more rewarding. Every course I was required to take has proved useful. I found I could study again, could fit in. Acceptance, though a bit slow, did come, and the friendships I made are ones that I shall always treasure. Had it been necessary, I could have started over in a new career.

In one of the courses we were asked to review a book which had helped us in formulating new concepts, and in so doing I realized that what Catherine Marshall wrote in her book "To Live Again" was entirely possible. My experiences were different from hers, of course, but in the final analysis we each must adapt to our own set of circumstances. It was a challenge which took me out of the mundane and gave me new insights and knowledge that have helped me—and others.

Most of all, it has been inspiration to have had firsthand knowledge of the quality of education that Western Texas College espouses. Haskell has been privileged to share in this and to know and work with the distinctive leaders who have gone far afield to try to help us establish adult education in our small town. I have never known people—at all levels—who are more dedicated to the principles of higher education.

That ends Mrs. Pippen's

story. We asked Ray Robbins if he remembered having her as a student, and he said he certainly did.

"Her performance in the academic requirements of the program was consistently outstanding," he commented, "but she contributed much more than her classes required. Her pleasant personality, her thoughtfulness toward others, her genuine friendliness and her zeal for learning make her the type of student who challenges a serious instructor to do his best work."

"A large billboard greets the Haskell visitors with the statement that the city is the home of '42000 Friendly People and A Few Old Grouchy Ones.' In my judgment, Carolyn epitomizes the majority."

Mrs. Pippen modestly neglected to mention that she maintained a 4.0 grade average in her WTC studies, and that is the highest average which can be achieved. She is remembered well by all her WTC instructors for the same qualities Robbins mentioned.

STOCK MARKET

The market at Haskell Livestock Auction was higher on a run of 1204 head of cattle, 252 hogs, and 1 goat at its sale Feb. 4, 1978, according to Bill Dennis reporter.

The market was fully \$1.00 to \$2.00 higher on all classes of cattle. Top on hogs today was \$46.75. Few Fancy Feeder Heifer Yearling sold up to 46c. Butcher calves: choice, 39-42; good, 35-39; standard, 32-35; rannies, 30-32. Cows: fat, 29-33.75; cutters, 26-29; canners, 23-26; stockers, 30-33. By the head 275-320.00.

Bulls: bologna, 35-38.60; stockers, 40-48.50; utility, 34-40. Stocker Steer Calves: choice, 52-60; good, 49-52; medium, 46-49; common, 42-46.

Stocker Heifer Calves: choice, 43-45.50; good, 40-43; medium, 37-40; common, 34-37. Feeder Steer Yearlings: choice, 47.50-52.50; good, 44-47.50; medium, 41-44; common, 37-41. Feeder Heifer Yearlings: choice, 41-43.75; good, 39-41; medium, 37-39; common 35-37.

Cows and Calves: good, 300-376.00; plain, 240-295. Top on Hogs 46.75. Bulk of Butcher Hogs 44.00-46.75. Boars 26.00-30.00. Sows 37.00-41.00. Sows 37.00-41.00. Feeder Shoats 36.00-40.00. Pigs by the Head 20.00-27.50.

Hospital Notes

ADMISSIONS
MEDICAL: Valene Beaty, Throckmorton; Felix DeLeon, Rule; James Lewis, Haskell; Emilio M. Arrendondo, Haskell; Sisto Malina, Haskell; Shelby Harris, Haskell; Thomas Bird, Haskell; Lennie Robertson, Haskell; Lupe Granada, Haskell; Lillian Cole Rule; Inez Gholson, Haskell.

DISMISSALS
Emma Reed, Martin Randle, Mary Ray, Cecil Jones, Claudia Blankenship, Johnny Mullins, Stella Glass, Joe Davis, Dennis Ratliff, Ernest Stewart, Edith Green, Lonnie Carnes, Jr., Rodney Ezell, Guinn Medford, Ben Isbell, Jada Powell, Jim Benton, Jeff Hatfield, Bobbie Gates.

Washington "As It Looks"

From Here" OMAR BURLISON Congressman — 17th District

WASHINGTON, D.C.—THOSE OF US WHO HAVE TO DRIVE IN TRAFFIC most every day probably often wish, subconsciously or otherwise, that everybody else could be put off the street or highway and leave it to us. But, for other reasons, the crusaders and regulators would bully us out of our private automobile and put us in a public transportation system. In the name of safety, mileage and emission standards ordered by the Federal Government, they would ban motor vehicles from highway and street use.

WE WOULD BE IN A FIX IN WEST TEXAS if we had to depend on public transportation but so are those in many cities, even with new systems. San Francisco's subway trains are broken down at a reported cost of \$100,000 a day. Here in Washington, the Metrorail has an estimated cost over-run of \$5 billion and is still far from completion.

SINCE 1970, AUTOMOBILES HAVE BEEN LOADED WITH GADGETS for greater safety and less emissions. Costs of the cars have increased and recent studies suggest that little has been accomplished in the way of safety, savings of fuel or reduction of harmful emissions.

SEVERAL YEARS AGO, A PROPOSAL WOULD HAVE LEVIED A TAX OF \$4.05 per pound on lead going into ethyl gasoline to eliminate its use. As a substitute, something, called aromatics would be added for use in older cars not equipped to burn unleaded fuel. It was later found that

the emissions from this compound, in the form of a mist, were most harmful than lead. A study at Massachusetts Institute of Technology has found that standards set by Congress in 1970 have had no demonstrable impact in reducing emissions of any kind. The study shows that hydrocarbon emissions in 1975 were almost exactly what they were before the so-called Clean Air Act of 1970 was put into effect.

OTHER FINDINGS REFUTE THE "NADERITE" NOTION that auto manufacturers have deliberately fostered unsafe vehicles on us or that safety has been appreciably improved under Federal standards. It is found that traffic safety improvement was greater before the advent of all the regulations than it has been since all these standards were set. From 1945 to 1960 when auto ownership greatly increased, traffic fatality rates per 100 million miles were cut in more than half. This was the result of the construction of our interstate highway system as well as improvements in the automobile itself. The decline in fatality rates began to reverse itself in 1966 when Federal regulations began to apply. It is reasonable to conclude that Federal safety regulations have done little to improve our record of highway safety. It also appears that the newer emission standards are largely ineffective, prohibiting one chemical compound only to add another.

EVIDENTLY, THE STRINGENT SCHEDULE FOR THE REDUCTION OF EMISSIONS without bothering to count the costs or to assess the technical feasibility is a failure. The costs to the

public is not estimated but, obviously, it has contributed to inflation without appreciable results in safety and health.

THE AUTOMOBILE IS MORE THAN A SYMBOL OF AMERICAN INDIVIDUALISM, privacy and personal mobility; it is necessary part of the American economy and a necessity for many people. The planners and the regulators want us to stop moving

about according to our wishes and start traveling according to theirs.

Everyone should have a hearing test at least once a year, say officials of the Beltone Crusade for Hearing Conservation. Persons who work in extremely noisy environments probably should have such a test at more frequent intervals they add.

Slaughtering by appointment Tuesday and Thursday

Excellent facilities for Processing and Flash Freezing-

Kirksey's Inc.

Throckmorton, Texas 76083 Telephone 849-3051

PROFIT RAISING EARTHWORMS

Can You Answer "YES" to These Questions?

1. Do you like raising livestock?
2. Do you want a business of your own?
3. Do you need retirement or extra income?
4. Do you have a back yard or other land?



PERHAPS YOU CAN BECOME A WORM GROWER!

IF ACCEPTED AS A PRODUCER, WE OFFER:

- * Professional Guidance
- * Marketing Service
- * Exchange Membership
- * Complete Supplies

ACT TODAY! SEND FOR YOUR FREE BROCHURE!

Send name, address, phone, description of facilities to:



815 "A" STREET • SMYRNA, TENNESSEE 37167 • (615) 254-7327

A 1 EXTERMINATING

To rid your home or property of noxious insects, pests, call the experts at the A 1 Exterminating in Haskell, phone 864-3733, Stamford 915-773-5360! These qualified professionals will eradicate all types of harmful and dangerous insects including termites, roaches, fleas, ants, spiders, beetles and ticks. Rodent pests such as mice and rats are also taken care of in a safe, efficient manner. This is one firm that offers guaranteed results!

Call these professionals for your F.H.A. or state termite inspection. They will be glad to advise you as to the condition of your home and what means will be necessary to rid yourself of any pests that are present. You will have the peace of mind that exists with professional application and proper safety procedures. They are licensed and bonded, of course.

For complete eradication of all insects and rodents, call the A 1 Exterminating! They'll do a great job AND they offer areawide service, also Foundation repair and tree pruning.

The writers of this Consumers Message suggest that you contact this reliable firm for ALL types of pest control!

Surflan

plantin' time herbicide for Blackland cotton.

Caught wet and counting on cotton. Or just looking for a plantin' time herbicide that works all season on those fine Blackland soils. Either way, you're covered with Surflan.

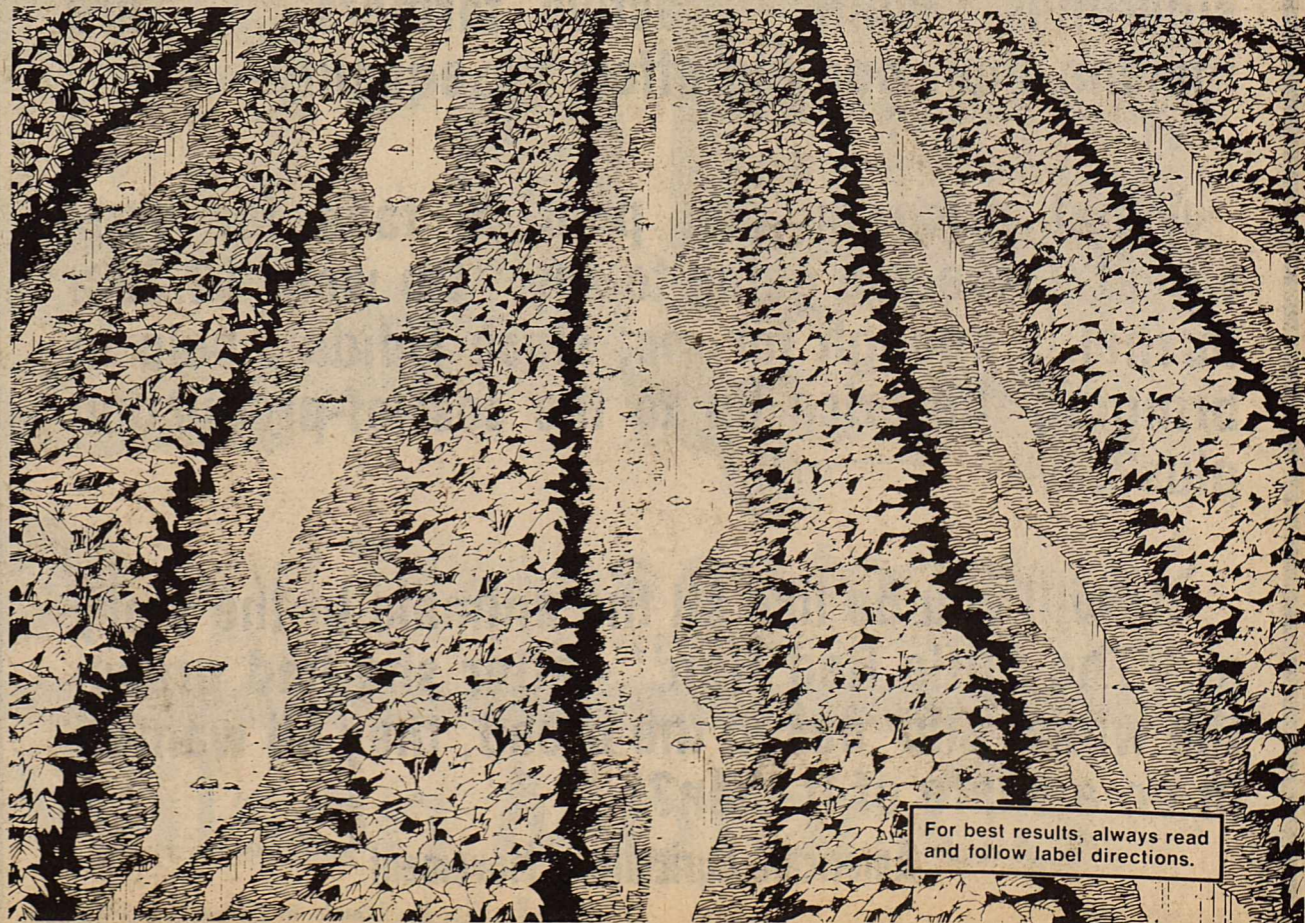
Surflan controls your hurrah grass, seed johnsongrass, crabgrass and carelesweed... and keeps on working 'til the lint is in the gin. Surflan won't leach out like some plantin' time herbicides. Banded or broadcast, Surflan's reliable in fair weather or foul.

This year, ask your farm chemical supplier for Surflan.



Elanco Products Company
A Division of Eli Lilly and Co
Indianapolis, Indiana 46206

(Surflan®—oryzalin, Elanco Products Company)



For best results, always read and follow label directions.

DANCE TO THE MUSIC OF

Silver Spur
Fastest rising band in the Southwest
We play your favorites
A little bit country
A little bit rock
A little bit jazz.

AT RHINELAND GYM

Saturday Night February 11 9 to 1 Admission \$4.00

"I JOINED THE LOSING TEAM AND I LOVE EVERY MINUTE OF IT."



That's what Judy Schultz of Lubbock says about the Weight Watchers Program.

Judy is 35 pounds lighter than she was six years ago. That's when she attended her first Weight Watchers meeting. Now she says, "I'm a lifetime member of Weight Watchers, and I'm confident that I can keep my weight this low with the Weight Watchers Maintenance Plan."

Isn't it time for you to check in and join the losing team? There is one near you.

WEIGHT WATCHERS
The Authority.

YOU'RE THIS CLOSE TO LOSING WEIGHT.

Haskell County Courthouse
2nd Floor
Tuesday 7 p.m.

"WEIGHT WATCHERS" AND "I" ARE REGISTERED TRADEMARKS OF WEIGHT WATCHERS INTERNATIONAL, INC., MANHASSET, N.Y. © WEIGHT WATCHERS INTERNATIONAL, 1978

Talk to four of the best insurance agents at once

... your State Farm agent! He's trained to be your car, home, life AND health insurance agent. See or call:

Brian Burgess
111 N. Ave. E
864-3250



Like a good neighbor, State Farm is there.

State Farm Insurance Companies • Home Office: Bloomington, Ill.

Letters To The Editor

(EDITORS NOTE: The Haskell Free Press will publish letters to the Editor dealing with any subject. All letters must be signed but names will be withheld by request. All letters are subject to editing for length and liability.)

Dear Editor:
I think most of us are beginning to realize that we are in this cost-price squeeze together in these small agriculture towns.

History shows that the only time that America has a good economy is when we are in a war or when farm prices are high. We in American Ag. are doing something about farm prices. If you as farmers and businessmen are concerned about the future of Agriculture and care about your fellow farmers, we strongly urge you

to join the American Ag. movement for 100% parity for all farm products.

If we can get more for our products we can afford to pay more for the things we buy which will create more jobs and more taxes, and will help our small towns as well as large cities. In 1977 at least 25% of the farmers in the United States lost money and a like number just barely broke even. This hurts our nation in that those 50% of farmers pay very little income taxes, and also when agricul-

ture prices are low we don't balance our trade with foreign nations which happened in 1977 when our country lost 27 billion dollars in our trade.

Many of our bankers and farm leaders feel that if we have one more year of farm prices as they now are, our nation will suffer another depression as we had in the early thirties.

Many people do not seem to realize the plight of the farmer, but we in the American Ag. movement have taken it upon ourselves to try to educate the consumer to the perils of the family farmer going out of business. We believe that corporate farming will take over and get a price that will guarantee them a profit in farming, and they can't grow food as cheap as family farmers. If this happens our young farmers will have to move to the cities to compete for jobs and cause more problems for our cities and also our small towns will suffer from their loss.

The American Ag. movement believes that we have enough farmers (about 45% behind the movement to get 100% parity. It will take longer if we don't grow any crops and buy anything to convince the President and Congress that we mean business, but if we had all the farmers in the nation in the Am. Ag. movement we could get what we ask for in one day and no one could go hungry, we could go ahead buying and selling and growing crops. But, unfortunately some do not see fit or care enough to try to better themselves or their fellow Americans.

Most of us know that our President who promised the farmer a fair price when he was campaigning for office, is told what to do by Unionized Labor which is receiving 160% of parity now, threatened to veto a farm bill this past Fall that would have guaranteed satisfactory prices to the farmer. We feel that he has let the farmer down and that our only recourse is to strike.

We know, as we have been told by a man in Washington that if we fail in this movement, there is no use for the farmer to ever try to get 100% parity again, because they will know that it is true that farmers can't "stick" together on anything as some now believe.

We've heard it said all our lives that when the farm population gets down to just a few, that we will get together and organize. That time to now! This movement has got to succeed and I believe that it will, for the good of America and because our young farmers believe in it and are willing to work for it.

May God help us and this great land of ours.

Sincerely,
Edward J. Smith
Rt. 2
Munday, Texas

Dear Editor:
We are writing to clear up an apparent misunderstanding and dispel the rumor that Farm Bureau is against the current Farm Strike. This is absolutely untrue! We, as working farmers and ranchers, individually sympathize with the American Agriculture movement. We are, as are all farm organizations, prevented from organizational support by the Sherman Anti-Trust Act. The Texas Farm Bureau membership, 85% of whom receive the major portion of their income directly from agriculture production, are caught in the same price

squeeze as everyone else.

Let us close by emphasizing that Farm Bureau, locally, at the State level, or Nationally, has never voted or taken a stand against the Farm Strike, and statements to the contrary are simply not true.

Board of Directors
Haskell County
Farm Bureau
J.W. Aycok, President

Old Glory To Host Red Heads

Susan "Spike" Callahan - freshman center for All American Red Heads comes from the state of Nebraska. "Spike" wears a #15 men shoe, has an arm span of 87 inches. This is the first full fledge season for the big red head. "Spike" is under a long term contract with the red heads. Orwell Moore, owner and executive director, feels that in 2 more years, she may very well be the greatest and strongest player in Women's Basketball.

Callahan, already making her presence known by her strength in coming off the boards with many rebounds. Leading her team in rebounds and playing tough on defense makes Callahan a gal to be reckoned with. Guarding the big man on the opposing team on defense and playing pivot on offense are two major assignments of "Spike" Callahan.

See this big red head in action - As the famous red heads take floor against the Old Glory Pros, game to be played in Old Glory High School Gym, in Old Glory, on Sunday, February 12, 1978.

Advance tickets may be purchased at a reduced price from members of the Old Glory Junior Class. Price of tickets are adults \$2.00, high school and grade school \$1.50 and \$1.00.

Game time is 2:30 p.m.

College News

A Haskell law student at Texas Tech University, John Preston Fouts, received the Doctor of Jurisprudence degree from the University School of Law at the end of the fall semester.

Fouts graduated from Texas Tech in 1975 with a bachelor of arts degree.

Texas Tech consists of undergraduate colleges of Agricultural Sciences, Arts and Sciences, Business Administration, Education, Engineering and Home Economics. Also a part of the complex are the Graduate School, School of Law, and the School of Medicine.

He is employed as an assistant District Attorney in Alton Griffins office in Lubbock.

He is the son of Mr. and Mrs. George Fouts of Haskell.

His wife, Bonnie, is teaching math in 7 and 8th grades at Lubbock Cooper. She is the daughter of Mr. and Mrs. Royce Adkins of Haskell.

Nelson Giant Print Red Letter Bibles, with 8 pages of full color maps, family record section and thumb indexed. Perfect for gifts. Haskell Free Press.

agri-facts

Pat Hale

Ever see a 15-million dollar cattle truck? It looks as though that's where things are headed with the announcement by major air carriers that 747's are going to be converted to livestock haulers for international markets. Officials say live cattle transportation to countries outside North America is already 80 percent by air with both the volume and the percentage expected to increase during the coming years. For the animals themselves it's all first class. Interiors are redesigned and structured to resemble a barn with separate pens or stalls. Special temperature control and ventilation systems are being designed and separate studies are underway to determine other ways to increase animal comfort. No one has yet decided whether to include in-flight movies but it sounds as if they may not be far away.

HALE FARM SUPPLY
Phone 864-2692

Methodist Set Fund Raising Meet

John Harrell of Stamford will preside over a meeting at 7 p.m. Wednesday, February 15, at St. John's United Methodist Church in Stamford to kick off the 1977-78 McMurry College Annual Fund drive in the Seymour district.

The Reverend Jarrell H. Sharp, Seymour district superintendent of the United Methodist Church, said Methodist churches in the area will participate by sending representatives who will help with the fund-raising for the Methodist-owned college in Abilene. Administrative board chairpersons, council on ministries chairpersons, McMurry Annual Fund chairpersons and members of the local Annual Fund teams have been invited to attend, according to Sharp.

Sending representatives to the meeting will be churches in Haskell, Stamford, Paint Creek, Sagerton, Weinert, Aspermont, Rochester, Lueders, Avoca, and Rule.

At the meeting, a McMurry student, a parent of a McMurry student, and a McMurry alumnus will each give his brief impressions of McMurry. Randy Strickland, director of alumni services at McMurry, will then present a slide show on the college.

Harrell is McMurry Annual Fund cluster chairperson for the group of churches invited to the Wednesday meeting. An active member of St. John's United Methodist Church in Stamford, he is president of First Federal Savings and Loan there.

Other Seymour district cluster meetings for the McMurry Fund drive will be held in Seymour on Monday and in Quanah on Tuesday.

As part of the Annual Fund effort, Dr. William Barrick of McMurry's religion department will speak in the pulpit of St. John's United Methodist Church in Stamford on Sunday February 12.

The McMurry Annual Fund was begun in 1973 to raise money for academic and general expenses of the college. McMurry president Dr. Thomas K. Kim noted at



BRUCE CAMPBELL, JR., of Knox City, left, shakes hands with Charles Stenholm, candidate for Congress from the 17th Congressional District, as Campbell accepts his appointment as Area Coordinator for the Stenholm for Congress Campaign in Baylor, Haskell, Kent, Knox, Stonewall, and Throckmorton Counties.

the time that most other private U.S. colleges have similar drives. Tuition brings in only about 40 percent of the McMurry budget.

"The McMurry Annual Fund is what I consider the lifeblood of the college," said Sharp. "How well the Methodists support the college enhances McMurry's ability to offer students a Christian liberal arts education.

"Without that support, McMurry is fighting an uphill battle," he said.

Last year the Seymour district raised \$11,139.45 for McMurry. Total Annual Fund contributions last year were

\$322,603.92, raised in campaigns in the Abilene, Amarillo, Big Spring, Lubbock, Pampa, Plainview, Seymour, El Paso

and Carlsbad districts of the Northwest Texas and New Mexico conferences of the United Methodist Church.

Bluebonnet Cafe Rule

Noon Buffet 11:00-1:30
5:30 P.M. Buffet

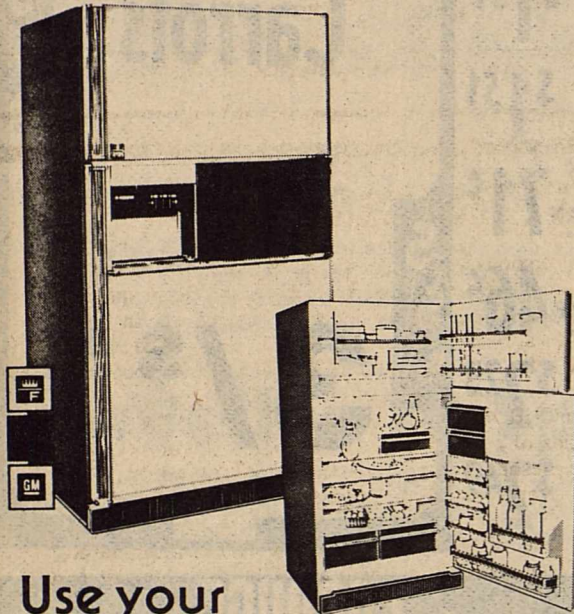
Tuesday night Mexican Buffet
Thursday night Catfish Buffet

Reddy Tips To Help You...



STRETCH

Your ENERGY Dollar\$



Use your Refrigerator Wisely...

- * Open and close the refrigerator and freezer doors only when necessary. Several items can be removed at once to reduce loss of cold air.
- * Freezers and refrigerators operate most efficiently when filled to the correct capacity. Foods should be placed slightly apart on refrigerator shelves for correct circulation.
- * Cover all liquids stored in the refrigerator (especially frost-free models). Moisture is drawn into the air from uncovered liquids making the refrigerator work harder.
- * Be sure your appliance is standing level so that the door seals properly. By setting a glass of water on the top, you can see if it is level.

Pick up your FREE copy of "ENERGY CONSERVATION" Booklet from



Home Environment Division of General Motors.

WEST TEXAS UTILITIES COMPANY



A Member of The Central and South West System

AVAILABLE NOW
the NEW Super C
Original Equipment Type
Mufflers
Free Estimates
Free Installation
Low Low Cost
years and years of
trouble FREE Service.

Nootens ★
Service Center

307 SOUTH AVENUE E HASKELL, TEXAS PHONE 864-3693

THE SALE OF THE YEAR!

SPECIAL PLYMOUTH VOLARÉ VALUE PACKAGES. SAVE UP TO \$250.



These special Volares, 2-door, 4-door, and America's No. 1 selling wagon over the past two years, come with up to \$663 worth of popular options at a \$250 savings off the sticker price! Features like AM radio, digital clock, many others. What a Volare value!

* Value Bonus Package requires optional power steering.

Volares shown with Value Bonus Package and optional custom exteriors.

INTRODUCING THE NEW PLYMOUTH FURY GRAN COUPE. SAVE \$250.

A full size savings is yours on this special Fury. \$680 worth of options for \$430. Including: halo vinyl roof, reclining buckets, much more. A savings of \$250 off the sticker price!

Fury Gran Coupe Package requires optional V-8 engine, power steering and automatic transmission.



ALSO SEE THESE OTHER GREAT VALUES

CHRYSLER CORDOBA 'S'
\$5982
Manufacturer's Suggested Retail Price excluding taxes.

CHRYSLER LeBARON 'S'
\$5403
Manufacturer's Suggested Retail Price excluding taxes.

CAR OF THE YEAR! NEW PLYMOUTH HORIZON.

38 / 25
MPG HWY / MPG CITY

*EPA mileage estimates, based on Horizon's manual transmission. Your actual mileage may differ depending on your driving habits, your car's condition, and its optional equipment.

AUTHORIZED DEALER CHRYSLER CORPORATION



1978 Plymouth Horizon

PAACIDAA
MOTOR TRENDS MAGAZINE'S
CAR OF THE YEAR
CHRYSLER
Plymouth

\$3706*

*Manufacturer's Suggested Retail Price excluding taxes and destination charges.

IT'S A GREAT TIME TO BUY AT YOUR CHRYSLER-PLYMOUTH DEALERS!

Perry Motor Co.

304 S. 1st

Haskell, Texas

864-2550

