



Per Copy

HASKELL—A GOOD PLACE TO VISIT: A BETTER PLACE TO LIVE

VOLUME NINETY-TWO

12 PAGES

HASKELL, TEXAS, 79521, THURSDAY, SEPTEMBER 7, 1978

NUMBER THIRTY-SIX

# Thirteenth Annual Fair To Begin September 21

BY REX FELKER

"The show must go on come H---or high water," is an often heard remark relative to some up coming special event listed on the calendar. However, due to our recent traumatic experience with high water, it would seem nothing short of stupidity to so brazenly challenge the weather man to make a repeat performance. Considering the fact that the special event is the 13th annual Haskell County Fair, we must also pay attention to the lucky number 13. Folks who are naturally a bit inclined to be suspicious of black cats, number 13 and walking under ladders will probably start imagining that potent things are brewing in the Witch's pot.

But taking into consideration all of the aforementioned bugaboos, present plans call for the annual fair to kick off on schedule for a three day and night successful run on the dates of Sept. 21st, 22nd and 23rd. The Haskell county fair has been recognized for several years as the largest small town fair in Texas and new and special additions to the 1978 production guarantee that it will take nothing from its' reputation.

One of the new innovations

for this year which is creating a great deal of interest and excitement, is the Haskell County Fair Queens pageant which will be the first since the organization of the annual event. On September 1st, last day for entries, twenty eight young ladies sponsored by County merchants, had entered the contest, according to Mrs. J.R. (Amelia) Perry, chairwoman of this particular phase of this years' fair.

The ATT attractions will again be here to provide the midway carnival entertainment where exciting rides will be available for the young and old to enjoy. The midway attractions will be set up on Monday of fair week and will be in operation until the final curtain is pulled on Saturday night.

Much activity will be going on Wednesday as the livestock will begin coming in, exhibit hall set up and numerous other things taking place for the weeks' agricultural and livestock promotion.

There will be free entertainment each night in the grounds with the always popular country and western music playing an important role. Each night at 10 p.m. tickets stubs will be drawn to make a cash award of \$100 to some lucky visitor.

A special called meeting of the board of directors was held on Tuesday night of this week to discuss the different phases of the fair, to iron out any problems, and to make final plans for the three day run of the fair. This years' president is Dale Burris and secretary-treasurer is Billy Jack Ray.

The Haskell County Fair Association is sponsoring a "Miss Haskell County Fair

Sweetheart Contest" for the first time this year. This affair will give the young ladies of Haskell County a chance to be introduced to the public and to each other. It has been several years since an affair of this kind has been held in Haskell, and never has the Fair Association had an event such as this.

The young ladies have been selected by business firms in the county. They will be entertained by the Haskell County Cow Belles at a tea on the night of September 18 at the Haskell Community Room, Bank Building. Judges will be present on this night and some of the young ladies will help to entertain the group. Judging will be on personality, poise, scholastic abilities, and appearance. There is to be no bathing suit appearance nor talent judging. On Thursday night, (the first night of the fair) September 21, at 7:30 p.m. the girls will be presented to the public, again at 9:00 p.m. they will be presented and the winners will be announced. There is to be a "Miss Haskell County Fair" and four (4) runner-ups.

Prizes, engraved plates, flowers, and gift certificates will be awarded these girls. Following is a list of all girls and the merchants who are sponsoring them.

Kids Duds-Haskell-Derinda Griffis; Jenny Brazell, Co Clerk, Haskell-Kay Carmac; O'Brien Co-op Gin, O'Brien-Kristi White; Leas' Beauty Shop, Rule-Kris Kupatt; McGee-Tidrow, Haskell-Sonja Tidrow; Gothard's Texaco, O'Brien-Angelia Reid; Landes Lumber, Rule-Marla Lehrmann; Exxon Company USA, Haskell-Sara Starr; Lane

Felker, Haskell-Selina Starr. Fraziers Appliance, Haskell D'Anne Burris; Philpot's Supply, Haskell-Tonya Roberts; Haskell National Bank, Haskell-Lindy Lee Collins; Anderson Tire Co., Haskell-Peggy Harris; Hassens, Haskell-Kay Campbell; Kennedy Lumber Co., Haskell Vickie New; Johnson's Pharmacy, Haskell-Tamara Parrott; Martha's Beauty Center, Haskell-Lynelle Billington; Dean Butane Co., Haskell-Carol Dean.

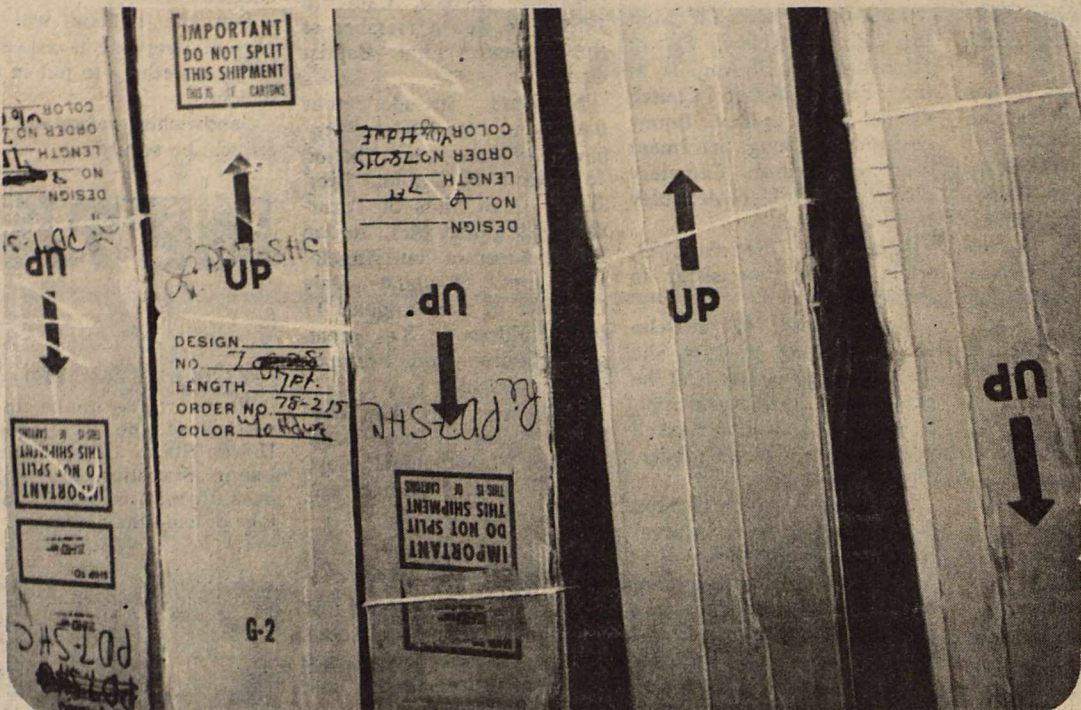
Birds Cleaners, Haskell-Kim Lane; Hartsfield Agency, Haskell-Teri Gideon; West Texas Utilities, Haskell-Debbie Morris; Home State Bank, Rochester-Cynthia Michaels; Pogue Gro., Haskell-Leisha Solomon; Heidenheimers, Haskell-Tammy Young; Knox Builders, Knox City-Shadella Boling; and Personality Shoppe, Haskell-Jackie Mayfield. The girls will be meeting with Mrs. Perry September 10th at 4 p.m. in the County Extension Service Kitchen.

## Rule Homecoming Scheduled For November 4

Rule Homecoming plans are in their final state for the Rule Homecoming to be held November 4.

Needed, Someone failed to return the address cards for the Class of 1965 and they are now needed to send out cards for this Homecoming.

Those knowing of address changes for Rule graduates made in the last two years, please call Faye Dunnam, Secretary, at 997-2603.



WHICH WAY IS UP?...If you're not sure the solution is simple, place half of the boxes one way and the other half the other

way, and you are guaranteed to be correct half of the time. (Staff Photo)

# Football Season Opens Here Friday At 8 p.m.

The Haskell Indians will host the Anson Tigers this Friday night at 8 p.m. at Indian Field for their season opener.

The Tigers defeated the Tribe last year 27-14 in the season opener.

The Tigers have a new coach and will run their

## Art Association To Hold Salad Supper

The Brazos West Art Association will meet Monday September 11th, at 7:00 in the home of Faye Dunnam in Rule, for an introductory salad supper.

The year books will be presented to each member and the entire slate of programs and guest artist will be disclosed at this meeting. Each member is to bring a salad. Guests are warmly welcome to attend.

Fern Livingood of Stamford will be featured as artist of the month by the Brazos West Art Association for the month of September. Her work will be on display at Iva Lee's Fabric Shop in Haskell and the public is invited to attend.

## CEMETERY ASS'N MEETING

Roberts Cemetery Ass'n will have a meeting Thursday, Sept. 14 at 7:30 o'clock in the Community Room of the bank. All interested persons are invited to attend.

## Beauchamp Retires

# Sue Pate Is Named New WTU Manager

Sue Pate has been named local manager for West Texas Utilities Co. in Haskell, succeeding R.H. (Bob) Beauchamp, who plans to leave the company on disability retirement.

Miss Pate's promotion was announced by WTU District



SUE PATE

offense from a Houston Veer or 'I' formation. They run a 6-1 defense. During the two scrimmages that Indian coaches have scouted, the Anson players did not wear numbers. The team has the same quarterback as last year and several returning starters. The team has good size.

The Tribe is healthy this week with no injuries reported. Jeff Hatfield, who had a broken bone in his hand, is expected to start and Monnie Hise, who had a bruised hip last week and missed the scrimmage, is also expected to see action.

The Tribe scored twice in last week's scrimmage against Archer City, but a penalty on one TD nullified the score.

The Indian coaches were pleased with the defense during the scrimmage. The defense held Archer City scoreless.

Coaches noted one change

## County 4-H Meeting Set Sept. 13

There will be a 4-H meeting, Wednesday, Sept. 13, at 5 p.m. at the County Extension Agents office in Haskell.

All members are urged to attend and all persons between the ages of nine and nineteen are invited.

in the schedule this week. The 7th and 8th grade games with Anson have been changed to October 5. The change came about when coaches received notification from UIL that Junior High School games could not begin before September 14.

## Street-Bridge Repair Work To Begin Soon

Haskell Mayor Royce Williams announced this week that the actual repair work on City streets, bridges, and parks is one step closer with the completion of Damage Survey Reports, DSR's, and the completion of the project application.

Engineers from various State and Federal agencies along with Mayor Williams and members of the Haskell City Council have inspected all areas of damage to City property and the engineers have estimated slightly over \$250,000.00 will be required to repair all damages.

Mayor Williams said that as

## BOOSTER CLUB

All Indian fans are invited to attend the booster club meeting next Monday night at 7 p.m. in the High School Cafeteria. The club will meet each Monday and review the film of the game the week before.

## Indian Band Is Largest In 13 Years

Wendell Gideon proudly announces that this year's band is the largest in over thirteen years. There are 83 members enrolled. Since this is the largest ever, there has been a shortage in uniforms. The drum section will be dressed in contrast to the band. They will wear black pants and gold silk shirts.

Band officers were elected the first day of school. As tradition holds true all officers are Seniors. They are: President, Phillip Stocks; Vice-President, Greg Gideon; Secretary-Treasurer, Vicky Hill; and Reporter, Jackie Mayfield. The Twirlers for the '78-79 year are: Patricia Arredondo (Head), Karon Gray, Sonja Tidrow, and Terri Gideon.

This Saturday the Indian Band will journey to Abilene to represent H.S. in the West Texas Fair Parade. After the parade the band will enjoy the amusements. Everyone is encouraged to come and support the band.

## COFFEE

There will be a coffee honoring Charles Stenholm, Democratic nominee for the 17th Congressional District, September 12, at 6 p.m. in the Community Building of the Haskell National Bank. The coffee is sponsored by the Haskell County Democratic Executive Committee. The public is invited to attend.



BOB BEAUCHAMP

# Light Fund Short Of Goal

The "Light up your Life with new Christmas Lights" project is actually a reality now, with the arrival last Wednesday of the decorations, a truckfull, that will light up the downtown area during the Christmas Season. These 48 units will be erected around the square, and for approximately 4 blocks each direction from the square along the highways.

As with the purchase of any item, the bill is coming due, and will have to be paid in the next 30 days. The fund to date is approximately \$600 short of the \$8,500 goal and must be met in order for the bill to be paid. This project, proposed by the Haskell Jaycees, Jaycee-ettes and Chamber of Commerce, is dependent upon donations from various individuals, organizations, and businesses in Haskell.

**1731 Collected During MD Telethon Here**

The Jerry Lewis Telethon, manned by the Haskell County Jaycees and Jaycee-ettes at The Chamber of Commerce office, collected \$1731 in Haskell County over Labor Day. This is the highest total ever collected during the telethon, and chairman Mike St. John and Earl Proctor were very enthused and thankful for everybody responding so well to this worthy cause. Special thanks go to Mrs. Judy Lanier's Girl Scout Troop, who collected \$327.50 for the largest group donation, and Mr. and Mrs. G.L. Kennedy for the largest individual donation, \$100, and Randy Messenger for most collected by an individual, \$75. Haskell Jaycees and Jaycee-ettes give a most special thanks for everybody's help.

Leaders urge anyone who has not donated to this project to do so as quickly as possible.

Contributions not previously acknowledged are Haskell Co. Jaycees, \$389.00; Jaycee-ettes, \$150.00; Perry

Motor Co., 150.00; Lee Bahney, \$15.00; Perry Bro. Variety, \$50.00. Total to date, \$7,900.63.

Needed to complete project, \$600.00. Won't you give today!



TEXAS JAYCEE-ETTE PRESIDENT Val Nesser, of Houston, was in Haskell Tuesday and stopped for a look at the new Christmas decorations which had just arrived. Shown with her are local Jaycee-ette president Diana Owens and Jaycee president Charles Thornhill. The total cost of the new decorations is about \$8,500.00 and the fund is approximately \$600.00 short of that total. Anyone who has not yet donated and would like to be asked to contact any Jaycee-ette, Jaycee or make a deposit at the Haskell National Bank. (Staff Photo)



# CLASSIFIED ADS

**NOTICE**  
The Haskell Free Press reserves the right to edit and/or delete all news stories and locals for length and liability and to refuse to print anything deemed not newsworthy.

**NOTICE**  
Due to the bookkeeping involved and the high postal rates, we ask that you please remember that classified ads are Cash in Advance unless you are a business firm or have an established credit with the Haskell Free Press. Either mail your ad with check or if you need assistance in writing it we will be happy to help you. Rates are 5c per word or a minimum of \$1.50.

**NOTICE**  
Please notify us of your change of address. If you do not, the Post Office charges us 25c for each time the Haskell Free Press is returned to us, this plus the cost of stencils, time and labor can make your move costly to us. In the future, failure to notify us will result in one month being deducted from your subscription.

**For Sale**  
McCULLOCH CHAIN SAW HEADQUARTERS. A saw for every job. See new. Woodard Farm Sale. 7fc

**WOODARD FARM SALES**  
Ford tractors, equipment, long harrows, Lilliston-Heston-Oliver plow parts. 4fc

**FOR SALE:** Gates fan belts and hoses. Also, heater hose, Delco Batteries and etc. stuff. Texaco gas and other oil and service. M.C. Wilfong, phone 864-2766. 2fc

**FOR SALE:** Illustrated Price Guide Books on all antiques. Sherman Interiors and Antiques, northwest corner of square. 6fc

**NEW INTERNATIONAL** Harvester 86 series Tractors with full 2 year warranty. Priced to Sell—See A.C. or Larry before you buy—Richardson Truck and Tractor 864-3474. 11fc

**FOR SALE:** 1975 Honda 750 with farings. Call 864-3427 or 864-2624. 26fc

**FOR SALE:** 1974 Ford 1 ton winch truck, 1968 580 Case back hoe and trailer, 1974 Chevrolet 1/2 ton pickup and 1972 International 2 ton truck. 817-864-2721. 30fc

**FOR SALE:** A clean 1972 Dodge Pick-Up, with Long Wheel Base and Power and Air. Call A.D. Frierson 864-3129. 35-36p

**FOR SALE:** A good used trombone. Call Juanita Dunnam at 864-2008. 35-36p

**FOR SALE:** Paint-Welsh mare, 9 years old, gentle, good children's horse. Call Sammy Larned at 864-2611 or 864-2454. 36c

**FOR SALE:** Trombone. Good condition. Call 864-3638, Albert Roberts. 36p

**FOR SALE:** 1 double bed size feather bed complete with removable flannelette cover, \$17.00, Mrs. Walter Kretschmer, 864-2447, 1300 N. Ave. G. 36p

**FOR SALE:** 1 hydraulic control dirt mover, 4 used tractors, equipment for all, plus one-way tandem, offset, mouldboard plows, trailers, propane tanks, irrigation pipe & trailers, and 2-4 inch turbine pumps, complete. 817-997-2394. 36p

**Attention Working Mothers!** Would like to keep a baby or small child in my home Mon.-Fri. Good location, experienced, fenced yard. 604 N. 6th. 864-2924. 36p

**For Sale**  
TRAILER CAMPER: ice box, stove, \$250; Camper Shell, \$100; 8 hp Elect start mower, nice; Gas Stove, \$50; Refrigerator, \$35; Stereo, AM-FM Tape Console, \$100; 11,000 BTU Fedders Air Conditioner, \$65; Small Refrigerator for office-Dorm, \$95. Western Auto. 36c

1971 Cadillac Sedan-Deville, nice \$1595.00. Lone Star Boat, Trailer, old motor, \$200.00. Western Auto. 36c

**FOR SALE:** 68 Ford Pick-up, 360 V-8 automatic in good condition, \$500. Call 864-2741. 36p

**EXTRA GOOD** Caddo Wheat, Clean, Treated and Sacked. Call G.M. Kemp at 864-8980, Godwin Station after 6 Call 864-3476. 36-37p

**FOR SALE:** TAM 101 Seed Wheat and Walken Oats. 1st year from certified. 817-422-4606 day and 817-422-4816 night. 35fc

**Miscellaneous**  
WANTED: Good used furniture and appliances. We buy and sell. Lee Used Furniture 120 N. Swenson St. (one block north of red light on hiway 277) Stamford, Texas. Phone 773-5608. 42fc

Shop our selves for EVERY-DAY LOW PRICES at Johnson Pharmacy where low overhead means low prices. 11fc

**WATER WELL DRILLING:** House, Stock, irrigation well, test holes. House well \$7 a ft. Call W.P. Hise, 864-3727 day or night. 26fc

**NEW D 5 DOZER** for your conservation or oilfield work. Tanking, build roads, water ways, brush work, build and rebuild terraces. Call Jerry Polk-Munday, 422-4245. 35-36p

**KITTENS** to be given away. 7 weeks old, litter trained. Call 864-2736. 36p

**NEW & Remodeling J & J Plumbing.** Call 915-537-2288 or write P.O. Box 2257-Abilene, Texas. 34-37p

I will still be selling my Mexican food Sat. the 9th and Sat. the 11th. Those two Saturdays will be my last food sale at my house. If you would like burritos or tamales to freeze, please let me know by calling Baird Cleaner's or calling 864-3344. Just ask for Paula. 36p

**INSTANT CASH** for any good merchandise, modern or old. Phone 864-3197 anytime. Lacey's, Throckmorton Highway, Haskell, Texas. 36fc

**Garage Sales**  
GARAGE SALE (3 family): Women's and Misses clothes size 7 to 10, nice coats, bedspreads, curtains, many odds and ends, baby things, and children's clothes. 1501 N. Ave. H Fri. 1-5:30, Sat. 9 to 5. 36p

**GARAGE SALE:** 112 N. 2nd, Friday and Saturday. 9:00-5:00. 36p

**CARPOT SALE:** 1305 N. Ave. L., Wed. & Thurs. nights-6:00 p.m. till-, upright frostless freezer, misc. items, good clean clothes. 36p

**GARAGE SALE:** 1201 N. Ave. F, Friday & Saturday. Selling Bedspreads, curtains & drapes, rods, clothes-children 5-6x, teens 1-3; 12 volt 8 track tapedeck stereo, coats, pictures, 2 ml. 2 wheel trailer, misc. 36p

**GARAGE SALE:** Good children's clothes, dishes, drapes, bedspread, & misc. items. Wed. afternoon, Thurs. & Fri. 1200 N. Ave. G. 36p

**GARAGE SALE:** Thurs., Fri., and Sat. 4th house on left south of Lutheran Church on Paint Creek Road. 36p

**BIG! BIG! CARPORT SALE** behind the Red house. 601 N. Ave. G. Saturday, September 9, 8-5. 36p

**Garage Sales**  
GARAGE SALE: Thurs. & Fri. 9-5. Clarinet, Metal Detector Guitar, Color T.V., Bicycles, Clothes, Household, Misc. corner N. 10th and I. 36p

**ESTATE SALE:** Sept. 6 & 7, 904 N. Ave. E. Furniture, Housewares, children's clothes and Toys, two water type air conditioners, German type wall units (has bar, holds T.V. & Stereo, and storage). Also 1973 Ford. 36p

**BIG GARAGE SALE:** Electric Stove Top, tools, bicycles, nice clothes for all the family, toys, games, dishes, craft items and many misc. items. Thurs. only, 9:00-5:00. 707 So. Ave. E. (across the street from Cliff's Garage.) 36p

**Lost & Found**  
FOUND: Two boats, one white and green, one red and white. Call Gene Wells. 36p

**Help Wanted**  
WANTED: School bus driver-janitor combination. Apply at Haskell High School or call 864-2848. 36c

**Jobs Wanted**  
LET US Price your next prescription. You will be glad you did. Johnson Pharmacy. 17fc

Will baby-sit on Friday nights during football games. Call 864-2445. 36p

WILL come to your home. Bring drapery samples to help you with decorating. Call Jessie Lee's Interior at 677-7819. 36-37p

**Wanted**  
WANTED: Any type of welding, portable rig, oil field insured. Call Nathan "Pat" Patterson (817) 864-2264 res. 864-2204 104 N. Av. D. Haskell, Texas. 22fc

**Wanted**  
WANTED: For Standard and Parallel Terraces and Diversion and Waterways call Glenn Phillips at 806-495-2985 or write P.O. Box 191, Post, Tex. 79356. 34-37p

**Mobile Homes For Sale**  
FOR SALE: 45' x 10' 2 Bedroom Trailer House, with Central Heat. See at Webbs County Line 8 mi. West of Rochester. Also have Sand, Gravel for sale and Dump Trucks for hire. Call 743-3298. 35-38p

**Real Estate**  
FOR SALE: 2 Bedroom House, newly remodeled, fully carpeted. Call 997-2328. 27fc

**FOR SALE:** 5 Room Home that is fully carpeted and paneled to be moved. Call after 5 p.m. 743-3486. 33-36p

Would like to rent or lease land in Haskell County. Call Bob Aycock at 864-3484 or 864-3332. 36-38p

Will build any type of feedlot, corral, carpet, or any other kind of metal project. Will furnish portable welder. Call Jeff Teague at 864-3596. 36p

**LOTS** for Sale on Throckmorton Hwy. Call 864-3424 or 864-3459. 36-39c

**FOR SALE:** 2 Bedroom and Bath Stucco Home. Plumbed for washer & dryer. Spacious living, dining, & kitchen area. Carpeted, attached garage, tall back yard fence. Need to sell. Price below market value. Make us an offer. Exclusive. Cross Real Estate. Phone 743-3425. Rochester, Texas. 36c

**Card of Thanks**  
We want to thank all our friends who showed so much kindness during the illness and death of our beloved father. May the Lord be with all of you. The Family of Victor Sanchez, Sr. 36c

**CARD OF THANKS**  
We would like to express our thanks to everyone for their kind deeds and expressions of concern shown at the recent loss of our mother. Sincerely, David & Amy Newman 36p

Yovne Howard's contest for the Queen Race drawing was held Sept. 3. Winners were: Quilt-Elvira Schmidt, Haskell; Pig-Alberto Salenas, Rochester. We thank everyone that bought tickets and helped out. The Howard Family. 36p

Need a babysitter? Call 864-2924 for experienced child care 5 days a week. Laela Martin. 36p

**PUMPS**  
Irrigation-Domestic Formation Testing Well Drilling We pull & repair all makes. REA PUMP CO. Throckmorton Highway Haskell, Texas Call 24 hrs.—864-3372 41fc

**Real Estate**  
**FOR SALE**  
Three Bedroom, Brick on 1/2 Acre Lot, 1 1/2 Bath, Spacious Kitchen, Utility Room, Study, Large Double Garage with extra storage. Fenced in Back Yard. 808 N. 16th. SHOWN BY APPOINTMENT ONLY. 300 Acre Cotton Farm SW of Haskell, \$365/acre. Large two bedroom house, ready for occupancy. Corner lot, fenced in backyard, will sell for \$10,000. 1015 N. Ave. D. WE NEED LISTINGS. IF WE CAN HELP YOU SELL OR BUY REAL ESTATE. PLEASE CONTACT US. Doyle High 864-2515 The Drug Store 100 S. Av. E. 34fc

**FOR SALE**  
New 3 Bedroom Brick Veneer on N. Ave. M Priced to sell. 2 Bedroom House on Av. K Real Nice 3 Bedroom B.V. Priced To Sell On N. Ave. E. 3 Bedroom Brick in North Part of Town. Priced to Sell. 2 Bedroom House on S. Av. E. We need more listings, (See us we sell) Furh's Real Estate Stanley Furh 864-2576 Betsy Nanny 864-3626 Garlene Dunnam 864-2814 Frances Arend 864-3156 35c

**DUNCAN REALTY**  
Doyle High 864-2515  
The Drug Store 100 S. Av. E. 34fc

**For Sale**  
New 3 Bedroom Brick Veneer on N. Ave. M Priced to sell. 2 Bedroom House on Av. K Real Nice 3 Bedroom B.V. Priced To Sell On N. Ave. E. 3 Bedroom Brick in North Part of Town. Priced to Sell. 2 Bedroom House on S. Av. E. We need more listings, (See us we sell)

**Furh's Real Estate**  
Stanley Furh 864-2576 Betsy Nanny 864-3626 Garlene Dunnam 864-2814 Frances Arend 864-3156 35c

**SALES AGENT WANTED**  
MAN OR WOMAN  
SELL ADVERTISING  
SPECIALTY GIFTS  
Businessmen in your area like to advertise by giving calendars and specialty items to their customers. This is a real opportunity for you. The Thos. D. Murphy Co., is a pioneer in the advertising field. If you can organize your time and work with a minimum of supervision this can be an excellent part-time or full-time business for you. Excellent commissions paid at once. Your accounts will be protected, repeat orders make money for you. Exciting offer. Write to Bert H. Belt, Sales Manager, The Thos. D. Murphy Co., 110 So. Second Street, Red Oak, Iowa 51566. 36-37p

**Obituaries**  
**Ira Dee Campbell**  
Ira Dee Campbell, born in Munday, Aug. 11, 1906, died in Ft. Worth, Aug. 31. He lived in Rule for many years, attended Rule High School and McMurry College. While in Rule, he was a dry goods merchant. For the last 30 years, he has lived in Ft. Worth and been an independent oil producer. Surviving are his wife, Mary Frances, a son, John Campbell of Arlington, three daughters, Mrs. James Hampton, Mrs. Gary Owens of Ft. Worth, and Mrs. Allen King of Crowley, a brother, Frank Campbell of Rule, a sister, Ed Verner of Rule, and ten grandchildren. He was a member of the University United Methodist Church of Ft. Worth.

**Inez Kelley**  
Funeral services for Mrs. Inez Brians Kelley, 61, of Haskell, were held Aug. 31, at the First Baptist Church Chapel with the Rev. Jimmy Griffith officiating. Interment was in Loraine Cemetery directed by Holden-McCauley Funeral Home. Mrs. Kelley died Aug. 29, while visiting her sister in Bedford. Born Feb. 28, 1917 in Delta County, she was an L.V.N. She married Floy Kelley and he preceded her in death on Sept. 8, 1965. She moved to Haskell in January 1978 from Snyder. She was a Baptist. Survivors include: three daughters, Mrs. Jim (Marva) Garwood of Lubbock, Mrs. Kenneth (Pat) Quattlebaum of Haskell, Mrs. Jim (Sharon) Townsend of Casper, Wyo.; two sisters, Mrs. Nadine Morris of Bedford, Mrs. Mona Head of Houston; one brother, D.F. Brians of Abilene; 5 grandchildren and 2 great-grandchildren. Pallbearers were: Vernay Burson, Joe Kimbrough, LeRoy Isbell, Albert Barnett, Duward Campbell, and Burton Sandefur.

**Mrs. Cox**  
Funeral services for Mrs. Robert Cox, 84, a longtime Bowie resident who died August 28, in a Bowie nursing home after a short illness, were Tuesday in Pleasant Mound Freewill Baptist Church. The Rev. Tiff Covington, pastor of Freewill Baptist, officiated, assisted by the Rev. Rural Conner, a retired Bowie minister. Burial was in Buffalo Springs Cemetery under the direction of Owens & Brumley Funeral Home. Her grandsons served as pallbearers. Mrs. Cox was born Feb. 11, 1894, near Paris, and was a member of Freewill Baptist for more than 50 years. Survivors include her husband; two sons, Edward Cox and Zirl Cox, both of Dallas; two daughters, Mary Katherine Simmons of Dallas and Mildred Dixon of Vashti, a sister, Mary Kemp of Haskell, 12 grandchildren and 12 great grandchildren.

**Mary Chandler**  
Funeral services for Mrs. Mary Chandler, 80, of Weibert were held Sept. 6 at the First Baptist Church in Weibert with the Rev. Paris A. Barton, pastor and the Rev. Roy Herricks, a Weibert Foursquare minister, officiating. Interment was in Johnson Memorial Cemetery in Munday with Holden-McCauley Funeral Home directing.

**PHILPOT'S DITCHING SERVICE**  
Plastic pipe & fittings, sewer pipe. Water & gas lines run. Call Philpot's Supply & Service. 864-3010 402 N. 1st 15fc

**GLENN PHILLIPS**  
Standard & Parallel Terraces Diversion & Waterways P.O. Box 191 Post, Tex. 79356 Phone 806-495-2985 34-37p

**NORA SEED OATS**  
Extra Clean J.R. Perry Farms 915-773-2968 33-36c

**FOR SALE:** One used Bundy Clarinet in excellent condition. New at around \$225.00. Used at \$100.00. See Wallace Cox, Jr. at Jones-Cox, Co. 35-36c

**HOT WATER HEATER HEADQUARTERS**  
Electric State with Sand Hog Heating Element 5 Year Warranty Gas State with 5 yr. Warranty on Tank 2 Yr. on Controls Philpot's Supply & Service 402 N. 1st 864-3010 37fc

**H.F. LANGFORD**  
Sand and Gravel Caliche and Fill RULE HWY. WEST HASKELL

**"Good Neighbor"**  
For all your insurance needs see: Brian Burgess 111 N. Ave E 864-3250 STATE FARM INSURANCE COMPANIES

**Used Color TV's**  
For Sale Cheap Anderson Tire Company 206 S. Av. E. 864-2900 16fc

**SAVE MONEY ON PRESCRIPTIONS**  
Send us your new prescriptions and lists of other drugs you are taking for our PRICE QUOTATION. Include names, strengths and quantities for the other drugs. YOU MAY SAVE up to 50% or more! If you are not pleased with our quoted prices you may have your prescriptions returned to you. ECONOMY DRUG, INC. offers you DRUG ECONOMY. ECONOMY DRUG, INC. P.O. BOX 1063, Big Spring, Texas 79720

**Hermann Sons To Hold Regular Meeting**

Regular Sons of Hermann Lodge #241 will hold their regular monthly meeting Sunday, Sept. 10, at the Lodge Hall. The meeting will begin at 3:00 p.m. All members are asked to attend to pick up their refund checks. Pop the balloon will be played. Everyone is asked to bring something to put in the balloons. Sandwiches, cakes and coffee will be served.

**NEWS OF WOMEN**  
**Women At Work**  
Women today make up almost half the work force. United States Department of Labor Statistics show, and over 35 million women hold jobs outside their homes.

**Crustal activity**  
The earth's crust doesn't just lie there. It shifts, slips, slides — and the results can produce earthquakes, volcanoes and continental drift. To help high school students have a better grasp of the ongoing processes of the earth's crust, The University of Texas and five other institutions in the U.S. are participating in a national project to prepare current materials on crustal activity for use in high school classrooms. The thought is that decisions on a variety of future issues — the location of nuclear power plants, for example — will require informed public opinion about crustal changes. One successful working woman is Mrs. Winifred T. Wells, a North Carolina attorney. She has served as county attorney and resident judge and was recently elected, with Dr. Henry Ponder (President of Benedict College, a member of the United Negro Fund) to the Board of Directors of J. P. Stevens & Co., Inc.

Some seven percent of the lawyers and judges in the country and about ten percent of America's physicians and surgeons are women.

**Dirt Contractor's**  
Terracing, Tank Building & Repair-Road Construction & location work. Complete line of equipment. Call Damsen Petroservices. 915-394-4251 Business 915-453-2992 Home Ramey Jameson 34fc

**Quality New Homes Construction**  
Have lots to build on East Part of Town Tommy McAdams Builder Call 864-2785 13fc

**FARMERS**  
I need 2 IH 95 Brush Strippers with CABS; 2 MODLE BUILDERS 32', D.H. Brewster, Box 26, Van Horn, or contact Hubert Seale, M.D., Abilene, Tx 915-698-0622. 33-36p

**Wiseman Construction Co**  
Land Cleaning, Stock Tanks, Road Building, Terracing and Dirt Work of All Kinds. D6 Dozer-F14. Motor Grader. Registered with the Texas State ASCS Office. Office Kenneth Patterson 817-683-4996 After Hours 817-683-2118 34-37p

**The Haskell Free Press**  
Established January 1, 1886 PUBLISHED EVERY THURSDAY MEMBER TEXAS PRESS ASSOCIATION  
BILL COMEDY—Publisher DON COMEDY—Editor Entered as second-class matter at the postoffice at Box 577, Haskell, Texas 79521, under the Act of March 3, 1879.

SUBSCRIPTION RATES		Total
In Haskell and Adjoining Counties		
One Year		\$6.25
Six Months		\$4.00
Two Years		\$12.00
Elsewhere in Texas		
One Year		\$7.50
Six Months		\$5.00
Two Years		\$14.00
Outside of Texas		
One Year		\$9.00
Six Months		\$6.00
Two Years		\$17.00

NOTICE TO PUBLIC—Any erroneous reflection upon the character, reputation or standing of any firm, individual or corporation will be gladly corrected upon being called to the attention of the publishers.







# Green, Tyler Repeat Vows

Miss Lura Louise Tyler and Billie Frank Green were married Saturday, September 2nd at 6:00 in the evening in the First Methodist Church of Haskell. The Rev. James Putnam officiated at the double ring ceremony.

The bride was given in marriage by her father, George N. Tyler, of San Antonio, Miss Lynnetta Bragg of Haskell and Abilene was Maid of Honor and Rickie Green of Dallas served as Best Man.

Vows were solemnized against a background of greenery, large gold candelabras and a lighted cross. The bride's white, floorlength, Victorian wedding gown was of cotton voile with lace insets on a fitted bodice coordinating with a lace flounce on the hemline and matching lace on long bishop sleeves. On the neck of her gown, she wore a cameo of her maternal grandmother's for something old, her gown was new, and a borrowed blue garter completed the traditional "bridal quartet." A mixture of yellow and white daisies, gladiolas, carnations and Baby's breath composed the bridal bouquet. Miss Bragg wore a floor-

length dress of yellow sheer knit with a v-neck and empire waist. For flowers, she wore a corsage of yellow and white daisies and carnations. Traditional wedding music was played by Mrs. Kenneth Lane.

Ann Tyler, of Austin, registered guests and Spencer and Bruce Tyler, brothers of the bride lighted candles and seated guests.

Friends of the bride and her grandmother, Mrs. Lillian Spencer, hosted a reception in the Fellowship Hall immediately following the wedding. The color scheme of yellow and white appeared in the tiered heart cake, fresh flowers, punch, and serving pieces.

After a short trip, the couple will be at home in Dallas.

Out-of-town guests included Mrs. Billy Moore of Mesquite, Bruce Tyler of Denton, Mr. and Mrs. Spencer Tyler of Austin, Mr. and Mrs. George Tyler of San Antonio, Kathie Campbell of De Soto, Mr. and Mrs. Rickie Green of Dallas, Mr. and Mrs. Jody Edwards of Waco, and Mr. and Mrs. David Green of Oklahoma City, Okla.

bras and a lighted cross. The bride's white, floorlength, Victorian wedding gown was of cotton voile with lace insets on a fitted bodice coordinating with a lace flounce on the hemline and matching lace on long bishop sleeves. On the neck of her gown, she wore a cameo of her maternal grandmother's for something old, her gown was new, and a borrowed blue garter completed the traditional "bridal quartet." A mixture of yellow and white daisies, gladiolas, carnations and Baby's breath composed the bridal bouquet. Miss Bragg wore a floor-

length dress of yellow sheer knit with a v-neck and empire waist. For flowers, she wore a corsage of yellow and white daisies and carnations. Traditional wedding music was played by Mrs. Kenneth Lane.

Ann Tyler, of Austin, registered guests and Spencer and Bruce Tyler, brothers of the bride lighted candles and seated guests.

Friends of the bride and her grandmother, Mrs. Lillian Spencer, hosted a reception in the Fellowship Hall immediately following the wedding. The color scheme of yellow and white appeared in the tiered heart cake, fresh flowers, punch, and serving pieces.

After a short trip, the couple will be at home in Dallas.

Out-of-town guests included Mrs. Billy Moore of Mesquite, Bruce Tyler of Denton, Mr. and Mrs. Spencer Tyler of Austin, Mr. and Mrs. George Tyler of San Antonio, Kathie Campbell of De Soto, Mr. and Mrs. Rickie Green of Dallas, Mr. and Mrs. Jody Edwards of Waco, and Mr. and Mrs. David Green of Oklahoma City, Okla.

## Davis Reunion Held Sunday

The descendants of the late Ben and Maggie Davis met in the V.F.W. Hall Sunday, September 3rd for their annual reunion.

There were 95 present to enjoy the event. A bountiful meal was served at the noon hour, and a lot of visiting during the day.

Those present were from Lubbock, Morton, Crosbyton, Goodland, Bledsoe, Stamford, Abilene, Mineral Wells, Hawley, Rule, Roaring Springs, Wichita Falls, San Angelo, Lorenzo, Clyde, Irving, and Haskell.

## Engagement Announced

Mr. and Mrs. Grady Holmes of O'Brien announce the engagement of their daughter, Donna LaRee to W.H. Patterson, son of Mr. and Mrs. W.H. Patterson of Rochester. The couple plan to wed in October.

## Hospital Notes

**ADMISSIONS**  
MEDICAL: Donald Harden, El Paso; Gladys Roberts, William Moore, Haskell; William Russell, Rochester.  
SURGICAL: Jessie Strickland, Haskell.

**DISMISSALS**  
Milge Brown, Rudolph Middleton, Nellie Collins, Essie Jettan, Bobby Dean, Steven Schmidt.



MR. AND MRS. WALTER BLAIR

## Blair, Beattie Wed In England

Heather Elizabeth Beattie and Walter Lincoln Blair were united in marriage August 5, at St. Mary's Church in Andover England, with the Rev. P. Chandler conducting the service.

The bride is the daughter of Mrs. J. Beattie-Smith of Andover, England. The groom's parents are the Rev. and Mrs. Kenneth Blair of Haskell.

The bride, given in marriage by her mother, wore a dress of white chiffon and Swiss lace with a veil and a bonnet of Swiss lace. She wore pearl earrings and a pearl and jade necklace and carried a bouquet of pink roses and white heather.

Bridal attendant was Mrs.

Wendy Egan. She wore a brown and white floral print dress and carried a posy of pink and white roses.

Kieron Beattie, brother of the bride, was Best Man.

A reception was held following the ceremony at the Bere Hill House Hotel in Andover.

The groom is a graduate of Haskell High School and Midwestern University in Wichita Falls. Following a wedding trip, they will reside in Fort Worth where the groom will attend classes in psychology at the University of Texas at Arlington.

Mrs. Kenneth Blair attended the wedding from Haskell.

## Around Town

Kevin Ray, son of Mr. and Mrs. Ray Herring, has been visiting his grandparents, Mr. and Mrs. Bud Herring for a week. Mr. and Mrs. Bud Herring took him home this weekend and stayed in his new home in Tyler.

Over the weekend, visiting with Mr. and Mrs. Amonett, were Mr. and Mrs. Howard Burnes of Dallas. For Sunday, were Mr. and Mrs. Bill Panel and children, Mr. and Mrs. C.C. Hook from Haskell, and Mrs. Betty Sue Hook from Lubbock. Visiting Sunday afternoon were Mrs. Mollie Darden, Mr. and Mrs. Arville Darden of Haskell and Mr. and Mrs. Cliff Darden of Irving.

Visiting Mr. and Mrs. E.L. Hillard over the weekend were Mr. and Mrs. Gary Shaw, Dawn, Karen, Loren and Marshall of Bryan. Mr. and Mrs. Ronald Hilliard, Jarred and Jasen of Lockhart visited Mr. and Mrs. E.L. Hilliard and Mr. and Mrs. Rex Murray of Rule over the weekend.

Mr. and Mrs. Billie Jack Ray have just returned from an extended trip to England and Ireland. They went to Limerick Ireland for a visit with Mr. and Mrs. James

Miller and then the Millers accompanied them back to London for a vacation and sightseeing.

While in London they were able to see Buckingham Palace, Picadilly Square, Trafalgar Square, (to feed the pigeons) the London Bridge, Big Ben, House of Parliament, and to take a walk through Hyde Park.

The highlight of the trip was a visit to the London tower where they viewed the Queens Jewels and saw the Star of Africa Diamond which belongs to the Queen. It is over 500 carats in size.

They left Monday noon for the return home and the Millers were leaving the same day to return to Limerick where he is employed by Sedco Drilling Company as office manager on their offshore drilling operations there.

## RULE RECREATION CLUB

The Rule Recreation Club will have its monthly dinner on Sunday, September 10 at 12:15. Hostesses will be the Wallace Allison's and Rayverne Oliver's.

Classifieds  
Small ads...Big Results

## HASKELL Lunch Menu

September 11-15  
**MONDAY**  
1&2 Hamburgers  
3 French Fries Catsup  
4 Lettuce, Tomatoes, Onion, Pickles  
5 Milk  
Extra Brownies

**TUESDAY**  
1 Spanish Dumplings  
2 Seasoned Greens  
3 Cornbread Butter  
4 Peach Halves  
5 Milk

**WEDNESDAY**  
1&2 Pizza  
3 Buttered Corn  
4 Fruit Jello  
5 Milk

**THURSDAY**  
1 Sliced Turkey Roll with Gravy  
2 Baked Potatoes  
3 English Peas  
4 Hot Rolls Butter  
5 Milk  
Extra Peanut Butter Cookies

**FRIDAY**  
1 Meat Loaf  
2 Mashed Potatoes  
3 Hot Rolls Butter  
4 Garden Salad  
5 Milk  
Extra Applesauce Cake

## Breakfast Menues

September 11-15  
**MONDAY**  
Orange Juice  
Cereal  
Milk

**TUESDAY**  
Grape Juice  
Cereal  
Milk

**WEDNESDAY**  
Apple Juice  
Cereal  
Milk

**THURSDAY**  
Mixed Fruit Juices  
Cereal  
Milk

**FRIDAY**  
Orange Juice  
Cereal  
Milk

## MARRIAGE LICENSES

Marriage Licenses issued during the month of August, in Haskell County included: James Edgar Walling, III Haskell, and Mary Loretta Callaway, Waco; Danny Paul Harris and Reida Vesta Mullino, Rochester; Thomas Derrell Sorrells, Rule and Twyla Renee Turnbow, Weirter; Billie Frank Green and Lura Louise Tyler, Haskell; Marlin Jewell Loewen, Abilene and Opal Belle Waters, Haskell.

## Rice Springs News

The Lutheran Church will be bringing the Sunday morning services for the month of September.

Frankie Posey and Neta of Knox City visited with Edna Collins.

Visitors of Charity Bradley included: Mrs. Marie Townsend, Mrs. Carl Baugh, Mrs. W. Doyle, Immalee Smith, Mary Place, and Lucy Hunt all of Rule. Aubrey Spalding of Hamlin, Mrs. Maude Kittley of Stamford, and Mrs. Easter May of Knox City.

Maude Kittley of Stamford visited with Willard Jones. The singers from the Sweet Home Baptist Church of Rule, entertained the residents Wednesday night. Everyone looks forward to their return.

Otto and Lula Peiser of Lubbock visited with Martha Peiser, Milton Reeves of Knox City visited with Joe Teague and Gene Collier.

Alma Cole enjoyed a visit with her daughters, Jane Barrett of Santa Anna, Calif. and Ruth Barton of Harlingen. Britt and Vera Baker of Hamlin visited with Beatrice Livengood.

Maggie Martin welcomed visits from Horace and Ada Snyder of Seymour, Marie Townsend, Laverne Lee and Julie and Ima Lee Smith all of Rule and Aubrey Spalding of Hamlin.

William Moore is in the local hospital. Everyone wishes him a speedy recovery.

Visitors of Trudie Bush included: Mrs. W.M. Smith of Denver City, Flora Smith, Mrs. Raymond Smith, Mr. and Mrs. Hollis Rucker all of

Rule. Aubrey Spalding of Hamlin and Linda Bartley of Lubbock.

Gary and Charlotte Turnbow of Abilene visited with Mae Belle Turnbow, Hallie Horgan, Zina Bills, and Lucy Hunt all of Rule, and Ruby Pierce, and Easter May of Knox City visited with Ora McCollough.

## Homemakers Install Officers

After a delicious salad supper was enjoyed by members and associate members retiring president, Paula Everett, called the meeting to order. Closing remarks were made and gratitude was expressed to all who had helped make the past year a very successful one for Young Homemakers. New officers for 1978-79 were then installed by Janis Browning. They are: President-Shelia McMeans; Vice-President-Shelia Hester; Secretary-Kathleen Tanner; Treasurer-Peggy Darden; Reporter-JoNell Trammell; Parliamentarian-Paula Everett.

## Freshman Class Elects Officers

The Freshman class officers were chosen for this school year, August 28. The class elected Casey Hannsz-president, Aaron Weaver-vice president, D'Anne Burris-secretary-treasurer, Terri Welsh-reporter, and Laurie Reynolds-student council representative.

\*\*\*\*\*

**You are invited to a  
Coffee  
Tuesday, Sept. 12, 6 p.m.  
Honoring  
Charles Stenholm**

Haskell National Bank  
Community Room

Get acquainted with  
your next congressman

Hosted By  
**Haskell Democratic  
Executive Committee**

\*\*\*\*\*



MRS. BILLIE FRANK GREEN  
...formerly Lura Louise Tyler

**ONE FREE**  
Big Country Elementary & High School STUDENT  
**ADMISSION COUPON**

**ONE DAY ONLY**  
TUESDAY,  
September 12  
Use Before 7:00 p.m.

**FREE ENTERTAINMENT**  
11:00 a.m. Gates Open  
4:00-6:00 "Mr. Pockets" on the Midway  
6:00 p.m. The Kendalls (Outdoor Stage)  
10:00 p.m. The Kendalls and The Amazing Vandermeide (Outdoor Stage)

**The West Texas Fair**  
ABILENE, TEXAS

**Tuesday, Sept 12**

**9 99¢**

KING SIZE  
WALLET  
CREATIVE  
COLOR  
PORTRAITS  
FOR ONLY

Kodak paper. For a Good Look at the Times of Your Life.

Extra Charge for GROUPS WE USE KODAK PAPER

NO LIMIT

GET PICTURES MADE OF GRANDPA, GRANDMA, DAD, MOM AND ALL THE LITTLE ONES AT THESE SAME LOW PRICES!

**SHUGART COLOR PHOTOS**

ASK About Our FREE 8 x 10 OFFER

**M SYSTEM**  
Your FRIENDLY  
**SUPER MARKETS**  
112 N Ave. D HASKELL, TEXAS

Hanes September 8-16

**Look Alive Sale**

**Alive**

support pantyhose **\$1.00 off**  
suggested retail \$5.95 Now \$4.95

support stockings **70¢ off**  
suggested retail \$3.95 Now \$3.25

THE *Personality* SHOPPE

**Frigidaire Jet Cone Washers.**  
Every laundry day, you'll be proud of the way they get your clothes clean.

Rugged Dependability: It's an integral part of every Frigidaire Heavy Duty Washer.

Wash a Full 18-lb. Load or just a few pieces, with just the right amount of water.

All Frigidaire Jet Cone Washers have an exclusive Up-and-Down Agitator Action. It gets clothes down to the bottom of the tub, where Cleaning Power is Greatest, an average of 9 times per regular Wash Cycle.

ASK ABOUT OUR SCHOOL CHANGE-OUT SPECIALS—  
ON FRIGIDAIRE REFRIGERATORS, RANGES, WASHERS & DRYERS  
.... BIG SAVINGS!

**Frigidaire Automatic Dryers.**  
They offer care for today's fabrics, backed by the 59-year Frigidaire tradition of craftsmanship.

Every Frigidaire Dryer offers you the Capacity to Help Save Energy: A Full 18-lb. Capacity that lets you Dry One Big Load, instead of Several Energy-Wasting Smaller Loads.

Frigidaire Dryers know when to take the Heat off — to Save you more than just Energy.

The 3-Step Starting Procedure Helps Prevent Accidental Dryer Operation.

**WEST TEXAS UTILITIES COMPANY**  
**WTU**  
A Member of The Central and South West System

Qualified Factory-Trained Servicemen Offer You The Finest In Appliance Service.



# Sagerton Community News

In the 1950's Mrs. Delbert LeFevre began her correspondent career that lasted for more than two decades. She has diligently reported the news and events that have taken place in and around Sagerton.

August 31, 1978 marked the end of Joyce's duties as our official "public ear". From all of us in Sagerton, a great big THANK YOU for the many hours you spent letting readers know that this little town is still alive and kicking.

Your new correspondent is Johnny Baitz, Rt. 1, Box 67, Moorewood Trail. I am a 1976 graduate of Rule High School and a member of Faith Lutheran Church. I attended Texas Tech University in Lubbock one year before returning to farm in the Sagerton and Old Glory areas. I am a junior accounting major at Abilene Christian University.

Anyone wishing to have news submitted for publication should turn it in or call me at 997-2123 by Saturday of each week. If you can't get a

hold of me you might call either 997-2686 or 997-2470 and give your news to my mother or my sister-in-law. (They might shoot me when they read this.)

The community sends get well wishes to Mrs. Lillie Lehrmann and Mr. Allen Meir who have been patients in Stamford Memorial Hospital. Mrs. Lehrmann's daughter and son-in-law, Mr. and Mrs. J.C. Schwartz of Snyder have been staying with her.

A somewhat dismal dove season opened officially on September 1. W.F. Tredemeyer was able to bag just two birds on his first hunt and is about the top shooter in the area so that may signal a somewhat poor dove population this season.

Senior citizens in the Sagerton Community don't get older and if you don't believe me then you should attend one of the Golden Age birthday parties held at the community center on the fourth Monday of each month.

This month's hostesses were Mrs. F.A. Ulmer, Mrs. Fred Kupatt and Miss Kris Kupatt. Mrs. M.F. Benton celebrated her birthday in August so she was the special honoree.

Others attending were Fritz and Henrietta Stegemoeller, Frieda Knippling, Lora Mathis, Louise Stegemoeller, Mrs. John Clark, Lena Boldecker and Etta Leach. Out of town guests were Mrs. Hardie Hewett, Mrs. Alice Newton, and Mrs. Vela Meir, all from Stamford, and Clara Hines and Lucy Williams from Rule.

Joyce LeFevre hosted the L.O.C. Home Demonstration Club meeting in her home this past week. The group discussed Christmas decorating ideas with their new agent Joanne James. Mrs. J.A. Hertel, who happens to be

your correspondent's grandma, was elected chairman for the coming year. Mrs. Johnny Teichelman, Mrs. Herbert Stremmel, and Mrs. Clarence Teichelman were appointed as the committee to oversee the food booth preparations at the Haskell County Fair.

Frieda Knippling presented opening exercises to the members and guests. Mrs. W.F. Hertel, Mrs. Lorene Hanson, Mrs. F.A. Ulmer and Mrs. Fred Schonerteadt were members present. Guests included Mrs. Larry LeFevre from Sagerton and Mrs. Lavon Beakley, Mrs. Herbert Hines, Mrs. J.N. Cornelius, and Mrs. Herbert Williams all from Rule.

Mrs. Leland Thane will be next month's host. Mrs. Thane and Mrs. Hanson will also host the Golden Age party next month.

Pastor and Mrs. Aalbe from Washington state, formerly holding pastoral duties at Faith Lutheran Church, are here visiting. It has been several years since the Aalbees first came to Sagerton but since that time our community has really come to life. They are perhaps the two people most responsible for our new look. We hope they have a pleasant stay.

That heavenly music you hear this Sunday afternoon from 2:00-4:00 won't be a choir of angels descending to earth. What it will be is a lot of good music coming from the Sagerton United Methodist Church. Anyone wanting to harmonize with the group should be sure and come, even if you don't have a Pearl Bailey voice.

Rumors are floating around that Dorothy Toney is having another birthday this week so if you are, we sure hope you have a nice one.

Anyone celebrating a birthday should be sure and let me know. I won't print your age unless you want me too. Mr. and Mrs. Reece Clark had a pre-med student from

Texas Tech as an overnight guest on Friday of last week. Their grandson, Clark Terrel, was on his way back to Lubbock and stopped in for a visit.

Your correspondent spent the afternoon with his grandmother, Mrs. Emma Raphael of Stamford on Wednesday of last week. Later Mrs. Raphael and daughter, Mrs. Leon Stegemoeller of Sagerton traveled to Austin to visit their brother and uncle, Weldon Tredemeyer who was recovering from surgery.

Mrs. Cliff LeFevre returned home from a visit with her sisters in Houston this past week. Her daughter, Mrs. Mozelle Manske, brought her back.

J.B. Toney has a new pet-a rattlesnake that he found in his father-in-law's yard. I don't know what he did with it but I bet he won't try to

houstrain it and keep it for a housepet.

Also, a big thank you to those who mowed the park. It certainly looks very nice and those responsible deserve a word of appreciation. If someone will turn in a list of those helping I'll mention it in the next column.

The Luther League at Faith Lutheran Church has also been very busy lately. They have painted the basement and are in the process of turning it into a game room. It sure looks nice. The League spent an afternoon skiing at Lake Stamford recently and had a very good time. Their sponsors are Mr. and Mrs. Tommy Manske and Mr. and Mrs. Billy Teichelman.

Kenneth Hertel, Mr. and Mrs. Jerry Manske, Pastor and Mrs. Steven Ritter, and Mr. and Mrs. J.B. Toney also accompanied them to the lake.

Leaguers present were Rene Toney, Ernie Manske, Dennis and Brenda Stegemoeller, Kris Kupatt and Debbie Manske. Guests were Philip, Betty, Tony, Michael, and Brian Manske, Jeff Ritter, and Johnny Baitz.

Mr. and Mrs. J.A. Hertel will have numerous members of the Cleveland family as their guests over the Labor Day holidays. Mrs. Hertel was formerly Velma Lou Cleveland. She has been hosting this annual gathering for many years. Guests are expected from all over the state and possibly a few from out of state.

Kacy Baitz, son of Mr. and Mrs. Fred Baitz, grandson of Mr. and Mrs. Melvin Baitz, and nephew of Johnny Baitz, who will be three months old on September 12th, recently became quite upset when his curious George Monkey (a gift

from his uncle) was recalled by the government. George was one of several million infant toys that were recalled because of dangerous amounts of lead believed to be in them. Kacy said he'll miss

George but he will get over the loss.

That's it for now. I sure hope all of you have a very nice week. Be sure and turn your news in if you want to see it in the paper.

**SHUGART COUPON**  
**Tuesday, September 12**  
 M-SYSTEM 112 N. Ave. D  
 Haskell, Texas




**9**  
 WALLET SIZE  
 COLOR PORTRAITS  
**99¢**

ASK  
 About Our  
**FREE**  
**8 x 10**  
 OFFER

Extra charge  
for  
GROUPS

**TOWER**  
DRIVE-IN  
 RULE, TEXAS

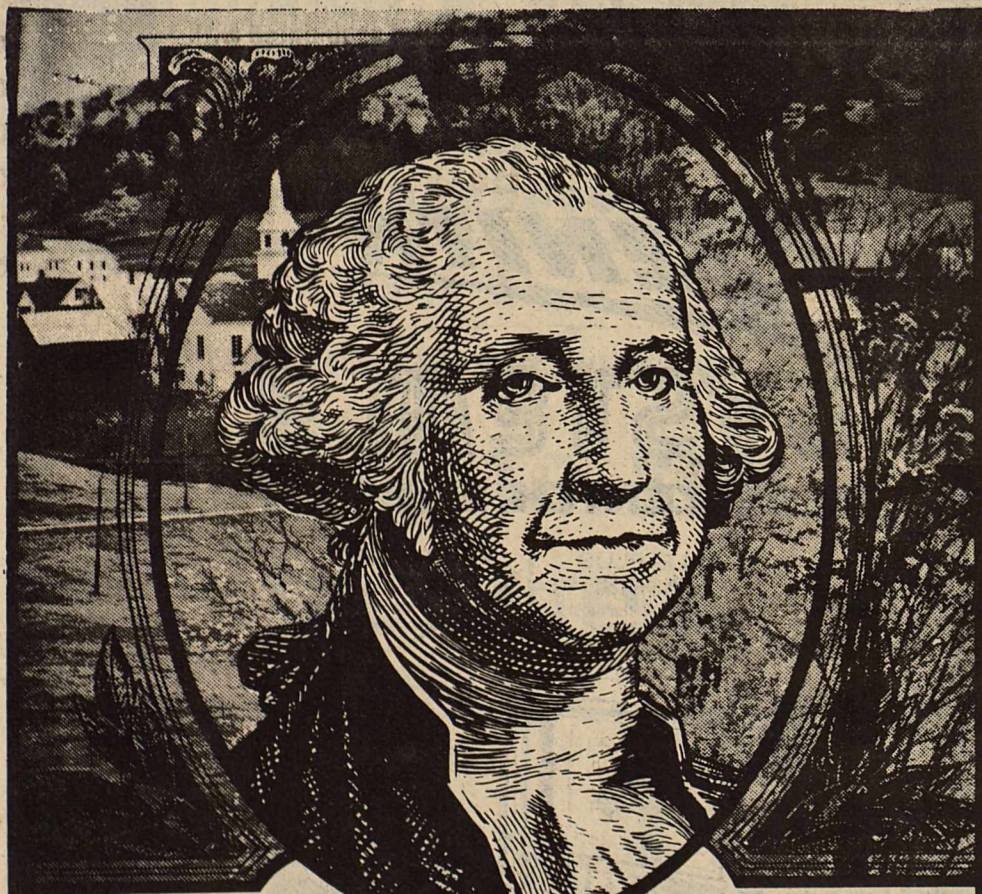
FRIDAY & SATURDAY SEPTEMBER 8-9



**CONVOY**  
ain't nothin' gonna  
 get in their way!

SUNDAY & MONDAY SEPTEMBER 10-11

**CURSE OF  
 THE  
 DEVIL**



## Save, America!

Together, let's invest time and effort . . . and money . . . now, so that we can look forward to the future.

Our contribution to your future is the high return that any of our more-for-your money savings accounts delivers.

We provide the opportunity for you to cash in on tomorrow.



### FIRST FEDERAL SAVINGS AND LOAN ASSOCIATION OF STAMFORD

Division Office: Quannah Federal Savings and Loan, 313 South Main St., Quannah, Texas 79525, 817-663-5388

Branch Office: #3 Avenue D, P.O. Box 444, Haskell, Texas 79521, 817-864-3179

Home Office: 122 W. McHarg, P.O. Box 511, Stamford, Texas 79553, 915-773-2714



Check out with  
highest Quality

## at Lowest Prices

<b>Wilson Sliced Bologna</b>	<b>98¢</b>	<b>U.S. No. 1 Lettuce</b> Head	<b>29¢</b>
<b>No. 1 Sliced Slab Bacon</b>	<b>\$1<sup>19</sup>/<sub>lb</sub></b>	<b>East Texas, New Crop YAMS</b>	<b>39¢<sub>lb</sub></b>
<b>Kraft Parkay</b>	<b>59¢<sub>lb</sub></b>	<b>California Nectarines</b>	<b>49¢<sub>lb</sub></b>
<b>Hamburger Meat</b>	<b>89¢<sub>lb</sub></b>	<b>Heinz White Vinegar</b> Gallon	<b>\$1<sup>59</sup>/<sub>100</sub></b>
<b>Chick, Lean &amp; Tender Roast</b>	<b>98¢<sub>lb</sub></b>	<b>Del Monte, 303 can Fruit Cocktail</b>	<b>49¢</b>
<b>Borden's MILK</b> 1 Gal. Plastic	<b>\$1<sup>89</sup>/<sub>100</sub></b>	<b>Del Monte Kraut</b> 3 16 oz cans	<b>\$1<sup>00</sup>/<sub>100</sub></b>
<b>Mrs. Bairds Large Loaf Town Talk Bread</b>	<b>43¢</b>	<b>Del Monte Catsup</b> 32 oz bottle	<b>89¢</b>
<b>Folgers or Maryland Club Coffee</b> 1 lb can	<b>\$2<sup>79</sup>/<sub>100</sub></b>	<b>Vlasic Dill Pickles</b> Quart	<b>89¢</b>
<b>Judson Candy</b> 3 49¢ Bags	<b>\$1<sup>00</sup>/<sub>100</sub></b>	<b>Honey Boy Salmon</b> 16 oz Can	<b>\$1<sup>49</sup>/<sub>100</sub></b>
<b>Best Maid Salad Dressing</b> Quart	<b>79¢</b>	<b>Johnsons Shout</b>	<b>89¢</b>
<b>TIDE</b> Giant Size	<b>\$1<sup>39</sup>/<sub>100</sub></b>		

# POGUE GROCERY

—Extra Parking Behind The Store. Home Owned and Operated—

113 North Avenue E Phone 864-2015 Haskell, Texas



## Dove Season Underway

The three most-asked questions about the current dove hunting season in Texas are:

—If I'm hunting in the South Zone, can I take a limit of mourning doves and white-wings on the same day?

—Why is the season split into two segments in both the North and South Zones?

—Why does it always rain on opening day?

This year, rain on opening weekend might almost be welcomed since most of the state is parched and dry.

Dry weather is a plus for dove hunters who can expect fast shooting action around the available water sources in the mornings and evenings. Wet weather tends to scatter the birds, making hunting difficult.

And doves prefer dry weather, being ground foragers. Their food is much easier to find on dry ground, and they will fly past muddy fields even if food is available there, according to Jim Dunks, the Texas Parks and Wildlife Department's dove program leader.

But back to the first two questions. Dunks said a hunter can legally shoot 20 doves per day—10 white-wings and 10 mourning doves—during the four-day whitewing season Sept. 2-3 and 9-10, in the 16 counties which have a whitewing season.

However, the hunter must leave one fully feathered wing attached to each bird for identification during those four days—whether he's hunting in the North or South Zone. Furthermore, in the entire South Zone, hunters in must leave a fully feathered

wing on every bird killed for the entire season—not just the four-day whitewing season.

The North Zone counties which have a whitewing season are El Paso, Hudspeth, Culberson, Jeff Davis, Presidio, Brewster, Terrell, Val Verde and Kinney. The South Zone counties are Maverick, Webb, Zapata, Starr, Hidalgo, Willacy and Cameron.

The split seasons in both zones are an effort by the department to satisfy the greatest number of hunters. The North Zone mourning dove season dates are Sept. 1-Oct. 21 and Jan. 6-Jan. 14. "We have to stay with a Sept. 1 opening for hunters in the northern parts of the state because that's when most of the birds are available and are apt to be gone soon after," Dunks said, "but in some areas of the North Zone the best hunting is in the mid-winter period."

The split season in the North Zone this year represents a compromise—it allows a reasonably long (51-day) early segment, but allows a nine-day late segment which encompasses two weekends. In past years when a split was authorized in the North Zone, the late segment was 16 days, Dunks pointed out.

The South Zone mourning dove season, also split, is Sept. 23-Nov. 5 and Jan. 6-21.

Shooting hours for mourning doves are 30 minutes before sunrise to sunset. Whitewing hours are noon to sunset. However, shooting hours are noon to sunset for both species in the counties which have a whitewing season, during those four

days.

Another change this year is a new alignment of whitewing sanctuaries along a narrow band of Rio Grande Valley. Maps and details of the sanctuary boundaries have been published by many newspapers, but hunters also can obtain this information from department offices or from hunting license sales deputies.

Dunks said it's too early to predict bird populations, but indications are that hunters can expect a reasonably good season for both species. "As usual, it's a guessing game as to where the birds will be," Dunks said, adding that the dove's capricious unpredictability may be one reason for its popularity as a game species.

## Child's play: serious business

Child's play is serious business for Dr. Joe L. Frost, a University of Texas professor of curriculum and instruction.

Playgrounds are his "laboratory" where he gathers research data on the function, safety and durability of equipment; children's free-play choices in selecting equipment; type of play engaged in, and playground language.

Dr. Frost recently designed a special playground in Austin that provides the sort of creative environment that makes for good play. Its equipment variety and space enhance motor development, encourage make-believe play, provide for building play and allow for competitive games.



Ten candidates for the Luckenbach U Football Team recently opened pre-season training in Luckenbach with anti-dehydration exercises. Pictured quaffing their favorite substitute for the not-yet-available Luckenbach Beer are, standing left to right: Bill Bob Schwartzneffer, Bandera; Ernesto (Pancho) Knickerbocker, Hackberry; Slippery Sam Furstenegger, Dolchburg; Harry Mann of Copperas Cove; Jim Bob (Skipper) Pillenwurfer, Port Aransas; and Tight End Manfred "Gloves" Hockenspitten, Round Mountain. Seated left to right: Billy C. Plains, Big-

foot; Lyle Talbot Baden-Schnitzer, Cotulla; "All American" candidate and (rookie of the year for the past six years), Lam Schwerdfeger (a/k/a Roger Lemon), Quarterback, Brownwood; an unidentified bystander who refused to leave the picture; and Jimmy John Stuhldreher, Dripping Springs. Luckenbach U, playing in the Gillespie County Football Conference, opens its season when it gets cooler against Cain City A&M. Neither team has ever won a game, and both are expected to continue their records this season.



## The Consumer Alert

by John L. Hill  
Attorney General

AUSTIN — Many students returning to school this fall are looking for a good used car for transportation. But our Consumer Protection Division attorneys advise them to do their homework before making a purchase. Used car complaints are always near the top of the list of consumer problems, they note.

Two of the most common tales of woe our lawyers hear about are the dealer who didn't keep his word on the warranty and the car that started to fall apart almost as soon as it left the lot.

Car-shopping consumers should also be aware of attempts by some unscrupulous used car dealers to roll back odometers. If an odometer reading has been altered, the ability to determine the car's real value, reliability, and safety is impaired. The Texas Deceptive Trade Practices-Consumer Protection Act provides protection against dealers who alter the odometer of any car or truck in an attempt to reduce the actual miles the vehicle has traveled. Any consumer who suspects odometer tampering should contact our attorneys. If the buyer is correct, the law provides that the dealer can be enjoined from such practices and that the consumer is entitled to restitution. Or a consumer can consult a private attorney and collect three times the amount of damages, plus attorney's fees and court costs, if a judge rules in his favor.

In addition to protection from such deceptive practices

under Texas law, a federal law requires the seller, whether dealer or private party, to give the buyer a signed statement that includes the mileage indicated on the car's odometer at the time of sale. If the seller knows that the mileage reading is incorrect, he or she must indicate that the actual mileage is unknown. Then if the buyer can prove he was sold a car by someone who violated these requirements, or gave false information, he can collect three times his damages or \$1,500, whichever is greater, plus attorney's fees and court costs.

If you are in the market for a good used car, the lawyers in our Consumer Protection Division offer these tips:

\*Select several established dealers and shop carefully. Reputable dealers will not object to comparisons with competitors.

\*Get a history of the used car's title from the Texas Highway Department's motor vehicle registration division. Then check with previous owners if possible for information about the car and its mileage.

\*Test drive the car and have your mechanic check it. A reputable dealer wants your return business and referrals and will not want to sell you a lemon.

\*Be sure that any warranty is in writing and that it spells out the services that will be offered.

If you have a complaint about an unscrupulous used car dealer, contact our Consumer Protection Division in Austin, Houston, Dallas, San Antonio, Lubbock, El Paso or McAllen. If you live outside these areas, call toll-free: 1-800-252-9236.

## agri-facts

Pat Hale

Most city folks still don't know the facts of life... facts of life about farming at least. This lack of knowledge is considered by some to be the most serious educational crisis in the United States. According to a report issued last year by a group of Kansas educators researching political and economic aspects of the issue, the country faces possible economic disaster if this situation is not corrected. Central to the problem is the attitude of many of those away from farming that agricultural products are natural resources... same as oil or coal. Little appreciation is shown for the work and costs that go into production of crops or livestock. Put most simply, there's a lack of savvy in the city... they don't understand if the farmer doesn't grow it... nobody's going to eat it. Officials releasing the special report in Kansas urged all agricultural groups to work toward enhancing consumer education.

HALE FARM SUPPLY  
Phone 864-2692

**OWN YOUR OWN MOVIE THEATER**

200,000,000 people in the U.S. Movie-going market... Over 4,400 theaters built in the last 4 years... Attendance records constantly broken. The theater business is better than ever... and so are profits!

**THEATER DEVELOPMENT CORP.**, the world's largest developer of indoor theaters, now offers to the general public a complete **TURNKEY THEATER OPERATION** with no continuing fees or payments of any kind.

**MINIMUM CASH INVESTMENT \$34,000**

**THIS IS NOT A FRANCHISE...**

For information call Mr. West (9 to 5 P.M. E.S.T.)  
TOLL FREE 1-800-327-3625 or write, including phone number  
**THEATER DEVELOPMENT CORPORATION**  
100 E. Linton Blvd., Delray Beach, FL 33444  
Locations are available right now in suburban areas throughout the state.

Nationally Advertised

**Morning Glory**

Back Relief Mattresses  
famous for Quality since 1903

**BYNUM'S**  
HASKELL, TEXAS

**AVAILABLE NOW**  
the **NEW Super C**  
Original Equipment Type  
**Mufflers**

Free Estimates  
Wheel Balancing  
Wheel Alignment  
Mufflers  
Tail Pipes  
Shocks  
Batteries  
Tires Repaired

**ALIGNMENT**  
& Front End Safety Check

- Set camber, caster
- Set toe-in, toe-out
- Check steering
- Road test the car

**\$12<sup>50</sup>**

Most American Cars  
Cars with Air-conditioning add \$2.00

**Wootens Service Center**

307 SOUTH AVENUE E HASKELL, TEXAS PHONE 864-3696

**UP TO \$60<sup>00</sup> cash rebate**  
**DIRECT FROM ZENITH TO YOU!**  
**DURING OUR ZENITH 60<sup>TH</sup> ANNIVERSARY CELEBRATION**

REBATE PROGRAM: Join with us and Zenith in this exciting double celebration by taking full advantage of the big Zenith 60th Anniversary Customer Rebate Program. You'll save significant dollars on selected Zenith SYSTEM 3 TV models... up to \$60.00 depending on the set purchased. Here's how the program works. Just buy any one of the qualifying models, fill out the money-back coupon from your Zenith dealer and send the coupon back to Zenith with your owner's registration card as your proof of purchase. You'll get a check direct from Zenith. Program starts Sept. 4 and ends Nov. 1, 1978.

Featuring New 1979 **ZENITH**  
**25" SYSTEM 3**  
THE BEST ZENITH EVER!

<b>TRI-FOCUS PICTURE TUBE</b> The sharpest Zenith picture ever!	<b>TRIPLE-PLUS CHASSIS</b> Designed to be the most reliable Zenith ever!	<b>COLOR SENTRY</b> Zenith's most sophisticated, automatic picture control system!
--	---	---

The ROSSINI • K2548E  
Mediterranean Styled Console. Genuine Oak wood veneers on top and ends. Front and base of simulated wood. Antique Oak color finish. Casters.

**\$60<sup>00</sup> Rebate**

The IVES • K2544M  
Early American Styled Console. Maple wood-grained finish applied to genuine Maple wood veneers on top and ends. Gallery of select hardwood solids. Front and base of simulated wood. Casters.

**\$60<sup>00</sup> Rebate**

The LISZT • K2542E  
Transitional Styled Console. Genuine Oak wood veneers on top and ends. Front and base of simulated wood. Finished in Antique Oak color. Casters.

**\$60<sup>00</sup> Rebate**

Get our great price PLUS you get up to \$60<sup>00</sup> from Zenith!

*Come in today!*

The DONIZETTI • K2528P  
Italian Classic Styled Console. Pecan wood-grained finish applied to durable wood products on top and ends. Front and base of simulated wood. Casters.

**\$40<sup>00</sup> Rebate**

The HAYDN • K2512W  
Table TV featuring American Walnut wood-grain finish applied to durable wood products.

**\$40<sup>00</sup> Rebate**

The NIELSEN • K2524M  
Early American Styled Console. Maple wood-grained finish applied to durable wood products on top and ends. Front and base of simulated wood. Casters.

**\$40<sup>00</sup> Rebate**

**ZENITH-AMERICA'S NO. 1 TV-YEAR AFTER YEAR!**

**Owens Radio & Electric**  
Haskell





**Special Sale Set Saturday At Haskell Livestock**

A special fall consignment sale has been scheduled for this Saturday at Haskell Livestock Auction, according to James Powell, co-owner.

Powell urges cowmen not to eat before coming to the sale because there is a free barbecue lunch set for 11 a.m.

Already consigned for the sale include: 200 pairs, 100 springer cows, young Herefords, Black Angus, Santa Gertrudis, and Brahmans, 100 open heifers, 200 light stocker steers and heifers ready to turn out. All cattle will be Bangs-tested.

Powell expects buyers from all over the area and out of state.

The sale will start following the barbecue at 12 noon. Consignments will be until sale time.

The regular weekly sale starts each Saturday at 10 a.m. with hogs and the cattle starts at noon.

Powell invites everyone out to meet the partners, Bobby Parrott of Haskell and Tom Nix of Anson.

Go Classified for the Action you want.

JIM POWELL, left of Baton Rouge, La., was the handicap winner at the Haskell Trap Club shoot last Sunday. Powell broke 98x100 to win the event. W.E. Wooten of Haskell punches his card and the next handicap event will be shot from one yard farther back for Powell. (Staff Photo)

**FmHA Loan Program Is Now Available**

A new Economic Emergency loan service for farmers (or, farmers and ranchers) who have financial problems caused by credit shortage or cost-price squeeze is now in effect through the U.S. Farmers Home Administration (FmHA).

Dale R. Burris, the agency's County Supervisor for Haskell County, reports that FmHA is prepared to take applications at the FmHA Haskell County Office in Haskell.

Economic Emergency loans are authorized under the Agricultural Credit Act of 1978 signed by President Carter Aug. 4. They offer special help to farmers who are hard-pressed by recent shortage of credit from their regular lenders, or by debts accumulated during the recent period of low farm prices.

Burris said the Economic Emergency loan program was enacted by Congress, with Administration support, in recognition of the fact that

"economic conditions, as well as weather, are often beyond farmers' control. FmHA emergency credit has previously been confined to loans for recovery from natural disaster, or the guarantee of private lenders' loans to livestock producers affected by economic conditions.

Under the new Economic Emergency program, any established farm operator—individual, partnership, corporation or cooperative—experiencing scarce credit or an overload of debt coming due, may apply for up to \$400,000 of credit through FmHA in order to survive in farming and continue their normal level of operation. Economic Emergency loans will not be made to expand a farm operation.

Loans made directly by FmHA will be at an interest rate equivalent to the cost of money secured by the government through sale of its securities to the public, plus an administrative add-on of up to one percent. The rate initially will be 8 1/2 percent. Guaranteed loans will be made at rates negotiated between borrower and lender, with FmHA providing the lender up to a 90 percent guarantee against loss.

**AAM Film Attended By Group**

Supporters of the American Agricultural Movement met Thursday night, August 31, to view a film about economics narrated by Gene Schroder of Colorado. Local AAM members were pleasantly surprised when 18 AAM supporters from Paducah arrived to view the film.

Mr. Schroder explained that when the farmers and ranchers receive less than 100% parity or less than cost of production for their products, they have to borrow from lending institutions to stay in business, and how in turn this causes these lending institutions to borrow from corporate banks who in turn borrow from the government. This then makes a deficit government. When the American farmers and ranchers are given 100% parity or cost of production in the marketplace, this helps them to make a profit which in turn means less borrowing from the lending institutions.

These institutions have less borrowing to do from the corporate banks and then this causes less borrowing from the government. For the farmers and ranchers to receive 100% parity in the marketplace will mean a less deficit government in the terms of money.

Loans for operating purposes will be made for terms of up to 7 years, with loan consolidations and rescheduling for another 7 years permitted, and 20-year payment authorized under special conditions. Real estate loans may be made for up to 40 years. Loans for annually-recurring expenses will be repayable annually.

Burris said initial inquiries about Economic Emergency loans can be made either through a commercial agricultural lender or the county FmHA office serving the county where the farm is located. The Act calls for decision by FmHA on individual applications within 30 days.

While introducing the new Economic Emergency farm loan, FmHA will continue all pre-existing services. They include various programs of non-emergency real estate and production loans to family-size farms, terms of which will soon be broadened under the recent Credit Act; emergency loans to farms damaged by natural disaster, and loans or grants for housing, community facilities and business and industry in rural areas.

**Temporary Texans Aid Victims**

Throughout Big Country, the rains came in early August—followed by a number of "temporary Texans," many with accents totally different from the soft twang of north-central Texas. These strangers are seen daily, sunup to sundown, seven days a week on almost every road in the five-county area, driving cars and trucks with different-looking license plates which read "U.S. Government."

Who are all these people, and what are they doing in Big Country? Many are members of the U.S. Department of Housing and Urban Development (HUD) Disaster Housing Office here. They come from throughout the country to administer the various programs HUD has to assist the residents of Haskell, Shackleford, Stephens, Throckmorton and Young counties, declared a disaster area by the President. They come from as far away as Puerto Rico, California, Washington State and Massachusetts, but Texas is represented by 21 (including 13 locally hired employees from Eastland, Breckenridge and Mineral Wells). There are 11 each from Pennsylvania and Virginia, followed by Oklahoma with four, three each from Arkansas and the District of Columbia. The HUD employees come from Maryland, North Carolina and Colorado respectively while Florida, South Carolina, Kentucky, Tennessee, Louisiana, Georgia and New York each have one representative.

Some of the Breckenridge employees are regular, full-time HUD employees from the central office in Washington or the local, area or regional offices. Others are serving on a one-year contract while others are experienced, trained personnel on an on-call basis. Still other workers are local residents temporarily hired to assist in this disaster.

There are several HUD staff members who could easily be classed as vagabonds—they have gone from one disaster to another without an opportunity to go home. Several are frank to admit they have lost track of the exact number of disasters they have worked. It is not an average working day for HUD's employees. A 9-to-5 schedule just doesn't exist. The local office is bustling with activity from early morning until often late into the night, seven days a week. During the early days of the Texas disaster, some

workers worked from 7 a.m. until 1 or 2 the following morning in makeshift offices to take and process applications. The men and women of HUD take the long hours and inconveniences in their stride, often times taking some of their precious few free moments to reminisce about the many high spots and low spots of past disasters they have worked. Of the heart-break and humorous things they have shared. Seldom, if ever, do you ever hear a complaint about the hours, the working conditions or having to grab a bite to eat whenever time allowed—they are here to do a job that is foremost on their minds.

Where ever HUD people go to render assistance, they tend to take with them a small part of the local life style. In the Breckenridge office, one can see non-Texans wearing new cowboy boots, others sporting new ten-gallon hats or proudly showing off a new set of longhorns. Cactus is seen carefully nurtured in plastic cups to be taken home. "Texas Jigger" glasses proudly sit on many desks while others express their appreciation for a good Texas steak.

Some HUD people will be leaving soon as their part of the Texas floods of 1978 is completed. Others may stay

for weeks or months—as long as there is work to be done and people to be helped or housed. This is who some of these people are who speak with "strange accents" and drive the cars with "U.S. Government" license plates.

**Housing Authority Receives Contract From HUD**

Congressman Omar Burleson announces the approval of a 275 thousand dollar contract to the Haskell Housing Authority by the Department of Housing and Urban Development. The funds will be used to modernize 50 low-income units that are approximately 27 years old. Priority will be given to energy conservation and projection of structural integrity that will result in cost saving and are required to comply with local, state, and federal laws. The contract obligates the Federal government through annual contributions to pay the principle and interest of bonds issued by the Housing Authority over a period of time in the amount of 275 thousand dollars.

"The busy have no time for tears." Byron

**Announcing...**

We are happy to announce

**Mr. Bobby Simpson**

is now associated with us as our **Electronic Technician**. Mr. Simpson has just completed TSTI, Sweetwater, and is up to date on all of your problems. Call 864-2870 or come in

**Amonett & Amonett**

YOUR AUTHORIZED RCA DEALER  
HASKELL, TEXAS

Wichita Falls Record News

YOUR MORNING NEWSPAPER

**BRINGS TO YOU THE LATEST**

Send Your Order Today **Less THAN 11 1/2¢ PER COPY**

- National News
- State News
- Sport News
- Area News
- Farm & Ranch News
- Market Pages
- Youth & School News

**ANNUAL FALL BARGAIN OFFER TO MAIL SUBSCRIBERS ONLY**

By turning in your subscription order now will insure you of 1 year against any increase in subscription rates, although postal rates have been increasing each year and will continue to increase each year for the next three years. OFFER LIMITED! ENDS JAN. 1, 1979. **SAVE**

TEXAS AND OKLAHOMA ONLY **NEVER SO MUCH FOR SO LITTLE**

PLEASE ENTER MY SUBSCRIPTION TO THE NEWSPAPER CHECKED BELOW

\$51.00 is the regular rate for the RECORD NEWS and SUNDAY TIMES for one year by mail. send only 40<sup>95</sup>  
\$1.00 is the regular rate of the WICHITA FALLS TIMES with the SUNDAY TIMES for one year by mail you send only 40<sup>95</sup>

Fall Bargain Rates Are the same with or without the Sunday Times  
PLEASE CHECK YOUR ABOVE PREFERENCE

NAME.....  
ADDRESS..... BOX NO.....  
CITY..... STATE..... ZIP CODE.....  
Money Order Enclosed Check Enclosed

By Sam Herren  
**TEMPERATURE**  
Hi.....102°.....18th  
Lo.....60°.....31st  
**RAINFALL**  
Total.....15.74  
Total to Date.....21.92  
Normal.....16.66  
Sept. Rainfall.....0.17

Love and Inspiration signature editions. Tiny books on Love, Faith, Friendship. A thoughtful idea to send to someone you care about. Only \$1.35 at the Haskell Free Press.

**The Warwick**  
In New Orleans

**POP \$30**  
\*POP means you pay one price for the entire family (up to 4) per day, just \$30.

Private dressing rooms, walk-in closets and two telephones in all rooms and suites; free valet parking. Great location; 2 blocks to the Superdome, 1 block to Medical Center, 3 blocks to Central Business District, 6 blocks to French Quarter and the Civic Center and Oil Center are right across the street.

While They Last—Reserve Now Every guest on our \$30 summer special will receive a free ticket to Pontchartrain Beach valid for admission to all the rides and shows. Hurry!

**the warwick HOTEL**

MAIL COUPON FOR BROCHURES AND SPECIAL PACKAGE INFORMATION.

NAME.....  
ADDRESS.....  
CITY.....  
STATE, ZIP.....

1315 Gravier Street  
New Orleans, La. 70112  
(504)586-0100  
Toll Free:  
1-800-535-9141

**PUBLIC HEARING**

A public hearing will be held on the proposed 1979 budget for Haskell County in the Commissioners' courtroom in the Courthouse at 1:30 p.m. Monday, September 11, 1978.

All interested taxpayers are urged to attend this important hearing.

HASKELL COUNTY COMMISSIONERS' COURT

BY: B.O. ROBERSON  
COUNTY JUDGE

**Building Supply HEADQUARTERS**

3' Round Stock Tanks..... \$40<sup>95</sup>  
4' Round Stock Tanks..... \$51<sup>50</sup>  
5' Round Stock Tanks..... \$71<sup>00</sup>  
6' Round Stock Tanks..... \$87<sup>50</sup>  
8' Round Stock Tanks..... \$133<sup>00</sup>

6' Steel T Post \$1<sup>99</sup> each  
Barbwire \$18<sup>95</sup> a Roll  
Barbwire \$24<sup>99</sup> a Roll

Chain-link Fence Apochie Steel Gates

**10% off** On All Garden & Lawn Tools  
Carpet & Linoleum Cost + \$1<sup>00</sup> per square yd.

Outside Latex Paint \$5<sup>95</sup> Per Gallon  
Inside Latex Paint \$3<sup>95</sup> per gallon

**McGee & Tidrow Builders Supply**



# FOOTBALL '78

## September 8, 1978 Indians vs Anson 8:00 P.M. Here



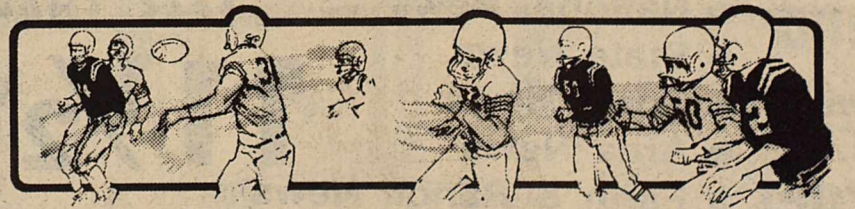
This Page Sponsored By The Following Firms and Individuals

Philpot's Service & Supply  
Trussell's Tire Center  
Haskell Custom Processing  
Biggon Drinnon  
Hanson Paint & Body  
Wallace's Exxon  
M-System  
Boggs & Johnson  
Hale Farm Supply  
Lane-Felker  
Kennedy Lumber Co.  
Jeter's Westside Texaco

Mike's Mobil  
McGee & Tidrow Builders Supply  
Elsie's Hi-Lander  
The Personality Shoppe  
Smart Wear for Women 864-2501  
Bynum's  
The Sweet Shop  
Haskell Co. Farm Bureau  
Eddie Chamber  
Agency Manager  
Hartsfield Agency  
First Federal Savings & Loan  
Haskell Branch—2. N. Av. D  
Nanny Plumbing  
Lane Apparel  
Texaco, Inc.  
Larry Gilliam  
Dean Butane Co.  
Hammer Laundry  
Buster's Drive-In Grocery  
Martha's Beauty Center  
Biard Cleaners  
Northside Gulf  
Bill Wilson Motor Co.

Brian Burgess  
State Farm Insurance  
Federal Land Bank Assn.  
Mayfield Cleaning Center  
Letz Builders Supply  
Haskell Co-op Gin  
Richardson Truck & Tractor  
Carolyn Reynolds  
District Clerk  
J & R Radiator Shop  
Gulf Oil Co.  
Brooks Middleton, Agent  
Nine Point Grain  
Heidenheimer's  
Hassen's  
Perry Brothers, Inc.  
Owens Radio & Electric

Patterson Welding  
Pat Patterson  
Tower Drive In Theatre  
Rule, Texas  
City Cafe  
Medford Buick-Pontiac  
Merchant Plumbing & Heating  
Smitty's Auto  
Anderson Construction Co.  
JRB Supermarket  
Jordan Insurance Agency  
Conner Nursery & Floral  
Bailey Toliver Chevrolet & Olds  
Jones Cox & Co.  
Sherman's Carpet & Interior  
Dairy Queen  
Haskell Steak House  
Haskell Livestock Auction  
Haskell National Bank  
Betty's Wigwam  
Cen Tex Cablevision Corp.



### HASKELL INDIANS

No.	Name	Position	Weight
10	Robert Rodriguez	WB	135
11	Mark Wallace	QB	140
12	Jim Harris	QB	165
20	Monnie Hise	TB	155
25	Thomas McAdams	B	145
28	Joseph Browning	E	140
32	Steve Escobedo	B	150
33	Vonnie Hise	FB	200
37	Robert Browning	WB	140
44	Jackie Steadham	E	150
50	Gil Richardson	T	180
54	Todd Bragg	C	177
55	Steve Livingston	G	210
60	Ben Benton	G	180
65	Jeff Hatfield	G	170
66	Bill Flanary	G	165
68	Ruffino Escobedo	G	175
72	Mark Jackson	T	200
75	Giles Kemp	T	175
77	David Drinnon	T	190
80	Richard Amaro	E	195
81	Jeff Frierson	E	150
82	Gabriel Capetillo	E	155
84	David Gonzales	E	150
88	Kirk Flippin	E	155

Coaches: Don Flippin, Jim Baldwin, Coy Payne, Stick Raughton  
Jimmy Lisle Managers: Tim Larned  
Band Director: Wendell Gideon Colors: Black & Gold  
Cheerleaders: Sarah Cox, Renae McBroom, Lindy Collins, Kim Lane,  
Cheryl Conner, Lorie Johnson  
Cheerleader Sponsor: Mrs. Jeter, Miss Middleton

### 1978 SCHEDULE

Sept. 8	..... Anson	..... Here
Sept. 15	..... Hamlin	..... There
Sept. 22	..... Seymour	..... Here
Sept. 29	..... Stamford	..... There
*Oct. 6	..... Knox City	..... Here
*Oct. 13	..... Crowell	..... There
Oct. 20	..... Open	
*Oct. 27	..... Aspermont	..... Here
*Nov. 3	..... Munday	..... There
*Nov. 10	..... Quanah	..... Here
*Nov. 17	..... Paducah	..... There

\*District Games

SCALP 'EM INDIANS

1978



## Sloan Receives Award

Each year members of the Haskell Young Homemakers choose a person from their chapter who has made significant contributions to the club and other community affairs to receive a special award. She must also obtain certain

character traits such as reliability, congeniality, sincerity, and enthusiasm. Chosen as the recipient of this year's special award, Outstanding Young Homemaker, was Mrs. Shirley Sloan. She was presented the award Monday, August 28, at the annual Installation Banquet of the club. Mrs. Paula Everett, last year's recipient, made the presentation.

Mrs. Sloan graduated from Haskell High School in 1962. Later she attended Midwestern State University where she obtained a B.S. Degree in Elementary Education in 1972. Also, she received her kindergarten certification in 1973 from Sam Houston State University.

Mrs. Sloan has taught in the Chillicothe Public School system and is now employed with the Haskell School system where she has taught

kindergarten for three and one-half years.

She is the daughter of Mr. and Mrs. Dennis G. Young of Haskell. She was married in 1962 to Dickie Sloan, who is engaged in teaching and farming. They have three sons: Scott, age 12; Lance, age 9; and Kurt, age 3.

This past year Mrs. Sloan served as secretary for the Young Homemakers and has helped on various committees. She and her family attend Rochester Methodist Church where she has taught Sunday School and Bible School. She is presently serving as Sunday School Superintendent and chairman of the Committee on Evangelism.

Shirley spends her free time helping with farm work, gardening, reading, and attending and participating in activities in which her children and husband are involved.



SHIRLEY SLOAN



Jaycee & Jaycee-ettes Happenings

Jaycees extend week (7 days) to 10 days. Busy week for Jaycees and Jaycee-ettes, Tuesday night 26th August, family night at the Charles Adress' and Bo Owens, approximately 40 Jaycees and Jaycee-ettes, children and guests enjoyed a great fish fry. Thursday night, Eddie Hester had a guest, Joe Josslett for a program on free enterprise after regular meeting. Friday night, Rest Stop all night, also several Jaycees and guests attended Abilene Jaycees "Casino Night", and won first prize, courtesy Jim Pace, of a Stereo console. Attending were Jim Pace, Charles Thornhill, Mike St. John, Jack Rueffer, Ricky Lee Adress.

Friday afternoon, area vice president Jim Ivey of Fort Stockton visited with several Haskell Jaycees, on his way through the area visiting the Holiday Rest Stops of the Texas Jaycees. Saturday morning, Jaycees and Jaycee-ettes had a very successful Doughnut sale and bake sale, raising \$350.00 to pay medical expenses of Jimmy Steadham. Saturday night, again the

An ideal gift for kids of all ages, the 'Froggy' by Papermate. It's a fun and bouncy pen holder with a fine quality, Papermate pen, perfect for home, school, or office. The Haskell Free Press.

Rest Stop. All night long. Sunday afternoon, Jaycees and Jaycee-ettes set up office at Chamber of Commerce Building for Jerry Lewis M D Telethon for Haskell, Ran through Monday afternoon at 7:00, 26 hours of continuous work, Raised \$1731.00. Monday night, between plays of Dallas Cowboys, ran Rest Stop till 12:00. Tuesday afternoon, Reception for Texas Jaycee-ette President Val Nesser of Houston. At the Bo Owens'! Tuesday night, Haskell Jaycee-ettes accompanied her to Knox City to attend Chapter night banquet of Knox City Jaycee-ettes, who were extended and chartered by the Haskell Co. Jaycee-ettes.

Tuesday night, Board of Directors meeting of Haskell Co. Jaycees at Chamber of Commerce Building. Haskell Co Jaycees doing great, 2nd in population Division III, 7th in the state over all in standings. Many projects and proposals discussed for coming months.

Special thanks to all who helped on these projects and activities. Visiting with Jaycees and Jaycee-ettes during Telethon were Texas Jaycee President, Elvis Wilson, (2:00 a.m.) Regional Director Lynn Smith (3 a.m.), who were making visits to Rest Stops and M D Pledge Centers throughout the region and state.

## Gena Fischer To Compete

Gena Fischer of Paint Creek will compete for top state honors in the 1978 State 4-H Fashion Revue, Sept. 14-16, at the Driskill Hotel in Austin.

A senior at Paint Creek High School, she is the daughter of Mr. and Mrs. Walter E. Fischer.

She is a member of the Paint Creek 4-H Club and has been active in 4-H work for 8 years.

Miss Fischer earned the right to compete at the state level when she became a top-scoring individual in the senior division at district competition in July.

For the contest, the 4-Her constructed a three piece ensemble consisting of a 3 tiered skirt, a blouse, and a vest. The skirt is of coordinated floral prints in various shades of pink, and is

complimented by the cream colored blouse and pink vest.

Contestants also submit a record book which indicates their overall involvement in 4-H projects. Points received in record-book judging are a part of each youth's total Fashion Revue score.

According to Joan James, Haskell County Extension agent, the State 4-H Fashion Revue is the culminating event of the 4-H clothing program in Texas each year.

"It is an optional part of the clothing program for youth who have constructed a garment as part of their clothing project and who wish to enter it in 4-H Fashion Revue competition," she explains.

4-H Fashion Revue is designed to help youth develop poise and grace in

modeling, to build self-confidence and to practice grooming and posture habits, the agent adds.

Last year more than 12,000 youth participated in the 4-H clothing program, which is part of the Texas 4-H and Youth Program—sponsored by the Texas Agricultural Extension Service, The Texas A&M University System, the agent says.

Ranging from ages 9-19, youth in the 4-H clothing program participate in learning experiences and develop skills related to clothing, she notes.

These include skills in fashion, textiles, buying, garment construction, wardrobe planning, grooming and the social/psychological aspects of clothing, the agent adds.

## PUBLIC HEARING

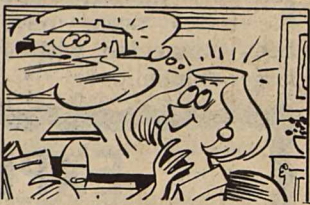
A public hearing will be held on the proposed budget for entitlement period 10 for Haskell County General Revenue Sharing in the Commissioners' Courtroom at the Courthouse on Monday, September 11, 1978, starting at 2:30 p.m.

All interested citizens are urged to be present.

HASKELL COUNTY COMMISSIONERS' COURT

BY: B.O. ROBERSON  
COUNTY JUDGE

## MOBILE HOME SALES ON MOVE



According to the Manufacture Housing Institute, mobile homes now account for nearly 30 percent of all new single family housing. While as luxurious and spacious as many regular homes, owners cite the mobile home's low initial cost and low upkeep cost as their main reasons for purchase.

the Country Travelers from San Angelo. Country at its best

AT RHINELAND GYM

Sat. night 9 to 1

Sept. 9

## DANCE TO THE MUSIC OF

the Country Travelers from San Angelo. Country at its best

AT RHINELAND GYM

Sat. night 9 to 1

## Flood Sale Continues

Sofa Love Seat Chair Ottoman Recliner Herculon Cover All 5 Pcs. <b>\$519<sup>50</sup></b> W.T.	Roll Top Desk Maple or Pine Finish <b>\$199<sup>50</sup></b>	Select Group Velvet Rockers Cash & Carry <b>\$44<sup>50</sup></b>
Sleeper and Loveseat Herculon Cover <b>\$419<sup>50</sup></b> W.T.	7 Pc. Dinnette W.T. <b>\$119<sup>50</sup></b>	Recliners as low as <b>\$99<sup>50</sup></b> W.T.
Sofa Bed Loveseat Chair Velvet Cover <b>\$299<sup>50</sup></b> W.T.	White Bedroom Suite Dresser Canopy Bed Chest <b>\$499<sup>50</sup></b> W.T.	
Trundle Bed W/Mattresses <b>\$229<sup>50</sup></b>	Stereo 1/2 price <b>\$169<sup>50</sup></b>	Admiral B & W TV 19" <b>\$55<sup>00</sup></b> Maple and Pine Fin.
Hotel-Motel Quality Mattress-Box Spring <b>\$149<sup>50</sup></b> W.T.		
Chest-o-Drawers <b>\$89<sup>50</sup></b>	Bed Pillows 1/3 off	Lamp Tables & Coffee Tables as low as <b>\$5<sup>00</sup></b> ea.

# Boggs & Johnson



**Perry's**  
Cut of the Cloth Sale

Just Arrived New Shipment

**Sayelle Knitting Yarn**  
Skein **99¢**

**Unbleached Muslin**  
38-40 Wide 100% Cotton No. 224  
Reg. 99¢ Now **77¢**

**SALE!**

**8" Potted Marqwater Trees**  
4 foot tall **\$8<sup>88</sup>**

**6" Potted Asst. Foliage Plants**  
2 foot tall each **\$3<sup>88</sup>**

**Matching Cannon Wash Cloths**  
Each **47¢**

**Crepe stitch Double Knit**  
60" Wide All Colors No. 100 **\$1<sup>99</sup>** yard

**Matching Cannon Bath Towels**  
Each **\$1<sup>77</sup>**

**6" Potted Rubber Plants**  
4 foot tall each **\$3<sup>88</sup>**

**Matching Cannon Hand Towels**  
Each **77¢**

**Perry's**  
11 N. Av E 864-2751



## Prepare Lawn Now For Next Spring

The long, hot summer has taken its toll on home lawns—and homeowners—throughout Texas. After six months of mowing and watering lawns, most homeowners will welcome the first frost that browns the lawn. However, before that time comes, a few chores remain to insure weed-free winter lawns and good recovery of the lawn next spring.

"Lawn insects, including chinch bugs, white grubs and armyworms, must be controlled during late summer and fall," says Dr. Richard L. Duple, turfgrass specialist for the Texas Agricultural Extension Service. "Where these insects damage the lawn, winter weeds rapidly invade the weakened turf and spring recovery is often poor. Timely applications of insecticides such as diazinon or chlorpyrifos (Dursban) will control most lawn insect problems."

According to Duple, fall fertilization is another requirement for maintaining green color and promoting early spring green-up of lawns. A dense, vigorous turf produced by proper fertilization also discourages invasion of lawns by winter weeds.

The turfgrass specialist recommends applying a complete fertilizer of a 3-1-2 or similar ratio at a rate of one and one-half pounds of nitrogen per 1,000 square feet of lawn. This means 12 pounds of 12-4-8 or a similar fertilizer per 1,000 square feet.

"Straight nitrogen fertilizers and fertilizers high in phosphorus (the middle number in the fertilizer analysis) should not be used for established lawns," cautions Duple.

"If winter weeds have been

a problem in past years, apply a preemergence herbicide for additional protection against weeds. Materials containing atrazine, benefin, bensulfide and dacthal provide pre-emergence control of many winter annual weeds. Some pre-emergence herbicides are available in formulations with fertilizers, which simplifies application," notes the Texas A&M University System specialist.

Of course, it's important to follow label instructions in regard to grass species and rates of application when using herbicides. Materials containing atrazine should not be used around trees and shrubs.

As far as disease control is concerned, Duple suggests applying a fungicide on St. Augustine lawns to prevent damage from brownpatch. Not only is brownpatch unsightly, but weeds generally invade where the disease has weakened grass. Also, spring recovery is delayed in areas damaged by brownpatch.

Fungicides containing PCNB (Terraclor, Ortho Lawn Fungicide, benomyl (Benlate, Tersan 1991) or chlorothalonil (Daconil) control brownpatch when applied according to label instructions.

"Another fall task for homeowners is to remove excess accumulations of grass clippings or tree leaves from the lawn," points out Duple. "The excess debris from these sources increases thatch accumulation and creates a favorable habitat for insects and disease organisms."

So, for attractive lawns this fall and to insure good spring recovery, homeowners need to fertilize and use preventative pesticides as well as mow weekly.

## Flu Immunization Urged By Health Dept.

Thinking about influenza immunization during the summertime is probably the last thing most Texans worry about.

But for certain groups it shouldn't be. Influenza, or flu, is

### Mesquite Dist. To Hold Seminar

Mesquite District club presidents and their program committee members will gather in Knox City Sept. 9 for a leadership seminar.

Mrs. W.V. Wheeler, of Albany, will conduct the seminar at 10 a.m. at the Community Center. Members are to bring a sack lunch. Registration fee is \$1.

According to Mrs. J.C. McGee, of Knox City and president of the district, "This is a sharing time for our clubs. We initiated this program to help our presidents become stronger leaders in their respective clubs."

Read about the Indians each week in the Haskell Free Press

an acute respiratory illness whose symptoms include fever, cough, sore throat, a "runny" nose and general aches. Most patients recover in a week, although many feel unusually tired for some time.

But to the aged or chronically ill, however, influenza may be a life-threatening illness.

"Each year in Texas we have an excess of illness and death from influenza among older persons," said Dr. Jerome H. Greenberg, Deputy Commissioner for Preventable Diseases for the Texas Department of Health.

"We recommend that those over 65 years of age receive influenza immunization. We also recommend immunization for adults and children with chronic conditions such as heart disease, chronic renal diseases, and diabetes mellitus. In addition, we suggest vaccination for

those with bronchopulmonary diseases, such as chronic bronchitis, tuberculosis, emphysema and cystic fibrosis," he said.

"Pneumonia, either 'primary' due to the influenza virus itself or 'secondary' due to bacteria which invade the diseased respiratory tree, is a common complication prolonging the disease beyond the usual one-week course. The pneumonia is frequently fatal in patients who are over 65 years of age or those who have a chronic debilitating disease."

The three types of influenza virus that have been identified are called types A, B, and C. It has been shown that influenza A and B viruses change their genetic make-up slightly each year. These annual changes are known as "drifts." A major shift which occurs at approximately 10-year

intervals has been observed only for influenza A.

These genetic changes have posed a special problem for developers of vaccines. As the virus changes or "drifts," immunity created by previous infection or vaccines become less effective. When a completely new virus strain appears, there has not been sufficient time to produce the quantities of vaccine needed.

"New" strains of influenza A virus may cause a major outbreak about every 10 years. For example, in 1957, it was the Asian flu and in 1968, the Hong Kong. Influenza caused by type B virus may have widespread occurrence, but the disease is generally milder. Type C viruses never have been connected with a larger epidemic.

Influenza epidemics are frequently associated with deaths in excess of the number normally expected. During the period from 1968 to 1978, more than 150,000 excess deaths are estimated to have occurred during epidemics of influenza A in the United States.

Dr. Greenberg said that in order to have enough lead time to produce the right vaccines for the next year, vaccines are produced from strains of the current year.

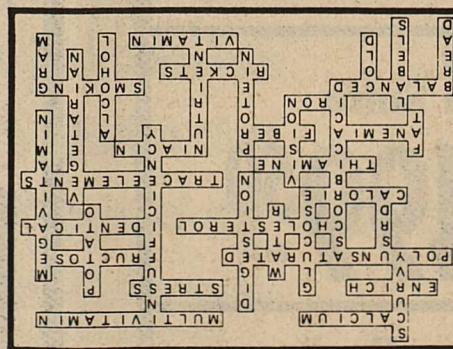
The Texas Department of Health has an Influenza Surveillance Program which it conducts during the respiratory season so that influenza viruses can be isolated, characterized and a determination made of emerging strains. Influenza information is gathered from selected

physicians acting as "sentinel physicians" in the 10 public health regions and in selected metropolitan areas.

Influenza vaccine for the target groups for 1978-79 will consist of inactivated trivalent preparations of antigens representative of influenza viruses expected to be prevalent. These viruses are the Russian Flu Virus, the Texas Flu Virus and the Hong Kong Virus. One dose of vaccine will be given to individuals 26 years and older, most of whom have had prior experience with all three types of viruses. For those 13 to 26 years of age two doses will be required, four or more weeks apart. Final dosage recommendations for children less than 13 will be available in about a month.

### Nutrition Crossword

- Across**
- most abundant mineral in body
  - a preparation containing a number of vitamins
  - food manufacturers—foods when they add nutrients
  - injury, fever or infection which may increase need for vitamin C
  - series of changes by which food is broken down for absorption
  - a simple form of sugar
  - food high in vitamin C and minerals
  - vitamins C and B-complex are \_\_\_\_\_ soluble
  - very high vitamin dosage
  - daily intake of essential nutrients recommended by FDA for most healthy persons (abbr.)
  - scientific or chemical name for vitamin C (2 words)
  - person who eats meatless diet
  - vitamin A is needed for night
- Down**
- disease due to lack of vitamin C
  - improper dieting may result in a vitamin and mineral \_\_\_\_\_
  - series of changes by which food is broken down for absorption
  - a simple form of sugar
  - food high in vitamin C and minerals
  - vitamins C and B-complex are \_\_\_\_\_ soluble
  - very high vitamin dosage
  - daily intake of essential nutrients recommended by FDA for most healthy persons (abbr.)
  - scientific or chemical name for vitamin C (2 words)
  - person who eats meatless diet
  - vitamin A is needed for night
- results in this disease substance found in small amounts in food which performs specific, vital functions in the body
- vitamins A, D, E and K are \_\_\_\_\_ soluble
- nutrient necessary for building and repair of body tissue
- food substance needed to maintain life
- intoxicating beverage that increases need for vitamins B<sub>1</sub>, B<sub>6</sub> and folic acid
- nutritional \_\_\_\_\_ list the nutrients in a package of food
- this baked food product is often fortified with extra nutrients
- vitamin C may reduce the symptoms of the common \_\_\_\_\_
- measurement of weight equal to about 1/28 ounce



## The Land Bank ...money to keep the farm in the family

One of agriculture's toughest challenges is keeping the farm in the family. It takes long-term planning and, often, long-term credit. For more than three generations, the Land Bank has helped farm families pass along what they have worked so hard to build. We may be able to help you, too.

### The Bank of Generations

**Federal Land Bank Association of Haskell**

JOE HARPER—Manager

Offices at Haskell, Anson and Seymour  
Haskell Telephone: 864-2062—Anson Telephone: VA 4-1142

Long-time loans on farms and ranches in Haskell, Jones, Baylor and Knox Counties

# NOTICE

## We Will Be Closed For 2 Weeks

### Sept. 11-22

For Vacations And To Complete The Job on The Haskell Housing Units.

Thank You For Waiting.

## Philpot Service & Supply

Phone: 864-3010 Haskell, Texas

It pays to advertise... Advertise where it pays in the Haskell Free Press

HERE'S TO YOUR HEALTH from Kenneth Jones

Each year, many people suffer from grease fires in pans. To put out a grease fire in the kitchen-smother it with a cover or inverted pan. Dump baking soda (not baking powder) on the flame. Baking soda creates carbon dioxide to smother the flames. Don't pour on water, it will cause the flame to flare up and may spatter the burning grease on you and around the room. In the absence of a fire extinguisher, a pound of baking soda is a good fire control to have handy in the kitchen.

DOYLE HIGHS  
**THE DRUG STORE**  
100 SOUTH "E" HASKELL, TEXAS  
PHONE 864-2515

## EXPERIENCED SEWING MACHINE OPERATORS!

Experienced Single Needle Operators On Jackets, Blouses or Dresses

- High Piece Rates
- Opportunity for Overtime
- Free Hospitalization
- Paid Holidays & Vacation
- Modern, Clean Air Conditioned Bldg.
- Plenty Free Parking
- Full Work Week--No Layoffs
- Will Consider Training Home Sewer

Apply in Person To Margie Huss at Herman Marcus, Inc. Hwy 380 West, Haskell Phone (817) 864-3625

## Kick-Off Time

Casual Shirts  
In velour and polyester blend just right with jeans

Corduroy Jeans  
The latest from Wrangler

Light weight Jackets  
For the Football season  
lots of colors

Felt Hats  
By Resistol  
Lots of styles and Brim widths

**Lane APPAREL**  
FOR MEN  
Next to M-System



# American Ag News

BY BETTYE McBROOM

The following commentary is from a paid advertisement. It appeared in THE WASHINGTON POST Wednesday, August 2, 1978, and came to me by way of Doris Piper of Paducah. For further facts about imported beef, contact the Meat Importers Council of America, Inc., One Penn Plaza, New York, New York 10001.

**"AMERICA DEMANDS IMPORTED BEEF"**  
The United States cannot economically produce sufficient lean beef to satisfy constantly increasing consumer demand for hamburger and other processed meats.

Imported beef is inherently lean. Combined with fat beef trimmed from domestic fed cattle it provides tasty, affordable, protein rich hamburgers, hot dogs and other manufactured meat foods.

Imported lean beef is an inflation fighter. Without it the hamburger could become an "endangered species" priced so high as to no longer be a staple of the American diet.

Hamburger prices at the retail level have already increased 30% this year. Additional restrictive measures on imports could force prices to \$2 per pound.

Consumers, particularly those on a fixed or low income, directly benefit from the ready supply of imported beef.

Yet, despite this public need, over 26 Bills are pending before Congress, supported by certain domestic cattle interests, which would add further restraints to beef

imports.

Incredibly, Texas Senator Bentsen's Bill HR5052 has been approved by the Senate and could become law. Among the Bill's restrictive proposals is one eliminating the President's authority under existing law to suspend meat quotas in time of need. By eliminating this authority HR5052 would virtually assure less beef imports in the future.

Congressman Gibbons of Florida, however, recognizing the consumer interest, has introduced legislation HR12752 to repeal present quota restrictions on imported beef.

The natural law of supply and demand should be allowed to operate. The best protection for the consumer and the cattlemen is to end all forms of government regulation. Let the marketplace decide!

A REBUTTAL by John R. Ratliff of Paducah, was given: Unfortunately the above reasoning is bad propaganda for it omits health requirements, and attempts to slander the American rancher in an indirect manner. First there was nothing in the above advertisement about the quality of the product. It is the law that only 10% of this imported beef is required to be inspected to meet U.S. standards of health. If any percent or percentage of the remaining 90% is contaminated (spoiled, thereby causing food poisoning or dysentery) the American rancher takes the blame. The overwhelming majority, if not all, imported beef is mixed

with domestic produce and consumed as hamburger or cold cuts. The American shopper is under the impression that the hamburger or beef franks bought is domestically produced.

A second indiscretion in this advertisement is the indirect assumption that U.S. produced beef is unfit or unhealthy for human consumption due to excessive fat. According to certain beef importers, the commercial feeding of beef cattle is lowering the quality of the product instead of increasing it.

A third indiscretion is the importation of a product, increasing the value of the dollar or lowering inflation.

These importers seem to forget that international trade is a two way street. Whenever American products (industrial and agricultural) is restricted by foreign government through the use of high tariffs or import quotas, this lessens the value of the dollar and at the present time, the majority commodities from the United States are agricultural. Increasing imports with exports remaining the same or slightly increasing only added to the spiral of inflation, for the American people are paying a higher price for the imports, than other people are paying for our exports.

Comments from Bettye: I wonder who owns and controls Meat Importers Council of America, Inc.? We will do our best to find out and let you know.

If Senator Bentsen's Bill does become a law, it will be one of the few things that he

has done lately to help the American people. The one big thing he has done recently to hurt the American people was his voting of yes to give the Panama Canal away.

## STOCK MARKET

The market at Haskell Livestock Auction was active on a run of 730 head of cattle, 185 hogs, and 2 sheep and goats at its sale Sat., Sept. 2, 1978 according to Tom Nix reporter.

Other comments: all classes selling strong on a Holiday Market, stockers and feeders \$2-\$3 higher. Next Sat. the hog sale will be at 10 a.m. B BO at 11 a.m. Cattle sale at 12 noon.

Butcher calves: choice, 53-55; good, 50-53; standard, 45-50; rannies, 35-45.

Cows: fat, 35-39; cutters, 33-38; canners, 25-33; stockers, 35-40.

Bulls: bologna, 40-45.50; stockers, 50-60; utility, 35-40.

Stocker Steer Calves: choice, 80-87.50; good, 70-85; medium, 65-70; common, 45-65.

Stocker Heifer Calves: choice, 65-72.50; good 60-65; medium, 57.50-60; common, 40-55.

Feeder Steer Yearlings: choice, 65-70; good, 58-65; medium, 55-58; common, 45-55.

Feeder Heifer Yearlings: choice, 60-68; good, 55-60; medium, 50-55; common, 40-50.

Cows & Calves: good, 450-525; plain, 350-450.

Top on Hogs: 48.

Bulk of Butcher Hogs: 46.50-48.

Sows: 38-40.

Boars: 33.50-36.

Feeder Shoats: 35-50.

Pigs By Head: 17.50-30.

## Putnam Awarded Scholarship

### At McMurry

Don Putnam, a 1978 top honor graduate of Bovina High School, has been awarded a Presidential Scholarship, McMurry College, Abilene. Don registered for the fall semester, Monday, August 28.

Byron Putnam, a recent graduate of Lon Morris Methodist Junior College, Jacksonville, registered for the fall semester at McMurry College as a voice major.

Wiley Putnam is a student at Mountain View Junior College, Dallas, where he is a Business Administration major.

Jan Russell Putnam, a recent graduate of Mountain View Junior College, Dallas, where his name was placed on the Dean's list for a 4.0 average last semester, is now a student at the University of Texas at Dallas. Jan is a ministerial student and is serving at the Tyler St. United Methodist Church in the Youth Department.

Jerry G. Putnam is a senior at the University of Texas, Dallas, where he is a Sociology major. He is a ministerial student serving as Singles minister at the Tyler Street United Methodist Church, Dallas.

Don, Byron, Wiley, Jan Russell, and Jerry Putnam are the sons of Rev. and Mrs. James Wm. Putnam, pastor of the First United Methodist Church, Haskell.



In 1925, it was against the law in Turkey to wear a fez.

**GRAND**  
Stamford 773-3181  
Fri. 8-Sat. 9-Sun. 10  
Jeannie C. Riley's  
"Harper Valley P.T.A."

**DRIVE-IN**  
Stamford 773-3272  
Fri. 8-Mon. 11  
"Coach"  
Tues. 12:00 Day Only  
All Spanish Show  
\$4 A Car  
"Enesta Primavera"  
Wed. 13-Thurs. 14  
X on X Rated  
Adults Only  
"Fringe Benefits"

# Leisure Lodge News

The monthly birthday party was given on Monday by the ladies Sunday School Class of the First Baptist Church as hostesses, with Earmal Bevel as chairman. Freddie Ballard led the singing accompanied at the piano by Bamah Ivey. Mrs. Bevel brought the devotion. Cake and punch was served. We want to thank Olen King for the cookies he furnished for the diabetics. Honored on their birthdays were: Ivy Massie, Kathryn Mitchell, Tom Rogers, Myrtle Russell, and Frank Hernandez.

We want to thank Randall Hale for coming out and playing pool with some of our residents. We also invite any others who may want to come out and play pool with our residents.

We have certainly enjoyed having the people from the First Baptist Church of Haskell bringing the Sunday morning worship services. We will be looking forward to having the people from the Trinity Lutheran Church bringing the worship period for the month of Sept. at 10:20 a.m.

Mrs. Alvin Norman, Lucy Hunt of Rule, Mrs. Easter May and Ruby Pierce of Knox City visited Mr. Alvin Norman.

Mrs. W.L. Davis of Morton visited her mother, Mrs. Beulah Lackey. Visiting Sam Parks were his daughter, Doris, and Botch Burson of Wills Point, a sister, Mrs. Erma Luckie of Ft. Worth, nephew, Aubrey Clyde Yeager to Denton, niece, Joy Blackwell of Ft. Worth, niece, Mildred and Les Boyer of Abilene.

Mary Stover visited her father, Mr. J.A. Wright and other residents this week. Mrs. Stover is a former employee of Leisure Lodge and is now living in Montague.

Anita and Eddie Camacho of Abilene visited their mother and grandmother, Nolberta Flores. Mrs. James E. Turner,

AT LAST—a pen you can't lose! The original pocket coil pen. Clips on dress, blouse, shirt or pocket. Contoured for easy writing. Uses standard refill. If dissatisfied with pen, maker will repair or replace. Only \$3.95 at the Haskell Free Press.

her daughter and grandbaby of Childress visited with Elsie Mitchell.

Visiting Joe Larned were: Mr. and Mrs. Tommy Larned and daughter, Judy of Mulberry, Florida, and Brucille Garrett of La Force.

Visitors of Mary Alice Smith were: Mrs. Judy Hicks, Kevin and Michael of Abilene, and Mr. and Mrs. George Gray of Weinert.

Mr. Durwood Wheatley and Travis of Wichita Falls visited

with Ivy Massie and took her out to the home of her sister, Mrs. Elmer Wheatley for dinner Sunday night.

Mr. and Mrs. Lloyd Bradley of Goree visited his mother, Mrs. Lillie Bradley.

Mrs. Ora Baugh and Mrs. Warren Doyle of Rule, and Mr. and Mrs. Travis Smith of Stamford visited Miss Alaph Dyches.

Audra Holsapple of Lubbock visited her mother, Mrs. Mary Ray for several days this

week.

Mr. W.O. Lewis visited in the G.C. Brockett home in Weinert and in the Jeff Smith home in Munday.

Mrs. Edna Adkins of Rochester visited Sam Parks and Carrie Edwards. Mrs. Esther King, Carrie Edwards, and Ophelis Medford were honored on Friday by Carrie Josselet and Pearl Holmesly bringing and serving them angel food cake and orange juice.

## 1978 Buick and Pontiac

# CLEARANCE

# SALE

These cars must be sold to make room for 1979 models

### 1978 Pontiacs

- 1 - 4 Dr. Catalina
- 1 - 4 Dr. Phoenix
- 1 - 2 Dr. Grand Prix
- 1 - 2 Dr. Sunbird

### 1978 Buicks

- 2 - 4 Dr. La Sabres
- 2 - Regal Coupes
- 2 - 2 Dr. Skylarks
- 1 - 4 Dr. LaSabre-Dome

# Priced To Sale

We are out of good used cars, will give top dollar for nice, clean used cars.

## Medford Buick-Pontiac

Haskell, Texas

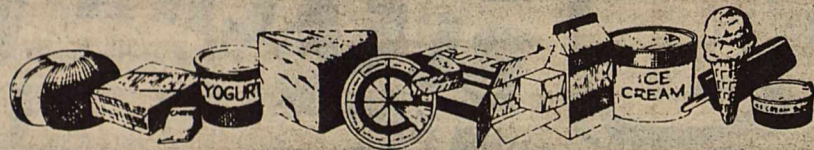
OPEN 24 HOURS

# ALLSUP'S

CONVENIENCE STORES

PRICES GOOD SEPT 7-SEPT 10, 1978

## ALLSUP'S AND BORDEN'S DAIRY MONTH SPECIALS



BORDEN'S ICE CREAM SANDWICHES  
6 PAK. **79¢**

BORDEN'S DUTCH CHOCOLATE MILK  
QT. SIZE **49¢**

BORDEN'S BUTTER MILK  
1/2 GAL. SIZE **79¢**

BORDEN'S FRUIT DRINK  
GAL. SIZE **59¢**

FOLGER'S ALL GRINDS COFFEE  
1 LB. CAN. **\$2.79**

BORDEN'S SHERBET  
2 PINT **79¢**

Ranch Style Beans  
15 oz **3/79¢**

Vienna Sausage  
4 **1.00**

Van Camp's Pork & Beans  
21 oz **3/89¢**

Del Monte Spinach  
15 oz **4/1.00**

Hunt's Whole Potatoes  
**3/89¢**

Kraft Miracle Whip  
32 oz **\$1.19**

FOUNTAIN GIANT SIZE COKE  
24 OZ. CUP **29¢**

Shurline Dog Food  
15 oz **10/\$1**

BORDEN'S COTTAGE CHEESE  
12 OZ. **63¢**

ALLSUP'S ICE CREAM  
1 GAL **\$1.29**

# FIRST SPECIAL FALL CONSIGNMENT SALE

HAD GOOD RAINS? TANKS FULL? NEED CATTLE?

## COME TO HASKELL LIVESTOCK AUCTION SAT., SEPT. 9, 1978

WE WILL HAVE PAIRS, ALREADY 200 PAIRS ARE CONSIGNMENT. ALL BREEDS . . . ANY KIND YOU WANT. 100 SPRINGER COWS. BANGS AND PREG. TESTED. BREEDING BULLS. ALREADY CONSIGNMENT YOUNG HEREFORDS, BLACK ANGUS, SANTA GERTRUDIS, BRAHMAS. ALL WILL BE BANGS TESTED.

100 OPEN HEIFERS—ALL BREEDS.

200 LIGHT STOCKER STEERS AND HEIFERS READY TO TURN OUT.

DON'T EAT BEFORE YOU COME. FREE BAR-B-Q LUNCH WILL BE SERVED AT 11 A. M.

YOU OUT OF STATE BUYERS WILL HAVE ONE OF THE BEST AIRPORTS WITH AN ADF APPROACH ON YOUR CHARTS.

CONSIGNMENTS WILL BE ACCEPTED UP AND UNTIL SALE TIME SAT., SEPT. 9, 1978, 12 NOON

Come Out and Meet the Co-Owners

JAMES POWELL, Haskell, Texas—Phone 817 864-3427

BOBBY PARROTT, Haskell—Phone 817 864-2470

TOM NIX, Anson—Phone 915 823-2231

You Have to Have the Cattle to Have the Buyers. You Have to Have the Buyers to Have the Cattle. WE HAVE THEM AT HASKELL, TEXAS

# HASKELL LIVESTOCK AUCTION

Sale Every Sat. - Hogs 10 a.m. - Cattle 12 Noon



# M SYSTEM

Your FRIENDLY SUPER MARKETS

Haskell

Where Your Dollar Buys More

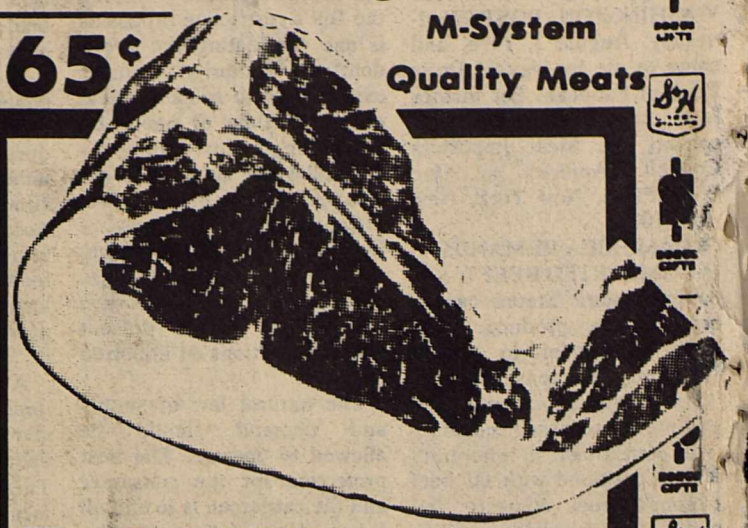


Full Cuts U.S. Choice

## Round Steak <sup>lb</sup> \$1.49

Chiffon Oleo <sup>1 lb tub</sup> 65¢

M-System Quality Meats



**SIRLOIN STEAKS**

lb. **1.69**

**GOOCH GERMAN SAUSAGE**

12-OZ. PKG. **1.69**

**T-BONE STEAKS**

**1.99** LB.

WILSON'S CERTIFIED All Meat **LB. 1.09**

BLUE BONNET **OLEO** LB. **55¢**

HORMEL BLACK LABEL **BACON** LB. **1.49**



**DOUBLE S & H GREEN STAMPS WEDNESDAYS**  
With The Purchase Of \$2.50 Or More

Specials Good Thurs. Sept. 7 thru Wed. Sept. 13

SHURFINE ALL GRINDS **COFFEE** **1.89**  
1 LB. CAN  
LIMIT 2 WITH 40¢ OR MORE PURCHASE

Shurfine **TEA BAGS** 100 Ct. Pkg. **\$1.69**

**BODY TALC** 13-OZ. REG. 2.99 **1.98**

**DOG FOOD** FIELD TRIAL 5-LB. BAG **89¢**

Lucky Leaf Apple Pie Filling 22 oz can **69¢**

Lucky Leaf Apple Juice 48 oz bottle **89¢**

Food King Frozen Shoestring Potatoes 20 oz bags **\$1.49**

Flex **CONDITIONER OR SHAMPOO** 16-OZ. REG. 1.99 **1.59**

**DEL MONTE CATSUP** 20-OZ. BOTTLE **59¢**

SHURFINE **PICKLES** DILL OR KOSHER DILL 32 oz jar **79¢**

**HI-DRI PAPER TOWELS** JUMBO ROLLS **3/1.00**

**DEL MONTE CUT GREEN BEANS** 17-OZ. CANS **3/1.00**

**DEL MONTE SWEET PEAS** 17-OZ. CANS **3/1.00**

**DEL MONTE GOLDEN CORN** Cr. Style-Wh. Kernel 17-OZ. CANS **3/1.00**

**DEL MONTE TOMATO SAUCE** 8-OZ. CANS **5/1.**

**ORCHARD ORANGE DRINK** 64-OZ. JAR **59¢**

**CLOROX BLEACH** 1/2 GALLON PLASTIC JUG **59¢**

**DEL MONTE PINEAPPLE GRAPEFRUIT JUICE DRINK** 46-OZ. CAN **59¢**

**DASH** CONCENTRATED CLEANING POWDER FOR TODAY'S AUTOMATIC WASHERS

**DASH DETERGENT** 211-OZ. FAMILY SIZE **4.79**

**MORTON FROZEN POT PIES** BEEF CHICKEN TURKEY Assorted Fragrances 6-oz. **39¢**

**INSIDE FROSTED LIGHT BULBS** 60-75-100 WATT PKG. OF 5 **1.19**

**SHURFRESH COTTAGE CHEESE** FULL LB. **59¢**

Glade Solid Deodorant  
Cascade Dishwashing Detergent Large 50-oz. Box **1.59**  
Dawn Dishwashing Liquid 32-oz. Bottle **1.19**

**WHITE ONIONS** 2 lbs. **29¢**

**FANCY NO. 1 BELL PEPPERS** LB. **39¢**

**TOKAY GRAPES** lb. **59¢**

**POTATOES** U.S. NO. 1 RUSSET LB. BAG **10.89¢**

**NEW CROP RED APPLES** Delicious 3-lb. bag **1.19**  
Kraft Wrapples 9 oz **69¢**

