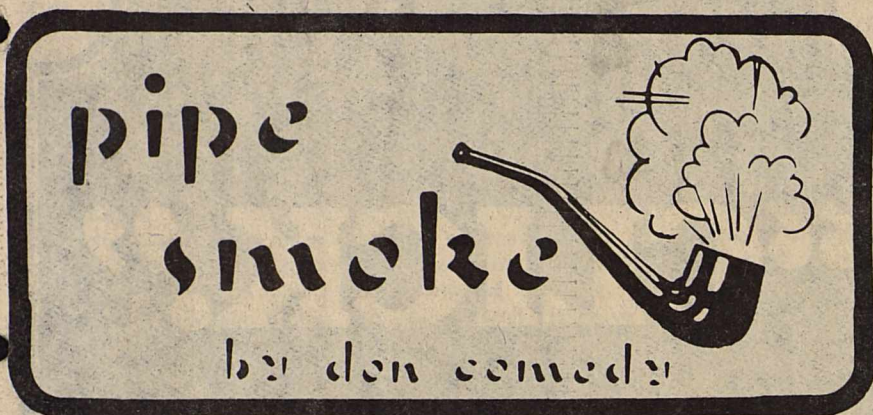


GRAND CHAMPION STEER — MIKEANA WILCOX



GRAND CHAMPION LAMB — DOUG BROWN



Grand Jury Returns One True Bill

A new Haskell County Grand Jury was impaneled Monday and returned one bill of indictment. Indicted was Cody Ray Hutson of Stamford. Hutson was indicted for Aggravated Assault in connection with the July 20 altercation at Allsup's. Serving on the Grand Jury are: Johnny Wheatley, foreman; Dan Wadzeck, Maxine Hertenberger, Walter Bredthauer, Bob Earles, Terry Blanks, Warner Collins, Charlie Woods, Larry Tanner, Ester Menchaca Conner, Cole Turner Jr., and Jessie Silba.

The 1980 edition of the Haskell County Fair is now over and another excellent production is history.

While the number of entries in the crops division were generally down, most other portions of the show were up from years past.

The Haskell County Fair is truly representative of the cooperative effort possible when an entire area pulls together to achieve a common goal.

It's hard to realize how many hours of preparation went into staging such an event when you walk through the exhibits or view the stock judging.

When you walk through the gate, it's hard to imagine the difficulties of scheduling volunteer workers to

take tickets.

Yet when you witness the smooth operation of the complete three day event and realize that the entire production is completed by volunteers, it instills a new pride in your County and community and in the people you live around.

City Council Plans Park Improvements

The major portion of the Tuesday night Haskell City Council meeting was spent discussing a \$109,090.00 park improvement grant.

The grant has been approved and calls for the Federal Government to provide \$54,545.00 in matching funds to build two new tennis courts and a lighted softball field in addition to other improvements.

Council members studied the cost projections of the program and attempted to determine what the

Rehab Benefit Set Saturday

A special sale and fund raising drive has been scheduled this Saturday at Haskell Livestock Auction in conjunction with the Cattleman's Round-Up for Crippled Children.

The annual event held this Saturday for the West Texas Rehabilitation Center will feature the sale by auction of several items.

The event at Haskell Livestock will begin at 2 p.m. with the sale of a goat.

Buyers of the goat or other animals do not have to take the animals, but may donate them back and they will be resold.

Persons who have any type of animal to donate to the sale should contact someone at Haskell Livestock Auction and the animals will be picked up.

Rule Residents To Petition Council

Residents of Rule are circulating a petition which is scheduled to be submitted to the Rule City Council at their next meeting.

The petition has been signed by about 250 residents of Rule and contains 18 items.

Three general areas of the petition address: actions taken by the council; law enforcement; and city water.

Several signers of the petition have expressed their agreement with portions of the petition by listing numbers of the portion with which they agree while others have signed the document, apparently indicating agreement with all portions.

The petitions will be circulated in Rule during the day and at the home of Zora Mathis, 600 Robbins, at night.

Rule Mayor Tom Kutch told the *Free Press* that he felt it would be inappropriate to comment on the petition until it is officially submitted to the City Council and Council members have an opportunity to study it.

The petition is printed in its entirety below:

TO THE HONORABLE CITY COUNCIL OF RULE, TEXAS: We, the undersigned petitioners, respectfully request action on the following petition:

1. That a nightwatchman be hired.

2. That PUBLIC NOTICE be given in advance of City Council vote on:

A. City money being spent on

raising any one city employee salary in excess of \$50.00 per year.

B. City money being spent on any single item in excess of \$100.00.

C. Failure of City Marshall, Constable, Deputy Sheriff or other public employee to respond to call or do what he's paid to do.

3. That reckless driving and disorderly conduct on our streets be brought under strict control.

4. That a reasonable curfew hour be set and enforced.

5. That Liability of City be insured, or if that is not feasible, that public be informed as to exactly WHO is liable for damage caused by city employee negligence or behavior.

6. That phone numbers and alternate numbers be posted or otherwise be made known to public of the law enforcement officers residing here and that they co-operate and make every effort to be sure that at least one of them can be reached by phone at every hour.

7. WATER:

A. That legal action be taken against persons, or liable party, who drew pay for reading water meters and failed to do so.

B. That water meters be checked when requested and if found to exceed the 2% allowable deviation

that charges or credits be PROPERLY applied.

C. That obvious errors be corrected and .75¢ rate be charged (NOT \$2.00) for water used while .75¢ rate was in effect and only being charged now due to negligence of city employees.

D. That our city water be re-tested and it PROVEN to us that it is UNSAFE to drink.

E. That the public be informed as to why a portion of this water is safe, and what proportion is safe, when mixed with Miller Creek water and why our water has been approved as safe up to now.

F. That it be PROVEN that

Miller Creek water is safe when it comes from watershed from land containing unsafe chemicals while our water at present is well filtered (by earth) underground water.

G. That the actual physical ability of Miller Creek water to supply all cities to be attached to it be proved BEFORE we are required to pay for something it appears we may NEVER get.

H. That we be given reasonable PROOF that our city water will be less than sufficient for our use.

8. That we, the public, back our city and county employees 100% when they do the job they get paid to do.

Bike-A-Thon To Benefit St. Jude's

Bike-a-thon chairman Rev. Mike Struve today asked Haskell residents to participate in the St. Jude Children's Research Hospital "Wheels-for-Life" Bike-a-thon, October 4.

Volunteer workers and riders are needed for the Bike-a-thon to raise funds for the world-famous research center and its battle against childhood cancer and other catastrophic childhood diseases.

Rev. Struve said this year's ride is being dedicated to Terry, a leukemia patient at St. Jude. "By riding for

Terry, we'll really be helping all stricken children since research is the only way these illnesses can be conquered." "We're looking for people who will contribute some of their time and energy to help children live. We really need bike riders, since they are the ones who can make this Bike-a-thon successful."

In the Bike-a-thon, riders enlist sponsors who donate a sum for each mile completed. Riders who raise \$25 will receive a St. Jude T-shirt, and those raising \$75 will receive a back pack said Rev. Struve. "We also have prizes for other riders." Sponsor forms are available at the Elementary and Junior High Schools and the *Haskell Free Press*.

The Haskell Lions Club has agreed to sponsor the event and have issued challenges to the Rotary and Kiwanis Clubs. Both clubs have accepted the challenge.

City Water To Be Off For Repairs

Water in Haskell will be turned off today, Sept. 25 for repairs and replacement of fire hydrants.

The water will be turned off at approximately 1:30 p.m. and residents are urged to make arrangements for an adequate supply before that time.

Frantic Fans Show Local School Spirits

BY GINA JENNINGS

With the roll of a drum, the figure of an Olympic athlete appeared on the steps of the Haskell County Courthouse Saturday—The torch was lit and the contests began.

Students and teachers from Haskell, Rule, Paint Creek and Rochester High Schools gathered before a crowd of about 200 spectators to engage in games matching their wits, coordination, speed and brute strength.

The Frantic Fan Antics, sponsored by the Haskell Chamber of Commerce, thus proved which area fans will do anything to prove they're "number one."

According to the official results of the contests, the most coordinated fans in Haskell County are from Rochester. The Steers proved as much by threading a spoon attached to a length of string through the apparel of several fans.

Haskell finished second in this event.

Teachers from Haskell High School rated number one in intelligence by being first to solve a giant "spirit puzzle." Second place winners in this game were Rule fans.

The speed of contestants was determined by the dubious art of covering one member of a team with toilet paper. Completing their mummy most quickly were the Paint Creek fans with Haskell fans finishing second.

The final event of the afternoon was a tug-of-war which proved (after several matches and re-matches) that Rochester fans had the strongest team. The Indian fans took second place in the tug.

Queen of the Haskell County Fair, Emily Cox, presented awards to winners and the 'noble' games were concluded with a rendition of the national anthem by members of the Rochester High School Band.

COTTON
GRAIN
CATTLE

THE HASKELL

25¢
per copy
12 PAGES

FREE PRESS

"HASKELL—A GOOD PLACE TO VISIT; A BETTER PLACE TO LIVE"

VOLUME NINETY-FOUR
HASKELL, TEXAS, SEPTEMBER 25, 1980
NUMBER THIRTY-NINE

weather

September 16-22
BY SAM HERREN
TEMPERATURE

Hi.....	100°	16th
Lo.....	55°	17th

RAINFALL

Total*	1.21
Total to Date	10.44
Normal to Date	18.69

*to 9 a.m. Tuesday

Superintendent's Views

BY JAMES LANIER
Superintendent, Haskell ISD

For several years, the Haskell Elementary lunchroom has used many students as helpers. This program was started to alleviate a labor situation plus teach the very important work ethic. However, like many programs, it has grown into a cumbersome problem. Fifty-five students were involved in this program this year. Each student worked one week each five weeks. These students were missing classes for approximately 35 out of 175 days. The 5th graders were missing reading while the 6th graders were missing English. All 55 students were receiving their lunches free as payment for their work.

After careful consideration by the administration into the pros and cons of the program, we decided a change must be made for two reasons: the student workers were missing entirely too many opportunities to learn and their leaving class was disruptive to the learning process of their classmates; and the cost was becoming prohibitive to the financially beleaguered lunchroom program. We could arrange for the 6th graders to

work without missing any classes by switching English and recess. The student helpers would miss only recess.

The students who work will receive a small stipend since they will work every other day. This change will provide more opportunities for academic classroom work without classroom disruption plus save the lunchroom approximately \$4,000.00 in paid lunches. We realize this has been a good program for the students as well as a financial help to many families. However, after careful thought and consideration, we felt that a change was in order especially because of the effect on the classrooms of the 5th and 6th graders.

HHS Drama Students Need Various Items

Old clothes, shoes, wigs, hats, costumes, and glasses are just a few of the articles needed by the speech and drama students to help fill their costumes closet.

Other articles needed are uniforms such as military or hospital and foreign clothes. Not only are clothes needed but newspapers from large cities except Abilene are needed and will be picked up on a weekly basis. Time, U.S. News and World Report magazines are needed to clip current events and background necessary for debate topics.

Persons wishing to donate to the costume closet or debate files can contact Mrs. Glenda Drinnon, speech and drama teacher, at 864-3147 after 4 p.m. and make arrangements to have the articles picked up.

HASKELL Lunch Menu

September 29-October 3
MONDAY

Spanish Dumplings
Mixed Vegetables
Rolls and Butter
Apple Sauce
Milk

TUESDAY

Pimiento Cheese Sandwiches
Vegetable Soup
Pickles
Peaches
Cookies
Milk

WEDNESDAY

Fish Portions
Potato Salad
Green Beans
Rolls and Butter
Fruit Cocktail
Milk

THURSDAY

Hamburgers
Lettuce and Tomatoes
French Fries
Cinnamon Crisps
Milk

FRIDAY

Turkey Tetzinnini
English Peas
Carrot Sticks
Brownies
Milk

Breakfast Menu

MONDAY

Orange Juice
Dry Cereal
Milk

TUESDAY

Apple Juice
Sausage Patties
Toasted Rolls
Milk

WEDNESDAY

Pineapple Juice
Oatmeal
Milk

THURSDAY

Apple Juice
Cinnamon Toast
Milk

FRIDAY

Grape Juice
Cereal
Milk

WE HAVE Riverside Family Reference Bibles. These large Family Bibles include presentation page, complete family record section, Biblical Cyclopedia Index, Study Helps, Great Bible Truths, Beautiful Illustrations, full page maps, padded cover with velva-gold edges. Haskell Free Press.



ALVIN SCHMIDT

Schmidt Promoted By DPS

Former Haskell resident Alvin Schmidt was promoted to the rank of Sergeant within the Department of Public Safety on July 1, 1980.

Sworn in by Department Colonel Adams in Austin on August 5, Sgt. Schmidt will be residing in Anahuac and acting as sergeant for Chambers County.

The son of Mr. and Mrs. Rufus Schmidt, he was a 1968 graduate from Haskell High School going on to receive an Associate Degree from Cisco Jr. College in 1970.

He graduated from the Department of Public Safety Academy in September of 1970 and in 1977 earned a B.A. in Law Enforcement from Wayland Baptist College.

Screening Services Slated

The Texas Department of Health Region 4, will hold screening services for area towns. The public is invited to attend, and there will be no charge for these services. Any abnormal findings will be referred to the client's private physician.

Services offered will be for diabetes, high blood pressure, anemia, vision, hearing, weight and urinalysis. Immunizations will also be given.

Clinics will be held at the following locations and dates: Anson, at the Assembly of God Church, 401 N. Commercial from 10:00 to 12:00 on October 8th. Immunizations will be given from 1:00 to 3:00.

Aspermont, Library Building, West Side of Square on October 1st, October 14th, and October 28th from 10:00 to 3:00. For further information concerning these services, contact Kewpie Duncan at 817/989-2730 or 989-2686.

Haskell, Experienced Citizens Center, N. Ave N on October 2nd, and October 22nd from 10:00 to 3:00. Screening will be held at the CAP Building on October 16th from 9:30 to 12:00, and immunization from 1:00 to 3:00.

Hamlin, Hamlin City Hall, on October 16 from 10:00 to 12:00. Immunizations will be given from 1:00 to 3:00.

Stamford, Stamford Library Building, 600 McHarg on October 15th from 10:00 to 12:00 and immunizations from 1:00 to 3:00.

College News

Rena McBroome of Haskell has been elected to the Student Senate for the 1980-81 school year at Western Texas College.

Officers of the Senate are Chris Welch of Midland, president; Stella Bickley of Robert Lee, vice president; Lynda Cain of Coral Springs, Fla., secretary, and Susan Tolbert of Snyder, treasurer. Mickey Baird, Student Activities Director, is faculty advisor.

Miss McBroome is a representative from the sophomore class and is a member of the recreation committee. She is the daughter of Mr. and Mrs. W.H. McBroome.

The Haskell Free Press
Established January 1, 1886
PUBLISHED EVERY THURSDAY

MEMBER 1980
TEXAS PRESS ASSOCIATION

BILL COMEDY—Publisher
DON COMEDY—Editor
Entered as second-class matter at the post office at Box 577, Haskell, Texas 79521, under the Act of March 3, 1879.
(USPS 237-840)

SUBSCRIPTION RATES
In Haskell and Adjoining Counties

One Year	Total
	\$7.25
Six Months	\$5.00
Two Years	\$14.00
Elsewhere in Texas	
One Year	\$8.50
Six Months	\$6.00
Two Years	\$16.00
Outside of Texas	
One Year	\$10.00
Six Months	\$7.00
Two Years	\$19.00

NOTICE TO PUBLIC—Any erroneous reflection upon the character, reputation or standing of any firm, individual or corporation will be gladly corrected upon being called to the attention of the publishers.

UMW Holds Special Study Program

Mrs. John Willingham, District Director for Area VIII, will be the guest speaker for a program on "Perennials for Shade" when she is in Haskell to visit the joint meeting of the Haskell Garden Club and the Rule Garden Club. This meeting will be Wednesday, October 1, at 2:00 p.m. in the Community Room of Haskell National Bank.

Young Homemakers of Haskell are to be special guests for this meeting although this is club guest day and every member is urged to bring someone with them to the meeting. Members should note that this is not the regular meeting date but due to Mrs. Willingham's busy schedule it is the only time she could be with the club.

The club would like to thank Mrs. Juanita Dunnam for all the work she has been doing toward cleaning up at the park. Also thanks go out to all members, non-members and Mrs. Dunnam and Mrs. Juanita Rhea for a beautiful flower show at the fair.

Ladies, don't forget the October 1 date. Rule and Haskell will be joint hosts.

Garden Club To Hear Mrs. Willingham

The United Methodist Women assembled in Fellowship Hall for a study of "The Interior Life" on Sunday, September 21 at 3:00 p.m. and again on Monday, September 22 at 7:00 p.m. The study was given by Mrs. J.R. Perry.

The program was well attended and refreshments were served by the Esther Circle and the Mary Circle. At least six hours of special study must be entered into by the local units of UMW before recognition will be given by the NWTU.

Mrs. Garvin Foote is president of the United Methodist Women of Haskell.

Musical Set In Rochester Sept. 27

There will be a country western musical at the Legion Hall at Rochester, September 27th starting at 7 p.m. Everyone is invited to attend this free entertainment. All musicians are invited to play. This event is every fourth Saturday night in each month.

GRAND
Stamford 773-3181

Fri. 26-Sat. 27-Sun. 28
Open 8:00 - Start 8:30
Box Office Closes 9:30
Willie Nelson
"Honeysuckle Rose"

DRIVE-IN
Stamford 773-3272

Fri. 26-Sat. 27-Sun. 28
Chevy Chase
"Caddyshack"

Tues. 30-One Day Only
All Spanish - \$5 A Carload
"Donde Quedo Bolito"

Wed. Oct. 1-Thurs. 2
XX-Adults Only
No One Under 18
"Love Bavarian Style"



Staff Photo by Glna Jennings

FAIR QUEEN

Miss Emily Cox (center) was crowned queen of the 1980 Haskell County Fair at the conclusion of the Third Annual Queen's Pageant Thursday, September 18. Chosen as runners-up from the twenty-five contestants were (l to r) Terri Welsh, Janet Wallace, D'Anne Burris and Sharla Drinnon.



In ancient Egypt, mushrooms were reserved as food for the Pharaohs.

"CLICK."

"CLICK." That's where energy conservation begins. Turning off unnecessary lights, running the clothes washer, dryer, and dishwasher only with full loads. Turn the TV off when you leave it. Set your thermostat at 78 degrees for cooling and at 68 degrees for heating. These are simple conservation measures that can add up to big savings with just a little effort.

For even greater energy savings be sure your home has adequate insulation in the walls and ceilings. Double paned windows or storm windows and doors also help to insulate.

Weatherstripping and caulking are important to help keep your heating or cooling inside where it belongs. An energy efficient heat pump can provide 200% efficiency for summer cooling and winter heating.

All of these conservation measures can save you energy. And saving energy means you're saving money, all year long. West Texas Utilities wants you to get the most for your energy dollars. If you want more information on energy conservation we'll have one of our energy consultants assist you free of charge. Just call WTU.

WEST TEXAS UTILITIES COMPANY



A Member of The Central and South West System

Remember REDDY Supplies the energy—
but only YOU can use it wisely!

At Big Country, watch the little get big. And the big get bigger.

Effective Sept. 18-Oct. 1

11.300% Annual Rate

12.140% Annual Yield

Earned on the \$100 minimum, 2 1/2 year C.D.

Effective Sept. 25-Oct. 1

11.074% Annual Rate

11.310% Annual Yield

Earned on the \$10,000 minimum, 6 month C.D.



BIG COUNTRY SAVINGS

Stamford, Haskell, Quanah, Abilene. Formerly First Federal of Stamford.



This is an annual rate. The rate is subject to change at maturity. Substantial penalty for early withdrawal.

This is an annual yield. The rate is subject to change at maturity. And federal regulations prohibit the compounding of interest during the term of the account. Substantial penalty for early withdrawal.

Now at **Anderson Tire Co.**

GE MAJOR APPLIANCES

FACTORY PRICE CUT!

Mini-Basket™ tub saves hot water on small loads.

End-of-cycle signal.

Filter-Flo™ System traps lint—non-clogging.

Up-front lint filter. Easily seen—easily cleaned.

Heavy Duty 3 Cycle.
5 wash/rinse temperature settings. The Mini-Quick™ cycle washes and rinses a small load in just 14 minutes. Saves energy, too... the exclusive Mini-Basket™ tub uses 25% less hot water and significantly less detergent than the big tub's low water setting. Variable water level selection.

Heavy duty 3-cycle dryer with automatic sensor control.
Sensor monitors temperatures and ends cycle when clothes reach selected dryness. Choice of 3 different cycles — normal, permanent press/polyester knit or timed up to 60 minutes. 4 drying selections — normal, special, low heat and air fluff.

WAS \$399⁹⁵ NOW ONLY \$379⁹⁵
WAS \$279⁹⁵ NOW ONLY \$269⁹⁵
SAVE \$20 SAVE \$10

Anderson Tire Co.
206 S. Av E 864-2900

Rice Springs News

It seems that Autumn is really in the air now. The nice cool nights and early mornings are such a welcomed relief from all the scorching heat that we suffered this summer. As I am writing this, the Haskell County Fair is opening and several of the residents have entered their works in it. We are wishing them much success and will be reporting on how they did the next time that we report the news.

The home was saddened this week by the death of Mary Schonert, one of our residents. We will all certainly miss her never ending sweet smile and we wish to extend our sympathy to her family at this time.

Joe Teague is certainly happy to be back home after spending about ten days in the V.A. Hospital in Big Springs. He says he is feeling great now.

We've only had one resident to celebrate their birthday since I last reported and that was Manley Branch who celebrated his on September 14th. We hope he had a good day.

Again we thank all our volunteer people who have come out. Those coming were Jo Simpson, William Hodge, Martin Jacobsen, the First United Methodist UMW, of Haskell, Mae Holcomb, Sweet Home Singers, Haskell Church of Christ, and the Haskell First United Methodist Church who will be conducting our Sunday morning services for the month of September. We also would like to thank Eleanor Blohm for coming and playing the organ each Wednesday before our Bible Study. We also thank Leddy Garcia for making homemade cookies and coming out and distributing them to all our residents.

Our out-of-county visitors for the past two weeks were: Coming to visit Bill Harrell and Mae Brock were Doris Slater and Raleigh Brock, both of Fort Worth. Also coming to see Bill was Al Adkins of Fort Worth.

Visiting Nannie Winter were her sons, Mr. and Mrs. Joe Winter of Arlington, and James Winter and his friend of Bowie.

Frances and Deanna Scheets of Rochester visited Tom Kreger and Alvena Holle.

Velma Wallace and Vicky Stevenson, both of Abilene, visited their aunt, Ora McCollough.

Visiting Joe Ray were

Odessa Hatfield and Marvin Bergan, both of Abilene, his sister-in-law, Edna Ray, and his nephew and family, Robert, Judy, and Christina Ray, all of Prague, Oklahoma.

Visiting Jim and Dutch Cross were Sam and Grace West of Lubbock, and Curtiss Cross of Cibola. Curtiss Cross also visited Edna Collins. Other visitors of Edna Collins were Ophus, Frankie, and Nita Posey of Knox City.

Coming to see Annie Jones were her daughter, Lelia Hix, and Pat Hardy of Wichita Falls, her cousins, Evelyn Cupp of New Mexico, and Virginia Williams of Brownfield, and friends, Mrs. Annie Fry and her daughter, Leona Porter, both of Abilene.

Meta Moritz and Leroy Nehring, both of Stamford, visited Emma Lammert.

Visitors of Dovie Gregory were her children, Mr. and Mrs. Jack Peterson of Plainview and their daughter, Wilberta of Matador, Bonnie Storr of Sweetwater, Marie Hobbs, Giggis Gregory, and Oleta Bevil, all of Stamford.

Coming to see Sam and Ethel Bradford, their son and daughter, G.A. Bradford and Fay Cox, and granddaughter, Brenda Bradford, all of Peacock.

Visiting L.C. Williams and Ethel Rose were Joy and Linda Sue Spalding of Hamlin and Roland Rose of Abilene.

Coming to see J.C. Hargrove were his sisters and her husband, Ollie and Gerald Mobley of Brownwood, and his daughter, Christine Armstrong of Seymour, and his son, Carroll Hargrove of Grand Prairie.

Elsie Eastland and her daughter, Jan, of Abilene visited Artie Bradley, Charity Bradley, and Mary Bradley.

Visiting MaeBell Turnbow were her daughter, Betty Sue Wolfe, and granddaughter-in-law, Mrs. Lance Wolfe, both of Potosi.

Mr. and Mrs. Bill Angley and Joe Bob and Becky Underwood, all of Amarillo, visited their mother and grandmother, Mamie Angley.

Ed and Mary Nell Donaldson, who had been on a trip to Holland and were on their way back to their home in Amarillo, came by to visit with June Smith.

Visiting Eva Hisey were Doyle and Clara Hisey of Oklahoma City, Oklahoma.

Mr. and Mrs. Barney Long of Kermit visited A.C. Boggs. Hazel Letz of Old Glory visited Sam and Ethel Bradford, Alma Cole, Trudie

Bush, Jonnye Pumphrey, and many of her other friends here at the home.

Andy Hutchinson of Munday visited with Hoyt and Lois Gray.

Rev. and Mrs. Weldon McCormick of Abilene came to see Alma Cole.

Visiting Trudie Bush was her daughter, Mr. and Mrs. Hollis Rucker of Friona.

John Pumphrey of Fort Worth visited his grandmother, Jonnye Pumphrey.

Eunice Stewart was visited by her children, Jerry and Alta Stewart of Midland and Melba Stowe of Olney.

Visiting Mattie Sammons was her daughter, Mr. and Mrs. John Rogers of Iowa Park.

June Martin of Anson visited with Eunice Honea.

Ada Snyder and Agnes Bowman of Seymour visited Maggie Martin, Trudie Bush, and Charity Bradley.

We again thank all our visitors for coming whether we get to print their name in our column or not.

That's the news for another time.

BIRTHS

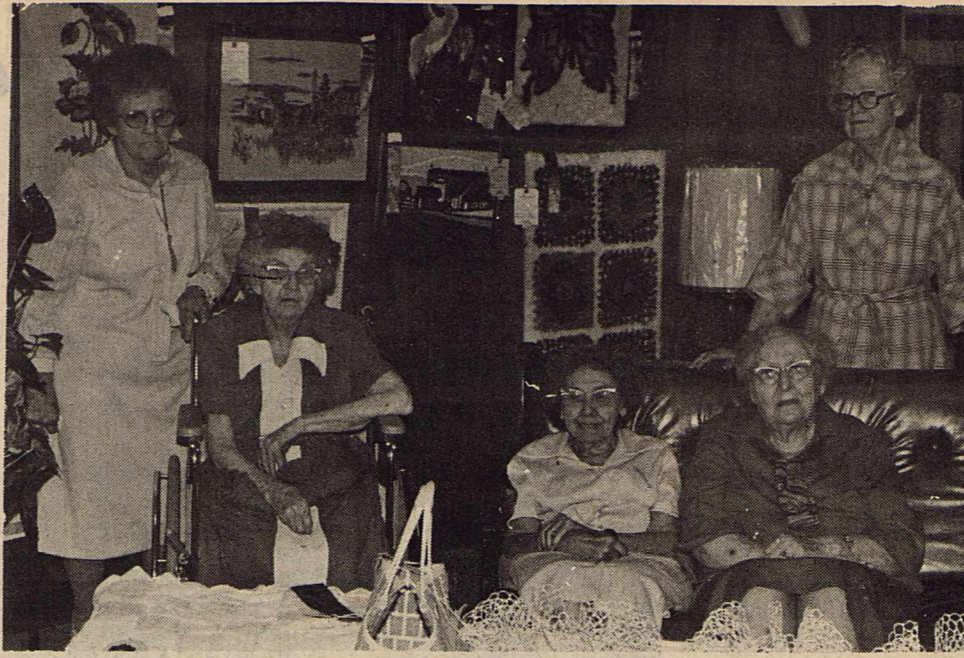
Mr. and Mrs. Orlando Cruz Acuna of Seymour announce the birth of their son, Orlando Raymond Acuna, born September 20, 1980 at Haskell Memorial Hospital weighing 6 lb 6 oz.

Mr. and Mrs. Maxie Neal Henson of Abilene announce the birth of their daughter, Misti DeeAnn Henson, born September 18, 1980 at Haskell Memorial Hospital weighing 7 lb 4 oz.

Mr. and Mrs. Julian Guzman Jr. of Stamford announce the birth of their son, Michael Anthony Guzman, born September 17, 1980 at Haskell Memorial Hospital weighing 7 lb 5 oz.

Kevin, Jason and Wendy Sturdy proudly announce the arrival of their baby sister, Kelly Paige, on Friday, September 12, 1980, at 11:36 a.m. Kelly weighed 8 lbs 4 oz and was 20½ inches long. Parents of the Sturdy children, Lonnie and Lavern Sturdy are both 1962 graduates of Haskell High School and now reside in Irving. Grandparents are Mr. and Mrs. O.T. Sturdy of Grand Prairie and Mr. and Mrs. Woodrow Jones of Haskell. Great maternal grandmother is Mrs. Ruby Moon of Haskell.

Brenda, Ronnie and LeighAnn Reel of Paint Creek wish to announce the arrival of a new farm product: Jodie Griff. He was born at 12:30 p.m. on September 13, 1980 at Stamford Memorial Hospital. This little tax deduction weighed in at 10 lbs 7 ¾ oz and measured 23 inches. Jodie's maternal grandparents are Mr. and Mrs. Bill Griffith of Paint Creek and his paternal grandparents are Mr. and Mrs. W.C. Reel of Winters.



Staff Photo by Glna Jennings

MINI-FAIR

Leisure Lodge residents (l to r) Eva White, Mrs. Myrtle Russell, Florene Sorrells, Mrs. Ivy Massie and Mary Ray were just a few of the winners during the Lodge's annual Mini-fair held Wednesday, September 17. Blue ribbons were plentiful throughout the colorful displays of arts, crafts and antiques shown by residents and employees during the event.

Leisure Lodge Holds Mini-Fair

Resident artists and craftsmen at Leisure Lodge displayed their works Wednesday, September 17, during their annual Mini-Fair held at the lodge. Even the employees joined in the fun with their own contributions to the displays.

According to Cris Collins, Activity Director, the fair was the best yet and both residents of the lodge and visitors to the fair enjoyed the event thoroughly.

Receiving a blue ribbon was the quilt which has been pieced and quilted by residents for donation to the rehab auction.

Judges for the fair were hard-pressed to make decisions and nearly everyone was judged a winner this year.

Winners included quilt entries by Willie Mae Hunt, Ruby Moon, Bessie Piland and Donna Westmoreland; pictures by Eva White and Elsie Norman; craft items by Eva White, Bessie Piland, Myrtle

Russell, Florence Sorrells, Ivy Massie, Bessie Hockett, Nealie Hammer, Mary McIver, Lummie Westmoreland, Ophelia Medford, Clonie Tarpley and Mollie Jarred.

Cecil White and Myrtle Russell won with plant entries.

Winners with collectors items included an antique typewriter and eyeglasses by Oscar Lewis; a 200 year-old canopy belonging to Gertrude Roberson's great grandmother; and a bonnet made 50 years ago for her son by Mary Alice Smith.

Leisure Lodge staff also contributed to the fair with arts and crafts by Marlene Avants, Ardell Beason, Cris Collins, Jerry Jackson, Debbie Yarbrough, Maxine Miller, Edna Yarbrough, Clariss Jones and Marie Elmore. In addition to crafts, the staff's entries included home-baked foods and various collectors items.

Fall Festival of Savings

Gooch Sliced Bologna	98¢ lb	Town Talk Bread	59¢ Large Loaf
No. 1 Sliced Bacon	98¢ lb	Coca Cola 6 Cans	\$1.59
Fresh Sausage	98¢ lb	Texas Yellow Squash	29¢ lb
Round Steak	\$1.99 lb	Colorado Cabbage	19¢ lb
Rump Roast	\$1.79 lb	Comet Rice	69¢ 28 oz box
Del Monte Peaches	69¢ No. 2½ Can	Premium Crackers	69¢ 1 lb box
Del Monte Pears	59¢ 16 oz can	Lipton Tea Bags	\$1.79 24 count box
Del Monte Pineapple	49¢ No. 1½ Can	SPAM	89¢ 7 oz can
Del Monte Kraut	39¢ 303 can	Bounty Towels	79¢ Large Roll
Skinner's Macaroni	47¢ 12 oz bag	Spray & Wash	\$1.59 16 oz can

POGUE GROCERY

—Extra Parking Behind The Store. Home Owned and Operated—

113 North Avenue E

Phone 864-2015

Haskell, Texas



Sutterfield Electric

Commercial-Residential-Industrial

Haskell, TX

Stamford, TX 773-5571

CABLEVISION offers a Choice!

- Ch. 2—Home Box Office (Optional)
- Ch. 3—USA Network
- Ch. 4—Local Weather and Music
- Ch. 5—KTVT Ft. Worth
- Ch. 6—KAUZ Wichita Falls
- Ch. 7—KSWO Lawton, Okla.
- Ch. 8—Trinity Broadcasting
- Ch. 9—KRBC Abilene
- Ch. 10—KTAB Abilene
- Ch. 12—KTXS Sweetwater
- Ch. 13—KERA Dallas

CENTEX CABLEVISION CORP.

Phone Enterprise 2406

—Night Phones—

Sammy Decker
864-3236

Tony Rosas
Call Collect
915-773-2438

Jerry Smith
Call Collect
915-773-3597

CLIP & SAVE

Bird-Turnbow Wed Saturday, September 13

Miss Sharon Louise Turnbow and Ricky Kyle Bird were wed Saturday, September 13, during a ceremony at the East Side Baptist Church with Rev. Darrell Feemster officiating.

Parents of the couple are Mr. and Mrs. Melvin L. Turnbow and Mr. and Mrs. Wallace Bird of Haskell.

Given in marriage by her parents, the bride wore a gown of satin and chantilly lace overlay with fitted tapered sleeves and scalloped neckline. Her 12 gored skirt of satin had a chiffon overlay trimmed with a ruffle of chantilly lace gliding into a

chapel length train. Her net veil was trimmed with satin and chantilly lace accented by seed pearls completing the lovely ensemble. The bridal gown was made by the mother of the groom.

She wore the traditional something old, new, borrowed, blue and sixpence in her shoe. The pearls she wore belonged to the groom's grandmother and have been worn by all of her granddaughters at their marriages.

The bride carried a nosegay of white roses, stephanotis, white miniature carnations and baby's breath.

Attending the bride were

Nancy Everett, maid of honor, and Mrs. Stephen Drinnon and Leann Turnbow, sisters of the bride. All wore identical long dresses of rust brown chiffon trimmed with ivory lace and satin ribbon. The dresses were worn slightly off the shoulder and were accented by ruffled skirts.

Keith Solomon, best man, Lee Andress and Mike Lusk attended the groom wearing toast colored tux's with dark brown lapels over white ruffled shirts. Ushers included David Tidwell and Roger Bryan.

Gina Turnbow, sister of the bride, was flower girl and Kyle Darden was ring bearer.

Soloist for the ceremony was Mrs. Doyle High with Mrs. Kenneth Jarred playing the organ.

Following a wedding trip to San Antonio, the couple will reside at 2601 Nonesuch Road in Abilene.

A graduate of Haskell High School and Glen and Lottie's School of Beauty, the bride is employed with Mary Pat's for Hairdesigning.

Also a graduate of Haskell High School, the groom is currently employed with Melvin L. Turnbow.

Huntsman-Rexrode Wed In Sherman

Miss Gena Lynn Rexrode and David Ray Huntsman were united in marriage during a single ring ceremony Saturday, September 20, at the couple's new home in Sherman with the Rev. M.D. Rexrode, grandfather of the bride and retired minister of Missions of First Baptist Church, Dallas, and former pastor of Haskell First Baptist officiating.

Parents of the couple are Mr. and Mrs. Bobby G. Rexrode of Sherman and formerly of Haskell and Mrs. Patti Huntsman of Sherman and Mr. Jimmy Huntsman of Conway, Arkansas.

Given in marriage by her parents, the bride wore a gown of chantilly lace which was a family heirloom worn by both her mother and aunt, Mrs. Terry Futch. The bodice was fashioned with a scalloped square neckline enhanced with seed pearls with long slim sleeves. A band of silk organza enhanced the floor length skirt.

Her chapel length veil of silk illusion was attached to a circlet of lace and seed pearls. She carried a cascade of ivy, blue and white carnations and blue and white daisies on a white Bible which her mother had carried in her wedding.

Matron of honor, Mrs. Terry Futch of Denver, Colo., wore a floor length slate blue gown with long raglan sleeves, fashioned by the bride's mother. She carried long stemmed blue carnations with baby's breath and blue static tied with blue ribbon. Blue static and baby's breath accented her hair.

Mark Germany of Sherman served the groom as best man.

Following the ceremony, the bride's parents hosted a reception for the couple. Members of the houseparty included Susie Huntsman, sister of the groom of Sherman, and Kathy Futch.

Attending the wedding were out-of-town guests Mr. and Mrs. J.P. Perrin, grandparents of the bride, and Dudley Perrin, all of Haskell; and Mr. and Mrs. Jimmy Rexrode of Houston.

The bride is the great granddaughter of Mr. J.L. Tolver Sr. of Haskell.

Following a wedding trip to Dallas the couple will make their home at 815 West College in Sherman.

A graduate of Sherman High, the bride is currently attending Grayson County College and is employed with Henderson, Bryant, Wolfe, Vogelsang and Graber in

Sherman. Also a graduate of Sherman High School and a former student at Grayson County College, the groom is employed with Terry Skipworth Construction in Sherman.

Showers

Parties and showers given the bride included a lingerie shower given by Becky Ham and Patty Riddels and a miscellaneous shower hosted September 14 at the Oak Room in the Grayson Bank by

Mrs. Patti Spears, Mrs. Ann Price, Mrs. Dean Grant and Mrs. Phyllis White.

A surprise gift shower was also given the bride by attorneys and secretaries at Henderson, Bryant, Wolfe,

Vogelsang and Graber. On the evening preceding the wedding, a dinner was given by Mrs. Huntsman at her home and the groom was treated to a bachelor party hosted by Mark Germany.

4-H Club Elects Officers

The Haskell 4-H Club met Sept 22 and elected their new officers.

Officers for this year include: President, Carl Hopkins; Vice President, Becky Holt; Secretary-Treasurer, Dalyn Gilly; Reporter, Kristen Campbell; Council Delegated, Jill Jennings and Jerry Davis.

The club also set the date for the 4-H awards program for Oct. 6, 7:30 p.m., at the Haskell High School cafeteria.

Girl Scout News

By Mary Lehrer Scout Reporter

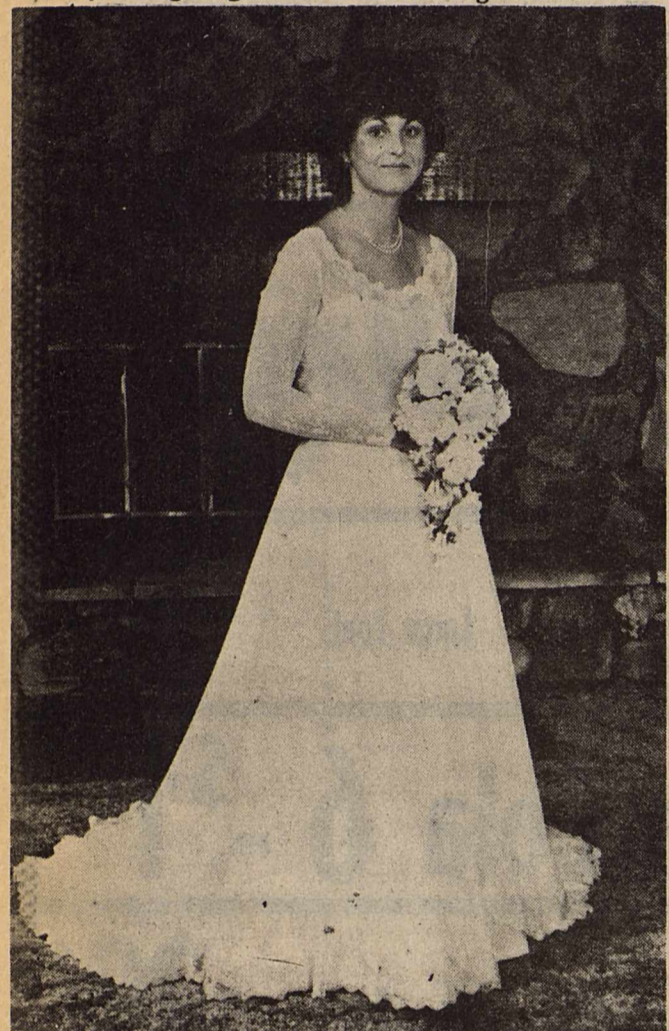
The 6th grade girl scout troop 468 had a meeting Monday, Sept. 22, 1980. The first thing that the girls scouts did was have the roll called by Robyn Struve, Patrol Leader. Then they said their promise and their law. The next thing they did was have refreshments.

The scouts then made flowers from crepe paper that Shelley Baker taught them to make. When they got through doing that they cleaned up and went home.

The girl scouts attending the meeting were: Shelley Baker, Marcy Davis, Mindi Hestilow, Kelli Gilliam, Julie Roewe, Robyn Struve and Mary Lehrer. The leaders were: Judy Baker and Betty Roewe. Scouts that were absent are Rhonda Adams and Emily Camacho.



MRS. DAVID RAY HUNTSMAN
...formerly Gena Lynn Rexrode



MRS. RICKY KYLE BIRD
...formerly Sharon Louise Turnbow

JoNell Trammell Named 1979-80 Outstanding Young Homemaker

JoNell Trammell has been named 1979-80 Outstanding Young Homemaker by the Haskell Young Homemakers of Texas. Each year this honor is awarded by the club membership on the basis of service to the club and the community.

JoNell has served as president and reporter of the local YHT chapter and is currently serving as parliamentarian. She is a member of the Progressive Study Club, the Association of Texas Profes-

sional Educators, and First Baptist Church.

Having graduated from North Texas State University with a degree in education, JoNell has taught for eight years. She is currently employed by Paint Creek Independent School District where she teaches second and fourth

grades. She also has taught private piano lessons the past three years.

JoNell's interests and hobbies include folk art, cross-stitch, piano, and singing.

She and her husband, Bill, have a son, Will, age four.

Haskell Young Homemakers Discuss Upcoming Projects

The Haskell Young Homemakers met on September 15 in the homemaking cottage. Jerry Sorrells presented an informative program on Emergency Medical Training (EMT).

Plans were discussed for the upcoming Mexican food supper on October 24 and the arts and crafts sale on November 9. Caron Yates was winner of

the door prize.

JoNell Trammell was named Outstanding Young Homemaker for the 1979-80 year.



JOANEL TRAMMELL

Around Town

Mr. and Mrs. David Mitchell and Brandon of Midland are visiting Mr. and Mrs. Bennie Jackson, Mr. and Mrs. Mark Jackson of Haskell, Mr. and Mrs. Tony McWhortor of Rochester and other friends.

E.C.C. Nutrition Program Menu

Meals Served at 12:00 Noon Monday-Wednesday-Friday Call for reservations before 9:30 each serving day

THURSDAY September 25

Fish Filets
Cream Potatoes
Cole Slaw
Peach Fried Pies

FRIDAY September 26

Chicken Casserole
Glazed Sweet Potatoes
Green Bean Salad
Fruit Cocktail

MONDAY September 29

Luncheon Steak
Macaroni & Cheese
Green Beans
Fresh Orange Sections

TUESDAY September 30

Bake Ham
Glazed Sweet Potatoes
Savory Peas
Fruit Salad

WEDNESDAY October 1

Oven Fried Chicken
Glazed Carrots
Brussel Sprouts
Purple Plums
Cheese Sticks
Orange Juice

WATCH FOR OUR AUCTION To donate items Call 864-2030 Haskell Kiwanis Club

VIVANTI

is a new line being carried by The Hayloft.

Sweater knit short sleeve tops, long sleeve tops, and cardigans in the color of honey. Pants and pleated skirts also in the color of honey. Pants and pleated skirts in navy to coordinate with the trim on the tops.



409 South First Phone 864-2901

Beginning September the 25th

Collector's Corner

is announcing her

New Hours 6 Days a Week!

Monday through Friday 10-5:30 Saturday 10-5:00

and New Shipments!

- New brass shipments, includes everything from brass containers to brass beds! (High quality to low prices!)
- More silk flowers than ever before (Hand selected, custom arranged or arrange them yourself!)

AND SO MUCH MORE!

'If unique is what you seek!'

It's:

Collector's Corner

(915) 823-2572 1319 S. Commercial Anson, Texas

Thank You!

Let me take this means of expressing my appreciation to all who helped make the 1980 Haskell County Fair a success. As the President of your Fair Association I want to thank each person who had a part in helping with the fair. The tentative financial report is good and it appears the fair was financially successful.

We had one of the most successful and competitive livestock shows I have ever seen. I am so glad our young people have taken an active interest in the fair. It did me a lot of good to see them competing and learning to be good losers as well as good winners.

Twenty-four young ladies competed in this year's Fair Queen Contest. Miss Emily Cox, daughter of Mr. and Mrs. Wallace Cox Jr. was named the 1980 Fair Queen.

I am interested in seeing our fair expand, enlarge, and become even more successful than it already is. Each citizen of Haskell County can help me by putting your ideas into the fair. This can be accomplished by writing your idea, suggestion or gripe in the form of a letter and mailing it to me c/o B. J. Ray, Fair Association, Haskell, Texas 79521. I can assure you that your idea or gripe will be taken to the Board of Directors at the next meeting.

Haskell County Fair Association

Sagerton News

Mr. and Mrs. Walter Kretschmer of Haskell would appreciate people from Sagerton who might be taking trash to the dumping on their place to please not burn it. It may set their pasture on fire and burn their house and tractors. With no rain, the grass and weeds are very dry and they will bury it with a bull dozer.

Mr. and Mrs. Robert Burton visited with Mr. and Mrs. Sam Neinst Saturday.

Mr. and Mrs. Sam Neinst visited Mr. and Mrs. Roy McEwen and boys Saturday in Tuscola. Mr. and Mrs. Clarence Neinst visited with Mr. and Mrs. Sam Neinst last Tuesday. They are from Littlefield. They attended the funeral of Clarence's aunt, Mrs. Mary Schonerstedt Wednesday.

Mr. Fred Monse visited in the home of Mr. and Mrs. Leo Monse over the weekend.

Mr. and Mrs. Grady Lee Laughlin while visiting in the home of Mr. and Mrs. Alvin Bredthauer stayed over to attend Helen's aunt's funeral, Mrs. Mary Schonerstedt, Wednesday.

Mr. and Mrs. Alvin Bredthauer enjoyed playing 84 in the home of Mr. and Mrs. Clyde Laughlin in Rule Tuesday night. Mr. and Mrs. Grady Laughlin were there also.

Lillian Neinst went to Christ Lutheran Church in Stamford Sunday to play the organ for the church.

Erna and Walter Schaaake, and Emma Raphael of Stamford and Lena Schaaake played 84 in the home of Mr. and Mrs. Alvin Bredthauer Thursday night.

Mr. and Mrs. Alvin Bredthauer went to Rice Springs Care Home Wednesday to take Mrs. Emma Lammert and Alvina Holle to attend the funeral of Mrs. Mary Schonerstedt which was at Stamford.

Mr. and Mrs. Arthur Knippling went to play Skip-Bo in the home of Erna and Walter Schaaake Sunday night.

Mr. and Mrs. Herbert Nierdeick, Mr. and Mrs. Arthur Knippling and Mr. and Mrs. Herbert Lammert of Old Glory enjoyed playing 84 in the home of Mr. and Mrs. Leonard Kieke Friday night.

Guests in the home of Mr. and Mrs. Franklin Marzek Sunday of Aspermont were Mr. and Mrs. Leo Monse, Mr. Fred Monse of Dudley. Then in the afternoon, Mrs. Leo Monse and Mrs. Franklin Marzek visited Mrs. Katie Gerloff and Mrs. Adolph Letz

at the Rest Home.

The Hobby Club had their annual picnic at the Leland Thane's cabin at Lake Stamford Tuesday night. Those who attended were: Mr. and Mrs. Clarence Teichelman, Mr. and Mrs. Bill Hertel, Mr. and Mrs. Arthur Knippling, Mr. and Mrs. Delbert LeFevre, Mr. and Mrs. Alvin Ulmer, Mr. and Mrs. Herbert Stremmel, Mr. and Mrs. Gene Teichelman and Mr. and Mrs. Johnny Teichelman. The next meeting will be in the home of Mrs. Alvin Bredthauer, Oct. 21st at 2 o'clock.

Mr. and Mrs. Steve Lehrman and Jennifer, Mr. and Mrs. Clancy went to Omaha, Nebraska, to see Gail Lehrman.

Mr. and Mrs. J.M. Blackwell visited in the home of Mr. and Mrs. Alvin Ulmer Sunday night.

Mrs. Ivadell Umer of Bridgeport visited in the home of Mr. and Mrs. Alvin Ulmer Thursday. Then they went to Big Spring on Friday on some business. Mr. and Mrs. U.L. Ulmer of Hobbs, New Mexico, and granddaughter visited recently in the home of Mr. and Mrs. Alvin Ulmer.

Mr. and Mrs. Delbert LeFevre had a birthday dinner for Jill Sunday. Those who attended were: Louise Stegemoeller, Mrs. Alva LeFevre, Mr. and Mrs. Larry LeFevre and children, Mr. and Mrs. Kent LeFevre of Tuscola.

Mr. and Mrs. Delbert LeFevre went to Tuscola Thursday to a football game.

The Roundup Boys played at Haskell Thursday, then they played at the rest home in Haskell Friday night.

There was supposed to be a work day for all the members of the Faith Lutheran Church on Monday but just a few showed up. The following men showed up for work: J.B. Toney, Leonard Kieke, Herbert Nierdeick, Herbert Lammert, Clarence Stegemoeller, Melvin Baitz, Alvin Bredthauer and Steve Ritter, the pastor, and today was his day of rest.

Mrs. Joe Clark accompanied her mother, Mrs. Emma Raphael of Stamford on a trip to southeast Texas last weekend. They went by Round Rock to see Mrs. Selma Becker, a long time neighbor to them when they lived at Old Glory. They also visited with Mrs. Emma Thuemler, Vallie Schlotman, Ester Bohlmeier, Mr. and Mrs. Edwin Boening, Mr. and Mrs. Charlie Tiedt, Mr. and Mrs. Jimmy Blabb, Lisa and Lambert and Mr. and Mrs. Walter Schaefer, all of LaGrange. From there they visited with Mrs. Minnie Baumbach in Schulenburg, Mr. and Mrs. Ray Clark and Phillip of Seguin and Weldon Tredemeyer in Leander. Mrs. Raphael was born in LaGrange and spent most of her childhood years there. She enjoyed visiting her friends and relatives.

Mrs. Buster Tredemeyer, Mrs. Joe Clark and Mrs. Leon Stegemoeller of Sagerton, Mrs. Carl Hertel of Rule, Mrs. Emma Raphael of Stamford were in Leander last Wednesday for the funeral of Terry English, Jr. Little Terry was the 8 month-old son of Mr. and Mrs. Terry English and grandson of Mr. and Mrs. Weldon Tredemeyer. He passed away at Houston of an undiagnosed disease. Burial was in Capital Hill Cemetery in Austin.

Mr. and Mrs. Joe Clark and Emmalee Bivins visited with Rev. and Mrs. David, Anna Marie and Christopher in Pecos Saturday and Sunday. They were there to help Peggy Adler celebrate her birthday.

Mr. and Mrs. Joe Clark received word Saturday that their son, Ray of Seguin, was slightly injured in an automobile accident near his home Saturday afternoon. He was not hospitalized but there was extensive damage to his pickup that he was driving.

Mrs. John Clark and Reece Clark went to a funeral at Idalou last week.

A bridal shower honoring Zena Renee Berry, bride-elect of Lyn Dale Dudensing, was held Saturday, Sept. 20, in the Faith Lutheran Church Fellowship Hall. Honor guests were Mrs. A.L. Berry of Granbury, mother of the bride-elect, Mrs. Wallace Dudensing, mother of the prospective bridegroom, Mrs. August Ender, grandmother of the prospective bridegroom, and Mrs. Larry Hobrathschk of Littlefield, sister of the prospective bridegroom.

Guests registered at a table covered with a white embroidered cloth topped with a small arrangement of autumn colored flowers. The serving table was covered with an ecru embroidered cut work tablecloth and centered with an arrangement of autumn colored flowers. Cookies, nuts and punch were served from crystal appointments.

Hostesses were Mrs. Lewis Corzine, Clarence Teichelman, Carl Luma, Danny Lammert, J.B. Toney, Eugene Teichelman, Herbert Vahlenkamp, Clancy Lehmann, David Letz, Norvell Lehmann, J.D. Kupatt and Jack Monse.



Staff Photo by Gina Jennings

FRANTIC FANS

Students from Paint Creek High School "wrapped up" first place as well as a fellow student during one of the contests at the Frantic Fan Antics Saturday. The "mummy" contest was just one of several testing the skills of fans from area schools.

SWCD Election Scheduled Oct. 9

An election for a director to serve in Zone 2 on the Haskell Soil and Water Conservation District Board is scheduled for October 9, 1980 at the Community Center in Weinert, announced R.V. Earles, Chairman of the Board. The election will be held at 10:00 a.m.

State Law degrades that to be eligible to vote in a soil and water conservation district director's election, a person must own agricultural land within the sub-division where the election is being held. The person must also live in a county all or any part of which is in the district and the voter must be 21 years old. A landowner's spouse may also vote in this election.

Legal qualifications state that a candidate for the office of a soil and water conservation district director must own land in the zone he represents, be 21 years of age and be actively engaged in farming or ranching. He must also live in a county all or part of which is in the district.

Zone 2 of the district includes an area with Farm to Market Road 2163 as the western boundary, the old Curry Chapel Road and FM 1080 as part of the southern boundary, FM 266 from Mattson to US 280 being the rest of the western boundary, and US 380 being the remaining portion of the southern boundary. The Haskell County east and north lines complete the boundaries of the zone.

Current members of the board of directors of Haskell SWCD are R.V. Earles, Chairman, Paint Creek; M.W. Phemister, Vice-Chairman, Weinert; F.A. Ulmer, Sagerton, Secretary-Treasurer; Dan

Wadzeck, member, Rochester; and Johnny Wheatley, member, Haskell.

The purpose of the Haskell SWCD, with headquarters in Haskell is to promote sound soil and water conservation programs on farm and ranch lands within the district and to serve as a voice for farmers and ranchers on conservation matters and other issues affecting private property rights of landowners.

The district board of directors coordinates the conservation efforts of various local, state and federal agencies and other organizations and has authority to enter into working agreements with these governmental agencies and private concerns to carry out its purposes.

All conservation programs managed by the district are of a voluntary nature to the landowner or operator.

USDA Soil Conservation Service

Conservation Viewpoints

Mr. and Mrs. R.V. Earles, Paint Creek; Mr. and Mrs. M.W. Phemister, Weinert; Mr. and Mrs. F.A. Ulmer, Sagerton and Mr. and Mrs. Johnny Wheatley, Haskell, directors and their wives from the Haskell Soil and Water Conservation District will be in San Antonio September 29-October 1 to attend the Fortieth Annual State Meeting of Texas Soil and Water Conservation District Directors.

The theme of this year's meeting is "Soil and Water Conservation Districts—What Is Their Future?" Approximately 900 are expected to attend.

The purpose of the meeting is to review developments effecting Texas conservation programs and to plan future conservation district programs and activities.

Speakers scheduled for the meeting include State Representative Susan Gurley McBee of Del Rio; Dr. Jarvis Miller, Special Assistant to the Chancellor and past president of Texas A&M University; Congressman Eligio "Kika" de la Garza of Mission and Lyle Bauer of Harper, Kansas, president, National Association of Conservation Districts.

Herman Petty of Mineral Wells, president, Association of Texas Soil and Water Conservation Districts, will also address the group.

Representative McBee is a fourth generation member of a

pioneer ranching family in Val Verde County. During her three years in the Texas Legislature, she has served on the Agricultural and Livestock Committee and as chairman of subcommittees concerned with eminent domain and agricultural commodities. Representative McBee has introduced and helped pass legislation dealing with producer's liens on livestock, agriculture credit and implied warranty on the sale of livestock.

Dr. Miller, whose broad professional career has included teaching and research at Texas A&M University as well as serving as Director of the Texas Agricultural Experiment Station, is recognized as a leading spokesman and advocate for agricultural research. He is also recognized for his innovative international program activities within higher education.

Congressman "Kika" de la Garza serves as Vice Chairman of the House Agriculture Committee and Chairman of the Agriculture Subcommittee on Investigations, Oversight and Research. He is a member of many other subcommittees in the House of Representatives. Congressman de la Garza is particularly noted for his support of the Great Plains Conservation Program and sponsorship of the bill which extends the GPCP program until 1991.

As president of NACD,

Bauer has established a select task force to consider the need for possible elements of a national strategy linking natural resource conservation with food and agricultural policies. He is also a past chairman of the Kansas Conservation Commission, as well as having served in each office of the Kansas Association of Conservation Districts. J.C. Yearly, Jr., District Conservationist

GTE Delivers New Directory

The new September, 1980, General Telephone Directory has recently been delivered to telephone customers in Haskell, according to B.D. Drennan, Brownwood division manager.

"We want to call attention to the incorrect Repair Service telephone number on Page 2 of the directory. The correct number is 915-646-9551, and can be called toll-free or no charge from General Telephone Company exchanges," Drennan said.

"Customers are requested to note this number in their directory in the event they have to contact Repair Service," Drennan added.

"Listings for other communities in addition to Haskell include Aspermont, Benjamin, Goree, Knox City, Munday, Rochester, Rule, and Weinert," Drennan concluded.

WATCH FOR OUR AUCTION
To donate items
Call 864-2030
Haskell
Kiwanis Club

Funny or Unfunny

(A digest of significant news items that failed to appear in most of the nation's press.)

SEND MISSIONARIES, NOT MONEY. The World Council of Churches was soundly denounced around the world when it contributed hundreds of thousands of dollars to the terrorists operating in Rhodesia before the elections. Now they have done it again, with a \$400,000 grant to the South West Africa Peoples Organization (SWAPO). SWAPO, encouraged by the success of its brother terrorists in Rhodesia, has been terrorizing the bush country and villages for several years.

Thanks to jogging, more people are collapsing in perfect health than ever before.

"What does your husband do?" one wife asked another.
"He's an expediter."
"WHAT'S THAT?"
"Well, it's hard to explain, but if we women did what he does, they'd call it nagging."

A politician who had changed his views rather radically was congratulated by a colleague. "I'm glad you've seen the light," he said.
"I didn't see the light," came the reply. "I felt the heat."

Smitty's Auto Supply
LOW RENT DISTRICT
Haskell, Texas U.S.A.

Hospital Notes

ADMISSIONS

MEDICAL: Willie Hostas, Seymour; Pauline Carmack, Haskell; Margie Casey, Rule; Corsie White, Haskell.

SURGICAL: T.J. Poer, Haskell; Lonelle McCandless, Rule.

DISMISSALS

Marvin Holmes, J.H. Franklin, Lizzie Letz, Emma Earles, Marsha Hale, James Powell, Joseph Perez, Deborah Jennings.

Haskell's Market Place

The Classified Ad Page

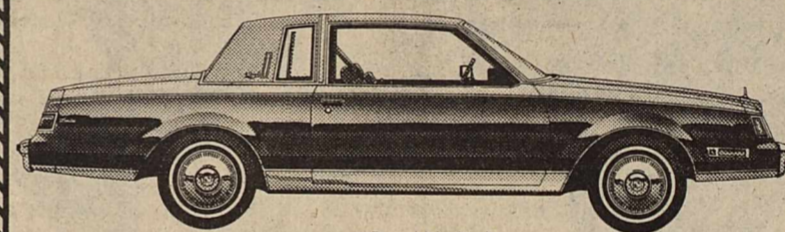
COW POKES

By Ace Reid



"Wul, Ma, if you're in a hurry, walk home, I'm jist gittin' started good."

Haskell National Bank
Your Independent Bank
Haskell, Texas
IBA, IBAT, FDIC



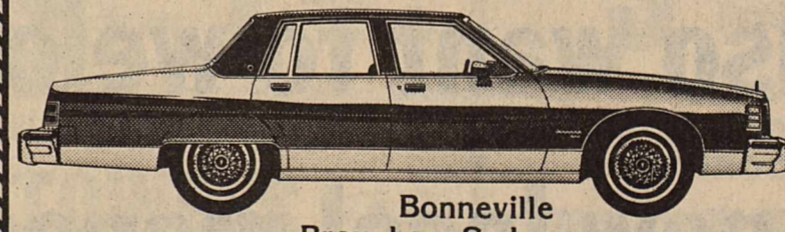
Regal Limited



LeSabre Limited Sedan



Electra Park Avenue



Bonneville Brougham Sedan

YOU ARE INVITED TO COME IN & SEE THE 1981 BUICKS PONTIACS GMCS

REFRESHMENTS

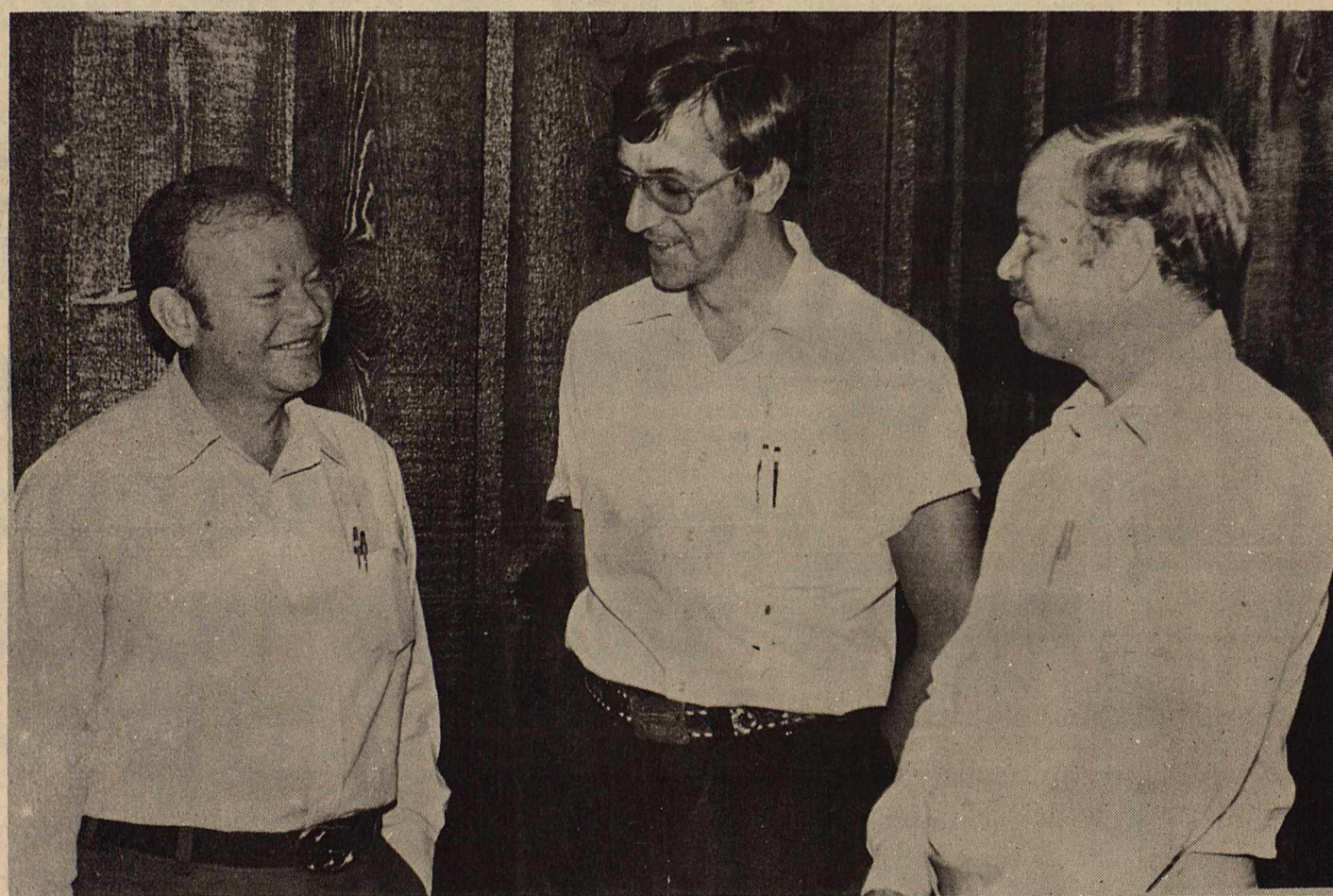
THURS.-FRI., SEPT. 25-26

WE STILL HAVE A FEW 1980 CARS AND PICKUPS LEFT AT GOOD PRICES

MEDFORD BUICK-PONTIAC & GMC
HASKELL, TEXAS

THANK YOU CHARLES THORNHILL

Charles has been a dedicated employee for 23 years and we want to express our sincere thanks for his dedication and leadership. We would also like to take this means to express our best wishes to Charles in his new Farmers Union Insurance Agency.



JOE PACE-CHARLES THORNHILL-GARY PACE



COTTON WHITFIELD

We also want to welcome Cotton Whitfield as the new local manager. Cotton has worked in the market for five years as market manager.

JOE & GARY PACE

M-SYSTEM SUPERMARKETS



Staff Photo by Gina Jennings

PUZZLED...

Haskell teachers (foreground) pitted their puzzle-working skills against those of Weinert, Paint Creek and Rule during an "intelligence test" at the Frantic Fan Antics Saturday. With students cheering them on, the Haskell teachers did succeed in taking the prize for the event. Winners were awarded with a Mickey Mouse Puzzle to help better prepare for future contests.

New Number To Social Security Is Toll Free

There is a new toll-free telephone number for most residents of this area to call when they have social security questions, according to Glyn Hammons, Social Security Manager, Abilene.

Residents of Callahan, Eastland, Fisher, Haskell, Jones, Kent, Nolan, Shackelford, Stephens and Stonewall Counties may simply dial direct 1-800-392-1603 and reach personnel who are specially trained to accept reports and answer social security questions by telephone.

Social Security representatives from the Abilene office, will continue to visit your area, but not quite as frequently as in the past.

Even with less frequent visits, service will be better because most social security questions and reports can be handled by telephone, any weekday, at the caller's convenience, by dialing the toll free number.

A few examples are questions about Medicare, requests for retirement benefit estimates, address changes from social security beneficiaries to insure prompt delivery of their monthly checks, beneficiaries' reports of earnings, questions about the disability provisions of the law, and inquiries about supplemental security income. The agency refers to this type of service as "Teleservice."

Bulldogs Defeat McCauley

The Weinert Bulldogs defeated the McCauley Eagles 58-38, to even their season record at 1-1.

McCauley lead scoring 6-0 at the end of the first quarter but trailed 16-12 at half.

Each team scored once in the third quarter and the Bulldogs scored 36 of the 55 points scored in the final period to win by a 58-38 margin.

John Brueggeman carried the ball 25 times for 176 yards and Mark Stewart carried 10 times for 155 yards.

Jeff Robertson, quarterbacking the Bulldogs, passed for three Weinert TD's. Two were completed to Danny McGuire and one to David Boling. The Weinert offense moved the ball over 450 yards. Defensive standouts were Wade Raynes, Bryan Phemister and Boling.

The Bulldogs are open Sept. 26, but will host the homecoming game October 4 in Weinert.

Obituaries

Roy Fought

Funeral services for Roy Fought, 73, of Haskell were held Sunday, Sept. 21, at the Church of Christ with Larry Suttle of Wichita Falls officiating. Burial was in Willow Cemetery under the direction of Holden-McCauley Funeral Home.

Mr. Fought died Friday, September 19, 1980 at Wichita General Hospital.

Born May 14, 1907 in Goree, he had been a resident of Haskell for 55 years. He married Maida Burkett June 8, 1929 in Farmersville. He was a member of Haskell Masonic Lodge #682 and a member of the Church of Christ.

Survivors include: his wife of Haskell; a daughter, Mrs. Billie Hix of Wichita Falls; a son, Arvie Lynn Fought, Wichita Falls; a brother, Sam Joe Fought, Haskell; two sisters, Mrs. Clarence Booe and Mrs. Cecil Booe, both of Munday; and five grandchildren. He was preceded in death by a daughter, Bertie Mae, in 1954.

Pallbearers were Dale Burris, Billy Jack Ray, Raymond Davis, Glenn Merchant, Garth Garrett and C.E. Smith.

Mrs. E. A. Linn

Funeral services for Mrs. E.A. (Hazel Foote) Linn, 59, of Chicago were held September 18 in the Smith Corcoran Funeral Chapel. Interment was in Chicago.

Mrs. Linn died at her home in Chicago September 16, 1980 after a lengthy illness.

Born October 31, 1920 the daughter of the late Mr. and Mrs. R.L. Foote in Haskell, she attended Haskell schools, graduating in 1938. She worked as a nurse in the office of the late Dr. E.M. Kimbrough and later at Randolph Air Force Base in San Antonio. She went to Chicago in 1943 where she was employed by Chicago and Southern Airlines.

Mrs. Linn was married May 24, 1947 to E.A. Linn of Chicago. She was an executive with Specialty Products, a branch of Sunbeam Appliance Company at the time of her death.

Survivors include her husband, two sons, a daughter and a grandson, all of Chicago. She is also survived by a brother, Garvin Foote, and a sister, Mrs. Maurice Gannaway, of Haskell.

Mary Pierson

Funeral services for Mary Pierson, 90, of Abilene were held Monday, Sept. 22, at

Elliott-Hamil Funeral Home Chapel in Abilene with Rev. Robert Weissinger, associate pastor of First Baptist Church, Abilene, officiating. Burial was in Willow Cemetery with graveside services officiated by Mike McKinney, pastor of First Baptist Church, Haskell.

Miss Pierson died Sunday, September 21, at Hendrick Medical Center in Abilene.

Born Jan. 3, 1980, in Emory, she moved with her parents to Haskell soon after her birth. The family moved to Abilene in 1915. She studied music at Baylor University for three years and later received her degree from Simmons College. She spent a summer studying at Cincinnati Conservatory of Music and two summers studying at Bush Conservatory in Chicago. She taught piano privately and at Hardin-Simmons University in Abilene.

She belonged to the Abilene Woman's Club, the Grape Way Club, and KOY Sunday school class. She was a member of the First Baptist Church in Abilene.

Survivors include: a sister, Mrs. Oliver Cunningham of Abilene; a brother, Alfred C. Pierson of Haskell; and a number of nieces and nephews.

Bill Wilson Receives Award

Bill Wilson Motor Company of Haskell has been selected as one of the nation's outstanding Ford dealerships and will receive Ford Motor Company's Distinguished Achievement Award.

The Distinguished Achievement Award is presented "in recognition of progressive management...modern sales and service facilities...sound merchandising practices...high quality standards...and continuing interest in rendering superior service to Ford owners."

Bill Wilson Motor Company has been a Ford dealer in Haskell since 1945. The dealership is located at 209 South Ave E.

Indian Booster Club To Sell Jackets

The Indian Booster Club is again selling jackets to help support Haskell athletes.

Money made from the spring project went for the football lights. This year's project is being discussed.

All jackets will be black with gold lettering, but there will be three kinds; light weight windbreaker, medium weight lined jacket; and heavy weight, lined, quilted arm honest-to-goodness winter jacket.

Samples may be seen at Merle Norman Studio, Haskell Elementary Library or Haskell High School during the sales campaign, and orders will be taken through Thursday, October 2.

The jackets are top quality and can be purchased with Haskell Indians and an Indian head logo on the back or front. Plain black jackets can also be purchased for those who do not wish to have the printing on them.

Jackets cost \$14.95, \$22.95 and \$28.95 and an additional charge of \$1.00 will get the printing on both back and front.

For additional information, call Geraldine Hise 864-2847, Janice Browning 864-2755, Elaine Davis 864-2720 or Joan Baldwin at Merle Norman Studio.

Jackets are available in youth and adult sizes.

Cotton Whitfield Named New M-System Manager

Cotton Whitfield has been named manager of M-System Super Market in Haskell.

Whitfield has been manager of the meat market for the past five

years and was named store manager last week.

He came to Haskell about five years ago from Throckmorton. His wife, Frankie, is assistant manager at Perry's. They have two children, Christi, 15, and Kaelyn, 12. They are members of the Assembly of God Church.

Whitfield replaces Charles Thornhill as manager. Thornhill had been an employee of M-System for twenty-three years when he announced he would enter the insurance business in Haskell.

He will begin duties as local agent for Farmers Union Insurance Agency in October.

Employees of the store honored Thornhill with a supper recently and presented him with a new office chair and clock.

Thornhill expressed his thanks to the employees for the many years of association and told those present that he was retaining an interest in the store.

Thornhill was praised highly by Joe and Gary Pace at the gathering. They are major stockholders in the company.

Bryant's "B & E Grain Co."

Fertilizer & Chemical Service
Custom Application

Owners Beaty & Elda Bryant
Call 817-989-2847
Old Glory, Texas

Featuring Good Pasture Fertilizer.

GOODYEAR

Out front. Pulling away.

EVERYDAY LOW PRICES
DIAGONAL PLY
POLYESTER



POWER STREAK

- Polyester cord body for smooth ride
- Six-rib tread designed for grip
- Genuine Goodyear quality and value

Blackwall Size	OUR PRICE	Plus FET and old tire
B78-13	\$29.75	\$1.77
F78-14	\$37.80	\$2.23
G78-14	\$38.80	\$2.38
H78-14	\$41.25	\$2.60
F78-15	\$38.80	\$2.31
G78-15	\$40.55	\$2.46
H78-15	\$42.70	\$2.66

\$23⁹⁵

A78-13 blackwall, plus \$1.55 FET, and old tire

PROLONG TIRE LIFE, BOOST MPG
FRONT-END ALIGNMENT
and FREE tire rotation



\$15⁸⁸

Parts and additional services extra if needed. Front wheel drive and Chevetttes extra.

* Inspect and rotate all four tires * Set caster, camber, and toe-in to proper alignment * Inspect suspension and steering systems * Most U.S. cars, some imports

Liberal Budget Terms...Low Monthly Payments

Anderson Tire Co.

206 S. Avenue E

Phone 864-2900

WANTED
Dance Band For Rhineland
Outlaw Summer
from the Big Country
-REWARD-

Saturday
Sept. 27

9-1
Adm. \$5.00

Haskell Free Press

Fall Specials

Haskell \$6²⁵
And Adjoining Counties.....

Elsewhere in Texas.. \$7⁵⁰

(On New Subscriptions Only)

Name _____

Address _____

City and Zip _____

Special Good Through October 31

Haskell Free Press

Box 577

Haskell, Texas 79521

NEW CAR TIME



Monte Carlo Sport Coupe Landau

YOU ARE INVITED TO
COME IN AND SEE THE
1981

CHEVROLETS & OLDSMOBILES

Sept. 25-26

FREE COFFEE & FAVORS

FOR THE BEST DEAL ON A NEW 1980 CHEVROLET
PASSENGER CAR, DON'T MISS OUR ONCE IN
A LIFETIME SALE.

BAILEY TOLIVER CHEVROLET—OLDS

Phone 864-2626

Sales & Service on Olds & Chevrolets

1980 Haskell County Fair Results

YOUTH CROPS & GARDENS

Best of Show
Trina Fry
Reserve Best of Show
Andy Hill

Ricky Moeller, 4 blue; Scott Fields, 2 red; Clifton Brister, 1 blue, 1 red; Lonnie Hise, 1 blue, 1 red; James Davis, 3 blue; John McCoy, 6 blue, 1 red; Walter McBroom, 1 blue, 1 red; Ruben Diaz, 4 blue; Henry Flores, 2 blue, 2 red, 1 white; Terry Snelling, 2 blue; Eddie Martinez, 2 blue; Johnnie Hise, 2 blue; Bryan Middlebrook, 3 blue, 1 red, 1 white; Mike Garcia, 2 blue, 1 red; Teresa Reed, 1 blue; Gloria Garcia, 1 blue, 1 red; Hope Gonzales, 1 blue, 1 red; Michele Scoggins, 3 blue; Don Kretschmer, 2 red; Keith Reed, 1 blue, 1 white; Robert Lehrer, 3 blue; Todd Jennings, 5 blue, 1 red; Ruben Gonzales, 2 blue, 1 white; Dewayne Meier, 3 red; Craig Buerger, 2 blue, 2 red; Mark Stewart, 2 blue, 1 red; Wade Raynes, 3 blue, 3 white; Kevin Strickland, 1 blue, 1 white; Randall Frierson, 1 blue, 1 red; Paul Barnett, 1 blue; John Beauchamp, 2 blue; James Beauchamp, 3 blue; Dennis Carver, 1 blue; John Baum, 1 blue; David Wheatley, 2 blue; Ricky Dunnam, 2 blue; Doug Richerson, 2 blue; Lee Roberts, 1 blue, 1 red; Sam Toliver, 3 blue; Chris Grand, 2 blue; Kay Fischer, 6 blue, 3 red; Linda Fischer, 6 blue, 2 red; Ruth Garcia, 2 blue, 1 red; Julie Patty, 1 blue, 1 red, 1 white; Ricky Patterson, 1 blue; Gary Reed, 4 blue, 1 red; Larry Reed, 3 blue, 2 red;

Michele Pannell, 2 blue, 2 white, 4 red; Mark Stewart, 1 blue; Larry Bruggeman, 3 red, 1 white; David Boling, 1 blue, 2 red, 1 white; Chad Ballard, 3 blue; Mindy Ballard, 2 blue; Julie Nanny, 3 blue, 3 red; Greg Turnbow, 3 blue, 1 white, 2 red; John Bruggeman, 1 blue, 3 red; Byron Pheister, 3 blue, 2 red; Keith Medford, 2 blue, 1 white, 2 red; Rodney Medford, 1 white; Tim Ballard, 2 blue; Becky Medford, 3 blue, 3 red; Julie Coleman, 1 blue, 1 red, 2 white; Danny Griffith, 6 blue, 1 red; Ray Burnett, 10 blue, 4 red; Noel Amburn, 2 red; Albert Enriquez, 1 blue, 1 red; Wes Jones, 1 blue, 1 red; Jill Jennings, 1 blue; Johnny Lacey, 3 blue; Danny Kierepka, 2 red; Duke Pendegraft, 2 blue; Jeff Baker, 2 blue; DeeAnn Pendegraft, 1 blue, 2 red; John Reed, 3 blue, 3 red; Daryl Peel, 2 blue; Tom Barnett, 1 blue; Charles Wells, 2 blue, 1 red; Jeff Robertson, 1 red, 2 white; Danny McGuire, 2 blue, 1 red, 1 white; Trina Fry, 5 blue; Jerry Davis, 1 blue; Missy Davis, 1 blue; Steven Quade, 2 blue; Debbie Quade, 1 red; Janet Quade, 1 blue; Carlos Rodriguez, 1 red, 1 blue; Tino Gonzales, 1 red, 1 white; Andy Hill, 5 blue, 1 red; Jan McKeever, 1 blue, 1 red, 1 white; Kendall Strickland, 1 red, 1 white; Aaron Weaver, 2 blue; Lee Lane, 1 blue, 1 red, 1 white; Bill Pogue, 1 blue, 1 red; Joseph Toliver, 3 blue; Johnnie Walker, 2 blue; Monnie Moeller, 1 blue, 1 red.

YOUTH CANNED FOODS

Best of Show
Kristen Campbell
Reserve Best of Show
Michelle Scoggins
Ball Awards
Vegetables
Charles Wells, 1st; Janet Quade, 2nd
Fruit
Michelle Scoggins, 1st; Melody Speck, 2nd
Pickles & Relishes
Kristen Campbell, 1st; Marva Holmes, 2nd
Jams & Jelly
Shirlene Nicholson, 1st; Missy Davis, 2nd
Golden Harvest Awards
Pickles & Relishes
Debbie Quade, 1st
Fruits
Janet Quade, 1st
Vegetables
Melody Speck, 1st
Jams & Jelly
Kay Fischer, 1st
Ages 6-10
Kristen Campbell, 2 blue, 1 red, 3 white; Michelle Scoggins, 21 blue, 13 red, 12 white; Melody Speck, 5 blue, 3 red, 5 white; Kay Fischer, 2 blue, 1 red; Janet Quade, 1 red, 4 white; Missy Davis, 1 red
Ages 11-13
Marva Holmes, 1 blue, 1 red; Jerry Davis, 1 red
Ages 14-19
Linda Fischer, 1 red; Charles Wells, 2 blue; Jan McKeever, 1 white; Hopie Gonzales, 1 white; Mike Iley, 1 white; Shirlene Nicholson, 1 blue; Debbie Quade, 2 red, 3 white

BAKED GOODS & CANDY

Best of Show

Melody Speck

Reserve Best of Show
Jennifer Shaver
Ages 6-10
Mindy Ballard, 1 blue; Kristi Brister, 3 blue, 1 red; Christi Bartley, 1 red; Gina Calk, 1 blue; Kay Fischer, 1 red, 1 blue; Janet Quade, 1 red; Melody Speck, 1 blue; Jennifer Shaver, 1 blue; Sondra Patterson, 1 blue; Michelle Scoggins, 1 red; Dalyn Gilly, 1 red; Faye Mullins, 1 red
Ages 11-13
Marva Holmes, 2 blue; Tammy Scott, 1 blue; Tina Lacey, 1 blue; Jill Jennings, 1 blue; Melinda Smith, 1 red; Traci Fry, 1 blue
Ages 14-19
Chris Reyna, 1 red; Debbie Quade, 1 white; Kim Jones, 1 red; Cindy Modesti, 1 red; Elvira Saucedo, 1 white; Linda Fischer, 1 blue; Diedra Jackson, 1 red
YOUTH ART
Best of Show
Sheryl Elliott
Reserve Best of Show
Kim Grigsby
Ages 6-10
Kim Grigsby, 1 blue; Jeff Neal, 2 blue; Toby V. Howard, 1 blue; Val Sims, 2 blue, 2 red; Billy Mitchell, 1 white; Frederick Caraway, 1 blue; Chad Gibson, 1 blue; Tiffany Grigsby, 1 blue; Penny Peden, 1 red, 1 blue
Ages 14-19
Lisa Biard, 2 blue; Fred Rike, 1 blue; Debbie Norwood, 1 blue, 1 red; Sheryl Elliott, 2 blue, 1 red; Steven Quade, 1 blue; Mike Iley, 1 blue

CLOTHING

Best of Show
Brenda Walling
Reserve Best of Show
Janet Quade
Ages 6-10
Aaron Bahney, 1 blue; Dalyn Gilly, 1 red, 1 white; Janet Quade, 1 blue, 1 white; Tammie Miller, 1 red; Kristen Campbell, 1 red; Michelle Scoggins, 1 blue; Tamara Burnet, 1 white; Sharla Jetton, 1 blue; Kay Fischer, 1 blue
Ages 11-13
Melinda Smith, 1 red; Jill Jennings, 1 blue
Ages 14-19
Brenda Walling, 1 blue; Teresa Hatfield, 3 blue, 1 red; Debbie Norwood, 1 blue; D'Anne Burris, 1 blue; Rinette Vincent, 1 red; Debbie Quade, 1 blue; Denise Pierce, 1 white

POSTERS

Best of Show
Traci Fry
Reserve Best of Show
Traci O'Neal
Ages 6-10
Chad Gibson, 2 blue; Mandy Mayfield, 1 red; Cori Brzozowski, 1 blue; Mitch Mayfield, 1 red; Dalyn Gilly, 1 blue
Ages 11-13
Jill Jennings, 1 blue; Traci Fry, 1 red, 1 blue; Chad Ballard, 1 blue
Ages 14-19
James Iley, 2 blue, 2 red; Traci O'Neal, 1 blue; Jody

Freeman, 1 red

HOBBIES & CRAFTS

Best of Show
Sheryl Elliott
Reserve Best of Show
Val Sims
Ages 6-10
Michelle Scoggins, 7 blue; Christi Bartley, 2 blue, 2 red; Denny Tibbets, 2 blue; Kevin Connor, 1 red; Craig Rogers, 1 red; Wayne Hester, 2 blue; Ruben Salinas, 1 red, 1 white; Robert Ortiz, 2 red; Shawn Wallace, 2 blue; Trina Fry, 2 blue; Faye Mullino, 1 blue, 1 red; James Rike, 1 blue; Kim Gilly, 1 red; Misti Bartley, 1 blue, 2 red, 1 white; Eric Gardner, 1 blue; Jay Miller, 1 red; Joy McKeever, 1 blue; Corie Brzozowski, 1 blue; Gina Turnbow, 1 red; Tamara Burnett, 1 blue; Melody Speck, 1 blue; Karen Brown, 1 red; Esmeralda Saucedo, 1 white; Maxine Martin, 1 white; Ervin Session, 1 red; Mitch Mayfield, 1 red; Mondy Mayfield, 1 red; Christopher Brown, 1 blue; Sammie Goff, 2 blue, 1 blue; Kristen Campbell, 1 blue
Ages 11-13
Tina Lacey, 1 blue, 3 white; Joseph Perez, 2 blue; Val Sims, 1 blue; Jerry Davis, 1 blue; Allen Kutch, 1 blue; Jill Jennings, 3 blue; Lori McGhee, 1 red; Keith Medford, 1 red; Judy Iley, 2 blue, 4 red; Chad Ballard, 1 blue
Ages 14-19
Martha Garcia, 2 blue; Elvira Saucedo, 1 red; Andy Hill, 1 blue; Denise Pierce, 1 blue; Kathy Sota, 1 white; Leann Turnbow, 2 blue; Tammy Letterman, 1 red; Kathy Campbell, 1 blue, 1 red; Mike Iley, 4 blue, 4 red; Terry Kuykendall, 2 blue; Brenda Walling, 3 blue; Sheryl Elliott, 2 blue; Walter McBroom, 1 blue, 1 red; Delia Aguilera, 1 red; Connie Session, 1 blue; Michelle Walsch, 1 blue; Debbie Norwood, 1 blue; John Bruggeman, 1 blue
TRAINING CENTER
Best of Show
Margaret Santera
Reserve Best of Show
Margaret Santera
Alfred Dukatrak, 1 blue; Stella Story, 5 blue; Jan

Corley, 1 blue; Margaret

Santera, 4 blue; Margie Counts, 4 blue; Elsie Benavides, 3 blue; Randall Linton, 1 blue; Fay Wallace, 6
ADULT CROPS
Best of Show
W.P. Ballard
Reserve Best of Show
Mrs. M.L. Cook
M.L. Cook, 3 blue; Mrs. M.L. Cook, 2 blue; Harmon Mathis, 5 blue; Mrs. R.E. Mathis, 2 blue; Pat Quade, 1 blue; Allen Moeller, 1 blue; Noland Lees, 2 blue; Frances Moeller, 2 blue; Waller Overton, 1 blue; Steffie Overton, 1 blue; W.P. Ballard, 1 blue; Dean Quade, 1 blue; Paul Fischer, 6 blue; R.P. Riley, 1 blue
BAKED GOODS
Best of Show
Kim Crawford
Reserve Best of Show
Laela Martin
Quick Breads
Laela Martin, 1 blue
Coffee Cake
Sharee Gardner, 1 red
Yeast Breads
Kim Crawford, 1 blue; Mrs. Paul Fischer, 1 red; Kathy Mazurkiewicz, 1 white; Sandy Sanford, 1 pink
Bundt or Tube Cake
Dora Brueggeman, 1 blue
Cream Pies
Kim Crawford, 1 blue

Pound Cake

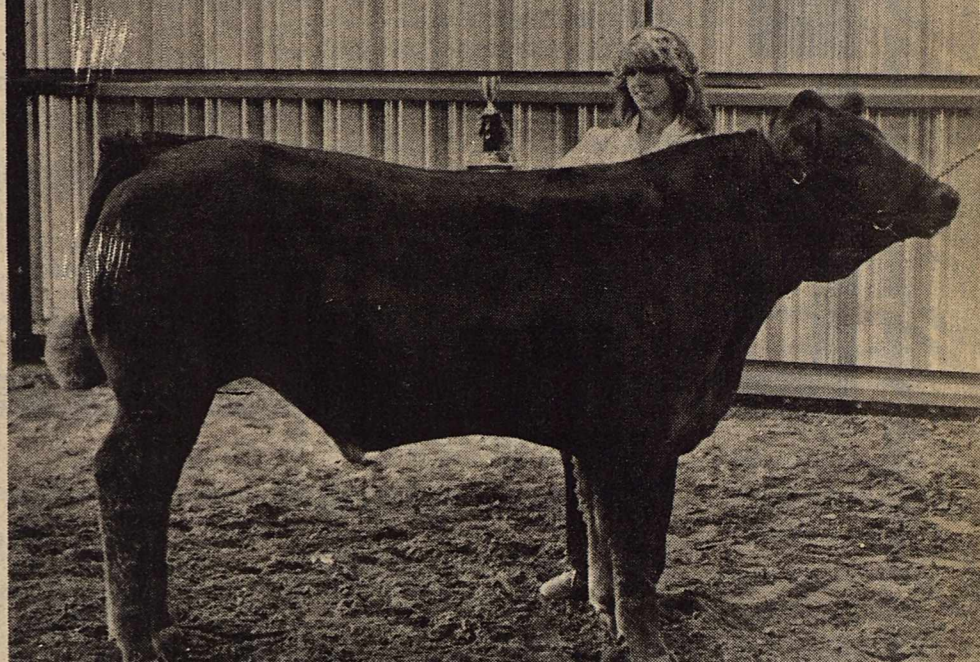
Laela Martin, 1 blue; Jenny Brazell, 1 red
Fruit Pie
Alice Yates, 1 blue
ADULT CANNED GOODS
Best of Show
Kim Crawford
Reserve Best of Show
Kim Crawford
Pickled Peaches
Herman Mathis, 2nd
Relish
Herman Mathis, 1st; Michelle Panell, 2nd; Jonette Tibbets, 3rd
Sweet Pickles
Mrs. Paul Fischer, 1st; Jerry Iley, 2nd; Henrietta Fischer, 3rd; Mrs. Dean Quade, 4th; Mrs. Herman Mathis, 5th
Pickled Okra
Kim Crawford, 1st; Mrs. Paul Fischer, 2nd; Herman Mathis, 3rd; Jonette Tibbets, 4th; Shirley Brown, 5th
Pepper Mixtures
Herman Mathis, 1st; Jonette Tibbets, 2nd
Dilled Vegetables
Kim Crawford, 1st; Herman Mathis, 2nd; Mrs. Philip Martin, 3rd; Mrs. Paul Fischer, 4th; Mrs. Gene Overton, 5th
5th Pickles
Henrietta Fischer, 1st; Dorothy Wells, 2nd; Shirley Brown, 3rd
Peaches
Kim Crawford, 1st

Pears


Jonette Tibbets, 1st; Judy Lanier, 2nd
Green Beans
Mrs. Philip Martin, 1st; Shirley Brown, 2nd; Lee Barnett, 3rd
Whole Tomatoes
Jenny Brazzell, 3rd
Wax Beans
Jerry Iley, 1st
Stewed Tomatoes
Mrs. Philip Martin, 2nd
Beets
Mrs. Paul Fischer, 1st; Jonette Tibbets, 2nd; Herman Mathis, 3rd
Tomato Juice
Mrs. Paul Fischer, 3rd
Corn
Shirley Brown, 3rd
Blackeye Peas
Pearl Walker, 1st; Kim Crawford, 2nd; Dorothy Wells, 3rd; Shirley Brown, 4th; Lee Barnett, 5th
Yellow Squash
Shirley Brown, 2nd
Carrots
Pearl Walker, 1st; Kim Crawford, 2nd; Mrs. Dean Quade, 3rd
Other Vegetables
Kim Crawford, 1st; Jonette Tibbets, 2nd; Jenny Brazzell, 3rd; Kim Crawford, 4th; Michele Pannell, 5th
New Potatoes
Shirley Brown, 2nd



RESERVE CHAMPION LAMB — BUBBA DAVIS



RESERVE CHAMPION STEER — JULIE PARTRIDGE



Monroe Shocks

SAVE \$12⁰⁰ PER PAIR

Monro-Matics

REG. PRICE	OUR PRICE
\$19 ⁹⁵ ea	\$13 ⁹⁵ ea

Ace Oil Filters

Ford, Chev. Ply. **\$1.98**

STP Oil Treatment

\$1.25

STP Gas Treatment

80¢

WD-40

\$1.30

You ALWAYS Do Better at

Smitty's Auto Supply

LOW RENT DISTRICT
Haskell, Texas U.S.A.

MOBILE HOME INSURANCE

- *Lower Rates
- *Premium Financing
- *Homeowner's Coverage
- *Help with claims

Call for FREE QUOTE
672-6466
Abilene Mobile Homes



POPULAR PECOS PULL-ON

1155 

Red Wings

HEIDENHEIMERS

ALLSUP'S

CONVENIENCE STORES

SEPTEMBER SPECIALS

WE RESERVE THE RIGHT TO LIMIT PRICES EFFECTIVE SEPTEMBER 25-27, 1980
SPECIALS GOOD WHILE SUPPLY LASTS - LIMITED SUPPLY

CLOVER CLUB POTATO CHIPS	7 1/2 OZ. PKG.	79¢	 <h3 style="font-size: 1.5em;">FRESH COOKED BURRITO'S</h3> <h1 style="font-size: 2.5em;">3 \$1.00</h1> <p style="font-size: 0.8em;">FOR</p>
BORDEN'S ASSORTED FLAVORS ICE CREAM	1/2 GAL. RD. CTN.	\$1.69	
BORDEN'S CHOCOLATE MILK	QT.	69¢	
BORDEN'S ASSORTED FLAVORS YOGURT	8 OZ. CTN.	39¢	



DIET OR REGULAR

7-UP



\$1.69

6 PACK CANS

 <h3 style="font-size: 1.2em;">FRESH ALLSUP'S MILK</h3> <h2 style="font-size: 2em;">\$1.99</h2> <p style="font-size: 0.8em;">GAL. JUG</p>	<table style="width: 100%;"> <tr> <td style="width: 50%;">Armour 5 oz Vienna Sausage</td> <td style="width: 50%; text-align: right;">43¢</td> </tr> <tr> <td>Gladioia 5 lb bag Flour</td> <td style="text-align: right;">89¢</td> </tr> <tr> <td>Our Darling 17 oz Corn</td> <td style="text-align: right;">3/89¢</td> </tr> </table>	Armour 5 oz Vienna Sausage	43¢	Gladioia 5 lb bag Flour	89¢	Our Darling 17 oz Corn	3/89¢
Armour 5 oz Vienna Sausage	43¢						
Gladioia 5 lb bag Flour	89¢						
Our Darling 17 oz Corn	3/89¢						

**O
T
T
O
T
B
A
L
L**

No.	Name	Position	Weight
10	Joe Benavides	B	147
11	Albert Enriquez	B	166
12	Elliott Cox	QB	146
20	Mark Bailey	QB	151
22	Jonnie Hise	QB	155
25	Monte Moeller	B	134
28	Joseph Browning	B	146
32	Robert Marshall	B	153
37	Casey Hannsz	E	152
44	Carey Hannsz	E-B	150
50	Carl Mayfield	G	168
54	Lonnie Hise	C	176
55	Steve Livingston	T	219
62	Joseph Toliver	T	176
65	Kendall Strickland	G	156
66	Bill Flanary	G	167
68	Barry Tidrow	T	160
72	Jimmy Roberts	C-T	172
75	Domingo Villa	T	186
77	Randy Campbell	T	286
78	Bernie Holder	T	196
80	Randall Frierson	E	144
81	James Davis	E	137
82	Tim Cedillo	E	151
84	Kerry Therwhanger	E	135

COACHES: Jim Baldwin, Jimmy Lisle, Coy Payne, Jim Raughton, Stick Raughton, Bobby Busby
MANAGERS: Ray Burnett, Robert Ivey, Jerry Snelling
BAND DIRECTOR: Barry Crudgington
COLORS: Black & Gold
ATHLETIC PHONE: 864-2539
CHEERLEADERS: Kim Lane, Lorie Johnson, Terri Welsh, Cindy Everett, Janet Wallace, D'Anne Burris
DRUM MAJORETTE: Sharla Drinnon
TWIRLERS: Kim Griffith, Tonya Roberts, Roche Reddell, Vickie Wallace
SUPERINTENDENT: James Lanier
PRINCIPALS: Frank Pulattie, Clayton Neal, Bill Blakley

Game Time 8:00 P.M.



INDIAN FOOTBALL

September 26, 1980 Indians vs Stamford

This Page Sponsored By The Following Firms and Individuals:

JRB Supermarket

Biggon Drinnon

Bill's Dollar Store

Reddy Pest Control

—Bill St. John—

Hanson Paint & Body

Wallace's Exxon

Haskell Co. Farm Bureau

Eddie Chambers—Agency Manager

The Hartsfield Agency

Smitty's Auto

Anderson Construction Co.

Conner Nursery & Floral

Sport-About

Queen Roofing

Jones Cox & Co.

Sherman's Carpet & Interior

Dairy Queen

Bailey Toliver Chevrolet & Olds

Northside Gulf

Bill Wilson Motor Co.

Brian Burgess

—State Farm Insurance—

Federal Land Bank Assn.

Haskell Co-op Gin

Richardson Truck & Tractor

Carolyn Reynolds

—District Clerk—

Gulf Oil Co.

—Brooks Middleton, Agent—

John Wayne McDermott

—County Judge—

Kids Duds & Richardson Hallmark

City Cafe

Medford Buick-Pontiac

Heads or Tails Western Wear

M-System

Boggs & Johnson

Hale Farm Supply

Nine Point Grain

Owens Radio & Electric

Lane Apparel

Gilliam Oil Co.

—Larry Gilliam—

Dean Butane Co.

Lee Bahney Tax Consultant

—314 N. 1st—

Philpot's Service & Supply

Trussell's Tire Center

Kennedy Lumber Co.

Jeter's Westside Texaco

Haskell Trailer Builders

McTid's, Inc.

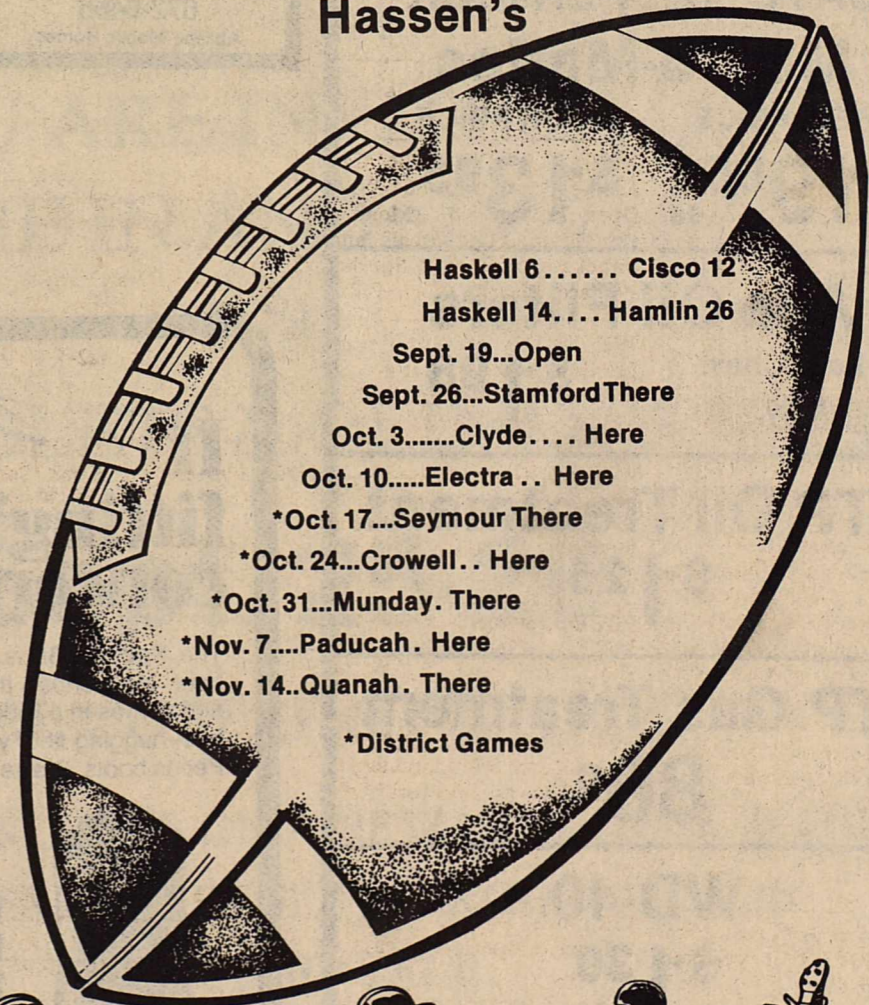
Elsie's Hi-Lander

Bynum's

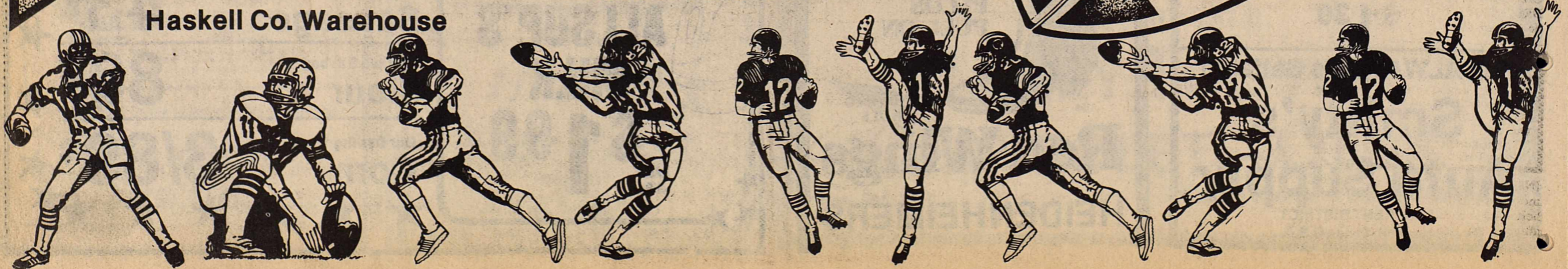
The Sweet Shop

Sears Catalogue Store

Hassen's



Haskell Co. Warehouse



BUYING? SELLING? CHECK OUT THE...

CLASSIFIED ADS

NOTICE

The Haskell Free Press reserves the right to edit and/or delete all news stories and locals for length and liability and to refuse to print anything deemed not newsworthy.

For Sale

FOR SALE: butcher calves for sale. We deliver to locker plant. Haskell County Feeders Supply. Phone 864-2011. 41tc

FOR SALE: Gates fan belts, hoses and clamps, Delco batteries and battery charging, oil filter, coal oil, naphtha, and etc. Wilfong Texaco Service, Phone 864-2766. 11tc

FOR SALE: Baby Calves, roping calves, cows and calves. We buy livestock everyday. Call us. Haskell County Feeders Supply 864-2011. 18tc

FOR SALE: Repossessed gas stove, used only two weeks. Ken Lane, 864-2597. 33tc

FOR SALE: 1966 Mustang, good condition. \$1700.00. Call 864-2532. 37tc

FOR SALE: '68 Chevrolet pickup. Power steering, power brakes, air conditioned. Good farm truck. \$650.00. 864-3339 or 864-2739. 36-39c

FOR SALE: 1978 Chev. 1 ton truck, 14 ft. body, good condition; Lighted Arrow sign on cart; refrigerated cases; large heater and clothes dryers. Inquire: 1506 N. Ave Haskell. 38-39p

FOR SALE: Encyclopedia set with matching Dictionaries. Henderson Book Store. 38-39p

FOR SALE: 64 Impala Super Sport, 2 door hard top, V8-283 engine, automatic, bucket seats, power brakes, steering and air. Excellent mechanical condition. Needs paint. \$895.00. McNair Texaco, Avoca, Texas. 39p

FOR SALE: Catalina clothes dryer. Phone 864-2828. 39p

FOR SALE: 1974 twelve passenger Van. Good condition. 864-3450. 39p

FOR SALE: Young Bantam hens. 714 S. 11th. 39p

FOR SALE: Stevens-Savage 20 gauge Dbble. Shot gun with case-\$150.00. Remington 6mm Rifle with 4X Scope, Sling, Case-\$225.00. Call 864-2475 after 5:00 p.m. W. O. Elmore. 39p

FOR SALE: One twelve foot stock trailer, solid steel cover, middle end gate, tandem wheels. Call H.M. Bledose, 864-2696. 39p

FOR SALE: Triumph 64 wheat seed. Call Ken Lane, 864-2597. 39tc

Miscellaneous

CHILD CARE. New Registered Home opening Monday, Oct. 5. I will have 5 openings for children ages 2-5. We will have planned activities, arts and crafts, puppet shows, movies and field trips. Hot meals and snacks served and loving care given. Nita Higgins 864-2540. 39-40p

BUYING Gold and Silver in all forms. Anything marked Sterling or 10K, 14K or 18K. Also old U.S. and foreign coins. Call after 5 p.m. 864-3860. 37-40c

CHECK our prices at THE DRUG STORE. We will both be glad you did. 14tc

LET FX BACTERIA help clean your Septic Tank the Easy Way \$7.98. Tree Roots Removed from Sewer Lines. Sinks Opened. Dennis Lumber Co. Rule, Texas 79547 35-39c

INTERESTED in Trains or model railroading? Want to help start a club? Call Dusty after 5 at 864-2445. 38-39p

Miscellaneous

HAVE FORD tractor and equipment. Will plow and clean vacant lots and gardens. Call 864-2491. H.A. Sherman Sr. 22tc

JACK'S WELDING. 24 hour service. Box 383, Rochester. 817-743-3444. 32tc

FOR T.V. REPAIRS call 864-2346 for Bobby Simpson-We are your new Magnavox Dealer. Boggs & Johnson Sales & Service. 13tc

NEW INTERNATIONAL Harvester 86 series Tractors with full 2 year warranty-Priced to Sell-See A.C. or Jerry before you buy-Richardson Truck and Tractor 864-3474. 11tc

LET US Price your next prescription. You will be glad you did. Johnson Pharmacy. 17tc

WATER WELL DRILLING: House well, Stock, Irrigation Wells, Test Holes. Call W.P. Hise, 864-3727 Haskell, Tx. (Day or Night). 7tc

INSTANT CASH for any good merchandise, modern or old. Phone 864-3197 anytime. Lackey's, Throckmorton Highway, Haskell, Texas. 36tc

WANTED: Good used furniture and appliances. We buy and sell. Lee Used Furniture 120 N. Swenson St. (one block north of red light on highway 277) Stamford, Texas. Phone 773-5608. 42tc

HAVE LOTS OF BOOTS, Cowboy and Work Boots. 40% to 60% Discount. Open till 7:00 p.m. Haskell Trade Mart. 38tc

FROM wall to wall, no soil at all, on carpets cleaned with Blue-Lustre. Rent an electric shampooer, \$1.00. Perry's. 39c

NEW SHIPMENT of men's western shirts, short sleeve and long sleeve. Priced from \$8.95. Haskell Trade Mart. 38tc

CERAMICS: Finished or You Make Them. Large selection. Make selections early for Christmas. The Mud Puddle, 205 N. 1st, Haskell. 38-44c

WANT to pot some plants to move inside? We have pots and planters at 1/2 price and up Haskell Trade Mart. 38tc

BE YOUR OWN BOSS. Booth space for rent. At Potporri Hair Fashions, 400 N. First. 39-40c

WILL DO YOUR quilting. Call after 5 p.m. 997-2517. 39c

NEED A BABYSITTER. Call Kiddie Kottage at 864-3509. Open 7:30 to 5:30. Monday thru Friday. Hot Meals and Snacks are served. Sandra Wallace, Director. 34tc

WE HAVE Wrangler and fashion jeans in men and women priced from \$9.95 to \$12.95. Haskell Trade Mart. 38tc

Shop our shelves of EVERY-DAY LOW PRICES at Johnson Pharmacy where low overhead means low prices. 11tc

FREE: Get ready for winter. FREE firewood. Call 864-2010. 38-40p

AGRICULTURAL LOANS. Assistant for farm purchasers, farm refinance, convert short term to long term, livestock and machinery. Minimum \$150,000. Call Toll Free 1-800-228-2702, American Midlands, Inc., 2945 South 132 St., Omaha, Nebraska, 68144. 35tc

ATTENTION LAND OWNERS if your land is not leased for oil, Call 817-864-3087 or 817-864-2290. 31tc

PAINTING SUPPLIES, samplers, DMC embroidery thread, Formby Refinishing Products, Aladdin lamp parts, wooden pieces to paint or refinish. Village Bath Products, picture frames and small gifts to choose from. Shop at Wigwam Crafts & Plants in Haskell. 33tc

Collectables

Old Ice-Box Hardware, Old Furniture Pulls, Keyholes, Old Lamp Parts, Old Furniture Refinished, Old Quilts, Old Cowbells, Old Iron Skillets. Sherman's Antiques

Garage Sales

GARAGE SALE: 9 o'clock Friday and Saturday, across from elementary school. Lots of items including a hand knitted afghan and hand made quilt. 39p

GARAGE SALE: Saturday only 9 til 5. 504 South 8th. 39p

GARAGE SALE: 917 North 6th. Saturday only, 8 a.m.-5 p.m. 3 families. Lots of goodies. 39p

GARAGE SALE: 101 N. 2nd East. Friday and Saturday. 39p

GARAGE SALE: Inside the house. Lots of misc. Saturday, starts 9 a.m. 805 8th Pawnee, Rule. 39p

GARAGE SALE: Antique furniture, dishes, ladies clothes, odds & ends. Saturday. S.E. 5th. Mrs. Clara Gardener. 39p

BIG YARD SALE. 5 family. Furniture, antiques, lots of misc. Saturday only starts 8 a.m. No early sales. Stamford, 305 E. Oliver. 39p

GARAGE SALE: Friday and Saturday, Sept. 26-27. Beginning 9 a.m. and Sunday afternoon. Three families with clothes for infant through adult. Miscellaneous baby furniture and household items. Corner of 15th and Adams in new Southside Addition in Rule. 39p

Lost & Found

LOST: Large grey male cat, with crooked tail. Last seen behind the Drug Store, after jumping from under pickup hood. Child's pet. If you have any information, please call 864-3488 or contact Danny Medford. 39p

LOST in Paint Creek vicinity. Large male Siamese cat with white feet and mouth. Reward. Call 864-2911 or 864-2039. 39p

LOST: Brown Haskell National Bank money bag containing a check to Charlene Hawkins from Olive Chambers plus other money. If found, please call 864-2894 before 5 p.m. or 864-3816 after 5. Or contact me at Potpourri Hair Fashions. 39c

Help Wanted

PART TIME MAN needed to help set up funeral tents in surrounding cemeteries. Work not hard and ideal for semi-retired person. Call 422-4706 in Munday. 39c

WANTED: LVN's or GVN's. Rice Springs Care Home. Call 864-2652 or come by. 39-42c

For Rent

U-LOCK storage stalls. Contact Lanco Insurance. 864-2629, 864-2555, or 864-2704. 38tc

Mobile Homes For Sale

FOR SALE: 1972 Western-United 14' X 82' mobile home. Call Larry LeFevre, 997-2540. 29tc

Bus. Opportunity

WHY LEAVE HASKELL to get a good job? Nationally known feed manufacturer can use wide-awake self-starter for full-time work as sales and service representative right here in Haskell. On-the-job training. Good promotion possibilities. No forced transfers. Excellent benefits program. Home every night. Interested in you if you are capable of being on your own, making decisions, and meeting people. Confidential evening interview. Contact: Box 17, Aspermont, Texas 79502. 39-40p

Bus. Opportunity

OPEN YOUR OWN retail apparel shop. Offer the latest in jeans, denims and sportswear. \$14,850.00 includes inventory, fixtures, etc. Complete Store! Open in as little as 2 weeks anywhere in U.S.A. (Also infants and childrens shop). Call Sue, Toll free 1-800-874-4780. 39p

OWN YOUR OWN Jean Shop; go direct-no middle man, no salesman's fee. Offering all the nationally known brands such as Jordache, Vanderbilt, Calvin Klein, Sedgefield, Levi and over 70 other brands. \$14,500.00 includes beginning inventory, airfare for 1 to our national warehouse, training, fixtures and Grand Opening Promotions. Call Mr. Loughlin at Mademoiselle Fashions 612-835-1304. 39p

AVON. Give yourself a Christmas bonus. Sell Avon. Earn good money. Flexible hours. Call collect, Doris Hale, 915-573-8625. 39-44c

Real Estate

FOR SALE Three bedroom B.V. on Rule Highway, on two acres. \$50,000.00.

Three bedroom frame 1401 N. K. corner lot. Sold in yard. \$30,000.00. Have possession in 2 weeks. Priced to sell. \$35,000.00.

Three bedroom frame at 904 S. 2nd (Weatherly Home). Ready to be moved into. Priced for quick sale. \$20,000.00.

Two bedroom frame on large lot, good neighborhood at 1406 N. Av H. Corner lot needs a new owner. \$12,000.00.

Two bedroom frame at 805 N. Av K. Large corner lot. \$10,000.00.

Two bedroom house on N. 8th. \$11,000.00.

Furrh's Real Estate

864-2576 Stanley Furrh

FOR SALE 160 acres of the best farmland in Haskell County. Two irrigation wells without pumps. \$1,000.00 per acre with 1/2 minerals. Close to O'Brien.

400 acres, sub-irrigated, all cultivated. 1/2 minerals now with the return of the other 1/2 in a few years if no production. East of Rochester.

Nice business with excellent potential. Bad health forcing retirement. Good financing available. Shoes for the family. Norma's Leather Express in Knox City.

In Rule, 3 bedroom house on East side of Robin Avenue. Great location. Great buy at \$15,000.00. Shown by appointment only. Call us.

Counts Insurance & Real Estate Knox City 817-658-3211 1tc

FOR SALE Several lots behind the rest home. 60 acres of land in East edge of town.

Lanco Insurance 817-864-2629

YOUR Independent AGENT SERVES YOU FIRST Where We Treat You Like A Person, Not A Number 1tc

Real Estate

FOR SALE: By Owner. 3 bedroom 2 bath, Fireplace, wood frame, U.S. Steel siding, large corner lot, lots of trees, good well. Call 864-3847 or 864-3388. 38-39c

FOR SALE

3 bedroom, 2 bath, utility and garage.

3 bedroom, 1 bath frame, carpeted, utility room.

3 bedroom, 1 bath stucco on 5.8 acre, 3 car carport, cellar, barn, and fenced.

Elegant 4 bedroom, 3 bath brick, den, on 3 city lots in Rule.

3 bedroom, 2 bath brick, on 2 large lots.

3 bedroom, 2 bath rock veneer, utility, garage on corner lot.

2 bedroom, 1 bath frame, central heat, new plumbing on two northside lots.

2 bedroom, 1 bath frame, new carpet, Southside.

We have Lake property \$10,000 & up.

Commercial Bldg. on northside of square.

Station location 193' highway front.

White brick Church Bldg.

Frances Arend Real Estate

408 N. First 864-3880 864-3156 Bob Dulaney 864-3336 39c

FOR SALE

Large two bedroom on N. Av M. 21,000. Fenced Yard.

3 bedroom, 2 bath on 4 acres. Lots of extra.

Large 2 bedroom close in on Brick Street.

Small two-bedroom, 2 blocks North of Square.

Two bedroom stucco in good location.

Large 3 bedroom stucco on N. Av M.

3 bedroom, 3 bath, 2 story on 1 acre.

Two stock farms in Stonewall County: 326 acres at \$250 per acre; 164 acres at \$200 per acre.

THE HARTSFIELD AGENCY INSURANCE-REAL ESTATE-LOANS

(817)864-2665 417 S. FIRST ST. HASKELL 37-38c

FOR SALE

JUST LISTED-2 bedroom, 1 bath frame home on northside. Fenced yard, garage. Needs TLC!

LARGE DUPLEX on N. 5th. Frame, good location.

Duncan Realty

Doyle High 864-2515 The Drug Store 100 S. Avenue F

FOR SALE BY OWNER

4 bedroom brick, large lot with trees, central heat and air-conditioning, double garage.

13th and Ave G 864-2785 35tc

REAL ESTATE

Nice 2 bedroom home, 605 Pawnee Ave.

2 bedroom home. Lots of trees. Large garden area. 108 Sunny Ave.

140 acres Sandy Land farm in Jud Community.

Allison's Real Estate

Rule 997-2561 28tc

Wanted

WANT TO BUY good used telephone poles and railroad ties. Call 864-2540. 39-40p

WANTED: Vacant lot with or without utilities, northwest portion of Haskell, north of Rule road, west of Wichita highway. Contact William H. Henry, P.O. Box 10293, Fort Worth, Texas 76114. 39-41p

Card of Thanks

CARD OF THANKS I want to say thanks to the ones who sent flowers, cards, letters, phone calls and most of all for your prayers. Also to the Drs., nurses and all the staff for the good care while I was in the Haskell Memorial Hospital. Delia Mae Tidrow. 39p

CARD OF THANKS

WE would like to express our sincere thanks to the people who sent cards, flowers, food and prayers during this time of sorrow. The Family of Roy Fought. 39p

ELECTRIC SEWERROOTER Cleans clogged pipes, drains, sewers. No digging. No damage. Philpot's Supply & Service 402 North 1st 864-3010

Steel Toe Safety Boots. Oil Tan & Ruff Outs. Get 'em at 20% Savings at Lane Apparel

See Us First FOR Shoes, Bags & Hose Also Shoe Care Items Slipper Shoppe Joy Chapman

PROFESSIONAL PAPPER HANGING

Paper, Vinyl, Cloth, Mural. Quality You Can See. O. T. FOIL, 103 N. Av L 864-3231. 33-40c

FOR ALL YOUR GENERAL PLUMBING NEEDS

Call Philpot's Supply & Service Center. 864-3010 402 N. 1st

SIMPSON'S ELECTRONICS

Magnavox Service Center Located in Boggs & Johnson East Side of Square TV & Stereo Repair VHF & UHF Antennas Phone 864-2346

PHILPOT'S DITCHING SERVICE

Plastic pipe & fittings, sewer pipe. Water & gas lines run. Call Philpot's Supply & Service. 864-3010 402 North 1st

ATTENTION

Place your orders now for Calendars, Pens, Pencils & Other Speciality Items. Phone 864-3860 or Contact Richard Albus

New & Used Color & BW TV

Amonett & Amonett Radio & TV 864-2870 Haskell

PUMPS

Irrigation-Domestic Formation Testing Well Drilling We pull & repair all makes. REA PUMP CO. Haskell, Texas Call 864-3372 after 8 p.m.

"Good Neighbor"

For all your insurance needs see: Brian Burgess 111 N. Av E 864-3250 STATE FARM INSURANCE COMPANIES

Gospel Singing Set In Stamford

There will be a Gospel singing in the Stamford High School Auditorium on Saturday night, September 27, 1980, beginning at 7:00 p.m. Highlighting the evening of fellowship in song will be several area singing groups including; The Weaver Family, headed by Rev. Freddy Weaver of Hamlin; Faith, a traditional-contemporary gospel singing group from Anson, will be appearing along with their special guest, area rancher and gospel recording artist, Buddy Lytle. Bringing a unique brand of gospel music will be a high spirited group from Saginaw, The Evangels; Joy Ministries, a three man four woman groupe from Hawley, will also be sharing Jesus in inspirational testimony and song. Rounding out the evening of fun in music will be soloist Rev. Steve Pearce of Hamlin, and The Castner Family, a country style gospel group from Lubbock.

STOCK MARKET

The market at Haskell Livestock Auction was steady with last week's decline on a run of 1729 cattle, 94 hogs, and 1 goat at its sale Saturday, according to Tommy Clay, market reporter.

Butcher calves: choice, 67-72; good, 62-67; standard, 57-62; rannies, 52-57.

Cows: fat, 40-45; cutters, 42-47; canners, 37-42; stockers, 50-60.

Bulls: bologna, 50-55; stockers, 60-70; utility, 45-50.

Stocker Steer Calves: choice, 95-1.05; good, 90-95; medium, 85-90; common, 80-85.

Stocker Heifer Calves: choice, 80-85; good, 75-80; medium, 70-75; common, 65-70.

Feeder Steer Yearlings: choice, 62-68; good, 57-62; medium, 52-57; common, 47-52.

Cows & Calves: good, 550-650; plain, 400-550.

Used Color TV's For Sale Cheap Anderson Tire Co. 206 S. Av E 864-2900

Ceramic Tile Work New Homes or Remodeling All work Guaranteed! Phone Day or Night 915-773-2365 915-773-5636 or 915-773-5505 37-39p

NEW! The pen that floats across the paper, "Spinnaker," a rolling ball pen by Sanford. Available in black, blue & brown. Haskell Free Press.

WATCH FOR OUR AUCTION To donate items Call 864-2030 Haskell Kiwanis Club

JRB

SUPERMARKETS
 NO SALES TO DEALERS.
 We reserve the right to limit quantities.
 WE HONOR FOOD STAMPS
 DOUBLE STAMPS
 WEDNESDAY AND SATURDAY

Prices Effective: Sept. 25th thru Wed. Oct. 1st

— VALUE OF YOUR GREEN STAMPS

One Book Green Stamps contains 1200 - 10c Stamps which are the stamps given with \$60.00 purchase on Double Stamp Day. S&H pays sales tax on \$3.14 per book Retail Value.

WE NOW FEATURE HY-TOP BRAND MERCHANDISE INSTEAD OF PARADE. HY-TOP IS THE SAME MERCHANDISE AND PACKED BY THE SAME PACKER AS PARADE, BUT WITH MORE ITEMS AVAILABLE.

<p>WILSON'S DEVILED HAM CANNED MEAT 2 1/2 oz. can 39¢</p> <p>Jell-O, All Flavors GELATIN DESSERT 3 oz. box 3/1</p> <p>Golden Griddle SYRUP 21 oz. btl. \$1.29</p> <p>Bama Strawberry PRESERVES 16 oz. jar 99¢</p> <p>Gala Jumbo Roll PAPER TOWELS 79¢</p> <p>FOLGER'S FLAKED 13 oz. can \$2.65 COFFEE</p> <p>Log Cabin, Regular SYRUP 24 oz. btl. \$1.29</p> <p>Log Cabin, Complete PANCAKE MIX 2# box \$1.09</p> <p>Hunt's SNACK PAK PUDDINGS 4 pak size \$1.09</p>	<p>HUNT'S TOMATO SAUCE 8 oz. can 5/\$1</p> <p>HUNT'S PRIMA SALSA ALL VARIETIES SPAGHETTI SAUCE 15 1/2 oz. can 69¢</p> <p>WESSON COOKING OIL 48 oz. btl. \$2.59</p> <p>HUNT'S CATSUP 32 oz. btl. 89¢</p> <p>HUNT'S HALVES/SLICED PEACHES 29 oz. can 69¢</p> <p>HUNT'S #300 can TOMATOES 39¢</p> <p>HUNT'S TOMATO JUICE 46 oz. can 79¢</p>
--	---

Ranch Style CHILI 15 oz. can 89¢	Hawaiian Punch, All Flavors FRUIT DRINK 46 oz. can 79¢
Gravy Train DOG FOOD 25# bag \$5.99	Milk-Mate CHOCOLATE FLAVOR SYRUP 20 oz. btl. \$1.29

White Cloud BATHROOM TISSUE 4 roll pkg. \$1.09	Mazola CORN OIL 24 oz. btl. \$1.39
Sunlite SUNFLOWER OIL 32 oz. btl. \$1.79	Fresh Start 60¢ off Label Family size DETERGENT \$5.99

Kleenex FACIAL TISSUE 125 ct. box 59¢	Lawry's Spaghetti SPAGHETTI SAUCE MIX 1 1/2 oz. pkg. 39¢
Softasilk CAKE FLOUR 2# box 98¢	Hershey's CHOCOLATE SYRUP 16 oz. can 89¢
Lucky Leaf Apple PIE FILLING 21 oz. can 98¢	

Folger's COFFEE
 All Grinds
\$2.59
 1 Lb. Can

Gold Medal FLOUR
 5 Lb. Bag
89¢

Del Haven Cut GREEN BEANS
 303 Can
4/\$1
 Limit 4

Del Haven Whole Kernel/Cream Style CORN
 363 Can
4/\$1
 Limit 4

HEALTH & BEAUTY AIDS

CREST Mint/Regular 5 oz. Tube
TOOTH PASTE **99¢**

ANACIN 15c Off Label
PAIN RELIEVER 50 ct. btl. **\$1.29**

HEAD & SHOULDERS 7 oz. Bottle/4 oz. Tube
SHAMPOO **\$1.69**

DRISTAN 50 ct. size
DECONGESTANT TABLETS **\$2.99**

DEODORANT Right Guard 5 oz. size **\$1.79**

HAIR SPRAY Rave 7 oz. size **\$1.49**

EYE DROPS Visine 1/2 oz. size **\$1.39**

MAXI-PADS New Freedom 12 ct. box **99¢**

TAMPONS Kotex Stick 30 ct. box **\$1.99**

WASHINGTON RED DELICIOUS
APPLES **49¢** lb.

Texas New Crop
CABBAGE lb. **19¢**

East Texas New Crop
YAMS lb. **49¢**

Italian Sweet
RED ONIONS lb. **49¢**

1 lb. pkg.
CARROTS **3/\$1**

Purple Sweet
PRUNE PLUMS lb. **49¢**

RUSSET 8 lb. Bag **\$1.69**
POTATOES

HOLLY FARMS CHICKEN
FRANKS CUTLETS 12 oz. **69¢**

USDA HEAVY BEEF TENDERIZED FAMILY PAK
\$2.89 lb.

Decker Jumbo All Meat
FRANKS 1# pkg. **\$1.59**

Armour Star
SMOKIES 12 oz. pkg. **\$1.69**

Armour Star All Meat Beef
HOT DOGS 12 oz. pkg. **\$1.29**

Hillsire Farms Reg./Polish
SMOKED SAUSAGE each **\$2.29**

Armour Star
LUNCH MEATS 6 oz. pkg. **85¢**
 (Beef Bologna, Pickle, Salami, Liver, Luncheon)

Oscar Mayer Beef/Reg.
BOLOGNA 8 oz. pkg. **\$1.09**

Oscar Mayer
CHOPPED HAM 8 oz. pkg. **\$1.49**

USDA HEAVY BEEF FULL CUT
ROUND STEAK lb. **\$1.99**

USDA HEAVY BEEF BONELESS
FAMILY STEAK lb. **\$1.89**

LEAN ANY SIZE PACKAGE
GROUND BEEF lb. **\$1.79**

USDA Heavy Beef Boneless
ROUND STEAK lb. **\$2.19**

USDA Heavy Beef Boneless
TOP ROUND lb. **\$2.39**

USDA Heavy Beef Bone-In
RUMP ROAST lb. **\$1.99**

Lean Boneless
STEW MEAT lb. **\$1.79**

Farmland
BACON 12 oz. pkg. **\$1.19**

Decker
BACON 1# pkg. **\$1.69**

FROZEN FOOD SPECIALS

Kraft Longhorn
CHEESE Half-Moon Cheddar 10 oz. pkg. **\$1.59**

Kraft Singles
CHEESE American/Pimento 12 oz. pkg. **\$1.79**

Parkay 1 lb Quarters
Margarine **49¢**

Totinos All Varieties 13 oz size
Pizzas **99¢**

Hunt's 11 1/2 oz. can
MEATLOAF FIXINS **83¢**

Hunt's 6 oz. can
TOMATO PASTE **2/73¢**

Chef-Boy-Ar-Dee
RAVIOLI 15 oz. can **85¢**

Chef-Boy-Ar-Dee Cheese
PIZZA MIX 29 oz. box **\$1.89**

Beefaroni & Beef-o-Getti 15 oz. can
CHEF-BOY-AR-DEE **85¢**

Ovaltine Malt Chocolate
DRINK MIX 9 oz. jar **\$1.79**

Welch's 12 oz can
Grape Juice **89¢**

Gandy's or Oak Farms
 Slim & Trim 1/2 Gallon Carton
Ice Milk **\$1.19**