



We were delighted about six months ago when the State Comptroller issued a ruling that civic clubs were exempt from paying state sales tax.

The catch came this week with the approval of a small booklet explaining various aspects of the sales tax laws.

The majority of the information presented in the booklet was simple and to the point, but questions arose on the exempt organizations.

The book explained that an exemption certificate was required for each sale to an exempt group.

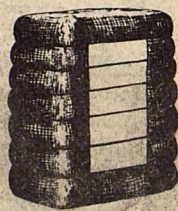
A call to the Comptroller's Office in Austin further confused the issue when we were told that the certificate must be completed with each sale to an exempt group and attached to a copy of the bill. These items, we were told, must be kept for four years.

It started to look as if a building expansion would be necessary to house the new paperwork.

Still confused as to whether or not taxing units, (cities, counties, and schools) were required to complete the exemption certificates, we placed another call.

This time, talking to a different

#### HASKELL COUNTY GIN REPORT



BY MAX STAPLETON  
County Extension Agent  
January 18, 1982

HASKELL:	BALES
Farmers Co-op Gin... (final)	10,176
Haskell Co-op.....	15,239
K & G Gin.....	4,265
<b>ROCHESTER:</b>	
Paymaster.....	3,924
Farmers Co-op.....	12,895
<b>RULE:</b>	
Rule Co-op.....	13,814
C M Gin.....	3,899
Sagerton..... (final)	5,000
Denson Gin..... (final)	5,948
<b>O'BRIEN:</b>	
O'Brien..... (final)	15,577
<b>WEINERT:</b>	
Paymaster..... (final)	9,418
Weinert Gin.....	8,563
<b>Total.....</b>	<b>108,729</b>

person, we were told that no exemption certificate is required for sales to taxing units if they pay by check and the check shows that the unit is sales tax exempt.

Again the problem came later in the explanation when we were told that a copy of each check must be attached to the invoice and kept for four years.

Further questions about the civic clubs revealed that according to the person we were now talking to, only one exemption certificate for each group was required. As long as the one exemption certificate was kept on file, no other certificates were required.

Liking this answer better than the first we asked if the taxing units could complete the certificates and alleviate the problem of keeping copies of the checks. Yes, we were told, that would be fine.

Welcome to the continuing saga of the great, efficient bureaucracy.

#### Tickets On Sale For Booster Club Luncheon

Tickets are on sale for the Annual Booster Club Salad Luncheon that will be held January 26, 11:00-1:00 at the Community Building.

Parents of Junior High and High School children will be preparing a variety of salads and desserts.

Come and enjoy the food and support our local youth at the same time.

#### Hurst Tool Donations

Donations to the Haskell Volunteer Fire Department Hurst Tool Fund include:

Mr. and Mrs. Robert E. Speer in memory of Bill Letterman.....	15.00
Rex and Cam Pitman in memory of Sterling Hannsz and Bill Letterman.....	20.00
Johnson Pharmacy in memory of E. A. Schaake.....	15.00
Lynn and Faye Walton and Toni Bahnsen in memory of Sterling Hannsz.....	25.00
Dr. and Mrs. Joe Thigpen.....	50.00
Mr. and Mrs. Hill Oates.....	50.00
Mr. and Mrs. Bobby Robinson in memory of Sterling Hannsz.....	25.00

COTTON
GRAIN
CATTLE

# THE HASKELL

POULTRY
25¢
OIL

14 PAGES  
Plus 2 Inserts

## FREE PRESS

"HASKELL—A GOOD PLACE TO VISIT; A BETTER PLACE TO LIVE"

VOLUME NINETY-SIX
HASKELL, TEXAS 79521, JANUARY 21, 1982
NUMBER THREE

## Junior Livestock Show Scheduled Jan. 29-30

Plans for the 1982 Haskell County Junior Livestock Show and Premium Sale have been completed and the event is scheduled to begin at 9 a.m. Friday, January 29 and continue through January 30.

Show activities will begin with the judging of the poultry and rabbits and will continue with the sheep judging at 10 a.m. and the swine at 1 p.m.

Steer show judging will begin at 9 a.m. January 30 and will be followed by the heifer show.

The premium sale will begin at 2 p.m. in the show barn with James Powell serving as the auctioneer.

Preliminary entries indicate that the show will include about 90 barrows, 55 lambs and 45 steers and heifers in addition to the poultry and rabbits.

General Chairman of the show is Duane Gilly and Superintendents include: C. A. Thomas, Beef; Truman Therwhanger, Swine; Calvin Powers, Poultry and Rabbits; and Jim Hudson, Sheep.

Judges for the show will be Eddie Puckett, Vocational Agriculture Teacher from Sweetwater and Richard Spencer, Fisher County Extension Agent. Spencer will judge steers and heifers and Puckett will judge rabbits, poultry, sheep and barrows.

The Junior Livestock Show Association will pay premiums of about \$1,250.00 to the exhibitors.

During the premium sale, a total of 16 steers, 25 lambs, 36 barrows

and five pens each of rabbits and poultry will be sold.

The sale will enable buyers to pay a premium on animals that will be received by the exhibitors to help defray expenses in showing the stock.

Persons who wish to participate in the sale are invited to attend the sale or to contact any member of the Sales Committee who will accept donations.

Sale Committee Chairman is Larry Beauchamp. A partial listing

of others on the committee includes: Truman Therwhanger, C. A. Thomas, Max Stapleton, Duane Gilly, Tommy Matthews, Tom Kutch, Mike Wilcox, Tiffen Mayfield, George Mullino, Cookie Shaver, and Jerry Carver.



Staff Photo by Don Comedy

#### FULL HOUSE

A large crowd was on hand Tuesday night for the annual cornbread and bean supper. The event is sponsored by the Haskell County Junior Livestock Show Association as a fund raising project to support the show. The 1982 edition of the livestock show will be held January 29 and 30.

## Area Cities Receive Sales Tax Checks

State Comptroller Bob Bullock Thursday sent payments totaling \$34.7 million to Texas cities with the one percent city sales tax.

The payments, the first of 1982 to the nearly one thousand cities who collect the tax, totaled \$1.6 million more than these cities received in January of last year.

Haskell received a check for \$5,090.06. Area cities and their checks were: Anson, \$2,287.48; Hamlin, \$5,472.37; Knox City \$3,643.81; Rochester, 0; Rule, \$892.54; and Stamford \$7,594.33.

The biggest check—\$7.4 million—went to Houston, an 11.7 percent increase over last January's check.

Dallas received a check for \$4

million, compared to \$3.7 million for the same period last year.

San Antonio's check of \$1.8 million compares to \$1.7 million for last January.

Austin received \$1.1 million compared with \$1 million in

January last year, and El Paso received \$869,000, up from the \$808,000 check that city received last January.

Bullock also forwarded January rebates to the state's two Metropolitan Transit Authorities. The Houston MTA received \$8.6 million for the period and the San Antonio transit authority received \$874,000.

The city and MTA sales taxes are collected along with the state sales tax by merchants and businesses and rebated monthly to the cities in which they are collected by the Comptroller.

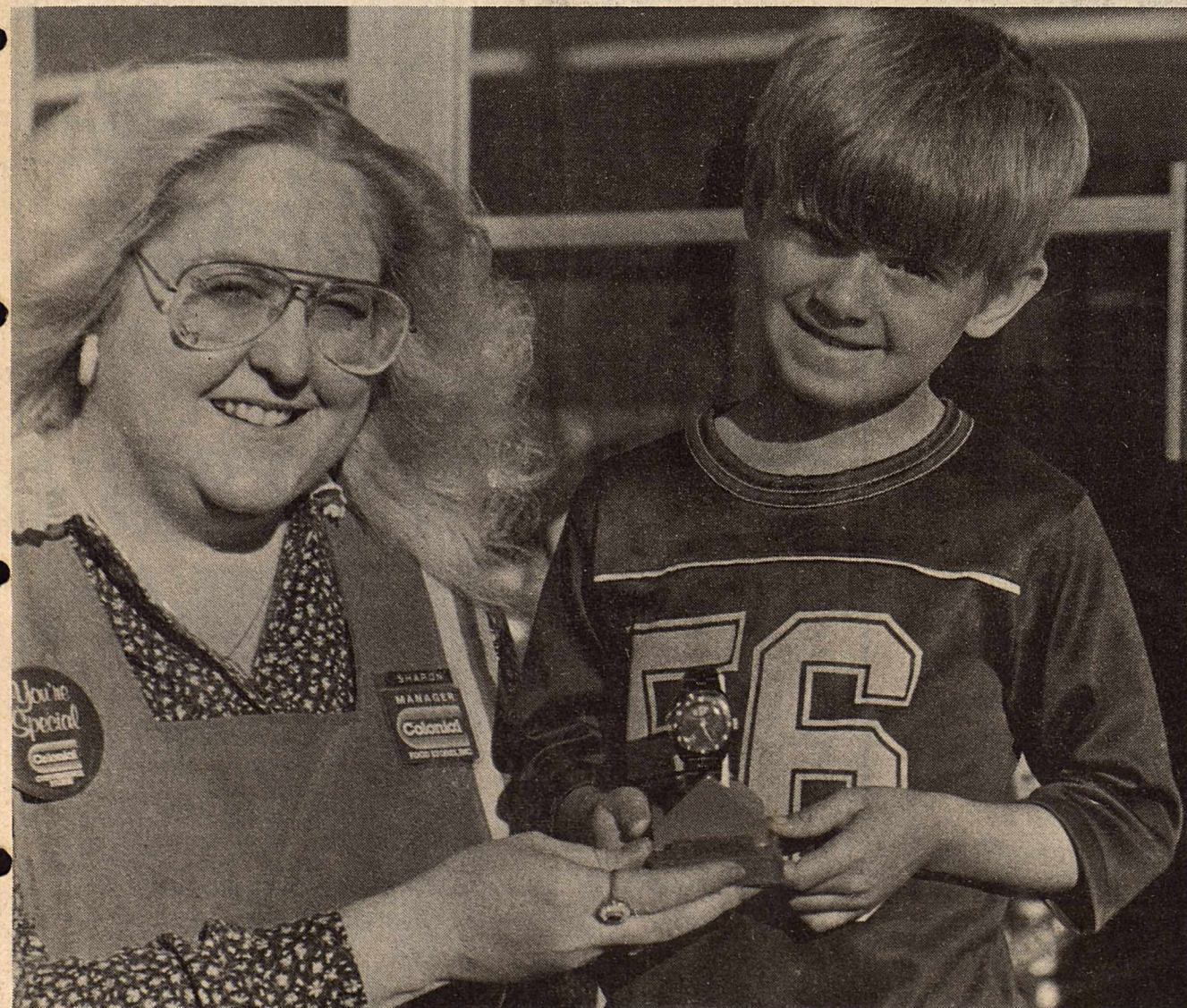
#### Reception Set For New Chamber Mgr.

A special reception introducing Wanda Dulaney, new Chamber of Commerce Manager, will be held Friday from 5 to 7 p.m. in the Community Building of the Haskell National Bank.

Wanda is a native of Haskell, but has lived in Dallas and Abilene for the past several years.

The reception, open to the general public, will give old friends an opportunity to visit with Wanda and at the same time allow new residents in the area to meet her.

Refreshments will be served.



Staff Photo by Don Comedy

#### WINNER

Jonathan Tatum, five year old son of Mr. and Mrs. Billy Tatum, was the winner of a Snoopy watch given by Colonial Food Stores and the West Texas Rehabilitation Center. Jonathan collected a total of \$557.73 to win the local prize.

#### EMERGENCY PHONE NUMBERS

Ambulance.....	864-2621
Fire Department.....	864-2222
Police Department.....	864-2323
Sheriff's Office.....	864-2345
Highway Patrol.....	864-3356

**weather**

By Sam Herren  
January 12-19

**TEMPERATURE**

Hi..... 78°..... 18th

Lo..... 11°..... 17th

**RAINFALL**

\*Precipitation..... Trace

Normal to Date..... 0.57

Total to Date..... Trace

\*Snow









**FIRST PLACE MEDIUM HEAVYWEIGHT STEER**

Faye Mullino, Rochester, is at the halter of her first-place medium heavyweight steer exhibited at the Sandhills Hereford Show held in Odessa. The entry weighed in at 990 pounds and was bred by Gibb Ragland, Acuff.

**USDA Soil Conservation Service**

**Conservation Viewpoints**

The beginning of a new year means preparing for the coming crop season, income taxes and the green of spring. This is a time of planning for tomorrow and a time to begin work for those of you who are planning to plant windbreaks around fields, farmsteads and

your homes. The Soil Conservation Service assist land owners and operators in Texas to plan and establish trees for various purposes.

We can't do much when it comes to preparing for the weather we receive in Haskell, but we can try to "weather" the storms by planning and planting windbreaks that help reduce wind, dust and sound movement around our properties.

Many Haskell County residents have their windbreak or tree needs settled for 1982 except for the most important item, the seedlings. For the early birds and for those of you who have not quite finalized your needs, the SCS is available for help. We can assist you in planning and we do have ordering forms from two Soil and Water Conservation Districts sponsoring tree programs this season.

Some of the trees available are: Evergreens - American Arbovitae, Eastern Red Cedar, Austrian Pine and the

Mondale Pine. Deciduous trees available are Siberian Elm, Russian Olive, Honeylocust and Green Ash. And for those of you that need deciduous shrubs, Apricot, Redbud, Lilac and Plums are available.

These seedling will be delivered to either Abilene or Sweetwater where you can then pick them up. If you are interested in a windbreak for your farm or maybe your home, contact the Soil Conservation Service in Haskell at 864-3212 or come by the office at 510 South Second. Their office at 510 South Second.

These seedlings will be delivered to either Abilene or Sweetwater where you can then pick them up. If you are interested in a windbreak for your farm or maybe your home, contact the Soil Conservation Service in Haskell at 864-3212 or come by the office at 510 South Second. These orders must be placed by February 15 to receive trees

this year.

Another item of interest to some of you is the Emergency Conservation Program (ECP). Following the heavy rains received in Haskell County on August 4, 1978 we received funds for this program and we still have a few producers that have not reported completion. The ASCS has informed us that all work must be reported by January 29, after which date all outstanding requests will be cancelled. If you are unsure about your work, contact us this week if possible.

Due to the number of responses received concerning the Resources Conservation Act, the response period has been extended thru January 29, 1982. An explanation of the RCA and the future of Conservation Programs along with response forms are available in the SCS office. Come by and discuss this program with us and get your responses in by the 29th.

**NEWSTAB 32  
AT 6:  
COMPLETE  
NEWS PLUS**

**KTAB TV  
YOUR NEWS STATION**  
We've Got You Covered



**EMS**

**EMERGENCY MEDICAL SERVICE**

*It's a lot more than  
an ambulance ride.*

*It's a system that  
saves lives.*

**Haskell Co. Emergency  
Ambulance Service**

307 North 1st  
Haskell

**864-2621**  
EMERGENCY NUMBER

Office  
864-3945

SALE SALE SALE SALE SALE SALE SALE SALE

**Bynum's  
Furniture  
Gallery**

**(Haskell Store Only)**

---

**Pre-Inventory  
Sale**

**— 2 Days Only —  
Friday & Saturday  
at 9:00**

**STOREWIDE  
REDUCTIONS**

as much as

**20% to 50% off**

---

Items such as:

Sofas, Loveseats w/matching chairs  
Coffee tables, End tables  
Recliners  
Dining Room Furniture      Bedroom Furniture  
Roll Top Desks

---

All pictures

**20% to 50% off**

---

Everything in Bed & Bath Dept.

**20% to 50% off**

---

**\$100,000 Inventory  
must be sold!**

SALE SALE SALE SALE SALE SALE SALE SALE

WE GIVE  WE GIVE  WE GIVE  WE GIVE  WE GIVE  WE GIVE  WE GIVE  WE GIVE  WE GIVE  WE GIVE  WE GIVE 

# M SYSTEM

Your FRIENDLY

**AFFILIATED  
SUPER MARKETS**

Your Dollar Buys More  
at M-System Store

**Double days**

**WEDNESDAYS**  
With the purchase of \$2.50 or more.

Specials Good Thurs. Jan. 21  
thru Wed. Jan. 27

We Reserve  
The Right  
To Limit  
Quantities!

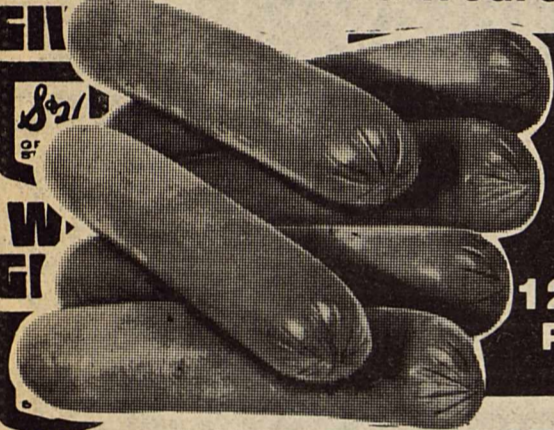
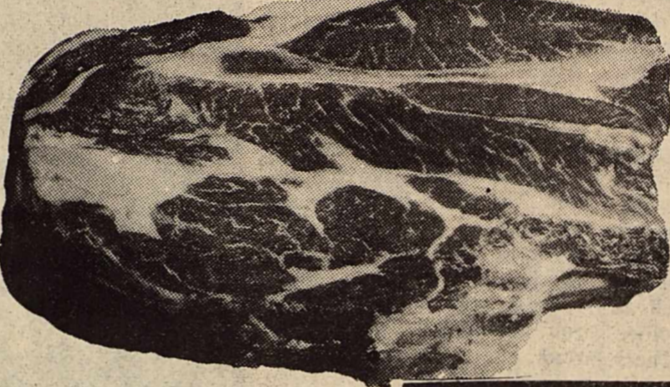
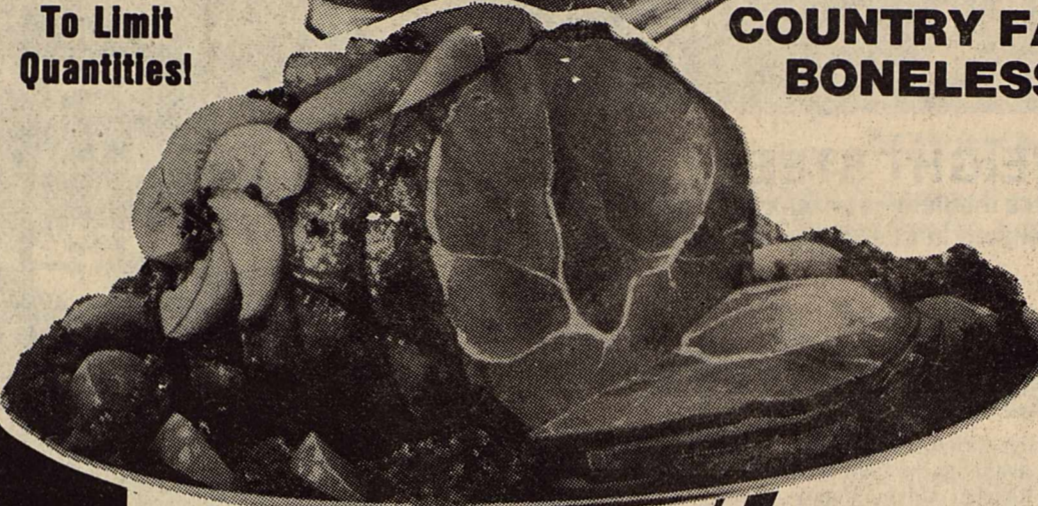


**BACON**  
Wilson's  
Certified  
1-Lb. Pkg. **1.39**

**COUNTRY FAIR  
BONELESS HAMS**  
3 to 5-Lb. Average Halves

Lb. **1.99**

**Chuck Roast**  
Lb. **1.29**



SHURFRESH  
ALL MEAT

**Franks**  
12-oz. Pkg. **89¢**

SHURFINE **CORN OIL** 1-Lb. Quarters  
**Margarine 49¢**

T-Bone Roast	\$1 79 lb
Arm Roast	\$2 09 lb
Beef Ribs	\$1 19 lb



**TUNA**  
SHURFINE  
6 1/2-oz. Can **69¢**  
(Limit 2)

Frozen Mexican Style  
**Patio Dinners**  
Assorted  
Kinds **99¢**  
EACH

**BRAWNY**  
PAPER TOWELS  
Jumbo  
Roll **79¢**

6 Pack 32 oz Returnable Bottles  
**Coke, Tab, 7-Up \$1 65**

**KLEENEX**  
Facial Tissue  
200-ct. **79¢**

MR. COFFEE — COFFEE  
**Filters**  
100-ct. Pkg. **79¢**



**DEL MONTE**  
● **Green Beans**  
CUT OR FRENCH STYLE  
16-oz. Cans  
● **Golden Corn**  
WHOLE OR CREAM STYLE  
17-oz. Cans

MIX OR MATCH! **5 For 1 89**

Shurfine Brown or Powdered  
**SUGAR**  
1 lb box **49¢**

**VAN CAMP'S**  
PORK and  
BEANS **2 79¢**  
16-oz. Cans

**Gladiola Flour**  
5-Lb. Bag **99¢**

**Pouch Mixes**  
GLADIOLA-Pancake, Biscuit, Cornbread  
**4 1 00**  
6-oz. Pkgs.



**DEL MONTE**  
**Sauerkraut**  
**2 89¢**  
16-oz. Cans

**Fisher Boy** Frozen Fish  
**STICKS**  
**2 99¢**  
8-oz. Pkgs.

**PINE-SOL**  
CLEANER  
15-oz. Bottle **1 19**



**OREO**  
Sandwich Cookies  
**1 59**  
19-oz. Pkg.

**Peter Pan**  
PEANUT BUTTER  
Smooth or Crunchy  
18-oz. Jar **1 79**

WE GIVE  WE GIVE  WE GIVE  WE GIVE  WE GIVE  WE GIVE  WE GIVE  WE GIVE  WE GIVE  WE GIVE  WE GIVE 




**Del Monte Sweet PEAS**  
17-oz. Cans  
**2/89¢**



**Grapefruit Juice**  
SHURFINE PINK  
46-oz. Can  
(Limit 2)  
**59¢**

**Miracle Whip**  
KRAFT  
Quart Jar  
Limit 1 with \$10.00 grocery purchase or more!  
**99¢**



**Del Monte Tomato SAUCE**  
8-oz. Cans  
**4/1 00**



**Tomato Catsup**  
Del Monte  
32-oz. Bottle  
**1 19**



**Fruit Cocktail**  
Del Monte  
17-oz. Can  
**69¢**

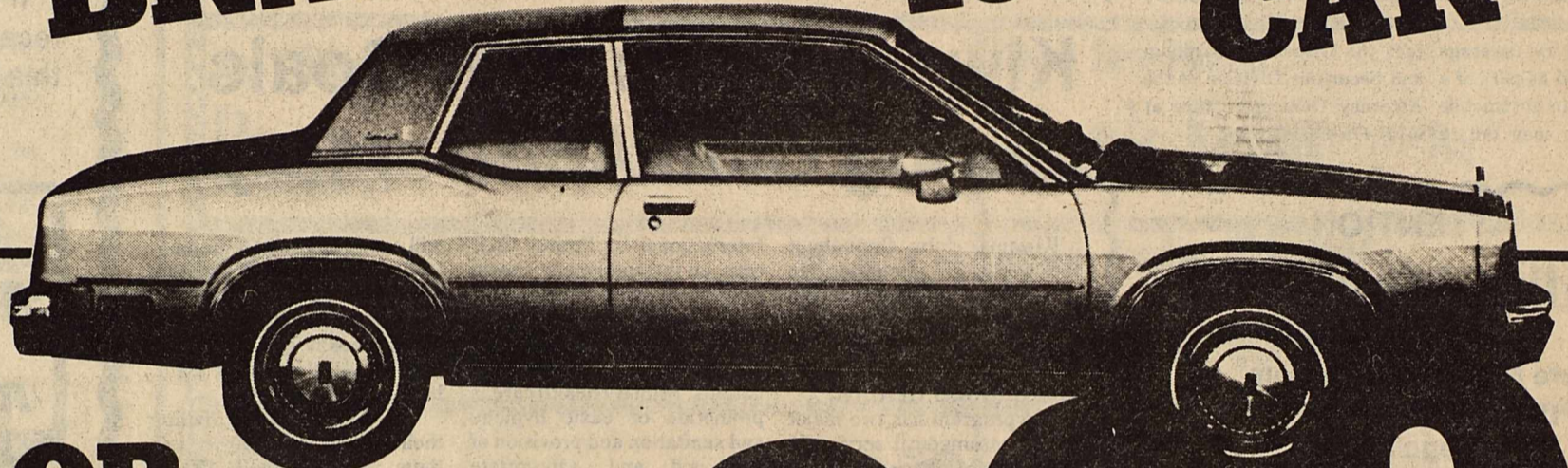


**Grapefruit**  
TEXAS RUBY RED  
5-LB. BAG  
(Limit 2 Bags)  
**79¢**

# M-System Stores Joined Affiliated to Bring You A...

## ROUND UP OF RICHES

Look What You May Win!  
**WIN A BRAND NEW 1982 CAR**



**OR \$5,000**  
IN ONE OF OUR GRAND PRIZE DRAWINGS

**HOW TO PLAY**  
Simply pick up a FREE Roundup of Riches Collector Card at any of our participating stores. Every time you visit our stores, you will receive a FREE Game Ticket. No purchase necessary. Punch out the game markers and match them to the corresponding square on the collector card. Cash prizes of \$1,000, \$100, \$10 and \$5 are available! You could also be an "Instant Winner" of a Shurfine or Shurfresh grocery prize. There are over 123,000 of these "Instant Winners" so start playing today.

**FOR MORE DETAILS, SEE THE RULES ON YOUR COLLECTOR CARD.**

**THREE BIG DRAWINGS... SIX GREAT PRIZES!**

**HERE'S HOW TO ENTER:**  
Simply collect 9 Moneybag Jackpot markers and exchange them for 10 FREE Game Tickets at the store office. Complete a Grand Prize Drawing Entry Form and you qualify for the chance to win one of the Grand Prizes!

**1st Drawing \$5,000**  
All entries completed by February 10, 1982 will be eligible for the first drawing on February 16, 1982. TWO \$5,000 prizes will be awarded in the first drawing.

**2nd Drawing - \$5,000**  
All entries completed by March 10, 1982 will be eligible for the second drawing on March 16, 1982. TWO \$5,000 prizes will again be awarded. All entries not selected in the first drawing will remain eligible for the second drawing.

**3rd Drawing - 1982 Olds Omega Brougham**  
All entries completed within three days after the game ends will be eligible for the third drawing. Exact date of the third drawing will be announced. All entries not selected in the first or second drawings will remain eligible for the third drawing. TWO Cars will be given away.

**THE ODDS**  
Odds vary depending on number of game tickets you obtain. The more tickets you collect the better your chances of winning.

**ODDS CHART EFFECTIVE JANUARY 21, 1982.**

PRIZE VALUE	NUMBER OF PRIZES	ODDS FOR ONE GAME TICKET	ODDS FOR 10 GAME TICKETS	ODDS FOR 100 GAME TICKETS
\$5,000	2	1 in 225	1 in 22.5	1 in 2.25
\$1,000	10	1 in 22.5	1 in 2.25	1 in .225
\$100	100	1 in 2.25	1 in .225	1 in .0225
\$10	1,000	1 in .225	1 in .0225	1 in .00225
\$5	2,250	1 in .1125	1 in .01125	1 in .001125
TOTAL	3,350	1 in .03	1 in .003	1 in .0003

Odds to obtain a 1982 Olds Omega Brougham are 1 in 225. Odds to win Grand Prize Drawing will depend on the number of participating stores in the Roundup of Riches Series #W1234 being played in 174 participating Affiliated M-System Stores in Texas.  
Scheduled termination date of this promotion is April 24, 1982, however, ROUNDUP OF RICHES officially ends when a game ticket is distributed.  
\*Average Retail Price of Group 1 Product Prizes  
\*\*Average Retail Price of Group 2 Product Prizes

There are over 130,000 prizes available, so start playing today...  
**YOU COULD BE THE NEXT BIG WINNER!**



**CARROTS**  
1-Lb. Cello Bags  
**4 1 00**



**PURPLE TOP Turnips**  
3 Lbs.  
**1 00**



**U.S. No. 1 Sweet Potatoes**  
Lb.  
**39¢**



**SUNKIST JUMBO Tangerines**  
3 Lbs.  
**1 00**







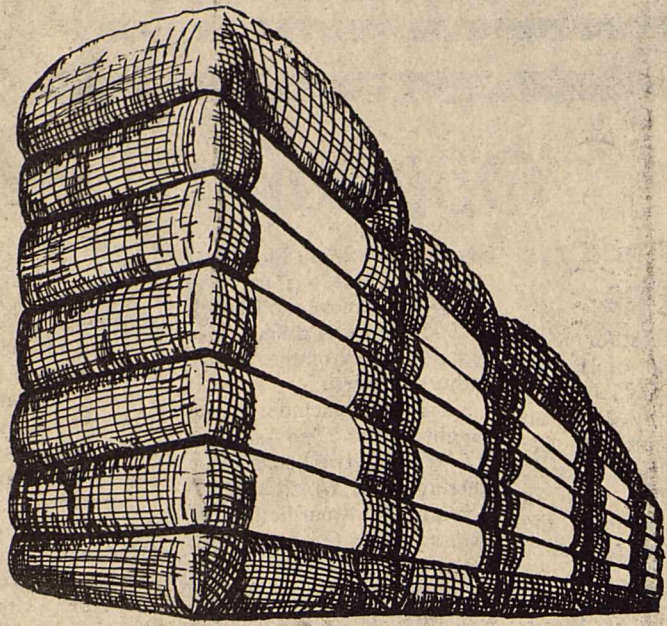




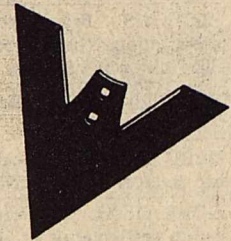
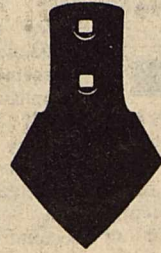
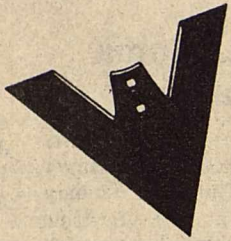
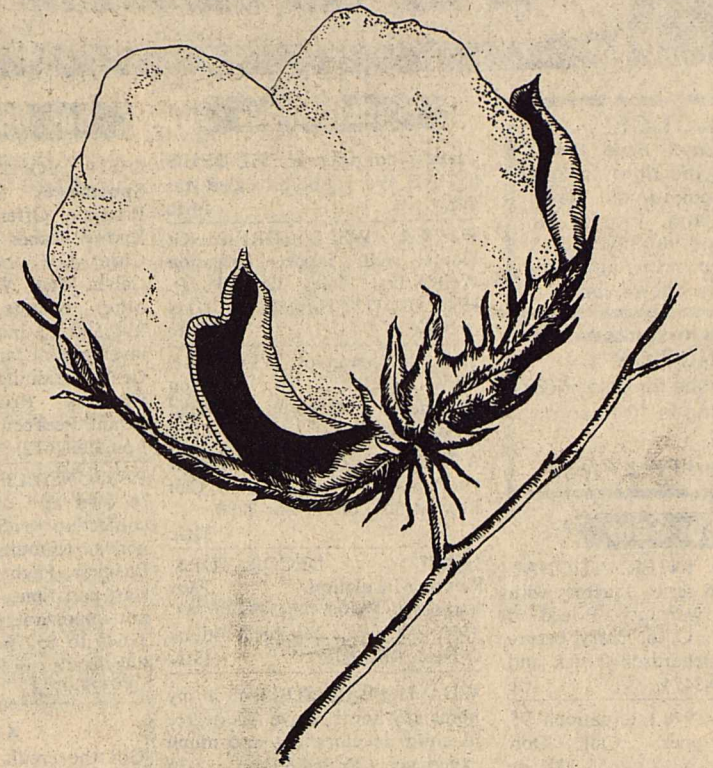








# 46¢ COTTON SALE



## John Deere Sweeps

### Chisel (7/16 bolt hole) discontinued styles

6" N61113.....	Reg. \$4.18 Now	<b>\$3<sup>05</sup></b>
10" Y954N.....	Reg. \$6.21 Now	<b>\$4<sup>53</sup></b>
16" N130107.....	Reg. \$7.26 Now	<b>\$5<sup>30</sup></b>
18" N130108.....	Reg. \$8.73 Now	<b>\$6<sup>37</sup></b>
20" N130109.....	Reg. \$11.49 Now	<b>\$8<sup>39</sup></b>

### Cultivator discontinued styles

6" N137120.....	Reg. \$2.64 Now	<b>\$1<sup>93</sup></b>
8" N137121.....	Reg. \$3.05 Now	<b>\$2<sup>23</sup></b>
10" N137122.....	Reg. \$3.49 Now	<b>\$2<sup>55</sup></b>
14" N61104.....	Reg. \$4.04 Now	<b>\$2<sup>95</sup></b>

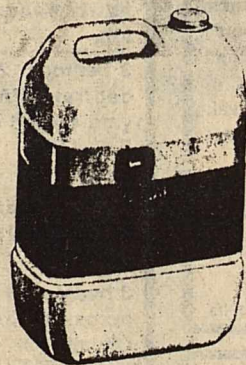
### Peanut discontinued styles

12" N61119.....	Reg. \$5.58 Now	<b>\$4<sup>07</sup></b>
14" N61120.....	Reg. \$7.38 Now	<b>\$5<sup>39</sup></b>
16" N61121.....	Reg. \$9.58 Now	<b>\$6<sup>99</sup></b>
20" N61123.....	Reg. \$15.64 Now	<b>\$11<sup>42</sup></b>

## 25% off All Current Styles Sweeps

Supplies Limited Some Sizes

1/2" bolt holes in chisel sweeps



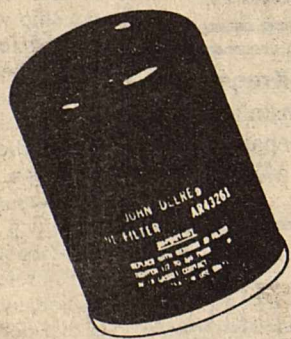
### John Deere Hydraulic Oil

5 gal. AR69444  
Reg. \$33.22 Now **\$26<sup>00</sup>**

2 gal. TY6237  
Reg. \$13.53 Now **\$10<sup>50</sup>**

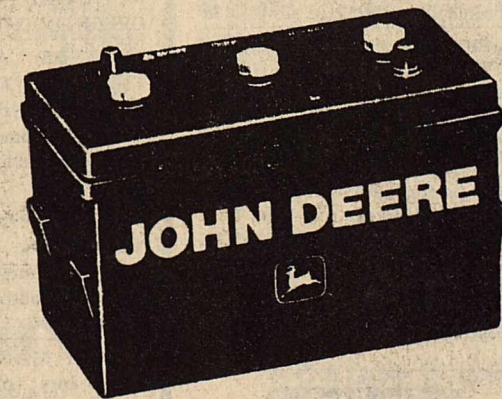
**ALL SALE PRICES  
CASH ONLY**

Sale Ends Feb. 27, 1982  
or when  
Supply is Exhausted



**\$2<sup>00</sup> off**

AR43634 Engine Oil Filter  
Filter for John Deere 30-40 Series



### Save On These John Deere Batteries

6 volt AR47455  
830 Cold Cranking Amps  
For 30 & 40 Series Tractors  
Reg. \$95.00 Now **\$80.00**

6 volt AR45450  
830 Cold Cranking Amps  
For 20 Series—12v System  
Reg. \$80.00 Now **\$67.24**

12 volt AR46115  
425 Cold Cranking Amps  
For 20 Series - 24v System  
Reg. \$77.00 Now **\$62.12**

Buy the Battery that fits Your Tractor Now and We Will Charge It with Acid When You Need It.

### Mystik 15-50 Engine Oil 24 qt. Case

Reg. **\$32<sup>90</sup>** Now **\$27<sup>90</sup>**



### Hale Farm Supply

Haskell, Texas  
817-864-2692