

# Frontier Days Celebration Scheduled May 17, 18, & 19

BY WANDA DULANEY

The Frontier Days Celebration, sponsored by the Haskell Horse Club, is set for May 17, 18 and 19th, according to Bob Brandon, president.

Beginning at 7:30, a rodeo will be held each night with Runt Sloan of Newcastle as producer.

To launch the activities, a Frontier Days Parade will be held at 5:30 p.m. on May 17. Parade chairman Grace Womack announced that all entries are asked to follow a western theme and many businesses and organizations, individuals are expected to enter floats along with area bands, riding clubs, etc. More information will be released at an early date regarding categories and prizes.

Several community organizations are participating with the following already confirmed and others expected to join: Haskell Fire Department, Tom Watson Chief, will be in charge of tickets sales of \$4.00 for adults and \$2.00 under twelve, and no charge for children under six. The firemen will also hang flags in the downtown area to fly during the celebration.

Kiwanis Club, Dan Hoover, president, will have charge of the concession stands at the arena and will also have a barbeque stand on

the square after the parade.

Rotary Club, Cotton Whitfield, president, has agreed to be responsible for the printed programs.

Young Homemakers, Rosemary Brown, president, will run the Queen's Contest in which entrants will be judged on appearance and horsemanship.

Businesses, organizations or individuals may sponsor an entry who is between the ages of 14 and 20 for \$25.00.

Chamber of Commerce, Tom Watson, president, is in charge of promotion.

As plans are finalized, news items will be given on each event to local and area newspapers, television stations and radio stations.

From the Horse Club, Bob Brandon is serving as Rodeo Chairman; Jerry Briscoe, attendance chairman; Bud Lane, concessions and barbeque; Mike Harrell, photographer; Phil Henshaw, parade, Robert Weaver, seating; Gwen Butler, rodeo; Cliff Morris, Queen's Contest; Jerry Kuykendall, ranch teams; Linda Briscoe, publicity.

Among other activities being planned are window displays, a dance and a beard contest, with announcements concerning these

and other events to be announced shortly.

Horse Club president Bob Brandon, said that his organization is very enthusiastic about spearheading the move to reinstate rodeos in Haskell.

"Everyone really missed not having one last year," he said.

Brandon said the support from the various organizations is gratifying and he stressed the Horse Club members determination that the rodeo and entire celebration be a community affair for the enjoyment of all ages in our community and area towns.

Many visitors and contestants are expected from other cities as well. The sponsors ask that everyone be thinking about wearing prairie dresses and other western attire during the celebration, both at their jobs and at the parade and rodeo and that merchants plan to feature windows to fit the occasion.

## Woods Pharmacy Burglarized Twice During Week

Two burglaries occurred this week at Woods Pharmacy in Rule. The first occurred sometime Sunday night and only drugs were taken. The second occurred sometime Tuesday night and in addition to drugs, watches and jewelry were taken.

Burglars entered the store through the front both nights. Sunday night the glass to the front door was broken and Tuesday night the entire front door was destroyed.

According to Harold Woods, owner, these two burglaries represent a total of about twenty times the store has been burglarized in the eighteen years he has been in business in Rule.

At press time Wednesday, investigators were at the scene and no further information was available.

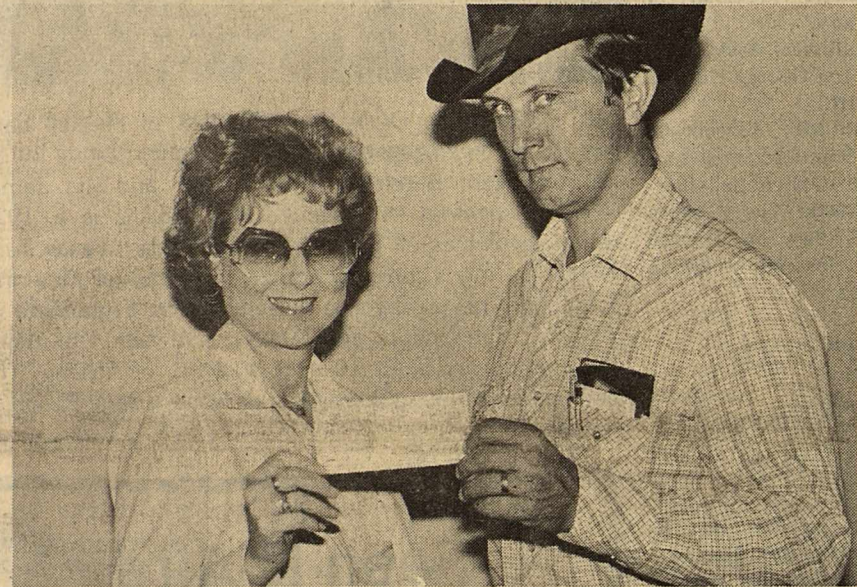
## Aggie Muster Set April 21 At Lake Stamford

The 1984 Aggie Muster will be held April 21, at John Kimbrough's cabin at Veda's Camp on the Lake Stamford according to Muster Chairman Wallar Overton.

Bar-B-Que will be served at 6:30 p.m. with the muster following. All former students, wives, and friends of Texas A & M are encouraged to attend.

Reservations for the meal must be made by Wednesday, April 18 by contacting Overton at 817-864-2958.

In case of inclement weather, radio station KVRP will broadcast alternate plans.



Staff Photo by Don Comedy

## SOFTBALL FUNDS

Haskell Mayor Franciene Johnson accepts a \$3,000.00 check from the Haskell Softball Association. Jim Hudson made the presentation on behalf of the Softball Association. The funds represent profits from projects and tournaments during the past three years. Mayor Johnson has appointed Hudson as the City Softball Association Representative.

## School Board Members Canvass Election

Members of the Board of Trustees of Haskell Independent School District spent much of their Tuesday night meeting canvassing last Saturday's election and reorganizing the board.

The official results of the election included a total of 533 total ballots cast. Roger Moeller received 446, Max McMeans received 379 and Jim Bridwell received 230. Moeller and McMeans received oaths of office during the meeting following the canvass.

Officers of the board were elected with Jerry Hannsz serving as president, Sammy Larned as vice president and David Davis as Sec.

In other action, the board agreed to call for bids on the heating and cooling of the two primary wings at the elementary school. The bids will call for window coverings on north windows, electrical wiring and heating and cooling units for classrooms in the two wings. The

bids will be open May 8.

Board members accepted the resignation of Elizabeth Stewart effective the end of the school year. Mrs. Stewart has served as elementary school secretary for the past sixteen years and has announced her plans to retire.

Board members agreed to hire George Martin as a coach to replace Coy Payne. Martin is currently serving as assistant coach and head girls coach in Colorado City.

Sup. James Lanier told board members of two upcoming meetings of interest. One is the spring meeting of the Texas Association of School Administrators and Texas Association of School Boards in Wylie and the other meeting will deal with Chapter 75. The Chapter 75 meeting will be for school administrators and board members and will be held in the Haskell Elementary School Cafeteria April 26.

## Drug Awareness Program Set In Throckmorton

A special program on the apprehension and prosecution of drug offenders will be held next Tuesday night, April 17, at 7 p.m. in the Throckmorton High School Auditorium.

The program is co-sponsored by District Attorney Joseph Thigpen and Throckmorton County Sheriff Jerry Schrimsher.

Program participants will be Capt. Fred Jack, from the DPS Narcotics Division in Lubbock and Bob Baker of Haskell. Baker is a

retired Department of Justice Drug Enforcement Administration Officer and Thigpen.

The program is being held in conjunction with a drug awareness program currently underway in Throckmorton. Admission is free and all area residents are urged to attend.

Following the program, a question and answer session will be held.

## FUND RAISERS

Twenty-seven fifth grade students from Haskell Elementary School raised \$1859.19 in 10 days to benefit the American Heart Association during the annual "Jump Rope for Heart" program. This is apparently the most any group from Haskell has collected. Special awards went to Craig Hanson, Clifton McFadden, Rod Jeter, Rusty Stocks, Erik Harvey, and Jay Miller. These boys are the winning team members. Each boy collected over \$100.00. Craig won the trophy for collecting the most money. He collected over \$400.00. Craig and Clifton McFadden each won a jacket for collecting over \$200.00. Members of the contest were Craig Hanson, David Foreman, Amanda Diaz, Billy Bennett, Stacey Martin, Jason Davis, Erik Harvey, Wendi Watson, Steve Quattlebaum, Morgan Kreger, Becky Cline, Shelia Unger, Clifton McFadden, Rod Jeter, Mindy McGee, Sam Rodriguez, Kim Arrigo, Corie Brzozowski, Robin Harrell, Jay Miller, Rusty Stocks, Eric Gardner, Bernie Gonzales, Tiffany Bradford, Christie Hargrave, Alex Casarez, and Patrick Moseley. Coordinator was Nene Comedy, PE teacher. Classroom teachers are Sherry Adams and Dolores Foster.

# THE HASKELL

# FREE PRESS

25¢

16 Pages in  
One Section

"HASKELL—A GOOD PLACE TO VISIT; A BETTER PLACE TO LIVE"

VOLUME NINETY-EIGHT    HASKELL, TEXAS 79521, APRIL 12, 1984    NUMBER FIFTEEN

## Eleven HHS Students Honored

BY DAVID ADAMS

Eleven students received awards at the All Sports Banquet, Friday, hosted by the Booster Club.

Recognition was given for athletic and scholastic ability and sportsmanship.

Patrick McCoy received the Booster Club award for being the most sincere player.

The Jaycee Sportsmanship Awards went to Kathy Kemp for girls' basketball and Shane Hadaway for boys' basketball. Doug Lanier received the award for football.

The Dick Gaines Award went to the most scholastic football athlete, Fred Barnett.

The Red Howard Award went to the girl that excels the most in track. This year the award went to three-time regional qualifier Holli High.

The Jeffery Anderson Award was given to Roger Dever, the most outstanding boys' track member.

This year's football sweetheart award went to head cheerleader, Shelia Klose, and the football hero award to Sam Toliver.

The basketball sweetheart for this year was Julie Roewe, and the basketball hero was Ricky Rojas.

An ex-Haskell student, Jerry Larned spoke to the capacity crowd. Larned is the Assistant Superintendent at Monahans.



Photo by Scott Field

## AWARDS

Haskell Indian Doug Lanier accepts the Haskell Jaycees Football Sportsmanship Award from Charles Thornhill. The award was one of eleven presented last Friday during the annual All-Sports Banquet. The banquet is sponsored by the Indian Booster Club.

## City And County To Assist In Clean Up

The City of Haskell, assisted by Haskell County Commissioners, will begin pickup routes in conjunction with a city wide cleanup on April 16.

All city residents are urged to complete their cleanup projects prior to April 16 and stack debris for pickup near their regular garbage pickup place.

City and county crews will begin their pickup about April 16 and will make pickups on designated garbage routes. These routes will be made on a time permitting basis but crews will not backtrack or make several return trips after they have completed a designated route. In other words, if debris is not in place the first time the crew comes by, the crew will make a special pickup only if the resident agrees to pay a special fee.

The annual spring cleanup is a public service by the city assisted by

county commissioners and there is no charge for debris removal if the debris is in place at the time the crews come by a residence.

All property owners are urged to take advantage of this free pickup service and do their part in making Haskell an attractive place to live.

The program was discontinued several years ago when residents failed to cooperate with the schedule. At that time a special week was set aside for pickup of debris. Residents who did not have debris in place when city and county crews came by felt they were entitled to the service if they could have debris ready by the end of the week.

As a result, the project continued for several weeks when a resident would call City Hall and announce that his debris was in place before the end of the designated week. When neighbors saw trucks make the pickup, they would begin to clean up and call later.

## Over 500 Vote In Elections

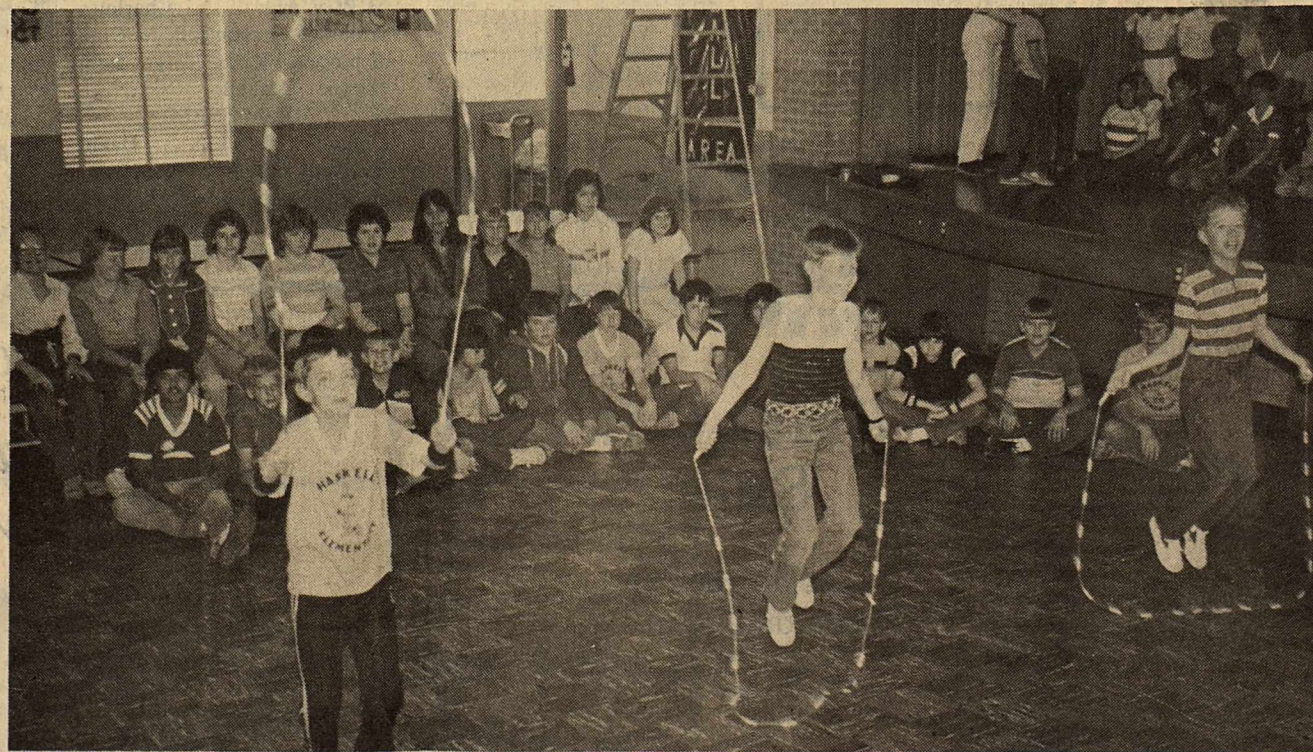
Abe Turner, Kenny Watson and Larry Gilliam were elected Haskell mayor and councilmen and Roger Moeller and Max McMeans were elected to the school board during a heavy turnout in city and school elections last Saturday.

A total of 533 votes were cast in the school election with Moeller leading the ballot with 446. Max McMeans was re-elected to the school board with 379 votes over Jim Bridwell with 230.

In the city election, a total of 597 votes were cast. Abe Turner was unopposed in his bid for the mayor's seat. He received 529 votes. Watson led the council ballot with 363 votes and Larry Gilliam was elected to a second term on the council with 348 votes. Other challengers for council positions were Bailey Toliver with 236 votes, Louis Wilson with 104 votes and Sam Rodriguez with 95 votes.

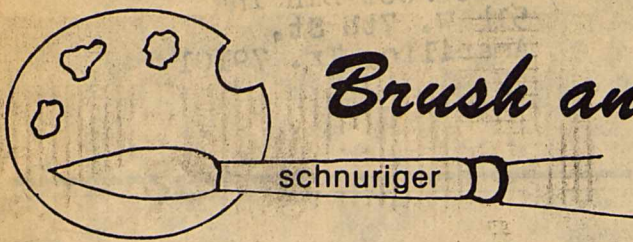
Both the city and school elections were certified Tuesday night at the regular meetings of the two groups and new members received oaths of office.

Members of the school board elected officers and council members elected a mayor pro-tem.



Staff Photo by Don Comedy





## Brush and Palette

"Images 1984" is past! Again this year it was my pleasure to go to Callaway Gardens, Georgia for this great seminar. Last year it was at Amelia Beach, Florida. The two young ladies who coordinate the seminar brought Edward Betts, Donald Holden, writes under the pseudonym of Wendon Blake, Dale Kennington, Everett Raymond Kinstler and Charles Reid. Edward Betts is a noted watercolorist. He has been

represented in virtually every important exhibition and has received over 60 awards. He is a three-time winner of the National Academy of Design and many other outstanding awards. He has written three books. Mr. Betts did critique from a selection of slides sent in by the participants as well as elaborating on watercolors and canvas paintings. Donald Holden is the world's most widely-published author of books for artists and art students as well as being a

painter and sculptor. He lectured twice and was coordinator in the panel discussion by the group of artists.

Dale Kennington is a premier portraitist and has work displayed throughout the United States. She has completed over 350 commissioned portraits. She enjoys painting children and did two portraits at the seminar of children, one in oils and one in pastels.

Everett Raymond Kinstler has been described as "The outstanding American portraitist". He has painted from life over thirty United States cabinet members and did the White House portrait of former President Gerald Ford. He gave me a copy of this portrait, which he autographed. He is the author of "Painting Portraits and Painting Faces, Figures and Landscapes". He did a portrait of Charles Reid and also a landscape, which he sold right off the easel.

Mr. Kinstler painted John Wayne and told us how many sittings he had with Mr. Wayne. Mr. Kinstler is quite a showman, holding his audience with the experiences he has had with his commission.

Charles Reid is a noted author and watercolorist. He has won numerous awards and the National Academy of Design Altman prize with many other prizes and awards. He has written five books. He did watercolor demos accompanied by informal discussion of techniques, color, design and procedure at each of his three sessions. One evening several of his works were presented on slides, which was most enjoyable. He is one of the greatest!

HINT: Ed Betts: "Expensive is a product of many bad decisions." Dale Kennington: "Don't push the river, it flows by itself." Don Holden: "Force yourself to do something that is hard." Charles Reid: "You are in control." Kinstler: If you want to be a portrait painter, be an artist first."

The Haskell Free Press  
Established January 1, 1896  
PUBLISHED EVERY THURSDAY

MEMBER  
1984  
**TEXAS PRESS ASSOCIATION**

BILL COMEDY—Publisher  
DON COMEDY—Editor  
Entered as second class matter at the post office at Box 577, Haskell, Texas 79521, under the Act of March 3, 1879 (USPS 237-040)

SUBSCRIPTION RATES in Haskell and Adjoining Counties	
One Year	\$7.25
Six Months	\$5.00
Two Years	\$14.00
Elsewhere in Texas	
One Year	\$8.50
Six Months	\$6.00
Two Years	\$16.00
Outside of Texas	
One Year	\$10.00
Six Months	\$7.00
Two Years	\$19.00

NOTICE TO PUBLIC: Any erroneous reflection upon the character, reputation or standing of any firm, individual or corporation will be gladly corrected upon being called to the attention of the publishers.

## Study Club Features Arts & Crafts

The Progressive Study Club met in the Community Room on April 5, 1984, at 7:30 p.m. Mrs. Mike Harrell, first vice-president, called the meeting to order and presented Mrs. Charles McCauley, director for the program, "You Gotta Have Arts and Crafts."

Mrs. McCauley introduced Molly and Brenda, sisters and owners of Country Pleasures, 644 Hickory, Abilene. These two talented Texas women demonstrated the art of quilting by using modern tools and quick methods which they use in teaching "It's OK to Sit on My Quilt Classes." They illustrated the Triple Rail Fence, Amish Shadow, and

Log Cabin quilts and wall hangings and how to quilt on the sewing machine. Molly demonstrated stencils and told how to choose materials and colors.

The hostesses for the meeting, Mrs. Ken Lane, Mrs. Mike Harrell, and Mrs. Joe Alves, served a delicious and beautiful dessert of ice cream and fruit sauce to give the members a touch of Mesquite District Convention held recently at Kiva Inn, Abilene, which was attended by Mrs. Harrell, Mrs. Ken Quattlebaum, Mrs. Hugh Horton, and Mrs. Mary Martin, who attended all three sessions.

The business session followed the social period. Minutes of the March 15, 1984

meeting were read and approved. The final reading of the report of the constitution committee to change the meeting of the club to the second Thursday of each month, beginning with the second Thursday in September and ending with the second Thursday in May was accepted. The names of Mrs. Pat Hale, Mrs. Cathy Jones, and Mrs. Pat Henry were presented.

Amotion to set aside the constitution and vote carried since the next meeting will be the ACU Dinner Theater on April 12 at 6:30 p.m. The ladies were elected to active

membership. Mrs. Elbert Johnson, treasurer, reported on the number attending the ACU Dinner Theater. Mrs. Mary Martin reported on Mesquite District events. The yearbook received a first place for its cover and was sent to State for judging.

Mrs. Virgil Cobb reported that club members are to bring a favorite meat, vegetable, or fruit salad for the final meeting May 3 at the home of Mrs. Joe Alves. The hostesses will provide dessert and other things to complete the menu.

Mrs. Faye Brown, Abilene, and mother of Molly and Brenda, was a guest.

## Easter Fashions Parade Scheduled

The youth group at Trinity Lutheran Church, Haskell, are sponsoring a fashion show Friday night, April 13th at 7:30 p.m. in the Elementary School Cafeteria. The fashion

show is a fund raiser for the youth group to meet expenses for summer camp.

Featured in the fashion show will be numerous models wearing latest styles from several local merchants.

Local and area individuals will be modeling fashions made by Eunice Koehler, which will be infants Easter clothes, toddlers and teen sportswear, and casual, to adult sportswear, and fashion dresses.

There will also be some men modeling, so there will be something for everyone to enjoy.

Highlight of the evening will be the showing of a wedding party.

Judy Blackwell of KVRP will be the mistress of ceremonies.

Tickets can be purchased from any member of the youth group from Trinity Lutheran Church or from their sponsors, or call Eunice Koehler 864-2134, Janis Brzozowski 864-2134, or Jo Ann Watson 864-3883. You can also purchase tickets at the door.

Tickets are \$2.00 for adults, \$1.00 for students, children under 6 free.

## Rochester Hobby Club Meets

Attendance was good at Hobby Club meeting on April 3rd. A local Rochester resident came to see what happened at our meetings and by time for the business meeting, Mrs. Kim Knight had decided to join us. We welcome her sincerely.

Fourteen members and seven visitors enjoyed fellowship during the noon meal. Odessa Erwin was hostess today and Jo Veta Ellison will be on April 17th.

## Hospital Notes

Visiting hours at Haskell Memorial Hospital are 2 to 4 p.m. and 7 to 8:30 in the evening. No visiting hours in the morning. No children under 14.

**ADMISSIONS**  
MEDICAL: Aleene Waldrip, Knox City; Effie Lusk, Rule; Willie Thomas, Knox City; Irene Cloud, Rule; Ora Childress, Haskell; Mike Adkins, Rochester.

**SURGICAL:** Charlotte Arendall, Haskell; Olga Espinoza, Knox City; Debi Burson, Haskell.

**DISMISSALS**  
Donna Howeth, David Everton, Matthew Arendaze, Jo Speck, Bobby Sosolik, Neda Eiland, Joyce Thomas, Zetta Dutton, Harvey Medford.



Mr. and Mrs. Ray Herren of Tyler, announce the birth of a son, Dustin Marshall Herren. He arrived Friday, April 6th, 1984 at 2:22 p.m. in Mother Francis Hospital in Tyler. He weighed 4 lbs. 1 1/2 oz. and 18 in. long.

He will soon join his brother, Kevin Ray and his sister Lindsey Renee at their home.

Grandparents are Mr. and Mrs. Ray B. Bradshaw of Tyler and Mr. and Mrs. Clinton H. Herren of Haskell.

Great grandparents are: Mrs. Claudie Marshall of Borger and Mrs. Angie Herren Mullino of Haskell and Mr. and Mrs. George Howard of Ft. Worth.

Mr. and Mrs. Vincent G. Lopez of Stamford, announce the arrival of their daughter, Yvonne Marie Lopez, born April 7, 1984 at Haskell Memorial Hospital, weighing 10 lbs. 6 oz.

## Childhood First Aid Is Program

Members of the Haskell VFD Auxiliary met Tuesday, April 3 for their regular meeting at the Fire Station.

Don Glandon, of the Haskell County Emergency Ambulance Service presented a program on Childhood First Aid. Glandon stressed the importance of knowing how to get help. He also gave pointers on poisonings, obstructed airways and burns. He used a resusci-baby to give demonstrations on clearing obstructed airways on small children.

Hostesses for the evening were Jo Ann Watson and Regina Lane.

First Vice President, Floradean Cockerell, presided at the business meeting. Members were reminded of the upcoming convention and the Easter bake sale. Members also discussed the possibility of sponsoring a CPR class in the future.

WE HAVE pencil cups, stackable trays, book-ends, paper clip holders, stamp cubes and telephone files in matching colors. *Haskell Free Press*



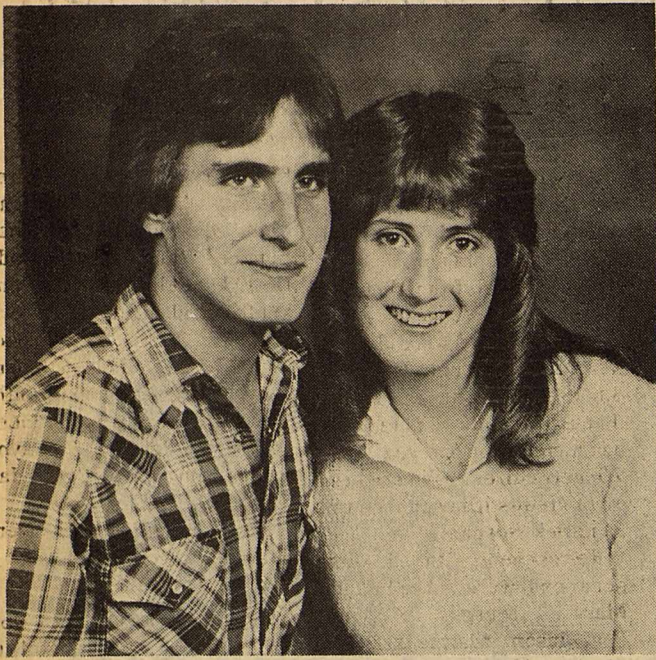
MR. AND MRS. DON W. COLLINS of Haskell have announced the engagement of their daughter, Lindy Lu, to James Weldon Barefoot, Jr., son of Mr. and Mrs. James Weldon Barefoot of Abilene. Miss Collins is a 1979 graduate of Haskell High School, attended Texas Tech University and is currently employed by Haskell Memorial Hospital. The prospective bridegroom is a graduate of Abilene High School and Abilene Christian University. He is employed by Red Raider Mud Co. of Abilene. The couple plans a June 3 wedding at Kona Village Resort in Hawaii.

### Fash-N-Aire Beauty Salon

7 N. Ave E 864-2242

Announces  
**Deann Stiewert**  
is having an  
**Easter Perm Sale**  
\$17<sup>50</sup>

April 10-21, Tues. Through Sat.  
9:00—5:00  
She will also do shampoo's,  
sets and men and women's hair  
cuts. Walk ins welcomed.



MR. AND MRS. GENE HUCKABEE of Munday announce the engagement and approaching marriage of their daughter, Jerri, to Terry Maxon, son of Mr. and Mrs. John Mason of Ft. Worth. Jerri is a graduate of Munday High School and is employed by Southwest Service Life Insurance of Ft. Worth. Terry is employed by Trinity Contractors in Ft. Worth. The couple plans a May 26 wedding in the First Baptist Church in Munday.

### Beth's Beauty Shop

101 Ave. J. East Throckmorton Hwy.

## Jill Everett

Specializing in hair cuts,  
blow drying and perms.  
Monday through Thursday  
8:30-5:00

Call for your appointment now  
**864-2237**

## Busy Bee Mini Mart

7 N. Ave E 864-2242

Monday thru Saturday  
9 a.m. to 5 p.m.

### The Fash-N-Aire Beauty Salon

Frances Bennett Deann Stiewert

**EASTER SPECIAL**

For the next two weeks Deann will have special prices on Perm Waves  
**\$17<sup>50</sup>**

Walk Ins are always welcome

### Sculptress Bras

On Friday April 13, Paula Wray, Company Representative will be back in our store from 10 a.m. to 4 p.m. Paula will be happy to help you choose the bra that is right. Paula will also measure and take orders for ladies who need a prosthesis.

### Lea Haller

Linda Briscoe will be giving complimentary facials and makeovers with our wonderful new Lea Haller Cosmetics. Come in and try our non-surgical face lift—Free of Charge. You will love it.

**In Our Furniture Dept.**

This week we have a Beautiful Recliner in Santa Fe Brown Vinyl. This is an extra large chair.  
**\$199<sup>95</sup>**

## LUCKY FRIDAY THE 13TH SAVINGS!

### Black Cat Sale

Special group of  
coordinates at  
**1/3 Off**

One day only!

409 South First  
Haskell, Texas  
Phone 864-2901

## Happy 40th Birthday Daddy

Hallmark

## COME CELEBRATE OUR GRAND OPENING

Receive a free gift with every purchase while supplies last, and enter our Easter Coloring Contest! Celebrate the opening of this beautiful new store featuring all the best Hallmark products — greeting cards, gift wrap, partyware, stationery, albums, jewelry, puzzles, plaques, picture frames, gifts — everything a thoughtful person like you needs.

April 17 - 21

**Gail's Hallmark Shop**

127 E. McHarg Stamford  
© 1983 Hallmark Cards, Inc.





MRS. MARY MARTIN and Mrs. Terry M. Diggs, retired Haskell teachers, examine new library books purchased in their honor. The Fields Museum Board donated \$1800 to the school library to honor three retired teachers. Dr. Hazel Weaver is not pictured.

## Help Children Learn About Honesty By Setting Good Example

"Did you steal that?" asked the mother.

"No, I didn't," replied the child.

In reality, the child had stolen the candy. Now to the guilt of stealing, he has added the guilt of lying about it.

Parents don't like to admit—or even think—that their school-age children have lied or stolen. Call it "human nature" or call it "growing up"—but be aware that lying and stealing are much more common among young children than parents want to believe, according to Growing

Up, the child development newsletter about school-age children.

Given that these behaviors are likely to occur, what can a parent do when confronted with the fact that a child has told a "white lie" ("I didn't do it") or left a store with something not paid for?

It's best to avoid the extremes of irrational over-concern ("My child is a budding criminal") or apathy ("So what?"). Treat the occasion, instead, as a valuable opportunity to teach a

lesson about moral behavior. For example, let's say you've almost reached home after an exhausting afternoon of shopping. You notice that your child has a bar of candy that you didn't pay for, and you know he didn't have any money to pay for it, either.

Instead of accusing him ("You stole that!") give him a chance to confess ("Where did you get that candy bar?"). Avoid asking a "yes" or "no" question that invites your child to tell a lie.

Then, even though it may be a nuisance to turn the car around and go back to the store, do so. The effort will teach the child an important lesson.

A child learns nothing about honesty from a parent who is

too apathetic or embarrassed to go back to the store. He learns an entirely different lesson from a parent who takes him right back to the cashier or manager to return the ill-gotten goods and tell them the truth about what he did.

If the child doesn't have to go back to the store, he learns that, apart from a brief scolding, the consequences of lying and stealing are not very great.

The child who has to return the stolen object and tell the truth learns about personal responsibility, discovers an inner sense of satisfaction that comes from being honest, and leaves the store with the good feeling of having done the right thing.



THE FREDDY WEAVER FAMILY will present special services Sunday, April 15 through Wednesday, April 18 at the First Assembly of God Church in Haskell. Sunday services will begin at 6:30 p.m. Weeknight services will begin at 7:30 p.m. Everyone is invited to attend.

## Pester, Cannon United In Marriage

Brenda Kay Cannon and Dr. Rollin Pester were married Saturday, April 7th in Concordia Lutheran Church, San Antonio by Dr. Guido Merckens, pastor.

Parents of the bride are Mr. and Mrs. Don Nanny of Haskell. The bridegroom's

parents are Mr. and Mrs. Henry Pester of San Antonio. Matron of honor was Donna Caraway of Havelock, N.C., sister of the bride.

Flower girl was Mackenzie Caraway, niece of the bride. Henry Pester, father of the

groom, was best man. Guests were seated by Frederick Caraway, nephew of the bride, and Jason Peterek, cousin of the groom.

The grooms' parents hosted the rehearsal dinner at Steak and Ale. The reception was held in the backyard of the groom's home.

The bride is employed by USAA in San Antonio.

The bridegroom is a podiatrist in San Antonio.

Following a wedding trip to Australia, the couple will be at home in San Antonio.

## Bicycle Safety Week Is April 15-21

Bicycle accidents result in 1,100 fatalities, 50,000 disabling injuries, and over 500,000 assorted minor injuries annually across the nation, according to George R. Gustafson, Executive Vice President of Texas Safety Association.

Last year in Texas pedal-cyclist/motor vehicle accidents alone resulted in 48 fatalities and 2,978 injuries, according to Department of Public Safety records.

"Bicycle education for both children and adults and alertness on the part of all Texas motor-vehicle drivers can help prevent these tragedies," Gustafson said.

Recent estimates gathered by Texas Safety Association show that 300 deaths and 3,000 hospitalizations would be prevented yearly if the nation's 105 million bicyclists would wear helmets while riding.

Gustafson reminds parents that a child riding along on a baby seat attached to the

bicycle should also be equipped with a helmet. Texas Safety Association suggests that bicycle baby seats have a high back to help offer support to the baby, a seat pad for comfort, straps and/or belts to secure the child, and a shield protecting the child's feet from contacting the bicycle spokes.

During National Bike Safety Week, April 15-21, Texas Safety Association offers cyclists the following advice:

1. Never ride a bicycle while listening to a portable radio or tape player through headphones.
2. Obey all applicable traffic regulations, signs, signals, and markings.
3. Place the required reflectors and lights on your bicycle to protect yourself at night.
4. Indicate turns and stops by using hand signals.
5. Ride your bike defensively.

## 51 Units Collected In Blood Drive

Fifty-one units of blood were collected at the blood drive held March 20 at the Weinert School Gym.

Donors were from Weinert, Munday, and Haskell.

Units used by Alice Briscoe were replaced and Hendrick Blood Bank officials stated that extra units donated will be on credit for one year. Any Weinert citizen may use these extra credits if hospitalized at Hendrick Hospital.

Refreshments in lieu of donations were furnished by Mary Murphy, Kathi Hutchinson, Margie Stewart, Brenda Hager and Sarah Guess.

Blood donors include: La Rue Patton, Tiffen Mayfield, Jeanette Therwanger, Caron Yates, Larry Brueggeman, Elmer Adams, Russ Perry, Kim Stewart, Bob Wood, Kelly Perry, Anna Perez, Darlene Carroll, Linda Stewart, Lowell McGuire, Karen Harlen, H.L. Guess, Edward Perez, John Brueggeman, Mike Adams, Brian Adams, Johnny Earp IV, Johnny Earp III, Jan Cullers, Jerry Hester, Woody Turnbow, Betty Raynes

Lester Hutchinson, Kerri Urbanczyk, Joe Yates,

Kenneth Campbell, Andrea Estrada, Patricia McNeal, Chet Forehand, Marshall Benner, Hal Guess, Todd Herricks, Celia Peace, Verlene Smith, Cal Leuning, Doris Walker, Judy Underwood, Tom Yates, Dickie Slogn, Mike Stewart, Maynon Smith, Jerry Briscoe, Jerry Bennett, Pedro Perry, Wayne Hutchinson, Adelfa Perez, Jan Cullers, Michelle Johnson.

Seven potential donors were unable to give.

HAVING TROUBLE with your office supply needs? Let us help you. **Haskell Free Press**

## Life Of Christ Pageant To Be Presented Easter

The Kendrick Religious Pageant "THE LIFE OF CHRIST" termed by the July 1980 edition of the TEXAS MONTHLY MAGAZINE as being the best outdoor drama in the State of Texas, will begin its 20th year of productions with the annual Easter Sunrise Pageant at 3:30 a.m. on Easter Sunday, April 22, 1984, ending at sun up.

This production is the complete LIFE OF CHRIST from the birth through the resurrection, portrayed in sixty scenes by a cast of dedicated Christian people of

all walks of life and religious denominations. The production is non-denominational, with the script being taken word for word from the King James version of the Holy Bible with nothing added or taken from. Included with the cast is a grey donkey for the Mother Mary, a white donkey for the Triumphant Entry of Jesus, a camel for the Shepherds in the fields.

Admission is a freewill offering, free parking and free overnight camping is allowed

on the grounds. Electric and water hooks ups are available for a minimal fee. A concession stand and clean restrooms are available on the grounds for the convenience of those attending.

Summer productions of the pageant will begin June 14, 1984 and will be presented each Thursday and Friday night at 9 o'clock DST through August 17, 1984.

Also located on the pageant grounds is Texas' only all Religious Diorama and Museum which is open every day of the year from 10 a.m. til 4 p.m. During Easter weekend this Diorama and Museum will be open continuous from 10 a.m. Saturday through 4 p.m. Easter Sunday with the exception of the pageant presentation time.

The Diorama is scenes from both Old and New Testaments set with 140 life sized figures as realistic as is possible with narration, also from the King James Bible, and soft organ music for each scene. As you view the scenes, you are actually standing right in the midst of the figures, giving you the feeling of being right there with the biblical characters. Admission to the Diorama is children 6 through 11 \$2.00 and Adults \$2.50 Each tour lasts 1 1/2 hours.

So now, plan a spirit filled trip and come to the LIFE OF CHRIST PAGEANT Eastland between Cisco and Eastland on U.S. Highway 80.

For further information, contact the LIFE OF CHRIST PAGEANT Route No.2 Box 46 Cisco, Texas 76437 or Phone 817-629-8672.

Want Ads—Your Best Market Place.

**KOTAB NEWS**  
Covers The Big Country—  
not just Abilene

## Skinformation

by Linda Allen Schoen

Even skin that tends to be oily can look fresh, healthy and vibrant. A little extra care is all it takes.

It's commonly known that oily skin, neglected, can lead to clogged pores and acne blemishes.

So it is especially important to clear skin of excess oil throughout the day.

In accordance, cosmetics and treatments containing oils should never be used on oily skin areas, such as the forehead, nose and chin.

External applications cannot control how much oil your skin produces. But much of the accumulated material can be removed with an efficient soap especially formulated for oily skin.

Neutrogena introduced an oily skin formula not long ago that cleanses gently and leaves no irritating residue.

When washing is inconvenient, a 100% oil free astringent preparation can be used to blot oil. They are available in gels or pre-moistened pads.

Makeup should consist of powder forms of eye shadow and blush, and loose powder foundation.

Makeup tends to run whenever skin becomes oily, so touchups throughout the day are necessary to keep makeup looking fresh and pretty.

It is false to assume oily skin will be less apt to show age or wrinkles.

Special care should be taken to choose a sunscreen free of heavy mineral oils to shield oily skin from the aging rays of the sun.

Want Ads...  
the most powerful  
column in the world.

## Marriage Licenses

Marriage licenses issued during the month of March, 1984, by County Clerk Woodrow Frazier included:

David E. Bartley and Donna G. Isbell, Haskell.

Danny Alan Sutton and Jennifer Lee Ebbecke, Rule.

Noel Alfred Lopez and Jovita Maldonado, Rule.

Pablo Chavez Rodriguez, Munday and Carolina Hernandez, Knox City.

Jack Edwin Rueffer and Betty Pecchioni, Haskell.

George Louis Diaz, Ft. Leonardwood, Mo. and Verna Mae Thurston, Haskell.

Gary John Thomas and Reda Gay Campbell, Haskell.

David Reyes and Donna Kay Newell, Stamford.

Ruben Gabino Diaz, Haskell and Mary Jane Aleman, Garland.

AREA'S MOST POPULAR  
**The S & S**  
**DRIVE-IN**  
Snack Bar  
Stamford 773-3272

Fri. Sat. & Sun.  
DUDLEY MOORE  
NASTASSJA  
KINSKI  
**Unfaithfully Yours**

Tuesday-Wed.-Thurs.  
XX Adults Only  
You Must Be 18 With I.D.  
"When She Was Bad"

**Kids...**  
Take your picture with our Easter Bunny  
...and register to take him home!  
This big 6-foot-tall bunny would just love to celebrate Easter at your house! So come in soon to take your picture with our Bunny — \$2.00 includes frame — and register to take him home. Some lucky youngster will win our Bunny before Easter. It could be you!

**Gail's Hallmark Shop**  
127 E. McHarg Stamford

**More than just the Easter Bunny...**  
We've got baby kangaroos, llamas, anteaters and more at Westgate Mall. Jett's Petting Zoo has returned as a special Easter treat.  
April 12-21, you can walk through Jett's corral to feed and pet tame, cuddly animals from all over the world!  
Come on over to Westgate Mall today and enjoy your favorite animals!

**WESTGATE MALL**  
South First at Winters Frwy., Abilene, Texas 79605

## FHA Chapter Elects Officers

BY VICKIE JUDD  
The Haskell Chapter of Future Homemakers of America elected officers for the 1984-85 school year at their April 9th meeting.

New officers include Kim Lanier, president; Tina Lacey, vice president of programs; Miehell Stout, secretary; Emily Thornhill, reporter; Robyne Struve, vice president of recreation; Lynn Dewey, vice president of encounter; Lorry Geilhausen, Historian; Linda Torres, parliamentarian; Diana Jarred, song leader; Deborah Rodriguez, treasurer; and Kimla Strickland, vice president of projects.

FHA members are participating in the Cancer Drive, April 8-14. Donations are being accepted from businesses and individuals.

Mrs. Frances Easter, FHA sponsor, Lanier, Geilhausen and Struve will attend the state convention in San Antonio on April 12 and 13. The members and the

Young Homemakers of America will host an Easter party for the residents of the Haskell Nursing Center at 7 p.m., April 16.

The annual Mother-Daughter Salad Supper will be held at 7 p.m., May 7 in the high school cafeteria. The new officers will be installed at this time.

## Interested?

If you are interested in buying insurance or would like to compare ours with what you now have: Call for:

Life Health  
Medicare Supplements

Frances Arend Real  
Estate & Insurance

817-864-3880

817-864-3156

**The Dude**

**\$1.29 sale**

For Texas Taste, DQ's the place for a Golden Chicken Fried, 100% Pure Beef Sandwich Served on a toasted bun with crisp lettuce and red, ripe tomatoes.  
So come on by...

**Dairy Queen** Monday thru Sunday,  
\* April 16-22, 1984  
...a Texas tradition that keeps on Getting Better.



## Skip Row Patterns May Save Money

Southwest cotton producers using skip row planting patterns may pay less for crop insurance this year, according to Merritt W. Sprague, Manager of the Federal Crop Insurance Corporation, an agency within the Department of Agriculture.

"We are changing the method of determining premium rates for skip row growers," said Sprague, "which will result in a 15 to 30 percent reduction in premium."

This change will correct an inequity in the skip row rate table. Under the old requirements, skip row yields were converted to solid plant before determining the premium rate. "This grossly distorted the premium cost for some farmers," said Sprague.

"We've heard of cases where per-acre costs went up 50 percent and higher," said Sprague. "That was never the Corporation's intent. Our goal is to make crop insurance more affordable for all farmers."

Under the new procedure,

skip row yields will not be converted to solid plant for rate determinations.

Skip row yields will continue to be converted to solid plant, however, for purposes of establishing the farmer's historical yield data base.

The premium rate change affects all skip row cotton growers in Texas, New Mexico and Oklahoma. To give farmers a better opportunity to take advantage of this change, the Corporation has extended its March 31 sales closing date to April 15. The April 15 sales closing date has been extended to April 30.

Irrigated and non-irrigated solid plant cotton growers are in no way affected.



Alfred, Lord Tennyson wrote a 6,000 word epic poem when he was twelve years old.



Staff Photo by Don Comedy

### BROWNIES

Haskell Brownies recently spent a day at Camp Boothe Oaks near Sweetwater to meet requirements for a Day Camp Patch. Brownies attending the Day Camp include: front row (l to r) Sharon Jimenez, Dana Miller, Tara Moeller, Nacole Lefevre, Laura Barbour and Crystal Pace. Back row: Amy Cunningham, Jennifer Guadaluca, Jennifer Comedy, Mandi Pope, Katie Martin and Christy Cadenhead.

## Series Offers Tips For Energy Conservation

**First in a Series**  
By Lou Gilly & Max Stapleton  
County Extension Agents

Heat moves from warm to cool areas. Heat escapes and cold air enters wherever two different materials or parts of a dwelling join as well as where pipes and wires enter. This is heat loss by convection. Heat loss also occurs from heated to unheated areas of a structure or from heated areas through structural materials to the outdoors. This is heat loss by conduction.

Securing your home against heat losses caused by conduction and convection could reduce your fuel bill by as much as 40 percent. The key is your willingness to examine your home carefully and make thorough repairs and adjustments. You may request an energy audit from your local utility company. Their report will give you general recommendations about what needs to be done to weatherize your home. It will not give you the specific places to apply caul-

ing and weatherstripping. You must find these places yourself.

#### Caulking

On the outside of the home, look for cracks in the following places:

- Around window and door frames, sills, and joints. Also check the putty around window panes and repair if cracked or worn away.
- At corners formed by siding.
- Between porches and the main body of the dwelling.
- Around water faucets, electrical outlets, and gas or oil lines.
- Where the chimney or masonry meets the siding.

On the inside of the home, check:

- Between foundation and the sill plate;
- Around ceiling fixtures;
- Around the furnace flue, plumbing vents, pipes, and air ducts in the attic;
- Between heated and unheated areas, such as attached garages and crawl spaces.

#### How To Apply Caulking

Thoroughly clean the area to be caulked with a solvent and putty knife. Get rid of dirt, built-up paint, and cracked putty or old caulking compound. If cracks are deep or wide, fill them with caulking cotton, sponge rubber, or mineral wool before applying caulking compound.

A caulking gun is useful for long, narrow cracks. Hold the gun at a 45° angle and work from top to bottom. Make sure the bead covers both sides of the crack. It may be necessary to apply a second bead if the crack is wide. Seal the two beads.

**A WARNING:** Don't caulk windows or doors so that they cannot be opened in case of an emergency.

Next week look for an article on weatherstripping.

## Consumers Can Register New Tire Purchases

New tire purchasers across the country are being urged to take advantage of a new law allowing consumers to register new tire purchases directly in case a tire recall notice is ever issued.

In a Washington press conference, the National Tire Dealers and Retreaders Association in cooperation with the National Highway Traffic Safety Administration launched a national campaign urging consumers to use the new system of voluntary tire registration. In 1983, more than 130 million new passenger tire were sold in the U.S. replacement market.

Other groups urging use of voluntary tire registration include: American Automobile Association (AAA), American Farm Bureau Federation, National Grange, Service Station Dealers of America, and Rubber Manufacturers Association.

Under the new law, the independent tire retailer must give new tire purchasers a postcard form containing the tire registration numbers. Tire purchasers then, add their addresses on the form (already pre-addressed to the manufacturer), add postage and mail it.

If a tire recall occurs, the manufacturers would use the registration information to notify tire owners.

"NTDRA members, tire manufacturers, other tire retailers and several national groups are urging new tire purchasers to take advantage of this law which provides a type of insurance for recall information," NTDRA President Jim F. Hughes, of Asheville, North Carolina said in kicking-off the public information campaign.

"NTDRA's nearly 5,000 members are happy to join NHTSA and others in this partnership of business and government in urging the public to take a few minutes to register their new tire purchases," Hughes added.

"Independent tire retailers supporting the program are not only obeying the law, they are showing a real concern for their customers," Hughes concluded.

NTDRA members across the country have received showroom display posters urging consumers to take advantage of the voluntary registration program.

This voluntary system of new tire registration is the result of an effort which began in 1979 with NTDRA's efforts

to increase the number of tires being registered and, also lift a paperwork burden from the independent tire retailer under the unsuccessful mandatory registration system.

In studying the registration system, NTDRA commissioned an independent nationwide consumer survey, and found that 86.1 percent of those surveyed would or probably would complete and mail the form under a voluntary system.

Tires mounted on new cars and those sold through mass merchandisers, and tire company owned stores are to be registered by the company.

**PLASTIC SHEET PROTECTORS,** 11x8 1/2, punched 3 holes, wide reinforcing flap. Comes with black mounting sheet. *Haskell Free Press*



In 1910 President William H. Taft became the first president to open the baseball season by throwing out the first pitch.

## NOTICE We Are Moving

Sunday April 15th will be our last day at our present location.

We Will Open Thurs., April 19

At our new location 900 S. Ave E

Watch next weeks paper for ad

## PIZZA BARN

103 1/2 N. Ave D  
864-8918

### TAX PLANNING

Written by

Gerald Rodgers, CPA



### FILING TIPS FOR THE FRANTIC

The deadline for filing your 1983 Federal Income Tax Return is just around the corner. The deadline this year is April 16th since the 15th falls on a Sunday. As you prepare to meet this year's deadline, consider these options and suggestions:

1. If at all possible you should meet the filing deadline on April 16th. The penalty for filing your return late is presently 5% of any additional tax due per month up to a maximum of 25%.

2. If you file your return near to or on April 16th, send your return certified mail, return receipt requested. This will clearly substantiate a timely filing of your return, thus avoiding late filing penalties.

3. Get an automatic four-month extension (by filing FORM 4868) if you cannot meet the deadline. You must also include a payment for an estimate of the tax you will ultimately owe with the extension. Additionally, if 90% of the total tax you ultimately owe is not paid with the extension, a penalty of 1/2 of 1% per month will be charged. The penalty is in addition to the normal interest charged on the unpaid balance which is currently running at 11% compounded daily.

4. The filing of the automatic extension also extends the deadline for making an IRA contribution for 1983 until August 15th.

5. If you are filing your return or getting an extension and you are also making your first estimated tax payment for 1984, be sure to send two separate checks with your correct social security number on the face of each check.

If you are unsure about the proper handling of your tax matters as the filing deadline approaches, consult your tax advisor for the options available to you.

Sponsored by

**JAMES E. RODGERS & COMPANY**  
Certified Public Accountants  
20 Southwest Third Street  
Hamlin, Texas

### DENTISTS OFFER FREE BOOKLET

The 1984 All-Star Checkup Booklet, with baseball, fitness, sportsmanship and dental tips from professional ballplayers, is being offered free to children by dentists as part of a national baseball sweepstakes.

Former Cincinnati Reds catcher Johnny Bench, official spokesman for the 1984 All-Star Checkup Sweepstakes, is featured in the booklet, along with Dale Murphy of the Atlanta Braves, Rickey Henderson of the Oakland A's and five other baseball stars.

The sweepstakes, for children ages 6 to 13, is sponsored by Major League Baseball, the American Dental Association (ADA) and Crest toothpaste in cooperation with thousands of dentists and local dental societies nationwide. Entry blanks are included in the All-Star Checkup Booklets.

Two grand prize winners will be selected as Honorary Batboy and Batgirl for the All-Star Game in San Francisco on July 10. They will receive an expenses-paid trip to the game with three family members, their dentist and a guest.

Forty-eight second prize winners (24 boys and 24 girls) will be named Honorary Batboys and Batgirls for games played by local Major League teams. Second prize winners will also be invited to bring along three



Youngsters ages 6 to 13 can pick up the free 1984 "All-Star" Checkup Booklet at American Dental Association member dentist offices now through May. It features dental tips teamed with baseball pointers from top Major League stars.

family members, their dentist and a guest. In addition, 1,250 third prizes — two free tickets to a Major League game played by the nearest ballclub — will be awarded.

Complete details and entry forms are available at participating dental offices. The sweepstakes is void in Alaska, Hawaii and wherever prohibited by law. Entries must be postmarked no later than May 29, 1984.

## Just Arrived

New shipment of beautifully designed gas and electric

## Stove Top Covers

Also have double size for gas and griddle.

**Allison Farm Supply**  
Rule, Texas

# Great Value

**DOYLE HIGH'S THE DRUG STORE**  
100 So. E. Haskell, Texas

**STORE HOURS:**  
Monday-Saturday—8:00 a.m.-6:00 p.m.  
Sunday—8:30 a.m.-10:30 a.m.  
864-2515

**FREE DELIVERY**  
Let us price your next Prescription

Ask About:  
**Senior Citizens Discount**  
Look for a Great Value Ad Each Week

<p style="text-align: center;"><i>New!</i> <b>Fiberall</b> Natural-Fiber Laxative "Sugar-Free"</p> <p style="text-align: center;">Reg. \$7.69 Orange Flavor 10 oz Introductory Offer Save \$2.70</p> <p style="text-align: center; font-size: 2em;"><b>\$4.99</b></p>	<p style="text-align: center;"><b>McKesson Aspirin</b> 325 mg (5 gr) each</p> <p style="text-align: center;">Reg. \$2.19 250 tab</p> <p style="text-align: center; font-size: 2em;"><b>\$1.49</b></p>	<p style="text-align: center;"><b>McKesson Rubbing Alcohol</b></p> <p style="text-align: center;">16 fl. oz Reg. \$1.69</p> <p style="text-align: center; font-size: 2em;"><b>99¢</b></p>
<p style="text-align: center;"><b>Max Factor le Jardin</b> Lotion Parfumee and Bath Gelee Parfumee</p> <p style="text-align: center;">5 fl. oz Reg. \$8.99</p> <p style="text-align: center; font-size: 2em;"><b>\$4.99</b></p> <p style="text-align: center;">Save \$4.00</p>	<p style="text-align: center;"><b>Cathy Personal Mirror and Comb Set</b></p> <p style="text-align: center;">Perfect Gift for a Little Girl</p> <p style="text-align: center;">Reg. \$3.59</p> <p style="text-align: center; font-size: 2em;"><b>\$1.99</b></p> <p style="text-align: center;">Save \$1.60</p>	<p style="text-align: center;"><b>Emergency Alert</b> Necklace and Bracelet IDs</p> <p style="text-align: center;">Available for Vital Health Problems</p> <p style="text-align: center;">Reg. \$3.99 Save \$1.00</p> <p style="text-align: center; font-size: 2em;"><b>\$2.99</b></p>
<p style="text-align: center;"><b>Style Hair Spray</b> New Improved</p> <p style="text-align: center;">Reg. \$1.99 8 oz</p> <p style="text-align: center; font-size: 2em;"><b>99¢</b></p> <p style="text-align: center;">Save \$1.00</p>	<p style="text-align: center;"><b>HDR Shampoo &amp; Conditioner</b> (Hair's Daily Requirement)</p> <p style="text-align: center;">15 fl. oz</p> <p style="text-align: center;">Reg. \$4.60 Save \$1.00</p> <p style="text-align: center; font-size: 2em;"><b>\$3.69</b></p>	

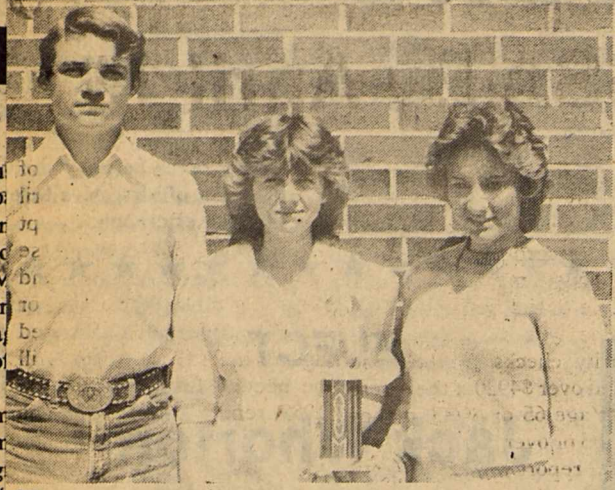






## Rex Allen Helps PCA Celebrate 50th

1984 World's Fair Ambassador



Rex Allen, TV and movie star, helped Rolling Plains PCA celebrate their 50th birthday with a laugh filled program at both sections of the Annual Stockholders Meeting held April 6th in Childress and April 7th in Stamford. Allen, whose ranching family has had a long affiliation with PCA in Arizona, recalled hard times on their "starvation ranch" during drought and the Depression. Interspersed with

reminiscences of his boyhood and life now in Palm Springs, California, he entertained the large crowds with reditons of such favorites as "Up A Lazy River" and "Tumblin Tumbleweeds."

In appreciation of his excellent performance, R. C. Cobb, President of Rolling Plains PCA, presented a gold-plated 50th Anniversary commemorative belt buckle to Rex Allen. Shelley Smith, Executive Director of the West

Texas Rehabilitation Center and member of the Association, introduced Allen at both gatherings and was also given one of the limited edition buckles.

B.H. DeBusk, Board Member from Anson, gave the Report from the Board which cited the strength the Association has attained in its 50 year history and especially the growth since the merging of the Memphis and Stamford PCAs creating Rolling Plains Production Credit Association in 1965.

The Nomination Committee Report was presented by Darrell Richards, Chairman from Avoca. Elected to serve on the 1985 Nominating Committee were: Childress Office - Ben Teague; Matador Office - Stewart Dixon; Munday Office - James Albus; Spur Office - Bill Young; and Stamford Office - Jack Young.

Reelected to the Board of Directors were W.J. Boykin of Northfield and B.H. DeBusk. Also serving on the Board are W. H. Williams of Spur,

Garon B. Tidwell of Munday and Dan Henard, Jr. of Wellington.

Mr. Cobb introduced many former directors, officers and personnel as well as numerous guest in attendance and discussed the Association's financial report.

The Board of Directors met immediately following the Annual Meeting. For the upcoming year, W.J. Boykin and W.H. Williams will continue as Board Chairman and Vice Chairman respectively. Action of the Board resulted in Matador Office Manager Allen Bingham's appointment as Vice President and Bobby Sosolik of Munday and Jay Morris of Childress being named as Assistant Vice Presidents, with each to continue in the office to which they are currently assigned.

Approximately 250 attended the Childress session with over 500 in attendance at Stamford. The Association maintains offices in Childress, Matador, Munday, Spur and Stamford.



"Seymore D. Fair", veteran pelican mascot of the World's Fair in New Orleans May 12 - November 11, 1984 welcomes a dapper new critter, a spiffy alligator, to the sometimes hectic, always fun world of promoting the World's Fair. The alligator, based on a design by the Fair's own art department director Robert Whitney, will be hitting the trail all over the country and the world. Seymore D. Fair has already made 300 appearances, visited 30 states and 10 countries.

**PAINT CREEK FFA Range and Pasture team** qualified to go to the State Contest at Stephenville, April 19. Team members are (left to right) John Lind, Kathy Simmons, Regina Rogers and not pictured, Jettone Bivins. The team placed 2nd at Haskell SWCD Judging Contest, 3rd at AGU, at Sweetwater, 2nd in District and 4th in area.

## PC Junior High Girls Place 2nd At District

The Paint Creek Junior High Girls came in 2nd place at the district track meet with a total of 74 points. Gina Calk

had the only 1st place finish in the 800 meter fun with a time of 2:37.88. Calk also got second in the triple jump with a jump of 30' 2 1/2. The 800 meter relay of Rhonda Coleman, Sharlene Grisham, Sophie Gonzales and Gina Calk was second with a time of 1:59.29. Coleman came in second in the 400 meter dash running a 66.96. The mile relay consisting of Coleman, Grisham, Gonzales, and Calk came in second finishing in a time of 4:44.94. Grisham finished third in the 3200 meter run. Calk tied for fourth in the high jump and Coleman finished fourth in the long jump. Kim Short finished fifth in the 800 meter run and sixth in the 1600.

## Cisco Wins Avoca Aces Tourney

Cisco defeated Abilene 101 to 85 to win first place in the third annual Avoca Aces Invitation Basketball Tournament last Friday and Saturday.

McMurry defeated Hamlin 88 to 81 to win third place and Avoca beat Merkel 89 to 81 to win consolation.

Haskell's Darrell Anderson was named to the ten member All Tournament Team.

Call  
**Nanny Plumbing**  
for all your plumbing needs. We offer Rheem H/C, Roto-Rooter and Ditch Witch Services, Plus Dependable Service  
Monday thru Friday 7 a.m. to 5 p.m.  
Sat. 7 a.m.-12 noon  
01 S. Ave E 864-3043

## Making Family Life More Fun

### Camping For Everyone

If your family loves the outdoors but not everyone is into camping, there's a new way to enjoy weekend and vacation fun that's likely to please one and all.

All you need are sleeping bags or bed linens, pillows and a camping lantern. The accommodations are comfortable, rustic cabins with sleeping room for at least four... and the cost is only about \$20 a night.



To save even more, you can bring along your own camp stove and utensils. Picnic tables are right at hand where you can prepare and eat meals.

These cabins are located at nearly 300 Kampgrounds of America (KOA) Campgrounds throughout the U.S. Cabin users have access to all the KOA services and facilities including swimming pool, playground, game room, laundry, convenience store and clean rest rooms with hot showers.

The new Kamping Kabins appeal to those who don't own tents or recreational vehicles because they offer the comfort and security of sleeping indoors with all the fun and economy of camping out.

For a free directory listing all Kamping Kabins locations, write to KOA Kamping Kabins, P.O. Box 30558P, Billings, MT 59114.

Be a beauty bug  
Not a litterbug!  
Beautyfisk Council

YOUR VOTE AND INFLUENCE WILL BE APPRECIATED  
**C. E. (Chunky) Tidwell**  
CANDIDATE FOR  
**Commissioner**  
PRECINCT 1  
HASKELL COUNTY  
SUBJECT TO ACTION OF THE DEMOCRATIC PRIMARIES  
Pd. By C.E. Tidwell, Haskell, Tx

**GOODYEAR**  
**Driver's Choice RADIAL SALE**  
Choose The Steel Radial That Works Best For You!

<b>Custom Polysteel RADIAL</b> Keeps its feet, even in the rain • Sure-footed wet traction tread • Penetration resistant steel belts • Gas-saving radial construction		
\$48 <sup>00</sup> Whitewall Size P165/80R13	\$51 <sup>00</sup> Whitewall Size P175/80R13	\$51 <sup>95</sup> Whitewall Size P185/80R13
\$53 <sup>95</sup> Whitewall Size P175/75R14	\$56 <sup>45</sup> Whitewall Size P185/75R14	\$59 <sup>50</sup> Whitewall Size P195/75R14
\$57 <sup>95</sup> Whitewall Size P205/75R14	\$64 <sup>95</sup> Whitewall Size P175/75R14	\$63 <sup>95</sup> Whitewall Size P205/75R15
\$68 <sup>35</sup> Whitewall Size P215/75R15	\$67 <sup>95</sup> Whitewall Size P225/75R15	\$70 <sup>95</sup> Whitewall Size P235/75R15

<b>ARRIVA RADIALS</b> Even its footprint tells you its different • All-season year-round driving traction • Use with front or rear wheel drive • Long wearing, steel belted radial construction		
\$49 <sup>90</sup> Whitewall Size P155/80R13	\$55 <sup>05</sup> Whitewall Size P175/80R13	\$59 <sup>95</sup> Whitewall Size P185/80R13
\$56 <sup>95</sup> Whitewall Size P175/75R14	\$58 <sup>95</sup> Whitewall Size P185/75R14	\$60 <sup>95</sup> Whitewall Size P195/75R14
\$63 <sup>95</sup> Whitewall Size P205/75R14	\$65 <sup>95</sup> Whitewall Size P215/75R14	\$65 <sup>95</sup> Whitewall Size P205/75R15
\$67 <sup>95</sup> Whitewall Size P215/75R15	\$69 <sup>95</sup> Whitewall Size P225/75R15	\$73 <sup>95</sup> Whitewall Size P235/75R15

These prices include our Road Hazards Guarantee.

**TWO GREAT CHOICES FOR LIGHT TRUCKS!**

Tracker LT \$59 <sup>00</sup> G78X15, Load Range C	Tracker AT \$83 <sup>95</sup> 9X15, Outline White Letter, Load Range B
--	--

**COME ON IN AND SAY HELLO TO VECTOR**  
Meet Goodyear's newest All Season radial. It's the high tech, high traction, high mileage tire with the unique criss-cross tread.

<b>COMPUTERIZED WHEEL BALANCING</b> \$5 <sup>00</sup> PER WHEEL Reduced vibration Balanced wheels smooth your ride, help promote long, even treadwear.	<b>YOUR CHOICE BRAKE SERVICE</b> \$79 <sup>95</sup> Additional parts and services extra if needed. • Most U.S. cars, many imports and light trucks 2-WHEEL FRONT DISC: Install new front brake pads and grease seals • Resurface front rotors • Repack front wheel bearings • Inspect callipers and hydraulic system • Add fluid (does not include rear wheels) OR 4-WHEEL DRUM: Install new brake lining, all 4 wheels • New front grease seals • Resurface drums • Repack front wheel bearings • Inspect hydraulic system • Add fluid	<b>FRONT-END ALIGNMENT</b> GAS SAVER! \$19 Prolong tire life, boost MPG! Front wheel drive and Chevetttes extra • Inspect all four tires • Set Caster, camber, and toe-in to proper alignment • Inspect suspension and steering systems • Most U.S. cars, some imports.
--	---	--

**Anderson Tire Co.**  
206 South Avenue E Phone 864-2900  
**GOODYEAR**

THE SILVER CARD Credit card convenience for automotive needs. Sign up now at your nearby Goodyear retailer.  
• Use The Silver Card nationwide at participating Goodyear retail outlets. • Enjoy credit convenience whenever you travel.

**WE FIX FLATS**

**When your spare cash is low**

When your spare cash is low and the bills are piled high, your banker can be very important. Our officers are experienced in helping people get back on sound financial ground and keeping them there.

We have several banking services to jack up your finances. See us soon.

**FDIC**  
**The Farmers NATIONAL BANK**  
Post Office Box 10  
Phone (817) 997-2216  
Rule, Texas 79547



# Cotton Council Chairman Cites Credits

Industry investment in the National Cotton Council produced returns of more than \$295 million on five activities alone in 1983, cotton industry leaders heard at a meeting here today.

Chairman of the meeting was Edward Ekdahl, Avoca, a Council producer delegate.

Program for the meeting was given by a team of Council staff members. Among the activities cited by the team were:

**Boll Weevil** — The Council played a major role in obtaining the federal funding necessary to extend the boll weevil eradication zone throughout the Carolinas to supplement the 70 percent cost share borne by growers.

**Bale Packaging** — The improved bale package resulting from efforts by the Council and other groups is estimated to save at least \$10 a bale each year.

**Korean Credit** — Obtaining blended credit for Korea last year enabled the U.S. to hold a market for more than half a million bales, improving producers' prices for the whole crop in addition to the shippers' profits on the extra sales.

Ekdahl explained that the \$295 million returned by the five activities was produced from a \$3.5 million annual dues investment by industry members.

Since the beginning of this year, changes obtained by the

Council in conservation requirements on diverted acreage will save growers an estimated \$30 million, while still protecting the soil.

"In addition to these and other concrete returns," Ekdahl said, "we must include a value for the very real but intangible goodwill factors, such as the reputation the Council has built up for integrity and political influence."

Noting the difficulty in placing a value on these intangibles, Ekdahl added, "It is safe to say the figure would be in the hundreds of millions of dollars."

The Council staff team

reported that perhaps the greatest challenge facing cotton and the Council will be the shaping of new farm legislation which must be passed not later than 1985.

Still others are solving the cotton dust problem, finding an answer to the textile import problem that is eroding cotton's domestic market, and achieving reasonable policies on agricultural chemicals.

The staff team reported that delegates at the annual meeting in February voted to step up their investment in the Council. The report noted that:

"This is only the third time dues have been increased

since the Council was formed in 1938;

"Despite belt-tightening and personnel reductions, inflation and short crops seriously eroded the Council's financial position in 1983, and a further decline is evident for this year;

"Unless the dues structure is changed, Council reserves would be wiped out by the end of 1986 and income would fall \$1.5 million short of current program needs in 1987.

"As I see it, we in the cotton industry need the Council more than ever," Ekdahl said. "Over the last 15 years, our problems in the legislative and regulatory areas have multi-

plied unbelievably—and the only way our industry has survived has been through pooling our resources and our best brains and working together in our central organization."

He noted that Council programs have just been thoroughly reviewed by a special committee made up of four producers—one from each region of the Cotton Belt—and one representative from each of the six other sectors of the industry.

"They concluded that Council programs are cost-effective and are zeroing in on the main concerns of the industry," Ekdahl added.

# Report Earnings To SSA By April 15

April 15 is the deadline for reporting 1983 earnings to the Social Security Administration, according to Glyn Hammons, manager of the Abilene Social Security office. Anyone who received Social Security checks in 1983 and earned over \$4920 if they were under age 65 or \$6600 if they were 65 or over has to make an annual report to Social Security so that their records can be balanced. The report is needed even if the estimated earnings for the year turned out to be exactly the amount earned.

The 1984 estimates of earnings are also due by April 15. This year the exempt amounts are \$5160 for those who are under age 65 and \$6960 for those who are 65 or over. If a beneficiary turned age 70 in 1983, no report will be needed for 1984, but the 1983 report will have to be made.

**LIQUID PAPER** Correction: Fluid in ledger colors including pink, greens, buff, blue and yellows. Perfect for stationery; too! *Haskell Free Press*

## Haskell Honor Roll

### FIRST GRADE

Christy Cadenhead, Amnitti Alvarez, Brandon McFadden, Matt Tate, Casey Larned, Jill Mullen, Tara Moeller, Damon Drinnon, Amy Cunningham, and Christopher Silvas.

Nacole Lefevre, Micca Jordan, Sharon Jimenez, Shayla Jeter, Melissa Chapman, Jennifer Comedy, Katie Martin, Angela Pittman, Mandi Pope, and Shonda Posey.

### FOURTH GRADE

Misti Bartley, Jeffery

Brister, David Holt, Heather McMeans, Chris Tanner, Kim Gilly, Craig Neal, and Wendy Tate.

### FIFTH GRADE

Rusty Stocks, Shailla Unger, Cole Callaway, Erik Harvey, Craig Hanson, Tiffany Bradford, Becky Cline, Nole Hadaway, Rod Jeter, and Geneva Lopez.

### SECOND GRADE

Matthew McFadden, Wayne Hodgins, Teresa Diaz, Trece Burson, Alisa Green, Shane McKinney, Richard Collins, Paul Jon Gibson, Mart Guess, Brandon Hester, Jeremiah Isbell, and Cynthia Rodriguez.

### THIRD GRADE

Susan Jarred, Tommie Isbell, Marsha Moore, Sarah Jo Mullen, and Mark Jones.

### SIXTH GRADE

Davis Chapman, Julie Nanny, Holly Reed, Dawn Langhofer, and Marty Trussell.

### EIGHTH GRADE

Lori Alvarez, Sylvia Castillo, Lori Darden, Sheree Dumas, Bruce Geihausen, Wayne Geihausen, Kirk High, Sharla Jetton, Steven Klose, Matt Lane, Jim Lanier, Tiffany Moeller, Patrick Perez, Michael Rodriguez, and Sandra Thornhill.

### SEVENTH GRADE

Dalyn Gilly, Loutina Hadaway, Joy McKeever, Kayce Nemir.

### FRESHMAN

Julie Roewe.

### JUNIORS

Denise Burris, Joey Kimbrough, and Randy Roewe.

### SENIORS

Kathy Kemp, Sheila Klose, and Jana Overton.

## Major Medical that's worth a Million.

### Time Insurance Company's Major Medical plan offers:

\$1,000,000 in lifetime benefits per insured party.

Payment of all covered charges both in and out of the hospital. Without schedules.

A deductible you pay just once a year rather than with each medical occurrence.

And the plan is area-rated so you don't pay for higher risk areas of the country.

Call us for full details.



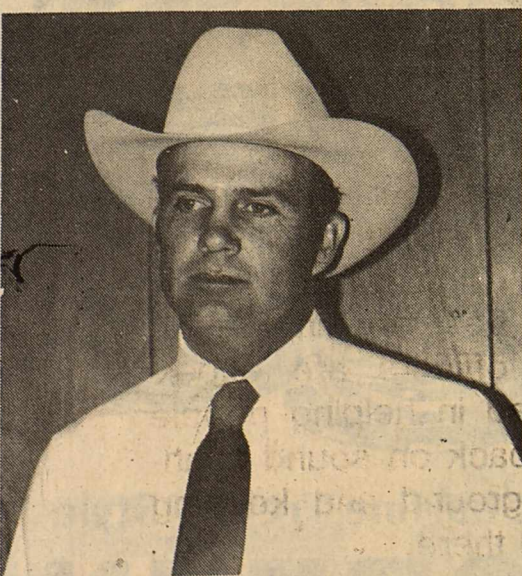
**Lanco Insurance**  
Buddy Lane  
(817) 864-2629

TIME INSURANCE COMPANY



The principality of Monaco consists of only 370 acres.

## ELECT



# PHIL COLEMAN

Candidate for Haskell County

# SHERIFF

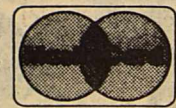
Your vote and support will be appreciated

Pd. Pol. Adv. Pd. for by Phil Coleman Campg. Treas.

## Layaway



to 8 p.m.

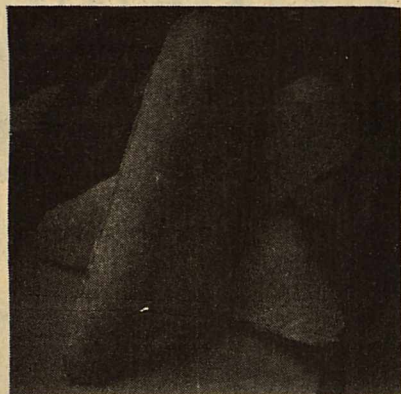


Sale starts now thru April 14th

1303 N. Swenson

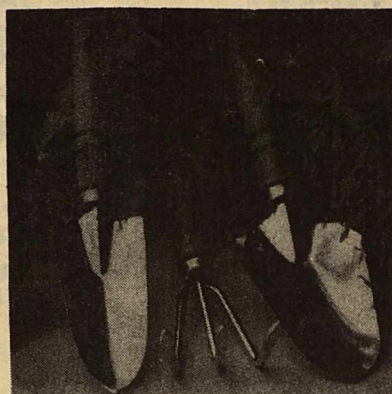
Stamford, Texas

# Spring Lawn & Garden Sale



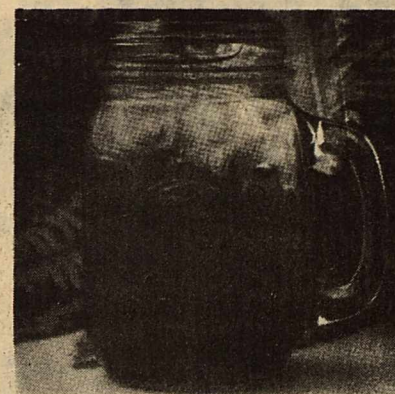
**HYPONEX TREE AND SHRUB SPIKES.** The sure and easy way to fertilize non-evergreen trees and shrubs. 15-10-9 analysis. Package of 5 spikes plus pounding cap. Can be used year round. **SAVE OVER 1/3**

**88¢**  
REG. 1.39



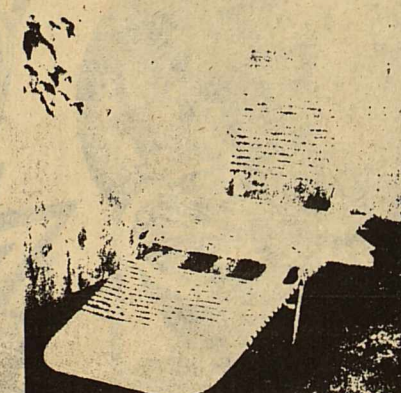
**GARDEN TOOLS.** Just in time for the gardening season, Winn's has a selection of tools for you. Choose trowel, transplanter, weeder or cultivator. Each with a wooden handle and rawhide loop for hanging.

**57¢**  
REG. 99¢



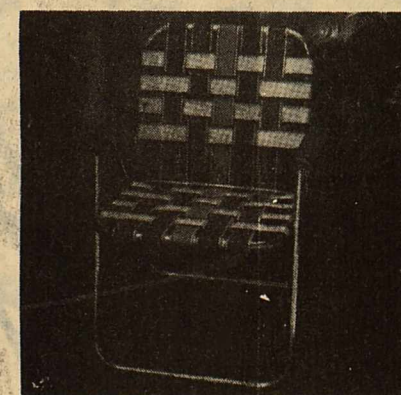
**PLANT STAND.** 4 paddle, oak. Easy assembly. Very decorative.

**8.88**  
REG. 12.88



**CHAISE LOUNGE.** Lightweight, multi-position lounge chair lets you relax, sunbathe. Aluminum frame folds for storage and easy portability. Plastic webbing in earthtone colors goes with any decor. **SAVE**

**8.99**  
REG. 10.99



**MARDI FRAS FOLDING CHAIR.** Comfortable lawn chair features sturdy aluminum frame, colorful nylon webbing, easy-clean plastic arms. Folds up easily for carrying and compact storage. **SAVE OVER \$1**

**6.88**  
REG. 7.99

## HARTZ

**Parakeets**  
Easy to care for. Teach them to talk.  
**\$11.88**

**Parakeet Cage**  
With feeding cups, swing and perches.  
**\$11.88**

**Hamsters**  
Soft and lovable pets.  
**\$1.88**

**Hamster Cage**  
The ideal home for your new pet.  
**\$11.88**

**10 Gal. Aquarium & Kit**  
Includes: Pump, Filter, Filter Floss, Charcoal, Airline, Tubing, Thermometer.  
**14.88**

**Tropical Fish & Kit**  
**2 FOR 88¢**

**2 Goldfish,**  
**2 FOR 48¢**

**FRITO LAY POTATO CHIPS**  
BUY ONE GET ONE FREE



**2 LITER COKE, DIET COKE**

**99¢**

**Whitewood PICKET FENCE**

33" x 14 3/4"

**66¢** Save 22¢

## BEDDING PLANTS

Both Vegetable and Flowering

Pack of 4 **2/\$1**



**5/8" x 50' GARDEN HOSE**

100% vinyl **5.66** Save 1.13

Fully warranted against defects.

## 10" HANGING BASKETS

Spring Rye, Fern, Boston Leaf Fern, Pothos Ivy

**5.99**

and Many More To Choose From

PRICES GOOD WHILE QUANTITIES LAST

Winn's Advertising Policy

Winn's attempts to please our customers at all times. That includes having ample quantities of advertised items on hand. But occasionally, due to unforeseen reasons, an advertised item may not be available for purchase. In this event, Winn's will issue a Rain Check upon request for the item to be purchased at the sale price as soon as it becomes available. If the item will not be available within a reasonable time, the customer may purchase a similar item as a comparable reduction in price. Merchandise designated as available in "limited quantities" will be sold on a first come, first served basis while quantities last. Winn's reserves the right to limit quantities purchased so that as many customers as possible may benefit from advertised prices.



**AMMONIA SULFATE FERTILIZER.** Winn's own brand of fertilizer for lawns, gardens, shrubs and trees of all kinds. 21-0-0 analysis. For use in spring, fall or summer. 40-lb. bag includes instructions. **SAVE OVER \$1**

**4.88**  
REG. 5.99





# M SYSTEM

Your FRIENDLY

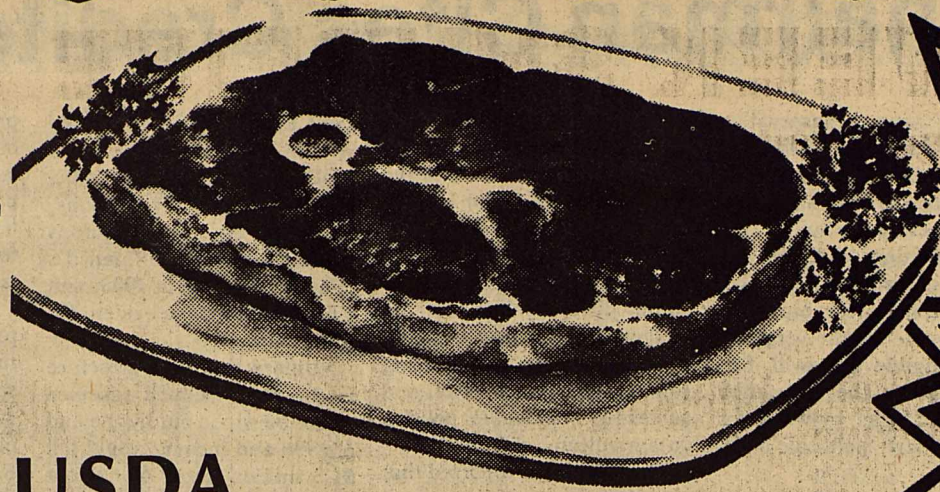
**AFFILIATED SUPER MARKETS**

Haskell, Texas  
Where Your Dollar Buys More

**Double days**

**WEDNESDAYS**  
With the purchase of \$3.00 or more.

SPECIALS GOOD THURS.,  
April 12th Thru April 18



USDA

## Round Steak

First Cut **1.55** Center Cut **1.99**  
Lb.

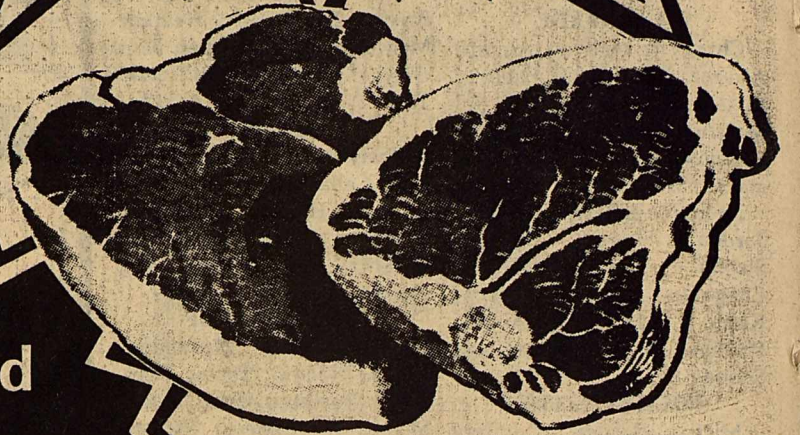
We Reserve The Right To Limit Quantities!



Armour

## BACON

1-Lb. Pkg. **1 59**

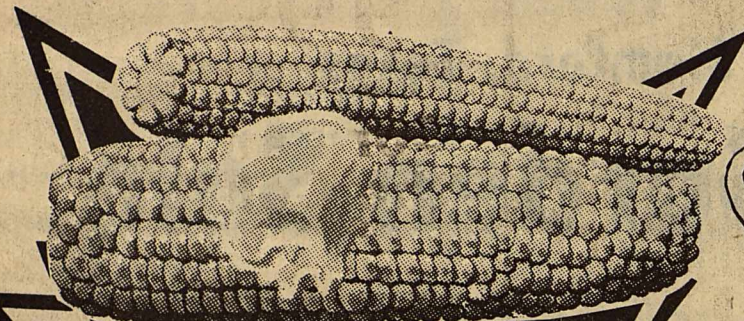


Fresh

## Pork Chops

Center Cut **\$1 79**  
Lb.

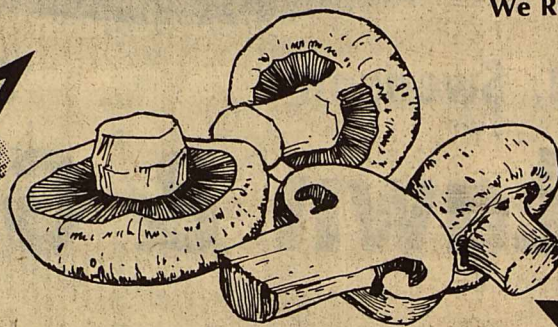
End Cut **\$1 25**  
Lb.



Fresh Florida Ear

## CORN

**5 1 00**  
Ears



Fresh

## MUSHROOMS

8-oz. Carton

**99¢**

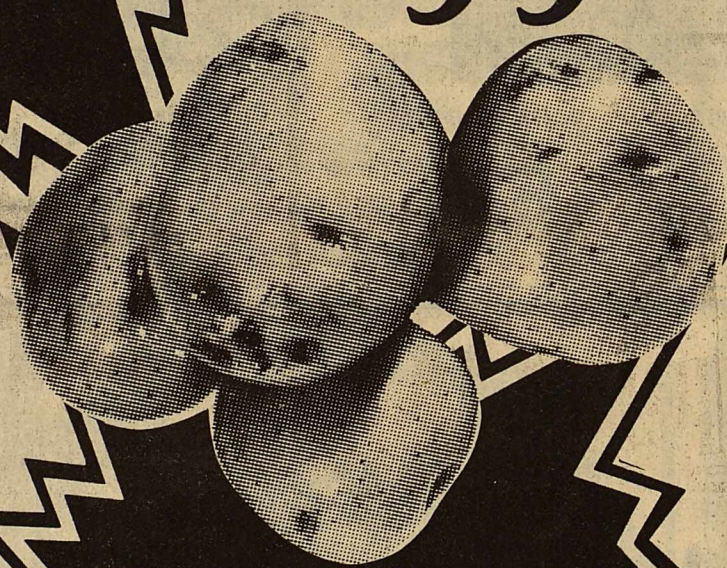


Shurfresh  
Soft Spread

## Margarine

2-Lb. Tub

**89¢**

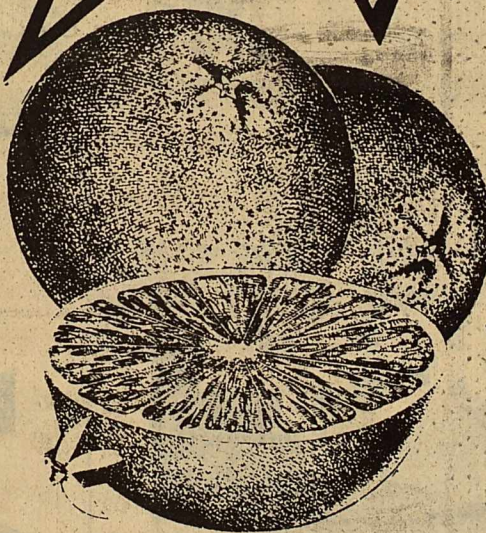


U.S. No. 1 Russet

## POTATOES

10-Lb. Bag

**1 19**



Sunkist Juicy

## Oranges

4-Lb. Bag

**1 29**

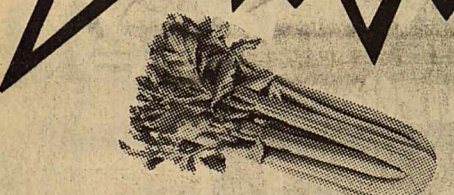


Shurfresh

## BISCUITS

8-oz. Cans

**5 For 1 00**



Fresh Pascal

## CELERY

Stalk

**39¢**



Shurfine Macaroni & Cheese

## DINNERS

7.25-oz. Pkg. (Limit 7)

**7 For 1 00**

Shurfine

## Light Bulbs

60, 75 or  
100 Watt  
Pkg. of 2

**69¢**



Shurfine Bathroom

## TISSUE

4-Roll Pkg.

**65¢**

Limit 1 with \$10.00 or  
more grocery purchase



Shurfine French Style

## GREEN BEANS

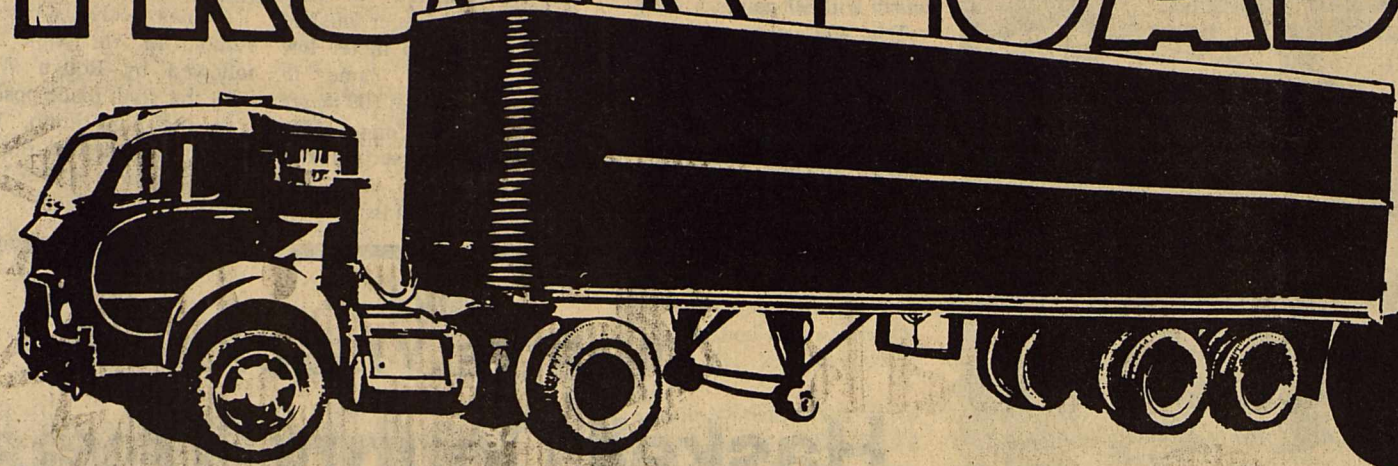
**3 1 00**  
16-oz. Cans





WE GIVE  WE GIVE  WE GIVE  WE GIVE  WE GIVE  WE GIVE  WE GIVE  WE GIVE  WE GIVE  WE GIVE 

# SECOND WEEK SHURFINE TRUCK LOAD



# SALE 5 For 100



Shurfine Tomato SAUCE  
8-oz. Cans

Shurfine Tomatoes  
16-oz. Cans (Limit 3)



3 For 100

Shurfine Instant TEA  
3-oz. Jar



159

Shurfine Golden CORN  
Whole Kernel or Cream Style  
16-oz. Cans




3 For 119

SHURFINE HAMBURGER DILL SLICES PICKLES  
32-oz. Jar



99¢

Shurfine Frozen Corn on the Cob  
4 Ear Pkg.



1.19

Shurfine Blackeye PEAS  
15-oz. Cans



3 For 100

Cokes  
2 Liter Bottle

79¢

Strawberries  
Shurfine Frozen  
16-oz. Package



149

SHURFINE APPLESAUCE  
16-oz. Cans



3 For 100

Shurfine Powdered or Brown Sugar  
2-Lb. Bag



99¢

Shurfine Bleach  
Gallon Jug (Limit 2)



45¢

Shurfine Bartlett PEARS  
16-oz. Cans



69¢

Shurfresh Homo Milk  
gal jug

199

Shurfine Pork & Beans or Sliced Beets  
16-oz. Cans




3 For 100

Light Crust Flour  
5-Lb. Bag

79¢

Ice Tea Tumblers  
Assorted Colors  
22-oz. Size

6 For 100

Shurfine Frozen ONION RINGS  
16-oz. Pkg.

99¢

DIAMOND Deluxe Plates  
40-Ct. Pkg.

199

STAMP PRICE SPECIAL

Shurfresh Med. Eggs  
Doz. 49¢

WITH ONE SPS FILLED CARD

STAMP PRICE SPECIAL

M-System Bread  
1 1/2 lb. Loaf  
9¢

WITH ONE SPS FILLED CARD

STAMP PRICE SPECIAL

FREE Milk  
1/2 Gal. Shurfresh  
WITH ONE SPS FILLED CARD

STAMP PRICE SPECIAL

Color-Tex Toilet Tissue  
4 Roll Pkg.  
19¢

WITH ONE SPS FILLED CARD

STAMP PRICE SPECIAL

Dri-Mop Paper Towels  
Jumbo Roll  
9¢

WITH ONE SPS FILLED CARD

WE GIVE  WE GIVE  WE GIVE  WE GIVE  WE GIVE  WE GIVE  WE GIVE  WE GIVE  WE GIVE  WE GIVE 



# Superintendent's Views

BY JAMES LANIER  
Superintendent, Haskell ISD

Our girls' athletic season is drawing rapidly to a close. Because of the unusual success of our boys' athletics this year, I am afraid we have overlooked the girls' program somewhat. Our girls' basketball season was a good one. All five teams (7th, 8th, 9th, Jayvee, and Varsity) had winning seasons. They worked hard. The girls' golf team in only its second season of competition, improved markedly under the coaching of Jimmy Dan Raughton. The girls' tennis team won 1st place in district under the leadership of Greg Melton. Three girls, Jennifer Davis, Denise Burris, and Sheila Klose, qualified for Regional. All three of the girls' track teams were successful. The varsity girls came in second in district. Six girls qualified for Regional, Emily Camacho in the 3200 meter run, Kathy Kemp in the 1500 meter run, Denise Young in the 800 meter run, Holli High in the 400 meter dash, and Mindy Smith

in the 100 meter dash. One person who deserves special mention is Coach Jim Bob Mickler. Coach "Mick" is the line coach in football and coached the Jayvee football team. He is the head girls' coach. When Coach Coy Payne, who was to serve as his assistant, became ill, Coach Mickler was left with the burden of coaching all the Junior High and Varsity basketball. Coach Holt took the 9th and Jayvee girls. Coach Mickler taught three science classes in addition to these coaching responsibilities. It is a good thing he is a hard, willing worker. The future looks bright for our girls' program. We have a group of hard-working, competitive girls all the way through our program. They like to play and get along well together. They also have some ability. We really believe they will achieve their share of success.

A Haskell Free Press want ad will find you a buyer.

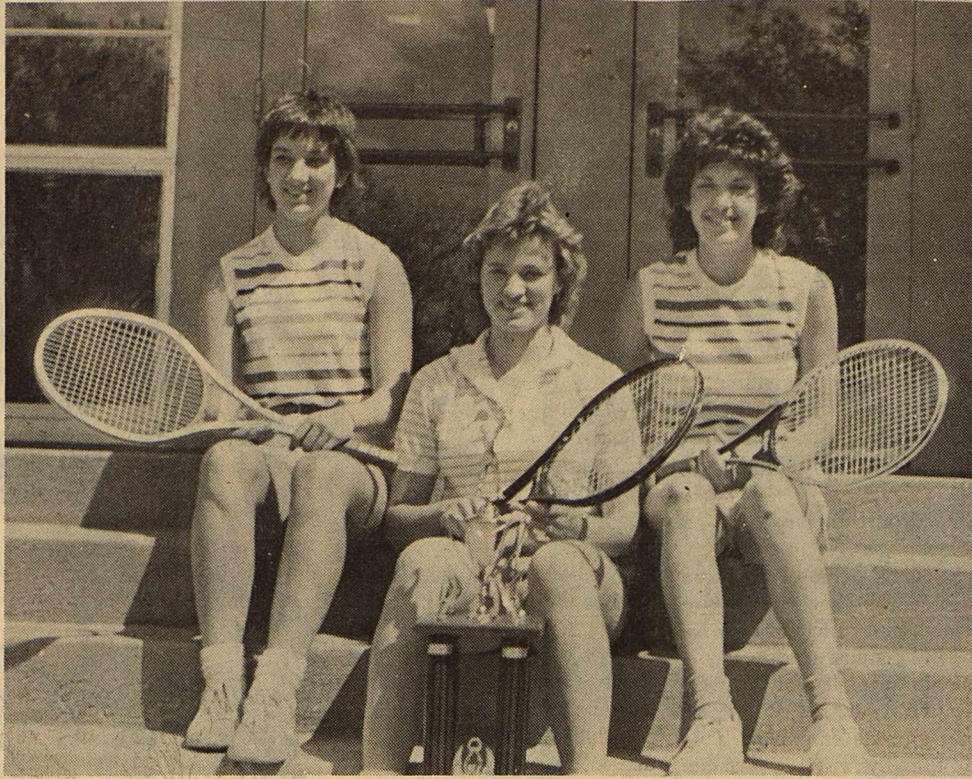


Photo by Randy Rowse

## REGIONAL QUALIFIERS

Sheila Klose, Jennifer Davis and Denise Burris will participate in the Regional Tennis Tournament April 17-19 in Lubbock. Greg Melton, coach, and Mrs. Lynda Burris will accompany the students.

# Houston Neurologist Warns Against Nicotine Poisoning

Snuff dipping and tobacco chewing can cause high nicotine levels in the blood and can lead to nicotine poisoning, a Houston neurologist warns in the journal *Texas Medicine*.

Dr. Bernard M. Patten notes that within five minutes a single pinch of snuff results in a nicotine blood level that is 28 percent greater than the level reached from cigar smoking for 65 minutes.

"The nicotine peak with snuff matches that achieved with those old Havana-type cigars and exceeds that found in heavy cigarette smokers," he writes in the April issue of the *Texas Medical Association's* journal.

A continually high level of nicotine from constant use of snuff "could pave the way for chronic nicotine toxicity," says Patten, an associate professor of neurology at Baylor College of Medicine. Nicotine poisoning from snuff dipping and tobacco chewing can lead to nerve damage, severe muscle weakness, fatigue and weight loss, he says. The physician cites the case of a 20-year-old man who

led a vigorous life of working cattle, riding bulls, and jogging. He became ill about the time he began using snuff and chewing tobacco, and his condition worsened over a six-month period.

His snuff dipping became continuous as his consumption reached two tins a day. He lost about 35 pounds without change in appetite or diet.

"His muscles became thin and weak and ached especially after exercise," the doctor writes. "Despite attempts at weight lifting and other exercise, the muscle wasting continued and especially involved muscles around shoulders and hips."

The patient had difficulty climbing stairs and getting out of a chair, Patten says, "and bull riding became impossible....He complained that he felt unsteady and tended to drift to the right when he walked." Other problems included slight muscle twitches and cold feet.

Patten notes that after the patient stopped using all tobacco products, he felt better. The aches disappeared within a week, and the patient was back to normal body weight and activity within three months.

"As an experiment, the patient decided to restart dipping the snuff to see if the condition would return," Patten writes.

It did. But the patient again returned to normal after he stopped dipping.

"The return of similar symptoms after the patient resumed use of snuff and remission of symptoms when he again quit using snuff speak for a definite role for tobacco in causing his weakness," Patten concludes.

He says adverse effects of nicotine on nerves and muscles depend on several factors: the individual's susceptibility, state of nutrition, liver function, type of tobacco, where it was grown, and the nicotine content.

# 8th Grade Girls Track Team Places Fourth

BY DAVID ADAMS

At the district 4-AA track meet at Hamlin Thursday, the eighth grade Maidens placed fourth with 97 points.

The 400 meter relay of Vickie Chavez, Tammi Miller, Dana Hale and Sheree Dumas placed second while the 800 meter relay of Sylvia Castillo, Tiffany Moeller, Chavez and Miller placed third. The 1600

meter relay of Castillo, Dumas, Miller and Leiza Morales finished first in that relay.

Dumas finished in third while Brandie Kreger finished eighth in the 100 meter low hurdles. Chavez came in seventh place in the 100 meter dash. In the 400 meter dash Morales finished second and Hale finished fifth. Morales also finished se-

cond in the 800 meter run while Castillo placed third in the 1600 meter run followed by Donna Rowan with sixth place.

Dumas received a first place ribbon in the triple jump followed by Robyn Weaver with the sixth place position.

In the high jump, Tamra Burnett finished in the third place position while Dumas ended in sixth place.

## 1984 QUARTERLY REPORT

# Haskell County, Texas

JANUARY, FEBRUARY & MARCH

	BALANCE DECEMBER 30 1983	RECEIPTS JAN, FEB, MAR 1984	DISBURSEMENTS JAN, FEB, MAR 1984	BALANCE MARCH 31 1984
GENERAL	71,832.62	321,178.17	322,024.51	70,986.28
JURY	11,707.53	15,291.24	4,250.08	22,748.69
PERMANENT IMPROVEMENT	12,753.28	3,843.85	.00	16,597.13
OFFICER SALARY	36,767.77	142,531.97	68,712.24	37,051.96
LAW LIBRARY	508.67	1,638.85	1,486.50	661.02
ROAD & BRIDGE # 1	75,058.47	31,184.77	39,895.24	66,348.00
ROAD & BRIDGE # 2	7,007.53	21,938.19	12,375.56	16,570.16
ROAD & BRIDGE # 3	7,085.85	25,087.21	9,531.30	22,641.76
ROAD & BRIDGE # 4	28,307.35	21,938.19	9,857.55	40,387.99
LATERAL ROAD # 1	.10	.00	.00	.10
LATERAL ROAD # 2	266.80	.00	.00	266.80
LATERAL ROAD # 3	21.63	.00	.00	21.63
LATERAL ROAD # 4	11.51	.00	.00	11.51
F M L ROAD # 1	10,149.58	38,837.80	31,352.15	17,635.23
F M L ROAD # 2	5,906.62	22,193.02	9,781.48	18,318.16
F M L ROAD # 3	5,195.26	27,741.30	7,694.59	14,851.45
F M L ROAD # 4	4,639.55	22,193.02	10,203.07	16,629.50
SOCIAL SECURITY FUND	489.45	18,799.80	18,799.80	489.45
GROUP INSURANCE	78.40	316.90	316.90	78.40
CRIMINAL JUSTICE	2,460.50	2,445.00	1,530.00	3,375.50
GEN. REV. SHARING	146.29	16,713.69	16,300.46	559.52
REV. SHARING # 1	3,874.39	3,865.75	.00	7,740.14
REV. SHARING # 2	108.62	3,865.75	.00	3,974.37
REV. SHARING # 3	2,419.73	3,865.75	.00	6,285.48
REV. SHARING # 4	4,029.13	3,865.75	1,800.00	6,094.88
VOTER REGISTRATION	3,326.45	59.74	1,615.16	1,771.03
LAW ENF. OFFICER	455.60	466.00	277.20	644.40
PROBATION OFFICER	2,341.22	2,356.26	1,602.37	3,095.11
COMP. TO VICTIMS OF CRIME	196.00	532.50	152.00	576.50
COUNTY ATTORNEY FUND	7,778.51	1,032.79	325.10	8,486.20
DIST. ATTORNEY FUND	734.50	75.00	.00	809.50
T.C.D.R.S.	.00	17,324.84	17,324.84	.00
JUVENILE PROBATION OFFICER	1,829.89	3,491.76	750.09	4,571.56
HASKELL COUNTY SCHOOLS	7,359.02	5,973.97	10,000.00	3,332.99
JUVENILE PROBATION COMM.	.00	7,412.00	3,818.16	3,593.84
TOTALS	\$ 230,921.76	\$ 788,060.83	\$ 601,776.35	\$ 417,206.24

## Investments of Haskell County, Texas

SOCIAL SECURITY FUND	
Certificates of Deposit # 14956	6 for 30 months @ 9.45%
per annu.	Dated December 30, 1982 and maturing June 30, 1985
	\$ 5,550.00
HASKELL NATIONAL BANK HASKELL, TEXAS PLEDGES SECURING COUNTY DEPOSITS	
Federal National Mortgage Association Bonds	2-10-86
Evenman Ind. School Bond	4-01-88
Thurston County Washington (Escrow in U.S. Government)	
	\$ 410,000.00
Insurance Coverage for Time Accounts	100,000.00
Insurance Coverage for Aggregate Checking Accounts	100,000.00
	\$ 610,000.00
HASKELL NATIONAL BANK HASKELL, TEXAS CERTIFICATES OF DEPOSIT	
Certificated of Deposit # 15144 Criminal Justice Account	
for 6 months @ 9.25% Annum.	Dated January 18, 1983
	\$ 1,500.00
Certificated of Deposit # 9086 District Clerk's Cost Account	
(case set, money paid but not deposited of ) 30 months	
@ 11.75% payable 6 months. Dated May 23, 1983 and maturing	
November 23, 1986	
	\$ 3,000.00
	\$ 4,500.00

On April 9, 1984 A.D. the Commissioner Court of Haskell County, Texas met in the regular session compared and examined the quarterly report for the quarter ending March 31, 1984, and found same to be true and correct.

THE REQUIREMENTS OF ARTICLE 394 P.C. HAVE BEEN COMPLIED AND AN TABULAR STATEMENT HAS BEEN FILLED REQUIRED

*S. E. Tidwell*  
COMMISSIONER PRECINCT # 1

*Ronnie Chapman*  
COMMISSIONER PRECINCT # 2

*J. P. Gray*  
COMMISSIONER PRECINCT # 3

COMMISSIONER PRECINCT # 4

*John Wayne McParrett*  
COUNTY JUDGE, HASKELL COUNTY, TEXAS

*Harlow Bryan*  
COUNTY CLERK, HASKELL COUNTY, TEXAS

**911**  
**PIONEER**  
BRAND SEEDS

**TAKING THE HEAT**

Plant this pair from Pioneer for a superior grain sorghum crop in hot, dry weather.

**911 Big Tonnage Forage Producer**  
Tropical hybrid that doesn't head under growing conditions in Southwest due to its photosensitivity response. Extremely high yield potential: has won New Mexico forage trials for the past three years. Large, strong stalks are moderately juicy and sweet; broad, dense, dark green leaves provide a forage with high feed value. Excellent disease resistance. Excellent roots and stalks provide 8' to 12' tall plants with very good standability. Plant thick in narrow rows or broadcast for hay, silage or greenchop. Plant thick in 30" to 40" rows for grazing. Plant at moderate rates for use as green manure or cover crop on set-aside acres.

**877F Outstanding New Sorghum-Sudangrass Hybrid**  
Premium quality sorghum-sudangrass hybrid adapted to all areas of the Southwest for hay, pasture, greenchop or silage. Small, sweet stems with broad, dark green leaves produce outstanding yields. Flexible stems provide excellent standability plus outstanding baling qualities. Excellent drought tolerance and regrowth. Better disease resistance than 988. Including excellent downy mildew resistance (Pathotypes 1 & 2). For hay, greenchop or silage production, broadcast or drill in narrow rows at higher populations to maximize forage yields and minimize stem size. For pasture, plant in 30" to 40" rows...your cattle will tend to walk on unplanted area between rows and field loss will be reduced.

See:  
**Campbell Seed Co.**  
864-3017

**877F**  
**PIONEER**  
BRAND SEEDS

## Public Notice

Southwestern Bell Telephone Company, in accordance with rules and orders promulgated by the Public Utility Commission of Texas, hereby gives notice of a public hearing to begin at 10 a.m. on Monday, May 14, 1984, in the offices of the Public Utility Commission, 7800 Shoal Creek Blvd., Austin, Texas, concerning proposals made by the company to add three optional services and delete two services from the list of local exchange services available to its Texas customers.

Proposed additions to the local exchange tariffs include an optional Local Measured Service under which all residence customers and single-line business customers could pay monthly rates less than flat rate for one-party service, with an additional charge for each completed outgoing call to be determined by the time of day, distance and duration of each call; and a subsidized LIFELINE local service to be made available to qualified individuals, as determined by the Public Utility Commission. The monthly rate for LIFELINE service would include an allowance of 25 outgoing calls per month, plus a charge for each additional call.

Proposed for deletion from the local exchange tariffs are one-element measured service offerings for residence customers and single-line business customers, but current customers would not be affected.

The company does not anticipate that these additional services will result in an increase in revenue to Southwestern Bell Telephone.

Persons who wish to intervene or otherwise participate in these proceedings should notify the Commission as soon as possible. A request to intervene, participate, or for further information should be mailed to the Public Utility Commission of Texas, 7800 Shoal Creek Boulevard, Suite 400N, Austin, Texas 78757. Further information may also be obtained by calling the Public Utility Commission Consumer Affairs Division at (512) 458-0223 or (512) 458-0227, or (512) 458-0221 teletypewriter for the deaf.

Southwestern Bell Telephone

## Aviso al Publico

Por medio del presente aviso y en conformidad con las reglas y dictámenes de la Comisión de Servicios Públicos de Texas, la compañía Southwestern Bell Telephone anuncia la audiencia pública que se llevará a cabo a partir de las 10 de la mañana del día lunes 14 de mayo de 1984 en las oficinas de la Comisión de Servicios Públicos, 7800 Shoal Creek Blvd., Austin, Texas, con respecto a la propuesta de la compañía, que consiste en agregar tres servicios opcionales y suprimir dos servicios de la lista de servicios telefónicos locales a disposición del usuario en Texas.

Las adiciones propuestas al arancel del servicio telefónico local incluyen un Servicio Medido Local opcional según el cual todos los clientes residenciales y los clientes comerciales con línea única pagarían tarifas mensuales menores que la tarifa fija para servicios de línea única, con un cargo adicional por cada llamada completa efectuada desde ese teléfono, establecido según la hora, la distancia y la duración de cada llamada; así como un servicio local subvencionado de LIFELINE que estaría disponible para determinadas personas, según lo establezca la Comisión de Servicios Públicos. La tarifa mensual para el servicio de LIFELINE incluiría 25 llamadas mensuales con un cargo adicional por cada llamada en exceso de 25.

Se propone suprimir del arancel del servicio telefónico local las opciones de servicio medido de un elemento para clientes residenciales y clientes comerciales con línea única, pero esto no afectaría a los clientes actuales.

La compañía no espera que estos servicios adicionales produzcan un aumento de ingresos para Southwestern Bell Telephone.

Toda persona que desee intervenir o participar en el proceso debe notificar a la Comisión lo antes posible. Las solicitudes de intervención, participación o información deben dirigirse a: Public Utility Commission of Texas, 7800 Shoal Creek Blvd., Suite 400N, Austin, Texas 78757. Para obtener mayor información debe llamar a Public Utility Commission Consumer Affairs Division, (512) 458-0223 o (512) 458-0227, o al (512) 458-0221 si requiere teletipo para sordos.



# Six Maidens Qualify For Regional Track

**BY TODD HARRIS**  
The Haskell Maidens track team qualified six individuals for the regional meet last week at district.

Emily Camacho won first in the 3200 meter run. Denice Young finished second in the 800 meter dash, while Tamala Randle coasted to another easy win in the 110 meter low hurdles.

Kathy Kemp placed second in the 1600 meter run. Mindy Smith finished second in the 100 meter dash while Hollie

High showed a strong finish to win the 400 meter dash. These six girls will compete at a regional qualifiers meet at Wall this Friday. Preliminaries will start at 4 p.m. with the finals starting at 7 p.m.

Other finishers at district were: the 400 meter relay, consisting of Randle, Smith, Holly McBroom and Julie Roewe, finished fourth. The 800 meter relay, consisting of the same members, also finished fourth. Susie Blankenship placed

third in the 110 meter low hurdles. Lori McGee placed fourth in the 400 meter dash. Kelli Gilliam finished fifth in the 3200 meter run while Patricia Henry finished sixth in the 3200.

McBroom finished fourth in 200 meter dash. Comacho also placed fifth in the 1600 meter run.

The 1600 meter relay team consisting of Mitchell Stout, McGee, Young and High finished sixth. Kemp and Smith finished fifth and sixth, respectively, in the triple jump.

Randle finished fourth in the high jump while Roewe placed fifth in the high jump. Young and Tina Lacey finished fifth and sixth, respectively, in the shot. Lacey also finished sixth in the discus while Smith finished third in the long jump.

The team placed second overall with a total of 110 points.

Brightly colored — attention getting — Open-Closed Signs for your office or business. Comes complete with changeable letters in black or red. Also includes a sign for counter top use. See at the Haskell Free Press.

# Farabee Explains Workers' Comp Ruling

Questions about the recent state district court ruling in Travis County that farmworkers cannot be exempted from workers' compensation protections and concerns about a proposal by a statewide committee on farmworker insurance were addressed Monday by Senator Ray Farabee of Wichita Falls.

"Many people from the 30th District have questions about what the court decision will require of them. It is important to note that the court decision does not require farmers and ranchers to carry workers' compensation insurance on their employees. It does, however, remove important defenses employers have traditionally raised in lawsuits over farmworker injuries sustained on the job. This makes it easier to win a lawsuit against an employer and makes a suit against the employer harder to defend," Farabee stated.

Ranch workers in the state had the right to sue their employers for injuries received on the job but were required to prove that the accident had occurred due to the employer's negligence. Following the court ruling, workers are still required to prove that the employer was negligent, but traditional defenses, such as contributory negligence by the laborer, are no longer allowed.

The Senator noted that from a strictly legal point of view, the ruling has a narrow applicability at this time. Since there are about 365 district courts in Texas, and those courts are not bound by Judge Clark's decision, it is possible that cases in other district courts could be decided differently.

The Attorney General has appealed the case to the Court of Appeals. If the case is ultimately appealed to the State Supreme Court, the Court's decision will be binding for all of Texas, whether it affirms or reverses

the district court decision. Because of the uncertainties of litigation for all sides, many would prefer to see this issue resolved by the Legislature.

The compromise legislation drafted by the Joint Committee on Farmworkers Insurance has been approved by most members of the Committee. Representatives of the Farm Bureau have not approved the bill. Senator Farabee outlined some of the major provisions of the compromise legislation:

•All migrant workers, those seasonal workers employed on truck farms, orchards and vineyards or those working for employers with payrolls greater than \$25,000 in 1985, would be covered by the Workers' Compensation Act. The \$25,000 threshold would be adjusted for inflation in subsequent years.

•Full-time workers would be covered by the Workers' Compensation Act, but their inclusion would be phased in over a ten-year period. Those working for a farmer or rancher with a gross annual

payroll of greater than \$100,000 in 1985, 1986 or 1987 would be added immediately. By 1995 all full-time workers would be covered, regardless of the employer's payroll. (Gross annual payroll does not include family members, partners of corporate shareholders.); and

•Migrant or seasonal workers covered by workers compensation would be prohibited from bringing suit against the owner or operator of the property for any injuries they may sustain.

**Thomas Shoe Shop**  
Knox City

Best in Boot & Shoe Repairs

Full Stock of Mens Belts and Billfolds

Polishes and Oil

In Business Since 1938

**RE-ELECT Joseph Thigpen**

Your District Attorney

(pd. pol. adv. pd. for by Pam Thigpen, Campg. Treas.)

# Small Business Workshop Set

An all-day workshop, "Planning and Operating a Small Business," will be held from 9:15 a.m. to 4:00 p.m. Tuesday, April 24, 1984, at the Security State Bank meeting room, 825 North Judge Ely Blvd. in Abilene.

Co-sponsored by the Abilene SCORE/ACE Chapter and the U.S. Small Business Administration, the workshop will cover proper planning and potential problems in starting a new business.

The program will present a clear approach to the examination of requirements and assistance for pre-business and small business operations in today's market.

Topics given in-depth treatment and discussion will include: Personal Traits for Business Success; Financial Factors and Sources of Capital; Management of Small Business; Types of Business Organizations; Business Re-

cord; Marketing for Growth; and Business Regulations, Taxes and Insurance.

Also featured on the agenda will be two films, "There's a Genius in the Average Man" and "Planning a New Business."

Past Chairman and veteran SCORE member George W. Ervin will be emcee and offer the welcome following the 9:15 - 9:30 a.m. registration.

Other members on the program will be drawn from Abilene business careers, each with varied and different backgrounds, acting as consultants for those seeking direction. All are volunteer workers for the Abilene SCORE/ACE Chapter.

Cost of the workshop will be \$5 including all materials. For further information, call SCORE at (915) 677-1857.

**HOME FIX-UP TIME**

Paint Up—Fix Up—Clean Up Sale

Outside Latex Paint.....	\$10.95
Inside Latex Paint.....	\$8.95
Latex Caulk.....	90¢
Ceiling Hugger Fans.....	\$90.00
3 Tulip Light.....	\$18.95

Rake	Shovel	Hoe
\$4.95	\$4.95	\$3.95

Storage Buildings..... \$795<sup>00</sup>

McGee's LUMBER YARD

105 N. 1st 864-3552

# PICK A STAR ACCOUNT FROM COMMODORE SAVINGS.

All checking and transaction accounts are not created equal. That's why Commodore Savings gives you a choice of checking and checking/savings accounts. There's one or more here that's right for you, and all three pay you high interest.

**STARCHECK**  
StarCheck is an Interest-Bearing Checking Account that pays you 5 1/4% simple interest monthly. With a StarCheck Checking Account, you have the option of having your checks returned to you each month. The account requires a minimum balance of \$500, with a \$7.50 charge for the month if your balance falls below \$500.

**SUPER STARCHECK**  
Super StarCheck is an unlimited check-writing account that pays a high simple interest when a minimum balance of \$2,500 is maintained in the account. If your average balance should drop below the \$2,500 minimum, the account will earn at the StarCheck interest rate of 5 1/4%. Like StarCheck, you have the option of having your checks returned in your statement each month. Also like StarCheck, there will be a small \$7.50 service charge if your balance falls below \$500.

**STARPLUS MONEY MARKET ACCOUNT**  
The StarPlus Money Market Account is a limited check-writing account that pays you the current Money Market rate when a minimum balance of \$2,500 is maintained in the account. The Money Market rate is subject to change weekly. Like Super StarCheck, if your average balance should drop below the \$2,500 minimum, the account will earn at the StarCheck interest rate of 5 1/4%. Transfers and drafts can be written to the StarPlus Money Market Account. Like all the Star Accounts, you have the option of having your checks returned each month. There is also a small \$7.50 service charge if your balance falls below \$500.

StarCheck, Super StarCheck and the StarPlus Money Market Accounts. Three highly interesting ways we're working for you and working with you at Commodore Savings. Come in and find out more about these money-making accounts today.

"WORKING FOR YOU... WORKING WITH YOU."

**COMMODORE SAVINGS**

*A Dash of Class!*

Dress your son up for Easter with Wrangler Coordinates

**Suits**  
By Esskay  
100% Polyester from  
**\$98<sup>00</sup>** up  
Sizes 35 to 42

For the young men  
Perfect for Banquets and Easter  
Come in and see our entire selection of fine clothes

**Shirts**  
Short Sleeve Pullover  
Stripes and solids  
Sizes 14 to 20  
Matching  
Gaberline or Knit  
**Jeans**  
Sizes 25 to 32  
Short Sleeve Dress Shirts  
New spring colors  
Shirts and Pants  
As Low As  
**\$28<sup>00</sup>**

**Lane APPAREL FOR MEN**  
Next to M-System



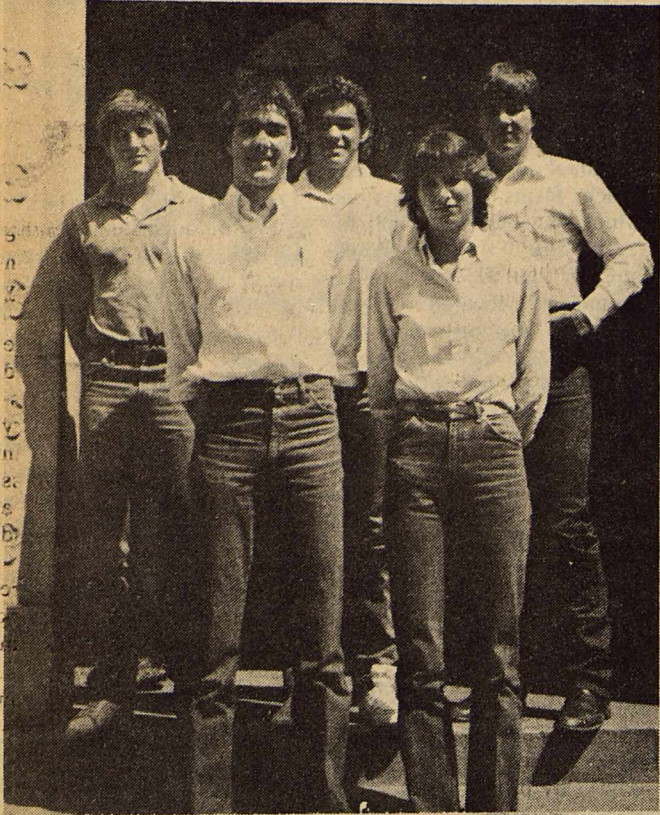


Photo by Scott Fields

RECENT ILPC STATE WINNERS include (backrow left to right) Robert Ivey, Todd Harris and Joey Kimbrough. Front row, Shane Hadaway and Kathy Kemp.

## Journalism Students Win State Awards

Five journalism students won state Interscholastic League Press awards for their work on the Haskell High School newspaper, the **War Whoop**.

Juniors Todd Harris and Joey Kimbrough won a first place award in the Photo Story category for their ag photo story. Harris, a photographer and sports writer, took the pictures, and Kimbrough, photographer and ag reporter, wrote the story.

For his interpretive article about a football player's thinking or instinct, sports editor Shane Hadaway placed second.

Editor Kathy Kemp took both second and third places for her front page lay out on

the Dec. 2, 1983 and Jan. 28, 1984 issues of the **War Whoop**.

In sports column writing Hadaway teamed with Robert Ivey, also sports editor, to take a third place for their article about the suspension of Abilene football players for their involvement in over-the-counter drugs.

Students competed against other AA schools throughout Texas for these awards.

"We enter this contest each year because it is the most prestigious contest for high school journalists. Only three places in each category are awarded and the competition is tremendous," Mrs. Jill Druessedow, adviser, said.

## CAPITOL UPDATE

*John Tower*  
U.S. SENATOR for TEXAS  
WASHINGTON, D.C. 20510



In the last several years, Texas has evolved into a virtual oasis for business and industry. Texas has emerged, especially in the last 10 years as a powerful business, political and social influence on the rest of the nation.

As we recognized Texas Business and Industry Week April 1-7, it was a time to applaud the many accomplishments of Texas business men and women. When business prospers, all Texans benefit in the form of jobs and increased business opportunities.

And the future for Texas business looks bright. Projections indicate Texas will continue to exceed the United States economic growth rate as a whole. Unemployment also is expected to continue to decrease.

This optimistic outlook is responsible for a mass immigration of people from other parts of the country. Our population is growing faster than that of California, and it has been predicted that one out of every 12 Americans will live in Texas by the year 2000.

A recent national study ranked Texas as having the second most favorable business climate in the nation. Several factors make Texas attractive to business and industry.

One is a relatively strong economy. Non-farm employment in the last 10 years has grown by more than twice the national average. Personal incomes have risen by 26 percent faster than the United States as a whole in the past decade.

Texas also has one of the lowest per capita tax burdens in America. We have no corporate or individual income tax. Taking into account all state and local taxes, the total tax burden per capita in Texas is about 80 percent of the national average.

Labor laws in Texas also are favorable for business investment. We have a right to work law that makes it illegal to force union membership on a worker as a condition for employment. Union membership extends to only about 12½ percent of the manufacturing workforce — about half of the national average. In many areas of Texas, there is almost no union activity.

Texas also is a transportation center. Houston ranks third among U.S. ports in its annual volume of business. There are 11 other deepwater ports in the state, and Texas handles more than an eighth of all U.S. foreign trade. To assist in the trade effort, there are seven foreign trade zones in Texas with an additional four awaiting approval. In terms of passenger traffic, Dallas-Fort Worth Regional Airport is the sixth busiest airport in the world and Houston is the 13th busiest.

Finally, the style of Texas life, coupled with a reasonable cost of living, makes Texas an attractive place for investors and employees to locate or relocate. We can look forward to Texas becoming the home of many emerging industries such as those in the field of high technology.

This continued business and industry boom in Texas will mean a better economy for our nation and a better life for Texans.

## School Land Bids Increase

Texas Land Commissioner Garry Mauro announced today that bids received by the School Land Board in Tuesday's lease sale of 81,000 acres of state land have earned an additional \$17,525,052 for the Permanent School Fund which now totals \$4.1 billion.

Mauro, who serves as Chairman of the School Land Board, said that the new leasing policies implemented by his office for the April 3 sale resulted in an average bonus bid of \$216.49 per acre. The School Land Board accepted 178 bids on 159 tracts of state land.

"The average is about twice what we received in the October lease sale (\$120.40 per acre bonus) and is an indication that our new leasing policies are paying off," Mauro commented. "The new policies are intended to ensure that the state of Texas collects every cent it is entitled to from mineral production on state land."

Getty Oil Co. with a bid of \$860,650.86 on a 1701.16 acre tract in the Gulf of Mexico had the single highest bid. Amoco Production Co. had the highest number of successful bids with 18 totaling \$4,702,734.

"When I came into office, we examined state leasing policies and discovered numerous inequities," Mauro explained. "As a result I appointed a Blue Ribbon Commission of oil industry experts and consumer representatives to conduct an in-depth review of the state's leasing procedures.

"Despite the fact that today's lease sale was somewhat smaller than in the past, a series of new leasing policies based on the commission's recommendations are now in place and are working to increase revenue for the Permanent School Fund," Mauro said. "Without these policy changes, today's lease sale would have produced substantially less income for the state."

Mauro said new leasing policies in effect for today's lease sale included: 1) an increase from 30 to 60 days advance notification on tracts to be included in the lease sale; 2) establishing a \$100 nomination fee to discourage

companies from nominating tracts for inclusion in the sale that they have no real interest in; 3) increases in the state's minimum per acre cash bonus for all types of land; 4) measures to ensure prompt development of state leases; 5) increased analysis and identification of state tracts with significant discovery potential.

Four tracts in the Gulf of Mexico that Mauro had rejected bids on in the October lease sale received a total of almost \$2.7 million in bonuses. The new bids are approximately \$2.2 million higher than the original

rejected bids.

"I think today's substantially higher bids on these same tracts is an indication that our rejection of the original bids was certainly in the best interest of the state," Mauro said.

"The money realized from these lease sales goes directly to the Permanent School Fund to support public education in Texas," Mauro emphasized.

"These new policies will give us fair market value on production from state land and will help ensure the state receives a maximum return from its irreplaceable oil and gas reserves," Mauro said.

**FREE Tractor Care For 3 Full Years!**

**HUNT FORD TRACTOR CO.**  
1107 N 1st 864-2401

## Paint Creek Girls Finish 5th At District

The Paint Creek High School Girls finished fifth at the district meet. Two girls qualified for Regional. Lisa Bennett finished second in the discus with a throw of 96'8". Gina Kuykendall finished second in the 800 meter run with a time of 2:33.8. The 400 meter relay consisting of Missy Briscoe, Kay Fischer, Lisa Bennett and Denise Ootton finished fifth.

The 800 relay of Briscoe, Fischer, Doretha Moore, and

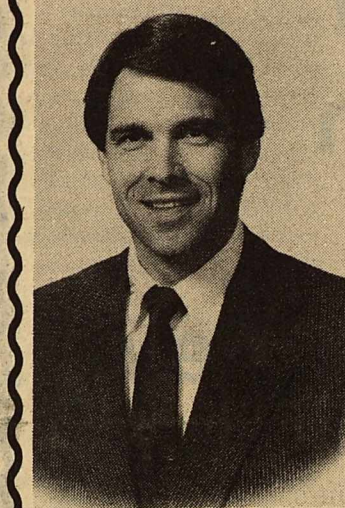
Ootton finished fourth. The mile relay of Briscoe, Ootton, Moore, and Kuykendall came in fourth. Fischer finished fourth in the high jump.

## ELECT RICK PERRY

State Representative  
64th District

- Young
- Energetic
- Honest
- Hard Working
- Democrat

(Pd. Pol. Adv. Pd. for by Tom Watson, Campg. Treas.)



## Correction

In the UIL literary district meet results, Robyn Struve who placed fourth in spelling was accidentally omitted from the list of winners.

## 7th Grade Maidens Win 2nd at District

**BY JIMMY BURSON**  
The seventh grade Maidens wound up their 1983-84 track season last Thursday at the district meet at Hamlin.

The Maidens placed second in district with a total of 109 points.

In the 400 meter relay the Maidens finished second. Relay members were Christina Camacho, Gloria Castillo, Dala Harris, and Joy McKeever.

McKeever also picked up points for the Maidens by placing first in the 100 meter low hurdles, and first in the triple jump.

In the 800 meter Gloria Castillo placed second and the Maidens 800 meter relay team also placed second.

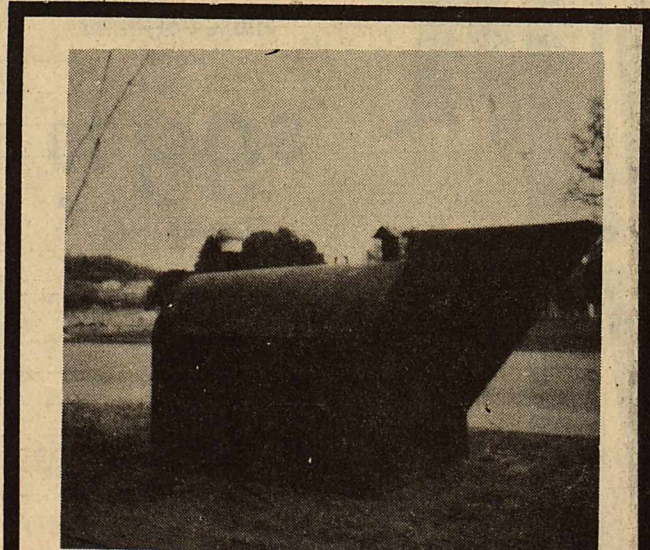
In the 100 meter dash Missy

Watland took fifth place, and in the 400 meter Teresa Rodriguez and Alice Boatman placed first and seventh respectively.

In the 200 meter dash the Maidens had fifth, seventh, and eighth place finishes. In the 1600 meter run Lakay Gibbs finished third and Shanna Langford took a fourth place finish.

The 1600 meter relay team took third place and in the high jump Watland took sixth place. In the long jump Dala Harris took fourth place and Teresa Unger took sixth place.

**NEW!** The pen that floats across the paper, "Spinnaker," a rolling ball pen by Sanford. Available in black, blue & brown. *Haskell Free Press*



## K & K STORM CELLARS

Complete Installation  
Just in time for the storm season!

We offer two sizes:  
6 ft. x 12 ft. 6 ft. x 8 ft.  
Our cellars are 6½ ft. tall inside.  
Set in concrete ★ Tar coated to prevent rust!

★ ★ ★

Call Graham 549-1340 or 549-7259

# BUILDING YOUR RETIREMENT IS AS SIMPLE AS A.B.C.

**OPEN A TAX-DEFERRED, MONEY-MAKING INDIVIDUAL RETIREMENT ACCOUNT TODAY AT COMMODORE SAVINGS.**

Retirement used to be a taxing situation. But not any longer. Because now, you can open an Individual Retirement Account (IRA) at Commodore Savings — the simple-to-understand retirement account that will save you money today so you can enjoy better tomorrows.

Just add up the benefits for yourself:

- All contributions are tax-deferred and 100 percent deductible. You pay no taxes on the money you invest in your IRA or on the interest it earns until you begin taking distribution as early as age 59½.

- Save as little or as much as you want each month. Up to \$2,000 a year if you are single and employed. Up to \$2,250 a year for a couple where one spouse is employed and the other is not. And up to \$4,000 a year for a working couple. Save as little as \$10 a month. Even skip a whole year's contributions if you prefer.

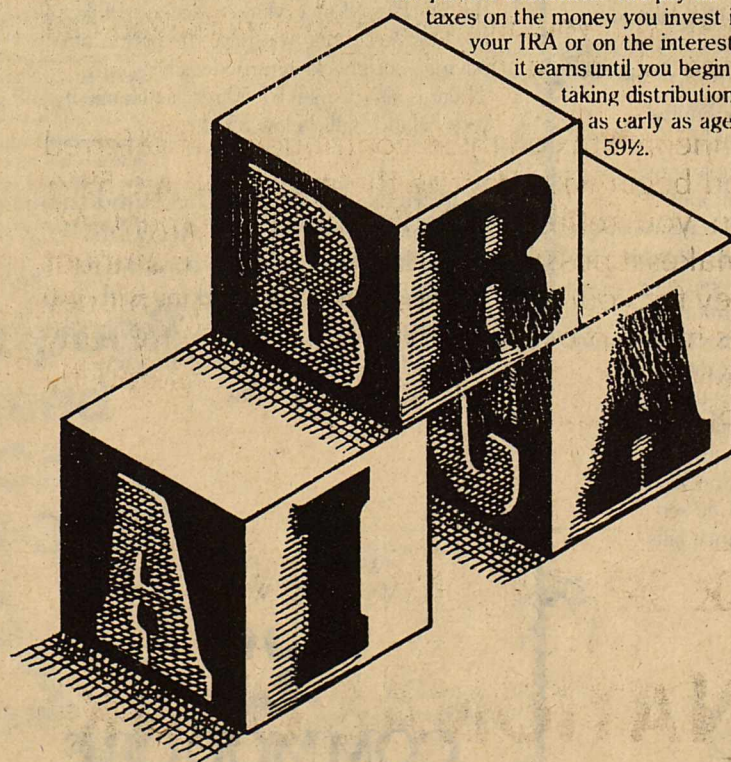
- Pay much less tax on your retirement income. By retirement age, you'll probably be in a lower tax bracket, so the taxes you'll pay on your IRA retirement income could be much less than you pay now.

- Almost everyone can qualify. If you are under age 70½ and are earning an income, you qualify for a Commodore IRA, even if you are already participating in another retirement program.

Best of all, the money you put into your IRA earns a guaranteed high compound interest rate. Save \$2,000 a year for just 20 years, and your IRA investment could amount to well over \$100,000!

Seven different retirement plans are available, including Regular IRA, Spousal IRA, Employer IRA, Rollover IRA, Payroll Deduction IRA, IRA/SEPP and Keogh Plan. Find out which plan is right for you. Call Commodore today, and build yourself a better retirement at Commodore Savings. It's as simple as A.B.C.

**CALL TODAY. (915) 773-2713**



**COMMODORE SAVINGS**

Working for you. Working with you.

QUANAH DALLAN HASKELL STAMFORD CLYDE AND THREE LOCATIONS IN ABILENE

MEMBERS, ETC.

## 21 Reasons to stay a weekend at the Kiva Inn in Abilene and Wichita Falls

1. To make your shopping spree the best ever
2. Beautifully appointed rooms overlooking an atrium
3. Luxurious suites (Prices on request)
4. Indoor swimming
5. Children's wading pool
6. Nine-hole putting green
7. Shuffleboard
8. Ping pong and pool tables
9. Game Room with exciting video games
10. Exercise Room
11. Take off that extra pound or just relax in our sauna
12. Relaxing whirlpool
13. The Library with rich paneling and stained glass windows, fantastic seafood, fine cuts of beef, and flambe cooking
14. Sidewalk Cafe Friday night chicken fried steak and fried chicken buffet for only \$4.95 per person
15. Saturday night Sidewalk Cafe Mexican buffet with live mariachi band only \$6.95 per person
16. Kiva Club-A great fun spot (in Wichita Falls a private club with memberships available)
17. Enjoy oysters on the half shell and shrimp on ice Saturday nights only in the Kiva Club (in Wichita Falls a private club with memberships available)
18. Enjoy our woodburning fireplace
19. Shop in our unique gift shop
20. People watch from one of our decks
21. Enjoy watching your small children play in their special play area

All The Above For Only **\$45** per night

Family room rate, Friday, Saturday and Sunday nights only Call 817-766-6000 Wichita Falls or 915-695-2150 Abilene or Toll Free 1-800-592-4466 and ask for The Family Weekend Special

This rate in a family rate and does not apply to group rates

**Kiva inn**  
MOTOR HOTEL

401 Broad 5403 S. First  
Wichita Falls, TX Abilene, TX

Weekend rate available through April 29, 1984



# Crop Insurance Decisions Must Be Made Soon

Some Texas farmers have until mid- to late-April to decide on insurance for their 1984 crops.

Although sign-up time is past for farmers in South Texas and in some other areas depending on the crop, farmers in central, eastern and far western areas have until April 14 to make a decision on peanuts and April 15 to decide on insuring cotton. Farmers in the plains and parts of north central Texas have until April 30 to insure cotton, but all other crops must be insured by April 15.

Basically, farmers have a choice among three different kinds of insurance, points out Dr. Ashley Lovell of Stephenville, economist with the Texas Agricultural Extension Service, Texas A&M University System.

A farmer can choose to insure his crops for 50, 65 or 75 percent of the average yield and can select from several price levels. The premium will depend on the percent coverage and price election as well as the risk area where the farm is located. Average historical yields are determined for each risk area and are used in calculating insurance premiums and coverage levels.

Farmers with high yield histories can now secure higher coverage under the Individual Yield Coverage

Plan, adds Lovell.

He reminds farmers that the base premium rates they pay vary with each crop and risk area. However, these premiums are all subsidized by the government, depending on the coverage level.

In general crop insurance is a good alternative for managing risk, contends the economist.

A farmer will collect on his insurance if the actual physical yield falls short of the guaranteed yield coverage he selected earlier. The indemnity per acre is determined by the actual yield minus the yield coverage selected multiplied by the price option selected and adjusted by the producer's share.

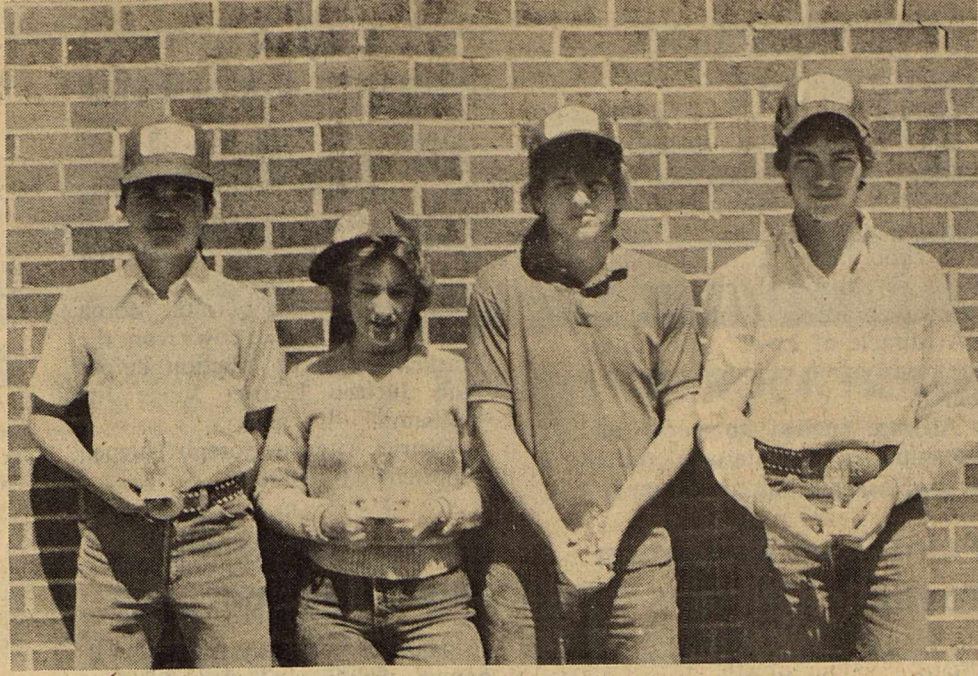
Policies can be purchased through private insurance

companies. The Federal Crop Insurance Corporation helps to market the policies and reinsures them.

Crop insurance does not cover neglect or theft but does cover unavoidable losses due to adverse weather, points out Lovell. It provides protection for physical quantity and quality losses on a specific crop.

Farmers insuring their 1984 crops will receive their premium bills around harvest time, notes Lovell. Then they have 30 days to pay or the government will start charging interest on the unpaid balance.

A farmer insuring his crops this year will automatically be reinsured from year to year unless premiums go unpaid or he cancels the policy.



HIGH SCORING INDIVIDUALS at the ACU Judging Contest held March 26 in the Range and Pasture Judging Division were John Reed, 7th, Regina Rogers, 8th and Greg Rowland, 6th. High Scoring individual in the Land Judging Division was Rob Mickler.

## Church Of Christ Sets Spring Meeting

The Church of Christ, which meets at 510 N. Ave. E in Haskell, announces their Spring Meeting with Dan Billingsly of Denton. Dates for the meeting will be Sunday, April 15 through Wednesday, April 18. Mr. Billingsly will speak at 9:30, 10:30 and 6:00 on Sunday, and each morning Monday through Wednesday at 7:00 a.m. at a thirty minute devotional service, with the main message each night at 7:00 p.m.

Billingsly was among the first evangelists in Stockholm, Sweden, where he labored for five years. During this time he worked in Norway, Finland, Denmark, and several European countries. In 1963, upon his return from Sweden, Billingsly established the first school in Dallas for training evangelists among churches of Christ. This work is now known as the Preston Road School of Preaching, and has seen twenty one classes graduate.

Billingsly has been involved in an exhaustive study in the contrast of the Old and New Testaments, especially the period covering the life of Christ as revealed in Matthew, Mark, Luke and John.

Theme for this meeting is "Understanding the Bible." Everyone is urged to be present for this series of lessons.

## J. L. Hendrix Issues Statement To Voters

To the voters of Constable Precinct 1 of Haskell County, I am trying to see as many of you as possible, but if I can't get around to everyone, I would appreciate your vote. I have been a night watchman in the City of Haskell in the past for 2½ years. I will do my best to work with and for the people with their best interest in mind. I don't know

everything about the law, but I do know some and will put forth every effort to learn all the aspects of the job of a constable. Again, I would appreciate your vote. God loves you and I do too.

J.L. (Happy) Hendrix

Low cost Classified Ads will bring positive results fast. Try them.



# ELECT Truman (Cotton) Therwhanger Haskell County Sheriff

\*Qualified

\*Graduate Dallas Police Academy

\*Experienced over 2 years Dallas Police Dept.

\*Willing to serve the citizens of Haskell County

(Pd. Pol. Adv. Pd. for by Truman Therwhanger, campg. treas.)

# Money Matters

A Series Of Informative "Plain Talk" Thoughts Regarding Your Money Matters

## The IRA Account

The Individual Retirement Account is a good investment in your future as well as a great way to pay less taxes.

With the new eligibility requirements, you may open an IRA Account even if you are already covered by a pension or profit-sharing plan at work. You may make annual contributions of up to \$2,000 into the IRA Account (\$2,250 if you have a non-working spouse). If both you and your spouse work, you can contribute \$2,000 each.

Federal income tax on these contributions is deferred until you begin withdrawing the money at age 59½ or when you retire. An Individual Retirement Account makes it possible to save an enormous amount of money for your future retirement and save money on taxes in the process. Substantial penalty for early withdrawal. Your deposits with us are insured by FDIC for up to \$100,000.

We Think Money Matters!

# HASKELL NATIONAL BANK

864-2631 • 601 N. First  
Haskell, Texas — Member F.D.I.C.

## C. E. Tidwell Issues Statement To Voters

I would like to thank all of the people in Precinct #1 for your support in the past, and would appreciate your vote and influence in the coming election.

I have no other job, so I can devote all my time as your commissioner.

Precinct #1 is in good shape financially. I have bought three new trucks, four pickups for the men to go to work in, one motor grader, and one tractor. The other four motor graders are in good shape.

In the seven years I have been your commissioner, I have enjoyed working with each of you, and helping each one in anyway I could. I have been in my place at Commis-

sioners Court each time. In the seven years I have been commissioner I have only missed court one time.

The Lord has blessed me with good health and I would like to serve as your commissioner another term. I will try to see each one of you in person, but if I should miss you, please accept this as a solicitation for your vote and influence.

My men working for me are H.L. (Cooter) Boles, Mark Whittemore, Jack Sellers, Jim Hearn and Gearld Walters. They are willing to help you anyway they can.

Thank you,  
C.E. (Chunky) Tidwell

# Haskell Lions Club Mop & Broom Sale

Thursday-April 19-8 a.m.-6 p.m.

Southside Courthouse

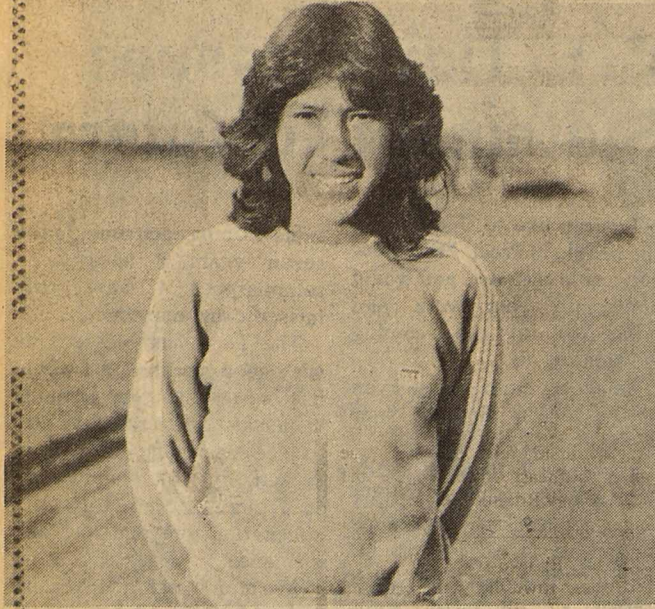
Proceeds benefit local Lions Club Projects & The Lighthouse for the Blind

Come by the Courthouse for your purchases or Complete this order blank & leave it at the Haskell Free Press or The Drug Store before Thursday & your order will be delivered.

NAME: \_\_\_\_\_ ADDRESS: \_\_\_\_\_

ITEM	DISCRIPTION	ITEM	PRICE	AMOUNT
#101	Warehouse Mop	#101	\$5.50	\$
#102	House Mop Cotton	#102	3.75	
#103	House Mop Rayon	#103	3.75	
#104	Toy (Utility) Mop	#104	2.00	
#106	Sponge Squeeze Mop	#106	6.25	
#107	Sponge Mop Refill	#107	2.25	
#110	Industrial Mop Handle	#110	6.00	
#116	16 Oz. Rayon Mop Head	#116	4.00	
#124	24 Oz. Cotton Mop Head	#124	4.00	
#142	Bug-Mugger Squeegee	#142	3.00	
#199	Lamb's Wool Duster	#199	6.75	
#201	Warehouse Broom	#201	7.00	
#205	House Broom	#205	6.00	
#206	Daintee Plastic Shoulder Broom	#206	5.50	
#207	Rainbow Plastic Bristle Broom	#207	5.25	
#208	Whisk Broom	#208	2.25	
#209	Toy (Utility) Broom	#209	2.50	
#210	Lawn Rake/Carpet Broom	#210	6.00	
#211	Flor-Adora Soft Plastic Broom	#211	5.50	
#314	14" Garage Brush W/Hdl&Sup Stiff Maroon Bristle	#314	10.75	
#318	18" Garage Brush W/Hdl&Sup Stiff Maroon Bristle	#318	14.75	
#324	24" Garage Brush W/Hdl&Sup Stiff Maroon Bristle	#324	16.75	
#418	18" Floor Brush W/Hdl&Sup Soft Black Bristle	#418	14.75	
#424	24" Floor Brush W/Hdl&Sup Soft Black Bristle	#424	16.75	
#518	18" Floor Brush W/Hdl&Sup Feather-Tip Plastic	#518	14.75	
#524	24" Floor Brush W/Hdl&Sup Feather-Tip Plastic	#524	16.75	
#660	Extra Brush Handles	#660	3.00	
#670	Extra Handle Supports	#670	2.00	
#708	Gong Brush with 8 1/2" Short Handle	#708	2.75	
#720	Gong Brush with 20" Long Handle	#720	3.75	
#730	Bowl Brush	#730	1.50	
#740	Counter Brush	#740	4.75	
#768	Grill BBQ Brush	#768	5.50	
#770	Scrub Brush	#770	1.25	
#820	Dish Towels (2 to pkg)	#820	3.25	
#821	Dish Cloths (4 to pkg)	#821	3.00	
#822	Dust Cloth	#822	1.00	
#824	Pot Holder	#824	1.00	
#825	Oven Mitts (2 to pkg)	#825	3.25	
#826	Scouring Pads, Nylon Mesh/Terry Cloth (3 to pkg)	#826	3.00	
#827	Mesh Washing Machine Bag	#827	3.00	
#828	Utility Sponge Large	#828	1.75	
#829	Sponge/Scourer	#829	1.25	
#830	Scrub-eez Scrubbers (2 to pkg)	#830	2.00	
#841	Dust Pan	#841	1.25	
#842	Pet Dish	#842	1.00	
#843	Fly Swatter	#843	.75	
#890	Toilet Bowl Deodorizer	#890	1.00	
#892	Ironing Board Cover & Pad Set	#892	5.50	
#901	Small Rubber Door Mat	#901	12.00	
#903	Large Rubber Door Mat	#903	20.00	
#911	Small Grass Door Mat	#911	4.75	
#913	Large Grass Door Mat	#913	9.75	
#1018	18" Commercial Dust Mop complete	#1018	16.00	
#1024	24" Commercial Dust Mop complete	#1024	20.00	
#1036	36" Commercial Dust Mop complete	#1036	28.00	
#1118	18" Commercial Dust Mop Refill	#1118	7.25	
#1124	24" Commercial Dust Mop Refill	#1124	8.75	
#1136	36" Commercial Dust Mop Refill	#1136	13.25	
#1500	Bus/Truck Washing Brush complete	#1500	18.25	
#1560	Extra Flow-Thru Handles for above	#1560	7.75	
#1800	18" Prof. Brass Window Squeegee complete W/hdl	#1800	14.75	
#1818	Extra Rubber Refill for Window Squeegee	#1818	2.00	
#1854	Extra Tapered Handle for Window Squeegee	#1854	2.00	
#2400	24" Industrial Floor Squeegee complete W/hdl	#2400	20.00	
#2424	Extra Rubber Refill for Floor Squeegee	#2424	6.00	
#2460	Extra Handle for Floor Squeegee	#2460	5.50	





MARY CARDOZA, Rochester Sophomore, placed 1st in the mile and 1st in the two-mile at the District track meet at Aspermont on Thursday. She will compete in the Regional track meet at McMurry in about two weeks.

### Easter Cantata Set April 18

A Community Easter Celebration will be held Wednesday, April 18 at 7:00 p.m. at Eastside Baptist Church in Haskell.

A choir made up of individuals from several local churches will present an Easter Cantata entitled "A Miracle of Love" to celebrate the resurrection of our Lord Jesus Christ.

All are invited to come and worship. The Cantata is sponsored by the Haskell Ministerial Alliance.

### Paint Creek Reception To Honor Rick Perry

A reception will be held from 6:30 to 7:30 p.m. April 19, in the Paint Creek High School honoring Rick Perry.

Perry, a native of Paint Creek and a 1968 graduate of Paint Creek High School, is a candidate for State Representative of the 64th Legislative District in the May 5 Primary.

All area residents are invited to attend the reception.

### Pritchett Receives Sentence For Plea

Tony Gene Pritchett, 32, of Denton County, received a five year probated sentence, a \$500.00 fine and was ordered to pay restitution of \$800.00 Monday in District Court.

Pritchett pled guilty to the March 4 theft of 10 head of cows from the Haskell Livestock Auction before 39th Judicial District Judge Joe Williams.

District Attorney Joseph Thigpen represented the state.

### Singing Convention Scheduled April 21-22

Plans are underway for the 93rd annual Haskell County Singing Convention April 21 and 22.

The event will include singing Saturday afternoon and evening at the Assembly of God Church and all day Sunday in the Community Building of the Haskell National Bank.

A complete schedule and details of the convention will be published next week.

## BUY-SELL-RENT-HIRE... Classified Ads

**NOTICE**  
The deadline for Classified Advertising is 12 noon on Tuesday.  
**Haskell Free Press**

**NOTICE**  
The Haskell Free Press reserves the right to edit and/or delete all news stories and locals for length and liability and to refuse to print anything deemed not newsworthy.

**For Sale**  
FOR SALE: 30' Holiday Traveler, self contained travel trailer. Call 864-3682 after 5. dcf

FOR SALE: 14x76 Schult mobile home to be moved. 2 bedroom, 2 bath, central heat, Whirlpool refrigerated air conditioner, kitchen appliances. \$3000.00 equity and assume \$7500.00 loan. 817-864-2962 after 5:30. 15-16p

FOR SALE: 1967 Chev. 3/4 ton pickup. Good motor, rear end and automatic transmission, wide bed, good tires, tool box, new battery. \$750.00 firm. Cash only. See at 901 N. Av D. 15c

FOR SALE: Lawn mower. Professional hi-wheel, 5 horse Briggs & Stratton, 22" cutter. Wholesale price \$448.16. Special price \$375.00. See at Smitty's Auto. 15c

FOR SALE: 1982 Toyota pickup SR-5, air, gauges, bucket seats, \$5595.00; Fisher receiver and turntable, \$200.00; 2 child bicycle seats, \$5.00 each. 864-8011. 15p

FOR SALE: 1983 Delta 88 Oldsmobile, 2 door, loaded. 864-2452. 15p

FOR SALE: 1973 Ford Pinto. Good mechanical shape. Also Baldwin Fun Machine, easy play organ with beginner's book, stool and head phones. Call 997-2524 after 5 p.m. 15-16c

FOR SALE: 10 hp Briggs & Stratton riding lawn mower, electric start, transaxle, headlights, like new, \$595.00. Also one 20" mower, 997-2186. 15c

PETITE ROLEDEX: the perfect file for telephone numbers and addresses. Typewriter spaced lines. Replacement refills. Decorator colors and styling for home and office. Haskell Free Press. 15c

**For Sale**  
FOR SALE BY OWNER: 1950 Chev. 6 cyl., 2 ton truck, big winch, and gin poles, \$750.00; 3-2000 gal. steel fuel tanks, \$1000.00 each; 5-service station electric fuel pumps \$500.00 each; 1954 2 ton Chevrolet, 6 cyl., \$250.00; Large 2 wheel steel stock trailer. 103 North 1st, Haskell, Texas 817-864-2146 or 864-3147. 5tfc

Thousands enjoy the benefits of "ALOE VERA". We are now taking orders for ALOE VERA "Forever Living Products". Unspoiled by preservatives. Satisfaction guaranteed. Phone 864-3330. 14tfc

FOR SALE: Several extra good used lawn mowers. Also can repair or tune-up your lawn mower for spring and summer use. 605 N. 6th St. 864-3590. 12-15c

CATFISH FINGERLINGS. Now booking orders for spring delivery. Douglass Fish Farm. Sylvestor, Tx. 915-993-4487. 7tfc

SHAKLEE products, 100% NATURAL VITAMINS, herb lax, food supplements, and cosmetics. Products in stock at 300 N. Ave. H. 864-3330. Free deliveries in Haskell. 26tfc

FOR SALE: AKC Cocker puppy. Blonde, 7 weeks old. Pick of litter. See Maxine Hannz or call 915-773-3879. 15p

FOR SALE: Farmall 20 tractor and planter. Good running shape \$250.00. Call 864-2728. Ed Honea. 15tfc

FOR SALE: Tide Craft 14' bass boat. 33 hp Johnson motor, electric start. Little Dilly trailer. Good condition, \$995.00. 21" TV module, good shape, \$90.00. 864-3221. 1700 N. Av F, Haskell. 15p

FOR SALE: 1973 Plymouth Nova, 4 door sedan with power, clean and ready to go, \$795.00. Call 864-2536 or 864-3725 after 5:30. 11tfc

FOR SALE: 1980 model Fiat sport convertible. Gold and black. Low mileage. Must see to believe. 35 mpg. 864-2756. 15-17c

FOR SALE: 1 Sony Betamax Video Tape Recorder/Player. \$725.00. Ed Walling. Business 864-2959. Home 864-3845. 15-17c

FOR SALE: 2 Shetland-Welch ponies—mixed. 864-3236. 15-16p

FOR SALE: 1983 Chev. Silverado 4x4 short-wide, automatic, 305 4 bbl., AM-FM, cassette, power windows-door locks, cruise control, tilt wheel, auxiliary gas tank, dual exhaust, toolbox, siderails, running boards, sliding rear glass, 4 Yokohama tires. May see at 1103 N. Av L. 817-864-3359. 15c

**For Sale**  
FOR SALE Pre-fabricated Concrete Cellars. Tony Williams 864-3674 or 864-2419. 12tfc

FOR SALE: Several good used reconditioned washers and dryers, with guarantee. Frazier's Appliance. 864-2756. 13tfc

FOR SALE: 1981 Luv diesel, new tires, AM/FM stereo, A/C, long bed. 1982 Prowler 33' travel trailer. Self-contained, sleeps 8, dinette, AM/FM, cassette, 8 track player, quad ceiling sound, TV antenna. 864-3705. 11tfc

US Price your next prescription. You will be glad you did. Johnson Pharmacy. 17tfc

FOR SALE: 1975 Ford 3/4 ton pickup. Call 864-3729 or 864-3412. 35tfc

DE-SURFACE concrete with attractive cool epoxy and stone. Beautiful outdoor flooring for pool, patios, porches, walks, and driveways. Call for samples and free estimates. 864-2629. 12tfc

FOR SALE: 1970 Toyota Corona, 4 door, paint and body in fair condition. Call 864-8056 after 5 or 864-2305 ask for Ken. 14-15wd

### Miscellaneous

INSTANT CASH for good used merchandise. A little or a lot. Phone 864-3197 anytime. Lackey's Hwy 380 East, Haskell, Tx. 6tfc

WATER WELL DRILLING: House well, Stock, Irrigation Wells, Test Holes. Call W.P. Hise, 864-3727 Haskell, Tx. (Day or Night). 7tfc

CIRCLE C DECORATING: "INTERIOR AND Exterior Renovation". See Steve Cottron for your interior or exterior painting, hanging wallpaper, paneling and siding needs. 864-3919. 39tfc

CIRCLE C DECORATORS specialize in home workshops, storage houses and rec. rooms. Call Steve Cottron for details. 864-3919. 37tfc

CLEAN CARPETS the inexpensive and safe way with Blue Lustre. Rent electric shampooer. Perry Brother's. 19tfc

CHECK our prices at THE DRUG STORE. We will both be glad you did. 14tfc

HOME DECORATORS. Painting-Insulation. Free Estimates. Phone 743-3592 or 743-3550. V.A. Mitchell—Bobby O'Neal. Rochester. 3tfc

"I know every bolt and beam. Block knows every deduction and credit."

There's no room for mistakes when it comes to my taxes. That's why I go to H&R Block. They really stand behind their work. And they're around all year if I need them. So when it comes to taking care of my taxes, I take them to H&R Block."

People who know their business go to

**H&R BLOCK**

Haskell 864-3087      Stamford 773-3203  
115 N. Ave. E      600 N. Swenson

**ELECT Johnny Mills Sheriff Haskell County**

Your vote and influence will be appreciated

(Pd. Pol. Adv. Pd. for by Johnny Mills, campaign treasurer)

### Registration Set For Girls Softball

Registration is now underway for girls softball. Two leagues are formed—one for younger girls 3rd through 6th grade and an older league of 7, 8 and 9th graders.

If interested and you have not already signed up please contact Julia Harrell, Muriel Nanny or Zona Medford.

### Jr. Parents Set Work Nights

All parents of Haskell High junior students are urged to attend work nights at the Haskell Country Club, April 16 and 23.

The junior parents are in charge of planning and decorating for the Junior-Senior Banquet.

Everyone is asked to bring scissors and glue for the worknights.

**ALLSUP'S CONVENIENCE STORES**

\*PRICES EFFECTIVE APRIL 12-14, 1984

- SELF SERV GAS - GROCERIES
- OPEN 24 HOURS - EVERYDAY
- "THERE'S ONE NEAR YOU"

<p>ALLSUP'S COOKED FOOD SPECIAL</p> <p><b>SAUSAGE ON A STICK</b></p> <p>AS FEATURED ON T.V.</p> <p><b>99¢ EACH</b></p>	<p>ALLSUP'S ASST. RND CTN.</p> <p><b>ICE CREAM</b></p> <p>1/2 GAL. CTN. <b>\$1.69</b></p>
<p><b>EASTER BASKETS</b></p> <p>LARGE \$8.99</p> <p>MEDIUM \$7.99</p>	<p>Hunts Ketchup 32 oz. <b>99¢</b></p> <p>Chicken Patty Sandwich <b>99¢</b></p>
<p>DISH DETERGENT T.V. SPECIAL</p> <p><b>SUNLIGHT</b></p> <p>12 OZ. BTL. <b>45¢</b></p>	<p>SWIFT VIENNA SAUSAGE <b>2.79¢</b></p> <p>5 OZ. CANS</p>
<p>CONTADINA TOMATO SAUCE <b>7.00</b></p> <p>8 OZ. CANS <b>\$1.00</b></p>	<p>BORDEN'S BUTTERMILK <b>1.09</b></p> <p>1/2 GAL. CTN.</p>
	<p>6 pack 16 oz Non Ret. Bottles <b>2.29</b></p>

## EMERGENCY MEDICAL SERVICE

24 Hour Ambulance Service  
Oxygen Equipped  
Complete Insurance filing for, Medicare, Medicaid, or Private Ins

Licensed Personnel  
3 Ambulances

### Haskell Co. Emergency Ambulance Service

307 North 1st Haskell      **864-2621**      Office 864-3945  
EMERGENCY NUMBER



# WANT ADS Work Wonders!

**Miscellaneous**

We pack SELLING POWER in our CLASSIFIED ADS.

WILL BUY minerals, royalty, overrides, and producing wells. P.O. Box 11193, Midland, Texas 79702 or 915-682-6191. 9-17p

FOR PERMANENT HAIR REMOVAL call Billie Freeman, Certified Electrologist, at Martha's Beauty Center. 864-2192. Wednesday and Thursday. 1006 N. 6th. 12-17p

WILL SHARPEN SCISSORS. \$1.50 pair. C & G Feed & Seed. 300 N. 1st. 864-2725. 12-15c

**Help Wanted**

DON'T SHAMPOO dirt into your carpet. Steamex it out the professional way. Steamex pulls out dirt other cleaners can't begin to reach. Rent Steamex at Kay's Cleaners. 12tf

GENERAL SHELTERS of Texas, Inc. is seeking a dealer in Haskell area for retail sales of portable buildings. Lot and small investment required. Excellent opportunity to expand existing business with low risks. Contact Mike Wolf, General Manager 817-422-4548. 12-15p

NATIONAL HOME HEALTH AGENCY has openings for RNS and Home Health Aides. Great benefits with excellent opportunity for advancement. EOE. 817-888-5223. 14-15c

FEDERAL, STATE & Civil service jobs now available in your area. Call 1-619-569-8304 for info. 24 hrs. 14-16p

PART TIME take inventory in Haskell stores. Car necessary. Write phone number, experience to: ICC 508, Box 527, Paramus, NJ 07652. 15-17p

LVN needed for a supervisory position with a Home Health Agency, providing services to elderly and disabled. Call 1-800-592-4499. 15p

11-7 shift. Paid shift differential, paid insurance, holidays, sick leave, vacation, weekends off. Plus other benefits. Knox County Hospital, Knox City, Texas. Contact Melba Pharr, Director of Nurses. Call collect 817-658-3535. 15-16c

NEED BABYSITTER for summer. Call 864-2721 or 864-3359. 15c

WANTED: Need someone to clean house 1 day per week. 864-3197. 14tf

**Wanted**

WANTED: Someone to shell my pecans on the halves. 864-3741. 15c

**Garage Sales**

YARD SALE: Fri., April 13, 9 to 5, furniture, clothes and lots of misc. 501 Second St., Rule. 15p

4 FAMILY GARAGE SALE: 100 N. 3rd. Thursday only. Radios, children's clothing, tricycle, Hot Cycle, material and lots more. 15p

IN HOUSE SALE: 304 N. 5th. Open at 9:30. Lots of Corningware, pots and pans, canning jars, pitchers, women's clothes size 12, boxes of nails. Sat. April 14. 15c

GARAGE SALE: 1/2 price of what was left of my garage sale. 1404 N. 3rd. Behind radio station. Thursday. 15p

CARPORIT SALE: Sat. April 14, 8:00-4:00 only. Lots of size 9. Several formals, like new. Misc. items. 204 S. Av H. 15p

CARPORIT SALE: Weather permitting at 1407 N. Av J. Friday and Saturday from 8-5. Lots of nice children's clothes. Baby items, maternity clothes, dishes and appliances, ladies clothes and shoes, toys and much more. 15p

BACKYARD SALE: 406 N. Av B. 9 to 5 weather permitting. Self-propelled lawn mower, 1 man bass boat, toys, hobby horses, mens, women and children clothing, mens overalls, dinette suite. 15p

CARPORIT SALE: 110 S. 1st. Sat. 8-4. Lots of kids, mens and womens clothing. Lots of dishes. 15p

GARAGE SALE & Bake Sale. Sat. 14th. Girls bicycle, dining table, lots of clothes and misc. 406 S. F. 15p

**Jobs Wanted**

WILL REPAIR vacuum cleaners and small appliances. Pickup and deliver in Haskell. Charley Redwine, 1100 N. 8th, Haskell. 864-2595. 15-16p

WANTED: Houses to clean. I have worked for builder contractors in a large city cleaning houses for show and sale. I can do your spring cleaning or your basic weekly cleaning. Call anytime during the day or after 5. 864-3545. 15-16p

CARPENTRY, PAINTING, repair and remodeling, fireplaces and all types bricklaying. Experienced. Erwin Lehde. 864-3169. 15p

**Public Notice**

**NOTICE TO BIDDERS**  
The City of Haskell will accept sealed bids for the purchase or lease of a motor grader until 7 p.m. April 24. Specifications are available at City Hall. The City of Haskell reserves the right to reject or accept any or all bids. 14-15c

**NOTICE OF OPPORTUNITY FOR PUBLIC HEARING ON PERMIT APPLICATION FOR SOLID WASTE SITE**  
CITY OF HASKELL has filed Application No. 1604 with the Texas Department of Health for a permit to operate a proposed Type II municipal solid waste disposal site to be located approximately 4 miles east-northeast of Haskell, 2.6 miles west of the junction of FM Highway 266 with U.S. Highway 380, 300 feet northwest of the junction of FM Highway 618 with U.S. Highway 380, and 300 feet northwest of U.S. Highway 380 in Haskell County. The site consists of approximately 65 acres of land, and is to be used to receive and store approximately 10.5 tons of solid waste under the regulatory jurisdiction of the Texas Department of Health. The application is being processed and the final decision will be made by the Department pursuant to the provisions of the Texas Solid Waste Disposal Act (Article 4477-7, Vernon's Texas Civil Statutes), the Texas Department of Health's Municipal Solid Waste Management Regulations, and the Administrative Procedure and Texas Register Act (Article 6252-13a, V.T.C.S.). No public hearing will be held on this application unless a person affected has requested a public hearing. Any such request for a public hearing shall be in writing and contain the name, mailing address, and phone number of the person making the request; and a brief description of how the requester, or persons represented by the requester, has suffered or will suffer actual injury or economic damage by the granting of the application. If a hearing is requested by a person affected, notice of such hearing will be provided to the requester and will also be published in a newspaper of general circulation in the area where the site is located at least 30 days prior to the date of such hearing. If no request for a hearing is received within 30 days of the date of publication of this notice, the Department will make a decision. Requests for a public hearing and/or requests for a copy of the technical summary of the application prepared by the Bureau of Solid Waste Management shall be submitted in writing to the Chief, Bureau of Solid Waste Management, Texas Department of Health, 1100 W. 49th Street, Austin, Texas 78756. A copy of the complete application may be reviewed at the Bureau of Solid Waste Management or at the Department's Public Health Region 4 headquarters located at Commerce Plaza Office Building, 1290 S. Willis, Suite 100, Abilene, Texas 79605; telephone (915) 695-7170. Issued this 9th day of April 1984. Robert Bernstein, M.D., F.A.C.P., Commissioner of Health Texas Department of Health BY: Hal L. Nelson, General Counsel Texas Department of Health 15c

**Card of Thanks**

CARD OF THANKS  
The Hopewell Baptist Church, pastor and members wish to thank everyone who helped make our barbecue dinner a success. A special thanks to L. C. Johnson, Jr. who cooked the meat and to Marie Jameson who worked so hard selling tickets. Also an apology to all who did not get a plate. 15p

Advertise where it pays in the Haskell Free Press

**Bus. Opportunity**

OWN A BEAUTIFUL Children's Shop. Offering the latest in fashions. \*Health Tex \*Izod \*Levi \*Lee \*Jordache \*Chic \*Buster Brown and many more. Furniture and accessories by Gerber and Nod-A-Way. \$14,900.00 includes beginning inventory-training-furniture and grand opening promotions. Prestige Fashions 501-329-8327. 15p

SATELLITE ANTENNA dealerships available. No experience required. Dealer cost for complete unit as low as \$599. Retail \$1395. Call day or night 303-574-4988. 13-16p

**Open Your Own Fashion Store**

We will help you make your dream of owning your own business come true. Our 10 year old company will supply you with training, fixtures, supplies, & a beginning inventory of famous lines such as Calvin Klein, Gloria Vanderbilt, Chic, Lord Issac, Condon, Stuffed Shirt, Jordache, and Zena. Purchase is \$16,500. For more information call Marti Hutchinson collect at (405) 238-5429. 15p

**The Source**

FOR RENT: Self storage. A few units, large enough for bass boats. 864-2629. 510 N. 1st St. Lanco Insurance. 12tf

FOR RENT: Small house in country west of Rule. Has storm windows, city water, storm cellar. 4 person limit. \$125.00 month and deposit. 997-2186. 14tf

FOR RENT: 1 two bedroom furnished trailer. 1007 N. Av J. Call Dee Larned, 864-2612. 14-15c

FOR RENT: 1 three bedroom house. 1 one bedroom house. Call 864-2504. 14-15p

HOUSE FOR RENT: 3 bedroom, 2 bath brick. Call 915-672-9216. 15-16p

**Real Estate**

FOR SALE: Modern 3 bedroom house, approx. 2,000 square feet floor space. 10 miles northeast Stamford. 4 miles West Lake Stamford on FM618, call 915-773-3373. 15-17p

**Real Estate**

FOR SALE: 3 lots. Corner lot, \$3000.00. Other lots \$2,000.00 each. 1003 S. Av E. 864-3128 after 5:30. 15p

FOR SALE OR RENT: Building in Rule. Has new roof. Call 997-2186. 15c

LARGE BUILDING for sale or rent on South Avenue E. Call Jones Plumbing 915-823-2169, Anson. 14tf

FOR SALE: 7 room, 1 bath house on 1 acre land for sale. In country. Call 817-997-2732. 14-15p

FOR SALE: 160 acres 2 miles S.E. of Rule. \$450.00 acre. 112 acres in cultivation, caliche pit and pasture, 1 oil well. See or call Harley Langford, 864-2849. 14tf

FOR SALE: One bedroom house on close in business lot. Every convenience. Also solid maple 6 piece bedroom suite. Good price. Call 864-3131. 14-15p

200 acres 9 miles Northwest of Haskell. 185 acre cotton base. Some minerals. \$800 acre. Call after 6 p.m. 817-864-3579. 15-16p

**New House For Sale**

1800 sq. ft. brick, 2 baths, fireplace, covered patio, built ins, 2 car garage, outside City limits. Qualifies for farm loan.

**Lumber Yard**  
864-3552  
after 5 864-3431. 1tf

**FOR SALE**

Nice homesight, 16 acres with water well. Ready for mobile home. 5 miles east of Rochester. Lots of amenities. \$20,000.

Haskell County Farm—160 acres excellent soil, 2 irrigation wells without pumps. Approximately 1 mile east of O'Brien. \$850 per acre, must sell to settle debts, loan available. Owner financing available.

14 acres all cultivated, 2 miles South of Knox City. Use your Texas Veterans. \$20,000.00.

207 acres 1 mile north of Knox City. Has assumable loan for \$60,000. Salt water disposal will pay \$100 a month. \$900 per acre.

IN ROCHESTER: Super buy. Completely remodeled, 3 bedroom, 2 bath, living room, kitchen, dining room. 2 lots. Large workshop, good neighborhood. Must sacrifice. \$29,000.00. Call on this one soon.

**Counts Insurance & Real Estate**

Knox City 817-658-3211

**NOSTALGIC ROCK HOME**

Has porch swing, large pecan trees, 3 bedrooms, 1 bath. Lots of storage. Good condition. Detached two car garage. Close to downtown.

Call Betsy Nanny 864-3521 after 5 or Joan Lain 864-8988 12tf

**NOTICE**

Lois LeFevre has joined our Firm as Salesman, come in and get acquainted with her and let her help you with your Real Estate needs. Our office will be open full time now. Monday thru Friday 9:00 to 5:00.

**Frances Arend Real Estate & Insurance**  
408 North First 817-864-3880 Lois 817-997-2586 15c

**REAL ESTATE LISTINGS WANTED**

We Don't Just List: We Sell

I am on call and ready to talk to you about your Real Estate at any time if you are interested in buying or selling, please call me. I am full time in Real Estate and will try harder to please you.

**LORAIN JOHNSON REALTOR ASSOCIATE**  
Bus. 864-2665 Res. 864-2951  
After Hours and Weekend Welcomed  
H.H. HARTSFIELD, BROKER 11tf

**FOR SALE**

NEW 3 BDR. located at 712 S. 12th.

3 BEDROOM BRICK on N. Av L. Central H/C. Utility room, fenced yard, ceiling fans. Clean and immediate possession. Owner transferred.

NEARLY NEW, large commercial building on 380 East. Has office space and rest rooms. On extra large lot.

ONE OF HASKELL'S BEST: Brick 4 bedroom-2 1/2 bath located on 1/4 block: 605 N. F. has hot tub and outside landscaped lights. A lot of living in a choice location in this one. Quality built with many extras. Must see to appreciate.

325 ACRE Haskell Co. farm. All cultivation. Located northeast of Stamford.

EAST SIDE FINA STATION in Haskell. Small house, and extra lot goes with this property.

NEW AND READY FOR OCCUPANCY. 3 bedroom, 2 bath brick with double garage and large patio. Only \$59,000.00.

3 YR. OLD COUNTRY ROCK. 5 bedroom, large den, living room, dining room, located on 17 acres of land with option lease. 12 acres pasture. Plenty of water. 8 miles northwest of Haskell or 2 1/2 miles northeast of Rule.

3 BR., 2 bath, with utility close to High School. Newly remodeled.

LARGE OLDER HOUSE on N. 3rd. 3 or 4 bedroom, large living room. Has double garage and storage building. Ready to move in or would be a good one to do your own thing with.

OUTSIDE CITY LIMITS. 3 bedroom, 1 1/2 bath on extra large lot. Patio, carport, garage, storage bldgs. & water well. Kitchen built-ins including microwave oven & Genaire range.

LOT FOR MOBILE HOME with hookups owner will carry at 12% with \$500.00 down.

**Real Estate**

COUNTRY LIVING with city conveniences. One to five acre tracts outside city limits. Three miles southeast of courthouse off Paint Creek Rd. 806 995-4510. 14tf

FOR SALE: Two-story building. 3 bedroom, town house apartment upstairs, 7 car parking space rentals. Excellent buy. 111 N. Av D. Phone Jo Matthews, 405-255-7744. Would lease to right party. 9tf

HOUSE FOR SALE: 3 bedroom, 2 Whirlpool refrigerated air conditioners, large carport with storage room, chain link fence with storage house, several fruit trees, storm windows. 401 Amity Rule. 997-2206 after 4:30. 11-16c

**Real Estate**

Barney Arnold Real Estate 658-3509 Knox City, Texas

FOR SALE IN RULE: 3 B/R, 1 1/2 acres land. Good location and other buildings. Real nice and cheap price. 13-15p

**FOR SALE**

Large white brick church bldg, 300 North 3rd.

Rochester Cafe, owner would finance.

Three bedroom 1 bath frame, South of Rochester on two-tenths acre.

Building lots East Third. 81' X 140'.

Building lots on North Ninth. 140' X 140'.

**Frances Arend Real Estate & Insurance**  
408 North First  
817-864-3880  
817-864-3156  
Lois LeFevre  
817-864-2586 15c

**PAT'S TV Service**  
10 Ave D  
Service Calls  
864-2067  
25 Years Experience 15-18c

**Used Color TV Sets**  
19 and 25 inch  
Some remotes.  
**Owens Radio & Electric** 14tf

**HOMEOWNERS POLICY**  
Call: Brian Burgess  
703 N. Av E  
864-3250  
State Farm Fire and Casualty Company

**Good Used Color TV's, Stereos & Washer/Dryers**  
**Anderson Tire Co.**  
206 S. Av E Phone 864-2900 ttf

**Professional Painting**  
Inside, Outside  
Drywall & Acoustic Ceilings  
Quality Work  
Reasonable Prices  
864-2859 14-15p

**CA'S Small Engine Repair**  
Overhauls, tune-ups  
Located in my workshop  
behind 507 S. 9th St.  
864-3241 14-15p

**Painting & Dry Wall Acoustic Ceilings**  
Call Donnie Green  
864-3114 15-18p



**Carpentry & Cabinets**  
Remodeling, Painting, Repair.  
All types of work!  
**Bobby Stickney**  
997-2748 Rule, Tx

If you aren't satisfied with your Health Insurance call  
**C.H. "Bud" Herren**  
864-3322 or 864-3087

**INSURANCE**

**Life • Health Auto Farm • Home**  
**CHARLES THORNHILL**  
522 South 2nd, Haskell  
—Phone 864-2842—  
 National Farmers Union Insurance Companies

**POL. CALENDAR**  
The Haskell Free Press is authorized to make the following announcement for the political office in Haskell County, subject to the action of the Democratic Primaries in 1984. Unless otherwise specified the candidates listed paid for the announcement, and have designated themselves as campaign treasurer. All political advertising, announcements, and printing is cash in advance.

**U.S. Representative, 17th Dist.**  
Charles Stenholm  
(Pd. for by Charles Brownfield, camp. treas.)  
**State Senate, Dist. 30**  
Ray Farabee  
(Re-election)  
(Pd. for by Jerry K. Estes, camp. treas.)  
**State Representative Dist. 64**  
Sam Newcomb  
Rick Perry  
(Pd. for by Tom Watson, camp. treas.)  
Kenneth F. Neighbors  
**District Attorney**  
John Fouts  
Joseph Thigpen  
(Re-election)  
(Pd. for by Pam Thigpen, camp. treas.)  
**Sheriff**  
Phil Coleman  
Johnny Mills  
Jack Whorton  
(Pd. for by Patrick Pace, camp. treas.)  
Truman Therwanger  
E. "Bud" LeFevre  
**County Attorney**  
Charles Chapman  
**County Tax Assessor**  
Collector  
Bobbey Collins  
**Commissioner Precinct 1**  
T. C. (Tim) Burson  
C. E. (Chunky) Tidwell  
(Re-election)  
**Commissioner Precinct 3**  
J. R. (Ray) Perry  
**Constable, Precinct 1**  
J. L. "Happy" Hendrix  
D. L. "Jack" Speer  
(Re-election)  
**Constable, Precinct 5**  
Troy Brown  
Sam Basden  
(Re-election)  
(Pd. for by Alton Byrd, camp. treas.)  
E. Gregg Hearn  
(Pd. for by Kenneth P. Russel, camp. treas.)  
**Constable, Precinct 6**  
W. A. Beard  
L. V. "Sonny" Pittcock

**SEEKING EMPLOYMENT**  
The new Jobs Training Partnership Act may be able to assist you in getting started on a job.  
Apply: Thursday, April 19 & 26—10:30 a.m.  
**Haskell County Courthouse Commissioners' Courtroom**  
Must meet certain U.S. Department of Labor guidelines and be at least 16 years old to qualify.  
**West Central Texas Council of Governments**  
915/ 672-5633  
Equal Opportunity Employer 15-16c

**Doyle High Real Estate**  
Commercial lot on south highway 277. Over 1/2 block of frontage.  
2 acres just outside city limits on east side. Priced to sell.  
Enjoy this summer more! Own your own Lake house in Earles' Camp. 3 bedrooms; refrigerator, stove, and furniture included. Water well, dug channel and boathouse. Shady double lot.  
Country living northwest of Rule. 2 bedroom, 1 1/2 bath, home completely remodeled inside. Surrounded by evergreens. Water well. Large den with fireplace. Spacious kitchen includes Jenn-Aire range.  
Lots for sale at N. Avenue H and 9th. Would consider trading for small house.  
Three bedrooms and 2 baths provide room for a family on a budget. Large den adjoins kitchen and dining area. Central heat and air. Fenced backyard with large storage building. Owner anxious to sell.  
We have other homes for sale not described here. Call us to buy or sell.  
Priced right. 2 bdr., 1 bath small frame home. Selling price includes washer & dryer, refrigerator & metal dinette. Excellent investment as rent property.  
**Doyle High, broker—864-3872**  
**Betsy Nanny — 864-3521**  
**Roberta High — 864-2815**  
**Debbie Earles — 864-2216**  
**Viola Wilcox — 997-2640**

**Hartsfield Realty**  
864-2665  
**THE REALTOR WITH A HEART**  
AFTER HOURS & WEEKENDS  
Lorraine Johnson 864-2951  
Hess Hartsfield 864-2004

**Gonzales Plumbing & Repair**  
24 Hour Service Except for Sundays  
**Roto Rooter Service**  
**Sprinkler System Repairs**  
Licensed Plumber  
864-2190





**AFFILIATED**

WE HONOR ALL AFFILIATED TV ADVERTISEMENTS

1200 N. Ave E.  
Haskell, Tx.

Open 8 a.m. til 8 p.m. Daily  
Sunday 9 a.m. til 6 p.m.

Specials Good Thru Sun., Apr. 15

**DOUBLE COUPONS**

each TUESDAY & WEDNESDAY at Modern Way Food Stores

We will redeem all manufacturer's "cents off" coupons for DOUBLE their value when the product is purchased.

—LIMIT—1 COUPON PER ITEM—

This policy does not include retailer (any food store) or free coupons, cigarette or tobacco coupons or refund certificates. The total redemption will not exceed the value of the item.

**Join Us In Our 3rd Birthday Party**

Register for a Sunbeam Oval Burner Gas Grill to be Given Away Saturday April 14th 6 P.M.

**Lunches To Go**

From 11 a.m. til 2 p.m. Daily

**Chicken Dinner  
Barbecue Plate  
Smoked Sausages**

**\$2.69**

With All Fixings

plus tax

USDA Choice Heavy Beef

Boneless **\$1.58** lb  
**Round Steak**  
Tenderized **1.78** lb

U.S.D.A. Choice Heavy Beef Boneless Top	<b>\$2.09</b> lb
Round Steak	
Boneless	<b>\$2.49</b> lb
Sirloin Tip Steak	
Boneless Rump or Pikes Peak	<b>\$1.89</b> lb
Roast	
Lean & Tender	<b>\$2.99</b> lb
Cube Steak	

Swift's Tend'r Lean Family Pack	<b>\$1.28</b> lb
Pork Chops	
Swift's Tend'r Lean Center-cut Loin	<b>\$1.69</b> lb
Pork Chops	
Center Cut Loin	<b>\$1.79</b> lb
Pork Chops	

Gooch German Sausage	Buy 2 At Reg. Price Get 1 Free
Shurfresh Sliced Assorted	<b>69¢</b> 6 oz pkg
Meats	
Decker Meat or Beef	<b>\$1.29</b> 1 lb pkg
Jumbo Franks	

Gooch Franks	Buy 2 At Reg. Price Get 1 Free
Silver Spur Sliced Slab	<b>\$1.39</b> lb
Bacon	
Market Packed Hash Brown	<b>59¢</b> lb
Potato Patties	

Fresh Back	<b>98¢</b> lb
Beef Ribs	
Affiliated	<b>\$1.99</b>
Corn Dogs	10 Ct. Pkg.
Shurfresh	<b>\$1.39</b>
Singles	12 Oz. Pkg.

Shurfine **Pork & Beans**  
**Tomatoes**  
Mix or Match  
**3** 16 oz cans **\$1.00**  
Limit 3

Shurfine **Toilet Tissue**  
4-Roll pkg **68¢**  
Limit One  
With \$10 Purchase or More

Shurfine **Bleach**  
1-gal size **48¢**  
Limit 2

Shurfine **Macaroni & Cheese Dinners**  
**6** 7 1/4 oz **\$1.00**  
Limit 6

Shurfine Applesauce	<b>3</b> 16 oz cans <b>\$1.00</b>
Shurfine Soft Spread	<b>99¢</b> 2 lb size
Margarine	

Shurfine Hamburger	<b>99¢</b> 32 oz jar
Dill's	
Shurfine Peach Preserves	<b>99¢</b> 18 oz jar

Shurfine Vegetable Oil	<b>\$1.99</b> 48 oz
Lightcrust Flour	<b>89¢</b> 5-lb bag

Shurfine Instant Tea	<b>\$1.59</b> 3 oz jar
Lightcrust Pouch Mixes	<b>\$1.00</b> 5 6 oz pkg

Shurfine **Golden Corn Sliced Beets**  
Mix or Match  
**3** 16 oz cans **\$1.00**

**Dr. Pepper**  
Reg. & Sugar, Pepper Free  
2-Liter No Deposit **79¢**

Shurfine **Homo Milk**  
1-gal jug **\$1.99**

Shurfine **Green Beans & Blackeye Peas**  
Mix or Match  
**3** 16 oz cans **\$1.00**

Shurfresh Sweetmilk & Buttermilk **Biscuits**  
**5** 8 oz cans **\$1.00**

Shurfine Frozen **Corn on the Cob**  
**4** ear pkg **\$1.19**

Shurfine **Tomato Sauce**  
**4** 8 oz cans **\$1.00**

Maxwell House **Coffee**  
1-lb can **\$2.29**

Visit Our Drug Dept. For Savings On Health & Beauty Aids

Sure Solid Deodorant	<b>\$2.39</b> 2 oz size
Check-Up Toothpaste	<b>\$2.39</b> 4.1 oz size
Liquid Pepto-Bismal	<b>\$1.99</b> 8 oz

Fresh **Cantaloupes** **49¢** lb

Calif. Stalk Celery	<b>39¢</b> ea	Florida Fancy Sweet Corn	<b>\$1.00</b>
Black Ribier Grapes	<b>99¢</b> lb	Large Bellpepper	<b>69¢</b> lb
White Mushrooms	<b>99¢</b> 8 oz	Sunkist Oranges	<b>\$1.29</b> lb bag
Hawaiian Pineapple	<b>39¢</b> lb	Sunkist Lemons	<b>49¢</b> lb

US NO. 1 **Russet Potatoes**  
10 lb bag **\$1.29**

<b>3 STAR</b> SHURFRESH MILK 1/2 GAL. <b>59¢</b> WITH ONE FILLED SUPERSTAR BOOKLET	<b>3 STAR</b> SHURFRESH MED. EGGS DOZ. <b>49¢</b> WITH ONE FILLED SUPERSTAR BOOKLET	<b>3 STAR</b> COUNTRY FRESH BREAD 1 1/2 LB. LOAF <b>9¢</b> WITH ONE FILLED SUPERSTAR BOOKLET	<b>3 STAR</b> Shurfine Bleach 1 Gallon Size <b>9¢</b> WITH ONE FILLED SUPERSTAR BOOKLET	<b>3 STAR</b> Spillmate Towels Jumbo Roll <b>9¢</b> WITH ONE FILLED SUPERSTAR BOOKLET	<b>3 STAR</b> Chiffon Soft Stick Margarine 1 lb <b>29¢</b> WITH ONE FILLED SUPERSTAR BOOKLET
--	---	--	---	---	--