

C

Baze Book Binding
514 W. 7th St.
Amarillo, Tx. 79101

Amarillo, Texas 79000
Amarillo 790



Staff Photo by Don Comedy

GROUND BREAKING

Official ground breaking ceremonies for the Haskell Memorial Civic Center were held Tuesday morning. Board chairman R.C. Couch Jr. and general contractor Ervin Frierson are shown with the first two shovels of dirt from the site located at the Haskell Fair Grounds. According to Couch, ample funds are available to complete the foundation, building exterior, plumbing, wiring and lighting. Approximately \$100,000.00 in additional funds will be needed to complete the interior and purchase furnishings.

Tribe Falls 42-0 To Iowa Park Hawks

BY SHANE HADAWAY

The Haskell Indians suffered a 42-0 loss to the tough 4-AAA Iowa Park Hawks last Friday night.

The Hawks rolled up 406 yards total offense, 393 yards rushing and 13 yards passing. James Beebe of the Hawks rushed for 164 yards and two touchdowns. The Indians could only muster 103 yards total offense; 64 yards rushing and 39 yards passing.

The Hawks rolled up 21 points in the first quarter.

The Indians took the opening kick-off and were driving when on the third play of the drive they fumbled. The Hawks recovered and

11 plays later James Beebe powered his way in from two yards out with 5:54 remaining in the first quarter. The PAT by Jerry Allen was good.

The Indians got the ball back on the kick-off and after three plays had to punt. The snap from center was high and Allen came driving in and blocked Todd Harris' punt. The ball rolled into the end zone, and Scott Weaver recovered the blocked punt for a touchdown. The PAT by Allen was good.

The Hawks last touchdown came with 16 seconds left in the quarter when Beebe fumbled the ball around the one yard line and it rolled into the end zone. Jeff Tucker

fell on the ball for the touchdown. The PAT by Allen was good and put the Hawks up 21-0 before the end of the first quarter.

Iowa Parks next touchdown came in with 6:14 left in the third quarter when on a fourth down and 1 yard on the 39, Beebe took the hand-off and sprinted 61 yards for a touchdown. The PAT by Allen was good.

The Hawks scored once more with 27 seconds left in the third quarter when Robbie Williams bulled his way in from one yard out. The PAT by Allen again was good.

The Hawks last touchdown came with 6:11 left in the ball game when Kendell Hill tip-toed in from 24 yards out. The PAT by Allen was good putting the Hawks up 42-0.

The loss offset a fine defensive performance by linebacker Robert Ivey who led the Indian defense with 27 tackles.

The Indians open up district play this Friday against the Hamlin Pied Pipers. The Pipers are 5-0 and ranked 7th in state according to the latest poll.

Game time is at 7:30 p.m. at Indian Field.

Haskell	Iowa Park
6	17
22-64	52-353
39	13
3-12-1	2-6-2
4-31	2-33
3-3	1-1
4-26	12-105
Scoring by Quarters	Total
Haskell	0 0 0 0
Iowa Park	21 0 14 7

Country Dinner Theatre Set October 27

The third annual Country Dinner Theater, sponsored by the Haskell Chamber of Commerce is set for October 27 at 7:30 p.m. Tickets at \$5.00 for dinner and show are on sale from any of the following Board of Directors: Tom Watson, Raymond Andrada, Joel Fox, Dickie Greenwood, Pat Hale, Mike Harrell, Dr. Ed Harris, Eddie Medford, Tom Richardson, Carolyn Reynolds, Bill Comedy, Kay Smith, Abe Turner, Donna Wilson, Grace Womack, and from the Welcoming Committee: Mr. and Mrs. Hess Hartsfield, Mr. and Mrs. Chas. Thornhill, Mr. and Mrs. John McDermott, Mr. and Mrs. W.H. McBroom, Mr. and Mrs. Eddie Grand, Andy Gannaway, Mr. and Mrs. Eddie Hester, Dan Hoover, Mr. and Mrs. Leon Jones, Patsy Castleberry, Tommy Watson, Sandy Horton and the Chamber of Commerce office.

Rule Lodge Meeting

A special open meeting of Rule Lodge 954 AF&AM will be held next Monday, Oct. 15 to present 25 and 50 year membership pins. The meeting will begin at 7:30 p.m. and will be followed with ice cream and cake.

ATPE Members To Meet

The fall meeting of the local ATPE members will be held Tuesday night, October 16 at 7 p.m. in the Rule High School auditorium.

Speaker for the evening will be Dr. Jeri Pfeifer of Abilene. Refreshments will be provided by the Rule members.

Two door prizes will be awarded. Discussion will be held pertaining to providing a scholarship fund for local members.

Dr. Pfeifer would like to know how many members to expect at the meeting and members who plan to attend need to advise their building contact or Jo Cox at Haskell High School, 864-2848 by Thursday, October 11 to confirm their attendance.

College Entrance Exam Seminar

All area junior and senior students are invited to a special seminar Oct. 15 dealing with improving college entrance exam scores.

The meetings will be held in the Rule High School Cafeteria. Improving SAT scores will begin at 7 p.m. and improving ACT scores will begin at 8 p.m.

Students are invited to attend either or both sessions and parents are welcome.

Turkey Shoot To Benefit WTRC

A turkey shoot will be held this Saturday and Sunday at the Aspermont Gun Club. Proceeds from the shoot will benefit the West Texas Rehab Center.

Shooting will include trap, skeet, rifles, pistols and archery. The event will begin at 10 a.m. Saturday and at noon on Sunday.

Prizes will be turkeys, hams and merchandise.

Fire Department Offers Inspections

In conjunction with Fire Prevention week, the Haskell Volunteer Fire Department will offer free fire prevention inspections to businesses and residences.

Persons interested in scheduling an inspection should contact Fire Chief Tom Watson at 864-2355. Chief Watson requests that calls not be placed on the fire phone since that phone is reserved for receiving fire calls only.

Homecoming Set In Weinert

The 1984 Weinert Homecoming will be held on Saturday, October 13th. The day will begin with registration at 10:00 a.m. The FHA will have a concession stand for lunch and snacks. The program will begin at 2:00 p.m. A catered meal will begin at 5:30. At 7:30 the Weinert Bulldogs will take on the Rochester Steers in the district opener. The Homecoming Queen and Coming Home Queen will be crowned during halftime ceremonies.

The Weinert Child Care Center will be open from 10:00 a.m. through the ballgame for preschool children.

Make plans to attend, and help make this the best Homecoming ever.

Chicken Spaghetti Super Friday

Tickets are on sale now for the Progressive Study Club Chicken Spaghetti Supper, October 12, from 5:00 to 7:00 p.m. in the High School lunchroom. Tickets are \$4.00 and are available at Sears, Johnson Pharmacy, Haskell National Bank and Lane-Felker.

Bloodmobile To Visit Haskell October 15

A modern day miracle (that has existed forever) is the ability of the body to replenish the blood supply.

According to officials with the Red River Regional Blood Services in Wichita Falls, a donor will replace the unit of blood he donates in only three to five weeks and, in fact, may donate again in only 56 days.

Mrs. Polly Brumfield, Director of Donor Resources Development in Wichita Falls, explained that with today's modern technology, the pint of fluid donated can now be separated enabling as many as six people to be helped from only one unit of blood.

"So, in effect, your donated

blood can help save many lives, and doesn't hurt the donor at all."

Citizens of Haskell will have an opportunity to participate in a bloodmobile next Monday, October 15, 1-6 p.m. at First Baptist Church. Goal is 80 units.

The blood supply obtained locally is taken back to Wichita Falls for laboratory processing and then distributed to the 42 hospitals in 31 counties in Texas and Oklahoma served by the Regional Blood Services.

Mobile units from Wichita Falls are in one of the serviced cities Monday through Friday. "The need for blood is continuous," Mrs.

Brumfield said. "The quantity of blood required to keep the hospitals serviced adequately, plus allowance for emergencies equates to the number of units our mobiles must collect," Mrs. Brumfield explained.

What happens when several emergencies arise at the same time? "That's when you'll see the notices at the bottom of your television screens and hear pleas on the radio asking for donors."

So far, blood donor responses have satisfied the demand. "The people in our area have always answered the call for blood, and we feel certain their unselfish giving will be even better in the future."

COTTON
GRAIN
CATTLE

THE HASKELL

30¢ FREE PRESS

Including Tax

16 Pages in One Section
Plus Insert

HASKELL—A GOOD PLACE TO VISIT. A BETTER PLACE TO LIVE.

VOLUME NINETY-EIGHT HASKELL, TEXAS 79521, OCTOBER 11, 1984 NUMBER FORTY-ONE

In Sales Taxes

Haskell Area Lagging Behind State Average

State Comptroller Bob Bullock today sent checks totaling \$58.2 million in local tax payments to the 990 cities that levy the one-percent local sales tax.

"So far this year, these payments are running better than 16 percent ahead of last year, and most Texas cities can expect even bigger checks for the rest of 1984," Bullock said. The Comptroller explained next month's checks will reflect payments from sales tax permit holders who report quarterly and the December checks will reflect the

first increases from new goods and services taxed for the first time beginning October 2.

Houston received the largest check—\$9.8 million—pushing payments this year up 7 percent to \$117.8 million. Dallas' check for \$6.9 million brought its total to \$80.5 million, a 19 percent increase over 1983.

San Antonio's payment of \$3.6 million increased total payments to \$39.9 million, also up 19 percent for the year. Austin received \$2.7 million for a \$29.6 million 1984

total and a 32 percent increase.

Fort Worth's check was \$2.2 million, bringing total payments to \$24.8 million, up 17 percent. El Paso received \$1.3 million for a total \$14.8 million, 18 percent over last year.

Bullock also sent checks totaling \$23 million to the state's four Metropolitan Transit Authorities. Houston MTA received \$11.4 million for a 1984 total of \$135.7 million. DART's payment was \$9.6 million for October and \$76.8 million for the year. San Antonio VIA's check for \$2 million brought 1984 payments to \$22 million and Fort Worth received \$517,000 for a total \$2.5 million.

October checks represent taxes collected on sales made in August and reported to the Comptroller by September 20.

Comptroller To Send Representative To Haskell

Comptroller Bob Bullock announced he is sending a representative from his Abilene Office to Haskell on October 16, 1984 to assist local taxpayers and answer questions about state taxes.

Bullock said Enforcement Officer Royce Manning, will meet with local taxpayers at the Haskell County Courthouse, Commissioner Courtroom from 2:00 p.m. until 3:00 p.m.

"If Haskell area merchants, or anyone else for that matter, have any questions about state taxes or need help in preparing tax forms, Mr. Manning will be there to assist them", Bullock said.

"We're trying to cut the red tape in this office and we believe these face-to-face sessions with taxpayers help do just that", Bullock added.

Bullock reminded those taxpayers who are unable to meet with his representative on October 16, 1984 that they can still get their questions answered quickly by calling his TOLL-FREE information number in Austin. That number is 1-800-252-5555.

The Abilene Office, headed by James Martin, serves Taylor, Callahan, Fisher, Haskell, Jones, Mitchell, Nolan, Scurry, Shackelford, and Stonewall Counties.

AREA SALES TAX

City	Payment This Period	Payment Prior Year	1984 Payments	1983 Payments	% Change
Seymour	8,807.30	5,254.85	120,213.82	109,576.50	9.71
Haskell	9,589.51	5,035.83	129,720.15	125,457.76	3.40
O'Brien	0.00	0.00	929.97	918.69	1.23
Rochester	0.00	0.00	7,832.02	8,658.65	-9.55
Rule	1,081.93	0.00	14,092.56	15,012.28	-6.13
Weinert	0.00	0.00	1,372.13	1,350.72	1.59
Anson	4,423.50	2,714.40	60,202.61	57,673.61	4.39
Hamlin	4,738.46	4,210.57	75,349.36	76,115.80	-1.01
Hawley	1,453.34	894.12	14,679.38	11,099.64	32.25
Lueders	826.98	1,143.81	7,616.17	4,527.02	68.24
Stamford	9,573.82	7,844.32	137,036.45	126,022.28	8.74
Benjamin	578.35	0.00	2,666.78	1,850.80	44.09
Goree	0.00	0.00	3,747.31	3,564.17	5.14
Knox City	4,245.73	4,900.46	61,359.21	57,122.43	7.42
Munday	3,234.81	1,910.20	37,231.48	38,957.46	-4.43

Western Texas Has New Fall Record

Western Texas College reached a new fall semester enrollment record with a total of 1,319 students, Dr. Duane Hood, Dean of Student Services, said.

The figure compares with 1,271 last fall, the previous record for a fall semester. The all-time record enrollment for WTC is 1,414, reached in the 1983 spring semester. WTC traditionally has a higher spring semester enrollment.

Part-time students at WTC outnumber full-time students by 742 to 577 this semester. Seventy-seven Texas counties are represented in the enrollment. Forty students come from states outside Texas and four are from foreign countries.

Scurry County has the greatest number of students from a single

county with 614. Mitchell County is second with 117 students and Nolan County third with 109. Other area counties represented by 10 or more students are Fisher with 70, Haskell with 58, Jones with 54, Borden with 18, Runnels with 17, Knox and Taylor with 15 each. Lubbock with 13, Kent with 11 and Dickens with 10. Crosby, Garza and Tom Green counties are represented by nine students each.

Haskell has the largest extension center registration this fall with 88 students, breaking the record of 85 set in 1979. Enrollment figures from other extension centers show 54 students in Sweetwater, 34 in Rotan and 17 in Ballinger. Some of these students also attend classes on the Snyder campus.

Mrs. Cordie Cunningham Named Weinert Clubwoman Of The Year

The Weinert Home Extension Club met for its regular meeting on Tuesday, October 2nd in the lovely home of Agnes Winchester. In a report of the recent County Fair it was determined that the Club Members had approximately 20 entries, and received 12 blue ribbons, 2 red, 2 white, with 1 Best of Show and 1 Reserve Best of Show.

The quilt made for the benefit of the West Texas Rehab Center is still being displayed at the Hayloft, and plans are to display it at the Weinert School Homecoming and award it to some lucky person at a drawing in the afternoon of October 13th. With each \$1.00 donation to the Rehab Center, one's name is put into a "pot" for the drawing.

Mrs. Cordie Cunningham was unanimously elected as the Club's Outstanding Club Woman of the Year, and her name will be presented at the next council meeting where the County Club woman of the Year will be selected.

Alice Yates gave a report of the State Convention held in San Angelo in September. She also reminded the club of some important dates to remember: Bloodmobile on October 15th; Denim workshop, October 17th; 4-H Food

show on November 3rd, and County Information Day, to be hosted on November 14th.

Lou Gilly Extension agent gave a program on the subject "Your Image-Does it Matter?" We project our image to others through six avenues; Our Body Build, Our Body Movements, Our Posture, Our Clothing, Our Facial Expressions and Our Voice. Some Researchers say people judge us 95% by what they see, and only 5% by what we really are. In judging our voice, we are judged 55% by our verbal innuendoes, 38% by our tone, and 7% by what we say. She suggested Brian Burgess as an example of having the most pleasing, spirit-lifting, telephone voice of anyone she calls.

She closed with saying, "Get an image of someone you really admire, and 'copy-cat' that person. Ask them their source of inspiration, if necessary. If you really want to, you can change your image."

After the program, Mrs. Winchester served a delicious refreshment plate to eight members, then gave a tour of her home. Those present were: Cordie Cunningham, Faye Jetton, Laverne Mayfield, Anna Mae Roberts, Alice Yates, Myrtle Phemister, and the President, Henrietta Rueffer.

The club will meet on November 6th in the home of Mildred Gness where Faye Jetton and Agnes Winchester will present a program on "Arthritis is a Serious Disease." Visitors are always welcome.



MR. AND MRS. BILLY ROGERS of Paint Creek announce the engagement and approaching marriage of their daughter, Regenia, to Jimmy Davis, son of Mr. and Mrs. Truman Davis of Stamford. The bride-elect is a 1984 graduate of Paint Creek High School. The prospective bridegroom is a 1983 graduate of Stamford High School. Both are employed by D&D Tong Service in Stamford. The couple plans a November 17 wedding in Central Baptist Church in Stamford.

Throckmorton To Host Annual Fall Mesquite District Meeting

The 39 Study Club of Throckmorton will host the 25th Annual Fall Board Meeting of the Mesquite District, GFWC, Texas Federation of Women's Clubs Saturday, October 13 at the First Methodist Church in Throckmorton. Theme for this year's meeting is **The First Mile**.

Registration will begin at 9:00 a.m. The Executive Committee will meet at 9:30 a.m. Mrs. James C. Drain of Stamford, Mesquite District President, will call the general meeting to order at 10:00 a.m.

Following the invocation by Mrs. Robert Herren of Haskell, visiting clubwomen will be welcomed by Throckmorton County Judge, W.T.

Lindsey. The response will be given by Mrs. J.L. Pritchett of Abilene.

The board meeting is aimed at presenting goals for the Mesquite District's 1984-86 Administration headed by Mrs. Drain.

During the morning session reports of officers and projects chairmen will be heard. Past district presidents, life members and special guests will be recognized.

Following the 12:00 noon luncheon, Department and Division Chairmen will explain the duties and responsibilities of their offices. Door prizes will be given during both morning and afternoon sessions.

Mrs. Drain asks that each club member bring three

things to the meeting: 1. A copy of her club's yearbook to show at roll call so that she may be prepared to repeat her club president's theme; 2. At least one pair of NEW panty hose for Girlstown, USA; 3. All available clean USED panty hose for M.D. Anderson Hospital and Research Center Volunteer Service. The used hose will be cut up and used by volunteer workers to stuff toy animals for children patients at the Houston cancer center.



Births

Mr. and Mrs. George Brown of Haskell announce the birth of their daughter, Angela Fay Brown, born October 1, 1984 at Hendrick Medical Center in Abilene at 5:09 p.m. weighing 9 lbs. 1/2 oz and was 21" long.

Maternal grandmother is Mrs. Anna Kimbrough of Abilene. Paternal grandparents are Mr. and Mrs. Fred D. Brown of Haskell. Great grandmothers are Mrs. Carrie Osment and Angie Mullino, both of Haskell.

Charles and Lisa Purdy of Lamar, Colorado announce the birth of their son, Charles Louis Purdy II, born September 25 at Prowers Medical Center in Lamar. His grandparents are Mr. and Mrs. Jerry V. Collins of Gallup, New Mexico and Mr. and Mrs. Joseph E. Purdy of Neptune, New Jersey, great-grandparents are Mr. and Mrs. Marvin Collins of Haskell, Mrs. Ethel Barbee of Stamford, Mr. Robert L. Barbee of Comanche.

Great-great-grandmother Verna Barbee of Clyde.

Arts & Crafts Bazaar Set Nov. 3 In Knox City

The K.C. Circle Extension Homemakers Club will hold its second annual Arts and Crafts Bazaar Saturday November 3rd, 1984.

The bazaar will be held in the former Boutique building at 300 Central in downtown

Knox City between Jones Pharmacy and, Clonts Hardware.

Arts and crafts booths are still available for the bazaar. Area clubs, individuals, businesses, and families who have an interest in arts and crafts are invited to participate.

Information about the booth entry fee may be obtained by contacting Linda Carver at 658-3197. Deadline is October 15th.

There will be a drawing for a handmade quilt the day of the bazaar. One dollar donation is required.

All proceeds are going towards new playground equipment for the city park.

The public is cordially invited to attend. For further information contact Becky Baker at 658-3328.

Mrs. Sanders To Celebrate 80th Birthday

Mrs. Sallie Alexander Sanders of Weinert will be honored with an eightieth birthday celebration reception and open house hosted by her children and grandchildren October 13, 1984, from 4 until 7:00 p.m. at her home in Weinert.

Mrs. Sanders is a life time resident of Weinert and her children grew up and attended school there.

Friends and relatives are invited to attend the celebration.

PAINT CREEK Lunch Menu

Oct. 15-19 Monday

Beans
Tacos
Lettuce
Onions
Cheese
Fruit Cobbler
Cornbread
Milk

Tuesday

Spaghetti
Meat Sauce
Blackeyed Peas
Cabbage Slaw
Brownies
Garlic Bread
Milk

Wednesday

Hamburgers
Tater Tots
Sliced Cheese
Lettuce
Onions
Pickles
Banana Pudding
Milk

Thursday

Fish Portions
Tater Sauce
Macaroni Cheese
Carrot-Raisin Salad
Apple Crisp
Rolls
Milk

Friday

Bologna
Tuna Fish
Sliced Cheese
Lettuce
Onions
Pickles
Pork and Beans
Ice Cream
Milk

BREAKFAST Monday

Cereal
Juice
Milk

Tuesday

Cinnamon Toast
Juice
Milk

Wednesday

Biscuits
Butter
Jelly
Juice

Thursday

Buttered Toast
Jelly
Milk

Friday

Cereal
Juice
Milk

Beta Chi Chapters Holds First Meeting

The Beta Chi Chapter of Delta Kappa Gamma Society International met Saturday, October 6 for a 9:30 brunch at the Knox City High School Cafeteria with the Knox City members serving as hostesses.

The tables were decorated with crock pots filled with greenery.

The first regular meeting of the year was conducted by Dorothy Myers, president, of Munday.

Treasurer's report was presented by Margaret Chafin; Carol Dickson gave the membership report; Cathy Bartley reported on the programs; Erma Liles gave the report on the constitution and Kathleen Tanner gave the communications report.

Each member registered in the guest book. Belle Grill of Benjamin won the door prize. Yearbooks were distributed by Cathy Bartley.

Melodee Christian of Haskell introduced the program. Karen Longan of Munday gave a presentation on "Food Power and Your Mind." The group learned which key nutrients are needed for brain power. Peppermint tea has been proven to aid in memory so all present plan to buy some for their classrooms.

Gerre Larned of Haskell shared her knowledge of "Exercise for Today and Tomorrow." After a brief discussion of the benefits of aerobic exercises throughout life, Gerre led the group in several aerobic routines.

43 members were present for this fun and casual meeting.

Denim Workshop Set October 17

Would you like to know what to do with all the old jeans you have laying around the house?

The Family Living Committee of the Haskell County Extension Education Program has planned a workshop especially for you on "Decorating Your Home with Denim". The Workshop will be Wednesday, October 17 at 2:00 p.m. in the Haskell National Bank Community Room.

Mrs. Glenna Gene Moore from Roby will exhibit her

items made of denim. Mrs. Alice Yates from Weinert will demonstrate how to transfer an applique to a piece of denim. Workshop participants will need to bring a 8" x 8" piece of denim and a scrap of calico print fabric. The denim can be cut out of an old pair of jeans, preferably 100% cotton. However, the denim made from a blend will work. Everything else you will need will be furnished.

A registration fee of \$1.00 will be charges to cover Mrs. Moore's mileage.

Young Homemakers Learn "Super Woman" Tips

The Haskell Young Homemakers met October 1 at 7 p.m. in the home of Karen Crain.

Hostesses were Karen Crain, Katie Hopper and Valiene Bullinger. Donna Cole presented a program on today's "Super Woman." She shared with the group how women can understand, handle, cope and enjoy being an individual, mother,

wife and career person. Leesa Toliver, president opened the business meeting with a discussion on the Smorgasbord held October 6.

The group also discussed the upcoming annual Arts and Crafts Sale. The sale is set November 10 at the Fair grounds.

Members drew for secret pals and had refreshments.

Rochester Hobby Club

Tickets for the Quilt Show are beginning to sell like snow-cones on a hot summer day. The reason? It is less than six weeks away and the quilt that is to be given away as a door prize is out of the frames. These quilts will be shown alternatively in our display windows so you can see them anytime you drive by.

Ida Pack of Knox City visited today with Hobby Club and decided she needed to

become a member of this group of women in Rochester. Did you know that there was no limit age-wise of any woman who wanted to belong to Hobby Club?

17 members and 10 visitors had a deliciously good time around the 5 dining tables in the dining room. Mary Bowman and Olga acted as co-hostess. On Oct. 16th, Emily Wilson will be the hostess.

Thank You

We would like to express our appreciation to everyone who attended and participated in our **pounding**. Thank you all for the enjoyable time.

Bonnie & Ike

Hospital Notes

Visiting hours at Haskell Memorial Hospital are 2 to 4 p.m. and 7 to 8:30 in the evening. No visiting hours in the morning. No children under 14.

ADMISSIONS
MEDICAL: Mana Welsh, Haskell; L.J. Dunn, Munday; Johnnie Love, Haskell; William Orsak, Goree; Cleve Hester, Haskell.

DISMISSALS
M.S. Walker, Charlotte Arendall, Oscar Milstead, Abigail Salinas, Beatrice Free, Henry Calmillio, Caleb Bennett, Lillian Spencer.

The Haskell Free Press
Established January 1, 1886
PUBLISHED EVERY THURSDAY

MEMBER 1984

TEXAS PRESS ASSOCIATION

BILL COMEDY—Publisher
DON COMEDY—Editor

Entered as second class matter at the post office at Box 577, Haskell, Texas 79521 under the Act of March 3, 1879 (USPS 237-040)

SUBSCRIPTION RATES
In Haskell and Adjoining Counties

One Year	\$9.46
Six Months	\$7.35
Two Years	\$17.86

Elsewhere in Texas

One Year	\$11.55
Six Months	\$9.46
Two Years	\$22.08

Price includes sales tax. Outside of Texas

One Year	\$13.00
Six Months	\$11.00
Two Years	\$25.00

NOTICE TO PUBLIC: Any erroneous reflection upon the character, reputation or standing of any firm, individual or corporation will be gladly corrected upon being called to the attention of the publishers.

NOW AT Owens Radio

THE GREAT SOUNDING AUDIO LINE by SHARP

The VZ 3500: Both sides play linear tracking Stereo Turntable, AM/FM Stereo, Cassette Stereo Player & Recorder with Dolby Noise Reduction...matching Sharp Speakers, too! Come in for an amazing demonstration!




VZ 3500 Component Stereo System \$415.00

2-Band Portable Radio w/Cassette Recorder

- AC or opt. batteries
- Auto Stop on Play/Record
- Built-in Mic/ALC

now only... **\$55.00**

Owens Radio & Electric

512 N 1st Haskell, Texas 864-2536

Bill's Dollar Store

★ SUPER SPECIAL ★

From Magic Camera

20

Portraits in Living Color

- ★ One per subject 2 - 8x10
- Two per family 3 - 5x7
- ★ Variety of Poses 15 - Wallets
- ★ All Ages

\$1.95 Plus Tax
When Photographed

Groups \$2.00 Extra

\$13.00 Plus Tax
on Delivery

Total Package Price **\$14.95 Plus Tax**

Tell your friends - they will love our color too!

Bill's Dollar Store

Wednesday-October 17
10:00 a.m.-5:00 p.m.
Haskell, Texas

Minors must be accompanied by parent

Grand Opening

Saturday, October 13
of the

Candy Nook

302 S. 1st

Homemade cream and butter fudge candy.
Come in and sample our
chocolate and vanilla fudge.
Register for the free drawing!

Sue & David Patterson, owners.
Located at side entrance of

Sue's Flowers, Gifts & Photography

2 Ave. D



The colour of the season at Diana Esber is thee colour!

At Diana Esber, there is no "the colour of the season" for your makeup. It's all up to you - your skintone, your hair and eye colour and all the other wonderful variables that make you - you! No dab of Cherries - this and Sun Bronzed - that will do at Diana Esber. A complete scientific analysis - individual or in group sessions - will show you how to use Diana Esber colour the way colour was meant to be worn. To your best advantage. Follow that up with all the wonderful Diana Esber Cosmetic and Skin Care Collection and give her look a good name. Yours!

Oct. 11-15 Free Mascara with foundation purchase. Sissy Accessories - original designs from earrings to handbags - always with your colors in mind.

Call Joan Lain at 817/864-8988 for your appointment. Gift certificates available.

Diana Esber

B E A U T Y

Be Aware Of Nutritional Misinformation

You could become a victim of misinformation if you don't know much about diet and health, says a Texas A&M University Agricultural Extension Service nutritionist.

With an increasing amount of nutrition material in the media and health claims in advertisements, distinguishing sound from unsound information is difficult, says Marilyn Haggard.

Learning something about nutrition is worthwhile, she says, since misinformation can aggravate or create health problems. Diseases like diabetes or cancer can worsen if you ignore medical diagnosis and treatment in favor of a "miracle vitamin cure."

Taking large amounts of vitamins in the mistaken notion that this will improve your health can also affect medical tests, in the case of diabetes, too much vitamin C can give a false negative on urine tests for diagnosis and management of the disease.

Fad weight-loss diets can even lead to disease, note Haggard. For example it's possible to starve to death on a macrobiotic brown rice diet. Even if misinformation does not directly affect your health, it may cause you to waste money on unnecessary food, gadgets and vitamins. Or you may trade good food habits for poor ones and a balanced diet for an imbalanced one, she says.

"Consumers can best protect themselves by recognizing that a single diet or food can not cure health problems or guarantee weight control."

No scientific evidence shows that arthritis, cancer, heart

disease and other chronic diseases are cured by eating specific foods, she explains. Instead, a balanced diet of meat, poultry, legumes and fish; dairy products; fruits and vegetables; and enriched or whole grain breads and cereals will provide all the nutrients anyone normally needs.

Also beware of personal testimonies and stories, says Haggard, since they are not scientific studies. When a person loses weight from eating a particular food, it does not mean the food caused the weight loss. The person may have done other things to change his life-style, such as increased exercise, that actually resulted in the weight loss. Everyone gets tired and

has occasional pains. Many causes could produce such universal symptoms. But if the cause is nutritional, it should be diagnosed by a physician who will prescribe medication if it's warranted.

Be skeptical, ask for evidence about diet or nutrition ideas and use your right to evaluate, cautions the nutritionist.

If you want to know whether a nutrition or diet book is reliable, check book reviews from the professional nutrition journals which can be found in many public libraries, she says. Or, if you're in doubt about a nutrition claim, ask your physician, a registered dietician or your county Extension home economist.

Child Care Is Big Business

Federal officials report that child care has now become an eleven billion dollar industry. In many family budgets, child care is the third largest expenditure.

Although the figures seem to indicate that child care is "big business," it's really more like a "cottage industry." Contrary to popular belief, the vast majority of young children of working parents are cared for individually or in small groups, either in their own homes or in the home of a caretaker.

Estimates are that only ten to 15 percent of all pre-school

children of working mothers are cared for in day care centers. In the past decade, however, the trend has been toward increasing group care in day care facilities.

For parents of extremely young children, family day care in private homes is sometimes the only answer to child care problems. Government studies have shown that one in five working mothers pays for this kind of care and more than three-quarters of a million children spend at least thirty hours a week in these private homes.

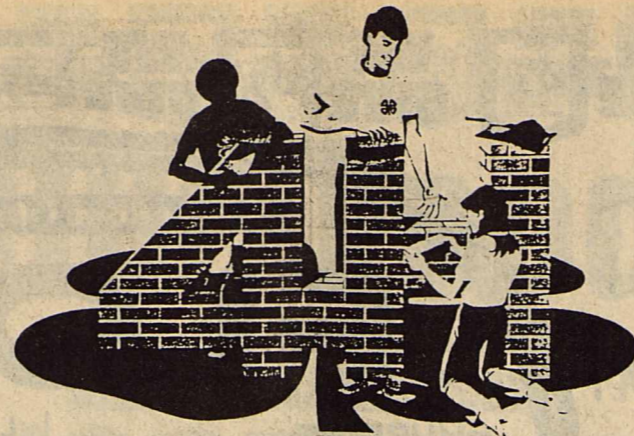
Care in private homes is popular because it is usually inexpensive and offers flexible hours. When it is good, it can be the next best thing to a home away from home.

Whether parents place their children in a professional daycare center, with a relative or neighbor, or a private home, quality childcare should be the first concern.

Country Club To Hold Dance For Weinert Exes

The Haskell Country Club will hold their regular dance Saturday, October 13 in conjunction with the Weinert Homecoming.

Country club members and guests are invited to join Weinert exes at the dance.



4-H: Building on Experience 4-H Celebrates 75-Year Heritage

4-H has a proud 75-year heritage that forms the basis of this year's National 4-H Week theme, "4-H: Building on Experience."

National 4-H Week, Oct. 7-13, is a special time for 4-H members and leaders to promote the nation's largest youth organization and to bring some recognition to its contributions, point out Lou Gilly and Max Stapleton, County Extension Agents with the Texas Agricultural Extension Service, Texas A&M University System.

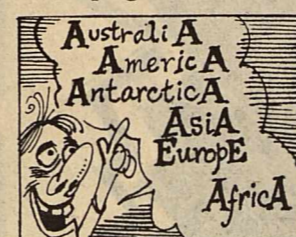
Over the years millions of 4-H'ers have gained valuable leadership experiences and learned practical skills that have improved their quality of life.

Today almost five million youth across the nation between the ages of 9 and 19 are gaining valuable learning experiences through 4-H—almost 200,000 of those are in Texas. The Texas 4-H program reaches boys and girls through more than 2,000 community based clubs and another 900 short-term project groups.

4-H'ers are engaged in some 50 different project areas in which they gain lifelong skills through the program's "learning-by-

doing' concept. These projects had their beginning in 1908 when special Corn Clubs were organized for boys in Jack County. First focusing on such traditional areas as crop and livestock production and canning and sewing, 4-H projects now deal with a wide range of subjects, including small engines, rocketry and veterinary science—even the use of computers.

The 4-H program is conducted in each state through the Cooperative Extension Service and is backed by the state's land grant university (Texas A&M University for the Texas program) and the U.S. Department of Agriculture. Some 17,000 adult and teenage 4-H leaders shoulder much of the responsibility for the 4-H program in Texas.



The first letter of every continent's name is the same as the last: Australia, Antarctica, Europe, Asia, Africa.

Local 4-H'ers Comment On Meaning Of 4-H

The Haskell 4-H Club along with other 4-H'ers all over the country are now celebrating National 4-H week. 4-H is a youth program that helps young people learn how to do new and interesting things, through learn-by-doing projects.

4-H means different things to each member. Jerry Davis, Kelly Strickland, Mindy

Smith, Rebecca Holt, Stephen Holt, and Patrick Burson enjoy giving method demonstrations. Stephanie Browning has spent part of her summer on a 4-H back-packing trip in the New Mexico mountains or entertaining a 4-H exchange student. Other 4-H'ers enjoy their animal projects and showing livestock.

Penny Peden states that 4-H has enriched her skills as a cook, seamstress, and public speaker and she said she has made many new friends through 4-H. "4-H has helped me learn more things about foods, animal and etc. Going to the food shows has let me meet new people from other towns," says Heidi Mullen. Dalyn Gilly reports "4-H

has helped me communicate with other people. I am nervous talking in front of a group because I've had a lot of experience doing this in 4-H. "Through 4-H I have gained self-confidence and leadership ability but most of all I've had a good time attending activities all over the state," J. Jennings said.

Tamra Burnett said she likes 4-H because it is a fun and popular club which teaches a big variety of things such as cooking, sewing interior decorating, etc.

"I've learned to cook, sew and other things through 4-H. I've also made new friends," said Jana Payne.

The Haskell 4-H'ers would like to encourage participation in 4-H.

NOTICE

Todd's Bait Shop has been re-located. It is now part of the East Side Fina Station, which is now open again under management of Todd Isbell.

We Still have

Crappie Minnows \$1.00 doz.

Bass Minnows \$1.25 doz.

Goldfish \$1.75 doz.

Worms \$1.00 box

Catfish Baits-Tackle-Trotlines

Todd's Bait Shop

Open 7:00 a.m.-8:00 p.m.
7 Days a Week
Phone 864-3679

PRICE BREAK

ARTCARVED SILADIUM HIGH SCHOOL CLASS RINGS

Every ring is backed by the ArtCarved Full Lifetime Warranty. This offer expires November 30, 1984 and is to be used only for the purchase of ArtCarved Siladium high school class rings.

PLUS up to \$36 worth of custom features FREE!

\$74.95 WITH THIS AD

Bassing Jewelry

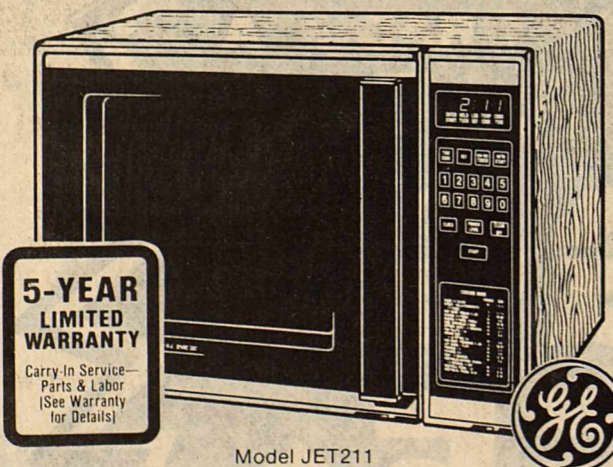
864-2548
873 J-0000

BRING THIS AD

404 N. 1st
Haskell, Texas



MICROWAVE OVEN Offers Cooking Versatility with DUAL WAVE™ Microwave System



5-YEAR LIMITED WARRANTY
Carry-In Service—Parts & Labor (See Warranty for Details)

Model JET211

- 1.4 cu. ft. oven cavity.
- Cooking Complete Reminder tells you cooking cycle is finished.
- Word Prompting Display provides programming instructions.
- Up to 12-Hour Delay Start.
- 10 Power Levels.

WAS \$379.95
NOW \$349.95
SAVE \$30.00

GE. WE BRING GOOD THINGS TO LIFE.

Anderson Tire Co.
206 S. Ave. E Phone 864-2900



Most automobile trips in the U.S. are under 5 miles.

Major Medical that's worth a Million.

Time Insurance Company's Major Medical plan offers:

\$1,000,000 in lifetime benefits per insured party.

Payment of all covered charges both in and out of the hospital. Without schedules.

A deductible you pay just once a year rather than with each medical occurrence.

And the plan is area-rated so you don't pay for higher risk areas of the country. Call us for full details.



Lanco Insurance

Buddy Lane
(817) 864-2629

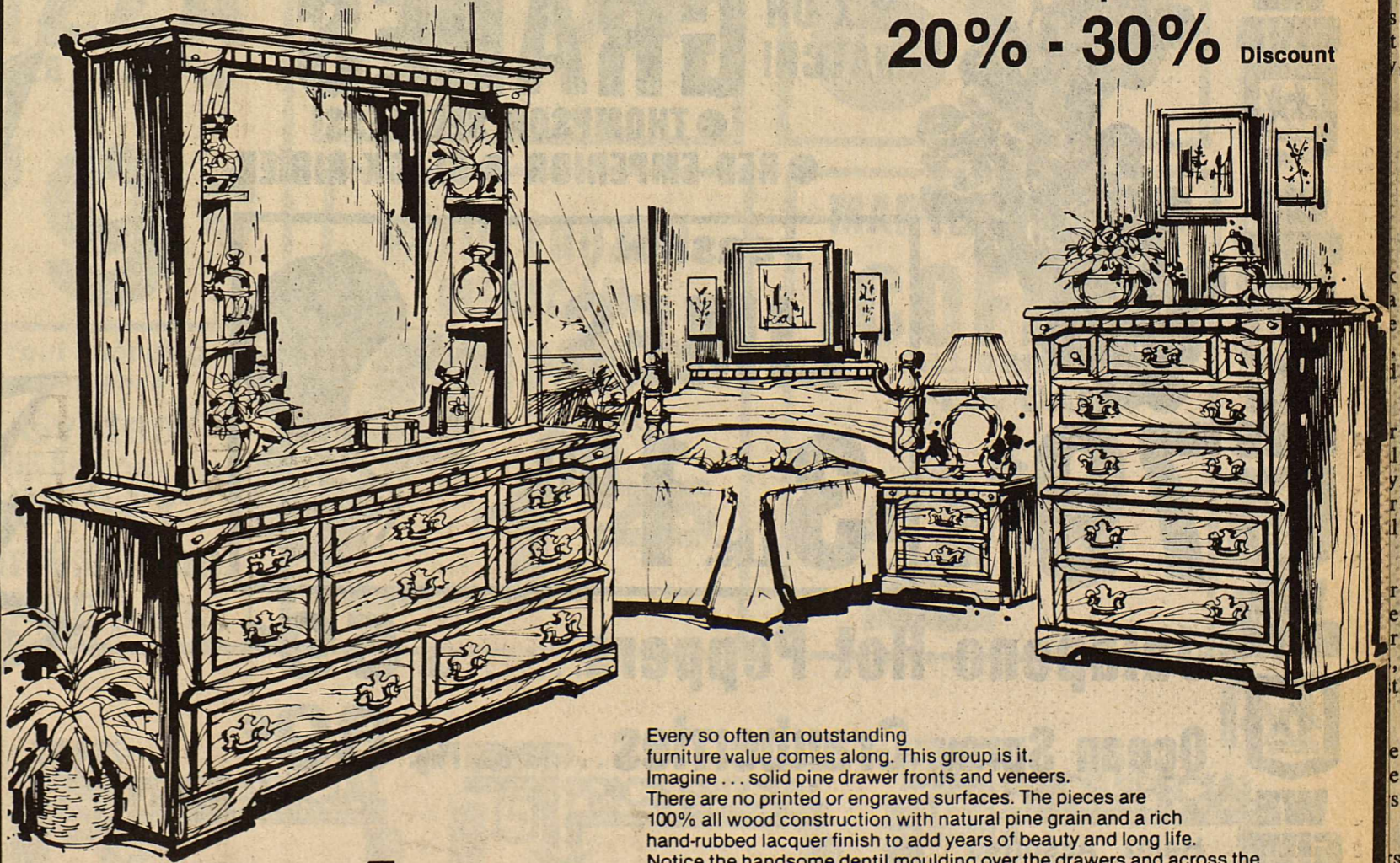
TIME INSURANCE COMPANY

\$699.00

Our best price ever... on Pine 4 Piece Master Bedroom!

Includes triple dresser hutch mirror chest-on-chest Cannonball Panel Headboard
Night Stand Extra: \$125.00

All other Bedroom Groups in stock
20% - 30% Discount



Every so often an outstanding furniture value comes along. This group is it. Imagine... solid pine drawer fronts and veneers. There are no printed or engraved surfaces. The pieces are 100% all wood construction with natural pine grain and a rich hand-rubbed lacquer finish to add years of beauty and long life. Notice the handsome dentil moulding over the drawers and across the headboard. At this amazing price, quantities will not last long—so don't miss out on a great opportunity to own one of America's best... for less!

Forest
FURNITURE INDUSTRIES INC.

Aladdin House

FURNITURE ★ GIFTS ★ OFFICE SUPPLIES
19 NORTH AVENUE E PHONE (817) 864-8936
HASKELL, TEXAS 79521

WE GIVE  WE GIVE  WE GIVE  WE GIVE  WE GIVE  WE GIVE  WE GIVE  WE GIVE  WE GIVE  WE GIVE 

WE GIVE 
 WE GIVE 
 WE GIVE 
 WE GIVE 
 WE GIVE 
 WE GIVE 
 WE GIVE 
 WE GIVE 
 WE GIVE 
 WE GIVE 
 WE GIVE 
 WE GIVE 
 WE GIVE 
 WE GIVE 
 WE GIVE 

M SYSTEM

Your FRIENDLY

AFFILIATED SUPER MARKETS
 Haskell, Texas
 Where Your Dollar Buys More

Double days

WEDNESDAYS
 With the purchase of \$3.00 or more.

Prices Good Thurs., Oct 11th
 Thru Wed., Oct. 17th

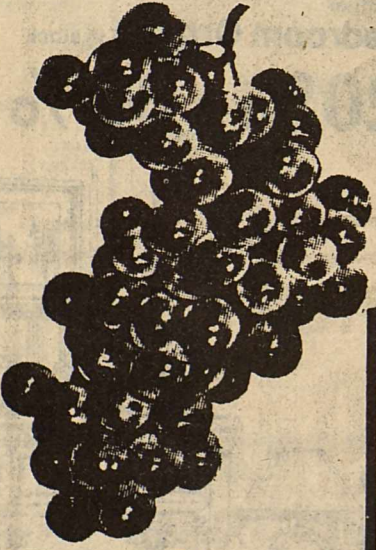
We Reserve The Right To Limit Quantities.

Go Indians **WIN!**



New Crop TEXAS NEW POTATOES

20-Lb. Bag **1 39**



MIX OR MATCH! **GRAPES**
 ● THOMPSON SEEDLESS
 ● RED EMPERIOR ● BLACK RIBIER

PERSIAN **LIMES**

3 Lbs. **1 00**



Jalapeno Hot Peppers..... Lb. **59¢**

Ocean Spray Cranberries... 12-oz. Pkg. **89¢**

Heinz Assorted
Strained Baby Food
 or
Juices 10 Jars **\$1 00**

★ Freedom Of Choice ★

FLOUR

SHURFINE 5lb. BAG **58¢**

LIGHT CRIST LIMIT 1W/\$10.00 MIN. PURCH. 5lb. BAG ADD. PURCH. 99¢ **66¢**

SEE HOW MUCH YOU SAVE WHEN YOU PURCHASE AFFILIATED'S PRIVATE LABEL

LOMA DELUXE PLASTIC 32-Gallon
Trash Can
5 99

MRS. BAIRD'S
HONEY BUNS
 4 For **1 00**

NABISCO ALMOST HOME CHOCOLATE CHIP
COOKIES
 12-oz. Pkg. **1.39**

TRAIL BLAZER
DOG FOOD
 25-Lb. Bag **4.39**

HEINZ KEG 'O
KETCHUP
 32-oz. Bottle **1.19**

Smucker's Strawberry
PRESERVES
 18-oz. Jar **1.69**

WELCH'S GRAPE
JUICE
 24-oz. Bottle **99¢**

Baker's Angel Flake
COCONUT
 14-oz. Pkg. **1.39**

Cracker Jacks
 1-oz. Boxes
 4 For **1 00**




SHURFRESH GRADE "A"
LARGE EGGS
 55¢ DOZ.

WE GIVE  WE GIVE  WE GIVE  WE GIVE  WE GIVE  WE GIVE  WE GIVE  WE GIVE  WE GIVE  WE GIVE 

WE GIVE  WE GIVE  WE GIVE  WE GIVE  WE GIVE  WE GIVE  WE GIVE  WE GIVE  WE GIVE  WE GIVE  WE GIVE 

Sample Our Food Savings


★ Freedom Of Choice ★



SHURFINE
3LB. CAN \$1.69

SHORTENING

3LB. CAN \$2.49




CRISCO
48 OZS. (1.5)

SEE HOW MUCH YOU SAVE WHEN YOU PURCHASE AFFILIATED'S PRIVATE LABEL



GOOCH BLUE RIBBON BACON

Lb. **1.39**



SAUSAGE

OWEN'S SMOKED Lb. **1.69**



FRESH LEAN GROUND BEEF

3-Lbs. or More Family Pack

Lb. **79¢**

Kraft Half Moon CHEESE

10-oz. Package

1.79

PARKAY MARGARINE

1-LB. QUARTERS

59¢



COKE

Regular or Diet
2-Liter Bottle

89¢

FOX DELUXE FROZEN PIZZA

ASSORTED 10-oz. Pkg.

79¢

For Your Shopping Convenience
M-System Will Be Open
SUNDAY
From 9:00 a.m. to 7:00 p.m.

CORONET BATHROOM TISSUE

4-Roll Pack

1.09

CORONET Paper Towels

Jumbo Roll

69¢

PATIO FROZEN MEXICAN DINNER

13-14 oz. Size

Each **1.25**

MARYLAND CLUB COFFEE

ALL GRINDS
1-LB. CAN

2.09

STAMP PRICE SPECIAL

M-System Bread
1 1/2 lb loaf

9¢

WITH ONE SPS FILLED CARD

STAMP PRICE SPECIAL

Lipton's Family Size Tea Bags

\$1.69

24 count
WITH ONE SPS FILLED CARD

STAMP PRICE SPECIAL

Giant Box Tide

\$1.89

49 oz
25¢ OFF
WITH ONE SPS FILLED CARD

STAMP PRICE SPECIAL

Gladiola Flour
25 lb bag

\$3.99

WITH ONE SPS FILLED CARD

STAMP PRICE SPECIAL

Shurtfresh Sweet Milk

1/2 gal ctn

59¢

WITH ONE SPS FILLED CARD

WE GIVE  WE GIVE  WE GIVE  WE GIVE  WE GIVE  WE GIVE  WE GIVE  WE GIVE  WE GIVE  WE GIVE  WE GIVE  WE GIVE  WE GIVE  WE GIVE  WE GIVE 

Paint Creek Pirates Defeat Grady Wildcats

The Paint Creek Pirates defeated the Grady Wildcats 38-33 in a close scoring game. Mikeal Gonzales and Keith Medford had two touchdowns

each and Greg Rowland had one. Gonzales scores came on a 35 yard run and a 78 yard run; Medford scored on a 72 yard run and a touchdown reception from Rowland. Rowland scored on a 15 yard run.

The Pirate defense had a total of 106 tackles. Leading with 20 tackles was Lewis Lacey followed by Medford and Rob Mickler with 18 tackles each.

Trailing 38 to 36 the Wildcats marched the ball down to the Pirate 12 yard line. It was fourth and goal with three seconds left on the clock when Kenneth Jeffcoat sacked the Grady quarterback. This play earned Jeffcoat the Defensive Player of the Week Award. Selected as Offensive Player of the Week was Gonzales.

The Pirates enter district play with a 4-1 record against Rule on Friday, October 12 at 7:30 p.m. in Rule.

Letters To The Editor

Dear Don;
I just wanted to thank everyone and bring them up to date on the aluminum can drive that the Boy Scouts are conducting to earn money to donate to the Haskell County Ambulance Service. To date, we have collected approximately 600 lbs. of aluminum cans. We have until Oct. 31 to reach our goal of 1000 lbs. If anyone would like to donate any cans they can do so by calling Bo Watson at 864-3090 or Jerry Davis at 864-2720 any time until Oct. 31. Thanks again to everyone for all your help.

Bo Watson
Troop 136 Haskell, Texas

Conservation Viewpoints

USDA Soil Conservation Service

Dan M. Wadzeck of Rochester was recently re-elected to the Haskell SWCD board of directors October 2, 1984. Wadzeck represents Zone 1 of the district.

The purpose of the Haskell SWCD, with headquarters in Haskell is to promote sound soil and water conservation programs on farm and ranch lands within the district and to serve as a voice for farmers and ranchers on conservation matters and other issues affecting private property rights of landowners.

The board of directors coordinates the conservation efforts of various local, state and federal agencies and other organizations and has authority to enter into working agreements with these governmental agencies and private concerns to carry out

its purposes.

As one of five individuals serving on the district board of directors, Wadzeck will be responsible for district policies and procedures for carrying out the district program within the framework of the Texas soil conservation district law.

In Texas there are 201 soil and water conservation districts. Each is a legal subdivision of state government organized by local agricultural landowners with the assistance of the Texas State Soil and Water Conservation Board. Unlike most other legal subdivisions of state government, SWCDs do not have the powers of taxation or eminent domain. All conservation programs managed by the districts are of a voluntary nature to the landowner or operator.

Commodore Savings To Expand

A 40 percent Facility expansion is planned by Commodore Savings with the addition of space adjacent to present offices at 518 South

2nd.

Commodore expects to complete the expansion by December, when the Savings and Loan Association will

mark its 10th year in Haskell, said Dickie W. Greenwood, assistant vice president and manager of the Haskell branch facility.

The expansion area, to the east of Commodore's current space, will accommodate additional personnel and a vault area for safe deposit boxes, as well as providing room to enlarge the lobby, Greenwood said. Interior and exterior remodeling and landscaping are also planned.

The new offices are designed to enhance service to customers and respond to recent growth, according to Greenwood, who reports a gain of "well over \$5 million in Haskell since the first of the year."

The full-service financial institution offers money market accounts, passbook savings, junbo certificates of deposit, checking accounts, retirement accounts, consumer, commercial and mortgage loans, credit cards, wire transfers, direct deposit, free travelers' checks, and

many other services.

Commodore savings is a \$489 million Savings and Loan Association with offices in Stamford, Clyde, Quanah, Haskell, Garland, Dallas and three locations in Abilene.

PETITE ROLODEX: the perfect file for telephone numbers and addresses. Typewriter spaced lines. Replacement refills. Decorator colors and styling for home and office. *Haskell Free Press*

Get Bitter About Litter



Beautiful Haskell Council

Booster Club Hamburger Supper Is Successful

Booster Club President Jerry Harris commended members at the Monday night meeting on the success of last week's hamburger supper. The profit will be used mainly to pay for the All Sports Banquet to be held this spring.

Indian booster Joe Larned suggested that a victory line be formed by the fans to see the boys onto the field each week. Coach Blue Holt said that since a UIL rule prohibits fans' being on the field, the line could go only from the door of the field house to the gate of the field. But he and

Coach Jim Bob Mickler both encouraged fans to do that.

Coach Holt thanked the members of the Booster Club for their support. He said that after a game like Iowa Park, he really appreciates "your letting us use these young men." He said they did "as good a job as they could do." He commented that Friday night he thought they had let down. But after having viewed the film he realized the Indians had played a fine football game and they "did their best."

The first district game will be played this Friday night at home. Coach Holt said that Hamlin has a fine football team. The are 5-0 this year and are currently ranked seventh in the Schoolboy Poll. They have several players returning from last year's team. The Indians would like to avenge the 13-12 loss handed them by the Pied Pipers a year ago.

The game beginning at 7:30 this week will be broadcast on KVRP.

Nice People Do Not Litter!



Beautiful Haskell Council

Men In Service

Frederich L. Barnett, son of Tom D. and Lee Barnett of Star Route, Haskell, has been officially accepted into the U.S. Military Academy's Corps of Cadets as a new member of the class of 1988 during the annual acceptance parade.

The parade followed six weeks of rigorous basic cadet training at the West Point, N.Y., academy. Training in military customs and courtesies, drill and physical conditioning,

exercises and the firing of weapons introduced the basic cadets to military life with special emphasis on leadership, duty, honor and country.

The academy is a four-year educational institution graduating men and women to serve as career Army officers. In addition to military training the academy offers athletics and an academic curriculum which included basic and engineering sciences and social sciences and the humanities.

TOWER
DRIVE-IN (HIWAY 6)
RULE, TEXAS
ON PHONE 957-2382

FRIDAY - SATURDAY & SUNDAY
Oct. 12-13-14

THE NEVER ENDING STORY
A BOY WHO NEEDS A FRIEND FINDS A WORLD THAT NEEDS A HERO.
Noah Hathaway - Barret Oliver

AREA'S MOST POPULAR
The S & S DRIVE-IN
Snack Bar
Stamford 773-3272

Fri., Sat., & Sun.
RED DAWN
Tues.-Wed.-Thurs.
XX Adults Only
"Suzie Super Star"

The most efficient, the most economical heating and cooling system for your home.

When you say you want higher rates...

12.75% 10.50%

90-DAY JUMBO CD
\$100,000 MINIMUM DEPOSIT

STARPLUS MONEY MARKET
CHECKING ACCOUNT

RATES SUBJECT TO CHANGE WITHOUT NOTICE.

We listen.

At Commodore Savings, highly competitive interest-earning rates are not the exception: they are the rule.

Not everyone offers attractive rates like these, because not everyone shares Commodore's commitment - a commitment to *listen* to our customers. Because, when you know how to listen, you know how to help with some of the fairest and most competitive rates available in the marketplace - like our \$100,000 minimum deposit 90-day Jumbos* and our innovative StarPlus Money Market Interest-Bearing Checking Account with a minimum balance of \$2,500 (*substantial

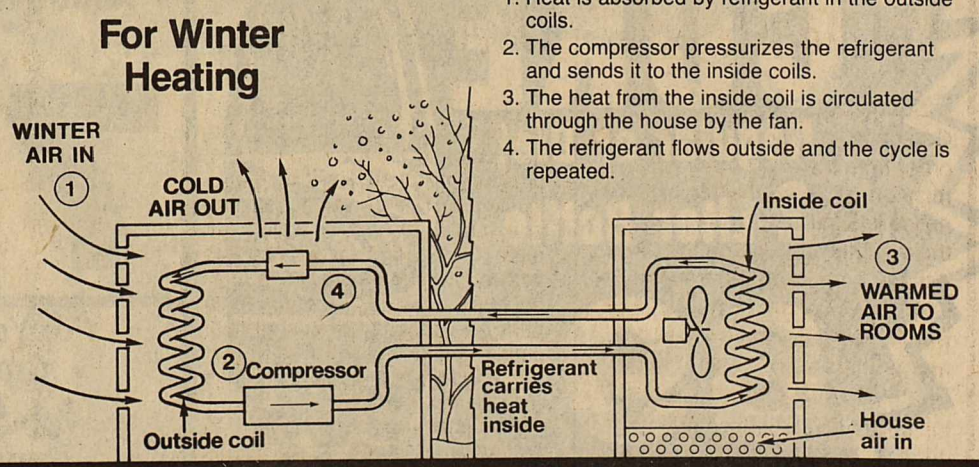
penalty for early withdrawal).

When you say you want higher rates, it's good to know that someone is listening...and someone is helping. Commodore Savings.

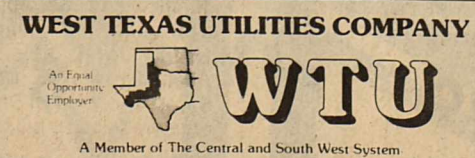
We're here to listen.
We're here to help.



THE **Electric heat pump.**
It's part of "the plan" — the Energy Saving Plan
Here's how it works:



THE ELECTRIC HEAT PUMP: It can save you money on your home energy bills. And when it's used along with other WTU-recommended energy conservation measures according to the ENERGY SAVING PLAN, you can save even more. WTU will pay YOU money when you install an electric heat pump to meet the E.S.P. requirements that add to your home's comfort and energy efficiency. That's where the ELECTRIC HEAT PUMP comes in — it's part of "the plan" because it's the *most* efficient system for heating and cooling. During the winter it removes heat from the outside air and pumps it into your home. In the summer it reverses the process and becomes an air conditioner, so you get even comfort year-round. CALL YOUR LOCAL WTU OFFICE OR A FACTORY-TRAINED ELECTRIC HEAT PUMP DEALER TODAY TO FIND OUT MORE ABOUT SAVING ENERGY AND MONEY ON YOUR HOME ELECTRIC BILLS.



To Qualify, Your Home must be served by WTU and meet our Energy Efficiency Requirements.

Sagerton News

Guests in the home of Mr. and Mrs. Fred Kupatt on September 16th were Mr. and Mrs. Kraig Kupatt of Sagerton, Mrs. Shortie Hewett of Stamford, Kris Kupatt and Cheryl Hopson of Abilene. The group celebrated Billie and Kraig's birthdays.

Those who attended the Friendship club at The Faith Lutheran Fellowship Hall on Sept. 27 were Mr. and Mrs. J.B. Toney, Mr. and Mrs. Reece Clark, Mr. and Mrs. Delbert LeFevre, Mrs. Alva LeFevre, Mrs. Neva McKerall, Mr. and Mrs. Charles Clark, Mrs. M.Y. Benton, Mrs. Glyn Quade, Mr. and Mrs. Clarence Stegemoeller, Mr. and Mrs. Anton Teichelman, Mr. and Mrs. A.L. Gibson visited in the home of Mr. and Mrs. Joe Clark on Friday night they also attended the football game at Paint Creek because their son is coach there and teaches school.

Mr. and Mrs. Harvey Wagner of Hawley visited in the home of Mr. and Mrs. Joe Clark over the weekend. Mr. and Mrs. Anton Teichelman spent the weekend before last with Mr. and Mrs. Dan Humphreys, Matt and Stephen of Wichita Falls to help Stephen celebrate his 3rd birthday.

Mr. and Mrs. Anton Teichelman attended a musical Saturday night.

Mrs. Lena Boedecker of Stamford attended Faith Lutheran Church Sunday and then spent the rest of the day with Mr. and Mrs. Anton Teichelman. Bill Tabor and Jayne Skeff of Dallas spent the weekend with his mother Mrs. John L. Brooks, and his aunt Beulah Mae Summers.

Mr. and Mrs. Leo Monse, Mrs. Bobby Don Smith and her children went to Denton last weekend to attend a baptism of the great grandchild of Mr. and Mrs. Leo Monse. Grandchild of Mr. and Mrs. Virgil Vahlenkamp.

Mr. Fred Monse and Dudley spent the weekend in the home of Mr. and Mrs. Leo Monse.

Mr. and Mrs. Alvin Bredthauer visited Mrs. Hazel Grantham who is in the hospital in Stamford, Sunday afternoon.

Mrs. John L. Brooks visited Mr. and Mrs. Les Loessberg, Mr. and Mrs. J.M. Lawrence in Sweetwater last weekend. Mr. and Mrs. Aubrey Nichols of Austin were also visiting in the Lawrence home.

Brad Ulmer of Lubbock and David Bishop of Texas Tech were weekend visitors of Brads grandparents Mr. and Mrs. Alvin Ulmer.

Mr. and Mrs. Winston Ulmer and Paige visited recently with Mr. and Mrs. Alvin Ulmer.

The Ulmer Reunion was hosted by Mr. and Mrs. Alvin Ulmer at the Community Center Sept. 30th. Seventy people were present. They came from San Antonio, Lubbock, Marble Falls, Mineral Wells, Fort Worth, May, Dallas, Bridgeport, Hamlin, Stamford, Lockney, Snyder, Brownwood, Abilene, Merkel, Big Spring, Wichita Falls, Burkburnett, Athens, Texas and Hobbs, New Mexico.

Mrs. M.Y. Benton and Mr. and Mrs. J.B. Marr of Haskell went to Midland to attend the funeral of Mrs. Benton and J.B. Marr's sister.

Mr. and Mrs. Charles Clark went on Saturday to also attend the funeral of Mrs. Clark's aunt which was held in Midland on Saturday.

Mr. and Mrs. Franklin Mrazek of Aspermont ate lunch in the home of Mr. and Mrs. Leo Monse Sunday.

Mr. and Mrs. Zenor Summers went to Fredericksburg over the weekend to visit Mr. and Mrs. Mike Summers also to help Mike celebrate his birthday.

Mr. and Mrs. Melvin Baitz went to Ozona to visit with Mr.

and Mrs. Gorge Olson also to bring Mrs. Emma Raphael home after she spent some time with the Olson's.

Mr. and Mrs. Alvin Bredthauer, Mrs. Lena Schaake, Mr. Clarence Stegemoeller went to Stamford Sunday night to play 84 in the home of Erna and Walter Schaake. The women were lucky for a change and beat the men.

The group of people who went on a trip to Canada and the Northwest States on Sept 21st came back on Oct 3rd with everyone having a nice time. Those who went were, Mr. and Mrs. Lewis Corzine, Mr. and Mrs. Carl Lunn of Stamford, Mr. and Mrs. Gene Teichelman, Mr. and Mrs. Clarence Teichelman, Mr. and Mrs. Alvin Bredthauer, Mrs. Odene Dudensing, Mrs. Velma Lou Hertel, Mr. Herbert Lammert, Mr. and Mrs. Herbert Vahlenkamp of Old Glory, Mr. and Mrs. Curtis Weise of Haskell, Mr. and Mrs. Fred Teichelman of Hamlin.

College News

Jerry Snelling of Haskell has been named photo editor for **The Western Texas**, the student newspaper at Western Texas College.

The Western Texas is published biweekly by the Mass Communications Department of WTC.

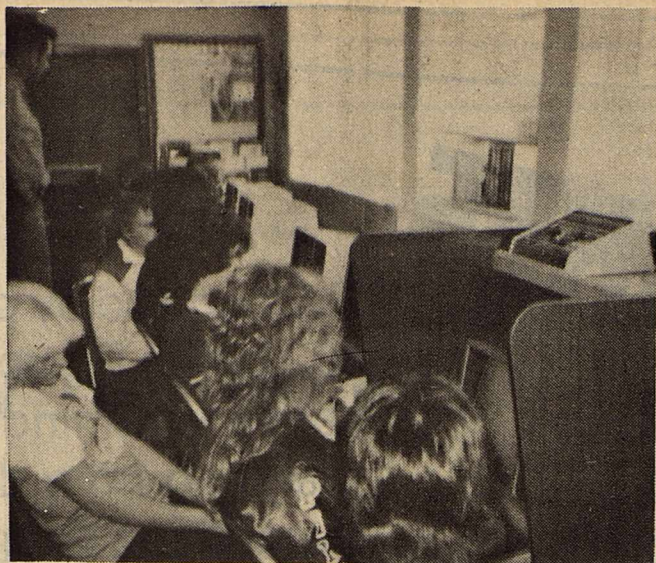
Western Texas College set a new fall semester record this year with a total of 1,319 students. The all-time record enrollment for WTC is 1,414 students, set in the 1983 spring semester. WTC traditionally has a higher spring than fall enrollment. The Haskell extension center also set a new enrollment record with a total of 88 students. The previous high of 85 students was recorded in 1979.

Fines Collected

Geraldine Hise, Judge, City of Haskell, Haskell County, Texas reports a total of 76 convictions for the month of September, 1984. Resulting in a total of \$3474.00 in fines.

Judge Geraldine Hise, Justice Court, Precinct 1, Haskell County reports a total of 121 convictions for the month of September, 1984. Traffic and Criminal Cases were filed by the following Law enforcement agencies: Highway Patrol 112; Game Warden 8; Sheriff's Dept. 1, resulting in a total of \$4947.00 in fines.

A Haskell Free Press want ad will find you a buyer.



COMPUTERS—the machines of the future. Paint Creek is offering a Computer Literacy class to the eighth grade. They have been working with computers since the first of school. Paint Creek has five Radio Shack TRS 80 computers so the students are able to work with only two students per computer. Mr. Howard Brass, the math teacher, is teaching this course. The students are learning how to make computer programs. During the second semester the seventh graders will be taking Computer Literacy.

Local Car Dealer Offers Child Safety Seats

Many Texas franchised new car dealers will be offering at cost a federally-approved child safety seat that will protect young car passengers from birth through 4 years.

The community service program, planned for Oct. 15-20, is being held in conjunction with Passenger Safety Month and prior to the Oct. 31 effective date of a new state law requiring that automobile passengers younger than 2 years ride in a safety seat and children 2-4 years old be in a safety seat or restrained by a seat belt.

The seats will be sold for \$33.50 plus tax and they will be available during regular business hours the week of the program. Those wanting the seats need only go to a participating dealership and

buy a seat. The child safety seat, which often retails for \$45-\$60, will fit most cars and does not require any modifications.

"There are a lot of misconceptions about automobile safety," said Gene Fondren, president of the Texas Automobile Dealers Association which represents about 1,500 franchised new car dealers in the state.

"Some parents think their child is safe if the parent is holding the youngster. But that is a deadly misconception," Fondren said. "A 30-pound child sitting in the lap of someone wearing a seat belt becomes a 300 pound missile slamming against the windshield in an accident of only 10 mph.

"A child sitting in the lap of any unrestrained adult will be

crushed against the dash by the parent whose body takes on a force many times greater than the persons weight," Fondren said. "Many parents don't know this and we hope our program will eliminate some of these myths."

He said the \$33.50 charge includes the shipping costs and the wholesale price of the seat. Fondren added that the price of a car seat is considerably less than the pain and suffering a parent experiences when a child is injured or killed in what could have been a survivable accident.

"The cost of a car seat is much less than one visit to a hospital emergency room or two tanks of gasoline," Fondren said.

In Haskell, Medford Buick-Pontiac will sell the seats.

SAVINGS-A-PLENTY

ON FOODS FOR FALL MENUS!



HELP WANTED
Taking applications now.

Specials Good Thursday, Friday, & Saturday

Store Made Sausage	99¢ lb	Colorado Green Cabbage	15¢ lb
No. 1 Sliced Bacon	\$1.29 lb	No. 1 Russet Potatoes	10 lb bag \$1.29
Armour Nugget Ham	\$1.89 lb	Boneless Fully Cooked	
Best Quality Pressed Ham	\$1.49 lb	Parade Hominy	can 29¢
Good Hamburger Meat	\$1.19 lb	Parade Saltine Crackers	1 lb box 49¢
Del Monte Catsup	32 oz. \$1.19	Parade Peaches	2½ can 79¢
Gebhardt Chili Powder	3 oz. 89¢	Campbell Cream of Chicken Soup	3 cans \$1.00
Folgers Coffee	1 lb can \$2.59	King Size Tide	\$3.39
True Blue Lemon Cookies	24 oz. pkg. \$1.29	Liquid Dawn	22 oz. \$1.09
Towie Banana Peppers	15½ oz. jar 99¢	Every Day Price Cigarettes	\$8.39 Plus Tax ctn.

POGUE GROCERY

—Extra Parking Behind The Store. Home Owned and Operated—

113 North Avenue E

Phone 864-2015

Haskell, Texas

Women: bring your aching feet to us!



Comfort Shoes for work and play.

SIZES 5-10
Narrow/Medium/Wide
Sizes/widths vary by style.

Colors: white, black, tan, brandywine and navy.

Women's **Red Wings** HEIDENHEIMERS

Public Notice

Southwestern Bell Telephone Company, in accordance with an order from the Public Utility Commission of Texas, hereby gives notice it has filed a tariff to reduce the monthly rates for the Switched Access portion of the company's intra-LATA Foreign Exchange (FX) Service offering that was implemented starting June 1, 1984. Simultaneously, the LATA-wide toll-free calling scope, also started June 1, would be discontinued and the calling scope would return to that in effect prior to June 1. The Commission has assigned this matter Docket Number 5891.

The net effect of the tariff will be a monthly decrease in total billing of approximately \$700,000 until November 1, 1984. After that time the net effect on the company's revenue is estimated to be negligible.

Persons who wish to intervene or otherwise participate in these proceedings should notify the Commission as soon as possible. A request to intervene, participate or for further information should be mailed to the Public Utility Commission of Texas, 7800 Shoal Creek Boulevard, Suite 400N, Austin, Texas 78757. Further information may also be obtained by calling the Public Utility Commission Consumer Affairs Division at (512) 458-0223 or (512) 458-0227, or (512) 458-0221 tele-typewriter for the deaf.



Southwestern Bell Telephone

Aviso Público

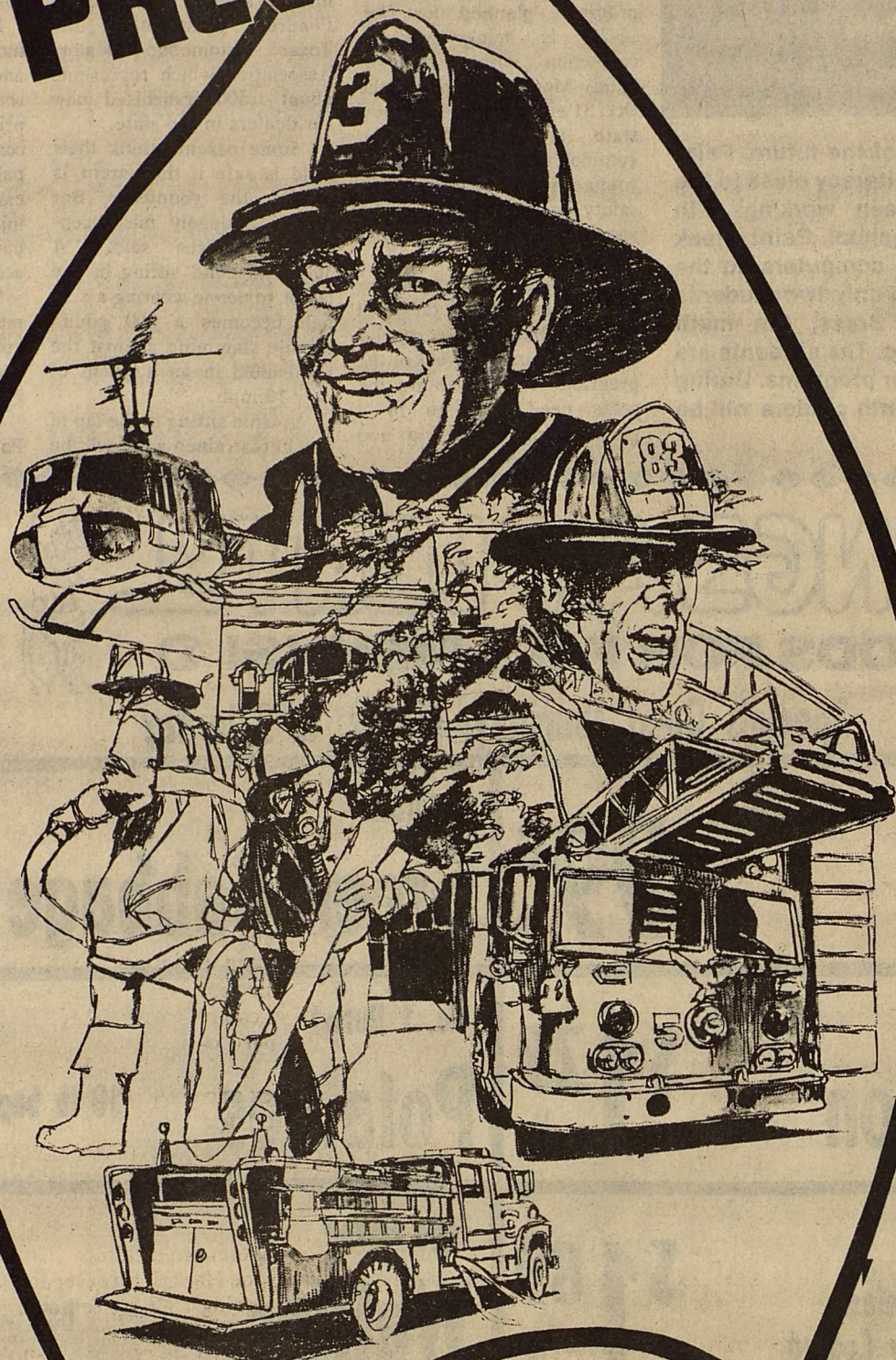
En conformidad con una orden de la Comisión de Servicios Públicos de Texas, se anuncia mediante el presente aviso público que Southwestern Bell Telephone ha presentado una tarifa con el objeto de reducir las cuotas mensuales que se han cobrado desde el 1 de junio de 1984, por la porción de la tarifa para acceso a la red central necesaria con el uso del Servicio de Zona Exterior (Foreign Exchange (FX) Service).

Simultáneamente, el servicio de llamadas de larga distancia sin cobro dentro del área de servicio que también se efectuó el 1 de junio de 1984, se discontinuará; y el campo de llamadas será al igual que antes del 1 de junio de 1984. Se ha registrado la nueva tarifa bajo el Docket 5891.

El efecto real de la nueva tarifa se verá en la reducción del costo total de facturas de aproximadamente \$700,000 hasta el 1 de noviembre de 1984. Se calcula que despues de esta fecha el efecto real para nuestra empresa será despreciable.

Los usuarios de Southwestern Bell Telephone Company que estén interesados en participar en esta reunión, o que requieran mayor información, deben dirigirse por escrito a: Public Utility Commission of Texas, 7800 Shoal Creek Blvd., Suite 400N, Austin, Texas 78757. También se puede obtener información adicional llamando a Public Utility Commission Consumer Affairs Division al 512/458-0223, al 512/458-0227, o al 512/458-0221 si requiere teletipo (aparato para personas con impedimentos de audición).

PREVENT FIRES



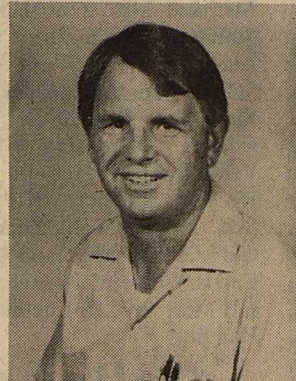
Recognized by presidential proclamation since 1922, Fire Prevention Week is a special observance to remind people of the pain and losses resulting from destructive fire and burns and to caution "Learn Not To Burn" wherever they may live, work or play, all year round.



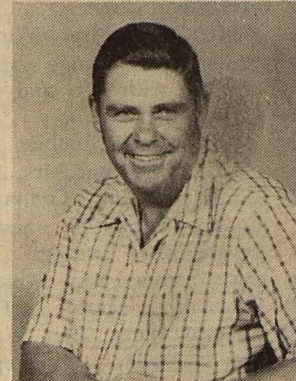
TOM WATSON
Chief
1952



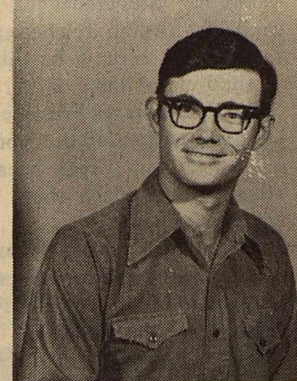
E.J. STEWART
Captain
1950



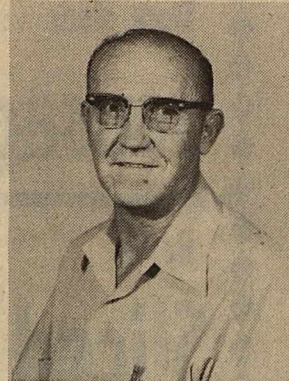
BILLY JACK RAY
Fire Marshall
1966



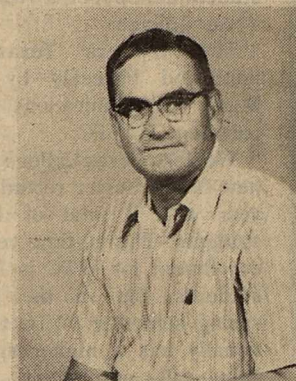
TED JENNINGS
Chaplain
1973



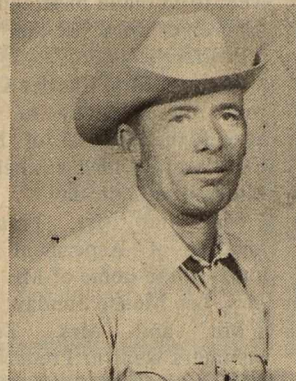
DON COMEDY
Vice President
Training Officer
& Public Information
Officer
1976



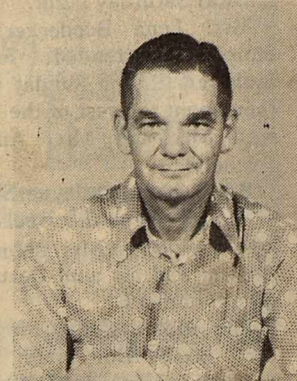
CHESTER HODGIN
1954



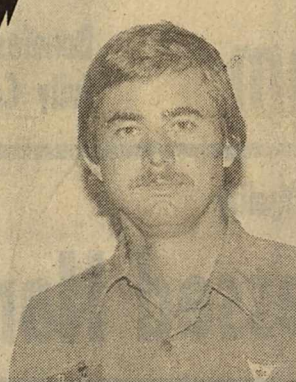
JOHN WATSON
1959



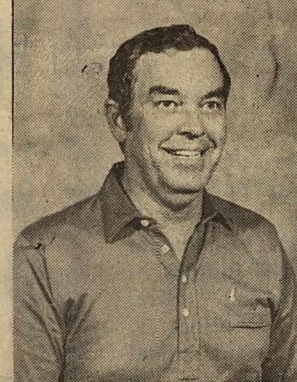
WAYNE WAINSCOTT
1960



TOMMY WATSON
1961



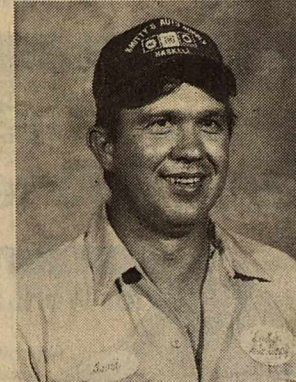
CLIFFORD SHORT
1981



W.H. McBROOM
1981



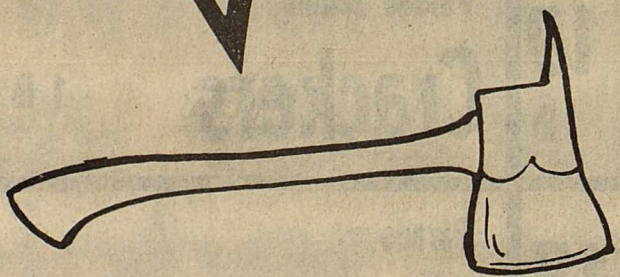
BILL STEELE
1981



DAVID DAVIS
1982



MIKE
1981



FIRE PREVENTION WEEK

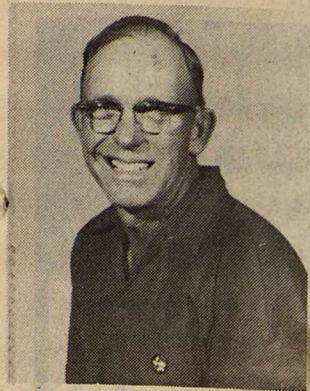
Robbie & Charlotte Peiser
Breann & Bergene Peiser
Agricultural Services, Inc.
Charles, Joetta & Tamra Burnett
Andy & Edna Anderson
Jones Cox & Co.
J.W. & Sandra Wallace
Juanell & B.J. Ray
Mrs. Agnes Cox Rike
Henry Druessedow
Dave, Sue, Tammi & Jay Miller
Mr. & Mrs. John Thomas
Mr. & Mrs. Norman Nanny
Grace & Jimmy Hannsz
Mr. & Mrs. Frank Oman
Archie & Janette Jones
Mr. & Mrs. Jim Bridwell
Mr. & Mrs. Rodney Goss & Nicklaus
Nored & Durene Boone
Max, Sheila, Heath & Misty McMeans
Sam Rodriguez Family
Mac Rodriguez Family
Rodriguez Inn
Mrs. Mac Rodriguez Sr.
Rodriguez Inn Employees
Lois & Charley Redwine
The John Wallace Family
The Duane Gillys
Max, Christi & Kaki Stapleton
Haskell Medical Supply
Mr. & Mrs. Jake Dusak Sr.
Mr. & Mrs. Rick Perry & Griff
Bill & Bud Comedy
Lisa & Jason Shaw
Jake Dusak Jr.
Buster & Inez Gholson
Mr. & Mrs. A.M. Stocks
Skeeter Miller & Family
Mr. & Mrs. Bill Shaw
Lyles Jewelry Store

The Kenny Thompson Family
Jody, Betsy, & Matt Bellah
R.A. Brown Ranch
Nene & JJ
Jennifer Comedy
Wanda Dulaney
Phil, Phyllis, Adam & Casey Coleman
George & Faye Gray
Sandy Horton-Sears Catalog Store
The Charles Thornhill Family
Edith Wheatley
Melvin & Juanita Miller
Lyla Mary Isbell
Mr. & Mrs. J.H. Strain
The Hollis Callaway Family
Max, Jeannette, & Gina Calk
The Jim Pope Family
Bud & Jo Turnbow
Bill, Kay, Matt, & Mandi Perry
Mindy & Rusty Howard
R.V. & Violet Earles
The Bobby Watson Family
Sammy, Gerre, Cole & Casey Larned
Pat Henry Family
Jimmy & Helen Owens
Christyne, Stephanie, & Michelle
Mr. & Mrs. L.O. Green
Twain & Shirley Mickler
Lewis & Joyce Thomas
Ray & Amelia Perry
A Friend
Gene Fischer Family
Gene & Mabel Overton
Elizabeth Stewart
The Wallar Overton Family
Dennis & Mildred Young
Francis Blake
Jerry, Jerry Ann, Dala, & Todd Harris
Veda's Camp
The Bobby Sanford Family
Vernay & Eula Mae Howard

The Jimmy Browning Family
Mrs. Fosters Fifth Grade
Mrs. Adams Fifth Grade
Patsy Casselberry & Leona Pearsey
Frank & Roberta Jenkins
Grace Womack
Larry Gilliam Family
Buddy & Jenny Brazell
Sue Pate
Wilda & Anita Medford
Cotton & Charlene Therwhanger
The Sammons Grandchildren
Tom, Carla & Nathan Long
Gene & Jo Iva Long
Clayton & Shirley Hawkins
Floradean, Steven & Jimmy
Mr. & Mrs. Lee Cockerell
The J.W. Hawkins Family
The Sammy Decker Family
The Tom Dewey Family
Darrell, Kay & Jennifer Smith
John & Bonnie Fouts
Kennedy Lumber Company
The Jerry Briscoe Family
Robert, Elisha and Jr. Spells
Sue's Flowers, Gift's & Photography
The Edd Howeth Family
Luann Cockerell
Gary, Vickie & Joseph Hawkins
Doris Carroll
Mr. & Mrs. Jerry Jetton & Family
Ed, Jill & Evan Harris
W.O. & Mendi Elmore
Brian & Jennifer Burgess
Bobby & Lena Tidwell
Campbell Seed Company
CW Cattle Company
Tommy Clay Family
Bobby Watson Family
Doug & Sharon Lefevre & Family

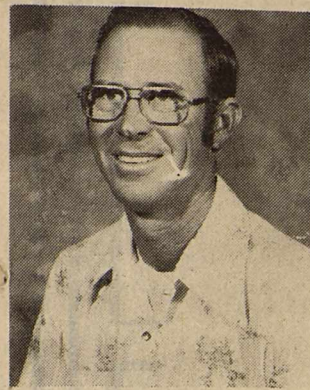
Jim, Ann, Jimmy & Jamie Johnston
Jesus & Florentina Arellano & Family
John Hicks
John, Betty, Betsy & Lori McDermott
Tamala, Camey, Kathryn, & Lori
Pam, Heather & Wes Steele
Buck & Carolyn Everett
Jerry, Melba & Missy Lowrance
Raymond & Pauline Couch
Jesse & Vickie Dean
Abe & Ruby Turner
Bob & Rita Kramp
Milbert & Ladelle Opitz
Leon or Melba Kretschmer
Billy Wayne & Sheila Hester & Family
Lois Howard Nursery
R.C. & Jerrene Couch
Haskell National Bank
Danny & Connie Brueggeman
Tommy & Selina McGuire & Family
Janet Strickland & Family
Mike, Teri & Jessica Turner
Wood Stoves of Haskell
Trey, Debi, Trecl & IV Burson
Mr. & Mrs. C.G. Burson
Scott, Betsy & Jason Langford
Modern Way
John, Bella Abila & Family
Louetta, Shane, Loutina & Nole
Betty Ann Watson & Ashley
Sandra & Debra Watson
Betty Sue & Edna
Kountry Kookin-Betty Lacey
M-System Super Market #4
The Cotton Whitfield Family
Bettle Waincott
Geraldine Hise & Family
Jim, Scharlyn, Whitney & Zach Hudson
Vergil & Vera Smith
Curtis, Betty & Pam Weise

Satch & Pearl Lu
Jo Ann & Brent V
Tom Barnett & fa
Mary & George V
Robert Baker & E
Lillian Hodgkin
Tommy Watson
Wilton & Elna W
Bill & Doris St. J
Mr. & Mrs. Alvin
Linda & Rhonda
Chester, Ree, La
Chester & Juanit
James & Margie
Jim, Vickie & Ca
Amy Cunningham
Mathew Cunning
Denia Cunningh
David & Azila La
Mr. & Mrs. John
Wayne, Britta &
Merry, Erik & Bud
Nerva Oates
Casey Caldwell
Joe & Joyce Dav
Polly Marlon
Charles & Leatric
Mayree Hollis
Joe & Sharon Alv
Dr. Wayne Caden
Don, Debbie & Ly
Betty Alvarez & F
Marsha Guess &
B.J. & Juanita Ra
Donna Howeth &
Ford, Donna, De
Jim & Lila Brock
J.C. & Sue Yeary
Haskell Medical
Paul C. Williams

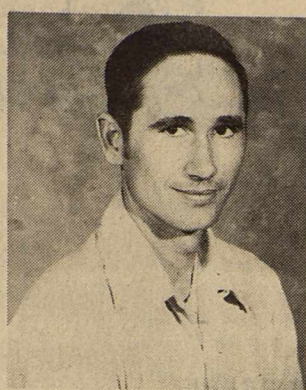


SONNY REYNOLDS
Asst. Chief
1954

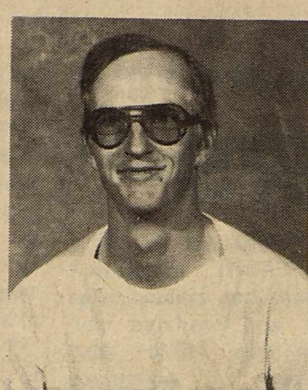
Proceeds from this page will be used by the Haskell VFD Auxiliary to benefit the Haskell Volunteer Fire Department.



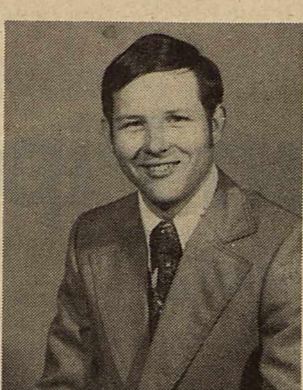
JERRY STOCKS
President
1978



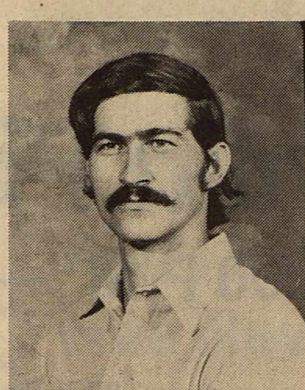
KENNY WATSON
Sec. & Lt.
1978



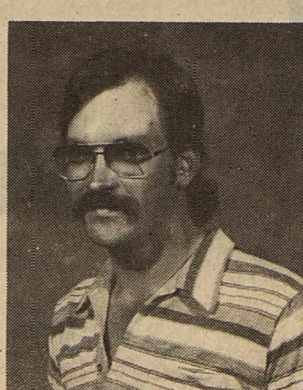
SAM WATSON
Lt.
1978



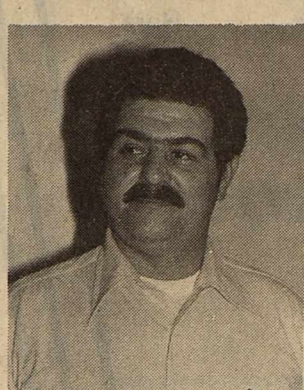
BILL LANE
Lt.
1978



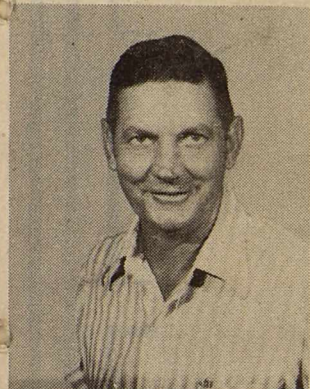
PHILLIP COCKERELL
Tall Twister
Captain
1979



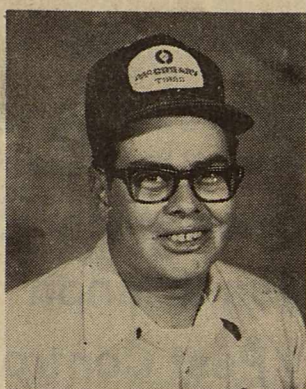
RANDY SHAW
Captain
1981



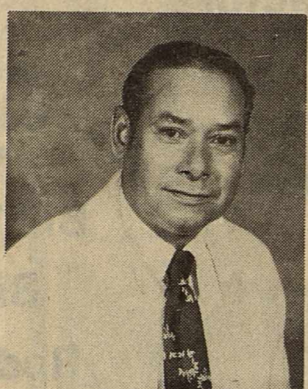
JOE ALVES
Asst. Sec.
1983



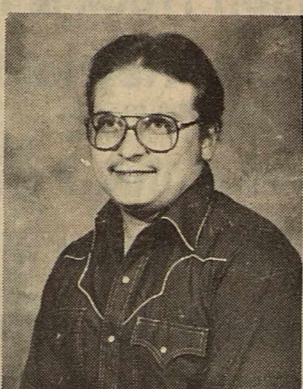
WILBERT KLOSE
1964



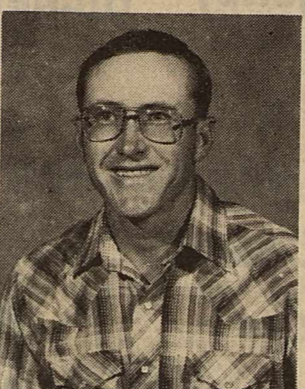
ROY TRUSSELL
1976



JOE CORTEZ
1976



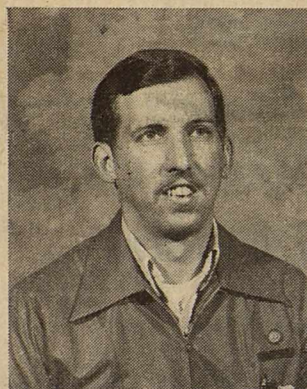
JOHN ANDRADA
1981



DON CUNNINGHAM
1981



NEW



CHARLES HARVEY
1982



MIKE ST. JOHN
1983



BILLY TATUM
1984



EDDIE MEDFORD
1984



CLAYTON NEAL
1984

Each year in the United States approximately 8,000 people are killed by fire and another 250,000 are seriously injured.

This year as we observe fire prevention week, join with the members of the Haskell Volunteer Fire Department and Haskell VFD Auxiliary in pledging to do your part in fire prevention.

Almost all fires can be prevented and each of us doing a small part can contribute to a safer community.

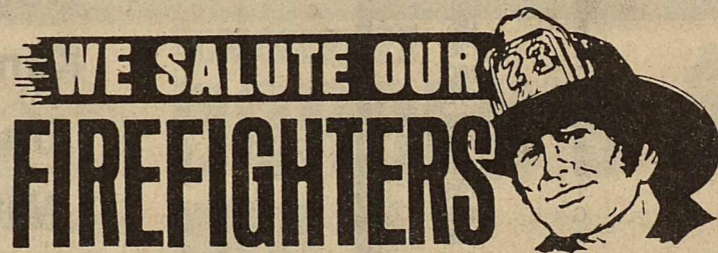
Fires cost money and lives. Common sense and dedication to good fire prevention practices will reap measurable benefits to our community.

The volunteers of the Haskell Fire Department are dedicated to saving lives and property. The cooperation of every resident in preventing fires will make all our lives more pleasant.

All members of the Haskell Fire Department are involved in an on-going training centered around fire suppression, rescue and salvage. With the cooperation of the Haskell City Council and the Haskell County Commissioners Court and organizations like the Ladies Auxiliary and many individuals, the Haskell Fire Department is recognized across the State as one of the best trained and best equipped.

With the cooperation of every citizen, Haskell can also be recognized as having the same quality of fire prevention.

WEEK OCTOBER 7-13



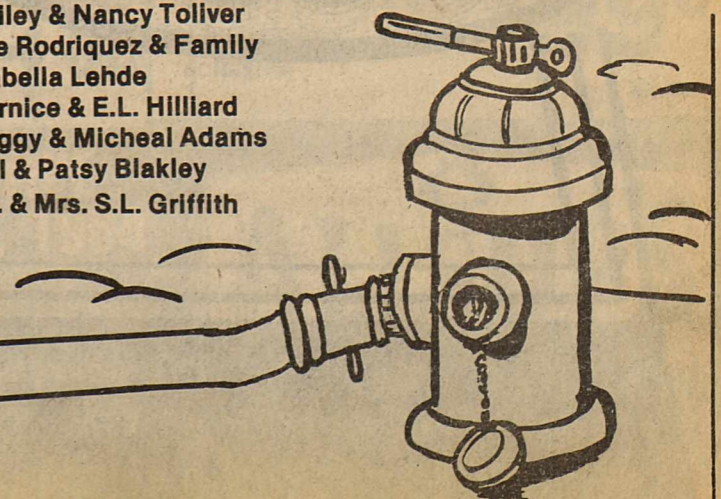
Retta Baccus
Mr. & Mrs. E.B. Love
Mr. & Mrs. Carl W. Myers
Jerry & Deborah & Heather Curd
Hanson Paint & Body Shop
Bobby & Bobby Jr. Medford
Dale R. Burris Family
Mr. & Mrs. Lorraine Johnson
Bob & Loretta Gray
The Lonnie Hodgln Family
Genelle Overton
Dr. Frank & Billie Cadenhead
Raymond & Tommie Andrada
Belton & Lucille Duncan
J.B. & Iva Lee Gipson
Jack Medford
Dude & Evelyn Mercer
Alton & Nadine Middleton
The Pizza Barn
Richard Lee Potts
Allce Larned
Jerry Don, Phyllis, Sheila & Steven Klose
Nancy, Stony & Marty
David Earle
Earle Brothers
Wanda & Melvin Vojkufka

Royce & Jimmie Adkins
The Bob Brandon Family
The Melvin Turnbow Family
Gary Harris
L.C. Johnson, Jr.
The Marc Thane Family
Lane Felker
Wayne & Billie Jean Walters
Ike Neal
Drey & Mary Lowe
Vivian Roberson
John & Ann Darnell
Kenneth & Dorothy Blair

Terry & Clifton Hawkins
Jake, Katy, Regina & Jakle Roysdon
The Glendon Hawkins Family
Pogue's Grocery
Travis & Alama Solomon
The John Isbell Family
Queen Roofing
Clarence & Boneta Tatum
Jonathan & Christopher Tatum
Margaret & Creora Tatum
Eisle's HI-Landers, Jack Rueffer-owner
Mr. & Mrs. Bill Cox & Mitchell
Danny, Vickie, Cody & Amber Josselet
Roy & Margie Medford
Alvis & Frances Bird
Jim & Ruby Alvis
The Hayloft
Mac & Bettye McBroom
Teresa & Joshua & Micah New
Robert & Dude Dumas
Ray & Ann Lusk
Mrs. J.A. Bynum
James & Arvella Moore
Mr. & Mrs. Glenn Caddell
Gentry & Mavis Middleton
Kenneth, Ann, & Denice Young
Kay, Jeff, & Craig Neal
Nancy Mickler & Ruby Cheaney
John & Janie Andrada
Larry, Marijane, Kelli, & Craig
Thelma Thomas
Doris, Bo, Wendi, & Mary Kay Watson
The Dan Griffith Family
Leon & Letha Newton
The Milton Christian Family
Charles Gibson Family
Sticky, Jeanie, & Jim Raughton
Joe, Sarah, Sarah Ann & girls
The Kenneth Jarred Family
Paula, Tim, & Mik Everett

The Wayne Wells Family
Mr. & Mrs. W.B. Griffith
Betty Davis
Kim, Jim, & Amanda Crawford
Bobby & Rowena Hester
Mrs. Charlie Conner
Faye & Glen Walton
Ruby Mae & Dale Middlebrook
Wanda Morrison
Bill & June Perry
The Burl Medford Family
Marvin & Alene Collins
Gaston, Willie Faye, Barry & Sonja Tidrow
Carloyn & Mark Reynolds & Family
Johnny & Polly Mills
Jerry Walker
Audra Holsapple
Mr. & Mrs. Royce Williams
Sam & Nina Wester
Joel, Betsy, Ryan & Michele Nanny
Mr. & Mrs. Woody Frazier
Glenn & Geri Darden
James & Judy Dunlap
Ronny, Kathleen & Chris Tanner
Jodie & Ethel Earles
Martin, Janie & Rhonda Coleman
Betty, Rusty & Cody Stocks
Mr. & Mrs. F.A. Bryant
Rob & Amy McKnight & Katie
Ethel Lou Shelton & H.W. Clanton
Morris & Lois Jones
Bill, Darlene, Shelia & Joey Swinney
Benny & Mary Bassing
Zona, Shanna & Sherry Mueller
Hess & Dorothy Hartsfield
Ben, Sue, Lori & Mendy McGee
McGee's Lumber Yard
Lydia Stocks

Leon & Delight Jones
Owens Radio & Electric
Mr. & Mrs. Bill Trammell
Dr. & Mrs. T.W. Williams
Lane Apparel
The Gary Druessedow Family
Ken & Nelda Lane
Glenn & Janis Brzozowski & Family
Thelma King
The Darrell Feemster Family
The Ronnie Reel Family
Jimmy & Katie Hopper
Mike, Vicki Struve & Family
Southside Barber Shop
The Ted Jennings Family
Chester Lamb & Family
Bill Wilson Motor Co.
Tom & Lois Richardson
The Pat Hale Family
Darold & Maxine Roberson
Rex, Camin & Ross Pittman
The Tim Burson Family
Rick Phemister
Baldemar Perez & Family
Harlan & Jimmie Weinert
Bob, Debbie Earles, & boys
Bailey & Nancy Tollver
Joe Rodriguez & Family
Isabella Lehde
Bernice & E.L. Hilliard
Peggy & Micheal Adams
Bill & Patsy Blakley
Mr. & Mrs. S.L. Griffith



sk
atson
mily
atson
rooke
ntis
ose
ohn
Dorner
St. John
asha & Tony Lamb
a Cunningham
Judd
hey Judd
m
ham
am
ned
y Becker
Tiffany Bradford
ky Harvey
EMT-P
ST
e Swinson
ell
as
head & Family
nette Glandon
amily
Family
y
Chris
re & Loren Cole
on
re
Supply



Indian

FOOTBALL

1984 FOOTBALL SCHEDULE

Sept. 7..... Haskell 2—Munday 20
 Sept. 14..... Haskell 0—Electra 37
 Sept. 21..... Haskell 20—Seymour 7
 Sept. 28..... Haskell 21—Quanah 13
 Oct. 5..... Haskell 0—Iowa Park 42
 *Oct. 12..... Hamlin..... Here
 *Oct. 17..... Rotan..... There
 *Oct. 26..... Stamford..... There
 *Nov. 2..... Hawley..... Here
 *Nov. 9..... Anson..... Here

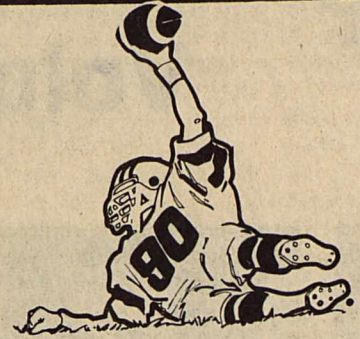
*District Games

Haskell Indians

vs

Hamlin Pied Pipers

8:00 P.M. — Here



This Page Sponsored By The Following Firms and Individuals

Willie Faye Tidrow
County Treasurer

Brian & Jennifer Burgess
—State Farm Insurance—

Fieldan Motel
Haskell's Finest Downtown

The Hartsfield Agency

Richardson Truck & Tractor

Haskell Free Press

Jones Cox & Co.

Carolyn Reynolds
—District Clerk—

Mike Harrell

Sherman's Carpet & Interior

Medford Buick-Pontiac

Glenn & Jo Pogue

Federal Land Bank Assn.

M-System

Pogue's Meat Processing

The Video Vendor

Boggs & Johnson

Bill Wilson Motor Co.

Biggon Drinnon

Reddy Pest Control

—Bill St. John—

Owens Radio & Electric

Gilliam Oil Co.
—Larry Gilliam—

Hanson Paint & Body

Pizza Barn

Wallace's Exxon

Queen Roofing

Smitty's Auto Supply

Centex Cablevision Corp.

Kiddie Kottage
—Director, Sandra Wallace—

Anderson Construction Co.

Conner Nursery & Floral

Sport-About

Dean Butane Co.

Holden-McCauley Funeral Home

Trussell's Tire Center

Nanny Plumbing

Kennedy Lumber Co.

Haskell Livestock Auction

Under the Rainbow

Haskell National Bank

Mitchell's Porthole

Double A Drive In & Exxon

McGee's Lumber Yard

Leon Jones Welding

Rodriquez Inn

Buster's Drive-In Grocery

The Sweet Shop

Haskell Marine

Sonic Drive In

The Personality Shoppe

Lane-Felker

—Smart Wear for Women 864-2501—

Kountry Kookin'

Thornhill Insurance Agency

Guess-Munday Northside Gulf

Modern Way Food Store

Haskell Co. Warehouse & Compress, Co.

Haskell Steak House

Bailey Toliver Chevrolet & Olds

Haskell Paint & Body

Kids Duds

Dairy Queen

Heads or Tails Western Wear

Elsie's Hi-Lander

Steele Precision Machine

Haskell Co. Farm Bureau
Lonnie Tate—Agency Manager

Jake Dusak, Jr.

Commodore Savings
Haskell Branch—518 S. 2nd

The Back Porch
864-3761



1984 HASKELL INDIANS

NO.	NAME	POSITION	WEIGHT
10	Felipe Arredondo	B	114
11	John Castillo	TB	140
12	Todd Harris	QB	156
20	Steven Rodriguez	E	125
22	Joel Torres	B	165
25	Harry Henry	E	137
32	Michael Wallace	E	132
33	Carl Dever	B	140
35	Kendall Larned	B	151
37	Robert Ivey	B	185
40	Ruben Ozuna	E	136
54	Joey Thomas	C	190
55	Shawn Lane	C	172
60	Jimmy Burson	G	166
62	Keith Parrott	G	165
65	Sam Baker	G	190
67	Shane Gilliam	T	195
72	Seth Pace	G	185
74	Scott Schaake	T	148
75	Joseph Perez	T	228
79	Andy Griffith	T	190
80	Randy Roewe	E	144
82	Billy McFadden	E	119
84	Ponciano Lopez	E	138
88	Ricky Rojas	E	160

MANAGERS: Mickey Dewey, Jerry Davis, David Swann, Eric Mullen, Stephen Holt

COACHES: W.L. Holt, Head/Athletic Director
 Jimmy Lisle, Defensive Coordinator
 Jim B. Mickler, Assistant
 George Martin, Assistant
 Jim D. Raughton, Assistant

SUPERINTENDENT: James Lanier
 PRINCIPAL: Clayton Neal

BAND DIRECTOR: Carl Wilke

CHEERLEADER SPONSOR: Cathy Bartley

DRUM MAJOR: Kim Lanier

TWIRLERS: Hollie High, Mitchell Stout, Lorry Geilhausen, Jill Jennings, Kelli Gilliam

CHEERLEADERS: Holly McBroom, Denise Burris, Stephanie Browning, Kelly Wallace, Rhonda Adams, Mindy Smith

1984

Superintendent's Views

BY JAMES LANIER
Superintendent, Haskell ISD

HB 72 mandates the school districts provide tutorial service for students in need of extra help. This idea will revise a program which Haskell ISD provided at the secondary school about fifteen years ago. Mrs. Martin continued this service with her "eighth period" until she retired. The program has a great deal of merit. Often times a little extra help is the difference in understanding and totally grasping a concept and failing to totally comprehend.

This tutorial program will be in place in both campuses starting this Thursday. Two tutors will be available each Tuesday and Thursday at 3:30 for a period of one hour ending at 4:30. Their regular classroom teachers have devised a method of communication so that the tutor will know what the student needs to remedy his deficiency. The board of education on the recommendation of the administration made the program optional. The reasoning behind this decision was students and parents should be motivated to want the improvement possible. It goes back to the old theory "that you can drive

something to water, but cannot make it drink". Each parent should desire the best education possible for their children, therefore, they should be willing to use any avenue possible. The tutorial program is just another avenue. We find that most students are motivated to learn, however, they do become discouraged by failure to comprehend the work presented. We have strived several years to upgrade our program. Anytime you upgrade a program, it must go beyond doing away with exemptions or raising passing grades. You must also improve quality of materials or work provided. We have had this as a priority goal for our school for several years. HB 246 (Chapter 75) has now mandated this improvement in all schools. With the improvement in the quality of education comes the quality of education comes the possibility of some student to keep up with his work and not suffer the frustration of failure. This program can be a valuable asset to the student. Hopefully, when a student needs help, they will avail themselves to this program.



Photo by Joey Kimbrough

WINNING HIGH SCHOOL HGAA TEAM
(l-r) Kim Short, Lorry Geilhausen, first place in high school with 50; Lori McGee, Tamala Randle and Leiza Morales, second place with 48. Proceeds from the sale benefit Girls Athletics.

Girls Athletic Assn.

Fund Raiser Successful

The Haskell Girls Athletic Association (HGAA) sold spice holders and shakers to help purchase new basketballs, shoes and workout equipment for track and basketball.

Although bad weather persisted, the combined junior-high and high-school girls sold a total of \$2,445. The junior-

high girls sold 132, and the high-school girls 124.

A \$50 bill was the top prize for the top salesman in each building. Other prizes include, a telephone for 29 or more products and a Sony AM/FM Walkman radio for 29 or over the first day.

The top three winners in junior-high were Penny Peden 52; Jenny Hayes, 48; and Teresa Unger, 40. High-school winners include Lorry Geilhausen, 50; Leiza Morales, 48; and Shawna Welch, 40.

Jenny Hayes, Kristie Brister, Wendy Smith, Sheree Marr and Julie Martinez were the members of the junior high winning team.

Winners for the high-school team were Lorry Geilhausen, Lori McGee, Kim Short, Leiza Morales and Tamala Randle.

"Once again the Maidens came through and did a good job on their annual project. The support of all the people who participated is appreciated. Haskell people really do a great job of supporting all of their teams on all levels," coach Jim Bob Mickler said.

The Video Vendor is giving a complimentary prize to the winning team for one week.



Photo by Shane Gilliam

JUNIOR HIGH HGAA WINNERS: (l-r) Penny Peden, top salesman in junior high and high school, sold 52 products and Jenny Hayes, sold 48 for second place. Proceeds from the sale benefit Girls Athletics.

Haskell Nursing Center News

We are so proud of our new American flag presented to us by the Stamford VFW Post. Every year the Post donates flags to different organizations and this year they were presented to nursing homes in the area. Plans are now being made for landscaping and erecting a permanent flag pole so that we may conduct daily flag raising ceremonies. Our deepest gratitude to this fine organization for remembering us. Thank you so much.

Sunday was a special day for Lillie Webb, age 91, when she was honored by the Experienced Citizens Center. The Center hosted a special luncheon to honor area citizens who are 90 years of age or older. Mrs. Webb was introduced by Lorene Beason, Administrator of Haskell Nursing Center, and enjoyed all the special attention she received. Also honored, but

unable to attend, was another one of our residents, Donna Westmoreland, who will be 98 years of age on October 26th. A big "get well soon" goes out to Cleve Hester and L.J. Dunn who are both in Haskell Memorial Hospital. We miss you and are looking forward to you getting home soon.

Visiting with Lillie Greenwood this week were George and Gracy Erath, along with Artie and Clyde Boydston.

Visiting with Easter May was Marie Townsend and Mr. and Mrs. A.D. May of Rule.

Ervalene Beason and Bessie King of Knox City were here visiting with their husband and father Erwin King.

Pauline Williams was walking on air when her son, Grady Webb of Elk City, Oklahoma surprised her with a visit last week.

Harrell Mays was here from Friona to visit with Fannie B. Hargrove.

Dollie Alexander was visited by Willie Jennings, Ovada Webb, and Jack Tidrow, all of Rule.

Claudia Reid was here from Rochester to see Delma Glover. Bessie Hockett was visited by Mae Belle Crist of Fort Worth, Mr. and Mrs. Bill Nail of Aspermont, and Bessie's daughter Vivian Hunt of Rule.

Those down to visit with A.J. Patterson and to check on their mother and grand-

mother, Cleve Hester who has been hospitalized, include, Mr. and Mrs. Mike Patterson of Oklahoma City, Geneva Patterson of Denver City, Shawnda Adkins of Sweetwater, and Carolyn Taubhan from Brownwood.

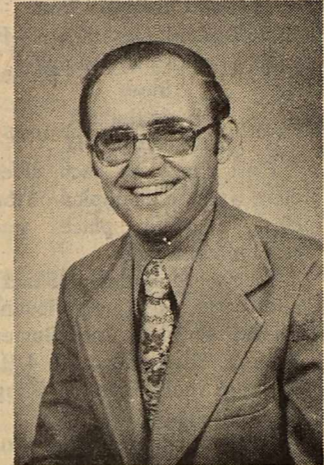
Elaine Glover was down to visit with Lector Thomason. Lewis Cox and Sammie Higgins of Albany were here to visit with all the residents. Mr. Cox who is a very young 93, loves to visit with nursing home residents and entertaining them with his rope tricks and stories.

Faith Lutheran Church Has New Pastor

The Rev. Mel Swoyer, formerly a chaplain at Hendrick Medical Center in Abilene and Robert H. Dedman Memorial Hospital in Dallas, will be installed as the pastor of Faith Lutheran Church in Sagerton on Sunday, October 14, at 4:00 p.m. Area churches are invited to this worship service and the supper afterwards.

Pastor Mel Swoyer was raised in Washington, D.C., graduated from Valparaiso University (Indiana) and Trinity Lutheran Seminary (Ohio), and was ordained into the gospel ministry on October 14, 1973, in Immanuel Lutheran Church, Killeen. He served as an artillery officer in the U.S. Army and while stationed at Fort Hood, he married the former Gaile Vahrenkamp from Killeen. He and his wife have three daughters: Stacey, age 13; Jennifer, age 10; and Marcia, age 5.

St. John's Lutheran Church in Winters (1973-1977) and Grace Lutheran Church in Abilene (1977-1981). In his chaplaincy work, he has done extensive counselling with alcoholic and psychiatric patients. "I am happy to serve God's people in Sagerton," said Pastor Swoyer, "and feel good being back in West Texas."



REV. MEL SWOYER

His previous pastorates

Call
Nanny Plumbing
for all your plumbing needs.
We offer Rheem H/C, Roto-Rooter and Ditch Witch Services, Plus Dependable Service
Monday thru Friday
7 a.m. to 5 p.m.
Sat. 7 a.m.-12 noon
301 S. Ave E 864-3043

We wrote the book on modern savings plans

While today's economy demands that you get the most from your money, a conventional savings account may not be the best way to meet your financial needs. To serve you better, we offer an array of savings plans designed to fit any budget. Our passbook accounts earn the highest interest allowed by law. High-yield certificates of deposit pay an even higher rate. We also offer money market shares and Individual Retirement Accounts at varying terms and dividends. Come in today and let one of our financial counselors draw up a savings plan that's right for you.

FDIC

The Farmers NATIONAL BANK

Post Office Box 10
Phone (817) 997-2216
Rule, Texas 79547

ALLSUP'S FRESH COOKED CORN DOGS 289¢ FOR

HOMOGENIZED BORDEN'S MILK \$2.59 GAL.

FALL AT WAREHOUSE SALE

CITRUS HILL FROZEN ORANGE JUICE 3 \$2.79 12 OZ. CANS.

BORDEN'S ASST. FLAVORS ICE CREAM \$1.79 1/2 GAL. CTN.

CAMPBELL'S SOUP Chicken Noodle O's Cream of Chicken Chicken with Rice 3/\$1.00 10 oz Can

KRAFT MACARONI DINNERS 3 89¢ 7 1/2 OZ. BOXES

OSCAR MAYER SLICED BOLOGNA 68¢ 8 OZ. PKG.

6 Pack-12 oz. Cans PEPSI PEPSI LIGHT, PEPSI FREE, DIET PEPSI \$2.19

JENOS PIZZA 99¢ Assorted Styles 11 oz.

PRICES EFFECTIVE OCTOBER 11-13, 1984 WHILE SUPPLIES LAST PICNIC SUPPLIES-ICE-SOFT DRINKS FRESH COOKED FOODS-SELF SERVE GAS-SNACKS -PRODUCE- MONEY ORDERS

ALLSUP'S CONVENIENCE STORES THERE'S ONE NEAR YOU®



1984 Haskell County Fair Results

Steer Class 10 48 1/4-48 3/4
Gary Edgar, Throckmorton Co. 4-H, 1st; Chris Carver, Haskell Co. 4-H, 2nd; Russell Moore, 3rd; Ross Shaver, Haskell Co. 4-H, 4th; and Carla Bradley, Baylor Co. 4-H, 5th.

Michelle Heirman, Shackelford Co. 4-H, 6th; Bubba Whithers, King Co. 4-H, 7th; Brad Bevel, Haskell FFA, 8th; and Roger Bille, 9th.

Steer Class II 49-49 1/2
Leslie Wall, Jones Co. 4-H, 1st; Joey Kimbrough, Haskell Co. 4-H, 2nd; Jennifer Bowman, Shackelford Co. 4-H, 3rd; Faye Mullino, Haskell Co. 4-H, 4th; Dalyn Gilly, Haskell Co. 4-H, 5th; and Joseph Pace, Haskell Co. 4-H, 6th.

Tommy Casey, Rule FFA, 7th; Jerri Ann Cornett, Throckmorton Co. 4-H, 8th; Patrick Burson, Haskell Co. 4-H, 9th; Cary Garvin, Shackelford Co. 4-H, 10th; and Kim Wicker, Baylor Co. 4-H, 11th.

Steer Class 12 49 1/4-50 1/2
Michelle Bowles, Haskell Co. 4-H, 1st; Mickey Dunnam, Haskell FFA, 2nd; Michelle Heirman, Shackelford Co. 4-H, 3rd; Michelle Scoggins, Haskell Co. 4-H, 4th; and Chris Edgar, Shackelford Co. 4-H, 5th.

Lee Shelton, Shackelford Co. 4-H, 6th; Shelly Drinnon, King Co. 4-H, 7th; Brad Donnell, Baylor Co. 4-H, 8th; Brad Bevel, Haskell Co. 4-H, 9th; and Russell Moore, Shackelford Co. 4-H, 10th.

Steer Class 13 50 1/4-51 1/2
Michelle Scoggins, Haskell Co. 4-H, 1st; Merrick Hager, Jones Co. 4-H, 2nd; Faye Mullino, Haskell Co. 4-H, 3rd; Mickey Dunnam, Haskell FFA, 4th; and Jimmy Burson,

Haskell FFA, 5th. Samantha Hawkins, Shackelford Co. 4-H, 6th; Pete Moberley, Shackelford Co. 4-H, 7th; Michelle Scoggins, Haskell Co. 4-H, 8th; Mondy Mayfield, Weinert FFA, 9th; and Jennifer Shaver, Haskell Co. 4-H, 10th.

Steer Class 14 51 1/4-52
Michelle Scoggins, Haskell Co. 4-H, 1st; Joseph Pace, Haskell Co. 4-H, 2nd; Michael Mathis, Rule FFA, 3rd; Donnell Brown, Throckmorton Co. 4-H, 4th; Leslie Wall, Jones Co. 4-H, 5th; and Jennifer Bowman, Shackelford Co. 4-H, 6th.

Steer Class 15 52 1/4-53 1/4
Mandy Ford, Shackelford Co. 4-H, 1st; Mandy Mathis, Haskell Co. 4-H, 2nd; Kim Gilly, Haskell Co. 4-H, 3rd; and Samantha Hawkins, Shackelford Co. 4-H, 4th.

Tracy Wheeler, Shackelford Co. 4-H, 5th; Lee Shelton, Shackelford Co. 4-H, 6th; and Marianne Brown, Throckmorton Co. 4-H, 7th.

Steer Class 16 53 1/4-54 1/4
Mindy Ballard, Haskell Co. 4-H, 1st; Chad Ballard, Haskell Co. 4-H, 2nd; Jessica Oman, Shackelford Co. 4-H, 3rd; Dalyn Gilly, Haskell Co. 4-H, 4th; and Brian Wilson, Shackelford Co. 4-H, 5th.

Kirby Andrews, Throckmorton Co. 4-H, 6th; Leslie Walls, Jones Co. 4-H, 7th; Chris Carver, Haskell Co. 4-H, 8th; and Brad Donnell, Baylor Co. 4-H, 9th.

Steer Class 18 54 1/4 and up
Chad Ballard, Haskell Co. 4-H, 1st; Mandy Ford, Shackelford Co. 4-H, 2nd; Jennifer Oman, Shackelford Co. 4-H, 3rd; Richard Shaver, Rochester FFA, 4th; Merrick Hager, Jones Co. 4-H, 5th; and J. Brad Bevel, Haskell Co. 4-H, 6th.

HEIFERS
Grand Champion Heifer
Jessica Oman, Shackelford Co. 4-H

Reserve Grand Champion Heifer
Marianne Brown, Throckmorton Co. 4-H

BRITISH HEIFERS
Champion British Heifer
Faye Mullino, Haskell Co. 4-H

Reserve Champion British Heifer
Michelle Barton, King Co. 4-H

British Heifers Class I
Faye Mullino, Haskell Co. 4-H, 1st; and Faye Mullino, Haskell Co. 4-H, 2nd.

British Heifers Class II
Michelle Barton, King Co. 4-H, 1st; Matt Wilson, Anson FFA, 2nd; Faye Mullino, Haskell Co. 4-H, 3rd; Faye

Mullino, Haskell Co. 4-H, 4th; and Paul Gibson, Haskell Co. 4-H, 5th.

British Heifers Class III
Faye Mullino, Haskell Co. 4-H, 1st; Faye Mullino, Haskell Co. 4-H, 2nd; and Tommy Casey, Haskell Co. 4-H, 3rd.

Brahm Cross Heifers
Champion Brahm Cross Heifer
J. Brad Bevel, Haskell Co. 4-H

Reserve Champion Brahm Cross Heifer
Leiza Morales, Haskell FFA

Brahm Cross Class IV
J. Brad Bevel, Haskell Co. 4-H, 1st and Leiza Morales, Haskell FFA, 2nd.

EXOTIC CROSS HEIFERS
Champion Exotic Cross Heifer
Jessica Oman, Shackelford Co. 4-H

Reserve Champion Exotic Cross Heifer
Marianne Brown, Throckmorton Co. 4-H

Exotic Cross Heifer Class V
Jenny Wheeler, Shackelford Co. 4-H, 1st; and Jennifer Bowman, Shackelford Co. 4-H, 2nd.

Exotic Cross Heifers Class VI
Jessica Oman, Shackelford Co. 4-H, 1st; Samantha Hawkins, Shackelford Co. 4-H, 2nd; Joey Kimbrough, Haskell Co. 4-H, 3rd; and Jennifer Bowman, Shackelford Co. 4-H, 4th.

Exotic Cross Heifers Class VII
Marianne Brown, Throckmorton Co. 4-H, 1st; Smantha Hawkins, Shackelford Co. 4-H, 2nd; and Kevin Mathis, Rule FFA, 3rd.

STEER CLASS 43 1/4-45 1/4 STEERS
Grand Champion Steer
Chad Ballard, Haskell Co. 4-H

Reserve Grand Champion Steer
Mindy Ballard, Haskell Co. 4-H

First Place in each steer class was the champion of the class; second place was reserve champion.

Tracy Moberley, Shackelford Co. 4-H, 1st; Chad Gibson, Haskell Co. 4-H, 2nd; Buster Shelton, Shackelford Co. 4-H, 3rd; and Shelly Drinnon, King Co. 4-H, 4th.

Shelly Drinnon, King Co. 4-H, 5th; Kaelyn Bradley, Baylor Co. 4-H, 6th; and Sam Bradley, Baylor Co. 4-H, 7th.

Steer Class 9 46 1/2-48
Michael Mathis, Rule FFA, 1st; Mondy Mayfield, Haskell Co. 4-H, 2nd; Mitch Mayfield, Haskell Co. 4-H, 3rd; and Jennifer Davis, Baylor Co. 4-H, 4th.

Bubba Whithers, King Co. 4-H, 5th; Gary Garvin, Shackelford Co. 4-H, 6th; and Buster Shelton, Shackelford Co. 4-H, 7th.

RABBITS
Junior White Doe
1st. Cindy Payne, Haskell FFA; 2nd. Chris Mills, Haskell FFA; 3rd. Melissa Cockerell, Paint Creek FFA; 4th. Luann Cockerell, Paint Creek FFA; and 5th. Ginger Houghton, Jones Co. 4-H.

6th. Jerry Houghton, Hamlin FFA; 7th. Chris Mills, Haskell FFA; 8th. Wade Foreman, Haskell FFA; 9th. Joel Torres, Haskell FFA; and 10th. Gary Gibbs, Stamford FFA.

Senior White Doe
1st. Wade Foreman, Haskell FFA; 2nd. Richard Brewer, Knox Co. 4-H; 3rd. Jerry Houghton, Hamlin FFA; 4th. Jerry Jones, Jones Co. 4-H; and Michelle Hantman, Shackelford Co. 4-H.

6th. Joel Torres, Haskell FFA; 7th. Eric Gardner, Haskell Co. 4-H; 8th. Ronny Weeks, Haskell Co. 4-H; 9th. Joel Torres, Haskell FFA; and 10th. Billy Large, Knox Co. 4-H.

Jr. Colored Doe
1st. Kristen Campbell, Haskell FFA; 2nd. Cindy Payne, Haskell FFA; 3rd. Greg Webb, Anson 4-H; 4th. Billy Large, Knox Co. 4-H; and Billy Large, Knox Co. 4-H.

6th. Kristen Campbell, Haskell FFA; 7th. Eric Gardner, Haskell FFA; 8th. Mark Smith, Hawley 4-H; 9th. Joey Swinney, Haskell FFA; and 10th. Leon Fletcher, Anson FFA.

Sr. Colored Doe
Best Doe
Tami Brewer, Knox Co. 4-H

1st. Tami Brewer, Knox Co. 4-H; 2nd. Jerry Houghton, Jones Co. 4-H; 3rd. Joey Swinney, Haskell FFA; 4th. Richard Brewer, Knox Co. 4-H; 5th. Billy Large, Knox Co. 4-H; and 6th. Daniel Swan, Haskell FFA.

Jr. White Bucks
1st. Eric Gardener, Haskell Co. 4-H; 2nd. Mark Smith, Hawley 4-H; 3rd. Melissa Cockerell, Paint Creek FFA; 4th. Chris Edwards, Hawley FFA; and 5th. Jenny Jones, Jones Co. 4-H.

6th. Chris Mills, Haskell Co. FFA; 7th. Leon Fletcher, Anson FFA; 8th. David Foreman, Haskell FFA; and 9th. Kristen Campbell, Haskell FFA.

Sr. White Bucks
1st. Michelle Heiman, Shackelford Co. 4-H; 2nd. Cindy Payne, Haskell FFA; 3rd. Chris Edwards, Hawley FFA; 4th. Jerry Houghton, Hawley FFA; and 5th. Jim Ed Jones, Jones Co. 4-H.

6th. Ginger Houghton, Jones Co. 4-H; 7th. Richard Brewer, Knox Co. 4-H; 8th. Billy Large, Knox Co. 4-H; and 10th. Melissa Cockerell, Paint Creek FFA.

Jr. Colored Bucks
1st. Greg Webb, Anson 4-H; 2nd. Billy Large, Knox Co. 4-H; 3rd. Ginger Houghton, Jones Co. 4-H; 4th. Tami Brewer, Knox Co. 4-H;

and 5th. Luann Cockerell, Paint Creek FFA.

6th. Gina Falk, Paint Creek FFA; 7th. David Foreman, Haskell FFA; 8th. Russell Weeks, Haskell 4-H; 9th. David Swan, Haskell FFA; and 10th. Morgan Kueger, Haskell 4-H.

Jr. Colored Buck
Best Buck
Chris Edwards, Hawley FFA

Best of Show
Tami Brewer, Knox Co. 4-H

Best Opposite Sex
Chris Edwards, Hawley FFA

1st. Chris Edwards, Hawley FFA; 2nd. Mark Smith, Hawley 4-H; 3rd. Michelle Parsley, Stamford FFA; 4th. Joey Swinney, Haskell FFA; and 5th. Mark Smith, Hawley FFA.

6th. Jim Ed Jones, Jones Co. 4-H; 7th. Jerry Houghton, Hamlin FFA; 8th. Joe Torres, Haskell FFA; and 9th. Ginger Houghton, Jones Co. 4-H.

YOUTH EDUCATIONAL
Best of Show
Kacy Nemir, Dalyn Gilly

Reserve Best of Show
Haskell 4-H Club

Haskell 4-H Club, 1 blue; Kacy Longan, 1 blue; Kacy Nemir, 1 blue and Dalyn Gilly, 1 blue.

YOUTH PROJECTS
POSTERS AND EXHIBITS
Best of Show
Kacy Longan

Reserve Best of Show
Missy Reneau

Jae Jae Reneau, 1 red; Kacy Nemir, 1 red; Kacy Longan, 1 blue; Faye Mullino, 1 red; Missy Reneau, 1 blue; Mindy Ballard, 1 red and Andrea Longan, 1 blue.

YOUTH CLOTHING
Best of Show
Michelle Scoggins, Rochester

Reserve Best of Show
Jae Jae Reneau, Munday 6-10

Missy Reneau, 1 blue; Jennifer Comedy, 1 blue; Mindy Ballard, 1 blue; Kim Gilly, 1 blue and Andrea Longan, 1 red.

11-13
Jennifer Shaver, 1 red; Tessa Kiser, 1 blue; Jae-Jae Reneau, 1 blue; Robin Reneau, 1 blue; Dalyn Gilly, 1 red; Lynn Parker, 1 blue; Ann Parker, 2 blue; Faye Mullino, 1 red and Cristy Rowan, 1 red.

14-19
Amy Parker, 2 blue, 4 red; Donna Rowan, 1 white; Mendie Stewart, 2 red; Leann

Oustad, 1 blue; Jeanette Navarrette, 1 red; Karen Munoz, 1 blue, 1 red; Elaina Morgan, 1 red; Selvia Choucair, 1 red and Cindy Berryhill 2 red.

Lynette Norman, 1 white; Rhonda Averitt, 1 blue; Debbie Hollowell, 1 red; Stephanie Cannon, 1 red; Judy Iley, 1 red; Kristi Wilson, 1 red; Jill Jennings, 1

red, 1 blue and Michelle Scoggins, 1 blue, Best of Show.

Beverly Brown, 1 red; Christy Morgan, 1 blue; Gala Luster, 1 red; Cheryl Wilde, 2 red; Ann Kuehler, 1 blue, 1 white; Kathy Byard, 1 white; Mary Sanchez, 1 blue; Renita Redder, 1 red.

Advertise the Action Way!
The CLASSIFIED WAY!

1984 Quarterly Report
Haskell County, Texas
July, August & September

	BALANCE JUNE 30 1984	RECEIPTS JULY, AUG. SEPT	DISBURSEMENTS JULY, AUGUST SEPT	BALANCE SEPT 30 1984
GENERAL	15,846.77	109,496.53	120,643.13	4,709.17
JURY	18,584.38	797.56	4,337.08	15,044.86
PERM IMP	16,722.75	89.56	.00	16,812.31
OFFICER SALARY	17,521.45	53,972.53	68,787.94	2,706.04
LAW LIBRARY	355.52	607.25	1,065.40	102.63
ROAD & BRIDGE #1	76,727.92	11,440.25	65,003.36	23,164.81
ROAD & BRIDGE #2	31,162.85	10,822.74	13,247.58	28,738.01
ROAD & BRIDGE #3	32,445.32	11,025.91	25,163.91	18,307.32
ROAD & BRIDGE #4	55,021.01	10,818.70	16,795.47	49,044.24
LATERAL ROAD #1	.10	8,259.36	.00	8,259.46
LATERAL ROAD #2	266.80	8,259.36	.00	8,526.16
LATERAL ROAD #3	21.63	8,259.36	.00	8,280.99
LATERAL ROAD #4	11.51	8,259.36	.00	8,270.87
F M L ROAD #1	2,528.98	987.39	.00	1,541.59
F M L ROAD #2	10,428.60	571.72	5,257.85	5,742.47
F M L ROAD #3	191.10	705.28	.00	896.38
F M L ROAD #4	3,332.89	564.23	5,328.76	1,431.64
SOCIAL SECURITY	489.44	17,723.45	17,723.45	489.44
GROUP INSURANCE	78.40	320.55	300.60	98.35
CRIMINAL JUSTICE	3,840.00	2,435.00	2,389.50	3,876.50
GEN. REV. SHARING	595.26	514.77	483.50	626.53
REV. SHARING #1	6,136.67	4,115.75	10,235.36	17.06
REV. SHARING #2	2,740.13	4,115.75	2,445.03	4,410.85
REV. SHARING #3	10,401.23	4,115.75	14,300.00	216.98
REV. SHARING #4	10,210.63	4,115.75	4,810.86	9,515.52
VOTER REGISTRATION	1,097.63	1,740.00	20.00	2,817.63
LAW ENF. OFFICER	741.00	463.00	464.40	739.60
PROBATION OFFICER	4,415.34	2,459.96	1,588.02	5,287.28
COMP. TO VIC. OF CRIME	812.25	892.50	643.50	1,061.25
COUNTY ATTORNEY	8,726.24	689.32	4,219.83	5,195.73
DISTRICT ATTORNEY	809.50	30.00	.00	839.50
T C D R S	.00	16,637.44	16,637.44	.00
JUV. PROB. OFFICER	4,724.50	2,642.05	146.17	7,220.38
HASKELL CO. SCHOOL	11,444.88	14,676.75	26,121.63	.00
39th. DIST. PROB. BOARD	4,588.87	6,062.00	4,640.70	6,011.17
TOTALS	347,964.59	328,686.88	432,800.47	243,851.00

Investments of Haskell County, Texas

SOCIAL SECURITY FUND
Certificates of Deposit # 14956 1 for 30 mos @ 9.45%
Dated Jan 30, 1983 and Maturing July 3, 1985 5,550.00

HASKELL NATIONAL BANK HASKELL, TEXAS		
PLEDGES SECURING COUNTY DEPOSITS		
Federal National Mortgage Association Bonds	2-10-86	265,000.00
EVERMAN IND. SCHOOL BOND	4-01-88	45,000.00
Thurston County Washington (Escrow in U.S. Government)		100,000.00
		410,000.00

Insurance Coverage for Time Deposits 100,000.00
Insurance Coverage for Aggregate Checking Accounts 100,000.00
610,000.00

HASKELL NATIONAL BANK Haskell, Texas		
CERTIFICATES OF DEPOSIT		
Certificate of Deposit # 15144 Criminal Justice account for 30 mos. @ 9.25% Dated January 18, 1983 and maturing July 18, 1985		1,500.00
Certificate of Deposit # 9086 District Clerk's Cost Account (Case set, money paid but not disposed of) 30 months @ 11.75% Dated May 23, 1983 and maturing November 23, 1986		3,000.00
One Time Deposit		10,000.00
		14,500.00

On October 1984 A.D., the Commissioners Court of Haskell County, Texas met in the regular session, compared and examined the Quarterly report for the quarter ending September 30, 1984, and found same to be true and correct.

THE REQUIREMENTS OF ARTICLE 394 P C HAVE BEEN COMPLIED AND A TABULAR STATEMENT HAS BEEN FILLED AS REQUIRED.

J. E. Tuberville
COMMISSIONER PRECINCT # 1

Ronnie Chapman
COMMISSIONER PRECINCT # 2

J. P. ...
COMMISSIONER PRECINCT # 3

B.O. Robinson
COUNTY JUDGE, HASKELL COUNTY TEXAS

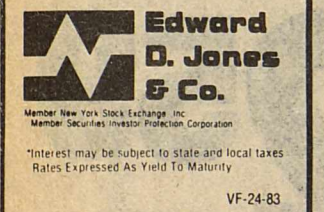
Arthur ...
COUNTY CLERK, HASKELL COUNTY TEXAS



DON BOOK

11.85% U.S. GOVERNMENT GUARANTEED BONDS
10.50% FEDERAL INCOME TAX FREE MUNICIPAL BONDS
13.40% INVESTMENT GRADE CORPORATE BONDS

DON BOOK
118 S. Swenson
Stamford, Texas 79553
915-773-2709



Compare & Save Sonny's

658-3162
Plumbing
15 Years Experience



New Construction
Industrial
Commercial
Residential
Remodelling
Repair
Fire Sprinkler Systems
Lawn Sprinklers

10% Discount for Senior Citizens
Licensed Plumber
No Trip Charge

Save This Coupon For A 10% Introductory Discount

LEARN TO FLY!

Private ground school at Stamford Airport Starting October 16 - 7 p.m.

Stamford Flying Service
915/773-3392

Announcing Claude Payne

is now performing on site
Mechanic Work
Call 864-2994 or come by
406 N. Ave. B

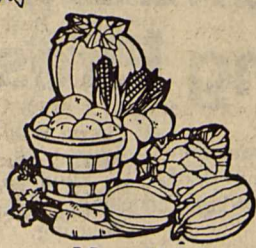
NOTICE

To monthly subscribers of the **Abilene Reporter-News**
Effective October 2, 1984, sales tax will be added to the price of your subscription.

Daily & Sunday \$7.75 plus 40¢ tax \$8.15
Sunday only \$3.50 plus 18¢ tax \$3.68

Mary Lowe 864-2254 or 864-2710
Debra Gibbs 864-2914

Haskell County Fair Results



Youth Crops Division

6 yr.-10 yr.
 Mindy Ballard, Rochester, 11 blue, 4 red; Brian Holmes, Rochester, 5 blue, 2 red; Justin Stewart, Haskell, 4 blue; Heather Stewart, Haskell, 4 blue; Aaron Earles, Haskell, 1 blue; John Beauchamp, Rochester, 1 blue, 2 red; Tracy Bevel and Stacy Bevel, Rochester, 1 blue each.

14-19
 Brandie Kregger, Haskell, 3 blue, 1 red; Rusty Meeks, 1 blue, 2 red; Keith Parrott, Haskell, 3 blue; Leiza Morales, Haskell, 4 blue, 4 red; David Adams, Haskell, 1 blue, 2 red; Shane Gilliam, HHS, 2 blue, 1 red; Shane Lane, HHS, 1 blue, 3 red; Chad Ballard, Rochester, 3 blue, 5 red and Doretha Moore, PC, 1 blue, 1 red 1 white.

Age 11-13
 Faye Mullino, Rochester, 18 blue, 3 red; Kacye Nemir, Haskell, 1 blue, 1 red; Gregg Webb, Anson, 1 blue; Brad Bevel, Rochester, 1 blue and Jacob Marin, Rochester, 1 blue.

red; Don Compton, Stamford, 1 blue; Bobby Short, PC, 2 blue, 2 red; Ty Williams, PC, 2 blue, 1 red; Donna Rowan, HHS, 2 blue, 2 red; Kirk High, HHS, 2 blue, 1 red; Billy McFadden, HHS, 3 blue; and Bruce Geilhausen, HHS, 2 blue, 1 red.

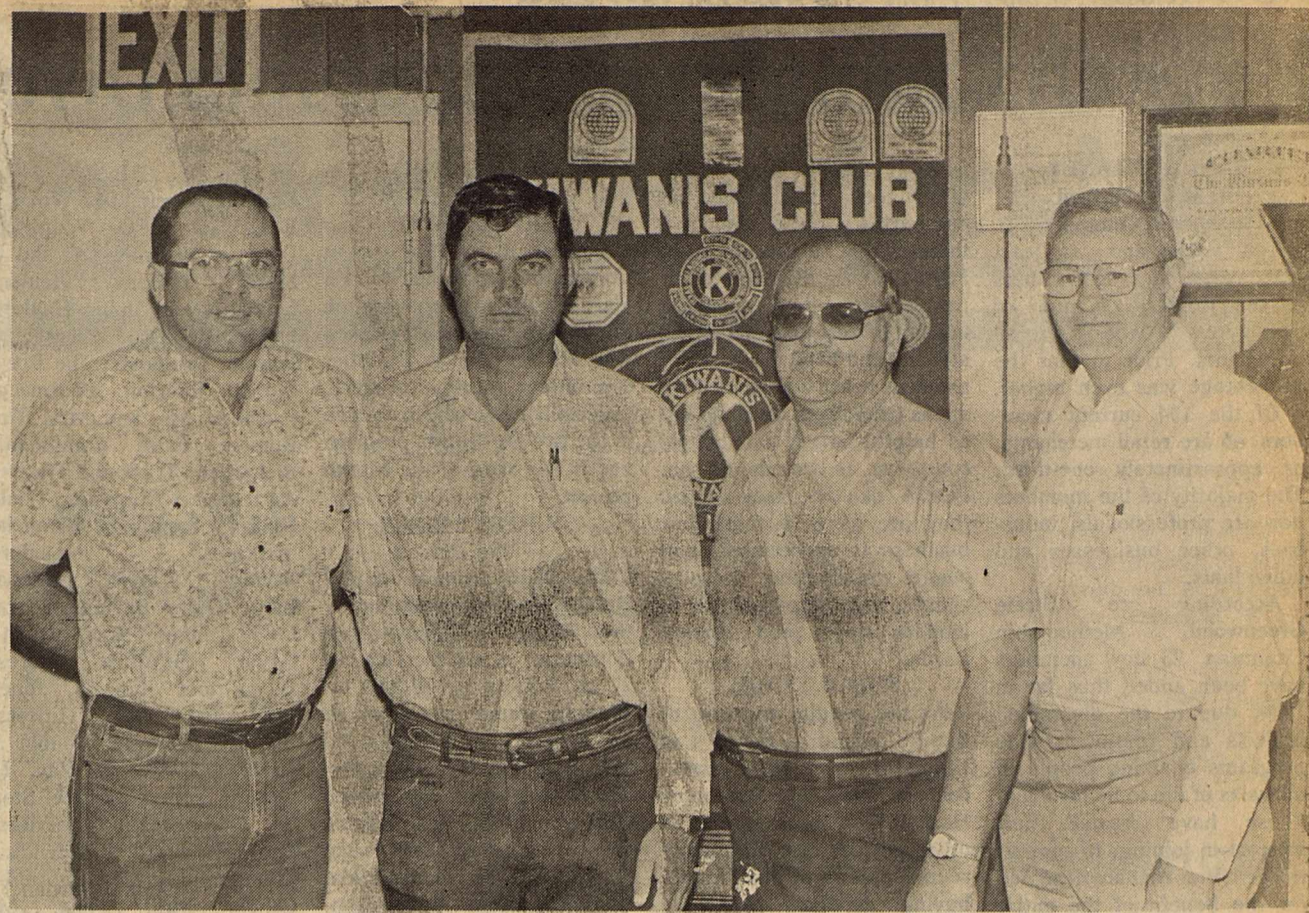
Casey Reed, HHS, 3 blue; Matt Lane, HHS, 1 blue, 2 red; Keith Medford, PC, 2 blue, 1 red; Jerry Davis, HHS, 2 blue, 1 red; Andy Griffith, HHS, 2 blue, 1 red; Val King, 2 blue, 1 red; Patricia Henry, HHS, 2 red, 1 blue, 1 white; Julie Roewe, HHS, 4 red; Robyne Weaver, HHS, 1 blue, 3 red; Patrick Perez, HHS, 1 blue, 2 red.

Louie Torres, HHS, 2 blue, 3 red; Emerterio Flores, HHS, 3 blue, 1 red; Danny Letterman, PC, 1 blue; Gina Kuykendall, PC, 1 blue; Wayne Geilhausen, HHS, 2 blue, 1 red; Tiffany Moeller, HHS, 3 blue, 1 red; Wade

Wilburn, Rule, 2 blue, 1 red; Russ Flanary, Rule, 2 red, 1 blue; Chris Medford, HHS, 2 blue, 1 red and Darryl Hoover, 3 red.

Dana Hale, HHS, 2 blue, 4 red; Lori Lane, HHS, 7 red, 2 blue; B.J. Mitchell, HHS, 3 blue, 1 red; Joel Torres, HHS, 1 blue, 2 red; Joey Thomas, HHS, 1 blue, 2 red; Rhonda Coleman, PC, 4 blue; Chris Mills, HHS, 3 red; Mikael Gonzales, HHS, 2 red; Kenneth Jeffcoat, PC, 3 blue; Kathy Simmons, HHS, 1 blue, 1 red, 1 white;

Lori Peiser, HHS, 2 blue, 2 red; Mark Young, HHS, 2 red, 1 blue; Quang Tran, HHS, 2 red; Greg Rowland PC, 1 red; Kristen Campbell, HHS, 3 blue, 2 red; Scott Burris, HHS, 1 blue, 2 red; Edward Nova, 4 blue, 1 red; Kelly Klose, HHS, 3 blue; A.G. Gonzales, PC, 1 red; Gary Scheets, PC, 1 blue, 2 red; Doug Davis HHS, 2 red, 1 blue.



Staff Photo by Don Comedy

NEW OFFICERS

New officers of the Haskell Kiwanis club were installed Tuesday night for the 1984-85 year. Pictured in front are: Secretary James Davis; President Marshall Brown; Vice President Gene Long; and Treasurer Abe Turner.

Heart Association Sets Elementary Inservice

The American Heart Association (AHA) will sponsor a teacher inservice program for Elementary Physical Education and health teachers October 20 in the Haskell National Bank Community Building.

The morning session, 9:30 to 11:30, will center around teaching K-3 essential elements in physical

education. The program will familiarize teachers with the Texas Physical and Motor Fitness Development program developed by the AHA and the Governor's Commission on Physical Fitness.

The afternoon session, 1 to 2:30 p.m., will provide inservice training for K-5 Health Education teachers. The program "Putting Your Heart Into the Curriculum", will provide

Health Education materials developed by the AHA and endorsed by the Texas Education Agency as meeting essential element requirements.

Both programs are free and the hours will qualify for advanced academic training hours.

To register call: Alicia Nemecek, 817/723-1431 or local principal.

Public Notice

Southwestern Bell Telephone Company hereby gives notice that a Private Coin Service tariff has been filed with the Public Utility Commission of Texas.

Under the proposed tariff, Private Coin Service would be offered for use with a customer-provided instrument-implemented coin telephone at the request of the customer.

Interim approval of the tariff has been requested by Southwestern Bell Telephone Co. and a hearing has been set for Oct. 15. Unless the tariff is approved on an interim basis, the new service is scheduled to become effective on March 7, 1985. The matter has been assigned to Docket 5905.

Persons who wish to intervene or otherwise participate in these proceedings should notify the Commission as soon as possible. A request to intervene, participate or further information should be mailed to the Public Utility Commission of Texas, 7800 Shoal Creek Boulevard, Suite 400N Austin, Texas 78757.

Further information may also be obtained by calling the Public Utility Commission Consumer Affairs Division at (512) 458-0223 or (512) 458-0227, or (512) 458-0221 teletypewriter for the deaf.

Aviso Público

Por medio del presente aviso, Southwestern Bell Telephone Company anuncia que ha registrado una tarifa referente al Servicio Telefónico Privado a Monedas ante la Comisión de Servicios Públicos de Texas.

De acuerdo con la tarifa propuesta, el Servicio Privado a Monedas podrá utilizarse, previa solicitud del usuario, con un aparato telefónico a monedas provisto por el usuario.

Southwestern Bell Telephone Company ha solicitado la aprobación interina de esta nueva tarifa y ha sido fijada una audiencia para el día 15 de octubre. A menos que la tarifa reciba aprobación interina, el nuevo servicio entrará en vigencia a partir del 7 de marzo de 1985. La tarifa se ha registrada bajo el Docket 5905.

Toda persona que desee intervenir o participar en el proceso debe notificar a la Comisión lo antes posible. Las solicitudes de intervención, participación o información deben dirigirse a: Public Utility Commission of Texas, 7800 Shoal Creek Boulevard, Suite 400N, Austin, Texas 78757.

Para obtener mayor información debe llamar a Public Utility Commission Consumer Affairs Division, al (512) 458-0223, al (512) 458-0227, o al (512) 458-0221 si requiere teletipo para personas con impedimentos de audición.



John Wilson, HHS, 4 blue; Jerry Hunt, HHS, 3 red; Mickey Dunnam, HHS, 3 blue; Linda Lewis, HHS, 2 blue; Jeff Neal, HHS, 1 blue, 2 red; Rhonda Adams, HHS, 3 blue; Kelli Gilliam HHS, 2 blue, 2 red; Joey Swinney, HHS, 3 blue, 1 red; Jasen Whitehead, HHS, 3 blue; Joey Kimbrough, HHS, 1 red, 2 blue; Todd Harris, 1 blue, 1 red.

Joseph Perez, HHS, 2 blue, 1 red; Mickey Dewey, 2 red, 1 blue; Sophie Gonzales, PC, 1 red, 1 blue; Shanna Mueller, HHS, 4 blue; David Headley, PC, 2 red; Steven Klose, HHS, 2 blue, 1 red; Kay Fisher, PC, 2 blue, 1 red; Cheryl Strickland, HHS, 2 blue, 3 red.

Rodney Medford, PC, 1 red; Jimmy Burson, HHS, 3 red; Marty Decker, HHS, 1 red, 1 blue; Steve Simmons, PC, 1 red; Melissa Cockerell, PC, 1 red; Dan Benton, HHS, 3 blue; Cindy Payne, HHS, 2 blue, 2 red; Mendie Stewart, 2 blue.

TRAINING CENTER

Best of Show
 Jan Corley

Reserve Best of Show
 Margie Counts

Margie Counts, 4 blue, 2 red; Alfred C. Dukatnik, 4 blue, 1 red; Jan Corley, 4 blue, 3 red; Haney Stanfield, 3 blue, 1 red; Randall Linton, 3 blue, 2 red, 1 white; Faye Wallace, 5 blue, 3 red, 2 white and Stella Story, 5 blue, 1 red.

Money Matters

A Series Of Informative "Plain Talk" Thoughts Regarding Your Money Matters

Installment Loans

We make installment loans for all sorts of good reasons: cars, boats, R-Vs, motorcycles, vacations, emergencies, furniture, carpeting, and more.

Every day we are helping our customers buy the things that they need by loaning them the money they need to get them.

We feel that the purpose of our bank is to reinvest the deposits of our customers in our community. So next time you're thinking of investing, think of us.

We Think Money Matters!

HASKELL NATIONAL BANK

864-2631 . 601 N. First
 Haskell, Texas — Member F.D.I.C.

©1983 MICHAELS

Attention Haskell County Shoppers: All Savings Listed End Oct. 13th.

Pre-Inventory CLEARANCE

Save now and save big as we reduce stocks for inventory. Step up to Goodyear with savings—now through Saturday October, 13th

<h3>Bias Ply Power Streak II</h3> <p>\$25.70</p> <table border="1" style="font-size: 0.8em;"> <thead> <tr> <th>Blackwall Size</th> <th>PRICE</th> </tr> </thead> <tbody> <tr> <td>F78x14</td> <td>\$31.85</td> </tr> <tr> <td>G78x14</td> <td>\$34.95</td> </tr> <tr> <td>G78x15</td> <td>\$36.00</td> </tr> <tr> <td>H78x15</td> <td>\$37.00</td> </tr> </tbody> </table> <p>A78x13 Blackwall.</p> <p>Sale Ends Oct. 13</p>	Blackwall Size	PRICE	F78x14	\$31.85	G78x14	\$34.95	G78x15	\$36.00	H78x15	\$37.00	<h3>Bias Belted Cushion Belt Polyglas</h3> <p>\$30.85</p> <table border="1" style="font-size: 0.8em;"> <thead> <tr> <th>Whitewall Size</th> <th>PRICE</th> </tr> </thead> <tbody> <tr> <td>E78x14</td> <td>\$36.00</td> </tr> <tr> <td>F78x14</td> <td>\$39.10</td> </tr> <tr> <td>G78x15</td> <td>\$43.25</td> </tr> <tr> <td>H78x15</td> <td>\$45.30</td> </tr> </tbody> </table> <p>B78x13 Whitewall.</p> <p>Sale Ends Oct. 13</p>	Whitewall Size	PRICE	E78x14	\$36.00	F78x14	\$39.10	G78x15	\$43.25	H78x15	\$45.30
Blackwall Size	PRICE																				
F78x14	\$31.85																				
G78x14	\$34.95																				
G78x15	\$36.00																				
H78x15	\$37.00																				
Whitewall Size	PRICE																				
E78x14	\$36.00																				
F78x14	\$39.10																				
G78x15	\$43.25																				
H78x15	\$45.30																				

<h3>SAVE All Season Radials</h3> <h2 style="font-size: 1.5em;">Arriva Radial</h2> <p>\$39</p> <p>P145/80R13 blackwall.</p> <table border="1" style="font-size: 0.8em; margin-top: 10px;"> <thead> <tr> <th colspan="2">FOR U.S. CARS</th> <th>Whitewall</th> <th>SALE PRICE</th> </tr> </thead> <tbody> <tr> <td>P155/80R13</td> <td>\$49.00</td> <td></td> <td></td> </tr> <tr> <td>P165/75R13</td> <td>\$51.20</td> <td></td> <td></td> </tr> <tr> <td>P165/80R13</td> <td>\$53.55</td> <td></td> <td></td> </tr> <tr> <td>P175/80R13</td> <td>\$54.95</td> <td></td> <td></td> </tr> <tr> <td>P185/80R13</td> <td>\$56.15</td> <td></td> <td></td> </tr> <tr> <td>P185/65R14</td> <td>\$60.90</td> <td></td> <td></td> </tr> <tr> <td>P175/75R14</td> <td>\$56.15</td> <td></td> <td></td> </tr> </tbody> </table> <table border="1" style="font-size: 0.8em; margin-top: 10px;"> <thead> <tr> <th colspan="2">FOR IMPORTS</th> <th>Blackwall</th> <th>SALE PRICE</th> </tr> </thead> <tbody> <tr> <td>P145/80R13</td> <td>\$39.00</td> <td></td> <td></td> </tr> <tr> <td>P155/80R13</td> <td>\$47.00</td> <td></td> <td></td> </tr> <tr> <td>P165/80R13</td> <td>\$50.45</td> <td></td> <td></td> </tr> <tr> <td>P175/80R13</td> <td>\$51.95</td> <td></td> <td></td> </tr> <tr> <td>P165/80R15</td> <td>\$53.40</td> <td></td> <td></td> </tr> <tr> <td>P175/70R13</td> <td>\$52.95</td> <td></td> <td></td> </tr> <tr> <td>P185/70R13</td> <td>\$55.50</td> <td></td> <td></td> </tr> <tr> <td>P185/70R14</td> <td>\$59.95</td> <td></td> <td></td> </tr> <tr> <td>P195/75R14</td> <td>\$64.15</td> <td></td> <td></td> </tr> <tr> <td>P205/75R14</td> <td>\$67.95</td> <td></td> <td></td> </tr> <tr> <td>P215/75R14</td> <td>\$70.95</td> <td></td> <td></td> </tr> <tr> <td>P165/80R15</td> <td>\$56.55</td> <td></td> <td></td> </tr> <tr> <td>P205/75R15</td> <td>\$70.55</td> <td></td> <td></td> </tr> <tr> <td>P215/75R15</td> <td>\$73.75</td> <td></td> <td></td> </tr> <tr> <td>P225/75R15</td> <td>\$76.95</td> <td></td> <td></td> </tr> <tr> <td>P235/75R15</td> <td>\$79.95</td> <td></td> <td></td> </tr> </tbody> </table> <p>With Trade</p>	FOR U.S. CARS		Whitewall	SALE PRICE	P155/80R13	\$49.00			P165/75R13	\$51.20			P165/80R13	\$53.55			P175/80R13	\$54.95			P185/80R13	\$56.15			P185/65R14	\$60.90			P175/75R14	\$56.15			FOR IMPORTS		Blackwall	SALE PRICE	P145/80R13	\$39.00			P155/80R13	\$47.00			P165/80R13	\$50.45			P175/80R13	\$51.95			P165/80R15	\$53.40			P175/70R13	\$52.95			P185/70R13	\$55.50			P185/70R14	\$59.95			P195/75R14	\$64.15			P205/75R14	\$67.95			P215/75R14	\$70.95			P165/80R15	\$56.55			P205/75R15	\$70.55			P215/75R15	\$73.75			P225/75R15	\$76.95			P235/75R15	\$79.95			<h3>SAVE Double Belted Steel Radial</h3> <h2 style="font-size: 1.5em;">\$52</h2> <p>Custom Polyglas P175/80R13 Whitewall With Trade</p> <table border="1" style="font-size: 0.8em; margin-top: 10px;"> <thead> <tr> <th>Whitewall Size</th> <th>PRICE</th> </tr> </thead> <tbody> <tr> <td>P175/75R14</td> <td>\$52.40</td> </tr> <tr> <td>P205/75R14</td> <td>\$63.00</td> </tr> <tr> <td>P215/75R14</td> <td>\$66.30</td> </tr> <tr> <td>P235/75R15</td> <td>\$74.85</td> </tr> </tbody> </table> <p>Sale Ends Oct. 13</p>	Whitewall Size	PRICE	P175/75R14	\$52.40	P205/75R14	\$63.00	P215/75R14	\$66.30	P235/75R15	\$74.85
FOR U.S. CARS		Whitewall	SALE PRICE																																																																																																												
P155/80R13	\$49.00																																																																																																														
P165/75R13	\$51.20																																																																																																														
P165/80R13	\$53.55																																																																																																														
P175/80R13	\$54.95																																																																																																														
P185/80R13	\$56.15																																																																																																														
P185/65R14	\$60.90																																																																																																														
P175/75R14	\$56.15																																																																																																														
FOR IMPORTS		Blackwall	SALE PRICE																																																																																																												
P145/80R13	\$39.00																																																																																																														
P155/80R13	\$47.00																																																																																																														
P165/80R13	\$50.45																																																																																																														
P175/80R13	\$51.95																																																																																																														
P165/80R15	\$53.40																																																																																																														
P175/70R13	\$52.95																																																																																																														
P185/70R13	\$55.50																																																																																																														
P185/70R14	\$59.95																																																																																																														
P195/75R14	\$64.15																																																																																																														
P205/75R14	\$67.95																																																																																																														
P215/75R14	\$70.95																																																																																																														
P165/80R15	\$56.55																																																																																																														
P205/75R15	\$70.55																																																																																																														
P215/75R15	\$73.75																																																																																																														
P225/75R15	\$76.95																																																																																																														
P235/75R15	\$79.95																																																																																																														
Whitewall Size	PRICE																																																																																																														
P175/75R14	\$52.40																																																																																																														
P205/75R14	\$63.00																																																																																																														
P215/75R14	\$66.30																																																																																																														
P235/75R15	\$74.85																																																																																																														

<p>LUBE, OIL CHANGE & FILTER</p> <p>\$15</p> <p>• Includes up to five quarts oil • Special diesel oil and filter type may result in extra charges</p>	<p>GUARANTEED DISC BRAKE SERVICE</p> <p>\$79</p> <p><small>If semi-metallic disc pads are required add \$14.</small></p> <p>New front disc pads, repack front wheel bearings, resurface front rotors. Conventional rear-wheel drive vehicles. Prices vary for front-wheel drive. Caliper overhaul \$19 each if needed. Hydraulic service will be recommended for safe operation.</p>	<p>GUARANTEED WHEEL ALIGNMENT</p> <p>\$21</p> <p>• Set front or rear wheel caster, camber, and toe on cars with adjustable suspension. Chevettes, light trucks, cars requiring MacPherson Strut correction extra.</p>
--	--	---

Anderson Tire Co.

206 S. Avenue E Phone 864-2900

Haskell Chamber Membership Diversifies

WANDA DULANEY, Manager, Haskell Chamber of Commerce

Ten years ago, at least eighty percent of the members of the Haskell Chamber of Commerce were retail merchants. Prior to that the percentage was even higher.

Of the 134 current members, 46 are retail merchants, or approximately one-third. The majority of the members now are professionals, industries, other businesses and individuals.

According to Dickie Greenwood, Membership Chairman, 23 new members have been added thus far in 1984, due to the diversified projects and communitywide programs enabling people of all walks of life to be involved. These have created new interest in joining, to support the activities that are designed for the benefit of the entire town and to call attention to Haskell, the hub of the rolling plains and acknowledged shopping center.

Tom Watson, Chamber president, says that the Current Board of Directors is stressing positive actions that attract visitors and encouragement of local participation.

"We believe that if all will set aside their individual pursuits for occasional joint community efforts that they cannot help but result in individual gain. Take our night Christmas parade for instance. Never in Haskell history has a single event drawn so many thousands of people. Those same people are bound to want to return to trade in a town that can produce such a spectacular show of community pride and unity."

Watson also cited the Frontiers Day Celebration, sponsored by the Haskell Horse Club as further evidence of the success that is assured when it is produced by an entire town.

"There's a lot of griping

when it doesn't rain or if it rains too much, and an outpouring of negative thinking that gets us nowhere. People start blaming other people for slow business instead of self examination of attitude and behavior. Each of us needs to ask ourselves if we are as friendly as we could be, as helpful as we can be, as courteous as we should be. People like to trade where they are assured that their business is appreciated, and where merchandise is purchased and displayed to fit modern times and current needs."

RETAIL TRADE

At the regular meeting of the Chamber Board of Directors this past week, concern was noted that many Haskell merchants as well as other citizens are frequently seen shopping in other cities, buying products that are available in their own home town and often at lower prices and better selections.

"If everyone here will simply spend our money in the town where we earned it, our economy would make a decided change. It is the first and most important step toward increased commerce, not only for retail merchants but for all other business and professional services as well," Donna Wilson, chairman of the Retail Trade Committee, said.

"We must not waste our time with negative thinking, but move forward with a positive approach, finding solutions for problems instead of just complaining about them."

She urges all Retail Merchants to attend a breakfast meeting at 7:00 a.m. on Wednesday Oct. 17, at the Back Porch Restaurant. The meal will be \$2.95 plus tax and Mrs. Wilson states that reservations must be made by Friday, Oct. 12 either by contacting her or confirming attendance with the Chamber

office.

COMMUNITY BETTERMENT

Community Betterment Committee chairman Dr. Ed Harris praised the cooperation of the many people of Haskell who are serving on Chamber committees in this category, especially those who are active in the fire prevention program and in the Yard of the Month project.

COUNTRY DINNER THEATER

The third annual Country Dinner Theater, sponsored by the Haskell Chamber of Commerce is set for October 27 at 7:30 p.m. Tickets at \$5.00 for dinner and show are on sale from any of the following Board of Directors: Tom Watson, Raymond Andrada, Joel Fox, Dickie Greenwood, Bud Lane, Mike Harrell, Dr. Ed Harris, Eddie Medford, Tom Richardson, Carolyn Reynolds, Bill Comedy, Kay Smith, Abe Turner, Donna Wilson, Grace Womack and from the Welcoming Committee: Mr. and Mrs. Hess Hartsfield, Mr. and Mrs. Chas. Thornhill, Mr. and Mrs. John McDermott, Mr. and Mrs. W. H. McBroom, Mr. and Mrs. Eddie Grand, Andy Gannaway, Mr. and Mrs. Eddie Hester, Dan Hoover, Mr. and Mrs. Leon Jones, Patsy Castleberry, Tommy Watson, Sandy Horton and at the Chamber of Commerce office.

PROMOTION

The Chamber of Commerce is very grateful to the Haskell Free Press and KVRP Radio for their ongoing promotion of Chamber activities and other community programs.

MEMBERSHIP

The range of current members of the Chamber of Commerce is evident in the following categories: Abstract Business, Dulaney Abstract Co., Appliance, Frazier Appliances; Attorneys: Adkins, Chapman and Fouts, Dennis P. Ratliff; Auction: Haskell Livestock; Automobile Dealers: Medford Buick and Pontiac, Bill Wilson Mtr. Co.; Automotive Repair: J and R Radiator Shop; Auto Supply: Smittys, Anderson Tire Co.; Bakery, Sweet Shop; Beauty Shops: Martha's Beauty Center, Robbie Roberts; Butane Ser.: Dean Butane Co.; Carpets, Shermans; Catalog Sales, Sears; City, County District Officials and Employees: Bob Baker, Geraldine Hise, Sheriff and Mrs. Johnny Mills, Carolyn and Sonny Reynolds, Joseph Thigpen, Mr. and Mrs. C.E. Tidwell, Joe Williams, Mr. and Mrs. Don Collins; Churches: First Assembly of God, Hopewell Baptist; Cleaners: Kay's Cleaners; Cotton Buyer: Doris Reeves; Cotton Gins: Farmers Coop #1, Stamford Electric Coop; Dairy: Sam Watson, Borden

distributor; Dentists: Dr. Edward Harris, Dr. Wm. J. Kemp, Dr. J.G. Vaughter; Department Stores: C and B Store, Hassens, Heidenheimer; Dress Shops: Hayloft, Lane Felker, Personality Shoppe; Druggists: The Drug Store, Johnson Pharmacy; Farmers; Mr. and Mrs. Tim Burson; Farm Equipment: Richardson Truck and Tractor, Agricultural Supplies, Hale Farm Supply; Financial Institutes: Commodore Savings, Haskell National Bank; Olney Savings; Floral Co.; Conner Nursery and Floral; Furniture Stores; Bogs and Johnson, Jones Cox and Co.; Grocers: Buster's Drive in, Double A Drive In, Modern Way, M System, Pogue Grocery, Stop 'n Go; Health Services: Bodimetrics; Individual Memberships: Mrs. Hassie D. Couch, Mrs. Chas. M. Conner, Mr. and Mrs. Desmond Dulaney, Mr. and Mrs. V.C. Dulaney, Belton Duncan, Mr. and Mrs. Burnell Gilleland, Christine Greene, Mr. and Mrs. Ira Hester, John Wayne McDermott, Mr. and Mrs. Miller Montgomery, Mr. and Mrs. Lynn Pace Jr., Mr. and Mrs. Rick Perry, R.W. Raines, Weirner, Mrs. W. P. Ratliff, Billy Jack Ray, Mr. and Mrs. Clay Smith, Mr. and Mrs. J.H. Strain, Mr. and Mrs. Chas. Swinson, J.E. Walling, Jr., Tommy Watson, Jack Whorton, Rule; Grace Womack, J.C. Yeary. Industry: Anderson Construction Haskell Co. Warehouse and Compress, Nine Point Grain, Texas Coca Cola Bottling, Stamford; Trammel Bit and Spur; Insurance: Brian Burgess, Clinton (Bud) Herren, Lanco, Thornhill; Jewelers: Bassings, Lyles; Lumber Companies: Kennedy, Letz, McGee's; Machine Shops: Steele Precision Machine; MEDIA: CenTex Cablevision Stamford; Haskell Free Press, KVRP Radio, KDWT Stamford; Medical and Nursing: Haskell Clinic, Haskell Nursing Center, Dr. T.W. Williams, Funeral Homes: Holden McCauley; Motels: Fieldan Motel; Music Dealers: The Music Box; Oil Companies: Walling Reiger; Organizations: Experienced Citizens Center; Plumbing Co.: Otho Nanny; Real Estate: Hartsfield Agency; Restaurants: Dairy Queen, Double A Drive In, Kountry Kookin, Pizza Barn; Schools: James Lanier; Service Stations: Biggon Drinnon, Land Exxon, Larry Gilliam Texaco, Wooten Oil Co.; Shoe Stores: Slipper Shoppe; Specialty: Jean Country, Under the Rainbow, Viviane Woodard Cosmetics; Sporting Goods: Sport About; Tax Service: Bernard E. Godley, Inc., Mike Harrell, Opal Rose; TV/Radio: Owen Radio and Electric, Video Vendor-Radio Shack; Utilities:

Construction of Buildings Assists In Controlling Fires

"On July 4, 1983, a gasoline station and adjacent auto parts store on the south side of Pleasanton's downtown burned for about seven hours before being brought under control and eventually extinguished. Compounding this serious situation was a strong 25 miles-per-hour wind out of the south.

"The fire was fed and intensified by the numerous flammable liquids and products involved in the two businesses. With our limited fire-fighting equipment, we did the best we could to keep the fire from spreading in the high winds across the downtown district.

"However, the one thing that saved downtown was a brick and masonry wall directly adjacent to the raging fire. If it had been built from any other burnable material, I don't know if we could have stopped the fire and saved the business district," said Richard Troell, Chief, Pleasanton Volunteer Fire Department.

Concrete and masonry materials won't burn. Period. However, many of the articles and furnishings within a building will. Oct. 7-13 is National Fire Prevention Week, and with the approach of colder weather, is a good time to think about fire safety, according to the Texas Aggregates and Concrete Association.

Not only do concrete and masonry walls not burn, they also are particularly effective in preventing the spread of a fire, reducing loss of lives or injuries, property losses and costs, according to information from the State Fire Marshal's Office in Austin.

"Masonry walls are most effective in preventing the spread of fire, particularly in multi-family dwellings," explained Dennis Gissell, information specialist with the Fire Marshal's Office.

"And, while preventing the spread of a fire is important, there are many things that can be done to prevent fires from

ever starting." According to Gissell, most fire fatalities in Texas occur in residences, many of which are related to home heating and water heaters.

"Most of these fatalities result from gas-fueled space heaters being placed too close to combustible materials, such as walls and furniture," he explained. "Also, placing combustible materials too close to water heaters also causes a number of fatalities."

These two situations, as well as other hazardous conditions, can often times be avoided through common fire safety sense, and regular fire safety inspections. Most local fire departments conduct these inspections, or have available information.

In other words, residents and businesses can protect themselves from fire dangers within their buildings, but often have little control or

protection from outside sources of a spreading fire.

When choosing a multi-family unit of housing, especially for an elderly person, the Texas Aggregates and Concrete Association urges you to consider fire safety. Check with the manager about fire safety inspections. Look at the construction of both interior walls between units, as well as outside building walls. Both are important in restricting the spread of fire.

The same applies for a business location. The construction materials of exterior walls can make the difference between slight smoke damage, or a total loss when a fire begins in an adjoining business.

ERASERMATE PEN by Papermate. Erasable ink that can be erased with any standard eraser and is refillable. Available in a variety of colors. Ideal for students. *Haskell Free Press*

DANCE

at Rhineland Gym

Wes King & Stampede from the Big Country

Sat., Oct. 13 9 p.m. to 1 a.m.

FIRST NATIONAL BANK

(In Organization)
HASKELL, TEXAS

Now Interviewing for Staff

Cashier: Minimum two years experience. Knowledgeable of all regulatory reports. Thorough background of all banking operation procedures.

Loan Secretary: Minimum two years experience in processing commercial, agricultural, real estate and consumer loans. Minimum typing speed-60 wpm. Shorthand helpful.

New Accounts and Savings Accounts Counselor: Minimum two years experience. Knowledge of Individual Retirement Accounts, Certificates of Deposit and checking accounts.

Tellers: One year experience.

Bookkeeping and Proof Machine Operators: One year experience.

Contact Mabry J. Brock, Chairman/Chief Executive Officer, (806) 795-1111, P.O. Box 99070, Lubbock, Texas, 79499.

All applications will be held strictly confidential. AN EQUAL OPPORTUNITY EMPLOYER

Commodities To Be Distributed

The Aspermont Small Business Development Center will distribute USDA SURPLUS COMMODITIES at the following dates, times, and locations.

TUESDAY OCTOBER 23rd
Haskell, 60 and over 8:00 - 9:00; 60 and under 9:00 - 10:00. Experienced Citizens Center.
Rule, 9:00 - 11:00 Church of Christ.

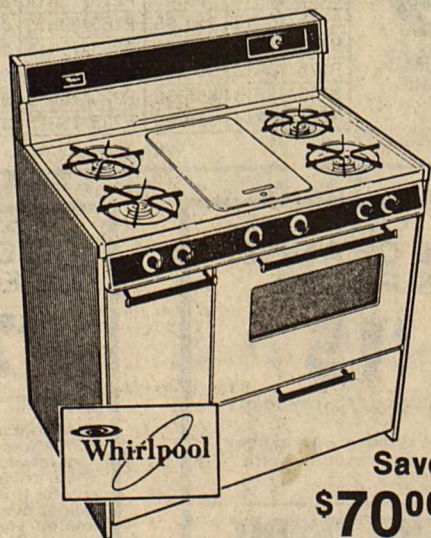
For more information please call the Aspermont Small Business Development Center Inc. at (817) 989-3538.

Stagecoach Inn in Stamford Saturday, Oct. 13

presents
Cole Younger Band
Come enjoy yourselves!

Great chefs insist on natural gas for cooking.

And so should you. Gas gives you infinite temperature control, and it saves energy.



Save \$700

Whirlpool SF5140SK 36-inch gas range • MEALTIMER® clock with Minute Timer • Fifth surface burner for extra convenience • Center griddle • Variable heat surface burner control • Lift-up/lift-off cooktop • Drop-door, roll-out broiler • Balanced Cooking System. *Tmk.

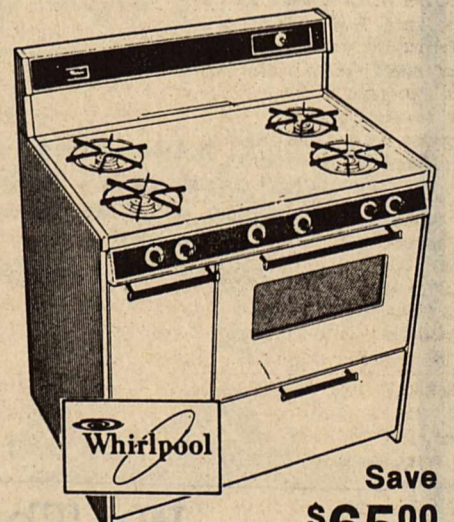
MEALTIMER® clock

Minute Timer



Making your world a little easier.

Frazier's Appliance and Furniture
Save by cooking with gas.



Save \$6500

Whirlpool SF5100SK 36-inch gas range • MEALTIMER® clock with Minute Timer • Variable heat surface burner control • Lift-up/lift-off cooktop • Non-turn burner grates • Drop-door, roll-out broiler • Porcelain-enamelled broiler pan and grid • Balanced Cooking System. *Tmk.

MEALTIMER® clock

Minute Timer

Other Models & Sizes on Sale at
Frazier's in Haskell

Get more energy for your money with a gas range.

NOTICE

New sales tax on
Cable Television
Effective Oct. 2

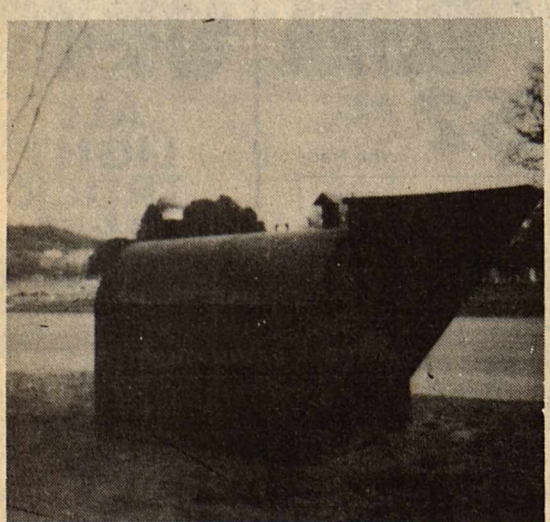
New payment books will be mailed to all subscribers reflecting the tax increase.

Cen-Tex Cablevision Inc.

902 N. Swenson
Box 470

Stamford, Tx. 79553

Dial 0 and ask for Enterprise 2406



K & K STORM CELLARS

Complete Installation
Just in time for the storm season!

We offer two sizes:

6 ft. x 12 ft. 6 ft. x 8 ft.
Our cellars are 6½ ft. tall inside.
Set in concrete ★ Tar coated to prevent rust!

New Dealer in Aspermont
Call 817-989-2837

WANT ADS Work Wonders!

NOTICE

The deadline for Classified Advertising is 12 noon on Tuesday.
Haskell Free Press

NOTICE

The Haskell Free Press reserves the right to edit and/or delete all news stories and locals for length and liability and to refuse to print anything deemed not newsworthy.

For Sale

RE-SURFACE concrete with attractive cool epoxy and stone. Beautiful outdoor flooring for pool, patios, porches, walks, and driveways. Call for samples and free estimates. 864-2629. 12fc

FOR SALE: 1983 Fleetwood mobile home. 14x68. 2 bedroom, 2 bath. Central Heat and air, underpinning, skirting, porches. To be moved. Like new, \$19,500.00 or \$3,000.00 down and take over payments. 673-4591 or 673-4581. 23fc

FOR SALE

Pre-fabricated Concrete Cellars.
Tony Williams
864-3674 or 864-2419. 12fc

SHAKLEE products, 100% NATURAL VITAMINS, herb lax, food supplements, and cosmetics. Products in stock at 300 N. Ave. H. 864-3330. Free deliveries in Haskell. 26fc

FOR SALE: 1963 Shasta camper, 17 ft., self contained, sleeps four \$1000.00. Inquire at Veda's Camp on Lake Stamford for H.P. Weaver cabin. 39-45p

FOR SALE: 1976 Pinto wagon. Runs but needs work. \$500.00. As is. 864-3985. 39-42p

FOR SALE: 1983 KTM 125cc dirt bike. Good condition. Priced to sell. Call 864-2692 ask for Jerry. After 5 p.m. call 864-2516. 39-41p

FOR SALE: 1979 Cadillac Sedan De'Ville. Excellent condition. Nice, one owner car. Call 864-8060. 40-42p

FOR SALE: 1981 Mustang Hatchback, 6 cyl. A.C., 4 spd., power brakes and steering, cruise control, new radial tires, black, one owner, extra call. Call after 6 p.m. 817-997-2326. 40-41p

FOR SALE: Wheat seed, TAM 105 or Triumph 64. Cleaned, treated, in the bulk. Call Ken Lane 864-8505. 40fc

FOR SALE: House trailer. 8x40 ft. Like new. Call 997-2543. 41p

MOBILE HOME furnace parts, plumbing, storm windows, doors, vinyl skirting, Send \$2.00 for new catalog. Abilene Mobile Homes, 4620 North First, Abilene. Open on Saturday. 41-43p

FOR SALE: Reduced 1981 Bonneville Brougham, 2 door coupe, loaded, 33,000 actual miles, one owner, excellent top-mint condition. \$6800.00 Call 997-2433 or 997-2322. 41p

FOR SALE: Good used Artley flute, \$115.00. Come by and see at 910 N. Av C or call 864-2019 and talk to Debra. 41p

FOR SALE: Sweet potatoes. Gann's Greenhouse, Rule. 41c

TAMALES FOR SALE: Starting the 12th of October, every Friday, the Spanish Mission Assembly of God will be selling tamales to the public. From 12 noon til 5 p.m. For order and more information call 864-3702 or come to 504 N. Av B. \$3.00 dozen. For church funds. 41p

FOR SALE: 2 Beauty Rest twin beds, long boxes. These are in perfect condition. Also included is swing apart frame which makes beds into regular King size bed. Can be seen at 605 N. Av F. Thursday, Friday and Saturday, 8 to 4. A steal at \$150 for entire set. 41p

FOR SALE: 1 divan, \$25.00; 1 swivel rocker, \$25.00; 1 platform rocker, \$35.00; 1 iron bedstead \$10.00; 1 wood bedstead, \$20.00; 1 large Coke box, \$75.00; 30 sheets of used tin mostly 8x10 ft all for \$30.00. Jesse Seets. 864-8021. 41p

FOR SALE: 1966 14 ft. fiberglass boat, 35 hp Johnson on Dilly trailer, \$350.00; Sears 10" radial arm saw, like new, \$250.00; old cement mixer, \$25.00; 23 channel High Gain CB with base load, \$40.00; Dearborn stove with blower, \$75.00; aluminum camper shell LWB, \$125.00. 864-3344 or 864-2240. 41c

FOR SALE: Peavey guitar amp; 210 watt head with 4-12" enclosure. Includes foot switch for effects and covers. Call 864-3954 after 6 p.m. 41-42p

FIREWOOD. Delivered and stacked. Jim Hearn. 743-3365. 41-42p

FOR SALE: General Electric Frostless Coopers refrigerator. Good buy. Call 864-3408 after 5 p.m. 41p

For Sale

FOR SALE: Citation sewing machine in cabinet, \$65.00. See at Kay's Cleaners, Haskell or call 864-3344. 41c

Miscellaneous

TO GIVE AWAY TO GOOD HOME: Mother cat and two kittens. Take one or take all. Call 864-3000. 41p

HOME INTERIOR SHOW. Christmas ideas. Cash and carry items. Come and go. Sat. Oct. 13, 2 p.m. to 4 p.m. Philadelphia Club Building, Rule, Texas. 41p

WEIGHT LOSS breakthrough! The Grapefruit Diet Plan with Diadax. Medically proven results available at Johnson Pharmacy. 41-42p

FREE PUPPIES. Call 864-8088. 41p

LET US Price your next prescription. You will be glad you did. Johnson Pharmacy. 17fc

HOME DECORATORS. Painting-Insulation. Free Estimates. Phone 743-3592 or 743-3550. V.A. Mitchell—Bobby O'Neal. Rochester. 3fc

CLEAN CARPETS the inexpensive and safe way with Blue Lustre. Rent electric shampooer. Perry Brother's. 19fc

CHECK our prices at THE DRUG STORE. We will both be glad you did. 14fc

INSTANT CASH for good used merchandise. A little or a lot. Phone 864-3197 anytime Lackey's Hwy 380 East, Haskell, Tx. 6fc

WATER WELL DRILLING: House well, Stock, Irrigation Wells, Test Holes. Call W.P. Hise, 864-3727 Haskell, Tx. (Day or Night). 7fc

WE IMPRINT! We imprint Christmas cards FREE until October 15! Napkins, albums, playing cards, stationery! Gail's Hallmark Shop, 127 E. McHarg, Stamford, Tx. 39-41c

DON'T SHAMPOO dirt into your carpet. Steam it out the professional way. Steamers pull out dirt other cleaners can't begin to reach. Rent Steamers at Kay's Cleaners. 39-41c

FOR PERMANENT HAIR REMOVAL call Billie Freeman, Certified Electrologist, at Martha's Beauty Center, 864-2192. Wednesday and Thursday, 1006 N. 6th. 23fc

Garage Sales

STORAGE HOUSE SALE: Across alley from funeral home. Friday and Saturday, October 12 and 13. 41p

YARD SALE: 801 Union Street, Rule. 10-5. Friday, Saturday and Sunday. 41p

CARPOR SALE: Sat. Oct. 13. 9 to 5. Clothing, womens, boys, several sizes. Draw drapes and rods, lamps, lots of misc. items. 1206 N. 9th. 41p

YARD SALE: 82 Yamaha 750 Virago; 75 Suzuki RV125, top condition; 2 sets golf clubs, clothing, bedding, mens shoes and suits, misc. Friday 9 to 6. 106 S. Av L. 864-3391. 41p

GARAGE SALE: Saturday only. 407 N. Av B. Mens, womens and girls clothes, decorator items, Christmas decorations and gifts. Lots of misc. 41p

GARAGE SALE: 605 N. Av F. Becky Richardson Tubbs. LOW PRICES. Dishes, clothes, bedspreads, electrical appliances, record player, items too numerous to list. Everything must go!! Many good gifts for Christmas. Thursday, Friday and Saturday, 8 to 4. 41p

GARAGE SALE: Sat. 9 to 5. Weather permitting. 1405 N. Av F. Blankenships and Smiths. Coats, suits, sweaters, 2 pair new boots, formals and some collectibles. 41p

CARPOR SALE: Oct. 12. 503 N. 7th. Dishes, clothes, chairs and lots of misc., bicycle, tricycle. 41p

3 FAMILY GARAGE SALE: Lots of men, women and childrens clothes, all sizes; antique school desk, furniture, bicycle, large selection of household items. Lots of jeans and western shirts. Thursday and Friday, 9 to 5. 706 N. Av G. Positively no early sales. 41c

Lost & Found

LOST: Tire and rim left at the car wash on the Throckmorton Highway. Call 864-2870. 40-42c

Bus. Opportunity

OWN YOUR OWN Jean-Sportswear, Ladies Apparel, Combination, Accessories, Large Size store. National brands: Jordache, Chic, Lee, Levi, Vanderbilt, Izod, Esprit, Britannia, Calvin Klein, Sergio Valente, Evan Picone, Claiborne, Members Only, Organically Grown, Healthtex, 700 others. \$7,900 to \$24,900, inventory, airfare, training, fixtures, grand opening, etc. Can open 15 days. Mr. Loughlin (612) 888-6555. 41p

Help Wanted

MANAGER TRAINEEES WANTED for a 36 store Dairy Queen chain. Experience unnecessary. We will train in our field. Must be willing to work and learn. Good pay with hospitalization and paid vacation. Training for big monies. Must be willing to relocate. Phone Richeson Restaurants 817-549-5041 Monday through Friday 9 to 5. 38-41c

GENERAL SHELTERS OF TEXAS, INC., the fastest growing manufacturer of portable buildings, is seeking a dealer in Haskell area for retail sales of portable buildings. Lot and small investment required. Excellent opportunity to expand existing business with low risk. Contact Mike Wulf, General Manager, at 817/422-4548. 41-44p

Wanted

WANTED: Land for shallow oil well drilling. 90 day drilling commitment. Call Odell Anders Drilling Co. 915-699-7700. 40-43p

Jobs Wanted

COBBLER SERVICES. Same day, time, and place. Thanks. 37fc

POODLE GROOMING. Prices starting at \$10.00. For appointment, contact Marsha McGaughey, 658-3090, Knox City. 39-42p

EXCELLENT CHILD CARE in my home. Healthy meal and snacks provided. Full time daytime hours. References available. Call Ginny 864-8027. 41-42c

For Rent

FOR RENT: Self storage. A few units, large enough for bass boats. 864-2629. 510 N. 1st St. Lanco Insurance. 12fc

FOR RENT: 2 bedroom, 1 bath, small house. Ideal for couple or small family. \$150.00 per month plus utilities. 864-2175. 41-42c

FOR RENT: 1 bedroom furnished apartment. 864-3509. 41fc

FOR RENT: House in country. Call 864-2393. 41-42p

WILL LEASE: 3 bedroom. 11 years old, fresh paint inside, carpet, carport, fenced backyard. Close to elementary school. \$215.00 per month. 609 S. 8th, 864-3978. 41fc

FOR SALE: 3 Bdr 2 bath on 6 lots Ave P Large 2 Bdr 506 S Av F New 2 Bdr 1200 Blk N Av J

3 Bdr Brick 712 So. 7th 3 Bdr Frame 702 So. 2nd 3 Bdr Frame 507 S 9th 4 bdr, 3 bath, brick, just outside city limits.

4 Bdr Stucco on 7.2 acres. 2 story 3 Bdr 3 bath 901 N Av F 3 Bdr with new siding 1105 N 5th \$21,500. 3 Bdr, 2 Bath, BV, 1 yr old NE 3rd 2 Bdr stucco 106 S Av C 2 Bdr stucco furnished 304 N 4th 3 Bdr 3 bath all extras N Av G 3 Bdr 1 bath older home 604 N 6th

One of Haskell's finest homes. 318 Addison Drive. 3 Bdr 501 S 6th 3 Bdr 710 S 8th 2 Bdr 1018 N 6th 3 Bdr Stucco Brick 505 N 9th Large cabin on 1 acre Lake Stamford 3 Bdr 2 bath brick 1304 N Av M

FARM LAND 200 acres NW of Haskell 96 acres NW of Haskell 82 acres NW of Haskell 80 acres NW of Haskell

RULE 3 Bdr 2 bath with fireplace. 3 Bdr brick in new addition. 2-2 Bdr stuccos 1000 S Adams St.

COMMERCIAL New ICM Bldg. with office 380 East Large bldg. on 165x160 ft. lot. Choice of City Lots.

Hartsfield Realty 864-2665 Loraine Johnson 864-2951 Hess Hartsfield 864-2004 Dorothy Hartsfield 864-2004

Real Estate

LARGE BUILDING for sale or rent on South Avenue E. Call Jones Plumbing 915-823-2169, Anson. 14fc

FOR SALE: The West 200 acres of land, more or less, out of Section 11, B.B.B. & C.R.R. Co. Survey, Abstract N. 874, Stonewall County, Texas, together with all minerals, aka Ruby Rennels Farm, Old Glory, Texas. (Property located approximately 12 miles east of Asperment, Texas, and approximately 1/2 mile west of the Stonewall/Haskell County line.) The tract is all under cultivation—no pasture. The First State Bank, Abilene, Texas, Independent Executor of the Estate of Ruby Rennels, Deceased, hereby notifies any and all person(s) interested in purchasing the hereinabove described tract that it will accept bids for a cash sale covering both the surface and mineral estate. All bids must be sealed and received in the office of the Trust Department, First State Bank, P.O. Box 3218, Abilene, Texas 79604 (500 Chestnut Street) Abilene, Texas, no later than 5:00 p.m., Monday, October 15, 1984. The successful bidder will be notified and will be required to present a cashier's check for the entire amount due. First State Bank, Abilene, Texas, Independent Executor of the Estate of Ruby Rennels, Deceased, reserves the right to refuse any and all bids, and assumes no liability prior to or after the sale. If questions, please contact C. True, AVP & TO at 915-677-2661, Ext. 472. 40-41p

IDEAL HOME for couple or small family. Close in for shopping, grocery stores and churches. Central heating, carpeted, window draperies and carport. Call 864-3131. 39-46p

THREE BEDROOM HOUSE. 1 mile southeast Rochester. For rent or sale. Owner finance 3/4's at 10%. 864-3985. 39-42p

FOR SALE: 3 bedroom house. 864-2761. 39fc

FOR SALE: Large brick home. 907 N. Av G. 864-3219 or 864-8047. 37fc

Card of Thanks

CARD OF THANKS We are grateful to the people of Haskell for your kindness during our sorrow. Thank you for the flowers, food and cards. The pastor and members of the Hopewell Baptist Church for their prayers, the doctors, nurses and hospital staff. May God bless each of you. The Family of Versie Whittaker. 41p

CARD OF THANKS We would like to express our thanks and appreciation to the Haskell and Rule Fire Departments, family and friends for their help and kindness at the fire of our home last week. Our sincere thanks. May God bless you. Wanda and Tanya Milburn. 41c

CARD OF THANKS We thank everyone for their kind concern in the death of our mother and grandmother, Vida Williamson. The flowers, memorial gifts, food, cards, visits and calls, thank you. May God bless and keep you. The family of Clifford Williamson. 41p

Real Estate

FOR SALE: 3 Bdr 2 bath on 6 lots Ave P Large 2 Bdr 506 S Av F New 2 Bdr 1200 Blk N Av J

3 Bdr Brick 712 So. 7th 3 Bdr Frame 702 So. 2nd 3 Bdr Frame 507 S 9th 4 bdr, 3 bath, brick, just outside city limits.

4 Bdr Stucco on 7.2 acres. 2 story 3 Bdr 3 bath 901 N Av F 3 Bdr with new siding 1105 N 5th \$21,500. 3 Bdr, 2 Bath, BV, 1 yr old NE 3rd 2 Bdr stucco 106 S Av C 2 Bdr stucco furnished 304 N 4th 3 Bdr 3 bath all extras N Av G 3 Bdr 1 bath older home 604 N 6th

One of Haskell's finest homes. 318 Addison Drive. 3 Bdr 501 S 6th 3 Bdr 710 S 8th 2 Bdr 1018 N 6th 3 Bdr Stucco Brick 505 N 9th Large cabin on 1 acre Lake Stamford 3 Bdr 2 bath brick 1304 N Av M

FARM LAND 200 acres NW of Haskell 96 acres NW of Haskell 82 acres NW of Haskell 80 acres NW of Haskell

RULE 3 Bdr 2 bath with fireplace. 3 Bdr brick in new addition. 2-2 Bdr stuccos 1000 S Adams St.

COMMERCIAL New ICM Bldg. with office 380 East Large bldg. on 165x160 ft. lot. Choice of City Lots.

Hartsfield Realty 864-2665 Loraine Johnson 864-2951 Hess Hartsfield 864-2004 Dorothy Hartsfield 864-2004

Mattie Bell

Mattie Bell, 82, of Haskell died October 3, 1984.

Born July 27, 1902 in Sulphur Springs, she came to Haskell in 1977 from Dallas. She was a missionary and the mother of the church of Mission Revival Center.

Survivors include one daughter, Mrs. Betty Jean Hardmen of Dallas; three sons, Theodore Hodge of Tuscon, Ariz., Evangelist William Hodge of Haskell and Marvin Hubbard of Dallas; one brother, Lee Taylor of Dallas; 17 grandchildren, 16 great grandchildren and 7 great great grandchildren, and many other relatives.

Funeral services are pending in Dallas.

Mrs. Johnnie Barron

Services for Mrs. Johnnie Elizabeth Barron of Midland were a 11 a.m. Saturday Oct. 6 at the Ellis Chapel with Gayle Reeves, pastor of Calvary Assembly of God Church officiating. Interment followed at Resthaven Memorial Park under the direction of Ellis Funeral Home. The Rebekah Lodge conducted rites at the gravesite.

Mrs. Barron died Tuesday Oct. 2 in Tyler following a lengthy illness.

She was born Oct. 31, 1913

Public Notice

NOTICE OF BUDGET HEARING A public hearing will be held on the Proposed 1984 Budget for Haskell County, Texas, in the Commissioners' Courtroom in the Courthouse at 10:30 a.m., Tuesday, October 23, 1984.

All interested taxpayers are urged to attend this important hearing.

HASKELL COUNTY COMMISSIONERS' COURT By: B.O. Robertson County Judge Haskell County, Texas. 41-42c

Medicare Supplement Insurance*

Call: Joe King 864-2993 W.B. Tidrow 864-3103 41-44p

Brian Burgess

864-3250 28fc

Real Estate

Doyle High Real Estate

New listing: House & Studio! This lovely 3 bedroom frame house located across from Haskell Elementary features a beautiful custom kitchen, with energy saving features throughout. The studio is 24x36. Don't miss this one!

Reduced. 3 bedroom brick home on North Avenue G. Fireplace in den. Central air and heat. 2 baths. 2 car carport. Owner must sell.

Commercial property on North Highway 277. 3000 sq. ft. building. Will sell with or without contents.

Reduced. Two acres just outside city limits on east side. City water available.

3 bedroom brick home on newly paved N.E. 3rd. 2 baths, 2 car garage and carport. Large backyard with fruit trees.

Country living northwest of Rule. Completely remodeled inside. 2 bedrooms, 1 1/2 baths, fireplace, Genn Aire range.

Reduced. Small 2 bedroom, 1 bath frame home on North Avenue C. Selling price includes metal dinette, refrigerator, and washer and dryer.

Lots for sale in the Addison Addition starting at \$3500 per lot.

Doyle High, broker—864-3872 Betsy Nanny — 864-3521 Roberta High — 864-2815 Debbie Earles — 864-2216 Viola Wilcox — 997-2640

Obituaries

in Haskell, moved to Carlsbad, N.M., and to Midland in 1951. She married A.J. Barron in 1960. He died in 1967. Mrs. Barron was a member of the Church of God and the Rebekah Lodge.

Survivors include one son, Jerry Gay of Midland; four daughters, Mrs. Lois Lovelady of Palestine; Mrs. Claudette Nelson of Midland; Mrs. Jimmy (Georgia) Kilgore of Midland; and Mrs. Linda Carmack of Austin; five brothers, Eugene Marr of Mineral Wells; J.B. Marr and Bill Marr both of Haskell; Ed Marr of Midland; and Mitchell Marr of San Francisco, Calif.; three sisters, Mrs. Vashti Benton of Sagerton, Mrs. Alice Martin of Fort Worth and Mrs. Mineola Drake of Houston; 20 grandchildren and 16 great-grandchildren.

Pallbearers were Jimmy Don Kilgore, Charles Eugene Kilgore, James Carmack, William Carmack, Jerry Dale Nelson, Kenneth Lovelady and Jacky Nelson. Honorary pallbearers were Johnny Dale Carmack, Michael Nelson and Jerry Leonard Gay.

Funeral services for Mrs. Johnnie Elizabeth Barron of Midland were a 11 a.m. Saturday Oct. 6 at the Ellis Chapel with Gayle Reeves, pastor of Calvary Assembly of God Church officiating. Interment followed at Resthaven Memorial Park under the direction of Ellis Funeral Home. The Rebekah Lodge conducted rites at the gravesite.

Mrs. Barron died Tuesday Oct. 2 in Tyler following a lengthy illness.

She was born Oct. 31, 1913

Mrs. Oleta Sorenson

Funeral services for Mrs. M.H. (Oleta) Sorenson, 75, of Haskell were held at 2 p.m. October 10 at First Baptist Church with Rev. Darrell Feemster, pastor East Side Baptist Church, and Ford Cole, director of Music at First Baptist Church, officiating. Burial was in Willow Cemetery under the direction of Holden-McCauley Funeral Home.

Mrs. Sorenson died October 8 at 9:15 p.m. in Haskell Memorial Hospital.

Born August 20, 1909 in

Medicare Supplement Insurance* Complete Remodeling & Construction Additions, Conversions, Cabinets Acoustical, Exterior Painting, Roofing For Free Estimates Call: 915-698-0563 Abilene Bonded Contractor 38-41p

Medicare Supplement Insurance* No Maximum Dollar Limit Guaranteed Renewable Hess Hartsfield 864-2665 20fc

Good Used Color TV's, Stereos & Washer/Dryers Anderson Tire Co. 206 S. Av E Phone 864-2900

Joe King's Custom built homes and remodeling. Joe King 864-2993 W.B. Tidrow 864-3103 41-44p

If you aren't satisfied with your Health Insurance call C.H. "Bud" Herren 864-3322 or 864-3087

RAINBOW INTERNATIONAL CARPET DYEING & CLEANING CO. Joe Lynn LaCresha Phillips Owner/Operator 817-422-4703 Munday, TX. 76371 25% off with this ad. Furniture Cleaning Deodorizing Drapery Cleaning 38-41p

REAL ESTATE LISTINGS WANTED We Don't Just List: We Sell I am on call and ready to talk to you about your Real Estate at any time if you are interested in buying or selling, please call me. I am full time in Real Estate and will try harder to please you.

LORALINE JOHNSON REALTOR-ASSOCIATE® Bus. 864-2665 Res. 864-2951 After Hours and Weekend Welcomed H.H. HARTSFIELD, BROKER 11fc

INSURANCE Life•Health Auto Farm•Home CHARLES THORNHILL 522 South 2nd, Haskell —Phone 864-2842—

National Farmers Union Insurance Companies

OPEN YOUR OWN FASHION STORE! We will help you make your dream of owning your own business come true. Our 10 year old company will supply you with training, fixtures, supplies, and a beginning inventory of famous lines such as Calvin Klein, Gloria Vanderbilt, Chic, Lord Isaac, Condor, Stuffed Shirt, Jordache, and Zena. Purchase price is \$16,500.

For more information call Marti Hutchinson collect at (405) 238-5429.



1200 N. Ave E.
Haskell, Tx.

DOUBLE COUPONS

each TUESDAY & WEDNESDAY
at Modern Way Food Stores

We will redeem all manufacturer's "cents off" coupons for DOUBLE their value up to \$1.00 in value when the product is purchased.

—LIMIT—1 COUPON PER ITEM—

This policy does not include retailer (any food store) or free coupons, cigarette or tobacco coupons or refund certificates. The total redemption will not exceed the value of the item.

AFFILIATED

WE HONOR ALL
AFFILIATED TV ADVERTISEMENTS

Open 8 a.m. til 8 p.m. Daily

SUNDAY

9 A.M.-7 P.M.

Sweet Flowers
COOKWARE
at savings up to 75%!

1 QT. SAUCEPAN
\$1.99
only

with 55¢ purchase and coupon
After 1st & 2nd week \$4.99
Manufacturers Sugg. List \$7.99

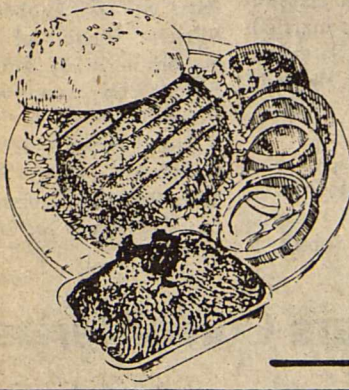
The ultimate in gourmet cookware can now be yours at incredible savings! This is the heavy gauge porcelain-on-steel cookware scientifically engineered to help you prepare the finest meals you've ever tasted! Natural flavors are preserved because the snug-fitting covers seal in moisture. And you can cook evenly and gently over lower heat settings with a minimum of water. So beautiful to look at, its lovely floral motif will surely enhance your kitchen decor. So pick up this week's featured piece today when you shop. It can be yours at extraordinary savings just for buying the groceries you need!

This week's special



SPECIALS GOOD THRU SUNDAY, OCT. 14

USDA CHOICE - HEAVY-BEEF



GROUND BEEF

FRESH LEAN
FAMILY PACK
3 lbs. or More

79¢

lb

Boneless
Chuck
Roast

\$1.48
lb

Boneless Chuck Steak	\$1.79 lb
Boneless Arm Swiss Steak	\$1.99 lb
Boneless Arm Roast	\$1.79 lb
Boneless Lean Stew Meat	\$1.88 lb
Family Pack-Chuck Cube Steak	\$2.38 lb

Frosted Fryer
Leg
Quarters **58¢**
lb

Frosted Large Meaty
Pork
Spareribs **78¢**
lb

County Fair
Boneless
Hams **\$1.69**
lb (Whole)

Swift's Family Pack (end cuts)
Pork
Chops **\$1.38**
lb

Swift's Center-Cut
Rib
Pork
Chops **\$1.79**
lb

Swift's Center-Cut
Loin
Pork
Chops **\$1.89**
lb

Texas Newcrop Red
Potatoes
\$1.49
20 lb Bag

Farm Fresh Fruits & Vegetables

California Grapes	White Red Black Riber	Mix or Match	79¢ lb
Red Plums			79¢ lb
Persian Limes	3 lbs		\$1.00
Carmel Apple Kits			69¢ ea.
Dole Pineapple			69¢ lb
Ocean Spray Cranberries			89¢ pkg.
McIntosh Apples		Bag	99¢



Crisco Shortening
\$2.39
3 lb Can
Limit-1 with \$10.00 purchase or more

Freedom Of Choice

FLOUR

SHURFINE 5lb BAG **58¢**
LIGHT CRIST 5lb BAG **68¢**

Morton Frozen
Pot Pies
3 8 oz **\$1.00**

Heinz
Ketchup
\$1.19
32 oz

Parkay
Margarine
1-lb quarters **59¢**

Shurfine
Shortening
\$1.69
3-lb can

Hidden Valley Dressings	8 oz	79¢
Welch Grape Juice	24 oz	89¢
Lightcrust Flour Mixes	5 6 oz pkg	\$1.00
Cornet Towels	Jumbo Roll	69¢ ea.
Strong Heart Dog Food	4 15.7 oz cans	\$1.00

MARYLAND CLUB - ALL GRAINDS
COFFEE

11b. CAN **\$2.19**

Del Monte Whole Green Beans	16 oz	59¢
Del Monte Sliced Carrots	2 16 oz cans	85¢
Mobil Oil 10W 40	QT.	\$1.09
Treesweet Frozen Orange Juice	12 oz	\$1.39
Kraft Orange Juice	32 oz	\$1.19

Shurfresh
Bread

2 1-lb loaves **98¢**

CORONET ASSISTED COLORS
TOILET TISSUE

4 4-ROLL PKGS. **\$1.09**

Shurfresh
Grade "A" Large
Eggs

doz. **57¢**

Birds Eye
Cool Whip 12 oz **\$1.29**

3 STAR
Shurfresh
Homo Milk
59¢
1/2 gal.
WITH ONE FILLED SUPERSTAR BOOKLET

3 STAR
Shurfresh
Medium Eggs
1¢
DOZ.
WITH ONE FILLED SUPERSTAR BOOKLET

3 STAR
Shurfresh
Bread
9¢
1 1/2 lb. Loaf
WITH ONE FILLED SUPERSTAR BOOKLET

3 STAR
Purex
Bleach
29¢
1 Gal. Jug
WITH ONE FILLED SUPERSTAR BOOKLET

3 STAR
Coca Cola
69¢
2 Liter Bottle
WITH ONE FILLED SUPERSTAR BOOKLET

3 STAR
Scott
Paper Towels
29¢
Jumbo Roll
WITH ONE FILLED SUPERSTAR BOOKLET