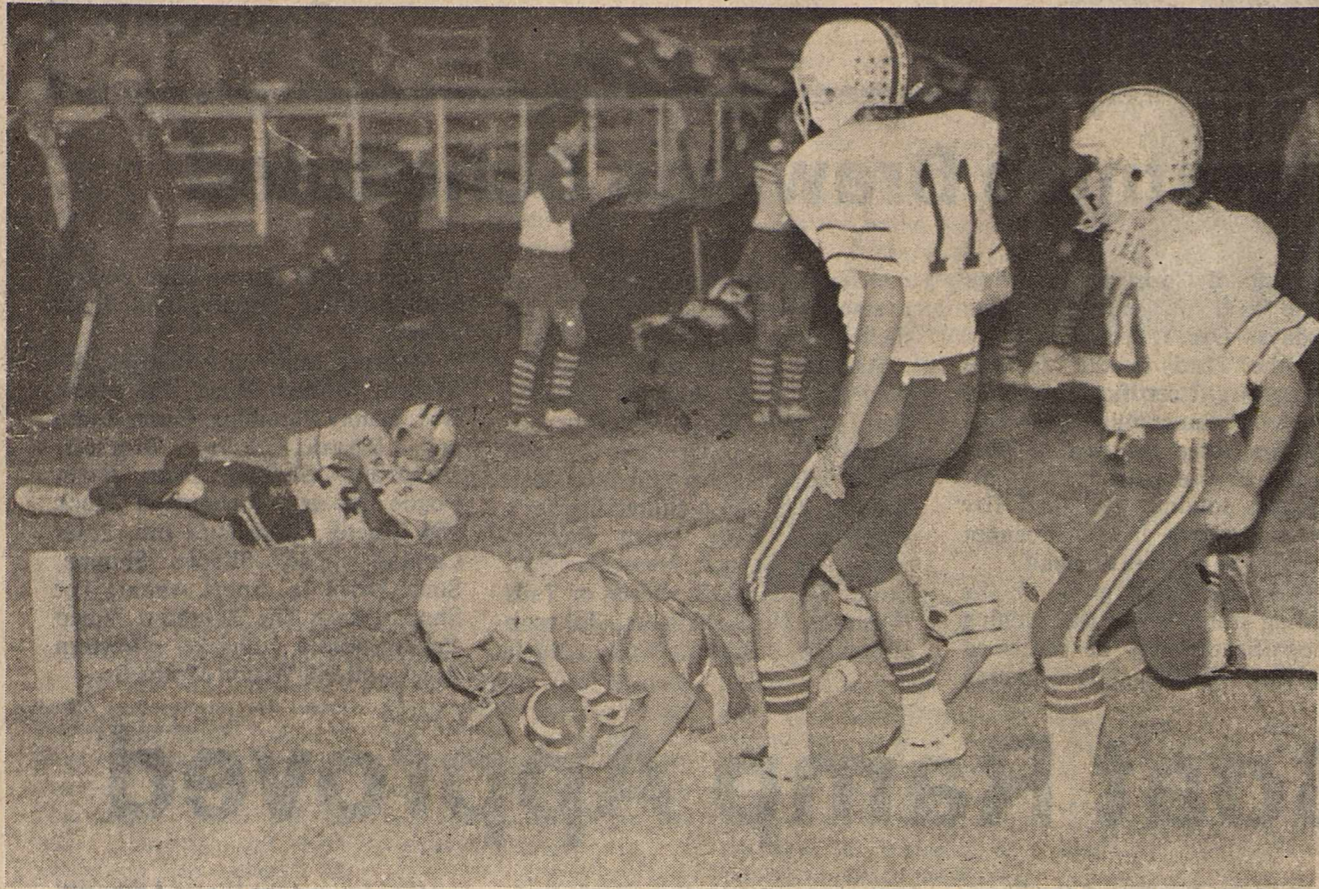


Base Book Binding  
514 W. 7th St.  
Amarillo, Tx. 79101



Staff Photo by Don Comedy

**PAY DIRT**

Shown is a Weinert Bulldog as he hits pay dirt as the Bulldogs rolled over Paint Creek last Friday night, 50-12. Weinert advances to bi-district competition, as the runner up, and will play against Highland, at Roby, this Friday, beginning at 7:30 p.m.

**Proclamation**

WHEREAS, the Great American Smokeout is a light-hearted effort to encourage cigarette smokers to give up their habit for 24 hours on Thursday, November 15, and

WHEREAS, many smokers have indicated a willingness to participate in this event, and

WHEREAS, the health benefits of not smoking are substantiated and well known, and

WHEREAS, there are additional civic benefits such as a reduction of the risks of accidental fire,

NOW, THEREFORE, I, Abe Turner, Mayor of Haskell, do hereby proclaim Thursday, November 15th, 1984 as the day of the Great American Smokeout in Haskell, and in so doing urge all cigarette smokers in the community to demonstrate to themselves and their friends that they can do so if they wish.

Signed *Abe Turner*  
Mayor

**Smokeout Scheduled**

The cigarette habit is a tough one to break. But one day each year, smokers nation-wide can get lots of support when they toss away their packs, and have fun while they do it. The occasion is the American Cancer Society's Great American Smokeout, a day when all types of smokers—from those who know they want to quit to those who are just thinking about it—can give it a try.

The eighth annual Great American Smokeout is on Thursday, November 15.

Other programs which help smokers kick the habit include: "Adopt a Smoker," the "KWIT line" and "Breathing Easy." "Adopt a Smoker" allows a non-smoker to pick a special smoker and give him or her extra encouragement all day. "Adoption papers" are available at local ACS units.

The nation-wide "KWIT line," 900/210-KWIT, is set up to offer minute-long messages giving advice and inspiration based on personal experience to Smokeout quitters.

On the eve of this year's Smokeout, "Breathing Easy," a one-hour variety show aimed at helping teenagers to quit smoking will be aired on PBS television stations across the country.

Last year more than one in every three smokers in the United States, (36%), participated in the Smokeout. Of these, over 8% did not smoke all day, over 4% reported that they were not smoking still one to 11 days later.

"Just this year, the U.S. Surgeon General C. Everett Koop has challenged us to make America a 'smoke-free society by the year 2000,'" says Larry Hagman, chairman of the Great American Smokeout.

**Heart Assoc. Nets \$2,643 In Turkeywalk**

The American Heart Association earned \$2,643.10 in the recently held Turkey walk, with 24 participants walking some 200 miles for pledges for the Heart Association.

There were 365 sponsors for the event, and eight of the walkers won turkeys for having \$100 or more in pledges turned in, with 15 winners of T-Shirts, who had at least \$50 in pledges turned in.

The grand prize winner was Geraldine Hise, who will be awarded her choice of either a 9 inch color television or a VCR.

Second place winner was Ferrell Coston, and he will receive the other prize.

Third place went to Ruth Ann Close, fourth went to Joe Williams, fifth went to Cindy Guess, and sixth place winner was Robert Steed.

Also, winning seventh place was Debbie Glandon, as there was a tie for eighth place, with Ruth Jimenez and Kenneth Jarred.

Those winners will be awarded turkeys, T-shirts, and prizes.

Bulah Persons, a 90 year old resident of the Rice Springs Care Home, also earned \$25 for the Turkey Walk as she walked around the home and received that amount in pledges.

**Tax Payment Checks Sent To Area Towns**

State Comptroller Bob Bullock Monday sent checks totaling \$99.5 million in local tax payments to the 985 cities that levy the one-percent local sales tax.

"So far this year, we've sent 13 percent more money to these cities than we did last year," Bullock said. "And they can expect another increase next month as we begin sending them receipts we collect for the new items and services that became taxable October 2. We'll be getting this extra money later in November and sending it to the city halls in December."

Houston's check was the largest—\$16.9 million—bringing 1984 payments to \$134.8 million, up four percent. Dallas received \$11.4 million for a total \$92 million, a 15 percent increase over last year.

San Antonio's payment of \$6.2 million brought the city's 1984 allocations to \$46.1 million for a 16 percent increase. Austin's check for

**THE HASKELL**

**30¢**  
Including Tax

**FREE PRESS**

14 Pages in One Section  
Plus Two Inserts

HASKELL—A GOOD PLACE TO VISIT. A BETTER PLACE TO LIVE

VOLUME NINETY-EIGHT HASKELL, TEXAS 79521, NOVEMBER 15, 1984 NUMBER FORTY-SIX

**Indians Fall To Anson In Last Football Game**

BY SHANE HADAWAY

The Haskell Indians suffered a close fought 30-20 loss to the Anson Tigers in both teams last game of the 1984 football season.

The Indians rolled up 215 yards, total yards offense all on the ground. Fullback Robert Ivey lead the Indian attack with 104 yards rushing on 18 carries. The Tiger offense gained 288 total yards offense, 277 yards rushing and 61 yards passing.

The Tiger's exploded for the first 17 points of the ball game before the Indians could get on the board.

The Tiger's first points came on a 27-yard field goal by Matt Wilson with 6:32 left in the first quarter. The Tigers lead 3-0, and this is the way the quarter ended.

The Tigers put 14 more points on the board in the second quarter.

The first touchdown came off a 17-yard pass from Tiger quarterback Jeff Tollerson to tightend Matt Wilson on the first play of the second quarter. The PAT, with 11:56 left in the half, by Wilson was good. This put the Tigers up 10-0.

The Tigers widened their lead to 17 points on an 8 yard scamper by running back Eddie Villanueva with 6:58 left in the half. The PAT by Wilson was good putting the Tigers up 17-0.

The Indians got a big break right before the close of half when safety Ponciano Lopez picked off a Tollerson pass and raced 45 yards for the touchdown. The PAT with 27 seconds left in the half, by Ivey was good, drawing the Indians to within 10, 17-7.

Late in the third quarter the Tigers recovered an Indian fumble

deep in Tiger territory. The Tigers took the ball and Villanueva raced 78 yards for a touchdown. The PAT was no good, putting the Tigers up 23-7 with 2:33 left in the third quarter.

On the ensuing kickoff the Tigers tried an on-side kick. Kendall Larned picked up the ball and danced in from 55 yards out for a touchdown. The PAT was no good. This drew the Indians closer to the Tigers by a score of 23-13 with 2:27 left in the third quarter.

The Indians drew even closer when Ivey thundered in from 17

yards out with 34 seconds left in the third quarter. The PAT by Ivey was good, drawing the Indians to within 23-20. Unfortunately for the Indians this was the last points the Indians put on the board.

The Tigers managed to score once more. The touchdown came off a 33 yard run by Villanueva with 7:41 left in the ball game. The PAT by Wilson was good putting the score at 30-20. This is the way the ball game ended.

The Indians ended their season with a 4-6 record, 2-3 in non-district games and 2-3 in district play.

**Civic Center Pledges Needed**

The new Civic Center still has about \$40,000 out in pledges to date.

The foundation of the building has been laid, and the building was brought in on Tuesday, with erection of the building beginning on Wednesday.

About \$180,000 in cash and pledges will be needed for the completion of the concrete, electrical wiring, plumbing, and erection of the structure.

Approximately \$100,000 more is needed to complete the interior and

finish the walls, petitions, kitchen and to buy tables and chairs.

Board members are hopeful that funds will come in to enable the construction of the building to continue.

The funds now available will pay for all of the costs through the completion of the bare building.

Additional funds will be used as received to finish the facility in stages.

The Board is asking that people please turn in their pledges as soon as possible.

**News Briefs**

**Community Service**

The annual community Thanksgiving service will be held this Sunday, Nov. 18, at the First Assembly of God Church, beginning at 7 p.m., with Rev. Raymond Chenuault, pastor of the Greater Independent Baptist Church as the featured speaker.

Everyone is invited to attend the service.

**New Law**

As of October 2, 1984, there is a new law which makes leaving a child under the age of seven in a vehicle for longer than five minutes of time, if he is not being watched by a person 14 or older.

In section 1, chapter of the Texas Penal Code, the law states: "A person commits an offense if he intentionally or knowingly leaves a child in a motor vehicle for longer than five minutes, knowing that the child is (A) younger than seven years, and (B) not attended by an individual in the vehicle who is 14 years old or older.

This offense is punishable as a Class C misdemeanor, which can carry with it a fine of up to \$200, and is considered a criminal offense.

**Scrimmage**

Thursday, November 15 will be the date for a girls and boys varsity and JV intra-squad scrimmage to be held at the Haskell High School Gym.

The girls teams will begin their scrimmage at 4:30 p.m. followed by the boys game.

Coach Martin invites everyone to come out and view this year's Maiden and Indian teams in action.

**Lions Club**

The Haskell Lions Club recently welcomed three new members, bringing the membership of the club up to 33.

New to the club are Joe Alves, Rick Perry, and B.O. Roberson.

Anyone who is interested in becoming a member of the Lions Club may contact any Lions Club member or contact Lions Club president Dr. Ed Harris.

**Playoff Game**

A playoff game will be held this Friday night in Indian Stadium pitting the Aspermont Hornets and the Munday Moguls. Kickoff time will be at 7:30 p.m., and the Band Boosters will have the concession stand open at the game.

**Election Tally**

In the final election tally, there were 3,177 votes cast, and of those, 1,203 were voted on a straight Democratic ticket, and 457 of the votes were cast on a straight Republican ticket. This comes to a total of 1,660 votes on a straight ticket from one party or the other.

Fifty two percent of the voters voted a straight ticket.

**Safety Restraints**

At the end of October, new legislation regarding the use of child safety restraints for motor vehicles will go into effect.

This law spells out that a child two and under must be restrained in a federally approved child passenger safety seat system. The system must meet the standards as set out by the National Highway Traffic Safety Administration. A child over two years old and under four must be restrained in a safety seat belt.

A person who violates this law can be subjected to a fine of \$25 up to \$50. He will be required to acquire a safety seat system within ten days of committing the offense.

A person is in violation of the law if he: is a resident of the State who operates a passenger car or light truck on a road, street, or highway, and does not keep the child secured during the operation of the vehicle.



Today, Thursday, Nov. 15, 1984, has been designated officially as the "Great American Smokeout" (GAS) and the friendly folks of the American Cancer Society (ACS) have asked me (along with several million other smokers) to quit for the day.

Today, as I write this, it seems like a wonderful idea. Thursday morning it probably won't sound nearly as much fun.

According to the ACS folks, the GAS, is billed as "a light-hearted effort to encourage smokers to give up their habit for 24 hours".

Somebody's effort in the ordeal needs to be light-hearted, because any effort on the part of smokers will be far from light-hearted.

The ACS folks have come up with a couple of special programs to aid in stopping smoking for "just a day". One of the programs is called "Adopt a Smoker" and allows non-smokers to pick a special smoker and give him or her extra encouragement all day. The project is complete with adoption papers but it seems that potential "foster

parents" are pretty scarce. After all, how many non-smokers are there who have not watched a close friend try to quit smoking. Generally the abuse on non-smokers is worse than the withdrawal on the smoker.

While writing this column, I polled the other two smokers at the Free Press, Bill Comedy and Mary Kennedy, concerning their thoughts on quitting for a day. Mary agreed to try. When I asked Bill, a chorus of "Please Don't" arose from the non-smokers on the staff who had been around on prior occasions when he tried to quit.

According to Lisa Shaw, the Great American Smokeout is some kind of underground plot to torture employees of smokers.

She was somewhat happier when I told her only 36% of all smokers actually tried to quit and of those only 8% did manage to quit all day and only 4% had still not smoked a week later. So the chances are on her side.

But it is a good idea and for the first time in the eight year program, I'm going to try.

**AREA SALES TAX**

City	Payment This Period	Payment Prior Year	1984 Payments	1983 Payments	% Change
Seymour	19,733.31	24,461.82	139,947.13	134,038.32	4.41
Haskell	21,682.15	28,588.39	151,402.30	154,046.15	-1.72
O'Brien	406.84	299.61	1,336.81	1,218.30	9.73
Rochester	1,768.47	1,854.38	9,600.49	10,513.03	-8.68
Rule	2,975.28	3,578.50	17,067.84	18,590.78	-8.19
Weinert	444.13	441.34	1,816.26	1,792.06	1.35
Anson	10,581.85	13,300.61	70,784.46	70,974.22	-0.27
Hamlin	12,450.56	14,878.48	87,799.92	90,994.28	-3.51
Hawley	1,697.11	3,761.11	16,376.49	14,860.75	10.20
Lueders	1,458.91	1,457.57	9,075.08	5,984.59	51.64
Stamford	22,201.86	26,593.05	159,238.31	152,615.33	4.34
Benjamin	461.11	711.39	3,127.89	2,562.19	22.08
Goree	1,256.93	1,323.02	5,004.24	4,887.19	2.40
Knox City	9,810.09	10,054.47	71,169.30	67,176.90	5.94
Munday	6,170.08	12,368.32	43,401.56	51,325.78	-15.44

### Editorial

Last Friday, I understand that at the Pep Rally, there were some tears shed. Ah yes! I remember the last pep rally of my senior year. There has never been a time in my life that I enjoyed, yet hated so much, as my senior year. I think there were some seniors Friday night on the field, on the stands, and on the sideline who felt the same way...they were glad to get it over with, but hated to see it end. It was hard, even for me, to watch as the senior drum major lead the band in her last school song, it was tough to watch as three senior twirlers performed their last halftime routine, and it was sad to see the two senior cheerleaders kneel with the football team in prayer for the last time, as it is difficult to watch the last high school football game for the senior players. Those kids will never have another Friday night football game as high school students. They will never again know the joy, frustration, anxiety, and happiness which all are part of being in high school, and in the activities which are part of being in high school. But, hardly before it begins, it is all over. The football stadium will sit still for another year, but when fall rolls around, it will again be filled with spirited yells of the cheerleaders, the strains of high stepping marching bands and the efforts of gridsters who are giving their all. But, for those seniors who participated in their last high school game, in whatever form, last Friday, they will have already begun a new chapter in their lives when fall and football returns. For in a world where it is acceptable to be a quitter, these seniors did not quit. They stayed through their last halftime show, their last yell, their last routine, and their last play. Each of them gave four hard years of effort and determination, and for this they will be rewarded...maybe not in laurels or fame or fortune. But, in memories, which will be enough to last a lifetime!

## Superintendent's Views

BY JAMES LANIER  
Superintendent, Haskell ISD

Continuation of 1984-85 Budget Analysis)

We will address the last two parts of the expenditures budget, capital outlay and the total expenditures, in this column.

Capital outlay in instruction totals \$32,350. This total includes the cost of new furniture for one section of the elementary school, new equipment for the additional requirements of science, computers for the secondary school, and other less major items. Capital outlay in instruction related services consists mainly of the purchase of library books and totals \$7743. The estimated expenditures in capital outlay for pupil services is \$33,407. This includes \$20,000 for the purchase of a new bus and capital outlay items in curricular such as uniforms, etc. In general administration, we are estimating an expenditure of \$500 for miscellaneous furniture. In the plant services category, we are estimating capital outlay cost at \$3100. This total

includes cost of a buffer and replacement of worn out equipment. Our total estimates for capital outlay for 1984-85 is \$77,100 which represents 4% of our total estimated budget.

If you have followed this column the past four weeks, I think you can realize how heavily involved our budget is with payroll cost. Over 75% of our total budget goes to payroll cost. Our total estimated expenditures for 1984-85 is \$1,985,536. This includes \$1,231,494 in instruction, \$117,960 for instruction related, \$269,492 in pupil services, \$155,840 in general administration, and \$210,750 in plant services.

The final total represents a sizable increase over last year's budget. This is due to increased salaries for teachers and some changes brought about by HB 72 concerning contracted services for special education. In the concluding column of this series next week, we will strive to explain from where the money for paying for this budget is projected to come.

## Views From City Hall

BY ROBERT N. BAKER City Administrator

By Robert N. Baker  
CREEK PROJECT

It sure has been a slow process, but the Creek Project is progressing. During the past several months we have been obtaining easements from approximately thirty five land owners. There are two parcels that we cannot locate the owners, therefore, this property will probably have to be condemned. The Federal government will not let any work start until all easements have been obtained.

The engineer recently presented the final plans to the City Council. After extensive review the City will probably make some changes. Because of insufficient funds bridges could not be built at every intersection. The engineer had selected Ave. L, Ave. H, and south 3rd to build bridges. After checking it appears the City will change Ave. L to a low water crossing and put a bridge on South 1st. It is important that we have plenty of access to the elementary school during times of high water.

The plans call for straightening the creek in several places. Also it will be widened and deepened considerably. Several telephone poles, gas lines, and water and sewer lines will have to be moved. It should be noted there will be no cost to

the property owner for any of the necessary changes.

We hope that sufficient funds are available to complete the project as proposed, but we will not know until the bids are received. If the bids are too high, the City may do some of the work. As soon as the State approves the final plans we will go out for bids. The plans were submitted to the State approximately two weeks ago.

As most of you know the City received a \$500,000 grant for this project from the Federal Government. We will make these funds go as far as possible so that we can have a worth while flood control system. There will be additional cost to the City in the future, because we are obligated to maintain the project. Grass will be planted and mowed regularly. It should improve the image of our community as well as serving as an excellent flood control.

### STREET LIGHTING

If you notice a street light burned out, please notify City Hall or West Texas Utilities so that it can be fixed. The City pays a flat fee for each light whether it is working or not. Also if you observe someone vandalizing the street lights let the police or us know so that corrective action can be taken.

## West Texas Chamber Concerned By Water Needs

A recently completed survey by the West Texas Chamber of Commerce shows its members most concerned about water, education and highways as the next session of the state legislature nears. The survey polled all of its several hundred members interested in state affairs, as well as chambers of commerce in West Texas.

When asked to rank issues facing the next Texas State Legislative session in order of importance, WTCC members rated the issues as follows: water resources ranked #1 far ahead of all other issues. Education and highways were closely ranked as the second and third most important issues. These were followed by #4 taxes and #5 solid and hazardous waste. Rounding out the plate of most important issues to West Texas Chamber members were #6 prison reform, and #7 alcohol related issues, #8 pari-mutuel betting, and #9 workers compensation. Other issues ranked farther behind all of these.

In the area of water resources, WTCC members continued to register strong support for meaningful action in water resource planning as 97% of those surveyed agreed that increased emphasis should be given to water conservation statewide. 80% of respondents urged more research of drought resistant crops and plants, and 77% believed more loan guarantees for local water projects are needed. Three-quarters of those surveyed believed that a multistate committee should be formed to discuss and coordinate the importation of water. A bare majority of those surveyed believed that increased funding for brush control was needed, or that a "grid system" should be implemented to enhance future interbasin water transfer. A majority support the revised Texas Water Plan as submitted by the Texas Department of Water Resources.

In the area of legislation on alcohol, WTCC respondents agreed by a 74% margin that the minimum drinking age in

## Feeds Named For Use By Federal Govt.

Secretary of Agriculture John Block announced today that the types of grain available to livestock producers under the Emergency Feed Assistance Program are being expanded to include Commodity Credit Corporation-owned lower grade grain sorghum, oats, barley and wheat, in addition to the lower grade corn already available.

The Emergency Feed Assistance Program is available to livestock producers in counties designated by the U.S. Department of Agriculture as disaster areas due to drought or excess moisture. To be eligible to purchase lower grade feed grain, producers must show that their livestock feed production is inadequate to maintain their foundation livestock and poultry for a 90-day feeding period, which begins the day a farmer applies for assistance.

Lower grade feed grain and wheat includes grain of U.S. No. 4, U.S. No. 5 and sample grade. Lower grade grain sorghum, oats, barley and wheat are being included because most of the lower grade corn has now been sold

## Cotton Council Meeting

National Cotton Council's 47th annual meeting is slated for January 27-29 in San Antonio.

President John S. Barr, III, Oak Ridge, La., grower, will preside over the industrywide meeting at the Hyatt Regency. Theme of this year's convention, which will set policies and programs for the coming year, is "Mission '85'."

The Council's Producer Steering Committee and Cotton Council International's board of directors will assemble at headquarters hotel on Friday afternoon, January 25, and Council

Texas should be raised from 19 to 21. However, only 40% agree that "Happy Hours" should be outlawed in Texas, with 34% disagreeing and 26% expressing no opinion.

Only 23% of the respondents supported legislation passed during the special session providing workers compensation coverage for migrant labor, while 66% of the respondents opposed this legislation, with 11% undecided.

A bare majority of 52% of WTCC members surveyed believe that additional money should be appropriated to highways above what was passed during the special session this summer. A slightly higher majority of 59% believed that pari-mutuel betting should be allowed in Texas, with 35% opposed to the concept and only 6% undecided.

While expressing concern over education by ranking it second among issues, WTCC members were equally divided between favoring and opposing many of the concepts proposed by H. Ross Perot's Select Committee on Education.

In the area of increasing taxes in the upcoming legislative session, 55% of those responded that no new taxes should be considered this session and that expenditures should be trimmed to meet revenue forecasts. 42% of those surveyed acknowledged that some increases in taxes might have to be considered during the upcoming session. When asked where the additional taxes should come from, 66% indicated that they should come in some form of sales taxes, while only 8% and 1% respectively believed that corporate or personal income taxes should be considered by state lawmakers.

Results of the survey will be considered as the regional chamber takes positions on issues in the upcoming session of the state legislature beginning in January. In addition, results will be made known to participants in the WTCC Pre-Legislative Conference with state lawmakers taking place in Odessa on December 3-4.

to eligible livestock producers.

An estimated 94,905 bushels of oats are available in Kansas, Maine, Minnesota, North Dakota and South Dakota. Barley, estimated at 599,971 bushels, is on hand in Kansas, Minnesota, Nebraska, North Dakota, South Dakota and Wisconsin. Approximately 758,638 cwt. of grain sorghum is available in Arkansas, Colorado, Illinois, Kansas, Louisiana, Missouri, Nebraska, New Mexico, South Dakota, Tennessee and Texas. Approximately 11,546,839 bushels of wheat are available in 33 states.

The grain will be sold to eligible livestock producers at 75 percent of the current basic county loan rate of the applicable commodity for the average quality of the available grain—sorghum, oats, barley and wheat—in the county where it is stored. This is the same pricing formula as for the lower grade corn currently being sold to eligible producers. Producers are responsible for transportation costs to move the lower grade grain to their farms. Producers should contact their County ASCS office for further information.

program committees will begin sessions the following morning. The groups will draft recommendations for consideration by the Council board and delegates.

Jerry Harris, Lamesa, Tex., grower, is chairman of general arrangements for the annual meeting and Homer Easterwood, Sinton, Tex., producer, is vice chairman.

More than 1,000 cotton industry leaders representing producers, ginners, merchants, warehousemen, cottonseed crushers, cooperatives, and textile manufacturers in the 17 cotton-producing states are expected to attend.

# NEWS & VIEWS

Editorials  
News  
Comments

## Christmas Drawings Scheduled

The annual Christmas drawings will be held on four successive Saturdays—Dec. 1, 8, 15, and 22.

On the 22nd is the Jackpot Drawing of gift certificates of \$500 at which the winner must be present.

The first three drawings on Dec. 1, 8, 15 will give away at each: gift certificates totaling \$100 and five others at \$50 each. If winner cannot be present, he receives one-half.

Tickets are being given at the following stores where the winning gift certificates may be redeemed from any of these participating

merchants. Merchants are required to stamp the tickets on the back with their store name and the year 1984.

Agricultural Services, Allsups, Anderson Tire, Bassing Jewelry, Ben Franklin, Boggs and Johnson, Buster's Drive In Grocery, C and B Dept. Store, Conner Nursery, Dean Butane, The Drug Store, Frazier's Appliance, Hale Farm Supply, Hartsfield Agency, Hassen's Dept. Store, The Hayloft, Heads or Tails Western, Heidenheimers, Johnson Pharmacy, Jones Cox, Kay's

Cleaners, Kids Duds, Lane Felker, Letz Building Supply, and Lyles Jewelry.

Medford Buick and Pontiac, M-System, Modern Way, The Music Box, Nanny Plumbing, Owen Radio and Electric, Perry Brothers, Personality Shoppe, Pizza Barn, Pogue Grocery, Richardson Truck and Tractor, Rodriguez Inn, Sears Catalog Store, Slipper Shoppe, Sonic Drive In, Sport About, Tot Shop, Under The Rainbow, Video Vendor/Radio Shack, Western Auto, and Bill Wilson Motor Co.

## Boat Ramp Approved

In an open hearing of the Texas Parks and Wildlife Dept., Oct. 11, Commissioner's of the Dept. approved the total costs of \$46,000.00 for the construction of a two lane boat ramp and parking lot at Millers Creek Lake.

Under the department's funding policies, the State of Texas will reimburse 70% of the total expense of the project.

According to the departments

boat ramp construction chief, Earl Craig, the North Central Texas Municipal Water Authority, which owns and operates the lake, can contribute its share of the costs through in-kind services such as labor, materials, or machinery.

The Authority is required to lease the property to the State for a period of 25 years. During this time the state is responsible for the maintenance of the ramp and

parking lot and the Water Authority is responsible for basic house keeping.

Before funding is secured, the Water Authority must provide the lease to the State and agree to all funding requirements.

Bidding for the project will probably begin shortly after the completion of the lease agreement and construction should take less than one year.

# Haskell 1984-85 Basketball Schedules

### HASKELL INDIANS 1984-85

DATE	OPPONENT	PLACE	TIME	BOYS	GIRLS
Nov. 8	Abilene Cooper (scrimmage)	Here	4:00		A&B
Nov. 8	Lueders (scrimmage)	There	3:30	A&B	
Nov. 20	Seymour	There	4:00	A&B	A&B
Nov. 27	Seymour	Here	4:00	A&B	A&B
Nov. 29, 30, 1	Seymour	Tourney		A	A
Dec. 4	Merkel	There	4:00	A&B	A&B
Dec. 6, 7, 8	Wylie	Tourney		A	A
Dec. 11	Munday	Here	4:00	A&B	A&B
Dec. 13	Eastland	Here	5:00	A&B	
Dec. 20	Merkel	Here	4:00	A&B	A&B
Dec. 27, 28, 29	Haskell Kiwanis Tournament				
Dec. 31	Weinert	Here	5:00	A&B	A
Jan. 4	Anson	Here	4:00	A&B	A&B
Jan. 8	Rotan	There	4:00	A&B	A&B
Jan. 11	Hamlin	There	4:00	A&B	A&B
Jan. 15	Hawley	Here	4:00	A&B	A&B
Jan. 18	Stamford	Here	4:00	A&B	A&B
Jan. 22	Anson	There	4:00	A&B	A&B
Jan. 25	Rotan	Here	4:00	A&B	A&B
Jan. 29	Hamlin	Here	4:00	A&B	A&B
Feb. 1	Hawley	There	4:00	A&B	A&B
Feb. 5	Stamford	There	4:00	A&B	A&B

### GRADES 9, 8, 7

DATE	OPPONENT	PLACE	TIME	BOYS	GIRLS
Nov. 19	Anson	There	5:00	7, 8, 9	
Nov. 19	Anson	Here	5:00		7, 8, 9
Nov. 26	Rotan	Here	5:00	7, 8	
Nov. 26	Rotan	There	5:00		7, 8
Dec. 3	Hamlin	Here	5:00	7, 8, 9	
Dec. 3	Hamlin	There	5:00		7, 8, 9
Dec. 10	Hawley	There	5:00	7, 8	
Dec. 10	Hawley	Here	5:00		7, 8
Dec. 13, 14, 15	Paint Creek	Tourney		7, 8	7, 8
Dec. 17	Stamford	There	5:00	7, 8, 9	
Dec. 17	Stamford	Here	5:00		7, 8, 9
Jan. 7	Anson	Here	5:00	7, 8, 9	
Jan. 7	Anson	There	5:00		7, 8, 9
Jan. 14	Rotan	There	5:00	7, 8	
Jan. 14	Rotan	Here	5:00		7, 8
Jan. TBA	Knox City	Tourney		7, 8	7, 8
Jan. 17, 18, 19	Haskell	Tourney		7, 8	7, 8
Jan. 21	Hamlin	There	5:00	7, 8, 9	
Jan. 21	Hamlin	Here	5:00		7, 8, 9
Jan. 24, 25, 26	Knox City	Tourney		9, JV	9, JV
Jan. 28	Hawley	Here	5:00	7, 8	
Jan. 28	Hawley	There	5:00		7, 8
Jan. 31	Haskell	Tourney		9, JV	9, JV
Feb. 4	Stamford	Here	5:00	7, 8, 9	
Feb. 4	Stamford	There	5:00		7, 8, 9

## Abilene Garden Club Sets Annual Fall Festival

The Abilene Garden Club's Annual Fall Festival held at the Garden Center, 300 Westwood Drive, Friday, November 16, from 8:00 a.m. to 6:00 p.m. will include lunch and an auction of two outstanding articles in addition to an array of foods, arts and crafts.

The Snack Bar will open at 8:30 for coffee, tea, cake or pie which will be served through-

out the day. Lunch will be served from 11:00 a.m. till 2:00 p.m. and will include soup, sandwiches and course the traditional chili.

Once again the ladies of the Abilene Garden Club have out-done themselves. For several years now they have created a beautiful quilt to sell at the Annual Fall Festival and each year's quilt seems to be more beautiful than the last.

## Rochester Hobby Club

I was a strange sight to see members of the Hobby Club sitting around in easy chairs today, just visiting. All quilts and quilting frames had been stored away to make room for the Quilt Show and Bazaar. Last minute details will be done Thursday and have everything in place for opening Friday the 9th. It's probably the lull before the storm because on Thursday afternoon the full two rooms, the stairway and the second floor balcony will be filled with colorful quilts, bedspreads, afghans, etc.

Twenty one members and 14 visitors partook of the good food. Two special visitors were Mr. and Mrs. F.D. Hindsley. Bobbie knows what it means

to be a working Hobby Club member. Mattie Lou Cole was hostess today and Blanche Corley will be hostess for the Nov. 27th meeting. On account of Thanksgiving holidays, we will meet the 4th Tuesday instead of the 3rd Tuesday this month.

### Around Town

Mr. and Mrs. Argin Carrigan of Sallisaw, Okla. visited in the home of Mr. and Mrs. Slover Bledsoe last Thursday evening and night. Mrs. Carrigan is Mrs. Bledsoe's sister. They were on their way to Wichita Falls to visit a Brother and wife, Mr. and Mrs. P.C. Patterson.

This year they chose the revived technique of shadow applique quilting, incorporating it into a window-pane medallion design with flower filled baskets and bouquets. The 780 soft pastel pieces on an ecru background are gracefully joined together like a fresh breath of spring with yellow sashing and borders.

Our own dear Mrs. W.H. Buchanan has crocheted a large size off-white afghan. The ever popular Popcorn and Diamond pattern was selected for the design of this magnificent piece.

These lovely heirloom quality creations are the result of months of planning and work and would complement any home. Treasures to be passed on to future generations. Their beauty and quality reflect the years of experience, pride and craftsmanship of these dedicated women. They will be on display at the Festival all day and will be sold to the highest bidder. Don't miss this opportunity to come and admire fine works of art.

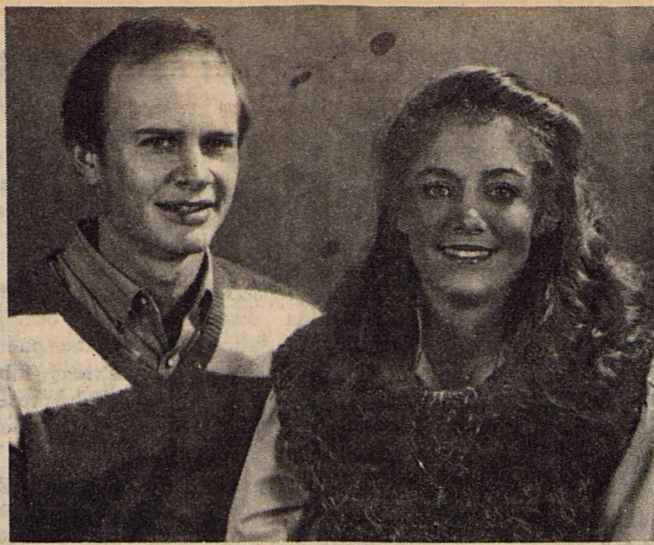
The Handcraft Center will have Christmas wreaths, wraps and other Christmas trimmings; Stitch'n Time will have lots of crochet items, pot holders, rugs, spice strings, hand painted candles, yardstick holders, pillows and Christmas stockings; Bargains on books, cards, stationary and jewelry will be found in Yesterday's Treasures Booth.

Among the many kinds of candies you will find in the Candy Kitchen will be chocolate, devinity, patience and date loaf; Yummy Bakery will feature home baked breads, corn bread, cakes and pies; delicious frozen casseroles, fruits vegetables, deserts and breads offered in the Frozen Food Booth will be prepared by the club members.

These are only a sample of the many items to be offered at the Festival.

Our Festival Chairman, Mrs. Bill Musgrave was assisted by her committee; Mmes. W.W. Clemmer, D.F. Brians, Kenneth Williams, J.L. Musgrave, Norman FitzGerald, Geo. Dunning, E.A. Park, Leota Ledbetter and M.C. Curry.

There will be no admission charge. Proceeds raised will be used for maintenance, local, district and state projects.



MR. AND MRS. ARCHIE JONES of Haskell announce the engagement and approaching marriage of her daughter, Janie Rinette Vincent, to Sammy Don Nauert, son of Mr. and Mrs. Leland Nauert of Stamford. The couple plans a December 23rd wedding in Bethel Lutheran Church in Ericksdahl. The bride-elect is a graduate of Stamford High School and is attending Western Texas College in Snyder. The prospective bridegroom is a graduate of Texas Tech University and is self-employed in Stamford. Rinette is the granddaughter of Mrs. Clara Holt in Haskell. Sammy is the grandson of Mr. and Mrs. Herman Nauert of Stamford.

## Rules For Pecan Bake Show Nov. 29

November 29, 1984  
Haskell Nat'l Bank  
Community Room

Pecan Bake Show Department  
1. Entries will be accepted from any male or female resident of Haskell County.

2. There will be two age divisions in the Bake Show; Adult and Youth. The youth division will include all unmarried youth through age 19.

3. FOOD DIVISION CLASSES: I. Pie; II. Cake (with or without icing. Mixes may be used as an ingredient in a recipe; but no mixes may be used by themselves).

4. The food exhibited must have been prepared by the exhibitor.

5. All pie entries must be exhibited in a disposable pie plate and covered with transparent plastic wrap. All cake entries must be exhibited on a paper plate or other disposable container and covered with transparent plastic wrap. Exhibitors must have food entries already covered prior to registration.

6. Pecans for food exhibits do not have to be grown by the exhibitor. Pecans must be included in the recipe contents and not used just for decoration.

7. A recipe typed or written on a standard sheet of paper must accompany the food exhibit. Recipe must give exact measurements. Exhibitor's name, address, and phone number must be on back of recipes. Recipes will not be returned to exhibitor.

8. Food exhibits may be entered between 7:45 a.m. and 9:45 a.m. on Thursday, November 29 at the Haskell National Bank Community Room.

9. Judging will be done between 10:00 a.m. and noon on Thursday November 29.

10. Either a blue, red or white award ribbons will be awarded to each entry. Rosettes will be awarded to the Grand Champion and Reserve Grand Champion in each age food division.

11. Adams Extract assorted gift packs will be awarded to the Grand Champion and Reserve Grand Champion in each age food division.

12. Exhibits will be open to the public from 1:00 p.m. to 4:00 p.m. on Thursday, November 29.

13. Food judged may be donated to the Pecan Show for a silent auction. All proceeds from the silent auction will be used for next year's pecan bake show. If the owner does not choose to donate their baked item for the silent auction, it must be picked up between 4:00 and 5:00 p.m. on November 29. The Haskell County Extension office or Pecan Show Committee will not be held responsible for food left after 5:00 p.m. on November 29.

### Births

Mr. and Mrs. Ricky Garza Salazar of Aspermont announce the birth of a son, Ricky Lee Salazar born November 12, 1984 at Haskell Memorial Hospital weighing 8 lbs. 5 oz.

Mr. and Mrs. Antonio Aguayo of Munday announce the birth of a son, Alfred Aguayo, born November 11, 1984 at Haskell Memorial Hospital weighing 8 lbs. 1 oz.

Mr. and Mrs. Benny Lopez of Haskell announce the birth of a son, Joshua Andrew Lopez, born November 8, 1984 at Haskell Memorial Hospital weighing 5 lbs. 5 1/2 oz.

## Weinert Extension Homemakers Hear Program On Arthritis

The Weinert Extension Homemakers Club met at the home of Mrs. W.B. Guess for its November program. Ten members answered roll call with "Someone I Know (besides me) Who Has Arthritis". They enjoyed the opening exercise "All about Grandmothers" led by Betty Sanders, Alice Yates and Laverne Mayfield.

Mrs. Winchester reported that the quilt the members made, was given away at the Weinert Schools Homecoming to a former student, a 1968 graduate, Mr. and Mrs. Charles Davis of Dallas. Net proceeds of all donations for the West Texas Rehab Center came to \$423.00.

Faye Jetton and Cordie Cunningham brought an informative program on Arthritis, stating that 1 out of every 4 persons in the world have the disease, and the majority of those stricken are women. There is no known cure, or cause, but approximately 20 million dollars are spent each year for medication. They gave some hints on what to do and some exercises that help. Heat pads and hot baths are beneficial to relieve pain.

The Christmas party was planned for Dec. 11th, 6:30 p.m. at the Weinert Community Center. Hand-made gifts will be exchanged. The following officers will

begin their tenure on January 1st. They are: President, Mrs. Ton Yates; Vice-President, Mrs. R.S. Sanders; Sec.-Treas., Mrs. J.E. Jetton; Council Delegate, Mrs. M.C. Cunningham; Council Alternate, Mrs. J.A. Mayfield; Parliamentarian, Mrs. Gus Rueffer; and Reporter, Mrs. M.W. Phemister.

Nov. 14 will be "Information Day" and the place will

be Haskell's "Port-Hole". The "Outstanding Club Woman" will be made known at the program. Two of the Weinert Club have been nominated, Mrs. M.C. Cunningham by the Weinert Club, and Mrs. R.S. Sanders by the Eager House Wives Club. The Weinert Club will be responsible for the welcome "Coffee" table on that day.

## Haskell Co. Retired Teachers Hold Meeting

The Haskell County Retired Teachers Association met at Mitchell's Port Hole on Tuesday, November 6 for a luncheon.

During the business session Mrs. Lena Hughy, president, reported that she will be attending the District 14 Area Meeting in Abilene on November 12. Jewell Harris, a member of the recently-dissolved state education committee, will be discussing HB 72. Mrs. Hughy has received material concerning a state-sponsored health insurance plan. Mary Martin, legislative chairman, reported on AARP questionnaire

concerning Doggett and Gramm and read a letter from Congressman Charlie Stenholm thanking the association for communicating with him about a national balanced budget.

A thank-you note from the family of Evalyn Nichols was read.

Since this was the last monthly meeting of 1984 members who have not paid state and local dues should mail them to Mr. F.L. Wilson Rochester.

All Haskell County retired teachers are invited to join us on the Tuesday, March 5, 1985, the next meeting.

**Want to Feel Good or Lose Weight NOW**  
Lose 10-29 lbs Per Month  
Guaranteed or Money Back  
A Natural Herbal Formula  
is the answer to your  
Weight Problem  
Free Consultation  
**DON'T WEIGHT**

Distributors Now Being Accepted  
High Earning Potential

864-3602 Leona Hanson Haskell



Santa will be at Haskell

## Sears Catalog Store

Fri., Nov. 23—1 to 5 p.m.  
Sat., Nov. 24—11 to 2 p.m.

Harrell's Photography will be on hand to take your child's portrait with Santa.

1-5x7 print

\$5<sup>00</sup> plus tax

### The Haskell Free Press

Established January 1, 1886  
PUBLISHED EVERY THURSDAY

MEMBER 1984

TEXAS PRESS ASSOCIATION

BILL COMEDY—Publisher  
DON COMEDY—Editor

Entered as second class matter at the post office at Box 577, Haskell, Texas 79521, under the Act of March 3, 1879.

(USPS 237-040)

SUBSCRIPTION RATES

In Haskell and Adjoining Counties

One Year.....\$9.46

Six Months.....\$7.35

Two Years.....\$17.86

Elsewhere in Texas

One Year.....\$11.55

Six Months.....\$9.46

Two Years.....\$22.08

Price includes sales tax.

Outside of Texas

One Year.....\$13.00

Six Months.....\$11.00

Two Years.....\$25.00

NOTICE TO PUBLIC—Any erroneous reflection upon the character, reputation or standing of any firm, individual or corporation will be gladly corrected upon being called to the attention of the publishers.

## NOW OPEN TOT SHOP

107 N Ave D—Haskell  
Across from M-System

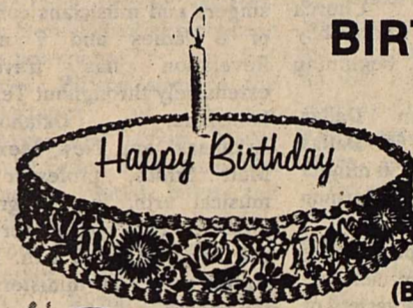
Featuring:

Name Brand  
Childrens Clothing  
Sizes Infant thru 14

864-3783

9:30-5:30

Monday thru Sat.



**BIRTHDAY SALE**  
November 15, 16, & 17

We are 1 year old.  
Help us celebrate!

All Books  
(Bibles, Religious  
Books, Music)  
1/2 Price

DMC Thread  
Regular Price 43¢  
Now 39¢

Yarn Sale  
Includes these yards:  
Bernat Yarns  
Baby Yarns  
Dazzleaire Yarns  
Sayelle Yarns by  
Bell

All Pattern  
Books  
20% off

We also have  
crocheted items  
and afghans for  
sale.

All at a discount!  
Last sale this year!

**Book & Skein**  
112 S. Central  
Knox City



3 Big Days  
Thurs. 15, Fri. 16, & Sat. 17  
Early Fall and Transeasons

Sportswear- A great selection. Shirts, Blouses,  
Sweaters, Vests, Jackets, Skirts, Pants.

1/3 off

Special Group Coordinates- Sizes 5 to 11  
1/2 Price & Less

Sportswear- Missy broken styles and sizes  
1/2 Price

Blouses- Cotton Blends, Regular to \$40.00  
now \$12<sup>00</sup> to \$16<sup>00</sup>

Coat Special- A select group  
1/3 off

Dresses- A great size selection  
1/3 & 1/2 off

Shop our Bargains  
Browse our Exciting and Beautiful Gift Collection  
Layaway Invited

COKE PARTY SPECIAL 2 Liter Bottle 79¢

THE Personality SHOPPE

# COKE PARTY TIME

Thursday, Friday & Saturday

2-liter **79¢**  
With \$100.00 purchase or more  
one liter FREE  
Reg. Coke or Diet Coke

409 South First  
Haskell, Texas  
Phone 864-2901

## 4-H Food Show Participants Making Preparations

Haskell County 4-H members are making final preparations for the Rolling Plains District 4-H Food Show. It will be held Saturday, November 17, at the Sikes Senter Mall shopping center in Wichita Falls.

A total of eight 4-H'ers from the county will compete. They are: Jennifer Shaver,

daughter of Mr. and Mrs. R.A. Shaver, III of Rochester; Michelle Scoggins, daughter of Mr. and Mrs. Johnny Scoggins, of Rochester; Faye Mullino, daughter of Mr. and Mrs. George Mullino of Rochester; Jill Jennings, daughter of Mr. and Mrs. Ted Jennings of Haskell; Angela Hisey, daughter of Mr. and

Mrs. Danny Hisey of Rule; Laurie Hester, daughter of Mr. and Mrs. Jerry Hester of Weinert; and Kim and Dalyn Gilly, daughters of Mr. and Mrs. Duane Gilly of Haskell.

Entrants from 21 counties will compete in senior and junior divisions. Each division has four food classes; main dish, fruits and vegetables, breads and cereals, and snacks and desserts. Contestants in the district event are all winners of their county food shows. Senior division winners in each category will advance to the state 4-H Food Show next June in College Station.

County Extension agents Lou Gilly and Max Stapleton said the contestants will report to the shopping center in Wichita Falls at 9:30 a.m., November 17. Judging will begin at 10:00 a.m.

The dishes will be on display in the mall during the afternoon and the public is invited to view them. Ribbons and trophies will be presented during an awards ceremony at 2:00 p.m.

Cookbooks containing all the recipes prepared in the district show will be on sale at the competition for \$3.00, said Cheryl Mapston, Wichita County Extension Agent-Home Economics and Chairman of the District Show Committee. Also on the committee are Extension Home Economics Agents Carolyn Halsell, Gail White, Mary Streit, and Lou Gilly.

## Rice Springs News

Charity Bradley was given a beautiful birthday cake, many gifts and flowers, also received many cards and congratulations on her 98th birthday. Those visiting here were Mr. and Mrs. Roland Rose and family of Abilene, Mr. and Mrs. Truett Rose and son of Hawley, Gerlene Pool and Ione Sellers of Rule, Mr. and Mrs. Spurgeon Neely of Rochester.

We had a good Halloween day and night. First the E.C.C. Center gave a party at 2:30 with good singing and delicious cup cakes. That night the children from the Church of Christ came all dressed in costume, sang and gave every one a treat, a banana and kleenex. Thanks to both groups.

We also want to thank Neoma Kirby and Julia Jordan for giving some Thanksgiving decorations and putting them up. We also appreciate the good job that Jess Leonard did in calling the Bingo for a

We have a good selection of Thanksgiving and Christmas Counter Cards and Boxed Christmas Cards

Sunshine Gift Shop  
101 N. Av D  
864-2365

couple of weeks when I was ill and out for two weeks.

We also want to thank 97+ years, Beulah Persons for her part in helping the American Heart Assn. by her walking halls and collecting \$25.00. This amount was given by: Doyle High, Frank Jenkins, Charlie Hunter of New Orleans, La., John McCollough of Potts Town, Pa., Shells Avey, Sharon McDowell, Bonnie Workman and Minnie Faye Dean.

The Church of Christ Ladies sponsored the monthly birthday party for October. After singing happy birthday to Angie Mullino, Harmon Swinney, Jane Cummings,

### Dallas Christian College Singers To Present Program

The eighteen members of the Dallas Christian College singers will be featured at the First Christian Church Sunday, Nov. 18, where they will be in concert, beginning at 10:45 a.m.

Revelation from Dallas Christian College in Dallas will be presenting a 50 minute cantata based on the Sermon on the Mount.

They will be performing during the worship service, and will be singing a variety of selections. Some of the performers will also be playing musical instruments in addition to their vocal talents.

The youth of the First Christian Church is hosting the Dallas group, and Saturday, the FCC young

people will have a fellowship in honor of the Singers.

This talented group of singers and musicians consist of 8 ladies and 7 men. Revelation has traveled extensively throughout Texas, Louisiana, Oklahoma, Arkansas, and New Mexico.

Matt Smith, professor of musical arts, is the group director. This special service will begin at 10:45 a.m. Phil Harris serves as minister for the church.

Revelation from Dallas Christian College in Dallas will be presenting a 50 minute cantata based on the Sermon on the Mount.

They will be performing during the worship service, and will be singing a variety of selections. Some of the performers will also be playing musical instruments in addition to their vocal talents.

The youth of the First Christian Church is hosting the Dallas group, and Saturday, the FCC young

people will have a fellowship in honor of the Singers.

This talented group of singers and musicians consist of 8 ladies and 7 men. Revelation has traveled extensively throughout Texas, Louisiana, Oklahoma, Arkansas, and New Mexico.

Matt Smith, professor of musical arts, is the group director. This special service will begin at 10:45 a.m. Phil Harris serves as minister for the church.

Revelation from Dallas Christian College in Dallas will be presenting a 50 minute cantata based on the Sermon on the Mount.

They will be performing during the worship service, and will be singing a variety of selections. Some of the performers will also be playing musical instruments in addition to their vocal talents.

The youth of the First Christian Church is hosting the Dallas group, and Saturday, the FCC young

people will have a fellowship in honor of the Singers.

This talented group of singers and musicians consist of 8 ladies and 7 men. Revelation has traveled extensively throughout Texas, Louisiana, Oklahoma, Arkansas, and New Mexico.

Matt Smith, professor of musical arts, is the group director. This special service will begin at 10:45 a.m. Phil Harris serves as minister for the church.

Revelation from Dallas Christian College in Dallas will be presenting a 50 minute cantata based on the Sermon on the Mount.

They will be performing during the worship service, and will be singing a variety of selections. Some of the performers will also be playing musical instruments in addition to their vocal talents.

The youth of the First Christian Church is hosting the Dallas group, and Saturday, the FCC young

people will have a fellowship in honor of the Singers.

This talented group of singers and musicians consist of 8 ladies and 7 men. Revelation has traveled extensively throughout Texas, Louisiana, Oklahoma, Arkansas, and New Mexico.

Matt Smith, professor of musical arts, is the group director. This special service will begin at 10:45 a.m. Phil Harris serves as minister for the church.

Revelation from Dallas Christian College in Dallas will be presenting a 50 minute cantata based on the Sermon on the Mount.

They will be performing during the worship service, and will be singing a variety of selections. Some of the performers will also be playing musical instruments in addition to their vocal talents.

The youth of the First Christian Church is hosting the Dallas group, and Saturday, the FCC young

people will have a fellowship in honor of the Singers.

This talented group of singers and musicians consist of 8 ladies and 7 men. Revelation has traveled extensively throughout Texas, Louisiana, Oklahoma, Arkansas, and New Mexico.

Matt Smith, professor of musical arts, is the group director. This special service will begin at 10:45 a.m. Phil Harris serves as minister for the church.

Revelation from Dallas Christian College in Dallas will be presenting a 50 minute cantata based on the Sermon on the Mount.

They will be performing during the worship service, and will be singing a variety of selections. Some of the performers will also be playing musical instruments in addition to their vocal talents.

The youth of the First Christian Church is hosting the Dallas group, and Saturday, the FCC young

people will have a fellowship in honor of the Singers.

This talented group of singers and musicians consist of 8 ladies and 7 men. Revelation has traveled extensively throughout Texas, Louisiana, Oklahoma, Arkansas, and New Mexico.

Matt Smith, professor of musical arts, is the group director. This special service will begin at 10:45 a.m. Phil Harris serves as minister for the church.

Revelation from Dallas Christian College in Dallas will be presenting a 50 minute cantata based on the Sermon on the Mount.

They will be performing during the worship service, and will be singing a variety of selections. Some of the performers will also be playing musical instruments in addition to their vocal talents.

The youth of the First Christian Church is hosting the Dallas group, and Saturday, the FCC young

people will have a fellowship in honor of the Singers.

This talented group of singers and musicians consist of 8 ladies and 7 men. Revelation has traveled extensively throughout Texas, Louisiana, Oklahoma, Arkansas, and New Mexico.

Matt Smith, professor of musical arts, is the group director. This special service will begin at 10:45 a.m. Phil Harris serves as minister for the church.

Revelation from Dallas Christian College in Dallas will be presenting a 50 minute cantata based on the Sermon on the Mount.

They will be performing during the worship service, and will be singing a variety of selections. Some of the performers will also be playing musical instruments in addition to their vocal talents.

The youth of the First Christian Church is hosting the Dallas group, and Saturday, the FCC young

people will have a fellowship in honor of the Singers.

This talented group of singers and musicians consist of 8 ladies and 7 men. Revelation has traveled extensively throughout Texas, Louisiana, Oklahoma, Arkansas, and New Mexico.

Matt Smith, professor of musical arts, is the group director. This special service will begin at 10:45 a.m. Phil Harris serves as minister for the church.

Revelation from Dallas Christian College in Dallas will be presenting a 50 minute cantata based on the Sermon on the Mount.

They will be performing during the worship service, and will be singing a variety of selections. Some of the performers will also be playing musical instruments in addition to their vocal talents.

The youth of the First Christian Church is hosting the Dallas group, and Saturday, the FCC young

## Two Workdays Are Set For Church Cookbook

Two workdays are set for work on the cookbook which the Baptist church youths, and young people from other churches who all participated in "Celebrate Life", are putting together.

The cookbook is being made to be sold, and the money will be used to finance the group's trip to Durango, Colorado, to ski, and also to present "Celebrate Life" in an area church near Durango.

For anyone interested in the cookbook, advanced orders may be placed now by calling the church, 864-2581 and speaking to either Mary Harvey or Joyce Davis.

They will be \$5.00 each. The ski trip which this money will go to finance, will be held December 26-31, and the group will perform their production on Sunday December 30.

Those participating in "Celebrate Life" are: Shelia Klose, Robyne Weaver, Jana Overton, Robyn Struve,

Shannon Lane, Stephanie Browning, Tiffany Moeller, Teresa Unger, Glenda Reynolds, Lolita Reynolds, Corye Mills, DeLyn Gilly, Patrick Burson, Shane Buchanan, Kristi Brister, Tammi Miller, Sandra Thornhill, Emily Thornhill, David Adams, Rhonda Adams, Tamra Burnett, Kristen Campbell, Doug Davis, Jennifer Davis, Shere Dumas, Andy Griffith, Kirk High, Holli High.

### Hospital Notes

Visiting hours at Haskell Memorial Hospital are 2 to 4 p.m. and 7 to 8:30 in the evening. No visiting hours in the morning. No children under 14.

### ADMISSIONS

MEDICAL: Delbert Brazell, Haskell; Rachel Dunn, Haskell, Julia Havran, Knox City; Lillian Spencer, Haskell.

### SURGICAL:

Hollingsworth, Rochester; Rosa Rodriguez, Haskell.

### DISMISSALS

Lloyd Renfro, Ruby McNeil, Lois Trimmer, Gillie Lewis, Berlie Henderson, James Bass, Madelin Hunt, Ederina Wilson, Mary Thomas, John Mills, Cruz Nava, Pamela Hodge.

The directors are Lyn Gooden, Brian Burgess, and Ford Cole.

Low cost Classified Ads will bring positive results fast. Try them.

Beautyify Haskell Council

Nice People Do Not Litter!



### PAINT CREEK Lunch Menu

Nov. 19-21 Monday

Turkey-Dressing Gravy  
Green Beans  
Sweet Potatoes  
Stuffed Celery  
Cranberries  
Applesauce  
Cake Rolls  
Milk

Tuesday

Hamburgers  
Sliced Cheese  
Lettuce  
Onions  
Pickles  
Tater Tots  
Milk

Wednesday

Pizza  
Mixed Vegetables  
Cabbage Slaw  
Apple Crisp  
Milk

BREAKFAST Monday

Cereal  
Juice  
Milk

Tuesday

Biscuits-Butter  
Jelly  
Milk  
Juice

Wednesday

Cinnamon Toast  
Juice  
Milk

50¢ THIS COUPON ENTITLES THE BEARER TO 50¢

**50¢ OFF** THE PURCHASE OF ONE POUND OF **Fudge**

Good Only at: **The Candy Nook** Offer Expires: **11-24-84**

Sue's Flowers  
Southeast Corner of the Square Haskell, Tex. 79521

**Dairy Queen** knows what makes a burger better.

**new HOMESTYLE Hungr-buster 99¢**

Let's get right to the meat of the matter. What makes our new Homestyle Hungr-buster® so much better is the beef. A quarter-pound of 100% pure beef to be exact, in a real homestyle patty made especially for you. Juicier, more tender and more flavorful. Made to your order, and topped just the way you want it. Come taste the new Homestyle Hungr-buster® at Dairy Queen. There's no better burger. Because there's no taste like home.

Monday thru Sunday, Nov. 5-Nov. 18, 1984

**Dairy Queen** "Just keeps on getting better."

**Pre-Thanksgiving Sale**

**Grouping of Boys sportscoats \$15<sup>00</sup>**

**Grouping of Girls Blazers 7-14 \$15<sup>00</sup>**

**All Gunne Sax Blouses Girls 4-14 and preteen \$15<sup>00</sup>**

**Panama Jack Sweats 1/4 off**

**All Parachute Pants 1/4 off**

**All Shoes 30% off**

**Kids Duds**

**ORDER NOW....**

We have all kinds of goodies for your Thanksgiving needs. Place your orders early for fruit cakes, cakes, fruit pies and etc.

Your business is appreciated.

**The Sweet Shop**

507 N. Av E 864-2711

**COMING SOON**

in the **Music Box..... CAROUSEL**

featuring **Educational and Wooden Toys**

**Gotz Dolls from Germany**

**Amlic Toys from Holland**

Watch for grand opening in time for **Christmas Shopping!**

**Dorothy Hartsfield** OWNER

415 S. 1st inside the Music Box

**Ear Piercing now done at**

**Merle Norman Cosmetics**

For \$10 you can get your ears pierced plus you get a free pair of earrings.

We have 4 different styles of earrings for you to choose from.

Also

Our new "Finishing Touch" Christmas Gift Items are here. A sample of these new items are:

Decorator Decanter Set Decorator Dish & Soaps  
Fragrant Candles Fragrant Potpourri  
The Salt Shaker Fragrant Drawer Liners

**Plus Many More Items**

Come in today and look at all these new Christmas Gifts for that someone special in your life.

**Merle Norman Cosmetics**

6 N. Ave. D 817-864-2739  
Haskell, TX 79521 Mary Murrin, Owner

Thanks from **THE DEPOT**

for making the first weekend a big success. Plan to shop the new arrival of gifts and country decor this weekend.

**Mayree Hollis**  
North 16th and H Haskell, Texas

Saturday 9-5  
Sunday 1-5

# Sagerton News

Overnight house guests in the home of Mr. and Mrs. Bill Hertel on Tuesday were Mr. and Mrs. David Lee Allen of Beaver Falls, New York. David is a cousin of Bill and they hadn't seen one another in 25 years.

Rule "1954" class held its 30th class reunion in the home of Mr. and Mrs. Bill Hertel Saturday night. Lots of visiting and stories were told. Those present were Nell Wester of Ozona, Cora Sue Office of Amarillo, Mr. and Mrs. Audie Conder of Abilene, Jerri Franklin of Abilene, David Verner of Lubbock, Mr. and Mrs. Dean Quade of Rochester, Jerry Saffel, Travis Townsend, Mr. and Mrs. Bill Dunman all of Rule. Mrs. Dunnam was one of our high school teachers.

David showed a movie of how we all looked 30 years ago while in school at Rule. My how we changed. Mrs. Louise Stegemoeller visit Mrs.

Henrietta Stegemoeller on Monday afternoon.

Mrs. M.Y. Benton visited in the home of Mrs. Aline Summer on Monday afternoon.

Mr. and Mrs. Alvin Bredthauer went to Abilene on Monday to see a doctor and do some shopping.

Most of the women of the Hobby Club went to Abilene Thursday to attend the Southern living cooking school at Abilene Civic Center. After, they went to eat lunch at Bonanza. Those attended were, Mrs. Zenor Summers, Mrs. Alvin Bredthauer, Mrs. Delbert LeFevre, Mrs. Arthur Knipling, Mrs. Alvin Ulmer, Mrs. Johnny Teichelman, Mrs. Clarence Teichelman, Mrs. Gene Teichelman, Mrs. Bill Hertel, Mrs. Velma Lou Hertel, Mrs. J.B. Toney, Mrs. Reece Clark, Mrs. Herbert Stremmel, Mrs. Leonard Kieke, Erma Schaake.

Erma and Walter Schaake

of Stamford, Mr. Clarence Stegemoeller played pinochle in the home of Mrs. Lena Schaake on Tuesday night.

Mr. and Mrs. Anton Teichelman spent last weekend with Mr. and Mrs. Dan Humphreys, Matt and Stephen in Wichita Falls.

Mr. and Mrs. Bill Vahlenkamp of Abilene, Mr. August Angermann of Sagerton, Mrs. Mary Jo Hogg of Rustore, La. and Mrs. Rosie Scifres and son Jeffery Scarf were dinner guests in the home of Mr. and Mrs. Ernest Bredthauer in Rule on Saturday.

Mr. and Mrs. Ernest Bredthauer were dinner and supper guests in the home of Mr. and Mrs. Bill Vahlenkamp Sunday.

Mr. and Mrs. Ernest Bredthauer visited Mr. and Mrs. Tom Florence Wednesday afternoon.

The Altar Guild met last Tuesday at 2:30 with a few women there. Those who were there, were Mrs. David Letz, Mrs. Arthur Knipling, Mrs. Buster Tredenmeyer, Mrs. Louise Stegemoeller, Mrs. Alvin Bredthauer, Mrs. Glyn Quade, the Pastor Mel Swoyer. Planning to re-organize the Altar Guild to get some women involved.

The monthly Bredthauer dinner was held in the home of Mr. and Mrs. Alvin Bredthauer Sunday with all the brothers and sisters being there.

After lunch some of the people watched the Cowboys play football and others played 84. Those who were there were Mr. and Mrs. Walter Bredthauer of Haskell, Mr. and Mrs. Alfred Bredthauer of Stamford, Mr. and Mrs. Ernest Bredthauer of Rule, Mrs. Adela Niedieck, the hosts Mr. and Mrs. Alvin Bredthauer.

Mr. and Mrs. Virgil Vahlenkamp of Denton, Mr. and Mrs. Norvell Lehrmann of Rule, Mr. and Mrs. Franklin Mrazek of Aspermont visited in the home of Mr. and Mrs. Leo Monse over the weekend.

Mr. and Mrs. Virgil Vahlenkamp came for the wedding of Shawna Vahlenkamp and Gregory Melton.

Mr. and Mrs. Bill Laughlin, Peggy and Nole of Oroville, California visited in the home of Mr. and Mrs. Reece Clark. The Laughlins had been to help his mother celebrate her 95 years old and just came to spend a short time with Bills parents used to live here.

Mr. and Mrs. Clyde Laughlin of Rule also visited with the Bill Laughlin while they visited here visiting the Clarks.

Arthur and Frieda Knipling and Walter and Erna Schaake enjoyed visiting with Mr. and Mrs. Ewald Schaake in Cego last week. They also went Georgetown to visit Mr. and Mrs. Edward Carter and then to West Columbia to visit Mr. and Mrs. Ed Peel, Mr. and Mrs. Bill Perkins, Mr. and Mrs. Steve Moffett and family, and Mr. and Mrs. Mark Williamson and Shea.

A large crowd attended the second annual Bazaar and Flea Market held Saturday at the Sagerton Community Center. The Sagerton Hobby appreciates the support of the community and the neighboring communities who came to the Bazaar. There were seven booths other than the Hobby Club's booths which made a good selection of gifts. Mrs. Neva McKerall was the winner of the quilt made by the Sagerton Hobby Club.

Mr. and Mrs. J.B. Toney were in San Angelo Sunday to attend the Parents' Day Luncheon of the Delta Zeta Sorority with their daughter, Rene, who is a member of the Sorority at Angelo State University.

Want the memory of a loved one to live on? Give to the Haskell Co. Ambulance Memorial Fund. Let their memory live on in the lives of others who may be helped by the Service. Your contributions are appreciated.



## HALLOWEEN DRESS

Shown are the pumpkin people which were part of the Halloween dress which adorned the Elementary school cafeteria. One of the more notable pumpkins is Mr. T, seen far right.

## Chamber Of Commerce Briefs

### WANDA DULANEY, Manager, Haskell Chamber of Commerce

In its second monthly breakfast meeting, the Retail Trade Committee of the Haskell Chamber of Commerce convened Wednesday morning at the Kountry Kookin Cafeteria, with chairwoman Donna Wilson, presiding. The October meeting was held at the Back Porch Restaurant, with both sessions well attended.

According to Mrs. Wilson, the December meeting is scheduled for December 5 at 7:00 a.m.

She praised the merchants on their cooperative efforts for the 3 day Ghostbuster Sale and activities, and announced that all winners of the Window Painting Contest have received their awards, totalling

\$328 in cash prizes which were donated by various merchants.

The group voted to host a Haskell Coke Party this month, a plan presented by Gene Long. Detailed information is published elsewhere in this newspaper.

Mrs. Wilson stressed the importance of positive thinking and action. Mattie Muriel Felker emphasized the value of united effort and input from younger business people. "We must work together", she said.

A.C. Richardson invited merchants and the public to his open house at his company on Nov. 27.

Tommy Long stated that the merchants' breakfast meetings are both enjoyable and beneficial and encouraged attendance.

### Store Lighting and Decorations

Mrs. Wilson reminded merchants of the annual Christmas Parade December 1 at 6:00 p.m. and asked that all of the stores who outline their windows in lights please have them turned on by 5:00 p.m. so that uniform lighting will exist as dark approaches. The same applies to residential areas.

Decorations in store windows should also be complete by that date.

### Christmas Drawings

Mrs. Wilson announced that 42 merchants had already signed up as participants in the Christmas drawings, with possibly still others to join. Merchants voted that as in the past, the winner must be present for the \$500 Jackpot Drawing on December 22 at 2 p.m. on the south side of the

courthouse but that names drawn at the Dec. 1, 8, 15 drawings will receive one half even if they cannot be present. At the first three drawings, the first ticket is for \$100 in gift certificate with five additional at \$50.00 each. The gift certificates that are awarded may be redeemed at any of the participating merchants' stores.

Mrs. Wilson also said all merchants are required to stamp the name of their business and the year 1984 on the back of all tickets given.

### Chairman Praised

At the regular monthly meeting Nov. 6 of the Board of Directors, Haskell Chamber of Commerce, Retail Trade Chairman Donna Wilson was praised for her leadership in reorganizing the merchants of Haskell and in their united efforts.

Nov. 15 through 21

2 liter bottle <b>Coke</b>	<b>79¢</b>
Decaffeinated Folger <b>Coffee</b> 13 oz can	<b>\$2.99</b>
Giant Box <b>Tide</b>	<b>\$1.89</b>
Del Monte 17 oz can <b>Fruit Cocktail</b>	<b>79¢</b>
Extra Spicely - 15 oz can <b>Wolf Chile</b>	<b>99¢</b>

**Buster's Drive-In**

# Announcing

## The Rolling Plains Shopping Center

is having a

# Coke Party

in

**Haskell, Texas**

**Free Coca Cola will be served on the square all day Saturday.**

Participating merchants include:

Sue's Flowers, Gifts, Candy, and Photography  
The Slipper Shoppe  
Smitty's Auto Supply  
Sonic  
Westside Texaco  
Walling—Rieger Oil Co.  
Western Auto Store  
Sport About  
Sears  
Boggs and Johnson Furniture  
White's Auto  
Kay's Cleaners

Heads or Tails Western Wear  
The Lumber Yard  
Lyles Jewelry Store  
M-System Grocery  
Merle Norman Cosmetics & Boutique  
Modern Way Grocery  
Music Box  
Owen's Radio & Electric  
Personality Shoppe  
Pizza Barn  
Rodriguez Inn  
S & H Green Stamps

Hassen's Department Store  
Frazier's Appliance  
Farmers Union Insurance  
Haskell Free Press  
Haskell National Bank  
Haskell Steak House  
Heidenheimer's Dept. Store  
KVRP  
Kid's Duds  
Lane Felker  
Letz Building Supply  
Bassing Jewelry

Ben Franklin  
Bill Wilson Motor Co.  
Bird's Exxon Service Station  
Boot Hill Western Store  
Buster's Drive-In Grocery  
Busy Bee Mini Mart  
Commodore Savings  
The Drug Store  
Aladdin House  
Video Vendor  
Jones—Cox and Co.  
Johnson Pharmacy  
The Hayloft

**It's a party! Come one, come all!**

WE GIVE  WE GIVE  WE GIVE  WE GIVE  WE GIVE  WE GIVE  WE GIVE  WE GIVE  WE GIVE  WE GIVE 

# M SYSTEM

Your FRIENDLY

**AFFILIATED SUPER MARKETS**

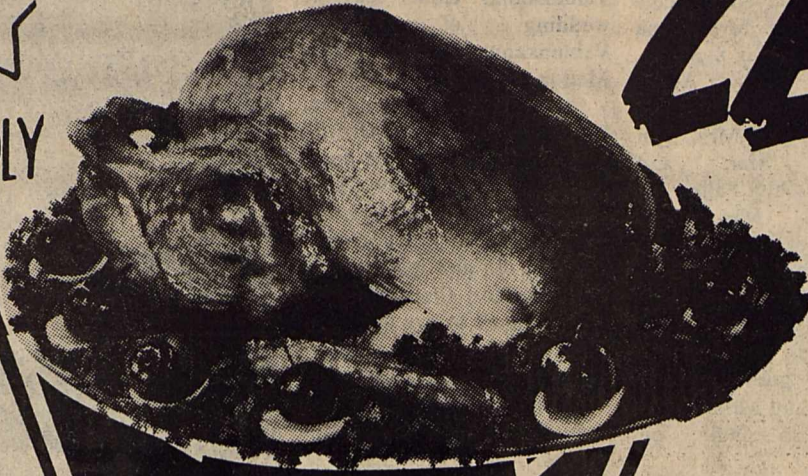
For your shopping convenience M-System will be open on **SUNDAYS—9 a.m. til 7 p.m.**

**Double days**

**WEDNESDAYS**  
With the purchase of \$3.00 or more.

Prices Good Nov. 15th Thru Nov. 22nd, 1984!  
**6 DAYS OF SAVINGS!**  
We Reserve The Right To Limit Quantities!

# LET'S TALK TURKEY

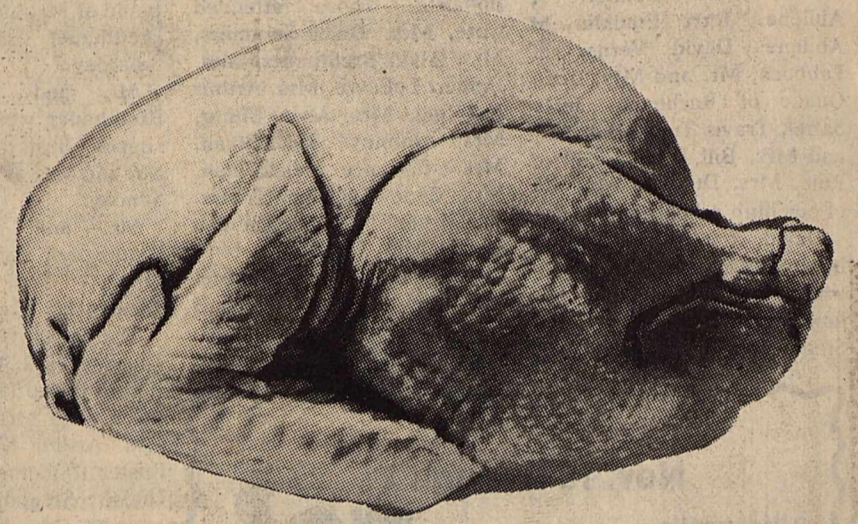


SHURFRESH GRADE "A" SELF-BASTING YOUNG

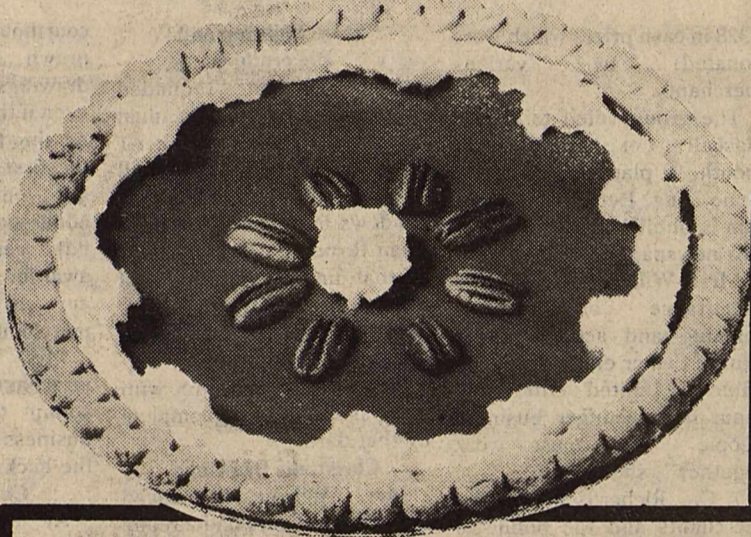
**TURKEYS**

HENS **57¢**  
Lb.

TOMS **55¢**  
Lb.



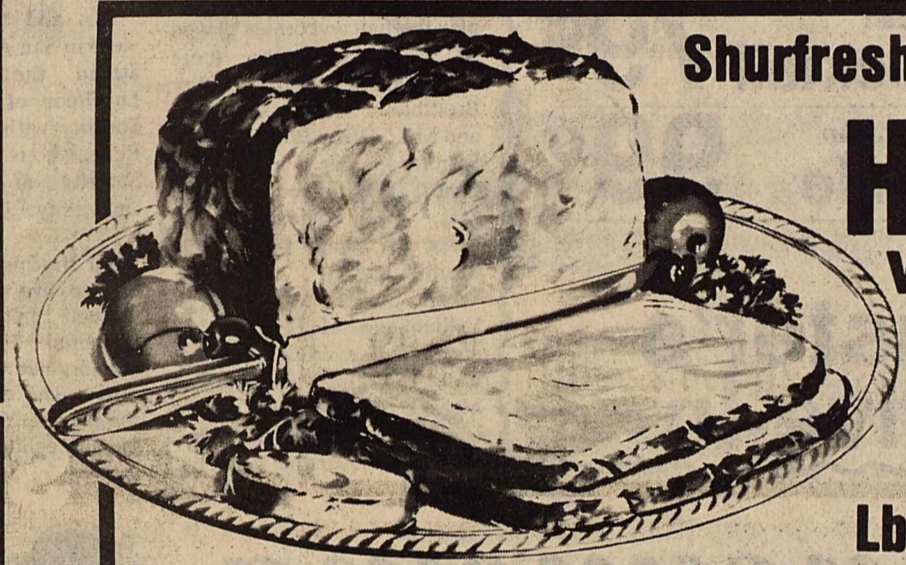
**BAKING Hens 79¢**  
5 to 7-Lb. Average Lb.



Shurfine **PUMPKIN**  
15-oz. Can **29¢** (Limit 2) Additional Purchase 39¢

GANDY'S **WHIPPING CREAM**  
8-Oz. Carton **55¢**

SHURFRESH WHIPPED **TOPPING**  
8-oz. Carton **58¢**



Shurfresh BONELESS

**HAMS**  
WHOLE

**1.58**  
Lb.

HALVES.....Lb. 1.68


**PIE SHELLS**  
SHURFINE (2) 9-INCH SHELLS **57¢**

**Green Onions or Bag Radishes**  
MIX OR MATCH! **4 For 1.00**

Shurfresh **Cream Cheese**  
 **65¢**  
8-oz. Pkg.

**PARKAY MARGARINE**  
1-Lb. Pkg. (Quarters) **59¢**

**SWEET Potatoes**  
Lb. **49¢**

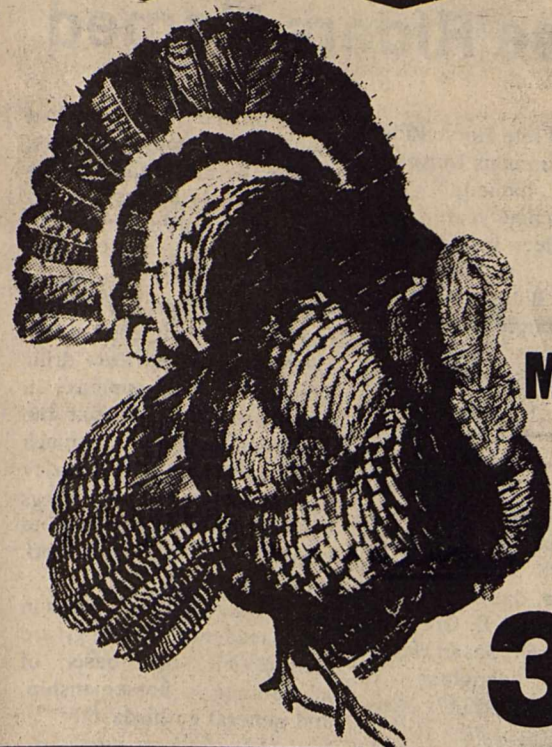
Fresh **Cranberries**  
 **69¢**  
12 Oz. Pkg.

**LARGE STALK CELERY**  
Ea. **39¢**

RICH 'N CREAMY **Avocados**  
70-Count Size **4 For 1.00**

WE GIVE  WE GIVE  WE GIVE  WE GIVE  WE GIVE  WE GIVE  WE GIVE  WE GIVE  WE GIVE  WE GIVE 

WE GIVE  WE GIVE  WE GIVE  WE GIVE  WE GIVE  WE GIVE  WE GIVE  WE GIVE  WE GIVE  WE GIVE  WE GIVE 



# Thanksgiving Day SALE!

M-SYSTEM STORES WILL BE CLOSED THURSDAY, NOV. 22nd, THANKSGIVING DAY

SWANSON CHICKEN  
**BROTH**  
14-oz. Cans  
**3 For 1<sup>00</sup>**

BETTY CROCKER  
**Cake Mixes**  
18.5-oz. Box **68¢** (Limit 2) Additional Purchase 99¢

Shurfine Whole Kernel or Cream Style  
**Sweet Corn**  
16-oz. Cans **3 For 1<sup>00</sup>**

SHURFINE CUT  
**GREEN BEANS**  
16-oz. Cans **3 For 1<sup>00</sup>**

Nice 'N Soft Bathroom  
**TISSUE**  
4-Roll Pkg. **99¢**

TOWN TALK  
BROWN 'N SERVE  
**ROLLS**  
12-Count Packages  
**3 FOR 89¢**

SHURFINE  
**CRANBERRY SAUCE**  
16-oz. Cans  
**3 FOR 1<sup>00</sup>**  
Limit 3. Additional Purchase 2/89¢

**Spill-Mate**  
PAPER TOWELS  
Jumbo Roll **69¢**

KRAFT  
**MIRACLE WHIP**  
32-oz. Jar **1.79**

Del Monte Regular or Lite  
**FRUIT COCKTAIL**  
17-oz. Can **79¢**

Del Monte Yellow Cling  
**PEACHES**  
Regular or Lite 16-oz. Can **69¢**

**PET MILK**  
13-oz. Tall Cans  
**2 For 1<sup>00</sup>**

SHURFRESH GRADE "A"  
**BUTTER**  
1-LB. QTRS. **1.48**  
Limit 1 with \$10.00 purchase  
Additional Purchase 1.89

- SHORTENING **Crisco** .... Reg. or Butter, 3-Lb. Can **2.45**
- ASHBURN All Flavors **Ice Cream** ..... Half Gal. Ctn. **2/5<sup>00</sup>**
- Kraft Miniature or Jet Puffed **Marshmallows** ... 10.5-oz. **2 For 1<sup>00</sup>**
- LIGHT CRUST **FLOUR**..... 5-Lb. Bag **79¢**
- SUGARY SAM **Cut Yams** ..... 23-oz. Can **79¢**
- SHURFINE FLAKED **Coconut**..... 14-oz. Pkg. **99¢**
- HEAVY DUTY FOIL **Reynolds Wrap** ... 18x25 Roll **1<sup>09</sup>**
- MARYLAND CLUB **Coffee** ..... All Grinds, 1-Lb. Can **2.39**
- SHURFINE PURE CANE **SUGAR** ..... 5-Lb. Bag **1.55**
- SHURFINE Powdered or Light Brown **SUGAR**..... 2-Lb. Bag **99¢**

**COKE or TAB**  
Regular or Diet  
2-Liter Bottle **79¢**

STAMP PRICE SPECIAL  
Lipton  
**Instant Tea**  
**\$1.69**  
3 oz  
WITH ONE SPS FILLED CARD

STAMP PRICE SPECIAL  
Shurfresh  
Grade "A" Large  
**Eggs**  
**23¢**  
WITH ONE SPS FILLED CARD

STAMP PRICE SPECIAL  
Shurfresh  
Sweet Milk  
½ gal ctn  
**59¢**  
WITH ONE SPS FILLED CARD

STAMP PRICE SPECIAL  
M-System  
**Bread**  
½ lb loaf  
**9¢**  
WITH ONE SPS FILLED CARD

STAMP PRICE SPECIAL  
Parkay  
**Margarine**  
**14¢**  
(1 lb pkg) quarters  
WITH ONE SPS FILLED CARD

WE GIVE  WE GIVE  WE GIVE  WE GIVE  WE GIVE  WE GIVE  WE GIVE  WE GIVE  WE GIVE  WE GIVE  WE GIVE 

### 8th Graders End Season Undefeated

By Shawn Lane  
The undefeated eighth grade Warriors finished their superb season with a 33-7 victory over Anson last Saturday.  
The scores came off runs by Dan Guess, Derrick Billington and three by Fred Law.  
"It was a super team effort consisting of good defense and good blocking," Coach George Martin said.  
"The linemen were awed by Anson's size but carried out their assignments creating big

holes," Coach Martin said. Linemen were Brad Bevel, Wade Martin, Eric Mullin, Dusty Meeks, Bo Watson and Bobby Medford.  
"The backs ran well and got the big yardage," Coach Martin said. Backs were Guess, Paul Harvey, Billington, Shaw, Corey Mills and Cole Larned.  
"It was a great experience and a privilege working with a group that has as much talent as these eighth graders have," Coach Martin said.



**MOTHER AND CHILD**  
Elementary school students here were creative and came up with this variation on the use of pumpkins during the days before Halloween.

### Deborah Rodriguez Is Band Sweetheart

By Elizabeth Scharff  
Haskell High School Band Sweetheart Deborah Rodriguez was crowned Friday during halftime ceremonies at Indian Field. She is the daughter of Mrs. and Mrs.

Joe Rodriguez. She was escorted by her brother Patrick Rodriguez.  
First runner up was Kimla Strickland, daughter of Mrs. Janet Strickland. She was escorted by Kelly Klose.

Second runner up was Michelle Stout daughter of Mr. and Mrs. Wayne Stout. She was escorted by Jeff Neal.  
The queen and her court were driven onto the field by band president Tim Johnson.  
Rodriguez, a senior, has played the trumpet in the band for seven years. Practicing the trumpet takes a lot of her time as she is going to try out for district. In her freetime she reads a lot, plays tennis, swims, jogs and loves aerobics.  
She is the senior class reporter, FHA treasurer, band secretary, member of the annual staff and in drama class.  
She plans to either go to college in Stephenville and major in business or to join the Air Force.  
Strickland plays the flute, and she has been in band for four years.  
She likes to travel, listen to music and ski. She also likes to

dance and she has done some string art.  
She is vice president of projects in FHA and on the annual staff.  
After this year she wants to go to Dallas and major in fashion merchandizing.  
Stout, also a senior, has been in band for seven years and plays the clarinet.  
She enjoys horsebackriding, lathhooking, dancing and twirling. She also plays softball, volleyball, basketball and likes to iceskate.  
She is on the varsity basketball team, a twirler and FHA secretary.  
Next year she plans to go on to West Texas State University and major in home economics.



### H-SU Six White Horse Riders Named

The Six White Horse Riders of Hardin-Simmons University have been named for the 1984-1985 school year.  
These riders include: Kim Wedeking, sophomore, daughter of Bobby Wedeking, Rt. 3, Stamford; Tammy Miller, senior, daughter of James Miller, 9235 High Mesa Rd., Clathe, Co.; Anna Marie Warren, freshman, daughter of Loyd Warren, 1350 Glenhaven, Abilene; Suzahn Inman, freshman, daughter of Marlon Inman, Rt. 1, Box 192 A, Farwell, Texas; Sharon Gray, senior, daughter of Mr. and Mrs. Robert E. Gray, 504 N 11th, Haskell; Susan Henry, sophomore, daughter of Marvin Henry, 1117 Ross, Abilene.  
Texas proved so popular that they're still around. In fact, they make more appearances now than ever before.  
Under the direction of Dr. W.O. Beazley, HSU's vice president emeritus and rodeo enthusiast, the Six White Horses and their coed riders have perfected intricate drills which have won applause in many arenas throughout the Southwest. They are so much in demand that Dr. Beazley has to watch the bookings with care in order not to jeopardize the scholastic work of the riders.  
The riders, all HSU coeds in good academic standing, are chosen on the basis of appearance, horsemanship, and general enthusiasm.

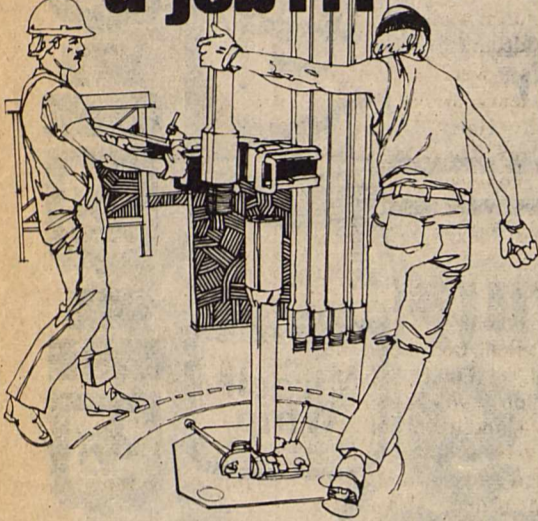
In addition to the six riders, three alternates have been named and include: Mindy Reed, freshman, daughter of Bobby Reed, 733 Glenhaven in Abilene; Lisa Harrington, freshman, daughter of Ed Harrington, 14240 Herring Rd., Colorado Springs, Co.; and Michaella Lindsey, junior, daughter of Geraldine Lindsey, 1201 Briarwood, Weatherford, Tx.

They started out back in the 1930's, nobody seems to remember exactly when, as just a promotional gimmick for the famed Cowboy Band. But the Six White Horses and the girl riders bearing the six flags that have flown over

### Tigers Defeat JV, 26-2

By Robert Ivey  
The Haskell JV were defeated by the Anson Tigers 26-2.  
The JV's only score was a safety about midway through the first quarter.  
The JV suffered 6 fumbles and 3 interceptions in the game against the Tigers.  
This was the JV's final game of the year as they finished the season at 1-7.

This looks like a job...



for Super Soles



- Long-lasting Urethane "Super Soles"
- Soft, water-repellent Leather
- Comfortable Cushion Insoles

You've earned your Wings!

Safety shoe



Red Wings  
Heidenheimer's

When you wanted to talk about some change in CD rates, we listened.

Commodore Savings listens to its customers. That's why, when you told us you wanted a variable instead of a fixed CD maturity term, we heard you. And now, Commodore Savings gives you what you asked for: on any Commodore Certificate of Deposit - from our 32 day CD all the way up to a 5-year CD - you can pick your maturity term.

With a Star CD from Commodore Savings, you set the maturity date at 7 months...or 2 years and 3 months...or 1,713 days...[of any length CD you want up to 5 years.] And on each one, you'll receive the same high CD rates you always expect from Commodore Savings:

LENGTH OF CD	RATE
1 Month to 3 Months (32 thru 89 days)	10.50%
3 Months to 6 Months (90 thru 179 days)	10.75%
6 Months to 9 Months (180 thru 269 days)	11.00%
9 Months to 1 Year (270 thru 364 days)	11.25%
1 Year to 2 Years (365 thru 729 days)	11.50%
2 Years to 3 Years (730 thru 1094 days)	11.75%
3 Years to 4 Years (1095 thru 1459 days)	12.00%
4 Years to 5 Years (1460 thru 1824 days)	12.25%

At Commodore Savings, we think listening is important. Because when you know how to listen, you know how to help with innovative ideas like our Star CD's. Come talk to us about opening a Star CD today.

We're Here To Listen. We're Here To Help.



ABILENE 440 Hickory, (915) 676-5701 • 3800 South Clack, (915) 695-2940 • 4601 South 14th, (915) 698-4931  
CLYDE Interstate 20 & Cherry Lane, (915) 893-5885 HASKELL 518 South Second Street, (817) 864-3179  
QUANAH 111 West Fourth Street, (817) 663-5388 STAMFORD - HOME OFFICE 122 W. McHarg, (915) 773-2713  
DALLAS 2501 Cedar Springs, (214) 871-0005 GARLAND 4402 Broadway, (214) 271-4581 MEMBER F.S.L.I.C.

Call  
**Nanny Plumbing**  
for all your plumbing needs.  
We offer Rheem H/C, Roto-Rooter and Ditch Witch Services, Plus Dependable Service  
Monday thru Friday  
7 a.m. to 5 p.m.  
Sat. 7 a.m.-12 noon  
301 S. Ave E 864-3043



**EMS**

EMERGENCY MEDICAL SERVICE



24 Hour Ambulance Service  
Oxygen Equipped  
Licensed Personnel  
3 Ambulances  
Complete Insurance filing for, Medicare, Medicaid, or Private Ins

**Haskell Co. Emergency Ambulance Service**

**864-2621**  
EMERGENCY NUMBER

307 North 1st  
Haskell

Office  
864-3945



# Drunk Driving Tips Listed From M.A.D.D.

**By Janet Wilke**  
In the next two issues of the **Free Press**, you will see an article which deals with drunk driving and Mother's Against Drunk Drivers.  
When trying to write an editorial which would give a punch to this series, I was really having trouble until I found the following item in the materials I obtained from MADD. I feel that this piece says better than I could what needs to be sent across. It is entitled "HOW TO DRIVE WHEN YOU'RE DRUNK".  
1. "Two cups of black coffee sobers me up". Wrong. Coffee, be it black, strong, or straight out of the can, can't

rid your system of alcohol. It just makes you a very nervous drunk.  
2. "Once I roll down the windows I'm okay." More myth. No amount of fresh air can keep an inebriated person from being inebriated. So you gain nothing by rolling down a window, turning on the air conditioner, driving a convertible, or living in Alaska.  
3. I'm bigger. I can handle my liquor better." Big people don't necessarily make better drivers, better backgammon players, or better drinkers. Fact is, after three to five drinks, most every one under eight feet is legally drunk.

4. "I always stay away from the hard stuff." Alcohol is alcohol. Behind the wheel, low calorie beer can be just as deadly as straight scotch. Same holds true for all of those slushy, sweet concoctions that look like tulips.  
5. "All I have to do is to splash myself with cold water." Splash all you like. You can even take a shower. It won't sober you up but it may make you cleaner and keep you off the road.  
6. "I just drive slower." Many people do. Believing they are actually compensate for their drunkenness by creeping along at 22 mph. Others creep along at 80 mph. The truth is, drunk drivers are unsafe at any speed.  
Coffee, fresh air, cold showers.  
No matter how invigorating, they can't sober you up. Nothing can, except time. About an hour for every drink you've had.  
You, meaning everyone, even the champion chugger!  
Because no matter who you are, a few beers, or a couple of glasses of wine, or a half shaker of martinis is all it takes to dim your vision, slow your reflexes, and warp your judgement.  
And, turn your automobile into a deadly weapon.  
So, if you really want to know how to drive when you are drunk, the answer should be obvious, you don't!  
—taken from MADD

## Mrs. Wallace Cox Sr.

Funeral services for Mrs. Wallace Cox, Sr., 83, of Haskell were held at 2:30 p.m. November 9 in First United Methodist Church with Rev. Mike Struve, pastor, officiating. Burial was in Willow Cemetery under the direction of Holden-McCauley Funeral Home.  
Mrs. Cox died November 7 at 6:05 a.m. at her residence. Born March 13, 1901 in Gatesville, she was a homemaker. She graduated from Abilene High School and then Simmons College (now Hardin-Simmons University) in 1921. She was valedictorian of her class and recipient of the Julius Nelson Olsen and Minter Awards. She taught school in Abilene and Haskell and was a Sunday School teacher, long time member of the church choir, United Methodist Women, Delta Kappa Gamma and the Magazine Club. She married Wallace Cox Sr. February 6, 1926 in Abilene. She was a member of First United Methodist Church.  
Survivors include her husband; one son, Wallace Cox Jr. of Haskell; two sisters, Mrs. Annie Bess Slaughter of McAllen, Mrs. Dollie Louise King of Abilene; one brother, Sam Chambers of Austin; two granddaughters, Sarah Cox of Amarillo and Emily Cox of College Station; three grandsons, John Cox of Houston, Elliott Cox of Snyder and Paul

# Obituaries

Cox of College Station. Pallbearers were Wilda Medford, Ottie Johnson, Homer Josselett, Joe Harper, Jack McAdoo, and Joe Williams.

## Buril Hudson

Buril Dean Hudson, 53, former mayor of Lawn, died Monday morning Nov. 12 at his residence after a lengthy illness.  
Services were at 2 p.m. Wednesday in Lawn First Baptist Church. Officiating was Rev. Robert Elkins, former pastor of Lawn; Rev. Ray Ash, also a former pastor of Lawn; and Rev. Price Matheson, present pastor of Lawn.  
Burial was in Dewey Cemetery south of Lawn, directed by Fry Funeral Home of Tuscola.  
Born Dec. 5, 1930, at Goldsboro, he married Peggy Lanell Ainsworth Dec. 20, 1948, in Abilene. He lived in Lawn most of his life, farming and working as a self-employed plumber and electrician.  
He was a member of Lawn First Baptist Church and was a Royal Ambassador Leader in the church for 23 years.  
He was preceded in death by his father, Buril E. Hudson and a sister, Barbara Polk.  
Survivors include his wife; three daughters, Peggy Oakley of Austin, Laura New of Coahoma and Teresia Pierson of San Antonio; two sons, James Derald Hudson of Haskell and Johnny Buril Hudson of Lawn; his mother, Minta Hudson of Lawn; two sisters, Wanell Bowyer of Abilene and Yvonne Adams of Abilene; a brother, Derald Hudson of Montgomery; eight grandchildren; and 20 nieces

## Samuel Villarreal

Funeral services for Samuel Villarreal Jr., 27, of Guymon, Oklahoma, were held at 4 p.m. Monday, November 12 at St. George Catholic Church in Haskell with Rev. Sean Moran, pastor, officiating. Burial was in Willow Cemetery under the direction of Holden-McCauley Funeral Home.  
He died November 10 at 12:05 p.m. in Baptist Medical Center in Oklahoma City, Oklahoma.  
Born March 30, 1957 in Abilene, he attended Haskell schools and had lived in Guymon for the past 3 years. He worked in road construction. He was a Catholic.  
Survivors include his wife, Sallie Villarreal of Guymon; two sons, Samuel III and Manuel, both of Guymon; his parents, Mr. and Mrs. Sam Villarreal of Haskell; maternal grandfather, Maties Tonche of Abilene; paternal grandmother, Mrs. Petra Villarreal of Haskell; three brothers, Fernando Arredondo of Haskell, Sammy Villarreal of Kansas City, and Adriaan Villarreal of Haskell; three sisters, Mrs. Linda Lucille, Mrs. Alice Chavez and Mrs. Jesse Martinez, all of Haskell; one step-son and one step-daughter.

was in Ringling Memorial Cemetery.  
Mrs. Couch was born Dec. 9, 1899, in Eastland County. She died Nov. 11, 1984, at her home north of Ringling, Okla.

She moved to Haskell at the age of 20 and lived there until she moved to Ringling in 1963. She married George Robert Couch, Jr. on April 19, 1925, at Haskell. He preceded her in death in 1966.  
She was a member of the Mount Zion Missionary Baptist Church.

Survivors include one daughter, Jenella Scifres, of the home; two sisters, Ruth Reeves, Jayton, and Billie Miller, Shamrock; one brother Fletcher Rich, Lubbock; two grandchildren and two great-grandchildren.  
Bearers were Raymond Couch, Geary James, Elmer Wall, Jr., Harry Goodman, J.C. Awtrey, Lyndell Awtrey, and R.T. Longest.  
Services were under the direction of Alexander Funeral Home.

Need a tax break? Why not give to the **Haskell Co. Ambulance Memorial Fund?** Your contribution will be tax deductible, and it will go to aid in the upkeep and future of the ambulance service in Haskell. By your giving, you allow others to benefit. Please give!

Want Ads—  
Your Best Market Place.

**AMERICAN SPELLING BOOK**  
In 1783, Noah Webster published his "American Spelling Book". Its estimated sales in the next 100 years were 70 million.

## A&M's chancellor chairs committee on science/technology

COLLEGE STATION — Gov. Mark White has selected Texas A&M University System Chancellor Arthur G. Hansen to serve as chairman of the newly formed Science and Technology Council intended to improve Texas' position as a national leader in research and development.  
The governor named 27 prominent businessmen, scientists, engineers and educators to the blue-ribbon advisory panel in June, but he did not announce at the time who would lead the group.

LET US HELP YOU with all your office supply needs. **Haskell Free Press**

**DON BOOK**  
10.28% to maturity  
Earn this rate of return and pay no federal taxes.



**DON BOOK**  
118 S. Swenson  
Stamford, Texas 79553  
915-773-2709

Edward D. Jones & Co.

Member New York Stock Exchange  
Member Securities Investor Protection Corporation

Member New York Stock Exchange  
Member Securities Investor Protection Corporation

## TAX PLANNING

by James E. Rodgers, CPA



### YEAR-END BUSINESS MOVES

The tax regulations specify that it is your responsibility to pay as little tax as possible under the existing laws. Businesses can reduce their annual tax bill with some very simple year-end techniques.

•Bad debts are deductible in the year in which they are determined to be worthless or partially worthless. Your deduction must be substantiated by records showing your collection efforts.

•The lower your inventory, the lower your net profit. You are not permitted to under-value your inventory or to list less inventory than you have on hand. You are permitted, however, to write inventory down to a reduced valuation which you can substantiate. Write down the value of shopworn items and eliminate those items that are unsaleable.

•If you anticipate major repairs to building or equipment early next year, consider having them completed before year-end. Some items you consider repairs the Internal Revenue Service might consider capital expenditures which need to be depreciated over a period of years.

•No one would advocate turning down sales. But, perhaps a sale could be closed in January instead of December or merchandise could be sold on consignment. Consigned sales are not final until the merchant sells the product.

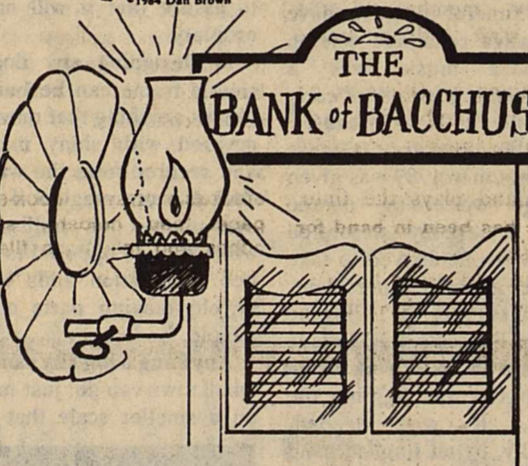
•You are allowed to deduct certain year-end bonuses even though they are not paid until next year. If your company is on the accrual basis, you can take a deduction for a committed year-end bonus if it is actually paid within 2½ months after the close of your tax year (not permitted for majority shareholders).

Even though some of these techniques simply push the tax problem one more year down the road, they provide you with the interest-free use of those tax dollars.

Sponsored by  
**JAMES E. RODGERS & COMPANY**  
Certified Public Accountants  
20 Southwest Third Street  
Hamlin, Texas

## TEXAS TRAILS

LONE STAR STATE HISTORY by DAN BROWN



**GAS AT THE BANK ...**  
Dick Dowling, the red headed Irish hero of the battle of Sabine Pass, operated a saloon in Houston after the Civil War. The saloon was called the "Bank of Bacchus." Dowling was an innovative businessman; he advertised he not only sold spirits but also cashed checks. The "Bank" was the first establishment in Houston to have gas lights.

## HASKELL NATIONAL BANK

864-2631 • 601 N. First  
Haskell, Texas—Member F.D.I.C.

**SELF BASTING, WITH TENDER TIMER**  
**SHURFRESH TURKEYS** 10-12 LB. AVG. OR 12-14 LB. AVG. **59¢ LB.**

**COOKED FOOD SPECIAL AS FEATURED ON TV**  
FRESH COOKED **BURRITOS** READY TO GO **2 FOR 99¢**

**BOLOGNA, SALAMI, LUNCHEON LOAF**  
**LUNCH MEATS** **69¢**

**HOME FOR THE HOLIDAYS**  
**BORDEN'S BUTTERMILK** ½ GAL. CTN. **\$1.09**

**FALL AT WAREHOUSE SALE**  
**HOMEL'S BREAKFAST SAUSAGE LITTLE SIZZLERS** 12 OZ. PKG. **88¢**

**KRAFT VELVETTA CHEESE** 2 lb box **\$2.89**

**6 Pack 12 oz. cans** **\$2.19**

**ALLSUP'S CONVENIENCE STORES**

**COOKED FOOD SPECIAL AS FEATURED ON TV**  
W/ FREE SMALL COFFEE OR HOT CHOC. **2 SAUSAGE & BISCUITS FOR 99¢**

**DECKER BACON** **\$1.39** 1 lb

**BORDEN'S WHIPPING CREAM** ½ PINT CTN. **59¢**

**BORDEN'S ICE CREAM** ½ GAL. RND. CTN. **\$1.79**

**INSIDE FROST 75 / 100 WATT SYLVANIA LIGHT BULBS** 2 CT. PKG. **88¢**

**ALL GRINDS HILLS BROS. COFFEE** 1 LB. CAN **\$2.19**

**RANCH STYLE CHILI** 19 oz **89¢**

**SHURFINE CATSUP** 32 oz **59¢**

**OPEN THANKSGIVING**  
ICE-MILK- BREAD- FRESH PRODUCE- SOFT DRINKS- SNACKS- BROWN & SERVE ROLLS-CHIPS & DIPS WHILE SUPPLIES LAST!

**ALLSUP'S CONVENIENCE STORES**  
PRICES EFFECTIVE NOVEMBER 15-17, 1984

Let's be partners for your Thanksgiving Dinner!

Boggs and Johnson will provide you with a turkey of your choice with the purchase of any Dining Room Suite. Thursday, Friday, or Saturday-November 15, 16, 17

We'll sell you Coca Cola to serve as well for only **79¢ per 2 Liter bottle**

With each dinnette you buy we'll toss in a chicken. (P.S. You furnish the cranberries!)

Oh, all right, buy barstools and we'll furnish the cranberries too!

We want to be your furniture store!  
**Boggs & Johnson**  
East side of Square



### MEET THE MAIDENS

Shown are the mothers of some of the Haskell Maiden's varsity players with their daughters yard signs. On the front row, left to right are: Ann Young, Jane Smith, Charicy Henry, and Lynda Burris. Back row, left to right are: Bettye McBroom, Betty Roewe, Sandra Wallace, Judy Lanier, Lowell Ann Geilhausen, and Roberta High. The yard signs were placed in the girls yards Wednesday.

## Maidens To Get Yard Signs

Parents of members of the girls varsity basketball team have been busy for the past two weeks or so, as they were preparing wooden yard signs, which will be placed in each of the yards of the varsity players and managers.

This project was under wraps, so it would be a surprise to the girls, and the parents have been working at night in the old industrial arts building at the school, preparing the 18 signs.

After the wooden signs were cut out, the parents did the painting and Mac McBroom sprayed the weather-proof varnish on them to make the signs last for a longer period of time.

The project began October 29, and the parents have worked hard in order to get the signs finished before the start of basketball season.

Some of the parents who have worked on this project include: Jenabeth Buchanan,

Sandra Wallace, Janice Browning, Bettye McBroom, Jeannie Stout, Lowell Ann Geilhausen, Jane Smith, Judy Lanier, Ann Young, Linda Burris, Ruthie Randle, Merilan Sue Holt, Betty Roewe, Charicy Henry and Roberta High.

These signs, which will be

displayed in front of the girls homes this week, will feature a girl basketball player, holding a ball, who will be dressed much like the girl's uniforms look.

Members of the HHS Ag classes have also been helpful in making the wooden stakes for the signs.

## Public Meeting Set For Agricultural Conservation Views

The U.S. Department of Agriculture will hold a public meeting in Washington D.C. Dec. 12 to consider recommendations by state and county conservation review groups concerning agricultural conservation, pollution control and forestry programs.

The public also is invited to submit comments and suggestions on these USDA programs, according to Everett Rank, administrator of USDA's Agricultural Stabilization and Conservation Service.

Rank said the meeting will begin at 9 a.m. in room 4960 of USDA's South Building.

Conservation review groups were formed to help USDA carry out rural conservation and environmental programs. These groups have responsibility for making program recommendations, including changes in administrative procedures and policy guidelines, and evaluations of program effectiveness and operating arrangements.

Agricultural conservation program assistance is offered to encourage eligible farmers to voluntarily perform soil and water conservation, energy conservation and pollution abatement measures, Rank said. Under the program, USDA shares the cost of such work with farmers who ordinarily would not or could

not perform needed conservation practices without federal assistance.

For additional information or to make reservations for the meeting, write to the director of the Conservation and Environmental Protection Division, ASCS, P.O. Box 2415, Washington, D.C., 20013, or call (202) 447-7333.

*A Haskell Free Press want ad will find you a buyer.*

Brightly colored — attention getting — Open-Closed Signs for your office or business. Comes complete with changeable letters in black or red. Also includes a sign for counter top use. See at the *Haskell Free Press*.

## Parades Date Back To Early Times

WANDA DULANEY, Manager, Haskell Chamber of Commerce

In a book donated recently to the Haskell Chamber of Commerce by Christine Greene, a history of parades is outlined which we found very interesting and wanted to share with you.

"A parade is anything that puts on a show and moves in a line," said L.F. Vaughn, whose company is known all over the United States as a parade and float expert.

"A parade is organized fantasy, a look into never-never land, purposely ostentatious", he said.

Anthropologists, in their findings of ancient and primitive drawings on walls of caves show parade-like sketches of people and animals, made centuries ago.

In other findings, paintings on decorated caskets show chariots in funeral possessions, decorated in splendor.

Records show that the Greeks made parades a part of their drama in the sixth century B.C. Lighted by flaming torches, the procession was from the temple to the festival theater.

In one Roman play, a procession to its theater consisted of six hundred pack mules.

Medieval times in England were times of great church processions and cross country pilgrimages to distant cathedrals.

There are old prints picturing triumphal cars and pageant vehicles used in the dramatic festivals in 1616 A.D.

The ancient parades have been traced in Egypt, Babylon and Europe. The Oriental genius for fashioning bizarre parade figures survives to this day.

The funeral parades have not always remained solemn and jazz music was a distinguishing feature of early ceremonies in New Orleans.

In this country, George Washington in 1789 was given a huge welcoming parade along a lavishly decorated route when he arrived to take his place as the first president.

Even earlier, in 1779, the first St. Patrick's Day Parade was held in New York when Washington was fighting the British. It was headed, ironically, by an English band and 400 transplanted Irishmen.

More parades are staged in America on the Fourth of July than at any other time.

The fabled Tournament of Roses Parade in Pasadena, California was held in 1890 with a rule set then, and still

in effect, that only fresh flowers were to be used to decorate any parade entry. The Rose Bowl stadium was not built until 1923.

One of the most widely known annual events in the United States, in the world too for that matter, is the famed Mardi Gras Festival of New Orleans. Although a few were held earlier, the series was actually established in 1771. Always held at night, torches and flares were used to delight the spectator.

Each of the major parades have new and special themes each year that are not akin to the season in which they are held. Although presented on January 1, the Rose, Cotton, Orange and Sugar Bowl Parades have themes unrelated to New Years. Macy's Thanksgiving Parade has few if any notations of Thanksgiving.

All of the larger parades require that the vehicles pulling the floats be hidden to provide an illusion that the entry is just "floating along."

Equestrian groups provide glamour, variety and excitement, with riders and mounts always crowd pleasers.

It takes hundreds of people many months to put together a parade of as large a scope, with contacts with potential float entries, bands, riding clubs, etc. as early as possible.

Haskell parades are no different, especially ones the size of the annual night Christmas parade. Total advance planning and organization are required, with the marshaling procedure a must. It takes hundreds of people off the scenes to make the parade move.

High standards are of utmost importance to stage a spectacular and unique parade to assure that it will not be ordinary.

In designing any float, a simple frame can be built on almost anything that moves. If covered with shiny material and secured from the wind, a float is more magical if there are plumes or trellises or overhangs as opposed to a flat bed. Animation adds to the novelty-moving parts or live people.

Anything a big city can do, a small town can do, just merely on a smaller scale that does

not compromise its standards. Haskell will, of course, not have the \$35,000-\$50,000 floats seen in the Bowl Parades or Macy's, but no big city can top the Spirit that this town radiates with its beautiful floats, its high stepping bands, and drill teams and its many other entries in Haskell's gift to itself and people from neighboring towns.

It is all a matter of pride, and the 1984 Night Christmas Parade is shaping up to be even more spectacular than the first two have been, made possible by merchants, other businesses and organizations that want the very best for their home town and are willing to work hard to achieve it. Some merchants and groups do not have the manpower to build floats but they contribute to the enthusiasm of those who do and boost attendance by ballyhooing the activity with pride and pleasure.

### HERE COMES THE PARADE

Hearts beat faster as distant drums signal the beginning of what is to come. A gentle cold rain begins to fall, but fails to dampen the spirits of the

people, for they are warmed with excitement as they view the gliding floats, appreciate the clowns, admire the beautiful horses and the grace of the riders. Many feel tears coming on as they listen to the music of the colorful bands, and are not ashamed to cry when their country's flag is unfurled, for the spectators are proud Americans. With all the grandeur of a parade, with all the glitter, there is no glow to equal the wonder in the eyes of the children who watch the enchantment, the fantasy. The 1984 Night Christmas Parade in Haskell is designed especially for them, with a theme of "A Child's Christmas." There is a bit of child in everyone who watches a parade.

While it may be true that money can't buy love, it can buy life, especially when you give a contribution to the Haskell Co. Ambulance Memorial Fund. Your contribution is tax deductible, and will be useful for years to come. Don't hesitate. Make arrangements now to give. Thank you.

Rex Allen, Cowboy Hall of Fame Honoree and PCA Member

**"Like an old FRIEND,**

**Production Credit**  
is still there  
when  
we need 'em."

The old west has changed a lot. But, one thing hasn't changed... we still need all the help we can get. That's why today more and more farmers and ranchers look to Production Credit Association. They know at PCA you get more than just a loan. You get a free, personalized financial analysis of your operation. Take it from me, Rex Allen... it's help you can use today from Production Credit... your First Class, First Choice Ag Lender.

**Rolling Plains PCA**

Childress      Stamford      Spur  
Matador                                      Munday

## COLONIAL STOP-N-GO

SPECIALS THIS MONTH ARE:

Quaker State 30 wt. Oil <b>99¢</b> Offer expires Dec. 2	Peak Antifreeze <b>\$3.99</b> gallon Offer expires Dec. 18
Wrigley's Plenty Pak Gum—All Flavors <b>2/99¢</b> Offer expires Nov. 25	Quartz Cypress Clock—Reg. \$34.98 <b>\$17.78</b> While Supply Lasts
Fast & Hot Sausage & Biscuits <b>89¢</b>	Coke, Tab, Diet Coke, Caffeine Free Coke, Caffeine Free Diet Coke—6 pac can <b>\$1.79</b> Offer expires Dec. 2
Fast & Hot Jumbo Cheeseburger <b>\$1.39</b>	Brut Stick Deodorant 8.5 oz—Reg. 79¢ <b>39¢</b> While Supply Lasts
Bic Disposable Shavers 2 pac—Reg. 39¢ Now <b>19¢</b> While Supply Lasts	Conair Pro 1200 Blow Dryer <b>\$3.99</b> One only!
Hershey's Kisses 9 oz bag <b>\$1.09</b> While Supply Lasts	

Open 6 a.m. till 12 midnight  
Haskell, Texas

## CenTex Cablevision Corp.

is showing their  
**FREE PREVIEW**  
On Cable Channel 4  
(Not Channel 7 as previously advertised)  
**ORDER BY NOVEMBER 20TH AND RECEIVE FREE INSTALLATION WHEN ADDED TO YOUR CURRENT CABLE SERVICE.**

### CENTEX CABLEVISION CORP.

902 N. Swenson      Dial 0, Ask  
Stamford, TX                                      for Enterprise 2406

You are cordially invited to our  
**3 Day Pre-Holiday Sale**  
with savings up to 25% on selected groups of Mens Suits, Slacks, Sport Coats, Dress Shirts, Sport Shirts, Jackets & Sweaters. Also save up to 25% on selected groups of Ladies Sweaters, Skirts & Blouses.

Our Pre-Holiday Sale lasts 3 Days Only  
Nov. 14, 16 & 17  
Thursday, Friday & Saturday

## RANDY'S ON THE SQUARE

Stamford, Texas

## RCA

RCA HAS THE HOTTEST TICKET IN TOWN

This is your ticket to great entertainment. Just buy a RCA Video Disc Player from only \$149<sup>00</sup> and we will give you our movie ticket good for 52 free movie rentals. That's one a week for a year. And RCA has over 1200 titles to choose from. But you had better hurry, the tickets are going fast.

North Side of Square      **THE VIDEO VENDOR**      864-2870  
Haskell, Tx

We Service What We Sell

## PME Presents Program At Assembly Of God

Over the past weekend, the young people of the First Assembly of God Church hosted a ministry group from the Southwestern Assembly of God College in Waxahachie.

This group was called the PME Club, (which stands for Pastors, Ministers, and Evangelists), and there were eight of these college students who came to participate in the services, Saturday and Sunday.

On Saturday night, the services were held in the gym of the First Baptist Church.

Sunday morning, Noel Amburn, 19, who is the son of the local Assembly of God pastor, J.C. Amburn, was the featured speaker for the Sunday morning service. Noel

is a student at Southwestern.

This Friday evening, the young people of the church will be attending their monthly Christ's Ambassador's Rally in Abilene. The rally will be held at Northpark Assembly of God, beginning at 7:30 p.m. Transportation will be provided for those wishing to attend the rally, and the church van will depart from the church at 6:15 p.m.

Wednesday night, November 21, there will be a special youth service, and this will be held in conjunction with the observance of Thanksgiving. It will begin 7:30 p.m. at the church, and following the service there will be games and fellowship.



### RAISING OLD GLORY

Shown are members of the Haskell Girl Scouts as they are raising the flag at last Friday night's football game against Hawley.

## VFW Post And Aux. To Sponsor Program

"My Pledge to America" is the theme of the 38th annual Voice of Democracy script-writing program being sponsored locally by Post V.F.W. 9179 and Aux.

The Voice of Democracy Scholarship Program, open to 10th, 11th, and 12th grade students, offers local, district, and national recognition and awards with the top national award being a \$14,000 scholarship. Wilma John Pruet urges students interested in participating to contact Paul Stovall, Box 572, Haskell, phone 817-864-8064.

Participating students are encouraged to tape their scripts using professional equipment available at co-operating radio stations. The recorded script must be at least 3 minutes and not over 5 minutes in length. It is recommended the script be transcribed on reel type magnetic tape at a speed of 7 1/2 inches per second.

Deadline for entries in the local competition is Nov. 30, 1984, said Paul Stovall. There were 250,000 young people from over 8,000 public, private and parochial schools participating in the national program last year.

Tapes will be judged for content, originality and delivery.

The winner from the State of Texas will receive a five day all-expense paid trip to Washington, D.C. next March, together with winners

from the other 49 states. The will visit national monument see Congress in action and meet high government officials. National awards in addition to the \$14,000 first place scholarship include \$7,000, \$4,500, \$3,500, \$2,500 and \$1,000 scholarships for second through sixth place winners.

The program now in its 38th year, is sponsored by the Veterans of Foreign Wars of the United States and its Ladies Auxiliary. The National Association of Secondary School Principals has placed the Voice of Democracy Program on the Advisory List of National Contests and Activities for 1984-85.

"Participation in the Voice of Democracy Program give students experience in writing and speaking" said Paul Stovall. "It gives them a chance to reflect on our nation and its meaning for them."

# Estate AUCTION

ALBINA PRIVYLA ESTATE  
1 P.M. SEYMOUR, TEXAS

508 S. WASHINGTON (5 Blocks South of Courthouse)  
5 Old Gold Coins (Back U.S. Currency & Notes)  
Howard Manulo Self-Player Piano Dated 1900 HC White Viewmaster with pictures  
Many music rolls for piano Hand-painted Kerosene Lamps  
2 Antique Wind up Victrolas Trunks-2 Flat, 2 Camel Back  
Old Records for Victrolas Quilts, Spreads and Bedding  
Oak Dining Table Crochet & Embroidery Items  
Set of 4 Antique Dining Chairs New & Old Linens  
5 Odd Dining Chairs Several Pieces Old Carnival Glass  
China Cabinet w/glass doors (Oak) Tapestries  
China Cabinet Depression Glass-Green, Pink & Pink Frosted  
Oak Bed w/bedding & Dresser Antique Picture Frames w/ Oval glass  
Treadle Sewing Machine in Oak Cabinet Antique School Books  
Electric Sewing Machine Croch & Misc. Kitchen Ware  
Oak Chiffoniere Pots and Pans  
Odd Chairs and Rockers 3 Pc. Poster RR Suit w/bedding  
Chrome Dinette w/6 Chairs Dearborn Heater, Fans  
Numerous other items of a Pioneer Family Household

TWO BEDROOM, ONE BATH HOUSE. HOUSE IS IN GOOD CONDITION AND IN A GOOD NEIGHBORHOOD OF TOWN.  
1966 OLDSMOBILE, DYNAMIC 88, 45,000 MILES, CLEAN, A.C., AUTOMATIC, RADIO, & DOORS.  
HOUSE AND CAR WILL SELL AT 4 P.M.

AUCTIONEERS NOTE: This will be an outstanding estate auction.  
JAMES POWELL & ASSOCIATES - AUCTIONEERS  
888-5271 - 888-2964 - FAX 072-0225

FOOD & DRINKS AVAILABLE

## Haskell Nursing Center News

The First Christian Church had the Sunday morning services for the Home Nov. 4th. The First Methodist will be here for the month of Nov. We invite friends and the families of residents to attend the service, Sunday morning at 10:15.

Several ladies of the Assembly of God Church, Mrs. Curtis Amburn, Mrs. E.G. Graham, Mrs. M.E. Jones, Mendoza girls and Juanita Loyd were here Tuesday for a devotional and singing. Mrs. Loyd read a poem and led singing with Mrs. Amburn playing the piano.

Tuesday night the Sweet Home singers came and presented a program of Gospel songs. Jess Leonard led the singing for the group. Mabel Sanders sang a special for the audience. This group has brought many a happy hour to the residents by sharing their musical talents.

A toe tapping good time was enjoyed by all attending the entertainment given by the Country Band Thursday night. Charles Clark, Dorothy Clark, Doc. Raughton and Leo McKeever played a melody of

old time country and western songs. Residents and visitors, alike remembered and recalled the period of "Put Your Little Foot" and "Oh Them Golden Slippers".

The Garden Club brought a beautiful arrangement of fresh flowers Thursday afternoon for the residents.

The Sunshine Ladies came Friday morning. Bringing the devotional was Ethel Tidwell and Nialene Hall.

Staff and residents enjoyed the Friday afternoon music of Laura Overton. Everyone enjoyed the Sing-a-Long.

A group of Assembly of God college students from Waxahachie Jr. College visited in the Home Saturday. They presented a program of singing and a devotional. Mrs. J.C. Amburn played the piano for the students, who were from different states of the country. Mona Gibson and John McDermett sang a special. Residents and staff alike enjoyed the gospel collie.

Collene Moody received a Certificate of Recognition from the Editor of Caring Magazine, Judy Overton, concerning the nice letter she

wrote about Haskell Nursing Center where she lives.

Mr. and Mrs. Raymond Crain visited in the Home this week.

Visiting in the Home this week was F.D. Hindsley and Bobbie Hindsley.

Marie Townsend from Rule and Sherry and Daniel Payne visited Mrs. Anders, Mrs. May and Dollie Alexander.

Delia Petrick and Delia Mae Tidrow visited several residents.

Mr. and Mrs. Artie Boydston from Aspermont visited A.J. Patterson.

Mr. and Mrs. Danny Payne

visited L.J. Dunn.

Evelyn Green from Ft. Worth and Hallie Morgen from Rule visited Esther May. Hallie Morgen visited Pauline Williams.

Visiting Lillie Greenwood was Shirley, Micheal and Glen Larance from Graham.

Sammy Rodrizy, Floydada, Ralph Herrera, Fresno, Calif., Nail Amburn, Gary Jiveshaber, Bert Ontjes, visited in the Home from Waxahachie.

Visiting Pauline Williams, Rose Floyd from Hawley, and Kristi Brown from Abilene.

## 7th Grade Warriors Defeat Anson Tigers

By Steven Boyd

The seventh grade Warriors traveled to Anson last Saturday to do battle with the Tigers and came home with a 26-14 victory.

The scoring drive was led by Salvador Rodriguez, who had two touchdowns. Baldemar Perez and Rodney Johnson had one touchdown each. Joe Ray Comacho had a two point conversion.

"The team put out a great deal of effort, and they controlled the game," Coach Jim Dan Raughton said. "Perez and Johnson had a great defensive game."

"We have had a pretty successful year, and it has been a pleasure to work with these kids. I expect good things to come from them in the years to come," Coach Raughton said.

**TOWER**  
DRIVE-IN (HIGHWAY 6)  
RULE, TEXAS  
OR PHONE 997-2382

Friday, Saturday, & Sunday  
Nov. 16-17-18

In our time, no foreign army has ever occupied American soil. Until now.  
Patrick Swayze  
C. Thomas Howell  
Lea Thompson

**RED DAWN**  
PG-13

Get Bitter About Litter  
Beautyify Haskell Council

---

AREA'S MOST POPULAR  
**The S & S DRIVE-IN**  
Snack Bar!  
Stamford 773-3272

Fri., Sat., & Sun.  
Purple Rain  
"Never Sleep Alone"

## Make this fall your planting season!

If you don't have a savings plan, open one now.

If you do, add to it regularly and reap the harvest of financial security!

As a full service bank, we also offer a selection of banking services which will help you on auto, home and business loans, plus arrange for future financial security.

Post Office Box 10  
Phone (817) 997-2216  
Rule, Texas 79547

**The Farmers NATIONAL BANK**

# STOCKROOM TIRE SALE

**SAVE ON ALL SEASON RADIALS**

**\$41.95**

P155/BOR12 Blackwall No trade needed.  
**Arriva Radial**

Blackwall Size	Sale Price No trade needed.
P165/70R13	\$49.45
Whitewall Size	
P175/75R13	\$54.35
P185/75R14	\$60.90
P225/70R15	\$80.80

**SAVE ON STEEL BELTED RADIALS**

**\$52**

P175/BOR13 Whitewall No trade needed.  
**Custom Polysteel Radial**

Whitewall Size	Sale Price No trade needed.
P175/75R14	\$52.40
P205/75R14	\$63.50
P215/75R14	\$66.30
P235/75R15	\$74.85

Sale Ends Nov. 17

**SAVE ON WHITE LETTER RADIALS**

**\$58**

P195/70R13 Raised White Letter No trade needed.  
**Eagle ST Performance Radial**

**\$74.50**

P205/70R14 Raised White Letter No trade needed.

**\$84.65**

P235/70R15 Raised White Letter No trade needed.

**SAVE ON THESE GOODYEAR FAVORITES**

**Power Streak II**

**\$25.70**

A78-13 Blackwall No trade needed.

Blackwall Size	Sale Price No trade needed.
F78-14	\$31.85
G78-14	\$34.95
G78-15	\$36.00
H78-15	\$37.00

**Cushion Belt Polyglas**

**\$30.85**

B78-13 Whitewall No trade needed.

Whitewall Size	Sale Price No trade needed.
E78-14	\$36.00
F78-14	\$39.20
G78-15	\$43.25
H78-15	\$45.30

**PICKUP, VAN & RV OWNERS:**

Long Mileage, Heavy Duty Strength, Low, Low Prices

**\$45.50**

Rib Hi-Miler 700-14 TL Blackwall Load Range C

Blackwall Size & Type	Load Range	Our Price with tire.
700-15 TT	C	\$49.50
700-15 TL	C	\$53.50
750-16 TT	C	\$55.50
750-16 TL	D	\$63.50

GUARANTEED WHEEL ALIGNMENT

**\$21**

\* Set front or rear wheel caster, camber, and toe on cars with adjustable suspension. Chevetttes, light trucks, cars requiring MacPherson Strut correction extra.

Liberal Budget Terms—

Low Monthly Payments

# Anderson Tire Co.

206 S. Avenue E Phone 864-2900

GUARANTEED DISC BRAKE SERVICE

**\$79**

If semi-metallic disc pads are required add \$14.  
New front disc pads, repack front wheel bearings, resurface front rotors. Conventional rear wheel-drive vehicles. Prices vary for front-wheel drive. Caliper overhaul \$19 each if needed. Hydraulic service will be recommended for safe operation.

# Swedish Exchange Student Visits In Haskell

By Janet Wilke  
Elizabeth Scharff, 17, who is staying with Duward and Gwen Campbell says that the most different thing she has had to grow accustomed to was the heat she encountered here when she arrived in the United States last August.

Born in Mjølby, Sweden, she is the oldest daughter of Bertil and Ylva Scharff. Elizabeth has a sister, Anna, who is 11.

Other than the heat, Elizabeth says the foods have been a real experience. "In Sweden, hamburgers are regarded as teenage food. My mother would not eat a hamburger for anything. Junk food is just not eaten and there is very little fried foods," said Scharff.

Asked if it was hard for her to understand Texans form of the English language, Elizabeth smiled and said that it really had not been a problem, because they have shows like Dallas and Dynasty on Swedish television, and they pick up the language differences from them.

Elizabeth's father is a principal, and her mother is an English teacher, who also instructs in French and Swedish, as well.

When asked what she missed most about her home-

land, Miss Scharff said she missed the food, her family, friends, and cool weather.

Elizabeth listed her hobbies as art, sketching, painting, traveling, weaving, and sewing. Gwen Campbell interjected that many of Elizabeth's clothes she had made herself.

She also said that she liked to listen to rock music. Elizabeth's favorite group is a Swedish group called Ebba Gron.

Elizabeth also listed listening to language records, skiing, and ice skating as some of her other hobbies.

As far as trends are concerned, Elizabeth says that the Swedish teenagers are just about the same as Americans in fashion, music, and dancing. They do break dance in Sweden, says Miss Scharff. The main difference between Texas kids and Swedish kids, as far as Elizabeth can tell, is that Texas kids are "cowboy".

However, she also said that foreign kids are much more independent.

"Foreign kids don't think anything about hitchhiking if they can't get a bus. There is a mutual trust between the travelers and passengers in Sweden", said Scharff.

As far as the family



## SWEDISH STUDENT

Shown are Gwen Campbell, left, and the Swedish foreign exchange student who is staying with the Campbells, Elizabeth Scharff. She is one of many young persons who, over the years, has called the Campbell's home home for a time.

differences are concerned, Elizabeth said she felt that families in America are closer than are their Swedish counterparts. "This may be the reason that Swedish kids are more independent," she concluded.

This was Elizabeth's first visit to America and she said, had she been given the choice, she would have gone to California. Not meaning this in an offensive way she added, "I mean, Disneyland is there".

The only choice Elizabeth said she had was to either come to America or go to Canada.

She arrived here in August, and came to Haskell in October. Sponsored by the American/Swedish Student Exchange, she was selected after applying for the program, being asked to write an essay about herself, and having an interview. Two to three months later, she was contacted that she was chosen. Health records and immunizations were required, and then she underwent orientation programs which helped acquaint her with some of the American customs, ideas, and habits.

This orientation program was conducted by former exchange students, and should Elizabeth choose to do so, she can become an interviewer and will be able, if she stays in the program, to come back to America or perhaps go to another country.

Elizabeth said she was "loving" her stay here, and enjoyed her host family. She also added that the life in another culture was very interesting.

She will be going home in June 1985.

In Haskell High School, Elizabeth is active in Drama, with the annual staff, and she is on the staff of the War Whoop. She also is taking art.

In Swedish schools, there are no sports during the school day, and students don't study five subjects per day as they do here. They might study two hours on Math, then take a break and go home, then come back for English, one day, then on the second day they might study History for three hours, and have a one hour language lesson. Swedish schools operate more on a college schedule than do American schools.

Elizabeth said that school was mandatory through the 9th grade and this was called compulsory school. A student could graduate at 16 then go on to a job or finish their education in Junior College.

When asked how the subjects in Sweden and the subjects in America differed, Elizabeth said they are just about the same. She said that the difference came in how the teachers were...hard or easy.

Elizabeth also said that the teachers and the students, together, decided how the subject should be taught, and what areas of the course the

students would like to study. In her city, which has 10,000 people, Elizabeth said the major business was industry, with some agriculture as well. Dairy cattle are grown in her area of Sweden, and so is wheat, on which the cattle feed.

After she completes her education, Elizabeth said she would like to do some traveling, and perhaps land a job with a cruise ship or some other form of travel.

She said that people in her country tend to marry later in life after they have lived together for a while, so she was not planning on marrying soon.

If an American were to go to her city in Sweden, would he be accepted? Elizabeth says yes, provided he could communicate with the people and was outgoing.

In June, when Elizabeth goes back, she will take with her many memories and will continue the many friendships which she has already made. But, one thing is for sure, it is real hard to find a good bowl of pea soup, and a stack of pancakes to suit this Swedish girl. And, will she ever be ready to get some of those delicacies when she gets home again?!

## Post 584 Celebrates Veterans Day

American Legion Post 584 held their Veterans' Day Services Saturday the 10th of Nov. Flag raising services were held and the day was dedicated to the Legion member who had passed away during the last year. They were 'Son' Webb, J.D. Holmes, and C.E. Charles. Commander Bill St. John welcomed everyone to the Post Home and introduced Charles Thornhill as Master of Ceremonies. Kathryn Byrd gave the invocation and benediction. Tom Watson led in singing the Star Spangled Banner. Guest speaker was Gus Satterfield, Judge Advocate of American Legion, District 13.

A chicken dinner, prepared by members of the post and Ladies Auxiliary, was enjoyed by all. Games were played during the afternoon and 'Country Gold' with Norm Anderson played for the dance that evening. The post would like to give special thanks to John Mark Wyatt and Steven Andrada for their rendition of Taps.

## WTU Announce New Rates Effective Soon

West Texas Utilities Co.'s new rates will go into effect late this month or in early December, but most customers will hardly notice the difference.

The Public Utility Commission of Texas issued a final order Friday approving a settlement agreement reached earlier by WTU, the PUC staff and several intervening cities.

The compromise agreement includes a \$12.4 million annual increase in base rates and a \$13.3 million decrease in fuel expense charges. The net effect is an apparent revenue cut, but it does not mean customers' bills will automatically go down nor that WTU will lose money.

In fact, for residential customers the annual effect will be an increase of about 4.36 percent. Their bills and those of commercial customers, will decrease slightly in the winter (November through April) and increase in the summer peak usage months. This means a modest profit for the utility.

As for the fuel cost recovery, fuel expenses, by law, are simply passed through to customers. The fuel cost factor, or rate, is set for a year at a time, but eventually is adjusted so that the company does not gain or lose money.

Under the new rates, a residential customer using 600 kilowatt-hours per month and who does not have electric heating will pay \$47.42 in the winter and \$52.91 in the summer. Currently that customer pays \$47.50 and \$48.63, respectively.

WTU initially sought a \$30.8 million annual revenue increase in the case filed this past June. The main reason cited for the increase was the Company's construction program, which includes the new Oklaunion Power Station, a coal-fired plant being built near Vernon. The plant is slated for completion in December 1986.

Durable, Dependable, Smooth writing Write Bros. Stick Ball Pens. Haskell Free Press

**K & K STORM CELLARS**  
Complete Installation  
Just in time for the storm season!  
We offer two sizes:  
6 ft. x 12 ft.      6 ft. x 8 ft.  
Our cellars are 6½ ft. tall inside.  
Set in concrete ★ Tar coated to prevent rust!  
New Dealer in Aspermont  
Call 817-989-2837

**Close Out Sale**  
Begins November 1  
All Merchandise Goes At Bargain Rates!  
Groups of: 20% 30% 50%  
**FURTHER MARKDOWNS** **FURTHER MARKDOWNS**  
& 75% Reduction  
Selling Out To Bare Walls!  
No Alterations—No Exchanges  
All Sales Final  
All Sales Cash  
**Hurst's Dept. Store**  
Munday, TX      126 E Main

## Public Notice

Pursuant to an order of the Public Utility Commission of Texas in Docket No. 5926, notice is hereby given that Southwestern Bell Telephone has filed a Feature Group "E" (FGE) Access Service as a new tariff offering to meet the needs of Cellular Mobile Radiotelephone Common Carriers.

The new tariff offering will also be available, on an optional basis, to Radio Common Carriers authorized to provide domestic public land mobile radiotelephone and paging services.

FGE Access Service will be provided as trunk side switching with line treatment at suitably equipped Telephone Company electronic end offices and other end offices where equipment is available. The proposed rates for FGE Access Service are on a minutes of use basis.

A number of common switching optional features will be available with FGE Access Service, including Class of Call Screening, up to 7-digit outpulsing of called party telephone number of customer, delay dial start-pulsing signaling and dial pulse address signaling. Certain additional optional features will be offered in connection with FGE Access Service under other tariffs of the Telephone Company, including blocks of telephone numbers and Billed Number Screening.

Southwestern Bell Telephone Company customers interested in participating in this hearing or needing additional information, should write to the Public Utility Commission of Texas, 7800 Shoal Creek Blvd., Suite 400N, Austin, Texas 78757. Further information may also be obtained by calling the Commission's Consumer Affairs Division at 512/458-0223, 512/458-0227 or teletypewriter for the deaf at 512/458-0221.



Southwestern Bell Telephone

## Aviso Público

En conformidad con una orden de la Comisión de Servicios Públicos de Texas bajo el Docket No. 5926, se anuncia mediante el presente aviso que Southwestern Bell Telephone ha registrado un Servicio de Acceso para el Grupo de Clasificación "E" (o sea Feature Group "E", o FGE) en una nueva opción tarifaria destinada a responder a las necesidades de las Empresas de Telecomunicaciones Radiotelefónicas Celulares Móviles.

La nueva tarifa estará disponible también, en forma opcional, para las Empresas de Radiocomunicaciones autorizadas para proporcionar servicios nacionales públicos de radiotelefonía móvil terrestre y de altavoces.

El Servicio de Acceso FGE se proporcionará mediante conmutación de cable troncal con tratamiento especial de la línea telefónica en centrales terminales electrónicas de la compañía de teléfonos que estén debidamente equipadas, y en otras centrales terminales que tengan disponible el equipo. Las tarifas propuestas para el Servicio de Acceso FGE se computan por minutos de uso.

Junto con el Servicio de Acceso FGE se ofrecerán varias opciones de conmutación central, incluyendo Investigación de la Clase de Llamada (Class of Call Screening), representación visual de hasta 7 dígitos del número telefónico llamado por el usuario, retardo de la señal para transmitir y señalización de la dirección para marcar. También se ofrecerán algunas opciones adicionales en relación con el Servicio de Acceso FGE bajo otros sistemas tarifarios de la Empresa Telefónica, incluyendo restricciones a bloques de números telefónicos e Investigación del número al que se carga la cuenta (Billed Number Screening).

Los usuarios de Southwestern Bell Telephone Company que estén interesados en participar en esta audiencia, o que requieran mayor información, deben dirigirse por escrito a: Public Utility Commission of Texas, 7800 Shoal Creek Blvd., Suite 400N, Austin, Texas 78757. También puede obtenerse información adicional llamando a Public Utility Commission Consumer Affairs Division al 512/458-0223, al 512/458-0227, o al 512/458-0221 si requiere teletipo para personas con impedimentos de audición.

# Money Matters

A Series Of Informative "Plain Talk" Thoughts Regarding Your Money Matters

## Make Your Own Certificate Of Deposit

Because of the recent deregulation of the financial industry we are now able to offer you the option of creating your own C.D.

Here's how it works. All you have to do is let us know how much you want to invest, how long you want to invest it, and we'll quote you a rate, guarantee it, and insure it.

This is the perfect option when you want to invest in a Certificate of Deposit and the standard fare just doesn't fit your needs.

There is a substantial penalty for early withdrawal on Certificates of Deposit.

We Think Money Matters!

# HASKELL NATIONAL BANK

864-2631 • 601 N. First  
Haskell, Texas—Member F.D.I.C.



### 1984-85 Paint Creek Pirates Basketball Schedule

DATE	OPPONENT	PLACE	TIME
Nov. 6	New Castle (scrimmage)	Here	5:30
Nov. 13	Eula (scrimmage) girls only	Here	5:30
Nov. 19	Albany girls only	Here	6:30
Nov. 20	Throckmorton	There	6:30
Nov. 27	Woodson	There	6:30
Nov. 29, 30, 1	Woodson Varsity	<b>Tourney</b>	
Dec. 4	Throckmorton	Here	6:30
Dec. 6, 7, 8	McCaulley Varsity	<b>Tourney</b>	
Dec. 11	Rochester	There	6:30
Dec. 18	Rochester	Here	6:30
Dec. 20	New Castle	Here	6:30
Jan. 3	New Castle	There	6:30
Jan. 4	Woodson	Here	6:30
Jan. 8	Roby*	There	6:30
Jan. 11	Aspermont*	Here	6:30
Jan. 15	Old Glory*	There	6:30
Jan. 18	Rule*	Here	6:30
Jan. 22	McCaulley*	Here	6:30
Jan. 25	Roby*	Here	6:30
Jan. 29	Aspermont*	There	6:30
Feb. 1	Old Glory*	Here	6:30
Feb. 5	Rule*	There	6:30
Feb. 8	McCaulley*	There	6:30

\*Denotes District Games Coach: Randy Stone Phone: 817-864-2471

### 1984-85 Paint Creek Pirates Junior High Basketball Schedule

DATE	OPPONENT	PLACE	TIME
Nov. 19	Roby*	There	5:30
Nov. 26	Aspermont*	Here	5:30
Dec. 3	Old Glory*	There	5:30
Dec. 6, 7, 8	Weinert Junior High	<b>Tourney</b>	
Dec. 10	Rule*	Here	5:30
Dec. 13, 14, 15	Paint Creek Junior High	<b>Tourney</b>	
Dec. 17	McCaulley*	Here	5:30
Jan. 7	Roby*	Here	5:30
Jan. 14	Aspermont*	There	5:30
Jan. 21	Old Glory*	Here	5:30
Jan. 28	Rule*	There	5:30
Feb. 4	McCaulley*	There	5:30

\*Denotes District Games Coach: Randy Stone Phone: 817-864-2471

## Civic Center Donations

**CORA FEEMSTER COLLIER**  
Wayne and Bettie Wainscott  
Mr. and Mrs. R.C. Couch, Jr.  
Mr. and Mrs. Elbert Johnson  
Mr. and Mrs. W. Burnell Gilleland  
Mr. and Mrs. W.V. Felker  
Mrs. R.A. Lane  
Jack and Dorothy Melton  
**CARL WHEATLEY**  
Cliff and Juanita Dunnam  
Mr. and Mrs. C.O. Holt  
Mr. and Mrs. Burnell Gilleland  
**JOHN W. BREEDEN**  
Cliff and Juanita Dunnam  
**TOMMY WHEATLEY**  
Cliff and Juanita Dunnam  
Mr. and Mrs. Burnell Gilleland  
**LESTER PRINCE**  
Cliff and Juanita Dunnam  
**ETHEL FOIL**  
Mr. and Mrs. Burnell Gilleland

**BETTY HIPP**  
Patsy Cobb, Dovie Pate, Sue Pate  
Mr. and Mrs. W.V. Felker  
Mrs. R.A. Lane  
**VIRGINIA FEY**  
Mr. and Mrs. W.O. Nanny  
**OLETA SORENSON**  
Raja Hassen  
Mrs. S. Hassen  
Opal Adkins  
Veta Furrh  
**J.B. KUENSTLER**  
Mrs. J.B. Kuenstler  
Beverly Conrow and family  
Gay Nell Langford and family  
**JAMES BYRD, SR.**  
Steve Byrd, M.D.  
**MR. AND MRS. I.N. SIMMONS**  
Mr. and Mrs. Frank Junell  
**JOHN AND MAUDE CRAWFORD**  
Mr. and Mrs. Maurice Crawford

**GROVER AND MAE LARNED**  
Jack Larned  
**HHS CLASS OF 1960 IN MEMORY OF**  
Freddie Gilliam  
Shelah Langston  
Suzanne Weaver  
Etta Drinnon  
Prev. reported... \$165,128.35  
Memorials... 712.00  
Wendel Coston... 25.00  
Robert L. Cobb DVM... 100.00  
Mr. and Mrs. Tom Clifton... 50.00  
Doris Lowe Williams... 25.00  
Mr. and Mrs. Rondel M. Bailey... 25.00  
Roy E. Baughman... 25.00  
CenTex Cablevision... 50.00  
Progressive Study Club... 1,000.00  
Grand Total Gifts and Pledges... \$167,140.35

## Input Needed For Pesticide Regulations

The recently proposed standards regarding pesticide use in agriculture by the Texas Department of Agriculture need farmer's input, according to the president of the state's largest family farm organization.

"The proposed set of standards (issued Friday, October 19th by TDA) are viewed with a lot of skepticism in rural Texas right now, but unless farmers comment to TDA or the Texas Farmers Union, farmers won't have a chance to make changes that they feel are needed," said Mike Moeller, president of the family farm organization.

"The Texas Farmers Union has not taken a position on the proposed standards, but we are asking our members to send their comments to us," explained Moeller.

"As a farm group that conducts business democratically (that's democratic with a small 'd'), we need the comments of our membership if we are going to formulate how our organization is going to stand on this issue. The farmers that I talk to tell me that they are already practicing their pesticide application in the manner that the new standards call for, but we need to make the public understand that farmers are not monsters spraying deadly chemicals helter-skelter. The overwhelming majority of farmers are socially responsible individuals, who want to do the correct thing, standards or no standards."

The Texas Farmers Union is an organization of approximately 10,000 families involved in agriculture across Texas. Comments on the pesticide standards can be sent to: Texas Farmers Union, P.O. Box 7276, Waco, 76714. Attn: Mike Moeller or Pete McRae.



## Harvest of Foods Celebration

Prices Good Through Nov. 24th

Cured Ham Whole	\$1 <sup>19</sup>	Armour Turkeys	69 <sup>c</sup> lb
Cured Ham Butt End	\$1 <sup>49</sup> lb	Armour Treet can	\$1 <sup>19</sup>
Cured Ham Shank End	\$1 <sup>19</sup>	Nabisco Nilla Wafers	\$1 <sup>19</sup>
Cured Ham Center Slices	\$1 <sup>89</sup> lb	Casserole Pinto Beans 2 lb bag	55 <sup>c</sup>
No. 1 Sliced Bacon	\$1 <sup>29</sup> lb	Crisco Oil 32 oz.	\$1 <sup>79</sup>
Gooch Wieners pkg	89 <sup>c</sup>	Corn Kits 3 for	69 <sup>c</sup>
Jello 3 3 oz boxes	\$1 <sup>00</sup>	Hersheys Bar Large Size	79 <sup>c</sup>
Coca Cola 6 cans	\$1 <sup>69</sup>	Puffs 200 count box	79 <sup>c</sup>
Morton Salt box	25 <sup>c</sup>	Surf Giant Size	\$1 <sup>59</sup>
Early American No. 300 can	79 <sup>c</sup>	Bounty Towels Large Roll	79 <sup>c</sup>

# POGUE GROCERY

—Extra Parking Behind The Store. Home Owned and Operated—

113 North Avenue E

Phone 864-2015

Haskell, Texas

## FIRST NATIONAL BANK

(In Organization)  
HASKELL, TEXAS  
**Immediate Opening**  
Experienced Loan Secretary (Salary Open)  
call  
**Zeke Gilliland**  
864-8555  
or  
P.O. Box 498  
Haskell, Texas 79521  
AN EQUAL OPPORTUNITY EMPLOYER

## Indians Elect 1984 Captains

Captains for the 1984 Haskell Indians were elected last Tuesday. The captains for this year are senior linebacker / fullback Robert Ivey; senior Joseph Perez who plays tackle on offense and defense; senior center/linebacker Shawn Lane, and senior Jimmy Burson, who plays guards and defensive end.

The captains are chosen by fellow team members at the end of the regular season.

Senior players rotated captain duties throughout the season before the selection was made.

*Sport About*

of Haskell

Join us during Haskell's  
**Coke Party**



New Shipment of  
**WARM—UPS**

We will be Open each  
**Thursday Night until 9:00 P.M.**  
Now until Christmas.