

# Cancer crusade Saturday

The Haskell County unit of the American Cancer Society will conduct the 1987 Cancer Crusade Saturday morning.

Local volunteers will be calling on homes and businesses, asking for donations to help further the work to continue the fight against the disease.

The American Cancer Society is fueled by the fire and light of hope. For those suffering from the dreaded disease there is hope for successful treatment, leading to a full and rewarding life. For those who fear the possibility of cancer there is hope for a future free from its destructive potential. For those who have not yet learned to fear it there is hope that someday soon this will become an unnecessary lesson.

Community-based volunteers comfort and assist cancer patients, providing services when they are needed most. The educational programs combat ignorance, fear and futility with an emphasis on the unquestionable life-saving potential of prevention and early detection.

The Society's substantial financial support of research projects affirms its commitment to achieving the goal of a world free from cancer. Through research, education and service, the fight against cancer is being won.

Much has been accomplished. Today, almost half of all cancer patients will survive their disease, and scientists believe that cancer is the most preventable of all chronic illnesses.

With everyone's support there is faith that more will be accomplished. Many people working together can change things, and it is hoped that each person contacted will want to contribute, thereby personally becoming a part of this great battle.

All volunteers who are helping with the Crusade will meet for orientation and their supplies at the home of Mary Kaigler, 901 N. Ave. F, between 9 and 10 a.m. Saturday when coffee and doughnuts will be served on the patio.

# Program on rape planned

Adult women of Haskell County will be able to attend a program dealing with rape defense and education.

The program will be April 30 at the Experienced Citizens Center. It begins at 7 p.m.

All adult women, regardless of age, are urged to attend the session.

It will be given by state trooper Bob Hart of Mineral Wells.

There will be no charge.

# Bug control organization is planned

An organizational meeting and supper for cotton producers interested in an insect scouting program will be held next Thursday (April 23) in the Rule school cafeteria.

The meeting, begins at 7:30 p.m.

A pest management program for Haskell, Kent and Stonewall counties will be explained, said Paula Verden, extension entomologist.

Emory P. Boring III, extension entomologist from Vernon, will present information on last year's insect situation and tell what to expect this year. He also will have information on a diapause program.

Mike Wallace of the Texas Pest Management Association will explain how the scouting program will be run and what it will cost.

Those interested in attending should call the county agent's office (864-2658) and give the number of people who will be attending. There will be no charge for the meal, but it will be necessary to know how many to prepare for.

Officers and steering committee members will be chosen at the meeting.

## Land Bank reduces interest

Page 3

## Churches plan services today

Page 8

## Track teams reach district

Page 11

# THE HASKELL FREE PRESS

35¢  
Plus Tax

VOL. 101--NO. 16

HASKELL, TEXAS 79521, April 16, 1987

14 PAGES -ONE SECTION-PLUS ONE INSERT

DON W. BERRY, M.D., F.A.C.S., P.A.  
CARDIOTHORACIC AND  
PERIPHERAL VASCULAR SURGERY

AMERICAN BOARD OF SURGERY  
AMERICAN BOARD OF VASCULAR SURGERY

HENDRICK PROFESSIONAL CENTER SUITE 4-B  
1100 North 19th Street  
Abilene, Texas 79601  
915-677-2402

April 13, 1987

Re: Mr. E. H. Norwood

Letter to the Editor  
Haskell Free Press  
PO Box 1058  
Haskell, Texas 79521

Dear Mr. Faught:

I would like to introduce you to a patient who has a story that I believe would be worthwhile publication in your newspaper, regarding the medical care that this patient received under the care of Dr. Frank Cadenhead.

On the evening of March 27, 1987, Mr. E.H. Norwood arrived in the emergency room of the Haskell Hospital complaining of severe abdominal pain. This was followed very shortly by resuscitative efforts directed by Dr. Frank Cadenhead, with the prompt diagnosis of ruptured abdominal aortic aneurysm. The patient's abdomen gradually distended with the intraabdominal bleeding from the rupture. Dr. Cadenhead, in an expeditious manner, arranged for immediate transfer for Mr. Norwood, and prompt surgical care in Abilene at Hendrick Medical Center.

Mr. Norwood's blood pressure was recorded to be only 60/40 in the emergency room, which is at shock level. Even though there was very little hope for survival, Dr. Cadenhead persisted, and after advising the family of the seriousness of the situation, he transferred Mr. Norwood. While in route, he received 4 units of universal donor blood.

Mr. Norwood was taken immediately to the surgical suite at HMC, and underwent emergency surgery for the repair of a large ruptured abdominal aortic aneurysm with intraabdominal bleeding. The aneurysm sac measured 6 inches by 8½ inches, and was about the size of a football. The patient was operated, and he survived the procedure and was subsequently dismissed home in good condition.

Mr. Norwood stated that the felt luck to be alive, and he was very grateful for the prompt medical care that he received.

If you have questions regarding this possible publication in your paper, please feel free to contact me at my office.

Sincerely yours,

Don W. Berry, M.D.

DWB:fr



## OUTSTANDING CITIZENS

R. C. and Jerrene Couch were honored Saturday night as Haskell's Most Outstanding Citizens. They were presented a plaque at the annual Chamber of Commerce banquet.

# Couch couple top citizens

Haskell's Outstanding Citizens of the Year are R. C. Couch Jr. and Jerrene Couch.

The Haskell Chamber of Commerce selected them for this honor. They were presented with a plaque at the Chamber banquet Saturday night.

Couch's name has long been synonymous with the word "Haskell". He is chairman of the board of Haskell National Bank. He has been president of the Haskell Memorial Civic Center for 14 years and has been president and director of the North Central West Texas Water Authority for 15 years. He also has been a member of the Executive Council of the West Central Texas Council of Governments for the past 10 years.

An active member and past president of the Rotary Club, he is a director of the Haskell Industrial Foundation. He is a native of Haskell and a graduate of Haskell High School. He holds a BS degree in agriculture from Texas A&M University and is a veteran of World War II.

Mrs. Couch is employed at Lane-Felker. The former Jerrene Verner of Rule, she is a graduate of Rule High School and Texas Tech University. She is a retired school teacher and is very active in the Progressive Study Club. She is Sunday School teacher coordinator at the First Baptist

Church and a member of the choir. This past year, Mrs. Couch was chairman of the city and county Sesquicentennial activities.

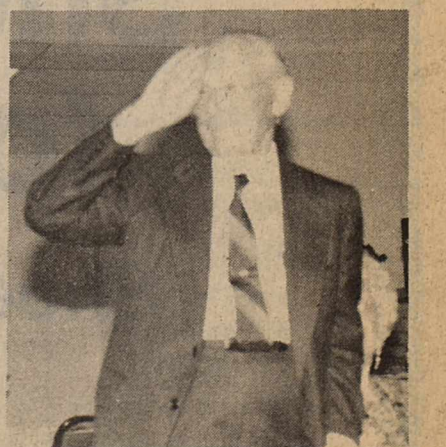
The Couches are parents of Jerre Sue Moore, who lives in Japan with her Air Force officer husband, and Riley C. Couch II, executive vice president of Central Bank in Dallas.

Mr. and Mrs. Couch have made many contributions of time, service and money to many worthwhile civic and community activities. Their recognition by the Chamber as Outstanding Citizens of the Year was based particularly on his leadership of the Civic Center and her direction of the Sesquicentennial activities.

Surprise guests at the banquet to help honor the Couches were their son, Riley C. Couch III of Dallas; her mother, Mrs. Audie Verner of Rule; her brother and sister-in-law, Mr. and Mrs. David Verner of Lubbock; his sister, Mary Ogilvie of Dallas, and another sister and brother-in-law, Mr. and Mrs. Bill Baxter of Dallas.



Dr. Stevens ...makes a point



FIRST Among the past presidents honored at the 51st annual Chamber of Commerce banquet Saturday night was Dr. T. W. Williams, the very first president of the Chamber.



Haskell Chamber of Commerce Welcoming Committee members were on hand at the hospital Monday afternoon to welcome the "Flight for Life" helicopter when it made a stop in Haskell.

# Helicopter visits Haskell hospital

Haskell citizens got a first-hand look Monday afternoon at the new emergency helicopter service implemented by St. Mary of the Plains Hospital in Lubbock.

The "Flight for Life" helicopter landed at Haskell Memorial Hospital during a tour a communities it serves.

Flight for Life serves a 43-county region within a 125-mile radius of Lubbock. Stationed on a helipad atop St. Mary of the Plains Hospital, the jet-powered Alouette III helicopter provide rapid transport of patients between hospitals or directly from the

site of an emergency.

Flight for Life is available 24 hours a day, seven days a week and may be accessed by physicians, medical and hospital personnel, EMS providers, law enforcement agents, fire fighters and public safety officials.

St. Mary of the Plains Hospital has a specially trained, dedicated flight team consisting of a flight nurse, a flight medic and an EMS pilot available to launch Flight for Life within five minutes of receiving an emergency call.

# Paint Creek student wins trip

A Paint Creek student was one of two winners of an all-expense-paid trip to Washington in the Youth Tour speech contest held last week by Stamford Electric Cooperative.

Thad Jennings, son of Mr. and Mrs. Tim Jennings, will leave for Washington June 10 and will return June 23.

The other winner was Loretta Herrera of Stamford. Runnersup were Claire Minter Ferguson of Hamlin and Rebecca Norman of Hawley.

The young people spoke on "What An Electric Cooperative Means to a Rural Community," in the competition at Stamford High School auditorium.

# Non-stop to Knox City

It's a non-stop trip now from Haskell to Knox City. And vice versa.

The stop signs at the intersection of FM roads 617 and 2163 have been changed.

They are now located on FM 617 (Rochester-Weinert road) instead of FM 2163 (Haskell-Knox City road).

Knox County Judge David N. Perdue requested the change by the Texas State Department of Highway. He pointed out the importance of having direct access to the Haskell hospital.

## Jossetlet Homemakers

The Jossetlet Extension Homemakers Club met on Tuesday, April 7, for their club meeting in the home of Mrs. Virgil Wall. Eleven members and one guest, Eula Mae Herren, were present.

Roll call was answered with "How I Try to Save Money."

The club met one week early as on April 14, the Haskell County Club ladies will go to Jayton to district 3 meeting. Eleven members from Jossetlet plan to attend this meeting.

All the Haskell County Club ladies are encouraged to make this trip in hopes to keep the "Traveling Trophy" in Haskell County.

Francis Fischer, Alice Yates and Hazel Thomas are the voting delegates to the district meeting.

Mrs. Gladys O'Neal gave a very interesting program on: "How to Save \$\$ When You Don't Have a Dime to Spare."

The hostess served a delicious refreshment plate of sandwiches, cake, nuts and punch and coffee.



Darlene Carroll and Kerry Therwanger

## Wedding date told

Mr. and Mrs. Dale Carroll are proud to announce the engagement of their daughter, Angela Darlene, to Kerry Therwanger, son of Mr. and Mrs. Truman Therwanger of Haskell.

The bride-elect is a graduate of Weinert High School and is now

attending Angelo State University.

The prospective bridegroom graduated from Haskell High School and ASU. He is a teacher in the Megargel Independent School District.

A June 27 wedding is planned at the First Baptist Church in Weinert.

## Garden Club sees flower presentation

"With Wild Abandon" was the theme Thursday, April 9, when members of the Haskell Garden Club and their specially invited guests met in the Fields Museum.

Quoting words of William Blake, invitations to the tea and program had been sent inviting guests "to see a world in a grain of sand, and heaven in a wildflower." Nettie McCollum greeted and seated guests as they arrived. Thirty guests were registered.

Mary Kaigler introduced the speaker, Joe Harold Cloud of Rule, who showed his extensive collection of colored slides of the wild flowers of Haskell County.

Cloud, a county farmer, has been taking the excellent photographs for the past eight years. Identifying each of the nearly 200 species by both the scientific and colloquial name, he recalled the location where many were found.

Following the program a tea was given by the officers of the club. Covered with a white linen and lace cloth, the tea table held silver and china appointments and was centered with an arrangement of fresh flowers

in shades of pink, mauve and rose. This and other arrangements used throughout the rooms were made by Juanita Rhea, depicting the theme of "Spring Has Sprung."

Pecan tassies, lemon squares, coconut drops, pink-iced butter cookies, baked meringues, date-nut cream sandwiches and toasted pecans were served with hot spiced tea and coffee, poured by Linda King.

Next meeting of the club will be a basket brunch May 14 in the Haskell National Bank Community Room.

## Frazier's marks 39th anniversary

Frazier's Appliance and Furniture is observing its 39th anniversary this week.

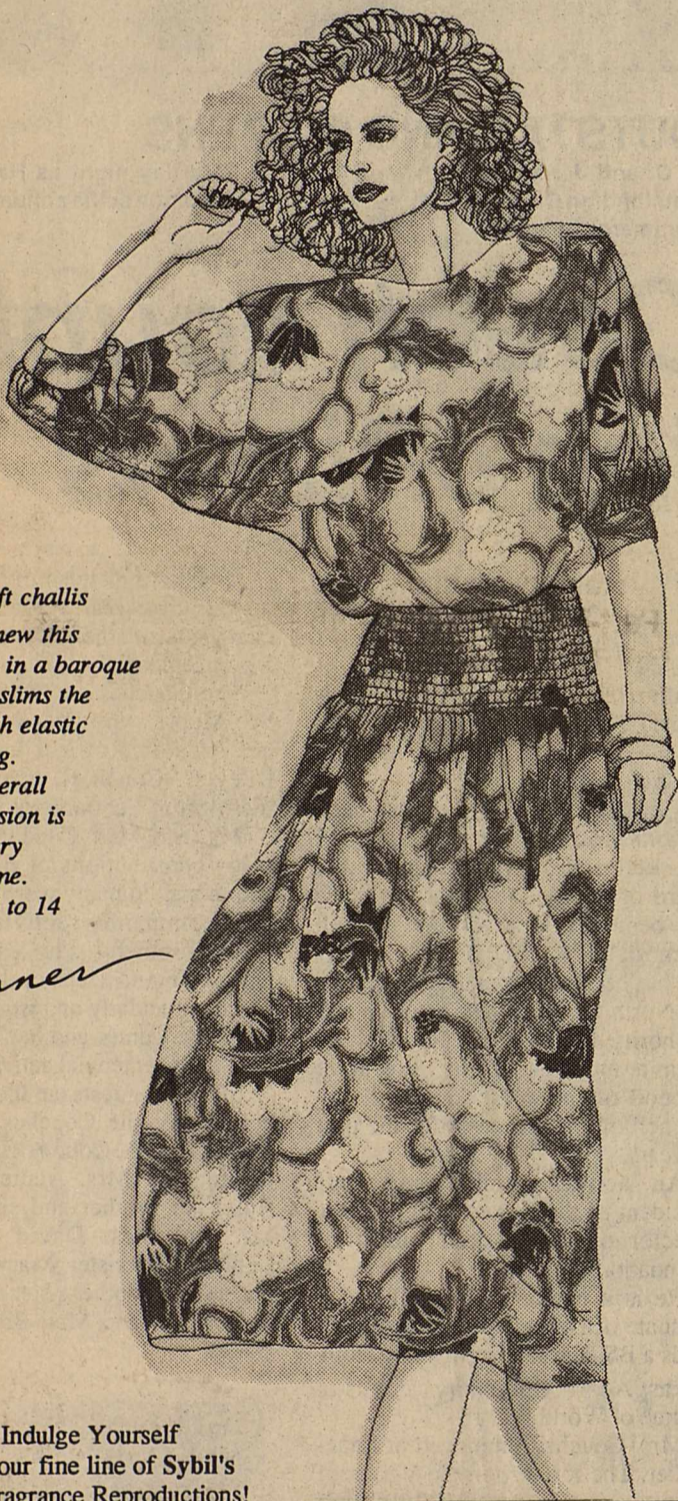
The business was opened April 15, 1948, by the late Byron Frazier and Ramia Lee Frazier, who is still owner.

Wayne Bradford, her son, now is associated with her in the business.

### Easter Bargains

# 1/3 OFF

Linen Blazers  
Select  
Sweaters, Blouses,  
Skirts, & Dresses



A soft challis print, new this season in a baroque floral, slims the hip with elastic shirring. The overall impression is very, very feminine. Sizes 6 to 14

Brenner

Indulge Yourself with our fine line of Sybil's Fine Fragrance Reproductions! Try our version of Giorgio, Opium or one of our other Fine Fragrances!

THE Personality SHOPPE

## Sterling Silver at Modern Way

just in time for Easter

Saturday 10:00 - 6:00

## Yellow Rose

Linda Burson  
Master Card & Visa

# CLOTHES

Fashion At Affordable Prices

Sizes 6-46

Easter Special

25% off

Rocky Mt. Jeans Pant R'Us (Large sizes)

Visit us for your Easter Fashions

Now in our new location on the

East Side of the Square

10 Ave D  
East Side of Square

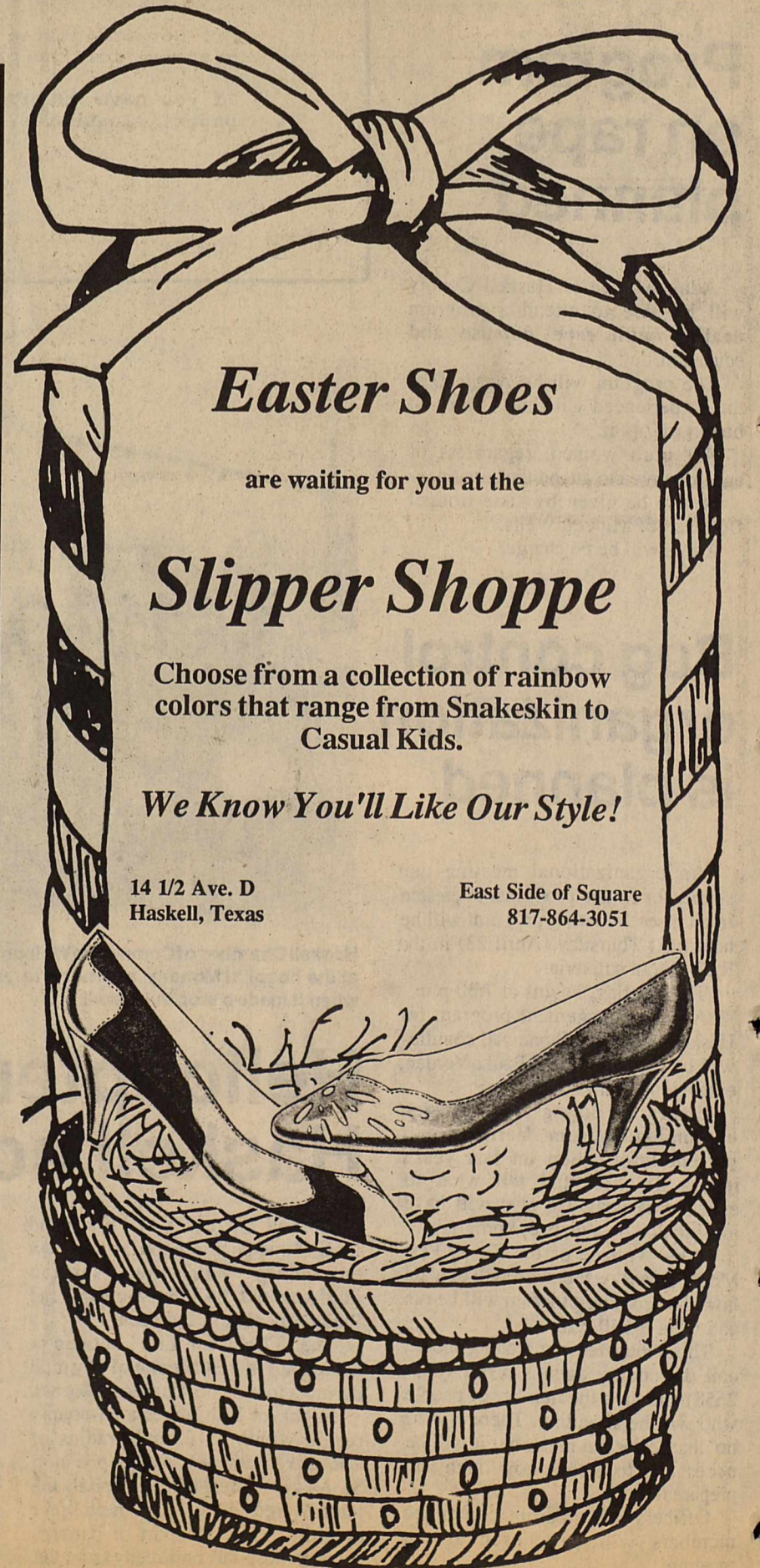
Stella Steele  
Donna Markey



Come Let Us Fill Your  
Easter Basket

with Easter Surprises  
Egg Stuffers \* Stuffed Bunnies

and much much more



## Easter Shoes

are waiting for you at the

## Slipper Shoppe

Choose from a collection of rainbow colors that range from Snakeskin to Casual Kids.

We Know You'll Like Our Style!

14 1/2 Ave. D  
Haskell, Texas

East Side of Square  
817-864-3051

# Shop Shoe Spoon for Easter

Shoes & Accessories

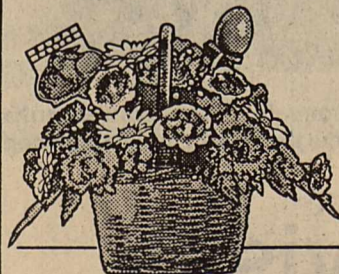
101 Swenson  
Mon-Fri 9:30 - 5:30

Stamford, Texas  
Sat 9:30 - 5:00

Visa

MasterCard

American Express



Celebrate Easter in full glory.

Send the FTD® Glory of Spring™ Bouquet. Easter Sunday is April 19. Just call or visit us today.

Conner  
Nursery & Floral Co.

505 N. Ave. H  
864-3121



Registered trademark FTD.

## Pre-schoolers to register next Friday

Kindergarten registration for next school year will be held Friday, April 24, between 1 and 2:30 p.m. in the elementary school library.

In order to be eligible for kindergarten next fall a child must be five years old on or before Sept. 1, 1987.

Parents will need to bring a birth certificate and immunization records to registration. It will be necessary for a child to have received immunizations for polio, diphtheria, tetanus and pertussis (DPT), mumps, measles and rubella.

Polio and DPT booster shots since the fourth birthday also are required.

## Tennis pair reaches regionals

Tennis doubles partners Trina Fry and Kim Bateman of Knox City won first place in district tennis competition last Wednesday and will advance to regional in Abilene April 29-30.

They also will advance to regional in golf, along with their team, after winning first place in district.

Trina and Kim won first and second place in district typing competition and will compete in regional typing April 25. They are sophomores.



## AT THE PERSONALITY

Junior and senior high school girls from throughout the area were guests March 29 of The Personality Shoppe in Haskell. The Haskell firm was showing the Mike Benet Formals as advertised in March Seventeen. Each girl was given a corsage. Flora Pace catered the refreshments. Beth Gober, a Throckmorton senior, won a formal.

## Paint Creek plans summer classes

High school classes may be offered this summer at Paint Creek.

Classes to be offered would be determined by the interest of the prospective students.

Credits earned would be transferable to the students' high schools. Classes, which will be open to all interested students, including seventh and eighth graders, will be approximately three hours per day for 30 days. Fees for the classes will be determined later.

Students interested in enrolling in these classes are asked to call the Paint Creek principal at 864-2471.

## Scout drive tops \$2500 in Haskell

The 1987 Sustaining Membership Enrollment Campaign for Haskell has topped the \$2,500, says Bob Oatman of the Chisholm Trail Council of the Boy Scouts of America.

Commonly called SME, the campaign is a fund-raising effort to finance the Chisholm Trail Council operating budget for 1987.

"Through the effort of many volunteers this year's drive has been a successful one," said Oatman.

Ed Walling has been the Haskell community campaign director in leading 25 volunteers in reaching the goal. Unit SME campaigns in the pack and troop helped in raising funds.

"Thanks goes to the many dedicated volunteers in scouting, the community leaders and businesses, and citizens who supported the 1987 Sustaining Membership Enrollment Campaign," said Oatman.

## Pre-schoolers register April 24

A pre-school kindergarten clinic for Paint Creek Independent School District will be from 8:30 to 9:30 Tuesday morning (April 21) in the nurse's office.

Any child who is five years old on or before Sept. 1 of this year is encouraged to attend the clinic.

Parents are asked to bring birth certificates and immunization records.

Tired of your conventional rubber stamp and stamp pad? Order a new self-inking stamp by 'deal. Refillable. Haskell Free Press.

## Federal Land Bank to reduce interest

The Federal Land Bank will reduce its interest rates for long-term mortgages on June 1, according to Dale E. Bullinger, president of the Federal Land Bank Association of Haskell. Don Rogge, president of the Federal Land Bank of Texas, announced the rate change at the bank's annual meeting.

Bullinger and other officials of the Federal Land Bank Association of Haskell were among the more than 500 Federal Land Bank stockholders who met in Austin recently. Local association officials attending with Bullinger were directors Lavon Beakley of Rule, Ernest Beck of Red Springs, Macky Spurgin of Anson and Lynn White of Stamford.

The Land Bank's new variable rates will be 10.25 percent on farm and ranch loans and 10.5 percent on farm related business loans and rural residence loans. The decrease represents a one-half of one percent reduction on farm and ranch loans and a three-quarters of one percent reduction on farm related business loans and rural residence loans.

"In some ways, our situation looks a little better today than it did last year at this time," said Bullinger.

"For the most part, the Texas district has the authority to set its own interest rates. Until last fall, that was all being determined by the Farm Credit Administration in Washington," said Bullinger. "Also, we were pleased with the recent court decisions regarding the assessments on the Texas district."

Federal judges in both Texas and Massachusetts ruled earlier this year that at least one of the regulations which required stronger banks like Texas to transfer funds to trouble banks in the system was invalid.

Rogge also announced a new loan program he said the FLB plans to initiate within the next 60 days. The program carries an even lower interest rate for loans to buy rural real estate.

The Federal Land Bank makes loans for a term of 35 years. This

program will provide a fixed rate for the first 10 years of the loan. Rogge said he anticipates the rate will be set at approximately 8 7/8 percent. He added that the lower interest rate will be available only for a limited time.

Aimed at stimulating the state's sagging real estate market, Rogge said the plan possibly would encourage other real estate lenders to initiate similar programs, further enhancing land price stabilization efforts. He said details of the plan will be available soon.

The Federal Land Bank and 44 Federal Land Bank associations make farm and ranch loans and long-term real estate loans. As of Dec. 31, the bank and associations had \$2.38 billion in loans outstanding on 37,000 loans to approximately 190,000 Texas farmers and ranchers. The bank and associations have a combined net worth of \$216 million. Reserves for loan losses stood at \$103 million.

Federal Land Bank Association of Haskell has almost \$36 million in loans outstanding to approximately 675 area farmers and ranchers who are Land Bank members in a four-county region including Haskell, Jones, Baylor and Knox counties.

## Only one license issued by clerk

Only one marriage license was issued last month (March) in Haskell County.

It was to Sammy Shawn Hawkins and Peggy Ruiz, both of Haskell.

AMERICAN CANCER SOCIETY

Mrs. Bairds Chocolate Cup Cakes 3 FOR \$1

Gandy's Milk 1 gal \$2.25

Burritos Corn Dogs 3 FOR \$1

Town Talk Bread 1 1/2 lb Loaf 69¢

Shasta Drinks 12 oz cans 6 pack \$1.49

46 oz Fountain Drink 59¢

We now accept MasterCard, Visa, and Phillips 66 Charge Cards

400 N. Ave. E Haskell Phone 864-3691

We are happy to have Judy Offield from Knox City join our Staff at Martha's Beauty Center 1006 N. 6th Haskell, Texas

We take appointments 8:30 to 3:00 Tues. thru Sat. We take Drop-ins, Standings Men's & Women's Hair Styling

Perm Special \$25.00 Starting April 14 thru April 25

22 years experience

Call for appointment 817-864-2192 We have 6 operators to serve you

Judy Karen Sharon Martha Debbie Brenda Marilyn

Now Available: Part-Time Positions Full-Time Excitement

Several part-time positions are now open for energetic individuals looking to turn extra time into extra income. As an independent Tupperware dealer, you'll represent an innovative product line that sells itself. There's hardly a home in America that doesn't use a Tupperware® brand product--and they're looking for more.

Your rewards are a handsome commission and an exciting selection of bonus gifts--furnish your house, enjoy a dream vacation, update your wardrobe. You need not invest any cash up front. All you need is a phone and transportation. And we'll start you off in our free professional training program. Call us today at the number below. It pays to do business with Tupperware.

Office hours: Mon.-Fri. 8:00-5:00 1-915-677-2038

Tupperware®

ALL STAR REBATE

on Gas Charged Heavy Duty™ Gas Charged Radial™ Gas Charged Radial Supreme™ or Gas Charged XT-60™ Shock Absorbers, and Gas Charged Replacement Struts or Gas Charged Replacement Cartridges.

Offer good April 1 through June 30, 1987

\$400 PER PAIR REBATE

\$600 PER PAIR REBATE

Wooten's Service Center 305 S. Ave. E 864-3698

Come Celebrate the 39th Anniversary Sale at Frazier's Appliance & Furniture on April 15, 16, 17 & 18

WITH THESE TERRIFIC Whirlpool HOME APPLIANCE BARGAINS!

75th Anniversary

This is also Whirlpool's will be on sale for and we are passing on a special discount loyal support for 39 years. second generation, and we plan to keep going. "We service everything we sell". Why not choose a Whirlpool Appliance at a fantastic reduction.

Frazier's Appliance & Furniture Haskell, Texas

EASTER SPECIAL FREE SECOND SET OF PRINTS

Winteralls \$1.00 off

Travel Size Items 1/2 Price

Vaseline Dermatology Formula Lotion 11 oz \$4.69

Ban Fresh Scent Roll-on Anti-perspirant Deodorant 2.5 oz \$2.19

Correctal Natural Grain Laxative With Fruit Fiber, Sugar Free, Low Sodium 5.5 oz \$2.89 Plus Coupon Inside

DOYLE HIGH'S THE DRUG STORE 100 S. AVE. E OPEN 8:00-6:00 864-2515



# Fort Worth: Where cowboys play

By O.C. Garza  
Media Chief  
Texas Tourist Development  
Call it Cowtown. That's what residents call it, and quite proudly, too.

Sure, Fort Worth has an enviable assortment of world-class museums: the masterpieces at the Kimbell, high tech at the Museum of Science and History, Picasso and Rothko at the

Fort Worth Art Museum, and American art at the Amon Carter Museum and the Sid Richardson Collection of Western Art.

There's also an unmatched cluster of gardens: the Botanical Gardens, the Japanese Gardens and the Water Gardens.

Inviting as those enriching attractions are, they are a part of Fort Worth I don't know.

The Fort Worth I know is the Stockyards area: where the Chisholm Trail lives in honor, where a breakfast of chicken-fried steak doesn't turn heads, where the scent of rawhide hangs in the air, where Texas cowboys play.

One doesn't gallop to the cowboy side of Fort Worth without proper duds. Dress for the day is a grey *Resistol* hat, preferably a 15X beaver shaded a light mist, some slightly worn but straight-creased blue jeans, a plaid western shirt, a belly-cutting oversized belt buckle that says T-E-X-A-S, and a pair of conservatively dark cowboy boots.

If you don't have western accoutrements hanging in the closet, don't fret, there are western stores galore.

Now properly attired, the first stop

is Booger Red's Saloon. This stop is mandatory since a cowboy stride is important in cowboy land. Booger Red's has authentic saddles for bar stools, so while you sip a drink and watch the rodeo replays on the televisions, you are developing the "bow-legged" gait that is the tell-tale sign of a real cowboy. Ninety minutes should your bones properly.

Now that the legs are broke-in, it's time to show off the cowboy shuffle. A walk down the brick streets of Fort Worth is a walk in history. Butch Cassidy and the Sundance Kid escaped the law here, Sam Bass and his men hid out between holdups, and "Long Hair Jim" Courtright shot it out with Luke Short.

Around the Stockyards one finds, naturally, stockyards. These are the remnants of the longhorn era, when over 10 million beeves were pushed up the Chisholm Trail to the railyards in the Midwest. The old Livestock Exchange Building was once the center of this thriving bovine business, and weekly auctions are still held. Next door, in the Cowtown Coliseum, was the site of the world's first indoor rodeo and, strangely enough, the site of Caruso's first concert in Texas (the New York Times reported that the concert was very successful as excited cowboys fired off their pistols in salute to the great tenor).

Evening entertainment comes in many forms around the Stockyards. From the White Elephant Saloon, to Cowboy USA, to Filthy McNasty's, the area is ripe with cowboy hangouts.

Then there's Billy Bob's. This is a Texas-sized honky-tonk, all 100,000 square feet of it. Step up to the Arcade Shooting Gallery for a little target practice. Sit back and watch cowboys ride real bulls in the rodeo arena. Cowboys can also enjoy one of the 40 bars in the joint. You can make a record at Billy Bob's or do the two-step on a 10,000 foot, sawdust-

covered dance floor with live country-western music providing the tunes.

After all the fun's over, you can even attend Cowboy Church in Billy Bob's. This is a rip-roaring, fire-and-brimstone, baby-crying service held in the rodeo arena on Sunday mornings, just like back in the cowboy days.

Yes sir, Fort Worth is where cowboys play, and pray.

For more information on visiting Fort Worth, write the Fort Worth Convention and Visitors Bureau, 700 Throckmorton, Fort Worth TX 76102. Tell them you're a cowboy.

## —HOSPITAL—

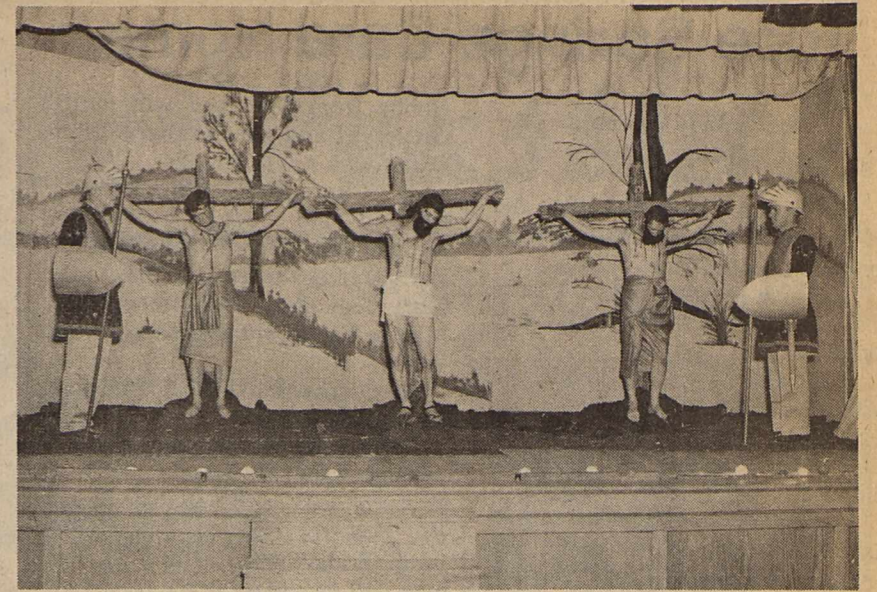
### ADMISSIONS

MEDICAL: Faye Cobb, Haskell; Brandon Langford, Rule; Zula Hanson, Rochester.

SURGICAL: Alton Hester, Knox City.

### DISMISSALS

David Foreman, Mary Bowman, Lloyd Heard, Jeanene Redder, Vernon Benson, Melton Tidrow.



## EASTER DRAMA

This is a scene from an Easter drama presented in Haskell about 1950. The program, directed by Wanda Dulany, was in the high school auditorium. Pictured, from left, are R. C. Couch Jr., Bill Emsoff, Rex Felker, Lynn Pace and Bill Wilson.



## RECOGNIZED

Special recognition was paid at the Chamber of Commerce banquet Saturday night to The Haskell Free Press for its 100 years of service to the community. Here, Abe Turner prepares to present a plaque to publisher Don Comedy.

**For Universal Life Insurance, check with State Farm.**  
BRIAN BURGESS, Agent  
703 North Avenue E.  
Haskell, Texas 79521  
Off. 864-3250  
Like a good neighbor, State Farm is there.

State Farm Life Insurance Company  
Home Office Bloomington, Illinois

Call  
**Nanny Plumbing**  
for all your plumbing needs  
We offer Rheem H/C, Roto-Rooter and Ditch Witch Services, Plus Dependable Service Monday thru Friday 7 a.m. to 5 p.m.  
301 S. Ave E 864-3043

HASKELL COUNTY GIN REPORT  
By Max Stapleton  
County Extension Agent  
April 13, 1987

<b>Haskell:</b>	
Farmers Co-op Gin.....	3298
Haskell Co-op Gin.....	7206
K&G Gin.....	830
<b>Rochester:</b>	
Farmers Co-op Gin.....	4516
<b>Rule:</b>	
Rule Co-op Gin.....	5117
Denson Gin.....	3462
<b>O'Brien:</b>	
O'Brien Gin.....	7108
<b>Weinert:</b>	
Paymaster Gin.....	3600
Weinert Gin.....	3895
<b>Total.....</b>	<b>39,032</b>

Repairs are still going on. We will reopen as soon as possible. We are still the Bus Stop. If you need to pickup or send items on the bus call us at 864-3817.  
**Haskell Steak House**

Pressed	Market Sliced lb.	<b>HAM</b>	<b>\$1.59</b>
Sliced	No. 1 lb.	<b>BACON</b>	<b>\$1.39</b>
Beef	Selected Sliced, lb.	<b>Liver</b>	<b>59¢</b>
Premium	1 lb. Box	<b>Crackers</b>	<b>89¢</b>
Angel Food	Duncan Hines	<b>Cake Mix</b>	<b>\$1.29</b>
Fruit	Stillwell Frozen	<b>Cobblers</b>	<b>\$1.79</b>
Pinto	Casserole 2 lb. Bag	<b>Beans</b>	<b>49¢</b>
	Fresh California Ctn.	<b>Strawberries</b>	<b>69¢</b>
	No. 1 Russets 10 lb.	<b>Potatoes</b>	<b>95¢</b>
	Reg. \$1.39 Bag	<b>Ruffles</b>	<b>99¢</b>
	Hi Dri Roll	<b>Paper Towels</b>	<b>49¢</b>
	Room Deodorant	<b>Glade</b>	<b>99¢</b>

**POGUE GROCERY**  
-Extra Parking Behind The Store. Home Owned and Operated-  
113 North Avenue E Phone 864-2015 Haskell, Texas  
Thurs. Fri. Sat. Specials

## White-Westinghouse Close Out Specials

**White-Westinghouse 17 Cu. Ft. Frost Free Refrigerator-Freezer with Twin Crispers and "Energy Saver" Switch**  
Model RT173G

- Completely frost free
- Energy saver switch
- Optional automatic ice maker
- Three full width shelves (two adjust to five positions)
- Twin crispers
- Two freezer door shelves including juice can rack
- Twin dairy compartment
- Removable egg server
- Two refrigerator door shelves
- Reversible, textured "Leather Look" doors

**\$548.00**

**White-Westinghouse 21.1 Cu. Ft. Upright Freezer**  
FU211J

**\$485.00**

**White-Westinghouse Heavy-Duty Laundry Pair**

- 3-Position Water Saver Control with Reset
- 3 Wash/Rinse Temperature Combinations
- Regular, Short & Pre-Wash/Soak Cycles
- Regular, Permanent Press/Delicates & Air Fluff Settings
- 180° Door Swing for Easier Loading & Unloading

ONLY **\$598.00** FOR THE PAIR

**White-Westinghouse 22.0 Cu. Ft. 3-Door Refrigerator-Freezer**  
MODEL RS228G

ONLY **\$898**

- Completely Frost-Free
- 14.7 Cu. Ft. Fresh Food Capacity
- 7.3 Cu. Ft. Freezer Capacity
- Optional Automatic Ice Maker
- Removable Ice Server and Two Quick-Release Ice Cube Trays

**White-Westinghouse Heavy-Duty Automatic Washer with Energy-Saving Features**  
MODEL LA550E Only

- Two-Speed, Washer
- Knit Wash Cycle

**\$378**

**White-Westinghouse Heavy-Duty Dryer with End-of-Cycle Signal**  
MODEL DE/DG650E

- Electric or Gas Model
- Three Temperature Selections

Only **\$288**

**Owens TV & Electric, Inc.**  
512 N. 1st Haskell Ph. 864-2536

## Rice Springs Care Home

By Judy Wolsch  
Activity Director

Visitors this week:  
Girl Scouts Troop 401 came out and brought Easter baskets with eggs for the residents. Thanks Scouts.

Georgine Meadows, Mrs. Clause and grandchildren from Munday with Ione Menefee.

J. C. and Margaret Wendeborn with John and Tillie Wendeborn; Jan Eastland, Eudora Bradley and Charlotte Bridges with Elsie Eastland.

Jean Buford from Weatherford with Lou Kuentler; John Neely from Irving and Ed Nelly from Snyder, Derinda Larned from Wichita Falls with Irene Reid.

Jerry and Mary Sorrells from Breckenridge with Edna Carter; Marie

Hobbs from Stamford with Gilly Gregory; Buddy, Jenny Herren from Dallas with Angie Mullino.

W. J. Rose from Highland, Calif., Rolland and Peggy Rose from Abilene with Charity Bradley; R. D. and Margaret Tanner with Effie Lusk; Mary Jean Reid with Irene Reid; Monroe Taylor with Jess Kreger from Waco.

Residents have been missing Sweethome Singers and the last two weeks Randy McLelland. Hope all volunteers are back soon.

RSCH will be having their Easter egg hunt for the little ones, 0-10 years, Friday, April 17 at 2:30. The hunt will take place in the back yard and each child is asked to bring a package of wrapped eggs.



### ANNIVERSARIES

Members of the Welcoming Committee of the Haskell Chamber of Commerce dropped by Monday to help a couple of local businesses celebrate anniversaries. The top photo shows them with Ramia Lee Frazier observing the 39th anniversary of Frazier's Appliance, and the lower photo shows them with Roy and Jewel Pittman, who are marking the 35th anniversary of Haskell Butane Co.

## Haskell Nursing Center

Tuesday morning Vivian Shaw came and gave manicures to a host of our ladies. We would like to thank her for coming out each week.

Mrs. Hill helped us out in our exercise class Tuesday morning. We all had a lot of fun.

Randy was here Wednesday. We always look forward to him coming out.

Rev. Hodge came out Wednesday afternoon for a devotional and prayers. He also visited one to one with many of our residents who were unable to come out of their rooms.

Thursday many of our residents came out for bingo. Vivian Shaw helped us with the fruit and numbers.

We have a new resident, Mrs. Jack Tidrow. He is here from Haskell. We would like to welcome him.

Colene Moody was visited by the First Baptist Church.

Arculla Holland was visited by Brenda Pester of San Antonio and Tera Wright of Longmont, Colo.

Loyd Wade was visited by Grady and Ophelia Newsom.

Alvin Koonce was visited by Pearl Koonce, Nancy, B.J., Shell Holden of Stamford.

We would like to thank the Girl Scouts for coming and handing out candy to our residents. They enjoy seeing all young people.

## Rule student selected for honor society

Lisa Kaye Wheatley of Rule is among 14 Southwestern Oklahoma State University students who have been elected to the Beta Upsilon chapter of Rho Chi Society. Rho Chi is a national honor society for pharmacy students.

To be eligible for membership a student must have completed three semesters of pharmacy school with at least a 3.1 grade point average. Also, the student must have a 3.1 grade point average in all college course work taken and must rank in the upper 20 percent of his/her class.

## Market report Haskell Livestock Auction

An active market greeted buyers and sellers at Saturday's weekly sale at Haskell Livestock Auction.

Gary Tate reported that stocker cattle were \$2 to \$3 higher, packer cows were steady to \$1 higher, packer bulls were steady to \$1 higher and feeder cattle were steady to \$1 higher.

There was a run of 1,499 head of cattle and 10 hogs.

Cows: fat 45-49; cutters 47-53; canners 43-47; stockers by head 450-550.

Bulls: bologna 55-60; stockers 70-80; utility 50-55.

Stocker steer calves: choice 92-112; good 82-92; medium 72-82; common 52-62.

Stocker heifer calves: choice 77-82; good 72-77; medium 67-72;

common 57-67.

Feeder steer yearlings: choice 75-81; good 69-75; medium 65-69; common 55-65.

Feeder heifer yearlings: choice 65-70; good 57-65; medium 56-61; common 51-56.

Cows and calves: good 650-725; plain 500-650.

DepoColors. Writes on plastics, glass, wood, or metal. The perfect way to personalize those special items. Haskell Free Press.

WW Gooseneck stock trailer 22'x5' for sale. Good condition & good tires. Call 817-864-3038

## Sagerton

The local fire department will have a meeting at the fire station Saturday at 4 p.m. for everyone to be there. They want everyone to get use to the fire truck. Let us support our fire chief Allen Meier who is doing a good job.

The Friendship Club met Thursday with some special guests, Don and Claire Young from Spowhegan, Maine. The Youngs were visiting Delbert and Joyce LeFevre. Present for the meal and fellowship were Pastor Mei Swoyer, F.A. and Ev Ulmer, C.E. Stegemoeller, Anton and Evelyn Teichelman, Arthur and Frieda Knipping, Charles Clark, Larry LeFevre, Delbert and Joyce, Frances Clark, DeWayne Monse, Leo and Minnie Monse, Don and Claire Young, Mrs. Louise Stegemoeller, Mrs. M.Y. Benton, Mrs. Henrietta Stegemoeller, Mrs. Lillie Lehrmann.

Mr. and Mrs. Jack Tabor of Belcamp, Maryland, and daughter Vanessa Griffin of Little Elm, Texas spent two days in the home of his mother Mrs. John L. Brooks and aunt Beulah Mae Summers.

Mrs. Brooks returned to Little Elm with them to greet Mr. and Mrs. Joe Newman, and great grandson Aaron Landisa from Fayetteville, Ark. On Monday the Tabors returned to Baltimore from Dallas D.F.W. After spending ten days in Texas visiting sons Bill and Jim Tabor in Austin and other relatives and friends.

Jack Tabor and Larry Griffin of Little Elm visited Beulah Mae Summers Friday night.

Bill Tabor of Dallas brought his mother Mrs. John L. Brooks back to Sagerton Saturday evening and

returned to Dallas Sunday. Mr. and Mrs. George Olson of Ozona were recent guests of Mr. and Mrs. Willie Tredemeyer. Additional supper guests in the Tredemeyer home were Leslie and Kay Baitz, of Austin, Weldon, Joyce and Larry Tredemeyer of Leander, Ted and Mary Jennings of Haskell, Mr. and Mrs. Larry Letz of Abilene, Mrs. Emma Raphael of Stamford and the host and hostess. They all came for the funeral of Carl Hertel.

Mr. and Mrs. Joe Clark spent the weekend in Argle, Texas visiting in the home of Mr. and Mrs. Don Bivins, Coleman, Tom and Emmalee. They went especially for the confirmation service for Emmalee held at Lamb of God Lutheran Church in Lewisville. Also attending the service and enjoying Sunday dinner with the Bivins were Clyde Stegemoeller of Dallas, Clifford Stegemoeller of Arlington, Mrs. Emma Raphael of Stamford, and Mr. and Mrs. Leon Stegemoeller.

Mr. and Mrs. Arthur Knipping, Erna and Walter Schaake, Mr. Clarence Stegemoeller enjoyed playing 84 in the home of Mrs. Lena Schaake Thursday night.

The monthly Bredthauer family get-together was held in the home of Mr. and Mrs. Walter Bredthauer in Haskell Sunday afternoon. Enjoyed playing 84 in the afternoon. Those who attended were Mr. and Mrs. Alfred Bredthauer of Stamford, Mr. and Mrs. Aivin Bredthauer of Sagerton, Mr. and Mrs. Dickie Greenwood and Adam, Brian, Bennie, also Wallene Bredthauer.

Crop Insurance can help protect your cash harvest

Call Brian Burgess for details. 864-3250

Multi-Peril Deadline April 15th

Wheat Crop - Hail \$8.00/\$100



State Farm and Casualty Company  
Home Office: Bloomington, Illinois

## "La Nueva Vida"

KVRP - AM - 1400

Cada Domingo a los 9:30 AM.

Escuchen Ustedes

## It's Our 35th Anniversary

Come Celebrate With US

Friday and Saturday April 17 - 18  
Refreshments Will Be Served

Register Now For Gift Certificates to be Given Away at Noon Saturday April 18th

1 - \$100.00  
2 - \$50.00  
2 - \$25.00

We can convert your car or pickup to propane, also we can convert fuel injected engines. We sell Propane, Diesel, Kerosene, Gasoline and Oil. Come by for details.

We really appreciate all the fine business you have given us the Past 35 Years and We Look Forward To Serving You In The Future

Thank You

# Haskell Butane Co.

Roy and Jewell Pittman  
Hwy 277 South Haskell, Texas  
817-864-2424

**Special of the Week!**  
**Chicken Sandwich \$1.09**  
Try Our New Egg Roll 95¢  
1402 N. Ave. E Haskell 864-3318

## OLNEY SAVINGS PROUDLY PRESENTS SEVEN FREE CHECKING ACCOUNTS

OPEN ANY ONE AND GET A FREE GIFT\*\*

- 1
- 2
- 3
- 4
- 5
- 6
- 7

<b>FREE CHECKING*</b>	<ul style="list-style-type: none"> <li>No Service Charge</li> <li>No Minimum Balance</li> <li>Unlimited Check Writing</li> <li>Non-Interest Bearing</li> </ul>
<b>FREE CHECKING* WITH INTEREST</b>	<ul style="list-style-type: none"> <li>Interest Bearing</li> <li>Unlimited Check Writing</li> <li>Free with \$500 Minimum Balance</li> </ul>
<b>FREE CHECK CLUB WITH INTEREST</b>	<ul style="list-style-type: none"> <li>Interest Bearing</li> <li>No Minimum Balance</li> <li>Free Duplicate Corporate Style Checks</li> <li>Unlimited Check Writing</li> <li>No Service Charge</li> <li>Monthly Membership Fee for Club Benefits</li> </ul>
<b>MARKET RATE FREE CHECKING*</b>	<ul style="list-style-type: none"> <li>Earns Daily Market Rates</li> <li>Unlimited Check Writing</li> <li>Free with \$1,000 Minimum Balance</li> </ul>
<b>MARKET RATE FREE CHECK CLUB</b>	<ul style="list-style-type: none"> <li>Earns Daily Market Rates</li> <li>Unlimited Check Writing</li> <li>Free Membership in Check Club</li> <li>Free \$20,000 Accidental Death Insurance Policy</li> <li>Free with \$2,500 Minimum Balance</li> <li>Free Duplicate Corporate Style Checks</li> </ul>
<b>55+ FREE CHECKING</b>	<ul style="list-style-type: none"> <li>Interest Bearing</li> <li>Unlimited Check Writing</li> <li>No Service Charge</li> <li>No Minimum Balance</li> <li>Free Duplicate Corporate Style Checks</li> </ul>
<b>VIP FREE CHECKING*</b>	<ul style="list-style-type: none"> <li>Interest Bearing</li> <li>No Minimum Balance</li> <li>Unlimited Check Writing</li> <li>No Service Charge</li> <li>Special Account for Customers with Automatic Loan Payment Plans or Direct Deposit</li> </ul>

\*Check Printing Extra  
\*\*When you open any one of these seven accounts with \$100 or more. Offer good while supplies last.

**CHECK BUY-BACK**

Present this Coupon with the unused checks from your current account when you open any Olney Savings Free Checking Account. We'll buy your unused checks at 10¢ per check up to \$10.

Name \_\_\_\_\_  
Address \_\_\_\_\_  
City \_\_\_\_\_ State \_\_\_\_\_ Zip \_\_\_\_\_

**HOT & COLD PUMP 32 OZ. THERMOS**  
YOURS FREE

**OLNEY SAVINGS**  
Come see us soon. Or call and we'll come see you. Member FSIC. We're neighbors. You can believe in us.

# M SYSTEM

Your FRIENDLY

# Happy Easter Feasting

**AFFILIATED SUPER MARKETS**  
 Haskell, Texas  
 Where Your Dollar Buys More

## DOUBLE COUPONS 7 DAYS A WEEK!

We will redeem your manufacturers cents off coupons for double their face value up to \$1.00 when product is purchased. We will double only one coupon per like item. All others at face value. Limit one coupon per item. Coupon not to exceed value of the item. This policy does not include free coupons, cigarettes, and tobacco, or refund coupons. Offer good for limited time only.

**WE GLADLY ACCEPT FOOD STAMPS!!**

**HOURS:**  
 Mon.-Sat 7:30am-8:00pm  
 Sunday 8:00am-7:00pm

W.I.C.



QUALIFIED

Prices Effective April 12th - 18th

Price Saver Boneless

**Hams**  
 Whole Only **1.28**  
 5/7# Avg.  
 Lb.

Halves Lb. **1.39**



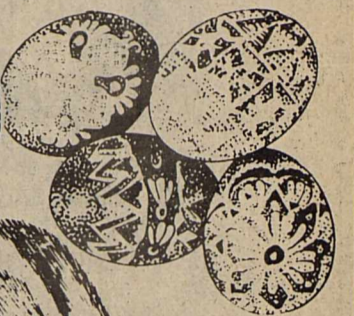
Chicken **Hens**  
 Lb. **59¢**

Chuck **Roast**  
 Lb. **1.29**

Kraft Barbecue **Sauce**  
 18-oz. Bottle

**69¢**

Limit 2 With \$10.00 or More Grocery Purchase



Town Talk **Brown & Serve**  
**Rolls**  
 12-Count Packages  
**4 PKGS. 1.00**

Classic Delight **PREMIUM**  
**ICE CREAM**  
**2 FOR 3.89**  
 HALF GALLON CARTON

Price's Pimento Cheese Spread..... 14-oz. **1.99**  
 Ground Chuck Extra Lean..... Lb. **1.39**  
 Smoked Sausage Hillshire Farm Reg. or Beef ..... Lb. **1.89**  
 Shedd's Spread Country Crock..... 3-Lb. Tub **1.69**



**COKES**  
 (All Varieties)  
 12-oz. CANS  
**6-PACK 1.89**



Del Monte **MIX OR MATCH!**  
**Green Beans**  
 Cut or French Style, 16-oz.  
**Golden Corn**  
 Whole Kernel or Cream Style, 17-oz.  
**3 For 1.00**

Regular or No Salt (Limit 3)

**EGGS FOR EASTER**  
**SHURFRESH**  
 GRADE "A" LARGE  
**DOZEN 49¢**



Duncan Hines **CAKE MIX**  
 18.5-oz BOX  
**78¢**  
 Limit 2 With \$10.00 or More Grocery Purchase

**CORONET PAPER TOWELS**..... JUMBO ROLL **75¢**  
 LIGHT BROWN or POWDERED **IMPERIAL SUGAR** ..... 2-LB. PKG. **1.19**  
 PURE CANE **IMPERIAL SUGAR** ..... 5-LB. BAG **1.69**  
 PURE VEGETABLE **CRISCO OIL** ..... 32-oz. BOTTLE **1.49**  
 LUCKY LEAF CHERRY Reg. or Lite **PIE FILLING** ..... 21-oz. CAN **99¢**  
 REGULAR or LEMON 60¢ Off Label **CASCADE** ..... 65 oz Box **2.79**  
 PET RITZ FROZEN **PIE SHELLS** ..... 9", 2-CT. PKG. **59¢**

Gold Medal **All Purpose Flour**  
 5-LB. BAG  
**88¢**

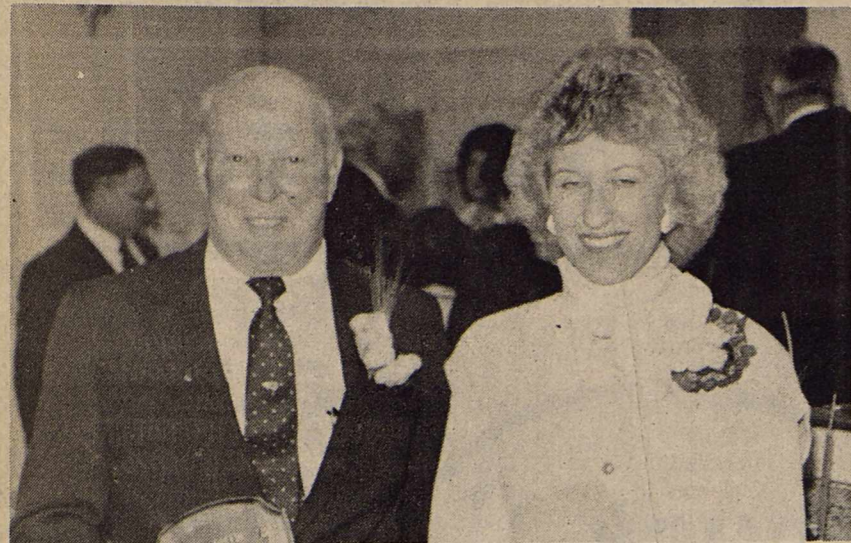


Ripe **Strawberries**  
**69¢**  
 Pint



**Celery** Calif. Large..... Ea. **39¢**  
**Avocados** Calif. Haas (48-Ct)..... Ea. **4/1.00**  
**Fresh Broccoli** ..... Bunch **99¢**  
**Carrots** ..... Crisp ..... 2-Lb. Pkg. **49¢**  
**Radishes** or Green Onions..... Ea. **4/1.00**  
**Mushrooms** Large Bulk.... Lb. **1.99**  
**Yellow Onions** New Crop..... Lb. **39¢**  
**Sweet Potatoes** U.S. No.1 ... Lb. **49¢**  
**Asparagus** Fresh..... Lb. **1.39**

ANGEL SOFT **BATHROOM TISSUE**  
**98¢**  
 4-ROLL PACK



### RULE CITIZENS

Leon Biffle and Donna Saffel were selected as Citizens of the Year by the Rule Chamber of Commerce. They were honored at the annual Chamber banquet last week.



### TOP STUDENTS

Allen Kutch and Yolanda Garcia were honored last week by the Rule Chamber of Commerce as the "Outstanding Students of the Year." They were recognized at the annual Chamber banquet.

## Parents concerned over teen depression

Recent highly publicized teenage suicides in other states have once again focused Texas parents' concerns closer to home.

"Like adolescents everywhere, many Texas youngsters are under a great deal of stress," says family life education specialist Diane Welch, agricultural extension service home economist at Texas A&M University. "This stress may lead to distress and then to depression."

"Depression takes many forms and has a wide variety of symptoms. It can range in intensity from a case of the blues to a chronic and recurring state of despair so severe that outside help is needed to overcome it," she adds.

Many mental health professionals think adolescents experience masked depression or behaviors that are indirect evidence of their depression, Welch says. These indirect signs include low school achievement, school phobia, drug and alcohol abuse, anorexia nervosa, social isolation, sexual promiscuity and delinquency.

"While depression is associated with a wide variety of behaviors, it's not always clear whether depression precedes or follows the behaviors," she emphasizes.

According to Welch, parents may help reduce stress and the possibility of depression in their teenagers.

"Recognize that youngsters can be under stress even from daily school activities such as getting good grades, succeeding in sports or making friends," she says. "Major life changes such as the death of a parent, friend or family member, pregnancy, parents' divorce or starting to take drugs are even greater stressors."

The specialist advises parents to communicate acceptance to their teenagers. "Communication is a key to positive parent-teen relations. It is important to listen as well as to speak. Be willing to share your feelings as well as accept differences."

Providing clear guidelines is also important, says Welch. Even though teenagers may outwardly reject

parental authority, they need clear guidelines as expectations. They will respect you for providing responsible standards and explaining the reasons behind the rules.

"Don't feel rejected," she says. "Accept the fact that teenagers turn to the peer group for emotional support and acceptance as part of growing up. The teenager is not rejecting you as much as reaching out for new relationships and independence."

Help is available in many communities for parents who want to improve their parenting and communication skills, the specialist emphasizes. Courses and workshops are offered through churches, community education and county Extension offices and other programs in most Texas communities.

"Parents who are concerned that this child is at risk of serious depression which may lead to suicide should not hesitate to call a local hospital, mental health clinic or suicide hotline for help," she advises.

### Churches plan Maundy service this evening

The First Presbyterian and First United Methodist Churches of Haskell will have a special Maundy worship service of Holy Communion and special music based on the seven sayings of Christ from the cross.

The program will be today (Thursday), beginning at 6 p.m. in the sanctuary of the First Presbyterian Church.

All Haskell residents are invited to attend.

Worship leaders will be the Rev. Cecil Shirey, pastor of the First United Methodist Church, and the Revs. Katie and Jimmy Hopper, co-pastors of the First Presbyterian Church.

## School Menu

April 20-24  
BREAKFAST

Monday: Orange juice, cereal, milk.

Tuesday: Apple juice, scrambled eggs, buttered toast, milk.

Wednesday: Grape juice, cinnamon toast, milk.

Thursday: Fruit juice, biscuits with jelly, milk.

Friday: Pineapple juice, cereal, milk.

LUNCH

Monday: Chicken nuggets with gravy, creamed potatoes, buttered mixed vegetables, hot rolls with butter, brownies, milk or tea.

Tuesday: Beef and vegetable stew, grilled cheese sandwiches, cherry

cobbler, milk or tea.

Wednesday: Cheeseburgers, french fries with catsup, lettuce and tomatoes, pickles and onions, ice cream, milk or tea.

Thursday: Pizza, buttered corn, coleslaw, sliced pears, milk or tea.

Friday: Chicken fried steak and gravy, cramed potatoes, tossed salad with dressing, hot rolls with butter, sliced apples, milk or tea.

(Menus made by fourth-grade class.)

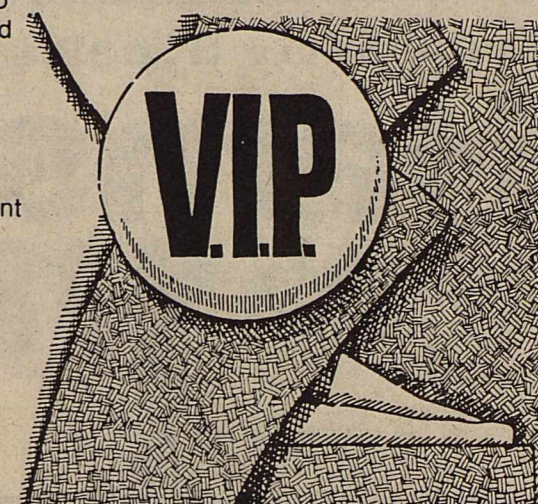
Catch the team spirit! Clipboards in your team's colors: black, gold, red or blue. Catch one now at the Haskell Free Press.

## EVERYONE'S A V.I.P. WITH US

We only have one type of customer at our bank... Yes, they're large and small, young and old, but to us they're all the same... VERY IMPORTANT PEOPLE.

We treat the paper carrier with a few dollars to deposit the same as the business owner with a few thousand. By treating everyone like a V.I.P. we've managed to prosper and grow along with the people we serve.

If you want the V.I.P. treatment where you bank, stop in soon.



FDIC Post Office Box 10  
Phone (817) 997-2216  
Rule, Texas 79547

### You don't have to lock up money to keep it safe.

You can have tax-deferred growth and tax-free income with guaranteed safety of your principal. Find out more about one of today's most exciting safe money alternatives.

Where can you earn **7.65%\*** tax-deferred?

**Edward D. Jones & Co.**  
Members New York Stock Exchange, Inc.  
Members Securities Investor Protection Corporation

**Don Book**  
118 S. Swenson  
Stamford, Texas 79553  
915-773-2709

\*The current rate is guaranteed for one year. Renewal rates are declared each plan anniversary and may go up or down annually. The guaranteed minimum rate is 5 1/2%.

### Cook Heating and Cooling

Has Moved  
To A New Location  
115 N. Ave. E Next to Pogue Grocery  
To Celebrate Our  
3rd Anniversary  
We are offering  
Air Conditioning Service  
For the Summer of 1987

For **\$19.87**  
Offer Good Through May 31  
Same telephone number  
864-2226 or 864-8010  
Mike Cook, owner  
"For All Your Heating and Cooling Needs"

## JOIN OUR NATIONAL CABLE MONTH CELEBRATION! Enjoy Cable TV FREE for 10 days!

April is National Cable Month and to celebrate this nationwide event we're making a special limited-time offer to new subscribers.

So if you've never tried Cable TV, or if you tried it once and found it wasn't quite right for you, now is the time to look again.

See what's on Cable TV in April!

The USA Network features America's new talk show hit *Robert Klein Time*, and on ESPN you'll get play-by-play of the Stanley Cup Playoffs.

Then, watch CNN for news updates every half hour; and turn to MTV for music at its best including concerts with groups like A-ha.

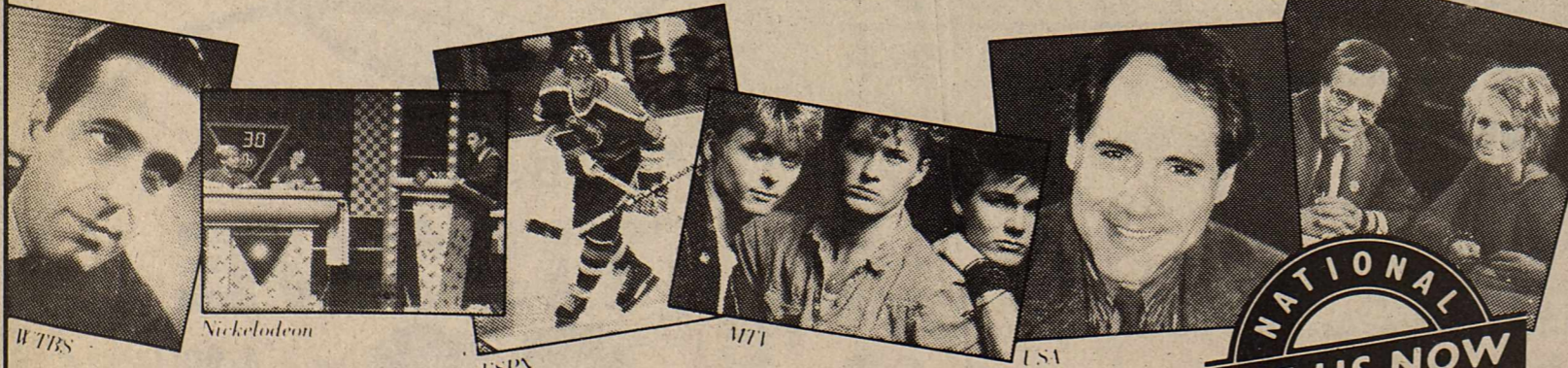
Also in April, Nickelodeon will feature *The First Annual Big Ballot* where kids vote for their favorite TV shows, music and movies...and WTBS will show exclusive colorized versions of classic films like *Dark Victory* starring Bette Davis.

Cable TV gives you all this—at your convenience—when you want to watch, and all for one low monthly fee. If you own a VCR, cable also lets you build a library of the programs you like to enjoy again and again.

Discover why Cable TV is better than ever and take advantage of the special savings available only during our National Cable Month celebration.

Call for a "Priority Hook-Up" that gives you:

- FREE 10-day trial of Cable TV
- 87¢ Installation (save over \$19.00)
- Free VCR hook-up



YOUR 10-DAY FREE TRIAL INCLUDES HBO!

Say "yes" to this limited-time offer and get blockbuster movies like *Back To The Future* plus music, comedy, sports and more... all on HBO!

CALL HARMON CABLE TODAY!

Enterprise 2406



### You can win CASH from KVRP

FM 95  
AM 14  
Haskell, Stamford

Just look for the orange Day-Glow poster in participating CASH ATTACK sponsors windows.

To be eligible, go in every week and register.

Listen to KVRP, when you hear your name announced on the air... Call KVRP within 3 minutes and correctly identify the amount of money in the CASH JACKPOT and it's yours!

Then, Friday, July 10th, a name will be drawn from previous CASH ATTACK WINNER'S

and that lucky person will be called and given an additional \$1,000 grand prize!

So go by participating CASH ATTACK sponsors and register and listen for your chance to win CASH from your friends at KVRP AM & FM!

**KVRP**  
**CASH ATTACK**  
**\$\$\$**





## Child Welfare update

During the last 10 years the referrals concerning child abuse and neglect have doubled. This is some information which Mr. Jim Marquart, Department of Human Services, shared with Region 04 County Council recently at the Abilene headquarters.

At the same time the resources and staff have been reduced. The result has brought about several changes in the program.

The Sunset Commission has

introduced legislation dealing with the definitions of child abuse and neglect and the process used for handling complaints. The Department of Human Services will have to screen more closely the kinds of cases in which the staff may become involved.

With limited resources the Department will need to become more of a child protective service. Mr. Marquart asked that the boards become educated and then help educate the communities about what can and

cannot be done in specific cases. Some changes are to be initiated in the investigation process. The policy has always been to contact collaterals. This will become flexible, allowing workers a choice of not contact collaterals if there is no reason to contact anyone else. For some referrals it will no longer be required that every child in the home be given a physical exam.

A new administrative review process will be implemented. Parents will be given a booklet at the beginning of the investigation. It is felt that this will give parents better information on what their rights are.

Such will also be helpful in appealing a case.

Several appropriation requests include more funding for in-home services, increase in foster care payment rates, liability insurance for foster parents, funds for respite care for foster parents, independent living program and family violence.

Mr. Marquart said that the relationship the Department has with the communities through child welfare boards helps make the program one of the best children's protective services. He encouraged the boards to continue working and providing education in their communities to help children by preventing abuse and neglect.

### Book honored by Jones Co.

The Haskell representative of Edward D. Jones & Co. has received the firm's prestigious sales manager's award for excellence in sales and service.

Don Book of Stamford is recipient of the annual award.

He is a member of the Rotary Club, Exchange Club and Charaber of Commerce.

Adult Scouters of the Chisholm Trail Council will meet at 7 p.m. today (Thursday) to plan the calendar of events and activities for the period of September 1987 through August 1988.

## "Great Trash Off" to be April 25

More than 750 people in the 13 counties of the Abilene district of the State Department of Highways and Public Transportation will join 15,000 Texans in cleaning up the state's highways on Saturday, April 25 in the largest one-day cleanup effort in the U.S.

Called "The Great Texas Trash Off," the program involves volunteers across the Lone Star State who will clean approximately 2,000 miles of roadways as part of the highway department's aggressive war against litter.

"By Saturday night, Texas should be as clean as it's been in the last 50 years," said Ray J. Green, district public affairs officer.

The cleanup effort combines two of the most successful anti-litter programs in the nation, "Adopt-a-Highway" and "Don't Mess With Texas." Both innovative programs were developed by the highway department.

"Our goal is not just to clean up after the folks who use our roadways as their personal garbage dump," Green said. "Instead, we want to demonstrate how much trash there is and convince Texans to put it where it belongs."

In 1985, Texas taxpayers spent \$24 million removing trash from the state's highways, and the cost had been increasing 17-20 percent every year since 1970.

In 1986, the highway department introduced the tough-talking "Don't Mess With Texas" program. It is the

first program in the country to talk directly to "habitual litterers." In its first year, the program is credited with a 29-percent reduction in litter.

"We're pleased with the reduction so far, but it is going to take the program several years to significantly and permanently change litterers' behavior," Green said. "That's when we'll realize the greatest cost savings for the taxpayers."

The "Adopt-a-Highway" program, the first of its kind in the nation, involves volunteer groups which regularly clean up their "adopted" stretch of highway. More than 1,300 groups throughout Texas have joined the program since it was first introduced 12 months ago.

"There's something about knowing a local group is responsible for cleaning up a stretch of roadway that makes people think twice before they litter it," said Green.

Civic, community and business groups have adopted more than 160 miles in the various Abilene district counties.

### Knox farmers set planting date

Knox County cotton farmers have selected May 25 as the uniform planting date for cotton.

The date is two weeks later than last year, as a result of the high boll weevil populations expected to emerge this year.

# NOTICE TO FARM BUREAU MEMBERS

In an effort to improve our insurance service Farm Bureau personell will be in Haskell County April 21 - 23, and will inspect all insured property. Please excuse any inconvenience this may cause you. Please call the county office if we can be of service to you.

817-864-2647.



FARM BUREAU INSURANCE  
LIFE • AUTO • HOME • FIRE • BOAT

Office: (817) 864-2647  
508 N. 1st

Box 740  
Haskell, Tx 79521



Celebrate Easter in full glory.  
Send a Floral Bouquet, Easter Lilies, Balloons, cards, Corsages, silk - fresh arrangements - gift items.  
Sue's Flowers, Gifts & Photography  
PH: 864-2204



Registered trademark FTD

**FREE SWEATBAND** with each pair of Nike or Roos L.L. shoes purchased



Conrad Roewe's Sport-About of Haskell

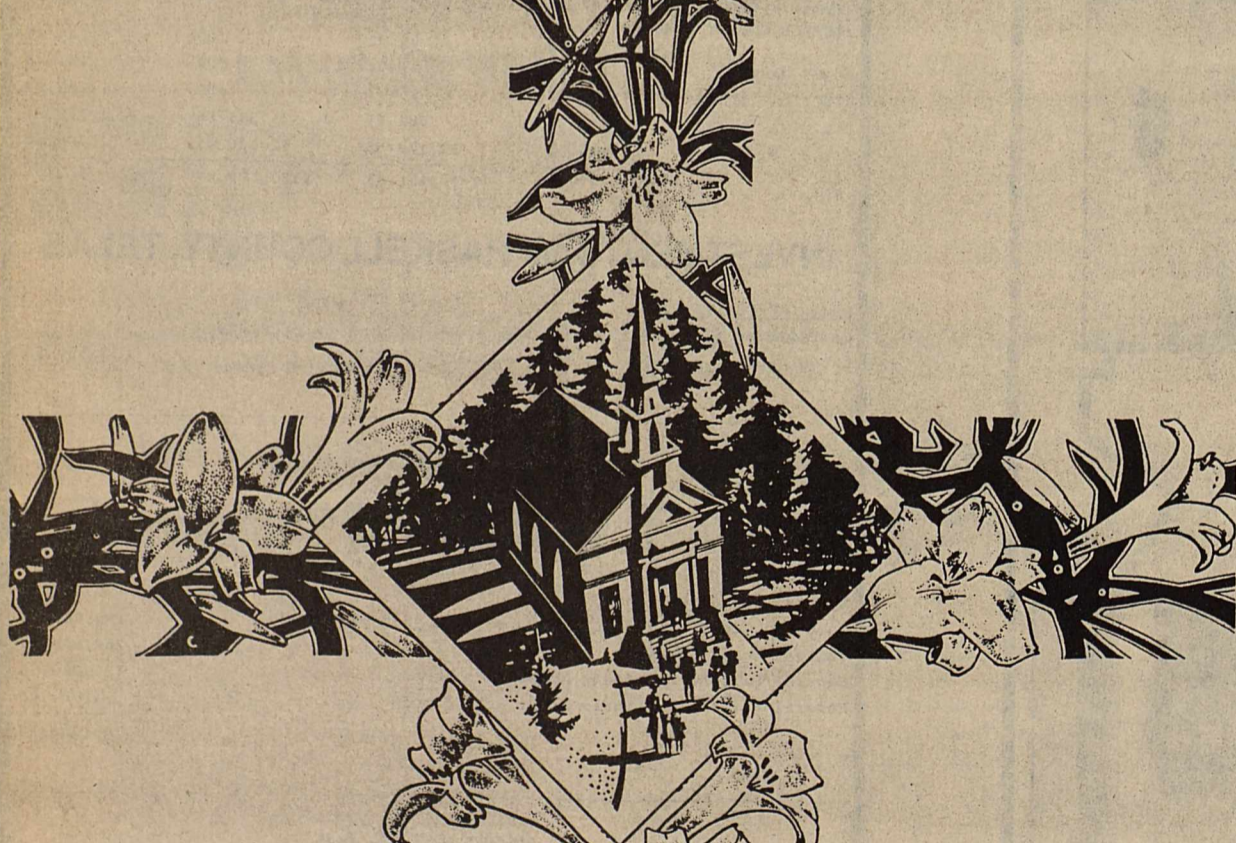
**FREE SWEATBAND** Limited to first 30 pair of shoes



817/864-3891  
402 N. 1st  
Haskell, Tx. 79521



# Happy Easter



Throughout the history of the world, there has never been a more dramatic episode than that memorable springtime weekend of long ago, marked by the Crucifixion and the Resurrection. The terrible ordeal and ultimate triumph of that lonely Figure, unjustly condemned by His enemies and deserted by His friends, was an event to be remembered all through the ages; along with its lesson for forgiveness, proof of immortality and demonstration of God's love for mankind; evidenced by the sacrifice of His only Son to atone for our sins.

Celebrate the joyful victory of life over death by attending the Church of your choice on Easter Sunday and every Sunday; and resolve to live your own life in a manner worthy of that most monumental sacrifice in all history.

The Friendly



First National Bank  
HASKELL TEXAS  
202 South Avenue E 864-8555 Member FDIC

2 day sale

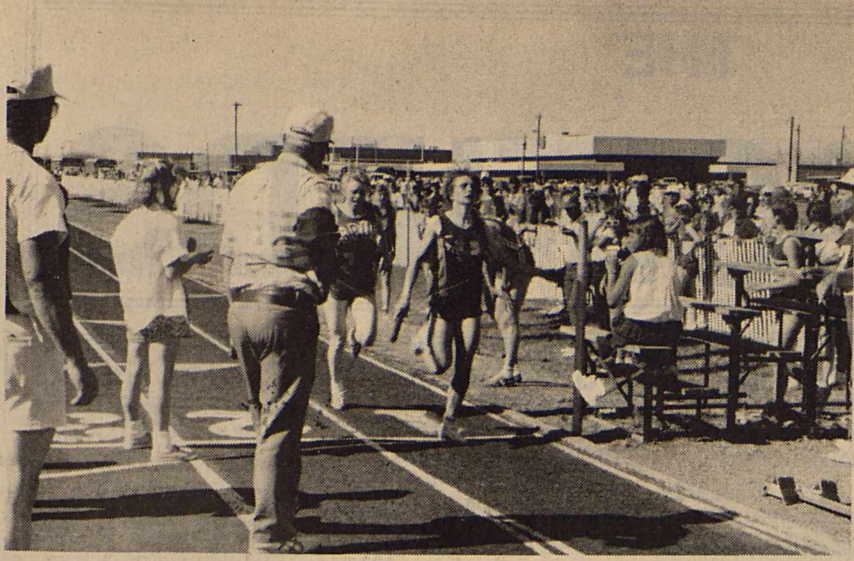
# 2 day sale

Thursday and Friday Only

<p>Sparco <b>Correction Fluid</b> <b>75¢</b> each</p>	<p>Perma Pak Letter/Legal <b>Storage Files</b> <b>\$2.79</b></p>
<p><b>Cash Box</b> #4CBT with coin tray <b>\$16.95</b></p>	<p>Panasonic Battery Powered <b>Pencil Sharpener</b> <b>\$14.95</b></p>
<p>All 1987 <b>Calendars</b> <b>25% off</b></p>	<p>Pentel Mechanical <b>SharpPencil</b> <b>\$2.98</b></p>

THE HASKELL FREE PRESS

401 South First
864-2686



Sheree Dumas was first in the triple jump and a member of the winning 1600 meter relay team.

# Track teams reach district

Haskell track teams will be in Hamlin Friday for the annual district meet, with both having high hopes of qualifying a good number of athletes for the regional meet in Big Spring two weeks hence.

Preliminaries in the field events will get underway at 8:30 a.m. Running preliminaries start at 11 a.m. and finals are scheduled to begin at 2:30 p.m.

Hamlin and Hawley will probably be the top choices in the girls' division. Haskell and Albany, along with Hamlin and Anson, should be strong in the boys' division.

The Haskell Indians let other district 7-AA teams know that they will be a team to be reckoned with as they put on an awesome display of power at the Pied Piper Relays in Hamlin Saturday.

The Indians claimed six first places--two in relay team events and four in individual contests.

Mark Young won both the 400 and 800 meter races. His 400 time was 50.73. In the 800, he was clocked in 1:58.9, his best time of the year and one of the best half miles run in the state this year.

Fred Shaw won the 100 with a time of 11.03 and Stephon Brockington's 22.44 in the 200 won him a first place.

The Indians' 400 meter relay team won first and so did the 1600 team.

The sprint relay team, composed of Johnny Castillo, Derrick Billington, Shaw and Brockington was clocked at 43.25. The 1600 relay team of Castillo, Brockington, Shaw and Young, was clocked in 3:21.47, its best time of the year.

In addition to the first-place winners, Haskell athletes won other positions. Louie Torres was fourth in the 400, Seth Pace fourth in the discus, Dusty Meeks fourth in high jump and Castillo sixth in the 400.

The Maidens won two first places in the Pied Piper Relays last Saturday.

Sheree Dumas was first in the triple jump at 34-7, and the 1600 meter relay team took first with a time of 4:13.85.

The 800 relay team was second at 1:50.31 and Leiza Morales took a third in the 8090 run with a time of 2:25.9.

Haskell's best bets in the district meet:

800 meters: Leiza Morales 2:25; Gloria Castillo 2:36.

100 meter hurdles: Joy McKeever 15.62; Missy Davis 17.21.

1600 relay: Leiza Morales, Teresa Unger, Gloria Castillo, Sheree Dumas, 4:13.6.

800 relay: Velma Castillo, Sheree Dumas, Teresa Unger, Leiza Morales, 1:50.21.

3200 run: Sylvia Castillo, 13:33; Emily Camacho.

400 relay: Velma Castillo, Dala Harris, Teresa Unger, Sheree Dumas, Vicky Chavez (alternate) 52.83.

100 meter dash: Velma Castillo, Vicky Chavez, Patricia Henry.

400 meter dash: Teresa Rodriguez, Kim Short, Julie Roewe.

200 meter dash: Teresa Rodriguez, Dala Harris, Vicky Chavez.

1600 run: Emily Camacho, Sylvia Castillo.

High jump: Kim Short, Dala Harris, Julie Roewe.

Triple jump: Sheree Dumas, Leiza Morales, Dala Harris.

Long jump: Sheree Dumas, Leiza Morales, Teresa Unger, Vicky Chavez.

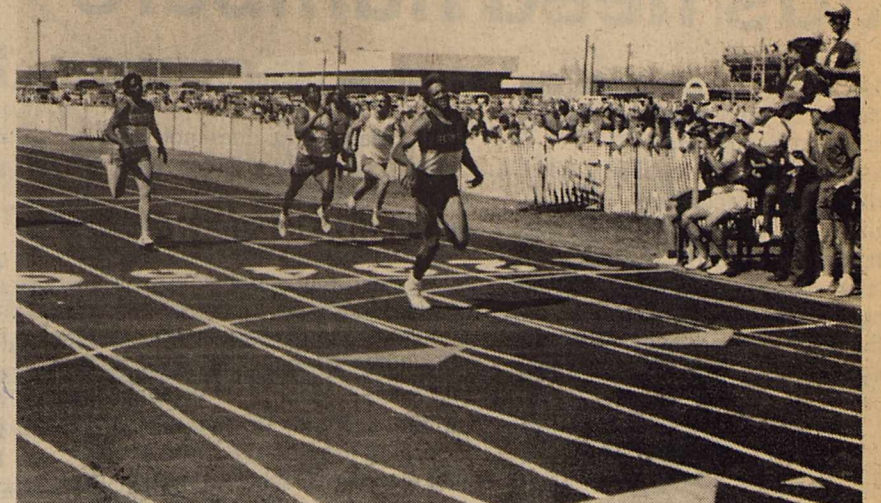
Shot put: Missy Davis, Gloria Castillo, Julie Roewe.

Discus: Missy Davis, Gloria Castillo, Julie Roewe.

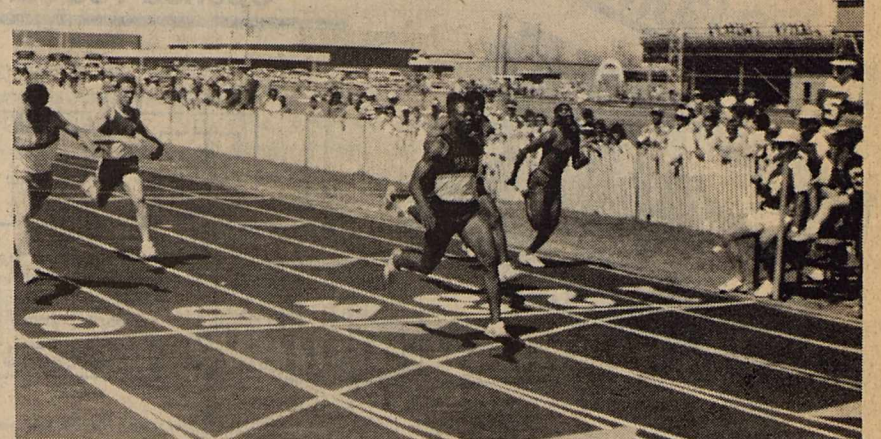
## Stamford posse kicks off season

The Stamford Junior Sheriff's Posse kicks off its playday season at 2 p.m. Saturday.

It starts with a cleanup of the quarterhorse arena, to be followed by a free hamburger supper and a playday.



Stephon Brockington won the 200 meter race



Fred Shaw was first in the 100 meters



Mark Young won the 400 and 800 meter races at Hamlin Saturday

## Playday winners named

Here are winners in the Haskell Horse Club Playday:

Eight and under: Mandy Howard, first in barrels; Amy Aycock, first in flags.

Nine-to-thirteen: Shara Reeves of Stamford, first in barrels, flags and poles.

Fourteen-to-eighteen: Robin

Harrell first in barrels; Lori Lane, second in barrels; Rebecca Curtis of Hamlin, first in flags; Leiza Morales, first in poles; Lori Lane, second in poles.

Open: 1. Tina Morris. 2. Robin Harrell.

(All contestants from Haskell except where noted.)

## Mindy Smith gains regionals

Haskell High School golfer Mindy Smith has earned a spot in the regional golf tournament in Big Spring April 27-28.

She was second-place medalist in the district tournament in Stamford last Wednesday, finishing behind

Robin Merket of Hamlin. This is Mindy's third year on the team. She is a senior.

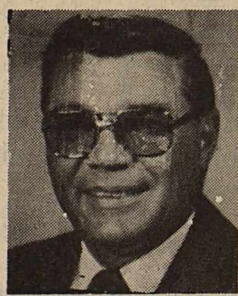
You are reading The Haskell Free Press and we thank you. Call us your news. 864-2685.

*We would like to thank all our friends and family for the cards, visits, flowers, food and phone calls. Most of all for your prayers and your love and concern for G. W. during his three surgeries. We are home from the hospital one more time. Come by anytime for a visit. We do appreciate all that has been done for us. May God bless each of you is our prayer.*

*G. W. & Doris Roberts & Family*

### TAX PLANNING

Written By  
James E. Rodgers, CPA



#### W-4 OR W-4A? (You must file one or the other)

Employees, you now have a choice. You can file either the new four-page W-4 tax withholding form or the new two-page W-4A form. The shorter withholding form was designed by the IRS after the Service was widely criticized for the length and complexity of the four-page W-4. The simpler W-4A forms should be received by employers sometime in April.

If you've already filed the longer W-4 with your employer, you've fulfilled your obligation. If you haven't, you have until October 1, 1987, to file one or the other of the new W-4s.

How do you decide which form to use? The IRS indicates that if your affairs are simple, you can use the W-4A. However, the form's simplicity is likely to result in overwithholding. (The excess will be refunded to you when you file your 1987 tax return.)

If your affairs are more complex, you will get your withholding closer to your actual liability by filling out the longer W-4. That includes working couples, taxpayers with substantial non-wage income, and those with many deductions and credits.

Though the deadline is in October, you should complete a W-4 or W-4A as soon as possible to adjust your withholding to bring it in line with requirements of the new law. Waiting until later in the year could result in underwithholding which might expose you to underpayment penalties. Under the 1986 Tax Reform Act, you are required to prepay at least 90% of your current year tax liability or 100% of your prior year's tax liability.

Embarrassed by the furor created by the four-page W-4, the IRS has indicated that it will not assess interest penalties on taxpayers who make a "good faith" attempt to accurately complete their W-4s (or W-4As) and submit them by June 1, 1987. You should keep the completed worksheet that is a part of the form to demonstrate your "good faith" attempt if you end up being underwithheld and subject to a penalty.

Sponsored By  
**JAMES E. RODGERS & COMPANY**  
Certified Public Accountant  
20 Southwest Third Street  
Hamlin, Texas

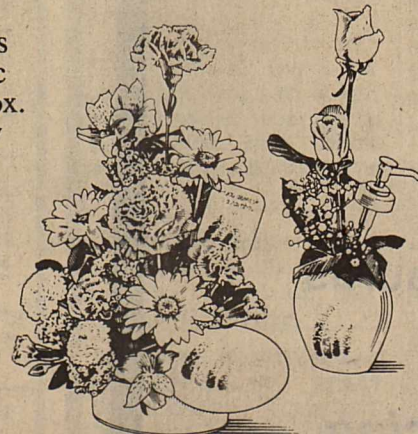
### Thank You

To our many friends and loved ones a very special thank you for the words of comfort, hugs, flowers, and food you so lovingly gave. The love of God in you is like a blanket of love over us all.

The family of Bud Adams

### Give your secretary flowers and a rainbow.

Say "Thanks" with flowers in a beautiful pink ceramic lotion bottle or treasure box. Both have a contemporary rainbow design and can be used in the office or at home for years. Secretaries' Week is...April 20-24! So call or visit us today. Helium Balloons are an added touch.



**ENTER NOW!!**  
Win a trip for two in  
The Paradise Vacation sweepstakes for Secretary Week.  
See Us For Details

### Sue's Flowers Gifts & Photography

2 N Ave. D  
Haskell, Texas  
PH: 864-2204

### BOOT • SHOE • SADDLE REPAIR

Handmade Belts, Billfolds & Chaps

HEADS OR TAILS WESTERN WEAR  
HASKELL, TEXAS



## AUCTION

Do you have some farm equipment you would like to sell?

We are having an auction

**May 16, 1987**

at the old Ford tractor building 1/4 mile west of Haskell, Texas.

Call us as soon as possible, so we can advertise your equipment.

Contact or call

**Wallace Allison**

997-2561

Rule, Texas

April 9-10-11

Coca Cola 16 oz Bottle 4 pack \$1.49

Paper Plates 40 count pkg. 69¢

Delsey Bathroom Tissue 4 roll pack 99¢

Butter flavored Crisco 3 lb. can \$1.99



**Buster's  
Drive-In**

# Kids need numbers

Today, most working people and two-thirds of their dependents have Social Security numbers. A Social Security number is used primarily in recording lifetime earnings for entitlement to future Social Security benefits. Also, it may be requested for a bank account or savings bond, a driver's license, an application for government benefits, a college entrance examination or other purposes. A provision in the Tax Reform Act of 1986 requires you to have a Social Security number for each dependent age 5 and over whom you list on federal tax returns due after Dec. 31, 1987. Just make sure you

have it when you file your tax return early in 1988. If a dependent does not have a number, generally you can apply by mail or in person at any Social Security office. If a dependent is 18 or over or was born outside the United States, the application must always be made in person. Evidence of the dependent's date of birth, U.S. citizenship or lawful alien status, and identity is required. A public, hospital, or religious birth record is usually sufficient for the first two proofs. School, medical, day care and certain other records can be used for identity.

## Bake sale

Paint Creek seniors will have Bake Sale Friday and Saturday at M-System in Haskell. The sale will begin at 9 a.m. each day and will continue until all the goodies are gone.

## Around town

Visiting over the weekend in the home of Mildred Kelso were her daughters and granddaughter, Imogene Camp of San Antonio, Patsy Lou Driver of Lubbock and Deborah Deane Adams of Lubbock.

Thank you for reading The Haskell Free Press!

# THE CLASSIFIEDS

**NOTICE**  
The Haskell Free Press reserves the right to edit and/or delete all news stories and locals for length and liability and to refuse to print anything deemed not newsworthy.

**NOTICE**  
The deadline for Classified Advertising is 12 noon on Tuesday.  
Haskell Free Press

**For Sale**

HALF PRICE! Flashing arrow signs \$299! Lighted, non-arrow \$289! Unlighted \$249! Free letters! See locally. Call today! Factory: 1 (800) 423-0163, anytime. 16p

**Public Notices**

**NOTICE SALE OF HOUSEHOLD GOODS**  
Household goods of Lloyd Taylor to be for sale April 18th at Storage Buildings. This sale is in compliance of rental contract by lessee and lessor. 15-16c

**Public Notices**

**FDIC SEALED BID SALE**  
Seven vehicles, 1970 to 1980 models. 1978 Chevy pickup truck, 1982 2 1/2 ton oil field truck, set of furr 133/8 tongs/set power tongs HDF, 1982 1704 McKee boat with Evinrude motor and trailer, satellite dish and receiver. Location-Boone's Used Cars, Stamford, Texas. Contact Junior Boone. 915-773-2963. Submit your bid and 5% of total bid to Helaine DiLeone, FDIC Addison Cons. Office, P. O. Box 802090, Dallas, TX 75380. Bid closing date is 12 noon April 21, 1987. 16p

**Card of Thanks**

**CARD OF THANKS**  
We would like to express our sincere thanks to all our friends and relatives for your prayers, cards, food, memorials, flowers, and concern shown us after the loss of our daughter, mother, and sister, Ruthell Clark Cobb. A special thank you is extended to the nurses and employees of Rice Springs Care Home, the medics and doctors for your care, and to Brother Tommy Wilson and Larry LeFevre for the beautiful memorial service. The Clark and Cobb families. 16c

**Bluebonnet Catfish Thursdays**  
71c

WANT ADS PAY OFF!



**Now that Good Stuff Video Club Has Opened You can.....**

## LET THE FUN BEGIN!

* Annual Membership Fee	Free
* First Day Rental	\$2.50
* Additional Day Rental	\$2.50
* 3 Movies for	\$6.00
* Saturday Movie Rental Not Due Back Until Monday	
* Wednesday 2 for 1	
* 1 Free Movie With Each 15 Paid Rentals	
* VCR Available For Rental	
* 500 Selections	



**GOOD STUFF VIDEO CLUB**

112 North Ave E  
Haskell, TX. 79521  
864-2813  
STORE HOURS MONDAY-SATURDAY 12:30 to 8:00



Out of Africa

## See Us For Crop Hail Insurance

### On Your Wheat Crop



522 South Second Street  
(Large Brick Office Bldg. 1 blk. S. of Square on Hwy. 277 S)  
Evan Matlock  
John Wheat

817-864-3050  
Melba Howard  
Secretary

## Executive Used Car Sale

We have purchased 18 Executive Cars  
All like new — Low Mileage — Factory Warranty  
Special Low Prices — Special Financing Available

Lincoln — Mercury  
Cougar — Thunderbird  
Sable — Topaz — Club Wagon Van  
*Many other used cars to choose from*

Also in stock Several clean used Trucks  
Super Cab — '86 Ford XLT  
'86 Chevy Silverado - Loaded — '86 Ford Bronco II  
*All Extra, Extra Nice*

Great selections to choose from  
on all '87 models

**Save Now!**

3.9% APR Financing on  
'87 Trucks — Tempos — Sables — Taurus  
Ends April 30th  
*See Us Now and Save On Financing*

## Bill Wilson Motor Company

*Service After The Sale!  
Four Salemen to Serve You!*

209 S. Ave. E

Haskell

864-2611


## This Special Time...

is for re-creation, renewal and rejoicing. The message may be old, but the meaning is filled with new life.

We wish for you a blessed Easter holiday. May it be just the beginning.


ATTEND  
The Church  
of your choice Sunday

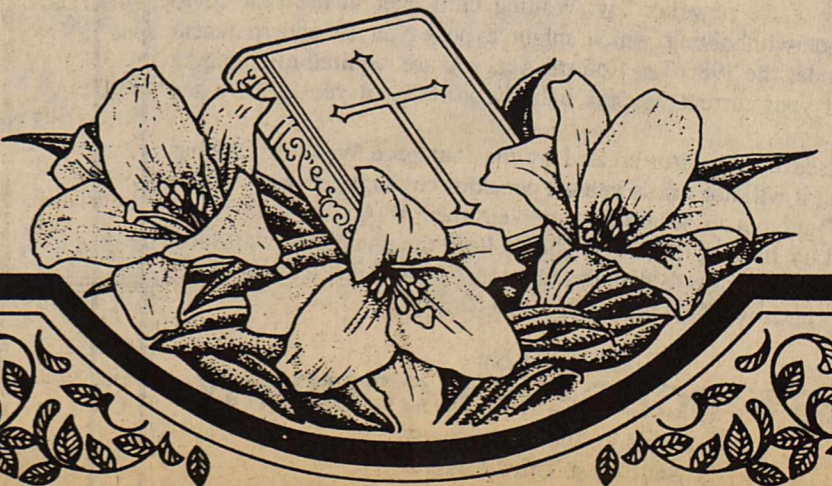
*Your Community Partner*



HASKELL NATIONAL BANK

601 N 1st Haskell, Texas 864-2631









1202 N. Ave E  
Haskell  
Phone 864-3763  
Open 8 a.m. - 8 p.m.  
Sun. 8 a.m. - 7 p.m.

Specials Good Thru Sunday  
**WE GIVE & REDEEM  
PRICE CHOPPER COUPONS  
DOUBLE ON  
TUESDAY & WEDNESDAY**

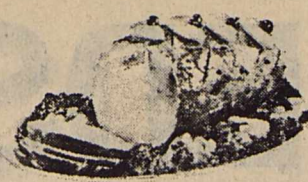
**DOUBLE COUPONS  
7 DAYS A WEEK  
at Modern Way Food Store**

- ✓ We will redeem your manufacturer's "Cents Off" coupons for double their value, up to \$1.00 when product is purchased.
- ✓ We will double only one coupon per like item, all others face value.
- ✓ Limit one coupon per item.
- ✓ Coupon not to exceed value of the item.
- ✓ This policy does not include Free coupons, cigarettes or tobacco coupons or refund coupons.
- ✓ Offer good for limited time only.



**OPEN ALL DAY EASTER SUNDAY**

5 - 7 lb Average Weight (W.A.)  
Price Saver  
**Boneless Hams \$1.28** lb  
(Half Ham \$1.39 lb)



5 - 7 lb Average Weight  
Hickory Smoked Fully Cooked  
Butt Portion Ham **99¢** lb  
Shank Portion Ham **88¢** lb

USDA Choice Boneless Chuck Roast **\$1.48** lb

Lean Ground Chuck **\$1.49** lb

Lean & Tender Chuck Cube Steak **\$2.29** lb

Shurfresh Grade "A" Young Turkeys 12 - 22 lb **58¢** lb

Hillshire Farm Smoked Sausage Reg/Beef **\$1.99** lb

Morrell Franks 12 oz Pkg **69¢**

Shurfresh Whole Hog Sausage (2 lb \$2.95) **\$1.49** lb

Shurfresh Sliced Meats All Varieties **\$1.39** lb

Oscar Mayer Franks Meat or Beef **\$1.79** lb

Sunday House Smoked Turkey 8 - 12 lb **\$1.28** lb

Decker Sliced Bacon **\$1.59** lb

Affiliated Anniversary W/A Boneless Ham Whole **\$1.89** lb Halves **\$1.99** lb

Classic Delight Ice Cream 1/2 Gal **\$1.99**  
Limit 3

Coca-Cola All Varieties 2 liter **99¢**  
6 pac Can **\$1.79**

Shurfresh Grade "A" large Eggs Dozen **49¢**

Shurfresh Brown N' Serve Rolls 4 12 Ct Pkgs **\$1**

Pet Ritz Pie Crust Shells 9 in 10 oz **59¢**

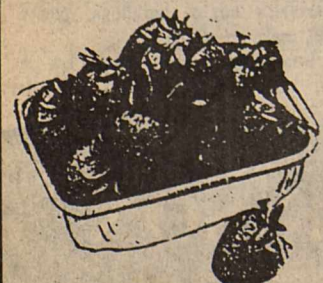
Chicken of Sea Tuna 6 1/2 oz	<b>59¢</b>
Betty Crocker Suddenly Salad 5.5 oz Pkg	<b>\$1.48</b>
Bordens Eagle Brand Milk 14 oz	<b>\$1.49</b>
Betty Crocker Brownie Mix 23.5 oz	<b>\$1.68</b>
Lucky Leaf Cherry Pie Filling 21 oz	<b>99¢</b>
Shurfine Whole Sweet Potatoes 22 oz	<b>\$1.29</b>
Imperial Sugar 5 lb Bag	<b>\$1.69</b>
Kraft Touch of Butter Spread 1 lb Tub	<b>69¢</b>

Shurfine Whole Green Beans 16 oz Cans	<b>3 \$1</b>
Shurfine Whole Kernel Corn 16 oz Cans	<b>3 \$1</b>
Betty Crocker Cake Mix 18 1/2 oz	<b>78¢</b>
Angel Food 16 oz	<b>\$1.48</b>
Kraft B. B. Q. Sauce 18 oz	<b>69¢</b>
Gold Medal Flour 5 lb Bag	<b>88¢</b>

LeSuer Sweet Peas 17 oz	<b>63¢</b>
Princella Cut Yams 16 oz	<b>59¢</b>
Shurfine Tea Bags 100 Cnt	<b>\$1.49</b>
Shurfine Cranberry Sauce 16 oz Cans	<b>2 \$1</b>
Cornet Towels Jumbo Roll	<b>75¢</b>
Angel Soft Toilet Tissue 4 - Roll	<b>98¢</b>
Green Giant Nibblers Corn 12 Ear Pkg	<b>\$1.99</b>
Shurfine Whipped Topping 8 oz	<b>59¢</b>

**FARM FRESH FRUITS & VEGETABLES**

CALIFORNIA **STRAWBERRIES**



**69¢** PINT

FRESH CRISP BROCCOLI BU.	<b>99¢</b>
LARGE BULK MUSHROOMS LB.	<b>\$1.99</b>
GREEN ONIONS RED RADISHES	<b>4 FOR \$1</b>
NEW CROP YELLOW ONIONS LB.	<b>39¢</b>
FRESH GREEN ASPARAGUS LB.	<b>\$1.39</b>
STALK CELERY EA.	<b>39¢</b>
CALIFORNIA AVOCADOS	<b>4 FOR \$1</b>

Shurfresh Homo Milk 1/2 Gal. <b>69¢</b>	Shurfresh Bread 1 1/2 lb <b>9¢</b>	Shurfresh Medium Eggs Dozen <b>19¢</b>
Price Saver Sugar 5 lb Bag <b>99¢</b>	Cornet Towels Jumbo Roll <b>29¢</b>	Nabisco Crackers 1 lb Box <b>69¢</b>