

WELCOME TO BRADY, TEMPLE BOOSTERS--GLAD TO MEET YOU

BRADY COMMERCIAL CLUB

POTENT FACTOR IN THE UPBUILDING OF BRADY—LIVE MEMBERSHIP AND A BOARD OF DIRECTORS WHO BELIEVE IN DOING THINGS.

Amongst Brady's most valuable assets is one of the liveliest commercial clubs to be found in any city of this size. While the club, during the past three years, has accomplished great things for Brady and the Brady Country, even bigger and better things are being looked forward to in the future.

At the fourth annual meeting of the club a week or two ago the body was re-organized, new directors were elected, and the club started off upon its new year with a membership of 115 live wires, all of whom are enthusiastic workers in the club. Included in the number are the leading business men and citizens, not only of Brady, but of the entire county, for the farmers and citizens of McCulloch county have realized the good work accomplished for them in the past, and are willing and anxious to do their part in promoting the welfare of the organization.

The following are the officers and directors of the club: F. M. Newman, president; W. L. Hughes, vice president; D. R. Hardison, secretary; W. D. Crothers, D. F. Savage, Dr. J. B. McKnight, J. T. Mann, Howard Broad, D. Doole, Jr., Joe A. Adkins, Aug. F. Behrens. The directors meet every Monday afternoon at 4:15.

Among the work planned by the directors at their meeting yesterday afternoon was a general clean-up and stay-clean campaign. Clean-up day was generally observed in Brady a few weeks ago, but the directors are determined not to let the good work lag with this effort, but will continue the crusade against the dirt and flies without let-up throughout the year, believing that through this means Brady's reputation as one of the healthiest cities in Texas may easily be sustained.

Another great work undertaken by the directors is a general advertising campaign. It is planned to advertise the Brady country extensively throughout the state and in the East, believing that such a campaign will insure the bringing of more settlers and the development of the fertile lands of the Brady Country.

ROADS AND WATER.

McCulloch County and Brady City Improvements.

Not the least of the improvements in McCulloch county are those of the roads. The past year saw the completion of 65 miles of first class roads leading out in all directions from Brady for a radius of ten miles, as well as the substantial improvement of all cross and secondary roads. For this purpose \$75,000 bonds were voted by the citizens of Brady Road District No. 1, and it is the universal opinion that the money was the best investment ever made in the county. Following the good example set by the Brady precinct, it is anticipated that other precincts will be incorporated for the purpose of voting road bonds, and within the next

few years McCulloch county will be able to boast of a system of thoroughfares unsurpassed anywhere in the state.

Brady last year completed the building of a dam impounding an immense body of water sufficient, according to the engineer, to supply a city of 10,000 inhabitants for one year. For this purpose \$40,000 water were voted by the citizens of Brady, and in addition to building the dam, the sum was expended for one of the most modern and up-to-the-minute filter plants in the state. Temple citizens who know what pure water is, will appreciate the statement made by Engineer John B. Hawley, the water expert, at the recent meeting of the waterworks superintendents in Ft. Worth, to the effect that Brady and Temple had the purest water in the state.

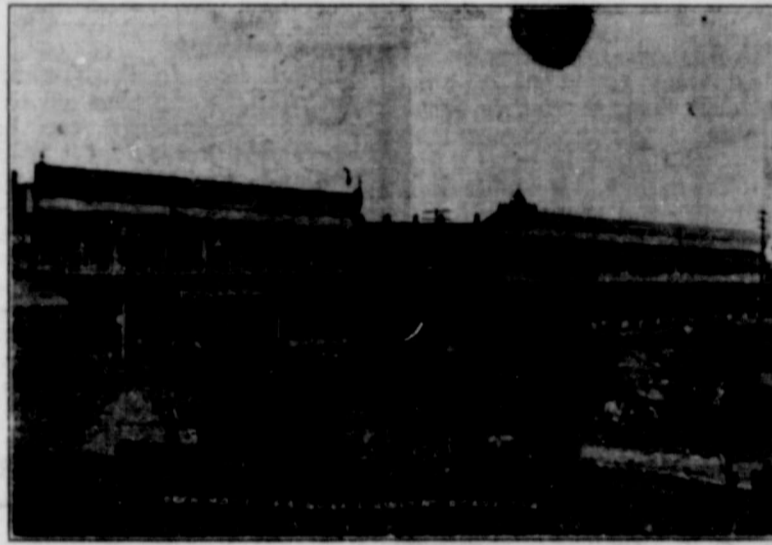
Our Latch String is Out--the Key to the City is Yours--Dinner is Waiting and Silver-Tongued Orators Ready.

Welcome to Brady, Temple boosters! We are glad to have you with us; to meet you and to greet you. We want to know you better; to have you come often, and we want your visit to be so pleasant that you will want to come often.

We only regret that your visit must needs be so short, for we have much here of interest—but let us hope that your first impressions will be so favorable that you will want, in the future, to see more and know more of the great Brady Country.

Just as Temple has her live wires, so has Brady. Her citizens are alive to every opportunity to promote her interests, and work in harmony and with united effort. You will find Brady a city of progressive and loyal citizenship. You will find here substantial businesses, prosperous industries and a steady growth and development in every line.

Short as your stay is, we want you to be at home among us. The keys to the city are yours. And always, when you come to Brady, you will find the latch-string hanging out, and a glad hand and a hearty welcome awaiting you.



SYNDICATE BUILDING, WHERE DINNER WILL BE SERVED AND ORATORY WILL FLOW.

MENU.

TEMPLE BOOSTERS' DINNER.

Served by the Calvary Circle of the Christian Church.

Fried	CHICKEN Broiled	Stewed
	Ham	
	Creamed New Potatoes	
	Fresh Beans	
Fruit Salad		Salmon Salad
Bread		Pickles
Iced Tea	Coffee	Water
	Ice Cream and Cake	

TOMATOES PROFITABLE.

\$400 Per Acre Realized Off McCulloch Farm.

J. E. Spiller was up from Voca last Saturday on business, and reported prosperity abounding in his section. The oat crop is being harvested and is turning out even better than expected. Maize and other crops are looking fine, while corn is already beginning to tassel out. Cotton is looking especially good, having a good, sturdy growth and rich color.

Mr. Spiller has one of the prettiest places in the Voca country, and is the possessor of one of the finest pecan orchards to be found. In addition to all the other good things, he has a fine flowing well, the flow being sufficiently strong to enable him to irrigate some seven or eight acres. The water is piped about seven feet above the well and conveyed to high ground by means of a flume.

Mr. Spiller specializes upon tomatoes, and finds this industry an exceedingly profitable one. Last year he had between one-half and three-fourths of an acre in tomatoes, and marketed over \$300 worth of the fruit, the prices ranging from 3c to 5c per pound. The year before he had about an acre in tomatoes and marketed \$359 worth of the products, the price

obtained being uniformly 5c per pound. This year he is putting in between one-half and three-quarters of an acre in tomatoes. The plants are placed in rows, and after they attain a very good growth the branches become so heavy that they bend over, resting in the furrows, where they again take root. To successfully raise the tomatoes, the plants must be watered once every week.

MUNICIPAL OWNERSHIP

City Owns Waterworks and Light Plant.

Municipal ownership is being given a try-out in Brady, and promises to be highly successful. The citizens of Brady just recently voted for the municipal ownership of the waterworks system and the light plant, both of which have been moved to permanent quarters adjoining the filter plant, where they can be operated at a minimum cost. With the installation of a new engine and dynamo, replacing the gasoline engine formerly used to supply the day current, not only has the service been greatly improved, but the cost of operation has been greatly reduced. In fuel alone a saving of \$16.75 per day has been effected, the fuel bill having been cut from \$25 per day to \$8.25.

IMPROVEMENTS IN BRADY

STEADY GROWTH EXEMPLIFIED IN BUILDINGS—SUBSTANTIAL BUSINESS HOUSES AND BEAUTIFUL AND COSTLY HOMES MARK PROGRESS OF THIS CITY.

There has been a wonderful amount of improvement in Brady in the way of new buildings and homes during the past two years, and included in the number are some of the largest and most substantial business houses, as well as some of the prettiest and most modern homes.

The list includes the new union depot, said to be the prettiest and best depot for a town of this size of any along the line of the Santa Fe. The handsome depot, completed at a cost of \$25,000, is the first and one of the favorable impressions the traveler receives when he reaches Brady. The beautiful parks, drives and walks which surround the depot also add to the favorable impression, and it is an open secret that the Santa Fe spent \$25,000 in converting the depot grounds into this beauty spot. The freight depot adds \$10,000 to the amount spent by the Santa Fe in buildings here.

Probably the most important of recent improvements in Brady is the ice plant completed about a year ago at a cost of about \$30,000, including machinery. To Messrs. J. T. and Duke Mann belong the credit of securing this important and needed industry for Brady, and to these live wires is also due the credit for Brady's first three-story building, now in course of construction, and which will cost about \$30,000 to complete. This building is thoroughly modern in every detail, and would be a credit to any city.

Briefly stated, some of the other improvements worthy of note during the past two years are as follows:

Mrs. Laura White, residence	30,000
Brady National Bank Building	25,000
Abney & Vincent Store Building	15,000
Filter Plant	16,000
Walker-Smith Wholesale Grocery House	\$10,000
Will Davidson, residence	6,000
W. F. Dutton, residence	5,000
C. D. Allen, residence	3,500
S. M. Richardson, residence	2,000
Claude Wood, residence	2,000
Judge Harvey Walker, residence	2,000
Paul Sheridan, residence	2,000

This list is incomplete, and was compiled on the spur of the moment, yet it is sufficient to indicate the growth and the substantial nature of the growth of Brady.

SCHOOLS AND CHURCHES.

To Be Found in Every Community in the County.

McCulloch county is blessed with schools and churches. There is not a district in the county but what has a substantial school building and a place of worship. During the past two years over \$40,000 bonds have been voted by the progressive communities of McCulloch county for the erection of substantial school buildings. Among the most noteworthy are the following:

Rochelle	\$12,500
Melvin	8,000

Whiteland	6,000
Placid	6,000
Waldrup	4,000
Nine	4,000

There are forty-three school districts in McCulloch county, all being supplied with good school buildings. The number of teachers employed totals 80, and the average salary paid is \$65.

Not included in the above figures is the Brady Independent School district, the buildings and equipment of the Brady high school and the North Ward school approximating \$65,000, while the faculty comprises a superintendent and twelve assistants.

Ladies Don't Be Soft Soaped By Soap Dopers or Soap Clubs

No better soap sold than the soap you get of the drug stores of Brady—your home town. Look up your wants in Toilet Articles, Talcum Powder, Tooth Paste, Toilet Water, Face Cream, Toilet Cream. Everything in toilets at

Jones Drug Co., Inc.

C. A. TRIGG, Manager

Cotton Chopping and Oat Cutting Time is Here

8 inch hoe	45c
9 inch hoe	50c
10 inch hoe	55c
Pitch Forks	65c
Garden Rakes	45c

Come to see us, we will save you money on many other things.

The Star Cash Store, Next to P. O.

Oh, You Boosters!

TEMPLE has some good boosters but they don't cover the whole map—don't claim too. Our chief methods of boosting is to give good service and the best merchandise for the money. Call in, get acquainted, and we'll show you what's what in Men's Furnishings.

R. E. Luhn & Co.

PHONE 148

