

Highway 18 May Become Important Artery Of Traffic

SPUR CITIZENS OPTIMISTIC AFTER MEETING AT ASPERMONT

D. L. Granberry, W. F. Godfrey, and Dr. T. H. Blackwell returned Tuesday evening from Aspermont where they attended a boosters banquet for the promotion of paving Highway 18 which connects at Dickens with Highway 24.

Representatives Haynes of Girard and Wade from Jayton, told the assembly that Kent county was practically certain of carrying out her part in the program to have a hard surfaced highway from Dickens to Stamford. And representatives from Stonewall county stated that with the submission of the proper number of names to the Commissioners Court of that county that a bond election would be held and that they were of the opinion that the majority of the people of that county were in favor of this improvement on No. 18.

Another meeting has been arranged in furtherance of this plan which will be a free barbecue at the newly constructed bridge near Aspermont at 10:00 A. M. September 26. County Judge Leonard Westfall of Stonewall county, and who was recently elected legislator from this district was instrumental in securing funds for this project and will likely be one of the principal speakers of the occasion. Everyone along Highway 18 is invited to attend and assurance is made that there will be a plentiful supply of barbecue, pickles, onions and coffee.

Surveyors have been working on this project for the past two years and it has been planned that the highway will not go through the business section in transgressing Spur but will continue along Hill Street to the city limits where it will diagonal across the valley to the railroad and map its path along the north side of the tracks of the Stamford and Northwestern Railway to the city of Jayton.

Such a course is in accordance with federal specifications that a survey shall not be directed across a railway right of way except where absolutely necessary and in order to avoid this hazard as well as to receive the federal grant of a portion of the funds this route will probably be adopted for the permanent highway.

Mr. French, of Abilene, highway division engineer of the district was present at the Aspermont luncheon meet and made an interesting talk.

Every interested person in the district is urged to attend the barbecue and meeting at Aspermont on the 26th of this month and it is likely a definite plan will be made there which will materialize in the hard surfacing of this section of the Fort Worth-Roswell highway which is the choicest Southern route from the east to west.

"Mother" Morris Is Seriously Injured In Fall Sunday Night

Mrs. C. P. Morris, known to her many friends here as "Mother" Morris and who has been spending some time with her daughters, Mrs. Birl Hight and Mrs. Kate Morris, was seriously injured Sunday night when she fell on the stairs of the Hight home.

In the fall Mrs. Morris received a fractured hip as well as other injuries and upon examination at the local hospital it was advised that she be taken to a specialist. An ambulance carried her to a Fort Worth hospital Monday where she was placed in a plaster cast. Mrs. Hight and a niece, Miss Alice Wright accompanied her.

Mrs. Morris is 83 years of age and we are glad to report that she is now on the road to recovery.

Spur and Levelland Tie In Game Friday

PLAY BY PLAY ACCOUNT OF THE GAME

(Morris Laine)

The Bulldogs opened the 1934 season Friday battling to a scoreless tie with the Levelland High Levellanders. The game was hard fought throughout, however the Spur team made more yards from scrimmage and out gained the Levelland boys. First downs were twelve to nine Spur. Soundly outplayed in the opening period the Bulldogs staged a comeback to carry the ball within eight yards of the goal line as the gun sounded ending the game. The game furnished many thrills for the large crowd that witnessed the tilt; all stores in Levelland were closed and the high school band staged a downtown rally and parade to ballyho the game, which was one of the best class B games played in a long while. The game was colorful one from both the playing field and the spectators view. The Levelland team solid red pants with black in seams; black jerseys with red numerals. The Spur club wore their new uniforms of gold duck pants with blue in seams, blue jerseys with orange numbers. This colorful combination along with the Levelland teams colors made the game a colorful one.

The teams were about evenly matched in weight with Levelland perhaps a little heavier. As to blocking and tackling the Bulldogs had the edge. Levelland had more speed as was proven when McArthur, ace Spur back, broke away for seventy yards and was hauled down from behind.

All in all it was a close hard played ball game and both teams at times displayed mid-season form. Levelland plays Lubbock Cowhands at Levelland next Friday while Spur is entertaining its arch-rival of past years, the Slaton Tigers, in a game at the local gridiron.

Levelland kicked off to Spur
(Continued on page 8)

Lubbock Boosters Visit Spur Tuesday

Led by a caravan of some twelve or fifteen cars the Lubbock boosters for the Panhandle South Plains Fair visited Spur about three thirty Tuesday afternoon. These boosters distributed literature and souvenir rulers.

The Panhandle South Plains Fair opens at Lubbock September 24th and lasts six days. There will be exhibits for each department of agriculture. At nights fireworks and trapeze artists will perform. In the afternoons football games and horse racing will be the diversions. Wednesday September 26 is childrens day and a shetland pony will be given away. During the course of the fair three Plymouth motor cars will be given away as well as two General Electric refrigerators. All in all its a big two dollar show for a quarter and the South Plains and Panhandle, are expected to turn out in big numbers.

The Lubbock High Westerner Band accompanied the boosters and rendered several peppy selections for a large Spur crowd which included children from all the schools that turned out for the occasion.

Spur Plays Slaton Here Next Friday

(Morris Laine)

Coach Wadzech Bulldogs open the home game season here Friday in a game with Coach Paul Wrights Slaton Tigers. Spur hasn't played Slaton since 1930 season when the two elevens split in a two game series. The first game was a 40 to 0 win for Spur on the local field. The second tilt was a semi-final game played at Tech Field in Lubbock when the Tigers beat the Bulldogs by a score of 26 to 6.

The game Friday will find two scrapping teams on the field, with both elevens out to avenge past encounters. The Tigers are strong this season and plan to take Spur. The Bulldogs have been working hard all the week in preparation and local fans will get a look in on what the Spur team has this year.

Spur's probable starting lineup for Fridays game: Eostic and McCoombs at ends, Gilbert and Hefner, tackles; Wilhoit and Scoggins at guards; Bingham at center; Martin, Guy Teague, Chapman and McArthur will work in the backfield. E. Martin, Suits, Perkins and Spivey will probably see service. These same boys outplayed a strong team from Levelland Friday at Levelland and are out to win for the high school in Friday's game with Slaton.

Singing Convention to Meet Jayton Sunday

The Tri-County Singing Convention will meet in regular session at Jayton September 23 at the high school auditorium.

This convention embraces Stonewall, Dickens and Kent counties and will be called at 10:30 A. M. Singing all day and dinner on the ground. We are asking every one to bring dinner if you live in any of the three counties. Now folks come. Let's enjoy ourselves and forget about the drouth for at least one day. Also remember the Saturday night session. Plenty good singing Saturday night. Bring your special numbers. We will be glad to have you on program also we have some important business to come before the convention. Now folks if you are interested in making this District Convention a success please be present.

R. E. Beaver, President

Mr. and Mrs. N. N. Rodgers of Post were here last week to attend the funeral of her father, I. G. Van Leer. Mrs. Van Leer returned home with Mr. and Mrs. Rodgers for an extended visit.

Mrs. W. F. Shugart and Mrs. Roy Arrington and little daughter of east of town six miles were visiting and shopping in the city Wednesday.

Fire Department To Sponsor Show And Rodeo 24 to 29

The Yellowstone Shows presenting four of the latest riding devices, six circus side shows and among many other attractions, a free rodeo exhibition each night will be presented here next week under the auspices of the local fire department. Dates announced are from the 24 to 29, inclusive of September.

Announcements state that for the rodeo program the company has an excellent string of bucking horses and steers and that all local riders are invited to enter the competition for the purses.

A location has been secured in the southeast part of the city on the Spur-Jayton highway.

Spur Golfers Win Cap Rock Tourney

In the final golf match of the summer season the Spur Club defeated the Matador team members by a score of 20 to 10. Results of the Sunday matches played on the local course are as follows.

Draper 2 1/2	Stearns 1/2
Culbert 2	Nally 1
Andrews 3	Craven 0
Neilson 1	Groves 2
Powell 1 1/2	Brandon 1 1/2
Lee 2	Pipkin 1
Caraway 2	Harp 1
Williams 2 1/2	A. Stearns 1/2
Clouse 2	Craven 1
Dickeny 1 1/2	

This win gives the championship cup of the Cap Rock League to the Spur Team and is the second time that the locals have won. Season total for the Spur Club: 225 1/2 to its nearest rival's, Matador 207 1/2.

Off To School

The past few days has found several Spur collegians and recent high school graduates beginning a trek back to college or off to school for the first time as the case may be.

Bernard Golding left Thursday of last week for Austin, where he will enter Texas University. He is a Junior at that institution.

Edith Foote, Elizabeth Keen, and Beth Blackwell have matriculated in Texas Womens College at Fort Worth for the 1934 term. Beth is a freshman while Edith and Elizabeth are transfers. Miss Foote attended Denton Teachers three years and Miss Keen was to be a Tech sophomore.

A. and M. College will get Alfred Payne, sophomore, as well as Ray Dickson also a second year man. Clinton Barrett attends that school and has already gone back. Robert Cross will be a Senior cadet at the school. Jack Jones, June graduate from Spur High has been at College Station for several weeks and intends to go.

Tommie Brittan has entered McMurry College at Abilene. Sam Chapman also has gone to his school and is now working out with the freshman football team. Sam is a three year letter man in football from Spur High.

October the first when Texas Tech opens its doors to students, Spur will be well represented. Those who will attend Tech are: Luther Garner, freshman engineer; Spencer Campbell, Junior Business Ad. major; Morris Laine, Journalistic major; Cecil Wolfe of the Business Administration study; Bill Powers, pre-law; Ferrell Albin, pre-med.; Selbia McCulley intends to enter Tech, as do many others whose names weren't available.

Lucy Blaire will be found at West Texas Teachers College at Canyon. And W. B. Francis will try Simmons-Hardin, transferring from Tech.

Misses Velma and Thelma Allison who have been attending business college in Plainview are visiting with their parents near Afton.

Mrs. Nannie Cobb of Dickens was a Spur visitor Monday.

Taylor's Department Store Moving to New Stand in Oklahoma

Taylor's Department Store is this week moving their stock of merchandise to Lawton, Okla., where they will operate a similar establishment on a larger scale.

The Taylor brothers and sisters who have conducted the business here for the past year or more expressed regret on their leaving this city and the many friends and acquaintances they have formed during their residence here. They also expressed appreciation for the patronage extended them in their operation of their business.

Credit Agent Makes Spur Headquarters

O. P. Fowler and son, Charles moved to Spur this week from Lubbock and Mr. Fowler states that he intends to make his headquarters in this city. He is a representative of the Mobile Adjustment Service and states that Spur has accorded him a most cordial welcome and that he has never met a better and more hospitable citizenship and plans to make this his permanent home.

Fire in Little Mexico

Fire of unknown origin destroyed the home of a Mexican resident of the city early Monday morning the alarm being turned in about 3:30 o'clock. The family were out of the city at the time of the fire and most of their personal belongings were destroyed.

LOCAL PEOPLE VISIT DUDLEY BRUMMETT AT AUSTIN

Judge and Mrs. H. A. C. Brummett, Mr. and Mrs. Robt. Reynolds, and John Alexander of McAadoo returned the past weekend from Austin where they had been for the past week attending to business matters at the capitol and also to visit Dudley Brummett who is a page in the legislature hall.

Young Brummett received the appointment through Hon. Joe A. Merritt, legislator for this district.

SPRADLING - SHERER

Miss Bonnie Spradling and S. E. Sherer of Girard married Friday, September 14.

Miss Bonnie is a daughter of Mr. and Mrs. B. F. Spradling.

S. E. Sherer is a son of Mr. and Mrs. Commie Sherer.

Truman Wallace, a prominent farmer of the McAadoo community was down Saturday transacting business and enjoying the horse race, at the Fair Park. Truman says there are several good race horses in this section and that several good race matches could be made in this 'sport of kings', if more interest was aroused.

The baby girl of Mr. and Mrs. Harvey Williams of Girard died Saturday night. The little remains were carried to Afton for burial Sunday afternoon.

Ericson Grocery AND CENTRAL MARKET

STEAK, tender veal, 3 pounds	35c
SAUSAGE, mixed, 3 pounds	25c
BACON, breakfast, sliced, 3 lbs.	86c
COFFEE, bulk, 3 pounds for	35c
COFFEE, 1 lb. pkg. 'Pep,' 3 for	33c
CATSUP, 7 1-2 oz. bottle, 3 for	28c
PEAS, English, 3 cans for	28c
RIBS, calf, 3 pounds for only	28c
SALT, table, 1 1-2 lb. pkgs., 3 for	13c
SOAP, giant bars toilet, 3 for	11c

Call 69 For Instant Service . . . and for
Clean, Wholesome Meats

I Will Buy Your OPTION COTTON CERTIFICATES

For particulars see me at

SPUR GIN COMPANY

J. A. GOODWIN

Pledge

I will think—talk—write . . . Texas Centennial in 1936! This is to be my celebration. In its achievement I may give free play to my patriotic love for Texas' heroic past; my confidence in its glories that are to be.

THE TEXAS SPUR
PUBLISHED ON THURSDAY

MRS. ORAN McCLURE & SONS
Publishers

Subscription Price, \$1.50 Per Year

Entered as second class mail matter on November the 12th, 1909, at the Post Office at Spur, Texas, Under the Act of March 3rd, 1879.

Program For Fifth Sunday Meeting

Our next Fifth Sunday Meeting of the Dickens County Association will meet with the Friendship Church, September 28, 29 and 30, 1934.

FRIDAY NIGHT

- 7:30—Song service led by Bob Allen.
 - 7:45—Devotional by Floyd Bradley.
 - 8:00 Sermon by Sidney Cox on Regeneration alternate L. S. Bilberry of Dickens.
- SATURDAY**
- 9:30—Song service led by W. B. Bennett.
 - 9:45—Devotional led by Bob Edd McCalester of Afton.
 - 10:00—Sermon on the Desegregation of the Sabbath Day by Rev. A. P. Stokes alternate Rev. Victor Crabtree.
 - 11:00—Sermon on the Church Covenant by Rev. A. L. Jordan of Matador.
 - 12:00—Dinner at Church.
 - 1:30—Devotional by E. L. Hooker.
 - 1:45—Sermon on Church Discipline by Rev. J. V. Bilberry.
 - 2:30—Sermon by Rev. F. M. Ewton of Spur on 2 Timothy 4:2 alternate Rev. W. B. Bennett.
 - 3:15—Miscellaneous business.
 - 7:30—Devotional by Fred Crabtree.
 - 8:00—Sermon by Rev. O. L. Cooley of Roaring Springs on World Wide Missions alternate Rev. Harvey Draper.
- SUNDAY**
- 10:00—Sunday School.
 - 11:00—Sermon on the Battle of Gog and Magog Rev. 20:8 by Rev. A. P. Stokes alternate Rev. F. M. Ewton of Spur.

Program arranged by pastor. Everyone has a special invitation to come to this meeting and don't fail for I am expecting you there.
Rev. H. T. Harris,
White Flat, Texas.

Robert Nickels, prominent gin man of McAdoo was a business visitor in Spur Saturday and incidentally taking in the horse race.

Robert Reynolds of Dickens was transacting business in Spur Monday and while here paid the Texas Spur a pleasant visit.

Oscar Gibson, of the Afton community, was a Spur visitor Saturday taking in the horse race and trading mules.

Gale Harvey of McAdoo was down Saturday greeting friends and attending the horse race.

Commissioner E. N. Johnson was a business visitor in Spur Saturday.

IF YOU ARE
PARTICULAR
—about your food you will probably join our host of satisfied customers and dine here . . .

NORRIS' CAFE
"Superior Food"

YOU ARE A STRANGER HERE
BUT ONCE
We Appreciate Your Business

SPUR BARBER SHOP
E. W. GEORGE, Prop.

McAdoo Farmer Has Laid 1-4 Mile of Tile

C. C. Neeley, McAdoo farmer has made and laid 1200 feet of concrete hollow tile in his garden during the past six weeks. He also has 275 feet more made ready to lay. For this amount he has used 10 sacks of cement, thus the tile has cost him a little better than half a cent a foot besides his labor.

"We made from 118 to 150 feet from a sack of cement; we used five parts sand to one part cement," he said. "We made the tile at odd times during the past few weeks. Since we had only 100 boards for pallets we made that many or less at a time. My 15 year-old son and I worked together and we have become quite efficient at turning the tiles out," he added.

"In laying the tiles we used tin coverings for the joints, cut from discarded tin cans. The tile is laid in rows four feet apart and are laid on a level. We did not make a feed line but made each line a separate row. To complete the garden we need to lay 700 feet yet; we have 275 feet of it made."

"The tile we made too late to use it in the spring and summer garden but we have planted beets, carrots, turnips, mustard, radishes and other things in the fall garden over the tile. It is growing nicely. We have cabbage, beans, peas, and peppers from the summer garden saved by surface irrigation. You know, we have not had any rain yet. We could not save the tomatoes."

"We want to put out strawberries and some more grapes this fall. We hope to have a worth while garden next year to show the results of our work. That is the reason folks do not have gardens; it just takes lots of work," he finished.

The Shifting Of The Hemispheres

In a recent address, James S. Carson, Chairman of the Council on Inter-American Relations, said: "The West is to play a new role on the world stage. The great war caused a shifting of the hemispheres. The New will supplant the Old in a leadership which will usher in a different concept in international relations and commercial exchanges. The actual war did not end with the signing of the Armistice, but we believe its termination is dimly visible today. Inter-Americanism will finally point the way to stop the ruthless economic struggle which has been designated 'The War After the War.' If this be true, the long labor pains caused by the birth of this new epoch will not have been suffered in vain."

It seems an axiom that intense nationalism, as pursued by many of the great European powers today, is productive of nothing save chaos—and there is good reason to believe that the peoples of the world will at last turn for relief to an enlightened nationalism such as concerns Mr. Carson. The rigors of military war are not greater than those of economic war.

Friendliness and cooperation between nations is vital to world stability, world progress and world welfare.

Mike Lairson of northeast of Jayton was visiting friends in Spur Sunday.

Uncle Bill Cherry from south of town in Kent County, was transacting business and greeting friends.

J. H. Palmer of Afton was a Spur visitor Tuesday.

Uncle Bill Stafford was here Saturday from his 'Honey Moon' farm and ranch near Afton.

Mrs. Bodey Stafford and sons visited with relatives and friends in Rochester the past week.

Miss Ramza Gabriel of Roaring Springs spent Tuesday in Spur with George and Sadie.

Mr. Clay Beaver from Girard was a visitor in Spur Tuesday of this week.

Mrs. Loren Harkey, is in Rochester this week visiting her sister, Mr. and Mrs. Paul Trimmer.

Chandler Club Gains Three New Members

Three new members gave new life and interest to the Chandler home demonstration club in its regular meeting Monday afternoon when it met with Mrs. Clark Forbis. Plans were made for the club exhibit to be held in November.

Mrs. Ruby Lefevre enrolled as wardrobe demonstrator class 1 and Miss Bertha Cooper as wardrobe demonstrator class 2. The club expects 100 per cent of the cooperators to keep a record of their clothing expenses during the year beginning August 1.

Members present were: Mrs. Frank Forbis, Mrs. Les Turpen, Mrs. Ruby Lefevre, Mrs. Clark Forbis, Miss Edna E. Hamm, and Miss Bertha Cooper.—Reporter.

Mrs. Bert Duncan of Roaring Springs was a visitor in Spur Wednesday.

Mrs. Bill Collier of Afton was a Spur visitor Wednesday.

Mrs. F. C. Gipson was a Spur visitor Wednesday.

Mr. and Mrs. John Adkins and children of Jayton were Spur visitors Wednesday.

Mr. and Mrs. C. W. Fincher of Girard had business in Spur Tuesday.

Mrs. C. W. Stephens and daughters of Dickens spent Tuesday with her daughter, Mrs. O. C. Arthur of Spur.

For Service—A pure milk Durham Bull at 709 North Miller St. Terms \$4.00 cash with service.—J. O. Adcock. 1tp

23 YEARS AGO

Taken from the files of The Texas Spur, published 23 years ago this week. Oran McClure, editor and publisher.

New Gin now going up in Spur—J. E. Johnson, of Stamford, is now installing a new gin plant in Spur in connection with the electric light plant.

J. R. Nations, of Henrietta, was in Spur last week and spent several days here looking after his property interests near Spur.

B. T. Duncan, of Draper, was in the city the latter part of last week. He reports purchasing his father's interest in the Draper gin and is now making preparations for the fall ginning season.

On account of a washout on the Stamford and Northwestern railroad near Swenson, Monday's train was delayed several hours.

C. F. Cates brought in a bundle of cane raised on the Bob Davis place three miles northwest of Spur. The can is fully nine feet high and Mr. Davis cut three acres averaging one thousand bundles to the acre. The cane is worth four cents a bundle.

Mrs. J. E. Pruden and children, of Quamah, are in the city this week visiting her sister, Mrs. G. C. Pass and other friends in Spur.

Recently we received a letter from J. T. George, of near Jayton, who with his family is now at their summer home in Iowa, enclosing two dollars for two subscriptions to the Texas Spur for which he has our sincere thanks.

The motion pictures now being presented at the Airdome, just north

of the Sol Davis store, are the very latest films, coming direct from Dallas and being carried on under the efficient management of Mr. Zinn*** Just received a lot of Shot Guns and Winchesters, 32-25, 25-20, .22 targets and 30-30s. Call and see us. Barber and Handcock.

W. A. Craddock, a prominent citizen of Crosby county, was in Spur last week and while here bought a twenty acre block of land north of Spur. We are informed that Mr. Craddock will at once build a fine residence

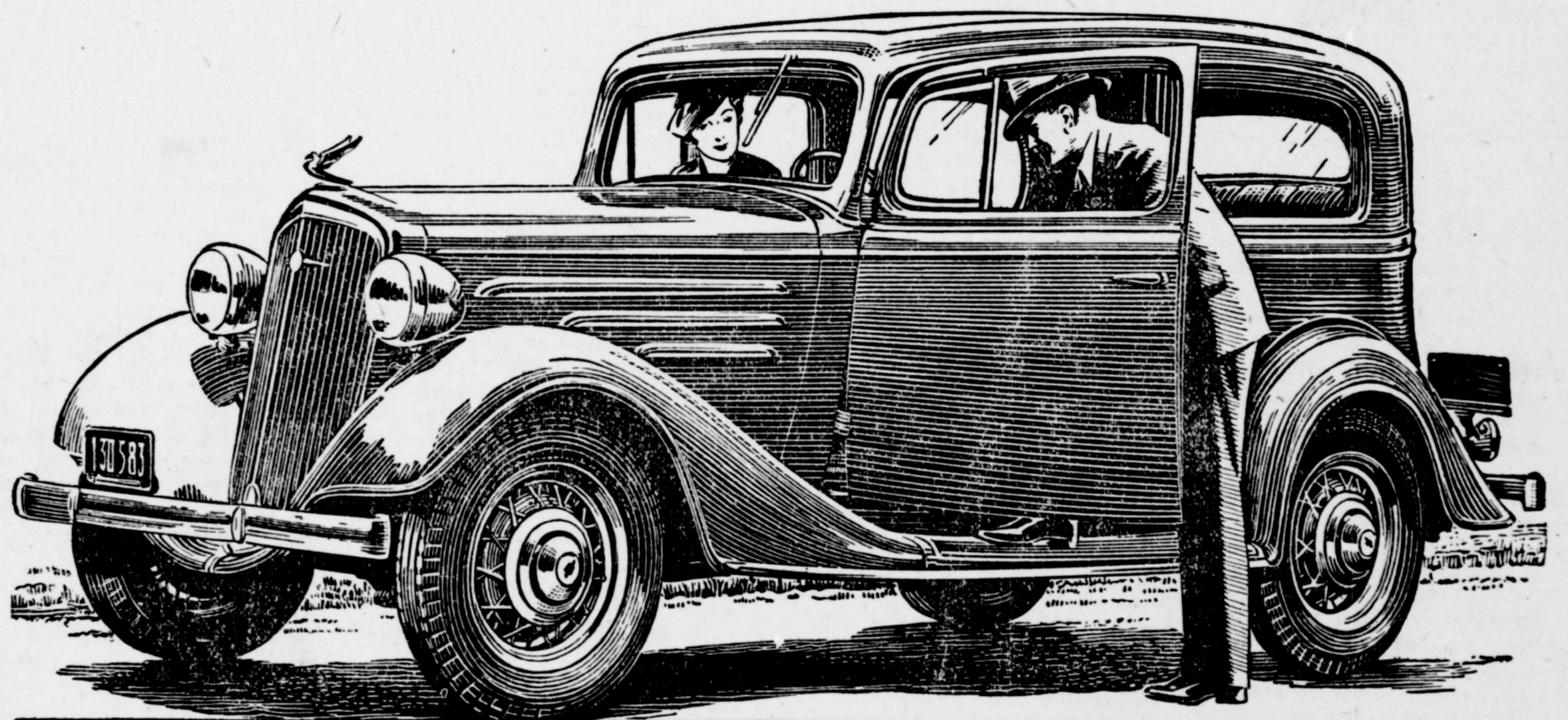
Dr. Bachelor and wife will vacate their home in the western part of the city this week, having recently sold it to C. H. Chumbley, of Dickens, whom we understand will move here at once for the benefit of the Spur public school.

That Messrs. C. C. Tyler, H. S. Haines and C. H. McDonald are fishermen of the old school is evidenced by the string of fish caught one day last week in Spade Tank just south of the city

THE PALACE THEATRE
Sun. Matinee - Mon. Matinee & Nite
"THE HOLLYWOOD PARTY"



Laurel & Hardy - Jimmy Durante - Lupe Valez - Jack Pearl - Polly Moran - Ted Healy and his Stooges
-and others- Mickey Mouse -and others-



Let Chevrolet tell its own story
of riding and driving comfort

Make the ownership test

THE best way to get at the truth behind the fine things you hear and read about the new Chevrolet, is to get in the car and drive. Take this car, drive it over the same routes, in the same way you drive your present automobile, and let the results you can see and feel tell their own story. You have heard that Knee-Action makes bad roads good, and good roads better. A ride will prove it. You have heard that Chevrolet provides shock-proof steering, Syncro-Mesh gear-shifting, a remarkably flexible 80-horsepower engine, and cable-controlled brakes. A few minutes at



One Ride
is worth a thousand words

the wheel will show you what a difference these advancements make in safety and driving ease. And when the ride is over, and you step out refreshed and ready for more, you will know why so many thousands have found it impossible to return to ordinary driving after an experience like this. That is the Ownership Test—easy, enjoyable, and the most practical way to choose a car.

CHEVROLET MOTOR CO., DETROIT, MICH.
Compare Chevrolet's low delivered prices and easy G. M. A. C. terms. A General Motors Value

Knee Action CHEVROLET

SPUR MOTOR COMPANY

SPUR, TEXAS

DEALER ADVERTISEMENT

Corn Stalks Make Good Grade Silage

(Chas. N. Shepardson)
 Hundreds of tons of feed that could be used to save cattle this winter are wasting in the fields today. Corn stalks that failed to make or have had the corn removed, are being lost by allowing them to stand in the field. These stalks if harvested and put in a trench silo can be made into palatable and nutritious feed. Normally these stalks are hardly worth the cost of harvesting and few farmers have machinery for handling them.

But, with hay prices approximately doubling those of a year ago and prospects of going higher, it will pay any farmer to cut and save his stalks even though they must be handled by hand.

The trench silo is easily constructed and can be dug to fit the feed available. Texas housewives know the value of the tin can in saving fruits and vegetables for winter food. Many Texas farmers still have to learn the value of the silo in converting coarse, dry stalks that are normally wasted by the cattle into a juicy, palatable feed that will be consumed readily. Stunted sorghum and other crops of that type can be materially increased in feeding value if handled in this way.

Another advantage of this method is the elimination of danger from sorghum poisoning. There have been several accounts in the papers recently of cattle losses due to grazing sorghum. This is caused by prussic acid on the sorghum, which is lost when the sorghum goes through the fermentation process in the silo.

In putting these crops in the

QUILTS—for sale and will make quilts to order.—Mrs. D. B. Ince, Phone 144J, 221 N. Keeler St., Spur, Texas. 2tc

You Should Be Guided By The Appearance OF OTHERS

It is something to KNOW that your coiffure is correct; and certainly it is adjudged by those around you. . . . We make a specialty of pleasing you with work that you know others will pronounce becoming and correct.

PERMANENTS
\$1.00 \$2.00 \$3.50
\$5.00 \$6.50
 Wave, dried 25c
 Eyebrow, Lash Dye 50c
 Manicure 50c
 Facial, plain 75c

Guaranteed Work—You Must Be Pleased

ULDEEN & BESSIE
 Phone 298

: Directory :

Mrs. P. A. Ramsey
 Picoting, Hemstitching and Button Covering
 SPUR, TEXAS

JOHN T. WYLIE
 PHYSICIAN & SURGEON
 Office Phone 2. Res. 105
 Office at Red Front Drug Store

Piles Treated
 "By Injection Method"
 See me at Dr. Hale's Office.
 DRS. SMITH & SMITH

Dr. T. H. Blackwell
 Specializing on Ear, Eye, Nose and Throat and Office Practice
 Office at City Drug Store, Phone 94

W. D. WILSON
 ATTORNEY-AT-LAW
 General Practice of Law

DR. P. C. NICHOLS
 PHYSICIAN & SURGEON
 Office, Nichols Sanitarium
 Phone 158 Residence 169

trench, care should be taken to see that they are packed tightly. Add plenty of water to moisten the entire mass. Cover with about one foot of dirt. The ensilage will be ready to use in about two weeks. Feed with on to two pounds of cottonseed meal per cow per day, it will make a good maintenance ration and will return from fifty to one hundred percent more feed value than the same crop fed dry.

Presbyterian

A regular program of services will be observed at the Presbyterian church on Sunday, September 23rd. This will include Sunday School at 10 o'clock, Morning Worship at 11 o'clock, and Evening Worship at 8 o'clock. Mid-week prayer service will be held on Wednesday, September 26th, at 8 o'clock. The topic for discussion during prayer service will be a book by Charles M. Sheldon, the title of which is, "In His Steps, What Would Jesus Do?" You are invited to worship with us; we take great pleasure in sharing our services.

1933 STUDY CLUB

The 1933 Study Club met Tuesday, September 18 at the home of Mrs. Acie Bailey, with twelve members present.

The subject of the program rendered was "Home". Mrs. R. A. Taylor gave an interesting paper on "The Home as a Social Center." This was followed by an interesting paper by Mrs. W. R. Weaver on the subject, "As is the Home, So Shall be the Community, County, and State."

Mrs. Webb, recently elected, accepted membership in the club.

Child welfare will be the subject for study for the next meeting, which will be at the home of Mrs. V. L. Patterson.

1931 STUDY CLUB

The 1931 Study Club met Tuesday afternoon at 3:30 with Mrs. Craig, with ten members present.

An interesting program on Texas Writers was given, with Mrs. Reece McNeill as leader, assisted by Mrs. King and Mrs. Middleton. The club history was given by Mrs. Rector and was most interesting.

The hostess served delicious refreshments of sandwiches, olives, angel food cake and punch.—Rep.

SETH PARKER CLUB

The Seth Parker Club composed of the choir of the First Baptist Church spent two hours of enjoyable singing of sacred songs at the home of Mr. and Mrs. R. T. Tolbert, Tuesday evening from 8:00 to 10:00 o'clock.

Nineteen members and six visitors were present to enjoy the singing and the delightful refreshments served.

Striking Novelties Make "Hollywood Party" Biggest Hit

A dizzy melange of stars, beautiful girls, catchy tunes and gorgeous settings hit the screen of the Palace Theatre Sunday when "Hollywood Party," Metro-Goldwyn-Mayers much-heralded joy-fest on celluloid opens its engagement.

FUN IN EVERY REEL

"Hollywood Party" is a fast-moving, syncopation-filled portrayal of life in the mansions of the screen capital, and Hollywood's foibles and folk are used in a hilarious story through which runs a romance. Thrills of escaped wild animals blend with the comedy antics of Laurel and Hardy, Jimmy Durante, Polly Moran, Charles Butterworth and others.

The rivalry between two "Jungle Stars," each trying to cheat the other out of a cargo of lions; the appearance of Mickey Mouse, Walt Disney's cartoon, actually working with human players—these are a few of the striking novelties in the picture. The "Musical Wall," a great orchestra mounted on a perpendicular wall, the side-splitting "Reincarnation" of Jimmy Durante, and other elaborate detail, for laughing purposes only, grace the different episodes of the fast-moving play. Song numbers, interpolated into the picture as integral parts of the plot, include "Hello," sung by Jimmy Durante, Jack Pearl and dancing chorus; a duet sung by Durante and Polly Moran; "I've Had My Moments," a love duet with June Clyde and Eddie Quillan; Mickey Mouse's "Hot Chocolate Soldiers"; "Hollywood Party" and "I'm Feelin' High."

HONORS ARE DIVIDED

A stellar aggregation scores in the picture, including Laurel and Hardy, Jimmy Durante, Charles Butterworth, Polly Moran, Lupe Velez, Frances Williams, Jack Pearl and Ted Healy and his stooges.

CARD OF THANKS

We wish to take this means of expressing our thanks and appreciation for the material kindness and expressions of sympathy shown during the illness and death of our beloved husband and father. In your time of need or bereavement may such tried and true friends be present to administer to you.

Mrs. J. H. Hooper
 W. S. Hooper and family
 J. C. Hooper and family
 Mrs. T. T. Childress and family
 H. L. Hooper and family
 Mrs. Katie V. Conaster and family
 R. C. Hooper and family
 P. J. Hooper and family
 Mrs. J. R. Culpepper and family
 C. A. Hooper and family
 Raymond Hooper and family
 Mrs. Rex Carlisle and family

CARD OF THANKS

We wish to express our sincere thanks for the many sympathies and kind words and deeds of our neighbors and friends during the illness and death of our husband and father.

Mrs. I. G. Van Leer
 Mr. and Mrs. A. W. Van Leer
 Mr. and Mrs. N. N. Rodgers.
 Mr. and Mrs. A. H. Rhodes

RUMMAGE SALE

The Ladies Aid Society of the First Christian Church will have a Rummage Sale Saturday, September 29 and Monday, October 1 in the Campbell bldg. next door to the Spur Motor Co.

Be there and get a bargain!

Club Woman Doubles Year's Fruit Budget

"My fruit budget for this year calls for 50 quarts of canned fruit and fruit juice and I have 112 quarts canned," says Mrs. Dock Reid, home demonstration club woman at Dry Lake. "I have canned 24 quarts plums, 8 quarts grapes, and 80 quarts of peaches. I may can some apples later."

"My complete budget will not be filled. I have not canned any vegetables this year. I have enough corn left over from last year and 10 quarts of pickles left over. I want to can some leafy vegetables from our fall garden. Then of course the meat will be canned later," she added.

Miss Lois Goodwin of Lubbock visited with her father the first of the week.

Uncle Bill Austin, a pioneer of this section, was down from his home in the Afton community Saturday, transacting business and greeting his many friends here.

Oh Boy--Oh Joy--Let's Go!

—A \$2.00 Show For 25c—

PANHANDLE SOUTH PLAINS FAIR

No Extra Charge for— Liberal Premiums In—

Horse Racing Every Afternoon
 Fireworks at Night
 Horse Shows
 Band Concerts
 Vaudeville and Circus Acts
 And Many Other Fair Association Attractions

Agriculture
 Livestock
 Poultry and Rabbits
 Boys' and Girls' Clubs
 Textiles, Culinary.
 Flowers, Art, Antiques,
 And All Other Departments

6 - Big Days - 6—6 - Big Nites - 6
 Lubbock, Texas
 September 24th, 25th, 26th, 27th, 28th, 29th, 1934

All School Children Free!—Come One! Come All!
 Wednesday, September 26th, Only

BIG BARGAIN

Subscription OFFER

on

THE TEXAS SPUR

and

THE SEMI-WEEKLY FARM NEWS

From now until December 31, 1934, a combination yearly subscription rate of \$1.50 for the two publications named above will be in effect.

Here is the offer—

The Semi-Weekly Farm News \$1.00
 The Texas Spur (in local territory) 1.00
Combination Price \$1.50

ADVICE GIVEN—

(Continued from page 1)

contractor or building supply dealer.

3. Do I borrow money from the government? No.

4. How much may I apply for? From \$100 to \$2,000 depending on any one property. A like amount in your income, for improvements on connection with not more than five properties (\$2,000 maximum on each) Approval by the Federal Housing Administration, Washington, D. C. must be secured by the lender in advance for loans on more than five properties.

5. How long may notes run? For any number of months from one to three years. (Notes extending from 37 months to five years may be submitted to the Federal Housing Administration by financial institutions for special consideration.)

6. What security is required? Only that you have an adequate regular income and a good credit record in your community.

7. What assurance need I give? (a) That you own the property. (Lessees under "repairing circumstances which the lending in-

stitutions can explain.

(b) That the annual income of the signers of the note is at least five times the annual payments on the note.

(c) That your mortgage, if any is in good standing, and that there are no past due taxes, interest or liens against your property.

(d) That you will use the proceeds solely for property improvement.

8. What signatures are required? Signatures of the property owner; and (except in special cases) if the owner is an individual and is married, also signature of wife or husband. No other co-signers or endorsers are required.

9. What is the cost of this credit? The financial institution may not collect an interest and/or discount and/or fee of any kind, a total charge in excess of an amount equivalent to \$5 per \$100 of the original face amount of a one year note, deductible in advance.

For example: If you need \$285 for housing improvements, you might sign a note for \$300 payable in 12 equal monthly installments. In this case the note would bear interest, because the maximum charge permitted (\$15) would be included in the face of the note.

SPUR-LEVELLAND

(Continued from page 1)

with Bostic making a nice return. McArthur carried 3 yds. McArthur stopped for no gain. McArthur kicked to 70. Kirkpatrick goes through tackle for big gain for Levelland. Kirkpatrick stopped by Bostic, no gain. Teague of Spur runs Kirkpatrick out of bounds on the 30. Levelland goes through tackle for 1st. down. Levelland offside and draws a 5 yd. penalty. Kirkpatrick drives off tackle for three yds. Levelland punts over goal line, ball brought out to 20 yd. line. Spurs ball. Jim McArthur circles left end for first down. Martin loses a yd, on a try at center. Martin passes and it is intercepted, play called back as Levelland is offside. Harty fumbles no gain. McArthur punts. Spur man kills ball on 45. Levelland carries for two yards. First down Levelland on line buck. Time out Spur. Sub-Levelland Rogers for Kirkpatrick. Rogers on 1st. try makes a 1st down on a thrust through center of Spur line. 5 yds for Levelland on line play. Rogers pass is incomplete. Center of the line yields 5 yds for Levelland and it is a 1st down. Gilbert smears Levelland ball carrier for no gain. Rogers trouch center for 8 yds. Inc. pass. Penalty Levelland offside. Martin breaks up another pass. Bostic breaks through and dumps passer for loss. Spurs ball. Harry fumbles on 25 yd line. Levelland recovered. McWorther cuts off tackle for 5 yds. 3 yd gain Levelland. No gain at center. Spurs line of Bostic, Gilbert, Wilhoit, Bingham was like a wall on the play. Bostic busts up attempted Levelland end run. Spur 0 Levelland 0.

QUARTER

Martin passes and it is intercepted. Levelland makes two yd off tackle play. Teague forces Levelland out of bounds on a try around enr, but it was enough for a 1st down. Levelland fumble was recovered by Bostic. On the next play Jim McArthur circles around right end behind pretty blocking and goes 70 yds to the 17 yd line before he was hauled down by McCann speedster from the Levelland back field; it was long run and set the crowd to yelling. First down Spur by virtue of the run. Henry Scoggin in the Spur backfield makes two yds at center. Harry M. loses 4 yd on a try at left end. Spur fumbles and loses 8. Martin passes, no receiver open and it is incomplete. Suits for Chapman in the Spur secondary. Levellands ball and no gain. Time out Spur. Levelland makes 5 yds. Levelland fumbles and Spur recovers. Bostic again. McArthur makes a five yd run. Teague carries for 2 more. Jim picks up a yard on a line smash. First down Spur with Martin running. McArthur no gain. Ford (guard) for Levelland intercepts Spur pass. Roberts smashes to a 1st down for Levelland. 6 yd gain through center for the Levellanders. Butler replaces Perkins for the Bulldogs. Levelland through center for gain of 2 yd. Sub for Levelland. McCann, quarter makes a 1st down for Levelland. Penalty offside Levelland. Fumble for the Plains boys. They kick to Martin on the 12—return twelve yds. Jim loses 2. Martin passes to Scoggin 28 yd. gain and first down. Levelland intercepts Martins pass. McWhorter over Spur tackle for 1 yd. Levelland punts, fair catch Martin on the 20. McArthur picks up two at center as the half ends. Spur 0 Levelland 0.

During the rest period between playing time the Levelland High School Band entertained with selections also a tumbling team did acrobatics.

HALF

The starting lineup continues for both clubs as the second half begins. Levelland kicked to Spur and H. Martin returned. Martin makes a 1st down doing some nice broken field capers around the left end. Jim Mc cuts through center for a couple of yds. stopped by Alvey, big guard. Martin passes out of bounds. Martin passes to Teague and he

drops it. Levelland draws a 15 yd penalty on the play. McArthur no gain. 5 yd penalty assessed to the flat country boys for offside. Jim Mc smashes to a first down and Martin gains a yard at tackle. Jim makes 4 at tackle. Martin passes to Bostic, inc. Another Spur pass is inc.—ball goes over and Chapman stops Levelland after a gain of only 1 yd. Lindsey into the lineup for Levelland, replacing Rogers. Levelland punts and recovers ball. Kirkpatrick back in the lineup for Levelland and he makes 4 yds at right end. Scoggin brushed aside the interference on the next play and spoiled a try at center. No gain Levelland as McCombs tackled hard. 1st down for Levelland McCann carrying. Again Henry met the ball carrier at the line to stop a play before it gained an inch. 5 yds at center, Levelland, 2 more at center. 1st down for Levelland, at tackle. It was a close play and had to be measured. Frosty broke into secondary and bumped the Levelland quarter for a loss. Inc. pass. Levelland. 1 yd at center for Spurs opponents. An attempted field goal from placement by Levelland on the 15 yd line was low as the whole Bulldog team rushed the play. The ball was brought out to the 20 and Jim Mc immediately made 8 yds. dashing around the end; on a statue of liberty play Suits, Spur half back made 30 yds around left end. (the statue of liberty play is an old one and usually works about twice in a game. It is executed thus: the quarter back receives the ball from center raises his hand containing the ball as if to pass and hands it to a half back who runs behind him and starts running.) Spur fast 4 yds as the quarter ended. Spur 0 Levelland 0.

QUARTER

Sub. Spur: Chapman for Suits. Teague tried center for no gain. Martin passes to Teague for 10 yds and a 1st down. Martins pass is intercepted by McCann but big Perkins stopped the runner. No gain Levelland. No gain again. Gilbert. Buck, Scoggin and McArthur in the way. Harry brings Levelland's punt back fifteen yards. Harry found nobody open for a pass so he runs for a first down. Incomplete pass Spur. Jim, no gain. Both teams offside on next play. Teague

drives through center for two yards. Jim made four at a faked line buck. Spur goes over for another first down, but failed by inches to make another. Levelland attempted pass is smeared. Five at center for Levelland. Bad pass from center is fumbled by Levelland. The Levellanders kick out on the 38 yard line. On a fake play makes a couple of yards. Harry Martin goes for a first down. Levelland broke thru to throw McArthur for a loss. Bostic made three yards on a pass from Martin. Scoggin hit the line for a yard gain.

An intended pass to Teague was no good—incomplete. Ball goes over. Two yards for Levelland. L punts and it is a wobbly end over end that only carried twenty yards, taken by Jim with no return. No gain Jim on a stab at the line. Teague catches Martin's pass for a first down. Harry breaks into the open field on the next play and after dodging several would-be tacklers, goes thirty yards before being downed. It's a first down. Teague two at center. Martin nine first down. Spur is carrying on a desperate drive to pay dirt and are in the shadow of the goal posts as the game ends; a scoreless tie.

STARTING LINE-UP

Player	Position	Player	Position
Spur		Levelland	
Bostic	left end	Berry	
Gilbert	left tackle	M. Alvey	
Scoggin	left guard	Ford	
Bingham	center	Green	
Wilhoit	right guard	L. Alvey	
Perkins	right tackle	Steel	
McCombs	right end	Langly	
Chapman	left half	McCann	
Teague	right half	Roberts	
McArthur	full	McWhorter	
Martin	quarter	Kirkpatrick	

Substitutions: Spur—Suits for Chapman; Butler for Perkins. Lev-

I WILL HAVE

Colorado Pears

SATURDAY ON LOTS IN SPUR—at only

'1.25 Per Bushel V. N. Redd

Terraces Prove Big Aid to Tree Growth

"We have worked to keep the trees alive this summer" says Mrs. Jim McArthur of the Red Top home demonstration club. "Those in front that were benefitted by the terraces we built at Mr. Dickson's suggestion have grown right along this summer. With the terraces those trees received the water from the lot and pasture that formerly was lost, while those trees back of the house have had to be watered by hand."

Mrs. McArthur plans to be yard improvement demonstrator for her club next year. They have made several improvements this past spring in moving some shrubs from the center of the yard and setting them at the base of the house as foundation plantings. A rock cobble stone walk was laid from the front steps to the gate. She plans to sod the yard with Bermuda grass and finish the foundation plantings.

Several years ago groups of Chinese Elms were set about the home. It has meant work and thought to keep them alive and growing this past year. The McArthurs feel that they have been well repaid for their labor for already they are enjoying the shade and the improved appearance of the house since it is framed with trees.

Fred Hisey returned the past week from South Texas where he has been for some time. He reports that a fairly good crop was harvested there this year and that conditions were better here than he expected from reports.

Mr. and Mrs. W. W. Ellis of the Rocking Chair Ranch were shopping and visiting in Spur Wednesday.



With each Eyebrow and Eyelash Dye we will give one Arch FREE! We still continue our Dollar Permanent.

Efficient and Expert Beauty Work

DeLuxe Beauty Shoppe
Loretta and Dorothy Garner
Phone 17

FRESH

OYSTERS

Every one is glad when the oyster season opens. We have them—any way you want 'em! . . . from raw to taw!

SHORT ORDERS

Everything in the short order line . . . all kinds of sandwiches and "take out on picnic lunches." Come in and try them.

TRY OUR PLPATE LUNCH FOR ONLY

25c

Highway Cafe

"A Good Place to Eat"

DAWSON HYDRO-CLEANED COAL

GIVES MORE HEAT

SWAFFORD

Phone 32

Harris Street

ANNOUNCEMENT

I shall begin my class in music September 1st, teaching the following instruments: Violin, Mandolin, Cornet, Saxophone and Piano.

All pupils will have free instructions in Orchestra and music appreciation.

Mrs. J. E. Berry

Studio at Home—314 East Harris St.

H. P. GIBSON INSURANCE AGENCY

PHONE 31

WENDELL BLDG.

INSURANCE BONDS

"SUPPOSE YOU HAVE A FIRE TONIGHT"

Duck Creek Girls Check Up Guides

In checking over the Inventory Guides for Girls in their club meeting Tuesday morning the Duck Creek 4-H club found that they had allowed their score to drop during the summer vacation. The Guide includes correct posture and grooming in personal appearance, health habits and selection and care of clothing.

The club lost half its membership when school started for four girls entered high school elsewhere. Those present Tuesday morning were: Ruth Matlock, Marguerite Bural, Pauline Hagins, Dot Swarngen. Miss Nell Durham, sponsor, Miss Cora Durham, visitor, and Miss Pratt.—Reporter.

Your Power Company A Service Institution



West Texas' phenomenal progress during the past decade has been equalled only by the steady expansion of its West Texas Utilities Company, for while West Texas has been carving industrial history, this company—to aid and foster that growth—has kept its facilities modern and in advance of immediate needs.

Today 2,600 miles of cardinal Transmission Lines—energized from three large, strategically located main generating stations and strengthened by many auxiliary or stand-by plants—has replaced the precarious and costly part-time "lighting" plant of yesterday. This new-day Transmission System insures an immediate supply of power sufficient to meet any development.

The program of this Company has been, and will continue to be, the rendering of increased use of service by constantly decreasing rates. Since the organization of the West Texas Utilities, the consumers have benefited by total rate REDUCTIONS amounting to MORE THAN SIXTY PER CENT—an unheard-of accomplishment in the days of isolated plants.

Electricity renders one of the most valuable services to the household. Yet it is sold at the lowest price of any item of the household budget. It represents approximately only one per cent of the workman's total expenditures. Electricity is cheap! You should use much more of it.

Do you know that your increased use of Electric Service is billed on a surprisingly low rate schedule . . . and adds only a small amount to your total bill?

West Texas Utilities Company

RAYENWOOD - NIGGERHEAD SUNSHINE - MAITLAND BEST COLORADO COALS Sold By Your Coal Dealer



You Get Them Clean In Thrifty Service

Why go thru the aching back-breaking process of doing the heaviest part of your laundry work—when we wash them for you at such a reasonable cost. The flat work is returned ironed, and ready to use—garments, etc. are returned damp.

5c per pound

SPUR LAUNDRY COMPANY

Phone 344