

The Winters Enterprise

VOLUME EIGHTY-ONE

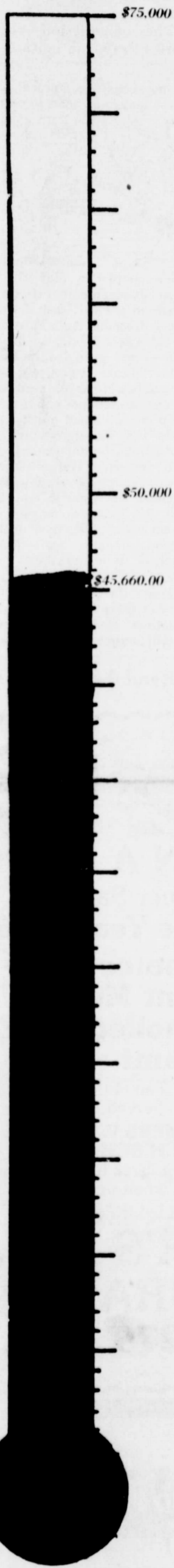
USPS NO. 687-220

WINTERS, TEXAS 79567, THURSDAY, AUGUST 8, 1985

PRICE 25 CENTS PLUS TAX

NUMBER 20

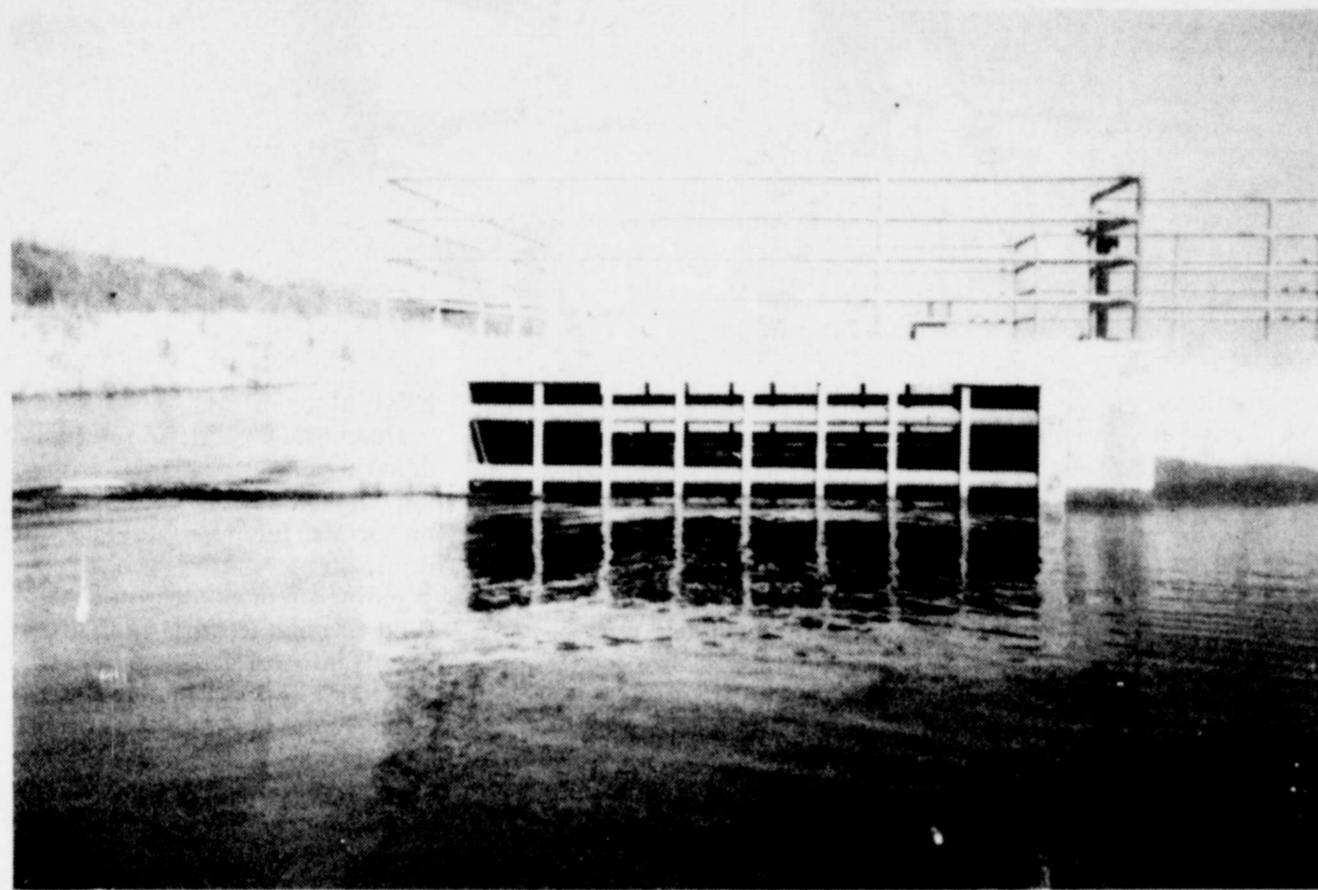
North Runnels Hospital X-Ray Machine Fund



TOTAL TO DATE: \$15,660.00
TOTAL NEEDED: \$75,000

Apply this week for pre-kindergarten

This Friday is the last day to enroll four-year-olds in the pre-kindergarten class of the Winters Elementary School. To be eligible for the class, a child must be four years old on or before September 1 and must either speak limited English or come from a family with low income. To enroll a child in the class, call L.C. Hounsel, Elementary Principal, at 754-4031 or 754-4037.



Filled to the brim, and then some

The level in the new Winters lake rose above overflow following recent rains. This is the most water to ever be impounded in the lake. Before dropping to the top of the overflow, the water completely covered the pier next to the boat ramp. This water is added insurance for the residents of north Runnels County of an adequate water supply.

Wait a minute... Grand jury true bills record number

By Kerry Craig
It seems like we just got through with the season for political rhetoric.

Now, quite frequently, we see good old Mark on the tube standing among a bunch of wreck cars. He is telling of the need to wear seat belts.

There is no political disclaimer at the end of the ad. You say that the spot is not political. I would bet otherwise.

The next race for the governor's office may be interesting. There has been something said about Bill Clements running again and that alone would be enough to make the good-old-boy we have now want to start shaking babies and kissing hands.

Another name that has been coming up quite often is Tom Loeffler.

Either Clements, a Republican, or Loeffler, a Democrat, could do a good job in Austin.

House Bill 72 and the seatbelts are enough to lose a bunch of votes for somebody.

All of our local governmental entities are busy preparing their budgets for the next fiscal year and it looks like taxes are going to go up.

In our local school districts we will find that the tax rates will increase. The increase is due to two things: House Bill 72 and a decline in the value of oil and agriculture property.

In Winters the two are about the same, just over \$90,000 each. The decrease in the property values is bad enough. But when the state legislature puts this additional burden on the tax payer it is—well I can't say it here.

Maybe, next election time, we can get the message across to the politicians (and Mr. Perot, too) that enough is enough.

Now that Stacy Dam is going to happen, there are some folks that just won't leave well enough alone.

All that mess about some snake that may be at the of his rope.

Well, they call it a water snake. It would seem that with a lake there would be more water for the snake to slither in.

Probably, if those guys that want to throw a monkey wrench into something they will find themselves out of a job.

They, in the past, have gone to great lengths to keep their jobs in their government bureaus. Remember when a bunch of big bucks were spent trying to learn if the baby monkey loved its mother?

There might well be some suggestions for other critters that are in danger of becoming extinct.

The Runnels County Grand Jury returned the most indictments, or true bills, ever handed down in this county.

A total of 17 indictments, ranging from kidnapping to felony DWI were returned in the marathon session.

Enrique Contreras Hernandez was true billed on an allegation of involuntary manslaughter.

Hernandez, a Mexican alien, was the driver of a pick up that went out of control on a curve on the Drasco highway July 20. The indictment alleges that Hernandez caused the death of Nelchor H. Israel, also of Mexico, when he lost control of the vehicle and it overturned.

Another passenger in the pick up remains hospitalized in Abilene with injuries sustained in the same wreck.

John Taylor Krause, of Winters, was named in two separate indictments by the grand jury.

Krause was indicted on a charges of kidnapping and burglary of a habitation and committing aggravated assault.

The charges leading to the grand jury indictments were filed in connection with an incident last month in which Rex Harrison was assaulted in his home then forced, at gun point, to drive to a convenience store to cash a check to give his assailant some money.

Teofilio (Apache) Santoya, of Winters was named in an indictment alleging aggravated assault with a deadly weapon. The indictment was in connection with an incident in which David Carroll was threatened by a man wielding a knife.

Two indictments were returned against Joanna Fry Ortiz of Winters. She was indicted on charges of aggravated robbery

You are invited to Stacy Dam meeting

A meeting with the Runnels County Commissioners and the Ballinger Industrial Development Authority to discuss the Stacy Dam project will be held in the Runnels County Courthouse in Ballinger on Tuesday, August 13 at 10 a.m.

Owen Ivie of the Colorado River Municipal Water District will be present at the meeting to discuss the project and to answer questions.

"All interested citizens of Winters are encouraged to attend," said Don Bethany, manager of the Ballinger Chamber of Commerce.

City sells old Winters Lake

The Winters City Council, in the regular meeting Monday, opened bids for the sale of the old lake north of town.

This was the second time that bids were opened on the lake property. The first two bids were rejected as being too low.

Only two bids were submitted to the council last night and the successful bid of \$22,001 was submitted by Bob Pruitt. The only other bid was in the amount of \$20,000.

With the sale of the lake, the city will retain a non-participating, 50 percent interest in the mineral rights to the 78-acre tract of land.

The council said that if the city were to keep the lake it would have to spend money to fence the property and that the dam will have to have some work done on it.

It was noted that the high bid was considerably less than the appraised value of the property. The council agreed that it had been hoped that the bids would have come in higher.

The council gave the go-ahead to advertise for bids for new water lines for the target area of north west Winters for Texas Community Development Block Grant funds.

Engineer Billy Jacobs told the council that it was anticipated that the water line project would cost in the neighborhood

of \$65,000 to \$70,000.

Bids for the water line portion of the project will be opened on August 29 and it is hoped that work can begin in September.

After the work is completed on the water lines, a number of streets in the target area will be paved.

Tony Cantrell, of Tony's Disposal Service, met with the council concerning operations at the landfill.

The council took no action on the item and will discuss it further in the next meeting.

Also tabled were items regarding camping fees at the new lake, a proposed subdivision development along F.M. 1770, and a request for access to water in Elm Creek, below the dam at the new lake.

of \$65,000 to \$70,000.

Bids for the water line portion of the project will be opened on August 29 and it is hoped that work can begin in September.

After the work is completed on the water lines, a number of streets in the target area will be paved.

Tony Cantrell, of Tony's Disposal Service, met with the council concerning operations at the landfill.

The council took no action on the item and will discuss it further in the next meeting.

Also tabled were items regarding camping fees at the new lake, a proposed subdivision development along F.M. 1770, and a request for access to water in Elm Creek, below the dam at the new lake.

Free Immunization Clinic scheduled

There will be a Free Immunization Clinic held by the Texas Department of Health, Monday, August 12 from 10 a.m. till 12 p.m. and 1 p.m. till 3 p.m.

Location is at 100 Grant Street in the Professional Building, Suite 108. Please use Grant Street Entry for more information call 754-4945 between the hours of 9 and 12 - Monday through Friday.

Notice-this will be the last Immunization Clinic held before school starts!

Local golf tournament will benefit young cancer patient

A benefit golf tournament will be held at the Winters Country Club on Sunday, August 11, with proceeds going to the Jeremy Peugh Medical Fund. The format of the tourney will be Florida Scramble. Tee time is 10 a.m.

The entry fee is \$10 per person, which is tax deductible, as are any extra contributions.

Jeremy is the son of Virgil

and Tanya Whitlow Peugh and the grandson of Mr. and Mrs. Jerry B. Whitlow of Winters. Tanya is a Winters High School graduate.

Jeremy, age three, suffers from acute myelogenous leukemia, a severe form which usually only attacks adults.

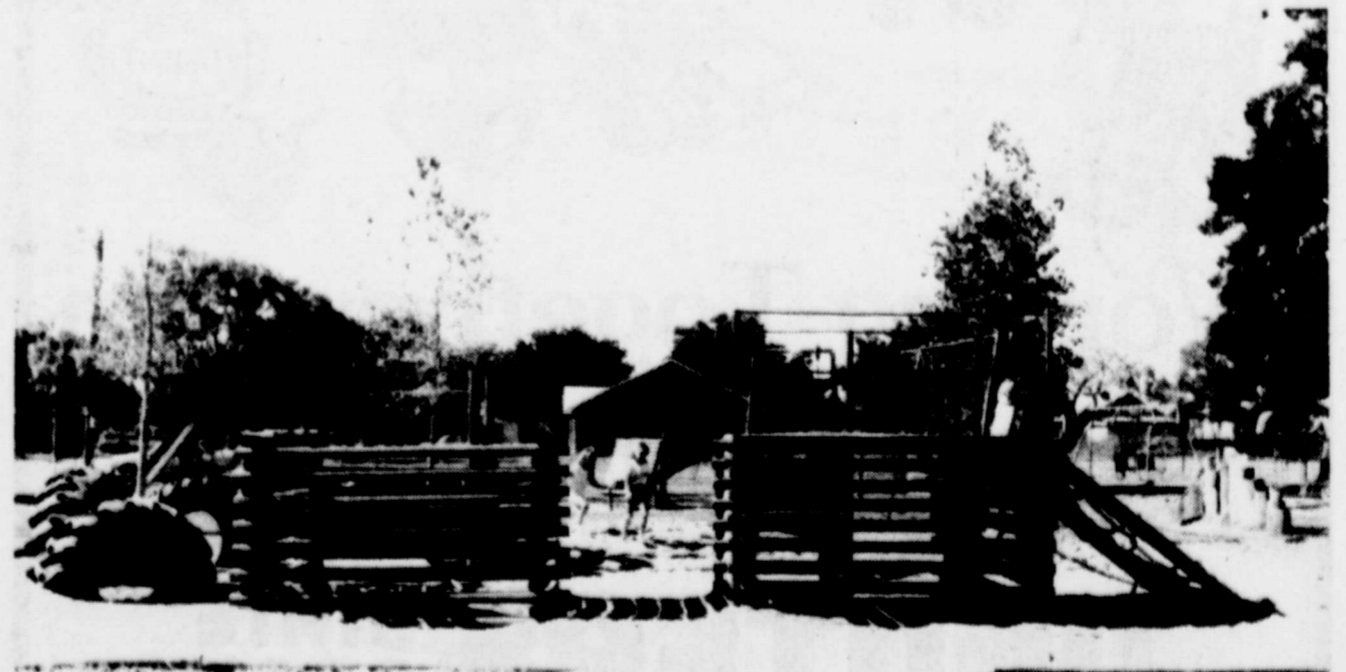
A fund was established earlier this year at the Winters State Bank to help the family defray medical expenses.

Parker to seek re-election to house

State Representative Jim Parker, of Comanche, said this week that he will seek re-election to his legislative seat in Austin.

Parker, in his weekly column, said, "I have pretty well come to the conclusion that I have no real alternative but to seek election to a third term, if for no other reason than to secure the added benefits that come with seniority. I seriously doubt that my personal economic realities will allow me to do a great deal

of campaigning and I prefer not to do that; but, as I say, I much prefer to come before high school classes, civic groups or other interested groups and simply try to explain, to the best of my ability, what has happened and what I expect in the future. If you or your group have any desires along this line, feel free to contact my office. I might can assist you in your understanding of the activities of your state government and I sure do work cheap.



Good place to play

The new playground equipment at the Winters City Park is now in place and is a popular gathering place for young and old alike. The innovative project was organized by the Young Homemakers with funds and materials supplied by the city and by many area residents.

MEMBER 1985
TEXAS PRESS ASSOCIATION

The Winters Enterprise
 Published by RyKel Corporation
 (USPS 687-220)

915/754-5221 P.O. Box 37 Winters, Texas 79567
 Yvonne Thomas, President
 Kelley Thomas Craig, Vice-President
 Kerry Craig, Managing Editor
 Lee F. Craig, Business Manager
 Jerre Heathcott, Circulation Manager
 Patsy Roach, Assistant News Editor

Entered at Post Office, Winters, Texas 79567,
 As Second Class Matter

SUBSCRIPTION RATES

In Rannels County, One Year\$ 8.41
 In Other Texas Counties, One Year.....\$10.51
 Outside Texas, One Year.....\$14.00

Any erroneous reflection upon the character, standing, or reputation of any person, firm or corporation which may appear in the columns of this newspaper will be gladly corrected upon due notice of same being given to the editor in writing personally at this office.

New playground equipment at park being enjoyed by children



The long-awaited playground equipment at the Winters City Park is now in place and is being enjoyed by local residents of all ages. Included in the new construction are a fort made of logs with a woven rope ladder, a tire swing, an enclosed sand box,

balance beam, three spring-mounted animals to ride, and a tire climb.

The obstacle course on the south side, designed for older youths and teens, features tires to run through, a bridge and a wall to climb, parallel bars, and



a rope climb. A "mothers' swing" (large porch-type swing) is also included for the convenience of mothers watching their children play in the park.

New seats were put on the swings, and the merry-go-rounds were painted and repaired.

The project was conceived by the Winters Young Homemakers in 1982; original plans called for \$10,000 of ready-made equipment; but earlier this year, the club voted to secure local donations of materials and to do as much of the work as possible themselves.

Funds for the equipment were

Coleman County Jr. Rodeo to be held

The 29th Annual Coleman County Junior Rodeo will be held on August 22, 23, and 24, 1985 at the Coleman Rodeo Grounds in Coleman, Texas. The producer for this years rodeo will be Runt Sloan from Newcastle, Texas. Performances will begin nightly at 8 p.m. There are three age groups for boys and girls which are: 12 and under, 13-15, and 16-19. Events include barrel race, pole bending, goat tying, breakaway roping, steer riding, Jr. bull riding, tie-down roping, ribbon roping, and Sr. bull riding, and bareback riding.

Highpoint boy and highpoint girl will receive a Longhorn Trophy Saddle and 1st place in each event will receive a buckle. Second and third places will receive trophies and all events will be jackpot.

Entries will close on August 17, 1985 and entries and money must be postmarked by August 17, 1985. Mail entries to Kay

Hubbard, Gouldbusk Rt., Coleman, Texas 76834. Call in entries will be accepted on Monday, August 12, and Tuesday August 13, from 6-10 p.m. only, at 915/357-4480 - Kay Hubbard.

There will be one parade on Saturday afternoon, August 24, at 5 p.m., which will include all entries in the float division, riding club division, and decorated cars, along with other riders who wish to participate. Prizes for the decorated cars and floats will be \$50 - 1st place, \$30 - 2nd place, \$20 - 3rd place. Trophies will be awarded for 1st, 2nd, and 3rd places to participating riding clubs. Becky Watson is Chairman of the parade, and anyone wishing to enter the parade competition is urged to contact Becky at 625-2328 after 5 p.m., or the Coleman Chamber of Commerce office at 625-2329.

This year a special event has been added to the rodeo and it is the Wild Goat Milking. It will consist of three team members ages 10 and under from Coleman County, and each team will have a sponsor. Trophies will be awarded nightly to the first, second, and third place teams, and this promises to be a fun event for all to see. For further information, call Kay Hubbard at 915/357-4480 after 6 p.m. If there are any participants who need a sponsor call and we will find you a sponsor, or if there are any sponsors needing participants, call and we will find you a team.

Joy, temperance, and repose
 Slam the door on the doctor's nose.
 -Textbook on hygiene from Salerno, written in Latin verse about 1100 A.D.

Ellen Moore.

Businesses and individuals donating materials, labor, or giving discounts on the cost of materials for the playground equipment include Winters Welding Works, Winters Oilfield Supply, Jedd Manufacturing, Winters Farm Equipment, Foxworth-Gabraith, B's Oilfield, West Texas Utilities, Alderman-Cave, Mansell Brothers, Dunigan Tool and Supply, Keith Graham, David Bradley, and Higginbothams.

The Young Homemakers would like to say thank you to all who helped with the project in any way.

FOOD news & notes

Salad Smarts

Can you create superstar salads? Real salad fans create their favorite combinations year-round. They know that mixing leftover meats, chicken or fish with raw or blanched fresh or frozen vegetables, fruits or greens, then garnishing with flair with croutons, bacon bits, hard-cooked eggs, nuts or

Women meet for United Methodist

The United Methodist Women met in the church parlor on Tuesday morning with Odessa Dobbins presiding.

Odessa led in the program, "U.N. Decade for Women: Equality, Development and Peace." Scriptures: Matthew 5:6-10 and Ecclesiastes 3:1-11 were read by Jonah Vinson and Margurite Mathis.

The purpose of the program for these ten years is equality, development and peace.

Each person gave a share of the program on the goals of the decade. Those on the program were: Odessa Dobbins, Lula Belle Leeman, Jonah Vinson, Margurite Mathis and Margaret Anderson.

The benediction was the Lord's Prayer in unison.

raisins is easy, economical, nutritious — looks and tastes great, too!



It's simple to play the salad game. Just remember that a super "meal in a bowl" toss deserves a super dressing. As a base, there's no substitute for clear, golden Bertolli—100% pure Italian olive oil with delicate flavor and a light bouquet. And it contains absolutely no cholesterol...not one little bit.

To dress a salad quickly and in style for 8-10 hungry lunch or supper guests, combine a cup of Bertolli Imported Italian Olive Oil with 1/3 cup red wine vinegar, 1 mashed clove garlic, 1 teaspoon salt, 1/4 teaspoon pepper, 1 teaspoon sugar plus a dash of chervil, thyme, oregano, basil—whatever fresh or dried herbs you have on hand.

That's the classic, versatile recipe. For extra zip, add 2 teaspoons mustard. However you serve it, they'll scrape the bowl!

Read the Classifieds



A MEAL ON A BUN
 "The Super Summer Sandwich"
Big Home Made Yeast Bun
 Your Choice
of 3 Different Meats
Roast Beef, Smoked Ham,
or Salami

With Mayo—Lettuce and Tomato—American Cheese and Swiss Cheese. Served With Chips.

FOR THOSE CUSTOMERS WHO ARE ON A LIMITED LUNCH SCHEDULE,
 Please call and we will have it ready to go— or on the table ready for you when you get here.

TRY IT, YOU WILL LIKE IT.

TAYLOR'S #2 RESTAURANT
754-4279



Working Together Can Be Very Profitable

WINTERS STATE BANK

Your Full Service Community Bank!

754-5511 500 South Main Member FDIC Winters, Texas

8.8% Financing Continues!
GMAC Has Extended the 8.8% on all 1/2 and 3/4-ton Pickups



Now Is The Time To Buy

Charles Bahlman Chevrolet
 134 S. Main 754-5310

Nothing Works Like A Chevy Truck



Jodie Dani

In a doubt the First B... ters, on Sa Jodie Ella V... bride of Dan... Mr. and Mr... of Winters... of Mr. and M... Ballinger.

Reverend... formed the ceremony... decorated w... blue and wh... by brass ca... with flower... greenery. F... blue bows f... white bows... DeOnn D... David Spee... formed "If... Song," and... Given in... father, the b... off-the-shou... za and lace... ed the bodi... ruffled org... peplum of lae... back waistli... accented the... Her veil w... wore a diam... a gift of the b... ried a case... blue, and b...



CH

306 Wood... Sunday Sch... p.m., Wed...

608 North... Sunday Se...

Sunday Se...

Mon...

Sun...



Mrs. Daniel Joseph Schaefer
Jodie Wearden wed to Daniel Schaefer Saturday

In a double ring ceremony in the First Baptist Church, Winters, on Saturday, August 3, Jodie Ella Wearden became the bride of Daniel Joseph Schaefer. The bride is the daughter of Mr. and Mrs. Charles Wearden of Winters. The groom is the son of Mr. and Mrs. Roy Schaefer of Ballinger.

Reverend Chris Walker performed the 7 p.m. candlelight ceremony. The church was decorated with arrangements of blue and white gladiolas flanked by brass candelabras entwined with flowers, blue bows, and greenery. Pew markers were blue bows for the mothers and white bows on the other pews.

DeOnn Deaton, organist, and David Speegle, vocalist, performed "If," "The Wedding Song," and "The Lord's Prayer." Given in marriage by her father, the bride wore a V-neck off-the-shoulder gown of organza and lace. Organza roses graced the bodice which featured ruffled organza sleeves. A peplum of lace was caught at the back waistline, and tiers of lace accented the full-length skirt.

Her veil was of tulle caught to a headpiece of beaded lace. She wore a diamond heart necklace, a gift of the bridegroom. She carried a cascade of white, dark blue, and baby blue roses, ac-

cented by blue and white beaded streamers, designed by Sherry Calcote.

Kim Mansell, niece of the bride, of Fort Worth, was maid of honor. Bridesmaids were Sherry Calcote of Winters and Michelle Schaefer of Ballinger, sister of the groom. The attendants wore mid-length baby blue dotted-swiss dresses with ruffled scoop necklines. They carried baby blue roses edged with dark blue, surrounded by lily of the valley.

Jennifer Matthews niece of the bride, was flower girl; and Steven Herrington was ring bearer.

Best man was Roy Schaefer, Jr. of Ballinger, brother of the groom. Groomsmen were Fred Stern of San Angelo, brother-in-law of the groom, and John Wearden of Ballinger, nephew of the bride.

Ushers were Alton and Bernard Schaefer, Norton, cousins of the groom.

Candlelighters were Stephanie Poehls of Ballinger, niece of the groom, and Chris Matthews of Winters, niece of the bride.

The reception was held in the church fellowship hall, hosted by the bride's parents. Dianne Rivera, niece of the bride, of Fort Worth, and Tammy Fenwick served at the bride's table.

Reception Aug. 16 for the Jerrell Walkers

A reception is to be held in the home of Jerrell and Shirley Walker, Route 2, Wingate on Friday, August 16 at 7 p.m. Relatives and friends are invited to attend.

Shelton's 50th anniversary reception to be Sunday

The children of Mr. and Mrs. J.W. Shelton will host a reception in honor of the couple's 50th wedding anniversary. The reception will be held Sunday afternoon, August 11, between the hours of 2 and 4 p.m. at the fellowship building of the Ninth Street Church of Christ in Ballinger.

John Wesley Shelton and the former LaVerne Ray were married July 26, 1935 in Crews. Living briefly in the communities of Bradshaw, Crews, Talpa and Pyote, they have made their home in Ballinger since 1953.

Children of the couple are Mr. and Mrs. Joe Bryan of Winters, Mr. and Mrs. George Shelton of San Angelo, Mr. and Mrs. Bob Bailey of Fairfield and Johnny Shelton of San Angelo.

The couple also have nine grandchildren, two step-grandchildren and one great-grandson.

The attendance of their friends and relatives is the only gift they desire.



Mr. and Mrs. Toby Cullen Gerhart
Melinda Kvapil married Toby Gerhart July 27

In a nuptial mass on July 27, 1985 at Saint Joseph's Catholic Church, Rowena, Melinda Sue Kvapil became the bride of Toby Cullen Gerhart.

The bride is the daughter of Mr. and Mrs. Stan Kvapil of Brenham, formerly of Winters, and the groom is the son of Mr. and Mrs. Milton Gerhart of Winters.

Msgr. Curtis T. Halfmann, uncle of the bride, celebrated the mass. The double ring ceremony began at 2 p.m.

Baskets of pink gladiolas and spider mums flanked the altar. The candelabras were entwined with greenery and pink bows.

Organist Iris Dankworth, guitarist Robert Zientek, and soloist Rudy Rodriguez performed wedding music.

Given in marriage by her father, the bride wore a princess silhouette gown of white crystalline designed with a sweetheart neckline and multi-layered, ruffled crystalline sleeves. The traditional gown was trimmed in venetian lace on the bodice and skirt. The cathedral train fell to several layers of matching ruffles.

The bride's waltz length veil of imported white illusion was secured by a wreath of silk flowers and scattered pearls. She carried a crescent bouquet of pink and white roses surrounding a white orchid.

Maid of honor was Louise Davis of Blackwell. Bridesmaids were Pam Bell, Maggie Campos, and La Shea Guy. They were attired in tea length gowns of pink nylon chiffon over pink taffeta featuring a sweetheart neckline and wrap around bell sleeves edged with lace. The skirt featured deep borders of delicate re-embroidered scrolled lace. They carried nosegays of pink and cream roses, interspersed with stephanotis.

Karen Kvapil of Brenham, sister of the bride, and Christy Rodriguez of San Antonio, cousin of the bride, were flower girls. They wore long gowns of pink eyelet embroidery featuring puff sleeves and gathered skirts with deep ruffles. They carried baskets filled with cream and pink roses.

Scott Stubblefield of Lubbock was best man. Groomsmen were Terry Gerhart of Morgan City, Louisiana, Joe Gerhart of Winters, both brothers of the groom, and Don Kvapil of Brenham, brother of the bride.

Ushers were Tony Quita of Smithville, Wade Williams of Wellington, Van Ray Whitteberg of Winters, Kelly Compton of Clyde, and Mark Willingham of Lubbock.

Acolytes were Eric and Chris Fischer.

The reception was held in the ODHS Hall in Rowena. A centered round table held the four-tiered bridal pineapple cake encircled by four petal cakes. Tiny baskets of pink silk flowers centered the cakes. They were edged with scalloped string work and lattice work and accented with pink floral hearts.

One long side table held armature coffee service and candlesticks and bowls of nuts and mints. The groom's rectangular banana nut confectionery was topped with double rings decorated with a spray of roses.

Another long side table with crystal and silver appointments was centered with a crystal punch bowl and trays of cream cheese mints. Supper was catered by Inman's of Llano followed by a dance with music provided by "The Ramblers" of Brenham.

The rehearsal dinner was hosted by the groom's parents at Holloway's Bar-B-Q Barn in Winters.

Other courtesies for the bride and groom included a miscellaneous shower at the Lutheran Church in Winters and a spice and recipe shower in the home of Mrs. Charles Allcorn. Anita Stoll hosted a bath and lingerie shower in Brenham.

The bride graduated from Brenham High School and is enrolled in Richland College, Richardson, Texas. The groom graduated from Winters High School and received a degree in computer science from McMurry College. He is employed by Electronic Data Systems.

Following a wedding trip to the Bahamas, they will be at home in Richardson.

Habits are first cobwebs, then cables. Spanish proverb



50th anniversary for the Ellis Ueckerts August 18

Mr. and Mrs. Ellis Ueckert will be honored by their children and grandchildren on the 50th anniversary of their marriage Sunday, August 18, 1985. Family and friends are invited to a reception in the Fellowship Hall of St. John's Lutheran Church in Winters from 2 p.m. to 4:30 p.m.

The honorees and hosts request that you bring no gifts, only your presence along with a memory to share.

Ellis Ueckert and Adala Pruser were married on August 20, 1935, at St. John's Lutheran Church in Winters with the Rev. C. N. Roth officiating.

Attendants for the couple were the late Dora Pruser Onken and Erwin Ueckert.

They have made their home in the Pumphrey community and are engaged in farming.

They have two children, Keith Ueckert and Altus Aschen; four grandchildren, Lauree and Kay Aschen and Bonnie and Jeffrey Ueckert all of Port Lavaca, Texas.



The average red-blooded American male has from 4.6 to 6.2 million red blood cells per cubic centimeter. The average woman has 4.2 to 5.4



Let's Worship Together

CHURCH DIRECTORY

Winters Assembly of God Church
306 Wood Street, Winters, Texas 915-754-5400
Sunday School 9:45, Morning Worship 11:00, Missionettes Tuesday 3:30 p.m., Wednesday Night 7:30, Women's Ministries Thursday 7:00 p.m., Reverend Leonard E. Pringle 754-5400

New Life Chapel Pentecostal Church of God
608 North Cryer, Winters, Texas 754-4460
Sunday Services 9:45 a.m. and 7:00 p.m., Wednesday 7:30 p.m. Christian School through grade 12. Minister Art Barnes 754-4460

Second Baptist Church
200 Wood Street, Winters, Texas
Sunday School 9:45 a.m., Worship 11:00 a.m., Sunday Evening 7:30 p.m., Wednesday Prayer Service 7:30 p.m. Minister James Gehrels 754-4276

Bradshaw Baptist Church
Bradshaw, Texas
Morning Worship 11:00 a.m., Sunday School 10:00 a.m., Evening Worship Service 5:00 p.m. Reverend Clarence A. Jolley 915-643-4907

Southeast Baptist Church
617 Crews Road, Winters, Texas 79567
Sunday School 9:45 a.m., Morning Worship 10:50 a.m., Sunday Evening Service 6 p.m., Wednesday 7 p.m. Reverend Dennis W. Burt, Jr.

PUBLIC NOTICE

Pursuant to the Gas Utility Regulatory Act, Lone Star Gas Company hereby gives notice of the Company's intent to implement a new schedule of rates effective August 24, 1985

to be charged for natural gas service to residential and commercial customers in the environs area (outside incorporated limits) of Winters, Texas.

The rate schedule, which is already in effect for customers within the city limits, is expected to furnish a .61 percent increase in the Company gross revenues in the environs of Winters, Texas.

A statement of intent has been filed with the Railroad Commission of Texas and is available for inspection at the Company's business office located at 116 North Main, Winters, Texas.

Any affected person desiring to contest such changes in rates can file a complaint with the Director of the Gas Utilities Division, Railroad Commission of Texas, 55 North I.H. 35, Austin, Texas, 78711.



USED CAR SAVINGS

- 1976 Subaru
- 1977 Ford Granada
- 1978 Chevrolet Monte Carlo
- 1979 Ford LTD
- School And Work Cars
- Below Wholesale

C & C Used Cars

Phone 754-5039 230 S. Main

CLASSIFIED ADS... for results

CLASSIFIED RATES

CASH
Minimum—\$3.00, 1 time 20 words; 10 cents per word for over 20 words.
CHARGED
Minimum—\$3.50, first insertion, \$3.00 per insertion thereafter, 10 cents per word over 20 words.
DEADLINE FOR ALL ADS
12:00 noon Tuesday week of publication.

FLOWERS

FLOWERS for all occasions. Orders wired anywhere, any time. Bonded FTD Florist florist, Mayme Little, Winters Flower Shop, 754-4568.

FLOWERS, ETC.

Full Service Florist. Funerals, weddings, wire service. Something for all occasions. Mary Ellen Moore, Owner. 754-5311

AUTOMOBILES FOR SALE

'83 RIVIERA fully loaded except moon roof, 20,000 miles, velour interior, beautiful car. \$13,500 or best offer. 754-5662 or 754-4806 after 5 p.m.

'81 FORD RANGER excellent condition with new tires. Call 754-4017

FORD SUPER CAB 1981 with butane system, auto, air, ps, cruise, tilt, book price. Also 1977 GMC crew cab, auto, air, \$2200, pop up camper \$500. Call 723-2242 or 723-2378.

FOR SALE

FOR SALE: water pump, jet and pressure tank. Good condition. call 754-4865 after 6 p.m.

FOR SALE: Kawasaki K2 1300. Fully dressed ready to go. Trophy winning show bike. Call 754-4865 after 6 p.m.

HONDA SUPER SPORT motorcycle for sale. Has windjammer faring \$1500. Call 754-4292.

CUSTOM HAY BALING large round bales. Call 754-2048.

SEARS side-by-side refrigerator-deep freeze and Sears refrigerated air conditioner, 1 year old. Call 754-5771 or 754-5226.

CAMPER SHELL to fit short bed pickup. Can see at 307 Arlington or call 754-4880.

AKC REGISTERED BASSET HOUND puppies, 6 weeks old, wormed and first set of shots, \$125. Call 754-4042 after 5 p.m.

STRICKLAND REAL ESTATE

WE ARE ACCREDITED M.R.A. APPRAISERS

SPLIT BEDROOM DESIGN: 4 BR, 2 B, very attractive 2 living areas with large stone fireplace. Deck overlooks shady backyard, carport.

STUDIO APARTMENT: \$125.00 deposit.

ENERGY EFFICIENT: 3 BR, newly remodeled, attic fan, trees.

DESIRABLE NEIGHBORHOOD: 2 stories, 4 BR, carport, lovely shady lot.

GOOD HOUSE: 2 BR with 3 city lots--lots may be bought separately at \$2500.

HOUSE FOR RENT: 2-3 BR, good location, \$175. plus deposit.

Treut Street: remodeled 2 BR, panelling and carpet, garage and fenced garden spot.

302 ACRES APPROX: down the Navice Road, tanks 100% minerals go with, plans are made for drilling.

CALL US -- WE HAVE MORE TO SHOW YOU

WE WELCOME OUR NEW SALESPERSON MELVINA THORMEYER!

OFFICE: 754-5218
Weekends, Holidays, and Nights
754-4771 or 754-5257

100 West Dale Winters, Texas

FOR SALE

TEXAS LONGHORN CATTLE oldest family herd in Texas, yearling heifers \$600, bulls \$400, 2 yr. bulls \$800. Single sales welcome also wild hogs. Delivery available. Jack Rogers, Jack Rogers Chevrolet Company, Palestine, Phone 217-729-6928, night 729-5830.

14' STOCK TRAILER \$500. 16' Lowboy trailer \$250. Call 723-2242 or 723-2378.

EXCELLENT ELECTRIC WATER heater, 40 gal. Gun cabinet with storage that holds ten guns. 754-4233.

TRACTOR WITH EQUIPMENT, boat, motor, trailer, nice camper top, old Coke machine, snow cone machine, lots of misc. Ovalo Trading Post 554-9387 or 554-9230.

FOR SALE jet skis, 400 cc, and trailer, \$2000. Model \$444 14 hp Case garden tractor and mower, \$1,200. Portable General Electric dishwasher, \$50. Call 754-4593.

CHEST TYPE FREEZER for sale. Call after 5 p.m. 754-4236.

New Brick Home For Sale

3 bedroom
2 bath
230 Circle Drive
Large
2 bedroom
1 bath
Duplex
915-572-3766

REAL ESTATE

NICE 3 BEDROOM HOUSE: S. Penny Lane, brick, central H/A, curbed & paved. Dead end street. Call K.W. Cook, 754-4719.

FOR SALE by owner 2BR, 1B, double garage. Equity and assume \$249. monthly. Call 754-5073, after 5 p.m. or anytime on weekends.

3 BR 2 B house for sale. Den with fireplace, water well, fenced yard. By appointment only. 754-5025 after 6 p.m.

FOR SALE BY OWNER nice brick 3 BR, 2B, central heat and air. Good neighborhood. 111 Bel Air. Call 754-5443 after 5 p.m. Priced to sell.

FOR SALE 3 BR, 2B, central heat and air, corner lot. Call 754-4849, after 6 p.m.

LARGE LOT FOR SALE on Circle Drive. Call 754-4081 after 4 p.m.

REAL ESTATE

HOUSE FOR SALE 2 BR, 1 B. Totally remodeled. Under \$30,000. 915/754-4395 after 5 p.m.

FOR RENT

RENT A STORAGE: Crouch Rent A Storage, you store it, you lock it. Phone 754-4712.

RENTALS: 2 and 3 BR houses, apartments and mobile homes. Call 754-4286.

LARGE 2 BR DUPLEX central heat and air, washer & dryer hookup. Lots of storage space, near school. Phone 572-3766 or 754-5488.

HELP WANTED

WANTED A BABYSITTER during school year for after school in my home. Drivers license preferred. Susan Conner 754-5760.

RUNNELS COUNTY JUDGE is now accepting applications for Secretary. Apply in person before August 15 at the Courthouse. Runnels County is an equal opportunity employer.

WORK WANTED

CUSTOM COMBINING wanted, contact Bryan Davis at 754-4030 or Don Davis at 754-5093.

HAVE OPENINGS in registered daycare home. Call 754-5783.

CUSTOM CUTTING & BALING square bales. Also have baled oats & haygrazer for sale. Richard Denny, 754-5117.

WANTED

SCRAP IRON copper — brass — Auto — Tractors — Machinery — Engines — Motors — Radiators. BALL-INGER SALVAGE, PINE ST. SALVAGE, Abilene.

I WILL BUY Your Silver Coins, other coins and paper money. Highest prices paid for rare and choice items. FLOYD SIMS 754-4224 or 754-4883

MISCELLANEOUS

SHOP NOW FOR CHRISTMAS save time and money with Discovery Toys. Quality educational toys, books and games. Some items up to 50% off. Call 915-365-2846.

COMPLETE BACKHOE SERVICE Approved septic systems installed. K.W. Cook, 754-4719.

We Handle Estate, Farm and all types of liquidation For More Information Call Randy Cave Tennis Auction Co 915/653-3494 San Angelo

TIME TO RE-POT: We have a new shipment of Carl Pool Potting Soil. Also Carl Pool Magic Grow plant food. Winters Flower Shop.

ROY CALCOTE & SONS, INC. Yard dirt for quick delivery. Dozers, maintainers, backhoes, loaders, and dump trucks. 24 hour service. 915-767-3241, P.O. Box 896, Winters, TX.

SKATE PALACE Open Friday nights 6-8:30, 8-10:30, Ballinger

GARAGE SALE

GARAGE SALE 3 families. Some of everything. Saturday, August 10, 8:30 - 6:00, 203 Roselane.

GARAGE SALE

GARAGE SALE Saturday August 10, 8 a.m. - 5 p.m. New house on old Crews Rd., 1/4 mile East of Southside Baptist Church.

4 FAMILY GARAGE SALE Wingate, 1st house right from Post Office, Friday 8 a.m. to 6 p.m. School clothes, shoes, dishes, bedspreads, curtain, wheels and tires, Misc. items. Cheap Prices!

GARAGE SALE Saturday, August 10, 1985, 8 a.m. 106 E. Pierce. Furniture, clothes, misc.

GARAGE SALE Saturday, 8-5, 307 S. Arlington, 3 family.

CARPOR SALE Moved, lots of treasures, no room for linens, TV, typewriter, clocks, much more. Cents-off coupons with each purchase. Saturday only August 10, 9 a.m. to 5 p.m. 424 Tinkle.

3 FAMILY GARAGE SALE 508 Albert, Friday 9-5, Saturday 9-12. NO EARLY BIRDS.

Find Out Why Leasing Makes Sense. Talk to Charles at CHARLES BAHLMAN CHEVROLET. 754-5310

CUSTOM HAY BALING \$14 Per Bale We Have 2 Round Balers And Can Bale Your Hay When It Needs Baling We Also Do Square Bales Larry Or Keith Colom 723-2242 723-2378

BUSINESS SERVICES

WINTERS SHEET METAL & PLUMBING WORKS Plumbing, Heating, and Cooling 215 W. Dale Phone: 754-4343

MANSELL BROTHERS Ballinger-Winters "Your Authorized John Deere Dealer" Ballinger 365-3011 Winters 754-4027 Parts and Service Complete Shop Facilities Hwy. 53 West

Harold W. Shelburne Certified Public Accountant 100 W. Dale Winters, Texas 915/754-5753

WINTERS FUNERAL HOME Insurance and Markers 24 Hour Service 754-4529

BUSINESS OPPORTUNITIES

OWN YOUR OWN BUSINESS Own your Own Jean-Sportswear, ladies apparel, childrens, large size, combination, store, accessories, Jordache, Chic, Lee, Levi, Easy Street, Izod, Esprit, Tommy, Calvin Klein, Sergio Valente, Evan Picone, Liz Claiborne, Members Only, Organically Grown, Healthtex, over 1000 others. \$7,900 to \$24,900 inventory, training, fixtures, grand opening etc. Can open 15 days. Mr. Loughlin (612) 888-6555.

OWN YOUR OWN BEAUTIFUL CHILDREN'S STORE. Infant to Pre-Teen. Nationally known brands *Health Tex *Donmoor *Lee *Lee *Levi *Chic *Buster Brown *Izod *Her Majesty *Nannette *Fellman and many more. Furniture, accessories and toys by Gerber and Nod-A-Way. \$14,900.00 to \$17,900.00 includes beginning inventory, training fixtures, grand opening promotions and round trip air fare for one. Call Today. We can have your store opened in 15 days. Prestige Fashions 501-329-8327.

Breadfruit is a staple food to people of the Pacific's tropic islands. The part that lies between the skin and the core looks like new bread. It makes an excellent pudding when mixed with coconut milk

WIN-TEX CATTLE FEEDERS Phil Smith Charles Smith P.O. Box 696 915-754-5571 Coffee's always on! Come see our improvements!

Resource Management A BRANCH OF DELTA COMMODITIES BUS. 915-754-5533 SUITE 103, PROFESSIONAL BUILDING

Figure Perfection Salons Where Resolutions Become Realities St. 106 110 S. Main Winters, Texas 754-5569 Appts. Available M-F 8 a.m.-7 p.m. SAT. 9 a.m.-12 Noon

Swatches Electric Co. Oil Field Commercial & Residential Wiring Air Conditioning Sales & Service Authorized Dealer for GE GIBSON ROPER FRIEDRICH Phone 754-5115 • P.O. Box 307 • Winters Texas 79567

TEXAS OILFIELD SERVICE COMPANY INC. P.O. Box 668 Winters, Texas Modie 675-9012 BILLY R. WITTE SR W. M. BUNGER

H & H TIRE STORE Richard Hamilton, Owner 24-Hour Road Service Day 754-4841 Night 754-4237 or 754-4103

CUSTOM DITCHING & SPRINKLER SYSTEMS TORO OASIS TORO FREE ESTIMATES HAROLD TOWERY, 915-365-5425 Route 2, Box 277 KATHY SEAWRIGHT, 915-365-5579 BALLINGER, TX 76821

UNDERWOOD Real Estate 135 West Dale 754-5128
LOVELY 3BR, 2B, 24x24' playground, on 5 acres, 2.7 miles N. Hwy 83.
BEAUTIFUL 3BR, brick on 7 acres, with extras-9 miles W. of town.
APARTMENTS 4-1 BR, 1 bath units live in one rent other 3.
CORNER LOT 2 BR, 1 bath, large rooms, very neat.
OWNER SAYS SELL Very neat 3BR, 1 bath, excellent location.
WEST DALE 3 BR, 1 bath, dishwasher, fenced, mid 20's.
REMODELED 2 BR, 1 bath, all new appliances, on corner lot.
PRICED SLASHED 2 BR, 1 bath, stucco, fireplace, carport.
LOTS Residential and commercial lots and buildings, call for locations.
OUTSIDE CITY LIMITS Neat 3 BR, 1 bath, fenced, reasonably priced.
OUTSTANDING 3 BR, 3 1/2 bath, brick, workshop, all the extras.
PRICE REDUCED Mobile home, furnished, lot, garage, 2 BR, 1 bath.
HIGHWAY FRONTAGE 100 acres, call for more information.
EXECUTIVE 4 BR, 3 1/2 bath, with all the extras.
OWNER FINANCE 2 BR, 18 house. Needs repair, \$6000.
GOOD LOCATION 3BR, 1B, brick, CP.
MOBILE HOME 14x72, extra nice, includes appliances.
EDGE OF TOWN 3 BR, 1 B, 2 lots, shop building, low 20's.
A FRAME 2 story, 3 BR, 2 B, with swimming pool.
BRADSHAW Large house with 7 lots, and plenty storage.
NEW LISTING 2 BR, 1B, large shade trees on corner lot.
NEW LISTING 3 BR, 2B, white brick, corner lot.
NEW LISTING 2 BR, 1 B, on Main Street, mid teen's.
NEW LISTING Special 3 BR, 2 B, brick home, H/A, double garage, priced to sell.
NEW LISTING Very nice brick home, 3 BR, 2 B, on 2 acres, minutes from town.
NEW LISTING 2 BR, 1 B, with large rooms in edge of town.
NEW LISTING 2 BR, 1 B, brick, extra nice, in choice location.
NEW LISTING 187 acres, mostly cultivation with 5 room house in Bradshaw area. Priced to sell.

CONSUMER CORNER

E.T. may have stolen your heart, but EFT is going to take your checkbook. Bankers predict the day isn't far off when EFT—electronic funds transfer—will make your checkbooks all but obsolete, give you 24-hour access to your financial assets (even the equity in your home), and virtually eliminate conventional bank card fraud.



Bringing the efficiency of electronics to banking may make things easier and less costly for everyone.

EFT's best-known form is the automated teller. Some 40,000 automated tellers let U.S. consumers withdraw cash from savings or checking accounts, using an electronic "check" called a debit card.

Increasingly, debit cards will be accepted at retail stores in place of cash and checks. Stores will be electronically linked to banks so that debit cards can be used to transfer cash from the consumer's to the retailer's account.

While there may always be some need for checks, companies are trying to simplify and add greater safety to the way we transact business. Visa, for example, plans to introduce a talking terminal that reads electronic data on a card, dials a computer and informs the merchant—in English—whether to accept or reject a purchase. The company reports that it is also looking at a machine that would protect the legitimate cardholder by verifying signatures. The device's electronic eye would actually watch the way the customer writes and then decide whether the signature matches the one on file in a computer.

GREAT MALE ACHIEVERS These sports history facts are brought to you by Speed Stick Deodorant and Anti-Perspirant



Mark Andrew Spitz of the U.S. won the most Olympic medals by an individual — 11 medals in all — at the Olympic Games in 1968 and 1972. His honors also include winning the most Olympic gold medals in swimming — a total of nine. They are for the 4x100 meter medley relay, the 4x200 meter freestyle relay, the 4x100 meter freestyle relay, the 200 meter freestyle, the 100 meter butterfly. At the time, all but one of these performances were world records. In 1968, Spitz captured a silver in the 100 meter butterfly and a bronze in the 100 meter freestyle as well.

Cou
Grazing
Before
ACR you
spection
quest for
Once a
tion can
value if m
We will
check-o
througho
O
Let's g
tion turn
The s
duction t
can start
yields. T
wheat bu
well.
18
Runnel
as follow
Grain So
ton 57.55
is 7.875%
To be e
must be p
Farm Pro
A
If you a
haying A
leave eno
to protee
water er
also be c
problems
around yo
Failure
ACR coul
gram ben
RRC
The Ra
ed Crude
Leakey \$
numeros
over seve
lease in F
Eleven
received
\$38,000 f
sion well
Some o
pear at C
ings on p
were fine
They incl
Houston,
the Lann
eman Cou
the Aldric
County.

Runnels County Rumors

Grazing or Baling ACR Land
Before baling or grazing of ACR you must first pay a \$10 inspection fee and complete the request form.

Once approved no compensation can be received for the feed value if not fed to your livestock. We will continue making spot checks of the haying and grazing throughout the year.

Crop Production
Let's get our wheat production turned in as soon as possible. The sooner we get ALL production turned in the sooner we can start working on proven yields. This applies not only to wheat but milo and cotton as well.

1985 Loan Rates
Runnels County loan rates are as follows: Wheat, \$3.33 bu. Grain Sorghum \$4.41 cwt. Cotton 57.55¢ lb. July interest rate is 7.875%.

To be eligible for loan the crop must be participating in the 1985 Farm Program.

ACR Maintenance
If you are currently grazing or haying ACR, let's be sure to leave enough residue on the land to protect it from wind and water erosion. Weeds should also be controlled as not to cause problems for yourself or those around you.

Failure to properly maintain ACR could result in a loss of program benefits.

RRC sets fines

The Railroad Commission fined Crude Processing, Inc. of Leakey \$45,000 this week for numerous pollution violations over several years on the Riggs lease in Frio County.

Eleven other operators received penalties totalling \$38,000 for violations of Commission well plugging rules.

Some operators failed to appear at Commission-called hearings on plugging violations and were fined for the violations. They included Burns Oil Co. of Houston, \$6,000 for one well on the Lanny Aldridge lease, Coleman County, and one well on the Aldridge "A" lease, Runnels County.

Turnrow

General Situation
Cotton and grain sorghum in Runnels and Tom Green Counties are doing great! Sorghum harvest is picking up and yields are good. Cotton is fruiting up and is progressing very well.

The insects of concern this week are sorghum midge in blooming grain sorghum and bollworms, aphids and spider mites in cotton.

More Than Our Share
It seems we have more than our share of bollworms in cotton right now and if you have not checked yours, you better do so in a hurry!! Few fields have missed the moths' visit.

Although the egg count seems to be decreasing, we are still finding up to 50 eggs per 100 terminals. The larval counts are even worse! We range from 5 small worms per 100 terminals to 92. That's a bunch of worms!!

Bollworms are easiest to control when they are very small (1 to 4 days old). As they grow they become more difficult to kill. Timely decision-making is essential to successful bollworm control.

Last week's TURNROW TIDBITS contained extensive information about the bollworm life cycle and control tactics.

Slow But Sure
Many of you who have elected to control your bollworms have used one of the pyrethroid insecticides, such as Pydrin, Ammo, Cymbush, or others. These are excellent insecticides on bollworms and I'm confident you will be satisfied with the results if the application was correct.

However, the pyrethroids do not work as quickly as parathion or other insecticides. They are slow, but sure! Give them time to work before you panic. Four to five days after application is soon enough to check for control.

Bear in mind that most fields still had some eggs in them when the pyrethroid was applied. These eggs will have to hatch and the young worms feed a little before they die from the insecticide. For that reason, if after four or five days you only find very small worms, don't be too concerned. If the insecticide was not working properly, you would see medium-sized worms by then.

Tidbits

Slow And Unsure
Some of you are slow to make your insect management decisions. And you're unsure about them after that. Time is critical in bollworm control!!

As soon as you find a bollworm problem, make a decision and stick with it. If, after you find the problem, you fret about it and cuss about it and mull it over for a week or ten days, you may as well stay home and take a nap. You have already lost most of your benefit from spraying.

Counting The Days
Bloom tagging over the years has shown that for a bloom to become a harvestable boll, it needs to bloom by September 1. And for a square to bloom by September 1, it needs to be a pinhead square by August 7.

In other words, everything we intend to take to the gin should be on the plant in at least a pinhead square by August 7. From there on, it's a matter of protecting the crop and maturing the fruit.

Think about that over a little and think about the fruit loads in your fields.

More Critters
We do still have aphids in some fields. Some of you decided to control them when you sprayed the bollworms. We do not have much information on cotton aphids but we're working on it! Y'all will be the first to know whatever we find out.

And we also have some spider mites showing up. We expect some mite problems late season (late September) but this is earlier than usual. Spider mites are a devastating pest and I encourage you to be on the watch for them.

Heavy infestations of spider mites can cause irreversible discoloration of leaves and extensive leaf loss causing: ★ low micronaire, ★ reduced yield, ★ stops fiber development, ★ premature boll cracking, ★ small boll (1 1/2 - 3/4" diameter) shed.

This sounds exaggerated but we've seen it before. In the past we've had fields that lost more than 50% of the leaves in spots and had red discoloration throughout the field. This interferes with photosynthesis causing the problems listed above.

Spider mites often begin on the edge of a field near a dusty road or next to maize fields that were infested. They infest leaves between the veins and squares at the base of the bracts

West Texas Fair sets contests

The Modern Living Mall staff for the West Texas Fair has announced changes in the taking of entries from previous years and is encouraging Big Country residents to take part in the 1985 Fair Contests.

Entries for contests in the Modern Living Mall for Adult and Youth Divisions will be received on Tuesday, September 3 from 10 a.m. to 8 p.m. This year, only one day is designated for entries with the hours scheduled to provide adequate time for people who are working during the day to have time after work hours to bring entries. This entry day applies to all categories except Perishable Foods in the Youth and Adult Departments and Living Plants.

Perishable Food entries for Youth food contests will be received on Saturday, September 7 from 9:30 a.m. to 11 a.m.

Adult Division Foods Department will have daily contests as listed in the West Texas Fair Catalogue.

To assure proper care of the Living Plants, persons entering in this contest are asked to bring their plants to the Modern Living Mall on the opening day of the fair, Friday, September 6, between the hours of 2 p.m. and 6:30 p.m.

All other entries will remain at the Modern Living Mall until Monday, September 16.

This year, over \$4,000 is available in premiums for winning entries in addition to numerous special awards from local companies in many contests. Please check catalogue for additional information.

In the Adult Clothing Department, the special award for the

Runnels County girl wins first place

Stacy Lee of Runnels County took first place in the registered geldings, five years and over, class at the 1985 State 4-H Horse Show which concluded July 27 in Abilene.

Clinton Hagler, Jr. of Taylor County and Jamie Smith of Brown County captured top honors at the show.

Hagler was named the Champion Judged Event Horseman and Smith was selected the Champion Timed Event Horseman of the 23rd annual show. This year's event at the Taylor County Expo Center attracted some 240 4-H youth from across Texas, said B.F. Yeates and Dr. Doug Householder, show managers and horse specialists with the Texas Agricultural Extension Service, which conducts the 4-H program in the state.

On his way to the championship of judged events, Hagler won the western horsemanship and western riding events and came in fourth in western pleasure.

causing either a red discoloration brown discoloration or a yellow mottled discoloration. Eventually, they can damage the leaf to the point that an abscission layer is formed and the leaf sheds. Adult mites are barely visible as tiny specks moving on the leaves or bracts. Magnification is usually necessary to see the immature mites or the eggs. Spider mites have eight legs during most of their development; the eggs are perfect spheres that are transparent yellow or clear. Often a "colony" of spider mites will cover portions of a leaf or bract with a very fine webbing. This reduces insecticide penetration to the plant surface and the mites themselves.

Spider mites are very prolific so populations can increase and spread rapidly. If the top leaves are turning red between the veins and almost every leaf has mites under it. Control is justified and necessary. Spot treatments are suggested in areas where the mites have not spread throughout the field; however, if infested areas are noticeable throughout the field, treat the entire field.

Control will take 12 applications about 57 days apart. Azodrin, Kelthane, Comite and others are labeled for mite control. Azodrin has been used frequently in our area before with success. These products don't have a fast knockdown so don't even check the field until 3 days

Smith placed first in stake racing, second in barrel racing and third in pole bending.

Reserve Champion Judged Event Horseman was Sharla Yeates of Brazos County, who placed second in western horsemanship and third in both western pleasure and western riding.

Rachel Davidoff of Collin County was named the Reserve Champion Timed Event Horseman by virtue of winning the barrel racing and pole bending events.

Winning top honors in the other performance event, western pleasure, was Christy Cobb, a Harrison County 4-H youth.

The Champion Mare was shown by Jennifer Jackson, an Erath County 4-H'er, and Jana Copeland of Bastrop County had the Reserve Champion Mare.

Angie Reese of Clay County exhibited the Champion Gelding, and Tal Bird of Brazos County had the Reserve Champion Gelding.

Capturing top showmanship honors for the second year in a row was Randy Schurig of Comal County.

The South Central District of the Extension Service, which has headquarters at Bryan, accumulated the most points among the state's 14 districts competing at the 1985 show, with Brazos County, in that district, being the high-point county.

The West Central District with headquarters at San Angelo came in second among districts and the East District with headquarters at Overton was third. Taylor County was second in total points and Comal County came in third.

The top three placings (name of 4-H'er and county) in all classes of the qualifying portion of this year's State 4-H Horse Show are as follows:

—Showmanship at halter: Randy Schurig, Comal, 1st; Corby Wilson, Williamson, 2nd; and Lindy Wells, Madison, 3rd.

—Registered mares, five years and over: Jennifer Jackson, Erath, 1st; Jana Copeland, Bastrop, 2nd; and Brent Golden, Walker, 3rd.

—Registered mares, four years

and under: Jade Widener, Hall, 1st; Will Rob Borchers, Bomal, 2nd; and Hayes Atwood, Wood, 3rd.

—Grade mares: Shelly Nichols, Andrews, 1st; Russell Schnitz, Gonzales, 2nd; and Scott Durham, Willacy, 3rd.

—Registered geldings, five years and over: Stacy Lee, Runnels, 1st; Laurie Rodgers, Victoria, 2nd; and Tonya Tinnin, Potter, 3rd.

—Registered geldings, four years and under: Angie Reese, Clay, 1st; Tal Bird, Brazos, 2nd; and Sunni Johnson, Comal, 3rd.

—Grade geldings: Bubba Withers, King, 1st; Christy Dart, Brewster, 2nd; and Summer Helbert, Andrews, 3rd.

—Western pleasure: Christy Cobb, Harrison, 1st; Lindy Wells, Madison, 2nd; and Sharla Yeates, Brazos, 3rd.

—Western horsemanship: Clinton Hagler Jr., Taylor, 1st; Sharla Yeates, Brazos, 2nd; and Scott Yeates, Brazos, 3rd.

—Western riding: Clinton Hagler Jr., Taylor, 1st; Scott Yeates, Brazos, 2nd; and Sharla Yeates, Brazos, 3rd.

—Pole bending: Rachel Davidoff, Collin, 1st; Michelle Driver, Midland, 2nd; and Jamie Smith, Brown, 3rd.

—Barrel racing: Rachel Davidoff, Collin, 1st; Jamie Smith, Brown, 2nd; and Shayne Felton, Bandera, 3rd.

—Stake racing: Jamie Smith, Brown, 1st; Shawn Taylor, Leon, 2nd; and Mindy Morris, Baylor, 3rd.

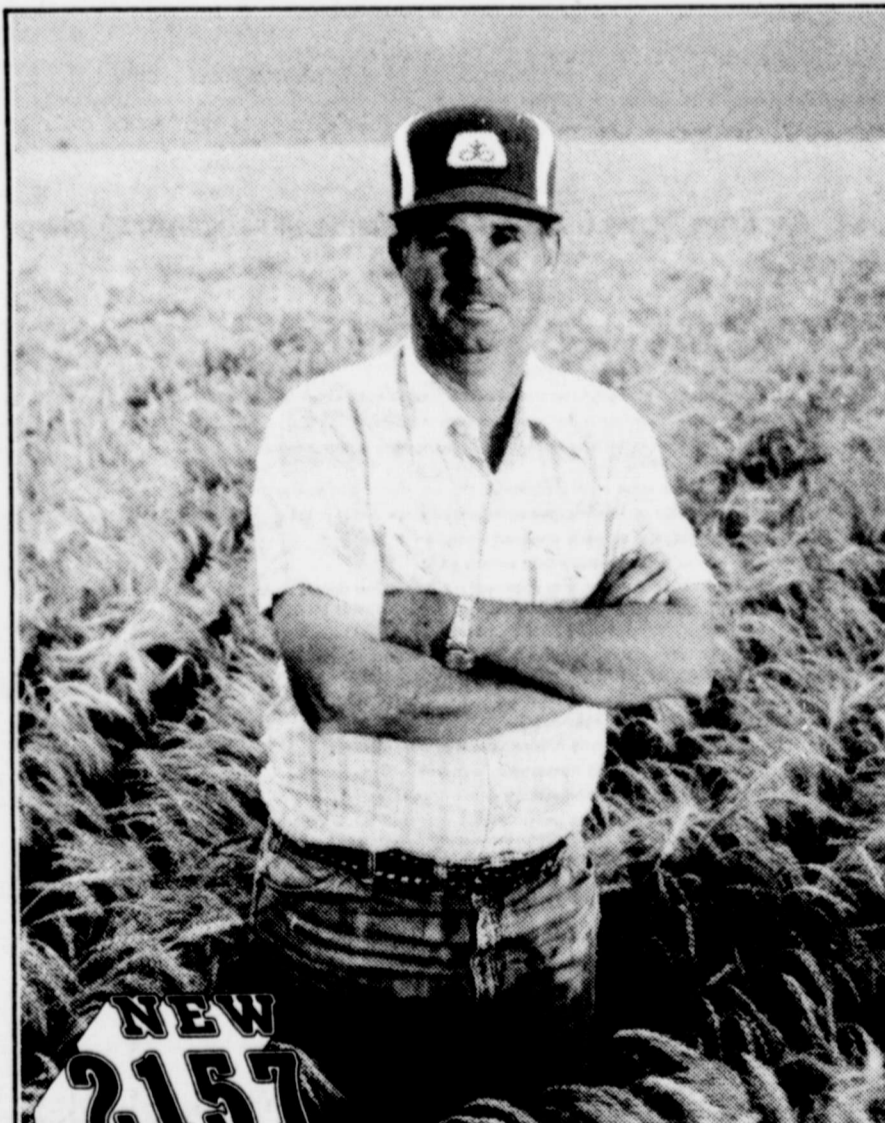
Drink tax received

Runnels County received \$413.23 recently as their 12.5 percent share of the mixed drink tax collected during the second quarter of 1985. The total collected for the county was \$3,305.86.

The Texas Legislature raised the tax from 10 to 12 percent in 1984. The mixed drink tax is collected by the Alcoholic Beverage Commission and city-county rebates are sent out quarterly by the State Comptroller's office.

Anyone can do any amount of work, provided it isn't the work he is supposed to be doing.

Robert Benchley



NEW 2157 2165 Superior grain yields with a good grazing bonus. Excellent straw strength, too!

Our researchers were impressed by the tremendous pasture production and grain yields from these new varieties during testing. And now that the varieties have stood the test of actual production on many farms under many conditions, the proof is in!

They grow off well and show strong resistance to SBMV, leaf rusts, fungal leaf blights, and the Hessian fly

New 2157 gives you good, early grazing, then stays with you through the winter. And the grain yields are right up there with anything you care to compare it against. Choose 2157 for dryland or limited water production.

New 2165 works with your irrigation program to make the most of all you put into the crop. Pasture comes on strong in the fall and grain yields are among the best you'll find, bar none.

Scotty Belew
Route 1, Box 15
Winters, Texas 79567
Phone 915-743-8972

PIONEER BRAND SEEDS

Registered trademark of Pioneer Hi-Bred International, Inc. PIONEER brand products are sold subject to the terms and conditions of sale which are part of the labeling and sale documents.
Pioneer is a brand name, numbers identify varieties. ©PHB 1985

MR. MILO FARMER!
Winters Grain Elevator would like to receive your milo crop. We offer these services:

- (1) We offer storage for the government loan program.
- (2) We will buy your milo.
- (3) We offer open commercial storage so that you can sell at a later time.
- (4) We will contract to buy your milo at a later date with no storage charge.

WINTERS GRAIN ELEVATOR
Dennis Poe—General Mgr.
754-5677

SATURDAY AUGUST 10, 1985 10:30 A.M.
SALE
MRS. R.T. O'DELL
LOCATION: From Downtown Winters, Texas (Runnels Co.) 1/2 Miles North on US 83 (Abilene Hwy.)

TRACTORS-PICKUP COMBINE-TRAILERS

- 1-1979 JD 4840, Cab, Factory 20.8x38 Duals, Powershift, triple hyd., AM-FM-tape, quick hitch (Only 2700 hours)
- 1-1972 JD 4320, Cab, Dual Hyd., wheels weights, Radio
- 1-1960 Case 740, LPG, W-F, 3-pt.
- 1-JD no. 105 Combine, Cab, Diesel, A-C, 20 ft. Header
- 1-Husker No. 225 Grain Hopper Trailer, drag
- 1-Husker No. 165 Grain Hopper Trailer, drag
- 1-20 ft. All-steel Cobey Grain Trailer, Drag (good)

MAY-LIVESTOCK-TRAILERS

- 1-Heston 1014 Hydro-Swing-Trailer (3 yrs. old & nice)
- 1-JD No. 224 SW Square Baler, drag, PTO
- 1-25 ft. Gooseneck all steel cattle trailer, tandem axle, divider gates
- 1-10 ft. Horse Trailer, Single Axle (shop)
- 1-Calf Cradle
- 5-Round Bale Hay Feeders
- 3-Mineral Feeders
- 3-Syrup Feeders
- 1-Pop-up Square Bale Loader, Drag
- 1-Bulk Cattle Feeder
- 1-8 ft. Crepe Feeder (new)
- 1-2 Prong Round Bale Mover on rubber, drag
- 1-3 pt. Round Bale Carrier
- 1-Round Bale moving attach for pick-up
- 2-15 ft. Mayrath Augers, elec. motor
- 1-Danuser 3 pt. Post Hole Digger (good)
- 1-Lot of smooth wire
- 1-Lot of Elec. Fence Posts
- 1-Cattle Spray Rig
- 1-Lot of Livestock Panels
- 1-Elec. Portable Sprayer, Battery hook-up

EQUIPMENT

- 1-JD no. 1610 32 Shank chisel Plow, spring loaded, hyd. fold-up wings, w/JD incorp. attach, drag (late style & nice)
- 1-JD No. 544 10 ft. Front Blade, Belly mount, cyl. cont.
- 1-Crustbuster 32 ft. (39x10) grain drill, fold-up style, 4 carrier wheels, fully hyd. (3 yrs. old & nice)
- 1-Bush Hog No. 1450 Tandem Disc, fold-up wings, Fully hyd., heavy duty (late style & good)
- 1-32 ft. Rope-wick Applic., front mount, cyl. cont. (good)
- 1-8 ft. Vermeer Blade, 3 pt. (NICE)
- 1-4 Row Bush Hog Shredder, drag, cyl. cont.
- 1-7 Shank Big OX Ripper Plow, 3 pt.
- 4-JD No. 804 Planters, fits 2 1/2"
- 1-14 ft. JD No. BW Tandem Disc, drag, cyl. cont.
- 1-4 Row JD No. EFO02 Cult., front
- 1-15 Disc, JD Surflex one-way, drag
- 1-Case 3x14 Spinner s/tipped Moldboard, 3 pt.
- 1-2 Row Case Shredder, 3 pt.
- 1-10 ft. Flatbed Steel utility trailer, single axle
- 1-2 wheel welding trailer, drag
- 1-200 gal. Treflan Rig
- 1-150 gal. Treflan Rig
- 1-3 pt. Grass Seeder

FUEL TANKS

- 1-500 gal. Diesel Tank w/upright filling station pump
- 1-250 gal. LPG tank on 4-wheel chassis, 250 psi
- 1-200 gal. Diesel Tank on 4-wheel chassis, 250 psi
- 1-160 gal. Diesel Tank w/12 volt elec. pump
- 1-560 gal. water tank on 2 wheel chassis
- 1-84 gal. LPG tank, 250 psi
- 2-30 gal LPG tank

2-WAY RADIO

- 1-Base and 3 mobile Regency XL2000

TOOL BAR MAKE-UP

- 4-JD Black Cylinders
- 1-Lot of 2 1/2" Bars
- 1-Lot of Shift Shanks, 2 1/2"
- 1-Lot of Clamps
- 1-Lot of Sweeps, Busters, Lister Beams
- 1-Lot of Rolling Feeders

MISCELLANEOUS

- 1-Shop Rotary Tiller
- Rear Wheel Weights, Twine, Grill Guard, Sproes and Rims, 1-Ton Chain Hoist, LPG Filler Hose, 2 Large Gear Pullers, Armway Adjuvant, Cycle Blade Changer, 8 ft. Axle, and Much More

NOTE: Here's you a nice one! Big, Clean, late style—There's something here for everyone! Don't be late, Denny & Ernie

Commissions Limited (Call First)
LOADS AVAILABLE
FOOD & DRINKS

ALL ANNOUNCEMENTS MADE AT SALE SUPERSEDE ANY PREVIOUS ORAL OR WRITTEN ANNOUNCEMENTS

BURNS HUTSON

WHERE SELLING IS PERFORMANCE
TXS-012-0934
Auctioneers-Realtors-Sales Managers
1806 East Broadway, Sweetwater, TX
915/235-9639

Winters ISD school supplies listed

Lists of school supplies needed by students in Winters Elementary School are as follows:

Special Ed/Self-Contained

- Kleenex (1-200 ct. box)
- 1 box crayons
- 1 pair blunt scissors
- 1 Elmer's glue 4 oz.
- 1 ruler
- 2 pencils #2 lead
- 1 large pencil eraser
- Notebook paper
- 1 pkg. colored construction paper 12x18, Herlitz #32020
- 1 bar hand soap

Kindergarten

- 1 tablet, Nifty pencil tablet No. 2047
- 2 Husky pencils
- 2 lg. pkgs. assorted colored construction paper, 12x18, Herlitz #32020
- 1 box Kleenex, 200 ct.
- Scissors, blunt end
- Crayons, basic 8 ct. only
- 1 Elmer's glue 4 oz.
- Cigar box
- 1 bar deodorant soap
- 2 #2 pencils

First Grade

- 1 folder with pockets
- 1 lg. pkg. Manila drawing paper, 12x18, Herlitz #32035
- 2 Husky pencils
- 2 #2 pencils
- 1 lg. pkg. assorted colored construction paper, 12x18, Herlitz #32020
- 2 tablets (Nifty Pencil Tablet Herlitz #2047)
- Washable glue—4 oz. Elmer's
- Pointed scissors
- Crayons 16 ct.
- Kleenex (2-200 ct. boxes)
- 2 Big Chief tablets, Herlitz #10520
- 1 bar soap
- Eraser
- School box

Second Grade

- Big Chief Tablet Herlitz #10520
- Tablet Nifty #2637
- Ruler (12" wood)
- Elmer's glue 4 oz.
- 2 #2 pencils
- Scissors—sharp pointed
- Crayons—basic 8
- Kleenex (1-200 ct. box)
- 1 lg. spiral composition book, 9x12 Herlitz #40130
- 1 bar hand soap

Third Grade

- Big Chief Tablet Herlitz #10520
- Or
- Notebook paper
- Pencils (#2 lead)
- Ruler (12" wood)
- Elmer's glue 4 oz.
- Scissors—blunt end
- Kleenex (1-200 ct. box)
- Crayons, basic 8 ct.
- Tablet #3, Herlitz #12053

1 red checking pen

- Fourth Grade
- 1 pkg. assorted colored construction paper 12x18 Herlitz #32020

- Kleenex (1-200 ct. box)
- 1 pr. pointed scissors
- 1 box crayons 16 ct.
- 1 box map colors
- 1 ruler
- 2 red lead pencils or pens
- Notebook paper
- 1 lg. pencil eraser
- 3 pencils #2 lead
- 1 pkg. Scotch tape
- 1 pkg. 9x12 Manila paper, Herlitz #32030
- 1 Elmer's glue 4 oz.
- 1 black Magic Marker
- 3 expansion folders with pockets
- 1 handwriting tablet 4th grade #140024

Fifth Grade

- 1 protractor
- 1 pkg. colored construction paper 12x18 Herlitz #32020
- Notebook paper regular lines
- 1 pair pointed scissors
- 1 box crayons 24 ct.
- 1 ruler metric and standard
- 2 pencils #2 lead
- 2 boxes Kleenex (200 ct.)
- 2 red ball point pens or pencils
- 1 pkg. typing paper (200 ct.) Herlitz #37220
- 1 pkg. Scotch tape
- 1 Elmer's glue 4 oz.

Sixth Grade

- Notebook paper regular lines
- 7 expansion folders with pockets
- 1 pair pointed scissors
- 1 box map colors
- 1 ruler
- 3 blue (no black) ball point pens
- 2 red lead pencils or pens
- 3 #2 lead pencils
- 2 boxes Kleenex (200 ct.)
- 1 pkg. Manila 12x18 Herlitz #32035
- 1 pkg. typing paper 200 ct. #32035
- 1 compass
- 1 protractor
- 1 Elmer's glue 4 oz.
- 1 box crayons
- 1 pkg. colored construction paper 9x12 Herlitz #32010
- 2 spiral notebooks
- 1 pkg. assorted colored tissue paper
- 1 set of water colors
- 1 pkg. paint brushes 10 ass'd. sizes
- 1 box Crayola felt tip markers (8 ct.)
- 1 roll Scotch tape
- 1 1/2 in. wide utility paint brush
- 1 pkg. sponges

All supplies should be marked with the child's name before they are brought to school.



New addition to park playground

4-H record books judged

Thirty-three Runnels County 4-H members submitted their 4-H record books for county judging competition. The record books were judged on the county level on July 26. Judges were: Mrs. Marsha Fry, Ballinger Home Economics teacher; Mrs. Kaila Blessing from Olfen and Kerry Shropshire, County Extension agent from Coleman County. Twenty record books were submitted for district 4-H level judging on July 30 in Mertzon.

These record books submitted to district judging and their placing are:

- Miles 4-H Club—Angie Hohensee, 1st; Jared Eggemeyer, 1st; Beth Eggemeyer.
- Rowena 4-H Club—Jason Schwertner, 2nd; Casie Green Fuchs, 1st; Jodi Franke, 1st; Crystal Calhoun; Grant Teplicek, 2nd.
- Olfen 4-H Club—Tabitha Halfmann.
- Ballinger 4-H Club—Kristy Hays; Raenese Turner, 1st; Jill Smith, 2nd; Kenneth Rose; Terry Davis, 3rd.
- Norton 4-H Club—Neal Niehues, 2nd; Caroline Niehues, 3rd; Heath Belk.
- Winters 4-H Club—Michelle Carter, 2nd; Kimberly Deike; John Andrae.

Only the senior age record books placing 1st in district will proceed to state judging. Raenese Turner, by virtue of her 1st place award, will send her record book to state level judging at Texas A&M in August.

Other 4-H members submit-

ting record books for county judging were:

- Norton 4-H Club—Barbara Belk; Angela Burris; Deron Robinson; H.A. Belk.
- Rowena 4-H Club—Jeff Schwertner; Amy Franke; Debra Franke.
- Ballinger 4-H Club—Mike Howard; Lucy Buxkemper; Kathy Hays.
- Winters 4-H Club—Mindy Andrae; Tandy Reagan; Kristin Deike.

Each of these 4-H'ers did an excellent job of preparing their record books and spent several hours compiling their year's activities.

Labeling rule delayed

The Food and Drug Administration has extended until July 1986 the deadline by which nutrition labels on processed food must include sodium content, says Texas A&M University Agricultural Extension Service nutritionist Mary K. Sweeten. The proposed rule, set to go into effect this July was extended by a year, after food processors complained of the economic burden of having to destroy their inventories of labels printed before notice of the rule, she says. Consumers on low-sodium diets will still find many products that already comply with the rule on the market, Sweeten adds.

ding these air tubes contract, and the membranes lining these airways swell and produce extra mucus. All three actions narrow the airways and cause the sufferer to gasp for breath.

Treatments are aimed at lessening the strength and frequency of asthma attacks. Often, the solution is avoiding those things that trigger the attacks. In addition, a drainage technique involves placing the person's head and trunk downward to help cough up excess phlegm. If the cause cannot be identified or avoided, drug therapy usually is necessary. Although some over-the-counter asthma drugs are available, patients who think they have the disorder should see a doctor first. The reason is that the symptoms of asthma—shortness of breath, wheezing, and dry coughing—also may indicate other serious problems like heart failure and bronchitis. Parents of asthmatic children should know the other warning signs: tightness in the chest, anxious or scared appearance, unusually pale color, or restlessness during sleep as an attack approaches.

Then the muscles surround



Abraham Lincoln was born in Kentucky.

Facts and myths about teen suicides

The idea that normal teenagers commit suicide without warning is a myth, according to an article in *Texas Medicine*. "Teenagers who take their lives are troubled, and they show signs and symptoms," five Dallas psychiatrists wrote in the Texas Medical Association journal's August issue.

"Perhaps the most important warning sign is a history of a suicide threat or attempt," noted Drs. John Looney, David Oldham, Lawrence Claman, Frank Crumley, and David Waller. Adolescents who do this "just to get attention" are signaling a mental disorder that requires thorough treatment, they explained.

Suicide is the third leading cause of death among U.S. adolescents. Trailing only accidents and homicides, teen suicide rates are higher for males than females and greater for whites than non-whites. "The frequency of suicide for all adolescents is increasing substantially," the psychiatrists said. "The suicide rate for adolescent white males doubled between 1964 and 1977." They noted that each generation has a higher suicide rate than the preceding one and a higher rate at every age.

Parents often can spot the warning signs before the act is attempted, and psychiatrists often can provide treatment to prevent it, the researchers said. "Adolescent suicide is closely associated with depression or other mental disorders."

They cited these signals that may indicate an increased suicide risk among teens: **Changes in behavior**—accident proneness; drug and alcohol abuse; physical violence toward self, others, and animals; sudden alienation from family and friends; worsening school performance; refusal to attend school; disposal of possessions; and letters, notes, or poems with suicidal content.

Mood changes—expressions of

SCHOOL DISTRICT: Winters

NOTICE OF CALCULATION OF EFFECTIVE TAX RATE, ESTIMATED UNENCUMBERED FUND BALANCES, AND DEBT SCHEDULE

I, J. B. Smith, Tax Collector for Winters, in accordance with Sec. 26.04, Property Tax Code, have calculated the tax rate which may not be exceeded by more than three percent by the governing body of the Winters I.S.D., without the holding a public hearing as required by the code.

The estimated unencumbered fund balance for Maintenance & Operation fund \$ 512,000
The estimated unencumbered fund balance for Interest & Sinking fund \$ 102,500

The following schedule lists debt obligations that 1985 property taxes will pay

	Principal	Interest & Fees	Total
1981 General Obligation	205,000.00	155,895.00	360,895.00

J. B. Smith, Tax Collector
Date: July 29, 1985

CALCULATIONS USED TO DETERMINE EFFECTIVE TAX RATE

I. DATA

1. 1984 Total tax levy from the 1984 tax roll	\$ 1,237,262.60
2. 1984 Tax rate (M&O and I&S)	\$.98 / \$100
3. 1984 Debt service (I&S) levy	\$ 379,614.60
4. 1984 Maintenance and operation (M&O) levy	\$ 857,648.00
5. 1984 M&O taxes on property in territory that has ceased to be a part of unit in 1985	\$.00
6. 1984 M&O taxes on property becoming exempt in 1985	\$ 656.54
7. 1984 M&O taxes on taxable value lost because property is appraised at less than market value in 1985	\$ 2,116.44
8. 1985 Total taxable value of all property	\$ 211,600,747
9. 1985 Taxable value of new improvements added since Jan 1 1984	\$ 12,025,250
10. 1985 Taxable value of property annexed since Jan 1 1984	\$.00
11. 1985 Tax levy needed to satisfy debt service (I&S)	\$ 360,895.00
12. Rate to raise 1984 tax levy due to appraisal roll errors (lost dollars divided by the difference of 1985 taxable values minus over-65 homesteads taxable values)	\$.00 / \$100
13. Rate to regain taxes lost in 1984 due to appraisal roll errors (lost dollars divided by the difference of 1985 taxable values minus 1985 over-65 homesteads taxable values)	\$.00 / \$100
14. 1984 M&O taxes used to regain lost 1983 levy	\$.00
15. 1985 Taxable value of over-65 homesteads with frozen taxes	\$ 4,571.75
16. Frozen M&O levy of over-65 homesteads with frozen taxes	\$ 12,024.18
17. Frozen I&S levy of over-65 homesteads with frozen taxes	\$ 3,222.26
18. Rate to generate reduced state aid or receive maximum equalization allotment (amount of lost aid or additional levy for equalization divided by 1985 taxable values minus 1985 over-65 homesteads taxable value + 100)	\$ 31,698 / \$ 31,600,547 = \$ 1,000,750 / \$ 100
19. Rate to raise 1984 tax levy due to appraisal errors (lost dollars divided by the difference of 1985 taxable values minus 1985 over-65 homesteads taxable values)	\$.00 / \$100

II. CALCULATION

MAINTENANCE AND OPERATION (M&O) TAX RATE	
(A) 1984 Total tax levy (Data 1)	\$ 1,237,262.60
(B) Subtract 1984 debt service levy (Data 3)	\$ 379,614.60
(C) Subtract 1984 taxes on property no longer in unit (Data 5)	\$.00
(D) Subtract 1984 taxes on exemptions (Data 6)	\$ 656.54
(E) Subtract 1984 taxes on productivity valuation (Data 7)	\$ 2,116.44
(F) Subtract frozen M&O levy of over-65 homesteads (Data 16)	\$ 12,024.18
(G) Subtract 1984 M&O taxes used to regain lost 1983 levy (Data 14)	\$.00
(H) Adjusted 1984 M&O levy	\$ 842,850.64
2. 1985 Total taxable value of all property (Data 8)	\$ 211,600,747
(B) Subtract 1985 value of new improvements (Data 9)	\$ 12,025,250
(C) Subtract 1985 value of annexed property (Data 10)	\$.00
(D) Subtract 1985 value of over-65 homesteads (Data 15)	\$ 2,459,750
(E) Adjusted 1985 taxable value for M&O	\$ 187,115,747
3. (A) Divide the adjusted 1984 M&O levy (1-H above) by the adjusted 1985 taxable value for M&O (2-E above) (\$ 842,850.64 / \$ 187,115,747)	\$.007189
(B) Multiply by \$100 valuation	\$.7189
(C) Effective M&O rate for 1985	\$.7189 / \$100

INTEREST AND SINKING (I&S) TAX RATE	
4. (A) 1985 I&S levy needed to satisfy debt (Data 11)	\$ 360,895.00
(B) Subtract frozen I&S levy of over-65 homesteads (Data 17)	\$.00
(C) Adjusted 1985 I&S levy	\$ 360,895.00
(D) 1985 Total taxable value of all property (Data 8)	\$ 211,600,747
(E) Subtract 1985 value of over-65 homesteads (Data 15)	\$ 2,459,750
(F) Adjusted 1985 taxable value for I&S	\$ 209,140,997
(G) Divide the adjusted 1985 I&S levy (4-C above) by the adjusted 1985 taxable value for I&S (4-F above) (\$ 360,895.00 / \$ 209,140,997)	\$.002753
(H) Multiply by \$100 valuation	\$.2753
(I) Effective I&S rate for 1985	\$.2753 / \$100

APPRAISAL ROLL ERROR RATE	
5. (A) Rate to raise 1984 tax levy due to appraisal errors (Data 12)	\$.00 / \$100
(B) Add rate to regain taxes lost due to errors (Data 13)	\$.00 / \$100
(C) Total rate to adjust for appraisal roll errors	\$.00 / \$100

TOTAL EFFECTIVE TAX RATE FOR 1985	
6. (A) Effective M&O rate (3-C above)	\$.7189 / \$100
(B) Add effective I&S rate (4-I above)	\$.2753 / \$100
(C) Add rate to adjust for appraisal roll errors (5-C above)	\$.0000 / \$100
(D) 1985 Effective Tax Rate	\$.9942 / \$100

1985 Effective Tax Rate is the tax rate published as required by Sec. 26.04, Property Tax Code

STATE AID/EQUALIZATION ENRICHMENT AID RATE

7. Rate to equalize reduced state aid or qualify for maximum equalization (Data 18)

Both the Marquis de Lafayette (who fought with Washington's forces during the Revolutionary War) and his wife had the same first name—Marie.

WANTED

Sewing Machine Operators

No Experience Needed.

Company Benefits Include:

- One Week Paid Vacation. Four Paid Holidays.
- Health and Life Insurance Available.
- Retirement Program.
- Good Working Conditions.
- Bonus Incentive for Low Absenteeism.

Apply at:

KENT, INC.

8:00 a.m. - 4:30 p.m.

EOE Highway 67 South, Ballinger, Texas 76821

OIL FIELD EQUIPMENT & INDUSTRIAL SUPPLIES

SUB-SURFACE PUMPS PRODUCTION EQUIPMENT

Sales & Repair Used & New

COMPLETE PUMP SHOP

WINTERS OILFIELD SUPPLY INC.

HWY. 83 S. - WINTERS

754-5545

NIGHTS AND HOLIDAYS

JIMMY BLACK—754-5159 DEAN MAAS—754-5635
JACK PIERCE—754-4198 IF NO ANSWER—754-5418
JACK PARR—365-5306

Happy Birthday

Jeryl

The Newest Member Of The Over The Hill Gang

We Love Ya Anyway

REFINISHING TIPS FROM

Home Family

Q. My aunt gave me an oak table that's still in good condition, but the finish is black and unattractive. What can I do?

A. Refinishing is a great way to give old furniture a "facelift." Furniture refinishers remove darkened finishes and reveal the wood's beauty. You don't need special tools or skills to get good results. Just dampen four-0 (0000) steel wool with refinisher and go to work on a small area. You'll see results very quickly. (Afterwards, don't forget to apply a new finish to protect your piece.) When friends compliment you on your "new" table, you can say, "I did that myself." That's a proud feeling.

I'll be happy to answer any questions on wood care. Send a self-addressed, stamped envelope to Homer Formby, P.O. Box 667P, Olive Branch, MS 38654.

By Margaret

They germs on even a dollar the

The attended to see re friends tended. called for meeting. elected reunion. President Secretary (Boatright NM., trav Bnea Bal Lissie W. Elvie an Corra Pe Earl Fau Kraatz-o Secretary, day in A

There homedac Jacob an who had of Walter Sunday. T family wa Birthday

Pat Ha spent the Saturday. Jackie a daughter in another d of Lubboe fie Dietz fo day Mrs. Darrell B Rhonda K On Saturd and Mildr Clay Bail some of h being stor Spending Doris and

By Ma

Shawn I visited with Vena Bob was in Se register for ASU.

Bertie St with Steve visit Kim a children o Robbie, Jones of So and Louise over the w Our gran Susan Sto week. Sus Sunday. T at San Ma Horace, Coleman W see Law Brevard in home.

Zane Co Wednesday Mr. and M in Del R fishing and they also c Susan S Alta Hale

Johnie went on recently w Decker an Angelo, on Mexico an Joanna a spending a their gran Dulcie De Eva Eva ding of he Dee Raine Shelton, o at Lamar S in Sweetw

Everett attend the daughter, Timothy r the third o the Hebro in Carrollt Skipper visited M Abilene delighted peas,okra tomatoes their gard Joyce

Korea visi Sikes Sun enjoyed s

Crews

By Hilda Kurtz

They say dollar bills have germs on them. That's not true, even a germ couldn't live on a dollar these days.

The Crews reunion was well attended and everyone was glad to see relatives, young and old friends alike. Around 150 attended. President Carl Faubion called for a brief business meeting. Therin Osburn was elected President for the 1987 reunion. Connie Gibbs, Vice-President; and Nila Osburn, Secretary-Treasurer. Ann (Boatright) Haines from Hobbs, NM., traveled the furthest; Dee Bnea Baker was the youngest; Lissie Whittle, Amber Fuller, Elvie and Blanche Berry and Corra Petrie were the oldest. Earl Faubion and Mrs. Gerry Kraatz-out going President and Secretary. See you second Sunday in August 1987.

There was cake and homemade ice cream for Brenda Jacob and Robert Van Zandt who had birthdays in the home of Walter and Margie Jacob on Sunday. The Robert Van Zandt family was also present. Happy Birthday Robert and Brenda.

Pat Hambright came out and spent the day with Corra Petrie Saturday. Cecil came for dinner. Jackie and Betty Baldwin and daughter Marta of Amarillo, also another daughter Karen Smith of Lubbock, came to see Mrs. Effie Dietz for lunch Friday. Saturday Mrs. Dietz had as guests Darrell Baldwin and girl-friend Rhonda Kimbrough of Lubbock. On Saturday evening, Clarence and Mildred Hambright visited. Clay Bailey came to pick up some of his furniture that was being stored.

Spending the weekend with Doris and Marion Wood were

their children. The Larry Calcote family of Winters; the Malloy Bryant family of Abilene; Frances Mincey of Big Springs; and Jessie Ray Klutts also spent time visiting.

Kat Grissoms' daughter Katherine Thomas of Dallas spent the weekend. Wanda, John and Joe Simms came for Sunday dinner to celebrate Kat and Adeline's 45th anniversary. Congratulations to the Grissoms.

Adeline Grissom was presented with a potholder surprise birthday party Tuesday by Hattie Minzenmeyer, Nila Osborne, Nera Eoff, Virela Foster and Hilda Kurtz.

Elvie and Blanche Berry of Abilene; Cecil and Susie McDaniel of Ft. Worth came by after the Crews reunion to see Mrs. Effie Dietz and also left her enough food for several meals.

Visiting during the week with Alta Hale were: Obed and Ann Fuller; S.G. and Helen Brevard; Sam Faubion; Claudia Hill; Hazel Mae Bragg; Mrs. Edgar Morrison; the Lawton Brevards; Lemma Fuller; Bessie Jameson; Ozela Stacy; Lemma Fuller and Alta Hale visited the Edgar Whittles' in Coleman Thursday.

Ronald and Eugenia Hill came down from Sweetwater and spent Saturday with Robert and Claudia Hill.

Harvey Mae and Noble Faubion were in Lubbock Wednesday to see Mr. Buford Goode who is still real sick in a hospital there. Later they visited with his family at home.

Gina Chambliss of Hawley spent a week with her grandparents, the Earl Coopers. On Sunday, Richard, Brenda and

Dodie Chambliss came.

I am sorry to hear Mr. Ralph McWilliam is in N.R.H. in isolation as I write. We hope he will be recovering real soon.

The Rodney Faubion family were in Abilene Sunday and spent some time with the Dan Phillips family.

Homer Martin, Rio Concho Manor and Mr. and Mrs. Eddie Boyd of San Angelo spent Sunday afternoon with Selma and Hazel Dietz. The Dietz' had supper with grandson Jimmy Chapman and Coy Saturday night in San Angelo.

Mr. and Mrs. Wilma Gerhart and Lillie Presley attended the Linderman reunion at Goldthwaite Sunday. They reported a good attendance.

Baldwin reunion held August 3

The Baldwin relatives and friends held a reunion Saturday, August 3, 1985. A fish fry was held in Mr. and Mrs. Carl Baldwin's back yard in the evening.

After the meal there was a short business meeting with Barbara Baldwin Pearce, President, presiding.

Each family introduced members of their families, 78 people attended.

On Sunday morning, August 4, a Continental breakfast was served at the Winters City Park.

Towns represented were: Dallas, Corpus Christi, Austin, Georgetown, Van Alstyne, Bronte, San Angelo, Amarillo, Colorado City, Big Spring.

Canyon, Prosper, Baird, Albany, Arlington, Abilene, Ballinger, Sweetwater, Victoria, Blackwell, Temple, Plano, Snyder, Winters and Albuquerque, New Mexico.

Wilson Reunion held in Abilene

Those attending the Wilson Reunion at the Abilene State Park Sunday were: Mrs. Harold Wilson and Billy, Mr. and Mrs. Don Wilson of Ovalo; Mr. and Mrs. Denzil Riggan, Angelia and Julienne Dooley of Sweetwater; Cheryl Riggan of San Angelo; Joyce Harvill of Ft. Worth; and Damon Arthur of Stephenville.

Also, Mr. and Mrs. Calvin King, Ima Shelton, Doug Dupre and Janie Neff of Abilene; Oneta Birkley of Cincinnati, Ohio; Mr. and Mrs. Harlan Meyer, Mr. and Mrs. Tony Gunn of Midlothian; Mr. and Mrs. Mike Meyer of Dallas; Mr. and Mrs. Benny Stallo, Harold Ray Wilson of Abilene; Mrs. Ben Stallo and Deborah of Merkel; and Mr. and Mrs. Ronnie Reel, Leigh Ann and Jodie of Paint Creek.

And Mr. and Mrs. Winford Reel, Heather and Kira; G.C. Harville of Winters; Mr. and Mrs. Ray Wilson and Michael, Mr. and Mrs. Bobby Ray Wilson and Cody, and Earnest Wilson of Abilene.

Card of Thanks

We would like to express our thanks to our neighbors and friends for all the food, cards and thoughtfulness after the death of my father.

The family of John Cook Sr. Cookie and Dick Ryan, Jill and Kristi Traylor, Dawn and Wayne Green.

Card of Thanks

The family of James M. Holland wishes to express their thanks and gratitude to Dr. Y. K. Lee, North Runnels Hospital, and to the many friends who furnished love, food, and flowers.



Coating food with flour can be easier if you use a flour-filled salt shaker.

FIRST UNITED METHODIST CHURCH

141 N. Church 754-5213
Gary F. Turner, Pastor

Church School 9:30 a.m.
Worship 10:40 a.m.

Sunday August 11

Old Fashioned Hymn Singing

Dister takes top marathon honors

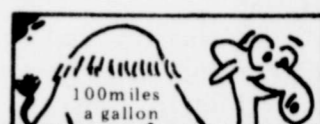
Sheppard A.F.B.'s Sherry K. Dister took first place in the 25-29 age group division at the Air Fiesta Half Marathon conducted May 18 at Randolph AFB, Texas.

Dister, of the School of Health Care Sciences, ran the 13.1 mile course in one hour, 31 minutes and 39 seconds. Having sliced five minutes off of her best time, it also gave her the fifth place overall for female finishers.

Having attended Texas Western Hills High School in Fort Worth where they did not have a women's track team, she never ran in any type of race until attending college at Eastern Washington University in Cheney, Wash.

Dister has competed in races ranging from a five and 10 kilometer run to a full marathon and triathlon. She says her best marathon time is three hours, 38 minutes.

The 5 ft., 7 1/2 inch, 119-pound Dister serves as a medical services special course, 3-level, instructor for the United States Air Force. Staff Sergeant Dister is the daughter of Mr. and Mrs. Dan Standley of Puyallup, Washington and the granddaughter of Lucille Virden of Winters.



Camels can go without drinking for as much as eight weeks in cool weather. After such abstinence, they can consume as much as a hundred quarts in ten minutes.

Hospital

Notes

ADMISSIONS

July 30
Enda Smyth
July 31
Irvie Talley
August 1
None
August 2
Robert Hill
Bill Coleman
Louise Gottschalk
August 3
None
August 4
None
August 5
Gladys Lofton

DISMISSALS

July 30
Tab Hatler
Catherine Hays
July 31
None
August 1
Bobby Staggs
Gladys Miller
Jimmy Davis
Monica Trevino
Alfreda Jacobson
Clarence Morrison, exp
August 2
None
August 3
Ellawayne Russell
Ralph McWilliams
August 4
Violet Edwards
Robert Hill
Eula Gardner
August 5
None

Talpa

By Maggie Ruth Stokes

Shawn Karr, of Dell City, visited with Mildred Pauley and Vena Bob Gates on Friday. He was in San Angelo to pre-register for the fall Semester at ASU.

Bertie Stone went to Lockney with Steve and Faye King to visit Kim and Robin King and children over the weekend.

Robbie, Carol, and Brooke Jones of Sonora visited Gordon and Louise Brookshier and Judy over the weekend.

Our grandchildren, Kevin and Susan Stokes, visited us last week. Susan went to Austin on Sunday. They will be in college at San Marcos this fall.

Horace, Susan and I went to Coleman Wednesday night to see Lawton and Tommy Brevard in the Edgar Whitley home.

Zane Cassaday spent from Wednesday until Sunday with Mr. and Mrs. Richard LaCasse in Del Rio. They went bow fishing and killed carp and gar, they also caught some catfish.

Susan Stokes and I visited Alta Hale on Friday afternoon. Johnnie and Dulcie Decker went on a weeks vacation recently with Mike and Patti Decker and daughters, of San Angelo, on a trip through New Mexico and Colorado.

Joanna and Jeffie Strawn are spending a couple of weeks with their grand parents, Johnnie and Dulcie Decker.

Eva Evans attended the wedding of her grandson, Rodney Dee Rainey and Donna LaRue Shelton, on August 1, at 4 p.m. at Lamar Street Baptist Church in Sweetwater.

Everett Evans was unable to attend the wedding of his granddaughter, Tresi Lea Moore to Timothy David Freemyer, on the third of August at 2 p.m., in the Hebron First Baptist Church in Carrollton, Texas.

Skipper and Shorty Hollinger visited Mrs. Jack Hollinger in Abilene Sunday. She was delighted with the black-eyed peas, okra, green peppers and tomatoes they took her from their garden.

Joyce Bomar Smith from Korea visited Orby and Thelma Sikes Sunday afternoon. They enjoyed so much talking to her

about her school teaching job in Korea. She will be returning over there soon.

Visitors in the home of Kenneth and Jo McWilliams on Friday were Jo's nephew Mr. and Mrs. Ben Moberley and two children, of Virginia and Edith Toombs and Leoma Poe of Coleman.

Bill, Karen, Angela and Amy Hicks went to Six Flags over the weekend, in celebration of Karean and Amy's birthdays.

WE FINALLY MADE IT!

Circle

Restaurant



and

Steak House

HIGHWAY 53 WEST

WINTERS TEXAS 79567

915-754-4814

Open 5 a.m. to 10 p.m.

FREE PREVIEW!

SHOWTIME
WE MAKE
Excitement
ON CHANNEL 14

THE DISNEY CHANNEL
ON CHANNEL 15

WINTERS AUGUST 9-23

BALLINGER AUGUST 16-30

VISIT OUR CONVERTER DISTRIBUTION CENTER IN
CHAMBER OF COMMERCE OFFICE 9-5:30 P.M. MON.-FRI.

Obituaries

Bettie Chambliss

Mrs. Neal Chambliss 63, of Winters died at 1 p.m. Thursday at her home in Winters.

She was born Bettie Campbell on April 1, 1922 in Gunsight, Texas, and was raised on a farm until the age of 16, when she moved to Tahoka where she lived with her brother. It was there she married Neal Chambliss on May 3, 1938.

They lived in Houston, Eastland County and moved to Winters in 1950.

She was a member of the Baptist Church.

Survivors include her husband Neal of Winters; three sons, Tommy of Ballinger, Jerry of Clarendon, Richard of Hawley; one daughter, Cecelia Schwertner of San Angelo; two brothers, Daniel Campbell of Kingman, Arizona and Joe Campbell of Thordale, Texas; two sisters, Mary Stewart and Effie Johnson both of Abilene; and 11 grandchildren.

Services were held at 2 p.m. Friday in the Winters Memorial Chapel with Rev. James Gehrels officiating.

Burial was in Lakeview Cemetery, under the direction of Winters Funeral Home.

Pallbearers were: Carson Easterly, J. T. Sprinkle, Joe Emmert, Ellis Wilson, Wilburn Waggoner and J. C. Hodnett.

James Holland, Jr.

James Monroe Holland, Jr., 55, of Winters, a member of the National Guard, died at 12:45 p.m. Thursday in Humana Hospital in Abilene after a short illness.

He was born August 7, 1929, in Ballinger. He moved to San Angelo in 1941 and entered the U.S. Army in 1945. He served in the Korean War and also was stationed in Germany for six years. He moved to Winters in 1970 and was an employee of Dry Manufacturing Company for 14 years. He was a member of the National Guard in Ballinger and was a Baptist.

Survivors include two sisters; Neva Mae Coplin of Prescott, Arizona and Pat Baker of Winters; also several nieces and nephews.

Funeral services were held at 2:30 p.m. Sunday, August 4, in the Winters Memorial Chapel with the Rev. James Gehrels, Baptist minister, officiating. Military rites were held by the Ballinger National Guard at the Old Runnels Cemetery directed by the Winters Funeral Home. Pallbearers were members of the National Guard of Ballinger.

John H. Cook, Sr.

John H. Cook, Sr., 67, of Ballinger died on Wednesday, July 31, 1985 in the VA Hospital in Amarillo at 12:10 a.m.

He was born September 7, 1917 in Crews, Texas to E.E. and Mary Elizabeth Marlar Cook. He married Lillie Mae Drake November 26, 1941 in Ballinger. She preceded in him death October 16, 1975.

A World War II veteran of the Army, he was a truck driver for B&B Transport for 16 years.

Survivors include two daughters, Jackie Hurt, of Rowlett and Elizabeth Ryan of Winters; three sons, Marvin Cook, Amarillo, Robert Cook and John Cook, Jr. both of Ballinger; nine grandchildren; four sisters, Mildred Harris, Ralls, Wanda Farmer of Plano, Pearl Tompson of Portales, NM, and Rose Enochals of Eldorado; two brothers, Cotton Cook and Bill Cook, both of Ballinger.

Services were held Friday, August 2, at 10:00 in the chapel of Rains-Seale Funeral Home, with burial in the Old Runnels Cemetery. Ferris Akins officiating.

Pallbearers were: O.T. Gabbart, Bobby Black, Jerry Cook, Charles Shepard, Dutch Voelkel, and Charlie Cook.

Jaunita Scruggs

Jaunita Scruggs, age 63, from Ballinger, died at 11:21 Tuesday, July 30, 1985 at Ballinger Memorial Hospital.

Born September 28, 1921 in Springfield, Missouri, she was the daughter of Hiram and Zena Rowe Bruton. She married Jason Scruggs on April 10, 1976 in Ingram, Texas. She was a member of Grace Baptist Church and the VFW Woman's Auxillary.

She is survived by a daughter, Lynda Wood of Austin; three sons, Clayton Davis of Ballinger, Melvin Paul Davis, Phoenix, Ar., and Milton Richard, Tulsa, Ok.; ten grandchildren; one great-grandchild; two sisters; and three brothers.

Graveside services were held August 1, 1985 at 2:00 p.m. in Evergreen Cemetery. Frank Wilson officiating.



The highest natural geysir in the U.S. is not Old Faithful. It is Old Faithful's neighbor, the Beehive Geysir.

IBM to build American owned plant

State Comptroller Bob Bullock Friday hailed recent changes in Mexican government economic policy as "long overdue good news for South Texas."

Bullock said the Mexican government's decisions to allow IBM to build a 100 percent American-owned plant in Mexico and to make twin-plant border industry a "national priority," represent "a bright silver lining" in the economic clouds that have been hanging over South Texas.

"These decisions will bring more American investment to the border to create jobs and paychecks for the part of our state where jobs and paychecks are needed the most."

Bullock pointed out nearly half the present twin-plant industries are located across the border from Texas cities hard hit in recent years by the U.S. national recession, devaluations of the Mexican Peso and a disastrous freeze that wiped out citrus orchards and agricultural jobs for years to come.

Bullock said a Texas Government study has shown that a 10 percent increase in twin plant employment in Mexico leads to a three percent increase in employment in Texas border towns.

"Not tonight dear, I have a headache"

"Not tonight dear, I have a headache" is a legitimate excuse and should be respected, according to Lee Kudrow, M.D., keynote speaker for the second annual Symposium on Pain to be held Saturday and Sunday, August 31 and September 1, at the Medical School of Texas Tech University Health Sciences Center (TTUHSC) in Lubbock.

A leading authority on headache, Dr. Kudrow says that over 80 percent of all headaches in women are related to hormonal changes during the menstrual cycle. The five types of migraine and the two types of cluster headaches are vascular in origin. They will be contrasted with three other general categories of headache, giving physicians, nurses and other health professionals an overview of the multiple causes underlying this common human experience.

When the dull ache of a headache is accompanied by extreme sensitivity to light, noise and touch sensations, symptoms indicate a form of migraine called the common migraine. Current theory holds that the "everything makes you want to scream" syndrome is an accompanying deficiency of neural (related to nerves) hormones which affect the sense organs, making these stimuli extremely painful. The only immediate help is to head for a dark, quiet room and wait it out.

Most types of headaches will respond to proper therapeutics, however. The trick is being able to diagnose the cause accurately. Dr. Kudrow, director of the California Medical Clinic for Headache, has been one of the nation's leading researchers into the causes and classification of headaches. The author of over 50 publications and some 137 lectures and symposia for faculty will discuss his system for classification and treatment.

The two-day symposia will also include six treatment methodologies for other forms of intractable pain. The Pain Center at TTUHSC School of Medicine is one of a few centers in West Texas specializing in the management of pain which has proven unresponsive to usual treatment methods.

The meeting has been accredited by the Physician's Recognition Award for 9.5 credit hours in Category I.

For more information, contact Vicki Hollander in the Office of Continuing Medical Education, Lubbock, Texas (806) 743-2929.



I think we should close the window. Buffalo and Rochester, NY, lead the nation in annual average snowfalls, even though they are further south than such cities as Minneapolis and St. Paul, MN.

Sue Spill graduates

Sue Spill, branch manager of Heart O' Texas Savings in Winters, graduated from the Texas Savings and Loan School July 26, marking the completion of the two-week course held at the University of Texas.

The school is co-sponsored by the University of Texas Department of Finance and the Texas Savings and Loan League, the trade association for the state's \$78 billion thrift industry.

Mrs. Spill and her 41 classmates attended more than 70 hours of classes, which covered such topics as management, monetary economics, marketing, communications and interest rate risk management.

Dr. Robert Mettlen, vice president for planning and special projects at the University of Texas, chairman of the board of the Federal Home Loan Bank of Dallas and co-director of the school, presented Mrs. Spill with her diploma during a luncheon for the graduates.

The Texas Savings and Loan League is a non-profit trade organization founded in 1922.

Consumption of sugar is down

U.S. Department of Agriculture figures show that the per-capita consumption of sweeteners is going up, even though the consumption of sugar is going down, says Texas A&M University Agriculture Extension Service nutritionist Dr. Alice Hunt. Since these sweeteners have about the same calories as sugar, weight-conscious consumers should watch their intake of sweeteners such as high fructose corn syrup, dextrose and maltose in processed foods.



Playing cards were originally modeled after the currency of the T'ang dynasty in ancient China.

DANCE

FRIDAY AUGUST 9

8 p.m. to 12 a.m.

Winters Rodeo Arena

Music by The Wagon Aces

Tables and chairs provided

Sponsored by the Winters Rodeo Assoc.

MUFFLER SHOP

WE DO IT ALL AT THE MUFFLER SHOP

- ★ Computer Alignment
- ★ Name Brand Tires
- ★ Air Conditioner Tune Up
- ★ Computer Wheel Balancing
- ★ Custom Wheels
- ★ Monroe Shock and Struts and Complete Brake Service
- ★ Oil Change and Lube
- ★ Complete Exhaust Service
- ★ Batteries

200 Broadway, Ballinger, Texas 365-2891

CONSOLIDATED REPORT OF CONDITION (Including Domestic and Foreign Subsidiaries)
(Dollar Amounts in Thousands)

ASSETS	1985		1984	
	July 31	July 31	July 31	July 31
1. Cash and balances due from depositories, institutions	1,4	1,4	1,4	1,4
2. Noninterest-bearing deposits and currency and coin	1,1	1,1	1,1	1,1
3. Interest-bearing deposits	2	2	2	2
4. Securities	2	2	2	2
5. Federal funds sold and securities purchased under agreements to resell (domestic offices of the bank and of its Edge and Agreement Subsidiaries, and in IBFs)	3	3	3	3
6. Loans and lease financing receivables	4,4	4,4	4,4	4,4
7. Loans and leases, net of unearned income	4,4	4,4	4,4	4,4
8. LESS: Allowance for loan and lease losses	4,0	4,0	4,0	4,0
9. LESS: Accrued transfer risk reserve	4,0	4,0	4,0	4,0
10. Loans and leases, net of unearned income allowance and reserve (from 4.4 minus 4.0 and 4.0)	4,4	4,4	4,4	4,4
11. Assets held in trading accounts	5	5	5	5
12. Premises and fixed assets (including capitalized leases)	6	6	6	6
13. Other real estate owned	7	7	7	7
14. Investments in unconsolidated subsidiaries and associated companies	8	8	8	8
15. Customers' liability to this bank or acceptances outstanding	9	9	9	9
16. Intangible assets	10	10	10	10
17. Other assets	11	11	11	11
18. Total assets (sum of items 1 through 17)	12	12	12	12
LIABILITIES				
19. Deposits				
a. In domestic offices	13,4	13,4	13,4	13,4
(1) Noninterest-bearing	13,4	13,4	13,4	13,4
(2) Interest-bearing	13,4	13,4	13,4	13,4
b. In foreign offices, Edge and Agreement Subsidiaries, and IBFs	13,4	13,4	13,4	13,4
(1) Noninterest-bearing	13,4	13,4	13,4	13,4
(2) Interest-bearing	13,4	13,4	13,4	13,4
20. Federal funds purchased and securities sold under agreements to repurchase in domestic offices of the bank and of its Edge and Agreement Subsidiaries, and in IBFs	14	14	14	14
21. Demand notes issued to the U.S. Treasury	15	15	15	15
22. Other borrowed money	16	16	16	16
23. Mortgage indebtedness and obligations under capitalized leases	17	17	17	17
24. Bank's liability on acceptances executed and outstanding	18	18	18	18
25. Notes and debentures subordinated to deposits	19	19	19	19
26. Other liabilities	20	20	20	20
27. Total liabilities (sum of items 13 through 26)	21	21	21	21
28. Limited-life preferred stock	22	22	22	22
29. Equity capital	23	23	23	23
30. Common stock	24	24	24	24
31. Surplus	25	25	25	25
32. Undivided profits and capital reserves	26	26	26	26
33. Cumulative foreign currency translation adjustments	27	27	27	27
34. Total equity capital (sum of items 23 through 27)	28	28	28	28
35. Total liabilities, limited-life preferred stock, and equity capital (sum of items 21, 22, and 28)	29	29	29	29

NOTE: This report must be signed by an authorized officer and attested by not less than three directors other than the officer signing the report.

I, the undersigned officer(s), do hereby declare that this Report of Condition has been prepared in conformance with official instructions and is true to the best of my knowledge and belief.

SIGNATURE OF OFFICER(S) AUTHORIZED TO SIGN REPORT: Edna Ruth Self - Cashier

DATE SIGNED: July 30, 1985

NAME AND TITLE OF OFFICER(S) AUTHORIZED TO SIGN REPORT: Edna Ruth Self - Cashier

AREA CODE PHONE NO: 915-743-6550

We, the undersigned directors, attest the correctness of this Report of Condition and declare that it has been examined by us and to the best of our knowledge and belief has been prepared in conformance with official instructions and is true to the best of our knowledge and belief.

SIGNATURE OF DIRECTOR: [Signature]

STATE OF TEXAS, County of Runnels, ss: [Signature]

Notary Public

Canterbury Villa Activities Report

By Ouida Dickinson

July has been a busy month with many activities.

Family night supper was Tuesday, July 2. Dennis Simon, administrator, and wife Sharon grilled hamburgers for everyone. Baked beans, potato chips and all the hamburger trimmings. Also cake for dessert. Ballinger String Band was on hand to entertain later that evening. Everyone enjoyed the music and the food was delicious. Thank you Mr. Simon and wife Sharon for cooking the hamburgers.

Mr. and Mrs. Scott Bell were here from Plano. It was a surprise visit. Everyone was happy to see them. All enjoyed the singing and devotion.

We would like to express our deepest sympathy to the families of Marie Kudlacek and Harvey Lisso.

Welcome to our new residents-Lyles Moseley, Earl Clayton and Gladys Miller.

Everyone was happy to see Frank Matthews home from the hospital.

We wish to thank everyone for all the fresh vegetables, squash, black-eyed peas, cantalopes and watermelons. The residents shelled the peas for the kitchen. This brought back memories of years past.

These hot summer days, the ice cream freezers have been busy. We had strawberry and peach ice cream.

We have had a watermelon party. Everyone said they were delicious.

Our monthly birthday party was Thursday, July 18. Those celebrating birthdays this month were: Edna Burkes, Maud Duff, Hilda Gottschalk, Ignacio Gonzales, Frank Matthews, Flora Poe and Marie Roach. Ladies from the AARP provided the delicious cakes. Mrs. Robert Fletcher, Eileen Gordon, Norma Jean Condra, Ruth Lisso and Pat Kvapil served the refreshments. Thank you ladies. Charlie Kvapil and Felix Havlak entertained on their accordians.

The 9th St. Church of Christ was out on their regular monthly visit. The singing was excellent as always. Thank you.

Our garage sale on the 12th of this month was great. Sales were \$200.00. We wish to thank everyone for the items to sell. We will have another garage sale the last of September.

We received memorials from Isabelle Fowler in memory of her parents, Mr. and Mrs. J.M. Davis. Memorial for Charles Morgan from his sisters and an anonymous check.

We wish to express our appreciation and thank you to the Mary Martha Sunday School Class for the cassette player and recorder and tapes.

Our domino games and card games are still going strong each week. There are some serious playing.

Edna Burkes went to Junction, Texas to a family reunion last week-end. She reported that a hundred relatives attended. She had a great time.

Ladies Aid met

The Ladies Aid Circle of St. John's Lutheran Church had their monthly meeting August 1 at 2 p.m., in the Fellowship Hall of the church.

Mrs. Walter Kraatz presided over the meeting. Mrs. Ellis Ueckert was August program chairman. There were 16 women who answered roll call.

Members in the program were Mmes. Walter Gerhart, Henry Witte, Stephen Byrne, W. F. Minzenmayer.

The Lutheran Women will again make quilts for World Relief in '86.

Articles made for Midland Rest Home are to be ready by October 5.

A talent show will be held in November for articles made by ladies for Christmas.

Mrs. Ellis Ueckert and Mrs. W. F. Minzenmayer were hostesses for August.



CONSUMER ALERT

by
Jim Mattox
Attorney General

Rights of Handicapped Motorists

There are state tax exemptions for orthopedically handicapped motorists. These exemptions come into play in the sale of vehicles equipped with specialized equipment needed to accommodate a handicapped driver or passenger.

What the Law Says

The first consideration to be made is whether the person seeking the exemption comes within the definition of "orthopedically handicapped." The definition is broad. Any person who has limited movement of body extremities or loss of physical functions to the extent that the person is unable to drive without special modifications is considered orthopedically handicapped.

The law previously provided for a sales tax exemption for only those persons who were handicapped drivers. However, the exemption has since been expanded to benefit people who transport the orthopedically handicapped. In addition, if specially modified vehicles are bought by partnerships, corporations, or other business associations, an exemption may be obtained.

Qualifications

To qualify for an exemption from the four percent motor vehicle sales tax, a person must meet three requirements:

1. The vehicle must be driven by or for an orthopedically handicapped person;
2. The vehicle must require modification of conventional foot brakes, accelerator pedal or steering wheel to facilitate driving by an orthopedically handicapped person; or
3. The vehicle must require some other device such as a wheelchair lift, hoist, or ramp, or

special seat restraints, without which the orthopedically handicapped person could not reasonably enter the vehicle, drive or ride as a passenger.

What To Do

Claiming the exemption is relatively simple. A handicapped person wishing to claim the sales tax exemption on a vehicle that he or she will operate must present the county tax assessor-collector with either a restricted Texas Driver's License showing the person to be so physically impaired as to be unable to drive an unmodified vehicle, or an invoice from the installer of the special equipment showing the vehicle had been modified so the handicapped driver may enter the vehicle.

If the person seeking the exemption is someone who transports an orthopedically handicapped person, then he or she must present to the county tax assessor-collector an invoice or other document from the installer of the special equipment which includes a description of the equipment and the vehicle being modified.

In the event the vehicle had not been modified prior to registration, a sworn statement on the application for Texas Certificate of Title may be made describing the planned modification, as well as naming the person making the modification.

Other benefits are available to the disabled person, including special license tags, insignia designating the vehicle as belonging to a disabled person, and special license plates for qualified veterans. For more information regarding the benefits extended to the motion-impaired citizens of our state, contact the local Comptroller's office.

Awnings returning to Texas homes

AUSTIN-Awnings add more than a cheery, nostalgic touch to Texas homes. They can take a lot of heat off of summer energy bills, according to the Energy Efficiency Division of the Public Utility Commission.

Awnings can reduce summer solar heat gain to a home by up to 65% on south-facing windows and 77% on west-facing windows. Light colored awning materials work best since they stay cooler and transfer less heat to the window. Because of the sizeable energy savings, awnings are regaining the popularity they had in Texas in the early 1900s.

Louvered, operable exterior shutters are even smarter window accents. Used properly, exterior shutters can effectively block all direct sunlight and reduce solar heat gain by 80%. Strategic landscaping can also help filter sunlight.

It's important to look at windows when trying to make a

home more energy efficient. That's why the Public Utility Commission of Texas offers a free brochure on windows. It charts the effectiveness of different window treatments like multiple panes and solar screens.

The Energy Efficiency Division of the Commission has compiled and published smart energy solutions for Texans on a wide range of topics. Brochures, consumer guides, books and films are available by calling 1-800-643-SAVE.



The Winters Enterprise, Winters, Texas, Thursday, August 8, 1985 9
City of Winters, Texas
Water System Improvements
TDCA Project No. 000821084

Advertisement for Bids

Separate sealed bids for the construction of WATER SYSTEM IMPROVEMENTS will be received by THE CITY OF WINTERS, TEXAS at City Hall, 310 South Main, Winters, Texas until 2:00 p.m., August 29, 1985, and then at said location publicly opened and read aloud.

The Contract Documents, consisting of Advertisement for Bids, Information for Bidders, Bid Bond, Performance and Payment Bond, General Conditions, Notice of Award, Notice to Proceed, Wage Determination, Drawings, Specifications, Addenda and Labor Standards Administration/Equal Opportunity Contractor Packet, may be examined at the following location:

JACOB & MARTIN, INC.
3465 Curry Lane, Abilene, Texas 79606

Bidders on this project will be required to comply with the President's Executive Orders No. 11246 and 11375 "Equal Opportunity in Employment." The requirements for Bidders and Contractors are explained in the Labor Standards Administration/Equal Opportunity Contractor Packet.

Each Bidder must deposit with his bid security in the amount, form, and subject to the conditions provided in the Information for Bidders. Liquidated Damages in the amount of \$100.00 for each consecutive calendar day beyond the determined completion date will be assessed as set forth in the General Conditions.

Copies of the Contract Documents may be obtained from the office of JACOB & MARTIN, INC., 3465 Curry Lane, Abilene, Texas 79606 (915-695-1070) upon payment of \$50.00 for each set. Any Prime Bidder upon returning all documents in good condition within five days after bid opening will be refunded his payment. Any Non-Bidder, including suppliers and sub-contractors, will be refunded \$20.00 upon return of all documents within five days after bid opening.

The owner reserves the right to waive any informalities or to reject any or all bids.

THE CITY OF WINTERS, TEXAS
By: Scott Epperson
City Administrator

Date: August 5, 1985
(August 8, 15, 1985)

Benign senescent forgetfulness

Or "Why am I always misplacing my keys, wallet or whatever?" Who among us at some time or other has not forgotten a face, an address, or even our own phone number? Well, Dr. Albert Heyman, a Duke University neurologist, assures us:

There is little doubt that memory seems to fail with aging. Elderly individuals frequently complain of their inability to recall immediately the names of close friends, favorite restaurants or TV programs. There are major differences between forgetfulness of this benign type and the memory loss associated with Alzheimer's disease. In the benign form, individuals frequently forget material belonging to the remote past, whereas those with AD tend to forget recent past. Most importantly, AD is a progressive disorder, whereas the benign condition remains relatively unchanged for years. Many physicians believe that BSF is an expression of normal aging of the brain which may be regarded as a natural development, whereas AD is an expression of a pathologic state affecting perhaps the same brain tissues but to a more devastating extent.

When a thing is funny, search it for a hidden truth.
George Bernard Shaw

Public Notice

The Wingate Independent School District Board of Trustees will hold a public hearing on the school district budget for 1985-86 on Tuesday night, August 13, 1985 at 8 p.m. in the administrative offices of the Wingate School.

August 8, 1985

Public Notice

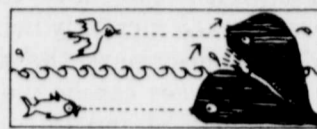
The Wingate Independent School District Board of Trustees will hold their regular meeting on Tuesday, August 13, 1985 at 8 p.m. at the Wingate School. At this time, the Board will adopt the tax rate. Interested persons are welcome to attend.

August 8, 1985

PUBLIC NOTICE

The Board of Trustees of the Winters Independent School District will meet Monday, August 19, 1985, at 7:30 p.m. in the School Administration Office to consider a proposed budget for the school year of 1985-86. Public notice is hereby given as required by law, and any person desiring to discuss the proposed budget is invited to attend.

(August 1, August 8)



Because its eyeball is fixed, the whale must move its huge body to shift its line of sight.

CITY OF WINTERS

NOTICE OF CALCULATION OF EFFECTIVE TAX RATE, ESTIMATED UNENCUMBERED FUND BALANCES, AND DEBT SCHEDULE

I, Shelia M. Paschal, Tax Assessor-Collector for the City of Winters, in accordance with Sec. 26.04, Property Tax Code, have calculated \$55180 per \$100 of value as the tax rate which may not be exceeded by more than three percent by the governing body of the City of Winters without holding a public hearing as required by the code.

The estimated unencumbered fund balance for Maintenance & Operation fund: \$ -0-
The Estimated unencumbered fund balance for Interest & Sinking fund: \$ -0-

The following schedule lists debt obligations that 1985 property taxes will pay: N/A

Shelia M. Paschal, Tax Assessor-Collector
July 31, 1985

CALCULATIONS USED TO DETERMINE EFFECTIVE TAX RATE

I. DATA	
1. 1984 Total tax levy from the 1984 tax roll	\$ 206,022
2. 1984 Tax rate (\$5.52 M&O and \$0-1&S)	\$ 52/\$100
3. 1984 Debt service (1&S) levy	\$ -0-
4. 1984 Maintenance & operation (M&O)	\$ 206,022
5. 1984 M&O taxes on property territory that has ceased to be a part of unit in 1985	\$ -0-
6. 1984 M&O taxes on property becoming exempt in 1985	\$ -0-
7. 1984 M&O taxes on taxable value lost because property is appraised at less than market value	\$ -0-
8. 1985 Total taxable value of all property	\$38,173,268
9. 1985 Taxable value of new improvements added since January 1, 1984	\$ 767,550
10. 1985 Taxable value of property annexed since January 1, 1984	\$ 68,070
11. 1985 Tax levy needed to satisfy debt service (1&S)	\$ -0-
12. Rate to raise 1984 tax due levy to appraisal roll errors (lost dollars divided by 1985 taxable value) (\$ -0- ÷ \$ N/A x 100)	\$ -0-/\$100
13. Rate to regain taxes lost in 1984 due to appraisal roll errors (lost dollars divided by 1985 taxable value) (\$ -0- ÷ \$ N/A x 100)	\$ -0-/\$100
14. 1984 M&O Taxes used to regain lost 1983 levy	\$ -0-

II. CALCULATION

MAINTENANCE AND OPERATION (M&O) TAX RATE	
1. (A) 1984 Total tax levy (Data 1)	\$ 206,022
(B) Subtract 1984 debt service levy (Data 3)	\$ -0-
(C) Subtract 1984 taxes on property no longer in unit (Data 5)	\$ -0-
(D) Subtract 1984 taxes for exemptions (Data 6)	\$ -0-
(E) Subtract 1984 taxes for productivity valuation (Data 7)	\$ -0-
(F) Subtract 1983 taxes used to regain lost 1983 levy (Data 14)	\$ -0-
(G) Adjusted 1984 M&O levy	\$ 206,022
2. (A) 1985 Total Taxable value of all property (Data 8)	\$38,173,268
(B) Subtract 1985 value of new improvements (Data 9)	\$ 767,550
(C) Subtract 1985 value of annexed property (Data 10)	\$ 68,070
(D) Adjusted 1985 taxable value of M&O	\$37,337,648
3. (A) Divide the adjusted 1984 M&O levy (1-G above) by the adjusted 1985 taxable value for M&O (2-D above) (\$206,022 ÷ \$27,227,648)	\$.005518
(B) Multiply by \$100 valuation	\$.5518/\$100
(C) Effective M&O rate for 1985	\$.5518/\$100
INTEREST AND SINKING (I&S) TAX RATE	
4. (A) 1985 I&S levy needed to satisfy debt (Data 11)	\$ -0-
(B) 1985 Total taxable value for all property (Data 8)	\$ -0-
(C) Divide the 1985 I&S levy (4-A above) by the 1985 total taxable value (4-B above) (\$ -0- ÷ \$ N/A)	\$ -0-
(D) Multiply by \$100 valuation	\$ -0-/\$100
(E) Effective I&S rate for 1985	\$ -0-/\$100
APPRAISAL ROLL ERROR RATE	
5. (A) Rate to raise the 1984 levy due to appraisal errors (Data 12)	\$ -0-/\$100
(B) Add rate to regain taxes lost due to errors (Data 13)	\$ -0-/\$100
(C) Total rate to adjust for appraisal roll errors	\$ -0-/\$100
TOTAL EFFECTIVE TAX RATE FOR 1985	
6. (A) Effective M&O rate (3-C above)	\$.5518/\$100
(B) Add effective I&S rate (4-E above)	\$ -0-
(C) Add rate to adjust for appraisal roll errors (5-C above)	\$ -0-
(D) 1985 Effective Tax Rate	\$.5518/\$100

1985 Effective Tax Rate is the tax rate published as required by Sec. 26.04, Property Tax Code

Special Stocker Calf SALE

Wednesday Aug. 14 Beginning at 11:00 a.m.

in conjunction with our regular sale, including all classes of Stocker & Feeder Cattle.

We have over 800 cattle already consigned for the Sale

Expecting 1200 to 1500 cattle

Appreciating all other consignments

For further info call Duwayne, Dan or Bob Edington 915-625-4191 office or 915-625-2091 res.

Coleman Livestock Auction Commission Co.



Winston Churchill's memory was so fine that he could repeat verbatim a lecture or a whole Shakespearean play.

Rogers Cable TV adds new programming

Rogers Cable TV customers in Ballinger and Winters will enjoy hours of quality family entertainment, recently released motion pictures and original programs when Showtime and the Disney Channel will be added to the current premium channel lineup in both cities in mid August. With the new converters that are currently being issued to all customers, the two premium services can be viewed on channels 14 and 15.

The Disney Channel is a premium cable TV service emphasizing quality programming for children and adults. While it draws from the Walt Disney film library for such classic films as "The Sword In The Stone," "Robin Hood," "Mary Poppins," and "Pollyanna," plus nearly 450 cartoon shorts, it also features entertaining films from other producers around the world. In addition, Disney has a strong commitment to produce programs exclusively for you, the subscriber. As an added bonus, all customers will receive the *Disney Channel Magazine* which has informative articles plus activity section for kids.

Showtime has long been recognized as one of the most original entertainment services in cable TV. You will find that with its own variety of exclusive movies and specials, Showtime will be a great addition to your entertainment package...HBO, Showtime, and the Disney Channel.

Showtime customers can benefit by viewing blockbuster Paramount movies like "Star Trek III: The Search For Spock" and "Terms of Endearment," as well as "The Dead Zone" and "Footloose." Besides Hollywood films, they also include classic and familytime programming. Broadway on Showtime plays, dramatic and comedy series, exclusives, concerts, and Las Vegas Shows.

Showtime and the Disney Channel can be added to your HBO service to give you the best in all-around family entertainment...programming to reach all ages!!

HBO has recently announced their new programming model...greater movie volume, lower repetition, higher viewer satisfaction. They will introduce about 25 new-to-the-month movies (compared to 15), and daytime programming will be

enhanced by a Breakfast Special, Lunchtime Matinee, afternoon and dinner movies. Blockbuster movies are scheduled on Saturday and Sunday nights and "T.G.I.F." for Friday night TV lovers to include light hearted comedies and much more.

Rogers Cable TV offers discount packaging to premium customers. The "Family PAC" includes basic service, HBO, Showtime, Disney, plus a cordless remote converter...a savings of \$7.05 under retail. The "Silver Pac" offers basic service, HBO, Showtime, and a cordless remote converter...A savings of \$3.05.

As an added bonus, TNN (The Nashville Network) and SPN (Satellite Programming Network) will be added to the basic service of channels 17 and 23.

Welcome Ballinger and Winters to the wonderful world of choice entertainment!!

Chamber of Commerce

Memo from Kay

By Kay Colburn

We need help! With the opening of school just around the corner, this office has received several calls from people needing to rent houses or apartments. If you have a dwelling for rent, it will be a great help if you will call the Chamber of Commerce office and list it with us. The Chamber of Commerce phone number is 754-5210.

We need more entries in the photo contest for our new city map and brochure. Color slides are preferred but clear color prints will be accepted. Needed are photos of points of interest in and around Winters, or any photo showing the good living aspects of Winters. Bring your photos by the Chamber of Commerce office by August 16. Ones chosen for the map and brochure will have credit given to the photographer. One will also be chosen to be enlarged for framing and hung in appropriate places around town. Get those cameras out and loaded with film and see what kind of photos you can get of your favorite spots in Winters.

There will be a meeting in the County Courtroom in Ballinger Tuesday, August 13 at 10 a.m. The purpose of the meeting is to

Indictments —

the Winters robbery in a Department of Public Safety newsletter. The information was matched with Stanford who was later identified in a line-up by a witness to the robbery.

Joe Luis Rocha, also known as Joe Luis Villarreal, was named in two indictments. Unauthorized use of a motor vehicle and aggravated assault with a deadly weapon indictments named Rocha.

Rocha was arrested by Winters Police officer Richard Hawkins following a chase that began when the driver of a pick up left a gas station without paying for about \$19 worth of fuel. The vehicle ran off of F.M. 53 about a mile east of Winters and the driver fled into a pasture.

The driver allegedly threatened officer Hawkins with a handgun.

Officers learned the vehicle was stolen and took the man into custody a short time later. He

was found hiding in tall grass near where he abandoned the stolen vehicle.

Tony Johnson was named in an indictment alleging forgery by passing in connection with an apparently forged check in the amount of \$115, payable to Johnson.

Johnson is being held in the Taylor County Jail in Abilene on charges sexual assault and a parole violation.

Simm Odell Sheppard, of Winters, was named on four counts in three indictments alleging indecency with a child by contact, indecency with a child by sexual contact, and indecency with a child by exposure.

Harvey Sparks Jr., of Winters, was named in a felony DWI indictment. The indictment came after Sparks was arrested by Winters Police officers in July.

Henry Garcia Jr., of Lovington, New Mexico, was indicted on a charge of indecency with a child by the grand jury.

Phillip Duwayne King, of Ballinger was indicted on felony charges of possession of marijuana.

King was arrested when sheriff's officers executed a search warrant at King's residence at 508 Largent in Ballinger and found a quantity of marijuana in the refrigerator.

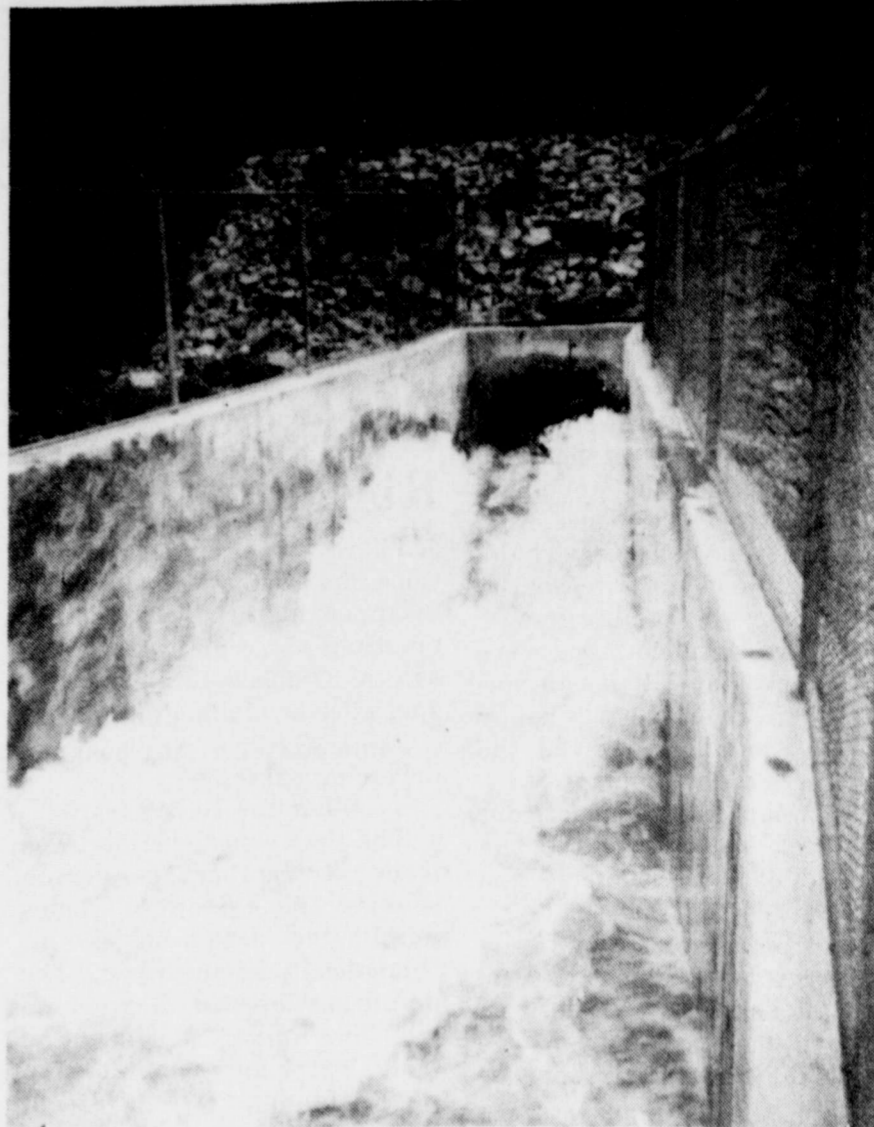
Ronnie Lee Payne of Miles was indicted in connection with the burglary of a building in Miles owned by Lonnie Rankin. The incident occurred on May 29.

The cases were presented to the grand jury by District Attorney Dick Alcala last Friday.

North Runnels Hospital X-Ray Machine Fund

Recent memorials to the North Runnels Hospital X-Ray Machine Fund include the following:

Ed Brewer	\$35.00
Bettie Chambliss	10.00
Koot Dry	10.00
Vera Jennings	77.50
Hazel Jordan	85.00



It comes out here

Water surges through the outlet below the dam at the new Winters Lake. Following recent rains, the lake level rose to a point well above the overflow.

Extension Extras

The beauty and versatility of wool will be the focus for the Texas Make-It-Yourself with Wool Contest for 1985. The contest is sponsored annually by the Texas Sheep & Goat Raisers Auxiliary, Texas Department of Agriculture and the American Sheep Producers Council. Purpose of the annual contest is to encourage the use of wool in sewing, knitting and crocheting fashionable garments. It also offers young experts the opportunity to compete for prizes and win recognition. District competition is held in 8 areas of Texas during September and October. State competition will be Saturday, October 19 at the State Fair of Texas. Anyone may enter. Categories for competition are determined by age and include Preteen - ages 10-13; Junior - ages 14-16; Senior - 17-21; and Adults - over 21. The District III Contest will be October 5th at the Sunset Mall in San Angelo. For more information, call Dana Craddock, Runnels County Extension Agent, 365-5042, or write P. O. Box 658, Ballinger, Texas 76821.

Le Belle Michaelis	47.50
Claudia Pounders	5.00
Mr. and Mrs. Elmer Pritchard	40.00
Reid Stoecker	10.00
J.R. "Cuss" Willis	10.00
Towner Key	25.00

The grand total now stands at \$45,660.00.

learn the probability and feasibility of building a road from Ballinger to the proposed Stacy Dam site. This meeting should be of great interest to the citizens of Winters. Also because this road would be the closest route from Winters to the Stacy Dam area. All who are interested are invited to attend. The meeting will be with the County Commissioners and Mr. O.H. Ivey.



Barr becomes statewide co-op board member

James C. Barr of Coleman has been elected secretary-treasurer of the Association of Texas Electric Cooperatives. The election was held last week during TEC's 45th annual meeting. Barr is the general manager of Coleman County Electric Cooperative.

Barr joined the co-op staff in 1960 and became manager in 1981. He attended Tarleton State University and has been active in the Masonic Lodge, the Chamber of Commerce, and the Coleman Rodeo Association. He is married to the former Jo E. Holland, who is also very active in local affairs.

Band practice set

The summer band schedule for the Winters High School Band and the Winters Junior High Band have been set according to Winters Band Director Bailey McAnulty.

The High School Band will begin rehearsals on Monday August 12 at 7:30 p.m. and continue to meet at that time on the following Tuesday, Thursday, and Friday. The schedule for the week of August 19 will be identical.

All band students in grades 8 through 12 are urged to attend all rehearsals as preparation begins for the 1985-86 school year and football season. All students are to bring their personal instruments to the first rehearsal.

Early band practices for the Winters Junior High Breeze Band are being implemented this year in hopes of getting a head start on the school year. All band students in grades six and seven are considered members of the Breeze Band and are encouraged to attend the rehearsals as scheduled below.

Monday, Tuesday, Wednesday, and Thursday, and Friday August 19, 20, 21, 22, and 23. Each daily practice will begin at 9 a.m. and end at 10:30 a.m.

Peoples National Bank will provide you with fast and confidential service when you apply for our

Auto Loan

You can also depend on interest rates that are low and reasonable. And we will take the time to tailor a monthly repayment program that makes allowance for your individual budget requirements, and saves you money, too.

Won't you stop in and see us soon? One of our loan officers would be happy to talk to you about arranging financing for the new or used car of your choice.

YOU'LL FIND WE LISTEN VERY CAREFULLY TO ALL OUR CUSTOMER'S NEEDS.

Peoples National Bank
Full Service Bank

Member F.D.I.C. 158 N. Main Winters, Texas 79567

SONNY'S WEST DALE GROCERY

Store Hours: 6 a.m. to 8 p.m. Everyday

Prices good Aug. 7 thru 14, 1985

WHOLE
Rib Eye
\$3.59
lb.
(8 - 12 lbs.)

WHOLE BONELESS
TOP
Sirloin
\$1.99
lb.
(7 - 10 lbs.)

WHOLE
Short Loin
(T-Bone)
\$2.59
lb.
(15 - 20 lbs.)

TOWN TALK
BREAD
69¢ Loaf

PARADE
Large
EGGS
69¢ Doz.

HALF
BEEF
\$1.05
(250 - 300 lbs.)

PRESTON
Homo or Lo Fat
MILK
\$1.79
Gal

HIND
QUARTER
\$1.29
lb.
(125 - 150 lbs.)

EXTRA LEAN
Country Style
PORK
RIBS
\$1.89
lb.

PORK
Spare Ribs
\$1.99
lb.

Center Cut
PORK
CHOPS
\$1.99
lb.

Beef Prices are Down
Take advantage of the Low Prices
Fill your Freezer
Prices good through August 14