

# Robert Lee Observer

Published at the County Seat

Sixty-Second Year--Established June 13, 1889

Official Paper County and City

Vol. 62, No. 9

Robert Lee, Coke County, Texas, Friday, Aug. 11, 1950

Published Weekly

## Editor Relates His Experiences On Capitol Hill

Dear Readers:

Mom and I concluded a wonderful week in Washington and Friday motored to Pittsburgh, Pa., where this is being written Saturday. In Washington we were guests of our son-in-law and daughter, Mr. and Mrs. James Hillman, who reside at 231 Evans Lane in Alexandria.

Because our children are well acquainted in the area it gave us an opportunity to get around much more than if we had been alone. However, there are so many places of interest that we were privileged to see only a few of them during the week.

Alexandria was the principal town in that locality at the time the District of Columbia was laid out and the nation's capital established there. There are many ancient buildings and landmarks in Alexandria and of course Mount Vernon, Washington's home lies at the south edge of the city.

With a population of 75,000 Alexandria is the home of thousands of government officials and office workers, who commute across the Potomac to the suburb on the west side of the river. A new bridge completed the past year handles only traffic into Washington, while traffic coming out is routed over the old bridge. These bridges are about a mile below the Arlington Memorial Bridge.

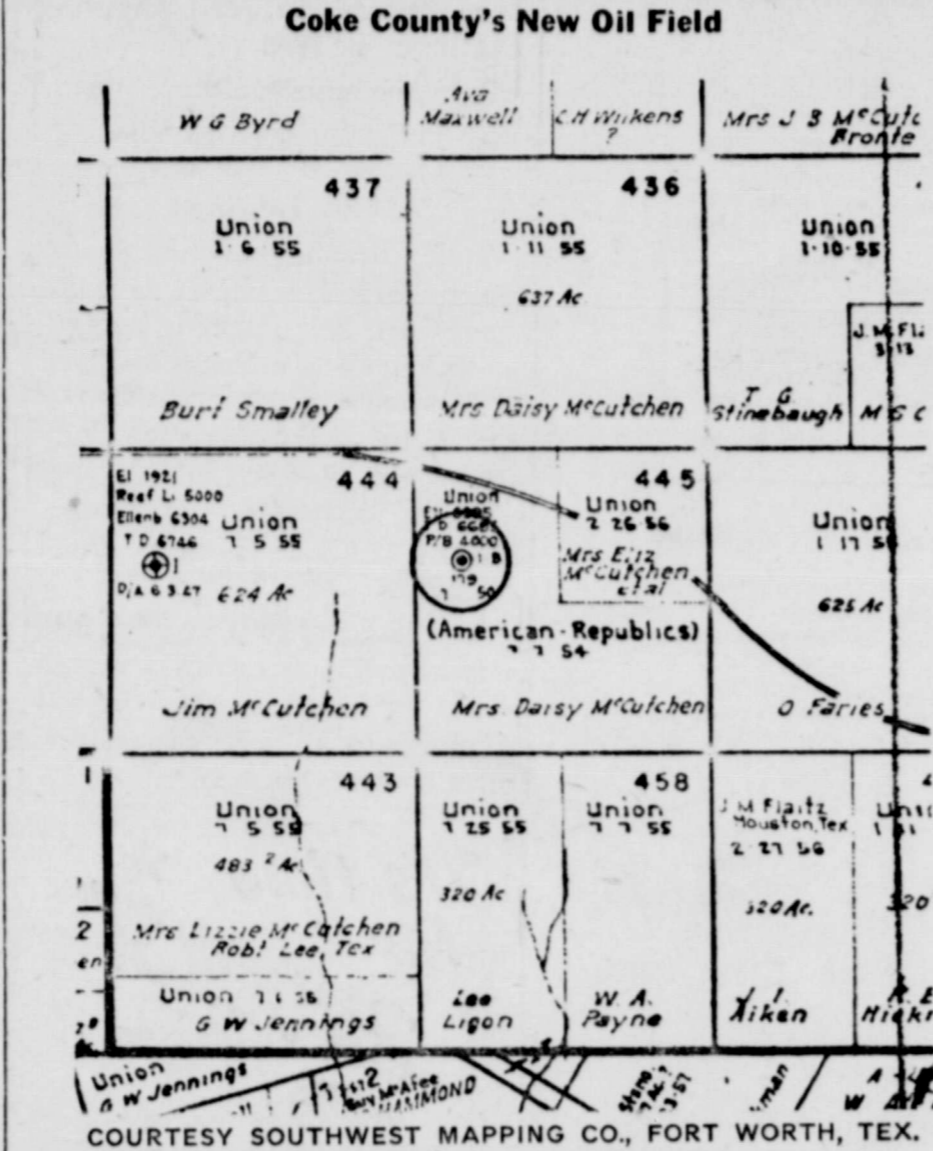
I went over to Capitol Hill on Monday but most of the men I wanted to see were not in their offices. However, I enjoyed a nice visit with Congressman Karl LeCompte of Iowa, who is also a weekly newspaper publisher and an intimate friend for the past 25 years. He has been in Congress 12 years and will likely be there for many more.

It became very hot in Washington the middle of the week and we loafed during the day and had some nice auto trips in the evenings. Returning to the Hill Thursday I was fortunate to meet a number of friends. Had an interesting and very pleasant visit with Congressman O. C. Fisher. He is busy these days as a member of the Armed Forces Committee of the House, and I should have started off by stating that the Korean War is the chief topic of conversation and concern in the nation's capital.

Everyone feels the State Department bungled the Korean situation. Fisher said that high officials in the Pentagon believed our lines would hold with more troops coming in. He further stated that more effective air support would be provided after the monsoon season ends about the middle of August. Bad weather has prevailed most of the time since the invasion started.

Congressman Fisher is proud of the wonderful progress being made in Coke county with the discovery of oil four years ago, and he considers Coke countians as highly deserving. A new cotton allotment bill is being prepared and is expected to be passed before the session adjourns. Fisher says Coke will fare as well as or better than the past year. It was necessary to make some adjustments since George Mahon's district to the north and west of us had 300,000 acres more than they were rightfully entitled to last year.

I again called at the office of Senator Lyndon Johnson, and he



**CISCO POOL FOR COKE**—Latest discovery oil producer in Coke County and the first from the Cisco section of the Pennsylvania is shown circled above. It is Union Oil Co. of California No. 1-B Daisy McCutcheon, C SW NW 445-1A-H&TC, five miles west of Robert Lee. The well found the Ellenburger barren in drilling to 6,685 feet and plugged back. It was completed for a 24-hour flow of 179.2 barrels of 42.6 gravity oil through a quarter-inch choke and casing perforations at 3,950 to 3,965 feet. The sand section, believed Swastika, had been washed with 500 gallons of mud acid.

was attending a session of the Senate Armed Forces Committee. However, a short time later this committee held an open hearing and I was privileged to attend. It seemed to be a highly important affair, with Edwin L. Pauley making a lengthy report of his observations in Korea back in 1946. He was head of the U. S. War Reparations Commission.

Pauley said he had difficulty in making a thorough investigation of conditions in northern Korea which at that time was occupied by Russia. After his return to this country he made a report to the President, setting forth his idea that we were making a mistake in letting Russia get away with their plans of establishing Communism there.

Was fortunate to see Senator Kenneth Wherry (Big Noise From Nebraska, Saturday Evening Post, Aug. 5.) We grew up together at Pawnee City, Neb. While talking outside his office he introduced me to Senator Harry Byrd of Virginia and Senator Russell of Georgia.

Wherry is perhaps the busiest senator in Washington, especially among the Republicans, as he is minority leader of the senate and has the responsibility of rounding up the Republican votes. He also has an office in the capitol just off the senate chamber, and invited me to meet him there at 12:30 and be his guest at lunch.

When I arrived his other guests included a famous scientist, Dr. Schwartz of New York City, a contractor from Omaha and a couple of his staff assistants. Wherry was primarily interested in discussing proposed controls which should be enacted because of the Korean War. In his opinion the most rigid controls seem entirely proper, but enforcement of them is something else.

In polling sentiment of those present, he wanted the opinion of

his "friend from Texas." I replied that I felt the government should enact a universal draft in time of war. If we can compel men to take up arms and give their lives, then we should at the same time draft all manpower, as well as agriculture and industry. In my opinion it's time we tried taking the profit out of war—maybe there wouldn't be anymore.

When men are drafted into the armed services, they are immediately put under rigid controls. Why shouldn't the rest of us get the same treatment? The "vultures" have swooped down over Washington to get those juicy war contracts. It looks like a lot of people want another war.

Wherry was a gracious host and I enjoyed the luncheon in the senate dining room in the capitol basement. Ken and I may not agree on all political issues, but he and his family are good friends of the Kirkpatricks and I never was much of a hand to trade an old friend for a new one.

I wanted very much to talk to Lyndon Johnson, but couldn't catch him. He is making a good name for himself and Texas, and is a good running mate for our elder statesman, Senator Tom Connally.—A. J. Kirkpatrick.

### Cowley Test Fails

Deep Rock Oil Corp. plugged and abandoned No. 1, L. E. Cowley, Coke county wildcat 4 3-4 miles southeast of Robert Lee, at 6,405 feet in the Ellenburger.

Recovery on a two-hour drillstem test from 6,311-51 was 60 feet of slightly gas-cut mud and 15 feet of salt water.

### Notice

There will be a working at the Edith Tabernacle Thursday, August 17, in preparation of the Edith Homecoming.

## Mrs. N. C. Brown Dies In Son's Home

Funeral services for Mrs. N. C. Brown, widow of the late N. C. Brown, pioneer Coke county school teacher and minister of the Church of Christ, were held at the Robert Lee Church of Christ at 3 p. m., Tuesday, with Idus England, minister, officiating.

Mrs. Brown died at 4 o'clock Monday morning in the home of her son, Chism S. Brown, in Robert Lee, after an illness of about a year. She suffered a stroke last September and was stricken by a heart attack followed by a stroke about six weeks ago, since then her condition had remained critical.

Agnes Augusta Eisenhower was born June 24, 1873 in Murry County, Ga. While she was still very young, she came to Texas with her parents, who settled in Collin county. She was married to Nathaniel C. Brown at Blue Ridge, Collin County, Sept. 13, 1888.

Mr. and Mrs. Brown moved to Coke county in 1900, residing in the Valley View community, where Mr. Brown taught. They moved to Robert Lee in 1905, and she had resided here since. Mr. Brown died March 4, 1942.

Mrs. Brown was the mother of fourteen children, eleven of whom lived to be grown. She also reared two grandsons, Foy Dell and Paul Smith. She was a good mother and a faithful and loyal member of her church.

Survivors of Mrs. Brown include four sons, Paul J. Brown of San Angelo, Chism S. and John H. of Robert Lee, and Rex of Houston; five daughters, Mrs. Inez Sullivan of Amarillo, Mrs. Iva Scoggins of Burnet, Mrs. Alice Acock of Corsicana, Mrs. Vera McSpadden of Marfa, and Mrs. Chanda McBroom of Quemado, N. M.; one daughter-in-law, Mrs. Ona Faye Brown of Cleburne; seven sisters, Mrs. Inez Smith and Mrs. Beulah Dye of Odessa, Mrs. Lula Binder and Mrs. Vera Polk of San Antonio, Mrs. Elsie Gardner of Dallas, Mrs. Mary Perkins of La Feria and Mrs. Aurora Donahoe of Desdemona; and two brothers, Clark Eisenhower of San Antonio and Elkanah Eisenhower of Houston. Twenty-seven grandchildren and 15 great grandchildren also survive.

Pall bearers were Calvin Wallace, Roy Hood, Emory Davis, Roy Ross, Bryan Yarbrough, Roy Braswell and Billy Carroll Green.

Burial was in the Robert Lee cemetery beside the grave of her husband with Clift Funeral Home in charge.

### Notes

#### From The Oil Field

In the Millican field at Edith Sun Oil Company's No. 2 Foster Sims Price had drilled to a depth of 6,060 feet. 5 1-2 inch casing was set to 6,035 feet with 2 inch tubing being run Thursday.

Sun's No. 7 Davidson was drilling at 3,225 feet in shale.

In the Jameson field at Silver Homer Jameson No. 16 was drilling at 5,640 feet in shale.

Sun's No. 12 Jewel Brannan had reached a depth of 3,590 feet in shale and sand.

Sun No. 1 Price Maddox, indicated small discovery Ellenburger producer in southwest Nolan

## Humble, Lion Plan Deep Coke Tests

Two more Ellenburger wildcats are to be started soon in Coke County, one by Humble Oil & Refining Co. near the Tom Green County line, the other by Lion Oil Co. in the Hayrick community.

Humble's test will be No. 1 E. H. Schuch, 1980 feet from the north and east lines of section 6, Tom Dieterich survey, on a 5,280-acre lease. It is projected to 7,100 feet and due to start at once. Schuch is a San Angelo ranchman and Pontiac dealer.

### On Strake Farmont

Humble took an option for geophysical exploration on a block of 16,657 acres in Coke and Tom Green Counties held by G. W. Strake of Houston. Under it is recently exercised an option to acquire an undivided half interest in the lease either on the north half or the south half of the block, and took the north half. For this Humble assumed an obligation to drill an Ellenburger wildcat. It will have the operation in the event of production and development.

No. 1 Schuch will be on the Callahan Divide, a remnant of the Edwards Plateau cut off by the Concho rivers, slightly less than one mile east of the San Angelo-Robert Lee highway. It will be only 1-4 miles north of the Coke-Tom Green line, 13 1-2 miles south of Robert Lee and 14 1-2 miles north of San Angelo.

### Southwest of Reed

The drillsite is 4 3-4 miles southwest of Seaboard and Southern Minerals No. 1 M. G. Reed in section 1, HE&WT Ry. Co. survey, which for awhile produced a small amount of oil with considerable water from the Ellenburger. Owners of land adjoining the Schuch ranch include Mrs. A. S. Willick, Oscar Brown and Mrs. Elizabeth M. Baker on the east and southeast, Mrs. Maude Brady on the south, Clyde A. Bowen on the west and H. E. Weaver and Mrs. S. E. Tucker on the northwest.

Lion Oil Co.'s wildcat will be No. 1 Runie Waldrop, 660 feet from the south and east lines of section 369, block 1-A, H&TC Ry. Co. survey. It will be only one-half mile east and slightly south of Hayrick Mountain and the same distance north of the abandoned school at Hayrick, first Coke County seat. The county seat was moved to Robert Lee in 1981.

### Smith-Welch Block

Lion assumed an obligation to drill an Ellenburger test, starting before Nov. 17, 1950 in acquiring a block of between 11,000 and 12,000 acres from Winston T. Smith of Paragould, Ark., and L. G. Welch of Houston. Lion has done geophysical work on the block, on which 10-year commercial leases were taken for Smith and Welch by S. E. (Skinny) Adams of San Angelo, most of it in July, 1946. In turning the block to Lion, Smith and Welch retained an override.

No. 1 Waldrop will be 4 1-2 miles northeast of Union of California No. 1 McCutcheon, recently completed Cisco discovery producer, 5 miles northeast of Robert Lee.

French Bros. of Electra are moving a rig in from Snyder to drill this test. The rig is a standard and drilled the discovery well in the north Snyder field in Scurry county where it has operated the past two years. Rig builders arrived Thursday and rigging up was under way.

county near the Coke county line, was setting up two 210-barrel storage tanks. The rig has been moved off the well and installation of a pump is in progress. Testing has been from open hole between 7,116 and 7,132 feet.

A new house is being built in the production department camp at Silver. The house is being built for a pipeline employee and will bring the total number of houses in the camp to 15.

### Jim McCutchen Drilling Ahead

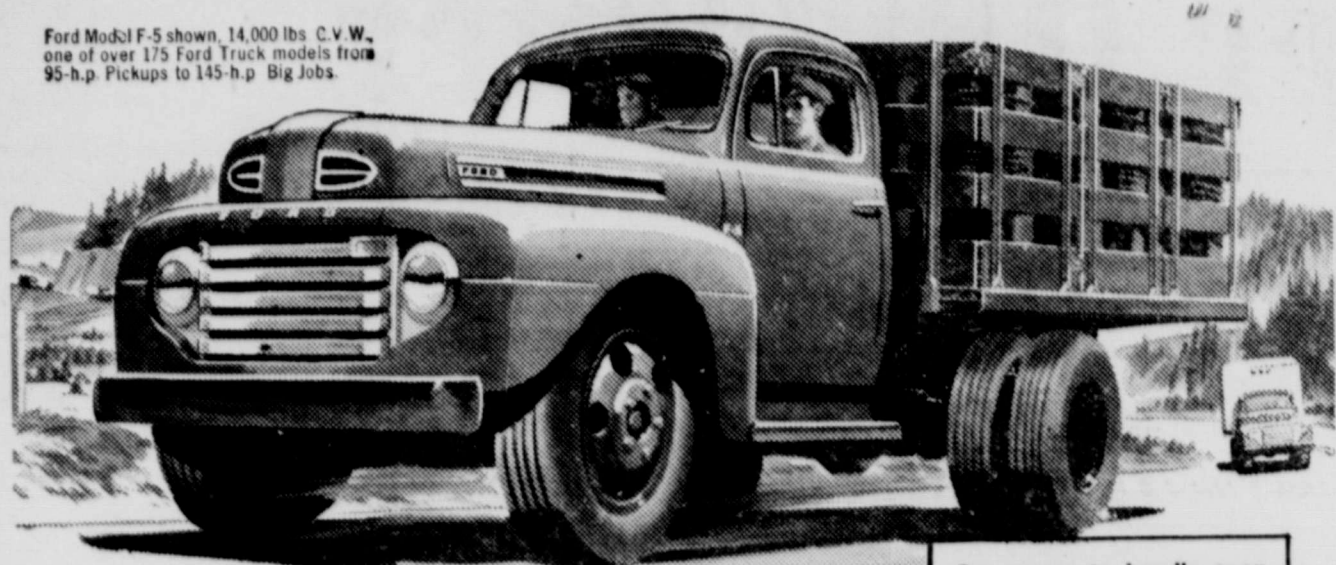
Union Oil Co. No. 2 Jim McCutchen, west offset to Union No. 1-B Daisy McCutchen, recently completed Cisco sand strike in Coke county five miles east of Robert Lee, was drilling at 3,500 feet Thursday in shale. Pay section should be reached in 3 or 4 days.

American Republics No. 1 Daisy McCutchen ran surface casing Tuesday night and was drilling ahead Thursday.



# IT'S LED THE FIELD FOR YEARS!

Ford Model F-5 shown, 14,000 lbs. C.V.W., one of over 175 Ford Truck models from 95-h.p. Pickups to 145-h.p. Big Jobs.



For power to handle even greater loads—the Ford F-6



Ford Model F-6, 16,000 lbs. G.V.W., gives you a choice of V-8 or Six in three engines—including the new 110-h.p. Six.

And the Ford F-5 outsells every other 1½ ton truck today!

• Registration figures prove it! The Ford F-5 has outstripped all sales competition since 1945. In fact, since the war's end, smart truckers have chosen the F-5 over the next leading make by a ratio of five to three! So, follow the lead of men who really know ton-and-a-half's. Switch to Ford and Ford economy!

### WAY AHEAD IN SALES BECAUSE IT'S WAY AHEAD IN VALUE

#### 10 ways better than the 4 other leading makes

1. Up to 1,720 lbs. more payload.
2. Up to 1,500 lbs. higher G.V.W.
3. Up to 310 lbs. less chassis weight.
4. Widest (3½") rear brake shoe lining.
5. Highest compression ratio.
6. Choice of V-8 or Six engine.
7. Oil filter standard.
8. Oil bath air cleaner standard.
9. Biggest clutch lining area.
10. "Million Dollar" Cab for more comfort, roominess and safety.

TO GET AHEAD OF THE GAME YOURSELF—SEE YOUR FORD DEALER TODAY!

Ford Trucking Costs Less Because—**FORD TRUCKS LAST LONGER**

Using latest registration data on 6,592,000 trucks, life insurance experts prove Ford Trucks last longer!

**IVEY MOTOR COMPANY**

ROBERT LEE, TEXAS

## THIS WEEK'S SPECIALS

Pork & Beans, Jack Sprat	2 Cans	19c
Hominy, No. 2½ can	2 for	25c
Sardines, American,	3 cans	25c
TEA, Bright & Early	Tea Glass Free	¼ Lb. 29c
Hunts Peaches, 303 can		15c
JELLO	2 boxes	15c
SurJell	2 boxes	25c
Wrigleys Gum,	3 pkgs.	10c
Ballard Biscuits	2 cans	25c
Grated Tuna,	No. 1 flat can	29c
Trend Washing Powder	2 boxes	31c
Tomato Juice	463 can	25c

We will be closed all day, Sunday, Aug. 13

**BAKER'S Groc. & Mkt.**

## Budget Figures For Robert Lee School Recently Released

Budget figures for the Robert Lee Independent School District for the 1950-51 term have been released by Supt. B. C. Goodwin. Also included in the report are the average daily attendance of 1949-50, which determines the number of teachers which the school will be permitted to employ under the Gilmer-Aiken law, and the net scholastics for 1950-51.

For the sake of comparison figures for the 1949-50 and the 1946-47 terms are also given.

### 1950-51 Budget

Total scholastics (on home census), 354; Total net scholastics (tentative), 375; Teaching personnel includes 13 classroom teachers, 2 vocational teachers, and the Supt., 16; ADA (average daily attendance, 1949-50), 307.47; Total teachers salaries (tentative), \$53,184; Total budget costs, \$67,204.

As a result of shifting of oil field personnel, 135 scholastics moved out of the Robert Lee district and 90 moved into the district during the school year just closed.

### 1949-50 Budget

Total net scholastics, 422; Total teachers and administrators, 17; Total salaries, \$53,626.44; Total budget cost, \$66,912.44; Foundation money received, \$30,000; Total valuation of district, \$1,801,000; Tax rate \$1.50 (\$1.12 1-2 maintenance, .37 1-2 bond)

The increased scholastic total for the year came as a result of a boom year in Coke county oil fields.

### 1946-47 Budget

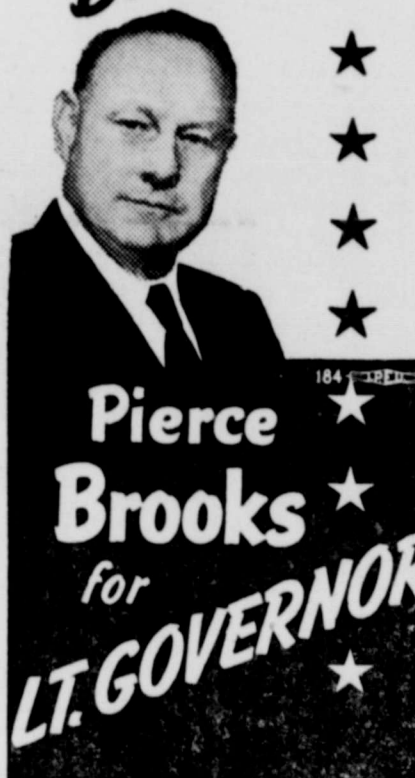
Total net scholastics, 354; Total teachers and administrators, 11; Total salaries, \$22,120; Total budget cost, \$25,642; State Aid received, \$8,000; Total valuation of district, \$1,170,000; Tax rate \$1.00 (\$.50 maintenance, \$.50 bond)

### Oklahoma Stock Farm

645 A. Highly improved. 140 A. native meadow will produce 4500 bales of hay. 175 A. corn, approximately 2500 bushels rent. Balance in tame and native pasture. Farming land will produce alfalfa. Will graze 100 cows. Wells and running spring water On State Highway, 3 miles of resort town. Price \$40.00 per acre. Geo. B. Hall, P. O. Box 333, McAlester, Okla.

Bud Austin returned to Robert Lee Thursday after a visit with relatives in East Texas

"It's time for BROOKS!"



**ALMANAC**

Pride a pleasure arising from a man's thinking too highly of himself.

**AUGUST**

- 13—Philippine Independence day
- 14—Atlantic Charter framed at sea by Churchill, Roosevelt, 1941.
- 15—Will Rogers, Wiley Post die in Alaskan plane crash, 1935
- 16—Dawes' reparation plan accepted, 1924.
- 17—Jackson and O'Brien set new airpale endurance record—647 hours, 28 minutes.
- 18—Woman suffrage granted in U.S., 1920.
- 19—National Aviation day

**SPORT OF THE MONTH**

TENNIS

**S. E. ADAMS**  
Oil Properties Insurance

**Butane Service Co.**  
STOVES - TANKS - SERVELS  
Prompt Service  
Robert Lee 92 PHONES Bronte 123

Made Right Styled Right Priced Right

**Dr. Phillips**  
OPTOMETRIST AND OPTICIAN  
28-A West Beauregard San Angelo, Texas

**Banner** ICE CREAM  
**MILK** ICE MILK  
"It tastes better"

**FLOYD HIGGINS** Distributor  
Phone 141 Robert Lee, Texas



# It's Super



## for Thrifty Travel!

You'll find driving's a real "picnic" . . . when you OIL-PLATE your engine with new Conoco Super Motor Oil.

**Proved by 50,000-mile Road Test!** In a 50,000-mile road test, engines lubricated with Conoco Super Motor Oil showed amazing economy of operation. Gasoline mileage for the last 5,000 miles of the test-run was actually 99.77% as good as for the first 5,000 miles. Proving that Conoco Super Motor Oil — with proper crankcase drains and regular care — can keep new-car gasoline mileage.

Come in and let me tell you about "50,000 miles no wear!"

©1950 CONTINENTAL OIL COMPANY



### Resolution Passed In Precinct Convention

The Democratic Executive Committee met Saturday July 29 in the court house in Robert Lee. The affairs of the committee were so great that it was Monday afternoon before it adjourned. The committee made a canvass of the election returns and adopted the following resolution.

We, the Democrats in Precinct Convention assembled, do hereby resolve as follows:

WHEREAS, Upon the untimely death of Governor Beauford Jester, Governor Allen Shivers succeeded to the administration of the affairs of this State. In our opinion, he has handled the office of Governor in a practical, businesslike and patriotic manner. His public statements have been typically expressive of the true ideals of the Democratic Party. Therefore, we endorse the conduct of the office of Governor during the administration of Governor Allan Shivers.

WHEREAS, The membership of the Texas delegation in Congress, including the two Senators, Speaker Rayburn and all members of the House, have given vigorous support to the effort to keep our tidelands. Therefore, we commend the Texas delegation for these efforts and request that they continue to press our claims to the end that Congress shall recognize the right of Texas to keep these tidelands that have always belonged to Texas.

WHEREAS, The State Land Board of Texas, composed of Land Commissioner Bascom Giles,

Attorney General Price Daniel and Governor Allan Shivers, has made a brave and vigorous fight to prevent the loss of the tidelands of Texas. Therefore, we heartily endorse these efforts and commend these patriotic public officials for their faithful work in this connection.

IT IS FURTHER RESOLVED that in all matters pertaining to the use and development of the inland waters of Texas, we subscribe to the expressed policy of the State of Texas that after long-recognized Federal rights and interests in navigable waters have been observed, the further use and control of these inland waters should be reserved to the the State.

### License Renewals Due September 1

Austin, August 5—The Chief Clerk of the Game, Fish and Oyster Commission said today all but eight of the thirty-nine licenses issued by the Commission, including those for hunting and fishing will be renewable September 1.

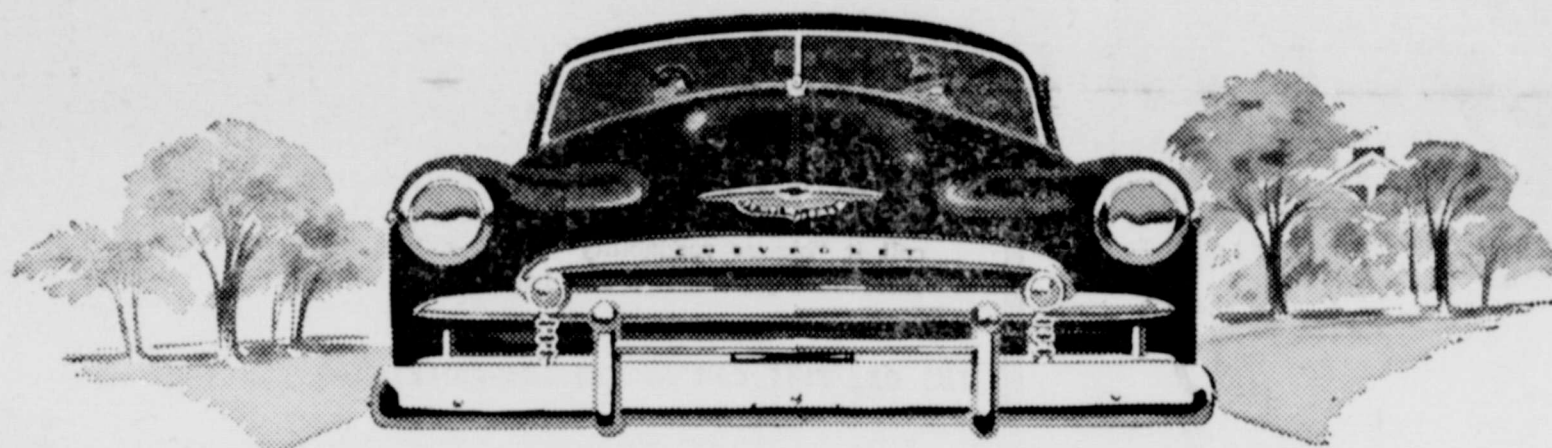
The license revenue provides a substantial part of the funds for Commission activities.

The Game Department staff now is busy readying the licenses for distribution. The actual sales are made generally by game wardens, county clerks and licensed deputies mainly in retail stores throughout the state. Only nine of the thirty-nine kinds of licenses are sold at the Austin headquarters.

Considerable Commission revenue comes from the \$1.65 individual fishing license and from the \$2.15 so-called big game hunting license. The \$2.00 resident hunting license represents only a small part of the collections. This is because the comparatively new big game license covers all kinds of hunting, except antelope which calls for a special \$5.00 fee.

The Chief Clerk explained that processing the license supplies represents a sizeable assignment because they have to be distributed to between 1800 and 2000 agencies.

The licenses range in cost from 50 cents for a duplicate individual fishing license to \$200 for a wholesale fish and oyster dealer permit.



Only Chevrolet offers such a *wide and wonderful choice* . . . and at the lowest prices, too!

#### You can choose between Styleline and Fleetline styling

Many an admiring glance will follow you when you roll by in your new Chevrolet with Body by Fisher. That's true whether you choose a Chevrolet Styleline model, with "notch back" styling, as the designers call it, or a Chevrolet Fleetline model, with "fast back" styling. Both are available on all Chevrolet sedans and at the same prices! Remember—Chevrolet is the only low-priced car that offers these two outstandingly beautiful types of styling . . . thus giving you an opportunity to express your own individual taste in motor car beauty.

#### You can choose between Automatic and Standard Drive

You have an enviable choice of engines and drives in Chevrolet, too. You can buy a Chevrolet combining Powerglide Automatic Transmission\* and 105-h.p. Valve-in-Head Engine for the finest *no-shift driving* at lowest cost, or a Chevrolet combining the highly improved standard Chevrolet Valve-in-Head Engine and Silent Synchro-Mesh Transmission for the finest *standard driving* at lowest cost.

\*Combination of Powerglide Automatic Transmission and 105-h.p. Engine optional on De Luxe models at extra cost.

#### You can choose between the Bel Air and the Convertible

And if it's a sports model you want, here's your car! Choose the fleet, fashionable, steel-topped *Bel Air*, with smart, racy lines, extra-wide windows, and gray, leather-trimmed upholstery, and you'll have the only car of its kind in the low-price field. Or choose the equally beautiful Chevrolet Convertible, with automatic top that lifts or lowers at the touch of a button, and you'll have the finest Convertible in its price range. Also available is an all-steel, four-door Station Wagon—smartest in its field—listing for \$260 less than last year.

America's Best Seller



America's Best Buy!

## HARVEY CHEVROLET COMPANY

ROBERT LEE, TEXAS

## STOP HERE

For Conoco Gas and Oil, Washing and Greasing Tire Repairs, Etc.

Prompt and Courteous Service All Ways

ROBERT LEE'S  
**Conoco Station**  
Denman & Tinkler

**DEAD ANIMALS**  
Un-Skinned  
REMOVED **free**

CALL COLLECT  
San Angelo 3200  
if no answer  
call 4023-3  
**SAN ANGELO**  
By-Products, Inc.



## Robert Lee Observer

A. J. KIRKPATRICK, Publisher

Entered at the post office in Robert Lee, Texas as second class matter

Published Every Friday

Established 1889—Oldest Business Institution In Coke County



### DR. NAOMI BENNETT

Naturopathic - Physician

E. Pulliam at Emerson  
Ph. 4071-1 San Angelo, Texas



Hayrick Lodge  
No. 696 A. F. & A. M.  
Meets second Tuesday  
night in each month.  
Visitors welcome.

R. L. Read, Worshipful Master  
H. S. Lewis, Jr., Secretary

Dr. O. H. Majors Dr. M. L. Majors

### Drs. Majors & Majors

OPTOMETRISTS

Colorado City, Texas

Phone 158 In J. P. Majors Co.  
For Appointment 129 E. 2nd St.

## Want Ads

Wanted—10,000 pairs of boots to fox. Stanley's Boot and Shoe Shop, Bronte. 5-6p

Watch Repairing—All I do is repair Clocks and Watches and time keeping instruments, but I do it right and use nothing but new and genuine parts. Leave work at Bilbo Drug Store in Robert Lee. H. L. Manley, Bronte.

The answer to your water problem for twenty years—AERMO-TOR Windmills and Steel Towers—Remember, Double Gears. Leeper Supply Co.

SPECIAL SALE—15 new patterns Pabco 9 x 12 rugs, \$8.65 while they last. Leeper Supply Co.

#### Fishing Tackle Headquarters

New stock for river and lake fishing. Rods \$1.49 to \$10.00 Reels from \$2.75 to \$10.00. Artificial bait. Catalogue on table for special orders, rods up to \$50.00, reels to \$35.00. Leeper Supply Co.

House for sale or rent Will take late model car as trade in. See Jack Capps. 3wp

PITTSBURGH QUALITY PAINTS are cheapest in the long run. Leeper Supply Co.

Building Materials—Cement and Paint. The right materials at the right price. McDonald Lumber Co., Robert Lee, Texas

For Sale—700 acre black land farm, all in cultivation. Section No. 17 and west part of 16, Block Z, D. & S. E. R. R. Co. Reasonable. If interested see me at 1408 Walnut St., San Angelo, Texas, or phone 48104. John Burroughs.

Wanted—Flat breaking. I have new John Deere equipment. Arthur Runnion. Phone 4113 at night.

For Rent—Four room furnished house. W. B. Bessent.

#### Pianos

Practically new piano been out less than 90 days. New piano guarantee. Going to sell in your community at a huge reduction. Will take trade in. Up to 24 months to pay. Also Small up right \$185.00. Ralph Nelson Piano Co. 1808 Rose St. Wichita Falls, Texas.

## Soil Conservation District News

Guy Denman and a group of his neighbors conducted a range tour Friday, August 4, 1950. The group met at Denman's farm and observed a seeding of Blue Panic and weeping Lovegrass that was seeded April 25, 1950. The Blue Panic and Weeping Lovegrass is a part of Denman's complete coordinated soil and water conservation program that he is applying on his farm as a member of the South Sanco Conservation Group and a district cooperator with the Coke County Soil Conservation District.

Denman plans to utilize the Blue Panic and Weeping Lovegrass to furnish summer grazing as a part of his range improvement program. By utilizing the Blue Panic and Weeping Lovegrass, he plans to give his native range land needed deferments during the summer.

The next stop was at the I. A. Austin ranch.

I started my range management by developing a soil, water and range conservation plan in January of 1949 with the Coke County Soil Conservation District. Personnel of the Soil Conservation Service assisted me with developing my plan, Austin said. My range has made remarkable improvement the

ast two years, and my calf and lamb weights will show the value of good range management. The pay weight of my calves was 470 pounds in 1948 compared to 607 pounds in 1949. The pay weight of my lambs was 65 pounds in 1948 compared to 92 pounds in 1949, Austin explained. I am beginning to get soil erosion stabilized and get a good cover of grass on my range, and I plan to keep it there. I have found out that grass is the only feed that a rancher can obtain on economical return from, Austin said.

The group observed the invader weeds and grasses being replaced with fair and good vegetation as well as the fair to good being replaced by choice vegetation. At each stop such grasses as Side Oats Grama, Black Grama, Little Blue-stem, Indian Grass, Buffalo, Curley Mesquite, are making good growth and gaining in plant vigor and replacing such vegetation as Croton Weed, Harry Triodia, Red Grama and Threawn Needlegrass.

The group observed excellent gulley stabilization was native grasses. I have never done any

mechanical work on this gulley, and it is almost stabilized. The grass is making a good growth in the bottom, and I am losing very little soil, Austin pointed out.

Ell Hatley and Cecil Smith went to Lubbock last week to visit Bobbie Hatley. Bobbie will finish his course at barbers school in six weeks.

Bobby Webb of Bronte is visiting in the home of his grandparents Mr. and Mrs. Monroe Parker, in Robert Lee this week.

## FOR YOUR HOME

SERVEL Refrigerators

All Sizes

BEN HUR

Home Freezers

Sharp Freeze Compartment Built In

BUTANE SYSTEMS All Sizes and Kinds

Easy Terms

FOR SALES and SERVICE

Call

Howard C. Preslar, Mgr.

Roper Ranges

- ★ Staggered Tops
- ★ Divided Tops
- ★ High Broilers
- ★ Low Broilers

Easy Washers

- ★ Spin Rinse
- ★ Spin Drier
- No installation to make

## FRALEY & WARD

Phone 154

Robert Lee, Texas

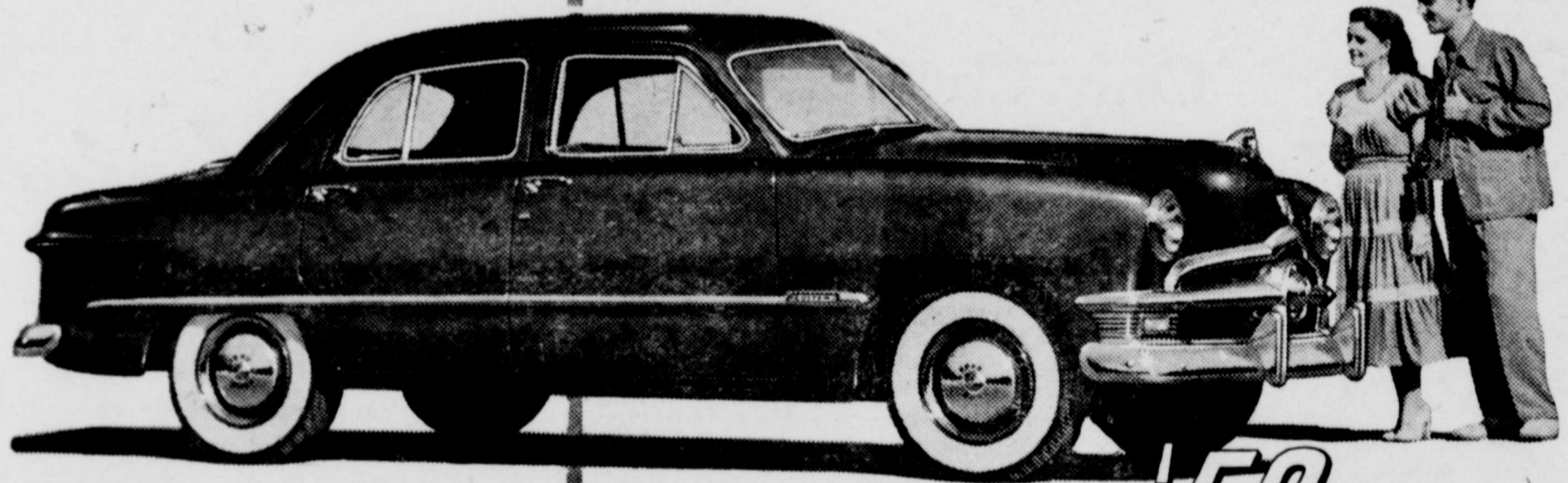
Upper bracket

Beauty



For the second straight year, Ford has received the Gold Medal award as "Fashion Car of the Year." And its good looks are matched, as owners will tell you, by its fine-car quality. Take a "Test Drive" in this '50 Ford and you'll find it has the "feel" of America's finest cars, too. We call it "big-car roadability"—you'll call it the smoothest, quietest ride on wheels. You'll agree Ford's

THE ONE FINE CAR IN THE LOW-PRICE FIELD



White sidewall tires and wheel trim rings optional at extra cost.

Low bracket

Cost

Compare the '50 Ford, feature for feature, with cars costing hundreds more! Only Ford, in the low-price field, offers an engine choice of either the 100 h.p. V-8 or its companion-in-quality, the 95 h.p. Six! Only Ford offers a "Lifeguard" Body! Only Ford offers 35% easier-acting King-Size Brakes! And no car offers a bigger combination of savings—savings in original cost, savings in running costs and the long run savings that result from Ford's high resale value.

"TEST DRIVE" IT AT YOUR FORD DEALER'S TODAY!

'50 Ford

## IVEY MOTOR COMPANY

ROBERT LEE, TEXAS



## SILVER NEWS

Susie and Billie Jameson and Colleen Soles returned recently from a twirling school at Ranger which was held in the Jr. College there. The Jameson girls were beginners and Colleen was a student instructor. Susie won first place medal in the beginners' contest. On Friday July 21st the school gave an exhibition of twirling at the rodeo.

Helen, Hazel and Rodger Holden of San Angelo and Bronte spent a few days here with their parents the T. B. Holdens. While Helen was here on vacation from her duties as operator for San Angelo Telephone Co. all the family visited the T. J. Holdens at Llano.

The T. C. Coffey family returned last Friday from Coleman where they went for a few days visit with relatives.

The Elmo Hargis and the J. W. Fishers left last weekend on a fishing trip to Colorado and Wyoming.

Phyllis Taylor of Merkel has been a guest of Barbara Keener's and was honored with a party in

the recreation hall last Friday night by Barbara and Mary Ann Snyder. Phyllis will return home tonight, accompanied by Barbara. They will visit a week before going on to Abilene where they will seek employment.

New residents of Silver are Mr. and Mrs. David J. English. Mr. English is a Junior Petroleum engineer with Sun Oil Co. and was transferred here from McAllen. He replaces Nelson Sapp who was recently transferred to Odessa.

Visiting the G. K. Bealls a short time ago were Mr. and Mrs. Wilson Brown and boys, the D. L. Browns and Lamar Adams all of Kempner, Texas.

Mr. and Mrs. W. L. Carr visited her brother, Elmer Allen, at Orient Sunday.

Living at the J. Jameson ranch now are Mr. and Mrs. W. A. Green and boys who hail from Slaton.

The G. B. Gebharts returned Saturday from a vacation spent in Longview with Mrs. Gebhart's parents, Mr. and Mrs. W. S. Powell.

Recent guests of the Fred L. Jones were Mr. and Mrs. H. C.

Harbert and Jo and Mary Frances Swiger of Brown, W. Va.

Here visiting Freddie Lee Jones are Jimmie and Jackie Thompson of Jal, N. Mex.

Lost—On Monday a blue bolero between Robert Lee and San Angelo. Will finder please notify J. B. Faris, Bronte.

Garland Austin has gone to Lubbock where he will be employed in a bakery there.

The Victor Wojtek family and Mr. and Mrs. S. R. Young attended a reunion at Christoval last Thursday.

## ALAMO THEATRE

"Motion Pictures Are Your Finest Entertainment"

FRIDAY and SATURDAY, AUG 11-12

George Montgomery-Rod Cameron in  
**DAKOTA LIL** In Cinecolor Also cartoon and late news

SUNDAY-MONDAY-TUESDAY, AUG 13-14-15

Sunday Matinees at 1:30 and 3:20  
Spencer Tracy-Katharine Hepburn in  
**ADAM'S RIB** Also cartoon

WEDNESDAY-THURSDAY, AUG 16-17

Dorothy McGuire-William Lundigan in  
**MOTHER DIDN'T TELL ME** Also cartoon

### RAMSEY GETS MANFORD'S BACKING



**SPEAKER ENDORSES RAMSEY** — Speaker of the House Durwood Manford of Smiley, left, announced this week that he would support Ben Ramsey of San Augustine, right, for Lieutenant Governor. Manford said Ramsey's experience as a House member and as a Senator made him the best qualified man in the race. (Pol. Adv.)

## WE CARRY A COMPLETE LINE OF

Wallpaper

Refrigerators

Water Heaters

Linoleum

Ranges

Paint

Radios

## Ivey Electric Co.

Robert Lee, Texas

**Tomatoes, No. 2 Can 11c**

**Cherry Bell 25 lbs.**

**FLOUR 1.67**

**Paper Napkins, 80 count 10c**

**Chili, Kimbells, No Beans 55c**  
No. 2 can



**Admiration**

**Coffee lb 79c**

**Baby Food, Heinz, 3 Cans 23c**

**Double Sheet Soft Topaz**

**Toilet Tissue 2 rolls 19c**

**Pork & Beans Jack Sprat 2 Cans 19c**

**OXYDOL or Duz, lge box 27c**

**Syrup, Staleys Golden 5 lbs. 39c**

**CORN Primrose Fancy 303 can 15c**

**TEA, Liptons 1/4 lb. : : : 29c**  
1/2 lb. : : : 57c

**Peaches, Hunts, 2 tall cans 35c**

**Peaches, Hunts, Buffet Cans 3 for 25c**

**Vinegar, Colored dist. qt. 10c**

**Prem, Swifts 12 oz. tin 47c**

## Frank's Food Store





# GRAND OPENING Roberts Grocery

ROBERT LEE, TEXAS

## Aug. 11-12

What is IGA? There is a great story behind IGA. It is the story of men with the courage and vision to develop an idea that provides opportunity for all.

IGA unites major units of food distribution: THE INDEPENDENT RETAILER in your community, THE INDEPENDENT WHOLESALER, the manufacturer, the FARMER, and YOU. They all work closely together in a well-knit, smoothly running organizations with just one purpose in mind: to bring YOU better foods at lower prices. With operating costs as low or lower than those of any other system in the food industry today, plus the combined purchasing power of thousands of stores from coast to coast, IGA stores can sell foods at low prices EVERY DAY IN THE WEEK, week in and week out.

Join the fun—and share in this great money saving opportunity! We are as proud as we can be of our store—come in and pay us a visit.

You Will Like Our Guaranteed Meats

Loin Steak	lb	85c
Seven Bone Roast	lb	59c
Hamburger	Fresh Ground lb	53c
Fryers,	Battery Raised lb	63c
Oleo, Meadowlake	lb	33c
Salmon,	No. 1 tall can	39c

**PURE CANE SUGAR**  
10 lb bag  
**93c**

FREE DRAWING  
\$15 Worth of Groceries to the Lucky Person.  
One \$10 Basket  
One \$5 Basket  
—So be sure to get your name in the pot. You do not have to be present to win.

IGA STRAWBERRY, APPLE JELLY 12 oz. <b>23c</b>
IGA GRAPE JELLY 12 oz. Glass <b>19c</b>
IGA APPLE JELLY 12 oz. Glass <b>17c</b>
IGA CHERRY PRES. 12 oz. Glass <b>27c</b>
IGA PURE PEACH PRESERVES 12 oz. Glass <b>19c</b>
IGA PINEAPPLE PRESERVES 12 oz. Glass <b>25c</b>
IGA GRAPE JAM 12 oz. Glass <b>19c</b>

Fresh Shelled IGA Blackeyed Peas No. 2 can . . . 15c
Valley Rose 46 oz can . . . 27c
Tomato Juice . . . 27c
Valley Rose No. 2 can . . . 17c
Pineapple Juice . . . 17c
Kimbells Orange Juice No. 2 can . . . 19c
Grated Tuna . . . 25c
IGA Pork & Beans 2 for . . . 17c
Argo Fancy No. 2 can . . . 29c
Cut Green Beans 2 for . . . 29c
Hearts Delight Peaches No. 1 tall can 3 for . . . 59c
Bright & Early Tea With Glass . . . 25c
No. 1 Argo Corn Golden Cream Style 3 for . . . 29c
Diced Carrots No. 303 can 2 Cans . . . 13c
C L Greens Cornmeal 10 lb bag . . . 63c
No. 2 can New Potatoes 2 for . . . 25c

IGA Vac. Packed  
**Coffee**  
1 lb. tin  
**79c**

White Fur  
**Tissue**  
4 rolls  
**39c**

IGA  
**Flour**  
Every Sack Guar.  
25 lb bag  
**1.69**

**PRODUCE**

Fresh Country Eggs	doz.	35c
Celery, Pascal stalk		17c
Radishes, Round Reds	bunch	5c
Carrots	bunch	5c
Green Beans, nice and tender	lb.	17c
CUCUMBERS Colorado Green	lb.	10c
FRESH CORN Golden Bantam	3 for 14c; doz. for	55c
LARGE PLUMS	lb.	15c
BARTLETT PEARS	lb.	17c
FRESH APRICOTS	lb.	17c
GRAPS	lb.	17c

**Roberts IGA Grocery**  
ROBERT LEE, TEXAS  
**LOW PRICES EVERY DAY**  
We reserve the right to limit quantity