

# Robert Lee Observer

Published at the County Seat

Sixty-Second Year--Established June 13, 1889

Official Paper County and City

Vol. 64, No. 21

Robert Lee, Coke County, Texas, Friday, October 31, 1952

Published Weekly

## GUIBERSON TO DRILL WILDCAT IN NORTH COKE

Allen Guiberson of Dallas has spotted his No. 1 D. D. Feldman as a 7,000-foot wildcat 11 miles north and slightly west of Robert Lee.

Drillsite, on a 160-acre tract, is 660 feet from the south and east lines of the southwest quarter of Section 301 1-A H&TC Survey. Feldman owns the mineral rights, while the land is the property of Mrs. Florine Price. The west half of Section 301 comprises the eastern end of the Price ranch west of Sango. None of the ranch is under lease.

Callamae Cargile has title to the west half of Section 301 which is leased to Sun. Guiberson holds leases on all of Section 308 which lays south of 301. The west half of 308 is owned by B. D. Gartman. Mrs. Cargile has the northeast quarter and the southeast quarter was purchased from Jack Lassiter by Willie I. Tubb of Silver.

The new location is one mile north and slightly west of the lone producer of the San Benito field, No. 1 Jack Lassiter, which produces from the Marble Falls of the Pennsylvania. The well at present is pumping from 20 to 25 barrels daily.

Guiberson brought in the Lassiter strike four years ago. However three subsequent holes were dry. One was on Lassiter to the northeast. The others were on Bryan Gartman to the west and Marvin Simpson, a south offset.

Guiberson's new attempt is located 1 1/2 miles southwest of Sun's Arledge field where there is small production at present.

### WILDCAT ON JENNINGS

White Drilling Co. is expected to move in rotary this week on G. W. Jennings property, 2 miles south of the McCutchen field east of Robert Lee. Operators are John B. Quinn of Midland and Sherman Oaks, Calif. The wildcat, scheduled 4,000-foot Cisco test, is 3,688 feet from south and 660 feet from west lines of block 966 1/2, John Johnson survey.

### WENDLAND FAILURE

Kewanee Oil Co. has plugged and abandoned No. 1 H. G. Wendland, wildcat 10 miles southeast of Robert Lee, on a total depth off 6,318 feet in the Ellenburger. Some shows of oil were found in a thin pay section in McCutchen sand. Operators announced they may drill another hole in the area after the first of the year.

Mrs. J. D. Gilbert of Silver is reported improved after being treated the past ten days at Shannon hospital in San Angelo. She is suffering from probable mental and physical exhaustion. The Gilberts a short time ago lost their 19-year-old son, Douglas, after a brief illness of infantile paralysis. Mr. Gilbert is a foreman at Sun's gas plant at Silver.

### Coke County

## Hospital News

- Oct. 22—Mrs. C. E. Calder, Mrs. Nancy J. Snell admitted.
- Oct. 23—Son born to Mr. and Mrs. C. E. Calder at 5:50 a.m. Sloane Boone, Mrs. Nancy Snell dismissed.
- Oct. 24—Jeff Blair dismissed.
- Oct. 25—Mrs. Calder and infant son dismissed.
- Oct. 28—Mrs. L. C. Gunnels admitted.
- Oct. 29—Mrs. J. C. Slaughter dismissed.

### RAY-HARRIS MOVES BACK

Ray-Harris Drilling Co. comes back to Coke County this week after an absence of 13 months. One of their rotary rigs moved in for Sun on the Willie I. Tubb lease. Ray-Harris started in the drilling business here soon after the oil play opened at Silver and they brought in a lot of producers for Sun. Ira Koskie is of course handling tools on the rig and many of the crewmen are Robert Lee residents.

### COUNTY HD COUNCIL

The Coke County Home Demonstration women held their annual council meeting in the council room of the Agriculture building, October 27.

Miss Gladys Waldrop, chairman, presided. Three clubs were represented and reports were given of the year's work.

The following officers were elected for 1953:

Mrs. C. E. Arrott, chairman; Mrs. Tom Rives, vice chairman; and Mrs. Lowell Roane, secretary-treasurer.



## Notes From The Oil Field

Seaboard No. 1 Marvin Simpson, wildcat 4 miles northwest of Robert Lee, was drilling Tuesday morning at 1,878 feet. Surface pipe was cemented at a depth of 1,407 feet.

New Seven Falls (A. G. Hill) No. 2 R. B. Allen cemented 7-inch casing at 6,430 feet, top of the lime reef. Total depth of hole is 6,458 feet. R-H-K Drilling Co. is the contractor and will get a new location on Hill's No. 1 J. B. Walker, Jr.

Union No. 1 G. C. Bell, wildcat east of Bronte, was drilling Tuesday noon at 3,397 feet. Moutray-Moore of Abilene is the contractor. Union purchased the Bell lease from Humble and Strake.

Humble has completed its sixth Goens producer in the Bronte field. It is No. 12 R. E. Hickman, account 2. The well was finaled for a 24-hour flowing potential of 443.81 barrels of 49.6 gravity oil. The potential was based on an actual five-hour flow of 92.46 barrels of oil through a 1/4-inch choke. Completion was natural in open hole between 4,830 and 4,884 feet. Gas-oil ratio 436-1.

Kirk F. Johnson No. 1 Blanks, south of the river at Silver, was drilling below 6,270 feet in shale.

American Republics No. 1 Eva Snowden at Silver was drilling at 4,090 feet in lime.

Headwaters Oil Co. No. 2 Russ Mathers, bottomed at 6,420 feet, was testing.

Magnolia 1 R. B. Allen, Jameson field outpost, swabbed 41 barrels of new oil and 55 barrels of acid water in 16 hours from the interval between 6,525-54 feet. Operator continued to test.

The project, one location southwest and northwest of production, is in the Dolly Conner survey.

Magnolia 2 Allen, Jameson test in the J. F. Conner survey, was bottomed at 6,463 feet in lime and was running logs.

On a one-hour and 45 minute drillstem test between 6,445-63 feet, recovery was 95 feet of gas-cut mud. Flowing pressure was 100 pounds and 15-minute shutin pressure was 450 pounds.

Davon Oil and Gas Co. No. 1 Chapman on the Divide southwest of Robert Lee was drilling below 3,000 feet. Baker & Taylor is the contractor.

## Editorial

The Observer is supporting a straight Democratic ticket. We have the highest respect for those who have other intentions. It's no disgrace to vote Republican, but there are some things connected with the Texas campaign this year that are disgraceful, even hideous.

Firstly we refer to the State Democratic Chairman, who is laughing, taunting and making fun of Democrats who are remaining loyal to their party. This Democratic State Chairman (we should strike out the capital letters) is a law partner of the Republic State Chairman, and said d. s. c. is doing everything in his power to defeat the Stevenson-Sparkman ticket and bring about the election of General Eisenhower.

It is doubtful if anything as ridiculous and disloyal has ever before taken place in any state in the union. The great Democratic Party of Texas is being sabotaged by a minority group who seized control of the state organization. Although representing the largest state in the nation, they were not big enough to tell the national committee what it had to do, so they propose to ruin their own great party at home if they can't rule.

It is hard to figure out what they expect to gain. We know Eisenhower would give them the tidelands. He's going to give everybody pie and ice cream on it, too. He has made commitments in various parts of the country he won't be able to deliver. If Stevenson is elected (and we think he will be) what will he and the Democrats in Congress think about the way the Texas Democratic organization has acted in this campaign? Of course Price Daniel, who will go to the Senate in place of Tom Connally, will be out in the cold. As John Garner said, he'll need a guide to get around the capitol building in Washington.

We should be thankful that Speaker Sam Rayburn was available to take over the Democratic campaign, and he has been ably assisted by Senator Lyndon Johnson, Senator Connally and a number of Congressmen. (Where's O. C. Fisher? He must have lost his voice or something.)

Taft should have been the Republican nominee. He has fought the New Deal from the start; he's smart and is also honest and gives straight answers. Jack Porter's hand picked delegation helped steal the nomination from Taft in Chicago last summer. But General Ike surrendered his great crusade, and it is apparent that Taft is really in the driver's seat although Ike got the nomination.

The Republican party has not changed. Hoover got into the act the other night and admitted he was an isolationist. Said he wanted to sit back and see Hitler and Stalin destroy each other when they were at it. Maybe he has forgotten that Hitler had old Joe reeling and was about ready for the kill when the U. S. A. stepped in to save Russia. Where would we have been if Hitler had taken Russia?

Hoover gave this writer and thousands of others a terrible fright 20 years ago in a campaign speech in Des Moines, Iowa, ten days before the election. He prophesied that grass would grow up the main street of Des Moines and other dire and tragic results would occur if he was defeated by Franklin D. Roosevelt.

When Roosevelt took over and began getting things straightened

## NEW COUNTY VOTING RECORD MAY BE SET AT TUESDAY'S ELECTION

One of the hottest presidential campaigns in modern times comes to a climax with the General Election next Tuesday, Nov. 4. The noly choice Coke County people will have to make is for President and Vice President. There is only one set of candidates for State, District and County offices.

Politics is being talked briskly as the campaign draws near its close, and a record vote may be cast in this county. About 1,650 persons voted in the Democratic primary in July and this figure may be exceeded next Tuesday.

County Clerk Weldon Fikes had received applications for 65 absentee ballots at noon Wednesday. Saturday is the final day for absentee voting.

Polls at the General Election open at 8 a. m. and close at 7 p. m. Nearly the same election boards that served in the primaries will again be used.

Wasn't it ridiculous when Gov. Shivers referred to Gen. Eisenhower as a second Franklin D. Roosevelt when he introduced the general at San Antonio?

Gov. Adlai Stevenson is a great candidate, probably the most outstanding individual who has run for President since Abraham Lincoln. The United States should not pass this opportunity to put him in as their president.

## SUN EMPLOYEE FOUND DEAD AT EDITH PLANT

The body of Charles W. Cypert, 42, Sun Oil Company employee, was found dead Tuesday morning at the company's gas plant in the Millican field west of Edith.

The man was discovered by a painting crew which reported for work at 7:30 a.m. His body was hanging over the railing of a catwalk leading into the plant.

N. K. Cheatum, who resides near the gas plant, notified county officials and an inquest was held. Present for the hearing were Sheriff Paul Good and Deputy J. L. Tinkler, County Attorney Frank Dickey, Dr. J. D. McDaniel and W. B. Clift and son, Wallace.

Cheatam said he and Cypert were operating the plant, each doing 12-hour shifts. Cypert was due to complete his shift at 8 a.m. Plant records showed the man had made a report at 3 a.m. but there was no report the next hour, indicating that death had occurred between 3 and 4 a.m.

The body was later removed to the Clift Funeral Home in Robert Lee. District Attorney Earl Smith came over from San Angelo in the afternoon to make an investigation. There was a bruise on the man's forehead and Sun officials and Mrs. Cypert agreed that an autopsy was desirable. The examination made in San Angelo Tuesday night showed that Cypert's death was due to a blood clot in the heart.

The remains were taken overland to Cypert's former home at Spring Hill, La., where funeral services and burial will take place Friday afternoon. Mrs. Cypert's parents came here Tuesday evening to be with their daughter. Mr. and Mrs. Perry Post of Silver will also go to Spring Hill for the funeral.

Cypert had been employed by the Sun Gas Department since 1948. He formerly was stationed at Delhi, La., and was transferred to Silver from South Texas a few weeks ago. After the Millican plant was enlarged he was assigned here as 1st class engine operator, but continued to reside in Tubb Camp at Silver. The Cyperts have two daughters.

Politics is being talked briskly as the campaign draws near its close, and a record vote may be cast in this county. About 1,650 persons voted in the Democratic primary in July and this figure may be exceeded next Tuesday.

County Clerk Weldon Fikes had received applications for 65 absentee ballots at noon Wednesday. Saturday is the final day for absentee voting.

Polls at the General Election open at 8 a. m. and close at 7 p. m. Nearly the same election boards that served in the primaries will again be used.

Will Get Returns

Ballot boxes and poll lists must be returned to the court house within 36 hours after the polls close, but an effort will be made to get the returns by telephone Tuesday night.

The Observer office will remain open until midnight to take the returns. The figures will be relayed to several daily newspapers and to the Election Bureau in Dallas.

Election officials in the 14 voting precincts have been asked to phone in results as soon as possible after the polls close.

How to Vote

Some confusion may arise in the manner of marking this year's ballot. The Observer has a supply of Sample Ballots which will be given to interested persons. Election officials will be expected to inform voters how to mark their ballots, if help is requested.

## TURKEY SHOW IS BIG EVENT

Everything is in readiness for the annual Coke County Junior Market Turkey Show to be held Saturday. The event takes place all day in the building formerly occupied by Key Feed Store. Wire crates borrowed from the State Fair management were set up in the building early this week.

A total of 50 fine birds will be on exhibition, being divided equally among hens and toms. The turkeys will be judged Friday, but the show is open to the public only on Saturday. Twenty-five boys and girls of the county will exhibit.

All turkeys will be sold. Champion and reserve champion birds go to the highest bidder, but the remainder are to go at a standard price of 4 cents above the market value.

Persons buying turkeys at the show may arrange to have them dressed and placed in cold storage.

Lichi nuts are grown in China.

## BIRTHS

CALDER—A son was born at 5:50 a.m. Oct. 23 to Mr. and Mrs. C. E. Calder (Dorothy Mae Casey) of Robert Lee. Tony Neil weighed 6 pounds, 7 ounces upon his arrival at Coke County Memorial Hospital. The Calders have four other children. Mr. Calder is engaged in the livestock trucking business here. Grandparents are Mr. and Mrs. Martin Casey of Robert Lee and Mrs. Susie Calder of Mullins, Tex.

## High School Notes

### CLASS OFFICERS & SPONSORS

#### FRESHMEN

President: Tommy Hood  
Vice President: Barbara Casey  
Secretary: Alice Ross  
Treasurer: Jackie Sparks  
Reporter: Joy Adkins  
Sponsor: Mr. Lloyd

#### SOPHOMORES

President: Ben Bessent  
Vice President: John McDaniel  
Secretary-Treasurer: Jeffie Harmon

Sponsor: Mr. Dibrell

#### JUNIORS

President: Jennie Lee Burns  
Vice President: Peggy Bilbo  
Secretary: Bill Casey  
Treasurer: Joyce Bagwell  
Sponsor: Mr. Jack Brock

#### SENIORS

President: Bill Havins  
Vice President: Bill Carwile  
Secretary: Marvin Simpson  
Treasurer: Johnnie Snead  
Sponsor: Miss Darter

## State Fair Sets Attendance Record

The State Fair of Texas shattered its own attendance record and set a new national record for annual fairs for the tenth straight time as its most successful exposition in history ended Sunday, Oct. 19.

James H. Stewart, executive vice president and general manager, said a total of 2,387,140 visitors attended the fair during its 16-day run. This exceeded by 67,011 the number who attended the 1951 fair and was more than twice that for any other fair in America this year. The fair's biggest day was Sunday, Oct. 12, when 281,228 attended.

The fair has set a new attendance record each year since 1939; no fairs were held during the war years, 1942-45.

The giant exposition ended on a solemn religious note, with a Cotton

Bowl religious festival Sunday night, dedicated to the late Dan D. Rogers, who had helped plan and organize the festival and who died suddenly three days before.

More than 85,000 people saw and enjoyed the Dean Martin-Jerry Lewis show in the auditorium, a record attendance for a revue-type show at the fair. About 115,000 saw Ice Cycles of 1953 in the Ice Arena, which has a larger seating capacity.

## Livestock Market Has Stronger Tone

Fort Worth — Most heartening news to livestock producers in weeks was the rally of cow prices at Fort Worth late last week and which carried over into Monday's trade. Cows sold Monday \$1 to \$2 above the low time last week. There was a better feel to the trade, though stocker demand remained very dull, and some signs of improving stocker demand at northern points were encouraging.

Lighter runs of sheep around the market circle set off a little rally in the sheep yards at Fort Worth Monday. Some lambs and some ewes sold 50 cents higher.

The stronger tone to the market at Fort Worth and at other points around the market circle was particularly good news since October's twin goblins, deteriorating ranges and heavy receipts, plumped calves and sheep to the lowest levels for the current crop and to the lowest point since OPA controls were removed in October, 1946, just a week ago.

Women are not eligible for Rhodes Scholarships.

Dr. O. H. Majors Dr. M. L. Majors

**Drs. Majors & Majors**

OPTOMETRISTS

Colorado City, Texas

Phone 158 In J. P. Majors Co.  
For Appointment 129 E. 2nd St.

Why accept less when we offer you more in a

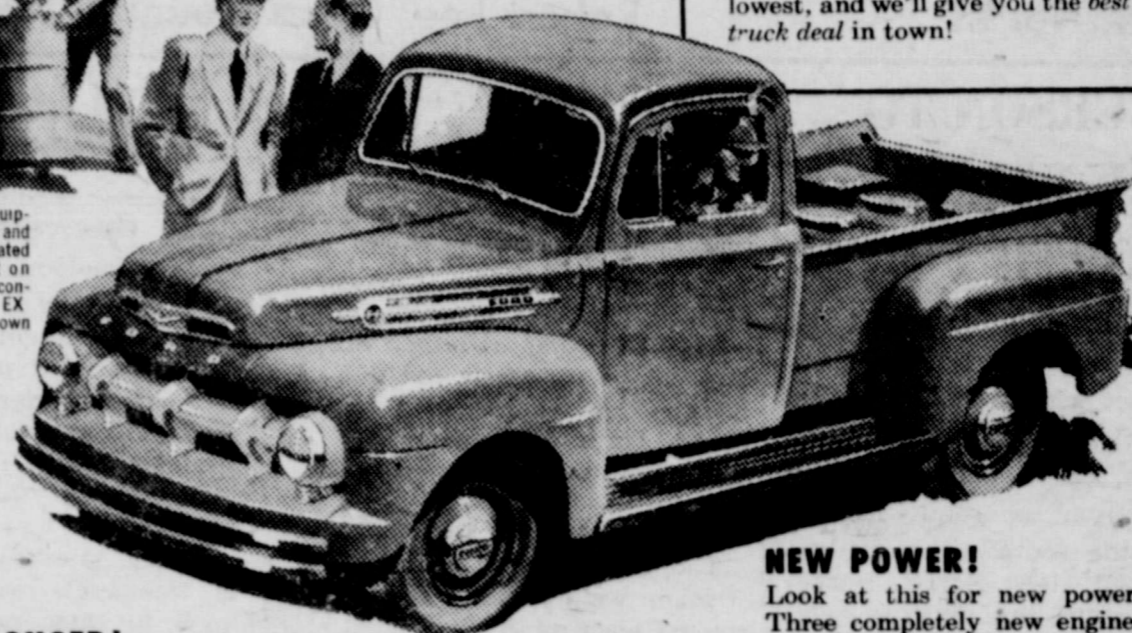
# FORD TRUCK

at no increase in price!

The only Pickup with a new Low-FRICTION engine! New Ford F-1 offers choice of new 101-h.p. COST CLIPPER SIX, or famous V-8, now 106 h.p.



Availability of equipment, accessories and tires is illustrated as dependent on material supply conditions. 5-STAR EX 1RA Cab shown (added cost).



### GAS SAVINGS UP TO 14%

Now three new high-compression, LOW-FRICTION, overhead-valve Ford Truck engines cut friction power-waste . . . you save as much as one gallon of gas in seven! Ford Trucks are priced with the lowest, and we'll give you the best truck deal in town!

### NEW POWER!

Look at this for new power! Three completely new engines — PLUS famous V-8 (now 106 h.p.) PLUS Ford's BIG SIX (now 112 h.p.)! FIVE great engines in all . . . a Ford Truck that's just right for your kind of job!

### NOW FIVE GREAT ENGINES!

- 101-h.p. COST CLIPPER SIX. New!
- 106-h.p. TRUCK V-8. New power!
- 112-h.p. BIG SIX. New power!
- 145-h.p. CARGO KING V-8. New!
- 155-h.p. CARGO KING V-8. New!

### LAST LONGER!

Using registration data on 8,069,000 trucks, life insurance experts—for the sixth straight year—prove Ford Trucks last longer!

### RUN FOR PENNIES!

Before you buy, let us show you the new Ford Economy Run Book. See running costs of 5,500 Ford Truck owners! See how little it can cost to run a Ford Truck in your kind of work!



F.D.A.F.

**FORD TRUCKING COSTS LESS**

... FORD TRUCKS LAST LONGER! Using latest registration data on 3,067,000 trucks, life insurance experts prove Ford Trucks last longer!

**IVEY MOTOR COMPANY**  
ROBERT LEE, TEXAS

# Announcement

Don't Fail to Attend The  
TURKEY SHOW  
Saturday, Nov. 1st

We wish to announce to the public that we have purchased the Robert Lee Hardware from Ray Shafer and we are open for business.

It is our intention to build up our stock immediately in all departments so that we may supply the needs of this territory with Shelf and heavy hardware, Home Appliances, Electrical Supplies, Plumbing Supplies and Fixtures, Farm and Ranch Supplies, Kitchenware, Radios and all items carried in an up to date hardware store.

It is a pleasure for us to be back in Coke County, and we hope to operate a business that will be a credit to the community.

You have a standing invitation to come in and see us.

# Walker Hardware Co.

CURTIS WALKER, Owner

Robert Lee, Texas

## CROWD ENJOYS FIREMEN AND LADIES SHOW

Members of the Robert Lee Volunteer Fire Department and their Auxiliary ladies staged a hilarious home talent production at the high school auditorium Tuesday night. Several excellent entertainment features were provided, while the style show presented the men in women's costumes, and the ladies modeled men's apparel.

Former Mayor John Harvey came over from Colorado City to serve as master of ceremonies, and music was furnished by a 5-piece orchestra composed of friends of Lewis Jay from Lake View high school.

Entertainers were Jimmy Bell, who sang the Goodbye Joe popular Bayou number, a dance by Jo Alice McDonald in Spanish costume, two selections by Ronnie and Dickie Snoddy in blackface, and a vocal solo by Nettie Bob Bell.

Appearing in the style show were Mrs. Sam Jay (Dr. Quack), W. D. McAdams (Millie), Doo-Dad Davis (Dorothy) in nightie, Waymon (Winnie) Robertson in evening gown, Corena Davis (Supt. I. Know-it) in man's suit, Melvin Bahlman (Aggie) in street dress, Juanita (John) Parker in roughneck outfit, Bub (Lilly) Lewis in slacks and sweater, Kenneth (Kathy) Lackey and Waymond (Callie) Davis in sun dresses.

Also Nathan (Nannie) Geer in outing night gown, Melvin (Mildred) Krall in mother Hubbard dress, Billie (Cap. Coon) Lewis in men's long underwear, Jack (Janice) Cowley in negligee, Bernice (Bill) Bell in cowboy suit, J. S. (Julia) Ferrell in evening dress, Winnie (William) Cowley as water supt., Elmo (Lois) Bell as drum majorettes, Maurice (Mary) Yarbrough in house dress, Edith (Ed) Bowen as truck driver, J. C. (Jennie) Wallace, Jr. in sport clothes, Lela Rae McAdams (I Stickum the banker), Mary (Harry) Krall, mechanic.

Judges for the show were Fred McDonald, Jr., Robert Baughan and W. T. Roach. They were assisted in making decisions by applause from the audience. First for ladies was Mrs. Bernice Bell as the cowboy, while Calvin Wallace and Elmo Bell as majorettes were tops among the men.

The Foremen and Auxiliary realized about \$100 from the venture and everybody enjoyed the hour's entertainment. It was directed by Mrs. Virginia Jay. An advance sale of tickets was well handled by Willie Sue Skipworth and Shirley Stewart.

### Personals

The condition of W. B. Bessent remains critical at Coke County Memorial Hospital where he has been a patient the past three weeks.

Mr. and Mrs. Pete Kamy and daughter, Judy, of Mertzon visited Robert Lee relatives last Thursday. A party honoring Judy's third birthday took place in the home of her grandparents, Mr. and Mrs. Lem Cowley.

Mrs. J. S. Gardner was happy to have her three sons and their families with her over the weekend. They included Mr. and Mrs. Winston Gardner of Kilgore, who were returning from a vacation trip to Colorado and New Mexico, also Mr. and Mrs. Wilfred Gardner and son of Midland and Mr. and Mrs. Woodrow Gardner of San Angelo.

Mrs. Ben Boykin recently returned from Bainbridge, Mr., where she spent several weeks in the home of her son-in-law and daughter, Mr. and Mrs. C. S. Haselden. She assisted in caring for the Haselden's new daughter, Mary Melrose, born Aug. 25 at the Naval hospital in Bainbridge. Both Mr. and Mrs. Haselden were connected with operation of the Coke County Hospital after its opening 2½ years ago. He was later recalled to active duty in the Navy and has been stationed at the induction center and boot camp at Bainbridge.

An archangel is an angel of the highest rank.

## SUN OIL NEWS

Sun No. 42 C. E. Mathrs was running tubing for completion with total depth of 6,455 feet. A drillstem test 6,440-55 feet recovered 60 feet of oil and gas-cut mud.

Sun C. E. Mathers A-13 was drilling Wednesday in shale at 4,720 feet.

Morris-Hamilton was rigging up rotary on Sun No. 5 Bloodworth. The rig was moved from Sun Central Bank No. 7.

Sun J. B. Walker-State Unit A-1 on the north bank of the river at Silver was drilling at 2,750 feet in shale. Baker-Taylor is the contractor.

Ray-Harris was rigging up on Sun Willie I. Tubb G-1, a sand test.

Sun Central National Bank has been plugged and abandoned with total depth of 6,041 feet. Three drillstem tests in sand failed to show much oil. A 25-foot core to 6,041 penetrated shale. Location is in the Lygay field south of the Colorado River in the Silver area.

J. I. Murtishaw has been confined to his home the past ten weeks following a second light stroke. A long time resident of this community, Mr. Murtishaw celebrated his 91st birthday on Oct. 2. All of his children but two were present for the occasion.

## Want Ads

BUCKS FOR SALE—Yearling Rambouillet bucks \$26 each with papers. See B. W. Waldrop at Hayrick. 19w3p

Aermotor Windmills, woodrod, cylinders and all fittings necessary to complete your water job. Leeper Supply Co.

### NOTICE

My place south of Robert Lee has been posted and \$50 Reward will be paid for the arrest and conviction of any person or persons trespassing upon my property without permission.

—Fred McDonald, Jr.

FOR SALE—2x4 shorts, 3½c per board ft. Houses just as cheap. MESQUITE LUMBER CO. Build M. Cheap Samuelson, Prop. 19tf

FOR SALE — Armstrong portable electric ironer, See Mrs. Elmer Adkins or call No. 172. 1p

PAINT — Pittsburgh Rubberized Satin Finish Wallhite for all inside work. Use it on paper, wallboard, wood, cement, anything. Dries in 15 minutes.—LEEPER SUPPLY CO.

AVON HAS BEAUTIFUL Christmas gift sets for every member of the family. Mrs. Jim Greer, Phone 4821. 21w2p

Mail your Kodak film to Etz Studio & Camera Shop, Sweetwater, Texas. 120 eight exposure rolls, 50 cents, 12 exposure rolls 70 cents. 16 eight exposure rolls 58 cents. All prints jumbo size. Prompt service, good work. Send cash with order.

FOR SALE — 15 ft. Grumman aluminum flat bottom canoe. Retail \$225. Good condition. Free trial. \$135. Jay Garrett, Ballinger. Phone 9294. w2p

LUMBER—2 x 4s and 2 x 6s, all lengths, 5 cents per board foot. MESQUITE LUMBER CO., Build M Cheap Samuelson, Prop. 16tf

FISHING TACKLE Headquarters —We have a complete new stock of fishing essentials. See the new guaranteed anti-backlash casting reel.—LEEPER SUPPLY CO.

NOTICE — This is to advise the public that the place operated by me (Sections 6 and 8) has been posted against hunters or any trespassers. I have had some stock killed and must protect myself in the future.—Charlie Arnold, Silver, Texas. 18w8p

Building Materials — Cement and Paint. The right materials at the right price. McDonald Lumber Co., Robert Lee, Texas.

FOR SALE—Two clay back butane heaters, 5 radiants, good condition, cheap. W. D. McAdams.

Give a windmill a chance. Change its oil and tighten its bolts once a year. Aermotor Windmill Oil. LEEPER SUPPLY CO.

### CATHOLIC STUDY CLUB

The Ark and Dove Catholic Study Club met Friday afternoon in the home of Mrs. Jack Price in Bronte.

The afternoon discussion led by Father Fidelis was based on the article recently published in Look magazine entitled "What Is A Catholic?" Special attention was given the question of the four marks of the Church namely oneness, unity, Catholicity and Apostolicity which was discussed by the group.

Refreshments of cake and Cokes were served by the hostess to Father Fidelis and Mmes. A. V. Huges and Frank Dickey of Robert Lee and James Burnett of San Angelo.

### Personals

Mr. and Mrs. F. A. Askins left Tuesday for their home in Arkansas after a few days' visit in the home of their son, Foy Askins, and family. They are well pleased with their new home, but report the drouth has been severe in that locality this year.

G. W. Barnett returned Saturday to his home in Houston after a visit of two weeks with his sister, Mrs. Joe Field, and husband.

Dr. and Mrs. E. C. Jenner of Independence, Mo., arrived Saturday for a visit with their daughter, Mrs. J. D. McDaniel and family. This is their first trip to West Texas.

## Don't Fail To See Coke County TURKEY SHOW In ROBERT LEE Saturday, Nov. 1

We congratulate these Boys and Girls for their fine success in raising their best crop of turkeys. Many of these young exhibitors bought their turkey feed here.

## KEY FEED STORE

## We'll See You at The BIG TURKEY SHOW Saturday, Nov. 1

Congratulations to the Coke County Boys and Girls who raised these wonderful birds

### MAC'S CAFE

Robert Lee, Texas

## Yes, There's an Easy Way To Pay Your Bills

It's as simple as A-B-C. Deposit your money in a checking account. When bills come in, sit at your desk at home, make out checks and send them by mail.

Your cancelled checks are legal receipts. Your checkbook stubs provide a perfect record for all transactions. Open a checking account tomorrow. It's the easy way to pay your bills.

## Coke County Turkey Show Saturday, Nov. 1

## Robert Lee State Bank

## Let's All Go to The Turkey Show To Be Held in Robert Lee Saturday, Nov. 1

We wish to congratulate the Boys and Girls of Coke County who have again produced a wonderful crop of prize winning turkeys.

## McDONALD LUMBER COMPANY

Fred McDonald, Jr., Owner

## HEART OF TEXAS SIZZLING HOT REPORTS EASTERN NEWS WRITER

(Note: The following article was written by the well known columnist, Joseph Alsop, who came to Texas when Eisenhower invaded the state on a speaking tour recently. Its a good honest report on the political situation in Texas at this time.)

Texans of all classes and walks of life will undoubtedly go to the polls and vote for Eisenhower in November. Yet the Eisenhower movement in Texas nonetheless derives its real force and motive power from the oligarchy of oil men and bankers, industrialists, large ranchers and big real estate operators who rule this state's amazingly expanding economy.

### RULED SINCE 36?

Businessmen tend to be Republican the country over; but few other states have anything to show that is quite like the Texas oligarchy. The oligarchs have increasingly controlled the state government and the state's politics ever since 1936. There are literally almost no Texan politicians left who dare to defy them.

The Oligarchy has long disliked the national Democratic administration. When Eisenhower was nominated, they were emboldened to challenge the long Democratic tradition of Texas. They seriously hoped to swing the twenty-four electoral votes from Texas into the Republican column despite the two-to-one majority which the loyal Democrats registered against Republicans and Dixiecrats only four years ago.

The intensity of the pro-Eisenhower effort is astonishing. Estimates of the sums that are being and will be spent to carry this one state for the General run from \$3,000,000 to \$6,000,000; and the imagination boogles at the amounts the Republican National Committee

is taking out of Texas for expenditure elsewhere. In cities like Dallas and Houston, pressure for Eisenhower is so strong that aspiring younger lawyers and businessmen are genuinely afraid not to declare for the General. Politicians who went along with the Eisenhower movement, like Gov. Allan Shivers and Senate candidate Price Daniel, have carried with them large segments of the established Democratic organization. The Texas press is all but unanimous for Eisenhower.

### LED BY RAYBURN

Yet this massive phalanx of wealth and power and influence is nonetheless being challenged. The chief challenger is Speaker of the House Sam Rayburn, whom a sour but well-informed observer described to this reporter as "the last really independent Texas politician." The description was a bit exaggerated, since Rayburn is being aided by Sen. Lyndon Johnson and most of the Congressional candidates. The other day, moreover, John Nance Garner, rather surprisingly came out on Rayburn's side.

With dogged energy and conspicuous guts, Rayburn is using his enormous knowledge of his own state to piece together a state-wide loyal Democratic organization. He and his co-workers are also campaigning furiously, although on a shoe string. Furthermore although the Eisenhower movement benefits from the tidelands issue, which means a lot in Texas, Rayburn and company have some very big assets too.

They have, first of all, the deep-rooted Texas Democratic traditionalism, which was what moved the aged squire of Uvalde to break his long political silence. (Of the pro-Eisenhower stand of Price Daniel, Garner is reported to have remarked, "Why, when that young squirt gets to the Senate, he won't even find anybody to show him the way to the outhouse.")

Then, too, Rayburn and company have the feeling of the predominant voting group in Texas, the farmers and small ranchers, that a Republican administration may endanger their prosperity. They have most of the industrial workers, an increasing Texas vote. And they have the Negroes — over 200,000 of them on the voting registers, enough so that the Eisenhower leaders are strikingly mum about F. E. P. C.

Taken together, these are very great assets which Rayburn and the other loyal Texas Democrats possess. A meek interloper cannot pretend to judge whether, in the end, these assets will outweigh the vast and visible power of the Eisenhower movement. According to the best local experts, the odds are 5 to 4 that Texas will end by going for Adlai E. Stevenson. You may place your money as you choose. — (New York Herald Tribune Inc.)

### AT LEGION CONVENTION

H. S. Lewis, Jr., A. M. Tubb and Eddie Patterson and their wives attended the district convention of the American Legion and Auxiliary in San Angelo over the weekend. Mrs. Lewis gave a report of her work as chairman of the Child Welfare committee of the Auxiliary for the past year. She received a few appointments as chairman of Girls State. The Robert Lee Auxiliary was cited for being the first unit in the state to exceed its membership quota. Mrs. J. C. Strickland, formerly of Robert Lee, is serving as the Auxiliary's District President.

### CLOTHING FOR ORPHANS

Reagan and Truly Circles met at the Baptist Church Monday afternoon with 16 present to study their Texas Year Book. Mrs. H. C. Allen directed the study period.

During the month of November the W. M. U. will collect good clothing and pack boxes for the Baptist Orphans Homes. If you have any such articles of apparel, phone Mrs. W. J. Cumbie, benevolent chairman, and they will be gathered up.

### Personals

George Arledge of Winchester, Ken., is here for a visit with his sisters, Mrs. Palmer Leeper and Mrs. Callamae Cargile, and his brother, Joe Arledge, Jr. Mr. Arledge says Kentucky experienced a serious drouth this year, but the condition has been relieved by recent rainfall.

A dinner served Sunday in the home of Mr. and Mrs. Roy Braswell honored the birthdays of Roy and Mrs. George Braswell of Bronte. Guests included the J. E. Mitchells, Mrs. J. H. Turner and the George Braswells of Bronte, the Irven Escues of San Angelo and the James Thomasons and J. W. Denmans of Robert Lee.

## APPLIANCES SYSTEMS

San Angelo Phone 4743

# FRALEY & WARD, Inc.

## Butane Distributors

Robert Lee Phone 154

SERVICE INSTALLATIONS

## The Observer For Fine Printing



M. J. KRALL  
Phone 141

Distributor  
Robert Lee, Texas

## For General INSURANCE

Life, Hospitalization, Polio.

Fire, Auto and Bonds

SEE

T. A. Richardson  
or G. C. Allen

At Robert Lee State Bank

Subscribe to  
**THE ABILENE  
REPORTER-NEWS**  
at the  
Fall Bargain Offer  
Daily & Sunday \$10.95  
Daily only . . . . \$ 9.95  
One Year—By Mail  
Anywhere in West Texas

Made Right      Styled Right      Priced Right



28-A West Beauregard      San Angelo, Texas

## Home Owners and Those Who Want to Build New Houses

We are now prepared to arrange financing for FHA Title I Loans for Remodeling and Repairing your home. Borrow up to \$2,500 with three years to pay.

Also FHA Loans for building New Houses.

Come in and talk over your building plans with us.

**McDONALD LUMBER CO.**  
FRED McDONALD, JR., Owner

# THIS WEEK'S SPECIALS

Be Sure and Visit the Turkey Show Saturday

**SALMON** tall can 39c

**PURE LARD** 3 lb crt 49c

**Rutabagas Turnips** Lb 7½c

**CABBAGE** Nice, firm heads Lb 7½c

**CARROTS** cello bag 15c

**CHILI, Kimbell** No. 2 can 59c

**Libby Deep Brown BEANS** Tall can 10c

**Kimbell Grapefruit Juice, No. 2 can** 2 for 19c

**CHEESE** Kraft Velveeta 2 lb box 98c

**Ballard Biscuits** 2 cans 25c

**STEAK** Choice Loin or T-Bone Lb 79c

**Bacon Ends & Pieces** Lb 19c

# BAKER'S Groc. & Mkt.

---

---

*Here's Our Man-*

The Great Illinois Governor  
**Adlai E. Stevenson**  
Democratic Candidate For  
**PRESIDENT**  
of the United States



We urge the Democrats of Coke County to be neither deserters nor turncoats. Support the eminent statesmen who are the candidates of the Democratic Party — Gov. Adlai Stevenson of Illinois for President, and Senator John J. Sparkman of Alabama for Vice President.

The Democratic Party has been the pillar and support of real Democracy from the days of Thomas Jefferson; and the vehicle which has enabled the American people to attain the highest standard of living of any nation in the world's history.

The Democratic Party is the one and only means through which we can hope to build for ourselves a better way of life.

The Democratic Party is traditionally and historically "The Party of All the People."

It is well known and generally admitted that most of the "Big Money" and all the Special Privilege groups are supporting the Republican Party and its candidates.

The only thing wrong with West Texas is the drouth. If we had been receiving a normal amount of moisture we would be "sitting pretty."

Former Vice President John Garner considers Gov. Stevenson the best presidential timber this nation has produced in fifty years. Let's help elect him!

**Coke County Stevenson-Sparkman Committee**

A. J. KIRKPATRICK, Chairman

MRS. DAISY McCUTCHEN, Vice Chm.

BRYAN YARBROUGH, Secretary

---

---

## HEART OF TEXAS SIZZLING HOT REPORTS EASTERN NEWS WRITER

(Note: The following article was written by the well known columnist, Joseph Alsop, who came to Texas when Eisenhower invaded the state on a speaking tour recently. It is a good honest report on the political situation in Texas at this time.)

Texans of all classes and walks of life will undoubtedly go to the polls and vote for Eisenhower in November. Yet the Eisenhower movement in Texas nonetheless derives its real force and motive power from the oligarchy of oil men and bankers, industrialists, large ranchers and big real estate operators who rule this state's amazingly expanding economy.

### RULED SINCE 36?

Businessmen tend to be Republican the country over; but few other states have anything to show that is quite like the Texas oligarchy. The oligarchs have increasingly controlled the state government and the state's politics ever since 1936. There are literally almost no Texan politicians left who dare to defy them.

The Oligarchy has long disliked the national Democratic administration. When Eisenhower was nominated, they were emboldened to challenge the long Democratic tradition of Texas. They seriously hoped to swing the twenty-four electoral votes from Texas into the Republican column despite the two-to-one majority which the loyal Democrats registered against Republicans and Dixiecrats only four years ago.

The intensity of the pro-Eisenhower effort is astonishing. Estimates of the sums that are being and will be spent to carry this one state for the General run from \$3,000,000 to \$6,000,000; and the imagination boogles at the amounts the Republican National Committee

is taking out of Texas for expenditure elsewhere. In cities like Dallas and Houston, pressure for Eisenhower is so strong that aspiring younger lawyers and businessmen are genuinely afraid not to declare for the General. Politicians who went along with the Eisenhower movement, like Gov. Allan Shivers and Senate candidate Price Daniel, have carried with them large segments of the established Democratic organization. The Texas press is all but unanimous for Eisenhower.

### LED BY RAYBURN

Yet this massive phalanx of wealth and power and influence is nonetheless being challenged. The chief challenger is Speaker of the House Sam Rayburn, whom a sour but well-informed observer described to this reporter as "the last really independent Texas politician." The description was a bit exaggerated, since Rayburn is being aided by Sen. Lyndon Johnson and most of the Congressional candidates. The other day, moreover, John Nance Garner, rather surprisingly came out on Rayburn's side.

With dogged energy and conspicuous guts, Rayburn is using his enormous knowledge of his own state to piece together a state-wide loyal Democratic organization. He and his co-workers are also campaigning furiously, although on a shoe string. Furthermore although the Eisenhower movement benefits from the tidelands issue, which means a lot in Texas, Rayburn and company have some very big assets too.

They have, first of all, the deep-rooted Texas Democratic traditionalism, which was what moved the aged squire of Uvalde to break his long political silence. (Of the pro-Eisenhower stand of Price Daniel, Garner is reported to have remarked, "Why, when that young squirt gets to the Senate, he won't even find anybody to show him the way to the outhouse.")

Then, too, Rayburn and company have the feeling of the predominant voting group in Texas, the farmers and small ranchers, that a Republican administration may endanger their prosperity. They have most of the industrial workers, an increasing Texas vote. And they have the Negroes — over 200,000 of them on the voting registers, enough so that the Eisenhower leaders are strikingly mum about F. E. P. C.

Taken together, these are very great assets which Rayburn and the other loyal Texas Democrats possess. A meer interloper cannot pretend to judge whether, in the end, these assets will outweigh the vast and visible power of the Eisenhower movement. According to the best local experts, the odds are 5 to 4 that Texas will end by going for Adlai E. Stevenson. You may place your money as you choose. — (New York Herald Tribune Inc.)

### AT LEGION CONVENTION

H. S. Lewis, Jr., A. M. Tubb and Eddie Patterson and their wives attended the district convention of the American Legion and Auxiliary in San Angelo over the weekend. Mrs. Lewis gave a report of her work as chairman of the Child Welfare committee of the Auxiliary for the past year. She received a new appointment as chairman of Girls State. The Robert Lee Auxiliary was cited for being the first unit in the state to exceed its membership quota. Mrs. J. C. Strickland, formerly of Robert Lee, is serving as the Auxiliary's District President.

### CLOTHING FOR ORPHANS

Reagan and Truly Circles met at the Baptist Church Monday afternoon with 16 present to study their Texas Year Book. Mrs. H. C. Allen directed the study period.

During the month of November the W. M. U. will collect good clothing and pack boxes for the Baptist Orphans Homes. If you have any such articles of apparel, phone Mrs. W. J. Cumbie, benevolent chairman, and they will be gathered up.

### Personals

George Arledge of Winchester, Ken., is here for a visit with his sisters, Mrs. Palmer Leeper and Mrs. Callamae Cargile, and his brother, Joe Arledge, Jr. Mr. Arledge says Kentucky experienced a serious drought this year, but the condition has been relieved by recent rainfall.

A dinner served Sunday in the home of Mr. and Mrs. Roy Braswell honored the birthdays of Roy and Mrs. George Braswell of Bronte. Guests included the J. E. Mitchells, Mrs. J. H. Turner and the George Braswells of Bronte, the Irven Escues of San Angelo and the James Thomasons and J. W. Denmans of Robert Lee.

## APPLIANCES SYSTEMS

San Angelo Phone 4743

# FRALEY & WARD, Inc.

## Butane Distributors

Robert Lee Phone 154

SERVICE INSTALLATIONS

## The Observer For Fine Printing



M. J. KRALL Distributor  
Phone 141 Robert Lee, Texas

## For General INSURANCE

Life, Hospitalization, Polio,  
Fire, Auto and Bonds

SEE

T. A. Richardson  
or G. C. Allen

At Robert Lee State Bank

Subscribe to  
**THE ABILENE REPORTER-NEWS**  
at the  
Fall Bargain Offer  
Daily & Sunday \$10.95  
Daily only . . . . . \$ 9.95  
One Year—By Mail  
Anywhere in West Texas

Made Right      Styled Right      Priced Right



28-A West Beauregard      San Angelo, Texas

## Home Owners and Those Who Want to Build New Houses

We are now prepared to arrange financing for FHA Title I Loans for Remodeling and Repairing your home. Borrow up to \$2,500 with three years to pay.

Also FHA Loans for building New Houses.

Come in and talk over your building plans with us.

**McDONALD LUMBER CO.**  
FRED McDONALD, JR., Owner

# THIS WEEK'S SPECIALS

Be Sure and Visit the Turkey Show Saturday

**SALMON** tall can 39c

**PURE LARD** 3 lb crt 49c

**Rutabagas Turnips** Lb 7½c

**CABBAGE** Nice, firm heads Lb 7½c

**CARROTS** cello bag 15c

**CHILI, Kimbell** No. 2 can 59c

**Libby Deep Brown BEANS** Tall can 10c

**Kimbell Grapefruit Juice, No. 2 can** 2 for 19c

**CHEESE** Kraft Velveeta 2 lb box 98c

**Ballard Biscuits** 2 cans 25c

**STEAK** Choice Loin or T-Bone Lb 79c

**Bacon Ends & Pieces** Lb 19c

# BAKER'S Groc. & Mkt.

---

---

*Here's Our Man-*

**The Great Illinois Governor**  
**Adlai E. Stevenson**  
**Democratic Candidate For**  
**PRESIDENT**  
**of the United States**



We urge the Democrats of Coke County to be neither deserters nor turncoats. Support the eminent statesmen who are the candidates of the Democratic Party — Gov. Adlai Stevenson of Illinois for President, and Senator John J. Sparkman of Alabama for Vice President.

The Democratic Party has been the pillar and support of real Democracy from the days of Thomas Jefferson; and the vehicle which has enabled the American people to attain the highest standard of living of any nation in the world's history.

The Democratic Party is the one and only means through which we can hope to build for ourselves a better way of life.

The Democratic Party is traditionally and historically "The Party of All the People."

It is well known and generally admitted that most of the "Big Money" and all the Special Privilege groups are supporting the Republican Party and its candidates.

The only thing wrong with West Texas is the drouth. If we had been receiving a normal amount of moisture we would be "sitting pretty."

Former Vice President John Garner considers Gov. Stevenson the best presidential timber this nation has produced in fifty years. Let's help elect him!

**Coke County Stevenson-Sparkman Committee**

A. J. KIRKPATRICK, Chairman

MRS. DAISY McCUTCHEN, Vice Chm.

BRYAN YARBROUGH, Secretary

---

---

## REPUBLICANS WOULD SELL TVA, P. O. DEPT. TO BIG BUSINESS

Agricultural gains of three-quarters of a century would be wiped out under a Republican master plan to sell to big corporations the TVA, the Post Offices, Federal electric power facilities and all similar government properties Roy J. Turner, former Governor of Oklahoma and former president of the National Hereford Breeders Association, declared in a statement today.

Governor Turner stated this master plan was prematurely revealed in the September 25 issue of U. S. News & World Report, published by a leading exponent of Republican thinking, David Lawrence.

"Mr. Lawrence has done the Farmers of America a service by revealing in advance of the November election this vicious plan to sell out the public interest," Turner said. "This master plan would mean the death for rural electrification, death for rural free delivery, death for irrigation projects, death for the institution which brought high analysis, low cost fertilizer to the farmers. It would mean the end to all of the services which has made farm life tolerable."

The Statement of Roy J. Turner, Director of the Agricultural Division of the Democratic National Committee, follows:

"The extensive article in U. S. News & World Report gives in detail the plans of Republican Senator Ferguson of Michigan, C. E. Wilson, former General Electric president and the Council of State Chambers of Commerce, to — as the magazine headlines the story — 'Plan: Sell Dams, Plants, Post Office to Investors.'

"Their pattern of liquidation is already set. It is to follow the plan by which war plants were sold to private industries at a fraction of their cost after World War II. In order to help finance the payment of even such a fractional value, it is also proposed that stock in the postal service, or the dams be issued to holders of government bonds.

"The inevitable consequences of this plan—shrewdly but shamefully labeled a plan to end Socialism—will be these:

"Rural free delivery would have to be ended or severely reduced. The best farmers could hope is that in some densely populated farming area they could get intermittent (semi-weekly or weekly) delivery—or perhaps pay a service charge to get continuance of rural route service to their homes.

"Certainly no private profit industry would maintain this least remunerative of the postal services on its present basis. Likewise, rural parcel post would probably require a surcharge for rural delivery.

"Rural electrification would ultimately be killed except in the few areas where loans are or can be paid off, and where REA co-operatives have their own adequate power generating and transmission facilities. With a monopoly on wholesale power supply in private hands, it is clear that private power corporations would put out of business every REA cooperative dependent upon them for power.

"It should be obvious, also, that both city and farm consumers of electricity should prepare for large increases in electric power rates when the complete monopoly is established.

"Every citizen of America, agricultural or urban, should closely study the article in Mr. Lawrence's magazine.

"If dams are to be the province of private capital only, flood control will be set back generations. There will be little additional irrigation. Development of an increasingly abundant supply of fertilizers to help meet our increasing national food requirements would be slowed. Just listing the consequences of the plan would take lengthy research and study.

"Certainly this is the most revolutionary proposal of the century. It is a proposal not just to halt the development of programs which have added greatly to American life, not just to go back twenty years to the good old Hoover depression period — but to go back to the days before the National Grange put over rural free delivery — to the Civil War era or even before.

"Urge every American voter to read the U. S. News & World Report revelation before he votes November 4 and to carefully re-appraise General Eisenhower's campaign speeches in light of the existence of the plan which Mr. Lawrence's magazine reveals."

### MRS. CHRISTENA CRAGIN

Mrs. Christena Cragin 79, died Tuesday morning at her home in Odessa. Her husband, F. E. Cragin, is a well known West Texas lumberman. Her son, Sumner, is a former Robert Lee resident who now lives in San Angelo. Survivors include the husband and son and a daughter, Mrs. C. W. Alcorn, of Houston. The body was taken to Houston for burial Thursday in Forest Park cemetery.

Melvin Childress was honored with a birthday dinner Sunday in the home of his son-in-law and daughter, Mr. and Mrs. Leslie Copeland. In addition to the immediate family, Mr. and Mrs. W. D. McAdams were guests.

## Copelands Hosts To Wildlife Association

Vernon Haggerton of Blackwell was elected president of the Coke County Wildlife Protective Association at its annual meeting Tuesday evening at the Charlie Copeland ranch near Blackwell.

Named as vice president was Bert Blaylock of Robert Lee, and County Clerk Weldon Fikes was re-elected secretary. James Arrott is the retiring president.

About 100 ranchers attended the affair and enjoyed a fine barbecue supper served by Mr. Copeland and his son. Talks were made by district and state representatives of the Game and Fish Dept. The group voted unanimously to request the legislature to make Coke County a closed area on hunting for a period of four or more years.

The Association accepted on invitation from Raymond Schooler and Delmir Sheppard to meet in the western part of the county next year.

J. S. Ross returned the last of the week from an extended visit in Colorado. He spent most of the summer in the home of his daughter, Mrs. M. W. Shepard, in Pueblo and also visited his son, Warren, at Florence.

Present indications are that "the people" are more intelligent than the experts give them credit for. The people are beginning to understand that a real statesman, competent and qualified for the job is running for President on the Democratic ticket in this year of 1952. HIS NAME IS ADLAI E. STEVENSON.

J. I. Reed has ordered The Observer for a year. His address is Route 10, Box 356D, Fresno, Calif.

Mrs. J. C. Slaughter was dismissed Wednesday after two weeks of treatment at Coke County Memorial Hospital. She plans to spend time with her daughter, Mrs. Noel Perciful, at Bronte.



Hayrick Lodge  
No. 696 A. F. & A. M.  
Meets second Tuesday  
night in each month.  
Visitors welcome.

T. M. WYLIE, JR., W. M.  
MELVIN CHILDRESS, Secretary

## Cold Weather Is Coming!

Now is the time to have your winter apparel dry cleaned and ready for use when the cold days arrive. Our work is guaranteed.

## Bahlman Cleaners

Pickup Station for Model Laundry Service

## Cheaper Than Sears Roebuck

Asphalt 210 lb. thick butt shingles, mixed colors, are still available at the Mesquite Lumber Co. at \$6.00 a square or two bucks a bundle.

No other dealer in the state offers standard brands at that price.

Robert Lee's oldest name in lumber.

## Mesquite Lumber Co.

Build M. Cheap, Prop.

**DEAD ANIMALS**  
Un-Skinned  
**REMOVED free**  
**CALL COLLECT**  
**San Angelo 3200**  
If no answer  
Call 3444  
**SAN ANGELO**  
By-Products, Inc.

## FELLOW DEMOCRATS

It's Easy To

# VOTE FOR TEXAS BORN IKE



## No. 0000 (Specimen) OFFICIAL BALLOT

You may vote for the candidates of your choice by placing an X in the square beside the name or you may vote for the candidate of your choice in each race by scratching or marking out all other names in that race.

DEMOCRATIC PARTY	REPUBLICAN PARTY	PROHIBITION PARTY	PROG...
For President and Vice-President: <input type="checkbox"/> DWIGHT D. EISENHOWER and <input type="checkbox"/> RICHARD M. NIXON	For President and Vice-President: <input type="checkbox"/> DWIGHT D. EISENHOWER and <input type="checkbox"/> RICHARD M. NIXON	For President and Vice-President: <input type="checkbox"/> STUART HAMBLEN and <input type="checkbox"/> E. A. HOLTWICK	
For United States Senator: <input type="checkbox"/> PRICE DANIEL	For United States Senator: <input type="checkbox"/> PRICE DANIEL	For United States Senator: <input type="checkbox"/> PRICE DANIEL	
For Congressman-At-Large: <input type="checkbox"/> MARTIN DIES	For Congressman-At-Large: <input type="checkbox"/> MARTIN DIES	For Congressman-At-Large: <input type="checkbox"/> MARTIN DIES	
For Governor: <input type="checkbox"/> ALLAN SHIVERS	For Governor: <input type="checkbox"/> ALLAN SHIVERS	For Governor: <input type="checkbox"/> ALLAN SHIVERS	
For Lieutenant Governor: <input type="checkbox"/> BEN RAMSEY	For Lieutenant Governor: <input type="checkbox"/> BEN RAMSEY	For Lieutenant Governor: <input type="checkbox"/> BEN RAMSEY	
For Attorney General: <input type="checkbox"/> JOHN BEN SHEPPARD	For Attorney General: <input type="checkbox"/> JOHN BEN SHEPPARD	For Attorney General: <input type="checkbox"/> JOHN BEN SHEPPARD	
For Associate Justice, Supreme Court, Place 1: <input type="checkbox"/> FRANK P. CULVER	For Associate Justice, Supreme Court, Place 1: <input type="checkbox"/> FRANK P. CULVER	For Associate Justice, Supreme Court, Place 1: <input type="checkbox"/> FRANK P. CULVER	
For Associate Justice, Supreme Court, Place 2: <input type="checkbox"/> GRAHAM B. SMEDLEY	For Associate Justice, Supreme Court, Place 2: <input type="checkbox"/> GRAHAM B. SMEDLEY	For Associate Justice, Supreme Court, Place 2: <input type="checkbox"/> GRAHAM B. SMEDLEY	
For Associate Justice, Supreme Court, Place 3: <input type="checkbox"/> W. ST. JOHN CARWOOD	For Associate Justice, Supreme Court, Place 3: <input type="checkbox"/> W. ST. JOHN CARWOOD	For Associate Justice, Supreme Court, Place 3: <input type="checkbox"/> W. ST. JOHN CARWOOD	
For Associate Justice, Supreme Court, Place 4 (unexpired term): <input type="checkbox"/> CLYDE E. SMITH	For Associate Justice, Supreme Court, Place 4 (unexpired term): <input type="checkbox"/> CLYDE E. SMITH	For Associate Justice, Supreme Court, Place 4 (unexpired term): <input type="checkbox"/> CLYDE E. SMITH	
For Judge of Court of Criminal Appeals: <input type="checkbox"/> KENNETH K. WOODLEY	For Judge of Court of Criminal Appeals: <input type="checkbox"/> KENNETH K. WOODLEY	For Judge of Court of Criminal Appeals: <input type="checkbox"/> KENNETH K. WOODLEY	
For Railroad Commissioner: <input type="checkbox"/> OLIN CULBERSON	For Railroad Commissioner: <input type="checkbox"/> OLIN CULBERSON	For Railroad Commissioner: <input type="checkbox"/> OLIN CULBERSON	
For Comptroller of Public Accounts: <input type="checkbox"/> ROBERT S. CALVERT	For Comptroller of Public Accounts: <input type="checkbox"/> ROBERT S. CALVERT	For Comptroller of Public Accounts: <input type="checkbox"/> ROBERT S. CALVERT	
For Commissioner of General Land Office: <input type="checkbox"/> BASCOM GILES	For Commissioner of General Land Office: <input type="checkbox"/> BASCOM GILES	For Commissioner of General Land Office: <input type="checkbox"/> BASCOM GILES	
For State Treasurer: <input type="checkbox"/> JESSE JAMES	For State Treasurer: <input type="checkbox"/> JESSE JAMES	For State Treasurer: <input type="checkbox"/> JESSE JAMES	
For State Commissioner of Agriculture: <input type="checkbox"/> JOHN C. WHITE	For State Commissioner of Agriculture: <input type="checkbox"/> JOHN C. WHITE	For State Commissioner of Agriculture: <input type="checkbox"/> JOHN C. WHITE	

HERE'S HOW

1. At the top of the Democratic Party column, strike out the names of Adlai E. Stevenson and John J. Sparkman.
2. Leave the rest of the Democratic Party column as it is.
3. At the top of the Republican Party column, leave the names of Dwight D. Eisenhower and Richard M. Nixon.
4. Strike out the rest of the Republican Party column.
5. Strike out all other columns on the ballot.

## TEXAS DEMOCRATS FOR EISENHOWER

CLAUD H. GILMER, CHAIRMAN

**OLD BILL'S ALMANAC** NOVEMBER

**PRESIDENTIAL ELECTION DAY**

2—Washington gives farewell address, 1783.

3—Arms embargo repealed, 1939.

4—Presidential Election Day.

5—Eugene V. Debs born, 1855.

6—Abraham Lincoln elected President, 1860.

7—Battle of Tippecanoe fought, 1811.

8—Roentgen discovers X-Ray, 1895.

One of the best face-saving ideas is to keep the lower half of it shut.

### S. E. ADAMS

OIL PROPERTIES INSURANCE

## Butane Service Co.

STOVES - TANKS - SERVELS

Prompt Service

Robert Lee 92 PHONES Bronte 123



# Political Observations

(Reprinted from The State Observer, Austin, Texas)

Political history has no parallel for the present situation in Texas. Never before have two elected officials who had been elevated to the highest offices in the power of the people to confer, turned on the party which gave them these honors, with deliberate intent to destroy it. This defection is not a sudden and surprising development, but is the result of years of careful planning, to seize complete control of the Democratic Party, and use the machinery of this party to accomplish its disintegration and destruction. Nothing of this kind has happened before.

This unprecedented mutiny on the part of Texas political leaders, who insisted that they were "the real Texas Democrats," confused the National Democratic Committee. The Democratic leaders from other States simply could not believe that allegedly "responsible leadership" would stoop to such perfidy. The National Democratic Committee persistently followed a policy of "appeasement," ignoring the true Democrats, and giving more and more power to the individuals and groups who were—and are—the bitterest enemies of the national Democratic Administration.

We are now reaping the harvest, of the short sighted policies, followed by the National Democratic Committee. Governor Allan Shivers, who has been elected and re-elected as State Senator, Lieutenant-Governor, and Governor, by the Democratic Party, is leading the mutiny against the party which has heaped these honors on him. Attorney General Price Daniel, who has been elected and re-elected to

the legislature, elected and re-elected as Attorney General and is now United States Senator-elect, by the Democratic Party, is trying to steal the ball from Shivers and grab the limelight in this revolt against the Party which has honored him.

The real responsibility for this ignorance on the part of the National Democratic Committee, can be laid at the feet of the Texas congressmen and senators—in Washington. They too have been pussy-footing around trying to "appease" the Texas Regulars and the Dixiecrats, for their own political welfare, until it is small wonder that the National Committee was fooled. The simple facts are that a majority of the Texas congressional delegation are more anxious to please the oil and gas industries, and other big business exploiters, than they are to serve the great majority of Texas citizens. If the Republicans take control of this nation, the blame can be placed on the two faced Democrats, who never have accepted the platform and policies of the Democratic Party, but used it as a vehicle to serve their own selfish ends.

Both of the presidential candidates will visit Texas this week. For the first time Texas is listed as "doubtful" and these visits by Governor Stevenson and General-Eisenhower may have a real effect on the November election. Texas voted for Herbert Hoover in 1928, and lived to regret it. Hoover, who had been active in European relief during World War I, was personally popular, but he didn't know anything about practical politics, and his Old Guard Republican advisors ruined him. It is an almost forgotten fact that the Democrats wanted to run Hoover for presidency in 1924, but he finally decided that he was a Republican.

There is a strange parallel between the cases of Hoover and Eisenhower. Eisenhower enjoys great personal popularity as did Herbert Hoover, in 1928, but he has definitely proven that he knows little—or nothing—about governmental affairs. He too has alienated his original Republican and independent supporters by surrendering to the same reactionary group that sunk Hoover. In addition he has subordinated his personal principles and policies to political expediency. In other words, he seems to be willing to stoop to any level in order to get himself elected. Rarely has a presidential candidate permitted himself to be so completely converted into a stooge for the Republican O'd Guard reactionary group led by Taft, McCarthy, Jenner, and their kind.

Adlai E. Stevenson is not faced by the wall of prejudice which sunk Alfred E. Smith in 1928. Al Smith was a Roman Catholic, and the nation was swept by a wave of religious prejudice, led by the Ku Klux Klan. In addition he was the product of New York City's "East Side," and his manner and dialect were strange and rather offensive to millions of middle-westerners and the Southerners from "the Bible belt." It is clear that Texas Democrats voted for their prejudices in 1928, rather than their party, and the results should teach them a lesson. Republicans in 1928 were just like the Republicans of 1952, as they have not learned one thing by their debacle, which led to the great depression in 1928, and will do the same thing in 1952.

The situation in regard to Governor Stevenson is entirely different. Born in California and educated in the best colleges of the nation, he has a fine record of accomplishment both in foreign and domestic affairs. Persons of intelligence in all walks of life recognize the earmarks of real statesmanship in Adlai E. Stevenson. Impartial observers rate him among the greatest statesmen who have ever aspired to the office of the Presidency of the United States. His political advisors' only fear is that his speeches are on such a high plane that "the people won't be able to understand him."

Flower arrangement is a national art in Japan.

## DICK RUSSELL BACKS ADLAI

**RUSSELL IS THE GEORGIA SENATOR FOR WHOM GOVERNOR SHIVERS AND TEXAS DELEGATION VOTED UNANIMOUSLY ON ALL BALLOTS AT DEMOCRATIC CONVENTION IN CHICAGO**

Senator Dick Russell of Georgia, the man the Texas Delegation headed by Gov. Allan Shivers supported on all ballots at the national Democratic convention in Chicago, predicted last week that Adlai Stevenson and John J. Sparkman will be elected by one of the largest majorities given a national ticket in recent years.

Senator Russell, who is chairman of the senate armed services committee and of the senate subcommittee on agriculture, said: "General Eisenhower's evident confusion in his efforts to grapple with vital political issues has clearly demonstrated to the American people the grave danger of placing our government in the hands of a military man. . . . No military career, however great, can be a substitute for familiarity with the operation of a government which traditionally and by law is dependent on civilian control. . . .

"As one who has admired General Eisenhower as a military leader, I have been bewildered by the endless contradictions of his political pronouncements. It would require a book to catalog them. "Shortly after stating that he did not understand the term 'Farm Parity,' he assured the American farmer of 100% parity for all the products of his toil. As one who has devoted a large part of his legislative service to overcoming Republican opposition to fair farm legislation I have vainly awaited an endorsement of this last farm statement from General Eisenhower's Republican congressional supporters. I have failed to see where one of them has disclaimed his record of opposition to the soil conservation program and to the laws which enabled these farmers to have some idea when they plant their crops what they will receive from their harvest.

"The American voters are thinking for themselves in 1952. Neither the bedlam of this campaign nor the military glamor of the Republican candidate will confuse them. They will go to the polls in the greatest number in our history on November 4 to maintain in power the party of the people. . . .

"Governor Stevenson has the potentialities which can make him one of the greatest presidents who has ever served our country. With the support and prayers of the American people and the aid of the Almighty he devoutly worships, he will see this nation safely through the dangers of today's world."

(Pol. Adv.—Paid for by Stevenson-Sparkman Committee, Sam, Rayburn, Chairman.)

# He would have been 21 this Tuesday



... just old enough to vote. Call him Bill or Ed or Tony—he was just one of the neighborhood boys. Perhaps you heard about him on the news broadcast or read about him in the paper . . .

"Advance forces of United Nations troops in Korea have recaptured Hill 704 in the face of stiff enemy resistance. American casualties were . . ."

He would have been 21 years old this Tuesday, November 4th . . . just old enough to vote. Now—nobody can presume to speak for this young man. Nobody can say for sure that he would have voted for this candidate or that—for one party or another. But this we do know

... with his life he has cast his vote against a monstrous opponent—one that seeks to control the minds and souls of all mankind . . . that opponent who says: "The state is everything—the individual, nothing."

"That young man might have been standing in the line next to any one of us next Tuesday—waiting to cast his first vote.

But—he will not be there.

Will you be sure to cast your vote this coming Tuesday? Go to the polls and vote according to your conscience and convictions . . . but, above all

★ Be sure to Vote ★

This advertisement published as a public service by

**West Texas Utilities Company**

## Time Out for Freedom

This coming election day, your local Santa Fe Agent will be taking a short "time out" for freedom's sake.

He'll be over at his polling place voting along with his neighbors.

It's only one vote, but like yours and your fellow citizen's, it's a mighty BIG one this year.

Be sure you take an active part in this year's election. You'll feel 100 per cent better after you have voted because you will know you are being a real American.

*See you at the polls, November 4th!*

# SANTA FE LINES

## STEERS LICKED BY HERMLEIGH FOR 3RD LOSS

Robert Lee's Steers are finding tough going in the 5-B football conference. Losing to Herleigh Cardinals last week 40-6 for their third straight defeat, the Steers may expect more of the same when they journey to Coahoma Friday night. Last week Coahoma's Bulldogs gained a 34-0 rout over Hobbs, the team that whipped Robert Lee 32-13 three weeks ago.

Hermleigh continues to lead the pack with 5 wins and no losses, and this week will entertain Loraine, a team that has dropped only one loop contest. Hobbs plays at Divide

**Robert Lee Observer**

A. J. KIRKPATRICK, Publisher

Entered at the post office in Robert Lee, Texas as second class matter

Published Every Friday

and Trent at Ira. Bronte Longhorns dropped a 31-7 game to Loraine last Friday night. Bronte has an open date this week. Robert Lee came through the Hermleigh fray in good shape. Norman Roberts was favoring a broken foot but played the entire game. Donny Duncan got into the lineup in the second half, but was used only to toss some passes. Most of his throws failed to connect. Duncan still has a bad knee, but he may try some passing at Coahoma.

### HERMLEIGH IS STRONG

The Steers looked good in defeat against Hermleigh and our boys played hard all the way. Their only score came early. Hermleigh received the opening kickoff, and gained only 7 yards in three plays. When an attempt was made to punt, the pass from center rolled through the kicker's legs and it was Robert Lee's ball on the Cardinal 20 yard line. On the second play Quarterback Bill Havins circled his right end for a touchdown.

Halfback Dickie Wall was the big cog in the Hermleigh machine. His powerful line plunges resulted

in touchdowns in the first and second periods and the half ended with the Steers on the short end of a 14-0 score.

In the third period Quarterback Floyd Haiker intercepted a pass and ran 85 yards for a touchdown. Wall picked up two more counters in the final quarter and Joe Grove crossed the goal once. Jerald Jordan, Hermleigh lineman, converted five points after touchdowns out of seven tries.

Robert Lee's starting lineup: Bill Carwile and Garland Davis, ends; Milburn Wink and Sherman Williams, tackles; Ed Davis and Marvin Simpson, guards; Hollis Lloyd, center; Bill Havins, quarterback; Bobby Roberts and Lynn Davidson, half backs; Norman Roberts, fullback.

### Personals

Mr. and Mrs. Johnny Rives and daughters, Johnnie and Floy, were here from Odessa for a weekend visit with relatives and friends. Because of the drouth Johnny and his family left their Friendship farm and moved to Odessa several months ago. He is employed as a maintenance carpenter by the Odessa school district, and Mrs. Rives is pastry cook at the high school cafeteria.

Mr. and Mrs. W. D. Jameson have gone to Arizona to spend the winter. They have requested their Observer sent to their new address which is 1346 E. Blackledge Drive, Tucson, Ariz.

Mr. and Mrs. Buck Ivey have received word that their son, Cpl. Gerald Ivey, expects to start home Oct. 30. He has been stationed in Germany more than a year and is due for a discharge upon his return to the States.

### GREEN MT. HD CLUB

The Green Mountain Home Demonstration Club met at the community center for its regular session on Oct. 21. Our yearly report was made. Three new members enrolled were Mrs. Elbert Davidson, Mrs. Riley Hendry and Mrs. Crowley Harmon. Nine members were present and four visitors welcomed were Mrs. A. S. Hendry of Sterling City, Mrs. Walter Smith of Denver, Colo., Mr. George Powers and Miss Jennie Scott.

Two quilts were completed, one for Mrs. Joe Garvin and one for Mrs. Fred Ashworth. — Mrs. Finis Millican, Reporter.

### AT SAN MARCOS COLLEGE

SAN MARCOS, Oct. 29 — Harriet Porter from Robert Lee is among the 1,550 students registered this year at Southwest Texas State Teachers College.

Continuing a trend set in post-war years, boys again outnumber girls at the College in San Marcos, a change from early days when the girls outnumbered boys by as much as two or three to one.

Approximately 85 per cent of those enrolled are studying for the teaching profession, with the remainder preparing themselves for professional careers in law, medicine, nursing, dentistry, journalism and other fields offered.

### SILVER

#### School Lunch Menu

The following menus will be used during the next week:

#### Monday, Nov. 3

Beef stew with potatoes, Tomatoes; corn, peas and onions; chees wedges; crackers; pickles; cake squares, orange icing; hot biscuits; oleo; sweet milk.

#### Tuesday, Nov. 4

Frito franks; mixed vegetable salad; chilled tomatoes; rice, steamed with sugar; fresh grapes; sliced bread and oleo sandwich; sweet milk.

#### Wednesday, Nov. 5

Turkey with mushroom sauce; cranberries; green beans, buttered; strawberry jello; cookies, sweet milk; sliced br ad, oleo.

#### Thursday, Nov. 6

Creole spaghetti; pork and beans; lettuce, egg salad; brownies; hot rolls, oleo; sweet milk.

#### Friday, Nov. 7

Pinto beans, pork; mixed greens; steamed cabbage; onions; relish; hot cornbread, oleo; apricot cobbler.

Washing Powder Large Box  
**DUZ 25c**

Honey Boy Can  
**Salmon 49c**

TOKAY Pound  
**GRAPES 10c**

NEW 2 Lbs  
**POTATOES 15c**

Large, firm 2 Heads  
**LETTUCE 27c**

Dromedary 1 Lb Pkg  
**DATES 45c**

## We Have Plenty Fresh Produce

Bama Peach 32 oz jar  
**PRESERVES 53c**

White Karo Half Gal  
**SYRUP 69c**

No. 1 Cans 2 For  
**TOMATOES 25c**

No. 1 Flat Can  
**Grated Tuna 27c**

Pie Cherries 303 can 27c

Morton's SALT 2 boxes 19c

**7-Bone Roast 49c**

**Rib Roast 37c**

**T-Bone Steak 79c**

Remember The  
**Turkey Show**  
Saturday and Buy a Turkey

**ROBERTS**  
Grocery and Market

## ALAMO THEATRE

—Motion Pictures Are Your Finest Entertainment—  
Evening Show Starts at 6:15 Sunday Matinee 1:30

FRIDAY and SATURDAY, OCT. 31-Nov. 1

**RED MOUNTAIN** in Technicolor Also Cartoon  
Alan Ladd-Lizabath Scott News and Iron Horse Serial

SUNDAY-MONDAY-TUESDAY, NOV. 2-3-4

Sunday Matinees at 1:30 and 3:15

**AARON SLICK FROM PUMPKIN CREEK** in Technicolor  
With Alan Young-Dina Shore Also Cartoon

WEDNESDAY-THURSDAY, NOV. 5-6

Gary Cooper-Ethyl Barrymore-Van Johnson in  
**IT'S A BIG COUNTRY** Also Cartoon

## Saturday Specials

Turkey Show Day, Nov. 1

**PRINTS, 80 Square**  
3 yds **\$1.00**

**WASH CLOTHS**  
10 for **\$1.00**

**Ladies Pajamas 1.95**  
Balbrigans, Pink and Blue

## BED SHEETS

GAZAR'S— Limit 2 to a customer

**\$2.00 each**

**Brunch Coats, 2.95**

Rose, Black and Floral

## ROACH'S

Department Store