





## Bread Baking and Cement Making

These facts every woman knows from experience — That proper proportions of rich, pure ingredients are only the first step in making a fine loaf of bread, — That you cannot properly mix these materials dry, — That without milk and water it is impossible to uniformly coat each particle of flour with exactly the right amount of yeast, salt and sugar.

Cement making is much the same. Uniform quality depends on perfect mixing of the proper materials.

Twenty years' experience in cement making combined with years of painstaking research has resulted in the perfection of the famous International Wet Blending Process. This process is used in the mills of the Texas Portland Cement Company.

Their product, LONE STAR Cement, is a super-grade cement that actually runs over 50% above the U.S. Standard Specifications. Yet it costs no more.

It carries our unqualified endorsement.



### HIGGINBOTHAM-BARTLETT CO.

LOCKNEY, TEXAS

LONE STAR Cement Lumber Plaster  
Paint Lime Brick Roofing

Ask us for cost figures and other facts on repairs, improvements and construction of any kind. Valuable information supplied without obligation.

### The Lockney Beacon

Entered April 14th, 1902, as second class mail matter at the Post Office at Lockney, Texas, by act of Congress March 3rd, 1879.

H. B. ADAMS, Editor and Owner

TERMS OF SUBSCRIPTION	
One year	\$1.50
Six months	.75
Three months	.40
Cash in advance	

All advertising matter will be run until ordered out, unless otherwise arranged. All advertising charged by the week. All bills payable first of each month.

That Floyd county and the Plains country are badly in need of railroads is quite certain, from the efforts that the roads are making to get a line of railroad built into this section, and keeping other roads from building their lines. The Santa Fe had the chance to stave off all other roads in this section of the country in past

years, if she had given the people the proper service, and built lines of road so that the people could have been properly served. But, to the contrary they have allowed the people to make the best of their railroad facilities, and have offered no relief, until they were forced to by other roads trying to come into the Plains country. The Quanah, Acme & Pacific, also, has got very active within the last few days, yet they have had an opportunity to seal up the proposition of a road being built upon the Plains from the east for many years, but the preferred to set quiet at Roaring Springs and let the farmers from this vast empire bring the stuff to the railroad, rather than stick out a line to care for the needs of the people. This business of holding trade without any effort on the part of the railroads has about reached a climax as far as the Plains is concerned. We, the people, of the Plains will stand for what we have to, but we don't propose to set still and take no action. The Denver has trumped on the cat's tail, and now both the Santa Fe and Quanah, Acme

& Pacific are very anxious to build all the lines of railroads that the country will justify, but not one word was heard from them in reference to getting into action until the Denver line announced that they proposed to build to the Plains. Since the Denver line proposed to build to the Plains the Santa Fe has been quite active with their surveying corps in and around the Lockney country, and they have surveyed a line from Lida to Silverton that would never have been considered profitable had not they desired to cut off the Denver Road from building across Floyd and Briscoe counties. That the road from Lida to Silverton would be a paying proposition is very questionable, and there are several such roads in the country now that the railroad commission is being asked permission by the railroad companies to discontinue, and even take up the track. It is our opinion that the Santa Fe never desired to build and never expects to build a line of railroad from Lida to Silverton, but is merely asking for the charter and making pretensions in order to block the Denver Road from entering this territory. Plainview has desired a road built from Silverton to Olton for a number of years, and at times it has been talked a great deal in business circles of that town, but never before were they able to interest the Santa Fe in the project to any great extent, and a various times it has been proposed that the people of the towns and along the line build the road and try to get the Santa Fe to operate it. But now, the Santa Fe pretends to be very anxious to get a line across this country, but we are of the opinion they did not spring their booger-boo sooner enough to have much effect. The people has taken the service they have been forced to, but the country has gradually developed, until it has reached a point where there is no question as to its needs as to railroad facilities. The Quanah, Acme & Pacific, like the Santa Fe, did not care to relieve the situation in this country, until it saw that the Denver was going to build. We call to mind, that several years ago there was considerable agitation over at Plainview for the Quanah, Acme & Pacific to build to Floydada and on to Plainview, or purchase or lease the line between Floydada and Plainview, and the town of Plainview was talking of raising a bonus for that line of \$120,000.00, but the Q. A. & P. did very little, if anything, in the matter, and the road was never built, and if even a civil engineer went over the route it was not generally known, yet they are today very anxious to build, and don't even ask for a bonus. Say, did you ever stop to think who started this business of not asking for a bonus on the Plains? Did you ever hear of the Santa Fe building a line in West Texas without a bonus. The Denver is the first road to propose to build a line for the right-of-way that we have ever heard of in West Texas, but now all the other contenders are willing to build if the right of way is furnished.

The one best bet for the people of this country is the Denver Line. It has proven that the other railroads, who have held us in the power in the past, fully realized that we were due better railroad facilities, but that they were not willing to do anything to relieve the situation until some other road made an attempt to come in to this section. Floyd county has a tremendous tonnage each year, but our markets are limited because we have not the facilities to reach the best nearby markets, such as Fort Worth and Dallas. All of our products must be shipped in a round about way to reach the best markets of Texas, and we are forced to trade out of the state in many instances because of the round about way of getting to our home markets. The new line of the Denver would afford us practically direct connection with our home markets. It would serve a country that is now without railroad facilities, and one of the richest and best producing countries in all the state of Texas. In common decency to the people of this section the Interstate and State Commissions should grant the Denver Road a permit to build from Carey to Lubbock, as the country traversed by this line is practically without railroad facilities, and the little branch line that runs to Floydada does not properly serve one fifth of the people that the Denver would serve between Carey and Lubbock. We want to grow and develop, we have sufficient tonnage along the Carey-Lubbock line today to support a good line of railroad, but we cannot hope for much growth or development so long as we have to depend on a branch line 32 miles long to carry away our products to the west, when our markets lay to the east of us. We have a country that will produce and does produce, and when it is properly settled will be one of the largest producing countries in the whole world, but we must have proper railroad facilities to properly develop it. The tactics that the Santa Fe and Q. A. & P. are using to retard our progress is looked on very unfavorably by the citizenship of this section. We believe and expect the Interstate Commerce Commission and the Texas Railroad

Commission to do the right thing, and the right thing will be to let Denver, Santa Fe and Q. A. & P. build, and the T. P. & G., also, if it can, for the country wants and needs railroads very badly, and will support all lines that are built. West Texas must have sufficient railroads to care for her tonnage, and no one road, or two roads should be allowed to monopolize this vast empire.

### RECIPES FOR PICKLING IN HOME DEMONSTRATION

The following recipes for pickling were handed to the Beacon by Miss Mabel Faulkner, County Home Demonstration Agent of Floyd County.

**Cucumber Pickles**  
1 Cup sugar.  
1 cup salt.  
1 cup mustard.  
1 gallon vinegar.  
Spices.

Method— Wash and dry cucumbers using earthen jars as containers for pickling. Mix the above ingredients place in earthen jars. Fresh cucumbers may be added from day to day, provided the vinegar covers the cucumbers well. Keep the cucumbers weighted down in vinegar as this is of much importance in order to get good results in pickling. These may be ready for use as soon as they become well seasoned, and may be tested from time to time. This is a very simple process since it requires no cooking. If you wish to bottle cucumbers, place them in sterilized jars, pour the cold vinegar mixture over them, place the lid on, take care not to screw the top down too tight, and place in cold water bath and bring to boiling point. As soon as this has been completed they may be sealed tight and set aside for future use.

**Sweet Pickles (Cucumbers)**  
Let cucumbers stand in cold brine (just salty enough to taste) overnight or use a boiling brine (same proportion of salt) generally two hours until brine cools. Then rinse with clear water and drain and pack in jars. Then use 2 cups sugar and 1 cup vinegar, heat to boiling point and pour over cucumbers. If vinegar is too strong, dilute with water. Seal partially. Drain and heat and pour syrup over cucumbers for three successive mornings, then seal. If syrup is weakened the last morning make a new syrup using the same proportions and pour over cucumbers and seal. Set aside for future use. Spices may be used if desired.

**Olive Oil Pickles**  
1 gallon sliced cucumbers (unpeeled) slice real thin, add 1-2 cup salt, mix thoroughly. Let stand overnight. Press juice out. Take 1 quart onions and put through grinder (have quart after ground). Add 1 teaspoonful black mustard and 1 teaspoonful white mustard seed, 1 1-2 cups olive oil, 3-4 cup Wesson oil and 3-4 cup Olive oil, let stand for 1 hour. Mix all together and pour enough vinegar to cover. (Dilute vinegar with water to proportion of 1 to 3).

**Mustard Tomato Pickles**  
2 quarts green tomatoes.  
1 quart onions.  
1 quart cabbage.  
1 quart sweet peppers.  
Chop fine, and add 1 gallon cold water and 1 cup of salt, let stand overnight. Press juice out thoroughly next morning.  
4 cups sugar.  
1 cup salt.  
6 teaspoonfuls prepared mustard.  
1 tablespoon tumeric powder.  
6 cups vinegar.  
2 cups water.  
Mix dry ingredients, add vinegar and mix thoroughly, add to the tomato mixture, and cook until thick, seal and put away.

### Personal Mention

K. Sammann and family, who live in the Providence neighborhood, out on route 1, will leave the first of next week for Rosenberg and Galveston on a three or four weeks trip to visit relatives and see the country.  
Mrs. Charles Simpson and child have returned from a visit to her parents and sister in Arkansas, where they spent several weeks.  
Mr. and Mrs. Roscoe Gass, of the Lockney Drug Company, returned Monday from Glenwood Springs, Colo. where they had spent the past two weeks on a summer vacation. Dr. and Mrs. A. T. Reed, who went with Mr. and Mrs. Gass, remained, and will spend about two weeks in Denver where the Doctor will attend a special clinic and tonsillectomy course.  
Mrs. Mary Puckett has again accepted a position as special nurse in the offices of Drs. Reed & Henry.  
Mrs. C. R. Wilkinson and children have returned from a visit with relatives at Amsted, New Mexico.  
W. W. Angel went to Snyder and Big Spring the latter part of last week. He went to Big Spring on business, and returned by way of Snyder, bringing Mrs. Angel and children, who have been visiting relatives in Snyder, home with him.  
Estes Woodburn spent Sunday in Hereford attending a reunion of the Woodburn family.



The garden is mightier than the can opener.

It takes a lifetime to save what you could lose in a poor investment in a single day.

It is easy enough to spend money, but not always so easy to find a good investment for your money.

Our bank offers you safe, sound advice in the matter of securities. It is cheerfully given as a part of our service.

## THE FIRST NATIONAL BANK

"The Bank Behind the Farmer"

"There is no Substitute for Safety"

## COMPLETE STOCK OF GROCERIES, SHELF HARDWARE AND UNDERTAKING GOODS

A big stock of Fresh Groceries and Vegetable at all times awaits your convenience at our store. We will appreciate an opportunity to serve you.

We carry a nice line of Shelf Hardware and Leather Goods, and have a Harness and Shoe Repair shop in our store to serve your needs in this line.

We also carry a stock of Undertaking Goods for your convenience, when you are in need of anything in this line.

## G. S. MORRIS

Groceries, Hardware and Undertaking Goods

"Where Price and Quality Meet"

Phone 30

## INSURANCE

Perfect Protection—Prompt Adjustment—In case of loss—Continuous Service—Strong Companies. See me for the best in insurance.

GRUVER INSURANCE AGENCY

Phone 148

"Trade In Lockney"

## PENNINGTON MOTOR CO.

DID YOU KNOW THAT WE SELL—

"THAT GOOD GULF GASOLINE,"

MAGNOLIA GASOLINE,

"GARGOYLE" MOBILOIL,

GULF SUPREME MOTOR OILS.

"PHILCO" DIAMOND DGRID Storage Batteries.

FISH BALLOON AND HIGH PRESSURE CORD TIRES.

A FULL LINE OF ACCESSORIES.

We do Expert Auto Repairing and We Guarantee Our Work.

We appreciate your business.

PHONE 57

## Fresh Fruits and Vegetables

We are fixing a cooler case in the front of our store for the display of fresh Fruits and Vegetables, where they can constantly be kept on ice, and we will have at all times everything that the market affords in the vegetable and fruit line.

In our market department we have everything you need in cold and hot cooked meats for lunches.

This is the Beatrice Creamery Station and we want your cream and produce.

## RILEY & BREWSTER

GROCERIES AND MEATS. PHONE 10.

# OUR BIG JULY SALE CONTINUES WITH A VIM

A Careful Comparison Will Convince the Most Skeptical  
that Our Prices are the Lowest in West Texas.

Below We Quote a Few for Comparison:

<p>9-4 Bleached Sheeting, best quality, per yard . . . . . 38c</p> <p>Best Sewing Thread, per dozen . . . . . 38c</p> <p>6 yards Everett Shirting, for . . . . . 95c</p> <p>25 Per Cent Discount on All Men's Work Pants.</p> <p>Full Standard Work Shirt, best \$1.00 value in Texas, each only . . . . . 79c</p>	<h3>BIG YANK WORK SHIRTS</h3> <p>Big Yank Work Shirts, sold for \$1.00 each the world over, each only . . . . . 69c</p> <p>All Piece Goods, Ready-to-Wear, Hats, Shoes, Notions and every item in the house is included.</p>
--	--

**POSITIVELY** No Goods Charged. It's the Cash we want, but we are willing to sacrifice for the cash, and we will positively make the best prices in Lockney.

**SALE CONTINUES UNTIL AUGUST 1ST**

**No Promoters--No Schemes**

**E. GUTHRIE & CO.**

Lockney, Texas

Leaders in Low Cash Prices

Lockney, Texas

**STORE WILL BE CLOSED**

**ALL DAY THURSDAY TO MARK DOWN**

**GOODS**

**MEN'S SUITS**

Men! Here is where you come in for your share of the Big Savings. Think of it! Such high grade Suits as HART SCHAFFNER & MARX and other well known brands placed on the Slaughter Block regardless of COST. Now is the Golden Opportunity to supply your needs, while we want to sell at a BIG SACRIFICE.

**EXTRA SPECIAL**

Men's Gabardine Suits. We have a big assortment of these fine suits to close out at—

**\$14.95**

**MEN'S GLOVES**

Men's Horse Hide Gloves, Sale Price only—

**49c**

**MEN'S WORK SHOES**

Men's Work Shoes, a good all-leather work shoe. Slaughter Price—

**\$1.98**

Yes, it is Star Brand.

**MEN'S KHAKI PANTS**

Men's Khaki Pants. This is an extra heavy pant, regular \$2.25 grade. Sale Price—

**\$1.49**

**MEN'S COTTON HOSE**

Men's Cotton Hose. A dandy 20c value. They go at—

**10c**

**Lack of Wheat Crop Folks, Cause**

**E. L. A**

**GENUINE OLD**

**UNLOADING**

**SALE STARTS FRIDAY, JULY**

**SHOES! SHOES! SHOES!**

Here is where all the family come in for Big Savings. Our entire stock of shoes go in this Sale at BARGAIN PRICES.

**EXTRA SPECIAL**

We have many shoes that are in broken lots or discontinued numbers we are making extra special prices on in order to move them quick. Every pair goes at less than WHOLESALE PRICE.

**MEN'S WORK SHIRTS**

Men's Blue Work Shirts. Sale Price Only—

**59c**

**MEN'S UNION SUITS**

Men's Union Suits, a good one. They go at—

**49c**

**TRUNKS, SUIT CASES AND BAGS**

**ALL GO AT**

**20 PER CENT DISCOUNT**

You are going to be Surprised! Amazed! As Sale is simply this: We bought for a heavy season try has had a very short wheat crop and with of not bought as heavily as we expected. We find merchandise on the shelves. When we make a mistake have it in a nutshell and you KNOW what it means. pose of merchandise. Here is, indeed, prices are REALLY REDUCED and do. been buying won't let you miss this event. We e

To all who appreciate honest merchandise and is your opportunity to participate in a GENUINE Store.

**REMEMBER E. L. AYRES' NEVER**

Our SALES are always a great money saving e

FOLKS: Read every word, don't let a single it stock is included. Everything is reduced. Ever filled with BARGAINS like these.

**IF YOU HAVE NOT ATTENDED A**

Ask your neighbor about them. They'll tell you when SALE. This is a store-wide cut Price Sale. You will find

**E. L. A  
LOCKNEY,**

# used This BIG SLAM BANG SALE

# AYRES

**OLD FASHIONED**

# ING SALE

**July 17th, AT 9 O'CLOCK SHARP**

Amazed! Astonished! The short snappy gist of the heavy season, but Lockney and surrounding county and with other unfavorable conditions people have found. We find the season going on with too much merchandise. We find the season going on with too much merchandise. We find the season going on with too much merchandise. We find the season going on with too much merchandise. We find the season going on with too much merchandise.

merchandise and honest service we say to you that now is a GENUINE SALE. WHOLESALE PRICES in a Retail Store.

**NEVER PUTS ON A FAKE SALE**

money saving event.

let a single item escape you! Remember this entire store is reduced. Every nook and corner of this big store is reduced.

**ENDING AN AYRES SALE**

When E. L. AYRES DRY GOODS has a sale it is a big one. You will find a big reduction on every Article in this Store.

# AYRES

LOCKNEY, TEXAS

THIS IS A STORE-WIDE CASH SALE

CASH IS KING

PLEASE DO NOT ASK FOR CREDIT

## WOMEN'S READY-TO-WEAR

Here is where style seeking, thrifty women will wend their way to the Savings in our Ready-to-Wear Section, where low prices will make this department the busy spot during this SALE.

HERE'S A SAMPLE

One lot Ladies' Silk Dresses we will unload them at—

**\$3.95**

## DRESS GOODS

We are very proud to call your attention to our line of Seasonable Dress Fabrics.

Housewives should take advantage of these wonderful values. Spend your money while it buys almost double. We have a big line of Plain and Printed Voiles, Printed Crepes, Linens, Satines, etc., All go at BARGAIN PRICES.

### LUNA SHEETING

9-4 Bleached Sheeting .....	37c
9-4 Brown Sheeting .....	35c

### BROWN DOMESTIC

36 inch Brown Domestic .....	10c
We are simply steeped to the eyebrows in Bargains Get your share.	

## BLEACHED DOMESTIC

25c Bleached Domestic .....	15c
Yard wide Bleached Domestic for pillow cases, sheets, etc. A 25c value, but at this Great Sale, price only, per yard .....	
	15c

## BLUE SHIRTING

Good grade Blue Shirting, Sale Price—  
**14c**

## GINGHAMS

32 inch Gingham. Sale Price—	15c
27 inch Gingham. Sale Price—	9c

Costs You Nothing—FRIDAY, 9 A. M. SHARP, Get Tickets as You Enter.

# FREE FREE FREE

Opening Day at 9 o'clock 50 Tickets Will be Given to First 50 Adults who Enter the Store. TEN TICKETS WIN PRIZES.

- |  |                             |
|--|-----------------------------|
| 1 Draws a pair of Silk Teddies           | 1 Draws 3 Yards of Ratine.  |
| 1 Draws a pair \$2.25 Women's Silk Hose. | 1 Draws a Ladies' Vanity.   |
| 1 Draws a Pearl Necklace.                | 1 Draws 5 Yards of Gingham. |
| 1 Draws a Jap Parasol.                   | 1 Draws a Man's Belt.       |
| 1 Draws a House Dress.                   | 1 Draws a pair of Silk Sox. |

Drawing Takes Place at 10 O'Clock A. M.



FLOYD COUNTY ABSTRACT COMPANY  
**IS YOUR TITLE CLEAR?**  
 GET READY FOR THE RAILROAD

Let us prepare your abstract work on lots or lands during our dull season, at very special prices. This is usually our dull season, so we are making some very interesting prices on all title work. Seventy-five per cent of titles are defective in some respects. Have an Abstract made now at a low price and if there are any defects in your title, get it up in shape to sell or trade. Many sales and loan contracts are turned down on account of defective titles, which in many instances take time to cure and make merchantable. We have had 20 years experience with Floyd County Land Titles; have a complete, modern and up-to-date abstract plant and give your work our personal attention.

**Floyd County Abstract Company**  
 R. C. SCOTT, Manager FLOYDADA, TEXAS

**4,000,000 ACRES LAND  
 WILL BE TRIBUTARY**

**NEW RAILROAD LINE TO OPEN  
 VAST WEST TEXAS FARM-  
 ING SECTION**

(From Tuesday's Star-Telegram)  
 Approximately 4,000,000 acres will be thrown open to settlement by farmers in only eight counties through the construction of the proposed Fort Worth & Denver line from Carey to Dimmitt, and Silvertown to Lubbock, according to latest estimates made by officials of that road, announced Monday.

Nearly all of this land is tillable low in price and may be irrigated by water obtainable at 40 to 80 feet, though many farms in the South Plains find that they do not have to irrigate to make paying crops.

Opening and cultivation of this vast section will have a direct and important influence upon the Fort Worth market, for it will largely increase the purchasing power of these counties, which look upon Fort Worth as their natural market and gateway, but which has been to a large extent denied due to lack of rail facilities.

At present citizens in these eight counties desiring to transact business with Fort Worth are compelled to ship by a roundabout route, to Lubbock or Plainview and thence up the Santa Fe to Amarillo and down the Denver to Fort Worth. Such shipments mean 200 miles of unnecessary travel and resultant higher freight rates. So this section is doing most of its business with Wichita, Kansas City, St. Louis and even California, because rail connections with those points are better.

**Check Up on Land Tapped**  
 The proposed Fort Worth & Denver line will eliminate that extra 200 miles, enabling shippers to route stuff from Plainview, Lubbock, Lockney, Silvertown or Dimmitt direct to Fort Worth by Childress. To construct this line will cost the Fort Worth & Denver \$7,000,000, but it will add more than that annually to Fort Worth coffers.

Officials of the Fort Worth & Denver City have checked up on land that will be tapped by the new line, which data shows up as follows:

**Briscoe County**—Fifty per cent of county fertile and tillable and only 25 per cent under cultivation.

**Floyd County**—Eighty-seven per cent of all land in the county rated as exceptionally excellent, tillable and only 50 per cent under cultivation.

**Hale County**—Eighty-seven per cent tillable and only 40 per cent under cultivation. Practically every acre in county will make good farm land.

**Castro County**—Seventy-two per cent of land is tillable, but only 20 per cent is under cultivation, showing there is room for thousands of farmers. Dimmitt is in Castro.

**Crosby County**—Seventy per cent of all the land is tillable, with only 35 per cent in cultivation. This county is forced to go 50 miles over a small branch line to Lubbock and then ships the 200 extra miles to Fort Worth.

**Lubbock County**—Seventy-one per cent of land is tillable and but 31 per cent is under cultivation, though the city of Lubbock has grown amazingly. It is the farm lands that need inhabitants.

**Lamb County**—In this county 85 per cent of the land is tillable and a very small portion, only 7 per cent, is under cultivation. The land is as good as any other in the South Plains.

**Motley County**—Fifty per cent of this land is fine and tillable, with but 18 per cent being farmed.

**Swisher County**—Here, again, is a large percentage of tillable land, but few farmers. Eighty per cent of it is tillable and only 34 per cent under cultivation.

**Room for Speculation**  
 On one crop alone, cotton, these counties, despite sparse settlement, have forged to the front rank. For instance, back in 1914 Briscoe county produced no cotton. But in 1924 its yield was more than 10,000 bales. Floyd county, 10 years ago produced 2,193 and in 1924 had a showing of 27,103 bales. Hale county had but 1,566 bales to its credit in 1914, while 10 years later it made nearly 30,000 bales. Some showing for a county whose farm land is only 40 per cent cultivated.

But Lubbock county made even a better record, for in 1915 it produced 3,496 bales, while in 1924 it made above 43,000 bales, a figure that any highly cultivated Central Texas county will find hard to beat. Still, Lubbock farm land is only 31 per cent cultivated.

Crosby county, badly located as to rail facilities and the Fort Worth market, in 1914 made 8,000 bales, dropped to 3,400 bales in 1915, and in 1924 produced more than 40,000 bales. Lamb county made 8,500 bales in 1914; 4,000 in 1915; dropped to 2,156 in 1918, and last year its record was 18,927 bales. Yet Motley county is only 18 per cent cultivated, while Lamb yielding nearly 19,000 bales is only 7 per cent cultivated. That leaves room for much speculation among Fort Worth business men as to what these counties could and would do if all of their farm lands were in cultivation.

But farmers argue: Why locate even on good land when Fort Worth market is so hard to reach and profits are eaten up in freight rates? But a line 200 miles shorter makes a great difference in costs, both to the shipper and consignee, for the consignee pays the charges, then his prices are adjusted to meet that exigency.

W. F. Sterely, a general passenger agent of the Fort Worth & Denver City, 38 years with that line, came to this city when it had only 2,000 population and has seen both Fort Worth and his railroad expand and prosper together. The Fort Worth & Denver City extended only to Wichita Falls when he moved to Fort Worth. The railroad and town here traveled, fought and prospered together, Sterely witnessing the entire panorama of western progress.

"In the pioneer days of Fort Worth 25 freight wagons arrived here daily for goods to be carried to other towns, Sterely said. "They included Fort Concho, Fort Griffin and Fort Davis in their itinerary. Now the number of freight cars reaching Fort Worth daily goes into the hundreds and it is likely that 100 cars of just package freight are received here daily.

"When West Texas and the Panhandle first opened up many of those who went there were land speculators who took up vast stretches to hold and sell at a profit. But those entering West Texas and the Panhandle now are experienced, capable farmers, who come here to make permanent homes. They are the true pioneers. They come here with sufficient money to get a start. The proposed new line will greatly increase the population and aid Fort Worth. Between 1900 and 1910 the population along the Denver increased 88 per cent and along the Wichita Valley more than 200 per cent. Perhaps we shall experience a similar increase."

M. M. Traylor and family of Malone, Texas, have been here for the past week visiting Mr. Traylor's brother and sister, Mr. George Traylor, and Mrs. A. B. Brown. Mr. Traylor is in the banking business at Malone.

Have your Abstracts made by  
**ARTHUR B. DUNCAN**  
 The Old Reliable Abstract Man.  
 Floydada, Texas

**WELCOME!**  
 To The  
**CITY TAILOR SHOP**  
 Now under new management, and fully equipped to supply your tailoring needs.

**ALL Work Guaranteed**  
 We call for and deliver  
**OTIS HARRIS**  
 Phone 133

For cleansing and softening the skin apply  
**NYLOTIS COLD CREAM**  
 generously, working the cream well into the skin with a pinching-kneading movement; wipe off with a soft cloth wrung out of hot water; then rub a little more cream into the skin. Do this regularly for your complexion's sake.  
 Two sizes—65c, 35c  
**Lockney Drug Co**

**HOW'S THIS?**  
**HALL'S CATARRH MEDICINE** will do what we claim for it—rid your system of Catarrh or Deafness caused by Catarrh. It consists of an Ointment which Quickly Relieves, and the Internal Medicine, a Tonic, which acts through the Blood on the Mucous Surfaces, thus restoring normal conditions.  
**HALL'S CATARRH MEDICINE** as a Blood Purifier gives wonderful results. Sold by druggists for over 40 years.  
 F. J. Cheney & Co., Toledo, Ohio.

**LOCKNEY DRUG CO**

**NOTICE OF BUSINESS CHANGE**

We have bought the F. F. F. Service Station and will strive to give you as good service or better than Mr. Ed Reeves.

We will appreciate your business and try to merit it. A full line of Gas, Oils, Tires and Accessories.

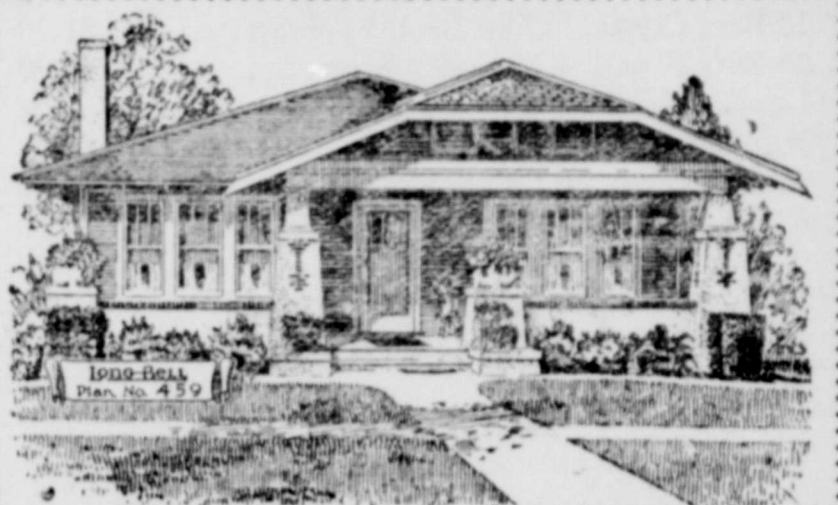
**F. F. F. FILLING STATION**  
 J. L. BELT & SON, Proprietors

JUST RECEIVED  
**CAR OF AMARYLLIS FLOUR**

We have just received a car of Amaryllis Flour. Come in and get you a supply of this good flour at once.

We have a complete line of Fresh Groceries to supply your wants. Phone us your needs and get prompt and efficient service.

**LOCKNEY GROCERY**



**BUILDING SERVICE**

**DEVOE PAINTS AND KYANIZE VARNISHES**  
**DEMPSTER SELF-OILING WINDMILLS**

2 gallons of Oil furnished with each mill to start it off on.

**PLENTY OF WELL CASING, PUMP PIPE, PUMP ROD, ALL SIZES.**

**FLOYD COUNTY LUMBER CO.**  
 PHONE 9

**WE WANT YOUR WHEAT AND OATS**

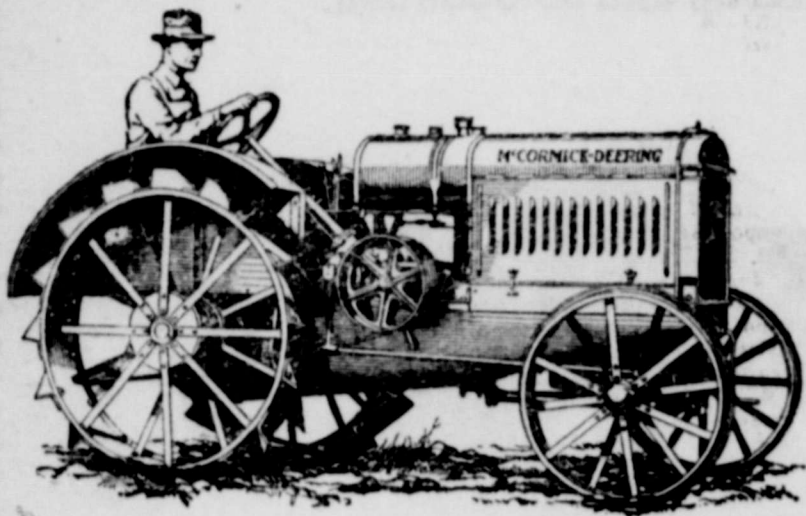
Bring us your Wheat and Oats, we pay the highest market prices and give you the very best of service.

We are in the market for your grain at all times and our prices are always the highest the market affords. Come in and give us a chance to figure with you or phone us about your crop.

If you need anything in the Feed line for your Cows, Hogs, Chickens, Horses, etc., phone us your wants. We are the authorized agents for the Purina Chows, and have a full stock of this feed on hand at all times.

**LOCKNEY COAL & GRAIN CO.**  
 PHONE 60 **BURTON THORNTON, Manager**

Good equipment makes a good farmer better



**McCORMICK - DEERING TRACTORS**

Reach the farm completely equipped with fenders, platforms, pulley, governor, brake and removable lugs, many of which have to be paid for as extras on other tractors.

The McCormick-Deering Tractors were originally designed for the power take-off.

We have just received a car load of new improved 15-30 McCormick-Deering Tractors.

**N. W. MORGAN & CO.**

Genuine I. H. C. Repairs  
 McCormick Deering Line

**CITY MARKET**

T. L. GRIFFITH, Prop. Phone 26

**INTRODUCTION SALE**

of Oleomargarine. Try this butter Substitute. You will like it. Also extra fine for baking cakes.

Special ..... 35c Per lb

**SINGER SEWING MACHINES**

\$5.00 DOWN, \$3.00 PER MONTH

We will bring machine to your home and demonstrate them. All machines leave our store in perfect shape.

**M. P. McCLESKEY, Agent**

In Old Ayres Building, Corner Main & College Sts.

# SPECIALS FOR FRIDAY. SATURDAY AND TUESDAY

Khaki Pants	\$2.00
Overalls	\$1.40
Jumpers to match	\$1.40
Blue Work Shirts	75c
One lot of Dress Shirts	\$1.00
\$8.50 Oxfords	\$7.00
\$6.75 Oxfords	\$5.50
\$6.00 Oxfords	\$4.80
\$5.00 Work Shoes "Any Style"	\$3.20
\$3.00 Work Shoes, Scout Style Rubber Sole	\$2.40
6 spools O. N. T. Thread	25c

## FLOYD HUFF

### WE STILL HAVE LEFT AT A BARGAIN SOME OF THOSE GOOD BROOMS, ONLY 50c

1 gallon Peaches	50c
24 Bars Grandmas Laundry Soap	\$1.00
20 Bars Crystal White Laundry Soap	\$1.00
20 Bars P. and G. Laundry Soap	\$1.00
1 gallon White Swan Syrup	90c
1 gallon New South Syrup	90c
One lot of Mixed Candy per lb.	20c

And a house full of other bargains at the

## CASH GROCERY

SELL FOR LESS.

## IF—

You think Lockney should have a Dairy show it by your patronage.

Our aim and ambition is to build up a Dairy that will be recognized not only in Lockney, but by the county and state as well, and be regularly inspected as to cleanliness and purity with all cows free from any disease.

If you want a Dairy of that kind, say so.

## GROVES' DAIRY

## WANT COLUMN

### Notice to Public

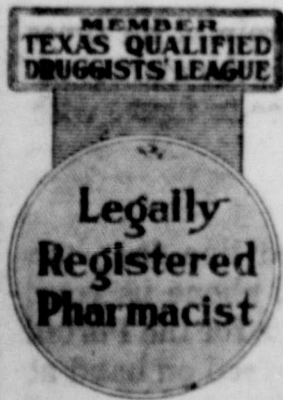
I am still in the dray business and will haul anything anywhere.—O. T. Prickett, the Old Reliable, phone 90.

Have Your Abstracts Made By  
ARTHUR B. DUNCAN  
The Old Reliable Abstract Man  
Floydada, Texas

FOR RENT—Nice bed room. Phone 108.

A nice mantel clock, will keep good time, for \$9.50, at F. M. Kester, the jeweler. 36-1f-c

### The Texas Qualified Druggists' League Says:



You can find at this qualified drug store, all the choice articles to be found in a high class drug store, and every article sold in this store can be depended upon to be just as we represent it. Our prescriptions are carefully and accurately compounded from the purest of drugs.

## STEWART DRUG COMPANY U TELLUM "STEWART HAS IT"

Member Texas Qualified Druggists' League

Read the League's messages in Farm & Ranch and Holland's Magazine

FOR SALE — 17-30 Minneapolis Tractor, in A1 shape, good as new, at bargain. W. J. Meyer. 39-1f-c

FREE—A shampoo with every Marcel during July. Please call 121 for appointments.—Mrs. Arch Crager.

Just received a nice assortment of Chinaware. Call and see me.—M. P. McCleskey. 41-1f-c

### \$2,000 In Cash Prizes

First Prize is \$1,000. Open to Everybody, anywhere, FOR ANSWERS IN EDUCATIONAL CONTEST. Send stamp for Circular. Rules and Questions. SHEFFIELD LABORATORIES, Dept. 1, Aurora, Illinois.

FOR SALE—North half of Aiken school building—See W. O. Stark, at Floyd County Lumber Co. 42-3t-p

FOR SALE OR TRADE—A milk cow.—D. D. Langford, Rural Mail Carrier Route 1. 43-1t-p

FOR RENT—Rooms. Phone 119.—Mrs. C. D. Fowler. 43tfc

### The Happy Go Lucky Sewing Club

The Happy Go Lucky Sewing club met last Tuesday, July 14th, in the home of Elsie Meriwether.

We had one new member, who was Margaret Collier; also one visitor, who was Miss Leo Bolin.

The members present at this meeting were: Sallie Middleton, Mary Lou Hammonds, Ellie Lee, Ruth Lee, Roberta Broyles, Mayme Lou Jarnigan, Winnie Grace Hughes, Grace Harper, Nell Kester, Margaret Collier, Edith Hughes and Elsie Meriwether.

The next meeting will be held on Tuesday, July 21st, at 3:30 o'clock in the home of Sallie Middleton.

All girls from 13 to 16 years of age are invited to be present.—Reporter.

### TEAFF-COX

Mr. Floyd Teaff and Miss Leola Cox, were married at the Baptist parsonage in Lockney, Friday afternoon, July 10th, Rev. C. J. McCarty performing the ceremony.

Floyd is the son of Mr. and Mrs. J. B. Teaff and Miss Leola the daughter of Mr. and Mrs. J. M. Cox, both families living north of Lockney.

The young people will make their home in Floydada, where Mr. Teaff has a position.

Mrs. R. M. Broyles and daughters, Misses Olga and Frankie, came in from Fort Worth Friday evening, where they have been making their home for several weeks. They made the trip from Fort Worth in a Ford coupe, making the run in fourteen hours, and about two hours of the fourteen were taken up in stopping for gas and repairs.

Miss Gertrude Conner, daughter of Mr. and Mrs. J. F. Conner, who live near the caprock, east of Lockney, has been here for several days visiting her parents. She has been attending the West Texas State Teachers College at Canyon.

Mrs. Ruth Homer of Lubbock, is here spending her vacation visiting her parents, Mr. and Mrs. Frank H. Ford, and sister, Miss Dorothy.

### KENNETH BAIN LAWYER

Room 4, First National Bank  
FLOYDADA, TEXAS

### DRS. REED & HENRY

Physicians and Surgeons  
Special Attention Given to Women's Diseases.

Office Lockney Drug Co.  
Office Phone 50—Res. 87  
Lockney, Texas

### Dr. HARRIS H. BALL DENTIST

LOCKNEY, TEXAS  
Office, Room 1, First National Bank Building. PHONE 72  
Office Hours, 8:30 to 12; 1 to 5:30

### Grady R. Crager

UNDERAKER AND EMBALMER  
Hearse to all parts of the Country  
Day Phones 125 and 121; Night 75  
In Crager Furniture Co.  
Day and Night Service  
LOCKNEY, TEXAS

### THE SPECIALIST

Whether in the commercial, financial or professional line, the specialist is the one who is mostly in demand. Why? Because he has mastered his particular line in every detail.

Naturally those whose vision is defective consult an eyesight specialist.

The Optometrist is the recognized eyesight specialist—Legally recognized and certified by the state.

We keep your glasses properly adjusted.

DR. WILSON KIMBLE  
EYESIGHT SPECIALIST  
FLOYDADA, TEXAS

# MAKE IT UNANIMOUS FOR ANOTHER RAILROAD

## Who Does Not Want Another Railroad? Let them please stand up and be Counted.



No! We don't want to give them anything, but, we have a Curlee Suit that will fit them if anybody will furnish the price, and these Clothes are good clothes, and worth every cent asked for them. Men favoring the railroad will all want a suit of these clothes, as they know a BARGAIN, and are willing to pay for what they get.

CURLEE CLOTHES for the economical buyer in any weight desired.

## All Millinery and Ladies' Ready-to-Wear

## REDUCED IN PRICE

## HARDWARE AND GROCERIES

A full stock of Cooking Utensils and the Pure Food to Cook in them.

OIL STOVES TO PREPARE THE MEAL.

Cream Freezers and the Flavoring and Salt.

Dinner Sets and the Food to Prepare the Dinner.

We keep busy supplying Busy People with a thousand necessities of life.

## BAKER MERCANTILE COMPANY

"THE STORE WITH THE GOODS"