

# THE RANGER TIMES

★ Gateway To  
Lake Leon ★

38TH YEAR

SEEKING COMMUNITY BETTERMENT SINCE 1919

RANGER, TEXAS, THURSDAY, DECEMBER 20, 1956

PRICE FIVE CENTS

## Ranger Stores to Remain Open Late

### Park Free Saturday Also Christmas Eve

Nearly every retail store in Ranger will remain open late for the rest of this week, it has been announced. Stores will remain open until 7 o'clock on Thursday and Friday nights, and until 8 o'clock on Saturday night. No announcement has been made concerning Christmas Eve, which is Monday night, but if things go along the same as they have in the past nobody will be in town by sundown, and staying open will be a matter that will regulate itself. It is expected that all stores will close at their regular times on Monday night.

In the meantime, Saturday is another parking holiday through the courtesy of Ranger city officials and paper sacks will be placed over all the meters. The same will be true of Monday, Christmas Eve, when the meters will again be covered up.

Merchants all over town have asked customers to kindly get their packages out of lay-away this week-end, if possible, as they do not want to close up Monday night with somebodys Christmas present all wrapped up and on their shelves, but it has happened before and it could very easily happen again. Most merchants will not be available Christmas day to open their stores and deliver these packages because, like most everybody else, they have different plans for the day.

All of the stores have taken advantage of the bad weather earlier in the week that kept many people off the streets to re-arrange their stocks and make fresh displays of their Christmas gift merchandise to make selection easy and pleasant. Many items that are turning up in short lots are reduced in several of the stores.

All stores will maintain their gift-wrapping service right up til the last minute so that any gift bought at this late date will leave the store ready for the Christmas tree.

"Million Dollar Rain" just about describes the downpour of Tuesday and Wednesday as well as anything else, and taken over the state as a whole a "Billion Dollar Rain" would come nearer catching it as it was the first moisture that hundreds of thousands of acres of small winter grain had seen since it was planted.

Here in Ranger the waterfall measured well over four inches. From the time it started Tuesday, a total of 2.30 inches had fallen up until 6 o'clock Wednesday morning and on top of that 2.30 inches fell during the day Wednesday, according to unofficial gauges.

Gutters, ditches, gullies and small creeks overflowed as the water spread in all directions in many sections. Many stock ponds filled to the top and ran over, more especially the smaller ones. Water was running heavy in every creek in the county and Leon River was catching its share of it.

By noon Wednesday it had rained so much that the ground could not soak up any more until it had been given a breathing spell. However, once the rain stopped falling the moisture sank right on in through the top soil and the land could stand at least another 10 inches before it became thoroughly saturated.

State Agriculture Commissioner John R. White said it was the best possible Christmas present that could have come to Texas and nobody was going to argue the matter with him.

Help! The Community Chest is \$1,827 short of its goal. Phone Mrs. Angus at 167 and give her your pledge today. The money MUST be raised!

FOR  
Fine Furniture, Floor Coverings, G.E. Appliances, It's Costs Furniture & Carpet, Ltd., Eastland.

Don't Forget Your Old Toys For Needy Children Take Them Now To Chamber of Commerce

### \$120,000 Approved For Roads Including Road to Lake Leon

The Texas Highway Commission has approved the expenditure of \$120,000 for improvement of roads in Eastland County, including State Highway 16 from U. S. 80, south, for a distance of 3.9 miles, which is the road from Ranger to Lake Leon. It is announced by D. C. Greer, state highway engineer. The \$120,000 will be spent on three different projects, and Greer said "we should have the program moving by spring." Besides the additional base and surfacing to be applied to Highway 16, the other two projects include a seal coat on F. M. 583 from Brown County line north to State 36, a distance of 1.5 miles. Also a seal coat on F. M. 587 from F. M. 1627 to Comanche County Line, a distance of 9.3.

### Community Chest Short \$1,827 Which Must Be Raised

At one of the neediest periods since the end of World War II the Ranger Community Chest, which had a goal of \$6,160, is short by \$1,826.60. A check up this week on funds that had been turned in for the Chest revealed that \$4,333.40 had been pledged or collected, leaving a deficit of almost one-third which must be made up before the first of the year, according to Dr. Price Ashton, president. Dr. Ashton sent out an appeal today to all workers and all team captains, who have not finished canvassing the names on their cards, to complete this task at the earliest possible moment and turn in their reports to Mrs. Angus at the Ranger Insurance Agency. An appeal is made to all business heads who were to contact

### First Turkey Meet Set for January 17

First of two big turkey meetings scheduled to be held early next year in Ranger has been officially set for Thursday, January 17, and will be held at Ranger Junior College. The second meeting has been set for April 4, and will also be held at the college. There is a big difference in the two meetings. The January 17 meeting is being sponsored by the Central Texas Turkey Growers Ass'n., and the Texas Turkey Federation, and will deal with diseases that infest turkey flocks and means of controlling them. The April 4 meeting is a Turkey Production and Marketing Clinic sponsored by the Extension Service of Texas A&M College. The January 17 meeting will get under way at 6 o'clock Thursday

### NEED \$500? Then Have Twins On New Years Day Between 12 Midnight and 12 Noon

If you need 500 bucks to tide you over the holiday season, it is all yours if you can contrive in some way to have twins between midnight and noon on New Year's Day. And, oh, yes, they must be girl twins. Little old boys don't count. This offer is being made by Toni, the permanent wave people, in the Ninth Annual Toni Twin Baby Derby. And, believe it or not, the odds are surprisingly favorable in this race with the stock. If you, or someone you know, expects a New Year's Day arrival, the chances are one in 528 that it will turn out to

BE SURE-SEE Don Pierson Olds-Cadillac Eastland Quality Cars at Volume Prices



SHOWN ABOVE are two little girls that could belong to just anybody almost anywhere as they look over the 1957 line of toys with their modern trend toward electronic and hobby amusements. Toys are getting to be more realistic every day and become more and more educational as manufacturers strive to duplicate grown-up things actually in use. Even the modern doll can do nearly everything a baby can which includes speaking and taking nourishment. They all must have their own baths, a complete wardrobe of clothes and a houseful of furniture. Many dolls must have their own perambulators. For boys, the toys are so real they're unbelievable.

### Home Judging Will Take Place Tonight

The Chamber of Commerce and its crew of judges which has been secured from a nearby community, will make the rounds of Ranger streets tonight, Thursday, determining which homes will win the cash awards for the best outside lighting display. Prizes are \$10 for 1st place, \$7.50 for 2nd place, and \$5 for third place. Although it is not absolutely necessary to call the Chamber of Commerce in order to enter a home in the contest officially, it would nevertheless be very much appreciated by C. C. officials if you did. By taking the trouble to call No. 31, the address of your home will be written down and will not be missed. Otherwise, it could be overlooked for some reason or other. Judging the homes is going to be a hard job for somebody because the town is full of many beautiful ones all over the residential sections as well as on Highway 80 within the city limits. Homeowners are urged to turn their lights on soon after dark so the display will be lit when the judges come by.

Have you done your part? The Community Chest is \$1,827 short. Phone your pledge now to Mrs. Angus at 167.

TV HEADQUARTERS RCA, Admiral, Philco, Zenith Free Delivery and Convenient Terms. Good Trade-In, too! L & J SUPPLY CO.

Whether it is \$1.00 or \$100, phone your pledge to the Community Chest NOW to Mrs. Angus at 167. The Chest is \$1,827 short and needs your help!

CITY HALL TO BE CLOSED MONDAY Ranger's City Hall will be closed all day Monday, Christmas Eve, according to City Manager Lester Crossley, in order that employees might get in a few last minutes of Christmas shopping. It will be open for business as usual on Wednesday, Dec. 26.

ONLY EXCUSE the Times has for running this picture is because some press agent sent it to us from Palm Springs, California and said it was a nice place to be this time of the year, and we certainly won't argue with him.

The Chamber of Commerce is working closely with the Central Texas Turkey Growers Ass'n. to get a big turn-out of growers here, and Ranger businessmen are notified they will be called upon to help with the barbecue.



4-H CLUB MEMBERS two million strong have joined the nation-wide Safety Program to "Back the Attack" in December. Above, 4-H boys and girls use a battering ram to smash the barricade of 42,000 fatal accidents which annually blocks safe driving on America's highways. Civic Clubs have taken up the movement to help stem the tide in December, the worst month of all, and religious leaders are carrying on the fight from the pulpit. Every individual in the nation has been asked to become a committee of one to see that his own life is preserved and likewise that of a neighbor and friend. The Lions Club is sponsoring the "Back the Attack" campaign in Ranger.

### WHAT'S...



### COOKING?

By NORMAN WRIGHT

It is a remarkable thing how some ingenious people in this world can take absolutely less than nothing and make a fortune out of it. A shining example of this is how the Featherlite Corp. here took a few acres of worthless old shale that didn't even make food filler for a hole in the ground, so good-for-nothing in fact that it wouldn't even grow goat feed, and converted it into a valuable product that is about to revolutionize the building industry.

By mixing this worthless old shale with a few other substances and cooking it all in an oven they are turning out an aggregate that is being widely used in the production of light weight building blocks. The aggregate is also taking the place of sand and gravel in the mixing of concrete, and is even being used in the manufacture of indestructible telephone poles and light poles, and may, eventually, even become the basic material in the nation's highways.

Now out here in our part of the country if there is one thing we can think of that is just about as worthless as this formerly no good shale it is the lowly mesquite tree, and we'll be darned if a rancher over in Dimmitt, named C. E. Dolin, isn't about to make a fortune out of those things.

He's found a way to make cattle feed out of them.

During the past seven years Rancher Dolin has had 1 1/2 a struggle of his lifetime, like all other Texas cattle ranchers, trying to prevent the liquidation of his breeding herds on account of the drought and no feed. Most of the cattle men had long since quit trying to raise beef for the market and considered themselves lucky if they could just scrape enough feed together for their basic herds.

Rancher Dolin was one of these men. The drought, together with the wind, had removed the last blade of grass from his rangeland. His pastures looked like they had been scrapped with sandpaper, all except these mesquite trees. Dolin decided since the trees were all he had left, he would just use them for feed.

Dolin set out to prepare what he now calls his "mesquite meal." He began by cutting the top half out of all the trees, leaving the lower limbs so they would grow fast for further feeding. He stacked the mesquite limbs and let them go through a five-day drying and curing process which separated them from some of their moisture but not some of their vitamins.

Then he fed this cured mesquite through a chipping machine. (Continued on Page Five)

### Camp Fire Girls Have Fruit Cakes

The Camp Fire Girls are selling beautiful, delicious, 3-lb. fruit cakes, already sliced, for \$3.25. Anyone interested in buying a cake, please call 622 and it will be delivered to you. The girls are buying their Camp Fire uniforms from this cake sale and would certainly appreciate a call.

SERVICE Pamper your car with quality service from our experienced mechanics. All cars—fast, efficient, economical. Call 802 today. Don Pierson Olds-Cadillac Eastland

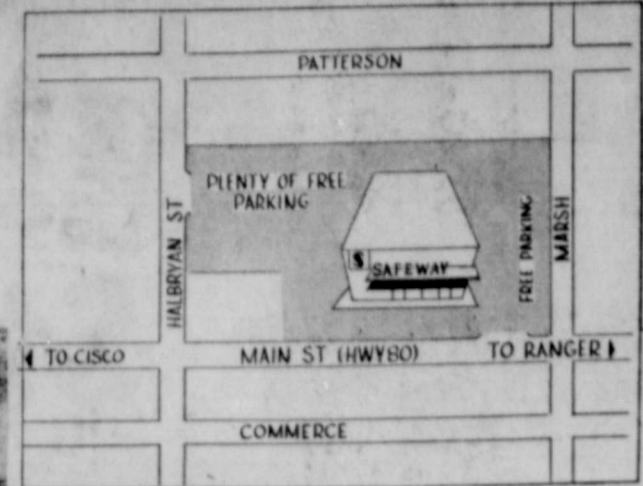
Weather Reports Partly cloudy and slightly warmer Thursday and Friday. Low Thursday night 35. High Friday near 60.

BOATS & MOTORS Frivande, Lone Star, Cadillac, Chryslercraft Boats L & J SUPPLY CO.



# New Safeway

Your New Safeway is Located  
**504 E. Main**  
 Eastland



Open...  
 Just in  
 time for  
 Christmas



Good News! Safeway's opening a beautiful new store, and you're invited to come and see it. You'll be amazed how fast you can shop here. Every item is easy to reach. There is no waiting at the meat counter. Safeway has more check stands, wide spacious aisles, plenty of free parking, and many other wonderful features to save your time and money. That's the new Safeway store in Eastland.



# GRAND

**FREE!** Registration  
 for Valuable Prizes . . .

ONE REGISTRATION ENTITLES YOU TO ALL  
 MAJOR PRIZES TO BE GIVEN AWAY

Be Sure and Register for These  
 Major Prizes at Safeway!

FREE! Hotpoint Electric Range to be given away  
 Saturday, December 29 at 4:00 P.M.

FREE! Hotpoint Electric Refrigerator to be given away  
 Saturday, January 5.

25 FREE TURKEYS To be given away at drawing  
 Friday, December 21.

**LIGHT CRUST DOUGHBOYS**

Will be at our Store from 1 to 6 P.M. Saturday, December 22 for your entertainment.



OH BOY! ALL THIS  
 FOR THE KIDDIES

**FREE BALLOONS**  
**FREE KIDDIE RIDES**

*Grand Opening Good Buys!*

- Sliced Pineapple** Dole, Libby, or Pineapple No. 2 Can **25¢**
- Cranberry Sauce** Ocean Spray Whole or Jellied 2 300 Cans **25¢**
- Mexicorn** Delightful Taste Extra Tender 2 12-Oz. Cans **25¢**
- Glenview Dates** Pitted 1-Lb. Cello **37¢**
- Lac Mix Milk** Instant Powdered 25 6/10-Oz. Box **59¢**

*Safeway Good Buys!*

- Lucerne Milk** Homogenized 1/2-Gal. Can **47¢**
- Whipping Cream** Lucerne 1/2-Pt. Can **28¢**
- Half & Half** Lucerne Pt. Can **26¢**
- Dinner Rolls** Skylark Brown and Serve 12-Count 11-Oz. Pkg. **17¢**
- Cloverleaf Rolls** Skylark Brown and Serve 12-Count 12-Oz. Pkg. **23¢**
- Edwards Coffee** Rich Coffee Flavor 1-Lb. Can **\$1.01**

*Fresh From the Farm Produce*

- Pascal Celery** Chop some for salads or better yet, set out long stalks in a shining dish. It's Crisp, Clean, Sweet. Lb. **5¢**
- Crisp Lettuce** Cracking Fresh Lb. **15¢**
- Cranberries** Gleaming Red Berries 1-Lb. Cello **15¢**
- Rome Apples** Full of Flavor-Tang Lb. **17¢**
- Sunkist Oranges** Naval 110's Lb. **15¢**
- Russet Potatoes** Bulk Lb. **8¢**
- Red Grapes** Emperor Lb. **19¢**

*Holiday Needs!*

- Red Cherries** Empress Maraschino 8-Oz. Bot. **31¢**
- Pumpkin** Moonbeam 7 1/2 2 1/2 Can **18¢**
- Mince Meat** Little Cook 9-Oz. Box **24¢**
- Brazil Nuts** Washed Large and Medium 1-Lb. Pkg. **49¢**
- Large Walnuts** Diamond 1-Lb. Pkg. **55¢**
- IXL Almonds** Blue Diamond 16-Oz. Pkg. **65¢**
- Emerald Walnuts** Long Type Baby 1-Lb. Pkg. **49¢**
- Mixed Nuts** Your Favorites 1-Lb. Cello **55¢**
- Cocoanut** Dukotee 4-Oz. Pkg. **18¢**
- Cane Sugar** Danish 5-Lb. Bag **49¢**

★ Happy note for the Holidays

**LUCERNE EGG NOG**

rich cream and eggs and spice so nice—all mixed and ready to pour

Qt. Ctn. **53¢**

**Graham Crackers**

Pirates Gold 1-Lb. Box **35¢**

FREE — 7-oz. box Busy Baker Crackers with purchase of Pirates Gold Graham's.

- Liquid Detergent** Scamper 22-Oz. Can **53¢**
- Cookies** Coconut Chocolate Drop. Jane Arden 16-Oz. Pkg. **39¢**
- Pecan Pieces** Perfect for Candies or Baking. Woodies 1-Lb. Pkg. **89¢**
- Salad Oil** Mayday Qt. Bot. **49¢**



Prices effective Thursday, Friday, Saturday, and Monday, December 20-21-22-23-24.



# FREE!

Join Safeway's Save-A-Tape Plan and get Wonderful Gifts Free.



Here's all you do to join Safeway's Save-A-Tape Plan: Save your Safeway GREEN cash register tapes. Save your tapes in this handy envelope until you have \$35.00 worth of tapes, use a separate envelope for each additional \$35.00. When you have the required number of envelopes for the gift you want, bring them to Safeway and the Store Manager will exchange them for your FREE GIFT!

IT'S QUICK, IT'S EASY AND THE PREMIUMS ARE

## FREE



HERE'S JUST A FEW OF OVER 50 PREMIUMS

**COPPER COOKWARE**  
**TV TABLES**

**ROLLER SKATES**  
**BATHROOM SCALES**

**ELECTRIC TOASTERS**  
**ELECTRIC SKILLETS**

# OPENING CELEBRATION

**Honey Comb Chips** 9-Oz. 39¢  
Fig.

**Chocolate Stars** 9-Oz. 39¢  
Fig.

**Old Fashion Mix** 16-Oz. 39¢  
Fig.

**Chocolate Drops** 16-Oz. 39¢  
Fig.

**Peanut Clusters** 16-Oz. 59¢  
Fig.

**Satin Mix** 28-Oz. 57¢  
Fig.

### Good Holiday Buys

- Kitchen Craft Flour** For all your baking 10-Lb. Bag **69¢**
- Light Crust Flour** Tender pies 10-Lb. Bag **69¢**
- White Corn Meal** Mammy Lou 5-Lb. Bag **29¢**
- White Corn Meal** Aunt Jemima 5-Lb. Bag **29¢**
- Roxbury Cherries** Chocolate Covered, Milk or Dark Chocolate Box 1-Lb. **45¢**
- Marshmallows** Fluffiest, Perfect with hot chocolate 1-Lb. Cello **29¢**

### Christmas Specials

- Sandwich Spread** Lunch Box 32-Oz. Jar **67¢**  
and You Get
- Peanut Butter** With Purchase of 32-oz. Jar Lunch Box Sandwich Spread Jar 12-Oz. **1¢**  
A \$1.03 Value for Only 68¢

- Bel-air Peas** Frozen 10-Oz. Fig. **19¢**
  - Frozen Pot Pies** Manor House, Chicken, Beef, Turkey 4 8-Oz. Fig. **\$1.00**
- All Safeway Stores To Close Monday December 24 at 6 p.m.



### Celebration Buys

- Apple Juice** Westfair 32-Oz. Bot. **30¢**
- Apple Cider** Westfair 32-Oz. Bot. **30¢**
- Orangeade** Kraft 46-Oz. Bot. **25¢**
- Applesauce** Lakeland 303 Can **21¢**
- Asparagus** Sunnysides Allgreen 300 Can **44¢**
- Tomato Soup** Campbell 3 No. 1 Can **32¢**
- Soup Mix** Liptons Onion 1 1/2-Oz. Pkg. **17¢**
- Eagle Milk** Condensed 15-Oz. Can **29¢**
- Airway Coffee** Full-Flavored 1-Lb. Pkg. **87¢**
- Nob Hill Coffee** Rich Flavored 1-Lb. Pkg. **95¢**

**FREE!** 1500 loaves of Skylark multi-grain bread. First 1500 customers receive a loaf free.

**FREE!** 1/2 Pint of Cottage Cheese to each customer Friday and Saturday, December 21 and 22.

**DON'T MISS THESE FREE GIFTS AT THIS NEW SAFEWAY**

# TURKEYS

- Fancy Hens** Broad Breasted Ready to Cook 10 to 16-Lb. Avg. Lb. **43¢**
- Fancy Toms** Broad Breasted Ready to Cook 16 to 24-Lb. Avg. Half or Whole Lb. **39¢**

- Canned Picnics** Ready to Eat 4 1/2-Lb. Can **\$2.49**
- Chicken Hens** Fancy, Nice for Stewing or Roasting Lb. **39¢**
- Fresh Pork Picnics** Whole Shank On Lb. **25¢**
- Pork Chops** Center Cut Sweet, Juicy Lb. **59¢**
- Half or Whole Hams** 10 to 16-Lb. Avg. Mahawk, Wilson, Neuhoff, or Armour's Star Lb. **49¢**

- Standard Oysters** Maryland Pt. Can **99¢**
- Chuck Roast** Calif. U.S. Gov't Graded Lb. **33¢**
- Ground Beef** Economy Lb. **29¢**
- Pork Sausage** Wingate Reg. or Hot 2-Lb. Roll **55¢**
- Sliced Bacon** Thick Northern Cured 2-Lb. Pkg. **89¢**
- Cooked Picnics** Swift Premium 3 to 5-Lb. Avg. Lb. **45¢**
- Canned Ham** Wilson 6-Lb. Can **\$5.79**
- Small Turkeys** Beltsville, Ready to Cook, 4 to 8-Lb. Avg. Lb. **59¢**

- Ice Cream** Party Pride Assorted Flavors 1/2-Gal. Ctn. **59¢**
- Fruit Cocktail** Hostess Delight No. 2 1/2 Can **25¢**

### Safeway Gift Certificates!

Solve your Christmas Shopping problems by giving Safeway's Gift Certificates, the one item that is always sure to please. They're easy to buy, easy to mail. Safeway Gift Certificates come in \$5.00 and \$10.00 amounts, and they are good for any of the fine foods at any Safeway.





### Martha Dorcus Class Has Xmas Social

The Martha Dorcus Sunday School Class of the First Methodist church was entertained by Mrs. H. C. Croom and her daughter, Mrs. Larry Griffith in the home of the latter Thursday afternoon from 3 until 5.

The spacious living room was attractively decorated with Christmas ornaments on the dining table and tree, where gifts for each person present were placed.

prayer by Mrs. F. C. Williamson. A Christmas greeting, sent in by Mrs. W. W. Paschall, was read. She also included a love offering to the class.

Mrs. L. H. Hagaman, teacher, was presented a lovely lamp in appreciation by the class. A delicious refreshment plate of sandwiches, fruit cake and cream, salted nuts and coffee were served by the hostesses, Mmes. Mills, Ratliff, Danley, Fyffe and Hummel to Mmes. Ramsey, Killingsworth, Moore, Alford, Baker, Lowe, Brown, McDowell, Balch, Al-

WEEKEND GUESTS  
Mr. and Mrs. Norman Huffman had as weekend guests Mr. and Mrs. C. C. Huffman and Madrin and Dana Pierce of Fort Worth.

### WSCS Meets For Christmas Social, Program

Members of the First Methodist Church WSCS met at the church Monday afternoon for their annual Christmas social and program.

Mrs. A. W. Brazda presided over the business session. Mrs. Stanley McAnelly had charge of the program, which was opened with a reading, "A Christmas Prayer" by Mrs. Brazda. The group sang "There is a Song in the Air" and the scripture was read by Mrs. Herman Boyd. Mrs. J. L. Turner led in prayer. Mrs. C. E. May, Sr., gave a reading, "The Shepherd at the Back Door." Miss Vivian Simmons was introduced and she conducted several members of the junior choir as they sang "Away in a Manger" and "Little Baby Jesus Was Asleep."

The benediction was given by Mrs. Ramsey.

### Columbia Study Club Meets For Review

The Columbia Study club met in the home of Mrs. J. E. Matthews Tuesday afternoon for a review by Mrs. Price Ashton of "The Imperial Women" by Pearl Buck. Holiday decorations were used throughout the entertainment rooms. Mrs. Stanley McAnelly poured coffee and Mrs. D. D. Pickrell and Mrs. E. E. Crawford assisted in serving.

Guests attending were Mmes. Blanche Murray, M. H. Hagaman, Herman Boyd and Miss Beulah Harrison. Members attending were: Mmes. McAnelly, Ashton, Crawford, J. P. Morris, Frances Jamison, P. M. Kuykendall, D. D. Pickrell, L. H. Hagaman, C. E. May, Sr., and the hostess.

SPEND WEEKEND IN FORT WORTH  
Mr. and Mrs. J. E. Matthews spent the weekend in Fort Worth.

IN FORT WORTH MONDAY  
Mr. and Mrs. Nick Crawford, Cindy and Mrs. E. E. Crawford spent Monday in Fort Worth.

VISITING IN RANGER  
Mrs. C. C. Craig of Lubbock is visiting in Ranger with friends.



MRS. SAMMIE ELDER

### First Baptist Commends WMU For Loyal Work

Mrs. Sammie Elder, president of the WMU of the First Baptist Church, gives guidance to an organization of over one hundred members from many auxiliaries of the work. She is assisted by the following elective officers: First vice president, Mrs. Harold Barrett, second vice president, Mrs. Lloyd Kennedy, secretary, Mrs. Raynald Base, treasurer, Mrs. M. R. Hamrick, W. C. Advisor and Bible study chairman, Mrs. Ralph Perkins, G. A. secretary, Mrs. H. C. Montgomery, Sun Beam secretary, Mrs. Earle Pittman.

Missions study, Mrs. Frank Arrendale, stewardship, Mrs. Wilson Guest, prayer, Mrs. Ronald Pruet, benevolence, Mrs. R. F. Webb. Circle chairmen: Mmes. A. W. Warford, Jimmie Jones, Wilson Guest, W. A. Reuser and Twyman Hale. The WMU cooperates and supports the entire church program. Missions, youth, community missions, benevolence, and all phases of the denominational work. The women have through the years led in Christian education, Home and Foreign Missions, and local benevolences, as well as supporting the Orphanages of the state. Mrs. Elder and her women are to be highly commended upon their fine and loyal work to both the church and the community.

VISITING FROM CALIFORNIA  
Mr. and Mrs. Charles Wright of Oakland, Calif. have been visiting Mrs. Lottie Davenport.

### S. S. Class Social Held In Hardy Home

The home of Mr. and Mrs. Kenneth Hardy was the scene of a Christmas social entertaining the members and their husbands of the Hope, Faith and Charity Sunday school class of the Eastside Baptist Chapel Friday night.

The entertainment rooms were decorated in the Christmas motif. A blue and silver centerpiece was used on the serving table. Games were played and pie and coffee were served to the following: Mr. and Mrs. L. D. Summers, Mr. and Mrs. Joe Harper, Mr. and Mrs. Finis Wheat, Mrs. Maurine

### Local Telephone Operators Have Xmas Party

The Ranger telephone operators held their annual Christmas party Tuesday evening at the Bell Telephone office. The group exchanged gifts which were placed under a beautifully decorated tree. Refreshments were served.

Bratton, Mrs. Wanda Sugg, Mr. and Mrs. C. A. Strong, and the host and hostess.

### Women's Activities

Dec. 20  
The Love Class of the First Baptist Church will have a Christmas Social Thursday evening at 7:30 in the home of Mrs. F. R. King, 803 Blundell. Each one is to bring a gift not to exceed \$1.00, for gift exchange and a can of milk for a needy family.

Dec. 20  
The Love Sunday school class of the First Baptist Church will meet in the home of Mrs. F. R. King, 803 Blundell, Thursday, 7:30 p. m., for a Christmas social. Each one is to bring a gift not to exceed \$1 and food for a needy family.

VISITS BROTHER  
Mrs. Matt Robinson, Mr. and Mrs. Ben Patterson and Mr. and Mrs. N. Sudderth visited their brother J. E. Patterson who is seriously ill in the Hendrick Memorial hospital, Sunday.

## Last Minute Gift Suggestions from PULLEY'S

FOR HER

- KEEPSAKE DIAMOND RINGS
- WATCHES
- BIRTHSTONE RINGS
- ELGIN AMERICAN COMPACTS
- COSTUME JEWELRY
- IMPORTED CUT GLASS SILVERWARE
- CLOCKS
- JEWELRY BOXES
- DELTA PEARLS
- RONSON CIGARETTE LIGHTERS
- WATCH BANDS
- WEDDING RINGS

FOR HIM

- WATCHES
- Automatic, Waterproof, Shockproof RINGS
- BILLFOLDS
- KEY CHAINS
- SPEIDEL KEY MASTERS
- CUFF LINKS AND TIE SLIDES
- RONSON CIGARETTE LIGHTERS
- STERLING BELT BUCKLE SETS
- JEWELRY CASES
- GOLD KNIVES
- PHOTO IDENTIFICATION BRACELETS
- WATCH BANDS
- WEDDING RINGS

And Many Other Gifts

### D. E. PULLEY

Diamonds - Watches - Jewelry - Silverware  
Ranger, Texas

## Dearborn

WORLD'S FINEST SAFEST GAS HEATER

Safe... because it has Dearborn's famous Cool Safety Cabinet... the cabinet that stays touch-cool. Can't harm little fingers or scorch rugs, walls, drapes or furniture. Heat circulates from front of heater... no smudged walls or soiled ceiling.

And Dearborn gives you more heating ability than you ever dreamed a heater could give. All this and economy, too! That's why we say, for the finest, safest gas heater...

*Dollar-wise... it's Dearborn*

### ARTERBURN'S

HARDWARE - FURNITURE  
Phone 945

## arrived just in time for our BIG WESTINGHOUSE

### Laundromats

at this very special price

**\$199.95** with famous New Way To Wash

with YOUR OLD WASHER

- ★ Complete agitation—each piece is lifted, turned, flushed 50 times a minute!
- ★ Action so thorough it uses 1/2 the detergent, up to 10 gallons less water.
- ★ Safe action for all kinds of clothes—no harsh center post agitators or speeds to change!
- ★ Lift-away rinsing—never strains dirty water back through clothes!
- ★ Rinsing so thorough it leaves even the washer clean!

SAVE ON WESTINGHOUSE LAUNDRY TWINS.  
Regularly 439.90 NOW! 369.95

**WATCH WESTINGHOUSE!**  
WHERE BIG THINGS ARE HAPPENING FOR YOU!

### RANGER FURNITURE EXCHANGE

123 N. Rusk RANGER Phone 242

## O. K. GROCERY MARKET

501 W. Main I. G. A. Phone 214

WISHES YOU A MERRY CHRISTMAS

Friday - Saturday - Monday

### Folger's Coffee

Reg. or Drip 1-Lb. Can **98c**

DEL MONTE—2 1/2 Can	<b>Spiced Peaches . . . . . 45c</b>	DEL MONTE—303 Can	<b>Cut Green Beans . . . . . 23c</b>
DEL MONTE—2 1/2 Can	<b>Fruit Cocktail . . . . . 39c</b>	DEL MONTE—303 Can	<b>Spinach . . . . . 15c</b>
DEL MONTE—Halves—2 1/2 Can	<b>Peaches . . . . . 33c</b>	DEL MONTE—12-Oz. Can	<b>Vac-Pack Corn . . . . . 17c</b>
DEL MONTE—2 1/2 Can	<b>Pears . . . . . 45c</b>	DEL MONTE—303 Can	<b>English Peas . . . . . 19c</b>

### Ready to Eat Hams

8 to 12-Lb. Avg. Whole **59c** Lb.

OCEAN SPRAY—300 Can	<b>Cranberries . . . . . 23c</b>	DEL MONTE MARY WASHINGTON—303 Can	<b>Asparagus . . . . . 43c</b>
NONE SUCH—Pkg.	<b>Mince Meat . . . . . 28c</b>	MONARCH—No. 1 Tall Can	<b>Jumbo Ripe Olives . . . 43c</b>
BAKER'S SOUTHERN STYLE—Can	<b>Coconut . . . . . 18c</b>	MONARCH—Jar	<b>Pic-L-Joy . . . . . 49c</b>

### Fancy Small Hens

Lb. **29c**

FRESH PACK—Lb. Box	<b>Strawberries . . . . . 39c</b>	STOKLEY—Pkg.	<b>Cauliflower . . . . . 29c</b>
STOKLEY—Pkg.	<b>English Peas . . . . . 23c</b>	STOKLEY—Pkg.	<b>Brussels Sprouts . . . . 35c</b>
STOKLEY—Pkg.	<b>Broccoli . . . . . 28c</b>	CAN	<b>Redi-Whip . . . . . 53c</b>

### Fancy Full RUBY RED GRAPEFRUIT

of Juice **5 For 29c**

EATMORE FRESH—1-Lb. Box	<b>Cranberries . . . . . 19c</b>	PASCAL EXTRA LARGE—Stalk	<b>Fancy Celery . . . . . 23c</b>
-------------------------	----------------------------------	--------------------------	-----------------------------------

### TANGERINES

**10 Lb. cello Bag 39c**

### RUSSET POTATOES

**10 Lb. cello Bag 39c**

TEXAS SWEET	<b>ORANGES 5 Lb. cello Bag 33c</b>	TEXAS	<b>GRAPEFRUIT 5 Lb. Bag 33c</b>
DELICIOUS	<b>APPLES 3 Lb. cello Bag 49c</b>	WINESAP	<b>APPLES 3 Lb. cello Bag 49c</b>

### BAKE RITE SHORTENIG

**3 Lb. Can 75c**

SEMI-BONELESS	<b>PORK ROAST . . . . lb. 39c</b>	SELECTED	<b>CLUB STEAK . . . . lb. 59c</b>
LARGE BOTTLE	<b>DR. PEPPER . . . . Plus Deposit . . . . 12 Bottles 37c</b>	SELECTED	<b>CHUCK ROAST . . lb. 39c</b>
			<b>FRESH HAM</b>

## hOLiDay Gifts FOR THE U.S. MALE by Pioneer.

*The mark of a man.*

- (a) "Diplomat" Buffalo Call wallet—removable pass case, secret pocket. 5.00\*
- (b) "Fashion League" Buffalo Call braces—smart striped elastic web. 2.50
- (c) Buffalo Call Money Fold—slim, trim . . . and very practical. 2.50\*
- (d) (top) "Constellation" cuff links of heavy sterling. 5.00\* (bottom) "Novas" cuff links, with Hematite stones. 2.50\*

Give Him A GIFT CERTIFICATE

### THE GLOBE CLOTHIERS

—New Charge Accounts Invited—  
218 Main RANGER Phone 539



# The Ranger Times

ELM STREET—RANGER, TEXAS ESTABLISHED JUNE 1, 1919  
 Retired as second class matter at the postoffice at Ranger, Texas under the act of Congress of March 3, 1917  
 TIMES PUBLISHING COMPANY  
 Published Tri-Weekly—Tuesdays - Thursdays - Sundays  
 JOE DENNIS and ONOUS DICK, Publishers  
 NORMAN WRIGHT, Editor

One week by carrier in city .15  
 One month by carrier in city .45  
 One year by mail in County 3.50  
 One year by mail in State 4.75  
 One year by mail out of State 4.95

NOTICE TO PUBLIC—Any erroneous reflection upon the character, standing or reputation of any person, firm or corporation which may appear in the columns of this newspaper will be gladly corrected upon being brought to the attention of the publishers.

## CLASSIFIED

All Classified Ads Must Be Paid For In Advance.

### FOR RENT -

TRANSIENT ROOMS and 3 and 4 room apartments. Ghoulson Hotel. Phone 9506.

FOR RENT: 4 room modern house. Call 429-W.

FOR RENT: Modern furnished house, 705 Blundell.

### MISC. FOR SALE -

TYPEWRITER Ribbon worn thin? We carry a complete stock of ribbons, \$1.25. Ranger Times. Phone 224.

BUSTITCH Desk Model Stapler. Handy, durable and compact. Only \$2.85. Ranger Times. Phone 224.

WHY DELAY? Use our convenient terms, repair or modernize now, pay later. Burton-Lingo Co. DANDY LETTER FILE. Handy for keeping track of daily correspondence. \$1.85. Ranger Times. Phone 224.

OFFICE Waste Baskets. \$1.85. Ranger Times. Phone 224.

FOR SALE: Bedroom suite, consisting of double bed, mattress and springs, vanity and bench. Good condition. Also Duncan Fyfe mahogany coffee table. Phone 566.

### HELP WANTED Female -

**EXPERIENCED WAITRESS WANTED**  
 Apply in person  
**White Elephant Restaurant**  
 Eastland

### AUTOS FOR SALE

FOR SALE: 1953 Dodge pickup. Commercial State Bank.

### SPECIAL NOTICES

FOR YOUR Lazers cosmetics call 325-W. Mrs. O. M. Franklin.

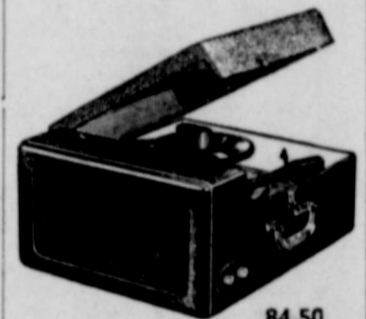
### LOST & FOUND -

LOST: Calf. Between stock yard and Frozen Food Center. If seen, contact Morris Newnam or call 426.

CALL 224 FOR CLASSIFIED ADS

### COLD SUFFERERS

Get STANBACK, tablets or powders, for relief of COLD DISCOMFORTS. The STANBACK prescription type formula is a combination of pain relieving ingredients that work together for FASTER RELIEF of HEADACHE, NEURALGIA and ACHING MUSCLES due to colds. STANBACK also REDUCES FEVER. SNAP BACK with STANBACK.



84.50  
**RCA Victor Portable "Vies-trode" Automatic 3-Speed Phonograph.** Twin speaker "Golden Throat" tone. Plays 45, 33 1/3 or 78 RPM records automatically! Plugs into AC outlet. Luggage-style simulated leather case. Two-tone gray with charcoal and coral colored grille. Model 6E55.

### ARTERBURN'S

HARDWARE - FURNITURE  
 Phone 945

## INCOME TAX AIDS

One of a Series of 12 Articles Prepared by The Internal Revenue Service

This is the third in a series of 12 articles prepared by the Internal Revenue Service to assist taxpayers in avoiding errors that cause "Pre-Refund Audits." We explained in the first articles in this series that the law requires an audit of tax returns containing questionable items before the taxpayer receives his refund. Approximately 60 per cent of our taxpayers receive refunds. Every year thousands of these taxpayers make returns containing questionable items. The "Pre-Refund Audits" on these returns delay the refund check. Some of the "Pre-Refund Audits" are not made until September 30th, the deadline date. Taxpayers selected for "Pre-Refund Audits" are notified at the time their return is selected.

Many returns are audited because of errors made in computing sick pay exclusions from income. Here are the 12 most common reasons for adjusting the sick pay exclusions claimed by taxpayers:

- (1) The amounts paid as Medical Expenses do not constitute "sick pay" and do not constitute an exclusion.
- (2) There is no exclusion as "sick pay" for amounts of pay which a taxpayer lost because of absence due to sickness or injury.
- (3) Gifts or gratuities do not constitute amounts paid under a plan for wage continuation and are not excludable as sick pay.
- (4) Amounts which are not paid pursuant to a wage continuation plan are not "sick pay" within the meaning of that term as used in the Internal Revenue Code.
- (5) Absence due to pregnancy is not considered absence due to sickness, therefore, the wages paid to a taxpayer for the period she was absent from work due to pregnancy are not excludable as "sick pay."
- (6) Retirement pay does not constitute wages and is not excludable as "sick pay."
- (7) Wages attributable to the first seven days of absence in each period of absence are not included in the amount excludable unless:
  - a. The taxpayer was hospitalized as a bed patient during the period of absence, or
  - b. The absence was attributable to personal injury.
- (8) In the case where an employee is recovering and is returning to work for one-half days over a period of time, the amounts attributable to the one-half days of absence are not excludable as "sick pay."
- (9) In no case may the maximum amount of the exclusion exceed a weekly rate of \$100. When the weekly rate of pay exceeds \$100, the special rule for determining the amount of the exclusion for each week or part of a week is:
  - a. The amount received
  - b. Multiply (a) by 100
  - c. Divide the result at (b) by the weekly rate of pay. This is the exclusion.
- (10) The amount of a taxpayer's "sick pay" was not included in the amount reported as wages. Since he did not include the "sick pay" in his gross income, the al-

lowance of a "sick pay" exclusion would, in effect, allow the "sick pay" exclusion two times.

(11) There is no exclusion for pay received when a taxpayer is absent from work due to injury or sickness of someone else even though the sick or injured person is a member of his immediate family.

(12) If a taxpayer were on vacation and would not have been expected to work, he is not considered to have been absent from work due to sickness or injury. Many taxpayers had their returns selected for "Pre-Refund Audit" last year because their returns contained a questionable sick pay exclusion item. It pays to carefully study your tax instructions. If you need more information after you read the tax instructions, you may obtain a very helpful booklet entitled "Your Federal Income Tax—1956" from the U. S. Government Printing Office for 30c in coin.

We will present the most common errors on contributions in the next article in this series.

### CHEST SHORT-

(Continued from Page 1)

the year the welfare organization is being called upon heavily for help, and they are now engaged in buying and putting up many packages of food to be distributed to the needy people of our town and community. All this money is being spent right here in Ranger for Ranger people, and the Chest must have every penny of its goal, one way or the other.

It is pointed out that money given the Chest now, or pledged to it before January 1st, is deductible from 1956 income. One thing is sure and certain, the money must be raised, and unless it is Community Chest workers will be canvassing the streets way into next January trying to get the remaining \$1,826.60 together.

Every other town in the county has long since gone over the top in their Community Chest or United Fund drives, and Ranger does not want it said of this city that it failed to meet its obligation in this matter. Nothing worse could be imagined than having to poll the town every so often all next year trying to raise money for some participant in the Community Chest who has gone broke because his quota was not reached.

It is asked that every worker turn in what he has now to Mrs. Angus, to see how far the shortage can be reduced, and then to hit the ball hard from now until Dec. 31.

**WEEKEND GUESTS**  
 Mr. and Mrs. T. K. Hardy of Fort Worth visited Mr. and Mrs. Kenneth Hardy over the weekend.

**VISITS GRANDPARENTS**  
 Kinney Rhodes spent the week with his grandparents, Mr. and Mrs. D. E. Puley and celebrated Christmas a little early so he could be with them here.

### What's Cooking-

(Continued from Page 1)

chine which shredded it, and from this the shreds and chips were fed into a grinding machine which reduced them to a light, powdery sawdust which he called "mesquite meal."

Dolin then got up a cattle feed mix for his herd which he prepared by using 1,000 pounds of mesquite meal, 500 pounds of molasses, 200 pounds of grain and 500 pounds of cotton seed meal. Not only did he save his breeding herd, but he has been marketing 4,000 mesquite-fattened steers each year for the past four years.

This enterprising Texas rancher says his cattle thrive and fatten on the mesquite diet and bring top prices at San Antonio where he markets them.

Not only has he made a big cut in his feed bill . . . for he can prepare mesquite for \$5 per ton . . . but he is utilizing an otherwise useless product that has heretofore been considered fit only for roosting places for locusts.

Now don't get us talking about a mesquite mill for Ranger. But if it looks like somebody around these parts is likely to come up with one, let's make sure he comes up with it right here in our own home town, and not somewhere else nearby.

### Christmas Tea Held In Pruet Home

The annual Christmas tea of the 1947 Club was held December 11th in the home of Mrs. Ronald Pruet with Mrs. James Townzen and Mrs. Sam Aills as co-hostesses.

Mrs. Charles Milliken gave a reading, "The Other Wise Man?" The entertainment rooms were decorated with artistic Christmas arrangements and a lovely tree, trimmed in silver balls and gold and silver birds. The coffee table was centered with apothecary scales with fir branches covered in snow drops with a snow ball candle surrounded with holly.

The tea table was laid with a white net cloth with gathered skirt decorated with white styrofoam birds, trimmed in green and gold. The table was centered with brass candelabra holding white tapers, with a background of white sea fern. Glistening magnolia pods and curly beans completed the arrangement. Appointments were of brass.

Guests attending were: Mmes. Roscoe Hopper, A. W. Brazda, James Ratliff, A. P. Thomas, Jr., Morris Newnam and Jim Eaton. Members attending were: Mmes. Bill Anderson, Morris Campbell,

### County Gets Field Operation

Sam Eakin of Rising Star staked location for a new regular field project in Eastland County three and a half miles northwest of Rising Star.

It will be No. 4 Pauline Roberds, spotting 150 feet from the north and west lines of the southwest quarter of Section 26, Block 3, ETRR Survey. Proposed depth is 1,150 feet with rotary.

Plugged at 2,955 feet was Magnolia Petroleum Co. of Abilene No. 1 Lee Lieske, project six miles south of Cisco in the Joe Kiel Field. It is in Section 81, Block 3, H&TC Survey.

**ATTEND THE CHURCH OF YOUR CHOICE SUNDAY**

### Our New Schedule of Prices

. . . effective January 1, 1957 are as follows:  
 (1) Certificate \$5.00. (2) Pages up to 10, \$1.00 per page.  
 (3) Pages from 10 up to 25, \$1.50 per page. (4) Pages from 25 up to 100, \$1.25 per page. (5) Pages over 100, \$1.00 per page.

These increases are unavoidable brought on and aggravated by high State and Federal taxes. You can cut down on future costs by keeping your abstracts in a safe place. Don't lose your abstracts or loan them to others without a cash replacement deposit.

**EARL BENDER & COMPANY**  
 Eastland (Abstracting since 1923) Texas

### HOSPITAL NEWS



Mrs. R. E. Harrell and the baby of Mr. and Mrs. J. W. Vinson are new patients in the West Texas Clinic.

New patients in the Ranger General Hospital are Mrs. R. V. Galloway, Ranger, medical; Mrs. Fred Lamb, Ranger, medical; W. B. Fulbright, Mingsu, medical; Linda Frank, Eastland, medical; Mrs. R. D. Swanner, Gordon, medical.

### TRADE WITH YOUR HOMETOWN MERCHANTS

**RANGER DRIVE IN**  
 Adults 40c - Kiddies Free Last Times Thursday

TO VISIT IN N.M.  
 Mrs. N. J. Novakovich will leave Dec. 19 for a trip to Lubbock and Albuquerque, New Mexico where she will visit her son, Iro Novakovich. She will also visit in Santa Fe.

CALL 224 FOR CLASSIFIED ADS

### Stop pain of piles today at home - or money back!

A doctor's tests, amazing new Stainless Pazo® instantly relieved piles' torture! Gave internal and external relief! 6 medically-proved ingredients including Triolyte, relieve pain, itching instantly! Reduce swelling. Promote healing. You sit, walk in comfort! Only stainless pile remedy. Stainless Pazo®. Superstudies of Ointment at drugstore. \*Trademark of Grove Laboratories, Inc. Ointment and Suppositories.

Friday and Saturday

### MAJESTIC

**MOLE PEOPLE**  
 JOHN AGAR - CYNTHIA PATRICK

**CURUCU BEAST OF THE AMAZON**  
 JOHN BROMFIELD - BEVERLY GARLAND

### Like anything else, Automobile Insurance should properly fit the needs of the owner.



**MAKE SURE IT FITS**

**C. E. MAY**  
 INSURANCE - REAL ESTATE

214 Main Phone 418

# NAPKINS...

from the HOUSE OF PAPER  
 Los Angeles, California

We take pleasure in announcing this new line of merchandise in addition to our stock of office supplies.

We have in stock crepe napkins in the following colors:

- Green
- Black
- Grey
- Yellow and Brown
- Peach
- Aqua
- Blue and Dark Blue
- Pink
- White

of course we imprint names if desired

## THE RANGER TIMES

MAKE IT A "LOCAL CALL" FOR YOUR SHOPPING NEEDS — "LONG DISTANCE" CAN BE EXPENSIVE...

Shop in Ranger, Today And Every Day!

Your local calls to your community merchants 'ring the bell' for friendly, courteous helpfulness. And, there's always a 'good connection' for merchandise that is outstanding in value, quality and style. You get the "right number" for extra savings when you avoid unnecessary travel, ease of shopping, and the benefits of the many local causes that hometown merchants are called upon to support.

**SHOP WITH YOUR RANGER MERCHANTS**



### Joe H. Adams Is Honored At Magnolia Christmas Dinner

Employees of the Magnolia Petroleum Company, producing department, met at Olden Saturday

for a Christmas dinner in honor of the retirement of their friend and fellow employee, Joe H. (Slim) Adams of Desdemona. His years

of service ranged from January 29, 1923 to December 31, 1956, a total of 33 years, 11 months and three working days.

Christmas music filled the air in the gaily decorated room as old friends gathered together again. Many new faces were welcomed also.

Carl Crone introduced Donald

E. Johnson, safety supervisor of Wichita Falls, who ably served as master of ceremonies for the evening. The invocation was given by John R. Day.

The group had as their guests former employees who had previously retired; Mr. and Mrs. Joe Lawrence of Olden, Mr. and Mrs. James Ward and Mr. and Mrs. W. W. Carney of Eastland and Mrs. De Alva Edwards of Olden.

The menu consisted of turkey and dressing, giblet gravy, green beans, creamed potatoes, cranberry sauce, celery sticks, hot rolls with butter, apple pie a la mode and coffee. This food prepared by Miss Charles Langston and Nina Lockhart, was highly commended and ultimately enjoyed by all.

Retirement gifts presented to the honoree and his wife from the women were a Sunbeam electric shaver, a Hillfold and a square of white emeralds that was worn by Mrs. Adams. For these they expressed their sincere appreciation.

E. B. Cantrell of Dallas, son-in-law of the honoree, took pictures of this momentous occasion as an additional gift to the honoree.

A program of music consisted of a rendition of "Rustic Dance" and "Blue Danube" at the piano by Miss Sharon Lawrence and the singing of "Jingle Bells" by a group led by Miss Darla Cooper and played by Miss Betty Baker.

Those registered in the guest book were as follows: Mr. and Mrs. W. C. Crone of Olden; Mr. and Mrs. R. O. Crowder and children of Olden; Mr. and Mrs. J. H. Adams and son of Desdemona; Mr. and Mrs. E. B. Cantrell, Jr. of Dallas; Mr. and Mrs. Don Johnson of Wichita Falls.

Mr. and Mrs. Joe Lawrence, Mrs. De Alva Edwards, Mr. and Mrs. Homer Lawrence and daughter and Mr. and Mrs. R. M. Covington and family of Olden; Mr. and Mrs. E. J. Norville, Mr. and Mrs. Dale Jones and family and Mr. and Mrs. Joe C. Langdon all of Breckenridge; Mr. and Mrs. A. E. Baker and Mr. and Mrs. Floyd Todd of Albany; Mr. and Mrs. Joe R. Day of Coleman; Mr. and Mrs. E. L. Huddleston and son of Anson.

Mr. and Mrs. James Ward, Mr. and Mrs. W. W. Carney, Mr. and

Mrs. Lynn Adams and daughters, and Mr. and Mrs. A. G. Crosby and daughter all of Eastland; Mr. and Mrs. Paul Price and children of Cisco; Bill G. Newman and Lettye J. Baker of Abilene; and Mr. and Mrs. Grey Cook and daughter of O'Donnell, guests of Mr. and Mrs. Huddleston.

The dinner party ended with Johnson wishing everyone a merry Christmas and a prosperous New Year.

### Olden School To Sponsor Turkey Supper Thursday

Olden High School students wish to invite the patrons of Eastland, Ranger and other surrounding communities to a turkey supper in the school lunchroom, in the main building, Thursday at 5:15 p.m.

The menu will consist of turkey, dressing, green beans, salad, cranberry sauce, pie and the choice of tea, coffee or milk. Admission will be a small plate for children under school age, 39 cents, high school students, 50 cents and adults, 75 cents. Proceeds from the supper will go to the school's athletic fund.

#### GUESTS FOR CHRISTMAS

Mrs. Lessie Jones Sanders is expecting for Christmas Day her son, Theodate Jones from Venezuela and her daughter, Dianne Sanders from Los Angeles, Calif.

TRADE WITH YOUR HOMETOWN MERCHANTS

#### READ THE CLASSIFIEDS

### SORE PILES

Don't let sore, itchy, painful hemorrhoids give you a bad Christmas. Use a special cream that gives you instant relief from pain, burning and itching. The cream is safe, effective and easy to use. It is money back guaranteed. Complete instructions only \$1.00 at drug stores. Try it today for better sleep tonight and a brighter tomorrow.

### BARBER SHOP

IT PAYS to LOOK WELL

Courteous Service  
**TONY'S BARBER SHOP**  
223 1/2 Main - Phone 108

**"Best Family Gift I ever thought of"**



**AN Evinrude for fun together**

Santa is in sight. Here's the gift that gives with the promise of fun-filled holidays to come. . . . years of them . . . family boating with a brand new '57 Evinrude. Drop in and find out how easily it can be arranged. Delivery for Christmas, or an Evinrude Gift Certificate to hang on the tree. A complete line of great new '57 Evinrudes to choose from. Call on us!

**L & J Supply Co.**  
403 Main Phone 202

**Give your "Mrs." a MAYTAG!**

## COLD WATER WASH AND RINSE

...now yours automatically!

**MAYTAG All-Fabric AUTOMATIC**



Yes, cold water! All modern fabrics love it . . . some can't be washed safely without it . . . saves ironing, too!

That's because those wonderful new man-made fabrics are heat-sensitive. But you don't need to wash them by hand! For now you can do them automatically, and safely, in the new MAYTAG All-Fabric Automatic, just by pressing the "cold" water button.

Of course you have a choice of hot or warm water, too, for regular fabrics.

**JOHNSON APPLIANCE CO.**  
305 Main Street RANGER Phone 46

**PUT PHEASANTS**  
On Your Christmas Shopping List . . . PHONE 211.  
**B. C. FURKLE**

**SINCE 1884**



... it has been our privilege to render a service to this community as monument builders.

**ALEX RAWLINS & SONS**  
Weatherford Phone 4-2726 Texas



### Brotherhood President Active In Church Work

J. B. (Joe) Houghton is president of the Brotherhood of the First Baptist Church. Active in all phases of the program, and regular in attendance. Joe is secretary-treasurer of the Cisco Baptist Brotherhood.

Mr. Houghton has filled the pulpits of some dozen churches as a "Lay-Speaker" and has a wonderful message. He has lived in Ranger some thirty years.

The Brotherhood sponsors a Boy Scout troop and both Junior and Intermediate R. A.'s.

The other officers are: vice presidents, program, Albert Koenig, activities, O. C. Warden, membership, Geo. Robinson, secretary-treasurer, Dwaine Dennis, benevolence, G. C. McGowan, chorister, J. C. Price, pianist, Wyoma Price, social chairman, J. W. Warren, youth chairman, Jesse W. White.

The Brotherhood is divided into four groups, of 25 men with a captain over each group: Dr. Marshall Jolly, R. V. Robinson, Harmon Shockey, and L. L. Bruce.

The meeting time is the first Monday in each month.

### 'CARE' Seeks Contributions For Hungary

NEW YORK — With its own representative inside Hungary to supervise distributions, CARE has launched a \$2,000,000 emergency relief campaign to aid both the people of Hungary and the refugees still fleeing to Austria.

A five-man CARE team of Americans is deployed between Budapest, Vienna and Belgrade, to keep food, blanket, clothing and other supplies flowing. Richard W. Reuter, executive director, announced at CARE headquarters, 660 First Ave., New York City. Spot purchases to meet most critical needs are supplementing standard CARE packages transferred from the agency's European stockpiles. Additional packages are now being shipped from CARE's stocks in the United States.

READ THE CLASSIFIEDS



**NOW OPEN**

# Proudest title in the world!

## housewife



**A tribute to the American housewife.**

"Just a housewife" is a term we hear too often. That's about like saying "just a doctor" or "just a company president." The job you're doing as a housewife is one of the most important anybody is doing in America today.

**Who is mainly responsible for your family's health?**  
It's you—the housewife. And our fine national health record testifies to the good job you're doing on this score.

**Who sets your family's standing in your community?**  
You do. You not only create an attractive home for your family and plan the entertaining, but also make most of the outside social contacts in church, club and community. How far would the charitable operations of these groups get without your help?

**And your family's financial standing depends as much upon your ability to manage money as it does upon your husband's ability to earn it.** Your family savings program is as much your responsibility as it is your husband's.

That's why so many women today are urging their husbands to invest in U. S. Series E Savings Bonds. They know that the principal invested in Bonds is safe—not subject to market fluctuations. And the returns are sure—an average 3% interest, compounded semi-annually when held to maturity (9 years and 8 months). With the automatic extension privilege, Bonds will continue to pay that same high interest for 10 years more. That means \$1.80 in returns for every \$1.00 invested.

**Remember, you can help your family win financial security tomorrow—by encouraging your husband to invest regularly in Savings Bonds today.**

And the next time you hear someone say "just a housewife," stick up your chin and speak up for the job you're doing. Where would your family or your country be without you?

**For the big things in your life, be ready with U. S. Savings Bonds**

## NEW WESTINGHOUSE TELEVISION



costs less to buy . . . less to operate . . . has more exclusive features-style-value

See the new Westinghouse "Presidential" line and learn how NEW Television can be. See distinguished SCULPTURED SETTING; simplified TIP-TOP-FRONT-TUNING; PRECISION-DRUM Picture-Perfection.

**ONLY \$189.95**

THE ADAMS: 21-inch Table Model with Best-by-Eye Aluminized Picture Tube; exclusive extra-reliable Silver Safeguard Chassis; Balanced-Tone FM Sound System. Mahogany finish. \*Overall tube diagonal measurement. (Screen base optional)

### Ranger Furniture Exchange

123 N. Rusk RANGER Phone 242

This B. & C. Government does not pay for this advertising. The Treasury Department thanks, for their patriotic donation, the Advertising Council and



# WORTH FOOD MART

PRICES EFFECTIVE THURSDAY, FRIDAY, SATURDAY & MONDAY (Open 'til 6:00 p.m. Christmas Eve)  
 ALL WORTH FOOD MARTS WILL BE CLOSED ALL DAY CHRISTMAS DAY



"S & H"  
 Green  
 Stamps  
 For Extra  
 Savings!

## TURKEYS

FANCY TOMS  
 Sunco Top Quality,  
 Broad-Breast, Young  
 14 to 22-lb. Avg. .... Lb.

**39¢**

TURKEY HENS SUNCO FANCY Broad-Breasted 8 to 14-Lb. Avg. .... Lb. **43c**

CHICKEN HENS PLUMP, TENDER, 3 to 5-Lb. Avg. .... Lb. **39c**

LONG ISLAND TABLE-READY  
 DUCKLINGS .... Lb. **59¢**



"High as the Sun  
 In Quality"

## BUYS for CHRISTMAS!

Holiday Frozen Foods!

### FLOUR

GOLD MEDAL 5 -Lb Bag **45¢**

### PUMPKIN

LIBBY or DEL MONTE 2 No. 303 Cans **25¢**

PEARS Rosedale Bartlett 3 No. 2 1/2 Cans **\$1**

Pineapple Del Monte Chunks 6 No. 211 Cans **\$1**

Bake-Rite Shortening 3 -Lb. Can **75¢**

Tomato Soup Campbell's 2 No. 1 Cans **23c** Stuffed Olives Towle Thrown 7 1/2-Oz. Jar **49c**  
 Ripe Olives Libby's Cadet Size, No. 1 Can **29c** Pickles Tempting Party Chip 16-Oz. Jar **39c**

Miracle Whip Salad Dressing Quart **49¢**

Golden Corn Del Monte Cream Style 2 No. 303 Cans **25¢**

Pitted Dates Bardo 1-Lb. Pkg. **33c** Seedless Raisins Del Monte, 15-Oz. Pkg. **21c**  
 Zante Currants Sun Maid 11-Oz. Pkg. **21c** Fruit Cake Holiday 3-Lb. Tin **\$1.99**

Sweet Potatoes Trappay's Whole La. No. 3 Sqt. Can **25¢**

Green Beans Del Monte Whole No. 303 Can **25¢**

Marshmallows Angel White, 10-Oz. Pkg. **21c** Ribbon Mix Christmas Candy, 12-Oz. Pkg. **29c**  
 Christmas Candy Old Fashion Mix 14-Oz. Pkg. **29c** Gloria Mix Christmas Candy, 24-Oz. Pkg. **69c**

Spiced Peaches Pratt-Low Whole No. 2 1/2 Can **25¢**

Fruit Cocktail Del Monte 5 No. 303 Cans **\$1**

Early June Peas April Showers No. 303 Can **15¢**

### PUMPKIN PIES

24-Oz. Pkg. **39¢**

WHOLE BAKED YAMS Trappay's La. 22-Oz. Pkg. **43¢**

FROZEN-RITE ROLLS Parker House or Colver Leaf 24-Ct. Pkg. **39¢**

CHEESE CAKE Foremost Pineapple, Strawberry or Vanilla 8-Oz. Pkg. **43¢**

FROZEN PEAS Libby's 2 10-Oz. Pkgs. **31¢**

CUT CORN Libby's Frozen 2 10-Oz. Pkgs. **35¢**

GRADE "A" LARGE EGGS DIXIE WHITE Doz. **59¢**

BALLARD OVEN-READY BISCUITS 8-Oz. Can **10¢**

CAPONETTES Succulent Flavor .... Lb. **49**

SLICED BACON Swift's 1-Lb. **43**  
 Oriole Pkg.

COOKED HAMS Rath Blackhawk 3 3/4-Lb. Can **\$3**

HAMS ARMOUR'S STAR 12 to 16 Lb. Avg. Half or Whole Lb. **49¢**

FRESH OYSTERS Eastern Standards Lb. **99**

PATTIE SAUSAGE Swift's 1-Lb. **53**  
 Brookfield Pkg.

PHILADELPHIA Cream CHEESE 2 3-Oz. Pkgs. **25**

CRACKER BARREL Kraft Mellow 13 1-3 oz. Pkg. **59¢** Kraft Sharp 13 1-3 oz. Pkg. **69**

Lower Price! Better Buy!



Washington State DELICIOUS APPLES

RED DELICIOUS, STAYMAN, WINESAP or ROME BEAUTY

Lbs. Only

**19¢**

COFFEE MARYLAND CLUE, All Grinds 1-Lb. Can **\$1.00**

TEA BAGS LIFTON'S 16-Ct. Pkg. **23**

VELVEETA Cheese Spread 2 Lb. Cn. **93**

APPLE CIDER MOTT'S 1/2-Gal. Jar **59**

GRAPE JUICE WELCH'S 24-Oz. Botl. **39**

Fresh and Festive!

TANGERINES Florida "Zipper-Skin" Lb. **15**

FLORIDA ORANGES Sweet, Juicy Lb. **10**

SEEDLESS GRAPEFRUIT Marsh, Juicy Lb. **10**

D'ANJOU PEARS Ripe, Mellow Lb. **19**

CAULIFLOWER White Snowball Lb. **15**

YELLOW ONIONS Mild Flavored Lb. **5**

RUSSET POTATOES U.S. No. 1 Select "Bakers", Lb. **7 1/2**

SWEET POTATOES East Texas Kilo-Dried Lb. **15**

Radishes or Green Onions 2 Bunch. **15**

CELERY Crisp Pascal Lb. **8¢**

SUNKIST ORANGES Juicy Navels Lb. **15¢**

CRANBERRIES Eatmore, Fresh Lb. **15¢**

NUTMEG McCormick 1 1/2-Oz. Can **29c**

CINNAMON McCormick 1 1/2-Oz. Can **14c**

BLACK PEPPER McCormick 4-Oz. Can **31c**

Poultry Seasoning McCormick 7/8-Oz. Can **15c**

Poultry Dressing Paddy's 8-Oz. Pkg. **29c**

Pie Crust Mix Betty Crocker, Pillsbury 7-Oz. Pkg. **20c**

Fruit Cake Mix Lyons 16-Oz. Pkg. **49c**



**Itching Torture PROMPTLY RELIEVED**  
 A doctor's formula—soothing anti-septic Zemo—promptly relieves the itching, burning of Skin Rash, Eczema, Psoriasis, Ringworm, and Athlete's Foot. Zemo stops scratching and soaks healing of irritated skin.

**TO MAKE A FINE PORTRAIT OF YOUR CHILD**  
 WE USE PHOTOGRAPHY AND FUN



A necessary ingredient in a truly fine child's portrait is a pleasant bit of fun to bring out the lively expression that is your child.

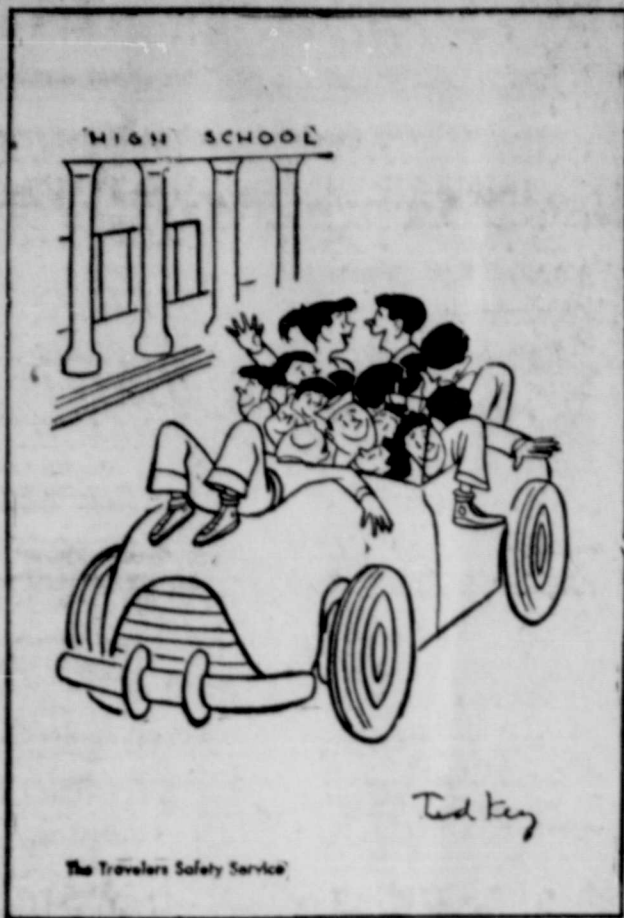
**CAPPS STUDIO**  
 104 Rusk Ranger

**TV LOG**  
 KRBC-TV

- THURSDAY**  
 3:45—Modern Romances  
 4:00—Comedy Time  
 4:30—Yesterday's Newsreels  
 4:45—Sterling  
 5:00—Kalvin Keewee  
 5:30—Laurel & Hardy  
 6:00—News  
 6:10—Football with Chuck  
 6:25—Weather  
 6:30—Dinah Shore  
 6:45—Open House  
 7:00—You Bet Your Life  
 7:30—Dragnet  
 8:00—People's Choice  
 8:30—Ford Show  
 9:00—Lux Video Theatre  
 10:00—News  
 10:10—Wrestling  
 10:40—Weather  
 10:45—Wrestling  
 11:15—Sign Off
- FRIDAY**  
 7:00—Today  
 9:00—Ding Dong School  
 9:30—The Price is Right  
 10:00—Home  
 11:00—Tic Tac Dough  
 11:30—It Could Be You  
 12:00—Daily Devotions  
 12:05—Mid-Day Theatre  
 1:30—Tenn. Ernie Show  
 2:00—Matinee Theatre  
 3:00—Queen for a Day  
 3:45—Modern Romances  
 4:00—Comedy Time  
 4:30—Yesterday's Newsreels  
 4:45—Sterling  
 5:00—Junior Auction  
 5:30—Laurel & Hardy  
 6:00—News  
 6:10—Sports  
 6:25—Weather  
 6:30—Coke Time  
 6:45—NBC News  
 7:00—Life of Riley  
 7:30—His Honor, Homer Bell  
 8:00—Story Theatre  
 8:30—The Unexpected  
 9:00—Cavalcade of Sports  
 9:45—Red Barbers Corner  
 10:00—News  
 10:10—Feature 9  
 10:40—Weather and Sports  
 10:50—Feature 9  
 11:30—Sign Off

**Fatal Fallacies**

by Ted Key



"Who's driving?"

**Protestants Appeal For Refugee Funds**

NEW YORK — Protestant and Eastern Orthodox churches in America are launching an immediate appeal for \$2,000,000 for relief for refugees from Hungary and eastern Europe.

This was announced today by Dr. R. Norris Wilson, executive director of Church World Service, National Council of Churches, inter-denominational agency of major American denominations for cooperative ministry to overseas need.

The funds sought will be used in the continuing programs of emergency relief — providing clothing, food, shelter, medical assistance, etc. and for resettlement and rehabilitation of the more than 100,000 refugees who have poured into Austria and for others fleeing from oppression behind the Iron Curtain.

The action followed a conference of denominational representatives with World Council of Churches and Church World Service officials, at which the appeal to churches was formulated.

The program of relief projected will be carried on through regular denominational representatives abroad in overseas areas affected, through the World Council of Churches and by Church World Service.

Of the total asked, approximately a million and a half dollars is being sought for direct denominational relief programs, with \$100,000 for inter-church aid and services to refugees by the World Council of Churches and \$250,000 for cooperative programs of the American denominations, carried on for them by Church World Service.

"The tragic situation resulting from the fight for liberty in Hungary is a pressing challenge to the Protestant churches in the United States," Dr. Wilson declared in announcing the appeal.

"Those fleeing from Hungary and other Eastern European countries thousands of them daily — arrive in the free world with little but the clothing they wear, often after traveling through marshes and swamps, worn and hungry.

"Many thousands of them are wholly dependent upon our aid for emergency shelter, food and clothing and for eventual resettlement and rehabilitation. This is an emergency demanding our quick and fullest help."

The scope of the full program of the churches, developed for the relief and resettlement of refugees from Hungary and eastern Europe, Dr. Wilson declared, is so large as to require generous support of all of the churches.

In addition to the large amounts of emergency relief supplies needed for immediate use, Dr. Wilson stressed the responsibility of the churches in resettling in America refugees being brought here under President Eisenhower's emergency immigration measure.

The appeal to the American churches is being made through the various denominational headquarters, each to its individual churches throughout the country, with overall assistance and cooperation of Church World Service, and the assistance — in localities — of councils of churches and ministerial associations.

Funds contributed in response to the appeal, Dr. Wilson said, should be directed through local churches to denominational headquarters or to denominational agencies for overseas relief and reconstruction designated for Hungarian and Eastern European refugees.

**KNOW YOUR BABY-SITTER**

The baby sitter! A problem this Holiday Season? Here are some helpful suggestions from the National Board of Fire Underwriters:

1. Know the sitter. Make inquiries about training and family background.
2. Employ only sitters who have a sense of responsibility and who like children.
3. Try to have the same sitter regularly, if possible, and one who lives nearby.
4. Have a preliminary "get acquainted" interview with sitter. Acquaint the sitter with children and pets, especially the watch-dog.
5. Give instructions orally and leave them in writing.
6. Show sitter all exits and how to get children out of house in case of fire.
7. Be sure sitter understands that, in the event of fire, the children should be gotten out of the house first, then the fire department called, and then the parents notified.
8. Give the sitter the telephone number of the fire department, family doctor, and place to which you (parents or adult members of the family) are going. Also, what neighbor to call in the event of any emergency.
9. If there is no phone, explain to sitter other means of notifying fire department in case of a fire.
10. Caution sitter against permitting child to play with matches, electric cords, or other electric appliances. Also, tell sitter to keep the child out of the kitchen, if possible.
11. If sitter is to bathe youngster, make certain she has had

such experience.  
 12. Leave a first aid kit with sitter and explain how to take care of simple burns, cuts, bruises.  
 13. Provide flashlights for use in case lighting should fail.  
 14. Always come home at the hour agreed upon. Telephone sitter home.  
 15. Make suitable and safe arrangements for accompanying the sitter home.

**For The PERFECT GIFT OR For Your Holiday Meals**

SEE US FOR

- All Sizes of TURKEYS
- CURED HAMS
- FRESH HAMS
- GEESE

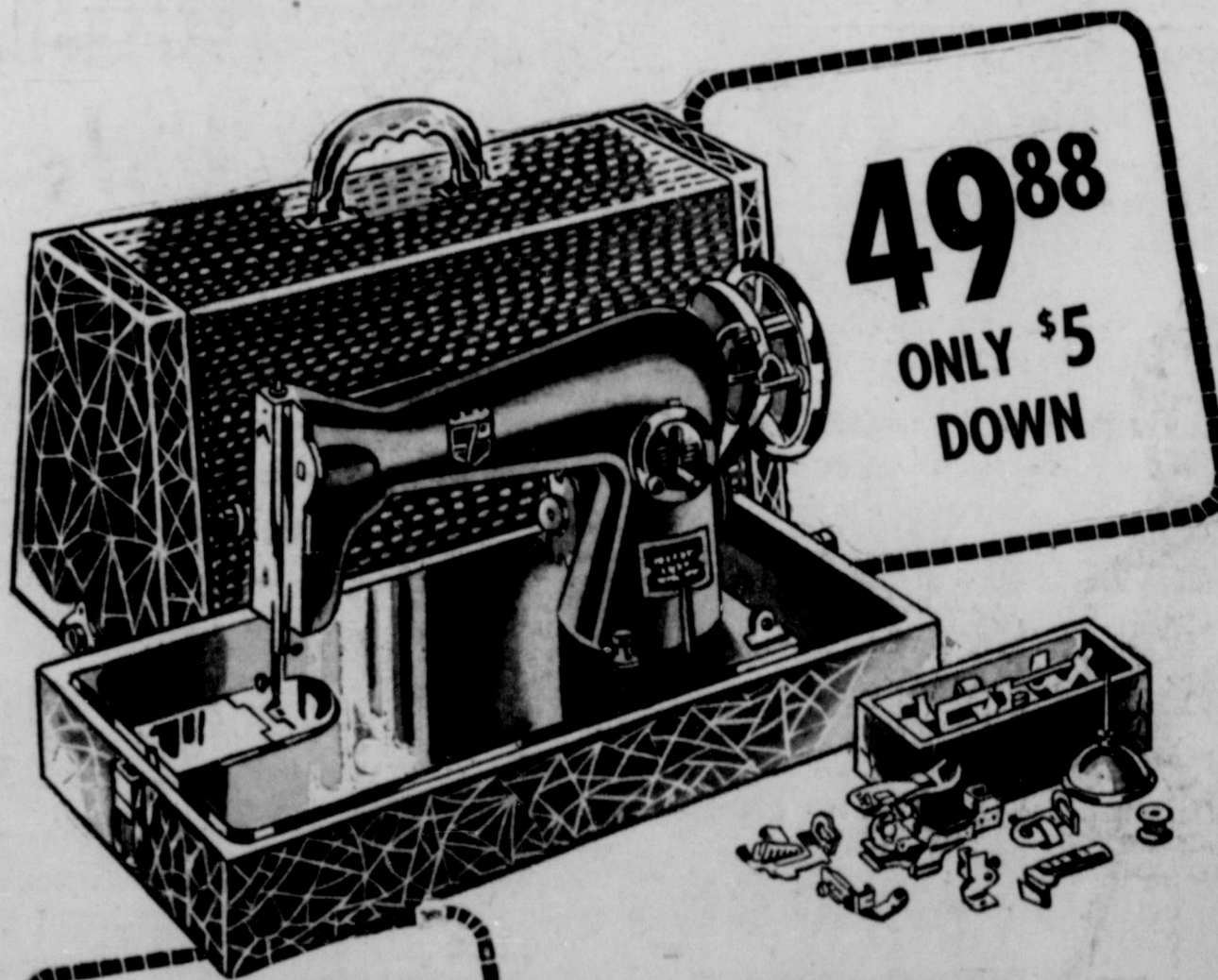
- Specialty Items
- SMOKED TURKEYS
- SMOKED SAUSAGE
- DRESSED QUAIL
- BAR-B-Q HAMS

**Ranger Frozen Food Center**

216 N. Austin Phone 426 Ranger



**PRICED \$70 LESS than comparable national brands**



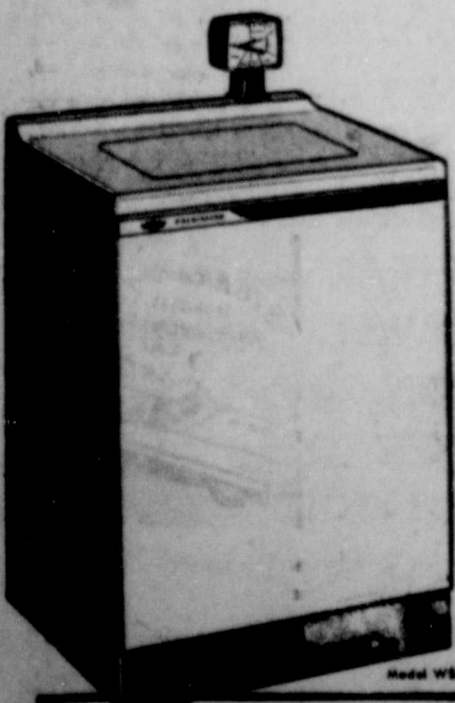
**FULL SIZE ROUND BOBBIN PORTABLE**

- Backed by Wards guarantee for 20 years against defects in workmanship and in parts.
- Complete with set of Greist attachments for hemming, binding, making buttonholes, etc.

Wards large volume buying, long range planning and factory-to-Wards-to-you policy make this low price possible. The portable sews both forward and reverse, over heavy seams and pins, has an automatic bobbin winder, darts.

Be Really Convinced! Ask for a Free 7-Day Home Trial Today! No Service Worries. Wards Expert Service is Nationwide

**LOOK! Here's how you save!**



The New Sheer Look fits in — builds in — EVERYWHERE!

**New Frigidaire Automatic Washer**

Look at the price  
 Only \$ **379.95**

after small down payment.

Just set the amazing Frigidaire Control Tower, and walk away. Your clothes will be washed cleaner, rinsed better, and spun drier than you've ever seen them before. Sensational RUB-FREE WASHING saves clothes because they're washed without wear from agitator blades. And you'll save up to 1,800 gallons of hot water a year — up to 21 boxes of detergent. Come in for an eye-opening demonstration TODAY!

TRADE WITH YOUR HOMETOWN MERCHANTS

What joy a **BULOVA** brings on Christmas

**GODDESS OF TIME**  
 17 jewels, 2 diamonds, unbreakable manspring, \$4950

**PRESIDENT**  
 17 jewels, unbreakable manspring, shock resistant, \$4950 (also available with charcoal dial)

new watch of **THIN-THIN** watch design!

**Ranger Jewelry Co.**

J. R. & Ethel Ervin  
 220 Main Phone 778

**ARTERBURN'S**  
 HARDWARE & FURNITURE

120 Main Street RAN GER Phone 945



### Quick Relief of HEADACHE

Ease PAINS OF HEADACHE, NEURALGIA, NEURITIS with STANBACK TABLETS or POWDERS. STANBACK combines several medically proven pain relievers. The wide effectiveness of these MULTIPLE ingredients brings faster, more complete relief, easing anxiety and tension usually accompanying pain.

*Sleep Easy with STANBACK*

Test STANBACK against any preparation you've ever used.

Guaranteed by Good Housekeeping

### Dry Xmas Tree Is Fire Hazard

A moist Christmas tree is a fresh one. A dry Christmas tree is a fire hazard.

There are the simple facts of Yuletide tree selection, according to Davey tree experts. Remember them, and you won't go wrong in buying the family Christmas tree.

You can't gauge a tree's moisture or dryness entirely by appearance. Some species retain their color fairly well even when dry enough to burst into flame at the first spark or short-circuit.

Feeling, not seeing, is believing. Feel twigs and needles to determine if they're dry and brittle. Then hang the tree butt against the floor. If a shower of needles

results, look for another, moister tree.

The best way to make sure the tree stays moist at home is to stick it in water. Florist shops feature special Christmas tree bases that can be filled with water; or an ordinary kitchen pail, decorated with aluminum foil, will do as well.

Garden supply shops carry colorless plastic sprays that help to keep the moisture in. These liquid plastics, known as anti-desiccants, are being used outdoors on transplanted materials and to protect evergreen trees and shrubs from winter injury. They'll help Yuletide trees retain their freshness indoors, as well.

Christmas trees should be watered daily like fresh-cut flowers. Holly decorations are another story. These Christmas ornaments

### Don't Be Afraid Of Dark—Just Be Careful

Afraid of the dark? You need not be afraid, of course, the National Safety Council says. But the Council adds that it's wise to have a healthy respect for the dark if you are driving a car.

The reason is simple—you must see danger to avoid it.

Last year more than half of the 38,300 fatal traffic accidents occurred at night—and during the Christmas holidays, which the Council says are the most deadly time of the year, 75 per cent of the fatal accidents happened during the dark hours of 5 p.m. and 7 a.m.

Because of the rising toll, a "Back the Attack on Traffic Accidents" campaign, launched this month and continuing through 1957, will emphasize night driving hazards during December. Emphasis also will be on speed, drinking drivers and pedestrians, and pedestrian hazards, all of which increase the Christmas holiday toll, the Council said.

The "Back the Attack" campaign, inaugurated because of the emergency traffic situation, seeks to encourage stepped-up enforcement by public officials, and to stimulate acceptance of enforcement by citizens.

"Drive safely yourself," said Ned H. Dearborn, Council president, "and prevent the one accident you can control—the one that involves you. Then get behind a community attack on this problem. Back your officials to the hilt in whatever needs to be done to stop this carnage."

The Council offers the following suggestions to help reduce night driving accidents:

1. Slow down. Don't regulate your speed by posted limits alone. Remember, speed must be governed by conditions, and darkness is a condition that calls for caution.
2. Have your car checked frequently. In darkness, immediate response of the vehicle is a must. Double-check all lights.
3. Be alert. Keep a constant watch for pedestrians and for vehicles with dim lights or no lights at all.
4. Don't wear tinted glasses at night. The advantage they offer in reducing glare is more than offset by the dangerously reduced vision.
5. Use headlights properly. Use upper beam only on rural highways when no approaching car is within 1,000 feet. Use lower beam when oncoming cars approach, when you are overtaking another car, and when driving in city and residential areas.
6. Dim your lights, even though an oncoming driver fails to dim his. Trying to get even by blinding him is risking your neck. Maintain control of your car by looking at the right shoulder of the highway.
7. Be sure your lights are on before you pull onto a lighted street at night.



*Santa knows what she wants!*

### IT'S WARDS POWERFUL 7/8 HP CANISTER CLEANER



- Deep-suction motor really gets out the dirt
- Throw-away paper dust bags end messy emptying
- Follows wherever you go on 4 smooth casters

only **29.88**

This handsome two-tone green cleaner makes cleaning day a breeze. It's compact, moves easily. Washable Fiberglas filter keeps the motor clean. Durable body made completely of steel.

ONLY 10% DOWN DELIVERS IT FOR CHRISTMAS



### Complete set of 7 Cleaning Attachments

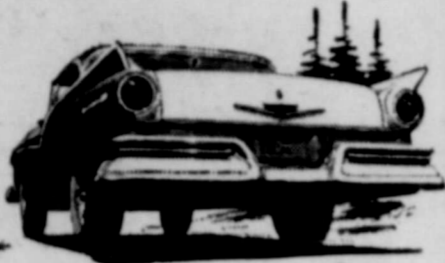
Get true cleaning ease from floor to ceiling. Seven all-purpose attachments and powerful suction clean venetian blinds, floors, upholstery, draperies and walls.



### Fleet

with Thunderbird GO

There's new power for the new kind of Ford in the great new Silver Anniversary V-8's... with new, wider horsepower ranges to meet your needs.\* Or choose the new Mileage Maker Six—the world's most modern.



### Low

long and light, it hugs the highway

Fairlane 500 (shown) and Fairlane models are over 17 beautiful feet long. Custom and Custom 300 models, over 16 feet. Every one of the 20 brilliant new Fords is longer, lower, roomier than ever before.



### Lovely

... with beauty that's more than "skin-deep"

The new kind of beauty in the '57 Ford is only the lovely "complexion" over the tough and precisely co-ordinated muscles of the stronger "Inner Ford" : : : that rides so silent . . . so solid . . . so secure!



\*A special 210-hp Thunderbird 218 Super V-8 engine available at extra cost. Also, extra-high-performance Thunderbird 218 Super V-8 engine delivering up to 255 hp.

Come in and Action Test the new kind of **FORD** for '57

**ELLIOTT MOTOR COMPANY**

Highway 80 East

Phone 954

TRADE WITH YOUR HOMETOWN MERCHANTS

## Wards Christmas Specials

**NO SERVICE WORRIES—WE SERVICE WHAT WE SELL**

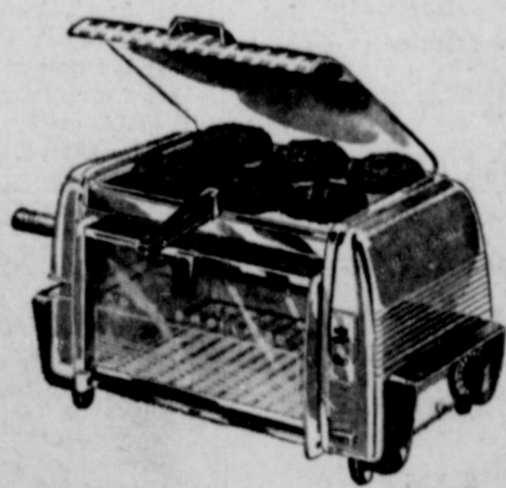


Wards Quality Corduroy Shirts—fine 16-wale Now cut-priced!

**3.48**

COMPLETELY WASHABLE

Corduroy means "corded-cloth of the king". And he'll look and feel like a king in Wards pin-wale shirts with satiny yoke, button-through pockets, spread collar.



59.95 "Family-size" Roto-Broil Famous Pushbutton model!

\$4 DOWN ON TERMS

Barbeque, broil, roast inside—grill, fry, toast on top—handy outlet takes percol 4-hr. timer, motorized spit.

**26<sup>98</sup>**



11.95 gift Snack Set King-size trays

SET OF FOUR **9.88**

Large metal trays clip to sturdy black enameled folding stands. Attractive wheat design.

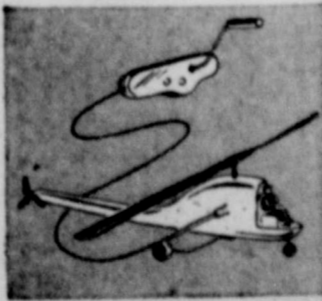
Buy On WARDS Time Payment Plan



"Mickey Mouse" Wrist Light with 3-color signals

REG. 79c WITH CELLS **66c**

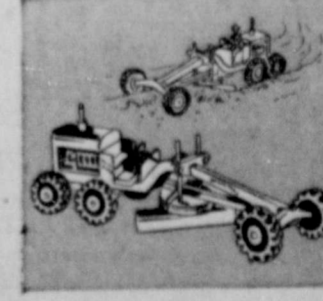
Child's delight! Just turn the color dial for red, green or white beam! Pushbutton switch.



10" Plastic Helicopter—flies by remote control! **2.98**



Reg. 3.98 Steel Toy Typewriter—really will type! **2.88**



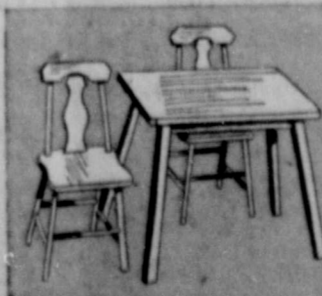
Reg. 2.98 Road Grader—movable blade. All steel. **2.66**



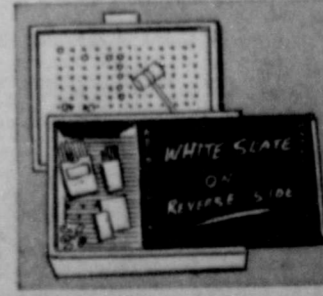
Steeraway Electric Car—goes in all directions! **6.95**



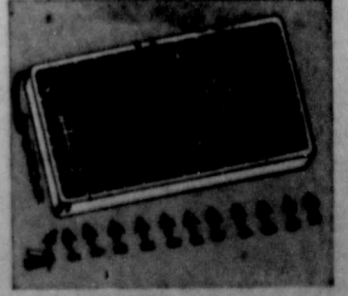
Sorry—quickly learned game that's fun for all. **2.45**



Table, Chair Set—wheat finish, ponderosa pine. **4.88**



Tak-a-Peg Desk Kit—w/ sliding blackboard top. **1.98**



Reg. 6.95 Electric Football—"live-action" game. **5.66**

TOYS  
Stuffed Walking Elephant  
Reg. 3.95  
Now 2.88

TOYS  
Girls Fancy Jewel Set  
Reg. 2.98  
Now 97c

TOYS  
Realistic Geiger Counter  
Reg. 3.95  
Now 99c

TOYS  
Large Pedal Fire Truck  
Reg. 22.44  
Now 16.88

Ladies Cotton SLIPS  
Reg. 3.98  
Now 2.97

Boys Steer Head Bolo Tie  
Reg. 98c  
Now 47c

Girls Rayon Packaged Panties  
Reg. 3 for 98c  
Now 3 for 77c

Boys and Girls Cowboy Hats  
Reg. 1.79  
Now 1.00



CALL 224 FOR CLASSIFIEDS

# Robinson Food Market

Specials for Fri., Sat., and Mon.

WE DELIVER  
121 North Rusk Street Phone 162

PRIME FED. FRESH DRESSED  
**FRYERS** ..... Lb. **45c**

**HENS** Young Fat  
3 to 5 Lb. .... Lb. **39c**

Decker Cured - 6 to 7 lbs. **Picnics** ..... Lb. **29c**  
Kraft's Longhorn **Cheese** ..... Lb. **49c**

FRESH HOME KILLED PORK  
Lean and Meaty Like You Like Them  
**Backbone or Ribs** ..... Lb. **49c**  
**Sausage, homemade 2 lbs.** **95c**  
**Fresh Ham, 1/2 or whole** Lb. **49c**

EXTRA GOOD  
**LOIN OR T-BONE STEAK**  
From Our Own Feed Lots ..... Lb. **59c**

Imperial Pure Cane **Sugar** ..... 5-lbs. **49c**  
Maryland Club **Coffee** ..... Lb. **1.00**

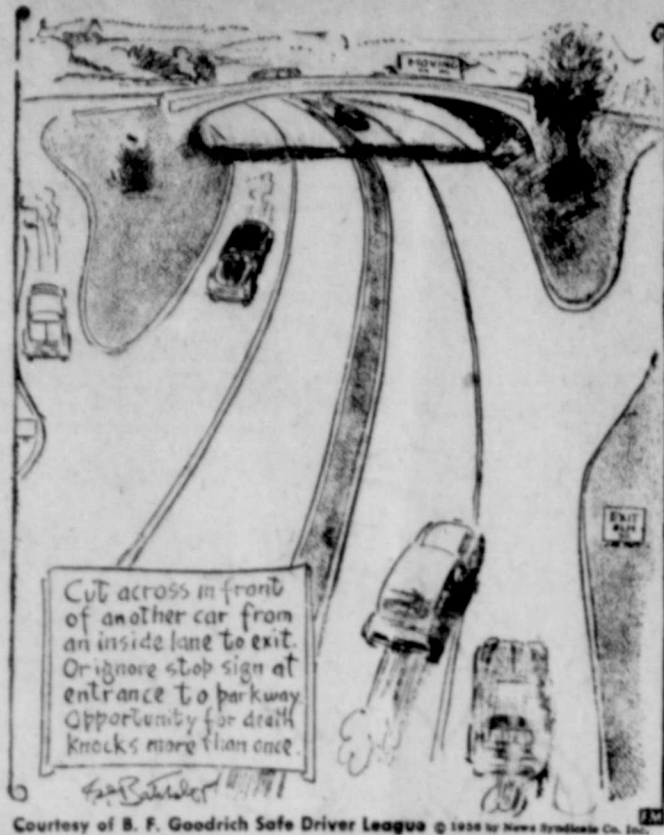
**BORDEN'S BISCUITS** ..... Can **10c**

**GLADIOLA CAKE MIX**  
Your Choice of Any 4 Boxes—Pound,  
White, Yellow, Devil Food, Marble ... **99c**

King Size **Dr. Pepper** ..... ctn of 6 ... **19c**  
White Swan **Milk** ..... 2 tall cans **25c**

**BORDEN'S—SQUARE CUT MELLORINE** ..... 1/2 Gal. **39c**

## INVITING THE UNDERTAKER-



Courtesy of B. F. Goodrich Safe Driver League © 1956 by B. F. Goodrich Co., Inc.

## COURTHOUSE NEWS AND RECORDS

Real Estate Transfers, Marriages, Suits Filed, Court Judgments, Orders, Etc.

County Clerk's Office  
Atlas Fence Company v. John Shelton, abstract of judgment.  
S. B. Aills to First Federal S & L Assn., deed of trust.  
W. T. Ashman to First Federal S & L Assn., deed of trust.  
Harvey E. Basham to Hanna Hdw. & Lbr. Co., MML & assignment.  
James A. Bentley to Charles F. Harding, assignment.  
Earl Bender v. Roy Parker, abstract of judgment.  
Byrd Adams Buckman to Erven L. Pophan, warranty deed.  
G. O. Boyd to Gene M. Gardner, MD.  
D. M. Beatty to Gene M. Gardner, MD.  
Burton Lingo Co. to First Federal S & L Assn., assignment of ML.  
R. E. Browning to Ranger Chamber of Commerce, warranty deed.

Clark P. Chandler to H. B. Alexander, assignment of oil and gas lease (5).  
City of Eastland to Mrs. J. C. Brumlow, deed.  
G. D. Chastain to Dewey Cox, Jr., quit claim deed.  
Commercial State Bank, Ranger to First Federal S&L Assn., assignment of ML.  
City of Eastland to Mrs. B. F. Wilcox, cemetery deed.  
L. N. Collins to B. W. Robert, have a natural waxy skin that prevents excessive moisture loss. son, deed of trust.  
City of Dallas v. Rodney D. Young, abstract of judgment.  
Jack Lee Cogburn to Lynn W. Adams, release of vendor's lien.  
Commercial State Bank, Ranger to Eva Mills, extension of vendor's lien.  
Lucretia A. Cauthen to E. P. Crawford, warranty deed.  
Mary E. Davis to Eldon Callaman, warranty deed.

J. M. Dunn to A. D. Taylor, warranty deed.  
F. C. Eaves to J. C. Cook, warranty deed.  
Irben H. Fannin to Standard Oil Company of Texas, oil and gas lease.  
R. C. Ferguson to W. F. Dillon, release of oil and gas lease.  
Mrs. Jonnie Belle Fisher to D. H. Sharp, warranty deed.  
First Federal S & L Assn., to W. W. Smith, release of deed of trust.  
Jess M. Griffith to Gene M. Gardner, MD.  
H. E. Gray to Higginbotham Bros. & Co., MML.  
Pearl Emily Harris to J. H. Maxwell, warranty deed.  
Russell Hill to M. E. Daniel, warranty deed.  
Higginbotham Bros. & Co. to Federal Land Bank, Houston, transfer of MML.  
R. Blake Hawk to Dr. R. I. La Scola, release of lien.  
Mrs. Billie Ikonen to First National Bank, Cisco, deed of trust.  
T. L. Joy to T. J. Johnson, quit claim deed.  
Harold Johnson to The Public, co probate.  
Fruman H. Jacobs to M. R. Mangie, warranty deed.  
Dorothy Jane Lockhart to Gustus Albert Dunn, Jr., assignment of oil and gas lease.  
Lance Miller to Magnolia Petroleum Co., rat. & rental division order.  
Cecil W. Meadows to Mae Carr, warranty deed.  
J. H. Nunnally to John L. Cook, warranty deed.  
O. F. Newson to A. F. Newson, assignment of oil and gas lease.  
O. F. Newson to Gustus Albert Dunn, Jr., assignment of oil and gas lease.  
O. F. Newson to Iris Jordan, assignment of oil and gas lease.  
O. F. Newson to Eddie Gorman, assignment of oil and gas lease.  
Stanley J. Pirtle to A. R. Huffman, assignment of oil and gas lease.  
O. C. Raynes to Standard Oil Company of Texas, oil and gas lease.  
B. W. Robertson to Lawrence N. Collins, warranty deed.  
Ruby Stone Springer to First Federal S&L Assn., deed of trust.  
Cecil Shelton to The Texas Company, lease.

J. L. Stafford to Mrs. Billie Ikonen, warranty deed.  
Safeway Stores, Inc. to The Public, resolution.  
Safeway Stores, Inc. to Seriad, Corp., warranty deed.  
W. W. Smith to S. B. Aills, warranty deed.  
Tri-State Credit Assn. to C. M. VanGeem, quit claim deed.  
A. D. Taylor to Gene Schaefer, warranty deed.  
L. T. Weathers to M. A. Oliver, release of vendor's lien.  
Jack Whitehead to Franklin P. Wilcozen, warranty deed.

H. O. Wooten Gro. Co. v. Mrs. Dee Anderson Guess, abstract of judgment.  
Roy Wallace to F. A. Seidel, assignment of oil and gas lease.  
Roy Wallace to Adelyn Wallace, assignment of oil and gas lease.  
**MARRIAGE LICENSES**  
Donald Lee Jordan and Doris Nell Abbott.  
Billy Richard Copeland and Mattie Lou Simmons.  
**PROBATE**  
William W. Ernst, deceased, application for administration.

Vernon Cannon, deceased, application to probate will.  
**SUITS FILED**  
91st District Court  
Donald Edward Buckalew v. Katherine Grace Buckalew, divorce.  
**ORDERS AND JUDGMENTS**  
91st District Court  
Opal Gladys Martera v. James F. Madera, judgment.  
Henry S. Melton v. Georgia Melton, judgment.  
Melba Weaver v. Basil M. Weaver, judgment.  
James C. Cloud v. Scurlack Oil

Company, order of dismissal.  
Jo Ann Darden v. E. C. Darden, order of dismissal.  
D. A. Kitchens v. R. M. Ivy, et al, judgment.  
Lorene Register v. George A. Register, judgment.  
Jane Graves v. Carl E. Graves, Jr., order.  
**CALL 224 FOR CLASSIFIED ADS**

### FOR GIFTS WONDERFUL WAY BEYOND THEIR PRICE TAG!

# Penney's is Your Santa!

Give her a hoisery treat with new double-loop **GAYMODE STRETCHABLES!**

- SLEEK REGULAR SEAM STYLES!
- BRAND NEW SEAMLESS!

## \$1.25

**8 EACH:**  
PLACE SPOONS  
PLACE FORKS  
SALAD FORKS  
HOLLOW HANDLE  
PLACE KNIVES

**1 EACH:**  
SUGAR SHELL  
PIERCED SERVING  
SPOON  
SERVING SPOON  
COLD MEAT FORK  
BUTTER KNIFE  
16 TEASPOONS

### "JUBILEE" 53 Piece Service

By International Silver!

Big-name quality at big savings for Christmas! Original Rogers AA quality silverplate, Penney's exclusive "Jubilee" pattern.

## 18<sup>95</sup>

Drip Dry Adonnas!  
**Practical Slips**

Lavished with luxury trims... the better to win her heart... four gore cut won't twist, or ride up! Suds beautifully... need no ironing... the better to save her do-up time!

## 3.98

**NOW!**  
just in time  
for  
Christmas!

**SPECIAL PRICE!**  
WAS \$369<sup>95</sup>  
NOW ONLY  
**\$269<sup>95</sup>**  
WITH OLD REFRIGERATOR

**YOU SAVE \$100<sup>00</sup>**  
ON ALL NEW 1957  
**Servel gas REFRIGERATOR**  
(FOR LIMITED TIME)

See these exclusive Servel features  
at your **SERVEL DEALER** or **LONE STAR GAS COMPANY**

**ONLY \$1 DOWN**  
\$1<sup>60</sup> a week—payable monthly

- **10 YEAR GUARANTEE** Servel's freezing system has a guarantee twice as long as for any other refrigerator. Serviced by Lone Star Gas.
- **NO MOVING PARTS** Nothing to wear out and cause repair expense—no motor or compressor!
- **CONTINUOUS COLD** No temperature ups and downs. Uses dependable gas—no interrupted service due to bad weather!
- **SILENT OPERATION** Runs on a tiny jet flame of gas. Operating costs stay low, efficiency stays high!

**ORDER NOW! WE'LL DELIVER BY CHRISTMAS!**

# RCA VICTOR TV ORIGINAL CONSOLE!

**only 259.95**

**261 sq. in. LIVING IMAGE PICTURE**  
**HIGH SHARP AND EASY TUNING**  
**BALANCED FIDELITY SOUND**

For the sharp, clear picture and rich full sound that add so much to television enjoyment, give the family an RCA Victor TV Original! It's the smartest way to ring in the holiday season.

**Give — "THE GIFT THAT KEEPS ON GIVING"**

**RCA VICTOR FIRST CHOICE IN TELEVISION**

**FOR THE SHARP, CLEAR PICTURE AND RICH FULL SOUND THAT ADD SO MUCH TO TELEVISION ENJOYMENT, GIVE THE FAMILY AN RCA VICTOR TV ORIGINAL!**

**The Boston, 261 sq. in. viewable area. Slips into, multi-gang ground or lined and grounded sockets. Model 211735.**  
**only 259.95**

**The Miami, Full 261 sq. in. viewable "Living Image" picture. Rounded picture frame. Heavy, moisture resistant, lined and grounded frame. Model 211735.**  
**229.95**

**The Ardmore, Decade, 3 color 261 sq. in. of viewable area, 2 grounded picture tubes. Multi-gang, wet-die ground frame. Model 211721.**  
**279.95**

Ask about RCA Victor Factory Service Contract

## Arterburn's Hardware & Furniture

120 Main Phone 945

### SENSATIONAL BLANKETS

ADVERTISED IN LIFE!

Fabulous Penney blankets of Avisco rayon with Orlon! Hand wash in lukewarm water, dry fluffly warm like new. Double woven. Life-of-blanket nylon binding.

## 7.90

72 by 90 inches long

### Leather Gift Slippers

Penney's Glove Soft For Men

... are ideal for basement, bedroom or backyard! Hard soles, Santitized linings for cleaner wear.

## 3.98