

**SOARING THRU RANGER WITH ANGER ON...**  
By Ronald Waters

**FLYING THRU RANGER**—I took several aerial photos of the city and the lake. Now that I've rambled thru Ranger, roared thru Ranger, and roared thru Ranger—I can add flying to my list!

Look for these photos in editions soon.

Talked with **BOYCE HOUSE** Friday and got enuff material to fill two newspapers. He has more interesting stories and tales than anyone I've met.

He covered Eastland-Ranger football games for the newspaper, writing the stories to please readers in both cities—no small task! House started working here one day a week for "Rip" Galloway, who was publishing a weekly at the time. He wrote oil articles and sports at that time.

He left Ranger in April of 1931 to work for the Fort Worth Star-Telegram. K. C. Jones, who was always "needing" someone, said at the time—if House was really a good writer, he would be working for the Dallas Morning News!

During his 10 year stay in the country, House covered football games with delight. He recalls the large crowds that would pour into the stadium, 30 minutes early. By quoting a San Angelo writer all at once in the *Ranger Times* before a big game, instead of spreading his quotes out, House "had this town in a furor" just before the game. The Bulldogs were so keyed up that they gave the San Angelo team a 30-0 licking.

"They took their football seriously, like they still do," House said.

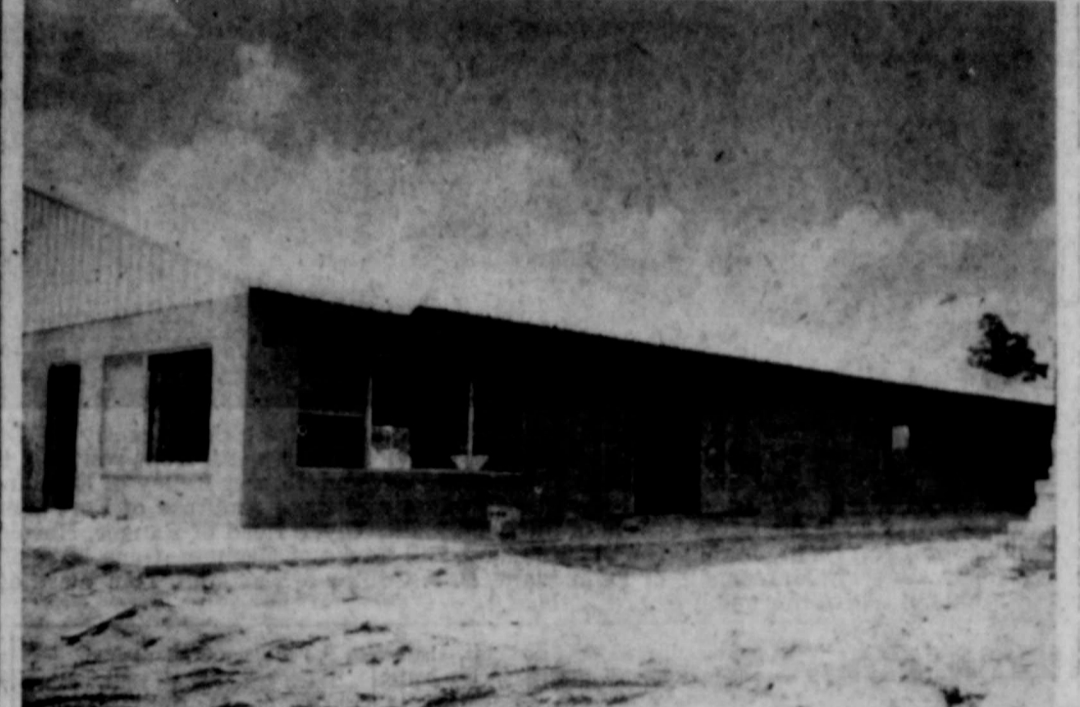
This "whirl-wind" writer once turned out 10,000 words of sports copy in a day. This was a summary of the season and a preview of the next. Besides that he wrote about 2,000 words of local copy.

New curtains at **TEEN TOWN** sure help the appearance. Furnished by the Mother's Club, they were put up last week. MRS. W. P. HATFIELD made the curtains in the annex, and MRS. DAVID B. ALLSP made them in the kitchen.

**MAKE-UP GAMES** in the Teen-Age League were rained out, again Friday night. Now, make-up games of the makeups continues to have its troubles. They have been hampered by rains and by lack of 15 and 16 year old boys.

Another glance the June 1919 edition of the *TIMES*. Ranger's B. P. O. ELKS were organized in May of 1919, with the following officers: C. J. DIETRICH, Exalted Ruler; M. B. NEWNAM, Esteemed Learning Knight; ROBERT L. HUNT, Esteemed Loyal Knight; LEK ROY PEARSON, Esteemed Lecturing Knight; H. D. DURST, Secretary; A. H. BOWERS, Treasurer; and PAUL S. TEAL, Esquire.

**MORE ROAMING**... likely to reveal most anything, will come Thursday.



**LONE CEDAR COUNTRY CLUB**—now nearing completion, overlooks Lake Leon. The finishing stages of the inside work are in progress, and the building is expected to be completed in August. The porch, shown here, extends over half way around the building, with large double doors opening out to it. (Print by Capps Studio)

### Little League Zone Tourney Dates Are Set

Cisco, will host this year's Area 6-B Little League tournament July 14-15, with teams from Eastland, Ranger, Clyde and Cisco participating. It was announced today following an Area meeting Sunday in Graham.

Area 6 was divided into four zones for the playoffs. Zone A will have teams from Wichita Falls, Iowa Park, Seymour and Haskell and will be played in Seymour.

Zone C will have teams from Oleny, Graham, Breckenridge and Albany, and the playoffs will be in Graham.

Teams competing in the Zone D tourney in Brownwood will be from Coleman and the two Brown Leagues.

Winners of each of the Zone tourneys will class in Graham July 17-18 in the District tournament.

In the Zone B tourney, Ranger will play Cisco in first round play and Clyde will test Eastland. Winners of the games will meet for the championship.

Attending the meeting from Eastland were James Wright and J. T. Gregory.

### Teen-age League Struggling Along

Interest seems to be lagging in Teen-Age League baseball and lack of cooperation may mean the end of the league, according to Dave Pickrell, president of the Ranger league.

Pickrell expressed some disappointment at the way things were going, at the present, in the league. Boys don't turn out for practice sessions, he said, and they seem to be losing interest.

At the present time, the senior leaguers only have one pitcher, and they need three. The junior leaguers have two pitchers, but one, Charlie De Los Santos, was injured last week. He is expected to pitch Tuesday night's game with the Cisco Indians, however.

Four more boys are needed in the older group of the league, Pickrell said. They can sign up for birth this week.

Birth certificate are needed from the 15 and 16-year old boys. Only four out of 15, have been turned in today. Senior leaguers can take their certificates to Drennon Daves, James Germany,

or Jerry Cantrell. Net enough pitchers are in the league, at the moment, to play any make-up games, Pickrell said. Since the senior leaguers play four games out of town this week, some make-up games could have been scheduled in Ranger, but for the lack of pitchers.

According to league rules, a pitcher can only be on the mound for 10 innings in one week. A lot of enthusiasm needs to be stirred up before the league can successfully finish out the present season, Pickrell said. Good crowds have continued to turn out for the games and a large crowd was present here Friday night.

The present season ends July 27. It will be a dismal season for the league, unless more interest is shown, according to league officials.

The next game scheduled this week, is with the Cisco Indians to-night. Senior Leaguers travel to Cisco Thursday night for a game and the junior leaguers play Albany—there—Friday night.

### PAGE ONE MUST

Registration starts for water skiers in the Chamber of Commerce offices.

Ranger junior leaguers play Cisco Indians, there, tonight.

### Political Rally Set in Eastland

A Democratic political rally will be held in the Eastland City Park this Friday at 8 P. M.

Sponsored by the County Home Demonstration Council, candidates from over the county have been invited to speak for the occasion. H. R. "Pop" Garrett, county school superintendent, will act as master of ceremonies.

Entertainment will be furnished by a trio composed of Harry Schaefer, Ernest Hittson and Al Anderson, all of Cisco.

Sale of home-made ice cream, pies, cakes, sandwiches and cold drinks will begin at 7 p.m. Proceeds from the sale will be used in carrying out projects of the home demonstration council during the coming year.

### Indians, Dodgers Win Games

Indians downed Yankees 10-5, and the Dodgers beat the Giants 8-5 in Little League games Monday night.

Despite a second loss in a row, the Giants continue to lead the league, with the Indians advancing in second place. The Dodgers remain in third place, and the Yankees are still striving toward a second win for the season.

**FIRST GAME** Indians scored 10 runs and made six hits limiting the Yankees to five runs and five hits. At the end of the second inning, the Indians were leading 6-0, and they continued their lead throughout the game.

Running for the Indians were Billy Matthews (with three runs), Alberino and Alec Garcia and O. J. Caraway (with two runs each). Making a single run was Johnny Earnest.

Scoring for the Yankees were Ray Leonard (with two runs), Lee Anshun, Joe Tidwell, and Douglas Browning.

**SECOND GAME** Dodgers downed the Giants, despite the fact that the Giants made more hits in the game. The Dodgers made eight runs and only two hits, while the Giants made five runs and seven hits.

Scoring for the Dodgers were Merky Barbosa and Ray Noyen. (Continued On Page Four)

## Nine Hurt In Five Weekend Accidents

### Registration Underway For Ski Entries

Registration gets underway this week for ski entries in the July 4th Celebration at Lake Leon. Entries may register at the Ranger Chamber of Commerce.

Each entry is being assigned a number, painted on sail cloth, upon registration. These may be pinned on life jackets.

Mr. and Mrs. J. Aston, head of the Aston Ski Club of Fort Worth, will judge ski contests for the event.

The best trick skier and the best all-around skier will win top prizes of \$15 each. A \$10 prize will be awarded to the best man and best woman to perform on two skis, and an additional \$10 for performances on one ski. Oldest and youngest skiers will also win \$10 in prizes.

Registration will continue until July 4th.

### Local Scouts Return From Summer Camp

Troop 15 and Explorer Post 16 returned Sunday afternoon from a week of camping activities at Camp Billy Gibbons, near Richland Springs.

Boys participated in Scout crafts, swimming, archery, horse-back riding, Indian lore and other events.

All members of Troop 15 advanced in rank to second class during court of honor services Sunday. Johnny Comacho won three medals on the rifle range, including pro-marksman, marksman, and marksman first class.

Sammy Summers and Dub Stevenson received horseman-ship merit badges, and Mickey Craig and Richard Wilhelm received merit badges in swimming. Also attending camp were Richard Robie, James Eaton and David Sutton.

### Norman Dennis Dies Monday; Services Set

Joe Norman Dennis of Lubbock, 42, son of Mr. and Mrs. Joe A. Dennis, died at 9:38 a. m. Monday in Ranger General Hospital of a heart attack.

Funeral services were to be held at 4 p. m. Tuesday at the First Baptist Church, with Rev. Ralph E. Perkins, pastor, and Rev. Ed. Scarborough pastor of the Second Baptist Church, officiating. Burial will be in Evergreen Cemetery.

A resident of Lubbock for the last eight years, Mr. Dennis graduated from Ranger High School. He had been ill about four months. Entering the hospital here last Saturday, he had also been a patient about a month earlier.

Born Feb. 16, 1916 at Goldthwaite, he was married to Frances Maxine Jones at Weatherford on August 28, 1940.

Mr. Dennis was a member of the Baptist Church.

Mr. Dennis was a sales representative at Lubbock for Republic Heater Corp., of Erie, Pa. Surviving are his wife; one daughter, Jo Ann; his parents, Mr. and Mrs. Joseph A. Dennis of Ranger; and one brother, Dwaine Dennis of Ranger.

Funeral arrangements are in charge of Killingsworth Funeral Home.

Fallbonners are Lester Crossley, Max Orr, James Ratliff, R. L. Pearson, Jr., Lloyd Bruce, T. J. Anderson, Nicol Crawford and C. E. May, Jr.

### Rain Totals Over 3 Inches Monday

A total of 3.30 inches of rain were dumped on the Ranger area Saturday in heavy downpours. Make up games in Teen-Age play were called off due to the weather.

Saturday's rain marked the heaviest of the month, and one of the largest—in a single day—for the year.

Slight scattered showers fell over the area Monday morning.

### Jimmy Arrendale Will Stay in Abilene Hospital

Jimmy Arrendale, who injured his back earlier in Ranger, is reported in about the same condition, according to the latest report.

He seems to be feeling fine, but attending physicians said that he would probably stay in Hendricks Memorial Hospital (Abilene) for several more weeks.

### Books Should Be Returned On Time

Mrs. Frances Jameson, Ranger Community librarian, today urged book readers to get their books in on time when possible.

Books may be re-checked to extend the time, but should be kept in circulation, she said. The library records become more difficult to keep when books are kept overdue or lost.

### Albany Man Fined

An Albany man was picked up here Saturday night for being drunk. He was later released to Constable R. W. Veal upon paying his fine.

## Treasurer's Office Sought By SCS Unit

Eastland County Commissioners Monday were officially asked to turn over the office now used by the County Treasurer to the Upper Leon Soil Conservation work unit. At the same meeting, commissions received the petition sent to them by Joe McNeely of the Kokomo community which asked that the paving project across Lake Leon dam not be pushed in front of other county road improvements.

The Commissioners took no action on either the request for the office space or the petition, but did announce they would reach a decision on the office move at their next regularly scheduled meeting, July 14th.

The request for new office space for the SCS unit was made by representatives of the county ASC Committee and the Upper Leon Soil Conservation Committee.

E. E. Blackwell served a spokesman for the group. He pointed out that the ASC and SCS have shared office space since 1951. He told Commissioners that the ASC now need all the office space, and that the SCS unit must have a new office.

The County Treasurer's office is next door to the ASC office and the convenience of having the two offices close together, so that 1700 farmers in the district can be better served, was stressed.

E. E. McAllister, who heads the SCS work unit, said that the ASC office now has equipment stored in the hall which should be used. He said that there was no other answer for the SCS but to seek new office space. McAllister told the Court he now has about a third of the space he needs.

Commissioners were told that the ASC and SCS offices were so closely related that they should be in the same office if possible. Blackwell declared farmers would

be greatly inconvenienced if the SCS office was forced to relocate in another section of Eastland.

Commissioner J. B. (Tip) Archer was not present at the meeting. He is on his vacation. That prompted Commissioner Carter of Rising Star to say that the Commission would have to wait until their next meeting to act.

All Commissioners present, and County Judge John Hart, said they realized the problem faced by the SCS, and would do everything possible to work something out.

### Jim Littlefield Wins Consolation Sunday

Winner of the second flight consolation in the Cisco Invitational golf tournament Sunday was Jim Littlefield, who beat C. E. McCalland of Cisco 2-2.

Also in the second flight division Gary Bradshaw was defeated by Dee Austin of Bakersfield, Calif., by 2-1.

Tommy Warford won his way into a semifinals match but went down in a 3-2 victory to W. E. Jenkins of Cisco, who won the 3rd annual tournament.

Ralph Glenn of Abilene beat Don Doyle of Eastland on the 15th extra hole, in a playoff for medalist honors. They tied with 73's in qualifying last Friday.

The third flight crowd went to James Smith of Eastland, winner over Kenneth Mays of Cisco, 2-up.

Full Sikes of Eastland won the Championship consolation over Glenn by a 3-2 score.

Jenkins downed Don Johnson of Cisco 3 and 2 in the final. First and second rounds of the tournament were played Saturday at the Cheo Country Club. Finals were played Sunday.

Glenn and Doyle shot qualifying rounds of 73, Friday.

Low qualifiers of the tournament was Jenkins, with 71.

For the first round Saturday, Glenn drew Tommy Warford, 77 and Bradshaw 94 drew Tommie Crosby of Colorado City. Littlefield, 94, drew James Williams of Stephenville, 89.

## Albany Over-Powers Ranger 19-0 Monday

Albany senior leaguers overpowered Ranger's teen-age players Monday night by a score of 19-0 in Albany.

The game was called in the third inning, as Ranger had been field scoreless and down to two hits.

James Germany yesterday took the position as head coach of the team, replacing Jerry Cantrell, and Rodger Kelly became Germany's assistant.

In the meantime, the Teenage-Age League continues to have troubles of its own (see related story)—due to lagging interest.

Pitching for Ranger Monday night was Jerry Anderson (in two one-half innings). Richard Robie and Ronnie Duskevich (one-half inning). Albany Pitcher was Jackie Jenkins. Umpires were Carter Jones and A. B. King was score keeper.

Albany scored eight runs, in nine times at bat, in the second inning. They returned in the third inning to make 11 runs.

Albany senior leaguers continue to be league favorites, with Cisco's oldest team.

### Wesley Tollett Dies Monday

Wesley Tollett, 86 a retired laborer, died here at 2:45 p.m. Monday.

Funeral services will be held at 2 p.m. Wednesday in the Second Baptist Church with Rev. Ed Scarborough, pastor, officiating. He will be assisted by Rev. J. E. Lamb, minister of the Pentecostal Church.

Burial will be in Evergreen Cemetery under the direction of Killingsworth Funeral Home.

A Ranger resident since 1923, Mr. Tollett resided at 639 N. Marston St. He was a member of the Masonic Lodge here.

Born May 9, 1872, in Wilson County, he married Minnie Lee Owen in Stephenville on April 5, 1922.

Survivors include his wife; two sons, G. W. Tollett of Fort Worth, and P. R. of Ft. Riley, Kans.; two daughters, Mrs. Helen Torpke of Big Spring, and Mrs. Katharine Miller of Eastland; and six grandchildren.

See The RCA WHITE FRIGID APPLIANCES at RANGER FROZEN FOOD CENTER

FREE HOME TRIAL on RCA Whirlpool Appliances RANGER FROZEN FOOD CENTER



**MYSTERY FARM**—This is the ninth in a series of 52 Mystery Farms being published in this newspaper. The names of all persons correctly identifying the farm will be placed in a hat and one name will be drawn out. That person will receive two free tickets to the Majestic Theatre. The owner of the farm will be given a free enlargement of the aerial photo if he will call for it at the newspaper office.

**HOT? SAVE \$71 FROM LIST!**  
Be cold in 40 seconds with the largest and best refrigerated auto air conditioner, installed in 3 hours, any make of model car or truck — ONLY \$159.95.

**L. C. PHAGAN, PREMIER JOBBER**  
1206 W. Bliss — Phone Cisco HI 3-1440  
All types of auto and greases for farm, industrial and commercial users.  
Only local oil line licensed and used in making Premier Products.

**Insurance At A Savings**  
Fire - Casualty - Automobile  
**M. L. KING**  
INSURANCE AGENCY  
Phone 73 808 Main St.

**Killingsworth**  
Funeral Home  
1206 W. Bliss  
Phone 73

# The Ranger Times

"SERVING COMMUNITY ENTERTAINMENT SINCE 1917"  
404 STREET—RANGER, TEXAS ESTABLISHED JUNE 1, 1917  
Referred as second class matter of the postoffice of Ranger, Texas under the act of Congress of March 3, 1879

**TIMES PUBLISHING COMPANY**  
Published Tri-Weekly—Tuesdays - Thursdays - Sundays  
JOE DENNIS and OMOUS DICK, Publishers

|                               |      |
|-------------------------------|------|
| One week by carrier in city   | .15  |
| One month by carrier in city  | .45  |
| One year by mail in county    | 3.30 |
| One year by mail in state     | 4.75 |
| One year by mail out of state | 6.75 |

NOTICE TO PUBLIC—Any erroneous reflection upon the character, standing or reputation of any person, firm or corporation which may appear in the columns of this newspaper will be gladly corrected upon being brought to the attention of the publishers.

## CLASSIFIED

All Classified Ads Must Be Paid For In Advance.

### MISC. FOR SALE

**BARGAIN:** Work benches. Well built of new lumber. Ideal for home workshop, 3 feet wide, 12 feet long. Will sacrifice for fraction of original cost. Ranger Iron Works.

**FOR SALE or trade,** 1955 Ford Fairlane, fordor, radio, heater, window lifts, electric seat, white tires, two-tone, light green. Real nice one owner car. Don Pierson Olds - Cadillac, Eastland.

**RUBBER STAMPS—Fast service,** reasonable prices, no order too large or too small to get our special attention. Ranger Times.

### REAL ESTATE For Sale

**FOR SALE:** 5 room furnished house and greenhouse. Cream separator, refrigerator, and deep-freezer. Singer sewing machine. 130 x 150 foot lot, 50 foot white picket fence. Norman Zahn, Strawn.

**FOR SALE:** Farm, 86 acres with house. New Hope vicinity. 4 1/2 miles west of Gorman. \$5000.00 cash. 1/2 mineral rights. Phone SEW-2, Gorman.

**FOR RENT:** NEWLY decorated garage apartment. Call 309.

**LOST:** Eye-glasses. Brown and white plastic frames. Lost downtown vicinity. Call 224.

**FOR LEASE:** New Premier Service Station located at Prairie Crossing. Contact L. C. Phagan Gasoline Company, Box 29, Cisco, Texas.

### HELP WANTED

**YOU CAN ADD \$25 to \$50 a week** to your present income. Part-time Rawleigh business now open in Ranger. See C. S. Eldridge, Box 67, Dardenona at once for full particulars or write Rawleigh's, Dept. -TXP-1024-185. Memphis, Tenn.

**MAN OR WOMAN**  
Established Toy Routes  
**GOOD INCOME**  
No Selling - No Experience Necessary. Operate from Home. We Place and Locate All Routes.  
**SPARE OR FULL TIME**  
Earn up to \$300.00 monthly re-filling and collecting from our **SELL SERVICE TOY STATIONS** in your area. Must have:  
1. Car  
2. References  
3. Six hours spare time weekly  
4. Minimum investment \$590.-  
90 cash for toys, store accounts, and displays.  
For local interview write fully about yourself - including phone number  
**TAK-A-TOY DISTRIBUTORS**  
Land Title Bldg.  
Broad & Chestnut Sts.  
Philadelphia, Penna.

**SEE O. G. Lanier FOR OIL AND GAS LEASES AND REAL ESTATE WE BUY AND SELL**  
Phone 410 - 113 So. Rusk Ranger, Texas

**ACHING MUSCLES**  
Suffer pain of Head, Neck, Aching Muscles with **STARBACK** Tablets or Syringes. **STARBACK** prescription-free formula combines several medicinal proven ingredients for faster relief of pain. **STARBACK** has been granted the Good Housekeeping Seal. **STARBACK** with confidence, and relief with **STARBACK**.

## Carl Johnson Dies Last Night In Sleep

Carl Johnson, prominent Eastland business and president of the Eastland Chamber of Commerce, died in his sleep last night, apparently of a heart attack.

Mr. Johnson, who owned and operated Carl Johnson's Dry Goods store on the north side of the square, had been in business in Eastland some 25 years. He was active in many phases of community life in Eastland, and is immediate past president of the Lake Side Country Club.

Death came at approximately midnight for Mr. Johnson, but his wife realized he was dead only when she tried to arouse him this morning.

Funeral services were still pending at pretime today. Mr. Johnson is survived by his wife, a daughter, Mrs. John Beatty of Fort Worth; and two grandchildren.

Mr. Johnson, in his early 50's at the time of his death, came to Eastland in about 1921. He operated the Kieiman store here for several years before going into business for himself.

He was a longtime member of the Eastland Voluntary Fire Department and had held almost every office in the Chamber of Commerce.

**AIR CONDITIONED**  
1955 Olds Holiday sedan, Factory air and all power!  
1955 Olds tudor sedan, factory air and all power!  
1955 Ford Fairlane sedan, all power, really like new!

1953 Olds Holiday Coupe Factory air and all power!  
1952 Cadillac hardtop coupe. Almost new condition, all power!  
1949 Buick Special, fordor sedan. A real top quality car!  
1957 Hillman Minx, fordor sedan. Radio, heater and white tires. Thirty miles per gallon!

**TRADE-CASH-TERMS**  
See  
**Don Pierson**  
Olds - Cadillac  
Eastland

**Free Estimates**  
On A New **ROOF**  
Or Repair your old Roof Residential & Commercial  
**Eastland - Ranger Roofing Co.**  
Noble Squires  
Phone 733 Eastland

**INGROWN NAIL HURTING YOU?**  
Immediate Relief!  
A few drops of **OUTGROW** before blood enters from penetrating pain of ingrown nail. **OUTGROW** loosens the skin underneath the nail, allows the nail to be cut and then grows the nail pain and discomfort. **OUTGROW** is available at all drug stores.

## Robinson Food Market

Specials For Wednesday Only

WE DELIVER Phone 182  
121 North Rusk Street

WHITE SWAN

|        |           |     |
|--------|-----------|-----|
| Coffee | Lb.       | 77¢ |
| Crisco | 3 Lb. Can | 89¢ |

KRAFTS

|                              |     |
|------------------------------|-----|
| 8 oz. Sliced American Cheese | 35c |
| 8 Oz. Sliced Pimiento Cheese | 35c |
| Miracle Whip, Quart Size     | 49c |
| Vanilla Sauce, 2 10-Oz. Jars | 45c |
| Mina. Marshallows, 6 1-4 Oz. | 15c |

GLADIOLA

|          |         |     |
|----------|---------|-----|
| Cake Mix | 3 Boxes | 95¢ |
|----------|---------|-----|

White—Pound—Devil Food—Yellow—Spice

|                      |        |     |
|----------------------|--------|-----|
| King Size DR. PEPPER | CARTON | 25¢ |
|----------------------|--------|-----|

PLUS DEPOSIT



**TESCO GOLFERS**—Texas Electric Service Co. personnel from five cities recently held a company golf tournament at the Lakeside Country Club in Eastland. Entries in the tourney were, front row, left to right, Winston Squires of Eastland, Leroy Schell of Fort Worth, Elton Ables of Eastland, Robert Kelley of Eastland, W. K. Cooper of Breckenridge, Norman Watson of Graham, Al Larson of Ranger and Zane Ambrose of Fort Worth. Standing, left to right, are Bill Brown of Graham, Larry Kinard of the Leon Plant, Clyde Reed of Ranger, Harold White of Eastland, James Gilkey of the Leon Plant, Johnny Hart of Eastland, Bill Parks of Graham, Gene Falk of Eastland, Dick Jones of Fort Worth, Waverly Massengale of Leon Plant, B. J. Collins of Eastland, Tom Ward of Breckenridge, Ben McKinis of Eastland and Johnny Collins of Eastland.

### HOME MAKERS Views and News

National and state park officials are preparing for an estimated 200 million family vacationers this summer. Some will stop for a few hours, some overnight and some for several days.

Whether it's a short or long cross-country excursion the way side picnic area is a welcome convenience to relieve periods of driving. State park officials watching the growing luncheon-on-the-way trend have found that families—and particularly the the homemakers—wish for more guidance in planning picnic lunches.

**ITEMS TO HAVE ON HAND**  
Much of the "rounding up" of picnic supplies can be eliminated by keeping staples in one convenient place. Such items may include:

roasting forks, flashlights, books of matches, bugbom, can-bottle opener, napkins, vacuum bottle, disposable cups, rolls of transparent plastic wrap, camera, salt and pepper shakers, insulated cooler, plastic dishes.

**FOODS WHICH CAN BE PREPARED AHEAD**  
A lesson many travelers learn is to keep foods simple. Just sitting out under the blue sky enjoying all of the relaxing qualities of mother nature, will make even the simplest meal extra tasty. Sandwiches store well in the refrigerator for 22-24 hours under 50 degrees. If frozen they will keep for longer periods. Fillings that freeze well include: peanut butter, cheese and cheese spreads, pickled or smoked meats.

Letture and mayonnaise should be carried separately and added to the sandwiches just before eating. Baked goods are "seasoned travelers" which may be prepared long ahead, wrapped carefully in household sarar film and placed

in the freezer until desired.

These travel well: rolls, cakes, cookies, donuts, fruitfilled pies, cupcakes.

Cream-filled desserts are not good hot weather travel foods.

**TIPS ON PACKING THE PICNIC BASKET**  
Carry mustard and ketchup in lightweight squeeze bottles.  
Wrap pickles in transparent plastic wrap.  
Onions may be cleaned and sliced at home.  
Carry a roll of transparent wrap along.  
Balance the weight of heavy objects on either side of the basket for easier carrying.

**PART OF A PICNIC**  
Before the picnic it's wise to discuss respect for public property and a few methods of procedure with family members. This practice helps prevent unnecessary accidents that can spoil a vacation trip.

1. Read signs about correct waste disposal. Leave a clean pic-

nic area.

2. Check for and avoid areas with poison ivy.
3. Put out all open fires before leaving the picnic area.
4. Do not peel tree bark; do not pick wild flowers.
5. Teach children how to chop wood and how to handle cutting tools if they are old enough and are permitted to use them.

### Stop pain of piles today at home - or money back!

A doctor's tests, amazing new **Stainless Pazo** instantly relieved piles' torture! Gave internal and external relief! 6 medically-proved ingredients including Triolyte, relieve pain, itching instantly! Reduce swelling. Promote healing. You sit, walk in comfort! Only stainless pile remedy. **Stainless Pazo** Suppositories or Ointment at drug stores. \*Trademark of Grove Laboratories, Inc. (Detroit and Westport, Pa.)

## WE ARE NOW A DIRECT Factory Dealers

**SAVE! SAVE! SAVE!**

HEAVY GAUGE STEEL

## Filing Cabinets

|                          |       |
|--------------------------|-------|
| One Drawer Letter File   | 24.50 |
| One Drawer Legal File    | 29.50 |
| Two Drawer Letter File   | 29.95 |
| Two Drawer Legal File    | 39.95 |
| Three Drawer Legal File  | 39.95 |
| Three Drawer Letter File | 49.95 |
| Four Drawer Letter File  | 46.50 |
| Four Drawer Legal File   | 54.50 |

## THE RANGER TIMES

PHONE 224

### Summer Training Marks End of Basic Training

The Army National Guard will conduct individual basic training for the last time at summer training exercises this year, the Department of the Army has announced. By next Oct. 1, nearly all Army National Guardsmen will have completed basic training or its equivalent and units will begin training as combat teams. This represents the highest degree of

combat readiness in the Guard's peacetime history. The rapid climb in the Army National Guard's training level can be traced primarily to enlistment requirements. Since April, 1957, units have enlisted only prior service men and individuals who agree to take active duty training. This year's annual field training, which began this month, will mark the end of basic training for those Guardsmen who enrolled before the new enlistment requirements went into effect. The 363,000 men expected to attend 1958 annual field training will represent more than 5,000 units from each of the 48 states,

the District of Columbia, Alaska, Hawaii and Puerto Rico. They will train at approximately 170 field training sites.

Last year, some 375,000 Army National Guardsmen attended field training. The reduction in attendance for 1958 is a result of decreased overall strength (424,000 to 400,000) and the increase in the number of Army National Guard personnel who will be taking six months training at the time their units are engaged in field training.

### Homemaking Class Is Taught By Miss Morris

During the month of June Miss Lovetta Morris taught an adult group homemaking. The class met five nights for two hours on food preparation.

Each lesson consisted of demonstrations and the class members also made the dishes that had been demonstrated. The lessons consisted of homemade biscuit mix from the biscuits, coffee, cake with strudel topping and apple twists were made; barbecued chicken, hot rolls, quick chili con carne, cold slaw, lemon pie, devil's food cake with double boiler frosting and primrose cake with penoche and meringue icing. Recipes were always given for home use.

The annual adult group is organized for instructions in some phase of homemaking. Any adult may participate in the work.

In the previous years in June there have been classes in home nursing, meal preparation, clothing construction and getting the most use from kitchens and laundry equipment.

### VISITS GRANDMOTHER

Cynthia Cox of Midland is visiting her grandmother, Mrs. C. E. Parrish this week.



### YOUR SOCIAL SECURITY

(Editor's Note: This is the 11th in a series of articles compiled by C. M. Vaden, Jr., field representative of the Abilene Social Security Office.)

Social Security is a self-supporting insurance system. It is financed through Social Security taxes paid by the employee and his employer, and by the self-employed individual. The present tax rate is 2 1/4 percent for the employee matched by 2 1/4 percent by the employer. The rate for the self-employed person is 3 3/8 percent. In order to keep the program self-supporting, tax increases are provided in the law each five years beginning with 1960 through 1975. The increase in the employee and employer will be 1/2 percent until a maximum of 4 1/4 percent is reached in 1957. The increase for the self-employed person is 3/4 percent until a maximum of 6 3/8 percent is reached in 1975.

Social Security taxes, as are all federal taxes, are collected by the Internal Revenue Service. They are then placed in the Social Security Trust Funds. For the fiscal year ending June 30, 1957, total tax collections were approximately 6.5 billion dollars. Interest on the approximately 23 billion dollars in the funds amounted to \$561 million.

From the trust funds are paid the Social Security benefits and the costs of administering the program. Payments from the trust funds for the fiscal year ending June 30, 1957, were approximately 6.5 billion in benefits and \$150 million for operating expenses. This latter figure represents about 2.2 per cent of taxes collected. It includes not only the cost of administration of the Bureau of Old Age and Survivors Insurance but also the cost of the Treasury Department for issuing Social Security checks.

The 2.2 percent cost, we believe, represents an efficient administration of your Social Security program.

For more information on the above subject write the Social Security Administration, P. O. Box 1641, Abilene and ask for a free copy of the booklet, "Facts About the OASI Trust Fund."

### HERE FROM ABILENE

Mr. and Mrs. W. N. Robinson and children of Abilene visited Mrs. Alice Higginbotham Sunday. Mrs. Phyllis Robinson remained for a longer visit in Ranger.

### VISITS GRANDPARENTS

Larry and Garry White who are the twin sons of Mr. and Mrs. M. J. White of Elmore, Okla., have returned home after visiting with their grandparents, Mr. and Mrs. A. E. Hallford. Mrs. White attended Music School in Dallas while her sons visited with their grandparents.

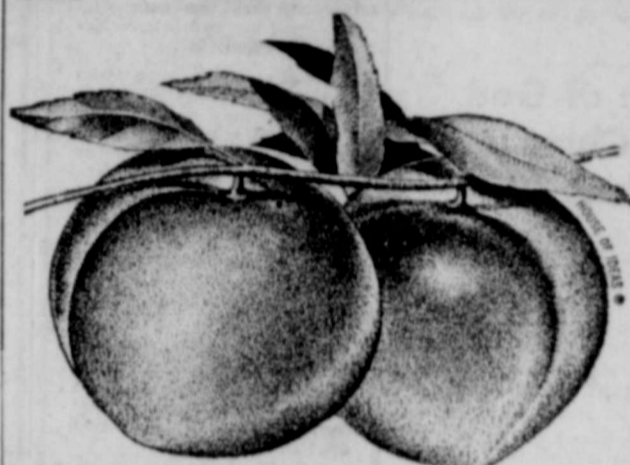
## Fill Your Refrigerator with These

# Budget Buys!

### During our Fantastic Fresh Fruit Fiesta!

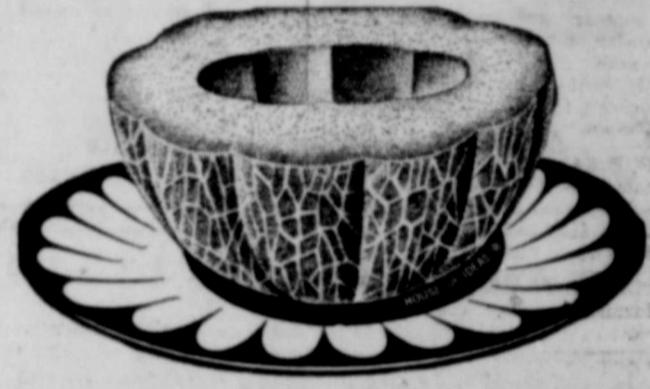
#### WE HAVE THE FINEST SELECTION OF FRESH FRUITS IN TOWN AT LOWEST PRICES

# Peaches



|                                   |   |     |     |
|-----------------------------------|---|-----|-----|
| Large Size California Mernll Gems | Lb.                                       | 19c |     |
| Santa Rosa Plums                  | JUICY SWEET                               | Lb. | 19c |
| Plump Grapes                      | CALIFORNIA "PERLETTES"                    | Lb. | 33c |
| Golden Apricots                   | LARGE CALIFORNIA                          | Lb. | 25c |
| Nectarines                        | DELICIOUS, DIFFERENT CALIFORNIA "SUNRISE" | Lb. | 29c |

|  |                       |     |                                |           |        |
|--|-----------------------|-----|--------------------------------|-----------|--------|
| CANTALOUPE                             | FRESH FROM CALIFORNIA | Lb. | 10c                            |           |        |
| LARGE WASHINGTON Bing Cherries         | .... lb.              | 49c | Large Central American Bananas | .. 2 Lbs. | 25c    |
| CARDINAL Red Grapes                    | ..... lb.             | 33c | CHARLESTON GREY Watermelons    | .. lb.    | 3 1/2c |
| MARSH SEEDLESS Calif. Fancy Grapefruit | ..... lb.             | 15c | TREAT FROM MEXICO Fresh Limes  | ..... lb. | 19c    |



## DOUBLE "S&H" GREEN STAMPS

WEDNESDAY With \$2.50 Purchase or more Prices Good Tuesday & Wed.

|                      |   |              |     |
|----------------------|---|--------------|-----|
| JELL-O               | 4 Pkgs.....                             | 29c          |     |
| PEACEMAKER FLOUR     | 5 Lb. Bag.....                          | 39c          |     |
| LEMONADE             | M.C.P. Pink Or Regular                  | 5 6-Oz. CANS | 59c |
| TV DINNERS           | ARMOUR'S SWANSON CHICKEN BEEF OR TURKEY | 11-Oz. Pkg.  | 65c |
| Dash Dog Food        | 2 1-lb. Cans                            | 25c          |     |
| Irish Potatoes       | 3 No. 303 Cans                          | 25c          |     |
| Pineapple-Grapefruit | 46-oz. Can                              | 25c          |     |

# Roast Heavy Beef .... lb. 49c

|                      |                  |           |     |
|----------------------|------------------|-----------|-----|
| Star Bacon           | ARMOUR'S SLICED  | Lb. Pkg.  | 69c |
| Calf Liver           | FRESH SLICED     | Lb.       | 69c |
| Frankfurters         | ARMOUR STAR      | Lb. Pkg.  | 59c |
| Pledge Furniture Wax | 6-oz. Can        | 89c       |     |
| Crackers             | N. B. C. PREMIUM | 1-Lb. Box | 27c |
| Trend Detergent      | Giant Size       | 49c       |     |
| Pard Meal FOR DOGS   | 5 Lb. BOX        | 65c       |     |

**Tooth Brushes**  
DU PONT ALL NYLON Each 33c

**Creme Shampoo**  
HELENE CURTIS \$2.00 \$1.19 Value

# WORTH FOOD MART

## DIXIE Drive-In

Box Office Opens 7:30 Show Starts 8:15  
Box Office Closes 10:00

ADMISSION NEVER OVER 50c  
Children Under 12 FREE—Each Tuesday is BARGAIN Night—Adults 25c

TUESDAY ONE DAY ONLY, JUNE 24  
Tuesday Is Bargain Day—Adults 25c  
Child Under 12—FREE



AN ALLIED ARTISTS PICTURE  
PLUS: Two Color Cartoons

WEDNESDAY - THURSDAY, JUNE 25 - 26

## TWO LOVERS caught in the web of a child's savage hate!



STARRING GEORGE NADER - CORNELL BORCHERS and MICHEL RAY  
with JUDSON PRATT - JOANNA MOORE - A UNIVERSAL-INTERNATIONAL PICTURE  
PLUS: Color Cartoon and Sports Reel

## RANGER DRIVE IN

Highway 80 East on Ranger Hill Phone 13  
LAST TIMES TUESDAY  
Bargain Nite Suspended



Admission for this Attraction 50c

WEDNESDAY & THURSDAY  
THE BIGGEST HAUL IN THE ANNALS OF CRIME!



MAJESTIC IN EASTLAND

TUESDAY AND WEDNESDAY  
LOADED WITH COMEDIAL SURPRISES!



JOANNE GILBERT - JIM BACKUS - GENA ROWLANDS

## NOW OPEN THOMAS FRUIT & PRODUCE STAND

OPEN THURSDAY, MAY 22  
We will carry a complete line of Fresh Fruits, Vegetables, Fryers and Eggs.  
HWY. 80 EAST RANGER JOE THOMAS

### Women's Activities

**June 26**  
The Future Homemakers of America will meet Thursday, June 26, at 9:30 a. m. in the home room department of Ranger High School, to work on the standing committee and on the constitution and by-laws.

### Mrs. Myers Is Hostess At Class Meeting

The Love Sunday School Class of the Eastern Baptist Church met in the home of Mrs. Monroe Myers for a monthly business meeting.

Mrs. K. C. Edmons led the opening prayer. Mrs. Jack Williams presented the devotional.

Refreshments were served to the following: Mrs. Edmons, Mrs. Nantz, Marie Parson, E. R. Rodgers, Bill Harper, Jack Williams, and the hostess.

### RETURNS HOME

Mr. and Mrs. J. D. Pittman have returned from Rome, Georgia, where they visited Mrs. Pittman's parents, Mr. and Mrs. O. T. Hudson. They also visited her brother and sister-in-law, Mr. and

### Former Ranger Teacher Weds Ft. Worth Man

Miss Barbara Getts of Fort Worth, bride of R. D. Houston, Jr., formerly of Ranger, became Mrs. R. D. Houston, Jr. on June 23 at the home of Rev. L. D. Anderson, officiating minister.

Parents of the couple are Mr. and Mrs. H. B. Getts of Winona and Mr. and Mrs. R. D. Houston of Fort Worth.

Miss Sue Killian was maid of honor. Best man was Edward Cummins.

The bride wore a ivory silk shantung chemise trimmed with white, a white straw hat and black patent shoes. She wore a white orchid corsage.

Following a short trip to San Antonio, the couple are at home at 2107 Pentecost, Fort Worth.

Mrs. Houston is a graduate of North Texas State College, and is a teacher at Brewer High School. Her husband attended TCU and Texas A&M College.

Mrs. James L. Hudson and children of Columbia, S. C.

Jeanne Pittman of Atlanta, Georgia, joined her parents in Rome for a week's visit. Anne remained in Georgia for a longer visit.

CALL 601 FOR CLASSIFIED

### 113 Fish Without License in May

Austin, June 23.—Despite continued warnings and reminders of old and new game laws, Texas fishermen topped the violation hit parade in May with that familiar old malady: fishing without a license.

The no-license charge was made against 113 reports the Director of Law Enforcement of the Game and Fish Commission. This figure was below April with 164 violations, while the previous months report showed only 42.

The increase, the Director said, is due to a move to clamp down on violators of the new laws. Game wardens had previously issued warnings.

Runners up to the license violations were pollution with 16 and trespassing with 13 violations.

The total game and fish law violations in May was 211, which added up to \$4,328.45 in fines and \$364 in court costs.

### Nine Hurt— (Continued From Page One)

May 31 in a truck-car smash-up.

A 1955 Rio truck-tractor, truck-tractor, operated by Theon Morris Irby of Meridian, Miss., collided. McLaughlin was traveling west on Highway 80, driven by Roy H. McLaughlin of Kansas City, and a 1957 Mack tractor jack-knifed on the bridge and Irby was going east. Irby's James and Nina Henry were hit the second truck. No one was injured, but damage to the trucks was estimated at \$1,700.

The final accident of the weekend took place at 5:15 p. m. Sunday 4.2 miles of Cisco on Highway 80. A 1955 Ford Thunderbird, driven by Kenneth Dale of Abilene, skidded off the highway and turned over in a ditch. Mead told officers he came upon a 1946 pickup driven by Thomas Duane Sadberry of Route 4, Cisco, from behind and had to hit his brakes to avoid a collision. Sadberry was attempting a left hand turn at a slow rate of speed at the time.

Highway Patrolman White said the accidents pushed the county's total up to 14 for the year.

### Church of God Youth Camp Is Held June 10-15

Fourteen Ranger young people attended the annual Church of God Youth Camp at Weatherford June 10-15.

Recreation at the camp included volleyball, baseball, croquet, tennis and swimming. Each morning's schedule included classes in leathercraft, Bible, and singing.

Those who attended from Ranger were: Nina Henry, James Henry, Sharon Browning, Sue Woods, Rena Davis, Lotoria Stephens, Armeta Stephens, Linda Stephens, Evelyn Adkins, Ruth Weimberly, Linda Anable, John Ed Anable, Jimmy Bass and Doug Browning.

Mrs. Walter Henry of Ranger was senior girl's counselor. Assistant junior girl's counselor was Mrs. Mac Anable. Mrs. Thomas Browning was cook's helper.

A girl's quintet the "Gloriettes" sang at two of the night services. Those in the quintet are Linda Anable, Nina Henry, Ruth Weimberly, Armeta Stephens, and Evelyn Adkins. Nina Henry and Linda Anable sang a duet for the Sunday service.

The meeting closed with a

**LITTLE LEAGUE**



**RANGER**

|         |   |   |      |
|---------|---|---|------|
| Giants  | 7 | 2 | .777 |
| Indians | 6 | 3 | .666 |
| Dodgers | 5 | 4 | .555 |
| Yankees | 1 | 8 | .111 |

### Indians—

(Continued from Page One)  
ham (with two runs each), and I. H. Founds, Floyd Ainsworth, Jerry Watson and Roy Pearson.

Running for the Giants were Johnny McGee (two runs), Ronnie Hinds, Larry Blackwell and Billy Arterburn.

### Hospital News

New patients in the Ranger General Hospital are: Mrs. R. L. Toms and baby girl, Moran; Mrs. David Anderson and baby boy, Ranger; Miss Effie High, Ranger, surgical; Miss Carrie Markham, Cisco, medical; Mrs. Lether Buckbee, Eastland, medical.

ATTEND THE CHURCH OF YOUR CHOICE EACH SUNDAY

### UPHOLSTERING

Furniture and Automobile Also Canvas and Tarpaulin Repairs We Cover Boat Seats

**EDGAR'S**  
309 Main Ranger Phone 411

### See Us For ...

**LENNOX**



**COOLERS RANGER BOAT SHOP**  
Black Bros. 122 Main Ranger Phone 312

### HOME VALUES

Large 2 bedroom completely completed home, located on paved street near High School. Well landscaped yard ..... \$8500.

2 Bedroom house, excellent condition, large lot on paved street, Young Addition. .... \$6,500.00

4 Room home in good condition. Paved Street ..... \$2750.

4 Room Home, South Oak Street, 3 lots. \$250 down, balance like rent.

**C. E. MAY**  
INSURANCE - REAL ESTATE


campfire service. Joe Southern of Kalamazoo, Michigan, was special speaker.

### ATTEND GLORIETA BAPTIST ASSEMBLY

Rev. and Mrs. Harvey Kimbler, George, James and Susan attended Glorieta Baptist Assembly in Glorieta, New Mexico. They returned home Monday. Rev. Kimbler is associational Sunday School Superintendent of the Cisco Baptist Association. The past week was Sunday School week at Glorieta.

Mr. and Mrs. Albert Cartledge and family and Mr. and Mrs. Marcus O' Dell and son also attended the Glorieta Baptist Assembly.

**YOUR Independent AGENT**  
"SERVES YOU FIRST"



**DON'T DO IT YOURSELF**

There's a saying among lawyers that the man who serves as his own lawyer has a fool for a client.

Likewise, the man who serves as his own insurance counselor may end up with a confused mind and a hazardous program which is far short of meeting his needs.

The only basis on which to build a sound program is by taking advantage of years of study, constant evaluation of new policies, personal experience, and the ability to meet all needs.

Take your problems to your local Capital Stock agent. He knows his job and he represents only SOUND, RELIABLE Capital Stock Insurance companies.

**C. E. MADDOCKS & CO**  
Insurance - Real Estate  
207 Main Phone 252

**FRIGIDAIRE WEEK**  
JUNE 23-28

See the proof of amazing new **FRIGIDAIRE** Frost-Proof Freezing!

"There's never any frost to defrost... anywhere!"



SEE a giant 133 lb. Freezer Section where moisture is whisked away before frost can form—that never, never needs defrosting. SEE the big Refrigerator Section where Flowing Cold chills foods faster. Keeps them fresher—that never needs defrosting! SEE the Big Picture Window Hydrator with New All-Climate Moisture Control. SEE shelves that practically hand you the food—PLUS Roll-to-You Freezer Baskets!

Sheer Look Outside! Sheer Magic Inside!

We'll give you 60 lbs. of Frozen Beef with every order on the world's first patented Frost-Proof Food Refrigerator-Freezer.

Model FP 142-58

**End Frost Forever!**  
Come in Today!

**ARTERBURN'S**  
HARDWARE  
120 MAIN Ranger, TEXAS  
PHONE 945

THIS WEEK ONLY

**SINCE 1884**



... it has been our privilege to render a service to this community as monument builders.

**ALEX RAWLINS & SONS**  
Weatherford Phone LY 4-2726 Texas

**The Average Individual—**

... gives little thought to the question of values when he should measure them in terms of personal worth in everything he buys, enjoys or does. For example, some folks will buy real estate without an abstract disregarding the fact that the principal value of the purchase is in the title, not in the land itself or the improvements thereon. This kind of thinking costs property owners thousands of dollars annually which loss could be saved and the savings wisely spent for abstracts of title.

**EARL BENDER & COMPANY**  
Eastland. (Abstracts since 1923) Texas



What a Beautiful BRIDE

Candlelight gleaming on satin ... a mist of tulle soft as starry eyes ... your Wedding Portrait is the only way to catch and hold the loveliness of your Wedding Day. Plan your Portrait as carefully as your wedding. Visit our Studio now, see what a beautiful bride YOU will be ... in your Wedding Portrait, too!

**Capps Studio**

BARBER

**Meal planning's fun..**



..when you have a wide variety of frozen treats stored in your **Electric Freezer**



With an appetizing array of frozen foods from which to choose, menu selection is quick and easy. And that's just one of many freezer advantages. See your appliance dealer soon about an Electric Freezer or combination Freezer-Refrigerator that will save you time, work and money! Lily Betty Electrically!

**TEXAS ELECTRIC SERVICE COMPANY**  
A. N. LARSON, Manager Phone 189