

Heavy Wind, Rain And Hail Hits Ranger



THE NEW PONTIAC—Pontiac's new approach to styling is pronounced by the Bonneville convertible and the Ventura sport coupe, only two in a parade of 16 beautiful models introduced by Pontiac for 1960. Priced just above the Catalina series, the Ventura features special interior appointments, including seats trimmed entirely in jewel-tone Morrokide. The new Pontiacs go on display at Bagwell Motor Co. today.

Strawn, Mingus And Gordon In Storm Path

The heavy wind and electrical storm that hit Ranger Wednesday night about 8:00 p.m. did extensive damage to businesses and residences.

There were high winds, hail and an estimated three to four inches of rain, and a reported small tornado.

The Texas and Pacific Oil Co. warehouse was hit by tornado-like winds which ripped a 20 by 40 foot section of the Butler warehouse roof off.

The Lone Star Gas Co. building in downtown Ranger reported the loss of a 6 by 8 foot plate glass window out of the office building.

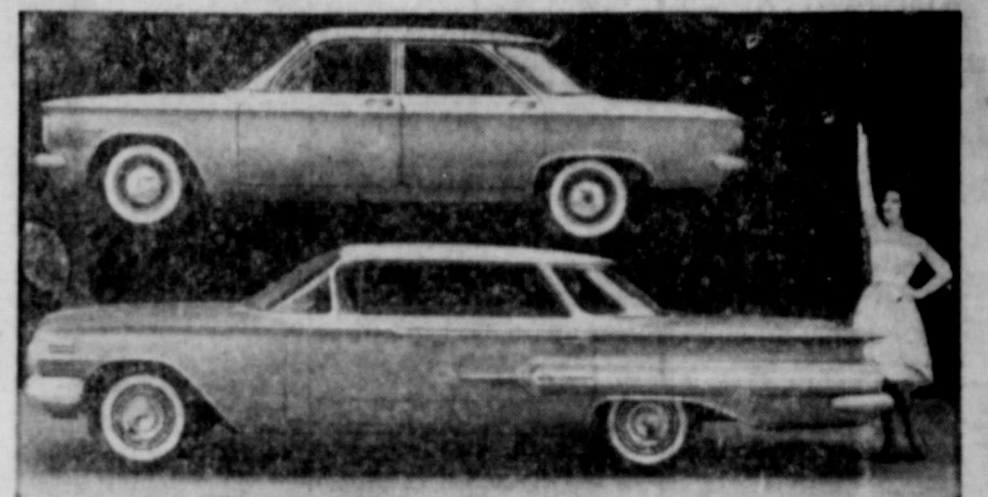
The home of Mrs. Mack McGouth of the Larkland Addition was destroyed by fire during the height of the storm. The fire was reported to have started from lightning.

A barn at the Johnny King farm northwest of Ranger was destroyed. Trees were completely stripped of their leaves in that area.

Damages were reported to the Hale Baggon home to the extent of five windows blown out. Extensive damages to homes in the Ranger residential area were reported from the high winds and hail.

The Southwestern Bell Telephone Mobile Serviced Land Transmitter tower located on Ranger Heights was completely destroyed by the tornado-like winds.

Ben Weekes of Strawn reported today that heavy rains, wind and hail caused extensive damage in the Strawn, Mingus and Gordon area Thursday night.



TWO CHEVROLETS—A strong family resemblance between the all-new Corvair and Chevrolet's conventional line of passenger cars for 1960 is evident in this unusual profile view. At 180 inches, however, the Corvair is more than two and one-half feet shorter, while its 108-inch wheelbase compares with 119 on the Impala Sport Sedan with which it appears. The two cars both go on display here Friday at Anderson Chevrolet.

Rangers Will Try To Even Score With Okla.

The Ranger College Rangers will travel to Tishomingo, Oklahoma, to take on the Murry State football team Friday night.

Both teams go into the game with identical records of two wins and one loss. The Rangers beat Murry State 28 to 0 while Murry State lost to Paris 14 to 6. This would indicate by comparative

Pontiacs Go On Display Today For First Time

"Sixteen stunningly new models in four series are presented by Pontiac in 1960, marking the greatest engineering and styling advances ever achieved by our firm," S. E. Knudsen, GM vice president and general manager of Pontiac Motor Division, said in announcing the Division's new line of cars. The new Pontiac goes on display here today at Bagwell Motor Co.

"Our engineers and stylists have overlooked nothing in their successful efforts to make Pontiac for 1960 the most desirable car that we have ever manufactured," said Knudsen. "We are confident that our new line of cars will maintain Pontiac's award-winning reputation as America's number one road car."

Gentle curves and flowing lines of sculptured beauty readily identify Pontiac's completely new line of cars for 1960. Pontiac's sensational classic styling and wide track design prevails throughout each series; from the luxurious Bonneville and Star Chief to the Catalina and the new Ventura series.

Heading a list of 47 new features is the exciting appearance of the 1960 Pontiac, highlighted by a "V" design front end. A massive, sweeping front bumper juts forward below a classical grille formed by seven narrow, gleaming bars with twin headlights set at either end. The distinctively different grille, the one-piece bumper and the clean, sharp line of the hood enhances the car's overall simplicity and beauty.

Pontiac's low, clean styling is complemented by a Vista-Panoramic windshield and a generous wrap-around rear window, with a

Rangers' Probable Line Up

RANGERS	Wt.	Pos.	MURRY STATE
Kenneth Hart	180	Q-back	Johnny McWhirter
Dean Faulkenberry	170	H-back	Tom Holt
Jimmy Knickerbocker	155	H-back	James Wolfe
R. E. Duggan	175	F-back	Dan Thompson
Wayne Gravely	195	Center	David Patterson
James Hoskinson	170	Guard	Earl John
James Stanford	175	Guard	Lesty Anderson
Vernon Singleton	200	Tackle	Charles Scifres
Howard Stallings	195	Tackle	Gary Straugh
Jim Hamilton	170	End	Al Chew
Wayn Cromer	170	End	Frank Johnson

Ranger Bids For Annual Pecan Show

A delegation of businessmen of the Ranger Chamber of Commerce attended the county pecan tour Monday to present invitations to the Association to hold the 1959 Pecan Show in Ranger.

Buck Wallace and T. C. Wylie, co-chairmen of the Agriculture committee of the Chamber of Commerce, W. J. Herrington and R. V. Galloway made the presentation of the invitation at a business meeting held at the Brown Jug Cafe in Gorman, of the Eastland County Pecan Growers Association.

The Annual Pecan Show will be held Dec. 11 and 12.

The site of the show will be determined by a ballot mailed to the members of the association and the exhibitors in the near future. Gorman and Cisco made bids for the show along with Ranger.

Oscar Schaefer of Cisco is president of the Eastland County Pecan Growers Association.

used to in the game at Paris. They play by the free substitution rule where a player can be substituted at any time. At Paris they had to abide by the rule where a player can only enter the game one time in each quarter. This caused Murry State to have to play some boys on defense and some on offense that had not been playing that type of football before. This could have affected the outcome of the game with Paris Friday night on their home field and playing by their own rules they may be a lot tougher than they were against Paris.

The Rangers of the other hand won their game against Austin "B" last Thursday, but failed to show the power they did against Paris in the season opener.

By the end of this week they may have regained the desire and spirit they had at the beginning of the season. If they do, all things indicate an interesting game coming up at Tishomingo Friday night.

R. E. Duggan, fullback, and Clyde Smith, center, were listed on the honorable mention players of the week by the Dallas Morning News this week.

New Oldsmobile Goes On Display At Don Pierson's

New crisply-tailored styling and a new balance of design are teamed with further advances in economy of operation in the 17 new Oldsmobile models for 1960, it was announced today by Don Pierson. The new Oldsmobile goes on display in Eastland Friday.

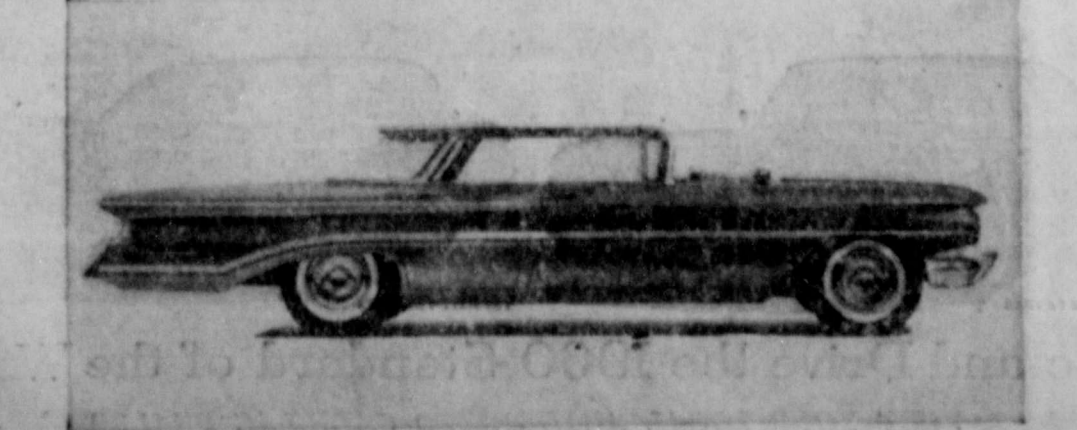
Pierson stated that the 1960 Oldsmobile features a redesigned Rocket engine in the Dynamic "88" series for use with lower cost regular grade gasoline.

"This engine," said Pierson, "will give our customers an improvement of 15 per cent in miles per dollar—maintaining excellent performance."

In all series there are new rear axle ratios and many other engineering advancements. Two thousand dollars have been added to Oldsmobile's station wagon line.

From the trim curved grille

(Continued On Page Six)



ON DISPLAY FRIDAY—A trim balanced design of clean flowing lines highlight the modern styling of the Oldsmobile for 1960. This side view of the "88" Holiday Sport Sedan shows off the smooth, uncluttered lines to their best advantage. Note the low and level design of the car. The new Olds can be seen Friday at Don Pierson's Oldsmobile in Eastland.

Mrs. R. L. Cromer Ranger Resident, Dies Monday

Mrs. R. L. Hunter Cromer, 99, Eastland County native and resident of Ranger for 25 years, died in her home in Ranger at 10:20 a.m. Monday.

Mrs. Cromer was born January 9, 1869.

Funeral services were held Tuesday, Sept. 29, at 2 p.m. in the Trevitt Funeral Chapel of Stephenville. The Rev. Raymond M. Burton, officiated.

Interment was in the Davidson Cemetery near Deadwood.

Survivors include three sons, E. E. Hunter of Ranger, O. E. Hunter of Mill Sap and Bill Hunter of Eastland, and four daughters; Mrs. Lillie Mayhew of Weatherford, Mrs. Roscoe Mayhew of Stephenville, Mrs. Mamie Watson of Ranger and Mrs. Odessa Abernathy of Deadwood. Sixty-six grandchildren, 29 great grandchildren and 25 great great grandchildren.

PAGE ONE MUST

The Globe Clothier's and the Star Dry Goods Store will close Saturday, Oct. 3, in observance of the Jewish New Year.

The Junior High Pups will play Cisco at 7 p.m. in Bulldog stadium tonight (Thursday).

The Eastland Lakeside Country Club will hold a covered-dish supper and game night (tonight) Thursday at 7 p.m. Ranger members and guests are urged to attend.

Lions Club Has Ladies Night At Lone Cedar

The Ranger Lions Club will have their annual ladies night at the Lone Cedar Country Club tonight at 7 p.m.

Ross Wilson, manager of the Southwestern Pecan Growers Association at Gorman, will be the guest speaker for the occasion. Arrangements are being made by Al Larson for a musical program to be presented, and also there will be additional entertainment for the group.

Lester Crossley, president of the Lions Club urges all Lions and their ladies to attend the program. There will be an excellent meal and entertainment provided.

New Cadillac to Go On Display Tomorrow

In announcing the 1960 Cadillac, which goes on public display tomorrow, James M. Roche, Cadillac general manager and vice president of General Motors, said, "The newness of the 1960 Cadillac is emphasized by its handsome lines and elegant simplicity of design."

The new Cadillac will be on display at Don Pierson's Oldsmobile in Eastland.

"In addition to the styling advances are important developments in mechanical operation, including further progress in achievement of smoothness and quietness of performance and significant developments in the braking system."

For 1960, Cadillac is offering 17 models in three standard series and one custom series, the Eldorado Brougham. All models are basic.

Cub Scouts Hold Introductory Meet At First Methodist

The Cub Scouts will hold an introductory meeting in the basement of the First Methodist Church at 7 p.m. Friday.

All boys in the Cub Scout age group (8 to 11) are invited to attend the meeting and bring their parents.

The meeting will be under the direction of George Rushton, and will be for the purpose of introducing the cub scout program to boys and adults.



AT DON PIERSON'S—The sweeping elegance of the newly created silhouette of the Series Sixty-Two six-window sedan typifies the handsome lines and simplicity of design of the 1960 Cadillac. The popular six-window sedan features all the advanced engineering and design characteristics of the new models.

Bulldogs Will try To Tame Lions

This week will end the pre-conference games for the Bulldogs. Following this week's game with Dublin, the Bulldogs will have a week of rest before starting the conference schedule with Winters on Oct. 16.

If Ballinger wins over Lake start district play. The Lobos will no doubt win over the De Leon group, but it won't be easy. The Bulldogs were looking good last week against the De Leon Bears, until the rain and muddy field put a stop to their passing attack. The threat of the

Probable Line Ups

Ranger	Wt.	Position	Dublin
Charles White	120	End	Kenneth Vauthier
Jim Robinson	175	Tackle	Sid Brown
Tommy Ford	157	Guard	David Hallmark
Bobby Fron	170	Center	Billy Kloster
Ronnie Daskevich	155	Guard	Roy Armstrong
Dean Eichey	195	Tackle	George Mote
James Henry	165	End	James Williamson
Jerry Anderson	165	QB	James Bassett
Bill Stuart	140	FB	Louis Siegel
Richard Robie	140	HB	Dale West
Bert Young	165	HB	Bobby Neal

White, and Coleman over Haskell, it will put Ranger in last place in pre-conference standing. Of course this doesn't have a lot of bearing on the results of the district, but it does indicate that there is some very strong teams in the conference.

Surplus Food Distribution Date Announced

Next issue date for USDA surplus food commodities in Eastland County were announced today by J. J. Foster Sr., administrator of the County program.

Distribution will be made in the Masonic Building in Eastland on the following dates:

Monday, Oct. 12—Eastland, Orlan and Ranger.

Tuesday, Oct. 13—Rising Star, Pioneer, Okra, Carbon, Gorman and Deadwood.

Wednesday, Oct. 14—Cisco, Scranton and Nimrod.

FREE HOME TRIAL on RCA Whirlpool Appliances RANGER CENTER FOOD CENTER

See The RCA WHIRLPOOL APPLIANCES at RANGER FROZEN FOOD CENTER

The Ranger Times

"Seeking Community Betterment Since 1919"
ELM STREET—RANGER, TEXAS ESTABLISHED JUNE 1, 1919
Entered as second class matter at the postoffice at Ranger, Texas under the act of Congress of March 3, 1879.

TIMES PUBLISHING COMPANY
Published Tri-Weekly—Tuesdays - Thursdays - Sundays
JOE DENNIS and ONOUS DICK, Publishers
GENE TOWNSEND, Editor

One week by carrier in city	.15
One month by carrier in city	.45
One year by mail on Ranger RFD Routes	3.95
One year by mail in county	4.95
One ear b mail in state	4.95
One ear b mail out of state	6.95

NOTICE TO PUBLIC—Any erroneous reflection upon the character, standing or reputation of any person, firm or corporation which may appear in the columns of this newspaper will be gladly corrected upon being brought to the attention of the publishers.

CLASSIFIED

All Classified Ads Must Be Paid For In Advance.

MISC. FOR SALE

GADGETS, GIZMOS, UNIQVES:
New all wool sleeping bags with cover \$5.50; Comforta \$3.95; 5 buckle overshoes \$3.00; New wool quilted Tanker jackets \$6.95; With mouton collar \$8.95; With mouton zipper parka \$15.95; New low quarter russet, plain toe dress shoes, size E-A \$3.95; 100 percent wool Air Force blue trousers \$4.00; Overcoats \$6.00; Eisenhower jackets \$3.00; Wool knit scarfs 50¢; 18-qt. G.D. water buckets \$1.00; Overall, flying jackets, kahki shirts; hunters caps, game bags, hunters' knives, rope, tarpaulins, rain coats, camp stools, all sizes metal and wood boxes at low, low prices. Come in and browse—Army Surplus Store, Eastland, Texas.

MY PLACE for sale or trade south of Ranger on Lake Highway. Would trade for house in town. Joe S. Hunt.

FOR SALE: New shipment of Steel Filing Cabinets now in stock at the Ranger Times Office. Several numbers on display for you to choose from.

RUBBER STAMPS—Fast service, reasonable prices, no order too large or too small to get our special attention. Ranger Times.

FOR SALE: One 2-bedroom, one 3-bedroom and one 4-bedroom homes on Pine Street. Other nice dwellings and good locations. These homes can be purchased with small down payments. Also see us for rentals. May Insurance Agency.

FOR SALE: Bookkeeping supplies, Post binders, indexes, receipt books, ledger sheets, storage files, sales books, order books and many other items . . . at the Ranger Times office.

SMALL electric pump for quick sale. Call 693-J-1 before 2:30 p.m.

ACHING MUSCLES

Relieve pains of tired, sore, aching muscles with STANBACK, tablets or powders. STANBACK acts fast to bring comforting relief . . . because the STANBACK formula combines several prescription type ingredients for fast relief of pain.

AUTO - TRUCK SERVICE

- Motor Tuneup
 - Motor Overhaul
 - Wheels Balanced
 - Hydraulic and Dyna-flow Transmission Repair.
- Authorized International Harvester Parts and Service
Ranger Garage
Hwy. 80 West Phone 430
RANGER

VERNE PETERSON NURSERY

Landscaping and Pest Control Service
Hwy. 80 West Phone 441
Watch for insects, now is the time for them to start working. Call us at 441 for information. We kill any kind of insects inside or outside. Free estimates.
We have all kinds of shrubs in containers ready to be planted. SEE US NOW.

no soaking, no shrinking
with safe "Flower-fresh"
**CARPET & FURNITURE
CLEANING by Duraclean**

DURACLEAN HOME SERVICES
Phone 1196 - 602 S. Daugherty
Eastland, Texas

NEWS FROM STAFF

Mr. and Mrs. Winston Boles and boys of Athens were visiting over the weekend with her parents, Mr. and Mrs. J. L. Little and his parents, Mr. and Mrs. Claude Boles.

Mr. and Mrs. W. T. Duncan visited with relatives at Sulphur Springs and Linden over the past weekend.

Mr. and Mrs. Jack Cole of Midland were visiting recently with her parents, Mr. and Mrs. O. T. Hazard Jack also made a business trip to Dallas.

Mr. and Mrs. Earl Dick of Phoenix, Ariz. were recent visitors in the community. Earl was raised near Staff attending school at Triumph. His wife was the former Corn Lee Wright; she was also one of the former students of Union.

Mr. and Mrs. Ray Bailey of Lubbock visited last week with his brother, Mr. and Mrs. W. H. Bailey. Together they motored to Burnet; to visit relatives there.

A very delicious P.E. Lock dinner was enjoyed at the Onous Dick lot on Lake Leon. The evening was a success. The dinner was prepared by Mrs. Dick. Those present were Mr. and Mrs. Earl Dick of Phoenix, Ariz., Mr. and Mrs. Onous Dick, Miss Nannie Allan, Mrs. Eva Dick, Mr. and Mrs. Dick Higgins all of Olden, Mr. and Mrs. Bill Walters, Sr. and Mrs. S. E. Hazard of Eastland.

FOR RENT

TWO 2-bedroom apartments, newly decorated. Unfurnished. On Pine Street. Phone 85.

APARTMENT. Neat, well-furnished. Bills paid. 309 Elm.

THREE room modern house, garage. Call 248-W.

SPECIAL NOTICES

SPECIAL NOTICE: Senior citizens come live with us. Reasonable rates. Few more downtown rooms available, for well or convalescing guests nursing care available around the clock. Golden Age Convalescing Home, formerly Mobley Hotel, Cisco, Texas. Phone HI 2-2370.

NOTICE

NOTICE: Anyone having the book "Mason Divine", belonging to the late J. F. Donley, please return to Mrs. J. F. Donley.

YOU ARE invited to see and play Hammond Spinnet organ at 211 Mesquite Street.

NOTICE: I will not be responsible for any debts other than my own. O. R. Gafner, Jr.

What clean, refreshing shaves you get with a

Gillette
SUPER SPEED
LIGHT REGULAR HEAVY
matched to your face
\$1.00 EACH
with Blue Blade Dispenser and Styrene case

Just below the contoured tail-light lenses in the trailing edge of the fins are new vertical, oval, chrome bumper housings each containing two circular lamps with concave lens. The lower lamp with a red reflector lens serves as a taillight, stoplight and directional signal light operating in unison with the taillight in the fin itself. The upper lamp is the backup light.

Highlighted by rich metallic tones, 17 teen basic acrylic paints are available throughout the line with five additional exclusive finishes for the Biarritz and Seville.

SEE O. G. Lanier FOR

OIL AND GAS LEASES AND REAL ESTATE WE BUY AND SELL
Phone 410 - 113 So. Rank
Ranger, Texas

SPECIAL
\$1.00 DOES IT!

Reserves A Magnificent
BULOVA
Gift of a Lifetime
Until Christmas!

D. E. PULLEY JEWELRY
Main Street - Ranger

New Appearance

(Continued from Page One)
per cent by new synthetic rubber and a change in the proportion of synthetic and natural rubber. The higher energy - absorbing tread material also promises less impact on bumps, reduced tire squeal on turns and surer traction.

Brakes have been improved and require less pedal pressure. The parking brake now carries a pop-out release lever.

Color choices in the 1960 conventional passenger car line include 13 solids and 10 two-tone combinations.

Body types offered include: Impala; four-door sedan and sport sedan; sport coupe and convertible. Bel Air; Two- and four-door sedans; sport coupe and sport sedan. Biscayne; Two-door and four-door sedans and a utility sedan. Station wagons: Nomad, Parkwood, Kingswood and two choices of Brookwood.

Mr. and Mrs. Robert Reeves have recently been having some improvement done on their house. Mr. and Mrs. Steele Hill of Ft. Worth spent the past weekend at their place, Hill's Haven, at Staff Village.

Mr. and Mrs. Jimmie Reeve and family have been spending the past week with his grandmother, Mrs. Henry Woods. Mr. Woods has been ill and in the hospital in Eastland.

Mr. and Mrs. Mearle Miller are having a new home built on their place.

Farmers have been very busy the past few weeks harvesting the maize and peanut.

Judge and Mrs. Esco Walters were out at their place on Lake Leon Friday evening.

Officers Elected At First Meeting Of Desdemona 4H

The first meeting of the 4-H Club work was held last week. The first business was to elect officers for the ensuing year.

They are as follows: Joyce Rainey, president; Rena Carr, vice-president; Charlene Stacy, secretary-treasurer; Brenda Roberts, council delegates; Anne Rainey, song leader and Ruby Lewis, reporter.

The program was on food and clothing. The 4-H teacher is Miss Wilene Sockwell.

H. W. Woods, 77, Dies Wednesday

H. W. Woods, 77, of 109 North Dixie, Eastland, passed away Wednesday at 3:15 p.m. in the Eastland Memorial Hospital.

Included in his survivors are two daughters, Mrs. Luena Holland, 102 Southeast Ave. B, Seminole, and Mrs. Jessie Harry of Ackerly; and one sister, Mrs. V. E. Harrison, a nurse in the Eastland hospital.

Funeral services are pending.

INGROWN NAIL HURTING YOU? Immediate Relief!

A few drops of OUYDOL bring blessed relief from burning pain of ingrown nail. OUYDOL softens the skin underneath the nail, allows the nail to be cut and thus prevents further pain and discomfort. OUYDOL is available at all drug concerns.

New Olds

(Continued from Page One)
to the clean-sweep of the rear deck the 1960 Oldsmobile is the "next automobile we have ever built," he said.

The balanced design of the car is new from every view—front, side and rear. We believe the new

Oldsmobile has the styling our customers want, the full-family excitement they need and the luxurious interiors they deserve," he said.

Bright chrome plated bars in groups of three give the 1960 Oldsmobile curved grille a wide, stable look even though the car itself is no wider than the 1959 models. Headlights are placed horizontally with the outboard pair set slightly behind the inboard pair. The parking lights are safely recessed in the wrap-around section of the bumper where they can be easily seen from front or side.

The lower and slightly rounded styling of the new front end aids

maneuverability of the 1960 Oldsmobile, Pierson said, especially in tight parking situations. Maneuverability is increased 2 1/4 to 3 1/2 inches.

The flowing lines of the 1960 Oldsmobile are emphasized by an attractive chrome accent strip which starts at the headlight on the front fender, sweeps back to the rear quarter where it dips down to the lower edge and rearward to the new bumper.

Taillights are moulded into the rear fenders in a high, easy-to-see position. Below the attractive angled bumper is ribbed heavy gauge metal that completes the solid, built-to-the-road appearance of the new Olds.

SAVE on Nationally Advertised PAINTS at the HOUSE OF COLOR Jack Williams Highway 80 East Phone 359

Yesterday Was . . . Day to Buy!

Eastland County citizens, like all good Americans, will start paying a penny a gallon more for gasoline today.

The new one cent increase in federal fuel taxes goes into effect today. Texans will now be paying four-cent per gallon federal tax plus five-cent per gallon state tax. That's about 90 cents in taxes on every 10-gallon purchase, or the equivalent of 42 percent of the average price Texans pay for motor fuel.

FOR STRONG BODIES

the 6 vitamin MILK A, B₁, B₂, C, Niacin and D

Boswell's

KEEP PLENTY IN YOUR REFRIGERATOR

Presenting the Magnificent Nineteen-Sixty

Cadillac



Creating a New Era of Elegance!

The motor cars represented here will soon introduce a new era of elegance to the world's highways.

They are the Cadillac cars of 1960—and, from every standpoint, they represent the Cadillac tradition in its finest hour.

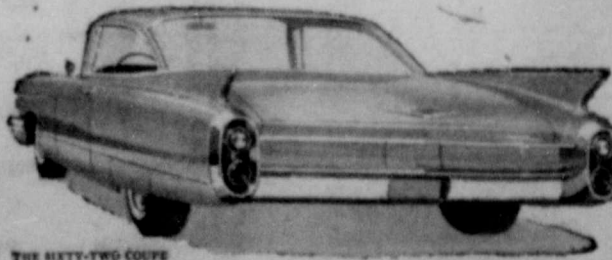
In appearance, they are regal and majestic as never before—a brilliant symphony of line and contour from the sparkling new front grille to the graceful flow of the rear fenders.

In interior decor, they are truly magnificent—featuring luxurious new fabrics and leathers—new convenience and excellence of appointments.

And in the way they drive and handle, they are perfection on wheels. There is a greatly refined engine and transmission that provide even finer performance . . . a ride of unbelievable smoothness and quiet . . . and notable advancements in power steering and braking.

These new Cadillac virtues have been interpreted in thirteen distinctive body styles. Every motorist owes himself an hour at the wheel.

The 1960 Cadillac is waiting for you now at your authorized Cadillac dealer's—and your dealer himself is waiting to introduce you to this magnificent new Standard of the World!



See and Drive the 1960 Standard of the World

VISIT YOUR LOCAL AUTHORIZED CADILLAC DEALER

DON PIERSON OLDS - CADILLAC

314 West Main Street

Eastland, Texas

MOST POPULAR "WESTERN" AND PRICES IN TOWN



DEL MONTE ROUND-UP

AT WORTH FOOD MART!

FREE! 1,000⁰⁰
-- IN CASH --

Register FREE Every Day at WORTH FOOD MART
1st Prize-\$500.00 • 2nd Prize-\$250.00
3rd Prize-\$150.00 • 4th Prize \$10 0.00
No Purchase Necessary

DEL MONTE
WHOLE POTATOES No. 303 Can 15c
DEL MONTE
TOMATO SAUCE 3 8-Oz. Cans 29c
DEL MONTE, GREEN
FRENCH STYLE BEANS No. 303 can 25c

Prices Good thru Sat.

FRUIT COCKTAIL DEL MONTE SAVE 25c 5 No. 303 Cans 1⁰⁰

PEACHES Del Monte Yellow Cling, Sliced or 1/2's 4 No. 2 1/2 Cans 1.00

TOMATOES Del Monte Fancy, SAVE 20c 5 No. 303 Cans 1.00

DEL MONTE PEAS EARLY GARDEN 2 No. 303 Cans 29¢

Golden Corn Del Monte Cream Style 6 No. 303 Cans 1.00

Green Beans Del Monte Cut 5 No. 303 Cans 1.00

CATSUP Del Monte YOU SAVE 10c 3 14-Oz. Botls. 49¢

PINEAPPLE Del Monte Chunks 2 No. 211 Cans 35¢

Tomato Juice Del Monte SAVE 16c 4 46-Oz. Cans 1.00

Pine.-Gr'fruit Del Monte Drink 46-Oz. Can 29¢

Chunk Style Tuna Del Monte SAVE 17c 2 No. 1/2 Cans 49¢

Chili With Beans Gebhardt's SAVE 40c 4 No. 300 Cans 1⁰⁰

PORK & BEANS WHITE SWAN 3 No. 300 Cans 29¢

BLACK PEPPER MORTON'S 3 1 1/2-oz. Cans 25¢

Pink or Regular
LEMONADE
or **LIMEADE**

M. C. P. Frozen 5 6-oz. Cans 49¢
SAVE 19c

Grape Juice

Welch's Frozen 2 6-Oz. Cans 39¢

Limit Rights Reserved

IRONING BOARD PAD & COVER SETS

TUFFLEX PAD SILICONE COVER REGULAR \$1.98 VALUE **99¢**

DEL MONTE GOLDEN
Whole Kernel Corn 2 Cans 39c
DEL MONTE
REESTONE PEACHES No. 303 Can 25c
DEL MONTE BEANS
EARLY GARDEN LIMAS No. 303 can 27c
DEL MONTE FRESH
CUCUMBER PICKLES 15-Oz. Jar 23c

Layer Cakes

Mrs. Baird's DEVIL'S FOOD eg. 49c Value **39¢**



RAINBOW TROUT
Empress Rainbow 12-Oz. Pkg. 49¢

ARMOUR'S STAR WHOLE
FRYERS Lb. 29¢
ARMOUR'S STAR CUT - UP FRYERS lb. 33c
BOLOGNA SWIFT'S PREMIUM SLICED Lb. 49¢

ARMOUR'S STAR BACON Lb. 49¢ Pkg.

Fresh Ground Beef WORTH QUALITY Lb. 45¢ Sliced Pork Liver FRESH Lb. 29¢

Smoked Bacon Squares SWIFT'S Lb. 29¢ Haddock Portions TASTE O' SEA 12-Oz. Pkg. 49¢

RED POTATOES U. S. No. 1 10 -Lb Cello 39¢

Jonathan Apples ROSY RED 2 Lbs. 25¢

U. S. NO. 1 SPANISH WHITE ONIONS 2 Lbs. 13¢

RED-RIPE, 3's, 4's CARTON TOMATOES Each 19¢

Colgate
TOOTH PASTE Economy 69c Size 53¢

WORTH FOOD MART

Rebekah Lodge Meets Tuesday At IOOF Hall

The Ranger Rebekah Lodge No. 244 met Tuesday, Sept. 29, at 7:30 p.m. for a routine business meeting. Sylvia Neal, Noble Grand,

presided. Members reported sick were Ray Todd and Ellen Jones. Mr. and Mrs. Bill Rainwater, Gertrude Gideon, and Clara Ivy reported on the O & R Circle meeting which they attended in Balm Sept. 28. The following members were present: Sylvia Neal, Suddie Strong, Clara Ivy, Lila Eiffert, Lena Mc-

Hospital News

New patients in Ranger General Hospital are: Mrs. J. W. White, Ranger, me-
Donough, Eary Wallace, Ethel Johnson, C. E. Bell, Lena Patterson, Freda Rainwater and Bill Rainwater.

dical Mrs. D. D. Cozart and baby girl, Ranger
Mrs. R. G. Green and baby boy, Ranger
Dismissed were: Mrs. A. E. Thompson, Ranger
A. C. Pierce, Cisco
Jim Lovell, Eastland
D. D. Owens, Cisco

Intermediate Department Meets At Sky Vu Ranch for 'T. U. Roundup'

The Jesse White lawn was transformed into Sky Vu Ranch Saturday night, Sept. 28, when cowboys and cowgirls from the Intermediate Training Union Department of the First Baptist Church arrived in western apparel to enjoy a ranch style meal of barbecue, baked beans, potato salad, cookies, and cold drinks.

After "Thanks" were offered by Roy Barret, Mrs. R. J. Rains and Mrs. White served the thirty-four cowboys and cowgirls present.

The meal had been prepared by ranch cooks Dale Cozart, Jesse White, Mrs. Roy Barret, and Mrs. Cozart. Assistant cooks were cowgirls Glenda Rains, Elaine Barret, and Carol Sae and Emma Lou Montgomery.

Following the meal, western style games were played. Those enjoyed most were "Corraling the Strays" and "Finning the Bowtie on a Cowboy." Then all cowhands gathered around the campfire for western songs and hymns. Jack Noth accompanied the group on the guitar. A duet, "You Are My Sunshine," was sung by Emma Lou and Carol Sue Montgomery. "Tom Dooley" was sung by a quartet, Jim Robinson, Donnie Chesnut, Johnny Bob King, and Bill Perkins. Jill Watkins and Donna Drennan also sang a duet. Jack Noth sang several solos. Then all cowhands joined in again to sing

"Home on the Range," "It Is No Secret," "Everyday With Jesus," "He," "Three Bells," "Old Time Religion", and other songs.

At the close of the Roundup a large circle was formed by all cowboys and cowgirls holding hands and singing "Thank You, Lord." Those attending were: Regina Fawcett, Charlene Montgomery, Jan Watkins, Cathy Covington, Patsi, Bill, and John Perkins, Lee Osburne, Alex Braasler, Chipper Lang, Robby Robinson, Johnny Bob King, Alex Eakin, Glenda Rains, Elaine Barret, Homer Montgomery, Jill Watkins, Donnie Chesnut, Jim Robinson, Donna Drennan, Emma and Carol Sue Montgomery, Easi Reeves, Jack Noth, Mr. and Mrs. Cozart and Cindy, Mr. and Mrs. Roy Barret, Mrs. R. J. Rains, and Mr. and Mrs. White and Brad.

Party Honors Pam Dennis On 10th Birthday

Miss Pam Dennis, daughter of Mr. and Mrs. Dwayne Dennis, was honored on her tenth birthday, Sept. 26, with a birthday party at her home from 9:30 to 11 Saturday morning. Bingo and other games were enjoyed by the group. Refreshments of cake, grape punch, and bubble gum were served. Favors of baby dolls in miniature basinetts were presented to each girl, and the boys received tops as favors. Many nice gifts were presented to the honoree.

The following attended: Betty Jo Weekes, Sharon Hudson, Cheryl Huffman, Peggy Houston, Phyllis Greenhaw, Patti Pittman, Dwayne Brown, Dorothy Ann Oliver, Lewis Pounds, Jerry Gibbs, Joe Wayne Dennis, Mr. and Mrs. Wayne White

Mrs. Joe Dennis, Mrs. Hoy Oliver, Mrs. Dwayne Dennis, the honoree, Pam Dennis.

TRADE WITH YOUR HOMETOWN MERCHANTS

Free Estimates

On A New ROOF

Or Repair your old Roof Residential & Commercial

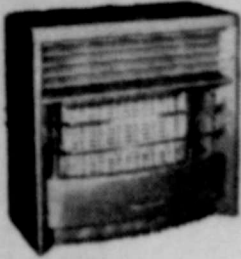
Eastland - Ranger Roofing Co.

Noble Squires Phone 733 Eastland

Millions agree Dearborn HEATS BEST!

Because only Dearborn offers all these features—

- COOL SAFETY CABINET You can use it as an extra table
- FORWARD-FLOW CIRCULATION Provides balanced, home filling heat
- CLEANLINESS Cleaner heat means less cleaning time
- ADAPTABILITY Blends with any decorative scheme



The gas area heater that adds more than warmth to your home!

Dearborn From 1995 up

CHAIR NO. 6 — FOAM RUBBER

Reg. \$24.95 SPECIAL 2 for \$35.00



RANGER FURNITURE EXCHANGE

Ranger

"BRASHIER'S"

Phone 242

Bridal Shower Honors Recent Bride Saturday

Mrs. Don Edward Morris of Fort Worth, the former Miss Dolores Hagar of Ranger, was honored with a bridal shower in the home of Mrs. Reese Rodgers on Saturday, Sept. 26, from 7:30 to 9:30 a.m.

Hostesses with Mrs. Rodgers were Miss Barbara Rodgers, Miss Pat Graham, Mrs. V. V. Cooper, and Mrs. Lynn Gentry.

Refreshments of punch and cookies were served from a table laid with an extra lace cloth. A bouquet of bronze mums in a glass container formed the centerpiece.

About twenty-five guests called during the evening, and gifts were sent by about sixty who were unable to attend.

Mrs. Morris is the daughter of Mr. and Mrs. W. T. Hagar of Ranger.

Ladies' Bible Class Begins Course of Study

The Ladies' Bible Class of the Mesquite and Bask Church of Christ is beginning a course of study on "The Sacrificial Life," a book written by Mrs. W. R. Smith. The lessons will be taught by Lloyd Bryant, minister.

The class meets at 2 p.m. each Tuesday. All ladies of Ranger are invited to attend. Twenty-six have already registered for the study course.

Mrs. Jim Horton Will Speak at Club Luncheon

The 1947 Club, Mrs. Morris Campbell, president, will entertain Saturday, "October 24" at Lone Cedar Country Club with a luncheon for all members and their guests.

Hostesses for the occasion will be members of the hospitality committee, Meses. W. H. Clem, James Rutiff, and Charles Milliken.

Guest speaker will be Mrs. Jim Horton of Eastland, who will present an interesting program on "Safari to Africa." Her talk will be illustrated with colored slides of her recent trip to Africa.

Bible Club Meets Tuesday Morning In McGee Home

Mrs. W. H. McGee was hostess to the Ladies' Bible Club at a meeting Tuesday morning at 9 in her home on Wayland Road.

Mrs. H. T. Pepper gave the devotional, after which games and refreshments were enjoyed by all. The following attended: Meses. Burl McGraw, D. A. Lambert, H. V. Dawson H. B. Crabbs, Pepper, Georgia Young, Wanda Tollett and four visitors.

The next meeting will be Tuesday, Oct. 6, at 9:30 a.m. in the home of Mrs. Pepper. The public is cordially invited to attend the meeting.

TRADE WITH YOUR Hometown Merchants

Eastland Steam Laundry

Service in Ranger

Pickups Daily

Call Eastland Collect PHONE 584

BARBER SHOP

IT PAYS

to LOOK WELL

Courteous Service

TONY'S BARBER SHOP 223 1/2 Main - Phone 108

ATTENTION, SECRETARIES And STENOS:



I cordially invite you to a preview showing of a new movie that I know you will especially love . . . because it's about a secretary . . . the kind of secretary even man would like to have. The movie is Paramount's "BUT NOT FOR ME". Clark Gable is the reluctant boss, and Carroll 'Baby Doll' Baker is the not-so-private secretary.

Come as my guest — and bring someone of your choice—and enjoy this hilarious romantic comedy.

AT 10 A. M. SATURDAY MORNING

OCTOBER 3rd at the MAJESTIC

At that time I have a surprise for you. I will tell you how you can win: A fall sports outfit . . . Skirt, Blouse and Shoes . . . Courtesy "Altman's" in Cisco and Eastland . . . Purse, Gloves, Hose and Scarf Courtesy "The Smart Shop" in Ranger.

IT'S REALLY EASY TO WIN! Looking forward to seeing you at this FREE PREVIEW I am.

Sincerely yours, Aubrey Van Hoy Manager Majestic Eastland

Robinson Food Market

SPECIALS FOR FRIDAY & SATURDAY, OCT. 2 - 3 WE DELIVER

121 North Rusk Street Phone 162

FRESH DRESSED—Cut or Whole

Fryers Lb. 33¢

WILSON'S THICK SLICED

Bacon 2 Lb. Pkg. 97¢

ARMOUR'S

Franks 1-Lb. Cello 49¢

FANCY HOME KILLED CALF

Round Steak lb. 87c

Loin Steak lb. 75c

T-Bone Steak lb. 85c

FRESH

Carrots Cello Bag 6¢

FOLGER'S

Coffee Lb. 69¢

DONALD DUCK FROZEN

ORANGE JUICE 2 6-Oz. Cans 49¢

GLADIOLA

CAKE MIXES 4 Boxes 99¢

White - Pound - Yellow - Devil Food



THERE'S NOTHING LIKE A NEW CAR . . . MAKE YOURS A ROCKET ENGINE OLDS!

SUPER 88 HOLIDAY SPORT SEDAN—Super action . . . more sophisticated! Every value-packed Super 88 model is powered with the PREMIER ROCKET Engine that delivers maximum performance from premium fuels. There's abundant reserve power for passing throughout the entire driving range.

YOUR LOCAL AUTHORIZED OLDSMOBILE QUALITY DEALER

invites you to see the Most Satisfying cars you've ever known!

The 1960 Oldsmobiles are here—as new as new can be! Every beautiful line and every outstanding new feature is included to bring you the finest the medium-price class has to offer!

Oldsmobile's new and radiant styling is designed to satisfy your sense of good taste. New Quadri-Balanced Ride with Vibra-Tuned Body Mountings is certain to be the most comfortable and satisfy-

ing ride you've ever tried. It brings new smoothness, new stability, new safety . . . and new silence! There's a new balance of power—with two Rocket Engines! Three established series to choose from! 17 new models . . . including two new 3-seat Fiestas! Come in and see the Mighty Satisfying 1960 Oldsmobiles . . . quality built, quality sold and quality serviced for your lasting satisfaction!



1960 OLDSMOBILE DYNAMIC 88 HOLIDAY SEDAN—You get more miles per dollar! Every dollar-saving Dynamic 88 has as standard equipment the new REGULAR ROCKET Engine—the Rocket "Go" on lower cost, regular gas—saves you about a dollar an every 100!



1960 NINETY-EIGHT HOLIDAY SPORT SEDAN—Incomparably sophisticated . . . elegantly styled. In the new Ninety-Eight Oldsmobile, you will find supreme satisfaction in every respect—power, prestige, pleasure. New Custom Lounge Interiors—New PREMIER ROCKET Engine!

OLDSMOBILE FOR 1960

DON PIERSON OLDS - CADILLAC 314 W. MAIN, EASTLAND, TEXAS

SEE THE SUPER CROSS SHOW • EVERY WEEK ON CBS-TV . . . HEAR LOWELL THOMAS AND THE NEWS • MONDAY THRU FRIDAY ON CBS-RADIO

WES Chapter Meets Monday For Initiation

The Ranger Chapter Order of Eastern Star, No. 275 held a meeting Monday, Sept. 28, at 8 p.m. for the purpose of initiation.

The Chapter was opened in short form by Mrs. G. C. McGown, Worthy Matron after which the initiation was held. Mrs. Byron Gailey and Pat Collins were initiated into the order.

The Worthy Matron had the hall decorated with flowers carrying out her colors of pink and white for the year. Small arrangements of pink rosebuds decorated the stands on either side of the

altar. A large arrangement of pink roses and spider lilies in a floor basket was in front of the Worthy Matron and the Worthy Patron's station. An arrangement of bronze mums adorned the secretary's desk.

After the initiation service, the group reassembled in the banquet hall where refreshments of cake and spiced tea were served. The refreshment table was covered with

a white damask cloth and centered with an arrangement of pink roses, flanked on either side by pink candles. All officers and programs were in their respective stations. About thirty-five attended.

TRADE WITH YOUR HOMETOWN MERCHANTS

WARDS
GUMMERY WARD

YOU SAVE MORE WHEN YOU SHOP WARDS

407 Main
Phone 447

LAY-A-WAY SALE!



\$1 DOWN

Jet Style Trike SAFER, MORE FUN!

15.88
10" wheel

Rugged construction—almost tip-proof Rocket styling on U-bar frame, sturdy rear arch for added support. Extra wide axle for stability and control. With light, horn, basket and streamers. Metallic gold, green or maroon finish.

12-in. front wheel now 16.88
16-in. front wheel now 18.88
20-in. front wheel now 21.88



\$2 DOWN
20" SIDEWALK BIKE
Coaster brake, deluxe features. Converts to girl's or boy's model. Metallic red finish. **24.88** reg. 27.95



\$1 DOWN
35-IN. STEEL WAGON
Semi-pneumatic tires, guard rail, zingy bell and tail reflectors. Coppertone finish. Usually 12.95

Corvair-

(Continued from Page One) performance at lower initial cost and greater economy of operation.

Special features include a flat, air-cooled engine mounted at the rear, unitized body with virtually flat passenger compartment floor, swing-type rear axle with independent springing at all four wheels. The Corvair will be offered in two models, the standard and the deluxe Corvair 700, both six-passenger four-door sedans.

A pioneering achievement, the Corvair offers many features which are new to American-made automobiles. Designed specifically for the compact car market, it has these dimensions:

Wheel base, 108 inches. Overall length, 180 inches. Height, four feet, three inches. Width, 66.9 inches. Weight, 2540 pounds. Quality, comfort, performance and safety were coupled with low initial and operating costs as basic objectives. A low, airy appearance in the modern styling tradition and convenience features such as the automatic transmission, were also tailored to American standards.

The overall size and roominess of the Corvair could not have been accomplished with an ordinary design. By virtue of the rear power-train mount, the driveline tunnel has been eliminated. The passenger compartment floor is virtually flat. Low seat positioning helps provide plenty of headroom.

Fore-and-aft weight balance is ideal for a short wheelbase car.

WEEKEND VISITORS
Mrs. Lula Baggett of Mineral Wells spent the weekend in Ranger visiting her sister and her niece, Mrs. Mae Whaley and Mrs. Albert Miller.

Other weekend visitors in their home were Mrs. James Murray, Kay, Carol and James of Ferrin, Texas.

Trade With Your HOMETOWN MERCHANTS

WINTERPROOF YOUR CAR NOW!



- ✓ WINTERLUBE
- ✓ GLASS
- ✓ ANTI-FREEZE
- ✓ BATTERY
- ✓ TIRES
- ✓ DEFROSTER
- ✓ HEATER
- ✓ BRAKES
- ✓ LIGHTS
- ✓ TIRE CHAINS

Don't Get Stuck When Winter Comes

Drive right in today! Let us give your car a thorough check! All necessary repairs and adjustments made quickly and expertly! There's rough driving ahead, so make sure your car is in perfect driving condition, ready to give you tip-top winter performance!

Campbell Ford Sales, Inc.
Authorized Test Station
Corner Pine & Rusk Phone 954 Ranger

LOW LOW PRICES RIVERSIDE NYLONS

OUR PREMIUM TIRE—NYLON 64

Size	List price each before trade-in plus excise tax	Sale price with trade-in plus excise tax
6.70-15	26.40	18.87
7.10-15	29.30	21.87
7.60-15	37.00	23.87
8.00/8.20-15	35.75	26.87

18.87

24-MONTH GUARANTEE
Super strong nylon cord tube-type plus excise tax and trade-in tire

Size	List price each before trade-in plus excise tax	Sale price with trade-in plus excise tax
6.70-15	24.00	16.87
7.10-15	26.65	19.87
7.60-15	27.10	22.87
8.00/8.20-15	33.30	23.87

16.87

20-MONTH GUARANTEE
Strong nylon cord construction resists dangerous impacts. "King-Row" tread design protects you from road skids.

Size	List price each before trade-in plus excise tax	Sale price with trade-in plus excise tax
6.70-15	19.95	13.87
7.10-15	23.95	16.87
7.60-15	26.65	19.87

13.87

15-MONTH GUARANTEE
Nylon cord construction for safer, longer driving. Tread designed for good traction, quick stops.

NO CASH DOWN YOUR TRADE-IN TIRE MAKES THE DOWN PAYMENT!

HUMBLE Presents... THE NEW TIRE of this generation!

ATLAS BUCRON TIRES

Ride easier than any other tires



Ordinary tires "bounce" . . . multiply bumps and jars. Atlas Bucron Tires smother "bounce," give shock-absorbing ride.

SOAKS UP BUMPS AND JARS! You notice bumps with ordinary tires because the rubber "bounces." The miracle new rubber in Atlas Bucron Tires smothers "bounce." Your car rides like the day you bought it, steers easier, handles better.



POSITIVELY NO SQUEAL! The new Atlas Bucron Tire grips the road so well you can't make it squeal. The secret is in the miracle new rubber of the tread.

SAFER! Stops 30% quicker than ordinary tires. Tested against other tires, the Atlas Bucron Tires stopped 30% quicker—often the difference between a safe stop and an accident. Atlas Bucron Tires will stop quicker on wet pavement than ordinary tires on dry.

HUMBLE OIL & REFINING COMPANY

Trade Now for a set of these amazing new tires. Ask for a demonstration ride—you'll be amazed! Then talk trade with your neighbor under the Humble sign. The price is less than you would think, and terms are available. Equip your car with Atlas Bucron Tires on all four wheels.

GUARANTEED BY HUMBLE
Humble guarantees the Atlas Bucron Tire against all road hazards for 18 months. Adjustment is based on months of service. Guarantee is honored by 35,000 Atlas dealers on service station driveways throughout the United States and Canada. (Note: All Atlas dealers do not carry Atlas Bucron Tires, but all will make adjustment under the guarantee.)



Save on Riverside batteries Get 2.50 to 5.00 on TRADE-IN!



Riverside...the finest name in batteries

Riverside 2-year guarantee battery

6-volt **10.88***

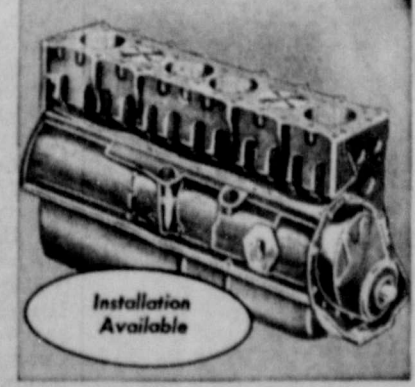
*with trade 12-v as low as... **13.88***

Riverside 3-year guarantee battery

6-volt **13.88***

GUARANTEE Full service guarantee for the specified time, prorated on the months used. Adjustments based on price before trade-in when returned.

INSTALLED FREE 12-v as low as... **16.88***



SAVE — Guaranteed Re-manufactured Engine

Every Riverside is re-manufactured from the pan up with up to 200 new parts, not counting nuts and bolts. Tolerances are 1/1000 of an inch. 18 months to pay.

10% Down

*ATLAS "BUCRON" REGISTERED TRADEMARKS. ATLAS SUPPLY COMPANY.

Pontiac—
(Continued from Page One)
low-cut roof adding to the rakish beauty of every model. Pontiac's fresh approach to styling is even more pronounced in the sculptured deck lid and the rear fenders top-

ped by twin dual tail lamps housed in individual cones extending toward the back window. Below each set of tail lamps are long, graceful backup lamp ports framed in chromium. The artistic deck flares downward to blend with a massive wraparound rear bumper. Below the front fender areas nameplate on each model a thin-line trim

series are two Ventura models, a four-door and a two-door hardtop. The two Ventura models have interiors trimmed entirely in colorful, customized Jewel-tone Morrokide available in many different shades to harmonize with exterior finishes.

Fifteen solid paint colors and 60 two-tone combinations are offered with the 1960 Pontiac. Harmonizing with exterior colors are 51 interior color and material combinations of cloth, Morrokide and genuine leather.

Pontiac's instrument panel for 1960 features a new horizontal speedometer, redesigned instruments and control knobs and a non-glare finish on the upper surface.

Pontiac's instrument panel for 1960 features a new horizontal speedometer, redesigned instruments and control knobs and a non-glare finish on the upper surface.

Pontiac's instrument panel for 1960 features a new horizontal speedometer, redesigned instruments and control knobs and a non-glare finish on the upper surface.

Pontiac's instrument panel for 1960 features a new horizontal speedometer, redesigned instruments and control knobs and a non-glare finish on the upper surface.

Pontiac's instrument panel for 1960 features a new horizontal speedometer, redesigned instruments and control knobs and a non-glare finish on the upper surface.

Pontiac's instrument panel for 1960 features a new horizontal speedometer, redesigned instruments and control knobs and a non-glare finish on the upper surface.

Pontiac's instrument panel for 1960 features a new horizontal speedometer, redesigned instruments and control knobs and a non-glare finish on the upper surface.

Pontiac's instrument panel for 1960 features a new horizontal speedometer, redesigned instruments and control knobs and a non-glare finish on the upper surface.

1920 Club Meets for Reassembly Luncheon At Lone Cedar Sept. 26.

Members and guests of the 1920 Club met Saturday, Sept. 26, at 1 p.m. in the main dining room of Lone Cedar Country Club for the annual Reassembly Luncheon.

An autumn motif was used in table decorations. The speaker's table was covered with a white cloth with a floor-length double ruffle of embossed white organdy.

An arrangement of orange pyracantha berries and artificial fruit in an oblong copper bowl formed the centerpiece. Similar arrangements in smaller brass and copper containers were used on the smaller tables. A bowl of red spider lilies was on the piano. Place cards with a fall flower design also carried out the fall theme.

Miss Mary Kay Rush played background music on the piano while guests were assembling. Miss Jimmie May Miller led the group in singing "America," after which Mrs. R. L. Hamrick gave the invocation. Mrs. Carl Black, Jr., president, welcomed guests. Mrs. C. E. May, Sr., second vice-president, introduced the new members.

Mmes. J. R. McLaughlin, Charles Gann, and Theodore Nicksick, Jr. Mrs. G. B. Rush, program chairman, presented Miss Miller, who sang "Autumn Leaves," accompanied by Miss Karen Killingsworth. Mrs. Rush then discussed the yearbooks and announced that the 1959-1960 course of study for the 1920 Club is Foreign Cultures.

The following members and guests were present: Mmes. Black, L. R. Conn, L. L. Bruce, McLaugh-

lin, E. L. McMillen, Carl Lammus, V. V. Cooper Jr., L. B. Hagaman, M. H. Hagaman, C. B. Pruet, S. M. Eubank of Putnam, Ven White, L. A. White, F. S. Pearsall, J. L. Turner, R. A. Jameson, Marjorie Theberge, W. M. Brown, Lively Brown, J. A. Johnson, Hamrick, F. E. Langston, A. N. Larson, E. E. Crawford, L. R. Pearson.

Mmes. D. D. Pickrell, Saule Perlestein, C. E. May, Sr., J. S. McDowell, Joe B. Scott, Gann, James Ratliff, J. B. Craig, Stanley McAnelly, W. F. Creager, A. W. Brazda, F. P. Brashier, Sr., F. P. Brashier, Jr., E. H. Mills, James P. Morris, Murr's Newnam, Joe Collins, M. L. King, J. E. Matthews, W. P. Watkins, Richard E. Henderson, James E. Blair, Nicksick, J. Floyd Killingsworth, Dave Adams, of Abilene, W. H. Clem, Rush, Ralph E. Perkins; Misses Beulah Harrison, Marjorie Maddocks, Killingsworth, Rush, and Miller.

Mmes. D. D. Pickrell, Saule Perlestein, C. E. May, Sr., J. S. McDowell, Joe B. Scott, Gann, James Ratliff, J. B. Craig, Stanley McAnelly, W. F. Creager, A. W. Brazda, F. P. Brashier, Sr., F. P. Brashier, Jr., E. H. Mills, James P. Morris, Murr's Newnam, Joe Collins, M. L. King, J. E. Matthews, W. P. Watkins, Richard E. Henderson, James E. Blair, Nicksick, J. Floyd Killingsworth, Dave Adams, of Abilene, W. H. Clem, Rush, Ralph E. Perkins; Misses Beulah Harrison, Marjorie Maddocks, Killingsworth, Rush, and Miller.

Mmes. D. D. Pickrell, Saule Perlestein, C. E. May, Sr., J. S. McDowell, Joe B. Scott, Gann, James Ratliff, J. B. Craig, Stanley McAnelly, W. F. Creager, A. W. Brazda, F. P. Brashier, Sr., F. P. Brashier, Jr., E. H. Mills, James P. Morris, Murr's Newnam, Joe Collins, M. L. King, J. E. Matthews, W. P. Watkins, Richard E. Henderson, James E. Blair, Nicksick, J. Floyd Killingsworth, Dave Adams, of Abilene, W. H. Clem, Rush, Ralph E. Perkins; Misses Beulah Harrison, Marjorie Maddocks, Killingsworth, Rush, and Miller.

Mmes. D. D. Pickrell, Saule Perlestein, C. E. May, Sr., J. S. McDowell, Joe B. Scott, Gann, James Ratliff, J. B. Craig, Stanley McAnelly, W. F. Creager, A. W. Brazda, F. P. Brashier, Sr., F. P. Brashier, Jr., E. H. Mills, James P. Morris, Murr's Newnam, Joe Collins, M. L. King, J. E. Matthews, W. P. Watkins, Richard E. Henderson, James E. Blair, Nicksick, J. Floyd Killingsworth, Dave Adams, of Abilene, W. H. Clem, Rush, Ralph E. Perkins; Misses Beulah Harrison, Marjorie Maddocks, Killingsworth, Rush, and Miller.

Mmes. D. D. Pickrell, Saule Perlestein, C. E. May, Sr., J. S. McDowell, Joe B. Scott, Gann, James Ratliff, J. B. Craig, Stanley McAnelly, W. F. Creager, A. W. Brazda, F. P. Brashier, Sr., F. P. Brashier, Jr., E. H. Mills, James P. Morris, Murr's Newnam, Joe Collins, M. L. King, J. E. Matthews, W. P. Watkins, Richard E. Henderson, James E. Blair, Nicksick, J. Floyd Killingsworth, Dave Adams, of Abilene, W. H. Clem, Rush, Ralph E. Perkins; Misses Beulah Harrison, Marjorie Maddocks, Killingsworth, Rush, and Miller.

Mmes. D. D. Pickrell, Saule Perlestein, C. E. May, Sr., J. S. McDowell, Joe B. Scott, Gann, James Ratliff, J. B. Craig, Stanley McAnelly, W. F. Creager, A. W. Brazda, F. P. Brashier, Sr., F. P. Brashier, Jr., E. H. Mills, James P. Morris, Murr's Newnam, Joe Collins, M. L. King, J. E. Matthews, W. P. Watkins, Richard E. Henderson, James E. Blair, Nicksick, J. Floyd Killingsworth, Dave Adams, of Abilene, W. H. Clem, Rush, Ralph E. Perkins; Misses Beulah Harrison, Marjorie Maddocks, Killingsworth, Rush, and Miller.

Mmes. D. D. Pickrell, Saule Perlestein, C. E. May, Sr., J. S. McDowell, Joe B. Scott, Gann, James Ratliff, J. B. Craig, Stanley McAnelly, W. F. Creager, A. W. Brazda, F. P. Brashier, Sr., F. P. Brashier, Jr., E. H. Mills, James P. Morris, Murr's Newnam, Joe Collins, M. L. King, J. E. Matthews, W. P. Watkins, Richard E. Henderson, James E. Blair, Nicksick, J. Floyd Killingsworth, Dave Adams, of Abilene, W. H. Clem, Rush, Ralph E. Perkins; Misses Beulah Harrison, Marjorie Maddocks, Killingsworth, Rush, and Miller.

Mmes. D. D. Pickrell, Saule Perlestein, C. E. May, Sr., J. S. McDowell, Joe B. Scott, Gann, James Ratliff, J. B. Craig, Stanley McAnelly, W. F. Creager, A. W. Brazda, F. P. Brashier, Sr., F. P. Brashier, Jr., E. H. Mills, James P. Morris, Murr's Newnam, Joe Collins, M. L. King, J. E. Matthews, W. P. Watkins, Richard E. Henderson, James E. Blair, Nicksick, J. Floyd Killingsworth, Dave Adams, of Abilene, W. H. Clem, Rush, Ralph E. Perkins; Misses Beulah Harrison, Marjorie Maddocks, Killingsworth, Rush, and Miller.

Mmes. D. D. Pickrell, Saule Perlestein, C. E. May, Sr., J. S. McDowell, Joe B. Scott, Gann, James Ratliff, J. B. Craig, Stanley McAnelly, W. F. Creager, A. W. Brazda, F. P. Brashier, Sr., F. P. Brashier, Jr., E. H. Mills, James P. Morris, Murr's Newnam, Joe Collins, M. L. King, J. E. Matthews, W. P. Watkins, Richard E. Henderson, James E. Blair, Nicksick, J. Floyd Killingsworth, Dave Adams, of Abilene, W. H. Clem, Rush, Ralph E. Perkins; Misses Beulah Harrison, Marjorie Maddocks, Killingsworth, Rush, and Miller.

Mmes. D. D. Pickrell, Saule Perlestein, C. E. May, Sr., J. S. McDowell, Joe B. Scott, Gann, James Ratliff, J. B. Craig, Stanley McAnelly, W. F. Creager, A. W. Brazda, F. P. Brashier, Sr., F. P. Brashier, Jr., E. H. Mills, James P. Morris, Murr's Newnam, Joe Collins, M. L. King, J. E. Matthews, W. P. Watkins, Richard E. Henderson, James E. Blair, Nicksick, J. Floyd Killingsworth, Dave Adams, of Abilene, W. H. Clem, Rush, Ralph E. Perkins; Misses Beulah Harrison, Marjorie Maddocks, Killingsworth, Rush, and Miller.

Mmes. D. D. Pickrell, Saule Perlestein, C. E. May, Sr., J. S. McDowell, Joe B. Scott, Gann, James Ratliff, J. B. Craig, Stanley McAnelly, W. F. Creager, A. W. Brazda, F. P. Brashier, Sr., F. P. Brashier, Jr., E. H. Mills, James P. Morris, Murr's Newnam, Joe Collins, M. L. King, J. E. Matthews, W. P. Watkins, Richard E. Henderson, James E. Blair, Nicksick, J. Floyd Killingsworth, Dave Adams, of Abilene, W. H. Clem, Rush, Ralph E. Perkins; Misses Beulah Harrison, Marjorie Maddocks, Killingsworth, Rush, and Miller.

Mmes. D. D. Pickrell, Saule Perlestein, C. E. May, Sr., J. S. McDowell, Joe B. Scott, Gann, James Ratliff, J. B. Craig, Stanley McAnelly, W. F. Creager, A. W. Brazda, F. P. Brashier, Sr., F. P. Brashier, Jr., E. H. Mills, James P. Morris, Murr's Newnam, Joe Collins, M. L. King, J. E. Matthews, W. P. Watkins, Richard E. Henderson, James E. Blair, Nicksick, J. Floyd Killingsworth, Dave Adams, of Abilene, W. H. Clem, Rush, Ralph E. Perkins; Misses Beulah Harrison, Marjorie Maddocks, Killingsworth, Rush, and Miller.

Mmes. D. D. Pickrell, Saule Perlestein, C. E. May, Sr., J. S. McDowell, Joe B. Scott, Gann, James Ratliff, J. B. Craig, Stanley McAnelly, W. F. Creager, A. W. Brazda, F. P. Brashier, Sr., F. P. Brashier, Jr., E. H. Mills, James P. Morris, Murr's Newnam, Joe Collins, M. L. King, J. E. Matthews, W. P. Watkins, Richard E. Henderson, James E. Blair, Nicksick, J. Floyd Killingsworth, Dave Adams, of Abilene, W. H. Clem, Rush, Ralph E. Perkins; Misses Beulah Harrison, Marjorie Maddocks, Killingsworth, Rush, and Miller.

Mmes. D. D. Pickrell, Saule Perlestein, C. E. May, Sr., J. S. McDowell, Joe B. Scott, Gann, James Ratliff, J. B. Craig, Stanley McAnelly, W. F. Creager, A. W. Brazda, F. P. Brashier, Sr., F. P. Brashier, Jr., E. H. Mills, James P. Morris, Murr's Newnam, Joe Collins, M. L. King, J. E. Matthews, W. P. Watkins, Richard E. Henderson, James E. Blair, Nicksick, J. Floyd Killingsworth, Dave Adams, of Abilene, W. H. Clem, Rush, Ralph E. Perkins; Misses Beulah Harrison, Marjorie Maddocks, Killingsworth, Rush, and Miller.

Mmes. D. D. Pickrell, Saule Perlestein, C. E. May, Sr., J. S. McDowell, Joe B. Scott, Gann, James Ratliff, J. B. Craig, Stanley McAnelly, W. F. Creager, A. W. Brazda, F. P. Brashier, Sr., F. P. Brashier, Jr., E. H. Mills, James P. Morris, Murr's Newnam, Joe Collins, M. L. King, J. E. Matthews, W. P. Watkins, Richard E. Henderson, James E. Blair, Nicksick, J. Floyd Killingsworth, Dave Adams, of Abilene, W. H. Clem, Rush, Ralph E. Perkins; Misses Beulah Harrison, Marjorie Maddocks, Killingsworth, Rush, and Miller.

Mmes. D. D. Pickrell, Saule Perlestein, C. E. May, Sr., J. S. McDowell, Joe B. Scott, Gann, James Ratliff, J. B. Craig, Stanley McAnelly, W. F. Creager, A. W. Brazda, F. P. Brashier, Sr., F. P. Brashier, Jr., E. H. Mills, James P. Morris, Murr's Newnam, Joe Collins, M. L. King, J. E. Matthews, W. P. Watkins, Richard E. Henderson, James E. Blair, Nicksick, J. Floyd Killingsworth, Dave Adams, of Abilene, W. H. Clem, Rush, Ralph E. Perkins; Misses Beulah Harrison, Marjorie Maddocks, Killingsworth, Rush, and Miller.

Mmes. D. D. Pickrell, Saule Perlestein, C. E. May, Sr., J. S. McDowell, Joe B. Scott, Gann, James Ratliff, J. B. Craig, Stanley McAnelly, W. F. Creager, A. W. Brazda, F. P. Brashier, Sr., F. P. Brashier, Jr., E. H. Mills, James P. Morris, Murr's Newnam, Joe Collins, M. L. King, J. E. Matthews, W. P. Watkins, Richard E. Henderson, James E. Blair, Nicksick, J. Floyd Killingsworth, Dave Adams, of Abilene, W. H. Clem, Rush, Ralph E. Perkins; Misses Beulah Harrison, Marjorie Maddocks, Killingsworth, Rush, and Miller.

Mmes. D. D. Pickrell, Saule Perlestein, C. E. May, Sr., J. S. McDowell, Joe B. Scott, Gann, James Ratliff, J. B. Craig, Stanley McAnelly, W. F. Creager, A. W. Brazda, F. P. Brashier, Sr., F. P. Brashier, Jr., E. H. Mills, James P. Morris, Murr's Newnam, Joe Collins, M. L. King, J. E. Matthews, W. P. Watkins, Richard E. Henderson, James E. Blair, Nicksick, J. Floyd Killingsworth, Dave Adams, of Abilene, W. H. Clem, Rush, Ralph E. Perkins; Misses Beulah Harrison, Marjorie Maddocks, Killingsworth, Rush, and Miller.

Mmes. D. D. Pickrell, Saule Perlestein, C. E. May, Sr., J. S. McDowell, Joe B. Scott, Gann, James Ratliff, J. B. Craig, Stanley McAnelly, W. F. Creager, A. W. Brazda, F. P. Brashier, Sr., F. P. Brashier, Jr., E. H. Mills, James P. Morris, Murr's Newnam, Joe Collins, M. L. King, J. E. Matthews, W. P. Watkins, Richard E. Henderson, James E. Blair, Nicksick, J. Floyd Killingsworth, Dave Adams, of Abilene, W. H. Clem, Rush, Ralph E. Perkins; Misses Beulah Harrison, Marjorie Maddocks, Killingsworth, Rush, and Miller.

Mmes. D. D. Pickrell, Saule Perlestein, C. E. May, Sr., J. S. McDowell, Joe B. Scott, Gann, James Ratliff, J. B. Craig, Stanley McAnelly, W. F. Creager, A. W. Brazda, F. P. Brashier, Sr., F. P. Brashier, Jr., E. H. Mills, James P. Morris, Murr's Newnam, Joe Collins, M. L. King, J. E. Matthews, W. P. Watkins, Richard E. Henderson, James E. Blair, Nicksick, J. Floyd Killingsworth, Dave Adams, of Abilene, W. H. Clem, Rush, Ralph E. Perkins; Misses Beulah Harrison, Marjorie Maddocks, Killingsworth, Rush, and Miller.

Mmes. D. D. Pickrell, Saule Perlestein, C. E. May, Sr., J. S. McDowell, Joe B. Scott, Gann, James Ratliff, J. B. Craig, Stanley McAnelly, W. F. Creager, A. W. Brazda, F. P. Brashier, Sr., F. P. Brashier, Jr., E. H. Mills, James P. Morris, Murr's Newnam, Joe Collins, M. L. King, J. E. Matthews, W. P. Watkins, Richard E. Henderson, James E. Blair, Nicksick, J. Floyd Killingsworth, Dave Adams, of Abilene, W. H. Clem, Rush, Ralph E. Perkins; Misses Beulah Harrison, Marjorie Maddocks, Killingsworth, Rush, and Miller.

Mmes. D. D. Pickrell, Saule Perlestein, C. E. May, Sr., J. S. McDowell, Joe B. Scott, Gann, James Ratliff, J. B. Craig, Stanley McAnelly, W. F. Creager, A. W. Brazda, F. P. Brashier, Sr., F. P. Brashier, Jr., E. H. Mills, James P. Morris, Murr's Newnam, Joe Collins, M. L. King, J. E. Matthews, W. P. Watkins, Richard E. Henderson, James E. Blair, Nicksick, J. Floyd Killingsworth, Dave Adams, of Abilene, W. H. Clem, Rush, Ralph E. Perkins; Misses Beulah Harrison, Marjorie Maddocks, Killingsworth, Rush, and Miller.

Mmes. D. D. Pickrell, Saule Perlestein, C. E. May, Sr., J. S. McDowell, Joe B. Scott, Gann, James Ratliff, J. B. Craig, Stanley McAnelly, W. F. Creager, A. W. Brazda, F. P. Brashier, Sr., F. P. Brashier, Jr., E. H. Mills, James P. Morris, Murr's Newnam, Joe Collins, M. L. King, J. E. Matthews, W. P. Watkins, Richard E. Henderson, James E. Blair, Nicksick, J. Floyd Killingsworth, Dave Adams, of Abilene, W. H. Clem, Rush, Ralph E. Perkins; Misses Beulah Harrison, Marjorie Maddocks, Killingsworth, Rush, and Miller.

Mmes. D. D. Pickrell, Saule Perlestein, C. E. May, Sr., J. S. McDowell, Joe B. Scott, Gann, James Ratliff, J. B. Craig, Stanley McAnelly, W. F. Creager, A. W. Brazda, F. P. Brashier, Sr., F. P. Brashier, Jr., E. H. Mills, James P. Morris, Murr's Newnam, Joe Collins, M. L. King, J. E. Matthews, W. P. Watkins, Richard E. Henderson, James E. Blair, Nicksick, J. Floyd Killingsworth, Dave Adams, of Abilene, W. H. Clem, Rush, Ralph E. Perkins; Misses Beulah Harrison, Marjorie Maddocks, Killingsworth, Rush, and Miller.

Mmes. D. D. Pickrell, Saule Perlestein, C. E. May, Sr., J. S. McDowell, Joe B. Scott, Gann, James Ratliff, J. B. Craig, Stanley McAnelly, W. F. Creager, A. W. Brazda, F. P. Brashier, Sr., F. P. Brashier, Jr., E. H. Mills, James P. Morris, Murr's Newnam, Joe Collins, M. L. King, J. E. Matthews, W. P. Watkins, Richard E. Henderson, James E. Blair, Nicksick, J. Floyd Killingsworth, Dave Adams, of Abilene, W. H. Clem, Rush, Ralph E. Perkins; Misses Beulah Harrison, Marjorie Maddocks, Killingsworth, Rush, and Miller.

Mmes. D. D. Pickrell, Saule Perlestein, C. E. May, Sr., J. S. McDowell, Joe B. Scott, Gann, James Ratliff, J. B. Craig, Stanley McAnelly, W. F. Creager, A. W. Brazda, F. P. Brashier, Sr., F. P. Brashier, Jr., E. H. Mills, James P. Morris, Murr's Newnam, Joe Collins, M. L. King, J. E. Matthews, W. P. Watkins, Richard E. Henderson, James E. Blair, Nicksick, J. Floyd Killingsworth, Dave Adams, of Abilene, W. H. Clem, Rush, Ralph E. Perkins; Misses Beulah Harrison, Marjorie Maddocks, Killingsworth, Rush, and Miller.

CARD OF THANKS
Our heartfelt thanks to all who extended comforting sympathy and help in our recent sorrow. For the beautiful service, floral offerings, and other kindness, we are deeply grateful.
The family of William M. Huff

HERE FROM NEW MEXICO
Mr. and Mrs. W. E. Sneed of Clovis, New Mexico were guests in the home of Mr. and Mrs. Charles Ashcraft and Mrs. Sallie Rodgers over the weekend.
Other guests in the Ashcraft home were Mr. and Mrs. A. Butler of Gordon and Mr. and Mrs. Johnny Brooks of Breckenridge.

ATTEND THE CHURCH OF YOUR CHOICE EACH SUNDAY

DIXIE Drive-In
EASTLAND RANGER HIGHWAY

Admission Never More Than 50c
Children Under 12 Bargain Night - Adults 25c
Box Office Opens 7:15 Show Starts 7:15
Box Office Closes 9:15

THURSDAY, FRIDAY, SATURDAY, OCT. 1, 2, 3

WATUSI
GUARDIANS OF KING SOLOMON'S MINES!
starting GEORGE MONTGOMERY
TAINA ELG - DAVID FARRAR
TECHNICOLOR THEATRE
PLUS: Two Color Cartoons

O. K. Gro. & Mkt.
501 W. Main Ranger Phone 214

ARMOUR'S STAR NO. 1 SLICED Bacon Lb. 49¢

N.B.C. 25c VANILLA WAFER 8-oz. Box 19¢

SWIFTS CHILI WITH BEANS Large Can 49¢

V-8 JUICE 12-oz. Can 2 For 27¢

SUPREME SALAD-WAFERS Lb. 28¢

SMOKED—6 to 8 Lb. Avg. Picnic Lb. 29¢

Pink SALMON Tall can 65c	American SARDINES 3 cans 31¢
Campbell's Tomato Soup 2 for 25c	Campbell's Vegetable Soup 2 for 31¢

RATH'S

PURE LARD
3 Lb. Ctn. 39¢

LIBBY'S JUICE 300 Size 2 For 23¢

KUNERS BLACKKEY PEAS 303 Can 2 For 31¢

KUNER'S KRAUT 303 Can 2 For 29¢

HONEY-CUP MELLORINE
Assorted Flavors 1/2-gal. . 39c 3 1/2-Gal. Cartons 1.00

ECONOMY STEAK Lb. 59¢

FRESH GROUND HAMBURGER Lb. 49¢

SELECTED CLUB STEAK Lb. 65¢

HOMEMADE PORK SAUSAGE Lb. 49¢

SELECTED SIRLOIN STEAK Lb. 79¢

SELECTED BRISKET Lb. 28¢

PRINCE REGULAR DOG-FOOD 4 Can 29¢

fresh point of view...from Pontiac!

Another fresh one from Pontiac!
The inspired beauty of perfect proportion!
The precision control of Wide-Track Wheel Design!
The softer ride of supple suspension!
The wide choice of vigorous Tempest V-8 Engines tailored to economy or high performance!

The car craftsmen who developed Wide-Track Wheels, the innovation that brought a new standard of roadability to the American passenger car, present another fresh original for 1960!

With clean, crisp lines they've composed a delightful rightness of form with unity and rhythm.

Into the proved principle of Wide-Track (wheels farther apart for a steadier stance) they've engineered an ingeniously improved suspension system. This combination of a firm foundation and supple suspension gives you flawless control, more skill in the fine art of driving, smooth stability, bump-yielding softness.

The power plant is typically Pontiac. A wide range of restless, ground-gaining power packages to choose from. All are husky V-8's, ranging from the frugal 425E economy engine that prefers regular grade gasoline to the fiery Tempest 425.

Haven't you been an admiring spectator of Pontiacs long enough? Isn't this your year to become a participant in Pontiac pleasure, to move up to Pontiac ownership, where the enjoyment is the fullest, where the point of view is the freshest?

Wide-Track Wheels give you swaying stability, solid comfort. You maneuver with skillful sureness, accurate control. It's the sweetest, most precise, most rewarding driving you've ever felt.

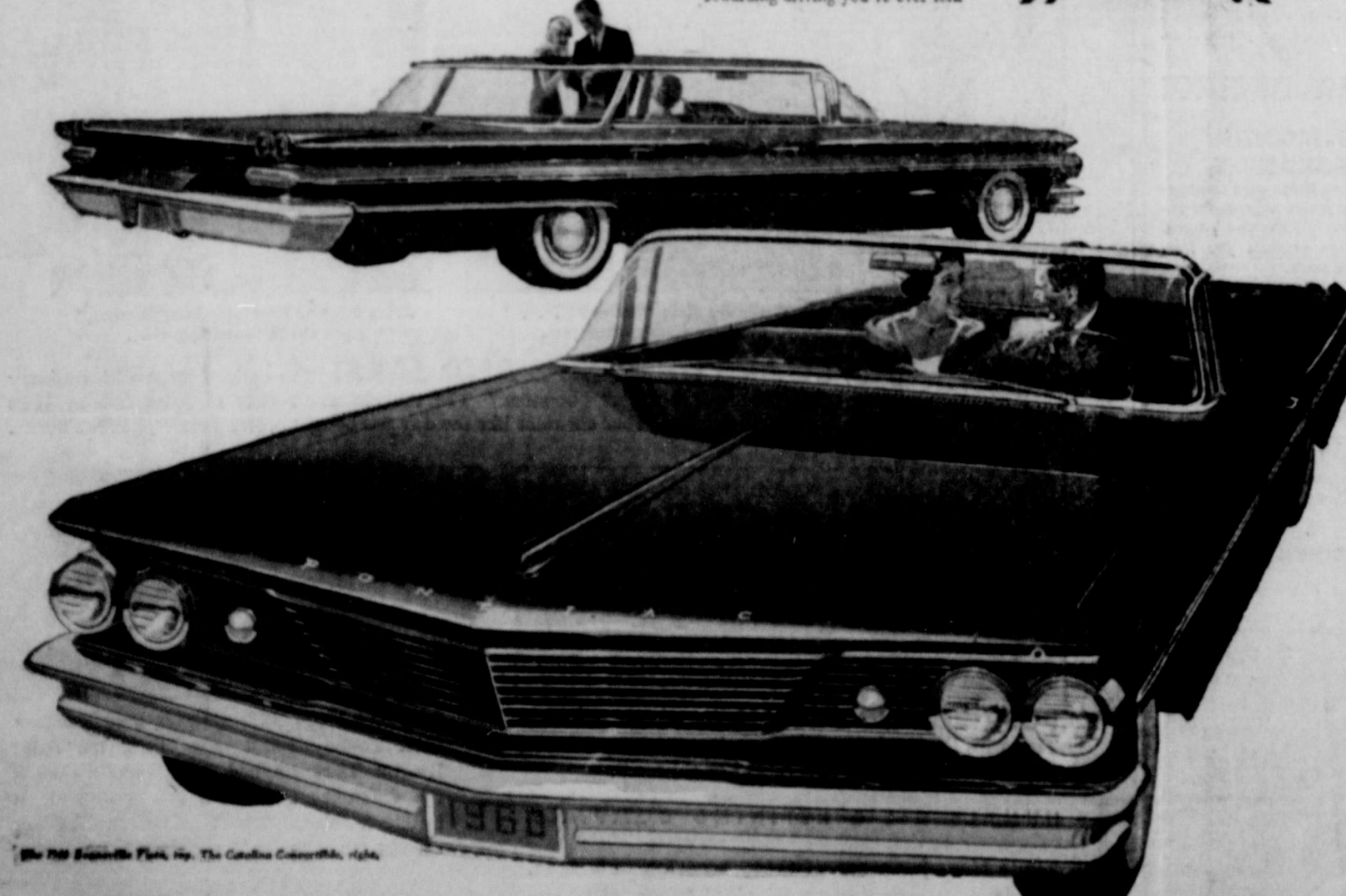
PONTIAC THE ONLY CAR WITH WIDE-TRACK WHEELS
ON DISPLAY TODAY AT ALL PONTIAC DEALERS

BAGWELL MOTOR CO.
Highway 80 East Ranger

READ THE CLASSIFIEDS

FARMERS INSURANCE GROUP
AUTO - TRUCK - FIRE - LIFE - BUSINESS
...all your insurance needs

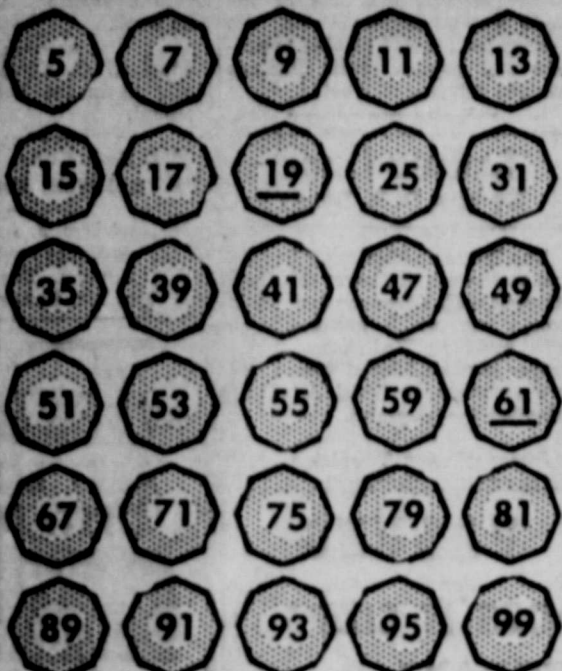
AUTO - TRUCK - FIRE AND EXTENDED COVERAGE BOATS
All your insurance needs
"Dividend Savings"
RUBY SPRINGER
Phone 1082 320 W. Main



PONTIAC THE ONLY CAR WITH WIDE-TRACK WHEELS
ON DISPLAY TODAY AT ALL PONTIAC DEALERS

BAGWELL MOTOR CO.
Highway 80 East Ranger

HERE'S YOUR THIRD "CROSS-OUT" GAME!



Copyright © U.S. Pat. Food — U.S. © 1937, 1938, 1939, 1940, 1941 & 1942, Canada © 1938, 1939 & 1940 by "CROSS-OUT" Pat. Co., Inc., Box 251, St. Louis, Mo., U.S.A.

Green Beans Townhouse—Cut. Delicious and Tender.

Golden Corn Del Monte— Cream Style. Delicious Nuggets.

Spinach Gardenside— Rich in Vitamins. Chucked Full of Iron.

Tomatoes Gardenside— Spanish Omelets. Call for Tomatoes.

Grapefruit Juice Town House Natural. Breakfast Beverage.

Tomato Juice Del Monte— Refreshing. Real Fun to Drink.

6 No. 303 Cans

6 No. 303 Cans

10 No. 303 Cans

10 No. 303 Cans

4 46-Oz. Cans

4 46-Oz. Cans



SAFEWAY DOLLAR DAYS



Safeway Meats

Sliced Bacon Safeway Thick Sliced— Wonderful for Breakfast or for Bacon and Tomato Sandwiches. **2** 1-Lb. Pks. **79¢**

Pork Sausage Safeway Pure Pork Country Style. A Delicious Breakfast Treat. **2** 2-Lb. Rolls **\$1.00**

"Safeway Calf Sale"

Round Steak Or Sirloin Steak. Bone-in. **1-Lb.** **85¢**
Sirloin Steak U.S.D.A. Good Grade Calif. **1-Lb.** **85¢**
T-Bone Steak U.S.D.A. Good Grade Calif. **1-Lb.** **89¢**
Chuck Roast U.S.D.A. Good Grade Calif. **1-Lb.** **43¢**
Arm Roast U.S.D.A. Good Grade Calif. **1-Lb.** **53¢**
Short Ribs or Briskets. U.S.D.A. Good Grade Calif. **1-Lb.** **25¢**

Pork & Beans Highway or Blackeye Peas or Spaghetti. **12** No. 300 Cans

Tempest Tuna Light Meat Grated— Delicious in Casseroles. **6** No. 1/2 Cans

Pooch Dog Food Regular or Liver Flavored. **14** 1-Lb. Cans

Del Monte Catsup Try the Liveliest-Tasting Catsup Ever. **6** 14-Oz. Bottles

Orange Juice Bel-Air Frozen— Delicious for Breakfast. **5** 6-Oz. Cans

Cherub Milk Evaporated— Just Right for Coffee or for the Baby. **8** 14 1/2-Oz. Cans

SAFEWAY FRESH EGGS!

Grade 'A' Eggs Breakfast Eggs. Grade "A" Quality. Small Size. **3** Dos. **\$1.00**

"Bakery Feature of the Week!"

Slenderway Bread Stylark **1-Lb. Loaf** **19¢**
Sandwich Bread Mrs. Wright's. White Slices. **1 1/2-Lb. Loaf** **24¢**
Hamburger Buns Stylark— 8-Count. **13-Oz. Pkg.** **19¢**
Black Bread Mrs. Wright's. Old World. **1-Lb. Loaf** **25¢**
Slenderway Bread Perfect for Weight Watchers. **1-Lb. Loaf** **24¢**

Ice Cream Lucerne Party Pride— Assorted Flavors. **1/2-Gal. Ctn.** **69¢**

Cottage Cheese Lucerne Reg. Farmer Style. Chive. Low Calorie or Dry Curd. **1-Lb. Ctn.** **23¢**

Iced Tea Blend Centerbury. **1/2-Lb. Box or Bags** **49¢**

Safeway Produce

POTATOES

RED — U.S. No. 1. Serve Them Boiled, Mashed or Fried — Good So Many Ways. **10** 1-Lb. Bag **35¢**

Tomatoes Red, Ripe. Ideal for Slicing. (13-Oz. Ctn. . . 13¢ or) **2** 13-Oz. Ctns. **25¢**

Texas Yams Texas Finest. Nutritious and Delicious. **2** Lbs. **15¢**

Red Apples Extra Fancy Delicious Apples. **1-Lb.** **19¢**

Cucumbers Delicious in Salads. **Each** **5¢**

Fish Sticks

Captain's Choice. Frozen Precooked. **4** 8-Oz. Pkgs. **1**

Cane Sugar

Imperial or Domino. Only 18 Calories Per Teaspoon. **5** 1-Lb. Bag **49¢**

Sliced Peaches

Highway. Sliced or Halves. **4** No. 2 1/2 Cans **1**

Green Beans Bel-Air Frozen. Regular or French Style. **5** 9-Oz. Pkgs. **\$1.00**

Folgers Regular or Drip. The Coffee with the Mountain Grown Flavor. **2** 1-Lb. Can **\$1.45**

Airway Coffee Mellow and Mild (2-Lb. Bag 97¢) **1-Lb. Bag** **49¢**

Nob Hill Coffee Rich and Fragrant! (2-Lb. Bag \$1.09) **1-Lb. Bag** **55¢**

Pinto Beans Highway. Dry Limas, or Dark Red Kidneys. **3** No. 300 Cans **29¢**

Dill Pickles Zippy Whole— Perfect for the Polish Dish. **2** 22-Oz. Jars **45¢**

Frozen French Fries Bel-Air French Fried Potatoes. **2** 9-Oz. Pkgs. **25¢**

Bel-Air Blackeye Peas Or Baby Okra— Frozen. Mix 'em or Match 'em. **4** 10-Oz. Pkgs. **69¢**

Kitchen Craft Flour Perfect for All Your Baking Needs. **10** 1-Lb. Bag **69¢**

Yellow Corn Meal Kitchen Craft— Makes Delicious Corn Bread. **5** 1-Lb. Bag **25¢**

Prices Effective Wednesday through Saturday, Sept. 30-Oct. 3, in Eastland. We reserve the right to limit quantities. No Sales to Junkies.



Chiropractic Service
12:00 to 5 p.m.
Monday - Wednesday - Friday
DR. E. R. GREEN
455 Pine Ranger, Texas



The MODERN Pest Control
Offers FREE Estimates on Termites and Pest Control.
Scientific methods. We have a complete line of insecticides.
302 Main St. Phone 911 Ranger

IT'S THE LAW in Texas
A public service feature of the State Bar of Texas

WHAT IS "ESCROW"?
What is an "escrow"? It is a deposit of money or documents, or both, with an escrow holder, who is really a "stakeholder."
What does an escrow do?
The escrow holder gets money from the buyer. He gets documents from the seller, and he carries out instructions of both upon

the performance of some act or the meeting of some condition. As a rule, in the escrow instructions the seller and buyer tell the escrow holder what to do and when.

An escrow arrangement helps in buying and selling land. It is an especially useful device when you may live in another city, or expect to be gone when time comes to close the deal. Suppose, through a real estate man, you find a buyer for your place. But he may not want to pay in full until you can give him clear title, or it may take time to raise the money. So you agree on terms, and both of you use the escrow to put the deal

Consumer Credit Publication Is Now Available

COLLEGE STATION — Do you know how to use your credit? Consumer credit can be a valuable tool. It can be a trap that will make your life miserable. Knowing how to use credit is an important asset.
Consumer credit is a business transaction that allows an individual or a family to get money, goods or services and pay for them at some future time. Good financial management often includes the use of credit. If used wisely, credit may enable a family to attain some of its major goals more quickly and easily. It may permit the purchase of furnishings and equipment when the family is young and needs are greatest, and allow the family to enjoy the goods as they pay for them.
To help individuals or families better use credit, extension specialists in home management have written a publication entitled, "Using Consumer Credit." This publication discusses the many phases of credit.

A few of the many reasons for using credit are: convenience, emergencies, savings, consolidation of debts and establishing a credit rating. Credit can be used at times to take advantage of special sales when cash is not available and also it is easier to return charged purchases than cash ones.
The specialists add that when using credit you should be cautious. When a person signs a credit contract, he mortgages his future income. The use of too much credit will lower the level of living. Research shows that people usually buy more when they can use credit. Also, goods bought at a store with charge accounts are usually more expensive because of the costs of investigating each person's credit rating and keeping records of payments; loss through non-payment of accounts; and difficulty of collecting from some customers. This cost of credit is hidden, although

through. As a neutral go-between, the escrow holder, which may be a bank, may only carry out instructions you give him. He cannot, for example, give you advice as to whether your deal is a good one.
The seller may tell the escrow holder: Hold the abstract and deed until the buyer pays over the money; then pro-rate taxes, insurance, rents; pay the real estate broker, and pay the proceeds to the seller.
The buyer may have the escrow holder hold his money until the title is approved; pro-rate estate taxes, rents, insurance; pay the seller at close of escrow; receive and record the deed from the seller, etc.

As a rule, you work out most deals before you open the escrow. Look carefully at "preliminary arrangements," "deposit receipts," or escrow instructions, for such papers may be binding. As a rule, one or more of them will be your basic contract.

(This column, prepared by the State Bar of Texas, is written to inform—not to advise. No person should ever apply or interpret any law without the aid of an attorney who is fully advised concerning the facts involved, because a slight variance in facts may change the application of the law.)

READ THE CLASSIFIEDS

included in the price of goods bought.

The publication also discusses types of sales credit available, where to borrow cash, decisions the individual or family should make before using credit, and an explanation of legal credit contracts.

Contact your local county agent for a copy of the publication, or write the Agricultural Information Office, College Station. Ask for MP-343.

17th Farm Census Coming This Fall

COLLEGE STATION — One of the biggest farm - government co-operative undertakings of this decade will get underway in October and continue through November. It is the 17th nationwide census in which farmers and the United States government have participated during the past 120 years.

Information gained from this agricultural census will have a vital influence on future planning, says A. R. Wooten, extension economist. More than 30,000 census takers will visit farm families throughout the nation to get information in three general fields: farm resources, farm products

and selected farming activities for this year.

Questioners have been mailed to farmers by the Census Bureau. Farm operators should complete these forms as they have them ready for the census taker when he calls. Wooten points out that all information given by a farmer is confidential and figures for individual farms will not be revealed.

The big job gets underway Oct. 7, in far South Texas and a week later work will begin in 34 additional counties. On November 18 work will begin in all other counties of the State.

Farm records will be very important and Wooten suggests that farm families have their records available and as complete as possible when the census taker calls.

By Providing complete and accurate records, the time of the taker will be conserved and the Census Bureau will be able to process and publish their findings without delay, says Wooten.

Lacasa Lines
By Mrs. D. B. Raney

The Woman's Missionary Society had their week of Prayer for State Missions each afternoon last week, except one, which was combined with regular Wednesday night prayer services. Eleven women and two members of Girls' Auxiliary attended the programs.

James Meador Templeton and

family have been visiting his mother, Mrs. Myrtle Templeton, the past week.

Mrs. A. O. Templeton is seriously ill in the Ranger General Hospital.

Mrs. Rosa Raylor had eye surgery at Mineral Wells Monday.

Mr. and Mrs. J. A. Caraway attended the White reunion at Stephenville Sunday. The Whites are in-laws of Mr. Caraway.

When You Buy Real Estate—

... you not only buy the land and all that's attached to it above and below, but some kind of a title, good or bad. The abstract is a written history of the title and is the evidence of your security or insecurity. Since security is the basis and measure of all values, the abstract becomes the most important factor in every real estate transaction. That may be the reason why most careful buyers require an abstract.

EARL BENDER & COMPANY

Eastland, (Abstracts since 1923) Texas

NO MORE RENT RECEIPTS



... With Our Home Loan Plan

You'll get a lot of pleasure out of seeing your monthly payments take you closer and closer to debt-free home ownership, once you exchange renting for buying a home. Ask about our sensible home loan plan, that has helped many of your friends and neighbors to debt-free home-ownership.

First Federal Savings & Loan Association of Ranger

204 Main RANGER, TEXAS Phone 820

WARDS

WARDS ANNOUNCES...

"Pre-vue Night"

TUESDAY, OCT. 6 - 6:30 - 9:00 P.M.

An exciting evening Pre-vue of WARD WEEK... the sale where all America shops and saves!

You'll be the FIRST to shop hundreds of special Ward Week bargains! FIRST to select the best of the values—whatever you need for your home and family. You'll like the exciting features, the low prices and the big, big savings to be found in every department. Bring your family and your friends. There'll be fun, gifts, special demonstrations and entertainment for all!

We'll look forward to seeing you!



DOOR PRIZE ENTRY BLANK

NAME _____
ADDRESS _____ Phone _____
CITY _____ STATE _____

Door Prizes will be—\$89.95 portable sewing machine, \$18.95 table model radio, \$10.00 in merchandise certificates. You do not have to be present to win. No purchase necessary. Just fill out this blank and deposit in drawing box at Wards. Make deposits Tuesday, Oct. 6th only. Drawing 8:45 p.m.

407 MAIN STREET RANGER PHONE 447

ON DISPLAY! FRIDAY! SPACIOUS! POISED! BEAUTIFUL! LIVELY!

DISTINCTIVE! SATISFYING! ENDURING! SPLENDID! SPIRITED! JOYFUL! SWEET!

ELEGANT! QUIET! SMOOTH! LUXURIOUS! ENDURING! SUPERB! SPIRITED! JOYFUL!



Elegant Impala 4-Door Sport Sedan—one of 16 spanking new Chevrolets you can choose from.

THE SUPERLATIVE '60 CHEVY

This is the one that says '60 like no other car. From its clean-thrusting grille to its dapper rear deck, there's so much that is new and different about this superlative Chevrolet it stands out from the rest like a fresh-minted coin. And you'll be just as wide-eyed over what's inside—the relaxing roominess, tasteful trim, hushed elegance, all comfortably cradled by Full Coil springs at all four wheels. Yet, sumptuous as this new Chevy is, you'll find new economy of operation, new dependability, new longer life. Here, then, we're confident both you and your budget will joyously agree, is the nearest to perfection a low-priced car ever came!

Here's the car that introduces a whole new decade of design—with so much that's new and different the other ones can only hope to come close. It's the superlative '60 Chevrolet—with new space inside, new spirit under the hood, new splendor in every clean-etched line. Freshly shaped contours rake back from the unified front grille to the jaunty rear deck, fitted with craftsmanship you'd expect only on the most expensive makes. Inside, there's room to sprawl in, room to sit tall in—generously provided by Chevy's sofa-wide seats and

extra margin of hat space. And there's even more leg room for the man in the middle—thanks to the way Chevrolet engineers have shaved down the transmission tunnel. Out on the road, as Chevy's Full Coil ride will persuade you most gently, there's not a car near the price that comes close to the hushed comfort of this one. And, adding to your sense of silence and solidity are thicker, newly designed rubber body mounts that do an even more efficient job of filtering out road shock, tire hum and vibration.

Quiet, quick-responding power is provided by a choice of two standard engines—Chevy's famed Hi-Thrift 6 and a new Economy Turbo-Fire V8 that gets up to 10% more miles out of a gallon of regular while delivering greater engine torque at normal speeds. Chevy's accent on comfort and convenience even extends back to its easier-to-load (and tremendous) luggage compartment. You'll also find a convenient new parking brake that automatically returns to normal height after application, a new clutch linkage that filters

out even the smallest engine impulses more effectively than ever and a trim new two-toning motif that's available on all 16 fresh-minted models. But, impressive as all this may look in print, there's really only one way to tell how near to perfection this superlative '60 Chevrolet actually comes... and that's to drop in on your dealer and drive one!



See your local authorized Chevrolet dealer

FRIDAY! POISED! QUIET! SMOOTH! LUXURIOUS! FRIDAY!

ANDERSON CHEVROLET COMPANY

111 S. AUSTIN ST.

RANGER

PHONE 44

...FOR THE LIVING!

Now you and your family can receive benefits from Life Insurance while you are living.

Evirude Offers Movie For Showing To Boat Clubs

"Report to Ole," a half-hour documentary movie pictures the history of outboard boating in the United States...

to clubs and boating organizations. The film was produced this year by Evirude Motors...



Good Taste

by EMILY POST

N. Y. Mrs. Post is sorry she can't answer personal mail.

COMPLETE BODY SERVICE

Painting and Body repairing on all make cars and trucks.

Save 15 cents on Robin Hood Flour



And Discover How Robin Hood's High Protein Richness Gives You Better Baking!

Coupon for Robin Hood Flour: Take This Coupon to Your Grocer. SAVE 15c on your next purchase of any bag of Robin Hood Flour.

ACHING MUSCLES

Ridiculous pain of tired, sore, aching muscles with STANBACK, tablet or powder. STANBACK acts fast to bring comforting relief.

SEE TODAY'S TOP-PERFORMANCE OUTBOARD MOTOR!

75 hp EVINRUDE STARBUDE with Johnson drive. There's never been another to match it before!

QUIET REVOLUTION! ON DISPLAY FRIDAY! HOORAY! SMALL WONDER!

THE REVOLUTIONARY CORVAIR BY CHEVROLET



Here's the car created to conquer a new field—Chevrolet's low-priced compact Corvair. The product of nine years of research and development...



The engine's in the rear where it belongs in a compact car!

By putting the engine in the rear, Chevrolet has made the floor practically flat, front and rear. There's plenty of freedom for ever-so-comfy, cushioning the passengers in the middle.

SHORT AND SWEET! SMALL WONDER! THREE COMPACT CHEERS! See your local authorized Chevrolet dealer

ANDERSON CHEVROLET COMPANY

111 S. AUSTIN ST.

RANGER

PHONE 14

ATTEND THE CHURCH OF YOUR CHOICE EACH SUNDAY

L & J SUPPLY COMPANY 403 W. Main Phone 202



PRESENTS THE NEW EVINRUDE 40 hp LARK II SEE IT OUTRIBES ANYTHING NEAR ITS POWER CLASS!

GET READY for WINTER

- Free Delivery on Lumber
Paints and Wallpaper
Big Selection of Millwork
All Types Building Tools

Ranger Lumber & Supply Co.

Phone 138

Calvin Brown—Earl Brown



BULLDOGS

VS.

DUBLIN

There Friday Nite October 2



RANGERS

VS.

MURRY STATE

There Friday Nite October 2

1959 FOOTBALL SCHEDULE Ranger High School Bulldogs

Sept. 4	—	Rotan 20, Bulldogs 0
Sept. 11	—	Mineral Wells 42, Bulldogs 20
Sept. 18	—	Bulldogs 38, Diamond Hill 26
Sept. 25	—	De Leon 24, Bulldogs 20
Oct. 2	—	Dublin There
Oct. 9	—	Open
Oct. 16	—	Winters There
Oct. 23	—	Cisco There
Oct. 30	—	Ballinger Here
Nov. 6	—	Coleman Here
Nov. 13	—	Eastland There

1959 FOOTBALL SCHEDULE Ranger College Rangers

Sept. 12	—	Paris Jr. Col. 0, Rangers 28
Sept. 19	—	Cameron 27, Rangers 7
Sept. 24	—	Rangers 18, Austin College "B" 6
Oct. 2	—	Murry State A & M (Okla.) There
Oct. 10	—	Texarkana There
Oct. 17	—	E. Oklahoma A & M Here
Oct. 24	—	Tyler Junior College There
Oct. 29	—	*Navarro Junior College There
Nov. 7	—	*Henderson County There
Nov. 14	—	*Blinn Junior College Here
Nov. 21	—	*Cisco Junior College There
Nov. 28	—	*Monterrey Tech (Mexico) There

*Denotes Conference Games

RANGER DRIVE-IN
HWY. 80 EAST
Adm. 50c - Child Under 11 Free
SUN. - MON. - TUES.
Color Cartoon

This Fall We Invite You to Ranger... Attend our Ball Games... Visit our Town... Do Your Shopping Here

Dearborn
Ranger Furniture Exchange
Dearborn Stoves
123 N. Rusk - Phone 242

WARDS
MONTGOMERY WARD

Killingworth's

WESTERN AUTO Associate Store
Home Owned by Betty and Ken Lewis

EVINRUDE
quiet outboard motors
L & J Supply Co.

Texas Electric Service Co.
A. N. Larson, Mgr.

ABC Floral & Garden Shop
813 Breckenridge Road Phone 661

Ranger College
Dr. Theodore Nicksick, President

Moffett Electric
Mr. and Mrs. D. O. Moffett

Anderson Chevrolet Company
T. J. Anderson Bill Anderson

Jack Blackwell
Marketer Sinclair Ref. Co.
Good Year Tires and Batteries
Phone 91

Young's Beauty Shoppe
Phone 56

Ranger Lumber & Supply Co.
Calvin Brown Earl Brown

Ussery Refrigeration and Electric
Mr. and Mrs. John Ussery Phone 161

Winnie's Beauty Shoppe
811 Breckenridge Road Phone 784

Betty's Flower Shop
Your Flower Problem is Our Pleasure
Phone 640

Page Plumbing Co.
Mr. and Mrs. Carl Page

Vinson Radio & TV Service
117 S. Rusk Phone 77

Dr. Pepper Bottling Co.
Maurice Owens, Mgr.

El Rancho Coffee Shop
L. N. Bryan - Raymon Bryan
Hwy. 80 West Ranger

Law's Premier Service Station
Mr. and Mrs. Maxie Law

Ranger Machine Co.
J. E. Fletcher

Glenn Hamner Tire Co.
Dunlop Tires - Wholesale - Retail
Best Buy in Town Phone 771

Capps Studio

Swaney's Pharmacy

Ranger Transfer & Storage Co.
M. D. Underwood, Mgr.

Times Publishing Co.
Publishers
Ranger Times - Eastland Telegram

Lilley Rexall Drug
Ray D. Lilley
Prescriptions Our Specialty

Dr. Charles E. Gann
Optometrist

Buck Wallace
Welding - Fabricating

Featherlite Corporation

May Insurance Agency
Insurance - Real Estate
Phone 418

The Globe Clothiers
The Best in Men's and Boy's Wear
Phone 539

Ranger Auto Parts
Gaston Dixon Phone 243

Ranger Clinic

A. H. Powell Grocery & Market
Phone 103 We Deliver

Herweck's Ranger Mattress Co.
203 North Austin Phone 977

Ranger Peanut Co.
T. C. Wylie, Mgr.
We Want To Buy Your Peanuts

Ranger Dry Cleaners
Mr. and Mrs. Jess Weaver

Mathena's Flower Shop
Flowers for All Occasions
219 Main Phone 144

Art's Tool & Supply Co.
Mr. and Mrs. E. F. Arterburn

J. C. Penney Co.
John L. Smith, Mgr.

Blackwell Gulf Service Station
Washing - Greasing - Gulf Products
Mr. and Mrs. Curtis Blackwell

Gid Maddox Steam Laundry
908 Blackwell Rd. Phone 342
Wet Wash - Rough Dry - Finish
Help Your Self

Jordan's Steak House
Red-Magic Steaks
Drive-In Service
Highway 80 Ranger

O. C. Mitchell, M. D.

Arterburn's Hardware and Furniture
Mr. and Mrs. D. C. Arterburn

White Auto Store
Byron Gailey
311 Main St. Phone 52

Penn Texaco Service Station
Mr. and Mrs. Frank Penn
Mr. and Mrs. Harry Weldon
Main & Commerce Phone 818

First Baptist Church
Ralph E. Perkins, Pastor
"You Are Always Welcome"

Ranger Farm Store
John and Ann Tibbels
John Deere Implements G. E. Appliances

Robinson Food Market
Mr. and Mrs. R. V. Robinson

Porkey Pig
Raymon Bryan

Compliments of...
Ford & Jones
Ranger Hill Cafe - Texaco Station
Modern Courts

Caraway Paint & Body Shop
Highway 80 West - Phone 55
Mr. and Mrs. F. E. Caraway

Commercial State Bank
Member F. D. I. C.

Premier Oil Refining Co.
David D. Pickrell, Supt.

Social Science Laboratories

Campbell's Humble Service Station
Highway 80 & Main Street Crossing

SARCO Southwest Athletic Repair Company
Hwy. 80 West Ranger Phone 1043