

Election Poll That Counts Set Tuesday

Heavy Local Vote Is Predicted Here

As I See Ranger

By Gene Townsend

Members of the Ranger Lions Club were treated to an exceptionally good program Thursday by Band Director Bill Auvenshine. He brought his stage band out to entertain the Lions at their regular Thursday noon meeting. The band played several selections to the enjoyment of the Lions. Quite a bit of foot tapping was in evidence as the Lions were captivated by the tempo of the music.

Even guest Louis Conn, a member of the Rotary Club, seemed to enjoy the program. Of course Louis is one of the younger members of the Rotary Club and still enjoys things like that.

Louis Conn announced Thursday that employees at the Worth Food market gave a generous \$90 to the Community Chest Campaign. If this type of generosity could be shown by every one in Ranger the Community Chest goal would be reached without any trouble at all.

There has been quite a bit of talk about people voting a split ticket in the forthcoming election, and there seems to be some misconception as to what a split ticket really is. On the election ballots, the listing under each party name is for President and Vice President, etc. The two names listed under this listing cannot be split. In other words a voter cannot vote for one person for President on the Republican ticket and another person for Vice President on the Democratic ticket or vice versa, or split their choice for President and Vice President in any way.

But a person can vote for President and Vice President of one party and switch to another party and vote for the rest of the candidates.

If a person turns in a ballot with the President and Vice President choices split, the ballot will not be counted as an official ballot.

Reference—Texas Election Code for 1960.

Art. 11.02 Effect of votes for candidates of Political Party. A vote for the candidates of any political party for both President and Vice President of the United States shall be conclusively deemed to be a vote for candidates of the same party for Presidential electors, and shall be so counted and recorded for such electors as the State shall be empowered to elect.

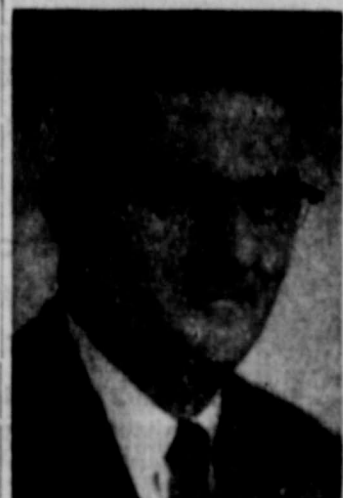
A quote from the Rev. Lively Brown, pastor of First Methodist Church: "This is a strange world in which we live. When we want to know something about science we go to the scientist. When we want to know something about medicine we go to the doctor. But when we want to know something about religion, we go to the professional politician."

Cisco has joined the straw vote parade. The Press, in a recent survey, discovered the Nixon-Lodge ticket enjoys a 28 to 17 lead in Cisco over the Kennedy-Johnson slate. Sixty-eight persons were interviewed. Ten said they were undecided, four indicated they weren't going to vote, four wouldn't say and five hadn't paid their poll tax. Eastland also favored the Republican ticket in a recent survey, but in Ranger it was almost two to one for the Democrats.

We can better evaluate these polls next Wednesday morning.

County Demo Ladies Hosted Coffee Wed.

The Eastland County Democratic ladies were hostesses to a coffee in the home of Mrs. Don Parker at Eastland at 10 a.m. Wednesday. A very enthusiastic group attended and made definite plans for the remainder of the campaign. Coffees were planned throughout the county in both the morning and afternoon for the remaining days before the election. The group announced that if any voter needs transportation or a baby sitter on Nov. 8 in order to go vote call MI 7-1323 in Ranger and MA 9-2075 in Eastland.



REV. RALPH E. PERKINS



G. B. RUSH

Two Ranger Baptist Given Directorship

Two Ranger Baptists were elected to the boards of trustees of three Baptist institutions during the Baptist General Convention of Texas meeting in Lubbock Oct. 31-Nov. 2.

They were Rev. Ralph Perkins, pastor of the First Baptist Church in Ranger and G. B. Rush, prominent Baptist layman and Superintendent of Ranger schools.

The Rev. Perkins was elected to the Houston Memorial Hospital and also was elected a member of the Executive Board. G. B. Rush was elected to Deatur Baptist College, Decatur.

More than 225 trustees and a board members were elected to the boards of 25 Baptist institutions during the annual Convention.

Colts Win Fourth Straight And Are Undeclared

The Young School Colts kept their undefeated record alive Thursday afternoon as they shut out Eastland fifth and sixth grades 16 to 0.

The Colts scored in the first and fourth quarters with Quarterback Jerry Watson accounting for both touchdowns and two of the extra points. Randall Rogers took a pass from Watson for the other two extra points.

The Colts defense, led by the hard charging line, kept the Eastland backfield bottled up for the entire game. The only time that Eastland threatened was on a pass play that carried down to the 20 yard line and on a recovered fumble on the 20 yard line, but the Colt defense held them both times at that point.

Eastland received the opening kickoff and failed to make a first down and was forced to punt. Ranger took over and mounted a 55 yard scoring drive with Watson going the last five yards for the score and ran the extra points. The first quarter ended with the Colts leading 8 to 0.

Early in the second quarter Bill Arterburn recovered an Eastland fumble and the Colts were on the move again. Ronnie Guess picked up 30 yards. Jimmy Crossley 19 more and a pass from Watson to Randall Hale, good for 30 yards, put the Colts within scoring range again, but the Eastland Dugies took over only to have Phillip Anderson intercept a pass to stop Eastland and the half ended with the Colts holding an eight point lead.

The third quarter began with Ranger receiving the kickoff but couldn't move the ball and was forced to punt. Eastland moved the ball down to the 20 yard line on a pass play, but Ranger recovered a fumble, to end the threat.

The Colts' Leland Moore recovered another Eastland fumble in the fourth quarter on Eastland's 20 yard line, but the Colts lost the ball right back on a fumble. Jimmy Crossley intercepted an Eastland pass and returned it 39 yards. On the next play Jerry Watson broke loose on his 30 yard scoring run. The pass from Watson to Rogers accounted for the extra points. The Colts then cleared the bench as the second and third units got their chance to enter the game. The little unit held the Eastland team and intercepted a pass as time was running out. The Colts will play Gorman here Monday at 6:30 p.m.

Bulldogs Routed In Final Grid Contest

The Coleman Bluecats closed out the Ranger Bulldogs Friday night 36 to 0 as Ranger completed their 1960 grid season. The Bulldogs held the Bluecats to only 8 points in the first half and showed a promise of making a game with the Bluecats, but in the second half Coleman broke loose for two touchdowns in each the third and fourth quarters, and could probably have run the score higher than what they did if they hadn't held back and attempted four field goals.

Coleman received the opening kickoff and moved into play. They moved out to the 31 yard line and was forced to punt. James Henry and Dean Richey rushed the kicker fast and he was forced to hurry his punt and it went almost straight up traveling only three yards forward.

Ranger took over on the 34 yard line but failed to make a first down and the ball went over on downs. Coleman couldn't move the ball on their try and another punt by Coleman gave Ranger the ball on the 30 yard line. They punted back to Coleman and got a break when Joe Barker recovered up fumble on Coleman 30 yard line. But couldn't capitalize on the break as they fumbled on the next play.

Postal Service Helps Count State Livestock

Rural mail carriers from the Ranger post office will leave some livestock survey cards along their routes beginning November 16.

"Information reported on these cards is used to set the yearly income tax on the State's livestock holdings." Carriers assisting with the survey are: O. G. Hise, Route 1; D. C. Singleton, Route 2; and C. B. Osteen, Route 3.

R. C. Baptist Student Union Has Luncheon

The Baptist Student Union of Ranger College had a luncheon at the First Baptist Church Thursday, Nov. 3.

Mrs. Betty Taylor of Dallas, state BSU worker, was the guest speaker. She explained the purpose, function, and organization of BSU on Texas campuses.

Beta Club Officers to be Installed Friday

National Education Week begins today, Nov. 6, and the Ranger Public Schools extends an invitation to all parents to visit their children in school. A special program is planned for Junior High and High School students on Friday at 11:30 p.m. in the auditorium. The Ranger High School and Junior High has received their charter to the National Beta Club and all charter members will be recognized at the assembly program and officers will be installed. All members will have a part on the program.

The National Beta Club is a society for honor students. The new club officers will be installed by National Beta Club members from DeLeon. Mr. Crosslin from Weatherford, area representative, will be on hand for the installation.

A special invitation to all parents of the charter members and to all others interested was issued today by Charlie Garrett, principal.

County Highway Construction to Cost \$860,000

The Texas Highway Department will spend approximately \$860,000 for construction on the ABC System of highways, which includes all State and U. S. highways. This system does not include interstate highways or farm to market roads. These funds will be spent to provide the right of way necessary and the construction costs on certain highways in the system which are not up to the State Highway Department standards for the traffic volumes being carried.

Paul Hinds Receives DMS Award At H-SU

Cadet Lt. Col. Paul T. Hinds, commander of the second battle group of the Hardin-Simmons University Reserve Officers Training Corps received the Distinguished Military Student award in ceremonies at the brigade's regular drill period Oct. 31.

Awards were presented to Hinds and eight other cadets by Lt. Col. Charles W. Spann, professor of military science and tactics. The DMS designations are reserved for ROTC students of proven leadership ability who rank in the upper third of the H-SU military classes and who hold similar academic standing in the university. Recipients must also show interest and initiative in campus and civic affairs.

Hinds, a senior from Ranger, is majoring in mathematics and minoring in physical education at Hardin-Simmons. He is a graduate of Ranger High School and is the son of Mr. and Mrs. L. A. Hinds of 319 Main, Ranger.

Hunters, Don't Throw Away Your Deer Hides

Publizee, Mr. Hunter, don't throw away that deer hide! That's the plea of volunteers in state-operated hospitals who annually sponsor the collection of these skins and have them tanned into leather for use by patients in occupational therapy.

Mrs. Frank O. Hamilton of Dallas, chairman of the Volunteer Services Council for all the state hospitals and special schools, said the patients fashion all types of small articles from the leather which provide gifts for their families, or if suitable, "make a n of cigarette" funds for themselves.

Telephone Co. To Make A Postcard Survey

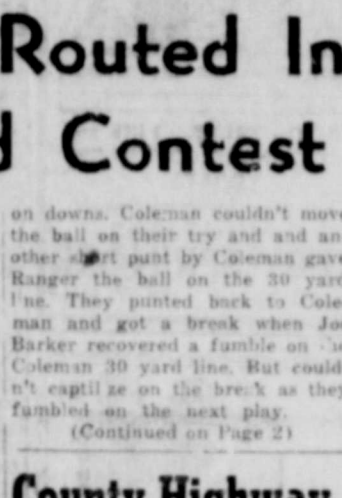
Every telephone customer in Ranger will receive a post card from the telephone company in the next few days, asking for his comments and criticisms of his telephone service and the company that provides it, according to Archer Marx, manager for Southwestern Bell Telephone Company here.

Marx calls the project a post card canvass. "In making the canvass, we'll mail a double post card to each customer. The cards will be mailed next Monday, so people will start receiving them Tuesday. We hope that everyone will take a minute to fill out the return half of the card and mail it to me.

"We're not seeking compliments," the manager points out. "If any of our customers have criticisms, we would like to know them. Comments like these help us give customers the kind of service they want."

Similar post card canvasses are planned for every town where Southwestern Bell Telephone Company operates. The purpose is to find out what customers have complaints so that the company can try to remove the causes of these complaints.

"That's our most important job—giving customers the kind of service they desire," Marx said. "We'll contact everyone who replies unfavorably and make every effort to clear up the source of his dissatisfaction."



HOMECOMING QUEEN — Beth Key of Throckmorton was crowned the 1960 Ranger College Homecoming Queen at the halftime of the Rangers-Navarro battle.

Miss Key was escorted by Franklin Bales of Albany. The Queen's attendants were Norma Gayle Emfinger of Ranger, Brenda Roberts of Throckmorton, and Wanda Jo Traver of Breckenridge.

County Demo Ladies Hosted Coffee Wed.

The Eastland County Democratic ladies were hostesses to a coffee in the home of Mrs. Don Parker at Eastland at 10 a.m. Wednesday. A very enthusiastic group attended and made definite plans for the remainder of the campaign. Coffees were planned throughout the county in both the morning and afternoon for the remaining days before the election.

County Demo Ladies Hosted Coffee Wed.

The Eastland County Democratic ladies were hostesses to a coffee in the home of Mrs. Don Parker at Eastland at 10 a.m. Wednesday. A very enthusiastic group attended and made definite plans for the remainder of the campaign. Coffees were planned throughout the county in both the morning and afternoon for the remaining days before the election.

County Demo Ladies Hosted Coffee Wed.

The Eastland County Democratic ladies were hostesses to a coffee in the home of Mrs. Don Parker at Eastland at 10 a.m. Wednesday. A very enthusiastic group attended and made definite plans for the remainder of the campaign. Coffees were planned throughout the county in both the morning and afternoon for the remaining days before the election.

County Demo Ladies Hosted Coffee Wed.

The Eastland County Democratic ladies were hostesses to a coffee in the home of Mrs. Don Parker at Eastland at 10 a.m. Wednesday. A very enthusiastic group attended and made definite plans for the remainder of the campaign. Coffees were planned throughout the county in both the morning and afternoon for the remaining days before the election.

County Demo Ladies Hosted Coffee Wed.

The Eastland County Democratic ladies were hostesses to a coffee in the home of Mrs. Don Parker at Eastland at 10 a.m. Wednesday. A very enthusiastic group attended and made definite plans for the remainder of the campaign. Coffees were planned throughout the county in both the morning and afternoon for the remaining days before the election.



Billy Patton was elected 1960-61 FHA Beau by the High School Future Homemakers of America on Oct. 27.

Others in the run-off were Ward Mendez, senior; Jo Wells, sophomore; and Kyzmonds, freshman.

County Demo Ladies Hosted Coffee Wed.

The Eastland County Democratic ladies were hostesses to a coffee in the home of Mrs. Don Parker at Eastland at 10 a.m. Wednesday. A very enthusiastic group attended and made definite plans for the remainder of the campaign. Coffees were planned throughout the county in both the morning and afternoon for the remaining days before the election.

County Demo Ladies Hosted Coffee Wed.

The Eastland County Democratic ladies were hostesses to a coffee in the home of Mrs. Don Parker at Eastland at 10 a.m. Wednesday. A very enthusiastic group attended and made definite plans for the remainder of the campaign. Coffees were planned throughout the county in both the morning and afternoon for the remaining days before the election.

County Demo Ladies Hosted Coffee Wed.

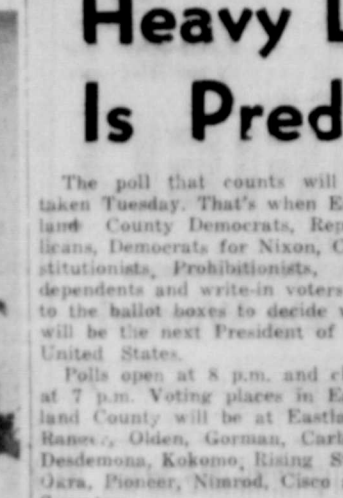
The Eastland County Democratic ladies were hostesses to a coffee in the home of Mrs. Don Parker at Eastland at 10 a.m. Wednesday. A very enthusiastic group attended and made definite plans for the remainder of the campaign. Coffees were planned throughout the county in both the morning and afternoon for the remaining days before the election.

County Demo Ladies Hosted Coffee Wed.

The Eastland County Democratic ladies were hostesses to a coffee in the home of Mrs. Don Parker at Eastland at 10 a.m. Wednesday. A very enthusiastic group attended and made definite plans for the remainder of the campaign. Coffees were planned throughout the county in both the morning and afternoon for the remaining days before the election.

County Demo Ladies Hosted Coffee Wed.

The Eastland County Democratic ladies were hostesses to a coffee in the home of Mrs. Don Parker at Eastland at 10 a.m. Wednesday. A very enthusiastic group attended and made definite plans for the remainder of the campaign. Coffees were planned throughout the county in both the morning and afternoon for the remaining days before the election.



Billy Patton was elected 1960-61 FHA Beau by the High School Future Homemakers of America on Oct. 27.

Others in the run-off were Ward Mendez, senior; Jo Wells, sophomore; and Kyzmonds, freshman.

County Demo Ladies Hosted Coffee Wed.

The Eastland County Democratic ladies were hostesses to a coffee in the home of Mrs. Don Parker at Eastland at 10 a.m. Wednesday. A very enthusiastic group attended and made definite plans for the remainder of the campaign. Coffees were planned throughout the county in both the morning and afternoon for the remaining days before the election.

County Demo Ladies Hosted Coffee Wed.

The Eastland County Democratic ladies were hostesses to a coffee in the home of Mrs. Don Parker at Eastland at 10 a.m. Wednesday. A very enthusiastic group attended and made definite plans for the remainder of the campaign. Coffees were planned throughout the county in both the morning and afternoon for the remaining days before the election.

County Demo Ladies Hosted Coffee Wed.

The Eastland County Democratic ladies were hostesses to a coffee in the home of Mrs. Don Parker at Eastland at 10 a.m. Wednesday. A very enthusiastic group attended and made definite plans for the remainder of the campaign. Coffees were planned throughout the county in both the morning and afternoon for the remaining days before the election.

County Demo Ladies Hosted Coffee Wed.

The Eastland County Democratic ladies were hostesses to a coffee in the home of Mrs. Don Parker at Eastland at 10 a.m. Wednesday. A very enthusiastic group attended and made definite plans for the remainder of the campaign. Coffees were planned throughout the county in both the morning and afternoon for the remaining days before the election.

County Demo Ladies Hosted Coffee Wed.

The Eastland County Democratic ladies were hostesses to a coffee in the home of Mrs. Don Parker at Eastland at 10 a.m. Wednesday. A very enthusiastic group attended and made definite plans for the remainder of the campaign. Coffees were planned throughout the county in both the morning and afternoon for the remaining days before the election.

The poll that counts will be taken Tuesday. That's when Eastland County Democrats, Republicans, Democrats for Nixon, Constitutionalists, Prohibitionists, Independents and write-in voters go to the ballot boxes to decide who will be the next President of the United States.

Polls open at 8 p.m. and close at 7 p.m. Voting places in Eastland County will be at Eastland, Hamock, Olden, Gorman, Carbon, Desdemona, Kokomo, Rising Star, Gora, Pioneer, Nimrod, Cleopatra and Scranton.

A heavy turnout of voters is predicted in the county. The voting box in Ranger will be located at the City Hall and Calvin Brown will be the election judge.

Chief interest in the election concerns the presidential race. On the Democratic ticket the candidates are John F. Kennedy and Lyndon B. Johnson and on the Republican slate the candidates are Richard Nixon and Henry Cabot Lodge. While that will come as no surprise to Eastland County voters, they may not realize that two other parties have presidential and vice-presidential candidates.

Charles L. Sullivan and Merritt B. Curtis are the Constitution Party candidates and Rutherford L. Decker and E. Harold Mann are the Prohibition Party nominees.

The rest of the ballot will look like this: FOR GOVERNOR—Price Daniel, Democrat; and William M. Steger, Republican.

FOR U.S. SENATOR—Lyndon B. Johnson, Democrat; John G. Tower, Republican; and Bard A. Logan, Constitution Party.

FOR SUPREME COURT JUSTICE—Robert W. Calvert, Democrat.

FOR ASSOCIATE JUSTICE, Place 1—Clyde E. Smith, Democrat.

FOR ASSOCIATE JUSTICE, Place 2—Joe Greenhill, Democrat.

FOR JUDGE, COURT OF CRIMINAL APPEALS—W. T. McDonald, Democrat; and Eubene R. Lozano, Constitution Party.

FOR RAILROAD COMMISSIONER—Earnest O. Thompson, Democrat; G. W. Ewing Jr., Republican; and I. C. Jarman, Constitution Party.

FOR STATE COMPTROLLER—Robert S. Calvert, Democrat; Mrs. Hargrove (Alicia) Smith, Republican; and Joseph M. Rummel, Constitution Party.

FOR GENERAL LAND OFFICE COMMISSIONER—Jerry Sadler, Democrat; Axtell Byles, Republican; and W. C. (Doc) Miles, Constitution.

FOR GENERAL STATE TREASURER—Jesse James, Democrat; Allen Lacy, Republican; and Bert Ellis, Constitution.

FOR COMMISSIONER OF AGRICULTURE—John C. White, Democrat; Clarence Dankless, Republican; and R. L. Peters, Constitution.

FOR 17th DISTRICT CONGRESSMAN—Omar Burton, Democrat; and Max V. Mosholden, Republican.

FOR 22nd DISTRICT SENATOR—Tom Creighton, Democrat.

FOR DISTRICT JUDGE—T. M. Collie, Democrat.

FOR STATE REPRESENTATIVE—Scott Bailey, Democrat.

FOR COUNTY ATTORNEY—Earl Conner Jr., Democrat.

FOR SHERIFF—Lee Horn, Democrat.

FOR TAX COLLECTOR—J. R. Allison, Democrat.

FOR COMMISSIONER, Precinct 1—J. B. (Tip) Arther, Democrat.

FOR CONSTABLE, precinct 1—Ralph Vasie, Democrat.

There are also four amendments on the ballot. They are:

No. 1—For or against the Constitutional Amendment authorizing the Legislature to create a Hospital District co-extensive with Lamar and Hidalgo counties, and co-extensive with county commissioners Precinct 4 of Comanche County.

No. 2—For or Against the Amendment to Section 49-b of Article III of the Constitution of Texas by adding thereto a provision authorizing the Veterans Land Board to issue the bonds authorized under such Section to bear interest at a rate or rates not to exceed 3-1/2 percent per annum.

No. 3—For or against the constitutional amendment allowing an annual salary of not to exceed \$4,800 per year and a per diem allowance of not to exceed \$1 per day for the first 120 days of each session of the Legislature as the maximum compensation for members of the Legislature and limiting the regular session to 140 days.

No. 4—For or against the constitutional amendment giving the Legislature authority to elect judges and lenders, license and regulate lenders, refine interest, fix maximum rates of interest and providing for a maximum rate of interest of 10 percent annum in the absence of legislation fixing maximum rates of interest.

Billy Patton Named FHA Beau

Billy Patton was elected 1960-61 FHA Beau by the High School Future Homemakers of America on Oct. 27.

Others in the run-off were Ward Mendez, senior; Jo Wells, sophomore; and Kyzmonds, freshman.

Fire Chief Charlie Isbell was appointed chairman of the parade committee, and Mrs. J. H. Greer and Mrs. A. L. Robbins were asked to assist him.

The Ranger Garden Club has volunteered to enter a float in the parade. The parade date will coincide with the Annual Garden Club Flower Show.

School will be dismissed at 2:30 p.m. on Dec. 2 and the parade will start at 3 p.m.

The cost of the plans for the Christmas promotion were discussed by the committee. An estimated cost of from \$400 to \$500 was figured to be what the promotion would amount to. This would include the installation of the lights and decorations, replacement of burned out lights, the painting of the Santa Claus, the cost of candy to be given to the children, and other expenses.

Workers were appointed to canvass merchants for donations to defray these expenses. They will begin work this week making their collections.

Present at the meeting other than Brushier were John Smith, Byron Galley, J. H. Boggs, Joe Weaver, Aaron Siles, Curt Blackwell, Morris Campbell, Burk Wallace and Rip Galloway, manager of the Chamber of Commerce.

Galloway stated that there were some empty windows on Main Street that haven't been opened for Christmas displays. Any one wishing to secure a window for a display should contact Rip Galloway at the Chamber of Commerce office.

The Christmas lighting and decorations will be installed by Nov. 24. Thanksgiving day and the lights will be turned on that night. The Santa Claus that is always placed in the center of Main Street at the railroad crossing has been repainted and will add to the attractiveness of the decoration this year.

The annual Santa Claus Parade will be held Dec. 2 at which time the children will be given 1200 bags of candy. The parade will begin at the East end of Main Street and travel up Main. Santa Claus will meet the children in the City Hall following the parade, at which time he will pass out the bags of candy and talk to the children.

SHOP AND MAIL EARLY

USE POSTAL ZONE NUMBER

Avoid the Last Minute Rush—Be Sure Your Christmas Cards and Gifts Arrive on Time.

Zellerbach

# The Ranger Times

"Serving Community Betterment Since 1919"  
ELM STREET—RANGER, TEXAS ESTABLISHED JUNE 1, 1919  
Entered as second class matter at the postoffice at Ranger, Texas under the act of Congress of March 3, 1917.

**TIMES PUBLISHING COMPANY**  
Published Tri-Weekly—Tuesdays—Thursdays—Sundays  
JOE DENNIS and ONOUS DICK, Publishers  
GENE TOWNSEND, Editor

One week by carrier in city	.15
One month by carrier in city	.65
One year by mail on Ranger RFD Routes	3.95
One year by mail in county	4.95
One year by mail in state	4.95
One year by mail out of state	6.95

**NOTICE TO PUBLIC**—Any erroneous reflection upon the character, standing or reputation of any person, firm or corporation which may appear in the columns of this newspaper will be gladly corrected upon being brought to the attention of the publishers.

## CLASSIFIED

PHONE MI 7-1101  
All Classified Ads Must Be Paid For In Advance  
**MISC. FOR SALE Help Wanted**

**FOR SALE:** 1 (one) new heavy duty cattle guard built for heavy trucks and cars. Also three joints, 10" casing, second hand small engine and will build go-carts to order. Norris Welding & Machine Shop. Phone MI 7-1467.

**RENT—LEASE OR SELL.** Easy terms. Paramount Hotel, Apartment (furnished) Cafe (equipped) also features provides extra income for you. You must be good restaurant family and be able to stock, safe and improve business and serve good meals. Will make special allowance on payments until you get well started. Will rent, lease or sell for \$125.00 week or \$400.00 month until paid for. Write owners, 128 Cass, Luidis Plaza, Dallas, Texas or call DAVID T. JONES, Hotel has 70 rooms and apartments, 30 baths. Family can make a big success. Must have good reputation. Restaurant alone should make payments, par profit also, giving you nice place to stay in hotel and rooms and 3 stories. Inspection invited.

**FOR RENT:** Modern House, 6001 Young. Call MI 7-3686.

**APARTMENT:** Bills paid. 2 blocks from Main. 309 Elm.

**FOR RENT:** Three room furnished apartment. Call MI 7-1390.

**FOR RENT:** 5 room house. Phone MI 7-3511.

**THREE ROOM** furnished or unfurnished apartment across street from High School, to couple or single woman. Phone MI 7-1671. Mrs. Charles Bobo.

**FOR RENT:** 3 room modern house for sale or rent. Call E. E. Arterburn.

**FOR SALE** or rent. Three bedroom house. Phone MI 7-1282.

**RUBBER STAMPS**—Fast service, reasonable prices, no order too large or too small to get our special attention. Ranger Times.

**1957 CHEVROLET** club coupe. Excellent condition. Ladies car. Phone MI 7-1387.

**FOR SALE:** Paper shell pecans. 400 pound. Bob Allen. Eastland Highway.

**FOR SALE:** 9' x 7' rug, two 4' x 6' rugs, 40 ft. of 27-inch rug runner. All in rose-rod. Mohawk wool carpeting with pads. Good condition. \$65.00. Phone MI 7-459.

**3 BEDROOM** home, 2 blocks from high school, partially financed. Call MI 7-1475 after 5 p.m.

**200 AMP** Lincoln welding machine and household furniture. Bargain. 701 6th Street.

**NOTICE**

**UNDER NEW MANAGEMENT:** Paramount Hotel and Apartments. 35th week up. Private tile baths, television, kitchenettes, 1 to 4 bedrooms, clean rooms, bills paid, laundry and mail service if wanted.

**CALL MI 7-3175**  
For All Your PLUMBING NEEDS

**City Plumbing**  
SPRING ROAD  
LICENSED PLUMBER  
U. E. WESTMORELAND

**WE ARE NOW EQUIPPED TO STEAM CLEAN**  
Auto and Truck Motors and any type of Heavy Equipment

**Caraway Truck & Tractor**  
Hwy. 80 East Ranger

**The MODERN Pest Control**  
Offers FREE Estimates on Termites and Pest Control.  
Sanitary methods. We have a complete line of insecticides.

Main Phone MI 7-3422

**NEED A GOOD LAWYER?**

You might need one very badly if someone—injured on your property—should bring suit. Aina Comprehensive Liability Insurance provides legal defense, pays court costs and judgments up to the policy limits.

**May Ins. Agency**  
214 Main St.  
Ph. MI 7-3582  
Ranger

**WOMEN'S ACTIVITIES**

Monday, November 7  
Royal Neighbors of America will meet Monday, Nov. 7 at 7:30 p.m. for lodge.

Monday, November 7  
The Women's Society of Christian Service in the First Methodist Church will meet in circles as follows Monday, Nov. 7.  
Circle No. 1 in the home of Mrs. A. W. Brazda at 3:30 p.m.  
Circle No. 2 in the home of Mrs. E. L. Danley at 3:30 p.m.  
Circle No. 3 in the home of Mrs. W. F. Creager at 3:30 p.m.  
Circle No. 4 in the home of Mrs. D. C. Arterburn at 9:30 a.m.

**SEE O. G. Lanier FOR OIL AND GAS LEASES AND REAL ESTATE WE BUY AND SELL**  
Ph. MI 7-3450 - 113 S. Rusk  
Ranger, Texas

**FARMERS INSURANCE GROUP**  
AUTO - TRUCK - FIRE - LIFE - BUSINESS  
... all your insurance needs

**AUTO - TRUCK - FIRE and EXTENDED COVERAGE BOATS**  
All your insurance needs  
"Dividend Savings"  
**RUBY SPRINGER**  
Ph. MI 7-3230 320 W. Main

## WOMEN'S ACTIVITIES

Monday, November 7  
The Women's Society of Christian Service in the First Methodist Church will meet in circles as follows Monday, Nov. 7.  
Circle No. 1 in the home of Mrs. A. W. Brazda at 3:30 p.m.  
Circle No. 2 in the home of Mrs. E. L. Danley at 3:30 p.m.  
Circle No. 3 in the home of Mrs. W. F. Creager at 3:30 p.m.  
Circle No. 4 in the home of Mrs. D. C. Arterburn at 9:30 a.m.

**SEE O. G. Lanier FOR OIL AND GAS LEASES AND REAL ESTATE WE BUY AND SELL**  
Ph. MI 7-3450 - 113 S. Rusk  
Ranger, Texas

**FARMERS INSURANCE GROUP**  
AUTO - TRUCK - FIRE - LIFE - BUSINESS  
... all your insurance needs

**AUTO - TRUCK - FIRE and EXTENDED COVERAGE BOATS**  
All your insurance needs  
"Dividend Savings"  
**RUBY SPRINGER**  
Ph. MI 7-3230 320 W. Main

**IT'S YOURS... ON OUR LOAN PLAN**

From coast to coast, savings and loan associations like ours are financing more of America's homes than any other type of lending institution. We're proud to have helped so many of our customers to reach free-and-clear home-ownership. Our popular plan involves monthly payments, much like rent, which may include principal, interest, taxes and insurance. If you're looking for a good home loan, see us!

**Debt-Free Home**

**First Federal Savings & Loan Association of Ranger**  
204 Main Ranger, Texas Phone MI 7-1611

**TELEPHONE TALK**  
by Arthur H. Marx, Jr., Manager

**VOICE FOR THE VOICELESS**

Last month in Telephone Talk I mentioned the successful launching of Echo, the communication satellite in orbit 1,000 miles above the earth.

Now I have news of still another product of communications research. It's a new artificial larynx to help people with impaired vocal chords to speak again.

This electronic larynx is really a "new voice" for people who have lost the use of their vocal chords. When held against the throat, this 7-ounce device (looks something like a flashlight) replaces the vibrations of normal vocal chords to produce speech. It is being offered on a non-profit basis.

In an age of great scientific achievements such as space satellite communications, the Bell solar battery and transistors (all pioneered by Bell scientists), it's reassuring to know that telephone research has not overlooked human needs in the search for better communications services.

**HOW ABOUT A FAMILY HARVEST?**

Have you noticed the changes being made in the food markets lately? It seems to me that it is much easier to find certain items... fresh or frozen turkeys, pumpkins, cranberries, chestnuts and other Thanksgiving treats.

It looks like some of the biggest Fall harvests in Ranger will be made around the dining room table. That's true in more ways than one. Because, in addition to the good things to eat and share, Thanksgiving has always been a great family day.

If all of your family live in Ranger it's usually a simple matter to get together for Thanksgiving. If your family is scattered in different parts of the country, you can still "get together"—by telephone.

The cost is low, and if you place your long distance call station-to-station, instead of person-to-person, you can save one-third. Rates are even lower if you call after 6 p.m.

Why not plan to call and make this Thanksgiving a "family harvest"?

**SCIENCE SHOW ON TELEVISION**

In addition to the Telephone Hour, which brings you top artists in the field of music every other Friday evening on Channel 9 at 8 p.m., I'd like to remind you of our new science program.

The first of the new series, "Thread of Life," tells the story of how we inherit our many and varied characteristics. This 60 minute color program will be Friday, December 9, on Channel 9 at 8 p.m. I hope you'll be watching.

Call by number. It's twice as fast.

**SOUTHWESTERN BELL TELEPHONE COMPANY**

**CALL MI 7-3175**  
For All Your PLUMBING NEEDS

**City Plumbing**  
SPRING ROAD  
LICENSED PLUMBER  
U. E. WESTMORELAND

**WE ARE NOW EQUIPPED TO STEAM CLEAN**  
Auto and Truck Motors and any type of Heavy Equipment

**Caraway Truck & Tractor**  
Hwy. 80 East Ranger

**The MODERN Pest Control**  
Offers FREE Estimates on Termites and Pest Control.  
Sanitary methods. We have a complete line of insecticides.

Main Phone MI 7-3422

**NEED A GOOD LAWYER?**

You might need one very badly if someone—injured on your property—should bring suit. Aina Comprehensive Liability Insurance provides legal defense, pays court costs and judgments up to the policy limits.

**May Ins. Agency**  
214 Main St.  
Ph. MI 7-3582  
Ranger

**WOMEN'S ACTIVITIES**

Monday, November 7  
Royal Neighbors of America will meet Monday, Nov. 7 at 7:30 p.m. for lodge.

Monday, November 7  
The Women's Society of Christian Service in the First Methodist Church will meet in circles as follows Monday, Nov. 7.  
Circle No. 1 in the home of Mrs. A. W. Brazda at 3:30 p.m.  
Circle No. 2 in the home of Mrs. E. L. Danley at 3:30 p.m.  
Circle No. 3 in the home of Mrs. W. F. Creager at 3:30 p.m.  
Circle No. 4 in the home of Mrs. D. C. Arterburn at 9:30 a.m.

## Week of Prayer and Self-Denial Held at First Methodist Church

Week of Prayer and Self-Denial was held at the First Methodist Church on Friday, Oct. 28.

The meeting was opened with a prayer by Mrs. Houston Moore. A series of meditation followed: Mrs. Moore spoke on "Think on These Things," and Mrs. Lively Brown gave the devotional on "Renewing Your Mind."

Mrs. W. F. Creager spoke on "Action." A luncheon was held in the basement at noon. Excerpts from a "Testament of Devotionals" by Thomas Kelly were read.

Mrs. R. H. Pearce conducted the afternoon worship and program. Parts of the program were given by Mrs. B. S. Dudley who discussed "Wesley Community Centers"; Mrs. A. J. Ratliff spoke on "Audio-Visual Program Around the World"; and Mrs. C. E. May discussed "Literary - Literature Program Around the World and World Missionary Service."

Mrs. F. S. Pearsall played for both morning and afternoon sessions.

Mrs. Pearce closed the meeting with a prayer.

**Bulldogs—**  
(Continued from Page One)

Coleman took over and started a 60 yard drive which was climaxed by fullback Thomas Casey on his 15 yard plunge for the score. Doug Coursey ran the extra points.

In the second half Coleman didn't waste any time beginning their scoring spree. Dale Graves scored early in the third quarter and Mike Hayes ran the extra points. Still in the third quarter and Hayes again added the extra point.

Two scores in the fourth quarter were made by wingback Riley Dunn and halfback Lee McDougall. Tries for extra points failed on these two scores.

With only minutes left in the game Ranger picked up their first down when Henry went for 11 yards and Richard Wilhelm for 14 and enoy again for 14. This was the only show of offensive Ranger showed in the game.

**Hospital News**

Patients in Ranger General Hospital are:

Mrs. Florence Roan, Cisco, medical

Mrs. Linda Zellers, Rising Star, medical

W. B. Drake, Strawn, medical

Mrs. T. J. Fuller, Ranger, medical

Frank Keener, Ranger, medical

Mrs. Ethel Stevens, Ranger, medical

Christine Christman, Cisco, medical

Mrs. Lucy Graves, Rising Star, medical

George Reager, Ranger, medical

Ronnie Reese, Ollen, medical

Mrs. C. N. Scott, Ranger, medical

Peggy Harmon, and baby boy, Carbon

Barnett Hale, Ranger, medical

Jim Vinson, Ranger, medical

Mrs. E. U. Bennie, Strawn, medical

Mrs. Joe Howle, Eastland, medical

Mrs. R. C. Smith, Abilene, medical

Gertrude Wilson, Ranger, medical

Dismissed:

Mrs. Jack Neale and baby boy, Ranger.

Mrs. M. R. Stewart and baby girl, Ranger.

Mrs. E. V. Goldsmith, Big Spring.

**Mrs. Nicksick Reviews Book For WSCS**

The Women's Society of Christian Service of the First Methodist Church met for the continuation of the study, "One World, One Mission" Monday, Oct. 31.

Mrs. Stanley McAnelly, president, called the meeting to order and led the opening prayer. The group sang, "Saviour, Like a Shepherd Lead Us."

Mrs. McAnelly announced that Rev. Lively Brown would give the Bible Study in February a n-d March since no one had been found to fill Mrs. Archie Robinson's place as Secretary of Spiritual Life. The study will be held at night and will be church-wide.

Mrs. J. L. Turner brought the devotional and Mrs. C. E. May, leader, called for current events from Mrs. Turner, Mrs. Lively Brown, Mrs. E. L. Danley and Mrs. Ed Keller.

Mrs. McAnelly introduced Mrs. Theodore Nicksick who reviewed the book, "The Night They Burned the Mountain," by Thomas Dooley.

**MAJESTIC TODAY & MONDAY**

**SEVEN WAYS FROM SUNDOWN**

**MURPHY SULLIVAN**  
VENETA STEVENSON - JOHN MONTAGNE

**STARTS TUESDAY**

**GARDNER BOGARDE**  
**THE ANGEL WORE RED**  
LARRY DOUGLASS - ROSALPH COLLIER

**Zemo Great for Minor Burns, Cuts**

Zemo, a doctor's formula, liquid or ointment, soothes, helps heal minor burns, cuts, bruises. Family antiseptic, eases itch of surface rashes, eczema, teen-age pimples, athlete's foot. Stops scratching, so aids faster healing. For stubborn sores, get Extra Strength Zemo.

## MODE O' DAY

**Smooth contour!**

**SEAMLESS LOVABLE "SWEATER BRA" in exciting colors only \$1.50**

**Lovable**

Lovable's sensational no-seam cups are foam contoured for smooth perfection... give you a sleek line under sweaters and all your figure hugging fashions. A must for your wardrobe...

**It costs so little to look Lovable**

## —Call MI 7-1101 for Classifieds—

**Better Keep This in Mind—**

... if you buy real estate without an abstract the chances are good that you will be required to furnish one when you go to sell or borrow money. It is customary for seller to furnish buyer with an abstract as he usually adds cost of same and other necessary expenses to the sale's price. So for many reasons all in your favor get an abstract and have it examined by your attorney when you buy real estate.

**EARL BENDER & COMPANY**  
Eastland, (Abstracts since 1923) Texas

**PRESTONE ... \$1.95 Per Gallon**

**ANTI-FREEZE—CASH AND CARRY**

**HIGHEST OCTANE**

**Totally New Premier**

**DETERGENT ACTION GASOLINE**

Served By Qualified Attendants

**BROWDER PREMIER SUPER SERVICE STATION**

Highway 80 East — Ranger, Texas  
Dewey Evans, Mgr. Jackie Williams, Asst. Mgr.

**RANGER DRIVE-IN**

Boxoffice Opens 6:45 — Show Starts at 7:00  
Adults 50¢—Kiddies Under 11 Free  
Only Eastland County Drive-In Open All Year  
**SUNDAY - MONDAY - TUESDAY**

**THE BEST-SELLER IS ON THE SCREEN WITH ALL ITS INTIMATE EMOTIONS INTACT**

**FROM THE TERRACE**

**NEWMAN WOODWARD**

**MYRNA LOY** **MARK ROBSON** **ERNEST LEHMAN**

CINEMASCOPE

**DIXIE Drive-In**

**EASTLAND RANGER HIGHWAY**

Box Office Opens 6:45 Show Starts 7:00  
Box Office Closes 9:00

Admission 50¢ — Children Under 12 Free

**THURSDAY - FRIDAY - SATURDAY, NOV. 3, 4, 5**

**THEY SHARED A LOVE WILD AS THE LAWLESS WILDERNESS!**

**BLACK HORSE CANYON**

**JOEL McCREA** **MARI BLANCHARD**

**MURVYN VYE** **IRVING BACON**  
and introducing **RACE GENTRY**

A UNIVERSAL INTERNATIONAL PICTURE

PLUS: Two Color Cartoons

**SUNDAY - MONDAY - TUESDAY, NOV. 6, 7, 8**

**VAST SPECTACLE! SWEEPING SPLENDOR! UNFORGETTABLE DRAMA!**

**THE BIG FISHERMAN**

**THE STORY OF SIMON PETER OF GALILEE!**

TECHNICOLOR - PANAVISION

PLUS: Two Color Cartoons

COLDS

Relieve aches and pains of colds with STANBACK Tablets or Powders. Also use as gargle for sore throat due to colds. STANBACK'S S. A. (Synergistic Action) reduces fever, brings faster, more complete relief. Remember... Snap back with STANBACK!

SPENDS WEEKEND IN RANGER

Visiting this weekend in Ranger with Mr. and Mrs. Robert Allen are their daughter and family, Mr. and Mrs. D. P. Gunn of Fort Worth, and their son, Jack Allen and Miss Betty Tyler of Jal, New Mexico.

— READ THE CLASSIFIEDS —

SCHOOL MENU

- Monday, November 7: Broiled Franks, Kraut Potatoes, Tomatoes, Okra Cornbread, Butter, Milk Bananas Pudding. Tuesday, November 8: Scrambled Meat, Turnips Soup Beans, Buttered Onions Salad, Bread, Butter, Milk Cake Squares. Wednesday, November 9: Sandwiches, Potato Chips Lettuce, Tomatoes Relish Tray, Milk Ice Cream. Thursday, November 10: Turkey and Dressing Giblet Gravy Peas, Sweet Potatoes Cranberry Sauce, Salad Bread, Butter, Milk. Friday, November 11: Fish, Macaroni and Cheese Onions, Spinach, Carrots Slaw, Celery Bread, Butter, Milk Fruit Cocktail.

WMS Meets in Reuwer Home Tues., Nov. 1

Mrs. W. A. Reuwer was hostess to the Carolyn Bell Circle of the Women's Missionary Society of the First Baptist Church on Tuesday, Nov. 1, at 2:30 p.m.

The meeting was opened with a prayer led by Mrs. Frank Arrendale. Mrs. T. J. Anderson, single chairman, presided over the short business meeting. Mrs. J. B. Houghton Sr. read the minutes in the absence of the secretary, Mrs. L. H. Kay.

Mrs. C. B. Pruet directed interesting sidelights on South America and taught the first two chapters of the Mission Study book "Across the Bridge" by Frank Kay Heans. Mrs. Lloyd Clem dismissed the meeting with prayer.

Refreshments were served to Mrs. Anderson, Luther Kirkpatrick, Pruet, Lee Mitchell, Arrendale, F. E. Langston, P. C. Long, J. B. Price, Lem Rushing, Houghton, G. C. McGowan, Clem, Miss Ethel Adams and the hostess, Mrs. Reuwer.

East Zone of Cisco Association To Have School

The east zone of the Cisco Baptist Association composed of the following churches: Cheaney Baptist Church, Eastside Baptist Church, New Hope No. 3 Baptist Church, Second Baptist Church and First Baptist Church, will meet Nov. 7-10, in the Ranger First Baptist Church for a Group School.

This Training Union sponsored program will deal with the specific problems, plans, and programs that are required to build the best program for Christ on Sunday night.

This is a "workers leadership" school. There will be departmental leaders for the Elementary-Nursery, Beginner and Primary, Junior, Intermediate, Young People and Adults.

The Adult Department, pastors and General T. U. officers will have Rev. Ralph Perkins to teach their work.

The Young People and their counselors will have workers from the First and Second Baptist Churches.

The Intermediate workers, leaders and sponsors will have Mrs. Cordia Lambert to lead their programs.

The Junior workers and sponsors will have Mrs. J. D. Nichols as their teacher.

Representatives from the Eastside and First Baptist Churches will lead the Elementary, Primary, Beginner and Nursery workers.

Intermediate children through the Beginner department will meet together and will have five adults each night to share together a variety of programs each night. There will be chalk talks, stories, movies, songs, and many other interesting things. Rev. Frank Brooks, Rev. Rob Estes, Mrs. Brooks and Mrs. Perkins and others will have a share of the time each of the four nights.

The Nursery will be open for the bed babies.

Christian Science

How spiritual enlightenment brings a clearer sense of direction and purpose into daily living will be emphasized at Christian Science services Sunday.

The account in Acts (Chap. 9) of Paul's conversion and regeneration will be read from the Bible in the Lesson-Sermon on the subject "Adam and Fallen Man."

Correlative citations from "Science and Health with Key to the Scriptures" by Mary Baker Eddy will include (326:23-27): "Saul of Tarsus beheld the way—the Christ or Truth—only when his uncertain sense of right yielded to a spiritual sense, which is always right. Then the man was changed. Thought assumed a nobler outlook, and his life became more spiritual."

The Golden Text is from Ephesians (5:14): "Awake thou that sleepest, and arise from the dead, and Christ shall give thee light."

RETURNS HOME

Mrs. C. E. Parrish has returned home from Fort Worth where she stayed with her brother, Harold N. Walker, who has been critically ill in All-Saints Hospital. His doctors report him to be improving.

TU Program to Be Held Sun. At Eastland Church

The Associational Training Union program under the directorship of H. K. Neely, Jr., of Rising Star will meet Sunday afternoon, Nov. 6th at 2:30 p.m. in the Eastland First Baptist Church. The meeting is designed to be for officers and workers of the local Training Unions. Information of the latest concerning organization, programs, promotional materials, and an enthusiastic schedule for the Training Union in the Association will be given.

Rev. Neely is a capable and well trained leader in Training Union work. He holds the distinction of being the second generation of Associational T. U. Directors for the Cisco Association.

Very capable and well trained leaders will direct each segment of the afternoon program. The Nursery will be open for the little ones.

The Associational T. U. Department is sponsoring a "Group School" Nov. 7-10. The churches together with the work of Training Unions have been divided into groups of churches to study and plan.

ment is sponsoring a "Group School" Nov. 7-10. The churches together with the work of Training Unions have been divided into groups of churches to study and plan.

YOU WILL BE PLEASSED WITH OUR WORK

OLD MATTRESS MADE LIKE NEW \$8.50 up

We Pick Up One Day... Deliver the Next JUST DROP US A POSTCARD

"Since 1928" "We Sell Sleep"

RANGER MATTRESS FACTORY RANGER, TEXAS

SPECIAL OFFER ONLY \$2.75 WITH FREE COUPON AVAILABLE AT SINCLAIR DEALERS. DAD, GET THIS FOR YOUR SON FOOTBALL AND KICKING TEE



Football is official size and weight. Brown with two white stripes. Pebbled grain finish looks like real leather. Kicking Tee is made of white plastic.

KICKING TEE ALONE, ONLY 53¢ HURRY! DRIVE IN TO YOUR SINCLAIR DEALER STATION TODAY FOR FREE COUPON!



GEORGE FALLS SINCLAIR SERVICE STATION Highway 80 Tiffin Road—RANGER—Phone MI 7-9387

Chiropractor DR. E. R. GREEN 115 South Rusk Street Mon., Wed., Fri.—1 to 5 p.m.

First Methodist Church Rev. Lively Brown, Pastor Sunday School will begin Sunday morning at 9:45 a.m. at the First Methodist Church. The morning worship service will begin at 10:50 with Dr. Allen Foxback, District Superintendent, preaching.

BARBER SHOP IT PAYS to LOOK WELL Courteous Service TONY'S BARBER SHOP 223 1/2 Main - Ph. MI 7-1126

Buy it By The Bagful! APPLES Winesap or Rome Beauty 4 -Lb. 49¢ Cello Grapefruit Texas Red Blush 5 -Lb. 39¢ Cello Potatoes U. S. No. 1 Red McClure 10 -Lb. 59¢ Cello BACON Armour's Star Thick-Sliced 2 -Lb. Pkg. 99¢ Frankfurters Armour's Star Lb. 49¢ Sliced Pork Liver Fresh Lb. 29¢ Fish Steaks Taste O'Sea "Big 4" 10-Oz. Pkg. 39¢ Hamburger Patties Swift's 8-Oz. Pkg. 55¢ CIRCUS OF VALUES!

Get Your FREE Mosiah Temple SHRINE CIRCUS Tickets at Worth Food Mart! One Ticket FREE with Each \$35.00 in Worth's Cash Register Tapes dated Oct. 20, 1960 or later. Your Choice of 2 Performances—Thanksgiving Night or Saturday Morning, Nov. 26. Plan a Circus Party!

WORTH FOOD MART GREEN STAMPS

Double Stamps Wednesday with Purchase of \$2.50 or More—Prices Effective thru Wednesday

Folger's Coffee 4¢ Off Label Lb. 59¢ Chili No. 2 Can 59c Food Mart Salt 2 Pkg. 15c Crackers Lb. Box 19c Liquid Bleach 1/2-Gal. Jug 25c Hominy 3 No. 2 Cans 29c Detergent 22-Oz. 39c Pie Apples No. 2 Can 19c Apple Butter 24-Oz. Jar 25c Peaches 2 1/2's Can 25c Tomatoes 2 30 1/2's Can 29c Syrup Pint 25c Blackeyes 3 30 1/2's Can 25c Beans and Potatoes Lima Brand 2 30 1/2's Can 25c Orange Juice Snow Crop 4 6-Oz. Cans 89¢ Orange Juice Snow Crop 2 12-Oz. Cans 89¢ Patio Beef Tamales 2 12" Pkgs. 69¢ Woodbury Hand Lotion Reg. \$1.00 Value (Plus 3¢ Tax) 39¢ 'H-A' 1/2-Gal. Size, Plus Tax 43c Schick Blades 12" 79c

THE GOP CLAIM



JOHN F. KENNEDY



LYNDON B. JOHNSON

The GOP Claim: "The Eisenhower-Nixon Administration has kept the country out of war."

THE ANSWER: The primary deterrent to war has been the strategic power advantage the U. S. has had over the Communists. Democratic Administrations built up this advantage. The Eisenhower-Nixon Administration has almost lost it. Many top military leaders have warned that the U. S. is now in great danger.

The GOP Claim: "Nixon and the Republicans can handle the Communists better than a Democratic President can."

THE ANSWER: The recent tragic failures and humiliations of President Eisenhower at the Summit and on his foreign journeys are sufficient proof of the emptiness of Republican "foreign policy." The Nixon-Eisenhower Administration has proved itself incapable of handling the Communists—either by scowling and threatening or by grinning and waving. The only way to "handle" the Communists was developed by Democratic leadership—overwhelming U. S. military, economic and spiritual strength. These are the tools with which we can again successfully handle the Communists and keep world peace. These are the tools we shall regain under Democratic leadership and moral regeneration.

The GOP Claim: "The American people have had 'the best seven years of their lives' under Nixon and Eisenhower—earning more and spending more."

THE ANSWER: Never since the Hoover Depression has the rate of our economic growth been slower than in these seven sluggish years! And the bulk of what little increase our economy has made has gone to the well-to-do, the special interests, the "fat cats." We have 2,000,000 more unemployed, and nearly 1,000,000 more Americans living in desperate poverty than in 1952 when Mr. Truman relinquished a strong, healthy country to Republican misrule.

The GOP Claim: "The Republicans are for 'fiscal responsibility,' while the Democrats are 'spenders.'"

THE ANSWER: This has been the most expensive, most wasteful Administration in American history. Its record of favoritism to special interests, and of using public office for private gain, is the most shameful since the days of Teapot Dome in another Republican era.

The GOP Claim: "Nixon's experience qualifies him to be President."

THE ANSWER: The most important qualifications for the Presidency are character, integrity and imaginative leadership. Nixon's record is not remarkable in regard to these factors. As for "executive experience" President Eisenhower himself said on 8-24-60 that Nixon had had no share in making any of the decisions of the Administration. Asked for any examples of major ideas Nixon had contributed the President said: "If you gave me a week, I might think of one."

(Pd. Pol. Adv.)

The EASY way is LAY-AWAY! HOLDS YOUR BULOVA TIL CHRISTMAS YOUR CHOICE \$35.75 D. E. PULLEY Diamonds - Watches Jewelry Phone MI 7-1616

### First Pentecostal Church

J. E. Lamb, pastor

The following is the schedule for the First Pentecostal Church, announced by J. E. Lamb, pastor.

Sunday School begins at 9:45 a.m. and is followed by the morning worship at 11 a.m.  
Mid-week services begin on Wednesday night at 7:30 p.m.  
Ladies Auxiliary meets on Tuesday afternoons at 2 p.m.  
The Young people meet at 7:45 p.m. on Friday nights.

### Mesquite & Rusk Church of Christ

Lloyd Bryant, minister

Services for Sunday at the Mesquite and Rusk Church of Christ begin with Bible Classes at 9:45 a.m. The morning worship follows at 10:45.

Evening services begin with song practice at 6 p.m. followed with the evening worship at 7:00.

Tuesday afternoon the Ladies' Bible Class meets at 2 p.m. Mid-week Bible classes are at 7:00 p.m. on Wednesday night. A cordial welcome is extended to everyone.

An invitation to listen to religious questions and answers program on KERC at 8:30 a.m. each Sunday morning is extended to everyone.

### The Church of God Of Prophecy

W. T. Holland, pastor

Sunday School begins at 10 a.m. at the Church of God of Prophecy followed by the morning worship service at 11 a.m.

Sunday evening services begin with V. L. B.'s at 6:30 p.m. followed by the evangelistic services at 7:30 p.m.

Mid-week services are on Wednesday evening at 7 p.m. W. T. Holland is pastor. Frank Robinson is Sunday School Superintendent and extends a friendly welcome to you to attend the services.

### Assembly of God Church

Thelma Hostetter is pastor.

The Assembly of God Church, 206 Young Street, meets at 9:45 a.m. each Sunday for Sunday School. The morning worship hour begins at 11.

Christ's Ambassadors meet from 6:30 until 7:30 p.m. on Sunday evenings. The evangelistic service follows at 7:45.

Mid-week services are held each Wednesday evening at 7:45.

### Church of God Announcements

Rev. A. J. Fox, Jr., pastor of the Church of God, Strawn Road and 1st Street, gives the following schedule of services.

Sunday school begins at 10 a.m., followed by the morning worship service at 11. The evening worship service begins at 7 p.m.

The Y. P. E. service begins at 7:30 Wednesday evening. Prayer meeting is held at 7:30 p.m. Friday.

The public is cordially invited to attend these services. Recreation equipment has been purchased for the young people.

### Nazarene Church

Bobby Ferguson, pastor

Rev. Bobby Ferguson, pastor of the Church of the Nazarene West Main and Oak Streets, gives the following schedule of services.

Sunday School meets each week at 9:45 a.m. Mrs. Burl McGraw is Sunday School superintendent. The morning worship service begins at 10:45.

N. Y. P. S. begins at 7 p.m. each Sunday evening, followed by the evening worship service at 7:45.

Prayer meetings are held each Wednesday night at 7:45.

### Harmony Baptist Church

Bill Penland, pastor

Harmony Baptist, the church with a friendly welcome and old time Gospel preaching from the Bible, welcomes you to its services.

Harmony Baptist Church will begin Sunday School at 10 a.m. with worship services at 11 o'clock with the pastor bringing the message. Training Union begins at 7 p.m. with evening preaching at eight.

Joe Matthews is music director. Wednesday evening midweek service is held at 7 p.m. with Bible study and prayer meeting.

Thursday evening is visitation night beginning at 7 p.m.

### Fundamental Baptist Church

Jack Walker, pastor

Rev. Jack Walker, pastor of the Fundamental Baptist Church, 830 Strawn Road, makes the following announcements.

Sunday School begins at 10 a.m., followed by the morning worship service begins at 7:30 p.m. The Wednesday evening prayer service begins at 7:30 p.m.



**DRIVE RIGHT IN ... Service Is Our Business**

**WHEN SHE SHIFTS TO FIRST GEAR, RUN FOR SHELTER**

We appreciate the warning, but this would be quite a switch for us. Usually the only running we do around here is in the direction of the customer. Always on our toes, we hop to every job pronto ... whether it's a tank-ful of gas, a quart of oil, car wash, a new tire or battery to be installed, or just your windshield washed.

**CAMPBELL'S HUMBLE SERVICE STATION**

Ranger Highway 80 East Phone MI 7-9397

**WHY PAY MORE!**

**Encore**  
by the makers of STARBRITE Diamond Rings

**BIG IN SIZE! BIGGER IN SAVINGS!! BIGGEST IN VALUE!!!**

**FULL CARAT \$275.00**  
Maximum brilliance from seven flaming gems highlight distinctive brilliant set ... in stunning 14K gold setting.  
Also in total weight  
1/2 Carat \$144.50  
1/4 Carat \$79.50

**DOUBLE-ROW WEDDING RING**  
Double dazzling with two scintillating diamonds. Set in gleaming 14K white gold.  
1/4 Carat \$199.50 total weight

**RUGGEDLY HANDSOME**  
Masterly men's ring boasts fully set with fiery diamonds binding in two-row 14K white gold setting. Flash setting.  
1/2 Carat total weight \$175.00

**SCULPTURED COCKTAIL RING**  
Equipping styled in the modern mode ... these lovely diamonds give in its sparkle. Set in 14K white gold setting.  
1/4 Carat total weight \$225.00

**EASY TERMS**

D. E. Pulley Jewelry  
203 Main RANGER Phone MI 7-1616

**Financing New Homes Remodeling and Repair**

**LOANS**

**Finance All Needed Improvements With A Single Low-Cost Loan**

It will pay you to see us first if you're planning to modernize, add living space, make repairs, paint or put any other improvements or additions into your home!

No need to put it off! See us today for a low-cost home improvement loan, and start work tomorrow! Have better living on a monthly budget basis.

**Free and Accurate Estimates On All Building Needs**

**Ranger Lumber & Supply Co.**

Calvin Brown — Earl Brown  
Phone MI 7-1481 Ranger

### Weekly Schedule For St. Rita's Catholic Church

The following is the weekly schedule for St. Rita's Catholic Church.

Mass every Sunday morning at 8 o'clock and Benediction at 7 p.m.

The Newman club for high school students meet every Wednesday at 7 p.m. after choir practice.

Religious classes for grade school students are Thursday at 6 p.m. and at 7 p.m. in Mass.

Rev. Joseph L. Van Winkel, pastor of St. Rita's is always available to give information about the Catholic Church and its Doctrine.

Everyone is welcome to attend the religious services at St. Rita's.

**Free Estimates On A New ROOF**

Or Repairs your old Roof Residential & Commercial

**Eastland - Ranger Roofing Co.**

Noble Squires Eastland Ph. MA 9-2370

**FURNITURE for the Entire Home**

**Carpet - Rugs All Prices**

Be Sure To Check With Eastland

**Coats FURNITURE**

**YOUR Independent AGENT**

"SERVES YOU FIRST"

**We don't sell Insurance.**

**we BUY it ... for YOU**

In our business as insurance experts, we represent YOU. We study your insurance needs and figure the best way to protect you in the most economical way.

Your needs can often be covered most reasonably with combination America Fore policies. They're sorta "club breakfast" policies which can be arranged to fit your special requirements.

Remember ... it's YOU we represent.

**C. E. MADDOCKS & CO**  
Insurance - Real Estate  
207 Main Phone MI 7-1171

**Local AND LONG DISTANCE MOVING STORAGE**

A carton or a carload ... we move it promptly, carefully. Storage facilities and service are the finest. Low rates. Insurance available.

**FREE ESTIMATES! Ranger Transfer and Storage**

M. D. Underwood, Mgr.  
Phone MI 7-1344

### Junior G.A.s Meet for Mission Study

Members of the Junior Girls' Auxiliary of the Second Baptist Church met Monday at 3:30 p.m. at the church for the monthly Community Mission Program.

Each girl brought bags of candy and cookies, which were mixed together to make 21 treats for the extension members of the church.

Tuesday afternoon at 3:30 the girls met in the home of Mrs. Carl White for Mission Study.

The program was opened with a prayer led by Jane Ann Bradford. The group sang the G.A. hymn "We've A Story to Tell."

Mrs. White taught the book, "New Home, New Friends," which is about Argentina. Five Latin American girls were guests and they closed the meeting by repeating the Lord's prayer.

Frito-chili pie, cookies and cakes were served to the following members: Jane Ann Bradford, Elene Nech, Kathy Sharp, Sandra Parsons, Sandra and Lana Jo Squyers, Jerry Long, Linda Kay White, and Guests, Sylvia Camacho, Fernanda Vasquez, Gloria Renteria, Iype and Louise Hernandez.

### READ THE CLASSIFIEDS



Model 420VEB — Mahogany grained finish on pressed wood fibers—VHF.

Model 432VHD—262 square inch picture.

**Ranger Farm Store**  
Pine & Rusk  
Phone MI 7-1322

**—Call MI 7-1101 for Classifieds—**

**SINCE 1884**  
... quality workmanship and efficient service, approved throughout this area.

**ALEX RAWLINS & SONS**  
Designers and Builders of Monuments Since 1884  
Weatherford Phone LT 4-2726 Texas

**The House Of COLOR**  
Your 'DISCOUNT' PAINT STORE

Hwy. 80, East Jack Williams Phone MI 7-1378

**SEE US FOR FURNITURE • APPLIANCES CARPETS**

Every Day Low Prices Means Savings For You!

No carrying charges on furniture for 1 full year

FREE DELIVERY

**Ranger Furniture Exchange**  
"BRASHIER'S"

123 N. Rusk Ranger Phone MI 7-1404

**WHAT WOULD THEY LIKE ... ROSES? OR MUMS?**

**FLORA-CHEQUE**

THIS FLORA-CHEQUE MAY BE EXCHANGED FOR FLOWERS OR PLANTS THROUGHOUT THE WORLD AT ANY OF THE 24,000 MEMBER SHOPS OF THE FTD ASSOCIATION AND ITS INTERNATIONAL AFFILIATE, INTERFLORA, INC. REDEEMABLE IN FLOWERS OR PLANTS ONLY.

**DON'T GUESS ... COME IN FOR NEW FLORA-CHEQUES**

**LET YOUR LOVED ONES AND FRIENDS CHOOSE**

- THE FLOWERS THEY WANT
- WHEN THEY WANT THEM
- WHEREVER THEY ARE!

Now you can give a floral gift and be sure it's right! Send our FTD Flora-Cheques ... your loved ones and friends exchange them anytime, anyplace, for the flowers or plants they want. Give them the fun of choosing and the chance to take advantage of special seasonal values. Flora-Cheques come in \$5, \$7.50 and \$10 denominations and are available now at our shop. Any one of the 11,000 members of FTD in the United States and Canada (or 13,000 florists abroad) will redeem them with a smile. To make something warm and human and wonderful happen ... give a gift of Flora-Cheques. Come in or phone today.

**BETTY'S FLOWER SHOP ... 210 Main Street**  
Phone MI 7-1811

**Edwin Dittrich**  
From Frank's TV Service of Stephenville WILL BE AT

**L & J Supply Co.**  
403 W. Main - Ranger - Phone MI 7-1377

**EACH TUESDAY AND SATURDAY FOR COMPLETE TV SERVICE**

We stock DuMont TV Picture Tubes with a 2-year guarantee. Also RCA and Sylvania Picture Tubes.