

Annual Bulldog Banquet Tonite

The Annual Football Banquet for the Ranger High School Bulldogs, sponsored by the Football Mother's Club, will be held at the Lone Cedar Country Club, Thursday at 7:30 p.m.

Twenty-seven members of the Bulldog squad, the coaches, manager and the cheerleaders will be honored at the annual affair.

Members of the football squad are: Joe Barker, Douglas Browning, Johnny Comacho, Tim Conington, Ronnie Daskevich, Charles De Los Santos, Kyge Edmonds, Chuck Garrett, Richard Guest, James Henry, Jerry Jones, David Lockwood, Edward Mendez, Jim Robinson, Mike Sanders, Carlton Stappner, David Sutton, Terry Townzen, Alfonso Vasquez, Richard Wilhelm, Dwight Squiers, Howard Parsons and Johnny Wells. Coaches are Harold Prescott and Bill Young and student manager is Ronnie Hinds.

Cheerleaders are Sandy Vinson, Jill Watkins, Sue Graham, Janis Thompson and Patsy Nail. Senior Dean Richey will serve as master of ceremonies.

Mrs. David Woods Dies Tuesday; Services Today

An Eastland County native, Mrs. David C. (Carra Jewell) Woods, 66, died at 10:55 a.m. Tuesday in Ranger General Hospital, following a short illness.

Funeral services were held at 2 p.m. Thursday at the First Methodist Church with the Rev. Lively Brown, pastor, officiating. Burial was in Alameda Cemetery, under direction of Killingsworth Funeral Home.

Mrs. Woods was born April 8, 1894, in Alameda. She had lived there and in Cross Roads community and in Ranger all her life. She married David Crockett Woods in Eastland County Feb. 22, 1914. She was a member of the First Methodist Church.

Survivors include her husband; four sons, Edward Lee, David C. III and Noel, all of Wichita Falls, and Alvin of Spearman; two daughters, Mrs. Q. M. Owen of Perryton and Mrs. Carl T. Caudle of Odessa; three sisters, Mrs. Jack Hugo Schmidt of Abilene, Mrs. Bill Parks and Mrs. Letha Wier, both of Dale; one brother, Bill Reid of Ranger; 16 grandchildren and two great-grandchildren.

Palbearers were Earl Blackwell, Curt Blackwell, B. W. Reid, John Tibbels, Willard Swaney, and Reed Campbell, all of Ranger; Jack Schmidt of Abilene and Bill Parks of Azle.

Gorman Man Dies In Alameda Crash

Funeral services are pending for Donald Ray Self of Gorman who was killed in an automobile accident 12 miles south of Ranger on Farm Market Road 571 in the Alameda community, at approximately 11:45 p.m. Wednesday.

The 18-year-old Gorman boy, on leave from the Navy, was dead on arrival at the Ranger General Hospital.

Hospitalized in the Ranger hospital were four other Gorman boys who were in the car with Self. Two Gorman High School boys, Kenneth Welch and Glendon Frasier and Allan H. Valstad on leave from the Navy and Lawrence Cates, on leave from the Air Force. Cate will be transferred to an Air Force base hospital where he will receive further treatment for a fracture. Valstad, who has a concussion and possible internal injuries, will remain in the Ranger General Hospital for further treatment. Frasier, who has multiple lacerations and abrasions, is being held for further treatment and Welch will be discharged from the hospital today.

Services are pending from the Higginbotham Funeral Home in Gorman for Self. Killingsworth Funeral Home ambulance brought the boys to the Ranger hospital. Self was born Feb. 28, 1942 in Gorman. He was on leave from

FILING CABINETS All steel construction. For office or home. Letter or legal size. One, two, three and four drawer. Locks optional. THE RANGER TIMES



JOHN F. KENNEDY ... President-elect of United States

County Voting ... Shows Increase

Eastland County voters turned out in larger numbers this year than they did four years ago.

A total of 7,074 persons voted this year compared to 6,107 in 1956. The heavy vote was indicative of interest in this year's campaign.

Rangers Capture Texas J C Conference Crown

The Ranger College Rangers became the undisputed champions of the Texas Junior College Conference Wednesday night as they defeated the Blinn Junior College Buccaneers 19 to 13 in a highly contested game.

Blinn, who didn't win a game all season, were going all out to defeat the conference leading Rangers. Blinn took an early first quarter lead and played hard defensive ball, but couldn't stop the determined Rangers.

The Rangers completed their conference schedule with a perfect 3-0 record. Navarro is in second place with a 2-1 record, Cisco third with a 1-2 record and Blinn fourth with an 0-3 record.

The Game At A Glance

Table with 2 columns: Ranger and Blinn. Rows: first downs, yards rushing, yards passing.

of 12 passes comp. 6 of 16 passes int. by 3 for 48 punts, avg. 5 for 23.3 10 for 110 yds, penalized 4 for 21 fumbles lost 4

Ranger took the opening kickoff and fumbled on their own 15 yard line and Blinn took over to set up the first score of the game. A pass from quarterback David Krueger to end Harvey Cernosek gave Blinn a first down on the four yard line and from there Larry Perkins went over for the score. Blinn Emmons kicked the extra point and Blinn led 7 to 0 with only two minutes gone in the game.

Ranger ran the following kickoff out to the 20 yard line but couldn't move from scrimmage and was forced to punt. A good 40 yard boot put them out of danger and they held Blinn on the next series of downs. A short punt by Blinn gave the Rangers the ball on their own 43 yard line and seven plays later Frank Rice povered over from the 3 yard line. A 21 yard run by Rice and a 16 yard run by Hutton Humphrey and a 14 yard pass from Kenneth Hart to James Polts set up the score. Hart kicked the extra point and tied the game at 7-7.

Deep in the second quarter Hart got off a 56 yard punt from his own 34 yard line to put the Buccaneers in the hole and strong offensive play forced them to punt from deep in their own territory. A strong rush put on by Warren Sheelar and Marvin Agnew caused the punt to be hurried and only traveled 15 yards, and Ranger took over on the 27 yard line.

On a third down situation with only 13 seconds left in the half, Rice broke loose for 25 yards and a score. The try for extra point was no good and Ranger led 13 to 7 at the half.

Early in the third quarter Ranger strengthened their lead when they staged a 72 yard drive climaxed by an 8 yard screen pass from Hart to fullback Printas Gidney. Marvin Agnew pounced on a loose ball on the following kickoff and Ranger advanced the ball down to the 13 yard line, but couldn't find the right scoring combination.

Blinn took over and moved the ball 85 yards for their final score with Emmons hitting Cernosek for a 29 yard pass play that capped the drive. The try for extra point was no good.

The Rangers moved into Buccaneers territory two more times during the game, once to the 30 yard line and again to the 12 where they tried an unsuccessful field goal.

Blinn tried desperately to count another touchdown as they went to the air in the last few minutes of the game, but a strong victory-type defense by the Rangers kept them from connecting on a long pass.

The Rangers will take on the north division junior college leaders Saturday, Nov. 19 as they travel to Lawton, Oklahoma to play the Cameron Aggies.

Young School Football Banquet Planned Monday

The Young School Football Banquet, which will honor the Young School Colts, the cheerleaders, Pep Squad and Teachers, will be held at the First Baptist Church Monday, Nov. 14, at 6 p.m.

Phillip Anderson will serve as master of ceremonies. Bill Auvenshine and his stage band will present a 30 minute concert and will be followed by a film shown by a representative of the Booster Club.

Special speakers will be Ronald Tate, Dorothy Ann Oliver, Janina Bradford and Gler a Renteria.

Stations serving Ranger since 1918 Insurance - Birth to 90 years Phone MI 7 3222

County Favors Nixon By Narrow Majority

Ranger Votes Strong Democratic Ticket

Eastland County voters picked a Republican presidential candidate for the third time in a row

J. A. Bates to Speak Sunday at Methodist Church

Christian Stewardship has been the emphasis in the Methodist Churches throughout Texas for the past three weeks and Sunday, Nov. 13 will celebrate the final phase, being Commitment Sunday.

Stewardship of ones time, was the first one given October 23 by Charlie Garrett, Chairman of the Board of Stewards, in which he brought out that the tithing of ones time should be practiced so that each day should include not only prayer and meditation, but in helping to build God's Kingdom.

On November 13, the talk is to be given by J. A. Bates as to the Tithing, which is deeply rooted in a long history of observance in Hebrew-Christian Religion, and is an outgrowth of a sense of thankfulness which, for the Christian, is as natural as breathing. Tithing puts a spirit of discipline into the handling of all our financial affairs and takes the irksomeness out of giving.

On November 13, the talk is to be given by J. A. Bates as to the Tithing, which is deeply rooted in a long history of observance in Hebrew-Christian Religion, and is an outgrowth of a sense of thankfulness which, for the Christian, is as natural as breathing.

The senate race was close in Eastland County, too. Lyndon Johnson won re-election by a vote of 3,731 to 2,793 for the Republican candidate, John Tower. Tower's strength in the county and state brand him as a definite strong candidate for the office which Johnson must give up to become vice president.

The governor's race was no contest. Gov. Price Daniel, the Democratic candidate, won easily, polling 4,901 votes to William Stegall's 1,000. (Continued On Page Six)

EASTLAND COUNTY RESULTS 1960 General Election

Table with 4 columns: Precinct, Kennedy, Nixon. Rows include EASTLAND, RANGER, OLDEN, GORMAN, CARBON, DESDEMONA, KOKOMO, RISING STAR, OKRA, PIONEER, NIMROD, CISCO, SCRANTON, ABSENTEE, and TOTALS.

Beta Club Officers Take Office Friday

Ranger High School is proud to announce that they are now members of the National Beta Club.

The officers of the Ranger Beta Club will be installed Friday, Nov. 11 at 10:30 a.m. in the High School auditorium.

Nine Members Added to Quarter Century Club

Texas Electric Service Co. said thanks to their employees in the Eastland District Tuesday night at the annual Quarter Century Club banquet held in the National Guard armory in Ranger.

Nine new members of the Quarter Century Club were presented watches by J. B. Thomas, TESCO president, swelling to 40 the total membership in the club in this district.

The future of America was settled today, Dr. Winters declared, pointing out that as he spoke the votes of all Americans were being counted to determine who will be the nation's next President.

Revealing that he is a Republican, the speaker reminded his listeners that no matter who won the election, "We're all Americans... we're all on the same team."

Telling of his tour of foreign nations, Dr. Winters declared, "American is a million sea miles ahead of anything else in the world."

Other members of the Quarter Century Club in this district are Raymond Alvarado, G. A. Barker, C. L. Bigby, Wayne Caton, J. P. Collins, H. E. Craven, R. J. Cunningham, A. Fauth, J. L. Punderburgh, J. K. Golden, H. M. Hart, S. B. Harbinson, F. T. Hightower, O. L. Hooper, H. R. Jones, J. L. Kuhn.

SHOP AND MAIL EARLY USE POSTAL ZONE NUMBERS Avoid the Last Minute Rush—Be Sure Your Christmas Cards and Gifts Arrive on Time.



LYNDON B. JOHNSON ... Vice President-elect of United States

The Ranger Times

"Serving Community Betterment Since 1919"
ELM STREET—RANGER, TEXAS ESTABLISHED JUNE 1, 1919
Entered as second class matter at the postoffice at Ranger, Texas on
the act of Congress of March 3, 1879.

TIMES PUBLISHING COMPANY
Published Tri-Weekly—Tuesdays - Thursdays - Sundays
JOE DENNIS and ONOUS DICK, Publishers
GENE TOWNSEND, Editor

One week by carrier in city15
One month by carrier in city66
One year by mail on Ranger RFD Routes3.95
One year by mail in county4.95
One year by mail in state4.95
One year by mail out of state6.95

NOTICE TO PUBLIC—Any erroneous reflection upon the character,
standing or reputation of any person, firm or corporation which may
appear in the columns of this newspaper will be gladly corrected upon
being brought to the attention of the publishers.

CLASSIFIED

PHONE MI 7-1101
All Classified Ads Must Be Paid For In Advance

MISC. FOR SALE

CLEMMER'S Cash and Carry
Dairy, 7th gallon.

FOR SALE OR TRADE: Equity
in 1/2-Ton Ford 6 Pickup. Radio,
heater, overdrive, Easy-eye glass,
new tires—MI 7-3549.

LUZIER COSMETICS: Designed for
scientific skin care. Uncondi-
tionally guaranteed. For a lovelier
you call MA 9-2024, Eastland.

RENT - LEASE OR SELL. Easy
terms. Paramount Hotel, Apart-
ments (furnished) Cafe (equip-
ped) also 3 stores provides extra
income for you. You must be able
restaurant family and be able to
stock cafe and improve business
and serve good meals. Will make
special allowance on payments un-
til you get well started. Will rent,
lease or sell for \$125.00 week or
\$500.00 month until paid for.
Write owners, 138 Casa Lido
Plaza, Dallas, Texas or call DA
7-2552. Hotel has 70 rooms and
apartments, 30 baths. Family can
make a big success. Must have good
reputations. Restaurant, also
should make payments, par pro-
fit also, giving you nice place to
stay in hotel and profit from
apartment and rooms and 3
stores. Inspection invited.

FIVE room modern house for sale
or rent. Call E. F. Arterburn.

FOR SALE or rent. Three bed-
room house. Phone MI 7-1282.

RUBBER STAMPS—Fast service,
reasonable prices, no order too
large or too small to get our special
attention. Ranger Times.

1961 CHEVROLET club coupe
Excellent condition. Ladies car.
Phone MI 7-1287.

FOR SALE: Paper shell pecan-
dic pound. Bob Allen. Eastland
Hill.

FOR SALE: Two 9' x 7' rugs, two
4' x 4 1/2' rugs, 40 ft. of 27-inch
hall runner. All in rose-wood
Mohawk wool carpeting with pads.
Good cond'n. \$45.00. Phone MI
7-2459.

TWO BEDROOM home, 2 blocks
from high school, partially financ-
ed. Call MI 7-1495, after 5 p.m.

300 AMF Lincoln welding machine
and household furniture.
Bargain, 701 6th Street.

HAVE buyers for houses in \$5-
600 and \$6,000 price. Call Mrs.
Higdon, MI 7-3138.

UNDER NEW MANAGEMENT:
Paramount Hotel and Apartments.
\$5.00 week up. Private tile baths,
television, kitchenettes, 1 to 4
spacious, clean rooms, bills paid,
linens and maid service if wanted.

NOTICE: Mattresses, new or re-
novated, boxed springs quality
made, save up to 50% renovated.
Choice of size or firmness. Guar-
anteed Western Mattress Co., San
Angelo. Phone Ranger MI 7-1252,
leave address.

FOR RENT

FOR RENT: Modern House, 6001
Young. Call MI 7-3686.

THREE ROOM furnished or un-
furnished apartment across street
from High School, to couple or
single woman. Phone MI 7-1671.
Mrs. Charles Bobo.

FOR RENT: 5 room house. Phone
MI 7-3511.

GOVERNMENT
SURPLUS SALES

NOW anyone can buy DIRECT from
U. S. GOVERNMENT SURPLUS DEPOSITS,
by mail for yourself or for resale.
Cameras, binoculars, cars, jeeps, tools,
boats, hardware, office machines and
equipment, tents, boots and tons of
thousands of other items at a fraction
of their original cost. Many items brand
new. For list of hundreds of U. S. Gov-
ernment Surplus Deposits, located in
every State and overseas with pamphlet
"How Government Can Ship Direct
to You" also procedures, HOW TO
BUY and how to get FREE SURPLUS,
mail \$2.00 to SURPLUS SALES INFOR-
MATION SERVICES, P. O. Box No.
1918, Washington, S. D. C.

May
Ins. Agency
214 Main St.
Ph. MI 7-3582
Ranger

—READ THE CLASSIFIEDS—

Local AND LONG DISTANCE MOVING STORAGE



A carton or a carload . . . we
move it promptly, carefully.
Storage facilities and service
are the finest. Low rates. In-
surance available.

FREE ESTIMATES!
Ranger Transfer
and Storage
M. D. Underwood, Mgr.
Phone MI 7-1344

The EASY way is LAY-AWAY!

HOLDS YOUR
BULOVA
TIL CHRISTMAS



YOUR CHOICE \$35.75

MISS AMERICA
Youth and beauty are captured in
this 17 jewel watch with beautifully
matched expansion bracelet.

SENIOR
The executive look — top level in
performance but not in price. 17
jewel, shock-resistant.

D. E. PULLEY
Diamonds - Watches
Jewelry
Phone MI 7 1616

COLDS

Relieve aches and pains of colds with
STANBACK Tablets or Powders.
Also use as gargle for sore throat
due to colds. STANBACK'S S. A.
(Syringic Action) reduces fever
brings faster, more complete relief.
Remember . . . Snap back with
STANBACK!

AUTO - TRUCK SERVICE

Harvesting Parts and Services
• Motor Tuning
• Motor Overhaul
• Wheels Balanced
• Hydraulic and Dyna-
flow Transmission
Repair.

Authorized International
Ranger Garage
Hwy. 80 West - Ph. MI 7-3279
RANGER

SEE US FOR FURNITURE • APPLIANCES CARPETS

Every Day Low Prices Means Savings For You!

No carrying charges on furniture for 1 full year
FREE DELIVERY

Ranger Furniture Exchange
"BRASHIER'S"
123 N. Rusk Ranger Phone MI 7-1404

YOU WILL BE PLEASED WITH OUR WORK

OLD MATTRESS
MADE LIKE NEW
\$8.50 up

We Pick Up One Day . . . Deliver the Next
JUST DROP US A POSTCARD

"Since 1928"
"We Sell Sleep"

RANGER MATTRESS FACTORY
RANGER, TEXAS

WEEKLY CROSSWORD PUZZLE

Songstress

HORIZONTAL
1 Dejected radio songstress
Carol
9 She sings with Crosby
10 Peaceful
14 Operatic solo
15 Transgressor
17 Channels
18 Softer
19 Hebrew ascetic
20 Gleams hillside
21 Bone
21 Symbol for nickel
22 Large fish
22 Discard
24 Reverbstrate
27 Correlative of either
28 Prefix
29 Symbol for tantalum
30 Son of Nut
31 Otherwise
34 Oriental nurse
36 Distinct

VERTICAL
1 Demolish
2 Flower
3 Overseer
4 Equitable
5 Danish measure
6 Uncommon

7 Doctor of Theology (ab.)
8 Indian weights
9 Jute fabric
11 Number
12 Channel
13 Canadian
22 Canadian hillside
23 Russian river
25 Wife of Zeus
26 Decorous
27 Facility
40 Lines (ab.)
41 Observes

42 Horn sound
43 Chibchan Indian
44 Native of Latvia
45 Gaelic
50 French article

Here's the Answer



Lacasa Lines

By Mrs. D. B. Raney
Rev. and Mrs. Bob Estes at-
tended the Baptist Convention at
Lubbock last week.

Friday afternoon the Gleaners
Sunday School Class of New Hope
Baptist Church met with their
mother, Mrs. Lottie Herrington
or a class meeting. After a short
devotional, the president, Mrs.
Vera Gray, presided over the busi-
ness meeting. Definite dates were
set for the monthly class meetings
and visitation day. Duties of class
officers were reviewed. Refresh-
ments, consisting of punch and
sodas, were served. Attending
were Meses. Vera Gray, Melmoth
Laster, Tryphena Pankas, Cor-
elia Lambert, Freddie McGowan,
Mary Herrington, Florence Raney,
and Sally Estes.

Mrs. Rosa Taylor underwent
ve surgery at Mineral Wells last
week, remaining in the Nazareth
hospital several days. Her daugh-
ters, Mrs. A. L. Stiles of Ranger
and Mrs. A. N. Bradford of this
community cared for her. She is
now at home and improving.

Mrs. Myrtle Tompkins is in the
Tanager General Hospital.
M. and Mrs. A. E. Howton visit-
ed their son, Lloyd and family in
Fort Worth, Sunday, and at-
tended the Open House at Con-
vair.

Mr. and Mrs. Norman Godfrey
of Memphis, Tenn. have been visit-
ing Rev. and Mrs. Bob Estes this
week. Mr. Godfrey, who is an em-
ployee of the Baptist Brotherhood
Commission at Memphis, brought
the evening message at New Hope
Baptist Church.

Charles Venale suffered a foot
injury at a hay baler, Sunday.
Mrs. H. L. Caraway is keeping
her grandchildren, Glenda and
Bobby Morrison, while their moth-
er goes through the clinic at Scott
and White Sanitarium, Temple.

O. K. Gro. & Mkt.

501 W. Main - Ranger - Ph. MI 7-3477

MIRACLE WHIP
Salad Dressing qt. 49c

Marshall—303 Can Hominy
3 cans 25c

Del Haven—12-oz. Botl. Catsup
3 for 49c

Mile Hi—303 Can Crm. Style Corn
4 for 69c

Del Haven—303 Can Tomatoes
2 for 29c

With \$2.00 Purchase of Merchandise or More
FOLGER'S Coffee 1 lb. 59c

Dart—303 Can Green Beans
2 for 29c

Bama Apple Butter
29-oz. jar 29c

HONEY-CUP MELLORINE 1/2-Gal. 39c

Kuners Whole—303 Can New Potatoes
2 for 29c

Franco - American Spaghetti
2 for 29c

Texize - 1-Qt. Texize - 1-Qt.
CLEANER STARCH . . . both for 65c

SIMPLE SIMON—Apple, Coconut, Cherry
FRUIT PIES ea. 39c

SWIFT'S PREMIUM BACON lb. 55c

FRESH DRESSED FRYERS lb. 35c

NEUHOFF THICK SLICED BACON . . 2-lbs. 98c

Mrs. Mitchell Has Charge of WMU Program

The Second Baptist Women's
Missionary Union met Tuesday,
Nov. 8 at 9:30 a.m. at a Royal
Service Program about 1st. The
home was "To Die Without His
Word."

Mrs. O. J. Caraway led the
opening prayer, and the group
sang "The Light of the World is
Jesus."

Mrs. Walter Mitchell was in
charge of the program. Taking
parts with her were Mrs. R. B.
Needham and Mrs. Lyra Beck.
Mrs. Floyd Caraway closed the
program with prayer.

The business meeting was pre-
sided over by the president, Mrs.
Albert Williams. The meeting was
adjourned with a prayer by Mrs.
Mitchell.

Those present were Meses O. J.
Caraway, Charlie Beck, Frank
Brooks, Floyd Cardway, Carl
White, J. D. Nichols, Mitchell,
Noth, G. P. Rose, Mae Rodgers,
W. C. Tipton, Caudle, Needham,
Williams, and one visitor, Mrs. R.
J. Matthews.

FARMERS INSURANCE GROUP

AUTO - TRUCK - FIRE - LIFE - BUSINESS
... all your insurance needs

AUTO - TRUCK - FIRE and
EXTENDED COVERAGE
BOATS

All your insurance needs
"Dividend Savings"
RUBY SPRINGER
Ph. MI 7-3230 320 W. Main

—Call MI 7-1101 for Classifieds—

JUST RECEIVED

Shipment of Children's Plastic
WATER PROOF SHOES



GYM SHOES
for
the
SCHOOL BOY & GIRL
STILES YOUTH SHOP
203 Main Phone MI 7-1414

WARDS



Riverside Air Cushion NYLONS

SALE PRICED 1188

6.70-15 block,
tube-type plus
excise tax and
trade-in tire

FULL 15-MONTH GUARANTEE

RIVERSIDE 4-SQUARE GUARANTEE

1. Against road hazards for the spec-
ified time. Adjustments prorated
on months used.

2. Against defects in materials, work-
manship for life of tread. Adjust-
ments prorated on tread wear.

3. To give nationwide service.

4. Satisfaction guaranteed. Adjust-
ment based on current price be-
fore trade-in when returned.

NO CASH DOWN!
Any old trade-in tire is
the down payment.

FREE MOUNTING!

AIR CUSHION TUBELESS BLACK TUBE-TYPE BLACK

Size List price each before trade-in plus excise tax Sale price with trade-in plus excise tax

6.70-15 20.60 13.88 17.95 11.88
7.10-15 24.40 16.88 20.60 13.88
7.40-15 26.40 18.88 22.65 15.88
7.50-14 20.40 13.88 Only \$3 more buys a Whitewall in your size!

Riverside batteries for fast, dependable starts!

"Power-Gard" coating resists corrosion,
no. 1 battery killer; prolongs battery life

30-MONTH GUARANTEE
6-volt, types 1, 2L

24-MONTH GUARANTEE
12-volt, type 245 1-A

with trade
SATISFACTION GUARANTEED or your money back!

NEWS FROM CARBON

The Carbon Wolverines clubbed Gordon 62-12 in a District 14-B six man football game here last Thursday night in their final game of the season.

Rhodney Jackson led Carbon's scoring with four touchdowns on runs of 55, 5, 55 and 60 yards. Don Guy tallied two on runs of 20 and 25 yards; Eddie Fraser got two more on runs of 65 and two yards; Danny Arnold caught a pass from Jackson for 30 yards and another TD and Billy Sandlin recovered a blocked punt for the other six-pointer. Marvin Gates ran over two extra points.

Turner scored both of Gordon's TDs on runs of 19 and 25 yards.

For a season total the Wolverines lost four games and won five which is a very good record.

Visitors in the John Wilson home last week were Mrs. Ada Brown of Paducah, Mrs. Minnie Melbourne of Crowell, Mrs. Sarah Crouch of Arnett, Okla., Mrs. G. H. Taddell of Wichita, Kansas, Mr. and Mrs. Gardner Harris and daughter, Willie Faye, of Jackson, Ala. The Gardner Harris also visited his mother, Mrs. Willie Harris.

Mr. and Mrs. Abe Hall of Frederickberg visited his parents, P. and Mrs. H. Hall, last weekend.

Mr. and Mrs. Charles Adair and children of Victoria spent the weekend with her parents, Mr. and Mrs. Henry Hines.

The following children and grandparents have been here to visit Mrs. George Barton, who is ill in the Gorman Hospital, Jack and Marie Barton of League City, Mrs. Della Hope of Dallas, Georgia Bell Barton of Houston, Mrs. Geneva Urbank of Houston, Edd and Bernice Barton of Hobbs, N. M., R. R. Barton of Forum, Okla. and Bill and J. D. McCoy of Cosco.

Mr. and Mrs. Raymond Turner of Rising Star spent Sunday night with their son, Rev. Jim Turner and family.

Mr. and Mrs. Gene Butler and children visited in Mineral Wells and Fort Worth Sunday.

Mr. and Mrs. Roland Lafevre and son, James, of Abilene visited his sister, Mrs. E. R. Butler, Sunday.

The local High School Tournament with some of the best teams in the area participating starts Dec. 1 and ends Dec. 5.

Gene Guy of Seminole visited his parents, Mr. and Mrs. J. F. Guy, recently.

DIXIE Drive-In
EASTLAND RANGER HIGHWAY

Box Office Opens 6:45 Show Starts 7:00
Box Office Closes 9:00

Admission 50c — Children Under 12 Free
THURSDAY - FRIDAY - SATURDAY, NOV. 10-11-12

THUNDER IN HIS HEART - LIGHTNING IN HIS HOLSTERS!

RANDOLPH SCOTT
WARNER BROS. **THUNDER OVER THE PLAINS**

LEX BARKER - PHYLLIS KIRK
RUSSELL HUGHES - ANDRE DROTIN
PLUS: Two Color Cartoons

SUNDAY - MONDAY - TUESDAY, NOV. 13, 14, 15

REACHING NEW HEIGHTS OF EPIC GREATNESS!

THE NEW, THE SPECTACULAR

TARZAN THE MAGNIFICENT

Actually filmed in the African jungle!

PLUS: Color Cartoon and Sports Reel

RANGER DRIVE-IN
HIGHWAY 50 EAST ON RANGES HILL

Boxoffice Opens 6:45 — Show Starts at 7:00
Adults 50c—Kiddies Under 11 Free
Only Eastland County Drive-In Open All Year
THURSDAY - FRIDAY - SATURDAY

HE BAITED HIS TRAP WITH A WOMAN

HELL BENT FOR LEATHER

CINEMASCOPE - EASTMAN COLOR - AUDIE MURPHY - FELICIA FARR - STEPHEN MCNALLY

FREEVUE EVERY SATURDAY NITE
SUNDAY - MONDAY - TUESDAY

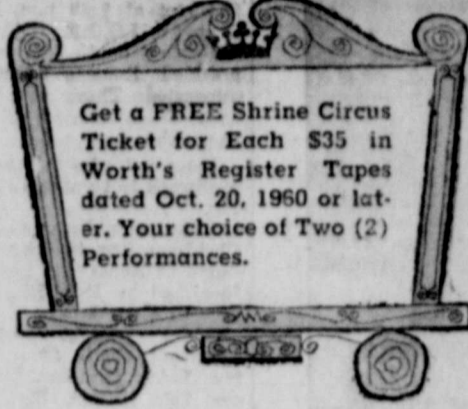
THE STORY OF RUTH

FROM PAGAN IDOLATRY TO THE WORSHIP OF ONE GOD... FROM UNTOUCHABLE PRIESTESS TO WOMAN IMMORTAL!

CHERRY WHITMAN - TOM TROTT - PEGGY WOOD - WALTER JONES - ETT MORROW - LANA ECK

Get Mostah Temple **SHRINE CIRCUS TICKETS FREE** at Worth Food Mart
SEE THE GREATEST SHOW ON EARTH--ON WORTH!

Prices Effective Thursday, Friday & Saturday



MELLORINE

Early June Peas Campfire
Ranch Style Beans A Texas Favorite

Taylor's "Home-Made" Ass'd. Flavors **3 1/2 Gal. 1.00**



Tapes Must Be Dated Oct. 20 or Later

POTATOES

U. S. No. 1 Idaho Russets **10 Lb. 69c**

U. S. No. 1 Colorado **Yellow Onions 5c**

Firm Heads **Crisp Lettuce 19c**

East Texas No. 1 **Sweet Potatoes 2 Lb. 25c**

Texas Red Blush **Pink Grapefruit 9c**

Large **Walnuts 55c**

Washington State Extra Fancy Delicacies **Golden Apples 23c**

Fancy Virginia **Roasted Peanuts 35c**

Crisp, Mild **Red Radishes 2 Cello Bags 15c**

Waxed Minnesota **Rutabaga Turnips 5c**

FROZEN FOOD FIESTA

Swanson, All Varieties **Meat Pies 5 8-Oz. Pkgs. 1.00**

Swanson, All Varieties **T-V Dinners 11-Oz. Pkg. 59c**

Swanson Apple or Cherry **Dessert Pies Individual Size 2 1/2 Pkg. 29c**

Libby's Sliced Strawberries	Libby's Sliced Peaches
Libby's Broccoli Spears	Libby's Cauliflower
Mix or Match Your Choice	4 10-Oz. Pkgs. 1.00

Potato Soup Campbell's 3 10-oz. cans 49c

Libby's Chopped Broccoli	Libby's Butter Beans
Libby's Ripple-Cut Potatoes	Libby's English Peas
Mix or Match Your Choice	5 Pkgs. 1.00

Phillips - Mint or Plain **Milk of Magnesia 12-Oz. Ref. 49c**



Round Steak "W. C. Q." Heavy Beef **79c**
Sirloin Steak "W. C. Q." Heavy Beef **89c**

"W. C. Q." Heavy Beef **Chuck Blade Roast 49c**

"W. C. Q." Heavy Beef **Shoulder Arm Roast 59c**

Swift's Sliced **Premium Bacon 55c**

Taste O'Sea Frozen **Perch Fillets 39c**

... Your 100% Guarantee

for Quality, Flavor and Tenderness

"W. C. Q." Heavy Beef **T-Bone Steak Lb. 99c**

"W. C. Q." Heavy Beef **Boneless Rib Steak Lb. 99c**

"W. C. Q." Heavy Beef **Fresh Ground Beef Lb. 39c**

Worth Quality **Beef Short Ribs Lb. 29c**

Hormel's Dairy Brand **Pork Sausage Lb. Roll 33c**

Taste O'Sea Frozen **Catfish Sticks 8-Oz. Pkg. 39c**

CLIP AND SAVE!
Redeem This Coupon for EXTRA
50 Free S & H Green Stamps
with Purchase, 1 Pkg. Yearling Frozen Beef Patties or Beef Steaks
Void After Saturday, Nov. 12, 1960—Limit One

CLIP AND SAVE!
Redeem This Coupon for EXTRA
50 Free S & H Green Stamps
with Purchase of 22-oz. (10c off Label) Chiffon Liquid Detergent
Void After Saturday, Nov. 12, 1960—Limit One

GERBER BABY FOOD Strained **12 4 1/2-Oz. Pkgs. 1.00**

JELL-O GELATIN Assorted Flavors **5 3-Oz. Pkgs. 39c**

ROSE-DALE PEARS Bartlett Halves **3 2 1/2's Cans 1.00**

CHUNK TUNA Carnation **3 1 1/2's Cans 69c**

Hunt's Whole Apricots Unpeeled **2 1/2's Can 29c**

Spaghetti & Meatballs Chef Boy-Ar-Dee **15 1/4-Oz. Pkg. 19c**

Orange-Grapefruit Juice Del Monte Blended **3 46-Oz. Cans 1.00**

Zee Toilet Tissue Assorted Colors, Family Pack **4 Roll 33c**

Reynolds Aluminum Foil Jumbo Size **75-Ft. Roll 69c**

Bayer **Aspirin 100's Bottle 19c**

Dristan Cough Syrup Botl. 99c

WORTH FOOD MART

CLIP AND SAVE!
Redeem This Coupon for EXTRA
50 Free S & H Green Stamps
with Purchase of 3 Pkgs. (3) Lipton's Soup Mixes
Void After Saturday, Nov. 12, 1960—Limit One

CLIP AND SAVE!
Redeem This Coupon for EXTRA
50 Free S & H Green Stamps
with Purchase Any Scent, 5 1/2-oz. Glade Room Deodorant
Void After Saturday, Nov. 12, 1960—Limit One

CLIP AND SAVE!
Redeem This Coupon for EXTRA
50 Free S & H Green Stamps
with Purchase of 2 Taste O'Sea Fish Dinners **2 8-Oz. 99c**
Void After Saturday, Nov. 12, 1960—Limit One

NEWS FROM OLDEN

Mr. and Mrs. John Cooper of Olden spent Saturday in the home of their son, and family, Mr. and Mrs. Dee Cooper.

The Edd Haynes family attended the Homecoming in Miles last week.

Ronnie Reese is ill in the Ranger General Hospital at this time. Mr. and Mrs. C. B. O'Brien visited their daughter and family Mr. and Mrs. Charles Verner and Charles Wade, in Mineral Wells Sunday.

Mr. and Mrs. Travis Reese spent Saturday at Possum Kingdom visiting with her sister and husband, Mr. and Mrs. Pete Hilliard.

Roy Lester of Abilene visited his mother, Mrs. Lula Lester, who is ill in the home of her daughter, Mrs. Walter Colburn, one day this week.

Mrs. McMinn returned home

with her daughter, Mrs. Millard Bryant of Kermit, for a visit.

Mr. and Mrs. Charlie Cook of Ft. Worth visited in the home of Mr. and Mrs. W. C. Stark recently. Mrs. Stark is a sister to Mrs. Cook.

Mr. and Mrs. R. J. White spent the weekend with relatives in Knox City.

Mrs. David Dolgren of Abilene visited with her mother, Mrs. Ruth Howard, last Tuesday. Mr. and Mrs. J. A. Supulver returned home with their granddaughter to spend two days with Mr. Supulver's brother, Will, who is ill, before he was taken to Ft. Worth for treatment.

Mr. and Mrs. J. D. Sims of Jal. N. M. spent the weekend with his parents, Mrs. and Mrs. Charlie Sims.

Mrs. W. E. Backman is in Abilene with her daughter, Mrs. Hershel Phillips and Mr. Phillips.

Mr. and Mrs. Travis Hilliard were joined in Kermit by their son, Mr. and Mrs. Phil Hilliard of Commerce, for a visit with their mother, grandmother and other relatives.

Mrs. Aubrey Poyner of Jacksboro visited with her parents, Mr. and Mrs. Charlie Sims, Monday.

Mr. and Mrs. Irvin Talley spent Sunday afternoon with Mr. and

Prosperity-Recession-War-Peace

all come and go but the land remains. By owning, developing and improving his basic investment in land, man creates financial security. We recommend such an investment with time-proven security behind it. No other is sounder or more profitable, provided the title is good. If the title proves to be faulty so will be the investment. Always demand an abstract, another good investment, before investing your funds in real estate.

EARL BENDER & COMPANY

Eastland, (Abstracts since 1923) Texas

PRESTONE \$1.95 Per Gallon

ANTI-FREEZE—CASH AND CARRY

HIGHEST OCTANE

Totally New Premier

DETERGENT ACTION GASOLINE

Served By Qualified Attendants

BROWDER PREMIER SUPER SERVICE STATION

Highway 80 East — Ranger, Texas
Dewey Evans, Prop. Jackie Williams, Asst. Mgr.

SEE O. G. Lanier FOR OIL AND GAS LEASES AND REAL ESTATE WE BUY AND SELL

Ph. MI 7-3450 - 113 S. Rusk Ranger, Texas

Dinner-In-A-Dish



Nutritionally, dinner is usually the biggest meal of the day. But from the cook's point of view, it should be easy to prepare as well as good to eat. For quick and easy dinners, evaporated milk is a real genie-in-a-can. Always dependable, it can be stored on a pantry shelf with no fear of spoilage. Its smooth, blendable texture makes this Tuna-Fetti Casserole an immediate success. And it takes only thirty minutes to prepare.

Tuna-Fetti Casserole

- 2 cans (6 1/2 or 7 ounces each) tuna
- 1 medium onion, sliced
- 1 tablespoon flour
- 1/2 teaspoon salt
- 1/2 teaspoon pepper
- 1 cup evaporated milk
- 1 can (1 pound) cut green beans
- 1 1/2 cups packaged precooked rice
- 1 can (4 ounces) pimiento, diced

Drain oil from tuna into 10-inch skillet. Add onion and cook until crisp tender. Blend in flour, salt and pepper. Add evaporated milk and cook, stirring constantly, until mixture thickens and comes to a boil. Drain liquid from beans; reserve 1/2 cup. Add beans and tuna to skillet. Push mixture to sides of pan. Place rice in center. Pour reserved bean liquid over rice. Add pimiento and stir gently. Cover. Bake in a moderate oven (375° F.) 15 minutes. Fluff rice with fork before serving. Yield: 4 servings.

Mrs. Clifford Nelson and little daughter, Rev. Nelson is a former pastor of the Olden Baptist Church.

Mr. and Mrs. J. T. Sims of Odessa are visiting in the home of their parents.

Mr. and Mrs. Pete Rodgers and Bessie accompanied by Mr. and Mrs. Ray Rodgers and Ginger of Eastland were in DeLeon Sunday to visit their daughter and sister, Mr. and Mrs. James Thackerson.

Mr. and Mrs. Durwood Smith of Decatur were weekend guests of Mrs. Smith's parents, Mr. and Mrs. J. D. Herrell.

Mr. and Mrs. Bailey Stark, enroute to their home in Port Arthur from a convention in Denver, Colo., stopped to visit their parents, Mrs. Myrtle Everett and Mr. and Mrs. W. C. Stark, over the weekend.

Mrs. Opal Henderson is in Tyler with her mother who is ill.

— READ THE CLASSIFIEDS —

First Baptist To Have Annual Music Program

The annual Thanksgiving music program presented by the First Baptist Church will be given Sunday evening, Nov. 13 at 7:30 p.m. Lee Russell, Minister of Music, will give direction to the musical program. Four chairs will sing.

The Beginner choir will be directed by Mrs. Richard Henderson and accompanist will be Mrs. Dan Tabor. Mrs. Kenneth Bounds will direct the Primary choir and Miss Mary Kay Rush will be the accompanist.

Mrs. F. P. Brasher will direct the Junior choir and Miss Jill Watkins will be the accompanist. The Intermediate choir will be directed by Dan Mitchell and the accompanist will be Mrs. Dick Hodges.

A spokesman said that those who love spiritual music will enjoy the services, and the public is invited to attend.

Rebekah Lodge Meets Tuesday At IOOF Hall

Ranger Rebekah Lodge No. 244 met at 7:30 p.m. November 8 at the I.O.O.F. Hall.

Noble Grand, Verrie Brown, presided. Routine business was transacted. Those reported sick were Bessie Harris and Lena McDonough.

Everyone who wishes to quilt are urged to be at the Hall Thursday.

Plans were discussed to send a Christmas Box to the Old Folks Home at Ennis. The penny prize furnished by Eula Blackwell was won by Clara Ivy.

Those present were Eula Blackwell, Sadie Strone, Clara Ivy, Louise Caulder, Ethel Johnson, Lila Efferit, Rudy Greer, Gertrude Gideon, Laura Todd, C. E. Bell, and C. Y. Brown.

READ THE CLASSIFIEDS

No Wonder People in EASTLAND COUNTY

like

WFAA-820

NEWS

• Complete, factual 15 minute reports
• Statewide weather reports

7 AM 8 AM 12 NOON 5:15 PM 6:30 PM

stay informed — stay with your neighbor of the air... WFAA-820 RADIO

Edwin Dittrich

From Frank's TV Service of Stephenville WILL BE AT

L & J Supply Co.

403 W. Main - Ranger - Phone MI 7-1377

EACH TUESDAY AND SATURDAY FOR COMPLETE TV SERVICE

We stock DuMont TV Picture Tubes with a 2-year guarantee. Also RCA and Sylvania Picture Tubes.



DRIVE RIGHT IN... Service Is Our Business

WHEN SHE SHIFTS TO FIRST GEAR, RUN FOR SHELTER

We appreciate the warning, but this would be quite a switch for us. Usually the only running we do around here is in the direction of the customer. Always on our toes, we hop to every job pronto... whether it's a tank-ful of gas, a quart of oil, car wash, a new tire or battery to be installed, or just your windshield washed.

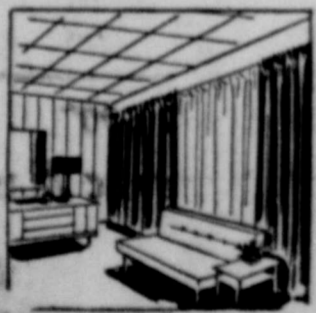
CAMPBELL'S HUMBLE SERVICE STATION

Ranger Highway 80 East Phone MI 7-9397

Financing New Homes Remodeling and Repair

LOANS

Finance All Needed Improvements With A Single Low-Cost Loan



It will pay you to see us first if you're planning to modernize, add living space, make repairs, paint or put any other improvements or additions to your home!

No need to put it off! See us today for a low-cost home improvement loan, and start work tomorrow! Have better living on a monthly budget basis.

Free and Accurate Estimates On All Building Needs

Ranger Lumber & Supply Co.

Phone MI 7-1481 Calvin Brown — Earl Brown Ranger

Robinson Food Market

SPECIALS FOR FRIDAY & SATURDAY, NOV. 11-12, 1960 121 North Rusk St. Phone MI 7-3530

WHITE SWAN Biscuits 3 Cans 25¢

FANCY HOME KILLED T-BONE STEAKS lb. 79c
TENDER LOIN STEAK lb. 69c

SWIFT'S PREMIUM Bacon 1-Lb. Pkg. 58¢

FOLGER'S Coffee 1-Lb. Can 63¢

DEL MONTE PINEAPPLE-GRAPEFRUIT Drink 3 46-Oz. Cans 79¢

LIGHT CRUST Meal 5 Lb. Bag 29¢

LIGHT CRUST Flour 5 Lb. Box 43¢

WILSON'S—No Beans Chili Big 24-Oz. Can 55¢

SUPREME SALAD WAFER Crackers 1-Lb. 28¢



HERE! EASIER GOING FOR THE DRIVER AND THE LOAD, LONGER LIFE FOR THE TRUCK!

'61 TORSION-SPRING CHEVROLETS

If you don't think scrapping the front axle has made a world of difference, you haven't driven a Chevy in a while. A few minutes behind the wheel and you can feel why drivers are happier and breakable loads are better protected. But the biggest advantage of all, you'll realize, is that the truck itself (sheet metal, tires, chassis components, everything) takes less abuse. With independent front suspension soaking up road shock and vibration, the truck lasts longer, goes extra thousands of miles before trade-in time. Add that to what everybody's always known about Chevy dependability and you find yourself looking at the soundest truck investment you could bet your business on.

and look! NEW REAR-ENGINE CORVAIR 95's

A panel and two pickups that put a thrifty air-cooled engine in the rear, the driver up front and as much as 1,900 pounds of load space in between! That's more capacity than a conventional half-tonner. Yet these Corvaire 95's are nearly two feet shorter from bumper to bumper. Highly maneuverable. Built to last and bound to save on a busy schedule!



SEE THE GREATEST SHOW ON WORTH NOW AT YOUR CHEVROLET DEALER'S

ANDERSON CHEVROLET COMPANY

111 S. AUSTIN STREET RANGER PHONE MI 7-1161



HE MADE THE SAVE—His eyes glued on the ball, Spanish goalkeeper Ramaletto heads for the turf at a London, England, soccer practice.

READ THE CLASSIFIEDS

Hints On Late Winter Pastures Are Given

Unusual weather in some areas of Texas has delayed winter pasture planting. For early grazing, most winter temporary pastures should have already been planted, but George McBee, extension pasture specialist, says that late pastures can be profitable if they are managed properly. The two most important factors to consider when planting late pastures are fertilization and seed treatment, McBee continues. Fertilization helps plants get off to a faster start, and this gives them a chance to become better established before cold weather sets in. Another important contribution of fertilization is the increased yields. Seed treatment for late planted pastures is like insurance—you may not need it, but you can't afford to do without it. Treatment is necessary because some seedling diseases may be worse for late planted small grains. McBee recommends using a mercury con-

taining fungicide to treat the seed. In some cases, the specialist continues, seed sowing may be advantageous. When an operator doesn't have enough land to allow planting the needed amount of winter pasture, or when winter pastures or when winter pastures on prepared seed are too wet to graze for long periods, seed sowing is beneficial. If an operator decides to use seed sowing, he should delay sowing until the grasses are dormant, and he should apply plenty of fertilizer. Winter pastures, early or late, are the only dependable sources of green grazing. There is no substitute for temporary winter pastures, and they can mean cheaper gains on beef cattle, more milk from dairy herds, and lower hay, grain and veterinary bills, McBee concludes. RETURNS HOME Mrs. C. A. Robie has returned home from Graham after a visit with Mr. and Mrs. Virgil Hogan. Mrs. Hogan returned home with her for a visit this week.

Luncheon and Workshop Set For Garden Club

The Ranger Garden Club will meet Friday, Nov. 11 at 9:30 a.m. at the Community Clubhouse for a luncheon and covered dish workshop. The theme will be "Flower Arrangements in the Dried" with Mrs. W. H. Buchanan of Abilene as the guest speaker. Members are to bring materials for making dried arrangements. Mrs. Hoscoe Hopper will bring the therapy gift. Mrs. Roy Baker, Carl Lammus, Floyd Killingsworth, and George Minnick will bring the flower arrangements. Hostesses will be Meses. L. H. Kay, H. C. Montgomery, Joe Jackson, and L. L. Bruce. Members are asked to bring a covered dish and a card table. VISITS FRIENDS Mrs. J. Way Harmon of Tyler is visiting friends in Ranger this week. Mrs. Harmon is a former resident of Ranger.

Auxiliary to Honor Buddies

The Ladies Auxiliary No. 1871 of Veterans of World War I will entertain the Buddies of the Barracks with a covered dish supper at the National Guard Armory on Highway 80 West Friday, Nov. 11. Members that have not been contacted are asked to bring a covered dish. TO VISIT IN CALIFORNIA Mr. and Mrs. F. H. Mills accompanied by their son and daughter-in-law, Mr. and Mrs. Buster Mills of Waco left Thursday for a trip to California where they will spend Thanksgiving. In San Bernardino they will visit with a daughter and sister, Mr. and Mrs. Hill; in Sacramento, another daughter and sister, Mr. and Mrs. Tom Watson, and in Los Angeles, a son and brother, Mr. and Mrs. Charles Mills.

SINCE 1884

... quality workmanship and efficient service, approved throughout this area.

ALEX RAWLINS & SONS

Designers and Builders of Monuments Since 1884

Weatherford Phone LY 4-2726 Texas

PENNEY'S

ALWAYS FIRST QUALITY

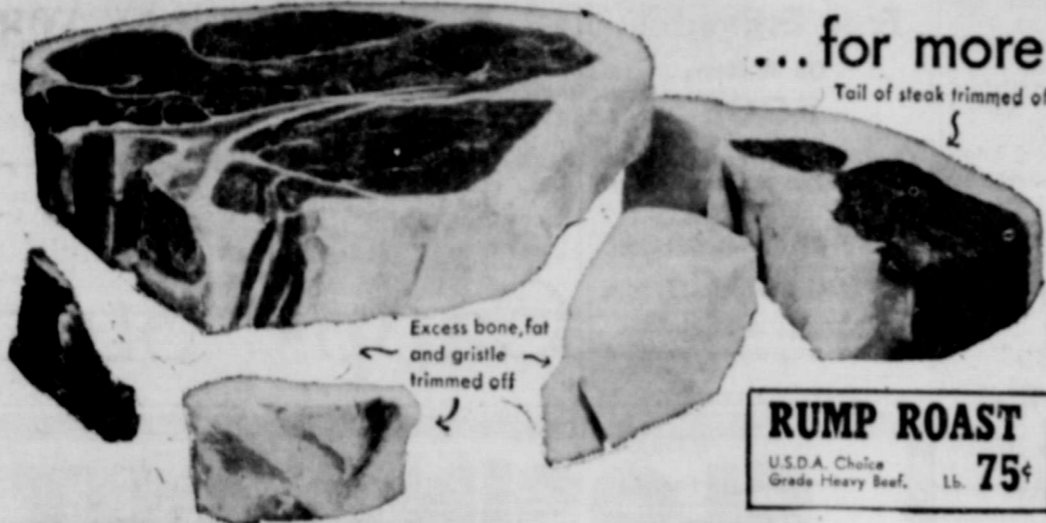
SAVE SAVE SAVE SAVE SAVE SAVE SAVE SAVE

CLEAN-UP

SAVE SAVE SAVE SAVE SAVE SAVE SAVE SAVE

Another reason there's no place like SAFEWAY for BEEF

CLOSE TRIMMED



- ...for more good-eating meat per pound!
- Round Steak** 85¢/lb. Full-Cut, U.S.D.A. Choice Grade Heavy Beef.
 - Sirloin Steak** 89¢/lb. U.S.D.A. Choice Grade Heavy Beef.
 - T-Bone Steak** 99¢/lb. Or Club Steak. U.S.D.A. Choice Grade Heavy Beef.
 - Pot Roast** 49¢/lb. U.S.D.A. Choice Grade Heavy Beef Chuck Blade.
 - Rib Roast** 79¢/lb. Standing. U.S.D.A. Choice Grade Heavy Beef.
 - Short Ribs** 29¢/lb. Or Brisket. U.S.D.A. Choice Grade Heavy Beef.
 - Beef Loins** 75¢/lb. U.S.D.A. Choice Grade Heavy Beef. Cut and frozen wrapped at our cost.

BACON 55¢/lb. Poppy or Armour's Star Sliced. 1-Lb. Pkg.

Grade 'A' Eggs 49¢/doz. Best of Farm, Grade 'A' quality, small size.

Bargains Galore!

- Pork & Beans** 6 No. 300 Cans 49¢
- White Hominy** 3 No. 300 Cans 19¢
- Tomatoes** 3 No. 300 Cans 39¢
- Wolf Chili** 2 No. 300 Cans 29¢
- TAMALES** 2 No. 300 Cans 25¢

50 SAFEWAY COUPON 50

This Coupon Worth 50 FREE GOLD BOND STAMPS

For your regular covered dish supper with the purchase of TWO 44-Oz. Cans Highway Tomato Juice

50 SAFEWAY COUPON 50

This Coupon Worth 50 FREE GOLD BOND STAMPS

For your regular covered dish supper with the purchase of TWO 22-Oz. Jars Zippy Whole Dill Pickles

50 SAFEWAY COUPON 50

50 FREE GOLD BOND STAMPS!

With the purchase of \$5.00 or more.

SAFEWAY

- Safeway Produce**
- TOMATOES** 15¢/lb. Red, ripe and firm. Perfect for slicing.
 - LETTUCE** 15¢/head. Firm, solid heads. The favorite salad vegetable. Head.
 - Radishes** 5¢/doz. Perfect for salads.
 - Italian Squash** 25¢/lb. Suitable for soups.
 - Boston Lettuce** 19¢/head. Fresh and tender. Head.
 - Fresh Escarole** 25¢/bunch. Head for salads.
 - Yellow Onion** 5¢/lb. Round and firm. Serves with meats.
 - Pascal Celery** 25¢/bunch. Perfect for salads.
 - Delicious Apples** 25¢/lb. New Crop. Extra Firm.
 - Emperor Grapes** 29¢/lb. California's finest. See Grapes.

- Pie Cherries** 2 No. 303 Cans 39¢
- Strawberries** 3 10-Oz. Pkg. 69¢
- Joyett Mellorine** 49¢/1/2-Gal. Ctn. Vanilla, Chocolate, Strawberry, Neapolitan or Raspberry.
- Salmon** 51¢/1-Lb. Can. Tempest Chum.
- Dog Food** 13 1-Lb. Cans \$1.00. Pouch regular or liver flavored.
- Chunk Tuna** 33¢/1-Lb. Can. Best of Chicken Light Meat - Green Label.
- Vigo Dog Food** 21¢/2-Lb. Can. Yellow Label.
- Waverly Wafers** 27¢/11-Lb. Pkg. Nabisco.
- Sunshine Cookies** 43¢/1-Lb. Pkg. Luncheon.
- Potato Waves** 25¢/4-Oz. Pkg. Market's - For snacks and parties.

- Brer Rabbit Syrup** 47¢/24-Oz. Bottle. Blue Label.
- Brer Rabbit Syrup** 62¢/5-Lb. Jar. Same Label.
- Crisco Shortening** 33¢/1-Lb. Can. Fully hydrogenated.
- Gladiola Flour** 53¢/5-Lb. Bag. For all your baking needs.
- Parkay Margarine** 25¢/1-Lb. Can.
- VELVEETA** 89¢/2-Lb. Pkg. Kraft. Cheese Spread for slicing or melting.
- Bakery Feature of the Week!**
- Old World Black Bread** 19¢/1-Lb. Loaf. Sliced - Regular 25¢ Value.
- Cinnamon Rolls** 23¢/11-Oz. Pkg. Mrs. Wright's - Baking Exp. 25¢ value. 24 ct.
- Sandwich Bread** 25¢/1-Lb. Loaf. Mrs. Wright's White Sliced.
- Bread** 25¢/11-Oz. Pkg. French Toasting Loaf.
- Apple Dumplings** 59¢/11-Oz. Pkg. Favorite Fruit Filling.

Mr. Clean Cleaner 39¢/15-Oz. Bottle. All purpose liquid.

Zee Toilet Tissue 37¢/4 Rolls. White or scented colors.

Zee Paper Towels 26¢/12 Pk. (12 sq. in. each). Soft.

Zee Garbage Bags 25¢/12 Pk. (New at Safeway).

Morton Salt 25¢/2 1/2-Oz. Boxes. Plain or Iodized.

Nestles Morsels 25¢/4-Oz. Pkg. Sweetened.

Nestles Morsels 47¢/11-Oz. Pkg. Sweetened. Juniors.

DETERGENT 59¢/Giant Box. White Magic - For pride and praise on wash day.

Cheer Detergent 32¢/Large Box. Most at hand.

Dreft Detergent 33¢/Large Box. Glycerin.

Tide Detergent 32¢/Large Box. Tide's in, dirt's out.

Oxydol Detergent 33¢/Large Box. Detergent - whitens to the max.

Dash Detergent 39¢/20-Oz. Box. For automatic washers.

Liquid Ivory 37¢/12-Oz. Can. Detergent - For dishes.

Liquid Joy 37¢/12-Oz. Can. Detergent - Makes dish-washing almost bliss.

Ivory Toilet Soap 29¢/4 Bars. Personal care.

Bab-O Cleanser 29¢/2 1/2-Oz. Tubes. (12 sq. in. each).

Comet Cleanser 39¢/2 1/2-Oz. Tubes. (12 sq. in. each).

SAFEWAY

Conveniently Located to Serve you at 504 E. Main, Eastland

Boys Sweat Shirts 100

Printed Characters on Front Size 4 - 12

Clearance Boys Jackets 300 - 400 - 500

Broken Lots and Sizes

Womens Felt House Shoes 100

Warm - Durable Soft Leather Soles

Girls Ski Type Knit Pajamas 122

Two-Piece Styles Sizes 10 - 14

Boys 10-oz. Western Style Denim Jeans 100

Priced To Clear Sizes 10 - 12 Only

20 x 40" Gauze Diapers 200

Soft - Absorbent - Doz.

2-Lb. Rum & Brandy Fruit Cake 100

Sealed in Can For Freshness

Warm Cotton Flannel 100

Sanforized! Special Buy! 3 Yds. For

3 Lbs. - 72 x 90" 100% Virgin Acrylic Blanket 666

Nylon Binding

Mens Sport Shirts Assorted Fabrics and Patterns 200

Rayons and Cottons Sizes S - M - L

60 Gauge - 15 Denier Nylon Hosiery 49¢

Self Seams Sizes 8 1/2 - 11

No Wonder People in
EASTLAND COUNTY
like
"Murray Cox, R. F. D."
on WFAA-820



• News on the farm and ranch front!
• Latest market and weather reports!

12:15 PM EVERY DAY!
Just set it and leave it —
your neighbor of the air...WFAA-820 RADIO

Season's Treatings!



Santa Claus Toffee ICE CREAM



Colorful as Christmas, Boswell's Santa Claus Toffee Ice Cream is a real surprise of red and green butter candy bits and toffee ice cream with crunchy pecans. You'll glow like Santa himself when you try Boswell's Santa Claus Toffee Ice Cream.

LOOK WHAT'S COOKING!



Barbeque-Pit
Now Open - Hwy. 80 East
SPECIAL - SATURDAY AND SUNDAY
FREE... One Pint of Beans
with purchase of one or more pounds of barbeque
TRY OUR SANDWICHES

Chipped Beef35
Sliced Beef50
Sausage35
Ham50

THE BARBEQUE PIT
Highway 80 East

Ticklers **By George**



"I'm afraid Grigsby lacks that inner conviction and self confidence!"

Hospital News

Patients in Ranger General Hospital are:
Mrs. Florence Roan, Cisco, medical
Mrs. Linda Zellers, Rising Star, medical
W. B. Drake, Strawn, medical
Mrs. T. J. Fuller, Ranger, medical
Frank Keener, Ranger, medical
Christine Christman, Cisco, medical
George Reager, Ranger, medical
Gertrude Wilson, Ranger, medical
Glynda Smith, Strawn, surgical
Mrs. Alma Wafer, Whitesboro, medical
Glendon Frasier, Gorman, accident
Albert Valstad, Gorman, accident

Lawrence Cates, Gorman, accident
Kenneth Welch, Gorman, accident

Dismissed
Mrs. Lucy Graves, Rising Star
Mrs. E. U. Bennis, Strawn
Mrs. Joe Howie, Eastland
James Henry, Ranger
J. R. Henson, Fort Worth
Richard E. Henderson, Ranger
Mrs. Myrtle Tompleton, Ranger
Sandra Cooper, Ranger
Manuel Gomez, Ranger

Dr. and Mrs. Frank Houpt and children, Steven and Susan spent Sunday with Mr. and Mrs. L. H. Kay.

The Houpts are former Houston friends of the Kays. They are now living in Abilene where he is an eye specialist at Dress Air Force Base.

THANKS TO THE PEOPLE

May we take this means to express our sincere thanks for the kindness and consideration shown the Democratic Campaign Committee during the recent General Election Campaign. We are deeply grateful and humble for victory in Texas and the nation.

Thank you for helping the Democratic Party to victory.

No Wonder People in
EASTLAND COUNTY

like
"THE EARLY BIRDS"
on WFAA-820



• With John Allen spinning good morning music!
• Latest time checks and weather reports!

7:15 AM DAILY
keep entertained — keep listening to
your neighbor of the air...WFAA-820 RADIO

Ranger -

(Continued from Page One)

er's 1,838 on the Republican side. Democrats won all of the other statewide races, too. Ben Ramsey was re-elected lieutenant governor; Robert W. Calvert, Supreme Court chief justice; Clyde E. Smith, associate Supreme Court justice; Joe Greenhill, associate justice; Earnest O. Thompson, railroad commissioner; Robert S. Calver, state comptroller; Jerry Sadler, general land office commissioner; and John C. White, commissioner of agriculture.

In local races Judge Cecil C. Collings, unopposed Democratic nominee, easily won re-election as associate justice of the 11th District Court of Civil Appeals in Eastland.

Rep. Omar Burleson handily defeated Republican Max V. Mosholder of Abilene by a count of 5,180 votes to 1,471 in Eastland County and piled up a big margin in the 17th District.

Eight county and precinct Democratic nominees were unopposed and won their races. They are Tom Creighton, 22nd District state senator; T. M. Collie, district judge; Scott Bailey, 76th District state representative; Earl Conner Jr., county attorney; Lee Horn, sheriff; J. C. Allison, tax assessor-collector; J. B. (Tip) Arther, Precinct 1 commissioner; and Porter O. Woods, Precinct 4 constable and Ralph Veal, Precinct 2 constable.

Amendments
County voters approved three of the four constitutional amendments and statewide all four were approved.

The only amendment which failed to gain county approval was the third amendment, which would raise legislators' salaries. Here is how voting went in the county:

Amendment 1 (Hospital Districts)—For 2170. Against 2017.
Amendment 2 (Veterans Bonds)—For 2580. Against 1658.
Amendment 3 (Legislators' Salaries)—For 1938. Against 2318.
Amendment 4 (Veterans' Interest Rates)—For 2501. Against 1797.

Effect Of Fumigants On Seed Studied

Many seed men have had damage claims filed against them because of the failure of fumigated seed to germinate. This failure could have resulted from poor field conditions, or it could have been the result of fumigant damage. The Texas Agricultural Experiment Station conducted a study to determine the effect that specific fumigants have on germination and vigor of seed and the conditions under which they may be most injurious.

For the tests, seven fumigants were used to treat seed of barley, oats, wheat, rice, cotton and two varieties of corn and sorghum. Because previous research has indicated that moisture content and temperature of seed during fumigation affects the possibility of fumigant injury, the seed for these tests were fumigated at three different moisture content and temperature levels. It was found that high moisture content and high temperature usually interacted to produce extensive injury to seed.

The fumigants included in these tests were classified into three groups on the basis of their effects on seed germination. Hydrogen cyanide and carbon tetrachloride in the first group had relatively little effect on seed germination. Germination was not affected immediately after fumigation with these materials, but after 12 months' storage of fumigated seed, reductions occurred in some crops without regard to temperature or seed moisture during fumigation.

The Texas Agricultural Experiment Station has published a complete report on this test. This publication, MP-448, may be obtained from the Agricultural Information Office, College Station, Texas.

— READ THE CLASSIFIEDS —

Retired Civil Employees Set Saturday Meet

Regular meeting of the Eastland County Chapter of the National Association of Retired Civil Employees will be held Saturday at 3 p.m. in the education buildings of the First Baptist Church in Eastland.

Former Eastland Student Enlists In Paratroopers

Pvt. E. I. Ardy, Phillip Hooper, son of Mr. and Mrs. C. W. Funderburg of 196 North Frances St., Sunnyvale, Calif., enlisted July 18 in the Airborne army. Hooper took his eight weeks basic at Fort Ord, Calif. He is now in his second eight weeks at Fort Ord in advanced infantry training. He will take his jump training on the East Coast. Phillip attended Eastland elementary and Junior High School. Hooper, 18, is the grandson of the late Mrs. Minnie Hurst of Eastland.

The MODERN Pest Control
Offers FREE Estimates on Termites and Pest Control.
Scientific methods. We have a complete line of insecticides.
302 Main Ph. MI 7-3422
Ranger

Free Estimates On A New ROOF
Or Repair your old Roof Residential & Commercial

Eastland - Ranger Roofing Co.
Noble Squires Eastland
Ph. MA 9-2370



the gift your favorite person deserves

Your Portrait

No other gift says so well, "from me—to you." No gift can duplicate it. No gift can please so much or mean so much! Let us make that special gift portrait for you now—and show you interesting ways to make it a memorable gift—in color or in a beautifully designed frame. Come in or phone for your appointment tomorrow.

Capps Studio

CLOSING OUT SALE

ALL MERCHANDISE 10% OFF

BUY YOUR HOLIDAY NEEDS NOW! AT GREAT SAVINGS!

All New Merchandise—Toys, Dolls, Xmas Tree Decorations, Light Sets, Xmas Cards.

All staple merchandise on sale: Hosiery, Rayon Wear, Cosmetics, Kitchen Ware, Electrical Goods and Many, Many Other Items.

DUKE & AYRES
RANGER, TEXAS

PEGGY LISSY!

WOW! GRACIOUS PAW WHAT'S THE MATTER!

I JUST DREAMED YOU MADE ME A WONDERFUL SUPPER! ROAST DUCK WITH ALL THE TRIMMINGS, AND A GREAT BIG COCONUT CREAM PIE, AND...

WELL, I'LL MAKE YOUR DREAMS COME TRUE... I'LL HAVE IT FOR SUPPER TOMORROW NIGHT!

OH BOY!

THIS IS JUST GOOD OLD EARTH!

NOW GO BACK TO SLEEP AND DREAM UP A NEW DRESS FOR ME!

FOR GOSH SAKES, MAW, WHAT'S THAT?

HAIR CURLERS! I WANT TO LOOK BEAUTIFUL TOMORROW WHEN OUR COMPANY COMES!

HMPH!

I WANT TO LOOK BEAUTIFUL TOO!

freshest taste in bread

MRS BAIRD'S ENRICHED BREAD
MRS BAIRD'S STAYS FRESH LONGER

Wheat Outlook For 1961 Crop Is Outlined

The domestic supply of wheat for the marketing year July 1, 1960 to June 30, 1961 is estimated to be about 2,682 million bushels, another record, says John McHaney, extension agricultural economist. This large supply is the result of a carryover on July 1, 1960 of 1,313 million bushels, and a 1960 crop estimated to be about 1,362 bushels. Added to this will be about 7 million bushels of imports.

Domestic disappearance in the present marketing year 1960-61 will probably be about 610 million bushels, about the same as in 1959-60, McHaney continues. The expected slight decline in per capita consumption will be offset by the population increase, however. Seed and feed use of wheat will be about the same as last year.

Exports during the present marketing year will probably be higher than in 1959-60. About 525 million bushels will be exported as compared to 508 million exported last year. Government export programs, which will account for about two-thirds of the exports, will continue to



WHAT A BOA—Squeazy, 10-foot boa constrictor at Boston's Museum of Science, seems unimpressed by penicillin shot. David Bonney administers the treatment for Squeazy's injured mouth.

play a major role in the movement of wheat abroad, the specialist points out. Less favorable crop conditions in Europe, however, will also aid U. S. exports. The 1959-60 price to U. S. farmers averaged \$1.76, about 3c above the average support rate after allowing for storage charges. The price in 1960-61 is expected to gain average above the effect support, storage deducted. This is mainly because large quantities of wheat continue to be placed under the price support program, explains McHaney. The support rate for the 1960-61 crop is \$1.78 as compared to \$1.81 for a year earlier.

With minimum allotments in effect for 1961, it is estimated that about 53 million acres will be harvested. If average yields are obtained, a crop of about 1,235 million bushels would be produced, the economist continues. A 1961 crop of this size would be about 7 percent below the 1,362 million indicated for 1960, but 11 percent above the 1959 average. Assuming that domestic disappearance and exports are the same as that estimated for 1960-61, the carryover on July 1, 1962 may be increased about 100 million bushels. The minimum national average support price for the 1961 crop wheat is \$1.78 per bushel, the same as the 1960 average support price, McHaney concludes.

Lacasa Club Enjoys Program On Fashions

The Lacasa Community Club met Thursday, Nov. 3 at the Community Center. A group of ladies met in the morning to quilt. In the afternoon Mrs. J. T. Gorrell brought a demonstration on Fashions. Further plans were made for the Thanksgiving Supper, Nov. 23. A committee from the club, Mrs. Ida Raney, Oral Templeton, Cordia Lambert, and Tappy Jackson, supervised the preparation of a parking lot for Macedonia Cemetery by the crew of the commissioner. Attending were Mrs. Mae Miller, Tryphena Packrus, Oral Templeton, Ida Raney, Velma Caraway, Mary Herrington, Arto Garrell, Tony Jackson, Leta Bradford, Lottie Herrington, Naomi Taylor of Caddo and Edith Graham of Strawn.

WOMEN'S ACTIVITIES

Friday, November 11
The Ranger Garden Club will have a covered dish luncheon and workshop Friday, Nov. 11 in the Community Clubhouse.
Mrs. W. H. Buchanan of Abilene will be the guest speaker. The theme is "Flower Arrangements in the Dried."
Monday, Nov. 14
Ranger Chapter No. 275, Order of the Eastern Star will meet Monday, Nov. 14 at 7:30 p.m. at the Masonic Hall.
Members are urged to attend and visitors are welcome.

INGROWN NAIL HURTING YOU?
Immediate Relief!
A few drops of GUTTA-TOE bring instant relief from burning pain of ingrown nail. GUTTA-TOE loosens the nail underneath the nail, allows the nail to be cut and then prevents further pain and discomfort. GUTTA-TOE is available at all drug counters.

WE ARE NOW EQUIPPED TO STEAM CLEAN
Auto and Truck Motors and any type of Heavy Equipment
Caraway Truck & Tractor
Hwy. 80 East Ranger

BARBER SHOP
IT PAYS TO LOOK WELL
Courteous Service
TONY'S BARBER SHOP
223 1/2 Main - Ph. MI 7-1126

CALL MI 7-3175
For All Your PLUMBING NEEDS
City Plumbing
SPRING ROAD
LICENSED PLUMBER
U. E. WESTMORELAND

YOU'RE Independent AGENT
"SERVES YOU FIRST"
We don't sell insurance.

—we BUY it ... for YOU
In our business as insurance experts, we represent YOU. We study your insurance needs and figure the best way to protect you in the most economical way. Your needs can often be covered most reasonably with combination America Fore policies. They're sorta "club breakfast" policies which can be arranged to fit your special requirements. Remember . . . it's YOU we represent.
G. E. MADDOCKS & CO.
Insurance - Real Estate
207 Main Phone MI 7-1171

The House Of COLOR Your 'DISCOUNT' PAINT STORE

Hwy. 80, East Jack Williams Phone MI 7-1378

SPECIAL OFFER ONLY \$2.75



WITH FREE COUPON AVAILABLE AT SINCLAIR DEALERS
DADDY GET THIS FOR YOUR SON FOOTBALL AND KICKING TEE

Football is official size and weight. Brown with two white stripes. Pebbled grain finish looks like real leather. Kicking Tee is made of white plastic.

KICKING TEE ALONE, ONLY 53c

HURRY! DRIVE IN TO YOUR SINCLAIR DEALER STATION TODAY FOR FREE COUPON!



GEORGE FALLS SINCLAIR SERVICE STATION

Highway 80 Tiffin Road—RANGER—Phone MI 7-9387

A GOOD SELECTION OF USED CARS At Bargain Prices

1959 Chevrolet, Bel-air, 4 door, hardtop, V-8, 25,000 actual miles. Trade-in on new car. Clean.

1959 Chevrolet, Bel-air, 4 door, V-8 with overdrive. Radio and heater, white wall tires. Come look this one over.

1959 Ford, 4 door sedan, V-8, Radio, heater and overdrive. Another new car trade-in. Clean.

1957 Chevrolet, 4 door, Radio, heater and air conditioner. In perfect condition.

1957 Chevrolet, 4 door, heater and air conditioner. Another good value.

1957 Ford, 6 cylinder. Standard shift. Clean. Radio and heater. 4 door sedan. Light blue.

1957 Ford Fairlane 500 Club Victory. Radio and heater.

We have several other good clean used cars to choose from.

Funderburg Ford Sales

Pine & Rusk RANGER Ph. MI 7-1555

Ranger, Texas

Dial MI 7-3224

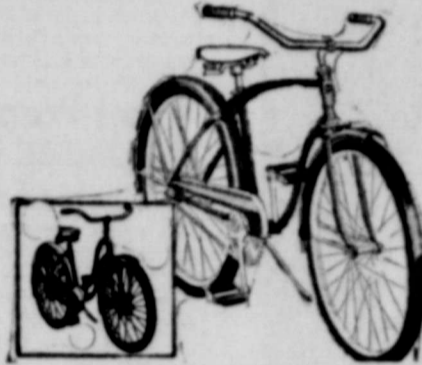
WARDS

MONTGOMERY WARD



USE YOUR CREDIT! TAKE ADVANTAGE OF TREMENDOUS SAVINGS AT WARDS

PRE HOLIDAY SALE



SAVE \$5 ON WARDS FAMOUS HAWTHORNE TWIN BAR BIKE

Sleek, streamlined design for boys or girls. Machine welded frame takes all punishment youngsters can dish out. Red for boys, blue for girls. 24-26". **\$30.00**



RIFLE-COLLECTORS' FAVORITE! THE "1891" GERMAN MAUSER

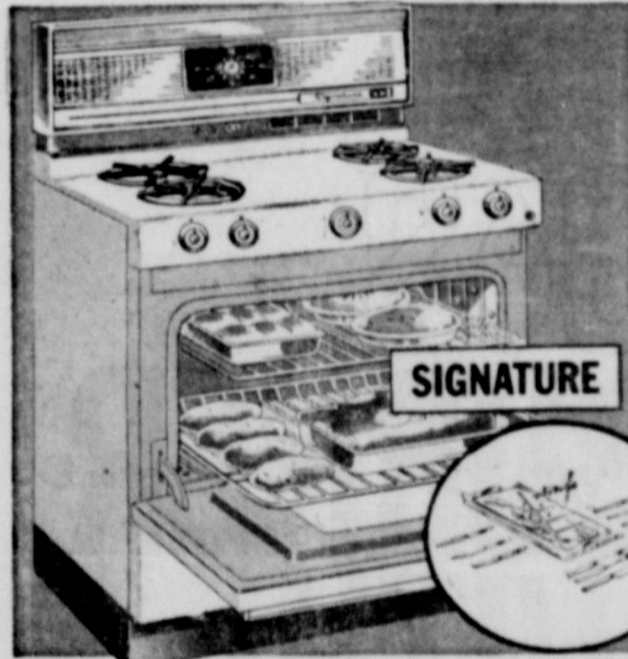
Ready to add to your collection, convert or use for target practice. Made in pre-WWI German arsenals with milled, fitted parts. **19.88**
Sports model **27.88**



20%-30% OFF ENTIRE STOCK FINE CHINA—25 PATTERNS!

Sale includes Bavarian china by Johann Haviland! Every pattern in sets for 1, 4, 8 and 12 with open stock **28.88** available. Extra cups in **36.50 "LAURA"** sets for 8, 12. Translucent. 57-PC. SET FOR 8

PLUS 10-PC. CUTLERY SET WITH 30" GOLD STAR GAS RANGE



GET ALL 3 AT THIS SPECIAL LOW PRICE

198.88

\$5 DOWN

- AGA Gold Star award for including over 28 modern cooking improvements
- "Burner with a Brain" prevents boilovers, scorched food
- Center simmer burners give you thrifty, measured heat

CUTLERY SET BONUS!
Cutlery set includes: carving board, 3-pc. carving set, 6 steak knives.

NOTICE!
for Friday and Saturday Only All HEATERS GAS Reduced **20%**

No Monthly Payments On Appliances 'Til February 1, 1961

military surplus special!

PRE-WW II COLT .45 DOUBLE-ACTION, 6-SHOT REVOLVER

2995



Made to U.S. Armed Forces standards of precision, accuracy and balance. Here's quality hard to equal, even at higher prices. Features 5 1/2" barrel, swing-out cylinder, milled, checkered grip. Very good condition.
* With Box of 50 Shells

SATISFACTION GUARANTEED . . . or your money back!

—Call MI 7-1101 for Classifieds—

61 Valiant!



—DRIVE IT—
SEE IT... BUY IT

BLEVINS MOTOR COMPANY

514 W. Main Eastland Ph. MA 9-2433

Mrs. Danley Is Hostess to WSCS Circle Nov. 7

Circle No. 2 of the Women's Society of Christian Service of the First Methodist Church met with Mrs. E. L. Danley at 3:30 p.m. Monday, Nov. 7. Mrs. T. D. Stewart, circle leader presided. Minutes were read by Mrs. Danley in the absence of the secretary, Mrs. C. N. Adams. Officers called and cheer fund reports were given by Mrs. Danley. Mrs. Arch's Robinson was in charge of the program on "Expanding our Horizons." Those taking part in the program were Mrs. Lively Brown, Gaston Dixon, and Harrison. Refreshments were served to the 11 present.

Chiropractor

DR. E. R. GREEN
115 South Rusk Street
Mon., Wed., Fri.—1 to 5 p.m.

WMS Meets for Royal Service Program Tues.

The Women's Missionary Society of the First Baptist Church met Tuesday, November 8 at 9:30 a.m. at the church for a Royal Service Program. The opening prayer was led by Mrs. Jesse White. The WMU Song of the year "Christ for the Whole Wide World" was led by Mrs. J. B. Houghton, Sr. Mrs. V. A. Galloway, president, gave a brief report on Baptist General Convention held last week in Lubbock. The program was brought by the "Kathleen Jones Circle," was led by Mrs. Joe A. Tullis, narrator. Panelists were Mrs. W. A. Lewis and Mrs. Fran Brooks. They discussed the old and new Israel and what our problems as Christians can do about the country. Prayers for mission work and for foreign missionaries was led by Mrs. Lloyd Clem. The Julia DuPriest circle served coffee and cookies to the following: Meses Galloway, White, Broolia Lewis, Stimm's Elder, Kenneth Williams, F. T. Shaddox, I. D. Tankersley, Houghton, W. A. Reamer, L. H. Kay, E. J. Anderson, Clem, G. V. McGowan, Joe Tullis, and L. D. Kennedy.

Panel Program Presented By Church of Christ

A religious question and answer panel program is being presented over KERC each Sunday at 8:30 p.m. and is sponsored by the congregations of the Mesquite and Rusk Church of Christ in Ranger, the 8th Street Church of Christ in Cisco and the Church of Christ in Eastland. The preachers of the three churches form a panel to answer questions on religion sent to the program. They are Lou Jones of Cisco, Lloyd Bryant of Ranger and Gary Adams of Eastland. Questions may be sent to the Church of Christ, Box 205, Eastland.

Viola Seay to Become Bride of Charles Boyer

Mr. and Mrs. Sam Seay of Ranger announce the engagement and approaching marriage of their daughter, Viola, to Carl Boyer of Albuquerque, New Mexico. Miss Seay is teaching at the Elementary School in Albuquerque. Mr. Boyer is a coach at Lincoln Junior High in Albuquerque. The couple will be married December 25 at 2 p.m. at the Second Baptist Church in Ranger. Friends are cordially invited to attend the wedding and the reception which will follow immediately.

Stephenville to Host AAUW Area II Workshop

Mrs. Fede-le Gilstrap of Albuquerque, N. M., former Second Vice President of the American Association of University Women, and for nearly ten years a member of its Board of Directors, will be the featured luncheon speaker when the Stephenville Branch AAUW acts as host to an Area III Workshop Saturday, Nov. 12 on the campus of Tarleton State College. Taking part with her on the program will be other Texas State Division notables: Mrs. J. H. Sorrels, College Station, president; Mrs. Charles Harter, Canyon, Higher Education Committee Chairman; Mrs. Charles W. Gollner, Arlington, Membership Chairman; Mrs. John A. Watkins, El Paso, Arts Chairman; Mrs. McKay Rice, Moody, Fellowships Chairman; and Mrs. E. H. Weas, Kerfille, Chairman of Program Development and Research. Miss Mae Jones, former Professor of Mathematics at Tarleton College and past Texas Division President, AAUW, will discuss "The Able Student." Mrs. Mary A. Moore, president of the Stephenville Branch, will welcome guests to the meeting to which members of the Vernon, Wichita Falls, Denton, Mineral Wells, Arlington, Fort Worth, Ranger, Brownwood, Cleburne, and Stephenville Branches have been invited. Mrs. S. F. Davis, Chairman of the Fellowship Committee

and Miss Dolie Marie Glover, Higher Education Chairman, Stephenville Branch, are co-chairmen in charge of the arrangements for the workshop. Registration will take place Saturday morning at 9 a.m. in the Wren Room of the Dining Hall of Tarleton State College where coffee will be served. At 10 a.m. the work session will be opened by Mrs. J. H. Sorrels, State Division President, in the Auditorium of the Agricultural Building. The meeting will conclude with a luncheon to be served in the Robin Room, TSC Dining Hall at 12:15 o'clock. Mrs. Moore will preside and Mrs. Gilstrap will deliver the address, a discussion of present day problems in higher education.

FURNITURE

for the Entire Home

★
Carpet - Rugs
All Prices

★
Be Sure To Check With
Eastland



—Call MI 7-1101 for Classifieds—

IT'S
YOURS...

Debt-Free
Home

ON OUR LOAN PLAN

From coast to coast, savings and loan associations like ours are financing more of America's homes than any other type of lending institution. We're proud to have helped so many of our customers to reach free-and-clear home-ownership. Our popular plan involves monthly payments, much like rent, which may include principal, interest, taxes and insurance. If you're looking for a good home loan, see us!

First Federal Savings & Loan Association of Ranger

204 Main Ranger, Texas Phone MI 7-1611

WHY PAY MORE!

Encore
by the makers of STARFIRE Diamond Rings

**BIG IN SIZE!
BIGGER IN SAVINGS!!
BIGGEST IN VALUE!!!**

FULL CARAT \$275.00
Matchless brilliance from James Huming's finest light refractive brilliant cut... in stunning 14K gold setting.
Also in total weight:
1/2 Carat \$144.50
3/4 Carat \$79.50

DOUBLE-ROW WEDDING RING
Doubly dazzling with two magnificent diamonds. Set in gleaming 14K white gold.
3/4 Carat \$199.50
total weight

EDGED! 7 HANDSOME
Magnificent ring beautifully set with four diamonds blazing in brilliant 14K yellow gold with finest setting.
1/2 Carat total weight \$175.00

SCULPTURED COCKTAIL RING
Exquisitely styled in the modern mode... these lovely diamonds glow in gracefully curved 14K white gold setting.
3/4 Carat total weight \$225.00

EASY TERMS

D. E. Pulley Jewelry

203 Main RANGER Phone MI 7-1616



GAS BURNER WITH A BRAIN*

makes all your pots and pans automatic — foods won't burn!

You get perfect flavor control every time. Set the all automatic gas burner with a brain and forget it. Holds temperature exact for as long as you want. Eliminates messy boilovers, burning, scorching. All new gas ranges give you complete automation: oven with a brain, clock controlled oven, rotisserie, meat thermometer, griddle... and the built-in economy and safety of gas cooking.

Buy an all-new Gold Star gas range now! Get high trade-ins on your present range during **FRANGE ROUNDUP** at your gas range dealers

★ LONE STAR GAS COMPANY.
more than 5,000 friendly people working together to serve our communities better.

PUBLIC AUCTION

- Electric Fans
- Electric Mixers
- Electric Skillets
- Electric Cookers
- Electric Toasters
- Electric Perculators
- Electric Alarm Clocks
- Power Drills 1/2" 3/4" 1 1/2" Chucks
- Power Saws — 7"

- Rogers Silverware
- Norelco Razors
- Waterless Cookware
- Luggage
- Chinaware
- Binoculars 7 x 50
- Leather Goods
- Electric Cables
- Hand Tools

- 17 Jewel Watches
- Power Mowers

- Ironing Boards
- Sewing Machine
- Portable or Console
- 3 Models to Choose From

- Chain Saws - Tarpaulins - Socket Sets

Conducted by EVERETT GRIFFIN
Not Responsible For Accidents or Injury

Friday Night, Nov. 11

7:00 P.M.

Holmes Livestock Sales Barn

Ranger, Texas