

PAGE ONE

A QUICK READ OF THE NEWS

MARCH 10 PRIMARY
How Bailey County voted

LOCAL

County treasurer
(D) Donna Kirk325

Sheriff
(D) Coy Platt338

County Clerk
(D) Jan Pierce302
(R) Sherri Harrison83

County Judge
(D) Marilyn Cox306

County Commissioner Prec. 4
(D) Bennie Claunch80
(D) Jerry W. Damron124

County Commissioner Prec. 2
(D) C.E. Grant59

District Clerk
(D) Elaine Parker324

District Judge 287th
(D) Gordon H. Green337

Justice of Peace Prec. 1
(D) Jack Bates67

STATE

State Rep. Dist. 85
(D) James "Pete" Laney312
(R) Hollis Cain74

State Senator
(R) Teel Bivens86

Governor
(D) Gary Mauro237
(R) George Bush12
(R) R.C. Crawford2

Lt. Governor
(R) Rick Perry83
(D) John Sharp255

Attorney General
(D) Gene Kelly50
(D) Jim Mattox228
(D) Norris L. Overstreet46
(R) Barry Williamson40
(R) Tom Parker22
(R) John Cornyn21

Comptroller of Public Accounts
(D) Paul Hobby246
(R) Carole K. Rylander82

Commissioner General Land Office
(D) Richard Raymond233
(R) Dan Loucks5
(R) David Dewhurst49
(R) Jerry Patterson23

Comissioner of Agriculture
(D) Ernesto L. DeLeon78
(D) L.P. "Pete" Patterson213
(R) Susan Combs46
(R) Hamp Hodges38

Board of Education Dist. 15
(R) Judy Strickland44
(R) Nancy Neal37

UNITED STATES

U.S. Rep Dist. 19
(D) Sidney Blankenship217
(R) Larry Combest88

SOURCE:BAILEY COUNTY CLERK'S OFFICE

Hawkins named to Council

Eugene "Peanut" Hawkins was appointed Thursday to the fill the vacant seat on the Muleshoe City Council for District 4. Hawkins was one of three candidates considered by the Council. The others were Lupe Olivarez and Sharon Grant. Hawkins will serve the unexpired term of Roger Williams, who resigned in February.

LOCAL WEATHER

	High	low	Pre.
Tuesday	50	15	—
Wednesday	35	15	—
Thursday	55	14	—
Total to date	1.31 inches		

EXTENDED FORECAST

Chance of rain and snow Sunday and Monday with highs in the mid 30s to lower 40s. Becoming warmer Tuesday with highs in the mid 50s, lows in the upper 20s.

Missing woman's body found near Mexican border

PRESIDIO COUNTY — A 19-year-old Muleshoe woman reported missing Thursday was found dead early Friday morning behind a store building near the Mexican border. Yvette Barraz died of blunt force trauma, according to Presidio County Precinct 2 Justice of the Peace Daniel Bodine. "She was hit in the head with a blunt instrument. It may have been a hammer," Bodine said. Authorities found a bloody claw hammer at

the scene. Authorities are searching for her ex-boyfriend, Gilberto "Tito" Reyes, 24, of Muleshoe. Authorities believe he may have abducted her. Barraz, a single mother, was last seen about 9:15 p.m. Wednesday in the parking lot of Leal's Mexican Restaurant, where she works. Her family reported her missing early Thursday morning after she didn't come home from

work. Evidence gathered in the restaurant parking lot indicated the likelihood she was abducted, according to Muleshoe Police Chief Don Carter. Local police issued a statewide bulletin for Barraz, Reyes and her 1996 Mitsubishi Eclipse a short time later. The car was found at 1:30 a.m. behind the

see **BODY** on page 2

PATRIOTIC SALUTE



Members of the Watson Junior High choir wave American flags and spell out "God Bless America" Thursday during a concert performance at the Muleshoe High School auditorium.

County youths show breed champions at Houston show

HOUSTON — Krystal Heathington of Muleshoe and Ashley Layton of Bailey County showed breed champions on March 3 at the Junior Market Swine Show at the Houston Livestock Show and Rodeo.

Heathington, 17, showed the champion Hampshire, a medium-weight barrow named Chester. Chester earned reserve breed champion at the 1998 Bailey County Junior Livestock Show.

It was the first time Heathington showed at Houston. She said she was inspired to show by her uncle, who showed the grand champion duroc at the 1989 San Antonio Exposition.

The Muleshoe High School junior plans to attend Texas Tech.

Layton, 13, showed the champion Berkshire, a 246-pound medium-weight that Judge Darrell Drake of Cambridge City, Ind. said had the largest outline, was biggest from end to end, and had the "most to offer in terms of length" in the class.

The champion Berkshire was breed champion at the Bailey County show.

Layton attends Three Way School and is a member of the Bailey County 4-H Club.

Other Bailey County 4-H members who made the Houston sale were Tatom Heathington, first-place cross; Chris Kindle, second-place Berkshire; Landon Kerby, fourth-place Duroc; Lauren Layton, fifth-place Poland; Keila Kennedy, ninth-place cross; Brandi Whalin, 11th-place Hampshire; and Kyle Hahn, 21st-place cross.

Bailey County 4-H members showed a total of 36 hogs at the show.

In the Junior Market Steer

see **SHOW** on page 2

Herington is cosmic in MISD spelling bee

Side-by-side they sat, friends and classmates in a fast-paced battle for spelling supremacy.

Twelve other Muleshoe students had already fallen by the wayside, leaving Terrell Herington and Jamie Wedel as the only two competitors left Tuesday in the annual Muleshoe Independent School District spelling bee.



Terrell Herington

Zipping through words like constellation and cultivation, atmospheric and avalanche, 10 rounds and nearly five minutes flew by before Herington captured the spelling bee title. Her winning word was cosmic.

Moderator Curtis Shelburne said it was the longest contest in recent memory.

Terrell, the daughter of Jay and JoAnn Herington, will represent the school district March 28 in a regional competition in Lubbock.

see **BEE** on page 2



Autum Remington (left) fidgets over her word Thursday during the MISD spelling bee as Andi Black waits her turn.

Workshop offers cotton farmers help managing price risk

A farmer may not be able to control price, but he can control how and when he prices his crop, say agricultural economists with the Texas Agricultural Extension Service.

"The cotton farmer can take advantage of profitable pricing opportunities only if he is prepared to evaluate the various alternatives,"

said Dr. Jackie Smith, professor and Extension Service economist.

To help area farmers evaluate such opportunities, the Extension Service will hold a series of one-day, in depth introductory cotton marketing workshops. The programs will be March 30 at Plainview, April 1 at Levelland, April 2 at Friona and April 3 at

Seminole.

These educational programs support a statewide risk management initiative funded by the Texas legislature. Instructors will be Dr. Carl Anderson, professor of agricultural economics and cotton marketing specialist with the Extension Service, College Station, and Smith. Participants must register for any

of the four courses by March 25. Each workshop begins a 9 a.m. and concludes at 5 p.m. The registration fee of \$30 includes an extensive set of materials, but doesn't include lunch. Spouses are encouraged to attend; one fee will cover both and include onset of materials. A work-

see **COTTON** on page 2

AROUND MULESHOE

Guidance for overcoming depression

Are you suffering from depression? The Christian Center Counseling Service is offering a free tape series entitled "Overcoming Depression". To obtain a free copy, call 806-272-3877.

3 on 3 basketball tournament

The Muleshoe Teen Leadership organization is sponsoring a 3 on 3 basketball tournament April 17-18 at the Muleshoe High School gym and the Watson Junior High gym.

The entry fee is \$20 per team. There will also be free throw and three point contests for \$1 each. Age divisions are 9-12, 13-15, and 16 and up. Each team is required to have four players.

Entry forms are available at Williams Athletics, Lambert Cleaners, and Lowe's Marketplace. Applications and fees must be received by April 1, 1998. Send entry forms to Muleshoe High School, Teen Leadership, C/O Jody Wood, 514 W. Ave. G, Muleshoe, Texas 79347. For more information contact Jody Wood at Muleshoe High School at 272-7571.

Open house at MHS computer labs

Community members are invited to visit the computer labs at Muleshoe High School. Open House will be from 6:30-8:30 p.m. Tuesday, March 24, 1998.

A short organizational meeting to discuss future community computer classes will begin at 7:30 p.m.

Woman's outdoor activities club forms

The Texas Parks and Wildlife Department (TPWD) has announced the formation of a Texas Outdoors Woman Network (TOWN) group in the Lubbock area.

The first meeting is scheduled at 6:30 p.m. on Thur., March 26 at the TPWD regional office located at 1702 Landmark Lane in Lubbock.

The program will offer weekend outdoor skills workshops for women as an opportunity to try out several outdoor activities in an atmosphere where women can have fun and enjoy the

outdoor environment. In the past, coordinated events included such things as kayaking trips, dove hunts, nature center tours, shotgun clinics, campouts and other outdoor activities.

To RSVP for the Lubbock TOWN meeting, contact Carolyn Helm at (806) 885-4259. F

For more information about the Becoming an Outdoors Woman program and workshops, contact Debbie Bunch at (512) 328-6035, or 1-800-792-1112 (press six and then four).

Lazbuddie Christian ladies fellowship

Christian women are invited to a new Lazbuddie Christian ladies fellowship group now forming. The group will meet the third Saturday of each month. The first gathering will be 9:30-noon, Saturday, March 21, 1998 at the First Baptist Church of Lazbuddie. Refreshments will be served. Everyone, regardless of denomination, is invited to come celebrate God with fellow Christian women.

District attorney honored by State Bar

AUSTIN — The College of the State Bar of Texas recognized Johnny W. Actkinson, district attorney for Bailey and Parmer Counties, as a member to the College during its Annual Awards Luncheon Feb. 21 in Austin.

Actkinson was one of 4,200 members honored. This distinguished group of attorneys accounts for less than 8 percent of the 63,500 attorneys licensed to practice in Texas.

MHS parents raise money for prom

Parents of Muleshoe High juniors and seniors are sponsoring a drawing for a Spring make-over valued at \$250. The funds raised will be used to defray the cost of the banquet and prom.

Tickets for the drawing are on sell for \$1 and will be sold throughout March. The drawing will be held April 6, 1998 at the Fine Arts Night to Shine. Tickets are available from any junior or senior parent.

COTTON

From page 1

shop at any site will be canceled if 10 registrations for that site haven't been received by March 25.

Registration forms are available at offices of the Extension Service in the participating counties of Hale, Cochran, Lubbock, Parmer, Castro, Bailey, Lamb, Gaines, Terry and Yoakum.

"All pricing alternatives are directly or indirectly related to the futures market," Smith said. "This requires that much of the workshop involve a study of the basics of futures and options."

He suggested that producers wishing to attend but unfamiliar with the futures market visit their county agent before the workshop and check out an audiotape and a handout which introduce use of the futures market for forward pricing.

Topics which will be covered in each workshop are an overview of price risk management, introduction to futures, localizing and futures-basis, introduction to options, estimating costs of production, comparison of pricing alterna-

tives, developing a marketing plan, the cotton situation and outlook, and organizing a marketing club.

BEE

From page 1

"It was exciting," said Terrell, who credits reading for her large vocabulary and spelling prowess.

She said she was very nervous throughout the 30-minute contest and was lucky that she didn't draw some of the words her competitors had to spell.

Harmonee House

Long Term and Rehabilitative Services With a Difference



1400 MAIN STREET
AMHERST, TEXAS
(806)246-3505



Harmonee House is a new 35 bed full service medicaid approved nursing facility providing a smoke free environment with a bed and breakfast atmosphere. It is our policy to admit, locate and treat our residents without regard to race, color, national origin, age, sex, or handicap.

Services include:

- *In-House Physical, Occupational and Speech Therapy
- *24 Hour Licensed Nursing Care
- *Therapeutic Whirlpool Bath
- *Spacious Private and Semi-Private Rooms
- *Private Rest Rooms and Showers
- *Individual Heating and Cooling Units in Each Room
- *In-House Chapel for Private and Group Services

LOCATED Adjacent to South Plains Pharmacy

Bailey County Journal USPS 040-200

Established March 31, 1963. Published by Triple S Publishing, Inc. Every Sunday at 304 W. Second, Box 449, Muleshoe, TX 79347. Second Class Postage paid at Muleshoe, TX. POSTMASTER: Send address changes to the Bailey County Journal, P.O. Box 449, Muleshoe, TX 79347. We are qualified members of: Panhandle Press Association, National Newspaper Association, West Texas Press Association and Texas Press Association

WEST TEXAS PRESS ASSOCIATION



PPA Panhandle Press Association

Scot Stinnett, Publisher
Lisa Stinnett, Vice-President/Comptroller
Rick White, Editor
Mary Ann Dominguez, Classifieds
Leah Bell, Advertising

© 1990

SUBSCRIPTIONS: Muleshoe Journal and Bailey County Journal By Carrier Yearly - \$22.00
Bailey County — by mail - \$24.00
Elsewhere \$26.00
Advertising Rate Cards on Application

Advertisers should check their ad the first day of insertion. The Journals will not be liable for failure to publish an ad or for a typographical error or errors in publications except to the extent of the cost of the ad for the first day of insertion. Adjustment for errors will be limited to the cost of that portion of the ad where the error occurred.

BODY

From page 1

Dollar Store by a Presidio County deputy, according to Bodine. The body of Barraz was found stuffed behind the back seat, Bodine said.

Reyes legally crossed the border into Mexico early Thursday morning, according to border authorities Carter said. Reyes was not wanted at the time.

Reyes was arrested Feb. 9 for allegedly firing a semiautomatic rifle at Barraz, according to Carter. He was charged with aggravated assault with a deadly weapon, felon in possession of a firearm and driv-

ing under the influence. He was later released on bail.

The Barraz family was seeking a restraining order against Reyes at the time of her disappearance.

SHOW

From page 1

Show, Jacen Claunch had the first-place Chianina; Judd Glover, second-place Limosine; Brady Black, fourth-place Brangus, Keila Kennedy, sixth-place Chianina; Rhett Richardson, 14th-place Chianina; and Katie Black, 15-place AOB.

- Local news for local folks
- The Muleshoe Journal



"The banquet is the best investment I'll make this year! All-U-Can-Handle fun, food and entertainment!"

-Phil Kent
First Bank of Muleshoe

Muleshoe Chamber of Commerce Annual Banquet

Saturday, March 28, 1998 • 6:30 pm (food served)

All-You-Can-Eat Steak and Shrimp

Muleshoe High School Cafeteria, Muleshoe High School Auditorium
Entertainment by: Ken Whitener, "Wizard of Comedy" and stage hypnotist
Mark Langford, magician
Adrian King and Others, the art of Mimes

Cost: \$50 (This is the Chamber of Commerce's only fund-raiser, folks!)

Help support the Chamber. Contact Susie Sowder at 272-6767 or Dawn Williams at 272-6853. Or get your tickets from any Chamber Board member.

It's going to be a laugh riot! Ya'll Come!

Home Folks Caring For Folks At Home. MULESHOE AREA HOME HEALTH Agency

Featured Patient

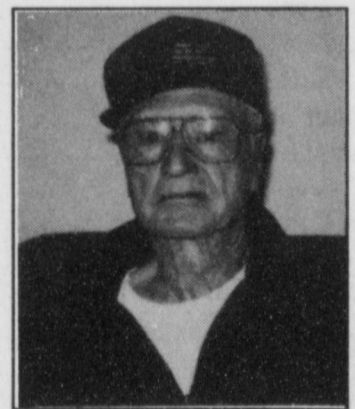
Randy Johnson was born October 6, 1921 in Conway, Arkansas. He moved to Oklahoma, where he lived for a couple of years. Mr. Johnson finally settled down in Muleshoe in 1932. He is proud to be one of the pioneer settlers of this area and can remember when there weren't many people or businesses here. The area had grassland, dirt roads and not much more.

Johnson married Betty Pool in late August of 1940. Betty has lived in Muleshoe most of her life. Randy and Betty have three children: Ronda Johnson of Lubbock, Ronald Johnson of Amarillo, and Stanley Johnson of Cleburne, TX. They have seven grandchildren: Jenifer Johnson Scott, Jill, Matthew, Ashley, Jeremy, Calli and AnnMarie Johnson.

Randy and his wife were 20 year proprietors of Johnson & Pool which handled appliances and hardware. Randy has also actively farmed and ranched for many years. Mr. Johnson still enjoys taking care of his cattle and is versed in Muleshoe's history- including most of this area's early ranches.

Randy is a past member of several social organizations here in Muleshoe and remains a member of the Texas Cattleman's Assn. He is an active member of the First Baptist Church of Muleshoe.

He greatly appreciates the girls at M.A.H.H.A. for taking such good care of him during his recovery.



Randy Johnson

Home Care



Home is where the heart is

Affiliated with Lubbock Methodist Hospital Systems

New Out Of Hospital Advance Directives Now Available!

24 Hour # 272-3346
Local Nurse on call 24 hours a day to offer prompt service.

We accept Medicare, Medicaid and Private Insurance
It Is Your Right To Choose
The Home Health Agency
You Prefer.

To receive Home Health Services, talk with your physician or talk with hospital personnel when you are hospitalized.



Ball field community effort

By TERESA STONE
Journal staff writer

The high school baseball season is in full swing and thanks to a lot of hard work by the entire community, Muleshoe High School has a brand new facility.

On Tuesday, the new \$80,000 baseball field was officially dedicated and broken in by the first varsity home game of the season.

According to Muleshoe school superintendent Bill Moore, the need for a new facility has been increasing as baseball has grown in popularity at the high school.

The project is a joint effort between the school district and

ther City of Muleshoe, which donated the land and labor.

Moore said that although it was a community collaboration that made the field possible, the Muleshoe Athletic Club was the one who got the ball rolling.

Moore explained how last spring the club approached the school board and the City Council about the idea of a new baseball facility.

In September, with a green light from both, the booster club broke ground and work was underway.

"A whole lot of people pitched in," said Moore, "making this even more special and truly making it a community

baseball park."

In September, the club bought and laid down sod.

Later in the season, Bamert Seed seeded the field with winter rye to keep the green color. Architect Bill Adling of Adling and Associates of Lubbock, volunteered his time and expertise in designing and drawing out the plans for the field.

The Southwestern Coca Cola Co. and Lowe's Market-

see FIELD on page 4

First pitch

Cindy Purdy, president of the Muleshoe Independent School District Board of Trustees, throws out the ceremonial first pitch before Tuesday's game against Littlefield as City Mayor Robert Montgomery waits his turn. The field was built as a joint project between the school district and the city

MARTINEZ Chevron

Car Wash Special

March 16th through March 28th Only

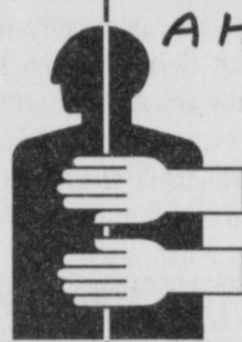
<p>Cars \$15⁰⁰</p>	<p>Trucks \$20⁰⁰</p>	<p>Vans & Suburbans \$25⁰⁰</p>
--	--	--

Call for Appointment
272-3251

502 S. 1st St.
Muleshoe

Precure Chiropractic Clinic

ARE YOU HURTING?



A HANDS-ON APPROACH TO...

- Headaches
- Tight, sore muscles in neck or back
- Athletic injuries
- Automobile or on-the-job injuries
- Fatigue, stress or soreness
- Chronic back or neck pain
- "Trigger points" in muscles
- Scoliosis
- "Subluxations" of the spine

There's no need to put it off any longer; you should see what chiropractic care has to offer. Dr. Mike Precure offers a wise choice for sensible, smart and effective care to keep you healthy and going strong!

Call 272-6784 today for an appointment or complementary consultation
Or come by Monday-Friday • 8 am to Noon, 1 pm to 5 pm
Located in Suite 4 in the Muleshoe Area Medical Center.



The frequency of cricket chirps can be used to determine the temperature by counting the number of cricket chirps in 14 seconds and adding 40.



Flying the colors

Members of the local Boys Scouts troop fly the U.S. flag and the Texas state flag Tuesday during a dedication ceremony at the new city baseball field

1998 Dodge Ram 2500 Pickup

Cummins Turbo Diesel



- Automatic • Tilt/Cruise
- Air • Trailer Tow Group
- Anti-spin axle
- H/D Service Group
- Loaded truck!

Unbelievable at only

\$24,995!

BENDER

CHRYSLER-PLYMOUTH-DODGE
3400 Mabry, Clovis, NM • 762-4511



We're 50 Years Old

Come Help Us Celebrate
Our 50th Anniversary in
business in Muleshoe

Harvey and Marie Bass Thank You for your
business and support through the years.

SALE DAYS MARCH 9-21, 1998

MAYTAG
Super Capacity
8 cycle Washer
As low as
\$484⁵⁰ *w/t

CROSLEY
WASHER & DRYER
X Large Capacity
\$550⁵⁰ pair *w/t

FRIGIDAIRE
Side/side Refrig.
Ice/water through door
\$899⁵⁰ *w/t

FRIGIDAIRE
Electric Range
Digital clock/timer
Porcelain oven
\$459⁵⁰ *w/t

MAYTAG
Super Capacity-Self
Cleaning Range
\$589⁵⁰ *w/t

CROSLEY
REFRIGERATOR
21 cu. ft. w/glass shelf
\$629⁵⁰
w/ FREE ice maker *w/t

Register for Drawings to
be held on Saturday,
March 21 at 3:00 p.m.
You could win a
Frigidaire Refrigerator
or a Maytag washer
worth \$550!
No purchase necessary.

CROSLEY
FREEZERS
As low as
\$299⁵⁰ *w/t

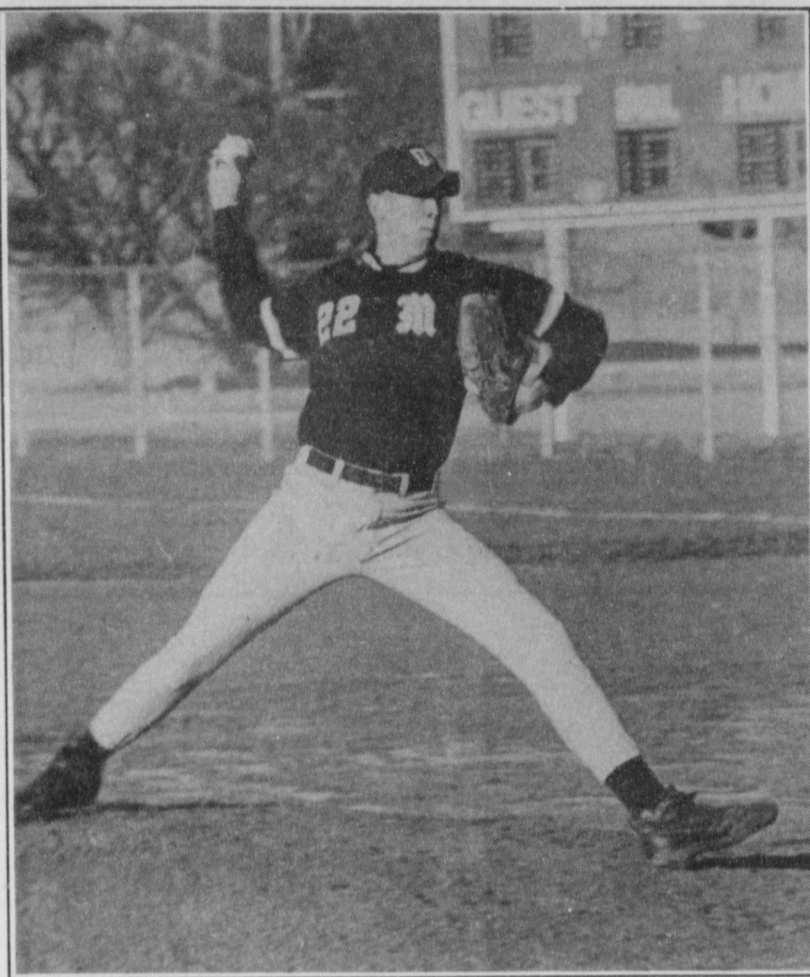
CROSLEY RANGES
Gas or Electric
Your Choice
\$299⁵⁰ *w/t

We service
what we sell!

HARVEY BASS APPLIANCE

122 South 1st St. • Muleshoe • 272-3030

* w/t - Qualified Trade
Many more models to choose from-
Come in for details! Financing
Available with Approved Credit.
Lazy-Boy - Berklene - Morning Glory
- Dinettes - Bedroom - Vacuums



Over Hahn delivery

Muleshoe sophomore Kyle Hahn fires a fastball Monday during a junior varsity game at the new city baseball field. Littlefield beat the Mules 18-8.

Mules drop opener in Midland tourney

MIDLAND — Muleshoe got off to a bumpy start in the Midland Tournament.

Clint pounded out 11 hits and took advantage of six Muleshoe miscues Tuesday, beating the Mules 8-2 in a first-round game.

Muleshoe (2-2) finished with seven hits, but left 12 runners on base.

Larry Pineda singled and scored both Muleshoe runs.

Layne Kemp had an RBI single in the third that cut Clint's lead to 5-1. Muleshoe scored another run in the fifth aided by two Clint errors to make it 5-2, but left the bases loaded.

Clint scored three times in

the bottom of the fifth to stretch its lead to 8-2.

The game was halted by a time limit with Clint batting in the bottom of the sixth.

Clint chased Muleshoe starter Rhett Kerby with a five-run second inning. Rodney Alanis relieved Kerby with two outs in the second inning and went the rest of the way.

Muleshoe also left the bases loaded in the second.

CLINT 8, MULESHOE 2
Muleshoe 001 010 2 7 6
Clint 050 03x 811 3

Kerby, Alanis (2) and Purdy; Arnold and Duran. WP — Arnold. LP — Kerby. 2B — Clint, Arnold 2, Ortiz. DP — Muleshoe.

Littlefield spoils MHS' home-field debut 17-4

Littlefield spoiled the debut of Muleshoe's new home field Tuesday, scoring 13 runs in the last three innings en route to a 17-4 win in a non-district baseball game.

A dedication ceremony was held before the game for the new field, located in the new city park.

Davey McLelland tripled and homered and lefthander Matt McNeese went the distance as the Wildcats (4-3) handed Muleshoe its first loss.

Matt Mason went 3 for 3 for the Mules (2-1) and Layne Kemp added a two-run home run. MHS finished with 10 hits.

With the game tied at 4, Littlefield broke the game open with nine runs in the fifth inning. The Wildcats sent

13 hitters to the plate, collecting six hits and taking advantage of three Muleshoe errors.

Littlefield finished with 16 hits off two Muleshoe pitchers.

The Wildcats took a 3-0 lead in the first on McLelland's three-run home run.

Kemp homered to left with Larry Pineda aboard via a walk in the bottom of the first to make it 3-2.

Ismael Nunez (2 for 3) singled and scored in the second and fourth inning as Muleshoe tied the game at 4.

LITTLEFIELD 17, MHS 4
Littlefield 310 090 4 17 16 1
Muleshoe 210 100 0 4 10 6

McNeese and Ensor; Kemp, Alanis (5) and Purdy. 2B — Muleshoe, McClanahan. 3B — Littlefield, McLelland. HR — Littlefield, McLelland; Muleshoe, Kemp.

This week's games:
Muleshoe at Littlefield, March 17, 1 p.m.

1633 AMERICAN BLVD.
MULESHOE • 272-3998

HAPPY HOUR
Buy 1 Get 1 Free Fountain Drinks
2-5 p.m. Everyday

SONIC

SINGLE (#1 or #2) BURGERS 99¢
All Day Every Tuesday

Not valid with any other special offers. Available at Muleshoe location only. Offers good for a limited time, subject to change. Cheese on burgers extra.

Bill Gates and the Heavenly Gates

I don't know if you know about or care about the current fuss between Microsoft, Bill Gates' amazingly successful computer operating system and software corporation, and the federal government's antitrust department. But I find the whole squabble interesting.

Bill Gates is the world's richest man. He and his company scored big by developing and marketing the operating systems used by 90% of the world's computers, MS-DOS and Windows. One of Microsoft's latest coups has had to do with their "bundling" their popular Internet "web browser," called Internet Explorer, along with Windows 95.

And therein lies the problem. The government's antitrust division and some Microsoft competitors say that it is unfair competition for the company that controls the computer operating system market to effectively force computer makers, distributors, and consumers to buy their Internet web browser by tying it to their operating system. Microsoft says, "Hey, we're not against competition. If you want another web browser, say Netscape's Navigator browser, you are welcome to buy it. It will work just fine on computers that use our operating system. But we're within our rights to say that Windows 95 will come with Internet Explorer."

I can play the issue both ways.

I am glad that Microsoft won the operating system battle a long time ago (even though some folks still want machines with fruit on the front—just kidding, Apple & Mac fans). I don't want to have to deal with fifteen formats. The government and Microsoft's competitors sound "whiny" to me. Microsoft is an American success story in a time when the government has a thousand ways to keep small business from ever becoming large or profitable. And Microsoft's competitors? Well, competing with Microsoft must be tough, but Gates has provided them the Windows platform upon which many have become very successful in their own rite, though, as one Gates' underling puts it, they tend to be "successful people whose biggest regret is they're not as rich as Bill."

Ah, but the government says, "Mr. Gates, you stifle competition. Prices would come down and quality would come up if you would get your finger off the market and play fair."

Who is right? I don't know. But squabbling factions in whatever arena of life can gain a lot by backing off, turning down the heat and the rhetoric, and trying, just for a moment, to see things from the other's point of view. Maybe your detractor has a point. Maybe you could learn something from each other and both come out better for it.

I don't see Microsoft or the government backing down. But Christians, though they may never be as wealthy as Microsoft or as powerful as the government, should be wiser as they realize that the battles that really count in God's economy have precious little to do with who is the wealthiest or the most powerful.

Curtis Shelburne is minister of the 16th & D Church of Christ in Muleshoe.

Focus On Faith
Curtis Shelburne

BASKETBALL

All-District 3-1A

GIRLS

FIRST TEAM

Cami Rea, jr. Vega
K'Lyn Gerber, sr. Nazareth

Ashley Crawford, so. Farwell
Amy Pohlmeier, sr. Nazareth

Roxann Warren, sr. Lazbuddie

SECOND TEAM

Laci Pearson, sr. Happy
Kimberly Artho, so. Vega

Valerie Mace, sr. Farwell
Jaci Cumby, sr. Happy

Kyla May, so. Vega

Roxann Warren earns 3-1A all-district honors

Lazbuddie senior Roxann Warren was named to the All-District 3-1A girls basketball team selected by league coaches.

Warren, a 5-7 post, averaged 15 points and 11 rebounds for the Lady Longhorns, who finished the season 14-14.

Joining her on the first team, were seniors K'Lynn Gerber and Amy Pohlmeier of district champion Nazareth, junior Cami Rea of Vega and sophomore Ashley Crawford of Farwell.

Rea was the leading vote getter.

Warren was a four-year starter for the Lady Longhorns.



Roxann Warren

"I'm real proud of her," Lazbuddie coach Carey Sudduth said. "She deserves it because she works so hard."

Lazbuddie junior guard Holly Engelking was named honorable mention.

FIELD

From page 3

place combined assets to provide a new scoreboard while Five Area/West Plains Telecommunications purchased new bleachers. Bailey County Electric helped take down the old lights and install new ones, and SPS put in new meters at no cost to the school.

Even the Muleshoe High School baseball coach Brad Hill recruited his own family members, such as his dad and brother, to help install the sprinkler system, and take care of the grass.

MULESHOE MOTOR CO.

We Want to Be Your Car & Truck Dealer, Too!

1997 F-250 Crew Cabs 4x4
\$1,750 Cash Back or 4.9%

1998 Ford F-150
\$199 Month & \$199 Down

24 mo. FMCC RCO; 4.5% MSRP \$18,640, Finance \$14,976; Balloon \$11,557; Residual 62% Plus T.T. & L. WAC

1995 Ford F-250
Only \$7,990 + T.T. & L.

1990 Lincoln Town Car
Only \$6,900 + T.T. & L.

1998 Ford ZX2
\$192 Month

24 Mo. FMCC RCO; 5.0%; 12,000 miles per year; \$1,000 Down; MSRP \$14,165; Balloon \$8,358, Plus T.T. & L.

1995 Nissan Pickup
\$191 Month

10% 60 months + T.T. & L. with approved credit

Muleshoe Motor Co.
1225 W. American Blvd.
(806) 272-4251 or 1-800-432-7616

Planting a spring garden: be smart when working with poisons

Spring is just around the corner, and it's time to start thinking about lawns and gardens. And bugs, seeds and pesticides.

National Poison Prevention Week is March 15-21, but with the mild winter Texans have had, it's never too early to start.

"Warmer weather means planting season and also means an increase in the use of pesticides in and around the home," said Diana Gray, a registered pharmacist who specializes in poison information. "Some plants can be just as dangerous as the chemicals we use on them."

She is part of the staff of the Central Texas Poison Center, located at Scott & White in Temple, Texas.

To keep homes safe for small children and pets, Gray suggests these tips when deciding what to plant and how to prevent springtime pesticide hazards.

Pesticide Safety

Insecticides and fungicides can be as toxic to humans as they are to insects, their intended victims. Handling fertilizers and garden chemicals also carry risks. "Since every chemical is different, it is important to read and follow each label closely," Gray said.

Other suggestions for safety around garden chemicals include:

- Wear all protective clothing the label specifies while applying chemicals.
- Follow the label directions for mixing solutions and rinsing spray containers.
- Apply the proper amount of product required to avoid overuse.
- Always wash your hands and change your clothes after applying a pesticide.
- Keep children and pets away during application and until the product dries, or as long as the label suggests.
- Store pesticides out of reach in a cool, dry place.
- Always store pesticides in their original containers.
- Protect directions on the package by covering them with clear tape.

If an accidental exposure happens, wash the area and immediately call the Poison Center on the toll-free line. Be prepared to verify important information such as the name, manufacturer, active ingredient and strength of chemical involved.

Plant Safety

When it comes to garden safety, remember all plants are

not alike, said Gray. "Many plants and trees native to Texas can be toxic if ingested," she said. For example, oleander, philodendron, dieffenbachia, and foxglove are some of the many plants that can be harmful when eaten.

Poisonous plants are also commonly kept as house plants or used for landscaping. "The most important step to avoiding dangerous exposures is to familiarize yourself with the plant life in and around your home. Take a sample of plants you are unsure of to a local nursery to be identified," she said.

Consider decorating your home with nontoxic flowers and shrubs such as African vio-

lets, fushias, roses, ficus and spider plants.

If an accidental exposure occurs or if you would like to receive a free plant guide, contact the Poison Center at (800)-Poison-1 or (800)764-7661. The phone calls are routed to the Poison Center nearest the caller.

The Texas Poison Center has six centers throughout the state, available free to any caller in Texas.

Sixty percent of the calls to the poison center concern children age 5 and younger.

Children are especially at risk because they are apt to explore everything and sometimes believe these products look good enough to eat.

That's why a little preventative maintenance in your home could possibly save a life in the long run, according to the staff at the Central Texas Poison Center.

About the Central Texas Poison Center

Each center is available 24 hours a day and seven days a week.

The staff has ready access to a computer database of 900,000 commercial products listed by common and brand names to help callers identify dangerous substances.

Parents, physicians, nurses, veterinarians and teachers are just some of the people who frequently call the poison center for information.

1.9% APR* For 60 Months!



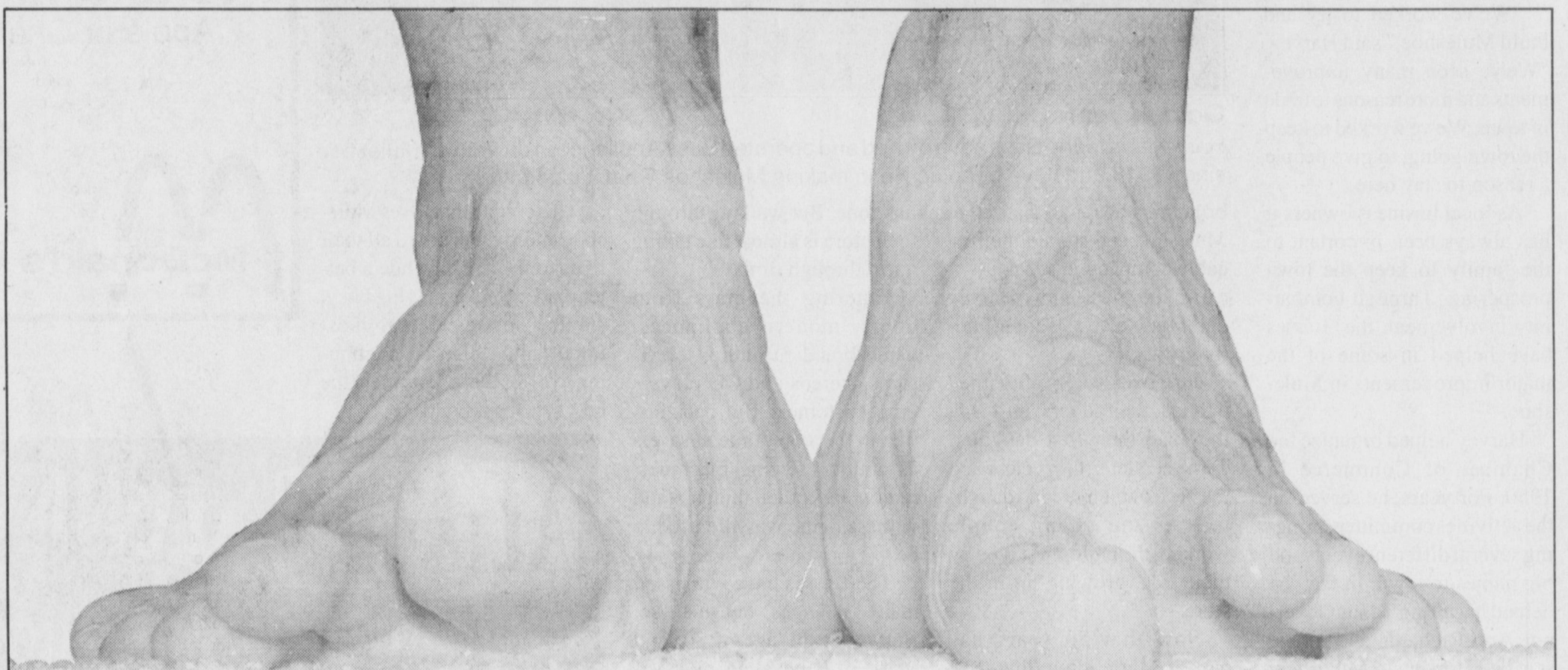
1998 DODGE NEON

Nobody has a better finance deal.

You save thousands in finance charges!

BENDER
CHRYSLER-PLYMOUTH-DODGE
3400 Mabry, Clovis, NM • 762-4511

Subscribe Today
272-4536



Don't you just love
the feel of new carpet?

SELECTED ROLLS IN STOCK

CARPET

\$2.99
Sq. Yd.*
& Up

Lots of Colors, Sizes and
Textures to choose
from!

**CARPET
REMNANTS**

39%
Off*
Regular Price

Sixth Annual tractor show

The Texas Plains Two Cylinder Club will hold its Sixth Annual tractor show March 21 and 22 at the Ollie Linder Center in Plainview.

Show times are Saturday from 8 a.m. to 6 p.m. and Sunday from 9 a.m. to 4 p.m.

There is no entry fee and no admission charge. Donations will be accepted.

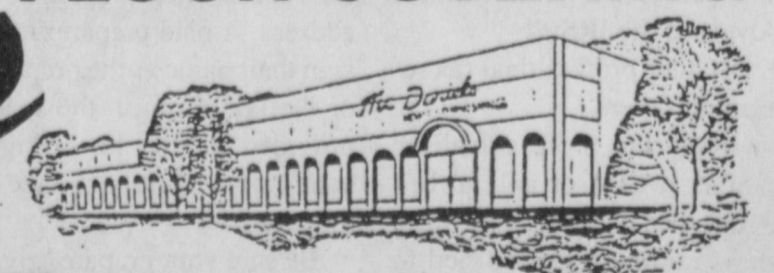
All makes of tractors and equipment will be on display. There will be a parade of tractors each day at 2 p.m.

The Hale County Farm Museum will have concessions.

McDaniel's

1013 Mitchell • 762-4481 Clovis, NM

FLOOR COVERING



*Prep, pad and installation extra



Financing Available

BUSINESS NEWS

Bass Appliance: 50 years & going strong

BY TERESA STONE
Journal staff writer

Harvey and Marie Bass are celebrating 50 years of serving the Muleshoe community, as local business owners and community activists.

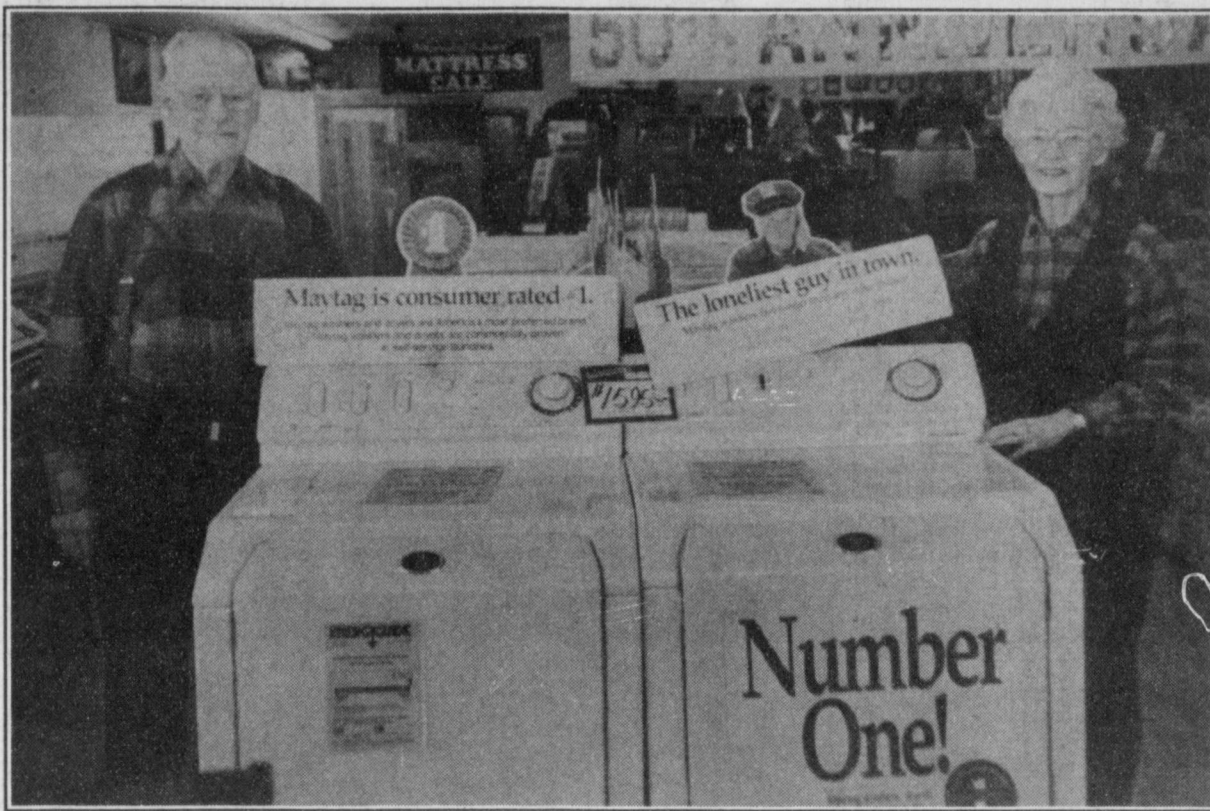
The couple has owned and operated Harvey Bass Appliance & Furniture in downtown Muleshoe since March 1948, opening up just a few weeks after they moved here.

Through their store and constant participation in the community, the Basses have been instrumental in making Muleshoe a thriving community.

"We've worked to try and build Muleshoe," said Harvey. "We've seen many improvements and more reasons to trade in town. We've worked to keep the town going, to give people a reason to stay here."

As local business owners it has always been important to the family to keep the town prospering. Through community involvement, the Basses have helped in some of the major improvements in Muleshoe.

Harvey helped organize the Chamber of Commerce in 1950. For years, he served on the activities committee, bringing several different events and big names to town. In fact, he helped in getting Texas Governor Ann Richards and movie star Lee Horsley to Muleshoe. Harvey said he also helped



Golden years

Harvey and Marie Bass have owned and operated Bass Appliance in downtown Muleshoe since 1948 and have been active in making Muleshoe what it is today.

bring the hospital district to Muleshoe and started the first cable company in town.

As the town grew, Harvey and Marie also saw their family grow.

Just two weeks after they opened their doors in 1948, they had their first daughter. Two years later, they celebrated the birth of their second daughter. As the young couple worked, the children stayed by their side, growing up in the store.

Now that 50 years has passed, Marie admits that she's not quite sure where the time

has gone. But walking through their store is almost like taking a trip through time.

Entering the glass front doors, modern appliances, name brand furniture, televisions, stereos and CD players greet customers. But back farther in the store, time unravels as antique sewing machines, radios and other things stand witness to the way life used to be.

The Basses have witnessed many changes; but even so, Harvey at the age of 80, and Marie, 77, have no plans of slowing down.

This couple that loves Muleshoe and have worked all their lives to make Muleshoe a better place, plan on staying busy, staying involved, and most importantly, plan on continuing to offer their customers the best service around.

IRS tips for choosing a tax return preparer

April 15 is fast approaching and it's time to prepare your tax return. The question is should you do it yourself, or is it time to hire a tax professional to do it for you?

The question can best be answered by you. If your return is reasonably simple, then you may want to do the return yourself.

If your return is complex, then you have to decide how much time you are willing to devote to reading and filling out our forms and weigh that against hiring someone with the experience and expertise on the tax issue you face.

If you decide to hire a tax preparer there are a few things to deep in mind before choosing one that is right for you.

- Certified vs non-certified

A certified public accountant (CPA) is someone who is certified by the State examining board as having met the requirements set by Texas law. CPAs are generally professional accountants, but that does not mean they all specialize in tax. If the person you are going to hire is a CPA, ask for their area of specialization.

An enrolled agent is someone who has passed a two-day examination given by the Internal Revenue Service. Enrolled agents generally specialize in tax issues and are empowered to represent taxpayers before all administrative levels of the IRS.

- Other professional tax return preparers

Many tax professionals are neither a CPA or an enrolled agent, but that does not mean they are any less qualified to prepare your tax return.

Many tax return preparers are

very skilled and specialize in tax return preparation year-round. Some are tax planners, some are tax attorneys. But whatever their qualifications, only you can decide if their skills and experience meet your needs.

As you would do anytime you attempt to hire a service provider, try to go to a preparer you know or one that has a good reputation in your community. Ask friends or family members if they have someone they have used in the past.

If you choose someone who does tax work on a part-time basis during the filing season, make sure they will be available to assist you if there is a problem with your return in the future.

Remember, you are the one who is responsible for what is on your tax return, so always review it after it is completed. Question any items that are different from what you gave the preparer, and never sign a blank tax return or one that is prepared in pencil.

- Fees vary

Generally, tax return preparers charge a flat fee or an hourly rate. Fees vary from preparer to preparer. Call around to get prices. Avoid preparers who guarantee a refund or whose fee is based on the size of the refund. You should also never have the refund check sent to the preparer's address. A paid preparer must sign their name as the preparer of the tax return in the space provided on the lower right hand corner of the back page of the return.

Be sure your preparer gives you a copy of the completed tax return including his or her

mane as preparer. Put it in a safe place in case you need it at some later date.

Many tax professionals now offer electronic filing (the IRS calls this IRS e-file) to their clients.

Tax professionals who are accepted into the electronic filing program transmit tax return information over telephone lines to IRS computers.

Fees for this service vary depending on the tax professional you choose and the specific services you request.

You can prepare your own return and pay a professional only to transmit it. Or you can pay to have your return both prepared and transmitted. Whichever you choose, shop around for a tax professional who offers the services you need at an acceptable cost to you.

If you do hire a tax preparer, keep in contact throughout the year, not just at tax time.

Good tax planning is a year round process, and an experienced tax preparer can offer valuable tips throughout the year.

- Free tax help

For simple returns, you may be able to get free tax help in your local community.

The IRS sponsors the Volunteer Income Tax Assistance (VITA) program to offer free tax assistance to moderate income taxpayers and the elderly. To find the VITA site nearest you call 1-800-829-1040 or visit the IRS website at www.irs.ustreas.gov.

Remember, choosing a tax return preparer is an important consumer decision and is one that should be done carefully.

1315 W. American Blvd.
Muleshoe • 272-3333

CONGRATULATIONS
ANGIE GARZA
"We Appreciate your hard work & dedication, Angie!"

Crew Member of the Month
February '98

New!
Pie à la Mode
Apple or Cherry

McDonald's
Only **99¢** (+ tax)

ALLSUP'S ALWAYS Low Prices

ALLWAYS OPEN • ALLWAYS FAST
The Grocery Store for People on the GO!!!

<p>MONEY SAVING COUPON</p> <p>Wilson Meat Franks With Coupon</p> <p>59¢ 12 oz. pkg. Regular Price 69¢ March 15 till 28, 1998</p> <p>CLIP AND SAVE</p> <p>Coupon good at all Allsup's locations. Offer expires MARCH 28, 1998 Muleshoe Journal</p>	<p>MONEY SAVING COUPON</p> <p>Blue Bunny Assorted Ice Cream With Coupon</p> <p>\$2.89 1/2 Gallon Regular Price \$3.19 March 15 till 28, 1998</p> <p>CLIP AND SAVE</p> <p>Coupon good at all Allsup's locations. Offer expires MARCH 28, 1998 Muleshoe Journal</p>
<p>Enjoy Coca-Cola CLASSIC</p> <p>6 pk. cans 12 oz. \$1.89</p>	<p>3 liter \$1.79</p>
<p>Fritos Original</p>	<p>Doritos Santitas</p>
<p>ALL FLAVORS FRITO LAY® Fritos or Lay's REG. 99¢ SIZE 89¢ Includes Lay's® Adobadas & Fritos Sabrositos®</p>	
<p>BLUE BUNNY ALL AMERICAN Chiller or Crunch Bar EACH 3 FOR 1</p>	
<p>SHURFINE BLEACH gal. \$1.39</p>	<p>SPAM 12 oz. can \$2.39</p>
<p>FOLGERS COFFEE 13 oz. can \$3.99</p>	<p>SHURFINE DOG FOOD 20 lb. bag \$4.99</p>
<p>CHECK YOUR FRIENDLY ALLSUP'S STORE FOR ADDITIONAL MARKDOWN SPECIALS!</p> <p>Store #34 • 318 W. American Blvd 272-4862 • MULESHOE</p> <p>PRICES EFFECTIVE MARCH 15-28, 1998 • OFFER GOOD WHILE SUPPLIES LAST</p>	

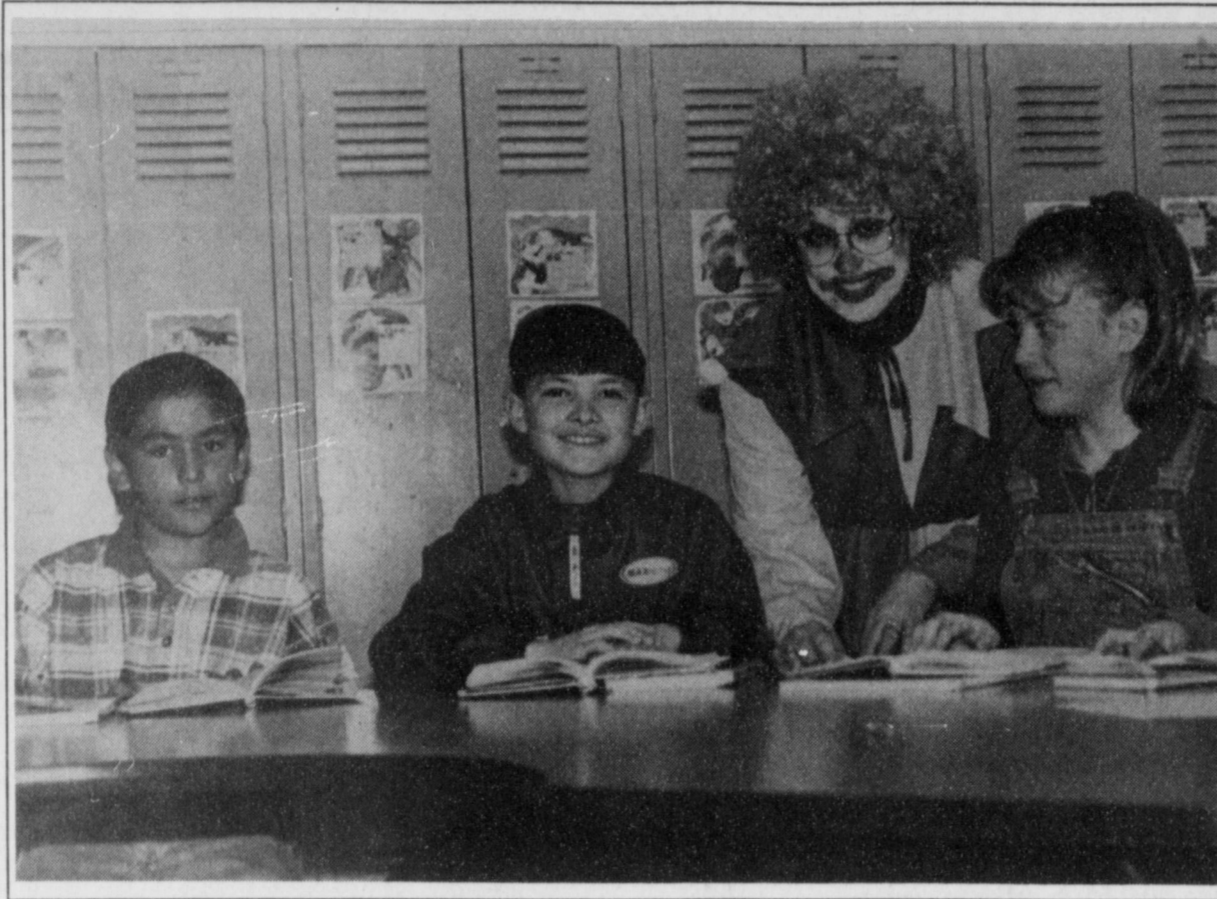
POLICE REPORT

MULESHOE PD

- Feb. 28 — Jose Reyes, 21, arrested for assault of a family member.
- Mar. 1 — Juan Rodriguez, 25, arrested for disorderly conduct.
- Mar. 1 — Omar Cavazos Jr., 20, arrested for disorderly conduct.
- Mar. 2 — Mario Flores, 22, arrested for driving while intoxicated.
- Mar. 2 — Jesus Jose Vargaz, 55, arrested for public intoxication.
- Mar. 2 — Mathew Lee, 31, arrested for public intoxication.
- Mar. 2 — Gonzalo Gomez, 25, arrested for disorderly conduct, fighting.
- Mar. 2 — Miguel Flores Carrasco, 20, arrested for disorderly conduct, fighting.
- Mar. 2 — Robert Rodriguez, 41, arrested for driving while intoxicated, third or more offense.
- Mar. 2 — Antonio Martinez, 61, arrested for assault.
- Mar. 5 — Horacio Granillo, 24, arrested for driving while intoxicated.
- Mar. 5 — Prajedez Patricio Vela, 26, assault of a family member.
- Mar. 10 — Roberto Torres Ruiz, 24, arrested for public intoxication and on a warrant from San Diego Immigration and Naturalization Service.

BAILEY COUNTY SO

- Feb. 27 — Denise Lynn Green, 19, arrested on Bailey County warrant for no insurance and speeding.
- Mar. 1 — Frayre Antonio Martinez, 62, arrested for assault class C.
- Mar. 2 — Juan Antonio Carrasco, 25, arrested for disorderly conduct.
- Mar. 5 — Horacio Granillo, 25, arrested for driving while intoxicated.
- Mar. 5 — Amador Mendoza, Jr., 25, arrested on motion to revoke.
- Mar. 5 — Franklin Monroe Roberts, 19, aggravated sexual assault with a child.
- Mar. 7 — Timothy Jason Hill, 20, arrested for driving while intoxicated.
- Mar. 8 — David Hernandez, 42, delivery of a controlled substance.



No joking

DeShazo Elementary School Principal Barbara Finney dressed as a clown Thursday as part of an agreement she made with students if they reached their goal in an accelerated reader program. DeShazo students read more than 5,000 books during the nine-week program.

Eastern New Mexico University extends in-state tuition to local Texas students

PORTALES—Eastern New Mexico University will offer New Mexico in-state tuition in the fall for Texans living within 135 miles of Portales.

Cities on the outer edge of the 135-mile arc include Masterson, Conway, Silverton, Claude, Crosbyton, Lamesa and Seminole.

The 1997-98 in-state tuition per semester for students taking between 12-18 credit hours was \$585, plus \$273 in student fees, for a total of \$858.

Officials expect a slight increase, to be determined in May, for the 1998-99 school year.

"We are very pleased to be able to offer this reduced tuition for our Texas neighbors," said Dr. Gordon Mack, vice president for Student Affairs. "With state-of-the-art technology in our 47 undergraduate majors, we believe prospective students will discover just about any academic program they are interested in at Eastern. We also think students from West Texas will be very impressed with the beauty and friendliness of our campus, which is totally centered around student learning."

Eastern New Mexico University was one of only three national recipients of the 1997-98 Pew Leadership Award for the Renewal of Undergraduate Education.

Frank Doyle, Pew jury chairman, described Eastern as "deserving special emulation by the rest of higher education."

For more information, prospective students may call 1-800-FOR-ENMU. Eastern is on the Internet at www.enmu.edu.

Rip's 314 Wheeler Texico
482-3363 or 800-748-2459

Layaways Welcome
Mon. - Sat. 9 a.m. - 6:30 p.m. cst

We Accept:

Justin Full Quill Ostrich
ROPERS & BOOTS \$399⁹⁸

All Smooth Ostrich
ROPERS & BOOTS \$199⁹⁸

CARHARTT OUTERWEAR 20% Off

RED WING WORK BOOTS
Closeout Sale On Style 1155
\$99⁹⁸

WINTER COATS 50% Off

New arrival of Non-Western
Knit Shirts For Men
Chaps by Ralph Lauren - Vira Club

50th Anniversary Celebration!

Jay and June Boyce will celebrate their 50th Wedding Anniversary on the 21st of March.

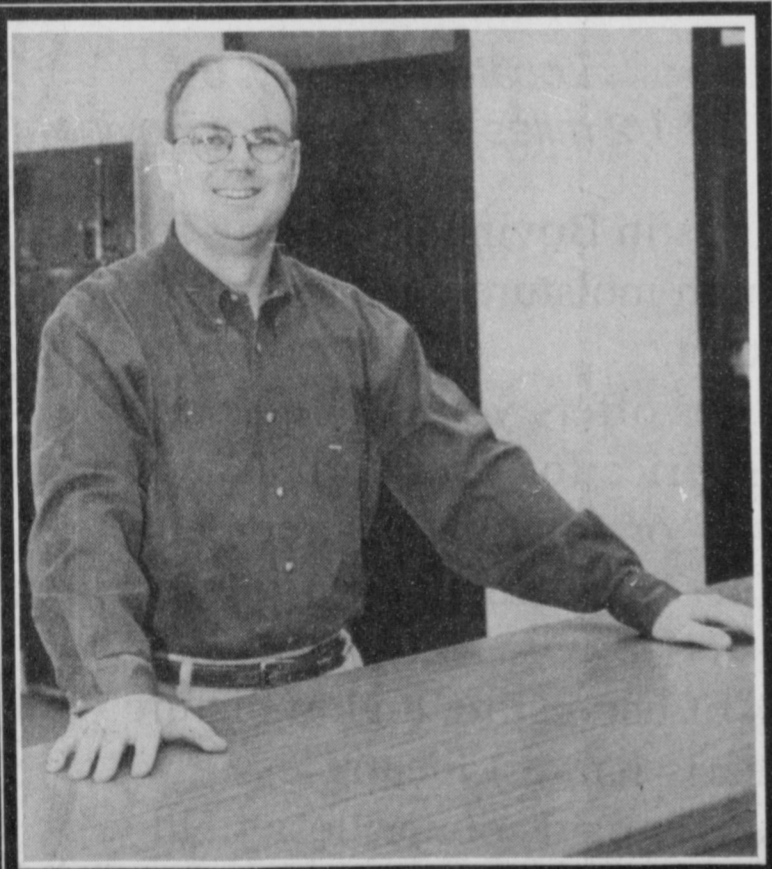
They were married by Judge Cecil Tate in Muleshoe on March 25, 1948. The witnesses were Ethel Walker and Dolly Crockett.

Jay & June were blessed with three children: Nelda, Joy and Johnny. They also have eight grandchildren and two great-grandchildren.

The Boyce's would like to extend an invitation to their family and friends to come and help them celebrate on March 21st from 2 pm to 4 pm at the Three Way School Home Economics Room. The event is being hosted by their children and grandchildren.

"March 28 will be more than enough excitement for everyone! Come on out and help support the Chamber of Commerce."

-James Fisher
City Manager of Muleshoe



Muleshoe Chamber of Commerce Annual Banquet

Saturday, March 28, 1998
6:30 pm (food served)

All-You-Can-Eat Steak and Shrimp

Muleshoe High School Cafeteria, Muleshoe High School Auditorium

Entertainment by: Ken Whitener, stage hypnotist
Mark Langford, magician
Adrian King and Others, Mime

Cost: \$50 (This is the Chamber of Commerce's only fund-raiser, folks!)

Contact Susie Sowder at 272-6767 or Dawn Williams at 272-6853.

Or get your tickets from any Chamber Board member.

It's going to be a laugh riot! Ya'll Come!

Remember Full Service?

At the Five Area/West Plains Telephone Organization we remember the days when businesses always provided their customers with Full Service in every respect. Milk was delivered to your door. The attendant at the gas station washed your windows and checked your tires and oil at no extra charge.



Today, our operations are making those days live again with personalized home town services. Simply give us a call at 272-5533 or drop by our offices at 302 Uvalde Street in Muleshoe and our employees will be happy to come to your home or business to service all your telecommunication needs.

It's a unique service, but it's just another way that we go the extra mile for our customers just as we've done for 42 years.

The Phone Company
"It's Your Business"

302 Uvalde St. • Muleshoe, TX • (806) 272-5533 or Toll Free 1-800-741-6925

Smith and Alexander wed

Sonya Dawn Smith and Matthew Clayton Alexander were united in marriage Jan. 31, 1998 in the New Covenant Church of Muleshoe.

Sonya is the daughter of David and Kay Gray of Muleshoe and Dennis and Margie Smith of Smithville, Tenn.

Her grandparents are Buster and Wanda Kittrell, Avalon Ringley, Tip and June McNeil, all of Muleshoe. Her great grandmother is Opal Foster of Levelland.

Matthew is son of Jimmy and Vickie Alexander.

His grandparents are Mickey and Elvia Alexander of Alamosa, Colo., Leroy and Patricia Schur of Monte Vista, Colo.

Jimmy Low officiated the ceremony. Sally Messenger and Toby Baxlay provided the music which included *Parents Prayers, I Will Be Here, and The Love Song.*

Shawna Slinger of Tulsa, Okla. was the matron of honor. Joey McCall of Rockford, Ill. was the best man.

Charity Alexander of Tulsa, Okla. and Tiffanie Kittrell of New Deal, Texas were the

bridesmaids. They wore column dresses of hunter green with crepe satin backs.

Steve Martin of Madison, Wis. and Stan Newton of Minneapolis, Minn. were the groomsmen.

Candlelighters were Kenneth Kittrell of New Deal and Lauren Gray of Friona. Ushers were Joe Duran of Levelland, Jeremy Stallings of Amarillo, Ken McAdams of Canyon, and Troy McAdoo of Lubbock.

The flower girl was Lacey Smith of Smithville, Tenn. The ring bearer was James Koelzer of Friona.

The bride's dress was white satin with embroidered lace embellished with clear sequins and seed pearls, long sleeves and a semi-cathedral train. The bride completed her ensemble with a matching choker with dangling pearls and a veil decorated with pearls.

The bride followed tradition. Something old was her shoes, something new was her dress, something borrowed was her necklace, and something blue was her garter.

The groom wore a peak la-



Mr. and Mrs. Alexander

pel, cut away 6 button black tux, with tails with a high cut black and silver vest with matching euro tie.

The reception was held in the Fellowship Hall at the New Covenant Church. Servers were Valerie Blair of Plains, and Becca Allison of Whiteface.

Sonya graduated from Muleshoe High School in 1994. She earned an associates degree

Biology from South Plains College. She is currently employed at Spring Harbor Animal Hospital as a veterinarian technician.

Matthew graduated from Verona High School. He is currently the assistant manager at Bachrach Mens Store.

After a honeymoon in Florida and the Bahamas, the couple will reside in Madison, Wisconsin.

Tax tips help consumers prepare for April 15 deadline

Throughout the country, Americans are busy sifting through receipts and canceled checks. These endeavors are part of that annual rite of spring filing a federal income tax return.

This process is particularly difficult for those Americans who owe taxes and are not sure how they are going to pay them.

However, through the Consumer Credit Counseling Service (CCCS) help is available.

"Most consumers have more options than they realize," said Marianne Gray, president of CCCS of Greater Fort Worth. "We find that the simple effort of reducing non-essential expenses will enable most people to save the money they will need before the April 15 deadline.

"Tax time makes many consumers feel overwhelmed if they owe money they do not have," adds Gray. "But the situation is

never hopeless. Instead, consumers should realistically review their situation and, if necessary, get help."

CCCS can assist consumers in preparing to meet a tax payment. Its certified counselors will help set up an emergency budget and find ways to cut expenses.

In addition, CCCS has been authorized by the Internal Revenue Service (IRS) to work out payment installment plans for consumers with delinquent federal income tax. This way, taxpayers can make manageable regular payments instead of being hit with an overwhelming lump sum payment.

CCCS offers these tips for consumers who think they may owe taxes;

- Work on taxes early.
- Calculate taxes as soon as possible. If a payment to the IRS must be made, know that amount

so a remedy can be determined. This gives you time to save or make other arrangements.

• Decide how to pay. Depending on the amount you owe and your financial situation, decide whether you should use savings or take out a loan. If you decide to borrow, shop around for the lowest interest rate.

• Start saving now. You still have time to save for an April 15 payment. Cut optional expenses such as entertainment and eating out. By reducing spending by \$50 a week, \$300 can be saved over the next six weeks.

• Investigate payment installment plans.

CCCS can help you work out a repayment plan with the IRS. A CCCS counselor can review your income and living expenses and develop an installment agreement with the IRS. You may still owe interest, but you may avoid

additional expenses.

For more information on budgeting, tax installment plans or help with debt problems, contact Consumer Credit Counseling Service.

CCCS has offices in Lubbock, Levelland, and Clovis. To schedule an appointment for confidential counseling or to receive information on educational seminars, call toll-free 1-800-374-2227. For information in Spanish call 1-800-935-3328.

STARTS TODAY!

Hanes®

SAVE 25% ON OUR ENTIRE STOCK OF HANES®

STOCK-UP AND SAVE 25% ON EVERY PAIR during our biggest Hanes® sale of the year! Choose from Silk Reflections®, Fitting Pretty®, Summer Sheer™, Alive®, Resilience® and Hanes Too®, Reg. 3.50-7.95, **SALE 2.63-5.96.** Save March 15 thru March 29. Hosiery.

HANES® BONUS!
Buy any 12 pair of Hanes® hosiery, get a **FREE** pair of Hanes Too® Silky Sheer pantyhose.

www.beallstores.com

BEALLS
We're all about you!

Muleshoe
321 Main St.
272-3478

You Snooze, You Lose. Read the News

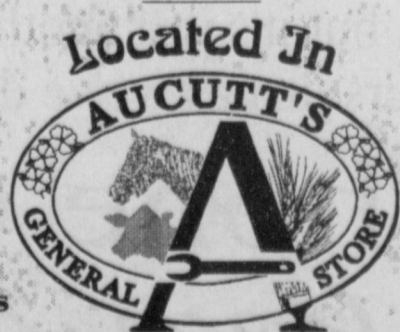


Enhance Your Home with Wallpaper at Affordable Prices

30% off
Hundreds of styles & patterns from two of your favorite manufacturers.

Come in today & let us help you with all of your decorating & gift needs.

The **Decorator Shoppe**



505-762-7717
2600 Mabry Drive
Clovis, New Mexico

Sale Ends April 4
Mon-Sat 9:00-5:00
Closed Sunday

IMPERIAL *Seabrook*
Bright New Florals & Prints
Stylish & Durable Bath & Kitchen Favorites
Contemporary Patterns & Textures
Special Designs "Just for Kids"

CAPROCK INDUSTRIES, INC.
225-4460
Located on Hwy. 60
3 1/2 miles southeast of Bovina

Caprock Industries in Bovina is looking for 1998 new crop high moisture corn for fall delivery to our feedlot.

Caprock Industries offers you the best opportunity for the best price for your corn. You can set the price now -- or any time between now and the expiration of December corn futures. The choice is yours!

The advantages of harvesting high moisture corn are many: early harvest means less weather risk; you get paid sooner; less field loss; and easier double cropping.

Selling your high moisture corn to Caprock Industries can mean more money in your pocket.

Call (806) 225-4460 to reach Nancy Norwood for the best deal in the country for your 1998 corn crop.

Caprock Industries in Bovina wants to be the home for your next corn harvest.

BAILEY COUNTY DEVOTIONAL PAGE

WES-TEX FEED YARDS, INC.
 Custom Cattle Feeding
 272-7555 Muleshoe, TX

FARWELL CONVALESCENT CENTER
"In Christ's Love, Everyone Is Someone Special"
 305 5th St.
 481-9027 • FARWELL, TX

OECIA SUSAN'S PHOTOGRAPHY
 Rt. 1 Box 120 • 2 Mi. N. Hwy. 214
 Susan Kerby
 (806) 272-5153
 Muleshoe, TX (806) 946-9524 mobile

MULESHOE COOPERATIVE
GINS
 P.O. Box 569
 272-4794 Muleshoe, TX

Risinger Plumbing
 Serving Muleshoe Area
 All Plumbing Repairs
272-6772

FIRST TEXAS FLBA MULESHOE
"Serving Farmer & Bailey Counties"
 272-3010 • Fax 272-5388
 316 Main • P.O. Box 424 • Muleshoe, TX

1315 W. American Blvd.
 272-3333
 Muleshoe, TX

SIMNACHER NATIVE GRASSES
 Darwin Simnacher Vince Simnacher
 (505) 762-7817 (806) 946-3461
 Thomas Simnacher
 (806) 285-2491

PACO FEED YARD, INC.
 Commercial Cattle Feeders
 P.O. Box 956 265-3281
 Friona, TX
 Feller Hughes-Mgr.

MULESHOE AREA HEALTHCARE
 Center
"Committed to Caring"
 106 W. Ave. H Muleshoe 272-7578

MULESHOE LIVESTOCK AUCTION
 Muleshoe, TX • Sale Every Saturday
 Clayton Myers • 272-4201

"THE FIVE AREA TELEPHONE COOPERATIVE ORGANIZATION"
 West Plains Telecommunications Co.
 Five Area Systems, Inc., Plateau Cellular Network
 Five Area Long Distance - Five Area Internet
 302 Uvalde Muleshoe, USA (806)272-5533

MULESHOE MOTOR CO.
 1225 W. American Blvd. 272-4251

BAILEY COUNTY ELECTRIC COOPERATIVE ASSOCIATION
"Serving Our Members Is Our Main Priority"
 1-800-869-7049
 Muleshoe 272-4504 Morton 266-8600

BRUCE, INC.
 AIR CONDITIONING
 Hwy. 214 North 272-5114
 Muleshoe, TX TAOL-B003350C, LP08638

BAILEY GIN COMPANY, INC.
 946-3397
 Sudan, TX
 Peanut Hawkins, MGR

Muleshoe Area Medical Center
"Your Hospital"
 708 S. First St. • 272-4524
 Muleshoe, TX

Lowe's MARKETPLACE
 515 W. American Blvd. Muleshoe
 401 W. American Blvd. Muleshoe
 Muleshoe 272-4585 272-4406

AMERICAN VALLEY INC.
 West Hiway 84
 272-4266
 Muleshoe

SHERLEY-ANDERSON LAZBUDDIE ELEVATOR
 965-2922 Lazbuddie, TX

Facts About The BIBLE BY JOHN LEHTI
LAMP UNTO MY FEET!

WHY WORD IS A LAMP UNTO MY FEET AND A LIGHT UNTO MY PATH? (PSALM 119:105)

THE LONGEST PSALM IN THE BOOK OF PSALMS IS THE ONE HUNDRED AND NINETEENTH, WITH 176 VERSES! IN A NUMBER OF WAYS, IT IS PROBABLY THE MOST INTERESTING AND CLEVERLY ARRANGED, EACH OF ITS TWENTY TWO STANZAS IS HEADED BY ONE OF THE HEBREW ALPHABETS TWENTY TWO LETTERS, FORMING AN ACROSTIC PATTERN.

WHEN THE ANCIENT JEWS TRAVELED BY NIGHT THERE WERE NO STREET LIGHTS, NO AUTO LIGHTS, TO DISPEL THE DARKNESS--THE ROCKY ROADS AND RUTTED FOOTPATHS THEY USED WERE PERILOUS PITFALLS TO THE NIGHT TRAVELER AND SO ALLEGORICAL DESCRIPTION OF GOD'S LAW AS A LAMP TO LIGHT THEIR WAY WAS READILY UNDERSTANDABLE--THIS PSALM IS A POWERFUL TRIBUTE TO THE MOSAIC LAWS. ALL PIOUS JEWS BELIEVED THESE LAWS TO BE BOTH TEACHER AND GUIDE, LIGHTING THEIR WAY THROUGH LIFE'S PRECARIOUS JOURNEY FOR ONLY BY A STRICT ADHERENCE TO THE LAWS COULD THEY BE SURE OF LIVING A LIFE FREE FROM SLOTH AND SIN!

NEXT WEEKS THE WORLD'S LARGEST HAND-WRITTEN BIBLE!...WHO DID IT?

SAVE THIS FOR YOUR SUNPAY SCHOOL SCRAPBOOK

This devotional & directory is made possible by these businesses who encourage all of us to attend worship services.

ASSEMBLY OF GOD
FIRST ASSEMBLY OF GOD
 521 South First Street • 272-3017
 Jack Stone, Min. • 272-3984
 S.S. 9:45 a.m., W.S. 11 a.m. & 6:30 p.m.,
 Wed. 7:30 p.m.

BAPTIST
CALVARY BAPTIST
 1733 W. Ave. C. Rev. Jeff Coffman
CIRCLE BACK BAPTIST
 Intersection FM 3397 & FM 298
 Jessie Shaver, Min • 946-3676
FIRST BAPTIST
 220 West Ave. E.
 Stacey Conner, Min.
FIRST BAPTIST
 Lazbuddie • 965-2126
PRIMERA IGLESIA BAUTISTA
 223 E. Ave. B Roy Martinez, Min.
PRIMITIVE BAPTIST
 621 South First
 Elder Cleveland Bass, Min.
PROGRESS BAPTIST
 Progress, TX
PROGRESS SECOND BAPTIST
 Arthur Hays, Min.
 1st & 3rd Sundays
RICHLAND HILLS BAPTIST
 17th & West Ave. D
 George Malis, Pastor
ST. MATTHEWS BAPTIST
 Corner of W. Boston & W. Birch
 Floyd R. Monroe, Min.
THREE WAY BAPTIST
 927-5467
 James Sinclair, Pastor
TRINITY BAPTIST
 314 E. Ave. B
 Robert Brown, Min.

CATHOLIC
IMMACULATE CONCEPTION CATHOLIC
 805 E. Hickory
 Joseph Augustine, Min.
CHRISTIAN
THE CHRISTIAN CENTER
 Morton Hwy. • 272-5105
 Reydon Stanford, Min.

CHURCH OF CHRIST
LARIAT CHURCH OF CHRIST
 Sam Billingsley, Min.
 S.S. 10 a.m.; W.S. 11 a.m. & 6 p.m.,
 Wed. 7 p.m.

LAZBUDDIE CHURCH OF CHRIST
 Nathan Crawford, Min.
 S.S. 9:30 a.m.; W.S. 10:20 a.m. & 5 p.m.;
 Wed. 7 p.m.

MULESHOE CHURCH OF CHRIST
 22nd & W. American Blvd.
 John Knox, Min.
 S.S. 9:30 a.m.; W.S. 10:20 a.m. & 6 p.m.;
 Wed. 7:30 p.m.

SIXTEENTH & AVE. D CHURCH OF CHRIST
 Curtis Shelburne, Min. • 272-4619
 W.S. 10:30 a.m. & 6 p.m.;
 Wed. 7:30 p.m.

LUTHERAN
ST. JOHN LUTHERAN
 Lariat, TX
 Richard Greenthamer, Min.
 S.S. 10:30 a.m.; W.S. 9:30 a.m.

METHODIST
FIRST UNITED METHODIST HISPANIC MINISTRIES
 E. 5th and E. Ave. D
 Pastor Benito Cavazos
FIRST UNITED METHODIST
 507 W. 2nd St.
 Pastor Brad Reeves
LAZBUDDIE METHODIST
 965-2121
EL DEVINO SALVADOR
 814 W. Ave. C, Muleshoe, TX
 Guadalupe Ballinas, Min.

NAZARENE
NEW VISION CHURCH OF THE NAZARENE
 814 W. Ave. C • 272-3622
 David R. McIntire

PENTECOSTAL
UNITED PENTECOSTAL CHURCH
 207 East Ave. G • 1-800-454-6051
 Pastor McKibben, 3 pm Sunday Service

INTER DENOMINATIONAL NEW COVENANT
 Plainview Hwy. Jimmy Low, Min.
 S.S. 9:30 a.m.; W.S. 10:15 a.m.;
 Wed. 7 p.m.

MULESHOE FEED BARN
 311 W. American Blvd.
 Muleshoe, TX
 272-5626

HI-PRO FEEDS

ST. BANK MEMBER FDIC
 202 South First 272-4515

In the fear of the Lord is strong confidence: and his children shall have a place of refuge.
 -Proverbs 14:26

IRRIGATION PUMPS & POWER
ZIMMATIC CENTER-PIVOTS
 W. Hwy. 84 272-4483

MOHAWK AUTO PARTS
 1701 W. American Blvd.
 272-4425 Muleshoe, TX

Bob STOVALL Printing
 The Wells & Janet Hall Family
 221 E. AVE. B • MULESHOE, TX
 (806) 272-3373

WESTERN DRUG
 114 Main 272-3106 Muleshoe

Henry Insurance Agency, Inc.
"Serving You Since 1964"
 111 West Avenue B 272-4581
 Muleshoe, TX

JAMES CRANE TIRE CO., INC.
 107 Main 272-4594
 Mike Hahn Muleshoe, TX

WINKLES TRUCKS, INC.
 Box 757 (806) 247-2724
 Friona, TX

Springlake Potatoes, Inc.
 P.O. Box 280 • Springlake, TX
 262-5542

Since 1957 - The Original
Leal's Mexican Restaurant
 1010 W. American Blvd. 272-3294
 Muleshoe, TX Victor & Debbie Leal

RONNIE HOLT INSURANCE AGENCY
 Specializing in Crop, Life & Health Insurance
 Western 66 Office Bldg.
 272-3614 Muleshoe, TX

TERRA DISTRIBUTION
 Hwy. 84 • 272-4203
 Muleshoe, Texas

SAIN IRRIGATION & MACHINES
 Complete Pump Service
 W. American Blvd. 272-4397
 Walt Sain Muleshoe, TX 272-4148

TINO'S
 104 W. American Blvd.
 272-7528 • Muleshoe, TX
 Daily Specials Owners: Tino & Linda Campoya

Shipman's Body Shop
 Auto Painting • Wrecker Service • Free Estimates
 Tractor Glass & Windshields
 410 N. 1st Muleshoe, TX
 272-4408 FAX 272-3366

BOBO INSURANCE AGENCY
 108 E. Ave. C 272-4264

MAPLE COOP GIN
 927-5501
 Maple, Texas

B/S & More Family Fun Center
 125 Main • Muleshoe • 272-3828

O & C OSONS
 Erection Sprinkler Ser. Welding & Repair
 Repair & Assemble 909 W. American Blvd.
 Lupe Olivarez 272-5018 272-3475

EASTER GRAIN, INC.
 Easter 276-5255 Labuddie 965-2817

Tortilla Leal's Factory, Inc.
"Serving West Texas since 1957"
 107 E. Ash 272-5772 Muleshoe, TX

Decorators Floral & Gifts
 616 South First 272-4340
 Muleshoe, TX

OBITUARIES

RICKI COFFMAN

Ricki Coffman, 51, of Morton died Wednesday, March 11, 1998 at his residence, west of Morton.

Memorial services were held March 14, 1998 at First United Methodist Church in Morton with Rev. Buddy Payne, pastor of First United Methodist Church of Post, officiating.

Burial followed in Morton Memorial Cemetery under the direction of Ellis Funeral Home.

Coffman was born August 20, 1946 in Lubbock. He married Mary Gard in Clayton, N.M. on May 12, 1973.

Coffman had lived in Morton most of his life. He was a farmer. He was a 1968 graduate of Texas Tech University. He received his masters degree from Texas A&M University with a

degree in animal science. He served in the US Army during Vietnam War, 1969-1971.

Survivors include his wife Mary; daughters, Brandy Reed of Shallowater; Shiloh Coffman of Morton; brother, Gary Coffman of St. Louis.

The family requests that memorials be made to your favorite charity or Hospice of Lubbock, 4314 So. Loop 289, Lubbock, TX 79413.

A.G. TAYLOR

A.G. Taylor, 85, of Muleshoe died Tuesday, March 10, 1998 at Methodist Hospital of Lubbock.

Memorial services were held Friday, March 13, 1998 at First United Methodist Church of Muleshoe.

Burial followed in Muleshoe Memorial Park Cemetery un-

der the direction of Ellis Funeral Home.

Taylor was born Sept. 2, 1912. He married Laura Ella "Toots" Gregory Oct. 12, 1930 in Lovington, N.M. She died March 19, 1980. Taylor married Jewel Glover Feb. 6, 1981 in Muleshoe.

Taylor moved to the Goodland community in Bailey County from El Dorado, Texas in 1949. He moved to Muleshoe from Goodland in 1960.

He was a member of the First United Methodist Church of Muleshoe.

He was a member of the El Dorado Masonic Lodge and the Bailey County Farm Bureau. He had served on the Three Way School Board and was employed by Bailey County, Precinct 2. Taylor was a farmer

and a rancher.

He was preceded in death by one daughter, Patsy Sowder on Feb. 14, 1998.

Survivors include his wife Jewel; sons, Gus Taylor of Amarillo, Tommy Taylor of Hudson, Ohio; step-son, Jerry Don Glover of Lazbuddie; daughter, Nonnie Bryant of Albuquerque; step daughter, Sue Chester of Sudan; 10 grandchildren, 5 step grandchildren, 13 great-grandchildren, 10 step great-grandchildren, 1 great-great-grandchild.

The family requests that memorials be sent to Hospice of the Plains, 7109 Olton Road, Plainview, TX 79072 or to Muleshoe Memorial Park Cemetery, P.O. Box 373, Muleshoe, TX 79347.



NURSING HOME NEWS

Thursday morning, Nancy Lemons made and brought ceramics for the residents to paint. Residents participating were Nettie Quesenberry, Bootie Tiller, Rosie Sneed, Pearl Helmer, Aline Locke, Florence Harvey, Jackie Davenport, Lora Dale, Winnie Orcutt, Katherine Rogers, Helen Tinskey. Aline Locke and Frankie Daniells sat on the sideline and gave moral support.

Pastor David McIntire, J.C. Shanks and Zona Gatewood directed our devotional, reflection times Thursday morning. Clara Lou Jones was our special guest at the devotional.

Friday afternoon, Harold and Avis Carpenter and Jean O'Brien directed our sing-along music and reminiscing time.

Sunday morning, Buster Kittrell and Nancy Kidd directed the music and taught our Sunday school lesson.

Sunday afternoon, the Muleshoe and Earth singers came for a music service.

Melvin and Wanda Griffin brought cake from their 50th anniversary celebration for the residents and staff.

The Francis Frank family brought several beautiful fresh flower bouquets to the Health-

care Center.

Nettie Quesenberry and her family met in the home of her daughter and son-in-law, Anna B. and Jack Lane, Saturday. They celebrated Nettie's birthday. Her son Bob Quesenberry, and son and daughter-in-law Eugen and Jo Quesenberry and Anna B. Lane also visited with her this week.

Tuesday morning, David McIntire, Glenda Jennings and Zona Gatewood directed a memorial service for Agnes Moyer.

Tuesday afternoon, Pat Watson, Claudine Embry, Mary Jo Burge, Lanell Stancell, Ozell Cherry, Karen Cook and Joy Stancell shampooed, set the ladies hair and gave manicures.

Mr. and Mrs. Jerry Hutton visited the Care Center Tuesday afternoon among those they visited were Winnie Orcutt, Pearl Helmer and Rosie Sneed.

Wednesday morning, Buster and Wanda Kittrell (Welcome back Buster and Wanda) Harold and Mary Jo Burge, Jane Reeder and Loyce Killingsworth served coffee and do-nuts to the residents gathered around the table in the day room and those in their rooms.

Loyce Killingsworth, Buster Kittrell and Jim Claunch lead us in our sing-spiration time. Bro. Cliff Hargrove, minister of the Primitive Baptist Church, gave the devotional on friends and "The Friend".

Wednesday afternoon, Glenda Jennings and Jonessa Brockman directed our mid-week sing-a-long with guest star, Billy Bob the puppet.

The Followers Sunday

School Class of The First Baptist Church of Muleshoe gave a donation to the Healthcare Center.

Mattie Grimsley returned to the Care Center Wednesday after being hospitalized. Welcome back Mattie.

Margaret Wilhite visited Grace Scarbrough, Florence Harvey, Mattie Grimsley and Sam White, Wednesday afternoon.

HOSPITAL ADMISSIONS

The Muleshoe Area Medical Center has reported admitting the following patients:

March 5 — Emma Armstrong, Loma Baker, Winnie Berry, Dorothy Browning, Ramiro Bustillos, Anna Clarkson, John Maddox, Dolores Orozco, Shayla Roland, Jesus Salcido, Callie Smith, A. Taylor, Maria Trevizo, Eva Terrazas.

March 6 — Emma Armstrong, Loma Baker, Ramiro Bustillos, Anna Clarkson, John Maddox, Shayla Roland, Callie Smith, A. Taylor, Eva Terrazas.

March 9 — Emma Armstrong, James Burris, Anna Clarkson, Alfredo Garcia,

Mattie Grimsley, Hettie Keller, John Maddox, Jacqueline Pierce, Callie Smith, Eva Terrazas, Kenneth, Wilson.

March 10 — Trini Benhan, James Burris, Alfredo Garcia, Mattie Grimsley, John Maddox, Jacqueline Pierce, Kenneth Wilson.

March 12 — Sandra Alafa, Johnny Hernandez, Frank Hinkson, Ruth McCarty.

Help available for utility and gas bills

The South Plains Community Action Association, Inc. wishes to announce its receipt of Enterp/Enterp oil overcharge funds to assist the truly needy in Bailey County.

The purpose of this program is to provide assistance to eligible person experiencing an energy-related crisis or energy related emergency.

It is a utility assistance program. Priority shall be given to eligible households with persons 60 years or older and/or with handicapped persons.

This priority does not exclude other income eligible households.

A person must apply at 804 W. American Blvd. in Muleshoe during the hours of 8:00 a.m. - noon and 1:00 p.m. - 5:00 p.m. Applicants must bring their utility bill, and evidence of their income for the last 30 days.


Proof of income may consist of checks, check stubs, award letters, employer statements, or other similar documents.

For additional information concerning this assistance, contact Janie Posadas 806-272-7537


ON PUBLIC TV

Festival '98
March 6th — 22nd


Henriette Wyeth and Peter Hurd
— Their Life and Work Showcased in Three Special Presentations



Henriette Wyeth
Conversations with Henriette Wyeth will be broadcast Sunday, March 15th at 7:05 p.m., followed by Henriette Wyeth at 7:40 p.m., and Peter Hurd at 8:20 p.m.



Peter Hurd and Henriette Wyeth



Georgia O'Keeffe:
The Plains on Paper
Sunday, March 15th at 9:25 p.m.

kenw 3
EASTERN NEW MEXICO UNIVERSITY
PORTALES, NM

Experienced Cars, Trucks & Vans!

1991 Chevy Cavalier Low Miles #751021 \$3,900	1993 Dodge Spirit #890491 \$4,900	1994 Plymouth Acclaim #730241 \$5,500	1993 Chevy Lumina #730641 \$6,000
1993 Oldsmobile Ciera #48631 \$6,900	1994 Chevy Beretta Z-26 #6006 \$8,700	1997 Dodge Neon (Highline) 2 to choose from \$8,995	1994 Pontiac Grand Prix SE #750791 \$9,200
1997 Plymouth Breeze 2 to choose from \$11,200	1997 Eagle Vision #6023 \$13,900	1997 Mitsubishi Eclipse GS #60012 \$16,300	1989 Dodge Dakota #48211 \$2,900
1992 Chevy 2500 4x4 #752261 \$9,700	1995 Dodge Ram 1500 Sport #6022 \$14,500	1996 Dodge Grand Caravan SE #6021 \$15,900	1996 Dodge Grand Caravan LE #850311 \$16,500
1996 Dodge Ram 1500 Club Cab #4871 \$19,500	1996 Dodge Ram 1500 Club Cab #850231 \$19,000	1997 Dodge Ram 1500 Club Cab #6020 \$20,500	1997 Dodge Ram 3500 Dually Diesel C/C SLT #850591 \$28,200

BENDER Chrysler • Plymouth • Dodge
You're going to like our family!
3400 Mabry Drive • Clovis, NM • (505) 762-4511
No Gimmicks, No Hassles! We Will Earn Your Business!

MULESHOE HERITAGE FOUNDATION NEWS

The Muleshoe Heritage Foundation board met March 9 at the Muleshoe Depot for its regular monthly meeting.

Board members present were Chuck Smith, Larry Nickels, Charles Flowers, Carolyn Johnson, Kristy Price, Vivian White, Jack Hicks, Jean Allison and center hostess Peggie Bruton.

President Vivian White, conducted the meeting and minutes were read by Peggie Bruton. The treasurer's report was given by Kristy Price.

Discussions were held about the new computer at the Center, advertising for the "Tour de Muleshoe," repairs on the servants quarters of the James Ranch House, plans for completing the log cabin and the

cook house, as well as maintenance of the yard.

Certificates of appreciation were shown and will be framed and presented to organizations and people who have given assistance to the Heritage Center.

Carolyn Johnson suggested that the presentation be made publicly in order for others to be aware of the many firms and people who give support to the Center.

It was noted that Pam Hancock has asked for suggestions for Eagle Scout projects at the Center. Suggestions given were picnic tables and benches, a rock fire pit to be used for outdoor cooking, a chain link fence and an authentic dug-out home.

Charles Flowers reported that he has written a letter to South-

west Airlines requesting two round trip tickets to wherever Southwest flies as a prize for the annual "Tour de Muleshoe."

The "Tour de Muleshoe" is held Labor Day weekend and bike riders come from all over the United States to participate.

Also, Red Raider Day will again be held at the Heritage Center. Flowers reported that a date will be chosen soon, one when it is possible for Coach James Dickey to attend.

Carolyn Johnson reported that she has Irvin St. Clair's Eagle Scout memorabilia which he has donated for the Heritage Center. Irvin was the first Eagle Scout of Muleshoe, and this display will be featured at the James Ranch House basement museum.

Board members are excited about finishing some of the projects at the Center such as the Old Muleshoe cook house and the log cabin. In order to complete these projects, board members are asking for donations of antique furniture and artifacts.

Some of the articles needed are beds, washstands, old dressers, cane-bottomed chairs, hat racks, dominoes or checker games, wardrobes, pie crust table with a lamp, etc.

If you have any of these items of the early 1900s or earlier, please contact the Center by calling 272-5873 or any board member.

Jean Allison said that the Student-Community Action Club (SCAC) will be again be holding a bake-auction over Channel

Keeping an eye on Texas

Consumers more confident than ever

Consumer confidence in Texas reached its highest point ever in December 1997. In a survey of households in the West South Central region*, consumers were pleased about low unemployment, minimum inflation, and growth in wages. The positive response in regard to the present and future economic outlook in the region climbed throughout 1997 to reach its peak in December at 140.7 points, surpassing the previous high in July 1981.

* The West South Central region includes Texas, Oklahoma, Arkansas and Louisiana.

SOURCES: John Sharp, Texas Comptroller of Public Accounts, and The Conference Board.

17 on April 14 beginning at 7:30 a.m. She asked for the support of the board members as all money raised by SCAC is donated to the Heritage Center. This is an annual affair of SCAC, and has gained much support from the community.

Journal Classifieds

Deadlines are 5 p.m. Monday and Thursday Call 272-4536 Deadlines are 5 p.m. Monday and Thursday

LEGAL

NOTICE TO BIDDERS
Sealed bids for summer 1998 roofing project for the Three Way I.S.D. campus will be received by Mr. William L. Hood, Superintendent of Schools, Three Way Independent School District in the Administration Office, P.O. Box, Maple, Texas, 79344, until 4:00 P.M., Tuesday, April 7, 1998.

The Project consists of sprayed polyurethane foam being applied to approximately 37,400 square feet of roofing. Specifications for this bid may be acquired from William L. Hood, Three Way I.S.D., P.O. Box 60, Maple, Texas 79344. Telephone (806) 927-5531. Bids will be opened at the regularly scheduled board meeting at 8:00 P.M. Thursday, April 9, 1998 in the Three Way Administration Office. The owner reserves the right to reject any or all bids. Published in the Muleshoe Journal March 12, 15.

FOR SALE

For Sale - 14 X 80 Mobile home 3 bedroom, 2 bath, on private fenced lot, 2 outside storage bldgs., 2 carports. Call 272-5394. 9s-6tpd

Full size sofa sleeper Victorian sofa Older model Kirby Vacuum Green rocker recliner 272-5408. 11t-2tpd

HELP WANTED

Need person to sit with elderly lady. 7 days a week from 3 p.m. to 6 p.m. (806) 272-3182. 11s-3tch

"AVON", Representatives Needed Now! No Inventory Required, IND/SALES/REP, Toll Free, 800-611-6892. 10t-4tpd

Wanted

Maintenance Person Requires general knowledge of electrical and mechanical equipment, heating/air-conditioning, carpentry and plumbing. Contact Keith Harp, Director of Engineering, Muleshoe Area Medical Center, 708 South First Street, Muleshoe, TX 79347. (806) 272-4524 Ext. 3280. 11s-8tch

HELP WANTED

Office Manager- A/R- Immediate opening for person experienced in accounting. Duties include- oversight of office operations with emphasis on accounts receivable. 4-year accounting degree preferred. We pay for experience. Apply to Farwell Convalescent Center, 305 5th Street, Farwell, TX; (806) 481-9027. For TDD contact, use TX relay system for hearing impaired (800) 735-2988 to contact the Center phone number above. FCC is an EEO employer. Pre-employment drug and physical tests will be required. 11s-3tch

Silage cutters & tractor operators needed for 1998 silage season. CDLs & some travel. Excellent hourly wages. Contact SCB Farms Inc. (806) 238-1206. 12s-6tpd

BUSINESS OPPORTUNITY

Perfect part-time home business! Earn \$2K per month 2-10 Hours a week Hands on training 24 hour message. 1-888-268-0617. 12s-4tpd

REAL ESTATE

For Sale; 2 bedroom, 2 bath, 1 carport, central air and heat, storm cellar. 272-5291. 10t-9tpd

For Sale or Rent to own, 3 bedroom, 2 bath house, 1750 sq. ft. 612 W. ave. F. Will show Sat. and Sun. 1 p.m. to 6 p.m. (806) 265-3413. 11t-tfc

For Sale; 2-1-1 brick home, center air and heat, fireplace. Large new deck and big yard. 272-4391 or 272-4251. 12s-1tch

WANTED

Need to find a good home for 2 male black Lab puppies 8 wks old. Also a 3 year old female black Lab-Free to a good home. Call (806) 246-7762. 12s-1tpd

REAL ESTATE

Daren Sudderth
Associate Broker • State Certified Appraiser
Res. (806) 825-3389

- * 306 acres south of Lazbuddie with three 8" irrigation wells. 2 circle sprinklers and 2,500 head feed lot. Good water area.
- * 550 acres south of Lazbuddie with 4 irrigation wells and 4 circle sprinklers. Good water area.
- * 2 Quarters-CRP-SE of Muleshoe city limits. 10 - year contract in CRP. One Quarter on Highway.
- * 404 acres north of Muleshoe with 2 irrigation wells, 2 circle sprinklers. Good water area.
- * 160 acres southeast of Muleshoe on Irma Lane crossroads, 1 irrigation well.
- * 160 acres northeast of Muleshoe on Irma Lane crossroads, 1 irrigation well.

WANTED

PLAINVIEW'S NEWEST FLEA MARKET!
FREE ADMISSION!
EVERY SATURDAY AND SUNDAY!! Everyone is welcome!! Treasures Galore, antiques, collectibles, crafts, even an area of garage sale specials!! Vendors, there is still time to choose your space to sell your crafts, collectibles, antiques or even have a garage sale. Call Mike or Judy Tiner at (806) 747-7833 or (806) 749-2202. 12s-1tch

SERVICE

Sewing and Alterations. Peggy 272-6764. Experienced, jeans, zippers, etc. 7s-tfc

SERVICE

Fill better in days, please call us for your caloral and CF1 needs. Portales, NM. (505) 359-0980. 12s-6tpd

SERVICE

ARE YOU SUFFERING DEPRESSION? Christian Center Counseling Service is offering a free tape series entitled "Overcoming Depression". To obtain a free copy, call (806) 272-3877. 12s-6tch

AUCTION

Saturday, March 21, 1998 SALE TIME 10:00 A.M.
Located: From Muleshoe, TX 7 miles South on Texas Hwy 214; or from Morton, TX 27 miles North on Texas Hwy 214. Same being from Needmore, TX 6 miles North on Texas Hwy 214.

Clifford Mardis Estate, Owner
To help settle the estate of Clifford Mardis, the following will sell at Public Auction. For information, Cruce and Fletcher Auctioneers, (806) 296-5050 or (806) 866-4201. Limited Consignments Welcome - Please Call First

TRACTORS 1-1980 John Deere 4640 Diesel Tractor, SG Cab, AC, Hr. Radio, WF, Ws, DH, Q/R Trans, 20.8-38 Rubber 1-1980 John Deere 4440 Diesel Tractor, SG Cab, AC, Hr. Radio, WF, Ws, DH, Q/R Trans, 18.4-38 Rubber 1-1973 John Deere 4430 Diesel Tractor, SG Cab, AC, Hr. Radio, WF, Ws, DH, Q/R Trans, 18.4-38 Rubber	SPRAYERS - TANKS - TRAILERS 1-4x4 Wheel Spot Sprayer, 2 W.D., Articulating, 3 Seat, Gas Engine 1-Set Twin 200 Gal Side Mt Sprayer Tanks 1-500 Gallon Aluminum Water Tank/Sprayer on 4 wheel Chassis, Ace Hyd Pump 1-500 Gallon Fuel Nurse Tank on 4 wheel Chassis, Pressurized 1-Bin 12 1/2 wheel, 24 ft. Flatbed Trailer 2-Cobby 4 wheel 24 ft. Flatbed Trailers 1-25 Gallon, 12 Volt, Hand Spot Sprayer 1-Clear 2 wheel DT Sprayer Chassis 1-110 Gallon Fuel Tank	TRACTOR & TOOL MAKEUPS 1-8 row 3pt Double Reinforced Tool Bar 1-John Deere Cat II-III 3 pt. Quick Hitch 1-Lee Cat II 3 pt. Quick Hitch 1-John Deere 21 ft. 3 pt. DTB Tool Carrier, GV 1-21 Ft. D.R.T.B. Tool Carrier 1-John Deere 3 Piece, 3 Pt. Hitch 1-8-RAC Individual row Rotary Hoe Units 1-8-Hamby Rotary Fenders 1-25 John Deere Orchard Shanks 1-Set Tool Bar Gauge Wheels 1-Set Shanks, Clamps 1-8-Hamby Rotary Fenders 1-Set Hyd Row Markers 2-C/O Drawbars 1-10t Hamby Home Shanks, H.C., 4 x 4 Clamps 1-Set Hamby 7/8 Gauge Wheels 1-Powder River Crowding Alley 1-8 R. 3 pt. 2 1/4" Toolbar 1-10t Sweeps, Chisel, Knives, Discs, Etc.
PICKUP 1-1991 Ford F-150 Custom Pickup, Radio, Hr. AC, V 8 Eng., A/O Tool Box, LWB	MODULE BUILDER - GRAIN KART COTTON STRIPPER 1-Bush Hog Cotton Module Builder, Cab, 32 ft Stripper Model 1-Big 12 400 Bushel Grain Kart 1-John Deere 283 Cotton Stripper & Basket	LIVESTOCK, HAY EQUIPMENT 1-Hale 16 ft. Stock Trailer, T.A. F.M.C. 1-Powder River Cattle Squeeze Chute 1-Powder River Crowding Alley 14-Powder River 16 ft. Stock Panels 2-Powder River 4 ft. Gates 1-S.M. Portable 2 wheel Cattle Loading Chute 2-10 ft. Stock Water Tubs 1-Steel Oblong Water Trough 2-Round Hay Bale Feeders 1-Wheel Barrow 3-4 wheel Round Hay Bale Feeders/Trailers 4 Bale Capacity 1-Set P.T.O. Wire Roller 1-Lot Electric Fence Wire, Post, Insulators, Fence Chargers, Etc. 1-Lot of Items Too Numerous to Mention
EQUIPMENT 1-Ty 8 row, 3 pt. Grain Drill, Big Box, DD, Chans, 10' Spaced 1-John Deere 8 row Luster Planter, 4 x 7 Bar, DDWD, Herbicide Attachments 1-John Deere 16 Ft. Offset Disc Plow, 10340 Type 2-John Deere 400, 6 row Rotary Hoe 1-John Deere 737 4 row Shredder, DT 1-John Deere 7 row Lister, 4 x 7 Bar, 2 1/2" Bar, Gauge Wheel Drive 1-John Deere F-805, 15 Ft. Oneway Plow, Cylinder Control 1-Big Ox 9 Shank, 3 pt. V Ripper Plow, Dual Gauge Wheel 1-Oliver 4-12' 3 Pt. Spinner Moleboard Plow 1-Schlab 4 bottom Clodbuster Packer 1-Bigham Bros. 3pt., 6 Row Cropping Plow, Single Square Bar 1-Sam Stevens 3 pt., 18 row Sandfighter, FW 1-Phares-Wilkins 3 pt., 6 row Stalkcutter 1-Johnson 28 ft., 3 pt., Spring Shank Field Cultivator w/Chisel 1-Burd RAC 3 pt., 21 ft. Chisel Sweep Plow, T.S.B., L.T.M., D.G.W., H.C. 1-SM 3 pt., 7 row Bed Knifing Plow 1-Servis 3 pt., 8 ft Blade 1-3 pt. LR Arm Crane 1-2 row 3 pt. Cultivator	NON-CLASSIFIED 1-2" Centrifugal Pump w/Gas Engine 1-12 volt Fuel Transfer Pump 1-Wheel Barrow 1-Lot Log Chans, Boomers 1-Lot Extension Cords 1-Lot Rubber Tie Downs 1-Desk 1-Portable Air Tank 1-Lot Scoops, Forks, Hoes, Etc. 1-Come-A-Long 1-Lot Barrel Bumps 1-Lot Oil, Grease 1-Lot Telephone Pole Post 1-Lot Gal Pipe, Various Lengths, Sizes 1-Lot of Tires & Wheels 1-Cast Iron Antique Bath Tub 1-4 wheel Iron Wheel Wagon Chassis 1-Lot Items Too Numerous to Mention	HAY 40-Round Bales Wheat Hay

Cruce & Fletcher
Auctioneers and Real Estate Brokers
PO BOX 609 - WOLFFORTH, TX 75382

Bobby Fletcher
Wolfforth, TX
(806) 866-4201
Lic #7131

REAL ESTATE

James F. Hayes & Co.

AGRICULTURAL REAL ESTATE SERVICES

4 Labors in Baillyboro area. Milo, wheat and cotton base. Good dryland cotton yield. Good government check. Immediate possession available.

390 Acres with 3 bdrm Austin stonehouse. Stegall area. 70 acres of native grass. 320 Acres of CRP just renewed for 10 yrs @ \$39.50 per acre. House and 70 acres can be sold separately.

Vic Coker, Agent
310 Main St. Suite 103 Muleshoe
Office 272-3100 Home 965-2468
WHEN LAND INVOLVES COWS AND PLOWS

REAL ESTATE

Price Reduced, Country Living at it's Best - 6 miles West of Muleshoe on Highway 1760.

Approx. 3500 sq. ft. Gorgeous 3-3-3 Brick home with lots of builtins, fireplace, central heat, ref. air, sunroom with hot tub, lots of storage, large family room and utility room, every woman's dream. All on 2 1/2 acres. Also 30x50 metal barn with corrals. If you want it! This place has it!

• 320 ac. NE of Muleshoe, 2 story stucco house, very large barn, 2 sprinkler systems, 4 wells, lays well. Out of Area Owner says "Sell It!"

• 160 ac. SE of Lazbuddie. Excellent water area, Circuits, 120 volt elect. Motor. Excellent cash lease in effect on this farm.

• 207 ac. NW of Muleshoe. 125 hp Elect Motor, electric springer, Domestic Well.

New Listing: Just west of Muleshoe on pavement. Nice 3 bedroom 1 3/4 bath brick home with attached garage. 30 X 40 insulated barn, corrals and lots of storage all on 4.4 acres. Must see to appreciate. Call for more details. Great Investment Opportunity- 25 acres with 3 rent houses, 6 complete mobile home hook-ups with electricity, water and cable. Just west of Muleshoe. Reasonably Priced!! Call for more details!!

(806) 481-3846 • Toll Free: 1-888-999-3846

Ronald Byrd, GRI Licensed Broker
Home: (806) 481-9318
Crista Bass, Sales Associate • Home: (806) 925-6464

Nieman Realty

116 E. Ave. C • George Nieman, Broker • 272-5285 or 272-5286

<h3>RICHLAND HILLS</h3> <ul style="list-style-type: none"> • 3-3-1 Brick, cent. Heat, Evap. Air, built-ins, 2000' + lv. area, fenced yd., stor. bldg. MORE!! \$60K !!! RH-2 • PARKRIDGE - NICE 3-2-2 Brick, Cent. A&H, built-ins, FP, cov. patio, fenced yd. \$50's!! • NICE 3-2-3 Brick, corner lot, Cent. A & H, built-ins, FP, 2 stor. bldgs., storm cellar, fenced yd., MORE !!! \$60K!! RH-1 	<h3>HIGH SCHOOL</h3> <ul style="list-style-type: none"> • Nice 3-2-2 Brick, Cent. A&H, built-ins fenced yd., MORE !!! \$40's !!! HS-5 • Very Nice 3-1-1 Brick Home, cent. Heat & Air, built-ins, fans, woodburning stove, nice carpets, storage bldg., fenced yd., More !!! Price Reduced!!! HS-7 • NEWLY REMODELED 3-1-1 Home, cent. A & H, new carpet & vinyl, fenced yd., MORE !!! \$30's !!! HS-2 • VERY NICE 3-1-1 Brick, Heat pump, DW, nice carpets, fenced yd., MORE!!! \$30's !!! HS-1 • NICE 2-1-1 Brick, Heat Pump, nice carpets, well insulated, storm windows & doors. \$30's!!! HS6
<h3>HIGHLAND AREA</h3> <ul style="list-style-type: none"> • 3-2-2 Brick, Cent. A&H, built-ins, gas log FP, fenced yd., stor. bldg., MORE!! Price Reduced!! HL-5 	<h3>RURAL</h3> <ul style="list-style-type: none"> • 3-2-2 Home on .92 acre at edge of town. Cent. Heat, evap. air, DW, storage bldg., fenced yd., & MORE !!! \$30K!! • W. of SUDAN-NICE 3-3-2 Brick Home, 5 acre tract on Hwy. 298, Cent. Air & Heat, built-ins, large Quonset Barn, MORE!!! \$95K!!! • JUST LISTED- NICE 4-1-2 Home, Heat Pump, Built-ins fenced yd., 2 Stor. bldgs., approx. 10 acre tract, on pavement close to town!! \$ 50's !!! • 5 Acre tract on pavement close to town! • NICE 3-2 Home, 40 acre tract, Geo-heat Pump, built-ins, 6' well, Hi-Pres. Lines, barns, corrals, tractor & equip.!! \$75K!!!! • LAZBUDDIE- NICE 3-2-1 CP Brick Home on pavement, DW, Geo. Heat Pump, 4.73 ac, barns, corrals, & MORE!!! \$40's !!! • NICE 3-2-2 Brick on pavement, 2200' t, built-ins, FP, large sunroom!! \$80's !!!
<h3>LENAU - COUNTRY CLUB AREA</h3> <ul style="list-style-type: none"> • 2-1-1 Carport Home, wall furnace, nice carpet, storm shelter, stor. bldg., fenced yd. \$20's!!! CC-3 • 2-1-1 Home, Cent. Heat, built-ins, Hardwood floors!! \$19,500! L-3 • 2-1-1 Home, floor furnace, win. ref. air, fenced yd, stor. bldg., \$19,500 !!! L-1 	<h3>COMMERCIAL</h3> <ul style="list-style-type: none"> • Established Business: Land, Bldg. & Equip., \$75K!! • 175' x 140' tract, approx. 8500' bldg. on Main. \$35K!!! • 56' x 140' tract, approx. 4700' bldg., \$35K!!! • NICE R.V. STORAGE, 14' X 40' metal bldg. 12' doors, corner lot!! • SNACKSHACK - Lot, Buildings, furniture, and fixtures!!!! • LARIAT- 240 acres, 3 wells, underground tile, good productive land!!!

The following people have announced their candidacy for the

General Primary Election

Tuesday, March 10, 1998

DISTRICT 287TH JUDGE

- Gordon H. Green, Democrat

JUSTICE OF THE PEACE PRECINCT NO. 1

- Jack Bates, Democrat

BAILEY COUNTY CLERK

- Sheri Bessire Harrison, Republican
- Jan Pierce, Democrat

DISTRICT CLERK

- Elaine Parker, Democrat

BAILEY COUNTY COMMISSIONER PRECINCT 4

- Jerry Damron, Democrat
- Bennie Claunch, Democrat

Paid political advertisement



SAVE LOTS O' GREEN!

Is "7" your Lucky Number?

At Lowe's... You don't have to be lucky to find Great Savings!

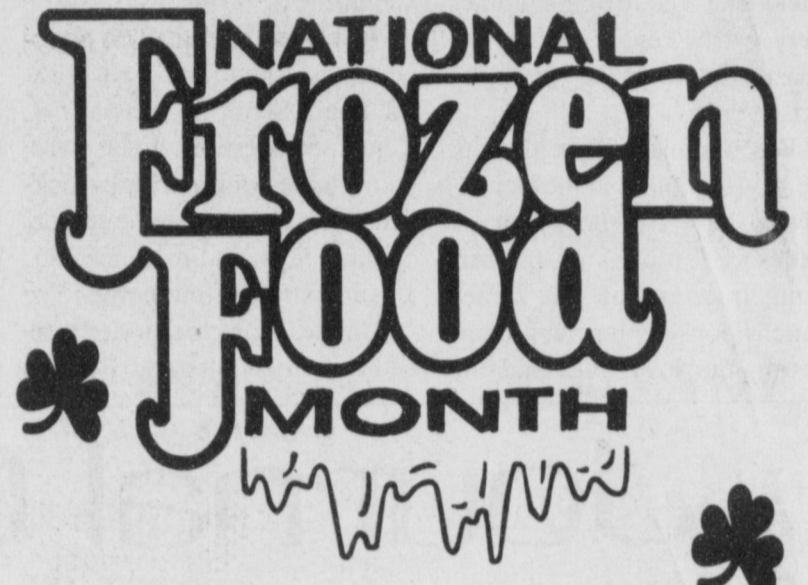
PRICES EFFECTIVE MAR. 11-17, 1998

MEAT

- VALUE PACK RAW
CATFISH NUGGETS.....LB **\$1²⁷**
 SMALL PACK RAW
CATFISH NUGGETS.....LB **\$1³⁹**
 BONE-IN
PORK BUTT ROAST.....LB **87^c**
 FAMILY PACK U.S.D.A. SELECT BEEF
TOP SIRLOIN STEAKS.....LB **\$1⁹⁷**
 HEALTHY
SALMON STEAKS.....LB **\$1⁹⁹**
 6-9 LB. AVERAGE
WHOLE H&G SALMON.....LB **\$1¹⁹**
 WHOLE SLAB
PORK SPARE RIBS.....LB **\$1⁴⁹**
 BONE-IN
COUNTRY STYLE PORK RIBS.....LB **\$1⁴⁹**
 50-70 CT. RAW SMALL
SHELL-ON SHRIMP.....LB **\$4⁹⁹**
 JUMBO PACK PILGRIM'S PRIDE CHICKEN
SPLIT BREAST.....LB **97^c**
 SMALL PACK PILGRIM'S PRIDE CHICKEN
SPLIT BREAST.....LB **\$1¹⁹**
 OSCAR MAYER READY TO SERVE
FULLY COOKED BACON...2.1 OZ. PKGS **2/^{\$4}**
 OSCAR MAYER
SLICED BACON.....16 OZ. PKGS **2/^{\$4}**
 LOUIS RICH
TURKEY BACON.....12 OZ. PKGS **2/^{\$4}**
 OSCAR MAYER ASSORTED VARIETIES
FUN PACK
LUNCHABLES.....10.8-13.1 OZ. PKGS **2/^{\$4}**
 BAR S
CHOPPED HAM.....10 OZ. PKG **\$1⁷⁹**
 BAR S EXTRA LEAN
COOKED HAM.....10 OZ. PKG **\$2³⁹**
 BAR S JUMBO
MEAT FRANKS.....1 LB. PKG **99^c**
 BAR S REGULAR OR THICK SLICED
MEAT BOLOGNA.....1 LB. PKG **\$1²⁹**
 BAR S SKINLESS
SMOKED SAUSAGE.....1 LB. PKGS **2/^{\$3}**
 BAR S
SMOKED SAUSAGE.....3 LB. PKG **\$4⁹⁹**
-
- FLORIDA OR CALIFORNIA
SUNNY DELIGHT
CITRUS PUNCH.....128 OZ. JUG **\$1⁷⁷**
 ALL TYPES
COCA-COLA OR
DR. PEPPER.....6 PK-20 OZ. BTLs **\$2⁸⁸**
 ALL TYPES
COCA-COLA OR
DR. PEPPER.....6 PK-12 OZ. CANS **\$1⁵⁷**
 ALL TYPES
COCA-COLA OR
DR. PEPPER.....3 LITER BTL **\$1⁸⁸**
 PUFFS, CRUNCHY, CHECKERS,
 FLAMIN' HOT OR CRUNCH NACHO
CHEETOS®.....REG. \$2.19 **\$1⁴⁷**
 FAC REGULAR, COLOMBIAN SUPREME,
 FRENCH ROAST OR GOURMET SUPREME
FOLGERS COFFEE.....34.5-39 OZ. CAN **\$8⁷⁷**
 SHURFINE
FOAM CUPS.....51 CT.-8 OZ **97^c**
 ASSORTED
UNSWEETENED KOOL-AID....MAKES 2 QTS. **5/^{\$1}**
 POTATO ORIGINAL/BBQ, RITZ, CHEESE NIPS,
 SOUR CREAM & ONION RITZ OR RANCH WHEAT
NABISCO AIR CRISPS.....7-8.5 OZ. PKG **\$1⁶⁷**
 ASSORTED
OREO COOKIES.....20 OZ. PKG **\$1⁹⁷**
 NATURAL BLEND, VEGETABLE, PURITAN OR CORN
CRISCO OIL.....48 OZ. BTL **\$1⁶⁷**

FROZEN & DAIRY

- MARKET CUT-BLOCK CUT
CHEDDAR CHEESE.....LB **\$2²⁹**
 GOLDEN COUNTRY
SANDWICH SINGLES.....10.7 OZ. PKG **\$1¹⁹**
 ASSORTED EL CHARRITO
MEXICAN DINNERS.....13-14 OZ. PKG **97^c**
 CHICKEN, PORK & SHRIMP OR SHRIMP
CHUN KING EGG ROLLS.....6 OZ. PKG **\$1²⁷**
 ASSORTED BANQUET
SELECT MENU
DINNERS.....6.7-10.2 OZ. PKG **4/^{\$5}**
 HEALTHY CHOICE
SPAGHETTI W/MEAT SAUCE.....10 OZ. PKG **\$1⁷⁷**
 ASSORTED
HEALTHY CHOICE
DINNERS.....10.5-11.7 OZ. PKGS **2/^{\$5}**
 HEALTHY CHOICE SUPREME OR PEPPERONI
FRENCH BREAD PIZZA...6-6.35 OZ. PKG **\$1⁷⁷**
 HEALTHY CHOICE ASSORTED
HEARTY HANDFULS
SANDWICHES.....6-6.1 OZ. PKG **\$1⁷⁷**
 CHICKEN, TURKEY, YANKEE POT ROAST
 OR CHICKEN & BROCCOLI
MARIE CALLENDER'S
POT PIES.....2/^{\$5}
 APPLE, PEACH, CHERRY OR BERRY
MARIE CALLENDER'S
COBBLERS.....17 OZ. PKG **\$2⁷⁷**
 BANQUET • FRIED CHICKEN • CHICKEN FRIED STEAK
 • TURKEY • SALISBURY STEAK • RIBLET • MEAT LOAF
THE HEARTY ONE
DINNERS.....15.2-19 OZ. PKG **\$1⁹⁷**



- FISHER BOY CRUNCHY
FISH STICKS.....16 OZ. PKGS **2/^{\$4}**
 COUNTRY GLAZED CHICKEN, BEEF
 PEPPER STEAK OR LASAGNA
HEALTHY CHOICE
ENTREES.....7.5-9 OZ. PKG **\$1⁷⁷**
 GOOD 'N CRUNCHY
ORE-IDA CRISPERS!.....20 OZ. PKG **\$1⁹⁷**
 GREEN GIANT NIBBLERS
CORN ON THE COB.....6 CT. PKG **\$1¹⁷**
 FROZEN
TEXSUN ORANGE JUICE.....12 OZ. CAN **87^c**
 ASSORTED
KID CUISINE DINNERS.....6-10.6 OZ. PKG **3/^{\$5}**
 BANQUET LEMON, BANANA, CHOCOLATE OR COCONUT
CREAM PIES.....14 OZ. PKGS **\$1¹⁷**
 ASSORTED REGULAR ONLY
KRAFT CHUNK CHEESE.....8 OZ. PKG **\$1⁷⁷**

PRODUCE

- CALIFORNIA
HASS AVOCADOS.....4/^{\$1}
 U.S.A.
D'ANJOU PEARS.....LB **69^c**
 WASHINGTON EXTRA FANCY
GRANNY SMITH APPLES.....8/^{\$1}
 TANGY FRESH
LEMONS.....8/^{\$1}
 FRESH AND TASTY
ZUCCHINI SQUASH.....LB **69^c**
 FRESH GREEN LEAF OR ROMAINE
LETTUCE.....2/^{\$1}
 DOLE AMERICAN BLEND
SALAD MIX.....10 OZ. PKG **\$1⁸⁸**
 FRESH GREEN
CABBAGE.....LB **17^c**

HEALTH & BEAUTY

- BONUS SPECIAL PACK
PEPSID AC
ACID CONTROLLER.....18 CT. PLUS 18 FREE **\$4⁹⁷**
 BONUS SPECIAL PACK CAPLETS OR TABLETS
MOTRIN IB SINUS....20 CT. PLUS 10 FREE **\$3⁹⁷**
 ASSORTED
FINESSE SHAMPOO
OR CONDITIONER.....10.5-15 OZ. BTL **\$2⁷⁷**
 ASSORTED 1.6-2.5 OZ. ANTI-PERSPIRANT
 OR DEODORANT STICK
SURE, SECRET
OR OLD SPICE.....YOUR CHOICE **\$1⁵⁷**
-
- BOPPIN' BERRY, FRUIT PUNCH OR ORANGE
HI-C DRINKS.....10 PACK-6 OZ. **\$1⁷⁷**
 ASSORTED BETTY CROCKER
HAMBURGER OR
TUNA HELPER.....3-9.25 OZ. BOX **4/^{\$5}**
 CRUNCHBERRIES OR ORIGINAL
CAP'N CRUNCH
VALUE PACK.....21-22 OZ. BOX **2/^{\$5}**
 PETER PAN ASSORTED
PEANUT BUTTER.....17.6-18 OZ. JAR **\$1⁷⁷**
 HUNT'S ORIGINAL, HICKORY OR
 HICKORY & BROWN SUGAR
BARBECUE SAUCE.....18 OZ. BTL **77^c**
 HUNT'S REGULAR OR NO SALT ADDED
TOMATO SAUCE.....8 OZ. CANS **4/^{\$1}**
 FLORIDA'S NATURAL
RUBY RED GRAPEFRUIT JUICE..64 OZ. CTN **\$2¹⁷**

REGISTER TO WIN
 2.2" COLOR TV

WIN A 2.2" RCA HAND HELD TV

DRAWING TO BE HELD MARCH 28
 ONE TO BE GIVEN AWAY IN EACH STORE

NABISCO AIR CRISPS
 7.5 OZ. PKG. **167**

ASSORTED Oreo Cookies
 20 OZ. PKG. **197**

2.2" RCA TV
 The hand held color LCD RCA TV has
 an electronic signal seek tuner
 VHF/UHF tuner, durable cabinet with
 carry strap a convenient locking
 stand, an earphone jack and a 2 way
 power supply system

See ya at
LOWE'S

WESTERN MONEY
UNION TRANSFERSM
"The fastest way to send money"

Lowe's
 MARKETPLACE



401 W. American Blvd.
Muleshoe 272-4585

WE RESERVE THE RIGHT
TO LIMIT QUANTITIES
IN TEXAS

515 W.
American Blvd.
Muleshoe
272-4406