



RANGER TIMES

TIMES PUBLISHING COMPANY, Publishers

212-214 Elm Street, Ranger, Texas Telephone 224

Published every afternoon (except Thursday, Saturday and Sunday) and every Sunday morning.

Entered as second-class matter at the postoffice at Ranger, Texas, under Act of March 3, 1879.

SUBSCRIPTION RATES

Ranger Times (One Year by Mail in Texas) \$2.00
Ranger Times and Eastland County News \$3.65

NOTICE TO THE PUBLIC

Any erroneous reflections upon the character, standing or reputation of any person, firm or corporation which may appear in the columns of this paper will be gladly corrected upon being brought to the attention of the publisher.

Louisiana Hayride

That jolly little jingle-song called "Louisiana Hayride" attempted to picture the pleasure of these informal festivities in the Pelican State. But it was a pale description compared with the realities of the hayride on which the late Huey Long took his fellow-citizens. Farther north, they call it a sleighride.

Twenty-seven men are now under arrest, 10 have resigned state positions under fire, six have been fired and five have been suspended in the shakeout which has followed Louisiana's ride, whose motto seems to have been "Share the Steath."

Huey didn't succeed in making "Every Man a King," but he did succeed in creating quite an aristocracy of predatory barons, knights and viscounts who occupied privileged positions in which the takings were good, for a time. Fortunately this aristocracy will not be hereditary, since most of the titles will probably soon be exchanged for numbers.

The United States' first sampling of a local variety of quasi-Fascism leaves a bitter after-taste not conducive of a second experiment.

First Matches of City Tournament Almost Completed

Most of the 40 players who have qualified in the Ranger Country Club tournament for members have played their first round matches, with Saturday being the deadline, in order that second round matches can be played Sunday.

Results of first round matches, as posted, are as follows: First flight—E. A. Norris, Jr., defeated H. H. Vaughn 2-up; O. Black defeated E. L. Norris, Sr., 4-3; Ray Trower defeated C. J. Owens 1-up; Jack Hensley won from James Phillips by default.

Second flight—F. D. Ford and Feltoff Brasher had not played; Bob Earnest defeated Guy Smith 3-2; Keith Finkle won from Happy Harrison 7-5, and G. H. West won from H. T. Schooley 3-2.

Third flight—Ray Snyder won from Mickey Sloan 6-5; Dr. W. L. Duntain won from Keith McLaughlin 3-2; Pleas Moore and Chief Williams had not played; Floyd Joyce won from J. R. McLaughlin by default.

Fourth flight—H. P. Earnest won from J. R. McLaughlin, Jr., but no score was posted; Saule Perlestein and Carl Heinlin had not played; Fred Hughes won from A. R. Bennett 1-up; Bobby Powell won from Cecil Townsend 3-2.

Fifth flight—A. N. Larson won from Arthur Williams 3-4; Morris Lyvelle and Fred Dreinhofner had not played; Dave Cooper nosed out Jack Mooney, Sr., 1-up in 19 holes, and Brann Garner won from Earl Svereland 1-up.

British Labor Is Strapping Parts Because Of War

LONDON.—Having disrupted employer-employee agreements throughout the country from its first days, the war now is producing an early outcropping of unemployment, labor dislocation, and ill-adjusted wage scales to harass union leaders and the ministry of labor.

"All agreements are going by the board," labor officials declare.

Workers have accepted voluntarily short time work in some industries to prevent lay-offs, but in others, particularly those on the eastern coast, there have been complete shutdowns. Between 2,000 and 3,000 men were dismissed by a large firm in the north which expects to re-employ some of them at its branch in the west of England.

Married men who work for companies that have transferred their staffs from vulnerable areas face the problem of maintaining two residences.

Railway unions have protested to authorities that 1,000 dining car attendants have lost their jobs, and that engine drivers are being reduced to firemen, and firemen to cleaners.

In the distribution trades, the shops assistants union is attempting to stem the flood of dismissals resulting from the fall in London shop trade after the mass evacuation of women, children and invalids from the metropolis.

In other districts, however, tradesmen are short of assistants

BULLDOGS TO PLAY IN FIRST HOME GAME OF SEASON TONIGHT AT 8

The Ranger Bulldogs, victorious in two out of three starts this season, will meet the Weatherford High School football team at Bulldog stadium tonight in the first home game for the Ranger team. The game will start promptly at 8 o'clock.

After winning their first game from Ysleta and their second from San Antonio Tech, the Bulldogs dropped a close decision to Stephenville in their first conference game of the season last Friday night at Stephenville.

Weatherford has dropped two games with Oil Belt teams this season, the first to Cisco by a score of 19 to 7 and the second to Mineral Wells, last week, by a score of 25 to 0. The game tonight will be one upon which local fans can draw a comparison between three teams in the Oil Belt.

Coach Bill Tipton has indicated that he will use his reserves throughout a good part of the game, in order that he may see whether or not good men may be developed who can be used in the lineup in future games, so the game may be even more closely contested than either the Mineral Wells or Cisco contests which Weatherford has played to date.

The turf and stands at Bulldog Stadium have been put in first class condition for the game, with both being even better than they were throughout the past football year.

A big crowd is expected at the game, though it is a non-conference contest, because many who saw the Bulldogs against Stephenville last Friday believe that the team is really much stronger than it appeared that night, and will want to see for themselves how the Bulldogs react to their upset.

Throughout the week they have been working harder than ever before in preparation for the game, two hard, long scrimmage sessions putting the team in excellent shape for the game. Only minor injuries have been sustained so far this season, though three members of the squad have slightly lame legs, but all will be ready to start Friday night, if called upon.

After the Weatherford game the Bulldogs take on Brownwood High School's Elkie's next week, in their second conference game of the season. The Lions, with 15 returning lettermen, are expected to be stiff competition, though they have lost two games, to San

PEEPING THRU THE KNOTHOLE

WITH BILL MAYES

There has been considerable discussion recently about the average weight of the Bulldogs, using Coach Tipton's figures on each member of the regular starting lineup the following figures have been obtained.

The average weight of the starters is approximately 159 pounds, the starting backfield averages 148 pounds while the starting line averages 165 pounds. These are not exact, the line total being one pound under enough to average 165 pounds, the backfield total weight being one pound more than enough to average 148, and the total weight of the team being two pounds shy of enough to average 159.

The weights, as given out by Tipton, show the backfield weights are McKelvin 160, Floyd 145, Houghton 148 and Adkins 140. The line weights are Bourdeau 165, Townzen 145, Anderson 195, Ames 185, Shot Gray 155, Graves 155 and Warden 154.

These weights, by the way, check up pretty closely with those given last year on boys who are still on the team. Their weights, first as given this year and then as given last year are McKelvin, 160 and 155; Floyd 145 and 142; Houghton 148 and 144; Adkins 140 and 140; Bourdeau 165 and 163; Townzen 145 and 140; Anderson 195 and 210; Ames 185 and 185; Gray 155 and 150; Graves 155 and 157; Warden 156 and 148.

From this it appears that McKelvin has gained five pounds, Floyd three pounds; Houghton four pounds; Adkins has remained the same weight; Bourdeau has gained two pounds, Townzen five pounds, Anderson has lost 21 pounds; Ames has remained the same weight, Shot Gray has gained two pounds and Warden gained six pounds.

Which is about all the information we have on how much the Bulldogs weigh, and we haven't seen them weighed, any of them.

because of depletions from calling up to service and the attraction of higher pay offered by civil defense services.

Workers in some other trades have been given large wage increases. Thirty thousand trawler men, for example, have been offered increases of 1 pound (\$4) a week. Skippers and mates of fishing vessels are guaranteed a new minimum of \$28 and \$20 a week respectively.

PROPELLER GLOWS, HE FLIES BLIND

DARWIN, Australia.—St. Elmer's fire—a flame-like glow that occurs in tropical storms—encircled the propeller of the plane which "Flying Doctor" Fenton was navigating to attend a patient suffering from appendicitis, forcing him to make the entire trip by flying blind, guided only by rivers.

Advertisement for Better Light Tonight featuring a woman and a lamp. Text: 'Enjoy BETTER LIGHT TONIGHT! Take a look at the lighting in your home tonight. See whether the light is well diffused throughout each room...'

Advertisement for Better Sight Lamps. Text: 'DO YOU HAVE ENOUGH LIGHT? WILL LIGHT A BETTER SIGHT LAMP FOR MORE THAN 1 HOUR. Light is one of the smallest items of household expense. You can enjoy better reading under a 110-watt Better Sight Lamp for more than one hour for only a penny's worth of electricity.'

Ford V-8 Fordor Sedan for 1940 Here



THE FORD V-8 Fordor sedan for 1940 is of modern streamlined design, with plenty of room for six persons to ride comfortably. The new finger-tip gearshift on the steering post clears the front compartment and allows two passengers to ride in front without interfering with the driver. In 35 horsepower models improved spring suspension and a new torsion bar ride-stabilizer help to provide an unusually comfortable ride. A 60 horsepower V-8 engine also is available. There is a large luggage compartment.

WILD LIFE

By JOHN R. WOOD

State Game Warden

There was recently published a bulletin by the United States Department of Interior through the Biological Survey, the big game inventory of the United States for 1938. This bulletin contained some interesting facts relative to the big game of Texas and the United States. As a matter of comparison the 1937 inventory showed a total of about 5,000,000 big game species in the United States. The 1938 inventory showed an increase of about 916,000 big game

animals in the one year period. In the last report Texas showed an increase in white tail deer, Mule deer, Javelina or peccary. Those species remaining about the same were elk, pronghorn antelope, black bear and buffalo.

"The question most frequently asked regarding the wildlife inventories is of what use they are. Successful management, particularly of species of economic importance, requires knowledge of populations and information on yearly increases and on distribution. With these facts before them game administrators can more wisely determine year by year the

need for restricting or relaxing protective regulations of any species according to the area involved. The Biological Survey annually determines the status of waterfowl on their wintering areas and summer breeding grounds. Data on the survival of breeding stocks and on yearly productions are important considerations in establishing Federal protective regulations. Knowledge of the status of all wildlife resources is a prerequisite to their management," the bureau states.

The Biological Survey makes no claim that the following figures and comparisons are accurate, but

the very best estimations from operating agencies was obtained. New and combined efforts were made each year for an accurate record of the big game species of the United States.

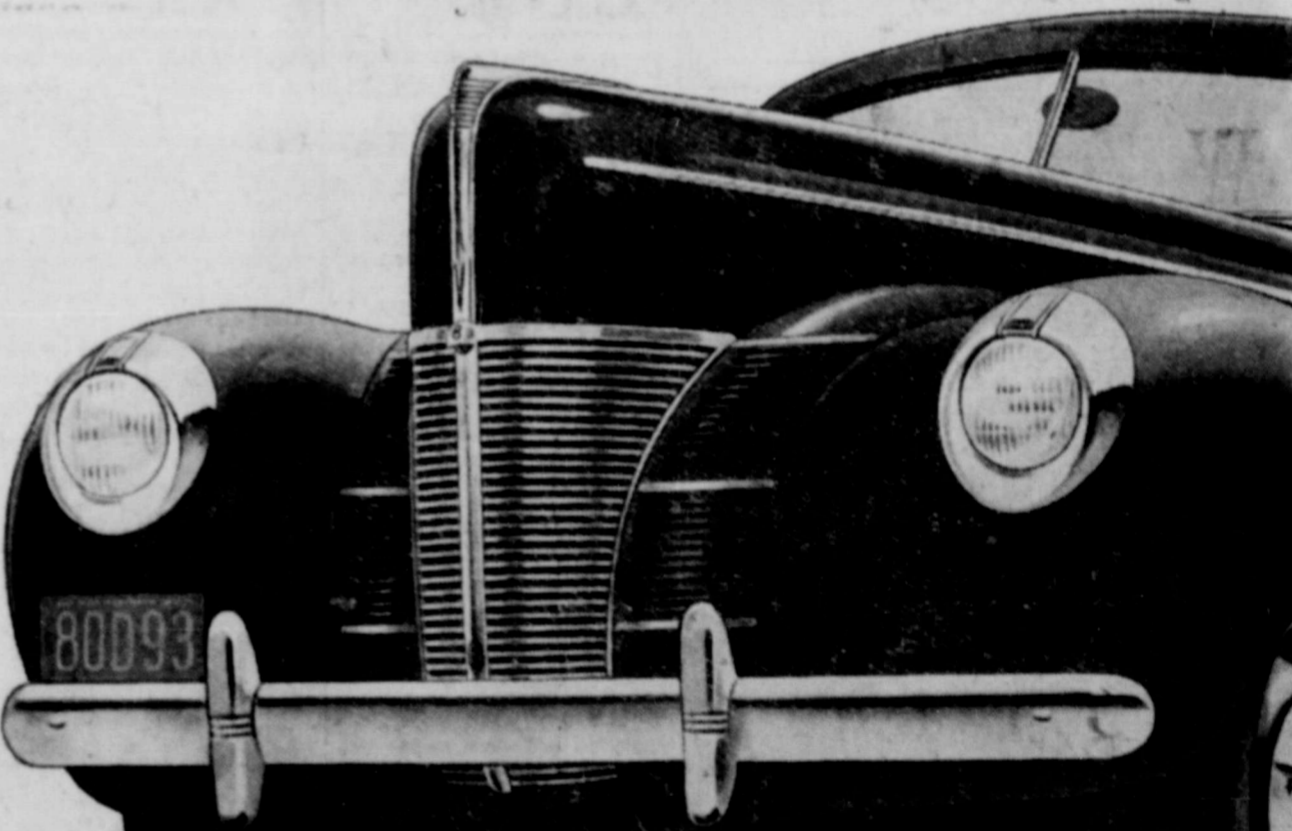
Texas Ranking in the Big Game Inventory

Texas had 269,116 white-tailed deer, 3,455,526 in the United States. Other species in Texas include mule deer, 14,323; elk, 358; pronghorn antelope, 9,075; desert bighorn sheep, 280; peccary or javelina, 32,563. Arizona and Mexico are the only other states having any of this species of game. Texas had 505 buffalo in the report issued by the Biological Survey showing that Texas has more of any of the following game species: Columbian spotted deer, woodland caribou, moose, Rocky mountain goat, European bear and grizzly bear.

Antelope, once thought of as extinct, increased about 50 per cent from 1924 to 1938. Numbers of big horn sheep, on the other hand, dropped from 25 (an estimate by E. T. Seton) 17,000 in 22 years.

Protective measures have been taken for elk, antelope, and moose, the bureau declares, but inventory makes apparent need for cooperative efforts. Vigorous applications of management plans for preservation of big game species. The main goal, grizzly bear, moose, caribou in addition to big sheep have declined in numbers the last 20 years. Measures that are now taken by national and state agencies backed by public support, improve the situation within next 20 years as has been done the last 20 years for elk, buffalo and antelope.

Announcing THE NEW FORD CARS FOR 1940



22 important improvements, added to fundamental Ford features, represent the most advanced engineering in the low-price field

WHAT do the Ford cars for 1940 offer to match their brilliant new beauty? New comfort, convenience, quiet, safety—and the roomiest, richest interiors ever designed for a Ford car. They have many interesting new features. Finger-Tip Gearshift on the steering post. An improved transmission, unusually easy to shift. New Controlled Ventilation. Improved shock absorbers. Softer springs, improved spring suspension and a new ride-stabilizer. A combination of new features makes the new cars quieter in operation. They have big, powerful hydraulic brakes. They have new Sealed-Beam Headlamps that are safer, stronger and stay bright longer. They have the famous Ford V-8 engine (85 hp in the De Luxe Ford. Choice of 85 or 60 hp in the Ford)—which blends 8-cylinder smoothness with economy. You've never seen cars with so much performance, style and comfort at such a low price. Get acquainted. You'll enjoy the experience!

22 IMPORTANT FORD IMPROVEMENTS. FOR COMFORT—More room inside. New Controlled Ventilation. New torsion bar ride-stabilizer. Improved spring suspension. Self-sealing shock absorbers. Two-way adjustable driver's seat. New-type resilient front seat backs. New "Floating-Edge" Seat Cushions. FOR CONVENIENCE—New Finger-Tip Gearshift. Engine more accessible. Two-spoke steering wheel. FOR SILENCE—Improved soundproofing. "Easy-shift" transmission. Curved disc wheels. Improved drums for big Ford hydraulic brakes. FOR SAFETY—Sealed-Beam Headlamps. Dual windshield wipers at base of windshield. Larger battery and generator. Battery Condition Indicator on all models. FOR STYLE—New exterior beauty. New interior luxury. New instrument panel. \*85-hp models only. MORE THAN EVER "THE QUALITY CAR IN THE LOW-PRICE FIELD"

NOW ON DISPLAY AT ALL FORD DEALERS

LIBBY'S WEEK AT PIGGLY WIGGLY means QUALITY PRODUCTS AT LOW PRICES! With Libby's long list of delicious, nourishing foods at our disposal in this wonderful sale, we offer our customers a chance to stock up at present low prices. Once again Piggly Wiggly proves its power to give its customers Highest Quality at the Lowest Possible Prices!



**PALMOLIVE SOAP**  
Per Bar 5c

**PICKLES**  
LIBBY'S FANCY FIRM  
4 Qt. Jar 25c

**PEAS**  
LIBBY'S SWEET VARIETY  
SMALL NO. 3 SIEVE  
No. 303 2 for 27c

**PINEAPPLE JUICE**  
LIBBY'S  
TALL CANS **8 1/3c**

**APPLE BUTTER** LIBBY'S 26 OZ. JAR 17c  
**PINEAPPLE** Libby's Tidbits or Crushed 2 9 Oz. Cans 15c  
**TOMATO JUICE** LIBBY'S 14 OZ. CAN 7 1/2c  
**CORN** Country Gen'man or Cream Style Golden Bantam, 2 for 23c

**OLIVES** No. 14 Tall JAR 25c  
**PRESERVES** Peach - Pineapple 2 Lb. Jar 33c  
 Apricot - Blackberry 2 Jar 33c  
**CRACKERS** 2 LB. BOX 15c

**POTATOES** 10 LBS. 25c  
**FLOUR** 6 Pound Bag 23c 24 Pounds 65c  
 12 Pound Bag 37c 48 Pounds \$1 25

**FLUFFO** Pure Vegetable Shortening MADE BY THE MAKERS OF CRISCO 4 LB. CART. 39c  
**OATS** 3 MINUTE Large Pkg. 19c Reg. Pkg. 10c



**APPLES** Jonathan New Crop Reds 2 DOZ. 25c

**CELERY** Stalk 10c **LETTUCE** Large Firm Heads 5c  
**BANANAS** Golden Ripe Lb. 5c **RHUBARB** Cherry Red Lb. 5c

**YAMS** FANCY RED VELVET LB. 4c

**ORANGES** PLENTY OF JUICE Doz. 17 1/2c **ONIONS** SPANISH SWEET 3 Lbs. 10c

**JONATHAN APPLES** Fine for Eating or Baking Dozen 19c  
**SUNKIST LEMONS** Per Dozen 19c

**CUCUMBERS** Fine For Slicing Pound 5c  
**GRAPES** Tokays or Seedless 2 Pounds 15c

**FANCY VEI VET OKRA** Lb. 8c  
**LIMES** Per Dozen 10c



**ROAST HENS**  
 Fancy Chuck PER POUND 19c Fresh Dressed PER POUND 16c

**SUGAR CURED BACON** 5 Lbs. \$1

**SALT BACON** No. 1 Sides Lb. 12 1/2c

**SALT JOWLS** PER POUND 10c

**HOPS** Pound 25c **BACON** Pound 29c  
**BACON** Pound 20c **OLEO** Pound 17c

**SAUSAGE** Pound 19c **BOLOGNA** Pound 15c  
**MEAT LOAF** Pound 15c **HAMS** 8 to 12 Lb. Average Pound 24c  
**POUP MEAT** Lb. 10c **SQUARES** Pound 15c

**BLUE CATFISH** PER LB. 25c

Libby's—with Meat Balls **SPAGHETTI** 2 Cans 29c  
 Libby's Vienna **SAUSAGE** 2 Cans 19c  
 Extra Heavy **CANVAS GLOVES**, pair 12 1/2c  
 Libby's **BEETS** No. 303 Can 10c  
 LIBBY'S HOMOGENIZED **BABY FOODS** 2 CANS 15c

**Tomato Catchup** LARGE 14 OUNCE BOTTLE 16c

**SUGAR** PURE CANE 10 Lb. Bag 59c  
**COFFEE** PLYMOUTH Lb. 15c FOLGERS Lb. 25c

**SUPER SUDS** IN THE RED BOX Reg. Pkg. 9 1/2c  
**CRYSTAL WHITE SOAP** 5 Giant Bars 19c  
**Sunbrite Cleanser**, Can 5c

**TOMATOES** 4 NO. 2 CANS 25c  
**COCOANUT** MONOGRAM IN CELLO BAG 1 Lb. 23c  
**CHILI** GEBHARDT'S WITH BEANS No. 303 Can 15c  
**TAMALES** RATLIFF'S GOLD MEDAL Can 12 1/2c

We Reserve the Right To Limit Quantities! OCT. 6 & 7th EASTLAND, TEXAS

# PIGGLY WIGGLY

# BEER AND PENSIONS

The Following Figures Show the Amount of Money paid in Taxes and License Fees by the Legalized BEER Operators In EASTLAND COUNTY:

THE FOLLOWING FIGURES REPRESENT LICENSE FEES AND TAXES PAID BY BEER DEALERS IN EASTLAND COUNTY DURING 1938 ON BEER LEGALLY SOLD IN THE COUNTY:

STATE OF TEXAS

\$16,057.74

EASTLAND COUNTY

\$612.50

CITIES of RANGER  
EASTLAND and CISCO

\$525.00

FEDERAL GOVERNMENT

\$59,900.96

**This Makes a Total of - - - - \$77,096.20**

A BIG PORTION OF THIS TAX MONEY GOES INTO THE OLD AGE ASSISTANCE FUND OF TEXAS!!!

DO NOT TAKE YOUR  
NEIGHBOR'S JOB  
AWAY FROM HIM  
BY VOTING HIM  
OUT OF BUSINESS!

RECEIVING A SMALL PENSION ---- TRYING TO GET  
HELP!



More than 800 aged citizens of Eastland County who are now on the Old Age Pension rolls will receive \$6.00 less during October than before. This cut comes at a time when these old people need help worse than ever before. Since three-fourths of the State tax on beer goes to pay old age pensions, we should consider these old people before you vote to reduce their incomes at the outset of winter.

VOTE AGAINST PROHIBITING THE SALE OF BEER!

THIS ELECTION IS  
HONEST TAX-PAYING  
BUSINESS AGAINST  
THE BOOTLEGGER  
AND THE DIVE!

There are a hundred good reasons why the good people of Eastland county should vote against prohibiting the sale of beer in the election to be held Saturday, October 7, 1939.

It would take too much space to enumerate all the reasons—but here are a few—plenty to cause the average voter to stop and think before he votes in the coming election.

First—Those of us who remember the ridiculous situation a dry county is placed in when all neighboring counties are wet. Our people go to these places and get what they want to drink. They spend their money with business enterprises that operate where drinks are being sold.

Second—Ranger, Eastland and Cisco business houses will suffer if the county goes dry. Why? Oil men and tourists that come out of Fort Worth and Dallas, through to the West Texas oil fields... they want to stop and drink a glass of beer... may stay all night at the hotel... will eat a meal or two... buy cigars... cigarettes and other things...

spend some money for gasoline, etc. . . . will they come through Eastland county? Should it's citizens vote dry most of them will travel by Mineral Wells and Breckenridge.

Third—Are we going to invite bootleggers to move into some alley or out of the way place to sell their wares instead of selling beer openly and paying a legitimate license.

Fourth—Out of every dollar of tax on beer, 75c goes for the old age assistance and another 25c goes for educating the children. If beer is voted out how are we going to get this money for our aged citizens and what are we going to do in regard to helping finance the schools? Here is the answer: The legislature will add another tax of some sort to the already tax heavy public in order to get the money the beer has been bringing into these funds.

Fifth—Figures taken from the Tax Collector's records and from sworn reports made to the Texas Liquor Control Board show that during 1938 there was collected a total of \$77,096.20 in taxes and license fees on beer legally sold in Eastland County alone. Where

will this money come from should the county go dry? Think this over. The money that has been coming into Eastland county will go to our neighboring counties and part of it will be used to give the needy employment, to repair roads and other worth while things while we in Eastland County will take just that much from the needy in our own county. Think that over!

Sixth—There are business investments in the county that operate trucks. Their drivers spend their money, support their families, pay house rent, and patronize all business interests. Who will take their place should we vote to make the County DRY?

Think these things over! Why force our people to vote for something that will not be—something that only leads to make citizens disregard and disrespect the law... go away from home and in alleys and bootlegging joints, where there is no police protection and where bootleggers thrive without paying one cent to help support the government. Do not vote to turn the county over to bootleggers.

VOTE AGAINST PROHIBITING THE SALE OF BEER-----

DO NOT VOTE TO TURN THE COUNTY OVER TO THE BOOTLEGGERS!

BUSINESS MEN AND TAXPAYERS COMMITTEE OF EASTLAND COUNTY

# HERE ARE THE TRUE FACTS

## Concerning the Prohibition Election to be Held In Eastland County, Saturday, October 7

### WHAT ABOUT OUR AGED CITIZENS? WHAT ABOUT BUSINESS?

### Isn't Legalized Beer Better Than the Bootlegger?

### As A Fair-Minded American Citizen You Owe It to Yourself to Study the Answers to These Questions Before You Vote!

Every intelligent, fair-minded citizen wants to cast an intelligent vote. In order to do so, he must study both sides of every question, in order to get the true facts. We wish, in this advertisement, to present briefly facts and figures with reference to the proposition to prohibit the sale of beer in those portions of Eastland County where its sale is now legal. THESE FIGURES ARE TAKEN FROM PUBLIC RECORDS AND ARE NOT GUESS WORK. They can be verified by any interested person.

#### WHAT ABOUT REVENUE FROM THE SALE OF LEGAL BEER?

The records in the Tax Collector's office in Eastland show that there was collected during the calendar year 1938, the following sums in license fees from those permitted to sell beer in the wet precincts of Eastland County: State of Texas \$1,325.00; Eastland County \$612.50; Cities of Cisco, Eastland and Ranger, \$525.00; Federal government, \$970.00. This makes a total of \$3,432.50 in license fees alone. This amount, however, is only a small portion of the total amount collected from the legal sale of beer in the county. Figures taken from sworn reports by dealers to the Texas Liquor Control Board show that a tax of \$14,732.74 was collected by the State of Texas on beer legally sold in Eastland county during 1938. This same beer paid \$58,930.96 in taxes to the Federal government during the same period. Thus we see that a total of \$77,096.20 of badly needed revenue was collected from the sale of beer in this county in one year's time. The State of Texas during 1938 collected a total of \$6,498,066.29 from taxes and license fees on alcoholic beverages. Three-fourths of the tax goes to the payment of Old Age Pensions and one-fourth to the Available School Fund. (Figures and information taken from Page 34, Fourth Annual Report, Texas Liquor Control Board). The importance of the Federal tax mentioned above will be realized when it is remembered that the Federal government matches the state dollar for dollar in the payment of Old Age Pensions.

#### HOW WILL OLD AGE PENSIONS BE AFFECTED?

Every informed person knows that the Old Age Pension fund is in worse shape than ever before. It has recently been announced that all pension checks for October will be reduced by \$6.00 each in every case. We know of many of these old people who will suffer because of this fact. This condition has been brought about because the state has been running short of money, in spite of the large amounts collected by the beer tax. Many counties in Texas which do not permit the sale of beer are paying nothing to the Old Age Pension fund from this source. It is reasonable to presume that any county which votes dry is voting to deprive the old people of Texas of a large sum of tax money which is needed worse at this time than ever before.

With taxes higher than ever before, and the need for tax money greater, we feel that it would be a grave mistake to cut ourselves off from this valuable source of revenue.

#### HOW WILL BUSINESS BE AFFECTED?

A careful survey shows that 167 people are employed directly in the sale of legal beer in the wet precincts of Eastland County. These people have many others depending on them for their support. If prohibition is permitted to carry, these people will be thrown out of work and their dependents made to suffer. We wonder if those who are sponsoring this election, which will cost the county many hundreds of dollars, will guarantee that these people will find other work to support themselves and their families. The merchants with whom they do business now being drawn to the larger cities of the county because of the fact that beer can legally be purchased in these cities, would go to the merchants of our neighboring counties which permit the sale of beer.

In addition to the enormous loss to the county and state in tax revenues, the business interests of Eastland county would be seriously affected if beer is voted out of the county. The loss in salaries, to automobile and truck concerns, to garages and filling stations, and to property owners who are renting buildings to legal beer establishments, can hardly be estimated. Certainly it will run into hundreds of thousands of dollars. In fact, there is no line of business in the county which would not be adversely affected by the loss of business if beer is voted out. We can think of no one who would be benefited in a business way except the bootleggers and businessmen in adjoining counties.

#### WHAT IS THE REAL ISSUE?

We believe the real issue in this election can be boiled down to this one question: Shall the sale of beer in Eastland County be regulated under the laws and kept in the hands of responsible people, or shall we return to the days of wild-cat corn whiskey and home-brew by the bootlegger?

DO YOU PREFER the sale of beer under a strict, legalized licensed system, with the safe-guards of the law surrounding its sale, or do you prefer to return to unlicensed and unregulated sale by irresponsible and disreputable persons?

DO YOU PREFER that the money derived from the taxes on beer go into the public treasury, to pay old age pensions and the expenses of your schools, or that it go into the pockets of racketeers and bootleggers?

DO YOU KNOW that under the present strict Texas Liquor Law a beer dealer's license may be cancelled for any of the following reasons?

- SELLING TO AN HABITUAL DRUNKARD.
- SELLING TO A MINOR.
- SELLING TO A PERSON VISIBLY INTOXICATED.
- EMPLOYING ANYONE UNDER EIGHTEEN YEARS OF AGE.
- PERMITTING DISTURBANCE OR BREACH OF PEACE ON HIS PREMISES.

DO YOU KNOW that 1,040 licenses were cancelled and 740 suspended for one or more of the above reasons in 1938, and that the law compels the liquor board to cancel the license of anyone immediately upon his conviction on a criminal case for violating the liquor laws?

DO YOU BELIEVE that a bootlegger in a back alley or behind drawn shades would have any disposition to abide by any of the above requirements? His only interest is "Cash on the barrel-head."

IN COUNTIES WHERE THOSE WHO BELIEVE IN TRUE TEMPERANCE LEND THEIR SUPPORT TO ENFORCEMENT OF THE LIQUOR LAWS, CONDITIONS ARE MUCH BETTER THAN IN COUNTIES WHERE THEIR GOOD INTENTIONS AND WELL-MEANING EFFORTS ARE DIRECTED TOWARD SO-CALLED "PROHIBITION."

Don't vote to deprive the old folks of money they need! Don't vote to deprive schools of money they need!

#### Special Notice!

No matter what the result of this election, the status of those precincts in Eastland County, in which the sale of beer is now prohibited will remain unchanged. For instance, if the Rising Star, Gorman, Carbon or Dosdemona precincts were to vote against prohibition next Saturday, they would still remain dry under the laws of Texas just as at present.

Although the election is county wide, under the constitution and laws of the state it cannot legalize the sale of beer in any precinct, city or town where same is now prohibited. If your city, town or precinct is dry now it will remain dry.

#### Evidence of a Theory That Failed



A TYPICAL SCENE IN ANY TEXAS COUNTY SEAT DURING PROHIBITION. IT SHOWS CAPTURED STILLS USED TO MAKE MOONSHINE WHISKEY, AND EQUIPMENT TO MAKE POISONOUS, HIGH-POWERED HOME-BREW.

Don't vote toward returning the bootlegger! Don't vote to put people out of work!

This is the way to mark your ballot to keep the sale of beer legal in the precincts of the county where it is now sold:

**SAMPLE BALLOT**

FOR Prohibiting the Sale of Beer Containing Alcohol Not Exceeding Four (4%) Per Centum by Weight.

AGAINST Prohibiting the Sale of Beer Containing Alcohol Not Exceeding Four (4%) Per Centum by Weight.

This is a vote for KEEPING the Sale of Beer in the hands of responsible people and out of the hands of the bootlegger and home-brew peddler.

This is a vote to COLLECT Taxes on Legal Beer to help pay the Old Age Pension.

## Business Men and Taxpayers Committee of Eastland County

(Paid Advertisement)

SERIAL STORY

WORKING WIVES

BY LOUISE HOLMES

Yesterday Marian admits to Mr. Fellows that she has hated to see Sally take over more and more of the office work. Tell him Dan has left her, and that she is going to have a baby. Fellow promises her a bonus, offers to help. "You helped me ruin my life," Marian says, "I'll build it up alone."

CHAPTER XXVII
THERE was no friction in the office after that. There was no late in Marian's heart. She taught jolly Blake every smallest detail of her work.

She said, "I'm leaving the first of February, Sally. I'm quitting for good. My husband is in the west. He wants me to join him. Saying it helped keep up her courage, gave her hope.

For Dan did not want her to join him. On the first of each month a letter arrived at the office. A single sheet with a check enclosed.

"Dear Marian," the letter might say. "It's a swell day. Oregon sparkles for some reason or other. Enclosed find check." Or, "I'm a day late with your check. Sorry. Have you seen 'Dark Victory'? It's very good." Never did he say, "I miss you."

Marian tried not to care. She was depositing the checks and hoarding the money against expensive things like layettes and medicines and special milk. She knew Dan must think her utterly callous to accept them when her salary was so much greater than his. Some day he would know. She clung to the money as if it were a living thing.

One day Florence Avery came to her in regard to changing her desk to a less dignified position. Before leaving she said, "I've got my husband, has a job. A good job, steady. He wants me to quit working, but I think that's silly, don't you, Mrs. Harkness?"

Marian asked her to sit down. She talked to Florence Avery for half an hour. The next Saturday Florence quit her job. Marian felt as elated as if she had brought a million-dollar account into the office. If she could save another young couple it might help. Always she was building, building, working to make herself worthy of the big job which was to be hers.

Randy and Dolly did not return. Randy felt that he deserved a vacation, so Dolly wrote. They were going around the world. It might be many a month before they returned. Never had there been so beautiful a honeymoon.

Marian missed Dolly more each day. But, on the other hand, she wanted to do her proud job alone. For her own satisfaction, she wanted to lay each stone herself. She knew now why Dan had

wanted to provide for her unaided. Often she wept into her pillow with the stark realization of what she had done to Dan.

MARIAN spent Christmas Day with the Sands. It was a little hard to be joyous that day. She had expected to hear from Dan, just a card, just a line. There had been nothing. She had to keep pushing at a worried thought. Suppose Dan had found someone else. What then?

Suppose she was too late. She couldn't think of it—she wouldn't. Of course, there was a way to forestall any such occurrence. If she wrote to Dan, told him about the baby. The temptation was strong upon her, day and night.

Dan, being himself, would return at once. Or he would send for her. He would be gentle, kind, agreeable. She didn't want that, she wouldn't have it. No, love was her goal. She was through with half measures. Perhaps not the love of 12 years ago. Perhaps Dan's hurt went too deep for that. But pride in his wife, she must give him that. Pride, that she had fought her battle alone and come out victorious. Pride, that she had done it for him. No whimpering now—not ever again.

January passed on even tread. On the last day of the month Marian gathered up the accumulated belongings of 10 years. She said goodby to the switchboard girl, to the stenographers and the office boy. She kissed Sally.

"Take good care of G. F.," she said.

She went away with two checks, her salary check and a bonus of \$500. No one except Mr. Fellows knew why she was leaving. They hoped she'd like the west, they said they'd miss her.

SHE had expected the days to be lonely, the waiting hard. Instead, the days were full and happy. She met her neighbors, gossiped with them in the hall, talked about cooking and slip covers and babies.

The brittle hardness went out of her face, her hair curled in soft ringlets, some days she forgot make-up entirely. She was young again, sweet, simple, glowing with a secret joy. In those waiting days she worked harder at being a homemaker than she had ever worked before. She read books on child care and feeding, she tolled over her budget, finding excitement in making two rather precarious ends meet. Dan would be proud and happy that she had lived on his checks while waiting for the baby. Often her lips moved in silent prayer. "Help me to be a good

more happily after today." She smiled and there was understanding between them. Angie remained for lunch. When she went away, Marian felt that one more wrong had been righted. It was as if she were impelled to smooth her past life, put it neatly in order, before taking the onward path.

SHE rested during the afternoon, dreamy, contented. Dolly would soon be back, she would hear from Dan on the morrow. Even his brief notes were things to be anticipated. Always there was the hope that she might find some personal bit, some sign that he cared for her. At 4 she dressed, planning to spend several hours at the neighborhood theater. The evenings were apt to be rather lonely. But that would soon be over. Soon there would be two persons in the apartment.

It was unreasonably warm and she made a tall glass of iced coffee, pouring the hot, amber liquid over cracked ice. It steamed pleasantly, the glass frosted over. Rich cream gave the glass opaque, golden shades. Sipping the drink, Marian was startled by a brisk rap on the door. One of the neighbors, they were kind, her neighbors, keeping an eye on her. She opened the door.

"Carma Forbes," she exclaimed. "My dear—am I glad to see you? Come in quick."

Carma came in. Her dark suit was as smart as ever, her small hat as extravagant, but there was a subtle difference. The restlessness was gone, serenity had taken its place. She did not glow like Dolly, she had not acquired Marian's wistful beauty, but she was serene, at peace. Marian hurried to the kitchen for another glass of iced coffee and Carma followed.

"Well, well," she said, "I guess I'm just one jump ahead of the stock."

"Hardly that," Marian laughed. "Most any minute I'll be presenting the more or less appreciative world with another citizen."

"I heard that you had quit your job, but I had no idea you were doing yourself proud like this. I got your address from Mr. Fellows."

Holding her glass, she sat down and looked around the pleasant apartment. "You're a housewife," she said, "I'm a housewife," she said, "I'm a housewife."

Carma nodded, "How's Dan?" "Oh, fine."

"I haven't seen him since—that night."

"Don't talk about it if you'd rather not, Carma."

"I'd give my right hand if it had never happened."

"Try to forget it. Everybody of

with the Sands. God. Watch over Dan and keep him for me. Don't let me be too late."

It was the last of April that a letter from Dolly was forwarded from the office. Although Marian had written frequently, addressing her letters to strange, romantic ports, she had said nothing of her new mode of life. Dolly might correspond with Dan, they had been the best of friends, and Dan must not know. Dolly's letter was postmarked "New York" and, all at once, Marian wanted to see Dolly, all at once she needed her.

She tore open the envelope. Dolly had written, "We're back, darling. Be prepared to listen to every detail of the world's most perfect honeymoon. Will call you at the office on May 1."

WITH the knowledge that Dolly was near, Marian realized how greatly she had dreaded the coming ordeal, how she had braced herself to go into it gallantly alone. Dolly, the very thought of her was like the pressure of a kind hand. Dolly would see her through.

She went to the market that morning, taking the long way round, walking slowly, breathing deeply of the warm air. She passed children and smiles at them, women who trundled baby carriages and stopped to talk. She felt a common bond with the world of women and babies.

In the market, standing before a counter piled high with wet, fresh vegetables, she heard a voice and turned quickly. Angie Doran, thinner, grayer, a bit shabby, stood beside her.

Marian hesitated for an instant. She and Angie Doran had not parted on the best of terms. Then she said warmly, "Angie Doran—I'm glad to see you."

Angie turned, surprised, instinctively drawing back. "Hello, Marian," she said coolly.

Marian would not be repelled. "I've wondered so often about you, Angie. Do you live near here?"

"Yes," politely. "And you?" She seemed slightly confused by Marian's appearance.

"I'm over on Claremont." And, impulsively, "Come home with me, Angie. I think you and I have a great deal in common."

"You're not working for Mr. Fellows any more?"

"I'm very busy having a baby," smiling.

"You're smart, Marian—smart to stop before they shoved you out." An old bitterness edged her voice.

"I was shoved out—by a young girl. That's what I want to talk to you about. Will you come home with me?"

(To Be Continued)

"OUT OUR WAY"

By Williams



RED RYDER

By Fred Harman



ALLEY OOP

By Hamlin



Committee Named To Work Out A Program For Masonic Meet

R. H. West, Odell Cole, Marvin Brock, C. E. May and F. R. Hicks were appointed last night at meeting of the Ranger Masonic lodge to work up a program for the forty-seventh birthday party to be held by the local lodge on next December 10. The committee announced that the grand master of Texas and his officers would be invited and plans for one of the greatest gatherings of Masons in the section in years would be undertaken. Announcement was made at the meeting that a Fellow Craft degree would be conferred Tuesday night.

Marriage Service Is Halted By A Fire

LIVERMORE, CAL.—That little, and apparently useless, warning which the marrying minister always gives to the effect that if anyone knows any reason why the wedding should not proceed "to state them now or forever hold their peace," is not always as superfluous as it may seem. The officiating minister at the wedding of Miss Bertha Carlson and Milton Fisher had just reached that point, when a neighbor poked his head in the door and announced that there certainly were reasons why the ceremony should not proceed. "The house is on fire," he declared.

BACKACHE, LEG PAINS MAY BE DANGER SIGN Of Tired Kidneys

If backache and leg pains are making you miserable, don't just moan and do nothing about them. Nature may be warning you that your kidneys need attention. The kidneys are Nature's chief way of taking excess acids and poisons out of the blood. They help most people pass about 2 quarts a day. If the 15 miles of kidney tubes and filters don't work well, poisons waste matter stays in the blood. These poisons may start nagging backache, rheumatic pains, leg pains, loss of energy, getting up nights, swelling puffiness under the eyes, headache and dizziness. Excess of acids poisons the body, making it hard to breathe, causing heart trouble in some cases. Don't wait! Ask your doctor for Dr. Williams' Pink Pills for Pale People. They give happy relief and will help the 15 miles of kidney tubes and filters work from the start. Geo. D. Davis, Pitts.

CANADA TO HAVE "EYE" By United Press
MONTREAL.—By the end of 1940 the Canadian National Institute for the blind may have its own training center for dogs, to be used by sightless persons, in full operation. Through an arrangement with the "Seeing Eye Incorporated" Morristown, N. J., a limited number of candidates from

Quebec will be accepted for intensive training.
COLD'S
Relieve misery as 3 out of 5 mothers do: fast relief of colds, coughs, throat, chest, back, and



VISIT THE Rose Festival AT TYLER
Why not plan to enjoy one of Texas' most famous sights, the Rose Festival at Tyler, October 13, 14, 15. See a million roses in bloom. This never-to-be forgotten event will be one of the high spots of your fall fun. The trip is lovely at this time of year and wherever you go you'll find your old favorite SOUTHERN SELECT to refresh you and make life more fun. Don't get in a rut—there's lots to see, do and enjoy and it's a grand time for a good time. When you plan good times be sure to include Southern Select—the natural companion of enjoyment and good fellowship.



Southern Select is the South's only Distilled Water Brew famous for Flavor for Forty Years. GEO. H. JEWELL, Distributor BRECKENRIDGE, TEXAS

OFFICIAL STATEMENT OF FINANCIAL CONDITION OF THE COMMERCIAL STATE BANK

at Ranger, State of Texas, at the close of business on the 2nd day of October, 1939, published in the Eastland County News, a newspaper printed and published at Ranger, State of Texas, on the 5th day of October, 1939.

Table with 2 columns: RESOURCES and LIABILITIES. Includes items like Loans and discounts, Capital Stock, Surplus Fund, etc.

STATE OF TEXAS County of Eastland W. Hall Walker, Vice-President and W. F. Creager, as Cashier of said bank, each of us, do solemnly swear that the above statement is true to the best of our knowledge and belief. HALL WALKER, Vice-President, W. F. CREAGER, Cashier. Subscribed and sworn to before me this 5th day of October, A. D. 1939. J. L. HANEY, Notary Public, Eastland County, Texas. CORRECT--ATTEST: O. D. Dillingham M. R. Newnam Edwin George, Jr., Directors.

WANT AD IN THIS PAPER WILL BRING QUICK RESULTS!

DAY, OCTOBER 6, 1939
Disclose
YORK
SA
ards b
ND
gains
Open Feet
Slee
warmer, i
stettest Rip-
stable butto
Cotton Flann
s Pa
high for CO2
roomy sizes
or surplus
WAR
MO
\$10
407-04

Disclose 6th Sense Aids Guesses

extraneous perception—governs to a certain degree the accuracy of guesswork, tests conducted by Columbia University psychologists indicate.

The research workers, after conducting a series of 1,000 tests with hidden cards, said even the average man or woman had some sort of mental prompting which tended to bring forth higher-than-chance guesswork on the part of some of the subjects.

but offered no opinion as to what the extra-chance factor might be. In every test, the cards were shuffled and set out of range of sight and hearing, and in about

half of the tests the subjects were a quarter of a mile away. The records indicate, contrary to chance expectation, that there is a definite relation between the

scores on some of the sets of cards," Prof. Gardner Murphy said. "Control series and statistical analysis suggests that something other than chance is at

work. . . There are several phases of the distributions of the data which are difficult to interpret and it is considered wise to continue the experiment.

# Use Words MONTHLY PAYMENT PLAN

## SAVE AT WARDS LOW PRICES... PAY IN CONVENIENT MONTHLY INSTALLMENTS!

Wards bring you the biggest assortment in town!

# UNDERWEAR WEEK

Gains for Every Member of Your Family!



**SALE! Regularly 98c!**  
**Flannelette Nighties**  
Values that will astonish you!  
**88c**  
Pinks, blues, roses! Fleece cotton flannelette with old fashioned swiss embroidery! With lace, ruffles, ribbons and long, warm sleeves! Careful cut. 15, 16, 17.

**SALE! 79c Values!**

**Unionsuits**  
Famous Heavyweight Healthgards  
**64c**

Slip into a Healthgard unionsuit and get set for a brand-new idea of comfort! No more squirming—every size is cut full . . . with an extra-roomy seat and skid-proof shoulders. Knit of warmest heavyweight cotton. Sale ends Saturday!  
**10% WOOL UNIONSUITS . 89c**



**SALE! Regularly 49c!**  
**Boys' Unionsuits**  
Guard Your Boy Against Colds!  
Healthgard Quality!  
**49c**



**SALE! Regularly 35c!**  
**Men's Sleepers**  
Warmer, 1-piece cotton knit! Rip-proof seams; washable buttons; 2, 4, 6.

**Outstanding Values!**  
**49c Sleepers**  
Sizes 2-4-6  
**44c**  
Warm rib-knit cotton with elastic drop seat and double-sole feet. Save at Wards!

**SALE! Regular 25c Values!**  
**Men's Shorts**  
Smash Values at  
**25c**  
Bright new patterns on fine cotton broadcloth. Full sizes. Combed Cotton Shirts . . . 25c

**SALE! Regular 25c Values!**  
**Vests, Panties**  
4 Days Only!  
**21c**  
Sleek-fitting Comfynugs. Long-wearing tuckstitch with a shiny rayon stripe. Double seat gusset.



**Sensationally NEW for Fall!**  
**Men's "Athletics"**  
Knit Shirts and Shorts  
**39c**



**SALE! Regularly 98c!**  
**Men's Pajamas**  
High for COMFORT! Full roomy sizes A to D. Notch, or surplice coat styles.

**With Elastic Drop Seat!**  
**"Easy Helps"**  
Suits for 2-10-ers  
**39c**  
"Easy Helps" speed up dressing! Knit of fine cotton. Boys' button-front; girls' step-in.

## SAVE UP TO 20% ON WINDOW SHADES

**Washable Fiber Shades**  
Complete with spring roller and nails!  
**35c**

You can't beat these shades for quality and price anywhere! Notice the firmly woven fiber—it actually looks like woven cloth! They're washable—mild soap and water cleans them like new! Equipped with edge-saver brackets to keep edges of shade from fraying when rolled! 36" x 6' size.

**Dustproof Cloth Shade**  
59c elsewhere! Glazed surface resists dust—just wipe with dry cloth to clean.  
**44c**

**Save \$25!**

**2 Velvet Pieces**  
**58<sup>88</sup>**

\$6 A MONTH, Down Payment, Carrying Charge.

Here's an exciting value, with features worth \$25 more! You have room for luxurious lounging in the davenport—it's actually 81 inches long! New styling in the channeled arms, rayon velvet cover, beautifully milled walnut finished base!

**Heats up to 5 Rooms**  
**\$35 Value Powerful Gas Circulator**

A big, powerful gas heater that circulates plenty of heat quickly. Has center-feed cast-iron burners that can be used separately or together. Modern streamlined design. A.G.A. approved.

1-2 room size . . . **14.95** 2-3 room size . . . **17.95**

**22<sup>95</sup>**  
\$6 A MONTH, Down Payment, Carrying Charge

**SALE! \$75 Quality!**  
**Waterfall 3 Pc. Bedroom**  
**59<sup>88</sup>**

\$6 A MONTH, Down Payment, Carrying Charge

MORE fine features than you'll see at \$80 elsewhere! These pieces are BIG with graceful, rounded waterfall tops! The satiny, hand-matched orientalwood veneers on hardwoods are protected with a beautifully rubbed and polished Dupont duco finish! The bottom drawer of the tall chest is cedar-lined! You get bed, roomy chest and choice of vanity or dresser!

## WARDS SUPER POWER GRIPS

**THE LONGEST WEARING EXTRA TRACTION TIRE WE KNOW OF!**

**SUPER POWER GRIP—Best Tire for Any Road!**

AS LITTLE AS **\$1<sup>25</sup>** WEEKLY BUYS **4** Tires & Tubes

\*For mud and snow, as well as paved roads. Famous Power Grip knobs give more complete traction everywhere! New "Life Track" stop-skid tread for more mileage, safer driving on slippery pavements! More stability, better steering, less vibration! See it at Wards now!

ON MUD AND CLAY ON DIRT SNOW ON PAVED ROADS

**Utility Heater**  
It's Portable **17<sup>95</sup>**

Modern design. Carry it anywhere. Has cast-iron burner. Clean white porcelain.

**Scenery Portable Kerosene Circulator**  
**15.95**

Clean, quick and odorless. No flame needed. 2 Giant wickless burners. Buffles distribute heat evenly. Save!  
With Cooktop **\$17.95**  
\$2 A MONTH, Down Payment, Carrying Charge

**Gas Circulator**  
Strong Steel Body **6<sup>95</sup>**

Porcelain inside and out. Center feed cast-iron burner. Circulates and reflects heat.

**Modern Design Gas Radiant**  
**8.95**

Radiates cheery heat quickly and economically. Strong rugged wrought iron design. Ceramic clay radiants. A.G.A. approved.

- Chrome Hearthplate and Deflector Plate
- Improved Wire Guard

**ALL THE WORLD SERIES DRAMA IS YOURS**

**9<sup>95</sup>** In Ivory \$1 More!

**Built-in Aerial**

A big 5-tube set—10 1/2x6 1/2x5 1/2! With Automatic Tuning! Super-dynamic speaker! Super-heterodyne circuit! Automatic Volume Control! Approved by Underwriters.

**6 Tubes! Automatic Tuning!**  
Amazing tone fidelity! 5" Super-dynamic speaker! Super-heterodyne! A.C. **14<sup>95</sup>** Monthly Terms

Society

Masquers Enter Eighth Year
The Masquers, dramatic club of Ranger Junior College had its formal opening Tuesday, October 3, at Lone Star Plant 3 clubroom.

The latter part of the meeting was spent duode ranch style. The game room of the clubhouse was decorated with saddles, hay, wagons and lanterns.

Mrs. Carl Heinlen was leader for the afternoon. Mrs. E. R. Green talked on the "State Birthday" and Mrs. C. E. Maddocks gave a very interesting article on "Safety Education in the Home and School."

ing that the club on October 23, will sponsor a concert by Mr. Elwood Prying, head of the fine arts department of Ranger Junior College.

HOSPITAL NOTES

Mr. and Mrs. Walter E. Cox announce the birth of a baby girl, Sandra Lynn, Thursday at the City-County Hospital.

Just a Bit Personal ...

Mr. and Mrs. J. J. Bell of Los Angeles are visiting Mr. Bell's sisters, Mrs. M. B. Zeigler and Minnie Bell. Mrs. Zeigler also has as her guests her son, Pete Zeigler, and his wife from Los Angeles.

ELECTRICAL APPLIANCES

Specials for Friday and Saturday!
Fresh Water Speckled Trout, 24c; Fresh Oysters, 15c; Fresh Sliced Fish, 24c; Fresh Cat Fish, 24c; Fresh Oysters, 33c; Fresh Large Oysters, 65c; CANDY, TOBACCO, COLD POP.

GLASS EYE COWS POLICE

E LCENTRO, Cal.—A man detained by police here as answering to a suspect's description was not half as disconcerted as were police when he proved he was not the man wanted. He merely took out a glass eye.

FOR RENT
2 - 3 and 4 Room
Furnished or Unfurnished
Apartments With Bath.
GHOLSON HOTEL

Mrs. Harrell's Eat Shop

HOT PLATE LUNCHES
HAMBURGERS
SANDWICHES
COLD DRINKS
ICE CREAM
CANDY
Full Line of Masterpiece School Supplies
Next Door To Band Hall

TOWNSENDITES TO MEET

The Ranger Townsend Club will meet Monday night, Oct. 9, at Calvary Baptist Church, when something different in the way of entertainment is promised. Business will also be transacted. The public is invited to attend.

IMPORTANT! Lasted personal appearance means so much in every way to a man these days. An neatly trimmed hair is necessary to good appearance. Have your hair trimmed frequently — and have it done here where we know how to make it look its best.

BROWN'S Transfer and Storage
FOR MOVING & STORAGE
Agents for T. & P. TRANSPORT

NOTICE!
Mrs. Bell's Cafe
Main St. Ranger

Chiropractic Service

By Aid of the New Radio-Clear Instrument!
We can easily find and ... are perfectly your trouble; also what organism involved. No guess-work, but everything is scientifically measured.

LOVE & CRAWLEY SINCLAIR SERVICE

TIRES, ACCESSORIES, BATTERIES ... NEW and RECHARGED

FAST SERVICE CALL PHONE 225

G. C. (Lum) LOVE & PRICE CRAWLEY

\$4 to \$6 Allowance for Your Old Tire

On a New BRUNSWICK TIRE. Why buy your tires elsewhere on time when you can get as good a value here for cash and save from \$4 to \$6 a tire. Also used tires ... all sizes and prices, and auto repairing of all kinds.

BILL'S USED TIRE EXCHANGE
115 South Commerce Street Ranger, Texas

END YOUR BATTERY TROUBLES NOW FOR THE ENTIRE WINTER SEASON BY INSTALLING A— Wizard Super-Power Battery

A Battery that exceeds all S.A.E. specifications! Long established Quality and Endurance permit WIZARD BATTERIES to bear a definite, written TIME GUARANTEE!

\$3.75 Exchange Up THE WESTERN AUTO STORE S. O. MONTGOMERY

Things They'll Need for SCHOOL

Buy Your School Supplies Here! Our Stock is Complete. The Prices Are Right!

Art Papers ... All kinds of Loose Leaf Paper Fountain Pens ... Pencils ... Compasses Protractors ... Typing Paper.

A. H. POWELL GROCERY & MARKET WE DELIVER PHONE 103

Extra Special VALUES For FRIDAY AND SATURDAY



FLOUR 48 LB. SACK 95c Jonathan APPLES 2 Doz. 25c

Red Velvet Sweet POTATOES 5 Lbs. 19c White POTATOES 10 Lbs. 21c

Delgado's TAMALES 303 size Can 9c Extra Fancy Jumbo CELERY Per Stalk 10c

Salt JOWL Per Lb. 9c Picnic HAMS 4 to 6 lb. avg. Per Lb. 17c

Crystal White SOAP 5 Bars 19c Sliced Pineapple 3 flat Cans 25c

STOP IN TODAY! You can depend on getting good values at SIG'S NU-WAY Store any time ... but this week we're surpassing ourselves! Stop in and get your share ... savings on everything!

Tokay GRAPES 2 Lbs. 15c SUGAR 10 LB. BAG 59c

Sun Glaze CHILI Con Carnie 303 Can 10c Fresh Tomatoes 2 Lbs. 15c

Sliced BACON Per Lb. 20c Dressed HENS Per Lb. 15c

Our Favorite Salad DRESSING Per Qt. 23c 1 lb. Graham Crax 19c 1/2 lb. Krispy Crax 10c 29c Value

SIG'S Nu-WAY STORE

WE DELIVER RANGER WE BUY HIDES, CREAM, POULTRY, LIVE STOCK!

CLASSIFIED

0—LODGE NOTICES
CALLED MEETING Ranger Masonic Lodge No. 738 A. F. & A. M., Tuesday night, Oct. 10, beginning promptly at 7:30. Work in Fellow Craft degree. Visitors welcome. All members urged to attend.

3—HELP WANTED, FEMALE
UNINCUMBERED woman to assist with house work and care of baby. B. E. GARNER, Arcadia Theatre.

7—SPECIAL NOTICES
WE BUY JUNK and all kinds of metal. We pay good prices. E. Vasquez, Hunt St., Ranger, Texas.

11—APARTMENTS FOR RENT
FOR RENT: 3 rooms furnished, 606 MESQUITE.

FOR RENT: Furnished apartment, bills paid.—311 WALNUT.

FOR RENT: 4-room apartment, bills paid.—LORRAINE APARTMENTS.

12—WANTED TO BUY
Wanted to buy: Used Safes & Vault doors, age no bar. State make, price, location and condition first letter. Write Pangburn's Supply Company, Box 542, Lubbock, Texas.

19—FOR SALE OR TRADE
FOR SALE OR TRADE—1 disc harrow, 4 pigs, 1 boar, 1 ten month old Jersey bull. O. A. Hinman, route 1, Ranger.

AUTOMOBILES

FOR SALE or Trade: 1930 Model A coupe.—CARL CLEMMER, 3 1/2 miles Ranger on Gorman road.

USED CARS

1938 Chevrolet Deluxe Sedan—driven only 14,000 miles, perfect condition. See and drive this car. An exceptional value. \$695
1938 Chevrolet Deluxe Coupe. Has had good care. Looks like a new car. \$565
1936 Chevrolet Standard Town Sedan, motor excellent, tires good. \$375
1935 Plymouth Coach, new paint, new seat covers. \$235
1935 Dodge Coupe, new paint, new upholstery, a dependable car. \$260
1934 Chevrolet Coach. See this bargain today. \$190
1934 Chevrolet Town Sedan. New paint, good tires, motor excellent. \$245
1933 Chevrolet Town Sedan. Motor OK, tires good. A good value. \$195
1933 Pontiac Coach. Lots of service in this car. \$165

ANDERSON-PRUET RANGER, TEXAS

Mrs. J. H. Crabb and daughter, Darlene of San Diego, Calif., are visiting Mrs. Crabb's mother, Mrs. Pearl Young.

COLDS Cause Discomfort
For Quick relief from the misery of colds, take 666
Liquid—Tablets—Salve—Nose Drops

INSURE IN SURE INSURANCE! See Me First! C. E. MAY Insurance in All Its Branches

TRADER'S GROCERY & MARKET

SPECIALS FOR FRIDAY AND SATURDAY! We Deliver - Cor. Walnut & Rusk Sts. - Phone 19
SUGAR 10 POUND Paper Bag 55c
SPRY 3 LB. CAN 53c
Red Pitted Cherries No. 2 CAN 10c
Cherub MILK 3 Tall Cans 19c
Goodwin's Pure APPLE BUTTER 38 OZ. 19c
Royal Gelatin DESSERT or Pudding 2 Pkgs. 9c
Lomco SPAGHETTI or MACARONI 3 Boxes 10c
Folger's COFFEE 2 Lb. Can 50c
PEANUT BUTTER Qt. 25c
K. C. Baking POWDER, 25 Oz. 17c
Frazier's CATSUP, 14 Oz. 10c
Washburn Pancake FLOUR, 2 Pkgs. 15c
Pinto BEANS, 3 Lbs. 21c
HUSKIES 2 Fks. 15c
Silk Toilet TISSUE, 5 rolls 19c
Van Camp's Pork & Beans, 1 lb. can 5c
Royal Gem CORN, 2 No. 2 Cans 15c
GREEN BEANS 3 No. 2 Cans 25c
TOMATOES 2 No. 2 Cans 15c
Camay SOAP 3 Bars 17c
P. & G. SOAP, 5 Giant Bars 19c

OXYDOL Large Size 19c

GOLD MEDAL FLOUR 24 LBS. 85c 12 LBS. 45c SHORTENING MERIT 4 lb. cart. 39c

Fresh Tomatoes Lb. 5c Tokay Grapes Lb. 5c Bacon Lb. 20c Pork Chops Lb. 22c
HAMBURGER BOLOGNA PORK SAUSAGE Lb. 12c DRESSED HENS And Fryers
Fancy Tender Steak Round, Loin T-Bone Lb. 25c Chuck Roast Lb. 18c

Notice!

Owing to the scarcity and high price of feed, we are raising the price of milk from 10c to 11c per quart, beginning—

Friday, Oct. 6th
MRS. HENRY HAMILTON
EASTLAND DAIRY PRODUCTS (Pasteurized Milk)
OAKWOOD JERSEY DAIRY
CLEMMER DAIRY