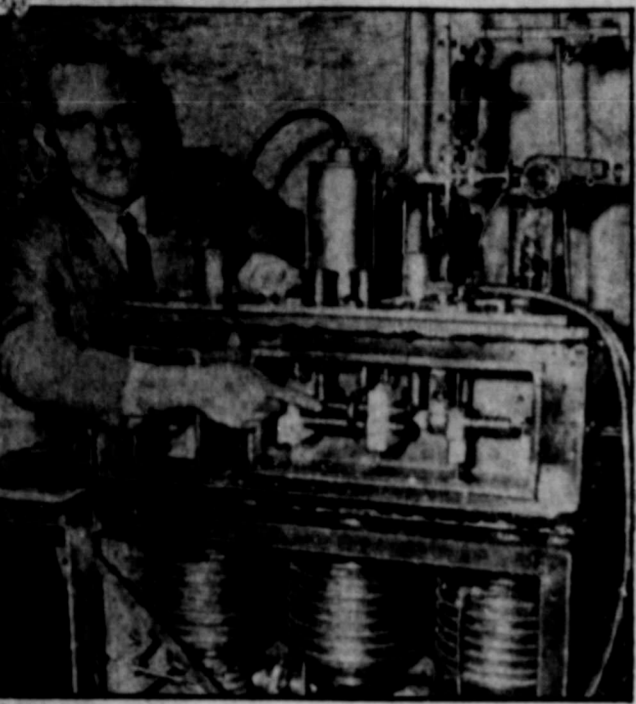


Bargain Days -- Friday, Saturday, Feb. 11-12

THE RANGER TIMES

RANGER, TEXAS, THURSDAY, FEBRUARY 10, 1955



TIME FOR ATOM AGE—Prof. Charles H. Townes, of Columbia University, points to mechanism of his "atomic clock," a device so accurate that it is expected not to vary more than one second from correct time in 300 years.

The Pathfinder

I can't understand why you failed in business," remarked the genius to his friend. "Too much advertising did it," his friend replied. "What do you mean—too much advertising? You never spent a cent in your life on advertising."

Low Of 22 Forecast For Tonight Here

A cold front that moved into the Eastland county area early this morning is expected to end the warm weather that has basked this locality in the past few days and above the temperatures to around 22 tonight.

Local Dealer Shows Newest In Kitchen Musts

Revolutionary built-in cooking equipment, plus 15 pace-setting refrigerators, 11 electric ranges, four dishwashers, two upright freezers and four room air conditioners, were announced here today by Frigidaire.

Firemen Honor Retiring Secretary With Supper

The Ranger Volunteer Fire Department held a chili supper Tuesday in honor of Dr. M. E. Jolly, retiring secretary of the organization.

Nineteen Bulldog Lettermen Get Jacket Awards

Football jackets were awarded to 19 members and three managers of the 1954 Bulldog football team at an assembly at Ranger High School this morning.



STEPHEN E. ALLEN



CLIFF M. DAVIS

Local Jaycees Draw National Aid In Attempt To Re-build

The Ranger Junior Chamber of Commerce will draw national and state assistance tonight as they attempt to reorganize their organization, Pat Mosley, secretary of the club, announced here Wednesday.

Kirk Takes Love's School Board Seat

W. G. Kirk, president of the First National Bank of Gorman, has been elected to fill the unexpired term of Melva Love as a trustee on the Eastland County School Board.

County Youth Gets \$1,400 At Auction

Harold Hilley, youthful Gorman I-H Club boy, sold his reserve champion shorthorn calf for \$1,400 at the Southwestern Exposition and Fat Stock Show auction held in Fort Worth.

"Dream Sales" Spark Weekend Bargain Sales

Ranger merchants will offer the kind of a sale that we all often dream of but rarely find in another City Wide Bargain Days Friday and Saturday.

Letter Jackets Awarded 31 At College

Gridiron letter jackets were awarded to 29 football players and two managers at Ranger Junior College in a special assembly program Wednesday morning.

Two Candidates Announce For City Election

Two persons have filed for election in the city election scheduled Tuesday, April 5, it was announced here today.

Ranger Scout Troop Featured In T-P Book

The cover of the January-February issue of Panorama, the official publication of the Texas Pacific Coal and Oil Company, contains a picture of members of Boy Scout Troop 15 of Ranger raising the flag over Thurber Lake.

Bank To Be Closed Saturday For Holiday

The Commercial State Bank of Ranger will be closed Saturday for Lincoln's birthday, it was announced today.

Mrs. Clyde Boyd Takes Position With 500 Cleaners

Mrs. Clyde Boyd, veteran dry cleaner and alterations expert, now is associated with the 500 Cleaners, owners and operators of the 500 Cleaning plant, announced today.

Rangers Shake Plows 77-53

The Ranger Junior College Rangers fired a shot that was heard around the Pioneer Conference Tuesday night.

Music Students To Compete In State Meet

Sam Houston, Ranger High School Band Director left for Dallas Wednesday morning to attend a meeting of the State Music Association.

Recruiter Notes Observer Shortage In Air Force

A recent change in requirements has resulted in many openings for aircraft observer flight training according to Sgt. Grady Hoyle, head of the local Air Force Recruiting Station at Ranger.

Just Facts Ma'm Just Facts

Several persons were agape late Tuesday afternoon as an unidentified aerial object soared through the air near the city.

Band Boosters Meet Tuesday

About 40 members of the Ranger High School Band Boosters Club met Tuesday evening at 7:30 at the Band Hall.



"THIS ONE WILL REALLY SLAY YOU"—Dr. William A. Irwin, of Detroit, Mich., exhibits a prized item of his extensive gun collection: a violin that's nothing to sneeze at.

SEE DON PIERSON—Olds - Cadillac - Before You Trade Eastland

SEE DON PIERSON—Olds - Cadillac - Before You Trade Eastland

Weather Reports - Cloudy to partly cloudy and colder Thursday and Friday.



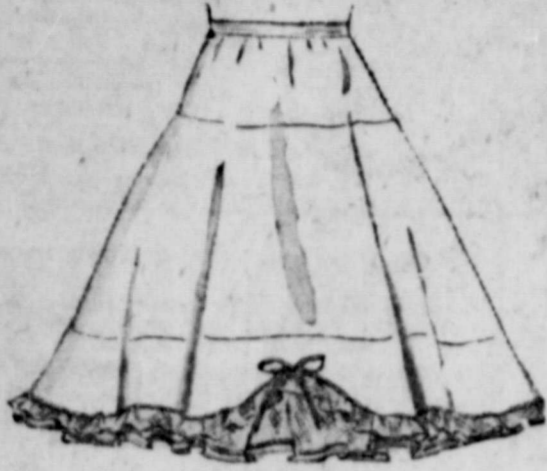
407 Main

RANGER

Montgomery Ward

Phone 447

# BARGAIN DAY SALE



REGULAR 3.98 BOUFFANTS

Gay assortments **1.99** Sizes S-M-L

Full swirling Petticoats are lovely to give and delightful to receive. See how prettily they set your skirts afloat. Crisp taffetized nylon is easy-to-laundry, quick-drying. White, colors. Women's sizes.



WOMEN'S BEAU DURAS

**49c** pair

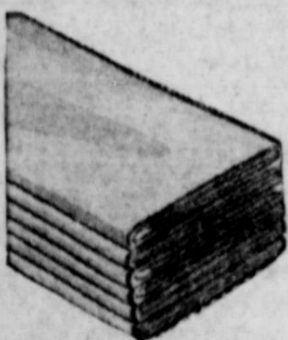
Nationally known Spun-lo knit rayon—famous for its strength and absorbency. Elastic and band leg styles. S-M-L.



BIRDSEYE DIAPERS

**1.98** Doz.

Soft, absorbent cotton is bleached white and steam sterilized. Long-wearing; maximum comfort assured for baby.



REGULAR 25c FLOUR SACKS

**6 For \$1.00**

Unhemmed cotton sack-ing. Opened, washed, bleached, ironed. For dusting, polishing, other home, farm uses. 30".



RIB-TO-TOE CREWS FOR GIRLS

**23c** Pair

Popular Socks for dress and sports. Lustrous mercerized cotton in assorted colors for every outfit. 6 1/2 to 11.



RUSTLY CHROMSPUN TAFFETA

Washfast **1.00** Color-locked acetate 2 Yds.

No fading worries—the new color-locked process keeps all shades bright as new. For petticoats, separates, party dresses, home decorations, too. 45". SIMPLICITY PATTERN illustrated. # 4779 .....35c

## LADIES SHOES

Now **2.99**

Large asst. Values up to \$6.00. Buy early.

## CHILDREN'S SHOES

Now **1.99**

Good size asst. New spring styles.

## BED SPREADS

Now **4.88**

Reg. 5.98 Chenille Spreads Now at this special low price.

## LADIES MOCCASINS

Now **88c**

4 Colors to choose from—Ideal for summer.

## Drapery Material

Now **77c** Yd.

Reg. 98c — Beautiful colors—Save on this Bargain Day Special.

## Girls Squaw Dresses

Now **3.00**

Reg. 3.98 — Our newest spring fashions for girls.

## MENS DRESS SHIRTS

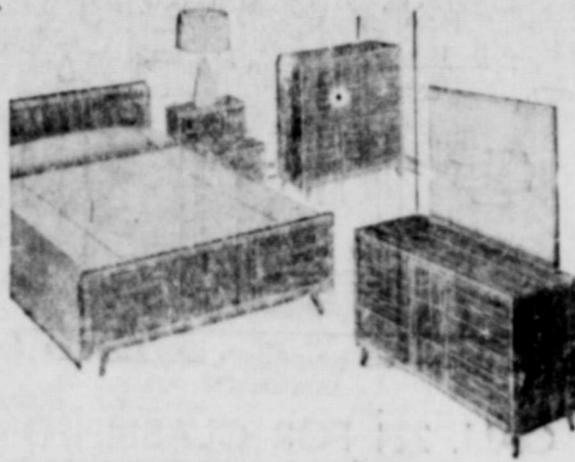
Now **2.98**

Newest colors — Newest styles — New pinks. Just arrived.

## STEEL BLINDS

Now **2.44**

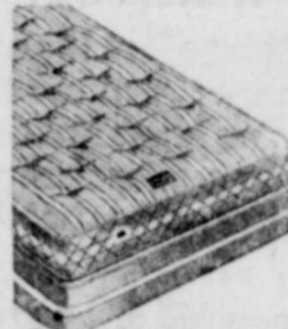
Choice of sizes at one low price. Reg. 2.98.



REG. 219.95 3-PC. BEDROOM SUITE

Brown Walnut **149.88** Ask about Terms

Bedroom beauty—priced low. Panel Bed, 9-drawer Triple Dresser, 4-drawer Chest—rich walnut veneer. Gloss varnish finish hand-rubbed to high luster. REG. 199.95 2-Pc. Suite 174.88



SAVE \$20 ON 49.50 QUALITY MATTRESS **29.88**

3.50 Down, on Terms. Special Purchase. Full or twin size 312-coil unit. BOX SPRING 29.88 SLEEP SET 58.88



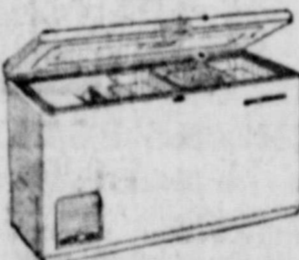
9X9" LUXURY RUBBER TILE **16c** ea.

Special price. Cover a 9x12' floor for \$30.72. Quiet, lustrous, durable. Wide choice marbled colors.



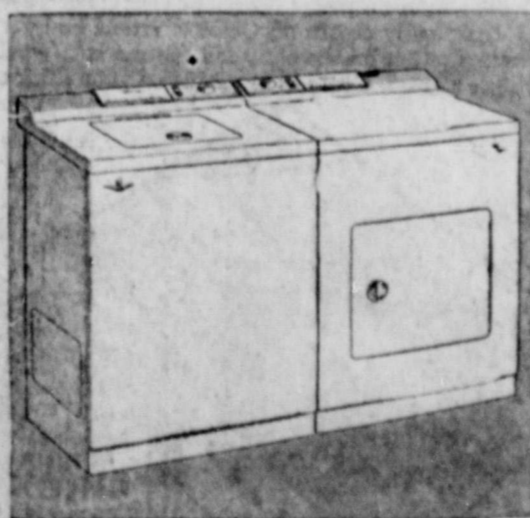
EXCELON FLAT PAINT **88c** qt.

Permanent, p e t a l - smooth pastel finish. Rubber - base makes Excelon really scrub-able. Dries in 1 hour. GAL. 3.33



REG. 339.95 FREEZER **\$299.88**

15.5 cu. ft. stores 542 lbs. in 2 compartments. Thermex insulation. Wrap-around condenser. Dividers and baskets.



COMPLETE HOME LAUNDRY **199.88** **169.95** WASHER **\$5.00** Down DRYER **\$5.00** Down

New arrivals—the Wardomatic automatic washer and the Wardrier—identical in design. Built with many time and work-saving features. Just a few are: over-flow rinsing—top loading. Select-A-Fill control. See them today.

## CARPET SAMPLES

**25%** off

4 1/2 Ft. by 6 Ft. A real buy — All colors — Prices range from 10.00 to 20.00.

## CUT ORDER CARPET

Now **6.97**

Rich textured "Tonnelle" carpeting — Cut to your needs.

## Occasional TABLES

Now **12.00**

End Tables — Lamp Tables and Step Tables — Values to 18.00.

## Armstrong Linoleum

Now **89c** Sq. Yd.

Both 9' and 12' — Many patterns to choose from.

## Childs High Chair

Now **7.88**

Reg. 9.95. Sturdy wood construction — Tray is easily adjustable.

## SPACE HEATERS

Now **10.00**

5 Radiant open face heaters — Sturdy construction.

## 8.2 Cu. Ft. Freezer

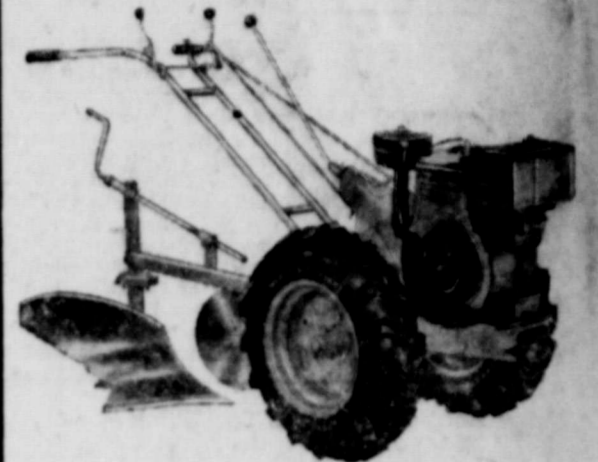
Now **189.88**

Reg. 239.95 — Thermex insulation — Saves money 2 ways.

## CAR RADIOS

Now **29.88**

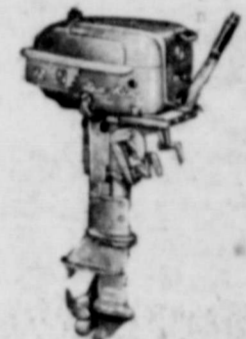
Reg. 39.95 — Only a limited quantity — Buy now.



WARDS 5-HP PLOW-TRAC

Tractor with tires **\$314.50** **\$322** down Terms

The tractor for big jobs. Reverse and 3 speeds forward for best tilling, plowing—all jobs that need heavy-duty service. 35 attachments available. 16-IN. PLOW, shown on tractor 48.95



REG. \$255 DELUXE 12-HP SEA KING

**234.88**

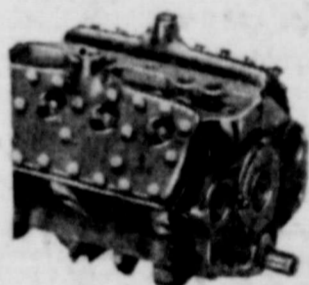
\$10 down on layaway. Gearshift Twin. Ideal for heavy loads. Spark, throttle on one control. Top speed to 22 mph.



SPECIAL PURCHASE

**88c**

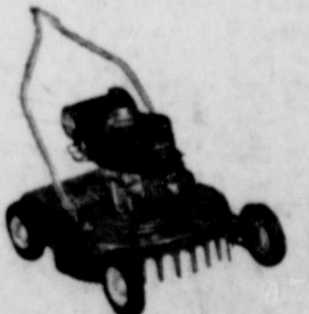
Bamboo Basket in new easy-to-lift, easy-to-carry shape—20" across top. Buy for wash-day and general use.



FORD-MERC. REBUILT

**189.00\***

Plus your motor—fits '42 to '48. New-motor pep and new-car guarantee: 4,000 miles or 90 days. \*Or Terms.



16" ROTARY MOWER

**57.88**

Especially made for smaller lawns. Easy to handle. Powered by 1.6 HP 2 cycle Clinton engine. All steel frame.



ECONOMY ENGLISH "TOURIST"

Full 26" size **39.95** 10% Down, on Terms

Lightweight sport frame and fingertip brake control make this striking English import a joy to handle. 3-speed shift takes the work out of pedaling. Boy's and Girl's in lustrous deep black enamel. See it now.

# Minister Proves Spiritual Values Are Contagious



MAX R. CRUMLEY  
R.J.C. Honor Student

Spiritual values are contagious—especially when one is afforded association with such a person as Max R. Crumley, minister of the Mesquite Church of Christ in Ranger and honor student at Ranger Junior College. Brother Crumley has a profound influence over all who come in contact with him on RJC campus.  
Loved, admired and respected by both students and faculty alike, Max Crumley is set up as an ideal by those who know him.  
Although his church work demands the majority of his time and a large portion of his heart, he is able to make excellent grades at the college, take part in all worthwhile activities furnishing all the time a living testimony of the worth of Christian living and the happiness one derives from a life of usefulness.  
Max was born in Washita Coun-

ty, Oklahoma, son of Joe W. Crumley, Sr., prominent evangelist who died before his son's birth.  
When Rev. Crumley was only eight years of age, his mother was in a fatal automobile accident, leaving Roger Max to live with his Grandfather Arnold in Stratford, Oklahoma.  
Filling the pulpit is not a new experience for Mr. Crumley. His first sermon was delivered at the tender age of 11. He did such an outstanding job until he was given speaking engagements at churches far and near. His Grandfather Arnold carried him on these tours until the speaker was old enough to buy and drive a "Model T" Ford.  
After his graduation from high school he became minister of the Church of Christ in Pauls Valley. It was here that he met and married the very lovely and talented Benita Nolan.  
He served churches at Braman, and Lawton before coming to Texas. His ministry in Texas includes Stephenville, Austin, Temple and Ranger.  
Besides his charming wife, a son, Roger Mac, and a daughter, Donna, complete the Crumley family. They reside at 803 Cypress St.  
Max Crumley is a member of the Rotary Club and president of the Band Booster's Club.  
It is no wonder that college students find themselves attending worship services again and again at the Mesquite Church of Christ. They hold in highest esteem this minister who means so much in their daily lives.

### It May Not be as Long as You Think—

... until you will need to meet an emergency. Those of you who have bought real estate without an abstract will encounter such an emergency when the opportunity comes to sell out or lease and the buyer demands an abstract on short notice. As it takes time and considerable skill to prepare an abstract may we suggest that you place your order now and be ready, just in case the abstract is unable to complete the job within the time specified by the buyer.

**EARL BENDER & COMPANY**  
Eastland (Abstracting since 1923) Texas



This suit would have been a bargain if it hadn't rained

If "bargain" suits go bad, you lose only the money that you paid for them, but if "bargain" INSURANCE goes bad, you may possibly lose thousands of dollars.

Get an Automobile policy you know will "be there" whenever or wherever you may need it, whether this year, next year or ten years hence. Buy an Aetna policy.

Representing  
AETNA CASUALTY & SURETY COMPANY of Hartford, Conn.

**C. E. MAY**

214 Main Insurance and Real Estate Phones 418 or 564

### Brotherhood Meets Monday

The Brotherhood of the First Baptist Church struck oil Monday night in a rich pay-off in good eats, an excellent program, a wonderful fellowship, and the largest attendance in many months.

Lee Cantrell and his group did the honors in the food. H. M. Bagwell, Corvis Beck, Ralph Perkins, and others assisted.

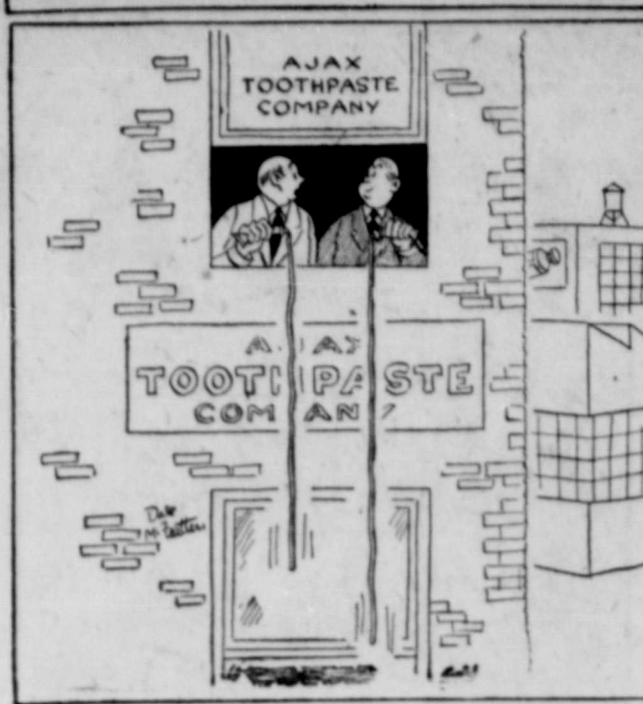
President Homer Coody introduced the visitors, and paid special honors to O. C. Warden for the attendance and T. J. Anderson for the excellent program.

The program consisted of a panel discussion with G. B. Rush as M.C., Lee Russell, Charles Layton, W. J. Arterburn, and Ronald Pruet answering the questions. These men had some eleven questions that were theological, in nature, and required both a Bible and a personal interpretation. The last and final interpretation was the Christian answer.

The next meeting will be held Feb. 21, at 7 p.m. and will be an executive meeting.

CALL 224 FOR CLASSIFIED ADS

### STRICTLY BUSINESS by McFeatters



You're right — our competitor's tube does hold more than ours!

CALL 224 FOR CLASSIFIEDS

## LOOK! LOOK!

February 10, 1955

### THE OZARK WATER CO.

Has advised us that after March 1, they will no longer give credit for water bottles no longer needed by you. But you can exchange bottle when buying another bottle of water.

The bottle you keep will always be yours.

**O. K. GROCERY AND MARKET**  
GEORGE FENGLER

### EARLY LAYERS MAKE THE MONEY!



#### SO START CHICKS EARLY!

Every month earlier in the year (before April 1st) that you start chicks makes every hen in your flock worth about 20¢ more in fall eggs. . . February starting would double that figure and bring in around 40¢ more from each pullet in the flock. That's \$40 more per 100 pullets! That's a tidy premium for starting chicks early, isn't it? Why don't you drop in or telephone your chick order now. Put those early chicks on Chick Startena and get that premium return on the early fall egg market! We'll help you get started. Come in or phone us your chick order.



**RATLIFF FEED AND SEED**  
Phone 109 Ranger

### Cheaney Chatter

Mrs. Bill Tucker

William Melton is a patient in the Gorman Hospital, suffering from an attack of flu which developed into pneumonia. He was resting better Sunday and returned to his home Monday.

Mr. and Mrs. Johnny Walton went to Sweetwater Saturday to be at the bedside of their daughter, Mrs. Lela Lockhart, who was scheduled to undergo surgery in a local hospital.

Lamar Perrin was the victim of a minor accident a day or so ago, when his son Hulen who was with his father while he was tending the stock discharged a B-B gun. The shot lodged in his upper lip. Seriousness of the injury had not been determined Sunday.

Mr. and Mrs. Oscar Strickler and Johnny Mac of Fort Worth were here Thursday visiting his mother, Mrs. J. P. Strickler.

Misses Barbara Alexander of Dublin, Linda Needham and Betty Ross, both of Ranger, attended a slumber party in the home of Miss Laverne Ainsworth Saturday night and attended church services at the Church of Christ Sunday morning.

Pvt. and Mrs. Jimmy Ice were also church visitors Sunday. Pvt. Ice is spending his leave here with his wife and in Ranger with his parents before leaving for Fort Lee, Virginia for a new assignment.

Mrs. Turner White of Dallas is visiting her cousin, Mrs. J. H. Freeman, in the Ben Freeman home this week.

Recent visitors in the John

Tucker home were Mr. and Mrs. Harry Deal and daughter, Judy, from Ranger.

Mrs. Frank Weekes and Mrs. Jim McGeehee of Ranger visited in the Hatley Dean and Ben Freeman homes Thursday.

D. W. (Slim) Blackwell and son Billy of Odessa came Sunday for a short visit with his mother, Mrs. Belle Blackwell and others of her family.

Let's shower a shut-in with cards on her birthday, Feb. 14. She is your friend and mine, Mrs. J. W. Blackwell, 413 S. Dixie, Eastland.

ATTEND THE CHURCH OF YOUR CHOICE EACH SUNDAY

# O. K. GROCERY MARKET

501 W. Main I. G. A. Phone 214

We Reserve The Right to Limit Quantity  
WE DO NOT LET PRICE INTERFERE WITH QUALITY

DONALD DUCK THOMAS **ORANGE JUICE** 6 Can 89¢

Thomas English **PEAS** 2 Pkg. 35¢ Thomas **SPINACH** 2 Pkg. 35¢

Thomas Cut **CORN** 2 Pkg. 35¢ Thomas **BEANS** 2 Pkg. 39¢

MULBERRY SLICED **BACON** The Bacon with the Flavor . . . . . LB. 34¢

MESH-BAG **RED POTATOES** 10 LBS 39¢



- MORGAN—No. 2 Can **Cherries** . . . . . 29¢
- HOMEFOLK—303 Can **Blackberries** . . . . . 22¢
- SKIPPY—Jar **Peanut Butter** . . . . . 49¢
- COMSTOCK—No. 2 Can **Pie Apples** . . . . . 29¢
- MONARCH—300 Can **Pork & Beans** . . . . . 14¢
- GULF-PRINCESS—Pkg. **Breaded Shrimp** . . . . . 63¢
- MONARCH—Bottle **Fruit Salad Dressing** . . 34¢
- MONARCH CUT—303 Can **Asparagus Spears** . . . . 35¢
- SKIPPY—Jar **BROWN BEAUTY—300 Can** **Spanish Rice** . . . . . 18¢
- RAMA—12-oz. Glass **Peanut Butter** . . . . . 31¢
- YACHT CLUB—Large Bottle **Vanilla Extract** . . . . . 23¢
- CAPE-ANN—Pkg. **Fish Sticks** . . . . . 49¢

Morton's Anniversary Special 1 1/2-OZ. **BLACK PEPPER** 10¢ Salad **DRESSING** . . . . . Pint 20¢

Supreme **COOKIES** Pkg. 29¢ NBC Premium **CRACKERS** 1 Lb. 27¢

Monarch Plain **Olives** Refrigerator Jar 38¢ Monarch Stuffed **Olives** Refrigerator Jar 49¢ Monarch Sweet Pickled **Beets** No. 303 25¢ Monarch Blue **Berries** 303 Can 39¢

Yacht Club **MUSTARD GREENS** 303 Can 2 For 27¢- Monarch Small White **POTATOES** 2 Can 25¢
- Yacht Club **GREENS** 303 Can 2 For 27¢
- Monarch **DICED CARROTS** 303 Can 19¢
- Monarch **KIDNEY BEANS** . . . . . 303 Can 18¢

FRESH **STEAK** . . . . . LB. 49¢

GROUND **BEEF BRISKET** . . . . . LB. 25¢

**HAMBURGER** 100 Percent Pure **SHORT RIBS** . . . . . LB. 28¢

**LB 33¢** **SALT JOWL** . . . . . LB. 21¢

Nice Size **AVOCADO** 2 For 25¢ Cello **CARROTS** . . . . . Bag 9¢

A used car is only as good as the man who sells it

USED CARS TRUCKS

Know the dealer before you buy a used car!

Remember it's where you buy a used car that counts

You can trust our **Ford Dealer** used cars and trucks

**Bagwell-Roberson Motors** 460 WEST MAIN PHONE 217

### DR. TICE TELLS EASTLAND LIONS LANDSCAPE GARDENING MERITS

Dr. Tice, head of the agricultural department of Ranger Junior College, spoke to Eastland Lions Tuesday on "Landscape Gardening" at their regular luncheon meeting held in the Fellowship Hall of the First Methodist Church.

Dr. Tice outlined landscaping the yard of a typical home. He said that it is generally believed that through landscaping, the real estate value of property can be increased on an average of 10 percent. Another purpose he said was to appeal to "aesthetic values."

The Ranger Junior College professor said that now is a perfect time to plant shrubs in this area. He made the following suggestions:

1. Dig holes with sufficient di-

ed often, but after they have been given a chance to get their roots firmed, they can hold their own. Program chairman was W. M. Crow.

### Lacasa Lines

Mrs. R. E. Miller, secretary and treasurer of the Lacasa Home Demonstration Club, and Mrs. H. E. Martin, Council delegate, attended the County Council at Breckenridge, and received the year books. These books are to be filled out and other yearly plans made at the regular meeting, Thursday, Feb. 10.

The Sunday School study course held at New Hope Baptist Church the past week has been well attended. Due to lack of sufficient time to finish the adult study of the book of Hebrews, the time has been extended to include Friday

and Saturday nights, Feb. 11 and 12.

Mr. and Mrs. A. E. Howton visited their son and family, Lloyd Howton in Ft. Worth this week end.

Several from this community attended the funeral of Mrs. Lula Bowles at Weatherford. She was a sister of Mrs. Roy Bradford and lived in the community many years.

Mr. and Mrs. V. L. Jones attended the funeral of Mrs. Jones' aunt, Mrs. Homer Kitchersid at Crowell Sunday. Their daughters, Kathy, Caroline, and Sharon stayed with their grandmother, Mrs. Vallie Jones.

Ann Raney is back in school at East Ward in Breckenridge after a ten day's absence due to an appendectomy.

Mr. and Mrs. D. W. Mitchell and son Lawrence Dan of Pampa spent the week end visiting her mother, Mrs. Ida Raney and other relatives.

Visitors at New Hope Church Sunday were Mr. and Mrs. M. Wilson, Mr. and Mrs. H. P. Flowers and Barbara, Mrs. Florence Bundick and Mrs. Dickie Hodges.

### Home Demonstration Council To Send Delegates To Spring Meet

Three delegates to the Texas Home Demonstration Association District Eight Spring meeting from Eastland County were elected Wednesday afternoon at a meeting of the County Home Demonstration Council held in the Texas Electric Conference Room in Eastland.

Delegates named were Mrs. Ernest Schaefer, Word Club; Mrs. Jess Flippin, Pioneer Club, and Mrs. John Love, Cheaney Club. Mrs. Will Ware, North Star Club, was named as alternate.

Mrs. Love was re-elected County THDA chairman to serve another year.

Mrs. Schaefer, president, presided over the Council meeting. Twenty-three women were present, including four council officers, 17 members, two home demonstration agents and visitors.

Nine clubs were represented including Cheaney, Flatwood, Lake Cisco, North Star, Okra, Pioneer, Pleasant Hill and Word clubs.

The Gorman Town and Country Club, a newly organized group, was welcomed as a new group member of the Council. Committee chairmen gave rec-

ommendations for the year's work, which were approved by the Council body.

Mrs. Bernard Campbell turned in her resignation as Council reporter.

Miss Minnie Mae Billingsley, home demonstration agent, explained how the new farm and home development plan will be put into practice for five farm families in the county by July 5. Food, nutrition, farm management, and child care will be some phases which the County Extension group will be able to help these families carry out, she explained.

Mrs. Bill Tucker presented a saga and song of "John Henry," hero of the early American ballads.

Mrs. Schaefer asked the cooperation of the rural women in the 1955 Red Cross drive and drive kits were distributed to each club president. Amount of each quota has not yet been announced.

Mrs. Schaefer and Mrs. Tucker gave a resume of the planning meeting in Hamilton, which they attended.

### STOP - LOOK - LISTEN

If you haven't tried our expert dry cleaning! Our modern plant . . . highly-trained operators assure you of that EXTRA touch—of perfection.

We are just home folks employing home town people.

Mrs. Clyde Boyd has rejoined our staff of skilled employees.

We Give S & H Green Stamps

### The 500 Cleaners

Home Owned and Operated  
PHONE 500

Free Pick-Up and Delivery Service

**WHILE THEY LAST!**  
**Firestone**  
**Gigantic**  
**Close-Out**  
**TIRE**  
**SALE**



**25%** TRADE-IN ALLOWANCE for your old tires on **Firestone DELUXE CHAMPIONS**

- All Sizes Including Super-Balloons
- Both Black and White Sidewalls

BLACK SIDEWALLS			WHITE SIDEWALLS		
SIZE	REGULAR NO TRADE-IN PRICE**	SPECIAL TRADE-IN PRICE*	SIZE	REGULAR NO TRADE-IN PRICE**	SPECIAL TRADE-IN PRICE*
6.00-16	\$22.20	\$16.65	6.00-16	\$27.20	\$20.40
6.50-16	27.30	20.48	6.50-16	33.45	25.09
6.40-15	23.20	17.40	6.40-15	28.40	21.30
6.70-15	24.35	18.26	6.70-15	29.85	22.39
7.10-15	26.95	20.21	7.10-15	33.00	24.75
7.60-15	29.45	22.09	7.60-15	36.10	27.08
8.00-15	32.40	24.30	8.00-15	39.70	29.78
8.20-15	33.75	25.31	8.20-15	41.35	31.01

Other sizes proportionately low  
\*Plus tax and your present recyclable tire \*\*Plus Tax

**PRICES SLASHED** . . . to New, All-Time Lows!

**Firestone CHAMPION TIRES**

SIZE 6.00-16	SIZE 6.70-15
\$11.75	\$13.25

Plus Tax Exchange If your old tire is recyclable

**TRUCK TIRE PRICES SLASHED!**

The New **Firestone TRANSPORT B-112**

**SALE 19.95**

Plus Tax Exchange If your old tire is recyclable

Other Sizes Proportionately Low!

**USED TIRE BARGAINS**

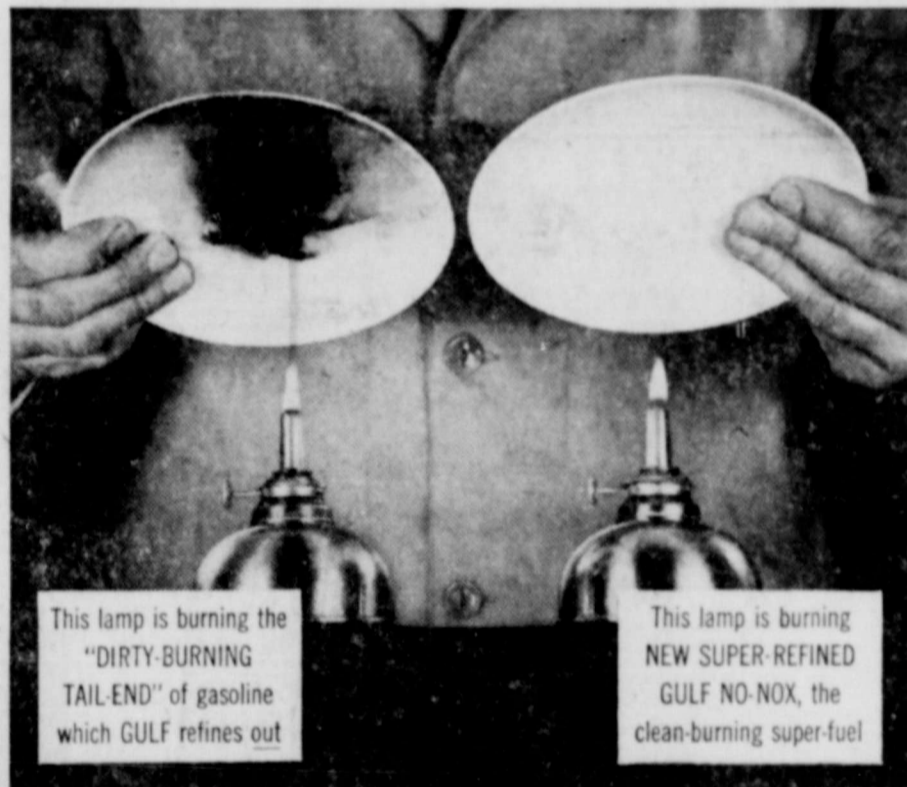
We Need Room . . . We're Overstocked!

SIZE and TYPE	
6.00-16	Black
6.50-16	White Sidewall
6.70-15	Black
7.10-15	White Sidewall
7.60-15	White Sidewall
8.00-15	Black

**We're Tubeless Tire SALES and SERVICE HEADQUARTERS**

Our trained Tubeless Tire Experts are anxious to show you how to get maximum service from your tubeless tires. If you are considering new tires for your present car, let us demonstrate the many advantages of New Firestone Tubeless Tires Today.

# No gasoline-no, not a single one- has higher octane than New 1955 GULF NO-NOX



but octane alone is not enough...

That's why new Super-Refined Gulf NO-NO, is specially made to burn clean—to protect your engine—to give you thousands of extra miles of full engine power.

Fill up with new Super-Refined Gulf NO-NOX and feel the difference, right from the start, in full engine power that lasts! You'll get:

- More complete engine protection than with so-called "miracle-additive" gasolines.
- Extra gas mileage in the short-trip, stop-and-go driving motorists do most.
- Stall-proof smoothness . . . instant starts . . . fast, fuel-saving warm-up.
- No knock, no pre-ignition—even in today's high-compression engines.

#### This is GULF'S PLEDGE to the motoring public

- We at Gulf make this promise to America's motorists. We will not permit a single competitor — no, not a single one — to offer a gasoline superior to our own superb No-Nox.
- It is our sincere belief that No-Nox is the finest gasoline on the market today, and no matter what others do or say we will keep it the finest — in power, in performance, in engine protection.
- This is not a boast, not a claim. It is a pledge to you, the motoring public—a pledge backed by the resources—and the integrity—of the Gulf Oil Corporation.

## New 1955 GULF NO-NOX

It's super-refined... to burn clean!

The '55 gasoline for all high-compression engines



Morris B. George Distributor

**H. H. VAUGHN**  
HIGHWAY 80 EAST RANGER PHONE 23

# SOCIETY

## Mrs. James Ratliff Hosts 1947 Club: New Officers Are Elected

Members of the 1947 Club met in the home of Mrs. James Ratliff at 4 o'clock Tuesday afternoon, Feb. 8.

During the business meetings, which was presided over by the president, Mrs. F. B. Brasher, Jr., the following officers were elected to serve during the next club year: President — Mrs. Marshall Jolly; 1st vice — Mrs. Chas. Millikan; 2nd vice — Mrs. C. E. May, Jr.; Recording secretary — Mrs. Walter Arterburn; Corresponding secretary — Mrs. James Townzen; Treasurer — Mrs. Ardell Kirk;

Parliamentarian — Miss Vivian Simmons; Reporter and Historian — Mrs. Morris George; and Federation Counsellor — Miss Mildred Balch.

For the program, Mrs. Pat Thomas gave a talk entitled "Your Child In This Changing World." Refreshments were served to the following members: Mmes. Bill Anderson, Arterburn, Brasher, Morris Campbell, Joe Collins Wilis Clarke, Jr., Deane Crawley, George, Jolly, Chas. Layton, Calvin Lipkins, Earle Pittman, Ronald Pruet, Thomas, Townzen, W. P. Watkins, Larry Purefoy, Millikan; Misses Simmons and Balch; and the hostess, Mrs. Ratliff.

## Dorothy Oliver Has Party On Sixth Birthday

Mrs. H. H. Oliver entertained at her home, 901 Foch Street, Monday afternoon at 3:30, honoring her daughter, Dorothy Ann, on her sixth birthday.

Following the play hour and the presentation of gifts to the honoree, refreshments of pink lemonade, angel food cake, cracker sandwiches and heart candies were served. The valentine motif was carried out in table decorations, and plate favors were valentines and miniature horns.

Those attending were: Iris Ann Boney, Janis Wilson, Anna Gail Holder, and Shannon Wilson, all of Eastland, and Carole Crawley, Teresa Ann Dudley, Jan Griffith, Mike Deffebach, Bruce Thomas, Dickie Langford, Mike Smith, Lee Nolan, Larry Nolan and Wayne Milmo.

Others attending were: Mmes. H. T. Wilson and Dick Holder of Eastland, and Mmes. Russell Nolan, N. E. Landers, Dorey Boney, Dalton Covington, Beverly Dudley, Jr., and Luna Lane and Misses Vivian Simmons and Inez Harrell.

## New Music Club Is Organized Monday Evening

Something new is in the air! Mr. Fred D. Baumgardner, head of the Fine Arts Dept. at Ranger Junior College, has organized a Music Club to promote more interest in music among our children and to bring worthwhile musical programs to Ranger.

Mr. Baumgardner presided at the first meeting Monday, Feb. 7 at 7:30 p.m. until the officers were elected. They are Mrs. Arthur Deffebach, president; Mrs. Theo Ferguson, vice-president; Mrs. Carroll Boon, secretary; and Mrs. Iris Hummel, treasurer. A reporter will be elected at the next meeting.

A program of musical selections was presented by Mary Ellen Deffebach, Diane Ervin, Jo Ann Crider and Mr. Baumgardner.

Present were: Mmes. Ferguson, Raymond Lingde, D. A. Weems, Hummel, D. D. Pickrell, Roscoe Hopper, F. R. King, Floyd Killingsworth, Max McCotter, G. B. Rush, Max Crumley, Corvis Beck, A. G. Koenig, Pete Brasher, A. Kirk, W. P. Watkins, Deffebach, Boon; Miss Mildred Balch and Mr. Baumgardner.

## Mrs. Dwaine Dennis Hosts Coffee Complimenting Mrs. Keith Langford

Mrs. Keith Langford was the honoree at a coffee and layette Wednesday morning from 9 to 11 in the home of Mrs. Dwaine Dennis.

After being greeted by the hostess and the honoree, the guests registered in a pink and blue baby book. The registry table was decorated with a blue and white pottery bassinets holding greenery and daisies in pastel shades.

The dining table was covered with a white lace cloth over pale yellow and was appointed with silver. The centerpiece was a stork carrying a baby doll.

Mrs. Joe Weekes presided over the silver coffee service and the hostess served the white-iced cake squares decorated with pink frosting-roses and "baby" spelled in blue. Favors were pink, yellow and blue strollers made from paper muffin cups with marshmallow wheels. Pink and blue napkins and assorted nuts completed the table arrangement.

The coffee table in the living room was adorned with a lovely ivy plant interspersed with tiny baby dolls.

Friends registering during the calling hours were: Mmes. Lee Everheart, Wilson Guest, Walter

## First Christian Ladies Meet For Weekly Study

The ladies of the First Christian Church met at 3 o'clock Monday afternoon in the home of Mrs. Eary Wallace on Spring Road for their weekly Bible study.

The lesson from chapters 13, 14 and 15 of Revelations was led by Mrs. B. G. Pirkle.

The meeting opened with the reading of the Lord's Prayer in unison.

There will be no meeting next Monday for Bible study, as the group will go to Eastland for the Eastern County Council meeting at 2:30 p.m.

The meeting was dismissed with prayer by Mrs. Martin.

Those present were: Mmes. Martin, Pirkle, Mame Moffett, R. A. Jones, O. R. Ervin, Dick Jones, John Bryan, B. S. Dudley, Sr., Lottie Davenport, Lowe Wallace, Edgar Black; Miss Janice Black; and the hostess, Mrs. Wallace.

1/2 PRICE SALE!

TUSSY CLEANSING CREAMS

Regular #2 size now only #1

**TUSSY SKIN LOTIONS**

\$1.75 size now only #1

CRAWFORD REXALL DRUG

## Mrs. Matthews Is Circle 3 Hostess

Circle No. 3 of the W.S.C.S. of the First Methodist Church met Monday afternoon, Feb. 7, in the home of Mrs. J. E. Matthews.

After Mrs. Roscoe Hopper had given the opening prayer, the secretary called the roll and read the minutes of the previous meeting. It was announced that Circle No. 3 will serve supper for the Men's Club this month.

Mrs. A. J. Ratliff presented the devotional entitled "New Ventures on Old Roads" after which the group sang "O, Master, Let Me Walk With Thee."

The program entitled, "The Driving Power on World Jungles and Qualifications Needed by All Who Travel the World," was presented by Mrs. Lee Daskery.

Mrs. R. L. Willis led in prayer and the group sang "O, Jesus, I Have Promised."

Refreshments were served to the following: Mmes. J. T. Roberson, Vernon Deffebach, Dockery, Hopper, J. T. Killingsworth, C. E. May, Sr., E. H. Mills, Ratliff, Wilis, Lillian Wolfe William Brown; two guests, Mrs. E. E. Crawford and Mrs. Gertrude Palmer; and the hostess, Mrs. Matthews.

## 'Sweethearts For Christ' Will Be Banquet Theme

C. Melvin Ratheal, dean of men at Howard Payne College, will bring the inspirational talk Saturday night at the Sweetheart's Banquet in the First Baptist Church, Feb. 12, 8 p.m.

Mr. Ratheal is a much sought after youth leader and after dinner speaker. His position with the students is evidence of his popularity among the youth of this area.



C. MELVIN RATHEAL

## HOSPITAL NEWS

New admissions to Ranger General Hospital include: Mrs. T. S. Thompson, Snyder, surgical; Mrs. W. B. Crabtree, Ranger, surgical; Mrs. W. R. Ivy, Ranger, surgical; Stanley Cook, Oiden, medical; Mrs. K. C. Smith, Cisco, medical; Mrs. D. F. Halliburton, Caddo, medical; and Reese Rogers, Ranger, medical.

Patients admitted recently at West Texas Hospital are: Mrs. S. L. Williamson, Ranger; Mrs. Ada Gray, Caddo; A. C. Cozart, San Francisco, Calif.; and Mrs. Earl Ewing, Ranger.

## WMS Meets For Royal Service Program Monday

The W.M.S. of the First Baptist Church met at 9 o'clock Tuesday morning, Feb. 8 for a Royal Service program.

The meeting opened with the singing of "Wonderful Words of Life" led by Mrs. Ronald Pruet and accompanied by Miss Annie Locke. The invocation was led by Mrs. A. W. Warford, after which Mrs. Pruet presided over a short business session.

Mrs. J. E. Houghton, program chairman of the Virginia Wingo Circle, presided over the Royal Service program entitled "El Camino In Cuba." Mrs. Glenn West gave the devotional, "Palm Tree Christians" from Ezekiel 40:16.

Mrs. Lee Everheart spoke on "The Radio Church in the Field"; Mrs. V. A. Galloway on "The Encampment of Yumuri"; Mrs. H. C. Montgomery on "Havana"; Mrs. Ralph Perkins on "Miramar, A Suburb and The University of Havana" and Mrs. Houghton concluded with "Where Do the Roads Lead?"

Mrs. Earle Pittman led the benediction after which refreshments were served to 19 members.

PATRONIZE YOUR HOME TOWN MERCHANTS!

Spring Time Pretty FROCKS FOR GIRLS!

FLARE-PLEATED CHARMER

Smart and pretty dress that will delight the heart of your junior miss. See them now in our new collection.

\$7.98

BELLS YOUNG MODERNS

Phone 477 Ranger, Texas

Duke & Ayres 5¢-\$1.00 Store

BARGAIN DAYS EXTRA SPECIALS

MEN'S COLOR BORDER — EXTRA SPECIAL

Handkerchiefs . . . . . 10 for 98¢

Child's Cotton and Rayon Stripe—Bargain Priced

Training Pants . . . . . 6 for 1.00

Mens', Ladies' & Childrens' Handmade Indian Design

Bead Belts . . . . . 98¢ & 1.29  
20% OFF SELLING PRICE

HAND PAINTED—BARGAIN PRICED

Wall Plates . . . . . each 25¢

DOUBLE DIPPED — SPECIAL

Choc. Covered Peanuts . . lb. 50¢

This Is Just A Few Of Our Many Bargains For Friday & Saturday

CARD OF THANKS

We, the family of W. R. Hatfield, wish to express our deep appreciation for the kindness and love shown us during the illness and death of our loved one. Words can not express the thankfulness we feel for each bit of food, for each one who called or sat up with us, for each beautiful floral offering.

May God richly bless each of you.

Mrs. W. R. Hatfield  
Mr. and Mrs. Lewis Hatfield  
Mr. and Mrs. W. D. Hatfield  
Herman Lee Hatfield  
Mrs. Audrey Nowlin  
Mrs. Ethel Tuggle  
E. N. Hatfield

MARK HICKLIN IMPROVING

Mr. and Mrs. Frank Hicklin have received word that their three-year-old grandson, Mark, son of Mr. and Mrs. J. W. Hicklin of Ft. Madison, Iowa, is slowly improving after undergoing surgery two weeks ago.

Mrs. John Leonard of Fort Worth spent the week end visiting in the home of her daughter and family, the Bill Andersons. Billy Anderson accompanied her home to spend this week.

Give BULOVA Gift of a Lifetime

WINCHESTER

17 jewels, self-winding, certified waterproof, shock resistant, anti-magnetic, rust proof, Swiss made, gold, white gold, and stainless steel. Color and distinction of natural gold \$71.50 (also available with blue dial)

Choose New During Our LAY-AWAY SALE

Ranger Jewelry Co.

J. R. and Ethel Ervin  
220 Main Phone 778

Sweetbriar . . . values for BARGAIN DAY

ALL of our NEW Spring and Summer DRESSES

Reduced 10%

Every dress on sale during this Bargain Event . . . they're All NEW for Spring & Summer . . . buy now and SAVE!

Sweetbriar's Regular 99c NYLONS . . . . . 79¢

Sweetbriar's 60 gauge, 15 denier nylons in regular and dark seams . . . Bargain Day Special!

PANTIES . . . 3 for \$1

Rayon Jersey briefs in pink, blue and white . . Bargain Day Special!

Sweetbriar

217 Main RANGER

NEVER BEFORE AT THIS LOW PRICE!

NEW 21" RCA VICTOR TV

only \$189.95

YOU GET THESE FAMOUS RCA VICTOR FEATURES

New "Easy-See" VHF Tuning Dial gives 50% greater readability! Big size numbers show up to meet your eyes.

New "Magic Monitor" Chassis—automatically flies sharp, clear pictures to full, rich sound!

New "Golden Throat" Fidelity Sound—exclusive RCA Victor balanced tone system gives you new tonal depth and clarity!

FOR USE—New High Speed VHF Tuner is a faster, more precise continuous-tuned Exclusive "Click Action" for instant, accurate switch to and from VHF. Get all stations in your area, VHF and VHF. (Optional, at extra cost.)

SEE THE NEW RCA VICTOR "SPECIAL 21" AT

Killingworth's

Phone 29 Ranger



### LOOK WHO'S NEW



Mr. and Mrs. Frank Johnson of Dallas announce the birth of a 7 pound 4 ounce boy at 10:20 p.m. Wednesday, Feb. 9 at Baylor Hospital. They have named him Mark Douglas.

Paternal grandparents are the J. A. Johnsons and the maternal grandparents are the Flake Turners, all of Ranger.

Mr. and Mrs. G. P. Green of Cisco are the parents of a 7 pound 3 ounce boy, born at 7:30 p.m. Wednesday, Feb. 9 at Ranger General Hospital.

### County Red Cross Drive Due To Begin

Mrs. E. E. Freyschlag of Eastland will head the 1955 Eastland County Red Cross fund campaign, it was announced Tuesday.

Mrs. Freyschlag said the campaign will officially begin March 1. The quota of \$6,150 is considerable less than it has been in several years, she explained.

Mrs. Freyschlag has served as a Red Cross volunteer for many years in various capacities. She is vice chairman of the board of directors. Her work with the camp and hospital group during World War II brought commendation from her fellow workers. A Red Cross spokesman credited her work as "a great help in keeping Red Cross services available in Eastland County."

The Eastland County chapter assisted 575 families during the past 12 months, rendering 2,303 services to them, Mrs. Freyschlag explained. A total of \$3,241 was expended in the county by the local Red Cross during the past year, she added.

The national organization spent \$500,000 during the past year in helping disaster victims of Texas storms. Mrs. Freyschlag said that the total financial support of the Red Cross rests in "voluntary contributions of the American people."

The fund drive chairman said she would name her division chairmen in the next few days. The drive will be county-wide. Ranger and Cisco, however, have already raised their quota in their Community Chest drives.

CONSULT THE CLASSIFIED AD COLUMN

### Now Is The Time To Plant Trees For Beauty And Shade Later On

Trees around the home have many values. They provide a natural setting. They add beautiful flowers, a friendly, homelike feeling. They provide comfort in the form of welcome shade, or food in the form of edible fruits or nuts. Depending on the skill with which they are planted, trees may give a home the appearance of a work of art, with greater pride of ownership and greater appreciation by neighbors.

More than any other area of comparable size in the country, the Southwest needs shade trees. Many varieties will thrive here. Native cedar, elm, ash, pecan, red, live, pin and water oaks; mimosa, thornless honey locust and numerous others will grow excellently. For quick-growing, though somewhat shorter lived trees, cottonwood, Chinese elm, weeping willow, catalpa, and acornwood grow excellently, with a minimum of care. Now is the time to plant them.

Large, flowering trees will afford shade, but there also are some incomparable small flowering or berried trees used for accenting the property. All are lovely, the more outstanding being red, flowering peach, magnolia, acacia, flowering desert willow,

cherry, plum, dogwoods, tamarix and crabapples. For outstanding color and artistry on the home property, combinations of these flowering trees cannot be bettered much anywhere.

Trees well-planted have the advantage of increasing the resale value of the home from 10 to 20 per cent, according to the Texas

Association of Nurserymen. The home owner doesn't need to wait for a small tree to grow up. Trees of three-inch trunk diameter and larger are usually available. They cost more than small trees but are worth it because they offer immediate flowers, shade or fruit and will not take long to grow into larger specimens.

Regular watering of trees is highly necessary. Consult with your nurseryman as to frequency of watering in accordance with variety and soil conditions in your immediate area.



**ONOUS DICK**

Now Associated With  
**Muirhead Motor Co.**  
301 W. Commerce

Wishes to Invite His Many Friends to Call Him Anytime for a New or Used —AUTOMOBILE—

**BUICK and PONTIAC**  
Eastland 692

### Sail-Into-Spring



Longer teen lines with the look of the Middy Blouse are carved out of a solid cotton to smooth out the hips over Nelly de Grab's clever pleat skirt. The fabulous fabric is a Cyrus Clark Pot Luck "Ever-Glaze" cotton of satin sheen.

But we can say this: We provide insurance for lots of people for various purposes. We keep up on all the new kinds of policies. We're right in the middle of insurance all the time.

So, we think we can qualify as insurance experts. And insurance is a complex subject, these days.

We're embarrassed. We'd like to tell you how smart we think we are about insurance. But it might sound like bragging.

We can make it simple for you, if you'll come in to discuss the protections that you may need — and ask us what they'll cost.

**We are blushing**

**C. E. MADDOCKS & CO.**  
INSURANCE & REAL ESTATE  
207 Main — Ranger

## Robinson Food Market

WE DELIVER  
121 North Rusk Street Phone 162  
Plenty garden fresh vegetables, choice home-killed meats, fresh variety of sandwich meats.

- EXTRA NICE FRESH DRESSED FRYERS ..... Lb. 48¢
- Fresh Pork Chops .. lb. 53c | Salt Jowl ... lb. 19c
- WILSON'S THICK SLICED BACON ..... 2 lb. pkg. 1.17
- HOMEMADE ALL PORK SAUSAGE ..... lb. 49c
- GOOD ERICK CHILI ..... lb. 53c
- NBC PREMIUM CRACKERS ..... lb. 27c
- MARYLAND CLUB —Limit 1 COFFEE ..... lb. 99c
- MORTON'S PURE—1 1/2-oz. BLACK PEPPER ..... 10c

EXTRA SPECIAL — Blue Plate  
**SALAD DRESSING** Ct. 39¢  
Limit: 1

- SWANSON'S FROZEN BEEF or—8-oz. CHICKEN POT PIES .... ea. 33c
- WHITE SWAN—Limit 5 MILK ..... tall can 11c
- FRESH SHIPMENT OF TAMA LINA
- FRESH GREEN CABBAGE ..... lb. 6c

"My, how he's grown..."



Time to have his next Portrait made

Keep the story of fast-flying years complete, with a portrait that captures the charm of each new age. Phone for an appointment—or call your child indoors right now—and come down to our studio while you think of it!

**Capps Studio**

104 RUSK RANGER

## Office Supply Specials

WEEK-END  
Friday and Saturday Only

8 1-2 x 11 Unglazed SEAFOAM BOND PAPER

500 sheets Reg. 2.05 **\$1.80**

THE BIG BEN LETTER FILE

Reg. 2.25 **\$1.90**

**RANGER TIMES**

Elm Street

Phone 224

### Aid Expected To Increase Quail Activity

AUSTIN — The Director of Wildlife Restoration for the Game and Fish Commission said Texas quail hunters are reacting favorably to Wildlife Biologist Dan Lay's recent plea for "all around cooperation" to help the bobwhites get a new start on life.

Several letters already have been received, showing "definite interest," according to the Director.

The first was from Bill Elevins of Gainesville, in north Central Texas. He wrote in part:

"I have just read in our local paper that there is a pamphlet prepared by Wildlife Biologist Dan Lay on quail culture. Would you be so kind as to send me a copy of this pamphlet."

"A small group of bird hunters here has found a land owner who also likes to hunt and wants our help to bring the quail back. He has about 1800 acres, pasture and



Co-ordinates to mix and match in a silk and viscose crease resistant fabric. The planter's jacket has tab pockets and the slim skirt its own leather belt. Shown with the jacket and skirt is a blouse of printed pongee. Colors: Charcoal, navy, natural, turquoise, cocoa.

grain fields; mostly pasture. Feed seems to be what is short here. Along old washes and creeks there are some trees, brush and a lot of green briars."

Biologist Lay's program for habitat restoration, detailed with illustrations in the current issue of Texas Game and Fish magazine was restated preliminary to the recent Commission allowance of \$290,000 for a State quail hatchery at Tyler.

The Director of Wildlife Restoration said "everyone agrees that loss of habitat and food from the historic drought and from land clearing comprises basic causes for the quail decline," adding that: "If we all pull together, and we get a break from the elements, we certainly will be able to count on the bobwhites to show their vaunted recuperative talents."

### Santa Fe RR Carloadings Show Increase

Santa Fe carloadings for the week ending February 5, 1955, were 22,155 compared with 20,316 for the same week in 1954.

Cars received from connections totaled 12,409 compared with 11,092 for the same week in 1954. Total cars moved were 34,894 compared with 31,919 for the same week in 1954.

Santa Fe handled a total of 24,302 cars in preceding week of this year.

### Your New SOCIAL SECURITY



(Editors Note: This is another in a series of informational articles prepared by Raleigh R. Tuley, Jr., Manager of the Abilene District Office.)

The extension of coverage under the 1954 Amendments to the Social Security Act, effective with 1955, includes the following:

The largest group of gainfully-employed people in the nation not heretofore covered by social security has now been brought in—the 2.6 million self-employed farm operators. Commencing January 1, 1955, these farm operators will be covered on the same terms as other self-employed people, except for a provision which simplifies the reporting procedure for farm operators with low annual incomes. The first social security tax will be paid early in 1956 on 1955 income.

Abolishing the old requirement that farm workers be regularly employed by one employer means that over two million additional farm employees will have social security protection for themselves and their families. The new provision simply requires that the farm hand be paid \$100 cash wages in a calendar year by one employer.

About 200,000 more domestic employees in private households will be covered by the law because of the removal of the former requirement that the domestic employee work 24 days in each calendar quarter in any one household. Here the requirement now is the payment of only \$50 cash wages by one household employer in a calendar quarter.

About 3,500,000 employees of State and local governments, excluded up to now because they are under a retirement system, may now be brought under social security subject to a referendum.

Ministers, whether employed or self-employed, may come under the law as if they were self-employed persons. Included in this provision are Christian Science practitioners.

Other self-employed groups to be covered by social security as of January 1, 1955, are professional engineers, accountants, architects, and funeral directors.

### Three Ranger Men Depart For Army Service

Three Ranger men recently enlisted in the Army in Abilene and were flown to California Wednesday for basic training at Fort Ord, it was announced here today. The recent enlistees were Otto Richard Gagner, Jr., Jackie Wright and Winfred Hatton. They were given examinations in Abilene before making the West Coast trip.

Turns for Easy Viewing Anywhere in the Room!



Full quality Philco with new transformer powered chassis, Golden Grid Tuner, Finger Tip Tuning and big 21-inch picture tube for ultimate TV enjoyment. Custom styled console turns on precision built Swivel Base for easy viewing anywhere in the room. It's the best TV buy in town!

Own a new 21-inch Philco TV for as little as \$179.95

L & J SUPPLY Co. 403 WEST MAIN - PHONE 202 - RANGER, TEXAS

## NOTICE!

We HAVE MOVED OUR HARDWARE STORE AND PARNELL'S RADIO & TV SERVICE from Main St. to Pine & Rusk St. AND HAVE PURCHASED THE JOHN DEERE MACHINERY STORE from Owen Implement Company

We will carry at all times a complete line of... hardware, houseware, GE Appliances, TV Sets, Antennas and accessories...

Also — John Deere Tractors, farm machinery and parts and maintain a complete service department.

We Cordially Invite Each and Everyone to Visit Us In Our New Location  
**Ranger Farm Store**

Formerly John Tibbels Hardware

PINE & RUSK STREETS

RANGER

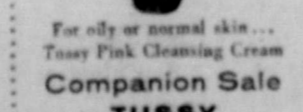


### TUSSY CLEANSING CREAMS

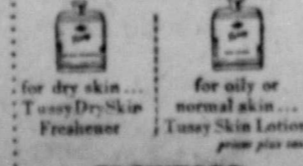
Regular 2 1/2 size now only \$1



For dry skin... Tussy Emulsified Cleansing Cream



For oily or normal skin... Tussy Pink Cleansing Cream Companion Sale



For dry skin... Tussy Dry Skin Freckle-er  
For oily or normal skin... Tussy Skin Lotion

CRAWFORD REXALL DRUG

Low! Low! Prices! LOW! LOW! PRICES!

We Reserve The Right To Limit Quantities of All Purchases. None Sold To Dealers or Their Representatives.

These Prices Effective: FRIDAY AND SATURDAY!

PIGGLY

WIGGLY

BISCUITS

BALLARD OR PILLSBURY ..... 2 Cans For 19¢

SLICED BACON	LB.	49¢	PORK ROAST	LB.	49¢
CHUCK ROAST	LB.	43¢			
ROAST	LB.	49¢			
CLUB STEAK	LB.	55¢			

FLOUR

GOLD MEDAL

5 45¢

Lb. Bag ..

Monarch Green Beans	Small Full Cut No. 303 can	25c	Sweet & Tender Peas	Monarch, No. 303 can	22c
Dark Red Kidney Beans	2 303 cans	37c	Del Monte Spinach	No. 303 Can	16c
Oven Baked Beans	Morton House No. 401 size	22c	Libby's Tomato Juice	No. 300 Can	12c
Monarch Tiny Whole Beets	8-oz. can	21c	Libby's Kraut Juice	No. 303 Can	12c
Whole Kernel Corn	Monarch, No. 303 can	19c	Eagle Brand Milk	Borden's, 15-oz. can	30c

COFFEE

Any Brand! Any Grind! (Limit 1) 1-Lb. Can ..

89¢

SNO-WHITE CAULIFLOWER Large Head	35¢	FRESH GREEN ONIONS CALIFORNIA	2 BUNCHES	15¢	RED GLOBE RADISHES 2 Bunches	15¢
		FLORIDA TANGERINES FIRM RIPE	EACH	29¢		
		TOMATOES	LB.	19¢		
			CTN.	19¢		

SUGAR

IMPERIAL PURE CANE (Limit 1) Lb. Bag ..

5 39¢

Monarch Bartlett Pears	No. 303 can	33c	Milk of Magnesia	Phillips, 12-ounce	39c
Welch Grape Juice	12-oz. Bottle	22c	Chicken Chow Mein	Chao King Dinner	99c
Sour or Dill Pickles	Betty, Quart Jar	27c	Casserole Pinto Beans	5 lb.	69c
Alka-Seltzer	8 in Bottle	35c	Biscuit & Cornbread Mix	Pioneer Bulk for	57c
Sal Hepatica	Small Size	29c	Crystal Wedding Oats	Lgt. Pkg	39c

ORANGE JUICE

FLORIDA GOLD! FRESH FROZEN! 2 6-oz. Can

25¢

Low! Low! Prices! LOW! LOW! PRICES!