

al Assn.
cts Three
rs Tues.

ual meeting of the
Mr. of the Lockney Gen-
at the Tuesday at the
re, three directors
ed, an auditor's re-
ard and other mat-
st to the member-
discussed. A small
attendance.

of Wayne McClain,
and Hubert Friz-
and these men were
rectors of the as-
a unanimous vote
bership. Hold-over
J. Lee Francis,
Hilburn Casey and
dley.

ite of Lubbock,
Buildi-
a report on the con-
hospital for the
October 1, 1951
ember 30, 1952. The
d total operating
\$66,697.81 for the
with total operating
\$72,598.85 for a net
of \$5,901.01. How-
ed out by directors,
of the hospital's
s improving con-
if the fall business
nsidered in the re-
ave changed the in-
e statement.

showed a net book
hospital properties,
ad, building, fur-
itures, equipment,
nts of \$56,214.04 and
its receivable of
ng term notes pay-
18,350.00 and other
6,052.14, for a total

discussion period
the hospital and
that members of
and others of the
ack the hospital
better, bring their
they have any to a
e board and there-
hospital of a steady
development.

**Basketball
Play Here**

High school basket-
both boys and girls
Lockney tonight
or district games
al teams. The boys
ave defeated the
in previous games
game was close and
ettes are expected
ght again.

uesday night, Feb.
eams play at Hale
district games. The
ns have also de-
Center in previous

Abernathy

split district games
y on the Abernathy
y night, the girls
the boys losing a
e boys B team also
to give Lockney
t of the three.

orns played the
close game all the
led ahead at one
second quarter but
e was 59 to 50 in
nathy. Bill Sherman
nt man with 18
Jerry Irons scored
for Abernathy was
with 14 points.
wettes won by a
The first half was
ernathy girls lead-
e way but the last
Lockney. Nancy
e 16 points and
idley made 14 for
eis was high for
h 12.

eam won by a
1 with Williams
d Myers 9 for the

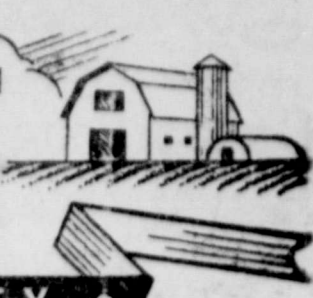
nds won third
arnament at Floy-
end, defeating
losing to the tour-
ns, Canyon by 68
n defeating Tulla
e 69 to 54. Bill
Jerry Irons made
ment team. Can-
defeating Floydada
y a wide margin.

King Missed

g, who was sched-
a train in Lubbock
to attend an REA
San Francisco,
dn, and in fact
et to Lockney due
now. Herman is a
board of directors
ounty REA. Other
board from Floy-
rip.



THE LOCKNEY BEACON



VOLUME 51 LOCKNEY, FLOYD COUNTY, TEXAS, THURSDAY, JANUARY 29, 1953 NUMBER 42

Snow Blocks Traffic, Disrupts Utility Service

The heaviest snow storm to strike this area in several years hit last Thursday and stalled traffic, blocked roads, disrupted power and telephone service, wrecked one building in Lockney, and brought 1.2 inches of moisture to the thirsty wheat crop of this area.

Against all predictions of the weather bureau, it started off with a light rain early Thursday morning. By 7:30 it had turned to a wet, heavy snow which fell without ceasing through most of the day. By nightfall snow was 7 or 8 inches on a level and drifted in places two and three feet high.

Electric service went out here about mid-morning Thursday. The telephone service was very limited during most of the day and then city employees shut off the water to conserve what was in the tanks for fire protection.

By the middle of Thursday afternoon the city was almost isolated from all surrounding towns both by travel and telephone. Only occasionally could the long distance operator at Plainview be contacted and then the connection was very poor.

Some traffic managed to get through to Floydada late Thursday afternoon but the road to Plainview was blocked with a large number of cars stalled in the vicinity of the Seale Drive-In Theatre three miles west of town. Travelers early Friday reported that around 100 cars were stalled along the highway between Lockney and Plainview early Friday although a Highway Department maintainer had scraped the snow off the pavement during the night and assisted many other cars back onto the road.

The Texas, New Mexico and Oklahoma bus coming through here enroute to Plainview was unable to get through and spent the night here with the passengers being cared for by people of the town. Bob Miller said that 8 passengers were on the bus with some staying at the Bill McClaskey home, others at the A. K. Meriwether home, the home of Mrs. W. L. Thomas, in apartments over the bank and in the Dagley apartments. The bus continued its trip about mid-morning Friday.

There were many anxious parents wondering what had happened to their child in school Thursday night since all the Lockney school buses failed to make their return trip. Most of them attempted to make the trip and ended up stuck in a ditch. Some students managed to get home by private car while many others spent the night in farm houses or in private homes in town. Thirty students were stranded on a bus about two

miles west of Lockney and the boys spent the night at the C. A. Gloyna home while the girls spent the night at the Henry Schacht home just across the road.

Since rural phones were out and children could not contact parents, it was noon on Friday before all school children were located and accounted for to parents. No school was held here Friday.

Power Lines Out

The heavy, sticky snow coated power lines in the area, snapping off poles and breaking wires. Service was disrupted here about mid-morning on Thursday. It was partially restored here about 6 p. m. Thursday but rural areas did not have service until Friday morning. Hardest hit by the storm in this area was Lockney and Kress, where service was out some 10 hours. Olton was out for seven hours and Floydada was out 5 hours. The Southwestern Public Service Co. lost only nine poles in the Lockney area but lost a round 100 poles in the Olton area. The Floyd County REA lost eight poles and had 30 line breaks.

For Southwestern more than 90 men worked on the lines throughout Thursday night. Three crews from Lubbock, and a construction crew which was passing through Plainview joined the Plains Division men in repairing the storm damage. Veteran electric company employees reported that the storm caused more damage in a short period than any other in their experience. The weight of the ice and snow caused lines to sag as much as 15 to 20 feet.

Work of the repairmen was hindered by heavy drifts on east and west roads and by stalled cars along the highway making it difficult for them to get to the line breaks. Radio communication from the company's Plainview office kept the repair crews moving through the area all during the night.

J. M. Collins, division manager for Southwestern, expressed his appreciation for the consideration shown by customers and the help the company received from many sources.

The Bailey County REA, serving an area west of Plainview, lost 1000 poles and service has not been restored yet to some areas. Many farmers with frozen food boxes, are having trouble keeping the contents, some packing them with dry ice while others brought their food to town and stored it in the frozen food plants.

The temperature hit a low of 10 degrees above Thursday night but warmed up rapidly following this.

\$15,000 Damage To Auto Building

Members of the firm estimated that the Lockney Auto Co. suffered a \$15,000 loss when the roof over the front part of their building collapsed under a terrific weight of snow, ice and water last Friday afternoon about 4 o'clock.

The roof fell into the show room and parts department, damaging a new 1952 Chevrolet pickup, the parts bins and scattering and damaging some parts.

Several employees of the firm narrowly escaped serious injury when the roof collapsed. Arthur Barker Jr., Barry Barker and Kenneth Murdock were on the roof shoveling snow off when it started to sway. They ran to the east wall and hung on while in the building below Leonard Finley, parts manager and Mrs. Floyd Jackson, bookkeeper, barely escaped the building when the roof came in. Finley saw the roof sag and called for Mrs. Jackson to leave but she, thinking he was joking, hesitated and was just out of the door when the roof fell. The roof had been popping all morning and personnel of the firm had been inspecting it to check its condition previous to the collapse.

Snow was two feet deep on the roof in some places and adding to the weight was the water and ice which had accumulated it was reported.

Cost of replacing the damaged portion of the building will probably cost \$20,000, members of the firm said. Insurance was carried on the building but insurance officials are reported to have said that this type damage was not covered by insurance policies. A similar damage resulted here several years ago when the First Baptist Church building collapsed under the same type weight and the church collected damages only after the insurance company had sued asking for judgment freeing them of liability for loss, with judgment rendered in favor of the church.

Still In Business

The auto firm is still doing business in the same location. Parts bins were moved into the spacious repair department and they are still taking care of all parts and repair work. Since the used car lot is across the alley it was also unaffected. The office has been moved into the same building with the telephone company maintenance crew across the street and just east of the auto building, and business matters are being taken care of there.

Firm members were expressing their appreciation this week for the many offers of assistance and help that has been given. Especially have other auto firms here and in neighboring cities been helpful, it was said.

Mothers March On Polio Tonite

The ladies of Lockney will join together for a march on polio tonight (Thursday) at 7 o'clock. They will call on every home in the community where the porch light is left on or where some other signal is given indicating that the residents there want to contribute to the march of Dimes drive for polio funds.

Mrs. M. W. Wiley of Lockney has been named chairman of the Mothers' March here and is planning a thorough campaign to cover the town. Rural areas will be canvassed by mail, it was reported.

Mrs. Wiley is well-known for her activity in community projects and has served previously as Chairman of the Mothers' March.

In accepting the chairmanship of the Mothers' March, Mrs. Wiley said: "Like every woman, I want to do my part in the fight against polio by assisting in the March of Dimes. We never know where or when polio will strike and must therefore do everything we can to raise the money for any emergency, whether in our own County or in a distant part" (Continued on back page)



School Board Votes To Start Building Program

The Lockney School Board, in session last week, voted to "try to build" eight class rooms with office space, storage room and rest rooms, a cafeteria to accommodate Junior High School and High School students, a gymnasium with ample facilities for teaching a modern health and physical education program and to remodel the old gymnasium, making it into an auditorium which will seat approximately 650 people.

The Lockney district voted some time ago a \$250,000 bond issue for the purpose of building added school facilities. The Board expects that the building program outlined above can be done for around \$200,000 leaving some funds to make improvements at the grade school building including ceiling and lighting features.

The new Junior High School building will be connected on to the present high school building as will the cafeteria and gymnasium, according to present plans. Plans call for extending the building west from the south end of the present building, across the street on the west side of the high school building and on to property purchased last year by the school for building purposes.

It was pointed out by members of the Board that the present gymnasium could not be built into a modern gym, but they have been advised that it could be made into a nice auditorium for a cost of approximately \$15,000. The auditorium would greatly benefit the school in carrying out a very important phase of a modern education program of which Lockney students are now deprived. School officials say that every student should have an opportunity to participate in programs presented to the public, should be able to hear outstanding lectures and take part in regular chapel programs. Students are now deprived of these privileges because the

school does not have a place of assembly.

The school needs a gymnasium to accommodate students for a health and physical education program, members of the Board said. The gymnasium is not for basketball alone, they pointed out, and if it was it would be a very expensive item, but if the Lockney school could construct a gymnasium with dressing facilities to accommodate both boys and girls of the Junior High School and the High School under our present enrollment, approximately 500 students would have the use of this gymnasium at least three periods per week per student. It was further pointed out that the students must have 120 minutes per week instruction in physical health education and the Lockney school is not meeting that requirement due to the lack of facilities.

Under the present set up there are approximately 100 students participating in basketball alone, school officials say, but the dressing facilities are very inadequate for this number. The gymnasium has so many uses around the school that it would almost be impossible to enumerate them all, it was said.

The Board has entered into a contract with Butler & Brashear, architects of Lubbock, and expect to have preliminary plans in hand soon for study. Probably the first step in the program will be selling of the bonds voted last year.

Board members urged the people of the community to visit the schools and see the need that exists for added facilities.

Maytag Cooking School Thursday

Pennington Motor Co. of Lockney, aided by a number of other local merchants, will present the annual Maytag Cooking School and Frozen Food Demonstration at the City Auditorium Thursday of next week, February 5. The school will begin at 2 p. m.

Mrs. Suzanne Pickett, Maytag Home Economist, will instruct in the school and will have many new recipes for those attending.

In addition to the lessons in cooking, a number of prizes will make the annual affair even more attractive to local ladies. First big prize is a \$200 Maytag Dutch Oven Gas Range.

Knox Grocery & Market here is furnishing all the food for the school.

Other Lockney merchants are giving various prizes of merchandise and service. These prizes are listed in the big advertisement for the school in this issue of The Beacon.

There is nothing to buy and every lady in the area is cordially invited to attend. Mr. Pennington said.

January 31 Is Last Day To Sign For Crop Insurance

January 31 is the deadline date for signing for 1953 Federal Crop Insurance, Floyd County farmers are reminded by the PMA office. The crop insurance covers the farmer from almost every crop threat, and assures some income regardless of what happens so long as the farmer works his crop, it was said. Application may be made at the PMA office, Floydada.

Deavenport Sale Will Be Held Today

A public sale scheduled by Wade Deavenport of South Plains for Thursday of last week was postponed because of the heavy snow and will be held today (Thursday) starting at 10 a. m. Mr. Deavenport has announced.

Free lunch and coffee will be served and the sale will be held at the Deavenport place, six miles north and one mile east of South Plains. A large number of farm implements are being offered to the public.

Building Permits Total \$427,455

Building permits issued by the City of Lockney during the calendar year of 1952 totaled \$427,455. Mrs. Faye Messer, city secretary reported this week. This is considerably above the 1951 totals.

The permits were divided into three classes, business, residential and remodel. The business building permits totaled \$141,850 with the new Methodist Church and the new Pylant Grocery building making up a large share of that amount.

The residential permits totaled \$270,805, and included around 25 houses of above \$6,000 value, plus many smaller ones.

The remodeling permits totaled \$14,800.

City officials estimated that the actual value of the buildings constructed would be at least 33% more than the permits called for, since many times the actual cost of a building exceeds by a great deal the first estimate. If this is true the actual building here would exceed a half million dollars considerably.

Mayor Reports On City Improvements

Mayor J. E. Cox this week gave The Beacon a report on improvements and expenditures made by the City during the past year, revealing that the City had spent some \$15,553.88 on improvements and paid out \$8,636.69 for bonds.

Since the bond purchased was not due until 1975, the City saved almost \$7,000 in interest by purchasing it the past year.

Improvements included 2090 feet extension of water lines at a cost of \$1,015.78 dollars. Paving of alleys in the business district was done at a cost of \$2,793, and sewer extensions cost \$607.50 the report showed.

Curbing in the business district cost the City \$740.00 and a number of city streets was covered with a new top of asphalt or seal coat at a cost of \$4305.30. This topping covered 32 blocks of paved streets.

The City also laid a water main to the Panhandle Compress plant at the southwest edge of the city at a cost of \$3207.00 affording the compress water supply for fire protection. In doing this the city took 56 1/2 acres of compress land into the city for tax purposes.

The public rest rooms were constructed during the fall at a cost of \$2884.70, especially to accommodate transient labor here.

Mr. Cox pointed out that the more than \$24,000 spent for improvements and bonds was in addition to regular operating expenses of the city, such as salaries, supplies, etc.

Father Of Mrs. Irons Dies Suddenly Tues.

Mrs. W. C. Irons was informed by telegram Tuesday that her father, T. L. Culberson passed away suddenly Tuesday afternoon about one o'clock at his home at Gilmer, Texas following a heart attack.

Mrs. Irons was accompanied to Gilmer by her sister and brother-in-law, Mr. and Mrs. Harvey Compton of Dalhart, Texas. Funeral services will be held at Crowley Funeral Home in Gilmer at 2 p. m. Thursday.

Mr. Culberson who was 72 years of age, is survived by three sons, four daughters, several grandchildren, one brother and two sisters.

Farm Bureau Will Start Drive Soon

The Floyd County Farm Bureau membership committee met at the Farm Bureau office in Floydada Tuesday night and made plans to begin the annual membership and enrollment campaign the second week in February. R. C. Mitchell, membership chairman, was in charge of the meeting. Twenty-four committeemen were present.

Community chairmen were named as follows: Sterling Cummings, South Plains; Walton Wilson, Center; H. G. Bishop, Lakeview; Roy Hale, Harmony; Raymond Rucker, Pleasant Valley; Johnny Lackey, Cedar; Ted Boedeker, Providence. A number of other workers will assist the community chairmen in making the drive.

The workers will attend a kick-off dinner to be held at Lubbock on February 9th. The local drive will start immediately following that dinner.

Burglars Hit Drive-In Cafe Tuesday

For the third time within six months burglars hit the "66" Drive In Cafe on Highway 70 in South Lockney Tuesday night, breaking open a cigarette machine, a record player and getting some cash and merchandise from the owners of the cafe, Mr. and Mrs. C. D. Kelley.

Deputy Sheriff Ray Hardin reported that the amount of money secured from the cigarette machine had not been determined but that the thieves took \$5.80 from the nickelodum and about \$2.50 in change and some merchandise from the cafe.

Mr. Hardin attempted to secure finger prints but they were smeared and he was unable to get a clear print, he said.

The building was entered by prying open a south window.

Revenue Agent To Be In Floydada Feb. 24

George R. LaForge, internal revenue agent, will be at room 201, Floyd County Courthouse at Floydada on February 24 to assist taxpayers of the county in preparation of their income tax reports. It was announced this week.

CASH MARKETS

Poultry	
Heavy Hens, 4 lbs. and over	18c
Light Hens, under 4 lbs.	16c
Cocks, pound	8c
Eggs, No. 1 dozen	50c
Geese, pound	12c
Ducks, pound	12c
Cream	
Butterfat, No. 1, pound	65c
Hides	
Hides, No. 1, pound	6c
Grain	
Wheat, per bushel	\$2.20
Milo, per cwt.	\$2.60

GO TO CHURCH SUNDAY.

Society

County Council Has First Meeting

The Floyd County Home Demonstration Council met in regular session in the court house Saturday afternoon, January 17. Various committees gave reports and recommendations to the club representatives to be used in the coming year's work.

Miss Petty announced that trees suitable for windbreaks were again available. If you are interested in securing some of these trees, contact either Miss Petty or the county extension agent, Mr. Gibson.

The Agricultural Extension Service of Texas A. and M. College are cooperating with the FORT WORTH PRESS, HOUSTON PRESS, and the EL PASO HERALD-POST in sponsoring the 7th Annual Conservation Award Program and the contest for the

Conservation Homemaker of the year. The theme this year is "Save the Soil and Save Texas."

Those attending the meeting were: Center: Mrs. M. J. McNeill, Mrs. Henry Willis; Dougherty: Mrs. Howard Drysdale, Mrs. Ruth Daniel, Mrs. Bill Smith, Mrs. C. A. Caffee; Fairview: Mrs. C. W. Payne, Mrs. S. H. Tackett; Harmony: Mrs. Carrick Snodgrass, Mrs. D. S. Batten; Lakeview: Mrs. B. P. Neff, Mrs. Earl Edwards, Jr.; Homebuilders: Mrs. W. R. Daniel; Lockney: Mrs. Thomas Marr; Lone Star: Mrs. W. D. Nance, Mrs. Raymond Teeple; Pleasant Valley: Mrs. I. K. Sherman; Mrs. Weldon Smith; Providence: Mrs. L. B. Brandes; Mrs. Ben Brandes; Sand Hill: Mrs. C. B. Cartwack; South Plains: Mrs. E. L. Marble, Mrs. Grigsby Milton; Starkey: Mrs. J. W. Day, Jr.; Mrs. John Shipley; Sterling: Mrs. P. H. Tinsley; Tansley: Mrs. D. J. Burke, Mrs. C. W. Denison; also the county home demonstration agent, Miss Lella Petty.

Wiley Post made the first solo flight around the world in July, 1933.

Barlow-Dietrich Vows Said In Home Rites

Miss Mary Sue Barlow, daughter of Mr. and Mrs. Jerry Barlow of Childress, and Mr. Arnold A. Dietrich, son of Mr. and Mrs. A. M. Dietrich of Plainview were married in a candlelight ceremony Sunday evening in the home of Mr. and Mrs. Virgil Brasher.

Rev. H. L. Anderson read the vows as the couple stood before an arch of greenery flanked on either side with baskets of white gladioli. White tapers in tall branched candelabra backed with fern completed the altar decorations.

Preceding the ceremony Mrs. Virgil Brasher played "Largo" as the candles were lighted by Miss Patricia Tucker and Miss Louann Word. Mrs. Brasher played the "Bridal Chorus" from "Lohengrin" and accompanied Mrs. Jimmy Bilby who sang "I Love You Truly" and "The Lord's Prayer." "Traumerel" by Schumann was played as a recessional.

The bride was attractively attired in a light gold colored suit

with navy accessories. She carried a Bible topped with American Beauty Rose buds showered with white satin ribbon and stephanotis. The Bible was a gift from her mother. For something old and blue she carried a handkerchief forty years old from Canada belonging to the bridegroom's mother. Something borrowed were her ear rings, something new was her wedding attire. She wore the traditional penny in her shoe.

Miss Laverne Word, niece of the groom was maid of honor. She wore a dress of tan wool with brown accessories and carried a Colonial bouquet of American Beauty Rose buds tied with red ribbon.

Flower girls were Carolyn Raby and Phillis Robinson who wore tan nylon dresses and head-dresses of red rose buds.

Mr. Leon Raby served as best man.

Reception
Mrs. Tom Word and Mrs. Leon Raby presided at the bride's table at the reception held immediately following the ceremony. A lace cloth covered the table which was centered with a two-tiered wedding cake surrounded with pink rose buds and fern. The bride's chosen colors were carried out with green candles and pink punch. Mrs. Riley Tucker presided at the bride's book.

After a short wedding trip the couple will be at home near Providence where the groom is engaged in farming.

Guests for the occasion included Messrs. and Mmes. K. Sammann, Plainview; Alfred Brasher and Verus, Jimmy Bilby and family, Harold Chewing and family, Bill Renegar and children of Clovis, N. M.; Albert Scheele, Rev. and Mrs. H. L. Anderson and sons, Riley Tucker and Pat, Tom Word and daughters, A. M. Dietrich, Virgil Brasher from Lockney. Due to illness the bride's mother was unable to attend.

Weekend visitors in the home of Mrs. R. E. L. Stutts were Rev. and Mrs. John W. Reynolds of Tyler, Mr. and Mrs. Bennie Bilbo and sons, Bennie Lee and Robert Roy of Corpus Christi. Other visitors were Mr. and Mrs. T. J. Stutts of Plainview.

Mr. and Mrs. Lewis Smith and children moved back to Lockney this week from Arkansas. They will live in one of the D. L. Handley houses.

IN A PURPLE MOOD



Helen Terrell of Shreveport modifies the shirtwaist dress with soft, boxy pleated skirt and Mandarin collar and lets the fabric carry the impact in this new fashion. She uses a two-toned, pleated cotton abstract print in white and aqua on lustrous purple. The National Cotton Council points out that the dress is washable and can be worn year-round.

Miss Boedeker Is Honoree At Bridal Shower

Miss Ruth Boedeker, bride-elect of Weldon Smith, was complimented Thursday with a tea-shower in the home of Mrs. M. C. Nance of Providence community.

Mrs. Nance greeted guests at the door and presented them to the honoree, her mother, Mrs. Leo Boedeker, and Mrs. Ira Smith, mother of the groom-designate. Mrs. L. B. Brandes assisted at the guest book, and Mrs. Ben Brandes and Mrs. W. A. Boedeker presided in the gift room.

The bride-elect's chosen colors of pink and blue were carried out at the serving table covered with a lace cloth over blue. It was centered with a crystal punch bowl surrounded with pink carnations and fern and flanked with blue tapers.

Mrs. Charlie Boedeker, assisted by Mrs. O. W. Schmidt and Mrs. Sam Neumann, poured punch. Cookies decorated with pink flowers and pink mints were served. Napkins were print-

ed with "Ruth and Weldon, January 24, 1953," the names of the engaged couple and their wedding date.

Hostesses were Mmes. O. W. Schmidt, W. A. Boedeker, Ben Brandes, Charlie Boedeker, Sam Neumann, L. B. Brandes and M. C. Nance.

Attending or sending gifts were Mmes. Ted Boedeker, Stewart McCallip, Weldon Foster, Roy Clements, M. C. Scheele, Jack Faver, E. M. Quebe, Ben Quebe, H. F. Quebe, B. H. Quebe, B. F. Sammann, Sr., B. F. Sammann, Jr., Norman McAnelly, R. S. Smith, J. M. Reed, T. C. Martin, Emory Mills, Leonard Grubb, Bunk Mills, C. E. Flippin;

H. L. Peterson, James Churchwell, J. E. Stair, Vincent Brittan, L. V. Brittan, Willie Clark and Joan, Roy Formway, Herman Russell, Melvin Mills, Walter Hoffman, Jesse Horn, Richard Matthews, L. A. Matthews, H. L. Anderson, Albert Scheele, Albert Sammann, Ernest Sammann, Wilfred Stoerner, Virgil Brasher, Al Dietrich, Tom Word, T. H. Boedeker, Albert Kelm, Melvin Kelm, Joe Zimmermann, Albert Lindeman and Gene Lene, Robert McDonald, Jimmy Hodel, A. H. Bontke, Clarence Brandes, Jake Jones, Henry Sammann and Clara, Edwin Boedeker, and Billie Boedeker.

Mrs. Conde Davis returned Sunday after spending three weeks in Amarillo with her daughter.

FARM BUREAU
Invites Investigation:
Fire — Life — Auto
Polio
BLUE CROSS: FARM LIABILITY
PHONE 665
FLOYDADA

John B. Stapleton
LAWYER
General Practice of Civil Law
Courthouse Floydada
Telephone No. 14

Most every family improved if the get back on spanking their children.

There are two men: Those who keep letters, and those letters keep them.

When the old man to earn his money usually has to work to get it.

CEMENT CONTRACT
We are capable of most any kind of work. See us for
W. F. Pirtch
Phone 3...

JUS ON

That's the total number of times you pay the self-cost for safe, dependable STATE FARM auto insurance coverage!
STATE FARM
Insurance IS ECONOMIC!
STATE FARM auto costs are low! Monthly local agent's sales call year after year, as well as insurance. STATE FARM to insure only carefully thereby reducing insur-

Join the new Members of
J. H. COOK
106 1/2 North
Phone 3312
STATE FARM
MUTUAL AUTOMOBILE

TRY this NEW METHOD of LAND-LEVELING on your own farm...FIRST

PROVE ITS WORTH TO YOUR OWN SATISFACTION

WESTATE LAND LEVELER

You can have a WESTATE LAND LEVELER demonstrated on your own farm. See its unbelievable maneuverability, how easily it can work around trees and along fences and ditches. Realize how it can give you the advantages of better seed beds, easier irrigation, freedom from crop-destroying pot-holes and how it will improve your soil year after year. See how it works as a bulldozer and a scraper where larger amounts of earth must be moved. Prove all these things to your own satisfaction before you buy.

GET 50% MORE FOR YOUR INVESTMENT

It is no longer necessary to invest in expensive oversized equipment to profit from ALL the benefits of land leveling when you own a WESTATE. You can SAVE 50% or more on original cost and operation because, by a remarkable new principle, the WESTATE LAND LEVELER uses your tractor as a PART OF THE LEVELING LENGTH. This new method provides economy and requires less storage space. In operation, no other comparable land leveler does the work faster or as well.

TWO MODELS! MODEL "F" is the ONLY effective land leveler that does a top job on a 3-point hookup tractor. MODEL "B" gives top performance with other types of wheel tractors.

LOOK HERE!

We can now make delivery on NEW G OR MODEL 60 JOHN DEERE TRACTORS complete with all equipment.

NEW EQUIPMENT ARRIVING DAILY!

We now have in stock and can make delivery on the following:

Hudson Automatic 4-row markers for A, B, G and 60 John Deeres, H, IHC, M, H and others.

John Deere Section Harrows with Eveners.

2, 4 and 6-section John Deere Rotary Hoes

Weeder King Go-Devs with Inside Rotary Hoes

SIGN UP NOW . . .

For a FOUR-ROW CRUSTBUSTER . . . We have only fifty of these machines allotted to us and twenty are already gone.

IT'S TIME TO THINK ABOUT . . .

Irrigation Supplies of all kinds.

We have Canvas and Plastic Dams in every size.

Also Aluminum and Plastic Syphon Tubes in at least 21 different sizes and shapes.

Irrigation Shovels, Pony, Light Weight.

If we don't have what you want we'll try to get it for you.

WE STILL HAVE . . .

A complete line of COMFORT TRACTOR COVERS in all popular makes for those cold, windy days still ahead of us.

Lockney Implement Co.

Your John Deere Dealer

Dial 3825

Pat Stansell, Mgr.



See Your JOHN DEERE Dealer for QUALITY FARM EQUIPMENT



(Continuation of standard equipment and trim illustrated is dependent on availability of material.)

1953 Chevrolet Advance-Design Trucks deliver more value!

4 powerful reasons why you get more of what you want...

more engine power!

108-h.p. Loadmaster—standard on 5000 Series heavy-duty ward-control national on 4000 Series duty trucks.

more staying power!

Heavier, stronger, able frames increase life, add to rugged stamina of 1953 trucks.

more braking power!

Trucks up to 4000 heavy-duty models "Torque-Action" series 4000 and "Torque-Action" front, "Twin-Action"

more economy!

New stamina plus line economy in models with Loadmaster, reduces gas per ton-mile.



MORE CHEVROLET TRUCKS IN USE THAN ANY OTHER MAKE!

LOCKNEY AUTO COMPANY

Telephone 3368 — Lockney, Texas

ella Casey, Mrs. J. C. and Mrs. N. L. Dashner returned to their homes after spending a month in South Texas. Christmas at Luling Mr. and Mrs. W. T. Dav- enjoyed several sight- in the hill country vicinity. They visited in went to Blum, Tex- and Mrs. Dashner's step Mrs. O. V. Wilson.

KITCHEN AND Field News

from Floyd County Rural Electric Cooperative, Inc. by Nancy Morckel and Claude Weatherbee, Electrification Advisers

Again, as in every case, your cooperation during the storm and blizzard helped to get everything back in operation with a minimum loss of time. Storms such as these work a hardship on every one—most of all on those depending on electricity to do so many of the chores in the home and around the farm. The linemen were out working for more than 38 continuous hours, doing everything they possibly could to restore service. They really did appreciate the help you folks gave them—food—assistance—moral support.

We had approximately 30 line breaks and lost 8 poles. We were very fortunate in comparison to other nearby cooperatives; as some of them lost probably a thousand poles and service still is not entirely restored. Storms like these are beyond anyone's control—and it is so nice when members understand and do their part to help out.

Jr. Womack reports a new nephew, Mr. and Mrs. Delbert Dillard of Midwest City, Okla. are the parents. The young man has been named Rickey Dale. Mrs. Arthur Womack, Jr., left Saturday for Midwest City to be with her sister and family for a few days.

Skinny Winn is a new employee of the Co-op. We are glad to welcome him and Mrs. Winn into the co-op family.

Noland Arney is going to Amarillo to fight in the Golden Gloves Tournament. We wish you luck Noland.

Wayne Collins said: "It really was rough on everybody last week."

Henry Brewer connected a new house at Wake on REA recently.

The linemen particularly want to thank those who helped pull them out of ditches and say thanks too, for the many cups of coffee and food given them.

Miss Lena Mae Anlauf, Regional Home Economist, for Texas, New Mexico and Arizona, is spending this week at the co-op.

Due to the storm last Thursday the demonstration was not given at Mt. Blanco. Weather permitting the demonstration will be given this week at the home of Mrs. Brice Allen.

Buster Hicks, with H. N. Roberts & Associates Engineering Co. of Lubbock was a Co-op vis-



A 1953 Ford Sunliner convertible will be the official pace car in the annual May 30th 500-mile race at the Indianapolis Motor Speedway. William Clay Ford (left), a director of Ford Motor Company, who will drive the car, and Wilbur Shaw, three-time winner of the international race classic and president of the Speedway, are shown above discussing the car's features. Shaw will ride with Ford on the pace lap to start the 1953 race.

itor on Monday.

Blair Adams and Hollis Pruitt with G. E. Corp. in Lubbock were co-op visitors last week.

In spite of the stormy weather Melvin and the Floydada group left Friday morning from Lubbock for San Francisco to attend the NRECA convention.

Carl Lewis and Reamer Rainer took a load of line poles to our neighbor cooperative at Muleshoe Monday. Karl said—"In seven miles of line only 3 poles were standing." Mr. Lancaster, the manager told them so far they had found 878 poles down.

T. J. Honea of Lockney has connected an irrigation well in the Lone Star Community recently.

Laughs For This Week—

Carrick Snodgrass trying to shave with his electric razor Friday morning (while holding a candle.)

John Smitherman putting bread in the electric pop-up toaster and watching by candle light for the toast to pop up.

Charley Perry said Friday morning—"After sleeping under an electric blanket all these years I had to pile on so much cover last night that my back is broken this morning."

The Manager and Board of Directors want to commend all who reported outages, line breaks and assisted in locating the trouble. Again this proves that cooperation within a cooperative is what it takes to get the job done.

Rev. and Mrs. J. R. Naylor and Mrs. Leslie Ferguson spent Tuesday in Lubbock.

All-Night Television Party Is Planned

Talent from the entire West Texas area, headlined by song writer-western singer, Slim Willet, is being lined up for an all night television scheduled on KDUB-TV, Lubbock, January 31. Reason for the all-night TV party is to invite contributions to the March of Dimes.

As plans now stand, according to Jay Hicks, program director, the giant telethon will start at 10 p. m. January 31, and continue as long as contributions keep coming in for the polio fund.

Topping the list of entertainers scheduled to appear is Slim Willet, author of the hit parade song, "Don't Let The Stars Get In Your Eyes," from Abilene. He will drive in from Abilene, after finishing his Saturday night show there, and arrive about 1:30 a. m. to appear on this public service program.

Handling the emcee duties will be Jimmy Isaacs and Ray Trent, KDUB-TV announcers. Talent thus far scheduled includes a negro minstrel, two singers from KLYN in Amarillo, a square dance exhibition with C. C. Lindsey of Lubbock calling, Bob Murphy at the organ, and several acts by airmen from Reese Air Force Base.

HOME HINTS

Boil potatoes in their jackets directly over the top burner of your automatic gas range. Peel and roll in melted butter until golden brown. Then sprinkle with finely chopped onions. Excellent with a juicy meat loaf.

Graham's Associate In Wayland Revival

Plainview.—Grady Wilson, associate evangelist with Billy Graham, will hold a series of services at Wayland College, Feb. 17-20, according to Sam Choy, director of religious activities.

Wilson returned recently from a preaching mission in Korea with Graham.

The Wayland services will be conducted at the usual chapel hour in the mornings and at 7 o'clock each evening in a Wayland auditorium with members of the Baptist Student Union serving as committee members.

The invitation to Grady Wilson to be at Wayland College was extended by President J. W. Marshall in the fall when the Graham evangelistic group was holding a series of services in Albuquerque, N. M.

MR. GRUVER INJURED

Stanley Mudgett, who has been visiting his sister, Mrs. Olive Myers the past two weeks has accepted employment with a former Lockney man, Lawrence Gruver at Gruver, Texas.

Many people here will remember Mr. Gruver as he formerly operated a hardware business in Lockney. Mr. Mudgett wrote to Mrs. Myers this week and stated that Mr. Gruver is now in an Oklahoma City Hospital being treated for a broken hip suffered when he was knocked down by a cow he was attempting to brand. The accident happened the first of the week.

Woman's best asset is man's imagination.

Set For Feb. 22-26

Abilene.—Speakers for the 34th Abilene Christian College Bible Lectureship—the largest unofficial annual meeting of Church of Christ members in the world—has been announced for Feb. 22-26 by J. D. Thomas, ACC Bible professor and lectureship director.

They are Glenn L. Wallace, Abilene; Robert C. Jones, Fort Worth; Delmar Owens, Tulsa, Okla.; Clifton Rogers, Port Arthur; Leonard Mullens, Dallas; Paul Wallace, Gladewater; Willard Collins, Nashville, Tenn.; James Willeford, Madison, Wis.; and Carl Spain, Houston. The nine are all Church of Christ preachers.

Mission reports from nine different fields will be given by Logan Fox, Japan; Leonard Gray, Africa; Carl Mitchell, Italy; L. E. O'Neal, Philippines; Maurice Hall, France; Mack Kercheville and Gabriel Ortiz, Latin America; Frenshon Kharlukhi, India; Charles McPhee, Canada; and Gottfried Reichel, Germany.

Lectureship will be classes relating to the 1953 theme, "The Church at Work," to be held four afternoons, Feb. 23-26.

Another new feature of this year's gathering will be panel discussions on "Worldliness in the Church," "Value of Christian Education," "A Christian in the Business World" and "The Fruits of the Spirit."

Other features will include films and slides of Palestine; sermons by four ACC student preachers; the Southwestern Christian College Chorus from Terrell and an address by Grover C. Washington, dean; programs by the ACC Symphony Orchestra and Band, Preachers-Elders Dinner and an Ex-Students' Luncheon.

CARD OF THANKS

We wish to thank our friends and neighbors for the sympathy shown us at the death of our mother and loved one.

M. J. Meester family.

Mrs. Warner Evans of Sherman, Texas is here visiting her brother, Joe Holt.

Protection
Insurance Cheap!

As sir, compared the possible cost you could have an accident, protection through insurance comes up.

Whether it's liability insurance or collision insurance your own car or the cost of the insurance will be a fraction of what it could cost if you had an accident.

Don't delay any day. Come in let us tell you how well insurance will protect

FRANK PERKINS AGENCY
Lockney

Let Us Supply Your

Fertilizer Needs

21% Ammonium Sulphate
45% Superphosphate
Anhydrous Ammonia
Also Mixed Fertilizers

We have the necessary equipment to apply all these fertilizers.

BAXTER & SMITH GRAIN CO.
Phone 3377

FOR DOUBLE COMFORT-DOUBLE ECONOMY

LOOK AT ALL 4

NOW! YOU CAN HAVE A FAMOUS Morning Glory MATTRESS ON EVERY BED IN YOUR HOME!

- \$69.50** THE Morning Glory DE LUXE
For the "sleep wise" the De Luxe offers the utmost in comfort, beauty and long service—actually the lowest cost Morning Glory PER YEAR OF SERVICE. Double cushioned, smooth, tuftless, sleeping surface with lovely damask covers and dozens of other refinements. Guaranteed up to 15 years.
- \$59.50** THE Morning Glory CHAMPION
The Southwest's best known quality Morning Glory. Bimful of sleeping comfort, tuftless, double cushioned upholstery over hundreds of resilient springs. The Champion Morning Glory is designed to give you that "Wake Up and Sing" feeling every morning. Guaranteed up to 10 years.
- \$49.50** THE Morning Glory STANDARD
A new version of Morning Glory quality that permits you to own a Morning Glory mattress and matching box spring (The Dream Team) for only \$49.50 each. Lovely pre-built border, button tufted, taped edges are some of the many features of the Standard. Guaranteed up to 7½ years.
- \$39.50** THE Morning Glory LEADER
For those whose budget will not permit top quality, the value-packed "Leader" mattress and box spring is a bargain at \$39.50 each. A 200 coil mattress with many advantages of higher priced mattresses, the Morning Glory Leader is an outstanding value. Guaranteed up to 5 years.

EASY TERMS

A GUARANTEED PRODUCT OF TAYLOR BEDDING MFG. COMPANY - THE WORLD'S LARGEST - TAYLOR, TEXAS

MAKE YOUR SELECTION FROM THESE A-1 USED CARS:

- 1949 Chevrolet Pick-Up ¾ ton
- 1948 Ford Pick-Up, ½ ton
- 1952 Studebaker Champion, clean, radio, heater and overdrive.
- 1948 Ford 2-Door

USED IRRIGATION MOTORS

- 145 h. p. used Ford Irrigation Motor
- 110 Ford 6-cylinder used Irrigation Motor
- SEE US FOR NEW 155 h. p. V-8 Ford Irrigation Motors

Only Ford Dealers Sell

You should see the **TERRIFIC USED CARS** we're taking in on '53 Ford's!

RIGHT! More people are trading in late models, too... that's why we've got the **FINEST USED CAR SELECTION** and the **BEST DEALS** we've ever had!

SEE US... and drive with "new car" confidence at a used car price! Terms are the lowest possible. It's easy for you to buy the **right car you need right NOW!**

YOUR FORD DEALER

A-1 USED CARS AND TRUCKS

BAKER HARDWARE COMPANY
LOCKNEY

"WHITEY" BACCUS
Telephone 3395 AUTHORIZED FORD DEALER Lockney

Livestock Prospects Told By Bates

College Station. — Texas livestock producers would like mightily well to see an improvement on the profit side of the ledger in 1953. The sharp drop in cattle prices since last summer was made more acute by the drouth which covered much of the country. Recent rains, however, have improved the prospects for feed and some strength has been noted in livestock prices.

The prospects for 1953 are not too bright, says C. H. Bates, farm management specialist for the Texas Agricultural Extension Service. This prediction is based on the forecast that more beef and poultry will be available. The supplies of mutton and pork will be less but the overall total of all meats is expected to be larger than 1952 supplies. Prices, says Bates, for both live animals and meat at retail are most likely to decline some unless unforeseen changes occur.

On the favorable side of the picture Bates adds that the strong demand for meat is likely to continue through 1953 and too, consumers should have more money with which to buy meats and other foods.

The long time outlook for profits from livestock production believes the specialist depends on how well producers balance livestock numbers with feed supplies. He points out that Texas producers in 1952 had some 21 percent more cattle than 10 years ago and this resulted in heavier stocking of range and pasture land. The drouth coupled with the 20 percent less acreage planted last year to may and silage crops made the feed situation a tough one. Even with normal yields there would have been feed shortages in most areas.

Thoughtless Habits Injure Teeth—Cox

Austin. — It's impressive to be able to pry off bottle caps with your teeth, but it's much smarter — from a dental health point of view — to use a bottle opener.

And using a cigarette holder

INSURANCE

FIRE — HAIL — TORNADO
REAL ESTATE and
SURETY BONDS
MONEY TO LOAN
on Farms and Ranches at
Low Interest Rate
Next door to Federal Bldg.

FRANK PERKINS
Phone 3311

Protect Your Baby Chicks From Disease By Using—

GERMOZONE

THE LIQUID DRINKING WATER MEDICINE

Safe even for the youngest chick . . . kills many germs and fights poisons! Used by thousands of successful poultry raisers every year.



Did you ever watch baby chicks around a drinking fountain? Notice their feet tracking in the water; dirty beaks carrying contamination from the floor into the drink. Soon the fountain is loaded with germs. It is easy to understand why Pullorum and other diseases spread so quickly to the entire flock.

That's why Germozone is so important. It kills germs such as those causing Pullorum, Fowl Cholera, Fowl Typhoid and others.

And it's low in Cost—

4 oz. bottle	50c	12-oz. bottle	90c
Quart bottle	\$1.75	1/2 gallon	\$3.00
One gallon	\$5.25		

BYRD PHARMACY

FRED D. BYRD, Prop.

Dial 3353

Lockney

I'll Walk Alone



Lively as a cricket is Randy Donoho, 4, who was stricken by polio, September, 1951, and still receives treatment. March of Dimes funds provided by Wayne County (Detroit) Chapter of the National Foundation for Infantile Paralysis, backed Randy in his fight toward recovery.

looks dignified, and it helps keep stain off your fingers, but it doesn't do your teeth any good. State Health Officer George W. Cox says.

Dr. Cox can count off some 36 everyday, commonplace habits that the great majority of Americans, including Texans, practice in one degree or another that are injurious to mouth tissue.

Lip biting is one such habit. Others are clenching or grinding teeth, picking them, chewing on match sticks, tooth picks, holding nails or bobby pins between the teeth, and thumb sucking. Biting on straw or the ear loops of eyeglasses, or chewing on pencils can also cause trouble.

Also said to be detrimental to teeth and gums is the practice of leaning your chin in the cup of your hands. It causes side pressure that is sometimes injurious to both teeth and jaws.

"This has to be a pretty consistent habit, though," the health officer asserted, "before it will be damaging. But it is something to watch."

Ever experience obscure headaches, tenderness at the temples, or tenseness in face muscles? These might be signs of faulty closure of opposing teeth which is reflected in mouth tissue.

Judge Lindsay said he had never tried gin and gingerale, but he had tried several who had.

FATHER ILL

Mr. and Mrs. Vernon Pylant left Tuesday afternoon for Hamilton to visit his father, H. A. Pylant, who is very ill. The elder Mr. Pylant has been ill for some

time but his condition has become worse, relatives said.

Mr. and Mrs. Lee Viall and Kenny of Amarillo spent Tuesday here with her parents, Mr. and Mrs. Walter Beall.

Mr. and Mrs. J. L. Thomas of New Baden spent from Monday until Wednesday visiting in the home of his brother, Mr. and Mrs. Sid Thomas.

GO TO CHURCH SUNDAY.

Royce Vernon and family of Olton were in Lockney on business Monday afternoon.

The shortage of strong elastic girdles has revealed just what shape this country is really in.

Mr. and Mrs. E. A. . . spending this week in and Farmersville visit his mother and his . . . Lloyd Taylor who is

Watch your expiration



Plan now to attend the FREE

Maytag

Dutch Oven Cooking School

THURSDAY, FEBRUARY 15

Starting at 2 p. m.

CITY AUDITORIUM - - LOCKNEY

You'll Enjoy this Program

Two hours of fun are ahead for you at the interesting Maytag Dutch Oven Cooking School. You'll see a complete demonstration of the beautiful new Maytag range that cooks ON with gas OFF. Many delicious recipes will be tested on the work-saving, time-saving Maytag. Plan now to attend!

Free Door Prizes and Maytag Menu

CO-SPONSORS CONTRIBUTING PRIZES ARE:

KNOX GROCERY is contributing the food used in the school.

BYRD PHARMACY — \$5.00 in merchandise
CITY BAKERY — 3 dozen assorted cookies
U & I LAUNDRY — 4 hours free washing
LOCKNEY VARIETY — Set of Boudoir Lamps
LOCKNEY DRUG CO. — 2 sticks Cologne
TRUETT VARIETY STORE — Table Lamp
WHITE ROSE CAFE — 2 Home-made Pies
BROWN'S CLEANERS & CLOTHIERS — \$5.00 in merchandise
RHODES GROCERY — \$5.00 in Shure-Fine merchandise
LOCKNEY BEACON — 2 Year Subscription

Possibly other merchants will have free prizes to be given away.

FIRST GRAND PRIZE \$200 MAYTAG DUTCH OVEN GAS RANGE

Nothing to Buy — Everything Free!

DON'T MISS IT! YOU'LL ENJOY EVERY MINUTE OF THIS COOKING SCHOOL AND FROZEN FOOD DEMONSTRATION.



MRS. SUZANNE PICKETT
Maytag Home Economist

who has hundreds of new recipes for preparing foods and ways to make homework easier and life more enjoyable.

Pennington Motor Company

Dial 3383

Lockney

ary Nets Man Two Sentence

How poorly burglary is being learned by Broe Ballard, 18, who had a penitentiary sentence years by a jury in Monday for breaking Capada theatre late.

He and his associates for a little crime were at it. Grundy fatal was another victim burglary efforts. Of ates in the Capada youngster is in reform the third is on pro-

Is A Legislator
ndant, who was due
d up for trial on a
receiving and dispo-
sition goods, is Steve
ubbock man, who will
r until sometime in
r. His attorney is a
lect, George Berry,
go to the legislature
ock county as repre-
place 2. A request,
a new law, for delay

of the case, was granted by District Judge Alton B. Chapman. Under this law an attorney representing a client cannot be required to come into court for a period of 30 days prior to a session of the legislature nor for 30 days thereafter. His client is alleged to have received stolen clothing from Brown's Cleaners at Lockney.

Kenneth Graham, the young man alleged to have written in \$250 on the amount line of a check intended by the giver, to be for the amount of \$2.50, was to have come to trial before District Judge Chapman without a jury Monday, but changed his mind and asked for a jury trial. According to Solon Walker, an elderly man of Providence, he gave Graham the check for \$2.50 to "help out" on a worthy cause. Graham, he said, told him he was a service man just back from Korea. He wanted to sell Walker a magazine subscription which Walker didn't want to buy.

The state is alleging that Graham put in the amount of the check after it was signed by Walker intended to be for \$2.50. Graham and three others have been given recent 4-year sentences in Clay county on a similar charge, said district attorney John B. Stapleton.

Mr. and Mrs. Edgar Hays and family spent last weekend in Austin where the editor attended the Texas Press meeting at the new Commodore Perry Hotel. They also visited Mr. and Mrs. W. T. Hays and family and Mr. and Mrs. Cecil Daniel.

GO TO CHURCH SUNDAY.

My Neighbors



"Everytime I look in my check-book—I realize that the government has beaten me to the draw!"

Nathan Johnson Concludes Long Teaching Career

School is out for Nathan Johnson after 37 years of class room duty, all of it in Central and West Texas schools.

Poor health caused his retirement recently but not until he had set an amazing record of 35 years teaching without once being absent because of illness.

Johnson was principal of the Lockney elementary school for some time before accepting a position with the Plainview school system where he taught in the high school for several years.

Born at Morgan's Mill in East Texas, he attended North Texas State College at Denton and taught his first school at Loving, a two-teacher school, in Central Texas. He received his bachelor of arts and master of arts degrees at Texas Technological College after coming to West Texas.

He served as principal of the Lamesa High School before enlisting in the Army during the First World War. Upon his return from overseas service he became superintendent of the Lamesa schools and served at that post for three years.

He was superintendent at Seagraves for six years. It was while he was with the Seagraves schools that he and Mrs. Johnson were married. The couple are parents of four daughters.

Johnson was superintendent at Idalou, Jarrell and Bronte.

You can't expect \$1 an hour for your working time if you spend your leisure hours like they were worth a dime a dozen.

Isn't it peculiar that no matter how busy we are we always see to it that our auto is kept in good repair?

Baptist Notes

WHY I BELONG TO THE WMU

It gives me opportunity

1. To obey Christ's command, "Go ye into all the world." I can do this through prayer and offerings.

2. To meet in Christian fellowship the women of my church, that I might grow in all love and Christian service.

3. To study the mission fields month by month I love to see God's hand in world affairs.

4. To give according to my ability. Be it little or much, I want Him to say, "She hath done what she could."

5. For community missions. I could make little impression by my efforts alone, but through cooperation with other consecrated women I can accomplish much for the kingdom of God through social uplift.

6. To turn aside from daily cares and seek spiritual strength through prayer and study.

If we know we care;
If we care we pray;
If we pray we will serve.

We extend an invitation to every woman in our church to join our WMS. We believe you will find a place for service in which you will be happy."

J. R. NAYLOR, Pastor.

Bargain Rates On Daily Papers Are Now Available

The Beacon is now authorized to accept subscriptions to a number of daily newspapers at the annual fall bargain rate.

The Fort Worth Star Telegram bargain rates just announced are \$12.95 per year for the daily and Sunday or \$12.00 per year daily only. This is a considerable saving from the regular rate of the Star Telegram which is \$18.00 per year for daily and Sunday.

The rates on the Amarillo Daily News are \$13.00 for the daily and Sunday and \$10.00 per year for the daily only.

The Lubbock Morning Avalanche rates are \$12.95 per

year for daily and Sunday and the daily is \$11.00 per year.

The Beacon can also accept subscriptions for the Abilene Reporter and the Wichita Falls Record News but we do not as yet have the bargain rates on these two papers.

You can always save money by renewing your daily at The Beacon office.

Watch your expiration date.

Lone Star Baptist Church

Sunday School 10:00 a. m.
Preaching Service 11:00 a. m.
Training Union 6:30 p. m.
Preaching service 7:30 p. m.

Wednesday

Prayer service 7:00 p. m.
W. M. U. 1st and 3rd Wednesdays at 2:30.

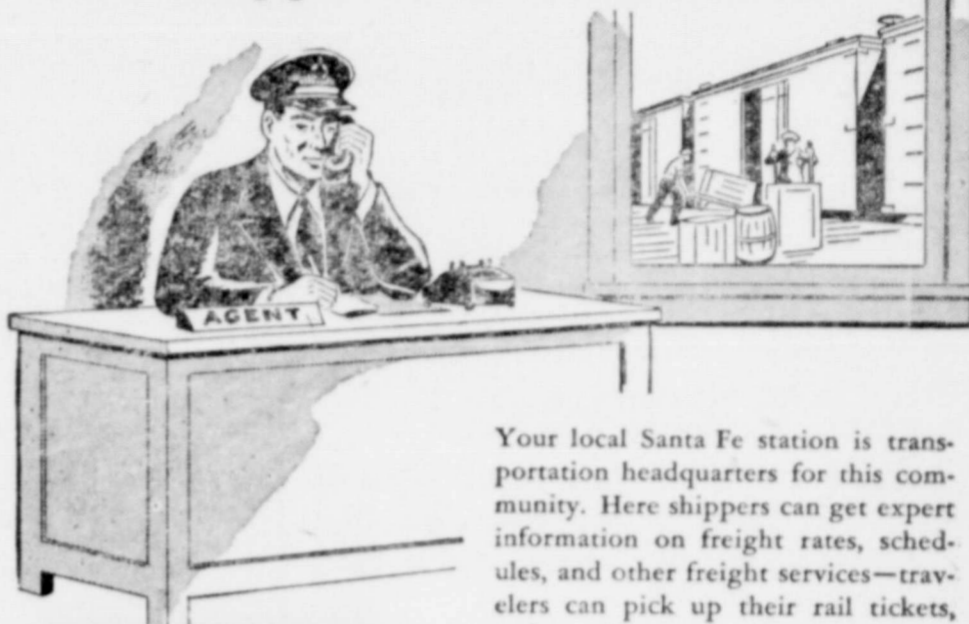
F. P. GRAHAM, Pastor.

'Tis reported that soldiers in New Guinea discovered a tribe of natives in which the bridegroom greased himself from head to foot before the ceremony started . . . but seldom escaped.

ToDay's style trend seems to be to swap the wedding dress for a divorce suit.

A lot of wives lead double lives—their own and their husbands.

Transportation Headquarters for Shippers and Travelers



Your local Santa Fe station is transportation headquarters for this community. Here shippers can get expert information on freight rates, schedules, and other freight services—travelers can pick up their rail tickets, make train reservations or get complete travel information for any trip.

Take advantage of this complete Santa Fe transportation service. Stop in or call your local Santa Fe agent whenever you have freight to ship or a trip to make. Let him help you with all your transportation needs.

SANTA FE LINES

L. BROWN

REAL ESTATE
Property—Farm and Ranch Land
deal in all kinds of Real Estate and
e glad to help you buy or sell. Come
see us.
ated in Frank Perkins Building
Lockney

DR. JOE E. WEBB

OPTOMETRIST
Rooms 306-308, Skaggs Building
Telephone 1234
Plainview, Texas

For the
**Best
Truck Deal
in Town**

See your **FORD** Dealer!

"WHITEY" BACCUS
• 5385 AUTHORIZED FORD DEALER Lockney

Mr. Farmer - - -

Federal Crop Insurance

offers you
PROTECTION
of your
CROP INVESTMENT

It's low-cost, too!

**Federal
Crop
Insurance**

**HURRY—January 31 is the deadline for
signing an application for crop insur-
ance this year. Don't delay! Do it today!**

CONTACT YOUR FLOYD COUNTY PMA OFFICE TODAY!

Society News

Mrs. Lovvorn Hostess For LaVentana Club

LaVentana Study Club met Tuesday morning at 11:30 at the home of Mrs. J. L. Lovvorn in Lone Star Community for a luncheon and program. Co-hostess with Mrs. Lovvorn was Mrs. C. D. Merrick.

Roll call was answered with "My Favorite Author." Mrs. Bill Johnston of Plainview gave an interesting review of the "Life of Geo. W. Truett," followed by a reading by Mrs. Herman Huffman entitled "Grandma and the Sea Gull."

Attending the meeting were Mmes. Clyde Baxter, E. J. Foster, J. T. Griffin, Hoyette Hodges, Bill Johnston, Albert King, Clois King, J. L. Lovvorn, Charlie Merrick, W. T. Rankin, Robert Smith, Raymond Teeple and Herman Huffman.

Wonder if they speak of the moon as silvery because it comes in quarters and halves?

Friendship Club Meets Tuesday

The Friendship Circle of Aiken met Tuesday evening, Jan. 20th in the home of Mrs. Collis Tanahill to finish the club's year of business.

A refreshment plate of coffee, cookies and candy was served to Mmes. Buck Kellison, Robert Kellison, Quinten Adams, Martin Bradley, Leslie Carlton Jr., Francis Montandon, C. Y. Roach and the hostess.

The next meeting will be in the home of Mrs. Quinten Adams when new officers will be elected. All members are to be present.

QUARTET SINGS OVER STATION KFLD

The Lockney Methodist quartet, composed of C. L. Record, Ike Johnson, Clark Harris and Oliver Holmes, sings over Radio Station KFLD each Sunday afternoon at 2:30. Mrs. Record accompanies the men on the piano.

Chinese Speaker Heard At B&PW Club Meeting

The sixth anniversary of Lockney Business and Professional Women's Club was marked Tuesday evening with a banquet at the grade school cafeteria. Mrs. Evelyn Terry and Mrs. Frances O'Hearn were hostesses and Mrs. Albertine Irons was program chairman for the delightful occasion.

A large birthday cake with six candles flanked by pink candles in crystal holders centered the speaker's table. Flags of the United Nations made by Girl Scout Troop No. 5 decorated the walls of the entertaining room. Smaller flags and dolls dressed in costumes of the United Nations, also made by the scouts, decorated the banquet tables.

"International Relations" was the theme of the anniversary program and guest speaker was Stephen Liu of China, student at Wayland College, Plainview. Young Liu was attending a college in Formosa at the age of sixteen when the Communists took over China. His parents have not been heard from since that time neither have the rest of his family except one sister who is studying music in Rome, Italy. He joined the army and served in India then returned to Formosa to resume his studies. He became a Christian and came to Wayland College, Plainview to prepare for missionary work among his own people in China when conditions in the country will permit. He is now 23 years of age. Stephen Liu proved to be a most charming speaker, members of the club report.

Corsages were presented to charter members who are still in the club. They include Frances O'Hearn, Wanda Baker, June Bybee, Leila Petty and Estelle Powers. Mrs. Powers, first president of the club, cut the anniversary cake.

Attending were Mmes. Baker, LaVerna Brunner, Birda Foster, Tangy Hargis, Betty Knox, Joan Moody, Ethlyn McAdams, O'Hearn, Powers, Dorothy Shipp, Ellen Wiley, Evelyn Terry, Winnie Angus, new member from Floydada, and Miss Leila Petty.

GO TO CHURCH SUNDAY.

Shower Honors Miss Beth Kellison

Miss Beth Kellison, bride-elect of Mr. Don McNeil of El Paso, was honored at a shower Saturday afternoon, January 17 from three until five o'clock in the home of Mrs. L. M. Honea.

Carrying out the honoree's chosen colors of blue and white an arrangement of blue iris and greenery centered the refreshment table which was covered with a cloth of linen cut-work. Candles and crystal service completed the table appointments. Candles were used in the decorations at vantage points throughout the entertaining rooms.

Miss Gail Kellison greeted the guests at the door, Mary Louise Manning and Mrs. Eddie Joe Fortenberry presided at the table. Nita Kellison registered and Mrs. Charles Hammitt and Wanda Kellison presided in the gift room.

Hostesses for the occasion were Mmes. Frances Montandon, Geo. Meriwether, Barney Manning, Mary Louise Manning, Edith Fortenberry, Lloyd Wofford, Frances Carthel, Hershel Carthel, John T. Carthel, Martin Bradley, G. E. Kellison, and V. H. Kellison.

Lockney HD Club Meets Today

The meeting of Lockney Home Demonstration club which was scheduled for Thursday of last week was postponed because of the weather and will be held Friday, January 30 at the home of Mrs. B. B. Moody. The same program which was scheduled last week will be heard. Miss Petty will be present for a demonstration.

Eastern Star To Meet Mon. Night

The regular Eastern Star meeting will be held next Monday, February 1 at 7:30 in the lodge hall. February is the month for honoring the star points.

In marriage, as in boxing, the preliminaries are often better than the main event.

Ruth Boedeker Bride Of Weldon Smith

Miss Ruth Boedeker, daughter of Mr. and Mrs. Leo Boedeker of near Plainview and Mr. Weldon Smith, son of Mr. and Mrs. Pete Smith of Tulla were united in marriage Saturday, January 24th at three o'clock p. m. in the Trinity Lutheran Church of Providence Community. Rev. H. L. Anderson, pastor, read the impressive double ring ceremony.

Huge baskets of white carnations decked the sides of the chancel and on the altar were gold plated candelabra holding white tapers. Gold plated flower vases held pink carnations.

Mrs. Ted Boedeker played traditional wedding marches on the organ and accompanied Mrs. H. L. Anderson who sang "Take My Hand Dear Father" and "O Perfect Love" and "The Lord's Prayer."

Escorted to the altar by her brother, Ervie Boedeker, and given in marriage by her father, the bride was gown in white satin with a long flowing train. The dress was fashioned with a sweetheart neckline and long sleeves terminating in points over the hand. Her veil of English illusion fell from a Juliet cap accented with seed pearls. She carried a white Bible topped with pink carnations. Something old and blue was a garter given her by a school mate, borrowed was the dress and veil belonging to her cousin, Mrs. A. G. Bontke and something new was a rhinestone necklace, gift from the bridegroom. Her satin slippers were a gift from her aunt, Mrs. T. H. Boedeker. She also wore the traditional penny in her shoe.

Maid of honor was Miss Joann Clark who wore a floor-length gown of pink net over satin and a net Juliet cap. Her corsage was of yellow carnations.

Werner Boedeker, brother of the bride, served as best man.

Ushers were Ervin Boedeker and Don Smith of Tulla. They also lighted the candles.

For her daughter's wedding, Mrs. Boedeker wore a black suit, black accessories and a corsage of white carnations. Mrs. Smith, mother of the groom, chose a brown suit, brown accessories and a corsage of red carnations. At the reception which followed in the church parlor, the bride's table was covered with a linen cut-work cloth and centered with a three-tiered cake. The crystal punch bowl which graced one end of the table was surrounded with fern and pink carnations and flanked by crystal candelabra with blue tapers. Mrs. Weldon Foster and Lotta Matthews served cake and punch. Miss Helen Newman presided at the register.

For going away the bride chose a beige two-piece dress with brown accessories and a corsage of pink carnations.

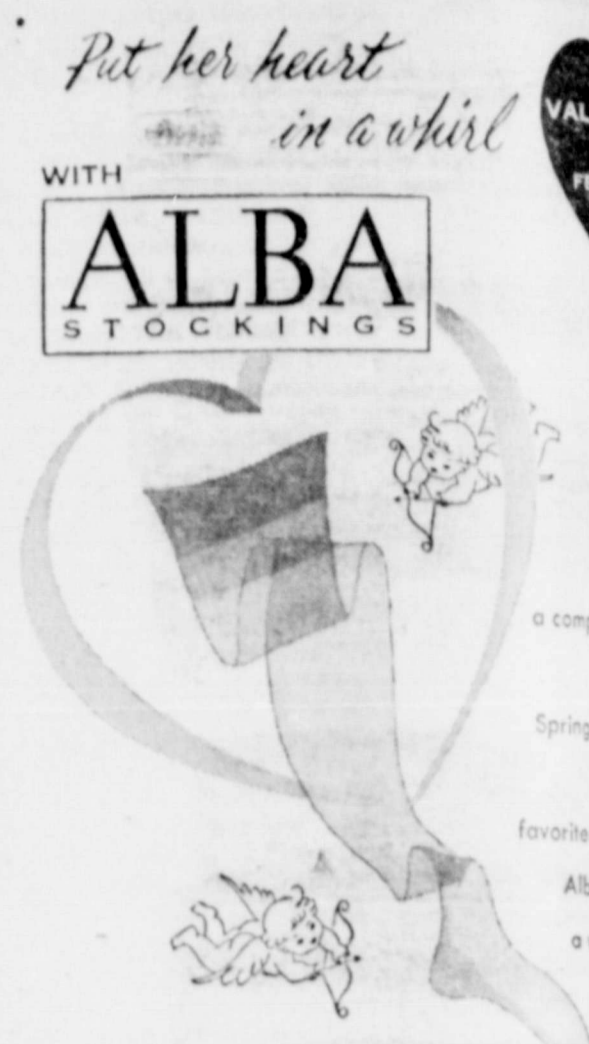
Mrs. Smith is a graduate of Plainview High School and Mr. Smith graduated from Dublin High School. He served his country four years in the air force. He is engaged in farming, and they will make their home at Tulla.

Mrs. Jimmy Hodel of Lockney, cousin of the bride, attended the wedding.

CARD OF THANKS

We extend this word of thanks for the many kind acts of sympathy expressed by thoughtful friends. These kindnesses have

meant much to richest blessings Mrs. Katie W. Mr. and Mrs. dusky.



Lady Fair Stockings

MRS. EDNA MAE HONEA, Prop.

Have You Tried The



If you haven't tried Lee tires, haven't tried the best in tires yet, tell you about the fine qualities of Lee tires today.

ALBERT WILLIS GULF SERVICE

Dial 2331

KOHLER BATH FIXTURES

- Cast Iron Tub with all fittings
- Beautiful White Porcelain
- Lavatory with high back, mixing faucet and trap
- White Commode with seat, supply pipes and setting ring

All for \$137.35 All A grade.

BRUNNIER LUMBER COMPANY

Your Home-Owned Lumber Yard Dial 3385

THRIFTY SHOPPERS **ENJOY** *the BEST* **FOR LESS**

Pears	No. 2 1/2 Can Syrup Packed Can	27c
Grapefruit Juice	No. 2 Can 4 For	38c
Spinach	No. 2 Can 5 For	49c
Coffee	FOLGERS Pound	83c
Pork & Beans	1 Pound Can 5 Cans	49c
Shelled Pecans	3 oz. pkg.	23c
Preserves	Pure Peach or Plum 2 Pound Jar	44c

FREE \$30.00 IN GROCERIES SATURDAY 4 P. M.

FRUITS and VEGETABLES

SPUDS
10 lb. Mesh Bag **54c**

CARROTS
Celo. Pkg. **12c**

BANANAS
Pound **12c**

MARKET

FRYERS
Pound **49c**

BISCUITS, Puffin
2 cans **25c**

RIBS, BEEF
Pound **48c**

PYLANT GROCERY AND MARKET
Phone 2134 for Free Delivery Trade Here and Save The Difference

LOCKNEY, FLOYD CO. KY
 9.95.
 or
 New
 one
 36
 ttacl
 nes 2
 - N
 pla
 ur el
 E
 - S
 three
 ter. J
 - N
 Spring
 enett
 tra
 ouse
 rage
 ane,
 id a v
 ns;
 with
 tick-up
 or tri
 tator
 cu.
 based
 ykes
 E
 ion
 equ
 es au
 tt, 3
 Lone
 E
 Webst
 E
 at B
 E
 W. F
 OR SA
 tion,
 at;
 too
 water
 ts, at
 good
 tion,
 two
 will h
 it a
 han
 2 go
 of im
 re; 1/2
 in go
 re, h
 ys in
 ot of
 come.
 Robe
 r Br
 orner
 Tex
 E
 with
 : goo
 : rang
 brown,
 E
 a goo
 E
 l tract
 Woff
 B
 d sea
 teleph
 s
 r you
 mber
 Magg
 ningt
 E
 setting
 30.
 AITCH
 ARTE
 UR B.
 STRA
 Caine
 Floy
 d me
 nt in
 to n
 serv
 the
 Loc

WANTED ADVERTISEMENTS

For Sale

Two registered Jimmy Rankin, 42-tfc.

GE Electric \$67.50 values, \$9.95. Lockney Drug 1tc.

CASH LEASE—New well. Charles one 3556. 41-2tp.

One wood lathe, 36 inch center, all attachments. Dykes one 2246. 1tc.

New Arvin Dimple plastic laminate chairs, 20% discount. Electric, phone 1tc.

Sheet iron build—three windows, one corner. J. D. Steele, 42-1tc.

Nine cabins, four cassettes; Magnolia transport storage; house and garage; range renting for \$50 a week, pumping plant, and a well; \$700 worth; '51 Chevrolet with 6500 miles; '51 pickup with 8,000 or trade. Inquire at station, Lockney, 42-1tc.

Used GE Food cu. ft., chest type. Used Frigidaire, Dykes Electric, phone 41-tfc.

145 h. p. V-8 motor, run 2 equipped for buses and drive shaft, 3 miles north, one Lone Star. 41-3tp.

Canary Birds, Webster. 40-tfc.

Old type cotton at Baxter & Smith 40-4tc.

4-room house W. Foster, Sterley, 40-3tp.

FOR SALE—A choice lot, near Plainview; a good quarter too far from Lockwater, nearly new lots, at \$250 per acre, good terms on balance, too much into two good 8-inch will have to see this at \$235 per acre. 1/2 handle; 1/2 section 2 good 8 inch wells of improvements at \$1; 1/2 section, no in good water area at \$1, half cash; a lot in smaller farms, lot of them. Seeing is come in and let us Roberson, Haney & Bryan's Grocery, corner of the square, Texas, telephone 39-4tc.

FOR SALE—A choice lot, near Plainview; a good quarter too far from Lockwater, nearly new lots, at \$250 per acre, good terms on balance, too much into two good 8-inch will have to see this at \$235 per acre. 1/2 handle; 1/2 section 2 good 8 inch wells of improvements at \$1; 1/2 section, no in good water area at \$1, half cash; a lot in smaller farms, lot of them. Seeing is come in and let us Roberson, Haney & Bryan's Grocery, corner of the square, Texas, telephone 39-4tc.

FOR SALE—A choice lot, near Plainview; a good quarter too far from Lockwater, nearly new lots, at \$250 per acre, good terms on balance, too much into two good 8-inch will have to see this at \$235 per acre. 1/2 handle; 1/2 section 2 good 8 inch wells of improvements at \$1; 1/2 section, no in good water area at \$1, half cash; a lot in smaller farms, lot of them. Seeing is come in and let us Roberson, Haney & Bryan's Grocery, corner of the square, Texas, telephone 39-4tc.

FOR SALE—A choice lot, near Plainview; a good quarter too far from Lockwater, nearly new lots, at \$250 per acre, good terms on balance, too much into two good 8-inch will have to see this at \$235 per acre. 1/2 handle; 1/2 section 2 good 8 inch wells of improvements at \$1; 1/2 section, no in good water area at \$1, half cash; a lot in smaller farms, lot of them. Seeing is come in and let us Roberson, Haney & Bryan's Grocery, corner of the square, Texas, telephone 39-4tc.

FOR SALE—A choice lot, near Plainview; a good quarter too far from Lockwater, nearly new lots, at \$250 per acre, good terms on balance, too much into two good 8-inch will have to see this at \$235 per acre. 1/2 handle; 1/2 section 2 good 8 inch wells of improvements at \$1; 1/2 section, no in good water area at \$1, half cash; a lot in smaller farms, lot of them. Seeing is come in and let us Roberson, Haney & Bryan's Grocery, corner of the square, Texas, telephone 39-4tc.

FOR SALE—A choice lot, near Plainview; a good quarter too far from Lockwater, nearly new lots, at \$250 per acre, good terms on balance, too much into two good 8-inch will have to see this at \$235 per acre. 1/2 handle; 1/2 section 2 good 8 inch wells of improvements at \$1; 1/2 section, no in good water area at \$1, half cash; a lot in smaller farms, lot of them. Seeing is come in and let us Roberson, Haney & Bryan's Grocery, corner of the square, Texas, telephone 39-4tc.

FOR SALE—A choice lot, near Plainview; a good quarter too far from Lockwater, nearly new lots, at \$250 per acre, good terms on balance, too much into two good 8-inch will have to see this at \$235 per acre. 1/2 handle; 1/2 section 2 good 8 inch wells of improvements at \$1; 1/2 section, no in good water area at \$1, half cash; a lot in smaller farms, lot of them. Seeing is come in and let us Roberson, Haney & Bryan's Grocery, corner of the square, Texas, telephone 39-4tc.

FOR SALE—A choice lot, near Plainview; a good quarter too far from Lockwater, nearly new lots, at \$250 per acre, good terms on balance, too much into two good 8-inch will have to see this at \$235 per acre. 1/2 handle; 1/2 section 2 good 8 inch wells of improvements at \$1; 1/2 section, no in good water area at \$1, half cash; a lot in smaller farms, lot of them. Seeing is come in and let us Roberson, Haney & Bryan's Grocery, corner of the square, Texas, telephone 39-4tc.

FOR SALE—A choice lot, near Plainview; a good quarter too far from Lockwater, nearly new lots, at \$250 per acre, good terms on balance, too much into two good 8-inch will have to see this at \$235 per acre. 1/2 handle; 1/2 section 2 good 8 inch wells of improvements at \$1; 1/2 section, no in good water area at \$1, half cash; a lot in smaller farms, lot of them. Seeing is come in and let us Roberson, Haney & Bryan's Grocery, corner of the square, Texas, telephone 39-4tc.

FOR SALE—A choice lot, near Plainview; a good quarter too far from Lockwater, nearly new lots, at \$250 per acre, good terms on balance, too much into two good 8-inch will have to see this at \$235 per acre. 1/2 handle; 1/2 section 2 good 8 inch wells of improvements at \$1; 1/2 section, no in good water area at \$1, half cash; a lot in smaller farms, lot of them. Seeing is come in and let us Roberson, Haney & Bryan's Grocery, corner of the square, Texas, telephone 39-4tc.

FOR SALE—A choice lot, near Plainview; a good quarter too far from Lockwater, nearly new lots, at \$250 per acre, good terms on balance, too much into two good 8-inch will have to see this at \$235 per acre. 1/2 handle; 1/2 section 2 good 8 inch wells of improvements at \$1; 1/2 section, no in good water area at \$1, half cash; a lot in smaller farms, lot of them. Seeing is come in and let us Roberson, Haney & Bryan's Grocery, corner of the square, Texas, telephone 39-4tc.

For Rent

FOR RENT—Duplex apartment, furnished or unfurnished. Mrs. J. L. Dagley, phone 2243. 41-tfc.

LAND FOR RENT—I have some machinery to sell and wheat land to rent. Also 1 irrigation well and some land for this year. See George Weast, South Plains. 41-2tp.

FOR RENT—Half of duplex furnished and one small apartment. Mrs. A. B. Kenady, phone 3807. 39-2tc.

FOR RENT—Unfurnished upstairs apartment, four rooms and bath, 2 blocks west of bank E. M. Lawson. 38-tfc.

FOR RENT—3 room apartment, either furnished or unfurnished. Separate bath. S. H. Milwee, Telephone 3845. 38-tfc.

FOR LEASE—95 acres, 80 in cultivation. Will drill well. Wade Deavenport, 6 miles north, one mile east of South Plains. 37-tfc.

FARM AND RANCH LOANS
See us for your farm and ranch loans. Quick appraisal. Low interest rate, splendid prepayment options liberal valuations. 7-tfc
GOEN & GOEN, Floydada, Texas

MONEY TO LOAN—on Farms and Ranches. See R. E. Fry, Floydada, Texas. 27-tfc

Miscellaneous

BUSINESS OPPORTUNITY \$250 MONTHLY SPARE TIME
Refilling and collecting money from new type 5c candy vending machines in this immediate area. No selling; to qualify for work you must have car, references, \$600.00 cash, secured by inventory. Deyoting six hours week to business, your end on percentage of collections will net up to \$250.00 monthly with very good possibilities of taking over full time. Income increasing accordingly. For interview, include phone in application. Write P. O. Box 1054, Dallas, Texas. 1tp.

Rain always sounds better on the roof than on the raincoat.

He who does only what he is hired to do is a slave.

The Lockney General Hospital
wishes to announce to the public the visiting and clinic hours for hospital patients:
10:30 to 11:30 a. m.
2:00 to 4:00 p. m.
7:00 to 8:30 p. m.

Clinic open Monday through Saturday 9 a. m. to 12 noon; 1 p. m. to 5 p. m. Closed Sunday except for emergencies.

Lockney General Hospital and Department of X-ray: State Approved Laboratory
Visitors wishing to inspect the hospital are welcome at any time.

LOCKNEY GENERAL HOSPITAL
Member:
TEXAS STATE HOSPITAL ASSOCIATION,
TEXAS ASSOCIATION OF BLOOD BANKS,
BLUE CROSS MEMBER HOSPITAL,
STATE APPROVED LABORATORY.

Lost and Found
LOST—3-bale cotton trailer taken from Cassel Bros. Gin at Lone Star. My name on front and back. If seen notify Donald Johnson or Cassel Bros. Gin. 42-3tc.

LOST—Black and white Toy Fox Terrier. Female. Notify W. L. Thomas, phone 3136, Lockney. 42-2tp.

Herbert W. Davis, Airman First Class of Sheppard Air Base, Wichita Falls visited in the home of his grandfather, J. J. Harris and uncle, Jesse Harris and family Tuesday noon.

SOCIETY

Music Students To Present Program
Pupils of Mrs. Charles L. Record will present a short musical program Sunday, February 1, at 3:30 p. m. at the First Methodist Church.

Two piano duets will be featured. Playing in these will be Ernestine Spradlin, Betty June Jackson, Sandra Sams, Jayne Aldredge, Carolyn Harris, Bonnie Sue Glenn, Paulette Kropp, Lynda Gayle Harris, Sandra Myers, Donna Lynn Record and Jane Douglas of Silverton.

Playing solos or duets will be: Oddie Mae Rogers, David Hartman, Lavona Carthel, Ronnie and Johnnie Belt, Pat O'Brien, Kay Martin, LaDora Ayres, Floy Baxter, Focine Boedeker, Orella Davis, Beth McLaughlin, Kay McPherson, Nancy Jo and John Paul Schacht, Jerry and Jonie Ross, Craig Tannahill, John Perry Truett, Alta Williams and Janis Widener.

Other programs will be presented during the remainder of the year before the regular close-of-school recital.

Lone Star H. D. Club Meets In Nance Home
Lone Star Home Demonstration Club met January 20th at the home of Mrs. W. D. Nance at 2 o'clock.

Mrs. Nance, president, presided over the business meeting during which new year books were filled out and a report was heard from the Library Committee and Mrs. Raymond Teeple brought an excellent report on the County Council meeting held Jan. 17. All new by-laws and changes, with other recommendations of Texas A. & M. College were read and adopted. Three new subscriptions for the Messenger were turned in.

Mrs. E. O. Barrett had charge of the program which included "Responsibilities of Officers and Committees" by Mrs. C. L. King; Mrs. J. L. Lovvorn brought "Gardening Hardy Flowers." Roll call was answered with "My Pet Garden Peeve" and some unusual points of interest were brought, as was a bit of humor. However the bugs won high score in the line of peevcs.

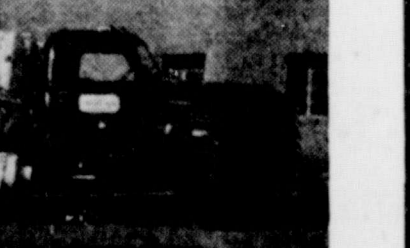
Refreshments were served to eleven members and one guest. Each member should bring a guest for the next meeting with Mrs. Hoyte Hodges on February 3rd at 2 p. m.

Mr. and Mrs. Sid Thomas left Wednesday to spend several days visiting in Waco with their son, Sid Thomas, Jr., and wife, and other relatives in that section.

Professional FLOOR SANDING and FINISHING
J. B. WINGO
Phone 1150-W, Plainview 42-9p

CONCRETE
HALE COUNTY CONCRETE CO.
Phone 2690—Collect
Plainview, Texas
Irrigation Spillways
Well Castings
We deliver anywhere—any amount—any time.
Prices reasonable.

Customer Service Is Our Aim!



We aim to give you the kind of Customer Service that you like. When we can be of service to you we ask that you just call our number—2331.

Baker FLASH-O-GAS CO. INC.
"THE OLDEST BUTANE DEALERS IN THE PANHANDLE"
Lockney Phone 2331

Hospital News

Patients In Hospital:
Mrs. Ella Marr, medical
Mrs. C. S. Keeter, medical
Miss Margaret McCoy
Mrs. J. B. Bennett and baby
Mrs. Wayne Bybee and baby.

Dismissed:
H. E. Frizzell
Mrs. R. H. Ford
E. J. Rogers
Eustalio Gutierrez and baby
Mary Kathryn Ford
Mrs. Leroy Harrison
H. F. Kidd
Mrs. H. F. Kidd
Mrs. Hershel Carthel
Mrs. Dila Rodriguez and baby
Mrs. Angelita Solis and baby
Henry McPherson
Mark Fairman.

New Arrivals:
Mr. and Mrs. Wayne Bybee are parents of a baby son born Jan. 24. He weighed 7 pounds, 14 ounces and has been named Monty Wayne.

Mr. and Mrs. J. B. Bennett are parents of a daughter born Jan. 25 who weighed 8 pounds and has been named Betty Lee.

Mr. and Mrs. Florencio S. Solis are the parents of a son born Jan. 24. He was named Juan Farias.

Mr. and Mrs. Tamiro Rodriguez are parents of a girl born Jan. 23. Her name is Maria Elena.

CHRISTIAN SCIENCE LESSON-SERMON
The Lesson-Sermon titled "Love" to be read in all Christian Science churches on Sunday will point out that the degree of one's love of God determines his health, happiness, and success.

The Golden Text presents the theme with these words from Jeremiah, "Let him that glorieth in this, that he understandeth and knoweth me, that I am the Lord which exercise lovingkindness, judgment, and righteousness, in the earth" (Jeremiah 9:24).

One of the citations to be read from the Bible is this verse: "A man that hath friends must shew himself friendly; and there is a friend that sticketh closer than a brother" (Proverbs 18:24).

Further stressing the universal brotherhood of man are these statements from the Christian Science textbook: "The rich in spirit help the poor in one grand brotherhood, all having the same Principle, or Father, and blessed is that man who seeth his brother's need and supplieth it, seeking his own in another's good. Love giveth to the least spiritual idea, might, immortality, and goodness, which shine through all as the blossom shines through the bud" (Science and Health with Key to the Scriptures, by Mary Baker Eddy, page 518). (Adv.-1tc).

W. L. Street Buys Produce Business

W. L. Street has purchased the business of Alford Produce here this week and is now open for business in the same place. Mr. Street opened the business Wednesday which has been closed since the later part of December due to the illness of Mr. Bill Alford former owner.

W. Leander Street is well known in Lockney and the surrounding area having lived in this section since 1915. He formerly owned the produce business he has repurchased. He sold to Bill Alford in 1930. Mr. Street will appreciate a visit from old and new friends.

NOTICE!
I have opened the ALFORD PRODUCE and will appreciate your business.

W. L. Street



We're Not **MAGICIANS**

But we can fix that watch up where it will keep good time and give you good service. We're in position now where we can give you fairly fast service on repair work so bring it in today.

Our work is guaranteed.
K. W. Cook
JEWELER
Crager Building Lockney

BARGAINS IN FURNITURE!

Our entire stock of Wallpaper 2 double rolls for the price of 1.
A group of Odd Living Room Chairs Reduced 33 1-3 percent
A group of Odd Pieces of Lime Oak Living Room Tables One-third off
9x12 Wine Floral Wool Rug Priced at \$64.50
30,000 BTU Circulating Heaters Formerly \$89.50, now—\$49.50
45,000 BTU Circulating Heaters Formerly \$139.50, now—\$69.50
65,000 BTU Circulating Heaters Formerly \$159.50, now—\$89.50
GET OUR ESTIMATE on that Wool Rug or Wall-to-wall Carpet for your home. Our prices include 40 oz. waffle padding and installation. See our Gulsitan and Mohawk Carpets on display now.

PARKER FURNITURE
PHONE 3315 LOCKNEY

you SHARE SAVINGS THESE

CRISCO 3 lb. can **75c**

TEA Bright & Early 1/4 lb. pkg. **18c**

BURLESON PURE, CREAMED **HONEY, 1 lb. box 35c**

DROMEDARY **DATES, 7 oz. box 23c**

PUSS' N' BOOTS **CAT FOOD, 2 for 25c**

POUND BOX **SUGAR CUBES 18c**

MARKET

STEAK, lb. 65c

FRESH FRYERS and HENS

WILSON'S **BUTTER, pound 75c**

PINKNEY'S **SAUSAGE, pound 35c**

DARNELL GROCERY
Phone 2233 for Free Delivery

Lockney Lodge
No. 867
A. F. & A. M.
Meeting third Tuesday 30.
MITCHELL, W. M.
ARTER, Secretary

UR B. DUNCAN STRACT CO.
Comer Square—Floydada
d most complete abt in Floyd County. to render prompt, service on every line of land

ED BOLLUMS
Loc...

The Lockney Beacon

Established 1902
PUBLISHED EVERY THURSDAY

HAYS & REYNOLDS
Publishers
Edgar R. Hays Editor
Willis Reynolds
Mechanical Superintendent

SUBSCRIPTION RATES:
In Floyd County, per year... \$2.00
Outside Floyd County, per year... \$2.50
Either new or renewal subscriptions

Entered April 14, 1902, as second class mail matter at the Postoffice at Lockney, Texas, under the act of Congress of March 3, 1879.

Any erroneous reflection upon the character, standing or reputation of any person, firm or corporation which may appear in the columns of The Beacon will be corrected gladly upon being brought to the attention of the editor.



MEMBER OF TEXAS PRESS ASSOCIATION

EDITORIAL

Now the God of hope fill you with all joy and peace in believing that you may abound in hope, through the power of the Holy Ghost.—Romans 15:13.

Three cheers for members of the Lockney School Board. They have, after much study and thought, took the first step in a program of building that is badly needed by the local school system and they have gone about the matter in the right way. There are several angles on which the Board is to be commended. First they have given the matter much thought and study before taking the first step. They have not rushed into the building program but have made their plans carefully. Second, (this is solely the editor's opinion) the board has selected a time to start their program when building costs are declining. It is highly probable, in our opinion, that by the time of construction, costs may be down so that the actual cost of the building will be lower than the present estimates.

Thirdly, they have chosen a time to start the program when

Dr. J. W. Kimble
Dr. O. R. McIntosh
Optometrists
Kimble Optometric Clinic
Floydada, Texas

bond sales may be advantageous to the school. Possibly the bonds can be sold for a better rate of interest now than any other time within the past year or in the coming year. Bonds are scarce just at this time, bond men tell us and that makes for better bids to the school system. Fourth, the Board has outlined a plan that will for the most part take care of the present actual need of the school system without spending any money extravagantly or on things that is not needed now.

We're glad they saw fit to include the auditorium and gymnasium in the program. If a school ever needed an auditorium this one does. Trying to hold chapel services or any other meeting of any size in a gymnasium without seats is highly unsatisfactory if not almost impossible. The auditorium is needed for the benefit of speech classes, plays, and such things as well as for chapel programs, public gatherings, etc. Then the gymnasium is badly needed. The present gym is unsatisfactory in almost every way. As school officials have pointed out a gymnasium isn't built just to play basketball in. State requirements say that each student must have 120 minutes per week in physical health education. Lockney students aren't getting that. They can't with the present facilities. Dressing rooms are totally inadequate to take care of the students. Seating for basketball games is not one-tenth sufficient to accommodate those who want to attend games. By converting the gym into an auditorium and building a gym the Board can kill two birds with one stone at a minimum cost.

The opinions expressed herein are our own — not necessarily those of the school board or any member. We believe that the Board is pursuing a wise course and looking to the future of the students of the school in the building program which they plan to attempt. We're for them 100 percent and it is our opinion that they deserve the support of all citizens of this district. If we're going to have a school let's have a good school—not an extravagant school but a good school.

Most of us have been dissatisfied in one way or another with our school system. It needs improvement in several ways and we think the Board is seeking that improvement. It won't and can't be done overnight—but it can be done and the improvement of facilities is one step. We've started in the right direction. Let's keep going that way.

Strange Facts About Polio

WALTER DAVIS, TEXAS A&M TRACK STAR OF NEDERLAND, TEXAS, STRICKEN WITH POLIO AT THE AGE OF 8, WAS NEVER EXPECTED TO WALK AGAIN...

10-DAY-OLD JIMMY SCHMEIDER, OF MONROE, WIS., YOUNGEST POLIO PATIENT OF 1952.

HE WON FIRST PLACE IN HIGH JUMP EVENT IN 1952 OLYMPICS WITH A LEAP OF 6 FEET 8.32 INCHES.

WAS THE WORST POLIO YEAR ON RECORD—55,000 CASES.

\$18,000,000 USED FOR WARCH OF DINES RESEARCH FOR POLIO SOLUTION.

POLIO CASES IN THE LAST 9 YEARS WERE EQUAL TO ALL OF THE PREVIOUS 20 YEARS COMBINED—185,000.

A LONG-TERM IRON LUNG PATIENT SPENDS AN AVERAGE OF 16 HOURS A DAY IN THE LUNG!

With Our EXCHANGES

THE WEATHER
Daily weather forecasts are convenient when planning a picnic and they are valuable to farmers and stockmen, but because of them much of the fun of living in West Texas is being dissipated. The element of weather speculation has about vanished. A blue bank in the north means nothing more than a cold front moving rapidly into Oklahoma, probably accompanied by some blowing dust. A cloud overcast that once might have indicated a snow storm or blizzard, is wasting its time. When it arrives we know that somewhere in Colorado it left snow flurries in the mountains and that there is no important temperature change. When we are deprived of our weather conservation, and with the Republicans in power, there certainly isn't much left to talk about. — Trail Dust in Matador Tribune.

PUNCTUALITY
It is impossible to give too much credit to those who possess the virtue of punctuality. Those who do not possess it, having no regard for other peoples' time, are certainly criticized for not

having this valuable virtue. Lack of punctuality causes more loss of time than does procrastination, because it generally involves wasting the time of one or more people other than the guilty party. A successful man conserves his time and in turn, he conserves the time of those with whom he deals and associates. Punctuality does not simply mean to begin on time. When the time the busy men is taken-up it also means that something be accomplished during that time, and that all concerned devote the full time that has been allotted. Being in the newspaper business Prattler is called upon to cover and attend many meetings, and we know from experience that nine times out of ten meetings never begin on a set time—neither do they close at a set time. — Paducah Post.

CHANGE OF STATUS
It is reported that Winston Churchill remarked that there could be worse things than a stalemate in Korea. Immediately anti-British commentators have leaped upon the aged statesman as if the statement were a spec-

ies of treason. Or at least monstrosity anti-American. You may get mad at Winston for such a statement, but remember that that is what the American Joint Chiefs of Staff have been saying for nearly three years now, and what thousands of Americans have said and believe. When the consensus of America is that a stalemate in Korea is the worst thing in the world, you can be sure something will be done to change the status. — You Be The Judge in Ralls Banner.

THE REAL TREASURES
In every language the word for money is a magic one. The love and pursuit of money alone is one of the rankest and most tragic blunders that can befall a man. It is certainly necessary to have some money and necessary to have many of the things that money alone can buy. But, mere money, after all, can only buy material things. It cannot buy happiness, health, loyalty, love, kindness, appreciation, contentment, salvation or a great multitude of vital and necessary things beyond the price tag. But, the person who achieves those things and who helps to distribute them to his fellow man deposits real treasures in the bank of his and their hearts. — Hamlin Herald.

HONOR COMES CHEAP
The Navy and the Marine Corps should be called upon to explain why they have cheapened their highest decorations by "giving" the Distinguished Flying Cross and five Air Medals to Sen. Joe McCarthy, the biggest liar since Hitler and certainly the "damnest" A Navy spokesman explains McCarthy applied for medals on the basis of flying 17 combat missions in World War II. McCarthy says he didn't, that the services voluntarily recognized his distinguished contributions to victory and sent him a barrel full of them. McCarthy got about as close to combat as Sen. Harry Byrd gets to Stalin's inaugural dinner. He was a chair-borne brasshat in World War II, and the flying he did was voluntary and as a passenger — not as a combatant. Every soldier who got his DFC and Air Medals for honorable and patriotic devotion to duty in World War II should resent this cheapening of the honors. — Ralls Banner.

Long Ago In Lockney

Items of interest from the files of The Lockney Beacon.

May 1, 1914
With gasoline at 8c a gallon, even the poor man could afford to take a ride if he had an automobile. Luther Cooper has purchased a new motorcycle to use on his rural mail route. The school board has named the following teachers to complete its faculty: W. L. Vaughn, Supt.; Prof. Vaughn, B. N. Graham, principal; Mrs. E. M. Randolph, Miss Mary Sawyer, Miss Tucker, Miss Sanders, Miss Hamilton, Miss Wadde Bragg, Miss Shell Merrill and Miss Florence Milwee, who will again be music teacher in the public school.

Attending the Odd Fellows Picnic held at Flomot last Saturday were: Messrs. E. R. Thompson, E. M. Broyles, Jim Meriwether, B. O. Downs, J. J. Addington and Alvy McCollum.

New officers for Lockney Chamber of Commerce were Pres. Johnnie Broyles; Vice-pres. Leonard Foster; Recording Secretary, Robin Baker; Corresponding Secretary, Orlin Starks; Treasurer, Madison Ayres; Executive committee: Embree Foster, John Broyles, Curtis Wilkerson, Madison Ayres, Leonard Foster.

April 20, 1923
This week a deal was made whereby Mr. A. M. McMillan of Plainview becomes owner of the Lockney Drug Store, he having purchased the interest of W. H. Dickinson of Lockney. Mr. McMillan, we are told, will remain at Plainview with the McMillan Drug Co. of that place and Mr. E. L. Woodburn who has been connected with the Lockney Drug Co. for a number of years, will have the management of the store here. Mr. C. W. Sewell is assisting Mr. Woodburn.

After eight months of successful work, the Bobbitt school, five miles north of Lockney, closed its term today with a picnic in the breaks. Mr. J. Harding Nail, principal reports an enrollment of sixty pupils for

oe N. Du
neast on
118, bl
M. H. V
No. 4, o
berberry
ry, 23 ac
fourth,
Miss Hinda
music teacher
a prominent p
over a radio
view Wednesd
Lone Star
miles north of
several hono
Interscholastic
Friday and Sat
line Stevenson
17 counties, w
girls' rural de
Miss Marjorie
school took 2
2, origina
Bobbitt, son of
Bert Bobbitt
in senior boys
ion and Otha
fourth place in
lamation. Miss
represent Floyd
with 10 V
State meet at
2 and no
ck 1, sou
ney.
School will s
the following
school: W. D.
W. Jones, pr
Reid, W. N. B
Snyder, Miss
Delmar Ashwa
mies, to be as
lian Hoeflein,
Stevenson, S
Grammar Scho
Principal, Mrs.
Mrs. Ray Will
Reid, Miss Les
Nora Sams, M
wether, Mrs. C
Mrs. Stevenson
lin.

BAPTIST BULLETIN

First Baptist Church

LOCKNEY, TEXAS
J. R. NAYLOR, Pastor
GERALD JOHNSON, Music and Ed. Dir.

OUR DEBT . . .

will be retired this week. We are so grateful for the offering we received last Sunday morning. If you were not here, will you yet make your offering? How soon we are to have an organ will depend on the gifts that we are yet to receive.

Amount of debt	\$3000.00
Approximate cost of organ	3000.00
Approximate cost of Auditorium redecoration	1,000.00
Total money to be raised	\$7,000.00
Amount received last Sunday morning	\$3,002.00
Money in building fund	141.00
Money in organ fund	1,614.00
Money to be accounted for	4,757.00
Balance needed	2,243.00

LAST WEEK

Dept.	S. S.	B. T. U.
Adult	82	30
Young People	30	17
Intermediates	30	8
Juniors	43	20
Primaries	25	13
Beginners	20	5
Nursery	23	
Total	283	104
Offering	\$3,355.75	
Budget	283.75	
Building Debt	3,002.00	
Organ Fund	70.00	
Mid-week Services	70	

Lament Of The Lost Hymnal
I am the Hymnal who lost his way
I lived at the church until one Day
Someone, by mistake, took me away,
And now on the piano bench idle I lay
Oh, that someone would take me back
Back to the church and to the hymnal rack
Then for a songbook no one would ever
lack
Please, oh please, won't you carry me Back?
—Copied.

OUR SPRING REVIVAL . . .
is March 13-22. Rev. B. J. Martin, Pastor of the First Baptist Church of Childress will be our evangelist.

THE REGULAR MONTHLY BROTHERHOOD . . .
is to meet this Tuesday evening. We are happy to announce that our men brought home the Associational banner from Silverton for having the best percentage of our men present. Thirteen men made the trip.

HAVE YOU SENT . . .
in your question yet? Do not delay, for we wish to devote the evening services in February to answering Bible, Doctrinal, and other questions related to Christian living. Most of the questions in thus far are doctrinal. The next Sunday evening message will be built around such questions as: "How may I join a Baptist Church?" Are all the people who do not belong to a Baptist Church lost? Why will Baptists not accept the baptism of other denominations? These and other related questions will be answered.

IT'S SOUND BUSINESS

To PROTECT Your Investment Federal Crop Insurance Guarantees You A Crop Return!

Hurry and sign your application. January 31 is the deadline today!

Contact Your Floyd County PMA Office At Once!

WTCC Plans Meet On Mexican Labor

Abilene. — West Texas Chamber of Commerce has called a meeting in San Angelo February 9 of representatives of 30 organizations that represent users of Mexican national workers and agencies charged with administering and enforcing the U. S. Mexico migrant labor agreement. Governor Shivers and West Texas congressmen have been invited.

R. M. Fielder of Abilene, chairman of the WTCC agriculture and livestock committee, said a number of organizations and suggested that the meeting be held. He said they feel that all Texas user groups should attempt to reach a unified policy as to extension of public law 78, under which the labor agreement is negotiated, and changes in the agreement itself. The present agreement will expire in December 1953.

WTCC headquarters said 48,600 braceros were used in West Texas last year.

HOME HINTS

The ingredients of a really successful wash day are an automatic washing machine, really hot water from an automatic water heater, bead bluing in the wash water, a water softener if you're in a hard water area, and your favorite all-purpose soap. Use of these items will give you whiter, cleaner washes.

Mr. and Mrs. J. B. Bennett are the proud parents of a baby daughter born Sunday night.

south 10 acres of survey No. 28, block SC.

1953 Production Goals Announced For Texas

College Station. — The 1953 production goals for spring-seeded crops in Texas reflect the need for more grain and forage crops and less cotton and wheat. If the goals are attained, says B. F. Vance, chairman of the State Agricultural Mobilization Committee, total agricultural production must continue at a high level and would equal or exceed last year's output.

The largest increase — 92 percent — is for grain sorghums for grain. The acreage goal is 5,150,000 acres, says Vance. The goal for all sorghums which includes those used for forage such as hay and silage and for grain has been raised 22 percent above last year's figure to 7,385,000 acres. The goal for tame or planted hay crops has been increased by 5 percent and stands at 1,400,000 acres.

These increases, points out Vance, are urgently needed to restore the depleted stocks of grain and roughage feeds because of the drought and reduced plantings in the state during the past two years. Unusually large quantities of hay have had to come from other states, says Vance, to help meet the demands for roughage feeds.

Texas producers of upland cotton are asked to reduce their acreage 14 percent below the July 1 acreage of last year. The 1953 goal, according to Vance, has been set at 9,945,800 acres. It is hoped that much of this reduced acreage will be planted to grain sorghums. Producers in the state of extra long staple cotton are asked to plant no more than 14,200 acres or a reduction of 59 percent from 1952 plantings. This type of cotton is produced in the Pecos-El Paso areas.

In commenting on the 1953 goals, Vance emphasizes that the goals program, as worked out by the State Mobilization Committee and approved by the USDA, recognizes that the demand for farm products will probably remain high because consumer income and expenditures are expected to exceed those for 1952. At the same time, he adds, exports of some of our important crops are dropping due to increased supplies of agricultural products in other countries and a shortage of dollar exchange. Cotton and wheat are two mighty important Texas crops affected by this export situation, says Vance.

In commenting further, he says, the purpose of the goals



JOIN THE MARCH OF DIMES

THE NATIONAL FOUNDATION FOR INFANTILE PARALYSIS - FRANKLIN D. ROOSEVELT, FOUNDER

program is to give farmers information on expected demand for their products and what acreage will be needed to meet this demand. If farmers make the necessary adjustments suggested by the goals program, he continues, they will reduce the possibility of building up burdensome surpluses and depressing prices which may in turn necessitate acreage allotments and marketing quotas.

The goals are carried to the farmers through the State and County Mobilization Committees. Other 1953 goals for Texas spring-seeded crops include rice, 550,000 acres, a decrease of 1 percent from last year; sudan for seed, 27,700 acres, an increase of 32 percent and sweet potatoes 38,000 acres.

Vance urges farmers to plan their spring planting schedules in accordance with the goals program and to utilize abandoned wheat acreage — should moisture deficiencies make this necessary — for growing grain sorghums and pasture or hay crops.

HOME HINTS

Even the best cook will have an occasional spillover in the gas oven. To eliminate the need for extensive cleaning later, the Gas Appliance Manufacturers Association recommends placing a sheet of aluminum foil on the oven rack or shelf below the dish.

HOME HINTS

Separate thermostatic controls in sleeping, living and service areas make a large home more comfortable. Gas Appliance Manufacturers Association researchers report. This "zoned heating" method of using automatic controls eliminates overheating warm sunny rooms and keeps colder areas at more comfortable temperatures.

Here's a treat for chili fans: Heat one can (12 ounces) of chili con carne and serve hot over toasted English muffins. You can make as many as nine individual servings by using the broiler of your gas range to toast the muffins. Top each with an onion ring and sprinkle with grated cheese. Serve with tossed salad.

A Roquefort sauce adds an extra something to a steak dinner. Mash 2 ounces of Roquefort cheese, 2 tablespoons of cream, a few drops of Worcestershire sauce, spread on steak when nicely browned, return to the broiler just long enough to melt the cheese.

Cloth toys pick up germs and dirt. Wash them often, just as you do your linens, and then fluff-dry them in the automatic clothes dryer. Tests made prove that they come out looking like new, last longer, smell fresher and are more sanitary.

Year Ahead Looks Good For Egg Producers—Parnell

College Station. — Texas market egg producers should find the year ahead to their liking. This forecast comes from Professor E. D. Parnell, poultry husbandry department of Texas A. & M. College.

He backs up the forecast with a lot of reasons. First there are fewer layers on the farms to produce the eggs needed to supply the demand from the nation's increasing population. There also exists a shortage of frozen eggs as compared to past years and too, the demand for stored shell eggs has recently been heavy.

Another very important factor, says Parnell, has been the recent decline—it's been slight—in the price of some feed ingredients and a rise in egg prices resulting from heavy demands and a declining supply.

High egg prices in the spring, says the professor, no doubt will cause more orders to be placed for pullets and this will increase the number of layers for next fall and winter but that is six months away, he adds. In the meantime producers who do a good job of managing their laying flocks, can be cashing in on a favorable market situation.

Parnell offers a last suggestion and that is give the laying flock the attention it deserves; check the feeding program; use proved sanitation and disease control practices; use artificial lights if needed; be sure the laying house is properly ventilated and that the flock gets plenty of clean drinking water — warm it during cold snaps. These and other management practices when followed will put extra eggs in the basket now when prices are good.

Mrs. Joe Holt and son, Joe, are in Conway, Arkansas spending a two-weeks vacation with her parents, Dr. and Mrs. H. L. Minter.

HOME HINTS

Fruited snowballs make an extra appropriate dessert for this time of year. Scoop one pint of vanilla ice cream into balls. Roll balls in ¼ cup drained crushed pineapple, then in ½ cup of shredded coconut. Place in freezing tray of your refrigerator for about an hour before serving.

HOME HINTS

If you need sour cream or sour milk and have none, just add 2 teaspoons of lemon juice or one tablespoon of vinegar to one cup of milk or cream.

Plains Theatre Lockney

THURSDAY and FRIDAY
January 29 and 30

Willie and Joe
"Back At The Front"

with Tom Ewell, Harvey Lembeck and Mari Blanchard.

More hilarious adventures of those lovable, laughable, dog-faces — Bill Mauldin's Willie and Joe — Now they're taking Tokyo apart—laugh by laugh in a wild off-limits spree.

Also CARTOON

SATURDAY MATINEE and NIGHT
January 31

"West Of The Pecos"

with Bob Mitchum
A real western story taken from one of Zane Grey's novels.
Also 2-REEL COMEDY

SUNDAY and MONDAY
February 1 and 2

"Somebody Loves Me"

with Betty Hutton, Ralph Meeker, Robert Keith.
The immortal Blossom Seeley — who rose to fabulous fame and fortune — because when she sang a love song it was a personal matter between her and one man.

Also FOOTBALL HIGHLIGHTS and NEWS

TUESDAY and WEDNESDAY
February 3 and 4

"Lydia Bailey"

with Dale Robertson, Anne Francis, Charles Karrin.

A masterpiece as a historical novel — springs to flaming life on the screen — it's a motion picture milestone — the most exciting spectacle of adventure and romance ever filmed.

Also CARTOON

SEALE DRIVE-IN THEATRE

2½ miles west of town on the Plainview Highway

COME EARLY and eat at our Snack Bar—Home-made barbecue and chili in our sandwiches and hot-dogs. Also cold drinks, snow cones, pop corn, etc.

SHOWS START AT
7 P. M.

FRIDAY and SATURDAY
January 30 and 31

"Westward The Women"

with Robert Taylor, Denise Darcel and Hope Emerson.

200 women blazing a trail to the new frontier — they set their course westward on a caravan that would not be stopped.

Also TWO CARTOONS
NOTE change in billing "The Outriders" has been cancelled.

SUNDAY and MONDAY
February 1 and 2

"Caribbean"

with John Payne, Arlene Dahl, and Sir Cedric Hardwicke

Another "Two Years Before the Mast" filled with exciting sea battles — adventure, romance and drama in pirate-laden Caribbean — handsome John Payne and glamorous Arlene Dahl—in a never-to-be-forgotten romance adventure—in days of old when pirates were bold.

Also CARTOON

The Seale Drive-In will be closed on Tuesday, Wednesday and Thursday during February.

See the latest and best pictures at The Plains Theatre and the Seale Drive-In in Lockney.

MONEY TO LOAN

on

Plains and Ranches

low rate of Interest

INSURANCE AGENCY

Phone 3329
JIMMIE

JOE

SELECT A
Gift For
Your Valentine!



ARN DATES

ed boxes. Just
our special val-

\$6.00

AIRMAID HOSE

This will thrill her heart at Valentine time—

\$1.39 and \$1.95

ovie Cameras
ume Jewelry
asion Bracelets
Necklaces

LADIES WRIST WATCHES

Beautiful Hamilton and Elgin Watches, for that special one—

\$35.00 up

LOCKNEY DRUG COMPANY

W. L. SMITH S. G. MILLER
PROFESSIONAL PRESCRIPTION SERVICE
Day Phone 3333 Night Phones 3693 and 2163

Color-Plan YOUR HOME with COOK'S Shadotone COLOR CABINET

OF 144 MAGNIFICENT
DECORATOR COLORS

COLOR-PLAN FOLDERS

The Most Fascinating Way to
Select a Color Scheme Ever Devised!

It's simple . . . and fun! . . . to color-plan your decorating the Cook-Plan way. It's the sure way to get color harmony! Select swatches of the colors you like best from 144 exquisite Decorator Colors in the Cabinet. Slip them into your Color Plan Folder and—presto!—your color scheme comes to life . . . just as you've planned it. And the Color Plan Folder is yours to keep—FREE—for checking against lighting, fabrics, drapes.

DECORATE THE EASY WAY . . . THE BETTER WAY

with COOK'S Shadotone ENAMELS



SHADOTONE FLAT ENAMEL
—a flat, glare-free finish. Use it for walls, woodwork or metal trim. Covers most surfaces with a single coat. And it's scrubbable!

MOST COLORS
\$145
Quart



SHADOTONE SATIN ENAMEL
—a soil-resistant finish for kitchens, bathrooms, etc. Use it for woodwork and trim wherever Shadotone Flat Enamel is used on walls or ceilings. The colors match perfectly.

MOST COLORS
\$165
Quart

Lockney Lumber & Supply



Sterley News

By Mrs. M. A. Boone

The Sterley club room on January 20, was the scene of a going away party honoring Mr. and Mrs. J. W. Foster, Lewis, and J. D., who left the following day for Fayetteville, Ark. where they will make their new home. They were presented with many lovely gifts, among which was a set of China presented to them by the Sterley Methodist Church, and a table cloth and napkins presented by the Sterley Home Demonstration Club.

An evening of fellowship was enjoyed and refreshments of sandwiches, coffee, hot chocolate and cookies were presented to approximately 75 guests.

Mr. and Mrs. M. A. Boone and Eldora spent the week end visiting Mrs. Boone's parents, Mr. and Mrs. J. L. Bursless in Hermleigh.

Mrs. A. H. Sulter and son, Jay of Amarillo visited friends and attended the going-away party for the J. W. Fosters Tuesday.

Kenneth Claborn of Grand Prairie spent from Friday till Sunday visiting his parents, Mr. and Mrs. L. A. Claborn.

Amos Nelson and children, Wayne and Billy Jo, of Lubbock visited Mr. and Mrs. G. P. Nelson Sunday.

Miss Maxine Seymour, daughter of Mr. and Mrs. A. C. Seymour and Andy Reeves of Stamford were married Saturday night in Clovis, New Mexico.

Kitchen and Field News

from Floyd County Rural Electric Cooperative, Inc. by Nancy Morckel and Claude Weathersbee, Electrification

James W. Holman and Harry K. Webb from south of Crosbyton were co-op visitors on Saturday morning. They were making plans for connecting their new dairy barn. This will be a Grade A Dairy, milk will be sold to Bell Milk Co. of Lubbock. Our best wishes go to these two young fellows in this new venture. They came to the plains country last year and are working with their uncle, Mr. H. Work. Mr. Holman came from Tennessee and Mr. Webb from Oklahoma.

Ben Childress of Peerless Pump Co., Plainview, was a co-op visitor last week.

A. A. Howard of Silverton connected a small irrigation motor last week.

W. A. Waters, Abernathy, has connected an irrigation well. Mr. Waters is a member of the Board of Directors for the South Plains Cooperative, in Lubbock. He is in the process of connecting three more wells.

Mrs. R. C. Yarbrough says she really is enjoying her new electric range. It was a surprise Christmas gift—they came home one afternoon to find it installed and all ready for operation.

There will be a demonstration for the Mt. Blanco Club given Thursday at the home of Mrs. Brice Allen of Crosby County.

Mr. and Mrs. Leland Woodward and Kathy have moved to Lamesa to make their home. We regret losing them as members of the co-op but we wish them well in their new home.

One dollar buys 44 cents of food. One dollar buys 49 cents of clothes. One dollar buys \$1.10 of electricity.

The electric wires which bring so much convenience and comfort into homes today can be fire hazards—if improperly installed — if they are in need of repair or if they are misused.

When a fuse blows, the specialists remind home owners, that's a danger signal either of an overload or a short circuit. Substituting a larger fuse is highly dangerous because then wires, instead of the fuse, heat up and a fire may start inside house walls. When new equipment has been added, additional circuits may be needed.

Wiring should always be done by a competent electrician. After wiring the job should be approved by a licensed wiring inspector.

Overloading wires is not the only cause of fires from the misuse of electricity. Badly worn cords also are fire hazards. Forgetting to disconnect an electric iron or other appliances has caused many a fire.

When buying electric equip-

the Underwriters' Laboratories on both electrical equipment and cords which show that the article has been tested and passed as safe.

Electric chick brooding has many advantages. Electric brooders are well-liked because they greatly reduce fire hazards and eliminate loss of chicks from overheating or asphyxiation from fumes or smoke.

Electric brooders do not heat the brooder house; which is a benefit because it eliminates overheating with the result that moisture does not condense on the ceiling, walls and floors. This one feature reduces disease and parasite infection since heat and moisture are necessary for their development.

Chicks tend to be livelier, to eat more, and to feather faster in cold rather than in heated brooder houses. Insulation in the brooder confines the heat to the hoyer area. This results in economical use of electric power.

Infra-red heat lamps have been used in recent years in brooding chicks (and pigs also). This is the most economical way of brooding. All that is necessary is the purchase of the infra-red lights and the rest can be built out of scrap lumber.

Obituary News

By Mrs. Wilfred Stoerner

How far does your dollar go? Depends on how far you live from Washington.

Our sincere sympathy to the relatives of Mr. Ewald Dietrich who departed this life Friday, Jan. 23. He was a patient at the Claude rest home at the time of his passing.

Mr. and Mrs. Alvin Dietrich, Mr. and Mrs. Arnold Dietrich left by car Saturday for Alvin, Texas where burial for Mr. Dietrich will be held.

Rev. H. L. Anderson conducted the funeral service for Mr. Dietrich at Lemons Funeral Chapel Saturday morning at 10 a. m.

Mr. and Mrs. Wilfred Stoerner attended the inauguration of Governor Shivers at Austin and watched the inauguration of Gen. Eisenhower on television. They also visited friends at Fredericksburg, La Grange, Belton, Caldwell, Thrall, Rockdale, Taylor, Lamesa last week.

Mr. and Mrs. Ben Brandes were indeed honored to have as their distinguished guests last week end, Dr. Marcus C. Rieke D. D., Youth Director of the American Lutheran Church from Columbus, Ohio and their son, Rev. Lee Roy Brandes who interned under Dr.

guest at the Brandes' home. Mr. and Mrs. Robert Payne called in the home of Mr. and Mrs. Wilfred Stoerner Friday morning. Light refreshments of fruit cake, jelly roll cheese crackers and coffee were served. An enjoyable time was spent taking snow pictures.

We are indeed thankful for the bountiful snow we received, although many were inconvenienced by the lack of electricity, telephone, ect. We will all have a deeper appreciation for our modern conveniences, won't we? Mr. and Mrs. R. G. Stoerner returned from Lubbock Abbeles Hospital after 10 weeks being patients. They returned with Mr. and Mrs. Wilfred Stoerner, staying at present with Mr. and Mrs. Hubert Stoerner.

Mr. and Mrs. Ben Brandes, Mr. and Mrs. Wilfred Stoerner left Monday afternoon to attend the funeral of Mrs. Radtke, aunt of Mrs. Ben Brandes. Rev. Lee Roy Brandes will conduct the funeral at Trinity Lutheran Church Tuesday afternoon at Wichita Falls, Texas.

Mr. and Mrs. Rinsteder of Columbus, Ohio are visiting their daughter, Mrs. H. L. Anderson. Trinity Lutheran Church H. L. Anderson, Pastor January 28th. Choir rehearsal

February 1st. Sunday School Let's have a 10 a. m. Divine Worship 11 a. m. ladies of Trinity Candle Light Circle meets at February 2 2 p. m. Mrs. Leo Boedeker as staff meeting

JUMBO GLADIOLI BUSHES

A nice selection of colors, 6c each

ROSE BUSHES

New shipment just received. Yours of two sizes.

LOCKNEY VARIETY



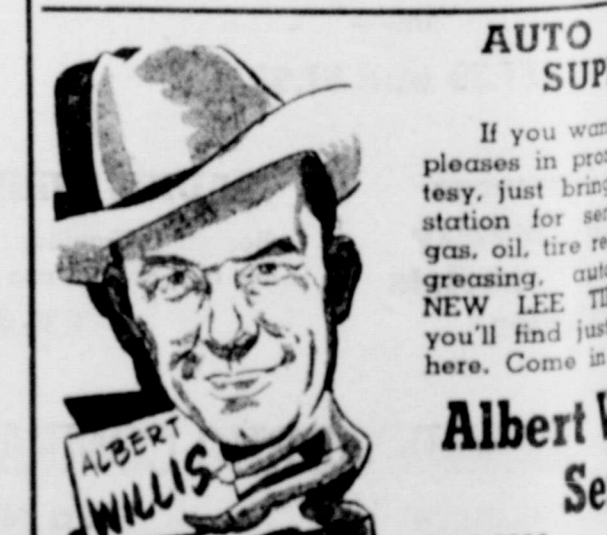
ELDON ROBERTS, Lockney Phone 3326

YOUR NEIGHBOR ON THEIR

CARICATURES BY HUT HUTSON



TROUBLES ARE OUR SPECIALTY



ANSWERS YOUR QUESTIONS

Q. My neighbors all seem to start chicks with Ren-O-Sal — why?

A. Because of the fine start they get with Dr. Salsbury's Ren-O-Sal! Yes, chicks grow faster, feather up better, and mature earlier when they get Ren-O-Sal in the water right from the start! Those benefits mean better birds, more profits. Ren-O-Sal prevents the spread of cecal cocciidiosis, too. Better do like your neighbors — use Ren-O-Sal!

BE ON THE ALERT! DR. SALSBUARY'S

Lockney Drug Co.

THE FIRST 300 FAMILIES (ANGLO-AMERICANS) ARRIVED in TEXAS WITH STEPHEN F. AUSTIN in 1821



WITH AUTHORITY and APPROVAL of the MEXICAN AUTHORITIES and BY 1835 the POPULATION of TEXAS WAS 35,000 to 50,000 the 1950 CENSUS GAVE TEXAS 7,711,194 — EARLY SETTLERS WERE IMMIGRANTS FROM at LEAST 35 NATIONS and FROM MANY STATES in the UNION

THE EARLY SETTLERS WERE TEXANS by CHOICE



THAT'S MY HOME TOWN GETTING LARGER EVERY YEAR!

DEAL WITH YOUR NEIGHBORS and HELP YOUR CITY TO GROW!



LET'S KEEP LOCKNEY MONEY AT HOME!

When your money goes out of town it doesn't do anyone in this community any good. It just helps the other community. The more local money we keep at home the more all of us will benefit and the more the town and community will grow.

Whether it's a deposit in the bank or buying groceries or dry goods, you'll help yourself and your neighbor as well by keeping your money at home. Come in and let us serve you.



Have you seen our new SAFE DEPOSIT BOXES? We still have a few left for rent. Ask us about them.

FIRST NATIONAL BANK IN LOCKNEY

Dial 3355 M. W. WILEY, President Lockney

Check These Prices For Your BAKERY NEEDS

- BREAD, large loaf 20c
- 7-Inch CAKES 40c
- PIE MIX, pkg., 18c, 2 for 35c
- BROWN-N-SERVE ROLLS, pkg. 12c
- COOKIES**
- Your choice, dozen 24c
- PIES 40c
- BROWNIES, dozen 40c
- DO-NUTS, dozen 40c

At The

City Bakery

Dial 2271 Lockney

IRRI...
SUP...
We have...
Irrigati...
Irrigati...
Get your irrig...
Auto...
CONS...
FUEL...
Dial 3336

Troubles are...
ize in. If you...
ery troubles...
blacksmith shop...
mand.

If you have...
troubles our...
will be glad to...
Farm H...
himself...
any s...
ishish."...
his l...
the Ne...
my in...
ur and...
al. Son...
See l their...
FRIGIDA...
Dry your cloth...
weather with...
Has the new...
eliminates mois...
from your home...
Only \$...
12 to 18...
See us also...
Proar Pau...
Electric W...
and...
DYKES...
Phone 2246

AUTO...
SUP...
If you want...
pleases in pro...
tesy, just bring...
station for ser...
gas, oil, tire re...
greasing, auto...
NEW LEE...
you'll find just...
here. Come in...
Albert W...
Ser...
Dial 8883

"Vacancy" Jan. 30

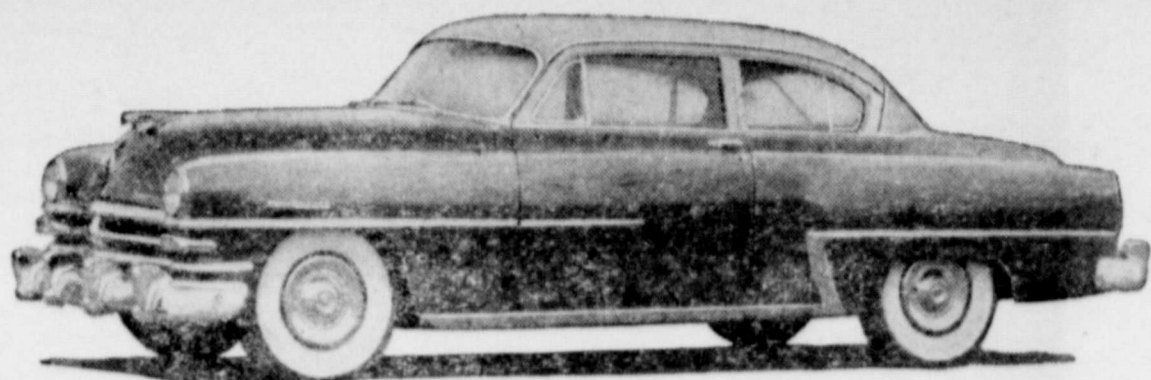
Property owners Lakeview and into Crosby coun- advised that the Sid Reed appli- on a "vacancy" is to have found Minnie Adams y well, will be ry 30. will be before the oard, which is g governor, the at- and the state land

I, chairman of a ed by residents a December meet- week that every the affected area ed and asked to ain hearing, pre- general land of- nittee has asked hrough their at- the application of ed. They are ex- testimony. The bers of the Lake- are L. L. Jones John Himmel of

claims as to the ners on which ed will be among factors when the is decision. on by Reed was 31, following the the Standard of dams on May 29, ide by Walter D. d state land sur- est of the state s completed in the ies of Newell's and his findings have been filed nd Commissioner and made avail- nd owners in the ey" claimed by

McADAMS INSURANCE
our — Polio —
— Auto — Bonds
ne 2141
tional Bank
lding

1953 NEW YORKER DELUXE CLUB COUPE HAS SPORTY LINES



Newest addition to the 1953 Chrysler line is this swank New Yorker Deluxe club coupe powered by the Chrysler 180-horsepower V-8 FirePower engine. On display at Chrysler dealers throughout the United States, this sporty two-tone club coupe provides new top treatment through use of chrome moldings over the windows running from the windshield to the rear window. A chrome panel partly covers the rear quarter panel accentuating

the graceful lines of the top. Interiors match the beautiful exterior styling in luxury with four rich two-tone upholstery combinations keyed to match the colors of the steering wheel, garnish molding and carpets. The car's wheelbase is 125 1/2 inches and the New Yorker Deluxe club coupe is offered in twelve solid colors and eight two-tone color combinations.

Reed consists of approximately 10.5 acres.

Buy's Own Land
L. L. Jones bought 10.48 acres of land last week from the State Land commissioner, although since the transaction he has no more and no less land than he had before he made the purchase.

The land bought by Jones was "excess" in the W. L. Laycock survey, due west of the Adams Survey No. 32, its east line being 1980 feet from the Standard of Texas Oil Company No. 1, Minnie Adams, discovery oil well. Jones' purchase of the "excess," a strip lying along the north side of part of the Laycock land, followed the findings and report of Walter D. Newell, state land surveyor, to the state land-commissioner.

Jones was given permission to buy his land at a price fixed by the board at \$50 per acre. He forwarded payment on this basis a sum of \$524.

The deed, when signed, will be a deed of acquittance. Fees for the deed and recording will cost Jones another \$6.04.

One Part Short, The Other Long
The story of how the property owner bought the 10.48 acres but had no more and no less than he had before, comes about this way:

The west tract of the Laycock land was bought for 62 acres, the east tract for 160 acres, total of 212 acres. When the survey was completed it was determin-

ed that the west tract actually was only 52 acres, whereas the east 160 acres was in fact 170 acres. Jones naturally didn't get anything back for the 10 acre shortage in the west tract but did have to ante up for the excess in the east tract. The state land board releases all claim to the land, including mineral rights, in the transaction.

The Laycock survey lies immediately north of the W. N. Jones home section of land, its north line being due west of the Lakeview school house corner.

Providence News

By Mrs. Wilfred Stoerner
(Delayed from last week)
Honor roll for third six weeks: Linda Scheele, Dorothy Huneycutt Fritzone Steinfield, Louise Jones, Larry Boedecker, Glenda Harden, Patsy McLaughlin, Gary Barker. These students made the "A" honor roll. Following is the "B" Honor roll: Tommy Barker, Bill Ooley, Rickey Collis, Herbert Smith, Gladys Matthews, Frances Jones, Joan Smith, Gaynel Crouch, Mary Jones, Margaret McAnally, Arlene Matthews. Mr. and Mrs. Norman Smith and family visited H. B. Ralls and family Friday night. Mr. and Mrs. R. C. Matthews and girls visited with Mr. and

Mrs. A. D. Schaffner, Mr. and Mrs. Mac Howard and Terry Lee Friday night.

Visitors in the Clyde Huneycutt home were Sam Miller and family.

Rev. and Mrs. H. L. Anderson and boys visited in the home of Mr. and Mrs. R. C. Matthews Thursday night. Sunday dinner guests in the home of Mr. and Mrs. R. C. Matthews were Mr. and Mrs. Marvin Scheele and Marie, Mr. and Mrs. Jack Favars and daughter.

Mr. and Mrs. J. W. Mathis and girls visited in the Harold McLaughlin home Wednesday night.

Dinner guests in the C. Koenig home were Mr. and Mrs. Fred Borchard and son, Mr. and Mrs. Fritz Steinfeld and Fritzone. The occasion was Mr. Koenig's 76th birthday.

Dinner guests of the L. M. Bakers were the Bill Barkers of Plainview.

J. A. Hardens visited with the R. M. Hardens Wednesday night. Mr. and Mrs. McAnally visited in Dimmitt Saturday and Sunday.

Mr. and Mrs. Klyce Ooley and family were dinner guests of the Edwin Barkers Sunday.

Mr. and Mrs. Wilfred Stoerner are on a vacation to South Texas.

The man at the top is usually someone who has been going to the bottom of things.

The only way to bridle your appetite is to put a little bit in your mouth.

The quickest way to the poor house is to spend like you were rich.

It's always FAIR WEATHER!



BUY YOUR CLOTHES DRYER WHERE YOU SEE THIS SIGN

...when you and an electric clothes dryer get together. Every day is a good drying day, whether it rains or snows, clouds up or blows, when you have an electric clothes dryer. Yes, and electric clothes dryers are especially good on bright, sunny days, because they don't fade your clothes like the baking sun does. You save time—an hour every wash day—and energy—2 tons worth a year—when you dry clothes electrically. Join the chorus now and bring your own fair weather by bringing home a dryer for your laundry.

SOUTHWESTERN PUBLIC SERVICE COMPANY
28 YEARS OF GOOD CITIZENSHIP AND PUBLIC SERVICE

MEDITATION

MISSION OF THE CHURCH

5th chapter of the Ephesian letter the apostle is that Christ so loved the church that he gave it. It was for the purpose, "That he might pre-himself a glorious church, not having spot, or any such thing; but that it should be holy and unish." We see by this that the church for which he his blood is a "glorious" church. Surely the the New Testament is a grand and glorious any in the world today try to remove some of ur and glory of the church. Some say that it is al. Some have it as just a social organization, a l their fancies and desires for prominence. The we read about in the New Testament was to ater purpose in this world than to suit the fan-

ar Paul again as he writes to Timothy. "But if I that thou mayest know how thou oughtest to self in the house of God, which is the church of God, the pillar and ground of the truth." Again grand and glorious mission of the church. Not make known the wisdom of God, but it is to be nd ground of the truth. If the church does not the truth of God, who will hold it forth? Is any, the church, delegated the authority to preach nd to execute the will of God? If the church is to r and ground of the truth how can the truth be

that are members of the church of the New have the grand and glorious mission of preach- world the only thing that is able to save their 1:16. "For I am not ashamed of the gospel of it is the power of God unto salvation to every lieve: to the Jew first, and also to the Greek." "But if our gospel be hid, it is hid to them that ve know then that if the gospel is hid to us then among the lost. If we would be free from sin ust "Come Where the Blood Can Heal," that is ence of the Gospel of Christ.

Main Street
CHURCH OF CHRIST



Here's the **MOST** fine car for the budget-minded!

- You'd never think it, but it's true :::
- . . . you can own this stunning new Chrysler Windsor for little more than a low-priced car with all its extras! Yet see what it gives you . . .
- Big car safety and steadiness . . . and a wonderful sense of complete car control!

- The breathtaking performance of the Chrysler Spitfire engine . . . plus the security of Full-time Power Steering, if you wish it!
- New-type shock absorbers that make even the roughest road feel like a boulevard!
- The satisfaction of driving a car that means the best there is to millions of motorists!
- Yes, you can own and enjoy all this at surprisingly modest cost . . . Stop in today and see!

The beautiful **CHRYSLER WINDSOR**—one of America's first family of fine cars!

BILBREY MOTOR COMPANY

205 South Main

Lockney, Texas

How to Join MOTHERS' MARCH ON POLIO Thurs., Jan. 29



Mothers March—

(Continued from page 1) of the nation.

"In accepting this honor, I share the feeling of every woman in Floyd County who places the safety and well-being of her children above any other consideration."

Forty women volunteers of Lockney will take part in the Mothers' March on Polio on the evening of Thursday, January 29, between 7:00 and 8:00. It was announced by Mrs. Wiley.

These marching mothers will be organized into a well-integrated volunteer army led by six district captains, and eighty four block wardens. They will be ready for the signal to march at 7:00 on the evening of January 29.

This signal will be the switching on of porch lights in most of the homes of the city. A light burning on the porch or in the window of any home that night will be an invitation to the marching mothers to ring the doorbell and receive a contribution to the March of Dimes.

"The local Mothers March on Polio is part of a vast, nationwide effort on the part of mothers to strike a telling blow against polio," said Mrs. Wiley. "The fruits of this hour of mercy will be the improved health and well being of thousands of boys and girls and men and women, not only in our own county, but throughout the nation."

Warren Embree Named Treasurer

Warren Embree, Vice President of the First National Bank of Lockney, and a leader in civic affairs, has accepted the position of treasurer of The March of Dimes Campaign for this part of Floyd County. Mr. Embree will accept and account for all money raised in this area for the fight against Infantile Paralysis.

Half of the March of Dimes funds raised here is used by the local chapter of the National Foundation for Infantile Paralysis to pay for local patient care, in emergencies, to finance patient treatment elsewhere. The other half goes to the national headquarters. Whenever a local

chapter uses up its funds, national headquarters gives supplementary financial aid so long as there is a need. A community hit by a polio epidemic may receive more from national headquarters than it contributed to the March of Dimes. Texas has received more money from the National headquarters for the past several years than it has collected from the March of Dimes.

Marion M. Chaney Funeral Held

The funeral of Marion Mack Chaney, 50, was conducted at 2 o'clock Tuesday afternoon. Mr. Chaney, who is the father of Mrs. J. T. Spears of Lockney, died at 5:30 Sunday afternoon at Plainview following an illness of several months. Services were held at the Church of Christ in Plainview.

Survivors include his wife and two daughters, Mrs. Joyce Spears, Lockney, and Mrs. Norma Caylor, Plainview.

HOME FROM HOSPITAL

Mr. and Mrs. H. F. Kidd were both taken to the Lockney Hospital Thursday of last week. Mr. Kidd had the flu and Mrs. Kidd had double pneumonia. They returned home Monday and Mr. Kidd is able to be up. Mrs. Kidd is much improved. Mrs. L. W. Pruett of Lovington, New Mexico is here taking care of her parents.

Visitors in the Kidd home during the week end were Lloyd and Cledys Griffiths of Wichita Falls and Mr. and Mrs. Roe Dalton of Wolforth.

CARD OF THANKS

We want to thank Dr. Mangold and the nurses at the Lockney Hospital and each one for their kindness to us during our illness. We appreciate Mr. Carter taking us to the hospital on such a very bad day. May God bless each of you.

Mr. and Mrs. H. F. Kidd.

OFFICE SUPPLIES at The Beacon Office.



DEATH CLAIMED T. D. H. WHITAKER Sunday afternoon at 1 o'clock at his home here. This picture, made last October 28.

er, was occasioned by his celebration of his 94th birthday. Mr. Whitaker had lived here since 1912.

Death Claims T. D. H. Whitaker

Ninety-four years of an active, useful life came to a close Sunday afternoon at 1 o'clock when T. D. H. Whitaker, a pioneer of West Texas, died at his home here. Mr. Whitaker had been ill for some time but was seriously ill only a short time. He celebrated his 94th birthday last October 28.

Funeral services were held at 3 p. m. Monday at the Main Street Church of Christ here, of which he was a member. George DeVoll, minister, officiated. Burial was in the Lockney Cemetery. Carter Funeral Home was in charge of arrangements.

Mr. Whitaker was born October 28, 1858, in Alabama. At the time he moved with Dallas where he lived when he came to Lockney his home.

Survivors include his wife, Mrs. Elmer; a daughter, Miss Margaret, who is the new supervisor at the Lockney Cotton Gin, Ganado, Texas; and a son, Mr. Elmer.

ble Se ing Permi day a per thirteen co the High tion Distri on well c mers and the distric over this paid as h premium ore the law So Bad couldn't fi or couldn' apital to f on, will pr situation as they h McFarland, iter distric

NEW MERCHAN

We've been getting in quite a bit of new... Wear lately and would like for you to come what we have for you.



WESTERN

Matching colors for men. Our new shirts a nice choice of colors and other features like. Come in today yours.

See the new... Blue Denim Jackets, Slacks Shirts to match.

Many new Sport Shirts in cottons, rayon and nylon.

Large selection of MALLORY HATS

for men. They look smart — feel smart \$7.50 \$10 \$15

Brown's Cleaners and Clo

Dial 3831

ted out a county com ter distric 1 in the pr there will all why ications fo approve Farland, r Squabbles is going ble to get filled out call in a le punched any r s boring far out that t of the wa nserve wi t the best of the a supplies te authorit rict. At th er rights e to be p ssible, un e with th any other tion form as a perm e county w rilled, is rmining will inter ts of other ater distri

SATIN LUMINAL

The original "rubber base paint". We are discontinuing this line of one of the very best interior rubber paints in order to keep within our line of Val Spar Products.

The advertised price of regular Satin Luminal is \$5.25 per gallon. We are offering this as long as it lasts for \$4.09 per gallon.

No quantity limit.

BRUNNIER LUMBER COMPANY

Your Home-Owned Lumber Yard

Dial 3385

Lockney

WE'RE STILL OPEN FOR BUSINESS!

Yes sir, in spite of our misfortune last week when the roof collapsed, we're still doing business in the same location and are anxious to take care of your needs.

Our repair department was not damaged in the mishap and we can still give you the same good service.

We have our parts department back in operation after digging it out from the derbis and can again give you genuine Chevrolet parts.

We're still trading cars as fast as we can and will be glad to trade with you if we have the car you want.

Our business office has been moved to the telephone company maintenance office, across the street and just east of our building.

We will appreciate your patronage and will be happy to serve you. Come in to see us.

THANKS FOR YOUR KINDNESS!

We surely appreciate the many offers of assistance and the help you have given us since our misfortune. Especially have our fellow auto dealers in Lockney and neighboring cities been helpful. Thanks for every thing you have done. We won't forget your kindness.

Lockney Auto Company

Your Chevrolet Dealer

Dial 3368

Lockney

BIG ECONOMY IN YOUR FOOD BUYS

Peaches

SHURFINE Packed in Heavy Syrup No. 2 1/2 Can — 4 For

\$1

MILK

SHURFINE 8 Tall Cans

\$1

Cherries

SHURFINE Pitted Red Sour No. 303 Can—5 For

\$1

KLEENEX

TISSUES 200 Size 2 For

25

Shortening

SHURFINE 100% Pure Vegetable 3 Pound Can

60

MEATS

U. S. GOOD GRADED

CHUCK ROAST, pound 49c

CLUB STEAK, pound 65c

Pinkney SAUSAGE, lb. 29c

FRUITS and VEGETABLES

CELLO PACKAGE CARROTS, 2 for

CELLO PACKAGE CELERY HEARTS

FRESH GREEN RADISHES, bunch

Rhodes Grocery & Market

Phone 2275

Free Delivery

information will also nation al tells, whi p build up informatio ormations of water: Plains o said th teemen l y of the l ity agent umber of mpanies ms. is som he advis l in a ce ing thre s signat n form s contactin To Drill e is a do lity of k tain pol mittees where ark, on if the ag the well e to prev her facte er is not ision, he e distric reason, nty com tained o , too, ca district's pected, l rly all of ed in th 2 en Decl left up to nen of t side whi individg ng may t of the ding to t arently' thing to water d lect the and ot High Pla stance b igh Plai tly by U ed ou n ele ater d bac