

Four Counties To Receive Conservation Services Grant

Congressman Omar Burleson announces the approval of a \$7,200 emergency energy conservation grant to the Community Action Council of Floyd, Crosby, Dickens and Motley

counties by the Community Services Administration. The grant is effective January 1, 1977 and will run for six months.

The funds from the grant will be used for the weather-

ization of homes of the elderly and poor by weather stripping, insulation, repair of windows and doors and roof patching to minimize heat loss in or improve thermal efficiency.



The largest car ever built was the Bugatti "Royale" of which only six were made. It measured over 22 feet in length and the hood alone was over 7 feet!



Wayne Lipham Resigns

University, will be the first guest artist to perform on the newly installed Holtkamp organ in the Recital Hall of the University Center-Music Building at Texas Tech University. Ragatz will perform music by Dietrich Buxtehude and Johann Sebastian Bach in a concert beginning at 8:15 p.m., Monday, Jan. 17. The public is invited and there is no charge. (TECH PHOTO)

Wayne Lipham has submitted his resignation as supervisor of the Weed District to the Board of Directors. Davis Duvak who has been an employee of the Weed District since October 1, 1974 replaces Lipham, who plans to farm. Duvak urges all farmers that are planning to have fence rows treated to do so now. The District will need to complete this type work by the last of March. By having your fence row as clean as possible before the application you will get a much better kill. April 1st bindweed will be emerging and the District will need to devote all their time on the treating of bindweed.

Tips To Help You

The Electronic Industries Association recommends that you unplug your TV set and disconnect the antenna if you plan on going off and leaving it for any length of time.



One ounce of silver can be drawn into a wire 30 miles long.

20.8 Cu. Ft. No Frost REFRIGERATOR
With 6.96 Cu. Ft. FREEZER

2 Ice 'n Easy Trays, or add an automatic ice-maker new or later, optional at extra cost

Power Save Switch

Tinted, See-Thru Meat Keeper and Crispers

Rolls out on wheels

REG PRICE \$559.95
\$485.00 WITH TRADE

TBF-21D

Parker Home Furnishings
IN LOCKNEY
WE SERVICE OUR SALES

Back by popular demand...

BANK VAULT BINGO

ALL NEW Series **2**

NEW CASH PRIZES TOTALING \$190,727

GAME VALUE	NUMBER OF PRIZES	ODDS FOR ONE GAME PIECE	ODDS FOR 13 GAME PIECES	ODDS FOR 26 GAME PIECES
\$1,000	96	1 in 96,490	1 in 7,376	1 in 3,788
\$100	96	1 in 96,490	1 in 7,376	1 in 3,788
\$50	191	1 in 49,503	1 in 3,808	1 in 1,904
\$20	383	1 in 24,687	1 in 1,899	1 in 949
\$10	765	1 in 12,359	1 in 951	1 in 475
\$5	4,309	1 in 2,194	1 in 169	1 in 84
\$2	6,742	1 in 1,402	1 in 108	1 in 54
\$1	25,236	1 in 375	1 in 29	1 in 14
TOTAL	37,820	1 in 250	1 in 19	1 in 10

Prices good thru January 22, 1977. We reserve the right to limit quantities. None sold to dealers.

<p>Heavy Aged Beef, Blade Cut</p> <h2>Chuck Roast</h2> <h1>78¢</h1> <p>Lb.</p>	<p>Ranch Style Bulk, Sliced</p> <h2>Slab Bacon</h2> <h1>\$1.09</h1> <p>Lb.</p>	<p>Piggly Wiggly</p> <h2>Sugar</h2> <h1>79¢</h1> <p>5-Lb. Bag</p>	<p>Betty Crocker All Layer Varieties</p> <h2>Cake Mix</h2> <h1>49¢</h1> <p>18½-oz. Box</p>
--	--	---	--

PIGGLY WIGGLY Inaugural Specials!!

<p>Texas Sweet Ruby Red</p> <h2>Grapefruit</h2> <h1>4 \$1</h1> <p>Lbs.</p>	<p>Frozen Foods</p> <p>In A Basket, Frozen</p> <h3>Morton's Chicken</h3> <p>2-Lb. Box \$1.99</p> <p>Tater Tots & Fries, Frozen</p> <h3>Ore-Ida Potatoes</h3> <p>2-Lb. Bag 69¢</p>	<p>Health & Beauty Aids</p> <p>Children's</p> <h3>Bayer Aspirin</h3> <p>36-Ct. Btl. 39¢</p> <p>Tablets</p> <h3>Vanquish</h3> <p>30-Ct. Btl. 89¢</p> <p>Twin Blade Cartridges Schick</p> <h3>Super II</h3> <p>9-Ct. Pkg. \$1.79</p> <p>Gillette Deodorant, Bronze</p> <h3>Right Guard</h3> <p>13-oz. Can \$1.99</p>	<p>ALL GAME PIECES PRODUCED FOR OUR BANK VAULT BINGO PROGRAM #478 HAVE BEEN DISTRIBUTED AND THAT PROGRAM HAS OFFICIALLY TERMINATED IN ACCORDANCE WITH F.T.C. REGULATIONS. ALL PRIZE WINNING GAME PIECES FOR PROGRAM #478 MUST BE PRESENTED FOR PAYMENT BY JANUARY 20, 1977 AND NONE WILL BE ACCEPTED FOR PAYMENT AFTER THAT DATE.</p> <h2>Paper Towels</h2> <h1>39¢</h1> <p>1-Roll Pkg.</p>
<p>Crisp, Crunchy</p> <h3>Carrots</h3> <p>1-Lb. Bag 35¢</p> <p>Garden Fresh</p> <h3>Cucumbers</h3> <p>Lb. 39¢</p> <p>FRESH</p> <h3>Green Cabbage</h3> <p>Lb. 19¢</p> <p>Golden</p> <h3>Ripe Bananas</h3> <h1>5 \$1</h1> <p>Lbs.</p>	<p>Fresh Dairy</p> <p>Piggly Wiggly</p> <h3>Low-Fat Milk</h3> <p>½-Gal. Ctn. 79¢</p> <p>Piggly Wiggly Regular Quarters</p> <h3>Fresh Margarine</h3> <p>1-Lb. Pkg. 3 \$1</p> <p>PIGGLY WIGGLY</p> <h3>Cottage Cheese</h3> <p>12 OZ. CARTON 69¢</p>	<p>Special Buys</p> <p>Fast Acting</p> <h3>Bayer Aspirin</h3> <p>200-Ct. Btl. \$1.99</p> <p>Regular or Mint</p> <h3>Phillips Milk of Magnesia</h3> <p>26-oz. Btl. \$1.89</p> <p>Sinus Medicine</p> <h3>Sine-Off</h3> <p>24-Ct. Btl. \$1.09</p> <p>Lotion Shampoo</p> <h3>Head & Shoulders</h3> <p>11-oz. Btl. \$1.99</p>	<p>Lady Scott</p> <h3>Facial Tissue</h3> <p>2 200-Ct. Boxes 99¢</p> <p>Lady Scott, Assorted Colors</p> <h3>Bath Tissue</h3> <p>2 2-Roll Pkgs. 89¢</p> <p>Floor Polish, Regular, Lemon or Natural Wood</p> <h3>Johnson's Pledge</h3> <p>14-oz. Can \$1.49</p> <p>Dry Dog Food</p> <h3>Gravy Train</h3> <p>50-Lb. Bag \$7.99</p> <p>Instant Chocolate Drink Mix</p> <h3>Nestle's Quik</h3> <p>2-Lb. Can \$1.79</p>

10 Accidents Investigated On Rural Highways In Floyd County Last Month

The Texas Highway Patrol investigated ten accidents with three injuries on rural highways in Floyd County during the month of December, 1976 according to Sergeant Ken Evans, Highway Patrol supervisor of this area.

These crashes resulted in no persons killed and three persons injured.

The rural traffic accident summary for this county during the first twelve months of 1976 shows a total of 58 accidents resulting in two persons killed and 45 persons injured.

The rural traffic accident summary for the 60 counties of the Lubbock Department of Public Safety Region for

December, 1976, shows a total of 514 accidents resulting in 10 persons killed and 255 injured, as compared to December, 1975, with 534 accidents resulting in 22 persons killed and 325 persons injured. This was 20 less accidents, 12 less killed, and 70 less injured in 1976 at

the same period of time.

The 10 traffic deaths for the month of December, 1976, occurred in the following counties: Two each in Dickens, Deaf Smith; one each in Collingsworth, Hansford, Parmer, Swisher, Hockley and Montague.

States Revenues Flow Into

Treasurer At Flood-Tide Levels

AUSTIN. Comptroller Bob Bullock said Wednesday that state revenues are continuing to flow into the treasury at flood-tide levels, totaling \$1.6 billion during the first three months of

fiscal 1977.

Bullock said that September, October and November revenues were 11 percent more than during the same period in fiscal 1976, which itself was an all-time record

year.

In his January financial statement, the Comptroller reported that fiscal 1977 sales tax collections are 15 percent ahead of 1976 levels, and that the natural gas production tax is reaping 36 percent more revenue.

"Meanwhile," said Bullock, "state expenditures during the first three months of fiscal 1977 totaled \$1.7 billion, only \$4.5 million more than was spent during the first three months of fiscal 1976. Partly as a result, the state closed out its books at the end of November with a cash balance of \$1.4 billion.

The Comptroller's January financial statement also reports on a Brookings Institution study that ranked Texas 43rd among the states in expenditures on state and local governmental services, and a Tax Foundation study showing Texas ranks 31st in

Medical group holds meeting

When the Hale, Floyd and Briscoe Counties Medical Society met Tuesday night in Central Plains General Hospital library in Plainview, during the business session the forthcoming South Plains Health Agency meeting was discussed by Dr. Joe Horn.

The public meeting will be Monday at 7:30 p.m. in Plainview High School Cafeteria. The plan development committee of the South Plains Health Services, Inc. is scheduling these meetings in each of 15 counties in order to allow area residents to say what they think priorities should be in the Health Systems Plan, set up by the federal

government.

The program for the society's meeting was presented by Ivan Barber, MD, and Dan Rodriguez, ARRT, both of Lubbock, who talked on "Cardiopulmonary Resuscitation and Status Asthmaticus."

Attending from Floydada were Drs. Jack Jordan, Carlos Ochoa and Terry James.

THE LOCKNEY BEACON
BOX 187
LOCKNEY, TEXAS 79241
Published each Sunday and Thursday at 220 S. Main, Lockney, Texas 79241. Wendell Tooley, Publisher, James Huggins, Editor. Second Class Postage Paid at Lockney, Texas 79241. Subscription Rates: Local \$8.50 per year. Out of state area: \$9.50 per year.

per capita state and local property tax burden.

Understanding Your Child

LET HIM TAKE TIME TO FIND HIMSELF

One of the biggest errors many parents make—one that fortunately is easily corrected—is that of expecting a child to succeed on the parents' own terms.

Psychologists say it's far more important for the health of the child and for a healthy parent-child relationship for youngsters to succeed in things they regard as important.

Mac's Backhoe Service
Call Harvey McJimsen
Silverton, Texas

STORAGE SPECIAL

At Wall & Mississippi Street
RENT STORAGE SPACE FOR 6 MONTHS
WE WILL GIVE 10% DISCOUNT.

Wilson Bond

983-2151-983-3573

West Texas Mini Storage

Back by popular demand... at

BANK VAULT BINGO

ALL NEW Series



ALL NEW Games

ALL NEW Folders... ALL NEW Prizes!



WIN UP TO \$1,000 IN CASH!

START WINNING THE ALL NEW CASH PRIZES TODAY!

- 96 - \$1000 Prizes
- 96 - \$100 Prizes
- 191 - \$50 Prizes
- 383 - \$20 Prizes
- 765 - \$10 Prizes
- 4,309 - \$5 Prizes
- 6,742 - \$2 Prizes
- 25,238 - \$1 Prizes

You have 96 DIFFERENT WAYS to WIN! YOU CAN WIN up to \$1000 on your FIRST visit to our stores!

WIN YOUR SHARE OF 37,820 CASH PRIZES TOTALING \$190,727



Get your FREE NEW Game Folder at our stores and start WINNING CASH today!

FREE • NO PURCHASE REQUIRED • ADULTS ONLY

ODDS CHART as of January 16, 1977 Program #483

GAME VALUE	NUMBER OF PRIZES	ODDS FOR ONE GAME PIECE	ODDS FOR 13 GAME PIECES	ODDS FOR 26 GAME PIECES
\$1,000	96	1 in 98,490	1 in 7,576	1 in 3,788
\$100	96	1 in 98,490	1 in 7,576	1 in 3,788
\$50	191	1 in 49,503	1 in 3,808	1 in 1,904
\$20	383	1 in 24,687	1 in 1,899	1 in 945
\$10	765	1 in 12,359	1 in 951	1 in 475
\$5	4,309	1 in 2,194	1 in 169	1 in 84
\$2	6,742	1 in 1,402	1 in 108	1 in 54
\$1	25,238	1 in 375	1 in 29	1 in 14
TOTAL	37,820	1 in 250	1 in 19	1 in 10

This Program is available at all Piggly Wiggly stores located in Texas, New Mexico and Oklahoma. Scheduled termination date of this Program is April 16, 1977, but game officially terminates with distribution of all game pieces. This program may be terminated at any time without notice. Prizes are awarded in cash or by check. Prizes may be requested per envelope and a self-addressed, stamped envelope must accompany each request.

BUDDY'S FOOD

Buddy Widener, Owner-Forrest Shannon, Mgr.
in Floydada, 220 South Second

DOUBLE **NEW STORE HOURS**
Monday - Friday 8 a.m. - 7 p.m.
Saturday 8 a.m. - 8 p.m.
WEDNESDAY Sunday 9 a.m. - 7 p.m.

THESE VALUES GOOD SUNDAY, JANUARY 16
THROUGH SATURDAY, JANUARY 22

We Reserve The Right To Limit Quantities

WHITE SWAN 5 LB BAG
SUGAR
EXTRA FINE granulated
39¢ WITH PURCHASE OF 4 LIGHT BULBS

CLOVERLAKE 1/2 GALLON 99¢ VALUE
BUTTERMILK
67¢

DEL MONTE 303 CAN 35¢ VALUE
CUT **GREEN BEANS**
4/\$1.00

HEINZ STRAINED FRUIT AND VEGETABLES 4 3/4 OZ.
BABY FOOD
7/\$1.00

3 OZ. SWIFTS 25¢ VALUE
POTTED MEAT
6/\$1.00

QT JAR \$1.39 VAL KRAFT
MIRACLE WHIP
99¢

21 OZ. WIN YOU CHERRY PIE 99¢ VALUE
FILLING
79¢

96 OZ. STA PUF CONCENTRATED FABRIC
SOFTNER
\$1.99

15 OZ. RANCH STYLE BLACKEYE
PEAS
4/\$1.00

CALIF EMPEROR **GRAPES** LB 39¢

CALIFORNIA SUNKIST **ORANGES** 5 LBS/\$1.00

SNOWWHITE HEADS **CAULIFLOWER** EACH 69¢

NEW MEXICO NO. 1 **POTATOES** 5 LBS/\$1.00

4 ROLL FYNREX **BATHROOM TISSUE**
69¢ 89¢ VALUE

TALL KORN BRAND sliced bacon
BACON \$1.19

U.S.D.A. FIRST CUT ROUND **STEAK** LB 99¢

CENTER CUT PORK **CHOPS** \$1.39 LB

ARMOUR BONELESS **HAM** \$1.99 LB

U.S.D.A. BEEF **RIBS** 59¢ LB

TONYS **PIZZA**
HAMBURGER SAUSAGE PEPPERONI \$1.19

U.S.D.A. T-BONE **STEAK** \$1.59 LB

U.S.D.A. ARM-OR-ENGLISH CUT **ROAST** LB 99¢

FRESH FROZEN **CAT FISH** LB \$1.39

RANCHER BLOCK **CHILI** LB 99¢

SLICED BEEF **LIVER** LB 49¢

20 QUART CARNATION **INSTANT MILK**
\$3.99 \$5.79 VALUE

SWIFTS WITH BEANS 15 1/2 OZ. CAN 69¢ VALUE
CHILI
4/\$1.00

NABISCO LB BOX 69¢ VALUE
CRACKERS
2/99¢

LB CARTON 77¢ VALUE
PARKAY
2/89¢

HOME LAUNDRY SIZE \$5.99 VALUE
TIDE 171 OZ.
\$3.99

14 OZ. JOHNSONS \$1.75 VALUE
KLEEN & SHINE
\$1.29

17 OZ. DEL MONTE 65¢ VALUE
APRICOTS 2/99¢

26 OZ. PER RITZ FRUIT **COBBLERS**
99¢ \$1.69 VALUE

200 COUNT \$1.19 VALUE
NOTEBOOK PAPER 99¢

MARS FUN SIZE SNICKER, MARS, MILKYWAY, MUSKETEERS **CANDY**
\$1.19 2 lb/\$2.37

12 COUNT LITTLE DEBBIE 69¢ SIZE **SNACKS** 79¢

24 OZ STALEY PAN CAKES \$1.35 VALUE **SYRUP** 2/\$1.19

9 OZ TWIN PAK PRINGLES 95¢ VALUE
POTATO CHIPS 69¢

28 OZ SHASTA 45¢ VALUE
POTATO CHIPS 69¢

CLUB SODA-GINGERALE-TONIC WATER 4/\$1.00

12 OZ. BOX **WHEATIES**
WITH COUPON 49¢

ALL FLAVORS **HAMBURGER HELPERS**
WITH COUPON 2/89¢

GOLD MEDAL 5 LB **FLOUR**
WITH COUPON 59¢

GOOD AT BUDDYS EXPIRES 1-22-77
79¢ WITHOUT COUPON

GOOD AT BUDDYS EXPIRES 1-22-77

GOOD AT BUDDYS EXPIRES 1-22-77

GOOD AT BUDDYS EXPIRES 1-22-77

GOOD AT BUDDYS EXPIRES 1-22-77

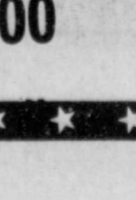
GOOD AT BUDDYS EXPIRES 1-22-77

Watch For Your Lucky Stars 25 Winners Each Week

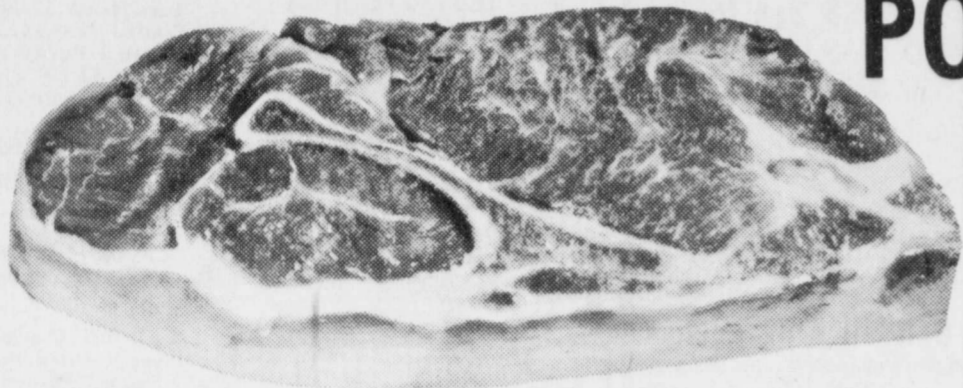
IF THERE ARE STARS ON YOUR CHECK SLIP TAPE
YOU HAVE WON THE FOLOWING

- ★ BLUE STARS 600 S&H GREEN STAMPS
- ★ GREEN STARS 1200 S&H GREEN STAMPS
- ★ RED STARS FREEZER BEEF APK
- ★ SILVER STARS YOUR PURCHASE FREE
- ★ GOLD STARS \$100⁰⁰ Gift Certificate

NO PURCHASE NECESSARY MUST BE 18 YEARS OF AGE



You Get A Lot More Without Paying More At Thriftway!!



PORK STEAK
\$1.09
LB.

BOSTON CUT
PORK ROAST

99¢
LB.

S & H
GREEN STAMPS
EVERYDAY
DOUBLE
ON WED.



U.S.D.A. CHOICE
BEEF BONELESS
CHUCK ROAST
99¢
LB.

FRESH-GUARANTEED 73% LEAN
GROUND BEEF
79¢
LB.

SLICED VACUUM PACKED
SHURFRESH BACON
\$1.19
1 LB. PKG.

RAMIREZ FRESH-LARGE
CORN TORTILLAS 32 OZ. PKG. **69¢**
BOZO'S EXTRA LARGE
FLOUR TORTILLAS 10 CT. PKG. **69¢**
OLD FASHIONED WISCONSIN
LONGHORN CHEESE LB. **\$1.59**
U.S.D.A. CHOICE BEEF LEAN
CUBES FOR STEW LB. **\$1.19**

U.S.D.A. CHOICE
BEEF CHUCK STEAK LB. **89¢**
U.S.D.A. CHOICE BEEF TENDERIZED
BEEF CUTLETS LB. **\$1.79**
HORMELS
LITTLE SIZZLERS 12 OZ. PKG. **89¢**
HORMELS WRANGLERS
SMOKED FRANKS 1 LB. PKG. **\$1.39**

HUNT'S TOMATO
JUICE
49¢
46 OZ. CAN

RANCH STYLE
BEANS
4 \$1
15 OZ. CANS

HEALTH & BEAUTY AIDS
12 HOUR RELIEF
CONTAC
99¢
10 CT. PKG.
LIQUID COLD MEDICINE
CONTAC JR. 4 OZ. BTL. **\$1.79**
Super II
SCHICK CARTRIDGE-25¢ OFF
SUPER 9 CT. PKG. **\$1.69**

HUNT'S TOMATO
Ketchup
69¢
QUART BTL.

FROZEN FOODS AND DAIRY
SAUSAGE-HAMBURGER-CHEESE-PEPPERONI
TOTINO'S PIZZA
79¢
13 1/2 OZ. PKG.

TOTAL GROCERY SAVERS
CHUNK STYLE
SHURFINE TUNA 6 OZ. CAN **59¢**
BATHROOM TISSUE
FAMILY SCOTT 4 ROLL PKG. **69¢**
NEW IMPROVED PAPER
BOUNTY TOWELS JUMBO ROLL **59¢**
SKINNERS THIN
SPAGHETTI 24 OZ. PKG. **59¢**
INSTANT COFFEE
MAXWELL HOUSE 10 OZ. JAR **\$3.99**

SHURFINE GRANULATED
SUGAR
589¢
LB. BAG

SHURFINE
Halves Bartlett
PEARS 2/79¢
16 oz. Can
Sterno
LOGS **98¢**
Each

BIRDSEYE LITTLE
CORN ON THE COB 8 EAR PKG. **79¢**
SHURFRESH
SOFT MARGARINE 1 LB. BOWL **49¢**
SHURFRESH LONGHORN
COLBY CHEESE 10 OZ. PKG. **89¢**

40¢ OFF LABEL
DETERGENT
TIDE
\$4.29
FAMILY SIZE BOX

20¢ OFF LABEL
DISHWASHER
Cascade
\$1.29
50 OZ. BOX

TOTAL GROCERY SAVERS
HEINZ 15 1/4 OZ. WITH BEANS 15 OZ. WITHOUT YOUR CHOICE **69¢**
NEW! TEXIZE IN E-Z SPRAYER
SPRAY & WASH 22 OZ. BTL. **\$1.19**
BEEF, CHICKEN, OR LIVER FLAVORED
DOG FOOD
STRONGHEART
6 15 1/4 OZ. CANS MIX-N MATCH **89¢**

SUNSHINE GRAHAM
CRACKERS 16 OZ. BOX **59¢**
NABISCO
OREO COOKIES 15 OZ. PKG. **79¢**
BRAND CHEESE FLAVORED FRIED
CHEE-TOS PUFFS 9 OZ. PKG. **59¢**
FRANCO AMERICAN
BEEF RAVIOLI 15 OZ. CAN **49¢**
FRANCO AMERICAN
ROTINI 15 OZ. CAN **29¢**
FRANCO AMERICAN-WITH MEAT BALLS
ROTINI 14 1/2 OZ. CAN **49¢**

WASHINGTON
ROME APPLES 4 LBS. **\$1.00**
SUPER
SELECT CUCUMBERS LB. **29¢**
CRYSTAL WAXED
WHITE ONIONS LB. **25¢**
LARGE
BELL PEPPERS LB. **49¢**

TEXAS RUBY RED
GRAPE-FRUIT
6 \$1
LBS.

FOR BETTER BAKING
BAKE-RITE SHORTENING
99¢
3 LB. CAN

BAMA RED
GRAPE JAM PLUM JAM APPLE JELLY
18 OZ. BTL. YOUR CHOICE **59¢**

10¢ VALUABLE COUPON NO. 2876-7 10¢
POST CEREAL
HONEY COMB 12 OZ. PKG. **79¢**
WITH THIS COUPON
VOID JANUARY 22, 1977
LIMIT ONE COUPON PER CUSTOMER
10¢ **THRIFTWAY** 10¢

PAGES THRIFTWAY

SPECIALS GOOD JANUARY 16-22, 1977