

15c
Per
Copy

The Lockney Beacon



VOLUME 76

LOCKNEY, FLOYD COUNTY, TEXAS 79241

SUNDAY, SEPTEMBER 25, 1977

12 PAGES IN ONE SECTION

NUMBER 76

Methodist Revival Starts Today

Guest evangelist for a revival this week at the First United Methodist Church in Lockney will be Rev. Homer M. Martin Jr. of Bowie, head of the Christ Is Life Evangelistic Association. Bill Sanford of Plainview will lead the singing at evening revival services.

The revival starts today (Sunday, September 25) at the regular services and continues through Wednesday (September 28) with services at 10 a.m. and 7:30 a.m. each day.



HOMER M. MARTIN

Rev. Martin is a Methodist minister who served many years as pastor of churches in the Oklahoma Conference. He is now in full time evangelism and travels extensively, preaching and teaching the Gospel of Jesus Christ.

Dusty Rhodes Seeks Congress Seat



A.L. [DUSTY] RHODES

A.L. (Dusty) Rhodes hasn't let any grass grow under his feet in his first month of campaigning for the U.S. House of Representatives.

The Abilene attorney and businessman announced his candidacy as a Democrat on August 16 with a one-day flying tour of the 17th Congressional District.

Rhodes' announcement came one week after Congressman Omar Burslem, who served the District in Washington for 32 years, announced that he would retire at the end of the present term.

Since announcing his candidacy, Rhodes has visited over 50 cities in 31 counties, and has been putting together a campaign organization that will be active in all 33 counties of the 17th Congressional District.

"I've been talking with businessmen, farmers and ranchers, elected officials, and hundreds of friends from all walks of life," Rhodes said.

"The campaign is off to a great start. Support is strong in every county," he added.

"Wherever I go," Rhodes said, "the issues that people raise run along similar lines."

"The economy, especially energy, is on everybody's mind," said Rhodes. "And so is agriculture-farm price policy."

"But the one thing that people feel strongest about is the amount of red tape and governmental control over more and more aspects of people's lives."

"I hear people say, 'We aren't going to ask you to get the government to give us anything—we just want you to go up there and hold the line—do all you can to cut back on spending and federal control.'"

Rhodes said a number have asked him how long it will take as a new congressman to have any influence in Washington.

"My answer is that seniority is on the way out in Congress. In recent years the rules have changed to take much of the power away from committee chairmen."

"Today it's more what you know than who you know and a willingness to

be active, creative and work hard that helps a congressman to be effective."

Rhodes said he felt the issue of leadership would be paramount in the coming election campaign.

"This district needs a representative who knows the people, who believes what they believe, who will be aggressive on their behalf," Rhodes declared.

"In my practice and in my business, I have become closely involved in the lives of thousands of people through the years."

"For me, politics will always be a personal thing. I believe I can make a difference in Washington."

The 45-year-old Rhodes is a senior partner in the Abilene law firm of Rhodes, Doscher, Chalk and Heatherly.

He is also engaged in a number of business enterprises in West Texas, including banking, oil and gas, farming and ranching, and retail merchandising.

He serves on the board of directors of Citizens National Bank in Abilene, and also on the board of Connally Oil Co. of Abilene.

He is chairman of the board of Gibson's of Duncanville, and also board chairman of Hale Farm Supply in Haskell.

He is president of Big Ed Oil Co., and the Christi Co., Inc. He is a member of TIPRO (Texas Independent Producers and Royalty Owners).

Rhodes was born into a farming family in Hugo, Okla., and has wheat farms in Oklahoma. He also has a cotton farm in Haskell County and Charolais and Hereford cattle in Taylor and Bosque Counties.

Rhodes is active in numerous community activities, including the boards of the Abilene Philharmonic, the Abilene Zoological Society, and the West Texas Rehabilitation Center.

He is a frequent speaker for older citizens groups, and recently won a state award for service on the governor's senior citizen symposium, the Generation Connection.

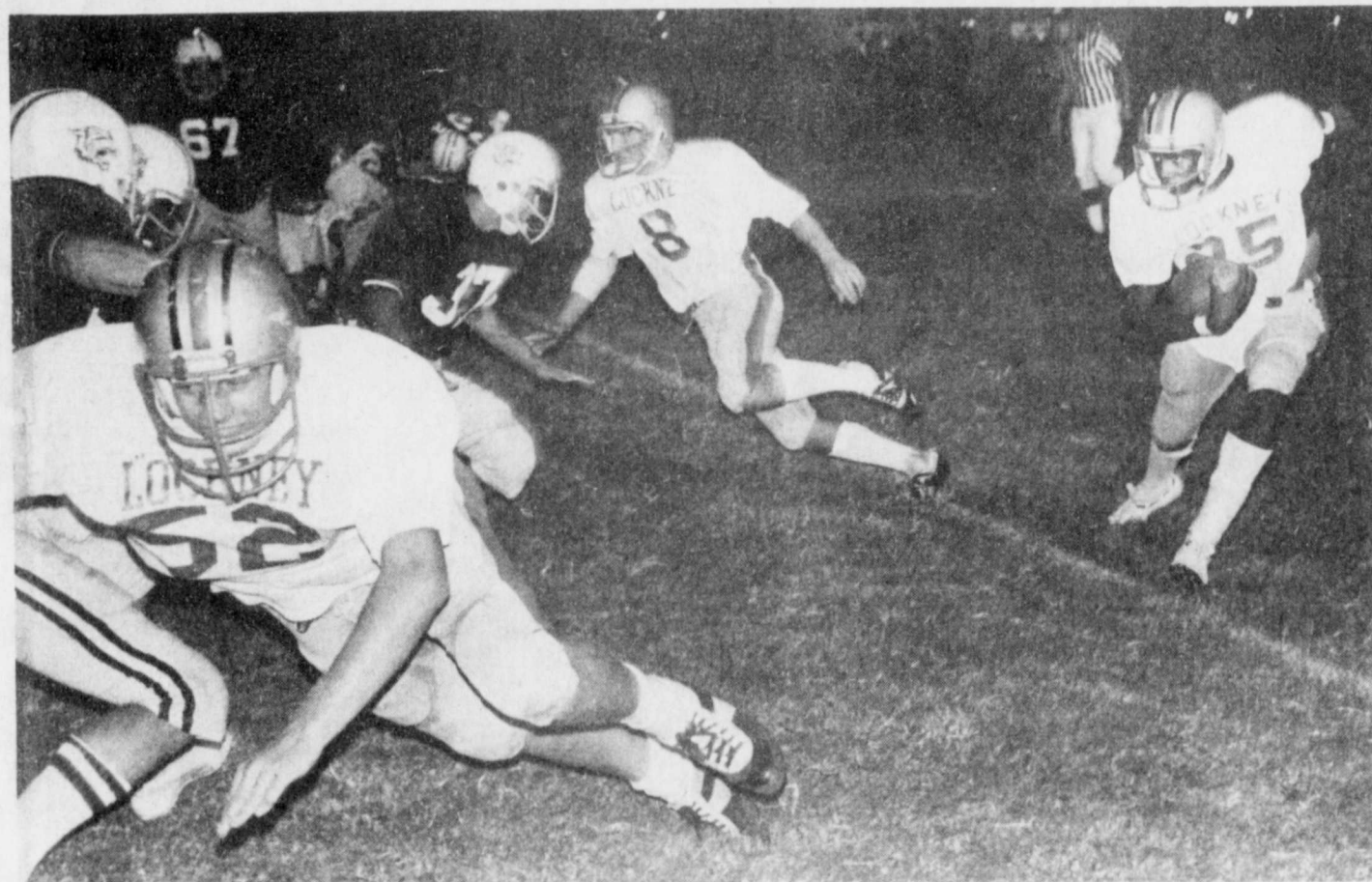
Rhodes is married to the former Nancy Fanson. They have four children: Ed and Christi, students at Abilene Christian University; Annette, an Abilene High School junior; and Sherry, a ninth-grader at Lincoln Junior High.

The family are members of the Highland Church of Christ in Abilene. Rhodes serves the congregation as a deacon and a Bible class teacher.

(Paid for and authorized by the Dusty Rhodes To Congress Committee, John Allen Chalk, Treasurer, Box 1978, Abilene, Texas 79604.)

Wildcats Win, 27-14

Longhorns got them mean ole fourth quarter blues again



DONNY WILEY (#52) throws a block for ballcarrier Danny Clark on a third-period play Friday night. Clark gained over 200 yards rushing for the third consecutive week, but Littlefield won the game 27-14 on a fourth period blitz. (Staff Photo)

Fumbles Costly

Fumbles cost the Lockney junior varsity football team a victory at Littlefield Thursday night, according to Coach Tommy Gregory.

The Wildcat JV won the game 14-6, largely as a result of Longhorns fumbles—four in the first half and another in the fourth quarter which killed a catch-up drive.

The Lockneyites won the first half. They held the 'Cats to two first downs and no score. The 'Horns moved the ball up and down the field but fumbled away several scoring opportunities.

(one fumble came on the Littlefield seven-yard line). The only first-half score came with about five and a half minutes left in the second period, when Junior Galvan ran 32 yards around right end for the Lockney TD. The extra-point try was no good.

Littlefield went ahead 7-6 when they kicked true after a third-quarter TD: The spread increased to 14-6 when the 'Cats scored and converted again with 7:25 remaining in the game.

The Longhorns had a drive going late in the game but a fumble ended the scoring threat again.

Defensive standouts for Lockney were noseguard Phillip Garza and linebacker Byron Brock, Gregory said.

The JV plays Lubbock Christian High School here at 7 p.m. Thursday.

STATISTICS		Littlefield
Lockney	First Downs	21
15	Yards Rushing	320
272	Yards Passing	97
10	Passes	4-11-1
1-3-1	Punts-Avg.	5-31
7-39	Penalties-Yds.	7-65
5-52	Fumbles Lost	2
2		

SCORING	
Lockney-Joe Rodriguez, 10 run (run failed) 8:52 first quarter	
Littlefield-Raymond Baiza, 1 run (Richard Soria kick) 10:25 second quarter	
Lockney-Danny Clark 1 run (Clark run) 1:43 third quarter	
Littlefield-Baiza 2 run (Soria kick) 10:32 fourth quarter	
Littlefield-Baiza 96 run (Soria kick) 8:09 fourth quarter	
Littlefield-Baiza 3 run (kick failed) 7:05 fourth quarter	

Everything was going along pretty well for the Longhorns Friday night until the fourth quarter of the football game, and then ZAP! Littlefield's Raymond Baiza scored three touchdowns in the space of three and a half minutes, and the Wildcats scored a 27-14 victory.

Baiza also scored Littlefield's other TD, in the second period.

Lockney scored first, just over three minutes into the game. Aaron Wilson set up the TD when he picked off a pass thrown by Littlefield quarterback Stan Jackson at the Lockney 30 and returned it to the Longhorn 42.

Armando Vasquez carried for six yards on the Longhorns' first play, then Danny Clark got nine, four, and 27 yards on successive totes, moving the 'Horns to the Littlefield 12. Lockney quarterback Billy Sesson got to the 10 on a straight-ahead keeper, and Joe Rodriguez bulled for the touchdown on the next play. There was a fumble on the conversion attempt.

The Longhorns threatened again immediately. They held the 'Cats, forcing a punt from the Littlefield 20-yard line, and drove to the Wildcat 19 before coming up a foot short on a fourth-down effort.

A Longhorn fumble set up Littlefield's first score. The Wildcats took over at the Lockney 30 and scored in five plays. Baiza stepped the final yard, and Richard Soria kicked the 'Cats ahead 7-6 with 1:35 elapsed in the second quarter. It stayed 7-6 until after halftime.

SECOND HALF

The Longhorns were next to take advantage of a fumble. Rodriguez claimed the pigskin for Lockney at the Littlefield 47, and Clark took over, gaining all the yardage in six plays including an 18-yard carry to the Wildcat one, and the touchdown on the next play. Clark's conversion run put

the 'Horns up 14-7. There was 1:43 showing on the third-quarter clock.

Then things started happening for Littlefield, folks. The 'Horns fumbled the ball away at their own 33, and Eddie Gregory, a young quarterback not even listed on the Wildcat roster in the program, hit on consecutive long passes to Jett West and Mark Watts and suddenly the 'Cats were camped on the Longhorns' two-yard line. But not for long. Baiza went over, and Soria kicked, and it was a 14-14 game.

Danny Riddle brought the kickoff out to the Lockney 34, but the Longhorns couldn't move and Junior Galvan got off a beauty of a punt that was killed at the Wildcat one-yard line.

Things look good for Lockney for one play. Baiza got only three yards on the first carry from deep in his own territory, but on second try, he popped into the clear and hoofed it 96-count 'em, 96-yards to the Lockney end zone. Soria kicked.

As if that weren't enough, Jett West picked off a deflected Lockney pass two plays after the kickoff, at the Lockney 38: Rudolph Smith, a speedy Wildcat high-stepper, scooted to the Lockney two yard line; and Baiza put the game out of reach with his fourth touchdown of the night.

Danny Clark gained 218 yards for Lockney. Smith had 158 for Littlefield and Baiza's total was 153 yards.



HOW DOES HE DO IT with one leg? Don't worry folks, there's another one in there somewhere. Danny Clark gained four yards on this play Friday. (Staff Photo)

LHS Student Is NMS Semifinalist



Tracy Beedy

Lockney High is proud to announce that Tracy L. Beedy has qualified as a Semifinalist in the competition for the Merit Scholarships to be awarded in 1978. Tracy is a senior in Lockney High School and is the daughter of Mr. and Mrs. Austin Beedy.

Approximately 15,000 students have been named Semifinalists in the twenty-third annual National Merit Scholarship Program. These academically talented students will have an opportunity to continue in the competition for about 3,900 Merit Scholarships to be awarded in the spring of 1978.

Semifinalists are named from over 1 million students enrolled in 17,500 high schools who entered the 1978 Merit Program by taking the 1976 Preliminary Scholastic Aptitude Test/Nation-

al Merit Scholarship Qualifying Test (PSAT/NMSQT). Semifinalists are the highest-scoring students in each state; the number named in a state is proportional to that state's percentage of the nation's total graduating senior class. The Semifinalists, most of whom will complete high school and enter college in 1978, represent the top half of one percent of the nation's most academically talented young people.

To be considered for scholarships, Semifinalists must advance to Finalist standing by meeting further requirements. These requirements include being fully endorsed and recommended for scholarships by their secondary school principals, presenting school records that confirm high academic standing, and substantiating their high qualifying test scores with equivalent scores on a second examination. Over 90 percent of the Semifinalists are expected to qualify as Finalists and to receive Certificates of Merit next February. All winners of Merit Scholarships will be chosen from the highly able group of Finalists.

Semifinalists who attain Finalist status will compete for at least 1,000 National Merit \$1000 Scholarships. Each Finalist in a particular state will compete with all other Finalists in that state for one of these scholarships that are allocated on a state representational basis (the procedure used to name Semifinalists). The National Merit \$1000 Scholarships are one-time, non-renewable awards supported by grants to NMSC from business and industrial organizations. A Selection Committee of professionals in college admissions and counseling is convened annually to select the 1,000 winners.

Beacon Lights

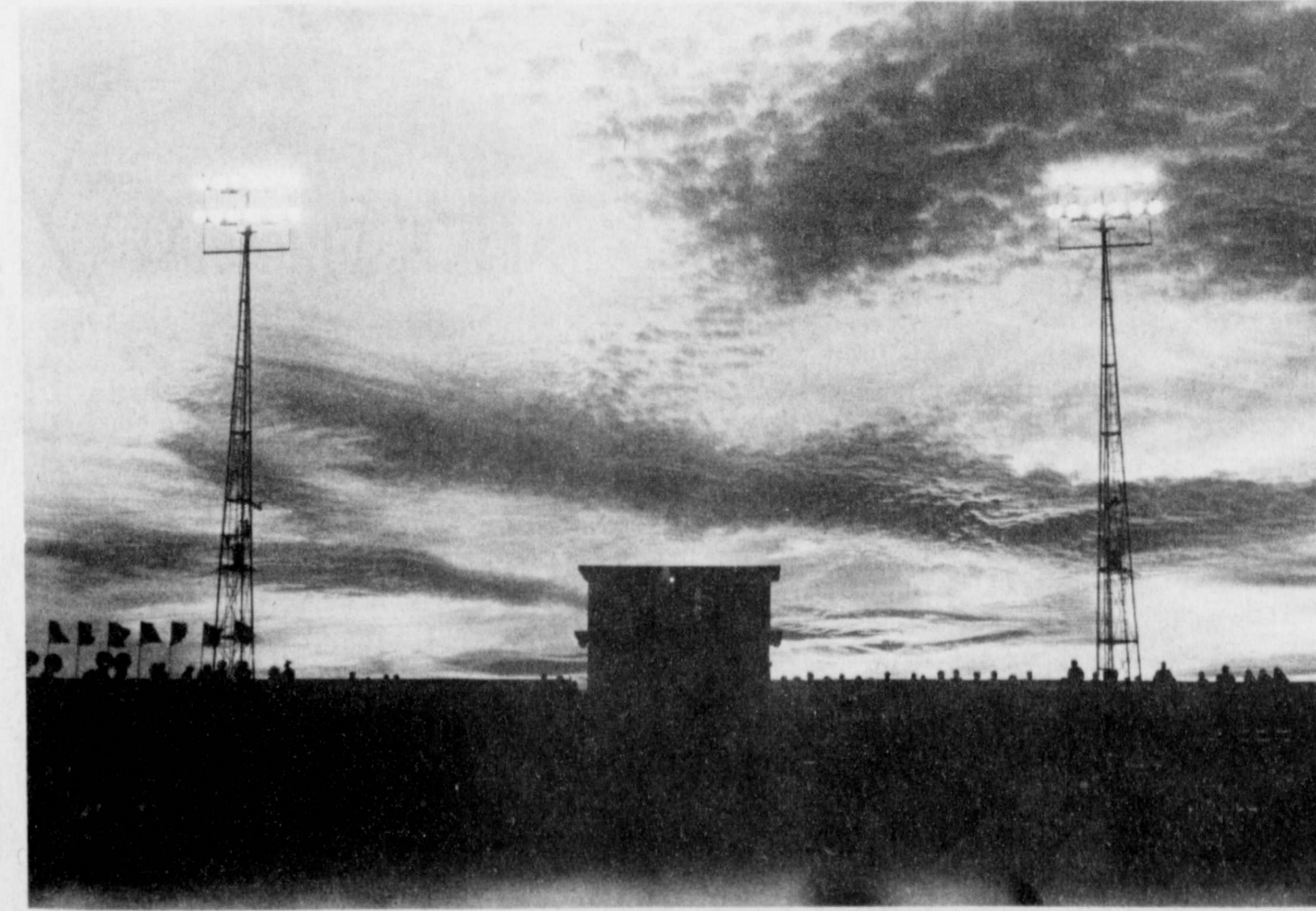
by Jim Huggins

HERE'S A LETTER from a Lockney citizen who wishes to remain anonymous. It's refreshing to hear from somebody who thinks there's something RIGHT about something. (By the way, the letter writer hasn't had a fire recently, or anything.)

Dear Jim,
I would like to take this opportunity to say "Thank You" to the Lockney Volunteer Fire Department for their services to the community—for their time spent in fighting fires and in making emergency ambulance runs.

We're fortunate to live in a town where people still care about one another.

(Name withheld by request)



THE SUNSET was pretty, anyway.

(Staff Photo)

HAVE FUN ...

WIN PRIZES ...

\$20 IN CASH PRIZES
EACH WEEK

HESPERIAN

**FOOTBALL
CONTEST**

**AND
QUARTERBACK
FORECAST**

CONTEST RULES:

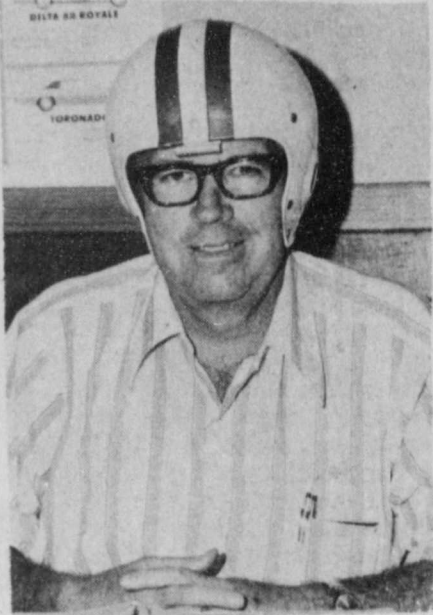
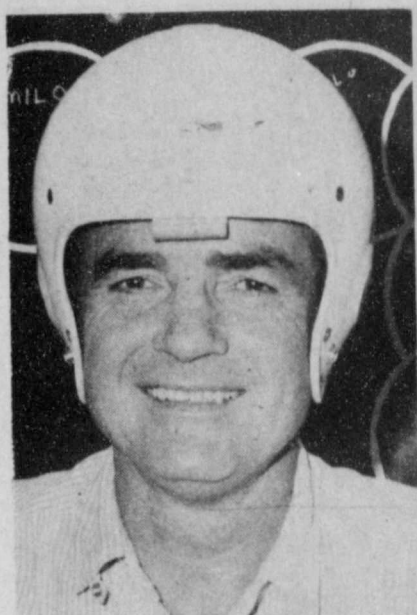
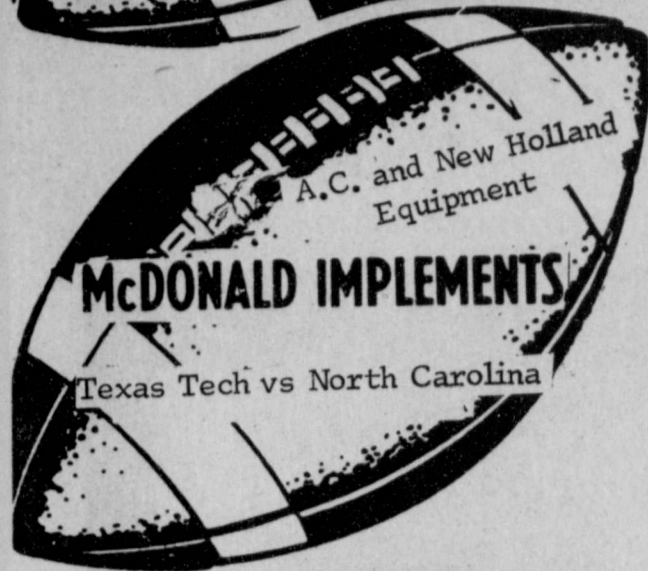
Anyone can enter except the employees of the Hesperian. Three cash prizes are given each week - ties will split prize money. Members of the sports department are sole judges of the contest and their decision is final.

It is not necessary to indicate scores on all the games....But score must be indicated on the tie breaker game at right.

Simply circle the team you choose to win in each of the footballs. Deadline for submitting entries is 5 p.m. Friday - winners will be announced the following week. Enter as many times as you wish, print name and address plainly on blank below and mail or bring entire page to The Hesperian office

Tie-breaker game will be considered only in case of ties.
Limit One Winner Per Family Per Week.

DEADLINE FOR ENTRIES - 5 P.M. FRIDAY
IN HESPERIAN OFFICE OR POSTMARKED

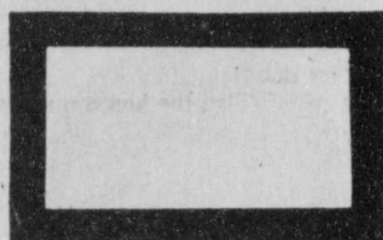


BILL CAGLE DOYLE WALLS
FLOYDADA 13 LITTLEFIELD 6 FLOYDADA 19 LITTLEFIELD 12

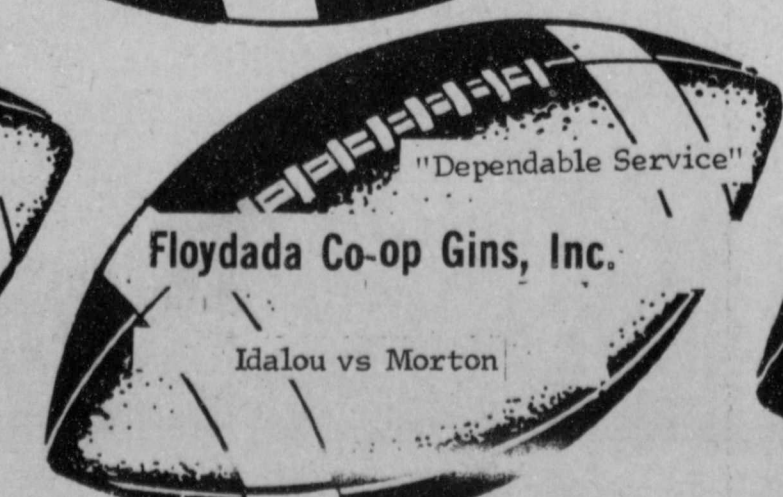
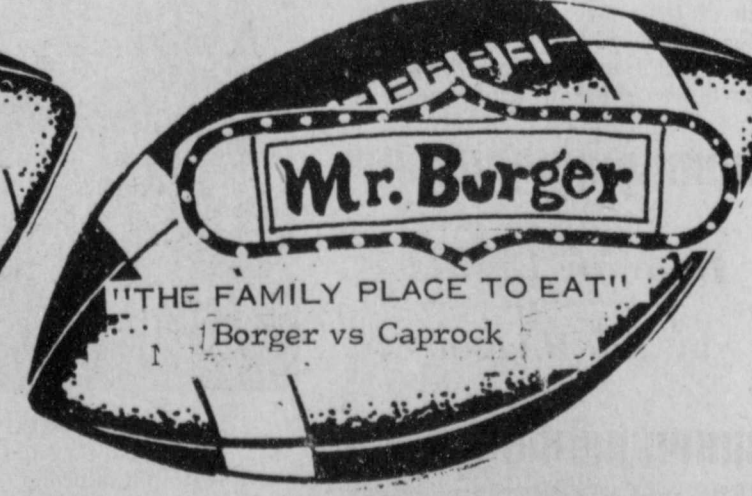
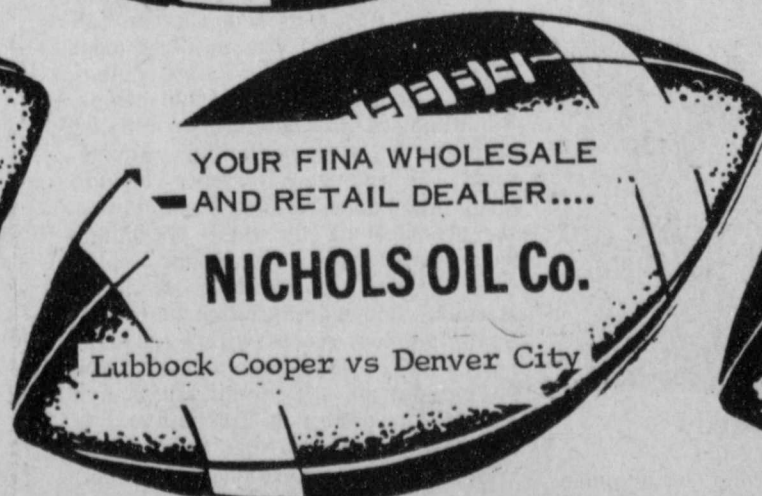
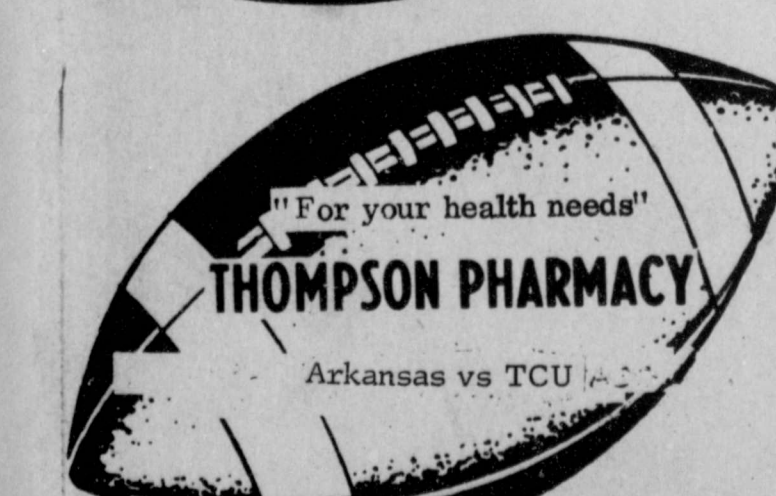
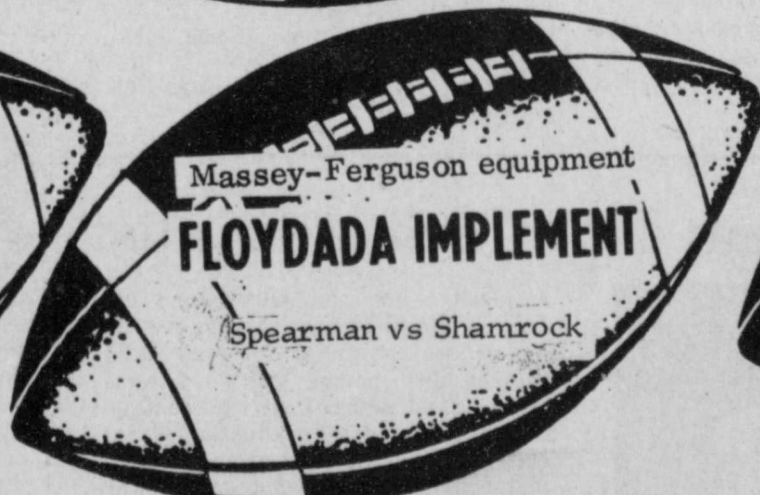
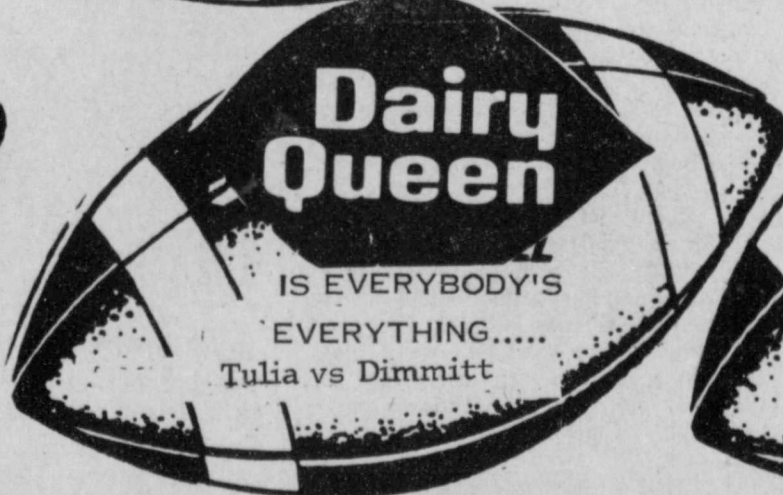
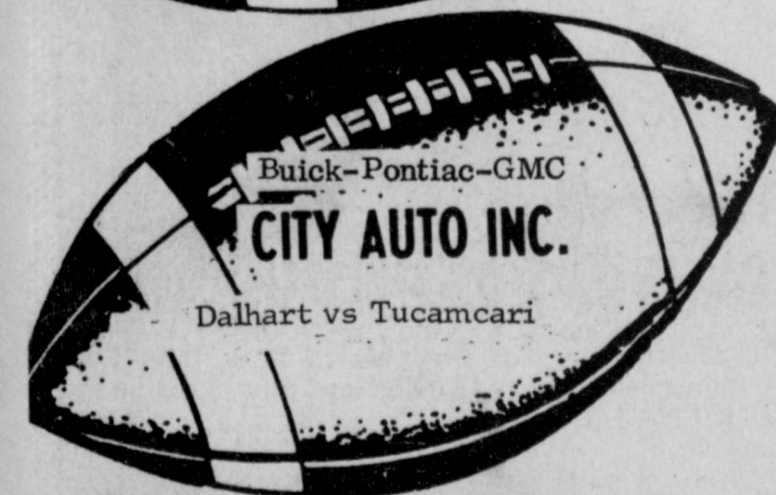
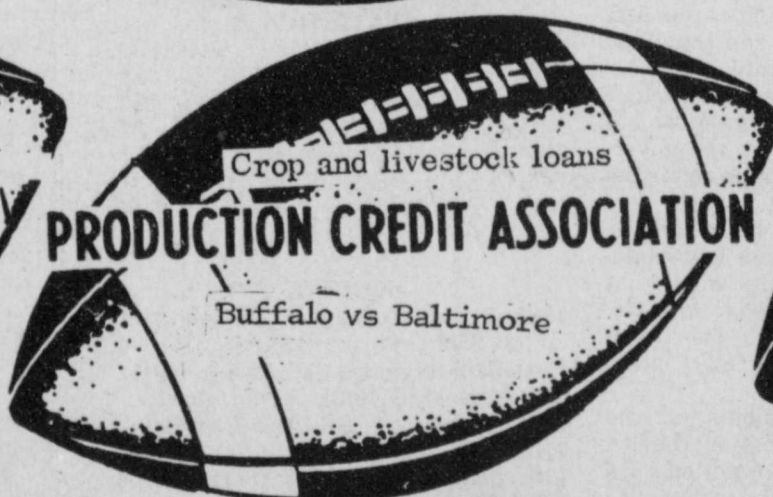
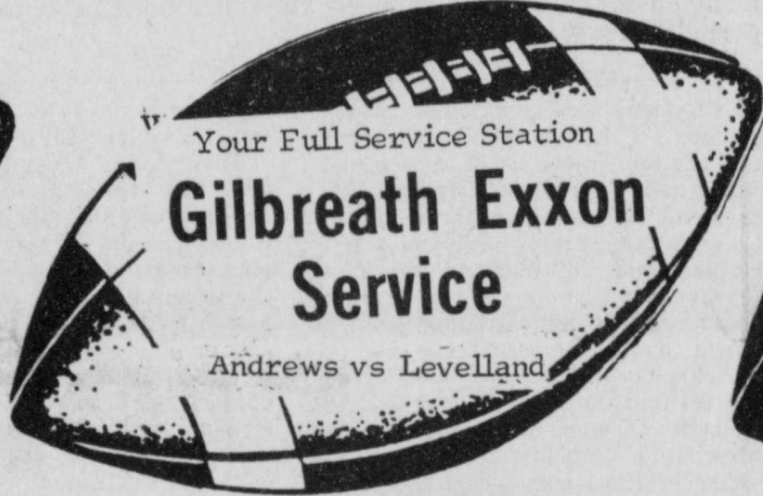
**TIE BREAKER-Guess Total Points
AND CIRCLE WINNER**

NAME
ADDRESS
CITY

1ST PRIZE \$10.00
2ND PRIZE \$6.00
3RD PRIZE \$4.00

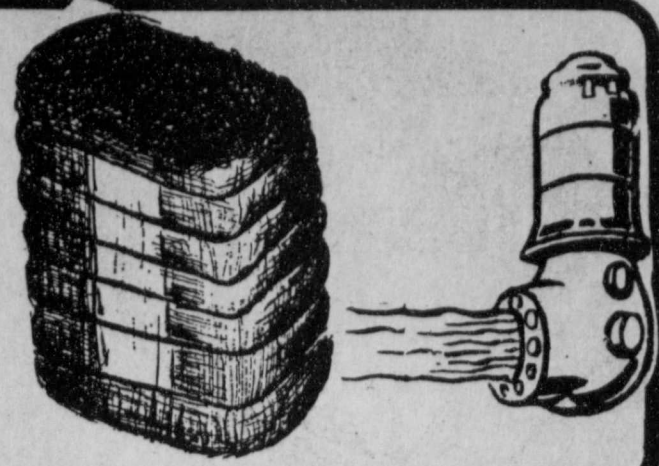


Littlefield
at
Floydada





FARM & RANCH NEWS



Farmers get sympathy, no promises

By JACK CLARK
Globe-News Correspondent

PUEBLO, Colo. — The U. S. Secretary of Agriculture missed his dinner last night as he fielded questions and listened to angry demands from farmers who threaten a production strike in 1978 unless they can get a break-even price for farm products.

The demand for parity — the price at which farmers could make a profit comparable to that in other industries — drew more than 3,000 farmers from two dozen states to Memorial Hall here yesterday afternoon to meet Secretary Bob Bergland.

The crowd filled the auditorium to capacity and overflowed into the grounds where they listened to the voices of Bergland and some of their own spokesmen amplified by a speaker system.

Bergland assured the farmers that he and the Carter administration are concerned about the farmer's problems, but he expressed doubt whether any government action can improve price levels as long as surpluses depress the market.

Speaking to the crowd — mostly wheat farmers from Colorado, Texas, Iowa, Nebraska, Oklahoma, Kansas and Minnesota — Bergland said he sympathizes with the farmers' situation but doubts whether a strike would prompt Congress to reconsider farm legislation.

He outlined provisions of the recently passed bill calling for 20 per cent set aside of wheat acreage in 1978 to reduce production and cut the surplus.

The crowd made its position clear with a one-minute ovation for a spokesman of the fledgling American Agriculture organization who stated the group's demands for a program to guarantee cost of production "or we strike on Dec. 14."

The farmers also emphasized their position with boos several times when Bergland was talking.

During the meeting, which took on a testimonial aspect, farmers spelled out the miseries of a 500 per cent increase in the cost of farm equipment while wheat prices have dipped to 1940 levels.

"I am not asking for myself, I am asking for my son," said Gerald McCathern of Hereford, a Texas farmer-rancher who broke into tears.

"After this year, there will be no farm."

"The farmer pays 51 per cent of the taxes in this country and buys 51 per cent of the merchandise," said George Whitman, from Colorado's Weld County.

"I know how to carry water. I'll plant a garden and let those people die in the cities."

Bergland, delayed by the explosive reception, did not leave the auditorium in time to keep a dinner date. He was scheduled to leave here lat-

er last night to go to Kansas City and was to be in Wichita tomorrow. At that time, he will meet more farm protesters, including a large delegation scheduled to leave from American Agriculture headquarters established this week at Elkhart, Kan.

Parked around the Memorial Hall were some of the tractors and other farm vehicles which had made the trip here, part of the time with a Colorado Highway Patrol escort.

The vehicles bore signs. One of them said: "There was a grain embargo, then the beef boycott. It's our turn, now."

"This is agriculture's profit," read the sign on a truckload of manure.

Earlier yesterday, a picnic atmosphere overrode the dead serious intent of the farmers, some of whom had travelled hundreds of miles to support the movement which is "taking on like a prairie fire" across the western wheat belt of the nation.

The description comes from R. J. "Bob" French of Boise City, Okla., pioneer oil lease broker and farm owner in Cimarron County.

French did not make the trip but said 25 or 30 farmers from the county had gone to Pueblo to lend support to the movement, which he says has also won the endorsement of many merchants in towns such as Boise City.

Farmers, traditionally conservative

and reluctant to join mass movements, have decided they'll have to hang together or hang separately, French said. "Price is running people off the farms," he said, "and farmers involved in the movement have decided it would be cheaper to let the land stay idle than to pour money into more crops to sell at less than the price of production."

French doubts whether a year's production holiday would result in a wave of foreclosures on farm property. "The collateral's good, and over the past 40 or 50 years there have not been many foreclosures around here," he said.

Meanwhile, at Waco, officials of the Texas Farmers Union issued a statement applauding efforts of out-of-state groups joining the protest movements. "We are further encouraging all farmers to get involved in some phase of direct action," said Jay Naman, president of TFU. "We welcome efforts of any group of farmers or farm wives seeking 100 per cent of parity," Naman said.

Members of the group from the Texas Panhandle attending the Pueblo protest meeting were active in a protest several weeks ago (the mailing of boxes of wheat to President Carter) which was organized by local Farmers Union leaders, including Mrs. Sheridan Hamly of Pampa.

Earlier this week, both Naman and Carroll Chaloupka of Dalhart, president of the Texas Farm Bureau, said

neither organization had experienced any loss of membership because of the militant program of the American Agriculture organization.

At that time, Chaloupka expressed hopes that prices of some of the things farmers must buy will come down when it becomes apparent they can't buy at present prices.

He also said that not all provisions of the farm bill have been spelled out, and said provisions of the bill may turn out to include payments sufficient to keep the farmer in business, although not at the scale to which he has become accustomed.

The "wait and see" position, however, had no audible takers among the hundreds of farmers, some of them accompanied by their families, who ate sack lunches at the fairgrounds at Rocky Ford before rolling on to Pueblo to meet Bergland.

According to an Associated Press story, Beryl Tate, 47, a wheat farmer from Walsh in southeast Colorado, said farmers are not worried about bank foreclosures.

"The bank can finance us for a year of just living cheaper than they can with us farming," said Tate.

Lawrence Bitner of Springfield, one of the leaders of the movement, pointed out a major difficulty for organizers. "It's getting farm people to accept that word, 'strike.' They've never believed in it. But it's time we took control of our lives," he said.

Floyd County State Poultry Winners On Youth Program

Two Floyd County youths, Darlene Broseh and Sharon Jones, of Lockney will present as a team a portion of the program "Youth In Action" at the 24th Junior Poultry and Egg Fact Finding Conference to be held at Kansas City, Missouri September 28-30. The girls won the State Poultry award for their speech on poultry, enabling them to participate in the International Show. The two are the only team from Texas which will be participating on the program. They were coached at state level

by Mrs. Buster Terrell of Lockney.

They will be accompanied to the conference by Mr. and Mrs. Kenneth Broseh, and Sharon Hillis, county extension agent. Their trip is being sponsored by the Texas Poultry Association.

Other activities during the three day event include workshops, sports events, ladies activities, or orientation meeting, breakfasts, luncheons, dinners, tours, rodeos, hayrides, program sessions, exhibits, and fact finders discussion.

FLOYD DATA

Mrs. B.C. Hinsley of Floydada is reported doing as well as could be expected in High Plains Baptist Hospital in Amarillo where she is receiving medical attention.

FLOYD DATA

Mr. and Mrs. Carl Boyd and two little daughters are new residents of Floydada. He is employed at Case Power and Equipment. Boyd originally lived in this vicinity, having completed his high school education at Petersburg.

Hamiltons Moving

Rev. and Mrs. Loyd Hamilton will be moving to their former home state, next week. Rev. Hamilton will be supply pastor at Farmington Ark., and will preach his last sermon for Bible Baptist Church Sunday, September 25. Rev. Hamilton has been pastor of the church for the past seven years and nine months.

The couple related they enjoyed their years in Floydada and extend their appreciation for all the help and assistance while serving the church.

NOTICE:

TO ALL PEOPLE SHOOTING GUNS IN THE PIT WEST OF LOCKNEY.

My House Has Been Damaged By A Stray Bullet. PLEASE BE CAREFUL OR THIS PIT WILL BE POSTED AND ALL VIOLATORS WILL BE PROSECUTED

Thanks - Pit Owner
Paul Teuton

CEDAR HILL NEWS

By Grace Lemons

Rev. and Mrs. Harley Barnhart of California spent the weekend with Rev. and Mrs. Jackie Thompson and family. Rev. Barnhart was guest speaker at both services at the Assembly of God Church Sunday.

Rev. Barnhart gave the devotion in the services at the Lockney Nursing Home Sunday afternoon. Rev. Jackie Thompson and wife, Edna Gilly, Imogene Forten-

berry and Ruth Fortenberry were also present.

Rev. and Mrs. Jackie Thompson returned home from the Minstrel School at Assembly of God Camp grounds at Roaring Springs Friday. They report a very enjoyable week where 55 preachers and their wives attended. Rev. Marvin Gorman, pastor of the First Assembly of God Church in New Orleans, Louisiana was the principal speaker.

Mr. and Mrs. Cecil Vanhoose and family of Morton spent the weekend with Cecil's parents Mr. and Mrs. John D. Vanhoose.

Claude Gene and Darla Hammit of Holly, Colorado visited with Edna Gilly Saturday.

Helen Patterson of Floydada, Sheila and Neil Schirato of Dallas ate lunch Sunday with Edna Gilly.

Imogene Fortenberry accompanied Edna Gilly to the 50th Wedding Anniversary held in the Fellowship Hall of the First United Methodist Church in Lockney honoring Mr. and Mrs. G. A. McAda Sunday afternoon.

Darris Hill is making a rapid recovery in his home after undergoing surgery recently.

Benny Golightly of Floydada and Thada Fowler of Silverton visited with Nannie Fortenberry in the Olsen Nursing Home in Amarillo Thursday. Mr. and Mrs. Roy Fortenberry of Friona were also present. It is reported that Mrs. Fortenberry is much improved but will spend some time confined to her bed.

Mr. and Mrs. J. R. Kelly and Connie Welch had lunch with Mr. and Mrs. J. A. Welch Sunday.

Mr. and Mrs. J. R. Kelly accompanied Norma Welch to Lubbock Thursday on business.

Joe and Linda Breckenridge of Plainview had lunch with Mr. and Mrs. Garland Tucker Sunday.

There is much excitement on Emogene Stansell's place as preparation is being made for digging an oil well.

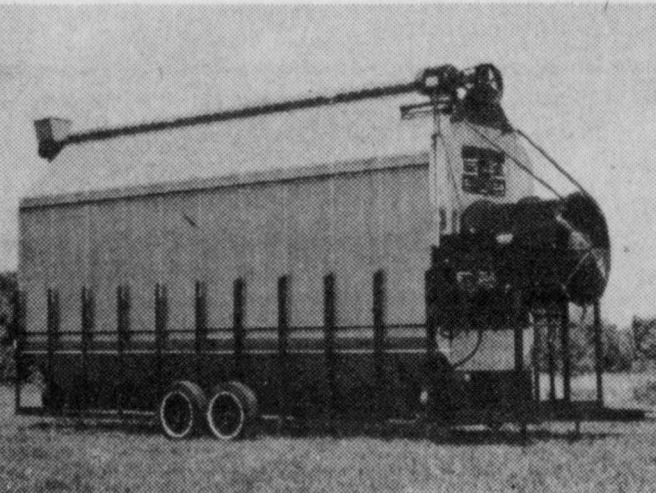
Mrs. Carl F. Lemons visited with Temp Phillips in Lockney Wednesday.

Mac's Backhoe Service
Call Harvey McJensen
Silverton, Texas

Increase your profits

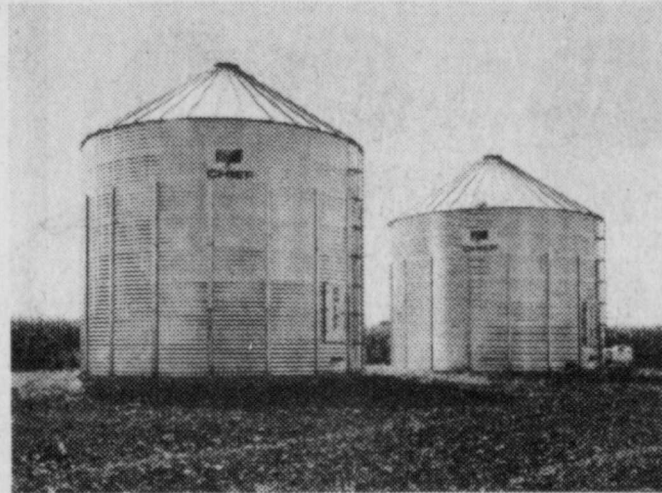
WESTERN AG SALES CO., INC.

DRYERS



The three temperature "Sensor" Automatic Dryer utilizes a ten inch compartmentalized grain column permitting more air flow and uniform drying. Unique air-foil blade design produces more Cubic-Foot of Air per Minute (CFM) at low horsepower. Ram Jet Burner/Plenum for more efficiency. Many sizes available - some sizes in stock.

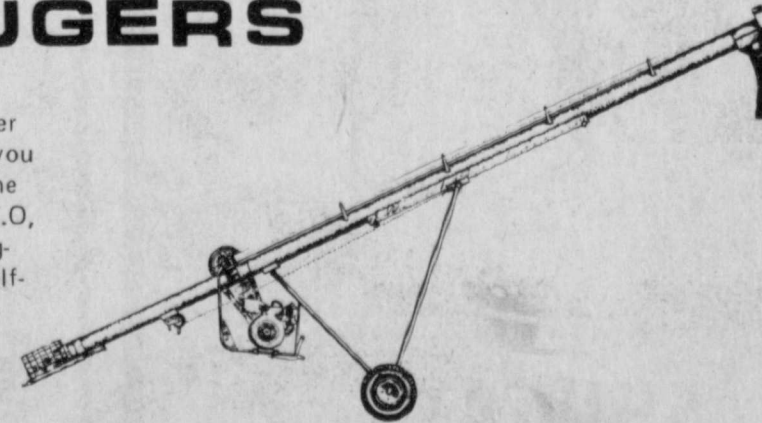
STORAGE



Meets the needs of both small and large operators. Heavy duty wall stiffeners resist downward pressures and are computer-designed to support drying loads and stirring devices. Easily adapted to include any number of bins and any size drying capacity. Your dealer can help you plan for the grain drying and storage you'll need.

AUGERS

Galvanized, seamless welded tubes provide greater strength and durability. Pre-Assembled to save you time and to eliminate parts shortages. Choose the power that's right for you, gasoline, electric, P.T.O., Hydraulic. Features include heavy channel, long-life drive, heavy-duty flight, heavy duty shaft, self-aligning bearings, high quality gear box.



Western AG Sales Co., Inc.

BILL PIGG, SALESMAN
OFFICE PHONE 983-5231 HOME 983-5367

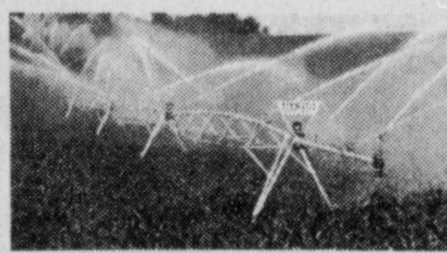
Lubbock, Farwell, Plainview, Hereford,
Dumas, Spearman, Seminole, Hutchinson

\$\$\$ GRAIN MANAGEMENT SYSTEMS — "THE PROFIT MAKERS" \$\$\$

Now!

What you pay to lease a Zimmatic depends on the price of corn.

Here's another first from Lindsay — the Zimmatic Corn Crop Lease. Instead of a fixed lease payment, you pay for your Zimmatic based on the price of corn. If corn prices plunge, so does your lease payment.



By offering this new lease, Lindsay is sharing some of the same risks that you face every year. Corn prices fluctuate, which affects your profit picture. That's why Lindsay developed the exclusive Zimmatic Corn Crop Lease... a revolutionary program that tailors your lease payments to the changing price of corn, from one year to the next.

The Zimmatic Corn Crop Lease is designed so you can lease a Zimmatic without using your normal operating credit sources... your Zimmatic pays its own way by turning on your production.

The number of Zimmatics available under this program and the time period of this offer are limited so come in soon and get all the details on the Corn Crop Lease and other exclusive leasing programs available only through Lindsay Credit Corp.

Take advantage of a program that has never been offered in the industry before... it's the lease we can do for you.

LINDSAY

christian irrigation, inc.

THE CENTER PIVOT SPECIALIST

GIVE US A CALL — CENTER PIVOTS ARE OUR ONLY BUSINESS.

REPRESENTATIVE — DELVIN BYBEE, LOCKNEY 652-3179

PLAINVIEW OFFICE — 830 E. 6TH. — 293-4337

Alpha Mu Delta Chapter Meets



The Alpha Mu Delta Chapter of Beta Sigma Phi held its regular meeting Sept. 20 at the home of Ilene Kendrick.

President Brenda Watson presided over the business meeting.

The Chapter voted to sell an International Cookbook "Dieting to stay healthy." Ilene Kendrick is in charge of this Ways and Means projects.

The Chapter came in with a first place in the Educational Booth, first place for their Community booth and plaque at the Floyd County Fair. Members who entered items and placed donated their winnings to the Chapter projects. Rushes helped prepare these booths.

The program was given by Brenda Watson entitled "Marriage." Members discussed books "Total Joy," "Total Woman" and "Christian Woman."

Refreshments were served by Ilene Kendrick and Lynn Daniel to Brenda Watson, Kay Powell, Donna Henderson and Special guests Barbara Koch and Judy Corniluis.

A Tacky Party will be held Oct. 24 for members and their children.

FLOYD DATA

Mr. and Mrs. W.A. Lovell accompanied their daughter and her husband, Mr. and Mrs. C.A. Wallace of San Diego, Calif., on a trip through the Ozarks of Arkansas recently. They visited scenic spots there and also toured in the states of Missouri and Oklahoma. Mr. and Mrs. Wallace returned to their home in California last week.

NOVEMBER WEDDING PLANNED...Mr. and Mrs. Johnny R. Lawson announce the engagement of their daughter Liz to Douglas Kent Hodel, son of Mr. and Mrs. Verner Hodel of Lockney. The couple plans to be married November 12 in the First Baptist Church of Lubbock. The bride-elect was graduated from Lubbock Monterey High School and attended Texas Tech University. The groom-to-be was graduated from Lockney High School and attended San Angelo State University and Texas Tech.

Expect more two dollar bills, says Claudia Kerbel, consumer information specialist with the Texas Agricultural Extension Service, The Texas A&M University System.

Sifting "two's" into circulation to substitute for a proportionate number of "one's" means less paper money will have to be printed. This will save the Treasury \$5 to \$6 million annually.

Women earn substantially less money than men. Median income for full-time year-round female workers in 1975 was only 57 per cent of their male counterparts' salaries.

Billie Ann McMorris Earns Service Award

COLLEGE STATION—Mrs. Billie Ann McMorris, Baylor County Extension agent, has earned the Distinguished Service Award for 1977—the highest honor given by the National Association of Extension Home Economists.

One of seven Texas County Extension agents (home economics) chosen for the honor, Mrs. McMorris will receive the award during the national association's annual meeting Sept. 19-23 in Boston, Mass.

According to Mrs. Juanice Boyd of Houston, awards committee chairman for the Texas Association of Extension Home Economists, which nominated the agent, the award recognizes Mrs. McMorris' "special abilities to lead, organize and educate—in 4-H, youth and adult Extension programs."

Through the agent's leadership, 523 homemakers and 138 youth in Baylor County participated in a two-year family health and protection program that taught nutri-

tion, food buying and preparation, home food preservation and health protection.

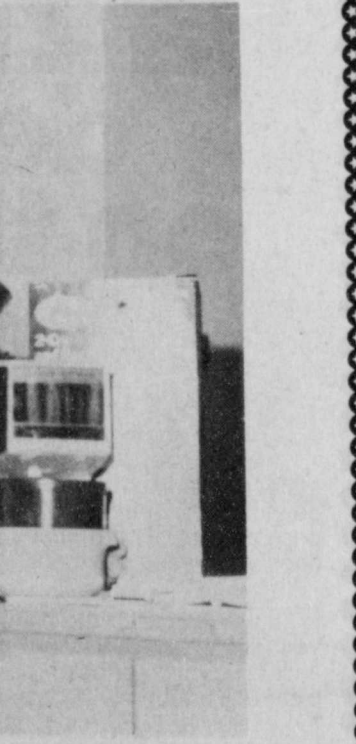
Sponsored by the Baylor County Family Living Subcommittee, the program reached Baylor County residents through workshops and demonstrations on food buying, preparation and preservation—as well as through programs on heart disease, cancer and food habits.

Teams of instructor-leaders, professional resource persons, Baylor County Family Living Subcommittee members and Baylor County Home Demonstration Club members—in addition to the agent—conducted the program.

Mrs. McMorris has been a home economist with the Texas Agricultural Extension Service for 10 years, serving Baylor County from 1967-71 and Floyd County from 1971-74. She was re-appointed to Baylor County in October, 1974.

She holds a bachelor's degree from North Texas State University and has done graduate work at Texas A&M University and

Billie Ann McMorris



Mrs. Campbell Winner Of Our Contest at the Floyd & Surrounding Counties Fair!

Displayed were some of the equipment to build one mile of 3-phase line.

In 1970 the cost of one mile of line including labor & overhead cost \$1,705²⁴. Today it costs \$4,809⁸⁹. Mrs. Campbell's guess was \$4,800.

CONGRATULATIONS for winning the sunbeam hot shot beverage and coffee maker.

Lighthouse Electric Cooperative

Society

Senior Citizens Attend Creative Living Workshop

On Tuesday, September 20, ten members of the Floydada Senior Citizens went to Levelland to attend an Older Texan Workshop for Creative Living held at the South Plains College. The main topics discussed were Your Mind and You, Your Body and You, and Your Hands and You.

This was a very informative and challenging program which urged the Senior Citizens to keep thinking positively, exercising daily, and working every day.

Some thoughts brought back; senility can be prevented by one's own attitude. We may be exempt from senility but none are exempt from getting older.

Activity is essential for survival having a reason for living. Find a vocation and

work at it, find something to do and do it. We must define "who we are" for ourselves, don't let others tell us who we are. We must be able to catalog information so it can be recalled. Wisdom comes from experience. Take courage and face life. To keep lively, be lively. Get involved. Keep physically fit, stay busy.

Those who attended this workshop feel that we had a day well spent, a very profitable day.

Those attending were Menard Field, president; Mrs. Menard Field; Mrs. Edna Phillip, Mrs. Edna Hunter, Mrs. Mary Wilson, Mrs. Mabel Epperson, Mrs. Ethel Warren, Mrs. Carl Plumlee, Mrs. Inez Barton and Mary Pearl Coward.

ed" were pearls belonging to the bride's mother, and "something blue" was a garter.

Matron of honor was Mrs. Randy Marsh, and the bride's sisters, Mrs. Ken Watson and Mrs. Jimmy Glenn, were bridesmaids. Their gowns were of yellow quiana cloth styled with an empire waist and an A-line floor length skirt. Each of the attendants also wore a yellow picture hat and carried votive candles in daisy rings.

Serving as best man was Lonnie King, the groom's father. Groomsmen were Jack Rogers, the groom's brother-in-law, and Tommy Vawter both of Irving.

Guests were registered by Miss Julie Tyson of Dallas and were seated in the church by ushers Jeff Terrell of Lockney, the bride's brother; Jimmy Glenn of Edmonson, the bride's brother-in-law; Mike Walker of Dallas, and Richard Walcott of Irving.

The reception was in the church fellowship hall. Covering the bride's table was a yellow floor length cloth trimmed with a yellow ruffle overlaid with a ruffled lace cloth. The four-tiered wedding cake was made by the bride's brother-in-law and sister, Mr. and Mrs. Ken Watson. Silver and crystal appointments created the table decor.

Serving at the bride's table were Miss Sissie King and Mrs. Jack Rogers, sisters of the groom, both of Irving; Miss Marty Ely of Oklahoma City; Mrs. Steve Patridge of Plainview; and Mrs. Dan Smith, and Mrs. Martin Stoerner, both of Lockney.

Parents of the groom hosted the rehearsal dinner Friday night in fellowship hall of the First Baptist Church. Mrs. Tom Marr was in charge of the dinner, assisted by Mrs. Glenn Cooper. Guests were members of the wedding party.

After a trip to Colorado, the couple will make their home in Irving.

The bride was a December graduate of Oklahoma Baptist University and is presently employed as executive secretary at Fisk Telephone Systems, Inc. in Dallas. The groom is a graduate of Mountain View Jr. College and plans to enter Dallas Baptist College in the spring. He is presently employed as a warehouseman at Firestone Tire and Rubber Company in Dallas.

Members of the reception house party were, Mrs. Thomas Marr, Mrs. Tom Duvall, Mrs. Harold Brock, Mrs. Dub Mercer, Mrs. Glenn Cook, Mrs. Larnie McCain, Mrs. Gene Owens, Mrs. Max Smith, and Mrs. Fred Fine of Dallas.



Mrs. Michael Edward King

Miss Kay Beth Terrell, Michael Edward King Wed

Wedding promises were spoken September 24th in First Baptist Church of Lockney by Miss Kay Beth Terrell and Michael Edward King, both of Irving. Rev. Randy Marsh, pastor of the First Baptist Church in Earlsboro, Oklahoma, directed the double ring ceremony.

Parents of the newlyweds are Mr. and Mrs. B.J. Terrell of Lockney and Mr. and Mrs. Lonnie E. King of Irving.

Nuptial setting for the 3 o'clock wedding was a brass candelabra flanked by cathedral candelabras covered with tropical foliage, tied with yellow satin and holding white wedding tapers.

The nuptial area was centered by the unity candle.

Ken Watson of Lockney, the bride's brother-in-law, was organist for the ceremony, and he accompanied Mr. and Mrs. David Kirk of Dallas in "God, A Woman And A Man." Mrs. Lavonia Vaughn of Petersburg, the bride's aunt, accompanied Rev. Marsh at the piano in "If" and Mrs. and Mrs. Kirk in "Wedding Song."

Given in marriage by her father, the former Miss Terrell chose a formal length gown of satin overlaid with silk organza. The dress, fashioned by the bride's mother, featured a scoop-neckline with a lace-trimmed wedding band collar and

sheer bell-shaped sleeves that ended at the wrist in a cuff with pearl button closures. The bride's skirt was accented by a crescent waistline and fullness that shirred to the back, creating her chapel length train. Chantilly lace accented the hemline and train. A Camelot cap held the veil of tiered illusion which was edged in Chantilly lace. The veil, also designed by the bride's mother, was recently worn by the bride's sister, Mrs. Jimmy Glenn, in her wedding.

An Edwardian arrangement of yellow roses and white daisies softened with gypsophilia and lace streamers was carried by the bride. Following the tradition of "something old," the original wedding bands of the bride and groom's mothers were tied with the bouquet. "Something new" was the dress, "something borrow-

sheer bell-shaped sleeves that ended at the wrist in a cuff with pearl button closures. The bride's skirt was accented by a crescent waistline and fullness that shirred to the back, creating her chapel length train. Chantilly lace accented the hemline and train. A Camelot cap held the veil of tiered illusion which was edged in Chantilly lace. The veil, also designed by the bride's mother, was recently worn by the bride's sister, Mrs. Jimmy Glenn, in her wedding.

An Edwardian arrangement of yellow roses and white daisies softened with gypsophilia and lace streamers was carried by the bride. Following the tradition of "something old," the original wedding bands of the bride and groom's mothers were tied with the bouquet. "Something new" was the dress, "something borrow-

sheer bell-shaped sleeves that ended at the wrist in a cuff with pearl button closures. The bride's skirt was accented by a crescent waistline and fullness that shirred to the back, creating her chapel length train. Chantilly lace accented the hemline and train. A Camelot cap held the veil of tiered illusion which was edged in Chantilly lace. The veil, also designed by the bride's mother, was recently worn by the bride's sister, Mrs. Jimmy Glenn, in her wedding.

WEDNESDAY, SEPTEMBER 28

9 99¢

KING SIZE WALLET CREATIVE COLOR PORTRAITS FOR ONLY

Kodak paper. For a Good Look at the Times of Your Life.

Extra Charge for GROUPS WE USE KODAK PAPER

NO LIMIT

GET PICTURES MADE OF GRANDPA, GRANDMA, DAD, MOM AND ALL THE LITTLE ONES AT THESE SAME LOW PRICES!

ASK About Our FREE 8 x 10 OFFER

SHUGART COLOR PHOTOS

Thompson Pharmacy

200 S. MAIN

NOW SAVE \$1.00 ON NEW Hanes Understatement™

Ultra Sheer pantyhose & panties in one.

The right look for today's clingy fashions is Understatement. And now—between September 23 and October 1—is the right time to buy them at the low price of \$2.50.

Understatement's sheer, shaped Ultra Sheer legs give your legs a look of smooth, silky elegance. And the panties combine a subtle diamond pattern with the comfort of a cotton crotch.

Take advantage of this limited offer. Indulge yourself with the pantyhose that show off your legs, knit into panties that don't show at all: new Hanes Understatement.

Brown's DEPARTMENT STORE

104-06 North Main Lockney, Texas

NEWS 'N' NOTES

(by Sharon Hillis)

NOW IS THE TIME TO ENJOY FRESH WESTERN BARTLETT PEARS It's fresh Bartlett pear time. From now through November this refreshing fruit can be found in abundance. There are a multitude of uses for fresh Bartlett pears and preserving is one of the favorites. Putting up preserves for the winter may be an old fashioned custom, but it's still very popular with today's trend towards basic living. And preserving the sun-grown goodness of fresh pears isn't difficult at all. Although Bartletts aren't recommended for home freezing, you can combine them with other fruits for delicious jams or preserves for your own enjoyment or for special holiday gifts.

LEMON PEAR MARMALADE
4 lemons
2 cups water
3 pounds fresh Western Bartlett pears (about 7 cups, diced)
3 1/2 cups sugar

Thinly slice and seed lemons. Place in large saucepan with water. Boil until peel of lemon is tender. Core, peel and dice pears. Add diced pears and sugar to lemon. Cook rapidly to jelly stage, about 30 minutes stirring frequently to prevent scorching. Pour into sterilized jars and seal. Makes 3 pints.

PEAR HONEY
9 cups diced fresh Western Bartlett pears (about 4-1/2 pounds)
1 cup diced pineapple
Grated peel and juice of 1 lime
5 cups sugar

Wash, peel and core pears. Dice fine and combine with diced pineapple, lime peel, lime juice and sugar. Mix well and cook over low heat, stirring frequently. Cook until thickened, then pack

Floydada Nursing Home Happenings

By Dartha Westbrook
We have had a lovely week, with many activities and visitors in our Nursing Home. Thanks to Mrs. Hardy for bringing out the knit scraps.
Monday was a treat for me, as I found out that we really have some good spellers in our home. We had a spelling bee, and our spellers were Hope Hammonds, Agnes Anderson, Pearl Carrick, Hallie Bertrand, Dora Langford, Albert Martin, and Florence Badgett. I couldn't believe the words they can spell. I decided before I was through that they really were taught how to spell. They really seemed to enjoy this event.
Thursday was our birthday party, and we had 6 birthdays to celebrate, they were Effie Smith, Docia Manning, Will Mooney, Florence Badgett, Carrie Cumbe, and Claud Hughes. The ladies of the City Park Church brought the cake and punch, and everyone enjoyed the party. Thanks ladies!
Our exercise classes, and devotions were well attended and enjoyed by all. Thanks to all the visitors: Flora Fawver, Ruby Davis, Mrs. J.T. Poole, Doris Snodgrass, Mr. and Mrs. S.W. Ross, Mr. and Mrs. Otis Anderson, Sue Moore, and Dot Cummings all of Floydada.
Dick Furrow, San Diego, Calif.; Mr. and Mrs. T.R. Sneed, Weslaco; Mrs. Bill Smallwood and Thanie Smallwood of Matador; Geo. E. Ross, Fresno, Calif.; Mr. and Mrs. D.E. Flowers, Amarillo; Mrs. Mattie Covington, Dougherty; Margaret Wieland Hill, Lakewood, Calif.; and Carl Caruthers, Fort Worth.

For A More Tender Omelet, add one tablespoon milk or water per egg during mixing, says Marilyn Haggard, foods and nutrition specialist with the Texas Agricultural Extension Service, The Texas A&M University System.

Hook-Needle Hobby Club Has Meeting

The Hook and Needle Hobby Club met for the first time beginning a new year with Mrs. Harry Reeves. Tues. Sept. 20 with Mrs. Fay Gooch as co-hostess. Plans were made for the coming months of hobbies. Refreshments were served to Mamie Bunch, Joy Denton, Betty Baker, Bessie Wilson, Mildred Cates, Thelma Crawford, and Margie Sue. The next meeting will be Oct. 4 in the home of Betty Baker for a salad luncheon and make Christmas bells in the afternoon.

Births

Mr. and Mrs. Doc Jones and Mrs. B.C. Hinsley of Floydada are great grandparents with the arrival last week of a new grandson, Aaron, who was born to Mr. and Mrs. Gary Simmons of Vega. The baby weighed 8 1/2 pounds at birth. Grandparents are Mr. and Mrs. John Hinsley of Hartley.

FLOYD DATA
Both Mr. and Mrs. Troy Cranford are home from separate hospitals and both are reported to be doing well. Cranford was in St. Mary of the Plains Hospital in Lubbock for treatment of a mild heart attack and his wife was in Central Plains Hospital in Plainview where she had a thyroid tumor removed.

Thank you, Wilbur.
We love you!
Athena

BUDDY'S FOOD

Buddy Widener, Owner-Forrest Shannon Mgr.



DOUBLE ON WEDNESDAY

in Floydada, 220 South Second

STORE HOURS

Monday-Saturday 8 a.m.-8 p.m.

Sunday 9 a.m.-7 p.m.



THESE VALUES GOOD SUNDAY, SEPTEMBER 25, THROUGH WEDNESDAY, SEPTEMBER 28
We Reserve The Right To Limit Quantities

DR PEPPER or 7-UP

6-32 OZ. BOTTLE CARTON

99¢

plus deposit with \$7.50 purchase
\$1.49 P.D., WITHOUT PURCHASE

GROUND BEEF

59¢ LB

PORK ROAST

89¢ LB

JUMBO FRANKS

79¢ LB

HAM SLICES

\$1.39 LB

PORK STEAK

98¢ LB

STEAK

89¢ LB

BACON

\$1.19 LB

CHUCK ROAST

89¢ LB

ROUND STEAK

\$1.09 LB

WRIGHTS SLAB

BACON \$1.19 LB

WRIGHTS 2 LB SAUSAGE

\$1.59

KLEENEX

4/\$1.00

WRAPPLES

79¢

VANILLA

89¢

LUNCH MEAT

89¢

CARROTS

4/\$1.00

TOMATOES

39¢ LB

CLEANER

89¢

ONIONS

10¢ LB

POTATOES

4 LB \$1.00

CLEANSER

4/\$1.00

CINNAMON ROLLS

2/\$1.19

SHERBET

\$1.19

COOKIES

59¢

MEAT TENDERIZER

2/\$1.19

EGGS

49¢

CRACKERS

2/99¢

PEACH TOOPING

5/\$1.00

BUTTERMILK

69¢

WOOLITE

89¢

OVEN CLEANER

\$1.19

FLOUR

\$2.49

STRAWBERRY PRESERVES

99¢

ANTI-FREEZE

\$2.99

DOWNY

\$1.49

INSTANT TEA

\$1.39

MILK

4/\$1.00

ALL

\$3.19

TEA BAGS

\$1.39

SOAP

3/\$1.00

OLIVES

69¢

ALL

\$2.19

SOAP

3/\$1.00

ALL

\$3.19

Fair Winners

PET SHOW

SMALLEST PET
1. Brent Poole; 2. Karyn Foster; 3. Joel Mitchell; 4. Michael Cooper; 5. Troy Bigham; 6. Clint Bigham; 7. Matt Mitchell; 8. Chad Williams; 9. Brian Galloway

LARGEST PET
1. Doug & Russell Warren
2. Monte Williams; 3. Ronnie Whittington.

LONGEST TAIL
1. Monte Williams; 2. Ronnie Whittington; 3. Doug & Russell Warren; 4. Matt Mitchell; 5. tie-Jeff Galloway and Joel Mitchell; 6. Lisa and Julie Smith; 7. Cindy Stair; 8. Chad Williams; 9. Michael Cooper.

SHORTEST TAIL
1. Karen Mathis; 2. Michelle Warren; 3. Vince Whitfill; 4. tie-Kip Holt; 5. tie-Kip Holt; 6. Chad Warren; 7. tie-Kip Holt; 8. Karyn Foster; 9. Rusty Simpson.

CURLIEST TAIL

1. Jerald Johnson; 2. Rusty Simpson; 3. Monte Williams; 4. Michelle Warren; 5. Chad Warren.

HAPPIEST FACE
1. Rusty Simpson; 2. Monte Williams; 3. Dean Smith; 4. Chad Williams; 5. Lisa & Julie Smith; 6. Jerald Johnson; 7. Brent Poole; 8. Audra Whitfill; 9. Cindy Stair; 10. Chad Warren.

SADDEST FACE
1. Brian Galloway; 2. Russell Warren; 3. Matt Mitchell; 4. Vince Whitfill; 5. Joel Mitchell; 6. Troy Bigham; 7. Clint Bigham; 8. Ronnie Whittington.

LONGEST EARS
1. Doug & Russell Warren
2. Audra Whitfill; 3. Clint Bigham; 4. tie-Jeff Galloway; 5. Michele Warren; 6. Chad Warren; 7. tie-Kip Holt; 8. Lisa & Julie Smith; 9. Lisa & Julie Smith; 10. Michael Cooper.

FURRIEST PET

1. Kip Holt; 2. Troy Bigham; 3. Clint Bigham; 4. Monte Williams; 5. Rusty Simpson; 6. Vince Whitfill; 7. Brian Galloway; 8. Brent Poole; 9. Michelle Warren; 10. Chad Warren.

ROLY-POLY PET

1. Brian Galloway; 2. Doug & Russell Warren; 3. Vince Whitfill; 4. Kip Holt; 5. Troy Bigham; 6. Clint Bigham.

MOST UNUSUAL PET

1. Jerald Johnson; 2. Troy Bigham; 3. Clint Bigham; 4. Kip Holt.

MOST SPOTS

1. tie-Dean Smith; Ronnie Whittington; 2. Cindy Stair; 3. Jerald Johnson; 4. Joel Mitchell; 5. Jeff Galloway; 6. Matt Mitchell

BEST TRICK

1. Rusty Simpson; 2. Lisa & Julie Smith; 3. Cindy Stair; 4. Chad Williams.

BIGGEST EYES

1. Rusty Simpson; 2. Doug & Russell Warren; 3. Jeff Galloway; 4. Karen Mathis; 5. Audra Whitfill; 6. Lisa & Julie Smith; 7. Karyn Foster; 8. Michelle Warren; 9. Chad Williams; 10. Matt Mitchell; 11. Chad Warren.

Sunday, September 25, 1977, Page 6

BEST SHOWMANSHIP
Rusty Simpson

BEST PET COSTUME

1. Karen Mathis; 2. Karyn Foster;

PET & MASTER LOOK-ALIKE

1. Michelle Warren; 2. Audra Whitfill; 3. Brian Galloway; 4. Jeff Galloway; 5. Lisa & Julie Smith; 6. Doug & Russell Warren; 7. Rusty Simpson;

Joel Mitchell-cat
Matt Mitchell-cat
Michael Cooper-dog
Russell Warren-dog
Karyn Foster-dog
Dean Smith-dog
Karen Mathis-dog
Lisa & Julie Smith-dog
Brad Warren-dog
Michele Warren-dog
Chad Warren-dog
Ronnie Whittington-dog
Troy Bigham-rabbit
Clint Bigham-rabbit
Chad Williams-dog
Monte Williams-dog
Kip Holt-rabbit
Jerald Johnson-dog
Cindy Stair-cat
Brent Poole-cat
Rusty Simpson-dog
Jeff Galloway-dog
Brian Galloway-dog
Vince Whitfill-dog
Audra Whitfill-dog

AG EXHIBITS

CLASS F VEGETABLES
Watermelon: Chad Edwards; 2. Shannon Edwards; 3. Todd Williams.
Tomatoes: 1 3/4 in. & over-1. Terry Boedeker; 2. John T. Carthel.
Tomatoes: 1 3/4 in. & under-1. Ralph Scheele; 2. Jim Dietrich; 3. Clay Simpson.
Carrots:
1. Mrs. J. P. Taylor. 2. Missy Pinner.
Onions (white):
1. Virgil Brasher; 2. Missy Pinner; 3. Mrs. Allen Kellum
Onions (any variety):
2. Virgil Brasher; 3. Ester Brasher.
Turnips:
1. Virgil Brasher.
Beets:
1. Virgil Brasher.
Bell Peppers:
1. Clay Simpson; 2. Floydada FFA.
Hot Peppers:

1. Virgil Brasher; 2. Ralph Scheele; 3. Jim Dietrich.
Okra:
1. Terry Boedeker; 2. Virgil Brasher; 3. Clay Simpson.
Rhubarb:
2. Virgil Brasher.
Irish Potatoes:
1. Virgil Brasher; 2. Mrs. J. P. Taylor.
Cucumbers (slicing):
1. Clay Simpson; 2. Orville Harris; 3. Floydada FFA.
Cucumbers (pickling):
1. Virgil Brasher; 2. Ester Brasher.
Pumpkins (field):
1. Chad Edwards; 2. Tommy Assister; 3. Shannon Edwards; 2. Mrs. Allen Kellum; 3. Clay Simpson.
Pumpkins (sugar):
1. Floydada FFA; 2. Scott Simpson; 3. Slim Robertson.
Squash (any type):
1. Clay Simpson; 2. Floydada FFA; 3. Chad Edwards.
Summer Squash:
1. Virgil Brasher; 2. Clay Simpson; 3. Scott Simpson.
String Beans:
1. Virgil Brasher; 2. Clay Simpson; 3. Odell Kerr.
Lima Beans:
1. Channon Edwards; 2. Terry Boedeker; 3. Betty Goen.
Peas (any variety):
1. Mrs. Allen Kellum; 2. Darlene Brose; 3. Odell Kerr.
Cashaw:
1. Floydada FFA; 2. Clay Simpson; 3. Slim Robertson.
Miscellaneous:
1. Channon Edwards; 2. Jim Dietrich; 3. Craig Edwards.
Novelty:
1. Ralph Scheele; 2. Chad Edwards; 3. Shannon Edwards.
Apples:
2. Floydada FFA.
Pears:
2. Floydada FFA.
Plums:
2. Darlene Brose; 3. Odell Kerr.
Grapes:
1. Virgil Brasher; 2. Clay Simpson; 3. Mrs. Jim Simpson; 4. Scott Simpson.
Miscellaneous:
1. Ralph Scheele; 2. Virgil Brasher.

CLASS B HEADS & EARS

Red Hybrid
1. Chad Edwards; 2. Sammy Bradley; 3. Virgil Brasher.
White Hybrid
2. Monty Lyons.
Hegari
2. Virgil Brasher.
Corn (yellow)
1. Danny Nutt; 2. Virgil Brasher; 3. Shannon Edwards.
Indian Corn
3. Chad Edwards.
Sunflower
1. Keith Nixon; 2. Virgil Brasher.
Popcorn
2. John T. Carthel.

CLASS C GRAINS & SEEDS

Wheat (1 gal.)
1. Darlene Brose.
Barley (1 gal.)
1. Virgil Brasher; 2. Keith Nixon.
Oats
1. Darlene Brose.
Red Hybrid
3. Darlene Brose.
Soybeans
1. Darlene Brose.
(yellow corn)
1. Danny Nutt.
Other Grain & Seed
2. Darlene Brose;
Cane
2. Darlene Brose.

CLASS A COTTON 20 OPEN BOLLS

1. Ralph Scheele; 2. John T. Carthel; 3. Monty Lyons.

CLASS D CURED BUNDLE FOR FORAGE

Wheat-1. Virgil Brasher
Rye-2. Virgil Brasher;
Oats-3. Virgil Brasher.

CLASS H STALKS COTTON DRYLAND

1. Mike Allen; 2. Harvey Allen; 3. Norman Allen:
Cotton Irrigated
1. Sammy Bradley; 2. Clay Simpson; 3. Ralph Scheele.
Soybeans:
1. Ralph Scheele; 2. Sammy Bradley; 3. Keith Nixon.
Peanuts:
3. Virgil Brasher.

SHEEP SHOW

FINE WOOL
Light weight-1. Jeff Bailey; 2. Sherri Griffin; 3. Monty Moore; 4. Powell Bros.; 5. Powell Bros. 6. Powell Bros.
Heavy weight-1. Doug Sparkman; 2. Jodie Smith; 3. Marla Moore; 4. Phillip Thornton; 5. Lisa Griffin.

FINE WOOL CROSS
Light weight-1. Phillip Thornton; 2. Sherri Griffin; 3. Paul Thornton; 4. Lisa Griffin; 5. Lisa Griffin; 6. Brett Cypert; 7. Powell Bros.

1. Virgil Brasher; 2. Ralph Scheele; 3. Jim Dietrich.
Okra:
1. Terry Boedeker; 2. Virgil Brasher; 3. Clay Simpson.
Rhubarb:
2. Virgil Brasher.
Irish Potatoes:
1. Virgil Brasher; 2. Mrs. J. P. Taylor.
Cucumbers (slicing):
1. Clay Simpson; 2. Orville Harris; 3. Floydada FFA.
Cucumbers (pickling):
1. Virgil Brasher; 2. Ester Brasher.
Pumpkins (field):
1. Chad Edwards; 2. Tommy Assister; 3. Shannon Edwards; 2. Mrs. Allen Kellum; 3. Clay Simpson.
Pumpkins (sugar):
1. Floydada FFA; 2. Scott Simpson; 3. Slim Robertson.
Squash (any type):
1. Clay Simpson; 2. Floydada FFA; 3. Chad Edwards.
Summer Squash:
1. Virgil Brasher; 2. Clay Simpson; 3. Scott Simpson.
String Beans:
1. Virgil Brasher; 2. Clay Simpson; 3. Odell Kerr.
Lima Beans:
1. Channon Edwards; 2. Terry Boedeker; 3. Betty Goen.
Peas (any variety):
1. Mrs. Allen Kellum; 2. Darlene Brose; 3. Odell Kerr.
Cashaw:
1. Floydada FFA; 2. Clay Simpson; 3. Slim Robertson.
Miscellaneous:
1. Channon Edwards; 2. Jim Dietrich; 3. Craig Edwards.
Novelty:
1. Ralph Scheele; 2. Chad Edwards; 3. Shannon Edwards.
Apples:
2. Floydada FFA.
Pears:
2. Floydada FFA.
Plums:
2. Darlene Brose; 3. Odell Kerr.
Grapes:
1. Virgil Brasher; 2. Clay Simpson; 3. Mrs. Jim Simpson; 4. Scott Simpson.
Miscellaneous:
1. Ralph Scheele; 2. Virgil Brasher.

SHROPSHIRE
1. Tracy Womack; 2. Teeter Bros.; 3. Teeter Bros.; 4. Darlene Brose; 5. Jodi Smith; 6. Heather Holt; 7. Earl Brose; 8. Lori Bailey.
Shropshire-Grand Champion, Tracy Womack; Reserve, Teeter Bros.

MEDIUM WOOL
Heavy weight-1. Brett Cypert; 2. Doug Sparkman; 3. Jodi Smith; 4. Ralph Scheele; 5. Duncan Woody; 6. Nicky Powell; 7. Bryan Emert; 8. Marla Moore; 9. Jodie Smith; 10. Monty Lyons; 11. Terry Butler.
Medium Wool-Grand Champion, Brett Cypert; Reserve, Doug Sparkman.
Medium weight-1. Jodie Smith; 2. Lisa Griffin; 3. Terri Sparkman; 4. Monty Moore; 5. Paul Thornton; 6. Sherri Griffin; 7. Shelly Powell; 8. Hunter Smith; 9. Lori Bailey.
Light weight-1. Jeffrey Simmons; 2. Darlene Brose; 3. Phillip Thornton; 4. Powell Bros.; 5. Earl Brose; 6. Lisa Griffin; 7. Kelly Marbie; 8. Ricky Nichols; 9. Jeffrey Simmons; 10. Earl Brose.

HAMPSHIRE
Rams-1. J.L.J. Sheep.
Ewe Lamb-1. J.L.J. Sheep.
Ewes-1. Dale Powell; 2. Dale Powell; 3. J.L.J. Sheep; 4. Dale Powell; 5. J.L.J. Sheep.
Grand Ram-J.L.J. Sheep.
Grand Ewe-Dale Powell.
Reserve Ewe-Dale Powell.

SHROPSHIRE
Rams-1. J.L.J. Sheep.
Ewe Lamb-1. H&K; 2. Teeter Bros.; 3. J.L.J. Sheep; 4. Teeter Bros.; 5. H&K; 6. J&K.
Ewe-1. J.L.J. Sheep.
Grand Ram-J.L.J. Sheep.
Grand Ewe- H&K; Reserve Ewe, Teeter Bros.

SOUTHDOWN
Rams-1. Earl Brose; 2.

SHROPSHIRE
1. Tracy Womack; 2. Teeter Bros.; 3. Teeter Bros.; 4. Darlene Brose; 5. Jodi Smith; 6. Heather Holt; 7. Earl Brose; 8. Lori Bailey.
Shropshire-Grand Champion, Tracy Womack; Reserve, Teeter Bros.

MEDIUM WOOL
Heavy weight-1. Brett Cypert; 2. Doug Sparkman; 3. Jodi Smith; 4. Ralph Scheele; 5. Duncan Woody; 6. Nicky Powell; 7. Bryan Emert; 8. Marla Moore; 9. Jodie Smith; 10. Monty Lyons; 11. Terry Butler.
Medium Wool-Grand Champion, Brett Cypert; Reserve, Doug Sparkman.
Medium weight-1. Jodie Smith; 2. Lisa Griffin; 3. Terri Sparkman; 4. Monty Moore; 5. Paul Thornton; 6. Sherri Griffin; 7. Shelly Powell; 8. Hunter Smith; 9. Lori Bailey.
Light weight-1. Jeffrey Simmons; 2. Darlene Brose; 3. Phillip Thornton; 4. Powell Bros.; 5. Earl Brose; 6. Lisa Griffin; 7. Kelly Marbie; 8. Ricky Nichols; 9. Jeffrey Simmons; 10. Earl Brose.

HAMPSHIRE
Rams-1. J.L.J. Sheep.
Ewe Lamb-1. J.L.J. Sheep.
Ewes-1. Dale Powell; 2. Dale Powell; 3. J.L.J. Sheep; 4. Dale Powell; 5. J.L.J. Sheep.
Grand Ram-J.L.J. Sheep.
Grand Ewe-Dale Powell.
Reserve Ewe-Dale Powell.

SHROPSHIRE
Rams-1. J.L.J. Sheep.
Ewe Lamb-1. H&K; 2. Teeter Bros.; 3. J.L.J. Sheep; 4. Teeter Bros.; 5. H&K; 6. J&K.
Ewe-1. J.L.J. Sheep.
Grand Ram-J.L.J. Sheep.
Grand Ewe- H&K; Reserve Ewe, Teeter Bros.

SOUTHDOWN
Rams-1. Earl Brose; 2.

SHROPSHIRE
1. Tracy Womack; 2. Teeter Bros.; 3. Teeter Bros.; 4. Darlene Brose; 5. Jodi Smith; 6. Heather Holt; 7. Earl Brose; 8. Lori Bailey.
Shropshire-Grand Champion, Tracy Womack; Reserve, Teeter Bros.

MEDIUM WOOL
Heavy weight-1. Brett Cypert; 2. Doug Sparkman; 3. Jodi Smith; 4. Ralph Scheele; 5. Duncan Woody; 6. Nicky Powell; 7. Bryan Emert; 8. Marla Moore; 9. Jodie Smith; 10. Monty Lyons; 11. Terry Butler.
Medium Wool-Grand Champion, Brett Cypert; Reserve, Doug Sparkman.
Medium weight-1. Jodie Smith; 2. Lisa Griffin; 3. Terri Sparkman; 4. Monty Moore; 5. Paul Thornton; 6. Sherri Griffin; 7. Shelly Powell; 8. Hunter Smith; 9. Lori Bailey.
Light weight-1. Jeffrey Simmons; 2. Darlene Brose; 3. Phillip Thornton; 4. Powell Bros.; 5. Earl Brose; 6. Lisa Griffin; 7. Kelly Marbie; 8. Ricky Nichols; 9. Jeffrey Simmons; 10. Earl Brose.

HAMPSHIRE
Rams-1. J.L.J. Sheep.
Ewe Lamb-1. J.L.J. Sheep.
Ewes-1. Dale Powell; 2. Dale Powell; 3. J.L.J. Sheep; 4. Dale Powell; 5. J.L.J. Sheep.
Grand Ram-J.L.J. Sheep.
Grand Ewe-Dale Powell.
Reserve Ewe-Dale Powell.

SHROPSHIRE
Rams-1. J.L.J. Sheep.
Ewe Lamb-1. H&K; 2. Teeter Bros.; 3. J.L.J. Sheep; 4. Teeter Bros.; 5. H&K; 6. J&K.
Ewe-1. J.L.J. Sheep.
Grand Ram-J.L.J. Sheep.
Grand Ewe- H&K; Reserve Ewe, Teeter Bros.

SOUTHDOWN
Rams-1. Earl Brose; 2.

SHROPSHIRE
1. Tracy Womack; 2. Teeter Bros.; 3. Teeter Bros.; 4. Darlene Brose; 5. Jodi Smith; 6. Heather Holt; 7. Earl Brose; 8. Lori Bailey.
Shropshire-Grand Champion, Tracy Womack; Reserve, Teeter Bros.

MEDIUM WOOL
Heavy weight-1. Brett Cypert; 2. Doug Sparkman; 3. Jodi Smith; 4. Ralph Scheele; 5. Duncan Woody; 6. Nicky Powell; 7. Bryan Emert; 8. Marla Moore; 9. Jodie Smith; 10. Monty Lyons; 11. Terry Butler.
Medium Wool-Grand Champion, Brett Cypert; Reserve, Doug Sparkman.
Medium weight-1. Jodie Smith; 2. Lisa Griffin; 3. Terri Sparkman; 4. Monty Moore; 5. Paul Thornton; 6. Sherri Griffin; 7. Shelly Powell; 8. Hunter Smith; 9. Lori Bailey.
Light weight-1. Jeffrey Simmons; 2. Darlene Brose; 3. Phillip Thornton; 4. Powell Bros.; 5. Earl Brose; 6. Lisa Griffin; 7. Kelly Marbie; 8. Ricky Nichols; 9. Jeffrey Simmons; 10. Earl Brose.

HAMPSHIRE
Rams-1. J.L.J. Sheep.
Ewe Lamb-1. J.L.J. Sheep.
Ewes-1. Dale Powell; 2. Dale Powell; 3. J.L.J. Sheep; 4. Dale Powell; 5. J.L.J. Sheep.
Grand Ram-J.L.J. Sheep.
Grand Ewe-Dale Powell.
Reserve Ewe-Dale Powell.

SHROPSHIRE
Rams-1. J.L.J. Sheep.
Ewe Lamb-1. H&K; 2. Teeter Bros.; 3. J.L.J. Sheep; 4. Teeter Bros.; 5. H&K; 6. J&K.
Ewe-1. J.L.J. Sheep.
Grand Ram-J.L.J. Sheep.
Grand Ewe- H&K; Reserve Ewe, Teeter Bros.

SOUTHDOWN
Rams-1. Earl Brose; 2.

SHROPSHIRE
1. Tracy Womack; 2. Teeter Bros.; 3. Teeter Bros.; 4. Darlene Brose; 5. Jodi Smith; 6. Heather Holt; 7. Earl Brose; 8. Lori Bailey.
Shropshire-Grand Champion, Tracy Womack; Reserve, Teeter Bros.

MEDIUM WOOL
Heavy weight-1. Brett Cypert; 2. Doug Sparkman; 3. Jodi Smith; 4. Ralph Scheele; 5. Duncan Woody; 6. Nicky Powell; 7. Bryan Emert; 8. Marla Moore; 9. Jodie Smith; 10. Monty Lyons; 11. Terry Butler.
Medium Wool-Grand Champion, Brett Cypert; Reserve, Doug Sparkman.
Medium weight-1. Jodie Smith; 2. Lisa Griffin; 3. Terri Sparkman; 4. Monty Moore; 5. Paul Thornton; 6. Sherri Griffin; 7. Shelly Powell; 8. Hunter Smith; 9. Lori Bailey.
Light weight-1. Jeffrey Simmons; 2. Darlene Brose; 3. Phillip Thornton; 4. Powell Bros.; 5. Earl Brose; 6. Lisa Griffin; 7. Kelly Marbie; 8. Ricky Nichols; 9. Jeffrey Simmons; 10. Earl Brose.

HAMPSHIRE
Rams-1. J.L.J. Sheep.
Ewe Lamb-1. J.L.J. Sheep.
Ewes-1. Dale Powell; 2. Dale Powell; 3. J.L.J. Sheep; 4. Dale Powell; 5. J.L.J. Sheep.
Grand Ram-J.L.J. Sheep.
Grand Ewe-Dale Powell.
Reserve Ewe-Dale Powell.

SHROPSHIRE
Rams-1. J.L.J. Sheep.
Ewe Lamb-1. H&K; 2. Teeter Bros.; 3. J.L.J. Sheep; 4. Teeter Bros.; 5. H&K; 6. J&K.
Ewe-1. J.L.J. Sheep.
Grand Ram-J.L.J. Sheep.
Grand Ewe- H&K; Reserve Ewe, Teeter Bros.

SOUTHDOWN
Rams-1. Earl Brose; 2.

SHROPSHIRE
1. Tracy Womack; 2. Teeter Bros.; 3. Teeter Bros.; 4. Darlene Brose; 5. Jodi Smith; 6. Heather Holt; 7. Earl Brose; 8. Lori Bailey.
Shropshire-Grand Champion, Tracy Womack; Reserve, Teeter Bros.

MEDIUM WOOL
Heavy weight-1. Brett Cypert; 2. Doug Sparkman; 3. Jodi Smith; 4. Ralph Scheele; 5. Duncan Woody; 6. Nicky Powell; 7. Bryan Emert; 8. Marla Moore; 9. Jodie Smith; 10. Monty Lyons; 11. Terry Butler.
Medium Wool-Grand Champion, Brett Cypert; Reserve, Doug Sparkman.
Medium weight-1. Jodie Smith; 2. Lisa Griffin; 3. Terri Sparkman; 4. Monty Moore; 5. Paul Thornton; 6. Sherri Griffin; 7. Shelly Powell; 8. Hunter Smith; 9. Lori Bailey.
Light weight-1. Jeffrey Simmons; 2. Darlene Brose; 3. Phillip Thornton; 4. Powell Bros.; 5. Earl Brose; 6. Lisa Griffin; 7. Kelly Marbie; 8. Ricky Nichols; 9. Jeffrey Simmons; 10. Earl Brose.

HAMPSHIRE
Rams-1. J.L.J. Sheep.
Ewe Lamb-1. J.L.J. Sheep.
Ewes-1. Dale Powell; 2. Dale Powell; 3. J.L.J. Sheep; 4. Dale Powell; 5. J.L.J. Sheep.
Grand Ram-J.L.J. Sheep.
Grand Ewe-Dale Powell.
Reserve Ewe-Dale Powell.

SHROPSHIRE
Rams-1. J.L.J. Sheep.
Ewe Lamb-1. H&K; 2. Teeter Bros.; 3. J.L.J. Sheep; 4. Teeter Bros.; 5. H&K; 6. J&K.
Ewe-1. J.L.J. Sheep.
Grand Ram-J.L.J. Sheep.
Grand Ewe- H&K; Reserve Ewe, Teeter Bros.

SOUTHDOWN
Rams-1. Earl Brose; 2.

SHROPSHIRE
1. Tracy Womack; 2. Teeter Bros.; 3. Teeter Bros.; 4. Darlene Brose; 5. Jodi Smith; 6. Heather Holt; 7. Earl Brose; 8. Lori Bailey.
Shropshire-Grand Champion, Tracy Womack; Reserve, Teeter Bros.

MEDIUM WOOL
Heavy weight-1. Brett Cypert; 2. Doug Sparkman; 3. Jodi Smith; 4. Ralph Scheele; 5. Duncan Woody; 6. Nicky Powell; 7. Bryan Emert; 8. Marla Moore; 9. Jodie Smith; 10. Monty Lyons; 11. Terry Butler.
Medium Wool-Grand Champion, Brett Cypert; Reserve, Doug Sparkman.
Medium weight-1. Jodie Smith; 2. Lisa Griffin; 3. Terri Sparkman; 4. Monty Moore; 5. Paul Thornton; 6. Sherri Griffin; 7. Shelly Powell; 8. Hunter Smith; 9. Lori Bailey.
Light weight-1. Jeffrey Simmons; 2. Darlene Brose; 3. Phillip Thornton; 4. Powell Bros.; 5. Earl Brose; 6. Lisa Griffin; 7. Kelly Marbie; 8. Ricky Nichols; 9. Jeffrey Simmons; 10. Earl Brose.

HAMPSHIRE
Rams-1. J.L.J. Sheep.
Ewe Lamb-1. J.L.J. Sheep.
Ewes-1. Dale Powell; 2. Dale Powell; 3. J.L.J. Sheep; 4. Dale Powell; 5. J.L.J. Sheep.
Grand Ram-J.L.J. Sheep.
Grand Ewe-Dale Powell.
Reserve Ewe-Dale Powell.

SHROPSHIRE
Rams-1. J.L.J. Sheep.
Ewe Lamb-1. H&K; 2. Teeter Bros.; 3. J.L.J. Sheep; 4. Teeter Bros.; 5. H&K; 6. J&K.
Ewe-1. J.L.J. Sheep.
Grand Ram-J.L.J. Sheep.
Grand Ewe- H&K; Reserve Ewe, Teeter Bros.

SOUTHDOWN
Rams-1. Earl Brose; 2.

SHROPSHIRE
1. Tracy Womack; 2. Teeter Bros.; 3. Teeter Bros.; 4. Darlene Brose; 5. Jodi Smith; 6. Heather Holt; 7. Earl Brose; 8. Lori Bailey.
Shropshire-Grand Champion, Tracy Womack; Reserve, Teeter Bros.

MEDIUM WOOL
Heavy weight-1. Brett Cypert; 2. Doug Sparkman; 3. Jodi Smith; 4. Ralph Scheele; 5. Duncan Woody; 6. Nicky Powell; 7. Bryan Emert; 8. Marla Moore; 9. Jodie Smith; 10. Monty Lyons; 11. Terry Butler.
Medium Wool-Grand Champion, Brett Cypert; Reserve, Doug Sparkman.
Medium weight-1. Jodie Smith; 2. Lisa Griffin; 3. Terri Sparkman; 4. Monty Moore; 5. Paul Thornton; 6. Sherri Griffin; 7. Shelly Powell; 8. Hunter Smith; 9. Lori Bailey.
Light weight-1. Jeffrey Simmons; 2. Darlene Brose; 3. Phillip Thornton; 4. Powell Bros.; 5. Earl Brose; 6. Lisa Griffin; 7. Kelly Marbie; 8. Ricky Nichols; 9. Jeffrey Simmons; 10. Earl Brose.

HAMPSHIRE
Rams-1. J.L.J. Sheep.
Ewe Lamb-1. J.L.J. Sheep.
Ewes-1. Dale Powell; 2. Dale Powell; 3. J.L.J. Sheep; 4. Dale Powell; 5. J.L.J. Sheep.
Grand Ram-J.L.J. Sheep.
Grand Ewe-Dale Powell.
Reserve Ewe-Dale Powell.

SHROPSHIRE
Rams-1. J.L.J. Sheep.
Ewe Lamb-1. H&K; 2. Teeter Bros.; 3. J.L.J. Sheep; 4. Teeter Bros.; 5. H&K; 6. J&K.
Ewe-1. J.L.J. Sheep.
Grand Ram-J.L.J. Sheep.
Grand Ewe- H&K; Reserve Ewe, Teeter Bros.

SOUTHDOWN
Rams-1. Earl Brose; 2.

SHROPSHIRE
1. Tracy Womack; 2. Teeter Bros.; 3. Teeter Bros.; 4. Darlene Brose; 5. Jodi Smith; 6. Heather Holt; 7. Earl Brose; 8. Lori Bailey.
Shropshire-Grand Champion, Tracy Womack; Reserve, Teeter Bros.

MEDIUM WOOL
Heavy weight-1. Brett Cypert; 2. Doug Sparkman; 3. Jodi Smith; 4. Ralph Scheele; 5. Duncan Woody; 6. Nicky Powell; 7. Bryan Emert; 8. Marla Moore; 9. Jodie Smith; 10. Monty Lyons; 11. Terry Butler.
Medium Wool-Grand Champion, Brett Cypert; Reserve, Doug Sparkman.
Medium weight-1. Jodie Smith; 2. Lisa Griffin; 3. Terri Sparkman; 4. Monty Moore; 5. Paul Thornton; 6. Sherri Griffin; 7. Shelly Powell; 8. Hunter Smith; 9. Lori Bailey.
Light weight-1. Jeffrey Simmons; 2. Darlene Brose; 3. Phillip Thornton; 4. Powell Bros.; 5. Earl Brose; 6. Lisa Griffin; 7. Kelly Marbie; 8. Ricky Nichols; 9. Jeffrey Simmons; 10. Earl Brose.

HAMPSHIRE
Rams-1. J.L.J. Sheep.
Ewe Lamb-1. J.L.J. Sheep.
Ewes-1. Dale Powell; 2. Dale Powell; 3. J.L.J. Sheep; 4. Dale Powell; 5. J.L.J. Sheep.
Grand Ram-J.L.J. Sheep.
Grand Ewe-Dale Powell.
Reserve Ewe-Dale Powell.

SHROPSHIRE
Rams-1. J.L.J. Sheep.
Ewe Lamb-1. H&K; 2. Teeter Bros.; 3. J.L.J. Sheep; 4. Teeter Bros.; 5. H&K; 6. J&K.
Ewe-1. J.L.J. Sheep.
Grand Ram-J.L.J. Sheep.
Grand Ewe- H&K; Reserve Ewe, Teeter Bros.

SOUTHDOWN
Rams-1. Earl Brose; 2.

SHROPSHIRE
1. Tracy Womack; 2. Teeter Bros.; 3. Teeter Bros.; 4. Darlene Brose; 5. Jodi Smith; 6. Heather Holt; 7. Earl Brose; 8. Lori Bailey.
Shropshire-Grand Champion, Tracy Womack; Reserve, Teeter Bros.

MEDIUM WOOL
Heavy weight-1. Brett Cypert; 2. Doug Sparkman; 3. Jodi Smith; 4. Ralph Scheele; 5. Duncan Woody; 6. Nicky Powell; 7. Bryan Emert; 8. Marla Moore; 9. Jodie Smith; 10. Monty Lyons; 11. Terry Butler.
Medium Wool-Grand Champion, Brett Cypert; Reserve, Doug Sparkman.
Medium weight-1. Jodie Smith; 2. Lisa Griffin; 3. Terri Sparkman; 4. Monty Moore; 5. Paul Thornton; 6. Sherri Griffin; 7. Shelly Powell; 8. Hunter Smith; 9. Lori Bailey.
Light weight-1. Jeffrey Simmons; 2. Darlene Brose; 3. Phillip Thornton; 4. Powell Bros.; 5. Earl Brose; 6. Lisa Griffin; 7. Kelly Marbie; 8. Ricky Nichols; 9. Jeffrey Simmons; 10. Earl Brose.

HAMPSHIRE
Rams-1. J.L.J. Sheep.
Ewe Lamb-1. J.L.J. Sheep.
Ewes-1. Dale Powell; 2. Dale Powell; 3. J.L.J. Sheep; 4. Dale Powell; 5. J.L.J. Sheep.
Grand Ram-J.L.J. Sheep.
Grand Ewe-Dale Powell.
Reserve Ewe-Dale Powell.

SHROPSHIRE
Rams-1. J.L.J. Sheep.
Ewe Lamb-1. H&K; 2. Teeter Bros.; 3. J.L.J. Sheep; 4. Teeter Bros.; 5. H&K; 6. J&K.
Ewe-1. J.L.J. Sheep.
Grand Ram-J.L.J. Sheep.
Grand Ewe- H&K; Reserve Ewe, Teeter Bros.

SOUTHDOWN

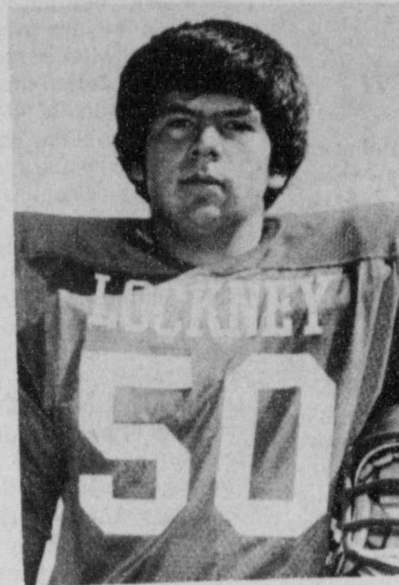
FOOTBALL CONTEST

MEET THE LONGHORNS

PICK THE WINNING TEAMS!

WIN FIRST PRIZE..... \$10⁰⁰
 SECOND PRIZE..... \$6⁰⁰
 THIRD PRIZE..... \$4⁰⁰

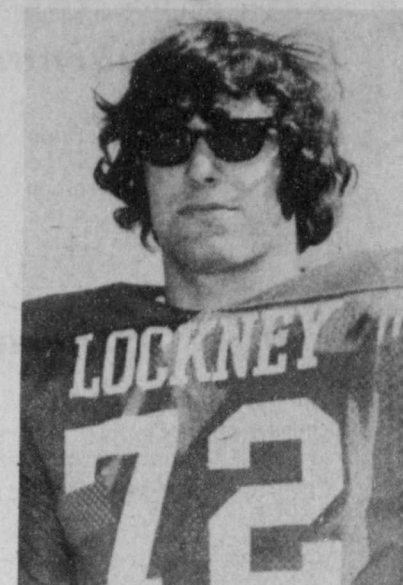
GO,
 FIGHT,
 WIN!!!



TIM COOPER
 154 pounds
 Junior Center



DONNY WILEY
 203 pounds
 Senior Tackle



CHRIS SUE
 187 pounds
 Senior Tackle

GO
 LONGHORNS
 GO

RAGIN'
 RED

CONTEST RULES

Circle on the official entry blank the number of the team you think will win each game. Circle the winner and indicate the total score in the tie-breaker game. Each entry must be validated by one of the merchants on the contest page. Take the entry form to the merchant of your choice for validation. (Validation by only ONE merchant is necessary.) Contestants may mail their entries or bring them to the Beacon Office, 120 South Main. Mail entries must be postmarked no later than 5 p.m. Friday, and in-person entries must be at the office by the same time. Mail entry address is Box 187, Lockney 79241. One Winner Per Family Per Week.

JERRY ULMER
TEXAS INSULATION SYSTEMS Box 591
 Lockney, Texas 79241
652-3348(806)
 33. Washington St. at 34. USC

<p>Baccus Motor Co. 321 SO. MAIN ST. LOCKNEY</p> <p>1. Baylor at 2. Houston</p>	<p>Moore-Rose Funeral Home Lockney Tx.</p> <p>13. Canyon at 14. Plainview</p>	<p>CONSUMER'S FUEL ASSN. Lockney, Texas</p> <p>23. Kentucky at 24. Penn State</p>	<p>Perry Implement Company John Deere Implements</p> <p>35. Nazerath at 36. Whiteface</p>
<p>Page's Thriftway No. 3 "A Better Way To Save"</p> <p>3. Texas A&M 4. Michigan</p>	<p>Boot Hill WESTERN WEAR Lockney, Texas</p> <p>15. Tulia at 16. Dimmitt</p>	<p>White's Auto Store Lockney, Texas</p> <p>25. Merkel at 26. Colorado City</p>	<p>First National Bank In Lockney Member of F.D.I.C.</p> <p>37. Perersburg at 38. Rall's</p>
<p>Caprock Appliances LOCKNEY, TEXAS HOME OF MAYTAG APPLIANCES, SERVICE YOU CAN DEPEND ON.</p> <p>5. Texas Tech at 6. North Carolina</p>	<p>Mize Pharmacy & TV Your Complete Family Drug Store Gift Headquarters ★ RCA Television</p> <p>17. Andrews at 18. Levelland</p>	<p>Webster Service & Supply "Where You're Always Welcome"</p> <p>27. Roosevelt at 28. Frenship</p>	<p>Thomason Grocery LOCKNEY, TEXAS</p> <p>39. Ozona at 40. Seagraves</p>
<p>Carter's Market LOCKNEY, TEXAS</p> <p>7. Hobbs at 8. Lubbock Monterey</p>	<p>Dairy Queen LOCKNEY, TEXAS RAY & DAVIE STEGALL</p> <p>19. Tucumcari at 20. Dalhart</p>	<p>Floyd County Insurance Agency "Around The Clock Protection"</p> <p>29. Sudan at 30. Happy</p>	<p>The Tye Company On The Plainview Highway</p> <p>41. Princeton at 42. Brown</p>
<p>Byrd Pharmacy "Accurate Prescription Service"</p> <p>9. Littlefield at 10. Floydada</p>	<p>Reecer's Cleaners "The Finest In Dry Cleaning"</p> <p>21. Arizona at 22. Wyoming</p>	<p>Ansley & Son LOCKNEY, TEXAS</p> <p>31. Missouri at 32. Arizona State</p>	<p>Longhorn Inn "Where School Friends Meet To Eat"</p> <p>43. Plains at 44. Springlake-Earth</p>
<p>Davis Lumber Co. "Where Customers Send Their Friends"</p> <p>11. Air Force at 12. Georgia Tech</p>	<p>OFFICIAL ENTRY FORM</p> <p>NAME _____ ADDRESS _____</p> <p>CITY _____ MERCHANTS STAMP _____</p> <p>1-2 3-4 5-6 7-8 9-10 11-12 13-14 15-16 17-18 19-20 21-22 23-24 25-26 27-28 29-30 31-32 33-34 35-36 37-38 39-40 41-42 43-44 45-46</p> <p>TIE BREAKER RIVER ROAD at LOCKNEY TOTAL SCORE.....</p>		<p>Brown's Department Store LOCKNEY, TEXAS</p> <p>45. Lorenzo at 46. Crosbyton</p>

Agribusiness Exposition Proves Successful

Farmers from throughout the area received an update in agriculture technology

Sept. 8-10 during the first annual High Plains Agribusiness Exposition at Lubbock

Memorial Civic Center. Industry exhibitors filled every available space in the

exhibition hall plus the pedestrian mall areas of the center. Larger equipment displays were set up on parking areas adjacent to the building.

The exposition was highlighted by an educational symposium featuring top speakers on water and energy matters.

Danny J. Cunyus, director of the show, said the event drew an estimated 7,000 qualified buyers in addition to curiosity seekers.

Farm supplies on display were worth an estimated \$1.5 to \$2 million, and ranged from hardware and implements to chemicals and seeds.

Cunyus said Industry Showcase, Inc., sponsor of the exhibition, feels the show was successful, and for a first run stacked up very well with other shows throughout the nation.

Some 170 exhibitors comprised the Lubbock event, compared to 400 in the Farm Progress Show of the Midwest, which Cunyus said is now in its 25th year. That show attracts some 300,000 visitors.

Cunyus said dealers reported selling more equipment at Lubbock in three days than in any other show held recently in the South. Cunyus, and his brother Larry Cunyus, assistant director of the exposition, are from Lockney.

Bridge Tournament In Lockney Thursday

An afternoon partnership bridge tournament will be held Thursday, September 29 from 1:30 to 5 p.m. in the Rebekah Lodge Hall in Lock-

ney. The Lockney Fire Department Auxiliary will sponsor the tournament.

Refreshments will be served, and very nice bridge prizes and door prizes will

be given.

Players from all area counties are invited to attend. For reservations call 652-2524 or 652-2417. Tickets will be \$3 each.

Trinity Lutheran Women ' Meet At Church

The Women of Trinity Lutheran Church in the Providence Community met Wednesday at the Church for their regular General Meeting.

Mrs. Wynona Quebe, president, called the meeting to order with the singing of the hymn, "God of Our Fathers, Whose Almighty Hand."

An instant program was directed by Anna Dell Quebe in a very interesting and unique manner, as she told the story of how a church women's group such as ours were expecting a special guest, Jesus Christ, at their meeting and at the last

minute found that the planned program did not appear. Thus the "instant program." Esther Brasher made an excellent master of ceremonies as she welcomed the guests and introduced each participant on program. She called on Lucie Boedecker to give the devotional, "Reach Out," and the Opening Prayer.

A Quartet of Phoebe Cypert, Billie Howard, Hattie Scheele and Priss Sammann were asked to sing "Reach Out and Be," to the tune of "Chop Sticks", accompanied by Georgie Brandes. Lillie Matthews added to the program as she brought the topic on "God's Creation and

"The Parable of Pollution." Nadine Foster gave the offering meditation and closing prayer. The program concluded with the entire group joining together in singing "Reach Out and Be."

Wynona Quebe presided at the business meeting with 13 members present. New officers elected were: vice president, Billie Howard; treasurer, Betty Sammann; secretary for education, Phoebe Cypert. Hold over officers are president, Wynona Quebe; secretary, Freda Boedecker; and secretary for stewardship, Nadine Foster. The meeting closed with prayer led by the president.



A CROSBYTON MAN escaped injury Wednesday afternoon when his pickup crashed a combine between Muncy and Floydada. The de-cabbed pickup is pictured. (Staff Photo).

Lockney Hospital Report

Sept. 14 to Sept 22.

Edna Giel, Lockney admitted 8-17 continues care.

Morine Bullock, Plainview admitted 9-7 dismissed 9-17.

Letha Mae Jacob, Quitaque admitted 9-10 dismissed 9-20.

Opal Marrison, Floydada admitted 9-13 dismissed 9-20

Manuela Diaz, Plainview, admitted 9-13, baby girl Rachel born 9-14 dismissed 9-16.

Bobby Jones, Plainview, admitted 9-14 dismissed 9-17.

Maylan Spence, Floydada admitted 9-14, continues care.

Arizona Vick, Lockney, admitted 9-14 continues care Fannie Belle McClure, Floydada, admitted 9-16 dismissed 9-21.

Luerinine Johnson, Quitaque, admitted 9-16 continues care.

Francis Gamble, Silvertown admitted 9-17 baby Boy Anthony born, 9-18 dismissed 9-20.

Weldon Dadson, Lockney, admitted 9-19 continues care San Juana Faz Plainview, admitted 9-19 baby Girl Priscilla born, 9-19 dismissed 9-21.

Avis Emert Floydada, admitted 9-20 continues care.

Robert Peel Ralls, admitted 9-20 continues care.

William Frazier Silvertown, admitted 9-20 continues care.

Richard Phillips Lockney admitted 9-21 continues care.

Birthdays, cont.

Sept. 30-Nolen F. Kell, Clydelle Jack, Kenneth Holt, Charlotte Brock, Maria Blanco, Mrs. Ashburn

Oct. 1 - Larnce McCain, Mary Bigham, Jayson Lusk, Donnie Jackson

OBITUARY

Rodney Hinkle Miss Crowley

Rodney Vance Hinkle, 43, of Panhandle, died Wednesday in an Amarillo Hospital following a lengthy illness. He was a former resident of Floydada and nephew of Bill Hinkle of Floydada. Services were conducted Saturday afternoon, September 24 at 2 p.m. in the First Baptist Church in Panhandle with the Rev. Vernon O'Kelly, pastor of the First United Methodist Church and Rev. Preston Harrison, pastor of the Calvary Baptist Church officiating.

Hinkle was born in Longview and was married to Oleta Lloyd in Friona on June 13, 1964. He had been a resident of Panhandle for the past 13 years where he owned Schulze Grocery and Bakery. Hinkle was a member of the First Baptist Church in Floydada. He was also a past member of the Rotary Club and Panhandle Chamber of Commerce and a leader of Carson County 4-H.

Survivors include his wife; three sons, Delwin of Waco, Rodrick of Panhandle and Tommy of the home; a daughter, Chandra of the home; his mother, Mrs. Claudia Adams of Amarillo; and a brother, Jerry Hinkle of Friona.

He was preceded in death by his father, Clyde Hinkle.

Rites for Miss Mildred Francis Crowley, 70, were held Saturday morning, September 24, at 10 o'clock in Moore-Rose Funeral Home Chapel in Floydada. Miss Crowley died at midnight Wednesday, September 21 in Floydada Nursing Home.

Born May 22, 1907 in Denton County, Tex., she moved to Ralls in 1911 with her parents, Tilman B. and Barbara Crowley, then to Floydada in 1962. She was a member of the Church of Christ.

Survivors include three brothers, Noah Crowley of Floydada, Charlie and Oliver Crowley of Boonville, Ark.; a sister, Lavada Reynolds of Houston and several nieces and nephews.

Officiating for the service was Elvin Upton, minister of the Emma Church of Christ of Ralls. Interment was in Ralls Cemetery under the direction of Moore-Rose Funeral Home.

Pallbearers were James Crowley Jr., Earl Crowley, Guy Vaughn, Symre Vaughn, Fred McKinney and James Crowley.

Happy Anniversary

Sept. 25 - Mr. and Mrs. Ted Salinas
Sept. 26 - Earl and Johnnie Kellison
Sept. 27 - Robert and Nellie Webb
Sept. 28 - John and Rochelle Dorman
Sept. 30 - Byron and Charlotte Brock
Oct. 1 - C. L. and Lucy Dean Record

Happy Birthday

Sept. 25 - Gilbert Gonzales
Sept. 26 - Christie Huley, Marjorie Ferguson, Maria Guerrero, Armando J. r. Banda
Sept. 27 - Ramiro Vasquez, Samantha Jean Salinas, Fred Huggins, M. C. Cook Jr.
Sept. 28 - Vicky Ortegón, Alicia Gallego
Sept. 29 - Billy Bob Sherman, Kyle Brock, Heather Holt, Mike Ferguson, Georgia Villarreal

THE LOCKNEY BEACON
THUR. SEPT. 22, 1977 CARRIED AN
ERROR IN CARTER'S MARKET
ADVERTISEMENT IT STATED
303 DEL MONTE PEARS 3/89¢
IT SHOULD HAVE READ
303 SIZE CAN DEL MONTE
PEAS 3/89¢
CARTER'S MARKET
121 W. College Lockney, Texas

FRIENDS OF LIBRARY

ANNUAL MEETING

OCTOBER 3

The Friends of the Floyd County Library will have their Annual Meeting for the purpose of electing officers on Monday, October 3, 1977, at 7:30 p.m. in the County Courtroom of the Floyd County Courthouse.

All who are interested are invited to attend this important meeting. Originally the annual meeting is held in September, however it has been re-scheduled for October 3rd.

If You're Buying

★ OFFICE SUPPLIES

★ OFFICE EQUIPMENT

★ OFFICE MACHINES

Out Of Town

YOU CAN NOW PURCHASE

THESE ITEMS AT

THE LOCKNEY BEACON

We Will Meet Or Beat

The Out-Of-Towners

Quality And Prices!



Prices good thru September 28, 1977. We reserve the right to limit quantities. None sold to dealers.

You can Count on Us
 To Bring You
FOOD SAVINGS!

Powdered, Laundry Fab Detergent 89¢ 49-oz. Box Limit one (1) 49-oz. Box, please	 Kraft Miracle Whip 89¢ Qt. Jar Limit one (1) Qt. Jar, please	Layer Varieties Duncan Hines Cake Mix 59¢ 18½-oz. Box
---	--	--

Piggly Wiggly MEDIUM
Fresh Eggs

51¢
 Doz.

Libby's
Tomato Juice
 Betty Crocker, Assorted Varieties
Hamburger Helper
 Glad, Family Pack
Trash Bags

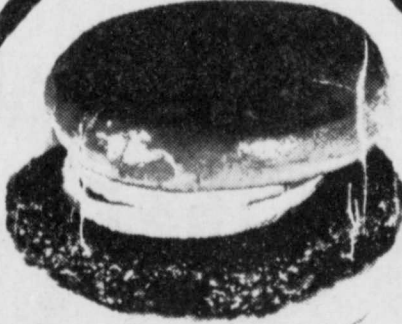
46-oz. Can **49¢**
 6-oz. Box **59¢**
 20-Ct. Box **\$1.99**

Washington Red
DELICIOUS APPLES

49¢
 Lb.

Luncheon Meat Regular or Smoked
Hormel's Spam

89¢
 12-oz. Can
 Limit two (2) 12-oz. Cans, please


 Fresh
Ground Beef
68¢
 Lb.


 Quarter Pork Loin Cut Into 9-11
Pork Chops
\$1.18
 Lb.

Ocean Spray
Fresh Cranberries

49¢
 1-Lb. Bag

Regular Quarters
Parkay Oleo

49¢
 1-Lb. Pkg.

Lean Meaty, Beef
Short Rib Lb. **59¢**
 Center Cut
Pork Chops Lb. **\$1.89**

Hillshire Farms, Heat & Eat
 Smoked
Sausage Lb. **\$1.59**
 Heavy Aged Beef,
Rump Roast Lb. **\$1.18**
 Heavy Aged Beef,
Round Steak Lb. **\$1.09**

Fresh, Crisp
Green Cabbage

10¢
 Lb.

30 Wt. 49" Ea.
Amalie Motor Oil

\$2.29
 5 Qt. Change

SIRLOIN STEAK Lb. **98¢**
 Center Cut Heavy Aged Beef
Chuck Steak
88¢
 Lb.

Boneless
Stewing Beef
\$1.09
 Lb.

All Varieties, Frozen
Fox De Luxe Pizza

79¢
 13-oz. Pkg.

LOCKNEY AREA CHURCH PAGE

LOCKNEY LOCALS

On a recent Saturday Mr. and Mrs. Johns Cox and Mr. and Mrs. Mel Holcomb went to Lubbock and met Mrs. Holcomb's daughter and son-in-law, Jerry and Charlotte Blazier, of Stratford, and visited with them. They also visited with Karen and Glenda Lewis, daughters of Mr. and Mrs. Glen Lewis of the Frick community.

Mrs. Olive Myers and the Mike Mooneys went to Plainview last Saturday and visited with Mrs. Myer's daughter Mr. and Mrs. Bill Veal. They also saw Mrs. Myer's new great-grandson, Shannon Ray Veal, son of the Gary Veals of Plainview.

Mrs. Mildred Hilton accompanied her niece, Mr. and Mrs. Louis Waddell of Amarillo, to Friona last Thursday and stayed until Monday visiting with Mr. and Mrs. Allen Stewart, Mr. and Mrs. Opal Jones, and other former neighbors of Mrs. Hilton.

Visiting with Mr. and Mrs. Travis Lee Huley and Monty last week was Mrs. Huley's mother Mrs. Pauline Laney from Seymour, Texas. Visiting on Sunday was the Huley's daughter Christi Huley and her friend David Hasley, both of Lubbock.

Paul and Judy Barker and son, Corbin, of San Antonio returned this weekend to get their oldest son, Paulo, who has spent the past week visiting his grandparents, the Art Barkers. They visited with other relatives while here.

Carria Rushing of Olney, Texas spent the past weekend visiting with her cousin, Vera and John Cox. Visiting in the Cox home on Saturday was Vera's brother Mr. and Mrs. Sweat of Plainview.

John's sister and her husband Mr. and Mrs. Alvin Nichols of South Plains visited on Sunday.

Mrs. Blanche Phegley was visited on Saturday by Mr. and Mrs. G. D. Tate of Denver City who were here for the McAda 50th Anniversary on Sunday. Visiting on Sunday with Mrs. Phegley were Mrs. Frank Pohl and her mother Mrs. Charlie Knierim of Matador who were also here for the McAda Anniversary.

Mr. and Mrs. Sidney Mudgett of Lubbock spent Tuesday and Wednesday visiting with his sister Mr. Olive Myers. They also visited with his niece Merle and Mile Mooney.

School Menu

- Sept. 26-30
- Monday:
Tuna salad
Buttered rice-lettuce leaf
French fried potatoes
Cherry gelatin w/fruit
Slice bread-milk
Devil's food cake w/frosting
- Tuesday:
Smoked sausage
Lima beans
Sweet potatoes
Cornbread-milk
Banana pudding
- Wednesday:
Roast beef
Gravy-creamed potatoes
Buttered broccoli
Hot rolls-milk
Peanut candy
- Thursday:
Chulipa Granda
Lettuce
Pear half-mex. corn
Sopapillas-milk
Honey
- Friday:
Sloppy Joe
Veg. soup
Milk-peaches
Rolled wheat cake

South Plains News

By Mrs. Murray Julian

South Plains, Sept. 19th... Around fifty were in attendance at the South Plains Baptist Church services Sunday morning, with visitors, Mr. and Mrs. Jack McCown, with Mrs. Walter Wood, and Mrs. Arby Mulder's grandchildren, Rhonda and Candy Taylor from Amarillo. It was good to see Mrs. Fletcher Powell back in church after recent surgery in Methodist Hospital in Lubbock.

Mr. and Mrs. Jack McCown of Lake Whitney are here visiting with her mother, Mrs. Walter Wood.

Youth of the Baptist Church will meet next Sunday afternoon, Sept. 25th, at 3:30 p.m. and go the Heritage Nursing Home in Plainview to visit residents in the home. They will then go with their sponsor, Mrs. Connie Johnson, for supper in Plainview, and later all will attend church services.

Mrs. Frank McClure is in Lockney General Hospital where she has been over the past week end, suffering with an infection. Her sister from Snyder, Mrs. J. E. Woodson, spent several days here last week, after Mrs. McClure got out of the hospital during her first stay.

Hobby Club Members met at Upton Grocery, Sept. 14th, at 11:30 and went to Plainview where they enjoyed a dutch luncheon at Plains Motel. Later all those went to the Heritage Center where they went through the museum. Those present for the luncheon and museum tour were Mmes. E. J. Kinslow, Mamie Wood, Fred Fortenberry, Leighton Teagle, Harold Hamm, Sterling Cummings, Kendall Cummings, Arby Mulder, Noel Deavenport, Mildred Wells, Tillman Powell, Grigsby Milton, Jr. Fred Blake and J. P. Taylor. The Hobby Club will meet at 9:30 a.m. Wednesday, October 12, in the home of Mrs. J. P. Taylor. There will be a salad luncheon, and an all-day quilting.

Mr. and Mrs. Tom Davis of Irving, arrived Tuesday to spend the night and are visiting here this week with her sister and husband, Mr. and Mrs. Alvin Nichols. The women's father, E. C. Cox, who is in the Lockney Convalescent Home, is still in a fair condition.

Mr. and Mrs. Early Pritchett left last week end for their vacation home, in Cloud Croft, New Mexico.

They enjoyed a stay there until Monday.

Mr. and Mrs. Hansel Sanders shared host duties for the Golden Wedding celebration and reception held Sunday afternoon in the Fellowship Hall of the First United Methodist Church in Lockney, for their aunt and uncle, Mr. and Mrs. G. A. McAda. Mrs. McAda was Artitia Gordon before her wedding to McAda, on September 18, 1927, in the Sunset Community, near South Plains. Mr. and Mrs. McAda are long-time Floyd County residents and reside in Lockney.

Sylvin Kinnibrugh underwent surgery in the Central Plains Hospital in Plainview on Monday. He went in the hospital Sunday, and was there until Wednesday of this week. He is getting along just fine.

Mrs. Frank McClure came home from the Lockney Hospital Wednesday, and is convalescing at her home at this time.

A pink and blue baby shower honoring baby Kendall Kelvin Cummings will be held in the South Plains Baptist Church on Wednesday afternoon from 2:30 - 4:00 p.m.

Summer ends Thursday, Sept. 22 and fall comes in at 10:30 p.m. that night, Eastern Standard Time.

Good weather and light winds have helped the farmers get a good start on the maize harvest in this vicinity. Trucks are rolling into the elevators until way late at night, as they try to get their grain harvested.

Mrs. Fred Blake, Mrs. L. T. Wood, Mrs. Murray Julian and Mrs. Fletcher Powell met at 9:00 a.m. Tuesday morning at the home of Mrs. Walter Wood, where her daughter, Mrs. Jack McCown is visiting this week, and the group presented the State Week of Prayer Mission Program, which is a study about "God's Harvest in Texas". This was a presentation of the WMU women and the last program of the weeks work. The Baptist Church has an offering goal of \$200.00 for missions work in Texas.

Mrs. George Weast (Myrtle) is still confined to the Central Plains Hospital in Plainview. Their granddaughter, Mrs. Al Rhebus and two girls flew to their home in Anchorage, Alaska Sunday after they had spent several weeks here visiting relatives.

time out for GOD

MAIN STREET CHURCH OF CHRIST

Bible Study 9:30
Morning Worship 10:30
Evening Worship 6:00
WEDNESDAY
Ladies Bible Class 9:30
Bible Study 8:00

EVANS CHAPEL BAPTIST CHURCH

Rev. Bennie Anderson, Pastor
Sunday School 10 a.m.
Morning Worship 11 a.m.
Training Union 6 p.m.
Evening Worship 7 p.m.
Wednesday Prayer Meeting 7 p.m.
Sunday afternoon worship 2:00

FIRST UNITED METHODIST CHURCH

Hugh Daniel, Pastor
SUNDAY
Sunday School 9:45
Worship Service 10:55
UMY 6:00
Evening Worship 7:00
United Methodist Women First Tuesday of Month
Circles Monday (2nd & 4th Monday nights) Tuesday & Wednesday mornings.

TRINITY LUTHERAN CHURCH

Providence Community
Andrew Mild
Sunday School & Adult Bible Class 10:00
Divine Worship Service 11:00

ASSEMBLY OF GOD CHURCH

Sunday School 10:00
Morning Worship 11:00
Evening Worship 7:00
Prayer Service Wed. 7:00
Rev. Bob Wright, Pastor

TEMPLO BAPTISTA SALEM

Sunday School 9:45
Worship Service 11:00
Christian Training Time 5:00
Evening Worship 6:00
Wednesday Prayer Meeting & Choir Practice 7:30

AIKEN BAPTIST CHURCH

Bill Sessom, Pastor
Sunday School 10:00
Morning Worship 11:00
Training Union 6:00
Evening Worship 7:00
Prayer Service Wed. 7:30
Brotherhood, W.M.U. and Auxiliary Wednesday 7:30

SAN JOSE CATHOLIC CHURCH

Father Richard Thomas Casey
Sunday Morning Mass 8:30
Saturday Evening 8:30
Wednesday Evening 8:30
Each Service Preceded By Confessions
Baptism - 1st Sunday of the month at 9 a.m.
Church Council - Meets 1st Sunday of month at 3 p.m.



True or False

Could this be your picture? Are you putting on a false face when you get up each morning? Are you pretending that you live surrounded by big, bright balloons? Or, on the other hand, that things are down, down, down? Or, that you were just born unlucky, and at this late date there isn't much you can do about it?

Most of us would have to admit that there is more than a little of the clown in the image we present to others—whether on the high side or the low side. More's the pity. Because we would come across a lot better if we could just be ourselves.

There is a place where you can be yourself, where you can find yourself! No questions asked! The Church. Won't you try it?

Scriptures selected by The American Bible Society
Copyright 1977 Kester Advertising Service, Strasburg, Virginia

Sunday	Monday	Tuesday	Wednesday	Thursday	Friday	Saturday
I Corinthians 6:1-20	Galatians 5:13-26	Galatians 6:1-18	II Timothy 1:1-18	Hebrews 12:1-13	Hebrews 13:9-25	I Peter 2:1-10

This Inspirational Message Sponsored By The Following

- | | |
|---|--|
| Plains Electric
Electrical Irrigation Installation | Brown's Department Store
Ready-to-wear-Quality Cleaning |
| Davis Lumber Company
Lumber and Building Supplies | Baccus Motor Company
"Where To Buy Them" |
| The Longhorn Inn
The Glen Cooper Family | Byrd Pharmacy
Fred D. Byrd, Pharmacist |
| Jackson Tire Company
Shamrock Products - National Tire | Consumers Fuel Association
Everything For The Farmers |
| Moore-Rose Funeral Home
Phone 652-2211 | Patterson Grain Company
Lockney |
| Lockney Lumber & Supply
We Appreciate Your Business | Schacht Jewelry & Floral
"It's Our Pleasure To Serve You" |
| | Lockney Beacon
Your Hometown Newspaper |
| | Sun-Vue Fertilizers
Your Smith-Douglas Dealer |
| | Page's Thriftway
Friendly Service Every Day of the Week |
| | Dan's Auto Service
Repair Specialists |
| | Perry Implement Company
Lockney's John Deere Dealer |
| | Lockney Co-Op Gin & Elevator
Serving Yourself thru Ownership |

FIRST BAPTIST CHURCH
Sunday School 9:45 a.m.
Morning Worship 11:00 a.m.
Church Training 6:00 p.m.
Evening Worship 7:00 p.m.
Prayer Meeting
Wednesday 8:00 p.m.
Nursing Home Service
Thursday 11:20 a.m.
CHOIR:
Adult Choir
Wednesday 8:45 p.m.
W.M.U. 1st & 3rd Monday 3:00 p.m.
B.Y.W., 2nd & 4th Monday 9:30 a.m.
R.A.'s, Sunday 5:00 p.m.
High School Rap and Activity, Monday 7:00 p.m.
Junior High Rap and Activity, Tuesday 7:00 p.m. (except when combined with High School on Monday).

LATIN AMERICAN BAPTIST CHURCH
Mickey Munoz, Pastor
Sunday School 9:45
Morning Worship 10:50
WMU, Brotherhood 5:00
Training Union 6:00
Evening Worship 7:00
Prayer Service Wednesday at 7:30

LATIN AMERICAN CHURCH OF CHRIST
Bible School 9:45
Morning Worship 10:45
Evening Worship 6:00
Wednesday Service 8:00

LOCKNEY LATIN ASSEMBLY OF GOD
Margarito Salazar, Pastor
Sunday School 9:45
Morning Worship 11:00
Evening Worship 7:30
Men's Fellowship Tuesday Evening 8:00
W.M.C. Thursday 8:00
Christ's Ambassadors Saturday Evening 7:30

WEST COLLEGE CHURCH OF CHRIST
West College And Third
Frank Duckworth, Evangelist
Sunday Morning Worship Services 10:30
Sunday Evening Worship Services 6:00
Wednesday Evening Prayer Services 8:00

LONE STAR BAPTIST CHURCH
William A. Prater, Pastor
Sunday School 10:00
Morning Worship 11:00
Training Union 6:00
Evening Worship 7:00
Prayer Service Wednesday Evening 8:00
Brotherhood, First Monday Night
W.M.U. First and Third Mondays at 9:30 a.m.

CEDAR HILL BAPTIST CHURCH
Sunday School 10:00
Morning Worship 11:00
Evening Worship 6:30
Prayer Service Wednesday at 6:30 p.m.

Do It the CLASSIFIED WAY...

AUTO PARTS & ACCESSORIES

CLASSIFIED RATES

FOR SALE-Headache rack for long bed pickup; pickup toolbox; 110 gallon gas tank that fits under toolbox. Call 983-3445. L9-25c

CLASSIFIED ADVERTISING RATE: 10 CENTS PER WORD FIRST INSERTION; 7 CENTS PER WORD EACH SUBSEQUENT INSERTION. MINIMUM CHARGE \$1.50. CLASSIFIED DISPLAY RATE: \$1.20 PER COLUMN INCH. CARD OF THANKS: \$1.50.

AUTOMOTIVE

1974 CUSTOM DeLuxe Chevy 1/2 ton 454 loaded 47,000 miles, camper topper, perfect condition \$3,200. 652-2468. 9-22c

FOR SALE: 1977 Dodge Charger, excellent condition reasonable price, call 983-3988 after 5:00 p.m.

1968 BUICK ELECTRA 225-all electric and power-good transportation. 983-2994. tfc

98 OLDSMOBILE-73 Regency, extra clean. Call 983-3073. tfc

TOMATOES \$3.00 bu. 1/4 mi. south of Ollie and Garrison intersection. 983-3150. You pick. L10-13c

PASTRIES OF ALL DESCRIPTIONS... Homemade and delicious for any occasion. Roger's Pastries.

New Distributor for AMWAY
April Morgan
652-3142

FLOYD COUNTY ABSTRACT CO.

Abstracts Of Title Title Insurance Verna L. Stewart Owner, Manager 217 W. California 983-3728 Floydada, Texas

case

You, Mr. Farmer, can Lease-Purchase your next tractor. Can get fast dependable service.

FOR summer Sale Prices on new or used equipment, 43 to 300 H.P.

CASE POWER AND EQUIPMENT 983-2836, Robert Crawford, Manager. Residence 983-5315. SILVERTON HWY.

ADAMS WELL SERVICE
Complete Irrigation Service, All Size Domestic Submersible Pumps In Stock, 1 Day Service On Submersibles. CALL 983-5003 DAY OR NIGHT FLOYDADA

QUALITY SHAMROCK PRODUCTS
Always Make A Good Deal On SONIC TIRES and SOUTHLAND BATTERIES Dial 652-3366
JACKSON TIRE COMPANY
Richard Wiley

SHUGART COUPON
WEDNESDAY, SEPTEMBER 28
Thompson Pharmacy
200 South Main
9 WALLET SIZE COLOR PORTRAITS **99¢**
ASK About Our **FREE 8 x 10 OFFER** Extra charge for GROUPS

FARM MACHINERY

FOR SALE: 2 basket mounted International Harvester Cotton Strippers Model 91, used less than 30 days- still under 1 year warranty call 512-992-4323 or 512-241-3183. 9-25c

90 INTERNATIONAL stripper, with large basket. Call 983-3073. tfc

REMODELING, All types Building, Built-Ins, Cabinet Work CALL CHRIS RINK 983-5117 222 W. Miss Floydada

Can You Use Some Extra Money? Let Us Help!!!
WE BUY SCRAP IRON, OLD JUNKERS, COPPER BRASS.
Call 983-5277
Help Us Keep Our Country Clean

DAN'S AUTO SERVICE
DAN TEUTON, Owner
Specializing in Automatic Transmission, Motor Tune-Ups, Auto Air Conditioning.
General Repair We Have A BRAKE LATHE to handle all passenger car brake drums. See us for complete brake service.
Phone 652-2462



Auto Accidents DO Happen... If one happens to you, be protected. Our car insurance offers coverage to meet your special needs—repairs to personal liability.

BAKER Insurance Agency
127 W. Calif. Ph. 983-3270

For Sale

OPEN for business, vegetable shed on Highway 70, Floydada. All kinds of vegetables. tfc

FOR SALE-Aliche grass hay. High in protein. Call 983-3828. tfc

TOMATOES 15 cents a pound, you pick. 983-2671. tfp

CONCORD GRAPES for sale, Lindsey Graham. 983-3038. tfc

SWEET POTATOES for sale, 6 1/2 miles North of Flomot on Farm Road 599. Joe Edd Helms 469-5367. L10-13c

KENMORE electric range, continuous cleaning oven, was \$325.95, CLOSE OUT \$239.95. Sears, Floydada. tfc

KENMORE gold 5 cycle, washer was \$331.95, NOW \$259.95. Sears, Floydada. tfc

KENMORE gold 5 cycle washer. Was \$321.95, NOW \$249.95. Sears, Floydada. tfc

FOR SALE, used Kenmore gas cook stove, 30" wide, two years old. One lounge chair. Call Eweyn Merrell 652-3687 or Caprock Appliance 652-3721. L9-18c

FOR SALE: Whirlpool copper-tone washer in good condition. 983-3487. 9-18c

J&M UPHOLSTERY
Custom upholstery on autos and furniture, also furniture repair. 319 E. Poplar, Lockney 652-2207 Jesse Savage Ltfc

Kirby
Vacuum cleaners, new and rebuilt. 1 yr. guarantee. Parts, sales and service. Prices begin at \$124.50. Parker Home Furnishings In Lockney. 652-3315 Ltfc

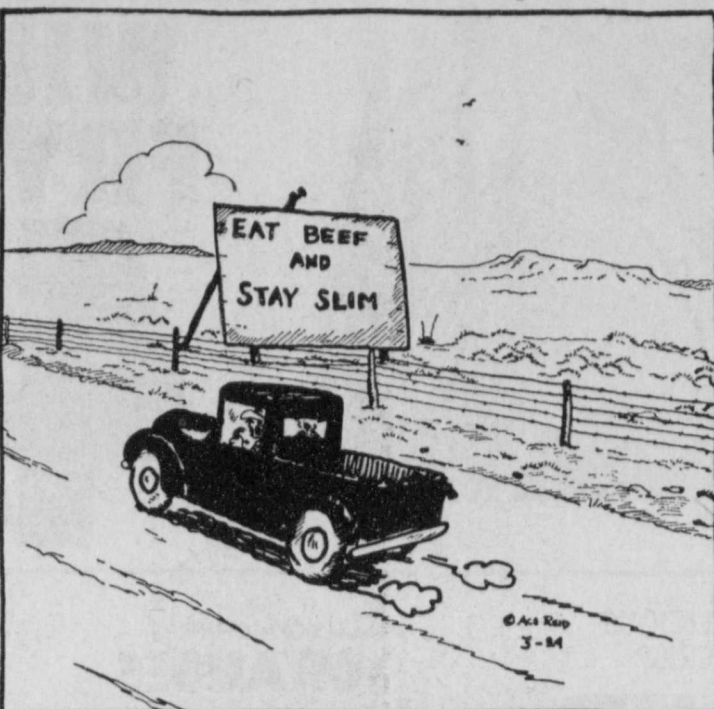
Your Message Makes A Bigger Splash... HERE!
Newspaper advertising is like having a party line to our entire circulation! Place your message today!

The Floyd County Hesperian or The Lockney Beacon



COW POKES

By Ace Reid



"'Ya, and raisin' that beef will do the same thing too!"

THIS FEATURE SPONSORED BY
Floydada Real Estate & Insurance Agency
AUTO, FIRE & FARM INSURANCE
Jim Word — — — Phone 983-2360

INSULATION
Fire-Resistant, Installed and Guaranteed
MARR INSULATION CO.
Tom Marr Owner 652-3593

LEGAL NOTICE

Notice is hereby given that effective as of the 15th day of September, 1977 the feedlot located 3 1/2 miles N.W. of Lockney, Texas, which was formerly owned and operated by Lockney Cooperative Gin will be under new management. The new operator of the feedlot is a Texas Limited Partnership known as Crofoot-Lockney, Ltd. After the above-mentioned date, Lockney Cooperative Gin will no longer be responsible for the operations at the feedlot.
LOCKNEY COOPERATIVE GIN
By Rainey Davis, General Manager L10-2c

MONEY TO LOAN
\$25,000 to \$100,000,000
For Most Any Purpose
Call- Randell King
983-5028

Farmers Insurance Group
Fast • Fair • Friendly
Farmers Insurance Group offers a complete line of protection: Auto • Fire • Life • Truck • Boat • Commercial • Liability
Sam A. Spence
112 W. Missouri 983-2881

Diamond Industrial Supply Co., Inc.
Phone Days 296-7118 Nights 296-1200 or 296-7828
1014 Broadway Plainview, Texas
Chain U-joints
Sprockets Oil Seals
V-belts O-rings
Sheaves Wisconsin
SKF BCA Timken Bower
Cotton Stripper Brushes & Bats
"We Appreciate Your Business More"
L-TFC

FARMS-RANCHES-CITY PROPERTIES-BUSINESS LEASES-LOANS
B. B. WILKES BROKER REAL ESTATE
100 S. Main, Lockney
Barry Barker, Solicitor
Barker Insurance Agency - 652-2642
IF IT IS INSURANCE -SEE-
BARKER INSURANCE AGENCY
LIFE-FIRE-CASUALTY-HOSPITAL

HOME FOR SALE

FOR SALE: New 3 bedroom and garage, two bath frame home. 325 West Missouri, Floydada. James Lovell, 983-2633. tfc

FOR SALE: 1 1/2 story brick house 1 mile west on Sandhill Highway. 4 bedrooms, 2 1/2 baths, kitchen, den, living room, and double garage. Phone after 5 o'clock 983-2276. tfc

NEW HOME FOR SALE: 3 bedroom, 2 bath, large double garage, built-in kitchen. Inquire First National Bank in Lockney. Lfc

2 BEDROOM home fully carpeted. Lots storage, extra large kitchen. Must see to appreciate. 983-3813 after 5:00. tfc

2 BEDROOM house, needs repair, fully carpeted, extra large. Kitchen, storage house. 610 W. Lee. 983-3347 after 5:00 p.m. or 983-2841 during day. tfc

SPACIOUS LIVING for large family, 5 bedroom or 4 bedroom with TV room. 3 1/2 bath shown by appointment only. 983-2856 ask for Gene Arwine or 983-2393. tfc

FOR SALE, Five room house and bath, garage and storage on big lot, good investment property. 414 Mississippi, Floydada. For information call Marvin Gilbert, phone 652-2337. Box 373, Lockney. L-tfc

2 BEDROOM, 1 bath, garage, storage house, 529 W. Missouri. Day 983-3929 after 5:00 p.m. 983-5277. TFC

FOR SALE-New three bedroom, two and a half bath home. Double car garage and storage. 3,751 square feet. 983-3828. tfc

LARGE 3 bedroom, 2 lots, double garage 983-3695. 602 South 5th. Joe Reid J ones. tfc

FOR SALE: 3 bedroom, 2 bath, large living room, large den, lots of storage. Pine panelling, Central Heat and Air Conditioning. Near schools. Call Guy Ginn, 983-2593. tfc

FOR SALE: 3 bedroom brick home, 1 1/2 baths, refrigerated air-central heat, on corner lot with cedar fence. 20' x 30' insulated metal building in back yard, has gas and electricity. Call 983-3840 after 5:00 p.m. tfc

3 BEDROOM HOUSE, large living room, dining, den and utility rooms. Price \$60,000 shown by appointment only. Call 983-2369, Harry Morckel, 817 W. Missouri St., Floydada, Texas. 9-28c

FOR SALE-2 bedroom house. Fully carpeted, storm windows, wall heaters, plumbed for washer and dryer. Good storage house. Contact Georgia Finley 983-3871 or Ann Ferguson 983-3157. tfc

HOUSE FOR SALE, 618 SW 2nd. The Lonnie Thompson house. Call 985-2285 or 985-2286, Tulla. L9-29c

FOR SALE, Remodeled brick duplex note carried by owner. Call 652-2688. Lfc

NICE 2 bedroom home, call after 4:30 p.m. 983-3310. TFC

MOBILE HOMES

LANCER 14 x 80. Many extras, excellent condition. 983-2951. 9-29c

FOR SALE-1974 ultimate 14 x 80, garage and lot. \$19,500. Call 652-2524. L-tfc

SITUATIONS WANTED

JOB WANTED: have commercial license. 983-2295. tfc

EMPLOYMENT

HELP WANTED: Must have commercial license. Call 983-2170. tfc

LOCKNEY INDEPENDENT SCHOOL District needs full-time SCHOOL BUS DRIVERS. Apply at Superintendent's Office, 416 W. Willow. L9-25c

HELP-WANTED... good part time job for mature lady in Floydada Methodist Church nursery. Good salary. Apply at the church. Jim Smith. tfc

EARN \$80.00 WEEKLY at home stuffing envelopes. Information: Rush 50 cents and stamped self-addressed envelope:
Financial Miracles
P.O. Box 15129
Forth Worth, Texas 10-6p

OWN YOUR OWN beautiful Jean Shop. No franchise. \$14,500.00 opens your door to success in the Fashion Field. Includes complete Inventory, Training and Fixtures. Ask for Mr. Hillard (501) 945-9661. 9/25p

RESPONSIBLE person wanted to own and operate candy & confection vending route. Floydada and surrounding area. Pleasant business. High profit items. Can start part time. Age or experience not important. Requires car and \$1495 to \$4995 cash investment. For details write and include your phone number: Eagle Industries 3938 Meadowbrook Rd. Minneapolis, Minn. 55426 9/25p

Real Estate

SEVERAL nice two and three bedroom homes for sale. Loans can be arranged. Call Sam Hale, Licensed Real Estate Broker at 983-3261. tfc

THREE bedroom house, carpeted, one-bath, utility room, fenced yard. Bond Real Estate. 983-2151 or 983-3573. tfc

FOR SALE-Three bedroom home in Lockney. Large rooms, cement cellar, double garage. Call 652-2134. Allison Realty. L-tfc

HAVE BUYERS for Floyd County land. If you have land for sale, please call Turner Real Estate, 983-2635. tfc

FOR SALE: store building, downtown Floydada, good location. Bond Real Estate. Call Wilson Bond 983-2151, 983-3573. tfc

BUSINESS SERVICES

MR. FARMER Let us clean your harvest equipment and well engines on your farm. Call Lone Star Chemical, Inc. 652-3594, 652-3504, or 652-3434. L-tfc

NORRELL TRACTOR PARTS for tractor and irrigation supplies and accessories. tfc

FEET TIRED? Try Mas-on Shoes with "Velvet-eez" air cushioned innersoles. Keith Emert, 652-3116. Lfc

PAINTING-residential and commercial, spray and brush. Acoustic ceilings and paneling. Economical prices-Free Estimates-Call 983-3306-Floydada. tfc

PIANO TUNING, Edward C. Lain. 25 years experience. Write Box 425 Silvertown or call 823-2151.

DIRT HAULING: Yard dirt and fill dirt. Call Wayne Bennett, 983-3209. tfc

SANDERS CONSTRUCTION AND MAINTENANCE CO. Welding, shop and portable pipe, structural and hard facing, all types of trailer repairs, elevator and gin work, pipeline work, electrical installations. 24 hour call 313 South Wall rear of building. Phone 983-5331. Home 983-3076. 9-25c

CARPENTER work wanted, additions, remodeling repairs, and cabinets. Call 296-5074, Plainview. L10-2c

FARMS AND ACREAGE

WANTED TO BUY irrigated or dryland farm in Floyd or surrounding area. Write Box X10, c/o Hesperian, Box 700, Floydada. tfc

PETS

AKC DOBERMAN puppies American and Canadian Champion Bloodline. Champion Pedigree, Males \$125.00 Females \$100 will make excellent watch and guard dogs. Lawrence Stovall 983-2847. 9-18c

Mr. and Mrs. House Buyer, Looking for a nice home in Floydada? Like a 3 bedroom brick, garage, central heat, evp, air, fenced yard and a low interest loan? Call 983-5315 after 6 Monday through Friday.



WE WANT YOU TO KNOW - We sell all kinds of Goodyear tires. Tractor, auto, truck, a good tire, good service. Best deals in West Texas. Truck winch and hauling service. BABE'S SERVICE CENTER, FLOYDADA. tfc

INSULATION
helps beat the heat!
TEXAS INSULATION SYSTEMS Box 591 Lockney, Texas 79241 (906) 652-3348
ThermoCon Spray-on for Metal Buildings & Shops ThermoCon Loose-Fill for Residential Application "Insulation doesn't cost, it pays!" Please call for a free estimate without obligation.

SAVE \$120.00 Extra hi-capacity water softener Was \$389.95 \$269.95
Model #3428, our largest water softener at its lowest price ever. Call today for free water test.
Shipping, installation extra
• Sears has a credit plan to suit most every need
• Prices are Catalog Prices
• Sale prices now in effect
Satisfaction Guaranteed or Your Money Back
Sears
Authorized CATALOG SALES MERCHANT
Sue Williams
100 S. Main
Floydada, Texas