

4-AA Playoff Tilt Saturday Afternoon In Plainview

The basketball playoff game for the District 4 AA girls' basketball title will be at 4 p.m. Saturday in the Plainview High School gym.

Admission is \$2 for adults and \$1 for students. Lockney fans will sit on the west side of the gym.

The game matches Lockney, 4-0 in the first round of district play, and Abernathy, 4-0 in the second round.

Lady Horns, Abernathy In Playoff

Sheila Hrbacek scored 37 points for Lockney Tuesday night as the Lady Horns basketball team defeated Idalou girls 50-41 in the final District 4 AA contest of the year.

Stephanie Turner scored 10 Lockney points. Bonita McDonald put in two, and Rebecca Evans got one in the contest.

The victory gave the Lady Horns a 7-1 district record. They're 3-1 in the second half, with a loss to Abernathy,

after going undefeated in the first round. The Lady Horns and Lady Lopes will tangle for the district

crown. Time and place for the playoff game was to have been decided Wednesday.

**WE BELIEVE IN YOU
LADY HORNS**

Lady Horns Lose To Abernathy, Beat Tulia

Lockney High School girls were defeated by Abernathy 45-38 in a basketball game here Friday night, but they bounced back and beat Tulia 55-30 Saturday in a game postponed from February 7.

The Lady Horns just didn't shoot well in the Friday game, Coach Marsha Sharp said. They made just 12 of 36

field goal attempts, and Abernathy played extremely well, Sharp said.

Lockney was paced by Sheila Hrbacek, who scored 14 points, and Stephanie Turner, who scored 13. Bonita McDonald added nine, Rebecca Evans two to the Lockney total. The Lady Horns were ahead 20-18 at halftime, and the score was tied at 32 starting the final period.

It was a different story Saturday, when Hrbacek netted 24, Evans 18,

Turner six, McDonald four, and Kim Spencer three for Lockney, and the Lady Horns soundly defeated Tulia's girls. Lockney led 34-16 at halftime and 42-23 at the end of the third quarter.

Sharp said she was proud of the good team effort shown after the previous night's defeat, and said Hrbacek, Evans, and guard Karla McCarter played one of the better games of the district season Saturday night.



The Lockney Beacon

"Serving The Irrigation Belt"

15¢ Per Copy

Volume 77 Lockney, Floyd Co., Texas 79241 Thursday, February 16, 1978 12 Pages in One Section Number 14

Longhorn Cagers Drop Two

The Longhorn basketball team lost district basketball decisions to the Abernathy and Tulia last weekend—Abernathy won 75-58 here Friday night, and Tulia posted a 59-41 victory there Saturday in a game that was supposed to have been the previous Tuesday but was postponed because of

weather and road conditions.

The nearly two week layoff (last time the 'Horns had played before Friday night was Tuesday, January 31) hurt the Lockney team in the Abernathy contest, Coach Mike Bellar said.

The Longhorns were down by 11 points at halftime but led by three once in the second half. They couldn't hold the lead, however, and were outscored 26-13 in the last quarter. It was "the poorest defensive effort of the year," according to Bellar. "It was the first time all year that we've been out-hustled," he said.

Jim Burt had an outstanding game, though, scoring 22 points and getting several key rebounds. "It was Burt's best game of the year," Bellar said. Also scoring for Lockney were Howard Moore, 14 points; Danny Clark, 13; Danny Riddley, six; and Earlee Mathis, three.

The Longhorns had a good defensive effort Saturday, Bellar said, but "couldn't buy a basket in the first and fourth quarters."

Clark and Riddley shared high-point honors with 10 apiece. Moore managed nine, Burt and Mathis three each, Aaron Wilson and Billy Sessom two apiece.



SHAVE AND A HAIRCUT...Lockney FFA'ers Joe Rotiz, Bryan Hayes and Hector Araujo ready pig for livestock show. (Staff Photo)



SHAMPOO...Lane Turner of the Lockney FFA washes his entry in the stock show. (Staff Photo)

'Horns Win For Seniors

The Lockney Longhorns closed out their basketball season with an overtime victory over District foe Idalou Tuesday night. The 'Horns pulled out a 48-46 win in one overtime period after ending regulation tied 41-41.

Scoring leaders for the Longhorns were Danny Riddley, who netted 12, Danny Clark, who put in 11, and Howard Moore, who totalled 10. Earlee Mathis added eight Longhorn points, Jim Burt four, Billy Sessom two, and Aaron Wilson one. Sessom's two knotted the score with less than a minute to play, throwing the contest into the extra period.

Coach Mike Bellar said it was a great team effort. "The kids wanted it, and they went out and got it," he said. Before the contest, the team dedicated the game to the seniors.

The Longhorns finished with 11 wins, 19 losses for the season. They were 4-4 (2-2 in each round) in district competition.

Stock Show Here Saturday

FFA and 4-H club members who live in the Lockney Independent School district are eligible to enter animals in the Lockney Junior Livestock Show, scheduled Saturday at the fairgrounds.

Lockney Chamber of Commerce sponsors the show each year, providing

ribbons and prize money totalling over \$500 for the young exhibitors.

About 100 swine, 100 sheep, and 15 steers are entered in this year's show, according to Lockney High School vocational agriculture teacher Elvin Lyon.

Show judge will be Tommy Hancock, vo-ag teacher at Olton.

Prize money in each sheep and swine class is \$6 for first, \$5 for second, \$4 for third, \$3 for fourth and \$2 for fifth place. Steer prize money is \$10 for first, \$8 for second, \$6 for third, \$4 for fourth and \$2 for fifth place in each

class. An additional \$10 goes to the exhibitors of the grand champion swine and steer, and reserve champion exhibitors get \$5 added prize money. Showmanship trophies will be awarded in each division.

The show starts at 9 a.m. Saturday in the fairgrounds show barn.

Sunday, the showmen will begin taking their animals to the Floyd County Junior Livestock Show at Floydada. The county show will be Monday and Tuesday, with the sale scheduled Wednesday and the annual banquet honoring exhibitors and their parents here next Thursday.

Ice Storm May Cost Lighthouse \$75,000

By Wendell Tooley
It wasn't exactly an ice storm, but the accumulation of snow, rain and cold weather that gradually loaded electric lines in Floyd, Briscoe, Motley and Crosby counties until the electric lines...and the poles begin to break that supplied power to rural people.

"Some as big as your arm encircled some of our wires," Lighthouse Electric Cooperative manager Alton Higginbotham said Tuesday.

"We noticed problems developing last Wednesday when some calls begin

to come in...on Thursday we had 15 poles down, and by Friday 37 poles...then Saturday morning about 6 a.m. the reports flooded in...and when we finally got everything under control we counted about 240 poles down," Higginbotham continued.

Higginbotham said the cost of poles, wires, other materials, 810 man hours from Saturday through Sunday, the employing of a Plainview contractor and some 12 men from there would all amount to possibly \$75,000 before

everything is back in order. "We were able to get in a load of poles, and had a pretty good supply of materials to get electricity back to almost all our customers this week...and we furnished auxiliary generators to some farms and ranches," Higginbotham said.

"We are most appreciative of the many people who helped in communication and other needs as we worked around the clock to restore service, and of course our employees came through in the time of stress," he said.

...and it could have been much worse had the wind got up during the icy

period of weather.

Higginbotham said this "freak of nature" was the worst he could remember for the Cooperative. He said there was a pretty bad ice storm back in 1949, but many people were not so dependent upon electricity back then.

School Election April 1

An election to choose two Lockney school district trustees will be held April 1 in the Lockney High School entrance. The school board called the election Monday night during the February board meeting.

The terms of trustees Kenneth Brosch and Kelton Shaw expire. Last day for candidates to file in the election is March 1.

The school board appointed Mike Mooney election judge, approved Mooney's selection of Kenneth Wolford, Eddie Teter, Boyce Mosley, Alice Cruz and Warren Mitchell as election clerks, and named school superintendent's secretary Billie Huggins absentee voting clerk. The school board terms are for three-year periods.

Also Monday night, school trustees accepted resignations from vocational agriculture instructor Monroe Shannon and kindergarten teacher Jean Marie Malton, and rehired principals R.L. Knox, James Poole and Weldon Dodson, and athletic director Jim Warren.

They met with a representative of Southern Bleacher Company about the aluminum seats installed at the

school football stadium last fall, and heard preliminary reports on the ag and band budgets from superintendent W.H. Hallmark and band director Raymond Lusk.

Insurance coverage on school-owned vehicles was extended to comply with attorney's recommendations. Trustees Eugene Tannahill, Eddie Foster and Tom Duvall were appointed to a committee to study all school insurance.

The school board approved a "vocational advisory committee" consisting of Bill Turner, George Sparkman, Paul Glasson, Buck Ford, Jerry Johnston, Dan Teuton, Kenneth Murdock, Richard Ellison, Mrs. Gayle Fortenberry, Claude Brown, Mrs. Fritz Schacht, Mrs. Elsie Clark, Mrs. Molly Huffman, Mrs. B.J. Saenz, Mrs. Pat Adams and Mrs. Jo Ann Rogers.

Two custodians, Mario Hernandez and Mary McCreedy, were hired. Attending the meeting were trustees Duvall, Foster, Tannahill, Brosch, Shaw, Jerry Williams and Austin Beedy; the superintendent, principals and athletic director.

American Ag Meeting Tonight

There will be an American Agriculture meeting tonight, February 16 at 7:30 p.m. at the MAC, Floydada.

All farmers and agribusiness people are urged to attend this important meeting. Local representatives who met with the House Agricultural Committee will present an update on current activities in Washington, D.C.

COMMISSIONERS WANT NEW JAILHOUSE PLANS

After meeting with architect Marvin Stiles and Joe Slater, state jail standards inspector this week, the County Commissioners asked Stiles to submit new plans for remodeling the present jail that would be less expensive.

The original plans which included an addition to be built on to the present jail and an elevator would have cost an estimated \$350,000. The Commissioners are trying to scale the plans down to a lower cost that will still meet state jail standards.

In other business the Commissioners set the salary of adult probation officer Lynn Buzbee of Spur at \$504.63 per month as of January 1, 1978, and appointed Kenneth Pool to take the place of Mrs. Beverly Washington on the county grievance committee.

Floyd Farmers Part Of Nationwide Survey

Production expenditures nationwide averaged just over \$32,000 per farm in 1976, according to a survey conducted by the U.S. Department of Agriculture and the Texas Crop and Livestock Reporting Service. The total outlay to raise crops, livestock, and poultry ran up a bill of \$89 billion.

The major expenditure was for feed, which accounted for over \$14 billion. Next came rent cost of \$8 billion; interest and taxes of \$7.9 billion; wages at \$7.4 billion; and purchases of fertilizer, lime, and soil conditioners at a cost of \$7.2 billion.

The Texas Crop and Livestock Reporting Service, with help from producers, participated in developing this information.

Melinda Wilson Plays In All-State Symphonic Band

Melinda Wilson, LHS senior, was in Houston Wednesday through Sunday, as a member of the 1978 All-State band. Rehearsals were Thursday through Saturday in Astro Hall.

Selection of all state bandmen is made through area audition, including students in the South Plains, and regional audition, including the West Texas area Amarillo to El Paso. Melinda who plays euphonium, was one of five selected to play euphonium in the symphonic band.

The rehearsals were climaxed on Saturday evening with the Grand Concert, including the all-state symphonic band, the all-state choir of 240 voices and the all-state orchestra, held in the Astro Arena. This is the third year Melinda has been selected.

Mr. and Mrs. Raymond Lusk, Keri Dee, and Mrs. Chuck Wilson attended the event and other concerts and programs of the Texas Music Educators' Association Convention held jointly in the Astro Complex.

Other of Melinda's relatives attending the grand concert were Mrs. Arnold Leonard, Brandt Leonard, Ft. Worth, Mr. and Mrs. James Carthel, Cara and Craig, Mr. and Mrs. Tom Parish, Rosemary, Anita, and Melanie, all of Houston.

program will be "Action" and the...
to provide...
with some...
information...
food situation...
marketing utilization...
own area," Brown...
Susan Schler...
to the Chief...
the United...
Department of...

FEBRUARY 12
HEART MONTH

25¢
5-Piece
Place Setting
MARCH 1, 1978

OUR
DELICATESSEN
FEATURES GOLDEN
FRIED CHICKEN
TO GO

SOFTNER SHEETS

PRICE 69¢
VALUE

2, KEEBLER
CH VANILLA OR
STER PATTERN

COOKIES 69¢
VALUE

SEVEN ROMAN MEAL

APPLES 67¢
VALUE

WINO DINNER TIME

ROLLS 3 FOR \$1.00
VALUE

WICH 2/99
VALUE

MULTI-PAK

ONEY 59¢
ONS

7% VALUE

LIQUID "FOR DISHES"

ALMOLIVE 77¢
WITH COUPON

THOUT COUPON 9¢

PER SUDS GIANT 40¢

PETERGENT 79¢
WITH COUPON

WITHOUT COUPON 9¢

5 LB FRISKIES

DOG FOOD \$3.99
WITHOUT COUPON 9¢



ENGAGEMENT ANNOUNCEMENT

Jackie Chadwick announces the engagement and approaching marriage of her daughter, Denice to Stan Payne, son of Mrs. Coy Payne of Lockney. Denice is a 1976 graduate of Southwestern Oklahoma State University School of Pharmacy and is currently employed as a registered pharmacist by Albertson's in Lubbock. Stan is a graduate of Lockney High School and owner of Stan's Barbers in Plainview. A March 18th ceremony is planned in the First Baptist Church of Floydada.

Wesley Anns Meet With Maymie Clark

The Wesley Ann Circle of the United Methodist Church met in the home of Mrs. Maymie Clark Monday evening. Mrs. Billie Jordan called the meeting to order and Eldie Bryant led in prayer. Elizabeth Armstrong read the minutes of the last meeting.

Diana Glover continued the study on THE CARRIBBEAN CRESCENT. Some of the points discussed were that the United States is controlling the economy of the Caribbean Crescent. The economics is dependent on agriculture. There is a low standard of living. Products are timber, cocoa, coffee, fruits, and animals. Eighty percent of the tourism comes from the United States and Canada. Money and politics influence big business. One of the greatest products is bauxite from which aluminum is made, and the U.S. uses seventy percent of it.

The group received a report that Larina McKinney fell and was injured and is in the Caprock Hospital. Refreshments were enjoyed by Elizabeth Armstrong, Julia Baker, Eldie Bryant, Diana Glover, Lula Green, Ethyle Hinson, Billie Jordan, Bennie Leibfried, Jewel Martin, Helen Solomon and Kathleen Stewart.

Society

Miss Donna Tannahill Is Honored At Bridal Shower

Miss Donna Tannahill was honored at a bridal shower Saturday afternoon in Fellowship Hall of the Lockney First United Methodist Church. The shower was moved from the home of Mrs. Bill Sherman to the church hall because of weather conditions. Miss Tannahill and Billy Marrielle are to be married March 19.

Guests were greeted by Mrs. Sherman and registered by Miss Bonnie Jack and Miss Karla Sherman. The registering table was an antique one belonging to Mrs. Sherman and was accented with handcarved candelabra with milk glass votives.

In the receiving line were Miss Tannahill, her mother, Mrs. Eugene Tannahill and grandmother, Mrs. Leta Tannahill; and Mrs. Buck Marrielle of Floydada, mother of the prospective groom.

They wore corsages made of kitchen utensils tied with yellow satin and tulle.

Miss D'Lyn Mathis, Miss Dena Casey, and Miss Kay Tannahill served refreshments. Coffee and hot spiced punch with an assortment of lovely cookies and nuts were served from a table covered with a white floor-length cloth under white lace. The centerpiece was a formal arrangement of yellow daisies in a silver urn, accented with mint green ribbon. Yellow candles in silver holders, yellow napkins imprinted "Donna and Billy," and silver coffee and tea service completed the table appointments.

Mrs. Floyd Lyles and Mrs. Joe Taylor helped display the gifts. Hostess gift was a vacuum cleaner.

Iota Tau Members Enjoy Valentine Supper

The Petersburg members of the Iota Tau Chapter of Delta Kappa Gamma hosted a delightful Valentine supper Monday evening, Feb. 13, in the Fellowship Hall of Petersburg First Methodist Church. Emily Johnston, president, presided over the business session, and Ruth Adams led a patriotic sing-along.

Chairman of Professional Affairs Committee, Barbara Webb, introduced the speaker Mrs. Frances Watkins, District Coordinator of Levelland. Meeting concluded with the singing of the club song.

The following members from Floydada attended: Carol Bell, Louis Hamilton, Emily Johnston, Sunny McDonald, Frances Mitchell, Noma Rainer, Ella Reue, and Dale Tyr.

The following members from Lockney attended: Wilma Adams, Dorothy Bradley, Mary Glenn Degge, and Jeanette Marr.



Sue Webster and Carrie Webster

Baker Granddaughter Is Rainbow Girls Worthy Ad

Mr. and Mrs. W. O. Baker have returned from San Antonio where their granddaughter, Carrie Webster was recently installed as Worthy Advisor of Huisache Assembly, Order of Rainbow for Girls at the Eastern Star Temple in San Antonio, Texas.

FLOYD DATA

Mrs. Ralph Lemons is at home recuperating from major surgery. Among her recent visitors were her sister and husband, Mr. and Mrs. Amos Turner, Belen, New Mexico, and son, Dewayne Lemons, Columbia, Maryland.

Whirler Dance Saturday

Floydada Whirlers Square Dance club will dance Saturday, February 18 at 8 p.m. in the Massie Activity Center. Finis Nabors of Lubbock will be the caller. Everyone is welcome to attend.

CORRECTION

The name of Debra Hardy was printed as Debra Hardy on the Grandchildren Valentine page Sunday. Debra is the daughter of Mr. and Mrs. Don Hardy.

Edwards Speaker For 1950 Study Club

The 1950 Study Club met at the First National Bank Community Room Monday

evening, February 13th. Ann Helms was hostess and also presided at a brief business meeting.

Guest speaker for the evening was Craig Edwards who reported on the American Agriculture Movement. Members present were Ann Helms, Nettie Ruth Whittle, Gale Ramsey, Carolyn Cheek, Shirley Morton and Nina Copeland.

Popcorn—a healthy snack food—supplies fiber and nutrition, and its starch digests easily, say Mary K. Sweeten, foods and nutrition specialist with the Texas Agricultural Extension Service, The Texas A&M University System. However, the extras—butter, oil, caramel, salt—could be diet hazards, she cautions.



THERE WAS A BIG CROWD Monday night in the FHS high school to see Fowler and his Gospel musicians. Wally is pictured here in his first...

Advertisement for Minit Mart featuring various products and prices. Includes items like Shortening (98¢), Detergent (\$1.29), Parkay Margarine (55¢), Catsup (49¢), Beans (3 for \$1.00), Pepsi (98¢), and Corn Dogs (2 for 39¢).

South Plains News

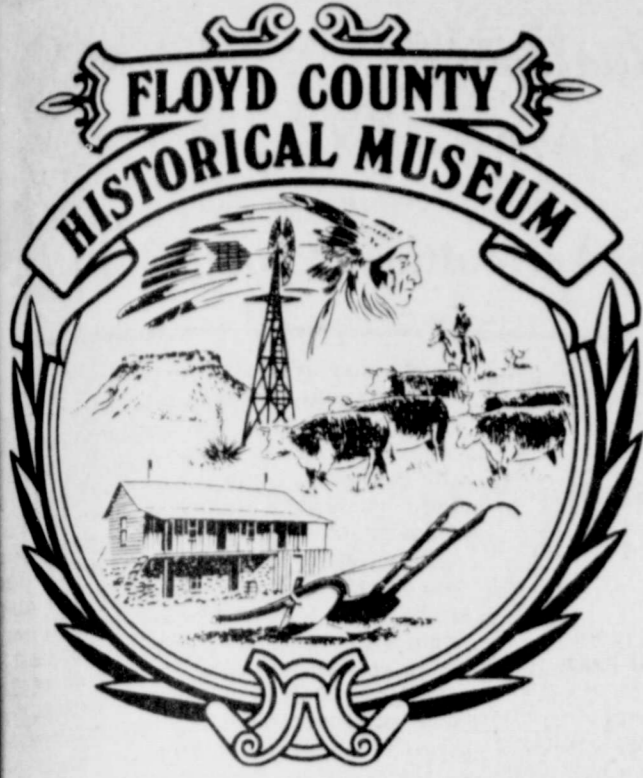
By Mrs. Murray Julian. South Plains, Feb. 13—The Associational Workers Conference was held at the Baptist Church in Flomot Tuesday Feb. 14, beginning at 6 p.m. with the evening meal and program following the Board meeting and WMU meeting, Wednesday the Adult Mission Group met for an all day session for the study, "The Leaven and the Salt." Husbands and others were invited to share the lunch hour. Mission Friends, G.A.'s and R.A.'s met at 4 p.m. Wednesday, and February 20-21, the Pastor's and Layman's Conference will be held at Wayland Baptist College in Plainview.

the daughter of Mr. and Mrs. Sylvan Kinnibrugh, entered the Central Plains Hospital in Plainview Monday Tuesday she had major surgery. During this past week of gray, icy weather, we had about 3 inches of snow and some rain Saturday night. Electricity and telephones have been out several times the past week, in many sections of our community. Thirty-nine electric poles were reported down and broken southeast of Silverton in the ice storm of last week. We had no reported trouble, except for inconveniences and cold homes which occurred while electricity was off for several hours at a time.



SNOW PREVENTED Senator Ray Farabee from speaking to Floydada Lions and Rotarians Wednesday but there were cuts off tie of Republican candidate Bill Hale so he distinguished from Democrat candidate G.B. Johnston in back...

By the Proj... Are you... the Floyd... look as far... ries are con... Histories w... until March 1... focused on r... minutes and bu... or inclusion... look. For month... county histo... has been ma... port to convin... who has ever... county, as we... ve here no... tories and... should be in... volume now i... being compil... will give the... county from... right up to no... s granted 50... space to tel... family life.



By the Project Committee

Are you aware that we are in the home stretch for the Floyd County history book as far as family histories are concerned? Histories will be accepted until March 15 while work is focused on memorials, tributes and business histories for inclusion in the history book. For months, the Floyd County Historical Museum has been making every effort to convince each person who has ever lived in Floyd County, as well as those who live here now, that family stories and photographs should be in the handsome volume now in the process of being compiled. This book will give the history of the county from 1878-1978—right up to now. Each family is granted 500 words of free space to tell about their family life.

There are still some people in, of, or from Floyd County who think that because they are not pioneers their stories are not wanted. Don't believe it! We want the family history of everybody who has ever been a resident of this county, and the time of residence is not a factor," states Mrs. Virginia Taylor, book committee chairman. Our publisher tells us that in each county where such a history book has been printed, there have been many disappointed people who failed to write their histories in time. We know that you don't want your names in the book for publicity, but we hope you will take time to write your family history so that your descendants will enjoy reading about their family. Many of you have already responded to the challenging task of writing your story. The historical book project

committee thanks each of you. Besides the family history section of the book, there will be a memorial, tribute and business history section. Memorial pages provide an excellent way of remembering someone for years to come. Tribute pages can be written about any living relative or friend and provide a unique way of saying "Thank You" and "I love you." Histories of businesses and organizations are very much wanted in the book and are available for a fee, the same as memorial and tribute pages. Every church in the county has been told that they may have a free page if 30 families will turn in their stories through the church. These stories must be given to the church to be counted. Books are being sold for a pre-publication price of \$24.50 plus sales tax. After March 15, the price will greatly increase. This is a once-in-a-life purchase for there will be no second printing. To submit stories, buy special pages or order books, please contact the Floyd County Historical Museum, Box 304, Floydada, Texas 79235, or call 983-2415.

Silverton Young Farmers Meet

The Silverton Young Farmers held its regular meeting Feb. 9, at 7:30 in the Ag Shop. Guest speaker, James Griffin, was unable to attend. A Dutch treat breakfast will be held Thursday morning, Feb. 23, at 6:30 a.m. at the City Cafe. At 7:00 a.m., Mr. Griffin will speak and everyone is invited to attend.

Plans were finalized for the upcoming Young Farmer/Young Homemaker Banquet on Feb. 18. Reports were read and the Outstanding FFA member was chosen. Guest speaker for the banquet will be Mrs. Jean Burchett of Childress, who calls herself the "Female Jerry Clower." Besides being a humorist and speaker for many functions across the Panhandle, Mrs. Burchett is also writing articles and has had nine of her stories published since March. Those attending the meeting were Orville Turner, Clinton Dickerson, Fred Brannon, Fred Hill, Fred Minyard, Calvin Shelton, G. W. Chappell, Wayne Stephens, Tobe Riddell, John Thacker, Jerry Bean, Doug Bradford, and guests Jarvis Flowers, and Wendell Hardin.

The Silverton Young Farmers met Jan. 26 at the Ag Shop. Plans were made and discussed about the Young Farmer/Young Homemaker Banquet scheduled for Feb. 18.

Members attending the meeting were Wayne Stephens, Clinton Dickerson, Fred Brannon, Van Breedlove, G. W. Chappell, Bailey Lloyd, Donnie Perkins, Calvin Shelton, John Thacker, Doug Bradford, Fred Hill and Earnest Kiker.

Water-saving showerheads, dishwashers and washers help save money—they use less water, and they save water-heating energy, says Sue Young, housing and home furnishings specialist with the Texas Agricultural Extension Service, The Texas A&M University System.

Area Farmer Urges 50 Percent Cutback

WASHINGTON (AP) — Jolted like a prizefighter on the receiving end of a sharp right jab, a Texas farmer stepped out of a Tuesday meeting with President Carter and vowed not to go down for the fourth time. "He (Carter) told us that the 1977 Farm Bill was working, that it will work and that American agriculture will work itself out of the situation it's in," said a tight-lipped Gerald McCathern after spending 50 minutes with Carter, Secretary of Agriculture Bob Bergland and 19 other farm group representatives. "We're going back to Texas and across the nation and urge farmers to participate in the 50 percent cutback. We feel this will cause shortages across the nation but this will get us a price." The Hereford farmer said the president, "gave the American Agriculture movement all of four minutes to explain our problems and proposed solutions to the problems." When asked who he thought the president was listening to in the meeting,

McCathern replied: "I feel the president was listening to the president." McCathern also said he felt the folks back home would support the farmer rather than the president. "The businessmen and bankers have helped pay our way up here. Yes, I think the people back home will back us." The farmers have been lobbying and rallying in Washington since early January when Congress reconvened. Citing the critical cost-price squeeze facing the farmer, the American Agriculture movement has asked both Congress and Carter for 100 percent parity. Full parity would theoretically restore the farmers to the buying power they enjoyed in 1910-14. Farmers now have 65 percent of the buying power they had more than 60 years ago. Before Tuesday's meeting, McCathern had voiced optimism toward the session. But the former Georgia peanut farmer dashed his hopes to the ground. "The Democratic platform says the exact opposite of what he and the administration are saying. The platform stated

FIRE ANT QUARANTINE EXPANDED—A federal quarantine has been expanded in Texas in an attempt to halt the spread of the imported fire ant, says an entomologist with the Texas Agricultural Extension Service. The quarantine now takes in all of Bastrop, Cass, Goliad, Hays, Lee, Travis and Williamson counties. Also, quarantined areas have been enlarged in Atascosa, Bee, Calhoun, De Witt, Ellis, Frio, Gillespie, Gonzales, Grayson, Kerr, Leon, Limestone, Refugio, Upshur and Wilson counties. The quarantine restricts the movement of such fire ant carriers as nursery stock, soil, grass sod, hay and soil-moving equipment.

Democrats were for parity prices for agriculture based on prices covering the cost of production plus a reasonable profit," continued McCathern. "I campaigned for Jimmy Carter... I voted for him." Asked if he would vote for the president again, McCathern quickly said: "No, I would not. I can't speak for the rest of the farmers, but he's lost his farmer's vote."



—Herald Staff Photo

CHECK SHIPMENT — Before loading three containerized truck-trailers in a pilot program to send soybeans directly from the High Plains to

Japan, Texas Commissioner of Agriculture Reagan Brown, left, Robin Anderson, Randell Hodges and Don Anderson check the quality of the soybeans.

Pilot marketing program kicked off in Edmonson

By DOUG McDONOUGH
Herald Staff Writer

EDMONSON — A pilot marketing program of shipping soybeans in sealed containers from the High Plains to Japan was kicked off today by Texas Commissioner of Agriculture Reagan Brown at Farmers Gin of Edmonson. "We are attempting to go direct from the High Plains farmers to the consumers of Japan with our products," said Brown. "We produce a high quality soybean on the High Plains and, by shipping it in sealed containers, we can take advantage of and maintain that quality without our soybeans being mixed with inferior beans in transit."

Three containerized truck-trailers were loaded with soybeans at Farmers Gin today, according to Randell Hodges, gin president. These trailers will be inspected and sealed in Edmonson and will not be opened until their arrival in Japan.

"We have some pretty stiff competition in agriculture marketing and we have to take advantage of everything we can. If this pilot project is successful, maybe some of our customers will begin asking specifically for soybeans from Edmonson along with products from other specific areas of Texas," Brown said.

A JOINT PROJECT between the Texas

Department of Agriculture, Farmers Gin of Edmonson and Agricultural Investment Consultants, Inc., of Lubbock, today's shipments culminated six months of planning, Hodges said.

Don Anderson of Agricultural Investment Consultants explained one of the aims of the project. "These soybeans will be test marketed in Japan for human consumption. This way we will be going directly to the consumer to determine what kind of soybeans he wants. This may lead to growing specific varieties of soybeans and other crops for specific customers."

South Plains School

Board Election April 1

The South Plains school board election has been set for April 1 and filing deadline is March 1. The terms of school board members Dean Stewart, Fred Marble and Tommy Scaff are up this year.

The soybean shipment corresponds with increased marketing efforts by the Texas Department of Agriculture, Brown said. "Agricultural products are the only things we have that people outside the United States are willing to buy. It is the only way to get our money back from foreign trade."

"OUR FARMERS' only sin is that they produce more than they can sell. We can't store ourselves into prosperity. We can't strike, set aside or soil bank ourselves into prosperity. I'm for 100 percent of parity, but this should come through the market place because the government has a poor track record for running anything," Brown said.

In addition to market development, Brown said a major aim of the Texas Department of Agriculture in the future will be work in better transportation systems for agricultural products. "The soybeans, because of rate differences and laws, will be shipped by truck to Houston. In Houston, they will be loaded on rail cars and shipped through Lubbock to the West Coast. To truly be competitive, we must correct some of those situations."

During 1977, Hale County was a major High Plains producer of soybeans, according to County Extension Agent Ollie Linder, raising 44,000 acres of the crop.

HAGGAR SEPARATES
LEISURE JACKET
Reg. \$27.50
21⁸⁸
MATCHING PANTS
Reg. \$15.00
11⁸⁸
The leisure look is back. Buy.... matching or contrasting pants to go with the leisure jacket of today.
Choose from Navy, Brown or Beige.
Sizes 38-46
Reg. - Long

PANTSUITS
Reg. to \$24.00 **15⁸⁸**
Choose from our large selection of styles, colors and sizes.
New spring colors included.

Jarman Shoes For Men
ALL STYLES
Reg. to \$33.00 **24⁸⁸**

2-Racks
Girls Clothing
Dresses, Pants, Tops, Sleepwear, Coats
Values to \$32.00 **1/2 Price**

WHILE THEY LAST!!!
Disposable Diapers
KIMBIES & PAMPERS
1/2 Price

Jr. Misses half size **Dresses 1/3 Off**
Jr. Jeans & Poly Gab **Pants 9⁸⁸**
May Queen Panty **Hose** Reg. 99¢ **66¢**
Ladies **Tops & Blouses 5⁸⁸-7⁸⁸**
Girls **Panties** Values to \$1.00 **77¢**

BEST FORM
Silver Saver Bra
REG. \$2.59 **2/5⁰⁰**
STRETCH STRAPS... self adjustable, always comfortable!
NO-SEAM CUPS... ultra smooth under the clingiest things!
FIBERFILL PADDING... LYCRA® BAND, SIDES, BACK

Bealls

Floyd Youth Enter Stock In Houston Show

Ten 4-H members from Floyd County and five FFA members from Floydada will be participating in the 1978 Houston Livestock Show and Rodeo, February 22-March 5. With more than 22,500 expected livestock entries, the Houston Show will once again be the largest in the world. For junior exhibitors throughout the state, the Houston Show is the culmination of a year's hard work of preparing their animals for the toughest of show ring competition. It is hard work that often pays off: open show and junior exhibitors will vie for \$470,210 in prize monies and premium auction prices above market value.

NOTICE OF INTENT TO ABANDON

QUANAH, ACME AND PACIFIC RAILWAY COMPANY hereby gives notice that on or about March 10, 1978, it intends to file with the Interstate Commerce Commission, Washington, D. C. 20423, an application for a Certificate of Public Convenience and Necessity, permitting the abandonment of a line of railroad extending from Railroad Mile Post G-728, plus 10 poles plus 700 feet, near Acme, Texas, to Railroad Mile Post G-833.2 near Floydada, Texas, a distance of approximately 104 miles, in Hardeman, Cottle, Motley, and Floyd Counties, Texas. The line for which the abandonment application will be filed includes the stations of Paducah, Texas at Mile Post G-766.1 and Floydada, Texas at Mile Post G-833.2.

The reasons for the proposed abandonment are the public convenience and necessity no longer require the continued operation of the line and the continued operation of the line would be a burden upon applicant.

The line of railroad has appeared on the System Diagram Map in Category 1 (§ 1121.20) (b) (1) since November 3, 1977. The interests of railroad employees will be protected by appropriate conditions as set forth in Chicago, B. & O. R. Co. Abandonment, 257 I.C.C. 700 and the applicable provisions of the Rail Passenger Service Act.

Any interested person, in response to this notice, is entitled to take either of the following actions:

1. File with the Interstate Commerce Commission written comments containing:
(a) exact name and address of the commenting party;
(b) brief statement of interest in the abandonment or discontinuance proceeding;
(c) specific statement of position and summary of evidence with regard to any or all of the following:
(1) intent to offer financial assistance;
(2) environmental impact;
(3) impact on rural and community development;
(4) suitability of the properties for other public purposes; and
(5) recommended provisions for protection of the interests of employees.

Written comments will be considered by the Commission in all proceedings in developing conditions and in determining whether to conduct an investigation on its own motion. In the event an investigation is conducted, then the commenting party may participate in the proceeding as its interests may appear.

2. File with the Interstate Commerce Commission a petition requesting that the application and proposed abandonment be investigated.

The petition to investigate shall be in the form of a verified statement, and at minimum, contain:

- (a) identification of petitioner including its name, address and business;
(b) statement of petitioner's interest in the abandonment or discontinuance proceeding; whether petitioner uses the involved service; and if it does not, information with respect to the group or public interest it represents;
(c) specific reason(s) for requesting the institution of an investigation, including information with respect to petitioner's reliance on the involved service, with allegations of fact supported by an affidavit of personal knowledge of the facts;
(d) any rebuttal of information or material submitted by applicant; and
(e) request for oral hearing and reasons therefor if desired.

Upon receipt of a petition to investigate, the Commission shall determine the extent of the investigation to be instituted. Those parties filing petitions to investigate should be prepared to participate actively in either oral hearings or via the submission of additional material in the form of verified statements. Parties seeking information concerning the filing of petitions should refer to 49 CFR 1121.36.

Petitions to investigate and written comments should indicate the proceeding designation No. AB-109 (Sub-No. 1F) and should be filed with the Interstate Commerce Commission, Washington, D. C. 20423 no later than April 14, 1978. Interested persons may file either a written comment or a petition to investigate with the Commission to become a party to this abandonment proceeding. A copy of each petition to investigate or written comment shall be served upon the representative of the applicant, D. E. Engle, Vice-President-General Counsel, St. Louis-San Francisco Railway Company, 906 Olive Street - Suite 1023, St. Louis, Missouri 63101. Replies to comments or petitions, the latter shall be in the form of a verified statement, shall be filed with the Commission no later than April 24, 1978 and shall be served on all commenting parties and petitioners. The original and two copies of all petitions, comments and replies shall be filed with the Commission together with a certificate of service.

In the event a petition to investigate prepared in accordance with the above instructions is filed, then the Commission will conduct an investigation of the abandonment. Written comments filed with the Commission will be considered by the Commission in all proceedings in developing conditions and in determining whether the Commission should conduct an investigation on its own motion in the event no petition to investigate is filed. Additionally, if an investigation is conducted then parties filing comments may participate in the investigation as their interests may appear.

Persons desiring further information concerning abandonment procedures may contact the Interstate Commerce Commission's Section of Finance, Office of Proceedings or refer to the full abandonment and discontinuance regulations at 49 CFR Part 1121. Persons desiring information concerning financial assistance for the continued operation or acquisition of the involved line should contact the Commission's Rail Services Planning Office. The carrier's representative to whom inquiries may be made is D. E. Engle, Vice-President-General Counsel, St. Louis-San Francisco Railway Company, 906 Olive Street - Suite 1023, St. Louis, Missouri 63101. A copy of the application will be available for public inspection on or after March 10, 1978 at each agency station or terminal on the line proposed to be abandoned or discontinued. The addresses of those agencies are: QA&P Depot, Box 517, Floydada, Texas 79235 and QA&P Depot, Box 476, Paducah, Texas 79248. The Floydada station is open 8:00 A.M. to 5:00 P.M., Tuesday through Saturday, and the Paducah station is open 9:00 A.M. to 6:00 P.M., Monday through Friday. The carrier shall furnish a copy of the application to any interested person proposing to file a written comment or petition to investigate, upon request.

QUANAH, ACME & PACIFIC RAILWAY COMPANY

bustling oil and space flight capital. More than 6,000 trailriders journeying as far as 2,000 miles will join city officials and bands as the annual rodeo parade winds through the canyons of downtown streets at 9:15 a.m. on Friday, February 24.

Following the parade, the action moves farther out Main Street to the Astro-dome and the adjoining Livestock Exposition facilities where the rodeo will open with a matinee performance in the Astro-dome at 2 p.m.

The livestock show begins a week earlier with open show competition on Feb. 22. Professional breeders and ranch owners from some 35 states will bring in the best in breeding stock to compete in breeding beef, dairy, swine, poultry, sheep, Angora goat and rabbit shows.

The Houston Show is a showcase of the livestock industry and cattlemen from Europe, Mexico, Central and South America plan to attend the open show to get a look at the best in stock. In 1977, 500 international visitors from 32 countries registered with show officials and the number expected for 1978 International Days, February 22-26, is expected to be even larger.

Horse show activities will fill the 4.3 acre Abercrombie Arena, adjacent to the livestock exposition building (Astrohall). With 2,600 horses entered in the nine shows, the horse show must run 16 days, beginning on February 18, in order to accommodate all classes. In addition, the second annual horse judging contest has almost doubled its number of entrants, with 792 contestants competing this year on February 23.

Junior show exhibitors take over the 22.3 acre livestock exposition facility for the second week of the livestock show, with judging beginning on March 2. Each exhibitor knows he is up against the best in livestock, with much riding on the decision of the most experienced livestock judges in the nation.

Junior shows include breeding beef heifers, dairy, breeding sheep, Angora goats, beef and dairy scramble heifers, commercial steers, breeding rabbits, market lambs, market poultry, market swine and market steers, including a carcass contest.

In addition to the premium awards and trophies, exhibitors of market animals know that a grand championship in their market division at Houston can translate into the stake for a

future cattle herd or college diploma. The Houston Livestock Show and Rodeo holds the world's record for prices paid for all five major animals—Grand Champion Steer, \$50,000; Grand Champion Barrow, \$23,000; Grand Champion Lamb, \$14,500; Grand Champion Turkey, \$10,500; and Grand Champion Pen of Broilers, \$10,800.

Floyd 4-Hers: Chris Fulton, Mark Beedy, Todd Beedy, Marty Covington, Tom Ross, Mitch Ross, Jon Jones, Ty Williams, Libby Williams, Rusty Cagle.

Floydada FFAers are: Rick Covington, Jim Covington, Tracy Womack, Greg Jones, Keith Nixon.

Cedar Hill News

By Grace Lemons

Today is a beautiful sunny day after snow and ice all week. Many lines were broken leaving us without electricity and telephones. The telephone company and REA spent many hours solving the problem.

Rev. and Mrs. Jackie Thompson went to Sulfer and Davis, Oklahoma Monday on business and came back Thursday.

Friday and Saturday Jackie Wayne Thompson was a participant with a debating team in Lubbock.

Rev. and Mrs. Jackie Thompson and family attended church services at the Assembly of God Church in Silverton Sunday evening with Eva Strickland speaking.

Mr. and Mrs. Royce Hess of New Deal spent Sunday with Rev. and Mrs. Jackie Thompson and family.

Gladys Fortenberry, Imogene Fortenberry accompanied Edna Gilly to Floydada Sunday evening and attended the services at the Assembly of God Church.

Ruth Hill of Floydada had lunch with Edna Gilly Sunday, and Helen Patterson of Floydada visited them in the afternoon.

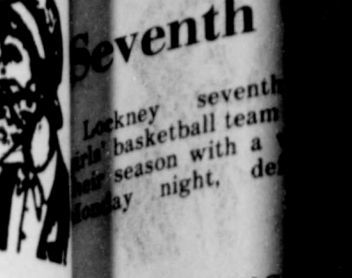
Wayne Vanhouse of Morton spent Saturday night with his grandparents, Mr. and Mrs. John D. Vanhouse.

Mr. and Mrs. Junior Taylor visited Trudy and Rainey Varner in Floydada Sunday afternoon.

Recently Mrs. C.V. Lemons was the honored guest in the home of Mr. and Mrs. Carl F. Lemons to celebrate his 81st birthday with a salad supper. Others present were Mr. and Mrs. Marvin Lemons and family of Lockney and Kathy Harris of Lockney and Mr. and Mrs. Phil Lemons and fam-

INVESTMENT CREDIT CAN REDUCE TAXES— Texas farmers and ranchers may be able to make good use of the 10 percent investment credit ruling to reduce their 1977 income taxes, notes an economist with the Texas Agricultural Extension Service. The credit applies to new or used depreciable property such as machinery, equipment or breeding livestock acquired during the tax year. The property must have a useful life of at least three years. Investment credit reduces taxes owed dollar for dollar. The maximum allowable credit is \$25,000 plus 50 percent of your tax liability above \$25,000.

The Floyd Philosopher Predicts Russia's 1978 Grain Crop And Then Solves U.S. Agricultural Problem



Editors note: The Floyd Philosopher on his Johnson grass farm examines the farm problem some more this week, we suppose. Dear editor: As we all know, the CIA has been unable to find out what a Russian grain crop is likely to be before it's harvested or what it came to after it was.

As a result, farmers never have much idea of what the export market will be, so they blindly plant in hope and sell in despair. I was turning this problem over in my mind the other day when I ran across a piece of news buried on the back page of a newspaper that may give the answer at least to what the 1978 Russian crops will amount to.

According to it, Soviet leaders, mad because the 1977 crop fell far short of the goals predicted by Russian agricultural experts, have ordered the experts to leave their offices in the cities, get out in the fields and show those farmers how to farm. I estimate this will reduce Russia's grain

production by at least a third. Back to our own farm problem, everybody knows the farmer isn't getting enough for what he produces, and what to do about the hard part. Because city people thrust their hands at the notion of price supports, have hit on a possible way to handle it.

Now everybody knows that far more important than gas, oil or coal to survival is oxygen. You can go quite a long time without the first three, but won't survive without the latter. And where does oxygen come from? From green plants, who produces more oxygen than anything else? Farmers and ranchers.

Here we've been growing the grasses, forests and weeds that produce oxygen city people have to have to stay and not getting one cent for it. We don't want any hand-outs. Just pay 50 cents a gallon for all the oxygen produce and you'll hear no more from

seventh... Lockney... basketball team... season with a... night, de... Shortthorns... Atharnathy beat... high boys in a... ball games... Girls Wi... ney notched a... in a junior... basketball game... Tuesday. The... held an 18-8... Penny Sterling... Frizzell put in... for Lockney... Haynes added... Yours faith...

SLEEP WHILE YOUR WANT AD WORKS FOR YOU

McMurry Dinner In Floydada February 27

Abilene-Wendell Tooley of Floydada will preside over a dinner and meeting at 6 p.m. Monday, February 27, at the Floydada United Methodist Church to kick off the 1977-78 McMurry College Annual Fund drive in the Plainview district.

United Methodist churches in the area will participate by sending representatives who will help with the fund-raising for the Methodist-owned college in Abilene. Pastors, McMurry Annual Fund chairpersons, members of the local Annual Fund teams, lay leaders, administrative board chairpersons and council on ministries chairpersons have been invited to attend. Sending representatives to the meeting will be churches in Floydada, Lockney, Matador, Roaring Springs, Petersburg, Quitaque, Flo-

ot, and Turkey. On the agenda for the program is a slide/tape presentation by Charles Hoggsett, director of planned giving at McMurry. Also there will be brief impressions of McMurry given by a current McMurry student, a recent graduate and the parent of a McMurry student.

Also on the program is Dr. John Hale, Plainview district chairman of the McMurry Annual Fund. A McMurry graduate, Dr. Hale is a dentist from Abilene. Tooley is a chairman of the cluster of United Methodist churches involved in the Floydada meeting.

The McMurry Annual Fund was begun in 1971 to raise money for academic and general expenses of college. Dr. Thomas K. McMurry president, at the time that most private U.S. colleges have similar drives.

Last year the Plainview district raised \$12,237.18 for McMurry.

Farabee Honored By County Agents

Political Calendar

Subject to the May Democratic Primary U.S. CONGRESS DUSTY RHODES CHARLES STENHOLM FILE GODFREY

STATE SECRETARY OF AGRICULTURE REAGAN BROWN STATE SENATOR RAY FARABEE

STATE REPRESENTATIVE BILL HALE (Republican Primary) GLENN CONRAD FOSTER WHALEY DISTRICT CLERK MARY McPHERSON

COUNTY JUDGE PARNELL POWELL G.B. JOHNSTON CHOISE SMITH

COUNTY SHERIFF FRED CARDINAL C.L. MCKAY

COUNTY TREASURER GLENNA ORMAN COUNTY CLERK MARGARET COLLIER

COMMISSIONER, PRECINCT 2 BOB JARRETT

COMMISSIONER, PRECINCT 4 JACK LACKEY JAMES LEE NICHOLS

JUSTICE PEACE PRECINCTS 1 AND 4 H.E. PORTER

U.S. Cong. George Mahor 2314 Rayburn Office Building, Capitol, Washington, D.C. 20515.

U.S. Sen. Lloyd Bentsen 240 Russell Senate Office Building, Capitol, Washington, D.C. 20510.

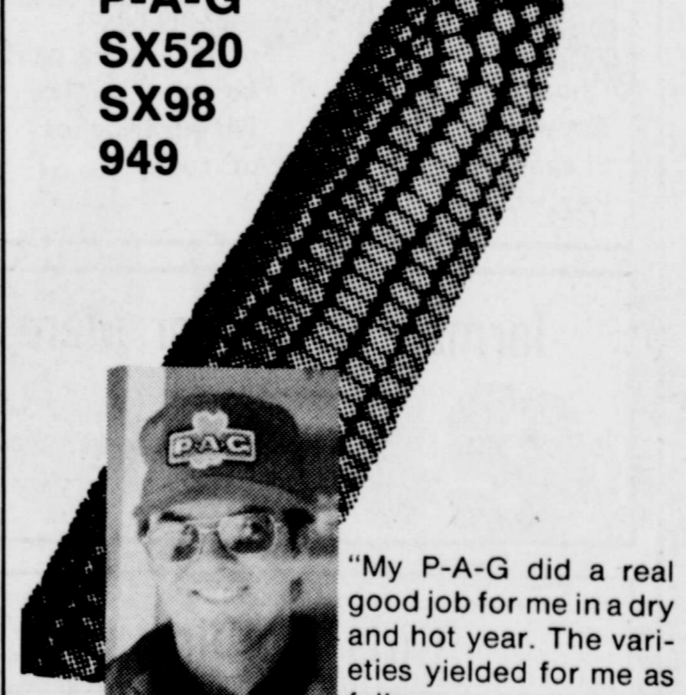
U.S. Cong. Jack Hightower, 1315 Longworth Office Building, Capitol, Washington, D.C. 20515.

U.S. Sen. John G. Tower, 142 Russell Senate Office Building, Capitol, Washington, D.C. 20510.

Texas Legislature: State Rep. Phil Cates, State Capitol, Austin, Texas 78767.

State Sen. Ray Farabee, 30th District, State Capitol, Austin, Texas 7

Read what your neighbor says about P-A-G SX520 SX98 SX99 949

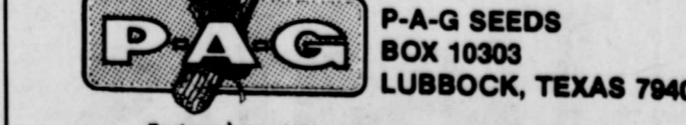


"My P-A-G did a real good job for me in a dry and hot year. The varieties yielded for me as follows: SX520—10.6 acres, 8,545 lbs./acre dry SX98 — 2.0 acres, 9,980 lbs./acre dry 949 —11.2 acres, 10,576 lbs./acre dry I pre-watered before planting, then watered the crop three times. We'll plant P-A-G again next year."

LYNN FRIZZELL Silverton, Texas

FOR MORE INFORMATION CONTACT ED NUTT Floydada, Texas LEWIS REDDY McCoy Farm Supply McCoy, Texas

Ask your P-A-G Dealer about the 1978 REBATE PROGRAM. It will save you money on your P-A-G purchases.



Performance of this seed may be adversely affected by environmental conditions, mutant strains of insects or diseases, or other factors beyond the control of P-A-G.

B. F. GOODRICH RADIAL TIRE SALE

	LIST PRICE	SALE PRICE
FR 78-15 RADIAL WHITEWALLS	\$79.99	\$35.00
GR 78-15 RADIAL WHITEWALLS	\$4.93	\$5.00
GR 78-15 RADIAL BLACK	78.43	50.00
HR-78-15 RADIAL WHITEWALLS	87.63	57.00
HR 78-15 RADIAL BLACK	80.63	52.00

ALL PRICES INCLUDE MOUNTING, BALANCING, AND INSTALLING ON YOUR CAR. *PRICE DOES NOT INCLUDE 5% SALES TAX*

LIMITED SUPPLY— COME GET THEM WHILE THEY LAST!

CORNELIUS' CONOCO

420 SO. 2nd, Floydada, Texas 983-2154 WE ACCEPT MASTER CHG, VISA, AND CONOCO CREDIT CARDS

WILSON ELECTRIC

COMMERCIAL & RESIDENTIAL CONTRACTOR

IRRIGATION PUMP WORK
INSTALLATION-REPAIRS-SERVICE
DON & PHILLIP WILSON-OWNERS

DIAL 983-2402 DAY/NIGHT
514 So. Third, Floydada
SERVING THIS AREA SINCE 1946

Got Heating Or Plumbing Problems?

Call HOLLIES PLUMBING

AUSTIN OR STEWART

983-2251

6:30 - 9:30 a.m. and 5:30 p.m. Until

REGGAE... Although one of... Reggae music... Rastafarians, a religion... Selassie was... members as a... played... REGGAE... 24... HOURS... ALLSP'S OFFERS... BEST!... 1 LB. CAN... GIANT S... DETERG... TIDE... MIXED C... NO. C... 3... SNIP... STR... COLLEGE...

Seventh Grade Lady Horns Whip Abernathy

The seventh-grade basketball team ended the season with a victory on Monday night, defeating

Abernathy by a score of 35-17. The Lady Horns were ahead 12-3 at the end of the first quarter, 22-12 at half-

time and 30-17 at the end of three quarters, and shut out Abernathy in final period.

Scoring points for Lockney were Connie Coffman, 10; Kay Reay, nine; Elizabeth Mathis, six; Dorren Alaniz, four; Mary Huffman, Carolina Sanchez and Margie Araujo, two each.

Abernathy won an earlier encounter 19-16. The eighth-grade Lockney team was not so fortunate. They lost a close one, 32-30 to Abernathy.

Lockney point-makers were Lisa Dipprey, 14; Virginia Wilson, Melody Burchfield and Tammie Wil-

liams, four each; Antonia Luna and Lori Bayley, two apiece. And Abernathy won the ninth-grade girls' game 30-24. Scoring for the Lady Horns in that contest were Penny Sterling, nine points; Tammie Hayes and Julie Frizzell, seven each; Julie Ferguson, one.

Lockney FFA's Enter Houston Stock Show

Thirteen FFA members from Lockney will be participating in the 1978 Houston Livestock Show and Rodeo, February 22-March 5. With more than 22,500 expected livestock entries, the Houston Show will once again be the largest in the world.

Lockney FFA members who will be competing in the Livestock show are Doug Sparkman, Lori Bayley, Jeff Bayley, Karyn Foster, David Foster, Jody Foster, Karen Mathis, Dean Molinar, Dee McPherson, Craig Ellison, Dwight Jackson, Denis Casey and Troy Dean Tur-

ley. For junior exhibitors throughout the state, the Houston Show is the culmination of a year's hard work of preparing their animals for the toughest of show ring competition. It is hard work that often pays off: open show and junior exhibitors will vie for \$477,210 in prize monies and premium auction prices above market value.

Junior show exhibitors take over the 22.3 acre livestock exposition facility for the second week in the livestock show, with judging beginning on March 2. Each exhibitor knows he is up against the best in livestock, with much riding on the decision of the most experienced livestock judges in the nation. Junior shows include breeding beef heifers, dairy, breeding sheep, Angora goats, beef and dairy scramble heifers, commercial steers, breeding rabbits, market lambs, market poultry, market swine and market steers, including a carcass contest.

Shorthorns End Cage Season

Lockney beat Lockney High boys in a pair of ball games Monday evening. The score was 45-39 in the eighth-grade game and 20-7 in the seventh-grade event.

Girls Win

Lockney eighth graders were Jeffrey McCormick, who got 17 points and five rebounds. Phillip Kidd had eight points and 11 rebounds, Ernest Galvan six points and seven rebounds, Junior McDonald four points and 15 rebounds, Tyke Dipprey two points and one rebound, Jeff Reece two points and one rebound, Wade Jackson one rebound, Domingo Hernandez one rebound.

Music

REGGAE Although one of the biggest hits around in popular music, reggae (pronounced 'rhythmic music of the people') is a great deal of music still don't know

Reggae musicians are from the Jamaican islands, a religious cult. Rastafarians believe the Ethiopian emperor Selassie was a god. Music is often used by believers as a form of worship, but much of it is played by non-believers.

Leading the Lockney eighth graders were Jeffrey McCormick, who got 17 points and five rebounds. Phillip Kidd had eight points and 11 rebounds, Ernest Galvan six points and seven rebounds, Junior McDonald four points and 15 rebounds, Tyke Dipprey two points and one rebound, Jeff Reece two points and one rebound, Wade Jackson one rebound, Domingo Hernandez one rebound.

Coach Steve Culwell said the Shorthorn showed character by not quitting and playing hard the whole game even though they were behind. The Lockney eighth-grade team finished the season with eight victories and five losses. Mario Arellano and Kyle Brock led Lockney in the seventh-grade game, scoring six and five points respectively. Chipping in two points each were Russell Warren, Tony Rodriguez and Joey Davis. Coach Lyndall Favor said the 'Horns seventh playing well even though they lost. The seventh grade team ended the season with four wins and six losses.

Shorthorns Split With

Tulia In B-Team Games

The Shorthorn "B" team beat Tulia 28-20 in an eighth-grade basketball game played here February 2.

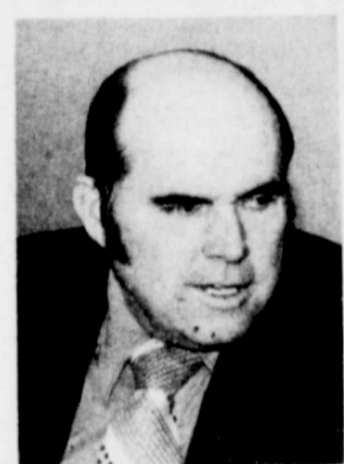
Leading the Lockney statistics was Criss Carthel, with nine points and 10 rebounds. Jeff Reece got four points and three rebounds, Domingo Hernandez four points and two rebounds, David Perales four points and one rebound.

Wade Jackson three points and two rebounds, Martin Tickle two points and six rebounds, Carl Bur two points and four rebounds, Eddie Kinard two rebounds.

Tulia won the seventh-grade "B" team game 21-15. Shorthorns scoring were Robert Hernandez, six points; Russell Ford, five; Donnie Ferguson, two; Scott McCarty, two.

Peck Resigns As SPHS Vice Chairman

John O. Peck, former Vice Chairman of the South Plains Health System, Inc. (SPHS), has resigned his position because of ineligibility resulting from his move from Floyd to Hale County. John H. Selby, M.D., Chairman of the Board of Directors of SPHS present-



John O. Peck

ed Mr. Peck a resolution commending him on his outstanding service to the Agency. The resolution was as follows:

"Whereas: Jack O. Peck has served South Plains Health Systems, Inc., in providing effective leadership and guidance through serving as Vice Chairman of the Board of Directors and has held membership on the Executive Committee, Plans Development Committee, Nominating Committee, and Staffing Committee, and

"Whereas: Mr. Peck is the Agency's official representative to the South Plains Emergency Medical Services, Inc. (SPEMS), Council, and

"Whereas: Mr. Peck has been significantly instrumental and effective as a leading force in developing Agency policies and standards, and

"Whereas: The South Plains Health Systems, Inc., stands up on behalf of the residents of Texas Health Service Area Two to pay tribute to John O. Peck and to extend to him a hearty 'Thank You' for all he has done.

"Now Therefore, be it hereby resolved that I, John H. Selby, M.D., Chairman of the Board of Directors, South Plains Health Systems, Inc., on behalf of the Agency present to: JOHN O. PECK this vote of appreciation and this resolution out of respect for his outstanding commitment and dedication to the Agency."

SPHS is the Health Systems Agency for Texas Health Service Area Two (HSA Two) which includes Bailey, Cochran, Crosby, Dickens, Floyd, Garza, Hale, Hockley, King, Lamb, Lubbock, Lynn Motley, Terry and Yoakum counties. SPHS was created by and operates under the Health Planning and Resources Development Act of 1974 (P.L. 93-641).

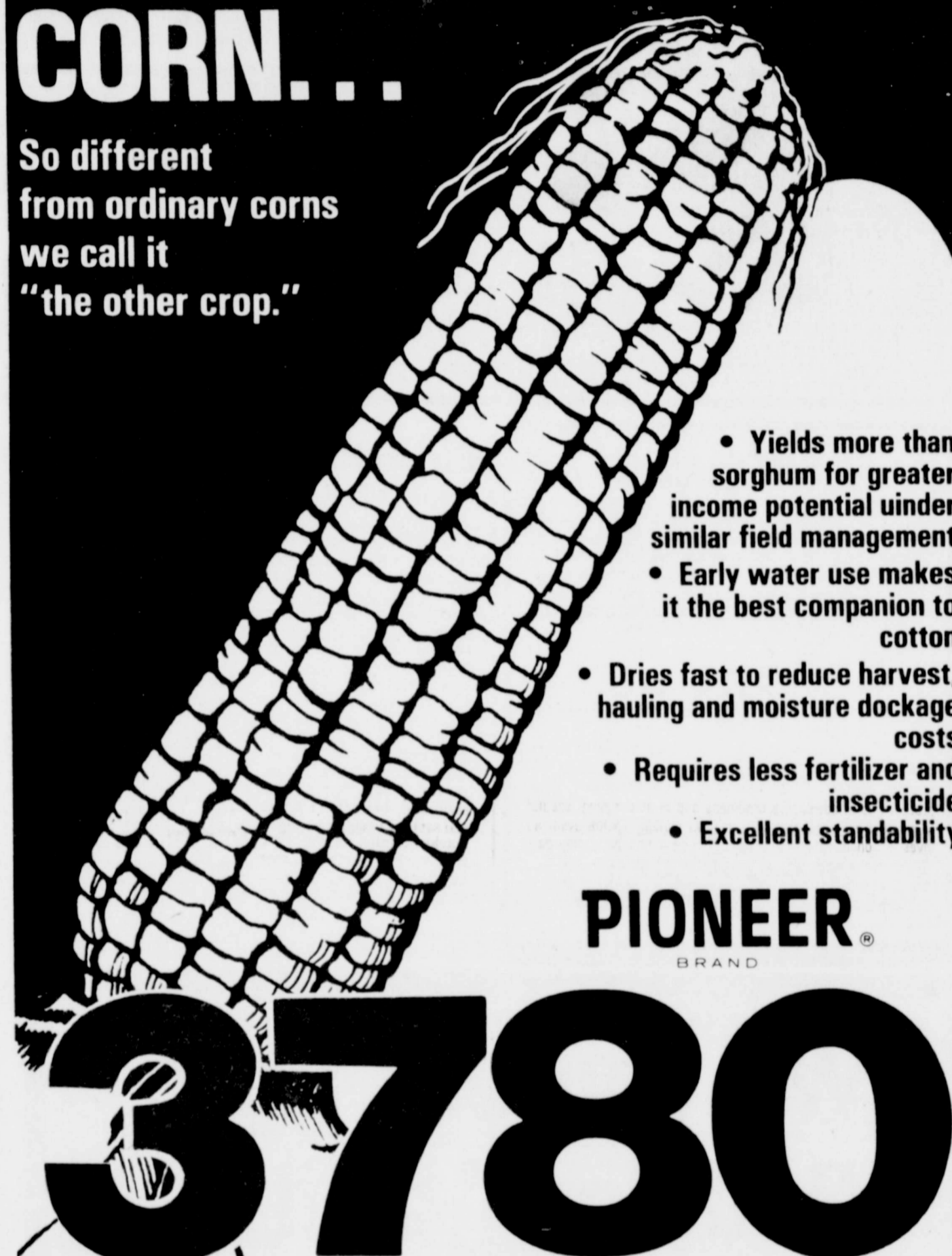
The Agency's primary purpose is to provide objective health planning for area residents which will ensure that quality health care will be available and accessible at a reasonable cost.



Some Reggae musicians have developed an offshoot of Reggae called "Soul Reggae," and some are into "dub" Reggae that entails creative engineering gimmickry to create a variety of special effects. There's sweet and sentimental Reggae, funky Reggae, rock-and-roll-like Reggae and some that seems to have a Latin beat.

COTTON FARMER'S CORN...

So different from ordinary corns we call it "the other crop."

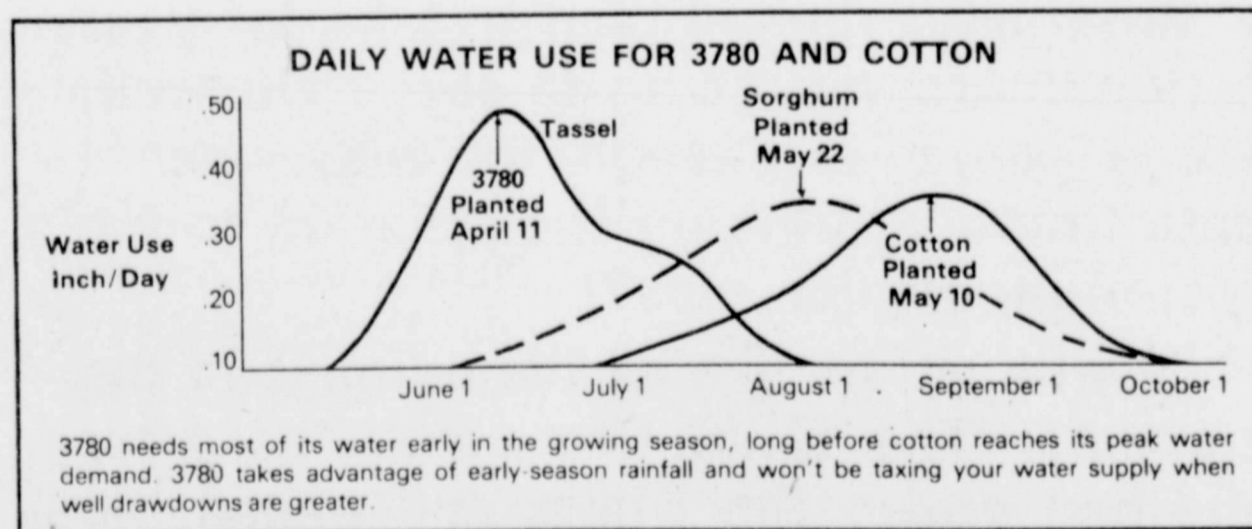


- Yields more than sorghum for greater income potential under similar field management
- Early water use makes it the best companion to cotton
- Dries fast to reduce harvest, hauling and moisture dockage costs
- Requires less fertilizer and insecticide
- Excellent standability

PIONEER BRAND

3780

Pioneer brand 3780 corn is an ideal companion to cotton because it uses water early in the growing season... long before your cotton needs water. (See chart below) And because of its unusual water use pattern, 3780 won't need water later in the season when wells begin to drawdown. Compared to other corns or sorghums, 3780 matures sooner, dries faster and requires less fertilizer and insecticides. It'll be harvested and in the elevator long before your cotton is ready to harvest, so you'll use machinery and manpower more efficiently. If you're looking for an ideal companion crop for your cotton, consider "the other crop" ... 3780 the cotton farmer's corn.



PIONEER BRAND SEEDS

Pioneer Hi-Bred International, Inc. Southwestern Division Plainview, Texas

The limitation of warranty and remedy attached to each bag of Pioneer brand seed is a part of the terms and conditions of the sale thereof. Registered trademark of Pioneer Hi-Bred International, Inc. Pioneer is a brand name, numbers identify varieties.

ALLSUP'S
CONVENIENCE STORES

OPEN 24 HOURS

SPECIALS GOOD FEBRUARY 16, 17, 18, 19, 1978

ALL GRINDS
FOLGER'S COFFEE
\$3.39

1 LB. CAN

ALL SIZES
ICEES
BUY ONE GET ONE FREE!

BORDEN'S BUTTER-MILK
HALF GAL. 89¢

GIANT SIZE
DETERGENT TIDE
\$1.39

BORDEN'S ICE CREAM
1/2 GAL. RD. CTN. \$1.19

FRONTIER PAPER TOWELS
3/99¢

MIXED CAN GOODS
1/2 PRICE

32 OZ. BTL. COCA-COLA PLUS DEPOSIT
6 BTL. CTN. \$1.49

WILSON COOKED HOT LINKS
3 FOR \$1

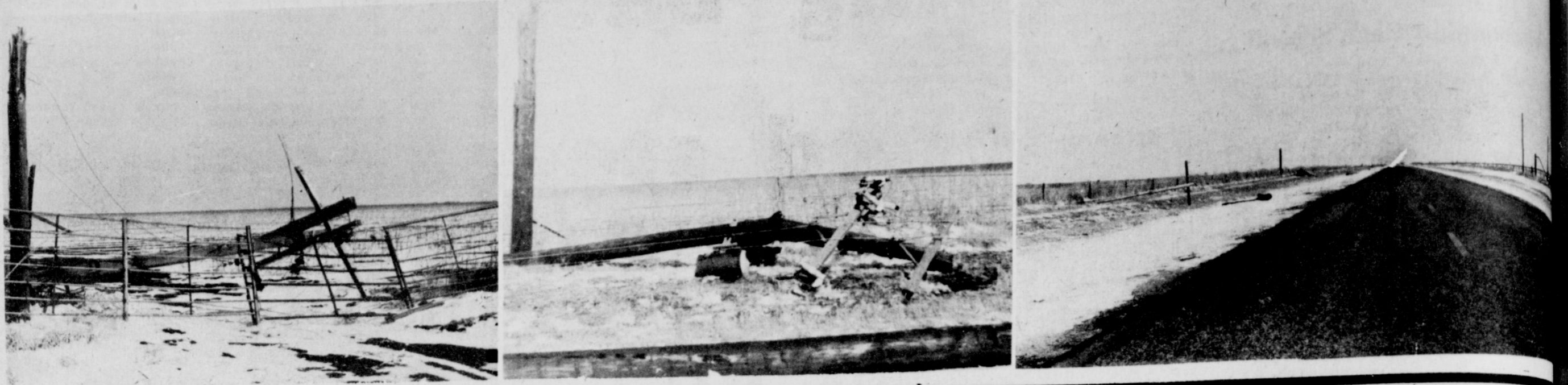
10 CANDIES FOR ONLY \$1.00

SNIP AND SIP STRAWS
10/\$1.00

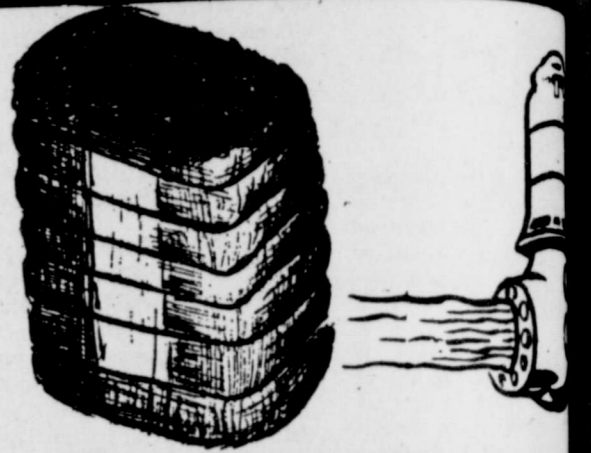
FRESH COOKED BURRITOS
3 FOR \$1

COLLEGE & MAIN, LOCKNEY

....the power line poles broke like match sticks!



FARM & RANCH NEWS



SPECIAL
FEBRUARY 16-23
CORN DOGS
25¢
 "THE FAMILY PLACE TO EAT"

 OF FLOYDADA

Farm Production Expenditures Reported

In 1976, U.S. farmers paid out nearly \$89 billion to produce crops, livestock, and poultry. The report from the U.S. Department of Agriculture noted that the average expenditure per farm was just over \$32,000, nationally.

Feed accounted for the major cost incurred during 1976. Feed expenditures at \$14 billion were up 2 billion from 1975. The second largest expenditure was rent at just over \$8.1 billion followed by wages at \$7.4 billion and fertilizer lime and soil conditioners at 7.2 billion. Feed expenditures showed the largest dollar increase from 1975 at 1.8 billion, followed by wages with a \$1.1 billion increase. Farm production expenditures are a significant ingredient when USDA computes the parity index, net farm income estimates, and other indicators of how well farmers are doing compared with other segments of the Nation's economy.

The information used to determine farm production expenditures comes from producers who volunteer such data about their individual farming operations. A survey of producers is conducted each February by USDA and its Crop and Livestock Reporting Service to update current estimates. Interviewers visit farmers and ask about the previous year's production outlays and such other details as marketing channels for crops and livestock.

A complete copy of "Farm Production Expenditures for 1976" is available upon request.

ITEM	AVERAGE PER FARM DOLLARS	TOTAL EXPENDITURE 1,000 DOLLARS
Feed	5,084	14,100,625
Rent	2,927	8,120,019
Wages	2,671	7,407,884
Fertilizer, Lime, etc.	2,606	7,229,119
Livestock & Poultry	2,579	7,152,329
Cattle	1,814	5,030,725
Poultry	307	852,461
Hogs	251	695,966
Sheep	59	164,943
Farm Services	2,282	6,329,267
Farm & Motor Supplies	1,962	5,443,540
Buildings, Fencing, etc.	1,901	5,272,503
Fuels & Energy	1,884	5,226,678
Interest	1,690	4,688,117
Taxes	1,158	3,212,982

meeting, Rep. Mahon said that while the 1977 farm act will not affect this past year's crop, it will inevitably have some impact on the 1978 crop.

Mahon said USDA estimates that if the same crop and price levels are obtained for the 1978 crop as for the 1977 crops, cotton payments under the new farm law would amount to \$455 million, compared with last year's \$237 million under the old farm law.

The Congressman also said the payment limitation will go from \$20,000 to \$40,000 and eventually \$50,000. In addition, he noted that the Administration recently announced no foreclosures will be made on Farmers Home Administration loans due to 1977's low commodity prices.

"I am of the opinion that if price levels do not improve in the marketplace for the 1978 crop and then if the Administration does not use its discretionary authority to improve prices in certain areas, then the Congress will pass legislation to ease the farmer's plight," Mahon stated.

Other important factors he sighted were: (1) equitable treatment for agriculture in international trade dealings; (2) efforts to improve the nation's ability to export farm products; and (3) the beginning of economic recovery throughout the world which should help boost export sales.

On another issue the House Appropriations Chairman said Congress has joined with industry in an effort to reduce government regulation, red tape, and paper work.

"We are continuing our battle to keep the Occupa-

tional Safety and Health Administration from updating American agriculture," Mahon said. "I am hopeful that we are making some progress but the issue is not yet totally settled in regard to this issue."

He pledged to Congress delegates that he will continue to support the cotton industry's position on the crucial issue of cotton dust standards.

Mahon also said Congress will not agree to cut agricultural research which have been proposed in President's budget.

IRS Will Compute Tax

The Internal Revenue Service will compute the income tax for single taxpayers having an adjusted gross income of \$20,000 or less and married taxpayers jointly with an adjusted gross income of \$40,000 or less when deductions are itemized. Taxpayers can either the Form 1040 or Form 1040 to request tax computation by the IRS.

The taxpayer's income will be solely from wages, salaries, dividends, interest, pensions and annuities the IRS to compute the tax.

To take advantage of the IRS service, the taxpayer need only complete certain portions of his or her return, attach all W-2 forms, sign the return, and mail it April 15 to the address listed in the tax instruction booklet.

The tax will be determined from the proper tax table and the taxpayer will either receive a refund for overpayment or be notified of the amount of any tax due.

Exact details of what portions of the return must be completed in order to have IRS compute the tax appear in the tax instruction booklet mailed each taxpayer.

Mahon Says Congress Will Help Farmers

HOUSTON, Feb. 6 (Special)—Representative George H. Mahon (D-Tex.) said here today he believes Congress will take whatever steps are necessary to insure that 1977 price levels for agriculture do not continue through the 1978 crop season.

The House Appropriations Committee Chairman said he does not expect any dramatic or immediate legislation but is convinced the agricultural leadership in Congress is sympathetic to the farmers' dilemma.

Speaking to the National Cotton Council's annual

Will you let "Little Red Hen" do it?

SIR: To all you "stay neutrals" — "lookers on-ers" — and "non-helpers" sitting on the side-lines while 'active farmers' are making their one big effort for equality —

What price do you plan to take for your cotton?! Are you going to say, "Oh well, 40c a pound is enough for me, since I didn't help in bringing the price up to the cost-of-production plus?!"

Or will you be like all the animals in the story of "The Little Red Hen" — After she had grown the wheat and baked the bread, they all wanted in on a share of it then?!

Come To The American Agriculture Meeting
Tonight In The Mac At 7:30 p.m.
And Show Your Support

Meet Funk's new "linebacker"



I'm the new Funk's G-Hybrid dealer in this area, but I'm sure not new to our growing conditions. So let's get acquainted over a cup of coffee at my place... or give me a call and I'll come out. I've got some hot new Funk's G-Hybrids you ought to look into for spring planting, and I'm backing a proud line of proven performers that produced record-high yields for growers in this area. Get in touch. I'll be lookin' forward to meeting you.

FUNK'S G HYBRID

Funk's is a brand name. Numbers identify varieties. The limitation of warranty and remedy on the tag attached to each bag of Funk's G Hybrids is a part of the terms of sale thereof.


Taking a new stand
RIVERSIDE CHEMICAL
 MUNCY
 TED ROBERTS MGR.
 BARRY STANSELL, WILLIE CRAVER

Insulate!

With the energy crisis on it makes more sense than ever to insulate! See us, we're tops!

TEXAS INSULATION SYSTEMS Box 591
 Lockport, Texas 75041
 (506) 852-3348

"We stand behind our work. That's Reason No. 5 why you should let us do your taxes."



Henry W. Block

If we prepare your return and the IRS should call you in for an audit, Block will go with you at no extra charge. We act as your legal representative, but to answer any questions about how your taxes were prepared.

H&R BLOCK
 THE INCOME TAX PEOPLE
 108 W. Missouri
 983-5233
 Hours 9-6 Sat.

"We're going back to old fashioned storekeeping"



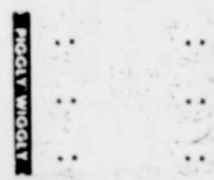
I'm Wally Williams the new president of Piggly Wiggly. Today at Piggly Wiggly there's a new spirit in store for you. We are returning to the careful service and efficient storekeeping you remember from the past. We're a fresh team and we are making changes. Changes we think will win us new customers and keep our old ones coming back. We are offering quality where it counts...in meat and produce.

We are, in fact, staking our reputation on giving you the finest, and so I'm announcing two new programs that insure freshness and quality.

1. I pledge that the side of meat you can't see is as good or better than the side you can see.



2. I pledge that our meats and poultry will be fresh when you buy them. Each cut will be dated or coded to let you know for sure that your meat and poultry are fresh and tasty.



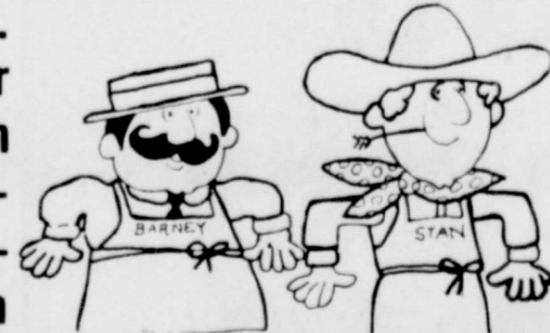
And, if there's any question about quality, Piggly Wiggly assures you a double your money back guarantee. You won't find this in any other grocery store.

In Piggly Wiggly's Produce Departments there are baskets and baskets of the country's finest fruits and vegetables. All of it is carefully selected and maintained by our produce men. The people in our produce department know their business. They are anxious to help, to answer your questions.

And we are going to have a new feature in our weekly ads. Each ad will carry a recipe, one that's easy to fix and economical. The recipes will feature either fruits or vegetables found in our Produce Departments or meat dishes that use our quality meats. We think they will be interesting and useful to you.

Finally, I'd like you to meet two new Piggly Wiggly helpin' hands, Barney the Butcher and Stan the Produce Man.

They symbolize our new emphasis on guaranteed satisfaction in meat and produce. Barney and Stan are going to win a lot of new Piggly Wiggly customers. Look for them and their helpers in our stores.



At Piggly Wiggly I am so sure of our excellence in meat and produce that I guarantee it, personally. If you are not satisfied with both our meat and produce I'll double your money back.



Piggly Wiggly wins your affection with meats and produce to perfection.

Will
pute

nal Revenue Se
compute the inco
single taxpayer
adjusted gra
20,000 or less
taxpayers fin
with an adjust
me of \$40,000
reductions are
taxpayers can
Form 1040A
to request
ation by the B
ver's income m
om wages, salar
ends, interes
and annuities
compute the ta

advantage of the
e, the taxpay
complete cert
his or her
ch all W-2 form
turn, and mail
the address list
instruction bo

will be determ
proper tax tal
payer will eit
refund for an
nt or be notifi
ount of any

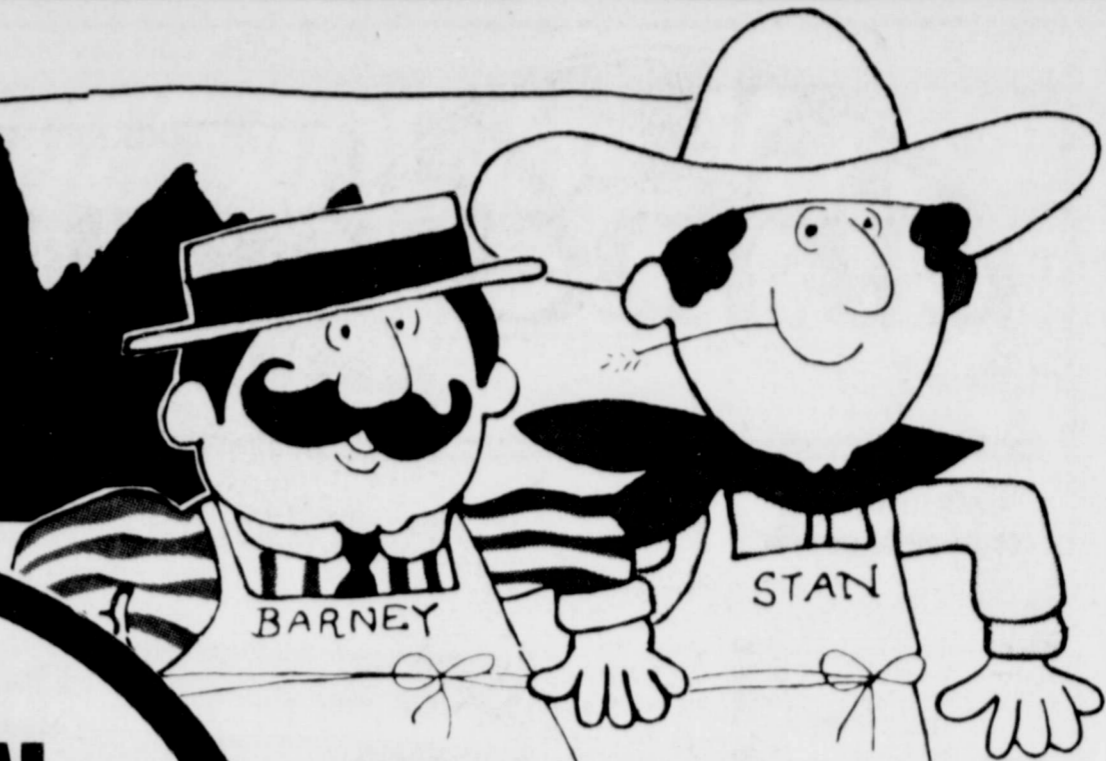
and behind
work. That's
n No. 5 wh
ould let us
our taxes.



py W. Block
are your return
ould call you in
Block will go w
extra charge. N
egal representat
over any questio
your taxes were

BLOCK
THE TAX PEOPLE
Missouri
3-5233
-6 Sat. 9-5

WINTER SALE!



**PIGGY WIGGLY WINS
YOUR AFFECTION WITH
MEAT AND PRODUCE TO
PERFECTION**

Western Heavy Grain Fed Beef

ROUND STEAK

\$1.18

Lb.

Western Heavy Grain Fed Beef

SIRLOIN STEAK

\$1.38

Lb.



- 3 Breast Quarters With Backs, 3 Leg Quarters With Backs, 3 Wings, 3 Neck, 3 Giblets, USDA Grade A
Box-0-Chicken Lb. **45¢**
- USDA Grade A, With Backs
Split Fryers Lb. **45¢**
- USDA Grade A, Fryer Thighs or
Drumsticks Lb. **99¢**
- USDA Grade A
Fryer Breast Lb. **\$1.09**
- Famer Jones
Bologna 12-oz. Pkg. **89¢**
- Famer Jones Meat or
All Beef Franks 12-oz. Pkg. **79¢**
- Commodore Frozen Batter Dipped
Fish Fillets 12-oz. Pkg. **\$1.39**
- Fresh
Red Snapper Lb. **\$1.29**
- Seapack
Fantail Shrimp Lb. **\$3.29**
- Kraft's Single Sliced
American Cheese 16-oz. Pkg. **\$1.79**

Combination 10 Chops - 4 Ends & 6 Centers

PORK CHOPS

\$1.28

Lb.



**BARNEY'S
BEEF & BEER STEW**

My stew recipe will take the chill right out of your bones on a cold winter's eve. Now, the beef is the main ingredient - so be sure you get the best (at Piggly Wiggly, of course). The beer will add gusto and bring out the superb flavor of the beef. You'll find this recipe tastes even better the second time around.

2 lbs. boneless stew beef cut into 1 inch cubes	1 clove garlic, finely chopped
flour for dredging	1 12-oz. bottle of beer
salt & pepper to taste	1 T chopped parsley
1/4 cup vegetable oil	1 bay leaf
6 medium onions, sliced	1/4 t thyme

Combine flour, salt & pepper. Dredge the meat in seasoned flour. Heat oil in skillet, add onion & garlic. Cook until tender but not brown. Remove onions from skillet. Add meat & brown, adding a little more oil if necessary. Return onions to the skillet. Add the remaining ingredients. Cover and cook over low heat until meat is tender, about 1 1/4 hours. Serve hot with boiled potatoes and a salad.

Market Style

Sliced Bacon

\$1.18

Lb.

Western Heavy Grain Fed Beef, Full Cut Round

Boneless Steak

\$1.48

Lb.

Western Heavy Grain Fed Beef

T-Bone Steak

\$1.79

Lb.

Texas

RUBY RED GRAPEFRUIT

79¢

5-Lb. Bag

All Purpose

RUSSET POTATOES

\$1.39

15-Lb. Bag

Full Of Juice Seedless

NAVEL ORANGES

99¢

5-Lb. Bag

- Garden Fresh
Bell Peppers For **49¢**
- Red
Delicious Apples 3-Lb. Bag **99¢**
- California Sunkist
Lemons For **39¢**
- California Smooth Skin
Avocados Ea. **39¢**
- Sugary
Sweet Yams Lb. **39¢**
- Purple Top
Turnips Lb. **29¢**
- Super Select
Cucumbers Ea. **19¢**

NON-FOOD FEATURES

Yellow

VOTIVE CANDLES

15 \$1

15 Hour Candles

All Purpose, Sheer, Assorted Colors

PANTY HOSE

59¢

Pr.

Colgate Instant

SHAVE CREAM

68¢

11-oz. Can

Hair Spray

AQUA NET

89¢

13-oz. Can

COCA COLA 12 OZ. CANS

6 FOR 99¢



PIGGLY WIGGLY

Store Hours
Daily 8a.m.-8p.m.
Sunday 9a.m.-7p.m.

309 South Wall
Floydada, Texas



WE GLADLY REDEEM USDA FOOD STAMPS

"Each of these advertised items is required to be readily available for sale at or below the advertised price in each store, except as specifically noted in this ad."

Prices good thru February 18, 1978. We reserve the right to limit quantities. None sold to dealers.

SAVE 54¢

All Vegetable
CRISCO SHORTENING

\$1.19

3-Lb. Can
Limit one (1) 3-Lb. Can with \$10.00 or more purchase excluding cigarettes.



SAVE 32¢
On the purchase of 4 cans

Van Camp's
PORK & BEANS

4 \$1

14 1/2-oz. Cans



Rainbo Pickles

Whole Dills 22-oz. Jar **69¢**

Schilling Ground
Black Pepper 4-oz. Can **89¢**



SAVE 25¢
on the purchase of 5 cans

Chicken Noodle
CAMPBELL'S SOUP
5 \$1

10 1/2-oz. Cans

Keobler
Vanilla Wafers 12-oz. Pkg. **69¢**

Detergent
LIQUID JOY
96¢

22-oz. Btl.

DAIRY FEATURES

Piggly Wiggly
CINNAMON ROLLS

9 1/2-oz. Can **39¢**

Solid Oleo
NU SPRED
3 \$1

16-oz. Pkgs. Fresh
YOGURT
4 \$1

8-oz. Ctns.

SAVE 13¢

4 Varieties
WAGNER DRINKS

3 \$1

32-oz. Btls.



Piggly Wiggly
WHITE BREAD

3 \$1

1 1/2-Lb. Loaves

SAVE 70¢

Plus Deposit
Coca Cola

6 \$1.39

32-oz. Btls.



FROZEN FOOD SPECIALS

12-14-oz. Pkg.
El Chico, Frozen
MEXICAN DINNERS

49¢

Ea. 20-oz. Pkg.

Pet Ritz, Frozen
CHERRY PIE

69¢

3 Varieties, Frozen
ORE-IDA POTATOES

79¢

2-Lb. Pkg.

14-15-oz. Pkg.
Chef Boy-Ar-Dee
FROZEN PIZZA

79¢

Ea.

3 Breast Quarter
3 Wings, 3 Neck
Box-O
USDA Grade A
Split
USDA Grade A
Drums
USDA Grade A
Fryer
Farmer Jones
Bolog
Farmer Jones
All B
Commadore
Fish
Fresh
Red
Seapack
Fanta
Kraft's Single
Amer

LOCKNEY AREA CHURCH PAGE

time out for GOD

MAIN STREET CHURCH OF CHRIST

Bible Study 9:30
Morning Worship 10:30
Evening Worship 6:00
WEDNESDAY
Ladies Bible Class 9:30
Bible Study 8:00

EVANS CHAPEL BAPTIST CHURCH
Rev. Bennie Anderson, Pastor
Sunday School 10 a.m.
Morning Worship 11 a.m.
Training Union 6 p.m.
Evening Worship 7 p.m.
Wednesday Prayer Meeting 7 p.m.
Sunday afternoon worship 2:00

FIRST UNITED METHODIST CHURCH
Hugh Daniel, Pastor
SUNDAY
Sunday School 9:45
Worship Service 10:55
UMY 6:00
Evening Worship 7:00
United Methodist Women First Tuesday of Month
Circles Monday (2nd & 4th Monday nights) Tuesday & Wednesday mornings.

TRINITY LUTHERAN CHURCH
Providence Community
Andrew Mild
Sunday School & Adult Bible Class 10:00
Divine Worship Service 11:00

ASSEMBLY OF GOD CHURCH
Sunday School 10:00
Morning Worship 11:00
Evening Worship 7:00
Prayer Service Wed. 7:00
Rev. Bob Wright, Pastor

TEMPLO BAUTISTA SALEM
Sunday School 9:45
Worship Service 11:00
Christian Training Time 5:00
Evening Worship 6:00
Wednesday Prayer Meeting & Choir Practice 7:30

AIKEN BAPTIST CHURCH
Bill Sessom, Pastor
Sunday School 10:00
Morning Worship 11:00
Training Union 8:00
Prayer Service Wed. 7:00
Brotherhood, W.M.U. And Auxiliary Wednesday 7:30

SAN JOSE CATHOLIC CHURCH
Father Richard Thomas Casey
Sunday Morning Mass 8:30
Saturday Evening 8:30
Wednesday Evening 8:30
Each Service Preceded By Confessions
Baptism - 1st Sunday of the month at 9 a.m.
Church Council - Meets 1st Sunday of month at 3 p.m.



Yet only a few had been struck!
Success is not simply reaching one's aim. A bowler knows how much depends on the right "action" once the ball hits that first pin.

Religion doesn't guarantee worldly success. The people who are in church every Sunday share their neighbor's hopes and dreams. But they are learning to cherish values which will make firmer their aims. They are challenged by a faith which teaches men to use constructively every achievement.

The Church can help you cultivate religious convictions which will influence how you live on the way to your goals . . . and what you become when you reach them.

Copyright 1978 Kester Advertising Service, Strasburg, Virginia. Scriptures selected by The American Bible Society

	Sunday	Monday	Tuesday	Wednesday	Thursday	Friday	Saturday
Mark	9:30-50	10:13-16	10:17-31	10:32-52	11:1-11	11:12-26	11:27-33
	+	+	+	+	+	+	+

This Inspirational Message Sponsored By The Following

- Plains Electric**
Electrical Irrigation Installation
- Brown's Department Store**
Ready-to-wear-Quality Cleaning
- Davis Lumber Company**
Lumber and Building Supplies
- Baccus Motor Company**
"Where To Buy Them"
- The Longhorn Inn**
The Glen Cooper Family
- Byrd Pharmacy**
Fred D. Byrd, Pharmacist
- Jackson Tire Company**
Shamrock Products - National Tire
- Consumers Fuel Association**
Everything For The Farmers
- Patterson Grain Company**
Lockney
- Perry Implement Company**
Lockney's John Deere Dealer
- Moore-Rose Funeral Home**
Phone 652-2211
- Schacht Jewelry & Floral**
"It's Our Pleasure To Serve You"
- Lockney Lumber & Supply**
We Appreciate Your Business
- Lockney Beacon**
Your Hometown Newspaper
- Sun-Vue Fertilizers**
Your Smith-Douglas Dealer
- Page's Thriftway**
Friendly Service Every Day of the Week
- Dan's Auto Service**
Repair Specialists
- "Beware Of Water!"**
A remarkably large number of Scottish words come from the French, because of an old alliance between Scotland and France against England. For instance, an Edinburgh University student magazine is called "Gardy-loo!" This may not seem French, but it's derived from that language and here's how:
- Lockney Co-Op Gin & Elevator**
Serving Yourself thru Ownership

LOCKNEY LOCAL

FIRST BAPTIST CHURCH
John C. Jenkins, Pastor
Miles G. Boucher, Minister of Music and Youth

Sunday School 9:45 a.m.
Morning Worship 11:00 a.m.
Church Training 6:00 p.m.
Evening Worship 7:00 p.m.

Prayer Meeting-Wednesday 8:00 p.m.
Nursing Home Services Thursday 11:20 a.m.

YOUTH
High School Youth Night Monday 7:30 p.m.
Junior High Youth Night Wednesday 7:00 p.m.

LATIN AMERICAN BAPTIST CHURCH
Mickey Munoz, Pastor
Sunday School 9:45
Morning Worship 10:50
W.M.U. Brotherhood 5:00
Training Union 6:00
Evening Worship 7:00
Prayer Service Wednesday at 7:30

LATIN AMERICAN CHURCH OF CHRIST
Bible School 9:45
Morning Worship 10:45
Evening Worship 6:00
Wednesday Service 8:00

LOCKNEY LATIN ASSEMBLY OF GOD
Margarto Salazar, Pastor
Sunday School 9:45
Morning Worship 11:00
Evening Worship 7:30
Men's Fellowship Tuesday Evening 8:00
W.M.C. Thursday 8:00
Christ's Ambassadors Saturday Evening 7:30

WEST COLLEGE CHURCH OF CHRIST
West College And Third
Frank Duckworth, Evangelist
Sunday Morning Worship Services 10:30
Sunday Evening Worship Services 6:00
Wednesday Evening Prayer Services 8:00

LONE STAR BAPTIST CHURCH
Frank Lorillard Jr., Pastor
Sunday School 10:00
Morning Worship 11:00
Bible Study 5:00
Evening Worship 6:00
Prayer Service Wednesday Evening 6:30
Brotherhood Breakfast, First Saturday 7:00

CEDAR HILL BAPTIST CHURCH
Sunday School 10:00
Morning Worship 11:00
Evening Worship 6:30
Prayer Service Wednesday at 6:30 p.m.

Clarence Ansley and Buck Ford accompanied three FFA boys, Mike and Randy Ford and Mike Chandler, to San Antonio on Wednesday of last week where they showed their sheep in a stock show. Mrs. Buck Ford and Karen flew down on Friday. The Fords older son, Ricky who attends school at A&M, met them in San Antonio. Buck's sister, the Tommy Bickels of Houston, came to San Antonio and visited with them. Buck, Glenda and Karen returned home Sunday, and Clarence and the boys were returning on Monday Feb. 13th.

Mrs. Ona Jones of the Providence community fell one day last week at her home and suffered a broken right wrist and other injuries. She has been hospitalized in Central Plains Hospital, Plainview, and is recovering satisfactorily.

The Howard Coopers of Ruidoso, N.M. are here for several weeks visiting in the home of her mother Mrs. R.E. Marr, her sister the Doyle Turners of Floydada, and their other relatives living in this area.

Austin Meriwether of Plainview, and formerly of Lockney, fell recently on the steps of the Garland St. Church of Christ in Plainview. He suffered extensive shoulder injuries requiring surgery at Central Plains Hospital, Plainview. He was in the Intensive Care Unit for several days and is still hospitalized.

Sherry Langford of Charleston, S.C. is here visiting her parents, Mr. and Mrs. Weldon Graves. Her husband, Etr. 3 Robert Langford has been sent for a six-weeks period to the U.S. Naval Station at Guantanamo Bay, Cuba. When he returns to Charleston, he plans to drive here to get his wife. Langford is the son of the A.J. Langfords of Lubbock.

Joan King and her guest Nick Davidson, both of Lubbock, spent the weekend visiting in the home of her parents, the Herman Kings. Mr. and Mrs. Tommy Johnson accompanied a youth group from the First Nazarene Church of Plainview to Angel Fire, N.M. this past weekend on a ski outing. Among the 37 making the trip were Steven and Melissa Ford, Lori Jane Bayley, and Wade Jackson of Lockney. Adults on the trip besides the Johnsons included Gayle Jackson, Gary Sanders, Carmel Donny, Mike and Debbie Belk.

Bill Pitchford received facial injuries at his home in southwest Lockney while reroofing his house. A ladder slipped as he was ascending it. The accident reportedly happened Thursday, and he underwent surgery Monday morning of this week in West Texas Hospital, Lubbock. Bill's wife is the former Lavonna Carthel, daughter of the Cecil Carthels, and they have three children.

The Marvin G. the weekend with their son and family, Orland and and children.

Mr. and Mrs. Douglas spent afternoon in Canyon his sister, Mr. Vona Cox. Also Coxes were mother, Mrs. Bob Plainview.

Paul Schacht Lubbock Saturday inator of the Lubbock Railroad Association Convention held at Lubbock Memorial Convention Center. Purpose of the was to acquaint with an enjoyable scale model railroad. Recently, Paul Chama, New Mexico took the scenic gauge train trip to the San Juan mountains into southern Colorado.

Mrs. Elvira Steuter, Mrs. Doris Green Bay, Wash. been here visiting Jan. 30th. Mrs. Terry to return home on Feb. 16th.

Terry Boedeker last Thursday month's trip to the went to Driggs, Idaho. He had much snow and it snowed all was there. Terry Boise, Id. and Gary McDonalds, Bay, Oregon he Terry Ulmer. From went to Lake Tahoe, Francisco, Ca. and with friends. In he visited with Janice Mickey turning home.

Terry and Mrs. Howard have a week her grandparents and Mrs. Glenn the Blunt, South Dakota arrived Friday and go on to Del Rio, Texas.

Dan Mercer, son of Dub Mercers, and student in the Ag. Dep. at West Texas Canyon, made the Honor Roll last with a 3.6 grade point average.

Mrs. Frank underwent eye surgery Tuesday in Methodist Hospital, Lubbock. She home on Thursday recovering satisfactorily.

Mrs. J.L. Miller La. arrived a couple weeks ago to spend time visiting in the her daughter, Mr. Leon Wofford. Recently the Lockneys were in Arizona they met Myrl's sister husband, Glad Robert Brodrick Valley, Calif., and of the home of another the V.N. Roberts of They also had a reunion some of Lloyd's schoolmates with at the P.D. Gam Safford. Others in ance were the Son of Tucson, and the Thomases of Lubbock.

Terrell County Finance Chairman For Stenholm

Charles Stenholm, candidate for Congress from the 17th Congressional District, has appointed J.T. "Buster" Terrell of Lockney as Floyd County Finance Chairman for the Stenholm for Congress Campaign. Terrell, a farmer, is a 36-year resident of Floyd County. Terrell is a past president of the Fair Board and a 4-H leader. He is a member of

the Methodist Masonic Lodge, and Club. Terrell also Sunday School. Terrell attended state Democratic conventions in 1976, and the county convention worked in the Floyd voter drive. Terrell will have raising the funds to Stenholm campaigns in Floyd County.

In olden days station was known in Edinburgh was allowed to streets and the to be horrendous. When housewives wants wanted to liquid refuse, they open a window and contents of slop street below. As they they shouted "Gardy it, but they were corruption of the "Gardez l'eau!" of the water Teacher's Scotch Centre points out that today you down a street in without worrying from above.

HOME FOR SALE

SALE: Seven and three Lond Road 983-3573.
GENERAL nice bedroom can be Sam Hale
SALE: New home, two an Double and storage feet. 983-3573.
ACIOUS LI family, 5 be room with bath shown b only. 983-28 Arwine or 98
SALE: 3 Br den, livin garage. community. Price value. 983-382
SALE: sto town Floy tion. Bond R Wilson Hon 3573.
SALE: La house, sun p big yard S. Wall ment. 983
SALE: T one bath, garage, and excell schools 4 Lockney. Koonsman 652-3 p.m. and week
LARGE 3 bed garage 9 South 5th. J oe
NEW HOME bedroom, 2 garage, Inquire F Lockney
House For Sa Ivona Floyd 4086.
FOR SALE: large ro amount of sto building and air Coligan water baths. A nur for applianc house; also Double garage Harry Morcke Street, P Floydada, Tex
I AM HERE roover remo room hom immediate Would trade home, travel \$2,000 de ing. Phone 983-3558.
FOR SALE 1 1/2 baths, la and dining e carpeted. B and servic e closets and eney apt. storage roo concrete ce speck sale. C
HOUSE F bedroom, 1 garage, brie generator, wa included. Ph 3313 for
FOR SALE room, 2 bath Missouri 2633.
FOR SALE brick home central he built in app basement, c with electri in a location and 517 S James Ra 5-3367.
LO PR ALL COM PR Phone We Your

If It's Results You Want - It's CLASSIFIED ADS You Need

LOCAL... Marvin... weekend... and his... children... and Mrs... in Canyon... also... Mrs. Bob... view... Schacht... Saturday... the Lubbock... Association... Memorial Civic... of the com... acquaint the... an enjoyable... model railroad... recently, Paul... New Mexico... scenic... train trip... Juan mountains... southern Colorado... Elvira Stewart... Doris Bartel... Hay, Wisconsin... where visiting her... 9th Mrs. Bartel... own home on the... 6th... ry Boedeker... Thursday... trip to the we... a week, Idaho... snow this... showed all the... here. Terry... Id. and visited... McDonalds. At... Oregon he visited... Ulmer. From the... to Lake Tahoe... Ca. and friends... in San... Mickey be... home. and Car... have as guest... grandparent... Mrs. Glenn Oler... South Dakota... Friday and... to Del Rio, Tx... Mercer, son of... and Mercers, and... in the Agri... West Texas... made the... Roll last season... 3.6 grade aver... Frank... went eye surg... ay in Methodist... book. She re... on Thursday... ring satisfactor... J.L. Miller of... arrived a couple... ago to spend... niting in the... daughter, Mr. and... Wofford. nly the Lloyd... ere in Arizona... et Myrl's sister... husband, Gladys... Brodrick of... Calif., and visit... ne of another... I. Roberts of... o had a reunion... of Lloyd's L... dates with a l... P.D. Garret... Others in... re the Son S... on, and the... es of Lubbock

HOME FOR SALE

FOR SALE Several good and three bedroom and three bedroom Bond Real Estate. Write Box XRO, c/o Hesperian, Box 700, Floydada. tfe

SEVERAL nice two and three bedroom homes for sale. Loans can be arranged. Sam Hale at 983-3573. tfe

FOR SALE New three bedroom, two and a half home. Double car garage and storage. 3,751 sq. feet. 983-3828. tfe

SPACIOUS LIVING for a family, 5 bedroom or 4 room with TV room, bath shown by appointment only. 983-2856 ask for Arwine or 983-2393. tfe

FOR SALE 3 Br. Stucco 2 1/2 den. living room, tile garage. Sandhill community. Priced less than value. 983-3828. tfe

FOR SALE store building, downtown Floydada, good location. Bond Real Estate, 413 S.W. 7th Lockney. Call Paul Bousman 652-3351. After 5 p.m. and weekends 652-3655. tfe

FOR SALE Large 3 bedroom, sun porch, room back, big yard and trees. S. Wall. Shown by appointment 983-5202. tfe

FOR SALE Two bedroom, tile, one bath, carpet and garage room. Good condition and excellent location. Schools 413 S.W. 7th Lockney. Call Paul Bousman 652-3351. After 5 p.m. and weekends 652-3655. tfe

FOR SALE new Buick AM radio, 1975 Mercury AM radio. Your choice \$25.00. Phone 983-3982. tfe

FOR SALE Mags for Pontiac or Chevrolet. 652-2440. L2-16p

FOR SALE Hunter wheel balancer, Cooper Conoco, Lockney. tfe

1974 CHEVY VEGA hatchback, air, auto, transmission, mag wheels, low mileage. 983-2912. tfe

T.F.N. '73 Mercury Comet, good economy 6 cylinder, radio and air conditioning, \$1600.00. Call John Zimmerman at Blanco Offset Print Shop. 983-3739. tfe

NEW HOME FOR SALE: 3 bedroom, 2 bath, large tile garage, built-in kitchen. Inquire First National Bank in Lockney. tfe

AM HERE at 730 West Over remodeling this two bedroom home. I can give immediate possession. Would trade for car, mobile home, travel trailer, or pickup. \$2,000 down and financing. Phone Skinny Winn 983-3558. tfe

FOR SALE: 3 bedroom, 2 baths, large den, living and dining combination. All carpeted. Breakfast room of service entrance. Lots of closets and storage. Efficiency apt. at back, also storage room, 2 garages, concrete cellar. Price for quick sale. Call 983-3609. tfe

FOR SALE: New 3 bedroom, 2 bath, forced air. 325 Missouri. James Lovell, 983-2633. tfe

FOR SALE: Three bedroom brick home, 1 3/4 baths, central heat and cooling, built in appliances, finished basement, double car garage with electric door openers, steel in back yard, excellent location. Newly remodeled 517 S.W. 8th Lockney. James Race 652-2324 or 983-3367. L2-26 S.C

LOCKNEY PRINTING
ALL TYPES COMMERCIAL PRINTING
Phone 652-2184
We Appreciate Your Business.

FARM AND ACREAGE

WANTED TO BUY irrigated or dryland farm in Floyd or surrounding area. Write Box XRO, c/o Hesperian, Box 700, Floydada. tfe

FARM MACHINERY

NORRELL TRACTOR PARTS for tractor and irrigation supplies and accessories. tfe

FOR SALE: 500 gallon propane tank. 983-2726. tfe

AUTOMOTIVE

FOR SALE: 1970 Delta 88 Oldsmobile 43,000 miles, clean. Call 983-2051 after 6:00 p.m. 983-2530. tfe

FOR SALE: 1975 Monte Carlo Landau, rally wheels, very good condition. \$3,000 983-2038. tfe

FOR SALE. 1970 Ford, Two door fastback mustang, good mechanical condition, low mileage, real clean. Call 652-3385 business, home 652-2182. tfe

FOR SALE new Buick AM radio, 1975 Mercury AM radio. Your choice \$25.00. Phone 983-3982. tfe

FOR SALE: Hunter wheel balancer, Cooper Conoco, Lockney. tfe

T.F.N. '73 Mercury Comet, good economy 6 cylinder, radio and air conditioning, \$1600.00. Call John Zimmerman at Blanco Offset Print Shop. 983-3739. tfe

WANTED

Would the party that borrowed the Whites Auto refrigerator trucks, please return them with our thanks. tfe

ARTHUR B. DUNCAN ABSTRACT COMPANY
Abstracts - Title Insurance Agents for Stewart Title Guaranty Company.
TELEPHONE 983-3167
Office on South East Corner public square, Corner California and Wall, Floydada, Texas.
"The Oldest Abstract Plant in Floyd County"

FOR YOUR CONVENIENCE
CUSTOM SLAUGHTERING & PROCESSING
- LOCALLY FED BEEF -
1/2 BEEF 79¢ LB
Hind Quarters 98¢ LB
Front Quarters 75¢ LB
ALL MEAT GUARANTEED
Thomason Meat Co.
FORMERLY LOCKNEY MEAT CO.
114 N. E. 8TH LOCKNEY, TEXAS
806-652-3346

MOBILE HOMES

For Sale: Double-wide Mobile home 24x60 - 1440 Square ft. 3 large bedrooms, livingroom, dining room, built-in kitchen, den, 2 full size baths; 3/2 ton refrigerator, are to be moved, must sacrifice for quick sale. Call 983-3345 after 5 p.m. Shown by app. only. tfe

14 x 80' Mobile Home, 3 BR-2B, 100' x 80' lot, 2 car garage w/shop and storage. Call 652-2524 for appointment. Price reduced. L2fe

1976 2 BEDROOM mobile home 14' x 64'. Excellent condition - small equity. Take up payments. Call 983-3512. tfe

FOR RENT

FOR RENT: Duncan Plaza Apartments 1 and 2 bedrooms, Central Heat and Air Conditioning, Tapan Ranges, Adjacent to Duncan Elementary School. Contact 302 E. Tenn. or 983-2061. tfe

FOR RENT: Apartments for rent.
1 bedroom-\$16.00 per week.
2 bedroom-\$18.00 per week.
3 bedroom-\$20.00 per week.
Contact Jan Kelley, Plainview 293-5231, 85 Monday-Friday. tfe

WANTED: Bookkeeping to do in my home. 20 years experience. 652-3111 or 983-2235 after 6 p.m. 2-26c

FOR YOUR portable disc rolling needs call Lawson Bros., Welding and Equipment. 983-3940. Floydada. tfe

CARPENTER WORK wanted. No job too large or too small. Contact Roy Jackson. Phone 983-3924. tfe

Concerned about the insulation in your home? Call Jerry 652-3348.

Vacuum cleaners, new and rebuilt 1 yr guarantee. Parts sales and service. Prices begin at \$124.50
Parker Home Furnishings in Lockney. 652-3315 tfe

THRASHER & CO.

Redi-mix Concrete
Sand & Gravel
Excavation
call us:
983-2170
229 E. California tfe

BEAR WHEEL ALIGNMENT, TUNEUPS, MUFFLERS, TAILPIPE AND BRAKE WORK, COOPER CONOCO TFC

Custom Application Of Pre-Emerged Chemicals.
BILLY WISDOM 652-3541
JOHN WISDOM 652-3544
TERRY HOWARD 652-2768
MAC HOWARD 652-3439

LEGAL NOTICE
INVITATION FOR BIDS
Sealed proposals for the construction of An Addition to Andrews Ward School for The Floydada Independent School Board, Floydada, Texas will be received by the Architects and the Board of Trustees in the Board Room at the School Business Office until 2:00 p.m. CST, February 23, 1978 at which time they will be opened publicly and read aloud. The proposals shall cover the entire construction (General Construction, Plumbing, Heating, Air Conditioning and Electrical Work). Each proposal shall be accompanied by a cashier's or certified check or an acceptable proposal bond in the amount of Five Percent (5%) of the greatest amount of the proposal submitted, payable without recourse to the order of Gene Arwine, President of the Board of Trustees, Floydada Independent School District, Floydada, Texas. Copies of plans and specifications may be obtained from Stiles, Roberts, Messersmith and Johnson, Architects-Engineers Planners, 3307 Avenue X, Lubbock, Texas upon a deposit of Twenty Five Dollars (\$25.00) for a complete set as a guarantee of the safe return of plans and specifications, the full amount of which will be refunded upon return of plans and specifications in good condition within ten (10) days after receipt of bids. The Owners reserve the right to reject any or all bids and to waive any or all formalities. Board of Trustees Floydada Independent School District By: Gene Arwine President 2-29-16c

COW POKES



"She's lookin' fer somethin' psychedelic!"

THIS FEATURE SPONSORED BY
Floydada Real Estate & Insurance Agency
AUTO, FIRE & FARM INSURANCE
Jim Word - - - Phone 983-2360

INSULATION
Fire-Resistant, Installed and Guaranteed
MARR INSULATION CO.
Tom Marr Owner 652-3593

DISCOUNT PRICES ON PET FOODS
PUFFINBERGER CO-OP - BOW WOW - FIELD RATTON.
Producers Cooperative Elevators

TURNER REAL ESTATE
FARMS RANCHES
983-2635 Floydada, Texas

DR. O. R. MCINTOSH
OPTOMETRIST
316 S. Main Telephone 983-3460
FLOYDADA, TEXAS

Hollis R. Bond
Real Estate
PHONE 983-2151
107 S. 5th FLOYDADA

BEAR WHEEL ALIGNMENT, TUNEUPS, MUFFLERS, TAILPIPE AND BRAKE WORK, COOPER CONOCO TFC

Custom Application Of Pre-Emerged Chemicals.
BILLY WISDOM 652-3541
JOHN WISDOM 652-3544
TERRY HOWARD 652-2768
MAC HOWARD 652-3439

MATTRESSES. New or renovated. For appointment call City Trim Shop. 983-2332. Floydada. T-fe

REMEMBER your loved ones with a living memorial to the Caprock Hospital Auxiliary Memorial Fund, Mrs. Ben Whitaker, Treasurer. T-fe

REDUCE SAFE and fast with Go Bese Tablets and E-Vap "water pills." Thompson Pharmacy. 2-16p

1975 MODEL 17ft. vacation trailer like new. Call 983-2453. 2-19c

FOR SALE: Ladies coat. Plush pile, size 16, beige color, \$40.00 and a Kenmore butane clothes dryer, \$50.00. Call 983-3077 2-26c

FOR SALE, used Trundle bed and springs. Dixie Johnson 652-2344. L2-23c

FOR SALE: Used Mediterranean sofa and matching hanging lamp. Very good condition, and a Ohdner adding machine, like new. Call 983-2079. tfe

For Sale

TWO BRAND NEW Smith Corona typewriter carrying cases. \$10 each. Phone 983-3737. tfe

FEET TIRED? Try Mason Shoes with "Velvet-eez" air cushioned innersoles. Keith Emert, 652-3116 LStfe

Oak Firewood \$78.00 cord 2-19c 983-2993

Hay for sale: Has not been rained on. \$1.75 bale. Call 983-2953 after 6. 2-19c

FOR SALE: 10 used side roll sprinklers 4 & 5" pipe 60 & 76 inch wheels all are I.R.-C.O. sprinklers. Call 983-5231 daytime. 983-5367 night time. tfe

FOR SALE: Two 35,000-BTU Deairex gas heaters. 652-3463, Lockney. L2-16c

Grand opening of West Texas largest muzzleloading gun dealer (retail and wholesale) Bill's Bullet Shop, 910 Columbia, Plainview, 806-296-6226.

Shop will be open full time beginning February 1, 9-6 p.m. Monday-Saturday, 9-9 Fridays. After hours please call.

Fifty Cal. Hawkin rifles regular \$189.95 special thru February 18, \$149.95. Come in and sign up now for drawing. The following prizes to be given away Saturday, February 18, at 4:00 p.m. (Need not be present to win).
1st Prize - Western Arms Confederal 44 cal. percussion revolver
2nd Prize - Deluxe Powder Horn
3rd Prize - Powder Flask
Black powder \$3.95 pound always in stock.
Modern gun, reloading components ammunition, gun smith, gun repair, buy, sale, and trade. Dealers inquiries invited. 2-16c

FOR SALE: Coppertone General Electric refrigerator, 983-3310 after 4:00. \$50.00. tfe

CERAMIC TILE. Do-It-Yourself Center. Bathroom Tile - Entry Tile - Quarry Tile - Mexican Tile - Patio Tile, etc. Free loan of tools and instructions. Germany Ceramic Tile Co., 2118 50th St., Lubbock. Phone 762-5543. 3-9-78

LARGE QUANTITY small pipe, low cost. Leatherman Steel. tfe

FOR SALE: 21 ft. Bush hog tandem, seven shank big ox. Call 652-2572. L2-16 P

FOR SALE: Mesquite fire wood, \$75.00 cord. U and I Upholstery, 652-2357 or 652-2358. L2-26c

FOR SALE: Young registered Angus bull. Call 983-3664. tfe

MATTRESSES. New or renovated. For appointment call City Trim Shop. 983-2332. Floydada. T-fe

REDUCE SAFE and fast with Go Bese Tablets and E-Vap "water pills." Thompson Pharmacy. 2-16p

1975 MODEL 17ft. vacation trailer like new. Call 983-2453. 2-19c

FOR SALE: Ladies coat. Plush pile, size 16, beige color, \$40.00 and a Kenmore butane clothes dryer, \$50.00. Call 983-3077 2-26c

FOR SALE, used Trundle bed and springs. Dixie Johnson 652-2344. L2-23c

FOR SALE: Used Mediterranean sofa and matching hanging lamp. Very good condition, and a Ohdner adding machine, like new. Call 983-2079. tfe

EMPLOYMENT

L.V.N. AND NURSES aided needed. Top wages. Call 652-2502. L2fe

BUSINESS OPPORTUNITIES

ONE OF A KIND Our 14-year history has proven a KWIK KAR WASH to be one of the highest investment return businesses known. We provide financing, site analysis, construction and service. Call Ray Ellis, collect (214) 243-3521. 2-16p.

ALCOHOL ANNONYMOUS IS HERE. If you have a drinking problem and want to quit, that is our business. If you don't, that's your business. We are on call 24 hours a day. 983-5058. tfe

PERSONALS

I would like to say thank you to every one who has helped in any way while I was in the hospital in Fort Worth. For all the cards, phone calls, visits and prayers. Mr. & Mrs. Weldon Cumbie L2-16 P

I WANT TO thank each and everyone for your prayers, flowers, cards, and also the food that was brought to my family while I was in the hospital. To the doctors and hospital staff, a great big thank you. You are the best. Jerry Bradford

I WANT TO thank everyone for all the food, flowers, cards and visits made while I was in the hospital. Such kindness and thoughtfulness can never be forgotten. May God Bless Each of you. Mrs. Ralph Lemons

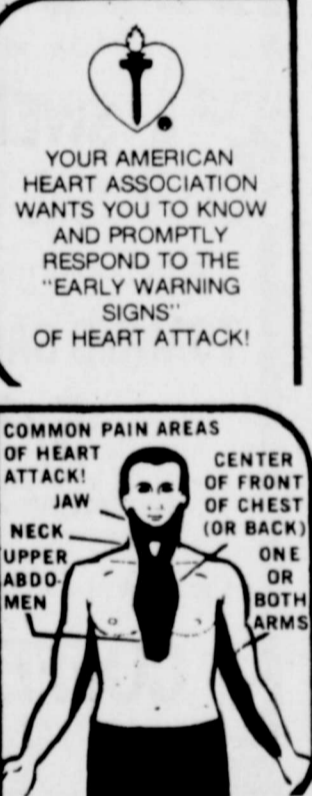
WE WOULD like to thank everyone who extended sympathy at the death of our mother. Thank you for the food, flowers, cards and every expression of love. Family of R.J. Weems Bruena Holmes Garner Weems Lucrene Gee Milton Weems 2-16p

SITUATIONS WANTED

WOULD LIKE to be companion to person requiring someone to stay with them nights only. Write Box 13, Floydada. 2-19c

'RULE OF 72' TELLS HOW FAST SAVINGS DOUBLE

COLLEGE STATION- Use the "rule of 72" to determine the approximate length of time it will take to double savings dollars, says Dr. Carolyn McKinney, family resource management specialist.
Dr. McKinney is with the Texas Agricultural Extension Service, The Texas A&M University System.
To use the "rule of 72", simply divide the interest rate into 72—the number obtained is the number of years required to double the investment, the specialist continues.
For example, if \$1,000.00 is placed in an account earning a 6 percent annual interest, divide the interest rate (6) into 72 and find that it will take about 12 years to double the initial investment to \$2,000.00, Dr. McKinney explains.



NO... WE AREN'T IN THE PHOTOGRAPHY BUSINESS BUT

WE WILL REPRINT PICTURES THAT WE HAVE SHOT AND PUBLISHED IN THIS NEWSPAPER

5 x 7 Gloss Finish \$1.50

FLOYD COUNTY HESPERIAN & LOCKNEY BEACON

OBITUARY

Mrs. Weems

Services for Mrs. Viola D. Weems, 86, of Floydada, were Monday at 2 p.m. in First United Methodist Church here with assistant pastor David Edwards officiating. Burial was in Floydada Cemetery under direction of Moore-Rose Funeral Home.

Mrs. Weems died at 1:35 a.m. Sunday in Central Plains Hospital at Plainview following a brief illness.

The Walden, Ark., native moved to Floyd County in 1924. She married Robert Weems in Wood County. He died in 1941.

Survivors include two sons, Garner and Milton, both of Floydada; two daughters, Mrs. Buena Holmes of Richardson and Mrs. Luvene Gee of Floydada; a sister, Mrs. Jewel Whitworth of Winnsboro; and 11 grandchildren.

Pallbearers were the grandchildren.

Benita Reyna

Granados

Services for Benita Reyna Granados, 64, of Floydada were at 2 p.m. Monday at the Temple Gethsemani (Assembly of God Church) in Floydada, the Rev. Ruben Menchaca officiating and the Rev. Saul Luna assisting.

Burial followed in Floydada Cemetery under direction of Moore-Rose Funeral Home.

Mrs. Granados died about 11 a.m. Saturday in Caprock Hospital here after a brief illness.

The Kenedy native married Francisco Granados in 1939. She moved to Floyd County in 1958 from Mathis.

Survivors include her husband; five sons, Raymond and Ramiro, both of Floydada, Francisco Jr. of Wellington, and Jose and David, both of Chicago; four daughters, Mrs. Domingo Espinosa, Mrs. Luis Genera, and Mrs. Juan Martinez, all of Floydada; and Mrs. Guadalupe Morin of Houston; five brothers, Marcos Reyna, Octavio Reyna, Celestino Reyna and Leonardo Reyna of Floydada; three sisters, Mrs. Pilar Ibarra of Range, Mrs. Esiquia Salos of San Antonio and Mrs. Edubigen Danilla of Kenedy; 41 grandchildren and five great-grandchildren.

Grover Perry

Services for Grover Cleveland Perry, 85, of Lockney, were held Tuesday morning in First Baptist Church in Lockney with the Rev. John Jenkins, pastor, officiating.

Burial was in Brownfield Cemetery under direction of Moore-Rose Funeral Home of Lockney.

Perry died at 12:20 p.m. Sunday in Methodist Hospital in Lubbock following a lengthy illness.

A native of Lapan, he moved to Lockney in 1967 from Pampa. He married Ethelyn Lucille Roach Aug. 31, 1916, in Weatherford. She preceded him in death in 1950. He married Annie Elizabeth Roach Sutton in 1951 at Roswell, N.M., and she preceded him in death in 1966. He was a member of First Christian Church in Pampa, and was a farmer before his retirement.

Survivors include three sons, Horace, Max and Darrel Van, both Midland and Roach of Lockney; a daughter, Mona Lajoyce King of Abilene; a step-daughter, Janie Bess Bowers of Pampa; a brother, Troy Franklin of Smithfield; five grandchildren; and five great-grandchildren; and 12 step-great-grandchildren.

Rachel James

Services for Rachel Virginia James, 58, of Lockney, will be at 2 this afternoon at the First Baptist Church in Lockney with Rev. John Jenkins, pastor, officiating.

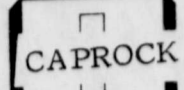
Burial will be in the Melvin Cemetery in Melvin Friday morning under direction of Moore-Rose Funeral Home, Lockney.

Mrs. James died at 9 a.m. Tuesday in the Central Plains General Hospital in Plainview after a short illness.

She was born in Fort Sumner, N.M. and married Ray W. James August 30, 1948 in Tucuman, N.M. He died in 1972.

She moved to Lockney

HOSPITAL NOTES



Henry Garner admitted 1-29 dismissed 2-11.
 Jerry Bradford admitted 1-30 dismissed 2-11.
 Marguerite Bond continues treatment.
 Rex Brown dismissed 2-10.
 James Richard Turner admitted 2-2 dismissed 2-11.
 Maude Turner admitted 2-2 dismissed 2-11.

Victoria Asher admitted 2-2 dismissed 2-14.
 Susie Mooney continues treatment.
 Juanita Martinez admitted 2-7 dismissed 2-15.
 Benita Granada admitted 2-9 expired 2-11.
 Jessie Stewart admitted 2-10 dismissed 2-13.
 Joyce Williams admitted 2-10 dismissed 2-12.

Patrick Monroe admitted 2-10 dismissed 2-12.
 Jessie Collins admitted 2-8 dismissed 2-11.
 Daris Hill admitted 2-12 dismissed 2-12.
 Johnnie Gordon admitted 2-12 dismissed 2-14.
 Bess Carr admitted 2-13 dismissed 2-15.
 Christine Smith admitted 2-13.
 Lorene McKinney admitted 2-13 dismissed 2-14.
 Jamie Rogers admitted 2-13.
 Henry Hammonds admitted 2-15.

NOTE OF THANKS

The family of Mrs. Christine Colston wishes to thank everyone for the many expressions of sympathy and love. All of the many cards, calls, flowers, visits, food, contributions of many kinds, and most of all your prayers have meant so much to us and have helped soothe the heartache caused by the loss of our loved one. "My ever prayer is while I live—God make me worthy

of my friends."—(Sherman)

Billy Don, Sherry, Ross, and Zane
 Mr. and Mrs. Hershel Swepton and family
 Mr. and Mrs. Vance Campbell and family
 Mr. and Mrs. Bob Burns and family
 Anne Swepton
 Mrs. Iris Colston
 Mrs. Irene Woods and family

NEW SOIL EXTENSION SERVICE
 Dr. Ed Colburn is appointed to the position of agronomist—soil management for the cultural Extension and will be heading the Texas A&M University Extension Service in the field of soil management. He will be giving the result demonstration field days in the field of soil management.

32 OZ. HUNTS

KETCHUP

67¢

\$1.07 VALUE

29 OZ. HUNTS

PEACHES

2 FOR 99¢

7% VALUE

1/2 GAL. BORDENS

ICE CREAM

\$1.09

\$1.69 VALUE

Stainless Flatware only **25¢** for a 5-Piece Place Setting. ENDS MARCH 1, 1978. every week!

WE RESERVE THE RIGHT TO LIMIT QUANTITIES

BUDDY'S

220 South 2nd Street 983-3149

HOURS MON-SAT 8 A.M.-7 P.M. SUNDAY 9 A.M.-7 P.M.

WE GIVE GREEN STAMPS

DOUBLE ON WEDNESDAY

OUR DELICATESSEN FEATURES GOLDEN FRIED CHICKEN TO GO

<p>SUNKIST</p> <p>ORANGES 4 LBS \$1.00</p> <p>STALK</p> <p>CELERY 27¢</p> <p>YELLOW</p> <p>ONIONS 10¢ LB</p> <p>SALAD</p> <p>TOMATOES 3 LBS \$1.00</p> <p>SWEET</p> <p>POTATOES 4 LBS \$1.00</p> <p>17 OZ. KOUNTY KIST</p> <p>SWEET PEAS 4/\$1.00</p> <p>34¢ VALUE FOR</p> <p>8 OZ. CONTIDINA</p> <p>TOMATO SAUCE 5/\$1.00</p> <p>27¢ VALUE</p> <p>1 LB MARYLAND CLUB</p> <p>COFFEE \$2.99</p> <p>12 OZ. PURINA</p> <p>TENDER VITTLES 59¢</p> <p>77¢ VALUE</p>	<p>U.S.D.A.</p> <p>ARM ROAST 89¢ LB</p> <p>U.S.D.A.</p> <p>ROUND STEAK \$1.19 LB</p> <p>U.S.D.A.</p> <p>TENDERIZED STEAK \$1.69 LB</p> <p>CENTER CUT</p> <p>PORK CHOPS \$1.49 LB</p> <p>LONGHORN</p> <p>CHEDDAR CHEESE \$1.49 LB</p> <p>1/2 GAL. CLOVERLAKE</p> <p>BUTTERMILK 69¢</p> <p>\$1.03 VALUE</p> <p>6 OZ. GLADIOLA WHITE</p> <p>CORN BREAD MIX 6/\$1.00</p> <p>21¢ VALUE</p> <p>15 OZ. ELLIS JALAPENO</p> <p>CHILI 2/99¢</p> <p>7% VALUE</p> <p>20 SQ. FT. REYNOLDS</p> <p>FOIL \$1.99</p> <p>\$2.91 VALUE</p> <p>RANCH STYLE BEANS 3/\$1.00</p> <p>15 OZ. 3% VALUE</p> <p>3 OZ. WHITE SWAN</p> <p>INSTANT TEA \$1.29</p> <p>\$1.79 VALUE</p>	<p>U.S.D.A.</p> <p>CHUCK ROAST 79¢ LB</p> <p>U.S.D.A.</p> <p>ROUND STEAK \$1.19 LB</p> <p>U.S.D.A. BONELESS</p> <p>GROUND BEEF 69¢ LB</p> <p>2 LB OWENS</p> <p>SAUSAGE \$2.89</p> <p>12 OZ. PLAZA</p> <p>FRANKS 59¢</p> <p>40 COUNT</p> <p>WET ONES 69¢</p> <p>9% VALUE</p> <p>28 OZ. ELLIS</p> <p>TAMALES 69¢</p> <p>8% VALUE</p> <p>50 COUNT 7 OZ.</p> <p>COZY CUPS 65¢</p> <p>77¢ VALUE</p> <p>12 OZ. CAN REGULAR-OR DIET</p> <p>PEPSI-COLA 6/99¢</p> <p>2% VALUE</p>	<p>1 LB "QUARTERS"</p> <p>PARKAY 2/99</p> <p>7% VALUE</p> <p>16 OZ. KEEBLER FRENCH VANILLA OR PITTER PATTEN</p> <p>COOKIES 69¢</p> <p>9% VALUE</p> <p>14 OZ. FROZEN ROMAN MEAL</p> <p>WAFFLES 67¢</p> <p>8% VALUE</p> <p>1 LB RAINBO DINNER TIME</p> <p>ROLLS 3 FOR \$1.00</p> <p>53¢ VALUE</p> <p>1 LB EARTH GRAIN</p> <p>SANDWICH BREAD 2/99</p> <p>7% VALUE</p> <p>RAINBO MULTI-PAK</p> <p>HONEY BUNS 59¢</p> <p>7% VALUE</p> <p>22 OZ. LIQUID "FOR DISHES"</p> <p>PALMOLIVE 77¢</p> <p>WITH COUPON</p> <p>WITHOUT COUPON</p> <p>GOOD AT BUDDY'S EXPIRES</p> <p>SUPER SUDS GIANT 40</p> <p>DETERGENT 79¢</p> <p>WITH COUPON</p> <p>WITHOUT COUPON</p> <p>GOOD AT BUDDY'S EXPIRES</p> <p>5 LB ALPO</p> <p>DOG FOOD 99¢</p> <p>WITH COUPON</p> <p>WITHOUT COUPON</p> <p>GOOD AT BUDDY'S EXPIRES</p>
---	---	---	--

15 Per Copy Volume

Fa Snow Into

School children, teachers were all smiles Friday after a Thursday night snowfall to the county. This will bring the month considerably above normal of 1.4 inches of snow. Although there isn't snow all that snow, the course will be beneficially dry windy March.

Lady Horn basketball show their support during an automobile district playoff game Saturday. Fans will drive to Plainview behind the school team. Those who wish to see automobiles in the caravans Lockney High School about 2:45 p.m. Saturday. LHS cheerleaders will "decorate" the caravan with streamers.

Democrat Crews 1 year old Weatherford Parker County, announce the post of U.S. from the 17th Congress. He believes that should be qualified stresses that his background includes veteran, foreign area, rancher, manufacturer.

McCulloch views issues facing the district and sees them as being. He has first hand problems faced by rancher, and says secure 100 percent of up on a farm and founded and operated acres in cotton, grain interests included a dealership, fish farm supply. He liquid interests because of increasing gas prices. He states, "Financially devastated credit for depreciation must often be paying for my decision. In the field of energy that he would fight for all oil and gas first hand the real policy. During 1971-72 manufacturing companies, energy crisis struck sales were off and by the end of bankrupt. Other are were also thrown into years and three are are still lacking an energy policy, but confused maize of congress at the present as gas and oil agricultural production on an annual basis to offset our foreign Many farm converted to alcohol gasoline to produce efficient fuel."

McCulloch is a veteran, serving again in Viet Nam. named Green Beret battalion of 850 decorations are gallantry in action heart for wounded