

15¢
Per
Copy

The Lockney Beacon



Volume 77

Lockney, Floyd County, Texas 79241

Sunday, September 17, 1978

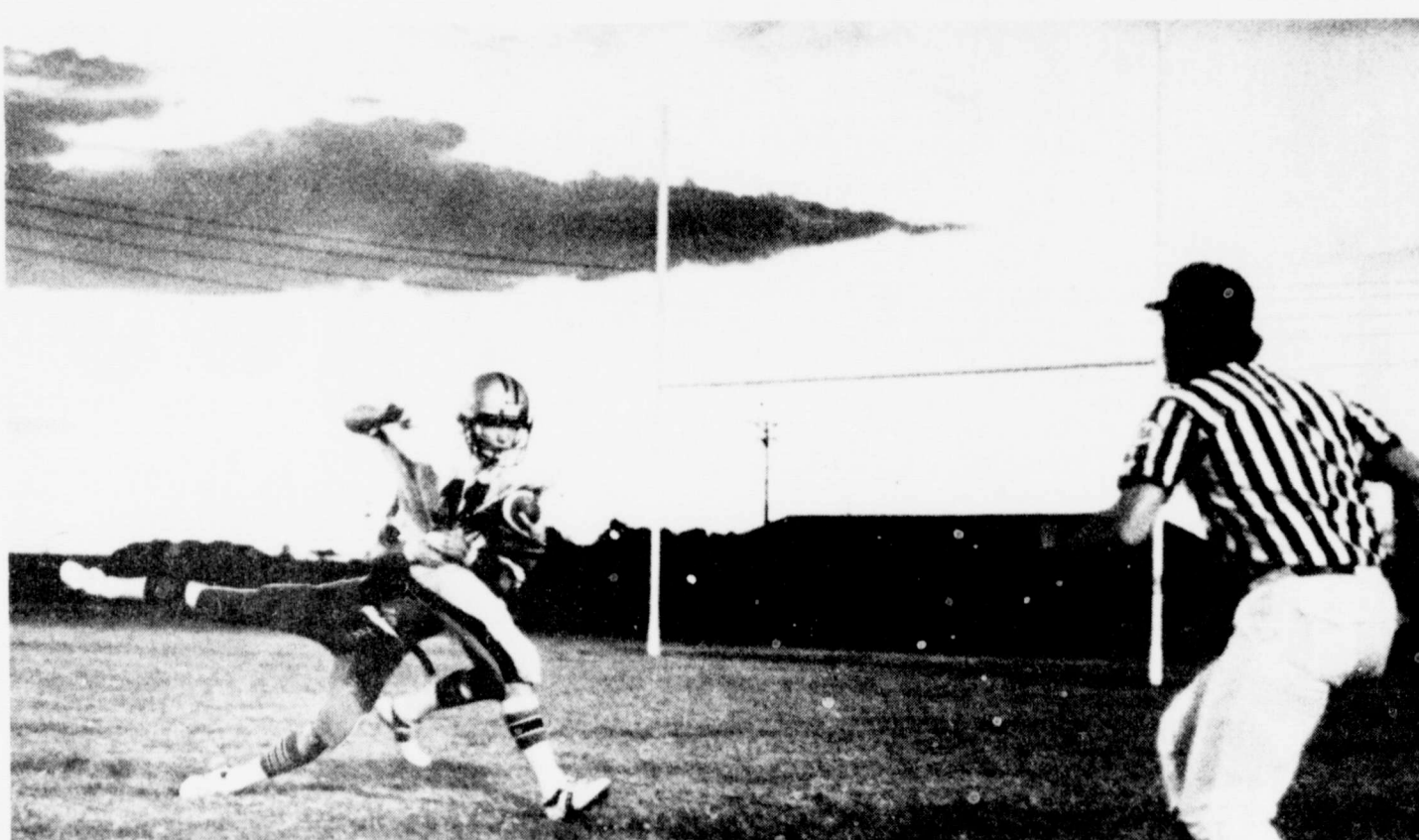
16 Pages In Two Sections

Number 75

'Horns Fall 7-6 To Friona

The Friona Chiefs downed the Lockney Longhorns 7-6 Friday night in a football game at Friona. The Chiefs' margin of victory was an extra-point kick which the Horns never got away.

End Leslie White put Friona on the scoreboard in the first quarter when he wound up on the receiving end of a 43-yard touchdown pass from quarterback Chris Barnett. Big Jerry Harrelson provided the Chiefs with what proved to be the winning point.



TRAPPED for a three-yard loss early in the game Friday, Lockney quarterback Steve Warren (#11) was near the wrong set of goalposts (at his own seven-yard line) when he was brought down by this enthusiastic Friona player. (Staff Photo)

The Longhorns retaliated in the second quarter. The Chiefs punted from the 28-yard line. Placido Gonzales signalled for a fair catch and apparently muffed it but a Friona player was flagged for interference, and after the walkoff, the Lockneyites owned the ball on the Friona 36. They fashioned a scoring drive from there. Curtis Ford got the first nine yards, and Earlee Mathis got most of the rest. Mathis went 11 yards to the 16, on the second play of the drive, then picked up a couple on the next try. Placido Gonzales gains six, and Mathis took it from there. He showed good second effort in picking up a first down on the three, and made it to the end zone on the next try.

But the Lockney extra-point effort went for naught when the holder didn't get the low center snap.

The kicker, Johnny Arjona, had a chance to put the Horns ahead eight plays later; the kickoff went into the end zone, and the Chiefs managed only five yards on three running plays and had to punt from their 25. The punt netted just seven yards, sailing high and short to the 40 and bouncing back to the 32. The Horns could move forward only four steps on an incomplete pass and two running plays, but that was close enough for Arjona, with the wind at his back, to try a field goal. He got the kick away this time. The

ball was aimed well. It hit the crossbar nearly dead center and bounced away.

The scoring was over for the evening, and so was the Longhorns' offensive punch. They netted 36 yards after the TD-six on the ground and 30 on two pass completions. (The Horns gained 34 yards rushing after the score but were thrown for losses totalling 28 yards.)

Friona racked up some more yardage. They drove to the Lockney 19

following the missed field goal and tried a three pointer of their own with nine seconds left in the first half, but it was no good - looked like it might have been partially blocked.

They got to the Longhorn 16 in the fourth period but lost the ball on downs. On their next possession the Chiefs drove to the Lockney 10-yard line before the Longhorn defense held and the Lockney lads again took over on downs.

Lockney	Friona
7	16
75	162
30	118
210-0	5-13-1
3-2	4-3
7-37	2-14
8-90	Penalties-Yards

Lockney	Friona
0	6
6	0
0	0
0	7

SCORING

Friona: Leslie White, 43-yard pass from Chris Barnett (Jerry Harrelson kick) Lockney: Earlee Mathis, 3-yard run (kick failed)



BEST BALE of cotton for the Lockney area -- Floyd County -- came to Sterley Gin at 5 p.m. Wednesday. Right to left are Jim Roberts, Sterley Gin manager; Santos Servando Villalon, ginners; and Don Sutterfield, producer. (Staff Photo)

Sutterfield Gets 1st Bale

A bale of cotton ginned in Floyd County this year was weighed at Sterley gin at 5 p.m. Wednesday, September 13. The \$90 Lockney Chamber of Commerce check for production, Sterley Gin producer, and Sutterfield got the seed money.

The bale weighed 530 pounds. Seed weight was 800 pounds. The cotton was stripped on the old Bennethome place southeast of Lockney. The dryland cotton (Mor-Cot 1141) was planted the first week of May and was defoliated on September 5.



HEAD OF MILO in the Lockney area earned Royce Latimer a \$50 bonus from the Lockney Chamber of Commerce. J.D. (left), Chamber of Commerce treasurer, hands Latimer a check. Pete Gonzales, manager of the Lockney Cooperatives Elevator Tuesday afternoon. (Staff Photo)

Latimer Cuts First Area Milo

Royce Latimer collected the \$50 premium check from the Lockney Chamber of Commerce for the Lockney area's first load of milo this year. Latimer's grain arrived at the Lockney Cooperatives Elevator Tuesday afternoon.

The first load weighed 17,720 pounds, had a moisture content of 13.80 percent and a test weight of 58.

Aiken Revival Starts Today

Revival services start today (Sunday, September 17) at the First Baptist Church of Aiken and continue through next Sunday, September 24.

The preacher will be the Rev. Bruce Keller, pastor of the Northside Baptist Church in Plainview. The singer will be a Northside Baptist Church layman, Mike Oden.

The Aiken church will hold Sunday services at the regular times Sunday School at 10 a.m. Morning Worship at 11. Church Training at 6 p.m. and Evening Worship at 7 during the revival. Monday through Saturday, revival services will be at 7:30 p.m.

Bill Sessom, pastor of the Aiken church, invites the public to attend all services.

Need Scrap Metal

Boy Scout Troop 206 of Lockney is having a scrap metal drive. Anyone willing to donate aluminum cans, old batteries or scrap iron is asked to please call these numbers: 652-3152; 652-2613; 652-2712; 652-2428 for pickup.

Works With Wankels

If you someday drive a car with a Wankel engine, remember that a Lockneyite had a part in the development of that engine. Kirby Collins spent the summer working on the Wankel, at a lab under contract from Curtis Wright corporation, the U.S. Wankel patent holder.

Much of Collins's work on the engine involved the study of the fuel injection system, with Professor Rich Steinberger of Princeton University, where Collins attends school. Collins was in Lockney last week on a short vacation from Princeton.

The lab where Collins has been working is under the direction of Frediana Braeco, who taught Collins a course last spring. Collins just asked Braeco about working in the lab this summer and got the job.

Collins worked two days a week with the engine and another three days a week with the computer in the lab.

There are several internal-combustion engine projects going on at the Princeton lab, and Collins says he's trying to get involved in another, with Dominic Santavicea, involving the use of lasers to study gases in internal-combustion engines. By firing lasers into the gases, scientists can tell the gas temperature, and compounds are present, and the amounts of each. By taking pictures of transparent engines, they can know exactly what is going on at any time in the engines' revolution cycles. Collins's part in the study would be to use the computer to analyze the data.

Collins graduated from Lockney High School in 1976. He is majoring in aerospace engineering at Princeton. Aerospace engineering, he says, covers everything from aerodynamics to mechanical engineering.

Collins says he's been interested in science and math for as long as he can remember. At LHS, he placed second in the state UIL science contest as a senior and was a National Merit Scholar and a member of the Lockney chapter of the National Honor Society.

He took a computer programming course at Texas Tech last summer. A computer course is a graduation requirement for Princeton engineering students.

Collins says he considered a lot of schools before choosing Princeton. It



Kirby Collins

came down to Princeton, Georgia Tech and MIT. Tech didn't impress him, he says, and MIT was in the Middle of Boston...

Princeton is located halfway between New York City and Philadelphia. He likes the size (small) of the department, and the school enrollment

is small, too (about 4300). And Princeton has a very small graduate school and seems to place more emphasis on the undergraduates, Collins says.

Collins left Lockney September 9 to return to Princeton for his junior year. He was accompanied by his parents, Mr. and Mrs. Gene Collins Jr.

Floydada Girl County Fair Queen

Lipham, the 15-year-old daughter of Mr. and Mrs. Julian Lipham, was named Queen of the annual Floyd and Surrounding Counties Fair Thursday night. The high school student was crowned by other contestants in the pageant.

Spoke Wideman of radio station KFYO was master of ceremonies and Lucy Dean Record was the organist. Jana Noland provided entertainment while the contestants were offstage.



THE QUEEN OF THE 1978 FLOYD COUNTY FAIR is Julianne Lipham, center. At left is first runner-up Ronee Thornton. At right, second runner-up Jeanna Duncan of Hale Center.

NHS Slates 'Work Day'

The National Honor Society chapter of Lockney High School will have a "work day" on Saturday, September 23.

Call Kevin Stennett, president of

the Lockney NHS 652-2252, to arrange for a National Honor Society student to come to your home.

They'll be doing jobs around the house. Pay what you feel it's worth.

Anderson Clayton Earned... THE FOURTH... ended June 30... Anderson Clayton's net... rose 95 percent to a... \$7.8 million or 55... per common share... red to \$4.0 million or... ts per share a year... J. Harlow, chairman... nounced... ed processing, con... and institutional... life insurance, animal... poultry feeds, ware... and materials hand... made higher contri... for the three-month

CUP or DINNER PLATE... SAUCER, BREAD and BUTTER or FRUIT-DISH... EXCLUDING CIGARETTES AND GAS... YOU CAN BUILD A 40 PIECE SERVICE LIKE THIS... FOR ONLY \$7.60... A \$49.20 VALUE!... CASH REGISTER TAKE... ACCEPTED ONLY FROM BUDDY... APRIL 10TH 1978 THRU... NOVEMBER 10TH 1978

983-3149... WE GIVE... 8x11... GREEN STAMPS... DOUBLE... ON WEDNESDAY... 5 LB. WHITE SWAN... SUGAR... 99... 1/2 GAL. BELL... SLIM & TRIM MILK... 69... \$1.09 VALUE... 8 COUNT BIRDSEYE... CORN ON COB... 79... \$1.09 VALUE... 6 OZ. FRANKLIN SNACK... MUNCH AND CRUNCH... 2/99... 79c VALUE... 13 OZ. NABISCO CHIPS... COOKIE... 79... \$1.19 VALUE... 17 OZ. LIBBY'S... FRUIT COCKTAIL... 2/89... 63c VALUE... 8 OZ. DEL MONTE... PINEAPPLE... 3/89... 39c VALUE... 1/2 LB. NESTLES CHOCOLATE FLAVOR CHIPS... 89... \$1.29 VALUE... 2 LB. NESTLES... CHOCOLATE WHIP... \$1... \$3.29 VALUE... 15 OZ. RANCH STYLE BEANS... 3/89... 33c VALUE... 1/2 OZ. KRAFT... MIRACLE WHIP... 69... 95c VALUE... 2 LB. SMUCKERS... RAPE JAM... 99... \$1.29 VALUE

DOUBLE... ON WEDNESDAY... 5 LB. WHITE SWAN... SUGAR... 99... 1/2 GAL. BELL... SLIM & TRIM MILK... 69... \$1.09 VALUE... 8 COUNT BIRDSEYE... CORN ON COB... 79... \$1.09 VALUE... 6 OZ. FRANKLIN SNACK... MUNCH AND CRUNCH... 2/99... 79c VALUE... 13 OZ. NABISCO CHIPS... COOKIE... 79... \$1.19 VALUE... 17 OZ. LIBBY'S... FRUIT COCKTAIL... 2/89... 63c VALUE... 8 OZ. DEL MONTE... PINEAPPLE... 3/89... 39c VALUE... 1/2 LB. NESTLES CHOCOLATE FLAVOR CHIPS... 89... \$1.29 VALUE... 2 LB. NESTLES... CHOCOLATE WHIP... \$1... \$3.29 VALUE... 15 OZ. RANCH STYLE BEANS... 3/89... 33c VALUE... 1/2 OZ. KRAFT... MIRACLE WHIP... 69... 95c VALUE... 2 LB. SMUCKERS... RAPE JAM... 99... \$1.29 VALUE

DOUBLE... ON WEDNESDAY... 5 LB. WHITE SWAN... SUGAR... 99... 1/2 GAL. BELL... SLIM & TRIM MILK... 69... \$1.09 VALUE... 8 COUNT BIRDSEYE... CORN ON COB... 79... \$1.09 VALUE... 6 OZ. FRANKLIN SNACK... MUNCH AND CRUNCH... 2/99... 79c VALUE... 13 OZ. NABISCO CHIPS... COOKIE... 79... \$1.19 VALUE... 17 OZ. LIBBY'S... FRUIT COCKTAIL... 2/89... 63c VALUE... 8 OZ. DEL MONTE... PINEAPPLE... 3/89... 39c VALUE... 1/2 LB. NESTLES CHOCOLATE FLAVOR CHIPS... 89... \$1.29 VALUE... 2 LB. NESTLES... CHOCOLATE WHIP... \$1... \$3.29 VALUE... 15 OZ. RANCH STYLE BEANS... 3/89... 33c VALUE... 1/2 OZ. KRAFT... MIRACLE WHIP... 69... 95c VALUE... 2 LB. SMUCKERS... RAPE JAM... 99... \$1.29 VALUE

DOUBLE... ON WEDNESDAY... 5 LB. WHITE SWAN... SUGAR... 99... 1/2 GAL. BELL... SLIM & TRIM MILK... 69... \$1.09 VALUE... 8 COUNT BIRDSEYE... CORN ON COB... 79... \$1.09 VALUE... 6 OZ. FRANKLIN SNACK... MUNCH AND CRUNCH... 2/99... 79c VALUE... 13 OZ. NABISCO CHIPS... COOKIE... 79... \$1.19 VALUE... 17 OZ. LIBBY'S... FRUIT COCKTAIL... 2/89... 63c VALUE... 8 OZ. DEL MONTE... PINEAPPLE... 3/89... 39c VALUE... 1/2 LB. NESTLES CHOCOLATE FLAVOR CHIPS... 89... \$1.29 VALUE... 2 LB. NESTLES... CHOCOLATE WHIP... \$1... \$3.29 VALUE... 15 OZ. RANCH STYLE BEANS... 3/89... 33c VALUE... 1/2 OZ. KRAFT... MIRACLE WHIP... 69... 95c VALUE... 2 LB. SMUCKERS... RAPE JAM... 99... \$1.29 VALUE

DOUBLE... ON WEDNESDAY... 5 LB. WHITE SWAN... SUGAR... 99... 1/2 GAL. BELL... SLIM & TRIM MILK... 69... \$1.09 VALUE... 8 COUNT BIRDSEYE... CORN ON COB... 79... \$1.09 VALUE... 6 OZ. FRANKLIN SNACK... MUNCH AND CRUNCH... 2/99... 79c VALUE... 13 OZ. NABISCO CHIPS... COOKIE... 79... \$1.19 VALUE... 17 OZ. LIBBY'S... FRUIT COCKTAIL... 2/89... 63c VALUE... 8 OZ. DEL MONTE... PINEAPPLE... 3/89... 39c VALUE... 1/2 LB. NESTLES CHOCOLATE FLAVOR CHIPS... 89... \$1.29 VALUE... 2 LB. NESTLES... CHOCOLATE WHIP... \$1... \$3.29 VALUE... 15 OZ. RANCH STYLE BEANS... 3/89... 33c VALUE... 1/2 OZ. KRAFT... MIRACLE WHIP... 69... 95c VALUE... 2 LB. SMUCKERS... RAPE JAM... 99... \$1.29 VALUE

DOUBLE... ON WEDNESDAY... 5 LB. WHITE SWAN... SUGAR... 99... 1/2 GAL. BELL... SLIM & TRIM MILK... 69... \$1.09 VALUE... 8 COUNT BIRDSEYE... CORN ON COB... 79... \$1.09 VALUE... 6 OZ. FRANKLIN SNACK... MUNCH AND CRUNCH... 2/99... 79c VALUE... 13 OZ. NABISCO CHIPS... COOKIE... 79... \$1.19 VALUE... 17 OZ. LIBBY'S... FRUIT COCKTAIL... 2/89... 63c VALUE... 8 OZ. DEL MONTE... PINEAPPLE... 3/89... 39c VALUE... 1/2 LB. NESTLES CHOCOLATE FLAVOR CHIPS... 89... \$1.29 VALUE... 2 LB. NESTLES... CHOCOLATE WHIP... \$1... \$3.29 VALUE... 15 OZ. RANCH STYLE BEANS... 3/89... 33c VALUE... 1/2 OZ. KRAFT... MIRACLE WHIP... 69... 95c VALUE... 2 LB. SMUCKERS... RAPE JAM... 99... \$1.29 VALUE

DOUBLE... ON WEDNESDAY... 5 LB. WHITE SWAN... SUGAR... 99... 1/2 GAL. BELL... SLIM & TRIM MILK... 69... \$1.09 VALUE... 8 COUNT BIRDSEYE... CORN ON COB... 79... \$1.09 VALUE... 6 OZ. FRANKLIN SNACK... MUNCH AND CRUNCH... 2/99... 79c VALUE... 13 OZ. NABISCO CHIPS... COOKIE... 79... \$1.19 VALUE... 17 OZ. LIBBY'S... FRUIT COCKTAIL... 2/89... 63c VALUE... 8 OZ. DEL MONTE... PINEAPPLE... 3/89... 39c VALUE... 1/2 LB. NESTLES CHOCOLATE FLAVOR CHIPS... 89... \$1.29 VALUE... 2 LB. NESTLES... CHOCOLATE WHIP... \$1... \$3.29 VALUE... 15 OZ. RANCH STYLE BEANS... 3/89... 33c VALUE... 1/2 OZ. KRAFT... MIRACLE WHIP... 69... 95c VALUE... 2 LB. SMUCKERS... RAPE JAM... 99... \$1.29 VALUE

Ladies Play Day

The Ladies Golf Association of the Floydada Country Club had a Ladies Play Day Tuesday September 12. There were eight present. Rue Nita Robertson won the ball for blind bogey. The planned meetings have ended for the season, but everyone continues to play golf on Tuesday as long as weather permits. It is hoped that next April every member will come and bring a person along so that the club will become bigger and better.

Alpha Sigma Upsilon Meets

Alpha Sigma Upsilon met September 12 in the home of Ilene Kendrick. It was decided to have an aluminum can drive with the money to go to the Chapter's various service projects.

The Chapter will participate in the upcoming Floyd County fair. Committees were set up for the educational booth and for the Community Display.

For a Ways and Means Project members will make several inexpensive gifts for children to buy at the Christmas Bazaar. Also, once a year each member will bring a raffle item to be auctioned at the meetings. Other business included: by-laws and traditions were outlined and accepted as outlined; and members drew names for their Secret Sister.

Judy Warren gave the program on "Growing up," which was followed by a discussion on what maturing, physically and mentally meant to each individual member.

The meeting was adjourned and refreshments were served by hostess Ilene Kendrick.

Members present were Brenda Watson, Judy Warren, Vickie Latta, Lynn Daniel, Ilene Kendrick, June McLaugh, Rhonda Guthrie and Vickie Yeary.

ALTHOUGH PRICES WERE HIGH, American consumers bought more real gold and silver accessories in 1977 than in 1976, reports Beverly Rhoades, a clothing specialist.

The largest jewelry consumption, however, was in gold tone, she points out. Accessory consumption in real gold and silver and in gold and silver tone are expected to increase even more in 1978, the specialist says.

Miss Rhoades is with the Texas Agricultural Extension Service, The Texas A&M University System.

Society

Christy Stringer Honored

Christy Stringer, bride elect of Paul Newberry of Dallas, was honored with a bridal shower Saturday September 16, from 10-11 a.m. in the home of Mrs. Mack Hickerson. Special guests for the occasion were Mrs. Robert Newberry, mother of the groom of Dallas; Mrs. Faye Stringer, grandmother of the bride to be of Floydada; and Mrs. J. M. Williams of Floydada.

Presiding at the serving table were Mrs. Blake Hickerson and Mrs. Steve Lloyd. The table was laid with an ecru lace cloth and centered with a basket of silk fall

flowers, which was presented to the honoree along with a gift of cookware. Melody Stringer, sister of the honoree, registered guests. Adding to the gala occasion were corsages of fall flowers worn by the honoree and special guests.

Hostesses were Meses. Ted Bell, Craig Edwards, Doyle Miller, Blake Hickerson, J. R. Turner, Jerry Livingston, Louis Anderson, Glen White, Norman Muncy; Don Rainer, D. C. Mayo, Bill Hopper, Bob Copeland, Eddie Smith, Ozell Chappell, Steve Lloyd and Mack Hickerson.

Anniversary Reception Honors

Mr. and Mrs. E. R. Stone

Mr. and Mrs. E. R. Stone were honored in their home in Lockney September 3 with a reception marking their 50th wedding anniversary. They were married September 9, 1928 near Stone-Well, Oklahoma.

Cake, coffee and punch were served by the couple's children, Mr. and Mrs. Clayton Henderson and children Kathy and Dewayne of San Angelo; Mr. and Mrs. Harold Stone and family of Miami, Texas; Mr. and Mrs. Billy Stone of Seymour; and

Bob Stone of Ralls. Some 80 people registered and 20 sent gifts and flowers.

Other out-of town guests included Mr. and Mrs. E. G. Johnson and Mr. and Mrs. Jack Baskin from Estelline; Elaine Lempink, San Angelo; Mr. and Mrs. Elmer Massey, Sulphur, Oklahoma; Mr. and Mrs. Alford Massey, Fairview, Oklahoma; Mr. and Mrs. Calvin Lexton, Ada, Oklahoma; Mr. and Mrs. Preston Sims and family, Moore, Oklahoma.

Jack and Jill Tournament Deemed Success

The Ladies Golf Association of Floydada Country Club hosted a Jack and Jill tournament Saturday September 9. Forty teams entered.

First and second places were won by a tie (137) between Kakkie Davis of Cone and Tammy Tyer of Floydada, and Tommie and Sandy Duboise of Spur. Coming in third was Alford and Louise Barton of Matador with 138; fourth were Jer-

rold Vinson and Teresa Hale of Floydada with 139; and a 5th place tie between Don and Gayle Morrison, Kim and Wendy Porter of Petersburg and Jessie and Donna Pernel of Dougherty, with 141; toss was won by Jessie and Donna.

Everyone enjoyed a day of golf and a barbecue supper afterward. A special "thanks" is extended to everyone who helped make the tournament a success.

Victory Baptist Ladies Meet

The Ladies Fellowship of the Victory Baptist Church met September 14, Monday evening at 7:30 at the church for their monthly meeting. The meeting was opened in prayer by Sharon Quisenberry.

After a short business meeting, Barbara Hendrix brought a devotion on "The Perfect Peace" which was followed by a discussion on how we can find such a peace. The meeting was dismissed in prayer by Ola Smith.

Refreshments were served to those attending: Barbara Hendrix, Ola Smith,

Sharon Quisenberry, Betty Paller, Arlene Clevenger, Gaya Hale, Barbara Clam-pitt and Edna Cochran.

The Ladies Fellowship would like to extend an open invitation to anyone who would like to share in their monthly meetings and fellowship.

Introducing



Jody Elise is the new daughter of Mr. and Mrs. Robert Bullock of Lubbock. She was born at 10:32 a.m. September 13 at Community Hospital in Lubbock, weighing 6 pounds and 10 ounces. The new mother is the former Belinda Covington of Floydada.

Grandparents are Mr. and Mrs. Jack Covington and Mr. and Mrs. R.C. Bullock of Floydada; great grandparents are Mr. and Mrs. Tom Daniel and Mrs. F.M. Covington of Dougherty. Great great grandmother is Mrs. L.L. Clark Sr., of Floydada.



Mr. and Mrs. C. B. McDonald

Floydada Couple Celebrates

50th Anniversary

Mr. and Mrs. C. B. McDonald are celebrating their 50th wedding anniversary with a family reunion at the South Park Inn in Lockney, September 15-16.

The former Mrs. Tatum were married September 15, 1928, in Amarillo, Texas. Mr. McDonald was a publisher for the Lockney Beacon before becoming a teacher at the

McDonalds in Floydada. Mrs. McDonald is a retired teacher who taught music and elementary grades for eighteen years, twelve of them in the Floydada public schools.

A total of twenty-one family members is expected to attend the celebration, including the couple's daughter, Mrs. Carolyn Cheek of Floydada and her five sons; their two children, also of Floydada, Mrs. McDonald's sister, Mrs. S.E. Gillispie, and daughter Martha, both of Lubbock; Mrs. McDonald's brother and his wife, Mr. and Mrs. Harry Tatum, also of Lubbock; a nephew and his wife, Mr. and Mrs. Don Gillispie and their three children, all of Claude, Texas.

Citizens Hold Luncheon

The Senior Citizens held their regular luncheon Thursday September 21, at the Senior Center at 301 1/2 Street. Every effort was made to bring in a new menu, and another effort might become a reality at the organiza-

tioned by Mrs. Joe Cluck and Mrs. Tommy Farris.

Remember the organization has started a Building Fund and a Loud Speaker Fund which must be kept growing if these improvements are to be made at the Center.

The next meeting will be at 11:00 a.m. and lunch will be served about 11:30 or 11:45.

KIRTLEY'S MARKET

316 N. 2ND 933-3105

WE ACCEPT FOOD STAMPS

WE RESERVE THE RIGHT TO LIMIT

WE GIVE DOUBLE S AND H GREEN STAMPS ON WED.

THESE SPECIALS GOOD SEPT. 18 THRU SEPT. 23, 1978

PRODUCE		MEAT	
ROSA	49¢	USDA CHOICE	SHORT RIBS LB. 98¢
MINIONS	12¢	HORMELL	SPARE RIBS LB \$1.19
STARINES	61¢	USDA CHOICE	HAMBURGER 73% LEAN \$1.09 LB
WATTOES	99¢	COUNTRY PRIDE GRADE "A"	FRYERS LB 56¢
79¢		VAN CAMP	PORK & BEANS 16 OZ. 2/69¢
79¢			HI-C DRINK 46 OZ. 59¢ REG. 76¢
63¢			POT PIES REG. 41 35¢
58¢	70¢		14 OZ. INSECT SPRAY & KILL REG. \$2.19
6-32 OZ. BTL.			
Cokes or Dr. Peppers \$1.49 PLUS DEPOSIT			

Values

ALL VEGETABLE PURE CRISCO

\$1.79

TOTAL GROCERY SAVER

HEFTY TALL (24x30) KITCHEN BAGS 15 CT. BOX 89¢

HEFTY 33 GAL. TRASH CAN LINERS 10 CT. BOX \$1.19

CARNATION INSTANT BREAKFAST 6 OZ. PKG. \$1.19

CRUNCHY NUT BUTTER 18 OZ. JAR \$1.19

WAFERS 12 OZ. BOX 69¢

HOUSE INSTANT FEE 10 OZ. JAR \$3.99

RAFT JAM 2 LB. JAR \$1.19

LIQUID OIL 32 OZ. BTL. \$1.19

CRISP 18 OZ. BOX \$1.19

CHETTI 12 OZ. PKG. 39¢

CHEESE 3 1/2 OZ. PKGS. \$1.19

YELLOW CLING-SLICES/HALVES 29 OZ. CAN 59¢

PEPPER 4 OZ. CAN 89¢

SHURFINE ASSTD. FACIAL TISSUE 200 CT. BOX 39¢

MARYLAND CLUB EXTRA MEASURE \$1.99

KRAFT - FOR CANDY APPLES WRAPPLE 9 OZ. PKG. 79¢

SALES EFFECTIVE SEPT. 17-23, 1978

1956 Study Club Celebrates "Texas Heritage"

The 1956 Study Club opened its fall season Tuesday September 12 at the home of Judy Dunlap with an old fashioned back yard supper celebrating their "Texas Heritage." Hostesses for the occasion, Judy Dunlap, Lorri Farris and Jan Thayer, were dressed in authentic floor length dresses borrowed from the Floyd County Museum...reflections of days gone by.

Tables were decorated with two centerpieces which were given away to those who were sitting in numbered positions at the tables.

Vickie Rainer won the door prize.

The menu for the evening included chili, beans, cantaloupe and a relish plate.

Roll call was a "traveler's hint." For the program, Mrs. Alan Bingham presented slides on "The Heritage of Texas."

New Focus Child Abuse Research

Money shortage, unemployment, lack of or loss of power or status are traits often found in child abusers. In addition, research reports child abusers exhibit isolation or less involvement in the community and neighborhood.

Also, abusive families tend to be larger than non-abusive ones. Discord, disorganized household, marital quarrels and fewer systematic routines are other typical traits of families that abuse, she continues.

CHILD'S PART In addition to mental health and homelife, researchers recognize that children can influence the behavior of their parents and may contribute to the maltreatment.

Abused children tend to be "different" from their brothers and sisters, Miss Taylor indicates. "Parents of abused children often describe the abused child as 'whiny, fussy, lazy, always crying, demanding, stubborn, sullen, pale, sickly, weak, fretful, panicky, and unsmiley."

"Therefore, the child is high risk for maltreatment," the specialist says. Other child-centered causes of abuse that parents indicate are unwanted pregnancies that cause them to reject the child and a child not knuckling under to punishment that is less harsh than severe abuse.

For instance, no response or no tears for a spanking could threaten a parent's power and provoke harsher discipline or even abuse, she explains.

WHITES

Home and Auto

Save on this big 2-door refrigerator.

Save Up To 111.95

It's family size, frost free and makes its own ice!

\$448

Reg 549.95-559.95 Popular Harvest Gold or Almond finish at no extra cost

You never defrost this spacious 17 cu ft Catalina 2-door refrigerator equipped with factory installed icemaker that makes fresh ice as you use it! Advanced thinwall foam construction locks in the cold with thinner walls for added storage and efficient energy use! Equipped with 3 sliding shelves, juice can rack, dairy chest and fingertip temperature control. Gleaming acrylic enamel finish in White, Harvest Gold or Almond. Hurry to Whites. Sale price limited time only. 130-616-23

117 W. California
Floydada, Tx.
983-3514

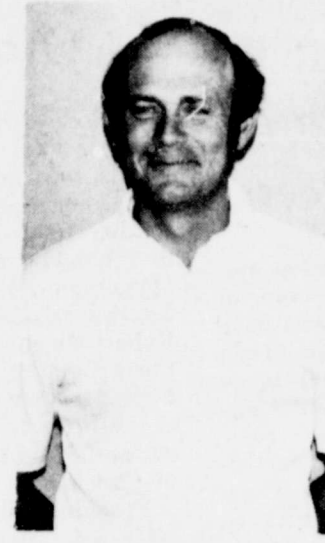
FOOTBALL CONTEST

PICK THE WINNING TEAMS!

WIN FIRST PRIZE..... \$10⁰⁰
 SECOND PRIZE..... \$6⁰⁰
 THIRD PRIZE..... \$4⁰⁰

**GO,
 FIGHT, WIN!!!**

MEET THE LONGHORNS



HEAD COACH
 JIM WARREN



COACH
 ROI AND MURRAY



**GO
 LONGHORN
 GO**

RAGIN' RED

<p>MARR INSULATION Tom Marr, Owner Lockney, Texas 1. Friona at 2. River Road</p>	<p>RAGIN' RED</p>		<p>Stricklands Restaurant HWY. 70 LOCKNEY, TEXAS 31. Idalou at 32. Friendship</p>
<p>Baccus Motor Co. 321 SO. MAIN ST. LOCKNEY 3. Crosbyton at 4. Motley Co.</p>			<p>Moore-Rose Funeral Home Lockney Tx. 15. Floydada at 16. Post</p>
<p>Page's Thriftway No. 3 "A Better Way To Save" 5. St. Louis Cardinals at 6. Dallas Cowboys</p>	<p>Dan's Automotive LOCKNEY, TEXAS 17. NTSU at 18. New Mexico St.</p>	<p>White's Auto Store Lockney, Texas 25. Dimmitt at 26. Tahoka</p>	<p>First National Bank In Lockney Member of F.D.I.C. 35. Panhandle at 36. Canadian</p>
<p>Wilson Photography LOCKNEY, TEXAS 7. Lubbock Monterey at 8. Midland</p>	<p>Mize Pharmacy & TV Your Complete Family Drug Store Gift Headquarters ★ RCA Television LOCKNEY, TEXAS 19. Abernathy at 20. Hale Center</p>	<p>Webster Service & Supply "Where You're Always Welcome" 27. New Deal at 28. Roosevelt</p>	<p>Thomason Grocery LOCKNEY, TEXAS 37. USC at 38. Alabama</p>
<p>Providence Farm Supply and Grain Co. 9. Baylor at 10. Kentucky</p>	<p>Dairy Queen LOCKNEY, TEXAS 21. Tulia at 22. Muleshoe</p>	<p>Roger's Pastry and Fried Chicken LOCKNEY, TEXAS 29. Arizona at 30. Texas Tech</p>	<p>The Tye Company On The Plainview Highway 39. Big Spring at 40. Snyder</p>
<p>Byrd Pharmacy "Accurate Prescription Service" 11. Morton at 12. Lubbock Cooper</p>	<p>CONTEST RULES Circle on the official entry blank the number of the team you think will win each game. Circle the winner and indicate the total score in the tie-breaker game. Each entry must be validated by one of the merchants on the contest page. Take the entry form to the merchant of your choice for validation. (Validation by only ONE merchant is necessary.) Contestants may mail their entries or bring them to the Beacon Office, 120 South Main. Mail entries must be postmarked no later than 5 p.m. Friday, and in-person entries must be at the office by the same time. Mail entry address is Box 187, Lockney 79241. One Winner Per Family Per Week.</p>		<p>Longhorn Inn "Where School Friends Meet To Eat" 41. Midland Lee at 42. Plainview</p>
<p>Davis Lumber Co. "Where Customers Send Their Friends" 13. Utah at 14. Houston</p>	<p>OFFICIAL ENTRY FORM NAME _____ ADDRESS _____ CITY _____ MERCHANTS STAMP _____ 1-2 3-4 5-6 7-8 9-10 11-12 13-14 15-16 17-18 19-20 21-22 23-24 25-26 27-28 29-30 31-32 33-34 35-36 37-38 39-40 41-42 43-44 TIE BREAKER OLTON AT LOCKNEY TOTAL SCORE.....</p>		<p>Brown's Department Store LOCKNEY, TEXAS 43. L. A. Rams at 44. Houston Oilers</p>

...CH! Danny R...
 ...erback Chris B...
 ...ed Longhorns...
 ...oper H...
 ...Wayne Cooper, s...
 ...Mrs. M.E. Coop...
 ...ney, has recently...
 ...the position as Ch...
 "The...
 G...
 BY Felicia App...
 ...the little mare. Ap...
 ...ing that black cow...
 ...as you would see...
 ...is the way Carter...
 ...his stories in L...
 ...DA...
 ...The expression w...
 ...was there an' the...
 ...to get back to the...
 ...so hard that she fel...
 ...didn't go down...
 ...ers-just simply be...
 ...of April Star," he...
 ...pony simply touc...
 ...to the ground in...
 ...ad on a level w...
 ...as a tense moment...
 ...among the people...
 ...will until the cow...
 ...ed tryin' to get...
 ...April Star held...
 ...every turn, ch...
 ...like her forefe...
 ...some old fiddle to...
 ...April Star made no...
 ...then began to tal...
 ...were misty and...
 ...ef in what they...
 ...mare had provide...
 ...tion that might...
 ...eller just once in...
 ...story of April Star...
 ...stories in BIG...
 ...white-spent 10 y...
 ...DA, a book that...
 ...individual horse stor...
 ...because he wants...
 ...and I love cows...
 ...vestock inspec...
 ...Health Commis...
 ...center, the author...
 ...counties but is...
 ...ere in Area one...
 ...home office in A...
 ...means that th...
 ...writes in his...
 ...he-less that time...
 ...writing about...
 ...er seen in action...
 ...is Crickett...
 ...grullo mare was...
 ...hat comes to my...
 ...kin' about her...
 ...cattle, and she...
 ...ion in the wor...
 ...down on a cow st...
 ...the next move at...
 ...s seldom out...
 ...was mentally...
 ...were near. She...
 ...when to move, a...
 ...order to head...
 ...get back into t...

T THE HORNS

GO LONGHORN GO

Tricklands Restaurant
HWY. 70
LOCKNEY, TEXAS

Idalou at 32. Frenship

Implement Company
John Deere Implements

Denver City at 34. Brownfield

First National Bank
In Lockney
Member of F.D.I.C.

Panhandle at 36. Canadian
Homason Grocery
LOCKNEY, TEXAS

USC at 38. Alabama

The Tye Company
On The Plainview Highway

Big Spring at 40. Snyder

Longhorn Inn
Where School Friends Meet To Eat

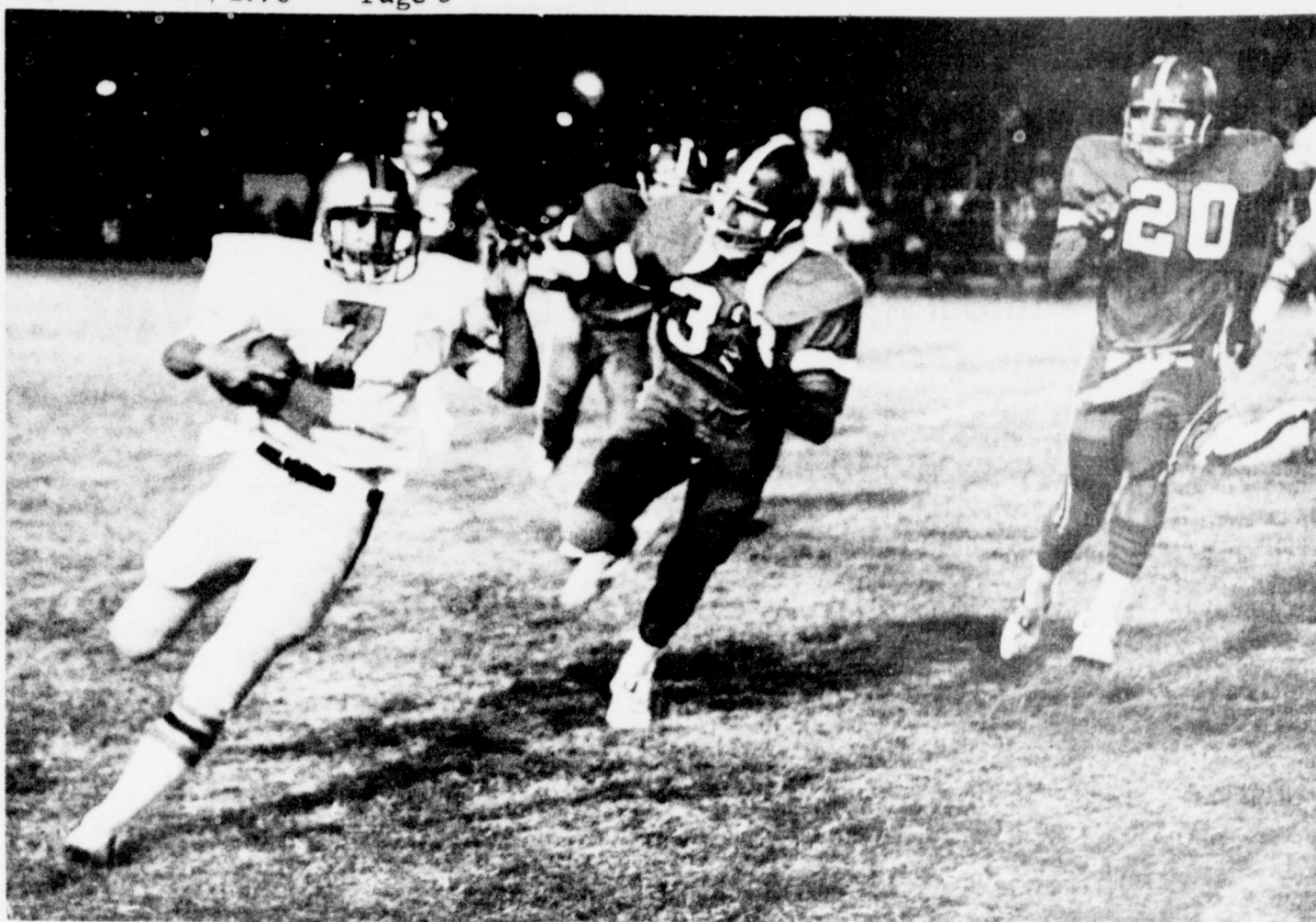
Department Store
LOCKNEY, TEXAS

Rams at 44. Houston Oilers



Danny Riddle (#22) wraps up Friona (Chris Barnett) for no gain. Other white Longhorns convergin on the play include

Joe Rodriguez (#21), Jeff Terrell (#74) and two whose numbers are not visible. (Staff Photo)



NINE-YARD GAINER...Curtis Ford (#7) netted nine yards for Lockney on this second-quarter effort. It was the first play of the Longhorns'

touchdown drive in the Friona game Friday. Joe Malouf (#33) and Kevin Kothman (20) are the Friona pursuers. (Staff Photo)

Cooper Heads Health Sciences Center Cardiology Division

Dr. Cooper, son of M.E. Cooper of Texas Tech University has recently accepted position as Chief of the Division of Cardiology at the Texas Tech University Health Sciences Center in Lubbock.

Dr. Cooper is a 1961 graduate of Lockney High School. He is a diplomate of the American Board of Internal Medicine and the American Board of Cardiovascular Diseases, and a member of the American

College of Physicians and American College of Cardiology.



Dr. Wayne Cooper

Reecer At Farmington Newspaper

Richie Reecer, son of Mr. and Mrs. Donald Reecer of Lockney, recently completed work at Texas Tech for a degree in journalism. He is employed by the Farmington (New Mexico) Daily News. Reecer is a 1974 graduate of Lockney High School.

Lodge Meeting Tuesday

Lockney Masonic Lodge No. 867 will have its monthly meeting at 7:30 p.m. Tuesday (September 19) at the lodge hall. There will be a program, and refreshments will be served. All Masons are invited to attend.



CONTEMPLATING big Joel Hight (#69), Lockney's Curtis Ford (#7) tries to avoid a loss. He didn't-Hight nailed him two yards behind the line of scrimmage. (Staff Photo)

LOCKNEY SCHOOL LUNCH MENU

- MONDAY
 - Burritos
 - Buttered Corn
 - Buttered greens
 - Fruit cup-cornbread
 - Milk-Brownie
- TUESDAY
 - Macaroni & Cheese
 - Green beans-carrot stick
 - Rolls-Orange whip
 - Milk
- WEDNESDAY
 - Chicken & Dumplings
 - Buttered Potatoes
 - English peas-Milk
 - Cole slaw-Hot Biscuits
 - Peanut Butter cookies
- THURSDAY
 - Char Broiled Hamburgers
 - Lettuce, Tomatoes
 - Pickles & Mustard
 - French Fried Potatoes
 - Purple Plum
 - Milk
- FRIDAY
 - Baked Ham
 - Chopped Broccoli
 - Potato Cheese salad
 - Corn bread-Apple crisp
 - Milk

Lockney Locals

Miss Jodi Smith of Lansing, Michigan and Patti Smith of Ft. Worth arrived Friday for a visit with their grandmother, Mrs. Raymond Parker and Mr. Parker. Saturday they went to Littlefield and visited with their great-grandmother, Mrs. J.A. Brooks, a resident of Heritage Home in Littlefield. Jodi Smith is a senior student at Michigan State University, Lansing, and Patti Smith is a freshmen student at Tarrant County Junior College, Ft. Worth. They flew to Ft. Worth Sunday, and Jodi plans to visit a friend at the University there.

Mr. and Mrs. Bob Livesey and son Douglas of Oak Ridge, Tennessee, arrived Thursday of last week for a visit with her parents, Mr. and Mrs. Elmo Savage. They plan to leave Wednesday for a visit with her brother, Edwin Savage of Lubbock, and then visit her sister, Wanda Head of Dallas, before returning home.

Visiting Sunday in the home of Mrs. LaVerna Sams were her daughter, Mr. and Mrs. Dean Burger of Pampa, her grandson, Mr. and Mrs. Ken Burger and children Jollee, Kenzie and Christopher of Pampa; her granddaughter, Mr. and Mrs. Bud Fields and children Melissa, Scott and Jeffrey of Groom; her daughter, Mr. and Mrs. Marvin Montague and son Mike of Silverton; granddaughter, Mr. and Mrs. Johnny Turner and daughter Heather of White Flat; and her daughter, Mrs. Dwight Stubblefield of Amarillo.

The Senior Citizens of Lockney met for the regular monthly meeting Thursday at 10 a.m. in the fellowship hall at the First United Methodist Church for a covered dish dinner. Greet Applegate asked the blessing and Mrs. Eleanor Schacht brought the devotional. The afternoon was spent visiting, playing "42" and dominoes. The meeting was dismissed with a prayer by Bro. De (Seago). Thirty nine members and guests were present. Hostesses for the meeting were Mrs. Hazel Johnson and Lena Hawkins.

"The Outside Of A Horse Is Good For The Inside Of A Man"

By Felicia Applewhite

The mare, April Star, was that black cow in front of her you would see a cuttin' pony the way Carter White begins his stories in his book, BIG REMUDA.

"The expression was there, the mare there an' that ole cow was goin' back to the herd. She was goin' down in the hind quarters simply bowed down 'n' April Star," he continues.

"I remember well the sharpness of Smokey's back; he sure was in a bad shape. I sure was wantin' a saddle before we found the old kack hangin' in Uncle Hugh's barn. It must have been 40 years old. The horn was not covered. I don't know what kind of metal it was. It was gold colored. The old leather was dried out. My, how good it felt though compared to Smokey's sharp back."

"You know, sometimes I get to thinkin' about Smokey and the way he would nicker when I'd start toward his pen, come feedin' time. Strange how animals you have been attached to, as do people you have loved, seem closer in memory as the evenin' shadows fall."

The author is a native of Garza County. He was graduated from Post High School where he played tackle on the Antelope team.

Following his marriage in 1951 to Sybil Smith, he leased grass out of Post where he had Hereford cattle and saddle horses.

"When the Crickett mare worked cattle, riding her was a chore, for you were on the 'hurricane Deck' if the stock in front of you was tryin' to get back to the herd. It was a full-time job to stay tight and ride her, for she was mentally ahead of the cow stock all the time."

Of course, White has had his favorites but, "if you could put all the good points together, you would really have an animal. However, a horse, just like people, has faults."

Don E. Thurman, an amateur photographer, who works at the City National Bank in Plainview, did the photography for BIG REMUDA'S outside cover. Cynthia White, daughter of the author, who is pictured in the book, also is employed at City National.

BIG REMUDA starts with a story about White's first horse, an "ole pony" named Smokey. At this stage of horse ownership, White was all "want to" and little "know how" just a "green kid still wet behind the ears."

Smokey was purchased on a "typical West Texas Fall Day-blistery and dirty" from a corral full of "rusties." They were all kinds and colors, bronco, outlaws young and old. Some would never be used and some were used up.

"I guess what made the little pony a play day horse was his handlin' ability...about as good as I've known in an animal. Jakotie and our baby girl Sherry, have put many performances together without breaking a pattern. Over and over, you will see them go an' run perfect patterns. This handlin' consistency has won them many places all over West Texas. Jakotie took Sherry to State in 1970."

"I think, if a kid is going to fool with it, he needs to learn how to take care of himself. Competition in 4-H is strong. At one time, I had 26 in my 4-H club."

When talk of 4-H comes up, the Wapago and Jakotie horses are brought to mind.

Wapago was Cynthia White's 4-H playday horse for all 4-H events. Cynthia always "cleaned him up" for play day. He was a chore to ride through pole bending and barrel racing.

"The fact is, I have been mighty proud through the years 'cause Pago and Cynthia were consistently in the placin's at 4-H horse shows throughout the area."

"Cynthia used the buckskin horse to lead grand parades all over West Texas. We hauled many miles to shows all over the country."

There are 26 Wapago and Cynthia 4-H playdays listed in BIG REMUDA. The Spanish word for Jakotie is "whip" spelled "chicote." The name "fit the sorrel horse because he was mighty quick and fast handlin'."

"I tell you, folks, if your child is lucky enough to win a trip to State 4-H Horse Show, be sure and go. The experience will be worth your while. All the flare and fan fare of big shows like this will live forever in the kids' memory. Makes no difference if they place in some event or not, just remember it's quite an accomplishment to win a state trip. When the colors are posted and the national anthem played there at the beginning of the show with all those fine kids mounted on some of the best horses in Texas, if you don't get a lump in your throat, then you are not 'horse people'."

There are 37 Jakotie and Sherry 4-H Play Days listed in BIG REMUDA.

Bobby McCall, publisher of BIG REMUDA, writes in the preface, "the stories contained in this book are sensitive in the fact that they are written by a man of very deep feelings in his personal, family and community life. Carter White has opened his feelings to the public with this book. He has written with expression and language commonly used in this part of the world."



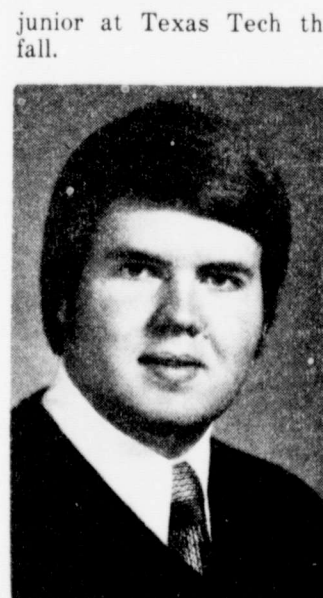
TYE EMPLOYEES COMPLETE MACHINIST COURSE- John M. Tye III, President, presents certificates to employees Lucio Vasquez, Ricky Vasquez, Frankie Graves and James Steele for successfully completing the recently held inhouse Basic Machinist Course. The course, prepared by American Machinists Beckwith Training Systems and instructed by Machine Shop Supervisor, Ed Kloholm, covered a variety of machine shop subjects from basic shop math, use of measuring tools, speeds, feeds, and selection of the proper cutting tool, was conducted two nights a week on the employees own time. In presenting the certificates, Mr. Tye congratulated the men for "An achievement of both personal and professional enrichment."

Barker Is Tech FFA President

Brent Barker has recently been elected president of the Texas Tech Collegiate Chapter of the Future Farmers of America. He served as treasurer of this organization last year. Brent has been a member of the Aggie Council for three years at Tech and organization made up of elected delegates from each department within the Agriculture Department. He is a senior, participating in Student Teaching this fall, and will graduate in December.

Brent is the son of Mr. and Mrs. Barry Barker.

Chris Johnston, son of Mr. and Mrs. G.B. Johnston, is now serving as treasurer of the Texas Tech Collegiate Chapter and Future Farmers of America. He is a



BRENT BARKER



When Stephen Foster first wrote "The Old Folks at Home" it originally began "Way down upon the Pee Dee River."



Carter White

"We don't want all the business—just yours"

Willson & Son Builders Mart

Palo Duro vs. Clovis

A. C. and New Holland Equipment

McDonald Implements

Dumas vs. Tascosa

MOORE—ROSE FUNERAL HOME

Hereford vs. Borger

Fender bener mender

QUALITY BODY SHOP

Midland Lee vs. Plainview

Your Fina Wholesale And Retail Dealer...

NICHOLS OIL COMPANY

Dimmitt vs. Tahoka

"For your health needs"

Thompson Pharmacy

Lockney vs. Olton

Hale Insurance

Slaton vs. Littlefield

"Dependable Service"

Floydada Co-op Gins Inc.

Tulia vs. Muleshoe

Buick-Pontiac-GMC

CITY AUTO INC.

Abernathy vs. Hale Center

HAVE FUN... \$20⁰⁰ In Cash Prizes Each Week

CONTEST RULES:

Anyone can enter except the employees of the Hesperian. Three cash prizes are given each week - ties will split prize money. Members of the sports department are sole judges of the contest and their decision is final.

It is not necessary to indicate scores on all the games... But score must be indicated on the tie breaker game at right.

Simply circle the team you choose to win in each of the footballs. Deadline for submitting entries is 5 p.m. Friday - winners will be announced the following week. Enter as many times as you wish, print name and address plainly on blank below and mail or bring entire page to the Hesperian office.

Tie-breaker game will be considered only in case of ties. Limit One Winner Per Family Per Week.



Clem McDonald Floydada 21 Post 6 Charles Abbe Floydada 28 Post 7

WIN PRIZES... Football CONTEST

AND QUARTERBACK FORECAST

DEADLINE FOR ENTRIES—5 P.M. FRIDAY IN HESPERIAN OFFICE OR POSTMARKED

TIE BREAKER- Guess Total Points AND CIRCLE WINNER

NAME _____

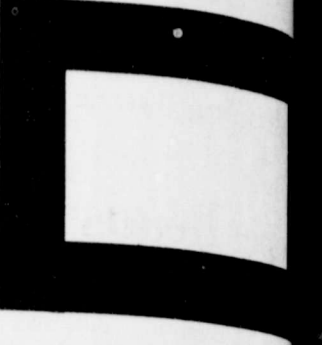
ADDRESS _____

CITY _____

1ST PRIZE \$10⁰⁰

2ND PRIZE \$6⁰⁰

3RD PRIZE \$4⁰⁰



Floydada At POST

Crop and Livestock Loans

PRODUCTION CREDIT ASSN.

Idalou vs. Frenship

Cosmetics and Apparel

Roye's Merle Norman

Coronado vs. Estacado

Good food and friendly folks

Buddy's Food

Texas Tech vs. Arizona

Massey-Ferguson equipment

Floydada Implement

Crosbyton vs. Motley Co.

Your Full Service Station

Gilbreath Exxon Service

Ark. State vs. Drake

The Fastest Service In Town

Cornelius' CONOCO

Colorado vs. San Jose St.

Sears

Lorenzo vs. Seagraves

Supplies For The Farmer

Russell's Equipment & Supply

Baylor vs. Kentucky

Your I.H. Dealer

MARTIN & CO.

Houston vs. Utah

"Is Everybodys Everything"

Dairy Queen

Kress vs. Petersburg

Kirtley's Market

Texas A & M vs. Boston College

Case Power & Equipment

Air Force vs. Holy Cross

City Trim Shop

Monterey vs. Midland

CONSUMERS FUEL ASSN.

SMU vs. Penn St.

Caprock Motor Parts & Hardware Inc.

Big Spring vs. Snyder

TEXAS TECH NEWS
MARCIA LUND
Sales of
foreign
important
agricultural
wrong
part
leave the buyer
impression that sor
investment.
C. Reed Richar
owner of animal se
Texas Tech Universi
Tech Universi
tour to Europ
correct use
sorghum in an att
foreign misu
sorghum. The tr
sorghum by the Fo
cultural Service
of the U.S. Feed G
a foreign cou
purchase a grain
that might, say,
lamic acid co
then feed it to po
wine. "Richardson
use tannic acid in
for these animals
will not get
is in feeding and
grain sorghum."
Richardson said he w
different uses
types of g
and which typ
as well as diffe
ods of proces
to improve its
al value.
will be accompanie
Harp, execu
tor of the G
ham Produ
tation, and
on, director of m
for the Texas Dep
of Agriculture.
will provide
country's perspective
on will discuss
omics of using
ham compared
feed grains.
the group will leave S
and return Oct. 4. A
ary includes semi
lectures in Edinbu
on, Hamburg, G
ckholm, Wars
na, Barcharest.
Richardson was invite
trip because of
ledge of grain sorg
on and expertis
ssing methods.

driving in the
the driest lane.
lane gets more tr
the others and is g
the driest.

facts from a p
I've been driv
ow my son is tel
ere any extra p
an take rather th
S. Fredericksb
Vision, hearing
ected by aging. B
sate by driving n
er past experie
times of the day w
e amount of back
maneuvers and avoi
eather conditions. I
k your doctor abo
our driving abilitie
if in good conditio
ales.

Are women d
rivers in Texas?
Although only 1.
old Texas driver's
and five times as ma
Why are some
and solid an
arlingen
Solid white lines
em to pass, where
e lane into anothe
double yellow line
at motorists in la
not stay within th
as is solid and the
oken line on their
er, vehicles with
de may not cross
ft across a yellow

If you have a q
Texas Office
P.O. Box 116
Austin, Texas

TECH NEWS

GARCIA LUNDY
 Sales of grain to foreign buyers is an important part of agricultural income. The wrong kind of grain for a particular buyer can result in a loss for the buyer with the grain.

Richardson, a veterinarian at the University of Illinois, is an expert on the correct uses of grain. He said that the misuse of grain in an attempt to increase the yield of the crop is a common mistake. The trip to Europe was sponsored by the Foreign Service Division of the U.S. State Department.

Richardson said he would be accompanied by Harp, executive director of the Grain Producers Federation, and Ben H. Burchard, director of the Texas Department of Agriculture. The trip will provide a perspective and discuss the use of grain sorghum compared with other grains.

Richardson will leave Sept. 18 and return Oct. 4. Their itinerary includes seminars in Edinburgh, Hamburg, Oslo, Berlin, Warsaw, and Bucharest and a visit to the grain sorghum fields in the rain forest of the Amazon.

Richardson was invited to give a seminar on the use of grain sorghum in the rain forest of the Amazon. The seminar is being held in the rain forest of the Amazon.

Richardson was invited to give a seminar on the use of grain sorghum in the rain forest of the Amazon. The seminar is being held in the rain forest of the Amazon.

Richardson was invited to give a seminar on the use of grain sorghum in the rain forest of the Amazon. The seminar is being held in the rain forest of the Amazon.

Richardson was invited to give a seminar on the use of grain sorghum in the rain forest of the Amazon. The seminar is being held in the rain forest of the Amazon.

Richardson was invited to give a seminar on the use of grain sorghum in the rain forest of the Amazon. The seminar is being held in the rain forest of the Amazon.

(What One Person Can Do)

TIM NUGENT, WORKER FOR THE DISABLED

Tim Nugent has waged a 30-year war against architectural barriers. Mr. Nugent, a University of Illinois professor, saw a major victory in December, 1977. At that time, all colleges receiving federal funding had completed plans for making their campuses accessible to the handicapped by 1980.

Director of the University's Rehabilitation Education Center, Tim Nugent began his battle for the rights of the disabled in 1949, when the school closed its Galesburg campus. There were no plans to transfer disabled students to the main Champaign-Urbana campus. Professor Nugent and 26 paraplegics staged a wheel-in at that state capitol and won the transfer. In the years that followed, he transferred the University of Illinois into a model campus for the 180 disabled students enrolled each year.

Professor Nugent's background in engineering has helped him design ramps, dormitory furniture and hydraulic lifts to hoist wheel chairs onto the university buses. On crisp autumn afternoons he coaches teams in wheelchair football, a game he developed in 1948. Handicapped students benefit from the physical therapy rooms, labs equipped to teach driving with hand controls, showers with folding seats and flexible hoses.

"He could see that the disabled would become lawyers, parents, school teachers," says Kenneth Clarke, dean of the College of Applied Life Studies. "Even the handicapped did not think they should go to college. Nugent demonstrated it could be done."

One person like Tim Nugent, with a vision and the determination to see the vision through, can be a force for good in the lives of thousands.

For a free copy of the Christopher News Notes, "Ability Is What Counts," send a self-addressed, stamped envelope to The Christophers, 12 E. 48th St., New York, NY 10017.

One Dry Irrigation Well Drilled In Floyd

Through the first six months of 1978, only 350 well permits have been issued. This appears to be an extension of a trend. The number of permit applications closely parallels the condition of the general farm economy. For instance, in 1977, only 819 permits were issued—the smallest number of permits since the District was formed in 1953. The following table shows the 1977 figures in detail.

County	Permits Issued in 1977	New Wells Drilled	Replacement Wells Drilled	Reported Dry Holes
Armstrong	1			
Bailey	76	60	8	3
Castro	113	101	4	1
Cochran	22	24	2	
Crosby	3	3		
Deaf Smith	127	102	9	
Floyd	83	67	11	1
Hale	26	23	2	
Hockley	39	39	1	2
Lamb	131	113	11	1
Lubbock	72	59	3	5
Lynn	16	6	1	2
Parmer	93	117	11	
Potter				
Randall	17	16	1	
TOTAL	819	731	64	15



Don't store onions and potatoes together; the onions can sprout or rot in the moisture potatoes give off.

PIGGLY WIGGLY

DOUBLE Gold Bond Stamps every Wednesday with \$2.50 or more purchase excluding cigarettes.

"Each of these advertised items is required to be available for sale at or below the advertised price in each store, except as specifically noted in this ad." We reserve the right to limit quantities. None sold to dealers.

Permits Issued in 1977

New Wells Drilled

Replacement Wells Drilled

Reported Dry Holes

Fall Savings Days

"Our New Triple the Difference Policy is Your Guarantee of Low Prices!"

Here's how it works: First shop at Piggly Wiggly and buy 25 different grocery items. Then check the prices on the same 25 items in any other store. If their total is lower, bring in your Piggly Wiggly tape and the other store's prices and Piggly Wiggly will pay the TRIPLE THE DIFFERENCE IN CASH. At Piggly Wiggly we're committed to offering you quality products at competitive prices. Meat and produce not included as quality and trim may vary from company to company.

Tide Detergent

50¢ off label.

4 29

only 171 oz.

Tide gets out the "everyday" dirt you see most—the dried in mud, the catsup, the chocolate milk and the ground-in dirt.

Hi Dri Paper Towels

Tough paper toweling that wipes up spills, cleans windows and doubles as a dust rag.

39¢

one roll

Velveeta

There's nothing quite like Kraft Velveeta for convenience, wholesomeness and delicious flavor. Have a Velveeta snack today.

2 lbs. 1 99

only 4

Texsun Grapefruit Juice

Squeezed from the finest Texas grapefruit, Texsun grapefruit juice is second to none.

49¢

46 oz. can

Banquet Frozen Dinners

10 1/4 oz. to 12 oz.

Ass't. Varieties (except, beef, ham, fish)

When you pull a piping hot Banquet frozen dinner out of the oven you can rest assured you're giving your family a tasty, nutritionally balanced meal.

2 for 99¢

Barney's Meat Sale!

Heavy Western Beef **Boneless Chuck Roast** 1 38 Per lb.

Rib or Loin, Center Cut **Pork Chops** 1 68 Per lb.

Market Style **Sliced Bacon** 1 18 Per lb.

Heavy Western Beef **Boneless Shoulder Roast** 1 58 Per lb.

Piggly Wiggly White Bread

Great sandwiches start with vitamin enriched Piggly Wiggly White Bread.

1 1/2 lb. loaves 3 for \$1

only

Stan's Country - Fresh Produce

Juicy, Sweet and Succulent **Bartlett Pears** 2 lb. 88¢

Mellow, Flavorful **Avocados** 4 for \$1 only

The Pick of the Crop! **Russet Potatoes** 10 lb. bag 78¢

Coca Cola

32 oz. bottles **6 for 1 29**

Prices Good September 17 Thru September 23, 1978

Ball TEST

CK FORECAST

Floydada At POST

Buddy's Food

Tech vs. Arizona

arnelius' CONOCO

vs. San Jose St.

MARTIN & CO.

ton vs. Utah

Case

vs. Holy Cross

prock Motor Parts & Hardware Inc.

pring vs. Snyder



Learn from a pro on driving to survive.

"I've been driving for over fifty years, but my son is telling me I should stop. Are there any extra precautions we senior drivers should take rather than give up cars entirely?" — J. C. Fredericksburg

Age, hearing and reaction time tend to be affected by aging. But most senior drivers can compensate by driving more slowly and making use of their past experiences. If possible, limit your driving to the day when the traffic is lightest, reduce the amount of backing and other difficult driving maneuvers and avoid driving at night and in poor weather conditions. If you are taking any medication, consult your doctor about the effect they may have on your driving abilities. Keep both your car and yourself in good condition and keep up-to-date on driving.

Are women drivers any worse than men drivers in Texas?—J.C., Vernon

Although only 1.1 times as many men as women hold Texas driver's licenses, last year men drivers were 1.1 times as many fatal accidents as women.

Why are some stripes in the center of the road solid and some dashes?—D.R., Houston

Solid white lines indicate that you must not cross the line to pass, whereas dashes allow you to cross from one lane into another. The road may be divided by a double yellow line down the center which means that motorists in lanes on either side of the line must stay within their lanes. If one of the yellow lines is solid and the other broken, vehicles with the solid line on their side may cross it to pass; however, vehicles with the solid yellow line on their side may not cross the line to pass. They may turn left across a yellow or double yellow line.

If you have a question on driving, send it to: Texas Office of Traffic Safety, P.O. Box 1165, Austin, Texas 78767

FLOYDADA'S CAPROCK HOSPITAL REPORT

Viola Anderson, admitted 7-23, continues treatment.
 Callie S. Clemons, admitted 8-29, dismissed 9-14.
 Gilbert Martinez, admitted 9-2, dismissed 9-8.
 Alton Ray Williams, admitted 9-3, dismissed 9-14.
 Lela V. Conway, admitted 9-3, dismissed 9-9.
 Jaine Cortinas, admitted 9-4, transferred to Lubbock 9-5.

Roy Guzman, admitted 9-4, dismissed 9-6.
 Mary Shaut Cantrell, admitted 9-5, continues treatment.
 Nicasia Martinez, admitted 9-5, dismissed 9-8.
 Carlos Perez Herrada, admitted 9-5, dismissed 9-10.
 Dorothy Jean Coleman, admitted 9-5, dismissed 9-7.
 Emma Lou Whitaker, admitted 9-7, dismissed 9-14.

John White, admitted 9-10, dismissed 9-12.
 Wanda Lovene Moore, admitted 9-11, dismissed 9-13.
 Mamie O. Bradshaw, admitted 9-11, dismissed 9-13.
 Nicasia Martinez, admitted 9-11, continues treatment.
 Walter G. Collins, admitted 9-11, continues treatment.
 Independence McDonald Jr., admitted 9-11, dismissed 9-13.
 Rosa F. Sustaita, admitted 9-11, dismissed 9-14.
 Alford V. Garcia, admitted 9-12, dismissed 9-14.
 Scott E. Robbins, admitted 9-14, continues treatment.

Monday Sept. 25th

9 99¢

KING SIZE WALLET CREATIVE COLOR PORTRAITS FOR ONLY

Kodak paper. For a Good Look at the Times of Your Life.

GET 1 FREE WALLET WHEN YOU BUY 9 FOR 99¢

NO LIMIT

Extra Charge for GROUPS

WE USE KODAK PAPER

GET PICTURES MADE OF GRANDPA, GRANDMA, DAD, MOM AND ALL THE LITTLE ONES AT THESE SAME LOW PRICES!

SHUGART COLOR PHOTOS

Mize Pharmacy

102 S. Main Lockney, Tx.

ASK About Our FREE 8 x 10 OFFER

Tax Office Opening In Plainview

The Comptroller of Public Accounts, Bob Bullock, announces the opening of a new suboffice in Plainview on September 25, 1978. Located at 3109-B Olton Road, the office will be open daily from 8:00 a.m. to 5:00 p.m., Monday through Friday, and will be serving taxpayers in Hale, Floyd, Castro, Briscoe, Swisher, Parmer, and Motley Counties, and a portion of Lamb County, which includes Earth, Olton, and Springlake.

THEN and NOW

In less than a century, the average American's life expectancy nearly doubled, thanks greatly to big changes in our knowledge of diseases and their treatment.



THEN: In the 1800's it was believed by some that typhoid could be cured by applying suction cups to the patient's skin.



NOW: Modern medicine and sanitation has practically eliminated that disease, and is concentrating on others—cancer in particular. In fact, some 5,500 scientists from over 70 countries are trying to help combat this problem by pooling their ideas at the Twelfth International Cancer Congress.



Thirteen certified cotton interest organizations caucused in Dallas September 6 and selected 20 cotton industry leaders, 14 of them from the High Plains, to fill important positions and serve as alternates in national cotton industry groups.

The High Plains area was represented at the caucus by Lloyd Cline of Lamesa, President of Plains Cotton Growers, Inc. Cline was named the official PCG representative September 5 at a meeting of the organization's Executive Committee. He was accompanied by PCG Executive Vice President Donald Johnson.

Three members and three alternates were named as directors to Cotton Incorporated (CI), the national cotton producers' fiber company which conducts research and market development programs under the Cotton Research and Promotion Act.

Four members and four alternates were nominated for two positions on the Cotton Board, the administrative body responsible for collections, disbursements and project approval in the CI program. The Secretary of Agriculture is required by law to appoint two of the "pairs" submitted by interest organizations and normally chooses the two for whom the organizations express a preference.

Three producer delegates and three alternates were named to the National Cotton Council (NCC), the industry's seven-segment research, promotion and service organization.

On the CI governing body the group placed J. D. Smith of Sudan, L. C. Unfred of New Home and Donnell Echols of Lamesa. Alternates to these directors were named as Gerald Caswell of Meadow, Clifford Hoelscher of St. Lawrence and Don Marble of South Plains.

Nominated as first choice for members and alternates, respectively, of the Cotton Board were Dan Davis and Donald Johnson, both of Lubbock, Mike Burkholder of Pecos and A. D. May of Rule. For second choice members and alternates, respectively, the caucus submitted T. W. Stockton of Crosbyton and Marion Bowers of Seminole, and Homer Easterwood of the Texas Coastal Bend area and Norris Anders of Rule.

As producer delegates to the NCC, the organizations named Cline, W. B. Criswell of Idalou, and Wilbert Braden of St. Lawrence. Alternates to the three will be Joe Pate of Lubbock, Gary Ivey of Ralls and Rusty Andrews of Brownfield.

In addition to PCG, six other regional cotton producer associations and the Texas Farm Bureau take part in the naming of producer delegates to the National Cotton Council. All of these, plus the Texas Farmers Union, the Texas Federation of Cooperatives, Texas Cotton Growers Cooperative, Southwestern Irrigated Cotton Growers, and Greenbelt Cotton Growers are certified by the Secretary of Agriculture as interest organizations for the selection of Cotton Board and CI Board members.

Texas Food and Fiber

Texas Department of Agriculture
 Reagan V. Brown, Commissioner



BAD WEATHER AND LOW PRICES have ganged up on Texas farmers this year, and the result may be one of the smallest grain crops in years, notes Agriculture Commissioner Reagan V. Brown.

"Low prices at planting time were very discouraging for grain producers in Texas," he said. "A lot of farmers took advantage of federal set-aside programs at that time and acreage normally planted to grains dropped considerably."

"Then the prolonged drought in most areas of the state cut normal dryland yields to further reduce harvests of almost all varieties," he said.

Wheat is expected to be down by over 50 per cent; grain sorghum will drop slightly; corn production should fall by 21 per cent

and the oat crop is estimated to be 43 per cent smaller than last year.

TEXAS FARMERS are being faced with decisions comparable in scope to those that brought about the change from mules to tractors, observes Agriculture Commissioner Reagan V. Brown.

"We live in a world of change," he told members of the Central Texas Electric Cooperative in its annual meeting recently. "Our agricultural production and marketing methods must keep on changing to stay in step. We must continue to strive for cheaper ways to raise our crops and more effective ways to sell those crops."

Brown cited inflation,

Couple Endorses FFA For Youths and Parents

AN OPEN LETTER TO PARENTS

We have recently had the privilege of attending the FFA State Convention for the first time. We were so favorably impressed with our experience that we feel the need to share it with other parents in this area.

The ten young men who were last year's state officers ran the convention with remarkable efficiency. There were hundreds of awards presented, yet all went forward with the smoothness of careful planning and attention to detail. Especially impressive was the State President, Elvin Caraway, who presided with dignity, assurance, and occasional humor.

But as outstanding as the

mechanics of the convention were, even more so was the spirit that seemed to flow through all proceedings, a spirit that had within it the best that we believe America stands for: Love and friendship, a quiet but deep patriotism, a striving for worthwhile goals, a reverence for God, these were the qualities that appeared again and again throughout all the ceremonies, presentations and speeches. We understand now why the FFA has meant so much to so many young men and women.

We are fortunate in Gorman to have a fine, dedicated young man as the FFA advisor in our school. Dwaine Brown is respected in his field

and dedicated to our program. There are many fine Ag teachers in our area. If your son or daughter has an interest in FFA, we encourage you to encourage and help him or her. Your money can be used in a way that would be beneficial to that young man or woman.

And the first chance you have, attend as FFA Convention — you'll be glad you did.

BOB and NEOLA GORMAN

NOW WINTERIZING TRUCKS AND AUTOS

Check Radiators, Heater Cores, Heater Hose, Steam Clean Radiators \$7.50

ANTI-FREEZE INSTALLED— \$2.50 gallon

All Work Guaranteed

M & N Auto

507 E. MISSOURI 983-2168

A MESSAGE ON FLUORIDE IN DRINKING WATER

From The South Plains District Dental Society

Many people in the West Texas area are concerned about the fluoride content in our water supply and the problems associated with an overabundance of the element in our drinking water. There are many misconceptions of fluoride and its good and bad points. This article will attempt to explain some of these things.

Fluoride is a very useful agent in the fight to prevent tooth decay. It makes teeth less susceptible to cavities. That is why fluoride is added to toothpastes and is often applied by the dentist after he cleans a person's teeth. Many cities throughout the United States add fluoride to their water supply to further help people prevent tooth decay. Adding the element to the water supply is an excellent way to obtain fluoride.

West Texas is unique in that fluoride is present in our natural underground water. In fact, there is often too much fluoride present in our water. The fluoride is not harmful to the body, but can cause staining of children's teeth. Because of this, it is often necessary to try to filter out the excess fluoride in the water. Some cities in our area have been able to successfully do this and some have not.

The result of an extended use of excessively fluoridated water in children is a mottling or brown staining of the enamel surface of the teeth. This is a serious problem, because the stains cannot be cleaned off. The teeth can be bleached, but still don't look as good as they would if the damage from the fluoride had not been done. The teeth can be capped, but this is an expensive procedure, and while caps are a marvelous dental service, they still can't compare to healthy, natural teeth.

The best way to combat dental fluorosis is to stop the problem before it starts. If you live in an area that has more than 1.0 parts fluoride for every one million parts of water, your children should be placed on bottled water from the time that you realize the mother is expecting until the child is about eight years old. It is a good idea to make sure that the bottled water has the proper amount of fluoride added to it to prevent cavities.

A good guideline to use to decide whether or not to put your children on bottled water is to find out the source of the water you are drinking. If it is well water or non-city water in the South Plains area you would be well advised to delay no longer and put your children on bottled water. If it is city water you should find out from your water department how much fluoride is in your water. Here is a list of towns that, according to a study done by the Department of Health in 1977, are known to be excessive in their water fluoride content. Also listed is a group of communities whose water supply is acceptable at this time, according to this study. Remember, a little precaution now can save a lot of dental headaches and cosmetic problems later.

EXCESSIVE FLUORIDE IN WATER

- Abernathy
- Amherst
- Bledsoe
- Buffalo Spring Lake
- Cotton Center
- Crosbyton
- Denver City
- Floydada
- Hale Center
- Idalou
- Littlefield
- Loop
- Lorenzo
- Lubbock Children's Home
- Lubbock Cooper
- Meadow
- Morton
- Muleshoe

- New Deal
- New Home
- Petersburg
- Plains
- Post
- Ralls
- Ropesville
- Segraves
- Shallowater
- Slaton
- Southland
- Spur
- Sundown
- Witharal
- Whiteface
- Wilson
- Wolforth
- Yellowhouse Canyon

ACCEPTABLE FLUORIDE IN WATER

- Brownfield
- Lamesa
- Levelland
- Lubbock
- O'Donnell
- Plainview
- Tahoka

THIS MESSAGE IS SPONSORED AS A PUBLIC SERVICE BY THE SOUTH PLAINS DISTRICT DENTAL SOCIETY

A MACHINE FOR ALL SEASONS

HEAT PUMP

YOUR CONSTANT COMPANION FOR HEATING & COOLING EFFICIENCY

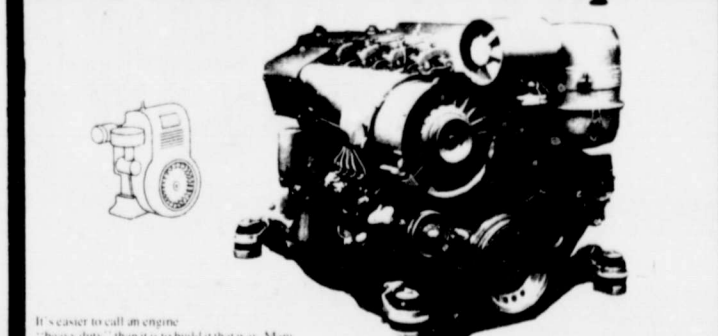
No matter what the weather outside, the heat pump works quietly... efficiently... automatically to keep your family comfortable. Since it pulls much of its heat right out of thin air, the heat pump actually saves energy as it works. In fact, it delivers as much as two units of heat for every one heat unit of electricity it uses. Costs are the lowest of any electric heating/cooling system available.

For year 'round heating and cooling efficiency, the heat pump is your constant climate control companion. Call us today for more information.

SPS SOUTHWESTERN PUBLIC SERVICE

909.4

All air-cooled engines are NOT created equal



It's easy to call an engine "Deutz" if it's made in Germany. Many companies use the name "Deutz" to describe their engines. They compare expensive fuel and oil burning engines to the Deutz engine and claim that the Deutz engine is the most efficient and reliable. In fact, the Deutz engine is the only engine in the world that is built to last. Deutz engines are built to last because they are built to last. Deutz engines are built to last because they are built to last.

If you can find an engine that uses less fuel than a Deutz Buy it!

ADAMS WELL SERVICE
 FACTORY AUTHORIZED DEALER FOR
 DEUTZ AIR COOLED DIESEL IRRIGATION ENGINES
 720 N. 2ND ST. FLOYDADA, TX. 983-5003

Horses FFA and Parents

the convention and dedicated to our people through this fine program. There are many fine Ag teachers in our area. If your son or daughter has an interest in FFA, we encourage you to attend the convention. Your money, time and energy could not be better spent in a way that would be so beneficial to that young man or woman.

And the first chance you have, attend an FFA Convention — you'll be glad you did.

BOB and NEDRA GORMAN
Gorman, Tex.



Tongue brushing can lick halitosis?

By LARRY STATSER
Staff Writer

Every dentist worth his salt and baking soda tries to get his patients to brush their teeth at least twice each day, but, according to the Journal of the American Dental Association, some of them have not been as diligent in convincing their patients to brush their tongues.

Now, a growing number of dentists have opened a second front on tooth decay by urging their patients to brush their tongues twice each day.

Dr. Kenneth Crossland of Canyon said dentists have always advised patients to keep their tongues clean, but the fact that many people fail to do so "is probably partly our fault for not educating our patients in this. It's something we sometimes fail to remember to tell them."

Tongue brushing or scraping was once more common than today and only began to be neglected in the 20th Century, according to two Air Force dentists stationed in Texas, Dr. Arden Christen and Dr. Ben Swanson.

Manufacturers of tongue scrapers went to great lengths and expense trying to make their products appealing to the hygiene-conscious public.

Joseph King, an English manufacturer of a "munchly improved" tongue scraper patented in 1892, warned of dire consequences if tongue cleaning was neglected in the morning bathroom ritual.

"In breathing the atmospheric air, it becomes carbonic acid on its expiration, which settles on the tongue as carbonic acid; and if allowed to go back, disorders the stomach and throws the whole system out of order. Therefore, the tongue cleaner is used to scrape it off first thing in the morning, when cleaning the teeth, and rinsing the mouth with water."

Few dentists now recommend tongue scraping. Instead, they advise their patients to use a soft-bristled brush.

But a Shawnee, Okla., manufacturer who has introduced a new tongue scraper claims brushing simply does not clean the tongue properly, because "the toothbrush was never designed for the tongue."

Only by daily scraping, says Venk Nevrekar, can the odor and bacteria-causing deposits on the tongue be properly removed.

Dr. John Curry of Amarillo said brushing the tongue twice each day with a good, soft toothbrush will probably remove most of the dead cells and bacteria that collect on the filaments of the tongue.

Dr. Crossland said tongue brushing is essential for clean teeth and breath.

"The tongue, like any other body organ, contains living cells that die and slough off the top layer. So it's necessary to regularly remove these cells and the plaque so that bacteria and germs do not build up."

Dr. Crossland said the way to brush the tongue is exactly the same way the teeth are brushed — up and down, on the sides and in the back.

But tongue scraping, a long-forgotten practice, is somewhat more difficult to perform. Instructions can, however, be found in a 1920 edition of a dentistry journal: "...protrude the tip of the tongue out as far as possible. Pass a clean cloth under it, and wrap to afford grip, while nasal breathing is done at the same time to reduce motion and gagging. Repeat cleansing, not scraping strokes, with a tongue cleanser, avoiding the papillae, until no scum shows at the dorsum linguae."

But since the advent of modern, "no-pain" dentistry, most dentists agree that mere brushing will suffice for most tongues. They said patients have a tendency to shy away from any practice in which pain, scraping, or gagging may be involved.

And, Nevrekar's patented, stainless steel, lifetime Lila tongue scraper notwithstanding, the re-emergence of widespread tongue scraping probably awaits the advent of the electric tongue scraper.

Young Farmers Named Outstanding

The annual Young Farmers banquet was held September 9 at the Hilton Inn in Amarillo. Featured speakers at the banquet were Rex McAnnelly, manager of Moody Farms in Pampa, and Billy Lyons, executive secretary of Texas Young Farmers from Austin.

Guests at the awards banquet were Jerry Hodge, Mayor of Amarillo and Frederick McClure, assistant to Senator John Tower, from Washington D.C.

At the awards banquet, Silverton Young Farmers

afternoon session were Rex McAnnelly, manager of Moody Farms in Pampa, and Billy Lyons, executive secretary of Texas Young Farmers from Austin.

Guests at the awards banquet were Jerry Hodge, Mayor of Amarillo and Frederick McClure, assistant to Senator John Tower, from Washington D.C.

At the awards banquet, Silverton Young Farmers

OBITUARY

A. P. Shugart

Services for A.P. Shugart Jr. of Lake Dallas were scheduled at 2 p.m. Saturday (September 16) at the First Baptist Church of Aiken with the Rev. Bill Sessom, pastor, officiating, and burial in Plainview Cemetery under the direction of Moore-Rose Funeral Home of Lockney.

Shugart died Thursday in a hospital in Dallas. He was born September 3, 1926 at Aiken. He was 52 years old.

He had lived in Lake Dallas for five years. He was an electronic engineer for the Honeywell Corporation, a member of the Baptist Church and a Navy veteran of World War II.

Survivors include his wife Elizabeth; three sons, Jimmy A. Shugart of Lubbock, Lloyd Shugart and Charles Shugart, both of Shelton, Washington; two daughters Susan Shugart of Shelton and Carol Shugart of Lubbock; his mother, Mrs. Anna Lou Shugart of Aiken; two sisters, Mrs. Irene Hale of Dallas and Mrs. Frankie Dean of Aiken; and three grandchildren.

Mrs. Virgil Adams

Services for Mrs. Virgil Adams, 61, of Plainview were conducted at 10:30 a.m. Saturday morning (September 16) at the Garland Street Church of Christ in Plainview. Gene Glaeser, minister, officiated. Burial was in Plainview Memorial Park by

Aransas. 28 min. Color. 1974. Acorn Films. JH-A Rare footage of an endangered species of wild whooping cranes and of the unique coastal ecology at the Aransas National Wildlife Refuge in Southeast Texas are featured.

CLIMB. 22 min. Color. 1974. Churchill Films. JH-A An adventurous pair of young men climb a treacherous cliff. Their thoughts and actions communicate human independence and interdependence.

ICE STORM. 25 min. Color. 1973. Encyclopedia Britannica. JH-A. Sheila Pennell, a research librarian, must determine which of her house guests has killed employer without being killed herself. Claire Bloom stars.

IT HAPPENS. 25 min. Color. 1972. Pyramid Films. JH-A. A poignant study of an unmarried teenage couple working together to handle the girl's pregnancy. The couple are well-informed to decide upon their options by the end of the film.

LAMBERT. THE SHEEPISH LION. 8 min. Color. 1971. Walt Disney Educational Media. Pre-El. Lambert tries to be a wild and woolly sheep, but finds that it is always best to be one's self. Preschool and early elementary children seem to enjoy this.

MR. FROG WENT A-COURTIN'. 5 min. Color. 1974. Films, Inc. El. The ancient Scottish folk song about a frog who courts a mouse. Animated by the unusually colorful technique of Evelyn Lambert with lyrics sung to lute accompaniment.

POPCORN LADY. 11 min. Color. 1972. Prentice-Hall Multimedia. SHA. A day in the life of the Popcorn Lady, the sole survivor of a clan that has served Cambridge, New York from an antique Model T popcorn truck since 1925. In the face

of a highly technical society, the tradition sustained by Dorothy Rich is one of quiet dignity.

THE SELFISH GIANT. 27 min. Color. 1972. Pyramid Films. El. Colorful animation distinguishes this interpretation of Oscar Wilde's allegory. A giant changes his attitude toward sharing his garden with children when nature torments him for selfishness.

WHY MAN CREATES. 25 min. Color. 1968. Pyramid Films. EFA. This film is a series of explorations, episodes, and comments on creativity. Each segment of the film makes its own statement in its own style and technique.

WILD ANIMAL FAMILIES. 15 min. Color. 1957. BFA Educational Media. Pre Shows family relationships, centering on care for the young, among bison, pronghorn antelope, prairie dog, bear, porcupine, elk, and Canada geese.

A NATION OF PAINTERS. 7 min. Color. 1973. Encyclopedia Britannica Educational Corp. SHA. Creates a pictorial diary of live in early America recording also the ideals and dreams of a growing nation.

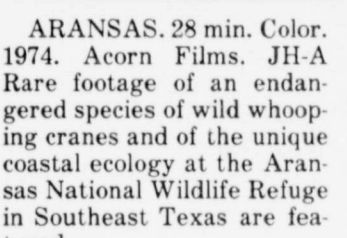
SKATING RINK. 27 min. Color. 1974. Learning corp. of America. JH-A Shows how a stammering teenage boy develops confidence by learning to ice skate well. A touching adaptation of Mildred Lee's work.

Lemons Funeral Home. Mrs. Adams died at 10:22 a.m. Thursday in Central Plains General Hospital after a short illness.

She was born March 4, 1917 at Clarendon, where she lived until 1949, when she moved to Tulia. She moved to the Lockney area in 1952 and to Plainview in 1961. She sold Avon products in the Prairie View community for many years.

Survivors include two daughters, Mrs. Red (Eula Jane) Archer of Lockney and Ruby Nell Adams of Dimmitt; two sons, Johnny Ray Adams and Gordon Allen Adams, both of Lockney; a stepson, Virgil Lee Adams Jr. of Amarillo; six brothers, two sisters, nine grandchildren, 10 step-grandchildren and 10 step-great-grandchildren.

Remember your loved ones and friends with a memorial to Lockney General Hospital Memorial Fund. These memorials go toward equipment to help serve our community in the best way possible.



To freeze meat, use a moisture-vapor-proof wrap, such as heavy aluminum foil, heavily waxed freezer paper, or specially laminated papers.

GIVE TO THE CYSTIC FIBROSIS CAMPAIGN

were named outstanding chapter and Friendship was named runner-up. The Star Young Farmer award was presented to Arlie Petty from Dimmitt and runner-up Orville Turner of Silverton. Outstanding new chapter is Hale Center. Public relations award went to Silverton, first place, and Dimmitt, second. Radio and TV award also went to Silverton, first, and Dimmitt, second. Outstanding agribusinessman was awarded to Danny Burns of Friendship. Teddy Smithson of Dimmitt was named outstanding associate member.

The new slate of officers for the Young Farmers are Roy Carlson, president; Max Eubanks, vice-president; Speck Cox secretary; Teddy Smithson, treasurer; and Bob Ward reporter.

A special award was presented to Mr. Walter Laboy, Plainview the Area I advisor to the Young Farmers. Mr. Laboy is retiring after 43 years of serving agriculture.

Attending from Silverton were Calvin Shelton, Tobe Riddell, Clinton Dickerson, Mr. and Mrs. Jerry Bean, Mr. and Mrs. Fred Hill, Mr. and Mrs. Donnie Perkins, Mr. and Mrs. Wayne Stephens, and Mr. and Mrs. G.W. Chappell.



WHEN SONS BECOME A DOUBLE PUZZLE to their father, that's when playwright Neil Simon creates a laugh-provoking comedy such as "Come Blow Your Horn." The Simon play is now on stage at Amarillo's Country Squire Dinner Theatre, 1-40 and Grand. Performances will be presented each evening Tuesday through Saturday through Sept. 16. Playing the father is Archie Dwyer (standing). Roles of the two sons, one shy and one sophisticated or "cool," are played by Tony Reitano and Kevin Hoover. Buffet dinner service at the theater begins at 6:30 p.m. Country Rouge pre-show entertainment is scheduled for 8 p.m. and the sound of the Country Squire Hunter's horn will announce comedy time at 8:30 p.m.

of a highly technical society, the tradition sustained by Dorothy Rich is one of quiet dignity.

WHY MAN CREATES. 25 min. Color. 1968. Pyramid Films. EFA. This film is a series of explorations, episodes, and comments on creativity. Each segment of the film makes its own statement in its own style and technique.

WILD ANIMAL FAMILIES. 15 min. Color. 1957. BFA Educational Media. Pre Shows family relationships, centering on care for the young, among bison, pronghorn antelope, prairie dog, bear, porcupine, elk, and Canada geese.

A NATION OF PAINTERS. 7 min. Color. 1973. Encyclopedia Britannica Educational Corp. SHA. Creates a pictorial diary of live in early America recording also the ideals and dreams of a growing nation.

SKATING RINK. 27 min. Color. 1974. Learning corp. of America. JH-A Shows how a stammering teenage boy develops confidence by learning to ice skate well. A touching adaptation of Mildred Lee's work.

of a highly technical society, the tradition sustained by Dorothy Rich is one of quiet dignity.

WHY MAN CREATES. 25 min. Color. 1968. Pyramid Films. EFA. This film is a series of explorations, episodes, and comments on creativity. Each segment of the film makes its own statement in its own style and technique.

WILD ANIMAL FAMILIES. 15 min. Color. 1957. BFA Educational Media. Pre Shows family relationships, centering on care for the young, among bison, pronghorn antelope, prairie dog, bear, porcupine, elk, and Canada geese.

A NATION OF PAINTERS. 7 min. Color. 1973. Encyclopedia Britannica Educational Corp. SHA. Creates a pictorial diary of live in early America recording also the ideals and dreams of a growing nation.

SKATING RINK. 27 min. Color. 1974. Learning corp. of America. JH-A Shows how a stammering teenage boy develops confidence by learning to ice skate well. A touching adaptation of Mildred Lee's work.

Got Heating Or Plumbing Problems? Call HOLMES PLUMBING
AUSTIN OR STEVE
983-2251
6:30 - 9:30 a.m. and 5:30 p.m. Until?

'78 Clearance Sale...

All '78 Models must go at Reduced Prices to make room for the New '79 models Arriving Daily!

RCA ColorTrak TV with XtendedLife Chassis

- Low power consumption - uses less energy than 100-watt bulb
- Automatic light sensor
- RCA Super Accufilter picture tube

RCA SelectaVision Model VC7200
List \$1,000.00
Now Only \$888.00

RCA XL-100 19" diagonal Model FB 433

SAVE

Check Our Competition and Then See Us For A Better Deal

JERRY'S T.V. & Appliance
WE SERVICE WHAT WE SELL

215 So. Main 983-3481 Floydada

WAREHOUSE SALE

OF REMAINING STOCK

25% DISCOUNT

Picked up in Plainview, Tx.

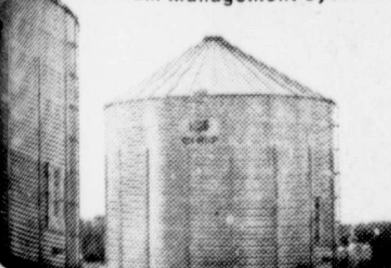
Wide Selection of Bins - Accessories - Fans

Authorized by Chief Industries)

Western Ag Sales

Pigg or Len Sheets 983-5231

CHIEF
The Grain Management System.



When you visit Lubbock, visit Furr's PIE KITCHEN

***A VARIETY OF MELT-IN-YOUR-MOUTH PIES

***CONVENIENT CARRY-OUT SERVICE

2708 50th Street 792-5154

Why not take one home!



WINTERIZING TRUCKS AND AUTOS

Radiators, Heater Cores, Hose, Steam Clean Radiators \$750

FREEZE INSTALLED - \$250 gallon

All Work Guaranteed & N Auto

MISSOURI 983-2168

GE ON DRINKING WATER

District Dental Society

are concerned about the fluoride ions associated with an overabundance. There are many misconceptions. This article will attempt to explain

the fight to prevent tooth decay. This is why fluoride is added to the dentist after he cleans a person's teeth. States add fluoride to their water supply. Adding the element to the water.

is present in our natural underground water. Too much fluoride present in the body, but can cause staining of the teeth. It is often necessary to try to filter out the fluoride in our area have been able

excessively fluoridated water in the enamel surface of the teeth. Stains cannot be cleaned off. The look as good as they would if the fluoride. The teeth can be capped, but caps are a marvelous dental service.

is to stop the problem before it starts. More than 1.0 parts fluoride for every one part of water should be placed on bottled water. The mother is expecting until the child is born. To make sure that the bottled water is safe to drink.

Other or not to put your children on bottled water you are drinking. If it is bottled water you would be well advised to buy bottled water. If it is bottled water you would be well advised to buy bottled water. If it is bottled water you would be well advised to buy bottled water.

IDE IN WATER

New Deal New Home Petersburg Plains Post Ralls Ropesville Seagraves Shallowater Slaton Southland Spur Sundown Witharral Whiteface Wilson Wolfthorh Yellowhouse Canyon

IDE IN WATER

O'Donnell Plainview Tahoka

AS A PUBLIC SERVICE DENTAL SOCIETY



IN THE FAIR PARADE... Top: The Longhorn Band. Center: Some of the Fair Queen contestants. Bottom: Sunshine Sally and the kids.



Facts from a pro on driving to survive.

Q. I frequently visit Houston. When I try to get on a freeway there, I stop and wait on the entrance ramp for someone to let me in, but nobody ever does. What should I do?—A. W., Baytown

A. Freeways are designed for driving at sustained high speeds so it's just not safe for a driver to slow down to let you merge. Getting on the freeway requires good judgement and timing. Use the entrance ramp to gain enough speed to match that of freeway traffic, pick a gap in the line of cars and accelerate into the gap.

Q. How many times can I be charged with DWI and still keep my driver's license?—G. B., Dallas

A. All you need is one conviction of driving while intoxicated (DWI) to have your license suspended for a year. Intoxication is determined by a chemical test that measures the alcoholic content of your blood. If the blood alcohol concentration is 0.10 per cent or more, you are considered under the influence of alcohol. Any law officer could ask you take the test if you are suspected of DWI. Your refusal could result in the suspension of your driver's license for as long as a year.

Q. I carry a plastic milk bottle of extra gasoline in the trunk of my car, but a policeman told me this is dangerous. Why?—J. J., Georgetown

A. Not only is this practice dangerous, but in Texas it is unlawful. Reserve gasoline may be carried only in metal containers. Plastic is hazardous because some kinds can be dissolved by gasoline, it can be punctured easily and, with enough heat, it can melt or catch fire.

If you have a question on driving, send it to:
Texas Office of Traffic Safety
P.O. Box 1165
Austin, Texas 78767



MORE FAIR PARADE PHOTOS... Top: The Lockney Care Center "family." Center: The Longhorn varsity cheerleaders. Bottom: Sunshine Sally and the kids.

LOCKNEY LOCAL VISITING with Mr. and Mrs. Jim Warren and sons last weekend were Mrs. Warren's parents, Mr. and Mrs. H.N. Parker of Plains.

Mr. and Mrs. Jay McPherson of Midland, Jackie Myers of Seminole and Jimmy Myers of Lubbock visited with their mother, Mrs. Olive Myers, over the weekend. Jimmy and the co-op banquet here on Saturday night. He is representative of grown-up members of the Assn. of Lubbock. To be up with the crutches and a wheel.



THE FIRST BALE of cotton for the lockney area - and for Floyd county-came to Sterley Gin at 5 p.m. Wednesday; Pictured left to right are Jim Roberts, Sterley Gin Mgr. Santos Duran and Servando Villalon, ginners and Don Sutterfield, Producer of the first bale.

CONGRATULATIONS
Don Sutterfield
PRODUCER OF AREA'S FIRST
BALE OF COTTON FOR 1978

THE FOLKS AT STERLEY GIN LOOK FORWARD
TO SERVING OUR AREA FARMERS AGAIN,
Thank You For Your Business
STERLEY GIN INC.

Jim Roberts Mgr.

IF...
HOME FOR SA...
LE: Several...
three bedr...
Bond Real Es...
Wilson Bond...
983-3573.
REAL nice two...
bedroom homes...
can be arrang...
Insurance...
at 983-3261.
HOME FOR SA...
2 bath, la...
garage, built-in...
First Nat...
Lockney.
LE: Three bedr...
carpeted, uti...
place, lots of en...
area. Bond R...
Call Wilson B...
or 983-3573.
FOR SALE: Liv...
en, 3 bedroom...
walk-in closets...
grill, other...
Call Doris McL...
LE: 5 room ho...
carpeted, good co...
location, encl...
large lot, large...
983-3562.
3 bedroom, 2...
garage, 602 S...
Would take tr...
and motor...
up for down...
983-3695, Joe...
ALE: 2 bedro...
partly carpeted...
lot, 1102 S. M...
James Lee N...
983-3144.
ALE: Large th...
house. Good lo...
lots, Bond R...
Call Wilson B...
983-3573.
FOR SALE: 2...
rooms remode...
about 2 bedroom...
room, large utility...
Filtered water...
storm doors and...
Yard light, fen...
building and ce...
property on lot...
983-3126.
ON FOUR LA...
ALE: 983-3414 d...
night or 983-2...
9.
BEDROOM house...
Floydada. Ne...
Call after 3 p...
LT
ALE: 2 bedro...
Fully carpeted...
ready to live in...
orter Finley, 9...
983-2493.
BEDROOM HOU...
and storage build...
location, good co...
and Real Estate...
ad. 983-2151 or...
VICE MUST SEL...
home. New Cas...
sher, and wa...
Central heating...
tioning, drapes...
storm wind...
George Fi...
9 after 5:00p...
ME FOR SALE:...
lar, Lockney, 1...
62-2284. L.9...
E BRICK cou...
10 acres, 3200 s...
kitchen and den...
ingroom and den...
with fireplace, ti...
ms, two baths, ut...
arn and shop, 2 m...
1 mile South...
Elevator. 652-35...
CLASSIFIED...
RATES
CLASSIFIED ADVE...
RATE: 10 CE...
WORD FIRST...
ON: 7 CENTS...
EACH SU...
INSERT...
CHARGE...
CLASSIFIED DISP...
\$1.20 PER...
INCH CARD...
KS: \$1.50.
You Use Som...
Extra Money...
Us Help!!!
BUY SCRA...
ON, OLD...
ANKERS, AN...
FREE PICKUP...
983-5277

If It's Results You Want-It's CLASSIFIED ADS You Need

PROPERTY FOR SALE

Several good three bedroom homes for sale. Call Wilson Bond, 983-3573. tfc

FOR SALE: Level 80 acres northeast of Lockney, two metal buildings, large three-bedroom, two-bath home. NICE CITY LOT with cement block building, 16 x 26. Allison Realty, 652-2134. tfc

FOR SALE: Living 3 bedrooms, 2 bathrooms, closets, other features. Call Doris McLain tfc

FOR SALE: 5 room house, good location, good condition. Call Wilson Bond, 983-3573. tfc

FOR SALE: 2 bedroom, 2 baths, large carpeted, utility room, 602 S. 5th. Would take travel trailer and motor. car. Call down pay. Call Wilson Bond, 983-3573. tfc

FOR SALE: 2 bedroom, 2 baths, large carpeted, utility room, 1102 S. Main. Call Wilson Bond, 983-3573. tfc

FOR SALE: Large three bedroom house, good location. Call Wilson Bond, 983-3573. tfc

FOR SALE: All rooms remodeled, 2 bedroom, den, large utility and filtered water system, wood floors and windows, dining and cellar. Property on lots for sale. Call Wilson Bond, 983-3573. tfc

FOR SALE: 4 bedroom house for sale. Call Wilson Bond, 983-3573. tfc

FOR SALE: 2 bedroom, 2 baths, large carpeted, wall to wall carpeting. Call Wilson Bond, 983-3573. tfc

FOR SALE: 2 bedroom, 2 baths, large carpeted, wall to wall carpeting. Call Wilson Bond, 983-3573. tfc

FOR SALE: 2 bedroom, 2 baths, large carpeted, wall to wall carpeting. Call Wilson Bond, 983-3573. tfc

FOR SALE: 2 bedroom, 2 baths, large carpeted, wall to wall carpeting. Call Wilson Bond, 983-3573. tfc

FOR SALE: 2 bedroom, 2 baths, large carpeted, wall to wall carpeting. Call Wilson Bond, 983-3573. tfc

FOR SALE: 2 bedroom, 2 baths, large carpeted, wall to wall carpeting. Call Wilson Bond, 983-3573. tfc

FOR SALE: 2 bedroom, 2 baths, large carpeted, wall to wall carpeting. Call Wilson Bond, 983-3573. tfc

FOR SALE: 2 bedroom, 2 baths, large carpeted, wall to wall carpeting. Call Wilson Bond, 983-3573. tfc

FOR SALE: 2 bedroom, 2 baths, large carpeted, wall to wall carpeting. Call Wilson Bond, 983-3573. tfc

FOR SALE: 2 bedroom, 2 baths, large carpeted, wall to wall carpeting. Call Wilson Bond, 983-3573. tfc

FOR SALE: 2 bedroom, 2 baths, large carpeted, wall to wall carpeting. Call Wilson Bond, 983-3573. tfc

FOR SALE: 2 bedroom, 2 baths, large carpeted, wall to wall carpeting. Call Wilson Bond, 983-3573. tfc

FOR SALE: 2 bedroom, 2 baths, large carpeted, wall to wall carpeting. Call Wilson Bond, 983-3573. tfc

FARMS AND ACREAGE

WANTED TO BUY irrigated or dryland farm in Floyd or surrounding area. Write Box XRO, c/o Hesperian, Box 700, Floydada, tfe

FOR SALE: Level 80 acres northeast of Lockney, two metal buildings, large three-bedroom, two-bath home. NICE CITY LOT with cement block building, 16 x 26. Allison Realty, 652-2134. tfc

For Rent

FOR RENT: in Lockney one and two-bedroom apartments. Come by 108 N. Main or call 652-3813. tfe

HELP WANTED

Good Head Bookkeeper for days and scales operator for nights, male or female. Call Hendricks Barwise Gins, 983-2737. 9-24c

Addressers Wanted IMMEDIATELY! Work at home-no experience necessary-excellent pay. Write American Service, 8350 Park Lane, Suite 127, Dallas Texas 75231. 10-8p

DEMONSTRATE TOYS, Gifts, no collecting, delivering, or cash investment. Kit on loan. Free training. 296-7318, Plainview. 9-21p

NEED DAYTIME HELP to care for convalescing patient Call 652-3413, Lockney, After 6. L9-28c

GARAGE SALE

GARAGE SALE. 2 refrigerators, 2 bedroom suites, nearly new shag rug, several chairs, 2 dinette sets, heaters and antiques. Evelyn Merrell, 420 S. Main, Lockney. L9-24c

GARAGE SALE: Eddie Foster, 3 1/2 miles west of Lockney on Highway 70, and 1/4 mile north. L10-12p

REAL ESTATE

FOR SALE: 229 acres, two miles north of Lockney. Three wells and underground pipe. \$375 acre. Harry Hamilton and Assoc. Realtors, Lubbock, 745-4474. L10-12c

STORAGE SPACE

BOATS, FURNITURE ANYTHING, ETC. BY THE MONTH OR SIX MONTH 10% DISCOUNT

WEST TEXAS MINI STORAGE 983-3573 OR 983-2151

NO... WE AREN'T IN THE PHOTOGRAPHY BUSINESS BUT

WE WILL REPRINT PICTURES THAT WE HAVE SHOT AND PUBLISHED IN THIS NEWSPAPER

5 x 7 Gloss Finish \$1.50

FLOYD COUNTY HESPERIAN & LOCKNEY BEACON

BUSINESS SERVICES

C-D-J INSULATION can help save your dollars. For information call 983-2601.

C-D-J 66 7-day service, car wash, oil change. Gas service, U-haul rentals. Located on Matador hwy. 983-2601.

INSULATION Fire-Resistant. Installed and Guaranteed. MARR Insulation Co. Lockney 652-3593. tfe

FARM MACHINERY

NORRELL TRACTOR PARTS for tractor and irrigation supplies and accessories. tfe

WANTED

Want to buy good 150 to 200 gallon butane-propane tank. Phone 983-3982 or 983-3737. tfe

WANTED. To do sewing. Call 652-2331 310 S.W. 2nd Lockney. L9-24p

PETS

To Give Away - Five beautiful black and white puppies, five weeks old. Hurl McCoy, 652-3602. L9-17p

PUPPIES to give away. Call 983-3049 after five. tfe

PETS FOR SALE

FOR SALE: Puppies, 1/2 Australian Sheppard, Blue Heeler \$50 each. Frank Breed 983-2324. L17p

Kirby

Vacuum cleaners, new and rebuilt. 1 yr. guarantee. Parts, sales and service. Prices begin at \$124.50. Parker Home Furnishings in Lockney. 652-3315. tfe

BUSINESS FOR SALE

FOR SALE: FOSTER MOTEL 417 N. 2nd Price Reduced for quick sale-Terms- Call 983-3751 Days; 983-3431-Nights. 9-17p

COW POKES



"See, just like I told you, Bankrobber... of Tufernal ain't gonna let anybody have any money even at the point of a gun!"

THIS FEATURE SPONSORED BY **Floydada Real Estate & Insurance Agency AUTO, FIRE & FARM INSURANCE** Jim Word --- Phone 983-2360

TURNER REAL ESTATE Farms Ranches Floydada, Texas 983-2635

Diamond Industrial Supply Co., Inc. Phone Days 296-7418 Nights 296-1200 or 296-7822 1014 Broadway Plainview, Texas

Chain Sprockets V-belts Sheaves U-joints Oil Seals O-rings Wisconsin SKF BCA Timken Bower Cotton Stripper Brushes & Bats "We Appreciate Your Business More" L-tfe

FARMS-RANCHES-CITY PROPERTIES-BUSINESS LEASES-LOANS

B. B. WILKES BROKER REAL ESTATE

100 S Main, Lockney Barry Barker, Solicitor Barker Insurance Agency-652-2642

IF IT IS INSURANCE -SEE- **BARKER INSURANCE AGENCY LIFE-FIRE-CASUALTY-HOSPITAL**

Big Savings -Up to 25% discount- Big Protection Farmers Texas Homeowners Policy

SAM A. SPENCE 112 W. MISSOURI PHONE 983-2881

DAN'S AUTO SERVICE

DAN TEUTON, Owner Specializing in Automatic Transmission, Motor Tune-Ups, Auto Air Conditioning.

General Repair We Have A BRAKE LATHE to handle all passenger car brake drums. See us for complete brake service.

Phone 652-2462

Thomason Meat Co.

1 Mile North Fair Barn on FM Road Number 378 on Lone Star Highway 114-118 N.E. 8th, Lockney, Texas

WE FEATURE LOCAL PEN FED BEEF

CUSTOM SLAUGHTERING AND PROCESSING

KILL CHARGE \$5.00 BEEF EACH

PROCESSING CHARGE 12¢ LB.

SLAUGHTER DAYS MONDAY AND THURSDAYS

WE ALSO HAVE 30 Lb. Beef Paks CONSISTS OF STEAKS, ROASTS AND FRESH GROUND BEEF

FORMERLY LOCKNEY MEAT CO. 114 N.E. 8TH LOCKNEY, TEXAS 806-652-3346

FOR SALE

USED FURNITURE AND APPLIANCES for sale. Service man on duty 24 hours. Caprock Appliance Center, 115 North Main, Lockney, 652-3721. tfe

FOR SALE: Rabbits, 983-5165 before 5 p.m. 983-3396 after 5 p.m. tfe

FOR SALE: Nearly new GE washing machine. Call 983-3171 before 5:00 or 983-5381 after 5:00. tfe

FOR SALE: Beautiful zenith color T.V. Console, Early American. \$300. 983-3077 9-21p

FOR SALE: 35 mm SLR Camera, GAF-ES, F1.7 lens, double exposure lever, vivitar electronic flash, wide angle adapter, 2X extender. All for \$250.00 Call Danny Daniel 983-3838 9-17 p.

FOR SALE: 1- 560 IHC Diesel Tractor, with a IHC Mod-30 Basket stripper. 1- Shop made cotton-ricker. 995-3683, or 995-4232; Tullia, Texas L10-14P

FOR SALE: Sears space saving compact dishwasher was \$274.95 now \$169.95. Sears, Floydada. tfe

FOR SALE: Sears trash compactor was \$274.95 now \$199.95. Sears, Floydada. tfe

FOR SALE: Sears 19" color television, now \$389.95, was \$456.95. Sears, Floydada. tfe

FOR SALE: Small cord electric organ. 983-3153. L-17p

CLASSIFIED ADVS. MUST BE PAID IN ADVANCE.

FLOYD COUNTY ABSTRACT CO.

Abstracts Of Title Title Insurance

Verna L. Stewart Owner, Manager

217 W. California 983-3728 Floydada, Texas

CAN CUSTOM BEND TAILPIPS TO FIT VEHICLE, MUFFLER, BRAKE WORK, AND BEAR WHEEL ALIGNMENT. YOUR MUFFLER SHOP...

COOPER CONOCO 652-3633 LOCKNEY, TEXAS L-17p



Auto Accidents DO Happen... If one happens to you, be protected. Our car insurance offers coverage to meet your special needs - repairs to personal liability.

BAKER Insurance Agency 127 W. Calif. Ph. 983-3270

FOR BETTER CONCRETE CALL CALLOWAY READY-MIX 652-2224 LOCKNEY PLAINVIEW HWY ALSO WHITE CALICHE ROCK FOR SALE

For Sale

FOR SALE: Tomatoes. Call 296-5051 after 5 p.m. L9-21p

FOR SALE: Young laying hens, \$3.00 each. 652-3414. tfe

FOR SALE: Four big 12 cotton trailers 8x9x24. 847-2645 9-17C

FOR SALE: Bundy Clarinet and case \$125. Selma wooden Clarinet and case 1 1/2 years old \$275. Both in excellent condition. 983-3422 after 5 p.m. 8-30, 9-14, 9-16

FEET TIRED? Try Mason Shoes with "Velvet-eez" air-cushioned insoles. Keith Emert, 652-3116. LStfe

FOR SALE: Stove and refrigerator, bed frame, box springs and mattress, dining room table and chairs. 983-2168 tfe

FOR SALE: Armstrong Flute \$150. 983-5052 10-11p

FOR SALE: Motorcycles: 1974 Honda 200, street bike, 18,000 miles \$550.00; 1974 Suzuki 380, 11,000 miles, \$550.00. Can be seen at City Auto. 9-28C

SEWING MACHINE SERVICE CENTER

New & Used Sewing Machines Sales & Service

111 S. Main Lockney 652-2721

NOTICE

NOTICE TO BIDDERS

The City of Lockney will receive bids for a 1979 ambulance until 9:00 a.m., October 5, 1978, at the City Secretary's office at City Hall, 215 E. Locust St. Lockney, Texas. The council reserves the right to refuse any or all bids and to negotiate with the bidder of their choice. Specifications may be obtained at City Hall, Box 387, Lockney, Texas or by calling 806-652-2355. ATTEST: /s/ Claude Brown erma Lee Duckworth Mayor City Secretary L-9-17c

Case

SEPTEMBER SPECIALS SEPTEMBER ONLY

NEW AND RENTAL OVER 90 HP TRACTORS NO INTEREST UNTIL 3-1-79

FREE with each new over 90 HP TRACTOR 30 Gal. TFD Hyd. Oil 12 Gal. HDM Motor Oil

1 Cab Filter
1 Set Oil Filters
1 Set Air Filters
1 Set Fuel Filters
1 Set Hyd. Filters

NEW & RENTAL

Case 1270 with Weights & Radio 25,500
Case 1370 with Weights & Radio 30 Hours 27,000
2-25 Ft. Tandem \$8,000.00 each

USED EQUIPMENT

1971 5020 JD with Cab & Duals \$10,500.00
1974 -1370 Cab & Air, 25000Hrs. \$16,500.00
1974 -1370 Cab & Air, 2800 Hrs. \$16,500.00
1975 -1370 Cab & Air 2000 Hrs. \$18,000.00
1972 -1175 Cab 3700 \$9,500.00

New Engine
18 Ft. Offset Disk \$3,250.00

Case Power & Equipment

Phone 983-2836 Floydada, Texas

AUTOMOTIVE

FOR SALE. 1971 L.T.D. 2 door, 400 engine. Also 1952 Ford pickup. New paint job and original V-8 engine, just overhauled. 652-2637 L-tfe

FOR SALE: 1973 Ford 1/2 ton pickup 4-speed, V-8, power steering, power brakes. See at 206 SW 1st, Lockney L-tfe

FOR SALE: 1978 Ford Crewcab (4 door) Pickup-Cust-Rang F 250, 400 eng, 4sp 9600 mi. below book 983-2631 or 983-2101 after 5 p.m. 9-28p

Sleep While Your Want Ad Works

WANT A GOOD BUILDING? CALL US

MORTON BUILDINGS Box 928 Plainview 806-293-4386

Top: The Lockney Care Center varsity cheerleaders. Bottom: Jay McPher and Jackie Minoline and of Lubbock their mother, over the weekend. Jimmy attended the co-op banquet here Friday night. He is a representative of growers Assn. of Lubbock. He is to be up with the crutches and a wheel.

IONS

FIRST

978

business

You Use Some Extra Money Us Help!!!!

BUY SCRAP PAH, OLD WORKERS, AND PICKUP

983-5277




FRESH - SOFT - SMOOTH
TENDERCRUST
BREAD IS BETTER



WE RESERVE THE RIGHT TO LIMIT PRICES EFFECTIVE
DOUBLE BLUE STAMPS ALL DAY WEDNESDAY
THOMASON
114 NORTH EAST 8TH
PHONE 652-3346 LOCKNEY, TEXAS
WE RESERVE THE RIGHT TO LIMIT

BLUE
NEW STORE HOURS
WEEKDAYS 8 A.M.-8 P.M.
SUN. 8 A.M.-6 P.M.

Double Stamps
Wednesday
Shurfresh Milk



THANK YOU LOCKNEY & SURROUNDING TRADE AREA FOR MAKING OUR FIRST YEAR AND HALF SOOOOO GOOD

Meat Specials

Meats For Everybody's Taste And Pocket book

Rib Steak \$1.59 LB.	T-Bone Steak \$2.19 LB.	Sirloin Steak \$1.59 LB.
Club Steak \$1.89 LB.	7-BONE CENTER CUT Chuck Roast 98¢ LB.	Cube Steak \$1.89 LB.
Round Steak \$1.49 LB.	OLD FASHIONED Chorizo 79¢ LB.	Rump Roast 98¢ LB.
PURE FRESH MARKET MADE APPROX. 2 LB. BAG Pork Sausage 98¢ LB.	FRESH EXTRA LEAN Ground Beef 98¢ LB.	
BONELESS Sirloin Tip Steak \$1.79 LB.	BONELESS Beef Stewing Cubes \$1.29 LB.	
BONELESS Pikes Peak Roast \$1.19 LB.	WRIGHTS-SLICED Slab Bacon \$1.29 LB.	
BLADE CUT Chuck Roast 89¢ LB.	WRIGHTS 3 LB. BOX Bacon Ends and Pieces \$1.39 BOX	
ARM ROAST \$1.09 LB.	GLOVER MEXICAN STYLE Hot Link Sausage 79¢ LB.	
LEAN Beef Short Ribs 89¢ LB.		

NOW IS THE BEST TIME TO FILL YOUR FREEZER WITH OUR LOCALLY GROWN FEEDLOT BEEF 1/2 BEEF-1/4 HINDS -1/4 FRONTS, ALSO 30 lb BEEF PACKS THAT CONSISTS OF STEAK, ROAST, AND FRESH GROUND BEEF, ALL LOW LOW PRICED TO FIT YOUR FOOD BUDGET
ALSO
WE HAVE THE LOWEST PRICES ON CUSTOM SLAUGHTERING AND PROCESSING IN TEXAS
ALL OUR MEATS ARE FULLY GUARENTEED

Dairy And Frozen Food

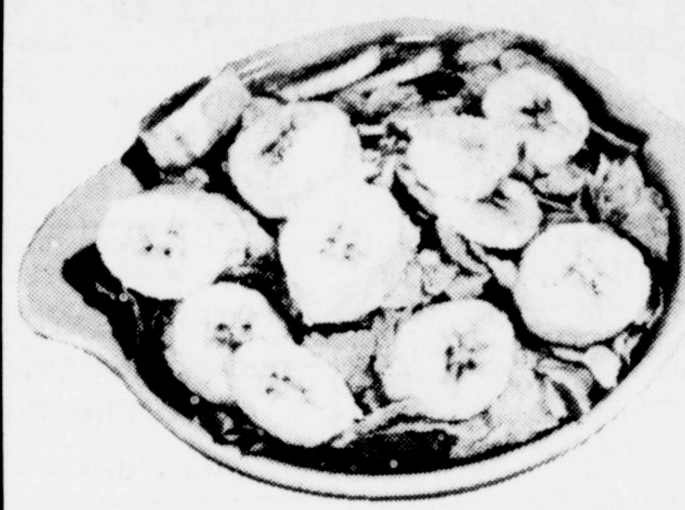
- KRAFT COLBY OR CHEDDAR Halfmoon** 10 OZ. PKG. \$1.09
- PILLSEURY SWTMILK/BTRMILK Biscuits** 6 7/8 OZ. CANS \$1.00
- SHURFINE FROZEN Orange Juice** 3 6 OZ. CANS \$1.00
- MORTON MEAT Pot Pies** Beef/Chick/Tky 8 OZ. PKG. 29¢
- ORE IDA CRINKLE CUT Potatoes** 2 LB. PKG. 79¢



2 LITERS PLASTIC BOTTLE

Pepsi Cola
EACH 79¢
REGULAR \$1.09

Margarine
49¢
1 LB.



CENTRAL AMERICAN
Bananas
5 \$1.00
LBS.

- WASHINGTON BARTLETT Pears** LB. 39¢
- GOLDEN DELICIOUS Apples** LB. 39¢
- 7TH WEEK SEPT. 18 THRU SEPT. 23 RD. GLACIER 8 1/2 Oz. Rocks Glass** EACH 29¢
- FULL EAR Corn** 4 EARS 49¢
- ALL PURPOSE RUSSET Potatoes** 10 LB. BAG 99¢

Grocery Specials

- KLEENEX 200 COUNT Facial Tissue** 59¢
- HUNTS FANCY 8 OZ. Tomato Sauce** 6/\$1.00
- WOLF PLAIN 19 OZ. Chili** 89¢
- SHURFINE DINNER 60 COUNT Napkins** 4/\$1.00
- CASSEROLE 2 LB. Pinto Beans** 53¢
- KRAFT DINNER Macaroni and Cheese** 3/\$1.00
- BORDENS RICH AND READY Orange Drink** GALLON JUG 79¢

Shelf Specials

- TEXSUN UNSWEETNED PINK Grapefruit Juice** 46 OZ. 59¢
- SHURFINE 16 OZ. Cut Green Beans** 3/\$1.00
- KRAFT MIRACLE PINT Sandwich Spread** 89¢
- LOS CABIN Syrup** 24 OZ. \$1.19
- KRAFT POURABLE Dressing** 8 OZ. 59¢
- PALMOLIVE Dishwashing Liquid** 32 OZ. \$1.19

Health And Beauty Aids

- EARTH BORN Shampoo** 8 OZ. \$1.49
- Q-TIPS Cotton Swabs** 170 CT. 99¢
- PONDS Dry Skin Cream** 3.9 OZ. \$1.59
- REGULAR HERBAL-VASELINE Intensive Care Lotion** 10 OZ. \$1.19
- VASELINE INTENSIVE CARE Bath Beads** 15 OZ. \$1.19
- NURSERY SIZE PLASTIC JAR Vaseline Petroleum Jelly** 12 OZ. \$1.19



32 OZ. 6 BOTTLE CARTON
Cokes or Dr Pepper
\$1.39
PLUS DEPOSIT

LOCKNEY LA Mahan, Jim Buracido Gonzalez
15 Per Copy
Volume 7
Rain
summer and m... will go into the hott... people of Floy... ended in many y...
ngho
Longhorn-C... Friday night... squads. Both... openers (Loe...
dol Boa
Independent... trustees acc... Insurance, Loc... policies Mon... called meeti... of the B...
Whitfill
oted To
his Office
manager of Ligh... Alton Hig... announced the ap... Whitfill to p... for the Co... County Cooper... at Memphis... October 31... been with Ligh... director of Membe... six years.
graduate of Floy... Texas Tes... in the service... discharged with t...
president of... in the Volun... past director... Commerce, Fair... stock show.
lils lived in Loc... before moving to... three children... Anna. They will... soon.
ham said, "We... the best qualif... applicants. His... line crew and... special to his... are now being... successor.