

2 LITER
"NO DEPOSIT"
PEPSI-COLA
69¢
\$1.19 VALUE



WE GIVE
DOUBLE ON WEDNESDAY

40 COUNT "FABRIC SOFTNER"

BOUNCE

\$2.39 VALUE
\$1.69

QUART KRAFT

MIRACLE WHIP

69¢

WITH PURCHASE OF
1 LB WILSONS BOLOGNA

\$1.19 WITHOUT PURCHASE

1 LB NABISCO

CRACKERS

91¢ VALUE

1 LB. KEEBLER

CLUB OR TOWN HOUSE

CRACKERS

87¢

\$1.19 VALUE

80 COUNT GLAD

SANDWICH BAGS

2/8

63¢ VALUE

10 COUNT GLAD LARGE KITCHEN

GARBAGE BAGS

79¢

\$1.19 VALUE

8 COUNT GLAD HEAVY WEIGHT

TRASH BAGS

\$1.41 VALUE

30 COUNT GLAD SMALL

GARBAGE BAGS

69¢

99¢ VALUE

10 COUNT GLAD

TRASH BAGS

99¢

\$1.49 VALUE

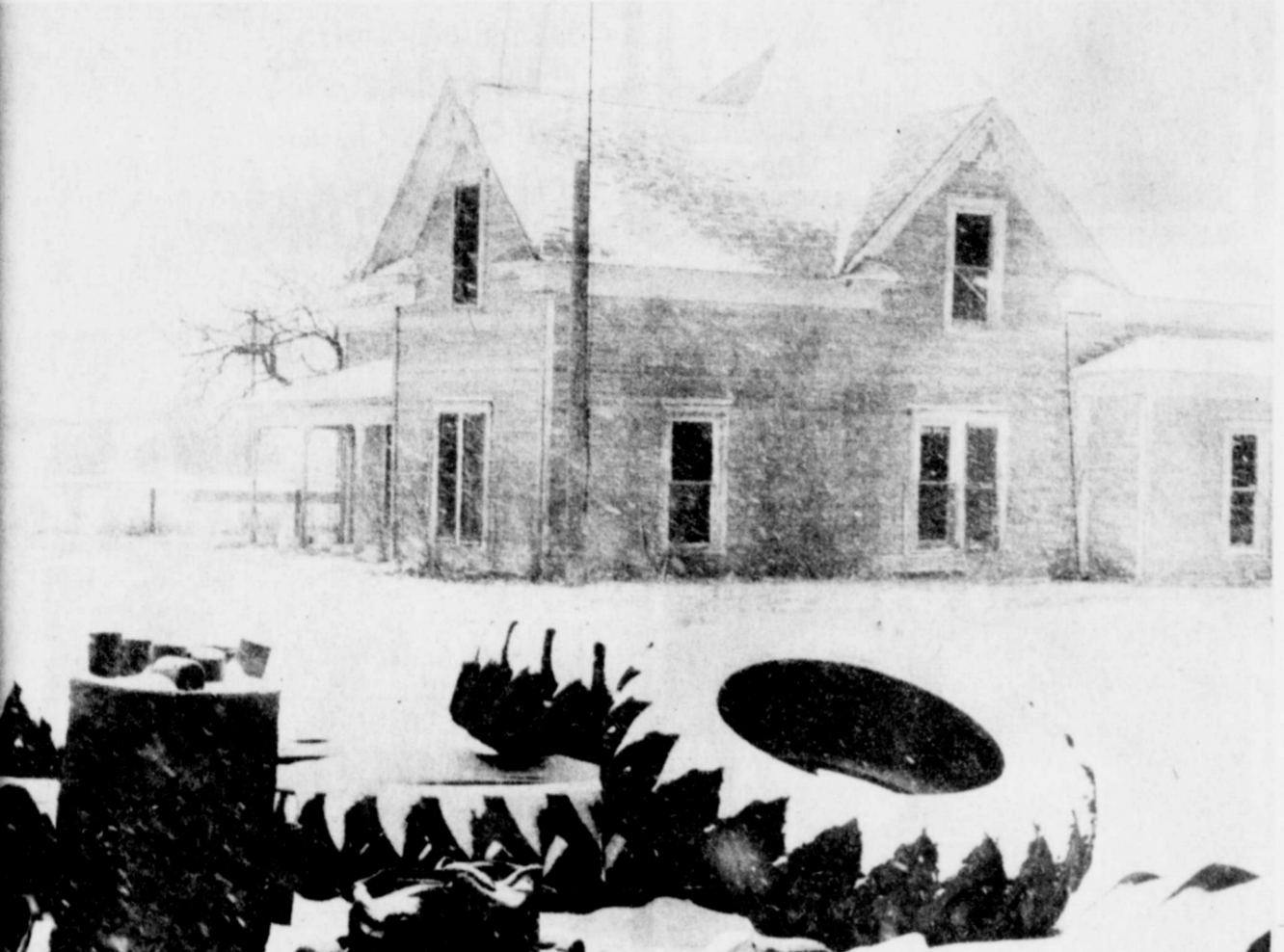
15¢
Per Copy

The Lockney Beacon



Volume 78 Lockney, Floyd County, Texas 79241 Sunday February 18, 1979 12 Pages in One Section Number 14

Floyd Livestock Show Next Week



VISIBILITY LIMITED — Friday-morning snowfall cut down visibility, as is evident in this picture, shot in downtown Lockney at about 11 a.m., before it really got bad. Tires on the Lockney Tire Company form the foreground; the old house on the corner of Locust and East First Streets, about half a block away, is visible through the snow; and if you look close at the top center, you can see the water tower about a block from where the picture was taken. (Staff Photo)

From the four corners of this county, groomed and sleek steers, lambs, and swine will be loaded onto pickups and trailers Sunday and Monday enroute to Floydada.

The goal of their proud owners — 4-H and FFA members — will be grand champion banners at the 25th annual Floyd County Junior Livestock Show.

The five-day event begins Sunday with weighing of barrows and continues through next Thursday when exhibitors and their parents are honored with a banquet in Duncan Elementary Cafeteria in Floydada. Floyd County Farm Bureau is sponsoring the banquet.

In between will be two days — Monday and Tuesday — of judging plus one day — next Wednesday — devoted to judging by FFA and 4-H members and the auction of animals.

James McNeill will serve as general superintendent of the '79 Floyd County Junior Livestock Show. Assistant superintendents are to be Orville Harris and James Cleveland of the Floydada High vocational agriculture department; Elvin Lyon and Mike Glenn, vo-ag instructors at Lockney High School; Steve Herber and Birch Lobban, county Extension agents.

ACTIVITIES OUTLINED
Weighing of barrows will begin when the barn opens at 2 p.m. this Sunday. All swine are to be in place by 6 o'clock that day.

Monday activities begin with the weighing of steers at 7 a.m. One hour later, at 8 o'clock, weighing, classifying and tooting of lambs starts. All steers must be in place by 9 a.m. and steer classifying is slated for 10 o'clock.

Judges for this year's show include: Jerry Adams, steers; Scotty Windham, swine; and Buddy Logsdon, lambs.

Ed Garnett will classify steers and lambs.

Windham will be the first to judge as he begins to examine barrows at 2 o'clock Monday afternoon.

Selection of lamb winners leads off the Tuesday agenda at 9 a.m. Steer judging is scheduled for 2 p.m. that day.

Notification to sell non-placing floor bid animals must be made to officials one hour after completion of the judging schedule. Swine exhibitors are reminded that barrows may not be returned home after the show, due to a new federal regulation.

Youth livestock judging is scheduled for 7:45 a.m. Wednesday.

AUCTION WEDNESDAY
Exhibitors begin to reap the benefits of their efforts during the Wednesday afternoon auction. Raymond Akin will begin the auction by selling champion stock to high bidders at 1 p.m.

Floyd County Junior Livestock will offer for sale 32 steers, 70 barrows, 70 lambs or 50 cent of the total lambs and barrows with the total not to exceed 140.

The 7 p.m. banquet is the only Thursday activity.

JUDGING DIVISION
Steers are to show in three classes — light, medium, and heavy — per breed. Prizes will include: first place, \$5;

second, \$4; third, \$3; fourth, \$2; fifth \$1; and sixth through tenth, ribbon. Breed champions and reserve champions are to receive rosettes.

A banner and \$5 will be received by the grand champion steer's owner. A banner and \$3 goes to the reserve champion steer.

Swine are to be exhibited in light, medium, and heavy classes for the following breeds: Berkshire, Chester, White, Duroc, Hampshire, Poland Chinas and Spotted Poland China crossbreeds, and other breeds. Any of these which have fewer than 10 barrows entered will be shown with "other breeds" rather than as a separate breed.

In the event of 20 or fewer entries, a breed is to be divided into two rather than three classes.

CHAMPION LAMBS
There will be no grand and reserve champion lambs, but the following class champions and reserve champions are to be declared:

Finewool — Rambouillet, Merino or cross between these two finewool breeds.

Finewool crossbred — typical first cross of a Suffolk, Hampshire, Corriedals, Dorset or Columbia.

Shropshire — purebred Shropshire lambs only.

Southdown — purebred Southdown lambs only.

Medium wool — Hampshire, Suffolk and all other medium wool are not eligible for the above mentioned classes.

OFFICIALS LISTED
Edwin Nutt is president of the Floyd County Junior Livestock Show for 1979. McNeill is vice president, and Larry Barbee serves as secretary-treasurer.

Jack Johnson is to be the announcer. Following are the superintendents and assistant superintendents in the three divisions:

Swine — Roger Dawdy, superintendent, Keith Phillips, Clinton Ware, Mark Noland, Harold Bennett, E.D. Morgan.

Lamb — Kenneth Broseh, superintendent, Harvey Allen, Austin Beedy, Eddie Teeter, Choise Smith.

Steer — Larry Golden, superintendent, Vernie Moore, Bob Ross, Warren Mitchell, and Ray Gene Carthel.

Harold Bennett is grounds superintendent, and Travis Jones will be loading superintendent. Dozens of other persons are assisting in various jobs.

Dr. Paul Glasson and Dr. Charles Overstreet will be show veterinarians.

BUYERS LUNCH
Individuals and managers of businesses who purchased animals during the '78 auction and prospective buyers this year are invited to a buyers lunch. Serving is scheduled to begin at 11:30 a.m. Wednesday at the show barn. The lunch precedes the auction.

'Two-Point Game' Expected In Playoff Lady Horns Vs. Abernathy Tuesday Night In Olton

Lockney and Abernathy, District AA co-champions in girls' basketball, meet in Olton Tuesday night to determine the district's playoff representative. The winner of the contest, scheduled to start at 7:30 p.m. in the

Olton High School gym, plays 3-AA champion Dimmitt the following Tuesday in the bi-district game.

It was earlier reported that Lockney fans would sit on the north side of the

gym, but that was incorrect. Lockney fans will occupy the south-side stands, with the student body sitting on the west end of those stands.

A large crowd is expected, and Lady Horns boosters are urged to come in force, wear the brightest red they own, and really support the team.

Last year when the Lady Horns and the Lady Lopes met in the conference playoff game, the Abernathy team prevailed by a three-point margin, 36-33. Earlier this year, Abernathy downed Lockney by a single point, 37-36, in an overtime game in the first round of district play and went on to win the first round with a 4-0 record. Second time around, the Lady Horns won by two, 48-46, and took the second round with a 4-0 mark. So look for a close game again Tuesday.

Lady Horn Coach Marsha Sharp expects a two-point ballgame, she says, if both teams continue to play the way

they have — but the Lockney girls will have to hit a better percentage of free throws, Sharp warned, to win this one. They averaged 59 percent from the field in the last game with Abernathy but made just eight out of 21 from the line.

Another big factor in the ballgame Tuesday will be defense. The Lady Horns will have to avoid turning the ball over, something they've been successful in doing for the most part this year.

"We feel if we can play without getting into foul trouble with our big people inside, we'll have an excellent chance to win," Sharp told The Beacon Friday.

Of the Lockney starters: Senior Karla McCarter is averaging 11 points a game. Stephanie Turner, the other senior in the starting lineup, has a per-game average of eight points. Both McCarter and Turner are described by Sharp as "superb" in the ball-handling department.

Rebecca Evans is Lockney's high-scoring post sophomore. She's hitting some 13 points and grabbing an average of 15 rebounds per contest. That's probably one of the highest rebounding averages on the South Plains this year.

Sharp says. And in eight district games Evans has been double-teamed all the time and sometimes triple-teamed. She's one of the top five post people in the district, Sharp believes.

Sophomore Penny Sterling has really shown improvement since stepping in for Rise Taylor midway into district play. Sterling has really come on strong in the last month, according to Sharp.

And Tammie Hayes, also sophomore, is averaging eight rebounds per game. She hasn't had a really high-scoring game, but she's always a threat to score.

Matter of fact, anyone of the five starters is a threat to score, any time they touch the ball.

A. O. Foster, Lifelong Farmer, Believes In Diversification

by Felicia Applewhite
A.O. Foster once thought the ground under Lubbock Methodist Hospital looked "pretty good". That land was selling for \$25 an acre when he and his father were looking for land to buy in 1924. If there had been a house or dug-out on the land, they would have bought it. His father had the money to buy, but needed a house on what he bought. A.O. was 19 years old then.

All there was to Texas Technological college then was a blueprint in the hands of contractors.

The Foster search for land ended a mile later by their renting a farm at Lubbock.

On that rented land the first year they raised, they had 200 acres of cotton to

freeze. After the freeze, it took 20 acres to make one bale of cotton.

It was ironic, since they were running (so to speak) from the boll weevil menace where they had been farming near Vernon, that they should be hit by a devastating freeze their first year here. They continued farming operations at Petersburg until 1945, when A.O. and family moved to 12 miles north of Lockney.

"I wanted an irrigation farm. It was all dry land around Petersburg. We worked a section of land there.

"After we moved north of Lockney to the Lone Star community, I raised cotton, wheat and milo. Then for a while, it was cotton and wheat. I saw then that a more diversified plan was better. The last few years, I have had just cotton and wheat. I have had cotton, feed and wheat etc. I am a firm believer in diversification. Everybody would be better off if all of us practiced it.

"When diversification is not practiced, we get too much of one thing and the price on it will drop. Then when the price on that one thing drops, everybody turns to something else. As a result, too much of that thing is produced and it is the same story all over again with dropping price.

"When cotton was a good price, everybody went to cotton. Soon cotton wasn't worth anything, so the switch was to corn. Corn is now a losing crop. A part of it is, of course, due to the corn borer and a part because of the depletion of water. Corn has been hard hit.

"It's hard to discuss farming without bringing up the subject of machinery and the cost of it. Something is going to have to be done about the cost of machinery."

While discussing farming with A.O. Foster, you are almost sure to get on the subject of hogs and cattle.

SEE FOSTER, PAGE 5

Helpful Lockneyites 'The Greatest'

Early on the morning of Wednesday, February 7, Rodger Stapp woke up and

immediately knew his home on North Main Street in Lockney was on fire. He

didn't smell smoke right then, he said, but he heard the unmistakable popping

sound a fire makes as it burns.

The fire started in the utility room on the northeast corner of the house and had not reached the main portion of the house when Stapp was awakened by the sound, about 12:12 a.m.

Fortunately, the Stapp family — Rodger, his wife Belinda and their children Shana, age six, and Andy, six, and Andy, three — escaped without injury.

But their home, although it didn't burn to the ground, is virtually destroyed as far as living in it again is concerned. Stapp estimates it would cost more to repair the house than it's worth.

He praised the Lockney Volunteer Fire Department for the way they handled the situation. While there was a great deal of smoke damage to the house and its contents, there was hardly any water damage, Stapp said. And several personal items and some furniture was saved from the blaze. "The fire department did a tremendous job," Stapp told The Beacon. "It couldn't have been handled any better," he added.

The Stapps are thankful, too, to the many people who gave them money, clothing and other items after hearing of their misfortune. He expressed special appreciation to the congregation of the West College and Third Street Church of Christ, where the family attends, church, and to the individuals, many of whom never even saw the fire-damaged home, who helped out.

"These are the greatest people in the world," Stapp said.



INSIDE THE STAPP HOME after the fire. (Staff Photo)



A.O. FOSTER and GRACE FOSTER daughter Barbara (Caw) caught off guard by a cameraman.

TOTAL SAVER **TOP QUALITY!**
WE RESERVE THE RIGHT TO LIMIT



THRIFTWAY IS YOUR HONEST VALUE STORE! BE SURE TO CHECK THIS ADD FOR A SPECIAL REFUND OFFER!

YOUR THRIFTWAY STORES SELL & FEATURE ONLY FINE QUALITY AMERICAN GROWN GRAIN FED BEEF, FRESH PORK & QUALITY POULTRY!

4-7 LBS. AVG. PORTIONS OR **HALF HAMS \$2.09** LB.



KAHN'S HICKORY GROVE BONELESS FULLY COOKED

WHOLE HAMS

HONEST VALUES!

STOREWIDE SAVINGS!

WINTER WARMER PLAIN **WOLF CHILI**
15 OZ. CAN **99¢**

ADDS LIFE TO... REFRESHING **COCA-COLA**
6-32 Oz. Btl Ct. **\$1.29** Plus Deposit

FRESH GUARANTEED 73% LEAN **GROUND BEEF \$1.29** LB.
WRIGHT'S HICKORY SMOKED SLICED **SLAB BACON \$1.39** LB.

REGULAR & WATER PAK CHUNK LIGHT **STARKIST TUNA \$0.69¢** 6 1/2 OZ. CAN

\$1.99 LB. WATER ADDED 12-14 LBS. AVG.

PURINA DRY **DOG CHOW** 50 LB. BAG

TOTAL GROCERY SAVINGS!
SUPER CLEANING **FORMULA 409**
MAXWELL HOUSE INSTANT **COFFEE**
SKINNER SHORT CUT ELBO **MACARONI**
SCHILLING PURE **VANILLA**
JELL-O INSTANT PUDDINGS & **PIE FILLINGS**
Bell Quality Checked

ICE CREAM \$1

SHELF SPECIALS
KRAFT MINIATURE **MARSHMALLS \$1** 10 1/2 OZ. BAGS

GRANATION **COCOA MIX \$1** 12-1 OZ. ENV.

ALL GRINDS MARYLAND CLUB **COFFEE**

KAHN'S HICKORY GROVE BONELESS CENTER CUT **HAM SLICES \$2.49** LB.
OSCAR MAYER FRANKS BEEF MEAT JUMBO **WEINERS \$1.59** LB.
CLAUSSEN SWEET 'N SOUR SLICES **PICKLES \$1.29** 24 OZ. JAR.
GOOCH'S GERMAN BRAND SMOKED **SAUSAGE \$1.39** 12 OZ. PKG.

OSCAR MAYER MEAT BEEF THICK SLICED **BOLOGNA \$0.99** 8 OZ. PKG.
OSCAR MAYER SLICED MEAT BEEF THICK THIN **BOLOGNA \$1.39** 12 OZ. PKG.
OSCAR MAYER SLICED **BACON \$1.99** LB.
OSCAR MAYER PORK LINK SAUSAGE **LIL' FRIERS \$1.99** LB.

10% OFF LABEL **CHEER DETERGENT** GIANT BOX

6% OFF LABEL SUPER SIZE **COAST SOAP** 7 OZ. BAR

DAIRY VALUES
SHURFRESH MARGARINE **SOFT OLEO \$0.59** 1 LB. BOWL
PILLSBURY'S DELICIOUS **CINNAMON ROLLS \$0.69** 9 1/2 OZ. CAN
KRAFT MIDGET HORNS **CHEDDAR CHEESE \$1.89** 16 OZ. PKG.
Bell Quality Checked **BUTTERMILK \$0.89** 1/2 Gal.
VICK'S FORMULA 44 **COUGH SYRUP \$2.39** 6 OZ. BTL.

PURE TEA REFRESHING **INSTANT NESTEA \$1.89** 3 OZ. JAR

U.S. NO. 1 RUBY RED **GRAPEFRUIT \$1.19** LB.

CALIFORNIA SUN-KIST **LEMONS \$0.39** LB.
WASHINGTON D'ANJOU **PEARS \$0.39** LB.
CALIFORNIA CELLO PKG **CARROTS \$0.29** LB.
CALIFORNIA LARGE SIZE **AVOCADOS \$0.25** EA.
LONG GREEN SLICERS **CUCUMBERS \$0.29** LB.

\$2.00 CASH REFUND ON THESE ITEMS

FROM YOUR **PARTNERS SAVINGS**
BUY 3 OF THESE 5 BRANDS FOR YOUR REFUND.

Vaseline Intensive Care Bath Beads
COTTON SWABS **Q-TIPS \$0.89** 170 CT. BOX
Vaseline Intensive Care **BATH BEADS \$1.09** 15 OZ. BOX
OILY OR LEMON CUTEX **POLISH REMOVER \$0.59** 4 OZ. BTL.
Vaseline Intensive Care-REG. HERBAL **LOTION \$1.19** 10 OZ. BTL.
Vaseline Extra Strength Intensive Care **LOTION \$1.19** 10 OZ. BTL.
Vaseline Blue Seal Petroleum **JELLY \$0.89** 7.5 OZ. JAR.
SHURFINE BALSAM PROTEIN REG. OILY **SHAMPOO \$1.09** 16 OZ. BTL.

REGULAR OR SUPER KOTEX TUBE TYPE **TAMPONS \$1.09** 16 CT. BOX

FROZEN FOODS
MINUTE MAID **ORANGE JUICE \$0.49** 6 OZ. CAN

S & H GREEN STAMPS EVERYDAY DOUBLE ON WED.

ORE-IDA SOUTHERN STYLE **HASH BROWNS**
BEEF ENCHILADA/CHEESE ENCHILADA/MEK. FIESTA/COMB **PATIO DINNERS**
CLASSIC/COMB. SAUSAGE-MUSHROOM/PEP. & MUSHROOM **TOTINO'S PIZZA**

LAST CHANCE TO COMPLETE YOUR SET **STONEWARE DISH** FINAL WEEK!

PAGES THRIFTWAY

PRICES EFFECTIVE FEB. 18-24

Mrs. Garrett Spe...
Dorcas Sunday S...

Dorcas Sunday school first Baptist Church met February 13... C.M. Meredith... prayer was voiced... line Bradley... ay Garrett, teacher... ss, gave the devo... read "Friends" by... ham. Mrs. Cleo... a historical Valen... of different coun... Mary Wilson then... reading "Are you... Mrs. Beulah Deni... a poem, "For... of the Aged." The... E.P. Nelson (Lula)... the poem to the...

dge For Heart S...

Floydada County Association Bridge for Feb. 13. Mrs. Neil Pritchard... m. to 3:30 p.m. at... Activity Center at... orgia in Floydada... for the event are... paghetti lunch will... The days events... de bingo prizes... es (including a... afghan) and two...

ebuilders E. H. C...

Builders E.H. Club home of Mrs. Bill Feb. 13. Mrs. tell led the group... entire game and... read the devotio... x. 25:1-5. arilyn (Williams) was introduced... med into the club... nd children have... rned home after... ars in Iran. She will... akers at the county... day in March. It was answered... favorite color."... were asked to fur... for the 4-H county... on Tuesday Feb... aron Hillis gave... am on "Color my... She said colors set...

A NEW HAIRD...

drey's Hair St...

All New Price Lis...

ampoo & Set

r Cut For Men Or Women

manents For Men Or Women

w Dry

ditioners

mpoo Only

ts

ach

ist

Sale Items

Wigs \$15.00

g Styling \$8.00

ull Service For Men And Women

all Now For An Appoint

983-3649

Audrey Thomas

L ON PAVEMENT 4 MILES SO... MILES WEST AND 1/2 MILE SO... OF FLOYDADA

lip And Save This Advertisement

Woman's Page

NEWS 'N' NOTES (by Sharon Hillis)

Take Precautions With Space Heaters

Take Precautions With Space Heaters
Take precautions when buying and using space heaters.

ELECTRIC SPACE HEATERS
An unvented or improperly vented gas, oil or kerosene space heater, especially a poorly adjusted and dirty one, can produce deadly quantities of carbon monoxide.

Older, unvented heaters may lack safety devices required by recent voluntary standards such as gas shut-off valves that stop the flow of gas and prevent carbon

monoxide poisoning and gas build-up in case the flame goes out.

Have gas, kerosene and oil space heaters inspected annually to ensure that they are properly adjusted and clean.

ELECTRIC SPACE HEATERS
Look for an electrical space heater with an automatic switch that cuts off electric power if the heater is tipped over.

To prevent electrical shock, avoid using a portable electrical heater in the bathroom, if at all possible.

Never place a portable electrical heater near a bath-

tub, shower or sink, and never touch an electric heater when wet.

In addition, keep all electrical wiring in good working condition.

FLAME HEATING COIL GUARD
Buy a space heater with a guard around the flames or heating coil to keep children, pets and clothing away from the heat source—clothing can catch fire and cause severe burns.

Falling against or touching the exterior surface also can cause severe burns.

Replace loose or missing guards on older heaters.

Credit Rating Check Up

READ LABELS
Read the labels and instruction before installing and using a new heater.

Check local codes and make sure all installation requirements are met.

Do not put a space heater near drapes, furniture or other flammable materials or near traffic lanes.

Keep a window partially open and the room well-ventilated when using an unvented, fuel-burning space heater.

Even vented heaters require ventilation for proper combustion.

El Progreso Club Meets

The El Progreso Study Club met with Josie Taylor on Wednesday, Feb. 14, 1979. As the guests arrived, they were served lovely refreshments from a beautifully decorated Valentine table.

Anna Dell Quebe presided for a short business meeting. The roll call was answered by each member telling of her favorite hobby. A contribution to the cemetery association was voted for. A new member, Roberta Sesgo, was announced.

The secretary announced the program consisting of three short presentations. The first was on crochet by Pauline Sams. She gave a short history of the craft and then showed many lovely pieces, many very old, of different types of crochet.

The second part of the program was given by Hazel Johnson on macrame. Several different knots were illustrated and some of the members tried tying some at the end of the demonstrations, names were drawn for a macrame towel hanger which was awarded Jeanette Marr.

The third part of the program was given by Faye Holmes on current fashions for spring. She stated that black and white are very good, skirts will be shorter,

shoes will be very bare and high-heeled, hair do's will be shorter with no back-combing so that new hats may be worn, and bags will be much smaller.

The next meeting will be a change in program — the one to be used was one that had been cancelled in Jan. because of bad weather. The meeting will be in the home of Cornelia Johnson, Feb. 28, 1979.

Those present were Faye Ferguson, Anna Dell Quebe, Alice Mitchell, Kathryn Ball, Polly Gilbert, Ann Brock, Marie Brock, Juanita Jenkins, Cornelia Johnson, Faye Holmes, Jeanette Marr, Pauline Sams, Bobbie Kellison, Hazel Johnson, Arla Copeland and one guest Carrie Apple.

Mrs. Garrett Speaks To Dorcas Sunday School

The Dorcas Sunday school of First Baptist Church met February 13. Mrs. C.M. Meredith, acting prayer was voiced by Mrs. Aline Bradley.

Mrs. May Garrett, teacher of the class, gave the devotional and read "Friends" by Graham. Mrs. Cleo read a historical Valentine of different countries. Mrs. Mary Wilson then read "Are you reading?" Mrs. Beulah Denison read a poem, "For ends of the Aged." The Mrs. E.P. Nelson (Lula) read the poem to the

Bivins Newsletter of the Bivins Home in Amarillo, and later Mr. Tooley printed it in The Floydada Hesperian.

A contest game was also directed by Mrs. Denison. Refreshments were served to Mmes. Mary Wilson, Ethel Warren, Nina Willis, May Garrett, Ola Warren, Lona Sparks, Myrtice Rainer, Mildred Fuqua, Eula Meredith, Cleo Goins, Cecil Whitehead, Beulah Denison, Carrie Cline, Vada Meredith, and guests: Aline Bradley, Eula Parrack and Vel Simpson.

Bridge For Heart Scheduled

The Floydada County Association Bridge for Heart will be given to February 20, 10 a.m. to 3:30 p.m. at the Massie Activity Center at W. Georgia in Floydada.

Prizes for the event are: A spaghetti lunch will be served. The days events include bingo prizes, prizes (including a timide afghan) and two

small paintings donated by Neil Pritchett and Elfe Sherman which will be given to the winning couple. Partners at bridge will remain partners throughout the day.

Everyone is invited to come out and enjoy this day of fun and games. Anyone who would like to come just for lunch will be eligible for the noon drawing.

Homebuilders E. H. Club Meets

The Homebuilders E.H. Club met at the home of Mrs. Bill on Feb. 13. Mrs. Norrell led the group in a Valentine game and Smith read the devotional Ex. 25:1-5.

Carolyn (Williams) was introduced and welcomed into the club. Her husband and children have returned home after several years in Iran. She will be a speaker at the county club day in March.

The hostess served a lovely Valentine cake to Mmes. Elmer Norrell, Raymond Evans, Raymond Williams, Ruth Trapp, J.W. McClure, Gordon Mayfield, Ernie Widener and Sharon Hillis.

The next meeting will be with Mrs. Elmer Norrell February 27.

the atmosphere of our homes, to choose a color scheme pleasing to all the family. Bases for choosing color are style of furniture exposure to light, and size and shape of the room. When selecting a carpet, take a sample home and test it with light from windows, color of walls and light pictures. It is surprising to find out how all these might take away color from the carpet you selected.

The hostess served a lovely Valentine cake to Mmes. Elmer Norrell, Raymond Evans, Raymond Williams, Ruth Trapp, J.W. McClure, Gordon Mayfield, Ernie Widener and Sharon Hillis.

Investigate Credit Rating

CREDIT RATING CHECK-UP

Schedule a credit rating check-up—and keep up the practice just like an annual medical or dental check-up.

Checking credit is an easy and beneficial process.

HOW TO BEGIN

Begin with a visit, telephone call or written request to the local credit bureau.

Look under "Credit Rating" or "Reporting Agency" in the telephone directory Yellow Pages.

If they are not listed, check with a bank, department store or Better Business Bureau office.

It does not fairly represent their side of a credit or billing dispute.

COSTS
Consumers denied credit, insurance or employment may check their credit file free of charge.

However, consumers not denied credit in the past 30 days may expect to pay—usually five dollars or less—for checking credit.

It may also cost to add information to a credit file and have the credit reporting agency verify this new information.

HOSPITAL NEWS

CAPROCK

- Della G. Younger, adm. 1-4, dis. 2-13.
- Alice M. Gonzales, adm. 2-1, dis. 2-7.
- Julio V. Ibarra, adm. 2-5, dis. 2-10.
- Annie Alenda Carr, adm. 2-8, dis. 2-9.
- Lola F. Cavanaugh, adm. 2-9, dis. 2-12.
- Eva E. Knerim, adm. 2-9 dis. 2-12.
- William A. "Bill" Dodson, adm. 2-10, dis. 2-11.
- Annie L. Neff, adm. 2-11.
- Marselino V. Carbajal, adm. 2-12.
- Jose Rodriguez, adm. 2-12.
- Billie Jordan, adm. 2-15.

HOW CREDIT BUREAU WORKS

Credit bureaus gather and sell data on consumers to credit grantors, insurers, employers and other business.

The bureaus are not permitted to interview third parties or collect personal information on a consumer without the consumer's prior knowledge.

ADVANCES

Many advances are derived from a credit file check. A consumer can question erroneous, vague or misleading items, plus they can have missing favorable credit references added to the file.

Also, the consumer can add information to the file if

Bennetts Honored On

Golden Wedding Anniversary

Mr. and Mrs. Wayne Bennett were honored with a 50th wedding anniversary celebration Sunday February 11 at Fellowship Hall in the First United Methodist Church in Floydada. Hosting the event were Mr. and Mrs. Luis Moore of Dumas and

Mr. and Mrs. Harold Bennett of Floydada.

Special out of town guests were Mr. Bennett's two sisters and families from Burkburnett, Pauline Marris and Fay Martin; his mother, Mrs.

Vivie Bennett, also of Burkburnett; and Mrs. Bennett's two sisters, Mrs. Edith Stringer of Lubbock and Fleet Halland of Brownwood.

The couple received special congratulations from President and Mrs. Jimmy Carter of Washington, D.C.

Flowers

SPEAK THE LANGUAGE OF LOVE!
Flowers For All Occasion

Potted Blooming & Green Plants Wedding & Funeral
Flowers Large Line Of Cut Glassware, Dinnerware,
Silverware. Complete Assortment Of Jewelry Gifts
For Everyone On Every Occasion.

"Our Pleasure Is To Serve You"

Schacht's

Flowers, Jewelry & Gifts

112 W. Poplar Lockney 652-2385

Floydada Rebekah Has Valentine Party

Floydada Rebekah No. 77 met for a regular meeting on Tuesday night, February 13th.

Betty Medford, Assembly Warden of the Grand Lodge of Texas and Bonnie Stogsdill of Levelland Rebekah Lodge #5 were visitors.

decorated in the Valentine motif.

Artie Webb read a Valentine quiz, and other games also were played. A guessing game was played and Ethel Sawyer won a box of chocolates.

Amanda Hart, Grace Grundy and Lona Sparks sang a special song entitled, "Because I Love You" and dedicated it to Artie Webb, Noble Grand and her husband, Floyd Webb.

Cake, coffee and spiced apple juice was served to the guests and members. All reported a lovely time.

Several members were reported ill. They were Foy Gooch, Laules Parkey, Estelle Warren and Fay Hart. Also the death of Artie Webb's uncle, Claud Brandon, was reported. A Valentine party was held after the lodge closed. The hall was

Hester Moore Presents

Program On China

Mrs. Ella Reue was hostess to the Wesley Ann Circle Monday night February 12.

Mrs. Hester Moore presented a program on "China", during which she showed the little shoes that Chinese women wore to make their feet very small. She stated that they wore "down" in their clothing for

warmth. Refreshments with a Valentine motif were served to members Elizabeth Armstrong, Julia Baker, Dianna Glover, Ethel Hinson, Billie Jordan, Bennie Leibfried, Jewell Martin, Lorena McKinney, Helen Solomon, Margaret Springer and hostess Ella Reue.

COFFEE-ICE CREAM FINALE

1/4 cup Irish style instant coffee beverage
2 cups boiling water
Vanilla or chocolate chip ice cream

Place instant coffee beverage in coffee pot or carafe. Add boiling water and stir well. Pour over scoops of ice cream in coffee or demitasse cups and serve at once. Makes 2 cups or 3 regular servings or 6 demitasse servings.

REVIVAL

MARCH 5-9 7:30 p.m.

BIBLE BAPTIST CHURCH

810 S. 3rd FLOYDADA

PASTOR
DALE KEENER

EVANGELIST
JIMMY GILMORE

SHURFRESH MILK

GREEN STAMPS

KIRTLEY'S MARKET

316 N 2ND 983-3105

WE GIVE DOUBLE S AND H GREEN STAMPS ON WED. THESE SPECIALS GOOD FEB. 19 THRU FEB. 24, 1979

WE ACCEPT FOOD STAMPS

WE RESERVE THE RIGHT TO LIMIT

<p>BANANAS 4 Lbs. \$1.00</p>	<p>Country Pride FRYERS Lb. 61¢</p>	
<p>ORANGES Lb. 39¢</p>	<p>Flavor Wright BACON Lb. \$1.29</p>	
<p>AVOCADOS 4/\$1.00</p>	<p>Shurfresh Canned HAM 3 Lb. Reg. \$6.86 \$7.52</p>	
<p>POTATOES 10 Lb. 99¢</p>	<p>GROUND MEAT Lb. \$1.39</p>	
<p>SUPER SUDS Giant Size 89¢</p>	<p>Shurfine PORK & BEANS 16 Oz. 29¢</p>	<p>Old El Paso REFRIED BEANS 16 Oz. 2/79¢</p>
<p>Keeblers CLUB CRACKERS 1 Lb. 89¢</p>	<p>Wolf CHILI 15 Oz. 89¢</p>	<p>PINESOL 15 Oz. 79¢</p>
<p>Shurfine COFFEE 2 Lb. \$2.49</p>	<p>6 32 Oz. Bottles COKE, 7UP, DIET 7UP OR TAB Plus Deposit \$1.59</p>	

STOREWIDE SAVINGS!

TOTAL GROCERY SAVERS

SUPER CLEANING **FORMULA 409** 22 OZ. BTL. **89¢**

MAXWELL HOUSE INSTANT **COFFEE** 10 OZ. JAR **39¢**

SKINNER SHORT CUT ELBO **MACARONI** 12 OZ. PKG. **49¢**

SCHILLING PURE **VANILLA** 2 OZ. BTL. **79¢**

JELL-O INSTANT PUDDINGS & **PIE FILLINGS** 3 1/2 OZ. BOX **29¢**

Bell Quality Checked

ICE CREAM \$1.19

1/2 Gal.

SHELF SPECIALS

KRAFT MINIATURE **MARSHMALLOWS** 4 10 1/2 OZ. BAGS **\$1.19**

CARNATION RICH HOT **COCOA MIX** 12-1 OZ. ENV. **\$1.19**

ALL GRINDS MARYLAND CLUB **COFFEE** 1 LB. CAN **\$2.49**

DOW \$9.99

50 LB. BAG

ETERGENT \$1.49

GIANT BOX

OAP 49¢

7 OZ. BAR

U.S. NO. 1 RUBY RED

PEFRUIT 19¢

CENTRAL AMERICAN **BANANAS** 29¢

LB.

FROZEN FOODS

MINUTE MAID **ORANGE JUICE** 6 OZ. CAN **43¢**

ORE-IDA SOUTHERN STYLE **HASH BROWNS** 2 LB. PKG. **69¢**

BEEF ENCHILADA/CHEESE ENCHILADA/MEX./FIESTA/COMB. **PATIO DINNERS** EA. **69¢**

CLASSIC/COMB./SAUSAGE-MUSHROOM/PEP. & MUSHROOM **TOTINO'S PIZZA** 20 OZ. BOX **\$2.99**

LAST CHANCE TO COMPLETE YOUR SET!

STONEWARE DISHES

FINAL WEEK!

ON PAVEMENT 4 MILES SOUTH, 1/2 MILE WEST AND 1/2 MILE SOUTH OF FLOYDADA

PRICES EFFECTIVE FEB. 18-24, 1979

TRY A NEW HAIRDO...

Audrey's Hair Styles

All New Price List

Shampoo & Set	\$6.00
Hair Cut For Men Or Women	\$5.00
Permanents For Men Or Women	\$18.50
Blow Dry	\$6.00
Color	\$8.50
Conditioners	\$2.00 & \$3.00
Shampoo Only	\$1.00
Tints	\$8.50
Bleach	\$18.50
Frost	\$16.50

Sale Items

All Wigs	\$15.00 To \$25.00
Wig Styling	\$8.00 To \$10.00

Full Service For Men And Women

Call Now For An Appointment

983-3649

Audrey Thomas

Clip And Save This Advertisement

Nominations For Awards Sought

The woman volunteer will be the emphasis of West Texas State University's fourth annual Texas Panhandle Distinguished Service Awards to be presented April 21 in the WTSU campus in Amarillo.

Nominations of the outstanding women volunteers in the top 32 counties of the Texas Panhandle are now being sought by the WTSU office of Programs for Women, which hosts the event. Nominations must be in March 30. The nominee must be 18 years of age or above, a resident of the top 32 Panhandle counties and have devoted her time to volunteer work. Forms can be obtained by writing the Office of Programs for Women, Box 495, WT Station, Canyon.

Twenty-eight women have received the Texas Panhandle Distinguished Service Award. Annie Taylor of Floydada was a 1977 awardee and Hester Moore of Floydada was among last year's distinguished women.



SUMMER SUNSET — This picture was taken last Summer in the Fairview Community by Jack N. Moore of 521 1/2 West Mississippi in Floydada. Moore receives \$2 for submitting the outstanding photo for this issue.

Courthouse NEWS

PROBATE

Paul B. Murff, will and app. to probate.
L.F. Duvall, will and app. to probate.
Vera Duvall, will and app. to probate.

WARRANTY DEEDS

J.T. Terrell, Jr. Farms, Inc. to John T. and Linda L. Terrell, All SE/4, S-12, B-N; All SE/4, S-14, B-N; Floyd. Lucille M. Hart to J.R. and Wanda Turner, 27 acres, S-136, B-1, Floyd.
Ona Ruth Neff and Verlon Wright to Charlie Wright, 1/2 int., L-5, W 14, 6'-L-6, B-1, Bartley, Floydada.
Billie T. Loudermilk to Jerry Cyfert, 640 acres, Floyd, S-106, B-4.
Glad Lyn Norman and Don Lewis Norman to James Freeman, All L-7, B-92, Floydada.
I.W.A. Massie to Lucy

Goins Cates, W/2 - L-13, All L-14, 15, B-6, Texas Add., Floydada.
L.B. and Theresa L. Elam to Oliver Ray Gant and Lynda Kay Gant, 2.064 acre tract, S-47, B-D6, Floyd.
Evelyn Lee Stalcup Worral to Gerald A. Ulmer, All L-1, 2, 3, 4, 5, B-33, Lockney.
Jacinto B. and Maria Lopez to Janie Flores, L-N.70, Ft. L-2, B-3, Lockney.
Janie Flores to Angel and Emma Araujo, N70, Ft. L-2, B-3, Lockney.
S.L. and Irene West to Mary Bell Neff, All L-9, N 1/2, L-10, B-1, Baker, Floydada.

CASES FILED

Emogene Lackey Stansell vs. Polk and Patton Inc., suit for damages.
In the matter of Ramon Hernandez petition for occupational drivers license.

Floyd Animal Entered Houston Show

FOSTER FROM PAGE ONE

A number of Floyd County exhibitors are planning to show animals in the annual Houston Livestock Show and Rodeo, according to a release from the association. The event is scheduled February 21 through March 4.

Information from Houston Livestock Show indicates that the following county youngsters — representing Floyd County 4-H, Floydada FFA and Lockney FFA — plan to exhibit stock:

Market lambs — Susan Hendrix, Hunter Smith, Judie Smith, Greg Jones, Darlene Brosch, Earl Brosch, Amy Jones, Tracey Womack (two), and Danny Timney.

Market steers — Dara Carthel, Carra Burleson, Beverly Burleson, Dusty Burleson, Jimmy Covington, Marty Covington, Chad Edwards, Shannon Edwards,

have had hogs and cattle all since I have been farming. I have had hogs for as little as 12 cents a day. Other years, I have made it's the same way about cow prices vary from year to year. You stay in there during the ups and downs with hogs and cows. I've had 25 sows here for a while now, but a lot of men have money to raise cows, and the interest hurts. I think the price on cattle and hogs hold up for about two years, a break come again. I've had a variety of experiences with weather. In mentioning the weather calls to mind hail, sandstorms, freezes.

"41 I had everything in wheat at a high price. I was hailed out in '47, cotton here in hail. Everything here was hit that year. The same happened in '51. Most of the time, I'm in June of July—too late to cotton back, but in '68, I was out on the 3rd of August—60% in 1976, another freeze hurt



SEEN any million-year-old turtles they had a lay-over in Paducah, Rick Day recently discovered the help of Jim Word of Floydada, excavating the turtles' last week. The two feet in diameter. Brad Feather Day are pictured with one of the

more than one four-year period with attack, he has farmed all his life. At two years, he has farmed his himself.

When he came to Lone Star, he his place from Bob Knox just mile north of Lone Star. He paid dollars an acre with the crop rested. Land then was "real". The house that was on the when he bought it was sold and to Kress.

"951. I moved this house in here. improvements have been made. I have built the place up by down 1 1/2 miles of pipe under the government paid 50% of the pipe. It has certainly water because my place is. It has sure helped by having round pipe.

When coming to West Texas, and for afterward, Foster farmed with. He didn't change to tractors '36.

When tractor I first bought in 1936 s. In about a year, we cut the and put rubber on. We then had with flats even though the front had no tubes.

When with the tractor, teams were a while. He had always had res around.

When were used to bring the farm here. When they moved, eight two wagons from Vernon day move to Petersburg. Even they had a lay-over in Paducah, he not hurt because they had

PRICES EFFECTIVE FEBRUARY 19-24, 1979 WE RESERVE THE RIGHT TO LIMIT QUANTITIES

THOMASON
VENTURE GROCERY & MARKET
PHONE 652-3346 LOCKNEY, TEXAS

DOUBLE STAMPS ON WEDNESDAY

Meat Specials
USDA GRADE "A" COUNTRY PRIDE

Whole Fryers 55¢

Potatoes 49¢
ALL PURPOSE RUSSET
5 LB. BAG

Pears 39¢
WASHINGTON D'ANJOU

Celery 39¢
CALIF. GREEN PASCAL

Lemons 39¢
CALIFORNIA SUNKIST

Apples 39¢
WASHINGTON GOLDEN DELIC

Pepsi, Bubble Up or Diet Pepsi \$1.49
6-32 OZ. PLUS DEPOSIT

FOOD SPECIALS

Potato Chips 69¢
All 89¢ Lays

Flour 5 Lb. Bag 69¢
Gladiola

Honey Buns 2/98¢
9 oz. pkg.
Frozen Morton

Wolf Chili 99¢
PLAIN
19 OZ. CAN

Morton Dinners \$1
ASSORTED FROZEN
2 11 OZ. PKGS.

Peanut Butter \$1.09
JIF SMOOTH CRUNCHY
18 OZ. JAR

Hills Brothers Coffee \$2.39
LB. CAN

Giant Cheer \$1.39
49 OZ. BOX
10¢ OFF LABEL

Kraft Dinners 89¢
Deluxe
14 OZ. BOXES
MACARONI & CHEESE

Liquid Joy 89¢
DETERGENT
12 OZ. BTL.

Liquid Joy 89¢
DETERGENT
12 OZ. BTL.

French Dressing 53¢
KRAFT
8 OZ. BTL.

**Tomatoes 69¢HUNT'S WHOLE PEELED
28 OZ. CAN**

Pineapple 2 \$1
DEL MONTE CRU/CHK/SLS
15 OZ. CANS

Glad Wrap 49¢
PLASTIC COVER
100 FT. ROLL

Vicks Vaporub \$1.59
FOR COLDS
3 OZ. JAR

Vicks Daycare \$1.79
DAYTIME COLD MEDICINE
6 OZ. BTL.

Cough Syrup \$1.19
VICKS
3 OZ. BTL.

Biscuits 39¢
SIX STICK MARGARINE
1 LB. PKG.

Kraft Singles \$1.29
AMER./PIM./SWISS
10 CT. CAN

Vick's Nyquil \$2.39
NIGHTTIME COLD MEDICINE
10 OZ. BTL.

"Little Strokes"

Little strokes occur when the supply to a part of the brain is reduced or completely cut off by hemorrhage or from an artery in the brain on the nerve cells of a brain are deprived of supply, the part of controlled by these centers cannot function normally. Little strokes occur when the supply to a part of the brain is reduced or completely cut off by hemorrhage or from an artery in the brain on the nerve cells of a brain are deprived of supply, the part of controlled by these centers cannot function normally. Little strokes occur when the supply to a part of the brain is reduced or completely cut off by hemorrhage or from an artery in the brain on the nerve cells of a brain are deprived of supply, the part of controlled by these centers cannot function normally.

Wed. February 9

9 9

KING SIZE WALLET CREATIVE COLOR PORTRAITS FOR ONLY

GET 1 FREE WALLET WHEN YOU BUY 2

Extra Charge for GROUPS

SHUGART COLOR PHOTOS

THOMPSON

200 SO. MAIN

talling Gas conditionin

ow is a airrelly a...

ne u'll nuts out this s

PIONEER NATURAL

Call Pioneer Natural cost estimate. TH

RCA For The Best
Price & Service On RCA T.V.'s
See
MIZE PHARMACY & T.V.
102 S. MAIN LOCKNEY 652-2435

PRESTON GALLON \$1.90
USDA Inspected Plant Custom Processing,
Wholesale and Retail Meats, Cut, Wrapped,
Frozen, and Fully Guaranteed.
Financing Available On Freezer Beef
Lockney Meat Co.
Lockney, Tx. 652-3305
Hwy. 70

The Cable & Regular Television Program
Schedule Will Appear In This Newspaper
Each Sunday
Sponsored By The Merchants
On These Pages!!!

OUR BEAUTIFUL
ASSORTMENT
OF CLOTHING AND
GIFT ITEMS
by Merle Norman
Cosmetics & Apparel

SUNDAY 02/18/79

AM	WTCCG CH. 17 Atlanta Cable 4	KTXT CH. 5 Lubbock Cable 5	PTL CH. 6 Charlotte Cable 6	KMCC CH. 28 Lubbock Cable 7	WGN CH. 9 Chicago Cable 8	KTV CH. 10 Floydada Cable 10	KCBD CH. 11 Lubbock Cable 11	KLBK CH. 13 Lubbock Cable 13
7:00	Three Stooges	No Programs	Sunday Celebration	Praise the Lord Club	News Buyer's Forum What's Nu	No Programs	Jimmy Swaggart Day of Discovery	This Is the Life Reop
8:00	Lost in Space	Rex Humbard	Jimmy Swaggart Prophecy Newsteel	Mass for Shut-Ins Church	Methodist Church	James Robison Presents Amazing Grace		
9:00	Hazel	Old Time Gospel Hour	Little Rascals I Love Lucy	Issues Unlimited Abbott and Costello	Westbrook Hospital Robert Schuller	Rex Humbard	Old Time Gospel Hour	
10:00	Knows Mr. Allison	PTL Club	Best of Donahue	Tarzan	Day of Discovery	Living Your Religion	Face the Nation	
11:00	Movie: Tammy and the	Baptist Church	Cisco Kid Lone Ranger	Orel Roberts Rex Humbard	Better Life The Press	Meet the Press	Daytona 500	
12:00	Doctor	Shakespeare's Plays: Julius Caesar	Holy Spirit in the Now	Issues and Answers Animals	Movie: Charlie Chan In The Secret Service	It Is Written	NCAA Basketball: Louisville vs.	
1:00	NHL Hockey	(PREMIERE)	Superstars	On the Square	Duke			
2:00	Atlanta at St. Louis	Amazing Grace Vicki Jamison Worship	International Championship Boxing	Country	Tarzan	Joe Garagiola Tucson Open	NBA	
3:00	Beethoven Festival	Service Country Club PTL	ABC's Wide World of	Movie: 'When Worlds'	Movie: 'I'd Climb the Highest Mountain'	Basketball: Washington at Seattle		
4:00	Untouchables	Firing Line	Sports	Collide	Homer Formby Show Porter Wagoner			
5:00	Championship Wrestling	Advocates	Larry Jones Ministry Human Dimension	Lay Witness ABC News	Star Trek	Movie: 'Maltese Falcon'	Last of the Wild CBS News	

SUNDAY 02/18/79

PM	WTCCG CH. 17 Atlanta Cable 4	KTXT CH. 5 Lubbock Cable 5	PTL CH. 6 Charlotte Cable 6	KMCC CH. 28 Lubbock Cable 7	WGN CH. 9 Chicago Cable 8	KTV CH. 10 Floydada Cable 10	KCBD CH. 11 Lubbock Cable 11	KLBK CH. 13 Lubbock Cable 13
6:00	Star Trek	Other School System Victory Garden	James Robison Presents Krooze Brothers	Osmond Family Show	Program Cont'd Next Step Beyond	Movie Cont'd	Wonderful World of Disney	80 Minutes
7:00	Movie: 'The Ghost and Mr. Chicken'	F.Y.I.: The Legacy of Vietnam	Festival of Praise Ten Commandments	Roots: The Next Generations Part 1	In Search of... Hee Haw	Movie: 'For A Few Dollars More'	Movie: 'American Graffiti'	All in the Family Alice
8:00	Masterpiece Theatre: Country Matters	PTL Club	Hee Haw Honeys	Hee Haw Honeys			Movie: 'Marathon Man'	
9:00	Dragnet	Novel: Memories from Eden	Battlestar Galactica	Lawrence Walk		Weekend		
10:00	Open Up	Look at Me Footsteps	Calvary Temple	News	News	Movie: 'Sam Whiskey'	News	
11:00	Sign Off	Something Special	Praise the Lord Club	the North Atlantic'			Bill Dance Outdoors Movie: 'East of Sudan'	
12:00			ABC News Sign Off		News	Open Line	News Sign Off	

MONDAY - FRIDAY

AM	WTCCG CH. 17 Atlanta Cable 4	KTXT CH. 5 Lubbock Cable 5	PTL CH. 6 Charlotte Cable 6	KMCC CH. 28 Lubbock Cable 7	WGN CH. 9 Chicago Cable 8	KTV CH. 10 Floydada Cable 10	KCBD CH. 11 Lubbock Cable 11	KLBK CH. 13 Lubbock Cable 13
7:00	Leave it to Beaver Hazel	No Programs	Accent on Music	Good Morning America	Ray Rayner and Friends	No Programs	Today	Morning
8:00	Lucy Show	Over Easy	Varied Programs		Family Affair			Captain Kangaroo
9:00	Movie: Mister Rogers Neighborhood Variety Programs	Mister Rogers Neighborhood Variety Programs	Tammy Faye Show	Phil Donahue	Movie	Cartoon Town	People Place	Sunshine Sally Price Is Right
10:00			PTL Club	Happy Days			High Rollers	
11:00	Love, American Style Movie	Sesame Street	\$20,000 Pyramid Eleven-Thirty	Phil Donahue	I Love Lucy	Jeopardy	Young and the Restless Search for Tomorrow	
12:00		Sign Off	Gerald Dastine Variety Programs	All My Children	Bozo's Circus	Big Valley	News	
1:00				Praise the Lord Club	Bewitched	Phil Donahue	News	
2:00	Speed Racer	Lilas, Yoga And You Villa Alegre	Chicago	General Hospital	Medical Center	Another World		
3:00	Space Giants	Sesame Street	Edge of Night	Flintstones	Dialing for Dollars Movie	Hollywood Squares Mayberry, R.F.D.	Match Game	
4:00	I Dream of Jeannie Beverly Hillbillies	Mister Rogers Neighborhood Electric Company	Insight	Brady Bunch	I Dream of Jeannie Soupy Sales	Gilligan's Island Beverly Hillbillies	My Three Sons	
5:00	Andy Griffith My Three Sons	Studio See Introduction Psychology	Accent on Music	ABC News	Andy Griffith My Three Sons	Woody Woodpecker	Get Smart	

MONDAY 02/19/79

PM	WTCCG CH. 17 Atlanta Cable 4	KTXT CH. 5 Lubbock Cable 5	PTL CH. 6 Charlotte Cable 6	KMCC CH. 28 Lubbock Cable 7	WGN CH. 9 Chicago Cable 8	KTV CH. 10 Floydada Cable 10	KCBD CH. 11 Lubbock Cable 11	KLBK CH. 13 Lubbock Cable 13
6:00	Carol Burnett and Friends Sanford and Son	Other School System MacNeil- Lehrer Rept.	Tammy Faye Show Adventures in Life	News	Dick Van Dyke	T.V. Powww with Tom and Jerry	News	Joker's Wild
7:00	Let's Go To The Races Last of the Wild	Bill Moyers' Journal	Hour of Power	Roots: The Next Generations' Part 2	Carol Burnett and Friends Movie: 'For Whom the Bell Tolls'	No Programs	Little House on the Prairie	Wonder Woman
8:00	NCAA Basketball: Kentucky at Georgia	Evening at Symphony	PTL Club		Bell Tolls		Backstairs at the White House Conclusion	WKRP in Cincinnati
9:00		Austin City Limits		Salvage 1		Movie: 'Oklaoma'		Low Grant
10:00	Hogan's Heroes Movie: 'The Desert Fox'	Dick Cavett Captioned ABC News	Westbrook Hospital Abundant Living	News	Newlywed Game	Movie: 'Hornet's Nest'	News	Tonight Show Rockford Files
11:00		Sign Off	Accent on Music	Police Story				Movie: 'A Touch of Class'
12:00							News	Tomorrow

TUESDAY 02/20/79

PM	WTCCG CH. 17 Atlanta Cable 4	KTXT CH. 5 Lubbock Cable 5	PTL CH. 6 Charlotte Cable 6	KMCC CH. 28 Lubbock Cable 7	WGN CH. 9 Chicago Cable 8	KTV CH. 10 Floydada Cable 10	KCBD CH. 11 Lubbock Cable 11	KLBK CH. 13 Lubbock Cable 13
6:00	Carol Burnett and Friends Sanford and Son	Cinematic Eye MacNeil- Lehrer Rept.	Tammy Faye Show Celebration	News	Dick Van Dyke	T.V. Powww with Tom and Jerry	News	Joker's Wild
7:00	NBA Basketball: Atlanta at Cleveland	The Cousteau Odyssey: Search for Atlantis	Good News	Happy Days	Carol Burnett	No Programs	Movie: 'The Eagle Has Landed'	Movie: 'White Lightning'
8:00		Movie: 'Silk Stockings'	PTL Club	Roots: The Next Generations' Part 3	Movie: 'Invitation to a Gunfighter'			
9:00	World at War					Odd Couple		Paper Chase
10:00	Hogan's Heroes Movie: 'My Sweet Charlie'	Dick Cavett Captioned ABC News	Westbrook Hospital The Answer	News	Movie: 'Support Your Local Sheriff'	NBA Basketball: Golden State at Los Angeles	News	Tonight Show Barnaby Jones
11:00		Sign Off	Accent on Music	Movie: 'Law and Disorder'	Your Local Sheriff			Movie: 'Make The Jaws of Death'
12:00				Sign Off		News	Tomorrow	

WEDNESDAY 02/21/79

PM	WTCCG CH. 17 Atlanta Cable 4	KTXT CH. 5 Lubbock Cable 5	PTL CH. 6 Charlotte Cable 6	KMCC CH. 28 Lubbock Cable 7	WGN CH. 9 Chicago Cable 8	KTV CH. 10 Floydada Cable 10	KCBD CH. 11 Lubbock Cable 11	KLBK CH. 13 Lubbock Cable 13
6:00	Edward the King	Look at Me MacNeil- Lehrer Rept.	Tammy Faye Show Gospel Music	News	Dick Van Dyke	T.V. Powww with Tom and Jerry	News	Joker's Wild
7:00	NBA Basketball: Portland at Atlanta	Great Per- formances: Fidelio	Rex Humbard	Eight Is Enough	Edward the King	No Programs	Supertrain	Spider-Man
8:00			PTL Club	Roots: The Next Generations' Part 4	Movie: 'Shot In The Dark'		'From Here to Eternity' Part 2	One Day at a Time Jeffersons
9:00	Love, Ameri- Dragnet	All for One				Odd Couple		Kaz
10:00	Hogan's Heroes Movie: 'Phantom of the Opera'	Dick Cavett Captioned ABC News	Westbrook Hospital Festival of Praise	News	Movie: 'Romance of a Horse thief'	Edward the King	News	Tonight Show Rockford Files
11:00		Sign Off	Accent on Music	Police Woman	of a Horse thief'	Upstairs, Downstairs		Kojak
12:00				Mannix		News	Tomorrow	

THURSDAY 02/22/79

PM	WTCCG CH. 17 Atlanta Cable 4	KTXT CH. 5 Lubbock Cable 5	PTL CH. 6 Charlotte Cable 6	KMCC CH. 28 Lubbock Cable 7	WGN CH. 9 Chicago Cable 8	KTV CH. 10 Floydada Cable 10	KCBD CH. 11 Lubbock Cable 11	KLBK CH. 13 Lubbock Cable 13
6:00	Carol Burnett and Friends Sanford and Son	Footsteps	Tammy Faye Show Sharing	News	Dick Van Dyke	T.V. Powww with Tom and Jerry	News	Joker's Wild
7:00	Mission Impossible	Nova: The Invisible Flame	Old Time Gospel Hour	Mork & Mindy	Carol Burnett	No Programs	Little Women	Waltons
8:00	NCAA Basketball: North Caroli- na State at North Carolina	World: Inside Europe: The Shirt Off Your Back	PTL Club	Roots: The Next Generations' Part 5	Movie: 'Captain Blood'		Quincy	Hawaii Five-O
9:00		People and Ideas Session				Odd Couple	'Women in White' Conclusion	Barnaby Jones
10:00	NCAA Basketball: Alabama at Louisiana	Dick Cavett Captioned ABC News	Westbrook Hospital Rise and Be Healed	News	Movie: 'El Dorado'	News	News	News
11:00		Sign Off	Accent on Music	Starsky & Hutch			Movie: 'Gilda'	News
12:00				Mannix		News	Tomorrow	

FRIDAY

PM	WGN CH. 9 Chicago Cable 8	KTV CH. 10 Floydada Cable 10	KCBK CH. 11 Lubbock Cable 11
6:00	Dick Van Dyke	T.V. Powww with Tom and Jerry	News
7:00	Carol Burnett	No Programs	Diff'rent Strokes Hello,
8:00	NBA Basketball: Chicago at New Orleans		Brother Sister Sweep
9:00		Odd Couple	
10:00	News	Movie: 'Monstar Zero'	News
11:00	for Me		Tonight
12:00	Nightbeat	News	Midnight Special

SATURDAY

AM	WGN CH. 9 Chicago Cable 8	KTV CH. 10 Floydada Cable 10	KCBK CH. 11 Lubbock Cable 11
7:00	U.S. Farm Report Daniel Boone	No Programs	Yogi's Space Fantasy Four
8:00	Movie: 'Clipped'		Godzilla Super
9:00	Wings	700 Club	Daffy D
10:00	Movie: 'Tom Sawyer, Detective'	Voice of Agriculture Black Forum	New Fr Barney Jettsons
11:00	Income Tax Charlando	Asians Now	Burford Loping Fabulous Funnies
12:00	Movie: 'San Antonio'	Our Men in the Capital World Tomorrow	U.S. Farm Report NCAA Basket
1:00		Outdoors	SWC Tourna First Re
2:00	Movie: 'Abbott and Costello Go to Mars'	Movie: 'War of the Monsters'	NCAA Basket
3:00	Soul Train	Movie: 'Clambake'	Gerald M
4:00			Wild Kin Griffith My Three Sons
5:00			NBC News

SATURDAY

PM	WGN CH. 9 Chicago Cable 8	KTV CH. 10 Floydada Cable 10	KCBK CH. 11 Lubbock Cable 11
6:00	Dick Van Dyke	Hee Haw	Lawren
7:00	NCAA Basketball: Illinois at Michigan	Movie: 'Breakfast at Tiffany's'	CHPs
8:00	Avon Tennis	Dance Fever	Rockf Files
9:00	News	Movie: 'Gilda'	News
10:00	Movie: 'The Secret of Santa Vittoria'		Saturd Night
11:00		News	Sh-N
12:00	Nightbeat	Celestial Horses	Sign O

Regular Television Programs Appear In This Newspaper Each Sunday Edited By The Merchants In These Pages!!!

SHOP OUR BEAUTIFUL ASSORTMENT OF CLOTHING AND GIFT ITEMS Roy's Merle Norman Cosmetics & Apparel

BUDDY'S
STORE HOURS
MON.-SAT. 8a.m. - 9p.m.
SUN. 9p.m. - 8p.m.
WE RESERVE THE RIGHT TO LIMIT QUANTITIES

KTV CH. 10 Floydada Cable 10	KCBD CH. 11 Lubbock Cable 11	KLBK CH. 13 Lubbock Cable 13
TV. Powww with Tom and Jerry	News Sanford and Son	News Joker's Wild
TV Programs	Little House on the Prairie	Wonder Woman
Movie: 'Oklahoma'	Backstairs at the White House Conclusion	M*A*S*H WKRP in Cincinnati
News	News	News
News	Tonight Show	Rockford Files
News	News	Movie: 'A Touch of Class'
News	News	News

FRIDAY

WTCB CH. 28 Atlanta Cable 7	WGN CH. 9 Chicago Cable 8	KTV CH. 10 Floydada Cable 10	KCBD CH. 11 Lubbock Cable 11	KLBK CH. 13 Lubbock Cable 13
6:00 Carol Burnett and Friends Sanford and Son	Dick Van Dyke	T.V. Powww with Tom and Jerry	News Sanford and Son	News Joker's Wild
7:00 Night Gallery	Odd Couple	News	News	News
8:00 Movie: 'Godzilla'	Chicago at New Orleans	Brothers and Sisters Sweepstakes	Duke of Hazzard	Duke of Hazzard
9:00 News	News	Odd Couple	Dallas	Dallas
10:00 Hoger's Heroes Movie: 'Caldwell'	News	Movie: 'Monster Zero'	News	News
11:00 Blood	Movie: 'Play Misty for Me'	News	News	News
12:00 News	News	Midnight Special	Movie: 'One of My Wives is Missing'	Movie: 'One of My Wives is Missing'

KTV CH. 10 Floydada Cable 10	KCBD CH. 11 Lubbock Cable 11	KLBK CH. 13 Lubbock Cable 13
TV. Powww with Tom and Jerry	News Sanford and Son	News Joker's Wild
TV Programs	Movie: 'The Eagle Has Landed'	Movie: 'White Lightning'
Movie: 'Oklahoma'	News	News
News	Tonight Show	Barnaby Jones
News	News	Movie: 'Mako: The Jaws of Death'
News	News	News

SATURDAY

WTCB CH. 28 Atlanta Cable 7	WGN CH. 9 Chicago Cable 8	KTV CH. 10 Floydada Cable 10	KCBD CH. 11 Lubbock Cable 11	KLBK CH. 13 Lubbock Cable 13
7:00 Cliffwood Avenue Kip Partridge Family	U.S. Farm Report Daniel Boone	No Programs	Yogi's Space Race Fantastic Four	All-New Popeye Hour
8:00 Star Trek	Movie: 'Clipped'	Wings	Godzilla Super 90	Bugs Bunny/Road Runner Show
9:00 Movie: 'Fiddlers 3'	Wings	700 Club	Daffy Duck	Tarzan and the Super
10:00 News	Movie: 'Tom Sawyer, Detective'	Voice of Agriculture Black Forum	New Fred and Barney Show Jetsons	Seven
11:00 News	Income Tax Charlando	Asians Now	Buford & Galloping Ghost Fabulous Funnies	Fat Albert & Cosby Kids
12:00 Movie: 'Experiment in Terror'	Movie: 'San Antonio'	Our Men in the Capital World Tomorrow	U.S. Farm Report NCAA Basketball	Festival of the Lively Arts
1:00 News	News	Outdoors	SWC Tournament, First Round	Capitol Eye Learning & Living
2:00 News	Movie: 'Abbott and Costello Go to Mars'	Monsters	NCAA Basketball	National AAU Indoor Track and Field Championship
3:00 Mission Impossible	Soul Train	Movie: 'Clambake'	Glen Campbell Los Angeles Open	Glen Campbell Los Angeles Open
4:00 Fishin' Hole	Andy Griffith My Three Sons	Wild Kingdom	NBC News	Hee Haw Honeyys
5:00 Champions Wrestling	News	News	News	News

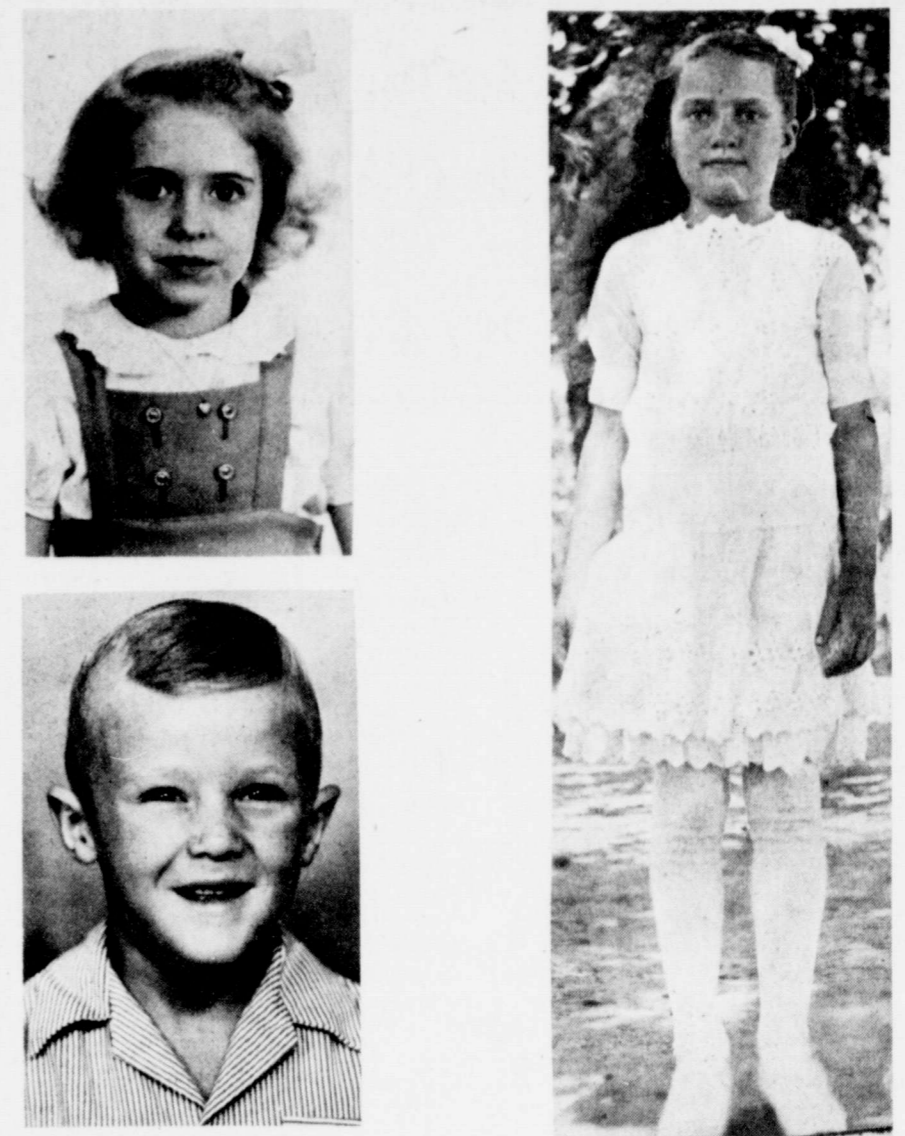
KTV CH. 10 Floydada Cable 10	KCBD CH. 11 Lubbock Cable 11	KLBK CH. 13 Lubbock Cable 13
TV. Powww with Tom and Jerry	News Sanford and Son	News Joker's Wild
TV Programs	Supertrain	Spider-Man
Movie: 'Oklahoma'	From Here to Eternity Part 2	One Day at a Time Jeffersons
News	News	News
News	Tonight Show	Rockford Files
News	News	News

SATURDAY

WTCB CH. 28 Atlanta Cable 7	WGN CH. 9 Chicago Cable 8	KTV CH. 10 Floydada Cable 10	KCBD CH. 11 Lubbock Cable 11	KLBK CH. 13 Lubbock Cable 13
6:00 Dick Van Dyke	Hee Haw	Lawrence Walk	Hee Haw	Hee Haw
7:00 NCAA Basketball: Illinois at Michigan	Movie: 'Breakfast at Tiffany's'	CHiPs	White Shadow	White Shadow
8:00 State	BJ and the Bear	Movie: 'Silent Victory: The Kitty O'Neil'	Story	Story
9:00 Avon Tennis	Dance Fever	Rockford Files	News	News
10:00 News	Movie: 'Gilda'	News	News	News
11:00 News	Movie: 'The Secret of Santa Vittoria'	News	News	News
12:00 News	News	She-Na-Na Sign Off	Movie: 'A Dandy in Aspic'	Movie: 'A Dandy in Aspic'



SORRY, GEORGE, but there is a better way! This photo attempts to remind folks who like to chop down cherry trees that there is an easier and better method for obtaining cherries today. But none of us, including Trinidee Achker in the picture, really have an axe to grind with our nation's first birthday, and we hope that Washington's birthday is a good day. Happy birthday, George.....Monday, or whenever it is! [Photo and story line by Floydada attorney Bill Kincaid.]



FLOYDADA WHOZITS — How many readers can identify this well-known Floydada couple? One clue: there could be more than one Floydada High student who bears a resemblance. If you would like to guess at the couple's identity, please contact our office Monday through Wednesday.

LOCKNEY WHOZIT — This young lady was about 10 years old when this picture was taken, in 1920 or thereabouts. We think she looks kinda like her granddaughter does now. Anybody know who she is? Call The Beacon if you think you do.

Sam Spence As None Recognize Floydada Whozit

Several persons guessed at last week's Floydada Whozit but no one was correct. The mystery man in the picture was Sam Spence.

This newspaper would like to have photos from yesterday to be published as Whozits. The pictures will be used in the order in which they arrive. Photos of present Floyd County residents are desired, but those of former residents also will be used.

Thomas Kids In Whozit Picture

The brother-sister pair in last week's Lockney Whozit were W.L. Thomas and Meda Ruth Thomas Watts, as everybody who called in correctly stated.

Marjorie Holcomb was the first to correctly identify the mystery picture subjects. Also guessing correctly were Agnes Frizzell, Nancy Carthel, Ida Rose, Mary Lou Bollman, Delbur Rose and Mrs. Alvin Nichols.

Agnes Frizzell thought the Floydada Whozit in last Sunday's paper was Janice Lloyd.

WASHINGTON'S BIRTHDAY SALE

RCA's new electronic Keyboard Control. Direct push-button tuning of all 82 channels. L.E.D. channel number display.

RCA ColorTrak 25" diagonal

COST PLUS 10% WITH TRADE

RCA 25" diagonal ColorTrak featuring ChannelLock electronic tuning with Keyboard Control

ColorTrak is RCA's most advanced, most automatic TV. And now RCA's new ChannelLock electronic tuning—the most accurate, most automatic tuning system in RCA history—makes it even better.

- New ChannelLock electronic tuning with keyboard control lets you tune all 82 channels directly. Large L.E.D. channel number read-out.
- 100% solid state XtendedLife chassis is designed for low power consumption, high efficiency and long life.
- Automatic Color Control and Fleshtone Correction.
- Automatic Contrast/Color Tracking lets you adjust contrast, color and brightness with one control instead of three.
- Automatic Light Sensor adjusts picture for changes in room light.
- RCA Super AccuFilter picture tube has tinted phosphors to help keep colors vivid, even in bright room light.
- Mediterranean cabinet with pecan finish on select hardwood solids and veneers. Simulated wood trim. Concealed casters.

JERRY'S T.V. & APPLIANCE
215 S. Main Phone 983-3481 Floydada

your electric investment

Chances are, you never thought about the value of the electric distribution system that serves you. How much do you suppose is invested in the electric meter, service connection, poles and wires just to serve you? And how about the miles of lines that bring electricity to your property — what's your share of that? And the transformers? And the trucks and the line equipment, and the electric utility property and building? What's your guess? Nationally, America's public power systems have an average investment of more than \$1,000 for each customer served — \$1,034 to be exact. And this figure is growing rapidly. Ten years ago the investment for each customer was \$596 — about half that of today.

We estimate that an average of nearly \$150 will be spent in electric system additions or improvements for each customer served.

Your electric utility investment is a sizeable and growing amount. As your local publicly owned electric utility, it is our responsibility to use and maintain this investment wisely. As a citizen-owner, you should know that we value your electric utility investment.

FLOYDADA POWER LIGHT

Floyd Animals Entered In Houston Show

A number of Floyd County exhibitors are planning to show animals in the annual Houston Livestock Show and Rodeo, according to a release from the association. The event is scheduled February 21 through March 4.

Information from Houston Livestock Show indicates that the following county youngsters — representing Floyd County — 4-H, Floydada FFA and Lockney FFA — plan to exhibit stock:

Market lambs — Susan Hendrix, Hunter Smith, Jodie Smith, Greg Jones, Darlene Brosch, Earl Brosch, Amy Jones, Tracey Womack (two), and Danny Timney.

Market steers — Dara Carthel, Carrla Burleson, Beverly Burleson, Dusty Burleson, Jimmy Covington, Marty Covington, Chad Edwards, Shannon Edwards,

FOSTER

FROM PAGE ONE

"I have had hogs and cattle all my life since I have been farming. I have sold hogs for as little as 12 cents a pound. Other years, I have made a profit. It's the same way about cows. The prices vary from year to year. You have to stay in there during the ups and downs with hogs and cows.

"Not too long ago, Jerry, our son-in-law, and I tried feeding cattle. We grazed them through and did well. We had hogs, too.

"We had 25 sows here for a while then had to quit. After two years, I got back in to show with a couple of sows. Now I have eight sows, but if the farmers raise the price of feed, I can't feed them even though hogs are now 52 and 53 cents per pound.

"Too, a 600 pound heifer will bring 63 cents now, but a lot of men have to borrow money to raise cows, and that 10% interest hurts.

"I think the price on cattle and hogs might hold up for about two years before a break come again."

During his life time of farming, A.O. has had a variety of experiences with the weather. In mentioning the weather, he calls to mind hail, sandstorms and freezes.

"In '41 I had everything in wheat at Petersburg. I was hailed out. In '47, I lost cotton here in hail. Everything around here was hit that year. The same happened in '51. Most of the time, it was in June or July—too late to get back, but in '68, I was hit on the 3rd of August—60% in 1976, another freeze hurt more than one four-year period with frost, he has farmed all his life.

"For two years, he has farmed his himself.

"When he came to Lone Star, he had his place north of Bob Knox just west of the north of Lone Star. He just bought an acre with the crop land. Land then was "real good." The house that was on the place he bought it was sold and he moved there.

"In 1951, I moved this house in here. Improvements have been made since then. I have built the place up by putting down 1 1/2 miles of pipe under the ground. The government paid 50% of the cost of the pipe. It has certainly helped because my place is in a hard water area and I have had to come to West Texas, and for a while, Foster farmed with tractors he didn't change to tractors until after I first bought in 1936. In about a year, we cut the tractors and put rubber on. We then had to buy flats even though the front end had no tubes."

With the tractor, teams were used while. He had always had teams used to bring the farm equipment here. When they moved, they brought two wagons from Vernon on a five-day move to Petersburg. Even though they had a lay-over in Paducah, they were not hurt because they had

SEEN any million-year-old turtles lately? Rick Day recently discovered these prehistoric turtles in the area of Mackenzie Lake. With help of Jim Word of Floydada, they are excavating the turtles last week. They are two feet in diameter. Brad Feuerbacher and Day are pictured with one of the turtles.

Chris Fulton, Todd Beedy, Mark Beedy, Byron Brock, Danny Nutt, and these figures are 18 steers and 18 hogs from the Houston Livestock Show. More than 20 entries have been shown.

"Do I ask what you with the money a drop?"

When it is known that the family had 8 children with A.O. as the oldest, it is easy to see how hard it was to clothe them. Even though hard, they "had plenty to eat and got by real good." At times it was hard.

"Those early childhood experiences furnished a background for A.O. Foster's determined efforts in educating his own children, years later.

"When we first came to Lone Star, they were trying to change to bussing and consolidation between Lone Star and Lockney.

"One of our girls was in a higher grade that was taught at Lone Star. I took them both to Lockney. That was before a pavement. When the roads were muddy, we often had deep ruts all the way. Sometimes, it was difficult to get out of those ruts when meeting another car.

"Ben McGhee and I took week about driving the children in.

"Finally, I leased a room from the Rose rooming house for the last two months. We really did not miss much school. Of course, there were mornings that we had trouble getting there.

"Later, when the bus was running, a snow storm came during the day. Bus travel taking the children home was difficult. In fact, G.A. McAda had to leave the bus he was driving at Foster's while A.O. took his home in a pick up. A.O. took the bus in the next day.

"I have had a good, happy life. I have enjoyed it. Of course, there has been a little static all along, but as far as trouble, we have never had it. Well, there was the heart attack, but that was over after a time. I have continued to work as I have always.

"I have gone to church all my life. I was Sunday School Superintendent for six years at Lone Star and missed only two Sundays. If we went off somewhere, we always came back in time not to miss church."

He continues operation of his farm, his hogs, his cows and sees no reason to regret his 1945 move from Petersburg to irrigated land.

There are two outstanding experience on the road from Wichita Falls to Charlie that he remembers well.

One of these was that as he sat on the spring seat of the wagon with his feed propped on the front end gate facing the sun, his legs took on a very bad blister from his knee britches to his feet.

Another experience was while crossing the Red River. The hill was so steep into the river that they had to tie all four wheels to the wagon to prevent the wagon from running over the horses. The rims on the tied wheels became very hot from the friction of sliding along the sand down the steep hill.

While the family was living in Charlie, the town burned to the ground. A hardware store, drug store, two grocery stores and a post office were burned as a result of a cigarette in a wastepaper basket. Some local boys came in from a dance one night and were at the drug store. One of them carelessly dropped the cigarette. The fire spread quickly.

After the fire, the druggist set burned candy out and "kids ate all they could hold" of chocolate candy. It was "real good."

Naturally, the first train ride is remembered. "My mother had a sister in Clarksville. Daddy put us on the train to go for a visit in Clarksville. It was my first train ride.

"In Ft. Worth, I was not scared, but Mother was. I was 10 then. I went to one

brought enough horse feed to feed them. One wagon had a few plow tools with odds and ends. The household goods were brought by truck.

Before coming to the Plains, the boll weevil had really hurt us in Vernon. That was the main reason for coming to the Plains. And, really there was not too much difference in here and there in other ways. Of course, we couldn't grow milo and wheat there where we were."

One childhood experience A.O. remembers when he was 10 years old.

"My dad took me to drive a wagon when he went on a freight trip from Charlie, where we lived, to Wichita Falls. He freighted quite a lot then.

"That was a very exciting trip. He took me to a show which was an unusual experience. More unusual, though, was the grasshoppers that came into town about 10 o'clock. There were so many of them that they stopped the street cars from running. The street car wheels were so slick with grasshoppers that they couldn't do anything but spin on the tracks. Too, doors had to be closed to keep them out of the stores and houses.

"Once while we were there, I was standing on the street looking at the city lights, and my father stepped behind some boxes to hide from me. I didn't panic, I didn't run. I just stood there and looked.

"On that same trip, Dad also took me to the fire station. It was a very impressive sight. The fire wagon was pulled by a team of horses that were so well trained that they would run and back into the harness that was hanging above them. The firemen would snap the harness right quick and be on the wagon and rush to the fire. The pressure for the water was furnished by a steam motor on the fire wagon."

When it is known that the family had 8 children with A.O. as the oldest, it is easy to see how hard it was to clothe them. Even though hard, they "had plenty to eat and got by real good." At times it was hard.

"Those early childhood experiences furnished a background for A.O. Foster's determined efforts in educating his own children, years later.

"When we first came to Lone Star, they were trying to change to bussing and consolidation between Lone Star and Lockney.

"One of our girls was in a higher grade that was taught at Lone Star. I took them both to Lockney. That was before a pavement. When the roads were muddy, we often had deep ruts all the way. Sometimes, it was difficult to get out of those ruts when meeting another car.

"Ben McGhee and I took week about driving the children in.

"Finally, I leased a room from the Rose rooming house for the last two months. We really did not miss much school. Of course, there were mornings that we had trouble getting there.

"Later, when the bus was running, a snow storm came during the day. Bus travel taking the children home was difficult. In fact, G.A. McAda had to leave the bus he was driving at Foster's while A.O. took his home in a pick up. A.O. took the bus in the next day.

"I have had a good, happy life. I have enjoyed it. Of course, there has been a little static all along, but as far as trouble, we have never had it. Well, there was the heart attack, but that was over after a time. I have continued to work as I have always.

"I have gone to church all my life. I was Sunday School Superintendent for six years at Lone Star and missed only two Sundays. If we went off somewhere, we always came back in time not to miss church."

He continues operation of his farm, his hogs, his cows and sees no reason to regret his 1945 move from Petersburg to irrigated land.

When it is known that the family had 8 children with A.O. as the oldest, it is easy to see how hard it was to clothe them. Even though hard, they "had plenty to eat and got by real good." At times it was hard.

"Those early childhood experiences furnished a background for A.O. Foster's determined efforts in educating his own children, years later.

"When we first came to Lone Star, they were trying to change to bussing and consolidation between Lone Star and Lockney.

"One of our girls was in a higher grade that was taught at Lone Star. I took them both to Lockney. That was before a pavement. When the roads were muddy, we often had deep ruts all the way. Sometimes, it was difficult to get out of those ruts when meeting another car.

"Ben McGhee and I took week about driving the children in.

"Finally, I leased a room from the Rose rooming house for the last two months. We really did not miss much school. Of course, there were mornings that we had trouble getting there.

"Later, when the bus was running, a snow storm came during the day. Bus travel taking the children home was difficult. In fact, G.A. McAda had to leave the bus he was driving at Foster's while A.O. took his home in a pick up. A.O. took the bus in the next day.

"I have had a good, happy life. I have enjoyed it. Of course, there has been a little static all along, but as far as trouble, we have never had it. Well, there was the heart attack, but that was over after a time. I have continued to work as I have always.

"I have gone to church all my life. I was Sunday School Superintendent for six years at Lone Star and missed only two Sundays. If we went off somewhere, we always came back in time not to miss church."

He continues operation of his farm, his hogs, his cows and sees no reason to regret his 1945 move from Petersburg to irrigated land.

When it is known that the family had 8 children with A.O. as the oldest, it is easy to see how hard it was to clothe them. Even though hard, they "had plenty to eat and got by real good." At times it was hard.

"Those early childhood experiences furnished a background for A.O. Foster's determined efforts in educating his own children, years later.

"When we first came to Lone Star, they were trying to change to bussing and consolidation between Lone Star and Lockney.

"One of our girls was in a higher grade that was taught at Lone Star. I took them both to Lockney. That was before a pavement. When the roads were muddy, we often had deep ruts all the way. Sometimes, it was difficult to get out of those ruts when meeting another car.

"Ben McGhee and I took week about driving the children in.

"Finally, I leased a room from the Rose rooming house for the last two months. We really did not miss much school. Of course, there were mornings that we had trouble getting there.

"Later, when the bus was running, a snow storm came during the day. Bus travel taking the children home was difficult. In fact, G.A. McAda had to leave the bus he was driving at Foster's while A.O. took his home in a pick up. A.O. took the bus in the next day.

"I have had a good, happy life. I have enjoyed it. Of course, there has been a little static all along, but as far as trouble, we have never had it. Well, there was the heart attack, but that was over after a time. I have continued to work as I have always.

"I have gone to church all my life. I was Sunday School Superintendent for six years at Lone Star and missed only two Sundays. If we went off somewhere, we always came back in time not to miss church."

He continues operation of his farm, his hogs, his cows and sees no reason to regret his 1945 move from Petersburg to irrigated land.

When it is known that the family had 8 children with A.O. as the oldest, it is easy to see how hard it was to clothe them. Even though hard, they "had plenty to eat and got by real good." At times it was hard.

"Those early childhood experiences furnished a background for A.O. Foster's determined efforts in educating his own children, years later.

"When we first came to Lone Star, they were trying to change to bussing and consolidation between Lone Star and Lockney.

"One of our girls was in a higher grade that was taught at Lone Star. I took them both to Lockney. That was before a pavement. When the roads were muddy, we often had deep ruts all the way. Sometimes, it was difficult to get out of those ruts when meeting another car.

"Ben McGhee and I took week about driving the children in.

"Finally, I leased a room from the Rose rooming house for the last two months. We really did not miss much school. Of course, there were mornings that we had trouble getting there.

"Later, when the bus was running, a snow storm came during the day. Bus travel taking the children home was difficult. In fact, G.A. McAda had to leave the bus he was driving at Foster's while A.O. took his home in a pick up. A.O. took the bus in the next day.

"I have had a good, happy life. I have enjoyed it. Of course, there has been a little static all along, but as far as trouble, we have never had it. Well, there was the heart attack, but that was over after a time. I have continued to work as I have always.

"I have gone to church all my life. I was Sunday School Superintendent for six years at Lone Star and missed only two Sundays. If we went off somewhere, we always came back in time not to miss church."

He continues operation of his farm, his hogs, his cows and sees no reason to regret his 1945 move from Petersburg to irrigated land.

When it is known that the family had 8 children with A.O. as the oldest, it is easy to see how hard it was to clothe them. Even though hard, they "had plenty to eat and got by real good." At times it was hard.

"Those early childhood experiences furnished a background for A.O. Foster's determined efforts in educating his own children, years later.

"When we first came to Lone Star, they were trying to change to bussing and consolidation between Lone Star and Lockney.

"One of our girls was in a higher grade that was taught at Lone Star. I took them both to Lockney. That was before a pavement. When the roads were muddy, we often had deep ruts all the way. Sometimes, it was difficult to get out of those ruts when meeting another car.

"Ben McGhee and I took week about driving the children in.

"Finally, I leased a room from the Rose rooming house for the last two months. We really did not miss much school. Of course, there were mornings that we had trouble getting there.

"Later, when the bus was running, a snow storm came during the day. Bus travel taking the children home was difficult. In fact, G.A. McAda had to leave the bus he was driving at Foster's while A.O. took his home in a pick up. A.O. took the bus in the next day.

"I have had a good, happy life. I have enjoyed it. Of course, there has been a little static all along, but as far as trouble, we have never had it. Well, there was the heart attack, but that was over after a time. I have continued to work as I have always.

"I have gone to church all my life. I was Sunday School Superintendent for six years at Lone Star and missed only two Sundays. If we went off somewhere, we always came back in time not to miss church."

He continues operation of his farm, his hogs, his cows and sees no reason to regret his 1945 move from Petersburg to irrigated land.

When it is known that the family had 8 children with A.O. as the oldest, it is easy to see how hard it was to clothe them. Even though hard, they "had plenty to eat and got by real good." At times it was hard.

"Those early childhood experiences furnished a background for A.O. Foster's determined efforts in educating his own children, years later.

"When we first came to Lone Star, they were trying to change to bussing and consolidation between Lone Star and Lockney.

"One of our girls was in a higher grade that was taught at Lone Star. I took them both to Lockney. That was before a pavement. When the roads were muddy, we often had deep ruts all the way. Sometimes, it was difficult to get out of those ruts when meeting another car.

"Ben McGhee and I took week about driving the children in.

"Finally, I leased a room from the Rose rooming house for the last two months. We really did not miss much school. Of course, there were mornings that we had trouble getting there.

"Later, when the bus was running, a snow storm came during the day. Bus travel taking the children home was difficult. In fact, G.A. McAda had to leave the bus he was driving at Foster's while A.O. took his home in a pick up. A.O. took the bus in the next day.

"I have had a good, happy life. I have enjoyed it. Of course, there has been a little static all along, but as far as trouble, we have never had it. Well, there was the heart attack, but that was over after a time. I have continued to work as I have always.

"I have gone to church all my life. I was Sunday School Superintendent for six years at Lone Star and missed only two Sundays. If we went off somewhere, we always came back in time not to miss church."

He continues operation of his farm, his hogs, his cows and sees no reason to regret his 1945 move from Petersburg to irrigated land.

When it is known that the family had 8 children with A.O. as the oldest, it is easy to see how hard it was to clothe them. Even though hard, they "had plenty to eat and got by real good." At times it was hard.

"Those early childhood experiences furnished a background for A.O. Foster's determined efforts in educating his own children, years later.

"When we first came to Lone Star, they were trying to change to bussing and consolidation between Lone Star and Lockney.

"One of our girls was in a higher grade that was taught at Lone Star. I took them both to Lockney. That was before a pavement. When the roads were muddy, we often had deep ruts all the way. Sometimes, it was difficult to get out of those ruts when meeting another car.

"Ben McGhee and I took week about driving the children in.

"Finally, I leased a room from the Rose rooming house for the last two months. We really did not miss much school. Of course, there were mornings that we had trouble getting there.

"Later, when the bus was running, a snow storm came during the day. Bus travel taking the children home was difficult. In fact, G.A. McAda had to leave the bus he was driving at Foster's while A.O. took his home in a pick up. A.O. took the bus in the next day.

"I have had a good, happy life. I have enjoyed it. Of course, there has been a little static all along, but as far as trouble, we have never had it. Well, there was the heart attack, but that was over after a time. I have continued to work as I have always.

"I have gone to church all my life. I was Sunday School Superintendent for six years at Lone Star and missed only two Sundays. If we went off somewhere, we always came back in time not to miss church."

He continues operation of his farm, his hogs, his cows and sees no reason to regret his 1945 move from Petersburg to irrigated land.

When it is known that the family had 8 children with A.O. as the oldest, it is easy to see how hard it was to clothe them. Even though hard, they "had plenty to eat and got by real good." At times it was hard.

"Those early childhood experiences furnished a background for A.O. Foster's determined efforts in educating his own children, years later.

"When we first came to Lone Star, they were trying to change to bussing and consolidation between Lone Star and Lockney.

"One of our girls was in a higher grade that was taught at Lone Star. I took them both to Lockney. That was before a pavement. When the roads were muddy, we often had deep ruts all the way. Sometimes, it was difficult to get out of those ruts when meeting another car.

"Ben McGhee and I took week about driving the children in.

"Finally, I leased a room from the Rose rooming house for the last two months. We really did not miss much school. Of course, there were mornings that we had trouble getting there.

"Later, when the bus was running, a snow storm came during the day. Bus travel taking the children home was difficult. In fact, G.A. McAda had to leave the bus he was driving at Foster's while A.O. took his home in a pick up. A.O. took the bus in the next day.

"I have had a good, happy life. I have enjoyed it. Of course, there has been a little static all along, but as far as trouble, we have never had it. Well, there was the heart attack, but that was over after a time. I have continued to work as I have always.

"I have gone to church all my life. I was Sunday School Superintendent for six years at Lone Star and missed only two Sundays. If we went off somewhere, we always came back in time not to miss church."

He continues operation of his farm, his hogs, his cows and sees no reason to regret his 1945 move from Petersburg to irrigated land.

When it is known that the family had 8 children with A.O. as the oldest, it is easy to see how hard it was to clothe them. Even though hard, they "had plenty to eat and got by real good." At times it was hard.

"Those early childhood experiences furnished a background for A.O. Foster's determined efforts in educating his own children, years later.

"When we first came to Lone Star, they were trying to change to bussing and consolidation between Lone Star and Lockney.

"One of our girls was in a higher grade that was taught at Lone Star. I took them both to Lockney. That was before a pavement. When the roads were muddy, we often had deep ruts all the way. Sometimes, it was difficult to get out of those ruts when meeting another car.

"Ben McGhee and I took week about driving the children in.

"Finally, I leased a room from the Rose rooming house for the last two months. We really did not miss much school. Of course, there were mornings that we had trouble getting there.

"Later, when the bus was running, a snow storm came during the day. Bus travel taking the children home was difficult. In fact, G.A. McAda had to leave the bus he was driving at Foster's while A.O. took his home in a pick up. A.O. took the bus in the next day.

"I have had a good, happy life. I have enjoyed it. Of course, there has been a little static all along, but as far as trouble, we have never had it. Well, there was the heart attack, but that was over after a time. I have continued to work as I have always.

"I have gone to church all my life. I was Sunday School Superintendent for six years at Lone Star and missed only two Sundays. If we went off somewhere, we always came back in time not to miss church."

He continues operation of his farm, his hogs, his cows and sees no reason to regret his 1945 move from Petersburg to irrigated land.



ON THE RIGHT 10-year-old A.O. Foster with his brother and sister. On the trip to see the relatives in the picture A.O. made his first train ride.

TEXAS PRESS ASSOCIATION

MEMBER 1979

THE LOCKNEY BEACON (USPS 317-220) BOX 187 LOCKNEY, TEXAS 79241

Published each Sunday and Thursday at 220 S. Main, Lockney, Texas 79241. Jim Reynolds, publisher; Jim Huggins, editor. Second-class postage paid at Lockney, Texas 79241. Subscription rates: Local \$10.50 per year, out of trade area \$11.50 per year. Postmaster: Send address changes to the above address.

ODD FELLOWS-REBEKAHS CHILI & STEW SUPPER THURSDAY

The Lockney I.O.O.F. and Rebekah Lodges will hold their annual chili and stew supper Thursday, February 22, at the lodge hall. Price of admission to the supper is \$2 for adults and \$1.50 for children under 12. Lodge members are selling tickets, or you can pay at the door. Ticket prices include drink and dessert.



On the average a man of 25, who doesn't smoke cigarettes, has a life expectancy 6 1/2 years greater than a man who smokes one or more packs a day. Are cigarettes worth the sacrifice of years of your life? Safeguard your health...and your future. Quit.

American Cancer Society

Conservation Meeting

Monday, February 19, 7:30 p.m. there will be a Water Conservation meeting at the Swisher Electric Meeting Room. Speaker will be Dr. Bob Stewart from the Southwestern Great Plains Research Center at Bushland, Texas. He will show slides along with his talk, then will answer questions afterwards. Swisher County W.I.F.E. (Women Involved in Farm Economics) are hosting the event.

Everyone interested in the conservation of our valuable water is urged to attend.



"OF COURSE I KNOW THE VALUE OF A DOLLAR. THAT'S WHY I'M ASKING FOR TWO."

SHUGART COUPON

Thompson Pharmacy Wed. February 21.



9 WALLET SIZE COLOR PORTRAITS 99¢

ASK About Our FREE 8 x 10 OFFER Extra charge for GROUPS

"Little Strokes" Alter Personality

Often unsuspected cause mental and physical incapacity. A series of "little strokes" stroke occurs when the blood supply to a part of the brain is reduced or completely cut off. This can be caused by a blood clot or by hemorrhage — from an artery in a part of the brain or by the nerve cells of a part of the brain are deprived of blood supply, the part of the body controlled by these centers cannot function normally.

Little strokes may start when a person is in the 30s or 40s, striking silently at night, or passing almost unnoticed as a sudden dizzy spell, a momentary blackout, or just a few moments of confusion. The stroke itself is not severe enough to compel the patient to seek medical aid, but some permanent brain damage remains just the same, the American Medical Association reminds.

A formerly kind, gentle person may become highly impatient and irritable. Judgment often is impaired. A strong man may become weak and prone to tears. Suspiciousness is common. A person with a tendency to emotional instability, held in check heretofore by will power, may suddenly develop a psychosis. Some become sloppy in dress and befuddled in thought, others lose part of their moral sense.

Sometimes the sufferer loses interest in family and friends, and lives secretly, constantly hiding things that through forgetfulness he or she cannot find later.

When the symptoms are mild, as they often are, the person may get along fairly well. The problem of small strokes is one of the most difficult ever tackled by medical science. The most hopeful research approach is that of finding ways of preventing stroke. Science seeks to learn more about how to recognize early symptoms so that treatment can be instituted promptly.

As they grow, so grows the nation.

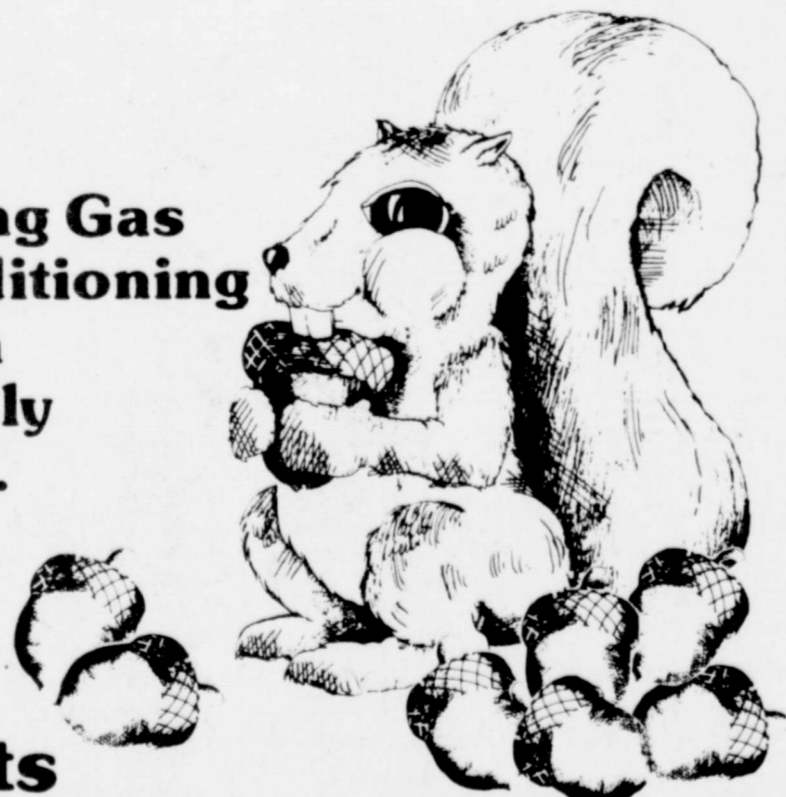
The green thumb of the financial world, U.S. Savings Bonds. With every Bond you buy, you plant the seed for your own future. And you help keep America strong. So buy Bonds today through the Payroll Savings Plan at work. They're the automatic way to make your money grow and keep America growing too.

E Bonds pay 6% interest when held to maturity of 5 years (4 1/2% the first year). Interest is not subject to state or local income taxes, and federal tax may be deferred until redemption.



Take stock in America.

Installing Gas conditioning now is a squirrelly business. You'll get nuts about this summer!



PIONEER NATURAL GAS COMPANY (A Division of PIONEER CORPORATION)

Call Pioneer Natural Gas for a free survey and cost estimate. There's no obligation.

Wed. February 21

KING SIZE WALLET CREATIVE COLOR PORTRAITS FOR ONLY 99¢

Kodak paper. For a Good Look at the of Your Life.



SHUGART COLOR PHOTOS THOMPSON PHARMACY 200 SO. MAIN FLOYDADA

THE CHOICE IS YOURS. BE CHOOSEY.

OBITUARY

Delafuente Infant

Services are pending at the Rose Funeral Home in Delafuente for David Delafuente, stillborn infant son of Mr. and Mrs. Joe Manuel Delafuente of Floydada. The infant was born Thursday morning at 9:45 p.m. in the General Hospital. Survivors include his father, three brothers, Joe Ramiro and Jose Luis; his sisters, Maria, Dolores and Belinda all of the home; his grandparents, Mr. and Mrs. Manuel Delafuente of Floydada and Mr. and Mrs. Montoya of Mercedes.

Warren Embree

Services for Warren Embree, 72, were held Friday morning in the Church of Christ with Darnell Boyd officiating and Jim Pyburn officiating.

Funeral services were held in Tuscola Cemetery under the direction of the Rose Funeral Home of Delafuente. Burial was in the Delafuente family grave site in the Delafuente cemetery.

Embree died Tuesday morning in Lynn County Hospital following a brief illness. He was a native of Tuscola, he was married to Marie Stephenson on Sept. 9, 1927. She died in 1975. He married Billie Embree on Jan. 15, 1979. He was a member of the American Banking Association, a member of the Chamber of Commerce, the I.O.O.F. Lodge and the Church of Christ.

Embree began his banking career in Bradshaw, and worked in Lubbock, Delafuente, Lockney and Delafuente. He founded a bank in Delafuente in 1964.

Embree was senior vice-president of the Tahoka National Bank, and had served as president of the bank since 1975. He was a member of the American Banking Association, a member of the Chamber of Commerce, the I.O.O.F. Lodge and the Church of Christ.

Embree began his banking career in Bradshaw, and worked in Lubbock, Delafuente, Lockney and Delafuente. He founded a bank in Delafuente in 1964.

Embree was senior vice-president of the Tahoka National Bank, and had served as president of the bank since 1975. He was a member of the American Banking Association, a member of the Chamber of Commerce, the I.O.O.F. Lodge and the Church of Christ.

Embree began his banking career in Bradshaw, and worked in Lubbock, Delafuente, Lockney and Delafuente. He founded a bank in Delafuente in 1964.

Embree was senior vice-president of the Tahoka National Bank, and had served as president of the bank since 1975. He was a member of the American Banking Association, a member of the Chamber of Commerce, the I.O.O.F. Lodge and the Church of Christ.

Embree began his banking career in Bradshaw, and worked in Lubbock, Delafuente, Lockney and Delafuente. He founded a bank in Delafuente in 1964.

Embree was senior vice-president of the Tahoka National Bank, and had served as president of the bank since 1975. He was a member of the American Banking Association, a member of the Chamber of Commerce, the I.O.O.F. Lodge and the Church of Christ.

Embree began his banking career in Bradshaw, and worked in Lubbock, Delafuente, Lockney and Delafuente. He founded a bank in Delafuente in 1964.

Embree was senior vice-president of the Tahoka National Bank, and had served as president of the bank since 1975. He was a member of the American Banking Association, a member of the Chamber of Commerce, the I.O.O.F. Lodge and the Church of Christ.

Embree began his banking career in Bradshaw, and worked in Lubbock, Delafuente, Lockney and Delafuente. He founded a bank in Delafuente in 1964.

Embree was senior vice-president of the Tahoka National Bank, and had served as president of the bank since 1975. He was a member of the American Banking Association, a member of the Chamber of Commerce, the I.O.O.F. Lodge and the Church of Christ.

Embree began his banking career in Bradshaw, and worked in Lubbock, Delafuente, Lockney and Delafuente. He founded a bank in Delafuente in 1964.

Embree was senior vice-president of the Tahoka National Bank, and had served as president of the bank since 1975. He was a member of the American Banking Association, a member of the Chamber of Commerce, the I.O.O.F. Lodge and the Church of Christ.

Embree began his banking career in Bradshaw, and worked in Lubbock, Delafuente, Lockney and Delafuente. He founded a bank in Delafuente in 1964.

Embree was senior vice-president of the Tahoka National Bank, and had served as president of the bank since 1975. He was a member of the American Banking Association, a member of the Chamber of Commerce, the I.O.O.F. Lodge and the Church of Christ.

Embree began his banking career in Bradshaw, and worked in Lubbock, Delafuente, Lockney and Delafuente. He founded a bank in Delafuente in 1964.



DR. BILL NORTON

Dr. Norton Psychologist At Family Service Office

Dr. Bill Norton has been named psychologist for the Central Plains Family Service office in Floydada. He is to be in the Floyd County office each Monday and Wednesday from 8:30 a.m. until 12 noon and from 1 until 5 p.m.

Central Plains Family Service office is located in Room 200B, which is on the second floor of the Floyd County Courthouse.

Dr. Norton was the first psychologist associated with the office in Floydada when it opened in the Spring of

1975. He served this office approximately two years before being assigned fulltime to the central office in Plainview.

A Plainview resident, Dr. Norton received his doctorate from Florida State University.

He encourages anyone in need of his services to phone 983-2584 or "drop by the office" in Floydada. Fee is based on a sliding scale depending upon a family's income and ability to pay.

Central Plains Family Service office in Floydada offers

a wide variety of counseling and education services.

KTXT-TV Reveals

Power Increase

KTXT-TV, the non-profit, public television station licensed to Texas Tech University in Lubbock, announces that it is increasing power to include Floyd County.

A spokesperson said KTXT is "the only station in our area that specializes in cultural and public affairs programs."

SAVINGS ROUNDUP

PIGGLY WIGGLY

"Each of these advertised items is required to be readily available for sale at or below the advertised price in each store, except as specifically noted in this ad. We reserve the right to limit quantities. None sold to dealers." Prices good February 18 thru February 24, 1979.

DAILY
8 a.m. - 8 p.m.
SUNDAY 9 a.m. - 8 p.m.

CRISCO

\$1.78

3-LB. CAN

Limit one (1) per customer with \$10.00 additional purchase excluding cigarettes. Thereafter at regular price of 00c.

SAVE

Barney's Butcher Shop Sale

"BE SATISFIED WITH PIGGLY WIGGLY MEAT OR DOUBLE YOUR MONEY BACK!"

SWIFT ROYAL ROCK ALL SIZES

YOUNG TURKEYS

78¢

LB.

SPAM

Limit two (2) per customer with \$10.00 additional purchase excluding cigarettes. Thereafter at regular price of 1.43

12-OZ. CAN

\$1.09

SAVE 34¢

USDA HEAVY WESTERN BEEF BONELESS BOTTOM ROUND ROAST

\$1.88

LB.

COMBINATION PACK 10 CHOPS: 6 CENTER, 4 END CUT

PORK CHOPS

\$1.48

LB.

STAR-KIST LIGHT CHUNK TUNA

6 1/2-OZ. CAN

69¢

SAVE 24¢

GLOVER SLICED BACON

\$1.28

12-OZ. PKG.

PILLSBURY BUTTERMILK OR REGULAR BISCUITS

7 \$1

8-OZ. CANS

SAVE 42¢ ON 5 CANS

Stan's Produce Sale!

"BE SATISFIED WITH PIGGLY WIGGLY PRODUCE OR DOUBLE YOUR MONEY BACK!"

NEW CROP RED JUICY RIPE CUT OR WHOLE WATERMELONS	LB.	18¢
LOADED WITH VITAMIN C RED GRAPEFRUIT	5 LB. BAG	98¢
CRISP & TENDER PASCAL CELERY	EA.	28¢
GENUINE RUSSET BAKING POTATOES	LB.	18¢
EXCELLENT FOR FRYING OR BAKING EGGPLANT	LB.	38¢

HEINZ KETCHUP

79¢

32 OZ. BTL.

SAVE 34¢

DOUBLE STAMPS EVERY WEDNESDAY

We give Double Gold Bond Stamps every Wednesday with any purchase of \$2.50 or more excluding cigarettes.

Shop
Floyd
County
FIRST!

Got Heating?
Dr Plumbing
Problems?
Call
HOLMES PLUMBING
AUSTIN OR STEVE
983-2251
8:30 - 9:30 a.m. and
5:30 p.m. Until?

Box 1928
Plainview, Tex
Phone 806-293-4386

MORTON BUILDING INC.
Jerry Smith
For information call or write
MORTON BUILDINGS INC.
Box 1928
Plainview, Tex
Phone 806-293-4386

FARM & RANCH NEWS

Business Incorporation Discussed By Texas Tech Professor

Farmers, ranchers or others who are incorporating small businesses should beware of a "knee jerk" recommendation to take advantage of Subchapter S of the Internal Revenue Code, according to a Texas Tech University professor who teaches tax law.

Dr. David C. Cummins, of the Texas Tech Law School faculty, said that incorporation under Subchapter S often is recommended in the belief that shareholders can avoid double taxation, a belief he calls "more myth than reality."

It is possible, he said, to manage a regular corporation's relationship to its stockholders so that the burden of double taxation does not apply.

"There are no blanket answers to the manner of incorporation," Cummins said, "but too many people automatically choose Subchapter S thinking there is a tax advantage, and they should look closely at the disadvantages."

Among the disadvantages, Cummins said, is that a very restrictive buy-sell plan for stock transfers is required by Subchapter S.

"Probably the best first step for the individual wanting to incorporate a closely held business," he admonished, "is to find a tax expert—accountant, lawyer or other specialist—to study the past performance of the business and the future plans of the individual who will be the principal stockholder. Then follow that expert's advice."

"The earlier advice is sought, the cheaper the fee and the fewer the pitfalls," Cummins said.

Unless paperwork is carefully drawn, he said, it is possible for the corporation

to have to pay taxes on profits while shareholders pay taxes also on their dividends, but there can be a pitfall if shareholders are required to pay taxes on dividends that have not been distributed, "in effect paying taxes on income they haven't received."

In Subchapter S, he explained, there is only one class of stock and none of it can be put in a trust. In a regular corporation, however, there can be more than one class of preferred and more than one class of common stock.

This protects the will of the patriarch or matriarch of a corporation in keeping the controlling interest in the hands of capable stockholders, whether relatives or key employees, and at the same time caring for bonafide stockholders who should have no share in controlling the corporation, whether for lack of interest or competence.

Another significant incorporation pitfall to avoid is Section 341 of the Internal Revenue Code, he said. This applies to a business incorporated for one reason only—for instance, to continue a line of credit—that is, a company incorporated only to be collapsed when its reason for existence disappears.

"The penalty section in 341 is designed to be a shoe two sizes too small, and it will pinch," he warned.

"The point is to not sell shares and liquidate the corporation but continue to operate until the business loses its status as a collapsible corporation."

"A tax expert will discuss Section 341 before the incorporation papers are drawn," Cummins said, "and plans can be made to avoid the penalties this section calls for."

Cummins said that the advantages and disadvantages of incorporating are particularly important now to farmers and ranchers who are faced with a cutoff in their lines of credit. Texas law limits to 10 percent the amount of interest that can be charged an individual borrowing money while the prime rate is 11.75 percent and the Federal Reserve discount rate so high that banks don't lend money at 10 percent. A corporation, unlike an individual, can borrow at a higher interest rate.

The Texas usury law does not apply to all kinds of credit but does apply to the production loans required by farmers and ranchers to operate their businesses.

Gasohol: What Are the Facts?

AUSTIN—One of the products recently in the spotlight as an alternate energy source is "gasohol," a blend of unleaded gasoline and alcohol which can be produced from agricultural crops and by-products, advises Agriculture Commissioner Reagan V. Brown.

Here are some of the answers to questions often asked about gasohol, compiled by the Texas Department of Agriculture:

1. What is gasohol? Gasohol is a type of fuel utilizing a blend of unleaded gasoline and ethyl alcohol—generally 10 per cent alcohol.
2. Can any automobile use gasohol? Yes. In fact, cars with carburetor adjustments can be operated with 100 per cent alcohol. Researchers at Texas A & M University report that three test cars driven for three years with 100 per cent methanol have shown no adverse effects. Economically, however, the 90 per cent gasoline, 10 per cent alcohol mix is the most feasible at present.
3. In those areas where gasohol is commercially available, does it cost more? Yes. Present technology can produce one gallon of pure fuel ethyl alcohol for between 80 cents to \$1.25 per gallon. The blended gasohol would cost around four to eight cents per gallon more than unleaded gasoline after tax exemptions, but there are definite advantages—improved mileage, less engine wear, and higher octane, therefore no ping.
4. How is this "fuel alcohol" produced? Scientists can distill alcohol from any agricultural material which contains sugar or starch—corn, grain sorghum, below-grade fruits and vegetables, citrus peels, sugar cane, sweet sorghum, wood wastes, and on and on.
5. Isn't there a lot of waste, using corn for instance, just for alcohol production? No. Residues produced make excellent livestock feed, since the protein in the corn is not destroyed or used in the distillation process. In fact, some operations could be almost "perpetual motion"

operations: Corn is used to make the alcohol. The residue is used to feed cattle. Cattle wastes can then be used to produce methane gas to power the alcohol-distillation plant.

6. Will fuel alcohol eventually completely replace gasoline in American cars? That's highly doubtful. The alcohol is, most practically, used as an additive to gasoline, but any volume marketed would certainly help alleviate the fuel shortage.

7. Would using agricultural materials for alcohol production cause less food to be grown in Texas? Again, probably not. Due to vast carryover stocks of grain, millions of acres of Texas farmland are currently not in production. This "set-aside" land can, under the Federal farm program, be used to grow energy-producing crops. Some experts estimate that Texas could double its production of grain, supplying plenty of material for alcohol production, as well as for food use and for exports, if there was a profitable market for their product.

8. Are there any commercial fuel alcohol plants in operation in Texas at present? No. Actually, there are no fully-established, commercial plants producing volume amounts of fuel alcohol in the U. S. at all.



CATTLE ON FEED UP—The total number of Texas beef cattle increased by eight per cent as of the first of the Texas Department of Agriculture reports, even though beef supplies declined due to a smaller number of calves available.

Beef Supply Down Due to Increased Feedlot Output

A sharp decline in the number of grass-fed cattle available has tilted the beef-supply balance, even though an eight per cent increase in cattle on feed has been reported, Agriculture Commissioner Reagan V. Brown said.

"It may be hard for many consumers to understand, but beef supplies are down in spite of the larger number of cattle in feedlots," Brown said. "The increased output on fed beef has simply not been able to offset the decline in grass-fed numbers."

As of January 1, there were 2 million head of cattle in Texas feedlots, according to the Texas Crop and Livestock Reporting Service. This is eight per cent above the 1.85 million on

feed at that time last year. Overall beef production declined by four per cent while veal production increased by one per cent. In Texas, the slaughter from a year ago declined by 10 per cent. The reduced supply resulted in higher prices for beef. Cattlemen endured a winter of high prices for feed and air. Beef prices have risen steadily since then.

Texas Cotton Crop Could Hit 20 Million Acres

Texas' farmers are expected to plant the largest cotton crop in over two decades, while acreage for other 1979 crops is predicted to drop, the Texas Department of Agriculture has reported.

Commenting on the latest Texas Crop and Livestock Reporting Service data on 1979 prospective plantings, Agriculture

Commissioner Reagan V. Brown said, "The report also shows a reduction in corn acreage. Corn acreage is expected to drop by 10 per cent from 1978 levels. Sorghum acreage is expected to increase by 10 per cent from 1978 levels. Soybean acreage is expected to increase by 10 per cent from 1978 levels. Rice acreage is expected to increase by 10 per cent from 1978 levels. Wheat acreage is expected to increase by 10 per cent from 1978 levels. Other crop acreage is expected to decrease by 10 per cent from 1978 levels."



Washington sources have informed Plains Cotton Inc. that the organization's continuing efforts to secure a voluntary acreage diversion program for 1979 have a chance to succeed.

PCG has been working to secure a 10 per cent set-aside and 15 percent voluntary diversion since its Board of Directors adopted that program at a meeting on October 11 last year. USDA officials have been asked to recommend to the Administration that a 10 percent set-aside and 15 percent voluntary diversion be implemented at the end of December.

At this late date, most planting time for some areas of the Cotton Belt, USDA's legal counsel ruled the Department cannot announce a set-aside option to offer a voluntary paid diversion program. And a high USDA official advised PCG that such a program "is still under consideration and its possibility." The official was not, however, over-optimistic.

The prospects for almost 14 million planted acres generally given much of the blame for a decline in cotton prices in the market price of cotton in late November.

As PCG President Lloyd Cline pointed out at a conference in Lubbock February 7, the current price of 50 cents per pound for average High Plains quality cotton is the cost of production. Using per-acre production of 100 pounds, the cost of production is 50 cents per acre. Extension Service, and assuming 10-year average production of 100 pounds per acre, the cost of production is 50 cents per acre. Cited a 1978 per-pound cost to produce irrigated cotton, respectively, of 66.6 and 55.7 cents per pound, called attention to Sartin's projected nine percent increase in production costs for 1979.

"Which simply means," Cline said after the conference, "that unless something is done to alter the huge cotton acreage and production this year, cotton may well be in serious trouble this fall."

The conference was called to rebut the remarks by Secretary of Agriculture Bob Bergland, who demands for better prices are motivated by "fashioned greed."

Other principals of the conference were Carl Kuhn, President of the Texas Corn Growers Association, and Harp of Lubbock, Executive Vice President of the Sorghum Producers Association. All three of the representatives quoted production cost figures especially critical of Bergland and called for the resignation.

Asked for PCG's feelings on the Secretary's remarks, again after the conference, Cline said he has never considered the issue.

By **Stephen H. Herber** County Agent's Column

Winter and early spring are good times for collecting soil samples, says Stephen H. Herber, county agent with the Texas Agricultural Extension Service.

At present, Extension Service laboratories are processing samples as soon as they arrive, and reports are mailed within one week.

Prompt service is an important requirement for an effective soil testing service, says Herber. However, waiting until the planting season can cause delays and results may not get back to producers in time.

Sampling well in advance of planting offers the advantage of allowing time to obtain needed fertilizers. Early sampling also is advised to avoid wet soil later in the season. If soils are muddy and sticky, it is difficult to obtain a good sample. And, excess moisture adds to shipping costs. To reduce shipping weight, samples can be air-dried for a day or two. Heating should be avoided, however, since it fixes potassium in some soils so it cannot be removed by laboratory procedures for testing.

One of the keys to a good soil test is collecting a representative soil sample of a field. From 10 to 15 samples should be collected from an area as large as 40 acres. These should then be mixed together for a composite sample. Also, the area tested should be divided according to soil type as well as past and future cropping practices.

Take time to collect representative soil samples and carefully complete the information sheet that must accompany each sample, advises Herber.

Collection and mailing instructions, mailing cartons and information sheets are available at the county Extension office.

Sponsored by the Following Interested Firms

First National Bank Floydada	Collins Implement Co. Floydada	Floyd County Farm Bureau
Case Power & Equipment Floydada	Russell's Equipment & Supply Floydada	Perry Implement Lockney
Floydada Cooperative Gins	Wilson Electric Floydada	Ansley & Son Lockney
McDonald Implement Co. Floydada	Hi-Plains Gin Lockney	Floydada Implement Co.
Martin & Co. Floydada	Consumers Fuel Association Lockney	

Sponsor Needed **Sponsor Needed** **Sponsor Needed**

Ed Credit Life

OUR FARM BUREAU AGENTS

CREDIT LIFE INSURANCE

Life Insurance

Health Insurance

Dent & Sickness Insurance

Liability

Fire

Crop-Hail

Equipment Insurance

County Farm Bureau

983-3777 & 652-2242
Floydada Lockney

Moonsman L. T. Cooper
2-3655 652-2739
Cates Pat Green 347-2
3273 Matador Of Home 347-2

It's Res

FOR SALE

2 bedrooms, good shape. 513-2518. 2-25p

2 bedroom carpeted, wall to live in. Call Finley. 983-3871 tfc

Three bedroom, brick home. Den, built-ins. Call Cates. 983-3451, tfc

3 bedroom ranch home. Den. Call King Realty. 983-3129. 2-25p

2 bath, 3 bedroom and den; air, fire place, rough out, gased back yard. 983-5379. tfc

3 bedroom ranch home. Call King Realty. 983-3129. tfc

Proposals for an Governments' Con. Proposals address Development Plan research and technical Regional Comprehensive will be considered Directors reserves Affirmative action 1968, as amended, Proposal guidelines Community Development of Governments, 11 (806) 762-8721.

Sealed bids addressed to the County Clerk and then publicly opened, material, and required for seal turnarounds, and Airport located north of Lubbock. Bids shall be submitted in the form of the proposal left hand corner. All proposals shall be certified check upon five (5%) percent without recourse to from a reliable source will enter into a contract within ten days after bid. Bids without certified check will be rejected. The successful bidder must provide payment bonds upon the amount of 100% surety company hold over. If contract payment bond is required, the right is reserved. Plans, specifications secured from the office of Bill R. McMorris, Amarillo, Texas 79101. Set which sum so documents are returned to McMorris & Associates for the time for receiving bid and all documents. McMorris & Associates opened.

DAN'S AUTO SERVICE

DAN TETON

Specializing in Transmission, Moors, Auto Air Con

General Rep We Have BRAKE LAY to handle all past brake drums. See for complete service.

Phone 652-2

If It's Results You Want-It's CLASSIFIED ADS You Need

HOME FOR SALE

SALE: 2 bedrooms, clean, good shape. 515 sq. ft. 983-2518. 2-25p

SALE: 2 bedroom, fully carpeted, wall to wall, ready to live in. Call Porter Finley. 983-3871 8-2498. tfc

SALE: Three bedroom, bath brick home. Den, room, built-ins. Call appointments. 983-3451, see Ave. tfc

SALE: 3 bedroom, red home for sale. G-double lot. 983-3129. 2-25p

SALE: 2 bath, 3 bedroom and den; heat and air, fire place, carpet through out; garage and fenced back yard. 983-5379. tfc

SALE: 2 and 3 bedroom for sale. King Real. 983-2881 tfc

SALE: nice two and three room homes for sale. can be arranged. Hale Insurance and Real Estate at 983-3261. tfc

SALE: 2 bedroom, partly carpeted on lot. 1102 S. Main, da. James Lee Nich. 983-2646 or 983-3144 tfc

SALE: Three bedroom, central heat and air, fully carpeted and kitchen with new appliances, laundry room. Garage, 150 x 140, 983-3498 after five. tfc

SALE: Three bedroom, one bath, single garage, quite neighborhood. Call after 6 p.m. for ment. 983-3961 2-18p

SALE: Three bedroom, two bath. 615 W. 983-3469. 2-25c

SALE: Nice two bedroom in Lockney. New central air and heat. 97 or 652-3432 tfc

SALE: 2 bedroom, good condition. make nice rent property. 99,700. Call after 6 on weekends. 983-218c

SALE: Two bedroom, 226 E. Marivena. 20 after 5:30. 3-11c

Real Estate

FOR SALE: Several good two and three bedroom houses. Bond Real Estate. Contact Wilson Bond. 983-2151 or 983-3573. tfc

FOR SALE: Three bedroom and two bath house. Allison Realty 652-2134. tfc

Public Notices

LEGAL NOTICE
Proposals for an Update to the South Plains Association of Governments' Comprehensive Water and Sewer Plan. Proposals addressed to the South Plains Association of Governments will be received at the Office of the Community Development Planner until 12:00 Noon March 12, 1979, for research and technical services in providing an update to the Regional Comprehensive Water and Sewer Plan. Proposals will be considered on March 13, 1979. The SPAG Board of Directors reserves the right to reject any or all proposals. Affirmative action plans under Section 3 of the HUD Act of 1968, as amended, will be required. Proposal guidelines are available in the Office of the Community Development Planner, South Plains Association of Governments, 1709 - 26th Street, Lubbock, Texas, Phone (806) 762-8721. 2-18, 2-22c

NOTICE TO CONTRACTORS

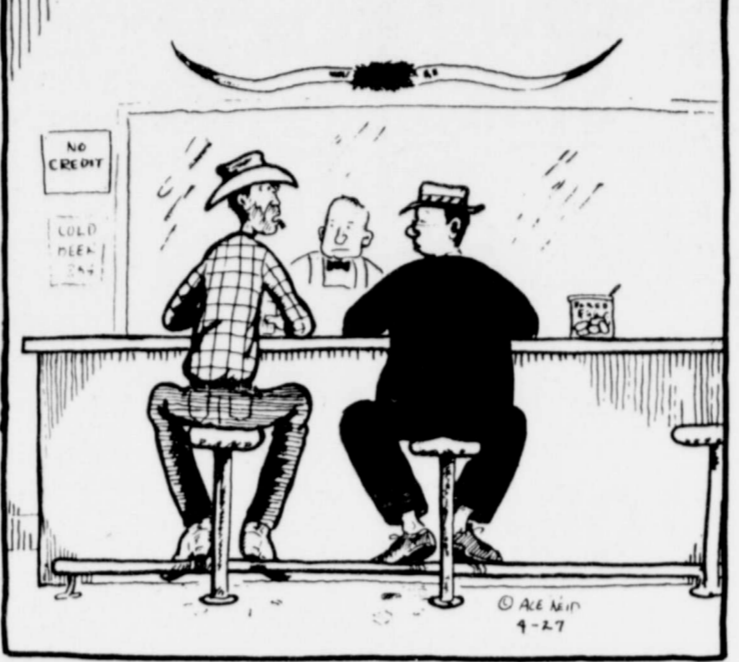
Sealed bids addressed to the City of Floydada, Texas, will be received at the City Hall until 7:30 p.m., March 13, 1979, and then publicly opened and read for furnishing all plant, labor, material, and equipment, and performing all work required for seal coating runway, aprons, parking areas, turnarounds, and access road at the Floydada Municipal Airport located north of the City. Bids shall be submitted in sealed envelopes upon the blank form of the proposal attached hereto and marked in the upper left hand corner. All proposals shall be accompanied by a cashier's check of certified check upon a national or state bank in the amount of five (5%) percent of the total maximum bid price payable without recourse to the City or a bid bond in the same amount from a reliable surety company, as a guarantee that bidder will enter into a contract and execute performance bond within ten days after notice of award of contract to him. The bid security must be enclosed in the same envelope with the bid. Bids without check or bid bond will not be considered. The successful bidder must furnish performance and payment bonds upon the forms which are attached hereto in the amount of 100% of the contract price from an approved surety company holding a permit from the State of Texas to act as surety or other surety or sureties acceptable to the Owner. (If contract is less than \$25,000, no performance or payment bond is required.) The right is reserved to reject any and all bids and to waive any informality in bids received. Plans, specifications and bidding documents may be secured from the office of the City Manager, or at the office of Bill R. McMorris & Associates, Inc., 6300 Canyon Dr., Amarillo, Texas 79109, on deposit of Fifty (\$50.00) Dollars per set which sum so deposited will be refunded, provided: (1) All documents are returned in good condition to Bill R. McMorris & Associates, Inc. not later than 48 hours prior to the time for receiving bids; or (2) The Contractor submits a bid and all documents are returned in good condition to Bill R. McMorris & Associates, Inc. at the time that bids are opened. CITY OF FLOYDADA, TEXAS By: Parnell Powell, Mayor 2-18c

FARM MACHINERY

FOR SALE: 30 brush stripper, triangle basket, good shape. Call Verlon Wright 983-3047 nights. 2-18c

NORRELL TRACTOR PARTS for tractor and irrigation supplies and accessories. tfc

COW POKES By Ace Reid



"Why do cowboys drink so much? Wul, you would too if yore rear end wuz always sore, or yore wuz too hot or too cold and yore pants wuz always too tight!"

THIS FEATURE SPONSORED BY
Floydada Real Estate & Insurance Agency
AUTO, FIRE & FARM INSURANCE
Jim Word — Phone 983-2360

JOHN DEERE

6" Hard Surface Chisel Sweeps
\$5.95
Collins Implement Co.
Floydada 983-3732

BE A WINNER!

Call Producers on all your chemical needs.

30 Gal. Treflan	\$651.00
5 Gal Treflan	\$111.00
5 Gal. Tolban	\$109.00
5 Gal. Prowl	\$108.00

PRODUCERS COOPERATIVE ELEVATOR
Floydada 983-2821

Diamond Industrial Supply Co., Inc.
Phone Days 296-7418 Nights 296-1260
or 296-7928
1014 Broadway
Plainview, Texas

Chain Sprockets V-belts Sheaves: SKF RCA Timken Bower Cotton Stripper Brushes & Bats U-joints Oil Seals O-rings Wisconsin

"We Appreciate Your Business More" L-tfc

FARMS-RANCHES-CITY PROPERTIES- BUSINESS LEASES-LOANS

B. B. WILKES BROKER REAL ESTATE

100 S Main, Lockney Barry Barker, Solicitor
Barker Insurance Agency-652-2642

IF IT IS INSURANCE -SEE-
BARKER INSURANCE AGENCY
LIFE-FIRE-CASUALTY-HOSPITAL

Treflan Application

\$3.50 Acre

Custom Plowing

Reasonable

Victor Smith 983-2048
Billie Jo Smith 983-2604

FOR SALE

FOR SALE: Country Club membership. 983-3451 tfc

FOR SALE: Late model Whirlpool washer and dryer. \$190.00. 652-3468. L2-18c

260 feet of 2 inch pipe and sucker rod, cylinder, Dempster pump jack, one horse motor. 983-2377.

FOR SALE OR TRADE FOR GUNS. Chain saw, and trolling motor. 983-3695. 2-22c

FOR SALE OR TRADE FOR GUNS. Chain saw, and trolling motor. 983-3695. 2-22c

INSULATION
Fire-Resistant. Installed and Guaranteed. MARR Insulation Co. Lockney 652-3593. L-tfc

WE DO Painting, floor leveling, house blocking, roofing and remodeling. We are now working Floydada Area. Contact Childress Bro. Collect 352-9563 tfc

"CARPET NEED CLEANING?" Let me do the work for you. Dry Foam, 10 cents sq. foot. Call Jack Moore 983-3033 at 5 p.m. 2-25c

FARMERS — A good marketing plan is a must in any business. Farmers Grain and Livestock Corporation can guarantee you up to 20% more profit for your 1979 production. It doesn't cost anything to listen. Call David Turbeville for appointment. 652-3348 day's — 652-2334 nights. L-tfc

TREFLAN APPLICATION AND PLOWING
Call Darell Dudley at 983-5320 or A.C. Carthel at 983-3200. 5-tfc

INVESTMENTS
FOR SALE: BANK STOCK — First National Bank, Floydada. Call Lubbock 797-1957 after 6 p.m. or Saturdays and Sundays. 2-18c

Vacuum cleaners, new and rebuilt. 1 yr. guarantee. Parts, sales and service. Prices begin at \$124.50. Parker Home Furnishings in Lockney. 652-3315. L-tfc

FLOYD COUNTY ABSTRACT CO.
Abstracts Of Title
Title Insurance
Verna L. Stewart
Owner, Manager
217 W. California
983-3728
Floydada, Texas



Auto Accidents DO Happen...
If one happens to you, be protected. Our car insurance offers coverage to meet your special needs — repairs to personal liability.

BAKER Insurance Agency
127 W. Calif. Ph. 983-3270

For Sale

FOR SALE: Diningroom Suite, extra leaf and 6 chairs. 983-2603. 2-22p

FOR SALE: Caloric gas range, two oven-double decker, auto. oven ignition, time cook and keep-warm system, auto. meat probe ultra-ray broiler. 1978 Chevrolet Silverado — four wheel drive. Loaded. Call Kay Tinney. 983-3726. 2-18c

For Sale or Trade, Portable G.E. pot scrubber dishwasher, will trade for old desk. Call 652-3179. L-tfc

FEET TIRED? Try Mason Shoes with "Velvet-eez" air-cushioned innersoles. Keith Emert, 652-3116. LStfc

FOR SALE: Dempster pump jack, Model G-3, 2 H.P. motor. 230 ft. of 2 1/2 inch pipe and rod, one 30 H.P. switch box 320 ft. No. 6 Cable. 652-3182. L-tfc

FOR SALE: Country Club share. \$125.00, dues paid until March 31. O.R. McIntosh. 983-3460. tfc

TREFLAN

Check on our Chemical prices, also we now have available Liquid fertilizer
Lone Star Chemical, Inc.
Office: 652-2761
Deanie Henderson: 652-3434

Can You Use Some Extra Money Let Us Help!!!!
WE BUY SCRAP IRON, OLD JUNKERS, AND FREE PICKUP
Call 983-5277

Big Savings -Up to 25% discount-
Big Protection
Farmers Texas Homeowners Policy
SAM A. SPENCE
112 W. MISSOURI
PHONE 983-2881

TURNER REAL ESTATE
983-2635 Farms Ranches Floydada, Texas

HELP WANTED
Help Wanted: Full or part time. Begin at \$2.90 per hour. Apply in person to Margie, Dairy Queen of Lockney — No Phone Calls. L2-18c

NEED RESPONSIBLE LADY TO BABYSIT INFANT. References required. 983-2037. tfc

WANTED: Lady to live in with patient in Floydada, or might consider day time only. Reasonable salary. Call 652-2339. L-tfc

HELP WANTED OFFICE

Must be Experienced, Must be able to type and use office machines. Bookkeeping experience preferred. Permanent position with good opportunities Will train to use computer. Previous Computer experience useful but not required.

CONTACT
Darrell Miller-Marble Bros.
South Plains 983-3744

Feed Supply Down Despite Increased Feedlot Output

The total number of Texas cattle on feed increased by eight per cent as of the first of the year, the Department of Agriculture reports, even though general supplies declined due to a smaller number of grass-fed beef cattle.

Overall beef production declined by four per cent while veal production dropped 10 per cent. New carpet from a year ago, while the price of feed has declined over 50 per cent, the reduced supply of feed resulted in higher prices, but cattlemen endured four years of overstocked herds. Brown beef prices have risen partially due to the higher prices for both grain and grain-fed beef, but also steadily increasing transporta-

Cotton Crop Could Hit 20-Year High

Commissioner Reagan V. Brown said the cotton crop in Texas is expected to plant in crop in over two million acres for other 1979 crop to drop, the Texas Department of Agriculture has reported.

The latest Texas Crop Reporting Service data on plantings, Agriculture

COTTON TALKS
FROM PLAINS COTTON GROWERS INC.

Need Credit Life?

SEE YOUR FARM BUREAU AGENT FOR CREDIT LIFE INSURANCE

Life Insurance
Health Insurance
Accident & Sickness Insurance
Auto Liability
Fire
Crop-Hail
Equipment Insurance

Floyd County Farm Bureau

OFFICE: 983-3777 & 652-2242
Floydada Lockney
L. T. Cooper
982-3655 652-2739
Pat Green 347-2880
983-3273 Matador Office
Home 347-3450

BUDDY'S

220 S. 2ND
STORE HOURS
Mon.-Sat., 8 a.m. to 8 p.m. Sun., 9 a.m. to 8 p.m.
VALUES IN THIS AD THRU WEDNESDAY, FEBRUARY 21, 1979
We Reserve The Right To Limit Quantities

WE GIVE S&H GREEN STAMPS

PLAY LUCKY STARS

<p>15 OZ. DEL MONTE SPINACH 3/\$1⁰⁰ 45¢ VALUE</p>	<p>15 OZ. EATWELL JACK MACKEREL 2/99¢ 69¢ VALUE</p>
<p>15 OZ. HONEY BOY PINK SALMON \$1⁴⁹ \$1.89 VALUE</p>	<p>14 OZ. CONTADINA WHOLE TOMATOES 2/89¢ 55¢ VALUE</p>
<p>VALUES IN THIS AD IN ADDITION TO OUR THURSDAY AD</p>	
<p>16 OZ. LARSEN VEG-ALL 3/\$1⁰⁰ 45¢ VALUE</p>	<p>16 OZ. ATKINS HAMBURGER DILL SLICES 59¢ 81¢ VALUE</p>
<p>LEAN GROUND BEEF LB. \$1²⁹</p> <p>CENTER CUT PORK CHOPS LB. \$1⁹⁹</p> <p>RUBY RED GRAPEFRUIT 6 FOR \$1⁰⁰</p> <p>12 OZ. KEEBLER VANILLA WAFERS 2 FOR \$1²⁹</p> <p>15 OZ. GEBHARDT CHILI 2/99¢</p> <p>40 COUNT BOUNCE FABRIC SOFTNER \$1⁶⁹</p> <p>30 OZ. GEBHARDT TAMALES 79¢</p> <p>12 OZ. TENDER VITTLES CAT FOOD 59¢</p> <p>5 LB. GLADIOLA FLOUR 79¢</p>	<p>BONELESS CHUCK ROAST LB. \$1⁹⁹</p> <p>WILSON HAM LB. \$2¹⁹</p> <p>RED DELICIOUS APPLES 39¢ LB.</p> <p>2 LITER "NO DEPOSIT" PEPSI-COLA 69¢</p> <p>171 OZ. FAMILY SIZE TIDE \$4³⁹</p> <p>KEEBLER CLUB OR TOWN HOUSE CRACKERS 87¢</p> <p>50 OZ. CASCADE \$1⁴⁹</p> <p>QT. MIRACLE WHIP 69¢ <small>WITH PURCHASE OF 1 LB. WILSON BOLOGNA \$1.19 WITHOUT PURCHASE</small></p> <p>22 OZ. LIQUID IVORY 79¢</p>

Happy Birthday

Happy Anniversary

Lockney Locals

Feb. 18 — Mr. and Mrs. Rayland Brotherton, Mr. and Mrs. Richard Mahagan

Feb. 19 — Debbie and Bruce Griffith

Feb. 20 — Bobby and Ann McCormick

Feb. 21 — Louie and Cynthia Bybee

Feb. 22 — Quentin and Wilma Adams, Max and Marty Smith, Loran and Inez Rhodes, Fred and Billie Huggins, Mr. and Mrs. W.T. Cooper

Feb. 23 — Mr. and Mrs. J.P. Taylor, Mr. and Mrs. Kenneth Tate

Feb. 24 — Mr. and Mrs. Johnny Garcia

Feb. 18 — Mr. and Mrs. Simona Blanco, Joe Cavazos, Susie Frizzell, Jim Gomez, Manual DeLeon.

Feb. 19 — Maria Elena Arellano, Brenda Williams, Paul Hrbacek.

Feb. 20 — Josefine Galvan, Deanie Henderson, Bud Casey, Willis Reynolds

Feb. 21 — Keith Jackson, Bill Crader, Fidel Blanco, Felicitia Castro, Terri Sparkman, Tim Mercer, Mirtala Rodriguez, Charles Ball, Hope Perez


Feb. 22 — Delores Auld

Feb. 23 — Wilfredo Robles, John Lee Carthel, Matt Williams, Donnie Meriwether, Jerri Ann McCormick, J.P. Taylor

Feb. 24 — Bobbie Kellison, Diane Johnson, Renee Silva, Emma Lois Huggins, Helen Delgado, Denny Quisenberry, Micheal Villa, Ray Gant, Gladys Childers

CONGRATULATIONS!
Mr. and Mrs. Paul Montandon of Tyler are the proud parents of a little girl Emily Kay. She was born Sunday, January 28 weighed 7 lbs. and 7 ozs. Grandparents are Mr and Mrs. Tommy Montandon.

"If we make an error, we pay the penalty. And the interest."



Henry W. Block

H&R Block preparers are carefully trained. But if we should ever make an error that costs you additional tax, you pay only the tax. Block pays any penalty and interest. We stand behind our work. That's another reason why we should do your taxes... whichever form you use, short or long.

106 W. Missouri
Floydada, Texas
983-5233

H&R BLOCK
THE INCOME TAX PEOPLE

Use Caution . . .
When Driving In Adverse Weather

One of the main reasons for accidents in inclement weather is improper application of brakes, according to safety engineers at Raybestos, manufacturers of quality brake products for passenger cars and light trucks.

When applying brakes in any kind of inclement conditions, moderation is always the rule. Never brake too heavily, and never steer too sharply or accelerate too quickly.

Even when you feel you are losing control of the car, such as in a hydroplaning situation, never brake or steer too sharply. Instead, take your foot off the accelerator and let your tires regain traction as their revolutions slow.

The first rule in any kind of poor weather conditions, of course, is to cut your speed. Also, be sure and increase the usual distance of one car length per every 10 miles per hour by at least 50 percent.

Slow down at the first sign of precipitation. Remember, the most dangerous time for drivers in rainy conditions is during the very beginning sprinkles when oil and dirt on the road combine to create a slick film.

Once the rainfall increases, beware of deep puddles. Avoid them as much as safely possible. But when forced to "ford" wet areas, be sure to drive slowly. Do not stop. You'll end up with no power if you do.

Once out of the water, pump your brakes several times to test them. Wetness always affects the good performance of brakes, so be sure and drive extra carefully. While driving, press gently on the brakes to help them dry more quickly.

If your brakes should fall while driving, try to regain control by gently pumping the brake pedal. It's possible the disorder is temporary and the power will come back. If your brakes fail to respond, ease the parking brake into position and downshift quickly.

When driving on snow and ice, be sure you're carrying all the equipment you'll need to cope with adverse road conditions, including chains, sand, a short shovel, blankets, an ice scraper and matches.

If you feel your car start to skid let up on the gas immediately. Steer in the direction of the skid. Do not apply the brakes. Instead, tap them lightly in short bursts.

Hard braking can lock wheels on ice, eliminating their traction. When this happens, pump your brakes at one-second intervals to release them.

If you find yourself suddenly driving on glare ice, slow down, either by tapping your brakes

Lady H

Mr. and Mrs. George Worsham have received word that their grandson Robin Worsham, a freshman at Abilene Christian College, has been named to the Dean's Honor Roll for the Fall semester, with a 4.0 grade average. Robin is the son of Mr. and Mrs. Glen Worsham of Burelson.

Mr. and Mrs. George Worsham visited in Lubbock Sunday with his sister, Mrs. E.W. Turner.

According to reports Rev. and Mrs. Frank Duckworth, received from Bell Helicopter, Wednesday, they have made arrangements to evacuate their employees from Iran and families beginning Saturday. They do not think that their son Robert will be on the first flight, but should follow within a day or so.

Visiting with Mr. and Mrs. Melvin Cooper Sunday and having dinner with them



WINNERS! — The Lady Horns claim championship trophy by beating Abilene.

The Lockney

Volume 78 Lockney, Floyd Co

Beedy, I

Beedy became the first exhibitor to show three grand steers when judge Jerry Abernathy slapped his 1,217 on the steer, designating him the steer show Tuesday

later, Adams — vocational teacher in Abernathy — a 1,160 pound Hereford champion. The animal's owner Beedy, Mark's younger

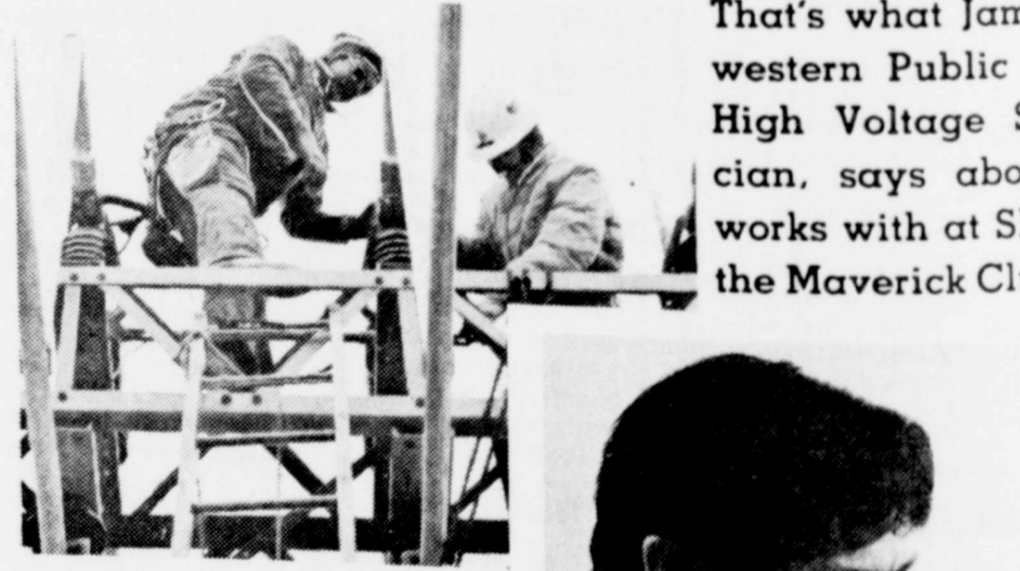
r-old Floydada High senior, had in two previous years the grand champion steer in puny Junior Livestock Show year showed the reserve His brother, Mark, a 15-year-old high freshman, now showed three reserve champion county show.

sons of Mr. and Mrs. (ton) Beedy.

WILEY WINNER
morning, judge Buddy Loggins had twice pointed at a 15-year-old Lockney freshman as breed champion Bayley exhibited both the Shropshire and Southdown he is the daughter of Mrs. Bayley and the late Dan Bayley, Lockney 4-Her, Matt Mitchell both the champion and champion fine wool cross nine-year-old fourth grade Schools is a son of Mr. and in Mitchell.

her Lockney 4-H member.

"They're Just Like Family"



That's what James Stoval, western Public Service High Voltage Substation, says about the works with at SPS and the Maverick Club.

JAMES STOVALL
money, drive the bus, put in van in 'bout 6 months driving tournaments I'm even a and their folks can't be at a and cheer 'em on. And the little ones, too. Those they're just something special family And you know, I feel western Public Service family too, everybody pitches in. And they take good care of Training program. Eleven years trade, no job security. Now journeyman electrician, that family...my trade that working with the Maverick things nobody can take away

Williams



GRAND CHAMPION STEER of the this Angus, shown by Ty Williams.

