

# The Lockney Beacon <sup>20c</sup>

Lockney (Floyd County) Texas 79241 Thursday, April 26, 1979 12 Pages No. 33

## Going To State...

### Davis, Burt Win State Trip

The Lockney High School debate team of Randy Davis and Jim Burt went undefeated through five rounds of competition at the regional UIL debate tournament last Saturday in Lubbock.

earning a trip to the state meet in Austin May 4-5.

Davis and Burt were the only unbeaten pair at the regional contest and added a regional first-place medal to their District 4-AA first-place award.

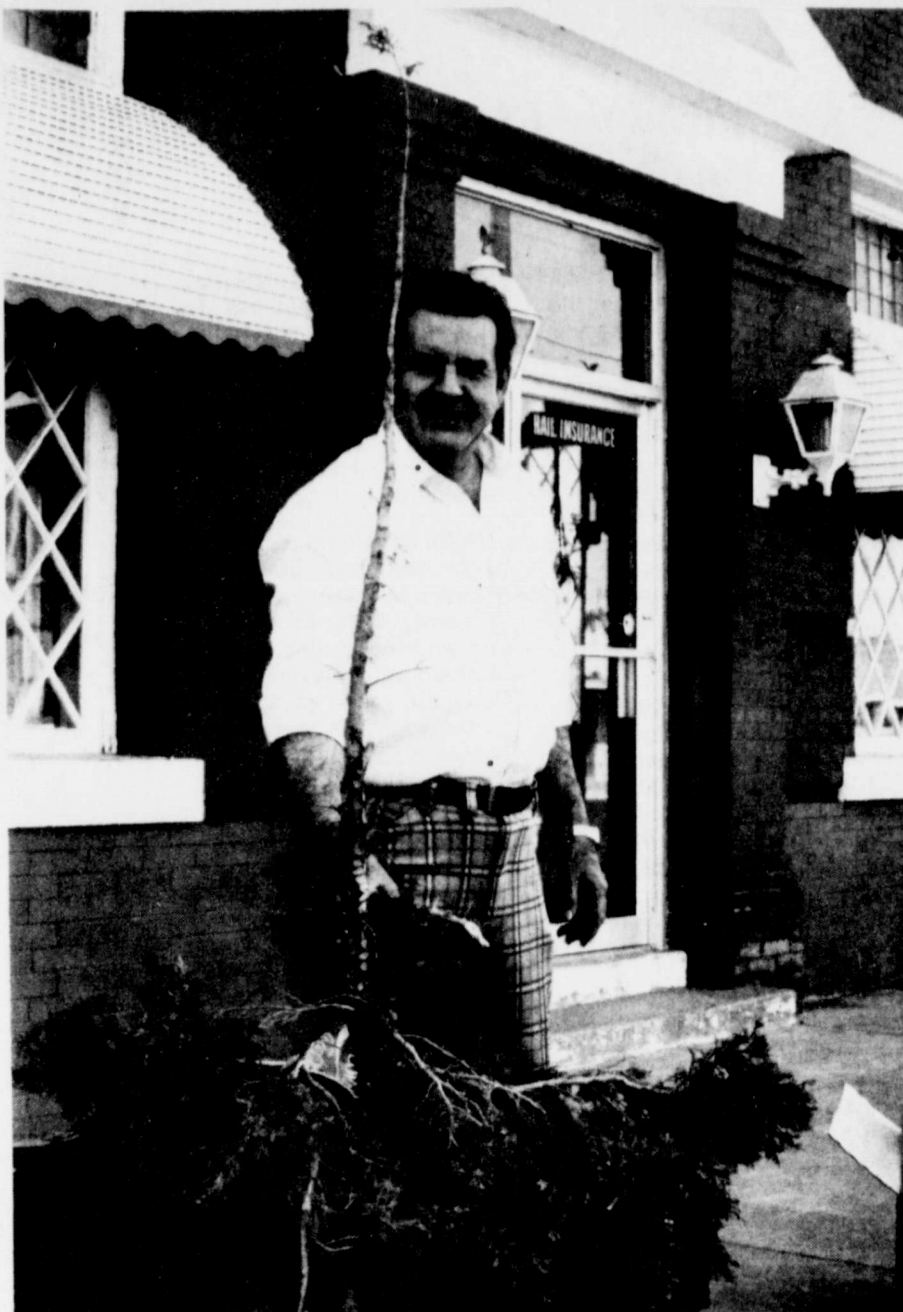
### Lockney Judging Team To Compete At State

Three Lockney High School FFA members, Hector Araujo, Ty Williams and Lori Bayley, members of the FFA Livestock Judging Team, will compete in the state livestock judging contest at

Texas A&M University this weekend. The Lockney team qualified for state competition by placing seventh at the Area I contest last Saturday at Texas Tech.



DEBATE TEAM — Randy Davis (left) and Jim Burt placed first in the regional UIL debate tournament Saturday in Lubbock, qualifying for the state tournament May 4 and 5 in Austin. [Staff Photo]



I THINK THAT I SHALL NEVER SEE...a mess like someone made of this tree. The miniature pine tree had been growing in front of Barker Insurance in downtown Lockney for "about eight or ten years," according to Barry Barker, pictured as he picked up the branches which someone removed from the tree. Barker watered the tree Saturday morning, discovered the damage Sunday morning. The tree was the only one left of several planted years ago as a Lockney businessmen's downtown beautification project.

## Internate Jail Plan Drafted

Plans for renovation of Lockney Jail to bring it into compliance with Texas Commission on Jail Regulations has been approved by architect Marvin Stiles.

Floyd County Judge Choise Smith and Stiles left Lubbock at 6:55 a.m. Wednesday enroute for Austin to confer with Robert O. Viterna, acting executive director of the Texas Commission on

Jail Standards. They planned to submit the new proposal to Viterna and hoped to have it approved, Judge Smith said Tuesday.

The entire commissioners court, along with Sheriff Fred Cardinal and Stiles, met with the TCJS head and other officials in Austin after opening bids on the initial plan.

Viterna was in Floydada April 13 to view the county jail and answer questions concerning the standards.

### USE EXISTING BUILDING

Encouraged by Viterna's attitude, the Floyd governing body instructed Stiles to draft rough plans on a proposal to

SEE JAIL, PAGE 5

## Sports Banquet Set Saturday Night

"All Season" will be the theme of the Lockney High School All-Sports Banquet, scheduled at 7:30 p.m. at the Lockney Elementary gymnasium.

Students who participated in basketball, tennis, track and football during the 1978-79 school year will be invited to the banquet.

The all sports banquet will be the "Fighting Spirit" presented by John Bickley and the

J.L. Martin Award by JoAnne Martin. C.L. Record will be the master of ceremonies. Dinner music will be provided by Ann Race.

Every member of the community is encouraged to attend and show support and appreciation for the young athletes. Tickets are \$3.50 each and may be purchased from members of the Quar-

terback Club, Girls Athletic Boosters, and Boys Athletic Boosters.

There will be a prom in the cafeteria following the banquet, and breakfast at Jerry and Andy Ford's home after the prom.

## Cancer Crusade Starts Today

The annual Cancer Crusade in Lockney is scheduled to start today (Thursday, April 26) and continue through May 10, according to Virginia Owens, chairman of the American Cancer Society fund drive this year.

During that period, workers will be knocking on doors asking for donations to the Cancer Society and distributing literature about cancer and how to protect against the disease.

The American Cancer Society recommends several steps to protect yourself against cancer. Some of the steps are as follows:

- Don't smoke cigarettes;
- Do breast self-examination;
- Don't over-sun;
- Get a Pap Test;
- Do a Guaiac Test;
- Have an oral exam;
- Get a complete checkup.



CANCER CONTROL — Lockney Mayor Claude Brown signs a proclamation designating "Cancer Control Week" in Lockney. Present at the signing were (from left) Virginia Owens, local Cancer Crusade chairman; Cindy Turbeville and Donnie Meriwether, Crusade workers. The Lockney Crusade starts today and continues through May 10. [Staff Photo]

## May Drive For Mental Health Set In Lockney

Mrs. Nora Bybee of Lockney announced that nine Bellringer workers will go house-to-house during May to collect for mental health in Lockney.

Mrs. Bybee is Bellringer chairperson for the May drive to benefit the Mental Health Association in Texas.

Money raised by the Bellringer campaign supports such projects as the monitoring of community mental health facilities to see that they are effective

and responsive and the improving of public attitudes regarding mental health, which are conducted by the volunteer agency.

The association is not a state agency and must rely on private contributions to carry on its work on behalf of the mentally ill and to promote mental health.

Since one of every six or seven Americans needs mental health care at

any given moment, public support is greatly needed, Mrs. Bybee said.

Bellringer workers collecting in Lockney, beginning May 1, will be Mrs. Melvin Cooper (Main Street), Lozell Graham (First), June Bybee (Second), Mrs. Paul Reece (Third), Mrs. Ricky Griffith (fourth), Mrs. W.L. Carthel (Fifth), Mrs. W.J. Mangold (Sixth), Mrs. M.C. Cook (Seventh), Mrs. Harold Brock (eighth).

## Longhorn To Regional...

### Longhorns To Track Meet

Lockney track men will be competing in the regional track meet at Lubbock on Friday, April 27, at the District 4-AA meet in Lubbock.

Lockney set a new Lockney record in the high jump, placing second at the meet. The mark Cummings set was the best in the district.

Lockney was second in the 200.6 half mile, placing second at district and second in the 800-yard event.

Lockney placed second with a time of 2:13.4 in the district 120-yard dash.

Lockney was second in the 440-yard relay team, placing second in the relay at district and placing first in the relay at Lubbock.

Lockney placed second in the 880, placing third in the 880; placing second in the long jump and

sixth in the 100-yard dash; Steve Warren, third in the 120 high hurdles and fifth in the 330 intermediate hurdles; Chris Hennagen, fourth in the 880; Placido Gonzales, fourth in the pole vault; Roel Rodriguez, fourth in the 50.1 seconds.

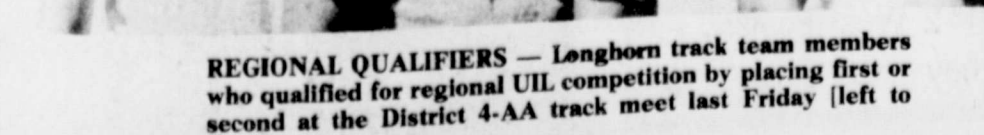
Lockney set a new Lockney record in the high jump, placing second at the meet. The mark Cummings set was the best in the district.

Lockney was second in the 200.6 half mile, placing second at district and second in the 800-yard event.

Lockney placed second with a time of 2:13.4 in the district 120-yard dash.

Lockney was second in the 440-yard relay team, placing second in the relay at district and placing first in the relay at Lubbock.

Lockney placed second in the 880, placing third in the 880; placing second in the long jump and



REGIONAL QUALIFIERS — Longhorn track team members who qualified for regional UIL competition by placing first or second at the District 4-AA track meet last Friday (left to

right): John Cummings, Danny Delgado, Placido Gonzales, Arnold Alaniz, Curtis Ford, Cecil Clark, Danny Riddley, Joe David Gonzales. [Staff Photo]

## Count The Cost! What's My Share?

### THE STORY OF SCHOOL TAXES

Personal opinion of Jack Samford

How often have you heard these, or similar words with the same meaning? One of our clubs recently took a fishing trip, the bills were paid and each person on the trip was asked for his share. (Cost of food and shelter, and etc. divided by the number of people on the trip). Things like this are very common so we can easily understand that if someone cheats, everyone else has to pay more. SO-OO a cheater don't go. (Everyone on the trip by the way, paid his share).

Now let's try something a little more complicated, something like running a school for about a thousand children. Let's say the total budget comes to \$1,500,000 to pay the teachers and other people, operate the buses, buy supplies, gas, electricity, repairs, etc. Let's say the Federal Government will pay about \$800,000 and the State will pay \$600,000 in the Pot to be paid with local funds.

Let's make a few rules about how to get this money so everyone can pay his fair share. First, let's agree on some principles that should be apparent so we can see how to divide the cost.

O.K., #1 since we say public education and call it free education, let's state rule one to be that everyone should pay according to their ability regardless of the number of children or lack of children. (Educated people create better living conditions and apparently

upgrade the entire society.)

#2. The best measure of ability to pay is to establish the amount of wealth for each person, and let's use total wealth on all but specified exceptions which let's call exemptions. Let's list the exemptions right here:

- #1 Government or subdivision of government. (Only get taxes, so could only pass tax money along.)
- #2 Churches (get support from taxpayers)
- #3 Homestead (to stabilize housing market and help make home ownership more attractive.) Less .5% \$5,000 value.
- #4 Retired and disabled people so they don't lose their homes and become a bigger expense—Less \$10,000 value extra.
- #5 Veterans, if disabled in War—Less up to \$3,000 value extra.
- #6 Automobiles two per family (over-taxed at other places).
- #7 Family personal items and intangibles.
- #8 Tax farms on production instead of market value.

There are probably a few other minor items, but let's assume these are the major ones. Now we have a few values to go by let's put everyone's name in a big book and list everything they own and what it's worth, add them all together and see what we get.

Let's say they all add up to about \$100,000,000 value, but we know there are probably some things charged out to the Mr. and also the Mrs. so let's allow some for that, we know some people we listed weren't here except during spring planting time, etc. so they don't owe anything. We need most of the money when school starts to get things rolling, but not all of it, so let's give a 3% discount for October payment, 2% for November, 1% for December, it's all due in January and put a penalty on after that with interest to offset the cost of collecting. Let's say to be safe we have \$93,000,000 value left, now let's see how to divide out the \$600,000 we need giving each person an equal share in the cost. Let's break up the \$93,000,000 into shares of \$100.00 each and divide that 930,000 shares into \$600,000 to see how much per share we will need rounded up to the next penny.  $600,000 \div 930,000 = \$0.646$  or 65 cents per \$100 share. Let's call that 65 cents the tax rate. Now let's take each person's value as we have it listed in the big book, let's call that book the Tax Roll, find how many \$100 shares each has after adjusting for any exemptions, multiply each one's number of shares by the 65 cents tax rate and send them a bill, let's call that bill a Tax Statement, this procedure will as near as humanly possible fairly establish each person's share of operating the school and pro rating the shares of responsibility equally based on each person's ability to pay.

Unfortunately anyone who cheats' cannot be left behind, their friends and neighbors listening to them brag about how they beat the tax collector or how they hid some property at listing time (rendering) will remember how that apparently fine neighbor was not so fine after all and caused them to dig for extra money they could not afford.

Believe it or not, that is the entire story of School Taxes.







## Learn About Floydada Volunteer Blood Donor

Jr. Study at Thurs home of Ida Hrb Mitchell ostesses. touring in Floyd sent a sewarm- gram was florist. The gave ging and to make es of arr- flowers combined bers had r yards. ricipated usual or they have ars. ave the reading Sue Lusk business

meeting. Members roll call by nam they like to grow A committee was ted to begin mak for a float to be ented in the Floyd County Fair this fall. Members voted to be sent to the aid the tornado vic

each donor the person who received their blood, but because there are so many patients receiving blood on a daily basis, that task is almost impossible. There fore, each time a volunteer donates, he is willingly shar- ing a part of himself with someone he may not even know. Of course, most do- nors realize that if they, a loved one or friend ever needed blood, someone be- fore them unselfishly gave of himself so that another may live. A volunteer blood donor also realizes that since there are no synthetic substitutes for blood, the only resource we have to turn to are human beings who manufacture this priceless product. It makes a blood donation even more special as we realize this, because only a human can assist another human being

## BLOOD DONOR QUALIFICATIONS

- AGE: 17 through 65 years old.
- If state law requires written consent of parent or guardian for 17-year-olds, the acceptable minor donor permit form will be provided by your community blood center.
- People 66 and over may donate if they obtain a doctor's written consent within 2 weeks of donation.
- WEIGHT: Minimum of 110 pounds (50 kg).
- DONATION FREQUENCY: At least 8 weeks between donations.
- MEDICAL HISTORY:
- YOU MAY NOT DONATE BLOOD IF YOU HAVE OR HAD:
- Hepatitis (yellow jaundice)
  - Active disease of heart, lung, kidney, liver, stomach
  - Internal malignancy (cancer)
  - Diabetes requiring medication
  - Addiction to injectable drugs
  - Epilepsy, convulsions, frequent fainting spells
- YOU MAY BE TEMPORARILY DEFERRED IF YOU HAVE OR HAD:
- Acute symptomatic flu, cold, or upper respiratory infection
  - Close contact with hepatitis in last 6 months
  - Ears pierced, tattoos, or acupuncture in last 6 months
  - Active infection or disease presently requiring medication
  - Vaccinations in last 24 hours; some vaccinations have longer deferral periods
  - Major surgery or blood transfusion in last 6 months
  - Dental surgery in last 3 days
  - Pregnancy in last 6 weeks
  - Currently active allergies (symptomatic) requiring prescribed daily medication
  - Traveled to malaria area in last 6 months
- FOR YOUR INFORMATION:
- It is best that you eat a substantial meal before donating, preferably one low in fats. Fasting is not recommended.
  - If you are taking vitamins, hormones, birth control pills, mild diet pills, thyroid medications, or antibiotics for acne, you may donate unless otherwise deferred.
  - We will ask for your Social Security Number for identification purposes.

## Library Book Sale

The Friends of the Floyd County Library will be having a Book Sale on Old Settlers Day May 26. The sale will be held in Lloyd Allen's T.V. from 10 a.m. - 4 p.m.

## South Plains News

Zach has graduated. He will be farming. We are glad to see the young folks settle in our community.

Mr. and Mrs. Sterling Cummings went to Hereford on Saturday night of last week where they attended the wedding of her nephew, Scott Hall and Lori Stienkruger.

At the District Meet in Tulia John Cummings from the Lockney High School set the school high jump record, and went out on 6 feet and 6 inches. This qualifies him for the Regional meet Saturday in Lubbock.

At the 40th Annual Light-house Electric Meeting which was held on Saturday, week before last in Floydada, those who won prizes in our community were E.J. Kinslow, with an automatic timer, and Grigsby Milton Jr., winning an electric can opener. Nine hundred attended the meeting and enjoyed the music, entertainment and a delicious barbecue and chicken lunch.

Zach Cummings was first at high hurdles at West Texas home meeting at Hereford. He defeated Wayland's Postel, Olympic alternate and he will run his last outdoor meet before MUC at Wayland on Friday. Zach is a

senior at West Texas State University, majoring in Plant Science. He will be graduating there on May 12. His parents are Mr. and Mrs. Sterling Cummings.

Mr. and Mrs. Travis Jones from Floydada were here Sunday to have dinner and spend the afternoon with their son, Mr. and Mrs. Nathan Johnson, Troy and Tracy.

A Secret Grandmother coffee was held at the home of Mrs. Nathan Johnson at 3 p.m. Saturday afternoon, April 21, with girls at hostesses for the party. Hostesses were Glenna Powell, Kristi Julian, Sandy Powell, Mitzi Julian, Pam Powell, Regina Sanders, Jamie Arredondo and Renee Sanders. Hostesses alternated at the serving table where punch, coffee, banana cake and assorted cookies were served. Secret granddaughters revealed their secret grandmothers and presented gifts to them.

Those present at the coffee with the girls and hostess Mrs. Nathan Johnson were Mmes. Fletcher Powell, Fred Blake, Murry Julian, Ruby Higginbotham, Early Pritchett, Tillman Powell, Raymond Upton and Grigsby Milton Jr. Grandmothers not able to be present were Mrs. Mamie Wood and Mrs. Arby

## sugar Facts and Fancies

When Renaissance Europeans got sick, they didn't take sugar-coated pills—they took sugar! Oddly, when sugar cane was first introduced to Europe, it was considered a medicine.

Not until 1717 was it discovered that there was a source of sugar other than cane: beets. Initially, though, beet sugar was scorned as being inferior to cane sugar. Ultimately, scientific experiments proved that the two sugars were absolutely identical.

## May 12 Date For Slaton Art Show

Slaton Art Show is planned from 1 to 4:30 p.m. May 12. A \$3 entry fee will be charged, with a 20 per cent commission being assessed. Anyone desiring further information should contact Pat Moses (828-5383), Ada May Robinson (828-6304), or the Chamber of Commerce office (828-6238).

## Beth Pratt Guest Speaker In Kentucky Seminar



Beth Pratt (Mrs. A.C.) will be in Louisville, Kentucky, April 26, as a guest speaker at a banquet for Southern Seminary students and professors, as well as church media center leaders, attending a seminar administered by Dr. Ronald Deering, librarian, the Southern Baptist Theological Seminary, Louisville, and made possible by the Straughan Fund.

The Straughan Fund for church librarianship was established in 1976 at the Southern Baptist Theological Seminary in Louisville to give instruction and emphasis in the importance, value, and methodology of church librarianship to young ministers in the course of their regular seminary studies in theology, religious education, and church music.

Dr. Deering says, "South-

ern Seminary in cooperation with the Church Library Department will do what it can today to see that the church media center received the emphasis it deserved in the program of training the ministers of Christ for tomorrow."

Beth is volunteer Media Center Director at First Baptist Church, Floydada and a Special Worker for the Church Library Department of the Southern Baptist Convention. As a special worker she teaches various phases of church media center work at training events sponsored by the convention and upon request to churches and association. She has had several articles published in Media, Library Services Journal and is currently writing an article each quarter for the publication.

## Wednesday May 2

**SHUGART COUPON**

Thompson Pharmacy

200 South Main Floydada

9 WALLET SIZE COLOR PORTRAITS 99¢

ASK About Our FREE 8 x 10 OFFER

Extra charge for GROUPS

## Birth

BLAZIER Little Kimberley zier made her appearance at 11:14 a.m. Tuesday, April 24, at High Plains Hospital, Amarillo. She weighed 7 lbs., 4 oz. and was 19 1/2 inches long. Parents are Marjorie Holcomb, Lockney, and Dale Blazier, Great-grandparents are Mrs. John C. Blazier, Rapeljie, Mont-

ESS WHO'S 50 RMA F.

## Accessories

Corner

## April 2

tion: ornia

day 9-12

## d See Shop

led lines

OPENING

**every mom loves a gift from Byrd Pharmacy**

- ★ Good Selection Of Mothers Day Cards
- ★ Costume Jewelry
- ★ Princess Gardner Billfolds
- ★ Conair Pro Baby Blow Dryers
- ★ Northern Fan Jet Blow Dryers
- ★ Norelco Mist 'N Dry Blow Dryers
- ★ Remington Mist Blow Dryers
- ★ Assorted Glassware ★ Jewelry Boxes
- ★ Chanel No. 5 ★ Colognes & Perfumes ★ Jontue
- ★ Charlie ★ Lenel Vesta' Lia ★ Intimate By Revlon
- ★ Tabu By Dana
- ★ Aviance By Prince Matchabelli
- ★ Cachet By Prince Matchabelli ★ Christian Dior Dusting Powder
- ★ Tigress By Faberge'
- ★ Chantilly By Houbigant

**Byrd PHARMACY** Phone 652-3353 LOCKNEY

**Sport Shirts 788**

Reg. to 14.00

Choose from several pattern and solid color sport shirts of poly/cotton blend. Size S, M, L, XL

**Pantsuits 1188**

Reg. to 26.00

Early spring 2 piece pantsuit now reduced for bonus savings. Sizes 10-20, 14 1/2 to 24 1/2.

GIRLS Spring Dresses Reg. to 22.00 Now — 1/3 Off

JUNIOR Spring Dresses Reg. to 46.00 Now — 1/2 Off

**TOWEL ENSEMBLE**

BATH SIZE \$288 REG. \$349

HAND SIZE \$188 REG. \$229

WASHCLOTH \$108 REG. \$139

100% COTTON TERRY

**Bealls**

REG. \$2400 \$2090

Wide strap knotted vamp in tan, navy, white or rust color leather looks great on a stacked, low wedge heel. Sizes 5-10, narrow and medium widths.



ans Learn About F

thena Jr. Study ers met Thurs- 2, in the home of on. Vida Hrba- Charlotte Mitchell co-hostesses. enjoyed touring y home in Floy- was presented a as a housewarm- the club. ng program was y local florist, aht. She gave r arranging and d how to make nt styles of ar- y using flowers ight combined members had o participated out unusual or ings they have r gardens. ran gave the onal, reading artha Sue Lusk the business

Birth

BLAZIER Little Kimber- zier made her ap- 11:14 a.m. Tues- 24, at High Plai- Hospital, Amaril- miss is the da- Charlotte (Mar- Blazier, of Am- weighed 7 lbs., 4 19 1/2 inches long, 19 1/2 inches long, and 19 1/2 inches long. Her eyes are blue, her hair is brown, and she has a few freckles. She was born at 9:20 a.m. in Lockney, Tex., weighing 7 pounds.

GUESS WHO'S 50 NORMA F.

Accessory Corner

April 2

California la

turday 9-12

nd See Shop

dded Lines

D OPENING

Be A Volunteer Blood Donor

each donor the person who received their blood, but because there are so many patients receiving blood on a daily basis, that task is almost impossible. Therefore, each time a volunteer donates, he is willingly sharing a part of himself with someone he may not even know. Of course, most donors realize that if they, a loved one or friend ever needed blood, someone be- fore them unselfishly gave of himself so that another may live.

when it comes to this particu- lar need.

Library Book Sale

The Friends of the Floyd County Library will be holding a Book Sale on Old Settlers Day May 26. The sale will be held in Lloyd Allen's T.V. from 10 a.m. - 4 p.m.

South Plains News

Zach has graduated. He will be farming. We are glad to see the young folks settle in our community. Mr. and Mrs. Sterling Cummings went to Hereford on Saturday night of last week where they attended the wedding of her nephew, Scott Hall and Lori Stienkruger.

Zach Cummings was first at high hurdles at West Texas home meeting at Hereford. He defeated Wayland's Postel, Olympic alternate and he will run his last outdoor meet before MUC at Wayland on Friday. Zach is a

senior at West Texas State University, majoring in Plant Science. He will be graduating there on May 12. His parents are Mr. and Mrs. Sterling Cummings.

Mr. and Mrs. Travis Jones from Floydada were here Sunday to have dinner and spend the afternoon with their son, Mr. and Mrs. Nathan Johnson, Troy and Tracy.

A Secret Grandmother coffee was held at the home of Mrs. Nathan Johnson at 3 p.m. Saturday afternoon, April 21, with girls at hostesses for the party. Hostesses were Glenna Powell, Kristi Julian, Sandy Powell, Mitzi Julian, Pam Powell, Regina Sanders, Janie Arredondo and Renee Sanders. Hostesses alternated at the serving table where punch, coffee, banana cake and assorted cookies were served. Secret granddaughters revealed their secret grandmothers and presented gifts to them.

Those present at the coffee with the girls and hostess Mrs. Nathan Johnson were Mmes. Fletcher Powell, Fred Blake, Murry Julian, Ruby Higginbotham, Early Pritchett, Tillman Powell, Raymond Upton and Grigsby Milton Jr. Grandmothers not able to be present were Mrs. Mamie Wood and Mrs. Arby Mulder.

Mrs. Jerry Taylor of Amarillo brought her daughter Candy here to spend the weekend with Mrs. Arby Mulder, who is convalescing from recent surgery, and getting along fine at her home. Mrs. Taylor came down and got Candy Sunday and spent the day with her mother, Mrs. Mulder.

BLOOD DONOR QUALIFICATIONS

AGE: 17 through 65 years old.

If state law requires written consent of parent or guardian for 17-year-olds, the acceptable minor donor permit form will be provided by your community blood center.

People 66 and over may donate if they obtain a doctor's written consent within 2 weeks of donation.

WEIGHT: Minimum of 110 pounds (50 kg.).

DONATION FREQUENCY: At least 8 weeks between donations.

MEDICAL HISTORY:

YOU MAY NOT DONATE IF YOU HAVE OR HAD:

- Hepatitis (yellow jaundice)
- Active disease of heart, lung, kidney, liver, stomach
- Internal malignancy (cancer)
- Diabetes requiring medication
- Addiction to injectable drugs
- Epilepsy, convulsions, frequent fainting spells

YOU MAY BE TEMPORARILY DEFERRED IF YOU HAVE OR HAD:

- Acute symptomatic flu, cold, or upper respiratory infection
- Close contact with hepatitis in last 6 months
- Ears pierced, tattoos, or acupuncture in last 6 months
- Active infection or disease presently requiring medication
- Vaccinations in last 24 hours, some vaccinations have longer deferral periods
- Major surgery or blood transfusion in last 6 months
- Dental surgery in last 3 days
- Pregnancy in last 6 weeks
- Currently active allergies (symptomatic) requiring prescribed daily medication
- Traveled to malaria area in last 6 months

FOR YOUR INFORMATION:

- It is best that you eat a substantial meal before donating, preferably one low in fats. Fasting is not recommended.
- If you are taking vitamins, hormones, birth control pills, mild diet pills, thyroid medications, or antibiotics for acne, you may donate unless otherwise deferred.
- We will ask for your Social Security Number for identification purposes.

Sugar Facts and Fancies

When Renaissance Europeans got sick, they didn't take sugar-coated pills—they took sugar! Oddly, when sugar cane was first introduced to Europe, it was considered a medicine.

Not until 1747 was it discovered that there was a source of sugar other than cane: beets. Initially, though, beet sugar was scorned as being inferior to cane sugar. Ultimately, scientific experiments proved that the two sugars were absolutely identical.

Mulder. Mrs. Jerry Taylor of Amarillo brought her daughter Candy here to spend the weekend with Mrs. Arby Mulder, who is convalescing from recent surgery, and getting along fine at her home. Mrs. Taylor came down and got Candy Sunday and spent the day with her mother, Mrs. Mulder.

Beth Pratt Guest

Speaker In Kentucky Seminar



Beth Pratt (Mrs. A.C.) will be in Louisville, Kentucky, April 26, as a guest speaker at a banquet for Southern Seminary students and professors, as well as church media center leaders, attending a seminar administered by Dr. Ronald Deering, librarian, the Southern Baptist Theological Seminary, Louisville, and made possible by the Straughan Fund.

The Straughan Fund for church librarianship was established in 1976 at the Southern Baptist Theological Seminary in Louisville to give instruction and emphasis in the importance, value, and methodology of church librarianship to young ministers in the course of their regular seminary studies in theology, religious education, and church music.

ern Seminary in cooperation with the Church Library Department will do what it can today to see that the church media center received the emphasis it deserved in the program of training the ministers of Christ for tomorrow.

Beth is volunteer Media Center Director at First Baptist Church, Floydada and a Special Worker for the Church Library Department of the Southern Baptist Convention. As a special worker she teaches various phases of church media center work at training events sponsored by the convention and upon request to churches and association. She has had several articles published in Media, Library Services Journal and is currently writing an article each quarter for the publication.

Wednesday May 2

SHUGART COUPON

Thompson Pharmacy

200 South Main Floydada



9 WALLET SIZE COLOR PORTRAITS 99¢

ASK About Our FREE 8 x 10 OFFER Extra charge for GROUPS

May 12 Date For Slaton Art Show

Slaton Art Show is planned from 1 to 4:30 p.m. May 12. A \$3 entry fee will be charged, with a 20 per cent commission being assessed. Anyone desiring further information should contact Pat Moses (828-5383), Ada May Robinson (828-6304), or the Chamber of Commerce office (828-6238).

Sport Shirts 788 Reg. to 14.00

Choose from several pattern and solid color sport shirts of poly/cotton blend. Size S, M, L, XL

GIRLS	JUNIOR
Spring Dresses	Spring Dresses
Reg. to 22.00	Reg. to 46.00
Now —	Now —
1/3 Off	1/2 Off

TOWEL ENSEMBLE

BATH SIZE \$288 REG. \$349

HAND SIZE \$188 REG. \$229

WASHCLOTH \$108 REG. \$139

100% COTTON TERRY

Pantsuits 1188 Reg. to 26.00

Early spring 2 piece pantsuit now reduced for bonus savings. Sizes 10-20, 14 1/2 to 24 1/2.

Wedge sandals \$2090 REG. \$2400

Wide strap knotted vamp in tan, navy, white or rust color leather looks great on a stacked, low wedge heel. Sizes 5-10, narrow and medium widths.

Bealls

every mom loves a gift from Byrd Pharmacy

- ★ Good Selection Of Mothers Day Cards
- ★ Costume Jewelry
- ★ Princess Gardner Billfolds
- ★ Conair Pro Baby Blow Dryers
- ★ Northern Fan Jet Blow Dryers
- ★ Norelco Mist 'N Dry Blow Dryers
- ★ Remington Mist Blow Dryers
- ★ Assorted Glassware
- ★ Jewelry Boxes
- ★ Chanel No. 5
- ★ Colognes & Perfumes
- ★ Jontue
- ★ Charlie
- ★ Lenel Vesta' Lia
- ★ Intimate By Revlon
- ★ Tabu By Dana
- ★ Aviance By Prince Matchabelli
- ★ Cachet By Prince Matchabelli
- ★ Tigress By Faberge'
- ★ Chantilly By Houbigant
- ★ Nina Ricci Dusting Powder
- ★ Christian Dior Dusting Powder

Byrd PHARMACY Phone 652-3353 LOCKNEY







News

Bagwell
this trip
me while
of the
of town
the Mize
d at the
Winona
dor and
Abilene.
of calls
of people
ere 50
is printed
e visited
s. Edna
as a Sun-
a. Kate
tta and
ck were
ents to
ion. The
d until
r grand-
rs. Bill
eir aunt
d Mrs.
amily.
Vernon.
r. and
was right
tornado
at as it
lives it
ed her
able to
d.
Payne
Monday
lahoma
d in the
ter and
Harvey



LOCKNEY DAY - Some of the participants in Lockney activities Wednesday morning at Lockney. From left: Cindy Brown, fashion merchandising, College, Levelland; Chuck Wilson, photography, Lockney; Burt Sinclair, law enforcement, Lubbock; Doug Stennett, health care, Amarillo; Jody Skeen, health care, Amarillo.

Lessons For Beginners, Intermediates Planned In Lockney

High School tennis activities Wednesday morning at Lockney through Friday, May 7-11. Monday through Friday, May 7-11. Saturday morning sessions, each lasting an hour and a half, are scheduled on May 12, 19 and 26, and June 2. Each class will be limited to six persons. Call Koester, 652-2390, to pre-register for the tennis lessons. Cost of the tennis lessons is \$20 per session per person.



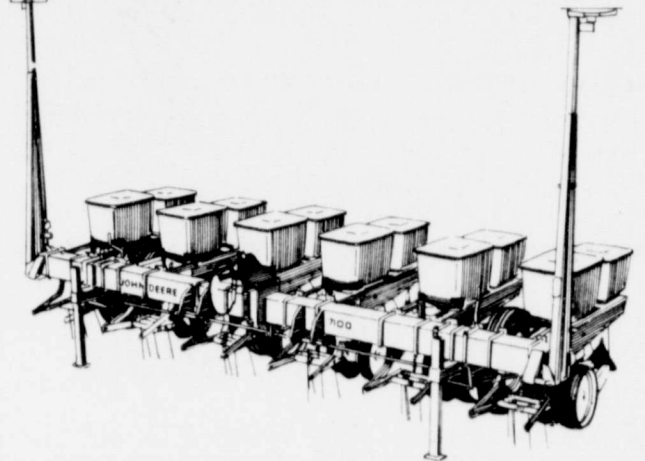
AMBULANCE - Fireman Webb showed the new ambulance to the Lockney Lions Club members Saturday morning.

Summer's On Its Way And Air Conditioning Season Is Here! EVAPORATIVE COOLERS STARTING AT \$179.00 AND UP REFRIGERATED AIR ALL SIZES STARTING AT \$199.00 AND UP PADS & PUMPS INSTALLED WHITE'S AUTO STORE FIRST & COLLEGE 652-2145 LOCKNEY

JAIL FROM PAGE ONE
remp and remodel the existing jail rather than construct an addition, as originally outlined. Judge Smith says the latest plans call for adding an outside stairs to the second and third floors and a new entrance to the present building. 'What I like about this plan is that the bulk of the money spent will be downstairs' to provide better working conditions for the sheriff's department, Judge Smith related Tuesday. A 'drunk tank' would be installed on the first floor. Existing cells would be utilized 'with alterations' on the second floor. The third floor is envisioned to have a large exercise room, as well as detention facilities for females and juveniles. COST COMPARISON The new plan is estimated to cost \$183,679, plus architect fees. This compares with \$501,000 (including architect fees) on the first proposal. 'I feel this (new plan) could fit into our budget,' Judge Smith states. He believes that 'the savings on detention cells and air conditioning would amount to quite a bit of money.' Latest plans call for refrigerated air and central heating on the first floor. Evaporative cooling would be utilized on the second and third floors. Judge Smith anticipates that the commissioners court would seek bids on the latest proposal if it is approved by the Texas Commissions on Jail Standards.

national secretaries week... April 22-28

7100 Series Integral Planters offer close-coupled maneuverability and Max-Emerge Planter benefits



Max-Emerge Planters offer many features to help you get a better stand - dual depth-gauging wheels, Tru-Vee™ openers, and angled firming wheels. 7100 Integral Planters combine these and other Max-Emerge Planter features with most of the advantages of a rigid or folding toolbar setup. For example, you get the convenience of central seeding rate change and hydraulic markers, plus the maneuverability of integral tractor mounting. And for planting wide and transporting narrow, 8- and 12-row 7100 Folding Planters are available. Stop in soon and discuss more reasons why you'll like 7100 Series Planters.

Collins Implement Co. 983-3732 Floydada

TEXAS PRESS MEMBER 1979 ASSOCIATION THE LOCKNEY BEACON [USPS 317-220] BOX 187 LOCKNEY, TEXAS 79241 Published each Sunday and Thursday at 220 S. Main, Lockney, Texas 79241. Jim Reynolds, publisher; Jim Huggins, editor. Second-class postage paid at Lockney, Texas 79241. Subscription rates: Local \$10.50 per year, out of trade area \$11.50 per year. Postmaster: Send address changes to the above address.

ALLSUP'S CONVENIENCE STORES Lockney APRIL SHOWERS BRING SAVINGS SHOP AND SAVE AT ALLSUP'S! PRICES EFFECTIVE APRIL 26-29, 1979. FANTASTIX SNACKS 59c BAR. RATH'S HICKORY LEAN \$1.29 12 OZ. PKG. RATH'S PURE PORK SAUSAGE 89c 1 LB. ROLL. MORTON'S ASSTD. POT PIES 3 \$1.00 9 OZ. PKGS. MORTON'S ASSTD. FROZEN DINNERS 69c 11 OZ. PKG. MORTON'S FROZEN FRIED CHICKEN \$2.99 2 LB. BOX. SUNSHINE KRISPY CRACKERS 89c 1 LB. BOX. FISHER'S WHOLE CASHEW NUTS \$1.79 8 1/2 OZ. CAN. SCHILLING'S BLACK PEPPER 99c 4 OZ. CAN. MORTON'S HONEY BUNS 59c 9 OZ. BOX. HUNT'S WHOLE 9 OZ. TOMATOES 4/\$1 REG. 68c. DELI STYLE BARBECUE BRISKET \$2.79 COOKED FOOD SPECIALS REG. \$3.49 LB. BORDEN'S COTTAGE CHEESE 69c 12 OZ. CTR. BORDEN'S HI-PROTEIN MILK 98c 1/2 GAL. CTR. BORDEN'S ASSTD. FLAVORS PREMIUM ICE CREAM \$1.39 1/2 GAL. RD. CTR.





**BUT I NEVER THOUGHT THEY'D REALLY DO IT!**



# Years Ago

## FROM THE FILES OF THE LOCKNEY BEACON

**April 25, 1968** — After lengthy discussion, representatives from Lockney, Floydada, Silvertown and Tulia voted to attempt to resolve differences and progress with the Mackenzie Water Authority.

Mrs. W.H. Counts took the oath of office as Justice of the Peace. She succeeded her late husband and was to fill the vacated office until the next general election.

Billy Joe Turner was elected president of the Lockney Lions Club. Paul Reecer was elected first vice president, Bryan Smith second vice president, Doug Meriwether third vice president, Jim Reynolds secretary, Alvin Hayes treasurer.

The Lockney High School student body elected cheerleaders for the 1968-69 school year. They were Kathy Thornton, Debbie Miller, Diane Ford, Susan Mosley, Mary Ann Byrd and Sara Ball.

## FROM THE FLOYD COUNTY HESPERIAN FILES

**Five Years Ago, April 21** — Steve Schmidly takes his sweepstakes band to Amarillo festival.

Maximo Casillas was pictured planting grain for Greer Christian as planting season got under way.

Janet Vick is HECE Girl of Week.

Grade 5 A honor role included Moody Younger, Lequita Davis, Terri Gentry, Julie Faulkenberry, Bart Patzer, Kelby Sue, Sylvia Coleman, Shelly Henry, Tommy Myrick and Tana Tyer.

Breezer District Champion Tennis Team: Bobby Whitaker, Kara Copeland, Donna Reid, T. Tyer, Carmen Soliz, Jill Poage, Bill Starkey, L. West, Valynnda Chandler and Greg Carthel.

Mrs. Raymond Luck was surprised Sunday night after church with a birthday party.

**Ten Years Ago, April** — A Santa Fe Railroad locomotive and a diesel truck loaded with 25,000 lbs. of meat collided on West Houston. Deputy Sheriff Connie Reid said the accident occurred at 10:05 p.m. Friday.

Willie Bradshaw at Caprock Hospital is Merchant of the Week.

The Hook and Needle Club Meets with Mrs. Gen White.

Dr. Patzer elected vice president of Chiropractic Society.

D.E. Club officers include Johnny Rowan, Lana Fair, Dale Martin, Penny McClintock, Hugh Peek and Jerry Douglas.

**Twenty Years Ago, April 23** — Honor students at FHS were Karen Goen, Linda Welborn and Bobby Seago.

T.L. Holland Jr. elected president of Floydada Lion's Club.

Mrs. Gus Hammonds entertains Home Demonstration Club.

Sandhill News — by Mrs. James Jeffress — "The cotton planting fever is beginning to get contagious this week although some are planting in overcoats."

Cancer crusades nets \$848.

T.J. Cardinal shows off his coon dog that he says is the best coon dog in the west.

**Forty Years Ago** — Dr. M.R. Garrison named president of Texas Dental Society for 1940.

One-fourth of Texas farms now have no milk cows, and 75,000 have no chickens.

Floyd County to celebrate 49th birthday May 28.

Local persons attending Gainesville Circus include J.C. Wester, Travis Collins, J.A. Arwine, Homer Steen, of Floydada, and John Gray of the McCoy Community.

## State Capitol Highlights

### Teacher Pay Raises

Now that legislators know how Clements feels about interest rates, they can get on to other more pressing matters such as teacher pay raises. The governor has kept no one in the dark about how he feels on this subject.

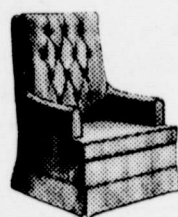
From the outset, Clements made clear that he favored only a 5.1 percent pay boost for all state employees, including teachers.

This week, seven of the state's largest school districts sent representatives to a half-hour meeting with the governor, and Linus Wright, Dallas school superintendent, said Clements made clear "he was not going to change his position" on teacher pay raises.

All of the superintendents said the governor's proposal of a 5.1 percent increase was unacceptable. "That is not going to be sufficient to meet the needs of our teachers," Austin superintendent Jack Davidson told reporters.

## City Trim Shop

### Specializing In Upholstery



- Furniture
- Car Seats
- Boat Tarps

## City Trim Shop

119 S. Wall Phone 983-2332  
Floydada

## It's Planting Season . . .



**. . . but it's never too late for a farm loan!**

**Any time is a good time to plant SAVINGS \$\$.**

"Helping You Change Things For The Better"

# THE FIRST NATIONAL BANK OF FLOYDADA

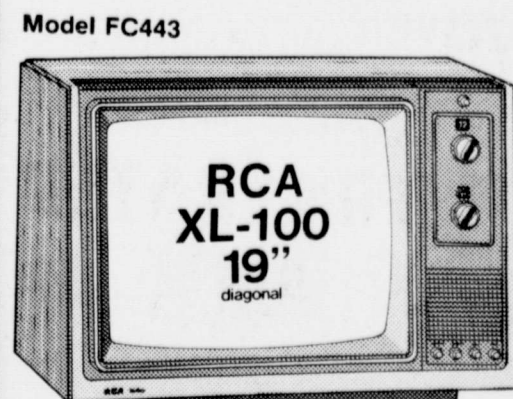
FLOYDADA, TEXAS 79235 MEMBER F.D.I.C.

## Hurry In Before They're All Gone . . . . .

Check Our Great Prices On Selected Models

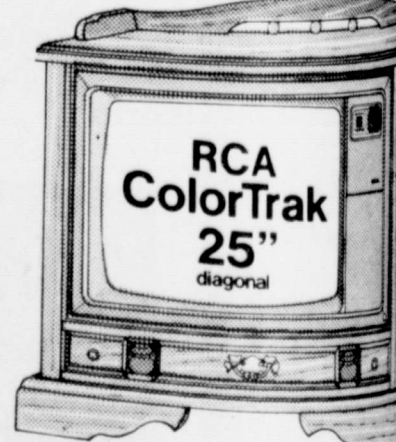
**VIDIO CASSETTE RECORDER**  
VBT 200

REGULARLY \$999<sup>95</sup> . . . . . **\$799<sup>95</sup>**  
WITH 5 FREE TAPES



RCA The Glenrich Model FC443

**8-XL100 & COLOR TRACK**  
INCLUDING 3 REMOTES  
GOING FOR COST



RCA The Lexington Model GC765R

**PLUS 10% WITH WORKING TRADE**

## MIZE PHARMACY & T.V.

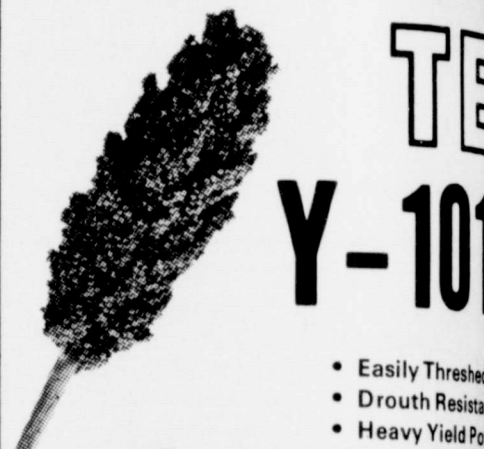
102 SOUTH MAIN

LOCKNEY

PHONE 652-3940

## Golden Acres

**HYBRID GRAIN SORGHUM**  
UNIVERSALLY POPULAR YELLOW ENDOSPERM GREENBUG RESISTANT



- Easily Threshed
- Drought Resistant
- Heavy Yield Potential
- Semi-Open Uniform Well Exserted Heads
- Thick, Short, Heavy Stalk, Excellent Storage
- Extensive Root System, Adapts to Various Soils
- Excellent Greenbug Resistance

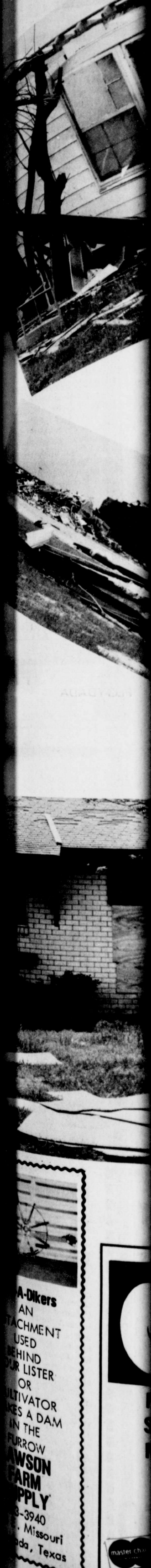
WE RECOMMEND TE-Y-101

## Davis Farm Supply

FLOYDADA

COME IN NOW FOR YOUR SEED NEEDS

The 'Village' Will Rise Again

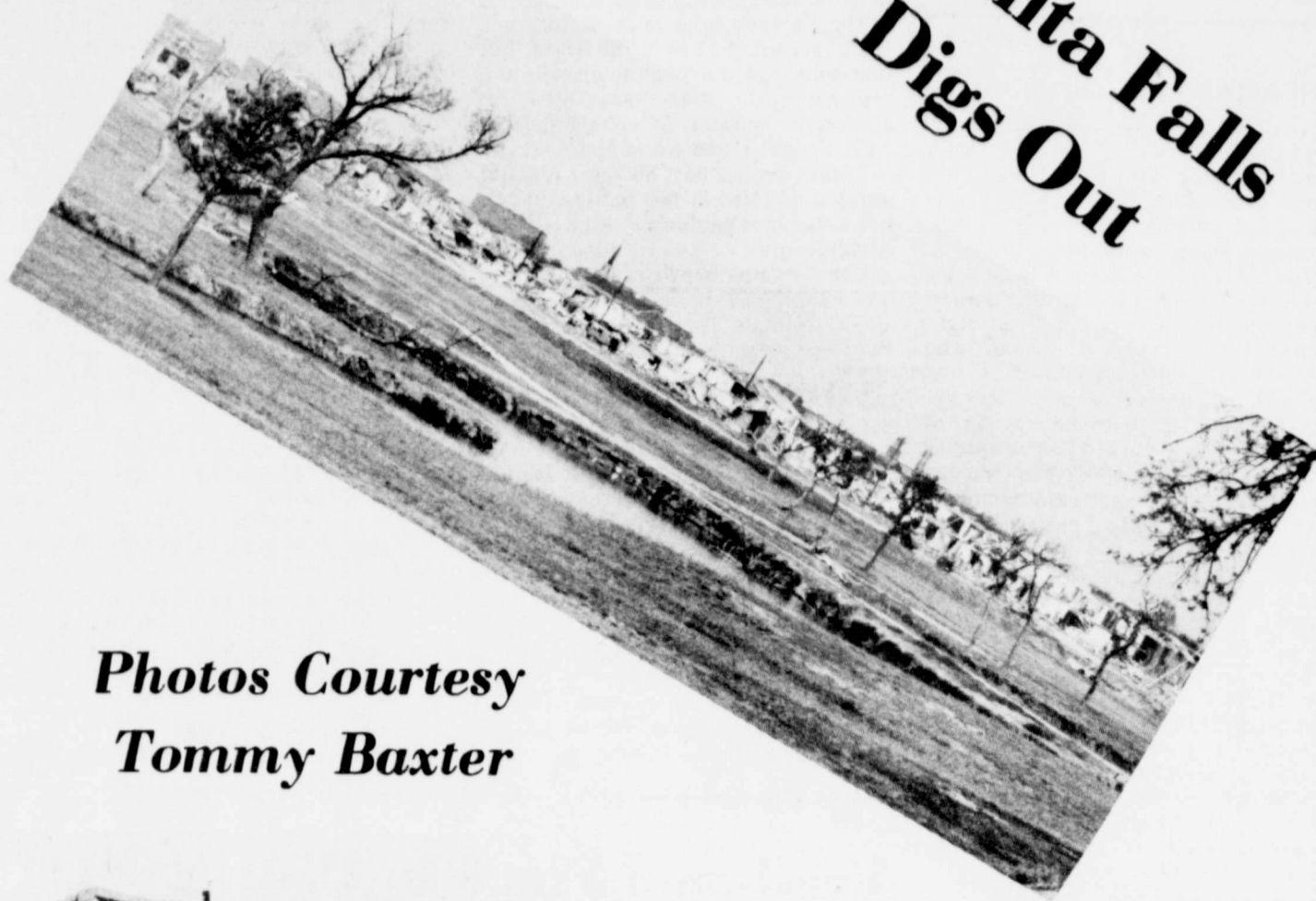




**The 'Village' Will Rise Again!**



**Wichita Falls Digs Out**



*Photos Courtesy Tommy Baxter*



THE TOMMY BAXTERS returned to their home town of Wichita Falls . . . and found that destruction was "even worse than we had imagined from newspaper and TV pictures!"

Residents of the tornado-ravaged city have retained their sense of humor and have a feeling of togetherness. Baxter says that he observed many cases of neighbor helping neighbor.

A residence in "Faith Village," the housing development where the Floydada coach's mother and stepfather live, is shown at top left. The home of friends where they had gone to the cellar was totally demolished. Mrs. Baxter's parents and sister also reside in Wichita Falls although the parents' home and the sister's apartment were not badly damaged.

Remains of three apartment complexes are pictured at top right with a golf course in foreground.



Little remains of the house [center photo] where the Baxters lived before the family moved to Floydada.

Picture middle left shows debris from a stricken church. The church secretary was killed as the twister leveled the building.

Wreckage of two late model autos is shown at bottom center.

Signs such as the one shown at bottom left are prevalent throughout stricken portions of Wichita Falls, Baxter says.

Builders from cities far and near are streaming into Wichita Falls as rebuilding begins.



**Sense of Humor Retained**



**Golden Acres BRAND**  
HYBRID FORAGE SORGHUM  
"GRAZE. GREEN CHOP OR HAY"



**TE HAYGRAZER**

- Astonishing growth, often 2" per day
- Exceptionally drought tolerant
- Will carry 4-5 cows per acre
- Tremendous Quantities of T.D.N. per acre
- Fast recovery, unexcelled regrowth

WE RECOMMEND TE HAYGRAZER

See Your Local Golden Acre Dealer

COME IN NOW FOR YOUR SEED NEEDS



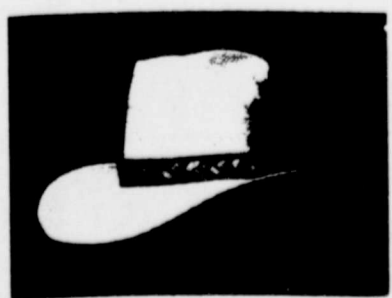
**We Have Straw HATS...**

A Good Selection To Choose

From In Casual, Dress or Work. With Tall Crowns, Short Crowns, Wide Brims or Narrow Brims.

Stop In Today !!!  
**THE LOFT**  
Western Wear

517 E. Houston, Floydada, Tx 983-2235



**Air Conditioner Supplies Are Here !**



**We Feature New Dearborn Air Conditioner Supplies**

The fifth year with *no price increase* on these items —

- .Pads
- .Paint
- .Pumps
- .Tubing
- .Float Valves
- .Belts
- .Fittings
- .Interior Coating

**KIRK & SON**

FURNITURE — HARDWARE  
NORTH SIDE OF SQUARE  
FLOYDADA

**hey Sa**  
NG THE ISSUE  
ly can't blame the Lubbock  
Journal for opposing the legis  
which would pro-rate city salar  
rding to population of cities  
voted such a tax, instead of  
em to the city where the sale is  
ow is done by the state. But we  
agree with the label of "bad"  
on the senate and house  
same reason they oppose the  
re much in favor of them. The  
e big cities would lose money  
aller ones, like Slaton, would  
bit each year. Of course we  
ommunities feel that we could  
use of the money than they do  
(it would have meant about  
ore for Slaton last year).  
editorial said passage of the  
divert money needed for urban  
"the affluent suburbs."  
is didn't realize we were that  
Slaton Slaton  
**den Acres**  
e registered by Taylor Evans Seed Company. T  
ames or numbers are variety designations.  
**RAIN SORGHUM**  
PULAR YELLOW ENDOSP  
BUG RESISTANT  
**TE Y-101**  
• Easily Threshed  
• Drought Resistant  
• Heavy Yield Potential  
orm Well Exserted Heads  
eavy Stalk, Excellent Stand  
System, Adapts to Varying  
bug Resistance  
**RECOMMEND TE-Y-101-R**  
**Farm Supply**  
LOYDADA  
FOR YOUR SEED NEEDS  
**'re**  
**d Models**  
Model GC765  
CA  
rTrak  
5"  
Journal  
ngton  
765R  
**V.**  
PHONE 652-24







# Floyd Armed Suspects Arrested In Motley County

Four Floyd County juveniles wanted for criminal mischief and auto theft were arrested Monday in Motley County in Sheriff Alton Marshall and DPS Trooper Dude Speed.

Two of the boys, armed with what was described as a .22 caliber rifle, were earlier reported to be shooting at objects and at the other two juveniles.

Motley County lawmen received a "be on the lookout" call at 9 a.m. Monday, from Paducah, where a pickup had been stolen. Trooper Speed later found an abandoned car 15 miles east of Matador.

The juveniles apparently took the car belonging to one of the subjects' mother in Floydada, drove it through

Matador and east until it ran out of gas. Then they stole the pickup and drove it until it ran out of gas in the south-east corner of Dickens County.

Two of the boys received a ride into Roaring Springs by a local farmer. There they were picked up by Speed, and told him the other boys

had been shooting at them. Sheriff Marshall began checking back roads in search for the other two. Less than a mile northwest of Alfton he spotted the remaining two suspects walking toward the community. They were carrying the rifle. Marshall stopped and ordered the two to throw down the weapon and walk toward him. The boy carrying the gun hesitated and Marshall gave the order again, this time displaying his pistol. The two immediately surrendered, threw away the gun and got down on the pavement when told to.

The four were taken back to Matador and later transferred to Floydada to await charges.

## Outdoor Education Workshop Slated For 4-H Leaders

By Birch L. Lobban  
County Extension Agent

4-H Leaders in Floyd County who are interested in receiving training in several new and exciting outdoor subjects and activities will want to mark May 5-6 on their calendars.

That's when special training sessions will be held at the Texas 4-H Center at Brownwood to prepare leaders for county 4-H camps and other outdoor projects and activities, points out Birch L. Lobban, county

agent with the Texas Agricultural Extension Service.

Leaders attending will be able to choose training in 4-H shooting sports or in such county camp activities as outdoor cookery, hiking and backpacking, planning day camps, bicycle rodeos and other events designed to make county camps better for 4-H members. There will also be a special training session on canoeing.

So, for a fun-filled week-

end that will provide learning opportunities and practical skills to use in county programs, Lobban encourages interested 4-H leaders to attend the workshop.

Additional details, including registration forms, are available at the County Extension office.

Educational program conducted by the Texas Agricultural Extension Service serve people of all ages regardless of socio-economic level, race, color, sex, religion, or origin.

### Congressman Charles W. Stenholm

#### Professional Comment

set" approach. This is a logical way to phase out those programs which have served their purpose or have proved to be unsuccessful. I believe that we must take positive action to initiate a workable agenda to pinpoint programs that are not working and make more room for those that are effective. It is time for the sun to set on much of our federal bureaucracy.

... M.C. ...

**QUEENS 22,**  
**ROCKETTES 16**  
Queens: Sarah Fitzgerald 18, Rachelle Ford 2, Betty Kay Cates 2, Rockettes: Doreen Greenfield 6, Linda Mata 2, Terri Hill 2.  
**ANGELTS 22,**  
**TIGERETTES 21**  
Angels: Crissy Carthel 10, Helen Garcia 8, Tamara Elam 2, Tammy Ballego 2, Tigerettes: Tiffani Duvall 9, Tracy Murry 4, Terri Spangman 4, Shandra Bybee 2, Amy Koonsman 2.

**STANDINGS**  
(through April 24)  
Queens 31-1  
Angels 22-2  
Tigerettes 22-2  
Ladybugs 0-4  
Kittens 0-4

**SEASON ENDS TONIGHT, TOURNAMENT STARTS FRIDAY**  
The girls' Little Drifters season ends tonight (Thursday) and the post-season tournament starts Friday. Tournament games are scheduled Friday night, Saturday morning, Monday night, Tuesday night, and the final game Thursday night.

... privo-  
... making  
... our  
... bureau-  
... responsive  
... This lack  
... own  
... of  
... Inflation  
... and  
... have become  
... "fed-  
... billion in  
... news to  
... had a \$1.3  
... in Febru-  
... time for a  
... legisla-

**CAPITAL**  
**RIGHTS**  
... Association

... Gov. Bill  
... to his un-  
... said this  
... any mea-  
... the Legisla-  
... interest  
... on top  
... didn't  
... for actual-  
... that would  
... their  
... bringing  
... Com-  
... as "bad  
... and said the  
... for six weeks  
... in a  
... for district  
... After the school  
... and have offices  
... Rolling has been  
... company for years.  
... He has one  
... Sherisa, 15, a freshman  
... rate  
... from 10 to  
... School. He is the son  
... and Mrs. Roy  
... Lockney.

... People have been  
... diamonds can only  
... at night.



# PRICES... Worth Your While

STORE HOURS DAILY: 8 a.m. - 8 p.m.  
SUNDAY: 9 a.m. - 8 p.m.

Barney's Butcher Shop Sale  
BE SATISFIED WITH PIGGLY WIGGLY MEATS OR DOUBLE YOUR MONEY BACK!

<p><b>Van Camp's Pork &amp; Beans</b> 16 oz. Cans <b>4 FOR \$1</b></p>	<p><b>Piggly Wiggly BREAD</b> 1 1/2 LB. LOAVES <b>2 FOR 79¢</b></p>	 <p><b>Wilson Certified Boneless Buffet Ham</b> <b>1.98 LB.</b></p>		
<p><b>White Swan Macaroni &amp; Cheese Dinners</b> 7 1/4 oz. Boxes <b>5 FOR \$1</b></p>	<p><b>White Swan Sweetmilk &amp; Buttermilk Biscuits</b> 8 oz. Cans <b>7 FOR \$1</b></p>			
<p><b>Duncan Hines Cake Mixes</b> All Varieties <b>66¢</b> 18 1/2 oz. Box</p>	<p><b>Sunshine Krispy Crackers</b> <b>56¢</b> 1 lb. Box</p>	<p><b>Old Fashioned Thick Sliced Market Style Sliced Bacon</b> <b>1.18 LB.</b></p>		
<p><b>Pepsi Cola, Diet Pepsi, Pepsi Light, Mountain Dew</b> 12 oz. Cans <b>6 FOR 1.19</b></p>		<p><b>USDA Heavy Western Beef Blade - Cut Chuck Roast</b> <b>1.38 LB.</b></p> <p><b>Lean Ground Chuck</b> <b>1.68 LB.</b></p>		
<table border="1" style="width: 100%; border-collapse: collapse;"> <tr> <td style="width: 50%;"> <p>USDA HEAVY WESTERN BEEF BLADE CUT <b>CHUCK STEAK</b> <b>1.48 LB.</b></p> <p>LEAN BOSTON BUTT <b>PORK ROAST</b> <b>1.28 LB.</b></p> <p>PORK <b>SHOULDER STEAK</b> <b>1.38 LB.</b></p> </td> <td style="width: 50%;"> <p>OSCAR MAYER <b>BOLOGNA</b> 8oz. PKG. <b>1.08</b></p> <p>LAND-O-FROST <b>CHICKEN BOLOGNA</b> <b>98¢ LB.</b></p> <p>PEAK <b>WIENERS</b> 2LB. PKG. <b>2.28</b></p> <p><b>Jimmy Dean Sausage</b> 1 LB. <b>1.65</b> 2 LBS. <b>3.28</b></p> </td> </tr> </table>		<p>USDA HEAVY WESTERN BEEF BLADE CUT <b>CHUCK STEAK</b> <b>1.48 LB.</b></p> <p>LEAN BOSTON BUTT <b>PORK ROAST</b> <b>1.28 LB.</b></p> <p>PORK <b>SHOULDER STEAK</b> <b>1.38 LB.</b></p>	<p>OSCAR MAYER <b>BOLOGNA</b> 8oz. PKG. <b>1.08</b></p> <p>LAND-O-FROST <b>CHICKEN BOLOGNA</b> <b>98¢ LB.</b></p> <p>PEAK <b>WIENERS</b> 2LB. PKG. <b>2.28</b></p> <p><b>Jimmy Dean Sausage</b> 1 LB. <b>1.65</b> 2 LBS. <b>3.28</b></p>	<p><b>Cascade Automatic Dishwasher Detergent</b> <b>1.99</b> 65 oz. Box</p>
<p>USDA HEAVY WESTERN BEEF BLADE CUT <b>CHUCK STEAK</b> <b>1.48 LB.</b></p> <p>LEAN BOSTON BUTT <b>PORK ROAST</b> <b>1.28 LB.</b></p> <p>PORK <b>SHOULDER STEAK</b> <b>1.38 LB.</b></p>	<p>OSCAR MAYER <b>BOLOGNA</b> 8oz. PKG. <b>1.08</b></p> <p>LAND-O-FROST <b>CHICKEN BOLOGNA</b> <b>98¢ LB.</b></p> <p>PEAK <b>WIENERS</b> 2LB. PKG. <b>2.28</b></p> <p><b>Jimmy Dean Sausage</b> 1 LB. <b>1.65</b> 2 LBS. <b>3.28</b></p>			
<table border="1" style="width: 100%; border-collapse: collapse;"> <tr> <td style="width: 50%;"> <p><b>Del Monte Pineapple</b> 15 1/2 oz. Can <b>56¢</b></p> <p><b>Picante Sauce</b> 8 oz. Btl. <b>59¢</b></p> <p><b>Sara Lee Pound Cake</b> 10 1/4 oz. Pkg. <b>1.29</b></p> <p><b>Minute Maid Lemonade</b> 30 oz. Can <b>1.99</b></p> <p><b>Cycle 1-4 Dog Food</b> 5 lb. Box <b>1.49</b></p> <p><b>Kraft Miracle Whip Salad Dressing</b> 48 oz. Jar <b>1.99</b></p> <p><b>Van Camp's Beenee Weenee</b> 8 oz. Can <b>47¢</b></p> <p><b>Dixie Refill Cups</b> 80 ct. Pkg. <b>1.39</b></p> <p><b>Folger's Instant Coffee</b> 6 oz. Jar <b>2.99</b></p> <p><b>Folger's Instant Coffee</b> 10 oz. Jar <b>4.29</b></p> <p><b>Chiffon Soft Margarine</b> 16 oz. Pkg. <b>79¢</b></p> <p><b>Tampax Super Plus Tampons</b> Regular, Super 40 ct. Box <b>2.09</b></p> <p><b>Sunshine Oatmeal Cookies</b> 20 oz. Pkg. <b>99¢</b></p> </td> <td style="width: 50%;"> <p><b>Downy Fabric Softener</b> 33 oz. Bottle <b>99¢</b></p> <p><b>Kraft Barbecue Sauce</b> 18 oz. Bottle <b>69¢</b> All Varieties</p> <p><b>Maryland Club Coffee</b> All Grinds 1 lb. Can <b>2.54</b></p> <p><b>Lipton 100% Instant Tea</b> 3 oz. Jar <b>1.99</b></p> <p><b>Ruffles Potato Chips</b> Regular &amp; Seasoned 5 1/2 oz. Bag <b>79¢</b></p> </td> </tr> </table>		<p><b>Del Monte Pineapple</b> 15 1/2 oz. Can <b>56¢</b></p> <p><b>Picante Sauce</b> 8 oz. Btl. <b>59¢</b></p> <p><b>Sara Lee Pound Cake</b> 10 1/4 oz. Pkg. <b>1.29</b></p> <p><b>Minute Maid Lemonade</b> 30 oz. Can <b>1.99</b></p> <p><b>Cycle 1-4 Dog Food</b> 5 lb. Box <b>1.49</b></p> <p><b>Kraft Miracle Whip Salad Dressing</b> 48 oz. Jar <b>1.99</b></p> <p><b>Van Camp's Beenee Weenee</b> 8 oz. Can <b>47¢</b></p> <p><b>Dixie Refill Cups</b> 80 ct. Pkg. <b>1.39</b></p> <p><b>Folger's Instant Coffee</b> 6 oz. Jar <b>2.99</b></p> <p><b>Folger's Instant Coffee</b> 10 oz. Jar <b>4.29</b></p> <p><b>Chiffon Soft Margarine</b> 16 oz. Pkg. <b>79¢</b></p> <p><b>Tampax Super Plus Tampons</b> Regular, Super 40 ct. Box <b>2.09</b></p> <p><b>Sunshine Oatmeal Cookies</b> 20 oz. Pkg. <b>99¢</b></p>	<p><b>Downy Fabric Softener</b> 33 oz. Bottle <b>99¢</b></p> <p><b>Kraft Barbecue Sauce</b> 18 oz. Bottle <b>69¢</b> All Varieties</p> <p><b>Maryland Club Coffee</b> All Grinds 1 lb. Can <b>2.54</b></p> <p><b>Lipton 100% Instant Tea</b> 3 oz. Jar <b>1.99</b></p> <p><b>Ruffles Potato Chips</b> Regular &amp; Seasoned 5 1/2 oz. Bag <b>79¢</b></p>	<p><b>Stan's Produce Sale!</b> BE SATISFIED WITH PIGGLY WIGGLY PRODUCE OR DOUBLE YOUR MONEY BACK!</p> <p><b>Avocados</b> Buttery Smooth <b>5 FOR \$1</b></p> <p><b>White Onions</b> <b>5 FOR \$1</b></p> <p><b>Spinach</b> <b>4 Bunches FOR \$1</b></p> <p><b>Cantaloupes</b> 3 Lbs. <b>3 FOR \$1</b></p>
<p><b>Del Monte Pineapple</b> 15 1/2 oz. Can <b>56¢</b></p> <p><b>Picante Sauce</b> 8 oz. Btl. <b>59¢</b></p> <p><b>Sara Lee Pound Cake</b> 10 1/4 oz. Pkg. <b>1.29</b></p> <p><b>Minute Maid Lemonade</b> 30 oz. Can <b>1.99</b></p> <p><b>Cycle 1-4 Dog Food</b> 5 lb. Box <b>1.49</b></p> <p><b>Kraft Miracle Whip Salad Dressing</b> 48 oz. Jar <b>1.99</b></p> <p><b>Van Camp's Beenee Weenee</b> 8 oz. Can <b>47¢</b></p> <p><b>Dixie Refill Cups</b> 80 ct. Pkg. <b>1.39</b></p> <p><b>Folger's Instant Coffee</b> 6 oz. Jar <b>2.99</b></p> <p><b>Folger's Instant Coffee</b> 10 oz. Jar <b>4.29</b></p> <p><b>Chiffon Soft Margarine</b> 16 oz. Pkg. <b>79¢</b></p> <p><b>Tampax Super Plus Tampons</b> Regular, Super 40 ct. Box <b>2.09</b></p> <p><b>Sunshine Oatmeal Cookies</b> 20 oz. Pkg. <b>99¢</b></p>	<p><b>Downy Fabric Softener</b> 33 oz. Bottle <b>99¢</b></p> <p><b>Kraft Barbecue Sauce</b> 18 oz. Bottle <b>69¢</b> All Varieties</p> <p><b>Maryland Club Coffee</b> All Grinds 1 lb. Can <b>2.54</b></p> <p><b>Lipton 100% Instant Tea</b> 3 oz. Jar <b>1.99</b></p> <p><b>Ruffles Potato Chips</b> Regular &amp; Seasoned 5 1/2 oz. Bag <b>79¢</b></p>			







# CLASSIFIED ADS sure to get results

## Derby

her trial heat and fourth fastest qualification. The RMOHA Sprint was carried a gross \$97,000. It was run on the Derby track.

In the trials, Quick defeated highly favored Third Pass, an \$82,000 winner, and Commonwealth, a \$35,000 winner.

Delmore Koozts needed the filly for the Friday. Koozts is Morris' brother.

**CONFIDENCE IN**  
"I have owned and led lots of horses. (Quick Victory) has the most fantastic thing. Morris says. The Quick to Victory by Morris had only one out of a year old because of a chip, a rattlesnake bite about with pneumonia. Despite these adversities Mrs. Morris never let her animal.

Quick Victory's granda, Depth Charge mare band. Her dam is owned by Mrs. Morris' father, Koozts of Chillicothe bred the filly and co-owner.

**RECORD HOLDER**  
Quick Victory owns speed index, 7.9. Downs track record with renowned stallion For Cash, for a world. She set this mark at Spring in Lubbock.

Linda Morris now living her outstanding life the World Champion Classic, to be run over 440 yards at Downs.

**WANT AD**  
for anything... for everything...

**Day Slats and Saturday**

Talk of the Town" featured from 7-9 on the Saturday night after 9 p.m. Sponsor start serving breakfast p.m. Saturday in Wills Cafeteria.

**Landry Lockett**

"My Lockett reduced 1,119 lbs. acre with a staple of 33. I'm going to do cotton acreage in the aim to plant most acreage to certified."

Bob Lockett, Plainview

**LOCKNEY PRINTING**  
ALL TYPES COMMERCIAL PRINTING  
Phone 651-2184

**PIONEER SEEDS**

### Real Estate

**FOR SALE:** Three bedroom, one bath, garage, new carpet, central heat, storm windows, quiet neighborhood. 983-5203. tfc

To be moved, 2 story frame house. Make reasonable offer. Marshall Formby 293-5361, 296-6776; Don Marble 983-3774, 983-3600. tfc

**HOUSE FOR SALE:** Owner will carry papers. Three bedroom, two bath, with fireplace and den. Concrete storm cellar, on double lot. 615 W. Miss. 983-3469. tfc

**FOR SALE:** Three bedroom brick house, prime location; standing brick fireplace; carpeted basement; large, carpeted patio, completely screened; two car garage with electric door opener; large utility room; excellent storage; see back yard to appreciate. Phone 983-5244 for appointment. tfc

**HOUSE FOR SALE TO BE MOVED:** 900 sq. ft. two bedrooms. Inside remodeled two years ago. Fully carpeted. Bedrooms and living-room paneled. Call 652-3488 after 5:00 p.m. tfc

**HOUSE FOR SALE:** Three bedroom, two baths; large den; large backyard; central heat; lots of kitchen cabinets; 18,500.00 983-3163 or 983-2162. tfc

**FOR SALE:** Nice two bedroom, living-dining room, den, carpeted, house on large lot with carport and small storage house 105 E. Hallie. Call after 6 p.m. Jamie Lewallen 983-3904. tfc

**FOR SALE:** Two bedroom, one bath, fully carpeted; garden; fenced back yard with garage spot; cellar. Shown by appointment, call 983-3444. 5-13c

**FOR RENT**  
For Rent — In Lockney, one and two bedroom apartments. Come by 108 N. Main or call 652-3813. Lfc

**HELP WANTED**  
HELP WANTED: City Maintenance man wanted for the City of Roaring Springs. Call 983-3131 mornings only. tfc

**WANTED — Part-time help.** Mim. 30 hrs. Boneing experience helpful but not necessary. Apply in person at Thomason Grocery, Lockney. L4-26c

**Addressers Wanted Immediately!** Work at home — no experience necessary — excellent pay. Write American Service, 8350 Park Lane, Suite 127, Dallas, TX 75231. 5-20p

**GARAGE SALE**  
GARAGE SALE — Eddie Foster, 3 1/2 miles west of Lockney on Highway 70, and 1/4 mile north. Lfc

**Neighborhood Garage Sale** — All day Saturday, 902 W. Houston, Floydada. L4-26c

**Family Garage Sale:** 12 miles southeast of Floydada at Lakeview Gin Office. Everything priced to sell even a 1/2 ton pickup camper and a house air conditioner. Friday 9 to 5, Saturday 9 to 5 and Sunday 1 p.m. to 5 p.m. 4-26p

**FLEA MARKET — 2323 Ave. K, Lubbock, Texas.** Over 200 booths. Open every Saturday and Sunday. Visitors welcome. 2323 Ave. K, Lubbock, Texas. 5-10p

**ESTATE SALE** April 28, Saturday Only 8 to 5, Furniture, appliances, dishes, linens, bedding, lawn mower, tools, everything goes. Leonard Smith 800 W. Georgia. 4-25c

**GARAGE SALE:** 816 S. 5th, north of Junior High Saturday, April 28, 9 to 5. 4-26p

### NOTICE

**FOR YOUR portable disc rolling needs call Lawson Farm Supply, Welding and Equipment. 983-3940, Floydada. tfc**

**WILL DO ALL Types of carpenter work.** Call 983-5201 after 5:30. tfc

**SEWING In my home.** Two days on some items. Paula Pauley 983-3542. tfc

**Have Information — Will Share Clubs and Organizations beginning to think about your 1979-80 programs consider a STEP program. Systematic Training for Effective Parenting. Excellent information for anyone caring for children — parents of children 0-18, teachers, sitters, grandparents, etc. Contact LaJuan Eddleman, Route 1, Silvertown, 847-2571. 5-3c**

**Have information-Will Share. Clubs and Organizations beginning to think about your 1979-80 programs, consider a STEP program. Systematic Training for Effective Parenting. Excellent information for anyone caring for children — parents of children 0-18, teachers, sitters, grandparents, etc. Contact LaJuan Eddleman, Route 1, Silvertown, 847-2571. L5-3c**

**Farms & Acre**  
WANTED TO BUY irrigated or dryland farm in Floyd or surrounding area. Write Box XRO, c/o Hesperian, Box 700, Floydada. tfc

**BUSINESS SERVICES**  
INSULATION  
Fire-Resistant. Installed and Guaranteed. MARR Insulation Co. Lockney 652-3593. Lfc

**C-D-J 66 7-day service, car wash, oil change. Gas service, U-haul rentals.** Located on Matador hwy. 983-2601.

**C-D-J INSULATION** can help save your dollars. For information call 983-2601.

**WE DO Painting, floor leveling, house blocking, roofing and remodeling.** We are now working Floydada Area. Contact Childress Bro. Collect 352-9563 tfc

**Minor repairs and tune up service on lawn mowers.** Call Whites Home and Auto, 652-2145. Lfc

**NOW OPEN A-1 Pet and Grooming professional grooming, all breeds-no tranquilizers 821 Broadway, Plainview, Texas 293-3557 tfc**

**MONTY'S AUTOMOTIVE OPEN FULL TIME Auto-repair-well motor repair 652-3543 U.S. 70 & FM 378, Lockney**

**WEED & INSECT CONTROL**  
Lawns \* Trees  
Alleys \* Fencerows  
Irrigation Wells  
Call Cecil Carthel 652-2136 or 652-3809 Lockney L5-6c

**your marketplace the WANT ADS**

**Shop Floyd County FIRST!**

### COW POKES By Ace Reid



"Wul, you're about as close to being a world's champion as you ever was!"

THIS FEATURE SPONSORED BY  
**Floydada Real Estate & Insurance Agency**  
AUTO, FIRE & FARM INSURANCE  
Jim Word — — — Phone 983-2360

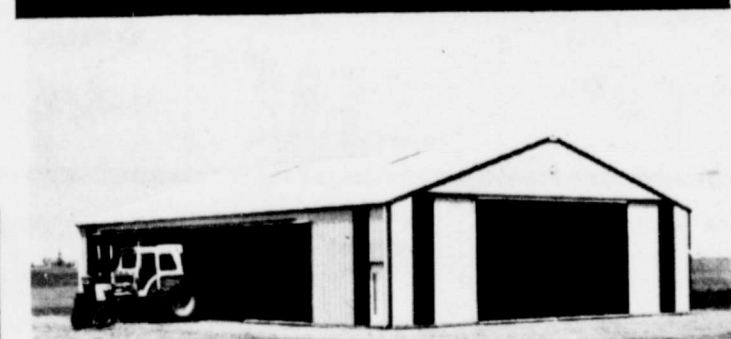
**DR. O. R. MCINTOSH**  
OPTOMETRIST  
316 S. Main Telephone 983-3460  
FLOYDADA, TEXAS

**Hollis R. Bond**  
Real Estate  
PHONE 983-2151  
107 S. 5th FLOYDADA...

**TURNER REAL ESTATE**  
983-2635 Farms \* Ranches Floydada, Texas

**J. P. WILLIAMS**  
Ph. 652-2326

**WEED CONTROL**  
ON LAWNS  
**INSECT CONTROL**  
ON TREES AND SHRUBS  
CONTROL OF  
**BINDWEED, RAGWEED, BLUEWEED & JOHNSON GRASS**  
ON FARMS  
C. A. LIC. NO. 22453 BUS. LIC. NO. 3106 LTFc



**MORTON BUILDINGS**  
For Information Call or Write. ....  
**MORTON BUILDINGS INC.**

Box 1928 Plainview, Texas  
Phone 806-293-4386

**SLEEP WHILE YOUR WANT ADS WORK.**

**ARTHUR B. DUNCAN ABSTRACT COMPANY**  
Abstracts - Title Insurance  
Agents for Stewart Title Guaranty Company.  
TELEPHONE 983-3167  
Office on South East Corner public square, Corner California and Wall, Floydada, Texas.  
"The Oldest Abstract Plant in Floyd County"

**WE WANT YOU TO KNOW —**  
We sell all kinds of Good year tires... tractor, auto, truck, a good tire, good service. Best deals in West Texas. Truck winch and hauling service. BABE'S SERVICE CENTER, Floydada. tfc

### FOR SALE

**DISPLAY**  
SPECIAL Under dash F.M. 8-track Pioneer Super Tuner with radio eject fast forward repeat. Loud, mute and distance buttons, with two tri-axial Jensen speakers, only used 5 months. Call Randy Ford 983-2948 Lfc

**FOR SALE:** 1 white gas stove. Used 3 months. \$165.00 Call 983-5193 after 5 p.m. 4-22, 4-26, 4-29p

**Parakeet and bird cage, also go-cart, call 652-2652. L4-29c**

**FOR SALE:** Custom built storage building, 7x8, wood built-in shelves, portable \$295. 983-5112 Floydada. tfc

**FOR SALE:** Rebuilt 1992 Chevrolet, Rebuilt 413 Chrysler well motors. Used 292 Chevrolet. Phone 983-2168 M&N Auto. Floydada TFC

**PIANO IN STORAGE**  
Beautiful spinet-concave stored locally. Reported like new. Responsible party can take at big savings on low payment balance. Write Joplin Piano, 1516 Valeska, Waco, Texas 76710. L4-26c

**FOR SALE:** Extra Clean, 1974 1/2 ton Chev. pick-up, low mileage, new tires. 983-3529. 4-29c

**BEDDING PLANTS Are Here**  
Flower & Vegetable SCHACHT'S Flower Jewelry & Gifts 652-2385 112 W. Poplar Lockney

**AMARILLO COIN & BULLION INVESTMENTS, INC.**  
Buy, sell or trade silver & gold coins. We have South African Krugerrands, Mexican 50 Pesos, American Gold. National Teletype Service. We guarantee to buy back anything we sell. 2300 W. 7th Amarillo, Texas Phone: 806-373-4102

**WANTED**  
RADIO SHACK DEALERSHIP Available in Floydada. Call collect Paul Crump 817-390-3606. 4-26c

**WILL DO HOUSE CLEANING.** Call 652-2769, ask for Francis Sepulveda. L5-3p

**WANTED: Roto Tiller Work**  
Free Estimates. 983-2347. tfc

**STORAGE SPACE**  
BOATS, FURNITURE, ANYTHING, ETC. BY THE MONTH OR SIX MONTH 10% DISCOUNT.  
**WEST TEXAS MINI STORAGE**  
983-3573 OR 983-2151

**Can You Use Some Extra Money Let Us Help!!!!**  
**WE BUY SCRAP IRON, OLD JUNKERS, AND FREE PICKUP**  
Call 983-5277

**TREFLAN**  
Check our Chemical prices, also we now have available Liquid fertilizer  
**Lone Star Chemical, Inc.**  
Office: 652-2761  
Deanie Henderson: 652-3434 LTFc

### For Sale

**MATTRESSES.** New or renovated. For appointment call City Trim Shop. 983-2332, Floydada. Tfc

**FOR SALE:** Country Club membership. 983-3451 tfc

**\$5.00 FOR EACH DOLLAR**  
In U.S. silver coins dated 1964 or earlier. Dimes, quarters, halves or dollars.  
Lloyd Wofford 652-2308, Lockney L5-10c

**FOR SALE — Fiberglass pickup cover, Long-wide bed. \$350.00 Call 652-2524. L4-29p**

**For Sale — Good upright Piano. 652-3417. L4-29p**

**SPRING CLEANING? Try Fuller Products.** Call Mrs. W.L. Carthel, 652-2674, L4-8, 4-15, 4-22, 4-29c

**FOR SALE — Electric range, portable dishwasher. 983-2726. tfc**

**FOR SALE:** 1/4 mile heavy six inch aluminum pipe. Call 983-3305. tfc

**FOR SALE:** Country Club Share. Call 983-3432. tfc

**SPECIAL PRICES — Steel Buildings — Several sizes with or without grain kits — Never erected (806) 647-4132. 4-26, 4-29c**

**FOR SALE:** Antique piano, station wagon, baggage carrier. 983-3310. tfc

**FOR QUICK SALE:** One large beige couch and few garden tools. 304 E. Georgia. Charley L. Berry. 4-29c

**FOR SALE:** Upright typewriter, good condition. Call 983-3973. tfc

**FOR SALE:** 26 ft. 1966 model Silver Streak travel trailer, good shape. \$4,000.00 983-5646. 4-29p

**FOR SALE:** Star Craft camper, sleeps 8, stove and ice box, \$1200.00 See at Don's Muffler Shop. t5-3c

**FOR SALE OR TRADE:** Like new model 70 Winchester 25-06-8 power weaver, call 983-3736 after 6:30 on weekdays. 4-29p

### CLASSIFIED RATES

**CLASSIFIED ADVERTISING RATE: 10 CENTS PER WORD FIRST INSERTION; 7 CENTS PER WORD EACH SUBSEQUENT INSERTION. MINIMUM CHARGE \$2.00. CLASSIFIED DISPLAY RATE: \$1.30 PER COLUMN INCH CARD OF THANKS: \$2.00.**

### AUTOMOTIVE

**FOR SALE:** 1973 Suburban Cheyenne Super. Four wheel drive, locking hubs. Call LeRoy Ratheal, home phone 697-2790, Shop 697-2728. tfc

**FOR SALE:** 1975 Chevrolet Silverado 45,000 miles, 454, \$15,100.00 or best offer. 983-5203.tfc

**FOR SALE:** 1976 Ford pickup 150. Ranger XLT; extra clean. 1970 model 5-10 Massey Ferguson Combine 20 ft. header. 806-983-3911. 4-29p

**For Sale:** Good 1962 Thunderbird. 32,000 miles. 652-3416. L5-3p

**For Sale — 1975 Ranger XLT** Pickup 47,000 miles. Excellent condition. Call 652-3694. L5-13p

**4 shocks for the price of 3.** Free installation. 123 W. Calif. tfe

**CARDS OF THANKS**  
We would like to express our appreciation to each person who helped make the Mize family Reunion such a memorable event.  
Clara and Albert Mize 4-26p

**THANKS TO everyone.** First to Joe Hayes and Keith Emert, the ambulance drivers. Cat and I are really grateful to Dr. Mangold, all the nurses, and our neighbors. My accident is not supposed to be very serious, but it is painful and time consuming. Cat and Walter Taack L4-26c

**cash in with a classified ad...**

**YOUR GARDEN**

**Roses Can Add Beauty Without Undue Effort**  
Sooner or later, everyone who has a garden thinks about growing roses. Unfortunately, many people don't ever get beyond the dreaming stage because they are overwhelmed by the thought that growing roses is beyond their ability.

**Howwash!** Certainly, there are the usual sorts of demands made by a living plant—proper soil conditions, regular fertilizing, sufficient water, good drainage, occasional pruning, a regular program of insect and disease control. And certain varieties do require special pampering. There are, however, hundreds of different varieties of roses, and you can easily find several that will suit your needs, tastes and maintenance requirements.

According to the American Association of Nurserymen, this is an excellent time to add fragrant, colorful rose bushes to your landscape. The nursery association is cooperating with other horticultural organizations in a nationwide "Year of the Rose" campaign in 1979, saluting that flower as a symbol of love, friendship and peace.

Although there are many varieties of roses, most can be placed into six basic classes. Hybrid Teas are hardy plants with long pointed buds whose blooms are noted for their fragrance and delicate color. Floribunda roses are known for their abundant flowers and adaptability to most any landscape purpose. Grandiflora roses combine the beauty of the Hybrid Tea with the free-flowering form of the Floribunda. They are generally taller and harder than the Hybrid Tea. Climbing roses are not a type of rose per se but include all varieties which have long shoots or canes that can be trained to many forms and purposes. Miniature roses are plants dwarfed in every respect, hardy, ever-blooming and used as potted plants both indoors and out. Finally, Shrub roses are a species of wild roses, extremely hardy, vigorous and easy to maintain.

Not only are there many kinds of roses, they may also be used in many different ways—to brighten a dull entryway, as a colorful border, climbing on a fence or privacy screen, growing in tubs to beautify a city garden, as a colorful foreground for an evergreen hedge, in a rock garden. Consult your local nursery garden center for the type of rose most appropriate to your particular needs and locations. Don't let the fear of growing roses keep you from enjoying their beauty and fragrant odor. A plant that has survived the rigors and perils of this world for 60 million years is far tougher than you would believe. Take advantage of this "Year of the Rose" and add the "Queen of the Garden" to your garden.



### 'Texas Conserve' Free Service

The Texas Agricultural Extension Service in cooperation with the Governor's Office of Energy Resources offers a free home energy payback analysis.

County Extension Agents and other groups in the county working with the Governor's Office of Energy Resources will be pleased to assist you. "You are encouraged to take this opportunity to identify cost-effective ways to save energy and money in your home. Information you provide and results of the survey are strictly confidential," agents note.

Texas Conserve is a computer program that calculates potential savings, or payback, from specific home energy saving actions. It estimates how quickly

different home energy conservation measures...like insulation, caulking and storm windows...will pay for themselves in lower home utility costs.

Local climate, utility rates and materials and labor costs are considered in the calculations.

The State of Texas offers this program. To receive the form for having an analysis of your home made, call the County Extension Office at 983-2806, or

the Texas Conserve toll free number 1-800-252-9361.

The questionnaire takes about 15 minutes to complete. Within 10 days after you mail the form, you will receive a computer printout. If you have any questions about the form or the printout, please call the County Extension Office or the toll free number.

Call 652-3318 for Beacon Classifieds

### Sunday Short Day: Only 23 Hours Long

Sunday will be — technically speaking — a 23 hour day. The last Sunday in April is the date when daylight saving time officially makes its debut.

Everyone who fails to run his or her timepieces forward one hour before retiring Saturday night runs the risk of being one hour late to church, the coffee shop, or wherever their first stop might be Sunday morning.

DST officially arrives at a.m. Sunday.

This means that daylight will arrive one hour earlier by the clock — Sunday morning.

The lost hour of sleep will not be recovered until the last Sunday in October, when standard time returns.

Shop  
Floyd  
County  
FIRST!

**Happy Birthday**

April 22 — Todd Hallmark, Kevin Evans

April 23 — Connie Vasquez, Joe Gonzales, Laura Davis, David Peralez, Mary Griffith, John Rodriguez, Louise Lopez

April 24 — Terry Taylor

April 25 — Robert Williams, Shanda Stapp, Martin Stoerner, Bill Evans, Peggy Bain, Mike Chandler, Bryan Smith, Ricky Lopez, Truett Bilbrey

April 26 — Melvin Bradley, Joe Ray, Harold Griffith, Jesus Martinez

April 27 — Lizzie Jack, Jerod Glasson, Belinda McCulloch, Ruby Kiser, Larry Don McCready

April 28 — Nora Bybee, Raz Ford, Ronnie Cunyus, Max Green, Margarito Arellano Sr., Gene Newton

**Happy Anniversary**

April 22 — Mr. and Mrs. Jessie Garza, Mr. and Mrs. Valeriano Diaz

April 24 — Mr. and Mrs. Romar Guerrero, Dr. and Mrs. W.J. Mangold

April 25 — Delbur and Bennie Mavat Rose

April 26 — Keith and Guinda Emert

April 27 — Roy and Sharon Kinard

Lockney  
Locals

Marjorie Holcomb entered Central Plains Hospital, last Thursday for minor surgery on her left hand. She was able to return home Saturday.

Nova Jean and Freddie Ivy of Manchester arrived by plan Saturday to visit her parents, Mr. and Mrs. Johns Cox. Freddy returned home Sunday. Nova Jean stayed on to be with her mother while her father is hospitalized in the Central Plains Hospital.

THE ILL  
Central Plains Regional Hospital, Plainview: Marjorie Holcomb, April 19; Dismissed April 21.

The first woman dental school graduate was Lucy Hobbs Taylor, who first practiced in 1861.

**Got Heating Or Plumbing Problems?**  
Call  
**HOLMES PLUMBING**  
AUSTIN OR STEVE  
983-2251  
6:30 - 9:30 a.m. and  
5:30 p.m. Until?

**BUDDY'S**

STORE HOURS  
Mon.-Sat., 8 a.m. to 8 p.m. Sun., 9 a.m. to 8 p.m.  
VALUES EFFECTIVE THRU WEDNESDAY MAY 2, 1979  
We Reserve The Right To Limit Quantities

42 OZ. MRS. TUCKER'S  
**SHORTENING**  
79¢ WITH ONE FILLED S & H BONUS BOOK  
\$1.29 WITHOUT

JUMBO ROLL BRANNY  
**PAPER TOWELS**  
19¢ WITH ONE FILLED S & H BONUS BOOK  
69¢ WITHOUT

1 1/2 LB. SOFT N LITE  
**BREAD**  
2/49¢ WITH ONE FILLED S & H BONUS BOOK  
2/99¢ WITHOUT

1/2 GAL. BUDDY'S  
**MILK**  
39¢ WITH ONE FILLED S & H BONUS BOOK  
99¢ WITHOUT

WE GIVE GREEN STAMPS 983-3149 220 SOUTH 2nd WE GIVE GREEN STAMPS

**DOUBLE ON WEDNESDAY**

15 OZ. BUSH'S OR SHOWBOAT  
**PORK & BEANS**

SPAGHETTI

WHITE OR GOLD HOMINY

PINTO BEANS

CHILI HOT BEANS

BLACKEYE PEAS OR MIXED GREENS  
MIX OR MATCH

5/\$1.00

15 OZ. BLACK FLAG ANT & ROACH SPRAY \$1.59  
\$2.29 VALUE

5 OZ. JOHNSTONS HOT FUDGE OR BUTTERSCOTCH TOPPING 3/\$1.00

10 LB. SMOKEY BEAR  
**CHARCOAL**  
\$1.29  
\$1.69 VALUE

LEAN GROUND CHUCK \$1.99 LB.

WHOLE PICNICS \$1.09 LB.

U.S.D.A. TENDERIZED STEAK \$2.79 LB.

U.S.D.A. BONELESS TOP ROUND ROAST \$2.29 LB.

SLICED SLAB BACON \$1.49 LB.

12 OZ. JENO'S "FLAT" PIZZAS \$1.09

LONGHORN "CHEDDAR" CHEESE \$1.99 LB.

24 OZ. COUNTRY MAN PORK SAUSAGE \$1.99

U.S.D.A. BEEF SHORT RIBS \$1.39 LB.

10 COUNT GLAD LARGE GARBAGE BAGS 79¢  
\$1.19 VALUE

100 COUNT 5 OZ. REFILL DIXIE CUPS 97¢  
\$1.35 VALUE

15 OZ. FAULTLESS SPRAY STARCH 69¢  
85¢ VALUE

8 OZ. SEVEN SEAS CREAMY ITALIAN, GREEN GODDESS, OR CAESAR DRESSING 59¢

20 COUNT GLAD MEDIUM GARBAGE BAGS 79¢  
\$1.29 VALUE

80 COUNT GLAD SANDWICH BAGS 39¢  
65¢ VALUE

10 LB. SMUCKERS GRAPE JAM OR JELLY 89¢  
\$1.49 VALUE

10 OZ. MOUNTAIN PASS ENCHILADA SAUCE 45¢ VALUE

37 SQ. FT. REYNOLDS WRAP 99¢  
\$1.43 VALUE

"TWIN" 1 LB. CHIFFON SOFT MARGARINE 95¢ VALUE

1 LB. HILLS BROS. COFFEE \$1.89  
\$2.89 VALUE

1 LB. ZESTA SALTINES 57¢  
71¢ VALUE

12 OZ. NABISCO VANILLA WAFERS 2/\$1.29  
89¢ VALUE

12 OZ. CAN PEPSI COLA OR MOUNTAIN DEW 6/\$1.29  
29¢ VALUE

69¢ SIZE "SNACK" FANTASTIXS 2/99¢

1/2 GAL. BELL MELLORINE 89¢  
\$1.29 VALUE

4 COUNT DEL MONTE PERKY PIES \$1.15 VALUE

13 OZ. PET SKIM MILK 3/\$1.29  
59¢ VALUE

12 COUNT KERR REGULAR JAR LIDS 47¢ VALUE

9" JOHNSTONS GRAHAM CRUST 89¢ VALUE

22 OZ. "FOR DISHES" DERMASSAGE 69¢  
GOOD AT BUDDY'S  
EXPIRES 5-2-79 89¢

5 LB. C & H SUGAR 99¢  
GOOD AT BUDDY'S  
EXPIRES 5-2-79 \$1.29 WITHOUT

**recollection**

Felicia Applewhite had a mule killed by lightning on the road near the Bill... "All this was open prairie... fences, no roads. The mules... and other range stock were... here.

...that the jaw teeth of an... were loosened when the animal... by lightning. The jaw teeth of... were loose. He also had a... from his shoulder to his... killed several through...

...Koger and Dad had a bull each... weighed around 1,200 pounds... had a big old bull that weighed... pounds or more. The Prater bull... either of the other two... ship either of them came up from... range to water at our mud tank... fenced water corral.

...big bull was fighting our bull... him backwards. John... him ran into the side of the... getting him with his horns... but he bellowed and ran through... sheep fence we had around...

...I was leading an old horse, or... lead him. I was on a tractor... behind the tractor. Hitched... was a fuel wagon. The horse... to the rear of the fuel wagon... I want to lead. He just set back... me drag him.

...I took my catch rope, pulled it... the fork of the saddle and fixed... crupper. He was an old buggy... didn't mind. I then tied the... shorter than the reins... started up real fast, he set back... almost made him jump into...

**The Lockney (Floyd)**

**TCJS**

**D**

...O. Viterna, acting executive... of the Texas Commission on... changes" an alternate plan... the Floyd County Jail.

...Stiles, a Lubbock architect who... working with Floyd officials... project, flew Wednesday to... confer with Viterna.

...Smith also visited with Bob... head of the Criminal Justice... and Ned Miller, who is in...

**John Bickley Gets**

...Bickley of Lockney, a... booster of Texas Tech athle... honored Wednesday night at... Baseball Banquet. Bickley re... massive plaque, presented by... of the 1979 Red Raider... team, recognizing his support...

...ONE MORE?... John F. Bickley... room wall for another award,... booster award he received Wedne...