

# The Lockney Beacon



Volume 78 Lockney (Floyd County) Texas 79241 Sunday, August 5, 1979 20 Pages in Two Sections Number 62

20¢ Per Copy

## NOBODY ELSE FIRST

### Longhorns Picked Last

Football fans are not sure what it means, but the 1979 Football magazine has the Longhorns finish last in District 4-AA this fall — and all the other teams in the district in a four-way tie.

The magazine's list of Class AA schools, Tulla is fifth, Friona fourth, and Abernathy ninth. Floyd County school is mentioned in the magazine's 1978 season, but the Longhorns' 1978 season, the magazine says "Last year's Longhorns wouldn't let any team score. Unfortunately, though, they didn't score either..."

The magazine says the Longhorns were picked last in the district last year offensively this year.

ing boys to watch" list. District 4-AA is described in the area grid magazine as "super tough".

The Longhorns start two-a-days on August 13. Shoes will be issued on Wednesday, August 8. The 'Horns open the season September 7 at Post. Their first home game is the following Friday, when they host Friona.

| LONGHORN SCHEDULE |                  |
|-------------------|------------------|
| Sept. 7           | — at Post        |
| Sept. 14          | — Friona here    |
| Sept. 21          | — at Olton       |
| Sept. 28          | — at Littlefield |
| Oct. 5            | — Seymour here   |
| Oct. 12           | — Dimmitt here   |
| Oct. 19           | — at Floydada    |
| Oct. 26           | — Abernathy here |
| Nov. 2            | — at Tulla       |
| Nov. 9            | — open           |
| Nov. 16           | — Idalou here    |



Some Garden!

LEST YOU THINK that all the vegetation in the Lockney area looks like the picture of the haled-out cotton in last Thursday's Beacon, we submit this picture of Thurman and Lynna Davis in the garden at their home, 111 S.W. 7th. The Davises have some of the best squash around, as the photographer will attest. [Thanks, Thurman and Lynna.] [Staff Photo by Jim Huggins]

### Terrell Picked For Bowl Game

Jeff Terrell has been chosen to play in the 30th Annual Greenbelt Bowl All-Star Football Classic in Childress Saturday (August 11).

He was selected because of his outstanding performance as a member of the Lockney High School Longhorns in 1978. College recruiters from throughout Texas and Oklahoma will be in Childress for the event. Forty-four boys participated in the game in 1978 and twenty-six were offered scholarships.

His queen nominee for this event is Gay Frizzell. He reported Saturday and will be in training for a week prior to the game. The queens will be judged Friday night with a winner announced at halftime of the game. Kickoff time for the game will be 8 p.m. Saturday.

### Reception Today For Co-Op Manager

The Board of Directors of the Lockney Cooperative will host a reception Sunday, Aug. 5 at the Co-op main office for Mr. and Mrs. Rainey Davis and Mr. and Mrs. Gail Kring. The reception will last from 2 p.m. until 4 p.m. Everyone is invited.

## Ronee Thornton Wins All-Around Horseman Award At State 4-H Show

Ronee, 17, daughter of Mr. and Mrs. Ronnie Thornton of Providence, accumulated more points than any other youth at the state show by placing

consistently in the performance events. She placed fourth in Showmanship, third in Western Pleasure, and third in Western Horsemanship, with her five-

year-old gelding "Afton Socks." There were more than 100 entries in each class at the state show.

It was only the third time in the history of the Texas show that the prestigious all-around title was won without halter points.

Although Ronee failed to place in the halter class at the state show, she won the Yearling Halter Futurity with a filly she raised herself, "Call Me Farah," out of Ronee's first who mare, "Ruby's Brandy."

Ronee, who will be a senior at Lockney High School this fall, is a member of the Lockney 4-H Club. She represented Floyd County at the District II 4-H Horse Show, where she qualified for the state competition.

As a state winner, Ronee is eligible for the Southern Regional 4-H Horse Show next week in Jackson, Mississippi, but she had to decline the invitation to compete in that event.

At Odessa, she was interviewed by a representative of "The Horseman" magazine. The article is scheduled to be published in the magazine's October edition.

Jay Waller of the Floydada 4-H Club participated in the Yearling Halter Gelding Futurity at the state show.

## Hammitt Chose The Shortest Line, Became A Chemical Engineer



Hammitt productions manager at Pittsburgh Paint and Plate Glass

work. That is about all the work that we did to pay college expenses other than the work I did on the farm in the summer time," he says.

Many of the chemical engineering students were married. As a result there was a "wives' club" that planned parties and other group activities for couples.

After four and one-half years at Tech and with the receiving of his degree, he began work in Corpus Christi with Pittsburgh Paint and Plate Glass. The company had three divisions — plate glass, paint, and chemicals.

"I have always been in the chemical division. That, of course, has very little to do with plate glass. I know very little about glass," he explains.

The company makes a float glass. From a furnace, the glass is poured out on a bed of molten tin and gradually cooled. It is easy to remove from the tin after it cools. This glass is used for everything — plate glass, aircraft, automobiles and other uses.

"For windows all you have to do to it is cut it to the right size. In the old process, they had to shine and rub it to make it a smooth surface. It is well formed now when it comes off the tin. For automobiles it is necessary to reheat and form the glass into a curve and laminate it.

"Since I work in the chemical division, we produce industrial chemicals such as agricultural chemicals. We sell products to Monsanto and Lasso and such companies," he explains.

While in Corpus Christi, he was promoted to production superintendent.

Most of their products then and now go into other chemicals.

A hurricane with winds exceeding 175 miles an hour caused a shutdown of the plant while he worked in Corpus Christi. A "lot of water was sucked out" of the company's ship channel.

After five years in Corpus Christi, Hammitt was moved to Pittsburgh in a technical job involved with safety problems related to sales, but not the same as sales.

"In other words, if a customer wanted to use one of our products, I would go in and show him how to use it safely, since most of our products have hazards. I spent about three years at that," he recalls.

He was in Pittsburgh about four years. Part of that time he worked as assistant product manager, before he went to sales.

"Being involved with customers and the product really interested me in sales. I had never thought of it before. This led to our move to Minneapolis and sales."

"In Minneapolis, it was a traveling job. I covered northern Wisconsin, Minnesota, and eastern Iowa, contacting paper companies. Our products go into paper making — the pulping of timber. Chlorine is used in bleaching. One of our chemicals, sel, brightens and makes paper white," he explains.

Almost any tree is used in paper making. Any of the hard woods make good paper.

Nearly all the trees in the area where Hammitt worked were second crop trees. In the early 1900's all the trees had been taken to be used for lumber.

Since it takes 15 to 20 years to grow a tree for pulp, some regulation is used in protecting trees. Much of the paper industry has moved to the South, to Alabama and Georgia. There is no government control over privately owned lands, but the government owns a lot of land it leases or sells for tree harvest.

Some conservation in trees used for paper is now practiced by using parts of the tree that were not used formerly. Now, the part not used for paper making is not dumped in streams, causing pollution.

Also, a new process used in mining iron ore, employing a chemical made at Pittsburgh Paint, was discovered in Michigan.

Following Pittsburgh, Hammitt spent a year in Philadelphia. The company's interest in Philadelphia was in the use of their chemical in the making of vinyl for slat covers in linoleums for floor covering. The Pittsburgh Company produces the emollient.

After the year in Philadelphia, Hammitt was back again in Pittsburgh in the anti-freeze division.

Someone asked him if he handed out samples to his friends. He laughed at that and announced, "We get ours at K-Mart."

As Pittsburgh products manager, he gets involved with sales, coordinating all the activities. Two antifreeze plants — one at Beaumont and one in Puerto Rico — are branch plants of Pittsburgh.

"As product manager for organic chemicals, which are basically chlorinated solvents, we sell to dry-cleaners. The question was asked as to how dry-cleaners stay in business. "Four or five years ago dry-cleaners went out of business because of wash-and-wear, but the last couple of years, the blends of natural fibers are much more popular, and dry-cleaning is doing a real good business. In fact, I was in Chicago, before I came here, at a dry-cleaning convention — "clean 79". All the dry-cleaners seem to be doing well. They are buying new equipment and are expanding operations.

"Wool or cotton with polyester, with accent on wool, seems to lead. Dry-cleaning caters to people who normally wear suits and go to work looking sharp.

"There are more and more women going into jobs. Women make up 40 percent of the work force today. It is expected to go to 50 percent. That is good for dry-cleaning because they don't have as much time for wash and wear. There are not a lot of choices, if you want to look nice. Wash and wear doesn't look as nice as a professional job



Ronee and 'Afton Socks'

### Stenholm To Visit Floyd County

Congressman Charles Stenholm will meet constituents and answer questions Wednesday morning in Lockney.

The 17th District U.S. Congressman

is scheduled to appear at the bank at 10 a.m. Wednesday (August 8).

Stenholm will meet with the Floydada Rotary Club at the noon luncheon Wednesday at Massie Activity Center.

### Make Senior Picture Appointments Now!

It's time for members of the Lockney High School Class of 1980 to make appointments for their class picture. Wilson Photography will be photographing the seniors now through

August 31, it was announced Friday. Seniors are urged to call 652-3731 soon to make their senior picture appointments.

### Earl Broseh Completes Auctioneering School

Earl Broseh of Lockney has successfully completed all requirements of Summer Session of Gregg School of Auctioneering and is now qualified to cry and completely manage any type of auction sale, according to an announcement by the Plainview auctioneering school.

Col. Cecil Rhoades of Marble Falls and Dr. Bob Kropp of Oklahoma State University in Stillwater assisted Col. Gregg in instructing the students in all phases of auctioneering and animal evaluation.

Col. Kenneth Gregg awarded students diplomas in a recent ceremony.

The winter session of Gregg School of Auctioneering will be held December 28 through January 4.



PITTSBURGH HOME of Larry and Sandra Hammitt.

See Hammitt, Page 2

Public Service of NRTA-AARP Crime Prevention. THAT'S THE ONLY WAY TO REDUCE CRIME - GET MORE CITIZENS INVOLVED AND REDUCE CRIMINAL OPPORTUNITY.

Sun Vale, Sliced Frozen Strawberries 3 \$1.10-oz. pkgs.

Triple the Difference. Come into Piggy Wiggy and buy 25 different grocery items, any items you wish except for meat or produce, since quality and price varies from company to company. Then compare our prices on those items at any other supermarket in town. If you find a lower total, bring in your Piggy Wiggy card and we'll pay you TRIPLE THE DIFFERENCE IN CASH! Now that's a serious money saving offer!

USDA Grade "A" With Backs and Giblets. T FRYERS 48c/lb.

Bologna Cheese Slices 4 6-oz. pkg.

Pies 4 6-oz. pkg.

Vegetable Oil 24-oz. bot.

Cookies & Log 3 7 1/2-oz. pkg. FOR

# Thunderbirds To Perform Aug. 5 At Reese Open House

The U.S. Air Force Thunderbirds flying team will return to the South Plains Sunday to take part in the annual Reese Air Force Base Open House.

Headlining the Open House, the famed aerial demonstration team comes back to the South Plains area with a new show featuring two solo performers as well as the traditional four-ship precision flying team.

Guiding the six-man team to Reese will be commander and lead pilot for the Thunderbirds, Maj. D.L. Smith. The major is flanked by Capt. Ron Maness, left wing, and capt. Jim Latham, right wing. Completing the formation team is Capt. Jim Coziar, flying in the slot position.

The Thunderbirds will open their show at 3 p.m. Sunday with the classic four-plane launch. For the next 40 minutes, Open House visitors will be treated to precision flying at its best.

Striking overhead at speeds nearing 600 m.p.h., the team will perform intricate maneuvers, often with no more than three feet of space between the wingtips of the red, white and blue T-38 Talon jets.

In between formations by the main group, the two solo pilots will make exciting passes before an anticipated overflow crowd.

Following the show, the Thunderbird pilots will sign autographs and talk with Open House visitors at planeside.

The Thunderbirds are in their 27th season of flying air shows. They have performed at more than 2,245 shows in the U.S. and in 45 foreign nations. More than 136 million people have watched their performances.

While the flying team is not performing, there will still be plenty of action in the skies above the base Saturday and Sunday as the U.S. Navy Leapfrogs Parachute Demonstration Team puts on a skyborne display of freefall parachuting.

The Leapfrogs are assigned to the Navy's Special Warfare Group One at San Diego, Calif. They will perform

saturday at 3 p.m. and Sunday at 1 p.m., just before the Thunderbirds.

All team members are selected from the worldfamous underwater demolition "frogman" teams or the elite SEAL's.

During their Reese show, the Leapfrogs will perform the aerial acrobatics and precision free-fall parachute techniques used by members of the UDT and SEAL teams during combat airborne infiltration operations.

For the convenience of the viewing audience, the Leapfrogs attach colored smoke canisters to their boots and climb to an altitude of 12,500 feet (two miles) above the demonstration landing area. Their show emphasizes split-second aerial maneuvers and landing accuracy.

A jumper can control his freefall rate of descent from a relatively slow 120 m.p.h. to a breathtaking head-down speed of 220 m.p.h. by changing his body configuration with his arms and legs. After free-falling for approximately 60 seconds, the Leapfrogs open their parachutes and three seconds later their rate of descent slows to 5 m.p.h.

By using his rectangular-shaped parachute like a glider wing, a jumper can maneuver himself at speeds up to 35 m.p.h. to a stand-up landing at a speed of 2 m.p.h. in the center of the drop zone's target panel.

Following each show, the Leapfrogs will be on hand to sign autographs and to describe first hand to their audience the art of parachute jumping.

Other highlights of Saturday's activities begin with a civilian aircraft fly-in from 9 a.m. until noon. A chili cookoff will run from 10 a.m. until noon, followed by an Oil Fiddlers contest scheduled from 2 p.m. to 4 p.m. The day winds up with a barbecue dinner from 6 p.m. until 9 p.m. and a street dance from 9 p.m. until midnight.

Highlights on Sunday, in addition to the 3 p.m. performance by the Thunderbirds, will be the U.S. Air Force Drill Team from Washington, D.C., and the 539th Air Force Band, from Lackland AFB, San Antonio.



**TOUCHDOWN** — A member of the Navy parachute team Leapfrogs hits the target panel squarely during an earlier demonstration of precision parachute

jumping. The jumpers increase their speed to 220 m.p.h. and then slow down to less than 5 m.p.h. for a stand-up landing. (U.S. Navy Photo)

## Floyd Philosopher Ponders The Crisis Of Confidence In Government

Editor's note: The Floyd Philosopher on his Johnson grass farm on White River tackles the confidence problem this week, sort of.

Dear editor:  
As though the energy shortage wasn't enough of a problem, we now have a shortage of confidence, we've been told.

We've declared war on energy but to declare it on confidence too and try to fight two wars at the same time may be more than the government can handle. Windfall tax money will go just so far.

Therefore it looks like we'll have to tackle the confidence problem on our own without tax support. Right off I can tell you one cause of it.

It's the filing system used by the television industry.

For example, an expert economist looks into the camera and tells us we're in a recession. Then some smart-alec in the TV studio digs back in the files and runs a shot of the same guy three months ago telling us aren't going to

have a recession.

Or a politician appears on the screen saying we've got to have gas rationing, followed by a film of him a few months saying under no circumstances will he support gas rationing.

This may be amusing but it sure plays havoc with confidence.

If Congress wants to help restore confidence in this country, not to mention confidence in Congress, it ought to pass a law prohibiting television stations from re-showing a news film or any part of it any sooner than five years after it's first shown.

How are we going to maintain confidence in our leaders when they're shown saying one thing today and another next month? Such confusion has got to be stopped. Don't the TV people know that sometimes confidence is based mainly on forgetfulness?

And another thing, why hasn't Washington required the installation of thermostats in air-conditioned automobiles so they can be turned up too?  
Yours faithfully,  
Floyd Philosopher

## Lockney General HOSPITAL REPORT

July 19 to Aug. 2  
Beatrice Collis Lockney adm. 7-11 dis. 7-19.  
John H. Turner Lockney adm. 7-16 dis. 7-25.  
Victoria Escalado Crosbyton adm. 7-16 dis. 7-19.  
Marie Leach Lockney adm. 7-18 dis. 7-23.  
Ruby Muncy Lockney adm. 7-18 dis. 7-30.  
Lydia Davila Pu adm. 7-19 baby boy Demetris Jr. born. 7-19. dis. 7-21.  
Joan Rogers Lockney adm. 7-19. dis. 7-24.  
Mary Fierro Turkey adm. 7-19 baby girl Alma born 7-19. dis. 7-21.  
Petra Trevino Floydada adm. 7-19. baby boy Raul Fr. born. 7-20. dis. 7-22.  
Pablo Guzman Floydada adm. 7-20. dis. 7-24.  
Mattie Jameson Floydada adm. 7-25 dis. 8-1.

Ethel Frizzell Lockney adm. 7-26 continues care  
Marsha Green Silvertown adm. 7-26 - dis. 7-31.  
Guy Sams Lockney adm. 7-27 - continues care  
Adela Martinez Lockney adm. 7-29 baby boy Javier born 7-29 - dis. 7-31.  
Delfina Caballero Petersburg adm. 7-30 - continues care  
Bertha Zapata Pu - Adm. 7-31 - baby girl Jennie born - 7-31 - dis. 8-2.  
Janie Santos Floydada adm. 7-31 - baby girl - Tori born 7-31 - dis. 8-2.  
Santos Gonzales Lockney adm. 7-31 baby boy Anthony born 7-31 - dis. 8-2.  
Jewell Rigdon Lockney adm. 8-1 - continues care  
Cecil Price Quitaque adm. 7-21 dis. 7-22.  
W.T. Cooper Lockney adm. 8-1-79 continues care  
Eryn McMillian Guyman Okla. adm. 8-1 continues care.  
David Perez Pu - adm. 8-1 continues care.

### Happy Birthday

Aug. 5 — Earl Broseh, Troy Turley, Mary Thomason  
Aug. 6 — Debbie Rodriguez, Jack Gibson, Andy Alaniz, J.V. Martin, Agapita Ramirez, Beatrice Martinez, Verdie Smith, Aruto Mata  
Aug. 7 — Dee McPherson  
Aug. 8 — Tina Hernandez, A.W. Auld, Elsie Clark, Oscar Palomin Sr.  
Aug. 9 — Emma Araujo, Wanda Zachary, Ramon Ortegón, Wesley Teeter  
Aug. 10 — Robert Delgado Sr., Roy Holly, Wayne Moseley, Michael Carthel, Beulah Steen, Pauline Gonzales, Carson Pierce, Rogelio Guerrero, Rachel Masten  
Aug. 11 — Jean Griffin, Sonia Salinas, Alicia Sepulveda, Valerie Isom

### Happy Anniversary

Aug. 5 — Bob and Doris Jarrett  
Aug. 6 — Gene and Virginia Owens  
Aug. 7 — Mr. and Mrs. Ronnie Roberts  
Aug. 8 — Byron and Patsy Ford, Mr. and Mrs. Oscar Palomin  
Aug. 9 — Tommy and Louise Weathers  
Aug. 10 — Frank and Ora Brown  
Aug. 11 — Mr. and Mrs. Silverter Garcia, Mr. and Mrs. Elmo Savage

## Upcoming Area Events

**Plainview**—All booths for the 1979 Running Water Draw Arts & Crafts Festival have been assigned, according to Festival director Rob Strong. The three-day show, October 12-14, features the work of 125 artists and craftsmen from Texas, Oklahoma, New Mexico, Colorado, Arizona, Missouri, and Ohio. Proceeds benefit Plainview Rotary Club and Llano Estacado Museum.

Applications for a waiting list are being accepted. Any artist or craftsman who would like more information can contact Strong at Wayland College, Plainview, Texas 79072.

Silvertown Fire Department will sponsor a Slow-Pitch Baseball Tournament in Silvertown August 17-18-19, 1979. Entry fee will be \$60.00 plus two balls, and all proceeds of the tournament will be used to help defray the cost to the fire department of installing the cable television storm warning system and balance due on the new fire truck.

Entries may be mailed to Emmett Tomlin, Jerry Patton or Anthony Kinigery in Silvertown. For further information, call Jerry Patton at 823-2125.

Trophies will be awarded to the winning teams.  
A concession stand will be provided.

Entrants for the Canyon Open Tennis Tournament, to be held on the West Texas State University campus Aug. 10-12, are now being accepted, according to Todd Reed, the organizer for the event.

Entries must be received by Aug. 8 for consideration. A \$5 fee will be assessed to persons entering singles matches and a \$10 fee for each team in the doubles.

Junior matches will start at 9 a.m., Aug. 10, with adult matches scheduled to begin at 5 p.m. that day.

There would be A and B division in the men's and women's matches. Experienced players would be placed in the A division, Reed said, with beginners going to the B division.

Matches will be held in the Men's and Women's singles and doubles, Men's Over 35 singles and doubles, Men's Over 45 singles and doubles, Women's Over 35 singles and doubles and mixed doubles matches in the A and B divisions.

In the Junior category, matches will be played in the Under 12, Under 14, Under 16 and Under 18 year old brackets, singles and doubles.

For more information, contact Todd Reed at Box 1006, W.T. Station, Canyon or telephone 655-3086.

## High Plains Water Conservation District Board Sets Meeting For Aug. 6

During their next regular meeting at 10:00 a.m. on Monday, August 6 in the Lubbock offices, the Board of Directors of the High Plains Underground Water Conservation District will consider the possibility of providing support data, on the depletion that occurs of underground water used in agriculture operations, either to landowners or tax assessors for use in appraising agricultural land.

Texas House Bill 1060, which passed during the last session of the legislature, provides guidelines for appraising agricultural land. The bill includes a provision for deduction, as a fixed expense, the depletion of underground water used in agricultural operations. The bill also stipulates how the cost depletion of irrigated lands should be calculated.

The High Plains Water District has been providing the necessary figures to support Federal Cost-In-Water Income Tax Depletion claims as a service to the District's area landowners since 1965.

The District has an extensive system of record keeping and data retrieval. The Board is anticipating requests from the soon to be established county-wide appraisal districts for data on which to calculate these depletion allowances for appraising the value of agricultural land. Board Members will discuss possible contractual stipulation or other options versus costs in providing this information to assessment offices. They will examine procedures and expenses involved in preparing the additional needed data which must be available next year when taxing entities will begin appraising agricultural land on its productivity rather than its market value.

In other business the Board will consider adopting a resolution to all District Counties to participate in each county's appraisal district, and they will consider testimony on the possible need for a rule requiring the installation of check valves on certain water distribution systems.



By examining the skeletons of whales, scientists know the ancestors of these animals once lived on land.

## Hammitt From Page One

of dry-cleaned clothes.  
"Also, with the wives working there is more money to spend. Even with the economy as it is today, there is a disposable income. Disposable income is a sort of an arbitrary number by statistics based on the average family. The government has the figures."

Chlorinated solvents are marketed by the Pittsburgh Company in England, Germany and France.  
"I visit these distributors and contact potential customers. The job I have is world-wide marketing of our products, so I get involved with other countries although our products are sold in the States."

"The European economic state is very similar to the United States, but demand is not as large. Americans still use more products than anybody else, per capita and total too."

"The American people are more wasteful. There is no doubt about that. Europeans can't understand why we waste so much gasoline and energy. They pay \$2.50 for a gallon of gasoline. Their tax is 30 cents to a dollar per gallon."

"Everything is more expensive there, with the devaluation of the dollar. I paid anywhere from \$80 to \$120 a night for a single-bed hotel room. Sometimes I'd get breakfast, which was coffee and a roll. Anything in the States is cheaper than in Europe," he says.

When he was first in Pittsburgh, he traveled by airline much of the time. He says he never had anything drastic like an engine falling off, but he remembers

incidents.

Once when he was in Newark, New Jersey, a lady came in and sat down in a little while, people around asking for her name. "I didn't know who she was," she said.

"Finally I asked her name and she said she was from Newark, who lives in the city and wanted to know if she had seen her quite a few years since then — a well-known name."

"Again, recently I was in Washington, D.C. at an international Commission hearing. I was one of those garages where they park the car."

"When I came for my fifteen or twenty minutes, I went up and down the stairs every where. The car was called the police. For anything for about three days, I came from the Washington area stating my car had been in an accident. I was to represent the case. Finally, my car was known who stole it. I had drugs. He had stolen the jack and everything of the back insurance company."

Following many miles of travel, and Larry Hammitt is still the one that employed him when he got out of college.

## Floyd County Gets Booze Rebate

Floyd County received a check for \$235.83 for its share of the tax revenue from the sale of mixed drinks in the county, according to state comptroller Bob Bullock.

The county collected a total of \$1572.19 in tax revenue for the second

quarter of 1979, and the percent of the amount received.

Taxes collected in the statewide were about \$2 million, Bullock said. The state collected \$1 million during the same



"I'm beginning to see why this is known as a tough course."

★ TEXAS PRESS MEMBER 1979 ASSOCIATION

THE LOCKNEY BEACON (USPS 317-200) BOX 187 LOCKNEY, TEXAS 79241

Published each Sunday and Thursday at 201 Main, Lockney, Texas 79241. John C. Huggins, publisher; Jim Huggins, editor. Second-class postage paid at Lockney, Texas 79241. Subscription rates: Local \$10.50 per year, out of state \$12.50 per year. Postmaster: Send address changes to above address.



RONEE THORNTON, Texas 4-H Champion

## BEEF-YOUR BEST BUY!

McSAVER HAS FOUND THE BEST STEAK SPECIAL JUST FOR YOU! SO INVITE THE FAMILY FRIENDS AND HAVE A GREAT STEAK COOK-OUT AT A GREAT PRICE! IT IS THE TIME TO UP YOUR GET!



THRIFTWAY STORES SELL & FEATURE ONLY QUALITY AMERICAN GROWN GRAIN FED BEEF, PORK AND QUALITY POULTRY!



QUALITY GRAIN FED BEEF

## ROUND STEAK

GRAIN FED BEEF TENDERIZED STEAKS ..... LB. \$2.99  
GRAIN FED BEEF Round Chuck ..... LB. \$1.99  
GRAIN FED BEEF LEAN LOIN TIPS ..... LB. \$2.99

## HEALTH & BEAUTY

ADORN NON-AEROSOL HAIR SPRAY 8 OZ. BTL. \$1.99

REG./UNSCENTED DRY IDEA ROLL-ON DEODORANT 1.5 OZ. BTL. \$1.99

TONI HOME PERMANENT GENTLE/REGULAR SILK WAVE EA. \$2.99

## DAIRY VALUES

CORN OIL MARGARINE MAZOLA QTRS. 1 LB. BOX 69¢

ENTRY ST./BUTTERMILK ALLS BURY 239¢  
SCUITS 7 1/2 OZ. CANS

AMERICAN/PIMIENTO/SWISS KRAFT SINGLES 12 OZ. PKG. \$1.99

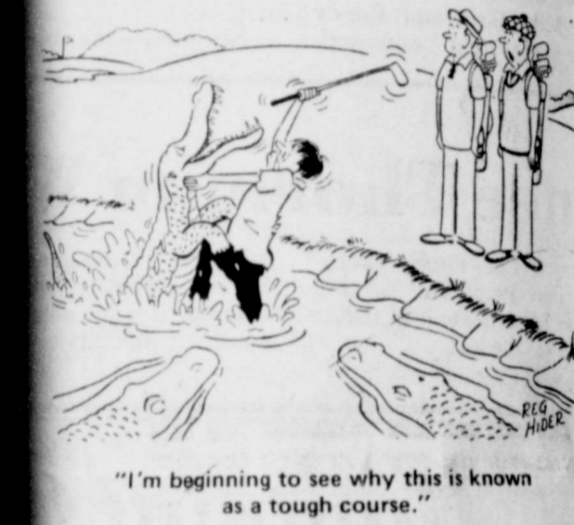
Quality Cheddar STAGE CHEESE 24 OZ. CTN. \$1.99

## PAG

clothes. The wives working there to spend. Even with the money today, there is a time. Disposable income in arbitrary number by on the average family. It has the figures. Solvents are marketed by Company in England, France. distributors and contact mers. The job I have is marketing of our products, and with other countries products are sold in the mean economic state is the United States, but as large. Americans still acts than anybody else, total too. mean people are more is no doubt about that. I understand why we gasoline and energy. for a gallon of gasoline. cents to a dollar per is more expensive there. ation of the dollar. I paid \$80 to \$120 a night for a room. Sometimes I'd which was coffee and a in the States is cheaper he says. first in Pittsburgh, he ne much of the time. He had anything drastic like off, but he remembers

County Gets Booze Rebate

received a check for share of the tax revenue of mixed drinks in the ng to state comptroller quarter of 1979, and was percent of the amount collected. Taxes collected on state-wide were about \$1.2 million than was collected in the Bullock said. The state collected a total of revenue for the second



"I'm beginning to see why this is known as a tough course."

TEXAS PRESS ASSOCIATION MEMBER 1979

THE LOCKNEY BEACON (USPS 317-220) BOX 187 LOCKNEY, TEXAS 79241

Published each Sunday and Thursday at 220 S. Main, Lockney, Texas 79241. John Carroll, publisher; Jim Huggins, editor. Second-class postage paid at Lockney, Texas 79241. Subscription rates: Local \$10.50 per year, out of trade area \$11.50 per year. Postmaster: Send address changes to the above address.



4-H HORSE SHOW

ORNTON, Texas 4-H Champion Horse

BEEF-YOUR BEST BUY!

BEEF UP YOUR BUDGET

BEEF-YOUR BEST MEAL! TOTAL SAVER

McSAVER HAS FOUND A STEAK SPECIAL JUST FOR YOU SO INVITE THE FAMILY FRIENDS AND HAVE A GREAT STEAK COOK-OUT AT GREAT PRICE! IT'S THE TIME TO BUY UP YOUR BUDGET!

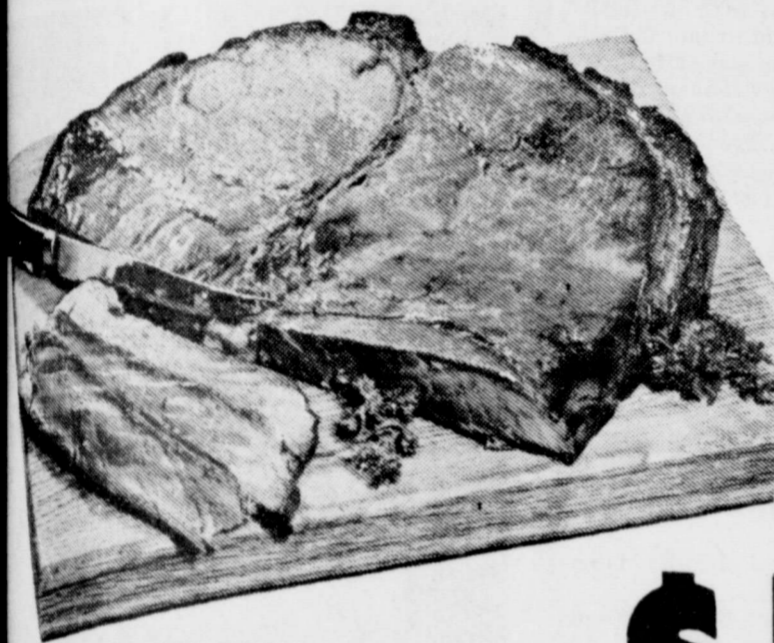


Bell Quality Chekd  
**Ice Cream**  
1/2 Gal. Round Ctn. **\$1.29**

PURE TEA REFRESHING  
**INSTANT NESTEA**  
3 OZ. JAR **\$1.89**

TOTAL GROCERY SAVERS  
MARDI GRAS DECORATED NAPKINS 140 CT. PKG. **69¢**  
HELLMAN'S BURGER BIG H SAUCE 18 OZ. JAR **99¢**  
NABISCO'S FAVORITE RITZ CRACKERS 16 OZ. BOX **99¢**  
MAXWELL HOUSE INSTANT COFFEE 10 OZ. JAR **\$4.59**  
PEN-JEL FOR JAM OR JELLY 1 3/4 OZ. BOX **39¢**

THRIFTWAY STORES SELL & FEATURE ONLY FINE QUALITY AMERICAN GROWN GRAIN FED BEEF, FRESH PORK AND QUALITY POULTRY!



"THE SUNDAY BACON" BLACK LABEL FROM HORMEL  
**SLICED BACON**  
1 LB. PKG. **\$1.39**  
HEAVY GRAIN FED BEEF BONELESS WHOLE IN THE BAG  
**BRISKETS**  
7-10 LBS. AVG. LB. **\$1.29**

CREAM STYLE OR WHOLE KERNEL GREEN GIANT  
**GOLDEN CORN**  
17 OZ. CANS **3 \$1**

SHELF SPECIALS  
15¢ OFF LABEL SOFTENER SHEETS  
**BOUNCE**  
40 CT. BOX **\$1.89**  
30¢ OFF LABEL  
**BIZ DETERGENT BOOSTER**  
38 OZ. BOX **\$1.79**  
TRIAL SIZE  
**MR. CLEAN** 6 OZ. BTL. **29¢**

HEAVY GRAIN FED BEEF  
**ROUND STEAK**  
LB. **\$1.99**  
HEAVY GRAIN FED BEEF BONELESS CENTER CUT  
**ROUND STEAK**  
LB. **\$2.19**

VAN CAMP'S  
**PORK & BEANS** NO. 300 CANS **3 \$89¢**

HEAVY GRAIN FED BEEF TENDERIZED  
**ROAST TIPS** LB. **\$2.59**  
HEAVY GRAIN FED BEEF  
**Round Chuck** LB. **\$1.59**  
HEAVY GRAIN FED BEEF LEAN  
**ROAST TIPS** LB. **\$2.29**  
HEAVY GRAIN FED BEEF SIRLOIN BONELESS  
**TIP STEAK** LB. **\$2.49**  
HEAVY GRAIN FED BEEF BONELESS  
**SIRLOIN ROAST** LB. **\$2.49**  
RUDY'S FARM OLD FASHIONED WHOLE HOG REG./HOT FROM TENNESSEE  
**SAUSAGE** 1 LB. ROLL **\$1.39** 2 LB. ROLL **\$2.77**

SUNSHINE GOLDEN  
**VANILLA WAFERS** 11 OZ. BOX **59¢**  
20¢ OFF LABEL LIQUID  
**LEMON JOY** 32 OZ. BTL. **\$1.09**

HEALTH & BEAUTY AID SAVINGS  
ADORN NON-AEROSOL  
**HAIR SPRAY** 8 OZ. BTL. **\$1.49**  
REG. UNSCENTED  
**DRY IDEA** ROLL-ON DEODORANT 1.5 OZ. BTL. **\$1.29**  
TONI HOME PERMANENT GENTLE/REGULAR  
**SILK-WAVE** EA. **\$2.29**  
NEW TONI PERMANENT KIT  
**Light-waves** EACH **\$4.99**  
NEW TONI PERMANENT KIT  
**Lightwaves** EACH **\$2.79**  
REFILL EACH

CALIFORNIA SANTA ROSA  
**PLUMS** 3 \$1 LBS.  
CENTRAL AMERICAN  
**BANANAS** LB. **29¢**  
CALIFORNIA THOMPSON SEEDLESS  
**GRAPES** LB. **89¢**  
LARGE PERSIAN  
**LIMES** LB. **49¢**  
LARGE TIE GREEN  
**ONIONS** 2 BU. **39¢**  
CALIFORNIA CELERY  
**HEARTS** PKG. **59¢**  
CALIFORNIA VINE-RIPENED  
**TOMATOES** LB. **39¢**

DAIRY VALUES  
CORN OIL MARGARINE  
**MAZOLA** 69¢ QTRS. 1 LB. BOX  
COUNTRY ST./BUTTERMILK  
**MILLSBURY** 239¢ BISCUITS 7 1/2 OZ. CANS  
AMERICAN/PIMIENTO/SWISS  
**KRAFT** 129¢ SINGLES 12 OZ. PKG.  
Bell Quality Chekd  
**CHITAGE CHEESE** 24 OZ. CTN. **\$1.09**

15 OZ. FREE! DETERGENT  
**TIDE**  
**\$2.49**  
99 OZ. BOX

FROM OUR SHELVES  
BOW WOW CHUNK **DOG FOOD** 25 LB. BAG **\$3.99**  
NEW! KLEENEX SUPER DRY LARGE  
**DIAPERS** WITH ELASTIC LEGS 18 CT. BOX **\$2.49**  
DECORATED/ASSORTED  
**TERI TOWELS** JUMBO ROLL **69¢**

FROZEN FOODS  
MORTON FAMILY PAK  
**GLAZED DONUTS** 14 OZ. BOX **69¢**  
ORE-IDA  
**CRISPERS** 20 OZ. BAG **79¢**  
MRS. GOODCOOKIES ASSTD.  
**COOKIES** 16 OZ. BOX **99¢**  
ASSORTED TOTINO'S  
**PARTY PIZZA** 13 1/2 OZ. BOX **\$1.09**

S.H. GREEN STAMPS  
DOUBLE ON WED.

15¢ OFF LABEL  
**CRISCO OIL**  
24 OZ. BTL. **99¢**





**RCA** For The Best  
 Price & Service On RCA T.V.'s  
 See  
**MIZE PHARMACY & T.V.**  
 122 S. Main Lockney 652-2435

**PRESTON MILK** GALLON \$1.90  
 USDA Inspected Plant Custom Processing,  
 Wholesale and Retail Meats, Cut, Wrapp-  
 ed, Frozen, and Fully Guaranteed. Fin-  
 ancing Available On Freezer Beef.  
**Lockney Meat Co.**  
 Hwy. 70 652-3305 Lockney, Texas

CALL CABLE TV  
 OF FLOYDADA 983-2511  
 TODAY  
 FOR MORE AND BETTER

SUNDAY 08/05/79

| AM    | WTCC<br>CH. 17<br>Atlanta<br>Cable 4 | KTXT<br>CH. 5<br>Lubbock<br>Cable 5 | PTL<br>CH. 6<br>Charlotte<br>Cable 6      | KMCC<br>CH. 28<br>Lubbock<br>Cable 7       | WGN<br>CH. 9<br>Chicago<br>Cable 9   | KTV<br>CH. 10<br>Oakland<br>Cable 10    | KCBD<br>CH. 11<br>Lubbock<br>Cable 11 | KLBK<br>CH. 13<br>Lubbock<br>Cable 13   | CBN<br>CH. 2<br>Virginia Bch<br>Cable 2 |
|-------|--------------------------------------|-------------------------------------|---|--|--------------------------------------|---|---------------------------------------|---|---|
| 7:00  | Three Stooges                        | No Programs                         | Kenneth Copeland                          | Praise the Lord Club                       | News Buyer's Forum What's Nu         |   | Jimmy Swaggart Day of Discovery       | This Is the Life Rebob                  | Lesson                                  |
| 7:30  |                                      |                                     |   |  |                                      |   |                                       |   |   |
| 8:00  | Maverick                             |                                     | Voice of Victory Oral Roberts and You     | Jimmy Swaggart Prophecy Newsreel           | Mass for Shut-Ins Church             |   | Oral Roberts Methodist Church         | James Robison Amazing Grace Bible Class | Hour of Power                           |
| 8:30  |                                      |                                     |   |  |                                      |   |                                       |   |   |
| 9:00  | Hazel                                |                                     | Jerry Falwell                             | Little Rascals I Love Lucy                 | Issues Unlimited Abbott and Costello | Westbrook Hospital Robert Schuller      | Rex Humbard                           | Jerry Falwell                           | Changed Lives                           |
| 9:30  | Movie: 'Youngblood'                  |                                     |   |  |                                      |   |                                       |   |   |
| 10:00 | Hawke                                |                                     | PTL Club                                  | Best of Donahue                            | Voyage to the Bottom of the Sea      | Day of Discovery                        | Living Your Religion                  | Face the Nation                         | Intouch                                 |
| 10:30 |                                      |                                     |   |  |                                      |   |                                       |   |   |
| 11:00 |                                      |                                     | Baptist Church                            | Cisco Kid                                  | Oral Roberts Lone Ranger             | Oral Roberts                            | Better Life                           | Hour of Power                           | Time of Deliverance Oral Roberts        |
| 11:30 |                                      |                                     |   |  |                                      |   |                                       |   |   |
| 12:00 |                                      | No Programs                         | Calvary Temple                            | Issues and Answers Animals                 | Major League Baseball: St. Louis at  | It Is Written at                        | Major League Baseball: Texas at       | Inquiry Women's Point of View           | Coral Ridge Presbyterian Church         |
| 12:30 | Movie: 'The Howards of'              |                                     |   |  |                                      |   |                                       |   |   |
| 1:00  | Virginia                             |                                     | Amazing Grace Bible Class Kroeze Brothers | Putt-Putt Golf Bass Fishin' America        | Chicago                              | On the Square                           | Cleveland                             | CBS Sports Special                      | World of Pentecost Deaf Hear            |
| 1:30  |                                      |                                     |   |  |                                      |   |                                       |   |   |
| 2:00  |                                      |                                     | Harvest Temple Celebration                | Long Driving Championship PGA Championship |                                      | Tarzan                                  |                                       |   | At Home with the Bible World Concern    |
| 2:30  |                                      |                                     |   |  |                                      |   |                                       |   |   |
| 3:00  | Dragnet                              |                                     | Abundant Living James Robison             |  |                                      | Major League Baseball: San Francisco at | Adam-12 SportsWorld                   | CBS Sports Special                      | He Lives Tomorrow                       |
| 3:30  | Championship Wrestling               |                                     |   |  |                                      |   |                                       |   |   |
| 4:00  |                                      | Firing Line                         | Club PTL                                  |  |                                      | Los Angeles                             |                                       |   | Wide World of Truth Jerry Falwell       |
| 4:30  | Football Replay                      |                                     |   |  |                                      |   | Ironside                              |   |   |
| 5:00  | Football Cont'd                      | Advocates                           | Amazing Grace Bible Class Kroeze Brothers |  |                                      | Baseball Cont'd Movie: 'Godzilla'       | NBC News                              | CBS News                                | Program Cont'd Good News                |

SUNDAY 08/05/79

| PM    | WTCC<br>CH. 17<br>Atlanta<br>Cable 4 | KTXT<br>CH. 5<br>Lubbock<br>Cable 5  | PTL<br>CH. 6<br>Charlotte<br>Cable 6 | KMCC<br>CH. 28<br>Lubbock<br>Cable 7 | WGN<br>CH. 9<br>Chicago<br>Cable 9 | KTV<br>CH. 10<br>Oakland<br>Cable 10 | KCBD<br>CH. 11<br>Lubbock<br>Cable 11  | KLBK<br>CH. 13<br>Lubbock<br>Cable 13 | CBN<br>CH. 2<br>Virginia Bch<br>Cable 2 |
|-------|--------------------------------------|--------------------------------------|--------------------------------------|--------------------------------------|------------------------------------|--------------------------------------|--|---------------------------------------|---|
| 6:00  |                                      | Consumer Survival Kit Victory Garden | Harvest Temple Celebration           | That's Bluegrass                     | Wild Kingdom In Search of...       | King of the Monsters'                | Wonderful World of Disney              | 60 Minutes                            | Hour of Power                           |
| 6:30  |                                      |                                      |                                      |                                      |                                    |                                      |  |                                       |   |
| 7:00  |                                      | Evening at Pops                      | Abundant Living James Robison        | Movie: 'Cheyenne Autumn'             | Next Step Beyond People to People  | Movie: 'Oklahoma'                    | Movie: 'Rescue from Gilligan's Island' | All in the Family One Day at a Time   | Rex Humbard                             |
| 7:30  | Major League Baseball: Atlanta       |                                      |                                      |                                      |                                    |                                      |  |                                       |   |
| 8:00  | Atlanta at Houston                   | Masterpiece Theatre: I, Claudius     | PTL Club                             |                                      | Hee Haw                            |                                      |  | Alice                                 | Best of 700 Club                        |
| 8:30  |                                      |                                      |                                      |                                      |                                    |                                      |  | Jeffersons                            |   |
| 9:00  |                                      | Upstairs, Downstairs                 |                                      |                                      | Jackie Gleason                     |                                      | Prime Time Sunday                      | Kaz                                   | Oral Roberts                            |
| 9:30  |                                      |                                      |                                      |                                      |                                    |                                      |  |                                       |   |
| 10:00 | Ruff House                           | Sign Off                             | Jimmy Swaggart PTL Club              | News                                 | News                               | Movie: 'Yours, Mine and Ours'        | News                                   | News                                  | Jesus Festival Insight                  |
| 10:30 | Open Up                              |                                      |                                      | Pop! Goes the Country                | Movie: 'The Real Glory'            | Movie: 'King'                        | Pre-Season Football                    |                                       |   |
| 11:00 |                                      |                                      |                                      | Praise the Lord Club                 |                                    | Part 3                               | Denver vs. Dallas                      |                                       | Sign Off                                |
| 11:30 |                                      |                                      |                                      |                                      |                                    |                                      |  |                                       |   |
| 12:00 |                                      |                                      |                                      | ABC News Sign Off                    | Nightbeat                          |                                      |  |                                       |   |
| 12:30 |                                      |                                      |                                      |                                      |                                    |                                      |  |                                       |   |

MONDAY - FRIDAY 08/05/79-08/11/79

| AM    | WTCC<br>CH. 17<br>Atlanta<br>Cable 4 | KTXT<br>CH. 5<br>Lubbock<br>Cable 5         | PTL<br>CH. 6<br>Charlotte<br>Cable 6 | KMCC<br>CH. 28<br>Lubbock<br>Cable 7 | WGN<br>CH. 9<br>Chicago<br>Cable 9  | KTV<br>CH. 10<br>Oakland<br>Cable 10 | KCBD<br>CH. 11<br>Lubbock<br>Cable 11 | KLBK<br>CH. 13<br>Lubbock<br>Cable 13          | CBN<br>CH. 2<br>Virginia Bch<br>Cable 2 |
|-------|--------------------------------------|---|--------------------------------------|--------------------------------------|-------------------------------------|--------------------------------------|---------------------------------------|--|---|
| 7:00  | Lassie Romper Room                   | No Programs                                 | Varied Programs                      | Good Morning America                 | Ray Rayner and Friends              |                                      | Today                                 | Morning  | Varied Programs                         |
| 7:30  |                                      | Weather                                     |                                      |                                      |                                     |                                      |                                       |  | Varied Programs                         |
| 8:00  | Lucy Show Green Acres                | Sesame Street                               |                                      |                                      |                                     |                                      |                                       | Captain Kangaroo                               | Varied Programs                         |
| 8:30  |                                      |   |                                      |                                      | Family Affair                       |                                      |                                       |  | Varied Programs                         |
| 9:00  | Movie                                | Mister Rogers Neighborhood Electric Company |                                      | Phil Donahue                         | Movie                               | Cartoon Town                         | People Place                          | All in the Family WHEW!                        | 700 Club                                |
| 9:30  |                                      |   |                                      |                                      |                                     |                                      | All Star Secrets                      |  |   |
| 10:00 |                                      | Varied Programs                             | PTL Club                             | Laverne & Shirley Family Faud        |                                     | Hanna-Barbers Romper Room            | High Rollers                          | Price Is Right                                 | Varied Programs                         |
| 10:30 |                                      |   |                                      |                                      |                                     |                                      | Wheel of Fortune                      |  |   |
| 11:00 | Love, American Style                 | Over Easy                                   |                                      | \$20,000 Pyramid Morning Magazine    | Phil Donahue                        | Partridge Family Room 222            | Password Plus                         | The Young and the Restless Search for Tomorrow | Ross Bagley                             |
| 11:30 | Movie                                | Dick Cavett Show                            |                                      |                                      |                                     |                                      | Hollywood Squares                     |  |   |
| 12:00 |                                      | MacNeil-Lehrer Rept. Sign Off               | Varied Programs                      | All My Children                      | Bozo's Circus                       | Rookies                              | News                                  | News   |   |
| 12:30 |                                      |   |                                      |                                      |                                     |                                      | Days of Our Lives                     | As the World Turns                             | Varied Programs                         |
| 1:00  |                                      |   | Praise the Lord Club                 | Bewitched                            | Phil Donahue                        |                                      |                                       |  | Varied Programs                         |
| 1:30  | Lucy Show                            |   |                                      | Regular Programming                  |                                     | The Doctors                          | Guiding Light                         |  | Varied Programs                         |
| 2:00  | Rebob (MWF)                          | Lilies, Yoga And You                        |                                      | General Hospital                     | Baseball                            | Medical Center                       | Another World                         |  | 700 Club                                |
| 2:30  | Banana Splits                        | Villa Alegre                                |                                      |                                      | Love, American Style                |                                      | M*A*S*H                               |  |   |
| 3:00  | Flintstones                          | Sesame Street                               |                                      | Edge of Night                        | Mr. Magoo                           | Dialing for Dollars                  | Love of Life                          |  |   |
| 3:30  | Partridge Family                     |   |                                      | Mike Douglas                         | Cartoons                            | Card Sharks                          | Gunslinger                            |  | Varied Programs                         |
| 4:00  | Star Trek                            | Mister Rogers Neighborhood Electric Company |                                      | Family Affair                        | Superman/Batman Abbott and Costello |                                      | Beverly Hillsbillies Ironside         | Gomer Pyle                                     | Varied Programs                         |
| 4:30  |                                      |   |                                      |                                      |                                     |                                      |                                       |  | Ross Bagley                             |
| 5:00  | Family Affair                        | Once Upon a Classic Over Easy               | Herald of Truth Christopher Close-Up | ABC News                             | Sgt. Bilko                          | Woody Woodpecker                     | Hogan's Heroes                        | Program Cont'd                                 |   |
| 5:30  | Father Knows Best                    |   |                                      | Mary Tyler Moore                     | My Three Sons                       | NBC News                             |                                       |  |   |

MONDAY 08/06/79

| PM    | WTCC<br>CH. 17<br>Atlanta<br>Cable 4 | KTXT<br>CH. 5<br>Lubbock<br>Cable 5    | PTL<br>CH. 6<br>Charlotte<br>Cable 6 | KMCC<br>CH. 28<br>Lubbock<br>Cable 7    | WGN<br>CH. 9<br>Chicago<br>Cable 9 | KTV<br>CH. 10<br>Oakland<br>Cable 10 | KCBD<br>CH. 11<br>Lubbock<br>Cable 11 | KLBK<br>CH. 13<br>Lubbock<br>Cable 13 |
|-------|--------------------------------------|--|--------------------------------------|---|------------------------------------|--------------------------------------|---------------------------------------|---------------------------------------|
| 6:00  | Get Smart                            | Word on Words                          | Gospel Music                         | News                                    | Dick Van Dyke                      | T.V. Power with Tom and Jerry        | News                                  | News                                  |
| 6:30  | My Three Sons                        | MacNeil-Lehrer Rept.                   | You Shall Be My Witness              | Bewitched                               | Star Trek                          | Sanford and Son                      | Joker's Wild                          |                                       |
| 7:00  | Movie: 'A Woman's World'             | Bill Moyers' Journal: How to Get a Job | Westbrook Hospital                   | Monday Night Baseball: San Francisco at | Next Step Beyond                   | Captain Cosmic Bewitched             | Little House on the Prairie           | White Shadow                          |
| 7:30  |                                      |  |                                      |   |                                    |                                      |                                       |                                       |
| 8:00  |                                      | James Michener's World: Spain          | PTL Club                             | Los Angeles/ or Baltimore at New York   | Movie: 'Dead End'                  | Six Million Dollar Man               | Movie: 'Murder in Peyton Place'       | M*A*S*H WKRP in Cincinnati            |
| 8:30  |                                      |  |                                      |   |                                    |                                      |                                       |                                       |
| 9:00  | Jack Van Impe                        | Masterpiece Theatre: Poldark           |                                      |   |                                    | Odd Couple                           | Dating Game                           | Law Grant                             |
| 9:30  |                                      |  |                                      |   |                                    |                                      |                                       |                                       |
| 10:00 | New Soupy Sales                      | Dick Cavett                            | Richard Hague PTL Club               | News                                    | News                               | Movie: 'Send Me No Flowers'          | News                                  | News                                  |
| 10:30 | Movie: 'Bird of Paradise'            | Captioned ABC News                     |                                      | Newlywed Game                           | Movie: 'The Agony and the Ecstasy' |                                      | Tonight Show                          | Rockford File                         |
| 11:00 |                                      |  |                                      | Police Story                            |                                    |                                      |                                       |                                       |
| 11:30 |                                      |  |                                      |   |                                    |                                      |                                       | Movie: 'Sweet Bird of Youth'          |
| 12:00 |                                      |  |                                      |   |                                    |                                      | Tomorrow                              | of Youth                              |

TUESDAY 08/07/79

| PM    | WTCC<br>CH. 17<br>Atlanta<br>Cable 4 | KTXT<br>CH. 5<br>Lubbock<br>Cable 5 | PTL<br>CH. 6<br>Charlotte<br>Cable 6 | KMCC<br>CH. 28<br>Lubbock<br>Cable 7 | WGN<br>CH. 9<br>Chicago<br>Cable 9 | KTV<br>CH. 10<br>Oakland<br>Cable 10 | KCBD<br>CH. 11<br>Lubbock<br>Cable 11 | KLBK<br>CH. 13<br>Lubbock<br>Cable 13 |
|-------|--------------------------------------|-------------------------------------|--------------------------------------|--------------------------------------|------------------------------------|--------------------------------------|---------------------------------------|---------------------------------------|
| 6:00  | Get Smart                            | On Nature's Trail                   | Happy Hour                           | News                                 | Dick Van Dyke                      | T.V. Power with Tom and Jerry        | News                                  | News                                  |
| 6:30  | My Three Sons                        | MacNeil-Lehrer Rept.                | You Shall Be My Witness              | Bewitched                            | Star Trek                          | Sanford and Son                      | Joker's Wild                          |                                       |
| 7:00  | Major League Baseball: Atlanta       | Once Upon a Classic: Copter Kids    | Insight                              | Happy Days                           | Next Step Beyond                   | Captain Cosmic Bewitched             | The Runaways                          | CBS Sports World News                 |
| 7:30  |                                      |                                     |                                      |                                      |                                    |                                      |                                       |                                       |
| 8:00  | Cincinnati                           | Shakespeare Plays: As You Like It   | PTL Club                             | Three's Company                      | Movie: 'Laura'                     | Six Million Dollar Man               | Movie: 'Monte Walsh'                  | Movie: 'Copar'                        |
| 8:30  |                                      |                                     |                                      |                                      |                                    |                                      |                                       |                                       |
| 9:00  |                                      |                                     |                                      | Starky & Hutch                       |                                    |                                      |                                       |                                       |
| 9:30  |                                      |                                     |                                      |                                      |                                    |                                      |                                       |                                       |
| 10:00 |                                      |                                     | Richard Hague PTL Club               | News                                 | News                               | Movie: 'The Matchmaker'              | News                                  | News                                  |
| 10:30 | Movie: 'Operation'                   | Sign Off                            |                                      | Newlywed Game                        | Movie: 'Wake Me'                   |                                      | Best of Carson                        | Barney's World                        |
| 11:00 | Werhead                              |                                     |                                      | Movie: 'Lady and the Outlaw'         | When It's Over                     |                                      |                                       | Movie: 'The Man Who Sings'            |
| 11:30 |                                      |                                     |                                      |                                      |                                    |                                      |                                       |                                       |
| 12:00 |                                      |                                     |                                      |                                      |                                    |                                      | Tomorrow                              |                                       |

WEDNESDAY 08/08/79

| PM    | WTCC<br>CH. 17<br>Atlanta<br>Cable 4 | KTXT<br>CH. 5<br>Lubbock<br>Cable 5    | PTL<br>CH. 6<br>Charlotte<br>Cable 6 | KMCC<br>CH. 28<br>Lubbock<br>Cable 7 | WGN<br>CH. 9<br>Chicago<br>Cable 9 | KTV<br>CH. 10<br>Oakland<br>Cable 10 | KCBD<br>CH. 11<br>Lubbock<br>Cable 11 | KLBK<br>CH. 13<br>Lubbock<br>Cable 13 |
|-------|--------------------------------------|--|--------------------------------------|--------------------------------------|------------------------------------|--------------------------------------|---------------------------------------|---------------------------------------|
| 6:00  | Get Smart                            | Spoletto Festival '79                  | Sound of the Spirit                  | News                                 | Dick Van Dyke                      | T.V. Power with Tom and Jerry        | News                                  | News                                  |
| 6:30  | My Three Sons                        | MacNeil-Lehrer Rept.                   | You Shall Be My Witness              | Bewitched                            | Star Trek                          | Sanford and Son                      | Joker's Wild                          |                                       |
| 7:00  | Major League Baseball: Atlanta       | Onim: The Warriors                     | Patterns for Living                  | Eight Is Enough                      | Next Step Beyond                   | Captain Cosmic Bewitched             | Real People                           | Dorothy                               |
| 7:30  |                                      |  |                                      |                                      |                                    |                                      |                                       | Hanging In                            |
| 8:00  | Cincinnati                           | Shakespeare Plays: Measure for Measure | PTL Club                             | Charlie's Angels                     | Movie: 'King of the Khyber Rifles' | Six Million Dollar Man               | Movie: 'Someone Is Watching Me'       | Movie: 'The Killer Elite'             |
| 8:30  |                                      |  |                                      |                                      |                                    |                                      |                                       |                                       |
| 9:00  |                                      |  |                                      | Vegas                                |                                    |                                      |                                       |                                       |
| 9:30  | Fall of Eagles                       |  |                                      |                                      |                                    | Dating Game                          |                                       |                                       |
| 10:00 |                                      |  | Richard Hague PTL Club               | News                                 | News                               | Window on the World                  | News                                  | News                                  |
| 10:30 | Movie: 'Pony Express'                | Sign Off                               |                                      | Newlywed Game                        | Movie: 'Arsenic & Old Lace'        |                                      | Tonight Show                          | Your Turn                             |
| 11:00 |                                      |  |                                      | Police Woman                         | Old Lace                           | Upstairs, Downstairs                 |                                       | Swain                                 |
| 11:30 |                                      |  |                                      |                                      |                                    |                                      |                                       |                                       |
| 12:00 |                                      |  |                                      | Baretta                              |                                    |                                      | Tomorrow                              | Light                                 |

THURSDAY 08/09/79

| PM    | WTCC<br>CH. 17<br>Atlanta<br>Cable 4 | KTXT<br>CH. 5<br>Lubbock<br>Cable 5 | PTL<br>CH. 6<br>Charlotte<br>Cable 6 | KMCC<br>CH. 28<br>Lubbock<br>Cable 7 | WGN<br>CH. 9<br>Chicago<br>Cable 9 | KTV<br>CH. 10<br>Oakland<br>Cable 10 | KCBD<br>CH. 11<br>Lubbock<br>Cable 11 | KLBK<br>CH. 13<br>Lubbock<br>Cable 13 |
|-------|--------------------------------------|-------------------------------------|--------------------------------------|--------------------------------------|------------------------------------|--------------------------------------|---------------------------------------|---------------------------------------|
| 6:00  | Get Smart                            | Cinema Showcase                     | Revival Fires                        | News                                 | Dick Van Dyke                      | T.V. Power with Tom and Jerry        | News                                  | News                                  |
| 6:30  | My Three Sons                        | MacNeil-Lehrer Rept.                | You Shall Be My Witness              | Bewitched                            | Star Trek                          | Sanford and Son                      | Joker's Wild                          |                                       |
| 7:00  | Uploose                              | National Geographic: Yukon Passage  | Insight                              | Laverne & Shirley Angle              | In Search of...                    | Captain Cosmic Bewitched             | Project U.F.O.                        | Watsons                               |
| 7:30  | Pre-Season Football                  |                                     |                                      |                                      |                                    |                                      |                                       |                                       |
| 8:00  | Atlanta vs. St. Louis                | Shakespeare Plays: Henry VIII       | PTL Club                             | Barney Miller                        | Movie: 'I Walk Alone'              | Six Million Dollar Man               | Mrs. Columbo                          | Hawaii Five-O                         |
| 8:30  |                                      |                                     |                                      | Carter Country                       |                                    |                                      |                                       | Barney's World                        |
| 9:00  |                                      |                                     |                                      | 20/20                                |                                    | Odd Couple                           |                                       |                                       |
| 9:30  |                                      |                                     |                                      |                                      |                                    | Dating Game                          |                                       |                                       |
| 10:00 |                                      |                                     | Richard Hague PTL Club               | News                                 | News                               | Movie: 'Legend Of Lizzie Borden'     | News                                  | News                                  |
| 10:30 | Movie: 'Captain'                     |                                     |                                      | Newlywed Game                        | Movie: 'The Sun Never Sets'        |                                      | Tonight Show                          | M*A*S*H                               |
| 11:00 | Carey, U.S.A.                        | Sign Off                            |                                      | Starky & Hutch                       | Sets                               |                                      |                                       | Movie: 'Latter'                       |
| 11:30 |                                      |                                     |                                      |                                      |                                    |                                      |                                       |                                       |
| 12:00 |                                      |                                     |                                      | Baretta                              |                                    |                                      | Tomorrow                              |                                       |

08/10/79

| WTCC<br>CH. 17<br>Atlanta<br>Cable 4 | KTXT<br>CH. 5<br>Lubbock<br>Cable 5   | PTL<br>CH. 6<br>Charlotte<br>Cable 6      | KMCC<br>CH. 28<br>Lubbock<br>Cable 7 |
|--------------------------------------|---------------------------------------|---|--------------------------------------|
| Get Smart                            | Lilies, Yoga And You                  | You'll Love It Jimmy Swaggart             | News                                 |
| My Three Sons                        | MacNeil-Lehrer Rept.                  |   | Joker's Wild                         |
| Movie: 'New Invention Man'           | Wash. Week in Review Wall Street Week | At Home with the Bible Westbrook Hospital | All Star Family Fe Show              |
|                                      |                                       |   |                                      |
|                                      | Evening at Pops                       | PTL Club                                  | Movie: 'Mother, Jugs and Speed'      |
|                                      |                                       |   |                                      |
| Patrol                               | Masterpiece Theatre: I, Claudius      |   |                                      |
| Uploose                              |                                       |   |                                      |
| New Soupy Sales                      | Dick Cavett                           | Richard Hague                             | News                                 |
| Movie: 'Yronoi'                      | Captioned ABC News                    | PTL Club                                  | Newlywed Game                        |
|                                      |                                       |   |                                      |
|                                      |                                       |   | Soap                                 |
|                                      |                                       |   |                                      |
|                                      |                                       |   | Sign Off                             |

These Floydada An Sponsor The For You Each W

08/11/79

| WTCC<br>CH. 17<br>Atlanta<br>Cable 4 | KTXT<br>CH. 5<br>Lubbock<br>Cable 5 | PTL<br>CH. 6<br>Charlotte<br>Cable 6 | KMCC<br>CH. 28<br>Lubbock<br>Cable 7 |
|--------------------------------------|-------------------------------------|--------------------------------------|--------------------------------------|
| Ultraman                             | No Programs                         | Meranatha Concerts                   | Fangface                             |
| Partridge Family                     |                                     |                                      | Scooby's All-Stars                   |

**CALL CABLE TV OF FLOYDADA 983-2911 TODAY FOR MORE AND BETTER**

**BIG SUMMER CLEARANCE!**  
MANY ITEMS 1/2 PRICE  
**ROYE'S**  
Merle Norman Cosmetics

| WGN CH. 9            | KTV CH. 10                    | KCBD CH. 11                     | KLBK CH. 13  |
|----------------------|-------------------------------|---------------------------------|--------------|
| Dick Van Dyke        | T.V. Power with Tom and Jerry | News                            | News         |
| Star Trek            | Captain Cosmic Bewitched      | Sanford and Son                 | Joker's Wild |
| Next Step Beyond     | Movie: 'Dead End'             | Little House on the Prairie     | White Shadow |
| Movie: 'The Ecstasy' | Six Million Dollar Man        | Movie: 'Murder in Peyton Place' | M*A*S*H      |
| ...                  | ...                           | ...                             | ...          |

| WTCG CH. 17          | KTXH CH. 5             | PTL CH. 6            | KMCC CH. 28  | WGN CH. 9     | KTV CH. 10                    | KCBD CH. 11     | KLBK CH. 13  | CBN CH. 2 |
|----------------------|------------------------|----------------------|--------------|---------------|-------------------------------|-----------------|--------------|-----------|
| Lilies, Yoga and You | You'll Love It         | News                 | News         | Dick Van Dyke | T.V. Power with Tom and Jerry | News            | News         | Good News |
| Wash. Week in Review | At Home with the Bible | All Star Family Feud | Wild Kingdom | Andy Griffith | Captain Cosmic Bewitched      | Sanford and Son | Joker's Wild | Lesson    |
| ...                  | ...                    | ...                  | ...          | ...           | ...                           | ...             | ...          | ...       |

| WGN CH. 9        | KTV CH. 10                    | KCBD CH. 11          | KLBK CH. 13                     |
|------------------|-------------------------------|----------------------|---------------------------------|
| Dick Van Dyke    | T.V. Power with Tom and Jerry | News                 | News                            |
| Star Trek        | Captain Cosmic Bewitched      | The Runaways         | CBS Reports: Any Place but Here |
| Next Step Beyond | Movie: 'Laura'                | Movie: 'Monte Walsh' | Movie: 'Capone'                 |
| ...              | ...                           | ...                  | ...                             |

| WTCG CH. 17 | KTXH CH. 5         | PTL CH. 6 | KMCC CH. 28       | WGN CH. 9               | KTV CH. 10          | KCBD CH. 11           | KLBK CH. 13 | CBN CH. 2 |
|-------------|--------------------|-----------|-------------------|-------------------------|---------------------|-----------------------|-------------|-----------|
| No Programs | Maranatha Concerts | Fangface  | U. S. Farm Report | Alvin and the Chipmunks | All-New Popeye Hour | Ever Increasing Faith | ...         | ...       |
| ...         | ...                | ...       | ...               | ...                     | ...                 | ...                   | ...         | ...       |

| WGN CH. 9        | KTV CH. 10                    | KCBD CH. 11                     | KLBK CH. 13               |
|------------------|-------------------------------|---------------------------------|---------------------------|
| Dick Van Dyke    | T.V. Power with Tom and Jerry | News                            | News                      |
| Star Trek        | Captain Cosmic Bewitched      | Real People                     | Dorothy                   |
| Next Step Beyond | Movie: 'King of the Hybers'   | Movie: 'Someone is Watching Me' | Movie: 'The Killer Elite' |
| ...              | ...                           | ...                             | ...                       |

| WTCG CH. 17 | KTXH CH. 5             | PTL CH. 6 | KMCC CH. 28            | WGN CH. 9        | KTV CH. 10 | KCBD CH. 11      | KLBK CH. 13 | CBN CH. 2 |
|-------------|------------------------|-----------|------------------------|------------------|------------|------------------|-------------|-----------|
| No Programs | Richard Hogue New Wine | See Hunt  | Our Men in the Capital | U.S. Farm Report | Ark II     | Best of 700 Club | ...         | ...       |
| ...         | ...                    | ...       | ...                    | ...              | ...        | ...              | ...         | ...       |

| WGN CH. 9        | KTV CH. 10                           | KCBD CH. 11     | KLBK CH. 13     |
|------------------|--------------------------------------|-----------------|-----------------|
| Dick Van Dyke    | T.V. Power with Tom and Jerry        | News            | News            |
| Star Trek        | Captain Cosmic Bewitched             | Project U.F.O.  | Waltons         |
| Next Step Beyond | Movie: 'The Legend of Lizzie Borden' | Movie: 'Lolita' | Movie: 'Lolita' |
| ...              | ...                                  | ...             | ...             |

| WTCG CH. 17            | KTXH CH. 5 | PTL CH. 6      | KMCC CH. 28   | WGN CH. 9 | KTV CH. 10    | KCBD CH. 11 | KLBK CH. 13 | CBN CH. 2      |
|------------------------|------------|----------------|---------------|-----------|---------------|-------------|-------------|----------------|
| Soccer Made in Germany | Club PTL   | Program Cont'd | Lawrence Walk | Hee Haw   | Lawrence Walk | Hee Haw     | Insight     | Jesus Festival |
| ...                    | ...        | ...            | ...           | ...       | ...           | ...         | ...         | ...            |

**Tech To Offer Photo Short Course**

Lubbock — A 35mm photography short course for amateur South Plains Photographers will be repeated this fall at Texas Tech University. "Beginning Photography" will meet on Monday nights for six weeks starting Sept. 10. Drill in operation and care of the camera will be given before major interest is placed on how to compose and shoot better pictures. The course will be taught by Texas Tech faculty member John McKinney, world-traveler and former editor and cover photographer of "Southern Living" and "Progressive Farmer" magazines.

Since inauguration of the Tech "Beginning Photography" short course series in 1977, 28 consecutive groups totaling more than 700 people have been enrolled. "Some amateurs, after shooting as long as 20 years, have enrolled for updating and new ideas," said McKinney. "Perhaps the course should be renamed 'Beginning Intermediate Photography.' We see rookie amateurs and veterans learning side by side." Pointing to photography as America's number one hobby, the teacher said,

"Suddenly millions of people are discovering the exhilaration of a good picture. Full-page newspaper ads feature heretofore unknown handsome cameras within budget range of most families. And at least five well-known camera brands are blossoming forth in TV commercials."

"Research at some of the large art museums shows that more people go to see photographs than paintings," he said. "It is really getting to be a photography world. However, we encourage photography student to take basic art courses at the first opportunity. Art can help photography."

Tuition for "Beginning Photography" is \$30. For a brochure describing the course and a form for enrolling by mail call Mass Communications Department (806) 742-3385, or pick up in Mass Communications Building, Room 102.

**WHOZITS...**



**LAST WEEK'S FLOYDADA WHOZIT**

Sally Galloway and Judy Lloyd both correctly guessed last week's Whozit as Duffy Rathel.

**FLOYDADA WHOZIT**

LONGTIME residents may recognize this Floydadan from a May 1947 snapshot. He now farms land near Dougherty.



**LAST WEEK'S LOCKNEY WHOZIT**

**MRS. APPLEWHITE EASILY RECOGNIZED**

Felicia Applewhite was last week's Lockney-area Whozit subject, as apparently everybody knew. Merle Mooney was the first to call The Beacon with correct identification of the mystery picture. Others who knew it was Mrs. Applewhite were Betty Vernon Cruse, Retha Wofford, Samantha Pinner, Billie Huggins, and several others who said "I know who it is, but don't put my name in the paper."

**LOCKNEY WHOZIT** — The Lockney-area mystery picture this time was taken in the early 1920s. He's a well-known farmer who lives west of Lockney. Call The Beacon, 652-3318, Monday through Thursday if you can name him.

**FLOYD DATA**  
Elain Dick traveled to Dothan, Alabama last week.

end by Trailway bus to attend the Cook-Brannon family Reunion.

**SHOP FLOYD COUNTY**

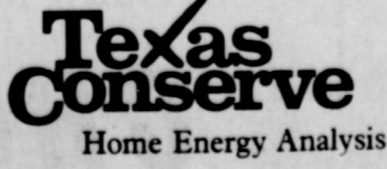
**Feel Like You're Trying to Air Condition the Entire Neighborhood?**

It's not a pleasant feeling, is it? Using energy and money so fast it's like the walls weren't even there.

Did you know that a 1/16" crack around your door lets out as much cool air as a 4" x 4" hole bored right through the middle of it? The Governor's Office of Energy Resources can help. We've got a free home-energy quiz. Just jot down some basic information about your house. We'll send you a computer analysis that tells you (1) how to make your house more energy-efficient; (2) how much it'll cost; (3) how much energy you can save; and (4) how much money you can save. You decide which of the suggested modifications make sense. In terms of increased comfort. In terms of a utility bill you can live with.

Call us toll-free at 1-800-252-9361. We'll tell you where you can pick up a quiz form in your area. And we'll answer any questions you might have. So you can begin to get your own house in order. And let the rest of the neighborhood fend for itself.

**CALL TOLL FREE: 1-800-252-9361**



A public service of this publication and the Governor's Office of Energy Resources.

## Car Tires To Receive 'Grades'

COLLEGE STATION — Look for a tire's "grade" before buying it for your car. Passenger car tires will soon have "grades" to tell consumers about tread wear, traction and temperature resistance, says Claudia Kerbel, a consumer information specialist.

By April 1, 1980, all car tires will have "grades," she says.

Ms. Kerbel is with the Texas Agricultural Extension Service, The Texas A&M University System.

**TREAD WEAR GRADES**  
To let consumers compare a tire's tread-wear future, grades will be in numerals—with the highest number indicating the longest wear expected.

Since different drivers and roads affect a tire's life expectancy, the grades simply compare one tire to another assuming all are driven under the same conditions.

So, to read the tread-wear grades, just compare the numbers, Ms. Kerbel says.

For example, a tire with a grade of 160 will have the life of a tire with a grade of 80.

**TRACTION GRADES**  
Traction grades use the letters A, B and C.

They represent the tire's ability to stop on wet pavement—as measured under controlled conditions on a specified government test surface.

A tire graded "Aaa" offers the best traction, while one

graded "C" may have poor resistance on wet roads.

**TEMPERATURE-RESISTANCE GRADES**

Temperature-resistance grades help consumers know how well a tire will hold up under excessively high temperatures.

Grades "A" and "B" represent the higher levels of performance—the tires that will withstand the highest temperatures.

However, all passenger car tires must at least meet the grade "C" standard.

## IT'S YOUR HEALTH

answers to your questions from the Texas Department of Health

You may think that seeking a tan this summer will make you look young and vibrant. But the sun can eventually make you look older, and perhaps give you some additional health problems as well, reports the Texas Department of Health.

**QUESTION:** Besides getting a sunburn, how can too much sun harm you?  
**ANSWER:** With enough time, the sun can weaken the skin's elasticity, and can also cause dark patches and scaly gray growths called keratoses, which are often pre-cancerous.

Children and teenagers who bask in the sun today without protection pay the price later on with wrinkles and a

tough, leathery look. They may also have to suffer from skin cancer.

**QUESTION:** Are there any early warning signs for skin cancer and is this type of cancer usually curable?  
**ANSWER:** There are visible, early warnings: 1. A sore that does not heal. 2. Change in size or color of a wart or mole. 3. Development of any unusual pigmented area.

Almost all of the 300,000 cases of skin cancer developed by Americans annually are considered to be sun-related.

## News And Reviews

**Media Center**  
**First Baptist Church**  
by Beth Pratt

How is it, Socrates wondered, that "men know what is good, but do what is bad?"

In *Whatever Became Of Sin?* the well-known Dr. Karl Menninger attempts to apply psychiatry to a worldwide affliction. Depression, gloom, discouragement and apprehensiveness are prevalent. The word "sin" has almost disappeared from our vocabulary, but the sense of guilt remains in our hearts and minds. Dr. Menninger believes that mental health and moral health are identical and the recognition of the reality of sin offers to the suffering, struggling, anxious world a real hope not of belated treatment but of prevention. This task enlists the physician, the psychiatrist, the minister, the lawyer, the editor, the teacher, and the mother in a

common army — an army against self-destruction and world destruction. For the serious reader this is a thought provoking book.

Dr. Bruce Narramore, Associate Professor of Psychology at Rosemead Graduate School, has written an excellent book concerning the development of a healthy self-image. In *You're Someone Special* he says, "Putting a priority on self-acceptance is the first step many of us need to take if we are going to build a more positive attitude toward ourselves." and "Our self-concept actually influences our concept of God. As long as we have bad attitudes toward ourselves, we will tend to distort biblical teaching on who God is."

Other topics in this book are: the development of self-image in the child; the problems that undermine self-esteem; and cultivating self-love in partnership with those who love us.

Fortunately, if treated in time, skin cancer is very curable.

**QUESTION:** What is the best protection against the sun?  
**ANSWER:** Perhaps the best protection is to wear proper clothing. Cool, loose-fitting beach robes, long sleeved shirts and wide-brimmed hats effectively cut down on exposure to the sun's rays.

**QUESTION:** Do true sunscreens or "suntan lotions" promote tanning?  
**ANSWER:** No, they don't. Sunscreens protect against sunburn by absorbing ultraviolet rays and allowing gradual tanning. Mineral oils and baby oils lubricate the skin, but don't protect from sunburn or promote suntan.

**QUESTION:** Do true sunscreens or "suntan lotions" promote tanning?  
**ANSWER:** No, they don't. Sunscreens protect against sunburn by absorbing ultraviolet rays and allowing gradual tanning. Mineral oils and baby oils lubricate the skin, but don't protect from sunburn or promote suntan.

**QUESTION:** Do true sunscreens or "suntan lotions" promote tanning?  
**ANSWER:** No, they don't. Sunscreens protect against sunburn by absorbing ultraviolet rays and allowing gradual tanning. Mineral oils and baby oils lubricate the skin, but don't protect from sunburn or promote suntan.

**QUESTION:** Do true sunscreens or "suntan lotions" promote tanning?  
**ANSWER:** No, they don't. Sunscreens protect against sunburn by absorbing ultraviolet rays and allowing gradual tanning. Mineral oils and baby oils lubricate the skin, but don't protect from sunburn or promote suntan.

**QUESTION:** Do true sunscreens or "suntan lotions" promote tanning?  
**ANSWER:** No, they don't. Sunscreens protect against sunburn by absorbing ultraviolet rays and allowing gradual tanning. Mineral oils and baby oils lubricate the skin, but don't protect from sunburn or promote suntan.

**QUESTION:** Do true sunscreens or "suntan lotions" promote tanning?  
**ANSWER:** No, they don't. Sunscreens protect against sunburn by absorbing ultraviolet rays and allowing gradual tanning. Mineral oils and baby oils lubricate the skin, but don't protect from sunburn or promote suntan.

**QUESTION:** Do true sunscreens or "suntan lotions" promote tanning?  
**ANSWER:** No, they don't. Sunscreens protect against sunburn by absorbing ultraviolet rays and allowing gradual tanning. Mineral oils and baby oils lubricate the skin, but don't protect from sunburn or promote suntan.

**QUESTION:** Do true sunscreens or "suntan lotions" promote tanning?  
**ANSWER:** No, they don't. Sunscreens protect against sunburn by absorbing ultraviolet rays and allowing gradual tanning. Mineral oils and baby oils lubricate the skin, but don't protect from sunburn or promote suntan.

**QUESTION:** Do true sunscreens or "suntan lotions" promote tanning?  
**ANSWER:** No, they don't. Sunscreens protect against sunburn by absorbing ultraviolet rays and allowing gradual tanning. Mineral oils and baby oils lubricate the skin, but don't protect from sunburn or promote suntan.

**QUESTION:** Do true sunscreens or "suntan lotions" promote tanning?  
**ANSWER:** No, they don't. Sunscreens protect against sunburn by absorbing ultraviolet rays and allowing gradual tanning. Mineral oils and baby oils lubricate the skin, but don't protect from sunburn or promote suntan.

**QUESTION:** Do true sunscreens or "suntan lotions" promote tanning?  
**ANSWER:** No, they don't. Sunscreens protect against sunburn by absorbing ultraviolet rays and allowing gradual tanning. Mineral oils and baby oils lubricate the skin, but don't protect from sunburn or promote suntan.

**QUESTION:** Do true sunscreens or "suntan lotions" promote tanning?  
**ANSWER:** No, they don't. Sunscreens protect against sunburn by absorbing ultraviolet rays and allowing gradual tanning. Mineral oils and baby oils lubricate the skin, but don't protect from sunburn or promote suntan.

**QUESTION:** Do true sunscreens or "suntan lotions" promote tanning?  
**ANSWER:** No, they don't. Sunscreens protect against sunburn by absorbing ultraviolet rays and allowing gradual tanning. Mineral oils and baby oils lubricate the skin, but don't protect from sunburn or promote suntan.

**QUESTION:** Do true sunscreens or "suntan lotions" promote tanning?  
**ANSWER:** No, they don't. Sunscreens protect against sunburn by absorbing ultraviolet rays and allowing gradual tanning. Mineral oils and baby oils lubricate the skin, but don't protect from sunburn or promote suntan.

**QUESTION:** Do true sunscreens or "suntan lotions" promote tanning?  
**ANSWER:** No, they don't. Sunscreens protect against sunburn by absorbing ultraviolet rays and allowing gradual tanning. Mineral oils and baby oils lubricate the skin, but don't protect from sunburn or promote suntan.

**QUESTION:** Do true sunscreens or "suntan lotions" promote tanning?  
**ANSWER:** No, they don't. Sunscreens protect against sunburn by absorbing ultraviolet rays and allowing gradual tanning. Mineral oils and baby oils lubricate the skin, but don't protect from sunburn or promote suntan.

**QUESTION:** Do true sunscreens or "suntan lotions" promote tanning?  
**ANSWER:** No, they don't. Sunscreens protect against sunburn by absorbing ultraviolet rays and allowing gradual tanning. Mineral oils and baby oils lubricate the skin, but don't protect from sunburn or promote suntan.

## THAT'S A FACT

**DANDY TUNE!**  
AMERICA'S FIRST PATRIOTIC SONG, "YANKEE DOODLE" WAS ACTUALLY WRITTEN BY THE ENEMY! IT WAS COMPOSED BY RICHARD SHUCKBURGH WHO SERVED UNDER GEN. BRADDOCK OF THE BRITISH ARMY.

**FAST FADE!**  
TODAY MONEY SEEMS TO FADE FASTER THAN EVER, BUT THERE'S A WAY TO MAKE IT GROW! TOO! THAT WAY IS FOR YOU TO INVEST IN U.S. SAVINGS BONDS OR JOIN THE PAYROLL SAVINGS PLAN WHERE YOU WORK. EITHER CHOICE WILL RESULT IN A METHOD OF SAVING PAINLESSLY ADD UP!

**GET A HORSE!**  
WILLIAM JENNINGS BRYAN WAS THE FIRST PRESIDENTIAL CANDIDATE TO RIDE A HORSELESS CARRIAGE. THE EVENT TOOK PLACE IN 1896. THERE WERE KNOWN TO BE ONLY 10 AUTOS IN THE WHOLE COUNTRY.

**FLLOYD DATA**  
Visiting the Travis Jones family and the Harold Bertrands until Monday or Tuesday of this week are Jana (Bertrand) Monday and Ly-chelle, Emily and D'Lynn... from Eastland.

Jana's husband, Derrell, is pastor of Bethel Baptist Church in Eastland and is camp pastor for an association youth week camp in Wyoming.

**FLLOYD DATA**  
Jay Jones and classmate Laurel Linn, Klamath Falls, Oregon, arrived Friday evening for a weekend visit with his parents, Mr. and Mrs. Travis Jones.

Jay and Laurel are students at the School of Veterinary Medicine, Texas A&M University, and are on trimester break.

**FLLOYD DATA**  
Mr. and Mrs. Jones and daughter, Tatyne, visited with Mr. and Mrs. Jones and daughter, Tatyne, in the home of Mr. and Mrs. Jones.

Julie, of Pampa, visited with Mr. and Mrs. Jones and daughter, Tatyne, in the home of Mr. and Mrs. Jones.

Other relatives and friends were present at the home of Mr. and Mrs. Jones.

Other relatives and friends were present at the home of Mr. and Mrs. Jones.

Other relatives and friends were present at the home of Mr. and Mrs. Jones.

Other relatives and friends were present at the home of Mr. and Mrs. Jones.

Other relatives and friends were present at the home of Mr. and Mrs. Jones.

Other relatives and friends were present at the home of Mr. and Mrs. Jones.

Other relatives and friends were present at the home of Mr. and Mrs. Jones.

Other relatives and friends were present at the home of Mr. and Mrs. Jones.

Other relatives and friends were present at the home of Mr. and Mrs. Jones.

Other relatives and friends were present at the home of Mr. and Mrs. Jones.

Other relatives and friends were present at the home of Mr. and Mrs. Jones.

Other relatives and friends were present at the home of Mr. and Mrs. Jones.

Other relatives and friends were present at the home of Mr. and Mrs. Jones.

Other relatives and friends were present at the home of Mr. and Mrs. Jones.

Other relatives and friends were present at the home of Mr. and Mrs. Jones.

Other relatives and friends were present at the home of Mr. and Mrs. Jones.

Other relatives and friends were present at the home of Mr. and Mrs. Jones.

Other relatives and friends were present at the home of Mr. and Mrs. Jones.

**Give and Take.**  
Give a little today. Take a lot tomorrow.  
That's what makes United States Savings Bonds a great way to secure your future. And why over nine million people like you have already joined the Payroll Savings Plan.  
You see, once you sign up, a small part of each paycheck is set aside to buy Bonds. Saving is so automatic, you'll soon forget about it.  
So buy United States Savings Bonds. Automatically, through the Payroll Savings Plan.  
You won't even feel like you're giving, until all those Bonds are yours for the taking.

**Take stock in America.**  
UNITED STATES SAVINGS BONDS

**PLEASE COME TO HEAR EDDY KETCHERSID**

**TEACH GOD'S WORD**

**August 12 thru 19**

**SUNDAYS-----10:30 A.M.----LUNCH TOGETHER-----6:00 P.M.**

**MONDAY--SATURDAY--7:30 A.M. & 8:00 P.M.**

**FRIDAY NIGHT "SERMON FOR YOUTH" HOMEMADE ICE CREAM AFTER**

**CHURCH of CHRIST**  
West College & Third  
Lockney, Texas

**IT PAYS**  
To Make People Happy Sell The Products People Want To Buy.....  
Sell AVON... Excellent Earnings, flexible hours. For More Information... CALL EDITH SELLARS 806-983-3139

**Second Session Swimming Lessons Begins August 6**  
6 To 6:30 P.M. Each Day  
Sharon Spencer & Gay Frizzell, Instructors  
Register Now!  
Lockney Swimming Pool  
652-3769

**Customer averaged billing plan**

**Southwestern's Averaged Billing Plan is designed to minimize the ups and downs in your electric bill.**  
If you've wished the amount of your electric bills could be more consistent every month instead of changing so much between seasons — here's a way.  
The Averaged Billing Plan is provided to HELP SMOOTH OUT THE HIGHS AND LOWS that occur in your electric bills. As the name implies, this plan arranges for you to pay an "average" rather than the actual amount used each month.  
**Who's eligible for this plan?**  
Any residential customer with satisfactory credit, whose average bill is \$25.00 or more, can request the Averaged Billing Plan.  
**How to get started.**  
All you have to do is call

**Southwestern Public Service Company** There's no charge for participation in the Averaged Billing Plan. If for any reason you decide to drop the plan once you've started, just notify us. Payment by Automatic Bank Draft can also, in most cases, be arranged.  
**This is how the Averaged Billing Plan works.**  
The dollar amount of your electric bill each month will be determined by averaging the actual dollar amount of your bill for the past 12 months. When the amount you have paid does not cover the amount you have used, 15 percent of the difference will be added to your monthly average.  
So, the Averaged Billing Plan does not change your rate, but allows you to pay less during high-use months and make up the difference by paying more during low-use months.

**SPS**  
SOUTHWESTERN PUBLIC SERVICE  
909.12

## Deat A Says Health

As continue to "unmet health needs" in any other "United States," Ahearn, an U.S. De- Agriculture.

report says metropolitan area by 157 every 100,000 Americans only 71 doctors, rural areas about a third as specialists per

100,000 population. Ahearn said while distribution of hospital and nursing home beds per capita more nearly equal between the two areas, rural facilities are generally older, are likely to be accredited and often lack specialized services, such as respiratory therapy and psychiatric services.

The recent reversal of rural-to-urban population migration has increased strain on the health care system in totally rural areas because the increase in number of physicians

## Musical To Be Featured

"Delightful, and deeply mu- of America's writers will be Tuesday, Aug. 14. Tech University presents David Johnson, who joined the repertory production in 1979, sings Portunes "C'est Magnifique" and "Begin the Beguine."

Actors and singers will produce blitter-sweet leads to rollicking showstoppers, each a nostalgic delightful reminder of Peter's style of humor, sadne and touch of class.

"An Evening With Porter" was conceived and adapted by Stan Gill and Robert Ferris in the spring of 1978. As director and musical director respectively, they introduced the show to Black Sheep Theater audiences. Following a successful run there, it went on road in September 1978 and played to enthusiastic audiences throughout the Midwest.

For reservations and ticket prices for the performance and dinner or for the performance only contact the UC Ticket Booth in the Activities Office on the second floor of the Texas Tech University Center or phone 742-3621.

Anderson, actor and comedian, will combine comedy in the play "A Clown." He is the Florida-born actress who has appeared in the University Center and Carnegie

Anderson, actor and comedian, will combine comedy in the play "A Clown." He is the Florida-born actress who has appeared in the University Center and Carnegie

Anderson, actor and comedian, will combine comedy in the play "A Clown." He is the Florida-born actress who has appeared in the University Center and Carnegie

Anderson, actor and comedian, will combine comedy in the play "A Clown." He is the Florida-born actress who has appeared in the University Center and Carnegie

Anderson, actor and comedian, will combine comedy in the play "A Clown." He is the Florida-born actress who has appeared in the University Center and Carnegie

Anderson, actor and comedian, will combine comedy in the play "A Clown." He is the Florida-born actress who has appeared in the University Center and Carnegie

Anderson, actor and comedian, will combine comedy in the play "A Clown." He is the Florida-born actress who has appeared in the University Center and Carnegie

Anderson, actor and comedian, will combine comedy in the play "A Clown." He is the Florida-born actress who has appeared in the University Center and Carnegie

Anderson, actor and comedian, will combine comedy in the play "A Clown." He is the Florida-born actress who has appeared in the University Center and Carnegie

Anderson, actor and comedian, will combine comedy in the play "A Clown." He is the Florida-born actress who has appeared in the University Center and Carnegie

Anderson, actor and comedian, will combine comedy in the play "A Clown." He is the Florida-born actress who has appeared in the University Center and Carnegie

Anderson, actor and comedian, will combine comedy in the play "A Clown." He is the Florida-born actress who has appeared in the University Center and Carnegie

Anderson, actor and comedian, will combine comedy in the play "A Clown." He is the Florida-born actress who has appeared in the University Center and Carnegie

Anderson, actor and comedian, will combine comedy in the play "A Clown." He is the Florida-born actress who has appeared in the University Center and Carnegie

Anderson, actor and comedian, will combine comedy in the play "A Clown." He is the Florida-born actress who has appeared in the University Center and Carnegie

Anderson, actor and comedian, will combine comedy in the play "A Clown." He is the Florida-born actress who has appeared in the University Center and Carnegie

Anderson, actor and comedian, will combine comedy in the play "A Clown." He is the Florida-born actress who has appeared in the University Center and Carnegie

Anderson, actor and comedian, will combine comedy in the play "A Clown." He is the Florida-born actress who has appeared in the University Center and Carnegie

Anderson, actor and comedian, will combine comedy in the play "A Clown." He is the Florida-born actress who has appeared in the University Center and Carnegie

Anderson, actor and comedian, will combine comedy in the play "A Clown." He is the Florida-born actress who has appeared in the University Center and Carnegie



# A FACT

**DANDY TUNE!**  
AMERICA'S FIRST PATRIOTIC SONG, "YANKEE DOODLE" WAS ACTUALLY WRITTEN BY THE ENEMY! IT WAS COMPOSED BY RICHARD SHICKLEBURGH WHO SERVED UNDER GEN. BRADDOCK OF THE BRITISH ARMY.

**FAST FADE!**  
TODAY MONEY SEEMS TO FADE FASTER THAN EVER. BUT THERE'S A WAY TO MAKE IT GROW TOO! THAT WAY IS FOR YOU TO INVEST IN U.S. SAYING BONDS! OR JOIN THE PAYROLL SAVINGS PLAN WHERE YOU WORK. EITHER CHOICE WILL RESULT IN A METHOD OF SAVING PAINLESSLY WHILE YOU WATCH YOUR MONEY ADD UP!



# ive Take.

ay. Take a lot  
akes United States  
reat way to secure  
why over nine  
e you have already  
l Savings Plan.  
ou sign up, a small  
heck is set aside to buy  
to automatic, you'll  
it.  
States Savings Bonds.  
through the Payroll

feel like you're  
ose Bonds are yours

UNITED STATES  
SAVINGS BONDS  
merica.

ME  
SID  
gust  
2  
ru  
9

5:00 P.M.  
EAM AFTER  
IST

ney, Texas

# Deat

**Alvin Elco**  
Services for Alvin Elco, 90, will be Monday in the First Church at Floyd C. Bradley, assisted by the Rev. Jenkins, pastor of Baptist Church in Lockney. Burial will be in the direction of Moore Cemetery Home, Lockney.

**Musical To Be Featured**  
"Night and Day" and "I've Got You Under My Skin." Linda Hart, a child's theater specialist in the Ohio-Michigan area, will sing "My Heart Belongs to Daddy" and "You're the Top."

**BOOMER** by Casson/Brown  
VETERANS OF WORLD WAR II, THE KOREAN CONFLICT, POST KOREAN AND THE VIETAM ERA ARE GENERALLY ELIGIBLE FOR GI LOANS FOR HOMES, MOBILE HOMES, AND CONDOMINIUMS.

**NEWS 'N' NOTES**  
(by Sharon Hillis)  
Once you've...  
Rather, place a loveseat or chair between the two — or even leave blank wall space between them.

**MIX WOOD\* UPHOLSTERY**  
Plan a half-and-half mix of upholstered and wood furniture.  
This decorator's trick lets you keep the scheme in balance.

**IT'S A...**  
Queen Elizabeth England was...  
"I have nothing...  
The monarch's...  
contained...  
dresses from...  
could make her...

**GROUP ITEMS**  
furniture in logi...  
Let small...  
groups of furniture...  
of furniture areas...  
of seating areas...  
surfaces...  
glasses...  
magazines and...  
chairs an...  
light and...  
The Occupatio...  
and Health Adm...  
rush to regulat...  
halted by the...  
cost the indust...  
oblation and co...  
crease consum...  
fabric and cloth...

Shop  
Floyd  
County  
FIRST!

Got Head  
Or Plumb  
Problem?  
Call  
HOLM  
PLUMB  
Austin or  
983-22  
6:30 - 9:30 a.m.  
5:30 p.m.

# Says Health Care Lags

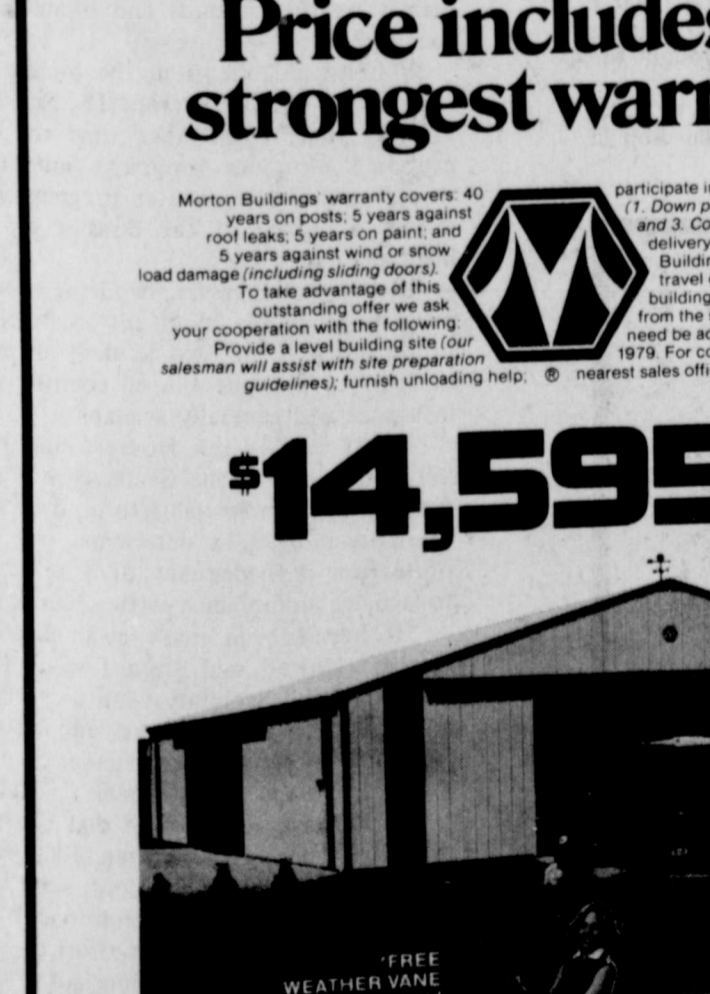
100,000 population.  
Ahearn said while distribution of hospital and nursing home beds per capita is more nearly equal between the two areas, rural facilities are generally older, are less likely to be accredited and often lack specialized services, such as respiratory, therapy and psychiatric services.  
The recent reversal of the rural-to-urban population migration has increased the strain on the health care system in totally rural areas because of the increase in the number of physicians in these areas between 1970 and 1975 did not keep up with population increases.

**The Library**  
The Public Library is a community institution, primarily funded by tax revenues, where any person without regard to race, religion, or economic condition should be able to obtain free access to the recorded history, learning, and knowledge of mankind.  
Libraries are the capitals of self-education.  
Public libraries accompany the citizen from childhood to the grave.  
Libraries are the memory of all mankind, the storehouse that contains all which is known and has been thought.

**So says the VA...**  
VETERANS OF WORLD WAR II, THE KOREAN CONFLICT, POST KOREAN AND THE VIETAM ERA ARE GENERALLY ELIGIBLE FOR GI LOANS FOR HOMES, MOBILE HOMES, AND CONDOMINIUMS.

**Price includes the strongest warranty!**  
Morton Buildings warranty covers 40 years on posts, 5 years against roof leaks, 5 years on paint and 5 years against wind or snow load damage (including sliding doors).  
To take advantage of this outstanding offer we ask your cooperation with the following:  
Provide a level building site (our salesman will assist with site preparation guidelines); furnish unloading help. © nearest sales office listed below.

**\$14,595**



**MORTON BUILDINGS INC.**  
Box 1928 Phone  
Plainview, Texas 806-293-4386

# BUDDY'S

220 S. 2ND  
STORE HOURS  
Mon.-Sat., 8 a.m. to 10 p.m. Sun., 9 a.m. to 8 p.m.  
Values In This Adv. Effective Through Wednesday August 8, 1979  
We Reserve The Right To Limit Quantities

|   |  |
|---|--|
| <p>6-32 Ounce Regular-or-Diet<br/><b>Dr Pepper</b><br/>\$1.59 Plus Deposit<br/>\$2.29 Value</p> | <p>1/2 Gallon Bell Deluxe<br/><b>Ice Cream</b><br/>\$1.49<br/>\$1.99 Value</p> |
| <p>1 Pound Keebler<br/><b>Club Crackers</b><br/>77¢<br/>99¢ Value</p>                           | <p>49 Ounce Giant<br/><b>Tide</b><br/>\$1.39<br/>\$1.71 Value</p>              |

VALUES IN THIS AD IN ADDITION TO OUR THURSDAY AD

|   |   |
|---|---|
| <p>1/2 Gallon Bell<br/><b>Buttermilk</b><br/>89¢<br/>\$1.29 Value</p> | <p>30 Ounce Big Batch<br/><b>Cookie Mix</b><br/>\$1.59<br/>\$2.53 Value</p> |
|---|---|

|  |   |
|--|---|
| <p>100 Extra S &amp; H Green Stamps<br/>With Purchase of<br/><b>2 Heads Lettuce</b><br/>100 Extra S &amp; H Green Stamps<br/>With Purchase of<br/><b>10 Pound Bag Potatoes</b><br/>100 Extra S &amp; H Green Stamps<br/>With Purchase of<br/><b>1 Pound Maryland Club COFFEE</b><br/>100 Extra S &amp; H Green Stamps<br/>With Purchase of 2 Liter<br/><b>Pepsi-Cola</b><br/>Corn King</p> | <p>Golden Ripe<br/><b>Bananas</b><br/>4 LBS \$1.00<br/>California</p> |
|--|---|

|   |  |
|---|--|
| <p><b>Bacon</b> \$1.39 LB.</p>                                      | <p>Buddy's Milk<br/><b>Milk</b> 99¢<br/>\$1.19 Value<br/>1/2 Gallon Buddy's</p>            |
| <p>U.S.D.A.<br/><b>Ground Beef</b> \$1.59 LB.<br/>U.S.D.A. Beef</p> | <p>24 Ounce Bell<br/><b>Cottage Cheese</b> \$1.19<br/>\$1.59 Value<br/>Grade 'A' Large</p> |

|  |  |
|--|--|
| <p><b>Short Ribs</b> 99¢ LB.</p>                           | <p><b>Eggs</b> 9¢ Dozen<br/>With Purchase Of 2 Lb. Owens Sausage</p> |
| <p>U.S.D.A. Boneless<br/><b>Round Steak</b> \$2.69 LB.</p> | <p><b>Era</b> \$1.09<br/>\$1.59 Value<br/>13 Ounce Milnot</p>        |

|   |  |
|---|--|
| <p>End Cut<br/><b>Pork Chops</b> \$1.09 LB.</p> | <p><b>Evaporated Milk</b> 3/\$1.00<br/>40¢ Value</p> |
|---|--|



# FARM & RANCH NEWS



## TEXAS - OKLAHOMA

### Module Builder Godsend To Cotton Producers

It looks like a giant trash compactor. But the module builder is a godsend to Texas-Oklahoma cotton producers. Developed jointly by Cotton Incorporated and engineers at Texas A&M University, the module builder speeds up harvesting by as many as 15 days and frees the cotton grower from dependence on the cotton gin. It's a huge machine that makes neat stacks of cotton which are left in the fields until gin time. And because the module builder is capable of holding up to nine bales of stripper cotton, which is then loaded onto a special flat-bed truck, cotton trailers which have been used for years to haul cotton to the gin have almost become obsolete, according to many growers. In the past, if a farmer used trailers to get his cotton to the gin, then his whole harvest operation was often dependent upon the supply of available trailers. The module builder has helped separate the ginning and harvesting operations so that growers can keep on harvesting

even though the gin may be backlogged or down for repairs. Since properly protected modules can be left in the field for weeks at a time without any noticeable damage to the cotton, a grower can harvest his cotton at the most convenient time for him and not have to worry about the progress at the gin. And what are other advantages to the grower using the module builder system? According to Ray Adams, vice president of sales with Bush-Hog Continental Gin Company, a leading manufacturer of module equipment located in Prattville, Alabama, moduling can be an advantage because ginning has become such a problem for growers. "The cost of ginning cotton has increased many fold in the last decade and we have every reason to believe that it is going to continue to increase," he said. "There has been a trend to have fewer and fewer cotton gins each year. As the number of cotton gins gets

smaller, the volume of these gins increases. But it also is becoming more difficult for the farmer to get his cotton ginned immediately. The expense of owning cotton trailers is getting to be too high and the economics of the module system provides makes it an ideal operation to turn to." Randy Eiland, a grower from Lamesa, Texas, switched to module builders to avoid losing cotton to the unpredictable West Texas weather. "We have a lot of bad weather in this area at times, and before we got module builders our stripping depended on how many trailers we could get to the gin," Eiland said. "Since we have gotten the module builders, our strippers can just run continuously to keep building modules. We don't have to worry about getting trailers or being out of trailers. Module builders help make a grower money because a crop can be lost, in this area, by leaving cotton on the stalks. By stripping continuously and putting cotton in modules, you can

completely avoid this happening. We can't store it on the stalk in West Texas. You can lose too much of it too quick." Harold Worrell, a grower from Altus, Oklahoma, has been impressed with the efficiency module builders have allowed him in his harvesting operation. "I had heard about module builders," he said, "and I had decided they would speed up my harvesting operation. I farm about 2,500 acres of stripper cotton, and I was having problems keeping all my trailers loaded and getting them to the gin and emptied so that I could keep on stripping. I was filling those trailers up nearly every day. Module builders made me think I could get by a lot easier. Module builders save me a lot of wear and tear on hauling cotton to town and it saves a lot of labor tromping it on trailers. I don't know if it's much cheaper, but it's a whole lot faster." And how does this remarkable machine work? Dr. Milton L. Smith, a professor of Industrial Engineering at Texas Tech

University, who has worked extensively with module builders, explains: "Initially, when the basket on a cotton stripper gets full, the load is dumped into the module builder. It usually takes two or three dumps before there is a sufficient depth to pack. Once there is a sufficient depth to pack, then the module builder goes into operation. The trampler compresses the cotton as it moves from front to back and back to front of the module builder. This operation constantly compresses the cotton and will occur many times throughout the process of building a module. With each successive dump, the trampler will first of all level out the cotton in the module builder and will then start to pack the loose cotton. And this continues until the module is fully formed. At that time, the operator will raise the back gate on the module builder, and a tractor pulls it forward, leaving a module that is free-standing to sit there in the field until it is ready to be moved." One of the key developers of the module builder was Lambert H. Wilkes of Texas A&M University. Together with J.K. "Farmer" Jones, a research-er for Cotton Incorporated, they completed work on the first module builders in 1971 and 1972. Research on the module builder was funded jointly by Cotton Incorporated, and Texas A&M. The result of their research has not only saved the grower valuable time and dollars with his cotton operation, but has significantly improved ginning techniques. Research by Cotton Incorporated on the module builder has also led to other valuable developments. For instance, the module feeder was developed, enabling cotton modules to be fed directly into the gin. The feeder-cleaner has also recently been introduced, as a result of Cotton Incorporated research. The feeder-cleaner removes approximately 60% - 70% of the trash

out of stripper cotton at the gin. This means more cotton dollars for the grower. Terms of four current contracts expire at that time. Written by Edmondson, Jr., Friona, John Gilmore, Don Nelson of Tulsa, OK, eligible for re-election in non-salaried position in bona fide grain sorghum area who produces grain is subject to the board eligible to vote, including farms and their tenants and pers. Any person eligible to make nomination. Qualified persons who their name placed in membership on the board application to the board by himself and 10 other eligible to vote. Ballots will be mailed must be returned to the by Sept. 15. Any person voted who does not return Sept. 2, may obtain of County Agent's office.

### TDA, USDA Battle Hungry Hoppers

AUSTIN — There is a range war going on in the Texas Panhandle, but it looks more like a bombing raid than a shootout. The targets are tiny, although numbering in the millions. The enemy is grasshoppers. Millions of grasshoppers are threatening thousands of acres of rangeland in 13 Panhandle counties and are being sprayed around the clock by personnel of the Texas Department of Agriculture (TDA) and the U.S. Department of Agriculture (USDA). By the time the spraying ends this

month, more than 1.4 million acres of range will have been treated at a cost of around \$1.5 million in state, federal and private funds to control the voracious insects that have invaded Texas and 13 other states in the greatest number since 1958. According to Agriculture Commissioner Reagan V. Brown, the cost-sharing aerial application program has been a "war on grasshoppers" that present "a very real threat to High Plains agriculture and to food production in that area."

Brown added that the program is proving successful. "It looks like we are going to win the war," he said. Preliminary reports indicate 95-99 percent control, about the same level that was achieved last year. Spraying has been taking place in Childress, Roberts, Carson, Hutchinson, Dallam, Lipscomb, Moore, Armstrong, Sherman, Potter, Hall, Collingsworth and Gray counties. Only rangeland meets federal guidelines which do not cover control on cropland. Acreage is being sprayed in blocks to prevent skipping heavily infested areas. "If land is skipped, grasshoppers will reinfest acreage that has been treated," Brown said. The grasshopper control program divides Texas into three zones, and the ranchers whose land is being sprayed. TDA's one-third share is expected to reach \$500,000, exhausting the program's funds for the fiscal year. The program will end naturally by the end of July when grasshoppers reach maturity and begin laying eggs. "Federal guidelines call for making the treatment before the eggs are laid," Brown said. "This procedure provides control for this year and also reduces the size of the hatch for next year, possibly eliminating the need for treatment."

## Cotton Today

**COTTON EXEMPTION ASKED:** The national Cotton Council has asked that cotton and cottonseed be specifically exempt from an agricultural bargaining practices bill. In a statement filed with the House Agriculture subcommittee, the Council maintained the proposal is not practical for marketing cotton and cottonseed because of: (1) rapid price changes, (2) the large number of buyers worldwide, and (3) the fact that they are non-perishable products sold on a year-round basis.

**WEEVIL TRIAL LOOKS GOOD:** Reporting on the second year of the boll weevil test in Virginia and North Carolina, scientists say that only five native weevils have been found this year in the evaluation zone, as of June 27. None has been detected in Chowan County, N.C., where the last known weevil was found June 28, 1978. If successful, weevil eradication techniques would be used on the pest in Texas and other cotton areas.

**EXPORTS REPORTED:** Exports of 76,000 running bales during the week ended July 8 brought the season's total to 5,596,000 compared with 4,939,400 a year ago. The week's new sales of 18,100 bales pushed total commitments for the current marketing year to 6,882,300, compared with 6,497,500 a year ago. New sales of 181,400 running bales for 1979-80 delivery brought the total to 2,232,600 thus far.

**AND COTTON YESTERDAY:** Colonists planted their first cotton crop in Virginia in 1607.



The crop protection bill reported recently by the Agriculture Committee doesn't even come close to meeting the objectives of Plains Cotton Growers, Inc., according to Joe D. Unfred of New Home, PGC's spokesman. PGC's policy calls for extending the current disaster program until it is proven that an all-risk crop insurance program is a workable and adequate replacement.

"It will take several years just to determine if the insurance plan envisioned by the Ag Committee will attract the level of producer participation necessary to make it work at all," Unfred states, "and there is serious doubt will ever provide the protection High Plains producers need against weather hazards and other conditions beyond their control."

Without an extension, the present disaster program expires with the 1979 crop. The Senate Committee, agreeing that it will take time to develop and pass a proposed insurance program, earlier reported a bill which would extend the disaster program for 1980 and give producers a choice of the disaster program or Federal crop insurance in 1981.

The House measure, while it would make the disaster program available to all cotton, wheat, feed grain and other producers in 1980, would deny disaster program eligibility in 1981 to producers in all counties where the new insurance was generally available.

To its credit, the House Committee did approve a bill authority for the Secretary of Agriculture to make a disaster program available to producers in 1981 if on a county or national basis he determines that Federal crop insurance protection is inadequate, or if he determines it is necessary to achieve compliance with set-aside or diversion program. "It hasn't been made clear exactly what this language means," Unfred said, "but I wouldn't want to see a heavy reliance on the Secretary admitting that the insurance program sponsored by him and his administration is not an adequate protection", particularly when such an admission might occasion an additional Federal expenditure."

Unfred is quick to note that Congressmen from the area who are on the Committee, Kent Hance of Lubbock and Charles Stenholm of Stanford, served their constituents in attempts to get an unconditional two-year extension of the disaster program and in an effort to raise the level of grower participation in premium costs.

"The opposition was too strong on these points," Unfred continues, "but they were successful in removing a limitation on subsidized crop insurance and its dependence on requirement that eligibility for insurance depend on compliance with recommended soil conservation practices."

The outcome of the two bills is very much in doubt when they reach Senate and House floors, Unfred points out. "And if one or both fail to pass, we'll then be looking to Congress for a simple two-year extension of the disaster program."

### Severe Car Shortage Grounds Record Texas Wheat Harvest

AUSTIN-- The Texas Department of Agriculture has reported millions of bushels of wheat are having to be stored on the ground in the state due to a record-breaking 133.5 million bushel crop and a severe shortage of railcars. "The new estimate for this year's production tops the previous record harvest in 1975 of 131.5 million bushels," commented Agriculture Commissioner Reagan V. Brown "and is 18 million bushels over the June 1 projection by the Texas Crop and Livestock Reporting Service. "With wheat prices now holding around \$4 per bushel, that's a half-billion-dollar crop literally sitting on the ground in many areas," Brown said. Brown said the transportation problems, caused by a lack of available railcars and high diesel prices used by

trucking, "can only get worse as the year goes on." "We are beginning grain sorghum harvest in the Coastal Bend area of the state right now," he continued, "and that harvest is moving northward steadily. By the time the grain sorghum is in, we will be well into corn harvest, placing even more strain on an already overburdened transportation system." Brown said many elevator operators have been forced to store grain "in the street" in some areas of the state. Wheat can be stored outdoors for a period of a week to 10 days with little loss of quality, but, Brown said, "at this point we don't know how long that wheat is going to have to stay there. And even though wheat can withstand a certain amount of rain, there is a loss of quality if outdoor storage is prolonged."

**Sponsored by the Following Interested Firms**

|  |   |  |
|--|---|--|
| <b>First National Bank</b><br>Floydada           | <b>Collins Implement Co.</b><br>Floydada                    | <b>Floyd County Farm Bureau</b>                    |
| <b>Case Power &amp; Equipment</b><br>Floydada    | <b>Russell's Equipment &amp; Supply</b><br>Floydada         | <b>Perry Implement</b><br>Lockney                  |
| <b>Floydada Cooperative Gins</b>                 | <b>Plainview Savings &amp; Loan Association</b><br>Floydada | <b>Ansley &amp; Son</b><br>Lockney                 |
| <b>McDonald Implement Co.</b><br>Floydada        |   | <b>Floydada Implement Co.</b>                      |
| <b>Federal Land Bank Association Of Floydada</b> | <b>Consumers Fuel Association</b><br>Lockney                | <b>Producers Cooperative Elevators</b><br>Floydada |
|  | <b>Wilson Electric</b><br>Floydada                          |  |

## CLAS

**Real Estate**

FOR SALE: Redwood cabin at White River Lake. Sleeps 12-call 983-3932 or 263-4488.

FOR SALE: Brick three bedroom, one bath, modern kitchen, new carpet and new evaporative air conditioner, storage shed, fruit trees, new paint, and fenced back yard. All this plus a great location. 104 J.B. Ave. Floydada. Call 293-8137 in Plainview after 5 p.m.

FOR SALE: Nice two bedroom, living-dining room, carpeted, house of large lot with carport and small storage house 105 E. Hallie. Call after 6 p.m. Jamie Lewallen 983-3904. ttc

FOR SALE: Three bedroom brick, two baths, living dining room, two car garage, cellar, fenced, large storage room. Call for an appointment. 983-3587 or 256-2485. ttc

**Grain Sorghum Board Meeting To Be Held**

Grain sorghum producers county area of the Texas A&M University will elect four members of the Grain Sorghum Board Sept. 15.

Terms of four current contracts expire at that time. Written by Edmondson, Jr., Friona, John Gilmore, Don Nelson of Tulsa, OK, eligible for re-election in non-salaried position in bona fide grain sorghum area who produces grain is subject to the board eligible to vote, including farms and their tenants and pers. Any person eligible to make nomination. Qualified persons who their name placed in membership on the board application to the board by himself and 10 other eligible to vote. Ballots will be mailed must be returned to the by Sept. 15. Any person voted who does not return Sept. 2, may obtain of County Agent's office.

**QUICK SALE:** With three lots, in three bedroom home, tile bath, granite counter top, built-in fireplace, modern breakfast nook, galore, carpet storm windows extra large garage and garage. All this for 983-5185. ttc

FOR SALE: 3 bedroom, 2 car garage, cellar, fence yard. 652-2538 316 5W 5th St. L8/Sp

FOR SALE: Three bedroom, living room, two baths. All carpeted; storage building and shed. 983-3994. ttc

FOR SALE: Three bedroom, carpeted, \$15,000. Good condition. Joe Mack Breed 983-3445. 8-5

FOR SALE: House in country to be moved - five rooms and both approximately 1870 Sq. Ft. Call 983-2530 nights. 8-23

HOUSE FOR SALE: 2 bedroom newly redecorated. Call 652-3179. Delvin Bybee. ttc

For Sale and Removal from Railroad Property. Approximately 35' x 140' OAP depot building located at ninth and Mississippi Street in Floydada. Building must be completely removed and area restored to natural condition. Mail bid to L. Planchon, Division Engineer, Frisco Railway Co., 3 So. Cincinnati, Tulsa, Oklahoma 74103. 8-9

**FLOYD COUNTY ABSTRACT CO.**

Abstracts Of Title Title Insurance Verna L. Stewart Owner, Manager

217 W. California 983-3728 Floydada, Texas

**MAIL INSURANCE**

easy to obtain insurance for your crops at low cost - a dividend is paid to Crop Policyholders at the past eight

**FARMS-RANCH BUSINESS**

**B. B. WILKINS REAL ESTATE**

100 S Main, Lockney Barker Insurance

**BARKER INSURANCE**

LIFE-FIRE-C

**TURNER**

983-2635 Farm

**cas**

**wi**

**cl**

**ad**

# CLASSIFIED ADS sure to get results

Real Estate

Real Estate

NOTICE

COW POKES

By Ace Reid

FOR SALE

For Sale

CLASSIFIED ADVERTISING RATE: 15 CENTS PER WORD FIRST INSERTION; 10 CENTS PER WORD EACH SUBSEQUENT INSERTION. MINIMUM CHARGE \$2.00.

CLASSIFIED DISPLAY RATE: \$1.40 PER COLUMN INCH CARD OF THANKS: \$2.00.

**WANTED: St. Bernard puppy.** Call 983-3737 or 983-5515. tfc

**FOR SALE: 1962 Chev. pickup.** 983-2061 before 5, 983-5381 after 5. tfc

**FOR SALE: 1978 Ford LTD pickup.** Runs regular gasoline. Power-air, 20,000 miles. 634-5717 Randy. tfc

**FOR SALE: 1974 Chevrolet Laguna.** 2 door, vinyl top. Loaded: AM/FM 8-track stereo, cruise, tilt, swivel seats. 983-3646 after 5:30 p.m. tfc

**FOR SALE: 1972 Oldsmobile 98.** four door, all extras. 520 W. Missouri, 983-3430 after 5:30 p.m. 7-2c

**FOR SALE: 1976 Catalina Pontiac 4-door.** high mileage, company vehicle. Priced to turn quick. 983-2821. tfc

**1977 Oldsmobile Cutlass Salon.** Clean low mileage. 983-3787, ask for Brenda, or 983-5116 after 5 p.m. 8-5c

**FOR SALE: 1977 GMC Jimmy** four wheel drive 415 W. Calif. 983-3466. 8-9c

**FOR SALE: 1963 Ford Pickup.** 1963 Vega, 1969 Volkswagens and 1972 pinto and trailers, bicycles, and other items. 903 W. Ross 983-2654. 8-5c

**HOUSE OF LLOYD** - now hiring gift and toy demonstrators, party plan, FREE KIT, no investment, details without obligations. Call 962-8163 or write 1920 43rd St. Lubbock, Texas 79412 8-9c

**HELP WANTED: Male,** experienced farm store merchandizing or retail store sales. Send resume to Box 6, Floydada. tfc

**HELP WANTED - Custodian** for Lockney Independent School District. Responsibilities will include inside and outside duties. Applications are being accepted at the Superintendent's Office. L8-9c

**HELP WANTED: Auto Accidents DO Happen...** If one happens to you, be protected. Our car insurance offers coverage to meet your special needs - repairs to personal liability.

**BAKER Insurance Agency** 127 W. Calif. Ph. 983-3270

**WANTED: Experienced diesel truck drivers.** Pay by mileage, starting rate based on experience. Allowance for meals and down time. Guaranteed \$160 per week for slow periods. Will need to bring copy of driving record, be able to pass ICC physical. Prefer 25 years or older. Liberal benefits including vacation plan, paid holidays, health, accident and dental insurance, life insurance and disability plan. Apply at **EBELING MANUFACTURING CORP.** 1608 West 24th Street Plainview, Texas 79072 An equal opportunity employer L8-5c

**STORAGE SPACE** BOATS, FURNITURE, ANYTHING, ETC. BY THE MONTH OR SIX MONTH 10% DISCOUNT. **WEST TEXAS MINI STORAGE** 983-3737 OR 983-2151

**WE WANT YOU TO KNOW** - We sell all kinds of Good year tires...tractor, auto, truck, a good tire, good service. Best deals in West Texas. Truck winch and hauling service. **BABE'S SERVICE CENTER,** Floydada. tfc

**FOR SALE: Redwood cabin** at White River Lake. Sleeps 12-call 983-3932 or 263-4480. tfc

**FOR SALE: Brick three bedroom,** one bath, modern kitchen, new carpet and new evaporative air conditioner, storage shed, fruit trees, new paint, and fenced back yard. All this plus a great location. 104 J.B. Ave. Floydada. Call 293-8137 in Plainview after 5 p.m. tfc

**FOR SALE: Nice two bedroom,** living-dining room, den, carpeted, house on large lot with carport and small storage house 105 E. Hallie. Call after 6 p.m. Jamie Lewallen 983-3904. tfc

**FOR SALE: Three bedroom brick,** two baths, living-dining room, two car garage, cellar, fenced, large storage room. Call for an appointment. 983-3587 or 256-2485. tfc

**FOR SALE OR TRADE FOR DRY LAND,** a beautiful 3 bedroom home and rental property. If interested call after 7 p.m. 983-3380. tfc

**FOR SALE - 3 bedroom, 2 car garage,** cellar. Fence yard. 652-2538 316 SW 5th St. L8-5c

**FOR SALE: Three bedroom,** den, livingroom, two baths; All carpeted; storage building and shed. 983-3994. tfc

**FOR SALE: Three bedroom,** carpeted, \$15,000. Good condition. Joe Mack Breed 983-3445. 8-5c

**FOR SALE: House in country** to be moved - five rooms and both approximately 1870 Sq. Ft. Call 983-2530 nights. 8-23c

**HOUSE FOR SALE: 2 bedroom** newly redecorated. Call 652-3179. Delvin Bybee. Lfc

**For Sale and Removal from Railroad Property.** Approximately 35' x 140' QAP depot building located at ninth and Mississippi Street in Floydada. Building must be completely removed and area restored to natural condition. Mail bids to I. Planchon, Division Engineer, Frisco Railway Co., 3 So. Cincinnati, Tulsa, Oklahoma 74103. 8-9c

**FLOYD COUNTY ABSTRACT CO.** Abstracts Of Title Title Insurance Verna L. Stewart Owner, Manager 217 W. California 983-3728 Floydada, Texas

**FARMS-RANCHES-CITY PROPERTIES-BUSINESS LEASES-LOANS** **B. B. WILKES BROKER REAL ESTATE** 100 S Main, Lockney Barry Barker, Solicitor Barker Insurance Agency-652-2642

**IF IT IS INSURANCE -SEE- BARKER INSURANCE AGENCY** LIFE-FIRE-CASUALTY-HOSPITAL

**TURNER REAL ESTATE** 983-2635 Farms' Ranches Floydada, Texas

**cash in with a classified ad...**

**WILL DO ALL Types of carpenter work.** Call 983-5201 after 5:30. tfc

**KAY STEEN REALTOR** invites you to call her for your real estate needs in Lubbock County. French Chateau Realtors: 744-2475 home or 792-4345 office. tfc

**INTERIOR AND EXTERIOR PAINTING.** 983-3364 8-5c C-D-J INSULATION can help save your dollars. For information call 983-2601.

**INSULATION** Fire-Resistant. Installed and Guaranteed. MARR Insulation Co. Lockney 652-3593. Lfc

**WE DO Painting, floor leveling,** house blocking, roofing and remodeling. We are now working Floydada Area. Contact Childress Bro. Collect 352-9563 tfc

**Minor repairs and tune up service** on lawn mowers. Call Whites Home and Auto, 652-2145. Lfc

**INTERIOR PAINTING WALL PAPERING** Call Rena Turner, 983-5130. tfc

**"Carpet Need Cleaning?"** Let me do the work for you. Dry foam, 10 cents sq. foot. Call Jack Moore 983-3033 after 5 p.m. tfc

**Farms & Acre** WANTED TO BUY irrigated or dryland farm in Floyd or surrounding area. Write Box XRO, c/o Hesperian, Box 700, Floydada. tfc

**MOBILE HOMES** FOR SALE: 1976 14x70 Lancer Mobile home. 983-2419. 8-12c

**FARM MACHINERY** FOR SALE: 1175 Case, 1974. Cab, A.C., heater, new tires, clean. 652-2572. Lfc

**LEGAL NOTICE** Lockney Independent School District will accept bids on the following until 5 p.m. August 13, 1979: One heavy-duty half-ton pickup, 350 cubic inches or larger engine; automatic transmission; power steering; power brakes; air conditioner; outside mirrors; heavy-duty battery; extra gas tank; rear hitch; heavy-duty front and rear shock absorbers; tinted glass. Bids will be opened at the regular board meeting, 8 p.m. August 13, 1979. L8-2, 8-5, 8-9c

**LEGAL NOTICE** The Lockney Independent School District Board of Trustees will meet in regular session beginning at 8:00 o'clock P.M., July 13, 1979 at the Administration Building Board Room located at 416 West Willow. Among other proceedings will be the adoption of a Budget for the Fiscal Year 1979-1980, and the setting of the tax rate for the Tax Year 1979. W.H. Hallmark, Superintendent Jack Samford, Tax A/C L8-2c

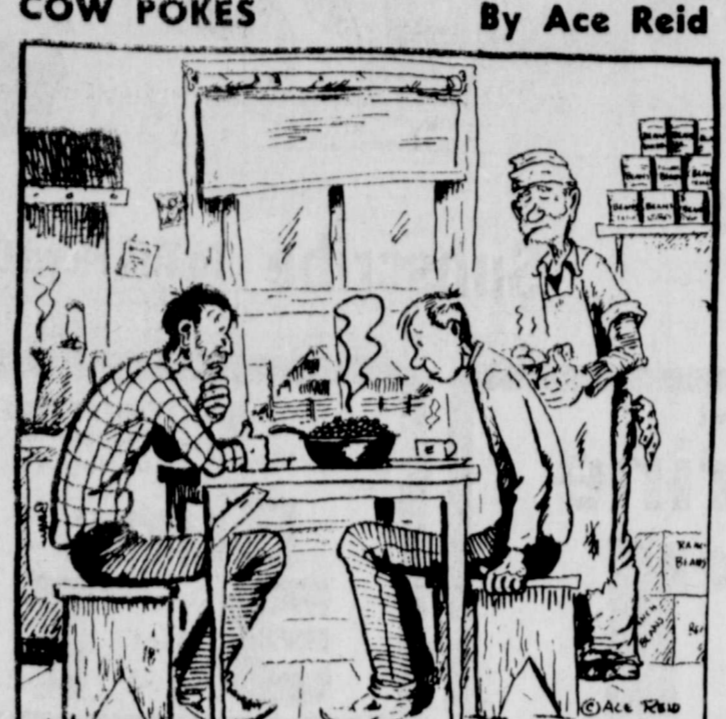
**Diamond Industrial Supply Co., inc.** Phone Days 296-7418 Nights 296-1200 or 296-7828 1014 Broadway Plainview, Texas Chain Sprockets U-joints V-belts Oil Seals Sheave: O-rings Wisconsin

**SKF ICA Timken Bower** Cotton Striper Brushes & Bats "We Appreciate Your Business More" Lfc

**WEED AND INSECT CONTROL** ★ Lawns ★ Trees ★ Alley ★ Fencerows ★ Irrigation Wells CALL CECIL CARTEL 652-2136 or 652-3809 Lockney L3Tfc

**Can You Use Some Extra Money Let Us Help!!!!** WE BUY SCRAP IRON, OLD JUNKERS, AND FREE PICKUP Call 983-5277

**STORAGE SPACE** BOATS, FURNITURE, ANYTHING, ETC. BY THE MONTH OR SIX MONTH 10% DISCOUNT. **WEST TEXAS MINI STORAGE** 983-3737 OR 983-2151



**"BEANS, agin! Either the boss is tight or he wants all his cow hands to be vegetarians!"** THIS FEATURE SPONSORED BY **Floydada Real Estate & Insurance Agency** AUTO, FIRE & FARM INSURANCE **Jim Word - - - Phone 983-2360**

## Public Notices

Notice is hereby given that the Board of Equalization of the South Plains Independent School District will meet August 16, 1979 at 9:00 a.m. til 12:00 p.m. at the South Plains School, South Plains, Texas. All persons having business with the board are invited to make an appointment to appear. By order of the Board of Trustees, South Plains Independent School District. s/Kendas Julian President, Board of Trustees 58-5c

**WANT TO RENT** Three bedroom house in Floydada. Junior Bearden. 983-2281 day - night 667-3442, Petersburg. tfc

**WANTED** WANT TO BUY: Large Chest type freezer. 983-2076. 8-5c

**Addressers Wanted Immediately!** Work at home - no experience necessary - excellent pay. Write American Service, 8350 Park Lane, Suite 127, Dallas, TX 75231. 8-16p

**Ready-Mix Concrete** Forming & Finishing Rock Gravel Sand **FIERROS & SONS** 652-2242 Lockney

**DAN'S AUTO SERVICE** DAN TEUTON, Owner Specializing in Automatic Transmission, Motor Tune-Ups, Auto Air Conditioning. General Repair We Have A BRAKE LATHIE to handle all passenger car brake drums. See us for complete brake service. Phone 652-2462

**Auto Accidents DO Happen...** If one happens to you, be protected. Our car insurance offers coverage to meet your special needs - repairs to personal liability.

**BAKER Insurance Agency** 127 W. Calif. Ph. 983-3270

**WANTED: Experienced diesel truck drivers.** Pay by mileage, starting rate based on experience. Allowance for meals and down time. Guaranteed \$160 per week for slow periods. Will need to bring copy of driving record, be able to pass ICC physical. Prefer 25 years or older. Liberal benefits including vacation plan, paid holidays, health, accident and dental insurance, life insurance and disability plan. Apply at **EBELING MANUFACTURING CORP.** 1608 West 24th Street Plainview, Texas 79072 An equal opportunity employer L8-5c

**STORAGE SPACE** BOATS, FURNITURE, ANYTHING, ETC. BY THE MONTH OR SIX MONTH 10% DISCOUNT. **WEST TEXAS MINI STORAGE** 983-3737 OR 983-2151

**WE WANT YOU TO KNOW** - We sell all kinds of Good year tires...tractor, auto, truck, a good tire, good service. Best deals in West Texas. Truck winch and hauling service. **BABE'S SERVICE CENTER,** Floydada. tfc

**WEED AND INSECT CONTROL** ★ Lawns ★ Trees ★ Alley ★ Fencerows ★ Irrigation Wells CALL CECIL CARTEL 652-2136 or 652-3809 Lockney L3Tfc

**Can You Use Some Extra Money Let Us Help!!!!** WE BUY SCRAP IRON, OLD JUNKERS, AND FREE PICKUP Call 983-5277

**STORAGE SPACE** BOATS, FURNITURE, ANYTHING, ETC. BY THE MONTH OR SIX MONTH 10% DISCOUNT. **WEST TEXAS MINI STORAGE** 983-3737 OR 983-2151

**WE WANT YOU TO KNOW** - We sell all kinds of Good year tires...tractor, auto, truck, a good tire, good service. Best deals in West Texas. Truck winch and hauling service. **BABE'S SERVICE CENTER,** Floydada. tfc

**WEED AND INSECT CONTROL** ★ Lawns ★ Trees ★ Alley ★ Fencerows ★ Irrigation Wells CALL CECIL CARTEL 652-2136 or 652-3809 Lockney L3Tfc

**Can You Use Some Extra Money Let Us Help!!!!** WE BUY SCRAP IRON, OLD JUNKERS, AND FREE PICKUP Call 983-5277

**STORAGE SPACE** BOATS, FURNITURE, ANYTHING, ETC. BY THE MONTH OR SIX MONTH 10% DISCOUNT. **WEST TEXAS MINI STORAGE** 983-3737 OR 983-2151

**WE WANT YOU TO KNOW** - We sell all kinds of Good year tires...tractor, auto, truck, a good tire, good service. Best deals in West Texas. Truck winch and hauling service. **BABE'S SERVICE CENTER,** Floydada. tfc

## Cotton Producers

has worked extensively... out of stripper cotton as it gets full, the load is more cotton dollars for the... Grain Sorghum Board Members To Be Elected

operator will raise... Grain sorghum producers... will elect four members... Terms of four current... expire at that time... Writen of Edmonson; A. W. Jr.; Friona; John Gilbreath; Don Nelson of Tulia. All are eligible for re-election to non-salaried position as long as bona fide grain sorghum producer. Any person in the 29-county area who produces grain sorghum is subject to the board's eligibility to vote, including farmers and their tenants and heirs. Any person eligible to be eligible to make nomination.

Qualified persons wishing their name placed in nomination on the board... application to the organization by himself and 10 other eligible to vote. Ballots will be mailed to be returned to the... by Sept. 15. Any person voted who does not receive Sept. 2, may obtain one County Agent's office.

## COTTON TALKS

FROM PLAINS COTTON GROWERS, INC.

crop protection bill reported recently by the House Committee doesn't even come close to meeting the needs of Plains Cotton Growers, Inc., Lubbock. To Joe D. Unfred of New Home, PCG President, the bill calls for extending the current disaster program and adequate replacement.

It will take several years just to determine if the current plan envisioned by the Ag Committee bill will provide the level of producer participation necessary to make it all. Unfred states, "and there is serious doubt that the protection High Plains producers need from weather hazards and other conditions beyond the

at an extension, the present disaster program with the 1979 crop. The Senate Committee, perhaps that it will take time to develop and prove the insurance program, earlier reported a bill which would extend the disaster program for 1980 and give producers the choice of the disaster program or Federal crop insurance in 1981.

house measure, while it would make the disaster program available to all cotton, wheat, feed grain and sorghum in 1980, would deny disaster program eligibility to producers in all counties where the new Federal program was generally available.

credit, the House Committee did approve in 1978 a bill to protect producers from loss from crop insurance.

to obtain insurance for your crops at low rates, a dividend was paid to Crop Producers for the past eight years.

your Farm Insurance... to get an unconditional two-year extension of the program and in an effort to raise the level of government participation in premium costs.

opposition was too strong on these points... but they were successful in removing a \$200 million subsidy from crop insurance and in deleting the eligibility for insurance depend on

a recommended soil conservation practices... some of the two bills is very much in doubt... reach Senate and House floors. Unfred said... if one or both fail to pass, we'll then be asking for a simple two-year extension of the disaster

**FB**

Accent On

Health

Texas Department of Health  
Raymond T. Moore, M.D., Commissioner

A medical mystery, which occurs 10,000 times a year, defies prevention and gives rise to a continuing number of theories, is continuing to plague the nation's parents.

This chance phenomenon, called Sudden Infant Death Syndrome, comes without prior warning, changing a family's happiness over a new baby into a stark tragedy.

The pattern is a familiar one: an apparently healthy infant dies suddenly and without reason.

This child is put to bed without the slightest suspicion that anything is wrong. It may show signs of a slight cold, but after a thorough examination, the family doctor tells both parents there is nothing to worry about. The next morning the infant is found dead in its crib. There is no evidence a struggle has taken place, nor have the parents heard anything during the night.

An autopsy reveals no evidence of illness and the diagnosis is that the infant dies from the Sudden Infant Death Syndrome (SIDS). Who is to blame? Was it something the parents did? Was it something they didn't do? Was it the fault of the physician?

"No one is to blame," says Dr. Clift Price, Chief of the Bureau of Personal Health Services of the Texas Department of Health. "SIDS cannot be predicted or prevented, even by a physician. SIDS sometimes even occurs in hospitals to well babies admitted for minor surgery."

Dr. Price said SIDS, more commonly referred to as crib death, is the leading cause of death in infants from one month to one year of age. He said SIDS claims the lives of 10,000 babies in this country annually and that according to the Department's Bureau of Vital Statistics, SIDS claimed the lives of 298 residents of Texas during 1978.

Dr. Price said the cause of SIDS remains unknown. He said a few victims may have had a slight cold just prior to death, although most are perfectly healthy babies.

Dr. Price said some medical authorities believe SIDS may possibly be associated with problem-related births. "In the cases of premature births, there may be some neurological cause whereby the nervous system may not be as mature or fully developed as in normal babies. In premature infants, apnea, or the temporary cessation of respiration, is a frequent complication," he said.

"Studies indicate that when spells of apnea occur in babies, the best procedure might be to attach them to monitoring

machines. The monitoring equipment would give a warning signal to alert an attendant to take care of the infant when he stopped breathing," said Dr. Price.

The parents of SIDS victims usually feel a sense of guilt that they may have caused the death of their child or that they somehow failed

to prevent it. "Unfortunately, this guilt complex is sometimes compounded by police or emergency room person-

nel who may misinterpret the case as child abuse or who may say the wrong

thing when the parent is the most vulnerable," warned Dr. Price.

THELMA THWARTUM -- By Alex



Copyright © 1979 by the National Retired Teachers Association and the American Association of Retired Teachers.

Subscribe To The Floyd County Hesperian and The Lockney Beacon

|  |  |   |
|--|--|---|
| <b>Blue Bonnet</b><br><b>Margarine</b><br>1-lb. pkgs. (qtr.)<br><b>2 \$1</b> | <b>Piggly Wiggly</b><br><b>Hamburger or Hot Dog</b><br>8-ct. pkgs.<br><b>3 \$1</b> | <b>Sun Vale, Sliced Frozen</b><br><b>Strawberries</b><br>10-oz. pkgs.<br><b>3 \$1</b> |
|--|--|---|



**Dollar Days ... Your Dollars Go Farther**

Triple the Difference... come into Piggly Wiggly and buy 25 different grocery items you wish except for meat and produce, since quality and price varies from company to company. Then compare our prices on those items at any other supermarket in town. If you find a lower total in your Piggly Wiggly bill, we'll pay you TRIPLE THE DIFFERENCE in CASH!

Operated locally by Shop Rite Foods, Inc. a New Mexico Corporation

Each of these advertised items is required to be readily available for sale at or below the advertised price in each store, except as specifically noted in this ad. We reserve the right to limit quantities. None sold to dealers.

|  |  |   |  |
|--|--|---|--|
| <b>USDA Heavy Western Beef</b><br><b>Boneless Bottom Round Roast</b><br>lb.<br><b>\$1.78</b> | <b>Combination Pack-6 Center-4 Ends</b><br><b>Pork Chops</b><br>lb.<br><b>\$1.28</b>                     | <b>Farmer Jones</b><br><b>All Meat Franks</b><br>lb.<br><b>\$1.28</b>   | <b>USDA Grade "A"</b><br><b>With Backs and Giblets</b><br><b>SPLIT FRYERS</b><br>lb.<br><b>48¢</b> |
| <b>USDA Western Beef Boneless Bottom Round Steak</b><br>lb.<br><b>\$1.88</b>                 | <b>Rib or Loin Center Cut</b><br><b>Pork Chops</b><br>Country Style, Lean, Meaty<br>lb.<br><b>\$1.98</b> | <b>Hormel</b><br><b>Little Sizzlers</b><br>12-oz. pkg.<br><b>\$1.08</b> | <b>Farmer Jones, All Meat</b><br><b>Bologna</b><br>8-oz. pkg.<br><b>98¢</b>                        |

|  |   |   |   |
|--|---|---|---|
| <b>Whole Sun Frozen</b><br><b>Orange Juice</b> 3 \$1<br>8-oz. cans                     | <b>American Beauty</b><br><b>SHELL RONI</b> 3 \$1<br>10-oz. pkgs. | <b>Morrison Cornbread or Pancake</b><br><b>BISCUIT MIX</b> 4 \$1<br>5 1/2-oz. pkgs. | <b>Kitchen Treat Ass't Varieties, Frozen</b><br><b>Pot Pies</b> 4 \$1 |
| <b>White Swan Cut Green Beans or Corn</b><br><b>Vegetables</b> 3 \$1<br>16-17 oz. cans | <b>Scott Tissue</b><br><b>Bath Tissue</b> 3 \$1<br>single rolls   | <b>Better Burgers &amp; Hot Dogs</b><br><b>HEINZ RELISH</b> 2 \$1<br>9 1/2-oz. jars | <b>White Swan</b><br><b>Blackeye Peas</b> 3 \$1<br>15-oz. cans        |

**Dollar Days Prize Melons**

**Watermelon** 10¢  
 Red Ripe, Cooling Juicy, Sweet Whole lb.

**Cantaloupe** 5¢  
 Large Size Western, Tasty

**Honey Dew Melons** 4 \$1  
 Luscious Sweetness  
 Crenshaw, Santa Claus or Casaba Melons

**Baking Potatoes** 5 \$1  
 California Russet

**Yellow Squash** 4 \$1  
 Garden Fresh  
 Ideal for Salads or Relish Trays

**Green Onions** 5 \$1  
 Stan's Peak of Freshness, Picks

**White Swan**  
**Salad Dressing** 32-oz. jar \$1

**White Swan**  
**Vegetable Oil** 24-oz. can \$1

**Fabric Softener 8¢ off label**  
**Downy** 33-oz. bot. \$1

**White Swan**  
**Macaroni & Cheese** 7 1/2-oz. pkg. \$1

**Swiss Miss Frozen**  
**Waffles** 5-oz. pkgs. \$1

**Flev-R-Pac, Regular, Frozen**  
**Lemonade** 12-oz. cans \$1

**So says the VA...**

**MANY VIETNAM ERA VETERANS ARE ELIGIBLE FOR GI BILL BENEFITS FOR APPROVED ON-THE-JOB TRAINING.**

Contact nearest VA office (check your phone book) or a local veterans group.

On Every Counter  
 SALE STARTS TODAY  
 Back-To-School STUDENTS

PERRY'S  
 We Have it ...  
 FABERLIC  
 SATURDAY