

Base Bookbinding  
P.O. Box 2558  
Amarillo, Tex. 79105

Free the Hostages

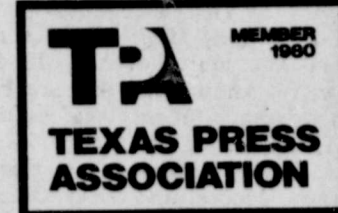
# The Lockney Beacon

Volume 79, Number 19 Lockney (Floyd County) Texas 79241

Thursday, March 6, 1980

12 Pages In One Section

20 Cents



Shadow Box, a new store for men's and women's clothing, is scheduled to open Saturday in downtown Lockney. Pictured are owners Beverly Hayes and Betty Hayes. (Staff Photo)

## More Candidates File In Local Races

At 10:30 a.m. Wednesday, last day for candidates to file in local elections, there were four candidates for three school board seats, three candidates for three upcoming vacancies on the city council, and two men running for two positions on the hospital board in Lockney.

School board candidates are incumbents Eddie Foster and Eugene Tannahill, and Bill Race and Buster Terrell. Terrell filed Friday afternoon; Tannahill signed up Monday.

Jimmy Stennet filed Tuesday morning for city council, joining incumbents J.D. Copeland and Paul Reecer in the city race. Alderman Pat Frizzell, who is serving out the unexpired term of Jerry Perry, had not filed for re-election at 10:30 a.m. Friday.

Candidates for the Lockney General Hospital District board of directors are Leslie Ferguson and Francis Montandon.

All three local elections are set for Saturday, April 5.



NEW SHOP — A new gift shop, Homemade Etc., owned by Sheryl Bybee, Karen Cooper and Myrl Wolford, opens Saturday at 100 East Willow. (Staff Photo)

## Shadow Box To Open Here Saturday

Shadow Box, featuring reasonably priced men's and women's clothing, is scheduled to open in Lockney Saturday, March 8.

The store is located in the 200 block of South Main Street, on the west side of the street just north of J&M Upholsterv. Store hours are 9 a.m. to 6 p.m. Monday through Saturday.

## Property Tax System Explained in New Pamphlet

Samford, tax assessor-collector for Lockney Independent School District, today announced the availability of a new 12-page pamphlet which explains the property tax system to residents.

The pamphlet explains how the property tax system in Texas operates and highlights possible tax savings available to citizens. The publication was developed by the State Property Tax Board in accordance with the provisions of Senate Bill 621, passed by the Texas Legislature in 1979.

## Beacon Lights

Jim Huggins

OF PROGRESS are all over us — we have several new or old businesses (stories about two in this issue of The Beacon). The addition is coming right along, in the new post office building, which recently completed an extension project. Rodriguez Cafe for business Tuesday, as did Hair Unique, the new beauty parlor on Locust Street.

BRAND-NEW SHOPS — Handmade Etc. and the Shadow Box — are scheduled to open Saturday. The Shadow Box is open for business in its downtown location, although still in the process of remodeling. I believe Page's Thriftway has added its parking facilities.

HERE'S THE NEW car wash Don't building on East Locust. And Art Barker are planning a storage facility. Of course The recently moved to snazzier on North Main (lots of people know that we're now doing where the Attic Shoppe used next door to Pioneer Natural

BODY BETTER TELL these folks that times are hard. Sure doesn't look that way in Texas, friends. These Lockney, predicted recession, internazies, and all sorts of ugly things in the world. I'm glad I'm right

ING OF PROGRESS, I hear that Pioneer Natural Gas and the Cooperatives recently waged campaigns on some property or are responsible for.

REALLY PROUD of this letter to Mr. Huggins. I want to thank you for covering the basketball team so well this year. I couldn't have done it without the support of the team.

Love,  
Julie Frizzell



TOP SPELLERS — Roger Alldredge of Floydada won the Floyd County Spelling Bee Monday night, and Tiffani Duvall of Lockney was runner-up. (Staff Photo)

## LOCKNEY GIRL IS RUNNER-UP

## Floydada Boy Wins County Bee

A Floydada seventh-grade student, Roger Alldredge, won the Floyd County Spelling Bee after 90 minutes of spelling Monday night in the Lockney Junior High School library.

Alldredge, 12-year-old son of Mr. and Mrs. Bob Alldredge of Floydada, won the county bee by correctly spelling "technical" after runner-up Tiffani Duvall had misspelled the word. Alldredge then correctly spelled "var-

able," and the 216-round bee was over. The Floydada youngster won the right to represent Floyd County in the regional bee March 29 in Lubbock. The regional winner is eligible to compete in the national bee in Washington, D.C. in May.

Alldredge and Miss Duvall spelled head to head for 62 rounds before the 12-year-old Lockney seventh-grader added an "i" after the "h" in technical.

Miss Duvall, daughter of Mr. and Mrs. Don Duvall of Lockney, is the county alternate to the regional bee. Alldredge was runner-up in the county bee last year.

Jaime Thayer, a Floydada sixth-grader whose parents are Mr. and Mrs. Fred Thayer, misspelled the word "pigeonhole" and placed third in the Monday-night contest.

Lockney eighth-grader Paul Castro, last year's county winner, was fourth this year. Castro, son of Mr. and Mrs.

Richard Castro of Lockney, misspelled "lioness."

Pam Richardson, daughter of Mr. and Mrs. Mike Richardson of Floydada, was fifth in the county bee. The Floydada sixth-grade student went out on "apparel."

Alternates to the county bee, who were present Monday night but did not spell, were Betty Kay Cates, daughter of Mr. and Mrs. Benny C. Cates of Lockney, and Jeannie Jackson, daughter of Mr. and Mrs. Doyle F. Jackson of Floydada. Miss Cates is a seventh-grade student at Lockney Junior High. Miss Jackson attends fifth-grade classes at Floydada.

Juanita Lopez of Lockney directed the bee. Words were pronounced by Mrs. Gwen Woodard of Lockney. Judges were Mrs. Wayland Jones, Floydada; Mrs. Maria Arellano, Lockney; and Mrs. Ethelyn Vernon, Lockney.

## Dribblers Season To Start April 3

It's Little Dribblers Basketball time again in Lockney! Entry forms for fifth- and sixth-grade boys and girls will be available at school Monday and should be returned Tuesday; the Little Dribblers draft is scheduled March 24; practice sessions are set March 25-27; the Little Dribblers season starts April

3; and the post-season tournament will begin April 29.

Boys' and girls' league play will run concurrently this year. Members of the Lockney High School girls' varsity team will coach the Little Dribblers girls' teams, and Longhorn varsity players will coach the boys' teams.

Kenneth Holt is girls' league commissioner; Eddie Teeter is commissioner of the boys' league.

Here is a Little Dribblers timetable:

March 10 — Entry forms available at school.

March 11 — Return entry forms.

March 24 — Little Dribblers "draft," 7:30 p.m. in the school gymnasium.

March 25-27 — Practice sessions, 5-6:30 p.m. and 6:30 - 8 p.m., both school gyms.

April 3-22 — Regular season play.

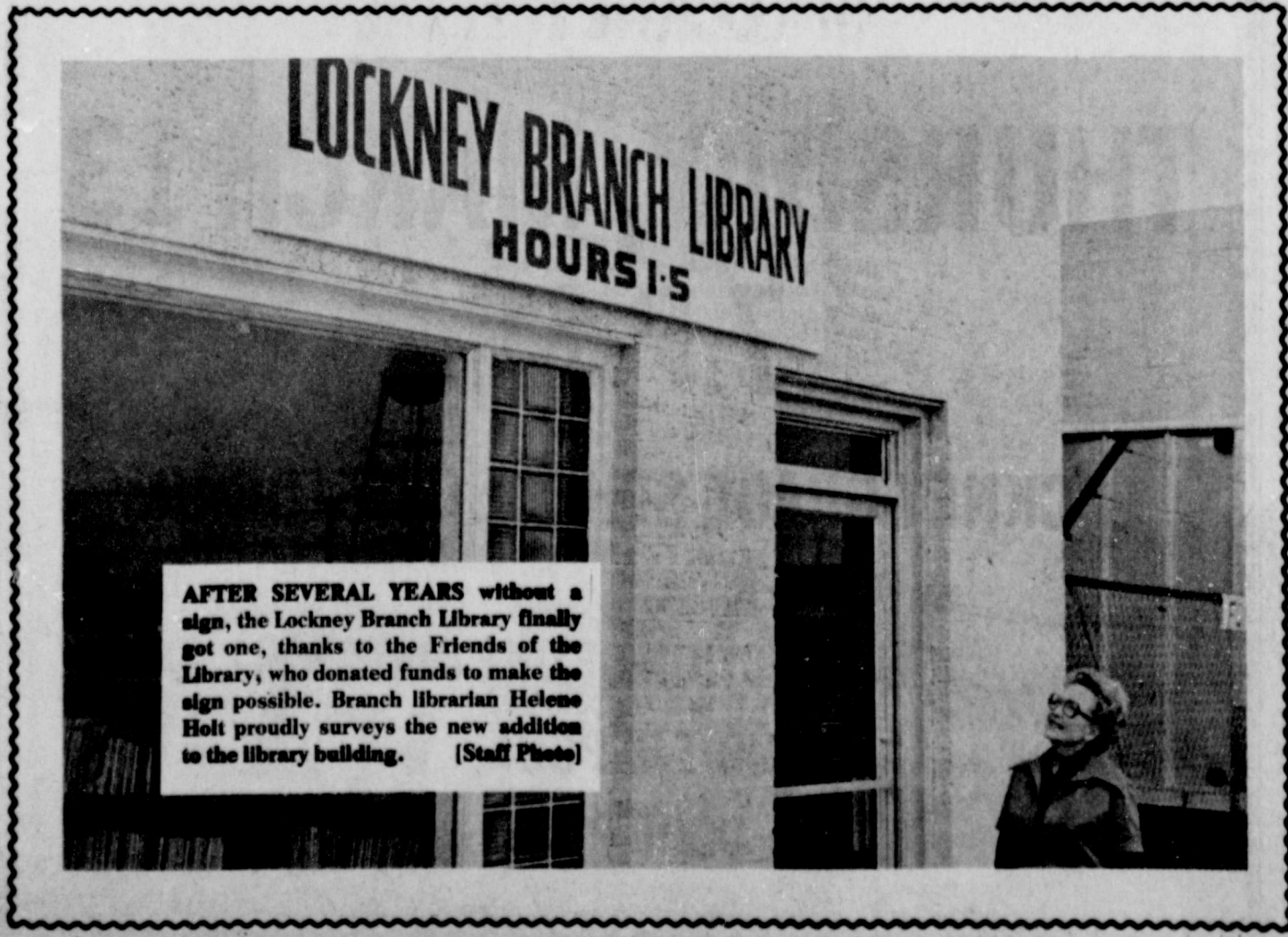
April 29-May 3 — Post-season single-elimination tournament.

Regular-season games are scheduled April 3, 8, 10, 14, 15, 17, 21, and 22.

Tournament games will be April 29, May 1, and May 3.

There is a \$10-per-player entry fee, which pays for team shirts and insurance. Spectator admission charges are \$1 for adults and 50 cents for students.

Lockney Girls Athletic Booster Club sponsors both Little Dribbler leagues.



AFTER SEVERAL YEARS without a sign, the Lockney Branch Library finally got one, thanks to the Friends of the Library, who donated funds to make the sign possible. Branch librarian Helene Holt proudly surveys the new addition to the library building. (Staff Photo)

LOCKNEY VARSITY GIRLS 1980 TRACK SCHEDULE  
March 7-8 — Plainview  
March 15 — Lamesa  
March 21-22 — Olton  
March 28-29 — Amarillo Relays  
April 4 — Tulia  
April 11 — District meet at Tulia  
April 18-19 — Regional meet at Lubbock

PERRY'S for lower PRICES  
20-OT BAG  
10-INCH PLASTIC HANGING BASKETS  
SHOP EARLY  
27" to 48" WHITE  
SALE PRICE 43¢  
CURTAIN RODS  
ASSORTMENT  
YOUR CHOICE



## LHS Senior English Class Takes A Trip

by Vicky Ortegon  
Seven Lockney High School seniors returned Thursday, February 28, from the Twelfth Annual Shakespeare Festival in Odessa. Students that attended were Troy Turley, Dean Molinar, Randy Davis, Sylvia Rendon, Gay Frizzell, Katherine Moore, and Vicky Ortegon. Sponsors for the trip were Mrs. Gwen Woodard, senior English teacher, and C.L. Record.

Since the senior English class has recently completed a study of Shakespeare's play "Macbeth," the trip came at a most appropriate time. Two plays, "Much Ado About Nothing," a comedy, and "Julius Caesar," a tragedy, were presented by the National Shakespeare Company at the Globe of the Great Southwest Theatre on February 27 and 28.

The actors were well worth watching; and the Globe of the Great Southwest, located on the Odessa College campus, was the perfect setting for the festival. This theatre is an authentic replica of the original theatre built in London, England, in 1598, for William Shakespeare's company. The building of Tudor architecture has been constructed during the last decade and a half as funds became available.

The students met Mrs. Marjorie Morris, the founder, whose work toward building the theatre has been highly accredited. She has been presented with an official historical marker for "the most nearly authentic replica of Shakespeare's theatre yet attempted."

The idea behind building the Globe of the Great Southwest came when Mrs. Morris was teaching in Odessa High School. One of her students made and brought a model of Shakespeare's Globe Theatre to school. He then commented that it would be exciting to

have an actual life-size replica of the Globe Theatre to be able to see actual plays by Shakespeare.

Although this was just a remark, Mrs.

Morris did not give up making her dream become a reality until the fall of 1968 when the Globe of the Great Southwest assumed full-time theatre

activity. The trip to Odessa was enjoyable and educational and is highly recommended for anyone who appreciates Shakespeare.



"TRAVIS AND FRIENDS" — Travis Thornton, Amy Frederickson and Keith Longbotham entertained Lockney students in assemblies Monday. Lockney

Elementary School children had a big time singing and clapping along with the music. (Staff Photo)

## New books in the Lockney Library

Among the new books just received at Lockney Branch Library is *Donahue, My Own Story*, by popular television show interviewer Phil Donahue. The book was highly praised recently by newspaper columnist Ann Landers.

Other biographies new on the shelves are *Second Wind*, The Memoirs of an Opinionated Man, by Bill Russell the fantastically-gifted basketball player, and *Taylor Branch*, Dinah by Bruce Cassidy (about Dinah

Shore); *Hondo My Father* by Becky Crouch Patterson (about Hondo Crouch, "Crown Prince of Luckenbach"); *Scott Was Here* by Elaine Ipswitch (about her son who was a victim of Hodgkin's disease).

New books of fiction include these titles: *The Strong Shall Live* by best-selling western author Louis L'Amour is a paperback copy.

*The Day Of The Butterfly* by Norah Lofts is a historical

novel set in early 19th century London.

*Smiley's People* is the new novel by spy author John LeCarreand gives the final, convulsive confrontation between George Smiley and Karla, his mortal enemy inside the Soviet Union.

*The Bourne Identity* is Robert Ludlum's latest book. This is the story of a man with no memory.

*Prize Stories of 1979*, the O. Henry Awards, is a collection of 21 fiction stories.

*The Song Of The Siren* by Philippa Carr (pseudonym of Victoria Holt) is the story of two half-sisters, one beautiful and the other plain.

*Hungry As The Sea* by Wilbur Smith concerns super-tankers built to minimum specifications and the prospect of the great of all oil spill.

*High Crimes And Misdemeanors* by Joanne Greenberg is a collection of stories which all center on a crime

ranging from the serious to the downright comic. This author also wrote *I Never Promised You A Rose Garden*.

Three small books of poetry by Rod McKeun have been placed on the library shelves. They are *Coming Close To The Earth, We Touch The Sky and The Sea Around Me*.

Prayers and meditations by Mother Teresa of Calcutta are included in *A Gift For God*.

*The Miracle Worker* is the television script by William Gibson about Helen Keller and her teacher Anne Sullivan.

*Stage Fright Be Damned* by Thomas Glenn Pelham is autographed by the author and seeks to help people with public presentations.

*The China Guidebook* written by Arne J. deKeijzer and Fredric M. Kaplan is a traveler's guide to the People's Republic of China. Two books of interest to

taxpayers and parents are *The Rights Of Parents In The Education Of Their Children* by David Schimmel and Louis Fischer and *School Budget: It's Your Money; It's Your Business* by Rhoda E. Dersh.

*Texas Centennial: The Parade of an Empire* by Wallace Owen Chariton tells of historical accounts, present vintage photographs and serves as a souvenir guide.

*Angels And Other Strangers* by Katherine Paterson is a collection of family Christmas stories.

*Real Ghosts* is a collection of stories about well-documented accounts of ghosts in the world. Author is Daniel Cohen, former managing editor of Science Digest magazine.

*Cosmetic Surgery May Be For You* by Dr. George Willeford discusses the medical, psychological and practical aspects of cosmetic surgery.

## Disposable Lighters Can Explode

Dear Editor:  
We just read the following in a farm magazine and we thought it might be important enough to publish in your newspaper.

"If you're doing some welding, make sure you're not carrying one of those disposable butane lighters that are quite popular now.

This warning comes from the extension agricultural engineering staff at South Dakota State University.

The Union-Pacific Railroad has reported two fatalities in recent months,

resulting from lighter sparks that burned through pockets of gas. The lighter was being carried in a pocket causing the butane to explode.

It is no minor matter. The service reports that the amount of force in an explosion is approximately three times what you're welding.

Thanks For

## Proclamation

THE WHITE HOUSE  
CENSUS 1980  
BY THE PRESIDENT OF THE UNITED STATES OF AMERICA

Our Constitution requires that there be a census of the people in the United States once every ten years. The Twentieth Decennial Census will be taken beginning April 1, 1980.

It is vitally important to everyone that this census be a complete and accurate report of the Nation's population and resources. Its results determine the representation of the States in the house of Representatives, the redrawing of congressional boundaries, and State and local redistricting. They also provide the basis for distributing large amounts of funds under various Federal programs among the States and communities.

The census is also important for a broader purpose. Americans are a free and mobile people. Significant and rapid changes take place in our country. To better understand ourselves and make intelligent decisions for the future, we depend greatly on our census.

NOW, THEREFORE, I, JIMMY CARTER, President of the United States of America, do hereby declare

and make known that it is the duty of every person in the census in the census schedule to answer the questions and to provide the information requested.

Every person in the census is to be sure that the information given is accurate and complete.

Answers cannot be given in any way which will harm the privacy of any individual.

By law individual information will not be used for taxation, investigation, or in connection with any service, the compilation, maintenance, or the regulation, or with the enforcement, of any law.

IN WITNESS WHEREOF, I have hereunto set my hand and the seal of the United States of America this 19th day of November, 1979.

JIMMY CARTER, President of the United States of America, do hereby declare

## Miss Texas To Band

Melvin Lloyd, 1979 president of the Chamber of Commerce, welcomed approximately 300 guests to the 2nd annual banquet Monday night at the Cafeterium.

Mark Wideman, 1980 vice-president, presided over the event. After a meal of prime rib and all the trimmings, Lloyd welcomed out-of-town guests from Lockney, Plainview, and other areas.

New directors and officers for 1980 were introduced. Officers include: Melvin Lloyd, president; Mark Wideman, vice-president; and Sue Moore, board member, and the family to be secretary. The 1980 directors are Roger Dawdy, Gordon Kirtley, Larry Barbee, and Stan McClendon.

Every person in the Chamber of Commerce is to be sure that the information given is accurate and complete.

Answers cannot be given in any way which will harm the privacy of any individual.

By law individual information will not be used for taxation, investigation, or in connection with any service, the compilation, maintenance, or the regulation, or with the enforcement, of any law.

IN WITNESS WHEREOF, I have hereunto set my hand and the seal of the United States of America this 19th day of November, 1979.

JIMMY CARTER, President of the United States of America, do hereby declare

Nancy Willson, 1979 president of the Chamber of Commerce, presented the 1980 officers and directors. Officers are: Louise Turner, president; Doris McLain, vice-president; Judy Dunlap, treasurer; and Dorothy Turner, secretary. Other directors include: Vicki Rainer and Gayle Ramsey.

Willson thanked the past directors. "This has been a busy year for the Women's Division. We have had open-house coffees and welcomed new merchants to Floydada. We are working with the hospital auxiliary in raising two doctors and have had

For elementary school children, the girls' workbooks are: *The Girl Who Rode the Horse* by Margery Williams, *Working Weights* by an introductory author, and *Building Buildings* by an introductory author.

The *Inner Child* by W. T. deBary is a teaching manual for children.

*Webster's Of Dictionaries* includes regular and also rhyming, and

And two new titles complete the month of books. Branch Library weekdays from 10:00 a.m. to 12:00 p.m. To Fool You is a collection of Best Jokes For

Officers and Directors for 1980 Chamber of Commerce are: Louise Turner, president; Doris McLain, vice-president; Judy Dunlap, treasurer; and Dorothy Turner, secretary. Other directors include: Vicki Rainer and Gayle Ramsey.

Officers and Directors for 1980 Chamber of Commerce are: Louise Turner, president; Doris McLain, vice-president; Judy Dunlap, treasurer; and Dorothy Turner, secretary. Other directors include: Vicki Rainer and Gayle Ramsey.

Officers and Directors for 1980 Chamber of Commerce are: Louise Turner, president; Doris McLain, vice-president; Judy Dunlap, treasurer; and Dorothy Turner, secretary. Other directors include: Vicki Rainer and Gayle Ramsey.

Officers and Directors for 1980 Chamber of Commerce are: Louise Turner, president; Doris McLain, vice-president; Judy Dunlap, treasurer; and Dorothy Turner, secretary. Other directors include: Vicki Rainer and Gayle Ramsey.

Officers and Directors for 1980 Chamber of Commerce are: Louise Turner, president; Doris McLain, vice-president; Judy Dunlap, treasurer; and Dorothy Turner, secretary. Other directors include: Vicki Rainer and Gayle Ramsey.

Officers and Directors for 1980 Chamber of Commerce are: Louise Turner, president; Doris McLain, vice-president; Judy Dunlap, treasurer; and Dorothy Turner, secretary. Other directors include: Vicki Rainer and Gayle Ramsey.

Officers and Directors for 1980 Chamber of Commerce are: Louise Turner, president; Doris McLain, vice-president; Judy Dunlap, treasurer; and Dorothy Turner, secretary. Other directors include: Vicki Rainer and Gayle Ramsey.

Officers and Directors for 1980 Chamber of Commerce are: Louise Turner, president; Doris McLain, vice-president; Judy Dunlap, treasurer; and Dorothy Turner, secretary. Other directors include: Vicki Rainer and Gayle Ramsey.

Officers and Directors for 1980 Chamber of Commerce are: Louise Turner, president; Doris McLain, vice-president; Judy Dunlap, treasurer; and Dorothy Turner, secretary. Other directors include: Vicki Rainer and Gayle Ramsey.

Officers and Directors for 1980 Chamber of Commerce are: Louise Turner, president; Doris McLain, vice-president; Judy Dunlap, treasurer; and Dorothy Turner, secretary. Other directors include: Vicki Rainer and Gayle Ramsey.

Officers and Directors for 1980 Chamber of Commerce are: Louise Turner, president; Doris McLain, vice-president; Judy Dunlap, treasurer; and Dorothy Turner, secretary. Other directors include: Vicki Rainer and Gayle Ramsey.

Officers and Directors for 1980 Chamber of Commerce are: Louise Turner, president; Doris McLain, vice-president; Judy Dunlap, treasurer; and Dorothy Turner, secretary. Other directors include: Vicki Rainer and Gayle Ramsey.

Officers and Directors for 1980 Chamber of Commerce are: Louise Turner, president; Doris McLain, vice-president; Judy Dunlap, treasurer; and Dorothy Turner, secretary. Other directors include: Vicki Rainer and Gayle Ramsey.

Officers and Directors for 1980 Chamber of Commerce are: Louise Turner, president; Doris McLain, vice-president; Judy Dunlap, treasurer; and Dorothy Turner, secretary. Other directors include: Vicki Rainer and Gayle Ramsey.

Officers and Directors for 1980 Chamber of Commerce are: Louise Turner, president; Doris McLain, vice-president; Judy Dunlap, treasurer; and Dorothy Turner, secretary. Other directors include: Vicki Rainer and Gayle Ramsey.

Officers and Directors for 1980 Chamber of Commerce are: Louise Turner, president; Doris McLain, vice-president; Judy Dunlap, treasurer; and Dorothy Turner, secretary. Other directors include: Vicki Rainer and Gayle Ramsey.

Officers and Directors for 1980 Chamber of Commerce are: Louise Turner, president; Doris McLain, vice-president; Judy Dunlap, treasurer; and Dorothy Turner, secretary. Other directors include: Vicki Rainer and Gayle Ramsey.

# ANNUAL STOCKHOLDERS' MEETING

# CONSUMERS FUEL ASSOCIATION

## OF LOCKNEY, TEXAS

# THURSDAY, MARCH 13

# 7 P.M.

## LOCKNEY GRADE SCHOOL CAFETERIUM

- ★ DINNER
- ★ ELECTION OF ONE DIRECTOR
- ★ AUDIT REPORT
- ★ DOOR PRIZES

Floyd Philosopher Comes Up With A Suggestion

Editor's note: The Floyd County Philosopher on his johnson grass farm on Whiteriver comes up with

Dear editor:  
As I understand it, one of the demands being made by the Iranians before they'll release the hostages is that the United States admit it kept the Shah in power for 25 years and is therefore responsible for whatever it was he did.

This would be admitting that the last four or five U.S. Presidents were somehow guilty of something and naturally the United States balks at that.

But there is a way to handle this and I don't know why the State Department hasn't thought of it. It's the use of "nolo contendere," one of the half dozen or so Latin phrases all lawyers have to learn, the better to mystify their clients. It means "no contest." Or, "I don't admit I'm guilty of the crime and I promise not to do it again."

That's easy. We've got all sorts of people experienced in such matters — Congressmen, ex-Congressmen, tycoons, heads of big corporations, even an ex-Vice President, all of whom have pleaded "no contest" when charged with such things as income tax evasion, bribe-taking, illegal campaign contributions, bribery of foreign governments, stock frauds, and other pastimes. They all said they didn't admit doing it and won't do it again.

Let's get one of them to deliver the message to Iran before Khomeini thinks up a brand new reason for taking his ire out on 50 innocent Americans.

Yours Faithfully,  
J.A.

## Sheep And Lamb Conference Scheduled In Lubbock

A conference to help area farmers who are interested in maintaining sheep and lambs as part of their farm operation will be held Saturday, March 15, at Lubbock Christian College, 5601 19th, Lubbock.

The program in the Betty Hancock Campus Center at the college will begin with registration at 8:30 a.m. and continue until 1:30 p.m. The program is free.

It is being sponsored by the livestock industries committee of the Lubbock Chamber of Commerce and cosponsored by the Texas Agricultural Extension Service, Texas Tech University and LCC, said Jett Major, Floyd County Extension agent. Lunch will be provided for participants, Bob Etheredge, agri-

cultural manager for the chamber, said.

Confinement ewe production will be discussed by David L. Judah, instructor at LCC. Dr. Judah, Extension area specialist from San Angelo, will discuss predator control with Floyd Brocharut, Crowfoot, Texas.

Wool management will be discussed by Laughlin, of Ranchman Mohair, Inc. Ahlschwede, economics and production specialists will answer questions at conclusion of the program.

## The Lockney Beacon

MEMBER 1980  
TEXAS PRESS ASSOCIATION

THE LOCKNEY BEACON [USPS 317-220] is published each Sunday and Thursday by Floyd County Publishing Co., 220 South Main Street, Lockney, Texas 79241. Second-class postage paid at Lockney, Texas 79241. Subscription rates: local \$10.50 per year, out of trade area \$11.50 per year. POSTMASTER: Send address changes to THE LOCKNEY BEACON, P.O. Box 187, Lockney, TX 79241.

Jim Huggins

Publisher

Editor

LOCKNEY FIREMEN battled a fire beside US 70 west of town Tuesday.



Lighters Can Explode

resulting from lighter explosions each case sparks from the lighter was being carried. The lighter went through the lighter's flame causing the butane to explode. It is no minor matter. The service reports that there is an amount of force in a butane lighter when it explodes as there are approximately three sticks of dynamite.

So don't carry a lighter like you're welding.

Proclamation

THE WHITE HOUSE  
CENSUS 1980  
BY THE PRESIDENT OF THE UNITED STATES OF AMERICA

Every person in the United States has a duty to answer the questions in the census schedule. The census is the most important of our national activities. It is the basis for the apportionment of seats in the House of Representatives and the electoral college. It is also the basis for the distribution of federal funds to the states and local governments.

IN WITNESS WHEREOF, I have hereunto set my hand and the seal of the United States of America this 1st day of January, 1980.

JIMMY CARTER  
President of the United States

How To Profit From Your And Crafts Includes information from Albert Lee, Carol Allman Lee, Anatomy Of An Illness, as advised by the patient, is Man Cousins' reflections on healing and regeneration. The Art Of Friendship by Elaine Leafeldt and Er-Callenbach focuses on human capacity for friendship.

The Vegetarian Epicure is a paperback book of 262 pages that bring vegetarianism to new gastronomic heights. It is written by Anna Rosenberg.

Learning To Live With The Of Your Life by Dorothy Job Greenwald is subtitled How To Stay Happily Married.

Unless Childbirth by and Lamaze details the method.

Gold: The Education Of A Builder is fully illustrated with action photos. It is written by Arnold Schwarzenegger and Las Kent Hall.

For elementary school children, The Girl Who Loves Horses by Paul G. Caldecott is a Caldecott medal winner.

Working On Weights by Steve is an introduction to sane weightlifting building techniques for beginners.

The Inner Games by W. Timothy teaches attitudes and techniques.

Webster's Encyclopedic Dictionary Of Dictionaries includes regular dictionaries and also Bible, rhyming, and other dictionaries.

And two books of riddles complete the collection of books in Branch Library which are available on weekdays from 10 a.m. to 5 p.m.

The juvenile book To Fool Your Friends contains mystifying tricks and puzzles.

Best Jokes From

Lamb Conference

area farmers raising sheep their farm day, March 14, 1980, at the college, 5601 Hancock will begin at 8 a.m. and program is provided by the Extension Service and County Agricultural Agents.

A panel of speakers and specialists will answer questions at conclusion of the conference.

Lockney Beacon

MEMBER 1980  
PRESS ASSOCIATION

LOCKNEY BEACON [USPS 317-220] is published Sunday and Thursday by Floyd Lockney Publishing Co., 220 South Main Street, Lockney, Texas 79241. Second-class postage paid at Lockney, Texas 79241. Subscription rates: \$1.00 per year, out of trade area \$11.50 per year. POSTMASTER: Send address changes to LOCKNEY BEACON, P.O. Box 187, Lockney, Texas 79241.

Publisher  
Editor

FLOYDADA

# Miss Texas Speaks To Banquet Crowd

Melvin Lloyd, 1979 president of the Chamber of Commerce, welcomed approximately 300 guests to the annual banquet Monday night at the Cafeteria.

Mark Wideman, 1980 vice-president, presented the invocation.

A meal of prime rib and all the trimmings, Lloyd welcomed out-of-town guests from Lockney, Plainview, and other areas.

Directors and officers for 1980 were introduced. Officers include: Edwin Nutt, president; Mark Wideman, vice-president; and Sue Moore, board member. The 1980 directors are Roger Barbee, Gordon Kirtley, Larry Barbee, and Stan McClendon.

LaBaume, Jerry Thompson, Anne Willson, Don Hardy, Alton Higginbotham, and Joe Cluck.

"This year we open the door to a new decade. We have a golden opportunity for a brighter future."

He thanked the community for their interest and enthusiasm during the year. The past president predicted that 1980 will "remain number one in the state."

Nancy Willson, 1979 president of the Chamber of Commerce, presented the 1980 officers and directors. Officers are: Louise Turner, president; Doris McLain, vice-president; Judy Dunlap, treasurer; and Edna Turner, secretary. Other directors include: Vicki Rainer and Gayle

appreciation coffees for the teachers of R.C. Andrews and Duncan Elementary.

She reported that the two blood drives they sponsored during the year collected a total of 59 pints of blood for the Blood Services Center.

Commenting on the style show, yard-of-the-week contest and Christmas program, Nancy also said, "We are very proud of the money we have raised for friends of the library, someday we hope to have a new library."

"I feel the year was a big success and we had fun while working for Floydada," Mrs. Willson commented. In a lighter vein, the president named honorary members to the Women's Division of the Chamber of Commerce. The men recognized for their services were: Joe Cluck, Keith Thomas and Bill Cagle.

The annual "Employer of the Year Award," sponsored by the women's division went to Donnell Gowens, maintenance foreman for the State Department of Highways and Public Transportation.

Also nominated were: Preston Watson, Jerry Cannon, Louis Anderson, Don and Sue Hardy and Choice Smith.

The choice is made by judging letters written and submitted by employees.

Melvin Lloyd, past president, presented the gavel to the 1980 president Edwin Nutt.

Nancy Willson presented her gavel to the new women's division president Louise Turner. The past presidents were given plaques in honor of their efforts for the community.

Lance Barrow, chamber manager, introduced the speaker for the evening, "Miss Texas," Lex Ann Haughey.

Miss Haughey, a junior business administration student at North Texas State University, gave an in-depth discussion on the requirements for contestants in the "Miss Texas" Pageant and also in the "Miss America" Pageant.

"Miss Texas" stressed the importance of current events. She commented that being knowledgeable in the area of world events was an important factor in the interview phase of the contests.

Emphasizing the scholarship aspect of the pageant as its most rewarding feature, Lex Ann said, "More than a beauty pageant, it is a way to further one's education by scholarships."

"We are all striving to get ahead," she said, "obtaining a goal is important, but what we become while striving for the goal is the most important part."

"Miss Texas" invited questions from the audience. Some of the questions and her responses are as follows:

"Why did you start in pageants?"  
"To further my education."

"What about Bert Parks?"  
"Nothing is forever," was Miss Haughey's reply, "it's time for a new face."

"Do you date?"  
"No time now."

When she was asked if she thought the "Miss America Pageant" was political, or if it was on the "up-and-up," she gave an emphatic response saying she thought it was very fair and well done.

After the banquet, "Miss Texas" attended an informal reception hosted by Mr. and Mrs. Melvin Lloyd. Several of the directors also attended.

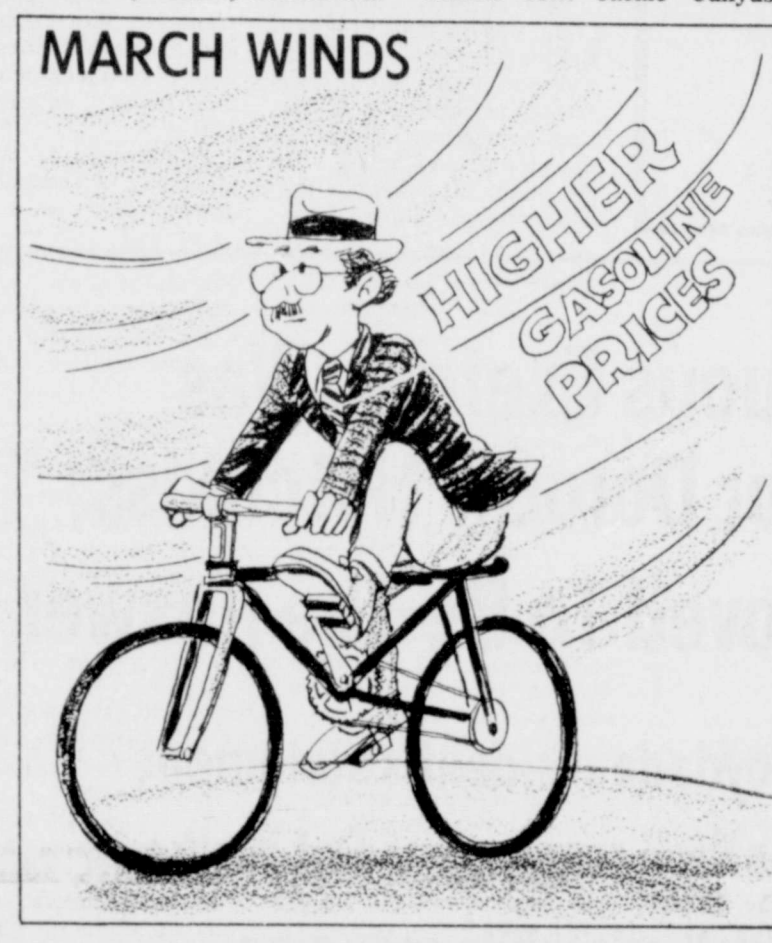
Lance Barrow, chamber manager, said he was delighted with the fine turnout and extends his appreciation to the community.



PLAY CAST AND CREW — The cast and crew of the Lockney Junior High UIL one-act play posed for pictures following a performance of "Moonshine and Martians" for the student body Tuesday morning. The UIL contest performance was yesterday afternoon at

Gaskins, Susy Pinner, Becky Pitchford. Back: Shawnda Brock, Jerri Ann McCormick, Dana Poole, Karyn Foster, Stephanie Bybee, Kim Carthel, Jeffrey Prisk. Also pictured: play director Mrs. Lela Warren.

[Staff Photo]



**Brass Quintet To Be Featured In Plainview March 9**

A brass quintet from North Texas State University in Denton will be featured in a bonus Community Concert at the Plainview High School auditorium at 3 p.m. Sunday, March 9.

Members of the Plainview Community Concert Association may contact Mrs. Lee Nowlin at 296-6239 for further details.

Community Concert subscribers who do not plan to attend the concert might like to invite a band student to attend in their place, suggested an association member.

**Not Too Bad**  
An economist has been defined as a person who has one foot in the oven and the other in the freezer and says, "On the average, things aren't too bad."



OFFICERS AND DIRECTORS FOR 1980 Chamber of Commerce are (back row, left to right) Edwin Nutt, Roger Dawdy, Don Hardy, Larry Barbee, Joe Cluck, Gordon Kirtley, Mark Wideman, Jon LaBaume, Melvin Lloyd and Chamber manager Lance Barrow. In the front row (left to right) are Sue Moore, Bob Gilliland, Tommy Cathey, Anne Willson, Jerry Thompson and Stan McClendon.

from HISTORY'S SCRAPBOOK DATES AND EVENTS FROM YESTERYEARS

March 6, 1475 — Birthday of Michelangelo Buonarroti, the great Italian painter, sculptor and architect.

March 7, 1876 — Alexander Graham Bell receives a patent for his invention of the telephone.

March 8, 1917 — Riots and strikes in St. Petersburg mark the beginning of the Russian Revolution.

March 9, 1822 — Charles Graham of New York City receives the patent for artificial teeth.

March 10, 1775 — Daniel Boone and a company of frontiersmen are hired by the Transylvania Company to cut a road through the wilderness to the Kentucky River.



LOCKNEY FIREMEN battled a grass fire beside US 70 west of town Tuesday afternoon.

[Staff Photo]

**We At Floydada First National Bank Congratulate The 1980 Chamber Of Commerce Directors**



OFFICERS AND DIRECTORS FOR the 1980 Chamber of Commerce are (back row, left to right) Edwin Nutt, Roger Dawdy, Don Hardy, Larry Barbee, Joe Cluck, Gordon Kirtley, Mark Wideman, Jon LaBaume, Melvin Lloyd and Chamber manager Lance Barrow. In the front row (left to right) are Sue Moore, Bob Gilliland, Tommy Cathey, Anne Willson, Jerry Thompson and Stan McClendon.

"Helping You Change Things For The Better"

**THE FIRST NATIONAL BANK OF FLOYDADA**

FLOYDADA, TEXAS 79235 MEMBER F.D.I.C.



### Alpha Mu Delta Volleyball Tourney Scheduled

The Alpha Mu Delta Chapter of Beta Sigma Phi is sponsoring a volleyball tournament March 6-7-8, at the Floydada jr. high gym. The first games will start at 6:30 p.m. Thursday and Friday nights. The first game Saturday will begin at 5 p.m. Admission to the tournament is \$1 per adult and 50 cents for children under 12 years of age. The chapter will also have a concession stand at the gym.

There are 5 mens and 8 womens teams entered. They are as follows:  
Mens: Plainview Rounders, Dougherty Men, Crosbyton Men, Billie Deans's, Jo-Barb-Dee.  
Womens: Floydada Livestock, Scorpions, Dalby Cattle Co., Eagles, Roy's Angels, Ketchersid Construction, Strain and Dunaway and Bob's Farm Store.  
Individual trophies will be awarded as well as a sportsmanship trophy.

**We Would Like To Express  
Our Appreciation  
For The Many Kindnesses  
Shown To Us On The Death  
Of Our Mother,  
Dailia K. Yearwood.  
The Yearwood Family**

## Since Strenuous Exercise Was Forbidden For Dorothy Hotchkiss; Pat Walker's Proved To Be The Answer!

Read a lifelong Floydada resident's statement  
about the "fringe benefits" received at Pat Walker's  
while reducing Walker's while reducing

Mrs. Hotchkiss writes:

It is a real privilege to have an opportunity to recommend the Pat Walker Program to others.

I was so pleased when a Pat Walker Salon located in our area. Close family members were enrolled in other cities and I had studied their health and beauty improvements with utmost interest.

Due to eye surgeries in both eyes in 1975; I was sure desperate for a safe, passive exercise program. Strenuous exercise was forbidden; walking was hazardous with poor vision.

My improvements in general health, figure correction and added vigor have been even beyond the great expectations; especially with the improved vision. It is theorized that the improved circulation method promoted "self healing" of the eye tissue.

P.S. I am pleased over losing the unwanted inches, too!!!

Dorothy Hotchkiss  
Floydada, Texas

Take Advantage Of Our  
Very Limited Offer &  
Start On Your Figure  
Correction Program Today!  
**\$50<sup>00</sup> Savings**  
(New Programs)



BEFORE

Call NOW for your complimentary treatment and figure analysis. There's no obligation, but do call ahead to reserve time for your free appointment.

**Pat Walker's**  
Figure Perfection Salons International

# Social Events

## Miss Wieferich, Schwertner United In Marriage

Joan Carol Wieferich and Arnold Eugene Schwertner were united in the holy sacrament of matrimony at 2 p.m. Saturday February 9 in San Jose Catholic Church in Lockney. A mass and double-ring ceremony was performed by Reverend Timothy Schwertner of St. Michaels, Levelland, uncle of the groom, and Reverend Richard Casey of Stratford. Parents of the couple are Mr. and Mrs. Robert Wieferich of Bethesda, Md., and Mr. and Mrs. August Schwertner of Floydada. Patricia Ross, sister of the bride, was the maid of honor. Bridesmaids were Patsy Huereca of Carrollton, Doris Schwertner of Lubbock, Barbara Schwertner, sisters of the groom, and Sandari Prastasto of Washington, D.C.

The bridesmaids wore long apricot dresses of satin back crepe with lace yokes and cuffs. The maid of honor wore a long yellow dress with matching lace. Wide brim hats and bouquets of daisies and baby's breath complemented their dresses. Gilbert Schwertner, brother of the groom, was best man. Groomsmen were David Schwertner of Hereford, Bruce Schwertner of Dumas, Harvey Wilde of San Angelo and Robert Wieferich of Bethesda.

Music for the mass and ceremony was played on piano by Clarice Schwertner and June Schwertner. Selections played included "Wedding Song" and "Our Father."

Following the wedding ceremony, a reception, dinner and dance were held at

the Harmony Community Center. A three-tiered wedding cake made by Janie Stafford was served. The couple will reside in Floydada.

## Spring Lipham Honored On Birthday

Spring Lipham, who had her 5th birthday Thursday, February 28, was honored with a birthday party Friday. D'Anna Spring is the daughter of Mr. and Mrs. Julian Lipham. Guests at the party were: Tian Younger, Scott and Lisa Crader, Brittany and Josh Gregory and Autumn and Crystal Nelson.

Also present at the party were Mrs. Dena Myrick, Spring's grandmother; Mr. and Mrs. Richard Nelson of Aiken; Mrs. Linda Crader and Julianne, Timothy and Joe Kim Lipham; and the honoree's parents. Birthday cake, ice cream and punch were served to the guests and games were enjoyed by the "little people."

## 1934 Study Club Meets

The 1934 Study Club met this week for their regular monthly meeting. After the president called the meeting to order, members answered roll call with "a recent book I have read."

During the business session the minutes were read and the president announced the names of those who are to serve on the committee to make plate favors for the upcoming district meeting. They are Lorene Newberry, Wanda Turner, Jettie Moss and Ruth Trapp. Lorene Newberry introduced the program. Ann Willson presented a review of the book "I Came To Love You Late," which is the story of Martha, Mary and Lazarus in Bethany. Members enjoyed "travelling mentally" in the events of the lives of these characters.

Present at the meeting were Diane Glover, Lorene Newberry, Effie Foster, Helen Dunlap, Eva Parker, Verla Lynn Stewart, Ann Willson, Ruth Trapp, Queen Annie Lawson, Aline Bradley, Freda Simpson, Wanda Turner and the hostess Jo V. Bingham.

## LOCKNEY LOCAL

Joe and Peggy Nance and daughters Tonya and Amy, Ross James of Plainview, Tom and La Juan Nance and son John David and Kim Smith, all of Providence, and their daughter Debra McCandless and children

Risa, Scott and Andrea, all spent this past weekend at Florietta. They were met Friday in Florietta by Joe and Tom's niece Susan and Benji Stone of Espinola and their nephew Steven Harp, who is stationed in Idalho.

## Penny Bertrand Ho To Alpha Mu Delta

The Alpha Mu Delta Chapter of Beta Sigma Phi held its regular monthly meeting February 19 at the home of Penny Bertrand.

Donna Anderson called the roll and read the minutes of the previous meeting. Five visitors from Sigma Eta Chapter of Beta Sigma Phi in Tulsa attended. Guests included Debbie Breed, Zane Burrow, Susan Bryant, Diane Powers and Debbie Brown. Treasurer Daphna Simpson read the chapter financial report.

Program chairman Donna Henderson reported that Kathy Green will present the program on physical beauty at the next meeting March 4. Hostesses will be Debbie Heasty and JoAnn Patterson.

The club discussed further plans for the annual

## Homebuilders Extension Club Meets

Mrs. Elmer Norrell was hostess for the Homebuilders Extension Club February 26. The devotional from Proverbs 30:5 was read by the hostess.

Final plans were made for the county-wide meeting to be held March 11 at the Lighthouse Electric Building where Homebuilders will host the other clubs in the county.

Mrs. Gordon Mayfield had charge of the program and gave a very informative program on Christianity and the

## First Lady Of Year To Be Chosen

A local woman will be recognized for accomplishments in her special field with the title of First Lady of the Year. A Certificate of Recognition will be present-

**Brown's**  
DEPARTMENT STORE  
MAN'S SHOP  
104-06 North Main Lockney, Texas

flattering & comfortable

SWEETHEART

EASY STREET

Sweetheart: A stylish, flattering sandal that doesn't sacrifice comfort. The ideal accent whether you go dressy or casual.

Sweetheart  
N-6-10, M-5-10 \$26.00

## NEWS & REVIEWS Media Center First Baptist Church Floydada

BY BETH PRATT

enters are installed this week in media center area. Center's office will be in library and the media center will be in chapel.

Materials preparation located in the hall will be completed by the media center. A window will be pass-through into teachers' room from this room on mornings.

The program on books and records not had time to finish in the last three months.

book that packs a punch is "America

Is Home" by Van Nuys, the story of a Vietnam family sponsored by a church in Georgia. It records confusions, the heartache and the triumphs of a refugee in America. It all it has a much-needed message for America about what is really important.

Grady Nutt, recipient of the television "Hee-Haw," has written an entertaining autobiography entitled "So Far, So Good." Nutt titled the chapter this year at Wayland Baptist College "Eight Miles from the Nearest Known." The humor makes it read and the serious adds another dimension to this masterful story-teller.

## Penseroso Members Hear Child Abuse Program

Penseroso Junior Study Club met Thursday, February 28, in the home of Mrs. Bybee and Cindy Dyer. A program on child abuse was presented by the Department of Resources. Roll call members was "Do you remember the worst you ever got?" Mrs. Jackson was chosen Penseroso representative to the selection for the Lockney Woman of the Year. Penseroso has donated the Lockney Club

the February 28 meeting were the hostess, Reed Smith; co-hostesses Cy Bybee and Cindy Dyer; Treena Aston, Cheryl, Linda Gant, Judy, son, Jessie Johnson, Kellison, Julie Martin, Mosley, Janette Work, Lynn Reves, Julie Hickey, Karen Herber, Char Burson, Sandra Cummins, Linda Cuny.

The March 13 meeting will be in the home of Mrs. Adrian. Mrs. Eileen Schacht of Schacht's Press will give the program.

members attending  
**Audrey's Hair Styles**  
WEST HOUSTON  
One 983-5220  
FLOYDADA

## Wayland

Troopers from the Department of Public Safety will again be on the case of Wayland Baptist College on Thursday and Friday evenings, March 6-7, to

## Happy 30th Birthday

Cheryl, Honey

Love,

Your Mushroom Friend

## Another Weekend

Mens 14 Ounce No-Fault  
Regular Fit, Slim Fit & Cowboy Cut

**Wranglers**

Regular 16"  
Weekend \$12<sup>88</sup>

Ladies Pul

Knit

This Weekend

**ANDE**  
3 Ways To Buy  
120 West C



## Penny Bertrand Homecoming Queen To Alpha Mu Delta

The Alpha Mu Delta chapter of Beta Sigma Phi held its regular monthly meeting February 19 at the home of Penny Bertrand.

Anna Anderson called the meeting to order. Five members from Sigma Eta attended. Guests included Debbie Breed, Zane Brown, Susan Bryant, Diane Brown and Debbie Brown. President Daphna Simpson reported on the chapter financial statement.

Hostesses Duffy Anderson, Daphna Simpson, Tonya Marble, Debbie Brown, Penny Bertrand, Kathy Green, Donna Patterson, Kay Jones, Debbie Brown, and Revis Pernell and guests.

## Homebuilders Extension Club Meets

Elmer Norrell was the guest speaker for the Homebuilders Extension Club meeting held on Thursday, February 26, at the home of Mrs. C.C. Burns. A program on "Homeownership" was presented by the speaker. Plans were made for the next meeting to be held on March 11 at the home of Mrs. C.C. Burns.

## First Lady Of Year To Be Chosen

A local woman will be chosen to be the First Lady of the Year. The selection will be held on Thursday, March 6, at the home of Mrs. C.C. Burns. The winner will receive a Certificate of Honor and a \$26.00 award.

Women are making important contributions in community service, business, government, welfare, research and education. The sorority's membership includes distinguished women from all over the world.

Beta Sigma Phi International Cultural Organization has approximately 240,000 members in about 100 chapters throughout the United States, Canada and territories around the world. The sorority was founded in 1931 and maintains its international headquarters in Kansas, Missouri.

Through the Beta Sigma Phi International Cultural Organization, more than \$75,000 has been contributed to cancer research, Lung Cancer Research, and other worthwhile projects. New projects are being developed by the organization.

The First Lady of the Year will be chosen by a committee of local women. The committee will be made up of members of the Alpha Mu Delta chapter.

Send nominations for the First Lady of the Year to the Alpha Mu Delta chapter, 303 Floydada, Texas. Only the community members are eligible for nomination. The winners will be kept confidential as well.

## NEWS & REVIEWS

Media Center First Baptist Church Floydada

BY BETH PRATT

Carpenters are installing shelves this week in the media center area. Miller's office will be present library and the media center will be the chapel.

Materials preparation now located in the Anderson home. A window will be a pass-through into the room for teachers needing materials from this room on mornings.

Hostesses Duffy Anderson, Daphna Simpson, Tonya Marble, Debbie Brown, Penny Bertrand, Kathy Green, Donna Patterson, Kay Jones, Debbie Brown, and Revis Pernell and guests.

## Penseroso Members Hear Child Abuse Program

The February 28 meeting of the Penseroso Junior Study Club was held in the home of Mrs. C.C. Burns. A program on "Child Abuse" was presented by the speaker. Plans were made for the next meeting to be held on March 11 at the home of Mrs. C.C. Burns.

The club adjourned on Thursday, March 25, at the home of Mrs. C.C. Burns. The speaker was Mrs. C.C. Burns.

**Happy 30th Birthday**  
Cheryl, Honey  
Love,  
Your Mushroom Friend

**Anderson's Weekend Specials**

Mens 14 Ounce No-Fault Regular Fit, Slim Fit & Cowboy Cut

**Wranglers** Regular 16" Weekend \$12.88

Large Selection Mens Haggard Dress Pants

Values to 26% This Weekend **25% Off**

**Special Ladies Pull-On Knit Pants** Sizes 10 to 20

This Weekend **\$9.88** Regular 12.00 Value

**ANDERSON'S** DEPARTMENT STORE  
120 West California Floydada



**ARTIST OF THE WEEK** Wanell Peel displays her oil painting, "Silent Winter Days." Mrs. Peel has been under the supervision of Winnie Carthel in her art studies for approximately 5 months.

## Department Of Public Safety Seeking Applicants

"Young men and women are needed to fill the ranks of the uniformed services of the Texas Department of Public Safety," Major C.W. Bell, Commander of Region Five, announced today. "Most importantly minority applicants are diligently being sought for employment."

"Any young person 20 to 35 years of age with a minimum of 60 college hours in an endeavor of study who is interested in a career with the most progressive law enforcement body nation-

wide should contact the Texas Department of Public Safety Drivers License office in Floydada for an application," Major Bell added.

The next all service recruit school will start in June, 1980 at the Homer Garrison Law Enforcement Academy. Recruits are given basic instruction in all phases of law enforcement with special attention given to drivers license law, firearms, physical agility, driving skills and traffic accident investigation.

Upon graduation and completion of probation troopers are paid \$14,880 annually. Uniforms, weapons, footwear and headgear are furnished each trooper. Transportation that is necessary to fulfill job requirements is also furnished.

"It is out intent to give all applicants the utmost in personal attention throughout the application and selection process. We will do everything possible to expedite the selection process of applicants," Major Bell stated.

## Today's Lifestyles

By Marilyn Tate

County Extension Agent

Homemakers near Dougherty are invited to join the Extension Homemakers Club which is currently being organized there. The first meeting will be Friday, March 7, 2:30 p.m., at Pam Overstreet's home. Everyone is welcome. Extension Homemakers Clubs are open to everyone regardless of socioeconomic level, race, color, sex religion or national origin.

The Floyd County Family Living Committee will meet at 9:30 a.m. March 7 at the Agriculture Building to plan Home Economics programs for the remainder of the year. All members are urged to attend and contribute their ideas.

## Reeves Return From Valley Area

Mr. and Mrs. Harry Reeves recently returned after spending several weeks in the Texas valley at McAllen, Mission and Weslaco and other south Texas areas. They met people from other states at the Sharrilee Traylor Motel, and enjoyed many activities with them. The weather was beautiful and warm.

Mr. and Mrs. Travis Lightfoot joined them in South Texas for about a weeks stay. They also visited Travis and C.D. Rutledge at Weslaco, old friends of Travis and Letha, C.C. is a brother of Mrs. Vada Meredith.

While there the Reeves and Lightfoots made several trips into Old Mexico and stayed a few days at south Padre Island. They said the citrus fruit was plentiful in South Texas this year. The Reeves plan to spend the winter months in the Valley next year and plan to see old friends they met again.

ing certain the unit come with complete installation instructions. More importantly, follow them in setting up the unit. Many woodstove fires result from improper installation. Two frequent errors are inadequate clearances and improper venting.

In cases where local building codes don't spell out clearances, use those of the National Fire Protection Association. They recommend a 36-inch clearance between a stove and any combustible surface to the front, back, sides and above. Insulating stoveboard or a non-combustible surface, such as brick or ceramic tile, is required underneath the stove.

If the stove will connect to an existing chimney, make sure the chimney is sound and has a flue lining. Fire in a cracked or unlined chimney can spread to the house. On the other hand, if you connect the woodstove to a fireplace chimney, always seal off the opening around the stovepipe to keep toxic gases from backing up into the room.

Remember, one stove to a chimney. Two stoves using one chimney can cause poor drafts and creosote build-up -- or flue gases can be drawn into the house through an opening that is not in use.

**Want To Lose Weight Safely**

- Guaranteed
- Doctor Recommended
- No Amphetamines
- Controls Hunger
- Diet Aid

For Information Call -

Brenda or Judy  
983-2904 or 983-2039  
983-3438

**ALLSUP'S CONVENIENCE STORES** Lockney

WE RESERVE THE RIGHT TO LIMIT PRICES EFFECTIVE MARCH 6-8, 1980 SPECIALS GOOD WHILE SUPPLY LASTS - LIMITED SUPPLY

**PRESENTS...**

**Family Reunion**

KRAFT HALFMOON CHEDDAR CHEESE 10 OZ. PKG. \$1.19

KRAFT AMERICAN CHEESE SINGLES 12 OZ. PKG. \$1.19

KRAFT ORANGE JUICE QT. 79¢

PILLSBURY DM/COUNTRY BISCUITS CANS \$1.00

KRAFT QUARTERS PARKAY MARGARINE 2 PKGS. \$1.00

KRAFT MARSHMALLOW JETS 10 OZ. PKGS. \$1.00

BORDEN'S BUTTER MILK 1/2 GAL. 99¢

BORDEN'S COTTAGE CHEESE 12 OZ. CTN. 79¢

BORDEN'S ASSORTED ICE CREAM 1/2 GAL. RD. CTN. \$1.59

KRAFT MACARONI AND CHEESE DINNER 3 7 1/2 OZ. BOXES \$1.00

KRAFT MIRACLE WHIP QT. \$1.19



### Clements To Deliver Address At Safety Conference

Governor William P. Clements will give the Keynote Address at the Opening Session of the 1980 Texas/Southwestern Safety Conference and Exposition in the Sheraton-Dallas Hotel at 9:30 a.m., March 17.

Hosted by the Texas Safety Association, the four-day convention, which begins with registration on March 16, will provide 40 informational and educational safety sessions for over 2,000 safety-conscious individuals from across the Southwest.

Emphasizing the theme "Safety for the 80's," General Conference Chairman Roger Meier, president, Roger Meier Cadillac and chairman, Dallas Chamber of Commerce, will open the General Assembly with a call to order and opening remarks; Meier's comments will be followed by a welcome from Dallas Mayor Robert S. Folsom.

Other highlights of the morning will include the presentation of the Rural Heroism Award by Millard Shivers, director of Rural Development for Blue Cross-Blue Shield of Texas, and the presentation of TSA awards,

including one to the broadcast medium which demonstrated outstanding service to safety in 1979, by Glynne Covington, TSA president and senior vice president of Enserch Corporation.

Following the Opening Session and for the remainder of the convention, conference delegates will attend meetings to hear the newest and most innovative safety ideas of such speakers as William J. Gregory, accident prevention representative for the Attorney General's Office; Nelson Mueller, safety and health administrator for ALCOA; and Jerry Purswell, OSHA director of Safety Standards Programs.

To further familiarize themselves with the most recent safety appliances and services, conference-goers will also attend the Safety Exposition in the north concourse and ballroom of the Sheraton-Dallas Hotel. Over 75 safety distributors and manufacturers will be displaying their safety apparatus at the exposition which is the second largest regional safety show in the nation. Open from 8 a.m. until 5 p.m., March 17-18.

and from 8 a.m. until noon, March 19, the exposition will feature products, services and information ranging from air pollution, clothing, lawn care, noise evaluation equipment-to security and protection devices.

Other outstanding events at the convention include a conference banquet with entertainment by The Levee Singers and speaker Don Newbury, March 16, and an

Air Bag Demonstration sponsored by the National Highway Traffic Safety Administration, March 18.

"The 1980 Texas/Southwestern Safety Conference and Exposition is our way of celebrating 41 years of safety and should prove to be an educational and enjoyable event for all those who attend," Covington said.

### Senator John Tower Co-sponsoring Legislation...

WASHINGTON — U.S. Sen. John Tower (R-Texas) is co-sponsoring legislation to block regulations which set unrealistically high certification requirements for laboratory personnel. The U.S. Department of Health, Education and Welfare rules would be a crippling if not fatal financial blow to 350 small hospitals in Texas, the senator explained.

The bureaucrats who wrote these rules would require the 50-bed rural hospital to meet the same personal standards as a major metropolitan medical center," Tower noted. "They show no awareness for the role of the small hospital and the vital services it provides to people who otherwise would have to travel many miles for emergency care."

"We fought this same mentality in 1977, when HEW was trying to impose guidelines which would have closed scores of Texas hospitals," he added. "But we stopped them then, and we expect to block this latest foray in ill-conceived over-regulation."

The new rules in essence would require a medical doctor, or a person of equivalent training and experience, to be hired as technical supervisor, and a person with a college degree to be on duty any time lab work is performed.



"Many hospital operators have told me a real shortage of these qualified people would bankrupt laboratory operations. Hospitals are able to do the kind of laboratory work that need to serve the community with skilled technicians. They need senior senior said."

THELMA



### Zero-Bracket Amount The Choice Of Over A Million North Texas Taxpayers

The Department of the Treasury of the Internal Revenue Service estimates that over three-fourths of all tax payers will find it to their advantage to use the zero bracket amount method of computing their taxes this year. The zero bracket amount, or "ZBA" may sound complicated, but it has simplified filing federal tax returns for over 1 1/2 million taxpayers in northern Texas. Actually, ZBA is a variation of what used to be called the "standard deduction."

Increased from \$2,200 to \$2,300 for single taxpayers and from \$3,200 to \$3,400 for

married taxpayers who file joint returns, the zero bracket amount is often higher than the total of itemized deductions for many taxpayers. Taking the ZBA eliminates the need to complete a Schedule A and, thus, means a simpler return.

"Our advice to taxpayers is to complete their tax liability both ways by using the ZBA and totalling their documented itemized deductions. This way a taxpayer can determine which method is more advantageous for him," says the Internal Revenue Service.

The IRS telephone tax assistance operation is in service Monday through Friday, 8 a.m. to 4:30 p.m., to answer taxpayer's filing questions.

"You Block people really know your stuff. I should have come here last year."



Each year, all Block preparers are updated on all the latest changes in the tax laws. That's another way of making sure we can complete your return accurately and correctly.

**H&R BLOCK**  
THE INCOME TAX PEOPLE  
106 West Missouri  
983-5233  
Floydada

**Gulf MR. FARMER**

BUY YOUR IRRIGATION OILS NOW AND SAVE \$\$\$ ON INCREASING OIL PRICES.

**GULF LUBE XHD OILS**  
For Your Irrigation Motors - Exceeds Ford, General Motors & Chrysler Specifications

**GULF DRIP OIL**  
**GEAR HEAD OIL**  
**GULF OIL FILTERS**

COME BY AND COMPARE OUR PRICES  
DRUMS - QUARTS

**DOUGLASS OIL CO.**  
GULF OIL WHOLESALE  
1305 EL PASO STREET PLAINVIEW 293-1579

**WE GIVE GREEN STAMPS**

**DOUBLE ON WEDNESDAY**

220 SOUTH 2ND

# BUDDY

Store Hours  
Mon.-Sat., 8 a.m. to 8 p.m. Sun., 9 a.m. to 7 p.m.  
Values In This Adv Effective Through Wednesday March 12, 1980  
We Reserve The Right To Limit Quantities

Grade A Large  
**Eggs**  
9¢ Dozen  
With Purchase Of 2 Lb. Jimmy Dean Sausage

Red Ripe  
**Tomatoes**  
3 \$1.00 Lbs.

16 Ounce Betty Crocker  
**Ready To Spread Frosting**  
99¢ \$1.33 Value

California Navel  
**Oranges** 3 \$1.00 Lbs.

18 Ounce Betty Crocker Layer  
**Cake Mix**  
69¢ 99¢ Value

99¢ Size "Cheese Snack"  
**Cheetos**  
2/\$1.39

1 Pound Bag  
**Carrots** 5/\$1.00

45 Ounce Wylers  
**Lemonade Mix**  
\$2.59 \$3.99 Value

13 Ounce Keebler  
**Pecan Sandies**  
89¢ \$1.19 Value

Giant 49 Ounce  
**Tide**  
\$1.59

10 Ounce Kraft Miniature  
**Marshmallows** 3/89¢ 47¢ Value

2 Liter "No Deposit"  
**7 Up or Dr Pepper**  
89¢ \$1.09 Value

50 Ounce King Size  
**Cascade**  
\$1.79 \$2.39 Value

4 Ounce Adams  
**Vanilla** \$1.39 \$1.59 Value

15 Ounce Liquid  
**Pine Sol** 69¢ \$1.09 Value

18 Ounce Jif  
**Peanut Butter** \$1.09 \$1.59 Value

12 Ounce Land of Dixie Dry Roasted  
**Peanuts** 99¢ \$1.39 Value

2 Pound  
**Crisco** \$1.99

12 Ounce Count Chocula  
**Cereal** \$1.09 \$1.43 Value

12 Ounce Nabisco  
**Party Graham Cookies** 99¢ \$1.19 Value

20 Quart Carnation  
**Instant Milk** \$5.29 \$6.19 Value

1/2 Gallon Borden  
**Ice Cream** \$1.49 \$2.09 Value

25 Pound Gold Medal  
**Flour** \$4.29 \$5.99 Value

We Take U.S.D.A. Food Coupons

We Take W.I.C. Cards

Betty Crocker

**ing Mix** \$1.19 Value 89¢

Fruit **Jello** 5/\$1.00 30¢ Value

22 Ounce Giant Liquid **Ivory** 89¢ \$1.39 Value

**Kenberry real** \$1.09 \$1.39 Value

**den Ham Cereal** \$1.09 \$1.39 Value

Nabisco **Crackers** 89¢ \$1.19 Value

14 Ounce Franco American **Spaghetti Os** 3/89¢ 39¢ Value

Gallon Buddy's **Milk** \$1.99 \$2.37 Value

Bell **termilk** 99¢ \$1.39 Value

Generic **et Peas** 3/\$1.00 \$2.50 Value

"Generic" Golden **n Beans** 3/89¢

"Generic" Cut **ato Sauce** 5/\$1.00



oring Legislation...

...of Texas hospitals added. "But we then, and we to block this latest ill-conceived over-... new rules in essence require a medical doc- person of equivalent and experience, to as technical super- ad a person with a degree to be on duty lab work is per-



...inally, oatmeal was only meal - coarsely and grain - but now it consists of oats, processed as flakes.

THELMA THWARTUM -- By Alex



NEVER LEAVE PACKAGES IN THE CAR WHERE THEY CAN BE SEEN. THAT'S AN OPPORTUNITY TO A THIEF!

A Public Service of NRTA-AARP Crime Prevention

Copyright © 1979 by the National Retired Teachers Association and the American Association of Retired Persons

9 a.m. to 7 p.m. Wednesday March 12, 1980

Quantities

**16 Ounce Betty Crocker Ready To Spread Frosting 99¢**  
\$1.33 Value

**18 Ounce Betty Crocker Layer Cake Mix 69¢**  
99¢ Value

**13 Ounce Keebler Pecan Sandies 89¢**  
\$1.19 Value

**7 Up or Dr Pepper 89¢**  
\$1.09 Value

**3 Pound Crisco \$1.99**

**25 Pound Gold Medal Flour \$4.29**  
\$5.99 Value

We Take U.S.D.A. Food Coupons

We Take W.I.C. Cards

**Betty Crocker Frosting Mix 89¢**  
\$1.19 Value

**Jello 5/\$1.00**  
30¢ Value

**Ivory 89¢**  
\$1.39 Value

**Wheatena Cereal \$1.09**  
\$1.39 Value

**Wheatena Cereal \$1.09**  
\$1.39 Value

**Wheatena Crackers 89¢**  
\$1.19 Value

**14 Ounce Franco American Spaghetti Os 3/89¢**  
39¢ Value

**Gallon Buddy's Milk \$1.99**  
\$2.37 Value

**3 Pound Sterilized Milk 99¢**  
\$1.39 Value

**3/89¢ Sweet Peas**

**3/89¢ Macaroni and Cheese**

**3/93¢ Dog Food**

**5/\$1.00 Ketchup**



SIERRA STONEWARE

Here is stoneware fired at the highest temperatures for greater strength. Hand glazed in warm, strong earthtones. Safe for use in Micro-Wave ovens. It's dishwasher-safe and completely oven-proof. Open stock available.

A 4-PIECE PLACE SETTING (DINNER PLATE, CUP, SAUCER, BREAD & BUTTER PLATE)

ONLY 99¢

SIERRA STONEWARE

HERE'S HOW EASY SAV-A-COUPON WORKS!

You will receive one coupon with each \$5.00 purchase. Redeem your full saver card for a 4-piece place setting as follows:  
\$ 5.00 to \$ 9.99..... one coupon  
\$10.00 to \$14.99..... two coupons, etc.

Sierra Stoneware Ends June 14, 1980

**Sausage and Eggs Deal Large Eggs 9¢ Dozen**  
With Purchase Of 2 Lb. Jimmy Dean Sausage

**1 Pound Farmland Bacon \$1.29**

**Longhorn "Cheddar" Cheese \$1.99 Lb.**

**USDA Ground Beef \$1.59 Lb.**

**Center Cut Pork Chops \$1.99 Lb.**

**Catfish Steak \$1.99 Lb.**

**USDA Ranch Steak \$1.79 Lb.**

**USDA Arm Roast \$1.99 Lb.**

**Center Cut Ham Slices \$1.99 Lb.**

**USDA Boneless Sirloin Steak \$2.99 Lb.**

**22 Ounce "Generic" Coffee Creamer \$1.33**

**18 Ounce "Generic" Peanut Butter 97¢**

**7 Ounce "Generic" Macaroni and Cheese 4/\$1.00**

**32 Ounce "Generic" Strawberry Preserves \$1.19**

**15 Ounce "Generic" Dog Food 3/67¢**

**32 Ounce "Generic" Grape Jelly 79¢**

**32 Ounce "Generic" Ketchup 87¢**

**48 Ounce "Generic" Vegetable Oil \$2.09**

Fairview News

BY MRS. CLYDE BAGWELL

Thursday Feb. 28, we all thought summer had arrived, but by Friday morning we decided winter was still with us. In fact, the weekend brought colder weather than we had all year. It was down to 8 above, and it continues to be very cold.

Sunday Mr. and Mrs. Bill Tye, Mr. and Mrs. Woodrow Wilson and Mr. and Mrs. Walton Wilson went to the home of Mr. and Mrs. A.S. Mize, had dinner with them and spent the afternoon and evening.

Mr. and Mrs. Bill Beedy are at their ranch near Claude for a few days stay. Monday Feb. 25, Mrs. Bill Tye and Mrs. Weldon Pruitt spent the day in Lubbock. They also visited in the home of Mr. and Mrs. Jim Tye and children.

Mrs. C.H. Wise visited Mrs. Roe Jones Sunday afternoon. Mr. and Mrs. Clyde Bagwell enjoyed a nice phone visit Sunday afternoon from their brother and sister, Mr. and Mrs. P.L. Joiner of Creswell, Oregon.

Mr. and Mrs. C.H. Wise celebrated their 54th wedding anniversary at home Saturday.

Those visiting Mrs. Clyde Bagwell during last week were Mrs. Mary Smith, Mrs. Dot Hammonds, and Mrs. Ray Cook.

Carolyn Burton visited Sunday with Mr. and Mrs. J.T. Myrick.

C.H. Wise visited Clyde Bagwell Wednesday afternoon.

Mr. and Mrs. Sam Bass of Lubbock visited Mr. and Mrs. Eugene Watts and family Saturday night.

Mrs. Kate Crabtree visited Mrs. Thelma Jones Wednesday afternoon.

Sam Crabtree dug up his Grandmother Crabtree's garden for her Wednesday after school. Dave Seymour and Cliff McClain visited with Sam while he worked in the garden.

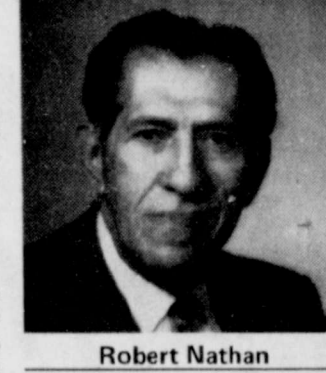
Sunday afternoon Mrs. Stella Crabtree of Lubbock called her sister, Mrs. Kate Crabtree. Stella said she was getting along fairly well.

Mrs. Ray Cook visited Mrs. Clyde Bagwell Monday.

ENERGY UPDATE

WHAT IS THE ROLE OF NUCLEAR POWER?

By Robert Nathan  
Robert Nathan is Chairman of Robert R. Nathan Associates, a consulting firm in Washington, D.C. He has served as economic advisor to a number of developing countries and has a broad view of the world energy picture.



The reduction in energy available from oil is going to be drastic in the next 10 years. The world supply is finite. Each decade from now there's going to be less oil and the competition among nations will be greater. Fifty years from now we may be out of oil.

This lack of oil along with uncertainties about how fast we can get going on synthetic fuels raises serious questions about our energy future. Even if we push hard for synthetics, it appears likely that we will have several years when we're going to be in dire trouble. The lead times for new supplies are long.

We know a great deal about the technology of nuclear power. I think the questions and worries about nuclear, manifested by some activist groups, do express the concerns of the American public, but it is foolish to throw this proven technology and its tremendous potential out and forget about it.

The Europeans and Orientals aren't doing that. I think we're digging our-

selves into a much more serious posture as an economic power. I hope that won't happen-if we toss our nuclear power.

If we're going to be energy independent, we must expand coal and nuclear power greatly. We have to focus strongly on synthetic fuels and gases. We have to do our utmost with solar, although I must say that the straight, direct solar prospects are still very remote. We don't know how to store it, nor is the engineering applicability available now.

It would be a great tragedy if we do not make nuclear as absolutely safe as possible and then go ahead with it. Every indication is that nuclear can be one of the safest sources of power-both economic and very large. Nuclear can help us become more energy independent by greatly reducing our dependence on foreign oil.

**FIX-IT FACTS**  
Every 1,000 parts sea water contain 35 parts salt.

THURMAN DAVIS

Welcome to FIX-IT FACTS. This is our first week and a good opportunity to explain a little about what you will be reading each week. FIX-IT FACTS will be covering topics of interest to anyone who enjoys or has the need to build, repair, or "fix things" around the house.

Subjects we will talk about will include: wood working, simple plumbing procedures, painting techniques and those special home projects or improvements you've been wanting to do... made easier, we hope, by reading FIX-IT FACTS. It's our hope you will find our column interesting, informative... and fun. If you have a suggestion or project you would like to know more about, let us know and we'll talk about it in... FIX-IT FACTS.

The Land Bank

Building, buying or remodeling a rural home?

See us.



Federal Land Bank Assn Of Floydada

Davis Lumber Company

Opening Soon  
Barker's Jewel Box  
Mini-Warehouse  
IN LOCKNEY, TEXAS



### Catholics Raise \$9 Million To Continue Cambodian Relief

Contributions to the Catholic Relief Services Cambodia Emergency Fund now exceed nine million dollars, it was announced today by CRS Executive Director Bishop Edwin B. Broderick. Of that total, \$6.5 million was donated in Catholic churches throughout the United States in response to an urgent request by Archbishop John R. Quinn, President of the National Conference of Catholic Bishops.

Bishop Broderick said that the monies would be used to expand and continue CRS' ongoing effort on behalf of the Cambodians. "The conditions and needs of the displaced people are expected to remain critical for two years. I anticipate that we will need \$15 million to fund the relief effort," he added.

Since June, 1979, CRS has brought 51 mercy convoys of food, medicine, clothing and cooking utensils to 35 refugee enclaves along the Thailand-Cambodia border. The convoys, ranging in size from one to 23 trucks, have distributed supplies to every reachable refugee enclave on both sides of the border, including locations 22 miles inside of Cambodia. The contents of the convoys are valued in excess of six million dollars.

In two of the major refugee camps in Thailand, Sa Keo

and Khao I Dang, CRS continues to be the only agency actually purchasing, cooking and distributing meals to all refugees in the medical and hospital programs of all the international agencies. In addition, CRS is responsible for all child nutrition in Sa Keo and Khao I Dang. This nutrition aspect has been a top priority for CRS, which recently sent its senior nutritionist to Thailand to assist in all camps and provide special training for Cambodian refugees working in the CRS field kitchen.

A total of 49 CRS medical personnel, comprising ten teams of doctors, nurses and paramedics, are currently working in Sa Keo, Khao I Dang and the border refugee enclaves. These medical volunteers include religious sisters, priests and lay people from the U.S., Australia, India, Switzerland and the Philippines.

At Khao I Dang, CRS has assumed total responsibility for the care of 700 children who have either lost their parents or been separated from them. CRS has divided them into small groups and provides them with individual feeding, activity programs and a "group mother" who insures that each child gets a healthy dose of

warmth and affection. In none other established refugee camps in Thailand, CRS programs include nutrition centers, child feeding, maternal/child health, food distribution, hospital care, child education, clothing distribution and vocational training.

Limited CRS aid has reached Phnom Penh, Cambodia by boat and CRS personnel have received permission to travel to Phnom Penh to initiate preliminary negotiations with the Heng Samrin government for extensive programs and projects for the displaced people inside Cambodia.

"The key to the CRS effort is the individual," said Bishop Broderick. "We have touched the lives of 1.4 million Cambodian refugees. The number is impressive, but we can only realize its full meaning when we consider the unspeakable struggles and personal hardships endured by each individual.

"It is the individuals in the U.S.," continued Bishop Broderick, "who have responded to the plight of the Cambodians. People from every walk of life have expressed their concern through CRS. Donations range from one dollar to \$50,000 and each is generous in its own right." He noted that many represent real

### Floydada Care Center Happenings

Several of our residents took full advantage of our Spring like weather last week.

Mrs. Susie Mooney enjoyed a trip to the beauty shop to get her hair fixed and also enjoyed a ride out to her old homeplace.

Mrs. Iris Colston also went to the beauty shop to get her permanent.

Mrs. Leona Bell and Mrs. Iva Simpson enjoyed sitting outside and taking a ride in their wheelchairs.

Mrs. Clara Murry enjoyed visiting with her niece, Mrs. Bernice Johnson of Denver, Colorado and Mrs. Jewell Colthrop of East Texas this week.

Mrs. Annie Neff and Mr. Leon Marble are still in Caprock Hospital.

The Sunshine S.S. Class of the First Baptist Church treated each resident to an Ice Cream bar this week which they enjoyed very much.

We had Bible Study and also took our bus trip Wednesday afternoon. Thanks to Steve for giving the Bible Study.

Those enjoying the trip to Cone and back through Lakeview were Mr. Emmitt Lawrence, Henry Love, Victoria Asher and Docia Manning.

We all enjoyed a frosted coke before leaving town.

Mrs. Clara Williamson was big winner in bingo with four games. Mr. Ray Reed

### Cedar Hill News

The weather has been cold but we have not received much moisture. The farmers are continuing their work in the cold.

Some people are still having colds and the flu. Elvie Lackey and Robin Fortenberry are among those this week.

Grace Lemons visited Pauline and John D. VanHoose Thursday evening.

Sherri and Wayne VanHoose and baby Randy are visiting in the home of Mr. and Mrs. John D. VanHoose for a while.

Alfred and Barbara VanHoose and girls of Lubbock arrived at the home of Mr. and Mrs. John D. VanHoose Friday night. They will stay until Sunday.

Cecil Wayne VanHoose of Kingsland has been here several days helping paint and get the John D. VanHoses moved to their new home in Floydada. We regret Pauline and John D. leaving our community where they have lived several years.

Grace Lemons and Almeda Phillips of Lubbock visited Temp Phillips in Lockney Saturday afternoon.

Patsy Boone and daughter Danita of Lubbock visited Mr. and Mrs. Tom Fortenberry Saturday.

Ruth Fortenberry accompanied Mr. and Mrs. Durrell Fortenberry, John and Tonya, to Amarillo Sunday to visit Bryan and Mr. and Mrs. Donnie Fortenberry. They brought Chad home with them for a few days when Carla will come after him.

Rolyn and Buddie Raulston of Fort Worth are guests in the home of her grandparents, Mr. and Mrs. W.E. Lackey, for a while. Gail and Craig DuBois visited in the Lackey home Saturday. Thada Fowler and son, Clayton of Silverton, and Lindsey and Billy Ruth Lackey also visited Sunday.

Rev. and Mrs. Vance Mitchell and girls returned home Saturday after visiting her parents, Rev. and Mrs. H.E. Barnard in Eakley, Oklahoma. They went to Oklahoma City on Friday before

### South Plains News

Mr. and Mrs. Kentian, Kristi and Tim, accompanied by Todd Ham of Floydada spent the end, from Thursday day at Ruidoso, New Mexico where they enjoyed skiing.

Among the many who came Sunday to South Plains Baptist Church for the services, were Blake, who led the service and sang two special songs, sister, Atha Blake of land at Plainview, Mrs. Bradford of Tulsa, and Mrs. Johnnie Wilcox, Mrs. Gertrude Crosby, Mrs. Fletcher Powell and Mrs. Glenna and Kathryn and Richard, Mrs. Turner, Shari, La Juan, Becky of Petersburg, Gary Gilbreath, Jeffrey and Jared of Perry.

Heather Powell of Floydada were around in Sunday School.

All fifth and ninth grade students from the South Plains Independent School District will participate in first Texas Assessment Basic Skills test scheduled for March 4, 1980.

This assessment plan, first in its kind in this state, is scheduled once each year under requirements set by the Texas Legislature during its 1979 regular session. The South Plains ISD expects to take the reading composition, mathematics tests during February 25-March 12 and a writing test period. Each test will require a minimum of 40 to 60 minutes.

The South Plains ISD will report its district campus aggregate scores to the public at a May meeting of the board of trustees, according to Christine Stark, principal of the South Plains School. However, individual scores will be reported to the student, parent, guardian, and the personnel directly involved. Mrs. Stark adds, "This Program is designed to help the student and school improve achievement."

"For this report to be in a manner that will everyone become more active." In 1980-81 third grade students will be added to normal sequence, and three tests will make up annual assessment effort. Signed to help both state and local officials improve their services. Mrs. Stark says, "Overall student performance will be reported year to the public by the board of trustees."

Westinghouse Data Systems of Iowa City, will help administer the test program and design and field test new items of the 1980-81 series under contract to the State Board of Education. Each test will relate to a specific objective or skill student expected to learn by the complete they complete the particular grade. Stark points out. The test program will be administered by specially-trained personnel in each school district under supervision of the Texas Education Agency.

Carlton Johnson celebrated her birthday, February 29, with her special birthday party.

Mrs. Sanders, daughter of Mrs. Curtis won first place trophy in the NFTA twirling and pageant held in the back on February 14. A Freshman in High School, and many trophies and her twirling. We congratulate to as she brought seven trophies from the event.

### GENELOGICAL WORKSHOP SLATED

The Hi-Plains Geneological Society met Tuesday night at 7 p.m. at the Unger Memorial Library for their regular monthly meeting. Dr. Bruce Dod of Wayland was the guest speaker.

The geneological society plans to have an all-day workshop Saturday, March 8, from 9 a.m. to 5 p.m.

They suggest that everyone bring a sack lunch and plan to spend the day. Also bring books pertaining to geneological records, histories, maps, or any records that will help in researching family history. There will be people on hand to help them with their research.

Persons needing information on the Queen's contest should contact Joann Madrid, student at SPC, at 894-9611.

Persons needing information on the Queen's contest should contact Joann Madrid, student at SPC, at 894-9611.

Persons needing information on the Queen's contest should contact Joann Madrid, student at SPC, at 894-9611.

Persons needing information on the Queen's contest should contact Joann Madrid, student at SPC, at 894-9611.

Persons needing information on the Queen's contest should contact Joann Madrid, student at SPC, at 894-9611.

Persons needing information on the Queen's contest should contact Joann Madrid, student at SPC, at 894-9611.

Persons needing information on the Queen's contest should contact Joann Madrid, student at SPC, at 894-9611.

Persons needing information on the Queen's contest should contact Joann Madrid, student at SPC, at 894-9611.

Persons needing information on the Queen's contest should contact Joann Madrid, student at SPC, at 894-9611.

Persons needing information on the Queen's contest should contact Joann Madrid, student at SPC, at 894-9611.

Persons needing information on the Queen's contest should contact Joann Madrid, student at SPC, at 894-9611.

Persons needing information on the Queen's contest should contact Joann Madrid, student at SPC, at 894-9611.

Persons needing information on the Queen's contest should contact Joann Madrid, student at SPC, at 894-9611.

Persons needing information on the Queen's contest should contact Joann Madrid, student at SPC, at 894-9611.

Persons needing information on the Queen's contest should contact Joann Madrid, student at SPC, at 894-9611.

Persons needing information on the Queen's contest should contact Joann Madrid, student at SPC, at 894-9611.

Persons needing information on the Queen's contest should contact Joann Madrid, student at SPC, at 894-9611.

Persons needing information on the Queen's contest should contact Joann Madrid, student at SPC, at 894-9611.

Persons needing information on the Queen's contest should contact Joann Madrid, student at SPC, at 894-9611.

Persons needing information on the Queen's contest should contact Joann Madrid, student at SPC, at 894-9611.

Persons needing information on the Queen's contest should contact Joann Madrid, student at SPC, at 894-9611.

Persons needing information on the Queen's contest should contact Joann Madrid, student at SPC, at 894-9611.

Persons needing information on the Queen's contest should contact Joann Madrid, student at SPC, at 894-9611.

Persons needing information on the Queen's contest should contact Joann Madrid, student at SPC, at 894-9611.

Persons needing information on the Queen's contest should contact Joann Madrid, student at SPC, at 894-9611.

Persons needing information on the Queen's contest should contact Joann Madrid, student at SPC, at 894-9611.

Persons needing information on the Queen's contest should contact Joann Madrid, student at SPC, at 894-9611.

### High School Juniors And Seniors Invited To South Plains College...

More than 200 high school students from throughout the South Plains area are expected March 7 on the South Plains College campus, Levalland, for the 10th annual Tejano Day Festivities.

Guest speaker for the 10th anniversary celebration, whose theme is "Progreso Con Educacion," will be Dr. Eusebio Ruiz, Jr., currently principal at Los Fresnos, Texas High School.

Sponsored by Los Tejanos, a service organization at SPC, the special day aimed at high school juniors and seniors will include tours of the campus, a general session, college talent show, oratory and beauty competition for college scholarships, dance and presentation of Tejano Day Queen.

Registration at 12:30 p.m. in the lobby of the SPC Theater for the Performing Arts will kick off the festivities.

Dr. Ruiz will be speaking during the 2:45 general session. He has a doctorate degree in special education administration from the University of Texas at Austin and served as director of special projects for the National Association of State Boards of Education at Denver before coming to Los Fresnos in 1977.

Ernest Barton, Lubbock businessman, will serve as master of ceremonies, and Nathan Tubb, SPC academic dean, will give the welcome and introduce the guest speaker.

The Baker's Dozen, SPC vocal and instrumental group, will be featured in a College talent show at 3:30 following the general session.

Persons needing information on the Queen's contest should contact Joann Madrid, student at SPC, at 894-9611.

Persons needing information on the Queen's contest should contact Joann Madrid, student at SPC, at 894-9611.

Persons needing information on the Queen's contest should contact Joann Madrid, student at SPC, at 894-9611.

Persons needing information on the Queen's contest should contact Joann Madrid, student at SPC, at 894-9611.

Persons needing information on the Queen's contest should contact Joann Madrid, student at SPC, at 894-9611.

Persons needing information on the Queen's contest should contact Joann Madrid, student at SPC, at 894-9611.

Persons needing information on the Queen's contest should contact Joann Madrid, student at SPC, at 894-9611.

Persons needing information on the Queen's contest should contact Joann Madrid, student at SPC, at 894-9611.

Persons needing information on the Queen's contest should contact Joann Madrid, student at SPC, at 894-9611.

Persons needing information on the Queen's contest should contact Joann Madrid, student at SPC, at 894-9611.

Persons needing information on the Queen's contest should contact Joann Madrid, student at SPC, at 894-9611.

Persons needing information on the Queen's contest should contact Joann Madrid, student at SPC, at 894-9611.

Persons needing information on the Queen's contest should contact Joann Madrid, student at SPC, at 894-9611.

Persons needing information on the Queen's contest should contact Joann Madrid, student at SPC, at 894-9611.

Persons needing information on the Queen's contest should contact Joann Madrid, student at SPC, at 894-9611.

Persons needing information on the Queen's contest should contact Joann Madrid, student at SPC, at 894-9611.

Persons needing information on the Queen's contest should contact Joann Madrid, student at SPC, at 894-9611.

Persons needing information on the Queen's contest should contact Joann Madrid, student at SPC, at 894-9611.

Persons needing information on the Queen's contest should contact Joann Madrid, student at SPC, at 894-9611.

Persons needing information on the Queen's contest should contact Joann Madrid, student at SPC, at 894-9611.

Persons needing information on the Queen's contest should contact Joann Madrid, student at SPC, at 894-9611.

Persons needing information on the Queen's contest should contact Joann Madrid, student at SPC, at 894-9611.

Persons needing information on the Queen's contest should contact Joann Madrid, student at SPC, at 894-9611.

## RCA Countdown Sale

**STARTS TODAY**

# 10 DAYS TO SAVE

on our greatest value ever in an RCA 25" ColorTrak TV



Here's your chance to save like never before on a deluxe 25" diagonal RCA ColorTrak table model...with a swivel base included! You get ColorTrak's eight automatic systems that lock the color on track...PLUS the unsurpassed tuning convenience of RCA's ChannelLock remote control. Don't miss out—offer ends March 15.

**INCLUDED! Free Swivel Base**

YOU PAY ONLY **\$719.00** For Both

Also available without remote control Model FD528 including base **\$649.00**

Previous Price Model FD530R \$799.95  
Retail Value of Base \$199.95  
Total Retail Value \$599.90

**TOTAL SAVINGS \$140.00**

SAVE ON THESE RCA COLOR TV SPECIALS TOO	
AC191 T 19" DIAG B AND W REGULAR \$189.95 NOW <b>\$139.95</b>	GD7085 25" DIAG. COLOR REGULAR \$849.95 NOW <b>\$649.95</b>
FD468WR 19" DIAG COLOR REMOTE REGULAR \$559.95 NOW <b>\$395.00</b>	ED 339WR 13" DIAG. COLOR REMOTE REGULAR \$479.95 NOW <b>\$399.95</b>
ED 395 W 17" DIAG. COLOR REGULAR \$449.95 NOW <b>\$325.00</b>	FD500W PROGRAMMABLE COLOR 19" DIAG. REGULAR \$999.95 NOW <b>\$525.00</b>

**Mize PHARMACY & TV**

LOCKNEY

### Got Heating Or Plumbing Problems? Call HOLMES PLUMBING

Austin or Steve 983-2251 6:30 - 9:30 a.m. and 5:30 p.m. Until

### "Your Good Neighbor Bank" First National Bank

Lockney, Texas Member F.D.I.C.

### Don't Forget... Lockney Chamber Of Commerce Banquet

March 14, 7:30 p.m. at the home of Mrs. E. P. Pritchard. Tickets \$10.00. For more information contact Mrs. E. P. Pritchard at 894-9611.

### Pickens County



"Maybe his daddy was a Steel Dust horse, but he looks more like plain old rust to me."

### Social Security News

Question: According to news report I heard, you will pay social security on earnings up to \$25,900 in 1980. Is the social security tax rate going up, too? Answer: No. The social security tax rate remains at 6.13 percent for employees and employers. The tax rate scheduled to increase in future years to ensure financial soundness of the program.

### An Invitation To Worship With Bible Baptist Church

Guest Speaker Rev. Gilbert Rhine Wednesday, March 12, 7:30 p.m. Bob Chapman, Pastor



# Cedar Hill News

Weather has been cold and have not received moisture. The farmers continuing their work in the fields.

People are still having and the flu. Elvie and Robin Fortenberry among those this year.

Lemons visited Paul and John D. VanHoose on Monday evening.

Wayne VanHoose and baby Randy are in the home of Mr. and Mrs. John D. VanHoose on Monday.

Woodrow and Barbara VanHoose and girls of Lubbock are in the home of Mr. and Mrs. John D. VanHoose on Monday.

Wayne VanHoose of Abilene has been here for several days helping paint the John D. VanHoose home.

Tom and Gladys Fortenberry went to Plainview on Monday where they were shopping.

Linda Lemons and Carl F. Lemons were in Lubbock on Monday.

Lucille Newberry of Fort Worth is in Lubbock on Monday.

Mr. and Mrs. Durrell Fortenberry, John and Tonny, and Mrs. W.E. Fortenberry, they will be here for a few days when they return home.

Mr. and Mrs. W.E. Fortenberry, they will be here for a few days when they return home.

Mr. and Mrs. W.E. Fortenberry, they will be here for a few days when they return home.

# South Plains News

Mr. and Mrs. Kendis Julian, Kristi and Tim, accompanied by Todd Hambricht of Floydada spent the weekend, from Thursday to Sunday at Ruidoso, New Mexico where they enjoyed skiing.

Among the many visitors who came Sunday to the South Plains Baptist Church for the services, were C.V. Blake, who led the singing and sang two specials, his sister, Atha Blake of Wayland at Plainview, Mrs. Bessie Bradford of Tulla, Mr. and Mrs. Johnnie Wilson of Crosbyton, Mrs. Gertrude Smitherman, Mr. and Mrs. Fletcher Powell and children Glenna and Kathryn Powell and Richard, Mrs. Linda Turner, Shari, La Juana and Becky of Petersburg, Mrs. Gary Gilbreath, Jeffrey, Jeremy and Jared of Perryton, Heather Powell of Floydada and there were around fifty in Sunday School.

All fifth and ninth grade students from the South Plains Independent School district will participate in the first Texas Assessment of Basic Skills test program scheduled for March 4-5, in 1980.

This assessment plan, first of its kind in this state, will be scheduled once each year under requirements set by the Texas Legislature during its 1979 regular session. The South Plains ISD students will be among 500,000 expected to take the reading, writing composition, and mathematics tests during the February 25-March 12 statewide testing period. Each of the tests will require a maximum of 40 to 60 minutes to complete. The South Plains ISD will report its district and campus aggregate scores to the public at a May or June meeting of the board of trustees, according to Mrs. Charline Stark, principal of the South Plains School. However, individual student scores will be reported only to the student, parents or guardian, and the school personnel directly involved, Mrs. Stark adds. "This testing Program is designed to help the student and the school improve achievement." "For this reason, results will be reported in a manner that will help everyone become more effective."

In 1980-81 third grade students will be added to the normal sequence, and the three tests will make up an annual assessment effort designed to help both state and local school officials improve their services, Mrs. Stark says. Overall student performance will be reported each year to the public by the local board of trustees.

Westinghouse Data Score Systems of Iowa City, Iowa, will help administer the 1980 test program and develop and field test new items for the 1980-81 series under contract to the State Board of Education. Each test question will relate to a specific objective or skill students are expected to learn by the time they complete the particular grade, Mrs. Stark points out. The annual test program will be administered by specially-trained personnel in each school district under supervision of the Texas Education Agency.

**Don't Forget - - -**

**Lockney Chamber Of Commerce Banquet**



Dean Rippe, Speaker

**March 2**

**Time To Retire That Old Gas Guzzler**

**Look For A More Economical Model**

**Arrange The Financing For You.**

**Will Give You The Best Possible Terms**

**or Bank"**

**Bank**

Member F.D.I.C.

**Social Security News**

**Question:** According to a news report I heard, workers will pay social security taxes on earnings up to \$25,900 in 1980. Is the social security tax rate going up, too?

**Answer:** No. The social security tax rate for 1980 remains at 6.13 percent each for employees and employers. The tax rates are scheduled to increase in future years to ensure the financial soundness of social security.

For further information regarding Social Security benefits please contact the Social Security office, 1401-B West 5th Street, Plainview, Texas. A telephone call to the Plainview office may save you time and a trip.

**An Invitation To Worship With Bible Baptist Church**

Guest Speaker  
**Rev. Gilbert Rhine**  
Wednesday, March 12, 7:30 p.m.  
**Bob Chapman, Pastor**

## Wayland To Offer Course

A continuing education course in cardio-pulmonary resuscitation training is being offered to the general public through the Office of Special Services at Wayland Baptist College.

The course, completed by some 30 WBC staff members last fall, offers certification in CPR Basic Life Support from the American Red Cross. Training is valid for one year from the course completion date.

Mrs. Sue Dobbins, R.N., director of health services at Wayland, will instruct the course form 6 until 10 p.m. on Monday, March 10, in Room 1 of Hutcherson Physical Education Center. Persons must attend both sessions in order to receive CPR certification.

## Births

**FOSTER**  
Charles and Ina McDowell would like to announce the arrival of a new granddaughter, Crystal Renee, daughter of Kellie and Danny Foster. Crystal Renee was born March 3 in Palo Duro Hospital in Canyon.

Reagan Michelle's new baby sister weighed 7 pounds 4 1/2 ounces and was 20 inches long.

## FLOYDADA LUNCH MENU

FLOYDADA SCHOOL MENU  
March 10-14

**Monday:** Breakfast: 1/2 cup fruit juice, cinnamon roll, 1/2 pt. milk. Lunch: cheese/macaroni, buttered mixed vegetables, carrot/raisin salad w/dressing, peanutbutter cake w/peanut-butter icing, hot roll, 1/2 pt. milk.

**Tuesday:** Breakfast: 1/2 cup fruit juice, sausage, hot biscuit, 1/2 pt. milk. Lunch: roast/brown gravy, mashed potatoes, broccoli/rice/cheese, sugar cookie, hot roll, 1/2 pt. milk.

**Wednesday:** Breakfast: 1/2 cup fruit juice, waffle, kitchen made syrup, 1/2 pt. milk. Lunch: pigs in blanket, blackeye peas, tomatoes/macaroni, peach cobbler, 1/2 pt. milk.

**Thursday:** Breakfast: 1/2 cup fruit juice, sugar frosted flakes, 1/2 pt. milk. Lunch: chili beans, mashed potatoes, buttered spinach, peach halves, cornbread, 1/2 pt. milk.

**Friday:** Breakfast: 1/2 cup fruit juice, toast, jelly, 1/2 pt. milk. Lunch: hamburger/mustard, French fries/cat-soup, sliced tomato/sliced dill pickle, jello, 1/2 pt. milk.

## Camera Club Meeting Set

Lubbock photographer John Yastrop will present the program for Caprock Camera Club tonight (Thursday).

Camera club members and others interested in photography are encouraged to attend the meeting, which starts at 7:30 p.m. in the meeting room at Lighthouse Electric Cooperative in Floydada.

Club members will discuss plans for upcoming field trips.

## LOCKNEY LOCAL

**Fred and Jewel Fortenberry** met their son and family, Elmo and Patsy Fortenberry and their children Elmo Jr., and Rhonda (Fortenberry) and Tom Brickey, all of Dumas, and Mrs. Faye Harston of South Plains, in Plainview last Tuesday afternoon, and they all went together to Austin to attend the State Basketball Tournament that their granddaughter Patricia was playing in with the Dumas Demomettes. They played Thursday and Saturday and won the state championship in the AAA division. While they were in Austin they also toured the State Capitol building and the L.B.J. Library.

They all returned home Sunday.



London was once the capital city of three-quarters of the world.

**Lenten Favorite, Icelandic**  
**TURBOT FILLETS**  
**1 39**  
lb.

**Pork Souler**

**Fresh Picnics lb. 95¢**

**Lean 'N' Meaty Beef**

**Short Ribs lb. \$1 39**

Wilson Certified Meat

**Bologna 1-lb. pkg. \$1 39**

Glovers Spicy

**Hot Links lb. 89¢**

Farmer Jones, Meat

**Franks 12-oz. pkg. 89¢**

Fresh Grade A, Thighs, Legs or

**Fryer Breasts lb. 95¢**

Oscar Mayer Meat

**Bologna 8-oz. pkg. 99¢**

Treasure Isle

**Fish Kabobs 16-oz. pkg. \$1 68**

**Grade A. Box-O-Chicken**  
**SPLIT FRYERS**  
With Back & Giblets  
**48¢**  
lb.

**PIGGY WIGGLE**

Prices Good March 2 thru 8, 1980.

**Instant Vegas Bingo**

ODDS TO WIN

ODDS CHART EFFECTIVE FEBRUARY 4, 1980

## JOIN THE WINNERS AT PIGGLY WIGGLY:

\$1,000 Winner - Shirley Coleman, Floydada, TX  
\$1,000 Winner - Dolores Orozco, Muleshoe, TX

Congratulations To The Following \$100 Winners:

Edward Zimmerman, Muleshoe, TX  
Anita Ramirez, Roswell, NM  
Lida Carry, Clovis, NM  
Clifford Johnson, Williamsburg, NM  
Miguel A. Madrio, T or C, NM  
Louise Chaffin, Carlsbad, NM  
James Dingler, Carlsbad, NM  
J. H. Shafer, Carlsbad, NM  
Ruby Hastings, Muleshoe, TX  
L. R. Bruns, Muleshoe, TX  
Terry Montoya, Espanola, NM  
Dennis D. Vaughn, Dexter, NM  
Kate Martinez, Muleshoe, TX  
Mrs. Al Yuzer, T or C, NM

**YOU COULD WIN \$1,000!**

Each of these advertised items is required to be readily available for sale at or below the advertised price in each store, except as specifically noted in this ad. We reserve the right to limit quantities. None sold to dealers.

**Ass't. Fruit Flavors**

**Hi-C Drinks 46-oz. can 59¢**

**Kraft Salad Dressing \$1 19**

**Miracle Whip 32-oz. jar 63¢**

8¢ off pkg.

**Ivory Bar Soap 3 bath bars 63¢**

**25¢ Off Label. Fabric Softener**

**Downy Softener 64-oz. btl. \$1 55**

**Hi-Dri. Ass't. Paper Towels 2 jumbo rolls 87¢**

**Hi-Dri. Ass't. Bathroom Tissue 4-roll pkg. 68¢**

**1-lb. pkg. (qtrs.) "Country Fresh Flavor"**

**53¢**

**Kraft All Vegetable Parkay Margarine**

Whole or Cream Style, Frozen

**Green Giant Corn 10-oz. pkg. 63¢**

**Del Monte, Sliced or Halves 29-oz. can 69¢**

**Peaches 16-oz. can 74¢**

**Lemon Juice 12-oz. jar 81¢**

**Realemon 12-oz. jar 81¢**

**Peter Pan, Creamy or Crunchy Peanut Butter 12-oz. jar 73¢**

**Breakfast Cereal 28-oz. can 83¢**

**Wheaties Cereal 12-oz. pkg. 73¢**

**Del Monte, Halves 28-oz. can 83¢**

**Pears 28-oz. can 83¢**

**6-pack 32-oz. btl.**

**\$1 89**

**Mt. Dew, Diet Pepsi or Pepsi Cola**

**Sunshine Crackers 10-oz. pkg. 65¢**

**Cheez-it 10-oz. pkg. 65¢**

**Sunshine Cookies 11-oz. pkg. 69¢**

**Vanilla Wafers 11-oz. pkg. 69¢**

**Chocolate 16-oz. can 69¢**

**Hershey Syrup 16-oz. can 69¢**

**Birdseye, Frozen, With Cheese Sauce 10-oz. pkg. 79¢**

**Broccoli 10-oz. pkg. 79¢**

**Birdseye, Frozen, With Cheese Sauce 10-oz. pkg. 79¢**

**Cauliflower 10-oz. pkg. 79¢**

**Minute Maid, Chilled Orange Juice 64-oz. 1 49**

**Hills Bros. Coffee \$2 89**

All Grinds  
1-lb. can

**Cremora Borden's Coffee Creamer \$1 39**

16-oz. jar

**Coffee Rich Frozen Coffee Creamer 36¢**

16-oz. ctn.

**Ass't. Varieties Totino's Pizza 11 1/2-oz. pkg. \$1 09**

**Chef-Boy-Ar-Dee, Ravioli Ass't. Varieties 15-oz. can 63¢**

**Golden Grain, Ass't. Varieties Noodles 6-oz. pkg. 63¢**

**Early Calif. Ripe Select Pitted Olives 15 1/2-oz. can 79¢**

**French's Pure Mustard 24-oz. jar 73¢**

**Country Kitchen Log Cabin Syrup 24-oz. btl. \$1 09**

**U.S. No. 1 Russet Baking Potatoes 5 lb. bag 68¢**

**Washington State, Red or Gold Delicious Apples lb. 38¢**

**Northwestern Anjou Pears lb. 48¢**

**Carrots 1-lb. bag 18¢**

**White Onions lb. 38¢**

**Red Cabbage lb. 28¢**

**Pineapples ea. 88¢**

**Leaf Lettuce Red or Green bunch 38¢**

**Radishes 4 bunches 98¢**



# THANK YOU .....

## To The Buyers Of The Animals At The Floyd County Livestock Show.....

### FLOYD COUNTY JUNIOR LIVESTOCK SHOW February 17 - 21, 1980

Floyd County Junior Fat Stock Show exhibitors, place, organization, pay weight, pound price, and buyers are listed as follows:

Ty Williams, Grand Champion Steer, FFA, 1232, \$1.65, Ranchers and Farmers Supply, Oscar Golden, Providence Farm Supply  
Dara Carthel, Reserve Grand Champion Steer, 4-H, 1200, \$1.20, Petroleum Transport  
Byron Brock, Grand Champion Swine, FFA, 232, \$3.00, Hale Co. State Bank, Fred Garrison, Bearing Industrial Supplies Inc., Bob Gardner Chevrolet, Plainview Savings & Loan Assn., Frontier Savings & Loan  
Kyle Brock, Reserve Grand Champion Swine, FFA, 244, \$2.50, Western Beef, Western Lockney  
Jodie Smith, Breed Champion, 4-H, 112, \$4.00, Floydada Businessmen and Farmers  
Terri Sparkman, Breed Champion, FFA, 113, \$4.25, Patterson Grain  
Lori Bayley, Breed Champion, FFA, 89, \$4.25, First National Bank of Lockney  
Tracy Womack, Breed Champion, FFA, 91, \$4.00, Floydada Businessmen and Farmers  
Dwayne Marble, Breed Champion, FFA, 108, \$4.00, Floydada Businessmen and Farmers  
Tracy Womack, Breed Champion, FFA, 107, \$4.00, Floydada Businessmen and Farmers  
Ritchie Thornton, Breed Champion, 4-H, 86, \$4.25, Patterson Grain  
Karyn Foster, Reserve Champion, 4-H, 95, \$4.25, Perry Implement, Perry's Farm Machinery, Floyd Co. Implement  
Patricia Ayala, Reserve Champion, 4-H, 107, \$3.75, First National Bank of Lockney  
Jenny Bayley, Reserve Champion, FFA, 97, \$3.75, Lockney Businessmen and Farmers  
Lori Bayley, Reserve Champion, FFA, 96, \$3.50, Lockney Businessmen and Farmers  
Rodney Smith, Reserve Champion, FFA, 111, \$3.75, Providence Farm Supply  
Lisa Terrell, Reserve Champion, 4-H, 119, \$3.75, First National Bank of Lockney  
Eddie Kinard, Reserve Champion, FFA, 87, \$4.25, Sterley Gin  
Susan Hendrix, 1st, 4-H, 102, \$3.50, Floydada Businessmen and Farmers  
Ronee Thornton, 1st, 4-H, 96, \$4.00, Owen Thornton  
Scott McCarty, 1st, FFA, 97, \$3.25, Consumers Fuel of Lockney  
Jeff Bayley, 2nd, FFA, 94, \$3.00, Lockney Businessmen and Farmers  
Pam Woody, 2nd, FFA, 104, \$3.00, Floydada Businessmen and Farmers  
D'Lee Marble, 2nd, FFA, 110, \$3.00, Floydada Businessmen and Farmers  
Gary Cawley, 2nd, FFA, 121, \$3.50, Sterley Gin  
Norman Allen, 2nd, FFA, 86, \$3.25, Consumers Fuel — Floydada  
Earl Broseh, 2nd, 4-H, 110, \$3.50, Sterley Gin  
Doug Sparkman, 2nd, FFA, 121, \$3.25, Eddie Foster  
Matt Mitchell, 3rd, 4-H, 97, \$3.50, First National Bank of Lockney  
Hunter Smith, 3rd, 4-H, 106, \$3.00, Lighthouse Electric  
Melanie Foster, 3rd, 4-H, 92, \$3.50, Mrs. J.R. Belt  
Matt Mitchell, 3rd, 4-H, 105, \$3.75, Perry Implement, Perry's Farm Machinery, Floyd Co. Implement  
Heather Holt, 3rd, 4-H, 84, \$3.50, Sun-Vue Fertilizer  
Rusty Teeter, 3rd, 4-H, 72, \$4.75, Brown Implement  
Jodie Smith, 3rd, 4-H, 94, \$2.75, Floydada Businessmen and Farmers  
Earl Broseh, 3rd, 4-H, 109, \$3.25, Muncy Elevator  
Jeff Bayley, 3rd, FFA, 126, \$3.00, Lockney Businessmen and Farmers  
Roxanne Ford, 3rd, FFA, 99, \$4.50, Caprock Gin  
Amy Jones, 3rd, 4-H, 115, \$2.75, Floydada Businessmen and Farmers  
Monty Williams, 3rd, FFA, 119, \$2.75, Floydada Businessmen and Farmers  
Melanie Foster, 4th, 4-H, 93, \$3.25, First National Bank of Lockney  
Todd Williams, 4th, FFA, 106, \$2.75, Consumers Fuel — Floydada  
Rusty Teeter, 4th, 4-H, 83, \$4.25, City National Bank of Plainview  
Ritchie Thornton, 4th, 4-H, 103, \$3.50, Lighthouse Electric  
Karyn Foster, 4th, 4-H, 124, \$3.25, Lockney Businessmen and Farmers  
Norman Allen, 4th, FFA, 95, \$2.75, Floydada Businessmen and Farmers  
Bryant Higginbotham, 5th, FFA, 98, \$2.75, Floydada Businessmen and Farmers  
Susan Hendrix, 5th, 4-H, 111, \$2.75, Floydada Businessmen and Farmers  
Duncan Woody, 5th, FFA, 102, \$2.75, Floydada Businessmen and Farmers  
Mike Allen, 5th, 4-H, 87, \$2.75, Floydada Businessmen and Farmers  
Jim Waller, 5th, FFA, 101, \$3.75, Cone Gin  
Jenny Bayley, 5th, FFA, 113, \$3.00, Lockney Businessmen and Farmers  
Ronnie Ford, 5th, FFA, 91, \$3.25, Beedy Spraying Service  
Michael Cawley, 5th, 4-H, 116, \$3.25, Riverside Chemical  
Ronee Thornton, 5th, 4-H, 103, \$3.25, Sterley Gin, Plainview Seed and Delinting  
Terri Sparkman, 6th, FFA, 105, \$3.25, First National Bank of Lockney  
Rodney Smith, 6th, FFA, 87, \$3.25, Sterley Gin  
Ronnie Ford, 6th, FFA, 92, \$3.25, Lockney Coop Gin  
Russell Ford, 6th, FFA, 95, \$3.50, Lindsey Lackey  
Mike Allen, 6th, 4-H, 110, \$2.75, Floydada Businessmen and Farmers  
Heather Holt, 7th, 4-H, 102, \$3.25, Kelton Shaw, Floyd Jackson  
Randy Ford, 7th, FFA, 105, \$3.25, Lockney Businessmen and Farmers  
Richard Schacht, 7th, FFA, 97, \$3.75, Schacht Flowers, Virgil Brasher  
Keith Hight, 7th, FFA, 123, \$3.00, First National Bank of Plainview, Jimmy Dean Meat Co.  
Karen Ford, 7th, FFA, 94, \$3.50, Ray Ford  
Michael Cawley, 7th, 4-H, 111, \$3.25, Kenneth Broseh  
Todd Williams, 7th, FFA, 121, \$3.00, J.E. Perry  
Dean Smith, 8th, 4-H, 109, \$3.00, Lakeview Gin  
Russell Ford, 8th, FFA, 99, \$3.00, Muncy Elevator  
Monty Teeter, 8th, 4-H, 92, \$3.75, Sun-Vue Fertilizer  
Hunter Smith, 8th, 4-H, 104, \$2.75, Floydada Businessmen and Farmers  
Kevin Helms, 8th, 4-H, 113, \$3.75, Floydada Coop Gin, Producer Coop Elevator  
Monty Teeter, 8th, 4-H, 118, \$3.00, Beedy Spraying Service  
Mike Ford, 9th, FFA, 99, \$3.25, Lockney Coop Gin

Carrie Woody, 9th, FFA, 114, \$2.75, Floydada Businessmen and Farmers  
Karen Ford, 9th, FFA, 99, \$3.00, Lockney Businessmen and Farmers  
Michael McGavock, 9th, FFA, 115, \$3.00, Lockney Businessmen and Farmers  
Mike Ford, 10th, FFA, 111, \$3.50, First National Bank of Lockney  
Santos Mariscal, Breed Champion, FFA, 231, \$2.00, Lockney Businessmen and Farmers  
Brad McNeill, Champion Cross, 4-H, 237, \$2.00, Muncy Elevator, Wayne Fuller Trucking  
Stephen Turner, Champion Other Breed, FFA, 244, \$2.00, Joe Smith  
Hugo Araujo, Reserve Breed Champion, FFA, 223, \$1.75, First National Bank of Lockney  
Brad McNeill, Reserve Breed Champion, 4-H, 237, \$2.00, Producers Coop Elevator  
Santos Mariscal, Reserve Breed Champion, FFA, 245, \$1.75, First National Bank of Lockney  
Wyman Rexrode, Reserve Champion Other Breed, 4-H, 250, \$2.00, Sterley Gin, Patterson Grain  
Larry Tannahill, 1st, FFA, 208, \$2.50, Providence Farm Supply  
Wade Jackson, 1st, FFA, 223, \$1.75, Providence Farm Supply  
Kenneth Rogers, 1st, FFA, 210, \$2.00, Van Bradley  
Dwight Jackson, 1st, FFA, 196, \$2.00, Crume Gin  
Brian Emert, 1st, FFA, 230, \$2.25, Keith Jackson  
Shannon Jones, 1st, 4-H, 213, \$2.00, First National Bank of Lockney  
Stephen Turner, 2nd, FFA, \$2.00, Lockney Businessmen and Farmers  
Keith Nixon, 2nd, FFA, 231, \$2.00, Perry Implement, Perry Farm Machinery, Floyd County Implement  
Cristi McNeill, 2nd, 4-H, 208, \$2.00, Floydada Businessmen and Farmers  
Mark Nutt, 2nd, 4-H, 216, \$2.00, Floydada Businessmen and Farmers  
Wade Jackson, 2nd, FFA, 220, \$2.25, Beedy Spraying Service  
Craig Ellison, 2nd, FFA, 225, \$2.25, Consumers Fuel—Lockney  
John Fortenberry, 2nd, FFA, 235, \$2.00, Lockney Businessmen and Farmers  
Phillip Kidd, 2nd, FFA, 203, \$2.25, Sterley Gin, 4 O'Clock Seed—Plainview  
Tracy Carlton, 3rd, 4-H, 211, \$2.00, Billy Hayes  
Kelly Hayes, 3rd, FFA, 199, \$2.00, Dale McPherson  
Craig Ellison, 3rd, FFA, 225, \$2.00, Lockney Businessmen and Farmers  
Danny Nutt, 3rd, FFA, 237, \$2.00, Floydada Businessmen and Farmers  
Margie Araujo, 3rd, FFA, 212, \$1.75, First National Bank of Lockney  
Patricia Ayala, 3rd, 4-H, 231, \$1.75, Lockney Coop Gin  
Dean Molinar, 3rd, FFA, 252, \$1.75, Lockney Businessmen and Farmers  
Karen Mathis, 3rd, FFA, 209, \$3.00, City National Bank of Plainview  
Kenneth Rogers, 3rd, FFA, 223, \$2.00, J. R. Belt  
Johnny Adams, 3rd, FFA, 238, \$2.25, Lockney Businessmen and Farmers  
Phillip Kidd, 4th, FFA, 223, \$1.75, Lockney Businessmen and Farmers  
Kelly Hayes, 4th, FFA, 202, \$1.80, Lockney Businessmen and Farmers  
Keith Nixon, 4th, FFA, 223, \$2.00, Lighthouse Electric  
Christy Pruitt, 4th, 4-H, 242, \$2.25, Consumers Fuel—Floydada  
Steven Wright, 4th, FFA, 214, \$2.00, First National Bank of Lockney  
Neal Becker, 4th, FFA, 228, \$2.25, Floydada Coop Gin, American State Bank of Lubbock  
Karen Mathis, 4th, FFA, 244, \$2.75, Crume Gin  
Mark Wright, 4th, FFA, 213, \$2.00, Lockney Businessmen and Farmers  
Kristy Dawdy, 4th, 4-H, 226, \$2.00, Rhomar Co.  
Robert Nixon, 4th, FFA, 251, \$2.00, Floydada Businessmen and Farmers  
Lane Turner, 4th, FFA, 240, \$1.75, Lockney Businessmen and Farmers  
Brent Duke, 5th, FFA, 211, \$1.85, Floydada Businessmen and Farmers  
Robert Nixon, 5th, FFA, 226, \$1.85, Floydada Businessmen and Farmers  
Margie Araujo, 5th, FFA, 240, \$1.75, Lockney Businessmen and Farmers  
Mark Wright, 5th, FFA, 204, \$1.75, Lockney Businessmen and Farmers  
Dee McPherson, 5th, FFA, 222, \$2.00, Providence Farm Supply, Crume Gin  
Christy Pruitt, 5th, 4-H, 242, \$2.00, Producers Coop Elevator  
Neal Becker, 5th, FFA, 221, \$1.85, Floydada Businessmen and Farmers  
Dee McPherson, 5th, FFA, 231, \$1.75, Providence Farm Supply  
Monty Williams, 5th, FFA, 239, \$1.85, Floydada Businessmen and Farmers  
Denis Casey, 6th, FFA, 200, \$2.00, Sterley Gin  
Bryan Hayes, 6th, FFA, 213, \$1.75, Lockney Businessmen and Farmers  
Van Lowrance, 6th, FFA, 203, \$1.75, Floydada Businessmen and Farmers  
Karen Pruitt, 6th, 4-H, 233, \$1.75, Floydada Coop Gin, Hurdt Seed Co.  
Byron Brock, 6th, FFA, 247, \$1.75, First National Bank of Lockney  
Dena Casey, 7th, FFA, 205, \$1.75, Lockney Businessmen and Farmers  
Clay Lowrance, 7th, FFA, 213, \$1.75, Floydada Coop Gin  
Boyd Jackson, 7th, FFA, 230, \$1.80, Providence Farm Supply, Crume Gin  
Steven Wright, 7th, FFA, 238, \$1.70, Lockney Businessmen and Farmers  
Kristy Dawdy, 7th, 4-H, 233, \$2.00, Floydada Coop Gin  
Patt Campbell, 8th, FFA, 207, \$1.75, Lighthouse Electric  
Charles Molinar, 8th, FFA, 247, \$1.95, Eddie Teeter  
Rex Reves, 8th, FFA, 196, \$1.75, Laron Fulton  
Marcus Schacht, 9th, FFA, 227, \$1.95, Schacht Flowers, Virgil Brasher  
Van Lowrance, 9th, FFA, 249, \$1.75, Floydada Businessmen and Farmers  
Brian Emert, 10th, FFA, 201, \$2.00, Jackson Tire Co.  
Joe Smith, 10th, FFA, 242, \$1.75, Consumers Fuel of Lockney  
Mike Campbell, 11th, FFA, 206, \$1.75, Edwin Nutt  
Romeo Araujo, 11th, FFA, 229, \$1.75, Lockney Coop Gin  
Samuel Alvarez, 11th, FFA, 231, \$1.75, Lockney Coop Gin  
Teddy Salinas, 12th, FFA, 220, \$1.75, Lockney Businessmen and Farmers  
Libby Williams, Breed Champion, FFA, 1107, \$1.15, First National Bank of Lockney, Hi Plains Harvester Inc.  
Colt Golden, 1st, 4-H, 997, \$1.25, Southwestern Grain,

The following business men and farmers helped to make the Floyd County Stock Show a big success and insure each and every showman a fair price for his animal. Johnny West and the Sales Committee wish to thank all contributors for their generosity.

### Contributors to Floyd County Stock Show — 1980 FLOYDADA BUSINESSMEN AND FARMERS

First National Bank, Floydada  
W.A. Massie  
Builders Mart  
Dougherty Farm Supply  
Lon Davis Grain Company  
Davis Farm Supply  
D & P Grain  
Ponderosa Meat Co.  
Ray Carthel Oil Co.  
Brown Gin Company  
First State Bank, Matador  
Melvin Lloyd  
Martin & Company  
Oden Chevrolet  
Buddy's Food  
Boone Adams Well Service  
Russell's Equipment & Supply  
Floydada Seed & Delinting  
J.S. Hale, Jr.  
Eugene Beedy Farms  
Scott Gin  
Swiftly Distributors  
Plainview Savings & Loan  
Darty Gin  
The Hamby Company  
Barwise Elevator & Fertilizer  
Covington Oil & Butane  
Floydada Implement Co.  
High Plains Farm Supply  
Faulkenberry Auction  
Marble Brothers  
Beedy Spraying Service  
Fulton & Fulton Cattle Company  
Crosbyton Seed Company  
American Cotton Growers  
City Auto  
Bob Ross  
Leslie Nixon, Jr.  
S.C. Burleson  
Adrain Helms  
Rob Helfin  
William Bertrand  
Rodger Dawdy  
Federal Land Bank of Floydada  
Crosby County Pump Company, Inc.  
R. R. Ferguson  
Green Machinery  
Parks Oil Company  
Wilson Electric  
Parker Studio  
Williams Insurance & Real Estate  
Carthel & Son  
Duncan Abstract  
I.O.R.M. #31  
Kirk & Son  
Tipton Oil Company  
Quality Body Shop  
Moore-Rose Funeral Home  
West Texas Industries, Inc.  
Reed Ford Sales  
First State Bank, Petersburg  
McNeill Farms  
Craig Edwards  
Bill Beedy  
Kenneth Bean  
Jack Lackey  
Ernest Wayland Jones  
Southwestern Bell Telephone  
Petersburg Coop Grain  
Cornelius Oil  
Petersburg Coop Gin  
Floydada Real Estate & Ins.  
Hale's Department Store  
Elmer Dean Williams

Baker Insurance Agency  
Case Power & Equipment  
Babe's Service Center  
Daniel Automotive  
Don's Muffler Shop  
Porter Drug, Petersburg  
J & R Automotive, Petersburg  
Arwine Drug  
Anderson's Dept. Store  
City Trim Shop  
Rucker's OK Tire  
Sue's Gifts  
Matador Motor & Imp-Goen & Goen Ins.  
McDonald Implement  
Lawson Farm Supply  
KFLP Radio  
Malvin Jarboe  
Billy W. Fulton  
Joe Rainer  
Jake Younger  
Richard Hale  
Mrs. J.O. Elliott  
Jackie Elliott  
W.S. Jones  
Doris Jones  
Larry Barbee  
Connie Bearden  
Hinsley Farms  
Randy Bertrand  
Donald Bean  
Dwight Teeple Farms  
Weldon Pruitt  
Billy Hinkle  
Don Rainer  
Jack Stansell  
Woodrow Wilson  
Greer Christian  
Charles Christmas  
J. K. West  
Mike Smith  
Kent Covington  
Jim Simpson  
H. B. Johnson  
Mickey D. Hammonds  
L. C. Pruitt  
Vernie Moore  
Tommy Assiter  
Johnney West  
Don Hardy Race Cars  
Don Hardy Car Wash  
Leonard's Cafe  
Travel Center Restaurant  
Kirtley's Market  
Louis Pyle  
Norrell Tractor  
Thompson Pharmacy  
Park Florist  
Sam Spence Insurance  
Bishop-Ramsey Pharmacy  
Milton Flying Service  
Edmiston Plumbing  
Solomon Jewelry  
Sears  
White Auto Store

### OTHER THAN CHAMPION BUYERS—1980 FLOYD COUNTY STOCK SHOW

Bearings & Industrial Supplies Inc.  
Van Bradley  
Kenneth Broseh  
Brown Implement Co.  
City National Bank of Plainview  
Cone Gin  
Jimmy Dean Meat Co.  
Consumers Fuel — Floydada  
Consumers Fuel Assn. — Lockney  
Crume Gin  
East Mound Gin  
First National Bank of Lockney  
First National Bank of Plainview  
Floydada Businessmen & Farmers  
Floydada Coop Gin  
Floyd Co. Implement

Ranchers Farm Supply, Oscar Golden  
Todd Beedy, 1st, FFA, 1151, \$1.15, Floydada Coop Gin,  
Plains Coop Ore mill  
Matt Williams, Reserve Breed, FFA, 1097, \$1.25, East Mound Gin  
Shawnda Brock, 2nd, 4-H, 1000, \$1.00, Plainview Coop per lb.  
Doug Sparkman, 2nd, FFA, 1038, \$1.00, Jerry Williams, Paul and Ricky Hrbacek  
Angie Hinsley, 3rd, 4-H, 947, \$1.16, Brown Implement  
Jill Whitfill, 3rd, 4-H, 1038, \$1.04, Sterley Gin, First National Bank of Lockney added .06 per lb.  
Danny Nutt, 3rd, 4-H, 1007, \$1.08, Floydada Coop Gin  
Dusty Burleson, 3rd, 4-H, 1209, \$1.18, John Barnhill, Mitch Ross, 4th, FFA, 1230, \$1.15, Perry Implement, Perry Farm Machinery, Floyd County Implement Co.  
Chad Edwards, 5th, 4-H, 983, \$1.06, Brown Implement Co.  
Marty Covington, 5th, 4-H, 1134, \$1.10, Floydada Coop Gin  
Chris Fulton, 5th, 4-H, 1223, \$1.11, Floydada Coop Gin  
Keith Hight, 6th, FFA, 963, \$1.00, Consumers Fuel—Lockney  
Beverly Burleson, 6th, 4-H, 1125, \$1.14, Muncy Elevator, First National Bank of Plainview  
Mark Nutt, 7th, FFA, 1103, \$1.10, Floydada Businessmen and Farmers  
Ralph Scheele, 7th, 4-H, 1169, \$1.10, Providence Farm Supply, Crume Gin  
Tom Ross, 7th, 4-H, 1236, \$1.11, Floydada Coop Gin  
Lisa Terrell, 8th, 4-H, 1016, \$1.09, Lockney Coop Gin  
Shannon Edwards, 8th, 4-H, 1056, \$1.08, Floydada Businessmen and Farmers  
Mack Sherman, 8th, FFA, 1149, \$1.16, Perry Implement, Perry Farm Machinery, Floyd County Implement

Frontier Savings & Loan of  
Wayne Fuller Trucking  
Bob Gardner Chevrolet  
Fred Garrison Oil Co.  
Hale County State Bank  
Billy Hayes  
Hi Plains Harvester Inc.  
Lakeview Gin  
Lighthouse Electric  
Lockney Businessmen & Farmers  
Lockney Co-op Gin  
Muncy Elevator  
Edwin Nutt  
Patterson Grain Co.  
Perry Farm Machinery  
Perry Implement  
J.E. Perry  
Petroleum Transport  
Plainview Coop  
Plainview Savings & Loan  
Plainview Seed & Delinting  
Producers Coop Elevator  
Providence Farm Supply  
Ranchers and Farmers Supply  
Rhomar Co.  
Schacht Flowers  
Kelton Shaw  
Joe Smith  
Southwestern Grain  
Sterley Gin  
Sun-Vue Fertilizer Inc.  
Western Beef  
Western Lockney  
John Barnhill  
Jay Johnson  
J. A. Welch  
Beedy Spraying Service  
Laron Fulton  
Ray Ford  
Caprock Gin  
Lindsey Lackey  
Eddie Foster  
Mrs. J. R. Belt  
Dale McPherson  
Jerry Williams  
Paul and Ricky Hrbacek  
Keith Jackson  
Jackson Tire Co.  
Eddie Teeter  
Owen Thornton  
Riverside Chemical

### NOTICE

Byron Brock—add \$1.00 per burrows  
Floydada Livestock Sale added \$1.00 per 100 for sale

Acco Seed  
Pioneer Natural Gas  
South Western Public Service  
Rudy Barber Shop  
Parker's Furniture  
Doug Meriwether  
John Hooten  
Ray Ford  
Pages Thriftway #3  
Green Hill Angus Farm  
Harold Ford  
R.L. Knox  
Dan's Auto Service  
W.H. Hallmark  
Baccus Motor Co.  
Lockney Butane Co.  
Whites Auto Store  
Lockney Meat Co.  
H.E. Frizzell  
Dick's Automotive  
B.J. Terrell  
Jerry Cawley  
Kenneth Holt  
R.C. Mitchell  
Dan Smith  
Harmon Handley  
Joe Nell Rexrode  
Mar Insulation  
Omar Burleson  
Beedy Spraying Service  
Gerald Ford  
Albert Scheele  
Bill Sherman  
G.L. Hight  
Bickley & Bickley  
High Plains Gin  
Schacht's Flowers & Gifts  
Audrey McCormick  
B.E. Thompson  
Walter Teach  
Tye Co.  
Byrd Pharmacy  
Stapp Brothers Body Shop  
Lockney Gin  
Davis Lumber  
West Texas Industries  
Ray Aston  
Ronnie Aston  
Floyd Lyles  
Ansley & son Farm Equipment  
Johnson & Johnson  
Floyd County Insurance  
Milze Pharmacy  
Barker Insurance  
J.D. Copeland  
Brown's Department Store  
JoAnn Rogers  
Bill Evans Gin  
A.L. Newton Trucking  
Moore Rose Funeral  
J.A. Bobbitt  
H.H. Bennett  
L.L. Rodes  
James P. Glasston D.V.M.  
Webster Service & Supply  
Lone Star Chemical  
C.L. Henderson

# for any

## Real Estate

FOR SALE: Several good three bedroom homes for sale. Call Wilson Bond, 983-3573.

FOR SALE: to be moved room house. 652-3183.

FOR SALE: Two bedroom one bath, steel insiding, \$25,000. Call 2425 or 983-3024 after 6 p.m.

FOR SALE OR TRADE: Investment Complex with terms, low interest. \$5000.

FOR SALE by owner — 3 bedroom brick, 1 3/4 bath, popular, Lockney. Life after 4 p.m.

FOR SALE OR TRADE: 2 bedroom, 1 1/2 bath, with fireplace, game room over basement, metal building. 983-5315 after weekends.

FOR SALE: Nice home, large room with dining area, den, 1 1/2 baths, new siding, insulated. Garage with large carport and fruit trees and 3000 sq. ft. link fence, \$32,000. Insurance and Real Estate, call 983-3261.

FOR SALE: Two bedroom with garage attached to lot. 303 E. Kentucky. 3-23c

FOR SALE: Trailer Courts, 21 lots, 10 lots. Cecil Malone 983-2312.

FOR SALE: Two bedroom with garage attached to lot. 303 E. Kentucky. 3-23c

FOR SALE: Three bedroom house. Call 983-3737.

ATTENTION PLEASE! For persons who took garage suede coat from 1st of Leonard's please get to the cafe. No questions asked. 3-6c

HELP WANTED: Make money at home. No experience necessary. Start immediately. Name and address to: Box 723, Cypress, TX 77429. 3-6p

SEPARATELY WANTED: Three bedroom house. Call 983-3737.

FOR YOUR Custom Exhaust Work SEE Bruce Williams SPECIALIZING IN GLASS PACK AND TURBO MUFFLER AT Dan's Auto Service LOCKNEY 652-2462 LS-

POLITICAL CALENDAR This political color brought to you as a service of this newspaper FOR SHERIFF Fred Cardinal FOR TAX ASSESSOR COLLECTOR Jonelle Fawcett FOR COMMISSIONER PRECINCT 1 1. Sam Spence 2. Rodger Dawdy 3. J.W. Becker FOR JUSTICE OF PEACE Walter Hollums Joyce Lipham Linda Morris FOR COMMISSIONER PRECINCT 3 Thomas Warren Larry Noland FOR U.S. CONGRESS 17th District Charles Stenhold Democrat

Shop Floyd County FIRST!

LOCKNEY PRINTING ALL TYPES COMMERCIAL PRINTING Phone 652-2184 We Appreciate Your Business.



# for anything... for everything... WANT ADS

Book Show.....

**Frontier Savings & Loan of Plains**  
Wayne Fuller Trucking  
Bob Gardner Chevrolet Inc.  
Fred Garrison Oil Co.  
Hale County State Bank  
Billy Hayes  
Hi Plains Harvestore Inc.  
Lakeview Gin  
Lighthouse Electric  
Lockney Businessmen & Farmers  
Lockney Co-op Gin  
Muncy Elevator  
Edwin Nutt  
Patterson Grain Co.  
Perry Farm Machinery  
Perry Implement  
J.E. Perry  
Petroleum Transport  
Plainview Coop Compress  
Plainview Savings & Loan  
Plainview Seed & Delinting  
Producers Coop Elevator  
Providence Farm Supply  
Ranchers and Farmers Supply  
Rohmar Co.  
Schacht Flowers  
Kelton Shaw  
Joe Smith  
Southwestern Grain  
Sterley Gin  
Sun-Vue Fertilizer Inc.  
Western Beef  
Western Lockney  
John Barnhill  
Jay Johnson  
J. A. Welch  
Beedy Spraying Service  
Laron Fulton  
Ray Ford  
Caprock Gin  
Lindsey Lockey  
Eddie Foster  
Mrs. J. R. Belt  
Dale McPherson  
Jerry Williams  
Paul and Ricky Hrbacek  
Keith Jackson  
Jackson Tire Co.  
Eddie Teeter  
Owen Thornton  
Riverside Chemical

Byron Brock—add \$1.00 per 100 per barrows  
Floydada Livestock Sales Com added \$1.00 per 100 for steers

**NOTICE**  
WANTED: To babysit one in my home, call 983-3236

Earn money at home. Pioneer Natural Gas South Western Public Service Rudy Barber Shop Parker's Furniture Doug Merlweather John Hooten Ray Ford Pages Thriftway #3 Green Hill Angus Farms Harold Ford R.L. Knox Dan's Auto Service W.H. Hallmark Baccus Motor Co. Lockney Butane Co. Whites Auto Store Lockney Meat Co. H.E. Frizzell Dick's Automotive B.J. Terrell Jerry Cawley Kenneth Holt R.C. Mitchell Dan Smith Harmon Handley Joe Neil Rexrode Marr Insulation Omar Burleson Beedy Spraying Service Gerald Ford Albert Schoele Bill Sherman G.L. High Bickley & Bickley High Plains Gin Schacht's Flowers & Gifts Audrey McCormick B.E. Thompson Walter Tanch Tye Co. Byrd Pharmacy Stapp Brothers Body Shop Lockney Gin Davis Lumber West Texas Industries Ray Aston Ronnie Aston Floyd Lyles Ansley & son Farm Equipment Johnson & Johnson Floyd County Insurance Mize Pharmacy Barker Insurance J.D. Copeland Brown's Department Store JoAnn Rogers Bill Evans Gin A.L. Newton Trucking Moore Rose Funeral J.A. Bobbitt L.H. Bennett L.L. Kodes James P. Glasson D.V.M. Webster Service & Supply Lone Star Chemical C.L. Henderson

**PETS**  
GIVE AWAY — One female dog, part German Shepherd, has been found. Call 983-2539. tfc

**ATTENTION PLEASE!**  
Persons who took orange suede coat from booth of Leonard's please return to the cafe. No money asked. 3-6c

**Shop Floyd County FIRST!**

**LOCKNEY PRINTING**  
ALL TYPES COMMERCIAL PRINTING  
Phone 652-2184  
We Appreciate Your Business.

**Real Estate**  
FOR SALE: Several good three bedroom homes for sale. Bond Real Estate, 983-3573. tfc

**Real Estate**  
FOR SALE: Two and three room homes for sale. Can be arranged. Hale Insurance and Estate at 983-3261. tfc

**Real Estate**  
SALE OR TRADE: Investment Complex with terms, low interest. J.E. Perry tfc

**Real Estate**  
SALE by owner — 3 room brick, 1 3/4 bath. Lockney. 652-2184. tfc

**Real Estate**  
SALE: Nice home, large room with dining area, den, 1 1/2 baths, new siding, insulated. Garage with large carport and cellar, two storage sheds, fruit trees and link fence. \$32,000. Insurance and Real Estate at 983-3261. tfc

**Real Estate**  
SALE: Two bedroom with garage attached. 303 E. Kentucky. 3-23c

**Real Estate**  
SALE OR TRADE: Trailer Courts, 21 lots, 10 lots. Cecil Hays. Phone 983-2312. tfc

**Real Estate**  
WANTED: Experienced welder and two laborers. Call 983-2276 or come by 322 W. Houston, Floydada. tfc

**Real Estate**  
HELP WANTED: Manager Position. Full responsibility. Highway 70 Texaco and Convenience Store. Contact Gary Garrison at 296-6353, Plainview. tfc

**Real Estate**  
FOR YOUR Custom Exhaust Work SEE Bruce Williams SPECIALIZING IN GLASS PACKS AND TURBO MUFFLERS AT Dan's Auto Service LOCKNEY LS-TFC 652-2462

**POLITICAL CALENDAR**  
This political column is brought to you as a public service of this newspaper.

**FOR SHERIFF**  
Fred Cardinal

**FOR TAX ASSESSOR-COLLECTOR**  
Jonelle Favver

**FOR COMMISSIONER PRECINCT 1**  
1. Sam Spence  
2. Rodger Dawdy  
3. J.W. Becker

**FOR JUSTICE OF PEACE**  
Walter Hollums  
Joyce Lipham  
Linda Morris

**FOR COMMISSIONER Precinct 3**  
Thomas Warren  
Larry Noland

**FOR U.S. CONGRESS 17th District**  
Charles Stenholm  
Democrat

**LOCKNEY PRINTING**  
ALL TYPES COMMERCIAL PRINTING  
Phone 652-2184  
We Appreciate Your Business.

**Real Estate**  
FOR SALE: Three bedroom two baths on large lot. 983-2306. tfc

**Real Estate**  
FOR SALE: to be moved — 5 room house. 652-3183. L-tfc

**Real Estate**  
FOR SALE: Two bedroom, one bath, steel insulated siding, \$25,000. Call 983-2425 or 983-3024 after 6 p.m. 3-16c

**Real Estate**  
Several 2 and 3 bedroom houses for sale. King Real Estate. 983-2881; 983-5028. 983-2707. tfc

**Real Estate**  
FOR SALE — House, four rooms and bath; steel tower with wooden water tank. 652-3187, Lockney. L3-6p

**Real Estate**  
WANTED TO BUY irrigated or dryland farm in Floyd or surrounding area. Write Box XRO, c/o Hesperian, Box 700, Floydada. tfc

**Real Estate**  
MUST SELL PRIME LOT IN FLOYDADA, corner of Texas and Lee. Jim Reynolds, Crosbyton. Phone 672-2881 or 675-2888 Night. 2-10c

**Real Estate**  
LAND LEVELLING doesn't cost, it pays. 983-2646 or 983-2074. tfc

**Real Estate**  
CHIPPING-FLAKING paint on overhang? TREAT YOUR HOUSE to a United States Steel Soffit and Facia System and never paint again. Free Estimate - Call D & B Construction Company 806-793-3173. Dave Taylor, owner. 3-30c.

**Real Estate**  
"Carpet Need Cleaning?" Let me do the work for you. Dry foam, 10 cents sq. foot. Call Jack Moore 983-3033 after 5 p.m. tfc

**Real Estate**  
**Fireplaces**  
BY MAJESTIC BUILT-IN OR FREE-STANDING CALL OR COME BY AUDRY MCCORMICK 107 WILLOW LOCKNEY 652-2572 L-TFC

**Real Estate**  
**CAKE DECORATING**  
Custom baked and decorated for birthdays, holidays, parties, club meetings, etc. Laura Wilson 652-3770 L-tfc

**MOBILE HOMES**  
FOR SALE: Mobile Home Park, good buy for retirement, in Floydada 806-983-3504. tfc

**LOST & FOUND**  
LOST! (In Floydada, Feb. 27) Antique hat pin, silver color, Reward. Call 983-2771. 3-9c

**BUSINESS SERVICES**  
Adams Well Service Complete Irrigation Service All sizes submergible pumps in stock. One day service. 983-5003. tfc

**INTERIOR PAINTING WALL PAPERING**  
Call Rena Turner or Nancy Mayo, 983-5130 or 983-2667. tfc

**INSULATION**  
Fire-Resistant. Installed and Guaranteed. MARR Insulation Co. Lockney 652-3593. L-tfc

**INSULATION**  
can help save your dollars. For information call 983-2601.

**TURNER REAL ESTATE**  
983-2635 Farms Ranches Floydada, Texas

**Public Notices**  
NOTICE OF OPPORTUNITY FOR PUBLIC HEARING

**MR. FARMER:**  
Acres wanted for onions, peppers, or cucumbers under contract. If interested, call 983-3791. 4-6c

**WE DO Painting, floor leveling, house blocking, roofing and remodeling.** We are now working Floydada Area. Contact Childress Bro. Collect 352-9563 tfc

**CUSTOM Application of Herbicides.** Bill Wisdom 652-3541, John Widom 652-3544. L-tfc

**HOUSE PAINTING.** Interior, exterior, taping, bedding, acoustical ceiling. Free Estimate. Call 293-8069 or 293-7679. 3-13p

**FISHERMEN BE READY** — Will do minor repair and cleaning of reels and rods — Install new lines — Have on hand size 6 lb. to 20 lb. test. E. Minter, 652-3338, 201 E. Willow, Lockney. L3-16p

## COW POKES By Ace Reid



"Oh, I'm shore glad it's you sheriff! You can help us return my neighbor's cattle that some thief put in our pickup!"

We would like to continue the COWPOKE SERIES. WE NEED A SPONSOR Call 983-3737

**Hollis R. Bond Real Estate**  
PHONE 983-2151  
107 S. 5th FLOYDADA

**TURNER REAL ESTATE**  
983-2635 Farms Ranches Floydada, Texas

## Public Notices

**NOTICE OF OPPORTUNITY FOR PUBLIC HEARING**

The City of Lockney has been granted a variance by the Texas Department of Health from the Maximum Constituent Level for fluoride contained in this Department's "Drinking Water Standards."

The Texas Department of Health is proposing to issue the following compliance schedule for the City of Lockney:

1. Written notice of the variance shall be provided to all dentists in the area you serve.
2. Public notification shall be issued quarterly.
3. The City of Lockney will continue investigating alternate sources of water.
4. Each January 1 a report will be submitted to the Division of Water Hygiene concerning the status of the proposed water supply from MacKenzie Reservoir.
5. An application for funding from the Farmers Home Administration must be submitted by January 1, 1981.
6. If the domestic water supply is not available from MacKenzie Reservoir by September 1, 1982, a new compliance schedule will be submitted to the Division of Water Hygiene.

The Division of Water Hygiene will hold a public hearing on the compliance schedule for the City of Lockney if a valid request is received by April 12, 1980. A valid request may concern the following:

The variance compliance schedule results in an unreasonable request to the public health.

All requests for a public hearing must be made in writing to:

Chief, Enforcement Branch  
Division of Water Hygiene  
Texas Department of Health  
1100 West 49th Street  
Austin, Texas 78756

A copy of the compliance schedule may be reviewed at the Division of Water Hygiene, Texas Department of Health, the Public Health Region 2, 3411 Knoxville, Lubbock, Texas, 79413, or by contacting the aforesaid applicant.

Issued this 27th day of February,  
Robert Bernstein, M.D., F.A.C.P.  
Commissioner of Health  
Texas Department of Health

Lc-6c

**STORAGE SPACE**  
BOATS, FURNITURE, ANYTHING, ETC. BY THE MONTH OR SIX MONTH 10% DISCOUNT.  
**WEST TEXAS MINI STORAGE**  
983-3737 OR 983-2151

**Can You Use Some Extra Money Let Us Help!!!!**  
WE BUY SCRAP IRON, OLD JUNKERS, AND FREE PICKUP  
Call 983-5277

**For Sale**  
FOR SALE: Small coke machine. Call 652-3613. L3-9c

**FOR SALE**  
FOR SALE: Baled Cane L-tfc  
FOR SALE: 11 yd. John Deere carry-all. Call 983-2646. tfc

**FOR SALE**  
FOR SALE: Niagara Professional Home Therapy Equipment. Call Sue Casey, 652-3414 L-tfc

**FOR SALE**  
FOR SALE: Four piece living room suit, mahogany bed, dresser with mirror. 983-3237. 3-6c

**FOR SALE**  
FOR SALE: Insulated metal camper for long-wide pickup bed. Contact Lockney FFA or Elvin Lyon. L-tfc

**FOR SALE**  
FOR SALE: Baled haygrazer. \$1.75 per bale. Tom Pierce, 983-2578. tfc

**FOR SALE**  
FOR SALE: Good clean used refrigerator. Collins Appliance. 983-5702 tfc

**FOR SALE**  
GUNS — Will pay cash for hand guns, rifles, and shotguns. Phone 806-675-2395 nights and weekends or 806-675-2245. tfc

**ALL AMANA REFRIGERATORS** in Stock 10% above cost Collins Appliance 111 W. California. 983-5702 tfc

**FOR SALE**  
FOR SALE: Module builder. 634-5434 or 634-5452. 3-16c

**FOR SALE**  
FOR SALE: Antique Pie Safe, good condition. Call Paula Pauley, 983-3542. 3-9c

**FOR SALE**  
FOR SALE: Used Lumber, 983-2998, Charlie Perry. 3-9c

**FOR SALE**  
FOR SALE: 1972 Chevrolet truck. Real good. 10x30 grainery to be moved. Call 983-3058. tfc

**CLASSIFIED ADVERTISING RATES**  
CLASSIFIED ADVERTISING RATE: 15 CENTS PER WORD FIRST INSERTION; 10 CENTS PER WORD EACH SUBSEQUENT INSERTION. MINIMUM CHARGE 12.00.  
CLASSIFIED DISPLAY RATE: \$1.40 PER COLUMN INCH CARD OF THANKS: \$2.00.

**Autos For Sale**  
FOR SALE: 1974 Plymouth Fury III. Good condition. Call after 5 p.m. 652-3596. L-tfc

**FOR SALE**  
FOR SALE: 1974 Pontiac Grand Prix excellent condition. Call 652-3731. L-tfc

**FOR SALE**  
4 shocks for the price of 3. Free installation. 123 W. Calif. tfc

**FOR SALE**  
FOR SALE: 1972 Cutlass, 983-2715. 3-16p

**FOR SALE**  
FOR SALE: Pontiac Firebird. Excellent Condition. Call Tom Marr 652-3593. L-tfc

**FOR SALE**  
FOR SALE: 1972 Chevrolet truck. Real good. 10x30 grainery to be moved. Call 983-3058. tfc

**FOR SALE**  
FOR SALE: 1979 Ford Courier. XLT, 2.3 engine, automatic, 6,000 miles with seven months warranty. 983-2038 after 5:00. 3-16c

**FOR YOUR portable disc rolling needs call Lawson Farm Supplies, Welding and Equipment. 983-3940, Floydada. T-tfc**

**cash in with a classified ad...**

**STOP PAINTING**  
Cover all outside walls and overhang with U.S. Steel Products  
**FREE ESTIMATES**  
Stan-By Steel Siding  
1501 N. Columbia  
Plainview, Texas  
Phone: 293-9330  
L-tfc

**Check with us for LIQUID FERTILIZER ANHYDROUS HERBICIDES**  
Rigs available for application  
**LONE STAR CHEMICAL INC.**  
Office: 652-2761  
Deanie Henderson: 652-3434 L-tfc

**It Pays To Advertise... Advertise Where It Pays...**

**★ Want Ads ★**

**Fast-Quick Results!**

**Phone: 983-3737**

**Shop Floyd County First!**



