

Base Bookbinding
P.O. Box 2550
Amarillo, Tex. 79105

The Lockney Beacon

THE LOCKNEY BEACON (ISSN 317-2201) is published weekly, except one week in September, October, and one week in November, each Thursday by Floyd County Publishing Co., 225 South Main Street, Lockney, Texas 79041. Second-class postage paid at Lockney, Texas. POSTMASTER: Send address changes to THE LOCKNEY BEACON, P.O. Box 187, Lockney, TX 79041.

Volume 79 Number 59 Lockney, Floyd County, Texas 79241 Thursday August 21, 1980 26 Pages In Two Sections 20 Cents

Floyd County Fair Happenings For September 11-12-13

Day at the Floyd County Fair will be held Friday, September 11 in the new building at the fairgrounds. Programs begin at 10:00 a.m. and will include: ARTS AND CRAFTS, FASHION SHOW, and a variety of other activities. Mrs. Colson will present a fashion show at Dunlap's in the afternoon. She will present information on coordinating a date wardrobe on Mrs. Colson will present accessories and the latest fashions in her presentation.



PATY ANDERSON shows off the catalogues for the 1980 Floyd County and Surrounding Counties Fair scheduled for September 11, 12 and 13 in Lockney. You copy can be picked up at the Beacon or Hesperian offices or at most businesses in the county.

The art department of the Floyd County Fair would like to urge all area artists to participate in the fair this year. What makes our county fair a success is you taking part in it.

Categories for entries are as follows. All divisions are divided into these basic mediums: oil, pastel, watercolor, acrylic and drawings. Each medium has three categories: landscapes or marine, still life, and portrait, figure or animal. Copies are in a class by themselves and should be labeled as such.

Division A is for teachers, Division B—adults, Division C—Youth (16-18), Division D—children (13-15), Division E—children (9-12), Division F—children (6-8), Division G—children (3-5), Divisions E-G also include crayon paintings.

These are the rules for the art department.

- 1) No article must be over three years old.
- 2) Adult pictures must be framed and wired. Children's pictures may be matted neatly and have a string attached.
- 3) Only one entry per category.
- 4) No tracing or number pictures accepted.
- 5) No article previously entered will be accepted.
- 6) Paintings must be entered between 4 and 8 p.m. Wednesday, September 10 and 9 and 10 a.m. Thursday, September 11.
- 7) All art should be clearly labeled as to division and category and the full name included.

Further information can be obtained by consulting the Floyd County Fair catalog or contacting Judy Schacht at 652-3449.

Floydada participants can arrange to have their paintings picked up and returned by taking them to Della Plains School, September 8-10 and leaving them with Clar Schacht.

Talent Show

The Talent Show will be held on Thursday, September 11, at 7:30 p.m. in the entertainment building on the fairgrounds in Lockney. There will be competition in two age divisions: 12 and under & 13 thru high school age. Entries will be judged by three out-of-town judges who are skilled in the areas of musical instruments, vocals, and dance (gymnastics, twirling, etc.)

Plaques will be awarded to the top three winners in each age division. Also, cash prizes and trophies will be awarded to the three winners, regardless of age. First place (the overall winner) will be given \$25, second place will receive \$15, and

third place will receive \$10.

Rehearsal had originally been scheduled for Saturday, September 6, but there will be no organized rehearsal held. If you would like to rehearse, please contact Lisa Mosley in Lockney and she will try to meet you there on Wednesday, September 10. All entrants should be at the entertainment building the night of the show by 6:45 p.m. for placement and instructions.

An organ, piano and two microphones will be available. If you need additional props we will try to get them for you, or you may furnish your own. For more information call Lisa Mosley, Lockney, at 652-2569 or Kyla Warren, Floydada, at 983-3037.

NOTICE Horns Begin Season With Scrimmage Against Owls

The Friends of the Library are planning a book sale at the Floyd and Surrounding Counties Fair which will be held September 11-13. Funds received at the fair will go for items needed by the Lockney Branch Library.

We desperately need more books to make the sale a success. If you have books (hardbook, paperback, or encyclopedias) you would like to donate, please take them by the Lockney library. Or if you would like someone to pick them up at your home call Lisa Mosley at 652-2569 or Helene Holt at 652-3561.

Athena Study Club will host a reception for all school employees on Sunday August 24, at 8 p.m. in the Junior High School Library. The public is invited to come and get acquainted.

Crime Call Offers Two Rewards

This week two "Spotlight Crimes" are featured with a \$200 reward offered in each case for information leading to arrests by Crime Call of Floyd County, Inc.

Sometime between 12 noon Friday, August 8, and 1:30 p.m. on Saturday, August 9, person or persons kicked in the back door of the Rex Rose residence, 413 W. Tennessee. The Rose's were out of town.

A JBC receiver, turn table and records were taken. Stolen items are valued at approximately \$700.

A blue van was seen in the area. A pick-up with dark windows was also seen.

Crime Call offers \$200 for information leading to the arrest of the person or persons involved in the theft.

Bob Patel, owner of the Floydada Inn, reported that rooms at the motel had been broken into twice and televisions were taken both times.

Fans will be given an opportunity to view the 1980 "Horns" tonight (Thursday) at home when they hold the first scrimmage of the year. They will go against a Hale Center team that comes off an 8-2 record and returns nine starters to the team. Hale Center lost out to state finalist New Deal last year. The freshman, JV, and varsity will all be playing tonight beginning at 6 p.m.

The second scrimmage will be next Thursday night at New Deal. It will also begin at 6 p.m. but will only be for JV and varsity. New Deal was in the state semi-finals and holds a 12-1-1 record. They are returning 12 starters including two all-district backs and two all-district linemen. Lockney has two offensive starters, five defensive starters, and 13 lettermen returning off of a

5-4-1 season. The 1980 Lockney Longhorns are completing their second week of workouts and Coach Dewayne Sexton said that the sessions have been very encouraging. There are 81 boys out for football this season which is the largest number in the district.

"We are running a totally different offense and defense this year. The offensive is much more

complicated than before and we have a lot to learn but I feel that the boys have a good attitude and are really trying," said Sexton.

"We have quickness. If we can keep a competitive spirit and try to win for 48 minutes rather than just trying to keep from losing, we may surprise some people," added Sexton. Lockney is ranked at the bottom of the Harris polls for district.

School Begins Thursday Aug. 28

School is scheduled to begin on August 28, at 8:45, for all students in the Lockney school system.

The buses will run their regular routes on that morning.

Any new students who have not attended the Lockney schools previously, are asked to contact the school before the above date. Any beginning kindergarten or first grade student is asked to pre-enroll this week. The child's shot record and birth certificate will be needed at the time of pre-enrollment.

The list of students and their teachers will be posted at the junior high school on Friday afternoon and at grade school on Tuesday morning. Grade school students will bring home a list of necessary supplies on the first day of school.

A faculty breakfast will be held at 8 a.m. on Monday, August 25. The teachers will begin in-service on that day.

REGISTRATION FOR LOCKNEY HIGH SCHOOL STUDENTS

WEDNESDAY, AUG. 27
Seniors: 8:30-10
Juniors: 10:00-12:00
Sophomores: 1:00-2:00
Freshmans: 2:00-4:00

Students must report at the assigned time to the HIGH SCHOOL room 102.

At that time you will be given instruction on how to register.

It is very important that you be here at the time assigned for you to register.

All H.E.C.E. students must contact Mrs. Aston at 652-3684, before coming to register.

All Co-Op Ag. students must contact Mr. Lyon at 652-2379, before coming to register.

The school schedule for the year is as follows: August 25-27:
In-service
August 28:
First day of school

September 1:
Labor Day
October 24:
In-service Day
November 27-28:
Thanksgiving
December 13:
In-service
December 22-January 4:
Christmas Holidays
February 23:
In-service
March 23-27:
Spring Break
May 22-29:
In-service

All stadium seats and parking space fees are due by September 1. They must be paid at the superintendents office.

NOTICE

FTA officers will be at High School during registration to collect membership dues for the coming year. The dues are \$3 per year.

For What It's Worth

By Nancy Carthel

If you didn't attend Old Fashioned Saturday Night you really missed some fun. There was a good crowd for the party and I think everyone agreed that it was one of the best Lockney parties ever had. Every owner I talked to was pleased with the turnout. There was good participation in the games for children and even the adults got into a little water competition. Some of us got very wet (see process) Gail Kring and Fortenberry did a good job of organizing the party. The merchants really enjoyed it. Nearly every

business in town donated something and this is what made it a success. Thanks to Wilbur, Betty, Beverly, and Lawson.

Watermelons always go over big. The Chamber of Commerce and Rotarians did a great job of distributing the slices to the crowd.

The police department deserves a big thanks for their help. They roped off the area and gave the use of their loud speaker when the one to be used at the drawing failed.

The night was successful and the Chamber of Commerce, Merchants Association, police, city, and the citizens of Lockney worked together for that success.

Old Fashioned Saturday Night



Courtesy And Service Week

CHIFFON MARGARINE Whipped, 1-lb. bowl

69¢

grocery Values



\$1.29

Style Ribs Bacon \$1.33 Fish Fillets

15¢ Off Label Tide Detergent \$1.70

Angel Food Cake Mix Betty Crocker 16-oz. pkg. 77¢ Grape Jelly Bama 16-oz. jar

32 oz. Bottle Carton Coke Cola plus deposit Detergent 128-oz. bil.

Ray Starch 15-oz. can 79¢ Green Chilies Ortega 2 4-oz. cans 79¢ Hash Browns Ore Ida 2-lb. pkg.

stant VEGAS Bingo

Target Sat., Aug. 16 is the day to Cash in Your Bingo Winnings.



FARM & RANCH NEWS



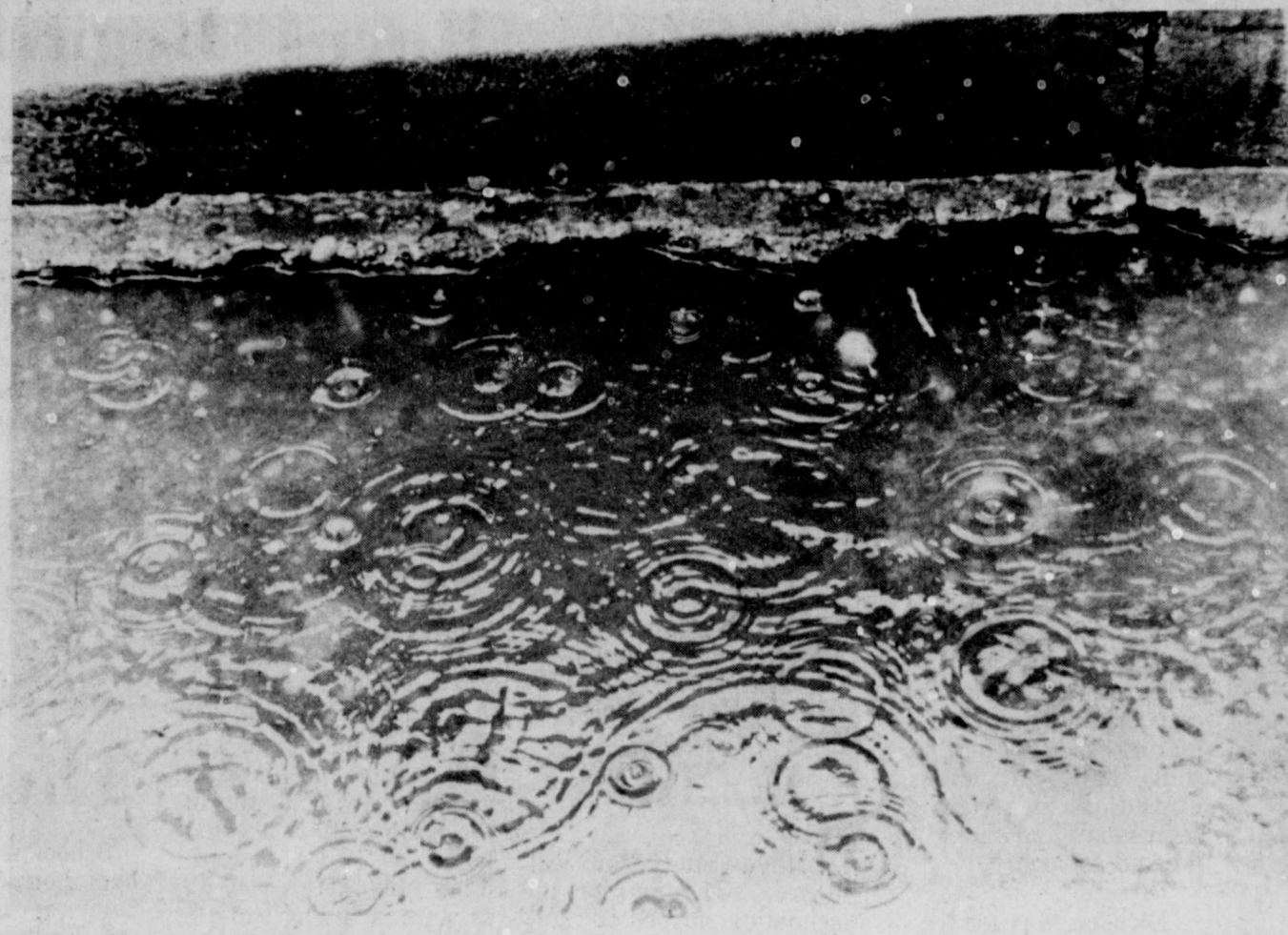
Insect Workshop To Be Held

The Floyd County Extension Service is sponsoring a crop insect scouting workshop for all interested producers in Floyd County. The workshop will be held from 1:30-4:00 on Friday afternoon, August 22, at the Lockney High School Vocational Agriculture Building.

The workshop will focus on training producers how to identify and scout fields for both beneficial and problem insects in corn, grain, sorghum and cotton. The session will begin with a short slide presentation at the Agriculture Building, after which the group will proceed out to the county where producers will learn and actually practice the scouting procedures discussed.

There will be no charge for this workshop which will be conducted by Paul Treptow, County Extension Entomologist for Crosby and Floyd Counties. With insect activity nearing its peak in Floyd County, all producers are encouraged to attend this insect scouting workshop.

Educational programs conducted by the Texas Agricultural Extension Service serve people of all ages regardless of socioeconomic level, race, color, sex, religion or national origin.



RAINS finally came this week to most parts of the county.

Texas Agricultural Extension Service The Texas A&M University System

Drought Reduces Grain Crop

Sorghum Crop Prospects

The 1980 grain sorghum crop has been reduced as much as one-third by this summer's drought, reported Elbert Harp, executive director of Grain Sorghum Producers Association. "The crop could be off as much as fifty percent if general rains don't fall in the next two weeks throughout much of the sorghum belt," he said.

Harp reported a telephone survey he conducted during the last week of July. "The crops are now in critical condition even where they had not suffered earlier in the year," he said. "The crops have gone as far as they can go without rain and they will deteriorate rapidly from this point. Even irrigated crops have suffered from the extreme heat."

Harp found that much of the crop is beyond the point of return. Large areas are being baled as hay, chopped as ensilage, or grazed out. These areas include a region west and south of San Antonio, Texas and another strip through North Texas, Oklahoma, Southeastern Kansas and Missouri.

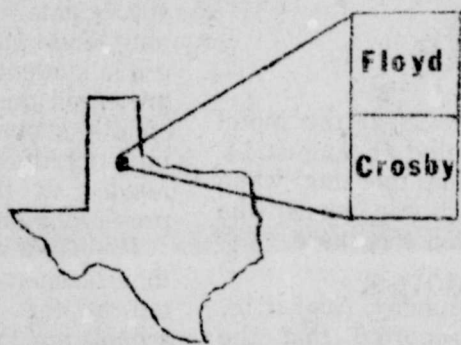
The irrigated crops of the Texas High Plains and Western Kansas are fair, but need supplemental rain and cooler weather. Western Kansas is spotted with much of the crop still in fair condition, provided rains fall very soon. The same is true of Nebraska.

Most of South Texas and South Central Texas sorghum matured before the onset of the heat wave. Harvest there produced fair-to-good yields.

The drought is already affecting market prices. Short crop prospects have strengthened prices to the "call level" for sorghum in the reserve program. On July 25, the last of the reserve sorghum was called. This means that more than 80 million bushels of sorghum will be forced into the market within 90 days following the call.

If the market continues to strengthen, reserve corn will be called. Then, over a billion bushels of reserve corn will be dropped into the market. (USDA is presently considering a plan to raise the call levels.) The "called" grain will tend to hold a ceiling on prices—at least temporarily.

The extent of damage to the corn crop will ultimately determine the price of both corn and sorghum. Some analysts are now predicting the 1980 corn crop to be 6.4 billion bushels or less. If the corn crop drops below this level, all reserve stocks will be absorbed and both corn and sorghum prices will remain strong throughout the coming year.



INSECT OUTLOOK

a weekly pest management newsletter

Paul Treptow

Paul Treptow

Extension Agent - Entomology

805-675-2426

983-2806

Courthouse, Rm B110
Crosbyton, Texas 79322
Vol. 5, No. 8

COTTON

Moderate to high bollworm egg laying activity is continuing in many fields in Crosby and Floyd County. Most activity can be found in fields that have been recently irrigated. Higher activity continues to be found in Floyd County. Egg counts of from 12 to 133 per 100 plants have been reported in the last several days. Bollworm counts of less than 10 per 100 plants in fields checked indicate worm numbers to be low at this time however hot spots do exist. High egg counts recorded last week have not materialized into treatable worm numbers.

In Crosby County a moderate egg lay is being seen in irrigated fields. Egg numbers of 14 to 36 and worm counts of 3 to 7 per 100 plants are being reported.

Beneficial numbers are increasing rapidly in many fields. Hardly noticeable to those not used to looking for them, the minute pirate bug is one of our better small worm and egg predators. High numbers of spiders and lacewing fly larvae can be found in many field.

Beet armyworm eggs are laid in masses covered by a whitish, velvety material on both the top and bottom of leaves. Newly hatched worms feed together but eventually disperse to surrounding plants. These worms skeletonize the leaves rather than chewing large holes in them. Beet armyworms will also feed on squares, blooms and bolls. Infestations are usually spotty within a field so careful scouting is needed to determine the need for control measures. Worms over 1/4 inch are difficult to control.

Cabbage looper eggs are laid singly, usually on the lower surface of leaves. Eggs are similar in appearance to bollworm eggs but looper eggs are more flattened,

Unfortunately some fields have extremely low beneficial populations.

I guess you could call 1980 the year of the worm. In addition to bollworms we have present in cotton fields the beet armyworm, cabbage looper, yellow-striped armyworm and even a few fall armyworms and cotton square borers.

Well-defined economic thresholds do not exist for these pests in our area. While treatment for leaf feeding of worms is seldom economically justifiable we cannot use the word never.

SORGHUM
Problems with mites, greenbugs and headworms continue in sorghum. Parasitic wasp activity is beginning to build up on greenbugs in some areas. Fall armyworms which were present two weeks ago in sorghum heads are now being replaced by corn earworms (bollworms). Mites have built rapidly in some sorghum fields. Treatment of fields for mites nearing the hard dough stage may not be necessary.

finely ribbed and do not turn brown before hatching. When feeding these worms cause leaf ragging and large holes in the leaves. Small green, oblong objects that you have noticed associated with loopers are actually cocoons of a parasitic wasp that has developed within the worm. Loopers with these parasites attached are in a weakened condition and will eventually die.

Combating Weeds Theme Of Field

New weapons in the war against an old foe of the farmer—weeds—will be examined during the 71st annual field day of the Texas Agricultural Experiment Station at Lubbock and Halfway.

This year's program will be from 12:30 to 5 p.m. Tuesday, September 9, at the Halfway research site, 14 miles west of Plainview on U.S. Hwy. 70.

The report on weed control will be one of four major stops during tours of the test plots and facilities, said Dr. Douglas F. Owen, research scientist at the station and field day chairman.

At the stop, Dr. John Abernathy, TAES weed research scientist, will present the latest information on new application systems and new chemicals for combating weeds. He also will present results of research at Lubbock and Halfway to help area farmers combat perennial and annual weeds.

"There are many different types of new application systems for herbicides," Abernathy said. Among those to be demonstrated and discussed are various rope and

wipe-on applications of spot sprayers.

Abernathy said visitors on research and Halfway facilities "making some progress" against weeds as lakeweed, white and blueweed.

He also will discuss methods for some weeds, such as spurred anoda and Hour, which cause an area.

Tests he has been conducting with growth regulators reported, the weed researcher said.

The annual field day alternates between the Halfway and Lubbock sites this year's host, resident director of Halfway experiments.

It is a cooperative effort of TAES, the High Plains Foundation, the Texas Extension Service, the Education Administration, U.S. Department of the National Weeds

Floyd County Farm Report

BY NANCY CARTHEL

Most areas of the county received some rainfall this past week. The northernmost part of the county had around 1/2 inch in spots on Tuesday night.

The worms are doing great. One farmer is trying to hire an entire fleet of airplanes to fly on chemical on his cotton. He swears that one plane will not be able to keep up with the worms.

There should be a little corn cut within the next week if no more rain falls. Some tested around 28% on Wednesday of this week.

Ground is being plowed getting ready for planting wheat.

On the grain market day afternoon, the price

Corn/cwt. — 57
Milo/cwt. — 53
Wheat/bu. — 2.75
Soybeans/bu. 4.85

Markets were not open on Wednesday afternoon due to the large volume of

They did report that was \$1-\$2 higher than they expected to see head by the end of the number of buyers were the sale.

Cotton futures were up the limit on Wednesday. Contracts were being offered at 2700 points over the 1980 loan.

Sponsored by the Following Interested Firms

First National Bank
Floydada

Case Power &
Equipment Floydada

Floydada Cooperative
Gins

Federal Land Bank
Association Of Floydada

Russell's Equipment
& Supply Floydada

The Floyd County Hesperian

Consumers Fuel Association
Lockney

Martin And Company
Floydada

Floyd County
Farm Bureau

Perry Implement
Lockney

Ansley & Sons
Lockney

Floydada Implement
Co.

Plainview Savings &
Association
Floydada



CHEERLEADERS FOR 1980-81 are: Bottom Row, Patricia Torres. Middle, Sharon Spencer, Georgia Villereal.



HIGH CHEERLEADERS: Bottom [l-r] Crissy Carthel, EVELIA



FROM THE INTERSQUAD scrimmage

!! Good



Combating Weeds Theme Of Field Day

As in the war against the farmer-weeds-will during the 71st annual Texas Agricultural Convention at Lubbock and program will be from Tuesday, September 23, to Friday, September 26, at Plainview on U.S. 75.

Weed control will be the focus of the field day program. Dr. John Abernathy, research scientist, will discuss the latest information on herbicides and new methods of combating weeds. He will also discuss the results of research at Halfway to help combat perennial and annual weeds.

Many different types of weed control systems for the farmer-weeds-will program will be demonstrated at the field day.



CHEERLEADERS FOR 1980-81 are: Bottom, [l-r]: Tammy Williams, Julie Patricia Torrez, Middle, Sharon Spencer, Rebecca Evans, and Julie Georgia Villereal.



LEADING THE JV CHEERS this year are [l-r] Shawnda Brock, Barbara Moore, Kay Reay, and [Top] Libby Williams.

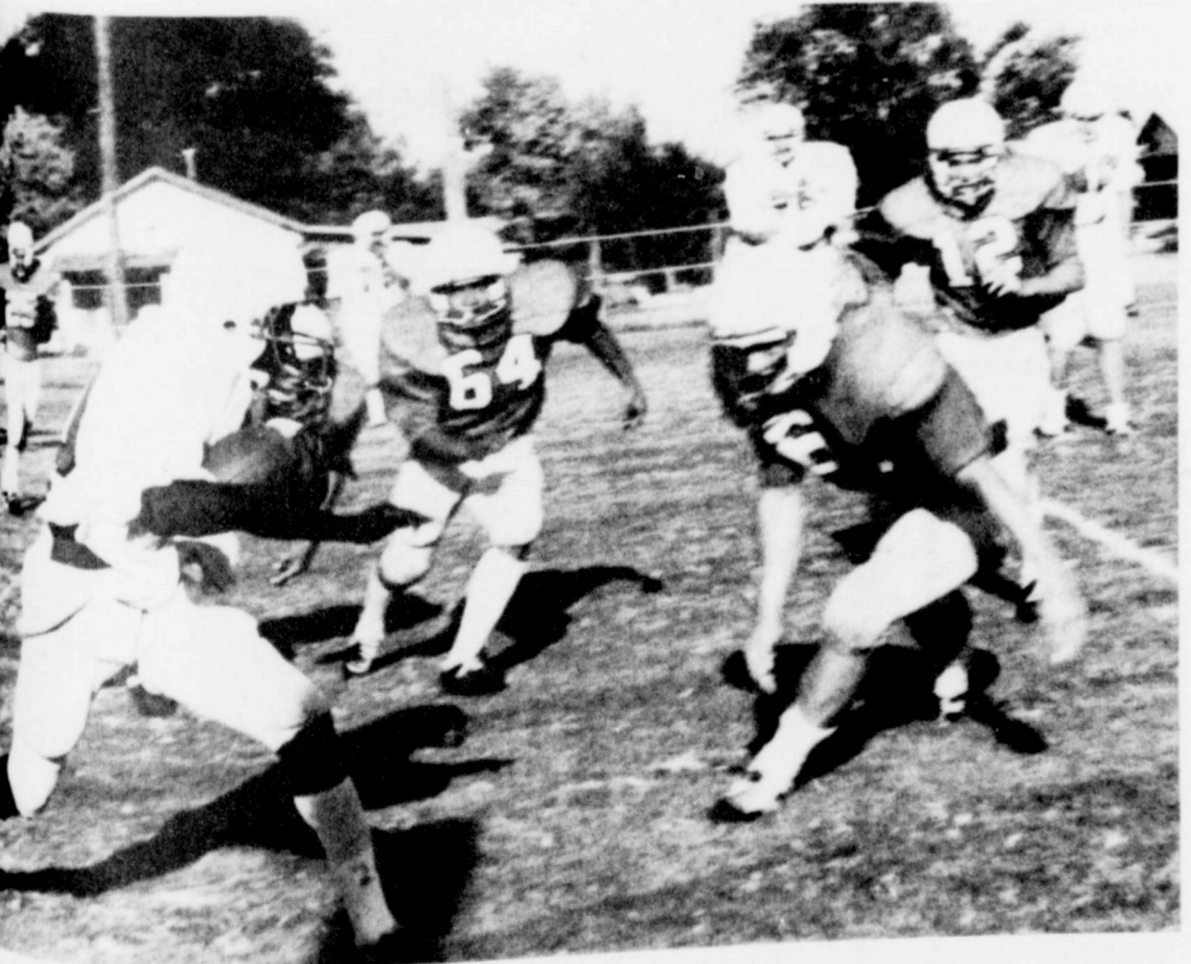
Go
Horns
Go



A LOOK AT THE NEW FIELD HOUSE.



SENIOR CHEERLEADERS: Bottom [l-r], Heather Holt, Irene Cantu, Sarah Arnold, Crissy Carthel. Back Row, Evelia Elias, and Elizabeth Guerrero.



FROM THE INTERSQUAD scrimmage held last Saturday night.

!! Good Luck !!

Lockney Local

Truett and Olien Bilbrey, went to Blanchard, Oklahoma Friday a week ago, to attend the wedding of their son Leland to Patricia Roberts, on Saturday. Truett, served his son as best man, and Leland's son Shayne, was ring bearer, for the double ring ceremony. Patricia's son Tim Roberts accompanied his mother to the altar.

The wedding and reception was held in his home. The Bilbrey's spent several days at Broken Bow and in the Oklahoma City area. They returned home Friday.

Mrs. Sharon Evans, of Lindsey, Oklahoma, visited with Elaine, Cliff and Robin Hardy, and Edith and Mevin Cooper, two days last week. Elaine and Sharon were roommates at college.

Floyd County Farm Report

BY NANCY CARTHEL

The county received a little corn cut if no more rain around 28% on Tuesday.

On the grain market on Tuesday afternoon, the prices were:

Corn/cwt. — 5.70
Milo/cwt. — 5.25-5.30
Wheat/bu. — 3.77-3.80
Soybeans/bu. 6.15-6.30.

Markets were not available for the Floydada Livestock Sale Wednesday afternoon because of the large volume sold.

They did report that the price of wheat was \$1-\$2 higher than last week. They expected to sell around the end of the day. The number of buyers were up over 700 points over the sale.

- Interested Firms
- Floyd County Farm Bureau
 - Perry Implement Lockney
 - Ansley & Son Lockney
 - Floydada Implement Co.
 - Plainview Savings & Loan Association Floydada

WE CAN HELP YOU SAVE MORE!!

WE RESERVE THE RIGHT TO LIMIT PRICES EFFECTIVE AUGUST 21-23, 1980
SPECIALS GOOD WHILE SUPPLY LASTS - LIMITED SUPPLY

ALLSUP'S CONVENIENCE STORES
Lockney

Burittos	5/\$1.00	 6 PACK DR. PEPPER \$1.69
Taco Rolls	5/\$1.00	
Chile Rellenos	2/\$1.00	
BORDEN'S CHOCOLATE MILK	69¢	 ALLSUP'S ASSORTED ICE CREAM \$1.39
ALLSUP'S ASSORTED ICE CREAM	12 OZ. GANS	
BORDEN'S ASSORTED FRUIT DRINK	89¢	 CLOVER CLUB POTATO CHIPS 69¢
Chicken Of The Sea Tuna	99¢	
Tru-Blu Cookies	89¢	
Miracle Whip	\$1.09	

Bradley-Jay Green Wed In Marriage



MRS. JAMES CREIGHTON

Rosson - Creighton Marry In South Carolina

James Edward Creighton and Sharon Kathleen Rosson became husband and wife in a ceremony conducted by Monsignor Charles J. Baum at 7 p.m. Saturday, August 9, at St. Mary's Catholic Church. A reception was held in the church social hall.

Mr. and Mrs. Barry L. Rosson of Greenville, South Carolina, are the bride's parents. Having attended the College of Charleston and Lander College, she is a secretary at Freeland & Associates Inc.

FLOYD DATA

Otis, Dana, Kim and Jo Lee Ellis returned home Saturday from Merritt Island, Florida where they visited Dana's sister and family, Mr. and Mrs. Hal Cosleton, Martin and Cassie.

While there they enjoyed a visit to Walt Disney World in Orlando.

We Have Moved Art Southwest

Has Moved To Carthel Oil Building Show
Lockney Highway
(Just North Of The Swimming Pool)
Tele: 983-3366

Wacker Jewelry

Roaring Springs
Announces It's
Last Days Of
Summer
Sale
Diamond, Ruby, Emerald,
& Precious Stone Jewelry

2/3 OFF
Gold Necklaces, Bracelets & Earrings
1/2 Off
Sept. 6th 10: 10 AM - 5:30 PM
Appointment Or Information
Free 1-800-692-4249

Society



MRS. JAY GREEN

Colston-Grogan Vows Exchanged In Brownfield

A double-ring ceremony at the Calvary Baptist Church of Brownfield united Miss Kelly Rae Grogan and Mr. Daniel Arthur Colston in marriage, Friday, August 15 at 7:30 p.m. The ceremony was performed by Rev. Bill Penland of the Calvary Baptist Church in Brownfield.

The bride is the daughter of Mr. and Mrs. Drury Grogan of Brownfield and the groom is the son of Mr. and Mrs. J.B. Colston of Floydada.

At each side of the church were two-nine branch brass candelabras with greenery. A brass arch was placed in the center and was decorated with greenery and a pink silk bow. A unity candle was placed in front of the groom's parents.

Music for the occasion was provided by pianist, Shere Forbes of Brownfield.

Soloists were Gayle Grogan, mother of the bride, who sang the "Wedding Song," Wayne Miller, music and youth director of Calvary Baptist Church sang "Savior Like A Shepherd Lead Us," and "All The Way My Savior Leads Me." Wayne also wrote an original fanfare especially for the bride to enter in, called "Fanfare For Kelly." Matthew Wilbourn and Tim Skupin played trumpets during the fanfare.

The bride wore a traditional gown of white organza, lavishly trimmed with Chantilly lace. The fitted bodice featured an empire waistline with a high neckline featuring a stand up lace collar. The sheer bodice was accented with two rows of the Chantilly lace, and the full sleeves were of lace, ending with fitted wrists and lace over the hands.

The full skirt featured two rows of organza and two rows of lace at the bottom and additional double rows of organza and lace swept from the front of the dress up the sides and ended in a point in the back below the waistline in an apron effect. A satin bow with streamers accented the back of the dress at the waistline. The full chapel train featured double rows of organza and lace. The fingertip veil featured an imported lace bandeau embroidered with seed pearls and was styled with two tiers of illusion with rolled edges.

She carried a cascade bouquet with white sweetheart roses and feathered carnations surrounded with greenery.

For the traditional something old and borrowed she carried a handkerchief belonging to her grandmother. Something new was her wedding attire and something blue was the traditional garter.

The bride and groom placed scriptures in their shoes instead of the traditional pennies.

The groom's scripture was I Cor. 13:4-7.

The brides scriptures were Isaiah 26:3, Proverbs 16:3 and I Cor. 2:9.

Maid of Honor was Connie Drake of Brownfield.

Angie McKee and Cyn-di Leavelle, both of Brownfield, served as bridesmaids.

Sister of the bride, Joy Grogan, served as flower girl.

Attendants wore dresses of pink dotted swiss with fitted waists, ruffled scooped necklines, and full skirts with bottom ruffles and accented with a white silk sash.

The flower girl wore a pink flowered organza with a crepe skirt lining with a ruffled neckline, sleeves and a bottom ruffle. She carried a white basket with petals and wore baby's breath in her hair. All attendants wore baby's breath in their hair.

The groom was dressed in a burgundy tuxedo with a tail and a white ruffled shirt trimmed with burgundy. He wore a pink rose with baby's breath.

Best man for the occasion was Randy Rainwater of Dougherty.

Kevin Nelson and Rick Carthel of Floydada served as groomsmen.

Mark Whittle, brother-in-law of the groom, and Mike Grogan, brother of the bride, escorted guests to their seats.

Ring bearer was Nathan Whittle, nephew of the groom.

All groomsmen wore burgundy tuxedos with white ruffled shirts trimmed in burgundy. They also wore pink carnations with baby's breath.

RECEPTION

The table was in a cross shape covered with white chiffon. The centerpiece consisted of pink carnations in a large silver vase.

The bride's cake consisted of four layers with pillars between each layer. It had two shades of pink roses topped with an arrangement of satin wedding bells. Pink punch and coffee were also served.

The groom's cake was a round German chocolate with a miniature carriage and groom on top. "Got Me To The Church On Time" was written on top.

Servers were Terri Nelson, Floydada; Teresa Whittle, sister of the groom, Floydada; Erma Miller, Brownfield; Tammi Hopkins, Brownfield; Loretta Penland, Brownfield, and Carol Dozier of Brownfield.

All servers wore corsages of white carnations trimmed with pink ribbon.

On the receiving line were Mr. and Mrs. Drury Grogan, parents of the bride; Mr. and Mrs. J.B. Colston, parents of the groom; Mr. and Mrs. O.J. McCain, grandparents of the bride of El Paso; Mr. and Mrs. Darrell Grogan, grandparents of the bride, of Pecos; Mrs. T.T. Hamilton, grandmother of the groom, of Floydada; Mike and Joy Grogan, brother and sister of the bride; and Teresa Whittle, sister of the groom, of Floydada.

Special guests of the bride were Mr. and Mrs. Dewey Gardner and Glori Perryton; Mr. and Mrs. Ray Goynes and family of Perryton; Mr. and Mrs. Bob Crow and family of Van Horn; and Mr. and Mrs. Roy Jones of El Paso.

Special guests of the groom present were Mr. and Mrs. Cubert Gray, Amarillo; Mrs. Clifford Potts, Levelland; Mr. and Mrs. G.L. Fawver, Floydada; Tammy and Terry Wilcox, Spur; Mr. and Mrs. Raymond Colston, Floydada; and Jo Ann Reid, Brownfield.

Friends attending from Floydada, other than the wedding party, included Mr. and Mrs. Kenneth Willis and Kristi; Mr. and Mrs. Travis Gentry and Tiffany; Mr. and Mrs. Olen Lyles, Mr. and Mrs. Floyd Bradford; Mr. and Mrs. Joe Richard Noland, Carlton and Mark, Patricia Anderson, Andy Rainwater and Sheldon Sue.

Lee Hamilton of Brownfield registered the guests. She wore a long, pink sundress with a pink chiffon cape over it. The table was covered with a white tablecloth trimmed with lace and a pink and burgundy silk rose in a white bud vase with baby's breath decorated the table. Lee also passed out the rice bags.

The bride's traveling outfit was a soft light blue pantsuit with white lace collar and cuffs. The groom wore a brown plaid shirt and brown corduroy pants.

The centerpiece was of pink and burgundy silk roses. Candles and namecards also decorated the table. Pink roses with green leaves mints were served for dessert.

After a wedding trip to Ruidoso, New Mexico the couple will reside in Floydada.



MRS. DANIEL COLSTON

by's breath decorated the table. Lee also passed out the rice bags.

The bride's traveling outfit was a soft light blue pantsuit with white lace collar and cuffs. The groom wore a brown plaid shirt and brown corduroy pants.

REHEARSAL DINNER

The rehearsal dinner was held at K-Bob's Thursday night at 7 p.m. The decorations were handmade by the groom's

mother. The centerpiece was of pink and burgundy silk roses. Candles and namecards also decorated the table. Pink roses with green leaves mints were served for dessert.

After a wedding trip to Ruidoso, New Mexico the couple will reside in Floydada.

"The two greatest stimulants in the world are youth and debt." Benjamin Disraeli

Bridal Selections For

Mrs. Jerry Bearden
Formerly
Rhonda Jordan
Cheryl Bearden Bride-Elect
Of William Couch

Available At
Sue's Gifts & Accessories

126 W. Calif. 983-5312

We Finance All Kinds



1980 Or 1981
Models
The Choice Is Yours

With Terms To
Suit Your Needs.

"The Friendly Folks"
at
The First National Bank

In Lockney

Member F.D.I.C.

Lockney, Texas

Warm Weather Special

Men's Short Sleeve Your Choice

Wrangler Shirts \$9.50
Values Up To \$17.00

Special Group Men's Wrangler \$6.00

Jeans

Reg \$13.00 Waist Sizes 27-33

All Sales Final No Refunds Or Exchanges



THE LOFT

517 East Houston

983-2235

YOUR MOVE



COME SEE US!
Floydada Real Estate &
Insurance Agency
AUTO, FIRE, FARM, AND
COMMERCIAL INSURANCE
Jim Word
Phone 983-2360

Lakeview News
by Joyce Williams

Mrs. Buell Neff had "driveway" guests this week during the Neff reunion at the MAC. Mr. and Mrs. Seth Neff of Tuscola, Mr. and Mrs. Billy Renfro of Roscoe parked their campers at Ona Ruth's to use the electrical hook-ups. They had not been to Floydada for some time and couldn't find their way around to the trailer park, so she invited them to park at her place. Mrs. Sara Neff, age 82, and the oldest person at the reunion, stayed in at Ona Ruth's during her visit from Tuscola.

There were over a hundred Neff's present for the gathering. More would have attended but Hurricane Allen had hit their homes and they had to stay and clean up.

Mr. and Mrs. Carl Mooseberg visited their daughter, Carla, and her husband Don Wisdom, in Duncan, Oklahoma this weekend.

Mrs. Carrie Brown of Haskell, Texas, stopped by at her sister-in-law's, Mrs. Viola Brown's house for lunch Wednesday. She had been visiting her son in Acuff. Since neither lady gets out much anymore, both highly enjoyed the visit.

Mr. and Mrs. Duane McClintock went to Possum Kingdom, Wednesday, for the McClintock family reunion. All stayed at the Bayley Camp and visited until Sunday, including Duane's mother, from Ft. Worth.

Mr. and Mrs. Dayne Go-lightly and children, Rance and Lacy, went to the McClintock reunion Friday, returning home Sunday evening.

Mrs. Georgia Mae Smith Erickson has had her former Connecticut neighbors, two little girls, visiting with her the past two weeks from Germany. The girls, age twelve and fourteen, were joined by Mrs. Hank Smith III, from San Antonio.

Mrs. Buell Neff returned home last week from a month's stay with her daughter, Pat Smith, who had surgery the early part of July.

Mrs. Viola Brown was among the celebrants at the Crosby County Old Settler's Reunion, Saturday, at the Pioneer Memorial building in Crosbyton.

Mr. and Mrs. Wayne Appling returned home Monday from Farmington, New Mexico where they visited Mr. and Mrs. Don Sanders and children. Mrs. Sanders is the former Judy Appling. Their children are Kerry, age nine, Cindy, age seven, and Misty, age five. The Appling's got to travel in rain from Plainview on Thursday to Santa Fe. When they came home they stopped in Albuquerque to visit Wayne's uncle and aunt, Mr. and Mrs. L.T. Archer. A five inch rain had fallen there and caused flooding. The road was washed out at Cuba, New Mexico, but was being repaired.

While in Farmington the Sander's and Appling's went to the Little League World Series Parade. The little Sander's girls were in the parade with their ballet class. Teams and floats were there from all over the world. The Appling's enjoyed the scenery on their trip. Don Sanders works at El Paso Natural Gas, and the family has lived there six years. The children's school starts this week and Judy is a teachers aid in the elementary school there.

Mr. and Mrs. Joe Dunn have enjoyed having their two daughters home with them the past two weeks. Mrs. Norma Hughes and children, Elyse, age 14, and Patrick age 17, arrived by plane from Los Angeles, California on Monday, August 4. Then Mrs. Snow Drop Gaut and son Jason, age 6, drove in on Monday, August 10, from Springfield, Missouri where she teaches speech therapy at the college.

Mrs. Joe Dunn's daughter's and grandchildren visited in Amarillo with her mother, Mrs. Hattie Fuqua in the rest home, and with her sister, Mrs. Hubert Scott. She reports Mrs. Fuqua's memory was sharp and clear, better than since her first stroke, and all enjoyed recalling family occasions together during their visit with her.

Mr. and Mrs. Dunn and their family also visited with her sister and husband, Mr. and Mrs. Clarence Ashon, and Joe's sister, Mrs. Harmon Roberts, in Floydada.

While the Dunn girl's were here they all went to Lubbock for a luncheon at the Gold Room at Hemphill-Wells with Mrs. Gerald Fugit and

daughter, Debra Susan. Betty Fran Fugit was engaged to the Dunn's son, Joe Mack, before he was killed in a car accident years ago, and still keeps in contact with the family. Her daughter, Debra Susan, is a junior speech major at Texas Tech University and she and Snow Drop had lots of ideas to exchange.

Mrs. Q.D. Williams went to Midland Friday and Saturday to attend the fifth birthday party of her grandson, Austin Williams.

Mrs. Louis Pyle has been at Crowell, the past two weeks, to be near her mother, Mrs. Hester Hammonds, who is seriously ill in the Crowell hospital.

Mrs. Lanny Glasscock, Robert Pyle, and Mr. and Mrs. Gene Smith went to

Crowell last Sunday to see their grandmother, Mrs. Hester Hammonds, in the hospital.

Mr. and Mrs. Weldon Hammonds spent Sunday and Monday at Crowell, at the hospital with his mother, Mrs. Hester Hammonds.

Mrs. Weldon Hammonds and Mrs. Lanny Glasscock went to Canyon last Monday evening to attend a layette shower for their daughter and sister, Mrs. Chuch Carpenter (Gay Lynn.)

South Plains News
Mrs. Murry Julian

August 18:
Wonderful rain showers here left 1.20 in South Plains, and as much as 1.80 in other areas. Farmers have not been able to stop watering the whole summer, or most of them have not, and this moisture and coolness will help keep fields going. The rain came Thursday evening, August 14, and it was spread over a large area.

Mrs. Raymond Upton (Nina) entered the Central Plains Hospital for tests Sunday, August 10, and on Monday underwent major surgery for a hernia. Raymond was there with her

during the week, and this Monday, she is scheduled to get to come home, where she will be confined to her home for awhile to recuperate.

Mrs. Alvin Nichols went to Lockney on Monday afternoon, where at 4 p.m., at the First United Methodist Church, she attended the funeral services of Mrs. Mary Emma Floyd, 88, of Corpus Christi, who died there Friday, and she was buried at the Lockney Cemetery.

Janet Ann Respondek of Slaton, daughter of Mrs. Tom Respondek who former-

ly lived in Amarillo, was here with her friends and family for the wedding of her daughter, Mrs. Sylvia Kin-

and Mr. and Mrs. Melissa of the past week at Gilliland, Texas, and spent the day with her family.

The First Baptist Church of Plainview held a rehearsal supper at K-Regina is the daughter of Mr. and Mrs. Richard Sanders, and grew up here in Floydada. The young couple will make their home

COME OVER & SAVE

99¢ Size Ruffles



Potato Chips 66¢

PLUS S&H GREEN STAMPS

DISCOUNT PRICE!

Hormel Tender Chunk



Ham, Turkey or Chicken 79¢

PLUS S&H GREEN STAMPS

DISCOUNT PRICE!

1 lb Maxwell House "All Grinds"

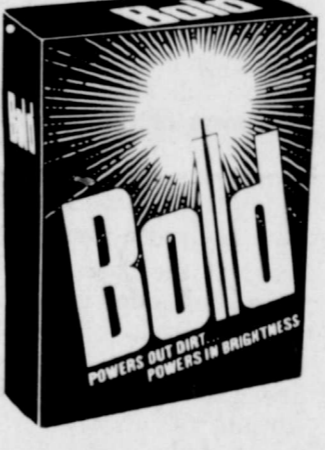


Coffee \$2.49

PLUS S&H GREEN STAMPS

COME OVER & SAVE

Giant 49 oz



Bold \$1.49

PLUS S&H GREEN STAMPS

COME OVER & SAVE

3 lb "Pure Vegetable"



Crisco \$1.89

PLUS S&H GREEN STAMPS

DISCOUNT PRICE!

Dr Pepper

6-32 oz Regular or Diet \$1.69

6 Pack \$1.39

12 oz Can

Plus Deposit Case \$5.49

PLUS S&H GREEN STAMPS

200 Extra S&H Green Stamps With This Coupon And Purchase Of \$20 Or More Good At Buddy's Expires 8-27-80



DOUBLE ON WEDNESDAY

2 lb Jimmy Deary Sausage \$2.79

12 oz Breakfast Sizzler \$1.39

8 quart 24 oz Wylers Drink Mix \$1.59

6 oz Soup Starter \$1.00

19 oz Spary Way Cleaner \$3.00

15 oz Hunts Make-A-Meat Sauce \$1.39

4 oz Adams Vanilla \$87¢

Twin Pack Summers Douche \$2.29

School Box \$1.59

Black Flag Roach Motel \$3.00

3 1/2 oz Taco Shells

USDA Chuck Roast \$1.89 lb

USDA Boneless Skinless Chicken Breasts \$1.99 lb

Facial Tissue 2/99¢

Hot Dog \$3.00

Meat \$1.39

Vanilla \$87¢

Card \$2.29

Box \$1.59

Roach Motel \$3.00

220 SOUTH 2ND

983-3149

BUDDY'S

AM-9 PM. WEDNESDAY August 27, 1980

VALUES IN THESE QUANTITIES

during the week, and this Monday, she is scheduled to get to come home, where she will be confined to her home for awhile to recuperate.

Mrs. Alvin Nichols went to Lockney on Monday afternoon, where at 4 p.m., at the First United Methodist Church, she attended the funeral services of Mrs. Mary Emma Floyd, 88, of Corpus Christi, who died there Friday, and she was buried at the Lockney Cemetery.

Janet Ann Respondek of Slaton, daughter of Mrs. Tom Respondek who former-

ly lived here, was married to Mr. and Mrs. Sylvia Kinney on August 9, at the Catholic Church in Lockney, where they were joined together by Rev. James C. Smith, pastor of St. Joseph's, South Plains.

A pink and blue wedding was held on Sunday at 11 a.m. at the home of Mrs. Gloria Gilliland, who officiated at the ceremony. Mrs. Gilliland and Mr. Sanders were bridesmaids, and the bride was accompanied by Mrs. Sanders and Mrs. Gilliland. The ceremony was officiated by Rev. James C. Smith.

August 16, at 7:30 p.m. at the South Plains Baptist Church with the reception following the beautiful ceremony. Friends, relatives and neighbors joined together for the occasion, and gave them a rousing send-off for the honeymoon.

The entire wedding party went to Plainview Friday night where they held the rehearsal supper at K-Bob's. Regina is the daughter of Mr. and Mrs. Richard Sanders, and grew up here and attended schools here and in Floydada. The young couple will make their home in

Sundown.

Mr. and Mrs. Sterling Cummings accompanied by their son and wife, Zach and Sandra Cummings went to Hereford Thursday, August 14, where they attended the wedding of Mrs. Sterling Cummings' niece, Rhonda, to Steve Nieman. The wedding was held at the First Baptist Church in Hereford at 7:30 p.m.

Mrs. Pauline Starke, teacher at the South Plains School went into the Central Plains Hospital a week ago Friday, and underwent major surgery there. She was in the

hospital a week, but she is home and doing well now.

Rev. and Mrs. Cecil Osborn at the South Plains Baptist Church have had much illness in their immediate families recently. Father of Rev. Osborn, Cecil Osborn Sr. of Tulsa, was in the hospital in Amarillo but he is doing just fine at this time. Their granddaughter, Janie, had eye surgery in Dallas last week, and Mrs. Osborn went there to be with her. She is also doing well at this time.

Visitors at the South Plains Baptist Church, Sunday

morning, were Rhonda and Candy Taylor of Amarillo, Cindy Mulder from here with their grandmother, Mrs. Leatha Mulder, Mrs. Corda Taylor of Muleshoe with the pastor and wife, Todd Ham-bright of Floydada and Brett Higginbotham from Amarillo.

Mrs. Corda Taylor of Muleshoe, Texas came home with her daughter, Mrs. Cecil Osborn, on Tuesday of last week, and plans to be here with them at the parsonage until next Wednesday.

Christy Wilson, daughter of Mr. and Mrs. Gary Wilson, was a visitor at the church last Sunday with her grandparents, Mr. and Mrs. John Wilson.

Mrs. Jim Roberts (Peggy) is in the Central Plains Hospital in Room 428 at Plainview at this time suffering with a virus. We sincerely hope she can soon be brought home.

Mr. and Mrs. Grigsby Milton Jr. accompanied by their daughter, Darla, Mrs. Jerry Chappell, flew to California recently and spent eleven days there with rela-

tives, including his brother, Otto, and other members of both families. Darla was co-pilot of the plane and piloted the plane. They arrived home last Saturday after a fine trip.

Mrs. M.M. Julian arrived back home Saturday evening after spending the past week in Perryton with her youngest son and family, Bruce and Janet Julian and boys, Clay and Wade. They received a good rain on Thursday night, and it literally poured for about an hour.

Mrs. Julian got to see Bruce and his team win the softball championship there in Perry-

ton on Tuesday night. The members all received trophies.

We are sad to hear the news about Mrs. Walter Wood (Kate) who is in the Whitney Hospital there at Lake Whitney, after she suffered a broken hip following a fall last Sunday morning. She is 93 years old, and we so hate to hear of her being confined to her bed at this time. Send her cards to: Whitney Hospital, Whitney, Texas 76692.

Mr. and Mrs. John Wilson, (Oleta and Johnny) got home a week ago, Friday, from Cuchara, Colorado, where they, with her father, Menard Field, had spent a pleasant vacation in Cuchara with her sister and family, the Billy Staniforth's, at their mountain resort home. They report a low of 39 at nights and about 69 degrees during the day. The Billy Staniforth's have spent much of their summer up there.

Mr. and Mrs. John Wilson have recently moved from South Plains to their new home in Floydada, and are fast getting settled there. We feel sad to have them move, but they are happy in their new surroundings.

Mrs. Ruby Higginbotham and Lori Higginbotham went to Lubbock last Tuesday and stayed until Thursday with Bud Higginbotham and Brett.

Mrs. Alvin Nichols drove up to Canyon Sunday of last week to visit her brother and wife, Mr. and Mrs. T.B. Cox.

Mrs. Mamie Wood left Tuesday morning from Floydada with women of the church to go, by bus, to Baylor University at Waco, where the group attended the 27th annual House Party, traditionally held on the Baylor Campus for Baptist women, with the date for the meeting August 12-15. Mrs. Wood was home Friday night.

We are sorry to report the death of Mrs. Myrtle West of Amarillo, who died today, Monday, August 18, and funeral services are pending at this time. She had spent most of her life here in South Plains and Silverton, and had been in Amarillo the past months in a nursing home where her daughter, Mrs. E.T. Evans looked after her. Her husband, George, passed away about two months ago in Plainview where he had been in a nursing home, with another daughter, Mrs. Lucille Smith, to see about him.

South Plains Baptist Church will have an evening of gospel music on August 31, beginning at 6:30 p.m. and the gospel singers from Plainview and piano player from Amarillo will be here for the evening's song service. Be sure to make your plans to attend this night of quartet singing.

WE GIVE WE GIVE WE GIVE WE GIVE WE GIVE WE GIVE

3 1/2 oz Taco Shells 19¢	USDA Ground Beef \$1.49 lb
3 lb Jimmy Dean Sausage \$2.79	USDA Chuck Roast \$1.89 lb
1 lb Jimmy Dean Taco Filling	USDA Boneless Short Ribs 99¢ lb
Center Cut Ham Slices \$1.99 lb	USDA Boneless Sirloin Steak \$2.89 lb
Swift Sizzlean REAL MEAT	
12 oz Breakfast Sizzlean Chops \$1.39 lb	

TOTAL SHOPPING VALUE
8 quart 24 oz Wylers Drink
Mix \$1.59
WITH STAMPS

TOTAL SHOPPING VALUE
200 count White Swan
Facial Tissue 2/99¢
WITH STAMPS

TOTAL SHOPPING VALUE
15 oz Liquid
Pine-Sol 99¢
WITH STAMPS

TOTAL SHOPPING VALUE
16 oz Keebler Rich-N-Chip or Pecan Sandie
Cookies 99¢
WITH STAMPS

6 oz **Soup Starter** \$4/\$1.00

19 oz Spary Way Glass **Cleaner** 3/\$1.00

15 oz Hunts Make-A-Meal **Sauce** \$1.39

4 oz Adams **Vanilla** 87¢

Twin Pack Summers Eve **Douche** \$2.29

School Box \$1.59

Black Flag **Roach Motel** 3/\$1.00

Farm Fresh Produce

Bartlett Pears 49¢ lb	Green Cabbage 19¢ lb
Red Ripe Tomatoes 69¢ lb	New Crop Peaches 59¢ lb

220 SOUTH 2ND
BUDDY'S
VALUES IN THIS AD
MON-SAM 9-9 PM
WEDNESDAY August 27, 1980
LIMIT QUANTITIES

WE GIVE WE TAKE U.S.D.A. FOOD COUPONS WE TAKE W.I.C. CARDS

DISCOUNT PRICE!
18 oz Duncan Hines "Layer"
Cake Mix 69¢
PLUS **STAMPS**

COME OVER & SAVE

1/2 gal Bell Mellorine \$1.19

6 Pack Popsicles, Fudgesicles, or Bell Bars 79¢
PLUS **STAMPS**

DISCOUNT PRICE!
Chinet 40 count Regular or 36 count Compartment
Plates \$1.69
PLUS **STAMPS**

ALPO 50 lb Alpo With Coupon \$9.99 Without Coupon \$10.99
Dog Food
BEEF FLAVORED DINNER
Good At Buddy's Expires 8-27-80

WE GIVE WE GIVE WE GIVE WE GIVE WE GIVE WE GIVE

WE GIVE WE GIVE WE GIVE WE GIVE WE GIVE WE GIVE

WE GIVE WE GIVE WE GIVE WE GIVE WE GIVE WE GIVE

Virginia DeWitt
Social Security
Representative

Question:
I have been drawing social security benefits on my disabled father's record. I am 18 and plan to begin working this summer and I may continue working part-time after I go to college this fall. Do I need to notify social security of these plans?

Answer:
Yes, if you expect to earn over \$3720 for the calendar year of 1980. Remember, that all earnings from work from January 1 through December count toward the limit. If you think your earnings will be over the limit call or go to your nearest social security office. They will need the claim number that you are drawing social security benefits on and they will ask you to make an estimate of what your total earnings will be for the year. You will probably want to sit down and figure your earnings before you contact the social security office. Be sure to have all pertinent information, such as your earnings per hour, how many hours you work per week, etc.

Teleservice will save you time, energy and money! To file a claim for Social Security or Supplemental Security income payments call collect, 806-293-4371. For assistance with other social security matters or Medicare call toll free 1-800-392-1603.

WE GIVE WE GIVE WE GIVE WE GIVE WE GIVE WE GIVE

Fifth Annual Reunion of Floyd County Residents Tour The Northwest

and Sabrina from Dallas. Relatives from Hereford were: Thurman Davis, Damrou and Brent Davis, Elton and Tricia Davis, Eric, James and Justin.

Joe and Lillian Guffee from Plainview.

Lubbock attendants included: Paul and Hauteen Woody and Mark, Phillip and Sharon Taylor and two children.

From Lamesa were: Glenn and Deanne Lobstein and Kelvin, Carol and Janna Woody and three children, Sam Woody and two boys, Janice Lavada Neff, Jerry and Winola Galloway, Sherry and Tammie of Floydada. Mary Neff, Floydada, Andy and Belinda Coals and Andrew from Lubbock.

Ona Ruth Neff of Floydada; Bill and Patricia Smith, Sheryl and Becky

Our fourth day, Friday, our trip westward follows the old Overland Trail, the route of the gold-seeking 49'ers. Passing the Great Salt Flats, we lunched in Elko. Then on to Reno, arriving in the early evening where accommodations were waiting for us. The evening was free for visiting the many glittering casinos, if one so chose.

Saturday, fifth day. We passed through historic Virginia City, and traveled along the beautiful resort-lined shores of Lake Tahoe. The lake, at an elevation of 6,227 feet is one of the most beautiful in the world, remarkably clear and deep blue in color. After lunch we continued through Sacramento, to the fascinating city by the Golden Gate. We spent two nights at the St. Francis Hotel on Union Square.

Sixth day, Sunday. "San Francisco" Our morning was free, so we rode the trolley car, and had lunch in China Town, and visited Fisherman's Wharf. That afternoon we had a conducted tour of the city that included the Civic Center, Mission Dolores, Twin Peaks, St. Francis Woods residential section, Steinhart Aquarium, Golden Gate Park, Seal Rocks and Cliff House, then to the Presidio and the Golden Gate Bridge.

Monday, we left San Francisco, and crossed the famed Golden Gate Bridge, and soon after we entered the Majestic Redwoods. A stop in Ukiah, for lunch and then we entered the Giant Redwoods. Many of the forest monarchs, older than Christianity, line the highway for 100 miles. The 464 foot Titan, in Founder's Grove, is the world's tallest tree. We spent that

night in Eureka, at the Red Lion.

Tuesday, eighth day. A sightseeing stop at the trees of Mystery, and then to the beautiful Pacific Coast at Crescent City, following one of the world's most spectacular shore drives, the Ocean Coast Highway. At times the road runs inland or climbs high above the surf, always remaining in sight of the big breakers and the rugged coastline. After sightseeing stops along the coast, we arrived in Cross Bay for lunch. Continuing our trip along the coast, we arrived in Portland and spent the night there.

Ninth day, Wednesday. Departing Portland and traveling through Olympia, the capital city, and Tacoma, we arrived at noon with reservations at the Holiday Inn, Bellevue. An afternoon tour of scenic Seattle and with a final stop and ride on the Space Needle.

Tenth day, Thursday. We left Seattle and traveled through scenic Washington to Anacortes. Here we boarded the ferry for an enjoyable cruise across Puget Sound, which took several hours, to Victoria. On arrival, a sightseeing tour of the city included the City Center, Beacon Hill park, Maine Drive, exclusive Upland and Oak Bay residential sections, Beach Drive, with its magnificent sea vistas of the Olympic Mountains and the Straits. Then to the world famous Butchart's Gardens for a view of the most beautiful flowers in the Pacific Northwest. We spent that night there at the Red Lion.

Eleventh day, Friday. This morning we cruised across the Strait of Georgia to Vancouver via British Columbia Ferries. The

afternoon is free for shopping in the city of Vancouver, and we spent two nights there at the Sheraton-Landmark.

Twelfth day, Saturday. A morning free for relaxation. In the afternoon, a tour of beautiful Vancouver. We saw Stanley Park, 1,000 acres of premeival forest, Shakespearean Gardens, Old Nine O'Clock Gun, Oriental Sections, shoreline residential sections, and beautiful flower yards and farms and dairy farms and fruit farms. Queen Elizabeth Arboretum, and the University of British Columbia.

Thirteenth day, Sunday. We left Vancouver and went over the Trans-Canada Highway, and Hope. Then to Manning Provincial Park for lunch. We continued through Hedley, and saw the remains of a former gold-mining town, and arrived at Kelowna and spent the night there at the Capri Hotel.

Monday, fourteenth day. We traveled along beautiful Lake Ojaganan through Vernon and Revelstoke. Then our route was over the beautiful new Trans-Canada Highway through spectacular Mount Revelstoke National Park and the Canadian Glacier National Park with a lunch stop enroute. Our drive continued through Golden and we soon arrived in Banff, located in the heart of the Canadian Rockies, where we spent two nights at the Voyager Inn.

Fifteenth day, Tuesday. We had a wonderful day of sightseeing that will not be forgotten...to the Columbia Icefields, where Velma and Pike rode in a track car over the ice fields, and then got out and walked on the ice.

through Casper and on to Cheyenne, the capital city famous for its Frontier Days Celebration. Then we entered Colorado and arrived in Denver, for the night and our "Farewell Banquet" that was held at the Brown palace.

Nineteenth day, July 26. We headed back for Amarillo and said our final goodbyes to our friends that we had met on our tour group, and this tour becomes a part of our treasure chest of memories."

Courtesies Fete Miss Turner

Debbie Gilbreath, Rhonda Stovall, Lori Young, and hostesses, Mrs. Hardy and Mrs. Turner.

BRIDAL SUPPER

The bridal supper combined with the spice, rice and recipe shower was held Monday evening in the R.O. Turner home. Two aunts of the bride-elect, Mrs. R.O. Turner and a great aunt, Mrs. S.D. Medley were hostesses for the supper, and Mrs. Craig Turner, sister-in-law of the bride-elect, and her mother, Mrs. Frank Johnson of Lubbock and Miss Janis Marr of Lockney, cousin of the bride to be, hosted the spice, rice, and recipe shower.

The serving table was covered with an ecru cut-work cloth cross-stitched in brown. An apricot colored silk floral arrangement was the focal point flanked by brown tapers.

we had a picnic at the Continental March Pass, and stopped sightseeing. We visited the Black Canyon of the Gunnison National Monument. Here we hiked 3,000 feet at the most impressive in the world. That night at our morning through the tending were and Kinast and Hearn both of Salt Lake City. An man Irwin and sightseeing of Lubbock, Marr, Mrs. R. the State University of Lockney, Mrs. and Matt of Houston.

Alton Nolan Floydada resident surgery Tuesday in Wyssong McKinney. He is in room condition is

we had a picnic at the Continental March Pass, and stopped sightseeing. We visited the Black Canyon of the Gunnison National Monument. Here we hiked 3,000 feet at the most impressive in the world. That night at our morning through the tending were and Kinast and Hearn both of Salt Lake City. An man Irwin and sightseeing of Lubbock, Marr, Mrs. R. the State University of Lockney, Mrs. and Matt of Houston.

Alton Nolan Floydada resident surgery Tuesday in Wyssong McKinney. He is in room condition is

we had a picnic at the Continental March Pass, and stopped sightseeing. We visited the Black Canyon of the Gunnison National Monument. Here we hiked 3,000 feet at the most impressive in the world. That night at our morning through the tending were and Kinast and Hearn both of Salt Lake City. An man Irwin and sightseeing of Lubbock, Marr, Mrs. R. the State University of Lockney, Mrs. and Matt of Houston.

Alton Nolan Floydada resident surgery Tuesday in Wyssong McKinney. He is in room condition is

we had a picnic at the Continental March Pass, and stopped sightseeing. We visited the Black Canyon of the Gunnison National Monument. Here we hiked 3,000 feet at the most impressive in the world. That night at our morning through the tending were and Kinast and Hearn both of Salt Lake City. An man Irwin and sightseeing of Lubbock, Marr, Mrs. R. the State University of Lockney, Mrs. and Matt of Houston.

Alton Nolan Floydada resident surgery Tuesday in Wyssong McKinney. He is in room condition is



ARTIST OF THE WEEK is Sheresse Cannon

Artist Of The Week

Sheresse Cannon was chosen "Artist of the Week" by Winnie Carthel, owner of Art Southwest.

Sheresse is the daughter of Jerry and Sheree Cannon. She is a freshman and a member of the Whirlwind Band and also a J.V. cheerleader. Sheresse also plays basketball. Sheresse enjoys painting landscapes and likes working with fall scenes and colors.

CORRECTION

In last week's paper we had an article on Brad Homer Steen, which had a misprinted paragraph on relatives.

It should have read he is the son of Mr. and Mrs. Maurice Steen and the grandson of the late Mr. and Mrs. Homer Steen and also of Mrs. Alva Sparks, of Floydada.

We would like to apologize for the error.

Allergeneme
Hypo-Allergenic

Anti-perspirant Deodorants
pure and simple
Least irritating in every form

- Non-Aerosol Anti-perspirant Deodorant Spray (Scented) 4 oz. \$3.25
- Roll-On Anti-perspirant Deodorant (Scented and Unscented) 2 oz. \$2.40
- Anti-perspirant Deodorant Cream (Scented and Unscented) 1 oz. \$1.75
- Liquid Spray Anti-perspirant Deodorant (Unscented) 1.5 oz. \$2.40
- Maxi-Dry Roll-On Anti-perspirant Deodorant (Unscented) 2 oz. \$2.75
- Maxi-Dry Cream Anti-perspirant (Unscented) 1 oz. \$2.00

BISHOP-RAMSEY
Pharmacy 983-3174
705 WEST HOUSTON HOUSTON, TEXAS

Our Fellow Texans



ing along the coast have suffered from a hurricane—this time Allen.

ks of earlier hurricanes, one thing is certain—cost millions.

ough and self-sufficient, but this time the pieces back together again.

le contribution earmarked "Hurricane Al... to your nearest Red Cross Chapter. Al... ank you.

SHOP THESE FOOD SPECIALS

Cabbage	19¢	Grade A Medium Eggs	59¢	White Cloud 4 Roll Bathroom Tissue	99¢
Thompson Seedless Grapes	79¢	5 lb Imperial Sugar	\$1.99	Pack Gaint Size Tide 49 oz	\$1.59
10 lb Bag Russett Potatoes	\$1.59	3 lb Can Crisco	\$1.89	Purina Dog Food 25 lb Plus 5 lb Free	15% OFF \$6.79
California Bartlett Pears	39¢	2 lb tub Oleo Velvet	79¢	Tyson Chicken Bologna 12 oz pkg	89¢ \$1.19
		gal Dari-Maid Milk	\$1.89	Back Bone Lean & Meaty Old Fashioned Steak	\$1.19
		1 lb Can Maryland Club Coffee	\$2.69	Pork Roast	99¢
		6 oz Can Minute Maid Orange Juice	3/\$1.00	Pork Cutlets	\$2.49
		6 pack 32 oz Cokes	\$1.79	Beef Stew	1.89
		1 gal Rich-N-Ready Orange Drink	99¢	Meat	1.89
				Wilson Smoked Sausage	\$1.19
				California Liver	39¢

KEETERS GROCERY
East Edge of Lockney
7 a.m. - 8 p.m. 652-2191
These Specials Good Thurs., Fri., & Sat.

We Reserve The Right To Limit Quantities

Lockney Hospital Report

Rose Turner, Matador, adm. 7-29, dis. 8-15.
Opal Morrison, Floydada, adm. 8-2, dis. 8-15.
Hazel Bailey, Lockney, adm. 8-4, dis. 8-13.
Katie Lady, Lockney, adm. 8-5, continues care.
Travis Glenn Calvert, Flomot, adm. 8-7, dis. 8-13.
Charles Thomason, Lockney, adm. 8-8, dis. 8-15.
Susie Thompson, Floydada, adm. 8-8, dis. 8-18.
Martha Mojica, Plainview, adm. 8-12, baby girl Melinda, born 8-12, dis. 8-14.
Connie Taylor, Plainview, adm. 8-12, baby girl Kristi, born 8-12, dis. 8-13.
Sarah Childs, Lockney, adm. 8-11, dis. 8-13.
Joaquin Nava, Plainview, adm. 8-12, dis. 8-18.
Hazel Porter, Floydada, adm. 8-12, baby girl, Mary born 8-13, dis. 14.
Omer Hill, Winters, adm. 8-12, dis. 8-13.
Armandina Ramirez, adm. 8-13, baby boy Noe Jr. born 8-14, dis. 8-17, baby transferred 8-16.
Rosa H. Rodriguez, Plainview, adm. 8-13, dis. 8-15.
Renee Brotherton, Aiken, adm. 8-13, dis. 8-16.
Rachel Guerrero, Lockney, adm. 8-12, baby boy, Rigoberto Jr., born 8-14, dis. 8-16.
Effie Hall, Floydada, adm. 8-15, dis. 8-19.
Mauricia Osorio, Quitaque, adm. 8-15, continues care.
Mable Fletcher, Denton, adm. 8-15, dis. 8-17.
Alph Kitchens, Lockney, adm. 8-15, continues care.
Arceila Rodriguez, Lockney, adm. 8-16, baby boy, Jerry, born 8-16, dis. 8-18.
Stephanie Bybee—\$25 Savings Bond from First National Bank.
Jackie Holt—Yardstick shelf from Homemade, Etc.
Jessie Arjona—Set of spark plugs from Johnson and Johnson.

Old Fashioned Saturday Night Winners Named

Rene Guerrero—8-track tape from Alsup's.
Jessie Garza—Tree Bird House from Art's Originals.
Mildren Martin—\$10 Gift Certificate from Brown's Department Store.
Cindy Cooper—\$25 Gift Certificate from Byrd's Pharmacy.
Domingo Luna—Free permanent from Carmen's Beauty Shop.
T.D. Perkins—Plugs and points from Dan's Auto.
G.A. McAda—3/8 inch drill from Davis Lumber.
Coy Holley—two burgers and two cokes from Dairy Queen.
Carlyn Wright—\$5 Gift Certificate from F&F Recreation.
Stephanie Bybee—\$25 Savings Bond from First National Bank.
Jackie Holt—Yardstick shelf from Homemade, Etc.
Jessie Arjona—Set of spark plugs from Johnson and Johnson.

Jewell Roberts—\$10 worth of groceries from Keeter's Grocery.
Nora Martinez—6 pack Igloo cooler from Lee's White's Auto.
Martha Sue Lusk—\$5 Gift Certificate from Lena's Beauty Shop.
Nora Garcia—\$20 Meat Deal from Lockney Feed Yards.
Diania McBride—Free gift and filter change from Lockney Oil & Butane.
Efrén Perez—\$10 worth of groceries from Page's Thriftway.
Mrs. N.H. Gammage, Summer Platt, Petra Molina, Norma Ragland, and Olive Myers each received 10 pounds of Puppy Chow from Patterson Grain.
J.B. Mercer—Weed Eater, Perry Implement.
Fortunato Delgado—Cookbook from Pioneer Natural Gas.
Mannie Hayes—western shirt from Four-R Irrigation and Western Wear.
Grace Colson—Beauty Bar from Rosa's Hair Chateau.

Victoria Martinez—Meal for two from Rodriguez Cafe.
Randy Rendon—6 pack Playmate cooler from Rowell This R That.
Mrs. J.E. Vaughan—\$10 Gift Certificate from the Shadow Box.
Roland Hayes—\$15 cash from Sterley Gin.
Freda Davis—Four washings and two dryings from Taylor Laundry.
Keith Emert—\$20 Gift Certificate from the Tye Co.
Joe Hayes—\$10 Gift Certificate from Thomasons Grocery.
Bernice Kent—\$15 Gift Certificate from Wilson Photography.
Jason Hill—\$5 Gift Certificate from Mrs. Sam (Avon).
Maggie Reyna—Mexican Dinner for two from Strickland's Restaurant.
Mollie Gonzalez—\$50 off purchase of Niagara chair from Sue Casey.
Delinda Glasson—12 inch black and white T.V. from Mize Pharmacy.

HAPPY BIRTHDAY

August 25—Elmo Reves, Karyn Foster, Byron Brock, Becky Pitchford
August 26—Jennifer Fortenberry, Rayford Cumbie, Cindy Cooper, Rudolph Schaefer, Owen Thornton, Verne Taylor Jr., Sammy Silva, Charlotte Carthel
August 27—Herman Huffman, Armonda Banda Sr., Cecil Carthel, Dara Faries, Wyman Rexrode
August 28—Jennifer Collins
August 29—Wavely Washington, Juanita Martinez, Trent Gant, Thomas Marr, Maxine Daniels
August 30—Jackie Gaskins, Amy Kring, Ramon Arballo, Jody Foster

Happy Anniversary

August 24—Clarence and Kathy Ansley, Windy and Edythe Clarke, Archie and Nora Bybee, Nick and Elvira Muniz
August 27—Rodolfo and Maria Blanco
August 29—Jim and Lela Warren, Larren and Brenda Elam.

Homecoming News

All Ex-Longhorn Band members interested in performing with the band in the pre-game show before the Homecoming game are asked to meet at the band hall at 4 p.m. of Friday September 19.
For further information, contact Clar Schacht or Johnny Wisdom. If horns are needed, some will possibly be available and can be obtained by contacting Johnny Wisdom.

The 1974-77 graduates of Lockney High will have a party Saturday night, September 20, at the American Legion Hall. There will be a \$2 per person charge to cover the cost of the food.
For further information, contact D'Lyn Mathis Morris, Karen Hooten,

Fairview News

Mrs. Clyde Baggett received some mail from her family in town. We had 1 1/10 inches of rain on Friday night. We had 1 1/10 inches of rain on Friday night. We had 1 1/10 inches of rain on Friday night.

Mr. and Mrs. Clyde Baggett visited Mr. and Mrs. C.H. Wise and Charles, day afternoon.
Mr. and Mrs. Lige Moore and Robie spent Sunday night in the home of Mr. and Mrs. Kay Crabtree and family.

Crabtree enjoyed her family for dinner. Her grandchild, Mrs. and Mrs. Robie of Anissa, will be leaving their home and Center having their 31, at the Center on Street. We have a number of members of the community and returned home from a three day group areas. They are Austria, and went to the they spent in Austria. Anne re- a beautiful

of Charles- polina and Arlington. to the home Ray Cook until Tues-

rs. Cooks Sunday Debra to Matador Mrs. Lewis Mrs. Bos- them to where they going. Leonard on returned fishing trip Mrs. Walton full time and nice lot of

A.S. Mize Thursday, on Wilson. Loyd Own- and Mrs. d sons, Scot- drest visited Clyde Bagwell soon. They are Mrs. Bagwell.

Mrs. Lige Moore and Mrs. Kate went to Lubbock Friday and visited Mrs. Preston of Portales, New Tuesday with her Crabtree and her Mrs. then the Pres- Mrs. spent the night Mrs. and Mrs. also visited Mrs. Eugene family went to day night and Mrs. Sam

Texas Books In Review

For information about any of these Texas books write: Texas Books In Review, P.O. Box 178, Burnet, Texas 78611

JIM BOWIE, A TEXAS LEGEND by Jean Flynn
Jim Bowie, the hero of the Alamo, was a legend in his own time. Author Flynn, a San Antonio librarian, tells his authentic life story from the Louisiana bayous to a hero's death in the Texas revolution. Stories from Young American Series. EAKIN PRESS \$4.95

CYNTHIA ANN PARKER, INDIAN CAPTIVE by Catherine Gonzalez
The most famous Indian captive in Texas History was Cynthia Ann Parker, mother of the last of the Comanche Chiefs, Quanah Parker. Author Gonzalez, a retired school teacher from Rhome, Texas, combined historic research and her own classroom imagination, to create an easy-to-read drama for upper elementary and junior high school age children. Stories for Young American Series. EAKIN PRESS \$4.95

CHILDREN INDIAN CAPTIVES by Roy D. Holt
On the Texas frontier in the 1800s, settlers and Indians were at war and captives were very much "prisoners of war." Author Holt, a long-time school superintendent and teacher from Copperas Cove, Texas, spent a lifetime researching life on the Texas frontier. He relates 31 of the many stories of children taken captive by the Indians, weaving pathos, horror, heartache and humor into his bigger-than-life stories. EAKIN PRESS \$4.95

HONDO MY FATHER By Becky Crouch Patterson
Here is an unsentimental and moving portrait of Texas humorist Hondo Crouch by one of the few people who was really close to him: his daughter. Hondo, known nationally as the "clown prince of Luckenbach", was an original: a funnyman who made both Bob Hope and Jerry Jeff Walker double up with laughter. Becky, the oldest of Hondo's four children, knew early and far better than most that the Texas folk hero was a "sad-sweet spirit" whose rejection of all things conventional had its cost—particularly for his family. He brought his family "a little bit of heaven and a whole lot of hell". SHOAL CREEK PRESS, \$12.50

Hal L. Sandefur and B. Randolph Swindle
Certified Public Accountants
Announce the relocation of their offices to new facilities located at 6301 Indiana Ave. Lubbock, Texas
Phone 793-2656

Case Previously Owned Equipment
YOU PAY NO FINANCE CHARGES UNTIL MARCH 1, 1981*
*Special waiver of finance charges on all used agricultural tractors.
If you buy a used agricultural tractor of any make from a participating Case dealer, and finance it through J. I. Case Credit Corporation, we'll waive finance charges thru March 1, 1981.

Lubbock Farm Tractors	
Case 118 Garden Tractor and Mower	425.00
Case 950 Cab	4,500.00
Case 1070 Cab and Air	9,800.00
Case 1175 Cab New Engine	10,900.00
Case 1370 Cab Air New Engine	15,900.00
Case 2090 Cab Air 200 HRS	24,400.00
Case 2390 Cab Air 900 HRS	28,800.00
Floydada	
Case 1370 Cab Air	15,400.00
Case 1175 Cab Air	12,900.00
Case 1175 With 70 Loader	8,900.00
Case 1175 With Cab	9,900.00
1H2 1066 With Cab and Air	11,900.00
JD H200D P. Shift	6,900.00
Ag Gator Sprayer	3,450.00
Lamesa	
1170 Cab and Factory Duals	6,900.00
1370 Case Cab Air	16,900.00
1570 Case Cab Air	21,500.00
1070 Case P.S. Cab Air	5,900.00
1H2 1466 Cab Air	17,700.00

Case Power and Equipment Lubbock 3302 Slaton Hwy 745-4451
Lamesa 902 S. Dallas 872-5861
Floydada 101 South 12th 983-2836

Lockney Locals

Duard, Mary, and Peggy Reves were in Denton August 16 to attend graduation exercises for Edith Reves Cole. Edith received a BS degree in Biology and Related Science with a 3.7 grade average. Approximately 300 Seniors and Graduates received degrees from Texas Woman's University.

Also attending were Willa and Misti Murdoch of Stamford. Misti returned with her grandparents for a few days visit.

Mrs. Shirley Griffith, and son Randall, of Iowa Park, visited with her mother Mrs. Alta Warren, this past weekend.

Corene Brown and Nancy Tucker and their sister Annie Craver, of Floydada, and their children, visited with relatives in Leonard, over the weekend.

Mrs. Kelly (Loy O'Brien) Harrison and children Kim, Kristi, Misty and Scott, of Springfield, Virginia, arrived last Thursday to visit with Mrs. Velma Harrison, and other relatives. They will return home on the 27.

Kelly, who is with the Department of Agriculture, in charge of Foreign Countries, in Washington, D.C. is on a trip that is taking him around the globe, will arrive in Lubbock the 28 and will visit with his mother and other relatives, a few days, before returning home.

Tim and Scott Stansell, of Lubbock, visited over the weekend with their parents Pat and Dottie Stansell.

Capada Theatre

Showing Fri. & Sat. Aug. 22
Hard hat days and honky-tonk nights.
JOHN TRAVOLTA
A PARASOUND PICTURE
PG-13
Showing Sun. Aug. 24 12:30 PM
"How do you do it?"
Did you see...
Why do you...
The GRAY

3 Days Only Aug. 29, Aug. 30 & Aug. 31 9:00 - 9:00
Friday, Saturday, Sunday
Parking Lot Sale

RENT A COLOR TV

NO Creditors Checked!

You can rent by phone. Our Rental plan applies your payment toward ownership of the set. There is absolutely NO LONG TERM OBLIGATION and NO CREDITORS CHECKED regardless of Credit Rating... because you are renting.

Call Collect Today!

- NO DEPOSIT
- SERVICE INCLUDED
- NO LONG TERM OBLIGATION
- DELIVERY INCLUDED
- LARGE SELECTION
- ORDER BY PHONE

WE RENT NEW... COLOR PORTABLES, CONSOLES, COMBINATIONS AND STEREO!

10

CALL TODAY & WATCH COLOR TV TONIGHT!

Rent Applies toward Ownership

Denver Sales Co
293-8941 or 293-8888

Delivers

TOTAL SAVER

BUSH'S BEANS
BUSH'S BEST CUT GREENS
BUSH'S BEST FRESH BLACKBEY
BUSH'S BEST WHITE GOULD
HOMINY

Coca-Cola

\$1

HAWAIIAN

MAXWELL HOUSE

MARINA

4 ROLL PKG.

HEALTH & VASELINE
VASELINE INT. COTTON SWABS
VASELINE BATH Q-TIPS
VASELINE JELLY POLISH REMOVER
CUTEX

PAGE

FLOYD COUNTY IMPLEMENT FLOYDADA

Homecoming News

All Ex-Longhorn Band members interested in performing with the band in the pre-game show before the Homecoming game are asked to meet at the band hall at 4 p.m. of Friday September 19.

For further information, contact Clar Schacht or Johnny Wisdom. If horns are needed, some will possibly be available and can be obtained by contacting Johnny Wisdom.

Capada Theatre
Showing Fri. & Sat. Aug. 22-23
Hard hat days and honky-tonk nights.
JOHN TRAVOLTA
URBAN COWBOY
Showing Sun. Aug. 24 15⁰⁰
"How did you do it Joseph? Did you die in a house? Why do you..."
THE CHANGELL

9:00 - 9:00
Lot Sale
FOR TV

CALL TODAY & WATCH
COLOR TV
TONIGHT!

ent Applies
d Ownership
ver Sales Co.
8941 or 293-832

Fairview News

Mrs. Clyde Bagwell
Mr. and Mrs. Clyde Bagwell visited Mr. and Mrs. C.H. Wise and Charles, Friday afternoon.

Mr. and Mrs. Lige Moore and Robie spent Sunday night in the home of Mr. and Mrs. Kay Crabtree and family.

Mr. and Mrs. Don Foster and son, Bobby of Dallas and her mother Mrs. May Pollan of Paris were by to see Mr. and Mrs. Bud Warren Friday afternoon, they were on their way to Portales, New Mexico.

Mr. and Mrs. Carrick Snodgrass and Mr. and Mrs. Bill Beedy visited Mr. and Mrs. Bill Tye Sunday afternoon. Mrs. Harve Allen and Mr. and Mrs. Ozell Chappell visited last Sunday night with Mrs. Ethel Graham.

Mr. and Mrs. Steve Lloyd and Stacy visited Sunday with Mrs. Ethel Graham. Mona Dell Wise of Amarillo and Mrs. Pauline Faulkenberry visited during the weekend at Mr. and Mrs. C.H. Wise's home.

Mr. and Mrs. Bill Tye visited Sunday night with Mr. and Mrs. Woodrow Wilson. Mr. and Mrs. Steve Lloyd and Stacy visited Sunday with Mrs. Ethel Graham.

Mr. and Mrs. Bill Tye visited Sunday night with Mr. and Mrs. Woodrow Wilson. Mr. and Mrs. Steve Lloyd and Stacy visited Sunday with Mrs. Ethel Graham.

Mr. and Mrs. Bill Tye visited Sunday night with Mr. and Mrs. Woodrow Wilson. Mr. and Mrs. Steve Lloyd and Stacy visited Sunday with Mrs. Ethel Graham.

Mr. and Mrs. Bill Tye visited Sunday night with Mr. and Mrs. Woodrow Wilson. Mr. and Mrs. Steve Lloyd and Stacy visited Sunday with Mrs. Ethel Graham.

August 21, 1980 Page 11

Mr. and Mrs. Bill Tye visited Sunday night with Mr. and Mrs. Woodrow Wilson. Mr. and Mrs. Steve Lloyd and Stacy visited Sunday with Mrs. Ethel Graham.

Mr. and Mrs. Steve Lloyd and Stacy visited Sunday with Mrs. Ethel Graham. Mona Dell Wise of Amarillo and Mrs. Pauline Faulkenberry visited during the weekend at Mr. and Mrs. C.H. Wise's home.

Mr. and Mrs. Bill Tye visited Sunday night with Mr. and Mrs. Woodrow Wilson. Mr. and Mrs. Steve Lloyd and Stacy visited Sunday with Mrs. Ethel Graham.

Mr. and Mrs. Steve Lloyd and Stacy visited Sunday with Mrs. Ethel Graham. Mona Dell Wise of Amarillo and Mrs. Pauline Faulkenberry visited during the weekend at Mr. and Mrs. C.H. Wise's home.

Mr. and Mrs. Bill Tye visited Sunday night with Mr. and Mrs. Woodrow Wilson. Mr. and Mrs. Steve Lloyd and Stacy visited Sunday with Mrs. Ethel Graham.

Mr. and Mrs. Steve Lloyd and Stacy visited Sunday with Mrs. Ethel Graham. Mona Dell Wise of Amarillo and Mrs. Pauline Faulkenberry visited during the weekend at Mr. and Mrs. C.H. Wise's home.

Mr. and Mrs. Bill Tye visited Sunday night with Mr. and Mrs. Woodrow Wilson. Mr. and Mrs. Steve Lloyd and Stacy visited Sunday with Mrs. Ethel Graham.

Mr. and Mrs. Steve Lloyd and Stacy visited Sunday with Mrs. Ethel Graham. Mona Dell Wise of Amarillo and Mrs. Pauline Faulkenberry visited during the weekend at Mr. and Mrs. C.H. Wise's home.

THE TOTAL SAVER SAVES YOU MORE

AT THRIFTWAY...

BUSH'S BEST SPECIALS!	TOTAL TAPE SAVINGS	LEAN FRESH GUARANTEED 73% LEAN GROUND BEEF \$1.29 LB.
BUSH'S BEST CUT GREEN/SHINY GREEN BEANS 3 15 1/2 OZ CANS \$1.00 BUSH'S BEST FRESH BLACKEYES 4 15 OZ CANS \$1.00 BUSH'S BEST WHITE/GOLDEN HOMINY 4 14 OZ CANS \$1.00	<p>HEAVY GRAIN FED BEEF BONELESS CENTER CUT ROUND STEAK \$2.19 LB.</p> <p>HEAVY GRAIN FED BEEF BONELESS TOP ROUND STEAK \$2.49 LB.</p>	<p>OSCAR MAYER SLICED BEEF REG THICK 8 OZ PKG \$1.09</p> <p>OSCAR MAYER SLICED PAK VARIETY 12 OZ PKG \$1.89</p> <p>OSCAR MAYER SLICED MEAT BOLOGNA 1 LB PKG \$1.89</p> <p>OSCAR MAYER FINEST QUALITY SLICED BACON 1 LB PKG \$1.89</p>
<p>COOL OFF WITH COCA-COLA \$1.79 32 OZ 6 RTI C IN PLU DEPOSIT</p>	<p>PARKAY QUARTERS MARGARINE 2 1 LB BOXES \$1.00</p>	<p>SHURFRESH ICE CREAM \$1.19 SQUARE 1/2 GAL CTN.</p>
<p>HAWAIIAN PUNCH PRESWEETENED DRINK MIX 3 2 QT PKGS \$1.00</p>	<p>FRESH DAIRY SPECIALS</p> <p>KRAFT HALFMOON HORNS CHeddar OR COLBY CHEESE 16 OZ PKG \$1.99</p> <p>KRAFT AMERICAN OR PIMENTO SLICES DELUXE CHOICE 12 OZ PKG \$1.59</p>	<p>KRAFT ASSTD. BARBECUE SAUCE 18 OZ JAR 69¢</p>
<p>MAXWELL HOUSE ALL GRINDS MAXWELL HOUSE COFFEE 1 LB CAN \$2.69</p>	<p>FROZEN FOOD SPECIALS</p> <p>MINUTE MAID FROZEN LEMONADE 3 6 OZ CANS \$1.00</p> <p>MRS. PAUL'S FISH FILLETS 8 OZ BOX 99¢</p> <p>MRS. PAUL'S SUPREME LIGHT BATTER FISH FILLETS 7 1/4 OZ BOX \$1.19</p> <p>GREEN GIANT IN CHEESE SAUCE BROCCOLI 10 OZ CTN 89¢</p>	<p>THRIFTY GROCERY BUYS</p> <p>CLEMENTE JACQUES WHOLE HOT JALAPENOS 11 OZ CAN 79¢</p> <p>FOLGER'S COFFEE CRYSTALS 6 OZ JAR \$3.79</p> <p>PEANUT BUTTER PETER PAN 28 OZ JAR \$1.99</p>
<p>MARINA BATHROOM TISSUE 4 ROLL PKG 99¢</p>	<p>TOTAL TAPE SAVINGS</p> <p>COLORADO RUSSET U.S. NO. 1 POTATOES 10 LB BAG \$1.59</p> <p>TEXAS NEW CROP PUERTO RICAN YAMS 49¢ LB</p> <p>CALIFORNIA VINE RIPPENED TOMATOES 2 BU 39¢</p> <p>TEXAS ONIONS 39¢ LB</p> <p>TEXAS CANTALOUPE 39¢ LB</p>	<p>DOG CHOW 30 LB BAG \$6.49</p>
<p>HEALTH & BEAUTY AID SAVINGS</p> <p>VASELINE INTENSIVE CARE SECTION</p> <p>VASELINE INT. CARE REG./HERBAL EX. STRENGTH 10 OZ. BTL \$1.19</p> <p>VASELINE INT. CARE REG./MINERAL 15 OZ. BOX \$1.19</p> <p>COTTON SWABS Q-TIPS 170 CT. BOX 99¢</p> <p>VASELINE BLUE SEAL JELLY 7.5 OZ. JAR \$1.29</p> <p>POLISH REMOVER REG./LEMON CUTEX 4 OZ. BTL 59¢</p>	<p>FROM OUR SHELVES</p> <p>BOUQUET 7" OFF LABEL FACIAL TISSUE 125 CT. BOX 65¢</p> <p>FLY AND MOSQUITO SPRAY HOT SHOT 11 OZ. CAN \$1.49</p> <p>ANT AND ROACH SPRAY HOT SHOT 11 OZ. CAN \$1.49</p>	<p>SHELF SPECIALS</p> <p>FOR NO-WAX FLOORS PERK CLEANER 12 OZ BTL 99¢</p> <p>AUTOMATIC VANISH 12 OZ BTL \$1.09</p> <p>STAINLESS STEEL GOURMET CUTLERY BUTCHER KNIFE \$2.99</p> <p>WITH EACH \$3.00 PURCHASE</p>
<p>LOTSA</p> <p>REGULAR OR DIET SHASTA DRINKS 12 OZ. CANS 5 FOR \$1</p> <p>LADY VICTORIA FINE CRYSTAL STEAMWARE CRYSTAL BUD VASE \$2.99</p> <p>WITH EA. \$3.00 PURCHASE COUPON EXPIRES AUG. 24 1980</p> <p>LADY VICTORIA FINE CRYSTAL STEAMWARE CRYSTAL BUD VASE \$2.99</p> <p>WITH EA. \$3.00 PURCHASE COUPON EXPIRES AUG. 24 1980</p>	<p style="text-align: center;">LOCKNEY - 1200 S. DATE - 809 E. 24th</p> <h1 style="text-align: center; letter-spacing: 0.5em;">THRIFTWAY</h1> <p style="text-align: center;">PRICES EFFECTIVE AUGUST 21-23 1980</p>	

OBITUARY

MRS. MYRTLE LEE WEAST
Long time Floyd County resident Mrs. Myrtle Lee Weast, 86, died Monday, August 18, in Amarillo. Services were held at 2:30 p.m. Wednesday, August 20, at the Church of Christ in Silverton with L.L. Thornton officiating. Burial was in the Silverton Cemetery under the direction of N.S. Griggs and Sons Funeral Home of Amarillo. Mrs. Weast was born in Grayson County on December 24, 1893. She moved with her family the Davises, to Brisco County in 1899. She married George F. Weast on May 14, 1916. They moved to Floyd County in 1920 and lived in the South Plains community. Mr. Weast passed away June 24, 1980. Mrs. Weast was a member of the Silverton Church of Christ. Survivors are two daughters, Mrs. June Evans of Amarillo and Mrs. Lucille Smith of Lockney; eight grandchildren and 10 great-grandchildren. The family requests that memorials be sent to Lubbock Childrens Home or to Hi Plains Childrens Home in Amarillo.

IRA ADRDY BLOODWORTH
Ira Adrly Bloodworth, 71, of Highmore, South Dakota, died Sunday, August 17. He had been in a hospital two and a half weeks following a stroke. Bloodworth was a former Floyd County resident, before he moved away in 1952. Funeral services were held August 19, at the First Methodist Church in Highmore with interment in Highmore Cemetery. Bloodworth was a former Floyd County resident, before he moved away in 1952. He and Miss Katherine Davis were married in 1929 in Matador. Survivors include the former Katherine Davis; one son, Damon of Highmore; two daughters, Coline Reynolds of Lyons, Kansas; and Teresa Gorman of Aberdeen, South Dakota; three brothers, Robert of Flagstaff, Arizona; Elbert of Amarillo; Charlie of Winslow, Arizona; three sisters, Mrs. Lois Allen, of Arkansas; Essie Gilbreath of Leveland and Lillie Schmitz of Borger; six grandchildren and one great grandchild. Mrs. Henry Bloodsworth, a sister-in-law, was not able to attend the funeral. Tuesday afternoon, we received new that a brother of Ira, Robert, had passed away Tuesday morning, in Arizona. Services are pending.

IRA BRADFORD
Services for Clad Ira Bradford, 72, of Spur were at 3 p.m. Wednesday at Bethel Baptist Church in Spur with the Rev. Johnny Williams, pastor of the First United Methodist Church in Turkey, officiating. Burial was in Spur Cemetery under the direction of Campbell Funeral Home. He died at 11:45 a.m. Sunday in Crosbyton Hospital after a lengthy illness. Bradford, a native of Dickens, married Juanita Holcomb in 1935 in Roaring Springs. He was a rancher and a Methodist. Survivors include his wife; three sons, Roger of Spur and Dewain and Ronny, both of Post; two daughters, Janell Stone-man of Spur and Duanita Rich of Roswell, New Mexico; a brother, Virgil of Madera, California; five sisters, Flora Rich and Mildred Woods of Afton, Odell Goss of Hereford, Velma Bradford of Odessa and Veda Norris of Spur; 11 grandchildren; and four great-grandchildren. He was an uncle of Mel Holcomb of Lockney.

NOBLE ABBOTT
Services for Noble Silas Abbott, 74, of Lockney were at 2:30 p.m. Sunday at First Baptist Church with the Rev. John Jenkins, pastor, officiating. Burial was in Floydada Cemetery under the direction of Moore-Rose Funeral Home. Abbott died about 4 a.m. Friday in West Texas Hospital in Lubbock after a brief illness. A native of Sulphur Springs, he married Linnie Fletcher May 20, 1945, in Denton. They moved to Floyd County from Lamb County in 1948. Abbott was a former school teacher and a farmer. In recent years, he had served as a clerk for the Floyd County Soil and Water Conservation District. He was a member of First Baptist Church and was a graduate of Texas Tech University. Survivors include his wife; three sons, Stanley Wayne of Santa Fe, New Mexico, Barton Lewis of Edmond, Oklahoma, and Larry Craig of Palm Harbor, Florida; a daughter, Linda Frances Cranfill of Midland; a brother Jerry of Abilene; a sister, Pauline McClure of Houston; and four grandchildren. Pallbearers were Les Ferguson, R.C. Mitchell, Paul Teuton, Hubert Frizzell, Raymond Watson and F.L. Montandon.

MRS. LESLIE FLOYD
Services for Mrs. Leslie (Mary Emma) Floyd, 88, of Corpus Christi were held at 4 p.m. Monday at Lockney First United Methodist Church with the Rev. Dewitt Seago, pastor, officiating. Burial was in Lockney Cemetery under direction of Moore-Rose Funeral Home in Lockney. Mrs. Floyd died Friday in her Corpus Christi home after a sudden illness. She had been under a doctor's care. She was born in Alma and was a Methodist. Survivors include four daughters, Delma Tabor, Melba F. Harper, Leslie Cunningham and Opal Nelson, all of Corpus Christi; a brother, Frank Whitfill of Lockney; two sisters, Ada Mills of Amarillo and Margaret Whitfill of Ennis; and eight grandchildren.

MARY PEARL SCOTT BROWDER
Funeral services for Mary Pearl Scott, 79, of 850 Books Cliff, Grand Junction, Colorado, were held at Martin Chapel Tuesday, August 12 at 2 p.m. Rev. William R. Iiams officiated. Mrs. Scott died at La Villa Nursing Home. She had been an administrative social worker. Born in Floyd county on September 6, 1900, she was the daughter of the late Mr. and Mrs. J.H. Lloyd. She had attended school in Floyd County and was married to Clarence Scott. After Mr. Scott's death in 1950, she lived in Big Springs, and Sacramento, California. Mrs. Scott enjoyed sewing, crocheting, knitting and raising flowers. She is survived by a daughter, Mary Ida Bray of Tuntutuliak, Alaska; two sons, Jack and Melvin L. Scott of Grand Junction, Colorado; eleven grandchildren; four great-grandchildren; a brother, Author Lloyd of Napa, California; and one sister, Dora Hicks of Austin. Pallbearers were Terry Hicks, Stanley Scott, Matthew Bray, Warren Broderson, Kenny Zimmerman, and John Schoening. Attending the funeral from this area were a sister-in-law, Mrs. John A. Lloyd and a niece, Mrs. G.W. Smith.

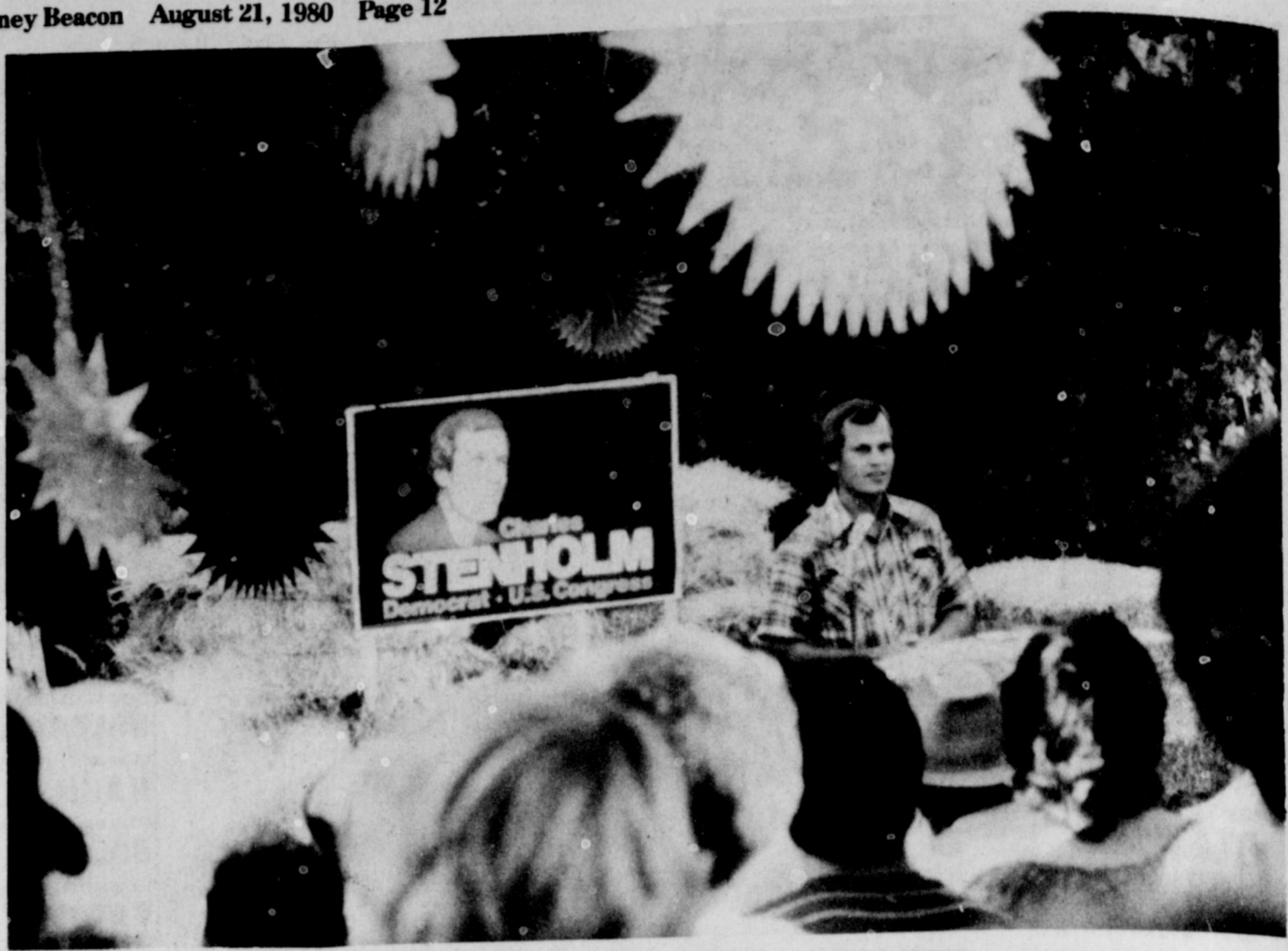
SAMUEL COPE
An 18-year-old Lamesa youth, who was target practicing with his brother and a friend, was killed Saturday evening when his brother's rifle accidentally discharged and the bullet entered his chest. Samuel Clayton Cope was dead on arrival at Medical Arts Hospital in Lamesa. Lamesa Justice of the Peace Fred Vera ruled the death accidental. Lamesa Police Chief Lee Barlett reported that Cope, his brother, Joe, and another friend were target practicing at the Cope Sand and Gravel Co., south of the city. Bartlett said that Joe Cope's rifle hammer slipped and that the gun discharged, with the .22-caliber bullet going through Samuel Cope's left wrist and then entering his left chest. Reports indicate that the two brothers were about 30 feet apart when the incident occurred about 7:25 p.m. Services for Cope were at 2 p.m. in the First Baptist Church with the Rev. Bill Hardage, former pastor, and Dr. C.H. Murphy, pastor, officiating. Burial was in Lamesa Memorial Park under direction of Branon Funeral Home. Cope, a native and lifelong resident of Lamesa, was a 1980 graduate of Lamesa High School. He was a member of the First Baptist Church. Survivors include his parents, Mr. and Mrs. Nolen Cope of Lamesa; two brothers, Joe Craig and Thomas Nolen, both of the home; and his grandparents, Mr. E.W. Cope of Lamesa and Mr. and Mrs. Sam A. Fowler of Floydada.

NOEL ANGEL RAMIREZ
Noel Angel Ramirez, two day old infant son of Mr. and Mrs. Noel Ramirez of Routh F. Lockney, died August 16, at Lubbock General Hospital at 4:45 p.m. The baby was born at the Lockney General Hospital on August 14. Services were held at San Jose Catholic Church in Lockney, Monday August 18 at 2 p.m. Father Rex Nichols of the Sacred Heart Catholic Church in Plainview officiated. Burial was in the Lockney Cemetery under the direction of Moore-Rose Funeral Home of Lockney. Survivors include the parents; three sisters, Maggie, Pricilla, and Chris, all of the home; paternal grandmother Mrs. Marcela Ramirez, of Rio Grande City; maternal grandparents Mr. and Mrs. Eligio Garza of Rio Grand City.

MRS. CALLIE BROWDER
Services for Mrs. Callie Browder, 97, of Amarillo were held Tuesday, August 12. Interment was in Happy. Mrs. Browder was an aunt of Mrs. C.B. Carmack of Floydada.

NOTICE
The annual meeting of the Cone Cemetery Association will be August 28 at 8 p.m. at the Primitive Baptist Foundation Building at Cone. Two directors are to be elected at this meeting. All interested in the Cone Cemetery are urged to attend.

REMEMBER your loved ones and friends with a memorial to Lockney General Hospital Memorial Fund. These memorials go toward equipment to help serve our community in the best way possible.
REMEMBER your loved ones with a living memorial to the Caprock Hospital Auxiliary Memorial Fund. Mrs. Ben Whitaker, Treasurer T-tfc



THE SECOND ANNUAL FUNDAY FESTIVITIES honoring Congressman Charles Stenholm are scheduled for Saturday, September 6, at the Ericksdahl Picnic Grounds near Stamford. Pictured is Stenholm talking with a group at last year's event.

Floydada Nursing Home Happenings

We have several people to thank for being so thoughtful this week. Don Harrison and Mr. and Mrs. Lesol Parker brought some of the largest and best cantalopes for the residents. They have really enjoyed them. Donna Yeary brought a sack of snapped green beans that were really good.

Billy Ruth and Lindsey Lackey brought two gallons of shelled black-eyed peas. The residents have enjoyed all these fresh vegetables and fruits. Mr. Emmitt Lawrence was our big winner in bingo with three games. Clara Williamson and A.G. Eubanks won two games each. Iva Simpson, Mamie Gray, W.C. Bates, Ray Reed, Leona Bell, Iva Simpson and Leona Bell.

Many thanks to our visitors this week which included: Flo Ella Jarboe, Clara E. McNeely, Marie Baxter, Julianne Lipham, Sherry Colston, Doris Snodgrass, Earl and Thelma Crawford, Christine Robertson, Estelle Hinkle, Mrs. Vernon McPeak, T.S. Brown, Josephine Bursiario, Mrs. A.H. Robertson, Mr. and Mrs. M.H. Hartness, Maurice and Ella Goodwin, Tom B. Jarboe, Cephus and Imogene Fortenberry, Charley L. Berry Sr., Mr. and Mrs. E.H. Childs, Jack and Beth Ray, Betty Draper, Otis, Dana, Kim and JoLee Ellis.

monthly birthday party Thursday afternoon. We had two honorees, Mrs. Susie Mooney, 93, and Mrs. Sallie Kreir, 83. Everyone enjoyed cake and punch. Mrs. Mollie Jones is back in Caprock Hospital. We send Mollie our love and prayers. Mrs. Iva Simpson enjoyed a trip and lunch with her children in Lubbock, last week. Mrs. Velva Pricer spent the weekend at home visiting her brother and three sisters. Thoses attending Bible Study Wednesday were: Mr. W.C. Cates, Mr. A.G. Eubanks, Myrtle Roy, Willie Stambaugh, Verna McGwain, Francis Childs, Hallie Bertrand, Iva Simpson and Leona Bell.

Clar McNeely and Velva Pricer all won one game each. The City Park Church of Christ ladies gave our

both parties will continue to nominate somebody, one man will get elected President, and six months after he's been in office a lot of people who voted for him will begin to wonder if they should have.

Yours faithfully, J.A.

Editor's note: The Floyd Philosopher on his Johnson grass farm takes a look at political conventions this week, from a safe distance. Dear editor: There's an argument going on among the heavy thinkers about national nominating conventions. It used to be that a convention actually nominated somebody for President. Now it merely whoops and hollers for the man nominated several months ago. One proposal to change this argues that delegates ought to arrive uncommitted: "Delegates should be a group of thinking people." The trouble with this is that it's hard to whoop and holler and think at the same time. A delegate standing up in his seat waving a placard and blowing a tin whistle is in a poor position to do much thinking. I've heard that in 1928 a man claimed he was influenced by a sign some delegate kept holding aloft, but the claim has not been substantiated. Probably belongs with the myth that there was once a candidate who promised to cut taxes and when elected did it. A political convention these days is like a Shakespearean play. You already know how it's going to come out. Well this is not quite true. There were over

Floyd Philosopher



Until the late nineteenth century, psychology was not considered a science!

For Rent
60' X 24' Building
Partial Partition
And
Counter Optional
Next Door To
The Hesperian

THE MARSHALL DILLON

1 fifth gold Puerto Rican rum
4 oz. lemon juice
8 oz. white wine
8 oz. red table wine
3 tablepoons sugar

Combine ingredients in 2-quart pitcher and stir to dissolve sugar. Add ice cubes and chilled club soda or ice water. Serves 12-14. Double recipe for an extra round.

Notice is hereby given that original mentary upon the Estate of Guy Sams, deceased, granted to the undersigned on the 11th day of 1980, by the County Court of Floyd County, Texas, persons having claims against the said hereby required to present the same to the time prescribed by law. My residence address is P. O. Box 682, Lockney, Texas. Claims may be presented through my attorneys, Sharp & Tisdell, P. O. Box 1800, Stamford, Texas 79072. Dated this the 14th day of August, 1980. Independent Executive of Guy Sams

ATTEST:
s/s Jimmie Lou Stewart
City Secretary

Notice is hereby given that original mentary upon the Estate of Guy Sams, deceased, granted to the undersigned on the 11th day of 1980, by the County Court of Floyd County, Texas, persons having claims against the said hereby required to present the same to the time prescribed by law. My residence address is P. O. Box 682, Lockney, Texas. Claims may be presented through my attorneys, Sharp & Tisdell, P. O. Box 1800, Stamford, Texas 79072. Dated this the 14th day of August, 1980. Independent Executive of Guy Sams

8-21c

Ruben's Drive-In Grocery
Is Open For Your Shopping Convenience
6 AM - 12 PM

Featuring A Good Selection
Of Canned Items, Produce & Meats, Produce & Sundries.

All Brands Cigarettes 70¢
We Accept Food Stamps

It's Results REAL ESTATE

SEVERAL nice two three bedroom homes for sale. Loans can be arranged. Call Hale Insurance Real Estate at 983-2881.

Three bedroom living area. Call 983-2881.

Cabin at Silverton, fully furnished. Call 983-4480.

3 bedroom home. King Real Estate 983-2881.

Several good three bedroom homes for sale. Call 983-3573.

BEAUTIFUL BEACHSIDE home, two bedrooms, two baths, large den, garage, with pool, 4 months left on warranty. Call 983-2120.

Five room carpeted, good storage building. Call 983-2540.

HOUSE FOR sale moved from 4th. Call C.E. 983-925p

3 bedroom carpet, 2 bedroom with garage. Call 983-3368.

Four room bath to be 983-2077. 18-28p

2 bedroom, 1 in Floydada. 1, single garage. Boyce 983-00.00. Sharp & Tisdell, P. O. Box 1800, Stamford, Texas 79072. 9-4c

HELP WANTED
Addressers W... Immediately! Work home - no experience necessary - excellent pay. Write American... Suite 127, Dallas, 75231.

EXPERIENCED cafe worker to work one day a week. Call 983-2153.

HELP WANTED
SCHOOL CROSS GUARD Second Crossing (Andrews School) Inquire at Hall-Mon. thru Friday 8:00 a.m. - 5:00 p.m.

Farm Items
FOR SALE: 250 Cu International tractor 42' deck cattle very good condition. 806-364-2135 after 6

Land Leveling, trench leveling, pump pits, all types dirt work for soil water conservancy. Fred Parsons, 983-2881.

WANTED TO BUY
gated or dryland farm. Floyd or surrounding area. Write Box XRO, Hesperian, Box 700, data.

GARAGE SALE
GARAGE SALE: clothes, child's ch... Thursday and Friday. Mesquite.



CLOROX BLEACH
Liquid, 1-gal. jug.

39¢

With One Filled Gold Bond Special Discount Booklet.



SUPER SUDS

69¢



PLAINS ICE CREAM
1/2-gal. square ctn.

\$1.49



HI-C FRUIT DRINKS
Ass't. Flavors

289¢

46-oz. can

With One Filled Gold Bond Special Discount Booklet.



GLADIOL FLOUR
5-lb. bag. All purpose

59¢

With One Filled Gold Bond Special Discount Booklet.

Shopping Rite Means Grocery Values Here



CHUCK STEAK

\$1.29

lb.

Blade Cut, Tender Beef.



PIGGLY WIGGLY

GOLD BOND STAMPS

Prices Good Thursday Thru Wednesday August 21-27, 1980

Each of these advertised items is required to be readily available for sale at or below the advertised price in each store, except as specifically noted in this ad. We reserve the right to limit quantities. None sold to dealers.

U.S.D.A. Food Stamps and W.I.C. Checks Freely Honored



FRYER BREASTS

\$1.19

lb.

Legs or Thighs U.S.D.A. Grade A Fryer Parts.

Cube Steaks Lean Tender Beef. lb. **\$1.88**

7-Bone Steaks Center Cut Chuck. lb. **\$1.49**

Ground Beef LEAN, Not less than 80% Lean. lb. **\$1.78**

PORK LOINS Whole or Half. **\$1.29** lb.

SLAB BACON Sliced lb. **1.09** lb.

Wilson Bologna Picnic Pals

Cheddar or Colby **\$1.79** 10-oz.

Fish Portions **1.19** 11-oz.



Welch's, Grape Jelly or Jam 32-oz. jar **\$1.09**



All Ass't. Coffee Grinds Folger's Coffee 1-lb. can **\$2.99**



Open Pit, Ass't. Varieties Barbecue Sauce 18-oz. btl. **59¢**

Apple Juice Tree Top. 32-oz. btl. **93¢**

Tea Bags Lipton. 100-ct. pkg. **\$2.49**

Cocoa Mix Swiss Miss, 1-oz. envs. 12-ct. pkg. **\$1.49**

Grape Nuts Post Cereal. 24-oz. pkg. **\$1.49**

Kraft Parkay (Soft. 2-ct. 8-oz. cups) (Squeeze 16-oz.) **79¢** ea.

Dream Whip Dessert Topping. 5-oz. pkg. **\$1.29**

A-1 Sauce Steak Seasoning. 10-oz. btl. **\$1.69**

Salad Dressing Ass't. Wishbone. 8-oz. btl. **69¢**



WHITE SEEDLESS GRAPES or

Red. Snacking Favorites lb. **78¢**

Valencia Oranges Juicy Sweet Large Size. lb. **38¢**

Mushrooms Snow White lb. **\$1.58**

Green or Red Leaf Lettuce lb. **30¢** Bunch

Yellow Onions Med./Large All Purpose. lb. **18¢**

Green Squash Excellent Bake or Boil. lb. **38¢**

Shop Rite Features Values You Appreciate!

Keebler Pecan Sandies, Rich 'N Chips Cookies. 16-oz. pkg. **\$1.09**

Boden's Orange Drink Rich 'N Ready. 1-gal. jug. **\$1.19**

Pork 'N Beans Showboat. 14 1/2-oz. cans **388¢**

Kal Kan Cat Food 2 Ass't. 13-oz. **88¢**

Spray 'N Wash Texize. 16-oz. can **\$1.49**

Fantastik Texize Cleaner. 22-oz. btl. **\$1.09**

Mop & Glo Floor Care. 32-oz. btl. **\$2.39**

Trash Bags Hefty. 20-ct. pkg. **\$2.89**

Kitchen Bags Hefty, Tall. 15-ct. pkg. **\$1.39**

Eagle Brand Condensed Milk Sweetened. 14-oz. can **99¢**

Kool Aid Drink Mix Ass't. Flavors. Makes 10 qts. **\$2.29**

Macaroni 'N Cheddar Golden Grain. 7 1/2-oz. pkgs. **269¢**

Maxi Shields Sure & Natural 30-ct. pkg. **\$2.99**

White Swan Apple Cider Vinegar 1 gal. **\$2.49**

Coolwhip 8 oz. **89¢**

Piggly Wiggly Toothpaste 7 oz. **95¢**



Director of the Panhandle-Plains Historical Museum, spoke to the Floydada Lions Club members at a reception.

Panhandle-Plains Museum Receives Grant

\$26,000 has been made to the Panhandle-Plains Historical Museum by the National Endowment for the Humanities. The grant will enable the Museum to research and plan its traveling exhibit, which will be entitled "The Migration: European to American."

Hospital Auxiliary

General Hospital Auxiliary met Tuesday afternoon in the auditorium for its monthly meeting.

Viola Mangum, Kitchen Supervisor, gave suggestions on items that would be suitable for tray fare for hospital patients. The following members were present: Dona W. Ter, Gayle Fortenberry, Grace Colson, Cora Johnson, Viola Mangum, Brenda Mangold, Laver Sams, Pauline Sams, Cora Reece, Joseph Smith, Wynona Allis, Helen Huffman, Fern Ferguson, Jewel Robert, Cindy Ward, Edna C. Elie Sherman and guest speaker, Tom Lovell, M.T.

The next regular meeting is scheduled for September 4. All members and anyone wishing to become a member are urged to be present.



The Consumer Alert

by Mark White, Attorney General

Without having to realize, there are differences in contracts offered by the state, federal savings and loan associations. Consequently, the renegotiable rate mortgage offered each lender should be considered very carefully so that the prospective home buyer will know exactly what to expect. The federal and state regulatory authorities attempted to insure that the prospective borrower will be given adequate information concerning the renegotiable mortgage. When considering the purchase of a home, you should review the information provided very carefully that you fully understand the differences between the renegotiable mortgage and the fixed rate mortgage. Ask questions and get answers. Remember, under the renegotiable rate mortgage, if interest rates rise, your monthly payment will increase at renewal. Conversely, a decrease in interest rates will lower your monthly payment. The purchase of a home represents a significant investment. Take the time to understand fully what you are doing. Show your financing care. The rates between lenders may vary even with new mortgage investments.

GLADIOLA FLOUR
5-lb. bag. All purpose.
59¢

Values Here

\$1.19
lb.

Bologna pkg. \$1.19
Hot Pals pkg. 49¢

Open Pit, Ass't. Varieties
Barbecue Sauce
18-oz. btl. **59¢**

A-1 Sauce 10-oz. btl. \$1.49
Salad Dressing 8-oz. btl. 69¢

You Appreciate!

Brand Condensed Milk 14-oz. can **99¢**
Aid Milk Mix Makes 10 qts. **\$2.39**
roni 'N 2 **69¢**
Grain. 7 1/4-oz. pkgs. **\$3.39**

Shields Sure & Natural 30-ct. pkg. **\$3.39**

an Apple Cider 1 gal. **\$2.49**

hip 8 oz. **89¢**

ggy Waste 7 oz. **95¢**



Director of the Panhandle-Plains Historical Museum spoke to the Floydada Lions Club meeting. Guests at that meeting were the Board of Directors of the Floyd County Historical Museum.

Panhandle-Plains Historical Museum Receives \$26,000 Grant

The \$26,000 grant was made to the Panhandle-Plains Historical Museum of Canyon, the National Migration of the Hu-

manities. The grant will enable the Museum to research and plan its first traveling exhibit, which will be entitled "The Last Migration: European Folk Islands in Northwest Texas." The exhibit will depict the histories and folkways of German, Austrian, Czech, Polish, Norwegian, Swedish, and Russian immigrants who settled in the region between 1890 and 1920. The research and planning of the exhibit will be conducted between July and

August 21, 1980 Page 1-B
December of 1980. The unveiling of the exhibit is scheduled for the summer of 1981.

The rich European cultural heritage of this region of Texas which has been largely ignored will be fully documented by the Panhandle-Plains Historical Museum.

This summer and fall researchers will visit the towns of Slaton, Wilson, Follett, Oslo, Waka, Paken, Wichita Falls, Thurber and others in search of interviews with descendants of immigrants, objects of historical interest, photographs, and historical data. The project directors, Bobby Weaver and Dianna Everett, would like to make contact with anyone familiar with those European communities listed and any others that might exist. If you have information or know of someone who should be interviewed, please contact:

Folk Island Project
Panhandle-Plains Historical Museum
Box 967, W.T. Station
Canyon, TX 79016

TSTI Fall Registrations To Be Held September 2 and 3

Registration for Texas State Technical Institute Amarillo campus fall quarter classes will be September 2 and 3 at the TSTI gymnasium from 9 am to 4 pm each day.

TSTI Amarillo offers technical vocational training in 18 programs. Associate of Applied Arts or Science degrees can be earned in twelve programs offered are Aircraft Mechanics, Auto Body Repair, Cosmetology, Meat Processing and Marketing, Professional Truck Operations,

Technology, Diesel Mechanics Technology, Drafting and Design Technology, Electronic Systems Technology, Industrial Maintenance Technology, Interior Design Technology, Printing Technology, Technical Office Training, and Welding and Fabrication.

Certification or diploma programs offered are Aircraft Mechanics, Auto Body Repair, Cosmetology, Meat Processing and Marketing, Professional Truck Operations,

and Saddle and Tack Making.

Night courses for credit toward a degree or certification will be offered in Aircraft Mechanics, Auto Body Repair, Auto Mechanics, Electronic Systems Technology, Professional Truck Operations, and Welding and Fabrication Layout.

Requests for information concerning Fall Quarter registration should be directed to the Texas State Technical Institute's Office of Admissions.

God cares.
hurting?
First Assembly Of God Church
983-3319

Key Hospital Auxiliary

Lab Talk

Key General Auxiliary met 7 p.m. in the center for its 25th anniversary. Mangold invited guest speaker Lowell, M.T., Lockney General Laboratory. Lowell gave a talk on "Procedures in Laboratory Departments - Charts to Blood Chemistry Analysis." Very informative and appreciated.

for the booth. The meeting was held at Elsie's Studio, 519 West Locust, Lockney.

Viola Mangum, Kitchen Supervisor, gave suggestions on items that would be suitable for tray favors for hospital patients.

The following members were present: Dona Winter, Gayle Fortenberry, Grace Colson, Cornelia Johnson, Viola Mangum, Brenda Mangold, Laverna Sams, Pauline Sams, Clara Reece, Josephine Smith, Wynona Allison, Helen Huffman, Faye Ferguson, Jewel Roberts, Cindy Ward, Edna Cox, Elsie Sherman and guest speaker, Tom Lovell, M.T.

The next regular meeting is scheduled for September 4. All members and anyone wishing to become a member are urged to be present.



The Consumer Alert

by Mark White
Attorney General

pective home buyers should be aware of developments concerning a new type of mortgage that is being offered on a limited basis in Texas. The state regulatory agencies have authorized savings and loan associations under their state mortgage laws to offer a renegotiable rate mortgage. This type of mortgage is an attempt to provide a more flexible way to obtain money available to prospective home buyers. Under the fixed rate mortgage, the period of the mortgage would be for a long-term period with an unvarying rate. Under the renegotiable rate mortgage, the interest rate would still be the same long term rate but it would be subject to an automatic renewal short-term rate. The interest rate would be renewed at the time of payment.

without having to refinance. There are differences in contracts being offered by the state and federal savings and loan associations. Consequently, the renegotiable rate mortgage offered by each lender should be considered very carefully so that the prospective home buyer will know exactly what to expect. The federal and state regulatory authorities attempted to insure that the prospective borrower will be given adequate information concerning the renegotiable rate mortgage. When you are considering the purchase of a home, you should review the information provided very carefully so that you fully understand the differences between the renegotiable rate mortgage and the fixed rate mortgage. Ask questions and get answers. Remember, under the renegotiable rate mortgage, if interest rates rise, your monthly payment will also increase at renewal. Conversely, a decrease in the interest rates will operate to lower your monthly payment.

The purchase of a home represents a significant investment. Take the time to understand fully what you are doing. Shop for your financing carefully. The rates between lenders may vary even with the new mortgage instruments.

New Case ONE-TWO Farm Tractor Offer

1. PLUS 2.

CASH REBATES up to \$3200

If you buy one of the new Case farm tractors listed in this ad, between Aug. 1, 1980 and Oct. 31, 1980, Case will send you a check for the dollar amount shown opposite the Case model you buy, or you can apply the rebate towards your down payment. NOTE: Government Agencies/Departments do not qualify for rebate.

Eligible Models	Cash Rebate	Eligible Models	Cash Rebate
885	\$ 500	2290	\$1900
990	\$ 700	2390	\$2100
995	\$ 700	2590	\$2200
1210	\$ 800	4490	\$2300
1410	\$ 900	4690	\$3000
2090	\$1500	4890	\$3200

WAIVER OF FINANCE CHARGES UNTIL MARCH 1, 1981

If you buy *any new Case* farm tractor or a *used* farm tractor of *any make* from a participating Case dealer, between Aug. 1, 1980 and Aug. 31, 1980 . . . and finance it through J I Case Credit Corporation . . . we'll waive finance charges from date of purchase until March 1, 1981.

J I Case
Agricultural Equipment Division
700 State Street, Racine, WI 53404 U.S.A.

See your Case Tractor Specialist **NOW**

Rest Home Honors Birthday Honorees

Along with Indian summer, August brings lazy, hazy days... A perfect time for parties To make us "mend our ways."

Our Mrs. Susie Mooney is boasting 93... She is still a lovely lady As one and all can see.

Our Mrs. Kreis is with us... Her friends all call her Sally... And through the years a party Has been right "up her ally."

To greet these lovely ladies Lets sing the birthday song... So get your "vocals" ready And join the sing-along!

Thursday, August 14, was time again for a birthday party and was hosted by ladies of the City Park Church of Christ.

Residents and guests were ushered into the dining room with the honorees being seated at the "honor" table. Their places were marked with special birthday cards.

The table was laid with a white cloth and centered with a large white candle surrounded by a multi-colored floral arrangement. The birthday cake was iced in white and decorated with pink love birds. The poem was read and all joined in singing the HAPPY BIRTHDAY song.

A refreshment plate of delicious cake and delightful fruit punch was served to residents and guests.

Mrs. Kreis had as her special guest her daughter, Ruth McIntosh, and Mary Adams was a guest

TRs Deadline Approaching

Two important Teacher Retirement System deadlines are approaching.

TRs members who have been employed in the past by a state agency and contributed to the Employees Retirement System have until August 31 to transfer that service credit to TRs. Transfer can be made even though the contributions may have been withdrawn.

Employees of higher education who are participants in Optional Retirement Program have until September 1 to exercise a one-time election to return to TRs membership.

Persons with questions concerning these deadlines should contact TRs, 1001 Trinity, Austin, Texas 78701.



FIX-IT FACTS
Thurman Davis
One... two or three? About the same amount of time is involved in making one or several storage cubes out of particle board. Sitting stacked or side by side, storage cubes can be arranged as a room divider or rearranged into wall shelves, etc., again and again. To make shelves which can be used many times over, decide on a size which will work well for most locations. Whatever size you chose, be sure the cubes are square for easy arranging. An adaptable cube is one 24 inches square and 11 inches deep. When strength is desired and using particle board, a butt joint is recommended. Join the two pieces in a 45 degree angle using glue to secure. Nails won't hold tightly on particle board. To make the cubes more versatile, inside shelves can be braced which will add extra strength. If any type of hardware is needed, use sheetmetal screws instead of wood screws.

DAVIS Lumber Company
LOCKNEY

of her mother, Mrs. Collins. We are always delighted to have visitors and we especially urge you to come if you have a relative or close friends being honored.

The next party will be Thursday, September 18, at 2:30 p.m.

Zumwalt Speaks To

Sr. Citizens

Floydada Senior Citizens held a luncheon August 21.

Bro. Perry Zumwalt, pastor of the City Park Church of Christ, delivered the devotional.

Following the luncheon the West Texas Home Health agency had a short film and checked blood pressures.

Blood pressure checks will be given, free of charge, every Thursday. Lavada Garrett's group provided entertainment for the luncheon.

Friendship Club Meets

The Friendship Social Club met Friday, August 8, in the L.O.O.F. Lodge Hall in Lockney. Lockney members served as hostesses.

After a bountiful pot luck dinner, president, Frances Grave called the meeting to order.

After business was finished the group was entertained with some humorous stories by Grace Grundy and Valree Turner.

A very enjoyable evening was reported by all present.

The next meeting will be held Thursday, September 4, at the L.O.O.F. Hall, in Floydada, with the Floydada members as hostesses.

FLOYD DATA

Mr. and Mrs. Gilmer Denison and Mr. and Mrs. Keith Denison of Lubbock, spent Monday night with their parents and grandparents, the C.W. Denison's.



Elaine McNeill (owner) opened Stitches' Pretty in January of 1980. Stitches' Pretty is one of the newest businesses in Floydada. They handle a complete line of sewing notions including, Butterick, Vogue, and McCall's patterns.

Materials are another item offered. They carry velours and polyester cotton blends by Burlington, H2O wool by Stevens, and plaids and cross action and chino by Dan River.

"We've grown tremendously since we opened. People are realizing that they cannot have quality fabrics and what we don't have, we can get within three or four days."

Stacy Reeves and Karen Pruitt are employees.

Center News

by Mrs. J.E. Green

August 18

We are grateful for the .6 of an inch of rain we got one nite last week, and we hope these are rain clouds floating around today.

Bro. and Mrs. Hollis Payne and family were back in church Sunday after several days on vacation. They report a good time.

Sara Henry, of Boston, Massachusetts, who has been visiting her grandparents, Mr. and Mrs. Mar-

Willa Finley

Receives PHD

Willa F. Finley, daughter of Mr. and Mrs. W.H. Finley, of Floydada, was among fifty-two graduate students at the University of Nebraska-Lincoln who received Doctor of Philosophy degrees at the end of the 1980 Summer Sessions.

Miss Finley received her degree in Agronomy, plant breeding and genetics.

She is presently a wheat breeder for the International Center for Agricultural Research in Areas in Aleppo, Syria.

ion Carpenter, left for home by plane from Lubbock Saturday.

Mrs. Claud Carpenter of Lockney Rest Home spent Sunday with a son and wife, the Marion Carpenters. She is doing well.

Miss Vera Meredith's company last week Amanda Patterson, Mrs. Clay Blunty, Wanda Findley, and Paul Jones. Mrs. Green and Mrs. Anthony Latta called Monday morning on Miss Meredith and Miss Esther Peck and sister Edith.

Mrs. Ashton's company Sunday was a sister from Amarillo. She reports their mother, Mrs. Fuqua, of Amarillo's Nursing home is not doing so well.

Mrs. Green has been a bit indisposed last week, but better today.

Mrs. Sam Green visited briefly with Mrs. J.E. Green Saturday afternoon.

The W.M.U. ladies who attended the Waco house party last week report a good time with 2,667 present.

Mrs. Ava Jackson dined Sunday with Mrs. Flora Warren.

Mr. and Mrs. Paul Stout and girls of Muleshoe are visiting her parents, the Thomas Warrens today.

Caprock Girl Scout Council

Designates "Invitation Day"

Thursday, September 4, has been designated "Invitation Day" for girls of all ages in the eighteen-county area of the South Plains, according to Mrs. Nolen Swain, President of Caprock Girl Scout Council. Girls between the ages of six and eighteen and adult men and women are invited to attend evening meetings at schools or community buildings near them and learn about the exciting world of Girl Scouting.

Mrs. Swain recently returned from a White House reception in Washington, D.C., at which Rosalyn Carter previewed new Girl Scout uniforms, badges and top awards. The event marked completion of a modernization of Girl Scout programs and activities in step with changing times. The first major update of Girl Scout programs since 1963, innovations include revision of handbooks, uniforms, proficiency badges and official recognition for girls.

Special invitations to evening meetings will be issued to girls in both public and private schools. Troop organizers, troop leaders and Girl Scouts will greet guests and explain the program.

The Girl Scout program is the largest voluntary organization for girls in the world and is international in scope. Ninety-four countries are affiliated with the World Association of Girl Scouts and Girl Guides.

The organization, with Caprock Girl Scout Council headquarters at 2567 74th Street in Lubbock (and a professional worker based in Plainview), ser-

ved 5,000 girls in an eighteen-county area this past year. Twenty-four men and women from the area serve on the board of directors and give direction to council policy and program.

Dr. Harvey Joanning, chairman of the personnel services committee on the Board of Directors, has announced that approximately thirty workshops and training sessions for adults will be held this Fall. Beginning with conferences for service team personnel, the calendar includes camping courses, first aid, leader training sessions, group dynamics workshops and bowling clinics. Mrs. Billy M. Hall, program services committee, states that in addition to regular troop meetings and field trips for girls, arrangements have been made for a

Brown... Junior... Council... for... World... Camp... owned... both... year... charged... and...

Girl... regard... national... registration... citizens... adults... decided... ops... Leaders... are... Girls... invited... 2855... for... mation... Scout... agency...



"I'll Be Glad To Help You."

Come By And See Joe

PERRYS

... Red Hot Specials On Every Counter

BACK TO SCHOOL SPECIAL SALE

SALE STARTS TODAY

3-1/2" RING SEE-THRU BINDER
POCKET ON BOTH SIDES
IN ASSORTED school COLORS
187 EACH

16-COUNT CRAYOLAS
NON-TOXIC
Tuck Box 16 COLORED CRAYONS Paper Wrapped
42c BOX

TRI-FOLD ORGANIZER
NOTES & FILES ENSEMBLE
317

WIRE COIL COMPOSITION BOOKS
ASSORTED COLORS
3.99c PKG.

DUO-TANG REPORT COVERS
3-BRANDS WITH POCKETS ASSORTED COLORS
24c EACH

200-COUNT FILLER PAPER
99c PKG. (LIMIT 2 PKG.)

4-0Z SIZE 41c

SPECIAL SPECIAL! BUY A 12-PACK AND SAVE A BUNDLE
YOUR CHOICE • BLACK OR • BLUE **99c**

4 1/4-INCH SHARP POINT ALSO BLUNT SCHOOL SCISSORS

14x20 Bulletin BOARDS \$1.88

The Averaged Billing Plan From Southwestern Public Service.

"A PLAN FOR ALL SEASONS"

"My fixed income got a big break now that I'm on the Averaged Billing Plan".

"Averaged Billing makes it easier to make ends meet because it smooths out the highs and lows of your monthly electric bill. Like your friends, you can have it too. Depend on it to help ... just give me a call at SPS."

"I know just about how much my electric bill will be each month ... there are no more surprises."

We changed to Averaged Billing with one phone call to SPS. And now, our family budget is easier to plan."

SPS
SOUTHWESTERN PUBLIC SERVICE

COURT
Distinguished

Reed For
Ralls Highway - Floyd

Perry
Implement

Arwine D
100 E. California - Floyd

FLOYDADA
Department Store
Person's Department
son & Son-Builders
s Gifts
a Gold
ot Printing
s
t National Bank
dy's Food
n Chevrolet
chin' Pretty
mpson Pharmacy
y's
ine Drug
derosa Meats

Girl Scout Council Announces "Invitation Day"

Over 5,000 girls in an eighteen-county area this past year. Twenty-four men and women from the area serve on the board of directors and give direction to council policy and program.

Dr. Harvey Joanning, chairman of the personnel services committee on the Board of Directors, has announced that approximately thirty workshops and training sessions for adults will be held this Fall. Beginning with conferences for service team personnel, the calendar includes camping courses, first aid, leader training sessions, group dynamics workshops and bowling clinics. Mrs. Billy M. Hall, program services committee, states that in addition to regular troop meetings and field trips for girls, arrangements have been made for a

Brownie Council Junior Jump (8-10) Council activities prior trip to "Our World Center in Camp Haynes, owned and operated both available year-round, (charge), for day and troop camps.

Girl Scouts girls of all ages regard to race, national origin, registration fee, participant insurance, both adult, weekly decided by individual ops. Uniforms are voluntary.

Girls and adults invited to call the Center in Lubbock 2855, for additional information. Capital Girl Scout Council is a agency of the United

COURTESY AND SERVICE WEEK

.Distinguished Service .Personal Service .Expert Service .Satisfactory Service

You Want It
We Got It
At Gene
Messer's
Lubbock
765-8000
19th & T



"I'll Be Glad
To Help You."

Come By And See Joe Bax

... Red Hot Specials
On Every Counter

SALE

WIRE COIL
COMPOSITION
BOOKS
SORTED COLORS
3 IN PKG. 99¢

4-OZ. SIZE
41¢

1 1/2-OZ. SIZE
27¢

SPECIAL! SPECIAL!
BUY A
12-PACK
AND SAVE
A
BUNDLE

YOUR
CHOICE
BLACK
OR
BLUE 99¢

4 1/2-INCH
SHARP POINT
ALSO
BLUNT 43¢

SCHOOL
SCISSORS

14x20
Bulletin
BOARDS
\$1.88

9¢ PKG.

Reed Ford
Ralls Highway - Floydada - 983-3761

Reecer's Cleaners
121 S. Main - Lockney - 652-2262

Shadow Box
South Main Street - Lockney

Perry Implement Co.
120 N. Main - Lockney - 652-3306

Ponderosa Meat
807 E. Missouri - Floydada - 983-2261

Case Power & Equipment
101 S. 12 - Floydada - 983-2836

**First National Bank
Floydada**
124 S. Main - 983-3717

Arwine Drug
100 E. California - Floydada - 983-2856

Floydada Implement Co.
Lockney Highway - Floydada - 983-3584

Page's Thriftway
210 N. Main - Lockney - 652-2293

You Are FIRST With Us.....

- FLOYDADA**
- Anderson's Department Store
 - Anderson's Department Store
 - Anderson & Son-Builders Mart
 - Anderson's Gifts
 - Pizza Gold
 - Script Printing
 - First National Bank
 - Daddy's Food
 - Ben Chevrolet
 - Witchin' Pretty
 - Thompson Pharmacy
 - Arwine Drug
 - Ponderosa Meats

- Case Power and Equipment
- Parker Studio
- City Trim Shop
- Brown's Implement
- Kirk and Sons
- Reed Ford Sales
- Russell Equipment and Supply
- Kirtley's Market
- Consumer's Fuel
- Whites Auto
- Floyd County Implement
- Piggly Wiggly
- City Auto
- Floydada Implement
- First National Bank of Floydada

- LOCKNEY**
- Schacht Flowers, Jewelry & Gifts
 - Davis Lumber
 - Brown's Department Store
 - Perry Implement
 - Pages Thriftway
 - Four R-Western Wear
 - Reecer's Cleaners
 - The Shadow Box
 - Mize Pharmacy & TV
 - First National Bank of Lockney
 - Beacon
 - Lee's White Home and Auto
 - Perry Implement Co.

Back-To-School Special

Jeans **10% OFF**
By Lady Wrangler & Rumber Seats
Thursday, Friday, Saturday ONLY

Playtex Bra Sale **20% OFF**
Cross Your Heart - Living Support Can Be Beautiful

New Fall Merchandise Comes In Everyday-See Our New Slacks And Plaid Skirts.

Hale's Department Store

112 East California - Floydada - 983-2388

An Ideal Gift For Your Students That Are College Bound

Hallmark Stationary **1/3 OFF**

Just Arrived: Not Available Until Now

Polaroid Time - Zero Supercolor SX-70 Film

Now Brilliant New Color Develops In Seconds

Texas Instruments Digital Watches

Now **25% OFF**

(Limited Selection - Better Hurry)

Arwine Drug

100 California - Floydada

Tools Of
All Kinds Saws, Drills, Wrenches Files & Accessories.

Featuring: Challenger, Skil, B&D, S&K, Fuller Plus Many More

Willson & Son-Builder's Mart

Floydada, Texas

Back-To-School Specials

3 Panel

Organiz-It

Only \$2.00

5 Ruled Compartment
200 Sheet Spiral

Notebook

Only \$1.79

THOMPSON
200 SO. MAIN
PHARMACY
FLOYDADA, TEXAS

Now Is The Time To Get That Worn Chair, Sofa & Car Or Truck Seats Upholstered

Before Christmas Good Selection Of Materials Available

City Trim Shop

119 South Wall
Floydada
983-2332



Gordon and Tita Kirtley were tired of the California rush and decided to move to Texas. They were looking for a small community. "We chose Floydada because it looked like one of the more progressive towns in the area," Gordon said. In September of 1977 they opened Kirtley's Market on Second Street. It is a complete neighborhood store, carrying a full line of groceries and meats. "We hope to serve our people the best we can," they said.

Rest & Play Mats

\$4.99

Storage Chest

\$1.12

Photo Albums

\$1.27

PERRYS

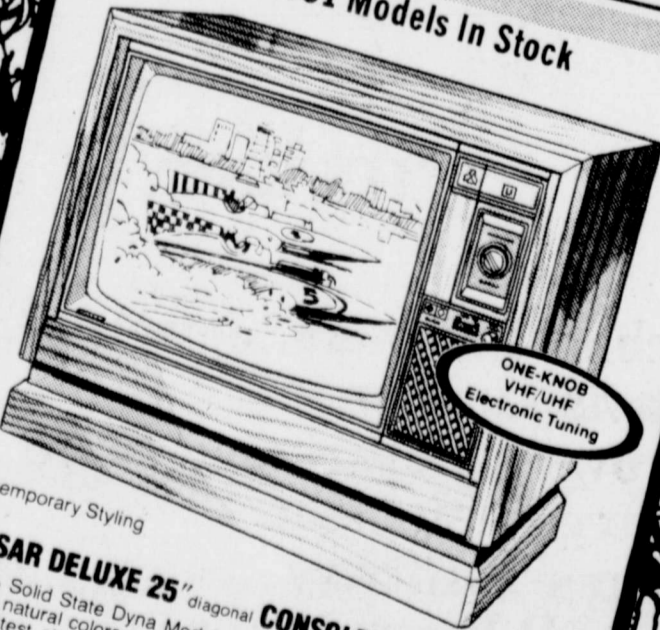
Floydada

118 East California

Visa & Mastercharge Welcome

Quasar TV Trade-in time
replace your old color TV now!

1981 Models In Stock



Contemporary Styling
QUASAR DELUXE 25" diagonal
locks in natural colors automatically
Our brightest, sharpest picture • One Knob VHF/UHF Electronic Tuning
Model WU9525P

Now For **\$689.95**
KIRK & SONS

119 West Missouri- Floydada - 983-3280
Buy For The Future Today

32 oz Kraft **Miracle Whip** \$1.19



2 lb Kraft **Grape Jelly** 89¢

1 lb (Quarters) **Parkay** 2/99¢



We Give S&H Green Stamps

Buddy's Food

220 South 2nd
Floydada

New Shipments
Supplies
All Occasions

Invitations Thank
Birth Announcements
We've Adopted

Place Cards It's A Boy Birth

It's A Girl Join Us For Brunch Luncheon

Bridal Showers We give and redeem

GOLD BOND STAMPS
Gifts & Accessories
California Floydada

New Charm Of
Dresses
er And More
Feminine
is Year With



Touches Of Lace,
Lace Collars,
Cuffs And,
Pockets,



Everyone

6 Passenger

Economy

1980

Ford

Fairmont

4 Door Automatic

Power Steering

Power Brakes

Air Conditioning

Plus Many
Other Extras
Retail \$6,800

Now
Only \$6,100

Reed

Mercury

Ralls Highway -

983-3761

For All

Meat

Individual Pieces

Larger Family

You Can Select

Grade A Choice

Quality Meat

Custom Cuts
Modest Prices

Ponderosa Meat Company

East Missouri Floydada, Texas

Tools Of
All Kinds
 Saws, Drills, Wrenches,
 Files & Accessories.
 Curving: Challenger, Skil, B&D,
 Fuller Plus Many More
Hillson & Son-
Childer's Mart
 Floydada, Texas

Back-To-School
Specials
 3 Panel
Organiz-It
 Reg. \$2.24
Only \$2.00
 1 Compartment
 1 Spiral
tebook
 Reg. \$2.20
Only \$1.79
IMPSON
 PHARMACY
 FLOYDADA, TEXAS

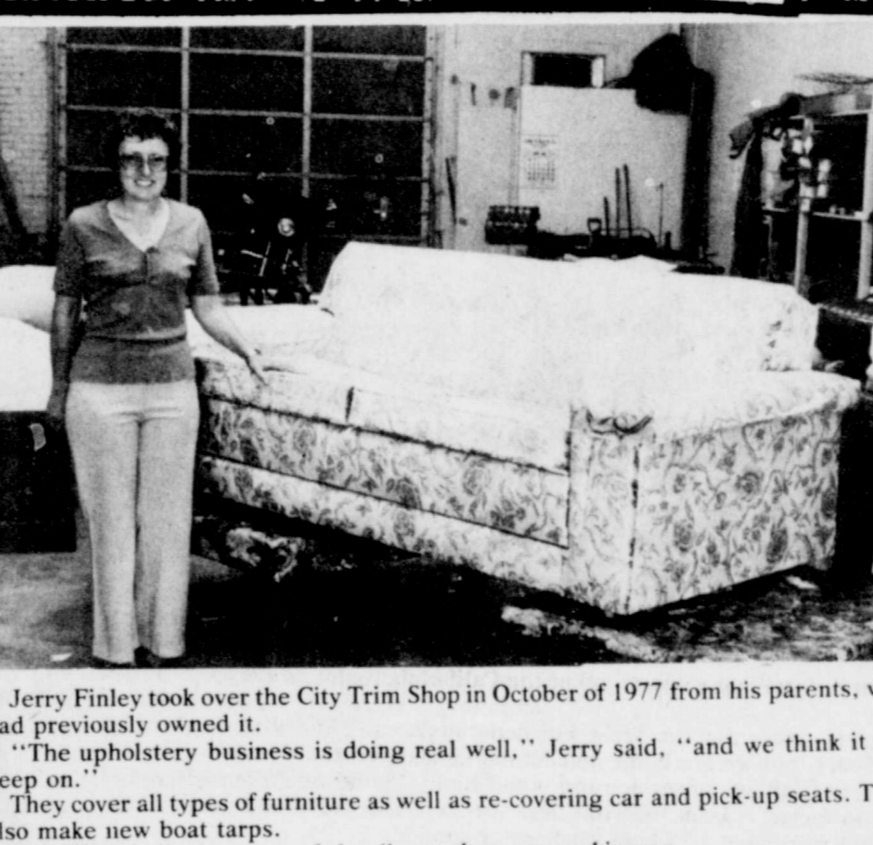
Everybody
 6 Passenger
Economy Car
 1980
 Ford
Fairmont
 4 Door Automatic
 Power Steering
 Power Brakes
 Air Conditioning
 Plus Many
 Other Extras
 Retail \$6,880
Now
Only \$6,199
Reed Ford
Mercury Sales
 Ralls Highway - Floydada
 983-3761

New Shipment Of Party
Supplies For
All Occasions!
 Thank You Cards
 Birth Announcements
 We've Adopted
 It's A Boy
 Birthdays Cards
 Baby Showers
 Invitations
 Place Cards
 Join Us For Brunch
 Luncheon
 Bridal Showers
 We give and redeem
GOLD BOND STAMPS
 Gifts & Accessories
 California Floydada

New Charm Of
Birthdresses
 After And More
 Feminine
 This Year With
 Touches Of Lace,
 Lace Collars,
 Cuffs And,
 Pockets,
 All
 Found At
 Stitchin
 Pretty
 983-3809
 118 West California
 Floydada

For All Your
Meat Needs
 Individual Pieces, Or
 Larger Family Packs,
 You Can Select From
Grade A Choice
Quality Meats &
Custom Cuts AT
Modest Prices.
Ponderosa Meat
Company
 200 East Missouri Floydada, Texas

Anderson's
Back-To-School Specials,
 Mens & Boys **Jeans** (Sedgefield & Wrangler)
 Men's **Wranglers** Reg. \$18.00 **Only \$12.88**
 Boys **Wranglers** Reg. \$13.00 & \$13.00 **Only \$9.88**
 Men's **Sedgefields** Reg. \$21.00 - \$24.00 **Only \$16.88**
 Boys **Sedgefields** Reg. \$16.00 - \$16.00 **Only \$12.88**
 Also Girls **Jeans** Sizes 2-14 Wiggles & Wranglers
Reduced 25% Off Reg Price
 (Thur., Fri., & Sat.)
ANDERSON'S
 DEPARTMENT STORE
 120 West California Floydada 983-3554



Jerry Finley took over the City Trim Shop in October of 1977 from his parents, who had previously owned it. "The upholstery business is doing real well," Jerry said, "and we think it will keep on." They cover all types of furniture as well as re-covering car and pick-up seats. They also make new boat tarps. Julie Finley displays one of the divans they are working on.

This Week Only
 1980 Buick Skylark Limited --
 Fully Loaded - With All The Extras
Only \$6,300.00
ODEN
Chevrolet - Olds, Inc
 221 S. Main
 983-3787 FLOYDADA
 KEEP THAT GREAT GM FEELING
 WITH GENUINE GM PARTS.

Pizza Gals
AND ICE CREAM PARLOR
 Hot Sandwiches
 Reg. \$2.29 **Only \$1.89**
 *AR-P-PEEF-REUBEN-POLISH SAUSAGE-SUBMARINE
 CORN REEF ON ONION BREAD - HAM ON ONION BREAD
 (OFFER NOT AVAILABLE ON DELIVERIES)
 With This Coupon Coupon Expires 8-27-80

Customer
Appreciation
 A bank is as good as
 the area it serves.
 That makes us
 the best bank around.
 "Helping You Change Things For The Better"
THE FIRST
NATIONAL BANK
OF FLOYDADA
 FLOYDADA, TEXAS 79224
 MEMBER F.D.I.C.

Sears Great Savings On Sculptured
 And Nylon Plush Carpeting
 Durable, Soil Resistant Sculptured
 Nylon Pile, Soft, Long-Wearing
Touch Of Spring \$10.99 sq yd
 Touch Of Pleasure \$12.99 sq yd
 Simply Plush \$9.99 sq yd
 Casual Design \$7.99 sq yd
 Easy Turf \$7.99 sq yd
 * Prices Include Quality Pad & Installation
 * Ask For Samples And Other Sales
 * All Floor Covering Professionally Installed
 * Ask About Sears Credit Plans
Sears AUTHORIZED CATALOG SALES MERCHANT
 100 S. Main
 Floydada, Texas
 Owned & Operated by
 Sue Williams
 Satisfaction Guaranteed or Your Money Back

August Parts
Special:
20% Discount
On All Oil!
 Also
 21" Tandem Disk \$9,200.
 (Cylinders & Tires included)
 23" Tandem Disk \$9,450.
 (Cylinders & Tires included)
 28" Double offset Tandem \$13,500.
 (Cylinders & Tires included)
 Amco Disk Bedders \$5,700.
 Reduced To -----
 For All Your Implement
 Needs Call
983-2836
Case
POWER &
EQUIPMENT
 983-2836
 101 South 12th Floydada, Texas

\$1000 REBATE

ON INTERNATIONAL TRACTORS
Buy before August 31, and save!

There's never been a better time to go Red Power than right now. That's because you can get a great deal on a new International Series 86 tractor, plus a \$1000 rebate. That's right! Buy any new Series 86 tractor over 86 PTO hp before August 31, and agree to take delivery Harvester will send you a check for \$1000.

The Series 86 tractors have it all! From the high-torque diesel engine up front, to the exclusive IH mid-mount Control Center, to the 3-point hitch... the Series 86 means efficiency, dependability and comfort.

But the best part is right now you'll get a \$1000 Red Power Rebate when you buy the new Series 86 tractor you need. See us today. For a great deal, a great tractor—and a great rebate from International Harvester!

Ask us about IH Credit Power, the new Waiver of Finance program that lets you buy now and delay finance charges until later.



For Service & Parts You Can Depend On Contact Your I-H Dealer
Brown's Implement Inc.
Ralls Highway - Floydada

Photography
Makes
Beautiful Gifts-
Plan Now
For Your Family
Or Individual
Portraits

(Cut-Off For Christmas Portraits Dec. 4)



Parker Studio
983-5063
121 W. Calif. Floydada

Featuring This Week
Tye Wheat Drills &
Midland Tandems
Early Orders Discount Of 15%
Don't Wait!

Russell Equipment & Supply
608 East Houston - Floydada - 983-3751

Tender Crust Big Bag
Bread

Extra Lean
Hamburger \$1.69

Shurfresh Canned
Biscuits 6/\$1.00

12 oz Can Hormel Roast
Beef \$1.89

We Give S&H Green Stamps
Double On Wednesday

Kirtley's Market
316 North 2nd - Floydada - 983-3105

White Swan
Apple Cider 1 gal \$2.49
Vinigar 95¢

Piggly Wiggly
Toothpaste 7 oz 95¢

Piggly Wiggly
Rubbing Alcohol 16 oz 59¢



303 South Wall - Floydada
983-2184

JOHN DEERE
BIG TRACTOR BONUSES
GET \$3,000
ON 4-WHEEL DRIVES
UP TO \$1,700
ON ROW-CROP TRACTORS



Tractor Model	Bonus July 15, thru Sept. 15, 1980	Bonus Sept. 16 thru Oct. 31, 1980
8640-4WD, 275 eng. hp	\$3,000	\$2,000
8440-4WD, 215 eng. hp	\$3,000	\$1,600
4640-2WD, 180 PTO hp	\$1,700	\$1,000
4440-2WD, 155 PTO hp	\$1,400	\$800
4240-2WD, 130 PTO hp	\$1,200	\$700
4040-2WD, 110 PTO hp	\$1,000	\$600
3840-2WD, 90 PTO hp	\$900	\$500

Floyd County Impl.
Ralls Highway - Floydada
983-3732



Sue Williams is a catalog sales merchant having bought the Sears store seven years ago. "I would like to stress that we are a Floydada business," Sue said. "we are on contract with Sears, but we are home owned and home operated." The store offers a full line of service and installation. "Some we do ourselves and some work is contracted". Leon Williams does the store's delivery and much of the installation. They also have a 24 hour emergency service. As a catalog store they can honor any Sears advertized price even if in another town. JoAnn Patterson and Sharon Ward also work at the store.



1980
Pontiac Sunbird Hatchback
Only One Left.

\$5,547.⁰⁰
Do It Today!
City Auto

Buick, Pontiac & GMC
201 East Missouri - Floydada - 983-3767

All Men's & Ladies
Timex Watches



10% OFF
(This Week Only.)

117 W. Calif. **White's Auto Store** 983-3514

...ney Long A

1930... boys, Leo... Weldon Lo... in the lineup of... State Teach... football team... season. Lo... captain of the... will be playing... for the Buffa... is a junior who... for two years... a guard... ing, a candi... nomination in... primary for... of Texas, spoke... house at the... Baker introduced... who devoted... his speech to... charges... against him by... one hundred... ended a meet... Isis Theater... Mason, mana-

ger of the oil m... connected with Lo... Irrigation Farm... the meeting with... talk on irrigation... produced Mr. Ulm... representative of the... son Pump Comp... California.
Mr. Ulmer told... the main princip... pumps for irrigatio... poses and gave... different sizes of... and how much wat... would supply.
Several farmers... signed up for pump... are getting ready t... wells. Mr. A.R. M... ther of Lockney... ment Co. is looki... the pump and well... ness and will be... tell interested far... about the irrigatio... tem.

Requires Checked

entering... the first time in... year must have... checked.
y-sixth Texas... passed the... Vision Screen... of 1979. The... the Act is to... children who are... a professional... ation to deter... they are... handicapped.
tute requires... children enrolling... blic, private... or denomina... for the first... have an eye... by a licensed... list or an ap... screening... primary target... udes young... tering kinder... first grade, and... nsferring into... hools from... te.
ory committee... of ophthalmol... public mem... emed with... isual problems... recommended... that screening... tests for visual... sic recommen... approved by... Board of

August 11, 1950
The Longhorns fo... workouts start next... Coach Curtis Kell... Elvin Lyons will sta... season with 11 lett... including C.B. S... Mac Howard, S... Conner, Orland G... Ray Ferguson, and... Baker in the bac... Linemen will be... Thompson, Bobby E... Tip Jeffcoat, Eddie... enberry and J... Woods.
Squadmen retu... are Pat Frizzell... Meriwether, Bobby... man, Bill Sherman... Carthel and Roger... in the backfield and... line are Joe Cunyus... nie Henderson, Ke... Williams, Carl Sam... Billy Terrell, Sid Th... Joe Taylor, Harold... fith and Bobby Griff... Floyd Barber, Jr... been named as temp... carrier of Rural Ro... He replaces Conde... who passed away... week.
Glenda Ann Read... spent Monday night... Tuesday with Bett... Farish.

SUMMER SELLABRA

Farm-N-M... Truck T... Prices... Featured at... \$48... and Bank

information re... the children's... eening program... obtained from:
Hearing and... ervices, Division... al and Child... Texas Depart... Health, 1100... Street, Austin... 66. Telephone... is: (512) 458-

August 11, 1960
The Lockney are... ceived from 2 1/2-3... ches of rain this... which will assure... very good crops this... Howard Mosley... ceived a patent... lubricating access... be used with gas po... irrigation engines... hopes to have the... sory manufactured... near future.



Voltaire was said... consumed 50 cups o... a day.

WES Crosby

Course#
Ag 134
Chem. 141
Eng. 131
His 131
Math 135
Psy 232
Spe 131
Spe 232
Occupational-Te
Mgt 135
Mgt 136
Mgt 233
Mgt 237
Mgt 238

For more info... P.S. SENIORS... may enr... will

Land Bank

ong-term... real estate... ans are... ible for... more than... uying land.

See us:
Federal ND BANK
Association
Land Bank Assn
OF Floydada
WALL 983-2471

Size	Code	Price
700-15-8	33-5813	\$ 8.95
700-15-8	33-5814	12.95
750-16-6	33-5821	14.95
750-16-6	33-5822	16.95
825-20-10	33-5842	19.95
900-20-10	33-5848	22.95
1000-20-12	33-5848	25.95

Counseling
Fuel Assn
404 East Missouri
983-3534

Lockney Long Ago

1930
Lockney boys, Leo
and Weldon Lo
in the lineup of
State Teach
football team
1930 season. Lo
captain of the
will be playing
for the Buffa
a junior who
for two years
guard.
Sterling, a candi
the nomination in
primary for
of Texas, spoke
house at the
Baker introduced
ing to devoted
charges
against him by
erson.
one hundred
attended a meet
irrigation
the Isis Theater.
Mason, mana-

ger of the oil mill and
connected with Lockview
Irrigation Farm, opened
the meeting with a short
talk on irrigation and in
troduced Mr. Ulmer, re
presentative of the John
son Pump Company of
California.

Mr. Ulmer told about
the main principles of
pumps for irrigation pur
poses and gave cost of
different sizes of pumps
and how much water they
would supply.

Several farmers have
signed up for pumps and
are getting ready to sink
wells. Mr. A.R. Meriweth
er of Lockney Implemen
t Co. is looking after the
pump and well business
and will be glad to tell
interested farmers about
the irrigation system.

August 11, 1950

The Longhorns football
workouts start next week.
Coach Curtis Kelly and
Elvin Lyons will start the
season with 11 lettermen
including C.B. Smart,
Mac Howard, Stanley
Conner, Orland Gilbert,
Ray Ferguson, and Norton
Baker in the backfield.
Linemen will be Barry
Thompson, Bobby Baxter,
Tip Jeffcoat, Eddie Fort
enberry and Johnny
Woods.

Squadmen returning
are Pat Frizzell, Doug
Meriwether, Bobby Dor
man, Bill Sherman, Teddy
Carthel and Roger Conner
in the backfield and in the
line are Joe Cunyus, Dea
nie Henderson, Kenneth
Williams, Carl Sammann,
Billy Terrell, Sid Thomas,
Joe Taylor, Harold Grif
fith and Bobby Griffith.

Floyd Barber, Jr. has
been named as temporary
carrier of Rural Route F.
He replaces Conde Davis,
who passed away last
week.

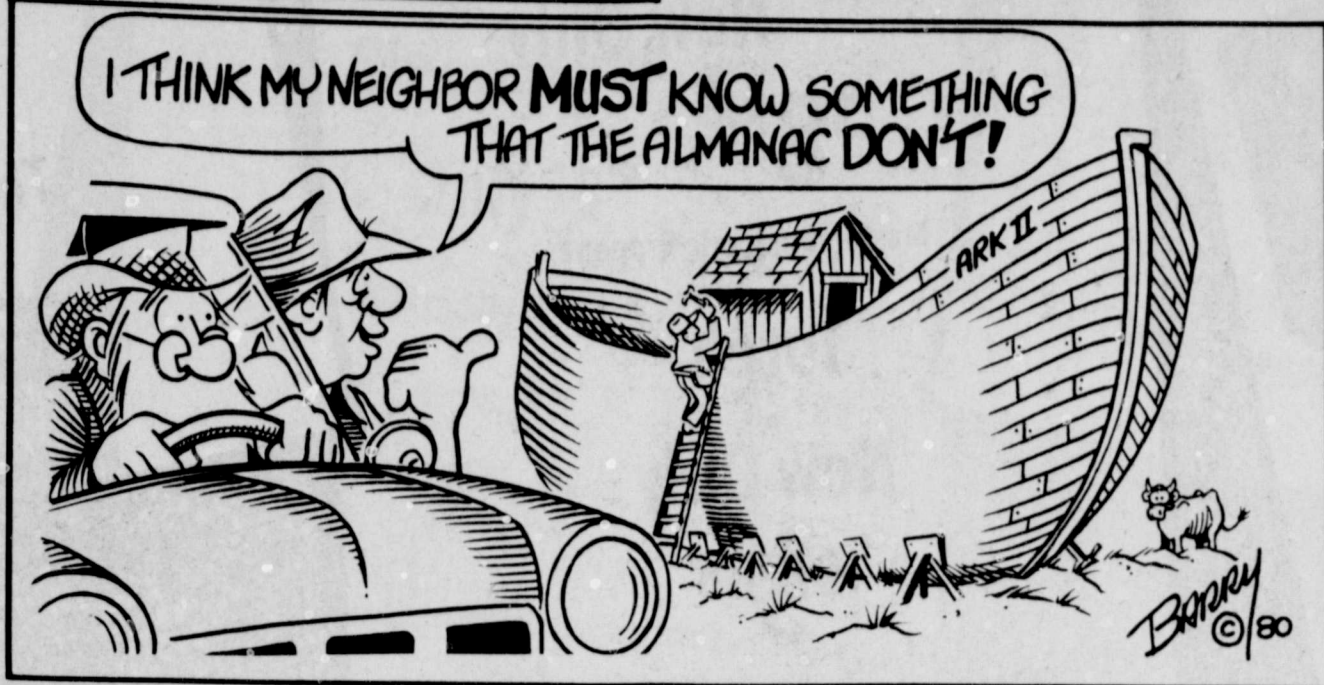
Glenda Ann Readhimer
spent Monday night and
Tuesday with Betty Sue
Farish.

August 11, 1960

The Lockney area re
ceived from 2 1/2-3 1/2 in
ches of rain this week
which will assure some
very good crops this year.
Howard Mosley re
ceived a patent on a
lubricating accessory to
be used with gas powered
irrigation engines. He
hopes to have the acces
sory manufactured in the
near future.



Voltaire was said to have
consumed 50 cups of coffee
a day.



CEDAR HILL NEWS

By Grace Lemons

We all enjoyed the nice
rain last week. It ranged
from 1.60 to 2 inches and left
the atmosphere cloudy and
cooler.

Rev. and Mrs. Vance Mit
chell and girls returned home
Wednesday from Eakly, Okla
homa where they had been
on vacation.

Mrs. Ruthie and W.M.
Clark of Plainview had din
ner Sunday in the home of
Edna Gilly.

Ernestine Gilly and Jan
ette Lackey of Floydada and
Edna Gilly went to Lubbock
Wednesday on business.

Norma Welch visited Jun
ior and Martha Taylor Wed
nesday. Martha's brother
and family, Mr. and Mrs.
Amos Glover and three girls
were visiting the Taylors.

Greer and Janet Lackey
and children Kelly and Troy
of Burleson arrived at the
home of his parents, Mr. and
Mrs. W.E. Lackey on August
14. Craig DuBois visited
them in the afternoon.

Saturday Benny Golightly
of Lubbock spent the night in
the home of her parents, Mr.
and Mrs. W.E. Lackey and
visited her brother and fam
ily.

Friday Lindsey Lackey
visited with the Lacks and
his brother Greer and family.

Saturday Wanda and Bill
DuBois and Quinn visited the
Lacks and all enjoyed
sandwiches for supper.

Greer and Janice and fam
ily left for their home in
Burleson Sunday morning.

Norma Welch visited Belle
Lemons Monday.

Clara Mize's niece and
husband Mr. and Mrs. J.H.
Green of Abilene visited in
the home of Mr. and Mrs.
A.S. Mize Friday and Satur
day.

Pauline VanHoose took
Edith VanHoose to Littlefield
Monday and Edith will re
turn home from there. Jeff
and Sherry Henson are still
guests in the VanHoose
home.

Alfred and Barbara Van
Hoose. They are moving to
Oklahoma City.

FLOYD DATA
Charley Berry attended
the Pharr Family Reunion
Saturday, and Sunday,
August 9 and 10.

His son, Harold, ar
rived from Amarillo, to
take him.

Ruby Surratt, of Mule
shoe, his niece, returned
him home Tuesday.

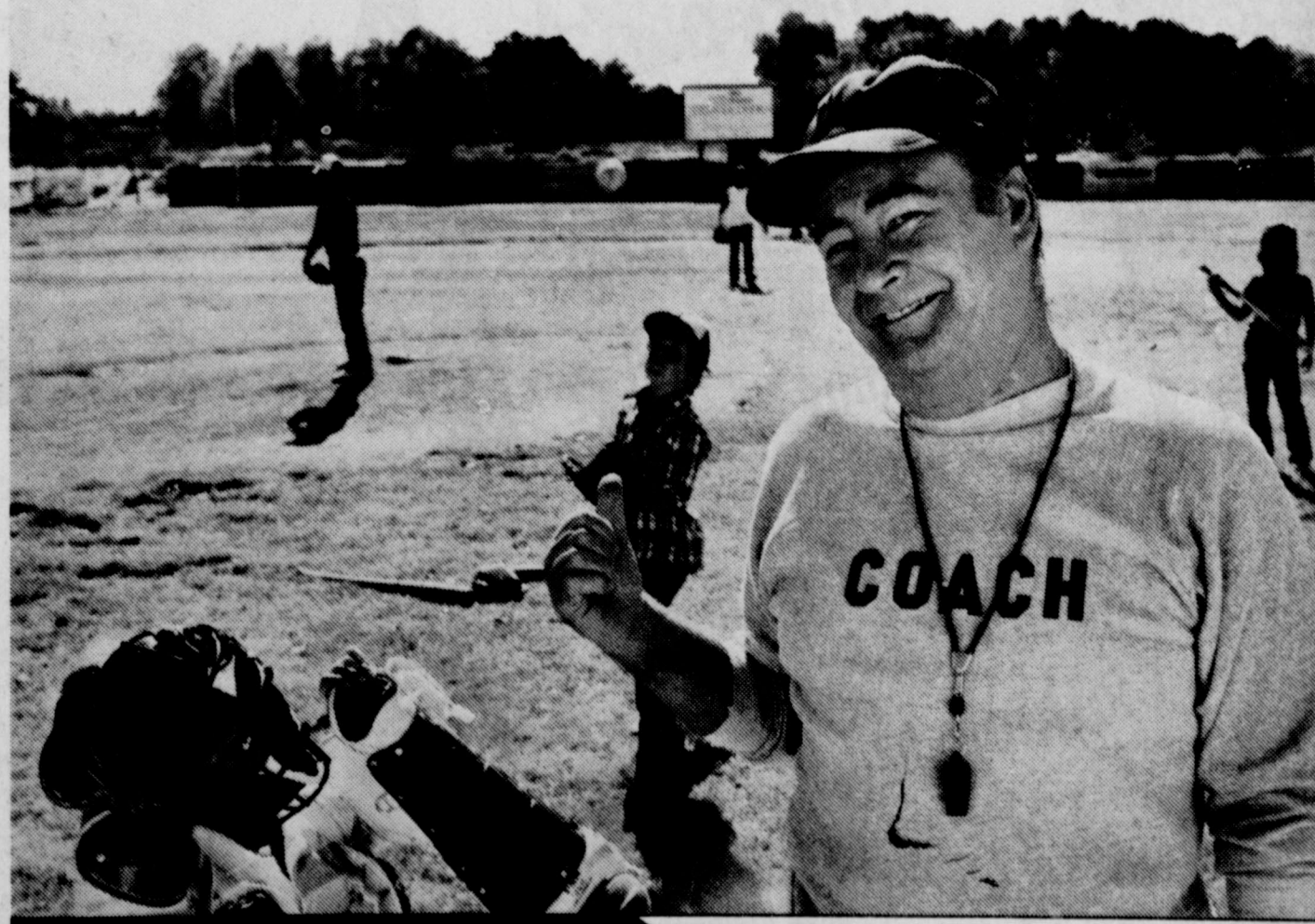
The reunion, which was
held at Elber Ewing's
home, was good, although
very few attended. Ar
minta (Berry Cain) arrived
by plane, from Lake Elsi
nore, California. Few
came from Ft. Worth,
Dallas and Wichita Falls,
by bus.

"With Direct Deposit the Government gives me more free time. And I give it to Louis, Roger, Barry, Mark, Scooter, Butch, Alan, and Theodore!"

Direct Deposit will give you the time to go wherever you want. And you can give it to someone else. Because you'll never have to stay at home waiting for your Government checks again. Your Social Security or other Government checks go straight to your personal checking or savings account. So you can go straight to your favorite vacation spot, Little League ball park, or grandchild. And know your money's safe and sound.

From coast to coast. Over 12 million people have discovered the convenience and safety of Direct Deposit.

Ask about it wherever you have a checking or savings account.



DIRECT DEPOSIT

You know your money's safe and sound

A Public Service of This Newspaper & The Advertising Council

United States Treasury

Requires
Checked

entering
for the first time in
this year must have
been checked.
Sixty-six Texas
were passed the
Vision Screen
of 1979. The
of the Act is to
children who are
of a professional
determination to deter
whether they are
handicapped.
statute requires
children enrolling
public, private,
or denomina
school for the first
time have an eye
exam by a licensed
optometrist or an op
thalmologist or an ap
pointed screening
primary target
includes young
entering kinder
garten first grade, and
transferring into
schools from
state.

visory committee
of ophthalmol
ogists and public mem
bers concerned with
these visual problems
recommended,
that screening
tests for visual
defects be recom
mended by the
Texas Board of
Education.

part of their pre
examination, a
group of children will
be visually
checked, there
fore, all children
entering kindergarten
for the first time in
this year. After
September 1, 1980, it
will be required that the basic
vision test and re
screening be uti
lized.

information re
the children's
screening program
is obtained from:
Hearing and
Speech Services, Division
of Special Services, Texas Depart
ment of Health, 1100
West Street, Austin,
Texas 78756. Telephone
(512) 458-

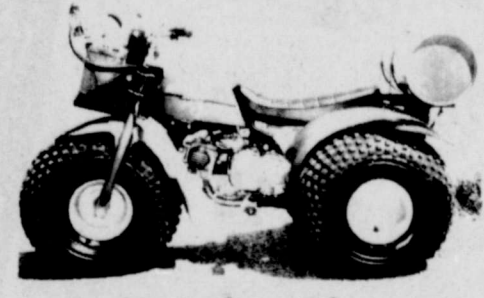
Land Bank

Long-term
real estate
loans are
available for
much more than
buying land.

See us:

Fidelity Land Bank
ASSOCIATION
Member LENDER
Land Bank Assn
of Floydada
P.O. BOX 983-2471

Three Wheel Weed Killer HONDA ATC 110 with spray rig



Cycle City

6523 Ave. H (Tahoka Hwy.) Open 6 days weekly
Lubbock, Texas 806-745-5070

WESTERN TEXAS COLLEGE

Crosbyton Extension Center Schedule Fall 1980

Snyder, Tx. 79549 Phone 915-573-8511
Registration: Thursday, August 21, 1980
6:30-8:00 p.m. Administration Building

Course#	Course Title	Day	Period	Instructor
Ag 134	Agri Econ.	M	6:30-9:20	Staff
Chem. 141	Fund./Chem. Lab	WTh	6:30-9:20	Stovall
		Tba	Tba	Barkowsky
Eng. 131	Comp. I	W	6:30-9:20	Walker
His 131	U.S. History	T	6:30-9:20	Staff
Math 135	Math Concepts	Th	6:30-9:20	Hamilton
Psy 232	Child Grow/Dev	M	6:30-9:20	Staff
Spe 131	Fund./Speech	M	6:30-9:20	Staff
Spe 232	Bus./Prof Speak	M	6:30-9:20	Staff
Occupational-Technical				
Mgt 135	Internship I	Tba	Tba	Sandel
Mgt 136	Internship II	Tba	Tba	Sandel
Mgt 233	Marketing	M	6:30-9:20	Sandel
Mgt 237	Internship III	Tba	Tba	Sandel
Mgt 238	Internship IV	Tba	Tba	Sandel

For more information please contact Mr. Chet Dye at 675-2618.
P.S. SENIORS who have the permission of their high school principal
may enroll for college credit courses. College hours earned
will be added to the student's transcript following
high school graduation.

Featuring This Week
Wheat Drills & Tandems
Land Tandems
Orders Discount Of 15%
Don't Wait!
Equipment & Supply
Floydada - 983-3751

Tender Crust Big Bag Bread 66¢
Extra Lean Hamburger \$1.69
Fresh Canned Cuits 6/\$1.00
Hormel Roast \$1.89
Reg '21

S&H Green Stamps
On Wednesday
Market
Floydada - 983-3105

SUMMER SELLABRAT
Farm-N-Mark
Truck Tire Prices

Featured at \$48.95

Farm-N-Market BUY IT!

Size	Code	Trade-in Price	Special Price
700-15/6	33-5813	99.90	89.95
700-15/8	33-5814	74.15	69.95
750-16/6	33-5821	75.40	69.95
750-16/8	33-5822	89.20	79.95
825-20/10	33-5942	165.30	149.95
900-20/10	33-5943	199.30	189.95
1000-20/12	33-5944	259.45	249.95

Counsumer Fuel Assn
404 East Missouri - Floydada
983-3394

Hand-Made
Baskets



(Large Assortment Of Styles & Sizes)
Rounds, Ovals & Oblongs

85¢ & Up

SCHACHT
Flowers, Jewelry & Gifts
"Our Pleasure Is To Serve You"
112 W. Ponlar - Lockney - 652-2385

Professional 26" Crosscut
Saw
Reg #1759 **Now Only \$888**
Master Mechanic Propane

Torch
Now Only \$588

"Where Customers Send Their Friends"
Davis Lumber & Tru-Value Hardware
652-3385 Lockney 102 E. Shubert

For All Your Back-To-School
Clothing Needs Shop
Brown's - Good Selection
All Departments
Including
The Latest In Fashions!



Brown's
104-06 North Main DEPARTMENT STORE
Lockney, Texas

Large Group Of
Giftware & Bridal
collections
Available


White Auto Store
South Main Lockney 652-21

Good Selection
Of Used Combines

Also Several Brands
Of New Plows
In Stock!

Always A Good Selection
Of Parts Available.

**Floydada
Implement Co.**
Lockney Highway - Floydada
983-3584



Fred Byrd has been in business in Lockney 28 years. He graduated from pharmacy school in 1943. He was discharged from the service in 1945. After that he owned a store in Oklahoma; he was in Levelland for one year; and Lamesa for two years before moving to Lockney.
They offer the best in prescription service, cosmetics, gifts, jewelry and veterinarian supplies. Employees, Lucy Delgado and Ruth Farish are pictured with Byrd.

**TOP BONUSES ON
JOHN DEERE
BIG TRACTORS
END SEPT. 15**



Buy or lease any of the new John Deere Tractors listed below by September 15 and you'll qualify for the top level John Deere Money bonuses shown. **BIG TRACTOR BONUSES** plus waiver of finance charges until March 1, 1981 - plus no payment on your annual payment contract until you harvest your principal crop in 1981!

Tractor Model	Bonus July 15 thru Sept. 15, 1980	Bonus Sept. 16 thru Oct. 31, 1980
8640-4WD, 275 eng. hp	\$3,000	\$2,000
8440-4WD, 215 eng. hp	\$3,000	\$1,600
4640-2WD, 180 PTO hp	\$1,700	\$1,600
4440-2WD, 155 PTO hp	\$1,400	\$1,000
4240-2WD, 130 PTO hp	\$1,200	\$ 800
4040-2WD, 110 PTO hp	\$1,000	\$ 700
	\$ 900	\$ 600

**PERRY
IMPLEMENT**
120 N. Main
Lockney, Texas

One Table
Office Supplies

0% OFF

Back to School
SUPPLIES

at
The
Lockney Bea
220 South Main
652

32 oz 6 btl ctn. **\$1.79**

Coca Cola

Shurfresh 1/2 gal **\$1.19**

Ice Cream

10 lb Bag Colorado Russell **\$1.59**

Potatoes

Page's Thriftway
221 North Main - Lockney - 652-2293

Check-Out
Our Great Selection Of
Western Apparel
For Men & Women
Including Boots
Also Good Range Of
Sizes & Styles In
Back-To-School
Clothing Moderately
Priced!

**Four-R
Western Wear**
102 1/2 Bryant Lockney TX

Large Loans

We Serve The All...
With Terms To Suit Your Needs.
We Welcome Your Account
Regardless Of Size, Come In & See
"The Friendly Folks"

Small Loans

The First National Bank
In Lockney Texas,



**We'll Answer
Medicinal**

Count on us to...
what the doctor...
have all the medicinal...
beauty aids you need

When you need any...
medication, we make...
that you have it...
Vitamins and...

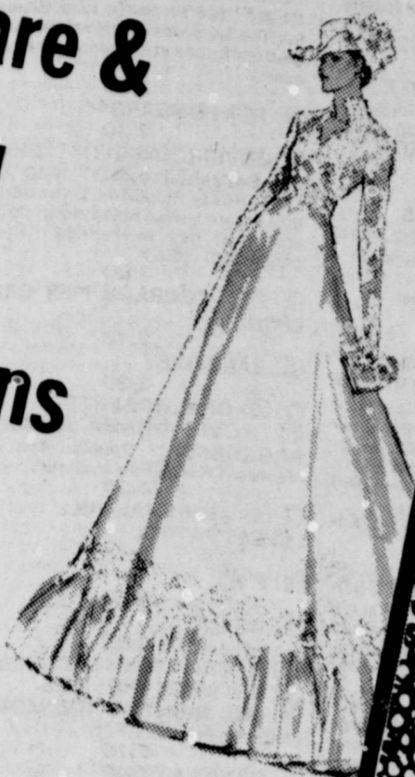


Space For
Sale

For All Your Back-To-School
Clothing Needs Shop
Brown's - Good Selection In
All Departments
Including
Latest In Fashions!

Brown's
DEPARTMENT STORE
Main Lockney, Texas

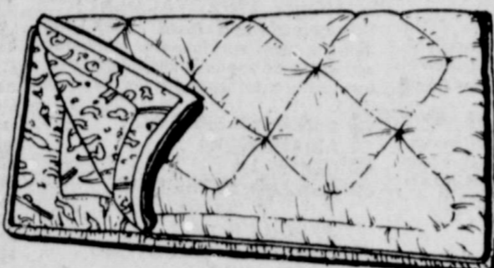
Large Group Of
**Giftware &
Bridal
Selections**
available



Cleaning Special

Regular Fiber Filled
Sleeping Bag
Only \$5⁰⁰

Normally \$7⁵⁰ & Up



Reecer's Cleaners

121 South Main - Lockney 652-2262

**The
Shadow Box**
South Main Street - Lockney, Texas



Good Selection Of
Ladies Blouses
(Plaids & Solids)

\$7⁹⁵ to \$9⁹⁵

**Select Now For
Back-To-School!**

A Special Thanks To All Our Customers For Making
"Old Fashioned Saturday Night" A Great Success!
(Lay-A-Way Welcome)

White Auto Store
Main Lockney 652-2145

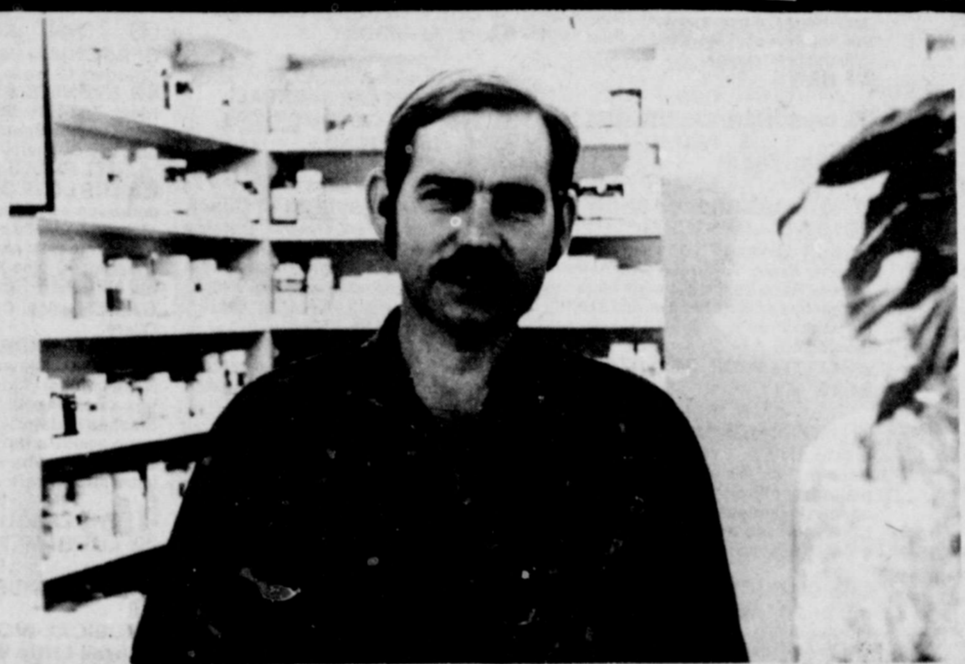
One Table
Office Supplies

50% OFF

**Back to School
SUPPLIES**
at

**The
Lockney Beacon**

220 South Main - Lockney
652-3318



Wilber Mize came to Lockney in 1963. He moved to his present location in 1968, combining two drugstores. He added a gift and cosmetics line. He then opened the T.V. shop adjacent to the drug store. The store sells R.C.A. televisions and video equipment. Whirlpool appliances, Cobra and Sanyo car stereos, and Tanglewood home stereos. They are both a sales and service store.

**Parts
And
Service**

Machinery Repair
Farm Equipment



Cisco And Adam Supplies

Martin And Co.

216 S. Main - Floydada - 983-3713

**TOP BONUSES ON
JOHN DEERE
BIG TRACTORS
END SEPT. 15**



Use any of the new John Deere Tractors listed below before September 15 and you'll qualify for the top level John Deere bonuses shown. **BIG TRACTOR BONUSES** of finance charges until March 1, 1981... plus no crop in 1981!

Tractor Model	July 15 thru Sept. 15, 1980	Sept. 16 thru Oct. 31, 1980
275 eng. hp	\$3,000	\$2,000
215 eng. hp	\$3,000	\$2,000
180 PTO hp	\$1,700	\$1,600
155 PTO hp	\$1,400	\$1,000
130 PTO hp	\$1,200	\$ 800
110 PTO hp	\$1,000	\$ 700
90 PTO hp	\$ 900	\$ 600

**FERRY
ELEMENT**
Lockney, Texas



**We'll Answer All
Medicinal Needs**

Count on us to stock what the doctor ordered. We have all the medicines and beauty aids you need.

When you need any kind of medication, we make sure that you have it promptly. Vitamins and toiletries.

Byrd
Phone 652-3318

**Come In & See Our
Complete Line Of
1981 RCA Televisions
Also 1981 Litton Microwave Ovens
Are Arriving At Low, Low Prices.**

Mize Pharmacy & T.V.

652-2435

102 South Main, Lockney

Space For

Sale



Consumer's Fuel Association is a farmer's owned co-op that opened in 1923. It is a full service station as well as farm fuel deliveries of gasoline, propane and diesel. They also do service on flats. "We have gone into a computerized bookkeeping system," said Charles Abbe, who has been manager for six years. Eddie Ellis is pictured with Abbe. "The future will be very challenging," Abbe predicted.

SPACE FOR

SALE

1:23 NIGHTBEAT
2:30 THE LESSON
MOVIE (SCIENCE FICTION)
MOVIE (COMEDY)
MOVIE (MYSTERY)
MOVIE (ROMANCE)
MOVIE (ACTION)
MOVIE (DRAMA)
MOVIE (MUSIC)
MOVIE (WESTERN)
MOVIE (HORROR)
MOVIE (THRILLER)
MOVIE (BIOPIC)
MOVIE (DOCUMENTARY)
MOVIE (SPORTS)
MOVIE (CHILDREN)

MOVIE (COMEDY)
MOVIE (ACTION)
MOVIE (DRAMA)
MOVIE (MUSIC)
MOVIE (WESTERN)
MOVIE (HORROR)
MOVIE (THRILLER)
MOVIE (BIOPIC)
MOVIE (DOCUMENTARY)
MOVIE (SPORTS)
MOVIE (CHILDREN)
MOVIE (SCIENCE FICTION)
MOVIE (ROMANCE)
MOVIE (MYSTERY)
MOVIE (COMEDY)
MOVIE (ACTION)
MOVIE (DRAMA)
MOVIE (MUSIC)
MOVIE (WESTERN)
MOVIE (HORROR)
MOVIE (THRILLER)
MOVIE (BIOPIC)
MOVIE (DOCUMENTARY)
MOVIE (SPORTS)
MOVIE (CHILDREN)

MOVIE (COMEDY)
MOVIE (ACTION)
MOVIE (DRAMA)
MOVIE (MUSIC)
MOVIE (WESTERN)
MOVIE (HORROR)
MOVIE (THRILLER)
MOVIE (BIOPIC)
MOVIE (DOCUMENTARY)
MOVIE (SPORTS)
MOVIE (CHILDREN)
MOVIE (SCIENCE FICTION)
MOVIE (ROMANCE)
MOVIE (MYSTERY)
MOVIE (COMEDY)
MOVIE (ACTION)
MOVIE (DRAMA)
MOVIE (MUSIC)
MOVIE (WESTERN)
MOVIE (HORROR)
MOVIE (THRILLER)
MOVIE (BIOPIC)
MOVIE (DOCUMENTARY)
MOVIE (SPORTS)
MOVIE (CHILDREN)

MOVIE (COMEDY)
MOVIE (ACTION)
MOVIE (DRAMA)
MOVIE (MUSIC)
MOVIE (WESTERN)
MOVIE (HORROR)
MOVIE (THRILLER)
MOVIE (BIOPIC)
MOVIE (DOCUMENTARY)
MOVIE (SPORTS)
MOVIE (CHILDREN)
MOVIE (SCIENCE FICTION)
MOVIE (ROMANCE)
MOVIE (MYSTERY)
MOVIE (COMEDY)
MOVIE (ACTION)
MOVIE (DRAMA)
MOVIE (MUSIC)
MOVIE (WESTERN)
MOVIE (HORROR)
MOVIE (THRILLER)
MOVIE (BIOPIC)
MOVIE (DOCUMENTARY)
MOVIE (SPORTS)
MOVIE (CHILDREN)

MOVIE (COMEDY)
MOVIE (ACTION)
MOVIE (DRAMA)
MOVIE (MUSIC)
MOVIE (WESTERN)
MOVIE (HORROR)
MOVIE (THRILLER)
MOVIE (BIOPIC)
MOVIE (DOCUMENTARY)
MOVIE (SPORTS)
MOVIE (CHILDREN)
MOVIE (SCIENCE FICTION)
MOVIE (ROMANCE)
MOVIE (MYSTERY)
MOVIE (COMEDY)
MOVIE (ACTION)
MOVIE (DRAMA)
MOVIE (MUSIC)
MOVIE (WESTERN)
MOVIE (HORROR)
MOVIE (THRILLER)
MOVIE (BIOPIC)
MOVIE (DOCUMENTARY)
MOVIE (SPORTS)
MOVIE (CHILDREN)

MOVIE (COMEDY)
MOVIE (ACTION)
MOVIE (DRAMA)
MOVIE (MUSIC)
MOVIE (WESTERN)
MOVIE (HORROR)
MOVIE (THRILLER)
MOVIE (BIOPIC)
MOVIE (DOCUMENTARY)
MOVIE (SPORTS)
MOVIE (CHILDREN)
MOVIE (SCIENCE FICTION)
MOVIE (ROMANCE)
MOVIE (MYSTERY)
MOVIE (COMEDY)
MOVIE (ACTION)
MOVIE (DRAMA)
MOVIE (MUSIC)
MOVIE (WESTERN)
MOVIE (HORROR)
MOVIE (THRILLER)
MOVIE (BIOPIC)
MOVIE (DOCUMENTARY)
MOVIE (SPORTS)
MOVIE (CHILDREN)

Eddie Rabbitt, Susan Raye To Appear At South Plains Fair

Eddie Rabbitt, who has become a major draw in Lubbock, will be making his third consecutive appearance at the 63rd annual Panhandle South Plains Fair here Sept. 20-27 go on sale August 15 at five new locations.

Tickets for stage attractions headlining the 63rd annual Panhandle South Plains Fair here Sept. 20-27 go on sale August 15 at five new locations.

General manager Steve L. Lewis said the tickets will be available for all seven shows at Ed's Wagon Wheel western wear store, Sears and Hemphill Wells stores at South Plains Mall, Luskey's Western Wear and Dunlap's.

Are You A Wristwrestler?

Limber wrists and flexing muscles will be put to the test August 23 as the Texas State Wristwrestling Championships are hosted by the Texas Forest Festival.

Winners in the four male and two female divisions will qualify for the World Wristwrestling Championships, Inc. telecast nationally every year from Pataloma, California. The World Championships will be held October 11.

Sanctioned by the WWCI, the Texas Championships will begin at 9 a.m. featuring two weight divisions for women: featherweight up to 151 pounds, lightweight 151 to 175 pounds, middleweight 176 to 200 pounds and heavyweight 201 pounds and over.

The release of "Eddie Rabbitt's Greatest Hits" underscores his rapid rise to popularity. Every song on the LP has been a number one hit on the country charts and several, most notably "Rocky Mountain Music," "You Don't Love Me Anymore" and "Every Which But Loose" were top hits as well.

"Suspicious," from the LP "Loveline," became his 11th straight number 1 country hit, setting a new record for the music industry.

Two of the songs he wrote, "Kentucky Rain" and "Pure Love," were made famous by Elvis Presley and Ronnie Milsap, respectively.

Miss Raye began by singing rock and roll when she was 16, also pursuing ballet. Buck Owens gave her a start while she was performing in a club in Portland, Oregon. Later, she appeared with Owens on "Hee Haw."

Subsequently, major trade publications such as "Record World" and "Billboard" chose her as the most promising female vocalists.

Wristwrestling, unlike arm wrestling, is not just brute strength. It takes agility and skill as two contestants grasp the base of each other's thumbs, clasp their left hands in a curl contact position directly below the clasped fists and the referee starts the match.



Benjamin Franklin said "He that falls in love with himself will have no rivals."

Got Heating Or Plumbing Problems? Call HOLMES PLUMBING Austin or Steve 983-2251 6:30 - 9:30 a.m. and 5:30 p.m. until!

INSUR-MATION

Floyd County Insurance Agency Jerry Cooper

My sister just renewed her life insurance policy without taking any kind of a physical. etc. What kind of policy is this? It sounds like your sister renewed a term life insurance policy which is written for a set number of years... one, five, ten, etc. The policy must be renewed to keep it in force.



CASE POWER & EQUIPMENT Your Case Power and Equipment Product Support Representative offers an invaluable service... * To assist in ensuring adequate parts availability at the dealership and in the Product Support Vehicle and in forecasting territory parts sales to meet your needs.

WE RESERVE THE RIGHT TO LIMIT QUANTITIES

Double Circle W Stamps



THOMASON

VENTURE GROCERY & MARKET
PHONE 652-3346 220 South Main Lockney

Venture FOODS

We Accept Food Stamps and WIC Cards

We Reserve The Right To Limit Quantity

Prices Effective August 18th-August 23rd 1980

MEAT SPECIALS	
HEAVY GRAIN FED BEEF BLADE CUT Chuck Roast LB.	\$1.19
HEAVY GRAIN FED BEEF CENTER CUT 7-BONE LB.	\$1.39
HEAVY GRAIN FED BEEF EXTRA LEAN Stew Cubes LB.	\$1.79
EXTRA LEAN GUARANTEED 81% LEAN CHUCK QUALITY LB.	\$1.59
WILSON CERTIFIED REGULAR Meat Franks 12 OZ. PKG.	99¢
FRESHWATER Catfish Fillets LB.	\$1.99

HEAVY GRAIN FED BEEF BONELESS

Chuck Roast

\$1.79
LB.



LOOK FOR THE
FREE
"BUN BUSTER"
FUN KIT OFFER
on specially marked
packages of Wilson's
Certified Franks

Free in the mail when you buy
3 packages of Wilson's Certified
Franks.

Full Color Fun Kit includes:
"Bun Buster" Iron-On
"Bun Buster" Decal
"Bun Buster" Embroidered Hat
Details on specially marked packages.

Family Pack Pork CHOPS LB	\$1.29
Loin & Rib Pork CHOPS lb.	\$1.59

Wrights Sliced Bacon lb.	99¢
--------------------------	-----

US NO. 1 RUSSET

Potatoes

\$1.59

10 LB. BAG

TEXAS VINE RIPENED Cantaloupe LB.	29¢	YELLOW SWEET Onions LB.	15¢
CALIFORNIA RED HAVEN Peaches LB.	49¢	TEXAS GREEN Cabbage LB.	17¢

Delsey Bathroom Tissue 4-Roll Pkg.	89¢
--	-----

Giant Size Cheer	\$1.19
----------------------------	--------

ENRICHED

Gladiola Flour

25 lb. Bag \$4.49

SHORTENING

Bake-Rite

3 LB. CAN \$1.19

PAPER

Hi-Dri Towels

2 ROLLS

TODAYS SHELF SPECIALS

Ranch Style 300 Cans Blackeye PEAS 3/\$1.00
Kraft Pourable Catalina, Italian, 1000 Island, Chunky Blue DRESSING 8 oz. Jar 69¢
Peter Pan Smooth or Crunchy 28 oz. Jar Peanut BUTTER \$1.99
Ragu Asstd. Spaghetti 15 1/2 oz. Jar SAUCES 89¢
Folgers Coffee Crystals 10 oz. Jar COFFEE \$4.99

Double Stamps	
Gebharts 15 oz. Can TAMALES	59¢
Shurfine Fresh Pack Cucumber CHIPS 16 oz. Jar	69¢
No-Wax Floor Treatment PERK 12 oz. Btl.	99¢
DAIRY & FROZEN FOODS	
MORTON Honey Buns 9 OZ. PKG.	59¢
BIG COUNTRY BUTTERMILK Biscuits 10 CT. CANS	79¢
KRAFT HALFMOON HORN COLBY/ Cheese CHEDDAR 16 OZ. PKG.	\$2.09

Reg. 99¢ Doritos	79¢
HEALTH & BEAUTY AIDS	
VASELINE LOTION Intensive Care 10 OZ. BTL.	\$1.19
VASELINE REG/HERBAL Bath Beads 15 OZ. BOX	\$1.29
PETROLEUM JELLY Vaseline 7.5 OZ. JAR	\$1.39

32 oz. 6-Pak. Dr. Pepper	01
Sugar Free Dr Pepper	\$1.19
Plus Deposit & Tax	
COTTON Q-Tips Swabs 70 CT. BOX	99¢
POLISH REMOVER REGULAR Cutex 4 OZ. BTL.	59¢

"POCKET THE CHANGE YOU SAVE AT VENTURE"

Base Doc
P.O. Box
Amarillo

CRIME
CALL
5200

Volume 79

ney, Whaley, Sho
Be Here For Fair

representative
Laney from
State Repre-
ster Whaley,
and State
Short on
be in Lockney
for go-carts, motor
etc. These will be
ribbons.

The bicycles w
divided into two divi
One division will b
under second grade
other division will
second graders and
Ribbons will be gi
the top three conte
in each division.

The parade is
duled for Thursday
noon, September 1
3:30 p.m. If any gro
organization plans t
cipate or would like
ther information, c
Mrs. Jim Martin, Ro
Lockney or call h
652-3594.

The success of th
parade depends on
participation of p
willing to exert the
and energy necess
make the parade wo

en Entrants Soug
Pageant Fair

arch is on for
ol-girls who
to enter the
Fair. Nancy
on, pageant co-
said that to
the pageant a suc-
"we really need
to enter."

Entrants must be
ol age, single,
married and an
citizen. Con-
ll model sports
long gown. No
necessary and
be no talent

The rehearsal w
Saturday, Septem
2:30 p.m. at the en
ment building on t
grounds.

All entrants ne
come to this rehear
Each contestant
individually inter
for two minutes
judges. The inte
will be at 2:00
September 13 on t
grounds. The page
be Saturday, Sep
13 at 7:30 p.m. D
for all entries is Sa
September 6.

ational Exhibits Needed

s, clubs, and
ons exhibits are
the education
nt of the Fair.

Exhibits must be in
by 12 p.m. Thurs-
September 11, and
remain until 9 p.m.
September 13
prizes. Exhibi-
begin putting up
at 4 p.m. Wednes-
September 10. Spa-
all is available. A
y be placed in
this space if

More About
Fair On Pag

Church To H

Open House

The South Plat
tist Church will be
an open house
night, August 31,
p.m.

There will be
throughout the
with the Gospel
group from the F
tist Church in F
providing the e
ment.

A Fellowship
cream supper will
for U-turns is
oming a problem.
way is not a
d should not be
such.

Everyone is we
attend.