

Helens, steam, dy Ber- after- as of Mr. during Bishop as Tech

tended the Alliance of- ing. p's et- game r. and

win of ma ar- to visit Mrs. necom- attend- ty for in the

Other inclu- Hale, Brown book; rque; Scott, Spine; nver; d Jill hoka; mings Judy v; g; erce.

Car- lass- aris and lson For the

A legacy left by his parents was the old family weather lore, the traditions and beliefs that often defy scientific explanation. Some- times scoffed at, many of them have an amazing high

percentage of re- The accuracy of the cac- ing for the man" is a simple but parents taught the closely the Em- How the weather on those days, year, almost how it will be the days. Krause be- The derivation term, "ember," but one theory comes from the Saxon "Ymbres" They were fast- ing and pray- thank- ing God for nature. For com- Roman Catho- Days were suc- 1095 specific da- signed and these days:

First Wednes- and Saturday after- Sunday in the Whitsunday (May). Exaltation Monday, October 13, at St. Lucius Day Court- house.

Spring Em- May 28, 29 and 30. The next Em- this year were 24, 26 and 27. Upcoming Em- are December 17, 18, 19 and 20.

If Mr. Krause's guide is true, the base the next three weather on the weekend, when a 3 1/2 inch rain, wheat and grass, cotton. You might ancient predic- it's true.

County Commissioners voted to discount for taxes paid in and a 2% discount for taxes quarterly. Regular procedure will be followed.

Commissioners met in regular session Monday, October 13, at the County Courthouse. The tentative rate has been set and the tax roll advising the re-evaluation of their tentative amount of the value may be contested. Dates have been set and are as follows:

County Commissioners will be set by the two Hospital precincts 1, 3 and 4. Lockney Hospital is precinct 2. The Plains Water Board set their tax rate at 177 cents.

County tentative rate was set at 177 cents. This includes a 15 cent special created several years ago. County general fund of 16 cents. Budget hearing was set for 10 at 2 p.m. at the County

ated that elected officials and employees at Floyd County will to keep their Blue Cross Blue insurance if employed by the five years or longer. Pre- mium to be paid by the policy later and in advance.

istrict Play ns Friday Night

ney Longhorns will begin the of competing in district ay this Friday night at Tulia e Hornets. Kick-off time is 8

ornets are 4-1 for the season only loss to Littlefield. The im is expected to be in good have two good backs in, is and Wade Littlefield. district action Floydada goes and Abernathy goes to

Beauty Salon ns In Lockney

ogers is now opening the new Cut and Curl Beauty Salon, located at ant in Lockney. has been a beautician for nine years. She specializes in the fashions, manures and the beauty line for men and and Curl Beauty Salon will be nday, Wednesday and Satur- ay, 17, 1980. will be a drawing for a nt on the 24th. Registration om the 17th through the 24th.

LINDA ROGERS, owner of the new Cut and Curl Beauty Shop, is pictured with her niece, Machele Dorcas. Linda will open for business on Saturday.

!!!! Shop Lockney First !!!!

Base Lockbinding P.O. Box 2550 Amarillo, Tex. 79105

The Lockney Beacon

Volume 79 Number 67

Lockney, Floyd County, Texas 79241

Thursday October 16, 1980

20 Pages in Two Sections

20 Cents

THE LOCKNEY BEACON (U.S. 317-220) is published weekly, each Thursday by Floyd County Publishing Co., 220 South Main Street, Lockney, Texas 79241. Second-class postage paid at Lockney, Texas 79241. Subscriptions rates: \$10.00 per year, outside of Lockney area \$11.50 per year. POSTMASTER: Send address changes to THE LOCKNEY BEACON, P.O. Box 187, Lockney, TX 79241.

Commissioners Tax Account

County Commissioners voted to discount for taxes paid in and a 2% discount for taxes quarterly. Regular procedure will be followed.

Commissioners met in regular session Monday, October 13, at the County Courthouse.

The tentative rate has been set and the tax roll advising the re-evaluation of their tentative amount of the value may be contested.

Dates have been set and are as follows:

County Commissioners will be set by the two Hospital precincts 1, 3 and 4.

Lockney Hospital is precinct 2. The Plains Water Board set their tax rate at 177 cents.

County tentative rate was set at 177 cents. This includes a 15 cent special created several years ago.

County general fund of 16 cents. Budget hearing was set for 10 at 2 p.m. at the County

ated that elected officials and employees at Floyd County will to keep their Blue Cross Blue insurance if employed by the five years or longer.

istrict Play ns Friday Night

ney Longhorns will begin the of competing in district ay this Friday night at Tulia e Hornets.

ornets are 4-1 for the season only loss to Littlefield. The im is expected to be in good have two good backs in, is and Wade Littlefield.

district action Floydada goes and Abernathy goes to

Beauty Salon ns In Lockney

ogers is now opening the new Cut and Curl Beauty Salon, located at ant in Lockney.



LOCKNEY MAYOR, CLAUDE BROWN signs a declaration proclaiming the week of October 19-25 as National Business Women's Week. Local B&P president, Merle Mooney and Gladys Ragle look on.

Annual Floyd County 4-H Awards Banquet Held

Melanie and Karyn Foster, daughters of Eddie Joe and Ann Foster, were named as recipients of the Gold Star Awards at the annual Floyd County 4-H Achievement Banquet on Saturday night at the Lockney Elementary Cafeteria. Other special awards were given to the following people: Foley Award, sponsored by the Foley Manufacturing Company, to Lisa Terrell. 4-H Sweetheart Awards, sponsored by Floyd County 4-H, to Jill Whitfill and Jodie Smith. Outstanding First Year Record Book, sponsored by Floyd County 4-H, to Sherri Kinard. Outstanding Junior Record Book, sponsored by Floyd County 4-H, to Lisa Terrell. Outstanding Senior Record Book, sponsored by Floyd County 4-H, to Melanie Foster. I Dare You Awards, sponsored by William H. Danforth, to Ronee Thornton and Mike Allen. Meritorious Service Awards, sponsored by Floyd County 4-H, to Texas Triumph Seed and Wilsons Electric. Outstanding Adult Leader Awards, sponsored by Lighthouse Electric Cooperative, to Joy Fulton and Buster Terrell. Gold Star Awards, sponsored by Mr. and Mrs. J.R. Turner, to Melanie Foster and Karyn Foster.



LINDA ROGERS, owner of the new Cut and Curl Beauty Shop, is pictured with her niece, Machele Dorcas. Linda will open for business on Saturday.

Chamber Makes Plans For Christmas and Banquet

The Lockney Chamber of Commerce met Monday morning, October 6, for breakfast at Strickland's Restaurant. Invocation was given by Rick Kellison. The Chamber agreed to have Santa Claus back in Lockney again this year. Don Vernon was appointed to contact him. Dee Copeland was appointed chairman of Christmas decorations for downtown Lockney. Claude Brown reported on Mackenzie Water Project. Chamber voted to support this project when bond comes up for vote. Those in attendance were: Lawson Rowell, Dee Copeland, Ricky Kellison, Claude Brown, Gail Kring, Margaret Schacht, Don Vernon, Ray Howell, Jerry Cooper, Mike Perry and Gayle Fortenberry.

For What It's Worth

I've just seen this year's edition of the Panhandle-Plains Basketball magazine and the Lady Horns, to no ones surprise, are picked to win the 3-AAA title. In the boy's division, the Longhorns are picked for the fourth spot. The Lady Horns are returning five all-district players for the year and the Longhorns are returning one. There is one oversight in the publication and that is the omission of Penny Sterling and Connie Coffman on the all-district honor roll. There are copies of the magazine on sale at the Beacon office for \$2.00 per copy. Elvin Lyons was recognized this past weekend at Olton when he was inducted into the Olton High School Athletic Hall of Fame. He and Don Patterson, another Olton ex, served as grand marshals of the Homecoming Parade. Richie Reecer, a former Lockney resident, has been doing a lot of writing for the Lubbock A-J. Another former Lockney resident, Milton Adams, is also associated with the A-J as photographer. Congratulations to both of them for doing a good job.



WAYNE STURDIVANT

Rotary Governor To Address Lockney Club

Lockney, October 17, 1980 — The Rotary Foundation will be the subject of an address to the Rotary Club of Lockney at its regular noon luncheon meeting on Friday, October 17, by Wayne Sturdivant, governor of this Rotary district. Mr. Sturdivant, of Amarillo, will also confer with John Tye, president of the local club, and club officers on the group's service activities this year. Mr. Sturdivant is one of 381 Rotary governors throughout the world who are representatives of Rotary International in districts composed of member clubs. Each district leader supervises the clubs in his area. A member of the Rotary Club of Amarillo, Mr. Sturdivant is a senior partner in the law firm of Gibson, Ochsner, and Adkins. He was elected to office at the Rotary International convention in Chicago, Illinois, U.S.A., in June, 1980 and will serve until June 30, 1981. Rotary, with more than 18,000 clubs in some 150 lands, is an organization of business and professional men who provide humanitarian service encourage high ethical standards in all vocations and help build good will and peace in the world.

Town Crier

NOTICE Band Boosters will meet Monday, October 20, at 7:30 at the Band Hall. The annual Band Bazaar will be discussed.

This week's football contest winners are: 1st, Michael Means; 2nd, Anne Lee and 3rd place, Homer Ragland.

A Nurses Aide Course will be taught beginning Monday, October 20, at Caprock Hospital. Anyone interested should be at Caprock Hospital at 8 a.m. Monday morning. The course will be taught all day for about three weeks. The course will be taught free of charge and no pre-registration is necessary.

It will be open to anyone interested in basic fundamentals of patient care and should be of interest to anyone seeking a career in this line of work. The latter part of the course, everyone will be doing some patient care.

NOTICE "The Jaws of Life" will be demonstrated at the Lockney Fire Station at 6:30 p.m. on Friday, October 17. The public is invited to come by and see the demonstration.

WE RESERVE THE RIGHT TO LIMIT QUANTITIES

THOMASON

VENTURE GROCERY & MARKET
PHONE 652-3346 220 South Main Lockney

We Reserve The Right To Limit Quantity.



Double Stamps On Wednesday

We Accept Food Stamps and WIC Cards
These Specials Good 7 Days A Week
October 16th To October 22, 1980



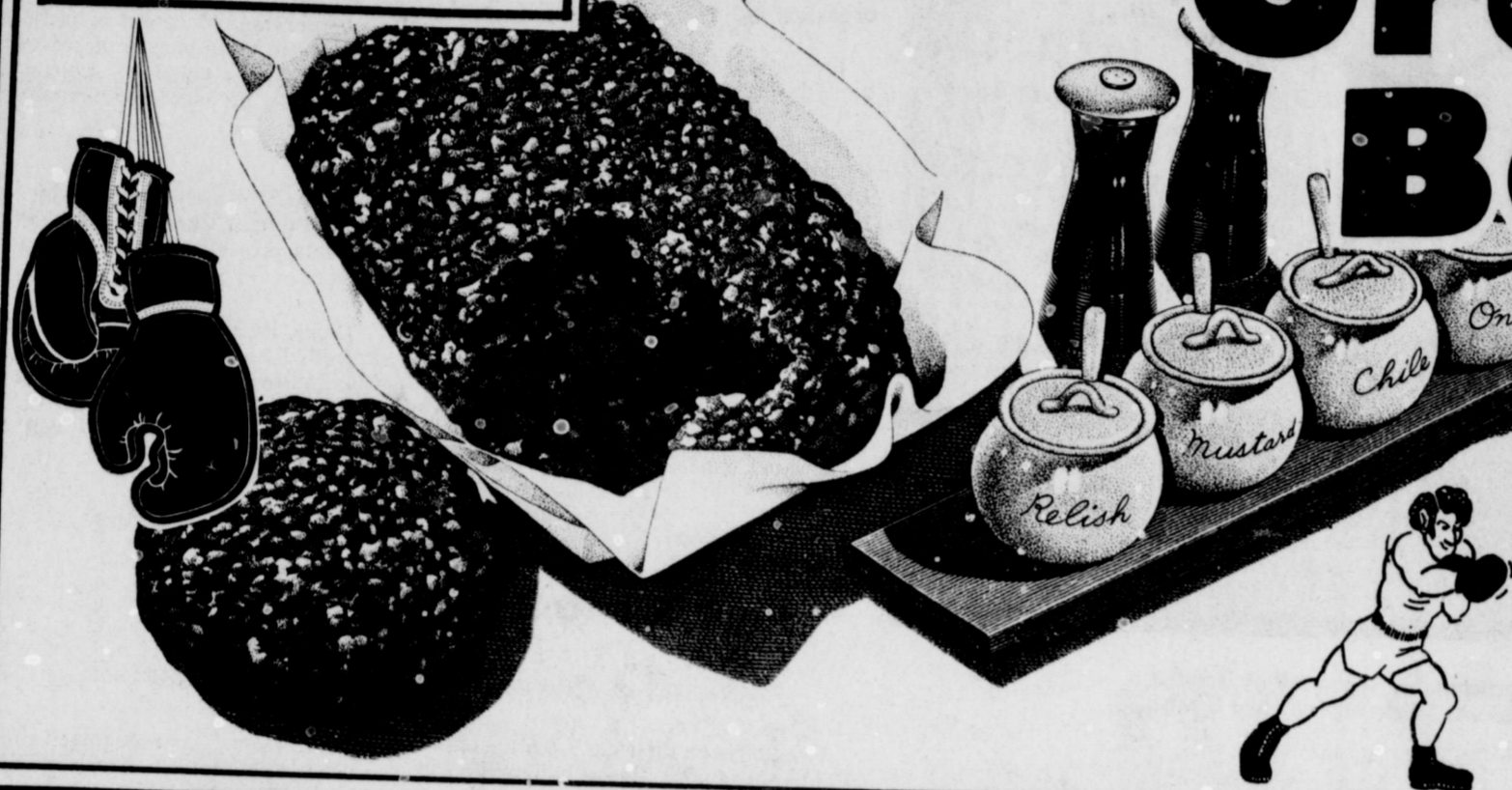
Open Monday - Saturday 8:00 a.m. - 8:00 p.m.
Sunday 8:00 a.m. - 5:00 p.m.

HEAVY GRAIN FED BEEF BONELESS
Chuck Roast
LB. **\$1.89**

LEAN FRESH GUARANTEED 81% LEAN

Ground Beef

\$1.39
LB.



MEAT SPECIALS

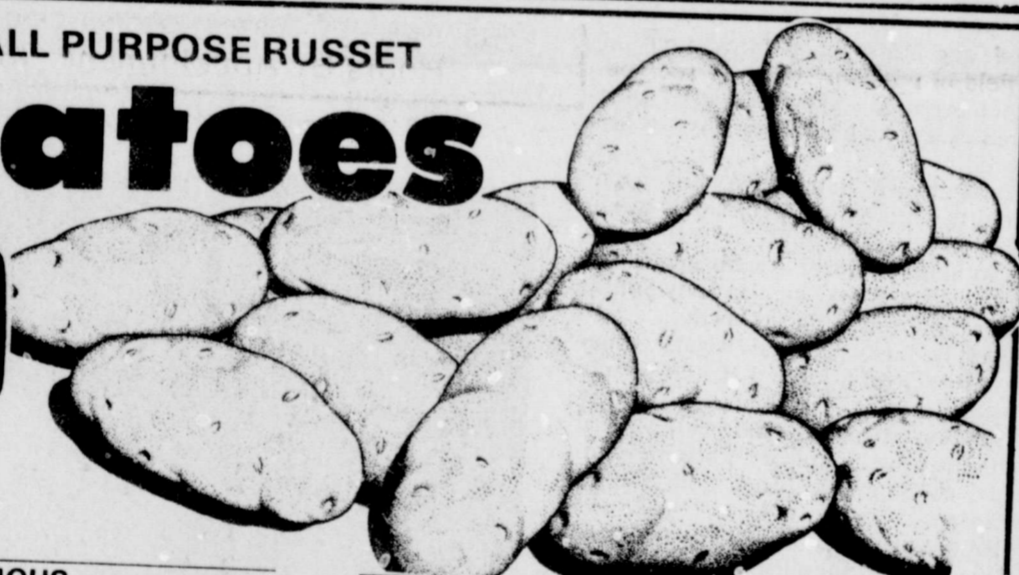
See Us For Custom
Beef 1/2 Or Whole

- HEAVY GRAIN FED BEEF EXTRA LEAN **Stew Cubes**
- OSCAR MAYER REG/ **Meat Wieners**
- OSCAR MAYER REG/ **Beef Franks**
- OSCAR MAYER MEAT/BEEF REG/ **Sliced Bologna**
- OSCAR MAYER SLICED CHOPPED **Ham & Cheese**
- Heavy Grain Fed Beef lb **Rib Steak**
- OSCAR MAYER SLICED **Cooked Ham**

Watch For FREE Silver Dollar
Inside Meat Packages

Potatoes

\$1.49
10 LB. BAG



COLORADO ALL PURPOSE RUSSET
CALIFORNIA RED DELICIOUS **Apples** LB. **39¢**
CALIFORNIA RUBY RED **Grapefruit** 4 LBS. **\$1**

TEXAS **Cucumbers** LB. **19¢**
TEXAS GREEN **Cabbage** LB. **15¢**

WOLF PLAIN Chili
19 OZ. CAN **\$1.19**

BETTY CROCKER Au Gratin Potatoes
5 OZ. PKG. **69¢**

DUNCAN HINES DELUXE II Assorted Varieties Cake Mixes
18 1/2 OZ. PKG. **89¢**

HEALTH & BEAUTY AIDS TABLETS
DRISTAN 24 CT. BTL. **\$1.59**

DRISTAN Nasal Mist
15 CC. BTL. **\$1.59**

ARTHRITIS PAIN FORMULA
ANACIN 40 CT. BTL. **\$1.39**

LAUNDRY DETERGENT
King Tide 84 OZ. BOX **\$2.99**

BATHROOM WHITE/ASSTD.
Charmin Tissue 4 ROLL PKG. **\$9.99**

HARVEST TIME OF VALUE WITH Del Monte

- DEL MONTE CS/WK **Gold Corn** 2 17 OZ. CANS **79¢**
- DEL MONTE **Sweet Peas** 2 17 OZ. CANS **79¢**
- DEL MONTE FRENCH SLICED **Green Beans** 2 16 OZ. CANS **79¢**
- DEL MONTE **Tomato Juice** 46 OZ. CAN **69¢**
- DEL MONTE YC SLICED/ **Halved Peaches** 29 OZ. CAN **79¢**
- DEL MONTE CRU/SLICED **Pine-apple** 15 1/2 OZ. CAN **59¢**
- DEL MONTE KOSHER STYLE **Tiny Dills** 15 OZ. JAR **79¢**

DAIRY AND FROZEN FOODS

- Shurfresh Medium **Eggs** Dozen **69¢**
- SHURFINE FROZEN **Orange Juice** 12 OZ. CAN **69¢**
- MORTON CKN/BEEF/TKY **Pot Pies** 2 FOR **69¢**
- LIPTON **Tea Bags** 48 CT. BOX **\$1.99**
- GLAMORENE **Spray'N'Vac** 24 OZ. BTL. **\$1.99**
- Reg 99¢ **FRITOS**
- Peanut Butter **PETER PAN** 12 OZ. JAR **\$1.99**

LOOK OVER THESE CANDIDATES FOR BEST FOOD VALUES OF THE WEEK!

labor De old Lu

hearings are being conducted in Lubbock, Texas, and are open to the public. The labor union will explain the labor contract to the public. The labor union will explain the labor contract to the public. The labor union will explain the labor contract to the public.



GOLD STAR AWARD
Karyn Foster are p



4-H AWARD
Mitchell and
Terrell and Sher



MORE AWARDS
Heather Holt,

Adventure FOODS

Monday - Saturday 8:00 a.m. - 8:00 p.m.
Sunday 8:00 a.m. - 5:00 p.m.

MEAT SPECIALS

See Us For Custom Beef 1/2 Or Whole

- HEAVY GRAIN FED BEEF EXTRA LEAN **Stew Cubes** 1 LB \$1.79
- OSCAR MAYER REG/Meat **Wiener** 1 LB PKG. \$1.79
- OSCAR MAYER REG/Beef **Franks** 1 LB PKG. \$1.79
- OSCAR MAYER MEAT/BEEF REG/ **Sliced Bologna** 12 OZ PKG. \$1.79
- OSCAR MAYER SLICED CHOPPED HAM/ **Ham & Cheese** 8 OZ PKG. \$1.79
- Heavy Grain Fed Beef lb **Rib Steak** \$1.79
- OSCAR MAYER SLICED **Cooked Ham** 8 OZ PKG. \$1.79

DISINFECTANT \$2.99 84 OZ. BOX

WHITE/ASSTD. **min 99** 4 ROLL PKG.

DEL MONTE **Tomato Juice** 46 OZ. CAN 69¢

DEL MONTE YC SLICED/ **Halved Peaches** 29 OZ. CAN 79¢

DEL MONTE CRU/SLI/CHK **Pine-apple** 15 1/2 OZ. CAN 59¢

DEL MONTE KOSHER STYLE **Tiny Dills** 15 OZ. JAR 79¢

PRICE FIGHTERS

LIPTON **Tea Bags** 48 CT. BOX \$1.49

GLAMORENE **Spray'N'Vac** 24 OZ. BTL. \$1.49

Reg 99¢ **FRITOS** 79¢

Peanut Butter **PETER PAN** 12 oz. jar 89¢

ATES

Labor Department To Hold Lubbock Hearing

Hearings are being conducted in the United States and are open to the public. The labor department will explain the labor laws to the public.

Very lucky to have this hearing in Lubbock," Darrell Krenk, labor specialist with the Department of Labor wage and standards division, said. "The people coming here will be able to see the field," Krenk said. "Farmers will say they don't know the laws or haven't heard of them. We will give each one a copy of the labor laws and explain them to them. We will be conducted under government rules and regulations. If anyone wants to be on the witness list can notify the committee by mail. Address the request to: U.S. Department of Labor, Regional Office, 555 Griffin Square Building, Room 800, Dallas, Texas 75202.

The hearing will be conducted over a five hour period. "We expect to have plenty of time for everyone to voice their opinions even if they aren't on the official witness list," Krenk said.

Those attending from the labor department will be representatives of: Occupational Safety and Health Administration (OSHA); Training/ Administration, those who work with the Texas Employment Commission; Wage/Hour Standards Administration.

There will be translators available for English and Spanish. The translators will be uninterested parties even though hired by the department. Headphones will be used for translation rather than loud speakers.

The U.S. Department of Labor is holding a public hearing concerning labor regulations as they pertain to agriculture. The hearing will be conducted at the Lubbock Memorial Civic Center on October 21 from 2-5:30 in the afternoon and from 7-10 that night.

The meeting is one of four being conducted in the state of Texas. It will allow the labor officials to explain the laws affecting the agricultural industry. More important those attending will be able to participate in a public discussion of the laws that effect their business.

Farmers, farm workers, and farm groups are invited to attend and to give their opinions and ask questions.

The Labor Department representatives will include all of the decision makers and enforcers from the regional office in Dallas. Representatives from Washington, D.C. are also expected to attend.



GOLD STAR AWARD WINNERS Melan'e Foster (left) and Karyn Foster are pictured with County Judge, Chloise Smith.



4-H AWARD WINNERS—Front row, (left to right): Matt Mitchell and Gwen Lane. Back row are Jodie Smith, Lisa Terrell and Sherre Kinard.



MORE AWARD WINNERS: Jill Whitfill, Karyn Foster, Heather Holt, and Earl Brosech.

J.P. Doodles

by Barry McWilliams



Floydada Registration For Adult Church Plans Education Classes Begin Bazaar

Make plans now to attend the First Methodist Church Christmas Bazaar and Turkey-N-Dressing dinner on Saturday, November 1. Tickets for the meal can be bought before hand at the church office or may be purchased at the door. The prices will be \$3.50 for adults and \$2.00 for children and under. It will be a buffet style meal. "Take Out" meals trays will be available.

Numerous and varying items will be donated by members and will be sold at the Bazaar. The Bazaar will begin at 9 a.m. and continue until 12:00. Lunch will begin at 11:30 and go until 1:00. At 12:30 the auction will begin. Any items that haven't sold previously or the "extra big and special" items will be up for sale at this time. Door prizes will be given away after the auction.

Get your Christmas shopping done early and at the same time benefit the Methodist Church as it used half of the profits earned on various projects in the church and the other half going out to the field of missions. Hope to see you there!

Mr. Raymond Lusk, director of Adult Basic Education for the Lockney I.S.D., announces registration for adult basic education classes. Interested adults may request classes by contacting Mr. Lusk at Lockney Junior High School or by calling 652-2236. Classes are open to all persons who want to work toward a G.E.D. Certificate, or improve their skills in reading, mathematics, writing, or language. The G.E.D. Certificate is equivalent to a high school diploma and is awarded after the student passes the G.E.D. Test.

The classes will include work on every level from beginning reading, math, writing, and speaking up to review and preparation for the G.E.D. Classes in English as a second language will be offered if demand is great enough.

Classes are offered free and sponsored by Lockney I.S.D. and Plainview Adult Basic Education Cooperative, and students may enroll at whatever class level meets their needs.

Detailed information can be obtained by calling 652-2236.

Richard R. Stafford, Ph.D
PSYCHOLOGIST
Announces The Opening Of His Full-Time Private Practice In Counseling For Individuals, Couples, Children and Families

STRICTLY CONFIDENTIAL
Hours By Appointment (806) 293-8848

You Don't Need a Magic Formula to Make Money Grow!

Just regular deposits into a good, solid savings plan will do... one that offers the highest interest rates allowed by law. We have a number of plans to fill the bill... one's just right for you!

"Helping You Change Things For The Better"

THE FIRST NATIONAL BANK OF FLOYDADA

FLOYDADA, TEXAS 79235 MEMBER F.D.I.C.



"WHAT KIND OF DEAL CAN I GET ON THIS OLD TRACTOR?" questions Timothy Mitchell, one of Lockney's future farmers. Timothy is the 21 month old son of Warren and Charlotte Mitchell.

Plainview Chamber Orchestra Opens Season

Plainview Chamber Orchestra will be having its opening concert of the 1980-81 season on Monday, October 20, at Herral Auditorium. Kerry Kirk, tuba player, and Sunny McDonald, violinist, both of Floydada, will be performing.

The 40-member chamber orchestra, made up entirely of local and area musicians, opens the season Monday, October 20, at Herral Auditorium. The program will include Handel's Overture to the Royal Fireworks Music,

Haydn's Symphony No. 104 in D Major (London), Musorgsky's Coronation Scene from the Opera Boris Godunov, Strauss' Prince Radetzky March, and Copland's Fanfare for the Common Man.

Trumpeters Larry Burks and Steve Thomson will be featured Monday, November 24, at 8:15 p.m. at Herral Auditorium in playing Vivaldi's Concerto for Two Trumpets and Orchestra in C Major. The program will also include other orchestral works.

Pianist Mark Pair will play Rachmaninoff's Concerto No. 2 in C Minor for piano and orchestra Thursday, February 5, at Herral Auditorium. Again, the program will include other works.

Wayland International Choir and the Plainview Chamber Orchestra will conclude the season Thursday, April 23 at First Methodist Church with Mozart's Requiem Mass in D Minor.

The chamber orchestra is conducted by Dale Daniels, director of music at First Methodist Church, Plainview.

Single tickets for \$5.00 each, season tickets for \$16 each, and student season tickets for \$8 each are available from Sunny McDonald at 983-3532 after 5 p.m. In the event another pops concert is scheduled this summer, free tickets to it will be mailed to season ticket holders. Contributions in the amounts below will be listed in the season's programs: \$25, Sponsor; \$250, Patron; \$50, Supporter; \$500, Benefactor; \$100, Sustainer; and \$1,000, Angel.

Editor's note: The Floyd Philosopher on his Johnson grass farm has encountered a new theory out of Washington.

Dear Editor:

A new medical theory has originated in Washington that requires a close examination.

According to a National Educational Committee's report to the Department of Health and Welfare, by 1990 there will be 70,000 surplus doctors in this country. This, the committee said, will run the cost of medical services billions of dollars above the 200 billion a year it now costs, because "more doctors will be doing more things to more people, without necessarily improving their health."

In other words, the more doctors there are, the more they're going to find wrong with you. Or, the amount of sickness increases in proportion to the number of doctors around to treat it.

I don't believe doctors will agree with this theory, but if it works, if the more doctors the schools turn out the more we'll have to pay for medical services, then I'd like to see the theory put to a wider use.

For example, apply it to ranchers, the more cattle they produce, the more they get per cow or calf. Or apply it to farming. The more cotton farmers produce, the more they get for it. I don't know of any doctors agreeing with this new theory but farmers and ranchers would endorse it unanimously.

Come to think of it, this theory has already been adopted in some areas by Congress. For instance, the more lawyers the schools turn out, the more laws Congress passes to give them something to do. And the people who make x-ray film have discovered the theory. The more film they produce, the more x-rays hospitals have to take.

For some reason, this theory hasn't worked with car manufacturing.

Yours faithfully,
J.A.



MYRTLE BURK, left, and SALLY CARPENTER, seated, tied for the title of October at the Lockney Care Center. Shirley Stansell was voted as employee of the month.

Homemakers Discuss Today's

Four Floyd County Extension Homemaker Club members, Mrs. Bess Carr, Mrs. Lillian Smith, Mrs. Elvira Stewart and Mrs. Sybil Teeple have been hearing "Helloise" and author Jane Jefferstrom during the Texas Extension Homemakers Association annual meeting this week at the El Tropicana Hotel in San Antonio.

They have joined more than 1,000 other delegates from across the state as

Texas Extension Homemakers Association members gathered and discuss today's family. They are attending workshops concerning family life, health, safety, citizenship, 4-H and youth, recreation and cultural arts, and will bring back information to share with other Extension Homemaker Club members in Floyd County.

Keynote speakers addressing the convention are author Jane Segerstrom, speaking



Tractor Shop Gain Sign

of yield. Pro by De meet ed to reser on FM J.N. presid barbe viewe tractor At Western Grand seven- ance C Bree increas ed by second multi- leads to the fe "origi seven y

of instrument classing of all Plains cotton is scheduled next year at USDA's classing station in Lubbock. In addition to fiber length, and micronaire, cotton leaf and trash content and seven characteristics will be the grower's green class

ated that fiber strength a major factor in selectivity before the end of the on breeder. I can say that strength stripper varieties do best is yet to come in terms

Computers To T and At Marke

of the computer is in a good sale" p cattle is price. C market not got back he Since tion, h and se specific stocke get the better empha But enthu opport special calves, adequ this, b special expose about Sart good l sion of effici more e-hoe about more he said bought sold by Foll tors in Aacti

system works this way. A requests a grad from a terminal location to list and the cattle he wants to sell. breed, flesh condition and dist- inguishing features. The also put a "no sale" price on which means he does not them for less than a certain

information is then run through a computer and is transmitted on a tube (CRT), a television-like screen. The system can also produce a listing description. A consign- ment through Cat- 4,000 pounds, and all consign- to 44,000 pounds must be op an auction in the computer explained Davis. Consign- 44,000 pounds, or a truck be sold "on ranch."

er advantage of this system is poses smaller lots of cattle to ers," emphasized Bliss. "I a system that offers a lot of because it offers more ext- cattle and really benefits ers and sellers. I like the way described and the grader's

seller of the first lot of "on title, noted that a big advan- case was that the cattle did leave his ranch to be sold. "I e to truck these cattle, and plus. The cattle were fresh and they didn't suffer any stress or weight loss. And I got

We Reserve The Right To Limit Quantities
Specials Good While Supplies Last

Allsup's Convenience Stores

Lockney

Prices Effective October 16-22
Save More By Shopping With Us

Don't Box Up Your Food Dollars Sack Up On Our Good Buys

<p>Allsup's Milk \$1.59 gal</p>	<p>Kraft 2lb Grape Jelly 89¢</p> <p>3 lb can Crisco \$1.69</p>	<p>Folger's 1 lb Coffee \$2.69</p> <p>Fresh Pumpkins \$1.99</p>	<p>Grade A Large doz Eggs 49¢</p>
<p>Bar B Que Sandwich</p> <p>Borden's 6 ct pkg Nutty Buddies</p> <p>Borden's 1/2 gal Buttermilk</p> <p>Borden's Ice Cream 6 count Sandwiches</p>	<p>Buy One Get One Free</p> <p>99¢</p> <p>\$1.09</p> <p>99¢</p>	<div style="border: 1px solid black; padding: 10px; text-align: center;"> <p>Allsup's 1 1/2 lb Bread 3/\$1.00</p> </div>	<p>Libby's 7 oz Vienna Sausage 3/\$1.00</p> <p>Chicken Of The Sea 6 1/2 oz can Tuna 89¢</p> <p>Velveeta Cheese 2 lb \$2.99</p> <p>Parkey 1 lb Stick Margarine 59¢</p>
<p>Borden's Ice Cream Asst Flavors \$1.49</p>	<p>Borden's qt Chocolate Milk 69¢</p> <p>16 oz NR Bottle 6 pack Pepsi Cola \$1.59</p>	<p>Large Reusable Tiffany Style Tumbler Filled With Fountain Coca Cola 49¢ Each</p>	<p>All Brands And Sizes Cigarttes \$5.39 Limited Supply</p>

FARM & RANCH NEWS



Porter Staple Cottons Stand Gain Significantly

Staple cottons stand to gain as mills turn more and more to spinning to step up end use costs.

News for Plains growers came today by Jerry Carroll, manager, Southwestern Division, Pine Co., at a field day by the company at Idalou.

Carroll sized that strength is a key in end spinning and that the fact that cottons are spun on the Plains with good strength.

Carroll estimated that spinning in the United States consumes 35 percent of U.S. production in the 1980's as compared with 14 percent at present.

Carroll says for open end spinners concentrating on (1) high strength varieties with good fiber and (2) confirmation of fiber through wholesale instrument classing of all Plains cotton is scheduled for next year at USDA's classing offices. In addition to fiber strength, micronaire, cotton leaf and trash content and seven characteristics will be on the grower's green class.

Carroll estimated that fiber strength is a major factor in selectivity before the end of the cotton.

Carroll, a cotton breeder, can say that the strength stripper varieties do the best is yet to come in terms of yield and fiber quality.

Promising cottons being developed by Delta and Pine Land Company to meet demands of the 80's were displayed today by 300 visitors at the research farm one mile south of Idalou on FM 400.

J.N. Marks, Jr., marketing manager, presided at the field day, where a barbecue lunch was served at noon and viewers boarded trailers to be towed by tractors through the plots.

At the first stop, Toler Jones, Wes.ern Sales representative, Casa Grande, Arizona, explained D&P's seven-year "Tough Variety Maintenance Cycle."

Breeders begin the first year with increase plant selection. This is followed by "increase progeny rows" the second year and progeny strain tests at multiple locations the third year. This leads to the originator's "elite" seed the fourth year and eventually to "originator's registered seed" after seven years.

At the main variety test plots Carroll called particular attention to cottons promising greater strength and with significant ability to withstand drought and other unpredictable stresses.

Pointed out were:

- * Deltapine SR-980 -- A new cotton for 1981 and companion for SR-2, a popular Deltapine variety in this area. Deltapine SR-980 has averaged eight percent higher yields in five years of testing, has early maturity but is somewhat indeterminate, performs well on dryland, has fiber strength as high as 100,000 p.s.i., a consistent staple of 1-1/32 inches, and is moderately tolerant to verticillium wilt.

Williams Cattle Win At Lubbock

Thomas Flash earned senior champion Angus bull honors, then went on to win the grand champion title at the recent Panhandle South Plains Fair in Lubbock. He's owned by Flash Associates, Janesville, Wisconsin.

Show judge Allen Poe, Waxahachie, Texas, went to the junior division of the 26-entry bull show to give reserve grand honors to J.K. Enforcer 510, owned by J.K. Williams Angus Farm, Lockney. Williams also grouped K.R. Osage 4016 progeny to take first in get-of-sire competition.

Junior champ Miss Bummer Wendy of E.T. earned top billing in the 41-head female show for owner Troy Morris of Bako, Oklahoma, and Earl Tollett, Borger. Clay Wilfong, Hamlin, followed to the reserve grand spot with intermediate champ C.W. HE 75 Tina L.

A brother-sister pair from Lockney took top honors in the junior heifer show. Libby Williams, 15, claimed the top spot with J.K. Queen 911, and her brother, Ty, 17, took reserve on J.K. Primrose 913. Their parents are Jerry and Kay Williams of J.K. Williams Angus.

Berry Angus Farm, Chico, took first in the junior get class with Hales Emulous 386 progeny. They also led out reserve senior champion bull R&J Sensation and reserve bull calf champ Berry Northern Bingo.

Adams & Lucas, Woodward, Oklahoma, gained reserve junior bull honors on Hinksonite 79169. Richmond Hales, Canyon, exhibited intermediate champion bull Hales Black Revolution 835 and reserve intermediate champ Hales Emulous 361-823. Rosharon Farms, Schulenburg, owned the bull calf winner Rosharon Freestate 2546.

George Graham, Wichita Falls, took reserve junior female honors with Ankonv 5G05 Burgess 508N9. Richmond Hales led Hales Revolution Queen to the reserve intermediate heifer spot.

Clay Wilfong topped the heifer calf division with C.W. Jonnie Mae A01, and Bernasek Angus Farms, Joshua, took reserve with McHenry Phala 120.



FIFTEEN-YEAR-OLD LIBBY WILLIAMS of Lockney, exhibited the grand champion Angus heifer in junior competition at the Panhandle South Plains Fair in Lubbock. Her heifer is J.K. Queen 911. Libby's parents are Jerry and Kay Williams. Photo by American Angus Association

At the main variety test plots Carroll called particular attention to cottons promising greater strength and with significant ability to withstand drought and other unpredictable stresses.

Pointed out were:

- * Deltapine SR-980 -- A new cotton for 1981 and companion for SR-2, a popular Deltapine variety in this area. Deltapine SR-980 has averaged eight percent higher yields in five years of testing, has early maturity but is somewhat indeterminate, performs well on dryland, has fiber strength as high as 100,000 p.s.i., a consistent staple of 1-1/32 inches, and is moderately tolerant to verticillium wilt.

Computers To Try Their Hand At Marketing Cattle

Use of the computer is in vogue again. Now a computer is being used to market cattle.

Initial crusting several "Cattlex," the computer-marketing program initiated by the Texas Cattle Extension Service and Agricultural Experiment Station, is running.

A lot of "on ranch" cattle sold the new system was owned by a farmer, rancher and cattle operator at DeLeon. The steers averaging 670 pounds were bought by Bob Bliss, vice president of Friona Industries, who is president of the Texas Cattle Association. The lot was graded by J.D. Sartwell, associate deputy for agriculture at Texas University, sold the first lot of "cattle via the new computer system. The lot of 19 Charolais steers was delivered to Port City Stockyards at Sealy and graded and sold for \$30 pounds each and brought premium over the day's market. The lot was bought by Bliss.

This is a nine-month project and computer terminals at 18 locations over Texas to link feedlots, order buyers and markets, according to Dr. Davis, Extension livestock market specialist.

The system works this way. A user requests a grad from a terminal location to list and sell the cattle he wants to sell. The user describes by sex, weight, breed, flesh condition and other distinguishing features. The user also put a "no sale" price on the lot, which means he does not want them for less than a certain amount.

Information is then run through a computer and is transmitted on a cathode ray tube (CRT), a television-like screen. The system can also produce a list of the listing description.

A minimum consignment through Cattlex is 10,000 pounds, and all consignments up to 44,000 pounds must be offered to an auction in the computer system, explained Davis. Consignments above 44,000 pounds, or a truck load, can be sold "on ranch."

A major advantage of this system is that it exposes smaller lots of cattle to more buyers, emphasized Bliss. "It's a system that offers a lot of exposure to the cattle and really benefits the buyers and sellers. I like the way the system described and the graders' information, seller of the first lot of 'on ranch' cattle, noted that a big advantage was that the cattle did not have to leave his ranch to be sold. "I have to truck these cattle, and a big plus, the cattle were fresh when sold, they didn't suffer any stress or weight loss. And I got a good price for them, by using a 'no sale' price, I simply could have kept the cattle if I had not been offered a good price. Once you truck your cattle to a market, you've got to sell them; you're not going to load them up and haul them back home."

Since Hanson runs a stocker operation, he gets involved in both buying and selling cattle. He said he looks for specific types of crossbred cattle for stockers, and Cattlex will allow him to get these. "I think cattle buyers will be better off with this system," he emphasized.

Butler viewed the new system with enthusiasm and said the "it's a real fine opportunity for cattlemen. It worked especially well for me since I had a special group of cattle—Charolais bull calves. Often, buyers will not give adequate attention to small lots such as this, but through Cattlex my calves got special attention because they were exposed to more buyers. I'm excited about the system."

Sartwell pointed out that Cattlex is a good logical experiment in the progression of events that should lead to more efficient cattle marketing and called for more participation in the project. He echoed much of what others have said about the system—that it gives cattle more exposure to buyers. "After all," he said, a man almost 600 miles away bought these cattle (referring to the lot sold by Butler).

Following is a list of the 18 cooperators in the Cattlex network:

Emergency Loans Available From FHA

Emergency loans for farmers, ranchers, or aquaculture operators are available through county offices of Farmers Home Administration (FmHA). O. Steven Kelley, FmHA County Supervisor, said recently.

Mr. Kelley asked that those who need farm credit as a result of drought, hail and high winds make their needs known at the Farmers Home Administration office at Floydada.

Applications for assistance in the disaster stricken counties will be accepted by Farmers Home until June 18, 1981 for physical and/or production losses.

FmHA loans covering actual physical and production losses may be used to replace installations, equipment, buildings, (including homes) lost through this disaster. Funds may be used to buy feed, seed, fertilizer, livestock, or to meet interest and depreciation payments on current real estate and chattel debts. Other loans, beyond actual losses, can be made for annual operating expenses or to make major adjustments in a farming operation.

"Funds can be used for essential operating and living costs," Mr. Kelley said.

Loans covering actual losses are made at an interest rate of five percent and are scheduled for repayment as rapidly as feasible consistent with the applicant's reasonable ability to pay. Loans beyond actual losses have various maturities, depending upon the purpose of the loan.

The interest rate for short-term loans for farm operating purposes is 13 1/2 percent. Long-term loans are being made at an interest rate of 12 1/2 percent.

To be eligible for an emergency loan, an applicant must have suffered losses from the disaster and be unable to get credit from other sources.

Emergency loans can be used to help the farmer restore damaged farm operation and additional loans based upon the emergency designation can be used to reorganize the farm for greater efficiency and better production.

MARKET REPORT

Local grain markets on Wednesday afternoon were:

Milo/cwt. — 5.75-5.80
Wheat/bu. — 4.22-4.25
Sorghum/bu. — 7.35
Corn/cwt. — 6.10

Cotton contracts on Wednesday were 3100 points over the 1980 loan.

Auction Markets—

Texas Livestock Marketing Office, Union Stockyards, San Antonio, Tom Bell.

Port City Stockyards, Sealy, Texas, J.D. Sartwell, Jr.

J&J Livestock Commission Co., Inc., Texarkana, Texas, Joe Hathoot.

Producers Livestock Auction Co., San Angelo, Texas, John Cargile.

Athens Commission Co., Inc., Athens, Texas, Don Forester.

Buffalo Livestock Commission Co., Inc., Buffalo, Texas, Harry Ellis.

Abilene Auction Company, Abilene, Tom Neff.

Amarillo Livestock Auction Co., Amarillo, J.R. Taylor.

Wichita Livestock Auction, Wichita Falls, Neal Collier.

Lometa Cession Co. Lometa, Texas, Aubrey Harrell.

Bee County Livestock Market, Inc., Beeville, Texas, W.R. Johnson.

Order Buyers—

Harrell Cattle Co., Gonzales, Texas, Maurice Harrell.

Texas Livestock Marketing Association, Fort Worth, A.J. Kemp.

Vann-Roach Cattle Co. Fort Worth, Roger Vann.

Thigpen Cattle Co., Inc., Chilton, Texas, Bob Thigpen.

Feedlots—

Caprock Industries, Gruver, Texas, Zay Gilbreath.

Xit Industries, Dalhart, Bob Thorne.

Friona Industries, Friona, Ron Dav-enport.

Sponsored by the Following Interested Firms

First National Bank Floydada	Russell's Equipment & Supply Floydada	Perry Implement Lockney
Case Power & Equipment Floydada	Floydada Cooperative Gins	Ansley & Son Lockney
Federal Land Bank	The Floyd County Hesperian	Floydada Implement Co.
Association Of Floydada	Consumers Fuel Association Lockney	Plainview Savings & Loan Association Floydada
	Martin And Company Floydada	

Case Fully Reconditioned Used Farm Equipment

At Case Power and Equipment, we take great pride in offering you only the finest reconditioned used farm equipment available. When we trade for used farm equipment, we don't just clean it up and make it look nice, we go over it from top to bottom, replacing any worn or worn-out parts before we offer our equipment for sale. Come to Case Power and Equipment today and look over our large selection of used farm equipment. You'll be glad you did.

Lubbock Farm Tractors

1965 930 Cab	\$4,500.00
AC 190 XT Series 3 Cab	\$7,900.00
1 HC 1066 with Cab and Air	\$11,900.00
1979 2090 Cab, Air, 223 hrs	\$24,400.00
1979 2390 Cab, Air, 895 hrs	28,800.00
1976 2670 Cab, Air, PTO	29,000.00
1971 1070 Cab	\$9,800.00
1978 990 D.B. only 321 hours	\$8,000.00

Floydada

1976 2670 Cab, Air, PTO	\$29,900.00
Case 1370 Cab, Air	\$15,400.00
Case 1175 Cab, Air	\$12,800.00
Case 1175 with 70 Loader	\$8,900.00
Case 1175 with Cab	\$9,900.00
Ag Gator Sprayer	\$3,450.00
AT 4 1600 White 4-wheel dr	\$12,560.00
PDO Cab and Air	

Lamesa

Case 830 LP	\$4,200.00
1170 Cab and Factory Duals	\$9,900.00
1370 Case Cab, Air	\$16,900.00
1370 Case Cab, Air	\$21,500.00
1 HC 1466 Cab, Air	\$17,700.00

Case Power and Equipment Lubbock 3302 Blanton Hwy. 748-6681
Lamesa 902 S. Dallas 872-5681
Floydada 101 South 12th 963-2836

The Lockney Beacon October 16, 1980

Prices Effective October 16-22
Save More By Shopping With Us

Good Buys

Grade A Large doz
Eggs 49¢

Sausage 3/\$1.00

The Sea 6 1/2 oz can
89¢

Cheddar Cheese 2 lb \$2.89

lb Stickarine 59¢

All Brands And Sizes
Cigarttes \$5.39
Limited Supply



SALLY CARPENTER, seated, tied for the resident of the... Care Center. Shirley Stansell was voted as employee of the...

HOSPITAL NOTES

October 7-15
 Hallie King, Lockney, adm. 8-25, dis. 10-8
 Ramon Gonzales, Plainview, adm. 9-26, dis. 10-10
 Laura Pratt, Floydada, adm. 9-29, dis. 10-9
 Hattie Steele, Silverton, adm. 10-2, dis. 10-11
 Sudie Thomas, Floydada, adm. 10-2, continues care
 Nora Hash, Plainview, adm. 10-3, dis. 10-11
 Darnell Ayres, Floydada, adm. 10-4, transferred 10-10
 Henry Sue, Lockney, adm. 10-6, dis. 10-10
 Elias Saucedo, Lockney, adm. 10-6, dis. 10-14

George Earl Kellison, Lockney, adm. 10-7, dis. 10-9
 Cecilia Arriaga, Plainview, adm. 10-8, baby boy, Abel, born 10-8, dis. 10-10
 Rebecca Truitt, Lockney, adm. 10-9, continues care
 Leona Vardell, Silverton, adm. 10-12, continues care
 Steve Hill, Roaring Springs, adm. 10-13, continues care
 Violet Jones, Plainview, adm. 10-15, continues care
 Lewis Blum, Floydada, adm. 10-14, continues care
 Delia A. Hernandez, Floydada, adm. 10-14, continues care.

Lockney Long Ago

October 20, 1950
 Passenger train service over the Fort Worth & Denver railway from Childress to Lubbock, through Lockney, will make their last run Saturday of this week, October 21st, it was announced Wednesday by FW&D officials.

Supt. Sidney Reeves informed the Beacon Wednesday that the board of trustees of the Lockney Rural High School district had decided to have petitions prepared asking for a vote on the matter of consolidating the original school districts on a common school district basis.

The petitions will be circulated in the original districts which are now grouped for high school purposes. These are Lockney, Pleasant Valley, Irick, part of Aiken,

LOCKNEY School Menu

October 20-24
Monday:
 Breakfast — Raisins, toast, milk
 Lunch — Roast, gravy, creamed potatoes, sliced tomatoes, fruit cocktail, hot rolls, milk
Tuesday:
 Breakfast — Oats, fruit cocktail, milk
 Lunch — Hamburger, lettuce, pickles, tomatoes, potato rounds, milk, peaches, oatmeal cookie
Wednesday:
 Breakfast — Rice, pears, milk

Lunch — Fried chicken, gravy, buttered corn, cole slaw, hot rolls, milk, fruit gelatin
Thursday:
 Breakfast — Scrambled egg, bacon, toast, juice, milk
 Lunch — Sausage, cauliflower w/cheese sauce, green beans, hot biscuit, milk, spice cake
Friday:
 Breakfast — Oats, milk, orange slice, toast
 Lunch — BBQ on bun, pinto beans, spinach, milk, cherry cream pie.

Happy Birthday

Oct. 19 — Molly Huffman, Becky Cavazos, Dick Ellison, Petra Cuellar

Oct. 20 — E.J. Colvin, Minnie Wright, Rachel Guerrero, Dean Hooten, Gean Hooten, Jimmie Allan Burt, Frank Duckworth

Oct. 21 — Jay King, Ann Gaskings, Alton Barnes, Paul Reecer, Joyce Marks, Juan Herrera, Juan Villarreal, Mark Montandon, Dodd Duvall, Rita Webster

Oct. 22 — Charlotte McCulloch, Jimmy Stennett, Robin Stoerner, Servando Villalon, Erica Martinez, Clay Adrian

Oct. 23 — Joe Araujo, Eddie Martinez, Lydia Watson

Oct. 24 — Ralph Hernandez, Lavona Pitchford, Mary Williams, Georgia Ford, Hank Winter, Laura Teuton, Elma Mata

Oct. 25 — Glenna Sue, Mike Means, Jerry Klein, Amy Koonsman, Andy Ford, Doug Bradley, Nita Henderson, Rita Huggins

Happy Anniversary

Oct. 20 — Mr. and Mrs. Lee Franklin Jr.

Oct. 21 — Omar and Rita Burleson, Rocky and Judy Mangum, Charles and Katherine Ball

Oct. 25 — Mr. and Mrs. Higinio Garza

Today's Lifestyles

By Marilyn Tate
 County Extension Agent



"FAST FOODS" - NUTRITION COST

Learn about the cost of "fast foods" versus home-cooked meals - and about their nutrition.

Home-cooked or "fast food" meals—they are about the same in nutrition, but not in calories or in cost. More and more women in the labor force and a busy lifestyle are sending Americans to eat, especially "fast foods."

Specifically, how do fast foods compare, in cost and nutrition, with home-cooked meals? One USDA comparison shows that fast food chain meals are as nutritious as their homemade counterparts but cost about twice as much.

Seven meal-type combinations of food from the same chain and corresponding meals prepared at home were similar in nutritive value. Five of the seven restaurant meals provided one-fifth or more of the U.S. Recommended Daily Allowance for protein, riboflavin, thiamin and vitamin C.

None of the meals furnished much vitamin A, since vegetables in the usual "hamburger place" are almost limited to French fries. The meal with milkshake exceeded one-fifth of the U.S. Recommended Daily Allowance for calcium. This indicated that more of some nutrients and less of others were provided.

In "fast food" hamburgers, thiamin values were consistently lower, though riboflavin values were higher. Protein levels in homemade hamburgers were



RAGIN' RED

Moore-Rose Funeral Home Lockney, Texas 1. Oklahoma vs. 2. Kansas St.	Lockney Meat Co. Plainview Highway-Lockney 3. Rice vs. 4. Texas Tech
Davis Lumber & True Value Hardware Lockney, Texas 5. W. Texas vs. 6. Drake	Schacht Flowers, Jewelry & Gifts Lockney, Texas 7. Texas A&M vs. 8. Baylor
Bob Miller Ins. & Real Estate Lockney, Texas 9. TCU vs. 10. Tulsa	Four R Western Wear & Irrigation Lockney, Texas 11. Lubbock High vs. 12. Mansfield
Lee's White Auto Store Lockney, Texas 13. Coronado vs. 14. Estacado	Byrd Pharmacy Lockney, Texas 15. Lamesa vs. 16. Lakewood
Thomason's Grocery Lockney, Texas 17. Dimmitt vs. 18. Friona	The Tye Company Plainview Highway-Lockney 19. Floydada vs. 20. Childress
Providence Farm Supply & Grain Co. 21. Abernathy vs. 22. Idalou	Fierros & Sons Reddy Mix Concrete Lockney, Texas 23. Slaton vs. 24. Fritch
Wilson Photography North of Lockney 25. Roosevelt vs. 26. Cooper	The Lockney Beacon Lockney, Texas 27. Tahoka vs. 28. Post

The Floyd Philosopher

Editor's note: The Floyd Philosopher on his Johnson grass farm apparently has had a bad dream, his letter this week indicates.

Dear editor:
 Over the years I've found that most people's dreams are interesting mostly to themselves. None the less I'm going to tell you about one I had.

Lockney Locals

By Dottie Stansell

tha Flanken of Canyon, and their daughter, Tammy Adams and Vicki Robinson, of Wayland College.

Joey Adams, son of Gordon and Dimple Adams, was hit by a car, in the parking lot of the Crosbyton Hospital last Tuesday. He sustained a broken leg and was transferred to Methodist Hospital in Lubbock. He was able to go home Wednesday afternoon and was able to return to school this past Monday.

Mrs. Linnie Abbott was able to return home Saturday a week ago.

Mrs. Trudy (J.P.) Taylor of South Plains had surgery Monday morning at Methodist Hospital in Lubbock. Mrs. Taylor is the mother of Virginia Taylor.

Earl Cooper was released from St. Anthony's Hospital in Amarillo on Tuesday afternoon. He entered the hospital September 30.

Louise Widner hosted a luncheon in her home on Tuesday, October 7, for family members.

Present were Mr. and Mrs. Owen White, Mr. and Mrs. Elbert White, of Vernon; Mr. and Mrs. G.C. Seagler, Plainview; Mrs. Zelma Rush and Mrs. George Railshark, Acuff; Mr. and Mrs. Allen Rogers of Texico, New Mexico; Mr. and Mrs. Clarence Robertson, Mrs. Alvin Law and Mrs. Joe Mayo, Plainview; Mrs. Otis Morris and daughters, Shelly and Carl of Oklahoma City and Elton Wilson of Plainview.

I dreamed I was in charge of the Presidential debates. My job was to ask the candidates questions. I took my stand at the podium and cleared my throat.

"Mr President," I began, "what would you do to end inflation?"
 "Doggone if I know," he said.
 "Governor Reagan, what would you do to end inflation?"
 "Darned if I know."
 "Congressman Anderson, what would you do to end inflation?"
 "Ditto."
 I declared the debates a draw and woke up rather gladly.

Back to reality, I've heard several people complain that television, radio and newspapers concentrate on the bad news. One man I read about decided to do something about this. He began taping two minutes worth of good news every day and offering it for sale to radio stations. Some stations tried it but it proved so un-listened to they discontinued it and the man went broke.

This bears out my theory that a fist fight in the stands always out-draws a play down on the football field.

Newspapers, TV and radio will stop reporting wrecks when they find people rushing out to the highway because they heard two cars had passed without hitting each other.

Yours faithfully,
 J.A.

Good Luck
 As You
 Dist
 H
 Tu



LOOKS LIKE HE THOUGHT
 Longhorn watches as a M...

Game S

Lockney First Yards Yardage Total Passes Penalties Fumbles Interceptions

5 28 36 64 3-11 6-30 2-20 3 0

OUR MOVE

SEE US!
 Real Estate & Insurance Agency
 FIRE, FARM, AND LIFE INSURANCE
 Jim Word
 Phone 983-2360

OFFICIAL ENTRY FORM

Name..... Address.....
 City.....

1-2 3-4 5-6 7-8 9-10 11-12 13-14
 15-16 17-18 19-20 21-22 23-24 25-26 27-28

Tie Breaker: LOCKNEY VS TULIA Total Score

Mrs. Joyce Williams

Dallas Cowboy football game and the State Fair at Dallas last week. They traveled on to Canton, Texas to attend First Monday trade days. On a thirty-five acre lot they saw every kind of antique, paintings, collectibles, goats, hound dogs, guns, quilts and anything anybody wanted to trade for. They also saw Mr. and Mrs. Wayne Battey of Paris, formerly of Lakeview, sold her oil paintings of flowers and scenes. Norman and Edith bought muffin China insets. So many sights intrigued them they are looking forward to another visit, held each first Saturday, Sunday and Monday of each month.

Judge and Mrs. Choise Smith attended the 4-H achievement banquet in Lockney Saturday night. Dean Smith was given a first year pin, and Hunter received his second year pin. Miss Jody Smith received her six year pin and an award as the Floydada Sweetheart.

Mrs. Weldon Hammonds visited her daughter, Mrs. Gay Lynn Carpenter and new baby son, Cody Braden, in Canyon on Monday.

Mrs. Byron Kendrick attended the meeting of the Alpha Sigma Upsilon sorority Tuesday evening at the home of Mrs. Rhonda Guthrie. Members quilted a quilt for the Christmas craft show.

Little Miss Lara Kendrick enjoyed a visit with her grandparents, Mr. and Mrs. W.R. Daniel on Monday and Tuesday, while her sister, Christi, attended G.A.S. on Tuesday, and went to choir practice on Wednesday.

Jack Morris Don Terrell Manager Door Openers DAY 293-8577 NIGHT 14 Dimmitt Plainview

Look At Us!!

ators

983-282

October 16, 1980

Stacy Smith... Redding... Falls.

Greg and Ma... parents, Mr. and Bishop, over and. Other... Mr. and Mrs. Lubbock, Mrs. and Sid Brown of Lezie and... Mr. and Mrs. Warren of Tah... an art show in Mexico.

Nitely Saturday-Carnival Mission

St. Floyd Fair OF TEXAS

First Assembly Church Floydada

Public Notices

October 21, 1980 City Council meeting: Hearing on proposed CDBG Citizen Participation

NOTICE OF MEETINGS

MEETING DATES FOR HEARINGS

PUBLIC NOTICE

Design Mobile Wins Competition

Padilla got... looked alike... that resemble... He lived in a... at one time... and they all... such the same... ed to design... different," he... tecture major... ch University... pleted the de... onstruction of... um model in... e weeks. He... it in the Rey... um Co. na... mpetition and... icate of excell-

The competition, co-sponsored by the American Institute of Architects, recognizes "original designs in which creative use of aluminum is an important contributing factor."

Padilla's mobile home model has two sets of solar panels which can track the sun from any position during the year. The panels are positioned by a home computer in the mobile unit.

The solar system is designed to provide hot water and space heating. Space cooling is provided by a conventional cooling unit under the home.

The mobile home design has two bedrooms, two baths, a kitchen and a living room. The aerodynamic design of the outer shell is aimed at preventing wind damage.

"I would like to build a solar mobile home some day. I imagine it will be 65 feet long and 14 feet wide," Padilla said.

Public Notices

October 21, 1980 City Council meeting: Hearing on proposed CDBG Citizen Participation

NOTICE OF MEETINGS

MEETING DATES FOR HEARINGS

PUBLIC NOTICE

In Order For Us To Give You The Best Of Our Abilities We Need & Appreciate Your Support!

National Newspaper Week Oct. 12-18



OUR FREEDOM SAFEGUARDS YOUR FREEDOM

Newspapers are the voice of a people and the force of a nation. They speak up and speak out... informing us all about what's happening in the world, and we in turn, learn and form opinions that help us to act on the issues and vote in government. The workings of a free and fearless press is our best defense against tyranny...and a powerful strength in a democracy.

The Floyd County Hesperian And The Lockney Beacon

Our Freedom Safeguards Your Freedom

South Plains News Mrs. Murry Julian

South Plains, October 13: Sunday morning visitors at the South Plains Baptist Church were Mr. and Mrs. Bobby Craddock of Sunday, and with Renee Sanders was Randy Johnson of Floydada.

The Caprock Workers Conference will be held at Spur at the First Baptist Church next Thursday, October 16, with the program beginning at 3:00 p.m. and the evening program will begin at 6:30 with supper, and the evening message will begin at 8:00 p.m.

Promotion Day at the South Plains Church will be on Sunday, October 26. Please make your plans to attend.

Mr. and Mrs. Sterling Cummings went to Glen Rose Saturday and Sunday of last week to bring his parents, Mr. and Mrs. Zach Cummings, home to Lockney. They had been visiting the week before with their son, Mr. and Mrs. Zach Walton Cummings at Glen Rose.

Mrs. Bonnie Moore who resides west of South Plains near the Herman Thornton home, had as house guest last week, Mrs. Ethel Gueing, from Lubbock. They attended church at South Plains Wednesday evening.

Mrs. Carlton Johnson (Diane) had the misfortune to get a big piece of rock in her eye on Saturday, which precipitated a visit to the doctor. We hope she is doing well by now.

The Young People of South Plains were given a Hay Ride and Progressive supper on Saturday night, October 11. They met at the home of Mr. and Mrs. Nathan and Connie Johnson at 6:30 p.m. and they went first to the home of Mrs. Mamie Wood where the first course was chips and dips and fresh vegetables. The second meal was at the home of Mr. and Mrs. Kendis and Janis Julian, where they had the main course of their supper, with Mexican enchiladas, Spanish rice and refried beans.

He had been taken there on Thursday, following his illness at home, and he passed away at 4:00 a.m. Friday morning, October 10. His services were held at the South Plains Baptist Church at 2:30 p.m. Saturday, October 11, with Rev. Cecil Osborne officiating. Interment was in the Lockney Cemetery. We offer our sympathy to his brother and family, who live in Lubbock and all his other relatives who were here for the services Saturday.

The South Plains Hobby Club met Wednesday, October 8, at 2:00 p.m. in the home of Mrs. Leighton Teeple, who resides east of South Plains. Mrs. Dot Cummings gave the thought for the Day, and roll call; a way I have saved money during this inflation was given by Marilyn Tate, from the Floyd County Home Extension Office in Floydada, who spoke on Heat Pumps, Ceiling fans, and told of the saving in electricity, etc. as well as helping cool the house, or warm it, with fans. Mrs. Teeple served refreshments of coffee, punch, sausage rolls, cheese puffs, and cookies. Those who were present were Mmes. Kendall Cummings, E.J. Kinslow, Letha Mulder, Fred Marble, Louzella Nichols, Hansel Sanders, Grigsby Milton Jr., Bonnie Julian, Keith Marble, guest Marilyn Tate, and hostess, Junanita Teeple.

Hobby Club will meet on November 12, in Lockney at the home of Mrs. Fred Fortenberry, with Roll Call: Something new I have made for Christmas. The meeting will begin at 2:00 p.m. and the program will be on crafts.

Baptist Women are making plans to meet at the South Plains Baptist Church, and plans are being made for WMU Royal Service programs.



Thurman Davis

Easily adapted to meet size needs, kitchen storage is as close at hand as the wall space below the upper kitchen cabinets and as accessible as pulling on the swing-down doors. Cut 3/4" plywood for the top, back and bottom to the full length of the upper cabinets less 3". Using butt joints, fasten the top, back and bottom together. Cut two pieces to fit over each end to give you a three-sided, close ended rectangular box. To section storage areas, cut inside dividers 3/4" less than the depth of the cabinets, leaving room for doors and trim. Cut facing strips out of a 1x2 and nail at both ends and the center. Fasten the box to the wall by screwing into the wall studs. Cut two doors out of 3/4" plywood measuring from each end to the center. Attach the doors with butt hinges on the bottom. Cut 4 chains for retainers to allow the doors to open horizontally to the unit.

DAVIS Lumber Company LOCKNEY



All Lettering And Set This Beautiful Companion Memorial Only \$495.00 CLINE MONUMENT CO. 400 Joliet Phone 296-2953 Plainview, Tx. 79072 Save Sales Agents Commission In Plainview

Arts And Crafts Festival To Open Friday, October 17

"Buy something original this year" is the slogan of the sixth Running Water Draw Arts and Crafts Festival. The annual event opens on Friday, October 17, at the Hale County Ag Center with 125 artists and craftsmen displaying their handmade items for sale. Plainview Rotary Club and Llano Estacado Museum sponsor the festival and share the proceeds for their projects in the community and at the museum.

Artists come from Texas, New Mexico, Colorado and from as far away as Ohio. "We even have an exhibitor who lives in Switzerland!" She knew about the show because she has relatives in Plainview," according to Festival director Rob Strong. "If you can't find a unique Christmas gift or something beautiful for yourself, you aren't looking." Strong commented. All artistic media are represented in this show. They include painting, stained glass, sculpture, leatherwork, needle crafts, egg-terry, woodwork, toys, calligraphy, candlemaking, engraving, pottery, and Scherenschnitte (scissor-cut pictures).

In addition to the artists and craftsmen, the Backstage Company of the Plainview Civic Theatre will be demonstrating stage make-up and face painting. Food will be available for all visitors who will have a wide choice of edible goodies. Wayland College's French and German Clubs offer authentic food, and Plainview TOPS clubs will have a variety of food items.

Many of the artists are returning, some for the sixth time. "They have told us that they like coming to Plainview because the people of the area are so friendly," commented Strong. Artist from the Floydada area include Mary Montandon from Aiken; Winnie Carthel, Ann Glasscock, and Joe Goen from Floydada; Cynthia Bybee, Elfie Sherman, Linda Terrell, Chuck and Joyce Wilson, and Sheila Poole from Lockney; and Grace Ashley from Ralls.

The Festival hours are 10:00 a.m. to 9:00 p.m. on Friday and Saturday and from noon to 5:00 p.m. on Sunday. Admission is \$1.00 for adults and \$.25 for children under 12. Visa and Master Charge are accepted for all purchases.

Chambers Photography Offers The Old As Well As The New

Tom Chambers, owner of Chambers Photography in Crosby, Texas, hopes to offer quality portraiture and an artistic approach to the medium of photography.

He also foresees future expansion for local and regional exhibitions, involving artists who work in other media of artistic expression as well as photographic.

Chambers will also be teaching basic black and white photography classes for those persons who would like to learn this exciting medium of self-expression (telephone #675-7075).



TOM CHAMBERS

Tom Chambers, owner of Chambers Photography in Crosby, Texas, hopes to offer quality portraiture and an artistic approach to the medium of photography.

He also foresees future expansion for local and regional exhibitions, involving artists who work in other media of artistic expression as well as photographic.

Chambers will also be teaching basic black and white photography classes for those persons who would like to learn this exciting medium of self-expression (telephone #675-7075).

SALT: THE HIDDEN MENACE

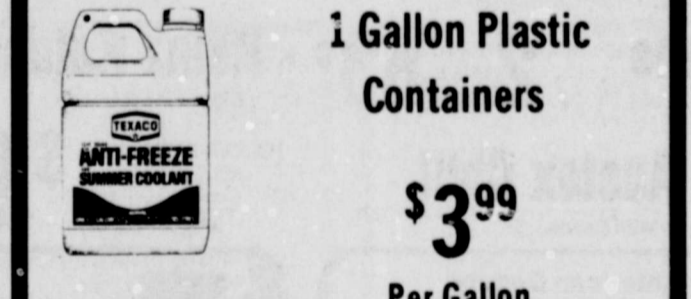
Salt, or sodium in Latin, was so highly regarded by the ancient Romans that it was sometimes used as money to pay their soldiers—thus, the word "salary". Though humans have always had a taste for salt, the body requires it only in small amounts. In fact, the Senate Committee on Nutrition and Human Needs recommends you limit your daily intake to no more than five grams (equivalent to two grams, or 2,000 milligrams sodium).



A giraffe's tongue may be one-and-a-half-feet long.

Announcing Mary Lewis Representing Montgomery Ward In Floydada, Texas To Place Orders Call 983-2196 Fast Teletype Service

Antifreeze 1 Gallon Plastic Containers \$3.99 Per Gallon



Buy The Best And Buy Early Hwy 70 Texaco Hwy 70 West Phone 652-8895 Open 7 days 7:00 am -- 9:00pm

Wendell Tooley, editor-publisher of The Tulia Herald this week became president of the Panhandle Press Association upon the resignation of Paul Simms. Simms, who was editor at the Hereford Brand resigned his office after accepting a position with Amarillo radio station KGNC. Tooley was vice president of the Association and will preside over the PPA convention at the Hilton Inn in Amarillo April 10-11, 1981.

Danny Andrews, editor of the Plainview Daily Herald, and a member of the PPA board will be "better newspaper contest" chairman at the convention. Other board members include Ron Filkins of the Peryton Herald, Linda Haynes of the McLean News, J.T. Bowling of the Borger News, Dave McReynolds of the Moore County News-Press.

Past president Lynn Brindine of the Brownfield News is also on the board. Lisa Patman of the McLean News is secretary for the Association.

Herald Publisher Becomes President Of PPA

Wendell Tooley, editor-publisher of The Tulia Herald this week became president of the Panhandle Press Association upon the resignation of Paul Simms.

Simms, who was editor at the Hereford Brand resigned his office after accepting a position with Amarillo radio station KGNC. Tooley was vice president of the Association and will preside over the PPA convention at the Hilton Inn in Amarillo April 10-11, 1981.

Danny Andrews, editor of the Plainview Daily Herald, and a member of the PPA board will be "better newspaper contest" chairman at the convention.

Other board members include Ron Filkins of the Peryton Herald, Linda Haynes of the McLean News, J.T. Bowling of the Borger News, Dave McReynolds of the Moore County News-Press.

Past president Lynn Brindine of the Brownfield News is also on the board. Lisa Patman of the McLean News is secretary for the Association.



HEY! LOOK AT US !!

Got Heating Or Plumbing Problems? Call HOLMES PLUMBING Austin or Stow 983-2251 6:30 - 9:30 a.m. and 5:30 p.m. until?

Table with TV listings for various channels including NBC, ABC, CBS, and PTL, listing programs like 'The Tonight Show', '60 Minutes', 'The Love Boat', etc.

KING'S CATERING SERVICE BAR-B-QUE IS OUR SPECIALTY FOR RESERVATIONS CALL IRENE 983-3464

Call Cable TV of Floydada 983-291 Today For More And Better We Have A Night Deposit Box On Drive-In Window.

Script Printing & Supply Up To 20% OFF On Furniture Order 108 S. Main 983-5131

DOUBLE STAMPS WEDNESDAY



PIGGLY WIGGLY

Your Place To Shop If You Really Enjoy Saving On Fall Foods
 Prices Good Thursday Thru Wednesday, Oct. 16-23, 1980. Each of these advertised items is required to be readily available for sale at or below the advertised price in each store, except as specifically noted in this ad. We reserve the right to limit quantities. None sold to dealers.

ORANGE JUICE Kraft 19¢ 32-oz. btl. With One Filled Gold Bond Super Discount Booklet.	WHITE SWAN BISCUITS Buttermilk or Sweetmilk 2 39¢ 10-ct. pkgs. With One Filled Gold Bond Super Discount Booklet.	FRUIT COCKTAIL Del Monte 9¢ 17-oz. can With One Filled Gold Bond Super Discount Booklet.	PARMESAN CHEESE Kraft 19¢ 3-oz. pkg. With One Filled Gold Bond Super Discount Booklet.	CHARMING TISSUE White & Cotton 49¢ 4-roll pkg. With One Filled Gold Bond Super Discount Booklet.
--	--	--	--	--

T-Bone Steaks Select Western Beef. lb. \$3.69	Sirloin Steaks Bone-In Select Western Beef. lb. \$2.89	Lean Stew Beef lb. \$2.29	Sliced Bacon \$1.39 Glover's Mkt. Style, lb.	Franks 99¢ Farmer Jones, 12-oz.	Amer. Cheese \$2.83 Kraft Singles, 16-oz.	Bologna \$1.09 Farmer Jones, 12-oz.
GROUND BEEF Fresh, Not Less Than 70% Lean \$1.38 lb. 3-lbs. or more	BONELESS HAMS Wilson's Certified \$1.89 lb. Sliced lb. \$1.99	BOSTON BUTT PORK ROAST \$1.49 lb.	PORK STEAKS \$1.59 lb.			

FOLGERS COFFEE All Ass't Grinds \$2.67 1-lb. can 2-lb. can \$5.32	DEL MONTE CORN Whole Kernel or Cream Style \$1 3 17-oz. cans	GREEN BEANS Del Monte, French Style or Cut \$1 3 16-oz. cans	COCA-COLA \$1.49 6-pack 32-oz. Returnable Btl.
---	---	---	--

Syrup Garden Club. 89¢ 32-oz. btl.	Sara Lee Danish \$1.39 Frozen, Ass't Varieties, 7 1/2-oz. pkg.	Pumpkin Pie \$1.49 Mrs. Smith's, Frozen, 26-oz. pkg.	Peanut Butter \$1.49 Skippy, Creamy or Crunchy, 18-oz.
Coffee Mate \$1.69 Carnation, 16-oz. jar	Refried Beans 2 83¢ Old El Paso, 16-oz. cans	Heinz Ketchup \$1.19 Keg, 32-oz. btl.	Italian Dressing \$1.69 Kraft, Reg. or Creamy, 16-oz.
Waffles 69¢ Aunt Jemima, Frozen Buttermilk or Orig., 10-oz. pkg.	Austex Chili \$1.19 With Beans, 24-oz. can	Macaroni & Cheese \$1.49 Kraft Deluxe, 14-oz. can	Orzo \$1.49 Nabisco, 19-oz. pkg.
Ritz Crackers 99¢ Nabisco, 16-oz. pkg.	American Beauty Spaghetti 88¢ Elbo Roni or Roni Macaroni, 24-oz. pkg.	Spaghetti Sauce \$1.49 Ragu, Plain, Meat or Mushroom, 32-oz. jar	Orzo \$1.49 Nabisco, 19-oz. pkg.

Krispy Saltines 69¢ Sunshine Crackers, 16-oz. pkg.	Chicken Noodle 59¢ Lipton Instant Soup, 2-ct. pkg.	Chicken 69¢ Chunk, Swanson, 5-oz. can	Stove Top Stuffing 89¢ Ass't Varieties, 6-oz. pkg.	Golden Delicious Apples 3 \$1 Crisp, Washington, lbs.	Pascal Celery 28¢ Crisp & Snappy, lb.	Bartlett Pears 48¢ Northwestern, lb.	Mushrooms \$1.58 Gourmet's Delight, lb.	Broccoli 58¢ Icy Fresh, California, lb.	CALIFORNIA ICEBERG HEAD LETTUCE 3/\$1.00	Cocoa Mix \$1.49 Swiss Miss, 1-oz. envs.	Marshmallows \$1.49 Kraft, Jets or Miniature, 16-oz.	Raw Honey \$1.49 Aunt Sue, 12-oz. jar	Chocolate Chips \$1.49 Baker's, 12-oz. pkg.
Mayonnaise \$1.39 KRAFT, 32-oz. jar with coupon and \$10.00 minimum purchase. Limit one jar per coupon, one coupon per customer. Thereafter 1.75 per jar. Coupon good thru Wednesday, Oct. 23, 1980.	Velveta \$2.79 2-lb. pkg.												

REAL ESTATE

South Main in...
 normal dining...
 with breakfast...
 with large double...
 corner lot...
 \$100 loan, and...
 contact Evelyn...
 in the day...
 at night at...
 L11-2c

TRADE: Two...
 house, \$10,000.00...
 propane tank...
 ttc

Two bedroom...
 and heat...
 Call Elmer...
 2051, day or...
 10-30c

3-room, brick home...
 unit on large...
 lot. Call The First...
 Bank of Floydada, ttc

Three bedroom...
 983-3767, ttc

WANTED

WANTED TO BUY...
 or dryland farm in...
 surrounding area. W...
 XRO, c/o Hesper...
 700, Floydada.

HELP WANTED

STRIPPER OPERAT...
 ted contact Ray Fo...
 2948.

FOR RENT

HOUSE FOR RENT...
 West Willow, 2 b...
 playroom, large b...
 includes all other pa...
 675-2097.

bin at White...
 carpeted...
 Call 983-3932...
 ttc

al good two...
 room houses...
 Estate, Contact...
 983-2151 or...
 ttc

SALE in Lock...
 brick, 1 1/2...
 garage, base-...
 corner lot. Excel...
 condition. Assumable...
 Contact Paul...
 1, Box 152...
 76457 or call...
 Life

ive room house...
 good location...
 garage, large lot...
 983-3562, ttc

LOCKNEY PRINTING

ALL TYPE...
 COMMERCIAL...
 PRINTING...
 Phone 652-2...
 We Apprec...
 Your Busin...

SEED WHEEL

Cleaning...
 Bulk or Bag...
 Double Treat...
 Producers Cooper...
 Elevators

LEASE

LEASE: Three bedroom...
 \$295.00 a month plus...
 deposit. Call 983-...
 ttc

LEASE

LEASE SALE at 322 W...
 Thursday, Friday...
 10-16c

FAMILY GARAGE

Friday and Saturday...
 9-600. Tenor sax, teen...
 clothes, household...
 corner of S. First and...
 10-16p

LEASE

LEASE: Friday and...
 at 502 N. 2nd...
 building, 9 to 6 Friday...
 Saturday. Lots of...
 10-16p

LEASE

LEASE: Saturday...
 9-5, 221 W...
 C.B. Radio and...
 aquarium, twin...
 stove, folding...
 10-16p

LEASE

LEASE SALE: Four family...
 at 108 W. Marivena...
 Friday 9 to 6...
 10-16c

PETS FOR SALE

BOXERS FAWN with...
 white markings...
 Louie Bybee...
 L10-16p

GLY
Savings On Fall Foods
U.S.D.A. Food Stamps and W.I.C. Checks Freely Honored

SANITARY
CHARMIN TISSUE
White & Colors
4-roll pkg. \$4.99
With One Filled Toilet Paper Super Discount Booklet

PORK STEAKS
\$1.59 lb.

COCA-COLA
32-oz. Returnable Bottles
6-pack \$1.49

Peanut Butter
Skippy, Creamy or Crunchy. 18-oz. \$1.19

Italian Dressing
Kraft, Reg. or Creamy. 16-oz. \$1.19

Carbonyl & Cheese
Nabisco
Oreo Cookies 19-oz. pkg. \$1.39

Cocoa Mix
Swiss Miss. 1-oz. envs. 12-ct. pkg. \$1.49

Marshmallows
Kraft, Jeta or Miniature. 10-10 1/2-oz. \$2.49

Raw Honey
Aunt Sue. 32-oz. jar \$1.99

Chocolate Chips
Baker's. 12-oz. pkg. \$1.99

Velveeta
2-lb. pkg. \$2.79

It's Results You Want-It's CLASSIFIED ADS You Need

REAL ESTATE
Farms & Acre
FOR SALE: Large Brick home 7 miles southwest of Floydada on 4 1/2 acres. Contact Joe Cluck (806) 935-4680
HOUSE FOR SALE in Lubbock. Nice 3 bedroom, 2 bath, brick in good location. 665 acres in Crosby County on east plains to settle estate. Call 697-2619 or 652-2179.
FOR SALE: Farm located West of Muncy. 216 acres cultivated, 40 acres grazing land, two irrigation wells, Bond Real Estate, Wilson G. Bond. 983-2151 or 983-3573.
FOR SALE: A two bedroom house and a four bedroom house. Also ten separate acres of land. Call 983-2941.
WANTED
WANTED TO BUY irrigated or dryland farm in Floyd or surrounding area. Write Box 700, Floydada.
HELP WANTED
STRIPPER OPERATOR wanted. Contact Ray Ford, 983-2948.

BUSINESS SERVICES
REPAIR WORK done on evaporative air conditioners. Collins Appliance. 983-5702.
Adams Well Service Complete Irrigation Service. All sizes submergible pumps in stock. One day service. 983-5003.
INSULATION
Fire-Resistant. Installed and Guaranteed. MARR Insulation Co. Lockney 652-3593.
JACKSON ELECTRIC Residential & Commercial Serving Rural Communities At 652-2737
INTERIOR PAINTING WALL PAPERING
Call Rena Turner or Nancy Mayo, 983-5130 or 983-2667.
"Carpet Need Cleaning?"
Let me do the work for you. Dry foam, 10 cents sq. foot. Also home and auto upholstery. Call Jack Moore 983-3033, after 5 p.m.
POOL SERVICE AND RADIATOR SHOP
Irrigation, domestic, and windmill service. 407 E. Houston, 983-5610 or 983-2285.
FARM SERVICES
Land Leveling, terraces, bench leveling, and pump pits. all types of dirt work for soil and water conservation. Dewie Parsons 983-2646. Fred Parsons, 983-2074.
CUSTOM Application of Herbicides. Bill Wisdom 652-3541. John Wisdom 652-3544.
WANTED: Fall & Winter Grazing. Call 652-2852. Byron Brock

Hollis R. Bond Real Estate
PHONE 983-2151
107 S. 5th FLOYDADA, TEXAS
Custom Spraying
Application of Herbicides and Insecticides
Bruce Williams
Day 652-2462 Night 652-3129
REAL ESTATE FOR SALE
Looking for something special? Beautifully landscaped, 2 living areas with fireplaces. Lots of extras. Starter home just right for that young couple. 3 bedroom, 1 bath, car port. Call today about this lovely almost new 3 bedroom, 2 bath, in quiet neighborhood.
Farm Land—144.6 Acres Irrigated Farm about 9 1/2 miles west of Floydada on paved F.M. road. Contact us for details.
Call Sam Hale at 983-3261
HALE INS. & REAL ESTATE

FOR SALE
FOR SALE: King size mattress and box spring. Call 652-3577, L.C. Pruitt. 10-16p
FOR SALE: Sweet potatoes, 6 miles north of Flomot on Farm Road 599. Call Joe Edd Helms, (806) 469-5387. L23-c
We have a full line of carpet and floor covering. Will install for you. Call for free estimate. Call 983-2862. Sears, Floydada.
Portable dishwasher for sale. Excellent condition. \$150.00 Call 652-3129 after 5 p.m.
AMWAY PRODUCTS means quality and personal service. Contact Joann or Randy Rogers at 652-3825 or 652-2121. L10

FOR Sale
Markdown — Slightly damaged standard capacity, heavy duty washer. Was 299.95. Now 229.95. Sears, Floydada, 983-2862.
Markdown — Vacuum with Powermate was 209.95, now 159.95. Sears, Floydada, 983-2862.
Markdown — Gold dishwasher, slightly damaged. Will install for you. Call for free estimate. Call 983-2862. Sears, Floydada.
FOR SALE: Twenty-five hundred ft. 2 inch steel gas line. Call 652-3613. L10-23p
FARM MACHINERY
FOR SALE: Own a cab Mobil 90 stripper. Call Rex Harrison, 983-2043. 10-9p
FOR SALE: Cotton trailers, 6 wood and wire, 24 ft. cobs. 2 expanded metal 24 ft. Big 12. Good Shape. Call 983-2922. 10-24p
Classified Rates
CLASSIFIED ADVERTISING RATE: 15 CENTS PER WORD FIRST INSERTION; 10 CENTS PER WORD EACH SUBSEQUENT INSERTION. MINIMUM CHARGE 2.00.
CLASSIFIED DISPLAY RATE: \$1.54 PER COLUMN INCH CARD OF THANKS: 2.00.
CARD OF THANKS
"WE SELL SLEEP"
Direct Mattress Co. New or renovated, for appointment call City Trim Shop, 983-2332, Floydada.
FOR SALE: one bedroom suite, new cedar chest, some antiques. 652-2111. L10-16c
22 ft. Coachman travel trailer for sale, 1979, like new. Call 983-2285, after 6 call 983-5610. L10-24c
FOR SALE: Exercise Bike \$50.00. Call 652-3613. L10-24c
AIRELOOM Ceiling fans. 3 speed 5 yr. warranty. 10 to 15% discount. Grady Dunavant 983-3609
STOP PAINTING
Cover all outside walls and overhang with U.S. Steel Products
FREE ESTIMATES Stan By Steel Siding 1501 N. Columbia Plainview, Texas Phone: 293-9330
We would like to say a great big "Thank You" to all the dear friends who sent cards, letters, flowers, gifts, and for your visits and prayers while I was in the hospital at Lubbock. It is friends like you that make this such a wonderful place to live. Hershel & Octavia Carthel L10-10c
DAN'S AUTO SERVICE
DAN TUNTON, Owner
Specializing in Automotive Transmission, Motor Tune Ups, Auto Air Conditioning
General Repair We Have A BRAKE LATHE to handle all passenger car brake drums. Set us for complete brake service. Phone 652-2462
Swifty
DISTRIBUTORS INC.
200 proof fuel alcohol (Ethanol) for sale. Any quantities, contact Lyndell Roberts or Arthur Welie, 806-983-3721

Diamond Industrial Supply Co., Inc.
Phone Days 296-7418 Nights 296-1200 or 296-7828
1014 Broadway Plainview, Texas
Chain Sprockets V belts Sheave U joints Oil Seals O rings Wisconsin. SKF BCA Timken Bower Cotton Stripper Brushes & Bats
"We Appreciate Your Business More"

Darden Machine & Welding
1 Day Service
Radiator and Gear Head Repair From Floydada, 6 miles North on Plainview highway, turn West at Muncy Elevator 1/2 mile and 1/2 mile South
Day or Night Phone 652-3743

J. P. WILLIAMS
Ph. 652-2326
WEED CONTROL ON LAWNS
INSECT CONTROL ON TREES AND SHRUBS
CONTROL OF BINDWEED, RAGWEED, BLUEWEED & JOHNSON GRASS
C. A. LIC. NO. 27493 BUS. LIC. NO. 3105 L70C

TURNER REAL ESTATE
983-2635 Farms & Ranches Floydada, Texas
Check with us for LIQUID FERTILIZER ANEYDROUS HERBICIDES
Rigs available for application
LONE STAR CHEMICAL INC.
Office: 652-2761 Deanie Henderson: 652-3434 L10-c
STORAGE SPACE
BOATS, FURNITURE, APPLIANCES, ETC. BY THE MONTH OR SIX MONTH 10% DISCOUNT.
WEST TEXAS MINI STORAGE
983-3574 OR 983-2151

OPPORTUNITY RINGS
Every time you use the Want Ads
JUST CALL 983-3737
Have something to buy or sell? One phone call to us is like dialing our entire circulation... person-to-person! Place your Want Ad today!
Floyd County Hesperian
Lockney Beacon

BAKER
Insurance Agency
J.W. Caffery
Ph. 983-2270
Auto Accidents DO Happen... If one happens to you, be protected. Our car insurance offers coverage to meet your special needs — repairs to personal liability.

FOR SALE
AMWAY PRODUCTS means quality and personal service. Contact Joann or Randy Rogers at 652-3825 or 652-2121. L10

FOR SALE
FOR SALE: Hot tamales and Spanish barbecue every Friday and Saturday. Call your order Thursday or Friday. 983-2630 or 983-5041. 10-23p

CONCERNED about hard water scale damage to pipes and appliances? We have an economical way to solve your problem. Write Aqua Products Co., Box L, Floydada, Texas 79235. L10-24c
STOP PAINTING
Cover all outside walls and overhang with U.S. Steel Products
FREE ESTIMATES Stan By Steel Siding 1501 N. Columbia Plainview, Texas Phone: 293-9330

Can You Use Some Extra Money Let Us Help!!!!
WE BUY SCRAP IRON OLD JUNKERS AND FREE PICKUP
Call 983-5277
BUSINESS OPPORTUNITIES
Addressers wanted immediately! Work at home, no experience necessary, excellent pay. Write: National Service, 9041 Mansfield, Suite 2004, Shreveport, Louisiana 71118 10-23c

OWN your own Jean Shop; go direct — no middle man, no salesman's fee. Offering all the nationally known brands such as Jordache, Vanderbilt, Calvin Klein, Sedgefield, Levi and over 70 other brands. \$14,500.00 includes beginning inventory, airfare for 1 to our national warehouse, training, fixtures and Grand Opening Promotions. Call Mr. Wilkerson at Made-moiselle Fashions 214-631-4022. L10-16p

FOR SALE
FOR SALE: one bedroom suite, new cedar chest, some antiques. 652-2111. L10-16c
22 ft. Coachman travel trailer for sale, 1979, like new. Call 983-2285, after 6 call 983-5610. L10-24c
FOR SALE: Exercise Bike \$50.00. Call 652-3613. L10-24c

STOP PAINTING
Cover all outside walls and overhang with U.S. Steel Products
FREE ESTIMATES Stan By Steel Siding 1501 N. Columbia Plainview, Texas Phone: 293-9330

CONCERNED about hard water scale damage to pipes and appliances? We have an economical way to solve your problem. Write Aqua Products Co., Box L, Floydada, Texas 79235. L10-24c
STOP PAINTING
Cover all outside walls and overhang with U.S. Steel Products
FREE ESTIMATES Stan By Steel Siding 1501 N. Columbia Plainview, Texas Phone: 293-9330

Can You Use Some Extra Money Let Us Help!!!!
WE BUY SCRAP IRON OLD JUNKERS AND FREE PICKUP
Call 983-5277
BUSINESS OPPORTUNITIES
Addressers wanted immediately! Work at home, no experience necessary, excellent pay. Write: National Service, 9041 Mansfield, Suite 2004, Shreveport, Louisiana 71118 10-23c

Here's an extra Wish Book VALUE
Because we can handle early Christmas business more efficiently, we can make this offer:
You'll get an **EARLY SHOPPER'S 10% DISCOUNT**
when the selling prices of the items you purchase on any order from the Sears Christmas Catalog total \$75 or more and the order is placed anytime through **OCTOBER 20, 1980**
FOR DETAILS, SEE YOUR SEARS REPRESENTATIVE.
100 South Main 983-2862 Floydada, TX

PETS FOR SALE
WINDERS FAWN with white markings, mask. Louie Bybee 110-16p

LOCKNEY PRINTING
ALL TYPES COMMERCIAL PRINTING
Phone 652-2184
We Appreciate Your Business.

SEARS
Authorized CATALOG SALES MERCHANT
Because we can handle early Christmas business more efficiently, we can make this offer:
You'll get an **EARLY SHOPPER'S 10% DISCOUNT**
when the selling prices of the items you purchase on any order from the Sears Christmas Catalog total \$75 or more and the order is placed anytime through **OCTOBER 20, 1980**
FOR DETAILS, SEE YOUR SEARS REPRESENTATIVE.
100 South Main 983-2862 Floydada, TX



Something's New— And Valuable, Too! GOLD BOND STAMPS With Every Great Value

KEETERS GROCERY

East Edge of Lockney

7 a.m. - 8 p.m.

652-2191

These Specials Good Thurs., Fri., & Sat.

We Redeem Food Stamps & WIC Cards

We Reserve The Right To Limit Quantities

 2 lb Folgers Coffee \$2⁵⁹ 11 lb can	Lettuce 25¢_{lb}	 12 oz Wilson Franks 89¢
 Poprite Popcorn 69¢ 2 lb Bag	 Hams ½ Half For Whole Cured \$1⁴⁹_{lb}	2 lb Box Kraft Velvetta Cheese \$2⁷⁹
 Morton Beef or Chicken Pot Pies 3/\$1⁰⁰	Grade A Large Eggs 69¢_{doz}	 46 oz can Hunts Tomato Juice 59¢
 Brawny Scott Paper Towels 59¢	 Dari-Maid Milk \$1⁸⁹ 1 gal	 ½ gal Bell Ice Cream \$1³⁹
 New Mexico Red Delicious Apples 79¢_{3 lb bag}	 Kraft 1 lb (Sticks) Parkay 59¢	 Del Monte Peaches 49¢_{303 can}
46 oz White Swan Shortening \$1¹⁹ 3 lb can	 Boneless Stew Meat \$1⁹⁸_{lb.}	 14 oz Kraft Carmels 89¢
 Golden Ripe Bananas 25¢_{lb}	 32 oz 6 btl ctn Pepsi Cola \$1⁵⁹	 Chuck Roast \$1³⁹_{lb}
1 lb Box Sunshine Saltine Crackers 69¢	 Wrights Thick Sliced Bacon 99¢_{lb}	 Arm Roast \$1⁷⁹_{lb}

GOLD BOND STAMPS with every purchase... Save them and redeem them for practical... for that very special gift you wanted. It costs you no more! Like PRICES and FINE QUALITY are still just added a new way to say "Thank you" shopping with us.

100 EXTRA GOLD BOND STAMPS With the purchase of

1 lb Can Folgers Coffee

100 EXTRA GOLD BOND STAMPS With the purchase of

1 gal Milk

100 EXTRA GOLD BOND STAMPS With the purchase of

2 Rolls Any Brand Paper Towels

100 EXTRA GOLD BOND STAMPS With the purchase of

5 lb Bag Of Flour (Any Brand)

100 EXTRA GOLD BOND STAMPS With the purchase of

6 Btl Ctn Coke Or Pepsi

100 EXTRA GOLD BOND STAMPS With the purchase of

Fryers

1000 EXTRA GOLD BOND STAMPS With the purchase of

Hindquarter Of Beef (Quick Frozen, Cut & Wrapped)

2000 EXTRA GOLD BOND STAMPS With the purchase of

½ Beef \$1²⁹

Time To Run" To Down October 19

TO RUN, a film that develops problems and will be shown at the Assembly of God on Sunday, October 19. The feature, Eastmancolor by Picture Pictures, will be beginning at 7:30 p.m. on location in the California area. TO RUN stars Ed Randall Carver, Barbara Sigel, Joan Winmill and Rigby. Nelson plays a hard driving industrial engineer who, because of over-involvement in work, has failed to communicate with his wife and suffering on the part of their son Jeff, played by newcomer Randall.

TO RUN allows the viewer to become involved on the emotional level. Viewed as entertainment, it's a suspenseful story of a man who attempts at sabotage and is caught by his father. The film is a threat to the youth and he puts his action on an emotional level. TO RUN is the story of a man who is tearing a

Airview News

Mrs Clyde Bagwell was taken to California where she is this morning. The report is that she is being taken to Mike Allen of the hospital where she is being treated. Mrs. T.J. P. her aunt Mrs. K. Saturday morning Mrs. Ruby S. the home of Mrs. Ray Cook. Mrs. cousin of Mrs. Donna Jean spent Friday night at the home of Mrs. L.L. Denton of the hospital Sunday evening Mr. Franklin Harris visited Mr. and Mrs. Eugene Watts and Mrs. Wilson went to Saturday to the home of his son, Leonard and family. Mrs. Sims leg, Mrs. Sims yard on the way when she fell. She

Set For The T Play—"Blithe Sp

production of the High School Drama has been set for 21 and 22. Noel three act comedy. It will be under the direction of Joe Willis, drama teacher. Spirit is a comedy about the misadventures of Charles Condonine struggles to fend off the advances of two wives at a spirited ending.



Lubbock C 6th

October 2
day 8a.m.-6p.m.

BUY-SELL-SW
DOOR PRIZE
(One Award)
Admissi

W- oo! AMPS Value

GOLD BOND STAMPS with every purchase now on. Save them and redeem them for some practical... for that very special gift you've wanted. It costs you no more! The same old PRICES and FINE QUALITY are still here. We've just added a new way to say "thank you" shopping with us.

100 EXTRA GOLD BOND STAMPS
With the purchase of
1 lb Can Folgers Coffee

100 EXTRA GOLD BOND STAMPS
With the purchase of
1 gal Milk

100 EXTRA GOLD BOND STAMPS
With the purchase of
2 Rolls Any Brand Paper Towels

100 EXTRA GOLD BOND STAMPS
With the purchase of
5 lb Bag Of Flour (Any Brand)

100 EXTRA GOLD BOND STAMPS
With the purchase of
6 Btl Ctn Cokes Or Pepsi

100 EXTRA GOLD BOND STAMPS
With the purchase of
Fryers

1000 EXTRA GOLD BOND STAMPS
With the purchase of
Hindquarter Of Beef \$1.49
(Quick Frozen, Cut & Wrapped)

2000 EXTRA GOLD BOND STAMPS
With the purchase of
1/2 Beef \$1.29

"Time To Run" To Be in October 19th

"TIME TO RUN," a film that develops between husband and wife, and between father and son. In an attempt to find freedom from the ever-growing hostilities, Jeff takes to the road, hoping to discover some meaning in his confused life.

Approached from a religious perspective, TIME TO RUN is also a story of friction between Jeff and his girlfriend, Michelle, played by Barbara Sigel, who is a familiar face to television viewers. Michelle has discovered a spiritual dimension in her life, and this aspect is very confusing to Jeff, who has little time for "a God who would allow war, hatred, and suffering on earth." But his life is shattered by an avalanche of personal problems, and he finds himself at a Jesus people gathering with Michelle, where he glimpses the possibility of a new life-style based on love and understanding.

TIME TO RUN is a film that can help strengthen love relationships between people. It's a film that was made for families to attend-together.

The film is being shown for "Youth Night" at the church. Admission is free and everyone is invited to attend this Billy Graham film. Be sure to bring a friend to see TIME TO RUN.

location in the California area, RUN stars Ed Barndall Carver, Joan Winmill and Joan Wilson plays a hard driving industrial engineer who, over-involvement with his wife and son Jeff, played newcomer Randall

TO RUN involves the more of the three levels. Viewed as a story of sabotage nuclear generating received, designed by his father, he feels that the threat to the action.

TO RUN is the drama of the tearing a

Airview News Mrs. Clyde Bagwell

was taken to Caprock Hospital where she had surgery this morning, Monday, and the report is she came through the surgery just fine.

Mike Allen of Texas Tech was home for the weekend with his parents, Mr. and Mrs. Harvey Allen.

Mrs. T.L. Perry visited her aunt Mrs. Kate Crabtree Saturday morning.

Mrs. Ruby Sullivan of Littlefield spent the weekend in the home of Mr. and Mrs. Ray Cook. Mrs. Sullivan is a cousin of Mrs. Cook.

Donna Jean Campbell spent Friday night with her aunt, Anne Swepton.

Thursday night Mrs. Flora Warren was hostess at a Salad Supper for the Warren families. Ones present were Mr. and Mrs. Bud Warren, Mr. and Mrs. Dorsey Warren, all of Floydada; and Mr. and Mrs. Lester Britton of Crosbyton.

Mr. and Mrs. Harvey Allen were at Plainview Hospital Sunday to visit his mother, Mrs. Ocie Morrison, who had undergone surgery and Harvey went back today to check on her.

Sunday afternoon visitors with Mrs. Flora Warren were her grandsons, Craig Hambright of Gorman, he is the band director at Gorman, and Grant Hambright and his fiancée, Martha Hammock, both students at Texas Tech.

Many of us are attending the revival at First Baptist Church Floydada this week.

Set For The Three Play-"Blithe Spirit"

Charles survives the connivings of Ruth and Elvira over him. This classic farce takes place in England around the 1940's.

Members of the play cast are: Charles, Bill Gray; Ruth, Terri Lloyd; Elvira, Julianne Lipham; Dr. Bradman, Jeff Moss; Mrs. Bradman, Amy Jones; Edith, Deanne Howard; and Madame Arcati, Teresa Weaver.

Blithe Spirit promises to be an enjoyable evening for all.

LUBBOCK GUN SHOW

Lubbock Civic Center
6th & N
October 25-26, 1980
Saturday 8a.m.-6p.m. Sunday 8a.m.-6p.m.
BUY-SELL-SWAP or JUST LOOK
DOOR PRIZE-BONE KNIFE
(One Awarded Each Day)
Admission \$1.00



TED JORDAN AND BOB COPELAND are forming the cement in front of Thompson's Pharmacy.

Floydada Nursing Home Happenings

This was a great week. We had a lot of fun, at our party Thursday.

Imogene Gray furnished ice-cream and Bonnie West and I baked cakes. No special occasion we just wanted to get together. During the party Mrs. Alta Probasco was presented a certificate of recognition for reading the New Testament through in less than a month.

Each resident drew a number and as the numbers were called several won gifts. Those winners were: Hollie Bertrand, Willie Stambough, Ray Reed, Myrtle Roy, Erhel Collins, Sallie Kreis. We want to thank May Adams and Gladys Widner for helping with the serving.

We went to Silverfalls on our bus trip. Those enjoying the trip were: Emmitt Lawrence, Verma McSwain, Velva Pricer, Mr. W.C. Cates and Iva Simpson, Mr. Cates really enjoyed the trip because it was the first time he had been to the falls. Thank goodness, it had rained enough for the park to be pretty.

Mrs. Hazel Ginn is home from the hospital and doing fine.

Several of our residents are about sick with colds and hay fever. These are: Velva Pricer, Dacia Manning, Grace Jarboe, W.C. Cates, Mr. Lawrence, Clara Williamson and Mamie Gray.

We have with us Mr. J.T. "Boots" Strickland. Mr. Strickland has lived with us before and we're proud to have him back.

Mr. Bob Rossen brought watermelons for the residents Tuesday afternoon. Dick and Inez Furrow is here from California visiting his mother, Mrs. Olie Furrow, and to enjoy Homecoming.

Mr. Roy Fawver who had been a resident here for only a short time died about 6:30 Sunday evening in our home.

We would like to express our deepest sympathy to his loved ones.

We had the largest Bible study class Tuesday we've had in a long time. There were seventeen eager residents to study the Gospel of Luke. Those attending were: Verma McSwain, Hallie Bertrand, Henry Love, A.G. Eubanks, Alta Probasco, Iris Colston, W.C. Cates, Myrtle Roy, Geneda Roberts, Iva Simpson, Clara Murry, Jessie and Merel Freeman, Ivy Biggs, Sue Thompson, Susie Mooney and Emmitt Lawrence.

Steve brought the reading and worded the opening and closing prayer.

We would like to thank Genelda Fulton for the beautiful red roses. We have enjoyed them so much.

Mr. and Mrs. Earl Bishop visited in our home Thursday morning. It is amazing to see

Elvis Childs, Watson and Jean Jones, Ocie Morrison, Todd and Caren White, Manuela D. Mendoza, Benita Martinez, Maurice and Ella Goodwin, Vonceil Colston, Mr. and Mrs. Gilbert Shirey, Mr. and Mrs. Ralph Taylor, Edith (Shirey) Saul, Asale (McGuffey) Noland, Evelyn and Jack Crull, Wiley Rogers, Doris Snodgrass, Murray and Corene Stewart, Wrona Felton Stewart, Tom and Betty Jarboe, Mr. and Mrs. Fay Hare, Eunice Hardy, Marie Baxter, Babe and Jack Dillard, Frances Badgett, Lea M. Sullivan, Helen Johnson, Lois Jones, Charley L. Berry Sr.,

Dena Myrick, N. Earl Edwards, Audie and Ruth Noland, Clara McNeely and family, Leola Lemons, Mr. and Mrs. Luther Lancastra, Flo Ella Jarboe, Rebecca Burns and Chad, Christine Robertson, Mrs. Vernon McPeak, Burmah Probasco, Sherry Colston and Zane Hubert Edwin, Mrs. Ronald McPeak, Verma Morren, Verma Cardinal, Ethel Carmack, Mr. and Mrs. V.L. McNeil, Mrs. Paul Murff and Charley L. Berry.

Lions Ramps Provide Easier Access To Downtown Area

Access to stores in downtown Floydada for persons who are confined to wheelchairs or who require the use of walkers has been made easier thanks to the efforts of the Floydada Lions Club.

In observation of World Lions Service Day, the Floydada Lions Club, this past weekend, constructed wheelchair ramps. Mike Samford, who is a disc jockey at KFBA radio, and has been having to go around to the alley to get into the station.

At least one person will get almost daily use out of the chair ramps in three locations. Ramps are located on Main Street on the east side by Arwine's Drug, and on the west side in front of Thompson Pharmacy. The third ramp was constructed on the northeast corner of California and Fifth Street.

"These first ramps are only the beginning," said David T. Seay, Lions Club president. "Our intent is to build more ramps in the Spring, and then continue until access is provided to all buildings in the downtown area."

Labor to bust out the existing sidewalks and curbs, and to pour and shape the concrete was performed by volunteers of the Lions Club. The City of Floydada provided a dump truck and man to pick up the old concrete. Purchase of the concrete was made possible by the proceeds that the Lions Club receives from its local projects.

"The Lions Club wishes to thank all of those in the community who participate in and contribute to our club projects," said Seay. "Without them, we would be unable to carry out such projects that benefit all of our community."

World Lions Service Day is an annual event when 1.3 million Lions all over the world unite to serve the needy and lonely. Over thirty-three thousand Lions Clubs in 150 countries and geographical locations in the world gather in their communities to perform special acts of service to the citizens of their locale.



MIKE SAMFORD gives the new ramp, at the northeast corner of 5th and California, its first try-out.



LIONS STARTED BUSTING CONCRETE Thursday. Left to right—Aldine Williams, Bob Aildredge, Gary Brown, Ted Jordan in front of Arwine's Drug Store.

LOCKNEY Care Center Happenings

by Vickie Hutton

We have had an enjoyable time this week. On Thursday, Mrs. Eunice Taylor celebrated her 94th birthday. A birthday party was held Thursday afternoon. Refreshments were brought by Mr. and Mrs. Dick Taylor and Mr. and Mrs. Preston Taylor. Mrs. Taylor's sons, Tuesday afternoon we played bingo. The winners were Bill Holt, Richard Latham, Bill Payne, Lavella Edwards, Myrtle Burke and Albert Poole. Blackout winner was Vera Rogers.

Myrtle Burke, Alpha Kitchens, Richard Landam, Bill Payne, Sally Carpenter and John Turner enjoyed cutting up okra Wednesday afternoon. We would like to thank all the people who brought blackeyed peas, okra and other fresh vegetables this past summer. The residents really enjoyed themselves during our pea shelling parties.

On Friday afternoon the residents enjoyed playing dominoes and popping popcorn.

We would like to welcome Mrs. Hallie King as a new member of our family.

Mrs. Sally Carpenter recently visited her son, Dale Carpenter and family and her daughter, Mrs. Joe Conway and family in Irving, Texas. While there Mrs. Carpenter went sightseeing and visited with her grandchildren and great grandchildren.



Neither reptiles nor frogs nor toads are found in Iceland.

New Case ONE-TWO Farm Tractor Offer

1. PLUS 2.

CASH REBATES up to \$3200

WAIVER OF FINANCE CHARGES UNTIL MARCH 1, 1981

If you buy one of our new Case farm tractors listed in this ad between Aug. 1, 1980 and Oct. 31, 1980, Case will send you a check for the dollar amount shown opposite the Case model you buy, or you can apply the rebate towards your down payment. NOTE: Government Agency Departments do not qualify for rebate.

Engine Models	Cash Rebate	Engine Models	Cash Rebate
885	\$ 500	2290	\$1900
990	\$ 700	2390	\$2100
995	\$ 700	2590	\$2200
1210	\$ 800	4490	\$2300
1410	\$ 900	4690	\$3000
2090	\$1500	4890	\$3200

If you buy any of our new Case farm tractors or one of our used farm tractors listed in any make between Aug. 1, 1980 and Oct. 31, 1980, finance charges will be waived from date of purchase until March 1, 1981.

Purchase date extended thru October 31, 1980! See us now and save!

Lubbock 3302 Slaton Hwy 745-4451
Lamesa 903 S. Dallas 872-5861
Floydada 101 South 12th 983-2836

case

WANT TO HELP FARMERS BEAT THE WEATHER?

THE FEDERAL CROP INSURANCE CORPORATION, an agency off the U.S. Department of Agriculture, would like to interview potential Sales representatives and Contract Loss Adjusters for its All-Risk Crop Insurance program in the following counties:

Childress, Cottle, Fisher, Floyd, Hale, Hall, Haskell, Jones, Knox, Stonewall, and Wilbarger.

Prefer Experience In:
Commission Sales
Insurance
Farming
Ag Related Business

Contact:
Jakie M. Harris, District Director
Box 1626
Plainview, Texas 79072
Phone: (806) 293-4777


FEDERAL CROP INSURANCE CO.
An Equal Opportunity Employer


WE GIVE


 WE GIVE


 WE GIVE

 WE GIVE

 WE GIVE

 WE GIVE

 WE GIVE

 WE GIVE

 WE GIVE

 WE GIVE

 WE GIVE

 WE GIVE

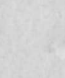
 WE GIVE

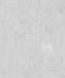

 WE GIVE

 WE GIVE

 WE GIVE

 WE GIVE

 WE GIVE

 WE GIVE

 WE GIVE

 WE GIVE


32 oz Liquid
Era **\$1.49**

35 oz
Cascade **\$1.29**



Ivory 
 22 oz Giant Size Liquid **99¢**
 32 oz King Size Liquid **\$1.39**



Tide 
 Giant 49 oz **\$1.69** King 84 oz **\$2.99**
 Family 171 oz **\$5.79**



99¢ "Round Tortilla Chips"
Tostitos **69¢**
 10 oz Tostitos Picante
Sauce **69¢**



24 oz Kraft Carmels, Fudgies,
 Rollers, Toffee or Mixed Bag
Candy **\$1.49**

12 oz Tom Scott
Mixed Nuts **\$1.29**



HILLS BROS **Coffee**

 10 oz Hills Bros Instant **\$3.99**
 1 lb Hills Bros All Grinds **\$2.49**



1 lb Armour Frozen Catfish
Bacon **\$1.89**
 Bacon
 2 to 4 lb Boneless Sirloin **\$2.69**
 Ham **\$2.69**
 USDA Ground Beef **\$1.49** lb
 Fries

Play Lucky Stars
 4 oz Adams
Vanilla **\$1.19**
 10 oz Campbell's Tomato Soup **4/\$1.00**

3 lb "Pure Vegetable" **Crisco** **\$3.99**
 36 count Chinest Compartment **Paper Plates** **95¢**
 Lowreys Summer Sausage or Beef **Jerky** **\$1.29**
 Granola Cluster **\$1.29**
 Big Batch **Eggs** **\$1.99**
 Ready To Spread **Ice Cream** **\$1.09**
 Cocker Layer **Milk** **77¢**
 1/2 gal Bell **Buttermilk** **2/99¢**

King Size Or 100's All Brands
Cigarettes **\$5.49**
 With Coupon **\$5.99**
 Without Coupon

Good At Buddy's Expires 10-22-80 One Coupon Per Purchase

We Give

DOUBLE ON WEDNESDAY

bud's
 SUPER

Mon.-Sat.
 Eff.
 We Reserve

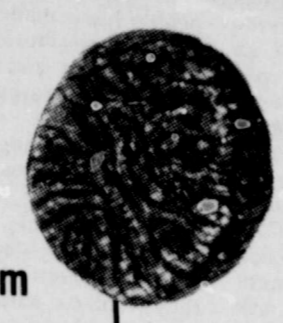
1 lb Armour Star Bacon **\$1.89**



Armour Star 2 to 4 lb Boneless Ham **\$2.69/lb**



Armour Star Catfish **\$1.29/lb**



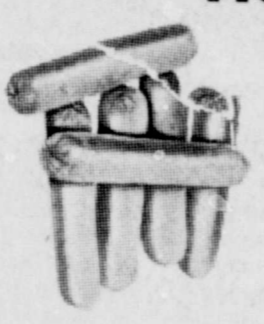
Armour Star Chicken Fry Patties **\$1.69/lb**

USDA Ground Beef **\$1.49/lb**



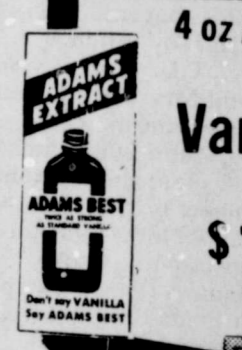
USDA Arm Roast **\$1.99/lb**

12 oz Armour Star All Meat Hot Dogs **\$1.29**



2 lb Banquet Fried Chicken **\$2.79**

Play Lucky Stars
4 oz Adams



Vanilla \$1.19

Play Lucky Stars
10 oz Campbells Tomato



Soup 4/\$1.00

Play Lucky Stars
14 oz Franco American



Spaghetti 4/\$1.00

Play Lucky Stars
Schilling Taco, Spaghetti

Mix 3/\$1.00

3 lb "Pure Vegetable" **Crisco \$3.99**

36 count Chinet Compartment **Paper Plates \$1.95**

Lowreys Summer Sausage or Beef **Jerkey \$1.29**

Grade A Extra Large **Eggs \$1.99**

1/2 gal Bell **Ice Cream \$1.09**

Gallon Buddy's **Milk \$0.77**

1/2 gal Bell **Buttermilk \$2.99**

Farm Fresh Produce

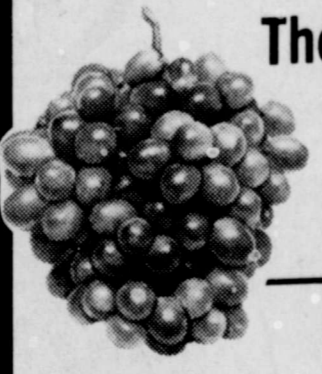
10 lb All Purpose **Potatoes \$1.59**



New Crop **Avocados 59¢**



Thompson Seedless or Tukay **Grapes 79¢/lb**



New Crop Sweet **Potatoes 3/lb \$1.00**

Buddys SUPERMARKET

220 South 2nd
983-3149
STORE HOURS
Mon.-Sat. 8 am - 10 pm Sun. 9 am - 9 pm
Values In This Ad
Effective Thru Wednesday
October 22, 1980
We Reserve The Right To Limit Quantities



We Give U.S.D.A. Food Coupons
We Take W.I.C. Cards

Play Lucky Stars

25 Winners Weekly
Look For Stars On Your Receipt

- Gold Stars ***** \$100.00 Gift Certificate
- Silver Stars ***** Purchase Free
- Red Stars ***** 10 lb Turkey
- Green Stars ***** 1200 S&H Green Stamps
- Blue Stars ***** 600 S&H Green Stamps

No Purchase Required Must Be 18 Or Older

Some Recent Winners
\$100.00 Gift Certificate



Fabian Torres



Margaret Killian

- Purchase Free Faye Benson
- Anita Garcia
- Eva Alfaro
- Mrs. WL Davis
- 1200 S&H Stamps Sally Salazar
- Maniva Vella
- CH Porter
- AS Smith
- 10 lb Turkey Nancy Graham
- 600 S&H Stamps Gene Lowrance
- Mildred Franics
- Janie Briones
- Sally Daiz
- Mrs Jerry Leatherman

1 lb Bag Pops Rite Popcorn 3/\$1.00

2 lb Nestles Chocolate Quik \$2.49



6-32 oz

Coke or Tab

Plus Deposit With Coupon

Plus Deposit Without Coupon

99¢

\$1.49

Good At Buddys Expires 10-22-80 One Coupon per Purchase

WE GIVE GREEN STAMPS

WE GIVE GREEN STAMPS

WE GIVE GREEN STAMPS

WE GIVE GREEN STAMPS

WE GIVE GREEN STAMPS

Library News



LEE BATTEY

Battey Accepts Director Of Nurses Position

Lee Battey, Registered Nurse of Floydada, has recently accepted the position of Director of Nurses of The Visiting Nurse Service, Inc., 2414 34th Street, Lubbock. Visiting Nurse Service, Inc. is a private, non-profit home health agency that is owned and operated by registered nurses of Lubbock. It is independent and unaffiliated with any other agency. The agency meets all of the regulations and requirements of the State and Federal Regulatory Act. Visiting Nurse Service, Inc. is directed by an Advisory Board that consists of persons from various disciplines: physicians, nurses, educators, therapists, and civic-minded individuals who are interested in delivering high-quality comprehensive health care and service that is responsive to unmet needs and underserved areas within the fifteen county Health Systems Agency, Area 2. Lee is the wife of David S. Battey, Jr., of Floydada, and the daughter of Mr. and Mrs. J.A. Hutchinson of Oklahoma City, formerly of Floydada. She has resided in Floydada since 1947. A graduate of Floydada High School, she also graduated from Lubbock School of Vocational Nursing in 1967. She attended Lubbock Christian College, South Plains College, and Texas Tech University. She is a 1976 graduate of Methodist Hospital School of Nursing. In 1979, she earned a Bachelor of Science in Nursing with emphasis on community health from West Texas State University school of Nursing. She has been employed by Methodist Hospital in Lubbock, from 1967 to 1980, with the exception of four years, 1971-1975, when she worked for Malcolm J. Thomas, M.D., a thoracic and cardiovascular surgeon. For the past two and one half years she had been Head Nurse of the Neurosurgery and Neurology Unit of Methodist Hospital. Lee is recognized as the facilitator of the hospice movement in the Lubbock area. She has attended and participated in numerous seminars and workshops on hospice which is a concept of

care for terminally ill patients and their families. She and her husband are active members of the First United Methodist Church of Floydada, and Lee is a member of the National Hospice Organization, American Nurses Association, and Texas Nurses Association. As Director of Nurses of Visiting Nurse Service, Inc., Lee wants to inform her community and area of the services provided by VNS, including nursing procedures in the home on an intermittent basis such as injections, dressings, catheter insertion and care, ostomy instructions and care, as well as nursing assessment, patient education, nutritional counseling, monitoring of vital signs, discharge planning and referrals to other community agencies. Rehabilitative services include physical therapy and speech therapy. All treatments are carried out as ordered by the patient's own physician. The availability of the visiting nurse allows an earlier discharge from the hospital, thus providing economy to the patient and cost containment in health care. Charges for services do not exceed actual cost to the agency, and payment is made by Medicare, Medicaid, Veterans Administration, Champus, private insurance companies, and private pay (full or partial, according to a sliding fee scale.) No patient is denied services regardless of race, creed, or socioeconomic need. Referral may be made by the patient, physician, nurse, hospitals, clinics, social workers, ministers, friends, and families. If initial visits and assessments disprove the patients outstanding services of Visiting Nurse Service, Inc., is the

No matter how demanding the nation's diplomatic and economic problems seem to be, they should not completely distract us from concerns closer to home. We should realize that our state's future will be affected by the information available to its leaders at all levels, in government, business and private life. Similarly, the ability of each individual to cope with change depends on ready access to timely, reliable information, for which the public libraries are a primary source.

In the wake of escalating costs of books, magazines and less traditional materials, libraries are sailing in troubled waters. For instance, the average cost of a book was \$8.77 in 1967, but by 1978 was \$20.10. Magazines now cost more than \$30 for the average annual subscription. In 1967 the cost was under \$9. Moreover, it is estimated that the sea of information is doubling every ten years. The indications are that public libraries should be given greater support in order for them to keep abreast of the public's growing and more sophisticated demands for service. How much emphasis does Texas place on statewide library development? For comparison, the state of Maryland has a population of 4 million, served by a library budget of \$9.5 million, for a per capita support of \$2.31. Pennsylvania boasts a population of more than 11 million, while spending more than \$10 million on its public libraries. In the traditionally more conservative South, there are states such as Arkansas, having a library budget of less than \$900,000 in 1978, or just 40 cents per capita. Louisiana allocated \$1.5 million to meet the needs of close to 4 million residents last year. In order to fully appreciate the significance of Texas' ranking with other states, one must consider the tremendous growth which we have begun to realize over the past decade. The population reached 12,830,000 in 1979. Try to imagine the impact of \$2.5 million toward the development and support of 381 diverse and widely scattered public libraries around the state. For 1980, the per capita support from the state's general revenue funds stands at 16 cents. How does the library allocation compare with other departments of the state government? One example is the Central Education Agen-

cy, representing our public schools. Its budget is just under \$3 billion. This amounts to \$1,100 for each of 2.6 million students. The Colleges and Universities Coordinating Board serves over 328,000 students at an allocation over \$2,000 per student. Another interesting figure is the \$144 million budget for the Department of Corrections, to be disbursed for a client population of 24,700, which works out to \$5,850 per client. The Department of Human Resources will spend some \$83 million of General Revenue Funds, at \$6.48 per capita. Certainly the chief responsibility for support of each public library must rest with its local government. However, the state obviously shares that obligation for serving its citizens, regardless of the town, county or region in which they live. Texas ranks 46th from the top in state support for libraries among the 50 states. It would seem that we have far to go.

16 MM Films October 1980

Alphabet. 6 min. Color. 1966. B&W. National Film Board of Canada. All ages. A sprightly jazz background supports this ever-moving journey through the alphabet. Often moves young audiences to shout the names of the images when they appear on screen.

Betty In Blunderland. 12 min. B&W 1934. Niles Films Products, Inc. EI-A. A classic black-and-white animated spoof on Lewis Carroll's Alice in Wonderland, starring Betty Boop. America's comic-strip heroine of the early thirties—everybody's flapper girlfriend.

Black History: Lost, Stolen, or Strayed. 54 min. Color. 1968. BFA Educational Media. JH-A. Actor Bill Cosby, narrator of this film, shows that black people have made a considerable contribution to the development and wealth of the United States.

Changes, Changes. 6 min. Color. 1972. Weson Woods. EI. Presents an animated story of two wooden dolls and the practical problems they solve with wooden building blocks. Illustrates the meaning of change. Captivating.

A Cry Of Pain. 15 min. color. 1977. Mass Media Ministries. SH-A. Focus is on child abuse and neglect. Points out the three victims of such treatment, the child, the parent, and society. Well done.

Fine Feathers. 6 min. Color. 1977. Benchmark Films. Pre-EI. A fable concerning a brightly colored blue jay and a loon who exchange their plumage for many-colored leaves, only to have the wind blow the leaves away.

Grand Canyon. 29 min. Color. 1961. Walt Disney. EI-A. All the grandeur of this majestic natural panorama—including its many moods, its diverse inhabitants, and

its contrasting seasons. Musical background is Ferde Grofe's "Grand Canyon Suite"; no narration.

The Gruesome Gray Monster. 9 min. Color. 1977. Coronet. Pre-EI. Combined animation and live action story of a grumpy gray monster who has stolen all the colors and refuses to give them back until a little girl "rescues" them. Very good for showing the color spectrum, particularly for preschoolers.

The Happy Prince. 27 min. Color. 1974. Pyramid Films. EI-A. An animated adaptation of Oscar Wilde's story of selflessness and friendship.

Identity. 6 films, 4 min. each. Color. 1975. Encyclopedia Britannica. Pre-EI. Contents: 1. I'm the only me! 2. Where are you in your family? 3. How do we look? 4. What do you think you want to be? 5. Every family is special. 6. The most important person. (Most important Person Series)

Indian Art Of The Pueblos. 13 min. Color. 1976. Encyclopedia Britannica. EI-A. Stresses the continuity of life-style and art of the pueblos of Southwest Indians. Painting, kachinas, basketry, hand weaving, and ritual dancing of Pueblo Indian tribes are displayed.

The Legend Of Mark Twain. 32 min. Color. 1969.

ATTEND THE SIXTH Running Draw Arts and Crafts Festival October 17-18 Hale County Agricultural Plainview, Texas

Friday and Saturday 10:00 a.m. to 5:00 p.m. Sunday, 12:00 p.m. to 5:00 p.m.

FEATURING THE WORKS OF 125 ARTISTS AND CRAFTSMEN

ADV. PAID FOR BY CONVENTION & TOURISM COMMITTEE, PLAINVIEW CHAMBER OF COMMERCE

"Buy Something from This Fair"



FHA Holds Watermelon Feast To Start The 1980-81 Year

Things have really gotten off to a good start in FHA. On August 28, we had a Watermelon Feast. On September 18, we had a film called, "Foreward In The Future With F.H.A.-HERO."

Later things were still rolling along with a skating party on October 6, in Plainview. On October 7, there was an area meeting held in Lockney. Members attending the area meeting were: Rande Poage, Neva West, Patsy Williams, Rena Weeks, Vicki Powell, Irma Vargas and Vicki Vasquez. Rande Poage was the homemaker for the month of September. He had the highest points.

Officers for 1980-81 are: President, Pattie Campbell; Vice President, Rande Poage; Secretary, Neva West; Treasurer, Sherry Galway; Reporter, Steve Espinosa; Historian, Dale Burns; Parliamentarian, Carol Cochran; Pianist, Abby Hendricks; Song Leader, Shele Morris.

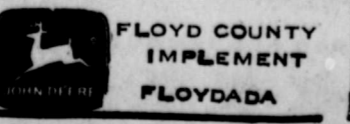
ATTENTION: High School students, if you have had at least 1 year of Homemaking, or you are in a Home-

making course now we would like to have you in F.H.A.!!! All you have to do is pay \$3.00 by October 15. We have lots of things planned throughout the year. Join Now!!!!

H. COSELL ATTORNEY AND SPORTSCASTER
Sportscenter Howard Cosell is also a lawyer.

Agri-Facts By Jerry Perry

BIOENERGY. That's the term used now in most official government reports on gasohol, alcohol fuels, methane gas and other energy forms to be developed from biomass. According to the latest forecast from the Office of Technology Assessment (OTA), bioenergy can account for up to 20 percent of the total energy needs of the United States by the year 2000. That's double the earliest projections. The OTA report was also one of the first to recommend the use of alcohol (methanol) as a stand-alone fuel rather than only as part of a blend. The big IF remains whether a significant realignment of priorities for federal agencies and extensive coordination among government entities, at all levels, will be required to successfully obtain production and usage goals.



ANNUAL Floydada Lions Club Pancake Supper Friday, October 24 5:00 - 7:30 p.m.

(Prior To The Floydada-Lockney Game)

Junior High School Cafeteria

Adults-\$3.00 Children under 12-\$1.50

Tickets on sale from Lions and Scouts

Proceeds Support Local Oions Club Projects

Time To Roof



RAPID ROOF — Acrylic Latex Sealer (Super Roofing Product - Just Roll It On or Spray It On). **RAPID ROOF** is the water-based, acrylic latex roof coating designed to provide a unilayered, flexible and seamless weatherproof covering over a variety of roof decking substrates. Lightweight yet durable, the **RAPID ROOF** exclusive membrane is many times lighter than conventional built-up roofing. **RAPID ROOF** can be applied over a great variety of roof decking substrates including built-up roofing, asphalt, composition shingles, tar and gravel, metal, concrete, sprayed-in-place urethane, new or old surfaces. Because **RAPID ROOF** is a fluid-applied elastomeric coating, roofing deck irregularities that might pose problems for seamed membrane applications can be overcome with the **RAPID ROOF** monolithic system. Forget the mess, expense and hazards of hot mopped asphalt. **RAPID ROOF** is applied cold, right from the container. By spray, brush or squeegee, the ease and convenience of the **RAPID ROOF** application greatly simplifies job-site procedures, significantly reducing the incidence of applicator error. The **RAPID ROOF** System — The Finest Roof Protection You Can Give Your Building. Great for Mobile Homes and RV Vehicles. I almost forgot to tell you how well it works on homes, apartment houses, warehouses, commercial, business, school and church buildings.

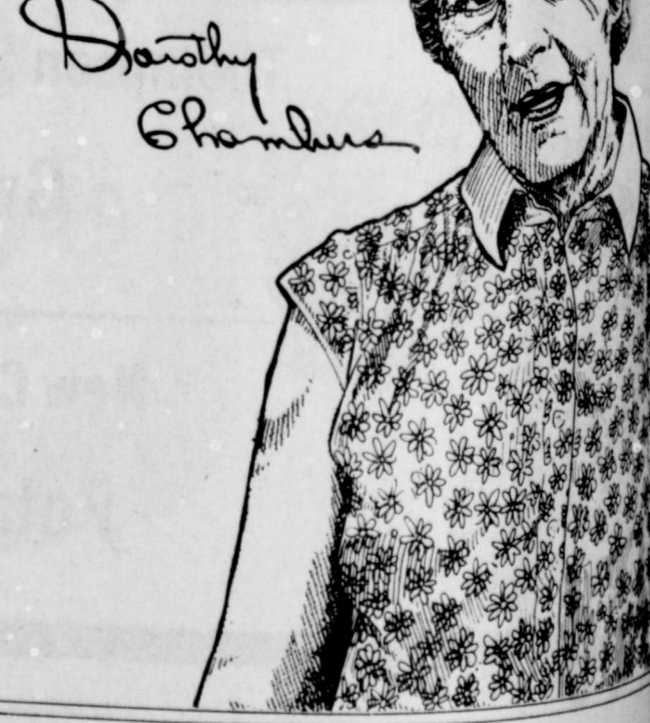
IF YOU HAVE ROOF PROBLEMS AND WANT THEM CORRECTED CALL US

Interested? Write or phone today

CAGER CARMACK-Floydada 983-3585
E.M.DENDY-Lorenzo 634-5382
G.W. SMITH-Floydada 983-2631
JOY G. WARD-Floydada 983-5169

It's True

"We've had the heat pump about a year and now months. The heat pump has saved us a lot of money this past winter. Everything that has been said about the heat pump is true. It's just great! And, I would advise everyone to install a heat pump. It's very very efficient."



The things said about the heat pump are true. Find out more about the heat pump. It can save for you.



Ja

cent death of a Hale Center... was pulled into a corn header... had to remain entrapped for 45... because rescuers were unable... has increased interest in... Lockney, to... a Jaws of Life unit.

ney Rotary Club has initia... to purchase the \$7800 unit to

Volume 79 Number

Winds, Winds Single Friday

ant time of year again... the annual battle for... championship of Floyd... rolls around. This... night the Longhorns... level to the county seat... the Whirlwinds.

ada is coming off a... loss to state ranked... dress last week and the... are trying to get back... winning path after... defeated by Tulsa.

ada has an identical... record as Lockney. ... both teams will be... to better that record... big to win the county...

game will be at Wes... and in Floydada and... time is at 8:00 p.m... upon KATX in Plain... broadcast the...

The Winds are lead by... Mike Self and... back Todd Beedy.

Starting Line-Up

Offense

End — Ronnie Minner
Tight End — Carlos Rainwater or Norman Allen
Tackle — Robert Nixon
Tackle — Bryan Emer
Guard — Ricky Heflin
Halfback — Kelly Seymour
Guard — Kelby Sue or Grey

Defense

Quarterback — Tim Radloff
Quarterback — Mike Self
Fullback — Jeff Rainey
Linebacker — Todd Beedy
Linebacker — Moody Younger

Special Teams

Kicker — Kevin Noland.
Punter — Tim Radloff.
Linebacker — Mark Nutt.
Linebacker — Norman Allen.
Linebacker — Carlos Rainwater.
Linebacker — Todd Beedy.

JEFF REECER JOHNSON hold October 28, sport