

# The Lockney Beacon

Volume 85 Number 27

Thursday July 2, 1981

22 Page In 3 Sections

25c

## Our Town

### City Council meeting is delayed

Regular monthly meeting of the Lockney City Council has been postponed from today until next Tuesday. The meeting will be held at 9 a.m. next Tuesday in the council chambers at the city hall.

### Floyd County road project approved

Work in the District Five Area is included in a huge highway and improvement program for highways and FM roads in the District. The project was approved by the State Highway and Public Transportation Department.

District Engineer C.W. Nall, Jr., said the work in this area is part of a major effort to modernize roads and highways which are worn out or in need of repair today's traffic.

Projects include the following work in Floyd County: FM 378, from the intersection of FM 378 and FM 261, to Seal Coat, at an estimated cost of \$100,000.

### Store re-opens tomorrow

Waller's Grocery Store on the Lone Star Highway will re-open for business tomorrow. The store was heavily damaged in a major fire several weeks ago.



**SHIRLEY MEREDITH** is the new director of nurses at the Lockney Care Center. She has been involved in nursing home care since 1968 when she was the assistant administrator of the Lockney Care Center. Most recently she was the director of nurses at Tulsa Care Center.

### Basketball camp sign up continues

Sign up continues for the Lockney basketball camp that will be held July 17-19 at the Lockney High School gymnasium.

Camp is open to boys and girls who will be in grades sixth through eighth next year.

Camp will be instructed by out-going Lockney boys varsity basketball coach Mike Leiby and girl's varsity coach Sheri Haynes.

Camp will cost \$40 which includes a personalized T-shirt and lunch.

Those interested in enrolling should send \$20 and their T-shirt size to Basketball Camp, P.O. Box 112, Lockney, Texas 79241.

For more information, telephone 652-2103 or 652-2748 in Lockney.

### Softball players are sought

15-year-old and under and boys 18-year-old and under are being sought to play in a state slow-pitch softball tournament July 17-19 in Lockney.

Those interested in playing should contact Victor Gonzales at 652-2501 in Lockney.

Deadline for signing up is 7 p.m. this evening.

### Softball tourney this weekend

Women's softball tournament will be held Saturday and Sunday at the Lockney High School field in Lockney.

Teams from Lockney, Plainview, Tulia, and surrounding towns will be competing from 8 a.m. to 8 p.m. both days.

"We'll be serving homemade ice cream," said Anna Anderson, tournament manager for the tournament. "We want the townspeople to come out and enjoy the fun."

### Post office closed tomorrow

Post office will be closed Friday, July 3, in observance of July 4. The office will re-open Monday as usual.

### Next week ahead....

July 1 - Lockney Club, Strickland's Restaurant

July 2 - Lockney Club, Rebekah Hall

July 3 - Lockney Chamber of Commerce, monthly meeting, Stickland's Restaurant, Merchants' prayer meeting, Rowell This R That, Main and Locust

July 4 - Lockney City Council, monthly meeting, council chambers, city hall.

## Block grant gets approval

The U.S. Department of Housing and Urban Development (HUD) has approved Lockney's application for a Community Development Block Grant.

HUD approved \$357,000 for the first year. An additional \$455,000 for the second year is contingent on the successful operation of the Block Grant program the first year.

In addition, HUD asked the city to make a commitment to develop a housing assistance plan.

The city made a commitment to develop 20 units of assisted housing.

Mayor J.D. Copeland said a seven-member Public Housing Authority board of directors will be named in the next few weeks to develop the housing program and administer it.

Barbara Ellis of Parkhill, Smith and Cooper Inc., of Lubbock, an engineering, architectural and planning firm which assisted the city in making the Block Grant application, said the city should be able to begin spending the money in a couple of weeks.

All the Block Grant funds will be spent for projects in the area bounded on the north by the Railroad tracks, on the east by First Street between Locust and Guest Streets, on the south by



LET'S SEE NOW, if the prime lending rate goes up three points, does that mean he's out? First National Bank president Carroll Anderson was pressed into service as an umpire this week for the Lockney youth baseball program.

## Mike Leiby resigns for Sweetwater job

The coach of the Lockney Longhorns boys varsity basketball team, Mike Leiby, has resigned.

Leiby, who had been Lockney's coach for just one year, resigned to accept a position as head basketball coach at Sweetwater High School.

In his one season as Lockney's head basketball coach, the Longhorns had a record of 13-16 overall and 3-7 in district 3-A competition.

Before coming to Lockney, Leiby spent two years coaching at Bovina

High School. In 1979-80 he was head basketball coach, when he was named coach of the year after leading Bovina to a second place finish in district 3-2A competition.

Sweetwater is class 4A school with a high school enrollment of about 900 as opposed to about 250 in Lockney School. The Sweetwater basketball team played

## Carol Lea Clark's It's Not Easy

I never particularly liked July. I know that it is supposed to be a sun and fun month for vacations, leisurely picnics, and long evenings with beautiful sunsets. It is also the month of my birthday, so I should like it.

Maybe my parents predetermined that I would not like July when they named me Carol, which means Christmas child, even though I was born on the hottest day of the year, in the middle of July.

Or maybe I dislike the month because my first exposure to the world was the sticky heat of an East Texas summer day when even the best air conditioning didn't make much difference in the temperature, and just made a lot of noise.

I don't particularly like air conditioning either. It makes me feel like a watermelon that is being slowly cooled just before it meets its end. The only thing I like less than air conditioning is not having air conditioning. One summer our air conditioner broke and my husband nearly divorced me. The heat doesn't improve my disposition.

My primary impression of July is heat and bugs, and bugs and heat. Anything that one can do in July can be done better in September when it is not so hot.

I will admit that I do enjoy charcoal hamburgers and steaks, and I love

nothing more than a weekend at the lake with our boat. Those are things that don't work well in December to March

for obvious reasons. It's hard to sail with frozen fingers, and it is easy to barbecue frozen fingers by mistake instead of chilled steak.

Since those three months each year to the cold, I can't bear to lose another month or two to the heat. So, as often as possible I am out in the sun, in July,

toasting myself like a reluctant marshmallow and asking myself why God couldn't have used a little more moderation in his allocation of temperature.

Someday if I'm ever rich enough to be choosy, I may find a nice little retreat on a lake in the sunbelt where it never gets too cold in the winter. For July, I'll find an identical cottage somewhere in the South American sunbelt where it never varies from the 70's in July, even though it's winter. I'll buy two matching boats and have one delivered to each location. Never again would I have to be too hot or too cold.

It would be perfect as long as I could stand being a little bored.

-c- 1981 Carol Lea Clark



Doug Meriwether, left, and Don Bloyd

## Meriwether is honored

On Wednesday, June 24, 1981, Lockney Postmaster Douglas Meriwether received a service award for 25 years of postal service.

The presentation was made by Lubbock's Sectional Chief Director of Finance, Donald S. Bloyd. Bloyd made the presentations on behalf of Lubbock MSC Manager/Postmaster Elmer J. Reed, Jr.

Bloyd stated, "The Postal Service has come a long way in the last 25 years, and dedicated employees like Meriwether have made it possible."

## New priest assigned to Lockney, Floydada

Bishop L.T. Matthiesen, Bishop of the Roman Catholic Diocese of Amarillo, has announced new clergy assignments to be effective Wednesday, July 1, 1981.

The Rev. Joseph E. Bixenman, pastor of St. Joseph's Church, Lockney and its parish mission St. Mary Magdalen, Floydada, is appointed director of the Integrated Ministries Training Program. He is also to continue to serve as vocation director, with his residence to be at Our Lady of Guadalupe, Amarillo.

Ordained June 9, 1972, at St. Laurence Church, Amarillo, he was appointed associate pastor of St. Elizabeth's Church, Lubbock in July 1972. Father Bixenman was appointed pastor of St. Joseph's Church, Lockney, and

St. Mary Magdalen, Floydada, in April, 1978.

The Rev. Terence Burke, pastor of St. Ann's Church, Morton, is appointed pastor of St. Joseph's Church, Lockney and its mission Church, St. Mary Magdalen, Floydada.

Father Burke, ordained August 4, 1975, served as associate pastor of St. Mary's Church, Amarillo and Christ the King Church, Lubbock; administrator of St. Joseph's Church, Stratford, and pastor at Holy Angels Church, Childress and St. Elizabeth Mission, Paducah. In 1979 Father Burke was appointed pastor of Immaculate Conception Church, Muleshoe, with its Mission of St. Mary Magdalen, Earth. In July of 1980 he was assigned as pastor of St. Ann's Church, Morton.

**5/\$1 REXALL SIGHT SAVERS** 24's  
These super soft lenses are silicone treated so they're non-smearing and lint free. Can be used on plastic lenses too. (X-750)

**\$8 ANSCO POCKETABLE 201 CAMERA**  
Small enough to carry along with you anywhere. Uses 110 film. (X-6614)

**CONAIR VAGABOND HAIR DRYER**  
Get 1250 watts of power in this compact, lightweight, portable dryer. 3 speeds and 3 heats. Comes with a FREE zippered carrying case. (X-6602)

**Murine Plus**  
for irritated eyes  
for faster redness removal (X-6608)

**MURINE EYE DROPS**  
Get soothing relief from minor irritation. Murine is formulated to closely match the natural fluid of your eye. (X-6608)

**MURINE PLUS 0.5 oz.**  
Get all the relief of Murine and faster redness removal. (X-6609)

**REXALL SIGHT SAVERS**  
24's  
These super soft lenses are silicone treated so they're non-smearing and lint free. Can be used on plastic lenses too. (X-750)

**5/\$1 REXALL SIGHT SAVERS** 24's  
These super soft lenses are silicone treated so they're non-smearing and lint free. Can be used on plastic lenses too. (X-750)

**\$8 ANSCO POCKETABLE 201 CAMERA**  
Small enough to carry along with you anywhere. Uses 110 film. (X-6614)

**YOUR CHOICE \$1 REXALL DISPOSABLE GLOVES** 3 pairs per pack  
Protect your hands when you clean with REXALL Disposable Gloves. They're great for many uses and they're disposable. (X-6623)

**REXALL LATEX HOUSEHOLD GLOVES** 1 pair per pack  
Custom fit gloves. Fit so well you can tell you have them on. Available in small, medium or large sizes. (X-6624)

**\$3 FRISBEE MOONLIGHTERS FLYING DISC**  
Glow in the dark for nighttime play. 110G Model. (X-6623)

**\$5 THE KOOL ONE ICE BUCKET** 3 qts.  
Rich earthy tones and bold graphics decorate the outside of these durable ice buckets. (X-6623)

**REXALL DISPOSABLE GLOVES**  
Protect your hands when you clean with REXALL Disposable Gloves. They're great for many uses and they're disposable. (X-6623)

**REXALL LATEX HOUSEHOLD GLOVES**  
Custom fit gloves. Fit so well you can tell you have them on. Available in small, medium or large sizes. (X-6624)

**\$3 FRISBEE MOONLIGHTERS FLYING DISC**  
Glow in the dark for nighttime play. 110G Model. (X-6623)

**\$5 THE KOOL ONE ICE BUCKET** 3 qts.  
Rich earthy tones and bold graphics decorate the outside of these durable ice buckets. (X-6623)

**CONAIR VAGABOND HAIR DRYER**  
Get 1250 watts of power in this compact, lightweight, portable dryer. 3 speeds and 3 heats. Comes with a FREE zippered carrying case. (X-6602)

**Murine Plus**  
for irritated eyes  
for faster redness removal (X-6608)

**MURINE EYE DROPS**  
Get soothing relief from minor irritation. Murine is formulated to closely match the natural fluid of your eye. (X-6608)

**MURINE PLUS 0.5 oz.**  
Get all the relief of Murine and faster redness removal. (X-6609)

**REXALL SIGHT SAVERS**  
24's  
These super soft lenses are silicone treated so they're non-smearing and lint free. Can be used on plastic lenses too. (X-750)

**5/\$1 REXALL SIGHT SAVERS** 24's  
These super soft lenses are silicone treated so they're non-smearing and lint free. Can be used on plastic lenses too. (X-750)

**\$8 ANSCO POCKETABLE 201 CAMERA**  
Small enough to carry along with you anywhere. Uses 110 film. (X-6614)



Photography category included

# Crosbyton Art Festival next week

The Crosbyton Art Festival will be July 8-July 11. The exhibit will be open to the public Friday, July 10, at 9:00 a.m. and Saturday, July 11, at 9:00 a.m. at the Crosby County Pioneer Memorial Auditorium in Crosbyton.

Awards, selected by Juror will include Best of Show, \$75.00; People's Choice, \$25.00; and First Place in Each Division, \$15.00. John Crump, Anson, will be judge.

Purchase awards will be from area businesses and private patrons totaling \$2,000 plus Friends of the Museum purchase prizes. Awards are \$250, \$200, \$100, \$50, \$35, and \$25.

## Mel Tillis will perform at fair

Country singer Mel Tillis will make his sixth appearance at the Panhandle-South Plains Fair October 2, according to fair general manager Steve Lewis.

Tillis, accompanied by his band, The Statesiders, will be on stage for two shows, at 5 p.m. and 8 p.m., Lewis said. The Maines Brothers, popular local favorites, will open his show.

In addition to his singing career, Tillis has made several major films and has written more than 1,000 songs despite a speech problem that has become "just part of the act."

Two of his songs helped propel Kenny Rogers' and Bobby Bare's careers. They were "Ruby (Don't Take Your Love to Town)" and "Detroit City."

The first hit he wrote for himself, "Good Woman Blues", won him the Entertainer of the Year Award from the Academy of Country Music.

Today, he owns a production

Ribbons will be given in each division.

Entry fee is \$4.00 per entry (no limit). A 20% commission will be charged on all sales (excluding purchase awards).

Standards are original work only, please! Class work, tracings, and/or copy work or kits are disallowed. Each exhibitor is requested to sign his work, thus signifying that entries are completely original in idea, composition and execution. Work must not have been previously entered in a Crosbyton Art Festival show.

C.A.F. reserves the right to disallow exhibit entries considered to be in poor taste, entries

not framed or presented properly for exhibit, entries which are wet, and entries found not to be original (as stated above). Entry fee is non-refundable if entry standards are not met.

Entry time is Wednesday, July 8, from 9-12 a.m. and 2-8 p.m.

The awards presentation will be at 5:00 p.m. Saturday, July 11.

Pick up time will be 5:30 to 6:30 p.m. Saturday afternoon.

Divisions include: I. Oil Still Life and Oil Landscapes; II. Watercolor Still Life and Watercolor Landscapes; III. Portraits (All Media); IV. Animal Portrait (All Media); V. Pastel and other media; VI. Graphics; VII. Sculpture; VIII. Photography: Black and White, Portrait, Still Life, Landscape, Animal and Abstract.

All entries will be combined if insufficient entries are presented - black and white only.

Color: Portrait, Still Life, Landscape, Animal and Abstract.

Entries must be original and entirely the work of the entrant, except that commercial processing is allowed. An exhibitor may not exhibit the same photograph twice in different categories.

All photographs must be at least 8"x10" and not larger than 50". They must be matted, or flush mounted, or gramed,

with a permanent means for hanging—preferably 2" from the top of the picture.

Hand colored prints are not allowed. No oil painted black and white photographs will be accepted. Corrective "spotting" air brushing, or other enhancements, however, are allowed.

Spraying photographs to protect the surfaces is encouraged.

Title of entry, artists name, and sale price (if not for sale, mark NFS) will be affixed to the back of each entry with forms provided at time of entry.

Junior Division will include all of the above categories, including class work will be accepted. Ribbons only will be awarded in the Junior Division.

Divisions are: 1. 12 years of age and below; 2. 13-18 years of age. Entry fee is \$2.00.

Arts and Crafts Day will be Saturday, July 11, on the square. Booth fee is \$5.00 (no commission).

Bring your own display equipment. No commercial articles.

All entries will be handled with the utmost care, however, Crosbyton Art Festival will not assume responsibility for any loss, damage or accident.

For further information, contact: Crosby County Pioneer Memorial Museum, Crosbyton, Texas; (806) 675-2331 or Dwayne Cornelius, Chairman C.A.F. (806) 675-2127.



Join us  
July 10 & 11, 1981  
in Crosbyton  
Juror Art Show  
July 10 & 11

in Pioneer Memorial Auditorium  
Craft Booths of Area Craftsmen  
and Artists on the Square July 11

# Public Notice

## Thomason's Grocery Advertisement

In The Lockney Beacon  
June 25 th Issue

# Is Still In Effect Thru July 8, 1981

Have A Fun & Safe July 4 th

## Thomason's Grocery

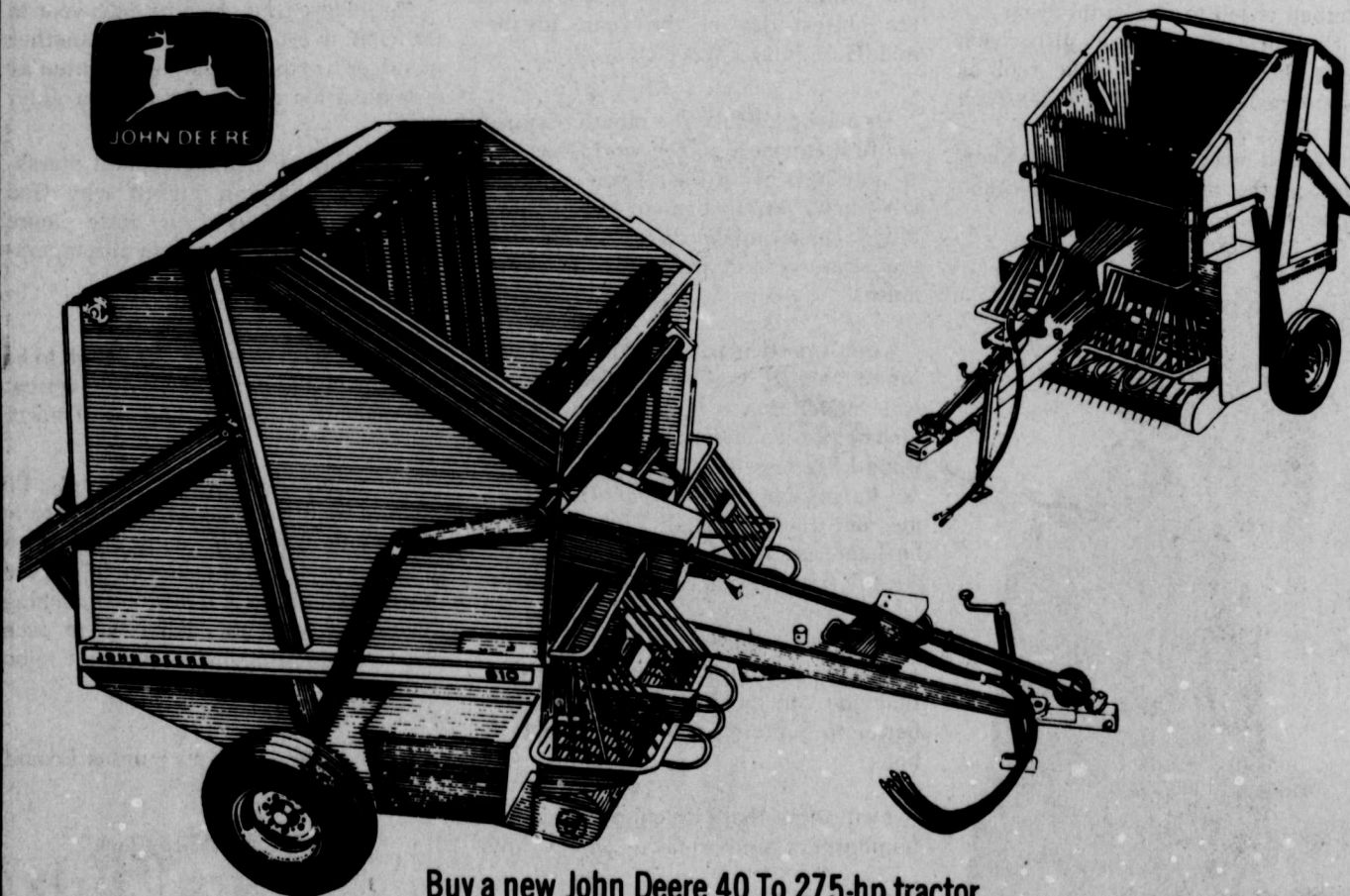
652-3346 220 South Main Lockney



NEW OFFICERS AND Club for 1981-82 have been elected. From left to right, George Sparkman and...



## Buy Hay Equipment Now. Pay No Finance Charges Until January 1, 1982



Buy a new John Deere 40 To 275-hp tractor before July 31, 1981 and no finance charges will accrue until March 1, 1982. This same offer applies to all used tractors and new John Deere and used implements sold with the tractor. Stop in and see us soon. We can help your equipment dollars do more.

All Cultivator & Hamey Sweeps 10% Off July 1-18 (Excluding Hard Facing)

# Floyd County Implement

Floydada, Texas

## Buy A John Deere Tractor Now And Save On Finance Charges.



Now's the time to buy the new or used haying equipment you need. Rectangular or round balers, mower/conditioners, windrowers and forage harvesters are all included in this money-saving program. Buy the equipment now and put it to work in your fields.

Stop in soon and make your deal.  
This special offer ends August 31, 1981.

# July Food

- ALLSUP'S WEEK

FRESH TEXAS WATER

SIX PACK 12 OZ. CANS

BORDEN'S ASSORTED ICE CREAM

COOKED FOOD Plum Brock Farm Marinated FRIED CHICKEN 2/89¢

NEW FROM ALLSUP'S FOUNTAIN COCA-COLA

SPARKLING ALLSUP'S ICE

PRICES GOOD JULY 2-4, 1981 SPECIALS GOOD WHILE SUPPLY LASTS

BIG SELECTION OF FRESH PRODUCE

8983-3



## Coal: energy of the future

**BY TERRY WILLSON**  
The executive vice president of Southwestern Public Service Company said Tuesday that the South Plains has the fuel needed for industrial growth.

Bert Ballengee told a small group of Floydada businessmen at the First National Bank community room that the chance for industrial growth in Floyd County is still possible.

"People still believe that our area is not the area for industry," said Ballengee. "they have no conception of what we have here in West Texas."

Ballengee said, "Industry is still interested in this area because we have plenty of energy."

Ballengee said government mandate has forced Southwestern Public Service to "get out of the gas business." He estimates that 60 percent of Southwestern Public Service's generation will be coal-powered by 1985.

He said coal prices have increased, but not rapidly as gas. Southwestern Public Service plans more coal plants, but no nuclear plants.

### Fireworks show at Floydada

The Floydada Country Club July 4th Celebration and Firework display will begin at 9:30 Saturday.

Registration will begin at 9:00. Swimming and games will start at 10:00. Kerry and Debbie Bearden are in charge of recreation. Ribbons will be awarded.

The fireworks display will begin after dark, with Johnny L. Harris, Jr. in charge.

A "Florida-scrambler" golf tournament will start at 5:00 p.m. Country Club manager Richard Hale said the golf course will be closed until 5:00 p.m.



BERT BALLENGEE

The Wyoming Coal is readily available and has many uses for its bi-products. The bi-products are derived from the removal of 90 percent of the particulates. Thus, Wyoming coal is a clean source of fuel, he said.

The main particulate can be used as a cement additive, a cattle feed supple-

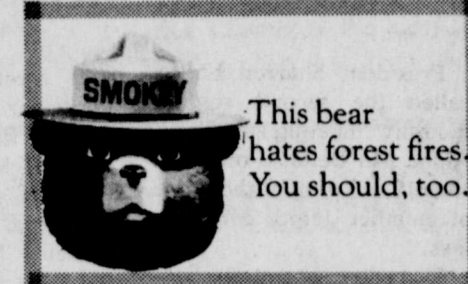
ment and a road base component. The use of particulates reduces the cost of fuel.

"We have no plans for nuclear plants because they are too uncertain, too costly and often cannot be completed once construction has begun," said Ballengee.

He said an injection process using carbon dioxide would allow the collection of more oil.

"Thirty-five to 40 percent is still in the hole," he said, "but we can get another 30-35 percent out by injecting carbon dioxide into these holes, the other small percentage is water."

Ballengee said small-town industry is hampered by the potential industry's fear that the work force will not be strong enough to satisfy a plant's needs.



This bear hates forest fires. You should, too.



NEW OFFICERS AND DIRECTORS of the Lockney Rotary Club for 1981-82 have been sworn in. The new officers, above, are, from left to right, Gail Krings, secretary, Jack Covington, vice-president and Roy Holly, president. New directors, below, are, from left to right, Fred Byrd, Jerry Paul Cooper, George Sparkman and Loyd Lee Wildener.



## Notice

on's Grocery

isement

ckney Beacon

5th Issue

still In

et Thru  
3, 1981

& Safe July 4th

n's Grocery

South Main Lockney

Tractor Now And  
nce Charges.



new or used haying  
angular or round balers,  
s and forage harvesters  
saving program. Buy  
t to work in your fields.  
your deal.  
August 31, 1981.

## July Fourth Sale

- ALLSUP'S WILL BE OPEN JULY 4TH -

FRESH TEXAS WATERMELON each \$2.29

REFRESHING COCA-COLA \$1.50  
SIX PACK 12 OZ. CANS  
SINGLE CAN 29¢

BORDEN'S ASSORTED ICE CREAM \$1.59  
1/2 GAL. CTN.

COOKED FOOD SPECIAL OF THE WEEK  
Plum Brock Farm Marinated FRIED CHICKEN 2/89¢  
BBQ CHICKEN \$2.79 \$2.99  
BRISKET SANDWICH Buy One Get One FREE

NEW FROM ALLSUP'S FOUNTAIN COCA-COLA 32 OZ. CUP 65¢

SPARKLING ALLSUP'S ICE 99¢  
LARGE BAG

PRICES GOOD  
JULY 2-4, 1981  
SPECIALS GOOD  
WHILE SUPPLY  
LASTS

**ALLSUP'S**  
CONVENIENCE STORES

WE RESERVE THE  
RIGHT TO LIMIT  
LIMITED SUPPLY

Lockney

### DIG SELECTION OF FRESH PRODUCE

ORANGES  
APPLES  
PEACHES  
LEMONS  
LIMES  
GRAPES  
STRAWBERRIES  
MANGOES  
CANTALOUPES

ONIONS  
CHERRIES  
PEACHES  
BANANAS  
LETTUCE  
TOMATOES  
WATERMELONS

### ALLSUP'S COOKED FOODS MENU

BURRITOS  
TACO ROLLS  
CORN DOGS  
GERMAN SAUSAGE  
HOT OR MILD LINKS  
BBQ CHICKENS  
BBQ BRISKET SANDWICH  
BBQ SPARE RIBS  
SOUTHERN FRIED PIES  
TACQUITAS

CHILI RELLENOS  
BBQ SANDWICH  
1/2 LB. HOT DOGS  
FRIED CHICKEN QUARTERS  
1/2 LB. HAM SANDWICH  
POCHITO  
BEER BATTERED  
COD FISH SANDWICH  
CHICKEN FRIED  
STEAK SANDWICH

983-373

# FREEDOM

the Strength of America

We're Soaring With Pride on the 4th!

This great nation is the product of its people ... and the strength of their ideals. As we celebrate the anniversary of our independence, let's also applaud America... her people... her freedom.

We Will Close July 3, In Observance Of Independence Day

The Floyd County Progressive Bank

## The First National Bank

In Lockney

Look for this symbol. We've got the answers.

Member FDIC Accounts insured to \$100,000



### Hardys celebrate 20th wedding anniversary

Clifford and Elaine Hardy observed their 20th wedding anniversary with a gathering of friends for a picnic at the Roaring Springs Ranch Club Sunday evening.

Hardy and the former Elaine Cooper were married June 30, 1961, and have lived in Lockney since that time.

Attending the anniversary celebration were Craig and Betty Edwards and Chad of Floydada, Jerry and Barbara Cawley, Keith and Gayle Jackson, Roy and Sharon Kinard and Eddie, L.T. and Karen Cooper, Chris and Cindy, Christy Norrell of Floydada and the Hardys' daughter, Robin.

### Janice McCandless hosts Alpha Mu Delta meeting

President Sharron Fulton called the second regular monthly meeting of Texas Alpha Mu Delta on order on May 19 at 7 p.m. at the home of member Janice McCandless.

Recording secretary Sandra Crawford called the roll and read the minutes from the May 5 meeting.

Treasurer Tonya Marble gave the financial report.

Extension officer Donna Anderson said that she would be responsible for the Yardstick being sent to the International Office in Kansas City, Missouri.

Vice-president Sherry Smith announced that six pledges would be signing their pledge agreements at

this meeting. New pledges include: Tana Probasco, Wendy Pierce, Barbara Anderson, Mitzi Nixon, Holly Hendrix, and LaNell McCandless.

Janice McCandless reported that in honor of our mothers and mothers-in-law a salad supper was held on May 9 at 5:30 p.m. at Lighthouse Electric Coop.

The program was given by Daphn Simpson on the topic "Economy." The program was enjoyed by all and a group discussion followed.

A cake bearing the international theme for 1981-82, and ice cream was served to all members and guests by hostesses Sharron Fulton and Donna Anderson.

### Homebuilders Extension Club hold salad luncheon

Homebuilders Extension Club was hostess to the other three clubs in the county Tuesday, June 23, in the agricultural building.

A salad luncheon was served, followed by a very humorous program given by Mrs. Wynon Mayes, extension agent from Hale County.

"A Medley from Erma Bombeck", using various excerpts from Emma Bombeck's books was the guest speaker topic. It was given in first person depicting the happening of Mrs. Bombeck.

Mrs. Mayes is a very clever reader and the program was greatly enjoyed.

In conclusion an auction sale was held. Mrs. Lela Mae Burns was acting auctioneer.

Crafts, plants, and baked goods made by members of the various clubs in the county, were sold.

Club members attending were Bess Carr, Elvira Stewart, Vera King, Sybil Teeple, Helen Huffman, Ruth Reeves, Ruth Scott, Maudie Lawson, Lucy Eastham, Trudie Taylor, and guests, Phyllis Kelly, Jane McCully and Mardell Fyffe, Floydada; and Ruby Kincheloe, Goldwaite; Wynon Mayes, Plainview; and hostesses, Gladys Widener, Evelyn Latta, Muri Mayfield, Mattie Norrell, Blanche Williams, Lillian Smith, Barbara Willis and Wilma Colston.

The clubs will re-convene in September.

### Alpha Mu Delta enjoy bar-b-que and dance

A goat bar-b-que and a barn dance was held for members of Alpha Mu Delta and their guests.

The event took place at the barn of Bill and Sharron Fulton, June 19 at 8 p.m.

Everyone enjoyed the feast of barbecued goat, red beans, potato salad, tossed salad and bread.

Members and guests present were: Bill and Sharron Fulton, Billy and Duffy Hinkle, Darrell and Janice McCandless, Steve and Donna Anderson, Mike and Tonya

Marble, Stan and Wendy Pierce, Joel and Holly Hendrix, Revis Pernell and Sherree Marquis, Todd McCandless, Shonda Fulton, Brent and Sarah Sanders, Rance and Nancy Young.

FLOYD DATA Mrs. J.K. West is recovering from a fall which broke her arm.

FLOYD DATA Jessie Sims of Lubbock recently spent several days with Mr. and Mrs. Ian Moore.

## Society and Features

### Dennings hold 21st Annual reunion Sunday, June 21

The family of the late Mr. and Mrs. S.H. Denning of Bryson met for their 21st Annual reunion on Sunday, June 21. The reunion was held at Fireman's Park in Graham.

Mr. and Mrs. Denning reared a family of thirteen children, nine of whom are still living. Eight were present for the reunion. O.W. Denning of Floydada was unable to be present due to ill health.

The brothers and sisters present were: C.L. Denning, Sr., Jackboro; Homer Denning, Sweetwater; Houston Denning, Bryson; Luther Denning, Bryson; T.A. Denning, Graham; Douglas Denning, Graham; Minnie Caley, Jackboro; Ruby Cowden, Graham.

The families of all thirteen of the Denning family were represented at the reunion. Those registering were:

From Graham were Mr. and Mrs. Ernest Cowden, Douglas Denning, Mr. and Mrs. Pete Coley and Mr. and Mrs. T.A. Denning.

Attending from Bryson were Mr. and Mrs. Houston Denning and Mr. and Mrs. Luther Denning.

From Jackboro were Mr. and Mrs. I.G. Coley, Mr. and Mrs. Harold Avants, Clarence L. Denning, Sr., and Mr. and Mrs. Gerald Eubanks.

Attending from Richardson were Mr. and Mrs. Dee Denning, Mr. and Mrs. Clifford Denning, Mrs. Margaret Sue Thomason and James O. Denning.

From Carrollton was Jenny Wicks.

From Irving were Mr. and Mrs. Henry Denning and Glenda Persell.

Attending from Dallas were Ricky Harrison and Mrs. Mary Langston.

From Greenville were Mr. and Mrs. Mike Taylor Matthew.

Attending from Fort Worth was Mrs. Don King.

From Cleburne were Mr. and Mrs. John Denning, and Anthony, Amy, Keith and Kari Jo Denning.

From Abilene was Becky and Johnny Thompson and boys.

Mr. and Mrs. Charles Connor attended from Newport.

Mr. S.H. Denning and Mr. and Mrs. Marvin L. Denning and boys attended from Sweetwater.

From Burkburnett was Mrs. Janie Jackson and family.

From Haskell was Mr. and Mrs. Grady Avants.

Attending from Arlington were Mr. and Mrs. James Harrison and son.

Mr. and Mrs. Dee Qualls attended from Eules.

Larry, Chris and Chad Mankins attended from Denton.

From Albuquerque, New Mexico was Mr. and Mrs. George Cullers.

From St. Jo was Mr. and Mrs. Winfred Denning and family.

And from Floydada was Mr. and Mrs. Clinton Denning.

FLOYD DATA J.C. Wester returned home after a stay in the hospital. He had suffered a stroke.



### WARREN

Ed and Kyla Warren are the proud parents of their first child, a son, Daniel Thomas.

Daniel Thomas was born on Wednesday, June 24 at Lockney General Hospital at 8:02 a.m.

Weighing in at 8 lbs. 4 ozs., he was 20 inches long.

Grandparents are Mr. and Mrs. D.M. Springer of Kress and Mr. and Mrs. Thomas Charla who is four.

Mandi was born on her great-grandmother, Mrs. C.W. Jones' birthday.

Other great-grandmothers are Mrs. O.R. Beard, Mrs. Rene Yearly and Mrs. Everett Warren.

Grandparents are Jack Year, Betty Yearly, Mr. and Mrs. Billy Hinkle and Virgil Warren.

Great-great grandparents are Mr. and Mrs. C.B. Lyles.

### COWARD

Mr. and Mrs. Daniel Coward are the proud parents of a baby girl, Jonna Elizabeth.

She was born Thursday, June 25, at 8:24 a.m. in Central Plains Regional Hospital, Plainview.

A first child, Jonna Elizabeth weighed 8 lbs., 8 ozs. and was 19 1/2 inches long.

Grandparents are Mrs. Betty Vogel of Albuquerque, New Mexico and Mrs. A.E.

### FLOYD DATA

J.C. Wester returned home after a stay in the hospital. He had suffered a stroke.

### Floydada Nursing Home Happenings

### Mrs. Roy receives congratulations from President

BY DOROTHY NEFF Mrs. Myrtle Roy receives birthday congratulations from President and Nancy Reagan.

There was a meeting held in the dining room to discuss plans for a picnic lunch for our residents. Those attending were, Mrs. Mary Adams, Evelyn Huggins, Laurita Bertrand, Faye Bertrand, Lynn Marler, Mary Corley, Ruth McIntosh, Dartha Westbrook, Deloris Cannon, Hazel Bradley, Dana Ellis and Jean Baird.

The date is Friday, July 10, at the Floydada Country Club. We will each bring a picnic lunch and serve buffet style. Everyone is invited, just bring something good to eat.

Mr. Emmet Lawrence and Mr. W.C. Cates tied in bingo with three games each. Mr. A.G. Eubanks and Clara Williamson won two games each. Iva Simpson, Geneta Roberts, and Ray Reed won one game each.

Ms. Vera Duke spent Tuesday night with her daughter, Jean Baird, and had lunch in town Wednesday before returning to the home.

Susie Mooney enjoyed a long visit with her son, N.B. and his wife of Fort Worth this week.

Jessie Freeman also enjoyed visiting with her niece and nephew, Mr. and Mrs. Scott Baird of Oklahoma City, Oklahoma this week.

We enjoyed two good movies Friday afternoon, "Solo" and "John Bakers Last Race." We want to thank the county library for their continued support in furnishing good movies. We want to thank all our visitors for the week.

Mr. Walter Collins is in Caprock Hospital after suffering a stroke. We send him our love and prayers for a speedy recovery.

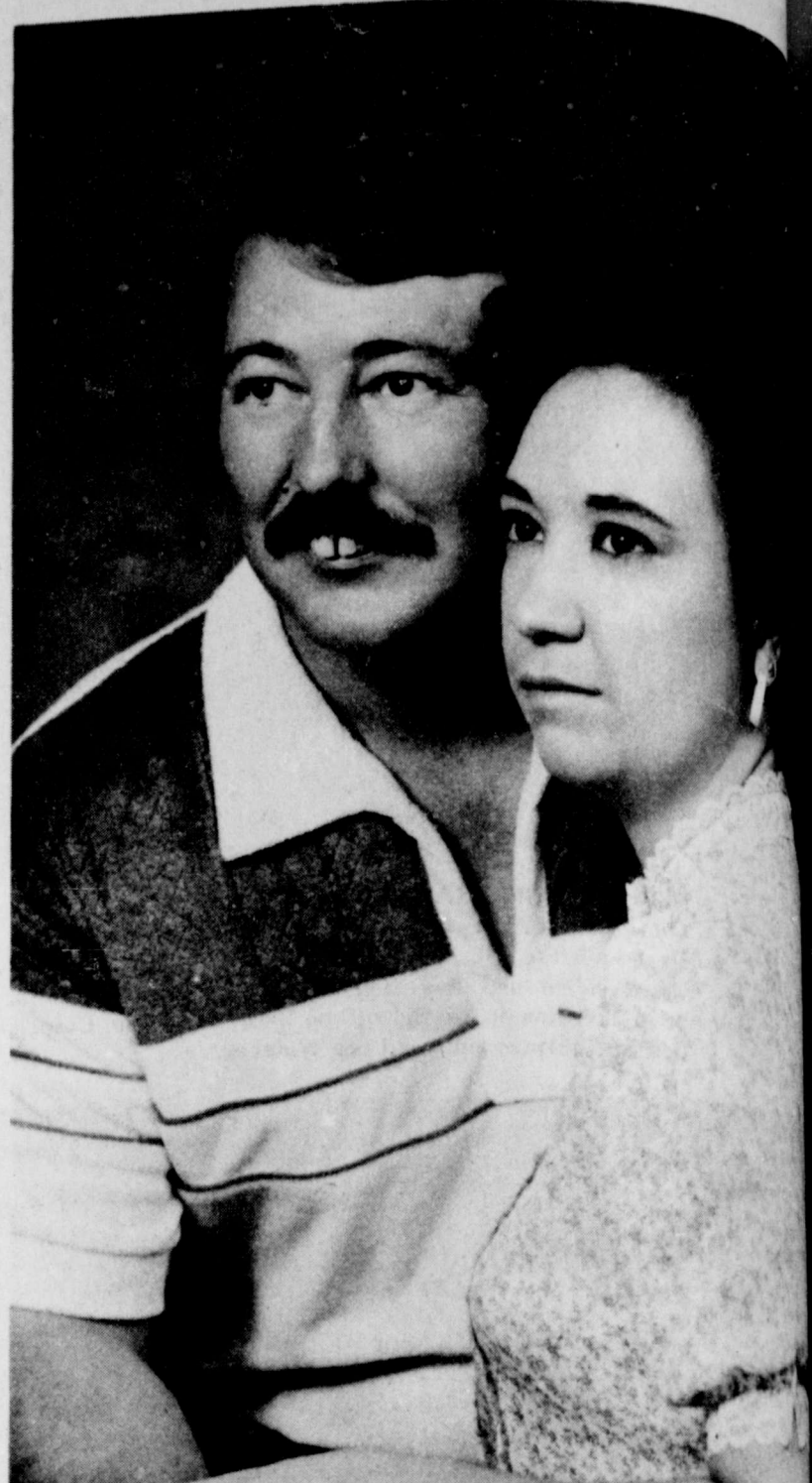
Our visitors this week included: Wylie Rogers, Neely Richardson, Connie, Randy and Chad Wideman, Gene Baird, Elvis and Lovelle Childs, Allene Henry, Gary and Emma Pate, Dana Ellis, A.B. Collins, Fred Collier, Lois Jones, Mr. and Mrs. Scott Baird.

Sandra Fryinger, Gayle Spick, Allene Henry, Mr. and Mrs. M.H. Hartness,

Vonceil Colston, Corene and Murry Stewart, Vertie Powell, Tenia Cooper, Marion Bailey, Worth Gwendolyn Howard, Allene Henry,

Charley L. Hambleton, Kim and Rebecca Roberts, and Rebecca Roberts.

Floydada on the Hambleton Hereford families will be employed full-time of the home. Friends are what the studies of the children of mothers: a mother's full-time employment is not likely few, if any, differences between of mothers who work outside full-time. virtually no difference in achievement adjustment between of mothers who remain at home.



ENGAGEMENT ANNOUNCED—Mr. and Mrs. Verne E. Taylor Jr. of Lockney announce the engagement and forthcoming marriage of their daughter, Patricia Ann Taylor, to Kenneth Ray Lockridge, son of Mr. and Mrs. J.W. Lockridge of Plainview. The August 22 wedding at the First Baptist Church in Aiken.

### Fuller children hold reunion

The children of the late Frank E. and Millie (Moore) Fuller will be having their reunion Saturday and Sunday, July 4 and 5 at the Harmony Community Center, 14 miles southwest of

KRISTIS Annual July Clearance Began Wednesday, July 1st 1/4 to 1/2 OFF All Summer Merchandise VISA/Master Card Welcome No layaways, approvals, or returns

Gift Selections For Dee Dee Ariola bride elect of Jim Covington Cindy Galloway bride elect of Mark Tharp La Delle Noland bride elect of David Gowen Paula Brooks bride elect of Ray Foster available at Lovell-Collins Jewelry 102 South Main - Floydada Sue Lovell Lu Ann Collins

Schacht Flowers, Jewelry, & Gifts In Observance of July 4th We will be closed Saturday, July 4th & Monday, July 6th Have a safe weekend! "Our Pleasure Is To Serve You" 112 W. Poplar - Lockney - 652-2385

The ownership of Solomon Jewelry will change effective July 1, 1981. After 52 years of family operations under the name of Solomon Jewelry. I will sell my interests to Sue Lovell and Lu Ann Collins. The new ownership will operate under the name of Lovell-Collins Jewelry. Many thanks to friends and customers who have made this business successful over so many years. I know that you will continue to enjoy the same high quality of service and merchandise with the new owners that we have always attempted to provide. Helen Solomon

### Today's Lifestyles By Marilyn Tate County Extension Agent

OTHERS... FOR DUAL... mothers... "jobs" at work. Home... is find... differences be... of employed... those who re... ne. However... that employe... and worry ca... ren. Guilt an... working outsi... to interfere... time mother... together less... research indi... suggestions... parenting skills... who work out... what is most... you are man... so realize you... to do every... increase stress... feeling guilty... you cannot do... limitations and... nity to accept... of yourself... of well-being... ly important... frazzled, go t... to relax. Sche... night a week... work and parent... to your child... Invite him to... work, and help... to know your... Perhaps most... look for ways your... help you in your... about your... participates in your... preparing for... ing years... findings say sev... about working... their children... an employed... part of a large... number, re... port. Almost half... in the United... school-age child... families will... employed full-time... of the home... what the studies... of the children of... mothers: a mother's full-time employment is not likely few, if any, differences between of mothers who work outside full-time. virtually no difference in achievement adjustment between of mothers who remain at home.

### Hockley Citizens p

Hockley County Seniors of Levelland are planning a trip to Washington, D.C. and the six New England states of Delaware, Vermont, New Hampshire, Rhode Island, Connecticut and Maine, touring all interesting places between. Cost of the trip will be which covers everything food. A deposit now will your reservation with a lance due August 1.

### Senior C

Thursday: Salisbury steak, mashed potatoes, carrots, roll, butter, pe, banana, strawberries, milk, tea or coffee. Friday: Fried chicken, cream, buttered rice, broccoli, cornbread, milk, tea or coffee. Monday: Beef stew with vegetable, green peas, slaw, cornbread, cherry cobbler, milk, coffee.

### Senior C

Thursday: Salisbury steak, mashed potatoes, carrots, roll, butter, pe, banana, strawberries, milk, tea or coffee. Friday: Fried chicken, cream, buttered rice, broccoli, cornbread, milk, tea or coffee. Monday: Beef stew with vegetable, green peas, slaw, cornbread, cherry cobbler, milk, coffee.

### Senior C

Thursday: Salisbury steak, mashed potatoes, carrots, roll, butter, pe, banana, strawberries, milk, tea or coffee. Friday: Fried chicken, cream, buttered rice, broccoli, cornbread, milk, tea or coffee. Monday: Beef stew with vegetable, green peas, slaw, cornbread, cherry cobbler, milk, coffee.

### Senior C

Thursday: Salisbury steak, mashed potatoes, carrots, roll, butter, pe, banana, strawberries, milk, tea or coffee. Friday: Fried chicken, cream, buttered rice, broccoli, cornbread, milk, tea or coffee. Monday: Beef stew with vegetable, green peas, slaw, cornbread, cherry cobbler, milk, coffee.

### Senior C

Thursday: Salisbury steak, mashed potatoes, carrots, roll, butter, pe, banana, strawberries, milk, tea or coffee. Friday: Fried chicken, cream, buttered rice, broccoli, cornbread, milk, tea or coffee. Monday: Beef stew with vegetable, green peas, slaw, cornbread, cherry cobbler, milk, coffee.

### Senior C

Thursday: Salisbury steak, mashed potatoes, carrots, roll, butter, pe, banana, strawberries, milk, tea or coffee. Friday: Fried chicken, cream, buttered rice, broccoli, cornbread, milk, tea or coffee. Monday: Beef stew with vegetable, green peas, slaw, cornbread, cherry cobbler, milk, coffee.



## Today's Lifestyles

By Marilyn Tate  
County Extension Agent



**MOTHERS - FOR DUAL-NESS**  
... mothers. ... jobs" at work. Home research is finding differences between those who re- ... However, ... employed ... and worry can ... Guilt and ... outside ... to interfere ... time mother ... together less ... research indi- ... suggestions ... parenting skills ... who work out- ... what is most ... You are man- ... realize you ... to do every- ... increase stress ... or feeling guilty ... you cannot do ... limitations and ... family to accept ... of yourself. ... of well-being ... important. ... frazzled, go to ... to relax. Sche- ... night a week ... of ... and parent- ... to your child ... Invite him to ... work, and help ... to know your ... Perhaps most ... ways you ... help you in your ... about your ... in your ... is preparing for ... years. ... findings say sev- ... about working ... children. ... an employed ... part of a large ... number, re- ... Almost half ... in the United ... school-age child- ... families will host ... union. ... Friends are wel- ... what the studies ... the children of ... mothers: ... a mother's full- ... is not likely ... child. ... few, if any, ... differences be- ... the home full-time ... who work outside ... time. ... tentially no differ- ... achievement ... adjustment be- ... of mothers ... the home ... of mothers who ... the home have ... attachment ... as do child- ... who remain at ...

item on your menu. Low-calorie greens provide vitamins A and C and fiber. Use a few buying, storage and fixin' basics, and you can serve your greens with that touch of culinary expertise so traditional in grand Southern cooking.

Here they are: Look for crisp, clean leaves that are fresh, young, tender, crisp and which have a good healthy green color. Avoid leaves with coarse, fibrous stems, yellowish-green color, softness or decay or a wilted condition. Look for evidence of insects -- they're hard to see and equally hard to wash away. Buy about 1 to 1 1/2 pounds for four servings.

Greens will keep in the refrigerator crisper or a plastic bag for three to five days. Or, to freeze, use young, tender leaves. Wash and

remove tough stems or im- perfect leaves. Cut leaves into pieces as desired. Heat in boiling water two minutes -- all greens except spinach which needs only 1 1/2 min- utes. Cool, drain, package and freeze immediately in moisture, vapor-resistant packaging.

**GREENS SOUTHERN STYLE** -- Simmer bacon or salt pork in a small amount of water, then slowly simmer the greens in that "pot liquor" for 15-20 minutes. Use a pan with a tight-fitting lid. Serve with vinegar, green onions and hot corn- bread for a great Southern treat.

Educational programs con- ducted by the Texas Agricul- tural Extension Service serve people of all ages regardless of socioeconomic level, race, color, sex, religion or nation- al origin.

### Hockley County Senior Citizens plans tour

Hockley County Senior Citizens of Levelland are planning a trip to Washington, D.C. and the six New England states of Delaware, Vermont, New Hampshire, Rhode Island, Connecticut and Maine, touring all the interesting places between.

Cost of the trip will be \$895 which covers everything but food. A deposit now will hold your reservation with a balance due August 1.

Two days will be spent in Washington, D.C. to see all the points of interest, then travel up the east coast to the New England States. The return trip will be through the southern states of Virginia, Maryland, Kentucky,

the Smokey Mountains and on to Gatlinburg, Tennessee for a two day stay in the beautiful city, nestled in the foothills of the Smokeys. Gatlinburg is the craft center of the world. Many persons shop there for Christmas gifts.

Many interesting over- nights will be spent in first rate motels across the way. For more information write the Hockley County Senior Center at 1202 Houston Street or call 894-7642 or 894-9939 and ask for Jimmie Lea Payne or Ruth Warren.

The charter TNM&O Coach will leave Levelland Senior Center at 7 a.m. October 5.

### Senior Citizens Menu

**July 9-15**

**Thursday:** Salisbury steak, gravy, mashed potatoes, buttered carrots, roll, butter, pineapple, banana, strawberry compote, milk, tea or coffee.

**Friday:** Fried chicken, cream gravy, buttered rice, buttered broccoli, cornbread, custard, milk, tea or coffee.

**Monday:** Beef stew with vegetables, cabbage, green pepper, slaw, cornbread, butter, cherry cobbler, milk, tea or coffee.

**Tuesday:** Baked ham, sweet potatoes, applesauce, roll, butter, whipped gelatin, milk, tea or coffee.

**Wednesday:** Broiled liver, smothered onions, potato tots, buttered mixed vegetables, roll, butter, cake, strawberry topping, milk, tea or coffee.

These menus have been prepared by a registered dietician from Lubbock for Senior Citizens. Serving time is 11:45-12:45. Call in if possible by 9:30.

### Bridal Selections For ...

Paula Brooks  
bride elect of  
Ray Foster

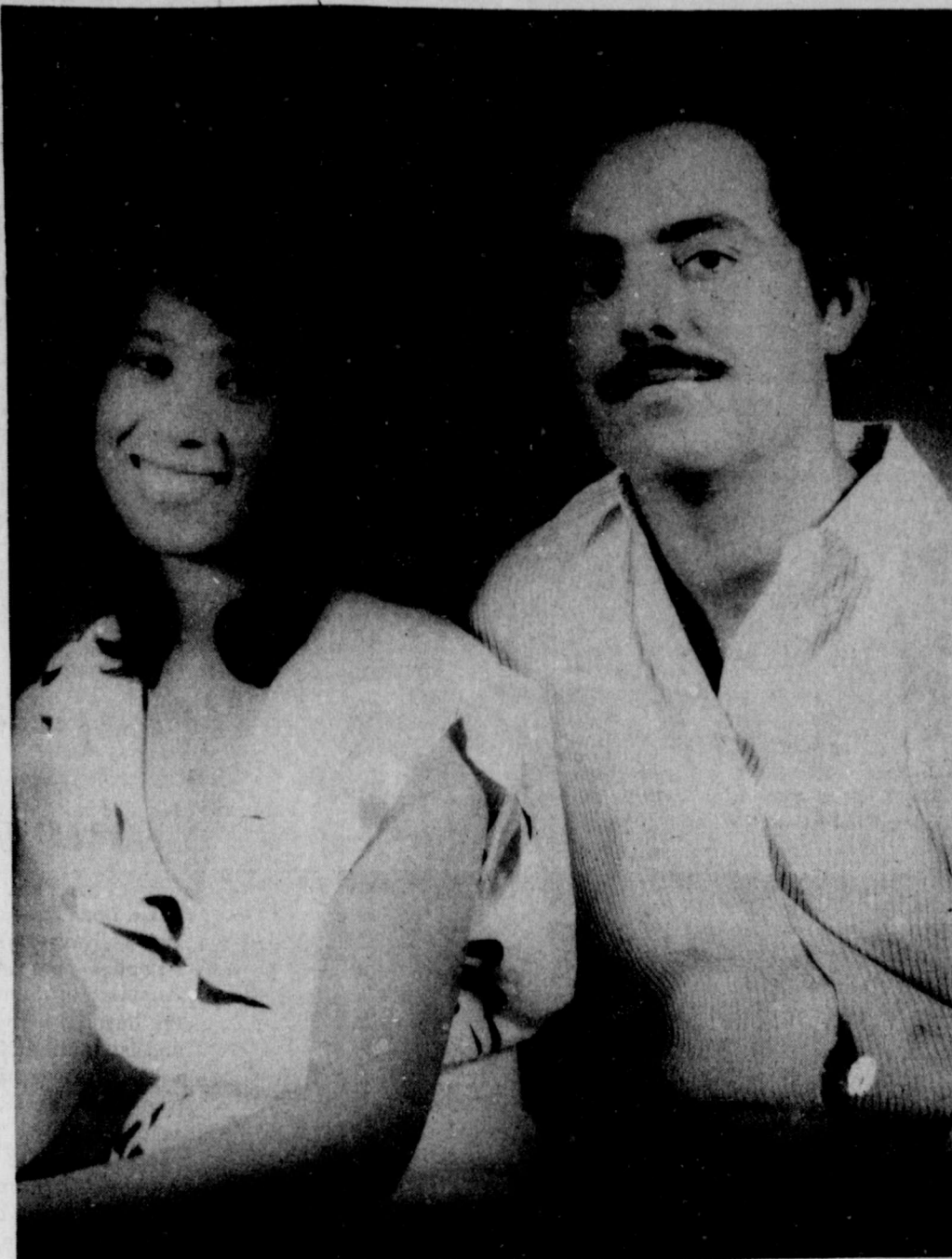
Dee Dee Ariola  
bride elect of  
Jim Covington

La Delle Noland  
bride elect of  
David Gowen

**Custom Orders On:**  
wedding invitations,  
napkins, thank you  
notes, books, etc.

Sue's Gifts  
and Accessories

126 W. Calif. - Floydada  
983-5312



ZULEMA PEREZ, CARLOS GONZALEZ

### Perez, Gonzalez plan to exchange vows July 18

Mrs. Viola L. Perez, of Rio Grande, Texas, announces the engagement and approaching marriage of her daughter Zulema to Carlos Gonzalez, son of Mr. and Mrs. Adalberto Gonzalez Sr. of Orange Grove, Texas. Zulema is the granddaughter of the late Margarito Perez and Mrs. Julia Perez of Lockney.

The prospective groom attended Texas A&I University and graduated in 1978 with a Bachelor of Arts and Sciences Degree in Physical Education and Health. He is currently employed

by the Mathis ISD as a teacher and Junior High head coach.

The bride-elect is a graduate of Rio Grande City and graduated Cum Laude from Texas A&I University, Kingsville, with a Bachelor of Science in Speech, Hearing, Language Therapy.

Currently she is employed by the Orange Grove ISD as a Speech Pathologist.

The couple will exchange nuptial vows on July 18, 1981 at the Immaculate Conception Church in Rio Grande City.

### Organize Your Sewing

Before you start sewing spring-fashion items, take inventory of the fabric, notions, patterns and tools on hand. Your savings as a result can be considerable in terms of storage space, money and time.

Here are some possible reasons: You may be a collector of fabric and have various yardages from years back. You may have bought thread on sale only to discover that you already had 15 spools of white thread or six spools of a color you don't even like. We all make mistakes in purchases. Get rid of these! They are confusing, and they take up valuable space. Give these items

to someone, or garage-sale them -- since one person's "junk" may be someone else's "treasure."

Set up files of everything

to assist you in the inventory. One idea is a metal file box (such as a recipe file) from an office-supply store and 3x5-inch file cards.

#### Floyd Data

Mrs. Babe Jones, Shari and Kerri, and Crystal Powers went to San Angelo Friday morning of last week to visit with Larry Jones. They also visited with Zane Jones and Ronnie Walls.

On Saturday they enjoyed the all day activities of the Concho Fiesta. The fiesta began on Monday and continued through Sunday. They returned home Monday night.

### New Shipment of Ladies' and Men's Costume Jewelry

including:

Necklaces,

Anklets,

Bracelets,

Stickpins,

Pendants,

Earrings (Pierced),

Also Men's and Ladies' Hat Pins

Good Selection to Choose from From

Rosa's  
Hair Chateau

Featuring Redkin Products

203 E. College

652-2169



Mr. and Mrs. Verne E. Taylor Jr. of Lockney are celebrating the forthcoming marriage of their daughter, Penny Taylor, to Mr. and Mrs. J.W. Lockridge of Plainview. The ceremony will be held at the Baptist Church in Aiken.

### Calculations from President

Vonceil Colston, Corene and Murry Stewart, Vertie Powell, Tena Cooper, Marion Bailey, Worth Gwendolyn Howard, Allene Henry,

Charley L. Berry, Mah Probasco, Kim and Jo Lee, Roberson, and Rebecca Barnes.

### Fuller children hold reunion

The children of the late Frank E. and Millie (Moore) Fuller will be having their reunion Saturday and Sunday, July 4 and 5 at the Harmony Community Center, 14 miles southwest of

Floydada on FM 314. Friends are welcome to attend. Almost half of the school-age children of the home will be present.

### KRISTI'S Annual July Clearance

Began Wednesday, July 1 at 9 a.m.

1/4 to 1/2 OFF All Summer Merchandise

VISA/Master Card Welcome

No layaways, approvals, or refunds

### Jim Covington

Mark Tharp

David Gowen

Ray Foster

available at

Lovell-Collins

Jewelry

102 South Main - Floydada

Sue Lovell

Lu Ann Collins

### Life

Life

Life

Life

Life

Life

Life

Life

Life

Life

Life

Life

Life





MEMBERS OF THE LOCKNEY PAYMASTER BASEBALL team are, front row, left to right, Jerry Klein, Lucinda Mahagan, Tommy Hutton, Lupo Coronado, and Michael Monroe. Back row, left to right, Aaron Kidd, Joe Jorrez, Ricky Balsadura and Wyman Rexrode.



MEMBERS OF THE LOCKNEY 15-and-16-year-old baseball team are, front row, left to right, Randy Emert, Israel Gonzales, Frank Castro and Robert Rendon. Back row, left to right, Paul Castro, Jason Hill, Chris Torres, Ketugo Vasquez, Hector Molina and Roy Smith.





THE LOCKNEY ASTROS have members: (back, left) Robert Price, Carlos Rendon, Larry Hardy, Shanna Stapp, David Brittain, Cody Jackson, (left, front) Keri Dee Lusk, Chad Golden, Clay Golden, Jason Lusk, Jr. Peraliz, and Tammy Vernon. Not pictured are Jason Bybee, Sandra Molina, and John Klein.

### Baseball entries accepted

The Idalou Athletic Booster Club is accepting entries for its annual Men's Invitational Slow Pitch baseball tournament. The tourney begins July 31 and ends August 2. Entry fee is \$65.00. Each team must furnish its own baseballs. For information, call Jody Foreman at 892-2136 or Jo Sisk at 892-3030. Checks may be made out to Pat Rosson, Box D, Idalou, Texas 79329.

**LEASE**  
**John Deere Tractors**  
 at  
**Perry Farm Machinery**  
 in Petersburg.  
 Sales and Service on  
 farm machinery  
 and tractors  
**Perry Farm Machinery**  
 (806) 667-3505 Box 680, Petersburg  
 John Deere Dealership

**agri-facts**  
  
 Jerry Perry  
 The fate that befell Humpt, Dumpty is hurting egg producers according to the U. S. D. A. which reports although the average U. S. laying hen produced a record 243 eggs last year, that total could have been as high as 260 per hen, had the shells been just a fraction sturdier. Not only a direct cash loss to the producer, shell breaks also cause additional problems in terms of appearance, for example. One broken egg in a carton can soil the others, classifying the entire contents as "dirty". Shells too fragile for mechanized gathering systems result in a 7 percent loss even before they leave the hen house, according to some estimates. Studies completed in 1970 indicated that up to 11.8 percent of eggs were cracked or smashed between nest and carton. Research continues for a solution which will toughen up shells while not causing any reduction in the quality of the egg itself.  
 Floyd County Implement  
 Floydada

**We're Qualified!**  
 Trust us to fill your prescriptions exactly as your doctor ordered... swiftly and professionally. And in and emergency... we'll deliver 'round the clock!  
  
**Byrd**  
 PHARMACY  
 Phone 652-3353  
 LOCKNEY  


### Texas DPS promotes safety campaign

The Texas Department of Public Safety will be conducting "Operation Motorcade" for this 1981 Fourth of July. The weekend death count will begin at 6 p.m. July 3 and end at midnight July 5. Major C.W. Bell, Regional Commander of the Department of Public Safety, said, "During the 54-hour 'Operation Motorcade' period all available troopers will be on the highways. The troopers will be especially aware of drinking drivers and violators of the speed laws. All drivers should be aware of their condition and the condition of their vehicles. If you are planning a trip, you should know your routes and what exits you will need to take. Sudden movements or lane changes can cause accidents and might possibly cost you your life." The Texas Department of Public Safety challenges each driver to drive defensively and help make this the safest holiday on record.

### Reception honors new doctors

Dr. Ilona Havasi and her husband Dr. George Havasi will be welcomed with a reception hosted by the Women's Auxiliary on Sunday. The reception in the hospital lobby will begin at 3 p.m. and last until 4:30 p.m. The Havasis have come to Floydada from Lubbock where they have been teaching at the Texas Tech School of Medicine for the past three years. Originally from Budapest, Hungary, the couple came to the United States to pursue careers in medical research and teaching. Dr. Havasi opened her office yesterday in Floydada's Cogdell Clinic.

### Tennis tourney begins July 15

The Floydada Open Tennis Tournament will be July 15, 16, 17, 18 and 19. The Junior High Division will begin play on the 15th at 8:30 a.m. Anyone 14 and under is eligible for the boys, girls singles and doubles brackets. There will be no mixed doubles in the Jr. High bracket. The High School Division will begin play on the 16th at 9:00 a.m. Players in this division must be 18 and under. The high school division will have mens and womens singles, doubles and mixed doubles. The Open division will begin on the 18th at 9:00 a.m. There will be mens, womens singles and doubles and mixed doubles. Competition will be completed on Sunday. The 35 and Over Division will also begin on the 18th. The competition will include mens singles, doubles, womens singles, doubles and mixed doubles. The tournament headquarters will be at the Floydada Junior High School. Entries can be sent to Tommy Baxter, 1112 S. 3rd., Floydada, TX 79235. For information, contact him at 983-5395.

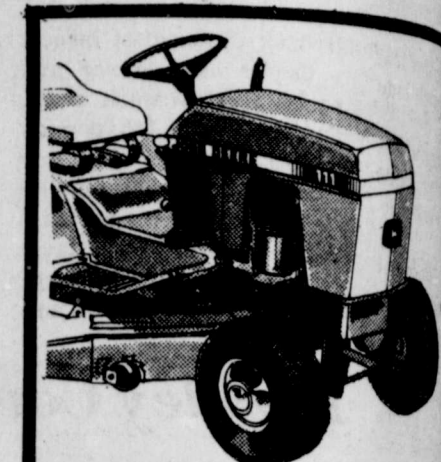
### Around the Co

#### No fireworks

Lake Mackenzie will not allow fireworks this year during the July 4th weekend. Neil Taylor, manager, said the dryness has prevented fireworks, but the park is still open for boating, picnicking, swimming and camping.

#### Award Winner

The Hesperian was awarded one of the Texas Press Association journalistic awards for its advertising competition. The fourth place award was accepted by Shelly Harris.



The John Deere 111 Lawn Tractor is easy to operate. It's powered by a 11-hp engine for smoother operation. It has a wide 38-inch mower and a 5-speed transmission. You also get color-coded padded seat, and roomy operator's compartment. The tractor is available in 111 today.

John Deere Dealer  
 For Lockney

### Texas Farm Machinery

910 Date Street - P...

**PERRYS** July  
**GIANT Sidewalk**  
**FURNITURE**  
**25% off**  
 UNFINISHED  
 1 GALLON INTERIOR LATEX  
**PAINT**  
**\$288**  
 INSIDE SPECIAL FLAT FOLD VALUES TO 1"  
**FABRIC**  
 NOW **99c**  
**SHORTS & HALTER TOPS**  
**25% off**  
**PERRYS**  
 114 East California  
 983-3570  
 We accept VISA & Mastercard.

## Viewpoi

## Editorial

BY PATRICK CLARK  
 Why shouldn't have come as any surprise...  
 Court ruled women should not be included...  
 How the United States Supreme Court...  
 men to be treated equally in matters such...  
 as they should be exempted from such a...  
 service.  
 The court in essence said that it was...  
 men by conscripting them for military service...  
 essentially made women more equal than...  
 men, especially true among the age group...  
 who is going to hire a young man facing...  
 a woman who is exempt from service.  
 The ruling's obvious unfairness to men, it...  
 is movement.  
 Opponents of the Equal Rights Amendment...  
 wanted to be equal when it was to their...  
 as proof of their argument.  
 The court has done wonders for the "Let's...  
 segment, Phyllis Schlafly, et al.  
 If it is re-instated, it'll be interesting to hear...  
 who has just received his greetings from...  
 disrupted why it is that a young woman who is...  
 way is unequal when it comes to military...  
 under if we are approaching the point that...  
 men to overcome the discrimination...  
 Supreme Court.

## Consumer

JUSTIN-In February, 1980, Attorney General Mark White sponsored a statewide conference which brought parents, teachers, school administrators, lawyers, enforcement personnel and students together to discuss the problem of discipline in the schools. Among other things, participants agreed that a written code of student conduct which defines student rights and responsibilities in clear and concise language and sets forth the legal limitations within which school officials may exercise their disciplinary authority would help solve the problem. Not only would such a code indicate to students what their rights and duties are, it would also make clear to teachers and administrators that, in fact, they possess sufficient authority to deal with the problem of violence and disruption in the schools. The code is completed and is now being distributed to school campuses and other interested groups throughout Texas. While the code is voluntary, meaning that it is up to each school district to decide whether to adopt all, part, or none of the code, it should be noted that the State Board of Education has recommended its adoption. School districts which lack clear and comprehensive codes of student conduct should find the Attorney General's code especially useful. Districts which already have a code of student conduct in place can use the Attorney General's code to update or strengthen their code. The code of student conduct is divided into two main sections, "Student Rights and Responsibilities" and "Student Discipline." It is further divided into subsections which address specific aspects of the main topics, such as damage to school property, possession of weapons, possession and use of alcohol and drugs, and general disruption.







# Obituaries

## OTTIE REXRODE

Services for Mrs. William Ottie Rexrode, 74, of Brownfield, were held Monday, June 29, at 2 p.m. at the First Baptist Church, Lockney. The Rev. John Jenkins, officiated. Burial followed in the Lockney cemetery under the direction of Moore-Rose Funeral Home of Lockney.

Mrs. Rexrode died Saturday, June 27, at 5:30 p.m. in the Brownfield Regional Medical Center.

Born October 8, 1906 in Rusk County, Texas, she married Minor Lee Rexrode on December 25, 1925 in Lockney.

She was a Baptist. Mr. Rexrode preceded her in death on November 23, 1980.

Survivors include two sons, Billy Rexrode, Mena, Arkansas, and Donald Rexrode, Brownfield; two daughters, Mrs. Oscar Lee, Odesa, and Mrs. Charlie Wilson, Kamay, Texas; one brother, Frank Hardy, Lockney; 14 grandchildren and 7 great-grandchildren.

Nephews served as pallbearers.

## W.C. WHITE

W.C. White, 53, stepfather of Deborah Bertrand and Steve Holmes, both of Floydada, died at 12:45 p.m. Friday at his home in Lubbock after a lengthy illness.

Services were held at 2 p.m. Monday in Resthaven Chapel. Burial was in Parklawn Memorial Gardens in Plainview by Resthaven Funeral Home of Lubbock.

Mr. White had lived in Lubbock 26 years. He was a native of Emmitt, Arkansas and a paint contractor. He was a member of the Elks Lodge.

Other survivors include his wife, Frankie; his parents Mr. and Mrs. M.H. White of Hobbs, New Mexico; four daughters, Mrs. Paulette Johnson of Arkansas, Mrs. Phyllis Pierce of Edwards AFB, California, Sherry White of Salida, Colorado, and Treva White of Salida, Colorado; three sons, Ronnie of Eldorado, Arkansas, Michael of Houston and Edward of Salda; one stepson, David Boutwell of Seminole; two brothers, Frank of Fort Worth and James of Emmitt; three sisters, Ruth Dillard of Emmitt, Joe Gregory of Hobbs and Jerretta Alexander of Sacramento, California; and 17 grandchildren.

Pallbearers were Glenn Bertrand, Steve Holmes, Eugene Kinkaid, Sammy Kay Beavers, Dave Yeager, James Duncan, Ron Edward and Tim Mitchell.

## LEE ORA HARPER

Lee Ora Harper, 91, of Corpus Christi, formerly of Lockney, died at 10:32 a.m. Wednesday, June 24, in Riverside Hospital in Corpus Christi.

Services were at 10 a.m. Saturday in First Baptist Church of Lockney with the Rev. John Jenkins, pastor, officiating. Burial followed in the Moore-Rose Funeral Home of Lockney.

Mrs. Harper was born February 7, 1890 in Hill County. She married James H. Harper December 25, 1906 in South Plains. He died June 23, 1962.

Mrs. Harper moved from Lockney to Corpus Christi 17 years ago to live with her daughter. She was a homemaker and member of Call Allan Baptist Church.

Surviving are one son, J.B. Harper of Plainview; two daughters, Verna Collis of Corpus Christi and Grace McCurdy of Roseburg, Oregon; four sisters, Velma Solomon of Hereford, Opal Ferguson of Clovis, New Mexico, Helen McLeod of Lockney and Geraldine Wilhite of Plainview; one brother, Raymond Upton of South Plains; six grandchildren, 10 great-grandchildren and one great-great-grandchild.

Pallbearers were Leslie Ferguson, Frank Brown, R.C. Mitchell, Austin B. Meriwether, John K. West, and Johnney West.

## MRS. J.G. WOOD

Services for Mrs. J.G. Wood, 89, of Floydada were

at 2 p.m. Wednesday in the First United Methodist Church in Floydada with the Rev. Jim Smith, pastor, officiating and the Revs. Jordan Grooms of Amarillo and Don W. Harris of Seardsdale, New York assisting.

Burial was in the Floydada Cemetery under direction of Moore-Rose Funeral Home.

Mrs. Wood died Monday at 8:30 a.m. in the Medical Arts Hospital in Lamesa after a lengthy illness.

She was a native of Atlanta, Georgia and moved to Texas at an early age. She married Jess G. Wood October 16, 1912, at Olney and moved to Floyd County in 1917 from Graham. Her husband, who was active in Floydada civic affairs, died in 1956. She was a member of the First United Methodist Church.

Survivors include a daughter, Mrs. J.B. Clayborne of Lamesa; a sister, Mrs. H.P. Shrader of Denver, Colorado; a brother, Laurin Guimarin of Olney; four grandchildren; and four great-grandchildren.



MRS. J.G. WOOD

REMEMBER your loved ones and friends with a memorial to Lockney General Hospital Memorial Fund. These memorials go toward equipment to help serve our community in the best way possible.

REMEMBER your loved ones with a living memorial to the Caprock Hospital Auxiliary Memorial Fund. Mrs. Ben Whitaker, Treasurer.

**Crop Hail  
Cotton Insurance**  
Stepladder Or Broadform Stepladder  
Coverage Of Your Choice  
Cash Or Interest Free Note  
Available At  
**Cates & Dawson Ins.**  
983-5322

**I did it!**

I lost 22 pounds in just 5 weeks at the Diet Center.

... A Counselor Who Really Cares ...  
... She's Been There!

At the Diet Center I received professional counseling help with a daily weight check and lots of encouragement — all standard fare at the Diet Center.

... Feel Good While Dieting  
With the Diet Center's nutritionally well-balanced diet and 100% pure food diet supplement, I felt really great. My hunger and sweet tooth were finally curbed.

You can do it too!  
Call: Geneva Giesecke  
983-2224  
983-5708  
Ralls Highway  
(under new management)

**DIET CENTER**  
No Shots, No Drugs, Nutritionally Sound and Doctor Approved.

## Piggly Wiggly donates gift certificate



MRS. BEN VAN CLEAVE ACCEPTS A GIFT CERTIFICATE from Piggly Wiggly manager Frankie Buckner. Mrs. Van Cleave's nephew Bennie McMurrin drowned recently.

## Lockney Hospital News

June 19-June 26

Hilburn Casey, Lockney, adm. 6-1, dis. 6-22.  
Olive Myers, Lockney, adm. 6-9, dis. 6-22.  
Vera Meredith, Floydada, adm. 6-13, continues care.  
Jessie Chandler, Plainview, adm. 6-15, dis. 6-24.  
Leona Vardell, Silverton, adm. 6-16, dis. 6-22.  
Birda Foster, Lockney, adm. 6-16, dis. 6-23.  
Sarah Childs, Lockney, adm. 6-17, dis. 6-26.  
Beulah Clark, Lockney, adm. 6-17, dis. 6-25.  
Ruth Johnson, Quitaque, adm. 6-17, dis. 6-23.

Juan Villarreal, Lockney, adm. 6-18, dis. 6-22.  
Bernice Kent, Lockney, adm. 6-20, dis. 6-23.  
Betha Cunyus, Lockney, adm. 6-21, dis. 6-25.  
Stella Wilson, Lockney, adm. 6-22, continues care.  
Mattie Readhiemer, Lockney, adm. 6-10, dis. 6-22.  
Lois Durham, Floydada, adm. 6-22, continues care.  
Mary Helen Molinar, Floydada, adm. 6-22, baby boy Erbey Jr., born 6-22, dis. 6-24.  
Ellen Galloway, Hamlin, adm. 6-23, continues care.  
Bernice Coleman, Crosbyton, adm. 6-23, baby boy Steven, born 6-23, dis. 6-25.  
Jewell Cheves, Lockney, adm. 6-23, continues care.  
Kyle Warren, Floydada, adm. 6-24, baby boy Daniel, born 6-24, dis. 6-26.  
Lydia Segura, Plainview, adm. 6-25, continues care.  
Sally Carpenter, Lockney, adm. 6-25, continues care.



An infant eel is known as an elver.

## Sewing Tips

NOTION FILE -- List on cards all notions on hand, such as zippers, seam tape and trims. Be sure to include size, colors and quantities. This will prevent buying duplicates, especially if you take the cards along on shopping trips. Be sure to mark them with the pattern number and style number. This will help you find the right notions for your project.

## Caprock Hospital Is Proud To Announce The Association Of Doctors Ilona Havasi M.D. General Practice

Weekdays Except Tue. 9:30-12:00  
Saturday 9:30-12:00  
Will Take Appointments For Your Convenience  
Drop-ins Welcome

## RCA July Clearance

Starts Thursday June 25th

All 1981 Models In Stock Must Go To Make Room For The 1982 Models To Arrive Soon

All Color Portables Cost Plus \$25

Includes Remote Models

Over 20 Models To Choose From

## Mize Pharmacy & T.V.

102 S. Main 652-2435

SHOWTIME MOVIE (EXC. FRI.) 'Hot Stuff' (THUR.), Showtime Sp (FRI.), 'Water Babies' (MON.), 'The (TUE.), 'Candlehoe' (WED.) 2:35

(1) FLINTSTONE 3:00

(2) SESAME STREET 3:00

(3) SCOOBY DOO (THUR.) 3:00

(4) MOVIE 'Duel At Silver Ca (THUR.) 'Night Lies A Thousand (FRI.), 'Restless Breed' (M 'Calamity Jane And Sam Bass' ( 'Forty Guns' (WED.) 3:00

(5) ONE DAY AT A TIME (TUE.) 3:05

(6) ADAMS FAMILY 3:30

(7) RELIGIOUS 3:30

(8) MARY TYLER MOORE (THUR., FRI.) 3:30

(9) YOGI BEAR (THUR.) 3:30

(10) GOLF: 1970 BRITISH O (THUR., FRI.) 3:30

(11) EMERGENCY 3:35

(12) LET'S MAKE A DEAL SHOWTIME (FRI.) 3:35

(13) HAZEL 4:00

(14) SPECIAL (THUR., TUE.) 4:00

(15) RELIGIOUS 4:00

(16) MISTER ROGERS 4:00

(17) BEWITCHED 4:00

(18) MY THREE SONS (THUR., FRI.) 4:00

(19) AUTO RACING: ATLA (THUR., FRI.) 4:00

(20) STARKY AND HUTCH SHOWTIME MOVIE (MON., TUE.) 4:05

(21) OZZIE AND HARRIET 4:05

(22) SPECIAL (MON., WED.) 4:30

(23) ROSS BAGLEY SHOW 4:30

(24) ELECTRIC COMPANY 4:30

(25) INHISLABOR (THUR.) 'Rose (THUR., FRI.) 4:30

(26) HAPPY DAYS AGAIN 4:30

(27) DICK VAN DYKE SHOW 4:30

(28) AUSTRALIAN RULES PA (THUR., FRI.) 4:30

(29) STANLEY SIEGEL SHOW 4:30

(30) MANNIX 4:35

(31) SHOWTIME MOVIE (THUR.) 'Urban Cowboy' (THUR.) 4:35

(32) BEVERLY HILLBILLIES 5:00

(33) SPECIAL (THUR., FRI.) (TUE.) 'Challenger' For Robi (TUE.) 5:00

(34) STUDIO SEE 5:00

(35) HUNTLEY ST 5:00

(36) ABC NEWS 5:00

(37) CHICO AND THE MAN 5:00

(38) JOKER'S WILD 5:00

(39) SHOWTIME MOVIE (FRI.) 'My Brilliant Career' (FRI.) 'Great (WED.) 5:05

(40) BASEBALL (THUR.) 'Knows Best' (EXC. THUR.) 5:30

(41) MOVIE (MON.) 'Just You A Kid' (MON.) 'Special' (WED.) 5:30

(42) VARIOUS PROGRAMMING 5:30

(43) M.A.S.H. 5:30

(44) HOGAN'S HEROES 5:30

(45) TIC TAC DOUGH 5:30

(46) NBC NEWS 5:30

(47) CBS NEWS 5:30

(48) SHOWTIME SHOW 5:30

(49) SPECIAL (TUE.) 5:35

(50) THAT GIRL (EXC. THUR., FRI.) 5:35

THURSDAY JULY 2, 1981

6:00

(1) THE BEST OF CONE REPORTS A compilation of hi from past Consumer Reports segments covering a broad r topics from food and medicine to household products and safety dev

(2) WEEKEND GARDNER 6:00

(3) SDF 6:00

(4) OVER EASY 'What is tology?' Hosts: Frank Blair and Douglass. (Closed-Captioned, U.S.A.) 6:00

(5) NEWS 6:00

(6) ANDY GRIFFITH SHOW 6:00

(7) SPORTS CENTER 6:00

(8) BULLSEYE 6:30

(9) WIMBLEDON '81 WC QUARTER FINALS HBO provides next-day coverage of Wimbledon quarter-finals in the m religious event in tennis.

(10) ANOTHER LIFE 6:30

(11) MACNEIL LEHRER RE 6:30

(12) ALL IN THE FAMILY 6:30

(13) CAROL BURNETT FRIENDS 6:30

(14) FACE THE MUSIC 6:30

(15) NAME THAT TUNE 6:30

(16) \$50,000 PYRAMID 6:30

(17) PRIORITY 6:30

(18) INTERNATIONAL 6:30

(19) HIDDEN PLACES: WH 6:30

(20) ODD LIVES 'Ancient Plac Philip Abbott hosts this m e explores little-known sites that important in the history of the West. 'Ancient Places' takes the canyons wilderness of to Hueco Tanks in Texas, wh rock art has endured for centu

(21) JERRY FALWELL 6:30

(22) MORK AND MINDY Mork as lead singer with a hilarious comedy group after a Reno fire entertainer because she is p which angers Mindy into leadi line against the restaurant. (R 6:30

(23) GOSSIP COLUMNIST an, a beautiful journalist-turn columnist, finds herself cas compromising world of Hollyw Kim Cattrall, Robert Vaughn, 6:30

(24) WORLD CUP 6:30

(25) QUALIFYING MATCH 6:30

(26) MOVIE (HORROR) \*\* 6:30

(27) GALLERY '1969 Joan Crawle McDowell. Paintings tell of the tales of suspense and the sup (2 hrs.) 6:30

(28) NBC MAGAZINE WITH BRINKLEY Garrick Utley fo trail of industrial spies who a United States micro-electro nology, and Betsy Aaron ex delayed stress syndrome, wha lects Vietnam war veterans. (P mins.) 6:30

(29) THE WALTONS Sentr the war and is reunited with Ce family's joy at his homecom pened by John's bad news ab (Repeat: 30 mins.) 6:30

(30) SHOWTIME 6:30

(31) 17 1/2 1/4 ?????????? (2 "Black Hole" 6:30

(32) SOUND OF TRUMPE 6:30

(33) THE LAWMAKERS 6:30

(34) BOSOM BUDDIES He being thought of as a girl's tries everything from silk st chains to riding the mechan urban cowboy saloon in orde new image for himself as a s (Repeat) 6:30

(35) 700 CLUB 8:00

(36) SNEAK PREVIEWS (Roser Ebert and Gene Sisk new movies in town, and from: 'Superman II.' the retu











Cedar Hill News

# Farmers keeping busy in fields

BY GRACE LEMONS

We have had hot dry weather although moisture is needed badly the farmers have kept busy in the fields.

The Assembly of God church had a good crowd Wednesday evening when Jude Strickland of North Carolina brought the message, Jude and his wife the former Marie Fortenberry are former residents of our community.

Wayne Jernigan of New Orleans, Louisiana brought both messages Sunday at the Assembly of God Church with about 30 present. His wife Nelda and children Pat and Jana have been visiting Nelda's parents, Cephus and Imogene Fortenberry.

The Rev. and Mrs. Vance Mitchell attended a Fellowship meeting at the Assembly of God Church in Lorenzo Tuesday evening. Jana Jernigan and Susie VanHoose accompanied their girls Sandra and Virginia Mitchell to the meeting and spent the night with the Mitchell girls.

Pauline and John D. VanHoose hosted a supper and a get together of Pauline's family in their home Tuesday evening. Those present to enjoy the occasion were Eula Mae and Chick Wilson and John Wilson of Ralls, Gail Fortenberry, Marcia and Keith Phillips, Sammy and Kelly Fortenberry and Jennifer, Danny and Lesca Durham and Michael of Lockney, Jude and Marie Strickland of North Carolina, Richard VanHoose and Susie VanHoose of Oklahoma City and Pauline and John D. VanHoose.

Mrs. Peat Kelley accompanied Norma Welch last Thursday to Beaumont on business and visited Mr. Kelley's twin sister, Mrs. Callie Gilbert in a nursing home and Mrs. Lucille Gilbert in the hospital also visited Mr. and Mrs. Bob Mauk and boys in Houston, Mrs. Willie D. Strain in Weatherford, Mr. and Mrs.

Harold Gilbert and daughters in Santos, P.D. and Lola Gilbert in Santos and Mr. and Mrs. Ben Estes in Spur and Mrs. Carrie Mae Cruze in Crosbyton and returned home late Wednesday.

Marie and Jude Strickland visited Mrs. Peat Kelley and Mrs. Belle Lemons late Wednesday afternoon.

Thada Fowler and Clayton of Silverton visited Mr. and Mrs. W.E. Lackey Sunday. Lindsey Lackey also visited with them.

Dinner guests in the home of Mr. and Mrs. Junior Taylor Sunday were Mattie Davis, Agnes and Gus Wesley of Plainview and two of Gus's sisters of Patterson, California.

Mrs. Lizzie Seay had the misfortune of falling just outside of her home in Carizozo and breaking her pelvis bone. She later had a stroke and has been in serious condition. Monday she was reported of being somewhat improved and was removed from intensive care to a private room. Her address is Room 215 Gerald Champion Hospital, Alamogordo, New Mexico. We sincerely trust that she will soon gain her



Notice

Ed Hartman

Known As Goober

Is Over The Hill

Happy 40 th

Ask the Land Bank about... money to buy land or improve your farm.



Farmers today are looking at ways to increase their productivity... building or remodeling facilities. Whatever way you choose to grow, the Federal Land Bank can provide long-term credit to help. So when you're looking to buy or build, stop in and talk to the long-term farm credit specialists at your Land Bank Association.

105 South Wall 983-2480

The Land Bank



- performed by native tribesmen, he kills all but one. Friday, the man he spares, is sensitive and intelligent and he becomes Crusoe's slave.
- 12:30 SHOWTIME MOVIE-(COMEDY) "Caddyshack" 1980 Rodney Dangerfield, Ted Knight, Wild antics of golfers and employees of an ultra exclusive golf course. (Rated PG) (2 hrs.)
- 12:34 NIGHTBEAT
- 12:45 MOVIE-(COMEDY) "Go- ing In Style" 1979 Lee Strasberg, George Burns. Three retired men decide to rob a bank to relieve their boredom. (Rated PG) (98 mins.)
- 12:50 NEWS REPLAY
- 1:00 WORLDVIEW
- 1:05 JIM BAKKER
- 1:10 JOE FRANKLIN SHOW
- 1:15 NEWS
- 1:04 MOVIE-(DRAMA) "Tom Sawyer, Detective" 1938 Donald O'Connor, Billy Cook. Family melodrama about Tom's adventures with some thieves he meets on a river boat. (2 hrs.)
- 1:05 ATLANTA BRAVES REPLAY in the event of a player's strike, alternate programming will air.
- 1:30 ROSS BAGLEY SHOW
- 1:35 SPORTS CENTER
- 2:00 GOOD NEWS
- 2:05 GOLF: 1970 BRITISH OPEN HIGHLIGHTS
- 2:10 MOVIE-(SCIENCE) "The Omega" 1980 Keith Larson, Ingrid Pitt. While painting in the Black River region of Malaya, an artist discovers his wife and his guide are lovers and plan to kill him. He gets revenge by making them pose in the cursed waters, which upon their death, causes them to disintegrate and cremate themselves. (2 hrs.)
- 2:30 ORAL ROBERTS
- 2:35 SHOWTIME LOS ANGELES BIG LAFF-OFF Dick Martin hosts special guest Gallagher, plus some of L.A.'s hottest new comedians, in this comedy showdown.
- 3:00 TENNIS: WCT CHALLENGE
- 3:05 ALL NIGHT PROGRAMMING
- 3:35 RAT PATROL
- 4:00 ALL-STAR SOCCER Nottingham Forest vs Wolverhampton (80 mins.)
- 4:05 NEWS
- 4:10 SHOWTIME BROADWAY ON SHOWTIME: "BULL SHOT CRUMMOND" Comedy about the world's most incompetent super sleuths.
- 4:05 MISSION IMPOSSIBLE
- 4:30 BLACKWOOD BROTHERS
- 4:35 VOYAGE TO THE BOTTOM OF THE SEA
- 5:00 U.S.A.M.
- 5:05 GOLF: 1971 BRITISH OPEN HIGHLIGHTS
- 5:30 HOLLYWOOD REPORT
- 5:35 ROSS BAGLEY SHOW
- 5:40 FAITH 20
- 5:45 SHOWTIME MOVIE-(DRAMA) "Great Santini" 1979 Robert Duvall, Blythe Danner. A Marine pilot in peacetime runs his family like a battalion and tries to shape his son into a stars and stripes image of himself. (Rated PG) (2 hrs., 30 mins.)
- 5:55 TOP O' THE MORNING
- WEDNESDAY JULY 8, 1981
- EVENING
- 6:00 MOVIE-(DRAMA) "Candle- show" 1977
- 6:05 NEW BIBLE BAFFLE SHOW
- 6:10 OVER EASY
- 6:15 NEWS
- 6:20 ANDY GRIFFITH SHOW
- 6:25 SPORTS CENTER
- 6:30 BULLSEYE
- 6:05 ALL IN THE FAMILY
- 6:30 ANOTHER LIFE
- 6:35 MACNEIL LEHRER REPORT
- 6:40 ALL IN THE FAMILY
- 6:45 CAROL BURNETT AND FRIENDS
- 6:50 FACE THE MUSIC
- 6:55 DANCE FEVER
- 7:00 \$50,000 PYRAMID
- 7:35 BASEBALL
- 7:00 SPECIALS
- 7:05 NATIONAL GEOGRAPHIC
- 7:10 CHARLIE'S ANGELS
- 7:15 BASEBALL
- 7:20 SPORTSTALK
- 7:25 SOCCER New York Cosmos vs Toronto Blizzard (2 hrs.)
- 7:30 REAL PEOPLE
- 7:35 CBS WEDNESDAY NIGHT
- 7:40 MOVIE
- 7:45 SHOWTIME MOVIE-(COMEDY) "More American Graffiti"
- 8:00 MOVIE-(DRAMA) "Human Factor"



MEMBERS OF THE FLOYDADA MASONIC LODGE AM and AF are (back row, left to right) Keith Rainer, Bill Gray, J.K. Holmes and Bob Kendrick, (front row left to right) Doyle Walls, Mac Wilson, Byron Kendrick, C.L. Berry and Bob Vickers.



GUILD PARTICIPANTS who take piano lessons from Elaine Hardy are, back row, (left to right) Laron Cheek, Tana Perry and Christi Norrell. Front row (left to right) Amy McCormick, Anita McCormick and Kim Perry.

For The Best In TV Viewing And The Latest Movies Contact Lockney Cable TV 652-2334 Service Is Our Business

**INSUR-MATION**  
Floyd County Insurance Agency Jerry Cooper

Got Heating Or Plumbing Problems? Call Holmes Plumbing Austin Or Steve 983-2251 Call Day Or Night

In a Buy-and-Sell Agreement involving life insurance purchased on the lives of partners or stockholders to fund an agreement to purchase that portion of the business, are the proceeds taxable as included in the insured's estate? If proceeds of the agreement policy are not payable to the insured's estate, and the insured has no incidents of ownership in the policies or his life, the proceeds are not includable in the gross estate and, therefore, not taxable. The value of his partnership interest or the corporate stock which he holds is includable in his estate, however, and is subject to Federal estate taxes. Incidents of ownership would be precluded by a provision in the agreement prohibiting the insured from surrendering or borrowing on the policy or changing the beneficiary.

Thad Lusk, 3 months, son of Mr. and Mrs. Raymond Lusk

**Tuesday is Tots' Day**

Have your little one photographed on Tuesdays and the \$20.00 Sitting Fee also pays for four (4) color previews of your choosing in a personalized mat. By appointment. 652-3731

Chuck Wilson, M. Photog., CPP (Master of Photography, Certified Professional Photographer)

**Wilson Photography** Rt. No. 1 652-3731 Lockney, Texas 79241

Wrangler Demin Jeans Junior Sizes 5-15 Buy One At Regular Price Get Another For \$1.00

Junior & Misses Large Selection Colors Slacks 1/2 Price

Men's Western Short Sleeve Shirts 1/2 Price

Bargain Rack Jeans, Blouses & Misc. Drastically Reduced

One Group Junior Skirt & Blouse Sets 1/2 Price

Junior Sizes 5-15 Blouses 1/2 Price

Rack Of Summer Tops & Shorts 1/2 Price

Straw Hats 1/2 Price

Close-Out On Wranglers Slim Fit Flare Leg Denims 3 Pairs / \$25.00

**THE LOFT** 517 East Houston 983-2235



## Motley gets grant

In early June the Motley County Library Board received word from the Texas State Library that their application for an Establishment Grant had been accepted. The County Commissioners signed a contract with the Texas State Library at their meeting on June 8, and soon the Board will receive funds to purchase books, furniture and equipment.

The Grant will total \$16,300 and is to be spent within a one-year period. The Board plans, however, to have most of the money spent by the time the library

opens its doors to the public this fall. The grant money will allow the library to get off to an excellent start with new shelving, a new card catalog, \$7,500 of new or almost new books, among other things. Board Chairman Darla Gwinn and the rest of the Board are to be congratulated on making successful application for this well-deserved grant money.

## Lockney Celebrates

### BIRTHDAYS

July 2 — David J. Hernandez, Arvie Newton, Charles Minick, Paul Castro, Anne Carthel

July 3 — Amie Cook, Martha Mangold, Jessie Gonzales

July 4 — Refugio Vasquez, John T. Hooten, Clarence Ansley, Ty Martin

July 5 — Alicia Palomin, Alicia Hernandez, Jason Carthel, Jo Carthel, Rex Reeves, Ronce Thornton

July 6 — Dub Hallmark, Juan Peralez Jr., Max Smith

July 7 — Rodger Stapp, Shandra Bybee, Becky Mathis

July 8 — Mavis Reecer, Christy Coffman, Chris Lynn Hardin, Wayne Coleman

ANNIVERSARIES  
July 2 — Tom and JoAnn Duvall, Randy and Jo Beth Ware

July 3 — Arvie and Gene Newton, Travis and Claudette Hulcy, Rusty and Laura Wilson, W.L. and Dot Thomas, Doug and Donnie Meriwether

July 4 — Kenneth and Retha Wofford

July 5 — Carroll and Anna Anderson

July 8 — Charles and Barbara Carthel, J.R. and Maye Belt

## Public Notices

Notice is hereby given that Seung Kook Hong, M.D., formerly practicing medicine as a sole proprietorship under the name of Seung Kook Hong, M.D., has ceased to continue such medical practice as a sole proprietorship and hereby gives notice that such medical practice was transferred to a Texas professional association on the 26th day of May, 1981, under the name of Seung Kook Hong, M.D., P.A.

Lockney ISD is calling for sealed bids on upright player piano. Player does not work. Piano can be seen at Superintendent's office between 8:30 a.m. — 4 p.m. Monday thru Friday. Bids must be in Superintendent's office by 4 p.m. July 14, 1981.

L7-2c

The Floydada Independent School District is now accepting bids for the purpose of selecting a depository for school funds received during the 1981-83 biennium which begins September 1, 1981. The Board of Trustees will select said depository during its regular scheduled meeting beginning at 7:30 p.m. on August 11, 1981. The Board of Trustees reserves the right to waive any or all formalities and the rejection of any or all bids. Additional information may be obtained from Floydada I S D administrative office located at 208 S. Main or call 806-983-3498. Bids must be received by 5:00 on August 11, 1981.

The Floydada Independent School District is now accepting bids for the purchase of petroleum products for its transportation department for the 1981-82 school year. Bid forms may be obtained from the administrative office, 208 S. Main or call 806-983-3498. The Board of Trustees will award contract during its regularly scheduled meeting on August 11, 1981. The Board of Trustees reserves the right to waive any or all formalities and to reject any or all bids. Bids must be received by 5:00 p.m. on August 11, 1981.

The Floydada Independent School District is now accepting bids for the renewal of its insurance policies covering the transportation department. Bid forms may be obtained from the administrative office, 208 S. Main or call 806-983-3498. The Board of Trustees will award contract during its regularly scheduled meeting on August 11, 1981. The Board of Trustees reserves the right to waive any or all formalities and to reject any or all bids. Bids must be received by 5:00 p.m. on August 11, 1981.

We are no longer responsible for Loraine Jones' actions or debts as of 6-18-81.

Mr. & Mrs. Robert Lee Jones  
7-2c

### PUBLIC NOTICE

The City of Floydada is soliciting proposals from qualified individuals or firms to provide grant administration services with respect to its Community Development Block Grant Program.

Interested parties should contact William Feuerbacher, City Manager at City Hall in Floydada, Texas between the hours of 8:00 A.M. and 5:00 P.M. Monday through Friday, on telephone AC 806/983-2834.

The City of Floydada is an Equal Opportunity Employer.

7-9c

### NOTICE TO BIDDERS

#### FOR SALE

The City of Floydada, Texas will receive sealed bids at the office of the City Secretary, City Hall, 114 W. Virginia, Floydada, Texas until 5:00 P. M., July 14, 1981 and then publicly opened and read at its regular meeting at 7:30 P. M. at the above address for the following equipment:

- 1978 Pontiac 4 door sedan.
- 1968 Mobile 4 wheel street sweeper

#### INSTRUCTIONS:

- The above equipment may be inspected at 114 W. Virginia, Floydada, Texas.
- The above items will be bid separate. The bids will be sealed and addressed to the Mayor and City Council and state what item is being bid.
- The City Council of the City of Floydada, Texas reserves the right to accept or reject any or all bids submitted.

s/Parnell Powell  
Mayor

s/Jimmie Lou Stewart  
City Secretary



### Fully Reconditioned Used Farm Equipment

#### Lubbock Farm Tractors

1980 Case 2590 Cab AC Duals 20.8x42 18.5x16 front. 20 front wts. AM/FM 8-track. Cab lights. 321 hrs. Balance of new warranty.

New price \$64,682.00	<b>SPECIAL</b>	\$50,000.00
Case 2670 Cab, Air PTO		\$24,500.00
1977 Case 1370 Cab & Air		\$20,500.00
1976 Case 1370 Cab & Air		\$19,500.00
Case 1370 Cab AC		\$17,500.00
1175 Case Cab & Air		\$12,500.00
1070 Case Cab & Air		\$11,000.00
1975 John Deere 283 Stripper		\$ 6,250.00
Case 1030 Cab		\$ 5,500.00
Case 930 Cab		\$ 5,250.00
Big OX 7 Shank Ripper Plow		\$ 1,000.00
10 HP Simplicity Tractor & Mower (like new)		\$ 999.00
Moline 4 Row Planter		\$ 950.00
Kravage 14 Foot Tandem Disc		\$ 500.00
12' Tandem Disc		\$ 475.00

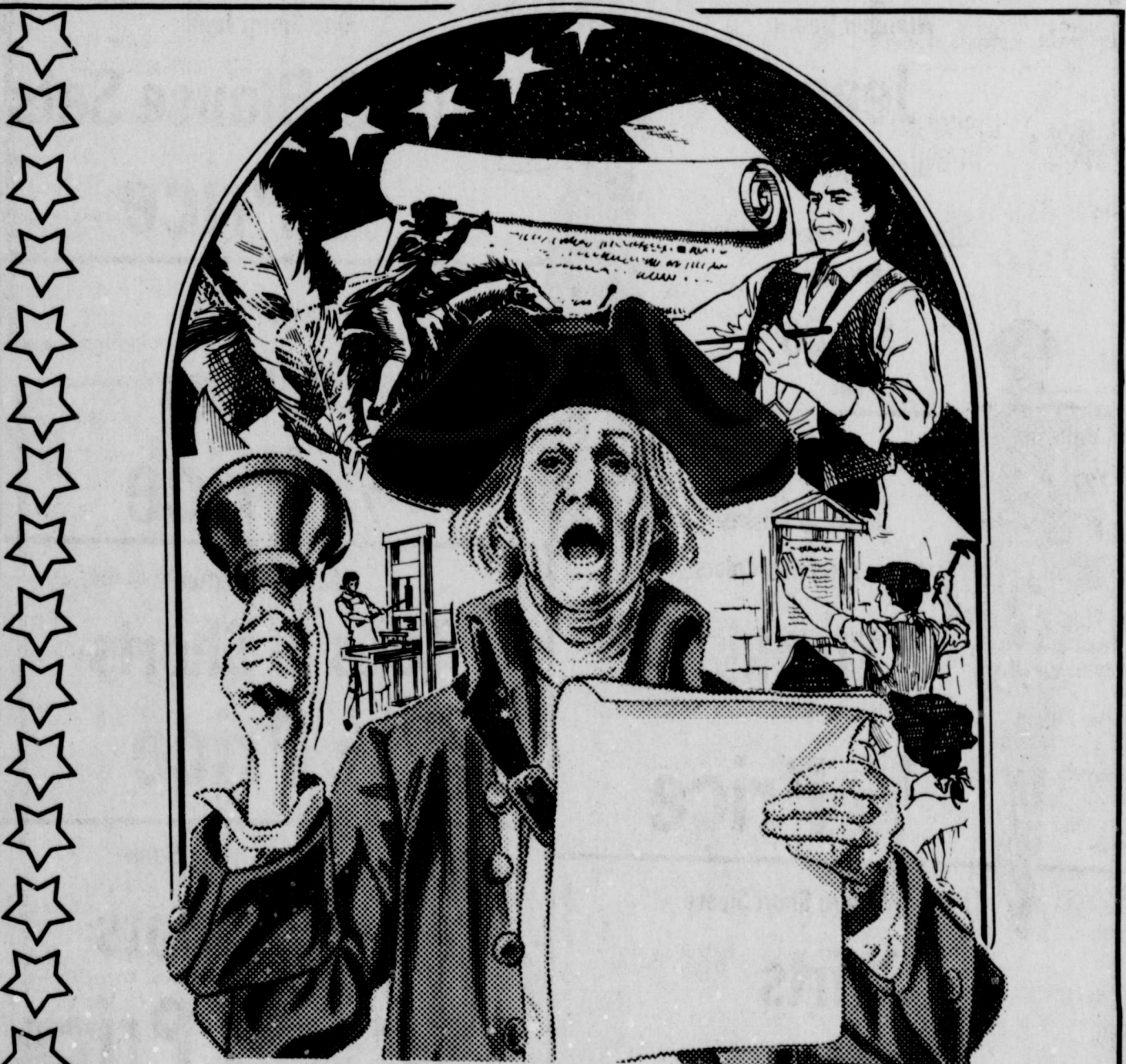
#### Lamesa

1978 1570 Cab Air 20.8 Radials 1800 hrs.	\$25,950.00
1973 Case 1270 Cab & Air 20.8 x 38	\$13,500.00
Case 1175 Cab & Dual A/C	\$12,500.00
Case 1090 Cab A/C	\$ 8,800.00
Heston 1978 300 Stripper	\$ 7,500.00
IHC 806 Cab Duals with IHC 90 Stripper	\$ 7,500.00

#### Floydada

1974 Case 1175 Cab & Air Radio	\$14,500.00
David Brown 880 1200 hrs.	\$ 7,900.00
Case 930 Cab	\$ 6,500.00
Case 1030 Cab	\$ 5,900.00

Case Power and Equipment  
Lubbock 3302 Slaton Hwy. 745-4451  
Lamesa 902 S. Dallas 872-5861  
Floydada 101 South 12th 983-2836



Hear Ye, Hear Ye! Let freedom ring from the hills, mountains and plains on our celebration of 205 independent years! This July 4th shall be a day to show just how proud we are, America!

We Will Close July 3, In Observance Of Independence Day

"Helping You Change Things For The Better"

**THE FIRST NATIONAL BANK OF FLOYDADA**

FLOYDADA, TEXAS 79235 MEMBER F.D.I.C. Accounts Insured to To \$100,000

## Public Notice

Southwestern Bell, in accordance with the rules of the Public Utility Commission of Texas, hereby gives notice of the company's intent to implement a new schedule of telephone rates in Texas effective July 21, 1981, unless otherwise determined by the Commission.

It is expected that the requested rate schedule will furnish a 15.8 percent increase in the company's intrastate revenues.

A complete copy of the new rate schedule is on file with the Public Utility Commission at Austin, Texas, and with each affected municipality served by Southwestern Bell, and is available for inspection in each of the company's public business offices in Texas.

### Notice to Customers of Other Telephone Companies

The filing includes, but is not limited to, proposals to increase rates for interexchange private line and foreign exchange (FX) service. Changes in such rates would also affect customers of other telephone companies because such companies provide interexchange private line and foreign exchange service in accordance with rates specified in Southwestern Bell's tariffs.

City of Floydada, 114 W. Virginia St., P.O. Box 100, Floydada, Texas 79235

### CITATION

To: Lula Redd Estate  
c/o Mrs. Voncail Casey  
2302B W. 16th Street  
Plainview, Texas 79072

Mrs. W.H. Pope Estate  
c/o Mrs. Clara Brock  
3004 W. 18th Street  
Plainview, Texas 79072

T.O. Watkins  
General Delivery  
Clarendon, Texas 79226

Robert Day Estate  
c/o Nita Joe Hartman  
3711 Lynette  
Amarillo, Texas 79109

Robert Day Estate  
c/o Teresa Gutierrez  
1505 Carswell Terrace  
Arlington, Texas 76010

Charles McDowell  
1108 S. 3rd St.  
Floydada, Texas 79235

Joe Ysasaga  
General Delivery  
Slaton, Texas 79364

Notice is hereby given to the above property owners that the City of Floydada, Texas has determined that the above structures being kept and maintained in violation of the City of Floydada, Texas.

The violations of Ordinance No. 622 are as follows or more of the following as relates to the structures situated on the premises, in that the structures are:

1. damaged
2. decayed
3. delapidated
4. unsanitary
5. have been disconnected from utilities for days and have been unoccupied.

The foregoing matters constitute a serious well-being of the public of Floyd County, Texas.

Notice is hereby given that a hearing on the above matters will be held at the City Hall of the City of Floydada, Texas, at the City Hall of the City of Floydada, Texas, 114 W. Virginia, Floydada, Texas, 79235. At this hearing the owners will be required to show why they are in violation of the ordinance as set forth above and why the buildings or structures situated on the premises are dangerous. The hearing shall be before the City Council. If the City Council finds that there is a violation of the ordinance as set forth above and that said buildings are vacant and dangerous, appropriate orders may be issued by the City Council, which may require the clearing and removing of the buildings and the above specified premises, and that the cost of the same may be charged to the property owner by a lien upon the premises in accordance with Ordinance No. 622.

Dated June 10, 1981.

/s/ Charles G. White  
City Attorney for the City of Floydada

/s/ Dorr Blasingame  
Building Official for the City of Floydada

## Aviso Público

Southwestern Bell, en conformidad a las reglas del Public Utility Commission (Comisión de Servicios Públicos) de Texas, por el presente hace saber su intención de establecer un nuevo arancel para el servicio de teléfono en Texas con vigencia a partir del 21 de Julio de 1981, a menos que la Comisión haga otra determinación.

Se espera que el nuevo arancel que se ha solicitado rindrá un aumento de 15.8 por ciento en los ingresos intrastatales de la compañía.

Una copia completa del nuevo arancel se ha archivado en las oficinas del Public Utility Commission en Austin, Texas, así como en cada municipalidad afectada y servida por Southwestern Bell, y cada una de las oficinas de la compañía para negocios con el público en Texas tiene una copia para lectura pública.

### Aviso a los Clientes de Otras Compañías de Teléfono

El registro incluye, pero no se limita a, propuestas para aumentar las tarifas para servicio de línea privada entre centrales telefónicas (intercambio de línea privada) y servicio de central telefónica extranjera (foreign exchange FX). Cambios en dichas tarifas de servicio también afectarían a clientes de otras compañías de teléfono porque dichas compañías proveen los servicios ya mencionados en conformidad a tarifas especificadas por Southwestern Bell.

Southwestern Bell

## It's Results

### REAL ESTATE

3 bedroom, 983-3767. tfc

90 ACRE IRRIGATED farm in South Plains community. Known as Stella Camp Estate. If interested contact Charlene Bishop, (915) 735-3501.

DOM brick, 1 1/4 acre, storage area. Would be used for farm dryland in Floyd County and surrounding counties. Any size, small or large.

THINKING ABOUT SELLING YOUR FARM OR RANCH? We have buyers for farm dryland and ranchland in Floyd County and surrounding counties. Any size, small or large.

Billington Real Estate Call Keith Billington at Plainview, 293-2572, office or 296-6918, home 7-9c

DOM brick, at fireplace. The residence to be transferred. 983-3767. tfc

brick home on large lot. Call The First of Floydada, tfc

WANTED TO BUY irrigated or dryland farm in Floyd County. Write E. XRO, c/o Hesperian, 700, Floydada.

WANTED: Cab height camper shell for short wheel pickup. 983-3834.

room home central heat Dean Morris. tfc

NEED PERMANENT part-time school bus driver in South Plains ISD. Contact 983-3801.

LVN NEEDED to provide supervision and direct patient care. Benefits include paid health insurance, full part time. Starting salary \$1.00 per hour. Call Laverne Christian Lockney Care Center. tfc

DAIRY QUEEN of Floydada now accepting applications for full and part time help. Please apply in person. tfc

LVN NEEDED part-time Floyd Co. area Visit Nurse Service. Call 983-2412 or 793-9067.

WANTED

LAWN MOWING DONE. New mower with grass catcher. Price depends on size and condition of lawn. Average lawn \$10. Call Grant Turner 983-5049.

HOUSE PAINTING: Interior or exterior. Call Jim W. 652-2538, Dewayne Seay 652-2373, or Robert Murr 652-2706.

Lawn mowing and edging. New equipment with grass catcher. Call Mike Lee 983-3772. tfc

Contract your lawn mowing for the summer. Mowing, edging and trimming. Garland Easter 983-2509 after 4 p.m.

Leak Repair

No job too small or large.

Pit Digging.

Juarez Backhoe Service 983-3393

Call Ward 7-2c



# It's Results You Want-It's CLASSIFIED ADS You Need

## CITATION

To: Lula Redd Estate  
c/o Mrs. Voncell Casey  
2302B W. 16th Street  
Plainview, Texas 79072

Mrs. W.H. Pope Estate  
c/o Mrs. Clara Brock  
3004 W. 18th Street  
Plainview, Texas 79072

T.O. Watkins  
General Delivery  
Clarendon, Texas 79226

Robert Day Estate  
c/o Nita Joe Hartman  
3711 Lynette  
Amarillo, Texas 79109

Robert Day Estate  
c/o Teresa Gutierrez  
1505 Carswell Terrace  
Arlington, Texas 76010

Charles McDowell  
1108 S. 3rd St.  
Floydada, Texas 79235

Joe Yasaga  
General Delivery  
Slaton, Texas 79364

Notice is hereby given to the above property of the Building Official of the City of Floydada, Texas. The City has determined that the above described property being kept and maintained in violation of Ordinance No. 622 of the City of Floydada, Texas.

The violations of Ordinance No. 622 found to be in violation of the following as relates to the structures situated on the premises, in that said structures are:

1. damaged
2. decayed
3. delapidated
4. unsanitary
5. have been disconnected from utilities for more than 30 days and have been unoccupied.

The foregoing matters constitute a serious threat to the well-being of the public of Floyd County, Texas.

Notice is hereby given that a hearing on this citation before the city council on Tuesday, July 14, 1981 at the City Hall of the City of Floydada, 114 W. Virginia Street, Floydada, Texas, 79235. At this hearing the owners will be required to show why they are not in violation of the ordinance as set forth above and whether the buildings or structures situated on the premises are dangerous. The hearing shall be before the City Council upon a finding that there is a violation of such ordinance. If the City Council finds that there is a violation of the ordinance, appropriate orders may be issued by the City Council, which may require the demolition and removing of the buildings and structures on the above specified premises, and that the cost of the same may be charged to the property owner or by a lien upon the premises in accordance with Ordinance No. 622.

Dated June 10, 1981.

/s/ Charles G. White  
City Attorney for the City of Floydada

/s/ Dorr Blasingame  
Building Official for the City of Floydada

## Aviso Público

Southwestern Bell, en conformidad a las reglas del Public Utility Commission (Comisión de Servicios Públicos) de Texas, por la presente hace saber su intención de establecer un nuevo arancel para servicio de teléfono en Texas con vigencia a partir del 21 de Julio de 1981, a menos que la Comisión haga otra determinación.

Se espera que el nuevo arancel que se ha solicitado rendirá un aumento de 15.8 por ciento en los ingresos intraestatales de la compañía.

Una copia completa del nuevo arancel se ha archivado en las oficinas del Public Utility Commission en Austin, Texas, al igual que en cada municipalidad afectada y servida por Southwestern Bell, y cada una de las oficinas de la compañía para negocios con el público en Texas tiene una copia para lectura pública.

### Aviso a los Clientes de Otras Compañías de Teléfono

El registro incluye, pero no se limita a, propuestas para aumentar las tarifas para servicio de línea privada entre centrales telefónicas (interexchange private line) y servicio de central telefónica extranjera (foreign exchange FX). Cambios en dichas tarifas de servicio también afectarían a clientes de otras compañías de teléfono porque dichas compañías proveen los servicios ya mencionados en conformidad a tarifas especificadas por Southwestern Bell.

Southwestern Bell

## REAL ESTATE

Three bedroom, 983-3767. tfc

General good two bedroom houses. Contact 983-2151 or tfc

ROOM brick, fireplace, 1/4 acre. Call Wilson Real Estate 983-3767. tfc

ROOM brick, at fireplace. The rest to be transferred. 983-3767. tfc

brick home on large lot. Call The First of Floydada, tfc

General nice two bedroom houses. Call Hale Ins. & 983-3767. tfc

bedroom home with central heat. Dean Morris, tfc

SALE. 115 W. room, fully carpeted. Call Wilson Agency, appointment 7-16p

under special price Baker. Lfnc

3 bedrooms, 105 E. LTFc

1 bedroom, 1 west Lockney, 983-3767. LTFc

SALE: 3 bedroom, 2 car garage, 1/2 acre. In the neighborhood. Need E. Locust, 652-17-2p

RENT

1 bedroom home by 108 N. 652-2334. This is in accordance with department of policy which determine best interest. color, or L-TFC

10' x 24' building, partition and next door to call 983-3767.

Level Box garage. Call Wilson Agency, 983-3767.

10' x 15' garage units located in Plainview, W. 6th Street, Office at Barren, 100 S. 10th, 652-2642. Sunday, and 983-3767.

Call Ward 983-3767.

Call Ward 983-3767.

Call Ward 983-3767.

Call Ward 983-3767.

Call Ward 983-3767.

Call Ward 983-3767.

Call Ward 983-3767.

Call Ward 983-3767.

Call Ward 983-3767.

Call Ward 983-3767.

Call Ward 983-3767.

Call Ward 983-3767.

Call Ward 983-3767.

Call Ward 983-3767.

Call Ward 983-3767.

Call Ward 983-3767.

Call Ward 983-3767.

Call Ward 983-3767.

Call Ward 983-3767.

Call Ward 983-3767.

Call Ward 983-3767.

Call Ward 983-3767.

Call Ward 983-3767.

## BUSINESS SERVICES

Adams Well Service Complete Irrigation Service. All sizes submergible pumps in stock. One day service. 983-5003. tfc

INTERIOR PAINTING WALL PAPERING Call Rena Turner or Nancy Mayo, 983-5130 or 983-2667. tfc

JACKSON ELECTRIC Residential & Commercial Serving Rural Communities At 652-2737 Lfnc

Insulation Installed & Guaranteed Free Estimates 22 Years This Area Marr Insulation Lockney 652-3593

THINKING ABOUT SELLING YOUR FARM OR RANCH? We have buyers for farm dryland and ranchland in Floyd County and surrounding counties. Any size, small or large. Billington Real Estate Call Keith Billington at Plainview, 293-2572, office or 296-6918, home 7-9c

WANTED TO BUY irrigated or dryland farm in Floyd or surrounding area. Write Box XRO, c/o Hesperian, Box 700, Floydada. tfc

WANTED: Cab height camper shell for short, wide pickup. 983-3834. TFC

NEED PERMANENT part time school bus driver for South Plains ISD. Contact 983-3801. TFC

LVN NEEDED to provide supervision and direct patient care. Benefits include paid health insurance, full or part time. Starting salary \$6 hour. Call Laverne Christian, Lockney Care Center. L7-2c

DAIRY QUEEN of Floydada now accepting applications for full and part time help. Please apply in person. 7-2c

LVN NEEDED part-time. Floyd Co. area Visiting Nurse Service. Call 983-2674 or 793-9067.

WANTED

LAWN MOWING DONE. New mower with grass catcher. Price depends on size and condition of lawn. Average lawn \$10. Call Grant Turner 983-5049. tfc

HOUSE PAINTING: Interior or exterior. Call Jim Ward 652-2538, Dewayne Sexton 652-2373, or Robert Murdock 652-2706. L7-16c

Lawn mowing and edging. New equipment with grass catcher. Call Mike Lee 983-3772. tfc

Contract your lawn mowing for the summer. Mowing, edging and trimming. Garland Easter 983-2509 after 4 p.m. tfc

Leak Repair

No job too small or large.

Pit Digging.

Juarez Backhoe Service 983-3393

CHILD CARE in my home, Brenda Martin. Days 652-8876, after 6 p.m. 652-2685. Lfnc

CHILD CARE in my home, Brenda Martin. Days 652-8876, after 6 p.m. 652-2685. Lfnc

CHILD CARE in my home, Brenda Martin. Days 652-8876, after 6 p.m. 652-2685. Lfnc

CHILD CARE in my home, Brenda Martin. Days 652-8876, after 6 p.m. 652-2685. Lfnc

CHILD CARE in my home, Brenda Martin. Days 652-8876, after 6 p.m. 652-2685. Lfnc

CHILD CARE in my home, Brenda Martin. Days 652-8876, after 6 p.m. 652-2685. Lfnc

CHILD CARE in my home, Brenda Martin. Days 652-8876, after 6 p.m. 652-2685. Lfnc

CHILD CARE in my home, Brenda Martin. Days 652-8876, after 6 p.m. 652-2685. Lfnc

CHILD CARE in my home, Brenda Martin. Days 652-8876, after 6 p.m. 652-2685. Lfnc

CHILD CARE in my home, Brenda Martin. Days 652-8876, after 6 p.m. 652-2685. Lfnc

CHILD CARE in my home, Brenda Martin. Days 652-8876, after 6 p.m. 652-2685. Lfnc

CHILD CARE in my home, Brenda Martin. Days 652-8876, after 6 p.m. 652-2685. Lfnc

CHILD CARE in my home, Brenda Martin. Days 652-8876, after 6 p.m. 652-2685. Lfnc

CHILD CARE in my home, Brenda Martin. Days 652-8876, after 6 p.m. 652-2685. Lfnc

CHILD CARE in my home, Brenda Martin. Days 652-8876, after 6 p.m. 652-2685. Lfnc

CHILD CARE in my home, Brenda Martin. Days 652-8876, after 6 p.m. 652-2685. Lfnc

CHILD CARE in my home, Brenda Martin. Days 652-8876, after 6 p.m. 652-2685. Lfnc

CHILD CARE in my home, Brenda Martin. Days 652-8876, after 6 p.m. 652-2685. Lfnc

CHILD CARE in my home, Brenda Martin. Days 652-8876, after 6 p.m. 652-2685. Lfnc

CHILD CARE in my home, Brenda Martin. Days 652-8876, after 6 p.m. 652-2685. Lfnc

## Hollis R. Bond Real Estate

110 N. Main Lockney, TX 79241 Ph. 652-2746 Office Hours: 8:30-5:00 Monday

2201 Edgemore Dr. Plainview, TX Ph. 296-7437 Office Hours: 8:30-5:00 Tuesday through Friday Saturday 8:30-12:00

PHONE 983-2151 FLOYDADA

107 S. 5th FLOYDADA

Diamond Industrial Supply Co., Inc. Phone Days 296-7418 Nights 296-1200 or 296-7828 1014 Broadway Plainview, Texas U joints Oil Seals O rings Wisconsin SKF BCA Timken Bower Cotton Stripper Brushes & Bats "We Appreciate Your Business More"

TURNER REAL ESTATE Farms' Ranches Floydada, Texas 983-2635 Lfnc

J. P. WILLIAMS Ph. 652-2326 WEED CONTROL ON LAWNS INSECT CONTROL ON TREES AND SHRUBS CONTROL OF BINDWEED, RAGWEED, BLUEWEED & JOHNSON GRASS ON FARMS C. A. LIC. NO. 22433 BUS. LIC. NO. 3106 Lfnc

Insulation Free Estimates Call 634-5932 Or 634-5470

Ed's Mechanic Shop Small motors, Lawnmowers, Tillers, etc. Second hand mowers for sale 429 W. Jackson Floydada tffc

FARM SERVICES Land Leveling, terraces, bench leveling, and pump pits, all types of dirt work for soil and water conservation. Dewie Parson 983-2646. Fred Parson, 983-2074. tfc

CUSTOM Application of Herbicides. Bill Wisdom 652-3541, John Wisdom 652-3544. Lfnc

Portable disc rolling Lawson Farm Supply Inc., Floydada 983-3940 tfc

Check with us for LIQUID FERTILIZER ANHYDROUS HERBICIDES Rigs available for application LONE STAR CHEMICAL INC. Office: 652-2761 Deanie Henderson: 652-3434 Lfnc

LOST & FOUND 2 BOXER DOGS strayed from Kenneth Cox farm. \$20 reward for both. Sentimental value. 983-2056. tfc

LOST: Two black cows from Sandhill-Pleasant Valley area. 652-3488. L7-2p

FOUND: I have your Tri Collie female. Call 983-3737 or 983-5750. TFC

PETS FREE PUPPIES: 6 weeks old. 983-5477 after 6 p.m. TFC

KITTENS TO BE GIVEN AWAY: one gray long-haired and one black and gray striped. very cute. 9 weeks old. Litter trained or could live outside. Have to see! 983-3736. tfc

PIANO IN STORAGE Fine Spinnet-Console, stored locally. Reported excellent. Responsible person can take at big saving on low payment balance. Write M.I.A.C. Mgr., 431 Virginia, Joplin, Mo. 64801. tfc

Script Printing & Office Supply Commercial Printing Office supplies & Furniture Business Machines 108 S. Main Floydada 983-5131 tfc

Classified Rates CLASSIFIED ADVERTISING RATES: 20 CENTS PER WORK FIRST INSERTION: 15 CENTS PER WORD EACH SUBSEQUENT INSERTION. MINIMUM CHARGE \$2.50 FIRST INSERTION. MINIMUM CHARGE \$1.50 SECOND INSERTION. CLASSIFIED DISPLAY RATE: \$1.68 PER COLUMN INCH. CARD OF THANKS: \$3.00.

983 3737 652 3318

## For Sale

"WE SELL SLEEP" Direct Mattress Co. New or renovated, for appointment call City Trim Shop, 983-2332, Floydada. tfc

NEW CHEMEX washing unit for cleaning trucks, pickups, or heavy equipment. 220V. Single phase. Develops 750 psi at 4 gpm using cold water to clean. Priced BELOW dealers cost. 983-3834. TFC

REFRIGERATOR. Freezer on bottom. Good working condition and clean. Call Marjorie, day 983-3737; night 652-3141. TFC

SINGER sewing machines for sale. Straight stitching, slant needle, used in hope-making dept. \$80 each includes cabinet and attachments. Call Floydada High School 983-2340.

FOR SALE MENUDO every Saturday. 2.25 plate. Azteca Cafe, Downtown Floydada. tffc

16 FOOT TOP TENNER Bass Boat with 70 Horsepower Evinrude. Call 652-2145, day; 652-3190, night. Lfnc

GOOD GAS RANGE \$50. five ewes and five lambs, real good quality. Harley Workman 652-3619. Lfnc

SHOW LAMBS for sale. 652-2468 after 7:00 p.m. L7-23c

NINE PIECE Queen Anne set includes round table, 6 chairs, china cabinet and buffet. \$995.00. 983-3979 7-9c

FOR SALE: \$75 each. G.E. Washer and dryer. For details call 983-3045. 7-2c

BIG 12 metal 4 wheel trailer. Also 1,000 gallon gas-diesel tank with 12 volt electric pump. Tipton Oil Co. 983-3144. 7-9c

1975 Whirlpool Washer. Make an offer. Call 983-2860. 7-9p

AIR CONDITIONER. evaporative cooler. Window model. practically new with custom cover. Call 983-3100. 7-2p

FOR SALE: Westinghouse electric range with double oven. Good condition. 652-2676. 7-2p

20% off on all firecrackers! Beside Keeter's Grocery. 7-2c

PIANO IN STORAGE Fine Spinnet-Console, stored locally. Reported excellent. Responsible person can take at big saving on low payment balance. Write M.I.A.C. Mgr., 431 Virginia, Joplin, Mo. 64801. tfc

Script Printing & Office Supply Commercial Printing Office supplies & Furniture Business Machines 108 S. Main Floydada 983-5131 tfc

Classified Rates CLASSIFIED ADVERTISING RATES: 20 CENTS PER WORK FIRST INSERTION: 15 CENTS PER WORD EACH SUBSEQUENT INSERTION. MINIMUM CHARGE \$2.50 FIRST INSERTION. MINIMUM CHARGE \$1.50 SECOND INSERTION. CLASSIFIED DISPLAY RATE: \$1.68 PER COLUMN INCH. CARD OF THANKS: \$3.00.

983 3737 652 3318

## Want a profitable location?

Steel Building 80'x74'. Office- 14' Drive thru doors. Suitable for: Storage-Truck Repair-Parts Sales & Service-Multi-Farmer Barn-Several Business could share building. Use your imagination. 983-2821 Day; 983-5168, Night. tfc

1977 4-dr. Chevrolet Caprice. Extra clean, 54,000 miles. 983-3700 or 983-3772. TFC

76 Datsun 75 Vega 76 Vega 75 Monte Carlo 73 Monte Carlo W.B. Eakin Car Lot Ralls Hwy. 983-3616 tfc

1970 HONDA 100 CC, good condition. Can be seen at 117 Mae Avenue. 7-2c

4 shocks for the price of 3. Free installation. 123 W. California. tfc

GEAR HEAD REPAIR. One day service. Pickup and delivery. 1/2 mile west of Muncy Elevator. Darden Machine, 652-3743. TFC

RADIATOR REPAIR: 1/4 mile west of Muncy Elevator. Darden Machine 652-3743. TFC

LET ME have your garage sale for you this summer. Elaine Hardy 652-2570. 7-9p

We would like to take this opportunity to thank each and every one of our friends, neighbors and relatives who helped to make our 50th Wedding Anniversary such a memorable occasion. Your remembrances - your calls, cards, flowers and gifts have been so greatly appreciated and have collectively created an unforgettable experience. After all the kindnesses that have been shown us during this time of rejoicing and observance with our children, we are reminded of some of the reasons why we selected this community with such wonderful people to make our home. Thanks again for memories we will treasure throughout our lifetime. Grady & Lorena Dunavant

DAN'S AUTO SERVICE DAN TEUTON, Owner Specializing in Automatic Transmission, Motor Tune-Ups, Auto Air Conditioning. General Repair We Have A BRAKE LATHE to handle all passenger car brake drums. See us for complete brake service. Phone 652-2462

Can You Use Some Extra Money Let Us Help!!!! WE BUY SCRAP IRON, OLD JUNKERS, AND FREE PICKUP Call 983-5277

STORAGE SPACE BOATS, FURNITURE, ANYTHING, ETC. BY THE MONTH OR SIX MONTH 10% DISCOUNT. West Texas Mini Storage CALL WILSON BOND 983-3573 OR 983-2151

IRRIGATION DRIP OIL Drum Price \$102<sup>30</sup> Bring Your Own Drum - We Will Fill DOUGLASS 1305 El Paso St. PLAINVIEW, TEXAS 79072

Auto Accidents DO Happen... If one happens to you, be protected. Our car insurance offers coverage to meet your special needs - repairs to personal liability. BAKER Insurance Agency /W. Calif. Ph. 983-3270

STORAGE SPACE BOATS, FURNITURE, ANYTHING, ETC. BY THE MONTH OR SIX MONTH 10% DISCOUNT. West Texas Mini Storage CALL WILSON BOND 983-3573 OR 983-2151

IRRIGATION DRIP OIL Drum Price \$102<sup>30</sup> Bring Your Own Drum - We Will Fill DOUGLASS 1305 El Paso St. PLAINVIEW, TEXAS 79072

Auto Accidents DO Happen... If one happens to you, be protected. Our car insurance offers coverage to meet your special needs - repairs to personal liability. BAKER Insurance Agency /W. Calif. Ph. 983-3270

STORAGE SPACE BOATS, FURNITURE, ANYTHING, ETC. BY THE MONTH OR SIX MONTH 10% DISCOUNT. West Texas Mini Storage CALL WILSON BOND 983-3573 OR 983-2151

IRRIGATION DRIP OIL Drum Price \$102<sup>30</sup> Bring Your Own Drum - We Will Fill DOUGLASS 1305 El Paso St. PLAINVIEW, TEXAS 79072

Auto Accidents DO Happen... If one happens to you, be protected. Our car insurance offers coverage to meet your special needs - repairs to personal liability. BAKER Insurance Agency /W. Calif. Ph. 983-3270

STORAGE SPACE BOATS, FURNITURE, ANYTHING, ETC. BY THE MONTH OR SIX MONTH 10% DISCOUNT. West Texas Mini Storage CALL WILSON BOND 983-3573 OR 983-2151

IRRIGATION DRIP OIL Drum Price \$102<sup>30</sup> Bring Your Own Drum - We Will Fill DOUGLASS 1305 El Paso St. PLAINVIEW, TEXAS 79072

Auto Accidents DO Happen... If one happens to you, be protected. Our car insurance offers coverage to meet your special needs - repairs to personal liability. BAKER Insurance Agency /W. Calif. Ph. 983-3270

STORAGE





FIVE GENERATIONS of the Bennett family gathered recently. The top left photo shows [l to r] Shannon Barbee, Valdonna Bennett Barbee, Shayla Barbee, Harold Bennett, Mrs. T.W. Bennett of Burkburnette [who's birthdate was September 12, 1890] and her son Wayne Bennett. The top right photo shows [l to r] Rhonda Bennett Stovall and her son Cody, Harold Bennett, Mrs. T.W. Bennett and Wayne Bennett. The lower photo shows Gary Bennett with his daughters Tiffany and Kristi, Harold Bennett, Mrs. T.W. Bennett and Wayne Bennett.



**COUPON**  
Celebrate your July 4th with  
**FIREWORKS**  
from Garland Easter's Stand  
Located North 2nd St.  
"End of the Drag"  
WITH THIS COUPON  
**-FREE-**  
1 Dozen Bottle Rockets with \$5.00 Purchase



Buy On  
Soft Ice  
**PIZZA GOLD**  
601 South 2nd

# time out for GOD

BY THE REV. MANUEL RENDON  
ASAMBLEA DE DIOS  
LOCKNEY, TEXAS

LA ORACION NO ES SUSTITUTO DE LA OBEEDIENCIA

1. Samuel 15.22

Church of Christ  
Jerry Klein, minister

Bible Study . . . . . 9:30  
Morning Worship . . . . . 10:30  
Evening Worship . . . . . 6:00  
WEDNESDAY  
Ladies Bible Class . . . . . 9:30  
Bible Study . . . . . 8:00

**EVANS CHAPEL BAPTIST CHURCH**  
Rev. Bennie Anderson, Pastor  
Sunday School . . . . . 10 a.m.  
Morning Worship . . . . . 11 a.m.  
Evening Worship . . . . . 7 p.m.  
Wednesday Prayer Meeting . . . . . 7 p.m.  
Sunday afternoon worship . . . . . 2:00

**FIRST UNITED METHODIST CHURCH**  
Rev. Michael O'Connor  
SUNDAY  
Sunday School . . . . . 9:45  
Worship Service . . . . . 10:55  
UMY . . . . . 7:00  
United Methodist Women . . . . . Monday (2nd & 4th Monday nights) Tuesday & Wednesday mornings.

**TRINITY LUTHERAN CHURCH**  
Providence Community  
Andrew Mild  
Sunday School & Adult Bible Class . . . . . 10:00  
Divine Worship Service . . . . . 11:00

**ASSEMBLY OF GOD CHURCH**  
Sunday School . . . . . 10:00  
Morning Worship . . . . . 11:00  
Evening Worship . . . . . 7:00  
Prayer Service Wed. . . . . 7:00  
Eddie Kendall, Pastor

**TEMPLO BAUTISTA SALEM**  
Manuel Alaniz, Pastor  
Sunday School . . . . . 9:45  
Worship Service . . . . . 11:00  
Christian Training Time . . . . . 5:00  
Evening Worship . . . . . 6:00  
Wednesday Prayer Meeting & Choir Practice . . . . . 7:30

**SAN JOSE CATHOLIC CHURCH**  
Father Joe Bixenman  
Sunday morning Mass 9 a.m.  
Saturday Evening Mass 8 p.m.  
Wednesday Evening . . . . . 8 p.m.  
Friday Evening . . . . . 8 p.m.  
Confessions Saturday . . . . . 6:30 p.m.

Ha notado usted cuanto se ha orado ultimamente por un avivamiento y cuan poco se ha obtenido?  
Considerando la cantidad de oraciones que se elevan en estos dias, rios de renovacion deberian fluir y bendecir toda la tierra.  
No deberia desanimarnos que tales resultados no esten en evidencia, mas bien deberia movernos a buscar el porque nuestras oraciones no tienen respuesta.  
Todo tiene su razon de ser en el Reino de Dios, asi como en el mundo natural. La razon por la cual Dios se rehusa obviamente a enviarnos un avivamiento puede tener causas profundas, pero seguramente no seran tan profundas como para no encontrarlas.  
Yo creo que nuestro problema es que hemos estado tratando de sustituir la oracion por la obediencia y esto sencillamente no funciona.  
Una iglesia, por ejemplo, sigue sus tradiciones sin pensar demasiado si estas estan de acuerdo a las Escrituras o no. O se rinde a la presion de la opinion publica y se deja llevar por tendencias populares que la apartan del modelo del Nuevo Testamento. Entonces los lideres notan una falta de poder espiritual entre la gente y comienzan a inquietarse por esto. Que hacer? Como pueden conseguir esa revitalizacion de espiritu que necesitan con tanta urgencia?  
Que pueden hacer para que bajen lluvias refrescantes que vivifiquen sus almas desfallecidas?  
En su concepto, ya tienen la respuesta. Los libros les dicen que hacer: oren! El evangelista que esta de paso confirma lo que los libros dicen: oren! Esta palabra se hace eco hacia todos lados, creciendo en volumen hasta convertirse en un bramido: OREN! Por lo tanto el pastor llama a la gente a orar. Pasan dias y noches rogando a Dios que sea misericordioso y envíe un avivamiento sobre su pueblo. Frente al entusiasmo de la gente, pareciera por un momento que el avivamiento esta en camino. Pero como no llega, el celo por la oracion comienza a decaer. Pronto la iglesia vuelve a su condicion anterior y el desaliento se apodera de cada uno. Que es lo que estado mal?  
Simplesmente esto: ni los lideres, ni la gente han hecho ningun esfuerzo por obedecer a la Palabra de Dios. A ellos les parece que toda su debilidad esta basada en no orar lo suficiente,

cuando realmente, de muchas maneras, estaban siendo deficientes en el vital asunto de la obediencia. "El obedecer es mejor que los sacrificios". La oracion nunca es un sustituto aceptable de la obediencia. El soberano Señor no acepta ofrecimientos que no esten acompañados de obediencia. Orar por renovacion ignorando o verdaderamente burlando el sencillo precepto establecido en las Escrituras, es gastar un monton de palabras y no obtener nada como respuesta a nuestros problemas.  
Ultimamente se ha afirmado demasiado que la fe de Cristo es arbitro absoluto. Esto hace que la persona se apropie de antemano de toda una personalidad redimida y excluye cualquier tipo de demanda. O mas precisamente hace que todas las demandas legítimas sobre la vida cristiana sean condicionales, y sin dudarlo decide la prioridad que corresponde a cada demanda dentro del esquema total. Nuestro compromiso con Cristo en la salvacion libra al creyente del castigo por el pecado, pero no le libra de la obligacion de obedecer. Mas bien le trae bajo la gozosa necesidad de obedecer.  
Observe las epistolas del Nuevo Testamento y note cuantos pasajes contienen de los que, erróneamente, son llamadas "pasajes de consejo". Dividiendo las epistolas en "pasajes de doctrina" y "pasajes de consejos", nos hemos librado de la necesidad de obedecer. Los pasajes doctrinales no requieren de nosotros otra cosa mas que que los creamos. Los asi llamados "pasajes de consejo", son lo suficientemente inofensivos, porque el mismo nombre que se les da revela que son palabras de consejo y estimulo, mas que mandamientos para obedecer. Esta es un error notable.  
Las exhortaciones en las epistolas deben ser interpretadas como mandatos apostolicos teniendo el peso de ser dados por la Cabeza de la Iglesia. Se espera que sean obedecidos y no considerados como buenos consejos frente a los cuales estamos en libertad de aceptarlos o rechazarlos segun no parezca.  
Si esperamos que la bendicion de Dios sea sobre nuestras vidas, debemos comenzar a obedecer. La oracion comenzara a ser efectiva cuando dejemos de usarla como sustituto de la obediencia. Dios no aceptara la oracion en reemplazo de la obediencia. Solamente nos estamos engañando a nosotros mismos cuando tratamos de hacer esto.

## This Inspirational Message Sponsored By The Following...

- |  |   |  |   |
|--|---|--|---|
| BROWN'S DEPARTMENT STORE   | DAN'S AUTO SERVICE  | JOHNSON & JOHNSON AUTO PARTS   | THE SHADOW BOX  |
| BYRD PHARMACY  | FLOYD COUNTY INS.AGENCY   | MARR INSULATION CO.  | PLAINS ELECTRIC   |
| CONSUMER'S FUEL CO.  | JACKSON TIRE CO.  | MOORE - ROSE FUNERAL HOME  | SUN-VUE FERTILIZERS   |
| DAVIS LUMBER CO.   | HWY.70 TEXACO   | PAGES' THRIFTWAY   | PARKER FURNITURE & APPLIANCE  |
| AIKEN BAPTIST CHURCH<br>Richard Clymer, Pastor<br>Sundy School . . . . . 10:00<br>Morning Worship . . . . . 11:00<br>Training Union . . . . . 6:00<br>Evening Worship . . . . . 7:00<br>Prayer Service Wed. . . . . 7:30<br>Brotherhood, W.M.U. And Auxiliary Wednesday . . . . . 7:30 | LOCKNEY COOP GIN<br>LOCKNEY MEAT CO.<br>THE TYE CO.<br>LEE'S WHITE AUTO STORE | PATTERSON GRAIN CO. CO.<br>WESTERN LOCKNEY LTD.<br>REECER'S MASTER CLEANERS<br>SCHACHT FLOWERS & JEWELRY | LONE STAR BAPTIST CHURCH<br>Sunday School . . . . . 10:40<br>Morning Worship . . . . . 11:40<br>Training Union . . . . . 5:00<br>Evening Worship . . . . . 6:00<br>Prayer Service Wednesday Evening . . . . . 6:30<br>Brotherhood, First Saturday Morning of Every Month. |

## Lara Barton American R

THE AMERICAN RED CROSS  
The American Red Cross is celebrating its 100th birthday. This is the first of four articles written by...

Lara Barton (1821-1912) one of the most famous Americans has produced, founded the United States Red Cross Society. She had devoted her life to humanity and became deeply interested in the work of the American Red Cross during the War of Secession. It was due to her efforts that the American Red Cross was organized.

Lara Barton went to Switzerland, where she was a member of the International Committee of the Red Cross. She was encouraged by them and inspired by the work of the International Committee of the Red Cross during the France-German War, in which she returned to America in 1873 and began her efforts to bring about the organization of the American Red Cross. She became its first president and held the position until 1904.

The American Association of the Red Cross was organized in 1881. The American Red Cross in 1893, and was given charters by the Congress in 1900.

1905 Charter and its amendments provide for the relations between the Federal government and the American Red Cross, which, with Miss Barton at its head, had itself largely to disaster relief for the first time of its life.

Cross Societies, a general name for a group...

### Center gets relief f

MRS. J.E. GREEN  
June 29:  
I think we are  
for a rain.  
Mrs. Sunday has gone  
and is nearly gone. How  
best! Sunday church  
were well attended,  
there were some absent-

last week, seeing a sister  
family, the Fred Cones.  
Mr. and Mrs. J.I. Jack-  
of Quanah, Friday, visit  
with his mother Mrs.  
Jackson. They were on  
way to Ruidoso.  
Mrs. Frank Dunn's daugh-  
pny Sunday were a daugh-  
ter and family, Margaret  
Tony Balias and children  
Lubbock.  
Mrs. Anthony Latta visit  
Mrs. Green while on  
Friday nite Green's grand-  
daughter and husband  
Sarah, and Doug Chan-  
of Hubbard came by. On  
Saturday they went on  
Lubbock.  
Mrs. Leo Frizzell and  
Sunday with Mrs. Ethel  
ren.

## RED DO SHOW

## SAVE UP TO \$10,000 IN RED POWER DOLLARS

WHEN YOU BUY AND TAKE DELIVERY OF SELECTED NEW INTERNATIONAL TRACTORS, AXIAL-FLOW COMBINES, HAY AND FORAGE OR MATERIALS HANDLING EQUIPMENT.

Red Power Dollar Showdown  
we're willing to pay you up to \$10,000 in Red Power Dollars for buying and experiencing the performance of selected new International\* Tractors, Axial-Flow Combines, Hay, Forage, and Materials Handling equipment.

Red Power Dollars put even more value behind the reliable quality of your International equipment investment. You may use them toward the purchase of any other new International equipment or toward the purchase price of qualifying equipment.

INTERNATIONAL AGRICULTURAL EQUIPMENT  
The Company reserves the right to withdraw or modify this offer.

Your I.H. Dealer  
**Brown**



# Clara Barton founded American Red Cross

THE AMERICAN RED CROSS  
The American Red Cross is celebrating its 100th birthday. This is the first of four articles written by S.W.

Clara Barton (1821-1912) one of the most famous Americans has produced, founded the United States branch of the Red Cross Society. She had devoted her life to humanitarian work and became deeply interested in the work of the Red Cross during the War of Secession. It was due to her efforts during the war that she was named to the position of a Bureau of Records, to assist in the search for missing soldiers.

Miss Barton went to Switzerland, where she came to know the International Committee of the Red Cross. Encouraged by them and inspired by the work of the Red Cross during the France-German War, in which she returned to America in 1873 and began to make successful efforts to bring about the organization of a National Branch of the Red Cross. She became its first president and held the position until 1904.

The American Association of the Red Cross was first organized in the District of Columbia Corporation in 1881. It was given charters by the Congress in 1900 and

its charter and its amendments provide for close cooperation between the Federal government and the Red Cross, which, with Miss Barton at its head, has been largely to disaster relief for the first twenty years.

## News

### Water gets relief from hot weather

J.E. GREEN

and cloudy this week. I think we are in for a hot week.

Sunday has gone nearly gone. How many church services were well attended. There were some absentees.

Recently sick in the Lockney area. Sally Carpenter, Vera Meredith, and others were in the hospital for their prayers.

Prayer Service at 7:30 p.m. Frizzell made a trip to Wichita Falls

organizations throughout the enlightened parts of the world, originally rendered aid to sick and wounded soldiers on battlefields and military hospitals in time of war. Their mission was to supplement with their trained physicians and nurses the work of the regular military organization.

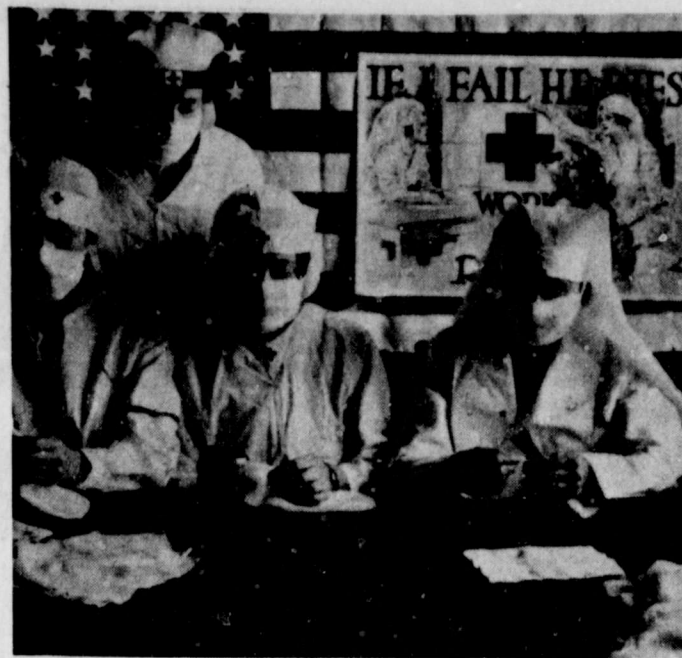
The movement to prevent needless suffering in war had become so popular a part of the world's work that 43 countries bound themselves by treaty to respect the Red Cross and to preserve its absolute neutrality when in service.

The Red Cross makes no distinction as to nationality, race, religious beliefs, class, or political opinions. It endeavors only to relieve suffering and gives priority to the most urgent cases of distress. The Red Cross is neutral in all matters. The Red Cross is independent in order to be able at all times to act in accordance with Red Cross principles. The Red Cross is a voluntary relief organization. There can be only one Red Cross Society in any one Country. It must carry on its humanitarian work through its territory. The Red Cross is a world wide institution in which all Societies have equal responsibilities and duties in helping each other. Every dollar given to the Red Cross must be accounted for to officials of the government.

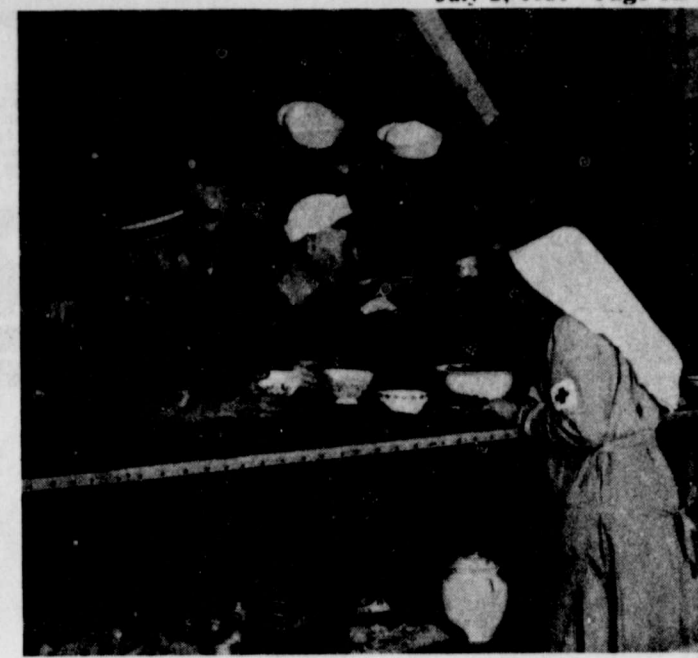
The President of the United States is the honorary President of the Red Cross Society; but the detailed operations is in the hands of officers of a Committee, whose chairman is named by the President.

In 1913, Congress voted \$400,000.00 toward the erection of a National Red Cross building in the City of Washington, conditioned on the raising of an additional \$300,000.00 by the Society. This task was easily accomplished.

Next week: Depression Years and World War II.



DURING WORLD WAR I, American Red Cross volunteers made warm garments and medical supplies for the troops up front. Here, in Butte, Montana, the workers made face masks.



FRANCE, 1917-18—A typical scene at the Red Cross canteen in Bordeaux, France.

## Wayland appoints Miller assistant cage coach

Sally Miller, a teacher-coach in area public schools for the past seven years, has been named assistant women's basketball coach at Wayland Baptist University. Dr. David Jester, president, announced.

Miller, a 1973 Wayland graduate, is the first full-time assistant ever in the Wayland women's program. She will also serve as a lecturer in the Division of Health, Physical Education and Recreation.

"I'm tickled to death to have Sally on the staff," said Cathy Wilson, third year head coach of Wayland's Flying Queens. "She is a close personal friend, has an excellent rapport with kids, and I think she'll do a super job for us."

A native of Panhandle, Miller has been in the Petersburg school system for the past year after a six-year stay in Floydada. In addition to teaching elementary physical education at Petersburg, she also was basketball coach for seventh through ninth grades, junior high and high school tennis coach, and varsity volleyball coach. She

also served as sponsor of the Petersburg High School senior class.

At Floydada, Miller was varsity basketball and track coach for three seasons, compiling an overall 51-31 cage record and taking the Whirlwinds to the bidistrict championship in 1974. She was a world history and physical education teacher her last three years at Floydada High, and coached ninth grade basketball two years as well.

A four-year letterman in basketball, tennis and track at Panhandle High School, Miller played two years for the Wayland Queen Bees and was student trainer for the Flying Queens for two years. She was also a member of the Wayland track team one year, was active in Theta Alpha Psi sorority and the Student Government Association.

Holder of the bachelor of arts degree with a major in physical education and a minor in history, Miller is a member of Petersburg's First Baptist Church.

She is the daughter of Mr. and Mrs. Joe Miller of Panhandle.



CLARA BARTON—Civil War Photo by Mathew Brady, the premier American photographer of that era. His work still ranks among the finest taken in this country.

## Kalvin Dick to appear in "Texas"

Kalvin Dick, former Floydada resident, is appearing in the amphitheater production "Texas" at Palo Duro

State Park. Dick's role is that of a Confederate and minor dan-

cing parts. Dick was graduated from Floydada High School in 1979.

First Baptist Church  
John C. Jester, Pastor  
Sunday School  
Morning Worship 10:00  
Church Training 11:00  
Evening Worship 7:00  
Prayer Meeting 7:30  
Wednesday Adult Choir  
Wednesday High School Youth  
Wednesday G.A. and Mission  
Wednesday R.A.'s  
Sunday PRIMERIA IGLESIA BAUTISTA  
Rev. Glenn Smith, Pastor  
Sunday School 10:00  
Morning Worship 11:00  
Evening Worship 7:00  
Wednesday Services  
LOCKNEY LUTHERAN CHURCH  
Pastor  
Sunday School 10:00  
Morning Worship 11:00  
Evening Fellowship 7:00  
W.M.C. Thursday  
Christ's Ambassador Day Evening  
WEST COLLEGE CHURCH OF CHRIST  
West College Avenue  
Frank Duckworth, Pastor  
Sunday Morning 10:00  
Services 11:00  
Sunday Evening 7:00  
Wednesday Evening 7:00  
Services  
CEDAR HILL CHURCH  
Sunday School 10:00  
Morning Worship 11:00  
Training Union 5:00  
Evening Worship 7:00  
Prayer Service Wednesday 7:30  
Brotherhood, First Saturday  
Prayer of Every Month.

## RED POWER DOLLAR SHOWDOWN

### SAVE UP TO \$10,000

THROUGH JULY 31, WE OFFER UP TO \$10,000 IN RED POWER DOLLARS WHEN YOU BUY AND TAKE DELIVERY OF SELECTED NEW, INTERNATIONAL TRACTORS, AXIAL-FLOW COMBINES, HAY AND FORAGE HANDLING EQUIPMENT.

We will pay you \$10,000 in Red Power Dollars to buy and take delivery of any new International 230-300-350 engine hp 4-Wheel Drive Tractor. Or get up to \$7,500 in Red Power Dollars when you buy and take delivery of any new, 130-150-170 PTO hp 2-2 or over 100 PTO hp Series 86 Tractor. See the chart for a complete list of models and savings.

MODEL	RED POWER DOLLARS	CASH REBATE FROM IH
<b>TRACTORS</b>		
4386, 4586, 4786	\$10,000	\$7,000
All 2-2's	\$ 7,500	\$5,000
1486, 1586	\$ 8,000	\$4,000
866, 1066	\$ 4,500	\$3,000
<b>COMBINES</b>		
1440, 1460, 1470, 1480	\$ 5,000*	\$3,500*
<b>HAY FORAGE, MATERIALS HANDLING EQUIPMENT</b>		
Forage Harvesters	\$ 1,320*	\$ 925*
Mower Conditioners/Square Balers/Round Balers	\$ 725	\$ 500
Grinder-Mixers	\$ 650*	\$ 450*
Manure Spreaders	\$ 450*	\$ 300*
Mowers/Rakes	\$ 300	\$ 140

\*Or instead you can choose Waiver of Finance, if applicable.

Your I.H. Dealer  
**Brown's Implement Inc.**  
Ralls Highway 983-2281

The Company reserves the right to withdraw or modify this program at any time without notice or obligation.

## IH SUPER SAVING TIME

### Protect your investment ... with top quality IH filters

**Oil Filter**

**HyTran**

International HyTran transmission fluid - Best on the market for lasting protection

Priced as low as \$5<sup>44</sup> for 66 and 86 Series Tractors- Additional 5% discount in case lots.

5 quart container	407530R5 List \$7 <sup>85</sup> Your Price \$6.32	SAVE <b>\$1.53</b>
5 gallon container	372705R5 List \$30 <sup>30</sup> Your Price \$24.45	SAVE <b>\$5.85</b>
55 gallon container	List \$309 <sup>00</sup>	SAVE <b>\$60.00</b>

## Buy One Sun Get One Free

### Soft Ice Cream

July 2 thru

# PIZZA GOLD

601 South 2nd

## THE SHADOW BOX

### PLAINS ELECTRIC

### N-VUE FERTILIZERS

### TURE & APPLIANCE

### LONE STAR BAPTIST CHURCH

Day School 10:00  
Morning Worship 11:00  
Training Union 5:00  
Evening Worship 7:00  
Prayer Service Wednesday 7:30  
Brotherhood, First Saturday  
Prayer of Every Month.



# STAMP PRICE SPECIALS

Remember what a penny could buy in the 'good old days? Well, take a good look at our good old thrifty Stamp Price Specials! For just a few pennies... and a 1/4 Saver Book of Green Stamps (50 Big 10¢)... it's 'happy days' are here again... every day! Stamp Price Specials are just one more way we help you save money through Green Stamps. Every time you shop. Hurry in for your Stamp-Price Specials Saver Books. The more you shop... the more you save. Promise. Price on these four Stamp-Price Specials effective through: 7-8-81



## More savings!

### STAMP PRICE SPECIAL

1 1/2 lb Soft N Lite  
**Bread**  
**19¢**  
With One Filled S&H Special Saver Book  
**79¢**  
without book

### STAMP PRICE SPECIAL

Gallon Grade A Buddy's  
**Milk**  
**\$1.69**  
With One Filled S&H Special Saver Book  
**\$2.29**  
without book

### STAMP PRICE SPECIAL

22 oz Liquid  
**Joy**  
**49¢**  
With One Filled S&H Special Saver Book  
**\$1.09**  
without book

### STAMP PRICE SPECIAL

7 Day Religion  
**Candles**  
**59¢**  
With One Filled S&H Special Saver Book  
**\$1.19**  
without book

1 1/2" Size Ruffles  
**Potatoe Chips**  
**Buy 2 Get 1 Free**

Bell Quality Check 6 Pack  
Popsicles, Fudgesicles Or  
**Bell Bars**  
**Buy 1 Get 1 Free**

Quart Of Bell  
**Buttermilk**  
**Free**  
With Purchase  
Of 1/2 gal  
**Bell Buttermilk**

Dozen  
Grade A Medium  
**Eggs**  
**Free**  
With Purchase Of  
2 lb Jimmy  
Dean Sausage

6 Pack 12 oz Can  
**Coke**  
**Free**  
With Purchase Of  
1 - 6 Pack At  
Regular \$2.19 Price

12 Count Pop Ice Bar  
**Free**  
With Purchase Of 24  
Count Fla-Vor-Ice Bars

49 oz Giant  
**Tide**  
**99¢**  
With This Coupon And Purchase Of \$20 Or More  
**\$1.99**  
Without Coupon

10 lb Bag All Purpose  
**Potatoes**  
**99¢**  
With This Coupon And Purchase Of \$20 Or More  
**\$1.59**  
Without Coupon

12 oz All Meat Swifts  
**Franks**  
**29¢** pkg  
With This Coupon And Purchase Of \$20 Or More  
**89¢**  
Without Coupon



8 oz Assorted Kraft  
**Dips**  
**Buy 1 Get 1 Free**

Mon Thru Sat 8 am - 10 pm Sun 9 am - 9 pm  
Values In This Ad Effective Thru July 8, 1981

VAN CAMP'S  
**Pork & Beans**  
15 OZ. **3 \$1** FOR

Fabric Softener  
Wynny  
2.19  
King Size  
Sold  
3.19  
12 lb Bonus Pack Alpo Beef  
**Dog Food**

LIQUID  
LAUNDRY DETERGENT  
**WISK**  
35% OFF LABEL  
64 OZ. **\$3.29**

**TREET**  
LUNCHEON MEAT  
15% OFF LABEL  
12 OZ. **\$1.29**

1/2 gal Heinz White Or Cider  
**Vinegar**  
**\$1.29**

6 oz Sweet 10 Liquid  
**Sweetener** 99¢

Schilling Taco  
Seasoning  
**Mix** 3/\$1.00  
Black Flag Fly  
**Spray**

Where your  
Dollar's worth more  
in Fine Fruits and Vegetables

**THOMPSON SEEDLESS**  
**Grape**  
**POTATOES**  
RIPENING  
ANTALOUPIES 29¢  
bananas 3/\$1.00



**STAMP PRICE SPECIAL**

7 Day Religious  
**Candles**  
 59¢  
 With One Filled  
 S&H Special Saver Book  
 \$1.19  
 without book

1<sup>st</sup> Size Ruffles  
 Potatoe  
 Chips  
**Buy 2  
 Get 1 Free**

Dozen  
 Grade A Medium  
 Eggs  
**Free**  
 With Purchase Of  
 2 lb Jimmy  
 Dean Sausage

Count Pop Ice Bar  
**Free**  
 With Purchase Of 24  
 Count Fla-Vor-Ice Bars

8 oz Assorted Kraft  
 Dips  
**Buy 1 Get 1 Free**

10 pm - 9 am  
 Sun 9 am 9 pm  
 In This Ad Effective Thru  
 July 8, 1981

VAN CAMP'S  
**Pork & Beans**  
 3 \$1  
 FOR  
 15 OZ.

Starkist  
**Tuna** CHUNK LIGHT  
 WATER OR OIL  
 6 1/2 OZ. CAN  
**88¢**

FRENCHES  
**Mustard**  
 24 OZ.  
**68¢**

WOLF BRAND 10 OZ.  
**Hot Dog Sauce**  
**39¢**

12 lb Bonus Pack Alpo Beef  
**Dog Food** \$3.49

LIQUID LAUNDRY DETERGENT  
**WISK** 35% OFF LABEL  
 64 OZ. \$3.29

WHITE OR PINK DOVE BAR SOAP  
 4" OFF LABEL BATH  
**59¢**

TREET LUNCHEON MEAT  
 15% OFF LABEL  
 12 OZ. \$1.29

SUNSHINE CRACKERS SNACK PACK  
 12 OZ. **89¢**

1/2 gal Heinz White Or Cider Vinegar \$1.29

6 oz Sweet 10 Liquid Sweetener 99¢

Schilling Taco Seasoning Mix 3/\$1.00

Black Flag Flying Insect Spray 12 oz \$1.99

aisle after aisle after aisle of...

Safe ways to **SAVE** money!

Aisle after aisle after aisle you'll find the world's finest foods attractively displayed and attractively priced to please your family as well as your purse. Celebrate with these savings



6-32 oz Plus Deposit  
**Tab Or Coke** \$1.79

9 oz Ovaltine  
**Mix** \$1.29

10 oz Lea And Perrins Steak  
**Sauce** \$1.29

8 Quart 24 oz Wylers Lemonade  
**Mix** \$1.99

Bell Whipping Cream Or  
 Half And Half **73¢**

15 Count Chinet Paper  
**Plates** \$1.19

18 oz Signal  
**Mouthwash** \$1.69

2 lb Nestles Chocolate Drink  
**Quik** \$2.59

1/2 gal Bell Deluxe  
**Ice Cream**  
 Red Ring Gold Ring  
**\$1.79 \$1.99**

**MORE GOOD EATING MEAT FOR YOUR MONEY!**

WE TRIM OFF THE WASTE TO HELP YOU TRIM YOUR BUDGET

SWIFT'S CIRCLE S  
 3 - 5 LBS. **Ham** \$1.99

SWIFT PREMIUM MEAT  
**FRANKS** 12 OZ. PKG. **29¢**  
 With coupon and purchase of \$20 or more

USDA Beef  
**Ribs** 99¢ lb  
 Country Style  
**Spare Ribs** \$1.59 lb

14 oz Morehead Pimiento  
**Spread** \$1.59

PRINGLES  
**Potato Chips** TWIN PACK REG. OR LITE  
 9 OZ. **98¢**

ZEE LAUA  
**Napkins**  
**2 \$1** FOR

SWIFT PREMIUM MEAT  
 12 OZ. PKG.  
**BOLOGNA** \$1.19

Hormel Black Label  
**Bacon** \$1.49 lb

Swift Butter Ball  
**Turkeys** 69¢ lb

Where your Dollar's worth more

THOMPSON SEEDLESS  
**Grapes** 99¢ LB.

ALL PURPOSE  
**POTATOES** 10 LB. BAG 99¢  
 With coupon and purchase of \$20 or more \$1.59 without.

STRAIGHT NECK YELLOW  
**Squash** 3/\$1.00  
**CORN** FLORIDA GOLDEN EARS 6 FOR \$1

Bananas 3 lb \$1.00



220 South 2 nd 983-3149  
 8 am - 10 pm Weekdays 9 am - 9 pm Sundays  
 July 8, 1981





**1980 UPLAND COTTON, TEXAS HIGH PLAINS**  
Source: Texas Crop and Livestock Reporting Service

COUNTY	ACRES PLANTED	ACRES HARVESTED	YIELD PER ACRE	480 # NT. WT. BALES
BAILEY	58,200	33,900	104	7,300
BORDEN	29,400	27,000	108	6,100
BRISCOE	69,900	64,800	232	31,300
CASTRO	83,300	77,800	414	66,900
COCHRAN	205,100	97,900	211	43,100
CROSBY	237,400	223,600	277	129,900
DAWSON	316,000	293,900	144	83,000
DEAF SMITH	10,800	9,100	353	6,700
DICKENS	75,300	60,300	107	13,400
FLOYD	245,400	229,600	363	173,800
GAINES	465,200	394,000	205	164,000
GARZA	56,000	47,600	112	11,100
HALE	278,900	271,000	430	243,000
HOCKLEY	347,900	325,700	243	165,100
HOWARD	110,600	96,700	115	23,200
LAMB	275,700	224,300	394	184,200
LUBBOCK	351,000	330,100	310	213,200
LYNN	300,300	280,600	163	89,900
MARTIN	189,700	139,800	118	34,400
MIDLAND	43,000	36,300	146	11,000
MOTLEY	69,000	58,300	105	12,800
PARMER	71,300	65,900	480	64,600
SWISHER	116,400	105,200	331	72,600
TERRY	356,700	329,600	175	120,200
YOKUM	187,700	144,500	143	43,000
TOTALS & AVERAGES	4,523,900	3,969,900	244.5	2,017,300



**COTTON TALKS**

FROM PLAINS COTTON GROWERS, INC.

Official figures just released by the Texas Crop and Livestock Reporting Service (TCLRS) show 1980 cotton production in the 25 High Plains counties represented by Plains Cotton Growers, Inc., Lubbock, at 2,017,300 bales of 480 pounds net weight.

The 1980 crop-year yield was 733,300 bales below the 2,750,600 bales produced in 1979 and almost 1.2 million below the all-time record of 3,215,400 grown in 1977.

Planted acreage according to TCLRS was 4,523,900, almost equalling the previous high of 4,565,000 seeded in 1979. But after about 12.5 percent of the crop was lost to drought and other adverse weather, only 3,959,900 acres were harvested in 1980. Yield per harvested acre came to 244.5 pounds in 1980, the lowest yield per harvested

acre since the 199.9 pounds harvested in 1952 and well below the average of 356.3 pounds per acre for the ten-year period 1970 through 1979. The highest average per-acre yield ever achieved on the Plains was 513.2 pounds, recorded in 1965.

Hale County's 243,000 bales led the area in production. The second, third and fourth places were taken by Lubbock (213,200), Lamb (184,200) and Floyd (173,800). Per-acre yield leaders in 1980 were Parmer County (450 pounds), Hale (430), Castro (414) and Lamb (394).

The chart above shows planted and harvested acres, yield per harvested acre and total production in 480-pound net weight bales for each of the 25 PCG counties.

**Farm News**

**Public hearing to be held by the TAHC in Lubbock Monday**

A public hearing and meeting of the Texas Animal Health Commission will be held in Lubbock, Monday at 10 a.m. in the Bronze Room of the South Park Inn, John Armstrong, Kingsville, chairman, Texas Animal Health Commission, said today.

"The hearing is the first in a series to be held throughout Texas in the A and B Control Areas of the Texas brucellosis control program," Armstrong said. At present, there are 134 counties in the Class A control area and 120 counties in the Class B control area.

"These public hearings will be held to address the progress of the program for the preceding quarter as well as receiving recommendations regarding overly burdensome regulations publish-

ed in the Texas Register, and recommendations to and complaints of the program to the Texas Animal Health Commission," Armstrong said.

Other topics for discussion during the meeting include poultry regulations, 1982 budget, report on the USAHA brucellosis committee meeting in Denver, Colorado, quarantine feedlot requirements pertaining to bonded Mexican heifers and amendments to the Texas brucellosis regulations.

Other members of the Texas Animal Health Commission are T. Euel Limer, Lubbock; Charles Koontz, Olton; Mort Mertz, Eldorado; Bob Baros, Gonzales; Dr. Ben Hopson, Laredo; C.E. Knolle, Sandia; Jimmy Owen, Tyler; and J.D. Sartwell, Sr., Sealy. Dr. John Holcombe, Austin, is executive director.

**Floydada Livestock Sales joins cattlemen's voluntary program**

The Floydada Livestock Sales Inc. of Floydada, has joined the statewide cattlemen's voluntary program to finance more aggressive beef promotion, said Don McCandless owner.

Beginning July 1, the Texas cattle industry will implement the voluntary 25-cent-per head beef promotion investment program.

Don said that under this new system, 25 cents will be collected on cattle and calves sold through participating markets, packers and order buyers. The funds will be remitted entirely to the Beef Industry Council of the National

Live Stock and Meat Board for use in national programs of research, education and promotion.

"We are very pleased to assist producers by contributing this personal service in strengthening the cattle industry," the local market owner said.

The investment plan was endorsed recently by five Texas livestock organizations: The Texas and Southwestern Cattle Raisers Association, Texas Cattle Feeders Association, Texas Farm Bureau, the Independent Cattlemen's Association and the Livestock Marketing Association of Texas.

**Farmers face irrigation decisions**

LUBBOCK—It's decision time again for High Plains cotton farmers who irrigate their crop: When should they begin watering?

The stage of growth of the plant is one key to its water needs, said Dr. James R. Supak, area cotton agronomist with the Texas Agricultural Extension Service. The accompanying chart illustrates the approximate rate of water use during various growth stages of the cotton plant, he said.

"Generally, the crop uses less than 0.1 inches a day until the first or second week of squaring," the cotton specialist said. "After that, the demand for water increases rapidly and can easily reach 0.4 inches or more a day at peak bloom."

Adequate soil moisture during the heavy fruiting period from mid-July to early August is essential for good production, Supak emphasized. Moisture stress during this period will reduce both fiber quality and yield, he

cautioned.

Numerous research studies on the number and timing of summer irrigations have been conducted by agronomists with the Texas Agricultural Experiment Station and USDA-ARS at Lubbock. Generally, these studies show that a preplant (4 to 6 acre-inches) plus one or two summer irrigations (4 acre-inches per irrigation) are adequate to produce profitable yields, the Extension specialist said.

The optimum timing of summer irrigations is a rather complex matter, Supak noted. "Generally, irrigations before first bloom is not recommended as high moisture levels prior to this growth stage tend to encourage vegetative growth and delay maturity." The initiation of irrigation is usually determined by such factors as availability of irrigation water, the water needs of other crops being grown and weather conditions, he said.

As a general guide, he suggested that a single summer irrigation be timed to coincide with bloom initiation. Early maturing determinate varieties frequently need to be watered before bloom to avoid premature "cutout." On the other hand, indeterminate varieties appear to be less critical and can frequently be delayed until one to three weeks after first bloom.

"Again, keep in mind that these are generalizations that can be modified by weather and other factors," Supak said.

Many farmers with limited water often plant a portion of their cotton acreage for an early maturing variety and the remainder to a late variety. Irrigation is initiated in the early variety (as early as the 1/3 to 1/2 grown square stage) and continues across later maturing cotton. In this manner, both varieties receive water at or near the growth stage where it can be efficiently utilized in fiber and seed production.

**Landscape & Gardening**

BY KEN LANGLEY

**HARVESTING CORN**

Sweet corn is a common item in most American home gardens. It provides a delightful addition to everyday meals, and in season the roasting ears are enjoyed for picnics and cookouts. Since the days of the Pilgrims, corn-on-the-cob has been a popular American favorite. Sweet corn - either fresh, frozen or canned - may be served as a separate dish or used in succotash (an American Indian dish), custards, puddings, fritters, souffles, and stuffed peppers, or added to soups and chowders. Sweet corn may also be used in relishes and mixed pickles.

Most gardeners will regard sweet corn as an essential item in their garden and take great pride in the good nutrition and eating pleasure it affords.

Sweet corn should be harvested when the kernels are in the milk stage. At this stage the silks are brown and dry beyond the end of the husks and the ear has enlarged enough to fill the husks tightly to the tip. The kernels are about as large as they will become, but they are still soft, tender and filled with an opaque milky juice.

With some experience the optimum maturity for harvest can be recognized by sight and feel. The husks should never be disturbed to peek at the corn as this will permit insects and birds to invade the ear.

Another way to estimate harvest time is to note the date of silk emergence on the earliest plants in a row, then harvest those ears 17 to 24 days later. The number of days from silk emergence to prime harvest will vary according to weather conditions. If days and nights are exceptionally warm, prime maturity may be reached 17 or 18 days after silking. If cooler weather prevails during this period, it may require 22 to

24 days. After picking, sweet corn usually can make a meal out of the nation about harvesting the corn at its peak maturity very quickly. If harvest is delayed, the corn will be tough, starchy and lack flavor.

Sweet corn also can be rapidly after it has been picked early in the refrigerator. Sweet corn is prepared for serving can be held in a refrigerator at 35 to 40 degrees F for 3 to 5 days. Moderate refrigeration is preferred.

To harvest corn, as close to the ear as possible without breaking the ear, grasp the entire ear with both hands and bend it to one side with a wrist. The inexperienced hand and use the other off. With practice, ears of most varieties can be removed with one hand.

Many of the modern optimum fertility plantations will produce one, and it will reach day or so ahead of the rest. Under such conditions should yield 120 to 150 bushels per acre.

Educational programs of the Texas Agricultural Experiment Station serve people of all socioeconomic levels of religion or national origin.

**PIC**

**AMERICAN**

**HAMBURGER OR HOT DOG**

**2**

**Tendercrust**

**PAPER PLATES** Dixie, White

**MURFINE PICKLES** Hamburger, Dill Slices

**MURFINE CATSUP**

**MORTON SALT** Ice Cream

**GR**

**3-lbs. or more**

**Americ**

**Kraft Brand Single**

Copyright © 1980 The Ad Company

**CORNELIUS CONOCO SERVICE STATION**

**conoco**

Floydada 983-2154

**FLOYDADA IMPLEMENT CO.**

**MF**

Floydada 983-3584

**FLOYD COUNTY FARM BUREAU**

**FB**

Floydada 983-3777

**BROWN'S IMPLEMENT INC.**

**mi**

Floydada 983-2281

**ADAM'S WELL SERVICE**

**AW**

Floydada 983-5003

**FEDERAL LAND BANK ASSOC. OF FLOYDADA**

**Federal Land Bank Association**

Floydada 983-2480

**RUSSELL'S EQUIPMENT & SUPPLY**

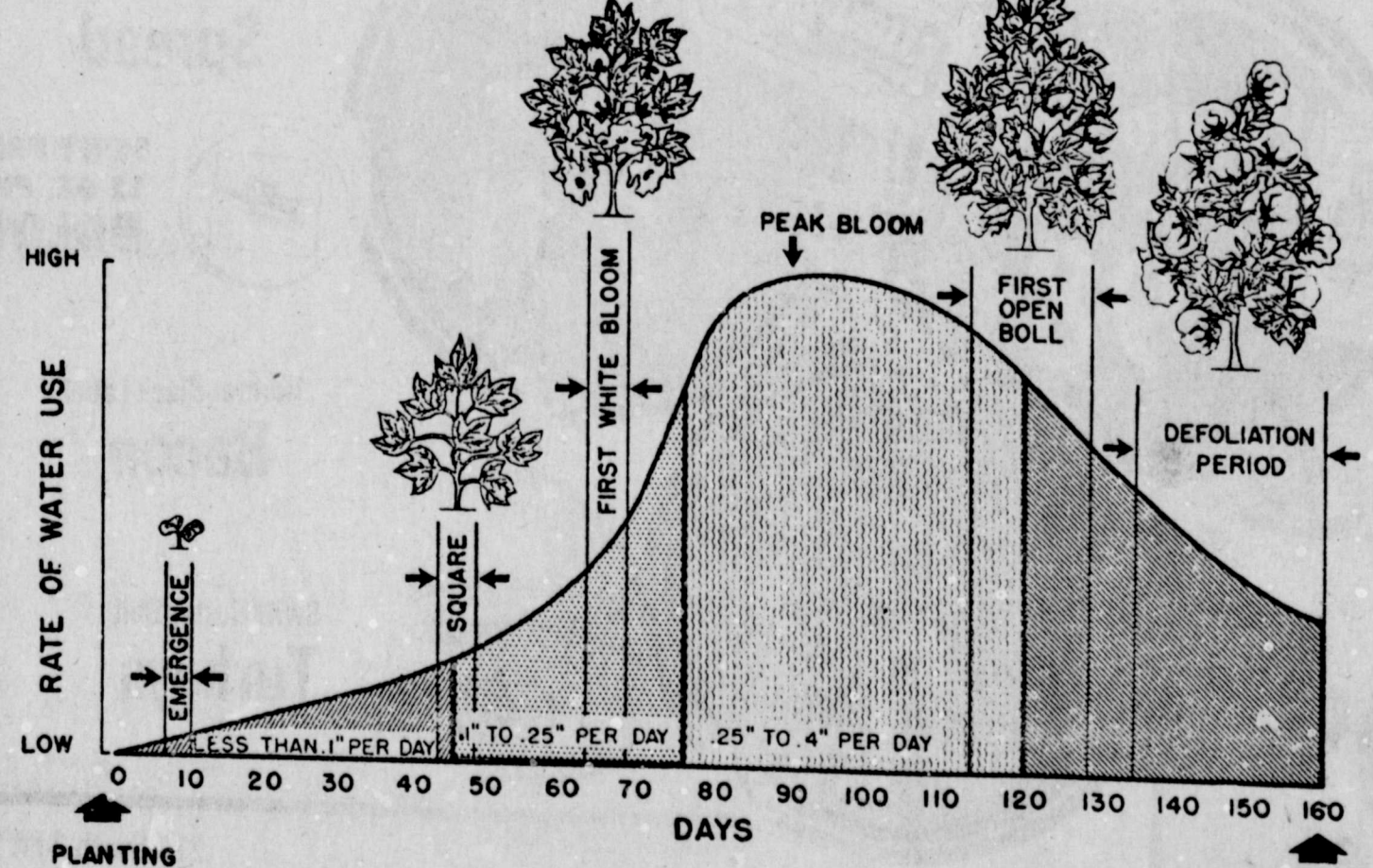
**Russell's**

Floydada 983-3751

**FLOYDADA COOPERATIVE GINS INC.**

**COOP**

Floydada 983-2884



WATER DEMAND VARIES--The rate of water use in relation to the growth stage of cotton is illustrated by this table. (Source: J.S. Newman. Report of Progress 1965-66, Texas A&M University Agricultural Research and Extension Center, Lubbock, Texas.)

**PLAINVIEW SAVINGS & LOAN ASSOC. FLOYDADA BRANCH**

**NSLC**

Floydada 983-3725

**ANSLEY & SON**

**BUSH HOG HUSKY**

Lockney 652-3361

**MARTIN & COMPANY**

Floydada 983-3713

**SUN-VUE FERTILIZER**

**SUN-VUE**

Lockney 652-3362

**RUCKEN O.K. TIRE SERVICE**

Floydada