

Base Dockbinding
P.O. Box 2558
Amarillo, Tex. 79105

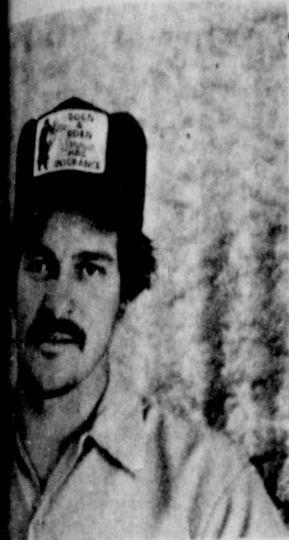
The Lockney Beacon

25¢

Volume 80 Number 33 Thursday August 13, 1981 24 Pages In Three Sections

Our Town

Hayes starts auto shop



Joe Hayes

Hayes Automotive just opened in Lockney this week at 715 Highway 70, behind the Texaco station. Joe Hayes is the owner and operator of the shop which specializes in auto, truck, and irrigation repair.

Band rehearsal begins Monday

Lockney Longhorn band will begin rehearsals at 2:30 p.m. next at the band hall. The band will practice Monday through Friday from 2 p.m. to 4:30 p.m. Longhorn Flag Corp will work out next Monday through Friday from 8:30 a.m. to 8:30 p.m. Band personnel should attend the rehearsals.

Meeting planned for teachers

Teacher coffee will be held at 8 p.m. Sunday, August 23 at the Lockney High School library for all teachers. All teachers are invited to attend and meet the new and returning teachers.

Senior pictures are being taken

Lockney High School seniors graduating in 1982 should make an appointment to have their senior pictures taken during August. Seniors should make an appointment by calling Wilson Photography at 334-1111.

Yearbooks have arrived

Lockney High School yearbooks. The Roundup, have arrived and will be distributed from 5 p.m. to 7 p.m. Saturday in front of the high school. Individual yearbooks may be purchased at \$13.95 each and covers will be \$1.50 each.

Library Friends seek books

Friends of the Library still need books for their book sale at the Floyd County Fair next month. A spokeswoman said a contribution of just two or three books would be appreciated. Books may be left at the Lockney Library. Books from the sale will be used for the Lockney Library.

Auxiliary plans ice cream feast

Firemen's Auxiliary will hold an ice cream feast from 7 p.m. to 9 p.m. at the fire station. The feast will be a charge of \$2 for adults and \$1.25 for all the ice cream you eat. The money will be used to buy equipment for the fire department.

Call reward is offered

Crime Call is offering \$500 reward for information leading to the arrest and conviction of individuals who broke into Mrs. Edwards home at 519 West Lee Street. Clothes and other items were stolen in the July 16 break-in. Information about the break-in can be reported to Crime Call, 983-5200.

Retires from Exxon



Percy Tate

Lockney native Percy Tate has retired after 35-years with the Exxon Company. He had been section head in the revenue and regulatory, accounting, midcontinent production division in Midland. Tate is the brother of Kenneth Tate and Mrs. Donald Reecer of Lockney.

Hightower gets Floyd County

Governor William Clements is expected to sign a bill tomorrow that will change Floyd County's congressional district for the second time in less than a decade.

The bill, approved by the Texas House Sunday on an 86-14 vote and by the senate Monday on an 18-13 vote, moves Floyd County from the 17th Congressional District of Charles Stenholm (D-Stamford) into the 13th Congressional District of Jack Hightower (D-Vernon).

A spokesman for the Governor, who had supported the bill, said there was no chance the bill would be vetoed. Hightower, who represented Floyd County for eight years in the Texas Senate, said he was pleased the redistricting issue was settled at last. "I'm sure glad this is settled and Floyd County is back in my district,"

Hightower said. "I'm delighted. I represented Floyd County for eight years in the state senate and I've got a lot of good friends in Floyd County."

Some Floyd County residents felt that if the county's district was going to be changed, it should have been moved into the 19th congressional district of Kent Hance (D-Lubbock) because Floyd County has more identification with Lubbock than it does with Amarillo, which is also in Hightower's district.

But Congressman Hightower doesn't agree. "I think the economic interests of Floyd County are very similar to that of surrounding counties in my district," Hightower said.

The Congressman said each county in his district faces similar problems. "The problems facing Floyd County are the same as the problems facing the



Jack Hightower

country. First we have to lick inflation and interest rates have to level off and begin going down," Hightower said.

"Floyd County is a great agricultural producing county and farmers all over are facing inadequate prices for their commodities," Hightower said.

"The farmer has to pay high costs for energy and everything he buys," Hightower said. With the low prices he gets for his commodities the high costs are devastating for the farmer."

Hightower's nearest office to Floyd County is in Amarillo in the old Post Office building. He also has offices in his hometown of Vernon and in Wichita Falls.

Congressman Hightower will speak to a combined meeting of the Floydada Lions and Rotary Clubs on Wednesday August 19 at noon. He will also be at the Floydada National Bank at 1:00 p.m.

Mackenzie ahead of schedule

Water from the Mackenzie Reservoir will be coming to Lockney, Floydada, Tulia and Silverton sooner than expected.

The manager of the Mackenzie Water Authority, Neil Taylor, said the reservoir may be able to provide water to the four towns by late 1983. It had been forecast earlier that water would not be available from the reservoir until 1984.

Taylor said the Farmers Home Administration loan of \$7,363,000 approved last month came just in time to keep the water project moving ahead.

The reservoir was built without federal or state funds after the voters of Floyd, Swisher and Briscoe Counties approved a bond issue in 1969.

Inflation and a lack of rainfall almost killed the project.

Silverton nearly dropped out of the project when it almost ran out of water. However, Silverton drilled five new wells to provide water until the reservoir begins functioning.

Since 1970, because of the water shortage, Silverton's population has dropped 10.5 percent while Tulia's has declined 4.9 percent.

However, the combination of water in the future plus lake recreation has pushed Lockney's population up 11.5 percent and Floydada's up two percent.

Taylor said he believes completion of the project will mean population increases in all four towns.

Each weekend, Taylor said, large crowds are coming to the reservoir for recreational purposes.

With the reservoir drawing people from Lubbock and Amarillo, a new park and campground are being built and Taylor said the two boat ramps and the beach are being given thorough maintenance to keep the area safe and clean.

As agreed in the November, 1980 bond election for Mackenzie, residents of the four towns will not receive a tax increase until after they begin receiving water from Mackenzie.

When service begins, a tax increase will be needed to pay for the \$3,405,000 in general obligation bonds for the raw water pump station and lines to bring the water from behind the earth dam to

the treatment station.

Water contracts with the four cities will pay the \$11,326,000 in revenue bonds for the construction of high rise pumps, the one-million-gallon storage reservoir near Rock Creek, and the treatment plant and transmission lines to the four towns.

Taylor said that engineering contracts should be awarded by March of next year and work should begin by June of next year.

One of the first problems that will face the engineers will be the purchase of right-of-way for transmission lines near highway 86 and farm road 378.

Taylor said all four towns should begin receiving water at about the same time, depending on the engineering contracts awarded next year.

It's Not Easy

BY CAROL LEA CLARK

President Reagan is on vacation for a month at his ranch in California. In a way it's comforting that the President thinks the country won't fall apart while he rides his horses and cuts wood.

I'm sure the change from pin-striped suits to blue jeans as well as the exercise will be good for his mental attitude as well.

Still, I can't keep from wondering who's minding the store. Oh, I know that the White House staff has been installed in several temporary buildings on the ranch, all at taxpayers expense.

But what happens if an important dispatch comes into the White House from some head of state who hasn't heard that the President is out herding cattle in the West? If there is enough time the dispatch can be sent to California by telex or carrier pigeon.

But what if an urgent reply is requested?

What if the Prime Minister of Outer Somalia calls about an infestation of 24 hour American fruit flies? He doesn't want to be put on hold while the operator checks with California.

Outer Somalia only has an infant fruit industry of 100 orange trees in 10 orchards. They may all be wiped out by the especially nasty American fruit flies that not only eat the fruit but also consume the trees.

The Prime Minister was really mad. "I want an answer right now. What can we do to stop this imperialist exploitation of our major industry?"

The clerk receiving the call responded uneasily. "I'll see what I can do but everybody important is on vacation."

"Well, who's in charge?" "I guess the President's cook is in charge. He didn't go because he can't cook barbecue or Mexican food, and that's all the President eats while he is on vacation."

The clerk put the Prime Minister on hold and quickly called the cook who had an answer. (A requirement for working at the White House is being able to come up with an answer for any problem.)

"Just pick the oranges right now, and the flies will lose interest in the trees."

Continued On Page 3



LOCKNEY CARE CENTER ADMINISTRATOR Laverne Christian (left), activity consultant Faye Steen of Crosbyton, and activity director Vicki Hutton make plans for the new Service Auxiliary for the Care Center. The new organization will raise money for activities and provide other volunteer services for the residents. Anyone interested in joining should contact Vicki Hutton at the Lockney Care Center.

Tax rate set: no increase

For the 20th consecutive year, there will be no increase in the real or personal property tax rate in the City of Lockney.

The City Council has set the tax rate at 19-cents per hundred dollars assessed valuation. Property in Lockney is currently assessed at a total of \$22,294,020. Taxes are levied on 100 percent of the assessed valuation.

Of the 19-cents, 13-cents will go into the general fund for operating expenses producing \$28,982.23 in revenue. The remaining six-cents will go for bond retirement, producing \$13,376.41 in revenue.

The remainder of the city's \$326,562 budget for the fiscal year ending next March 31 will come from various sources including the water department, sales taxes, franchises taxes, fines and the city farm.

The tax bills will go out October 1 and will become delinquent next February 1.

The Lockney bounty program on stray dogs and cats will be re-instated

beginning next Monday

Mayor J.D. Copeland said the bounty program will continue indefinitely.

Copeland said people have been getting lax and careless about letting their pets run loose since the bounty program was suspended several weeks ago.

During the initial phase of the bounty program some 60 dogs and cats were turned in for the \$5 per animal bounty.

"People must keep their animals penned up or on a leash," Copeland said. "We intend to enforce the law."

Under the bounty program, stray dogs or cats may be taken to veterinarian Paul Glasson where they will be placed in city pens. Glasson will issue a receipt for the animal and the receipt may be taken to city hall for payment of the \$5 bounty.

Copeland said the bounty will be limited to full-grown animals since there had been some abuses of the program previously when un-weaned kittens were brought in for the bounty.

The Lockney City Council has approved an ordinance that will allow the city to remove dilapidated, vacant buildings that pose a safety hazard, through due process.

Although the new ordinance covers the entire city, it will initially be used to remove dilapidated buildings in the southwest portion of the city which is the target area of the recently approved \$357,000 Block Grant from the U.S. Department of Housing and Urban Development. The Block Grant includes \$11,000 for the demolition of 20 buildings in the target area.

In a related action at its regular monthly meeting, the council approved the hiring of a city judge Ernest Fowler as housing program coordinator for the Block Grant program.

Fowler will receive a salary of \$700 a month which will be paid from Block Grant Funds.

Fowler will be in charge of determining which buildings will be demolished, which housing units will be rehabilitated, which housing should be replaced and identification of substandard housing.

Double ring ceremony unites Hardin, Finley

The First Baptist Church of Floydada was the setting for the wedding of Rosemary Hardin and Jimmy Wayne Finley Saturday, August 8. Dr. Floyd C. Bradley, pastor officiated at the 8 o'clock p.m. double ring ceremony.

The bride, a graduate of Floydada High School, is the daughter of Mr. and Mrs. William Dwight Hardin. She attended Wayland Baptist University and is a senior at Texas Tech University. The bridegroom, son of Mr. and Mrs. Jerry Wayne Finley, is also a graduate of Floydada High School and is a senior at Texas Tech University. The couple will be at home in Lubbock following a wedding trip to Ruidoso and Santa Fe, New Mexico.

Prelude music was provided by Mrs. David Seay, organist and Mrs. Mack Hickerson, pianist, both of Floydada. Mrs. Hickerson also accompanied soloist Barry Watts of Lubbock as he sang "Sunrise, Sunset," "Harnick-Bock," "Longer," "Fogelberg" and "The Wedding Hymn." Burns. She also accompanied Harvey Allen of Floydada as he played a harmonica solo, "Edelweiss," "Rodgers," "Hymn To Joy," Beethoven was used as the processional. The traditional marches were used for the entrance of the bride.

As wedding guests entered the church foyer, their names were secured in the bridal book by Kara Copeland of Floydada.

Large plaques of woodwardia fern placed high in the baptistry above the choir loft and large palms of commadore foliage formed the background for the exchange of vows. A brass arch candelabra flanked by a pair of brass tiered candelabra holding floral arrangements of burgundy gladiolus and pink killian daisies gave an impressive candlelight to the ceremony. Woodwardia fern covered the pulpit area and brass baskets holding arrangements of burgundy gladiolus and pink daisies

completed the nuptial scene. The bridal aisle was decorated by brass candelabra with burgundy and pink trim.

Given in marriage by her father, the bride wore a white knit chiffon gown designed by Alfred Angelo of New York. The bodice featured a Queen Anne neckline accented with pearls and sequins. The entire bodice was covered in re-embroidered Chantilly lace and dropped to a scalloped waistline. The pleated bishop sleeves gathered to a cuff of re-embroidered lace accented with pearls and sequins with covered button enclosures. The waistline fell to a chiffon skirt with Venice lace and pearl appliques adorning the front. An inverted "V" design outlined in re-embroidered lace was center front and draped to the back. The hemline was finished in a row of re-embroidered lace and encircled the cathedral length train. Inside the inverted "V" shape on the train were accordion pleats that extended the length of the train.

To complete her ensemble, the bride wore a matching white veil. The capulet was covered in re-embroidered lace with a double layer of silk illusion gathered to the capulet. The edges of both layers of illusion were finished in re-embroidered lace.

She carried a trailing bouquet of silk sweetheart rose buds, stephanotis and baby's breath. "Something old" was a linen handkerchief carried by the bride's mother in her wedding; "something borrowed" was a string of fresh water pearls borrowed from her cousin, Mrs. Mike Giesecke. "Something new" was a pair of diamond earrings, a gift from the bridegroom and "something blue" was the traditional wedding garter, a gift from her aunt, Mrs. Norman Muncy. Pennies minted in the year of the bridegroom and bride's birth were carried for good luck.

Mrs. Mark Hart, Stinnett.

served as matron of honor. Other attendants were Mrs. Mike Giesecke, Pamela Muncy, cousins of the bride, Kay Lyn Rainer and Jana Finley, sister of the groom, all of Floydada. Mrs. Rick Covington of Lubbock and Kimm Dillard, cousin of the bride, of Lubbock served as junior bridesmaid. The attendants wore gowns of burgundy chiffon fashioned with a scoop neckline. The attached capelet fell in handkerchief points. From the natural waisted bodice flowed a ballerina length handkerchief skirt. The junior bridesmaid wore a gown of pink organza with a V-neckline edged with a double flare ruffle. A full A-line skirt with a deep flare ruffle at the hemline caught up in the back to give a bustle silhouette. The attendants wore headpieces of forward clusters of burgundy lilies of the valley and velvet leaves holding a shoulder length veil of illusion. The junior bridesmaid wore a headpiece of clusters of pink lilies of the valley and velvet leaves.

The attendants carried cascade bouquets of rubrum lily blooms showered in pink pixie carnations, alstroemeria lily blooms and small Mary Devor rose buds. Serving as best man was Sheldon Sue, of Floydada. Groomsman included Jonny Finley, brother of the bridegroom, Terry Willson, Kerry Pratt, Hugh Miller, all of Floydada, and Rick Covington of Lubbock.

Mrs. Hardin was escorted by Terry Willson, Mrs. Finley escorted by her son Jonny.

The bride's mother wore a carpet length dress of dusty rose chiffon and the groom's mother wore a carpet length dress of mint green knit. Each wore corsages of Mary Devor miniature rose buds to complement their dresses.

Grandparents attending the wedding were Mrs. Robert Garrett, Mrs. Jess Daniel, Mr. and Mrs. Wayne Finley all of Floydada, and Mr. and Mrs. B.C. Hardin,

Sr. of McAdoo.

RECEPTION

Following the ceremony a reception was given by the bride's parents in the Wall Street parlor of the church. The bride's table was covered with an ecru lace cloth. The three-tier Lady Windemere style wedding cake was highlighted with burgundy and pink confection roses. A silver candelabrum nestled among the attendants bouquets and a silver punch service completed the table setting.

Serving at the bride's table were Shawnda Hefflin, Tammy Gentry of Lubbock and Vicki Hughett, of La Grange.

The bridegroom's table was covered with an ecru cloth with bamboo skirting. A fruit pyramid in a silver samovar formed the background for a tray of fruit, cheese and sausages. A two-tier chocolate cake decorated with love birds and crystal punch bowl completed the table setting. Aunts of the bridegroom assisted at the bridegroom's table. They were Mrs. Pat Cochran, Floydada, Mrs. Kelvin Tip-ton, Plainview, and Mrs. William Daniel, Arcata, California.

Bird seed bells were distributed by Shane Dillard, Lubbock, cousin of the bride and Matthew Daniel, Arcata, California, cousin of the

groom.

Members of the house party included: Mmes. Milton Ashton, Harvey Allen, Floyd Bradley, Ted Bell, Bill Cagle, Fred Cardinal, Carolyn Cheek, Gordon Ham-bright, Travis Jones, Bob Muncy, Norman Muncy, A.C. Pratt, Bobby Rainer, Johnny Bill Sue, J.M. Will-son, Jr., Jerry Dillard of Lubbock and James Dracken-berg of Smyer.

Mr. and Mrs. Jerry Finley were host and hostess to a rehearsal dinner Friday night in the Fellowship Hall of First Baptist Church.

Mrs. Norman Muncy, assisted by Mrs. Mike Giesecke and Pamela Muncy hosted the bridesmaids luncheon Friday.

Pre-nuptial courtesies for the bride included a miscellaneous shower in the home of Mrs. A.C. Pratt; a "Come as you are breakfast" hosted by Mmes. Travis Jones, Fred Cardinal, and Bill Cagle in the Jones home; a Hawaiian Luau in the home of Mr. and Mrs. J.M. Will-son, Jr. and Terry; a kitchen gadget shower hosted by Misses Shawnda Hefflin and Tammy Gentry, a lingerie party given by Mrs. Nolan Turner and Mrs. Rick Cov-ington in the Turner home and a "Honeymoon party" given by Mrs. Mike Giesecke and Miss Pamela Muncy in the Giesecke home.



MRS. JIMMY FINLEY

Desire Caldwell, James Wood Jr. exchange

In a formal ceremony solemnized at 7:30 p.m. Saturday, August 8, 1981, Miss Desire Caldwell and Mr. James C. Wood, Jr. exchanged wedding vows at St. Christopher's Episcopal Church in Lubbock. Officiating the double ring ceremony was Father James P. Haney.

The bride is the daughter of Mr. and Mrs. Robert Caldwell of Lubbock and the granddaughter of Mr. Leonard Smith, formerly of Floydada. The groom is the son of Mr. and Mrs. James C. Wood, Sr. of Dallas.

The bride was given in marriage by her father. She wore a gown of ivory organza lavishly trimmed with chantilly lace. The fitted bodice featured a modified empire waistline and the Queen Anne neckline featured a border of lace. Tiny sequins were featured around the neckline, on the bodice and over the lace applique that circled the waistline. The full skirt featured five tiers, each bordered in chantilly lace, and an all-over lace overskirt circled the entire dress. The back of the dress featured covered buttons extending from the neckline down below the waist. The skirt of organza and lace swept into a full chapel train.

Her fingertip veil featured three tiers of illusion, each tier edged in wide chantilly lace. The veil was gathered

onto a headpiece covered in lace, and featured sequins and embroidered seed pearls.

The bride carried a cascade bouquet of candlelight silk roses accented with baby's breath and long streamers of candlelight lace.

Mrs. Dixie Bright of Lubbock, sister of the bride, was the matron of honor for the wedding ceremony. She wore a gown of apricot silk organza fashioned with full sheer sleeves and a floor length full skirt and a rounded neckline. She carried a bouquet of candlelight and apricot silk flowers accented with baby's breath. She also wore lillie of the valley and baby's breath in her hair.

The other bridal attendants were Mrs. Laura Woolley of Lubbock and Mrs. Kay Fletcher of Wolforth. The attendants were attired identically to the matron of honor.

Miss Lindy Karr of Lubbock was the flower girl. She was also attired identically to the matron of honor. She carried a basket of apricot petals.

Mr. Robert Clinton Bright, nephew of the bride, was ring bearer. He wore a tuxedo of brown.

The groom was attired in a candlelight tuxedo. He wore a boutonniere of apricot roses and baby's breath. Richard Rutherford of Austin

served as best man and was attired in a brown tuxedo. Groomsman were Ron Sills of Athens, Texas, brother of the groom, and Kerry Porter of Lubbock. They also wore brown tuxedos.

The guests were ushered by Mr. Leonard Henson, Mr. Jeff Zahn, and Mr. Russ Dobbs, all of Lubbock.

The guests were register-

ed by Mrs. Becky Doyle, sister of the groom.

RECEPTION

A reception was held for the couple following the ceremony at Hillcrest Country Club.

The House Party included Mrs. Sandra Henson, Mrs. Francis Smith, Mrs. Cindy Malone, Miss Cindy Ste-

Taylor honoree of show

Miss Penny Taylor, bride-elect of Kenneth Lockridge, was honoree at a bridal shower given in the home of Mrs. Larry Golden on Saturday, July 25, from 2-4 p.m.

Arriving guests were greeted by Mrs. Larry Golden, Miss Penny Taylor, Mrs. Vern E. Taylor, mother of the bride-elect, and Mrs. J.W. Lockridge, mother of the prospective groom.

Mrs. Dessie Graves, grandmother of Miss Taylor, was special guest.

Corsages of white daisies

Miss Penny Taylor, bride-elect of Kenneth Lockridge, was honoree at a bridal shower given in the home of Mrs. Larry Golden on Saturday, July 25, from 2-4 p.m.

Arriving guests were greeted by Mrs. Larry Golden, Miss Penny Taylor, Mrs. Vern E. Taylor, mother of the bride-elect, and Mrs. J.W. Lockridge, mother of the prospective groom.

Mrs. Dessie Graves, grandmother of Miss Taylor, was special guest.

Corsages of white daisies

Miss Penny Taylor, bride-elect of Kenneth Lockridge, was honoree at a bridal shower given in the home of Mrs. Larry Golden on Saturday, July 25, from 2-4 p.m.

Arriving guests were greeted by Mrs. Larry Golden, Miss Penny Taylor, Mrs. Vern E. Taylor, mother of the bride-elect, and Mrs. J.W. Lockridge, mother of the prospective groom.

Mrs. Dessie Graves, grandmother of Miss Taylor, was special guest.

Corsages of white daisies



FLOYD DATA

Phillip and Georgia Cain spent part of a day with Charlie Berry on Friday. The Cains were on their way to Virginia where he is stationed with the military this side of Norfolk, Virginia.

MRS. JAMES C. WOOD JR.

Got Heating Or Plumbing Problems? Call Holmes Plumbing Austin Or Steve 983-2251 Call Day Or Night

Wedding Selections

for Kelly Helms Bairrington bride of James Maxey Bairrington

Sue's Gift Shop & Accessories

126 W. Calif. - Floydada 983-5312

BACK TO SCHOOL SPECIAL
FREE With Each \$15⁰⁰ Purchase
 Your Choice
McCalls Pattern
Velour Collar Initials
Or Love Lables
Stitchin' Pretty
 118 W. California
 983-3809

Incredible. Affordable

LEATHER
 soft to the touch
 sporting so much

From proper snazzy to the much to much in COLLEGE \$58

Brown's
 DEPARTMENT STORE
 106 NORTH MAIN LOCKNEY



ALICE MOOSBERG, KEN STEELE

Bridal selections for
 Mohr bride elect of Tracy Brown
 Fawver bride elect of Robert Ferguson
 (Helms) Bairrington bride James Maxey Bairrington

Lovell-Col
Jewelry
 Noritake - Lenox-Emp
 Franciscan-Denby

versary lun

August 2. Mr. ...
 The serving table draped with an ivory A 4-tiered cake with pastel flowers number "60" on the adorned the service. Granddaughters Brewer, Idalou, se-punch; Sherry Robb-ock, and Sharon M. Crosbyton, decorated the cake.

rs hold ann

ants of Frank ...
 The day was spent and the young played volleyball. All the family and sisters were present. Relatives attended D.F. and Bettye Reed, Daryl of Temple, Chick and Vickey Tammy and Danny Ron and Shirley M.

ise luncheon

birthday lunch-
 Walree Turner day August 8, of a daughter, Burns. Guests and when Mrs. d, she was the birthday

en, an array of vege-
 salad plates, and a birthday cake and ho-
 ice cream.

Before Mrs. ...
 opened gifts the gr-
 a song in her honor.

Those present w-
 Durham, Mary Wil-
 Whitehead, Ethel,
 Eula Parrack, De-
 Myrtice Rainer, Ole,
 Carrie Cline, Beul-
 son, Lona Sparks,
 Peggy Madley, Del-
 fee and Shane Derr-

Assisting Mrs. B-
 the hospitality were
 Irwin and Shelli Jo
 Lubbock, Margie
 Louise Turner, Doc-
 ner, Sheryl Derry-
 Rebecca Burns, Flo-

ed by Mrs. Becky Doyle,
 sister of the groom.

RECEPTION
 A reception was held for
 the couple following the ceremony
 at Hillcrest Country
 Club.

The House Party included
 Mrs. Sandra Henson, Mrs.
 Francis Smith, Mrs. Cindy
 Malone, Miss Cindy Ste-

Miss Penny Taylor, bride-
 elect of Kenneth Lockridge,
 was honoree at a bridal
 shower given in the home of
 Mrs. Larry Golden on Satur-
 day, July 25, from 2-4 p.m.

Arriving guests were
 greeted by Mrs. Larry Gold-
 en, Miss Penny Taylor, Mrs.
 Vern E. Taylor, mother of the
 bride-elect, and Mrs. J.W.
 Lockridge, mother of the
 prospective groom.

Mrs. Dessie Graves,
 grandmother of Miss Taylor,
 was special guest.

Corsages of white daisies

Miss Penny Taylor, bride-
 elect of Kenneth Lockridge,
 was honoree at a bridal
 shower given in the home of
 Mrs. Larry Golden on Satur-
 day, July 25, from 2-4 p.m.

Arriving guests were
 greeted by Mrs. Larry Gold-
 en, Miss Penny Taylor, Mrs.
 Vern E. Taylor, mother of the
 bride-elect, and Mrs. J.W.
 Lockridge, mother of the
 prospective groom.

Mrs. Dessie Graves,
 grandmother of Miss Taylor,
 was special guest.

Corsages of white daisies

Miss Penny Taylor, bride-
 elect of Kenneth Lockridge,
 was honoree at a bridal
 shower given in the home of
 Mrs. Larry Golden on Satur-
 day, July 25, from 2-4 p.m.

Arriving guests were
 greeted by Mrs. Larry Gold-
 en, Miss Penny Taylor, Mrs.
 Vern E. Taylor, mother of the
 bride-elect, and Mrs. J.W.
 Lockridge, mother of the
 prospective groom.

Mrs. Dessie Graves,
 grandmother of Miss Taylor,
 was special guest.

Corsages of white daisies

60th anniversary luncheon honors Brewers

August 2, Mr. Henry Brewer celebrated on their 60th anniversary with a luncheon at the home of Mrs. Millard H. Blanco com-

Crosbyton. The serving table was draped with an ivory cloth. A 4-tiered cake decorated with pastel flowers with the number "60" on the top tier adorned the serving table. Granddaughters Latonya Brewer, Idalou, served the punch; Sherry Robison, Lubbock, and Sharon McDougle, Crosbyton, decorated and served the cake; Brenda

Watson, Floydada registered guests. The centerpiece was a mixed assortment of fresh flowers sent to the couple by another granddaughter, Debra Fulmet of Dallas. Henry Brewer and Eunice Forman were married August 5, 1921 in Petrolia, Texas. The couple's children are: Glenna Watson, Crosbyton;

Dorothy McDougle, Crosbyton; Peggy Ayers, Lubbock; DuWayne Brewer, Irving; Darwynne Brewer, Floydada; Ervin Brewer, Lubbock and Harry Brewer, Lubbock. Friends and relatives attending the 60th anniversary of Henry and Eunice Brewer were: Mr. and Mrs. H.V. Forman, Mr. and Mrs. Joe Musgraves, Mr. and Mrs. Claude Draper, Mrs. Eilon Johnson, Mr. Tommy Draper, David Criss and Miss Merrollee Draper, all of Wichita Falls, Texas; Mrs. Larry Crabb, Kerry and Danny, Oklahoma City, Oklahoma; Mr. and Mrs. Guy Forman, Ft. Worth; Mr. and Mrs. Calvin King, Ft. Worth; Mr. and Mrs. Du Wayne Brewer and James, Irving; Miss Tommy Gillispie, Irving. Also Mr. and Mrs. Earl Lewis, Inglewood, Colorado; Mr. and Mrs. J.W. Jackson, Ropesville, Texas; Mr. and Mrs. Larry Jackson, Ropesville; Mr. Vernon Forman, Larry and Rhonda, Anton, Texas; Mr. Buren Forman, Littlefield; Mr. E.O. Forman, New Orleans, Louisiana; Mr. and Mrs. Elbert Forman, Vernon; Miss Michelle Grant, Lubbock; Mr. and Mrs. H.T. Ayers, Kelly and Karl, Lubbock; Mr. and Mrs. Fred McDougle, Crosbyton; Miss Sharon McDougle, Crosbyton; Mr. and Mrs. Ervin Brewer and Monty, Lubbock; Tisha Mooney, Lubbock; Mr. and Mrs. Harry Brewer, Ty and Brandon, Lubbock; Mr. and Mrs. Ken Robison, Kris, Karen, Suzanne and Cherisse, Lubbock; Darwynne Brewer, Floydada; Mr. and Mrs. Dean Watson, Deanna, Amanda and David, Floydada; Mr. and Mrs. Millard H. Watson, Crosbyton; Agnes Robinson, Crosbyton. Georgia Mae Smith Erickson, Crosbyton; Mrs. J.E. Green, Floydada; Mr. Anthony Latta, Floydada; Mr. and Mrs. Neeley Richardson, Floydada; Mr. and Mrs. Marvin Powell, Crosbyton; Mr. and Mrs. Noble Hunsucker, Crosbyton; Mr. and Mrs. R.W. Mathews, Wichita Falls, Texas; Mr. and Mrs. Clarence Mathews, Wichita Falls; Mr. and Mrs. Rudolph McCurdy, Floydada; Mr. and Mrs. Thomas Warren, Floydada; Mrs. Liddie Justus, Crosbyton; Mr. and Mrs. Raymond Watson, Lockney and Latonya Brewer, Idalou, also attended.

Brewers hold annual reunion

Descendants of Frank Rogers held their annual reunion Sunday, August 9, at the Andrews Center in Floydada. The reunion began at 10 a.m. with a luncheon at noon. Mammert gave the address at the noon luncheon. The afternoon was held at the home of Mr. and Mrs. McDougle of Crosbyton.

The day was spent visiting and the young ones played volleyball. All the family brothers and sisters were present. Relatives attending were D.F. and Bettye Rogers and Daryl of Temple, Texas, Chick and Vickie Owens, Tammy and Danny, Allen; Ron and Shirley Martin and

Windi, Crowley, Texas; Kenneth and Viola Rogers, Albuquerque, New Mexico; Joy Lambert, Lubbock; Desye and Jane Rainer, Wichita Falls; Marilyn Price, Edmond, Oklahoma; Estelle Tanner, Lubbock; Denise Cruce and Hailey, Lubbock; Wayland and Debbie Richardson, Holly, Heather and Misty, Plainview. Also Jamie McDonald, Mt. Pleasant, South Carolina; Adrian Burrows, Santa Clara, California; Melvin and Ouita Powell and Duane, Crosbyton; David and Emma Lea Lambert, Holly and Heather, Cisco; Gordan and Nora Mummert, Amarillo; A.G. and Willadean Tyler, Amarillo; Bruce and Viola Burrows, Bay St. Louis, Mississippi; Rick and Melody Swearingin, Plainview, and Byron and Hazel Powell of Falls.

Burns hold anniversary luncheon

Valerie Turner celebrated her 60th birthday luncheon Sunday August 8, at the home of Mrs. Burns. Guests included Mrs. Burns, Mrs. Turner, Mrs. D. F. and Bettye Rogers and Daryl of Temple, Texas, Chick and Vickie Owens, Tammy and Danny, Allen; Ron and Shirley Martin and

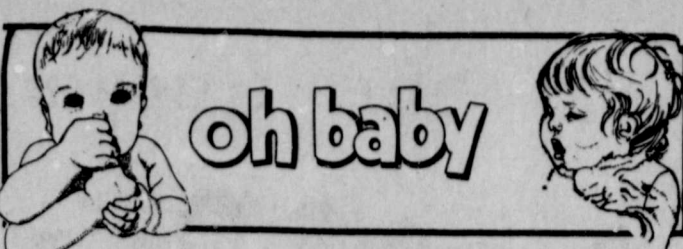
en, an array of vegetable and salad plates, and dessert of birthday cake and homemade ice cream. Before Mrs. Turner opened gifts the group sang a song in her honor. Those present were Lois Durham, Mary Wilson, Cecil Whitehead, Ethel Warren, Eula Parrack, Dell Stout, Myrtice Rainer, Ola Warren, Carrie Cline, Beulah Denison, Lona Sparks and Sue, Peggy Medley, Debbie Guffee and Shane Derryberry. Assisting Mrs. Burns with the hospitality were Audeen Irwin and Shelli Johnson of Lubbock, Margie Young, Louise Turner, Dorothy Turner, Sheryl Derryberry and Rebecca Burns, Floydada.

Harrison hosts Burleson shower

Debbie Harrison hosted a lingerie shower in honor of Beverly Burleson, bride-elect of Kirk Brock, on Sunday afternoon, August 2. The table was decorated with a white lace cloth over brown, crystal appointments, a large apricot bow with streamers printed "Bev, Kirk, August 22, 1981" and apricot candles. Punch and

Plumlee reunion held in Matador

On August 9th, the children of the late Mr. and Mrs. N.L. Plumlee of Matador gathered for their annual family reunion at the Legion Hall in Matador. Eight of the nine children were present for the occasion. They were Ruth Benson, Ruby Pharis, Mildred Plumlee, Artie Webb, Jackie Jackson, Jimmie Young, Billie Webb, and Lucille Wright. Nora Braselton was unable to attend because of illness. Also they were celebrating their father's birthday which fell on the 9th of August. He would have been 109 years old that day.



CARTHEL Careese Renee Carthel is the new daughter of Jack and Darla Carthel of Canyon. She arrived Sunday, August 9, at 4:44 a.m. She weighed 8 lbs. 3 ozs. and was 20 1/2 inches long. Careese was born at High Plains Baptist Hospital in Amarillo. Grandparents are Tommy and Joy Assiter of Floydada, and Ray Gene and Winnie Carthel of Clovis. Great-grandparents are Mrs. Annie Webb of Floydada, and Mrs. Fannie Sanders of Texarkana, Arkansas. Grandparents are Mr. and Mrs. Paul Montandon are the parents of a boy born August 6 at Tyler. The baby, named Chad Casey, weighed six and a half pounds. Grandparents are Mr. and

Mrs. Tommy Montandon of Lockney and Mr. and Mrs. G.E. Caskey of Tyler. Great-grandparents are Mr. and Mrs. F.L. Montandon of Tulsa and Mr. and Mrs. Glen Watson. **CAMPBELL** Ken and Polly Campbell of Dougherty are proud to announce the birth of their daughter, Anna Margaret on July 24 at 2:46 p.m. in Methodist Hospital, Lubbock. Anna Margaret weighed in at 6 lbs., 12 ozs. and was 19 1/2 inches long. She has one brother, Jason. Grandparents are Vance and Betty Campbell of Matador and Leon and Margaret Wilson of Shingle Springs, California. Great-grandparents are Charles and Montie McPherson of Frederick, Oklahoma.



MR. AND MRS. MICHAEL ANTHONY HALES

Mr. and Mrs. Hales at home in New Jersey

Janie Cortinas and Michael Anthony Hales were married May 9 in the chapel of the United States Coast Guard, Gloucester City, New Jersey. Both bride and groom are stationed with the United States Coast Guard. The bride is the daughter of Deacon and Mrs. Robert Cortinas of Floydada and the groom is the son of Mr. and Mrs. William Hales of Chester, Pennsylvania. The couple is presently residing in Camden, New Jersey.

The couple is presently residing in Camden, New Jersey.

MAC site for Warren reunion

The descendants and relatives of the late Mr. and Mrs. Russell E. Warren met at their annual family reunion, August 9, 1981 at the Massie Activity Center. After a delicious dinner and a short business meeting, everyone enjoyed singing, games and just visiting together.

Nancy Warren and daughter Melinda of Lorenzo; Bill and Johnnie Warren, Amarillo; Tom and Gerrie Warren and granddaughter, Tammy Hardin, Fort Worth, Mr. and Mrs. Foster Amburn, Canyon; and Mr. and Mrs. Glen Amburn, Tulsa. Those attending from Floydada were: Dorcie and Mary Lee Warren, Ed and Evelyn Pallan, Elvis and Estelle Warren, Kelly Warren, Chuck Rowley, Ethel Warren, Leona Warren, Kristi Meyers and son Jerry, Gordon and Darynn Ham-bright and Treva, Flora Warren, Bud and Gerrie Warren, and Louis Warren.

LaBaumes host Mexican Fiesta

A "Mexican Fiesta" supper was held in the home of Mr. and Mrs. Jon LaBaume on Thursday, August 6. Those attending were: Mr. and Mrs. J.O. Dawdy, Mr. and Mrs. Perry Zumwalt,

Mr. and Mrs. Edwin Nutt, Mr. and Mrs. Floyd Easter, Mr. and Mrs. John Dunlap, Mr. and Mrs. Dru Lloyd, and Mr. and Mrs. Roger Dawdy. This was hosted by the LaBaume's, Dunlap's, and Easter's.

Turner holds birthday luncheon

Valerie Turner celebrated her 60th birthday luncheon Sunday August 8, at the home of Mrs. Burns. Guests included Mrs. Burns, Mrs. Turner, Mrs. D. F. and Bettye Rogers and Daryl of Temple, Texas, Chick and Vickie Owens, Tammy and Danny, Allen; Ron and Shirley Martin and

en, an array of vegetable and salad plates, and dessert of birthday cake and homemade ice cream. Before Mrs. Turner opened gifts the group sang a song in her honor. Those present were Lois Durham, Mary Wilson, Cecil Whitehead, Ethel Warren, Eula Parrack, Dell Stout, Myrtice Rainer, Ola Warren, Carrie Cline, Beulah Denison, Lona Sparks and Sue, Peggy Medley, Debbie Guffee and Shane Derryberry. Assisting Mrs. Burns with the hospitality were Audeen Irwin and Shelli Johnson of Lubbock, Margie Young, Louise Turner, Dorothy Turner, Sheryl Derryberry and Rebecca Burns, Floydada.

McCluskey and Cox

A 10 piece set of Ken Steele, mixer were presented to the bride-elect and her mother. Special guests were Mrs. Tommy Sherman of Lockney, and Mrs. Donny Winslow of Duncan, Oklahoma; sisters of the bride-elect. Refreshments of punch, fruit pizza, and nuts were served from crystal and silver appointments. The serving table was covered with a burgundy cloth underneath an antique crocheted tablecloth. The centerpiece was an arrangement of burgundy silk roses in a silver bowl. Burgundy and pink napkins completed the setting. Hostesses were Mmes: Roger Dawdy, Jon LaBaume, Bob Hambright, J.T. Myrick, Joe Thurston, Weldon Becker, Ned Bradley, Tom Porter, S.H. Tackett, Lloyd Hardy, Edwin Pollan, Pike Hanna, Derral Yoang, Blanton Hart-sell, Monroe Shannon, Oscar Santos, Aaron Carthel, Riley Teague, and Gene Lawson. The hostesses' gifts to the bride-elect were the serving pieces to her chosen pattern of stainless flatware and a dinner plate in her pottery pattern. Ken and Alice will exchange wedding vows on September 12 in the First United Methodist Church in Floydada.

Moosberg feted with shower

Alice Moosberg, bride-elect of Ken Steele, was feted with a bridal shower Thursday evening at the home of Mrs. D. F. and Bettye Rogers. The bride-elect was greeted by Mrs. Miss Moosberg, Mrs. Carl Moosberg, and the bride-to-be, Miss Taylor and ridge plan at the wedding at the Church of Altus.

Silk flower corsages were presented to the bride-elect and her mother. Special guests were Mrs. Tommy Sherman of Lockney, and Mrs. Donny Winslow of Duncan, Oklahoma; sisters of the bride-elect. Refreshments of punch, fruit pizza, and nuts were served from crystal and silver appointments. The serving table was covered with a burgundy cloth underneath an antique crocheted tablecloth. The centerpiece was an arrangement of burgundy silk roses in a silver bowl. Burgundy and pink napkins completed the setting. Hostesses were Mmes: Roger Dawdy, Jon LaBaume, Bob Hambright, J.T. Myrick, Joe Thurston, Weldon Becker, Ned Bradley, Tom Porter, S.H. Tackett, Lloyd Hardy, Edwin Pollan, Pike Hanna, Derral Yoang, Blanton Hart-sell, Monroe Shannon, Oscar Santos, Aaron Carthel, Riley Teague, and Gene Lawson. The hostesses' gifts to the bride-elect were the serving pieces to her chosen pattern of stainless flatware and a dinner plate in her pottery pattern. Ken and Alice will exchange wedding vows on September 12 in the First United Methodist Church in Floydada.

NOTICE

To all future brides: The Hesperian and Beacon will gladly print your engagement and wedding write-ups and photos. A black and white photo is preferable, but color photos will be accepted. However, color photos may not reproduce as well as black and white. Wedding information sheets are available if you do not wish to write your own. Please come by our offices at least two weeks prior to your wedding date. Thank you for your cooperation.

Grandchildren, great grandchildren, and great great grandchildren, gathered for the occasion.

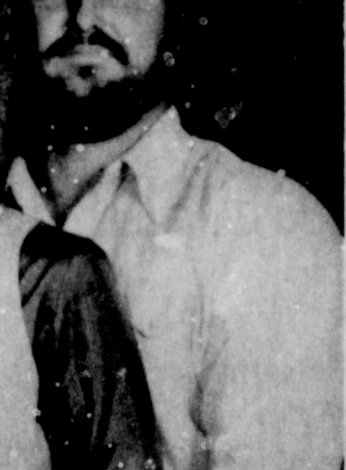
Those traveling the farthest were: Mr. and Mrs. Clifford Webb, Desert Hot Springs, California. Others attending were: Mrs. Ruby Pharis, Fort Worth; Mr. and Mrs. Willard Young, May, Texas; Mrs. Jackie Jackson, Mrs. Kay Roe, Tammy and Doug and Leona McElwany, Amarillo; Mr. and Mrs. Gordan Wright, Levelland; Mr. and Mrs. Wayne Crisp, Bryan and

LEATHER soft to the touch sporting so much

From snappy styles to snazzy leathers, we have something for everyone. It's a classic piece you'll enjoy very much. In COLOR or COLOR leather. \$35.

Brown's DEPARTMENT STORE 104 NORTH MAIN LOCKNEY

Alice Moosberg, Ken Steele



Lovell-Collins Jewelry Noritake - Lenox - Emperial Franciscan - Denby

Affairs of Life

The bee that gets the honey doesn't hang around the hive. The human likewise should be prudent in all matters. Courtesy of **Adams Well Service, Inc.** COMPLETE IRRIGATION SERVICE (806) 983-5003 BOONE ADAMS Owner-Mgr. 720 NO 2nd FLOYDADA.

olan mills THE NATION'S STUDIO One 8 x 10 Color Portrait 99¢ Your choice of family group or individual. One special offer per family, one per person. SHADOW BOX STORE Saturday August 29th Photo Hours: 11:00 a.m. - 5:00 p.m. LOCKNEY, TX No Extra Charge For Groups.

SCHOOL BELLS ARE RINGING 3 Way To Buy: Cash-Layaway-Master Charge-Visa **ANDERSON'S** Department Store 120 West California Floydada *** SPECIAL * Ladies Coats 10% OFF Use Our Lay-A-Way Plan** *** SHOP FOR * Girls Jeans Reduced 20% Sizes: 2-6X & 7-14 Thurs. - Fri. - Sat.** Come in and register for a \$25.00 "Back-to-school" Gift Certificate to be given away Saturday the 22nd of August Must be 18 years of age.

THE FIERROS READY MIX slow-pitch softball team took first place in the Lockney slow-pitch tournament and finished third out of 16 teams at a tournament in Quitaque. Members of the team standing with their Quitaque trophy are, front row, left to right, Johnny Arjona, coach Felipe Gatica, coach Jesse Garza, and Placido Gonzales. Back row, left to right, are Junior Galvan, Felipe Garza, Jesse Nuncio, Jerry Rodriguez, Joe Rodriguez, sponsor I. Fierros, Fidel Blanco, Rene Guerrero, I. Larmar and Able Ballego. Not pictured is team member Arnold Alaniz.



Bill Gray's

Prediction: It'll be Childress again

BY BILL GRAY

Once again, District 3-AAA will be one of the better balanced districts in Region I for the 1981 season of Texas High School football. It will be difficult for a team to go undefeated in District play, a feat accomplished by newcomer Childress in the 1980 campaign.

Tulia appears to have the best overall material, with Abernathy, Floydada, and Childress about evenly matched. Idalou and Lockney could be real spoilers, and a co-championship, or even a tri-championship seems very possible. The Tulia-Floydada contest on November 13 could well be for "all the marbles."

Here is a team-by-team breakdown, and (this writer's opinion) what may be in store for our "Friday Night Heroes" this Fall. (Teams rated in order of predicted finish)

1. TULIA: Veteran team with experience at full positions, especially at fullback and receivers. Strong at defensive ends — weak at linebackers and defensive secondary.
Summary: Mediocre defense could allow lots of points, but with potent offense, Hornets could be involved in several high-scoring games. (Predicted season record: 8-2)

2. (Tie) ABERNATHY: Well-balanced attack, featuring potential All-State tackle, Rick Houston. Unproven quarterback, but good depth at running backs. Solid, but not outstanding defense.
Summary: Could challenge for title if QB and receivers come around. (Predicted season record: 6-4)

2. (Tie) FLOYDADA: Strong nucleus of Seniors for leadership. Could have outstanding QB in district in Todd Beedy, who has good size plus experience. Several talented underclassmen, including Mike Salazar and Donnell Weeks, should step in and contribute a lot. Offense is questionable, due to lack of depth, but could have the premier defense in the district. Once again opens district play against defending champion Childress. A solid win here by the 'Winds could set the stage for a real dogfight!
Summary: Could be throne time again for L.G.'s troops if key people stay healthy. (Predicted season record: 7-2-1)

4. CHILDRESS: Lost host of skill performers to graduation. Lack of depth at running backs could hurt, but has one of the best in the area in Donald Sims. Five defensive regulars return, but the ranks of experienced players are rather thin.
Summary: The Bobcats are tough to beat at home. Winning tradition and Coach Charley Johnston could make the difference. (Predicted season record: 7-3)

5. LOCKNEY: Several outstanding players at skill positions (running back and linebacker), but lack of depth and experience will hurt. Lots of enthusiasm, plus playing arch-rival Floydada at home could contribute to success.

Summary: If they can beat or tie Floydada, the 'Horns could be trouble for the rest of the district. (Predicted season record: 4-5-1)

6. IDALOU: Seven starters return, but inexperience and lack of depth will plague both sides of the line of scrimmage. Underclassmen up from the JV will need to

come through. Boasts one of the largest linemen in the district (Rosenda Esquibel) and QB Henry Vega returns, but Vega may be hampered by having to go both ways.

Summary: Could be the year for the 'Cats to dip under .500 if younger players can't come through and fill in. (Predicted season record: 5-5)

Exchange homes new

Chances are you never heard of Diana Angelina Orsorio, or Pedro Xavier Hildalgo. Pedro is 17, from Guayaquil, Ecuador. He is entering 12th grade and likes sports in general — skating, surfing and tennis in particular. His future plans include computers. Pedro has four sisters, and his father manages an automobile company in Guayaquil; his mother works for an airline. Pedro, as well as his parents and sisters, speaks English.

Diana is also 17 and in the 12th grade. She plays the piano and likes basketball, swimming and softball. Following in her father's footsteps, she plans to become an accountant. Her mother is a housewife and there are three brothers. Diana is from Mexico City, and she has fair English.

Both students have been planning on coming to the United States this fall to live with a U.S. family and attend the local High School.

Smith takes golf title

Sixty-five members participated in the Floydada Country Club Championship golf tournament. Eighteen trophies were given away including a plaque presented to champion Joe Smith.

A barbecue was held Saturday night for all contestants.

The six flights were as follows:

Championship
 1. Joe Smith, 148; 2. Jim Furlingim, 151; 3. Tony Gregory, 151.

1st Flight
 1. Al Harrison, 158; 2. Max Scarborough, 159; 3. J.D. Adams, 159. Scarborough by playoff over Adams

2nd Flight
 1. Jim Jones, 162; 2. Jim McLaughlin, 163; 3. Bill Bruington, 165 by playoff over Lewis McDaniel.

3rd Flight
 1. E.P. Smitherman, 166; 2. Jim Covington, 168; 3. Frank Stanton, 170.

4th Flight
 1. Coke Fullingim, 177; 2. Gary Collins, 179; 3. Jesse

Courses offered

WTSU in Plainview

Two West Texas State University off-campus evening courses will be available for Plainview area residents for the fall semester.

Educational Research, a course offered for graduate credit through the College of Education Department of School Services, will be taught by Dr. Jim Kidd, a new faculty member in the College of Education. The class will meet from 5:30 p.m. to 8:20 p.m. each Wednesday.

SAVINGS by the Bag

GROUND BEEF \$1.19 lb

PORK CHOPS \$1.29 lb

Grade A FRYERS 59¢ lb

Oscar Mayer 1 lb pkg FRANKS \$1.19

Swift 5 1/2 oz. can VIENNA SAUSAGE 2/89¢

VELVEETA CHEESE 2 lb box \$2.99

Starkist 6 1/2 oz can TUNA 99¢

Hunts 32 oz. bottle CATSUP 99¢

Atkins 16 oz. hamburger sliced PICKLES 59¢

Bunte 1 lb bag ORANGE SLICES 69¢

Ranch Style 303 can BEANS 39¢

6-32 oz. Bottle carton COCA COLA plus deposit \$1.19

NEW Shield 5 oz. bar HAND SOAP 3/\$1.00

50 lb bag White Russett utility POTATOES \$4.95

Large firm heads LETTUCE 29¢ lb

Long-term credit to buy or improve land.

When you make the land your life... you need to look for a specialist when selecting a lender. At your Federal Land Bank Association our specialty is long-term credit to agriculture. At the Land Bank we have funds to help you finance a sound project.

The Land Bank

Close to the land and the people who work it
 105 South Wall
 983-2480
 Floydada

PARTS VALUE OF THE MONTH



Compare IH For Quality Price - Service Save money - buy now!

NEW REDUCED PRICES

IN PLASTIC SHIPPERS TWINE REG. 24.14
 7200 FT. CARTONS FOR SQUARE BALETS #99172R1 NOW \$1900

IN PLASTIC TWINE REG. 24.14
 9000 FT. CARTONS FOR ROUND OR SQUARE #99171R1 NOW \$1900

IN SHAL TWINE REG. 24.29
 10,800 FT. CARTON FOR ROUND OR SQUARE #113122R1 NOW \$2750

Brown-McMurtry

Implement Company
 Your IH Dealer
 Phone 828-2441 Silverton, Texas

September 12 - 13

Dallas COWBOYS VS. St. Louis CARDINALS

Register from August 14 to August 26

Living Desert State Park, a new dimension in native wildlife



DRK End Cut \$1.29
 OPS Center Cut \$1.69

Oscar Mayer 1 lb pkg
FRANKS \$1.69

VELVEETA
 CHEESE 2 lb box **\$2.99**

Hunts 32 oz. bottle
CATSUP 99¢

1 lb bag
ORANGE SLICES 69¢

Bottle carton
COLA plus deposit \$1.59

LETTERS
GROCERY

652-2191
 7:30 a.m. - 7:30 p.m.

Redeem Food Stamps
 & WIC Cards
 e Reserve The Right
 To Limit Quantities



Dallas COWBOYS

VS.

St. Louis CARDINALS

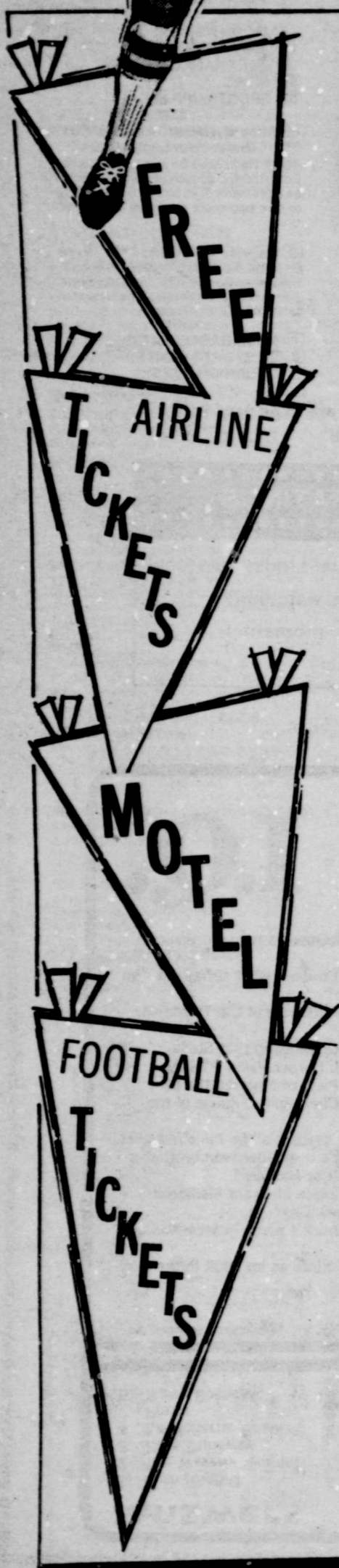
September
 12 - 13

Register from August 14 to August 26

Drawing at Annual Chamber of Commerce Breakfast
 August 28.

FREE! DALLAS TRIP

Come in and register with these friendly Floydada Merchants
 for FREE trip to for two to Dallas. September 12-13. ★



- | | |
|-----------------------------|---------------------------------|
| Oden Chevy - Olds | Pizza Gold |
| Hale's Dept. Store | Kirk & Son's |
| Floyd County Hesperian | City Auto |
| Willson & Son Builders Mart | Anderson's Dept. Store |
| Farm Bureau | Arwine's Drug |
| Collins Appliance | Sears |
| Consumers Fuel Assn. | Quailty Body Shop |
| Reed Ford Sales | Williams Insurance |
| Script Printing | Adams Well Service |
| Sue's Gifts | Sam Spence Agency |
| Thompsons Pharmacy | Kirtley's Mkt. |
| Hale Insurance | Brook's Oil |
| Char-Lee's | Producers Cooperative Elevators |
| Ponderosa Meats | Cornelius Conoco |
| Buddy's Food | |

★ Registrants must be 18 years of age or older.
 You need not be present to win.

Large homes need

Diana is also 17 and in the 12th grade. She plays the piano and likes basketball, swimming and softball. Following in her father's footsteps, she plans to become an accountant. Her mother is a housewife and there are three brothers. Diana is from Mexico City, and she has fair English.

Both students have been planning on coming to the United States this fall to live with a U.S. family and attend the local High School.

takes golf title

3rd Flight
 1. E.P. Smitherman, 166;
 2. Jim Covington, 170.
4th Flight
 1. Coke Fullington, 177; 2. Gary Collins, 179; 3. Jesse

Courses offered

WTSU in Plain

Two West Texas State University off-campus evening courses will be available for Plainview area residents for the fall semester. Educational Research, a course offered for graduate credit through the College of Education Department of School Services, will be taught by Dr. Jim Kidd, a new faculty member in the College of Education. The class will meet from 5:30 p.m. to 8:20 p.m. each Wednesday.

Another College of Education course offering is Reading from 7 p.m. to 9 p.m. each Monday at Plainview High School. Classes will begin with registration on Wednesday, August 14. The WTSU Admittance Test will be given following day.

the Bagfu



Entertainment

Living Desert State Park, a new dimension in native wildlife

Visitors to the Sonoran desert walk-through aviary at Living Desert State Park in Carlsbad are enjoying the experience of walking among the birds, says Park Manager Dean Ricer.

The new aviary is less than a year old and Ricer says the facility is already "very popular with visitors."

The \$160,000 aviary features plants and birds native to the warm Sonoran desert, located in southern Arizona and northern Mexico.

Living Desert State Park itself opened in 1971 and contains exhibits of over 1,000 cacti and perhaps the most complete collection of southwestern desert and mountain animals in the nation.

Among the birds flying over and around visitors are mockingbirds, curved-bill thrashers, cardinals, cactus wrens and Gambel's quail.

The five-sided Sonoran exhibit, built in Spanish-style architecture, has 19-foot walls that support a screened roof and leaves the display open to the elements. Heat cables buried in the ground give plants all the warmth they need during Carlsbad's mild winters.

A walkway curves through the middle of the exhibit, allowing visitors to see such cacti as Saguaro, organ pipe and barrel, jojoba plants, Washington palms and acacia and palo verde trees.

The entire park has large interpretive signs for both plant and animal exhibits. They are

written in English and Spanish.

Visitors to the park leave the entry building and wind their way along paved paths bordered with rare and common cacti to animal exhibits containing American bison, antelope, bear, otter, and prairie dogs, to name a few.

In another building, visitors see something that gives most people goosebumps: it's a collection of reptiles including several varieties of rattlesnakes, lizards and Gila monsters.

Living Desert State Park is one of three parks in the area.

Carlsbad Caverns National Park is open every day of the year and offers 800,000 people from over the world each year a safe and easy peek at one of the largest and most beautiful caves in the world.

Improvements at the Caverns include new high-speed elevators that whisk visitors from the surface to the lunchroom underground.

Opened to the public in 1972, Guadalupe Mountains National Park is a breath-taking combination of mountain, canyon and forest jammed into 77,500 acres of desert 45 minutes south of Carlsbad on the road to El Paso.

Guadalupe Peak, at 8,751 feet the highest point in Texas, is located in the park. McKittrick Canyon contains a rushing stream and is home to both broad-leafed and conifer trees, cactus and succulents.

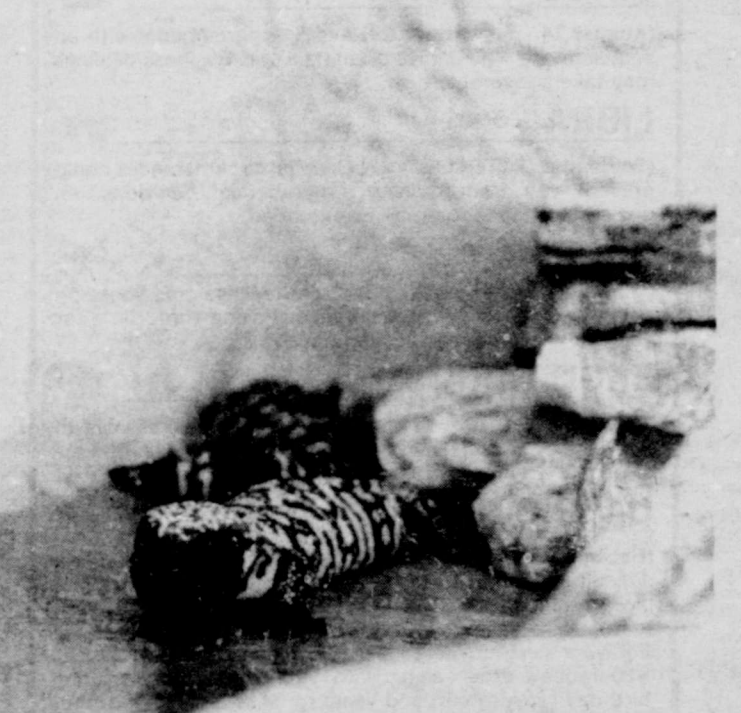
Carlsbad itself is famous for its hospitality and its modern hotels, motels and restaurants.



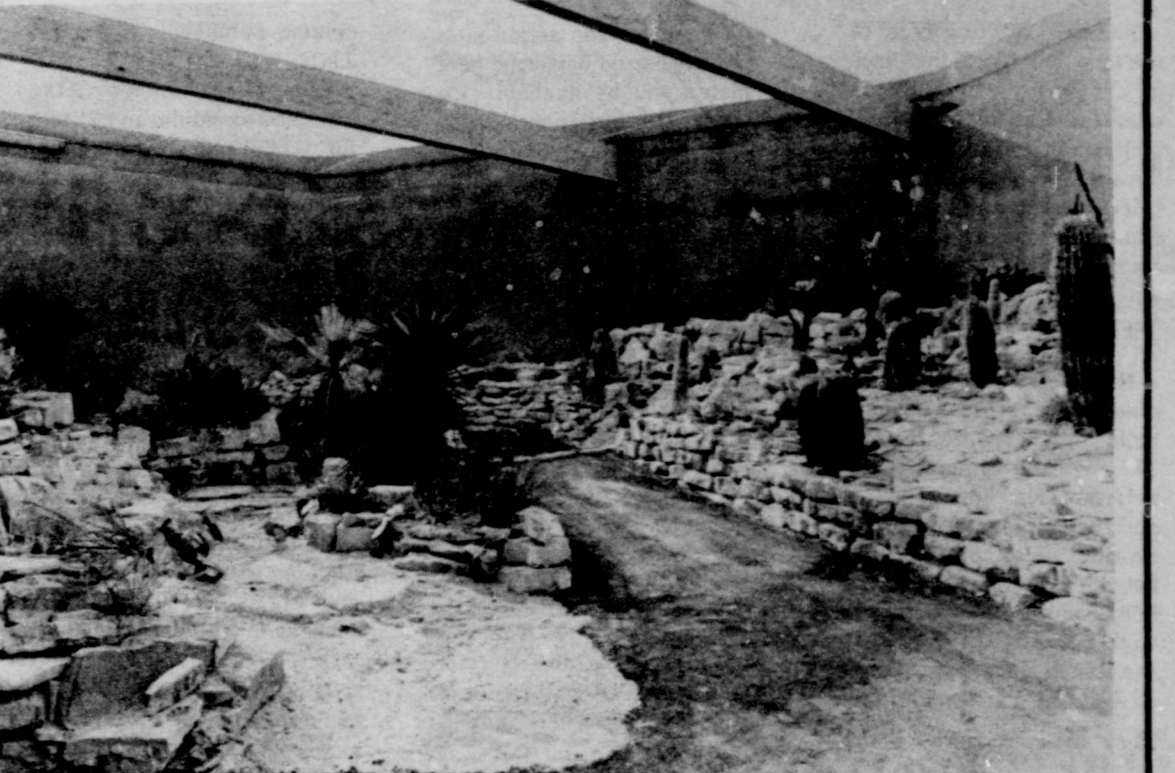
MOUNTAIN LIONS can be viewed at close distance as visitors walk through the park. [Photo by Nancy Barker]



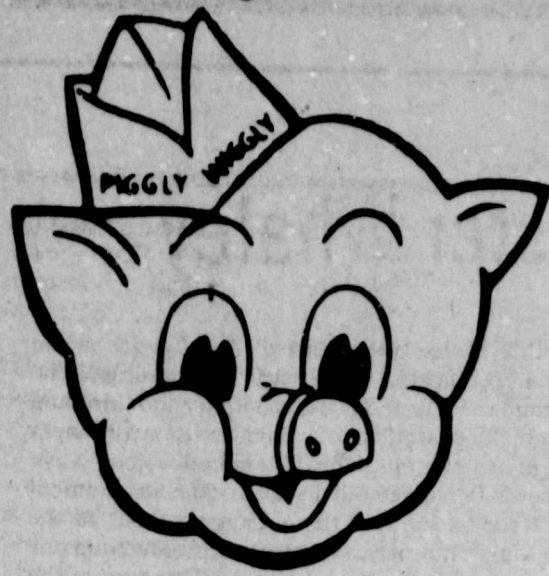
ANTELOPE have plenty of room to roam in the State Park. [Photo by Nancy Barker]



GILA MONSTERS are in glass cages at the facility. [Photo by Nancy Barker]



LOWER SONORAN EXHIBIT-- Visitors to Living Desert State Park in Carlsbad, N.M., will explore the park's new Lower Sonoran exhibit.



Piggly Wiggly

309 South Wall
Floydada

Open Daily 8 am To 9 pm

Sunday 9 am To 7 pm

Round Boneless Bottom
Roast \$1.89 lb
Steak \$1.99 lb

Eye Of Round Steak Or
Roast \$2.99 lb

Extra Lean (Ground Round Quality)
Not Less Than 90% Lean
Ground Beef \$1.99 lb

Beef Rump Boneless Lean & Tender
Roast \$1.99 lb

Chopped Oscar Mayer
Ham 8 oz \$1.59

Cooked Oscar Mayer
Ham 6 oz \$1.59

Morehead Potato
Salad 49¢
14 oz

Morehead Pimento Salad
Cheese 79¢
7 1/2 oz

USDA Grade A
Fryers Quarters
Leg 59¢ lb
Breast 63¢ lb



Shurfine Fruit
Cocktail 16 oz 69¢

Shurfine White Or Golden
Hominy 3 1/2 15 oz

Shurfine Early June
Peas 2 1/2 17 oz

Shurfresh Frozen Orange
Juice 79¢
12 oz Can

Shurfine
Mustard 3 1/2 15 oz

Pepsi 2 1/2 17 oz

Jimmy Dean Pork
Sausage 16 oz \$1.59
2 lb Roll \$3.15

Shurfine Saltine
Crackers 16 oz pkg 59¢

Nestle
Tea 3 oz Jar \$1.99

Shurfine
Bleach 64 oz 59¢

Shurfine
Cola 2 Liter 79¢

Kleenex Facial
Tissue 200 ct pkg 59¢

Shurfine Macaroni & Cheese
Dinner 3/79¢
7 1/2 oz pkg

Shurfine Mixed
Vegetable 3/\$1.00
16 oz Can

Shurfine
Spinach 15 oz Can 3/\$1.00

Shurfine Vegetable
Oil 38 oz \$1.49

Shurfine Evaporated
Milk 2/89¢
13 oz Can

Shurfine Medium Grain
Rice 2 lb Bag 89¢

Shurfine
Applesauce 2/89¢
16 oz

Kraft Bar-B-Que
Sauce 18 oz 69¢

Shurfine Grape
Jelly \$1.19
32 oz Jar

Bananas 29¢ lb

Delsey Bath
Tissue 89¢
4 Roll

Hi Dri Paper
Towels 2/99¢
1 Roll

Shurfine Peeled
Tomatoes 2/89¢
16 oz Can

DISH OF THE DAY
Dessert Dish 69¢

My's Lifesty

Marilyn Tate
County Extension Agent

of different program
"Christmas in Novemb
suit the interests and
of as many of you as po
in this area. If you h
special program sugges
or know of someone wh
an interesting Chri
presentation or demo
tion, I would appr
hearing from you!

FDA EXPANDS
WARNING ON CAN
MUSHROOMS
The United States
and Drug Administ
has expanded an e
warning regarding
ounce cans of mush
processed by Oxford
Mushroom Products an

celebrate

Aug. 19 — Janie A
Mina K. Peralez, Sa
Mendoza, Virgie Sa
Chuck Wilson, Roy Sm
HAPPY ANNIVERSAR
Aug. 13 — Richar
Peggy Wiley, Mr. and
Silvester Garcia
Aug. 14 — John L
Elizabeth Riley
Aug. 15 — Cecil
Donna Jones, Chuc
Joyce Wilson
Aug. 16 — Dale
Debbie Galloway, M
and Sharon O'Connor
Aug. 17 — Milto
Vicki Schaeffer
Aug. 18 — Garlan
Faye Sams, Louis and
da Martinez

ney Hospit

adm. 8.5, continues c
Willie Thomas, Loc
adm. 8.6, dis. 8-10
Mattie Readiemere,
adm. 8-6, continues
Plainview,
Rosa Gutierrez, z
view, adm. 8-6, baby g
ca, born 8-6, dis. 8-10
Annie Lee Smith,
adm. 8-7, continues
Frances Santos, v
view, adm. 8-8, bab
Jorge, born 8-9, dis.
Ruben Gray, Loc
adm. 8-10, continues
Gail Keiser, MI
adm. 8-11, continues

FLOYD DATA
Mr. and Mrs. Grad
ker returned last we
a vacation in Alaska
were accompanied by
granddaughters, Te
Ashley, of Dallas.
They flew from D
Vancouver and from
they sailed on the
Boat" up the inner r
to Skagway, rode t
row gauge train to
horse, then by jet
banks and by train
McKinley and on int
orage.
While in Anchora
experienced one of
earthquakes, 5.6 on
tor scale.

d County has been
aced in the 13th
gressional District.

ssman Jack Highto
our representative

ower will speak to
int meeting of the
Floydada
y and Lions Clubs
nesday August 19
12:00 noon.

are also invited to
by the First Natio
at 1:00 pm to sha
ands and visit with
Jack Hightower.

OBITUARIES



Day's Lifestyles
By Marilyn Tate
County Extension Agent

of different programs for "Christmas in November" to suit the interests and needs of as many of you as possible in this area. If you have a special program suggestion, or know of someone who has an interesting Christmas presentation or demonstration, I would appreciate hearing from you!

FDA EXPANDS WARNING ON CANNED MUSHROOMS
The United States Food and Drug Administration has expanded an earlier warning regarding four-ounce cans of mushrooms processed by Oxford Royal Mushroom Products and distributed under 45 brand names plus eight unbranded labels. The mushrooms may contain the toxin that causes botulism, a sometimes-fatal food poisoning.

CELEBRATE
Aug. 19 — Janie Archer, Mina K. Peralez, Randy Mendoza, Virgie Samford, Chuck Wilson, Roy Smith

HAPPY ANNIVERSARY
Aug. 13 — Richard and Peggy Wiley, Mr. and Mrs. Silvester Garcia
Aug. 14 — John L. and Elizabeth Riley
Aug. 15 — Cecil and Donna Jones, Chuck and Joyce Wilson
Aug. 16 — Dale and Debbie Gallaway, Michael and Sharon O'Connor
Aug. 17 — Milton and Vicki Schaeffer
Aug. 18 — Garland and Faye Sams, Louis and Brenda Martinez

LOCKNEY HOSPITAL
adm. 8-5, continues care.
Willie Thomas, Lockney, adm. 8-6, dis. 8-10.
Mattie Readhiemer, Lockney, adm. 8-6, continues care
Rosa Gutierrez, Plainview, adm. 8-6, baby girl Erica, born 8-6, dis. 8-10
Annie Lee Smith, Lockney, adm. 8-7, continues care
Frances Santos, Plainview, adm. 8-8, baby boy Jorge, born 8-9, dis. 8-11
Ruben Gray, Lockney, adm. 8-10, continues care.
Gail Keiser, Midland, adm. 8-11, continues care.

FLOYD DATA
Mr. and Mrs. Grady Walker returned last week from a vacation in Alaska. They were accompanied by their granddaughters, Terri and Ashley, of Dallas.
They flew from Dallas to Vancouver and from there they sailed on the "Love Boat" up the inner passage to Skagway, rode the narrow gauge train to Whitehorse, then by jet to Fairbanks and by train to Mt. McKinley and on into Anchorage.
While in Anchorage they experienced one of Alaska's earthquakes, 5.6 on the Richter scale.

FLOYD COUNTY HAS BEEN PLACED IN THE 13TH CONGRESSIONAL DISTRICT.
Congressman Jack Hightower your representative.
Hightower will speak to a joint meeting of the Floydada Rotary and Lions Clubs on Wednesday August 19 at 12:00 noon.
You are also invited to meet by the First National Bank at 1:00 pm to shake hands and visit with Jack Hightower.

tributed under 45 brand names plus eight unbranded labels. The mushrooms may contain the toxin that causes botulism, a sometimes-fatal food poisoning.

FDA is advising consumers to check all four-ounce cans of mushrooms they have at home for the two-line code on the lid. On the top line of the code, the first letter would be A through L. The second letter is K followed by three numbers, so the top line of the code on recalled cans could be, for example, DK113, AK128, GK126, or EK129.

The bottom line of the code has the letters P or LP followed by the numbers 1 or 2, for example, P1, P2, LP or LP2.

Consumers with mushroom cans with these codes should return them to the place of purchase. The mushrooms should not be eaten or opened.

Educational programs conducted by the Texas Agricultural Extension Service serve people of all ages regardless of socioeconomic level, race, color, sex, religion or national origin.

JOHN WALKER
Services for John Wesley Walker, 75, of Floydada were at 3:30 p.m. Tuesday in New Salem Primitive Baptist Church, Floydada, with Elder Joe Jackson officiating.

Burial followed in Floydada Cemetery under direction of Moore-Rose Funeral Home.
Walker, a native of Mills County, died at 10:45 p.m. Sunday in Methodist Hospital in Lubbock after a lengthy illness.

He married Ona Inez Simms June 29, 1929, in Dickens and came to Floyd County in 1947 from Hereford. He was a baker and restaurant owner. He was a member of the Primitive Baptist Church and the Sons of Confederate Veterans.

Survivors include his wife; a son, Joe of Hobbs, New Mexico; two daughters, Mrs. Bill (Beth) Turner of Fritch and Mrs. Ron (Shirley) Murray of Midland; two brothers, Bill Brown of Glendale, California, and Ben Walker of Boerne; two sisters, Hazel Brown Chandler of Comanche and Sarah Walker White of Coleman; eight grandchildren; and three great-grandchildren.

Survivors include two sons, C.E. of Cone and Joe of Amarillo; two daughters, Mrs. Juanita Brownlow of Amarillo and Mrs. Laverne Pierce of Baird; a brother, George Field of Ontario, California; 10 grandchildren and seven great-grandchildren.

Survivors include two sons, C.E. of Cone and Joe of Amarillo; two daughters, Mrs. Juanita Brownlow of Amarillo and Mrs. Laverne Pierce of Baird; a brother, George Field of Ontario, California; 10 grandchildren and seven great-grandchildren.

Survivors include two sons, C.E. of Cone and Joe of Amarillo; two daughters, Mrs. Juanita Brownlow of Amarillo and Mrs. Laverne Pierce of Baird; a brother, George Field of Ontario, California; 10 grandchildren and seven great-grandchildren.

Survivors include two sons, C.E. of Cone and Joe of Amarillo; two daughters, Mrs. Juanita Brownlow of Amarillo and Mrs. Laverne Pierce of Baird; a brother, George Field of Ontario, California; 10 grandchildren and seven great-grandchildren.

Senior Citizens Menu

August 17-21
Monday: Beef stew with vegetable cabbage, green pepper salad, roll, butter, cherry cobbler, milk, tea or coffee.
Tuesday: Swiss steak, black eyed peas, sliced tomatoes, cornbread, butter, rice pudding, milk, tea or coffee.
Wednesday: Ham cubes, with pinto beans, tomato, carrots, lettuce salad and dressing, cornbread, butter, pineapple, upside down cake, milk, tea or coffee.
Thursday: Lasagna with Mozarella cheese, buttered green beans, tossed salad with dressing, roll, butter, apple cobbler, milk, tea or coffee.

Friday: Salmon cakes, tartar sauce, catsup, scalloped potatoes, peas and carrots, roll, butter, stewed prunes, milk, tea or coffee.

BY MRS. LYLE CROSS
The 20th will be our regular luncheon day. Bring a dish and enjoy the day visiting.

Francis Mitchell will be with us Friday evening at 3 p.m. to show a film on "Alaska."
Don't forget.

ADALIA SANCHEZ

Graveside services for Adalia Sanchez, infant daughter of Mr. and Mrs. Juan Sanchez, were at 3 p.m. Wednesday, August 5, in Floydada Cemetery with the Rev. Eloy Felan Jr. officiating.

Burial was under direction of Moore-Rose Funeral Home of Floydada.
She died at 11:33 a.m. Tuesday in Lubbock General Hospital after an illness.

Survivors in addition to her parents include her grandparents.

Services for Bessie Mae Postelle, 75, of Floydada were at 2 p.m. Saturday.

OLLIE DALVA MILLICAN

Services for Ollie Dalva Millican, 85, of Floydada were at 11 a.m. yesterday in Calvary Baptist Church, Floydada, with the Rev. Hol-

lis Payne, pastor, officiating. Burial was in Cone Cemetery in Cone under direction of Moore-Rose Funeral Home.

Mrs. Millican died at 10 p.m. Monday in Bivens Nursing Home in Amarillo after a long illness.

The Callahan County native moved to Floydada in 1917 from Robert Lee. Her husband, Robert Porter Millican, died in 1940.

So says the VA...
If and only if you are a qualified veteran, you can get a loan for the purchase of a home, mobile home or condominium.
YEAH, BUT THE VA WILL GUARANTEE A QUALIFIED VETERAN'S LOAN FOR THE PURCHASE OF A HOME, MOBILE HOME OR CONDOMINIUM.

REMEMBER your loved ones with a living memorial to the Caprock Hospital Auxiliary Memorial Fund.
Mrs. Ben Whitaker, Treasurer.

DISH OF THE WEEK
Dessert Dish
69¢

Shurfine Fruit Cocktail 16 oz 69¢
Shurfine White Or Golden Hominy 3 1/2 15 oz
Shurfine Early June Peas 2/89 17 oz Can

Shurfine Mustard 16 oz
Shurfine Pepsi 6 Pack 32 oz \$1.79

Delsey Bath Tissue 89¢ 4 Roll

Hi Dri Paper Towels 2/99¢ 1 Roll

Shurfine Peeled Whole Tomatoes 2/89¢ 16 oz Can

PIGGLY WIGGLY

309 South Wall
Open Daily 8:00 a.m. to 9:00 p.m. Sunday 9:00 a.m. to 7:00 p.m.

Treasure Chest of Coupon Savings!

"Coupon Food Savings You Can Bank On!"

Beautiful, Fine Porcelain China
This Week's Feature:
69¢ each

<p>SAVE 50¢</p> <p>1 gal. Dairy Maid Milk \$2.29</p> <p>With an additional minimum purchase of \$7.50, excluding cigarettes and other Piggly Wiggly (or Shop Rite) coupon items. Limit one per coupon, one coupon per customer. Thereafter \$1.04 each. Redeemable thru Sunday, August 19, 1981.</p>	<p>SAVE \$1.20</p> <p>50 ct Tylenol \$2.49</p> <p>With an additional minimum purchase of \$7.50, excluding cigarettes and other Piggly Wiggly (or Shop Rite) coupon items. Limit one per coupon, one coupon per customer. Thereafter \$1.29 each. Redeemable thru Sunday, August 19, 1981.</p>
<p>SAVE 14¢</p> <p>Large Eggs 75¢</p> <p>With an additional minimum purchase of \$7.50, excluding cigarettes and other Piggly Wiggly (or Shop Rite) coupon items. Limit one per coupon, one coupon per customer. Thereafter \$0.89 each. Redeemable thru Sunday, August 19, 1981.</p>	<p>SAVE 90¢</p> <p>1 lb Oscar Mayer Bacon \$1.99</p> <p>With an additional minimum purchase of \$7.50, excluding cigarettes and other Piggly Wiggly (or Shop Rite) coupon items. Limit one per coupon, one coupon per customer. Thereafter \$1.14 each. Redeemable thru Sunday, August 19, 1981.</p>
<p>SAVE 25¢</p> <p>Minute Maid Frozen Orange Juice 16 oz. \$1.39</p> <p>With an additional minimum purchase of \$7.50, excluding cigarettes and other Piggly Wiggly (or Shop Rite) coupon items. Limit one per coupon, one coupon per customer. Thereafter \$1.93 each. Redeemable thru Sunday, August 19, 1981.</p>	<p>SAVE 30¢</p> <p>California Ice Berg Lettuce 59¢ ea.</p> <p>With an additional minimum purchase of \$7.50, excluding cigarettes and other Piggly Wiggly (or Shop Rite) coupon items. Limit one per coupon, one coupon per customer. Thereafter \$2.39 each. Redeemable thru Sunday, August 19, 1981.</p>

LIBRARY NEWS

Bighorn. 11 min. Color. 1971. Contemporary/McGraw-Hill Films. E1-A

A documentary about the Rocky Mountain Bighorn sheep, who live among the rocks and snow in the highest terrain of Banff and Jasper National Parks, still untouched by man. The camera records the bighorn's adventures with highlights of gamboling new-born lambs and of slow motion footage with two rams locked in combat.

Bird Brain: The Myster of Bird Navigation. 27 min. Color. 1976. Time-Life Multimedia. SH-A

Shows how birds navigate, how they set and hold an appropriate course by several different means. Informative.

Chicks and Chickens. 19 min. Color. 1970. Films, Inc. Pre-E1

This is a completely natural story of life on a chicken farm. In the film, a hen incubates a clutch of eggs and hatches a brood of chicks. She guards her babies and shows them how to find food. Constant activity is everywhere—feeding, quarrelling, pecking.

Consumer Complaints: The Right Way. 11 min. Color. 1976. Higgins. JH-A

How to make the best of sales slips, warranties, telephone calls and letters in filing consumer complaints is carefully but humorously presented.

A Crack In The Pavement. 8 min. Color. 1971. FilmFair. Pre-E1

An animated film about a little boy who becomes aware of living things and their beauty around his city home. Based on book of the same title by Ruth Howell.

Crash, Bang, Boom. 10 min. Color. Xerox Films. E1-JH

A film about musical motivation that encourages children in the use of percussion instruments.

Goldrush Country. 18 min. Color. 1974. Paramount Communications. JH-A

Shows the truth and consequences of the gold found at Sutter's Mill. Narrated by Hugh O'Brien.

Johnny Lingo. 25 min. Color. 1969. Brigham Young University. E1-A

According to island custom, Johnny Lingo bargains for a bride considered by her father to be of little value. Johnny pays an unprecedented amount of cows for the girl he loves. A short period of his tender treatment and respect brings out the true beauty of his bride. Filmed in Hawaii.

Larry Mahan. 22 min. Color. 1972. Paramount-Oxford. JH-A

A view into the rigors and triumphs of the rodeo circuit through a day in the life of All-Around Champion, Texan Larry Mahan.

Oil Well. 21 min. Color. 1976. Shell Film Library. JH-A

Provides an animated explanation of the principles of drilling an oil well. Also shows how a pattern of additional wells is used to appraise an oil field and bring it into production.

The Ride. 7 min. Color. 1968. National Film Board of Canada. E1-A

Presents a slapstick comedy in which a portly tycoon takes a wild ride in his Rolls Royce, which becomes a runaway toboggan on a snowy slope. Fun for all ages.

Romeo and Juliet. 45 min. Color. 1977. Paramount-Oxford Films. JH-A

Brings Shakespeare's *Romeo and Juliet* to life in a modern interpretation of the tale of history's most famous star-crossed lovers. Film extract from the original feature-length version.

The Snake: Villain or Victim? 24 min. Color. 1976. Encyclopedia Britannica. E1-A

Explores snake behavior and man's attitude toward and knowledge of snakes. Attempts to dispel myths and inform public about scientific research concerning snakes.

Thumbelina. 11 min. Color. No date. Coronet Instructional Media. Pre-E1

Tiny Thumbelina escapes from the ugly toad and finds refuge with a good-natured field mouse. But when he arranges for Thumbelina to marry the mole, she escapes on the back of a swallow that she nurses to health.

To Climb A Mountain. 15 min. Color. 1975. BFA Educational Media. E1-A

Blind young men and women climb a mountain, and talk about the personal challenge of the climb and of blindness itself.

Why Me? 6 min. Color. 1977. Encyclopedia Britannica. Pre-E1

Animated film about an orthopedically handicapped child. A discussion starter. From the Like You, Like Me Series.

Your Diet: Salt and Hypertension. 13 min. Color. 1978. Journal Films. SH-A

A serious film about a serious subject: hypertension. Explains what it is, how it affects the heart, and how to control it.

Zoo. 21 min. Color. 1977. Paramount. E1-JH

Documents the National Zoo in Washington, D.C. to answer some of the most commonly asked questions about how a zoo operates. Emphasizes staff teamwork for the benefit of all zoo animals.

process your registration so that GI Bill checks can be started your way promptly.

*Avoid dropping classes after registration.

*File for your GI Bill benefits as early as possible.

*If you have to interrupt your education, notify VA promptly and advise the date you expect to return to classes.

*If you change addresses, notify VA promptly. Of course, you'll want to notify the school and the post office, also.

*Submit transcripts to the college admissions and records office immediately after application is made. This will speed up the school's certification to the Veterans Administration.

*If you have any questions about the GI Bill or eligibility for it, contact the nearest VA regional office, veterans county service officer, or a

Tips for veterans on school

BY D.G. AYRES

If you're a veteran planning to enroll in or return to school this fall under the GI Bill, the Veterans Administration has a useful check list to help keep those VA education benefits coming regularly:

*Double check your choice of courses to be certain they will count toward your education objective.

*Register early. VA and your school need time to

process your registration so that GI Bill checks can be started your way promptly.

*Avoid dropping classes after registration.

*File for your GI Bill benefits as early as possible.

*If you have to interrupt your education, notify VA promptly and advise the date you expect to return to classes.

*If you change addresses, notify VA promptly. Of course, you'll want to notify

the school and the post office, also.

*Submit transcripts to the college admissions and records office immediately after application is made. This will speed up the school's certification to the Veterans Administration.

*If you have any questions about the GI Bill or eligibility for it, contact the nearest VA regional office, veterans county service officer, or a

PUBLIC NOTICE

LEGAL
Lockney Independent School District will conduct a public hearing on the 1981-82 school budget during its regular scheduled meeting, Tuesday August 18 beginning at 9:00 a.m. at 6th and Willow Streets. The public is invited to attend.
W.H. Hallmark, Superintendent
L8-20c

NOTICE
Energas Company, a division of Pioneer Corporation, hereby gives notice of its intent to implement new rates for domestic and commercial type, small industrial and large air conditioning/electric generating customer classes (reading in the unincorporated areas (municipalities) of the West Texas System. It is anticipated that the new rates will result in a 1.6% increase in Energas' gross revenues, which increase is not a "major change" as defined in Section 43(b) of Article 1446c, V.A.T.C.S. A Statement of Intent to change said rates was filed with the Railroad Commission of Texas on or about August 7, 1981, and is available for inspection at the Company's Amarillo office, 301 S. Taylor Street.

The proposed increase will not become effective until or except to the extent that the same rates are approved for service within the municipalities on the West Texas System.

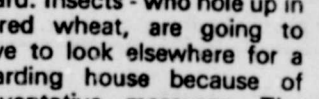
UNINCORPORATED AREAS (SERVICES):

OF THE FOLLOWING CITIES AND TOWNS ARE AFFECTED:

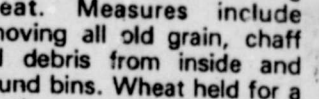
- Abilene
- Amherst
- Anton
- Big Spring
- Bovina
- Brownfield
- Canyon
- Coahoma
- Crosbyton
- Dimmitt
- Earl
- Edmonson
- Floydade
- Forsan
- Fritch
- Hale Center
- Happy
- Hart
- Hereford
- Idalou
- Kress
- Lake Ransom
- Lake Tanglewood
- Levelland
- Littlefield
- Lockney
- Lubbock
- Meadow
- Midland
- Mulhouse
- Nazareth
- New Deal
- New Home
- O'Donnell
- Olton
- Pampa
- Parham
- Parsons
- Perkinsburg
- Plainview
- Post
- Quitova
- Ralls
- Rossville
- Seagraves
- Seminole
- Shalwater
- Silverton
- Tule
- Turkey
- Vega
- Wellman
- Wolfforth



Farmers are taking steps to stop providing free room and board. Insects - who hole up in stored wheat, are going to have to look elsewhere for a boarding house because of preventative measures. The measure will be used by farmers and storers since many growers are holding wheat. Measures include removing all old grain, chaff and debris from inside and around bins. Wheat held for a month or more will be treated with malathion. To control meal moths, many will hang a dichlorvos (DDVP) plastic resin strip per every thousand cubic feet of over-space in the top of each bin. These strips will be replaced every six to eight weeks until the grain mass cools down to about 50-degrees. For infestation which has already occurred, the dichlorvos strips will be used and, in addition, bacillus thuringiensis is recommended, raked into the grain surface to control larvae. Finally, grain in wooden bins will be sealed off with covers of polyethylene plastic sheeting.



Floyd County Implement
Floydada



Avoid buying sweet potatoes with decayed portions or injuries to skin. Even if cut away, the remainder of the potato may have a bad taste.

NOTICE
Energas Company, a division of Pioneer Corporation, hereby gives notice of its intent to implement new rates for domestic and commercial type, small industrial and large air conditioning/electric generating customer classes (reading in the unincorporated areas (municipalities) of the West Texas System. It is anticipated that the new rates will result in a 1.6% increase in Energas' gross revenues, which increase is not a "major change" as defined in Section 43(b) of Article 1446c, V.A.T.C.S. A Statement of Intent to change said rates was filed with each of the cities and towns listed below on or about July 31, 1981, and is available for inspection at the Company's Amarillo office, 301 S. Taylor Street.

CITIES AND TOWNS AFFECTED:

- Abilene
- Amherst
- Anton
- Big Spring
- Bovina
- Brownfield
- Canyon
- Coahoma
- Crosbyton
- Dimmitt
- Earl
- Edmonson
- Floydade
- Forsan
- Fritch
- Hale Center
- Happy
- Hart
- Hereford
- Idalou
- Kress
- Lake Ransom
- Lake Tanglewood
- Levelland
- Littlefield
- Lockney
- Lubbock
- Meadow
- Midland
- Mulhouse
- Nazareth
- New Deal
- New Home
- O'Donnell
- Olton
- Pampa
- Parham
- Parsons
- Perkinsburg
- Plainview
- Post
- Quitova
- Ralls
- Rossville
- Seagraves
- Seminole
- Shalwater
- Silverton
- Tule
- Turkey
- Vega
- Wellman
- Wolfforth

Lockney Independent School District is accepting bids on all school insurance. Bid specifications are available at superintendent office, 416 W. Willow. Bids due 4:00 P.M. August 27, 1981. Bids will be opened August 27, 1981 at 8:00 P.M. Box 428, Lockney, Texas 79241, phone 652-2104. Contact W.H. Hallmark. 8-13c

FINAL NOTICE Construction School 3-Day Seminar
Learn How To Build The Room You Would Like To Build To Your Home Or Learn How To Build A New Home
Basic Education In Residential Construction
August 24, 25 & 26
Filmed Construction Sequence - Scheduling Subcontractors
No Experience Necessary - For Everyone - Continuing Education
Cost \$195⁰⁰
Minimum Advanced Deposit \$35⁰⁰
Accompanying Spouse \$35⁰⁰
Write To:
American Institute Of Construction
P.O. Box 65151
Lubbock, TX 79464
Or Call 806/983-3225

HOSPITAL NOTES

CAPROCK HOSPITAL August 1-10

Ora Gilliland, Floydada, adm. 7-23, dis. 8-9, Hong.
Margaret Lovell, Floydada, adm. 7-24, dis. 8-1, Havasi.

Walter Collins, Floydada, adm. 7-25, exp. 8-2, Hong.
Eunice Salazar, Floydada, adm. 7-27, dis. 8-7, Jordan.

Mary Faulkenberry, Floydada, adm. 7-27, dis. 8-8, Hong.
Mary Lou Salas, Floydada, adm. 7-29, dis. 8-5, Hong.

Baby Girl Salas "Christina", Floydada, born, 7-29, dis. 8-5, Hong.
William Yandell, Floydada, adm. 7-30, continues care, Jordan.

Dinah Del Toro, Floydada, adm. 7-31, dis. 8-2, Hong.
Baby Girl Del Toro "Maria", Floydada, born 7-31, dis. 8-2, Hong.

Carmelo Angeles, Matorador, adm. 7-31, dis. 8-5, Hong.
Ada Hinton, Floydada, adm. 8-1, dis. 8-8, Havasi.

John A. Kincheloe, Floydada, adm. 8-3, continues care, Havasi.
Irma Briones, Floydada,

adm. 8-3, continues care, Hong.
Annabell Hernandez, Lockney, adm. 8-3, dis. 8-8, Hong.

Nora McKnight, Floydada, adm. 8-3, dis. 8-10, Hong.
Antonio C. Polendo, Quitaque, adm. 8-4, continues care, Havasi.

Alice Gonzales, Lorenzo, adm. 8-5, dis. 8-8, Hong.
Beatrice Zuniga, Ralls, adm. 8-5, dis. 8-6, Hong.

Claude Fawver, Floydada, adm. 8-6, continues care, Hong.
Holly Sanchez, Floydada, adm. 8-7, continues care, Havasi.

Alma Sifuentes, Crosbyton, adm. 8-7, dis. 8-9, Hong.
Jimmy Moody, Oklahoma, adm. 8-8, dis. 8-10, Jordan.

Eufrazio Quillmaco, Floydada, adm. 8-10, continues care, Hong.
Gladys Simpson, Floydada, adm. 8-10, continues care, Jordan.

Jerry Bradford, Floydada, adm. 8-5, dis. 8-6, Hong.
Steven Allredge, Plains, adm. 8-10, continues care, Havasi.



Take a personal accountant with you when packing off to college

1. Pay your bills in a snap
2. Always have neat records
3. Keep all receipts in order

OPEN A CHECKING ACCOUNT WITH THE FRIENDLY FOLKS AT



Accounts Insured to \$100,000 Member F.D.I.C.

SHOP COMPARE

For Sale

Direct Mattress Co. renovated, for app. call City Trim Shop 2332, Floydada.

FOR SALE MENDU Saturday, 2.25 plate. Cafe, Downtown Flo.

FOR SALE: 10 joins of 1 inch galvanized cents per foot. Call

FOR SALE 360 feet used 1 1/2" and 2" gal. pipe. G.B. Johnston 652-3729

USED WASHING machines, \$75 each. Collins ave. 111 W. C. Floydada, Texas. 98

30 INCH GE electric 2 ovens, Automatic 983-3994

2-NEW LITTON microwaves at close-out Call 652-2435.

JULY SAVINGS man 20 in. mower, rear bagger. Was now \$167.00. Sealed, 983-2862.

2-NEW RCA V.C. plus \$25.00. Call 652-2435.

EARLY AMERICA form rocker and lamb table. Two set mattress and match springs. 652-2379.

1-NEW WHIRLPOOL Cost plus \$25.00 652-2435.

FOR PICTURE J.B. Avenue. B. Gregory.

2-NEW 18,000 BTU conditioners. \$500.00 652-2435.

SEVERAL NEW 19 color console TVs plus \$50.00. Call 652-2435.

SALE: 115 W. room, fully car. appliances. appointment 8-13p

2-NEW 18,000 BTU conditioners. \$500.00 652-2435.

1978 CONE CUTT boat, 80 HP Merc. tilt and trim. Trol. tors and other ext. 3273.

FOR SALE: Harv portable dishwasher 983-3049.

2-USED COLOR with new picture Solid State. Call 652-2435.

LYMAN SPAR T press with dies. 983-2948.

FOR SALE: Pot portable cooler. 2070.

1-NEW 17 cu. ft. refrigerator. Price Call 652-2435.

Floydada 80' office S. Main, F. 983-3498 FSD Tax Asses and Business M.

60"x24" build- partition and anal next door to Call 983-3737.

ROOM apart- E. Spruce. 652-8-13c

Day Care center welcome. 102 983-5080.

PR

SHOP / COMPARE / WANT ADS ARE YOUR BEST BUY!

For Sale **Garage Sale** **Fruits & Vegetables** **Farm Services** **Business Services** **Motor Home** **Automotive**

"WE SELL SLEEP"
Direct Mattress Co. New or renovated, for appointment call City Trim Shop, 983-2332, Floydada. tfc

FOR SALE MENUDO every Saturday, 2.25 plate, Azteca Cafe, Downtown Floydada. tfc

FOR SALE: 10 joints-21 feet of 1 inch galvanized pipe 75 cents per foot. Call 652-3637 tfc

FOR SALE 360 feet of good, used 1 1/2" and 2" galvanized pipe. G.B. Johnston Jr. 652-3729 L-TFN-c

USED WASHING machines, \$75 each, Collins Appliance, 111 W. California, Floydada, Texas. 983-5702. tfn

30 INCH GE electric range. 2 ovens. Automatic cleaning. 983-3994 tfn

2-NEW LITTON microwave ovens at close-out prices. Call 652-2435. L8-27c

JULY SAVINGS. Craftsman 20 in. mower, 3.5 with rear bagger. Was \$214.99, now \$167.00. Sears, Floydada. 983-2862. tfc

2-NEW RCA V.C.R.'s. Cost plus \$25.00. Call 652-2435. L8-27c

EARLY AMERICAN platform rocker and matching lamb table. Two sets double mattress and matching box springs. 652-2379. L8-13c

1-NEW WHIRLPOOL dryer. Cost plus \$25.00. Call 652-2435. L8-27c

FOR PICTURE FRAMES call 983-2636. B and M Gregory. tfc

SEVERAL NEW 1981 RCA color console TVs at cost plus \$50.00. Call 652-2435. L8-27c

FIBERGLASS CAMPER for 1/2 ton Ford pickup. \$450.00. Call 983-3737 or 652-3141. tfn

2-NEW 18,000 BTU air conditioners. \$500.00 each. Call 652-2435. L8-27c

1978 CONE CUTTER bass boat, 80 HP Mercury with tilt and trim. Trolling motors and other extras. 983-3273. L8-13c

FOR SALE: Harvest gold portable dishwasher. Call 983-3049. L8-13c

2-USED COLOR TVs. One with new picture tube. Both Solid State. Call 652-2435. L8-27c

LYMAN SPAR T reloading press with dies. Like new. 983-2948. L20p

FOR SALE: Portable evaporative cooler. \$50. 983-2070. L8-13p

1-NEW 17 cu. ft. Whirlpool refrigerator. Priced to sell. Call 652-2435. L8-27c

Card of Thanks
We wish to thank everyone who was so kind during the loss of our loved one. All the food, visits, calls, flowers and memorial gifts are greatly appreciated. A special thanks to the staff of the Nursing Home, Dr. Hong and the staff at the Caprock Hospital. May the Lord bless each of you.
Family of Walter Collins 8-13p

CUSTOM Application of Herbicides. Bill Wisdom 652-3541, John Wisdom 652-3544. Lfc

Portable disc rolling Lawson Farm Supply Inc., Floydada 983-3940 tfc

Check with us for LIQUID FERTILIZER ANHYDROUS HERBICIDES
Rigs available for application
LONE STAR CHEMICAL INC.
Office: 652-2761
Deanie Henderson: 652-3434 Lfc

POOL WELL SERVICE AND RADIATOR SHOP
Irrigation, domestic, and windmill service. 407 E. Houston, 983-5610 or 983-2285. tfc

Leak Repair
No job too small or large.
Pit Digging.
Juarez Backhoe Service 983-3393

Employment
Local firm has opening for 2 men.
Producers Cooperative Elevator
Floydada tfc

Town And Country Food Stores
is now hiring for the 10 a.m. to 6 p.m. shifts. Apply in person at 102 S. 2nd., Floydada, Tex.

Farm Machinery
BUCKS 292 irrigation engine. One year old. Call 983-3603. tfc

21 foot Bush Hog tandem, 21 foot Tye Hoeme, 6 row John Deere Disc bedder. 652-3144. L8-20c

Misc.
Fall Classes Decorative Acrylic with **Linda Mosher** Call 983-3334

ECONOMICAL STORAGE TRY BARKER'S Jewel Box-Mini Storage
and save your time and money. Ph 652-2642.
Barker Building Main and Locust Lockney, Texas

Script Printing & Office Supply *Commercial Printing *Office supplies & Furniture *Business Machines
108 S. Main Floydada 983-5131 tfc

Pets
FREE TO GOOD HOME. Eight week old 3/4 Chihuahua 1/4 Dashhund. 652-3716. L8-13c

Repair and Service
Lawn mowers, tillers, small pumps, air compressors.
Bill Van Cleave Bill's Small Engine Repair
904 E. Price, Floydada 983-3410

Carpet Need Cleaning?"
Let me do the work for you. Dry foam, 10 cents sq. foot. Also home and auto upholstery. Call Jack Moore 983-8038, after 5 p.m. tfc

INSURANCE AUTO TRUCK MOTORCYCLE MOTOR HOME HOME RENTER'S LIFE HEALTH
Cates & Dawson Insurance Agency
231 W. California Floydada Tx. 983-5322

76 Buick 2 dr. \$1850
76 Pontiac 4 dr. \$1850
73 Buick 2 dr. \$1250
73 Buick 4 dr. \$1250
73 Pontiac 4 dr. \$1250
73 Monte Carlo 2 dr. \$1250

W.B. Eakin Car Lot
Ralls Hwy. 983-3616

Auto Parts & Accessories
GEAR HEAD REPAIR. One day service. Pickup and delivery. 1/2 mile west of Muncy Elevator. Darden Machine. 652-3743. TFC

RADIATOR REPAIR: 1/2 mile west of Muncy Elevator. Darden Machine 652-3743. TFC

SEARS STEEL-BELTED
Radial 40,000 warranty. 175-13 was \$97.99. Now \$48.99. 185-14 was \$109.25 now \$57.99. In stock at Sears Floydada, TX 983-2862.

CUSTOM EXHAUST WORK
Bruce Williams
Specializing in Glass Packs and Turbo Mufflers At
DANS AUTO SERVICE
Lockney 652-7452

Insulation
Installed & Guaranteed Free Estimates 22 Years This Area

Marr Insulation
Lockney 652-3593

Auto Accidents DO Happen...
If one happens to you, be protected. Our car insurance offers coverage to meet your special needs—repairs to personal liability.
Baker Insurance Agency
127 W. California Ph. 983-3270

President Ronald Reagan's last movie was The Killers in 1964.

TURNER REAL ESTATE
983-2635 Farms/Ranches Floydada, Texas

DAN'S AUTO SERVICE
DAN TEUTON, Owner
Specializing in Automatic Transmission, Motor Tune Ups, Auto Air Conditioning.
General Repair
We Have A BRAKE LATHE to handle all passenger car brake drums. See us for complete brake service.
Phone 652-2462

Classified Rates
CLASSIFIED ADVERTISING RATES: 20 CENTS PER WORK FIRST INSERTION; 15 CENTS PER WORD EACH SUBSEQUENT INSERTION. MINIMUM CHARGE \$2.50 FIRST INSERTION. MINIMUM CHARGE \$1.50 SECOND INSERTION. CLASSIFIED DISPLAY RATE: \$1.68 PER COLUMN INCH. CARD OF THANKS: \$3.00.

983 3737
652 3318

Diamond Industrial Supply Co., Inc.
Phone Days 296-7418
Nights 296-1200 or 296-7828
1014 Broadway Plainview, Texas
Chain Sprockets V belts Sheave U joints Oil Seals O rings Wisconsin SKF BCA Timken Bower Cotton Stripper Brushes & Bats
"We Appreciate Your Business More"

Hollis R. Bond Real Estate
PHONE 983-2151
107 S. 5th FLOYDADA

J. P. WILLIAMS
Ph. 652-2326
WEED CONTROL ON LAWNS
INSECT CONTROL ON TREES AND SHRUBS
CONTROL OF **BINDWEED, RAGWEED, BLUEWEED & JOHNSON GRASS**
ON FARMS
C. A. LIC. NO. 22493 BUS. LIC. NO. 3106 L-TFC

STORAGE SPACE
BO VTS. FURNITURE. ANYTHING. ETC. BY THE MONTH OR SIX MONTH 10% DISCOUNT.
West Texas Mini Storage
CALL WILSON BOND 983-3573 OR 983-2151

FOR SALE
Floydada ISD has for sale a 50' by 80' office building located at 208 S. Main, Floydada Texas. Call 983-3498 for details.
FISD Tax Assessor/Collector **Tommy Cathey** and Business Manager

Remodel, Add-on or build a new home after attending our 3-day seminar "Basic Education In Residential Construction" Lubbock, Texas, August 24, 25, and 26. For reservations and cost call 806-983-3225. Continuing education for everyone - no experience needed. Classes are limited.

Can You Use Some Extra Money Let Us Help!!!!
WE BUY SCRAP IRON, OLD JUNKERS, AND FREE PICKUP
Call 983-5277

STORAGE VANS FOR SALE
26 - 27 - 28 Feet Long - 8 Feet Wide
250 Vans Available Immediately \$1000 to \$1500
Waterproof - Ratproof - Lockable
EASY TO MOVE - NO FOUNDATION NECESSARY
Perfect storage for farms, ranches
Store feed, tools, supplies & equipment
Or for home or recreational uses
Put it anywhere - Store anything
MOVING SERVICES AVAILABLE
OWENS SALVAGE CO., INC.
806/447-2581 Hwy. 83 So. Wellington, Tex. 79095

Do You Need?
Farm Machine Storage Buildings-- Livestock Shelters, Hay Barns, Horse Barns, Garages or Commercial Buildings at top Competitive Prices
Contact: **Jim Ritter,**
Morton Buildings, Box 1928
Plainview, Tex. 79072 806/293-4386

certified-bonded Locksmith
983-3834
PRO-LOCK SHOP
129 East Ollie Street Floydada
Don Probasco

Appendix A
Statement of Nondiscrimination
"Lighthouse Electric Cooperative has filed Federal Government a Compliance Assurance assures the Rural Electrification Administration will comply fully with all requirements of Title Civil Rights Act of 1964 and the Rules and Regulations of the Department of Agriculture issued thereunder and that no person in the United States on the ground of race, color, or national origin, be denied participation in, be denied the benefits of, or be subjected to discrimination in the conduct of and the operation of its facilities. Under this this organization is committed not to discriminate any person on the ground of race, color or national origin in its policies and practices relating to beneficiaries and participants including rates, and extension of service, use of any of its attendance at and participation in any of its beneficiaries and participants or the exercise of such beneficiaries and participants in the operations of this organization.
"Any person who believes himself, or any group of individuals, to be subjected by this organization to discrimination prohibited by Title VI of the Civil Rights Act of 1964, or the Rules and Regulations issued thereunder may, or a representative, file with the Secretary of Agriculture, Washington, D.C. 20250, or the Rural Electrification Administration, Washington, D.C. 20250, or the Federal Bureau of Investigation, Washington, D.C. 20535, a written complaint. Such complaint must be filed not later than 90 days after the date of the alleged discrimination, or by such later date as the Secretary of Agriculture or the Rural Electrification Administration extends the time for filing. Complaints will be kept confidential except as necessary to carry out the purposes of the Regulations."

FOR RENT
1 bedroom. Come by 108 N. Main. Call 652-2334. This is a 2 bedroom apartment in accordance with the US Department of Housing and Urban Development policy which discriminates on the basis of race, color, or national origin.
L-TFC

FOR RENT
60'x24' building partition and next door to the building. Call 983-3737.

FOR RENT
1 bedroom apartment. 301 E. Spruce. 652-2435. tfc

FOR RENT
1 bedroom. Call 983-3737.

FOR RENT
1 bedroom. Call 983-3737.

FOR RENT
1 bedroom. Call 983-3737.

FOR RENT
1 bedroom. Call 983-3737.

FOR RENT
1 bedroom. Call 983-3737.

FOR RENT
1 bedroom. Call 983-3737.

FOR RENT
1 bedroom. Call 983-3737.

FOR RENT
1 bedroom. Call 983-3737.

FOR RENT
1 bedroom. Call 983-3737.

FOR RENT
1 bedroom. Call 983-3737.

FOR RENT
1 bedroom. Call 983-3737.

FOR RENT
1 bedroom. Call 983-3737.

FOR RENT
1 bedroom. Call 983-3737.

FOR RENT
1 bedroom. Call 983-3737.

FOR RENT
1 bedroom. Call 983-3737.

FOR RENT
1 bedroom. Call 983-3737.

FOR RENT
1 bedroom. Call 983-3737.

ans on schooling
the school and the post office, also.
"Submit transcripts to the college admissions and records office immediately after application is made. This will speed up the school's certification to the Veterans Administration.
*If you have any questions about the GI Bill or eligibility for it, contact the nearest VA regional office, veterans county service officer, or a service officer at the national office.
Alton Abner completes
Alton N. Abner recently completed his Air Force Basic Training course. He is currently assigned to the 1st Texas Infantry at Ft. Bliss, El Paso, Texas. He is a member of the Texas National Guard.
The public is invited to attend.

FLYDADA INDEPENDENT SCHOOL DISTRICT
called Board meetings during August.
On August 24, 1981 beginning at 10:00 a.m. a meeting will be held for the sole purpose of the 1981-82 school tax rate.
On August 27, 1981 beginning at 11:30 a.m. a meeting will be held to amend the 1980-81 tax rate.
Both meetings will be held in the Administration Building located at 208 South Main Street, Floydada, Texas.
The public is invited to attend.

APPENDIX A
Statement of Nondiscrimination
"Lighthouse Electric Cooperative has filed Federal Government a Compliance Assurance assures the Rural Electrification Administration will comply fully with all requirements of Title Civil Rights Act of 1964 and the Rules and Regulations of the Department of Agriculture issued thereunder and that no person in the United States on the ground of race, color, or national origin, be denied participation in, be denied the benefits of, or be subjected to discrimination in the conduct of and the operation of its facilities. Under this this organization is committed not to discriminate any person on the ground of race, color or national origin in its policies and practices relating to beneficiaries and participants including rates, and extension of service, use of any of its attendance at and participation in any of its beneficiaries and participants or the exercise of such beneficiaries and participants in the operations of this organization.
"Any person who believes himself, or any group of individuals, to be subjected by this organization to discrimination prohibited by Title VI of the Civil Rights Act of 1964, or the Rules and Regulations issued thereunder may, or a representative, file with the Secretary of Agriculture, Washington, D.C. 20250, or the Rural Electrification Administration, Washington, D.C. 20250, or the Federal Bureau of Investigation, Washington, D.C. 20535, a written complaint. Such complaint must be filed not later than 90 days after the date of the alleged discrimination, or by such later date as the Secretary of Agriculture or the Rural Electrification Administration extends the time for filing. Complaints will be kept confidential except as necessary to carry out the purposes of the Regulations."

Construction Seminar
To Build The Room You Would Like To Add To Your Home Or Learn How To Build A New Home
Education In Residential Construction
August 24, 25 & 26
Construction Sequence - Scheduling Sub Contractors
Necessary- For Everyone - Continuing Education
Cost \$195
Minimum Advanced Deposit. \$35
Accompanying Spouse \$35
Write To:
Institute Of Construction
P.O. Box 65151
Lubbock, TX 79464
Or Call 806/983-3225

SHURFRESH BISCUITS
BUTTERMILK OR SWEETMILK
6 \$1.00
8 OZ. CANS

FOR YOUR CLOTHES
SHURFINE BLEACH
59¢
64 OZ. BTL.

SALTINE CRACKERS
59¢
16 OZ. BOX

BATHROOM TISSUE
ASSORTED DELICIOUS
89¢
4 ROLL PKG.

SUNSHINE ASSORTED
SUGAR WAFERS
99¢
12 OZ. PKG.

OPEN 24 HOURS
7 DAYS A WEEK
365 DAYS A YEAR

BACK TO SCHOOL SALE

WE ACCEPT FOOD STAMPS

COOKED FOOD SPECIAL
Chicken
2 pcs. / **89¢**

6 PACK REFRESHING
COCA-COLA
\$1.99 plus deposit
32 OZ. BTL.

SHURFINE DINNER
3 79¢
7 1/4 OZ. BOXES

ASSORTED
ALLSUP'S ICE CREAM
\$1.49
1/2 GAL. NO. CTR.

PRICES EFFECTIVE AUGUST 10-15, 1981

ASSORTED KLEENEX
59¢
200 CT. BOX

ASSORTED
SHURFINE PIZZA
99¢
12 OZ. PKG.

WIFTY SUBJECT NOTE
BOOKS 2 **89¢**
40 CT.

BLUE MEDIUM POINT BIC
PENS 9 CT. **89¢**
PKG.

AFFILIATED FILLER
PAPER 200 CT. **69¢**
PKG.

3 SUBJECT SPINAL NOTE
BOOK 200 CT. **\$1.49**
BOOK

FLEX-3 CARRY ALL NOTE
BOOK EA. **\$3.29**

AFFILIATED TYPING
PAPER 100 CT. **79¢**
PKG.

ELMER'S SCHOOL
GLUE 4 OZ. **49¢**
BTL.

BIG CHIEF
TABLETS 40 CT. **39¢**
TABLET

Shurfine 32oz.
Catsup **69¢**

ERASER MATE
PEN EA. **99¢**

GEN WARRIOR SUNNEG. \$7.00
GLASSES PAIR **\$4.99**

SHURFINE FRUIT
COCKTAIL 16 OZ. **69¢**
CAN

SHURFINE ST. MANZ.
OLIVES 10 OZ. **\$1.29**
JAR

NOT SHOT FLY & MOSQUITO
SPRAY 11 OZ. **\$1.89**
CAN

FROZEN
SHURFINE LEMONADE
4 89¢
8 OZ. CANS

SHURFINE
VEGETABLE OIL
\$1.49
38 OZ. BTL.

SHURFINE FROZEN ORANGE
JUICE 12 OZ. **79¢**
CAN

SHURFINE ST. MANZ.
OLIVES 10 OZ. **\$1.29**
JAR

NOT SHOT FLY & MOSQUITO
SPRAY 11 OZ. **\$1.89**
CAN

DELICIOUS
SHURFINE APPLESAUCE
2 89¢
18 OZ. CANS

ALL FABRIC
BIZ BLEACH
49¢
12 OZ. PKG.

PETER PAN PEANUT
BUTTER 16 OZ. **\$2.19**
JAR

HI-DRI
PAPER TOWELS
2 99¢
JUMBO ROLLS

ALLSUP'S
CONVENIENCE STORES

SHURFINE CUT
GREEN BEANS
3 \$1.00
16 OZ. CANS

There's One Near You

WE RESERVE THE RIGHT TO LIMIT

August 13, 1981 Page 1B
Nursing Home Happenings
Residents enjoy

DOROTHY NEFF
of the residents
Monday
The class was
by Chuck Shockley of
view. Chuck works with
M.R. of Plainview and Medi-
which furnishes every-
for each resident.
Those attending
will give two classes
month and the residents
ing forwards to the
Those attending
Williamson, Vera
Una Clark, Iva Simp-
Juanita Bailey, Clara
W.C. Cates, Sarah
and Jessie Freeman.
went to Plainview
uesday afternoon on the
We made several stops
returning home.
making the trip were
Lawrence, Mr. W.C.
Verna McSwain, Iva
Juanita Bailey and
Pricer.
want to thank Wayne
Collins for the
beautiful flower arrange-
flowers.
The residents enjoy
flowers.
who would like to
Lloyd Murry for the
Everyone had a
ice for lunch.
residents watched two
good movies Friday
"Dream of the
"Old Yel-
have enjoyed Old
for years and the
really enjoyed it.
McNight and
land are still in
hospital. I visited
Friday and they
improved.
Cates was top
bingo this week
our games. Iva Simp-
on three games. Vera
two games, and
amson, Clara Mc-
Emmit Lawrence
ame each.
gathered in the
morning for a
ppy session with
na of Plainview.
with M.H.M.R.
ough Medicare and
ide. Everyone had a

Center News
Center
BY MRS. J.E. GE

August 10, 1981
It is cooler to
enjoyed the Sun-
noon shower.
Mr. and Mrs. Ma-
penter arrived home
after spending sev-
in Dallas with r
While there Dale C
and wife of Irving s
week in Florida, a
ney keeping watch o
mother, Mrs. Sally
ter in the Lockney R
where she seems
improving.

Mr. and Mrs.
Chandler now of
visited Sunday at
with her grandmoth
J.E. Green. The C
moved to Lubbock I
where he will teach
Lubbock high school
plans to attend the
school.

Mr. and Mrs.
Johnson and son of
Oklahoma spent
night with the Hen-
wers. The Fred M
of Crosbyton had su-
the group and Gler-
son came Monday r

Mr. and Mrs. Ne-
of Colorado City spe-
night with her moth-
Ava Jackson, Tod-
Leo Frizzell, Mrs. Ed-
ren, also Mr. and M-
Cone of Wichita, Fa-
with Mrs. Jackson,
the group was in
attending the Jack-
union.

Mr. and Mrs. Ke-
son and Mr. and Mrs.
Denison of Lubbock
Mr. and Mrs. C.W.

CHURCH OF CHRIST
Jerry Klein, minister

Study 9:30
ing Worship 10:30
ing Worship 6:00
WEDNESDAY
Bible Class 9:30
Study 8:00

WYANS CHAPEL
FIRST CHURCH
Anderson.

Day School 10 a.m.
ing Worship 11 a.m.
ing Union 6 p.m.
ing Worship 7 p.m.
nesday Prayer Meeting 7 p.m.
day afternoon worship 2:00

FIRST UNITED
METHODIST CHURCH
Rev. Michael O'Connor
SUNDAY
Day School 9:45
ship Service 10:55
BY
ing Worship 6:00
Wed. Methodist Women 7:00
Tuesday of Month Cir-
Monday (2nd & 4th
day nights) Tuesday &
uesday mornings.

TRINITY LUTHERAN
CHURCH
Providence Community
Andrew Mild
Day School & Adult Bible
Worship Service 10:00

ASSEMBLY OF GOD
CHURCH
Day School 10:00
ing Worship 11:00
ing Worship 7:00
er Service Wed 7:00
Edie Kendall, Pastor

TEMPLO BAUTISTA
SALEM
Manuel Alanz, Pastor
Day School 9:45
ship Service 11:00
istian Training Time 5:00
ing Worship 6:00
nesday Prayer Meeting
Choir Practice 7:30

SAN JOSE
CATHOLIC CHURCH
Father Terry Burke
Day morning Mass 9:00
Day Evening Mass 8:00
nesday Evening 8 p.m.
Evening 8 p.m.
ions Saturday 9:30

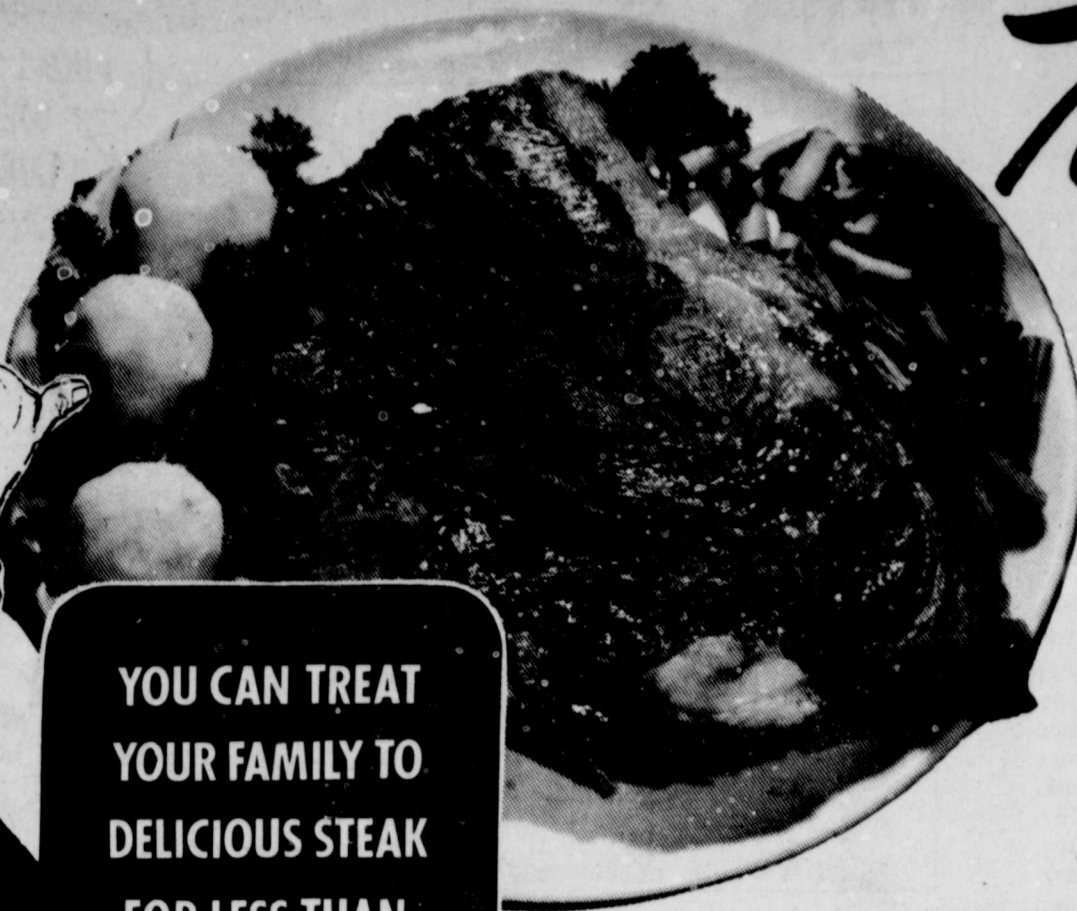
AIKEN BAPT
CHURCH
Richard Climer
Sunday School
Morning Worship
Training Union
Evening Worship
Prayer Service We-
Brotherhood, W.I.
Auxiliary Wednes-

This

Brown's
Byrd
Consumer



YOU CAN TREAT YOUR FAMILY TO DELICIOUS STEAK FOR LESS THAN THE COST OF EATING HAMBURGERS OUT!



13 oz Pet Evaporated Milk **2/99¢**

Farm Fresh Whole Cat Fish **\$2.69 lb**

USDA Arm Roast **\$1.89 lb**

12 oz Package Wilson Certified Franks **\$1.09**

Tonight!

Have a treat!
Have a steak!

USDA Boneless Sirloin Steak **\$2.89 lb**

12 oz Mr P's Pizza **99¢**

Country Style Spare Ribs **\$1.69 lb**

12 oz Package Wilson Certified Bologna **\$1.79**

From Our Deli Cooked Bar-B-Q Spare Ribs **\$2.79 lb**

Black Flag Roach Motel **\$1.29**

Gallon Size Sun Tea Jars **\$1.49**

12 oz All Fabric Bleach Biz **39¢**

BATH SOAP
TONE 2 PACK **99¢**

128 oz Gallon Size Liquid Detergent Era **\$6.69**



PALMOLIVE LIQUID
DISH DETERGENT 32 OZ. 20¢ OFF LABEL **\$1.49**

14 oz Alpo Beef And Cheese Dog Food **2/79¢**
Schilling Envelope Taco, Meat Loaf Or Sloppy Joe Mix **3/\$1.00**

Curbside Lawn And Leaf, Tall Kitchen Or Trash Bags **\$2.19**

LIGHT CRUST Flour PILLOW OR PAPER **\$4.99**
25 LB.

FOLGERS FLAKED Coffee **\$1.69**
13 OZ CAN
Coffee ALL GRINDS 1 LB CAN **\$2.09**

GAIN LAUNDRY Detergent **\$2.99**
84 OZ.

Rich & Ready ORANGE & FRUIT DRINK **89**
GAL

8 Quart Wyleis Tropical Punch, Wild Cherry, Crisp Apple Or Lemonade Mix **\$1.99**

10 oz Pillsbury Jel Ease **2/99¢**
40 oz Welch Grape Juice **\$1.39**
6 oz "No Stick Spray" Pam **\$1.49**

One Big Salad-Bowl of Savings

Here's where the world's finest fresh fruits and vegetables get together to save you money!

California Hass Avocados **6/\$1.00**

GRAPES CALIFORNIA THOMPSON SEEDLESS **69¢ LB.**

CORN COLORADO GOLDEN EARS **6/\$1.00**

PEACHES CALIFORNIA O'HENRY'S **59¢ LB.**

Oranges California 4 lb Bag **\$1.49**

NECTARINES CALIFORNIA'S FINEST **69¢ LB.**

Values In This Ad Effective Thru Wednesday August 19, 1981

buddy's
SUPERMARKET

6-32 oz Tab Or Coca Cola **\$1.69**
Plus Delivery

SCOTT Paper Towels **59¢**

12 oz Package Snack Crackers **\$1.99**

COOKIES **\$1.99**

MARINA BATH TISSUE WHITE ASSORTED **99¢**
4 ROLL PACK

STAMP

PRICE SPEC

With One Filled S&H Special Saver Book **79¢** without book

10 oz Folgers Instant Crystal Coffee **\$3.99**

11 oz Hot Shot Fly Spray **\$1.49**

Extra S...
With This Coupon
Good At...

S&H
With This Coupon
Thur...
Good At...

STAMP PRICE SPECIALS

Remember what a penny could buy in the good old days? Well, take a good look at our good old thirty Stamp-Price Specials! For just a few pennies... and a 1/4 Saver Book of Green Stamps (20 Big 10's)... it's happy days are here again... every day! Stamp-Price Specials are just one more way we help you save money through Green Stamps. Every time you shop. Hurry to for your Stamp-Price Specials Saver Books. The more you shop... the more you save. Promise. Prices on these four Stamp-Price Specials effective through 8-19-81

6-32 oz
Tab Or Coca Cola
\$1.69
Plus Deposit

SCOTT
Paper Towels
59¢

12 oz Package Frito
Snack Crackers Or
Cookies
\$1.99

MARINA BATHROOM
Tissue
WHITE ASSORTED
99¢
4 ROLL PACK

STAMP PRICE SPECIAL

Sunny Fresh Fram Grade A Medium
Eggs
19¢
With One Filled S&H Special Saver Book
79¢
without book

STAMP PRICE SPECIAL

White Swan Red Label 42 oz
Shortening
59¢
With One Filled S&H Special Saver Book
\$1.19
without book

STAMP PRICE SPECIAL

1 1/2 lb Soft N Lite
Bread
19¢
With One Filled S&H Special Saver Book
79¢
without book

STAMP PRICE SPECIAL

49 oz Giant Size Laundry Detergent
Tide
\$1.29
With One Filled S&H Special Saver Book
\$1.89
without book

ALPO
DOG FOOD
ALPO Beef Flavor 50 lb Bag
\$10.99

10 oz Folgers Instant Crystals
Coffee
\$3.99

4 lb Box Morton's "For Ice Cream" Rock
Salt
49¢



16 oz Bonus Package
Keebler Rich N Chips
Pecan Sandies
Or Iced Oatmeal Raisin

15 Count Chinnet Paper
Plates
\$1.19

11 oz Hot Shot Flying
Spray
\$1.49

Jumbo Roll Spillmate Paper
Towels
59¢
100 Count Luau
Napkins
59¢
Shower Size Sunshine Yellow Irish Spring
Soap
2/89¢



Cookies
\$1.09

16 oz Hungry Jack Mix For Instant
Potatoes
\$1.09

200
Extra S&H Green Stamps
With This Coupon And Purchase Of \$20 Or More
Good At Buddy's Expires 8-17-81

6 Pack
Popsicles Or Fudgesicles
69¢

1 lb Keebler Zesta
Saltines
69¢

Bowl of Savings
and vegetables get together to save you money

OS **6/\$1.00**

CALIFORNIA THOMPSON SEEDLESS... LB. **69¢**

GRADO GOLDEN EARS **6/\$1.00**

CALIFORNIA O'HENRY'S... LB. **59¢**

California 4 lb Bag **\$1.19**

CALIFORNIA'S FINEST... LB. **49¢**

as In This Ad Effective Thru Wednesday
August 19, 1981

buddy's
SUPERMARKET

DOUBLE
S&H Green Stamps
With This Coupon And Purchase Of \$20 Or More
Thursday, Friday Or Saturday
Good At Buddy's Expires 8-15-81

Double On Wednesday
With A \$5 Purchase Or More

buddy's
SUPERMARKET

Mon Thru Sat 8 am - 10 pm Sun 9 am 9 pm
Values In This Ad Effective Thru
August 19, 1981

Landscape & Gardening

BY KEN LANGLEY



"HOT WATHER TIPS FOR FALL GARDENS"

The Texas mid-summer heat can be threatening to early fall vegetable gardeners. However, for a successful fall garden, many vegetables must be planted during high temperature conditions in order to mature during late or early winter.

To avoid this problem, set out your own transplants. Finding a good healthy transplant can be done by purchasing your fall vegetable seeds and growing your own plant. Vegetable seed may be planted in flats, coffee cans, milk cartons, peat pots or peat pellets in areas that can protect them from the heat. However, to avoid transplanting, most gardeners prefer seeding vegetables directly in the garden.

The biggest problem with this is poor seed germination due to summer heat. This can be cured simply by modifying the garden seeding area. In Texas, bedding the soil prior to seeding or planting is important. After bedding the garden and marking off rows, take a hoe or stick and make seed furrows. Apply water directly in the seed furrow and allow it to soak in, then scatter the seed evenly along the furrow.

After the seed are sown, cover them with a material such as compost, potting soil, peat moss or vermiculite. These materials will provide a better environment to help the seed germinate and grow. Light colored material will help keep the seeding area cooler. It is very important during germination not to allow the soil around the young seedlings to dry out.

Once the plants have emerged, a protective shade or cover made of board, cardboard or shade cloth, on the west side of a row, can help protect the plants from the afternoon summer sun. When the plants reach one to two inches tall, they should be thinned to the proper stand.

A publication titled "Growing Your Own Vegetables" is available from the extension office. It is a USDA bulletin numbered 409. Come and ask for it.

Educational programs conducted by the Texas Agriculture Extension Service serve people of all ages regardless of socioeconomic level, race, color, religion or national origin.

HOMEOWNER'S FRUIT AND NUT SPRAY PRACTICES

Insects and diseases reduce the quality and quantity of fruits and nuts harvested each year by homeowners. A few carefully timed applications of fungicides and insecticides used in combination with certain cultural practices can reduce insects and diseases.

Cultural Practices—Healthy plants are less susceptible to insect and disease attack. Follow a well-balanced fertility program; select well-adapted varieties and practice proper pruning and other cultural practices conducive to optimum tree growth.

Proper clean-up around trees is extremely important in reducing plum curculio, hickory shuckworm, brown rot of peach and pecan scab.

Pesticide Safety—Before using any pesticide, carefully read its entire label. Note any special precautions, such as the need to wear special protective clothing when applying the chemical. Take necessary precautions in pesticide applications to avoid any unnecessary chemical contact.

Mix pesticides in a well-ventilated area or out of doors. Avoid chemical

contact with skin and do not breathe chemical vapors.

Apply recommended pesticide dosages. Using less pesticide than recommended may result in poor control, and using more than recommended may result in excessive residue or plant damage.

Store pesticides in a secure area away from pets and children. Prepare only the amount of pesticide for an application. Properly dispose of any unused diluted sprays or pesticide containers and never store pesticides in unmarked containers.

Spray Equipment—A number of sprayers on the market satisfactorily apply insecticides and fungicides to plants.

Pressure-type sprayers range in size from 1 to 10 gallons. Because of cost and handling ease, most homeowners prefer 2½ to 3-gallon sizes. Hose-on sprayers are least expensive but require a high volume of water, moderate pressure and a convenient water outlet.

Once a sprayer has been used, it becomes a used pesticide container and requires proper handling and storage. Proper cleaning will prolong its life. Applying insecticides and fungicides with a sprayer previously used to apply herbicides may cause plant damage.

The information given herein is for education purposes only. Reference to commercial products or trade names is made with the understanding that no discrimination is intended and no endorsement by the Cooperative Extension Service is implied.

Around The County

By Jett Major
FLOYD COUNTY EXTENSION AGENT



"PIX" LOOKS PROMISING IN COTTON

In a wet crop year such as 1981 has been up to now, cotton often makes a lot of vegetative growth and not much else. But use of a growth regulator can provide some relief of that problem.

"Pix, a growth regulator developed several years ago, holds a lot of promise for cotton, particularly in a wet year," points out Dr. Bob Metzger, cotton specialist with the Texas Agricultural Extension Service, Texas A&M University System.

"When applied as the first few white blooms appear, Pix reduces plant height, increases lateral branching, and makes for a more uniform cotton crop," explains the specialist.

This growth regulator has been used in studies involving both picker and stripper variety cottons throughout Texas, notes Metzger. Lint yields were equal or higher than untreated plots when adequate moisture was available during the early bloom period. However, Metzger cautions that using the product when cotton is under moisture

stress can reduce yields.

In addition to having the potential for improving yields, Pix creates a more uniform crop that enables more effective defoliation as farmers get ready to harvest. Furthermore, harvesting efficiency is increased due to the crop's uniformity, says the specialist.

"Field demonstrations and studies this year with Pix should provide a wealth of information because of the kind of weather conditions we've had," notes Metzger. "We will be able to get some good comparisons between treated and non-treated fields, and this information will help us develop better guidelines for using the product in the future."

According to Floyd County Extension Agent Jett Major, four Pix field demonstrations have been set up in Floyd County this year. It is too late to apply Pix in most field in Floyd County this year, but those interested in learning more about this cotton growth regulator can call the County Extension Office at 983-2806.

Screwworm watch continues for Texas

Wet weather during the spring and early summer of 1981 has enhanced the screwworm problem in northern Mexico, reports Ken Langley, county agent with the Texas Agricultural Extension Service, Texas A&M University System.

Screwworm program officials in Mexico have noted an incidence of positive screwworm cases in the northern Mexican states of Tamaulipas, Nuevo Leon, Coahuila, Chihuahua and Durango. A total of 20 positive worm cases have been identified approximately 35 miles south of the Texas-Mexico border.

"The adult screwworm fly is a very strong flier," says Dr. Cliff Hoelscher, Extension entomologist in College Station. "Research shows that the adult fly can travel distances greater than 200 miles," reports Hoelscher. "Nearness of the Mexican infestations poses a real threat to Texas livestock producers and pet owners."

Early detection of possible new screwworm infestations is the first line of defense against this flesh-eating insect pest.

County agent Langley says "We have

the technology to eradicate any new infestations, but we must be able to detect the pest before populations spread. Livestock producers and all pet owners are urged to send all larvae samples to the Mission USDA laboratory for identification.

"We appreciate the strong support of Texas producers who have increased their surveillance for this pest during 1981." The Mission Screwworm Lab has reported that 30 percent more samples have been submitted for identification this year than for the corresponding period of 1980.

Collection containers are available from offices of county Extension agents. The Extension Office is located on the Courthouse Square in Floydada.

No screwworm cases have been identified in Texas since May 22. Your help is urgently needed to keep Texas free of screwworms, Langley adds.

Educational programs conducted by the Texas Agricultural Extension Service serve people of all ages regardless of socioeconomic level, race, color, sex, religion, or national origin.

Farm News

Field day to be held by NPRRI

Growers having to make the most of a limited irrigation water supply will be interested in the 1981 Annual Field Day at the North Plains Research Field near Etter on August 19. Cecil Regier, manager of the Research Field says

high and low pressure sprinkler systems will be compared, improved furrow irrigation and furrow diking will be shown, and the best corn, sorghum and cotton varieties and hybrids will be on display.

According to Dr. G.B. Thompson, Research Director from the Texas A&M Center in Amarillo, the event will start at 1:30 with a welcome from Mr. Joe Cox, chairman of the North Plains Research Field Steering Committee. This will be followed by Dr. Robert Merrifield, Associate Director who will describe expanded research in the next two years by the Texas Agricultural Experiment Station, J.W.

"Buck" Buckner, Director of the Texas Agricultural Experiment Station, will discuss wheat and barley research. Dr. Kenneth R. Peterson, Research Director, will discuss sorghum research. Dr. Robert Merrifield, Associate Director, will discuss cotton research.

During the field day, the Campus at the North Plains Research Field, 15000 Highway 101, from Bushland to the North Plains Research Field, will be open to the public. In two years of water research, the system will be shown by Regier, Scientist.

For the first time, varieties were planted in the field. Dr. Jerry Plant Breeder from the North Plains Research Field, Tommy Moore, will discuss the potential of the system.

In a separate program, Tom Merrett, Extension Specialist, Texas Agricultural Experiment Station, will discuss the low and high pressure systems being tested. Present research results comparing the age and no-irrigation under the two systems will be presented.

"We are planning a field day since the system has been in operation for a year, believe growers will find our research interesting."

Applicators do not have to be retrained or attend meetings, and there is no fee involved, Brown continued. Even new applicators who have recently received their pink certificates need to fill out the application. The new certificates are blue and will be dated.

"If an applicator charges a fee and sprays for the public, he needs to get a commercial or non-commercial license," Brown said. "Certificates are issued to individuals, not to a farm, ranch or nursery. The certificates are also valid in New Mexico, Arkansas, Louisiana, Colorado and Nebraska."

Questions on these and/or other areas should be directed to the Texas Department of Agriculture, attention Charlie Rogers, P.O. Box 12847, Austin, Texas 78751 or any of the twelve TDA district offices.

CCC offers sorghum for sale

Farmers and other interested persons will be eligible to purchase Sorghum from the Commodity Credit Corporation starting July 31, 2:30 p.m. EDT.

Jack Stansell, Chairperson of the Agricultural Stabilization and Conservation Committee, said the CCC will offer sorghum for unrestricted use sale at market prices, but not less than the formula price which is 115 percent of the county loan rate for sorghum where stored plus 97 cents per hundredweight carrying charges.

"The minimum quantity that will be considered for acceptance is 560 hundredweight," Stansell said. According to Stansell, offers will be received and sales will be made on a first come, first serve basis.

Interested persons should contact the county ASCS office as soon as possible for further details. The office is located at 211 E. Missouri Street, Floydada. The telephone number is 806-983-3763.

Research on potential new money crops, as well as on cotton, and scientific developments to help High Plains farmers cope with weeds, insects and weather will be demonstrated September 8 at the 72nd annual field day of the Texas Agricultural Experiment Station (TAES) at Lubbock and Halfway.

The Texas A&M University Agricultural Research and Extension Center just north of Lubbock International Airport is the host this year, said Dr. Bill Ott, resident director of the station. The annual program alternates between the facilities here and at Halfway, in cooperation with the High Plains Research Foundation.

Five major displays are planned on the tours of the research plots and facilities of the center on FM 1294 at 1-27 (Amarillo Hwy.). Dr. Tom Archer, research entomologist at the center and field day chairman, said they will illustrate research being conducted on

grapes, cotton, ways of combatting drought conditions, weed control and bollworm control.

Also featured on the tour will be tests being conducted at the center on crop varieties, soil fertility and insect control; stations where research scientists and Extension specialists can answer questions about irrigation and fertilization, and a display of equipment and machinery.

Tours will begin at 1:00 p.m. and end at 5:00 p.m.

The field day is a cooperative presentation of TAES, the High Plains Research Foundation, the Texas Agricultural Extension Service and the Agricultural Research Service of the U.S. Department of Agriculture.

Professional staffs of these participating agencies will be on hand to answer questions and discuss problems with agricultural producers, home owners and gardeners, Archer said.

Lubbock Experiment Station plans field day September 8

Research on potential new money crops, as well as on cotton, and scientific developments to help High Plains farmers cope with weeds, insects and weather will be demonstrated September 8 at the 72nd annual field day of the Texas Agricultural Experiment Station (TAES) at Lubbock and Halfway.

The Texas A&M University Agricultural Research and Extension Center just north of Lubbock International Airport is the host this year, said Dr. Bill Ott, resident director of the station. The annual program alternates between the facilities here and at Halfway, in cooperation with the High Plains Research Foundation.

Five major displays are planned on the tours of the research plots and facilities of the center on FM 1294 at 1-27 (Amarillo Hwy.). Dr. Tom Archer, research entomologist at the center and field day chairman, said they will illustrate research being conducted on

grapes, cotton, ways of combatting drought conditions, weed control and bollworm control.

Also featured on the tour will be tests being conducted at the center on crop varieties, soil fertility and insect control; stations where research scientists and Extension specialists can answer questions about irrigation and fertilization, and a display of equipment and machinery.

Tours will begin at 1:00 p.m. and end at 5:00 p.m.

The field day is a cooperative presentation of TAES, the High Plains Research Foundation, the Texas Agricultural Extension Service and the Agricultural Research Service of the U.S. Department of Agriculture.

Professional staffs of these participating agencies will be on hand to answer questions and discuss problems with agricultural producers, home owners and gardeners, Archer said.

FEDERAL LAND BANK ASSOC. OF FLOYDADA
Floydada 983-2480

RUSSELL'S EQUIPMENT & SUPPLY
Russell's
Floydada 983-3751

FLOYDADA COOPERATIVE GINS INC.
COOP.
Floydada 983-2884

This space available
call 983-3737

ANSLEY & SON
BUSH HOG HUSKY
Lockney 652-3361

MARTIN & COMPANY
Floydada 983-3713

SUN-VUE FERTILIZER
SUN-VUE
Lockney 652-3362

RUCKER'S O.K. TIRE STORE
Floydada 983-3370

FLOYD COUNTY IMPLEMENT
Floydada 983-3732

CASE POWER & EQUIPMENT
case
Floydada 983-2836

FIRST NATIONAL BANK OF FLOYDADA
Floydada 983-3717

PRODUCTION CREDIT ASSOC.
Floydada 983-2454

Number 34

ard app tax inc

Board of Education has budget totaling nearly million-dollars for the year that will require no

approved unanimously, an increase of \$50,302 over the budget for

ucky we held it within budget totaling nearly million-dollars for the year that will require no

will remain at 72-cents per dollar assessed valuation. You don't have to have a tax increase to have a budget increase.

Legislature this past year a pay raise for the Board of Education of 26.4 percent over the

ghtower

Jack Hightower commended that he was very pleased with the four new counties in the new redistricting bill.

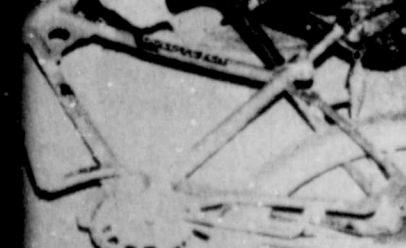
spoke at a joint meeting of the Rotary and Lions Clubs in the new redistricting bill.

erved in the Texas Senate, and three of the four new counties added to the district—Hightower noted. "I will be hard to continue his fine record until January of 1983, I hope to be of any assistance."

friend Congressman Stenyer represented those four counties and sure they will hate to see Hightower noted. "I will be hard to continue his fine record until January of 1983, I hope to be of any assistance."

istricting plan for the 13th Texas District raises from 33 to 37 of North Texas counties by Hightower.

d Fashi



Watermelon fea