

Lockney Library
Box 681
Lockney, Texas 79241

Memorial Day

The Lockney Beacon

25¢

Volume 81

Number 21

Thursday

©The Lockney Beacon

May 27, 1982

32 Pages In Four Sections

Old Settlers graced by near-perfect weather Pioneers enjoyed pavilion

A record number of 541 pioneers registered for Saturday's Floyd County Reunion held under the new Courthouse Pavilion.

Awards were presented to several pioneers while onlookers enjoyed comfortable seating, shade, a cool breeze, and near perfect weather.

Named outstanding Pioneer Woman and Man of the Year were Clara Day Murry of Floydada and O.B. Bailey of Lockney.

Mrs. Murry was given a certificate of appreciation for her many years in the county, raising a family and helping friends and her community. She was born here December 14, 1891 to pioneer parents, Mr. and Mrs. Joe Day. Her father was an old-time preacher. She married Otis E. Murry and continued to live in Floyd County.

Bailey came to Floyd County in 1913 on horseback. He was presented a certificate for his years of loyalty, service, and dedication.

Mr. and Mrs. C.H. Rose of Lockney were honored as the Oldest Pioneer

Couple. He is 93 and she is 92. Mrs. Rose, born November 15, 1889, also was recognized as the oldest pioneer woman attending the annual celebration. Mary Ida Casey came to Floyd County in March 1906. In August 1911 Carmillus Hayes Rose came to the county and were married June 7, 1914.

Their certificate read: "The Pioneer Association and the citizens of Floyd County wish to say to 'Rose and the girl' that we are happy that chose this place to live happily ever after."

Winnie Hilton of Floydada who was 100 years old in January was awarded the \$5 prize for being the oldest man at the reunion. Dicia Pittman Goltz of McKinleyville, California received a plaque for coming the farthest to the event. She was born in Floyd County and moved to California when she was 8 years old.

Charlie Boedeker of the Providence Community near Lockney was elected president of the Floyd County Pioneer Association; Sam Spence of Floydada, vice president; Ann Swebston of Floydada, re-elected secretary; and Hubert Frizzell of Lockney, treasurer.

Judy Allen conducted a memorial service for all Floyd County residents who died since the reunion last year, closing her service with a tribute in song, accompanied by her husband, Harvey Allen, playing the French harp.

The mornin program proceeded with Miss Swebston giving the dedication

speech for the pavilion on the courthouse square where the pioneers and other visitors sat in the cool shade. She dedicated the site to the pioneers "who turned this vast wasteland into a garden spot."

Miss Swebston thanked the people who made the structure possible and dedicated it to the pioneers of Floyd County. "May this structure stand for the principles they observed in their lives — honesty, perseverance, and love for their fellowmen, God and country," she concluded. "May it ever perpetuate the memory of our Floyd County forefathers and bring honor to those who have gone before."

Speaker for the morning was the Rev. Murle Rogers, pastor of First Baptist Church in Lockney.

Rev. Rogers spoke on "Freedom." "Freedom has ever been man's greatest desire," he stated. "Free people of the earth have loved freedom and been willing to fight and die for it."

Parade

The parade on Old Settlers Day was one of the largest and prizes were given out in 15 categories.

Winners were:

Best Pioneer Float: 1st place, Pioneer Farming Equipment (A.C. Carthel); 2nd place, Thrasher and Cage.

Best Commercial Float: 1st place, Russells Equipment

Continued To Page 2

Floyd County part of cheese program first time

Floyd County will share in the distribution of USDA cheese program which will be handled through the Community Action office in Floydada.

The cheese will be made available for low income and needy residents of the county. Storage fee on the cheese and transportation will be assumed by Commissioners Court.

Floyd County has asked for 300 cases to be divided between Lockney and Floydada according to Kathy Green, center director of Community Action.

Cheese will be distributed Thursday and Friday, May 27-28 at the center located in the Della Plains School in Floydada and at the center of 2nd Street

in Lockney. Regular offices at the two centers is from 8:30 a.m. to 5 p.m. Residents are asked to use the south entrance at Della Plains School.

Forms have been made up and applicants need only to sign their names, give their addresses, and state their income to qualify.

The cheese comes wrapped in five-pound blocks and will be given out at one block per household. For sanitary reasons, the center personnel will not be allowed to cut the blocks or change it in any way.

This is the first time that Floyd County has been part of the cheese distribution program, Green said.

Memorial Services

Lockney Cemetery Association will conduct a memorial service Monday at 10:30 a.m. in the American Legion Building.

Frank Duckworth, minister of West College and Third Street Church of Christ, is to be the speaker.

A business session will be held to hear the annual report of cemetery association receipts and expenses.

One, and possibly two, new directors will be elected. One is needed to replace the late Joe Foster. Present directors are Chester Carthel, John T. Carthel and T. Owen Thornton.

J.D. Copeland is association president. Mrs. Copeland serves as secretary.

The Lockney Cemetery Association gratefully accepts donations and memorials. Acknowledgements are quickly sent to families of those honored by memorials.

Awards assembly recognizes students

The Awards Assembly was held in the Lockney gym Thursday to bestow upon deserving recipients awards, scholarships and recognition that had been earned during the year.

Principal James Poole, in the absence of John Bickley presented Yolanda Garcia and Ralph Scheele with the Americanism award.

Dorothy Smith in behalf of the El Progreso Study Club made their annual presentation of a Bible to the valedictorian, Criss Carthel.

Jeff McCormick received the faculty scholarship.

Presenting the Rotary International award was Jack Covington as the representative of Tye Company. Recipients were Gary Cawley and Tammy Williams.

Warren Mitchell presented the Farm Bureau award to Kyle Brock and Michael Carthel.

Mrs. Mavis Marr gave Ernest Galvan the President's Plaque for his work as president of the student council this year.

Ty Williams was the first recipient of the Elvin Lyon scholarship of \$100.00.

Criss Carthel, valedictorian of this year's class with a 98.29 average, received a year's tuition paid by the state and a year's tuition to a church related college.

Ralph Scheele, salutatorian with a 96.44 average, also received a scholarship to a church-related college.

Bibles were presented to each of the seniors by four sponsors: Mize Pharmacy, Sun-Vue Fertilizers, Patterson Grain Company, and Floyd County Insurance Agency.

The First National Bank of Lockney gave billfolds to all the seniors.

Who's Who recognition was made at the Jr.-Sr. Banquet, but awards were



THE STAR OF OLD SETTLERS DAY was the new courthouse square pavilion. Pioneers enjoyed a meeting and entertainment comfortably. The Women's Chamber of Commerce

presented excerpts from their 1890's Music Review on the new pavilion stage Saturday.

Republican Party convention held

Bill Hale was elected as permanent chairman of the Floyd County Republican Party during the county convention on May 15. Mrs. Billy Don Colston was elected permanent secretary.

The convention, held at the First National Bank Meeting Room, was chaired by County Chairman Albert Scheele.

Delegates elected to the state convention in September were: Scheele, John N. Farris and Dwight Jackson. Alternates to the convention are: D.K. Jackson, Mrs. Colston and Ray Gant.

The following resolutions were approved to be sent to the state convention for consideration:

I. Whereas, federal spending rose from \$92 billion in fiscal year 1960 to more than \$650 billion in fiscal year 1981, an increase of more than 700 percent and in 1965 taxes on all levels took 19.5% of the gross income of the average working family and today they

take 36%.

Whereas, the Federal Budget Control Act of 1974 mandated a balanced budget for fiscal year 1981, yet the government ran a \$57.9 billion deficit for that year. It appears from the above facts that the U.S. Congress cannot restrain itself in matters of deficit spending.

Therefore, Be it resolved that the Republican Party exert its strongest efforts to pass a constitutional amendment limiting taxes and requiring a balanced budget, except in time of war.

II. Whereas, it appears that the 1983 federal budget will have more than \$100 billion deficit and a deficit of this size

will eat up all available capital and drive interest rates even higher than at present.

Whereas, we believe uncontrolled spending is the cause of this kind of deficit and that spending cannot be controlled without dealing with runaway entitlement programs which increase automatically each year. We further believe that these programs should not be "sacred cows" and that the deficit must be reduced by cutting or freezing them and not by raising taxes.

Therefore, be it resolved that the Republican Party exert its efforts to pass legislation to remove the automatic increase provisions of these programs

Continued To Page 3

Phil Rich new pastor of Assembly of God Church

Phil Rich has joined the Assembly of God of Lockney as pastor. He comes to Lockney from Mangum, Oklahoma where he pastored a church for about a year.

Rich and his wife Connie, have a 14 month old daughter, Kisha Dawn. Connie serves as pianist and arranger of music for the congregation.

Rich is a graduate of Southwestern Assemblies of God Bible College in Waxahachie, Texas. He graduated with a bachelor of science degree with a major in Pastoral Ministry and Evangelism and a minor in music.

Rich plays the bass guitar and trumpet. With his wife's piano talent, they write music for their own use and to be used by their choir.

Rich has served in an Associate Minister of Youth and Music in Waxahachie, Carrollton and Hunstville, Arkansas before assuming full duties of

the church.

Prior to his pastoring Rich travelled with a singing group known as the Voices of Praise throughout the southwestern United States. He served as director and founder of the 10-member group.

Before that he travelled with a singing drama group, the Marion Arthur Repertoire, for 3½ months.

It was a performing group of the Southwestern Bible College that presented over 100 services in West Texas, New Mexico, Arizona, California and Hawaii. Rich was the bass guitarist and sound effect technician.

The Rich family will reside in the parsonage next to the church. Members of the local congregation held a grocery shower in their honor last Sunday night after services.

The previous pastor moved to Mador about 6 weeks ago to retire.



PHIL RICH

This Week

Notice

Lockney Lodge #867 A.F.&A.M. will have a called meeting Saturday, May 29 for two Master Masons degrees.

The meeting will begin at 6:30 p.m. with a chili supper served approximately at 7:30 p.m. Work will be finished after supper.

Special Fund

A special fund has been started at the First National Bank for the Floyd County Senior Citizens Mini Bus. New tires are needed and it is hoped to pay for them through donations.

The bus is owned by the Senior Citizens Inc. and is used for both the Lockney and Floydada Rest Homes, as well as for transportation needs of Senior Citizens.

The county pays \$1500 a year for gas. Floydada pays for the insurance. Green Thumb pays for one driver and SPAG pays for the other driver through Community Action.

Old Settlers

Old Settlers Day photographs and information will be continued in next weeks edition.

Holiday

Monday, May 31, is Memorial Day. Local businesses vary about their closing practices, but the U.S. Post Office, the Beacon office, the First National Bank of Lockney and the City Hall will be closed in observance of that day.



RALPH SCHEELE AND YOLANDA GARCIA received the Americanism awards from Principal James Poole in the absence of John Bickley.



HONORED — Mr. and Mrs. C.H. Rose of Lockney, center front, were named the Outstanding Pioneer Couple, and Clara Day Murry, in wheel chair, the Outstanding Pioneer Woman of the Year, at the annual Floyd County Pioneer Reunion in Floydada Saturday. With the honorees were, left to right, Mrs. C.L. Record of Lockney and D.C. Rose of Plainview, daughter and son of Mr. and Mrs. Rose, and Floyd Murry of Canadian and Lloyd Murry of Floydada, twin sons of Mrs. Murry.



ARMADILLO RACES were a new attraction at this year's Old Settlers Day. They were sponsored by the Floydada Chamber of Commerce.



AWARDED — Warnie Hilton of Floydada, 100 years old [left] won the prize for being the oldest pioneer man at the Floyd County celebration in Floydada Saturday. O.C. Bailey of Lockney was named the Outstanding Pioneer Man of the Year. Dicia Pittman Goltz of McKinleyville, California, was presented a plaque for coming the greatest distance to attend the reunion.

Continued From Page 1

Old Settlers Day.....

Best Club Float: 1st place, Jr. Friends of the Library; 2nd place, Assembly of God Kids Crusade

Best Sheriff's Possee or Riding Club: 1st place, Post Riding Club
Oldest Man In Parade: Charlie Spence

Oldest Woman In Parade: Ada Pope
Bicycles: 1st place, Stacy Dawdy; 2nd place, Kara Cozby; 3rd place, Mychelle Harris

Best Modern Cowboy: 1st place, Clarence Pope
Best Modern Cowgirl: 1st place, Judy Rogers

Best Dressed Oldtime Cowboy: Paul Atteberry
Best Shetland Pony: 1st place, Jamie Rogers

Best Jr. Cowboy Up To 12 Years: Jim Bob Hambricht

Best Jr. Cowgirl Up To 12 Years: Crystal Rogers

Best Antique Auto: 1st place, W.R. Daniels; 2nd place, R.A. Maddox
Oldest Tractor: 1st place, 1935 J.D.D.; 2nd place, 1935 J.D.B.

Book Sale
The "Friends of the Library" book sale netted \$340 to be added to the Library Building Fund.

American Cancer Society
Victoria Cummings, three-year-old daughter of Mr. and Mrs. Kelvin Cummings, won the afghan given by the American Cancer Society.

It was a big day for the Cummings youngsters since brother Ken won a prize in the Youth Division at the Wildflower Show.

Reunion marked by many activities

BY SHELLY HARRIS
Hands-down star of the Old Settlers Day was the new pavilion which provided shade and comfortable seating for those attending the reunion. Those who donated their time and money had to have felt a great deal of satisfaction as they heard the favorable comments made all day long.

Armadillo
The new attraction this year of the Armadillo Races was fun and unveiled some fine armadillo manship in the jockeys.

Winner of the trophy was Wide Track Jack, sponsored by City Auto and ridden by Mark Ashley. Ashley was awarded a belt buckle.

Sue-Sue, sponsored by Sue's Gifts and Quality Body Shop, was a finalist contender, nosed out by Jack, Ernest Torres Jr. was the jockey.

There were six races, the semi-finals and the finals. Twenty-two entrants competed in the Floydada Chamber of Commerce sponsored event.

Armadillo Queen
Linda Stone was the Armadillo Queen and signaled the start of the races, as well as presented the winners trophy. She received a trophy herself.

First runner-up in the queen contest was Treva Hambricht. Second runner-up was Shele Morris. All three finalists were in the parade.

Playday
Another Chamber sponsored welcome touch was the playday for children which kept them happily entertained, and cut down drastically on the water balloon and shaving cream fights around the Courthouse lawn.

Fiddlers
Louis Ray Stapp and his Western String Band are all time favorites of those attending Old Settlers Day. Their music had toes tapping and heads bobbing as the audience listened to their favorite tunes.

1890's Revue
Certainly one of the highlights of the day's activities was the 1890's performance given by the Women's Chamber of Commerce.

The excerpt done for the Old Settlers was the young people's production number with songs about the top events of the day in the 1890's.

The performance was most appropriate for Pioneer Day and was exceptionally well done.

Playa Playboys
Another outstanding entertainment was the performance by Harvey Allen and the Playa Playboys. The local group put on a show of varied numbers that displayed fine musical talent. Susan Turner is vocalist for the group. Those of you who missed the T-shirt-clad, President of the Rank playing guitar and belting out country rock, be sure and catch the performance next time the Playboys do a concert.

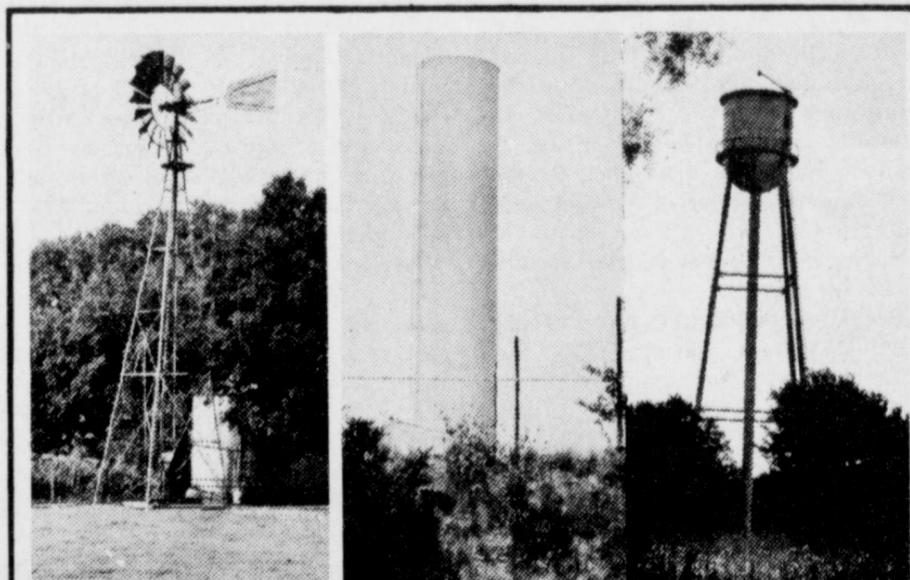
Queen sign up to begin

Floydada will have their annual rodeo on July 29, 30 and 31 and sign up for rodeo queen contestants will be held until July 1 at the Loft, with Kay Hicks. Candidates must be between the ages of 13 and 19, single and Floyd County residents.

Contestants will sell \$1.00 chances to a ½ beef from Ponderosa. The girl who sells the most tickets will be named rodeo queen.

Prizes will be a buckle and \$100 gift certificate from The Loft, 1st; \$75 gift certificate, 2nd; \$50 gift certificate, 3rd; and 4th with a \$25 gift certificate. All gift certificates will be from The Loft.

Queen contestants will not be required to ride a horse.



WATER WHEN THE WIND BLOWS

WATER ON DEMAND

Unlike electricity, water can be stored until it is needed. Pumped electrically during off-peak periods to pressure or gravity flow tanks, the water is ready on demand.

Higher electric costs have revived the romantic windmill but water systems which give you water when you need it, where you need it, and as much as you need, is one of the most agreeable rural amenities the electric cooperative has created.

Lighthouse Electric Coop Inc.

WeatherAll
Flat Acrylic Latex House Paint
Satin Acrylic House & Trim

Flat Acrylic **11.98** Gal.*
Satin Acrylic **12.98** Gal.*

Our finest acrylic latex house paint is now available in three attractive finishes. The original flat finish and our new satin finish are both ideal for exterior wood and aluminum siding, shingles, brick, stucco, etc. Stain and fade resistant. High hiding, 01/HPX/SH/ WeatherAll Gloss Finish (Not shown). Custom Colors, Black and White, 01/GHP.....13.98 Gal.

TRU-TEST
Supreme
Latex Flat Wall Finish
Latex Semi-Gloss

44 Colors & White **10.98** Gal.
44 Colors & White **12.98** Gal.

Davis Lumber & True Value Hardware

WOODSMAN
SOLID COLOR LATEX STAIN

Your Choice **9.98** Gal.

102 E. Shurbert
652-3385
Lockney, Texas

HEALTH INSURANCE

You Can Feel Secure With

**CONTACT: Helen Bertrand
Bill Dawson
David Cates**

FOR: Better Coverage
Best Price

**YOU SELECT: Daily Room Benefit
from \$50⁰⁰ to \$300⁰⁰**

Deductible from
\$100⁰⁰ to \$1,000⁰⁰



Cates & Dawson Ins.

231 W. California 983-5322



Are the graves of your loved ones marked?

Lockney residents are being urged to see that graves of loved ones are properly marked in the Lockney Cemetery.

Mrs. Mary Lou Bollman, local genealogical buff, and J.D. Copeland, president of the cemetery association, say that funeral home markers are not permanent.

"Over the years those markers are accidentally removed or just disappear," says Mary Bollman.

She has been working for over 20 years to list the names and grave spaces in the Lockney Cemetery. Mrs. Bollman started her work after hearing someone remark that no Civil War veteran was buried in Lockney. Her search of the gravestones revealed that a Mr. Cole, grandfather of Mary Hutton, had been a Civil War veteran. Mary Lou said that recently a new tombstone was made for a Mr. Taylor and the inscription listed him as a veteran also.

Mrs. Bollman's work on listing the grave sites includes using information from records made by Wilbur Miller and the late Rev. R.E.L. Muncy which were begun in 1937. Also, information has been gleaned from death records in

the Floyd County clerk's office, the City of Lockney Carter Funeral Home and Moore-Rose Funeral Home.

Mr. and Mrs. John Turner, cemetery caretakers, are also quite interested in getting the graves marked.

They and Mrs. Bollman say that some of the concrete tombstones have fallen apart.

Information on the burial sites may be obtained from Mary Lou Bollman, Rt. M, Lockney, TX 79241, 806-652-2289.

Her records indicate that the first adult grave was for E. Roberts, who was killed March 30, 1890. The trial was held at Old Emma in Crosby County as Floyd County was not organized until May 28, 1890. Roberts and his killer, W.R. Weems, were in love with Katie White. Miss White and Weems were married July 20, 1890, the first couple married in the newly-organized Floyd County.

According to Mrs. Bollman's records, the oldest person buried at Lockney was Caroline Jones, who died May 8, 1911, at the age of 110 years, 1 month and 27 days. Her death certificate listed as the cause of death "old age - worn out."



ERNEST GALVAN, 1981-82 president of the Student Council, accepted the traditional President's Plaque from Mrs. Jeanette Marr.

Republican..... Prospectives

Continued From Page 1

and perhaps cutting even the present level of expenditures for the programs.

III. Whereas, the use of catalytic converters to control automotive emissions is costing this country billions of dollars annually in purchases of noble metals to be used as catalysts, and

Whereas, the catalytic converter is in itself a proven safety hazard that has been responsible for many deaths and destruction of much property, and

Whereas, automotive emissions can be controlled more effectively with technology other than the catalytic converter without entailing any safety hazard, and

Whereas, millions of barrels of crude oil are being wasted annually because of the required use of unleaded gasoline in catalytic converter equipped cars and because of the implementation of the lead phasedown, and

Whereas, seventy-five percent of lead emissions can be controlled with particle traps, and

Whereas, automotive emitted lead has never been shown to be a health hazard, and

Whereas, in spite of the present oil glut it is generally accepted that our Country still faces an Energy Crisis;

Therefore, be it resolved on May 15, 1982 that this Floyd County convention does go on record as proposing a recession of the lead phasedown and a replacing of the catalytic converter with available alternate emission control technology.

IV. Whereas, our forefathers believed in God, country and home and set our nation on this course. Be it resolved that the Republican Party of Floyd County is in support of President Reagan's constitutional amendment on prayer in the schools.

What is the source of war in our midst. According to the Biblical writer James, the reason is "you want and do not have." A quick examination of the wars in the last couple of centuries would confirm that observation. Either they have been primarily economic in scope, or wars have been fought to gain territory or power.

We have in the U.S. seen ourselves as the defenders of freedom, and have supposedly only fought in wars to attain the preservation of that goal. Thus, we are supposed to have fought only on the highest principle. Would we ever then become the aggressor, the one to start a war, one in which nuclear armaments would be used?

The answer most commonly heard is, "Certainly not!" But, I am not so nearly convinced. A recent movie showed us going to war with the Russians over an economic conflict. In the end, convinced the Russians would fire nuclear weapons at the U.S., the President orders our own arsenal turned loose. While movies are certainly not authoritative, such a plot is not all that far fetched. If we thought we were facing massive destruction, we would quite likely shoot first. This because of the nature of the weaponry. Howitzers do not wreak the kind of damage bombs do, and conventional explosives do not radiate innocent people to death hundreds of miles away from the target.

Certainly in war innocent people die, but a conventional bomb dropped in Amarillo will not kill people in Lockney, and certainly will not continue to kill for years afterward.

Chemical and germ warfare is often deemed as immoral for the reason that its effects are not limited to the area under attack, and are not controllable. The same hold true for nuclear weapons, and yet we are still trying to defend having them.

Next: Can there be a just war?

THE LOCKNEY BEACON
[USPS 317-220]

Published weekly each Thursday by Floyd County Publishing Co., 211 North Main St., Lockney, Texas 79241. Second class postage paid at Lockney, Texas. Subscription rates: local \$11.50 per year, out-of-trade area \$12.50 per year. POSTMASTER: send address changes to the Lockney Beacon, P.O. Box 187, Lockney, Texas 79241.

Shelly Harris Publisher
Carolyn Redding Editor
David Cates Advertising Manager

Who NEEDS Police Dispatchers

Dispatchers

Law enforcement has evolved into a complex multi faceted field. To day, to be effective in enforcing and maintaining the laws of society, everyone in the field of law enforcement must function as a coordinated team.

One of the most overlooked and seldom recognized parts of the team is the police dispatcher.

The police dispatcher is responsible for receiving and dispensing information to the police officer out on the street. Without a well trained and alert dispatcher, the officer is at even more of a disadvantage.

The odds are seldom in the police officer's favor, but without competent assistance from the dispatcher, he is really in a mess.

The dispatcher must be a combination communications expert, public relations man, office secretary, jailer, telephone receptionist, and have that sixth sense to be able to tell when an officer is in danger without being told.

The dispatcher must somehow be able to monitor a chase in Lockney, know how long a Floydada officer has been checked out during a routine traffic stop, and all the while talking to a complainant on the phone.

In addition they must be doing paperwork required for modern police records.

Somehow it always seems that when its quiet it's quiet, and then everything breaks loose at the same time.

A police officers only link to help often is the dispatcher. Without the dispatcher a law enforcement agencies effectiveness is cut by 50 percent.

To many people the job looks easy, and unimportant. But ask any officer who has been out on the streets for any length of time and he will tell you he cherishes a good dispatcher.

Without that dispatcher he does not have access to teletype to check for stolen cars or wanted people. He cannot call for assistance or summon businessmen to come check their business in the middle of the night.

Most important of all he has no way of patrolling the streets and receiving incoming calls from citizens without the dispatcher. Of course in larger departments dispatchers are not responsible for much of the office work and jail work our dispatcher have to do.

Our dispatcher must be more versatile since their work load and responsibilities are more and varied than the large departments.

While not placed in danger as much as police officers some dispatchers are hurt or killed every year by inmates of jails while attempting to escape or fighting police officers during the booking process.

Not everyone is capable of being a dispatcher because of the sacrifices they often must make and the difficult conditions they encounter on the job. It takes years of experience and training to make a good dispatcher just as it takes experience to make a good officer.

I know from personal experience that many times I have been kept from harm or death because of a competent dispatcher. And I know the difficulties of the job because I have dispatched some too, and must admit that I wouldn't want their job.

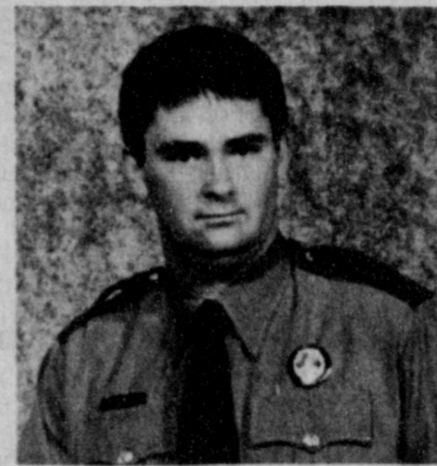
Of course there are still some people whose only understanding of law enforcement comes from watching reruns of Gunsmoke; that think modern communications in law enforcement are really not that important.

Of course they are the ones that have never been terrorized by someone trying to attack them or break into their house. They still don't realize that today we have the ability, in many cases, to stop the offense before it happens and someone gets hurt rather than try to solve the case after the damage is done.

That has been the whole thrust of modern police enforcement today. To try to stop a crime in progress before a party is injured or suffers a loss. The only way we can ever do that is by quick communications from the citizen to the police officer via police dispatcher.

If the truth were known more police officers are alive today because of alert dispatchers than 357 magnums, dispatchers would be paid more and held in much higher esteem by the public.

Who needs dispatchers? The police and you the citizen.



DOUGLAS JAY WHITWORTH

Jay Whitworth new trooper

Students enjoy outing

AUSTIN — Douglas Jay Whitworth of Arlington has been commissioned as a Trooper with the Texas Department of Public Safety.

Whitworth received his commission as a State of Texas law enforcement officer from Colonel Jim Adams, DPS director, in a graduation ceremony at DPS Headquarters in Austin.

Whitworth completed a rigorous 18-week training course at the DPS Academy. The intensive course, recognized as one of the best programs of its kind in the U.S., included instruction in traffic law enforcement, accident investigation, criminal investigation techniques, crime prevention, first aid, riot control and other subjects related to law enforcement.

"These men and women have been trained to deal with extremely sensitive, stressful and sometimes dangerous matters on a daily basis," said Colonel Adams. "But their foremost duty is to faithfully serve the citizens of Texas."

Trooper Whitworth, 24, has been assigned to the Highway Patrol Service and will be stationed at Floydada.

Approximately 300 persons undergo the special training and graduation from the DPS Academy each year.

Trooper Whitworth is the son of Mr. and Mrs. Jake E. Whitworth of Arlington.

Tuesday, May 18, 175 Lockney Jr. High students boarded three buses about noon for a trip at Funpark at Lubbock.

These sixth, seventh, and eighth graders were accompanied by Principal Raymond Lusk and sponsors, Kathy Grishom, Anna Anderson, Carolyn Whittington, Yvonne Rhoderick, Martha Milholland, Kim Murdock, Lana Jarry, and D'Lyn Morgan.

The group returned to the school by dismissal time.



HAIL SIZE ISN'T IMPORTANT—HAIL DAMAGE IS IMPORTANT.

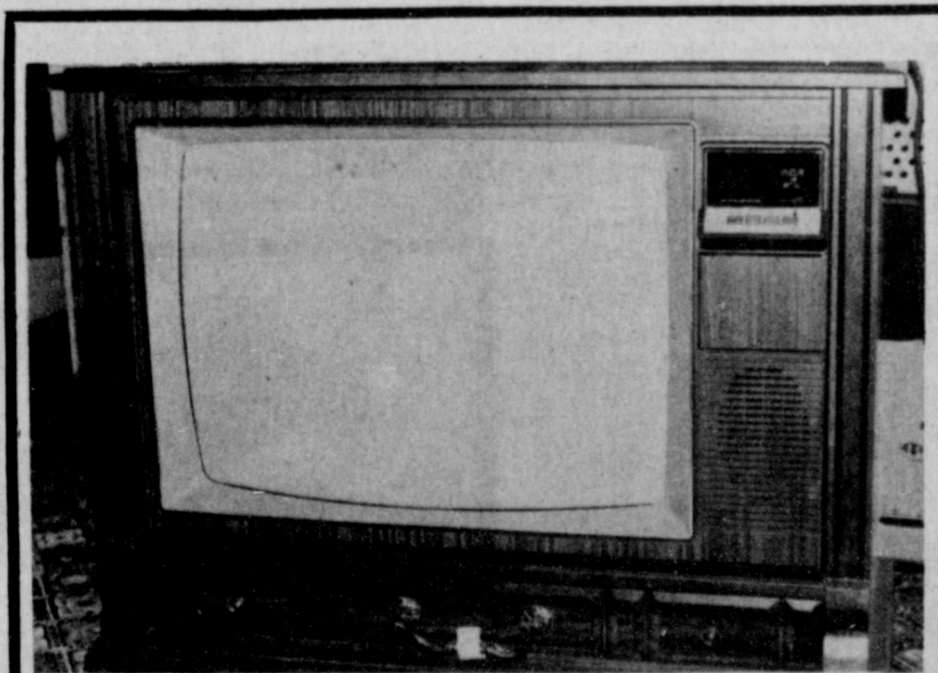
Insure your growing crops against loss from Hail Damage.

It's so easy to obtain hail insurance for your growing crops at low net cost—a dividend has been paid to Crop Hail Policyholders eight of the past eleven years, and for 1982—20% DEVIATION OFF OF TEXAS CROP HAIL RATES

Just call your Texas Farm Bureau Insurance Companies Agent.

James Race
Floydada
Farm Bureau

983-3777 or 652-2242



RCA XL 100 25" Diagonal-Spanish Pecan Cabinet

Remote Control

NOW \$675⁰⁰

Reg. \$799⁹⁵
Mod. No. GER689SR

Mize Pharmacy & TV

652-2435 Lockney 102 S. Main

MEMORIAL DAY

☆ IN HONOR OF THOSE WHO DIED ☆



We remember the courageous men and women of our country's armed forces who have made the ultimate sacrifice for our sakes. Let's make this day a tribute to them all.

"Helping you change things for the better"

THE FIRST NATIONAL BANK OF FLOYDADA

Accounts Insured up to \$100,000

Member F.D.I.C.



MRS. LARRY D. WESTBROOK

Frizzell, Cotham recite wedding vows

Cindy Renee Frizzell and William Philip Cotham recited vows of matrimony Friday evening in First Baptist Church with the pastor, Rev. Murle Rogers, officiating.

The bride is the daughter of Mr. and Mrs. David Frizzell of Lockney. She is a graduate of Lockney High School. She has been attending West Texas State University and is now enrolled in Wayland Baptist University where she will complete her education degree.

Cotham's parents are Mr. and Mrs. Bud Cotham of Brownfield. He is a May graduate of WTSU and will be coaching in the Lockney School system this fall.

The nuptial area was centered with a candle arch flanked by cathedral candelabras holding ice blue tapers and accented with tropical foliage and blue satin ribbon. Formal baskets of white daisies and true blue carnations and the unity candle completed the setting.

Nuptial music was presented by Mrs. C.L. Record, organist; Mrs. Bill Race, pianist; and Keith Longbotham, guitarist. Providing vocal selections were Mr. and Mrs. Travis Thornton of Plainview. Wedding guests were registered by Janie Guest of Floydada.

Candles were lit by Mrs. Tim Parker of Canyon and Rise Taylor, Hilary and Jaime Webster of Wichita, Kansas.

cousins of the bride, were flower girls and Kip Holt, also a cousin, served as ringbearer.

The bride was given in marriage by her father. She chose a formal length gown of white silk organza fashioned with Venice lace and seed pearls. Falling from an empire waistline was a full skirt that featured scalloped lace extending to the back of the chapel length train. Appliqued motifs of Venice lace were sprinkled over the veil of illusion and framed the brides headpiece. She carried a fleur d'amour cascade arrangement of white daisies and pixie carnations showered with gypsophilia.

For something old and something borrowed, the bride wore a solid gold wedding band belonging to her maternal great, great grandmother. Something blue was her garter, handmade by her mother and presented at a lingerie shower. Her wedding attire was something new. For good luck, she wore pennies with the couples dates of birth in her shoe.

Julie Frizzell, sister of the bride, was her maid of honor. Bridal attendants were Karla McCarter of Canyon, Mrs. Curtis Bainum of Fritch, Beverly Barker of Lubbock and Kay Tannahill of Weatherford, Oklahoma. Junior attendant was Heather Holt, the bride's cousin.

They wore identical formal length gowns of blue accordin pleated knit, topped by a matching chiffon bolero jacket with Venice lace motifs at the shoulders. Each carried a white lace fan accented with white daisies and blue miniature asters on a background of leather fern.

The groom's father served as best man. Groomsmen were Scott Metcalf of Amarillo, Robin Spain and Kyle allcorn, both of Olton, and Johnny Dorman. Junior attendant was Chad Frizzell, brother of the bride. Guests were seated by Billy Keel and Bryan Woodridge, both of Canyon.

RECEPTION

The reception was held in the garden room of the church. Assistants were Mrs. Don Neal of Robstown and Mrs. Bill McClure of Ft. Worth, both sisters of the bride, Connie Coffman, Christie Jack of Lubbock, Jerri Ann McCormick, Christy Coffman, Stephanie and Shandra Bybee and Amy Shaw also assisted.

A tiered wedding cake with nosegays of daisies and blue ribbon accents, crystal appointments, a five branched candelabra holding ice blue tapers and the bridal bouquet topped off a table covered with a white eyelet cloth.

The houseparty consisted of Mrs. R.V. Webster, Shelley Simpson, Rita Burlison, Delvin Bybee, Eddie Teeter, Audrey McCormick, and Jerry Cawley. Tom Coffman, all of Lockney and Mrs. Bill Weir of Floydada.

The couple left on a wedding trip to Ruidoso, New Mexico and will make their home in Lockney.

A rehearsal dinner was hosted by the groom's parents in the garden room of First Baptist Church. Friends of the bride prepared the meal.

Special guests at the wedding were the bride's great, grandparents, Mr. and Mrs. T.E. Crisp of McLean.

Pre-nuptial parties included a bridal shower in the home of Mrs. Kelton Shaw. Lingerie shower hosted by Mrs. Barry Barker and Beverly, a luncheon for the bride's family given by Mrs. Eddie Teeter, Mrs. Delvin Bybee and Mrs. Audrey McCormick and a bridesmaid's luncheon in the home of Mrs. Bill McCarter hosted by Mrs. McCarter and Karla, Mrs. Lonny Hooten and Mrs. Robert Murdock.

LOCKNEY LOCAL

Weekend visitors of Johns and Vera Cox and Mel and Marjorie Holcomb were Nova Jean Ivy, Sheila Young and Jason and Ricky Ivy, all of Mansfield, Letha Davis of Irving, Keith and Wanda Brock and Marlin Marble of Hart, and Charlotte and Kimberly Blazier of Amarillo.



MRS. WILLIAM PHILIP COTHAM

Johnson, Westbrook united in marriage

Trinity Church of Lubbock was the site for a 3:00 p.m. candlelight ceremony Saturday, uniting D'Anna L. Johnson and Larry D. Westbrook. Pastor Paul Jantzen officiated.

Parents of the couple are Mrs. James B. Johnson of Lubbock and the late Mr. Johnson, and Mr. and Mrs. Paul L. Westbrook of Floydada. Grandparents attending were Mrs. Jo K. Johnson, grandmother of the bride; Mr. and Mrs. Edd Walters and Mrs. Adron Westbrook, grandparents of the groom.

A communion table was the focal point in the chapel for the double ring ceremony. Branched candelabras held white tapers accented with greenery and pink apple blossoms. Candles were lit by Tony Bailey and Danny Evans, who also served as ushers. Worship leaders were Nick Taylor and Scott Beard, with Tom McGuire accompanying at piano. Nick Taylor sang a special

selection, Two Trusting Jesus, accompanying himself on guitar.

Guests were registered by Melanie Peak. Silk flowers of rose and pink, and a picture of the bride and groom accented the registration table.

The bride was escorted and presented by her brother-in-law, Van Sharpley of Ft. Worth. She wore a Victorian style gown of ecru lace over taffeta with a chapel length train attached at the waist. A two-tiered veil descended from a halo of silk flowers. She carried a bridal bouquet of spring flowers including purple iris, pink rosebuds, and daisies with baby's breath. Along with her bouquet, she carried a handkerchief her mother had carried at her wedding.

Attending the bride as Maid of Honor was Robin Dexter of Lubbock. Bridesmaids were Mrs. Van Sharpley of Ft. Worth and Jennifer Johnson of Lubbock, sisters of the bride, and Mrs.

Steve Westbrook of Floydada.

Dresses of the bridesmaids were of dusty rose voile, featuring a tucked bodice and high ruffled collar. The tea-length dresses were accented at waist with pink satin belt. Each wore halo of dusty rose silk flowers with pink satin streamers, and carried round nosegay bouquets of spring flowers.

Steve Westbrook of Floydada served his brother as best man. Groomsmen were Terry Westbrook, brother of the groom, and Brad Feuerbacher and Rob Thrasher, all of Floydada. They wore grey tuxedos. The groom wore a formal cream tuxedo.

RECEPTION

A reception was held following the wedding in the church courtyard. A large table covered with ecru lace tablecloth held a three-tiered antique white wedding cake, which was accented with roses and topped with silk flowers. Guests were served cake and punch by friends of the bride. Birdseed bags were distributed to guests by Tammy Walters and Shanna Jackson of Lubbock.

The bride graduated from Monterey High School and attended Texas Tech University. The groom graduated from Floydada High School, and is employed by Steve Hill Construction, Inc.

After a wedding trip to Corpus Christi, the couple will live in Lubbock.

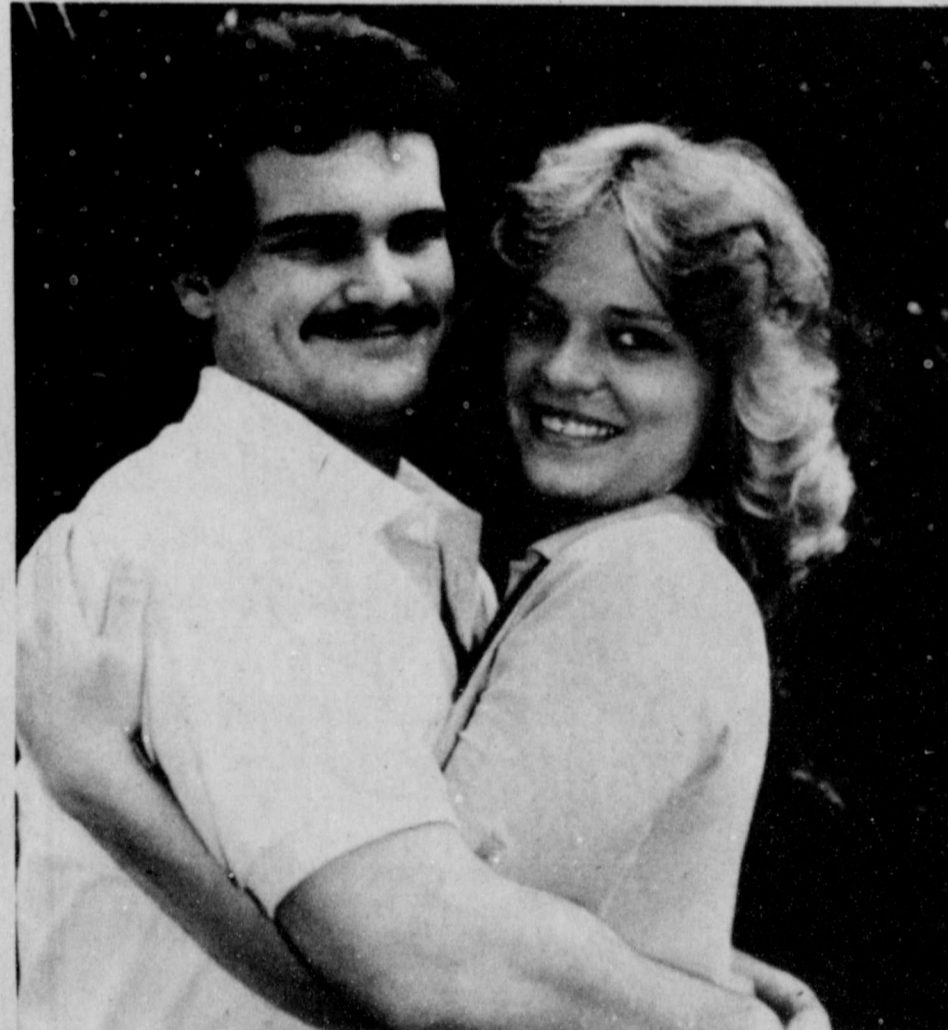
Casey, Hinkle reveal July wedding plans

Dena Sue Casey and Joe Wesley Hinkle would like to announce their engagement and approaching marriage on July 17, 1982 at the First Baptist Church in Lockney.

They are the children of Donice and Sue Casey of Lockney and Billy and

Doris Hinkle of Floydada.

Miss Casey is a 1982 graduate of Lockney High School and the prospective groom is a 1981 graduate of Floydada High School. He is presently farming northeast of Floydada.



JOE HINKLE, DENA CASEY

Ilano Estacado JAC Club met Thursday

The Llano Estacado Junior American Citizens Club met on Thursday May 20, 1982 at 11 a.m. at the Dougherty school auditorium. Chad Pernel, president, called the meeting to order and the JAC prayer was led by Heath Robertson.

Bobby Martinez led the pledge to the flag and The Star Spangled Banner was led by Noelia Huerta. Donna Jean Campbell read the minutes of the previous meeting and they were approved.

The guest speaker for the day was Mr. Jim Word who spoke to us on respect for the flag and what the flag means to him. Mr. Word gave an informative speech and held a question and answer session.

Having no further business, the meeting was adjourned. The next meeting will be in September.

Congratulations
Pete and Pauline
Nash
On Your
40th Anniversary
 Your Loving Children
 Margaret Camilla Paul Martha

Register Your
 Bridal Selection

Lovell - Collins Jewelry
 806/983-3240 102 S. MAIN FLOYDADA, TEXAS 79235

We honor both our customers and brides
 by selling **ONLY** bridal selections.

Bridal selections are now available for
D'Lee Marble bride-elect of
Dale Powell

.....
 Attention party givers!
 Luncheon Plates, Cups and Bowl Loaned FREE!
 Jewelry Cleaned FREE!

Morris honoree of bridal shower

A bridal shower for Adeana Morris and Gale Campbell was held Thursday evening, May 13, in the home of Mrs. Charles Holmes, 907 W. Mississippi, Floydada.

Brides chosen colors of apricot, coral and beige were carried out on the serving table. Punch and an assortment of sweet breads were served by Dee Die Covington.

Guests were met at the door by Adeana, her mother, Linda Morris, mother of groom, Dorothy Campbell, and the hostess, Betty Holmes.

Renee Sanders was at the guest register.

Out of town guests included: Oleta Morris and Pauline Koontz from Chillicothe, bride's grandmothers, Artie Wason of Matador, grandmother of the groom, Etoy Chapman from Iowa Park,

Nina Morris, Vanessa Morris, Vickie Terrell of Plainview and Mary Helen Wason of Matador.

Hostesses presented the honoree with a Kirby vacuum cleaner with attachments and several pieces of pottery in the bride's chosen group.

Other hostesses were Mrs. Howard Gene Bishop (Nancy), Hulen Carthel (Ann), Glenn Jarnigan (Floriene), De Ann Criswell, Don Green (Carolyn), Buddy Hatley (Barbara), Fern Hartsell, Sam Spence (Audrey), Don Hardy (Sue), Ed Wester (Jo), Don Daniel (Gayle), Lynn Campbell (Charlotte), W.H. Bunch (Mamie), A.C. Carthel (Dorothy), Johnny Bill Sue (Margie), Rosemary Finley, Jimmy McGaugh (June), Phillip Smitherman (Mildred), Carl Turner (Peggy), Doris Ray, Randy Fry (Phyllis).

McCain receives layette shower, Sat.

A layette shower was given in the home of Mrs. Rusty Wilson in Lockney Saturday afternoon from 2:30 to 4:30 p.m. for Mrs. Tim (Rhonda) McCain.

Guests were served from a table laid with a white cutwork cloth and milk glass appointments. The centerpiece was designed of multi-colored baby building blocks.

Refreshments of banana punch, assorted cookies, pastel mints, and nuts were served to the guests.

Special guests at the shower were Mrs. Kent Taylor of Plainview, the honoree's mother, and her grandmother, Mrs. Leon Cartwright, also of Plainview. Mrs. Ricky Mason of Plainview and Mrs. Delvin Bybee of Lock-

ney, the honoree's sister and sister-in-law respectively, also attended.

An automatic baby swing was given as a hostess gift.

Lockney hostesses for the occasion were Barbara McCormick, Tammy Zachary, Karen Hooten, Virginia Stapp, Erma Lee Duckworth, Mary Louise McCarter, Cleona Taylor, Linda Graves, Nora Bybee, Donnie Meriwether, Kim Lambert, and Laura Wilson.

Out-of-town hostesses were Kristie Widener and Christy Meriwether of Lubbock, and Mrs. Earl Widener, Judy Bradshaw, and Debra Reed, all of Plainview.

SAS

Nothing fits or feels better than
 our real leather hand-sewn
 MOCS by S.A.S.

\$38
 LATTICE
 CAMEL-NAVY

Why Settle For a Copy
 When We've Got The
 Real Thing?

Brown's
 DEPARTMENT STORE

104-06 North Main Lockney, Texas



MRS. STEVE SIMPSON

Schlobohm, Simpson wed in Richardson

Lisa Yvette Schlobohm and Steve A. Simpson were married in a 3 p.m. wedding ceremony on April 18, 1982 at St. Luke's Lutheran Church, Richardson. The Rev. Leslie Conrad, Jr., pastor read the vows.

The couple are the daughter and son of Mr. and Mrs. Robert Schlobohm of Richardson and Mr. and Mrs. W.H. Simpson, Jr. of Floydada.

The church was decorated with white pew bows. The altar was highlighted with white gardenias, gladiolas and candelabras. Candlelighters were Mike Simpson, brother of the groom, and Paul Dittmer, cousin of the bride.

Presented in marriage by her father, the bride was dressed in a gown of floor length, white chiffon. It featured long sheer sleeves with an inner lace sleeve and points on the cuffs. A small bustle train and sweetheart neckline accented the lace on the bodice. She wore a picture hat with a tulle veil and carried a bouquet of baby peach roses with miniature white carnations. The bride also wore a penny in each of her shoes with the year of birth for herself and the groom. These were placed in her shoes by the groom's father.

Attending as maid of honor was Valerie Davis of Dallas. Tina Schlobohm of Richardson and Chris Dittmer of Denton, sister and cousin of the bride, respectively, served as bridesmaids.

They wore ballerina length dresses of antique beige. The chiffon over the darker beige taffeta was bordered in beige lace with a beige satin ribbon sash and bow in the back and was accented

with long, sheer sleeves. In their hair they wore pink miniature carnations and carried bouquets of pink baby roses and baby's breath.

Mike Simpson of Lubbock attended his brother as best man. Groomsmen were Larry Jones of Floydada and Steve Specter of Arlington. Doug Simpson, brother of the groom, and Paul Dittmer, cousin of the bride, were ushers. They wore light brown tuxes with white ruffled shirts.

Special guests at the ceremony were Mrs. Elizabeth Lange, grandmother of the bride from Leeds, New York, and the groom's grandparents, Mr. and Mrs. Tom Hall of Hereford.

RECEPTION

Following the ceremony a reception was hosted by the bride's parents in the Terrace Room of the Holiday Inn in Richardson. It was decorated with bud vases and large arrangements of palm leaves.

The serving table featured hors d'oeuvre buffets, the bride's cake featuring roses and the groom's chocolate cake.

Following a wedding trip to Honolulu, Hawaii the couple will be at home in Arlington.

The bride attended Pearce High School in Richardson and is presently sales manager for K-mart Corp. The groom, a 1968 Floydada High School graduate, attended Texas Tech University and graduated from Angelo State University in 1972 with a BA degree. He is store manager for Pacific Stereo.



MRS. ANTHONY RASTETTER

Waits, Rastetter repeat marriage vows

Karen Jeanne Waits and Anthony Alan Rastetter were united in marriage Saturday afternoon. The Rev. Jack Webb officiated at the recitation of vows.

The bride is the daughter of Mr. and Mrs. Stanley Waits. She is a graduate of Hale Center High School and is currently a junior at San Angelo State University where she is majoring in elementary education. She is the director of a day care center in San Angelo.

Parents of the groom are Mr. and Mrs. Roy Rastetter. He is a graduate of Hale Center High School and will graduate from the Texas State Technical Institute in Amarillo in August. He is employed as a diesel mechanic in San Angelo.

Parents of the groom are Mr. and Mrs. Roy Rastetter. He is a graduate of Hale Center High School and will graduate from the Texas State Technical Institute in Amarillo in August. He is employed as a diesel mechanic in San Angelo.

Music for the ceremony was provided by JoLyn Maddin as the organist and Mrs. Eddie Turner as pianist. Eddie Turner was the soloist.

Guests were seated by John Waits of Corpus Christi, brother of the bride; Jeff Waits, brother of the bride; Jeff Chapman, cousin of the groom; and Monty Chapman, cousin of the groom.

Vows were exchanged at an altar centered with a spiral candelabra holding white tapers, trimmed with greenery. A unity candle centered the altar.

Given in marriage by her father, the bride wore a formal gown of white Chantilly lace and chiffon. A mandarin collar with a sheer off-the-shoulder yoke enhanced the gown. A Victorian flounce graced the fitted all-lace bodice. The chiffon skirt was fashioned with a chapel length train.

To complete her ensemble, the bride

chose a double-layered veil of illusion trimmed with Chantilly lace. She carried a cascade bouquet of yellow roses and rosebuds, accented with Stephanotis and long white streamers.

Elaine Siewert of Hart, sister of the bride, was the matron of honor. Bridal attendants were Janet Watson of Canyon, Julie Tiner of Lubbock, and Sharon White. All wore identical dresses of yellow antique lace lined with yellow taffeta. They featured a V-neckline, a set-in waistband, and double ruffle lace sleeves. The full-length skirts featured a wide flounce which attached to the back waist. Each carried a single yellow silk rose with white streamers tied in love knots.

The groom's father was his best man. Groomsmen were Jerry Chapman of Plainview, Junior Ashmore, and Berry Borchardt.

RECEPTION

Following the ceremony, a reception was held in the fellowship hall. Reception assistants were Donna Howard, Dee Keener, and Jill Waits of Aberrath.

The bride's table featured a double-tiered wedding cake decorated with yellow rosebuds and silver wedding bells. An arrangement of white and yellow roses enhanced the table setting. Guests were served from crystal appointments.

The groom's table was decorated with an ecru tablecloth with a yellow underlay. A silver service was used to serve guests.

A rehearsal dinner was hosted by the parents of the groom at K-Bob's Restaurant in Plainview.

Others attending included Mr. and Mrs. Orville Poole, Springfield, Missouri; Mrs. Odessa Cage and Mrs. Jimmie Hallomon, Lubbock; Mr. and Mrs. Gary Hill and Jeremy, Lockney, and Mrs. J.C. Odam of Floydada.

Il Penseroso Jr. Study Club hold meeting

Il Penseroso Jr. Study Club met in the home of Ricky and Marylyn Biggs. Co-hostesses were Kathy Kellison, Cathy Barnett, Julie Hickerson and Sandra Cummings. The end of the year was a covered dish luncheon.

A clever game of bingo revealed the Club Woman of the Year — Ginger Mathis and the winner of the quilt — Gayle Jackson.

The past president, Treena Aston, gave each parting officer a sachet bag and welcomed the new officers. Treena read three "thank you" notes.

The meeting was adjourned by each member guessing who their secret pal

had been and drawing for new ones.

Members present were Cindy Means, Judy Jackson, Jessie Johnson, Kay Martin, Charlanne Burson, Janette Workman, Linda Cunyas, Ginger Mathis, Robin Stoerner, Brenda Mangold, Reeda Cay Smith, Karen Quebe, Gayle Jackson, Linda Marr, Cynthia Bybee.

Kelly Fortenberry, Rhonda McCain, Treena Aston, Kathy Kellison, Julie Hickerson, Marylyn Biggs, Sandra Cummings, Anita Bigham, Sandra Adrain and special guest, Christi Kellison and Lauren Mangold.

Jordan, Breed to wed July 24th in Floydada

Mr. Wendell Jordan of Canyon, and Mrs. Joyce Jones of Moore, Oklahoma announce the engagement and approaching marriage of their daughter, Joy Dell to Rex Armon Breed, son of Mr. and Mrs. Frank Breed of Floydada.

The couple plans a July 24, 1982

wedding at the United Methodist Church in Floydada.

Miss Joy Jordan is presently employed at Texas Instruments in Lubbock, and her fiancé is engaged in farming in the Lakeview community.



JOY JORDAN, REX BREED

Jody Nance feted with bridal shower

Jody Nance, bride-elect of Scott Stansell was honored with a bridal shower in the home of Mrs. B.J. Terrell Saturday, May 22 from 10:00 to 11:30 a.m.

Mrs. Terrell and the bride-elect stood in the receiving line along with both mothers, Mrs. Joe Nance and Mrs. Pat Stansell.

They wore corsages of lavender tinted carnations tied with lavender ribbon.

Mrs. Elizabeth Sandefur, grandmother of the bride, Mrs. Tom Nance of Plainview, Mrs. Bud Nance and Mrs. Marie Henderson, all aunts of the bride-elect, were special guests at the shower.

The register table was graced with a floor length ecru cloth over pale yellow. Brass candleholders with lavender votive candles and bows centered the table. Amy Nance registered the guests.

Tonya Nance and Mrs. Mike Dietrich presided at the serving table. It was laid

with a white lace cloth over a white background. The overskirt was caught up with lavender bows at intervals around the table. The centerpiece was made up of a white candelabra with lavender votive candles, wedding bells and matching bows.

Mrs. Richard Wiley and Mrs. Thomas Marr assisted with the hospitalities in the gift room.

Hostesses sharing in the planning of the occasion and presenting the couple with a set of Farberware cookware were: Meses: B.J. Terrell, Roy Kinard, Neva Smith, Jerry Cawley, Bill Sherman, David Frizzell, Homer Ragland, Thomas Marr, Buck Ford, Bill Turner, Glen Cooper, Jack Frizzell, Richard Wiley, Pat Frizzell, Delvin Bybee, Kelton Shaw, Tom Moore, H.E. Frizzell, G.B. Johnston, G.E. Reeves, Mike Dietrich, and Claude Stallings.

The couple have planned a June 26 wedding in the First Baptist Church of Lockney.

Gift coffee honors

Mrs. Layne Kirk

Mrs. Layne Kirk was honored with a gift coffee in the home of Mrs. Delmas McCormick, Saturday May 8. The couple was married April 10 in Canyon, Texas.

Guests were greeted by Mrs. McCormick and Mrs. David Kirk, and presented to Susan and her mother, Mrs. Melvyn.

Mrs. Johnny Bill Sue served spiced apple juice and coffee from a silver tea service. Other refreshments were miniature fruit and nut muffins, sausage spirals and a platter of fresh strawberries. A spring bouquet of flowers, hand-stitched cloth, and crystal appointments completed the table appointments.

Hostesses for the shower besides Mrs. McCormick and Mrs. Sue were Meses: Jack Jordan, Robert Ward, Ozell Chappell, Buddy Lutrick, Newell Burke, Louis Lloyd, Edell Moore, Don Chesshir, Mack Hickerson, Adrain

Helms, Nile Bryant and Carolyn Cheek. Their gift to Susan and Layne was a mixmaster.

FLOYD DATA

Mrs. Ira Bobo and Mrs. Loyd Ownbey of Lubbock visited Mr. and Mrs. Clyde Bagwell last Thursday. Thurlam Thacker, also of Lubbock, visited the Bagwells on Saturday. They are all cousins of Mrs. Bagwell.

FLOYD DATA

Dr. and Mrs. K.C. Patzer and son, Bart, of Floydada, returned home this past weekend after a trip to the midwest.

Following a visit with relatives in Wisconsin, the Patzer's toured the Palmer College of Chiropractic in Davenport, Iowa. While there, Dr. Patzer lectured a 12th quarter class.

Memorial Day

May 30

Visit our shop or phone in your order for decoration for your graves in our local cemetery for this Memorial Day!

Place your order early! We will deliver & correctly install these decorations for you on your family plots.

Park Florist

983-2867 Floydada, Texas 983-2868

Helping you say it right.

GIFTS for the class of '82

SOLID GOLD CHAINS, EARRINGS, EARRING JACKETS, PENDANTS

BEADS, PEARLS, ONYX, LAPIS

ADD A BEAD

Diamond Studs and Matching Drop Set

\$50⁰⁰ 2½ point T.W.

Sue Hardy Jewelry

202 W. Missouri



BRIDAL SELECTIONS ARE NOW AVAILABLE FOR:

D'Lee Marble bride elect of Dale Powell

Sue's

Gifts and Accessories

126 W. California

983-5312

Nichols honoree of birthday reception

Louzilla Nichols was honored with a reception in her home Sunday, May 23 to celebrate her 80th birthday.

Hosting the event was her daughter and husband, Ruby Jewel and Glen Whitfill of Sweetwater, and granddaughters and husbands, Cindy and Terre Michaels of Garland and Judy and Lt. Commander David Allen and great-granddaughter, Davvynnia Allen of Virginia Beach, Virginia and Mrs. Bobbie Kinnibrugh of South Plains. Judy, David and Davvynnia were unable to be present.

Guests were greeted by Ruby Jewel and presented to her mother, Mrs. Nichols, Marjorie Holcomb, niece of the honoree, was at the guest register.

The table was laid with a lace tablecloth. Highlight of the table was the large sheet birthday cake decorated with red roses and the inscription "Happy 80th Birthday, Louzilla". Milk glass and gold appointments were used in serving.

Wanda Brock of Hart and Nova Jean Ivy of Mansfield, nieces, and Sheila Young of Mansfield, a great-niece served red punch, coffee, cake, nuts and mints. Bobbie Kinnibrugh was also in the houseparty.

Relatives registering were: Letha Davis of Irving; T.B. and Rosa Cox, Canyon; Doyle and Margie Cox and Nichole and Charlotte Blazier and Kimberly of Amarillo; Nova Jean Ivy, Ricky Iva and Sheila Young and Jason, Mansfield; Keith and Wanda Brock and Marlin Marble of Hart; Howard and Mary Lou Springer of Hale Center; Johns and Vera Cox, Mel and Marjorie Holcomb, C.H. and Ida Rose and C.L. and Lucy Dean Record, all of Lockney; Delbur and Bennie Mavet Rose of Plainview; and Joe Richard and Sandra Noland, Mark Noland and Meda Ruth Watts of Floydada.

Others registering were: Grigsby and Lillie Mae Milton Jr., Patty Anderson, Bonnie Julian, Ernest and Ruth Smitherman, Jack and Aileen Smitherman, John Key and Madge West, and Sylvan and Bobbie Kinnibrugh, all of Floydada; and Mary Lou Hammonds and Frank Brown of Lockney.



1956 JR. STUDY CLUB OFFICERS FOR 1982-84 — Left to right, Stacy Reeves, Secretary; Susan Garms, reporter/historian; Donna McClendon, 2nd vice president; Stacy Smith, president; Jan Thompson, 1st vice president; Sharon Vickers, federation counselor; and Sheree Cannon, custodian. Not pictured: Julie Cathey, parliamentarian; and Jan Thayer, treasurer.

Recital presented by students of Dell Gray

Piano students of Mrs. Dell Gray were presented in their annual Spring Recital in two performances on May 22, 1982, at the First United Methodist Church in Floydada.

Those participating in the 6:30 p.m. recital were: Alex Gregory, Brittany Gregory, Jayna Dunn, Jennifer Crow, Roxene Brown, Valency Zumwalt, Mindy Matsler, Shane Orman, Julie Smith, Amanda McDaniels, Paige Cannon, Jeannie Jackson, Virginia Mitchell, Misti Orman, Rusty Simpson, Anna Leta Bradshaw, and Sandra Mitchell. During the awards ceremony, following this recital, the following students were honored: Jeannie Jackson, Honorable Mention; Virginia Mitchell, 3rd Place Award; Anna Leta Bradshaw, 2nd Place Award; and Sandra Mitchell, 1st Place Award.

Students performing in the 8:00 recital were: Amanda Watson, Esther Hong, Deanna Watson, Mychelle Harris, Shelby Ogden, Mark Thompson,

Robin Galloway, Tammy Farris, Angie Bertrand, Sue Hong, Jill Smith, Joey Thayer, Daralyn Williams, Greg Thompson, Ruth Elaine Wilson, Treva Hambright, and Shawnda Sanders. Students honored from this group were: Robin Galloway, Honorable Mention; Treva Hambright, 3rd Place Award; Ruth Elaine Wilson, 2nd Place Award; and Shawnda Sanders, 1st Place Award.

Special recognition was given to the following students in the overall best student category: Ruth Elaine Wilson, 3rd Place; Anna Leta Bradshaw, 2nd Place; Shawnda Sanders and Sandra Mitchell (tie), 1st Place. This was the first time in seventeen years of teaching that Mrs. Gray awarded a "tie" in the overall best student category. Joey Thayer was the recipient of the "Henry Slaughter Most Excellent Award," a new recognition for those students enrolled in this well-known Gospel composer's study course which Mrs. Gray teaches, along with her regular piano curriculum.

Ester Hong also received special recognition as being the youngest student in the recital. Ester is in kindergarten, and is the youngest piano student Mrs. Gray has ever presented in recital.

Selections ranging from Mozart and Bach to Dolly Parton's "9 to 5" were played by the 34 students. A special guest soloist was Deon Zumwalt, who played and sang "Moving On." For the finale of the second recital, Mrs. Gray joined Shawnda Sanders on the twin piano in a stirring rendition of "All Hail the Power." Mrs. Gray wishes to express her appreciation to the members of the First United Methodist Church for the use of the facilities, and announces that her next recital will be the annual Christmas program, planned for early December.

SPC offering home design and furnishing course

South Plains College at Plainview is offering a course in Home Design and Furnishings during the first summer session. This course is for anyone interested in home designs and will be taught by Rita Williams who has five years experience and is the area Decor-

ation Consultant for Spears Furniture of Lubbock.

Registration will be May 31 with classes beginning June 3. Interested persons may call 293-3605 for further information.

Hardy presents piano recital

Students of Elaine Hardy will present their spring recital Thursday night, May 27, at the First Christian Church in Floydada.

The recital will be divided into two sections. From 6:00 to 7:00, an Honors Recital featuring Laron Cheek, Andrea Bonner, Shannon Edwards, Jamie Thayer, Tammy Leatherman, Mitzi Julian and Christi Norrell of Floydada plus Amy Shaw of Lockney.

They will be playing classical selections from their 10-piece National Program played for National Guild of Piano Teachers held in Lubbock last week.

From 7:00 to 7:30, a break with sandwiches, chips, dips and drinks will be served in fellowship hall.

All students will then perform at 7:30 with selections from popular, rock, and hymns being played on piano, electric piano, Yamaha Porta-sound and organ. Several ensemble groups will also present special selections with Keith Owens of Lockney on the drums.

Lockney students performing are: Betty Cates, Inez Gibson, Dee Carley, Jody Ansley, Tricia Steele, Amy Ansley, Amy Shaw, Stephanie Bybee, Shandra Bybee, Rachelle Ford, Karen Ford and Cherie Parrish.

Floydada students are Tammy Leatherman, Mike Leatherman, Tana Perry, Kim Perry, Cathy Langley, Jamie Thayer, Bryan Jarnigan, Christi Norrell, Cindy Burke, Amy McCormick, Anita McCormick, Chad Edwards,

Shannon Edwards, Andrea Bonner, Amy Ogle, Mitzi Julian and Laron Cheek. Also, Josh Thayer, student of Christi Norrell will play. Awards to the students will follow.

A reception will follow with public invited to attend all the portions of the recital. A table will be set up to honor the 8th grade graduates — Jamie Thayer, Shannon Edwards, Cherie Parrish, Rachelle Ford, Karen Ford and Shandra Bybee.

Also, an honor table to recognize the high point students with Christi Norrell's method book she composed and wrote from her high school Gifted and Talented class.

Record students to hold Musical Recital Thursday

Mrs. Charles L. Record will present a group of piano, guitar, and organ students in a Musical Recital Thursday, May 27, 1982, 7:30 p.m. at the First

United Methodist Church in Lockney. They will be assisted by a speech student of Mrs. D.C. Rose. The public is invited.

Those playing will be: Angie Clark and Tracey Johnson of the South Plains community; Billy Villarreal, Steve Morales, and Tana Turner of Floydada.

Those from Lockney will be: Kima Blaino, Jessica L'emons, Brian Thyen, Debbie Del Toro, Carrie Parrish, Brandon Widener, David Brittain, Justin Adams, John Klein, Jeri Ann Lambert, Lori Gonzales, Jayson Lusk, Robert Price, Jerry Klein, Louis Luna, Jennifer Turbeville, Phillip Glasson, Aimee Green, Heath Rexrode, David Perez, Donna Vernon, Daniel DeLeon, Linda Stephan, Lisa Terrell, Wyman Rexrode and Jovita Castro.

South Plains News

South Plains School presents play

BY MRS. MURRAY JULIAN

South Plains Elementary School children will have their school plays, recitations and songs this Monday, May 24, then on Tuesday they will have their room picnics and last of school work. Wednesday they will be going to school for the last day, of this term. Friends, relatives and teachers and pupils will gather at 2:00 p.m. this Monday, and everyone will enjoy the festivities, with refreshments served in various rooms.

Regardless of clouds, winds and storm signs, there has been no rain in our South Plains area this past week.

Rev. and Mrs. Cecil Osborne are to return this Monday from Mineral Wells, Texas where they have been enjoying a vacation for several days. Mrs. Osborne was in Dallas part of this time with another daughter, Mrs. Karen Mauney, and Rev. Osborne was also in Dallas for part of his vacation. Then both spent some time with Rev. Ron and Linda Somers, and granddaughters Jennifer and Jaime in Mineral Wells.

The pupils of the teachers of the South Plains School received many awards this Monday afternoon at the school program from 2-4 p.m., and 4 families had children with perfect attendance records for the year's school. Several children who did not speak English when school started have mastered the language, and were up with their classmates in the different grades. Mrs. Rance Young with 1, 2nd graders gave out awards, Miss Carol Arnold with her 3rd and 4th grades had several students with high grades.

Mrs. Charlene Starke had delightful kindergarten pupils—10 of them, and also she was school principal. Mrs. Jimmie Hunter with the 5-6th graders had the largest room of children she ever had. Now school will be out Wednesday for the coming summer.

We are very proud to announce that posters made here at our school to enter in the Fire Prevention Week Contest were judged in Floydada where they won the top 3, then were sent to Amarillo and won the top 3 there and now they are in Dallas where they are to be judged. No. 1 was Tim Juan, No. 2 was Keith Teeple and No. 3 was Rojel-

lo Gonzales. We congratulate them all.

The Annual Pioneer Reunion and Old Settler's Day for Floydada was held Saturday. There were Arts and Crafts Fair, and Friends of the Library held a book sale. The weather was perfect being cool and nice, especially in the new pavilion. A delicious barbecue lunch was served at noon, and there was the annual parade, and other festivities. Many from here were seen, including Mr. and Mrs. Grigsby and Lillie Mae Milton, Letha Mulder, Bonnie Julian, Mamie Wood, Ruby Higginbotham with her guests from Amarillo and Mrs. Fred Marble, who judged the Wildflower Show, and Mamie Wood who assisted.

Mr. and Mrs. Tillman and Doris Powell from Howe were in the South Plains vicinity Saturday morning and we were so pleased to have a visit from them. They report so much rain at their home near Dallas. They were here especially for their son Tom Powell's Masonic work, and planned to attend Old Settlers Day in Floydada. The Powells formerly lived here near us.

Mr. and Mrs. Kerry Reeves of Idabel, Oklahoma, are parents of a baby girl, their second girl, born May 3rd, in Idabel. She was named Kacie Janelle, weighed 8# and 10 oz. and was 22 inches long! Bob and Janelle Reeves and son Mark were there when she was born, and Janelle stayed with them 2 weeks. Kacie has a sister, Kristy 2, and a brother Kellas 5 and a half. Congratulations to them and to grandparents. Kerry grew up in our community.

Jean Reeves is attending West Texas State University in Canyon where she is working toward her degree, and she is living with her brother and family, the Jack Reeves. Jean is working at Texas Tech Medical Center in Amarillo this summer.

Mrs. Mamie Wood went to Lubbock this Monday, and was accompanied by Mrs. Bonnie Moore. Mamie will be attending graduation, exercises for her grandson Bodie Teague.

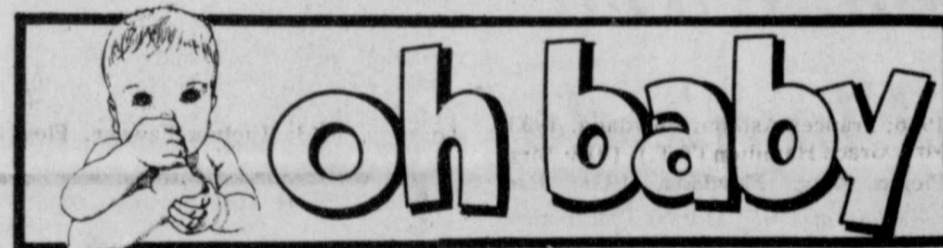
Kristi Julian, Mitzi Julian and Mrs. M.M. Julian plan to go to Roscoe, Tex. Tuesday morning where that evening they will attend graduation exercises for their cousin, and Mrs. Julian's grandson, Dickie Julian, who will be graduating from Roscoe High School the evening of May 25.

Mrs. Louzilla Nichols was the recipient of a birthday party in her home south of South Plains on Sunday afternoon, May 23, from 2-4 p.m. Mrs. Nichols was 80 years old Sunday, and was so happy to have her only daughter and husband the Glen Whitfills of Sweetwater, and her granddaughter, Cindy and Terre Michaels of Dallas. Another granddaughter, Mrs. Judy and husband David Allen live in Virginia. A host of other relatives and friends joined her for a lovely birthday.

The Hobby Club will have its next meeting in June at the home of Mrs. Mamie Wood, east of South Plains. The meeting is the annual breakfast, named "Breakfast at Mamie's", which is one of the nicest meetings of the year, since it is cool and nice, and the meeting is held outdoors, in the lovely backyard of Mrs. Wood, with all the trees and birds and a delicious breakfast! The time is Wednesday, June 9th, at 8:00 a.m. Hostesses with Mrs. Wood are Mrs. Kendall Cummings, Mrs. Ruby Higginbotham and Mrs. Bonnie Julian.

Our hearts are made to grieve this week by the sudden passing of our long time friend and neighbor, Frank McClure. He was taken to the Lockney Hospital Friday and Sunday he suddenly grew worse, and was taken to the Methodist Hospital in Lubbock, and this Monday morning he was stricken at 6:30 and passed away. We offer our sympathy and love to the family, and the services are to be held at the South Plains Baptist Church Wednesday afternoon, May 26, at 2:00 p.m. His family are all at the family home with Mrs. McClure at this time. Rev. Cecil Osborne will be preaching the services here at South Plains.

Mrs. Ruby Higginbotham had her brother Warren Cyper and wife and her sister Mrs. Edith Guggenheim and husband with her over the week end, and they all attended the Old Settlers Day festivities in Floydada, then Sunday went back to their homes in Amarillo.



MOSLEY

Rick and Lisa Mosley of Lockney are proud to announce the arrival of Lisa Nicole, born May 24, 1982 at Central Plains Hospital, Plainview, at 7:15 p.m.

Grandparents are Boyce and Inez Mosley, Lockney, and Howard and Jackie Gregory of Floydada.


YEARY

Rex and Brenda Yeary are the proud

parents of a son, Jess Ryan, born May 15 at 2:03 a.m. in Lubbock General Hospital. He weighed in at 5 lbs. 6 oz. and was 18 1/4 inches long.

Grandparents are Jack and Dona Yeary, Bill and Darlene Fulton of Floydada, and Preston and Betty Coomer of Graham.

Great-grandparents are Mrs. Sarah Beard and Mr. and Mrs. Cleo Fulton of Floydada, Mrs. Sylvia Yeary of Lockney and Mr. and Mrs. Olin Bryant of Idalou.



WE'LL BE CLOSED
June 7th - 12th For A Vacation !!!

Your Consideration
Is Appreciated

GENE'S CLEANERS

103 N. Main Floydada

Alterations - Drapery Cleaning - Laundry Service

Memorial Day

Wreaths, Sprays Or Vase
Fresh, Silk Or Permanent

Delivery To Cemetery



SCHACH'S
Flowers, Jewelry & Gifts
"Our Pleasure Is To Serve You"

Lockney 652-2385

never forgotten...
those who gave their lives

Proudly, we pay tribute to those Americans of our armed forces who have given their lives in the line of duty. Their great sacrifice is our everlasting sadness... their memory our everlasting pride.

Let us all honor them on this special day.
Floyd County's Progressive Bank

First National Bank in Lockney

MEMBER F.D.I.C.

Accounts insured up to \$100,000.

(806) 652-3355

Look for this symbol. We've got the answers.



Wed., June 9

19

KING SIZE
WALLET
CREATIVE
COLOR
PORTRAITS
FOR ONLY

99¢

ASK About Our **FREE** 8 x 10 OFFER

Kodak paper. For a Good Look at the Times of Your Life.

GET PICTURES MADE OF GRANDPA, GRANDMA, DAD, MOM AND ALL THE LITTLE ONES AT THESE SAME LOW PRICES!

WE USE KODAK PAPER

SHUGART COLOR PHOTOS

Mize
Pharmacy
& TV

102 S. Main St.

1982 Floyd County Pioneers

Jeffie Boone Smith, Floydada, 1892; Worth Gwendolyn Shipley Howard, Floydada, 1919; Bryan McKinzie Smitherman, Floydada, 1931; Syble Teeple, Silverton, 1907; Cecil Fyffe, Floydada, 1909; Charlie Boedeker, Lockney, 1914; Gilbert L. Fawver, Floydada, 1913; Bill Stephens, Floydada, 1920; Mary Sinor, Floydada, 1923; Dorothy Carthel, Floydada, 1920; Emma Lou Whitaker, Floydada, 1912; Leslie Fawver, Floydada, 1917; Jonelle Fawver, Floydada, 1928; Mary Alice Eakin, Floydada, 1916; Betty Chowning, Floydada, 1927; Leroy Chowning, Floydada, 1924; Pam Bennett, Floydada, 1952; Cindy Dudley, Floydada, 1953; Beatrice Davis Bloodworth, Floydada, 1918; Henry Bloodworth, Floydada, 1916;

Gertrude Davis, Clovis, New Mexico, 1918; Beulah Denison, Floydada, 1923; Carl Denison, Floydada, 1923; Bill Hale, Floydada, 1930; Carolyn Hale, Floydada, 1955; Aline Dobbins, Floydada, 1923; Lorin Leibfried, Floydada, 1924; Geneva Knight Elliot, Floydada, 1927; Mrs. D.C. Rose, Frazier, 1929; Mrs. A.S. Mize, Floydada, 1898; Lee Trice, Floydada, 1924; Loy Lee Trice, Shelby, North Carolina, 1932; E.L. Cornelius, Floydada, 1932; Mrs. Jess Glover, Dougherty, 1917; Jess Glover, Dougherty, 1916; R.L. Bullock, Floydada, 1925; Mary Lou Bullock, Floydada, 1924; Ruth Dutton, Floydada, 1913; A.S. Mize, 1919;

Emmit Dutton, Floydada, 1928; Wannie Hilton, Floydada, 1915; Bob Grundy, Odessa, 1946; Myrtle Finley, Floydada, 1929; W.H. Finley, Floydada, 1923; Betty Patterson, Floydada, 1923; Mrs. Hubert Davis, Floydada, 1928; Hubert Davis, Floydada, 1928; Thelma Jones, Floydada, 1911; Etha Williams Clay, Amarillo, 1924; Grace Grundy, Floydada, 1913; Sarah Plumlee, Floydada, 1929; Clara Day Murry, Floydada, 1891; Floyd Murry, Canadian, 1914; Lloyd Murry, Floydada, 1914; Dr. Mitch Murry, Canadian, 1936; W.R. Daniel, Floydada, 1919; Margaret Daniel, Floydada, 1948; Burl Huckabee, Floydada, 1917; Doris Huckabee, Floydada, 1920;

Howard Drysdale, Floydada, 1947; O.R. (Tommy) McIntosh, Floydada, 1925; Willie D. Wilkins Hill, Floydada, 1924; Charlie Spence, Floydada, 1914; Elva Perry, Lockney, 1901; Olive B. Myers, Lockney, 1916; Helen Huffman, Lockney, 1929; Edell Dubois, Floydada, 1919; Willie Hill McCormick, Floydada, 1917; Pauline Robertson, Floydada, 1914; M.S. (Tubby) Robertson, Floydada, 1925; Mrs. M.C. Smith, Floydada, 1924; Beulah Baker, Floydada, 1920; Goldie Jacobs, Floydada, 1904; Ila Marie Battey Warren, Floydada, 1925; Thomas Warren, Floydada, 1924; Alma Holmes, Duncanville, 1907; Clem McDonald, Floydada, 1915; Hilda McDonalds, Floydada, 1937; Mrs. O.R. McIntosh, Floydada, 1949;

Glenn Jarnagin, Floydada, 1917; Florine Jarnagin, Floydada, 1917; Harry Reeves, Floydada, 1923; Dorothy Reeves, Floydada, 1917; Bob Bradford, Floydada, 1926; Woodrow Badgett, Floydada, 1919; Gladys Ruth Badgett, Floydada, 1918; Mabel Laminack, Floydada, 1917; R.L. Neil, Floydada, 1924; Mrs. R.L. Neil, Floydada, 1928; Juanita Shurbet Henry, Floydada, 1916; George L. Henry, Floydada, 1914; Guy Garrison, Floydada, 1913; Mrs. John T. Carthel, Lockney, 1905; Francis Probasco Badgett, Floydada, 1920; Preston Badgett, Floydada, 1919; Estelle Carthel, Floydada, 1920; Aaron Carthel, Floydada, 1913; Pete Roe, Floydada, 1915;

A.C. Carthel, Floydada, 1917; R.B. Hatley, Floydada, 1917; Nora Hatley, Floydada, 1920; Jack Smitherman, Floydada, 1917; Mrs. Jack Smitherman, Floydada, 1905; Ann Watson, Floydada, 1914; Jake Watson, Floydada, 1916; Charlie Perry, Floydada, 1917; Lillie Dee Perry, Floydada, 1925; Walton Hale, Floydada, 1929; Mary Hale, Floydada, 1929; Mary Corley, Floydada, 1907; Travis Corley, Floydada, 1903; Ollie Meek, Floydada, 1905;

Mabell Meek, Floydada, 1902; Mrs. C.M. Meredith, Floydada, 1919; May Garrett, Floydada, 1900; Cleo Goins, Floydada, 1907; Carrie T. Cline, Floydada, 1924; Ethel Warren, Floydada, 1908;

Gertrude Hollums, Floydada, 1917; Russel Crawford, Floydada, 1923; Lucille Custer, Floydada, 1916; Ruby Custer, Slaton, 1919; Elbert Custer, Slaton, 1919; Beulah Fae McClure, Lockney, 1915; Zelma McClure, Lockney, 1912; Philip Dunavant, Plainview, 1916; Ruth Fortenberry, Lockney, 1922; Robin Fortenberry, Lockney, 1912; M.A. Barton, Floydada, 1923; Minnie G. Barton, Floydada, 1923; Cora Hartline, Floydada, 1912; Ottis Johnson, Floydada, 1919; Inez Roe, Floydada, 1937; Theo Thompson, Amarillo, 1919; L.D. Britton, Floydada, 1914; Sam Adrel Spence, Floydada, 1921; Audrey Spence, Floydada, 1942; O.C. Allison, Lockney, 1930;

Wynona Allison, Lockney, 1914; Grigsby Doodle Milton, Floydada, 1917; Lillie Mae Milton, Floydada, 1935; Queen Annie Lawson, Floydada, 1926; Floyd Lawson, Floydada, 1926; Dozier Dillard, Floydada, 1915; Dock Jones, Floydada, 1900; Evelyn Daniel Crull, Lubbock, 1923; J.T. Bilbrey, Plainview, 1923; Esther Freeman, Floydada, 1928; Grady Freeman, Floydada, 1925; Hazel Bradley, Floydada, 1913; Allene Henry, Floydada, 1916; M.D. Arterbury, Lockney, 1919; Frances Linch, Floydada, 1937; T.U. Linch, Floydada, 1923; Corene Daniel Stewart, Levelland, 1919; Edith Marrs, Floydada, 1931; Letha Lightfoot, Floydada, 1936; Travis Lightfoot, Floydada, 1917;

Marie Smith Tardy, Floydada, 1908; Harvey Tardy, Floydada, 1905; Clara Jetton, San Antonio, 1922; C.L. Berry Sr., Floydada, 1913; C.O. Lyles, Floydada, 1920; Josephine Britton Lyles, Floydada, 1924; Margaret Collier, Floydada, 1915; Henry Willis, Floydada, 1905; Clyde Stapp, Lockney, 1927; Nina Willis, Floydada, 1905; Lewis Gilliland, Floydada, 1926; Ruth Gilliland, 1937; Myrl Wofford, Lockney, 1927; Lloyd Wofford, Lockney, 1908; Annie Taylor, Floydada, 1926; Jewel Martin, Floydada, 1930; Iva Jewel Bonner, Floydada, 1928; Norma Ruth Martin, Floydada, 1939; Modena Cumbie, Lockney, 1923; Weldon Cumbie, Lockney, 1929; Pansy Finley, Floydada, 1924; Wayne Finley, Floydada, 1919;

Lila Kendrick, Floydada, 1919; David Kirk, Floydada, 1923; Opal Ashton, Floydada, 1926; Ann Smith, Floydada, 1926; Frances Ashton, Floydada, 1933; Mrs. Grace Hamilton (T.T.), 1918; Mrs. Pierce King, Floydada, 1921; Earl Cooper, Lockney, 1918; Ersel Matthews, Corpus Christi, 1920; Mildred Burke Cates, Floydada, 1927; Johnnie Cates, Floydada, 1917; Goldie Reed Brown, Crosbyton, 1917; Agnes McDermott Robinson, Crosbyton, 1911; Wanda Williams Williams, Floydada, 1930; E.A. Williams, Floydada, 1922; Clara Smith Martin, Hale Center, 1906; Jim Conner, Lockney, 1907; Viola Conner (Mrs. Jim), Lockney, 1917; Georgia Finley, Floydada, 1934;

Pernie Leatherman, Floydada, 1915; Clarence Leatherman, Floydada, 1925; Leona Watson, Lockney, 1923; Raymond Watson, Lockney, 1942; Gertrude (Mrs. John) Smitherman, Floydada, 1924; Mamie Woods, South Plains, 1938; Wm. H. (Bill) Smith, Floydada, 1912; Leroy Burns, Floydada, 1924; Loretta Burns, Floydada, 1926; Frank Jordan, Wake, 1926; Dorothy Jordan, Wake, 1926; Sy Medley, Floydada, 1923; Peggy Medley, Floydada, 1925; Lloyd Cumbie, Floydada, 1929; Drue Cumbie, 1929; Zenoba Cumbie, Floydada, 1922; Mrs. Zallie Burgett, Lamesa, 1916; Mattie Covington, Dougherty, 1913; Oliver Emert, Floydada, 1922; R.W. Landrum, Lockney, 1908; Fay Landrum, Lockney, 1923; Carl Simpson, Crosbyton, 1937;

Mina Simpson, Crosbyton, 1937; Foster Amburn, Canyon, 1907; Mariah Amburn, Canyon, 1914; Edith, Gugenheim, Amarillo, 1924; Dick Gugenheim, Amarillo, —; Mrs. Alvin Nichols,

Lockney, 1905; Ruby Whitfill, Sweetwater, 1929; Glenn Whitfill, Sweetwater, 1929; Marie Baxter, Floydada, 1919; Rubie Ratjen, Floydada, 1929; Mary Lou Bollman, Lockney, 1909; Bessie Yearly Sauls, Quitaque, 1908; Wm. F. Sauts, Quitaque, 1935; Ruth Hammonds, Floydada, 1951; Weldon Hammonds, Floydada, 1951; Lois Newson Morrison, Lubbock, 1916; Mrs. Nancy E. Newson, Floydada, 1910; Katherine Ball, Lockney, 1924; Mrs. Harmon Roberts, Floydada, 1915; Mrs. Lois Waller, Floydada, 1911; Sed Waller, Floydada, 1928; Lillian Smith, Floydada, 1932;

Tom Weathers, Lockney, 1921; Valree Turner, Floydada, 1923; Margie Young, Floydada, 1939; James Lovell, Floydada, 1926; Floyd W. Jackson, Lockney, 1917; Carolyn Jackson, Lockney, 1942; Leonard Matsler, Floydada, 1914; Lahoma Matsler, Floydada, 1936; E.T. Thacker, Lubbock, 1908; Faye Jackson, Floydada, 1919; Joanne Lloyd, Floydada, 1908; Alta Smith, Floydada, 1916; G.W. Smith, Floydada, 1915; Sue Casey, Lockney, 1946; Oletha Davis, Irving, 1909; Lois Gilly, Floydada, 1925; Carl Lee Gilly, Floydada, 1921; Grace Jarrett, Floydada, 1935;

Carl Jarrett, Floydada, 1916; A.L. Wylie, Floydada, 1948; Mildred Wylie, Floydada, 1948; Imogene Fortenberry, Lockney, 1925; Cephus Fortenberry, Lockney, 1916; Alma Dunn, Floydada, 1912; E.M. Jackson, Floydada, 1916; Fred Huggins, Lockney, 1927; Billie Huggins, Lockney, 1948; Mary Helen Day, Floydada, 1925;

Junior Day, Floydada, 1927; A.G. Tyler, Amarillo, 1928; Clarence Guffee, Floydada, 1926; Opal Guffee, Floydada, 1926; Gene Lawson, Floydada, 1929; Gladys Lawson, Floydada, 1930; Leon Thompson, Amarillo, 1928; Lois Marler, Floydada, 1920; Gus Hammonds, Floydada, 1922; Helen Hammonds, Floydada, 1950; Rudolph McCurdy, Floydada, 1937; Iva McCurdy, Floydada, 1934; Nola McCravey, Floydada;

Bill Beedy, Floydada, 1903; Mrs. Bill Beedy, Floydada, 1907; Carl Nelson, Floydada, 1917; Eddie King, Floydada, 1907; Mrs. Flora McNeill, Floydada, 1915; M.J. McNeill, Floydada, 1927; Elva Blum, Floydada, 1928; Ada Ellis, Floydada, 1908; Jack Lackey, Floydada, 1916; Fred Cardinal, Floydada, 1918; Polly Cardinal, Floydada, 1917; George L. Smith, Floydada, 1906; Wilma Black, Woodland, California, 1916; Dicie Goltz, McKinley, California, 1918; Mary Smith, Floydada, 1902; Mrs. Duncan Hollums, Floydada, 1917; Mr. Duncan Hollums, Floydada, 1910; R.A. Maddox, Floydada, 1915; Greer Christian, Floydada, 1916; Ruth (Troutman) Christian, Floydada, 1931; Michael Green, Floydada, 1950; H.E. Frazier, Lockney, 1913; Thelma Fawver, Floy-

dada, 1913; J.C. Anderson, Floydada, 1917; S.V. Adams, Floydada, 1906; Beatrice Adams, Floydada, 1917; C.H. Rose, Lockney, 1911; Mrs. C.H. Rose, Lockney, 1906; W.N. Staniforth, South Plains, 1928; Francis Staniforth, South Plains, 1929;

D.C. Rose, Lockney, 1917; C.L. Record, Lockney, 1941; Mrs. C.L. Record, Lockney, 1924; John Key West, Floydada, 1911; Mrs. R.M. Stovall, Plainview, 1927; Vaughan West Murff, Floydada, 1905; Fern Stovall Anderson, Floydada, 1931; Mrs. Edd Muncy, Floydada, 1921; Dola Maddox Lackey, Floydada, 1915; V.L. McNeil, Floydada, 1926; Leona McNeil, Floydada, 1949; Hester West Moore, Floydada, 1908; W.I. Moore, Floydada, 1973; Anne Swebston, Floydada, 1917; Gilbert Shirey, Torrance, California, 1925; Nita Hollum, Lockney, 1951; Cecil Pope, Floydada, 1923; Louis Newell, Floydada, 1921; R.G. Dunlap, Floydada, 1912; Helen Dunlap, Floydada, 1915; Mrs. Bud Warren, Floydada, 1931; Bud Warren, Floydada, 1914; Clara Luttrell Redd, Floydada, 1924; Ruthy Bell Luttrell Clark, Plainview, 1924; Verlie Johnston, Plainview, 1938; Lloyd Allen, Floydada, 1923; Joy Allen, Floydada, 1913; Jack Stansell, Floydada, 1918; Emogene Stansell, Floydada, 1921; Ethel Alexander Hambricht, Floydada, 1924;

W.M. Hambricht, Floydada, 1918; John McKenny, Floydada, 1913; Vernon McPeak, Floydada, 1906; Ethel Carmack, Floydada, 1929; Cager Carmack, Floydada, 1929; Ila Velle McPeak, Floydada, 1922; Thelma Crawford, Floydada, 1923; Earl Crawford, Floydada, 1933; W.B. Eakin, Floydada, 1925; Adrian West, Floydada, 1922; Sarah West, Floydada, 1939; Glenna Orman, Floydada, 1917; Janie Shurbet, Floydada, 1905; Mary Wilson, Floydada, 1934; Will Martin, Floydada, 1908; O.M. Watson Jr., Floydada, 1921; Betty Newell Shirey, Torrance, California, 1920; Mr. Earl Edwards, Floydada, 1916; Mrs. Earl Edwards, Floydada, 1918; Pauline Pierce, Floydada, 1937; J.D. Copeland, Lockney, 1908; Arla Copeland, Lockney, 1934; Louis Anderson, Floydada, 1928; Gladys Widener, Floydada, 1934; Ernie Widener, Floydada, 1916; Doyle Turner, Floydada, 1930; Dorothy Turner, Floydada, 1935; R.O. (Shorty) Turner, Floydada, 1932; Jessie Mae Wright, Floydada, 1925; Alma Edwards Rape, Floydada, 1911; Marvin Rape, Floydada, 1923; Mildred Rowse Owens, Floydada, 1931; R.E. Bob Owens, Floydada, 1928; Ruth Smitherman, Floydada, 1912; E.P. Smitherman, Floydada, 1917; Alton Higginbotham, Floydada, 1939; Harvey Allen, Floydada, 1939; Veda Dorsey (Ruth), Floydada, 1915; Viola Smith Brown, Crosbyton, 1913; W.B. Parrack, Crosbyton, 1925;

Mrs. W.B. Parrack, Floydada, 1925; Choise Smith, Floydada, 1938; Kenneth Bain, Floydada, 1919; Imelda Murry, Floydada, 1924; Laure Dade, Floydada, 1940; Myria Dade, Floydada, 1940; Pauline Sams, Lockney, 1905; A.C. Carthel, Floydada, 1917; Grace Colson, Lockney, 1911; Sylvia Yearly, Lockney, 1921; E.A. McLeod, Lockney, 1924; Helen Upton McLeod, Lockney, 1910; Burmah Probasco, Floydada, 1910; Mildred Fuqua, Floydada, 1917; P.L. Hart, Floydada, 1917; Amanda Hart, Floydada, 1921; Edith Hart, Amarillo, 1925; Lorene Battey Newberry, Floydada, 1918; Orbal Newberry, Floydada, 1916; Estefana Mercado, Floydada, 1925; Mrs. John Key West, Floydada, 1930; Frank Brown, Lockney, 1911; Esley Yearly, Floydada, 1902; Winford Payne, Floydada, 1926; Wilma Payne, Floydada, 1934; Wilma Payne, Floydada, 1934; Sue Ward, Floydada, 1938; Lurline Joiner Bagwell, Floydada, 1918; Clyde Bagwell, Floydada, 1917; Elton Goin, Floydada, 1916; Oleta Goin, Floydada, 1918; Mary Anna Ross Flowers, Amarillo, 1917; S.W. Ross, Floydada, 1907; Mrs. S.W. Ross, Floydada, 1965; Peggy McKinney, Plainview, 1912;

G.M. Armstrong, Floydada, 1912; Mrs. G.M. Armstrong, Floydada, 1912; Helen McKenny Solomon, Floydada, 1912; Edna Patton, Floydada, 1924; Evelyn Pierce, Floydada, 1924; Walton Wilson, Floydada, 1909; Mrs. Walton Wilson, Floydada, 1926; O.C. Bailey, Lockney, 1897; Alma Smith, Floydada, 1925; Letha Mulder, Floydada, 1931; Walter Hanna, Floydada, 1910; Billie Hanna, Floydada, 1922; Bonnie Julian, Floydada, 1943; Mollie Burleson, Floydada, 1916; Tom Emert, Dougherty, 1924; Ruth Perry, Floydada, 1918; Glenna Jack Miller, Floydada, 1923; Barbara Milton Edwards, Floydada, 1946; Mary Young Shurbet, Floydada, 1934; Elroy Emert, Floydada, 1928; Maxine Fry McCullough, Midland, 1917;

Rebecca Smith, Floydada, 1916; Lorraine D. Britton, Floydada, 1908; Darlynn Hambricht, Floydada, 1935; Flora Warren, Floydada, 1920; Gordon Hambricht, 1932; Doyle Moore, Floydada, 1926; Norma Martin, Floydada, 1941; Charles Beedy, Claude, Texas, 1929; Jan Watts, Floydada, 1948; Eugene Watts, Floydada, 1944; J.C. Wester, Floydada, 1919; Mattie Wester, Floydada, 1975; Marjorie Cox Holcomb, Lockney, 1929; Melvin Holcomb, Lockney, 1927; Vera Sweet Cox, Lockney, 1925; Johns Cox, Lockney, 1907; Ruby Higginbotham, South Plains, 1915; Nova Jean Cox Ivy, Mansfield, 1933; Sheila Ivy Young, Mansfield, 1954; Cleo Snodgrass Crawford, Lockney, 1904;

V.R. Crawford, Lockney, 1949; Warren Cyfert, Amarillo, 1923; D. Alan Benson, Floydada, 1977; Fay Benson, Floydada, 1977; Mamie Wood, Floydada, 1915; B.P. Sandefur, 1916; Crawford Sandefur, Floydada, 1930; Mae Muncy, Floydada, 1927; Maurice Campbell, 1915; Leona Campbell, Floydada, 1938; Roberta Garrett Hardin, Floydada, 1932; Floyd Bradford, Floydada, 1926; Euna Fawver Bradford, Floydada, 1925; Beth Cyfert, Amarillo, 1923;

Vel Darden, Lockney, 1918; Bill Darden, Lockney, 1945; Icy Biggs, Lockney, 1892; Sue Thompson, Floydada, 1902; Ila Biggs Goodwin, Lubbock, 1923; Wanda DuBois, Floydada, 1927; Bill DuBois, Floydada, 1926; Charlie Perry Smitherman, Floydada, 1932; Don Marble, South Plains, 1932; Nancy Marble, South Plains, 1951; Alma Baxter, Lockney, 1919; Clyde Baxter, Lockney, 1917; Everett Perry, Floydada, 1917; June Ware, Floydada, 1959; Maggie Jones Perry, Floydada, 1919; Mabel Foster, Floydada, 1926; Davis Bishop, Tahoka, 1925; Riley Teague, Floydada, 1915; Holt Bishop, Floydada, 1925; Ed Wester, Floydada, 1921; Mrs. Tom Emert, Floydada, 1924; Earl Bishop, Floydada, 1924; Jo Wester, Floydada, 1929; Dorothy Stapp, Lockney, 1946; Louis Stapp, Lockney, 1927; Floyd Montgomery, Plainview, 1917; Florence Montgomery, Plainview, 1919; Evalene Medley Boyd, Floydada, 1924; Ona Ruth Neff, Floydada, 1920; Sarah Beard (Lackey), Floydada, 1906; Nita Marble, South Plains, 1960; Keith Marble, South Plains, 1936; Ernestine Gilly, Floydada, 1921; Leona Neff, Floydada, 1931; Shorty Neff, Floydada, 1925; Cecil Baxter, Floydada, 1915;

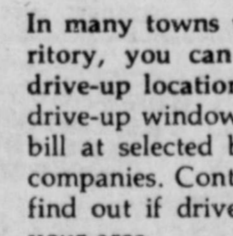
Rena Baxter, Floydada, 1916; Guy Ginn, Floydada, 1923; Margaret Ginn, Floydada, 1917; Ben F. Cox, Jr., Plainview, 1903; Ruth Hale (Snell), Lubbock, 1920; Bill Shurbet, Floydada, 1930; Gladys Howard, Floydada, 1910; Jett Major, Floydada, 1980; Lynette Major, Floydada, 1980; J.H. Workman, Lockney, 1920; Edna Workman, Lockney, 1931; Lesley Workman, Lockney, 1982; Dan Shurbet, Floydada, 1932; Gary Matsler, Floydada, 1942; J.W. Womack, Dallas, 1921; Helen Ring Womack, Dallas, 1929; O.D. Williams, Floydada, 1953; Joyce Williams, Floydada, 1953; G.A. McAda, Lockney, 1921; Artitia Gordon McAda, Lockney, 1915; George Don Probasco, Floydada, 1933; Sara Probasco, Floydada, 1981; Flois Reed, Panhandle, 1930; Darlene Reed, Panhandle, 1951; Connie Reed, Panhandle, 1944; Carolyn Cunningham, Lockney, 1939; Melba Vickers, Dougherty, 1953; Bob Vickers, Dougherty, 1936.

did you know?



Wanda Hooks, Production Chemist, Harrington Station, Amarillo.

Southwestern Public Service Company uses woven fiberglass bags in its air-quality control system at Harrington Station near Amarillo. The fiberglass is more heat-resistant than standard cloth bags and is not affected by the high temperatures common in flue gas emissions. This keeps the air around the plant, and in your community, cleaner.



Ramona Knight, Cashier, Seagraves.



Don Bigham, Local Manager, Portales.

In many towns within the SPS service territory, you can pay your electric bill at drive-up locations. Many SPS offices have drive-up windows. You also may pay your bill at selected banks or savings and loan companies. Contact your local SPS office to find out if drive-up service is available in your area.

SPS offers free booklets on a variety of subjects. These booklets are designed to help customers understand the process of providing electric service and how to use electricity wisely. Booklets are available on electric ranges and water heating, microwave cooking, insulating your home, and many other topics.

Knowing what electricity is worth is worth knowing. For answers to your questions, call or write your SPS manager.



SOUTHWESTERN PUBLIC SERVICE COMPANY

900.1

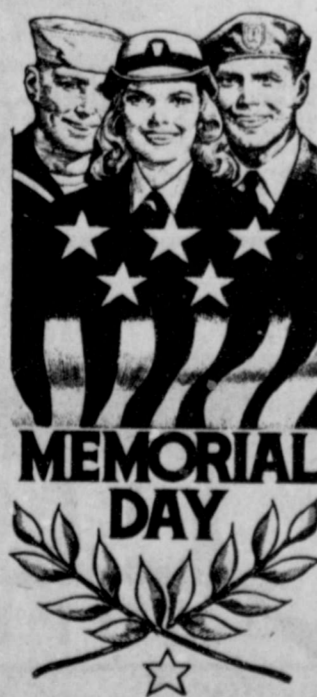
Willson & Sons - Builders Mart

will be closed
Memorial Day

In Case Of
Emergency Call

983-2474

983-5577



Sears
Authorized CATALOG SALES MERCHANT

RED TAG Home Appliance SALE

Check these reduced prices on home appliances. Some are demonstrators, some are floor models, some are one-of-a-kind.

Portable Compact Vac	\$69.95
Gas Grill	\$189.95
Meal In One Microwave Oven	\$469.95
Deluxe Gas Range	\$439.95
Continuous Cleaning Electric Range	\$399.95
5 Cycle Washer - white	\$359.95
5 Cycle Washer - Almond	\$369.95
Automatic Dryer - White	\$249.95
Automatic Dryer - Almond	\$319.95
19' Ref. with ice maker - Almond	\$749.95
16' Upright Freezer, HI-Efficiency - White	\$469.95
22' Upright Freezer - White	\$459.95
25" Color Console TV w/Remote	\$729.95

Quantities limited on some items

Delivery & Installation Included
• Sears has a credit plan to suit most every need
Each of these advertised items is readily available for sale as advertised
Satisfaction Guaranteed or Your Money Back

Sears 100 S. Main
Floydada, Texas

Convenient! Shop Sears
Catalog by Phone 983-2862 SEARS, ROEBUCK AND CO.

STAMP PRICE SPECIALS

Remember what a penny could buy in the good old days? Well, take a good look at our good old thrifty Stamp-Price Specials! For just a few pennies... and a 1/4 Saver Book of Green Stamps (30 Big 10's)... it's happy days are here again!... every day! Stamp-Price Specials are just one more way we help you save money through Green Stamps. Every time you shop. Hurry in for your Stamp-Price Specials Saver Books. The more you stamp... the more you save. Promise. Price-Price Specials effective through 6/2/82

More savings!

STAMP PRICE SPECIAL

5 lb Imperial Pure Cane
SUGAR
89¢
With One Filled
S&H Special Saver Book
\$1.49
Without Book

STAMP PRICE SPECIAL

1/2 Gallon Buddy's
MILK
49¢
With One Filled
S&H Special Saver Book
\$1.09
Without Book

STAMP PRICE SPECIAL

Jumbo Roll Hi-Dri
PAPER TOWELS
9¢
With One Filled
S&H Special Saver Book
69¢
Without Book

STAMP PRICE SPECIAL

Sunny Fresh Farm Grade A Medium
Eggs
19¢ doz
With One Filled S&H
Special Saver Book
79¢ doz
Without Book

24 Count Fla-Vor
ICE BARS
\$1.19

Mrs. Bairds 8 Pack Hot Dog - 6 Pack Hamburger
BUNS
59¢
or 1 1/2 lb Extra Thin
BREAD

Always the best in produce!
TAKE HOME THESE MONEY-SAVING SPECIALS

California Firm Green LETTUCE 59¢ head	4 Count Red Ripe Cello TOMATOES 65¢
Golden Ripe BANANAS 3.99¢ lb	Golden Delicious APPLES 59¢ lb
Texas Straight Neck YELLOW SQUASH 49¢ lb	New Crop K-V-S GREEN BEANS 59¢ lb

UP TO \$1,000.00 CASH MONEY BACK
WHERE
EVERYBODY WINS EVERYTIME
WITH MONEY BACK CARDS

HERE'S HOW!

GUARANTEED

YOU—PICK UP YOUR FREE MONEY BACK CARD TODAY OR WHEN YOU DO YOUR NEXT SHOPPING.
YOU—BRING IT WITH YOU EACH TIME YOU SHOP AT OUR STORE.
YOUR FRIENDLY AND HELPFUL CASHIER WILL RECORD YOUR PURCHASES AND YOUR VISIT.
YOUR CONCERNED MANAGER WILL OPEN THE SEAL IN THE AWARD SECTION WHEN YOU HAVE COMPLETED YOUR CARD.

CAUTION: PLEASE DO NOT TAMPER WITH SEAL ON YOUR MONEY BACK CARD. IT MUST BE OPENED BY AUTHORIZED PERSONNEL ONLY TO BE VALID.

COMPARE THESE ODDS TO ANY OTHER PROGRAM AND YOU WILL SEE THE DIFFERENCE!

Cash Awards	Total Number of Awards	Odds of Winning
\$1,000.00	4	1 in 11,500
\$500.00	15	1 in 2,044
\$100.00	150	1 in 2,044
\$50.00	300	1 in 200
\$10.00	48,516	1 in 152
\$1.00		1 in 1

EVERY CARD WORTH A MINIMUM OF \$1.00 IN CASH WHEN PROPERLY PUNCHED

THIS IS OUR WAY OF SAYING Thank You
BY GIVING YOU BACK SOME OF THE MONEY YOU SPEND AS YOU SHOP OUR STORE

Double On Wednesday With A \$5 Purchase Or More

buddy's SUPERMARKET

VALUES IN THIS AD EFFECTIVE THRU WEDNESDAY, JUNE 2, 1982

220 South 2nd - Floydada



buddy's

SUPERMARKET

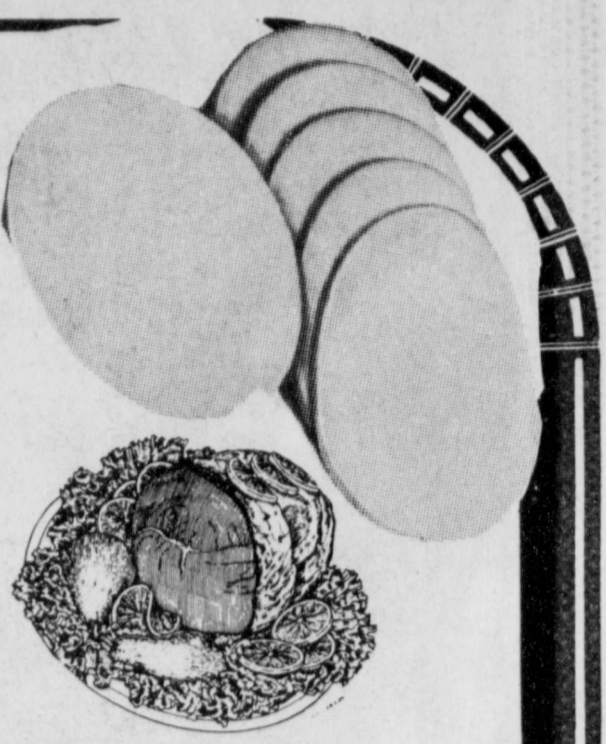


220 SOUTH 2nd • 983-3149
 STORE HOURS:
 MON. THRU SAT. 8 A.M. TIL 10 P.M.
 SUNDAY 9 A.M. TIL 9 P.M.
 DOUBLE STAMPS ON WEDNESDAY WITH \$5.00 PURCHASE OR MORE
 WE RESERVE THE RIGHT TO LIMIT QUANTITIES

12 oz Smoky Canyon Chicken
BOLOGNA 79¢

Fresh Daily
GROUND BEEF \$1.29
 lb

Halves Farmland
Boneless Ham \$2.19
 lb



Wilson Smoked
SAUSAGE \$1.99
 lb

2 lb Kraft Velveta
CHEESE \$3.79

USDA Boneless
ROUND STEAK \$2.89
 lb

12 oz Mr. Turkey Turkey
FRANKS 79¢

Sunny Savings for your Cookout!

32 oz Vlastic Hamburger
DILL CHIPS 99¢

10 lb Chiefs Choice
CHARCOAL \$1.69

2 Quart Pre-Sweetened
KOOLAID 2/99¢

1/2 gal Borden's
ICE CREAM \$1.59

6-32 oz Plus Deposit
TAB OR COCA COLA \$1.99

4 Roll Delsey
BATHROOM TISSUE 89¢

30 Count New Freedom
ANYDAY PADS \$1.69

30 Count New Freedom
MINI PADS \$1.89

30 Count New Freedom Super
MAXI PADS \$2.99

125 Count Kleener Boutique
FACIAL TISSUE 69¢

2 Liter-No Deposit-No Return
TAB OR COCA COLA \$1.09

12 oz Nestles
CHOCOLATE CHIPS \$1.99

16 oz French Squeeze
MUSTARD 69¢

9 oz Frenchs Spicy Brown
MUSTARD 3/\$1.00

10 oz Gebhardt's
HOT DOG SAUCE 3/\$1.00

Zee Luau
NAPKINS 59¢
 100 Count

8 lb Bag Crystal Clear
ICE 89¢

30 oz Pre-Sweetened Cannister
KOOLAID \$2.99

COUPON COUPON
 32 oz Dish Liquid
DAWN \$1.29
 with this coupon
 Good at Buddy's Food
 Limit 1 per Coupon
 Expires June 2, 1982
 \$1.59 without coupon

COUPON COUPON
 49 oz Giant Size
TIDE \$1.79
 with this coupon
 Good at Buddy's Food
 Limit 1 per Coupon
 Expires June 2, 1982
 \$2.09 without coupon

COUPON COUPON
 1 1/2" Size Ruffles
POTATO CHIPS 69¢
 with this coupon
 Good at Buddy's Food
 Limit 1 per Coupon
 Expires June 2, 1982
 99¢ without coupon

Frozen Foods
 6 Count Green Gaint Nibbles
CORN ON THE COB 99¢
 12 oz Minute Maid
LEMONADE 69¢
 6 oz White Swan
ORANGE JUICE 2/89¢

Health & Beauty Aids
 Twin Pack Summers
 Eve Disposable
DOUCHE 99¢
 7 oz Vaseline
PETROLEUM JELLY \$1.89
 8 Count Flip Flash 11
FLASH BULBS \$1.99

VALUES IN THIS AD EFFECTIVE THRU WEDNESDAY, JUNE 2, 1982



THIS LITTLE ONE IS NOT SURE WHETHER SHE WANTS HER PICTURE TAKEN OR NOT but we had to get a photo of her in her bonnet. Cobb Gilly, right, and daughter Kathy Steger, left, hold this darling, Heidi of Borger.

Lakeview News

Oil wells scheduled to be drilled soon

BY JOYCE WILLIAMS

Rain over the community has ranged from three-tenths to one inch. We've had about three rains so far this week. No hail so far.

Guests at the Randy Bertrands included Mr. and Mrs. Connie Reed and Darlene of Panhandle. They were here for Old Settlers on Saturday afternoon, and Angie's piano recital Saturday night with other students of Dell Gray. Connie Bertrand worked at the 1956 Study Club booth at the Arts and Crafts Show in the City Auto building Saturday during Old Settlers.

Mr. and Mrs. Lanny Glasscock attended a party Friday evening in the home of Mr. and Mrs. Brent Sanders. Mrs. Janie Hagood Assiter was guest of honor. Ann is practicing with her women's baseball team on week-ends. They will play with Lockney.

Mrs. Roy Fawver attended a Senior Citizens business meeting in Lubbock Thursday.

Greg Bishop visited the Odell Breeds Sunday evening.

Mrs. Viola Brown, Mr. and Mrs. Edmond Brown and Andy were in Albany and Cisco, Texas Friday through Sunday. Pat researched at the court house while the others visited old Ft. Griffin, where the late Mr. and Mrs. Hank Smith met and married before coming out on the Plains. They left in the Ft. Griffin Cemetery; their first baby and Aunt Hanks father and brother. The

Browns spent Friday night in Cisco with Viola's sister-in-law, Mrs. Mae Smith, whose husband, Henry Smith (Pete) was born at the Rock House in Blanco Canyon.

Mr. and Mrs. Carlton Fawver took Mrs. Roy Fawver for a Sunday afternoon drive down through Cedar Hill and Baker communities, looking at wheat, grass and the beautiful wildflowers. Rains and humidity have brought up an abundant display.

Miss Angie Glasscock was a hula girl in the program at Old Settlers.

Mrs. Odell Breed attended the High School graduation ceremony Monday night. Her niece, Treva Hambricht, was a graduate.

Mrs. Ronald Bertrand and daughter, Shelly, of Vernon, spent the weekend with Mr. and Mrs. William Bertrand. On Sunday night Faye and William attended a covered dish supper at the home of Mr. and Mrs. Thomas Warren.

Mrs. Nettie Adams visited Mrs. Roy Fawver on Friday afternoon.

Mrs. Mae Reep of Plainview visited her grandson, Lonnie Glasscock, and watched him rope calves at the arena Sunday evening.

Mrs. Rex Harrison is busy on the Little League and T-shirt leagues with her sons, Brandon and Jason. Brandon's team has their first game the first of June.

Mr. and Mrs. Joe Thurston are in East Texas to be with Alta's mother,

who had to be placed in the hospital. Mr. and Mrs. Leslie Fawver visited Mrs. Roy Fawver Sunday evening. Flora played 84 at the home of Mrs. T.T. Hamilton on Wednesday.

The historic old Smith house in Crosbyton was recently purchased by two daughters of early Crosby County developer, Jullian Basset. The two ladies have done extensive renovation on the living quarters and have brought their hundred year old mother there to live with them.

Oil wells are being drilled directly to the east and to the west of our com-

munity, in a direct line with the Adams well that was producing in the 1950's. J.S. Hale's well is to the west, and the Zimmerman well is being drilled almost in it's early location, to the east.

Quoting from 5-20 of the Lubbock paper: Floyd Co.; wildcat; Gulf Oil Corp. No. 1, J.S. Hale Jr.; 467 FSL, 660 FEL, CP Huckabay OG, Survey 273, Abstract 2:389; 4 miles S. Floydada 7000 ft.

Floyd Co; NRM field; Strata Reserve Inc., No. 1 A, Lucie D. Stephens; 1940 FNL, 660 FEL; Sect. 5, WCR Survey; 12 miles SE Floydada; 9650 ft.

We Fill Your Bill!

From vitamins... to all types of medications! See us!



Byrd PHARMACY
Phone 652-3353
LOCKNEY



WHY BUY A GAS GRILL NOW?

Now is a great time to buy a new gas grill. Choose from 7 quality models... save a big 20%... and take the heat out of your kitchen, too.

You'll really enjoy the convenience of cooking out with a natural gas fired grill... love the flavor of outdoor cooking without the mess of charcoal or the hassle of LP tanks.

Order your gas grill from any Energas employee now and make the most of summer.



Senior Citizen News

Esther Freeman, Reba Henry, Flora Fawver, and Mary Pearl Cowand attended the meeting of the Rural Nutrition Project Council of the South Plains Advisory Council in Lubbock Thursday May 20.

The Senior Citizen Center was closed Friday, May 21 and Monday May 24 for repairs and installation of some new equipment.

L.D. Britton is in the Caprock Hospital recuperating from a broken hip. He

underwent surgery Thursday evening. He is in Room 127 and will appreciate cards and visitors.

Mrs. Annie Turner is visiting this week with her sister in Wichita Falls.

The Quilting ladies are keeping busy with their quilting. They have generously given \$100.00 to the fund for buying new tires for the mini-bus. This generous gift is appreciated by all those responsible for buying the tires as well as those who use the bus for transportation.

Senior Citizen Menu

May 31-June 4

Monday: Hamburger steak with mushroom gravy, hashed brown potatoes, harvard beets, roll, margarine, canned apricots, milk

Tuesday: Meat pie, golden carrots, tossed salad with dressing, roll, margarine, plum cobbler, milk

Wednesday: Corned beef brisket,

boiled potatoes, steamed cabbage, cornbread, margarine, orange, banana, cantaloupe, fruit cup, milk

Thursday: Spaghetti with meat sauce, buttered green beans, tossed salad with dressing, French bread, margarine, bread pudding, milk

Friday: Fried chicken, cream gravy, buttered rice, oriental vegetables, roll, margarine, chocolate cake, milk

Creative Portraits

Portrait Package
Just \$12⁹⁵
With Deposit Of
99^c



2 8x10's, 2 5x7's, 10 wallers
Shop Rite

Friday, May 28th

10a.m.-6p.m.

PATIO KITCHEN

PK grills provide the convenience of natural gas fired barbecuing... have heavy top and bottom aluminum castings and H-shaped stainless steel burners for years of long wear... and exclusive Range Rock briquettes with controlled porosity for even heat and less flare-up.

PK DELTA 1
Single-burner model with 270 sq. in. chromed steel cooking grid.

ONLY \$6.85 PER MONTH*

List price \$155.00
Less 20% -31.00
124.00
Plus installation 70.00
194.00
5% sales tax 9.70
CASH PRICE \$203.70
BUDGET PRICE* \$246.60

Budget terms: no down payment, \$6.85 per month for 36 months.

PK REGENT 1
Dual burner and controls let you use one-half or all of burner; 325 sq. in. cast iron cooking grid, plus 120 sq. in. chromed steel step-up grid for warming.

ONLY \$8.91 PER MONTH*

List price \$228.00
Less 20% -45.60
182.40
Plus installation 70.00
252.40
5% sales tax 12.62
CASH PRICE \$265.02
BUDGET PRICE* \$320.76

Budget terms: no down payment, \$8.91 per month for 36 months.

JACUZZI

Jacuzzi cast aluminum grills feature Char-Brown enamel finish, rust-resistant porcelainized cast iron cooking grids, and cast iron and nickel alloy burners.

JET CHEF 4020
Two individually controlled burners in this top-of-the-line grill with 375 sq. in. cooking grid plus 110 sq. in. raised warming rack, accurate sealed temperature gauge, and all-weather shelf.

ONLY \$13.63 PER MONTH*

List price \$395.00
Less 20% -79.00
316.00
Plus installation 70.00
386.00
5% sales tax 19.30
CASH PRICE \$405.30
BUDGET PRICE* \$490.68

Budget terms: no down payment, \$13.63 per month for 36 months.

DUCANE

Ducane cast aluminum grills feature top-ported stainless steel burners, which last longer and save gas... porcelainized steel cooking grids... and a unique coal grate designed to prevent flare-ups and grease collection at the bottom of the firebox. Some models have Rotis-A-Grate, a separate vertical burner for rotissing from behind the meat.

CHALLENGER 800
Single-burner model with 310 sq. in. cooking surface.

ONLY \$8.57 PER MONTH*

List price \$216.00
Less 20% -43.20
172.80
Plus installation 70.00
242.80
5% sales tax 12.14
CASH PRICE \$254.94
BUDGET PRICE* \$308.52

Budget terms: no down payment, \$8.57 per month for 36 months.

CHALLENGER 1500
Dual burners, dual controls — one for each side, which saves gas when you don't need to use the total cooking surface of 405 sq. in.

ONLY \$12.27 PER MONTH*

List price \$347.00
Less 20% -69.40
277.60
Plus installation 70.00
347.60
5% sales tax 17.38
CASH PRICE \$364.98
BUDGET PRICE* \$441.72

Budget terms: no down payment, \$12.27 per month for 36 months.

CHAMPION 4000
Two burners — one main and one Rotis-A-Grate vertical burner, electronic ignition, 310 sq. in. cooking grid, rotissing motor and spit — all packaged in an elegant cart with large storage area, hardwood side shelf, heavy duty dual wheels, and connection hose.

ONLY \$21.67 PER MONTH*

List price \$711.00
Less 20% -142.20
568.80
Plus installation 45.00
613.80
5% sales tax 30.69
CASH PRICE \$644.49
BUDGET PRICE* \$780.12

Budget terms: no down payment, \$21.67 per month for 36 months.

TROPHY 2002
Three burners — two main and one Rotis-A-Grate vertical burner, electronic ignition, 310 sq. in. grid, rotissing motor and spit, and hardwood side shelf.

ONLY \$16.45 PER MONTH*

List price \$495.00
Less 20% -99.00
396.00
Plus installation 70.00
466.00
5% sales tax 23.30
CASH PRICE \$489.30
BUDGET PRICE* \$592.20

Budget terms: no down payment, \$16.45 per month for 36 months.

ASK ANY **ENERGAS** EMPLOYEE

* Budget terms available at 12.75% annual interest on declining balance. † Prices include sales tax and normal post-type installation, except for Ducane Champion 4000.

Sale ends July 31, 1982.



ANTIQUUE TRUCK was part of the antique car collection that was in the Old Settlers Day parade Saturday, May 22.

1983 Tri-County Schedule

1983 Tri-County Schedule for 13-14 Year Olds

Tuesday, June 1
Roosevelt at Abernathy
Petersburg at Idalou
Lockney at Floydada

Friday June 4
Idalou at Roosevelt
Abernathy at Lockney
Floydada at Petersburg

Tuesday June 8
Floydada at Abernathy
Lockney at Idalou
Roosevelt at Petersburg

Friday June 11
Lockney at Roosevelt
Petersburg at Abernathy
Idalou at Floydada

Tuesday June 15
Petersburg at Lockney
Abernathy at Idalou
Floydada at Roosevelt

Friday June 18
Idalou at Lockney
Abernathy at Petersburg
Roosevelt at Floydada

Tuesday June 22
Lockney at Abernathy
Petersburg at Floydada

Friday June 25
Abernathy at Floydada
Idalou at Lockney
Petersburg at Roosevelt

Tuesday June 29
Roosevelt at Lockney
Abernathy at Petersburg
Floydada at Idalou

Friday July 2
Lockney at Petersburg
Idalou at Abernathy
Roosevelt at Floydada

All games are scheduled to begin at 8:30 p.m. Any change in the schedule will be handled by the two teams involved. One and one-half hours of notification will be enough notification in case of rain-outs.

Town Contacts
Idalou, Dan Bell, 892-2995 or 892-

2971
Roosevelt, Carl Craig, 842-3581, home; 762-0571, business
Lockney, Rodger Stapp, 652-3429 or 652-2354
Petersburg, Junebug Miller, 667-3407
Abernathy, Laurin Prather, 298-2790
Floydada, Tommy Cathey, 983-2144 or 983-3189

Team Contacts
Idalou, Dan Bell, 892-2995
Roosevelt, Denny Thomas, 842-3481
Lockney, Roy Turley, 652-2589 or 652-3326
Petersburg, Joel Bruington, 667-2240 or 667-2231
Abernathy, Lee Blanco, 298-2227
Floydada, Ritchie Crow, 983-2408 or 697-2631

The end-of-season tournament will be held at Idalou during the week of July 11-17. The pre-tournament meeting will be July 11, Sunday, at 2 p.m. at the ball park. Coaches for each town are expected to attend to discuss rules and to draw for bracket position. Any town not sending a team to the tournament is expected to pay a fine of \$100 to the host town. This is in accordance to Tri-County rules.

1983 Tri-County Schedule for 15-16 Year Olds
Monday May 31
Petersburg at New Deal
Lockney at Idalou

Thursday June 3
Idalou at Petersburg
New Deal at Lockney

Monday June 7
Idalou at New Deal
Petersburg at Lockney

Thursday June 10
New Deal at Petersburg
Idalou at Lockney

Monday June 14
Petersburg at Idalou
Lockney at New Deal

Thursday June 17
New Deal at Idalou
Lockney at Petersburg

Monday June 21
Petersburg at New Deal
Lockney at Idalou

Thursday June 24
Idalou at Petersburg
New Deal at Lockney

Monday June 28
Idalou at New Deal
Petersburg at Lockney

Thursday July 1
New Deal at Petersburg
Idalou at Lockney

Monday July 5
Petersburg at Idalou
Lockney at New Deal

Thursday July 8
New Deal at Idalou
Lockney at Petersburg

All games are scheduled to begin at 8:30 p.m. Any change in the schedule will be handled by the two towns involved. One and one-half hours of notification will be enough notification in case of rain-outs.

The end-of-season tournament will be at New Deal during the week of July 11-17. The pre-tournament meeting will be Saturday, July 10, at 6 p.m. at the New Deal ball park. Coaches for each town are expected to attend to discuss rules and to draw for bracket position. Any town not sending a team to the tournament is expected to pay a fine of \$100 to the host town. This is in accordance to Tri-County rules.

Town Contacts
Idalou, Dan Bell, 892-2995 or 892-2971
Petersburg, Junebug Miller, 667-3407
Lockney, Roy Turley, 652-2589 or 652-2293
New Deal, Kirby Huffman, 763-3321 or 746-6101

Team Contacts
Idalou, Roseno Mojica, 892-3298 or 892-2503
Petersburg, Alan Fullingim, 667-3480
Lockney, Arnold Perales, 652-2143 or 652-2293
New Deal, Sam Herron, 746-5314

South Plains observes graduation

Commencement exercises for graduates from the three campuses of South Plains College were held on Friday, May 7, 1982. Candidates for graduation from the Levelland, Lubbock, and Plainview campuses gathered at 10:00 a.m. in the Texan Dome on the Levelland campus to have degrees conferred upon them. The receiving of these degrees signaled the successful completion of a chosen field of college-level study.

A total of 44 students from South Plains College at Plainview received degrees or certificates of completion in eight different areas of study. Those receiving an Associate of Applied Science degree in Child Development were: Sharon Jan Motley, Laura Pena, and John C. Williams. Receiving an Associate of Applied Science degree in Automotive Mechanics were: Darrell Lynn Burgess, Charles Crump, C. Anthony Henegar, Luis Antonio Portillo,

and Danny Salas. Graduates receiving a Certificate of Proficiency in Automotive Mechanics were: Don Davis and Lorenzo G. Martinez. Graduates receiving an Associate of Applied Science degree in the field of Human Services were: Betty Jean Eubanks, Jackie Lynn Heckathorn, Linda Sue Lopez, Grace LeEtte Turner, Joe M. Walker, and Melatework Bekele Wolde-Emanuel. Licensed Vocational Nursing students receiving a Certificate of Proficiency included: Clara Burns, Norma C. Catano, Rebecca Ann Cognasi, Maria Collins, Tina Doran, Danny Estrada, Patricia D. Fairchild, Mary Gallaway, Jimmi Dale Hackler, Jo Ann Harrison, Elaine Ruth Holbert, Betty Ann Jordan, Sally Ann Martinez, Vicki Diane (Hines) McCarty, Margaret Florez Molinar, Virginia Vasquez Perales, Lynda (Lynn) Williams Rachel, and Becky Trevathan. Graduates earning

the Associate of Applied Science degree in Mid-Management included Nino Garcia and Alfredo C. Lozano. Graduating with an Associate of Applied Science degree in Radio and Television Servicing was Morris Dean Waters. Receiving an Associate of Applied Science in Real Estate was Robert Chavez. Graduates earning an Associate of Applied Science degree in Secretarial Science included: Sylvia (Mata) Barnes, Amelia Lynn Cline, Yolanda Contreras, Marcelina R. Pena, Esther Salas, and Olivia Vasquez.

Registration for classes for South Plains College at Plainview's first summer session will be held on Monday, May 31. Classes for the summer will begin on Wednesday, June 2. Anyone interested in beginning classes at the local community college and wishing further information should call 293-3605 or come by the campus at 708 Yonkers.

Softball Schedule

1982 BASEBALL SCHEDULE

May 27
6:00 - V.F.W. vs. Red Legs; 8:00 - First Nat'l. Bank vs. Paymaster

May 28
6:00 - Dodgers vs. Pirates; 8:30 - Tye vs. Fire Dept.

May 29
4:00 Astros vs. Dodgers.

May 31
6:00 Red Legs vs. Astros

June 1
6:00 Pirates vs. V.F.W.; 8:30 Fire Dept. vs. First Nat. Bank

June 3
6:00 Paymaster vs. Tye

June 4
6:00 Red Legs vs. Dodgers

June 7
6:00 V.F.W. vs. Astros

June 8
6:00 Fire Dept. vs. Paymaster

June 9
8:00 First Nat. Bank vs. Tye

June 11
5:30 Pirates vs. Red Legs

June 11
6:00 Dodgers vs. V.F.W.; 8:30 Fire Dept. vs. Tye

June 14
6:00 Astros vs. Pirates; 8:30 Paymaster vs. First Nat. Bank

June 15
6:00 Red Legs vs. V.F.W.

June 17
6:00 First Nat. Bank vs. Fire Dept.; 8:30 Tye vs. Paymaster

June 18
6:00 Dodgers vs. Red Legs

June 21
6:00 Pirates vs. Dodgers; 8:30 Paymaster vs. Fire Dept.

June 22
6:00 Astros vs. Red Legs; 8:30 Tye vs. First Nat. Bank

June 24
6:00 V.F.W. vs. Pirates

June 25
6:00 Tye vs. Fire Dept.; Paymaster vs. FNB at 8:30

June 28
6:00 Dodgers vs. Astros

June 29
6:00 Fire Dept. vs. First Nat. Bank

July 1
6:00 Astros vs. V.F.W.

July 2
6:00 Red Legs vs. Pirates; 8:30 Paymaster vs. Tye

July 5
6:00 V.F.W. vs. Dodgers; 8:30 First Nat. Bank vs. Tye

Remember the men who can't forget. Wear a Buddy Poppy on Memorial Day.

July 6
6:00 Pirates vs. Astros; 8:30 Fire Dept. vs. Paymaster

July 8
8:30 Tye vs. Fire Dept.

COLORS
Gold - Astros
Red - Red Legs
Green - Dodgers
Black - Pirates
Blue - V.F.W.



A PROCLAMATION

WHEREAS: The annual sale of Buddy Poppies, through the combined efforts of the Veterans of Foreign Wars of the United States and the Lockney General Hospital Auxiliary, has been officially recognized and endorsed by governmental leaders since 1922; and

WHEREAS: V.F.W. Buddy Poppies are assembled by disabled veterans, and that portion of the V.F.W. proceeds of this worthy fund-raising campaign will be used exclusively for the benefit of disabled and needy veterans, and the widows and orphans of deceased veterans, and the equal part of the proceeds shared by the Hospital Auxiliary will be used to further their projects, and

WHEREAS: The basic purpose of the annual sale of Buddy Poppies by the Veterans of Foreign Wars is eloquently reflected in the desire to "Honor the Dead by Helping the Living"; therefore

I, J.D. Copeland, Mayor of the city of Lockney do hereby urge the citizens of this community to recognize the merits of this cause by contributing generously to its support through the purchase of Buddy Poppies on May 28, and 29, the days set aside for the distribution of these symbols of appreciation for the sacrifices of our honored dead.

I urge all patriotic citizens to wear a Buddy Poppy as mute evidence of our gratitude to the men of this country who have risked their lives in defense of the freedoms which we continue to enjoy as American citizens, and support the worthy-while support of the Hospital Auxiliary in our community.

Signed J.D. Copeland
Mayor
Attested Erma Lee Duckworth
City Clerk

Bag Worms are hatching NOW!

ferti-lome
BAGWORM & TENT CATERPILLAR KILLER

- Works Fast
- Economical
- Easy To Use

ferti-lome

Producer's Coop Farm Stores
Floydada-Dougherty

Open

Open 7 am to 9 pm
Monday Thru Saturday

Mexican Food
Is Our Specialty

El Rancho Restaurant
Located 414 W. Houston On The Y
Parking In The Rear

ALLSUP'S
CONVENIENCE STORES
"THERE'S ONE NEAR YOU"
Lockney

PRICES EFFECTIVE MAY 27-29, 1982
SPECIALS GOOD WHILE SUPPLIES LAST
LIMITED SUPPLY

OPEN MEMORIAL DAY

REFRESHING
COCA-COLA
2 LITER BTL. \$1.09

KRAFT ASSORTED BARBECUE SAUCE
2 18 OZ. BTL. 89¢

KRAFT VELVEETA
2 LB. BOX \$2.79

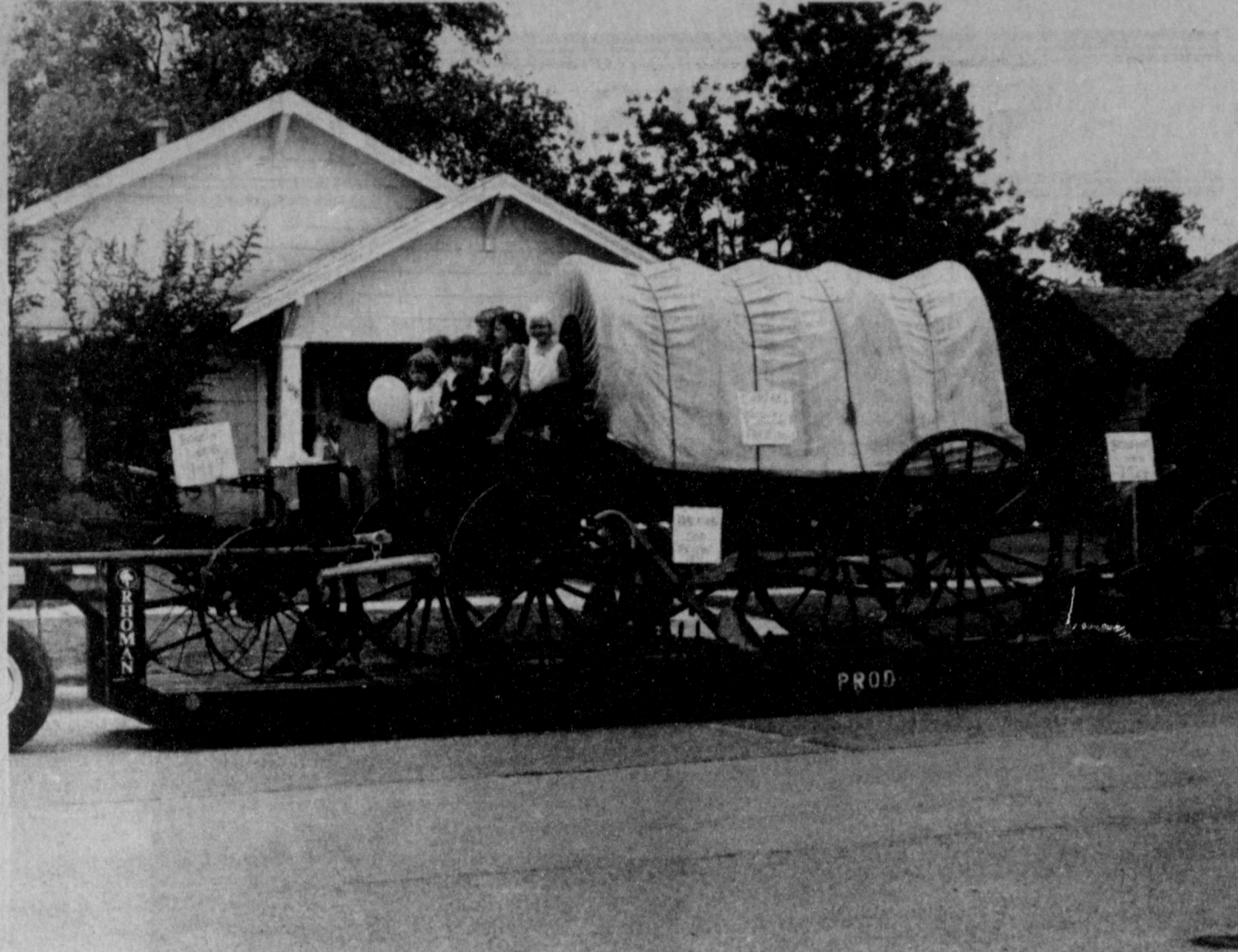
BORDEN'S FRUIT DRINK
1 GAL. 99¢

BORDEN'S ASSORTED YOGURT
3 8 OZ. CTNS. \$1

BORDEN'S FUDGESICLES OR POPSICLES
6 CT. PKG. 99¢

COOKED FOODS SPECIAL
Taco Rolls 3 \$1 FOR

SHOP ALLSUP'S FOR ALL YOUR HOLIDAY PICNIC NEEDS



PIONEER FARMING EQUIPMENT FLOAT took first place in the Best Pioneer Float division at the Old Settlers Day parade Saturday afternoon.

Floydada Nursing Home Happenings

BY LINDA EMERT

The weather has been pretty with hot days and cold nights most of the time. The cotton that is up is looking real good. All the wheat is great looking. Wheat harvest will be here before we know it. I will miss driving that truck this year, but I enjoy my job right here. I enjoy working with the residents and all the workers.

Monday, the residents enjoyed singing with Kim in music therapy.

Tuesday, we had a good group for Bible study. We are studying in Psalms. Wednesday, we played bingo. Each resident that played won one or more games. The winners are as follows: Sue Thompson with two games, W.C. Cates with one game, Una Clark with one game, Emmitt Lawrence with three games, Fay McMahan with two games, and Vera Duke with two games.

Thursday, we had arts and crafts. Each resident made a picture of their

choice. The Sunshine Sunday School Class brought out donuts for the residents. They really enjoyed them.

Friday, we showed two movies and served popcorn to the residents. We have a new resident, R.C. Rainer in 2 North.

Visitors this week were: Christine Robertson, Estelle Hinkle, Lois Guffee, Otis, Dana, Kim, and Jo Lee Ellis, Betty

Shirey, Charley L. Berry, Sr., Doris Snodgrass, Claude and Willene Lyles, Susie Mooney, Joyce and James Crowley, Allene Henry, Howard and Wanda Davenport, Ethel Barker, Gene Baird, Debra, Jason and Justin Bailey, Corene and Murry Stewart, Evelyn and Jack Crull and Joyce and James Crowley.

CAPROCK HOSPITAL NEWS

May 10-17

Juanita Bailey, Floydada, adm. 4-2, continues care, Hong.

Wiley Rogers, Floydada, adm. 4-6, continues care, Jordan.

Willie Pierce, Floydada, adm. 4-14, dis. 5-15, Hong.

Analee Brown, Floydada, adm. 4-25, dis. 5-12, Jordan.

Charles Epps, Floydada, adm. 4-26, continues care, Acar.

Jake Watson, Floydada, adm. 5-1, dis. 5-14, Jordan.

Donella Ann Thompson, Floydada, adm. 5-3, dis. 5-12, Hong.

Birdie Appling, Crosbyton, adm. 5-3, continues care, Jordan.

Robert Clem, Roaring Springs, adm. 5-6, expired 5-13, Jordan.

Geneva Bennett, Floydada, adm. 5-7, dis. 5-11, Jordan.

Reamer Rainer, Floydada, adm. 5-8, continues care, Hong.

Mitzi Nixon, Floydada, adm. 5-8, dis. 5-11, Jordan.

Helen Dunlap, Floydada, adm. 5-10, continues care, Hong.

Martha Griggs, Floydada, adm. 5-11, dis. 5-15, Hong.

Jolene Brown, Plainview, adm. 5-11, dis. 5-13, Hong.

Olga Pena, Floydada, adm. 5-11, dis. 5-13, Hong.

Mary Zacha Gregory, Floydada, adm. 5-12, dis. 5-14, Hong.

Earl Bishop, Floydada, adm. 5-13, continues care, Jordan.

Sandy Lutrick, Floydada, adm. 5-15, continues care, Jordan.

Beverly Barton, Floydada, adm. 5-16, continues care, Hong.

May 17-24

Juanita Bailey, Floydada, adm. 4-2, dis. 5-17, Hong.

Wiley Rogers, Floydada, adm. 4-6, continues care, Jordan.

Charles Epps, Floydada, adm. 4-26, continues care, Acar.

Birdie Appling, Crosbyton, adm. 5-3, dis. 5-17, Jordan.

Reamer C. Rainer, Floydada, adm. 5-8, dis. 5-22, Hong.

Helen Dunlap, Floydada, adm. 5-10, dis. 5-21, Hong.

Earl Bishop, Floydada, adm. 5-13, continues care, Jordan.

Sandy Lutrick, Floydada, adm. 5-15, dis. 5-19, Jordan.

Beverly Barton, Floydada, adm. 5-16, dis. 5-18, Hong.

Adolfo Garcia, Floydada, adm. 5-17, dis. 5-19, Hong.

Dollie Cardinal, Lockney, adm. 5-19, continues care, Hong.

L.D. Britton, Floydada, adm. 5-20, continues care, Hong.

Cammy Lea Hancock, Floydada, adm. 5-20, dis. 5-22, Hong.

Teresa Valdez, Floydada, adm. 5-21, dis. 5-23, Hong.

Albert Juarez, Floydada, adm. 5-22, continues care, Jordan.

Claude Hughes, Floydada, adm. 5-22, continues care, Hong.

Birdie Appling, Crosbyton, adm. 5-22, continues care, Jordan.

Marvin Goolsby, Floydada, adm. 5-23, continues care, Jordan.

Ricardo Salazar, Crosbyton, adm. 5-23, continues care, Hong.

Otis Anderson, Floydada, adm. 5-24, continues care, Jordan.

Nadine Cooper, Roaring Springs, adm. 5-24, continues care, Hong.

Gary Hillyard, Matador, adm. 5-24, continues care, Hong.

George Weeks, Turkey, adm. 5-24, continues care, Hong.

Glenn Armstrong, Floydada, adm. 5-24, continues care, Hong.

OBITUARIES

T.J. BONDS

T.J. Bonds, 75, died Monday, May 17.

Services were at 2:30 p.m. Wednesday, May 19, in First Baptist Church with the Rev. Merle Weathers, retired pastor, and the Rev. Michael Hale, pastor, officiating. Burial was in Happy Cemetery by Schooler-Gordon Funeral Directors of Canyon.

Mr. Bonds was born in Valley Mills and came to Happy 52 years ago from Tulsa. He was a member of First Baptist Church and was a farmer. He married Eula Weathers in 1925 in Lockney.

Survivors include his wife; two sons, Lloyd Bonds and Kenneth Bonds, both of Dumas; two sisters, Lora Ponder of Los Angeles and Mattie Elrod of Wildorado; three brothers, Posy Bonds of Happy, Keller Bonds of Valley Mills, and Gesler Bonds of Bentonville, Arkansas; six grandchildren; and seven great-grandchildren.

WARREN DANIEL

Warren Daniel, former resident and pioneer of the Floyd County, Lone Star and South Plains communities died in Dallas on May 9, 1982.

The Daniel family migrated to Texas via Oklahoma from Missouri just after the turn of the century. Mr. Daniel spent his youth and most of his adult life farming in the Panhandle. In 1962 he moved to Dallas where he was engaged in the barber business until he retired. He was a member of the Pleasant Grove Church of Christ in Dallas.

He is survived by his wife Agnes Daniel; one daughter Jackye Baker Jewett of Irving, Texas; one son L. Brock Daniel of Galveston; seven grandchildren and nine great grandchildren.

FRANK MCCLURE

Services for Frank McClure, 72, of Floydada were at 2 p.m. Wednesday in South Plains Baptist Church with Rev. Cecil Osborne, pastor, officiating.

Burial was in Floyd County Memorial Park under direction of Moore-Rose Funeral Home.

He died at 6:15 a.m. Monday at Lubbock Methodist Hospital after a sudden illness.

The Erath County native married Fanny Bell Newman on May 22, 1927, in Crosbyton. He moved to Floyd County in 1953 from Crosbyton and was a retired farmer. He was a Baptist.

Survivors include his wife; a daughter, Jean Lee of Plainview; a son, Donald of Houston; three sisters, Lena Givens of Lubbock, Florence Hendrie of Fort Worth and Hazel Hendrie of Denton; eight grandchildren; and four great-grandchildren.

Grandsons served as pallbearers.

KATHERINE MEARS

Services for Mrs. Katherine Mears, 88, of Dallas were at 2 p.m. Tuesday at the Mansfield Church of Christ.

Burial was in the Mansfield Cemetery under direction of Blessing-McInnis Funeral Home of Mansfield.

Mary Katherine Mears born April 19, 1894 in Parker County, died May 23, 1982 at Dallas Osteopathic Hospital after a lengthy illness.

She was married to Andrew Jackson Mears. She lived in Lubbock from 1949-1969, in Mansfield 1969-1979 and in Grand Prairie from 1979-1982.

Surviving are two sons, Jack Mears of Wichita Falls and Clifton Mears of Grand Prairie; two daughters, Gladys Holland of Austin and Doris Rankin Gray of Arlington; eight grandchildren including Cindy Rankin Smith of Lockney, Tom Rankin of Midland, and Ted Rankin of Lubbock; and 14 great-grandchildren.

Doris Rankin Gray is also a former Lockney resident.

ESTELLA NELSON

Mrs. Ray (Estella) Nelson, 72, of Plainview, died at 2:30 p.m. Saturday in E.O. Nichols Hospital after a lengthy illness.

Services were at 2 p.m. Monday in the chapel of the First Baptist Church with Rev. Shelby Baucum, minister of education officiating.

Burial was in Plainview Memorial Park under direction of Lemons Funeral Home.

The former Estella Harris, was born January 24, 1910, in Chico. She grew up in Wise County and moved to Floyd County in 1924, where she attended school in Lakeview.

She married Ray Nelson September 21, 1930, in Plainview. Following her marriage, she lived in Floyd County and moved to Petersburg in 1946. She moved to Plainview in 1950.

Mrs. Nelson was a member of the First Baptist Church and of the Hale County Senior Citizen's Association.

Survivors include her husband; one daughter, Mrs. Bob (Jane) Pillow of Hale Center; one son, Donald Nelson of Burnsville, Minnesota; two sisters, Ruby Wofford of Plainview and Mary Griffith of Lockney; and six grandchildren.

Nephews served as pallbearers.

PETE NICHOLS

Pete Nichols, 56, died Saturday in Amarillo.

Services were at 2 p.m. Monday, May 24 in First Baptist Church with the Rev. Joe S. Allen, retired Baptist pastor, officiating. Burial was in Childress Cemetery by Schooler-Gordon Funeral Directors.

Mr. Nichols was born in Childress. He was a lifelong resident. He operated his own construction firm. He was a veteran of World War II. He married Lillian Quinette in 1946 at Childress. He was past commander of the Veterans of Foreign War Post 2512 and past commander of the American Legion Post No. 65. He was a member of Elks Lodge No. 1113 and was a former Tyler of the lodge. He was a member of the Calvary Baptist Church.

Survivors include his wife; five daughters, Linda Manning of Amarillo, Peggy Hill of Floydada, and Patty Martin, Barbara Nichols and Lorry Nichols, all of Childress; a brother, L.W. Nichols of Childress; four sisters, Laverne Watkins of Wichita Falls, Georgia Bowman of Parnell, and Irma Custer and Merle Burchett, both of Childress; his mother, Zoila Nichols of Childress; and four grandchildren.

J. HAROLD PERKINS

J. Harold Perkins, 67, died at 5:30 p.m. Thursday, May 20, in High Plains Baptist Hospital in Amarillo after an illness of a year.

Services were at 2 p.m. Saturday in Lemons Memorial Chapel. Brent Adams, minister of Ninth and Columbia Streets Church of Christ, officiated, assisted by Dean Brookshire, assistant minister. Burial was in Plainview Memorial Park by Lemons Funeral Home.

Mr. Perkins was born April 18, 1915 in Grafado and at age 8 moved to Floyd County with his parents, Mr. and Mrs. George Joseph Perkins. He attended Lockney schools.

In 1927 Mr. Perkins moved to Hale County. He retired from farming in 1978. Mr. Perkins attended Ninth and Columbia Streets Church of Christ. He married Melrose Richardson January 16, 1937 in Plainview.

Survivors are his wife; one son, Richard Perkins of Dallas; one brother, Reggie Perkins of Plainview; one sister, Mrs. Leo (Betty) Duvall of Coleman; and three grandchildren.

REMEMBER your loved ones with a living memorial to the Caprock Hospital Auxiliary Memorial Fund. Mrs. Ben Whitaker, Treasurer.

Lockney Care Center Capers

BY VICKIE HUTTON

This was a week filled with a lot of fun and excitement. Wednesday afternoon, the Early Living Class with their teacher, Cindy Ford, came to the Care Center and revealed their secret adopted grandparents. This was a special time for the residents. They have received many nice gifts during the year and the anticipation grew and grew. We send a special thanks to Mrs. Ford and these special young people for adding this special joy to our lives.

Our lucky bingo winners this week were Richard Lanham and Mary Jo Fielding. Our bingo cards really get a working over during our games. Bingo really generates a lot of excitement.

Thursday, Laverne Christian, Elizabeth Foster, Anna Zubia, Emma Araujo, Maria Segovia, and myself attended an exercise workshop at West Texas State University. This was a fun workshop and very informative. We are looking forward to incorporating what we learned into our exercise program for the residents.

Erma Walker, sister of Armine Torpoy, was able to return home from the hospital last week. We were sure glad to have her back, she was truly missed.

Thomas Jones is still in Central Plains Regional Hospital in Plainview. We know he is feeling better because he still has his sense of humor.

Friday, Laverne Christian and myself presented our volunteer slide presentation to the Rotary Club. This gave us the opportunity to tell everyone about our special people. We send a special thanks to the Rotary Club for making us feel so welcome and the food was delicious.

Until next time, enjoy life.

Got Heating or Plumbing Problems?

CALL

Holmes Plumbing

Austin or Steve

Call Day or Night

983-2251

Just Arrived!

Staley Sweetlix Fly & Worm Blocks

- Fight Horn & Face Flies
- Kill Six Cattle Worms
- Stimulate Appetite and Improve Digestion
- Easy to Feed, Labor Saving Blocks
- Plus Supplemental Vitamins A & D

We offer these and other economical Sweetlix Blocks.

Lockney Co-op

The Land Bank

Your long-term farm credit specialists



105 S. Wall
Tommy Ogden mgr.
983-2480

Emert's Nursery & Tree Surgery

5 Gallon		Dwarf
Cottonless Cottonwood	\$10.00	Yaopan Holly
Purple Plum	\$13.50	Chinese Holly
Flowering Crabapple	\$13.50	1 Gallon
Multi Trunk River Birch	\$11.50	\$3.50
Arizona Ash	\$11.50	
Weeping Willow	\$11.50	
Euonymous Manhattan	\$11.50	

Nursery located 3 blks E of Hospital and 1/2 blk North

652-3116



International Tours

International Tours® of Plainview

112 East 5th Street • Plainview, Texas 79072 • (806) 293-4488

A MESSAGE TO CLIENTS OF INTERNATIONAL TOURS OF PLAINVIEW

During The Past Few Days We Have Witnessed The Demise Of A Company Which Has Served Texas Well Over A Period Of Almost Five Decades. We Will Miss Braniff Airlines, And Hope For Their Future Recovery.

If You Are Holding Braniff Tickets Issued By International Tours Of Plainview, And They Are Not Accepted For Travel By Another Carrier, Simply Return The Unused Tickets To The International Tours Travel Office From Which They Were Originally Purchased, And A Refund Or An Appropriate Adjustment Will Be Made.

We Value You, Our Clients, And Wish To Assure You That We Will Do Everything Possible To Protect You On Other Airlines So You May Continue Your Travel Plans In A Timely And Convenient Way. May We Also Remind You That We Are Ready To Help You With Any Future Travel Arrangements Which You May Wish To Make Either By Air Or Sea.

INTERNATIONAL TOURS OF PLAINVIEW
DOWNTOWN 293-4488 112 E. 5th

PUBLIC NOTICE
A regular meeting of The Board of Directors for Floyd County Central Appraisal District will be on June 2, 9 a.m., in the Appraisal Office Board Room 107, Courthouse.

NOTICE OF BOARD OF REVIEW
Floyd County Central Appraisal District Floyd County Courthouse Rm 107 In obedience to the order of the Board of Review regularly convened and sitting, notice is hereby given that said Board of Review will be in session at its regular meeting place in the city of Floydada, Floyd County, Texas, at 9:00 o'clock A.M., on Thursday, the 3 day of June, 1982, for the purpose of determining, fixing, and equalizing the value of any and all taxable property situated in the said Floyd County Appraisal District, for taxable purposes for the year 1982, and any and all persons interested or having business with said Board are here notified to be present. (Letter of Protest must be filed with appraisal office before meeting.)
Adrain Helms
Secretary
Floyd County Central
Appraisal District
Floydada, Texas
3 day of May, 1982.

ORDINANCE NO. 637
AN ORDINANCE DEFINING BILLIARD PARLORS: PROVIDING FOR THE OPERATION AND MAINTENANCE OF BILLIARD PARLORS, SUBJECT TO CITY'S LICENSING, REGULATIONS, SUPERVISIONS AND CONTROLS; PROVIDING FOR THE TAXING OF BILLIARD PARLORS; PRESCRIBING PENALTIES FOR THE VIOLATIONS HEREOF; REPEALING ALL ORDINANCES, ORDERS OR RESOLUTIONS IN CONFLICT HEREWITH; AND DECLARING AN EMERGENCY.
SECTION 5. Any person violating any of the provisions of this ordinance shall, upon conviction thereof, be fined in any sum not to exceed Two Hundred Dollars (\$200.00) and each violation thereof shall be and is hereby declared to be a distinct offense and punishable as such.
Passed and approved and adopted, this the 11th day of May, 1982.
ATTEST: CITY OF FLOYDADA, TEXAS
Jimmy Lou Stewart Parnell Powell
City Secretary Parnell Powell, Mayor

ORDINANCE NO. 638
AN ORDINANCE DEFINING AMUSEMENT CENTERS: PROVIDING FOR THE OPERATION AND MAINTENANCE OF AMUSEMENT CENTERS; SUPERVISION AND CONTROLS; PROVIDING FOR THE LICENSING OF AMUSEMENT CENTERS; PROVIDING FOR FEES; PROVIDING FOR REVOCATION AND NON RENEWAL OF LICENSES OF AMUSEMENT CENTERS; PRESCRIBING PENALTIES FOR THE VIOLATIONS HEREOF; REPEALING ALL ORDINANCES, ORDERS OR RESOLUTIONS IN CONFLICT HEREWITH; AND DECLARING AN EMERGENCY.
SECTION 11.
Any person violating any of the provisions of this ordinance shall, upon conviction thereof, be fined in any sum not to exceed Two hundred Dollars (\$200.00) and each violation thereof shall be and is hereby declared to be a distinct offense and punishable as such.
Passed and approved and adopted, this the 11th day of May, 1982.
ATTEST: CITY OF FLOYDADA, TEXAS
Jimmie Lou Stewart Parnell Powell
City Secretary Parnell Powell, Mayor

NOTICE
Application for Private Club Registration Permit
Notice is hereby given that application is being filed by unincorporated Association of Persons for Private Club Registration Permit by members of the Canyon Club to be located on Hwy. 62 east side, 6.6 miles south of intersection Hwy. 62 & 70, Floydada, Texas. Mailing address, Box 249, Floydada, Texas 79235.
Signed:
Irene King, Pres.
Jennifer Walker, V-Pres.
Jimmie West, Sec.
5-27

REPORT OF NAMES AND ADDRESSES OF MISSING DEPOSITORS, and the ADVERTISING THEREOF, AS REQUIRED BY ARTICLE 3272b, TITLE 53, REVISED CIVIL STATUTES OF TEXAS
TO: WARREN G. HARDING, State Treasurer
STATE OF TEXAS
P.O. Box 12608, Capitol Station
Austin, Texas 78711
FROM: The First National Bank
Box 550; Floydada, Texas 79235
(Name & address of Depository as defined by Article 3272b, Title 53, R. C. S., 1925)

Instructions: This form, identified as Form STD-201, is prescribed by the State Treasurer for use in reporting the names and addresses of missing depositors and the advertising thereof required by Section 3, Article 3272b, Title 53, Revised Civil Statutes 1925, as enacted by the Third Called Session of the Fifty-Seventh Legislature. Each copy of this report shall consist of at least two pages, the beginning page and a concluding page that contains the sworn statement required by the Act. If more states are required to list the names than is provided on these pages, the additional names should be listed on intermediate pages prepared for that purpose. The page each report must be forwarded to the State Treasurer within thirty days after the date of publication of the following notice, together with two copies of proof of publication on Form STD-202, which shall be completed in accordance with instructions thereon. Depositories shall retain one copy of this report and deliver one completed copy to the newspaper which shall be published only the notice that follows, there being no need for the publication of the information contained in and preceding these instructions. It is not necessary to publish the item number requested in the left hand column of the report, and run in form is acceptable. If many, or all, addresses are within one city it is not necessary to repeat the name of such city with each name advertised, provided explanation is given. Example: "Unless otherwise indicated all addresses listed are in Example City, Texas."
(Beginning of Notice Required to be published)

Notice of the Names of Persons Appearing as the Owners of Unclaimed Amounts Held By:
The First National Bank
Name of Depository
Box 550; Floydada, Texas 79235
Address of Depository

Item No. of This Report	Names of Missing Depositors (Must be listed alphabetically, surnames first. Use two lines if necessary)	Last Known Address	City and State
1	Freeman, Ronald E.	508 East Lee	Floydada, Texas 79235
2	Grimes, M. Dwayne or Carol	800 West Missouri Street	Floydada, Texas 79235
3	Hi Plains Investment Club	c/o Dwayne Grimes, Box 206	Floydada, Texas 79235
4	Huckaby, Judith G.	515 West Ross	Floydada, Texas 79235
5	Pack Estate	None	None
6	Pigg, G. H.	None	None
7	Rivera, Apolinar, Jr.	Box 74	Floydada, Texas 79235
8	Smith, Mr. or Mrs. Bill R.	Box 573	Floydada, Texas 79235
9	Zapata, Oscar M. or Sylvia M.	617 West Jackson Street	Floydada, Texas 79235

Public Notice
NO. 6734
CONDEMNATION PROCEEDINGS FILED
THE CITY OF LOCKNEY
VS.
I.G. SOLOMON, H.H. HINES and O.W. KEETER, ET AL
WITH THE JUDGE OF THE DISTRICT COURT OF FLOYD COUNTY, TEXAS
AFFIDAVIT FOR CITATION AND NOTICE BY PUBLICATION
THE STATE OF TEXAS
COUNTY OF HALE
BEFORE ME, the undersigned authority, on this day personally appeared PAUL LYLE, known to me to be a credible person, competent in all respects to make this affidavit, and who, being by me duly sworn upon his oath, deposed and stated as follows:
1. That Affiant is the attorney of record for the Plaintiff in the above entitled and numbered cause.
2. That the residences of the Defendants in said cause are unknown to Affiant and to the Plaintiff in said cause. After due diligence, the Plaintiff and Affiant have been unable to locate the whereabouts of such Defendants.
3. As indicated by Plaintiff's Petition for Condemnation in this cause, Plaintiff claims the right to condemn certain property, being real estate, more fully described in said petition and to which property the Defendants claim title. This affidavit is made for the purpose of authorizing the issuance of notice in said condemnation proceeding and the publication thereof pursuant to Article 3264 Revised Civil Statutes of Texas in conjunction with Rule 109 of the Texas Rules of Civil Procedure.
PAUL LYLE
SWORN AND SUBSCRIBED TO before me, the undersigned authority on this 5th day of May, 1982, by PAUL LYLE.
Sharon Kay Jackson
Notary Public in and for the State of Texas

NOTICE OF HEARING
TO I.G. SOLOMON, H.H. HINES, and O.W. KEETER, if living, and if any or all of the foregoing named individuals be dead, then the heirs, unknown heirs and legal representatives of each or all of the aforesaid named persons who may be dead; and the unknown heirs of the unknown heirs of the aforesaid named persons; and the unknown owner or owners of the hereinafter affected property; and any and all other persons, including adverse claimants, owning or having or claiming any legal or equitable interest in or lien upon the property the subject of the condemnation proceeding hereinafter described; and the executors, administrators, guardians, legatees and devisees of the aforesaid named persons, and all unknown persons, owning, having or claiming any interest or lien in the property the subject of the condemnation proceeding hereinafter described, their heirs, unknown heirs, assigns and legal representatives, all of whom are referred to herein collectively as "Defendants".
On the 26 day of April, 1982, the City of Lockney, Texas, filed with the judge of the above-designated court a condemnation petition with regard to real property therein described. The petition is set forth as follows:
NO. 6734
CONDEMNATION PROCEEDINGS FILED
THE CITY OF LOCKNEY
VS.
I.G. SOLOMON, H.H. HINES and O.W. KEETER, Et Al
FLOYD COUNTY, TEXAS
STATEMENT OR PETITION FOR CONDEMNATION
TO THE HONORABLE JUDGE OF SAID COURT:
Now comes the CITY OF LOCKNEY, a city having right of eminent domain, herein called Plaintiff complaining of the Defendants hereinafter named and for cause of action would respectfully show the Court as follows:

I. Plaintiff is a municipal corporation, a city, located in Floyd County, Texas. The Defendants are I.G. SOLOMON, H.H. HINES, and O.W. KEETER, if living, and if any or all of the above named Defendants be dead, then the heirs, unknown heirs and legal representatives of each or all of said above named persons who may be dead; and the unknown heirs of the unknown heirs of said above named persons; and the unknown owner or owners of the hereinafter described property; and any and all other persons, including adverse claimants, owning or having or claiming any legal or equitable interest in or lien upon the property hereinafter described; and the executors, administrators, guardians, legatees and devisees of the above named persons, and all unknown persons, owning, having or claiming any interest or lien in the property hereinafter described, their heirs, unknown heirs, assigns and legal representatives, all of whom are referred to herein collectively as "Defendants".
II. The respective addresses of the Defendants are unknown to Plaintiff.
III. Under Revised Civil Statutes, Article 1109b, Plaintiff is authorized to exercise the power of eminent domain to acquire private property for the construction and maintenance of streets, water lines, sewer lines and utility lines and for any other municipal purpose that may be deemed advisable. The City Council of the City of Lockney, Texas, by resolution, has heretofore found and determined the necessity for and ordered the acquisition of the fee simple title by Plaintiff of the following described lot, tract or parcel of land lying and being situated in the City of Lockney, County of Floyd, State of Texas, to-wit:
The North 9.55 feet of Lot 16, Block 6, Moore Addition, City of Lockney, Floyd County, Texas, described by metes and bounds as follows:
BEGINNING at a 3/8" rod in the East line of E. Fifth Street;
THENCE North, 9.55 feet to a 3/8" rod;
THENCE East 145.0 feet to a 3/8" rod in the West line of an alley;
THENCE South 9.55 feet to a 3/8" rod;
THENCE West 145.0 feet to the point of beginning and containing 0.032 acres, more or less.
IV. The Defendants own the above described property.
V. The Plaintiff has been unable to agree with the owners upon the value of the land or the damages.
VI. The purpose for which the land sought to be condemned is intended to be used is for street paving, installation of sewer lines, water lines and maintenance thereof.
VII. Plaintiff is entitled to condemn the fee title in the above described land for purposes aforesaid and asks that the same be condemned for such purposes aforesaid. Petitioner says that the Court should appoint special commissioners as provided by law to assess the damages of the owner.
VIII. All conditions precedent to the institution of these proceedings have occurred or been performed.
PRAYER
WHEREFORE, Plaintiff respectfully prays that three disinterested freeholders be appointed as special commissioners to assess the damages of the owner and file their decision all as provided by law, to the end that Plaintiff may have a final judgment or decree of condemnation vesting in it the fee simple title to said land, and for such other relief to which it may be entitled.
DAY, OWEN, LYLE, VOSS & OWEN
P.O. Box 328
Plainview, Texas 79072
(806) 296-6304
BY
Paul Lyle
Bar Card No. 12719000
ATTORNEYS FOR PLAINTIFF

CLASSIFIED ADS PAY OFF!

Business Opportunities

OWN YOUR OWN Jean-Sportswear or Infant-Preteen Store, Ladies Apparel (ALSO SHOE, ATHLETIC SHOE STORE). Offering all Nationally Known Brands and Jordache, Chic, Lee, Levi, Vanderbilt, Clavin Klein, Wrangler over 200 other brands. \$7,900 to \$19,500 includes beginning inventory, airfare for 1 to Fashion Center, training, fixtures, Grand Opening Promotions. Call Mr. Loughlin (612) 835-1304.

More Classified

LL & L JANITORIAL SERVICE
Complete line of floor care for office and home. 13 years experience. Free estimates. Larry Reeder, Matador, Texas.
Larry Reeder Phone 271-3557 Matador, Texas tfn

MANUFACTURER NEEDS DISTRICT DEALERS YESTERYEAR LOG HOMES
THE HOTTEST ITEM IN THE HOUSING MARKET TODAY
Featuring:
*Hand Hewn Rustic Look Exterior
*Flat Tongue and Groove Interior Look
*Solid 8 in. Uniform Logs
*New Contemporary Styles
*Custom Design Available
*Commercial Building Available
*Protected Territory
SIX DIGIT INCOME POTENTIAL NO FRANCHISE FEE
Requirements:
*Purchase Model Home from \$15,000 to \$25,000
*Meet Our High Standards
*Desire to Succeed
CALL MRS. MARKS COLLECT TODAY AT 704-932-0137 or write
YESTERYEAR LOG HOMES
P.O. BOX 1046
MOORESVILLE, N.C. 28115

BAKER INSURANCE AGENCY
COMPETITIVE RATES EAST MONTHLY PAYMENTS
* Auto * Fire * Homeowner
* Business * Mobile Homes
* Motorcycles * Boats
* Workmen's Compensation
* Life * Bonds
983-3270
NIGHTS SUNDAYS & HOLIDAYS CALL 983-2451
127 W. CALIFORNIA
Sam Baker

Diamond Industrial Supply Co., Inc.
Phone Days 296-7418
Nights 296-1200 or 296-7828
1014 Broadway
Plainview, Texas
SKF BCA Timken Bower
Cotton Stripper Brushes & Bats
"We Appreciate Your Business More"
Chain Sprockets V belts Sheave
U joints Oil Seals O rings Wisconsin

Phoenix, Arizona has by far the largest number of days of sunshine per year in the US - 213.

TOUGH CASE FOR YOU

WE HAVE A TOUGH CASE FOR YOU...OVER \$1,500,000 IN FARM AND CONSTRUCTION EQUIPMENT THAT MUST BE SOLD BY JUNE 15th. NOW IS THE TIME TO CASH IN ON A GREAT DEAL. SO COME BY ONE OF OUR FOUR LOCATIONS AND LET US STATE OUR CASE.

LUBBOCK AG TRACTORS

	WAS	NOW
1968 880 David Brown only 1220 hrs.	7000 ⁰⁰	5000 ⁰⁰
1979 2470 Cab Air PTO 4 Remotes	32500 ⁰⁰	29500 ⁰⁰
1980 4490 Cab Air PTO 4 Remotes	41500 ⁰⁰	37500 ⁰⁰
1976 1570 Cab Air PTO 4 Remotes	19500 ⁰⁰	17500 ⁰⁰
1977 1175 Cab Air	16500 ⁰⁰	15000 ⁰⁰
1978 1210 David Brown	11500 ⁰⁰	10000 ⁰⁰
1975 2670 Cab Air	21500 ⁰⁰	19000 ⁰⁰
1978 990 David Brown	8500 ⁰⁰	7000 ⁰⁰
1980 2590 Cab Air	36500 ⁰⁰	33000 ⁰⁰
1972 1070 Cab New Engine	12500 ⁰⁰	11000 ⁰⁰
1972 1070 Cab Air	10000 ⁰⁰	9000 ⁰⁰
1978 1570 Cab Air Radial Duals	23600 ⁰⁰	21000 ⁰⁰
1972 1175 Cab Air	8500 ⁰⁰	7000 ⁰⁰
1972 1070 Cab Air	7000 ⁰⁰	6000 ⁰⁰
1970 1170 Cab Air Good Rubber	7000 ⁰⁰	5000 ⁰⁰
1975 1370 Cab Air New Tires	12000 ⁰⁰	11800 ⁰⁰
1981 1390 Case with 56 Loader	18000 ⁰⁰	16200 ⁰⁰
1978 4440 JD Cab Air	27500 ⁰⁰	25000 ⁰⁰
1981 4440 JD Cab Air 800 hrs.	32500 ⁰⁰	28000 ⁰⁰
4010 JD LP & Stripper	8500 ⁰⁰	7500 ⁰⁰
Oliver 1800 LP & Stripper	7500 ⁰⁰	6500 ⁰⁰
Oliver 1550 D	3500 ⁰⁰	2500 ⁰⁰
1978 1HC 1086 Cab Air	17900 ⁰⁰	16000 ⁰⁰
1976 1HC 1466 Cab Air	13500 ⁰⁰	11500 ⁰⁰

- Interest Free 6mo. Leasing on Farm Tractors.
- 10% APR Financing 1st Year
- 50/50 60 Day Powertrain Warranty on all AG Tractors
- F.O.B. Case Power & Equipment.



LAMESA AG TRACTORS

	SOLD	WAS	NOW
1980 Case 2590 Cab Air	36800 ⁰⁰	37800 ⁰⁰	35800 ⁰⁰
1980 Case 2590 Cab Air	36500 ⁰⁰	38500 ⁰⁰	36500 ⁰⁰
1980 Case 2590 Cab Air	36500 ⁰⁰	38500 ⁰⁰	36500 ⁰⁰
Case 900	2750 ⁰⁰	3000 ⁰⁰	2750 ⁰⁰
JD 4630 Cab Air New Tires	22500 ⁰⁰	24500 ⁰⁰	22500 ⁰⁰
JD 3010	5200 ⁰⁰	6000 ⁰⁰	5200 ⁰⁰
1HC 1086 Cab Air	17900 ⁰⁰	18900 ⁰⁰	17900 ⁰⁰
1HC 1086 Cab Air	15700 ⁰⁰	17500 ⁰⁰	15700 ⁰⁰
1HC 1486 Cab Air Low Hours	18900 ⁰⁰	19900 ⁰⁰	18900 ⁰⁰
1HC 1486 Cab Air	17000 ⁰⁰	19000 ⁰⁰	17000 ⁰⁰
1HC 1086 Cab Air	17800 ⁰⁰	19000 ⁰⁰	17800 ⁰⁰
1HC 806 & Stripper New Engine	8600 ⁰⁰	10600 ⁰⁰	8600 ⁰⁰

IMPLEMENTS

Bush Hog Module Builder	17600 ⁰⁰	19500 ⁰⁰
Towner 4 Disc Plow	13500 ⁰⁰	15500 ⁰⁰
D15 Disc 16' Offset	3150 ⁰⁰	3500 ⁰⁰
Hesston 3000 Stripper	8000 ⁰⁰	9000 ⁰⁰
1981 7ft. 3pt Blade Like New	500 ⁰⁰	650 ⁰⁰

LITTLEFIELD TRACTORS

1980 Case 2590 Cab Air	36500 ⁰⁰	38500 ⁰⁰
1980 Case 2590 Cab Air	32500 ⁰⁰	36500 ⁰⁰
1980 Case 2090 Cab Air	25500 ⁰⁰	27500 ⁰⁰
Case 1175 Cab Air	10000 ⁰⁰	12500 ⁰⁰
Case 1175 Cab Air	9000 ⁰⁰	11500 ⁰⁰
1HC 1466 Cab Air	9000 ⁰⁰	10000 ⁰⁰

IMPLEMENTS

Case RP 24 Offset Like New	3750 ⁰⁰	4000 ⁰⁰
Case 600 4 Bottom Plow Like New	4300 ⁰⁰	4800 ⁰⁰
18 Row Sand Fighter	1200 ⁰⁰	1500 ⁰⁰
14' Birch Tandem Disc	950 ⁰⁰	1150 ⁰⁰
4 Row Packer	925 ⁰⁰	1025 ⁰⁰
Woods Shredders New	4000 ⁰⁰	4650 ⁰⁰
Case Model G Offset 14' Like New	3650 ⁰⁰	3950 ⁰⁰
M.F. 510 Diesel Combine	6500 ⁰⁰	7500 ⁰⁰
New Tye Planters Per Row	581 ⁰⁰	

FLOYDADA

9N Ford	1500 ⁰⁰	1750 ⁰⁰
New AMCO Disc Bedders	2100 ⁰⁰	3650 ⁰⁰
New 7 Bottom Case 400 Plow	3600 ⁰⁰	5600 ⁰⁰

USED CONSTRUCTION EQUIP

LOADER BACKHOES	WAS	NOW
Case 580D ROPS Canopy Std Hoe	36000 ⁰⁰	33000 ⁰⁰
Case 580C Cab Std Hoe	25000 ⁰⁰	20000 ⁰⁰
Case 580C Cab Std Hoe	25000 ⁰⁰	20000 ⁰⁰
Case 480C Cab Air Extendahoe	22500 ⁰⁰	19500 ⁰⁰
Case 580C ROPS Canopy Std Hoe	20000 ⁰⁰	18500 ⁰⁰
Case 580CK Std Hoe	7500 ⁰⁰	6500 ⁰⁰
JD 310 Loader Backhoe	8500 ⁰⁰	7500 ⁰⁰

CRAWLER LOADERS	WAS	NOW
AC HG7G 1 1/2 YD with Ripper	15000 ⁰⁰	12000 ⁰⁰
AC HG7G 1 1/2 YD with Ripper	15000 ⁰⁰	12000 ⁰⁰
Cat 941 1 1/2 YD	22500 ⁰⁰	20000 ⁰⁰

CRAWLER DOZERS	WAS	NOW
Cat D6 9Useries Hyd Blade	7500 ⁰⁰	6500 ⁰⁰
Case 1150C Low Hours 10' Power Angle Blade	59000 ⁰⁰	53000 ⁰⁰

WHEEL LOADERS	SOLD	NOW
Hough 90 3Yd with Cab	5500 ⁰⁰	10000 ⁰⁰
1HC 260A with 1Yd Bucket	9000 ⁰⁰	10000 ⁰⁰
MF 40 with Box Blade	7500 ⁰⁰	8500 ⁰⁰
Case 480C with 3Pt Hitch	16500 ⁰⁰	22500 ⁰⁰
Case W18 2Yd 300hrs.	52000 ⁰⁰	60000 ⁰⁰

EXCAVATORS	WAS	NOW
Drott 50 EC 1 1/4 Yd	67000 ⁰⁰	74000 ⁰⁰
Drott 50 EC 1 1/4 Yd	90000 ⁰⁰	115000 ⁰⁰
Drott 45 Rubber Tired 1Yd	122500 ⁰⁰	135000 ⁰⁰
Case 980 B 1Yd	90000 ⁰⁰	115000 ⁰⁰

TRENCHERS	WAS	NOW
Davis 30t4 Overhauled	4800 ⁰⁰	6000 ⁰⁰
Davis 1000 Crawler	5500 ⁰⁰	7500 ⁰⁰
Davis 7Hp Handle Bar New Engine	1700 ⁰⁰	2100 ⁰⁰
Case DH5 with Backhoe	22000 ⁰⁰	26500 ⁰⁰
Case DH4 Overhauled	15500 ⁰⁰	18000 ⁰⁰

TRAILERS	WAS	NOW
(2) MFI 800 LB New Trailers	395 ⁰⁰	650 ⁰⁰
1 Belshe 2 Axle	2000 ⁰⁰	2500 ⁰⁰
1 Belshe 2 Axle	1700 ⁰⁰	2200 ⁰⁰
1 2 Axle Home Built	500 ⁰⁰	

LUBBOCK
3202 SLATON HWY.
745-4451

LITTLEFIELD
E. HIGHWAY 84 BYPASS
385-4427

LAMESA
902 S. DALLAS
872-5861

FLOYDADA
101 SOUTH 12TH
983-2836

Case

POWER & EQUIPMENT

SHOP / COMPARE WANT ADS ARE YOUR BEST BUY!

Real Estate

FOR SALE: Three bedroom, den, living area. 983-3767. tfn

FOR SALE: Several good two and three bedroom houses. Bond Real Estate. Contact Wilson Bond, 983-2151 or 983-3573. tfn

THREE BEDROOM brick at 125 J.B. Avenue, Floydada. Fireplace, screened in patio. The remaining loan can be transferred at 5 1/4% interest. Call Jack Covington, 652-3367. Ltn

MUST SELL: Will accept bids. 3 bedroom, 2 bath, 402 W. Virginia. Call for appointment. 983-3319. Reserve rights to refuse bids not acceptable. Tfn

HOUSE FOR SALE: 2 bath, 3 bedroom. With large shop. 983-2636. 429 W. Mississippi. tfn

FOR SALE: Several nice two and three bedroom houses. Loans can be arranged. Contact Sam Hale at Hale Ins. & Real Estate 983-3261. tfn

3 BEDROOM BRICK home. 1 1/2 baths. 105 J.B. Avenue. Call 983-3288.

TWO BEDROOM HOUSE at 129 W. Jeffie. Call 983-2633. Tfn

NICE 3 BEDROOM: 2 bath home. Modern kitchen, large utility, recently remodeled. Redwood covered patio, basement. Domestic well. 1 mile east of city limits. For information, call Darrell McCandless, 983-2444 or 983-2153. tfn

3 BEDROOM HOUSE, 2 bath, 815 W. Jackson, 983-3617. 6-17

NICE 3 bedroom brick. Remodeled kitchen and dining room. Fully carpeted. Large lot and backyard. Assumable loan. 709 S. Wall. Call 983-3425 after 6. 5-27c

FOR SALE: 2 bedroom house at 318 W. Kentucky. By owner. Call 983-5274 between 4&6 p.m. 5-27p

TWO BEDROOM HOUSE. paneled. Carpet, 327 West Jeffie, 983-3216. 5-13p

HOUSE FOR SALE: 702 S.W. 1st. 3 bdr., 1 bath, utility room. Call 806-652-3742.

3 BEDROOM BRICK HOME — New carpet throughout. Den and large living room, 2 large full baths, utility room. Cedar lined closets. Double garage. Fenced-in yard. 14x18 storage building with triple closets, W.C. Strickland, 296-9480, 1205 Wayland, Plainview. 5-27c

3 BEDROOM, 2 bath, livingroom, den. Must see. Assume loan at 13%. \$29,500. Call for appt. 652-2538.

ONE 1350 sq. ft. 3 bdrm. and bath house with 2-car garage w/electric opener. \$18,500. 410 E. Locust, 652-3784. L6-3p

Someone needs to be living in this new brick home on W. Lee Street, 1,800 square feet. Energy efficient. Two baths, 3 bedrooms, 2 hot water heaters, ceiling fans. Plenty of storage. Paned garage. Walked around the house. Heat/air with fans, grill and many other extras. Call J.K. West, 983-2147.

Garage Sale

BIG GARAGE SALE: 908 S. Leonard, Floydada. Friday and Saturday. Toys, baby clothes, misc. 5-27c

GARAGE SALE: Friday, May 28, from 9 to 6. 817 Cedar, Floydada.

INDOOR SALE — Cookstove, chairs, carpet, chord organ and much more. 613 S. Main, Lockney. 6-3p

Let US have your garage sale for you. 613 South Main, Lockney. Open weekly. Elaine Hardy, 652-2570 Edith Cooper, 652-2201

SHARE THE COST OF LIVING
Give to the American Cancer Society
This space contributed as a public service.

For Sale

“WE SELL SLEEP” Direct Mattress Co. New or renovated. For appointment call City Trim Shop, 983-2332, Floydada. tfn

EARLY AMERICAN love-seat and a cricket style rocker. Both good condition. 652-2379, call after 5 p.m. or weekends. Ltn-c

BROWN, PLAID. Herculan couch. Excellent condition. Two Early American end tables. Crossover toolbox and sun shade for pickup. Call after 5:00, 983-2931. Tfn

TWIN BEDS, mattresses, box springs, frames. Pioneer AM-FM cassette deck stereo/ two speakers for car or pickup. RCA console TV. Call 983-3994 after 5 or weekends. Tfn

FOR SALE: Camper shell for full bed pickup. Like new. Call after 5. 983-3918. Tfn

2 USED PORTABLE B&W TV'S with maintenance agreements. \$50 each. 983-2862. tfn

FOR SALE: Hammond Piper Organ. Call 983-3143 or 983-3767. tfn

FOR SALE: Solid wood blonde bed. Interspring mattress and box springs. Slightly used. Reasonable. 983-2390. Tfn

RELAX — Enjoy golf, swimming, camping. Will sell charter membership to Roaring Springs Ranch Club. Call Lawrence Royal, Plainview, 806-296-7367. 5-27c

WANT TO SELL ten piece living room suite. Call 983-3842 or 983-3858, or come by 106 E. Hallie. 5-27p

FOR SALE: Couch and chair, \$185.00. 983-5041. 5-27c

DINING ROOM SET, table with 4 chairs and china hutch with glass doors. All wood. 206 E. Jeffie. 5-27c

GREEN SHAG CARPET. 6 years old at \$2 square yard or \$150. Also a green 10x14 and a 12x14 at \$40 each. Call 983-2645. 5-27p

Farm Items

FOR SALE: Delinted cotton seed. High germination. Call 983-2028. Tfn

YETTER REPLACEMENT ROTARY HOE WHEELS for ALL POPULAR MAKES. Only \$25.00 Each. Replace BEARINGS only \$3.71 each. Also HARD SURFACED 16 inch CHISEL BROW SWEEPS only \$11.85 each. BROWN-McMURTRY IMPLEMENT COMPANY, SILVERTON, TEXAS. PHONE 806-823-2441. 6-17c

SSAVES AGRICULTURAL BUILDINGS UNDELIVERED ALL STEEL BUILDING Sizes start at 30x40x12 go to 100 wide. 30% thru 50% discounts. Must sell immediately. Easy erection. Call collect. Johnny Peters 512-349-4080. 6-3

Lost & Found

LOST IN ALLSUPS: Wallet — identification and important papers. \$10.00 reward. Call 983-5289. 5-27p

NOTICES

New Physician Hours

South Plains Health Provider
319 S. Main, Floydada
Clinic will be open
8 am to 5 pm
Monday thru Friday
Physician will only be in the clinic Monday thru Friday
afternoons from
1:30 to 4:00
Call 983-5371 for appointments

For Rent

FOR RENT: 1 bedroom apartment. Call Lockney Housing Development 652-2334 or go by 108 N. Main. tfn

FURNISHED TRAILER for summer rent. Available now. Call 983-2173. Off street parking. 6-3c

FOR RENT

The W.R. Daniel, Jr. house in the McCoy Community. Reasonable. Call W.R. Daniel, Sr. 983-3234, Box 148, Floydada, Texas.

ECONOMICAL STORAGE TRY BARKER'S

Jewel Box-Mini Storage and save your time and money. Phone 652-2642. Corner Main & Locust — Lockney, Texas. Barker Building

STORAGE SPACE

BOATS, FURNITURE, ANYTHING, ETC. BY THE MONTH OR SIX MONTH 10% DISCOUNT. West Texas Mini Storage CALL WILSON BOND 983-3573 OR 983-2151

Want to Rent

WANT TO RENT 3 bedroom house in Lockney. Need to move on or before May 31, 1982. Call Joe Zorger between 8 a.m. and 5 p.m. Monday thru Friday at Moore-Rose Funeral Home, Floydada, 1-983-2525. 5-27p

WANT TO BUY OR RENT nice 3 bedroom home in Floydada. Willing to pay deposit. Needed by June 27. Call 983-3307. 5-27p

Wanted

WANT AN OIL & GAS LEASE

ON YOUR ACREAGE? CALL TODAY ON OUR NICKLE. CALL TOLL FREE 1-800-592-1446 9 a.m. to 5 p.m. weekdays
OIL & GAS ASSOCIATES P. O. DRAWER 952 MIDLAND, TEXAS 79702

Want To Buy

WANTED — Acreage with or without house. Anything from pasture land to a cotton field. 3 to 10 acres (or more). Located in the Floydada area. Couple will consider anything. Call 983-3736 after 5:00 p.m.

WANT TO BUY 3-point hitch post hole digger. 983-2300. 5-27p

WANTED TO BUY irrigated or dryland farm in Floyd or surrounding area. Write Box XRO, c/o Hesperian, 111 E. Missouri, Floydada. tfn

WANT TO BUY a Lazy-Boy recliner. City Trim Shop - 983-2332. 6-3c

MUST SELL TO SETTLE ESTATE.

2 Chest of Drawers 2 Dressers with Mirrors
1 B/W Console TV 1 Kitchen Gas Range
1 Philco Refrigerator 1 Wooden Bedstead
1 Leather Couch & Chair
Two Days ONLY, Thursday and Friday, May 27 & 28
TERMS: Cash! Must Be Moved Immediately!
318 W. Kentucky
Floydada, Texas

Farm Services

LAND LEVELING, terraces, bench leveling, and pump pits, all types of dirt work for soil and water conservation. Dewie Parson 983-2646. tfn

CUSTOM APPLICATION OF herbicides. Bill Wisdom, 652-3541. Ltn

Portable disc rolling

Lawson Farm Supply Inc., Floydada 983-3940

Nash Irrigation Supply. Plastic pipelines, aluminum pipe, lake pumps and accessories. 983-5231.

LEAK REPAIR

No job too small or large! Pit Digging. Juarez Backhoe Service 983-3393

Grease Pit Pumping Cess Pool RUBEN DELEON 318 W. Mississippi Floydada, Texas 79235 983-2171 OR 983-2449 Day or Night Mud Holes Septic Tank

FLOYDADA IRON & METAL

We buy Scrap Iron, Junk Cars, Aluminum Cans, Batteries, and sell new and used steel. Location - East Ross Call 983-2305

Services

SHARPENING: All garden tools, lawn mower blades, saws, scissors, etc. Sharpened by professional sharpeners. O.C. Allison, 652-2134. LTFN

15 YEAR OLD WANTS TO MOW your yard. Call 983-3273 Tfn

WILL MOW LAWNS. Call Keith Hancock, 983-2459 after 4:00 p.m. 5-27

WILL DO housecleaning. Call 983-3003. Monday through Thursdays.

I WILL DO CUSTOM QUILTING in my home. 652-2130, Mrs. R.L. Lackey. L5-27c

WILL DO small jobs, lawnmower and engine repair, and small items. Call 652-2637. L6-10p

WANT TO BABY SIT for summer. Call 983-3338. 5-27c

Wall papering and painting Call Nancy Mayo 983-2667 or Rena Turner 983-5130

Sharpen all cutting blades, hand saws, circle saws, garden and yard tools, scissors, knives, drill bits, plane blades. Pick-up service provided locally.

Bill Gibbs 983-3964 106 E. Jeffie

Business Services

ADAMS WELL SERVICE Complete Irrigation Service. All sizes submergible pumps in stock. One day service. 983-5003. tfn

LOCKSMITH: Locks opened. Locks repaired. Keys made for locks that have no keys. Duplicate keys made. Deadbolts installed. 24-hr. Mobile Service throughout area. Don Probasco. Pro-Lock shop, 983-3834.

POOLE WELL SERVICE AND RADIATOR SHOP Irrigation and domestic. 407 E. Houston 983-5610 or 983-2285

“Carpet Need Cleaning?” Let me do the work for you. Dry foam, 10 cents sq. foot. Also home and auto upholstery. Call Jack Moore 983-3033, after 5 p.m. tfn

Insulation

Installed & Guaranteed Free Estimates 22 Years This Area Marr Insulation Lockney 652-3593

Script Printing & Office Supply *Commercial Printing *Office supplies & Furniture *Business Machines 108 S. Main Floydada 983-5131

BICYCLE REPAIR SERVICE

Western Auto Store 201 S. Wall Street Floydada 983-2302

RICHARD WARD

Hochheim Prairie Farm Mutual Insurance Association Non-Deductible Policy at a lower cost Box 15 Mobile 983-5733 Dougherty, TX 79231 Home 983-2973

Employment

HOUSECLEANING AND IRONING help needed one day a week. Must furnish own transportation. Good wages for reliable person. Call 983-5084. 5-27c

LICENSED VOCATIONAL NURSE South Plains Health Provider, a non profit medical organization in Floydada offers a unique opportunity for a licensed vocational nurse to work in a clinical setting atmosphere. Bilingual preferred. Supervisory skills needed. Salary commensurate with qualifications and experience. Working hours 8 to 5 Monday thru Friday. Excellent fringe benefits package. For more information call Walt at 293-8561 in Plainview. An equal opportunity employer.

J.P. WILLIAMS

Ph. 652-2326 WEED CONTROL On Lawns INSECT CONTROL On Trees & Shrubs Control Of BINDWEED, RAGWEED, BLUEWEED & JOHNSON GRASS On Farms

C.A. Lic. No. 22453

Bus. Lic. No. 3106

TURNER REAL ESTATE

983-2635 Farms Ranches Floydada, Texas

Hollis R. Bond Real Estate

107 S. 5th PHONE 983-2151 FLOYDADA

Automotive

1980 GMC PICKUP, short wheel base. 6 cyl. - 4 speed, 12/24 battery, air compressor-tank and hose - 24,000 miles. \$5,250.00. 652-3742. LTFN

1981 CHEVY CHEVETTE. Excellent condition. Call after 6 p.m., 983-5577. 5-27p

1975 GRAN PRIX - Electric doors, windows and seats. AM-FM cassette, cruise, tilt steering wheel. Good condition. Call after 5 - (806) 347-2261. 5-27c

77 Chrysler 4-dr.	\$1500
77 Malibu 4-dr.	\$1950
71 LTD 2-dr.	\$ 850
75 LTD 2-dr.	\$1250
3-75 Malibus 2-dr.	\$1850
72 Vega 2-dr.	\$ 450
72 Olds 2-dr.	\$ 350

W.B. Eakin Car Lot 983-3616 Ralls Highway

Motorcycles

1981 KAWASAKI CSR650. 983-3273 after five. Tfn

Auto Parts & Accessories

E-Z RIDER SHOCKS by Monroe. Buy 3 and the 4th is FREE. Free Installation. Don's Muffler Shop, 210 W. California Floydada, Texas. tfn

68 International Pickup engine, 1100 series, complete V-8 engine, ready to install. Can be seen and heard run at 625 E. Kentucky, Floydada. \$350.00. See Juan. 5-27p

ALTERNATOR & STARTER REPAIRS Norrell Tractor Parts 114 W. Missouri 983-3417

CUSTOM EXHAUST WORK Bruce Williams Specializing in Glass Packs and Turbo Mufflers At DUNS AUTO SERVICE 652-2462

DAN'S AUTO SERVICE DAN TEUTON, Owner Specializing in Automatic Transmission, Motor Tune-Ups, Auto Air Conditioning. General Repair We Have A BRAKE LATHE to handle all passenger car brake drums. See us for complete brake service. Phone 652-2462

Shop Floyd County FIRST!

BOOTSTEPS

To:
PARAMOUNT PUBLISHING COMPANY
1000 West Tenth, Amarillo, Texas 79101

Please send me the following book(s):

- copies BOOTSTEPS, hard cover, \$6.50 each
- copies BOOTSTEPS, paperback, \$4.95 each.
- I enclose 85¢ per book for tax and shipping.

By

TOTAL NUMBER BOOKS ORDERED: _____
TOTAL AMOUNT ENCLOSED: \$ _____

Please autograph my book(s) to: _____

I am attaching a separate sheet for further autograph instructions.

MAIL BOOK(S) TO:

Name _____

Address _____

City _____ State _____ Zip _____

Mildred Crabtree Speer



POET RECOGNIZED — Mrs. Mildred Crabtree Speer, a nominee for Poet Laureate for the State of Texas, was honored recently by the Hi-Plains Chapter of the Poetry Society of Texas. Mrs. Speer, author of "Bootsteps — Poems of the West, Then and Now," is a renowned Panhandle poet, and has been widely published in the state and internationally. The book is illustrated by Eugene H. Brock and has 70 poems with 30 works of art in pen and ink. Mrs. Speer is the aunt of Mrs. John F. Speer of Floydada. Mrs. Speer is currently the alternate Poet Laureate of Texas and resides with her husband John at "September Acres," a retirement community northwest of Amarillo.

[Photo by Henry Bargas]

Baptist Women hold meeting in Bunch' home

Baptist women of the First Baptist Church met in the home of Mrs. W.H. Bunch Wednesday for Bible Study, "Am I to Share My Home Too?"

Mrs. Thelma Crawford was leader of the program. Others assisting with the program were Mrs. T.L. Holland and Mrs. Lorene Newberry. Mrs. Bradley voiced the opening prayer.

Others present for refreshments and the program were Mesdames Eula Parrack, Queen Annie Lawson, Carrie Cline, Vada Meredith, Beulah Denison, Nettie Adams, Iva Benson, Evelyn Latta, Cleo Goins, Josephine Switzer, Lisa Howard, and May Garrett.

Area students named to Presidents and Deans Lists

Margaret Molinar and Tonya Nance of Lockney have been named to the President's List at South Plains College for the 1982 spring semester.

To qualify for placement on the President's List, SPC students must maintain a 4.0 or "straight A" grade point average for the semester. Students on the Dean's Honor List must maintain a minimum grade point average of 3.25. All honor students must enroll for a minimum of 12 semester hours.

"We wish to extend our congratulations to these fine students who have demonstrated the academic excellence which is found at South Plains College," said Dr. Bud Joyner, dean of arts and sciences. "We are always proud of the students who are named to the President's and Dean's Honor Lists at SPC."

A total of 153 students were named to the President's List for the spring, and 242 students were named to the Dean's Honor List.



WHIRLERS SQUARE DANCE CLUB'S GRADUATION DANCE May 30th. Dudley Barber from Lubbock was the

caller. "Square dancing is friendship set to music."

84 LUMBER & HOME CENTER ALL AMERICAN LUMBER SALE

SALE DATES: May 23 through May 31

6' Patio Door
Mill Finish
With Screen
\$133.84

Fencing
Cedar Picket 75¢
Landscape Ties \$3.64 used

Pre-Cut Lumber

Sheathing Plywood 1/2" x 4' x 8' (CDX) \$6.49 ea.	Framing Lumber Construction Grade			
	10	12	14	16
Studs 2" x 4" x 92 3/8" \$1.31 ea.	2x4	2x6	2x8	2x10
	\$1.99	\$2.89	\$2.29	\$3.07
				\$4.64

Galvanized Steel Roofing
Build A Carport Or Deck Cover
\$150.00
Come To Your Nearest 84 Store For Details

Siding
3/8" x 4' x 8'
7/16" x 4' x 8' Hardboard \$10.25 ea.

Shingles
3 Tab \$22.99
100 Sq. Ft. Self Sealing Cont. colors

Drywall
1/2" x 4' x 8' \$2.84

Metal Storage Sheds

10' x 6'	Newburgh.....	\$142.84
10' x 9'	Newburgh.....	\$166.84
5' x 4'	Brentwood.....	\$77.84

Kitchen Cabinets
10% OFF Regular Price
All Stock Items

Insulation
Roll In 3 1/2" R-11 \$13.12
6" R-19 \$23.00
Blow-In..... \$5.69

Power Attic Vent
\$46.84 ea.

Concrete Mix
\$2.69 per bag

Fiberglass Panels
Corrugated

8	\$3.49	\$7.39
10	\$4.29	\$9.24
12	\$5.25	\$10.99

Paint Many Other Paints On Sale
2 Gal. Int./Ext. \$12.29
Latex \$8.39
In Bunches \$8.39
BPS Stain & Wood Pres. \$0.84
Latex Redwood Stain \$3.34

Stanley Tools
15-726 Hand Saw \$3.79
51-616 Wood Handle Hammer..... \$5.19
7088 Chain Door Guard..... \$1.79
4547 Locking Patio Door Bolt..... \$6.24

Barbed Wire
\$22.99 Per Roll

Carpeting
Per Sq. Yd. Carefree Shag..... \$6.69
Paydirt Tweed..... \$3.35
Artificial Grass..... \$2.34

CUSTOM SLAUGHTERING & PROCESSING

HALF LB \$1.29
HIND QUARTER LB \$1.49
FORE QUARTER LB \$1.19
Nice & Lean HAMBURGER \$1.29 LB
ARM ROAST \$1.89 LB
CHUCK ROAST \$1.59 LB
ROUND STEAK \$2.29 LB

Shurfresh 1/2 Gal Carton ICE CREAM \$1.39
Grade A Medium EGGS 59¢
Shurfresh 5 lb bag SUGAR \$1.28
Delsey 4 Roll Pkg TOLIET TISSUE 99¢
6-32 oz. PEPSI COLA \$1.59
Cans 6 Pak PEPSI \$1.49
Ruffles Frito Lay Reg #129 POTATO CHIPS 89¢
Shurfresh 1 Gal MILK \$2.19
TOMATOES 49¢ LB
10 Lb Bag Utility POTATOES \$1.49
BANANAS 33¢ LB
Washington Golden Delicious APPLES 39¢ LB
Yellow ONIONS 19¢ LB

KEETERS GROCERY
7:30 a.m. - 7:30 p.m. 652-2191
We Redeem Food Stamps & WIC Cards
We Reserve The Right To Limit Quantities

BLUE
We Give Circle W Blue Stamps Double on Wednesday

We welcome Mastercard and Visa
84 LUMBER & HOME CENTER
In Plainview



Shurfresh Whole
BONELESS HAMS
\$1.99
lb.



Top Sirloin Boneless
BEEF STEAK
\$3.09
lb.



Fresh Pork Whole Avg. 3-5 lb
SPARE RIBS
\$1.69
lb.



USDA Grade A
SPLIT FRYERS
53¢
lb.

Shurfresh Halves
BONELESS HAMS lb **\$2.09**

Shurfresh All Meat
FRANKS 12 oz **89¢**

Shurfresh
SLICED BACON 16 oz **\$1.79**

Shurfresh
SLICED BOLOGNA 12 oz **\$1.09**

Shurfresh
PORK SAUSAGE 16 oz **\$1.19**

Shurfresh
CANNED HAMS 3 lb **\$6.39**

Shurfresh Jalapeno or Pimento
CHICKEN SALAD 8 oz **99¢**

Shurfresh
SMOKED MEATS 2 for 2½ oz **99¢**



Shop Rite

PRICES GOOD THRU SUNDAY, MAY 30, 1982



Cool Whip
DESERT TOPPING
79¢
8 oz

Health & Beauty Aid Specials

Listerine
MOUTH WASH 18 oz **\$1.99**

Jergens
HAND LOTION 10 oz **\$1.99**

Revlon Flex
SHAMPOO 16 oz **\$1.99**

Revlon Flex
CONDITIONER 16 oz **\$1.99**



Kingsford
CHARCOAL
\$2.29
10 lb Bag



Squeeze Btl.
FRENCH MUSTARD
79¢
16 oz



Gulf Light
CHARCOAL LIGHTER
\$1.49
32 oz

ICE CHEST
Styroform
\$2.49
12 Qt

DIXIE COLD CUPS
11 oz **88¢**

PEPSI COLA
\$1.39
6 pk Cans



COKE
\$1.99
32 oz 6 Pk. Plus Deposit



BAR-B-QUE SAUCE
59¢
18 oz Ass't



Tender Crust
HAMBURGER BUNS
2 for **99¢**
8 pk

\$ DOUBLE \$

Shop Rite

Present this coupon along with any one manufacturer's "cents-off" coupon and get double the savings from Shop Rite. Not to include "retailer", "free" or tobacco coupons or exceed the value of the item. Limit 1 coupon per manufacturer's coupon. Limit 8 Double Coupons per customer. Coupons good at Shop Rite May 27 to May 30, 1982.

Shop Rite

COUPON

\$ DOUBLE \$

Shop Rite

Present this coupon along with any one manufacturer's "cents-off" coupon and get double the savings from Shop Rite. Not to include "retailer", "free" or tobacco coupons or exceed the value of the item. Limit 1 coupon per manufacturer's coupon. Limit 8 Double Coupons per customer. Coupons good at Shop Rite May 27 to May 30, 1982.

Shop Rite

COUPON

\$ DOUBLE \$

Shop Rite

Present this coupon along with any one manufacturer's "cents-off" coupon and get double the savings from Shop Rite. Not to include "retailer", "free" or tobacco coupons or exceed the value of the item. Limit 1 coupon per manufacturer's coupon. Limit 8 Double Coupons per customer. Coupons good at Shop Rite May 27 to May 30, 1982.

Shop Rite

COUPON

\$ DOUBLE \$

Shop Rite

Present this coupon along with any one manufacturer's "cents-off" coupon and get double the savings from Shop Rite. Not to include "retailer", "free" or tobacco coupons or exceed the value of the item. Limit 1 coupon per manufacturer's coupon. Limit 8 Double Coupons per customer. Coupons good at Shop Rite May 27 to May 30, 1982.

Shop Rite

COUPON



Red Ripe Juicy Sweet
WATERMELONS
25¢
lb.



Farm Fresh
SWEET CORN
4 for \$1



Large Slicers
TOMATOES
69¢
lb.



PEACHES
99¢
lb.

SHOP RITE

Each of these advertised items is required to be readily available for sale at or below the advertised price in each store, except as specifically noted in this ad. We reserve the right to limit quantities. None sold to dealers.

Relish Tray Favorite
RED RADISHES

4 for \$1⁰⁰

Summer Time Treat
ORANGES

lb 59¢

Bake'em, Boil'em, Fry'em
POTATOES

lb 39¢

Brighten Up A Salad
GREEN ONIONS

4 for \$1⁰⁰

YELLOW ONIONS

4 lb for \$1⁰⁰

BROCCOLI

lb 69¢

CUCUMBERS

5 for \$1⁰⁰


LEMONS

4 for \$1⁰⁰

Heinz
KEG-O-KETCHUP
\$1²⁹
32 oz



Vlasic Kosher
DILL PICKLES
\$1²⁹
32 oz Jar



Frozen Food Specials

Morton
POT PIES 2 for 99¢
8 oz pkg.

Tree Top Concentrate
APPLE JUICE 12 oz 99¢

Pet Ritz Deep Dish
PIE SHELLS 2 ct. 99¢

Morton
CREAM PIES 14 oz pkg. \$1¹⁹



Eagle Brand
MILK
\$1¹⁹
14 oz



Wolf
HOT DOG CHILI
39¢
10 oz

Delsey
BATH TISSUE
99¢
4 pk.

COCA-COLA
\$1²⁹
2 lt. Bottle

Bordens
ICE CREAM
\$1⁶⁹
½ gal Round

Tender Crust
HOT DOG BUNS
2 for 99¢
8 pk




Libby's
VIENNA SAUSAGE
2 for 88¢
5 oz Cans



Ruffles
POTATO CHIPS
89¢
8 oz Bag

\$ DOUBLE \$

Shop Rite

Present this coupon along with any one manufacturer's "cents-off" coupon and get double the savings from Shop Rite. Not to include "retailer," "free" or tobacco coupons or exceed the value of the item. Limit 1 coupon per manufacturer's coupon. Limit 8 Double Coupons per customer. Coupons good at Shop Rite May 27 to May 30, 1982.

Shop Rite

COUPON

\$ DOUBLE \$

Shop Rite

Present this coupon along with any one manufacturer's "cents-off" coupon and get double the savings from Shop Rite. Not to include "retailer," "free" or tobacco coupons or exceed the value of the item. Limit 1 coupon per manufacturer's coupon. Limit 8 Double Coupons per customer. Coupons good at Shop Rite May 27 to May 30, 1982.

Shop Rite

COUPON

\$ DOUBLE \$

Shop Rite

Present this coupon along with any one manufacturer's "cents-off" coupon and get double the savings from Shop Rite. Not to include "retailer," "free" or tobacco coupons or exceed the value of the item. Limit 1 coupon per manufacturer's coupon. Limit 8 Double Coupons per customer. Coupons good at Shop Rite May 27 to May 30, 1982.

Shop Rite

COUPON

\$ DOUBLE \$

Shop Rite

Present this coupon along with any one manufacturer's "cents-off" coupon and get double the savings from Shop Rite. Not to include "retailer," "free" or tobacco coupons or exceed the value of the item. Limit 1 coupon per manufacturer's coupon. Limit 8 Double Coupons per customer. Coupons good at Shop Rite May 27 to May 30, 1982.

Shop Rite

COUPON

Landscape & Gardening

BY BENNY J. BUTLER

TURFGRASS FOR TEXAS LAWNS

"I have replanted the grass in my front lawn several times. Still my grass does not develop as thick a carpet as my neighbor's. Is my soil bad? Do I have too much shade? Have I planted the wrong grass?" Many homeowners find themselves in the same situation. More often than not, the problem is with the selection of a properly adapted grass or grass variety. In the above situation, the homeowner had planted Floratam, a variety of St. Augustine grass, in a moderately shaded site and compared it to a neighbor's lawn of common St. Augustine grass. Had the homeowner known that, he could have avoided the inconvenience and expense of replanting the lawn. Similar mistakes are made with other grasses.

Selecting the proper grass for a particular site will enhance lawn appearance and reduce maintenance requirements. Poorly adapted turfgrasses do not perform satisfactorily even with good maintenance. Environmental conditions and management practice determine which turfgrass is best adapted to a specific site. Some grasses are suited to shade, others are not. And, some grasses tolerate traffic much better than others.

Texas has a wide range of environmental conditions—from semi-arid western regions to high rainfall regions of East Texas, and from temperate climates in the Texas Panhandle to subtropical regions in South Texas. Most turfgrasses can survive in arid areas with supplemental watering. But, temperature limits the adaptation of many species, in the cooler, drier climates of the Texas Panhandle, cool season grasses such as bluegrass and fescue can be grown. In the sub-tropical areas of South Texas, the warm season grasses such as bermudagrass and St. Augustine are best adapted. Between these extremes, both cool and warm season grasses can be grown in some situations with good management.

Shade, or light intensity, is a major factor in the adaptation of a turfgrass to a specific site. St. Augustine grass, for example, would perform well in an area receiving 50% of full sunlight. Bermudagrass would not be satisfactory under the same conditions. However, even shade tolerant grasses require 30 to 40% sunlight.

Interactions between environmental conditions such as temperature and shade can also be important. Tall fescue, for example, would not perform well in Central Texas in full sun, but in 50% shade it might do very well. Likewise, temperature and moisture may interact to influence the adaptability of a turfgrass. Bluegrass would not be a good grass for East Texas lawns because of the combination of high temperatures and high humidity. But, bluegrass can be grown in Texas Panhandle where temperatures may be just as high, but humidity is much lower.

Soils also influence the adaptability of turfgrasses to a particular site. The

sandy, acid soils of East Texas are well suited to carpetgrass and centipedegrass. The heavy (clay or clay loam) alkaline soils of West Texas are best suited to buffalograss. Other grasses such as zoysia, bermuda, and St. Augustine can be successfully grown on all soils.

Management practices may have an overriding influence on turfgrass selection. If a homeowner does not plan to water a lawn, a drought tolerant grass such as bermudagrass or buffalograss is required. If you don't want to mow your lawn more than twice a month, then only the low maintenance grasses will meet your requirements. In Table 1 three levels of maintenance are included. A high level of maintenance requires frequent watering, at least weekly mowing, several applications of fertilizer each year, and pest control. A low level of maintenance requires no supplemental watering, monthly mowing perhaps annual fertilization, and no pest control.

To select a turfgrass, use Table 1 to identify grasses that meet all requirements. Finally, select the variety that is best adapted in terms of environment and management to that site. For example, to select a grass for a shaded site in Amarillo, review descriptions of grasses to arid, low winter temperature, and shade conditions. Only zoysia, tall fescue and bluegrass meet those conditions. You could then select one of those grasses, or a grass mixture in the case of bluegrass and perennial ryegrass.

GRASS DESCRIPTIONS

* Common bermudagrass (*Cynodon dactylon*). Bermudagrass was introduced into the U.S. in the 1700's from South Africa. It has since become naturalized throughout the southern U.S. Common bermudagrass is a medium-textured turfgrass with a creeping growth habit. It spreads by rhizomes and stolons and is the only bermudagrass that can be established from seed. It spreads rapidly during late spring and summer and goes dormant after the first hard frost. It is straw-colored during the dormant period and resumes growth when temperatures are above 70 degrees for several days.

Common bermudagrass tolerates heavy traffic, moderate salinity, and does mowing; but, it has very poor shade tolerance and is susceptible to winterkill where winter temperatures drop below 10 degrees. Common bermudagrass has a number of pest problems (leaf spot diseases, armyworms, and white grubs), but its rapid rate of recovery reduces the need for pesticides. It performs best under a moderate level of maintenance, but it can be used as a low maintenance grass in parks, lawns, and along roadsides.

* Hybrid bermudagrass (*Cynodon* spp.). Most of the hybrid bermudagrass have been developed in the last 25 years. In general, each hybrid bermuda was developed for a specific purpose. All must be established from sprigs or sod. They develop a fine to medium texture and require a higher level of maintenance than common bermudagrass. Fertilization, mowing, and watering requirements are all greater than for common bermudagrass. The fine textured varieties including Tifgreen (328), Tifward, and Pee Dee are best suited for golf greens. Other varieties including Tifway (419), Santa Ana, Sunturf, Ormond, and Texturf-10 are best suited for lawns and athletic fields. Several hybrids bermudagrass including Midway, Midiron, and U-3 have superior cold tolerance.

* St. Augustine grass (*Stenotaphrum secundatum*). St. Augustine grass, often incorrectly called carpetgrass, is native to the Gulf Coast area of Texas. It is a coarse textured, warm season perennial grass that spreads by large creeping stolons. It is largely propagated from sod or sod plugs although it may be established from seed. St. Augustine grass is limited to areas with mid winter temperatures. It is the most shade tolerant of the warm season grasses. St. Augustine has good fall color retention, but goes dormant after several hard frosts.

St. Augustine requires a moderate level of maintenance. It has a number of serious pest problems including brown patch, chinch bugs, white grubs, and St. Augustine Decline. Several varieties of St. Augustine grass are available including Texas common, Floratam, and Raleigh. Floratam and Raleigh are resistant to St. Augustine and Floratam is also resistant to chinch bugs. However, Floratam is not as cold tolerant or shade tolerant as Raleigh or common St. Augustine grass.

* Zoysiagrass (*Zoysia* spp.). Zoysia was introduced into the U.S. from Southeast Asia in 1911. It is a warm season perennial that spreads by creeping stolons and rhizomes. The texture of zoysiagrass ranges from very fine (*Z. tenuifolia*) to fine (*Z. matrella*) to coarse (*Z. japonica*). The leaf blades of zoysia are much stiffer than those of

other warm season grasses. The improved zoysiagrasses must be established from sprigs or sod. Zoysia turns brown after the first hard frost, but is among the first grasses to green up in the spring. Zoysia has moderate shade tolerance, good drought tolerance, and excellent wear tolerance. But, zoysia is very slow to become established from sprigs or sod plugs.

The major varieties of zoysia for turf use are Meyer and Emerald. Meyer is a coarse textured variety used for lawns. Emerald is a medium textured grass used for lawns and golf courses. *Z. tenuifolia* is a very fine textured variety used primarily as a ground cover for difficult to mow areas on a landscape. *Z. tenuifolia* is not as cold tolerant as the other varieties of zoysia.

* Centipedegrass (*Eremochloa ophiuroides*). Centipedegrass is native to China and Southeast Asia. It was introduced into the U.S. in 1916 and has become widely grown in the Southeastern U.S. In Texas, it is best adapted to the sandy, acid soils in the eastern region of the state. On heavy textured, alkaline soils it develops severe iron chlorosis. Centipede is a low maintenance turfgrass ideally suited for lawns. It is a warm season perennial grass that spreads by stolons. The stolons produce rather short, upright stems resembling a centipede — thus the name centipedegrass. It produces seed and is readily propagated from seed. It is coarse textured and has a yellowish green color.

Centipedegrass forms a dense turf and has a rather slow rate of growth. It requires less mowing than St. Augustine or bermudagrass. Centipede turns a brown color after a hard frost, but recovers whenever temperatures are favorable. It is moderately shade tolerant, but grown best in full sun.

* Buffalograss (*Bushloe dactyloides*). Buffalograss is a native warm season perennial grass widely used for turf in the western region of Texas. It spreads by creeping stolons and can be propagated by seed. Buffalograss is one of the few grass species having separate male and female plants with the female plants producing a bur that contains the seed.

Buffalograss is not shade tolerant and has poor wear tolerance. It has excellent cold and drought tolerance. Although it develops a dry, straw-colored appearance during prolonged dry periods, it recovers after rainfall or irrigation. It requires little mowing and is well suited to low maintenance situations such as parks and roadsides.

* Carpetgrass (*Axonopus affinis*). Carpetgrass is a warm season perennial grass introduced into the U.S. from the West Indies in the early 1800's. Carpetgrass spreads by creeping, laterally compressed stolons. In contrast to St. Augustine, carpetgrass has blunt, rounded leaf tips. Also, the leaf blade makes about a 45 degree angle with the stem; whereas the blades of St. Augustine emerge at a 90 degree angle from the stem. In addition, the seedstalks of carpetgrass are 10 to 15 inches tall and forked; whereas the seedstalks of St. Augustine form a flattened, corky stem with the seed embedded on one side. Carpetgrass seed is commercially available; St. Augustine seed is not.

Carpetgrass is adapted to wet, poorly drained soils in East Texas. It grows well with little or no fertilization and has very few pest problems. It is more shade tolerant than bermuda, but less than St. Augustine. Carpet-

grass can be easily established from seed. Many homeowners think they are buying St. Augustine seed when in fact, it is carpetgrass seed. Carpetgrass does not produce a thick, dark green turf like St. Augustine. And, carpetgrass produces numerous tall seedstalks all summer that require weekly mowing to maintain a neat appearance.

* Tall fescue (*Festuca arundinacea*). Tall fescue is a cool season perennial bunch grass. In thin stands individual plants develop a rather broad crown through abundant tillering. Occasionally, plants develop a few short, thick rhizomes. Tall fescue is coarse textured, shade tolerant, and moderately drought resistant.

In Texas, tall fescue is best adapted to the far west and panhandle regions. Although it can be grown in north and central Texas in moderately shade sites. Kentucky-31, Kemwell, and Rebel are varieties suited for lawn use. All varieties are established from seed.

* Kentucky bluegrass (*Poa pratensis*). Kentucky bluegrass is the most popular lawn grass in the U.S. In Texas, its adaptation is limited to the far west and panhandle regions. Kentucky bluegrass is a cool season perennial bunch grass that spreads by tillers and rhizomes. It is a fine textured grass that forms a dense, dark green turf. Kentucky bluegrass is not shade or drought tolerant and has several serious pest problems.

Kentucky bluegrass can be established from seed or sod. Planting an adapted variety of bluegrass is very important. Delphi, Bristol, Baron, Victoria, Vantage, and Glade are among the best adapted varieties for Texas.

* Perennial ryegrass (*Lolium perenne*). Perennial ryegrass is a cool season bunch grass that behaves as an annual or short-lived perennial depending on environmental conditions. It is a fine textured grass characterized by rapid establishment and fast growth during the seedling stage. In Texas, it behaves as an annual in all regions except the panhandle where it survives in moderately shaded sites.

In lawns it can be used for a temporary winter cover or in a mixture with Kentucky bluegrass to provide a fast cover. Perennial ryegrass is established from seed. Varieties include Pennfien, Manhattan, Birdie, Derby, Yorktown, Citatin, and Caravelle.

Turf quality can be improved and problems reduced by selecting a grass adapted to a particular site. In low maintenance situations where water may be limited, only a few turfgrasses are adapted. In well maintained situations, environmental conditions influence the selection of a grass. Before selecting a grass, analyze a site to define conditions that might affect the adaptability of a turfgrass to the location. Temperature extremes, drought, shade, salinity, soils, and management influence the adaptations of a turfgrass.

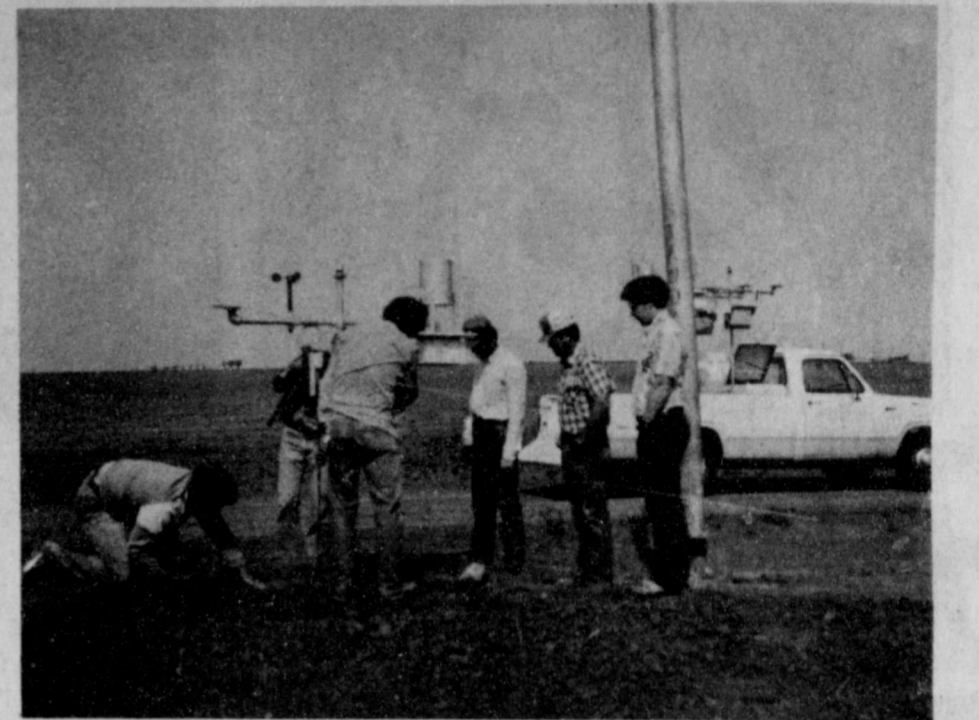
Selecting the best turfgrass for a site does not guarantee success. But, planting a grass not adapted to a site guarantees failure. An adapted turfgrass properly maintained will provide a beautiful lawn. Also, less money will be spent on lawn maintenance where adapted turfgrasses are used.

References to commercial products or trade names are made with the understanding that no discrimination is intended and no endorsement by the Cooperative Extension Service is implied.

Table 1. Selection Criteria for Turfgrasses

ENVIRONMENTAL CONDITIONS	LEVEL OF MAINTENANCE REQUIRED		
	HIGH	MODERATE	LOW
Arid Conditions	1, 2, 3, 4, 8, 9, 11	1, 4, 6, 8	6
Low Winter Temperatures (Below 10° min.)	2, 4, 8, 9, 10	4, 6, 8	6, 8
High Summer Temperatures - Low Humidity	1, 2, 3, 4, 8, 9, 10	1, 3, 4, 6, 8	6
High Summer Temperatures - High Humidity	1, 2, 3, 4	1, 3, 4, 5	1, 3, 5, 7
Shade (Less Than 80% Sun)	3, 4, 8, 9, 10	3, 4, 5, 8	3, 5, 7, 8
Saline Conditions	1, 2, 3	1, 2	1

1 - Bermuda (Common)	6 - Buffalo
2 - Bermuda (Hybrid)	7 - Carpet
3 - St. Augustine	8 - Tall Fescue
4 - Zoysia	9 - Kentucky bluegrass
5 - Centipede	10 - Perennial ryegrass



LOOKING ON as the three Texas Agricultural Experiment station researchers [on the left] assemble the new weather station on the Warren Mitchell Farm west of Lockney are [right to left]: Benny Butler, Floyd County Extension Agent, Warren Mitchell, Lockney farmer, and Jett Major, Floyd County Extension Agent.

Producers invited to Insect Scouting Workshop

Cotton, corn and sorghum producers in Floyd County are receiving a special invitation this year to take part in the annual High Plains Scout Training Workshop to increase the effectiveness of their pest management programs.

According to Jett Major, Floyd County Extension Agent, the workshop will be held Tuesday and Wednesday, June 1-2, at the Hale County Agricultural Center in Plainview. The center is on U.S. 87 Business Route south of the city.

The workshop, conducted by the Texas Agricultural Extension Service, was first held in 1973 to train scouts in the pest management programs conducted by Extension. In subsequent years, it has expanded to include scouts employed by consultants, aerial applicators, and others, as well as producers who want to learn how to scout their own fields of insects. The workshop focuses on perfecting skills in identifying crop pests and making timely pest management decisions which can protect investments and yield and hold down production costs.

The June 1 session opens at 8:30 a.m. with Dr. Pat Morrison outlining the scope of the workshop and explaining pest management concepts. Also on the morning program are Dr. Dale Pennington, Extension soil chemist; Dr. James Supak, Extension cotton agronomist; Dr. Robert Berry, Extension plant pathologist; and Dr. Jim Leser,

cotton Extension Entomologist.

The afternoon program will include Dr. Kirby W. Huffman, Extension agronomist; Dr. Pat Morrison, Extension entomologist; and Allen E. Knutson, Castro County Extension agent-entomology, who will discuss corn and sorghum pests.

The June 2 session, beginning at 9 a.m. will focus on scouting procedures and reports. Instructors will be county Extension agents-entomology Greg Cronholm of Hale County and Allen Knutson.

During the afternoon, participants will receive practical training on insect identification and scouting procedures during a field session. Educational programs conducted by the Texas Agricultural Extension Service serve people of all ages regardless of socioeconomic level, race, color, sex, religion or national origin.

MUNCY ELEVATOR
Lockney 652-3100

CONSUMERS FUEL ASSOC.
COOP
Lockney 652-3336

PRODUCTION CREDIT ASSOC.
Floydada 983-2454

BROWN'S IMPLEMENT INC.
Floydada 983-2281

FLOYD COUNTY FARM BUREAU
Lockney 652-2242
Floydada 983-3772

FLOYDADA IMPLEMENT CO.
MF
Floydada 983-3584

THE TYE COMPANY
tye
Lockney 652-3367

FLOYD COUNTY IMPLEMENT
JOHN DEERE
Floydada 983-3732

CASE POWER & EQUIPMENT
case
Floydada 983-2836

FIRST NATIONAL BANK OF FLOYDADA
1ST
Floydada 983-3717

SUN-VUE FERTILIZER
SUN-VUE
Lockney 652-3362

ADAM'S WELL SERVICE
Floydada 983-5003

FEDERAL LAND BANK ASSOC. OF FLOYDADA
Federal LAND BANK Association
Floydada 983-2480

RUSSELL'S EQUIPMENT & SUPPLY
Russell's
Floydada 983-3751

FLOYDADA COOPERATIVE GINS INC.
COOP
Floydada 983-2884

MARTIN & COMPANY
Floydada 983-3713